

San Diego State Aztecs

2018-19 Record: 8-6 (H: 6-2; A: 1-2; N: 1-2); 0-0 MW
12 Postseason Berths in Last 13 Years, 11-Time MW Champions

- The Aztecs have won at least 19 games in 13 straight seasons, which is tied for the 7th-longest active streak in the nation.
- San Diego State has advanced to postseason play in 12 of the last 13 seasons (2006 NCAA, 2007-09 NIT, 2010-15 NCAA, 2016 NIT, 2018 NCAA).

Trends:

- SDSU is 6-0 this season and 26-3 under Brian Dutcher when holding the opposition to 45.0 percent or less FG shooting.
- SDSU 27-3 last 30x when owing a higher FG pct.
- The Aztecs are 22-0 in the Dutcher era when holding opponents to 45 percent FG shooting and 35 percent 3FG shooting.

	PPG	RPG	APG	FG	3FG	FT	
0 Devin Watson <i>Guard, 6-1, 183, Sr.-1L</i> Oceanside, Calif. (San Francisco)	'18-19 15.9 MWC 24.0	2.8 3.0	5.2 3.0	42.9 50.0	39.4 28.6	74.2 80.0	1 of 7 players in the nation avg. 15 pts., 5 asts., 2.5 3FGM per game... Scored or assisted on 40.4 of SDSU FGs... Career numbers: 1,496 points, 251 rebounds, 421 assists... 77 career double-figure scoring games, including 12 of 14 TY... 29 career 20+pt. games... 37 asts. in last 6 gms... 6 gms. this season w/7+ assists... SDSU is 16-3 when he shoots 40 pct. or better and has two TO or less.
2 Adam Seiko / SAY-ko / <i>Guard, 6-3, 195, Fr.-RS</i> Boston, Mass. (Sierra Canyon HS (Calif.))	'18-19 3.1 MWC 0.0	1.0 0.0	0.6 1.0	45.0 0/1	7/15 0/1	83.3 0/0	Played in 13 of 14 games this season (167 mins.)... Scored in 4 of last 5 gms... Set CH for pts. (13) and rebs. (5) against CSUDH... Is 7-of-15 from 3-pt. range (4.67)... Coming off of a RS season... Three-star signee by Rivals... Sierra Canyon went 27-3, and was ranked No. 5 in California and No. 15 nationally his senior year... Strong guard who can shoot the three-point shot.
3 Aguek Arop / uh-GWUK uh-ROPE / <i>Forward, 6-6, 220, Fr.-HS</i> Omaha, Neb. (Omaha South HS)	'18-19 2.5 MWC 0.0	2.7 1.0	0.6 1.0	36.7 0/2	1/7 0/1	7/8 0/0	Played 11+ mins. in 7 of last 9 games... 26 pts. in last 7 gms. (83 mins.)... A 6-6 forward with a near 7-foot wingspan that is expected to see significant time this season... Tremendous defender and a gifted athlete that can play above the rim... Good mid-range game and is deadly from 15-foot and in... Has been hindered a bit during camp due to a hip injury... Very intelligent on the floor who has helped the other freshman adjust.
4 Michael Sohikish / so-HE-kish / <i>Guard, 5-9, 160, Sr.-SQ</i> San Diego, Calif. (University City HS)	'18-19 0.3 MWC	0.2	0.5	0/2	0/1	2/2	Walk-on who has seen action in 17 career games, including six games this season... Scored first points of the season on a pair of free throws against CSUDH (12-12-18)... Fifth-year in the program... A civil engineer major who served as a student-manager before arriving playing time... Career totals: 10 points, 3 rebounds, 5 assists, 4 steals, 43 minutes and just 3 turnover.
5 Jalen McDaniels <i>Forward, 6-10, 195, So.-1L</i> Federal Way, Wash. (Federal Way HS)	'18-19 14.7 MWC 14.0	7.3 5.0	2.6 1.0	46.7 46.2	30.3 0/2	70.2 2/2	10+ pts. in 14 of the last 15 games... Multiple assists in 8 of last 9 games (25)... Career FG pct. 53.4... CH 26 pts., 8 rebs., 3 blocked shots vs. Xavier... Against UAPB, became 4th SDSU player in last 23 seasons to post 15+ pts., 9+ rebs., 5+ asts. and 3+ stls in a game... One of 4 Fr. in the country last season to post 10.5 pts., 7.5 rebs. and shoot 58+ pct. from the field last season.
11 Matt Mitchell <i>Forward, 6-6, 240, So.-1L</i> Riverside, Calif. (Roosevelt HS)	'18-19 12.2 MWC 6.0	3.6 2.0	1.9 1.0	47.1 3/5	32.7 0/1	72.7 0/0	47 career starts (46 straight)... 28 gms. w/ at least 10+ pts... 5 20-point games (3 this season, 2 of last 5 gms)... 52 3FG in last 38 gms... Avg. 3.7 FTA/game... Made 15 straight FTA at one point this season... Has 69 points in 48 possessions (1.44 ppp) around the basket (includes post-ups)... SDSU is 18-6 when he has multiple assists... Has 517 points in his career.
20 Jordan Schakel / SHACK-ull / <i>Guard, 6-6, 200, So.-1L</i> Torrance, Calif. (Bishop Montgomery HS)	'18-19 8.7 MWC 8.0	4.4 2.0	1.4 2.0	45.5 2/6	44.8 1/5	89.7 3/4	1 of 14 players in nation to post following numbers 45 pct. FG, 44 pct. 3FG, 89 pct. FT (minimum 75 FGA)... Has 6 double-digit scoring games in 47-game career (has 5 in last 13 games)... 2nd Aztec in last 22 seasons to produce 3 3FGM, 7 rebs. and 100 pct. FT game (Jamaal Franklin)... T-32nd in the nation in FT pct. 89.7 pct. (min. 29 FTA)... Last season: 106 pts., this season: 122 pts.
23 Ed Chang <i>Forward, 6-8, 215, Fr.-HS</i> Papillion, Neb. (Garfield HS (Wash.))	'18-19 1.3 CMWC 0.0	0.9 1.0	0.4 1.0	3/9 0/1	3/8 0/1	0/0 0/0	Played 33 minutes total in 7 gms... All 3 FGM are from three-point range... Tremendous shooter (once made nine 3FG in one half of a HS game)... Did not play in high school last season... Attended Papillion-La Vista High in Papillion, Neb. for three years as a prep before finishing at Garfield High in Seattle... Was a two-time all-state selection in Nebraska... Tabbed a four-star recruit by ESPN.
24 Nolan Narain <i>Forward, 6-10, 230, Jr.-2L</i> Hamilton, Ontario, Canada (La Lumiere School (Ind.))	'18-19 3.4 MWC 0.0	2.6 1.0	0.5 0.0	68.0 0/0	2/3 0/0	50.0 0/0	Leads the MW and ranks T-50th nationally in FG pct. (min. 25 FGA)... Played in 45 career games, including 13 this season... Starting fourth year in the program (redshirt in 2015-16 campaign)... Played the best basketball of his career near the end of last season... Scored a career-high 18 points in 18 minutes of action against UW (2-14-18)... In a five-game stretch late last season, he had 43 pts. and 14 rebs.
31 Nathan Mensah / MEN-sah / <i>Forward, 6-10, 225, Fr.-HS</i> Labadi, Accra, Ghana (Findlay Prep (Nev.))	'18-19 4.9 MWC 4.0	4.9 3.0	0.4 0.0	55.8 2/5	0/0 0/0	64.5 0/0	Only 6 players in the country have more rebounds than his 69 in fewer minutes (228)... Avg. 11.9 pts. and 12.1 rebs. per 40 mins... Played 10+ mins. in all 14 gms... Has 49 rebs. in last 9 gms. (156 mins.)... An injury on the middle finger of his left (shooting) hand forced him to miss about four weeks... He was cleared on Oct. 31... He is playing with a hard brace on that finger.
35 Joel Mensah / MEN-sah / <i>Forward, 6-10, 215, Fr.-HS</i> Korle Gonno, Accra, Ghana (JSerra Catholic HS (Calif.))	'18-19 1.8 MWC 4.0	1.0 1.0	0.0 0.0	22.2 1/1	0/0 0/0	6/9 2/2	Played 47 minutes, action in 8 of 13 gms... A hard working center expected to see the floor this season... Is a good shooter with range out to 15 feet... Has a very good motor... Attended JSerra Catholic High in Capistrano, Calif... Averaged 15.9 points, 8.8 rebounds, 1.2 steals and 1.4 blocked shots in his senior season... Nathan and Joel Mensah are not related.
42 Jeremy Hemsley <i>Guard, 6-3, 195, Sr.-3L</i> Rancho Cucamonga, Calif. (Damien HS)	'18-19 9.6 MWC 4.0	2.9 3.0	2.0 0.0	41.4 1/6	38.5 0/3	66.7 2/4	16th in school history w/ 1,222 career points (10.6 ppg)... 134 career treys (9th in SDSU history)... Last 9 gms. 3FGs: 12-27 (44.4 pct.)... Started 77 of 115 games in his career... SDSU is 19-3 when he has at least four assists and 37-15 when he has one TO or less... Has 9 career 20-pt. games... Double figures in scoring 64x... Career numbers: 1,222 points, 229 assists, 263 rebounds, 83 stls., 134 3FGs.

red indicates probable starter, black indicates reserve, outline indicates player is injured; gold indicates player is not expected to play.

SDSU BROADCAST ROSTER

Wyoming at San Diego State | Viejas Arena | San Diego, Calif. | Jan. 8, 2019



0
DEVIN WATSON

Guard
6-1, 183, Senior-1L
Oceanside, Calif.
Univ. of San Francisco

PPG: 15.9 RPG: 2.8 APG: 5.2
FG%: 42.9 3FG: 39.4 FT%: 74.2



2
ADAM SEIKO

Guard
6-3, 195, Freshman-RS
Boston, Mass.
Sierra Canyon High (Calif.)

PPG: 3.1 RPG: 1.0 APG: 0.6
FG%: 45.0 3FG: 46.7 FT%: 83.3



3
AGUEK AROP

Forward
6-6, 220, Freshman-HS
Omaha, Neb.
Omaha South High

PPG: 2.5 RPG: 2.7 APG: 0.6
FG%: 36.7 3FG: 1/7 FT%: 7/8



4
MICHAEL SOHIKISH

Guard
5-9, 160, Senior-SQ
San Diego, Calif.
University City High

PPG: 0.3 RPG: 0.2 APG: 0.5
FG%: 0/2 3FG: 0/1 FT%: 2/2



5
JALEN MCDANIELS

Forward
6-10, 195, Sophomore-1L
Federal Way, Wash.
Federal Way High

PPG: 14.7 RPG: 7.3 APG: 2.6
FG%: 46.7 3FG: 30.3 FT%: 70.2



11
MATT MITCHELL

Forward
6-6, 230, Sophomore-1L
Riverside, Calif.
Roosevelt High

PPG: 12.2 RPG: 3.6 APG: 1.9
FG%: 47.1 3FG: 32.7 FT%: 72.7



20
JORDAN SCHAKEL

Guard
6-6, 200, Sophomore-1L
Torrance, Calif.
Bishop Montgomery High

PPG: 8.7 RPG: 4.4 APG: 1.4
FG%: 45.5 3FG: 44.8 FT%: 89.7



23
ED CHANG

Forward
6-8, 215, Freshman-HS
Papillion, Neb.
Garfield High (Wash.)

PPG: 1.3 RPG: 0.9 APG: 0.4
FG%: 3/9 3FG: 3/8 FT%: 0/0



24
NOLAN NARAIN

Forward
6-10, 230, Junior-2L
Hamilton, Ontario, Canada
La Lumiere School (Ind.)

PPG: 3.4 RPG: 2.6 APG: 0.5
FG%: 68.0 3FG: 2/3 FT%: 50.0



31
NATHAN MENSAH

Forward
6-10, 225, Freshman-HS
Labadi, Accra, Ghana
Findlay Prep (Nev.)

PPG: 4.9 RPG: 4.9 APG: 0.4
FG%: 55.8 3FG: 0/0 FT%: 64.5



35
JOEL MENSAH

Forward
6-10, 215, Freshman-HS
Korle Gonno, Accra, Ghana
JSerra Catholic High (Calif.)

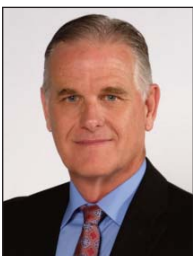
PPG: 1.8 RPG: 1.0 APG: 0.0
FG%: 4/18 3FG: 0/0 FT%: 6/9



42
JEREMY HEMSLEY

Guard
6-3, 195, Senior-3L
Rancho Cucamonga, Calif.
Damien High

PPG: 9.6 RPG: 2.9 APG: 2.0
FG%: 41.4 3FG: 38.5 FT%: 66.7

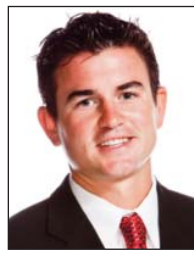


HEAD COACH
BRIAN DUTCHER

- 2nd season as head coach
- 20th year at SDSU
- 1989 NCAA champion
- 3 NCAA title game appearances
- 17 NCAA tournament appearances
- 11-time Mountain West champion



ASSISTANT COACH
ROD PALMER



ASSISTANT COACH
DAVE VELASQUEZ



ASSISTANT COACH
JAY MORRIS



ASST. TO HEAD COACH
MARK FISHER