

# San Diego State Aztecs

2018-19 Record: 5-2 (H: 3-0; A: 1-0; N: 1-2); 0-0 MW  
12 Postseason Berths in Last 13 Years, 11-Time MW Champions

- The Aztecs have won at least 19 games in 13 straight seasons, which is tied for the 7th-longest active streak in the nation.
- San Diego State has advanced to postseason play in 12 of the last 13 seasons (2006 NCAA, 2007-09 NIT, 2010-15 NCAA, 2016 NIT, 2018 NCAA).

- Trends:**
- SDSU is 13th nationally in winning percentage since the beginning of 2010-11.
  - San Diego State has won 70 straight games when shooting 50 percent or better from the field.
  - The Aztecs have won 15 straight when having a higher FG pct.

	PPG	RPG	APG	FG	3FG	FT	
<b>0</b> <b>Devin Watson</b> <i>Guard, 6-1, 183, Sr.-1L</i> <i>Oceanside, Calif. (San Francisco)</i>	'18-19 15.9 Career 13.7	3.0 2.3	4.7 3.8	43.9 41.0	41.2 35.4	78.3 74.0	1 of 8 players in the nation avg. 4+ asts. & 3 3FGM... Career numbers: 1,384 points, 233 rebounds, 381 assists... 71 career double-figure scoring games, including 23 of last 29... Last 23 gms: 47-107 3FG (.439)... 26 career 20+pt. games... 3FGM in 10 str. gms... SDSU is 19-5 when he shoots 40 percent or better from the field and 15-2 when he shoots 40 percent or better and has two TO or less.
<b>2</b> <b>Adam Seiko</b> / SAY-ko / <i>Guard, 6-3, 195, Fr.-RS</i> <i>Boston, Mass. (Sierra Canyon HS (Calif.))</i>	'18-19 2.6 Career same as season	0.7	0.6	4/9	3/6	70.0	One of seven players to see action in every game (77 mins.)... Career-high eight points (2-for- 3FGs) vs. Duke... Coming off of a redshirt season... Three-star signee by Rivals... Sierra Canyon went 27-3, and was ranked No. 5 in California and No. 15 nationally his senior year... Known for defending opposing team's best perimeter player in high school... Strong guard who can shoot the three-point shot.
<b>3</b> <b>Aguek Arop</b> / uh-GWUK uh-ROPE / <i>Forward, 6-6, 220, Fr.-HS</i> <i>Omaha, Neb. (Omaha South HS)</i>	'18-19 1.8 Career same as season	3.2	0.6	4/10	0/2	3/4	CH 7 pts., Sat. at ISU... Played 12+ mins. each of the last two games... A 6-6 forward with a near 7-foot wingspan that is expected to see significant time this season... Tremendous defender and a gifted athlete that can play above the rim... Good mid-range game and is deadly from 15-feet and in... Has been hindered a bit during camp due to a hip injury... Very intelligent on the floor who has helped the other freshman adjust.
<b>4</b> <b>Michael Sohikish</b> / so-HE-kish / <i>Guard, 5-9, 160, Sr.-SQ</i> <i>San Diego, Calif. (University City HS)</i>	'18-19 0.0 Career 0.5	0.0 0.1	0.3 0.2	0/2 3/11	0/1 0/5	0/0 2/4	Walk-on who has seen action in 15 career games, including four games this season... Fifth-year in the program... A civil engineer major who served as a student-manager before earning playing time... Career totals: 8 points, 2 rebounds, 3 assist, 36 minutes and just 3 turnover... Saw action in his first Mountain West game vs. Utah State (12-30-17).
<b>5</b> <b>Jalen McDaniels</b> <i>Forward, 6-10, 195, So.-1L</i> <i>Federal Way, Wash. (Federal Way HS)</i>	'18-19 14.6 Career 11.2	8.0 7.6	2.4 1.2	46.4 55.2	31.3 25.7	65.5 76.1	CH 8 str. gms with 10+ pts. (15.0)... Multiple assists in consecutive games for the first time in his career (6)... Career FG pct. 55.2... CH 26 pts., 8 rebs., 3 blocked shots vs. Xavier... Against UAPB, became 4th SDSU player in last 23 seasons to post 15+ pts., 9+ rebs., 5+ asts. and 3+ stls in a game (Franklin, Leonard, Tapley)... One of 4 Fr. in the country last season to post 10.5 pts., 7.5 rebs. and shoot 58+ pct. from the field last season.
<b>11</b> <b>Matt Mitchell</b> <i>Forward, 6-6, 240, So.-1L</i> <i>Riverside, Calif. (Roosevelt HS)</i>	'18-19 12.7 Career 10.9	4.0 4.0	1.7 1.7	42.9 44.5	29.0 34.5	76.5 76.5	40 career starts (39 straight)... 25 gms. w/at least 10+ pts... 44 3FG in last 31 gms... 17 of last 20 gms. w/a 3FG when attempting 3FG... Made 15 straight FTA at one point this season... SDSU is 15-4 when he has multiple assists... Averaged the third most minutes on the team as a freshman last season... Will likely see more time on the low post this season.
<b>20</b> <b>Jordan Schakel</b> / SHACK-ull / <i>Guard, 6-6, 200, So.-1L</i> <i>Torrance, Calif. (Bishop Montgomery HS)</i>	'18-19 9.6 Career 4.3	4.4 2.5	1.0 0.7	51.4 38.0	50.0 38.5	94.1 80.6	Has 4 double-digit scoring games in 40-game career (has 4 in last 6 games... 2nd Aztec in last 22 seasons to produce 3 3FGM, 7 rebs. and 100 pct. FT game (Jamaal Franklin)... 1 TO or less in 33 straight games (9 TO, 512 mins.)... His effort in workouts has reached legendary status... Great rebounder for his size... Averaged 13.8 mins. and played in all 33 games as a Fr... 9 TOs last season (455 mins.).
<b>23</b> <b>Ed Chang</b> <i>Forward, 6-8, 215, Fr.-HS</i> <i>Papillion, Neb. (Garfield HS (Wash.))</i>	'18-19 1.5 Career same as season	0.3	0.3	2/4	2/4	0/0	Played 15 minutes total in 4 gms... Tremendous shooter (once made nine 3FG in one half of a HS game)... Did not play in high school last season... Attended Papillion-La Vista High in Papillion, Neb. For three years as a prep before finishing at Garfield High in Seattle... Was a two-time all-state selection in Nebraska... Tabbed a four-star recruit by ESPN.
<b>24</b> <b>Nolan Narain</b> <i>Forward, 6-10, 230, Jr.-2L</i> <i>Hamilton, Ontario, Canada (La Lumiere School (Ind.))</i>	'18-19 4.5 Career 3.9	3.7 2.0	0.7 0.3	66.7 61.9	50.0 35.3	60.0 63.6	Played in 38 career games, including six this season... Starting fourth year in the program (redshirt in 2015-16 campaign)... Played the best basketball of his career near the end of last season... Scored a career-high 18 points in 18 minutes of action against Wyoming (2-14-18)... In a five-game stretch late last season, he had 43 points and 14 rebounds... An ankle injury has limited his practice time in the lead up to the season.
<b>31</b> <b>Nathan Mensah</b> / MEN-sah / <i>Forward, 6-10, 225, Fr.-HS</i> <i>Labadi, Accra, Ghana (Findlay Prep (Nev.))</i>	'18-19 3.6 Career same as season	5.9	0.6	36.8	0/0	64.7	Played CH 23 mins. at Illinois St. (4 pts., 10 rebs.)... Has 21 rebs. in last 2 gms. (37 mins.)... 11 pts. & 5 rebs in 20 mins. vs. TSU... An injury on the middle finger of his left (shooting) hand forced him to miss about four weeks... He was cleared on Oct 31 and is now practicing with the team again... He is playing with a hard brace on that finger... Nathan and Joel Mensah are not related.
<b>35</b> <b>Joel Mensah</b> / MEN-sah / <i>Forward, 6-10, 215, Fr.-HS</i> <i>Korle Gonno, Accra, Ghana (JSerra Catholic HS (Calif.))</i>	'18-19 1.8 Career same as season	1.0	0.0	30.0	0/0	3/4	Played 23 minutes, action in 5 of 7 gms... A hard working center expected to see the floor this season... Is a good shooter with range out to 15 feet... Has a very good motor... Attended JSerra Catholic High in Capistrano, Calif... Averaged 15.9 points, 8.8 rebounds, 1.2 steals and 1.4 blocked shots in his senior season... Nathan and Joel Mensah are not related.
<b>42</b> <b>Jeremy Hemsley</b> <i>Guard, 6-3, 195, Sr.-3L</i> <i>Rancho Cucamonga, Calif. (Damien HS)</i>	'18-19 10.9 Career 10.8	2.4 2.2	2.4 2.0	44.8 42.6	31.6 34.2	72.0 68.4	22nd in school history w/ 1,163 career points (10.8 ppg)... 125 career treys (7-11th in SDSU history)... Started 70 of 108 games in his career... Led team in scoring 27x and in assists 33x... SDSU is 17-3 when he has at least four assists and 26-14 when he has one TO or less... Has 9 career 20-pt. games... Double figures in scoring 62x... Career numbers: 1,163 points, 218 assists, 239 rebounds, 78 stls., 125 3FGs.

red indicates probable starter, black indicates reserve, outline indicates player is injured; gold indicates player is not expected to play.

# SDSU BROADCAST ROSTER

San Diego State at Illinois State | Doug Collins Court at Redbird Arena | Normal, Ill. | Dec. 1, 2018



**# 0**  
**DEVIN WATSON**

Guard  
6-1, 183, Senior-1L  
Oceanside, Calif.  
Univ. of San Francisco

PPG: 14.7    RPG: 3.0    APG: 4.3  
FG%: 42.6    3FG: 40.9    FT%: 85.7



**# 2**  
**ADAM SEIKO**

Guard  
6-3, 195, Freshman-RS  
Boston, Mass.  
Sierra Canyon High (Calif.)

PPG: 3.0    RPG: 0.8    APG: 0.7  
FG%: 4/9    3FG: 3/6    FT%: 70.0



**# 3**  
**AGUEK AROP**

Forward  
6-6, 220, Freshman-HS  
Omaha, Neb.  
Omaha South High

PPG: 0.8    RPG: 3.0    APG: 0.6  
FG%: 2/6    3FG: 0/2    FT%: 0/0



**# 4**  
**MICHAEL SOHIKISH**

Guard  
5-9, 160, Senior-SQ  
San Diego, Calif.  
University City High

PPG: 0.0    RPG: 0.0    APG: 0.3  
FG%: 0/2    3FG: 0/1    FT%: 0/0



**# 5**  
**JALEN MCDANIELS**

Forward  
6-10, 195, Sophomore-1L  
Federal Way, Wash.  
Federal Way High

PPG: 15.0    RPG: 6.8    APG: 2.5  
FG%: 47.1    3FG: 35.7    FT%: 67.9



**# 11**  
**MATT MITCHELL**

Forward  
6-6, 230, Sophomore-1L  
Riverside, Calif.  
Roosevelt High

PPG: 13.3    RPG: 4.3    APG: 1.8  
FG%: 44.4    3FG: 33.3    FT%: 85.2



**# 20**  
**JORDAN SCHAKEL**

Guard  
6-6, 200, Sophomore-1L  
Torrance, Calif.  
Bishop Montgomery High

PPG: 10.7    RPG: 4.0    APG: 1.2  
FG%: 52.9    3FG: 50.0    FT%: 94.1



**# 23**  
**ED CHANG**

Forward  
6-8, 215, Freshman-HS  
Papillion, Neb.  
Garfield High (Wash.)

PPG: 1.5    RPG: 0.3    APG: 0.3  
FG%: 2/4    3FG: 2/4    FT%: 0/0



**# 24**  
**NOLAN NARAIN**

Forward  
6-10, 230, Junior-2L  
Hamilton, Ontario, Canada  
La Lumiere School (Ind.)

PPG: 4.5    RPG: 3.7    APG: 0.7  
FG%: 66.7    3FG: 1/2    FT%: 60.0



**# 31**  
**NATHAN MENSAH**

Forward  
6-10, 225, Freshman-HS  
Labadi, Accra, Ghana  
Findlay Prep (Nev.)

PPG: 3.5    RPG: 5.2    APG: 0.7  
FG%: 37.5    3FG: 0/0    FT%: 9/15



**# 35**  
**JOEL MENSAH**

Forward  
6-10, 215, Freshman-HS  
Korle Gonno, Accra, Ghana  
JSerra Catholic High (Calif.)

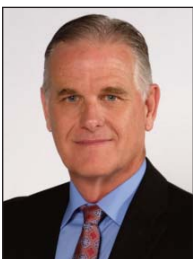
PPG: 1.8    RPG: 1.0    APG: 0.0  
FG%: 3/10    3FG: 0/0    FT%: 3/4



**# 42**  
**JEREMY HEMSLEY**

Guard  
6-3, 195, Senior-3L  
Rancho Cucamonga, Calif.  
Damien High

PPG: 9.8    RPG: 2.0    APG: 2.3  
FG%: 42.2    3FG: 28.6    FT%: 77.3

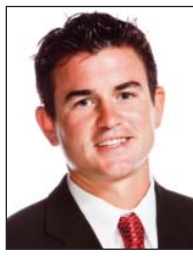


**HEAD COACH**  
**BRIAN DUTCHER**

- 2nd season as head coach
- 20th year at SDSU
- 1989 NCAA champion
- 3 NCAA title game appearances
- 17 NCAA tournament appearances
- 11-time Mountain West champion



**ASSISTANT COACH**  
**ROD PALMER**



**ASSISTANT COACH**  
**DAVE VELASQUEZ**



**ASSISTANT COACH**  
**JAY MORRIS**



**ASST. TO HEAD COACH**  
**MARK FISHER**