

# San Diego State Aztecs

2018-19 Record: 7-5 (H: 5-2; A: 1-1; N: 1-2); 0-0 MW  
12 Postseason Berths in Last 13 Years, 11-Time MW Champions

- The Aztecs have won at least 19 games in 13 straight seasons, which is tied for the 7th-longest active streak in the nation.
- San Diego State has advanced to postseason play in 12 of the last 13 seasons (2006 NCAA, 2007-09 NIT, 2010-15 NCAA, 2016 NIT, 2018 NCAA).

- Trends:**
- San Diego State ranks 11th nationally in three-point field goal percentage at 40.5 percent.
  - SDSU opponents are shooting 42.1 pct. from the field and 32.8 pct. from three-point range.
  - SDSU 26-3 last 29x when owing a higher FG pct.

	PPG	RPG	APG	FG	3FG	FT	
<b>0 Devin Watson</b> <i>Guard, 6-1, 183, Sr.-1L</i> <i>Oceanside, Calif. (San Francisco)</i>	'18-19 15.4 Career 13.8	2.8 2.3	5.3 3.9	44.0 41.1	41.3 36.57	72.3 73.7	1 of 5 players in the nation avg. 15 pts., 5 asts., 2.75 3FGM per game... Scored or assisted on 40.1 of SDSU FGs... Career numbers: 1,458 points, 245 rebounds, 412 assists... 75 career double-figure scoring games, including 10 of 12 TY... 28 career 20+pt. games... 28 asts. in last 4 gms. (career best)... 6 gms. this season w/7+ assists... SDSU is 16-2 when he shoots 40 pct. or better and has two TO or less.
<b>2 Adam Seiko</b> / SAY-ko / <i>Guard, 6-3, 195, Fr.-RS</i> <i>Boston, Mass. (Sierra Canyon HS (Calif.))</i>	'18-19 3.2 Career	1.1 same as season	0.6 same as season	43.8 same as season	6/12 same as season	83.3 same as season	Played in 11 of 12 games this season (126 mins.)... Scored in career-best 3 str. gms... Set CH for minutes (23), pts. (13) and rebs. (5) against CSDH... Is 6-of-12 from 3-pt. range (.500)... Coming off of a RS season... Three-star signee by Rivals... Sierra Canyon went 27-3, and was ranked No. 5 in California and No. 15 nationally his senior year... Strong guard who can shoot the three-point shot.
<b>3 Aguek Arop</b> / uh-GWUK uh-ROPE / <i>Forward, 6-6, 220, Fr.-HS</i> <i>Omaha, Neb. (Omaha South HS)</i>	'18-19 3.0 Career	2.9 same as season	0.4 same as season	42.3 same as season	1/4 same as season	7/8 same as season	Played 11+ mins. in 5 of last 7 games... 26 pts. in last 5 gms. (54 mins.)... A 6-6 forward with a near 7-foot wingspan that is expected to see significant time this season... Tremendous defender and a gifted athlete that can play above the rim... Good mid-range game and is deadly from 15-foot and in... Has been hindered a bit during camp due to a hip injury... Very intelligent on the floor who has helped the other freshman adjust.
<b>4 Michael Sohikish</b> / so-HE-kish / <i>Guard, 5-9, 160, Sr.-SQ</i> <i>San Diego, Calif. (University City HS)</i>	'18-19 0.3 Career 0.6	0.2 0.2	0.5 0.3	0/2 3/11	0/1 0/5	2/2 4/6	Walk-on who has seen action in 17 career games, including six games this season... Scored first points of the season on a pair of free throws against CSUDH (12-12-18)... Fifth-year in the program... A civil engineer major who served as a student-manager before arriving playing time... Career totals: 10 points, 3 rebounds, 5 assists, 4 steals, 43 minutes and just 3 turnover.
<b>5 Jalen McDaniels</b> <i>Forward, 6-10, 195, So.-1L</i> <i>Federal Way, Wash. (Federal Way HS)</i>	'18-19 14.3 Career 11.5	7.0 7.4	2.8 1.4	44.7 53.1	31.0 27.1	69.8 75.9	10+ pts. in 12 of the last 13 games... Multiple assists in 7 consecutive games for the first time in his career (22)... Career FG pct. 53.1... CH 26 pts., 8 rebs., 3 blocked shots vs. Xavier... Against UABP, became 4th SDSU player in last 23 seasons to post 15+ pts., 9+ rebs., 5+ asts. and 3+ stls in a game... One of 4 Fr. in the country last season to post 10.5 pts., 7.5 rebs. and shoot 58+ pct. from the field last season.
<b>11 Matt Mitchell</b> <i>Forward, 6-6, 240, So.-1L</i> <i>Riverside, Calif. (Roosevelt HS)</i>	'18-19 13.3 Career 11.2	3.6 3.9	1.9 1.8	47.7 45.8	34.7 35.5	71.7 74.6	45 career starts (44 straight)... Over last three gms., has 50 pts. (16.7 ppg), shooting 61.6 pct. FG pct. and 46.2 pct. 3FG pct... 28 gms. w/at least 10+ pts... 5 20-point games (3 this season, 2 of last 3 gms.)... 52 3FG in last 36 gms... Avg. 4.4 FTA/game... Made 15 straight FTA at one point this season... SDSU is 17-6 when he has multiple assists... Has 505 points in his career.
<b>20 Jordan Schakel</b> / SHACK-ull / <i>Guard, 6-6, 200, So.-1L</i> <i>Torrance, Calif. (Bishop Montgomery HS)</i>	'18-19 9.3 Career 4.8	4.6 2.7	1.3 0.8	49.2 39.4	51.1 40.8	92.0 81.8	1 of 5 players in nation to post following numbers 49 pct. FG, 50 pct. 3FG, 90 pct. FT (minimum 65 FGA)... Has 6 double-digit scoring games in 45-game career (has 5 in last 11 games)... 2nd Aztec in last 22 seasons to produce 3 3FGM, 7 rebs. and 100 pct. FT game (Jamaal Franklin)... T-17th in the nation in FT pct. 92.0 pct. (min. 25 FTA)... Last season: 106 pts., this season: 111 pts.
<b>23 Ed Chang</b> <i>Forward, 6-8, 215, Fr.-HS</i> <i>Papillion, Neb. (Garfield HS (Wash.))</i>	'18-19 1.5 Career	0.8 same as season	0.3 same as season	3/8 same as season	3/7 same as season	0/0 same as season	Played 28 minutes total in 6 gms... All 3 FGM are from three-point range... Tremendous shooter (once made nine 3FG in one half of a HS game)... Did not play in high school last season... Attended Papillion-La Vista High in Papillion, Neb. for three years as a prep before finishing at Garfield High in Seattle... Was a two-time all-state selection in Nebraska... Tabbed a four-star recruit by ESPN.
<b>24 Nolan Narain</b> <i>Forward, 6-10, 230, Jr.-2L</i> <i>Hamilton, Ontario, Canada (La Lumiere School (Ind.))</i>	'18-19 4.0 Career 3.8	3.0 2.0	0.6 0.3	73.9 63.8	2/3 38.9	50.0 59.0	Leads the MW and ranks T-16th nationally in FG pct. (min. 23 FGA)... Played in 43 career games, including 11 this season... Starting fourth year in the program (redshirt in 2015-16 campaign)... Played the best basketball of his career near the end of last season... Scored a career-high 18 points in 18 minutes of action against UW (2-14-18)... In a five-game stretch late last season, he had 43 pts. and 14 rebs.
<b>31 Nathan Mensah</b> / MEN-sah / <i>Forward, 6-10, 225, Fr.-HS</i> <i>Labadi, Accra, Ghana (Findlay Prep (Nev.))</i>	'18-19 5.0 Career	5.0 same as season	0.5 same as season	57.1 same as season	0/0 same as season	64.5 same as season	Only 13 players in the country have more rebounds than his 60 in fewer minutes (188)... Avg. 12.8 pts. and 12.8 rebs. per 40 mins... Played 10+ mins. in all 12 gms... Has 40 rebs. in last 7 gms. (115 mins.)... An injury on the middle finger of his left (shooting) hand forced him to miss about four weeks... He was cleared on Oct. 31... He is playing with a hard brace on that finger.
<b>35 Joel Mensah</b> / MEN-sah / <i>Forward, 6-10, 215, Fr.-HS</i> <i>Korle Gonno, Accra, Ghana (JSerra Catholic HS (Calif.))</i>	'18-19 1.4 Career	1.0 same as season	0.0 same as season	17.6 same as season	0/0 same as season	4/7 same as season	Played 39 minutes, action in 7 of 12 gms... A hard working center expected to see the floor this season... Is a good shooter with range out to 15 feet... Has a very good motor... Attended JSerra Catholic High in Capistrano, Calif... Averaged 15.9 points, 8.8 rebounds, 1.2 steals and 1.4 blocked shots in his senior season... Nathan and Joel Mensah are not related.
<b>42 Jeremy Hemsley</b> <i>Guard, 6-3, 195, Sr.-3L</i> <i>Rancho Cucamonga, Calif. (Damien HS)</i>	'18-19 9.8 Career 10.7	3.0 2.3	2.3 2.0	42.6 42.4	37.5 34.6	68.4 68.1	17th in school history w/ 1,205 career points (10.7 ppg)... 131 career treys (9th in SDSU history)... Last 7 gms. 3FGs: 9-20 (45.0 pct.)... Started 75 of 113 games in his career... SDSU is 19-3 when he has at least four assists and 37-15 when he has one TO or less... Has 9 career 20-pt. games... Double figures in scoring 63x... Career numbers: 1,205 points, 229 assists, 258 rebounds, 83 stls., 131 3FGs.

red indicates probable starter, black indicates reserve, outline indicates player is injured; gold indicates player is not expected to play.

# SDSU BROADCAST ROSTER

CSUN at San Diego State | Viejas Arena | San Diego, Calif. | Jan. 1, 2019



**# 0**  
**DEVIN WATSON**

Guard  
6-1, 183, Senior-1L  
Oceanside, Calif.  
Univ. of San Francisco

PPG: 15.4    RPG: 2.8    APG: 5.3  
FG%: 44.0    3FG: 41.3    FT%: 72.3



**# 2**  
**ADAM SEIKO**

Guard  
6-3, 195, Freshman-RS  
Boston, Mass.  
Sierra Canyon High (Calif.)

PPG: 3.2    RPG: 1.1    APG: 0.6  
FG%: 43.8    3FG: 50.0    FT%: 83.3



**# 3**  
**AGUEK AROP**

Forward  
6-6, 220, Freshman-HS  
Omaha, Neb.  
Omaha South High

PPG: 3.0    RPG: 2.9    APG: 0.4  
FG%: 42.3    3FG: 1/4    FT%: 7/8



**# 4**  
**MICHAEL SOHIKISH**

Guard  
5-9, 160, Senior-SQ  
San Diego, Calif.  
University City High

PPG: 0.3    RPG: 0.2    APG: 0.5  
FG%: 0/2    3FG: 0/1    FT%: 2/2



**# 5**  
**JALEN MCDANIELS**

Forward  
6-10, 195, Sophomore-1L  
Federal Way, Wash.  
Federal Way High

PPG: 14.3    RPG: 7.0    APG: 2.8  
FG%: 44.7    3FG: 31.0    FT%: 69.8



**# 11**  
**MATT MITCHELL**

Forward  
6-6, 230, Sophomore-1L  
Riverside, Calif.  
Roosevelt High

PPG: 13.3    RPG: 3.6    APG: 1.9  
FG%: 47.7    3FG: 34.7    FT%: 71.7



**# 20**  
**JORDAN SCHAKEL**

Guard  
6-6, 200, Sophomore-1L  
Torrance, Calif.  
Bishop Montgomery High

PPG: 9.3    RPG: 4.6    APG: 1.3  
FG%: 49.2    3FG: 51.1    FT%: 92.0



**# 23**  
**ED CHANG**

Forward  
6-8, 215, Freshman-HS  
Papillion, Neb.  
Garfield High (Wash.)

PPG: 1.5    RPG: 0.8    APG: 0.3  
FG%: 3/8    3FG: 3/7    FT%: 0/0



**# 24**  
**NOLAN NARAIN**

Forward  
6-10, 230, Junior-2L  
Hamilton, Ontario, Canada  
La Lumiere School (Ind.)

PPG: 4.0    RPG: 3.0    APG: 0.6  
FG%: 73.9    3FG: 2/3    FT%: 50.0



**# 31**  
**NATHAN MENSAH**

Forward  
6-10, 225, Freshman-HS  
Labadi, Accra, Ghana  
Findlay Prep (Nev.)

PPG: 5.0    RPG: 5.0    APG: 0.5  
FG%: 57.1    3FG: 0/0    FT%: 64.5



**# 35**  
**JOEL MENSAH**

Forward  
6-10, 215, Freshman-HS  
Korle Gonno, Accra, Ghana  
JSerra Catholic High (Calif.)

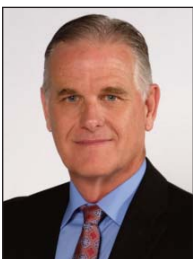
PPG: 1.4    RPG: 1.0    APG: 0.0  
FG%: 3/17    3FG: 0/0    FT%: 4/7



**# 42**  
**JEREMY HEMSLEY**

Guard  
6-3, 195, Senior-3L  
Rancho Cucamonga, Calif.  
Damien High

PPG: 9.8    RPG: 3.0    APG: 2.3  
FG%: 42.6    3FG: 37.5    FT%: 68.4

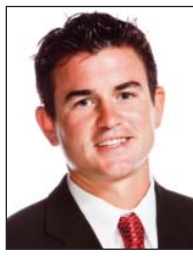


**HEAD COACH**  
**BRIAN DUTCHER**

- 2nd season as head coach
- 20th year at SDSU
- 1989 NCAA champion
- 3 NCAA title game appearances
- 17 NCAA tournament appearances
- 11-time Mountain West champion



**ASSISTANT COACH**  
**ROD PALMER**



**ASSISTANT COACH**  
**DAVE VELASQUEZ**



**ASSISTANT COACH**  
**JAY MORRIS**



**ASST. TO HEAD COACH**  
**MARK FISHER**