



# SAN DIEGO STATE WOMEN'S BASKETBALL

## 2018-19 GAME NOTES

Ben Pearson, Assistant Media Relations Director • E-Mail: ben.pearson@sdsu.edu • Office: 619-594-5547

### 2018-19 SCHEDULE

| Date                             | Opponent               | Time/Result |
|----------------------------------|------------------------|-------------|
| Nov. 2                           | Biola (Exhibition)     | W, 63-53    |
| Nov. 9                           | Hawai'i                | 11 a.m.     |
| Nov. 13                          | at Santa Clara         | 3 p.m.      |
| Nov. 15                          | at Cal State Fullerton | 7 p.m.      |
| Nov. 18                          | Incarnate Word         | 1 p.m.      |
| <b>SDSU Thanksgiving Classic</b> |                        |             |
| Nov. 23                          | Cal Baptist            | 5 p.m.      |
| Nov. 24                          | TCU                    | 7:15 p.m.   |
| Nov. 28                          | at San Diego           | 6 p.m.      |
| Dec. 2                           | Arizona                | 1 p.m.      |
| Dec. 7                           | at UC Irvine           | 7 p.m.      |
| Dec. 9                           | at CSUN                | 4 p.m.      |
| Dec. 11                          | UC Santa Barbara       | 1 p.m.      |
| Jan. 5                           | Boise State*           | 1 p.m.      |
| Jan. 9                           | at Wyoming*            | 6:30 p.m.   |
| Jan. 12                          | Air Force*             | 1 p.m.      |
| Jan. 16                          | at New Mexico*         | 7 p.m.      |
| Jan. 23                          | Fresno State*          | 6:30 p.m.   |
| Jan. 26                          | at UNLV*               | 3 p.m.      |
| Jan. 30                          | at Air Force*          | 7 p.m.      |
| Feb. 2                           | San José State*        | 1 p.m.      |
| Feb. 6                           | New Mexico*            | 11 a.m.     |
| Feb. 9                           | at Utah State*         | 2 p.m.      |
| Feb. 13                          | Colorado State*        | 6:30 p.m.   |
| Feb. 16                          | at Boise State*        | 2 p.m.      |
| Feb. 20                          | at Nevada*             | 6:30 p.m.   |
| Feb. 23                          | UNLV*                  | 1 p.m.      |
| Feb. 27                          | Utah State*            | 7 p.m.      |
| March 2                          | at San José State*     | 2 p.m.      |
| March 4                          | at Fresno State*       | 7 p.m.      |
| March 7                          | Nevada*                | 5:30 p.m.   |

**Mountain West Championship (Las Vegas, Nev.)**  
 March 10-13 TBD TBA

\* Indicates Mountain West game

### SEASON OPENER | vs. HAWAI'I (FRIDAY, NOVEMBER 9, 11:00 AM PT), Viejas Arena

LIVE MEDIA: Mountain West Network | Live Stats



**SAN DIEGO STATE**  
 2017-18 Record: 11-19 (5-13 MW)  
 Head Coach: Stacie Terry  
 Sixth Year at SDSU



**HAWAI'I**  
 2017-18 Record: 12-18  
 Head Coach: Laura Beeman  
 Seventh Year at Hawai'i

### TOP RETURNERS

|            |                         |
|------------|-------------------------|
| Scoring    | Najé Murray - 9.3       |
| Rebounding | Baylee Vanderdoes - 3.8 |
| Assists    | Tea Adams - 1.6         |

### TOP RETURNERS

|            |                        |
|------------|------------------------|
| Scoring    | Julissa Tago - 9.4     |
| Rebounding | Makenna Woodfolk - 6.1 |
| Assists    | Tia Kanoa - 5.1        |

- The Aztecs lost four starters and six players total from a year ago. The Aztecs return just 34.6 percent of their scoring from last season.
- Najé Murray (Stockton, Calif.), who was named to the Mountain West all-freshman team last year, is the Aztecs' leading returning scorer (9.3 ppg). She led all MW freshmen in three-pointers made per game and was fourth overall in scoring among freshmen.
- The support from the community was record-breaking a season ago. The Aztecs had 22,069 fans over their 16 home games for an average of 1,379. That broke the total and average attendance records set in 2007-08, when the Aztecs drew 14,730 fans for an average of 1,133 per game.
- The Aztecs have had a winning record at home in 10 of the past 12 seasons.
- The Aztecs shot 71.4 percent from the free throw line last year, their best mark since the 1988-89 season and the fourth best rate in program history.
- The Aztecs made 200 three-pointers last season, the second most in program history (204, 2016-17). They made 33.7 percent of their three-point attempts, their best percentage since the 2009-10 season and the fourth best rate in program history.
- For the second straight season San Diego State's incoming freshman class is nationally ranked. The Aztecs' 2018 recruiting class is ranked 59th nationally (according to Propects Nation), fourth in the Mountain West. G/F Mallory Adams (Frisco, Texas), G Jayden Perez (Las Cruces, N.M.) and G Sophia Ramos (San Antonio, Texas) comprise the freshmen class.
- Transfers Zayn Dornstauder (Ball State) and Taylor Kalmer (Oregon State) will also join the Aztecs this year, although Kalmer will sit out the 2018-19 season due to NCAA transfer rules. Dornstauder, a 6'3" center from Canada, redshirted at Ball State last year after playing two years at San Francisco as a reserve. Kalmer, a 5'8" guard, spent her past three years at Pac-12 powerhouse Oregon State where she averaged a career-high 6.0 points per game last season.

### SAN DIEGO STATE AZTECS (2017-18 STATS)

| No. | Name                 | Pos. | Ht.  | Yr.    | PPG | RPG | APG | Individual Player Notes                                                                                       |
|-----|----------------------|------|------|--------|-----|-----|-----|---------------------------------------------------------------------------------------------------------------|
| 0   | Kennedi Villa        | G    | 6-0  | So.    | 0.3 | 1.0 | 0.3 | Total 13 minutes in three games last year before suffering an injury                                          |
| 2   | Sophia Ramos         | G    | 5-9  | Fr.    | --  | --  | --  | Four-star recruit... Scored over 2,000 points at Incarnate Word HS... Averaged 22.4 ppg as a senior           |
| 3   | Mallory Adams        | G/F  | 6-0  | Fr.    | --  | --  | --  | Had 12 points & 16 rebounds vs. Biola... Dallas-Fort Worth HS Player of the Year... Four star recruit         |
| 4   | Monique Terry        | F    | 6-2  | Jr.    | 1.0 | 1.3 | 0.0 | Missed final 20 games last year due to injury... Changed jersey number from 40 to 4 this year.                |
| 5   | Tea Adams            | G    | 5-9  | So.    | 4.6 | 1.8 | 1.6 | Had team-high 18 points vs. Biola... Has most assists among returners (47 in 2017-18).                        |
| 10  | Najé Murray          | G    | 5-6  | So.    | 9.3 | 2.9 | 1.2 | Had 15 ptss & 10 rebs vs. Biola... Top returning scorer (9.3 ppg)... Led all MW freshmen in 3's per game      |
| 11  | Arantxa Gómez Ferrer | F    | 6-0  | Sr.    | 2.3 | 2.3 | 0.3 | Shot 61.7 from the field last year... Had career-highs in points (11) and rebounds (6) vs. SJSU (2-24-18).    |
| 15  | Jayden Perez         | G    | 5-8  | Fr.    | --  | --  | --  | Missed senior year due to injury, but still scored 1,586 points in HS... Averaged 20 ppg a junior.            |
| 22  | Zayn Dornstauder     | C    | 6-3  | RS-Jr. | --  | --  | --  | Redshirted at Ball State last year... Played first two years at the University of San Francisco.              |
| 23  | Loli Gomez           | G    | 5-10 | Sr.    | 0.0 | 0.0 | 0.1 | Appeared in eight games last season... Awarded scholarship over the summer.                                   |
| 24  | Kiara Edwards        | F    | 6-1  | So.    | 1.8 | 1.6 | 0.0 | Totaled 46 minutes across 9 games last season... Grabbed season-high three rebounds vs. Tulane (11-25-18).    |
| 25  | Taylor Kalmer*       | G    | 5-8  | Sr.    | --  | --  | --  | Played in 80 games in three years at Oregon State... Averaged 6.0 ppg last year... Will redshirt this season. |
| 33  | Monica Merkovsky     | F    | 6-1  | Sr.    | --  | --  | --  | Former team manager who recently joined team as a walk-on.                                                    |
| 34  | Baylee Vanderdoes    | F    | 6-1  | Jr.    | 3.3 | 3.8 | 0.2 | Team's leading returning rebounder (3.8 rpg) and shot blocker (0.7)... Started eight games last year.         |
| 45  | Naomi Ekwedike       | F    | 6-6  | RS-So. | 2.2 | 2.5 | 0.3 | Shot 52.3 percent from the field... Had career-high eight points vs. Nevada in MW Tournament.                 |

\*Utilizing redshirt season

Head Coach: Stacie Terry (UT Arlington, 1998) | (Sixth Season at SDSU)

Assistant Coaches: Kevin Morrison (Cal Poly Pomona, 1994); Ciara Carl (Point Loma Nazarene, 2005); Nick Grant (Baylor, 2010)

Director of Basketball Operations: Jon Silver (UCLA, 2009) | Director of Player Personnel: Mercedes Riggs (Duke, 2016) | Graduate Assistant: Sheila Boykin (LSU, 2015)

## PERSONNEL SUMMARY

## Returning Starters (1):

Arantxa Gómez Ferrer, Sr., F (2.3 ppg, 2.3 rpg, .617 FG %)

## Starters Lost (4):

McKynzie Fort, Sr., G (16.4 ppg, 5.9 rpg, 3.3 apg)

Geena Gomez, Sr., G (11.0 ppg, 3.9 apg, 56 3-pt FGs)

Khalia Lark, Sr., G/F (25.7 mpg, 6.5 ppg, 5.2 rpg)

Lexy Thorderson, Sr., G (7.7 ppg, 2.5 rpg, .407 3-point FG %)

## Other Players Lost (1):

Allison Brown, G (8 gms)

## Other Letterwinners Returning (4):

Téa Adams, So., G (16.6 mpg, 4.6 ppg, 1.8 rpg, 1.6 apg)

Naomi Ekwedike RS-So., C (22 gms, 2.2 ppg, 2.5 rpg, 52.3 FG %)

Najé Murray, So., G (9.3 ppg, 3.5 rpg, 53 3-pt FGs)

Baylee Vanderdoes, Jr., F (16.7 mpg, 3.3 ppg, 3.8 rpg, 0.7 bpg)

## Other Players Returning (4):

Kiara Edwards, So., F (9 gms)

Loli Gomez, Sr., G (8 gms)

Monique Terry, Jr., F (10 gms)

Kennedi Villa, So., G (3 gms)

## Newcomers (6):

Mallory Adams, Fr., G/F, 6-0, Frisco, Tex. (Lone Star HS)

Zayn Dornstauder, RS-Jr., C, 6-3, Regina, Saskatchewan (Ball State)

Taylor Kalmer\*, Sr., G, 5-8, Chandler, Ariz. (Oregon State)

Monica Merkovsky, Sr. F, 6-1 Torrance, Calif. (West Torrance HS)

Jayden Perez, Fr., G, 5-8, Las Cruces, N.M. (Onate HS)

Sophia Ramos, Fr., G, 5-9, San Antonio Texas (Incarnate Word)

\* Will redshirt in 2018-19

## ROSTER BREAKDOWN

## By Class

**Seniors (3):** A. Gómez Ferrer, L. Gomez, Kalmer; **Juniors (3):** Dornstauder, Terry, Vanderdoes; **Sophomores (5):** T. Adams, Edwards, Ekwedike, Murray, Villa; **Freshmen (3):** M. Adams, Perez, Ramos

## By State (5)/Country (5)

**Arizona (2):** Edwards, Kalmer; **California (5):** L. Gomez, Merkovsky, Murray, Vanderdoes, Villa; **New Mexico (1):** Perez; **Texas (3):** M. Adams, Ramos, Terry; **Washington (1):** T. Adams; **Canada (1):** Dornstauder; **Nigeria (1):** Ekwedike; **Spain (1):** A. Gómez Ferrer

## By Position

**Centers (2):** Dornstauder, Ekwedike; **Forwards (6):** M. Adams, Edwards, A. Gómez Ferrer, Merkovsky, Terry, Vanderdoes; **Guards (7):** T. Adams, L. Gomez, Kalmer, Murray, Perez, Ramos, Villa

## By Height

**6-6 (1):** Ekwedike; **6-3 (1):** Dornstauder; **6-2 (1):** Terry; **6-1 (3):** Edwards, Merkovsky, Vanderdoes; **6-0 (3):** M. Adams, A. Gómez Ferrer, Villa; **5-10 (1):** L. Gomez; **5-9 (2):** T. Adams, Ramos; **5-8 (2):** Kalmer, Perez; **5-6 (1):** Murray

## 2018-19 NUMERICAL ROSTER

| No. | Name                 | Pos. | Ht.  | Yr.    | Hometown (Previous School/High School)                        |
|-----|----------------------|------|------|--------|---------------------------------------------------------------|
| 0   | Kennedi Villa        | G    | 6-0  | So.    | Albany, Calif. (Saint Mary's HS)                              |
| 2   | Sophia Ramos         | G    | 5-9  | Fr.    | San Antonio, Texas (Incarnate Word HS)                        |
| 3   | Mallory Adams        | G/F  | 6-0  | Fr.    | Frisco, Texas (Lone Star HS)                                  |
| 4   | Monique Terry        | F    | 6-2  | Jr.    | San Antonio, Texas (Brennan HS)                               |
| 5   | Téa Adams            | G    | 5-9  | So.    | Kirkland, Wash. (Juanita HS)                                  |
| 10  | Najé Murray          | G    | 5-6  | So.    | Stockton, Calif. (Saint Mary's HS)                            |
| 11  | Arantxa Gómez Ferrer | F    | 6-0  | Sr.    | Valencia, Spain (Parque Colegio Santa Ana HS)                 |
| 15  | Jayden Perez         | G    | 5-8  | Fr.    | Las Cruces, N.M. (Onate HS)                                   |
| 22  | Zayn Dornstauder     | C    | 6-3  | RS-Jr. | Regina, Saskatchewan, Canada (Ball State/Hamilton HS (Ariz.)) |
| 23  | Loli Gomez           | G    | 5-10 | Sr.    | Huntington Beach, Calif. (CSU San Bernardino/Edison HS)       |
| 24  | Kiara Edwards        | F    | 6-1  | So.    | Surprise, Ariz. (Valley Vista HS)                             |
| 25  | Taylor Kalmer*       | G    | 5-8  | Sr.    | Chandler, Ariz. (Oregon State/Corona del Sol HS)              |
| 33  | Monica Merkovsky     | F    | 6-1  | Sr.    | Torrance, Calif. (West Torrance HS)                           |
| 34  | Baylee Vanderdoes    | F    | 6-1  | Jr.    | Auburn, Calif. (Placer HS)                                    |
| 45  | Naomi Ekwedike       | C    | 6-6  | RS-So. | Lagos, Nigeria (Potter's House Christian Academy (Fla.))      |

## 2018-19 ALPHABETICAL ROSTER

| No. | Name                 | Pos. | Ht.  | Yr.    | Hometown (Previous School/High School)                        |
|-----|----------------------|------|------|--------|---------------------------------------------------------------|
| 3   | Mallory Adams        | G/F  | 6-0  | Fr.    | Frisco, Texas (Lone Star HS)                                  |
| 5   | Téa Adams            | G    | 5-9  | So.    | Kirkland, Wash. (Juanita HS)                                  |
| 22  | Zayn Dornstauder     | C    | 6-3  | RS-Jr. | Regina, Saskatchewan, Canada (Ball State/Hamilton HS (Ariz.)) |
| 24  | Kiara Edwards        | F    | 6-1  | So.    | Surprise, Ariz. (Valley Vista HS)                             |
| 45  | Naomi Ekwedike       | C    | 6-6  | RS-So. | Lagos, Nigeria (Potter's House Christian Academy (Fla.))      |
| 23  | Loli Gomez           | G    | 5-10 | Sr.    | Huntington Beach, Calif. (CSU San Bernardino/Edison HS)       |
| 11  | Arantxa Gómez Ferrer | F    | 6-0  | Sr.    | Valencia, Spain (Parque Colegio Santa Ana HS)                 |
| 25  | Taylor Kalmer*       | G    | 5-8  | Sr.    | Chandler, Ariz. (Oregon State/Corona del Sol HS)              |
| 33  | Monica Merkovsky     | F    | 6-1  | Sr.    | Torrance, Calif. (West Torrance HS)                           |
| 10  | Najé Murray          | G    | 5-6  | So.    | Stockton, Calif. (Saint Mary's HS)                            |
| 15  | Jayden Perez         | G    | 5-8  | Fr.    | Las Cruces, N.M. (Onate HS)                                   |
| 2   | Sophia Ramos         | G    | 5-9  | Fr.    | San Antonio, Texas (Incarnate Word)                           |
| 4   | Monique Terry        | F    | 6-2  | Jr.    | San Antonio, Texas (Brennan HS)                               |
| 34  | Baylee Vanderdoes    | F    | 6-1  | Jr.    | Auburn, Calif. (Placer HS)                                    |
| 0   | Kennedi Villa        | G    | 6-0  | So.    | Albany, Calif. (Saint Mary's HS)                              |

\* Will redshirt in 2018-19 season

**Head Coach:** Stacie Terry (UT Arlington, 1998), Sixth season at SDSU

**Assistant Coach:** Kevin Morrison (Cal Poly Pomona, 1994), First season at SDSU

**Assistant Coach:** Ciara Carl (Point Loma Nazarene, 2005), Sixth season at SDSU

**Assistant Coach:** Nick Grant (Baylor, 2010), Fifth season at SDSU

**Director of Operations:** Jon Silver (UCLA, 2009; LSU 2017), Third season at SDSU

**Director of Player Development:** Mercedes Riggs (Duke, 2016), First season at SDSU

**Graduate Assistant:** Sheila Boykin (LSU, 2015), First season at SDSU

**Administrative Assistant:** Anne Shadle (Nebraska, 2006; Missouri, 2011, 2013), Third season at SDSU

## 2018-19 PRONUNCIATION GUIDE

|                          |                           |                       |               |
|--------------------------|---------------------------|-----------------------|---------------|
| #5 Téa Adams             | TAY-uh                    | #33 Monica Merkovsky  | mer-KAUV-skee |
| #45 Naomi Ekwedike       | nay-O-mee ECK-weh-DEE-kay | #10 Najé Murray       | Nah-ZHAY      |
| #22 Zayn Dornstauder     | ZANE dorn-STOU-der        | #34 Baylee Vanderdoes | VAN-der-doze  |
| #11 Arantxa Gómez Ferrer | uh-RON-cha fur-AIR        | #0 Kennedi Villa      | VILL-uh       |
| #23 Loli Gomez           | LOW-lee                   | Ciara Carl            | see-ARR-uh    |
| #25 Taylor Kalmer        | KELL-mer                  |                       |               |

## SAN DIEGO STATE QUICK FACTS

### GENERAL INFORMATION

Location: San Diego, Calif., 92182  
 Founded: 1897  
 Enrollment: 33,917  
 Nickname: Aztecs  
 School Colors: Scarlet and Black  
 Affiliation: NCAA Division I  
 Conference: Mountain West  
 Home Arena (Capacity):  
 Steve Fisher Court at Viejas Arena (12,414)  
 President: Dr. Adela de la Torre  
 Director of Athletics: John David Wicker  
 Faculty Athletic Representative: Patrick Papin  
 Athletics Dept. Phone: 619-594-3019

### AZTEC BASKETBALL FACTS

First Year of Basketball: 1976-77  
 All-Time Record: 651-592 (.524) / 42 seasons  
 Postseason Appearances/NCAA Appearances: 12/9  
 Last Postseason Appearance: 2013  
 Lost to BYU (69-58) in WNIT Second Round

### SDSU TEAM INFORMATION

2017-18 Record: 11-19 (.367)  
 2017-18 MW Record/Finish: 5-13/t-8th  
 2018 MW Tournament Record: 0-1  
 2018 Final NCAA RPI: 270  
 Letterwinners Returning/Lost: 6/5  
 Starters Returning/Lost: 1/4  
 Newcomers: 5

### AZTEC BASKETBALL STAFF

**Head Coach:** Stacie Terry  
 Alma Mater: UT Arlington, 1998  
**Career Record/Years:** 59-93/Sixth Year  
**Record at SDSU:** Same  
**Best Time to Call:** Contact SID  
**Basketball Office Phone:** 619-594-4095  
**Basketball Office Fax:** 619-594-8057  
**Assistant Coaches:**  
**Kevin Morrison**  
 First season at SDSU  
 Alma Mater: Cal Poly Pomona, 1994  
**Ciara Carl**  
 Sixth season at SDSU  
 Alma Mater: Point Loma Nazarene, 2005  
**Nick Grant**  
 Fifth season at SDSU  
 Alma Mater: Baylor, 2010  
**Director of Basketball Operations:** Jon Silver  
 Third season at SDSU  
 Alma Mater: UCLA, 2009  
**Player Development Coordinator:** Mercedes Riggs  
 First season at SDSU  
 Alma Mater: Duke, 2016  
**Graduate Assistant:** Sheila Boykin  
 First season at SDSU  
 Alma Mater: LSU, 2015  
**Administrative Assistant:** Anne Shadle  
**Athletic Trainer:** Queenie Soriano  
**Academic Advisor:** Dr. Bre White  
**Strength and Conditioning:** Eddie Padilla

### SDSU MEDIA RELATIONS

Women's Basketball SID: Ben Pearson  
 E-mail: ben.pearson@sdsu.edu  
 Office Phone: 619-594-5549

### Last Time Out (vs. Biola - Exhibition - 11-2-18)

The Aztec women's basketball team knocked off Biola 63-53 in an exhibition contest at Viejas Arena Friday evening. After falling behind by double-digits in the first quarter, the Aztecs used a 15-2 run in the third quarter to take the lead and then held off the Eagles down the stretch.

Téa Adams led all scorers with 18 points while Najé Murray and freshman Mallory Adams each had a double-double. Murray poured in 15 points and grabbed 10 rebounds and Mallory Adams hauled in 16 rebounds to go with 12 points.

The Aztecs started slow and missed all their three-point attempts (6) and free-throws (5) in the first quarter, allowing Biola to take a 17-6 lead.

SDSU started to heat up in the second quarter, pouring in 24 points in the quarter while not committing any turnovers. The Adams duo – sophomore Téa and freshman Mallory, combined to score 17 of the Aztecs' 30 first half points, but the Eagles held a 35-30 lead at the halftime break.

The Aztecs went on a 15-2 run in the third quarter to take a 45-40 lead, their first of the game. Great ball movement fueled their run; all six of their third quarter field goals were set up by an assist.

Once the Aztecs took the lead, they never relinquished it. Down the stretch, they held Biola without a field goal for a five minute span. Despite only scoring three field goals in the fourth quarter, SDSU iced the game with ten free-throws.

The Aztecs outrebounded the Eagles 53-36 and had 20 second chance points while Biola only had two.

### Noting the Biola Game

- The Aztecs have won their last 13 exhibition games.
- Since this was an exhibition game, official stats do not count. However, if they did, this would be the first time two Aztecs recorded a double-double since November 14, 2014 when Cheyenne Greenhouse and Erimma Amarika accomplished the feat.
- The Aztecs started two freshmen, two sophomores and one junior. That group had a combined 33 career starts.
- If the freshmen duo of Sophia Ramos and Mallory Adams start on Friday, it will be the first time two freshmen started the season opener since 2003 (Michelle Elliott and Courtney Fritz).
- During the Aztecs 15-2 third quarter run they had assists on all six of their field goals.
- The Aztecs finished strong, taking their biggest lead (12 points) with 43 seconds left in the game.

## MW PRESEASON POLL

| Rk. | Team                   | Pts.      |
|-----|------------------------|-----------|
| 1.  | Boise State (19)       | 229       |
| 2.  | UNLV (4)               | 208       |
| 3.  | Fresno State           | 175       |
| 4.  | Wyoming                | 158       |
| 5.  | New Mexico             | 150       |
| 6.  | Colorado State         | 128       |
| 7.  | Nevada                 | 115       |
| 8.  | Utah State             | 86        |
| 9.  | <b>San Diego State</b> | <b>64</b> |
| 10. | San José State         | 57        |
| 11. | Air Force              | 27        |

*First-place votes in parentheses*

## MW PRESEASON HONORS

### Preseason All-Mountain West Team

Riley Lupfer, Jr., G, Boise State  
 Marta Hermida, Sr., G, Boise State  
 Candice White, Sr., G, Fresno State  
 Jaisa Nunn, Sr., C, New Mexico  
 Katie Powell, Sr., F/C, UNLV

### Preseason Player of the Year

Riley Lupfer, Jr., G, Boise State

### Preseason Newcomer of the Year:

Mollie Mounsey, Jr., G, Colorado State

### Preseason Freshman of the Year

Jade Loville, G, Boise State

## SDSU IN THE MW POLL

| Year      | Pre. | Final |
|-----------|------|-------|
| 1999-2000 | 6th  | 6th   |
| 2000-01   | 7th  | 6th   |
| 2001-02   | 7th  | 7th   |
| 2002-03   | 7th  | 7th   |
| 2003-04   | 6th  | 7th   |
| 2004-05   | 7th  | t-7th |
| 2005-06   | 8th  | 9th   |
| 2006-07   | 7th  | 7th   |
| 2007-08   | 7th  | t-5th |
| 2008-09   | 2nd  | 2nd   |
| 2009-10   | 1st  | t-3rd |
| 2010-11   | 2nd  | 6th   |
| 2011-12   | 2nd  | 1st   |
| 2012-13   | 1st  | 1st   |
| 2013-14   | 3rd  | t-6th |
| 2014-15   | 7th  | 7th   |
| 2015-16   | 6th  | t-8th |
| 2016-17   | 7th  | 8th   |
| 2017-18   | 8th  | t-8th |
| 2018-19   | 9th  | --    |



## HAWAI'I SERIES NOTES

### Hawai'i at SAN DIEGO STATE *Hawai'i leads series 14-12*

#### • 2017-18 Comparative Stats

| HAW   |                   | SDSU  |
|-------|-------------------|-------|
| 12-18 | Overall Record    | 11-19 |
| .396  | Field Goal Pct.   | .385  |
| .295  | 3-PT FG Pct.      | .337  |
| .685  | Free Throw Pct.   | .714  |
| .433  | Opp. FG Pct.      | .418  |
| .323  | Opp. 3-PT FG Pct. | .320  |
| -0.8  | Turnover Margin   | -0.8  |
| 34.2  | Rebound Avg.      | 37.2  |
| -1.3  | Rebound Margin    | -0.7  |
| 63.0  | Points/Game       | 65.4  |
| 68.7  | Pts. Allowed/Game | 69.7  |

#### • Series Numbers

##### Hawai'i (14-12)

|                              |          |
|------------------------------|----------|
| Record at SDSU.....          | 8-5      |
| Record at UH.....            | 4-7      |
| Record at Neutral.....       | 2-0      |
| Most Points SDSU.....        | 96, 1987 |
| Most Points UH.....          | 88, 1998 |
| Largest Margin SDSU.....     | 52, 1982 |
| Largest Margin UH.....       | 50, 1998 |
| Longest SDSU Win Streak..... | 4        |
| Longest UH Win Streak.....   | 4        |
| Current Streak.....          | SDSU 2   |

#### • All-Time Meetings

|                   |              |       |
|-------------------|--------------|-------|
| 1-15-80.....      | H.....W..... | 58-54 |
| 1-11-81.....      | H.....W..... | 65-35 |
| 1-21-82.....      | H.....W..... | 80-28 |
| 11-29-83.....     | H.....W..... | 95-67 |
| 2-28-86.....      | A.....L..... | 75-79 |
| 3-2-86.....       | A.....W..... | 64-60 |
| 1-19-87.....      | H.....W..... | 96-56 |
| 1-20-87 (ot)..... | H.....L..... | 67-70 |
| 3-5-87.....       | H.....W..... | 68-62 |
| 1-28-88.....      | A.....W..... | 83-75 |
| 1-30-88.....      | A.....L..... | 58-70 |
| 1-25-89.....      | H.....L..... | 60-73 |
| 1-26-89.....      | H.....W..... | 56-52 |
| 2-8-90.....       | A.....L..... | 49-73 |
| 2-10-90.....      | A.....L..... | 70-72 |
| 12-21-91.....     | H.....L..... | 70-72 |
| 3-16-94.....      | N.....W..... | 81-75 |
| 1-25-97.....      | A.....L..... | 44-54 |
| 2-20-97.....      | H.....W..... | 58-53 |
| 3-7-97.....       | N.....W..... | 74-48 |
| 1-10-98.....      | A.....L..... | 38-88 |
| 2-3-98.....       | H.....L..... | 48-85 |
| 1-23-99.....      | H.....L..... | 57-65 |
| 2-20-99.....      | A.....L..... | 39-66 |
| 11-28-08.....     | A.....W..... | 71-48 |
| 11-19-11.....     | A.....W..... | 71-44 |

#### All-Time Series vs. Hawai'i

- The Aztecs are 12-14 all-time against Hawai'i and 8-5 at home.
- Their first meeting was January 15, 1980, a 58-54 home win for the Aztecs.
- This will be their first meeting since 2011 when the Aztecs won 71-44 on the road.

#### Scouting the Rainbow Wahine

- Hawai'i went 12-18 last year and 5-11 in the Big West, good for eighth place.
- They return four starters and 11 letterwinners from a season ago.
- They were picked to finish fifth in the Big West in the coaches poll and No. 6 in the preseason media poll.
- Hawai'i lost their season opener 64-65 to Pepperdine at home. Makenna Woodfolk paced them with 18 points, including going 7-for-7 from the FT line.
- In their season opening loss, they knocked down 50 percent of their three-point attempts (7-for-14).
- Julissa Tago is the team's leading returning scorer (9.4 ppg)
- Senior guard Tia Kanoa averaged 5.1 assists per game last season.
- Makenna Woodfolk averaged 8.9 points and 6.1 rebounds per game a season ago.
- Following their game against San Diego State, they will play at USD on Sunday.
- Head Coach Laura Beeman is entering her seventh year at Hawai'i and holds a 102-84 record.

#### 2018-19 Media Information

All media requests for interviews with the coaching staff or student-athletes should be directed to Ben Pearson at ben.pearson@sdsu.edu. Please submit your requests with a minimum of 24 hours notice. During the season, head coach Stacie Terry and the players are generally available to meet with the media following each workout, as requested.

There will be no interviews on game days until postgame. The Aztec basketball team officially began practice in early October. All workouts will take place at the Jeff Jacobs JAM Center with a few exceptions. Media wishing to attend practice should contact the Aztec media relations department at least one day in advance. Media desiring to cover Aztec practices on campus can park in Parking Structure 7 and obtain a special parking permit from the SDSU athletic media relations office. Media parking via permit only will be provided for all home games in PS12, adjacent to Viejas Arena.

## MOUNTAIN WEST STANDINGS

As of Nov. 6

|                        | MW  | Overall |
|------------------------|-----|---------|
| Utah State             | 0-0 | 1-0     |
| Colorado State         | 0-0 | 1-0     |
| Air Force              | 0-0 | 1-0     |
| Wyoming                | 0-0 | 0-0     |
| UNLV                   | 0-0 | 0-0     |
| Boise State            | 0-0 | 0-0     |
| New Mexico             | 0-0 | 0-0     |
| Nevada                 | 0-0 | 0-0     |
| <b>San Diego State</b> | 0-0 | 0-0     |
| Fresno State           | 0-0 | 0-1     |
| San José State         | 0-0 | 0-1     |

#### UPCOMING MW SCHEDULE

##### Tuesday, November 6

Fresno State at Northern Arizona, 73-86 NAU  
Eastern Michigan at Colorado State, 46-72, CSU  
Western State at Air Force, 54-72 AF  
Utah State at Washington State, 72-61 USU  
San Francisco State at San José State, 73-66 SFSU

##### Wednesday, November 7

Utah at Nevada, 6:30 p.m. PT  
Chadron State at Wyoming, 6:30 p.m. MT

##### Thursday, November 8

CSUN at Boise State, 5:00 p.m. MT

##### Friday, November 9

**Hawai'i at San Diego State, 11:00 a.m. PT**  
Northern New Mexico at Utah State, 2:00 p.m. MT  
George Mason at Air Force, 12:00 p.m. MT  
Wright State at UNLV, 6:00 p.m. PT  
Texas State at New Mexico, 7:00 p.m. MT  
Wyoming at Saint Mary's, 6:30 p.m. PT  
San José State at San Francisco, 7:00 p.m. PT

##### Saturday, November 10

Nevada at Santa Clara, 4:00 p.m. PT  
Southern Oregon at Boise State, 4:30 p.m. MT

##### Sunday, November 11

Air Force at Denver, 1:00 p.m. MT  
San José State at Portland State, 2:00 p.m. PT

#### AZTECS VS. MOUNTAIN WEST

|                |            |            |
|----------------|------------|------------|
| Air Force      | 34         | 9          |
| Boise State    | 8          | 6          |
| Colorado State | 27         | 29         |
| Fresno State   | 26         | 20         |
| Nevada         | 10         | 10         |
| New Mexico     | 28         | 33         |
| San José State | 22         | 8          |
| UNLV           | 28         | 29         |
| Utah State     | 6          | 5          |
| Wyoming        | 28         | 28         |
| <b>Total</b>   | <b>217</b> | <b>176</b> |

## CAREER HIGHS

## Points

1, vs. Presbyterian (11-10-17)

## Rebounds

2, vs. Tulane (11-25-17)

## Assists

1, vs. Presbyterian (11-10-17)

## Steals

N/A

## Blocks

N/A

## Field Goals

N/A

## Field Goal Attempts

N/A

## 3-Point Field Goals

N/A

## 3-Point Field Goal Attempts

N/A

## Free Throws

1, vs. Presbyterian (11-10-17)

## Free Throw Attempts

2, vs. Presbyterian (11-10-17)

## MISC. CAREER STATS

## Double-figure

scoring games: 0

## Double-figure

rebounding games: 0



## #0 KENNEDI VILLA

Sophomore

6-0

Guard

Albany, Calif.

Saint Mary's HS

**As a Freshman (2017-18 Season)**

Appeared in three games before suffering an injury ... Scored one point and dished out one assist in her collegiate debut vs. Presbyterian (11-10-17) ... Had two rebounds vs. Tulane (11-25-17) ... Played season-high six minutes vs. Hope International (12-10-17).

**At Saint Mary's High School**

A three-star recruit according to ESPN, earning a scouts grade of 88 at Saint Mary's High in Albany, Calif. ... Named to the *NorCal Sports TV* Girls West All-Star team her senior season alongside classmate Najé Murray ... Also named an *All-Bay Area News* Group honorable mention that year after pacing Saint Mary's with 1.9 assists per game while ranking second with 10.6 points and 2.7 steals per game ... Saint Mary's advanced to the 2017 CIF Division III Northern regional championship game, finishing the year 22-11 ... As a junior, averaged a team-best 11.3 points per game alongside 5.06 rebounds per game ... Averaged 8.4 points per game to rank second on the team as a sophomore, tacking on 5.3 rebounds per game with 70 total steals and 68 assists.

**Personal**

Kennedi Villa was born in Oakland, Calif. to Carrie and Joe Villa ... Has one brother, Joe Jr. ... Majoring in communications.

## CAREER STATISTICS

| Season  | gp-gs |         | Total  |      | 3-Point |      | F-Throws |      | Rebounds |     |     |     | Scoring |    |     |    |     |     |     |     |
|---------|-------|---------|--------|------|---------|------|----------|------|----------|-----|-----|-----|---------|----|-----|----|-----|-----|-----|-----|
|         | gp-gs | min/avg | fg-fga | pct  | fg-fga  | pct  | ft-fta   | pct  | off      | def | tot | avg | pf      | fo | ast | to | blk | stl | pts | avg |
| 2017-18 | 3-0   | 13/4.3  | 0-0    | .000 | 0-0     | .000 | 1-2      | .500 | 0        | 3   | 3   | 1.0 | 1       | 0  | 1   | 0  | 0   | 0   | 1   | 0.3 |
| TOTAL   | 3-0   | 13/4.3  | 0-0    | .000 | 0-0     | .000 | 1-2      | .500 | 0        | 3   | 3   | 1.0 | 1       | 0  | 1   | 0  | 0   | 0   | 1   | 0.3 |



## #2 SOPHIA RAMOS

Freshman

5-9

Guard

San Antonio, Texas

Incarnate Word HS

### At Incarnate Word High School

A four-star recruit according to Prospects Nation ... She scored over 2,000 career points at Incarnate Word High School in San Antonio, where she was a four-time Texas Association of Private and Parochial Schools (TAPPS) All-State and All-District first-team pick ... Two-time *Express News* Super Team member ... Four-time *Express News* All-Area Private Schools MVP ... As a senior averaged 22.4 points, 6.2 rebounds, 4.1 assists and 3.7 steals and was named to the TAPPS 6A state all-tournament team ... As a junior, averaged 16.6 points, 8.2 rebounds, 4.2 assists and 2.9 steals per game, leading Incarnate Word to a 27-6 record ... Ramos played AAU for SA Finest and coach Ray Caldwell. The team won the Super 64 National Championship with a buzzer-beater in 2017.

### Personal

Born in San Antonio to Nicola and Gavino Ramos ... Enjoys swimming, traveling and playing tennis ... Plans to major in kinesiology with hopes of having a career in physical therapy or coaching.



## #3 MALLORY ADAMS

Freshman

6-0

Guard/Forward

Frisco, Texas

Lone Star HS

### High School

A four-star recruit according to Prospects Nation, she earned an *ESPN* scout's grade of 90 as the 14th-ranked wing in her class ... Scored over 2,000 points in high school and was named the Dallas-Fort Worth High School Player of the Year ... Averaged 22.8 points and 10.3 rebounds per game in her senior year, leading Lone Star High School to a 34-5 overall record and a perfect 14-0 in the district ... As a junior, she garnered Texas Association of Basketball Coaches (TABC) and Texas Girls Coaches Association (TGCA) all-state and all-region honors and was the District 13-5A Offensive MVP after averaging 18.9 points and 9.0 rebounds en route to Lone Star's district championship ... She attended Centennial High School her first two years where she was the District 9-5A MVP and a TGCA all-state and TABC all-region honoree ... As a freshman, she was named the 2015 District 9-5A Newcomer of the Year after averaging 18 points and 10 boards per game ... Adams played AAU for Cy-Fair EYB L... She piqued interest from a number of schools, including SMU, Kansas, Alabama, Tulsa, Houston, New Mexico, Rutgers and New Mexico State among others ... Was a member of the National Honor Society.

### Personal

Born in Bryant, Ark. ... Parents are Michelle and Gary Adams ... Adams' older sister, McKenzie, was a guard on SMU's women's basketball team ... Her father, Gary, played four years of football at Arkansas and her mother, Michelle, played volleyball at Missouri Southern State ... Her favorite athletes are Kobe Bryant and Skylar Diggins ... Enjoys watching movies, swimming and going to the beach.

## CAREER HIGHS

## Points

8, vs. Biola (12-28-16)

## Rebounds

5, at Cal State Fullerton (12-22-16)

## Assists

2, vs. Central Connecticut (11-27-16)

## Steals

2, vs. Biola (12-28-16)

## Blocks

2, vs. Hope Int'l (12-10-17)

## Field Goals

4, vs. Biola (12-28-16)

## Field Goal Attempts

10, at New Mexico (12-31-16)

## 3-Point Field Goals

N/A

## 3-Point Field Goal Attempts

1, Three times

Last: vs. UT Arlington (11-26-16)

## Free Throws

2, Three times,

Last: at Arizona (12-3-17)

## Free Throw Attempts

3, at Nevada (2-11-17)

## MISC. CAREER STATS

## Double-figure

scoring games: 0

## Double-figure

rebounding games: 0



## #4 MONIQUE TERRY

Junior

6-2

Forward

San Antonio, Texas

Brennan HS

## 2017-18 Mountain West All-Academic Team

## As a Sophomore (2017-18)

Limited to 10 games due to injury... Scored in four games, totaling 10 points on 4-for-5 shooting... Had season-highs in points (4) and rebounds (3) at Arizona (12-3-17)... Had career-high two blocks vs. Hope International (12-10-17).

## As a Freshman (2016-17)

Appeared in 28 of the Aztecs' 30 games, making 10 starts... Started 10 of 11 games between Nov. 27 and Jan. 14, including four of five to open conference play... Second among freshmen in scoring (2.7/gm), rebounding (2.0/gm), assists (0.1/gm) and steals (0.25/gm)... Best offensive output came in a win against Biola (12-28-16), shooting 4-for-6 for eight points and grabbing three offensive boards in a season-high 23 minutes... Pulled down a season-best five rebounds in the game prior at Cal State Fullerton (12-22-16)... Dished out two of three assists on the year in the final game of the Seton Hall Thanksgiving Classic, a win over Central Connecticut (11-27-16)... Logged double-digit minutes in 19 games, playing 20-or-more minutes in four straight games from Dec. 28 to Jan. 7... Named to the MW all-academic team and earned SDSU scholar-athlete distinction.

## At Brennan High School

Graduated from Brennan High School in her hometown of San Antonio, Texas... A McDonald's All-American nominee who helped her squad to a pair of appearances in the University Interscholastic League (UIL) 4A state tournament... Was the lone player in District 27-6A to average a double-double during her junior campaign, posting 10.3 points and 10.4 rebounds per game while leading the district with a .540 field-goal percentage... Was named the District 27-6A defensive player of the year and garnered all-region accolades... Also served as team captain and landed on the Northside Independent School District's (NISD) all-tournament team... Earned a scouts grade of 89 and was rated a three-star recruit by *ESPNW*... Drew interest on the recruiting trail from Utah State, Houston, Tulsa, Western Kentucky, Arkansas State and Denver... Received District 6A all-academic distinction and was a three-year National Honor Society member.

## Personal

Born in Odessa, Texas... Parents are Steven and Elizabeth Terry... Enjoys reading, shopping and traveling in her spare time... Lists New York Knicks center Joakim Noah, Green Bay Packers linebacker Clay Matthews and three-time Naismith Women's College Player of the Year Breanna Stewart as her favorite athletes... Majoring in geological sciences at SDSU.

## CAREER STATISTICS

| Season  | gp-gs |    | min/avg |      | Total |     | 3-Point |    | F-Throws |      | Rebounds |     |       |     | Scoring |     |     |     |     |   |    |   |   |    |     |
|---------|-------|----|---------|------|-------|-----|---------|----|----------|------|----------|-----|-------|-----|---------|-----|-----|-----|-----|---|----|---|---|----|-----|
|         | gp    | gs | min     | avg  | fg    | fqa | pct     | fg | fqa      | pct  | ft       | fta | pct   | off | def     | tot | avg | pts | avg |   |    |   |   |    |     |
| 2016-17 | 28    | 10 | 344     | 12.3 | 33    | 62  | .532    | 0  | 3        | .000 | 10       | 19  | .526  | 19  | 38      | 57  | 2.0 | 38  | 0   | 3 | 16 | 3 | 7 | 76 | 2.7 |
| 2017-18 | 10    | 0  | 62      | 6.2  | 4     | 5   | .800    | 0  | 0        | .000 | 2        | 2   | 1.000 | 6   | 7       | 13  | 1.3 | 9   | 0   | 0 | 3  | 2 | 1 | 10 | 1.0 |
| TOTAL   | 38    | 10 | 406     | 10.7 | 37    | 67  | .552    | 0  | 3        | .000 | 12       | 21  | .571  | 25  | 45      | 70  | 1.8 | 47  | 0   | 3 | 19 | 5 | 8 | 86 | 2.3 |



CAREER HIGHS

Points  
20, vs. Hope International (12-10-17)

Rebounds  
8, vs. Hope International (12-10-17)

Assists  
7, vs. Hope International (12-10-17)

Steals  
4, vs. Hope International (12-10-17)

Blocks  
2, at San José State (1-10-18)

Field Goals  
9, vs. Hope International (12-10-17)

Field Goal Attempts  
13, vs. Hope International (12-10-17)

3-Point Field Goals  
2, vs. Hope International (12-10-17)

3-Point Field Goal Attempts  
4, Three times  
Last: vs. Santa Clara (12-14-17)

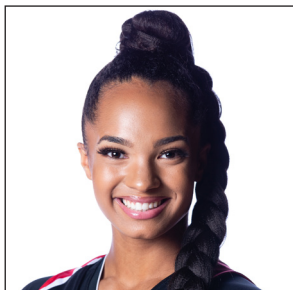
Free Throws  
4, at Wyoming (2-14-18)

Free Throw Attempts  
5, vs. San Diego (11-29-17)

MISC. CAREER STATS

Double-figure  
scoring games: 2

Double-figure  
rebounding games: 0



# #5 TÉA ADAMS

Sophomore  
5-9  
Guard  
Kirkland, Wash.  
Juanita HS

**2017-18 Mountain West All-Academic Team**

**As a Freshman (2017-18)**

Appeared in 29 games off the bench during her freshman campaign, averaging 16.6 minutes per game ... Averaged 4.6 points, 1.8 rebounds and 1.6 assists per game ... Had her best game of the season against Hope International (12-10-17) with season-highs in points (20 on 9-for-13 shooting), rebounds (8), assists (7) and steals (4) in just 22 minutes ... Had 10 points against Fresno State (2-7-18) on 4-for-8 shooting ... Had seven points and five assists against New Mexico (1-20-18) ... Was third on team in assists (47) and fourth in steals (22) ... Played at least 13 minutes in all but three games ... Named SDSU scholar-athlete and to the Mountain West All-Academic Team.

**At Juanita High School**

A three-star recruit ranked No. 22 among point guards in her class according to ESPN with a 90 scouts grade ... Finished her four-year career at Juanita High as the program's all-time leading scorer with 1,835 career points, leading the team in scoring each season ... As a senior, was a first-team All-3A/2A KingCo Conference honoree, her fourth consecutive all-conference honor, and was a *Seattle Times* Class 3A first team pick following career-high tallies in points (22.5), assists (3.3), rebounds (4.1) and steals (4.7) ... A 2016 All-USA Western Washington Preseason Girls Basketball Team honorable mention and KingCo 3A/2A First Team pick after recording 20.0 points per game ... Named to the 2015 All-USA Western Washington Preseason Girls Basketball first team and captured KingCo 2A/3A Co-MVP and Defensive Player of the Year accolades as a sophomore ... Collected All-KingCo 2A/3A first-team honors her freshman year.

**Personal**

Téa Adams was born in Kirkland, Wash., to Erika and Sam Adams ... Sam was a three-year starter on Texas A&M's football team and a member of the Aggies' track team, getting inducted into the school's Hall of Fame in 2001 ... Sam, a three-time Pro Bowl defensive tackle, was a first-round pick of the Seattle Seahawks in 1994, for whom he played six seasons, and also played for Baltimore, Oakland, Buffalo, Cincinnati and Denver, winning two AFC Championships and Super Bowl XXXV with the Ravens ... Adams has two brothers, Terin and Sam ... Majoring in business.

CAREER STATISTICS

| Season  | gp-gs |    | Total |      | 3-Point |     | F-Throws |     | Rebounds |      |     |     | Scoring |    |    |     |     |     |     |     |     |   |    |     |     |
|---------|-------|----|-------|------|---------|-----|----------|-----|----------|------|-----|-----|---------|----|----|-----|-----|-----|-----|-----|-----|---|----|-----|-----|
|         | gp    | gs | fg    | pct  | fg      | pct | ft       | pct | off      | def  | tot | avg | pts     | pf | fo | ast | to  | blk | stl | pts | avg |   |    |     |     |
| 2017-18 | 29    | 0  | 482   | 16.6 | 51      | 182 | .280     | 6   | 45       | .133 | 26  | 39  | .667    | 7  | 46 | 53  | 1.8 | 48  | 1   | 47  | 41  | 4 | 22 | 134 | 4.6 |
| TOTAL   | 29    | 0  | 482   | 16.6 | 51      | 182 | .280     | 6   | 45       | .133 | 26  | 39  | .667    | 7  | 46 | 53  | 1.8 | 48  | 1   | 47  | 41  | 4 | 22 | 134 | 4.6 |

## CAREER HIGHS

Points  
29, vs. New Mexico (1-20-18)

Rebounds  
7, Twice  
Last at Boise State (2-27-18)

Assists  
8, vs. San Jose State (2-24-18)

Steals  
4, Twice  
Last vs. Air Force (2-21-18)

Blocks  
1, Three times  
Last vs. Nevada (2-10-18)

Field Goals  
11, vs. New Mexico (1-20-18)

Field Goal Attempts  
18, vs. New Mexico (1-20-18)

3-Point Field Goals  
7, vs. New Mexico (1-20-18)

3-Point Field Goal Attempts  
13, vs. New Mexico (1-20-18)

Free Throws  
6, vs. Central Michigan (11-24-17)

Free Throw Attempts  
6, vs. Central Michigan (11-24-17)

## MISC. CAREER STATS

Double-figure  
scoring games: 16

Double-figure  
rebounding games: 0



## #10 NAJÉ MURRAY

Sophomore  
5-6  
Guard  
Stockton, Calif.  
Saint Mary's HS

**Mountain West All-Freshman Team (2017-18)****As a Freshman (2017-18)**

Named to the Mountain West All-Freshman Team ... Led all freshmen in the Mountain West with 1.8 three-point field-goals per game ... Was fourth in the MW in scoring among freshmen ... Appeared in all 30 games and made 16 starts ... Was third on the team in scoring (9.3) ... Second on the team in steals (30) and three-point field goals (53) ... Scored in double-digits in eight of her first 11 games ... Averaged 22.2 minutes per game and 25 per game in MW play ... Was 78.4 percent from the free-throw line (29-37)... Scored in double-digits 16 times ... Had seven three-pointers and scored 29 points against New Mexico (1-20-18). The seven three-pointers were tied for the second most in a game in Aztec history ... Had eight assists against San José State (2-24-18) ... Had eight rebounds at Nevada (3-2-18) ... Had back-to-back games with four steals against UNLV (2-17-18) and Air Force (2-21-18) ... Scored 14 points in her collegiate debut vs. Presbyterian (11-10-17).

**At Saint Mary's High School**

Ranked 30th among guards in her class, earned three stars and a 90 scouts grade by *ESPNW* as a three-year letterwinner at perennial national powerhouse Saint Mary's (Stockton, Calif.) under head coach Tom Gonsalves ... Reached the 1,000-career-point mark as a senior en route to a spot on the *NorCal Sports TV* Girls West All-Star roster alongside classmate Kennedy Villa ... As a junior, named to the Cal-Hi Sports All-State Underclass Junior First Team after averaging 12.9 points and 2.76 steals per game when the Rams were ranked No. 1 in the nation for part of the year ... Cal-Hi Sports All-State Underclass Sophomore First Team honoree with 9.1 points and 2.5 steals per game as Saint Mary's won the CIF Open Division state title ... All-Sac-Joaquin Section Tri-City Athletic League Second Team pick as a freshman after knocking down 8.2 points, 2.7 rebounds, 2.7 steals and 2.1 assists per game.

**Personal**

Najé Murray was born in Hayward, Calif. ... Parents are Douglas and Natalia Murray ... Has a younger brother named Nicolas ... Douglas played football at Hayward (now Cal State East Bay) ... Majoring in criminal justice and hopes to become a profiler in the FBI.

## CAREER STATISTICS

| Season  | gp-gs |          | Total  |      | 3-Point |      | F-Throws |      | Rebounds |     |     |     |    |    |     | Scoring |     |     |     |     |
|---------|-------|----------|--------|------|---------|------|----------|------|----------|-----|-----|-----|----|----|-----|---------|-----|-----|-----|-----|
|         | gp-gs | min/avg  | fg-fga | pct  | fg-fga  | pct  | ft-fta   | pct  | off      | def | tot | avg | pf | fo | ast | to      | blk | stl | pts | avg |
| 2017-18 | 30-16 | 667/22.2 | 99-279 | .355 | 53-157  | .338 | 29-37    | .784 | 15       | 73  | 88  | 2.9 | 70 | 2  | 37  | 49      | 3   | 30  | 280 | 9.3 |
| TOTAL   | 30-16 | 667/22.2 | 99-279 | .355 | 53-157  | .338 | 29-37    | .784 | 15       | 73  | 88  | 2.9 | 70 | 2  | 37  | 49      | 3   | 30  | 280 | 9.3 |

**CAREER HIGHS**

Points  
11, vs. San José State (2-24-18)

Rebounds  
6, Twice  
Last: vs. San José State (2-24-18)

Assists  
2, Twice  
Last: vs. San José State (2-24-18)

Steals  
2, Twice  
Last: at Air Force (2-3-18)

Blocks  
2, Seven times  
Last: at San José State (1-10-18)

Field Goals  
5, vs. San José State (2-24-18)

Field Goal Attempts  
6, Twice  
Last: vs. San José State (2-24-18)

3-Point Field Goals  
N/A

3-Point Field Goal Attempts  
N/A

Free Throws  
2, Four times  
Last: at Colorado State (1-24-18)

Free Throw Attempts  
4, Three times  
Last: at San Diego (11-17-16)

**MISC. CAREER STATS**

Double-figure scoring games: 1

Double-figure rebounding games: 0



# #11 ARANTXA GÓMEZ FERRER

Senior

6-0

Forward

Valencia, Spain

Parque Colegio Santa Ana High School / Ros Casares Valencia Club

**Malik Award Winner (Fall 2017)**

**Three-time Mountain West Scholar-Athlete (2016-18)**

**Three-time Mountain West All-Academic Team (2015-18)**

**As a Junior (2017-18)**

Appeared in 28 games while making 20 starts ... Averaged career-highs in points (2.3), rebounds (2.3) and minutes per game (13.8) ... Shot 61.7 percent from the floor (29-for-47) on the season and 63.6 percent (21-for-33) in conference play ... Second on the team with 11 blocks ... Posted career-high in points (11 on 5-for-6 shooting) and rebounds (6) against San José State (2-24-18) ... Had four games with two blocks ... Received Malik Award for having 4.0 GPA in the 2017 fall semester ... A Mountain West and SDSU scholar-athlete who also earned a MW All-Academic Team distinction.

**As a Sophomore (2016-17)**

Played in 28 games, starting the final seven contests of the year ... Logged 20 or more minutes in four games, including a season-high 25 against UC Santa Barbara (12-11-16), while averaging 11.5 minutes per game ... Tied for the team lead with nine blocks, getting two in three games ... Posted 49 points and 61 rebounds with six assists and four steals ... Recorded a season-best six points in a win against Utah State (2-15-17) ... Grabbed five rebounds three times for a season high ... Dished out a pair of assists in a home victory vs. Boise State (1-7-17) ... Posted five points each in wins against Nevada (1-4-17) and at Cal State Fullerton (12-22-16) ... Notched two-or-more points in seven consecutive games to end conference play ... A Mountain West and SDSU scholar-athlete who also earned MW all-academic team distinction.

**As a Freshman (2015-16)**

Appeared in 18 games as a reserve during her freshman campaign before suffering a season-ending knee injury at Air Force (2-13-16) ... Finished with a combined 10 points, 16 rebounds and four steals in 118 minutes of action ... Recorded her first collegiate basket in the season opener at Long Beach State (11-13-15) ... Grabbed a career-high three rebounds and came up with one steal in a season-high 15 minutes vs. UC Riverside (11-16-15) ... Also posted identical totals in the Aztecs' non-conference finale against San Diego Christian (12-21-15) ... Received Mountain West scholar-athlete recognition and earned a spot on the league's all-academic team.

**Prior to SDSU**

Gained extensive experience as a six-year member off the Ros Casares Valencia club program in her home town of Valencia, Spain ... Team was Spanish U16 champions in 2012-13 ... Averaged 13.0 points, 9.0 rebounds and 3.0 assists, leading her squad to an undefeated regular season as a prep senior in 2014-15 ... Earned most valuable player honors after Ros Casares captured the Comunidad Valenciana U18 Regional Championships in April 2015 ... Was also named MVP at the MHL Tournament in Zaragoza, Spain, after club finished in first place ... Competed for Valencia BC at the Spanish club national championships in May, helping her team to a group title and a spot in the quarterfinals ... Averaged a double-double with 15.0 points and 10 rebounds while shooting 50.0 percent (28-56) from the floor in five games ... Received an invitation to training camp for the Spanish U18 national team in July ... Graduated from Parque Colegio Santa Ana High School.

**Personal**

Has one sister, Sandra who played professional basketball in Spain for El Pilar ... Lists Zach Randolph as her favorite NBA player ... Majoring in aerospace engineering.

**CAREER STATISTICS**

| Season       | gp-gs     |           | min/avg    |             | Total        |             | 3-Point    |             | F-Throws     |             | Rebounds  |           |            |            |           |          | Scoring   |           |           |           |            |            |
|--------------|-----------|-----------|------------|-------------|--------------|-------------|------------|-------------|--------------|-------------|-----------|-----------|------------|------------|-----------|----------|-----------|-----------|-----------|-----------|------------|------------|
|              | gp        | gs        | min        | avg         | fg-fga       | pct         | fg-fga     | pct         | ft-fta       | pct         | off       | def       | tot        | avg        | pf        | fo       | ast       | to        | blk       | stl       | pts        | avg        |
| 2015-16      | 18        | 0         | 118        | 6.6         | 5-12         | .417        | 0-0        | .000        | 0-12         | .000        | 10        | 6         | 16         | 0.9        | 18        | 0        | 2         | 5         | 1         | 4         | 10         | 0.6        |
| 2016-17      | 28        | 7         | 322        | 11.5        | 18-34        | .529        | 0-0        | .000        | 13-27        | .481        | 32        | 29        | 61         | 2.2        | 34        | 0        | 6         | 17        | 9         | 4         | 49         | 1.8        |
| 2017-18      | 28        | 20        | 386        | 13.8        | 29-47        | .617        | 0-0        | .000        | 5-11         | .455        | 25        | 40        | 65         | 2.3        | 47        | 2        | 8         | 17        | 11        | 8         | 63         | 2.3        |
| <b>TOTAL</b> | <b>74</b> | <b>27</b> | <b>826</b> | <b>11.2</b> | <b>52-93</b> | <b>.559</b> | <b>0-0</b> | <b>.000</b> | <b>18-50</b> | <b>.360</b> | <b>67</b> | <b>75</b> | <b>142</b> | <b>1.9</b> | <b>99</b> | <b>2</b> | <b>16</b> | <b>39</b> | <b>21</b> | <b>16</b> | <b>122</b> | <b>1.6</b> |



## #15 JAYDEN PEREZ

Freshman

5-8

Guard

Las Cruces, N.M.

Ocate HS

### At Ocate High School

A three-star recruit according to ESPN, earning a scout's grade of 89 as the 73rd-ranked point guard in her class ... Missed her senior year due to injury, but still amassed 1,586 career points ... As a junior, averaged nearly 20 points with 5.8 rebounds, 2.7 assists and 1.7 steals ... Selected to the 2017 All-U.S.A. New Mexico Girls Basketball Team, she led Ocate HS to the Class 6A state tournament, earning Class 6A all-state second-team honors along the way ... A three-time New Mexico All-State honoree, she played her freshman and sophomore seasons at Las Cruces High, capturing District 3-6A Player of the Year and Class 6A all-state second-team honors each year ... Plays AAU for Team Fusion in El Paso, Texas, under head coach Lee Williams ... A 4.0 student, ranked ninth in her class ... Also competed for Ocate's volleyball team as a junior ... She was also recruited by numerous D-I schools including San Diego, New Mexico, Nebraska, Saint Mary's, UTEP and Long Beach State.

### Personal

Parents are Vanessa and Saul Perez... Plans to major in kinesiology as a fitness specialist ... Enjoys spending time with family, cooking and lifting weights ... Favorite athlete is Kelly Oubre Jr. of the Washington Wizards.

## CAREER HIGHS\*

## Points

8, at Pepperdine (1-16-16)

## Rebounds

4, at Santa Clara (1-23-16)

## Assists

2, vs. Holy Names (11-17-15)

## Steals

2, Twice

Last: at Pepperdine (2-2-17)

## Blocks

2, Twice

Last: at Washington State (11-18-16)

## Field Goals

4, vs. Holy Names (11-17-15)

## Field Goal Attempts

8, at Washington State (11-18-16)

## 3-Point Field Goals

N/A

## 3-Point Field Goal Attempts

N/A

## Free Throws

4, at Pepperdine (1-16-16)

## Free Throw Attempts

7, at Pepperdine (1-16-16)

## MISC. CAREER STATS

Double-figure  
scoring games: 0Double-figure  
rebounding games: 0

\* at San Francisco



## #22 ZAYN DORNSTAUDER

RS Junior

6-3

Center

Regina, Saskatchewan, Canada

Ball State/San Francisco/Hamilton HS (Ariz.)

## Prior to SDSU

Spent the 2017-18 season as a redshirt at Ball State... Played her first two years at the University of San Francisco ... In her freshman year (2015-16) at San Francisco, Dornstauder appeared in 17 games, averaging 6.8 minutes per game and 2.1 points. She had two games with a career-high eight points and helped the Dons win the WCC Tournament and advance to the NCAA Tournament ... Dornstauder appeared in five games the following season (2016-17), totaling five points.

## Prep/International Career

Completed her prep career at Hamilton High in Chandler, Ariz., playing one season for the Huskies ... Helped Hamilton HS finish with a 22-9 overall record and placed fifth in the 2015 Division 1 state championships in 2015 ... Played in the Arizona Senior All-star game to end her high school career ... Played three years at Dr. Martin Leboldus High, in Regina, Saskatchewan, helping them go 77-8 overall and win the 2013 provincial 5A championship ... Played four years for Team Saskatchewan, on the U15 and U17 squads ... In 2014, helped the U17 team finish fourth at the Canadian Women's National Championships while leading the tournament in rebounds and finishing second in blocks ... Led the 2012 Women's U15 Canadian Tournament in rebounds and blocked shots as well... Also competed at the 2013 Jeux Canada Summer Games and the 2011 West Canada Summer Games ... Played club basketball with the Regina Jr. Cougars and the Regina Hornets, traveling through Western Canada and the Northern United States... Lived in Southwest France for one year (2009-10) and played with the Port St. Marie U14 team.

## Personal

Born in Prince Albert, Saskatchewan, Canada to Gord Dornstauder and Patty Urbaniak ... Her sister, Quinn, played basketball at Arizona State and left in third place on the school's all-time career block list (138) ... Also has two brothers: Declan and Kaz... Lists her favorite athlete as Allen Iverson ... Enjoys drawing, photography and longboarding ... Is majoring in social work.

## CAREER STATISTICS

| Season   | gp-gs | min/avg | Total  |      | 3-Point |      | F-Throws |      | Rebounds |     |     |     |    |    |     | Scoring |     |     |     |     |
|----------|-------|---------|--------|------|---------|------|----------|------|----------|-----|-----|-----|----|----|-----|---------|-----|-----|-----|-----|
|          |       |         | fg-fga | pct  | fg-fga  | pct  | ft-fta   | pct  | off      | def | tot | avg | pf | fo | ast | to      | blk | stl | pts | avg |
| 2015-16* | 17-0  | 115/6.8 | 12-37  | .324 | 0-0     | .000 | 12-16    | .750 | 4        | 13  | 17  | 1.0 | 24 | 0  | 2   | 14      | 5   | 1   | 36  | 2.1 |
| 2016-17* | 5-0   | 37/7.4  | 3-17   | .176 | 0-0     | .000 | 4-7      | .571 | 1        | 5   | 6   | 1.2 | 11 | 1  | 1   | 4       | 3   | 4   | 10  | 2.0 |
| All*     | 22-0  | 152/6.9 | 15-54  | .278 | 0-0     | .000 | 16-23    | .696 | 5        | 18  | 23  | 1.0 | 35 | 1  | 3   | 18      | 8   | 5   | 46  | 2.1 |

\*at San Francisco

## CAREER HIGHS\*

## Points

6, vs. San Francisco State (1-29-15)\*

## Rebounds

5, vs. San Francisco State (1-29-15)\*

## Assists

1, Twice,

Last: vs. Hope Int'l (12-10-17)

## Steals

N/A

## Blocks

N/A

## Field Goals

2, vs. San Francisco State (1-29-15)\*

## Field Goal Attempts

3, vs. San Francisco State (1-29-15)\*

## 3-Point Field Goals

N/A

## 3-Point Field Goal Attempts

2, vs. San Francisco State (11-14-14)\*

## Free Throws

2, vs. San Francisco State (1-29-15)\*

## Free Throw Attempts

5, vs. San Francisco State (1-29-15)\*

## MISC. CAREER STATS

## Double-figure

scoring games: 0

## Double-figure

rebounding games: 0

\* at CSU San Bernardino



## #23 LOLI GOMEZ

Senior

5-8

Guard

Huntington Beach, Calif.

Edison HS

**As a Junior (2017-18)**

Appeared in eight games, totaling 11 minutes ... Had an assist against Hope International (12-10-17) ... Had an offensive rebound at Nevada (3-2-18).

**At Cal State San Bernardino (2014-15)**

Appeared in eight games during the 2014-15 season as a true freshman at Cal State San Bernardino, averaging 3.8 minutes per game ... Scored a season-high six points against San Francisco State, going 2-for-3 with a pair of free throws, both of which were season bests.

**At Edison High School (2014-15)**

Four-year varsity letterwinner at Edison High ... Helped her team as a freshman win the CIF Division I championship ... Team reached the CIF semis her sophomore year and the quarterfinals in both her junior and senior seasons ... A three-time all-league selection with first-team honors her junior and senior seasons ... Nominated her senior year for the National Society of High School Scholars.

**Personal**

Dolores Gomez was born in South Bronx, N.Y. to Wanda and Ismael Gomez ... One of five children, including older sister Geena, who played for the Aztecs from 2015-18 ... Majoring in business with aspirations of working in real estate or marketing after graduation.

## CAREER STATISTICS

| Season   | gp-gs | min/avg | Total  |      | 3-Point |      | F-Throws |      | Rebounds |     |     |     |    |    |     | Scoring |     |     |     |     |
|----------|-------|---------|--------|------|---------|------|----------|------|----------|-----|-----|-----|----|----|-----|---------|-----|-----|-----|-----|
|          |       |         | fg-fga | pct  | fg-fga  | pct  | ft-fga   | pct  | off      | def | tot | avg | pf | fo | ast | to      | blk | stl | pts | avg |
| 2014-15* | 8-0   | 30/3.8  | 3-10   | .300 | 0-5     | .000 | 2-5      | .400 | 3        | 5   | 8   | 1.0 | 4  | 0  | 2   | 1       | 0   | 0   | 8   | 1.0 |
| 2017-18  | 8-0   | 11/1.4  | 0-1    | .000 | 0-0     | .000 | 0-0      | .000 | 1        | 0   | 1   | 0.1 | 1  | 0  | 1   | 3       | 0   | 0   | 0   | 0.0 |
| TOTAL    | 8-0   | 11/1.4  | 0-1    | .000 | 0-0     | .000 | 0-0      | .000 | 1        | 0   | 1   | 0.1 | 1  | 0  | 1   | 3       | 0   | 0   | 0   | 0.0 |
| All*     | 16-0  | 41/2.6  | 3-11   | .273 | 0-5     | .000 | 2-5      | .400 | 4        | 5   | 9   | 0.6 | 5  | 0  | 3   | 4       | 0   | 0   | 8   | 0.5 |

\*at CSU San Bernardino

CAREER HIGHS

Points  
6, vs. Hope International (12-10-17)

Rebounds  
5, vs. Hope International (12-10-17)

Assists  
N/A, vs. Presbyterian (11-10-17)

Steals  
1, vs. UNLV (1-27-18)

Blocks  
N/A

Field Goals  
3, vs. Hope International (12-10-17)

Field Goal Attempts  
5, Twice,  
Last: vs. Hope Int'l (12-10-17)

3-Point Field Goals  
1, at Wyoming (2-14-18)

3-Point Field Goal Attempts  
1, Twice  
Last: at Wyoming (2-14-18)

Free Throws  
1, at Colorado State (1-24-18)

Free Throw Attempts  
2, at Colorado State (1-24-18)

MISC. CAREER STATS

Double-figure  
scoring games: 0

Double-figure  
rebounding games: 0



# #24 KIARA EDWARDS

Sophomore  
6-1  
Forward  
Surprise, Ariz.  
Valley Vista HS

**As a Freshman (2017-18)**

Appeared in nine games off the bench, totaling 46 minutes ... Averaged 1.8 points and 1.6 rebounds per game ... Was 7-for-16 (.438) from the field ... Totaled season-highs in points (6), rebounds (5) and minutes (15) against Hope International (12-10-17) ... Hit first career three-pointer at Wyoming (2-14-18).

**At Valley Vista High School**

A four-star recruit ranked No. 119 by Prospects Nation at Valley Vista High (Surprise, Ariz.) ... Invited to the 2016 Women's U17 World Championships team trials ... Averaged nearly a double-double over her four-year varsity career (12.9 PPG, 9.8 RPG) ... Her senior season, helped Valley Vista to a state title, the school's first, after averaging 12.1 points and 8.8 rebounds per game, both team highs ... Competed in the 2017 Arizona Girls High School Basketball All-Star game ... Was a 2016-17 All-West Valley Preps first team pick for the third-straight year after earning Girls Basketball Player of the Year runner-up nods each of the previous two seasons ... Also a two-time (2013-14, 2015-16) Sports360AZ All-Academic Girls Basketball Team honorable mention.

**Personal**

Kiara Edwards was born in Fresno, Calif., to Stephanie and Demetrius Edwards ... Demetrius was a three-year letterwinner at defensive tackle for Fresno State ... Also has a brother, Demetrius Jr. ... Uncle Johnny McWilliams played five seasons in the NFL after playing for USC ... Majoring in journalism at SDSU with plans of working in broadcasting.

CAREER STATISTICS

| Season  | gp-gs |    | min/avg |     | Total |     | 3-Point |    | F-Throws |      | Rebounds |     |      |     |     |     |     | Scoring |    |     |    |     |     |     |     |
|---------|-------|----|---------|-----|-------|-----|---------|----|----------|------|----------|-----|------|-----|-----|-----|-----|---------|----|-----|----|-----|-----|-----|-----|
|         | gp    | gs | min     | avg | fg    | fga | pct     | fg | fga      | pct  | ft       | fta | pct  | off | def | tot | avg | pf      | fo | ast | to | blk | stl | pts | avg |
| 2017-18 | 9     | 0  | 46      | 5.1 | 7     | 16  | .438    | 1  | 3        | .333 | 1        | 2   | .500 | 2   | 12  | 14  | 1.6 | 2       | 0  | 0   | 7  | 0   | 1   | 16  | 1.8 |
| TOTAL   | 9     | 0  | 46      | 5.1 | 7     | 16  | .438    | 1  | 3        | .333 | 1        | 2   | .500 | 2   | 12  | 14  | 1.6 | 2       | 0  | 0   | 7  | 0   | 1   | 16  | 1.8 |

CAREER HIGHS\*

Points  
19, vs. San José State (12-10-17)

Rebounds  
7, at Washington (2-11-18)

Assists  
6, at Washington (2-11-18)

Steals  
2, Twice,  
Last: vs. NCCU (11-22-17)

Blocks  
1, vs. San José State (12-10-17)

Field Goals  
8, vs. San José State (12-10-17)

Field Goal Attempts  
13, vs. Savannah State (12-13-17)

3-Point Field Goals  
3, Three times,  
Last: at Colorado (1-28-18)

3-Point Field Goal Attempts  
6, vs. Utah Valley (11-15-17)

Free Throws  
4, vs. Arkansas Pine Bluff (12-27-16)

Free Throw Attempts  
4, vs. Arkansas Pine Bluff (12-27-16)

MISC. CAREER STATS

Double-figure  
scoring games: 11

Double-figure  
rebounding games: 0

\* at Oregon State



# #25 TAYLOR KALMER

Senior  
5-8  
Guard  
Chandler, Ariz.  
Oregon State/Corona del Sol HS

**2018-19 Season**

Will redshirt this season due to NCAA transfer rules.

**At Oregon State (2015-18)**

Appeared in 80 games as a reserve in her three years at Oregon State... Improved her scoring each season: 2.7 ppg as a freshman, 3.3 ppg as a sophomore and 6.0 ppg as a junior ... As a junior, averaged 17.7 minutes per game and shot 38.4 percent from the floor and 37.2 percent from three-point territory ... Had career-high 19 points on 8-for-10 shooting against San José State (12/10/17 )... Helped the Beavers advance to the second weekend of the NCAA Tournament all three years, including a run to the Final Four in 2016 ... Named Oregon State's Most Improved Player after the 2015-16 season ... Three-time Pac-12 Academic Honorable Mention selection.

**At Corona del Sol High School**

A four-year starter at Corona del Sol High School, Kalmer tallied 1,648 points, 303 assists and 197 steals in her prep career ... A four-time all-city and all-state selection, Kalmer averaged 20 points as a junior and 18.7 as a senior and helped her team make the playoffs all four years ... McDonald's All-American nominee ... Kalmer was rated the No. 31 point guard nationally by ESPN before signing with Oregon State.

**Personal**

Born in Plano, Texas to Christi and John Kalmer ... Lists Russell Westbrook as her favorite athlete ... Enjoys hiking, working out, being outdoors, creative designing, crafts and reading ... Majored in merchandising management at Oregon State and hopes to work for Nike when her playing career is over.

CAREER STATISTICS

| Season   | gp-gs |    | Total  |      | 3-Point |     | F-Throws |     | Rebounds |      |     |     |      |    |     | Scoring |     |     |     |     |    |   |    |     |     |
|----------|-------|----|--------|------|---------|-----|----------|-----|----------|------|-----|-----|------|----|-----|---------|-----|-----|-----|-----|----|---|----|-----|-----|
|          | gp    | gs | fg-fga | pct  | fg-fga  | pct | ft-fla   | pct | off      | def  | tot | avg | pf   | fo | ast | to      | blk | stl | pts | avg |    |   |    |     |     |
| 2015-16* | 24    | 0  | 163    | 6.8  | 24      | 70  | .343     | 11  | 32       | .344 | 6   | 8   | .750 | 2  | 12  | 14      | 0.6 | 12  | 0   | 16  | 12 | 0 | 6  | 65  | 2.7 |
| 2016-17* | 24    | 0  | 215    | 9.0  | 29      | 69  | .420     | 7   | 29       | .241 | 14  | 17  | .824 | 3  | 17  | 20      | 0.8 | 9   | 0   | 21  | 21 | 0 | 5  | 79  | 3.3 |
| 2017-18* | 32    | 0  | 566    | 17.7 | 76      | 198 | .384     | 32  | 86       | .372 | 7   | 10  | .700 | 12 | 62  | 74      | 2.3 | 22  | 0   | 60  | 36 | 1 | 10 | 191 | 6.0 |
| All*     | 80    | 0  | 944    | 11.8 | 129     | 337 | .383     | 50  | 147      | .340 | 27  | 35  | .771 | 17 | 91  | 108     | 1.4 | 43  | 0   | 97  | 69 | 1 | 21 | 335 | 4.2 |

\*at Oregon State



## #3 MONICA MERKOVSKY

---

Senior

6-1

Forward

Torrance, Calif.

West Torrance HS

### **At West Torrance High School**

Received all-Pioneer second team honors as a senior... Helped her team win the 2015 CIF Southern Section 1A Championship and the 2014 CIF Southern Section 2A Championship... Her high school also won the Bay League championship in 2013 and 2014... Was recruited by CSUN and Cal State Los Angeles... Also competed in track and field... Was an honor roll student all four years... Was president of the Freshman Focus Club as a senior.

### **Personal**

Born in San Pedro, Calif. to Kathy and Joseph Merkovsky... Her grandfather played for the Pittsburgh Steelers in the 1940's... Enjoys reading, going to the beach, listening to music and spending time with family friends... Majoring in kinesiology pre-physical therapy... Hopes to work in sports as a doctor of physical therapy.

## CAREER HIGHS

## Points

12, vs. San José State (3-6-17)

## Rebounds

13, vs. Central Michigan (11-24-17)

## Assists

2, vs. Central Connecticut (11-27-16)

## Steals

2, Three times,

Last: vs. Santa Clara (12-14-17)

## Blocks

3, Twice

Last: at Air Force (2-3-18)

## Field Goals

5, Twice,

Last: vs. San José State (3-6-17)

## Field Goal Attempts

9, vs. Central Michigan (11-24-17)

## 3-Point Field Goals

N/A

## 3-Point Field Goal Attempts

1, at New Mexico (1-20-18)

## Free Throws

5, vs. Boise State (1-13-18)

## Free Throw Attempts

7, at Boise State (2-27-18)

## MISC. CAREER STATS

Double-figure  
scoring games: 3Double-figure  
rebounding games: 2

Double-Doubles: 1



## #34 BAYLEE VANDERDOES

Junior

6-1

Forward

Auburn, Calif.

Placer HS

**As a Sophomore (2017-18)**

Appeared in all 30 games and made eight starts ... Averaged 3.3 points and 3.8 rebounds per game ... Led the team with 20 blocks ... Second on the team with 55 offensive rebounds ... Led the Aztecs in blocks 10 times ... Had career-high 13 rebounds, including 11 offensive boards, vs. Central Michigan (11-24-17) ... Had career-high 13 points on 5-5 shooting at Nevada (3-2-18) ... Had career-high three blocks twice ... Scored 11 points vs. Boise State (1-13-18).

**As a Freshman (2016-17)**

Appeared in 23 contests with nine starts ... Began collegiate career by starting the season's first eight games ... Led all SDSU freshmen in scoring (3.9/gm), rebounding (2.7/gm), minutes per game (13.6/gm), assists (0.4/gm) and blocks (0.1/gm) ... Became the first Aztec freshman since 2013 to notch a double-double since 2013 with a 10-point, 10-rebound performance against San Diego Christian (11-14-16) in her second collegiate game ... Best offensive performance of the year came in the MW Tournament game against No. 8-seed San José State (3-6-17), a 12-point effort on 5-for-6 shooting in 16 minutes ... Played 20-or-more minutes five times, with 25 minutes logged against Loyola Marymount (11-20-16), during which she grabbed six boards, serving as a season high ... Pulled down five rebounds at Fresno State (2-22-17) ... Dished out a pair of assists in the final game of the Seton Hall Thanksgiving Classic, a win over Central Connecticut (11-27-16).

**At Placer High School**

A standout player at Placer High School in Auburn, Calif., who won four varsity letters under head coach Tony Camillucci ... Averaged 21.1 points, 11.0 rebounds and 3.6 blocks per game during her senior campaign, earning a spot on the *MaxPreps* Division IV all-California state second team ... Captured the Pioneer Valley League most valuable player award on two occasions and garnered second-team All-Metro accolades from the *Sacramento Bee* ... Holds Placer High's single-game record for points scored (41) and blocked shots (11) ... Was rated a three-star recruit by *ESPN* and received a scouts grade of 89 ... Chose the Aztecs over the likes of Oregon State, Fresno State, UNLV, Utah State, East Carolina and Florida Atlantic among others ... Also competed in volleyball as a prep.

**Personal**

Parents are Eddie and Behia Vanderdoes ... Has one older brother, Eddie, who was a defensive lineman at UCLA and was drafted by the Oakland Raiders ... Grandfather played professional basketball in Germany ... Lists Minnesota Timberwolves guard Derrick Rose as her favorite athlete ... Majoring in history.

## CAREER STATISTICS

| Season  | gp-gs |          | Total  |      | 3-Point |      | F-Throws |      | Rebounds |     |     |     |    |    |     | Scoring |     |     |     |     |
|---------|-------|----------|--------|------|---------|------|----------|------|----------|-----|-----|-----|----|----|-----|---------|-----|-----|-----|-----|
|         | gp-gs | min/avg  | fg-fga | pct  | fg-fga  | pct  | ft-fta   | pct  | off      | def | tot | avg | pf | fo | ast | to      | blk | stl | pts | avg |
| 2016-17 | 23-9  | 312/13.6 | 33-67  | .493 | 0-0     | .000 | 23-37    | .622 | 17       | 44  | 61  | 2.7 | 43 | 1  | 8   | 20      | 3   | 6   | 89  | 3.9 |
| 2017-18 | 30-8  | 500/16.7 | 33-88  | .375 | 0-1     | .000 | 34-56    | .607 | 55       | 60  | 115 | 3.8 | 53 | 1  | 7   | 30      | 20  | 11  | 100 | 3.3 |
| TOTAL   | 53-17 | 812/15.3 | 66-155 | .426 | 0-1     | .000 | 57-93    | .613 | 72       | 104 | 176 | 3.3 | 96 | 2  | 15  | 50      | 23  | 17  | 189 | 3.6 |

CAREER HIGHS

**Points**  
8, vs. Nevada (3-5-18)

**Rebounds**  
7, at UNLV (2-17-18)

**Assists**  
2, vs. Hope International (12-10-17)

**Steals**  
2, vs. UC Irvine (12-8-17)

**Blocks**  
2, vs. UC Irvine (12-8-17)

**Field Goals**  
4, vs. Nevada (3-5-18)

**Field Goal Attempts**  
5, Three times  
Last: vs. Nevada (3-5-18)

**3-Point Field Goals**  
N/A

**3-Point Field Goal Attempts**  
N/A

**Free Throws**  
1, Twice  
Last: at Colorado State (1-24-18)

**Free Throw Attempts**  
2, Four times,  
Last: at UNLV (2-17-18)

MISC. CAREER STATS

Double-figure scoring games: 0

Double-figure rebounding games: 0



# #45 NAOMI EKWEDIKE

RS Sophomore  
6-6  
Center  
Lagos, Nigeria  
Potter's House Christian Academy

**As a Redshirt Freshman (2017-18)**

Appeared in 22 games, while making one start ... In 7.2 minutes per game, averaged 2.2 points and 2.5 rebounds ... Was 23-for-44 from the field (.523) ... Had career-high eight points on 4-for-5 shooting against Nevada in Mountain West Tournament (3-5-18) ... Earned start against Santa Clara and scored four points and grabbed four rebounds in season-high 15 minutes ... Had six points and career-high seven rebounds (four offensive) at UNLV (2-17-18) ... Had five points, two blocks and two steals against UC Irvine (12-8-17) ... Named SDSU scholar-athlete.

**As a Freshman (2016-17)**

Played in the first nine games of the year before suffering a season-ending knee injury on Dec. 11 against UC Santa Barbara ... Averaged 1.9 points and 1.2 rebounds in 7.0 minutes per game ... Logged double-digit minutes three times, spending a season-high 12 minutes on the floor in the Seton Hall Thanksgiving Classic finale, a win over Central Connecticut (11-27-16) ... Knocked down a pair of field goals three times, going 2-for-4 for five points in a win against San Diego Christian (11-14-16) ... Pulled down a trio of rebounds twice: at San Diego (11-17-16) and UC Davis (12-2-16) ... SDSU Scholar-Athlete honoree.

**At Potter's House Christian Academy (Fla.)**

A native of Lagos, Nigeria, who competed for three years as a prep at Potter's House Christian Academy in Jacksonville, Fla. ... Was a member of two state championship teams and helped the Lions secure a national title in the National Christian School Athletic Association tournament as junior ... Averaged 3.8 points, 7.3 rebounds and 2.5 blocks during the 2014-15 campaign, posting four or more rejections in eight different games, according to *MaxPreps* ... Was named her squad's most improved player ... Received a scouts grade of 89 and was rated a three-star recruit by *espnW* ... Also drew interest from Virginia Tech, East Carolina, Prairie View A&M and Maryland-Eastern Shore during the recruiting process ... National Honor Society member and Good Citizenships award recipient.

**Personal**

Naomi Kelechi Ekwedike was born in Lagos, Nigeria ... Parents are Raymond and Bukola Ekwedike ... Has an aunt who played for the Nigerian national soccer team ... Majoring in business administration with a concentration in human resources at SDSU.

CAREER STATISTICS

| Season  | gp-gs | min/avg | Total  |      | 3-Point |      | F-Throws |      | Rebounds |     |     |     |    |    |     |    | Scoring |     |     |     |
|---------|-------|---------|--------|------|---------|------|----------|------|----------|-----|-----|-----|----|----|-----|----|---------|-----|-----|-----|
|         |       |         | fg-fga | pct  | fg-fga  | pct  | ft-fta   | pct  | off      | def | tot | avg | pf | fo | ast | to | blk     | stl | pts | avg |
| 2016-17 | 9-0   | 63/7.0  | 8-19   | .421 | 0-0     | .000 | 1-3      | .333 | 5        | 6   | 11  | 1.2 | 10 | 0  | 0   | 13 | 0       | 0   | 17  | 1.9 |
| 2017-18 | 22-1  | 158/7.2 | 23-44  | .523 | 0-0     | .000 | 3-11     | .273 | 22       | 32  | 54  | 2.5 | 28 | 1  | 6   | 16 | 5       | 3   | 49  | 2.2 |
| TOTAL   | 31-1  | 221/7.1 | 31-63  | .492 | 0-0     | .000 | 4-14     | .286 | 27       | 38  | 65  | 2.1 | 38 | 1  | 6   | 29 | 5       | 3   | 66  | 2.1 |

All games

Overall record: 11-19 Conf: 5-13 Home: 9-7 Away: 2-9 Neutral: 0-3

| #              | Player            | gp-gs | min  | avg  | Total    |      | 3-Point |       | F-Throw |       | Rebounds |     |      | pf   | dq  | a | to  | blk | stl | pts | avg  |      |  |  |
|----------------|-------------------|-------|------|------|----------|------|---------|-------|---------|-------|----------|-----|------|------|-----|---|-----|-----|-----|-----|------|------|--|--|
|                |                   |       |      |      | fg-fga   | fg%  | 3fg-fga | 3fg%  | ft-fa   | ft%   | off      | def | tot  |      |     |   |     |     |     |     |      |      |  |  |
| 15             | FORT, McKynzie    | 29-29 | 1013 | 34.9 | 184-397  | .463 | 12-40   | .300  | 95-127  | .748  | 56       | 116 | 172  | 5.9  | 54  | 1 | 96  | 83  | 5   | 41  | 475  | 16.4 |  |  |
| 20             | GOMEZ, Geena      | 30-30 | 966  | 32.2 | 106-311  | .341 | 56-148  | .378  | 61-72   | .847  | 17       | 87  | 104  | 3.5  | 64  | 0 | 116 | 90  | 5   | 28  | 329  | 11.0 |  |  |
| 10             | MURRAY, Naje      | 30-16 | 667  | 22.2 | 99-279   | .355 | 53-157  | .338  | 29-37   | .784  | 15       | 73  | 88   | 2.9  | 70  | 2 | 37  | 49  | 3   | 30  | 280  | 9.3  |  |  |
| 22             | THORDERSON, Lexy  | 15-15 | 319  | 21.3 | 36-91    | .396 | 33-81   | .407  | 11-15   | .733  | 8        | 29  | 37   | 2.5  | 25  | 0 | 6   | 10  | 4   | 8   | 116  | 7.7  |  |  |
| 01             | LARK, Khalia      | 30-30 | 772  | 25.7 | 71-189   | .376 | 36-105  | .343  | 16-23   | .696  | 29       | 126 | 155  | 5.2  | 54  | 1 | 22  | 60  | 4   | 16  | 194  | 6.5  |  |  |
| 30             | GREENHOUSE, Chey  | 30-1  | 509  | 17.0 | 66-134   | .493 | 1-5     | .200  | 36-50   | .720  | 37       | 47  | 84   | 2.8  | 25  | 0 | 31  | 18  | 0   | 13  | 169  | 5.6  |  |  |
| 05             | ADAMS, Te'a       | 29-0  | 482  | 16.6 | 51-182   | .280 | 6-45    | .133  | 26-39   | .667  | 7        | 46  | 53   | 1.8  | 48  | 1 | 47  | 41  | 4   | 22  | 134  | 4.6  |  |  |
| 34             | VANDERDOES, Bayle | 30-8  | 500  | 16.7 | 33-88    | .375 | 0-1     | .000  | 34-56   | .607  | 55       | 60  | 115  | 3.8  | 53  | 1 | 7   | 30  | 20  | 11  | 100  | 3.3  |  |  |
| 03             | BOJORQUEZ, Jenay  | 5-0   | 57   | 11.4 | 5-17     | .294 | 1-1     | 1.000 | 2-3     | .667  | 1        | 6   | 7    | 1.4  | 7   | 0 | 3   | 6   | 0   | 2   | 13   | 2.6  |  |  |
| 11             | GOMEZ, Arantxa    | 28-20 | 386  | 13.8 | 29-47    | .617 | 0-0     | .000  | 5-11    | .455  | 25       | 40  | 65   | 2.3  | 47  | 2 | 8   | 17  | 11  | 8   | 63   | 2.3  |  |  |
| 45             | EKWEDIKE, Naomi   | 22-1  | 158  | 7.2  | 23-44    | .523 | 0-0     | .000  | 3-11    | .273  | 22       | 32  | 54   | 2.5  | 28  | 1 | 6   | 16  | 5   | 3   | 49   | 2.2  |  |  |
| 24             | EDWARDS, Kiara    | 9-0   | 46   | 5.1  | 7-16     | .438 | 1-3     | .333  | 1-2     | .500  | 2        | 12  | 14   | 1.6  | 2   | 0 | 0   | 7   | 0   | 1   | 16   | 1.8  |  |  |
| 40             | TERRY, Monique    | 10-0  | 62   | 6.2  | 4-5      | .800 | 0-0     | .000  | 2-2     | 1.000 | 6        | 7   | 13   | 1.3  | 9   | 0 | 0   | 3   | 2   | 1   | 10   | 1.0  |  |  |
| 21             | LOWE, Abby        | 14-0  | 67   | 4.8  | 5-12     | .417 | 1-4     | .250  | 2-4     | .500  | 2        | 3   | 5    | 0.4  | 7   | 0 | 1   | 6   | 0   | 3   | 13   | 0.9  |  |  |
| 00             | VILLA, Kennedi    | 3-0   | 13   | 4.3  | 0-0      | .000 | 0-0     | .000  | 1-2     | .500  | 0        | 3   | 3    | 1.0  | 1   | 0 | 1   | 0   | 0   | 0   | 1    | 0.3  |  |  |
| 13             | BROWN, Allison    | 8-0   | 45   | 5.6  | 0-8      | .000 | 0-4     | .000  | 0-0     | .000  | 0        | 4   | 4    | 0.5  | 5   | 0 | 3   | 6   | 1   | 0   | 0    | 0.0  |  |  |
| 23             | GOMEZ, Lolli      | 8-0   | 11   | 1.4  | 0-1      | .000 | 0-0     | .000  | 0-0     | .000  | 1        | 0   | 1    | 0.1  | 1   | 0 | 1   | 3   | 0   | 0   | 0    | 0.0  |  |  |
| Team           |                   |       |      |      |          |      |         |       |         |       | 63       | 80  | 143  | 11   |     |   |     |     |     |     |      |      |  |  |
| Total.....     |                   | 30    | 6073 |      | 719-1821 | .395 | 200-594 | .337  | 324-454 | .714  | 346      | 771 | 1117 | 37.2 | 500 | 9 | 385 | 456 | 64  | 187 | 1962 | 65.4 |  |  |
| Opponents..... |                   | 30    | 6075 |      | 782-1871 | .418 | 207-647 | .320  | 319-437 | .730  | 348      | 789 | 1137 | 37.9 | 460 | - | 471 | 403 | 79  | 219 | 2090 | 69.7 |  |  |

| TEAM STATISTICS        | SDSU     | OPP      | Date       | Opponent            | Score      | Att.           |           |      |
|------------------------|----------|----------|------------|---------------------|------------|----------------|-----------|------|
| SCORING                | 1962     | 2090     | 11-10-17   | PRESBYTERIAN        | W 77-50    | 464            |           |      |
| Points per game        | 65.4     | 69.7     | 11-14-17   | CSUN                | W 58-55    | 366            |           |      |
| Scoring margin         | -4.3     | -        | 11-18-17   | CAL STATE FULLERTON | W 59-58    | 1108           |           |      |
| FIELD GOALS-ATT        | 719-1821 | 782-1871 | ^ 11-24-17 | vs Central Michigan | Lot 76-85  | 150            |           |      |
| Field goal pct         | .395     | .418     | ^ 11-25-17 | vs Tulane           | L 46-80    | 186            |           |      |
| 3 POINT FG-ATT         | 200-594  | 207-647  | 11-29-17   | SAN DIEGO           | W 77-76    | 790            |           |      |
| 3-point FG pct         | .337     | .320     | 12-03-17   | at Arizona          | W 78-67    | 1555           |           |      |
| 3-pt FG made per game  | 6.7      | 6.9      | 12-08-17   | UC IRVINE           | L 65-67    | 4148           |           |      |
| FREE THROWS-ATT        | 324-454  | 319-437  | 12-10-17   | HOPE INTERNATIONAL  | W 92-68    | 588            |           |      |
| Free throw pct         | .714     | .730     | 12-14-17   | SANTA CLARA         | L 34-48    | 617            |           |      |
| F-Throws made per game | 10.8     | 10.6     | 12-22-17   | at UC Santa Barbara | L 64-77    | 638            |           |      |
| REBOUNDS               | 1117     | 1137     | * 12-28-17 | WYOMING             | W 68-62    | 1325           |           |      |
| Rebounds per game      | 37.2     | 37.9     | * 12-30-17 | at Utah State       | L 58-62    | 368            |           |      |
| Rebounding margin      | -0.7     | -        | * 01-03-18 | COLORADO STATE      | L 63-65    | 490            |           |      |
| ASSISTS                | 385      | 471      | * 01-10-18 | at San Jose State   | W 75-65    | 813            |           |      |
| Assists per game       | 12.8     | 15.7     | * 01-13-18 | BOISE STATE         | L 70-86    | 674            |           |      |
| TURNOVERS              | 456      | 403      | * 01-17-18 | at Fresno State     | L 53-64    | 2122           |           |      |
| Turnovers per game     | 15.2     | 13.4     | * 01-20-18 | NEW MEXICO          | W 97-89    | 886            |           |      |
| Turnover margin        | -1.8     | -        | * 01-24-18 | at Colorado State   | L 43-72    | 1175           |           |      |
| Assist/turnover ratio  | 0.8      | 1.2      | * 01-27-18 | UNLV                | L 64-75    | 4568           |           |      |
| STEALS                 | 187      | 219      | * 02-03-18 | at Air Force        | L 51-61    | 918            |           |      |
| Steals per game        | 6.2      | 7.3      | * 02-07-18 | FRESNO STATE        | L 60-66    | 4306           |           |      |
| BLOCKS                 | 64       | 79       | * 02-10-18 | NEVADA              | W 75-72    | 812            |           |      |
| Blocks per game        | 2.1      | 2.6      | * 2/14/18  | at Wyoming          | L 50-70    | 2525           |           |      |
| ATTENDANCE             | 22069    | 14164    | * 02/17/18 | at UNLV             | Lot 67-73  | 783            |           |      |
| Home games-Avg/Game    | 16-1379  | 11-1257  | * 02-21-18 | AIR FORCE           | L 48-56    | 414            |           |      |
| Neutral site-Avg/Game  | -        | 3-112    | * 02-24-18 | SAN JOSE STATE      | W 85-78    | 513            |           |      |
| Score by Periods       | 1st      | 2nd      | 3rd        | 4th                 | OT         | Totals         |           |      |
| San Diego State        | 485      | 483      | 451        | 526                 | 17         | 1962           |           |      |
| Opponents              | 486      | 455      | 546        | 560                 | 43         | 2090           |           |      |
|                        |          |          |            |                     | * 02/27/18 | at Boise State | L 53-64   | 809  |
|                        |          |          |            |                     | * 3/2/18   | at Nevada      | L 72-84   | 2122 |
|                        |          |          |            |                     | 03/05/18   | vs Nevada      | Lot 84-95 | 0    |

^ = Junkanoo Jam - Bimini, Bahamas

\* = Mountain West game

Conference games only

| RECORD:        | OVERALL | HOME | AWAY | NEUTRAL |
|----------------|---------|------|------|---------|
| ALL GAMES      | 5-13    | 4-5  | 1-8  | 0-0     |
| CONFERENCE     | 5-13    | 4-5  | 1-8  | 0-0     |
| NON-CONFERENCE | 0-0     | 0-0  | 0-0  | 0-0     |

| #              | Player            | gp-gs | min  | avg  | Total    |      | 3-Point |      | F-Throw |       | Rebounds |     |     |      |     | pts | avg |     |    |     |      |      |  |  |   |
|----------------|-------------------|-------|------|------|----------|------|---------|------|---------|-------|----------|-----|-----|------|-----|-----|-----|-----|----|-----|------|------|--|--|---|
|                |                   |       |      |      | fg-fga   | fg%  | 3fg-fga | 3fg% | ft-fta  | ft%   | off      | def | tot | avg  | pf  |     |     | dq  | a  | to  | blk  | stl  |  |  |   |
| 15             | FORT, McKynzie    | 18-18 | 647  | 35.9 | 115-249  | .462 | 6-21    | .286 | 56-76   | .737  | 37       | 78  | 115 | 6.4  | 36  | 1   | 57  | 54  | 2  | 29  | 292  | 16.2 |  |  |   |
| 20             | GOMEZ, Geena      | 18-18 | 614  | 34.1 | 70-207   | .338 | 40-101  | .396 | 50-56   | .893  | 9        | 56  | 65  | 3.6  | 41  | 0   | 60  | 57  | 4  | 17  | 230  | 12.8 |  |  |   |
| 10             | MURRAY, Naje      | 18-14 | 448  | 24.9 | 58-180   | .322 | 28-95   | .295 | 14-20   | .700  | 14       | 53  | 67  | 3.7  | 45  | 1   | 23  | 31  | 3  | 23  | 158  | 8.8  |  |  |   |
| 01             | LARK, Khalia      | 18-18 | 485  | 26.9 | 46-114   | .404 | 21-63   | .333 | 8-10    | .800  | 12       | 86  | 98  | 5.4  | 35  | 1   | 14  | 41  | 2  | 9   | 121  | 6.7  |  |  |   |
| 30             | GREENHOUSE, Chey  | 18-1  | 319  | 17.7 | 42-86    | .488 | 0-1     | .000 | 27-39   | .692  | 19       | 29  | 48  | 2.7  | 16  | 0   | 16  | 13  | 0  | 6   | 111  | 6.2  |  |  |   |
| 22             | THORDERSON, Lexy  | 4-4   | 67   | 16.8 | 6-15     | .400 | 5-14    | .357 | 4-4     | 1.000 | 2        | 2   | 4   | 1.0  | 8   | 0   | 1   | 1   | 1  | 0   | 21   | 5.3  |  |  |   |
| 05             | ADAMS, Tea        | 17-0  | 321  | 18.9 | 30-101   | .297 | 3-17    | .176 | 16-23   | .696  | 2        | 23  | 25  | 1.5  | 35  | 1   | 27  | 25  | 2  | 9   | 79   | 4.6  |  |  |   |
| 34             | VANDERDOES, Bayle | 18-4  | 297  | 16.5 | 18-44    | .409 | 0-1     | .000 | 26-39   | .667  | 24       | 45  | 69  | 3.8  | 33  | 0   | 6   | 24  | 11 | 4   | 62   | 3.4  |  |  |   |
| 11             | GOMEZ, Arantxa    | 18-13 | 271  | 15.1 | 21-33    | .636 | 0-0     | .000 | 5-9     | .556  | 17       | 25  | 42  | 2.3  | 32  | 2   | 8   | 11  | 5  | 6   | 47   | 2.6  |  |  |   |
| 24             | EDWARDS, Kiara    | 5-0   | 16   | 3.2  | 3-5      | .600 | 1-2     | .500 | 1-2     | .500  | 0        | 4   | 4   | 0.8  | 2   | 0   | 0   | 4   | 0  | 1   | 8    | 1.6  |  |  |   |
| 45             | EKWEDIKE, Naomi   | 12-0  | 58   | 4.8  | 6-17     | .353 | 0-0     | .000 | 3-9     | .333  | 14       | 10  | 24  | 2.0  | 10  | 0   | 0   | 6   | 1  | 1   | 15   | 1.3  |  |  |   |
| 21             | LOWE, Abby        | 12-0  | 47   | 3.9  | 3-8      | .375 | 0-1     | .000 | 2-2     | 1.000 | 1        | 0   | 1   | 0.1  | 5   | 0   | 0   | 5   | 0  | 2   | 8    | 0.7  |  |  |   |
| 13             | BROWN, Allison    | 7-0   | 29   | 4.1  | 0-6      | .000 | 0-2     | .000 | 0-0     | .000  | 0        | 3   | 3   | 0.4  | 4   | 0   | 3   | 3   | 0  | 0   | 0    | 0.0  |  |  |   |
| 23             | GOMEZ, Loli       | 5-0   | 6    | 1.2  | 0-0      | .000 | 0-0     | .000 | 0-0     | .000  | 1        | 0   | 1   | 0.2  | 1   | 0   | 0   | 1   | 0  | 0   | 0    | 0.0  |  |  |   |
| Team           |                   |       |      |      |          |      |         |      |         |       | 42       | 52  | 94  |      |     |     |     |     |    |     |      |      |  |  | 7 |
| Total.....     |                   | 18    | 3625 |      | 418-1065 | .392 | 104-318 | .327 | 212-289 | .734  | 194      | 466 | 660 | 36.7 | 303 | 6   | 215 | 283 | 31 | 107 | 1152 | 64.0 |  |  |   |
| Opponents..... |                   | 18    | 3625 |      | 476-1128 | .422 | 116-369 | .314 | 196-267 | .734  | 208      | 475 | 683 | 37.9 | 292 | -   | 271 | 236 | 41 | 138 | 1264 | 70.2 |  |  |   |

| TEAM STATISTICS        | SDSU     | OPP      | Date                               | Opponent          | Score     | Att. |
|------------------------|----------|----------|------------------------------------|-------------------|-----------|------|
| SCORING                | 1152     | 1264     | * 12-28-17                         | WYOMING           | w 68-62   | 1325 |
| Points per game        | 64.0     | 70.2     | * 12-30-17                         | at Utah State     | L 58-62   | 368  |
| Scoring margin         | -6.2     | -        | * 01-03-18                         | COLORADO STATE    | L 63-65   | 490  |
| FIELD GOALS-ATT        | 418-1065 | 476-1128 | * 01-10-18                         | at San Jose State | w 75-65   | 813  |
| Field goal pct         | .392     | .422     | * 01-13-18                         | BOISE STATE       | L 70-86   | 674  |
| 3 POINT FG-ATT         | 104-318  | 116-369  | * 01-17-18                         | at Fresno State   | L 53-64   | 2122 |
| 3-point FG pct         | .327     | .314     | * 01-20-18                         | NEW MEXICO        | w 97-89   | 886  |
| 3-pt FG made per game  | 5.8      | 6.4      | * 01-24-18                         | at Colorado State | L 43-72   | 1175 |
| FREE THROWS-ATT        | 212-289  | 196-267  | * 01-27-18                         | UNLV              | L 64-75   | 4568 |
| Free throw pct         | .734     | .734     | * 02-03-18                         | at Air Force      | L 51-61   | 918  |
| F-Throws made per game | 11.8     | 10.9     | * 02-07-18                         | FRESNO STATE      | L 60-66   | 4306 |
| REBOUNDS               | 660      | 683      | * 02-10-18                         | NEVADA            | w 75-72   | 812  |
| Rebounds per game      | 36.7     | 37.9     | * 2/14/18                          | at Wyoming        | L 50-70   | 2525 |
| Rebounding margin      | -1.3     | -        | * 02/17/18                         | at UNLV           | Lot 67-73 | 783  |
| ASSISTS                | 215      | 271      | * 02-21-18                         | AIR FORCE         | L 48-56   | 414  |
| Assists per game       | 11.9     | 15.1     | * 02-24-18                         | SAN JOSE STATE    | w 85-78   | 513  |
| TURNOVERS              | 283      | 236      | * 02/27/18                         | at Boise State    | L 53-64   | 809  |
| Turnovers per game     | 15.7     | 13.1     | * 3/2/18                           | at Nevada         | L 72-84   | 2122 |
| Turnover margin        | -2.6     | -        | ^ = Junkanoo Jam - Bimini, Bahamas |                   |           |      |
| Assist/turnover ratio  | 0.8      | 1.1      | * = Mountain West game             |                   |           |      |
| STEALS                 | 107      | 138      |                                    |                   |           |      |
| Steals per game        | 5.9      | 7.7      |                                    |                   |           |      |
| BLOCKS                 | 31       | 41       |                                    |                   |           |      |
| Blocks per game        | 1.7      | 2.3      |                                    |                   |           |      |
| ATTENDANCE             | 13988    | 11635    |                                    |                   |           |      |
| Home games-Avg/Game    | 9-1554   | 9-1293   |                                    |                   |           |      |
| Neutral site-Avg/Game  | -        | 0-0      |                                    |                   |           |      |

| Score by Periods | 1st | 2nd | 3rd | 4th | OT | Totals |
|------------------|-----|-----|-----|-----|----|--------|
| San Diego State  | 298 | 268 | 262 | 316 | 8  | 1152   |
| Opponents        | 294 | 283 | 325 | 348 | 14 | 1264   |

TEAM STATISTICS

| Opponent                   | Date            | Score        | W        | Total           |             | 3-Pointers     |             | Free Throws    |              | Rebounds   |            |             |             | pts        |            |            |           | avg        |             |             |
|----------------------------|-----------------|--------------|----------|-----------------|-------------|----------------|-------------|----------------|--------------|------------|------------|-------------|-------------|------------|------------|------------|-----------|------------|-------------|-------------|
|                            |                 |              |          | fg-pts          | pcd         | 3fg-pts        | pcd         | ft-pts         | pcd          | off        | def        | tot         | avg         | pf         | a          | bk         | stl       |            | pts         | avg         |
| <b>PRESBYTERIAN</b>        | <b>11-10-17</b> | <b>77-50</b> | <b>W</b> | <b>38-60</b>    | <b>.583</b> | <b>12-26</b>   | <b>.462</b> | <b>5-7</b>     | <b>.714</b>  | <b>9</b>   | <b>36</b>  | <b>45</b>   | <b>45.0</b> | <b>13</b>  | <b>22</b>  | <b>18</b>  | <b>2</b>  | <b>7</b>   | <b>77</b>   | <b>77.0</b> |
| CSUN                       | 11-14-17        | 58-55        | W        | 21-64           | .328        | 11-29          | .379        | 5-7            | .714         | 11         | 28         | 39          | 42.0        | 17         | 15         | 17         | 5         | 10         | 58          | 67.5        |
| <b>CAL STATE FULLERTON</b> | <b>11-18-17</b> | <b>59-58</b> | <b>W</b> | <b>23-61</b>    | <b>.377</b> | <b>8-22</b>    | <b>.364</b> | <b>5-9</b>     | <b>.556</b>  | <b>15</b>  | <b>27</b>  | <b>42</b>   | <b>42.0</b> | <b>18</b>  | <b>9</b>   | <b>14</b>  | <b>4</b>  | <b>7</b>   | <b>59</b>   | <b>64.7</b> |
| vs Central Michigan        | 11-24-17        | 76-85        | Lot      | 26-82           | .317        | 9-30           | .300        | 15-21          | .714         | 21         | 19         | 40          | 41.5        | 20         | 13         | 4          | 0         | 6          | 76          | 67.5        |
| <b>vs Tulane</b>           | <b>11-25-17</b> | <b>46-80</b> | <b>L</b> | <b>17-66</b>    | <b>.258</b> | <b>5-16</b>    | <b>.313</b> | <b>7-13</b>    | <b>.538</b>  | <b>13</b>  | <b>23</b>  | <b>36</b>   | <b>40.4</b> | <b>15</b>  | <b>7</b>   | <b>19</b>  | <b>1</b>  | <b>7</b>   | <b>46</b>   | <b>68.2</b> |
| SAN DIEGO                  | 11-29-17        | 77-76        | W        | 28-67           | .418        | 7-18           | .389        | 14-24          | .583         | 16         | 22         | 38          | 40.0        | 17         | 16         | 12         | 4         | 5          | 77          | 65.5        |
| at Arizona                 | 12-03-17        | 78-67        | W        | 23-60           | .483        | 11-21          | .524        | 21-25          | .840         | 7          | 29         | 36          | 39.4        | 12         | 12         | 10         | 1         | 3          | 78          | 67.3        |
| UC IRVINE                  | 12-08-17        | 65-67        | L        | 24-59           | .407        | 8-24           | .333        | 9-12           | .750         | 16         | 25         | 41          | 39.6        | 11         | 14         | 21         | 6         | 7          | 65          | 67.0        |
| <b>HOPE INTERNATIONAL</b>  | <b>12-10-17</b> | <b>92-58</b> | <b>W</b> | <b>38-71</b>    | <b>.535</b> | <b>13-31</b>   | <b>.419</b> | <b>3-3</b>     | <b>1.000</b> | <b>10</b>  | <b>31</b>  | <b>41</b>   | <b>39.8</b> | <b>18</b>  | <b>25</b>  | <b>16</b>  | <b>4</b>  | <b>11</b>  | <b>92</b>   | <b>69.8</b> |
| SANTA CLARA                | 12-14-17        | 34-48        | L        | 13-59           | .220        | 3-28           | .107        | 5-9            | .556         | 12         | 26         | 38          | 39.6        | 15         | 6          | 15         | 0         | 12         | 34          | 66.2        |
| at UC Santa Barbara        | 12-22-17        | 64-77        | L        | 25-64           | .463        | 4-12           | .333        | 10-18          | .556         | 10         | 13         | 23          | 38.1        | 23         | 11         | 16         | 1         | 3          | 64          | 66.0        |
| WYOMING                    | 12-28-17        | 68-62        | W        | 23-54           | .426        | 3-12           | .250        | 19-25          | .760         | 7          | 29         | 36          | 37.9        | 17         | 6          | 14         | 2         | 9          | 68          | 66.2        |
| at Utah State              | 12-30-17        | 58-62        | L        | 21-68           | .362        | 6-28           | .214        | 10-14          | .714         | 13         | 21         | 34          | 37.6        | 21         | 9          | 14         | 1         | 6          | 58          | 65.5        |
| COLORADO STATE             | 01-03-18        | 63-65        | L        | 23-63           | .365        | 7-22           | .318        | 10-15          | .667         | 13         | 28         | 41          | 37.9        | 13         | 10         | 11         | 0         | 4          | 63          | 65.4        |
| at San Jose State          | 01-10-18        | 75-65        | W        | 28-67           | .418        | 4-16           | .250        | 15-21          | .714         | 15         | 35         | 50          | 38.7        | 21         | 13         | 20         | 6         | 7          | 75          | 66.0        |
| BOISE STATE                | 01-13-18        | 70-86        | L        | 23-52           | .442        | 3-9            | .333        | 21-24          | .875         | 8          | 21         | 29          | 38.1        | 18         | 7          | 15         | 1         | 4          | 70          | 66.2        |
| at Fresno State            | 01-17-18        | 53-64        | L        | 28-67           | .351        | 3-14           | .214        | 10-17          | .588         | 10         | 26         | 36          | 37.9        | 17         | 10         | 17         | 2         | 8          | 53          | 65.5        |
| NEW MEXICO                 | 01-20-18        | 97-89        | W        | 37-72           | .514        | 12-28          | .429        | 11-14          | .786         | 11         | 34         | 45          | 38.3        | 19         | 28         | 12         | 0         | 3          | 97          | 67.2        |
| at Colorado State          | 01-24-18        | 43-72        | L        | 15-62           | .288        | 8-23           | .348        | 5-10           | .500         | 8          | 23         | 31          | 37.9        | 13         | 10         | 20         | 1         | 5          | 43          | 65.9        |
| UNLV                       | 01-27-18        | 64-75        | L        | 25-61           | .410        | 10-25          | .400        | 4-8            | .500         | 9          | 27         | 36          | 37.8        | 20         | 19         | 16         | 3         | 3          | 64          | 65.8        |
| at Air Force               | 02-03-18        | 51-61        | L        | 17-46           | .370        | 3-12           | .250        | 14-16          | .875         | 7          | 25         | 32          | 37.6        | 11         | 4          | 20         | 5         | 7          | 51          | 65.1        |
| FRESNO STATE               | 02-07-18        | 60-66        | L        | 23-65           | .354        | 5-21           | .238        | 9-14           | .643         | 15         | 28         | 43          | 37.8        | 16         | 16         | 18         | 1         | 8          | 60          | 64.9        |
| <b>NEVADA</b>              | <b>02-10-18</b> | <b>75-72</b> | <b>W</b> | <b>28-62</b>    | <b>.452</b> | <b>8-16</b>    | <b>.500</b> | <b>11-14</b>   | <b>.786</b>  | <b>9</b>   | <b>23</b>  | <b>32</b>   | <b>37.6</b> | <b>28</b>  | <b>16</b>  | <b>13</b>  | <b>1</b>  | <b>6</b>   | <b>75</b>   | <b>65.3</b> |
| at Wyoming                 | 2/14/18         | 50-70        | L        | 18-53           | .340        | 4-10           | .400        | 10-13          | .769         | 6          | 24         | 30          | 37.2        | 11         | 5          | 8          | 1         | 1          | 50          | 64.7        |
| at UNLV                    | 02/17/18        | 67-73        | Lot      | 24-60           | .400        | 6-19           | .316        | 13-17          | .765         | 13         | 28         | 41          | 37.4        | 22         | 8          | 25         | 2         | 8          | 67          | 64.8        |
| AIR FORCE                  | 02-21-18        | 48-56        | L        | 14-50           | .280        | 2-7            | .286        | 18-21          | .857         | 10         | 19         | 29          | 37.1        | 16         | 4          | 17         | 1         | 10         | 48          | 64.2        |
| <b>SAN JOSE STATE</b>      | <b>02-24-18</b> | <b>85-78</b> | <b>W</b> | <b>35-78</b>    | <b>.449</b> | <b>9-23</b>    | <b>.391</b> | <b>6-9</b>     | <b>.667</b>  | <b>14</b>  | <b>29</b>  | <b>43</b>   | <b>37.3</b> | <b>19</b>  | <b>29</b>  | <b>13</b>  | <b>1</b>  | <b>10</b>  | <b>85</b>   | <b>64.9</b> |
| at Boise State             | 02/27/18        | 53-64        | L        | 20-67           | .299        | 5-23           | .217        | 8-12           | .667         | 17         | 23         | 40          | 37.4        | 11         | 8          | 15         | 1         | 6          | 53          | 64.5        |
| at Nevada                  | 3/2/18          | 72-84        | L        | 24-48           | .500        | 6-10           | .600        | 18-25          | .720         | 9          | 23         | 32          | 37.2        | 18         | 13         | 15         | 2         | 2          | 72          | 64.8        |
| San Diego State            |                 | 1878         |          | 686-1748        | .392        | 195-575        | .339        | 311-437        | .712         | 334        | 745        | 1079        | 37.2        | 474        | 365        | 445        | 59        | 185        | 1878        | 64.8        |
| <b>Opponents</b>           |                 | <b>1995</b>  |          | <b>750-1796</b> | <b>.418</b> | <b>201-534</b> | <b>.317</b> | <b>294-485</b> | <b>.721</b>  | <b>331</b> | <b>761</b> | <b>1092</b> | <b>37.7</b> | <b>447</b> | <b>453</b> | <b>385</b> | <b>72</b> | <b>215</b> | <b>1995</b> | <b>68.8</b> |

Games played: 29  
 Points/game: 64.8  
 FG Pct: 38.2  
 SFG Pct: 33.9  
 FT Pct: 71.2

Rebounds/game: 37.2  
 Assists/game: 12.6  
 Turnovers/game: 15.3  
 Assist/turnover ratio: 0.8  
 Steals/game: 6.4  
 Blocks/game: 2.0

**Aztec Individual Highs****Points**

32, McKynzie Fort vs. New Mexico (1-20-18)

**Field Goals Made**

12, McKynzie Fort vs. New Mexico (11-29-17)

**Field Goals Attempted**

21, McKynzie Fort vs. Nevada (3-5-18)

**Field Goal Percentage (min. 5 made)**

1.000 (5-5), Baylee Vanderdoes at Nevada (3-2-18)

**3-Point Field Goals Made**

7, Najé Murray vs. New Mexico (1-20-18)

**3-Point Field Goals Attempted**

13, Najé Murray vs. New Mexico (1-20-18)

**3-Pt Field Goal Percentage (min. 2 made)**

1.000 (2-2), Khalia Lark at Nevada (3-2-18)

1.000 (2-2), McKynzie Fort vs. New Mexico (1-20-18)

1.000 (2-2), Najé Murray at UC Santa Barbara (12-22-17)

**Free Throws Made**

12, Geena Gomez vs. Air Force (2-21-18)

**Free Throws Attempted**

13, McKynzie Fort at Arizona (12-3-17)

13, Geena Gomez vs. Air Force (2-21-18)

**Free Throw Percentage (min 4 made)**

1.000 (7-7), Geena Gomez at UNLV (2-17-18)

1.000 (6-6), Najé Murray vs. Central Michigan (11-24-17)

1.000 (6-6), Geena Gomez vs. Nevada (2-10-18)

1.000 (5-5), Geena Gomez at Nevada (3-2-18)

**Rebounds**

16, McKynzie Fort vs. San José State (2-24-18)

16, McKynzie Fort vs. Colorado State (1-3-18)

**Assists**

11, Geena Gomez vs. New Mexico (1-20-18)

**Steals**

4, Najé Murray vs. Air Force (2-21-18)

4, Najé Murray at UNLV (2-17-18)

4, Geena Gomez vs. Santa Clara (12-14-17)

4, Téa Adams vs. Hope International (12-10-17)

**Blocked Shots**

3, Baylee Vanderdoes at Air Force (2-3-18)

3, Baylee Vanderdoes vs. San Diego (11-29-17)

**Turnovers**

7, Geena Gomez vs. Fresno State (2-7-18)

**Minutes**

43, McKynzie Fort at UNLV (2-17-18)

43, McKynzie Fort vs. Nevada (3-5-18)

**Opponent Individual Highs****Points**

41, Cherise Beynon vs. New Mexico (1-20-18)

**Field Goals Made**

17, Cherise Beynon vs. New Mexico (1-20-18)

**Field Goals Attempted**

31, Cherise Beynon vs. New Mexico (1-20-18)

**Field Goal Percentage (min 5 made)**

.833 (5-6), Veronika Mirkovic at Colorado State (1-24-18)

**3-Point Field Goals Made**

7, Riley Lupfer vs. Boise State (1-13-18)

7, Kolby Morgan vs. Tulane (11-25-17)

**3-Point Field Goals Attempted**

12, Riley Lupfer vs. Boise State (1-13-18)

12, Julia Pihl vs. Hope International (12-10-17)

**3-Pt Field Goal Percentage (min 2 made)**

1.000 (2-2) Danae Miller at UC Santa Barbara (12-22-17)

1.000 (2-2) Sarah Porter at UC Santa Barbara (12-22-17)

1.000 (2-2) Vanessa DeSimone vs. Hope International (12-10-17)

1.000 (2-2) Sydney Williams vs. San Diego (11-29-17)

**Free Throws Made**

12, T Moe vs. Nevada (3-5-18)

**Free Throws Attempted**

14, T Moe vs. Nevada (3-5-18)

**Free Throw Percentage (min 4 made)**

1.000 (9-9), Drew Edelman at UC Santa Barbara (12-22-17)

1.000 (8-8), Victoria Price at Utah State (12-30-17)

1.000 (6-6), Cydni Lewis vs. San José State (2-24-18)

1.000 (5-5), Erika Chapman vs. Air Force (2-21-18)

1.000 (5-5), Liv Roberts vs. Wyoming (12-28-17)

**Rebounds**

19, Tinara Moore vs. Central Michigan (11-24-17)

**Assists**

10, Braydey Hodgins vs. Boise State (1-13-18)

**Steals**

5, Kaelin Immel at Air Force (2-3-18)

**Blocked Shots**

4, Channon Fluker vs. CSUN (11-14-17)

**Turnovers**

8, Kaelin Immel vs. Air Force (2-21-18)

## 2017-18 MISCELLANEOUS STATS

### ►The Last Time an Aztec...

#### Scored 20-24 points

22, Geena Gomez, 2-24-18 vs. San José State

#### Scored 25-29 points

25, McKynzie Fort, 3-5-18 vs. Nevada (MW Tournament)

#### Scored 30-39 points

32, McKynzie Fort, 1-20-18 vs. San José State

#### Scored 40+ points

41, Chana Perry, 1-2-88 vs. Northern Illinois

#### Had 20+ rebounds

27, Chana Perry, 11-25-88 vs. Alabama State

#### Had 15-19 rebounds

16, McKynzie Fort, 2-24-18 vs. San José State

#### Had 10-14 rebounds

10, McKynzie Fort, 2-7-18 vs. Fresno State

#### Had 10+ assists

11, Geena Gomez, 1-20-18 vs. New Mexico

#### Had A Double-Double

McKynzie Fort, 12 points, 16 rebounds, 2-24-18 vs. San José State

#### Had A Triple-Double

Chelsea Hopkins, 13 points, 11 rebounds, 12 assists, 3-9-13 vs. Boise State

### ►The Last Time San Diego State...

#### Had two players score 20 points in the same game

McKynzie Fort (32) and Najé Murray (29), 1-20-18 vs. New Mexico

#### Had two players with a double-double in the same game

Erimma Amarikwa (19 points, 13 rebounds) and Cheyenne Greenhouse (19 points, 11 rebounds), 11-14-14 vs. Sacramento State

#### Scored 100+ points

101, vs. Colorado State (101-62), 1-25-92

#### Allowed 100+ points

104, vs. UCLA (56-104), 12-11-98

#### Won by 20+ points

24, vs. Hope International (92-68), 12-10-17

#### Won by 30+ points

35, vs. San Diego Christian (60-25), 12-21-15

#### Won by 40+ points

41, vs. Boise State (86-45), 3-9-13

#### Won by 50+ points

51, vs. Air Force (79-28), 1-7-09

#### Won in Overtime

vs. Fresno State (65-54), 2-10-16

#### Lost in Overtime

vs. Nevada (84-95), 3-5-17

### ►2017-18 Aztec Leaders

#### Double-Figure Scoring Games

McKynzie Fort (25), Geena Gomez (16), Najé Murray (16), Khalia Lark (8), Cheyenne Greenhouse (8), Lexy Thorderson (5), Téa Adams (1), Baylee Vanderdoes (2), Arantxa Gomez Ferrer (1)

#### SDSU High Scorer

McKynzie Fort (18), Geena Gomez (6), Khalia Lark (2), Lexy Thorderson (2), Téa Adams (1), Najé Murray (1)

#### Double-Figure Rebounding Games

McKynzie Fort (3), Khalia Lark (1), Baylee Vanderdoes (1)

#### Games Led SDSU In Rebounds

McKynzie Fort (12), Khalia Lark (8), Baylee Vanderdoes (5), Najé Murray (4), Téa Adams (2), Naomi Ekwedike (1), Cheyenne Greenhouse (3), Geena Gomez (2), Lexy Thorderson (1)

#### Games Led SDSU In Assists

Geena Gomez (16), McKynzie Fort (12), Téa Adams (2), Baylee Vanderdoes (1), Khalia Lark (1), Cheyenne Greenhouse (1), Najé Murray (1)

#### Games Led SDSU In Steals

McKynzie Fort (13), Najé Murray (11), Téa Adams (8), Geena Gomez (8), Khalia Lark (4), Baylee Vanderdoes (3), Lexy Thorderson (3), Arantxa Gómez Ferrer (3), Cheyenne Greenhouse (3), Jenay Bojarquez (1), Kiara Edwards (1), Abby Lowe (1)

#### Games Led SDSU In Blocks

Baylee Vanderdoes (10), Arantxa Gómez Ferrer (6), Geena Gomez (2), Khalia Lark (2), Naomi Ekwedike (2), Lexy Thorderson (2), McKynzie Fort (2), Najé Murray (1), Téa Adams (1), Cheyenne Greenhouse (1), Monique Terry (1)

### ►2017-18 SPECIALTY STATS

San Diego State/Opponent

|                             | Points<br>in Paint | Points<br>off TOs | 2nd Chance<br>Points | Fast Break<br>Points | Bench<br>Points |
|-----------------------------|--------------------|-------------------|----------------------|----------------------|-----------------|
| vs. Presbyterian (W)        | 34/28              | 11/14             | 12/5                 | 13/12                | 39/5            |
| vs. CSUN (W)                | 10/18              | 9/7               | 5/6                  | 4/5                  | 8/7             |
| vs. Cal State Fullerton (W) | 26/26              | 11/7              | 11/9                 | 9/2                  | 26/27           |
| vs. Central Michigan (L)    | 26/42              | 17/4              | 10/13                | 2/4                  | 26/8            |
| vs. Tulane (L)              | 18/22              | 6/28              | 9/9                  | 2/0                  | 27/23           |
| vs. San Diego (W)           | 40/42              | 4/8               | 17/13                | 4/4                  | 22/21           |
| at Arizona (W)              | 18/30              | 5/6               | 6/11                 | 5/10                 | 21/15           |
| vs. UC Irvine (L)           | 20/36              | 16/29             | 9/16                 | 2/9                  | 18/37           |
| vs. Hope Int'l (W)          | 44/22              | 26/17             | 8/4                  | 12/7                 | 44/18           |
| vs. Santa Clara (L)         | 18/22              | 9/12              | 4/7                  | 6/2                  | 15/12           |
| at UC Santa Barbara (L)     | 28/38              | 17/19             | 9/12                 | 10/12                | 27/21           |
| vs. Wyoming (W)             | 32/19              | 20/13             | 1/10                 | 4/2                  | 22/15           |
| at Utah State (L)           | 26/28              | 8/15              | 6/10                 | 2/2                  | 14/12           |
| vs. Colorado State (L)      | 28/38              | 11/15             | 12/9                 | 5/16                 | 17/7            |
| at San José State (W)       | 34/36              | 19/13             | 11/13                | 2/4                  | 16/24           |
| vs. Boise State (L)         | 38/36              | 12/19             | 9/9                  | 6/13                 | 27/15           |
| at Fresno State (L)         | 24/42              | 15/20             | 12/8                 | 4/6                  | 21/29           |
| vs. New Mexico (W)          | 36/38              | 8/15              | 8/10                 | 13/13                | 22/14           |
| at Colorado State (L)       | 10/38              | 6/16              | 5/6                  | 4/11                 | 6/20            |
| vs. UNLV (L)                | 22/36              | 14/17             | 3/15                 | 7/4                  | 11/11           |
| at Air Force (L)            | 24/22              | 8/16              | 4/5                  | 2/0                  | 9/9             |
| vs. Fresno State (L)        | 32/40              | 15/12             | 12/0                 | 10/8                 | 27/24           |
| vs. Nevada (W)              | 34/48              | 23/15             | 14/18                | 11/4                 | 21/13           |
| at Wyoming (L)              | 14/22              | 9/10              | 5/4                  | 0/2                  | 13/21           |
| at UNLV (L, OT)             | 14/32              | 17/23             | 12/9                 | 6/4                  | 8/10            |
| Air Force (L)               | 20/28              | 13/15             | 12/13                | 8/4                  | 10/14           |
| vs. San José State (W)      | 44/32              | 11/9              | 17/17                | 17/11                | 36/16           |
| at Boise State (L)          | 28/32              | 17/8              | 8/14                 | 8/4                  | 10/8            |
| at Nevada (L)               | 34/50              | 6/24              | 4/17                 | 2/8                  | 24/18           |
| vs. Nevada (L, OT)          | 44/36              | 11/15             | 18/23                | 6/4                  | 37/29           |



► 2017-18 AZTEC GAME-BY-GAME POINTS-REBOUNDS-ASSISTS

|                     | 0       | 1      | 5      | 10     | 11      | 13      | 15       | 20     | 21    | 22         | 23    | 24      | 30         | 34         | 40      | 45       |
|---------------------|---------|--------|--------|--------|---------|---------|----------|--------|-------|------------|-------|---------|------------|------------|---------|----------|
|                     | Kennedi | Khalia | Téa    | Najé   | Arantxa | Allison | McKynzie | Geena  | Abby  | Lexy       | Loli  | Kiara   | Cheyenne   | Baylee     | Monique | Naomi    |
| Opponent            | Villa   | Lark   | Adams  | Murray | Gómez   | Brown   | Fort     | Gomez  | Low   | Thorderson | Gomez | Edwards | Greenhouse | Vanderdoes | Terry   | Ekwedike |
| Presbyterian        | 1-0-1   | 0-4-1  | 4-0-2  | 14-3-1 | 4-3-0   | DNP     | 16-7-2   | 6-2-6  | DNP   | 12-6-2     | DNP   | 0-2-0   | 6-4-4      | 8-5-1      | 2-2-0   | 4-1-0    |
| CSUN                | DNP     | 13-9-1 | 0-0-0  | 5-0-0  | 2-5-0   | DNP     | 16-6-3   | 2-2-10 | DNP   | 17-6-1     | DNP   | DNP     | 0-1-0      | 0-1-0      | 0-0-0   | 0-5-0    |
| Cal State Fullerton | DNP     | 3-10-1 | 2-1-3  | 11-0-0 | 0-2-0   | DNP     | 17-6-4   | 7-6-1  | DNP   | 6-2-0      | DNP   | DNP     | 3-3-0      | 8-3-0      | 0-0-0   | 0-5-0    |
| Central Michigan    | DNP     | 2-4-0  | 5-1-1  | 12-0-0 | 0-1-0   | DNP     | 21-3-3   | 15-6-7 | DNP   | 12-3-0     | 0-0-0 | DNP     | 4-3-2      | 3-13-0     | 0-1-0   | DNP      |
| Tulane              | 0-2-0   | 2-1-1  | 5-2-0  | 0-2-0  | 0-3-0   | DNP     | 2-3-3    | 6-0-0  | 5-3-0 | 9-0-0      | 0-0-0 | 2-3-0   | 3-5-1      | 0-2-0      | 2-1-0   | 4-3-1    |
| San Diego           | DNP     | 0-4-1  | 5-4-2  | 10-4-1 | 8-3-0   | DNP     | 24-6-8   | 7-5-3  | DNP   | 16-1-0     | DNP   | DNP     | 2-0-0      | 5-3-0      | 0-2-0   | 0-1-1    |
| Arizona             | DNP     | 7-5-2  | 0-4-1  | 13-2-0 | DNP     | DNP     | 26-6-2   | 12-3-7 | DNP   | 8-1-0      | DNP   | DNP     | 4-2-0      | 4-6-0      | 4-3-2   | DNP      |
| UC Irvine           | DNP     | 10-5-0 | 2-3-2  | 10-1-1 | 0-3-0   | DNP     | 16-4-3   | 12-2-7 | DNP   | 9-5-0      | DNP   | DNP     | 0-1-1      | 0-5-0      | 0-0-0   | 6-5-0    |
| Hope Int'l          | 0-1-0   | 14-4-1 | 20-8-7 | 16-1-4 | DNP     | 0-1-0   | DNP      | 10-1-4 | 0-1-1 | 6-4-1      | 0-0-1 | 6-5-0   | 10-6-4     | 2-2-0      | 2-2-0   | 6-3-2    |
| Santa Clara         | DNP     | 2-2-0  | 2-3-0  | 9-3-0  | 2-2-0   | DNP     | 10-8-1   | 7-6-3  | DNP   | 0-2-0      | DNP   | 0-0-0   | 0-2-2      | 0-2-0      | 0-2-0   | 2-1-0    |
| UCSB                | DNP     | 14-5-0 | 5-0-0  | 12-3-2 | 0-1-0   | DNP     | 10-1-4   | 9-1-3  | DNP   | 0-3-1      | DNP   | DNP     | 10-2-2     | 0-0-0      | DNP     | 4-4-1    |
| Wyoming             | DNP     | 10-4-0 | 9-0-1  | 3-2-0  | 3-2-0   | DNP     | 20-3-1   | 9-3-3  | DNP   | 4-1-0      | DNP   | DNP     | 6-3-0      | 4-9-1      | DNP     | 0-0-0    |
| Utah State          | DNP     | 6-3-0  | 5-3-2  | 6-2-0  | 4-2-0   | DNP     | 19-6-3   | 4-1-3  | DNP   | 11-1-1     | 0-0-0 | DNP     | 4-1-0      | 0-4-0      | DNP     | 2-1-0    |
| Colorado State      | DNP     | 2-5-0  | DNP    | 12-5-1 | 2-3-0   | DNP     | 22-16-7  | 14-5-1 | DNP   | 6-2-0      | DNP   | DNP     | 2-0-1      | 3-5-0      | DNP     | DNP      |
| San José State      | DNP     | 11-8-0 | 2-1-1  | 6-3-0  | 2-6-1   | DNP     | 19-9-7   | 21-3-2 | 0-0-0 | DNP        | DNP   | DNP     | 11-4-2     | 3-4-0      | DNP     | DNP      |
| Boise State         | DNP     | 8-6-1  | 4-1-0  | 4-1-0  | 4-2-0   | 0-0-0   | 13-1-4   | 14-4-0 | 0-0-0 | DNP        | DNP   | 0-0-0   | 12-3-2     | 11-8-0     | DNP     | DNP      |
| Fresno State        | DNP     | 7-8-0  | 6-1-2  | 0-1-0  | 2-4-0   | 0-1-1   | 20-5-1   | 3-1-5  | DNP   | DNP        | DNP   | DNP     | 12-4-1     | 3-6-0      | DNP     | 0-0-0    |
| New Mexico          | DNP     | 4-6-1  | 7-4-5  | 29-6-1 | 4-1-2   | DNP     | 32-9-4   | 6-4-11 | DNP   | DNP        | DNP   | DNP     | 11-3-2     | 4-6-2      | DNP     | 0-2-0    |
| Colorado State      | DNP     | 5-6-1  | 2-2-1  | 12-5-1 | 1-0-1   | 0-1-0   | 7-3-3    | 12-0-1 | 0-0-0 | DNP        | 0-0-0 | 3-3-0   | 0-1-1      | 0-2-0      | DNP     | 1-4-0    |
| UNLV                | DNP     | 17-5-1 | 7-0-1  | 5-4-2  | 4-4-1   | DNP     | 10-5-8   | 17-6-6 | DNP   | DNP        | DNP   | 0-0-0   | 4-1-1      | 0-2-0      | DNP     | 0-1-0    |
| Air Force           | DNP     | 10-4-1 | 4-0-0  | 5-1-0  | 2-1-0   | 0-0-0   | 20-8-1   | 5-7-2  | 2-0-0 | DNP        | DNP   | DNP     | 0-2-0      | 3-5-0      | DNP     | 0-1-0    |
| Fresno State        | DNP     | 4-7-1  | 10-1-1 | 7-2-4  | 0-1-0   | DNP     | 8-10-9   | 14-4-1 | DNP   | DNP        | DNP   | DNP     | 12-2-0     | 5-2-0      | DNP     | 0-2-0    |
| Nevada              | DNP     | 6-2-0  | 8-5-3  | 11-4-3 | 2-3-1   | DNP     | 15-2-1   | 18-3-6 | 0-0-0 | DNP        | DNP   | DNP     | 9-4-1      | 4-2-1      | DNP     | 2-2-0    |
| at Wyoming          | DNP     | 4-5-1  | 6-3-1  | 4-0-0  | 0-2-0   | 0-1-0   | 17-3-0   | 11-5-1 | 0-0-0 | DNP        | 0-0-0 | 3-1-0   | 4-2-1      | 1-2-1      | DNP     | DNP      |
| at UNLV             | DNP     | 4-8-2  | 0-0-0  | 16-7-0 | 0-0-0   | DNP     | 24-8-3   | 15-4-1 | 0-0-0 | DNP        | DNP   | DNP     | 2-1-1      | 0-2-1      | DNP     | 6-7-0    |
| Air Force           | DNP     | 7-4-0  | 0-0-0  | 9-2-0  | 0-0-0   | DNP     | 2-2-1    | 18-5-3 | 4-1-0 | DNP        | DNP   | DNP     | 6-8-0      | 2-0-0      | DNP     | 0-0-0    |
| San José State      | DNP     | 7-7-4  | 4-0-3  | 15-2-8 | 11-6-2  | 0-0-2   | 12-16-12 | 22-3-6 | 2-0-0 | 0-0-0      | 0-0-0 | 2-0-0   | 10-3-2     | 0-1-0      | DNP     | DNP      |
| at Boise State      | DNP     | 3-7-1  | 2-1-2  | 12-7-0 | 4-4-0   | DNP     | 13-5-1   | 11-2-3 | 0-0-0 | DNP        | DNP   | DNP     | 2-3-1      | 6-6-0      | DNP     | DNP      |
| at Nevada           | DNP     | 6-3-0  | 3-3-4  | 5-8-2  | 2-0-0   | 0-0-0   | 19-4-1   | 16-4-5 | 0-0-0 | DNP        | 0-1-0 | DNP     | 4-0-1      | 13-2-0     | DNP     | 4-4-0    |
| vs. Nevada          | DNP     | 6-4-0  | 5-3-2  | 10-2-5 | 0-0-0   | DNP     | 25-5-5   | 6-5-4  | DNP   | DNP        | DNP   | DNP     | 16-7-1     | 8-4-0      | DNP     | 8-2-1    |

**Starting Lineups**

| Game                     | F            | G/F  | G      | G        | G          |
|--------------------------|--------------|------|--------|----------|------------|
| vs. Presbyterian (W)     | Gómez Ferrer | Lark | Fort   | G. Gomez | Thorderson |
| vs. CSUN (W)             | Gómez Ferrer | Lark | Fort   | G. Gomez | Thorderson |
| vs. CS Fullerton (W)     | Gómez Ferrer | Lark | Fort   | G. Gomez | Thorderson |
| vs. Central Michigan (L) | Gómez Ferrer | Lark | Fort   | G. Gomez | Thorderson |
| vs. Tulane (L)           | Gómez Ferrer | Lark | Fort   | G. Gomez | Thorderson |
| vs. San Diego (W)        | Gómez Ferrer | Lark | Fort   | G. Gomez | Thorderson |
| at Arizona (W)           | Vanderdoes   | Lark | Fort   | G. Gomez | Thorderson |
| vs. UC Irvine (L)        | Vanderdoes   | Lark | Fort   | G. Gomez | Thorderson |
| vs. Hope Int'l (W)       | Vanderdoes   | Lark | Murray | G. Gomez | Thorderson |
| vs. Santa Clara (L)      | Vanderdoes   | Lark | Fort   | G. Gomez | Thorderson |
| at UC Santa Barbara (L)  | Ekwedike     | Lark | Fort   | G. Gomez | Thorderson |
| vs. Wyoming (W)          | Gómez Ferrer | Lark | Fort   | G. Gomez | Thorderson |
| at Utah State (L)        | Gómez Ferrer | Lark | Fort   | G. Gomez | Thorderson |
| vs. Colorado State (L)   | Gómez Ferrer | Lark | Fort   | G. Gomez | Thorderson |
| at San José State (W)    | Gómez Ferrer | Lark | Fort   | G. Gomez | Murray     |
| vs. Boise State (L)      | Gómez Ferrer | Lark | Fort   | G. Gomez | Murray     |
| at Fresno State (L)      | Gómez Ferrer | Lark | Fort   | G. Gomez | Murray     |
| vs. New Mexico (W)       | Gómez Ferrer | Lark | Fort   | G. Gomez | Murray     |
| at Colorado State (L)    | Gómez Ferrer | Lark | Fort   | G. Gomez | Murray     |
| vs. UNLV (L)             | Gómez Ferrer | Lark | Fort   | G. Gomez | Murray     |
| at Air Force (L)         | Gómez Ferrer | Lark | Fort   | G. Gomez | Murray     |
| Fresno State (L)         | Gómez Ferrer | Lark | Fort   | G. Gomez | Murray     |

| Game               | F            | G/F  | G    | G        | G          |
|--------------------|--------------|------|------|----------|------------|
| Nevada (W)         | Vanderdoes   | Lark | Fort | G. Gomez | Murray     |
| at Wyoming (L)     | Vanderdoes   | Lark | Fort | G. Gomez | Murray     |
| at UNLV (L)        | Vanderdoes   | Lark | Fort | G. Gomez | Murray     |
| Air Force (L)      | Vanderdoes   | Lark | Fort | G. Gomez | Murray     |
| San José State (W) | Thorderson   | Lark | Fort | G. Gomez | Greenhouse |
| at Boise State (L) | Gómez Ferrer | Lark | Fort | G. Gomez | Murray     |
| at Nevada (L)      | Gómez Ferrer | Lark | Fort | G. Gomez | Murray     |
| vs. Nevada (L)     | Gómez Ferrer | Lark | Fort | G. Gomez | Murray     |

**Lineup Records**

|                                            |     |
|--------------------------------------------|-----|
| Thorderson-Lark-Fort-G. Gomez-Greenhouse   | 1-0 |
| Vanderdoes-Lark-Fort-G. Gomez-Murray       | 1-3 |
| Gómez Ferrer-Lark-Fort-G. Gomez-Thorderson | 5-4 |
| Vanderdoes-Lark-Fort-G. Gomez-Thorderson   | 1-2 |
| Vanderdoes-Lark-Murray-G. Gomez-Thorderson | 1-0 |
| Ekwedike-Lark-Murray-G. Gomez-Thorderson   | 0-1 |
| Gómez Ferrer-Lark-Fort-G. Gomez-Murray     | 2-9 |

## TEAM SUPERLATIVES

### Aztec Team Highs

|                            |              |                                                                                               |
|----------------------------|--------------|-----------------------------------------------------------------------------------------------|
| Points                     | 97           | vs. New Mexico (1-20-18)                                                                      |
| Field Goals Made           | 38           | vs. Hope International (12-10-17)                                                             |
| Field Goal Attempts        | 82           | vs. Central Michigan (11-24-17)                                                               |
| Field Goal Percentage      | .535 (38-71) | vs. Hope International (12-10-17)                                                             |
| 3-pt Field Goals Made      | 13           | vs. Hope International (12-10-17)                                                             |
| 3-pt Field Goals Attempted | 31           | vs. Hope International (12-10-17)                                                             |
| 3-pt Field Goal Percentage | .600 (6-11)  | at Nevada (3-2-18)                                                                            |
| Free Throws Made           | 21           | vs. Boise State (1-13-18)<br>at Arizona (12-3-17)                                             |
| Free Throw Attempts        | 25           | at Nevada (3-2-18)<br>vs. Wyoming (12-28-17)<br>at Arizona (12-3-17)                          |
| Free Throw Percentage      | .875         | 21-24 vs. Boise State (1-13-18)<br>14-16 at Air Force (2-3-18)<br>at San José State (1-10-18) |
| Rebounds                   | 50           | at San José State (1-10-18)                                                                   |
| Assists                    | 29           | vs. San José State (2-24-18)                                                                  |
| Steals                     | 12           | vs. Santa Clara (12-14-17)                                                                    |
| Blocked Shots              | 6            | at San José State (1-10-18)<br>vs. UC Irvine (12-8-17)                                        |
| Turnovers                  | 25           | at UNLV (2-17-18)                                                                             |
| Fouls                      | 26           | vs. Nevada (3-5-18)                                                                           |

### Aztec Team Lows

|                            |              |                                                                                              |
|----------------------------|--------------|----------------------------------------------------------------------------------------------|
| Points                     | 34           | vs. Santa Clara (12-14-17)                                                                   |
| Field Goals Made           | 13           | vs. Santa Clara (12-14-17)                                                                   |
| Field Goal Attempts        | 46           | at Air Force (2-3-18)                                                                        |
| Field Goal Percentage      | .220 (13-59) | vs. Santa Clara (12-14-17)                                                                   |
| 3-pt Field Goals Made      | 2            | vs. Air Force (2-21-18)                                                                      |
| 3-pt Field Goals Attempted | 7            | vs. Air Force (2-21-18)                                                                      |
| 3-pt Field Goal Percentage | .107 (3-28)  | vs. Santa Clara (12-14-17)                                                                   |
| Free Throws Made           | 3            | vs. Hope International (12-10-17)                                                            |
| Free Throws Attempted      | 3            | vs. Hope International (12-10-17)                                                            |
| Free Throw Percentage      | .500 (4-8)   | vs. UNLV (1-27-18)                                                                           |
|                            | .500 (5-10)  | at Colorado State (1-24-18)<br>at UC Santa Barbara (12-22-17)                                |
| Rebounds                   | 23           | at UC Santa Barbara (12-22-17)                                                               |
| Assists                    | 4            | at Air Force (2-3-18)                                                                        |
| Steals                     | 1            | at Wyoming (2-14-18)                                                                         |
| Blocked Shots              | 0            | vs. Colorado State (1-3-18)<br>vs. Santa Clara (12-14-17)<br>vs. Central Michigan (11-24-17) |
| Turnovers                  | 4            | vs. Central Michigan (11-24-17)                                                              |
| Fouls                      | 10           | vs. Hope International (12-10-17)                                                            |

### Aztec Scoring

|                          |            |                                                          |
|--------------------------|------------|----------------------------------------------------------|
| First Half High          | 46         | at San José State (1-10-18)                              |
| First Quarter High       | 28         | vs. New Mexico (1-20-18)                                 |
| Second Quarter High      | 27         | vs. Central Michigan (11-24-17)                          |
| Second Half High         | 49         | vs. San José State (2-24-18)<br>vs. New Mexico (1-20-18) |
| Third Quarter High       | 23         | vs. CSUN (11-14-17)                                      |
| Fourth Quarter High      | 34         | vs. San José State (2-24-18)                             |
| First Half Low           | 15         | vs. Air Force (2-21-18)                                  |
| First Quarter Low        | 6          | vs. Wyoming (12-28-17)                                   |
| Second Quarter Low       | 7          | vs. Air Force (2-21-18)                                  |
| Second Half Low          | 14         | at Colorado State (1-24-18)                              |
| Third Quarter Low        | 5          | vs. Tulane (11-25-17)                                    |
| Fourth Quarter Low       | 2          | at Air Force (2-3-18)                                    |
| Largest Halftime Lead    | 15 (42-27) | vs. Presbyterian (11-10-17)                              |
| Largest Halftime Deficit | 17 (15-32) | vs. Air Force (2-21-18)                                  |
| Largest Lead             | 31 (71-40) | vs. Presbyterian (11-10-17)                              |
| Largest Deficit          | 36 (27-63) | vs. Tulane (11-25-17)                                    |
| Largest Deficit in a Win | 10 (11-21) | vs. New Mexico (1-20-18)                                 |
| Largest Lead in a Loss   | 18 (35-17) | vs. UNLV (1-27-18)                                       |

### Opponent Team Highs

|                            |              |                                                                         |
|----------------------------|--------------|-------------------------------------------------------------------------|
| Points                     | 95           | vs. Nevada (3-5-18)                                                     |
| Field Goals Made           | 33           | vs. New Mexico (1-20-18)                                                |
| Field Goal Attempts        | 81           | at San José State (1-10-18)                                             |
| Field Goal Percentage      | .500         | (31-62) vs. Tulane (11-25-17)<br>(25-50) at UC Santa Barbara (12-22-17) |
| 3-pt Field Goals Made      | 15           | vs. Tulane (11-25-17)                                                   |
| 3-pt Field Goals Attempted | 32           | vs. Hope International (12-10-17)                                       |
|                            | 32           | vs. CSUN (11-14-17)                                                     |
| 3-pt Field Goal Percentage | .556 (15-27) | vs. Tulane (11-25-17)                                                   |
| Free Throws Made           | 25           | vs. Nevada (3-5-18)                                                     |
| Free Throws Attempted      | 29           | vs. Nevada (3-5-18)                                                     |
| Free Throw Percentage      | .923 (12-13) | vs. Air Force (2-21-18)                                                 |
| Rebounds                   | 54           | vs. Central Michigan (11-24-17)                                         |
| Assists                    | 25           | vs. Boise State (1-13-18)                                               |
| Steals                     | 14           | vs. UC Irvine (12-8-17)                                                 |
| Blocked Shots              | 8            | vs. UC Irvine (12-8-17)                                                 |
| Turnovers                  | 19           | at UNLV (2-17-18)                                                       |
| Fouls                      | 23           | vs. San Diego (11-29-17)                                                |

### Opponent Team Lows

|                            |              |                                                                                  |
|----------------------------|--------------|----------------------------------------------------------------------------------|
| Points                     | 48           | vs. Santa Clara (12-14-17)                                                       |
| Field Goals Made           | 19           | vs. Santa Clara (12-14-17)                                                       |
| Field Goal Attempts        | 50           | at UC Santa Barbara (12-22-17)<br>vs. Santa Clara (12-14-17)                     |
| Field Goal Percentage      | .296 (24-81) | at San José State (1-10-18)                                                      |
| 3-pt Field Goals Made      | 2            | vs. Nevada (2-10-18)<br>vs. Air Force (2-21-18)                                  |
| 3-pt Field Goal Attempts   | 11           | at Nevada (3-2-18)<br>vs. Santa Clara (12-14-17)                                 |
| 3-pt Field Goal Percentage | .118 (2-17)  | vs. Air Force (2-21-18)                                                          |
| Free Throws Made           | 3            | at Wyoming (2-14-18)                                                             |
| Free Throw Attempts        | 3            | at Wyoming (2-14-18)                                                             |
| Free Throw Percentage      | .444 (4-9)   | vs. Colorado State (1-3-18)                                                      |
| Rebounds                   | 26           | vs. Presbyterian (11-10-17)                                                      |
| Assists                    | 9            | vs. Colorado State (1-3-18)                                                      |
| Steals                     | 2            | at Wyoming (2-14-18)<br>vs. Tulane (11-25-17)<br>vs. Central Michigan (11-24-17) |
| Blocked Shots              | 0            | at Nevada (3-2-18)<br>vs. Hope International (12-10-17)                          |
| Turnovers                  | 4            | vs. New Mexico (1-20-18)                                                         |
| Fouls                      | 7            | vs. Cal State Fullerton (11-18-17)                                               |

### Opponent Scoring

|                          |            |                                                   |
|--------------------------|------------|---------------------------------------------------|
| First Half High          | 44         | vs. New Mexico (1-20-18)                          |
| First Quarter High       | 32         | vs. Tulane (11-25-17)                             |
| Second Quarter High      | 23         | at UC Santa Barbara (12-22-17)                    |
| Second Half High         | 54         | at Nevada (3-2-18)                                |
| Third Quarter High       | 30         | at Nevada (3-2-18)<br>at Colorado State (1-24-18) |
| Fourth Quarter High      | 30         | vs. San José State (2-24-18)                      |
| First Half Low           | 16         | vs. Santa Clara (12-14-17)                        |
| First Quarter Low        | 7          | at UC Santa Barbara (12-22-17)                    |
| Second Quarter Low       | 5          | vs. Santa Clara (12-14-17)                        |
| Second Half Low          | 23         | vs. Presbyterian (11-10-17)                       |
| Third Quarter Low        | 11         | at Utah State (12-30-17)                          |
| Fourth Quarter Low       | 9          | vs. Air Force (2-21-18)                           |
| Largest Halftime Lead    | 16 (43-27) | vs. Tulane (11-25-17)                             |
| Largest Halftime Deficit | 17 (15-32) | vs. Air Force (2-21-18)                           |
| Largest Lead             | 36 (63-27) | vs. Tulane (11-25-17)                             |
| Largest Deficit          | 31 (40-71) | vs. Presbyterian (11-10-17)                       |
| Largest Deficit in a Win | 18 (17-35) | vs. UNLV (1-27-18)                                |
| Largest Lead in a Loss   | 10 (21-11) | vs. New Mexico (1-20-18)                          |

2018-19 BROADCAST ROSTER



**KENNEDI VILLA**  
So. | 6-0 | G  
Albany, Calif.  
Saint Mary's HS

0



**SOPHIA RAMOS**  
Fr. | 5-9 | G  
San Antonio, Texas  
Incarnate Word HS

2



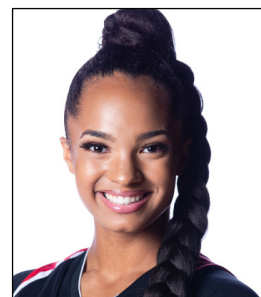
**MALLORY ADAMS**  
Fr. | 6-0 | G/F  
Frisco, Texas  
Lone Star HS

3



**MONIQUE TERRY**  
Jr. | 6-2 | F  
San Antonio, Texas  
Brennan HS

4



**TÉA ADAMS**  
So. | 5-9 | G  
Kirkland, Wash.  
Juanita HS

5



**NAJÉ MURRAY**  
So. | 5-6 | G  
Stockton, Calif.  
Saint Mary's HS

10



**ARANTXA GÓMEZ FERRER**  
Sr. | 6-0 | F  
Valencia, Spain  
Parque Colegio Santa Ana HS

11



**JAYDEN PEREZ**  
Fr. | 5-8 | G  
Las Cruces, N.M.  
Onate HS

15



**ZAYN DORNSTAUDER**  
RS-Jr. | 6-3 | C  
Regina, Saskatchewan, Canada  
Ball State /Hamilton HS (Ariz.)

22



**LOLI GOMEZ**  
Sr. | 5-10 | G  
Huntington Beach, Calif.  
CSU San Bernardino/Edison HS

23



**KIARA EDWARDS**  
So. | 6-1 | F  
Surprise, Ariz.  
Valley Vista HS

24



**TAYLOR KALMER**  
Sr. | 5-8 | G  
Chandler, Ariz.  
Oregon State/Corona del Sol HS

25



**BAYLEE VANDERDOES**  
Jr. | 6-1 | F  
Auburn, Calif.  
Placer HS

34



**NAOMI EKWEDIKE**  
RS-So. | 6-6 | C  
Lagos, Nigeria  
Potters House Christian Academy (Fla.)

45



**STACIE TERRY**  
Head Coach  
Sixth Season  
UT Arlington (1998)

HC



**KEVIN MORRISON**  
Assistant Coach  
First Season  
Cal Poly Pomona (1994)

AC



**CIARA CARL**  
Assistant Coach  
Sixth Season  
Point Loma Nazarene (2005)

AC



**NICK GRANT**  
Assistant Coach  
Fifth Season  
Baylor (2010)

AC