

San Diego State Aztecs

2018-19 Record: 3-2 (H: 2-0; A: 0-0; N: 1-2); 0-0 MW
 12 Postseason Berths in Last 13 Years, 11-Time MW Champions

- The Aztecs have won at least 19 games in 13 straight seasons, which is tied for the 7th-longest active streak in the nation.
- San Diego State has advanced to postseason play in 12 of the last 13 seasons (2006 NCAA, 2007-09 NIT, 2010-15 NCAA, 2016 NIT, 2018 NCAA).

Trends:

- SDSU is 13th nationally in winning percentage since the beginning of 2010-11, trailing Gonzaga, Kansas, Wichita State, Duke, Arizona, Kentucky, SMC, Villanova, UNC, SFA, Louisville & UVa.
- San Diego State has won 68 straight games when shooting 50 percent or better from the field.

	PPG	RPG	APG	FG	3FG	FT	
0 Devin Watson <i>Guard, 6-1, 183, Sr.-1L</i> <i>Oceanside, Calif. (San Francisco)</i>	'18-19 15.6 Career 13.6	3.0 2.2	4.4 3.7	43.9 40.9	43.2 35.4	85.7 74.1	Career numbers: 1,351 points, 227 rebounds, 370 assists... 69 career double-figure scoring games, including 21 of last 27... Last 20 gms: 42-93 3FG (.452)... 25 career 20+pt. games... 3FGM in 8 str. gms... SDSU is 18-5 when he shoots 40 percent or better from the field and 15-2 when he shoots 40 percent or better and has two TO or less... Played team-high 174 mins. this season.
2 Adam Seiko / SAY-ko / <i>Guard, 6-3, 195, Fr.-RS</i> <i>Boston, Mass. (Sierra Canyon HS (Calif.))</i>	'18-19 3.0 Career same as season	0.4	0.6	4/9	3/6	4/6	One of eight players to see action in every game (58 mins.)... Career-high eight points (2-for-3FGs) vs. Duke... Coming off of a redshirt season... Three-star signee by Rivals... Sierra Canyon went 27-3, and was ranked No. 5 in California and No. 15 nationally his senior year... Known for defending opposing team's best perimeter player in high school... Strong guard who can shoot the three-point shot.
3 Aguek Arop / uh-GWUK uh-ROPE / <i>Forward, 6-6, 220, Fr.-HS</i> <i>Omaha, Neb. (Omaha South HS)</i>	'18-19 1.0 Career same as season	2.8	0.3	2/5	0/1	0/0	Logged 38 mins. and played in 4 of 5 gm... A 6-6 forward with a near 7-foot wingspan that is expected to see significant time this season... Tremendous defender and a gifted athlete that can play above the rim... Good mid-range game and is deadly from 15-feet and in... Has been hindered a bit during camp due to a hip injury... Very intelligent on the floor who has helped the other freshman adjust.
4 Michael Sohikish / so-HE-kish / <i>Guard, 5-9, 160, Sr.-SQ</i> <i>San Diego, Calif. (University City HS)</i>	'18-19 0.0 Career 0.6	0.0 0.1	0.0 0.1	0/2 3/11	0/1 0/5	0/0 2/4	Walk-on who has seen action in 14 career games, including three games this season... Fifth-year in the program... A civil engineer major who served as a student-manager before earning playing time... Career totals: 8 points, 2 rebounds, 2 assist, 33 minutes and just 2 turnover... Saw action in his first Mountain West game vs. Utah State (12-30-17).
5 Jalen McDaniels <i>Forward, 6-10, 195, So.-1L</i> <i>Federal Way, Wash. (Federal Way HS)</i>	'18-19 15.2 Career 11.1	7.6 7.5	2.2 1.1	45.0 55.6	41.7 29.0	65.4 76.3	Six straight gms. w/10+ pts. (one short of CH)... 14 str. gms. w/5+ rebs. (8.5 rpg)... CH 26 pts., 8 rebs., 3 blocked shots vs. Xavier... Against UAPB, became 4th SDSU player in last 23 seasons to post 15+ pts., 9+ rebs., 5+ asts. and 3+ stls in a game (Franklin, Leonard, Tapley)... One of 4 Fr. in the country last season to post 10.5 pts., 7.5 rebs. and shoot 58+ pct. from the field last season.
11 Matt Mitchell <i>Forward, 6-6, 240, So.-1L</i> <i>Riverside, Calif. (Roosevelt HS)</i>	'18-19 13.0 Career 10.8	4.0 4.0	1.6 1.7	43.2 44.7	28.6 34.8	84.0 78.2	38 career starts (37 straight)... 24 gms. w/at least 10+ pts... 41 3FG in last 29 gms... 17 of last 20 gms. w/a 3FG when attempting 3FG... Made 21 of 25 FTA this season (made 13 straight)... SDSU is 14-4 when he has multiple assists... Averaged the third most minutes on the team as a freshman last season... Will likely see more time on the low post this season.
20 Jordan Schakel / SHACK-ull / <i>Guard, 6-6, 200, So.-1L</i> <i>Torrance, Calif. (Bishop Montgomery HS)</i>	'18-19 9.8 Career 4.1	4.4 2.4	1.2 0.7	46.4 35.9	47.6 37.4	13/13 81.3	Has 3 double-digit scoring games in 38-game career (has 2 in last 4 games... 2nd Aztec in last 22 seasons to produce 3 3FGM, 7 rebs. and 100 pct. FT game (Jamaal Franklin)... 1 TO or less in 31 straight games (8 TO, 461 mins.)... His effort in workouts has reached legendary status... Great rebounder for his size... Averaged 13.8 mins. and played in all 33 games as a Fr... 9 TOs last season (455 mins.).
23 Ed Chang <i>Forward, 6-8, 215, Fr.-HS</i> <i>Papillion, Neb. (Garfield HS (Wash.))</i>	'18-19 1.0 Career same as season	0.3	0.0	1/2	1/2	0/0	Played CH 4 mins. vs. No. 1 Duke... Played in 3 gms... Tremendous shooter (once made nine 3FG in one half of a HS game)... Did not play in high school last season... Attended Papillion-La Vista High in Papillion, Neb. for three years as a prep before finishing at Garfield High in Seattle... Was a two-time all-state selection in Nebraska... Tabbed a four-star recruit by ESPN.
24 Nolan Narain <i>Forward, 6-10, 230, Jr.-2L</i> <i>Hamilton, Ontario, Canada (La Lumiere School (Ind.))</i>	'18-19 3.2 Career 3.7	3.6 2.0	0.8 0.3	63.6 61.3	0/1 31.3	2/6 58.6	Played in 37 career games, including all five this season... Starting fourth year in the program (redshirt in 2015-16 campaign)... Played the best basketball of his career near the end of last season... Scored a career-high 18 points in 18 minutes of action against Wyoming (2-14-18)... In a five-game stretch late last season, he had 43 points and 14 rebounds... An ankle injury has limited his practice time in the lead up to the season.
31 Nathan Mensah / MEN-sah / <i>Forward, 6-10, 225, Fr.-HS</i> <i>Labadi, Accra, Ghana (Findlay Prep (Nev.))</i>	'18-19 3.2 Career same as season	4.0	0.8	36.4	0/0	66.7	Played 71 minutes in first four gms... 11 pts. & 5 rebs in 20 mins. vs. TSU... Extremely strong freshman player expected to see significant playing time this season... An injury on the middle finger of his left (shooting) hand forced him to miss about four weeks... He was cleared on Oct. 31 and is now practicing with the team again... He is playing with a hard brace on that finger... Nathan and Joel Mensah are not related
35 Joel Mensah / MEN-sah / <i>Forward, 6-10, 215, Fr.-HS</i> <i>Korle Gonno, Accra, Ghana (JSerra Catholic HS (Calif.))</i>	'18-19 1.8 Career same as season	0.5	0.0	2/8	0/0	3/4	Played 17 minutes, action in 4 of 5 gms... A hard working center expected to see the floor this season... Is a good shooter with range out to 15 feet... Has a very good motor... Attended JSerra Catholic High in Capistrano, Calif... Averaged 15.9 points, 8.8 rebounds, 1.2 steals and 1.4 blocked shots in his senior season... Nathan and Joel Mensah are not related.
42 Jeremy Hemsley <i>Guard, 6-3, 195, Sr.-3L</i> <i>Rancho Cucamonga, Calif. (Damien HS)</i>	'18-19 10.0 Career 10.7	1.8 2.2	2.2 2.0	43.6 42.5	25.0 34.0	81.3 68.7	22nd in school history w/1,137 career points (10.7 ppg)... 122 career treys (7-11th in SDSU history)... Started 68 of 106 games in his career... Led team in scoring 27x and in assists 33x... SDSU is 17-3 when he has at least four assists and 36-14 when he has one TO or less... Has 9 career 20-pt. games... Double figures in scoring 61x... Career numbers: 1,137 points, 212 assists, 231 rebounds, 74 stls, 122 3FGs.

red indicates probable starter, black indicates reserve, outline indicates player is injured; gold indicates player is not expected to play.

SDSU BROADCAST ROSTER

San Diego State vs. Jackson State | Steve Fisher Court at Viejas Arena | San Diego, Calif. | Nov. 27, 2018



0
DEVIN WATSON

Guard
6-1, 183, Senior-1L
Oceanside, Calif.
Univ. of San Francisco

PPG: 15.6 RPG: 3.0 APG: 4.4
FG%: 43.9 3FG: 43.2 FT%: 85.7



2
ADAM SEIKO

Guard
6-3, 195, Freshman-RS
Boston, Mass.
Sierra Canyon High (Calif.)

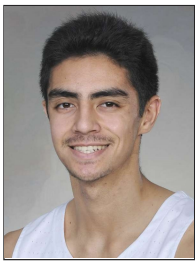
PPG: 3.0 RPG: 0.4 APG: 0.6
FG%: 4/9 3FG: 3/6 FT%: 4/6



3
AGUEK AROP

Forward
6-6, 220, Freshman-HS
Omaha, Neb.
Omaha South High

PPG: 1.0 RPG: 2.8 APG: 0.3
FG%: 2/5 3FG: 0/1 FT%: 0/0



4
MICHAEL SOHIKISH

Guard
5-9, 160, Senior-SQ
San Diego, Calif.
University City High

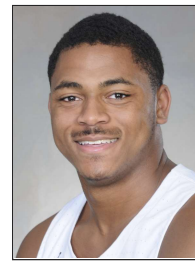
PPG: 0.0 RPG: 0.0 APG: 0.0
FG%: 0/2 3FG: 0/1 FT%: 0/0



5
JALEN MCDANIELS

Forward
6-10, 195, Sophomore-1L
Federal Way, Wash.
Federal Way High

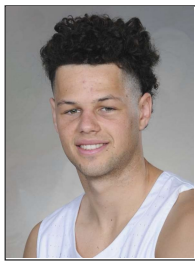
PPG: 15.2 RPG: 7.6 APG: 2.2
FG%: 45.0 3FG: 41.7 FT%: 65.4



11
MATT MITCHELL

Forward
6-6, 230, Sophomore-1L
Riverside, Calif.
Roosevelt High

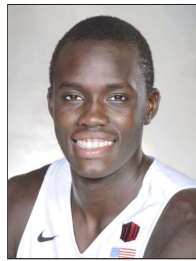
PPG: 13.0 RPG: 4.0 APG: 1.6
FG%: 43.2 3FG: 28.6 FT%: 84.0



20
JORDAN SCHAKEL

Guard
6-6, 200, Sophomore-1L
Torrance, Calif.
Bishop Montgomery High

PPG: 9.8 RPG: 4.4 APG: 1.2
FG%: 46.4 3FG: 47.6 FT%: 13/13



23
ED CHANG

Forward
6-8, 215, Freshman-HS
Papillion, Neb.
Garfield High (Wash.)

PPG: 1.0 RPG: 0.3 APG: 0.0
FG%: 1/2 3FG: 1/2 FT%: 0/0



24
NOLAN NARAIN

Forward
6-10, 230, Junior-2L
Hamilton, Ontario, Canada
La Lumiere School (Ind.)

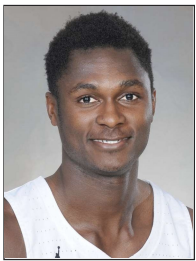
PPG: 3.2 RPG: 3.6 APG: 0.8
FG%: 63.6 3FG: 0/1 FT%: 2/6



31
NATHAN MENSAH

Forward
6-10, 225, Freshman-HS
Labadi, Accra, Ghana
Findlay Prep (Nev.)

PPG: 3.2 RPG: 4.0 APG: 0.8
FG%: 36.4 3FG: 0/0 FT%: 8/12



35
JOEL MENSAH

Forward
6-10, 215, Freshman-HS
Korle Gonno, Accra, Ghana
JSerra Catholic High (Calif.)

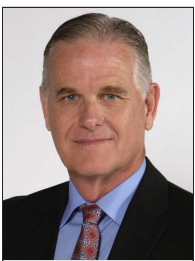
PPG: 1.8 RPG: 0.5 APG: 0.0
FG%: 2/8 3FG: 0/0 FT%: 3/4



42
JEREMY HEMSLEY

Guard
6-3, 195, Senior-3L
Rancho Cucamonga, Calif.
Damien High

PPG: 10.0 RPG: 1.8 APG: 2.2
FG%: 43.6 3FG: 25.0 FT%: 81.3



HEAD COACH
BRIAN DUTCHER

- 2nd season as head coach
- 20th year at SDSU
- 1989 NCAA champion
- 3 NCAA title game appearances
- 17 NCAA tournament appearances
- 11-time Mountain West champion



ASSISTANT COACH
ROD PALMER



ASSISTANT COACH
DAVE VELASQUEZ



ASSISTANT COACH
JAY MORRIS



ASST. TO HEAD COACH
MARK FISHER