

# San Diego State Aztecs

**2018-19 Record: 2-0 (H: 2-0; A: 0-0; N: 0-0); 0-0 MW**  
**12 Postseason Berths in Last 13 Years, 11-Time MW Champions**

- The Aztecs have won at least 19 games in 13 straight seasons, which is tied for the 7th-longest active streak in the nation.
- San Diego State has advanced to postseason play in 12 of the last 13 seasons (2006 NCAA, 2007-09 NIT, 2010-15 NCAA, 2016 NIT, 2018 NCAA).

**Trends:**

- SDSU is 12th nationally in winning percentage since the beginning of 2010-11, trailing Gonzaga, Kansas, Wichita State, Duke, Arizona, Kentucky, SMC, Villanova, UNC, SFA and Louisville.
- San Diego State has won 67 straight games when shooting 50 percent or better from the field.

	PPG	RPG	APG	FG	3FG	FT	
<b>0 Devin Watson</b> <i>Guard, 6-1, 183, Sr.-1L</i> <i>Oceanside, Calif. (San Francisco)</i>	'18-19 17.0 Career 13.6	3.0 2.3	5.5 3.7	50.0 40.9	7/14 35.1	3/4 73.8	Career numbers: 1,307 points, 218 rebounds, 359 assists... 67 career double-figure scoring games, including 19 of last 25... Last 18 gms: 33-70 3FG (.471)... 24 career 20+pt. games... 3FGM in 5 strt, gms... 2.07 a/to last season... SDSU is 18-4 when he shoots 40 percent or better from the field and 15-2 when he shoots 40 percent or better and has two TO or less... Played team-high 70 mins. this season.
<b>2 Adam Seiko</b> / SAY-ko / <i>Guard, 6-3, 195, Fr.-RS</i> <i>Boston, Mass. (Sierra Canyon HS (Calif.))</i>	'18-19 1.0 Career same as season	0.5 same as season	0.5 same as season	1/4 same as season	0/1 same as season	0/0 same as season	Played in both games (first of his career), 21 total mins... Coming off of a redshirt season... Three-star signee by Rivals... Averaged 10.4 points, 3.2 rebounds, 2.0 assists, 1.6 steals as a senior at Sierra Canyon High... Sierra Canyon went 27-3, and was ranked No. 5 in California and No. 15 nationally his senior year... Known for defending opposing team's best perimeter player in high school... Strong guard who can shoot the three-point shot.
<b>3 Aguek Arop</b> / uh-GWUK uh-ROPE / <i>Forward, 6-6, 220, Fr.-HS</i> <i>Omaha, Neb. (Omaha South HS)</i>	'18-19 1.0 Career same as season	3.0 same as season	0.0 same as season	1/1 same as season	0/0 same as season	0/0 same as season	Logged 23 mins. in first two gms... A 6-6 forward with a near 7-foot wingspan that is expected to see significant time this season... Tremendous defender and a gifted athlete that can play above the rim... Good mid-range game and is deadly from 15-feet and in... Has been hindered a bit during camp due to a hip injury... Very intelligent on the floor who has helped the other freshman adjust.
<b>4 Michael Sohikish</b> / so-HE-kish / <i>Guard, 5-9, 160, Sr.-SQ</i> <i>San Diego, Calif. (University City HS)</i>	'18-19 0.0 Career 0.6	0.0 0.2	0.0 0.2	0/2 3/11	0/1 0/5	0/0 2/4	Walk-on who has seen action in 12 career games, including the season opener against UAPB... Fifth-year in the program... A civil engineer major who served as a student-manager before earning playing time... Career totals: 8 points, 2 rebounds, 2 assist, 29 minutes and just 2 turnover... Saw action in his first Mountain West game vs. Utah State (12-30-17).
<b>5 Jalen McDaniels</b> <i>Forward, 6-10, 195, So.-1L</i> <i>Federal Way, Wash. (Federal Way HS)</i>	'18-19 14.5 Career 10.7	9.0 7.6	3.0 1.0	43.5 57.1	2/4 6/23	7/10 78.0	Had one of the best statistical seasons in the country for a freshman last season... One of 4 Fr. in the country last season to post 10.5 pts., 7.5 rebs. and shoot 58+ pct. from the field... Against UAPB, became 4th SDSU player in last 23 seasons to post 15+ pts., 9+ rebs., 5+ asts. and 3+ stls in a game (Franklin, Leonard, Tapley)... 40 min per game avgs. this season: 23.2 ppg, 14.4 rpg, 4.8 apg, 4.8 spg.
<b>11 Matt Mitchell</b> <i>Forward, 6-6, 240, So.-1L</i> <i>Riverside, Calif. (Roosevelt HS)</i>	'18-19 15.5 Career 10.8	5.0 4.0	3.5 1.8	43.5 44.8	3/10 35.4	72.7 76.0	35 career starts (34 straight)... 21 gms. w/at least 10+ pts... 38 3FG in last 26 gms... 15 of last 17 gms. w/a 3FG when attempting 3FG... SDSU is 14-4 when he has multiple assists... Averages 10.2 ppg, 3.6 rpg, 1.4 apg vs. AP Top 25 teams... Averaged the third most minutes on the team as a freshman last season... Will likely see more time on the low post this season.
<b>20 Jordan Schakel</b> / SHACK-ull / <i>Guard, 6-6, 200, So.-1L</i> <i>Torrance, Calif. (Bishop Montgomery HS)</i>	'18-19 11.5 Career 3.7	6.0 2.3	1.0 0.6	4/10 33.6	4/7 36.5	11/11 80.0	Coming off CH 16 pts., 3-3 3FGs & 7 reb. game... 2nd Aztec in last 22 seasons to produce 3 3FGM, 7 rebs. and 100 pct. FT (Lamaal Franklin)... 1 TO or less in 28 straight games (5 TO, 382 mins)... His effort in workouts has reached legendary status... Always been a great catch and shoot player, has added the ability to score off the dribble... Great rebounder for his size... Averaging 13.8 mins. and played in all 33 games as a Fr... 9 TOs last season (455 mins.).
<b>23 Ed Chang</b> <i>Forward, 6-8, 215, Fr.-HS</i> <i>Papillion, Neb. (Garfield HS (Wash.))</i>	'18-19 3.0 Career same as season	1.0 same as season	0.0 same as season	1/1 same as season	1/1 same as season	0/0 same as season	Saw 3 mins. of action vs. Tx. Southern after DNP in the season opener against UAPB... Tremendous shooter (once made nine 3FG in one half of a HS game)... Did not play in high school last season... Attended Papillion-La Vista High in Papillion, Neb. for three years as a prep before finishing at Garfield High in Seattle... Was a two-time all-state selection in Nebraska... Tabbed a four-star recruit by ESPN.
<b>24 Nolan Narain</b> <i>Forward, 6-10, 230, Jr.-2L</i> <i>Hamilton, Ontario, Canada (La Lumiere School (Ind.))</i>	'18-19 6.0 Career 3.9	4.0 1.9	1.0 0.3	5/6 62.5	0/0 5/15	2/4 63.0	Played in 34 career games, including both this season... Starting fourth year in the program (redshirt in 2015-16 campaign)... Scored the best basketball of his career near the end of last season... Played a career-high 18 points in 18 minutes of action against Wyoming (2-14-18)... In a five-game stretch late last season, he had 43 points and 14 rebounds... An ankle injury has limited his practice time in the lead up to the season.
<b>31 Nathan Mensah</b> / MEN-sah / <i>Forward, 6-10, 225, Fr.-HS</i> <i>Labadi, Accra, Ghana (Findlay Prep (Nev.))</i>	'18-19 6.5 Career same as season	4.0 same as season	1.0 same as season	3/6 same as season	0/0 same as season	7/10 same as season	Played 33 minutes in first two gms... 11 pts. & 8 rebs in 20 mins. vs. TSU... Extremely strong freshman player expected to see significant playing time this season... An injury on the middle finger of his left (shooting) hand forced him to miss about four weeks... He was cleared on Oct. 31 and is now practicing with the team again... He is playing with a hard brace on that finger... Nathan and Joel Mensah are not related
<b>35 Joel Mensah</b> / MEN-sah / <i>Forward, 6-10, 215, Fr.-HS</i> <i>Korle Gonno, Accra, Ghana (JSerra Catholic HS (Calif.))</i>	'18-19 3.0 Career same as season	1.0 same as season	0.0 same as season	2/5 same as season	0/0 same as season	2/2 same as season	Played 10 minutes in the first two contests... A hard working center expected to see the floor this season... Is a good shooter with range out to 15 feet... Has a very good motor... Attended JSerra Catholic High in Capistrano, Calif... Averaged 15.9 points, 8.8 rebounds, 1.2 steals and 1.4 blocked shots in his senior season... Nathan and Joel Mensah are not related.
<b>42 Jeremy Hemsley</b> <i>Guard, 6-3, 195, Sr.-3L</i> <i>Rancho Cucamonga, Calif. (Damien HS)</i>	'18-19 12.0 Career 10.8	1.5 2.2	2.5 2.0	56.3 42.7	3/7 34.5	3/6 67.8	T-22nd in school history w/1,111 career points (10.8 ppg)... 122 career treys (T-11th in SDSU history)... Started 65 of 103 games in his career... Led team in scoring 27x and in assists 32x... SDSU is 16-3 when he has at least four assists and 26-13 when he has one TO or less... Has 9 career 20-pt. games... Double figures in scoring 59x... Career numbers: 1,111 points, 206 assists, 225 rebounds, 72 stls., 122 3FGs.

red indicates probable starter, black indicates reserve, outline indicates player is injured; gold indicates player is not expected to play.

# SDSU BROADCAST ROSTER

San Diego State vs. No. 1/1 Duke | Lahaina Civic Center | Lahaina, Hawaii | Nov. 13, 2018



**# 0**  
**DEVIN WATSON**

Guard  
6-1, 183, Senior-1L  
Oceanside, Calif.  
Univ. of San Francisco

PPG: 17.0    RPG: 3.0    APG: 5.5  
FG%: 50.0    3FG: 7/14    FT%: 3/4



**# 2**  
**ADAM SEIKO**

Guard  
6-3, 195, Freshman-RS  
Boston, Mass.  
Sierra Canyon High (Calif.)

PPG: 1.0    RPG: 0.5    APG: 0.5  
FG%: 1/4    3FG: 0/1    FT%: 0/0



**# 3**  
**AGUEK AROP**

Forward  
6-6, 220, Freshman-HS  
Omaha, Neb.  
Omaha South High

PPG: 1.0    RPG: 3.0    APG: 0.0  
FG%: 1/1    3FG: 0/0    FT%: 0/0



**# 4**  
**MICHAEL SOHIKISH**

Guard  
5-9, 160, Senior-SQ  
San Diego, Calif.  
University City High

PPG: 0.0    RPG: 0.0    APG: 0.0  
FG%: 0/2    3FG: 0/1    FT%: 0/0



**# 5**  
**JALEN MCDANIELS**

Forward  
6-10, 195, Sophomore-1L  
Federal Way, Wash.  
Federal Way High

PPG: 14.5    RPG: 9.0    APG: 3.0  
FG%: 43.5    3FG: 1/2    FT%: 7/10



**# 11**  
**MATT MITCHELL**

Forward  
6-6, 230, Sophomore-1L  
Riverside, Calif.  
Roosevelt High

PPG: 15.5    RPG: 5.0    APG: 3.5  
FG%: 43.5    3FG: 3/10    FT%: 72.7



**# 20**  
**JORDAN SCHAKEL**

Guard  
6-6, 200, Sophomore-1L  
Torrance, Calif.  
Bishop Montgomery High

PPG: 11.5    RPG: 6.0    APG: 1.0  
FG%: 4/10    3FG: 4/7    FT%: 11/11



**# 23**  
**ED CHANG**

Forward  
6-8, 215, Freshman-HS  
Papillion, Neb.  
Garfield High (Wash.)

PPG: 3.0    RPG: 1.0    APG: 0.0  
FG%: 1/1    3FG: 1/1    FT%: 0/0



**# 24**  
**NOLAN NARAIN**

Forward  
6-10, 230, Junior-2L  
Hamilton, Ontario, Canada  
La Lumiere School (Ind.)

PPG: 6.0    RPG: 4.0    APG: 1.0  
FG%: 5/6    3FG: 0/0    FT%: 2/4



**# 31**  
**NATHAN MENSAH**

Forward  
6-10, 225, Freshman-HS  
Labadi, Accra, Ghana  
Findlay Prep (Nev.)

PPG: 6.5    RPG: 4.0    APG: 1.0  
FG%: 3/6    3FG: 0/0    FT%: 7/10



**# 35**  
**JOEL MENSAH**

Forward  
6-10, 215, Freshman-HS  
Korle Gonno, Accra, Ghana  
JSerra Catholic High (Calif.)

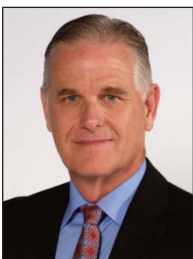
PPG: 3.0    RPG: 2.0    APG: 0.0  
FG%: 2/5    3FG: 0/0    FT%: 2/2



**# 42**  
**JEREMY HEMSLEY**

Guard  
6-3, 195, Senior-3L  
Rancho Cucamonga, Calif.  
Damien High

PPG: 12.0    RPG: 1.5    APG: 2.5  
FG%: 56.3    3FG: 3/7    FT%: 3/6

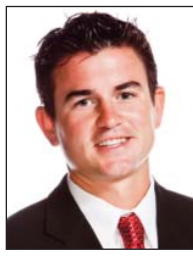


**HEAD COACH**  
**BRIAN DUTCHER**

- 2nd season as head coach
- 20th year at SDSU
- 1989 NCAA champion
- 3 NCAA title game appearances
- 17 NCAA tournament appearances
- 11-time Mountain West champion



**ASSISTANT COACH**  
**ROD PALMER**



**ASSISTANT COACH**  
**DAVE VELASQUEZ**



**ASSISTANT COACH**  
**JAY MORRIS**



**ASST. TO HEAD COACH**  
**MARK FISHER**