



2023 VOLLEYBALL MATCH NOTES

AUBURN ATHLETICS COMMUNICATIONS: 392 SOUTH DONAHUE DRIVE || AUBURN, AL 36830 || AUBURNTIGERS.COM || @AUBURNVB

2023 SCHEDULE/RESULTS

11-3 OVERALL | 1-2 SEC
6-2 HOME | 2-1 AWAY | 3-0 NEUTRAL

| DATE | OPPONENT | TV | TIME/RESULT |
|----------|--------------------------|-------------|--------------|
| Aug. 25 | vs Coppin State! | SECN+ | W, 3-1 |
| Aug. 26 | vs McNeese State! | SECN+ | W, 3-0 |
| Aug. 26 | vs Jacksonville State! | SECN+ | W, 3-0 |
| Sept. 2 | vs SMU@ | N/A | W, 3-1 |
| Sept. 3 | at Florida State@ | ACCN+ | W, 3-1 |
| Sept. 7 | vs Middle Tennessee\$ | SECN+ | L, 1-3 |
| Sept. 8 | vs Charleston Southern\$ | SECN+ | W, 3-1 |
| Sept. 9 | vs Mercer\$ | SECN+ | W, 3-0 |
| Sept. 14 | at South Alabama% | ESPN+ | W, 3-2 |
| Sept. 15 | vs UAB% | N/A | W, 3-1 |
| Sept. 16 | vs Samford% | N/A | W, 3-1 |
| Sept. 22 | vs #3 Florida* | SECN+ | L, 2-3 |
| Sept. 24 | vs Ole Miss* | SECN+ | W, 3-1 |
| Sept. 27 | at Arkansas* | SEC Network | L, 0-3 |
| Oct. 1 | vs Georgia* | ESPN | Noon CT |
| Oct. 6 | at Florida* | SECN+ | 6 p.m. CT |
| Oct. 8 | at South Carolina* | ESPNU | 1 p.m. CT |
| Oct. 13 | at Tennessee* | SECN+ | 5:30 p.m. CT |
| Oct. 20 | vs Missouri* | SEC Network | 8 p.m. CT |
| Oct. 22 | vs South Carolina* | SECN+ | 1 p.m. CT |
| Oct. 27 | at Georgia* | SECN+ | 6 p.m. CT |
| Oct. 29 | at Alabama | SEC Network | 11 a.m. CT |
| Nov. 5 | at Texas A&M | SEC Network | 3 p.m. CT |
| Nov. 8 | vs Kentucky | SECN+ | 6:30 p.m. CT |
| Nov. 12 | at Missouri | SECN+ | 3 p.m. CT |
| Nov. 15 | at Mississippi State | SECN+ | 6 p.m. CT |
| Nov. 19 | vs LSU | SECN+ | 2 p.m. CT |
| Nov. 22 | vs Alabama | SECN+ | 6:30 p.m. CT |
| Nov. 24 | vs Arkansas | SECN+ | 3 p.m. CT |

BOLD indicates home contest | All time Central and subject to change
! - War Eagle Invite | @ - Seminole Invite | S - Tiger Invite | % - Alabama Showdown
* - Southeastern Conference Game | # - NCAA Tournament

AUBURN ATHLETICS COMMUNICATIONS

Office Phone 334-844-9800
Kirk Sampson Associate AD
sampska@auburn.edu
Thomas Hoffman Volleyball Contact
tgh0024@auburn.edu
C: 503-302-9592

FOLLOW ALONG

Web AuburnTigers.com
X @AuburnVB
Instagram @auburnvolleyball

MATCH

15

GEORGIA

Sunday, Oct. 1 | Noon CT
Auburn, Ala. | Neville Arena | ESPN



AUBURN

AVCA Coaches Poll _____ 24
2023 Record _____ 11-3 | 1-1 SEC
Head Coach _____ Brent Crouch
Career Record (Year) _____ 141-126 (10th)
Record at Auburn (Year) _____ 46-35 (4th)

GEORGIA

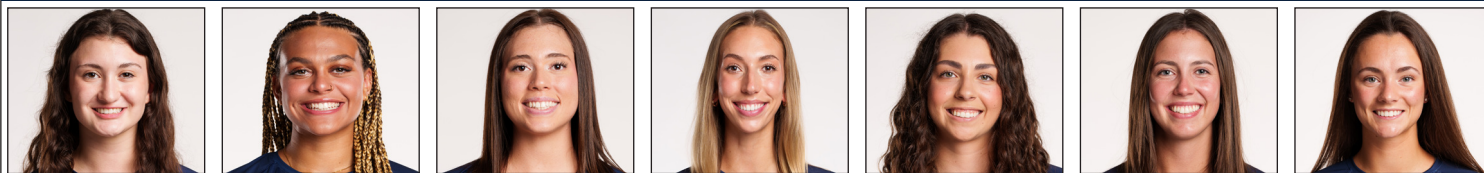
AVCA Coaches Poll _____ N/A
2023 Record _____ 9-4 | 0-1 SEC
Head Coach _____ Tom Black
Career Record (Year) _____ 352-194 (19th)
Record at Georgia (Year) _____ 110-79 (7th)

Site _____ Auburn, Alabama
Venue _____ Neville Arena
Live Stats _____ Statbroadcast
Broadcast Crew _____ Kevin Fitzgerald (Play-by-play) | Missy Whittemore (Analyst)
Series Record _____ Georgia leads 39-23
Last Meeting _____ Oct. 9, 2022 Auburn 3, Georgia 2 (25-22, 25-21, 15-25, 24-26, 16-14)
Last Auburn Win _____ Oct. 9, 2022 Auburn 3, Georgia 2 (25-22, 25-21, 15-25, 24-26, 16-14)

QUICK HITS

- Auburn welcomes back Georgia to the Plains for the first time since sweeping the series in 2022. The Tigers bested the Bulldogs in both matchups in Neville last season, including a dramatic five-set victory in game two when the Orange and Blue rattled off five straight points to end the match.
- Akasha Anderson remains among the top attackers in the Southeastern Conference. The Sophomore from Reston, Virginia ranks in the top 10 in the SEC in kills per set (3.77) and points per set (4.33).
- Kendal Kemp and Kyla Swanson are also near the top end of the SEC when it comes to blocking. Kemp's 52 blocks on the year are the sixth-most in the conference. Swanson, the graduate transfer from Illinois, is close behind with 50 rejections this season.
- Kemp is also one of the most efficient hitters in the SEC this season. The Minnesota native is swinging at .402 so are in 2023, the fifth-highest percentage in the conference.
- As a team, coach Crouch's Tigers continue to be one of the better blocking teams in the entire country. Entering the weekend, Auburn has totaled 130 team blocks, ranking third in the SEC and No. 38 in the country. The Tigers are also averaging 2.41 blocks per set, the fifth most in the conference.
- Despite a run of injuries, Jackie Barrett and the Auburn offense continues to operate at a high clip. The Tigers are second in the SEC in kills with 701 and sixth in hitting percentage at .257.
- Barrett herself ranks third in the conference in total assists with 458. The senior from Highland, California has also contributed defensively. Barrett has notched a team-leading seven double-doubles so far this season.
- In total, Auburn owns 619 assists, which also ranks second in the SEC.

AUBURN'S POTENTIAL STARTING SEVEN



| SARAH MORTON | | AKASHA ANDERSON | | BELLA BELL | | KYLA SWANSON | | KENDAL KEMP | | JACKIE BARRETT | | PAIGE THIBAUT | |
|-----------------------|---------------------|---------------------|---------------------|---------------------|---------------------|------------------------|-------|-------------|------|----------------|------|---------------|------|
| #2 • DS/L • SO. • 5-8 | #3 • PH • SO. • 6-3 | #5 • RS • SR. • 6-4 | #6 • MB • SR. • 6-4 | #8 • MB • SO. • 6-6 | #10 • S • SR. • 6-2 | #13 • DS/L • JR. • 5-7 | | | | | | | |
| D/S: | 3.20 | K/S: | 3.77 | K/S: | 1.31 | K/S: | 1.68 | D/S: | 2.41 | D/S: | 1.71 | | |
| A/S: | 0.93 | HIT%: | .197 | HIT%: | .295 | HIT%: | .220 | HIT%: | .402 | A/S: | 9.35 | A/S: | 0.31 |
| SA/S: | 0.07 | D/S: | 2.02 | D/S: | 0.35 | D/S: | 0.25 | D/S: | 0.10 | SA/S: | 0.31 | SA/S: | 0.14 |
| P/S: | 0.12 | B/S: | 0.44 | B/S: | 0.71 | B/S: | 0.96 | B/S: | 1.30 | P/S: | 1.32 | P/S: | 0.17 |
| | SA/S: | 0.33 | SA/S: | 0.00 | SA/S: | 0.06 | SA/S: | 0.03 | | | | | |
| | P/S: | 4.33 | P/S: | 2.96 | P/S: | 1.88 | P/S: | 2.43 | | | | | |

K/S: kills per set • HIT%: hitting percentage • D/S: digs per set • B/S: blocks per set • A/S: assists per set • SA/S: aces per set • P/S: points per set



#1 MADISON SCHEER
So. | PH | 6-1



#2 SARAH MORTON
So. | L | 5-8



#3 AKASHA ANDERSON
So. | PH | 6-3



#4 FALLAN LANHAM
Jr. | L | 5-8



#5 BELLA BELL
Gr. | MB | 6-4



#6 KYLA SWANSON
Gr. | MB | 6-4



#7 PEYTON DUNN
R-So. | S | 5-11



#8 KENDAL KEMP
So. | MB | 6-6



#9 ZOE SLAUGHTER
So. | L | 5-7



#10 JACKIE BARRETT
Sr. | S | 6-2



#11 JORDAN SINNESS
Jr. | S | 5-9



#12 BEL ZIMMERMAN
So. | PH | 6-2



#13 PAIGE THIBAUT
Jr. | L | 5-7



#14 CHELSEY HARMON
Sr. | MB | 6-3



#17 CASSIDY TANTON
R-So. | PH | 6-0



#19 JASMINE OKEOMA
Fr. | MB | 6-3



#22 SYDNEY HANDEL
So. | L | 6-0



#22 LAKIN LAURENDINE
Fr. | PH | 6-1

#WarEagle



AuburnTigers.com

@AuburnVB | @AuburnTigers
@AuburnVBCoach



/AuburnVB
/AuburnTigers

TEAM SCHEDULE AND MEDIA AVAILABILITY >> WEEK OF SEPT. 25 - OCT. 1

| MONDAY September 25 | TUESDAY September 26 | WEDNESDAY September 27 | THURSDAY September 28 | FRIDAY September 29 | SATURDAY September 30 | SUNDAY October 1 |
|---|-------------------------|---|--------------------------|---|---|--|
| PRACTICE: 3:45 p.m. - 6 p.m. SAC | TRAVEL | MATCH: 7 p.m. CT at Arkansas Fayetteville, Ark. | OFF | PRACTICE: 3:45 p.m. - 6 p.m. SAC | PRACTICE: 3:45 p.m. - 6 p.m. ARENA | MATCH: Noon CT vs Georgia Auburn, Ala. |
| INTERVIEWS BY REQUEST | INTERVIEWS BY REQUEST | INTERVIEWS BY REQUEST | NO INTERVIEWS | INTERVIEWS BY REQUEST | INTERVIEWS BY REQUEST | INTERVIEWS POST MATCH |

AUBURN ATHLETICS COMMUNICATIONS

QUICK FACTS

AUBURNTIGERS.COM

For updated game notes, statistics, safety protocols and latest information on Auburn volleyball and Auburn Athletics, visit AuburnTigers.com.

INTERVIEW POLICY

Coach Crouch, assistant coaches and student-athletes are available for interviews by contacting Thomas Hoffman in the communications office. All interviews during the week will be conducted via phone or ZOOM. Post-match interviews will be conducted in the media room at Auburn Arena following a brief cooling-off period.

CREDENTIALS

Anyone wishing to cover an Auburn volleyball match should contact Thomas Hoffman in the communications office at least 24 hours in advance to make arrangements.

MATCH DAY SERVICES

Printed copies of notes, flip cards and statistics will be available upon request. Digital copies will be emailed out prior to the match and will be available on AuburnTigers.com. Media members are permitted to bring their own printed materials. Stats will not printed between sets or after matches. Live stats will be provided during the match and final statistics will be emailed out and posted on AuburnTigers.com. All post-match interviews will be conducted in the media room. Wireless internet is available in the Arena; ask Thomas Hoffman for the password. Match highlights, photos and postgame interviews will be available on Imagen following matches.

VIDEO SERVICES

FTP feeds of selected Auburn volleyball highlights are available for the media. A number of studio and satellite services may be arranged for electronic media by contacting Cody Baker in War Eagle Productions at jcb0101@auburn.edu.

PHOTO SERVICES

For photos of Auburn volleyball or any Olympic sports, contact Zach Bland at zdb007@auburn.edu.

COMMUNICATIONS STAFF

Thomas Hoffman Volleyball Contact
cell: 503-302-9592
email: tgh0024@auburn.edu

Kirk Sampson Associate AD
cell: 334-750-1385
email: sampska@auburn.edu

UNIVERSITY INFORMATION

City / Zip _____ Auburn, Ala. / 36831
 Founded _____ Oct. 1, 1856
 Enrollment _____ 30,737
 Nickname _____ Tigers
 Colors _____ Navy Blue & Burnt Orange
 Affiliation _____ NCAA Division I
 Conference _____ Southeastern Conference
 Home Court _____ Neville Arena (9,121)
 President _____ Dr. Chris Roberts
 Athletics Director _____ John Cohen
 Sport Administrator _____ Joy Vrbka (Florida, 2003)

TEAM INFORMATION

Letterwinners Returning/Lost _____ 12/0
 Starters Returning/Lost _____ 6+libero/0
 Newcomers _____ 6
 2022 Overall Record _____ 22-9
 2022 Conference Record/Finish _____ 10-8/6th

PROGRAM HISTORY

First Year of Volleyball _____ 1967
 _____ Program discontinued 1981; Reinstated 1986
 Seasons of Auburn Volleyball _____ 45th
 All-Time Overall Record _____ 702-702-4 (.500)
 in Neville Arena (Since 2013) _____ 74-61 (.535)
 Total Home Record _____ 246-214 (.531)
 All-Time SEC Record _____ 199-370 (.350)
 NCAA Tournament Appearances _____ 2/2010, 2022
 SEC Championships/Last _____ 1/Co-West Champions (1996)

STAFF INFORMATION

Head Coach _____ Brent Crouch (Texas A&M, '98 & '00; Oregon '06)
 Career Record _____ 141-126 (.514)/10th Season
 Record at Auburn _____ 46-35 (.523)/4th Season
 Assistant Coach/Recruiting Coordinator _____ Rachel Corbelli (2nd Season)
 Assistant Coach _____ Keith Smith (2nd Season)
 Assistant Coach _____ Jack Burton (1st Season)
 Technical Coordinator _____ Mackenna Basore (2nd Season)
 Director of Operations _____ Emily Houle (2nd Season)
 Strength & Conditioning _____ Bethany Gainey
 Athletic Trainer _____ Nate Warner
 Equipment Manager _____ Brian Maddox

ATHLETIC COMMUNICATIONS

Associate AD/Communications _____ Kirk Sampson
 Assistant Director/Volleyball Contact _____ Thomas Hoffman
 Email _____ tgh0024@auburn.edu
 Phone _____ 503-302-9592
 Mailing Address _____ Auburn Athletics Complex
 _____ 392 S. Donahue Drive
 Website _____ AuburnTigers.com

GAMEDAY EXPERIENCE: NEVILLE ARENA

>> Neville Arena is in its seventh season as home of Auburn volleyball. The Tigers are 74-61 since moving to the Arena in 2013. The facility seats approximately 9,121.



LAST TIME OUT

» Auburn wasn't able to find any rhythm against No. 14 Arkansas on Wednesday. Both Zoe Slaughter and Bel Zimmerman recorded aces but the Razorback defense was too stout in the end, holding Auburn to -.049 hitting for the match.

SCOUTING GEORGIA

» Tom Black enters his seventh season at the helm of the Georgia Volleyball program. The Bulldogs already have signature victory this season, besting rival Georgia Tech on the road in Atlanta. Like Auburn, Black's squad also went five grueling sets last Sunday at then No. 3 Florida.

Georgia is led by the two-headed monster of Sophie Fischer and Kacie Evans. Fischer already boasts an SEC Offensive Player of the Week award to her name. The senior from Fort Mill, South Carolina ranks third in the SEC in kills per set at 4.13 and first in points per set at 5.22. Fischer is also bringing in 1.27 blocks per set, ranking fifth in the conference.

Meanwhile, Kacie Evans is right behind Fischer in kills per set at 3.13. Evans is also stellar from the service line, averaging 0.46 aces per set, the sixth-most in the conference.

As a team, the Bulldogs are one of the better serving teams in the country. Georgia's 1.93 aces per set are fourth in the SEC and No. 29 in the nation.

AUBURN-GEORGIA SERIES

» The Bulldogs own a 39-23 records against the Tigers. However, Auburn has bested Georgia in seven of the last 10 meetings, including two dramatic victories last season in Neville.

Head coach Brent Crouch has enjoyed early success against the Bulldogs since arriving on the Plains. Crouch is 3-1 against Georgia, including the series sweep a season ago.

MR. 300

» Three hundreds appears to be the perfect number for head coach Brent Crouch. All-time, when his teams manage a .300 hitting percentage, he carries an undefeated record of 35-0, including an 15-0 mark at Auburn. The Tigers have accomplished the feat seven different times already in 2023.

SECOND SET MAGIC

» Auburn is 8-1 this season when winning the second set of matches. Over the last two years, Crouch's teams are 26-1 when claiming the second frame.

NO PLACE LIKE NEVILLE

PLAYER TO WATCH: AKASHA ANDERSON

» The AVCA South Region Freshman of the Year was up to no good last season. With 590 career kills, Anderson leads the Tigers in both kills and kills per set (3.60).



» Auburn is now 25-16 at home under head coach Brent Crouch, including wins in 25 of it's last 37 games at home. All-time Auburn is 74-61 in Neville.

STAYING ACTIVE

» Bella Bell, Kendal Kemp, Jackie Barrett and Akasha Anderson are all amongst the SEC's top active career leaders. Bell (.344) and Kemp (.339) are both inside the top five in hitting percentage. Kemp's 1.43 blocks per set is currently second in the conference. Anderson ranks in the top 10 in both kills per set (3.60) and points per set (4.10). Barrett's 9.01 assists per set is seventh and Morton ranks fifth in digs per set (3.68).

RANK YOU VERY MUCH

» Welcome to the top 25 Auburn Volleyball. After wins over SMU and Florida State, the Tigers earned the program's first-ever ranking at No. 25.

A week later, Auburn moved up to No. 24 following a 2-1 showing at the Tiger Invitational. Auburn is currently riding a four-week streak inside the top-25.

BLOCKERS BEWARE

» Thanks to steady passing from Sarah Morton and the back row, the Auburn attack has managed to be one of the least-blocked teams in the SEC. On average Auburn allows just 1.61 blocks per set, the third-best in the conference.

500 CLUB

» Sophomore Akasha Anderson has eclipsed 500 career kills in her young career, doing so in just 37 matches.

Sophomore libero Sarah Morton earned her 500th dig of her young career against Florida State.

Eureka, Missouri native Madison Scheer is also barreling toward her 500th kill. The sophomore sits at 497 entering the weekend.

SEEING DOUBLE

» Jackie Barrett posted Auburn's first double-doubles of the season, piling up 36 assists and 14 digs against SMU. A day later, the Highland, California native grabbed 44 assists with 11 digs. Barrett posted a team-high 12 double-doubles in 2022. Barret owns a team-leading seven double-doubles in 2023.

Speaking of double-doubles, Bel Zimmerman earned the feat for the first time in her career with 17 kills and 16 digs against Charleston Southern. Zimmerman added her second and third double-double against UAB and Samford during the Alabama Showdown.

SEC STANDINGS & SCHEDULE

2023 STANDINGS

| | CONF | OVERALL | HOME | ROAD | NTRL | STRL |
|----------------|------------|-------------|------------|------------|------------|------|
| Arkansas | 3-0 | 13-2 | 7-2 | 2-0 | 4-0 | - |
| Tennessee | 2-0 | 11-1 | 6-0 | 4-1 | 1-0 | - |
| Florida | 2-1 | 10-2 | 5-2 | 4-0 | 1-0 | - |
| Texas A&M | 2-1 | 10-3 | 4-2 | 3-1 | 3-0 | - |
| Missouri | 1-1 | 9-4 | 6-1 | 2-2 | 1-1 | - |
| Mississippi St | 1-1 | 8-4 | 6-0 | 0-3 | 2-1 | - |
| Ole Miss | 1-1 | 7-6 | 4-0 | 1-3 | 2-3 | - |
| Kentucky | 1-1 | 3-7 | 1-2 | 1-5 | 1-0 | - |
| Auburn | 1-2 | 11-3 | 6-2 | 2-1 | 3-0 | - |
| Georgia | 0-1 | 9-4 | 5-1 | 2-1 | 2-2 | - |
| LSU | 0-1 | 5-6 | 2-2 | 0-3 | 3-1 | - |
| Alabama | 0-2 | 10-3 | 4-0 | 3-2 | 3-1 | - |
| South Carolina | 0-2 | 6-5 | 4-1 | 1-4 | 1-0 | - |

THIS WEEK IN THE SEC...

Wednesday, Sept. 27

Texas A&M 3, Florida 2

Arkansas 3, Auburn 0

Friday, Sept. 29

Tennessee at Mississippi St., 6 p.m.

Kentucky at Georgia, 7 p.m.

South Carolina at Ole Miss, 7 p.m.

Missouri at LSU, 8:30 p.m.

Sunday, Oct. 1

Georgia at Auburn, 1 p.m.

Florida at South Carolina, 2 p.m.

Kentucky at Alabama, 2 p.m.

Tennessee at Ole Miss, 2:30 p.m.

Missouri at Texas A&M, 4 p.m.

Mississippi St. at LSU, 6 p.m.

*All times ET

2022 FINAL NCAA RPI REPORT

| RK | TEAM | RECORD | AU RESULT |
|-----------|--------------------|-------------|-----------------|
| 8 | Kentucky | 22-8 | L, 3-0 & L, 3-0 |
| 12 | Florida | 25-6 | L, 3-0 |
| 15 | Creighton | 27-4 | W, 3-2 |
| 17 | Houston | 30-4 | L, 3-0 |
| 22 | Arkansas | 21-9 | L, 3-0 & L, 3-0 |
| 32 | Georgia | 23-8 | W, 3-1 & W, 3-2 |
| 37 | AUBURN | 22-9 | |
| 41 | LSU | 16-14 | L, 3-2 |
| 57 | Tennessee | 17-14 | W, 3-1 |
| 62 | Jacksonville State | 24-6 | W, 3-2 |
| 65 | Mississippi State | 15-13 | W, 3-2 |
| 75 | Texas A&M | 13-16 | W, 3-1 & W, 3-1 |
| 94 | South Carolina | 13-15 | L, 3-2 |
| 107 | Troy | 18-13 | W, 3-1 |
| 117 | Ole Miss | 11-17 | W, 3-1 |
| 122 | Southern Miss | 21-12 | W, 3-0 |
| 143 | North Florida | 12-17 | W, 3-0 |
| 149 | Alabama | 10-20 | W, 3-1 & W, 3-1 |
| 151 | UAB | 12-15 | W, 3-2 |
| 160 | Missouri | 9-19 | W, 3-2 & L, 3-1 |
| 218 | Alabama State | 20-14 | W, 3-0 |
| 224 | Marist | 18-11 | W, 3-1 |
| 287 | Belmont | 8-23 | W, 3-0 |
| 292 | Jackson State | 13-17 | W, 3-0 |
| 304 | Georgia State | 7-22 | W, 3-1 |
| 334 | Alabama A&M | 7-26 | W, 3-0 |

AUBURN OPPONENTS ONLY

AVCA COACHES POLL

| RK | TEAM | POINTS | RECORD |
|----|------------------|------------|-------------|
| 1 | Wisconsin [58] | 1,592 | 11-0 |
| 2 | Nebraska [6] | 1,531 | 11-0 |
| 3 | Stanford | 1,437 | 9-2 |
| 4 | Florida | 1,402 | 10-1 |
| 5 | Louisville | 1,363 | 11-1 |
| 6 | Oregon | 1,272 | 12-1 |
| 7 | Washington State | 1,184 | 12-1 |
| 8 | Pittsburgh | 1,140 | 11-2 |
| 9 | BYU | 1,082 | 13-1 |
| 10 | Texas | 1,064 | 7-3 |
| 11 | Georgia Tech | 873 | 11-1 |
| 12 | Tennessee | 850 | 11-1 |
| 13 | Minnesota | 793 | 5-5 |
| 14 | Arkansas | 749 | 12-2 |
| 15 | Penn State | 702 | 8-3 |
| 16 | Creighton | 680 | 10-3 |
| 17 | Purdue | 530 | 8-3 |
| 18 | Baylor | 477 | 6-5 |
| 19 | Kansas | 376 | 10-2 |
| 20 | Houston | 355 | 7-3 |
| 21 | Dayton | 246 | 13-2 |
| 22 | Ohio State | 216 | 4-7 |
| 23 | Kentucky | 185 | 3-7 |
| 24 | Auburn | 155 | 11-2 |
| 25 | Arizona State | 133 | 14-0 |

Others receiving votes: Iowa State 103; Western Kentucky 92; Southern California 30; UCF 29; Marquette 23; James Madison 18; Duke 17; Hawai'i 14; Rice 11; UC Santa Barbara 5; Texas A&M 3

INSIDE THE MATCH-UPS

GEORGIA 23-39 (.371)

11-16 H • 8-19 A • 4-4 N

| YEAR | SITE | RESULT | MATCH SCORE |
|------|---------|--------|-------------|
| 1975 | NEUTRAL | W | 2-1 |
| 1975 | NEUTRAL | L | 1-2 |
| 1978 | HOME | W | 2-0 |
| 1978 | AWAY | L | 1-2 |
| 1978 | NEUTRAL | W | 2-0 |
| 1979 | AWAY | W | 2-1 |
| 1979 | NEUTRAL | L | 1-2 |
| 1987 | HOME | L | 1-3 |
| 1988 | AWAY | L | 2-3 |
| 1988 | HOME | L | 1-3 |
| 1989 | NEUTRAL | L | 0-3 |
| 1990 | HOME | L | 0-3 |
| 1990 | HOME | L | 1-3 |
| 1990 | AWAY | L | 2-3 |
| 1991 | AWAY | L | 0-3 |
| 1992 | HOME | L | 1-3 |
| 1992 | AWAY | L | 1-3 |
| 1993 | AWAY | L | 0-3 |
| 1994 | HOME | L | 0-3 |
| 1995 | AWAY | L | 1-3 |
| 1995 | NEUTRAL | W | 3-1 |
| 1996 | HOME | W | 3-1 |
| 1997 | AWAY | L | 0-3 |
| 1997 | NEUTRAL | L | 1-3 |
| 1998 | AWAY | W | 3-1 |
| 1998 | NEUTRAL | W | 3-2 |
| 1999 | HOME | W | 3-1 |
| 2000 | AWAY | L | 2-3 |
| 2001 | HOME | L | 0-3 |
| 2002 | HOME | L | 0-3 |
| 2003 | AWAY | L | 1-3 |

KEMP ROOFING CO.

» After setting records in 2022, sophomore middle blocker Kendal Kemp is back to her old tricks this season. In eight matches this season, the Eagan Minnesota native is averaging 1.30 blocks per set. The mark is fourth in the SEC and No. 39 in nation.

Kemp also posted a career-high 13 kills on a season-high .526 hitting percentage in the Tigers' win over Charleston Southern.

AARP ELIGIBLE?

» Brent Crouch is on a collision course for 50 wins on the Plains. Should Crouch accomplish the feat this season, he'd be the quickest to 50 wins in the 25-point rally-scoring era.

RING THE BEL

» Not only did Bel Zimmerman post the first double-double of her career but her hitting efficiency spiked during the Tiger Invitational. After hitting .367 against Mercer, the Liberty, Missouri native is averaging .250 on the season.

CAN YOU DIG IT?

» In the first match of the season, libero Sarah Morton is already making waves. With 24 digs against Coppin State, the Muenster, Indiana native posted the third-most digs in a four-set match so far in the SEC this season.

STREAKING

» In each of Auburn's first five matches this season, the Tigers managed to hit north of .300, marking the only such streak in the 25-point rally-scoring era.

SOAKING UP SUMMER HEAT

» August has been good to Brent Crouch over the years. In nine years of coaching, Crouch is 22-3 in the month of August, including a 9-0 mark at Auburn.

QUEEN KEMP

» Minnesota native Kendal Kemp announced herself to the collegiate volleyball world in 2022. Kemp set single-season program records in solo blocks (26), block assists (154), total blocks (180) and blocks per set (1.48). Earning AVCA South Region Honorable Mention, Kemp totals were also second in the Southeastern Conference and her 180 total blocks were the second-most in the country.

BLOCK PARTY

» Speaking of blocks, Auburn's team totals were nothing short of brilliant. In the rally-scoring era, the 2022 Tiger team set single-season records in block assists (520), total blocks (312) and blocks per set (2.56).

PLAYER TO WATCH: BELLA BELL

» Senior transfer Bella Bell is set to return to the lineup this weekend. Coming into her own at right side, Bell is second on the team in hitting percentage, swinging .295.



THE JACK BURTON

» NCAA rules have allowed for an additional coach for volleyball programs. Crouch has added Jack Burton to his staff.

Following a prolific playing career at Grand Canyon University, Burton stopped over in Dayton for two seasons and most recently helped FGCU to a 26-7 record and the school's third trip to the NCAA Tournament.

AUBURN PICKED 7th IN PRESEASON POLL

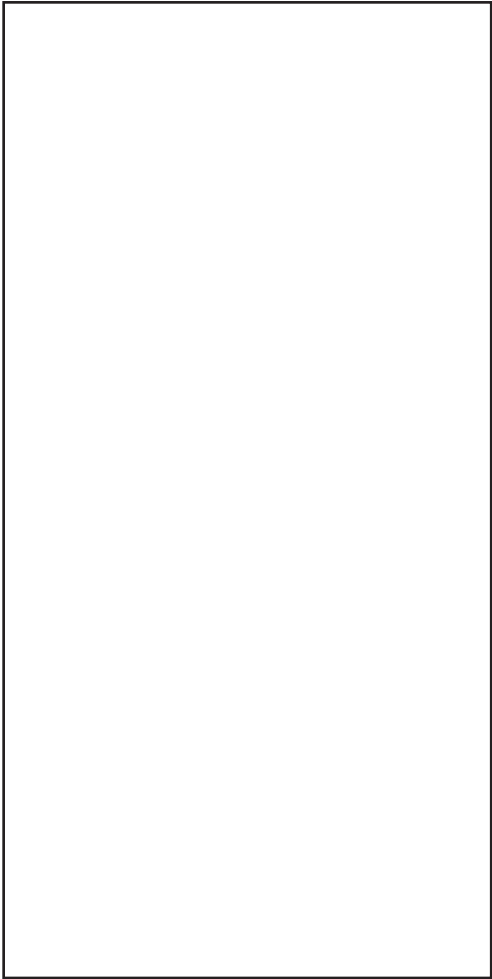
» After a sixth-place finish in 2022, the Auburn Tigers have been selected to finish seventh in the 2023 preseason poll.

NEW KIDS ON THE BLOCK

» All 12 student-athletes from a year ago return to the Auburn Volleyball roster. Head coach Brent Crouch added six new faces to bolster the squad in 2023. Four transfers (Bella Bell, Kyla Swanson, Peyton Dunn and Paige Thibault) make their debut in the Orange and Blue this season. Freshmen Jasmin Okeoma and Lakin Laurendine have also found a new home on the Plains.

INSIDE THE MATCH-UPS CONT...

| | | | |
|------|------|---|-----|
| 2003 | HOME | L | 0-3 |
| 2004 | AWAY | L | 0-3 |
| 2005 | HOME | L | 1-3 |
| 2006 | AWAY | W | 3-2 |
| 2006 | HOME | L | 1-3 |
| 2007 | AWAY | L | 0-3 |
| 2007 | HOME | L | 1-3 |
| 2008 | HOME | L | 2-3 |
| 2008 | AWAY | L | 1-3 |
| 2009 | AWAY | L | 2-3 |
| 2009 | HOME | L | 2-3 |
| 2010 | HOME | W | 3-0 |
| 2010 | AWAY | W | 3-2 |
| 2011 | AWAY | L | 1-3 |
| 2011 | HOME | W | 3-0 |
| 2012 | AWAY | L | 0-3 |
| 2012 | HOME | W | 3-1 |
| 2013 | AWAY | L | 1-3 |
| 2014 | HOME | W | 3-1 |
| 2014 | AWAY | L | 2-3 |
| 2015 | HOME | W | 3-0 |
| 2016 | AWAY | W | 3-1 |
| 2016 | HOME | W | 3-0 |
| 2017 | AWAY | W | 3-0 |
| 2018 | HOME | L | 2-3 |
| 2018 | AWAY | W | 3-0 |
| 2019 | HOME | L | 1-3 |
| 2021 | AWAY | W | 3-0 |
| 2021 | AWAY | L | 0-3 |
| 2022 | HOME | W | 3-1 |
| 2022 | HOME | W | 3-2 |



HEAD COACH BRENT CROUCH

QUICK FACTS

College ___ Texas A&M ('98, '00)
 ___ Oregon ('06)
 Wife ___ Marcy
 Sons ___ Jonathan and William

COACHING RECORD

Head Coaching Career _ 10th Season
 Career Record ___ 141-126
 NCAA Appearances ___ 3

COACHING CAPSULE

2020-Pr. Auburn 46-35
 2018-19 Southern California 40-25
 2014-17 Portland 55-66

YEAR-BY-YEAR RESULTS

| | | |
|------|----------|-------|
| 2023 | Auburn | 11-3 |
| 2022 | Auburn | 22-9 |
| 2021 | Auburn | 13-15 |
| 2020 | Auburn | 0-8 |
| 2019 | USC | 18-14 |
| 2018 | USC | 22-11 |
| 2017 | Portland | 15-15 |
| 2016 | Portland | 17-13 |
| 2015 | Portland | 16-15 |
| 2014 | Portland | 7-23 |



Brent Crouch begins his fourth season at the helm of the Auburn Volleyball program in 2023. Crouch and the Tigers look to reset the bar after a record-breaking 2022 campaign that saw success on the Plains unseen for more than a decade.

Last season, Auburn earned a berth into the NCAA Tournament for just the second time in school history and the first since 2010. A first-round victory over host and No. 14 Creighton provided the program with its second postseason win and first triumph over a nationally-ranked opponent since 2017.

The feat came on the heels of a historic season that saw the Tigers begin the season with a record mark of 14-0 and a record start to SEC play at 3-0. The 22 total victories on the season were the most in the 25-point rally-scoring era and the most since 1998. The Tigers also picked up its first win in Columbia, Missouri.

Under Crouch's guidance, Akasha Anderson, Madison Scheer and Kendal Kemp each garnered All-Conference Honors. Anderson and Kemp also picked up AVCA postseason accolades with Anderson grabbing South Region Freshman of the Year and All-Region. Meanwhile, Kemp solidified Honorable Mention. Auburn Volleyball student-athletes also picked up a record 10 SEC weekly awards.

Crouch wasn't left out of the postseason awards season, securing AVCA South Region Coach of the Year, the first such award for the Tiger Volleyball program.

Fans on the Plains saw Auburn become one of the most potent blocking teams in the Southeastern Conference in 2022. Crouch's guidance helped the Tigers break records for most block assists in a single season (520), total blocks (312.0) and tie for the most blocks in a four-set match (17 vs. Troy).

The Orange and Blue wall's foundation was laid by then-freshman Kendal Kemp. The Egan, Minnesota product shattered single-season records for solo blocks (26), block assists (154), total blocks (180) and blocks per set (1.48).

During his first full season leading the Auburn program in 2021, Crouch's leadership had an immediate effect. The Tigers opened the season winning 17 consecutive sets to tie the program record for most sweeps to begin a season (5), matching the 1974 Auburn team. Crouch led the team to a 13-15 record with a 5-13 mark in the SEC, picking up a season sweep over Alabama, the first Auburn win over Missouri since 1996 and the program's first victory in College State with a win over Texas A&M.

Crouch's expertise led to six total SEC weekly honors, splitting three on offense and three on defense. Individually, the Tigers also set nine individual records during the 2021 campaign.

Individually, it was Rebekah Rath and Tatum Shipies who benefited the most from Crouch's development. Shipies led the SEC in blocking and set records in blocks, block assists and blocks per set. Meanwhile, Rath led the SEC in five offensive categories, setting records in kills and kills per set.

Crouch made his Auburn coaching debut against No. 4 Florida on Oct. 21, 2020, to open the shortened fall volleyball schedule. Crouch led the Tigers on the court for eight total matches and his impact on the Plains was noticeable almost immediately, tying the record for most blocks in a four-set with 17 at South Carolina.

Prior to Auburn, Crouch served as the head coach at the University of South California, compiling a 40-25 record. He would lead the Trojans to the second round of the NCAA Tournament in both years in Los Angeles. In 2018, Crouch's Trojans earned the No. 11 overall seed in the Tournament and the No. 21 ranking in the final AVCA Coaches poll of the year.

Before leading the Trojans, Crouch spent four seasons as head coach of the University of Portland. The 2016 West Coast Conference Coach of the Year inherited a winless program and guided the Pilots to its winningest season in 25 years just two seasons later. His 48 victories in his final three years in the Rose City was the best three-season total since 1984-86. He put Portland on the WCC map, earning wins over top-10, top-15 and top-25 opponents while in charge of the Pilots. Crouch coached three All-WCC First Team selections, a WCC All-Freshman Team honoree and three WCC All-Academic First Teamers. He also established Beach Volleyball as a varsity sport at Portland in 2016.

Crouch arrived at Portland after four seasons (2010-13) at Saint Mary's College, where he was an assistant with the indoor program and head coach of the beach team.

Brent and his wife Marcy have two sons, Jonathan and William.

2023 AUBURN VOLLEYBALL ROSTER

| No. | Name | Year | Pos. | Ht. | Hometown (High School/Previous School) |
|-----|------------------|-------|------|------|--|
| 1 | MADISON SCHEER | SO. | PH | 6-1 | EUREKA, MO. (EUREKA) |
| 2 | SARAH MORTON | SO. | L | 5-7 | MUNSTER, IND. (MUNSTER) |
| 3 | AKASHA ANDERSON | SO. | PH | 6-3 | RESTON, VA. (HERNDON) |
| 4 | FALLAN LANHAM | JR. | L | 5-8 | LOUISVILLE, KY. (MERCY ACADEMY) |
| 5 | BELLA BELL | SR. | RS | 6-4 | BLYTHEWOOD, S.C. (KENTUCKY) |
| 6 | KYLA SWANSON | GR. | MB | 6-4 | WAHOO, NEB. (ILLINOIS) |
| 7 | PEYTON DUNN | R-SO. | S | 5-11 | DECATUR, TEXAS (OKLAHOMA) |
| 8 | KENDAL KEMP | SO. | MB | 6-6 | EAGAN, MINN. (EAGAN) |
| 9 | ZOE SLAUGHTER | SO. | L | 5-7 | HONOLULU, HAWAII (MOANALUA) |
| 10 | JACKIE BARRETT | SR. | S | 6-2 | HIGHLAND, CALIF. (CITRUS VALLEY) |
| 11 | JORDAN SINNESS | JR. | S | 5-9 | SEBRING, FLA. (SEBRING) |
| 12 | BEL ZIMMERMAN | SO. | PH | 6-2 | LIBERTY, MO. (LIBERTY NORTH) |
| 13 | PAIGE THIBAUT | JR. | L | 5-6 | WATERTOWN, MINN. (FIU) |
| 14 | CHELSEY HARMON | SR. | MB | 6-3 | PUYALLUP, WASH. (PORTLAND) |
| 17 | CASSIDY TANTON | R-SO. | PH | 6-0 | STONEVILLE, N.C. (DALTON MCMICHAEL) |
| 19 | JASMINE OKEOMA | FR. | MB | 6-3 | WOODBIDGE, VA. (FOREST PARK) |
| 22 | SYDNEY HANDEL | SO. | PH | 6-0 | LEE'S SUMMIT, MO. (LEE'S SUMMIT WEST) |
| 25 | LAKIN LAURENDINE | FR. | PH | 6-1 | JACKSON, MISS. (JACKSON ACADEMY) |

HEAD COACH | BRENT CROUCH (4TH SEASON)

ASSISTANT COACH | KEITH SMITH (2ND SEASON)

ASSISTANT COACH/RECRUITING COORDINATOR | RACHEL CORBELLI (2ND SEASON)

ASSISTANT COACH | JACK BURTON (1ST SEASON)

PRONUNCIATION GUIDE:

MADISON SCHEER – SHEER FALLAN LANHAM – FAL(LIKE PAL)-AN LAN-EM SYDNEY HANDEL – HON-DELL
 PAIGE THIBAUT – THEE-BALT JASMINE OKEOMA – OKAY-AH-MUH LAKIN LAURENDINE – LAY-KIN LOR-EN-DEAN
 RACHEL CORBELLI – CORE-BELL-EE

INSIDE THE 2023 NUMBERS



| CATEGORY | AUBURN | GEORGIA |
|------------------|--------|---------|
| Kills | 701 | 569 |
| Per Set | 13.0 | 12.6 |
| Errors | 241 | 234 |
| Total Attacks | 1791 | 1449 |
| Hitting Pct. | .257 | .231 |
| Assists | 619 | 528 |
| Per Set | 11.5 | 11.7 |
| Service Aces | 80 | 87 |
| Per Set | 1.5 | 1.9 |
| Service Errors | 168 | 134 |
| Reception Errors | 68 | 63 |
| Per Set | 1.3 | 1.4 |
| Digs | 693 | 597 |
| Per Set | 12.8 | 13.3 |
| Solo Blocks | 17 | 20 |
| Block Assists | 226 | 171 |
| Total Blocks | 130.0 | 105.5 |
| Per Set | 2.4 | 2.3 |

WEEKLY AWARDS

2023 INDIVIDUAL HIGHS BY SET

THREE SETS

HITTING PERCENTAGE (MIN. 12 KILLS) _____ .367, Bel Zimmerman vs Mercer (Sept. 9)
 KILLS _____ 14, 2 times (last Bel Zimmerman vs Mercer, Sept. 9)
 TOTAL ATTEMPTS _____ 35, Akasha Anderson vs McNeese (Aug. 26)
 ASSISTS _____ 31, 2 times (last Jackie Barrett vs Mercer, Sept. 9)
 DIGS _____ 11, Fallan Lanham vs Jacksonville St. (Aug. 26)
 ACES _____ 5, Jackie Barrett vs Mercer, Sept. 9
 BLOCKS _____ 7, Kendal Kemp vs Mercer (Sept. 9)

FOUR SETS

HITTING PERCENTAGE (MIN. 12 KILLS) _____ .526, Kendal Kemp vs Charleston Southern (Sept. 8)
 KILLS _____ 20, Akasha Anderson vs Ole Miss (Sept. 24)
 TOTAL ATTEMPTS _____ 60, Akasha Anderson vs Ole Miss (Sept. 24)
 ASSISTS _____ 46, Jackie Barrett vs Samford (Sept. 16)
 DIGS _____ 24, Sarah Morton vs Coppin St. (Aug. 25)
 ACES _____ 4, Chelsey Harmon vs Charleston Southern (Sept. 8)
 BLOCKS _____ 10, Kendal Kemp vs UAB (Sept. 15)

FIVE SETS

HITTING PERCENTAGE (MIN. 12 KILLS) _____ .235, Bel Zimmerman at South Alabama (Sept. 14)
 KILLS _____ 26, Akasha Anderson at South Alabama (Sept. 14)
 TOTAL ATTEMPTS _____ 69, Akasha Anderson at South Alabama (Sept. 14)
 ASSISTS _____ 48, Jackie Barrett at South Alabama (Sept. 14)
 DIGS _____ 29, Zoe Slaughter at South Alabama (Sept. 14)
 ACES _____ 5, Jackie Barrett at South Alabama (Sept. 14)
 BLOCKS _____ 6, Bel Zimmerman at South Alabama (Sept. 14)

2023 TEAM HIGHS BY SET

THREE SETS

HITTING PERCENTAGE (MIN. 12 KILLS) _____ .395, vs Jacksonville St. (Aug. 26)
 KILLS _____ 45, vs McNeese (Aug. 26)
 TOTAL ATTEMPTS _____ 102, vs McNeese (Aug. 26)
 ASSISTS _____ 37, vs McNeese (Aug. 26)
 DIGS _____ 33, vs McNeese (Aug. 26)
 ACES _____ 9, vs Mercer (Sept. 9)
 BLOCKS _____ 11.0, vs Mercer (Sept. 9)

FOUR SETS

HITTING PERCENTAGE (MIN. 12 KILLS) _____ .386, vs Samford (Sept. 16)
 KILLS _____ 62, at Florida St. (Sept. 3)
 TOTAL ATTEMPTS _____ 166, vs Ole Miss (Sept. 24)
 ASSISTS _____ 54, 2 times (last vs Samford Sept. 16)
 DIGS _____ 74, vs Ole Miss (Sept. 24)
 ACES _____ 7, vs Charleston Southern (Sept. 8)
 BLOCKS _____ 19.0, vs UAB (Sept. 15)

FIVE SETS

HITTING PERCENTAGE (MIN. 12 KILLS) _____ .196, vs Florida (Sept. 22)
 KILLS _____ 60, at South Alabama (Sept. 14)
 TOTAL ATTEMPTS _____ 178, at South Alabama (Sept. 14)
 ASSISTS _____ 54, at South Alabama (Sept. 14)
 DIGS _____ 81, at South Alabama (Sept. 14)
 ACES _____ 14, at South Alabama (Sept. 14)
 BLOCKS _____ 11.0, at South Alabama (Sept. 14)

THE LAST TIME AUBURN...

Won in three sets _____ Sept. 9, 2023 vs Mercer (25-15, 25-20, 25-11)
Won in four sets _____ Sept. 24, 2023 vs Ole Miss (21-25, 25-21, 25-10, 27-25)
Won in five sets _____ Sept. 14, 2023 at South Alabama (27-25, 23-25, 19-25, 25-23, 15-8)
Lost in three sets _____ Sept. 27, 2023 vs Arkansas (18-25, 10-25, 6-25)
Lost in four sets _____ Sept. 7, 2023 vs Middle Tennessee (22-25, 25-15, 25-23, 25-22)
Lost in five sets _____ Sept. 22, 2023 vs Florida (20-25, 26-24, 24-26, 25-19, 17-15)
Lost first set in a win _____ Sept. 24, 2023 vs Ole Miss (21-25, 25-21, 25-10, 27-25)
Won first set in a loss _____ Sept. 22, 2023 vs Florida (20-25, 26-24, 24-26, 25-19, 17-15)
Lost first two sets in a win _____ Oct. 15, 2022 at Missouri (21-25, 21-25, 25-17, 25-17, 15-12)
Won first two sets in a loss _____ Oct. 10, 2021 at Arkansas (25-20, 25-23, 15-25, 17-25, 7-15)
Beat a ranked opponent Dec. 2, 2022 vs #14 Creighton (21-25, 25-21, 25-20, 16-25, 15-11)
Hit .300-.399 in a match _____ Sept. 16, 2023 vs Samford (.386)
Hit .400-.499 in a match _____ Sept. 6, 2022 vs Alabama A&M (.400)
Hit .500 or better in a match _____ Oct. 18, 1998 at Ole Miss (.514)
Held opponent to .000-.100 in a match _____ Aug. 26, 2023 vs McNeese (.097)
Held opponent to a negative hitting percentage _____ Sept. 9, 2023 vs Mercer (-.053)
Had 70-79 kills in a match _____ Oct. 26, 2018 vs. Ole Miss (77)
Had 80+ kills in a match _____ Sept. 17, 2006 at Georgia (84)
Had 80-99 digs in a match _____ Sept. 14, 2022 at South Alabama (81)
Had 100+ digs in a match _____ Sept. 17, 2021 vs. Nicholls (105)
Had 15+ blocks in a match _____ Sept. 15, 2023 vs UAB (19.0)
Had 10+ service aces in a match _____ Sept. 14, 2023 at South Alabama (14)
Had a player(s) with 20-24 kills in a match _____ Sept. 24, 2023 Akasha Anderson vs Ole Miss (20)
Had a player(s) with 25-29 kills in a match _____ Sept. 14, 2023, Akasha Anderson at South Ala. (26)
Had a player(s) with 30+ kills in a match _____ Oct. 8, 2004, Ashlee Johns vs. Arkansas (30)
Had a player(s) with 10+ blocks in a match _____ Sept. 15, 2023 Kendal Kemp vs UAB (10)
Had a player(s) with 25-29 digs in a match _____ Sept. 14, 2023, Zoe Slaughter at South Ala. (29)
Had a player(s) with 30+ digs in a match _____ Oct. 17, 2021, Bella Rosenthal vs. Missouri(33)
Had a player(s) with 50+ assists in a match _____ Oct. 9, 2022 Jackie Barrett vs Georgia (51)
Had a player(s) with 60+ assists in a match _____ Oct. 5, 2022, Jackie Barrett at LSU (60)
Had a player(s) with 5+ aces in a match _____ Sept. 14, 2023, Jackie Barrett at South Ala. (5)

AUBURN DOUBLE-DOUBLES IN 2023

| PLAYER | OPPONENT (SETS) | DATE | STATS |
|---------------------|-----------------------|----------|---------------------|
| Jackie Barrett (7) | vs SMU (4) | Sept. 2 | 36 assists, 14 digs |
| | at Florida St. (4) | Sept. 3 | 44 assists, 11 digs |
| | vs MTSU (4) | Sept. 7 | 39 assists, 10 digs |
| | vs Charleston So. (4) | Sept. 8 | 41 assists, 13 digs |
| | at South Alabama (5) | Sept. 14 | 48 assists, 11 digs |
| | vs #3 Florida (5) | Sept. 22 | 40 assists, 12 digs |
| Akasha Anderson (3) | vs Ole Miss (4) | Sept. 24 | 42 assists, 17 digs |
| | at South Alabama (5) | Sept. 14 | 26 kills, 11 digs |
| | vs UAB (4) | Sept. 15 | 11 kills, 11 digs |
| Bel Zimmerman (3) | vs #3 Florida (5) | Sept. 22 | 18 kills, 10 digs |
| | vs Charleston So. (4) | Sept. 8 | 17 kills, 16 digs |
| | vs UAB (4) | Sept. 15 | 16 kills, 12 digs |
| | vs Samford (4) | Sept. 16 | 15 kills, 11 digs |

AUBURN'S 2023 RECORD WHEN...

| | |
|--|------|
| OVERALL | 11-3 |
| SEC- | 1-2 |
| NON-CONFERENCE | 10-1 |
| RANKED OPPONENTS | 0-2 |
| HOME | 6-2 |
| AWAY | 2-1 |
| NEUTRAL | 3-0 |
| BY SETS | |
| THREE SETS | 3-1 |
| FOUR SETS | 7-1 |
| FIVE SETS | 1-1 |
| WON FIRST SET | 8-2 |
| LOST FIRST SET | 3-1 |
| WON SECOND SET | 8-1 |
| LOST SECOND SET | 3-2 |
| WON FIRST TWO SETS | 5-0 |
| LOST FIRST TWO SETS | 0-1 |
| SITUATIONAL | |
| MORE KILLS THAN OPPONENT | 10-0 |
| FEWER KILLS THAN OPPONENT | 1-3 |
| KILLS ARE TIED | 0-0 |
| MORE DIGS THAN OPPONENT | 4-0 |
| FEWER DIGS THAN OPPONENT | 6-3 |
| DIGS ARE TIED | 1-0 |
| MORE ACES THAN OPPONENT | 8-1 |
| FEWER ACES THAN OPPONENT | 2-2 |
| ACES ARE TIED | 1-0 |
| HIGHER HITTING PERCENTAGE THAN OPPONENT | 11-0 |
| LOWER HITTING PERCENTAGE THAN OPPONENT | 0-3 |
| HITTING PERCENTAGE TIED | 0-0 |
| HITTING PERCENTAGE | |
| .400 OR ABOVE | 0-0 |
| .300-.399 | 7-0 |
| .200-.299 | 1-1 |
| .100-.199 | 3-1 |
| .000-.099 | 0-0 |
| NEGATIVE | 0-1 |
| OPPONENTS' HITTING PERCENTAGE | |
| .400 OR ABOVE | 0-1 |
| .300-.399 | 1-0 |
| .200-.299 | 2-2 |
| .100-.199 | 5-0 |
| .000-.099 | 2-0 |
| NEGATIVE | 1-0 |
| BY DAY | |
| MONDAY | 0-0 |
| TUESDAY | 0-0 |
| WEDNESDAY | 0-1 |
| THURSDAY | 1-1 |
| FRIDAY | 3-1 |
| SATURDAY | 5-0 |
| SUNDAY | 2-0 |
| DAY MATCHES (FIRST SERVE BEFORE 6 P.M.) | 6-0 |
| NIGHT MATCHES (FIRST SERVE AFTER 6 P.M.) | 5-3 |
| BY MONTH | |
| AUGUST | 3-0 |
| SEPTEMBER | 8-3 |
| OCTOBER | 0-0 |
| NOVEMBER | 0-0 |
| DECEMBER | 0-0 |
| JERSEY COLOR | |
| NAVY w/POWER STRIPE | 0-0 |
| NAVY SOLID | 0-0 |
| NAVY SLEEVELESS | 3-1 |
| ORANGE w/POWER STRIPE | 4-2 |
| ORANGE SOLID | 4-0 |

2023 AUBURN MATCH-BY-MATCH STARTERS

| DATE | OPPONENT | RESULT | OUTSIDE | MIDDLE | RIGHT SIDE/DS | OUTSIDE/DS | MIDDLE | LIBERO | SETTER |
|----------|------------------------|--------|-----------------|--------------|---------------|----------------|----------------|---------------|----------------|
| Aug. 25 | vs Coppin State | W, 3-1 | Akasha Anderson | Kendal Kemp | Bella Bell | Paige Thibault | Kyla Swanson | Sarah Morton | Peyton Dunn |
| Aug. 26 | vs McNeese | W, 3-0 | Akasha Anderson | Kendal Kemp | Bella Bell | Paige Thibault | Kyla Swanson | Sarah Morton | Jackie Barrett |
| Aug. 26 | vs Jacksonville State | W, 3-0 | Akasha Anderson | Kendal Kemp | Bella Bell | Zoe Slaughter | Kyla Swanson | Sarah Morton | Jackie Barrett |
| Sept. 2 | vs SMU | W, 3-1 | Akasha Anderson | Kendal Kemp | Bella Bell | Zoe Slaughter | Kyla Swanson | Sarah Morton | Jackie Barrett |
| Sept. 3 | at Florida State | W, 3-1 | Akasha Anderson | Kendal Kemp | Bella Bell | Zoe Slaughter | Kyla Swanson | Sarah Morton | Jackie Barrett |
| Sept. 7 | vs Middle Tennessee | L, 1-3 | Bel Zimmerman | Kendal Kemp | Bella Bell | Zoe Slaughter | Kyla Swanson | Sarah Morton | Jackie Barrett |
| Sept. 8 | vs Charleston Southern | W, 3-1 | Madison Scheer | Kendal Kemp | Bel Zimmerman | Fallan Lanham | Chelsey Harmon | Sarah Morton | Jackie Barrett |
| Sept. 9 | vs Mercer | W, 3-0 | Bel Zimmerman | Kendal Kemp | Zoe Slaughter | Fallan Lanham | Chelsey Harmon | Sarah Morton | Jackie Barrett |
| Sept. 14 | at South Alabama | W, 3-2 | Akasha Anderson | Kendal Kemp | Bel Zimmerman | Fallan Lanham | Kyla Swanson | Zoe Slaughter | Jackie Barrett |
| Sept. 15 | vs UAB | W, 3-1 | Akasha Anderson | Kendal Kemp | Bel Zimmerman | Paige Thibault | Kyla Swanson | Zoe Slaughter | Jackie Barrett |
| Sept. 16 | vs Samford | W, 3-1 | Akasha Anderson | Kendal Kemp | Bel Zimmerman | Madison Scheer | Kyla Swanson | Zoe Slaughter | Jackie Barrett |
| Sept. 22 | vs #3 Florida | L, 2-3 | Akasha Anderson | Kyla Swanson | Bella Bell | Paige Thibault | Chelsey Harmon | Sarah Morton | Jackie Barrett |
| Sept. 24 | vs Ole Miss | W, 3-1 | Akasha Anderson | Kyla Swanson | Bella Bell | Paige Thibault | Chelsey Harmon | Sarah Morton | Jackie Barrett |
| Sept. 27 | vs #14 Arkansas | L, 0-3 | Akasha Anderson | Kyla Swanson | Bella Bell | Paige Thibault | Chelsey Harmon | Sarah Morton | Jackie Barrett |

2023 AUBURN MATCH-BY-MATCH LEADERS

| DATE | OPPONENT | RESULT | KILLS | ASSISTS | ACES | DIGS | BLOCKS | HIT PCT. (MIN 10 ATT.) |
|----------|------------------------|--------|----------------------|--------------|-------------------------|---------------------|----------------------|------------------------|
| Aug. 25 | vs Coppin State | W, 3-1 | Scheer/Anderson (16) | Dunn (43) | Swanson (2) | Morton (24) | Swanson (6) | Bell (.480) |
| Aug. 26 | vs McNeese | W, 3-0 | Anderson (14) | Barrett (31) | Anderson (4) | Anderson (8) | Kemp (5) | Zimmerman (.400) |
| Aug. 26 | vs Jacksonville State | W, 3-0 | Anderson (10) | Dunn (16) | Zimmerman (3) | Lanham (11) | Swanson (3) | Bell (.750) |
| Sept. 2 | vs SMU | W, 3-1 | Scheer (18) | Barrett (36) | Anderson (2) | Morton (17) | Kemp (4) | Swanson (.500) |
| Sept. 3 | at Florida State | W, 3-1 | Anderson (15) | Barrett (44) | Slaughter (2) | Barrett (11) | Swanson/Barrett (4) | Swanson (.467) |
| Sept. 7 | vs Middle Tennessee | L, 1-3 | Zimmerman (11) | Barrett (39) | Barrett/Lanham (1) | 3 players (10) | Kemp (5) | Swanson (.333) |
| Sept. 8 | vs Charleston Southern | W, 3-1 | Zimmerman (17) | Barrett (41) | Harmon (4) | Zimmerman (16) | Harmon (7) | Kemp (.526) |
| Sept. 9 | vs Mercer | W, 3-0 | Zimmerman (14) | Barrett (31) | Barrett (5) | Morton (10) | Kemp (7) | Kemp (.500) |
| Sept. 14 | at South Alabama | W, 3-2 | Anderson (26) | Barrett (48) | Barrett (5) | Slaughter (29) | Zimmerman (6) | Kemp (.455) |
| Sept. 15 | vs UAB | W, 3-1 | Zimmerman (16) | Barrett (35) | Zimmerman/Thibault (2) | Zimmerman (12) | Kemp (10) | Zimmerman (.306) |
| Sept. 16 | vs Samford | W, 3-1 | Anderson (19) | Barrett (46) | Thibault (2) | Slaughter (16) | Swanson (3) | Anderson (.410) |
| Sept. 22 | vs #3 Florida | L, 2-3 | Anderson (18) | Barrett (40) | Anderson (2) | Morton (13) | Swanson/Anderson (3) | Bell (.214) |
| Sept. 24 | vs Ole Miss | W, 3-1 | Anderson (20) | Barrett (42) | Zimmerman (3) | Morton (20) | Harmon (8) | Harmon (.417) |
| Sept. 27 | vs #14 Arkansas | L, 0-3 | Scheer (4) | Barrett (11) | Slaughter/Zimmerman (1) | Anderson/Morton (7) | 3 players (2) | Scheer (.045) |

2023 OVERALL STATISTICS

Game Records

| Overall | Conference | Home | Away | Neutral |
|---------|------------|-------|-------|---------|
| 11 - 3 | 1 - 2 | 6 - 2 | 2 - 1 | 3 - 0 |

Team Box Score

| # | Player | SP | Attack | | | | | Set | | Serve | | | Dig | | | Blocking | | | | | PTS | |
|------------------|------------------|-----------|------------|--------------|------------|-------------|-------------|------------|--------------|-----------|------------|-------------|-----------|------------|--------------|-----------|------------|------------|-------------|-----------|-----------|--------------|
| | | | K | K/S | E | TA | PCT | A | A/S | SA | SE | SA/S | RE | DIG | DIG/S | BS | BA | TOT/S | BLK/S | BE | | BHE |
| 1 | Scheer, Madison | 51 | 152 | 2.98 | 52 | 410 | .244 | 3 | 0.06 | 0 | 0 | 0.00 | 4 | 20 | 0.39 | 1 | 19 | 20 | 0.39 | 1 | 0 | 162.5 |
| 2 | Morton, Sarah | 41 | 2 | 0.05 | 0 | 7 | .286 | 38 | 0.93 | 3 | 28 | 0.07 | 7 | 131 | 3.20 | 0 | 0 | 0 | 0.00 | 0 | 0 | 5.0 |
| 3 | Anderson, Akasha | 43 | 162 | 3.77 | 71 | 463 | .197 | 6 | 0.14 | 14 | 25 | 0.33 | 13 | 87 | 2.02 | 1 | 18 | 19 | 0.44 | 2 | 0 | 186.0 |
| 4 | Lanham, Fallan | 27 | 0 | 0.00 | 0 | 2 | .000 | 6 | 0.22 | 6 | 6 | 0.22 | 1 | 52 | 1.93 | 0 | 0 | 0 | 0.00 | 0 | 0 | 6.0 |
| 5 | Bell, Bella | 34 | 88 | 2.59 | 27 | 207 | .295 | 2 | 0.06 | 0 | 0 | 0.00 | 1 | 12 | 0.35 | 1 | 23 | 24 | 0.71 | 4 | 0 | 100.5 |
| 6 | Swanson, Kyla | 52 | 68 | 1.31 | 30 | 173 | .220 | 4 | 0.08 | 3 | 13 | 0.06 | 0 | 13 | 0.25 | 4 | 46 | 50 | 0.96 | 2 | 0 | 98.0 |
| 7 | Dunn, Peyton | 6 | 4 | 0.67 | 1 | 7 | .429 | 59 | 9.83 | 1 | 7 | 0.17 | 0 | 8 | 1.33 | 0 | 2 | 2 | 0.33 | 0 | 0 | 6.0 |
| 8 | Kemp, Kendal | 40 | 67 | 1.68 | 18 | 122 | .402 | 0 | 0.00 | 1 | 3 | 0.03 | 0 | 4 | 0.10 | 6 | 46 | 52 | 1.30 | 7 | 0 | 97.0 |
| 9 | Slaughter, Zoe | 54 | 0 | 0.00 | 0 | 8 | .000 | 21 | 0.39 | 5 | 19 | 0.09 | 10 | 118 | 2.19 | 0 | 0 | 0 | 0.00 | 0 | 0 | 5.0 |
| 10 | Barrett, Jackie | 49 | 35 | 0.71 | 5 | 73 | .411 | 458 | 9.35 | 15 | 11 | 0.31 | 0 | 118 | 2.41 | 1 | 27 | 28 | 0.57 | 3 | 3 | 64.5 |
| 12 | Zimmerman, Bel | 47 | 94 | 2.00 | 30 | 256 | .250 | 7 | 0.15 | 19 | 28 | 0.40 | 8 | 52 | 1.11 | 2 | 18 | 20 | 0.43 | 6 | 0 | 124.0 |
| 13 | Thibault, Paige | 35 | 1 | 0.03 | 0 | 4 | .250 | 11 | 0.31 | 5 | 16 | 0.14 | 7 | 60 | 1.71 | 0 | 0 | 0 | 0.00 | 0 | 0 | 6.0 |
| 14 | Harmon, Chelsey | 29 | 27 | 0.93 | 6 | 53 | .396 | 4 | 0.14 | 8 | 7 | 0.28 | 0 | 8 | 0.28 | 1 | 27 | 28 | 0.97 | 4 | 0 | 49.5 |
| 17 | Tanton, Cassidy | 1 | 1 | 1.00 | 1 | 5 | .000 | 0 | 0.00 | 0 | 0 | 0.00 | 1 | 0 | 0.00 | 0 | 0 | 0 | 0.00 | 0 | 0 | 1.0 |
| 22 | Handel, Sydney | 13 | 0 | 0.00 | 0 | 1 | .000 | 0 | 0.00 | 0 | 5 | 0.00 | 1 | 10 | 0.77 | 0 | 0 | 0 | 0.00 | 0 | 0 | 0.0 |
| AUBURN | | 54 | 701 | 12.98 | 241 | 1791 | .257 | 619 | 11.46 | 80 | 168 | 1.48 | 68 | 693 | 12.83 | 17 | 226 | 130 | 2.41 | 29 | 3 | 911.0 |
| Opponents | | 54 | 606 | 11.22 | 300 | 1727 | .177 | 564 | 10.44 | 68 | 121 | 1.26 | 80 | 737 | 13.65 | 17 | 140 | 87 | 1.61 | 38 | 14 | 761.0 |

Team statistics

| | AUB | OPP |
|-------------------------|--------|-------|
| ATTACK | | |
| Kills | 701 | 606 |
| Errors | 241 | 300 |
| Total Attacks | 1791 | 1727 |
| Attack Pct | .257 | .177 |
| Kills/Set | 12.98 | 11.22 |
| SET | | |
| Assists | 619 | 564 |
| Attempts | 1757 | 1790 |
| Assist Pct | .352 | .315 |
| Assists/Set | 11.46 | 10.44 |
| SERVE | | |
| Aces | 80 | 68 |
| Errors | 168 | 121 |
| Attempts | 1230 | 1119 |
| Serve Pct | .863 | .892 |
| Aces/Set | 1.48 | 1.26 |
| SERVE RECEPTIONS | | |
| Errors | 68 | 80 |
| Errors/Set | 1.26 | 1.48 |
| Attempts | 998 | 1062 |
| Reception Pct | .932 | .999 |
| DEFENSE | | |
| Digs | 693 | 737 |
| Digs/Set | 12.83 | 13.65 |
| BLOCKING | | |
| Block solo | 17 | 17 |
| Block Assist | 226 | 140 |
| Total Blocks | 130 | 87 |
| Blocks/Set | 2.41 | 1.61 |
| Block Errors | 29 | 38 |
| Ball handling errors | 3 | 14 |
| ATTENDANCE | | |
| Total | 9169 | 2953 |
| Dates/Avg Per Date | 8/1146 | 3/984 |
| Neutral Site #/Avg | 3/67 | - |
| Current win streak | 0 | - |
| Home win streak | 0 | - |

Team Results

| Date | Opponent | Score | Score-by-set | Att. |
|--------------|------------------|-------|-------------------------------|------|
| 08/25/2023 | Coppin St. | W 3-1 | 24-26,25-17,25-15,25-18 | 1124 |
| 08/26/2023 | McNeese | W 3-0 | 25-15,25-15,25-22 | 579 |
| 08/26/2023 | Jacksonville St. | W 3-0 | 25-12,25-11,26-24 | 1125 |
| 09/02/2023 | vs SMU | W 3-1 | 25-22,17-25,25-20,25-21 | 50 |
| 09/03/2023 | at Florida St. | W 3-1 | 30-28,25-21,19-25,25-23 | 361 |
| 09/07/2023 | Middle Tenn. | L 1-3 | 25-22,15-25,23-25,22-25 | 790 |
| 09/08/2023 | Charleston So. | W 3-1 | 23-25,25-16,25-9,25-19 | 1063 |
| 09/09/2023 | Mercer | W 3-0 | 25-15,25-20,25-11 | 967 |
| 09/14/2023 | at South Alabama | W 3-2 | 27-25,23-25,19-25,25-23,15-8 | 1218 |
| 09/15/2023 | vs UAB | W 3-1 | 25-15,26-24,21-25,25-19 | 87 |
| 09/16/2023 | vs Samford | W 3-1 | 25-19,20-25,26-24,25-11 | 65 |
| * 09/22/2023 | Florida | L 2-3 | 25-20,24-26,26-24,19-25,15-17 | 2393 |
| * 09/24/2023 | Ole Miss | W 3-1 | 21-25,25-21,25-10,27-25 | 1128 |
| * 09/27/2023 | at Arkansas | L 0-3 | 18-25,10-25,6-25 | 1374 |

2023 SEC STATISTICS

Game Records

| Overall | Conference | Home | Away | Neutral |
|---------|------------|-------|-------|---------|
| 1 - 2 | 1 - 2 | 1 - 1 | 0 - 1 | 0 - 0 |

Team Box Score

| ## | Player | SP | Attack | | | | Set | | Serve | | | Dig | | | Blocking | | | | PTS | | | |
|------------------|------------------|-----------|------------|--------------|-----------|------------|-------------|------------|--------------|-----------|-----------|-------------|-----------|------------|--------------|----------|-----------|-------------|-------------|----------|----------|--------------|
| | | | K | K/S | E | TA | PCT | A | A/S | SA | SE | SA/S | RE | DIG | DIG/S | BS | BA | TOT/S | | BLK/S | BE | BHE |
| 1 | Scheer, Madison | 12 | 31 | 2.58 | 11 | 100 | .200 | 1 | 0.08 | 0 | 0 | 0.00 | 1 | 6 | 0.50 | 0 | 1 | 1 | 0.08 | 0 | 0 | 31.5 |
| 2 | Morton, Sarah | 12 | 1 | 0.08 | 0 | 1 | 1.000 | 11 | 0.92 | 1 | 10 | 0.08 | 2 | 40 | 3.33 | 0 | 0 | 0 | 0.00 | 0 | 0 | 2.0 |
| 3 | Anderson, Akasha | 12 | 39 | 3.25 | 27 | 143 | .084 | 1 | 0.08 | 3 | 9 | 0.25 | 4 | 26 | 2.17 | 0 | 7 | 7 | 0.58 | 0 | 0 | 45.5 |
| 5 | Bell, Bella | 12 | 23 | 1.92 | 13 | 76 | .132 | 1 | 0.08 | 0 | 0 | 0.00 | 0 | 7 | 0.58 | 1 | 7 | 8 | 0.67 | 1 | 0 | 27.5 |
| 6 | Swanson, Kyla | 12 | 12 | 1.00 | 7 | 37 | .135 | 0 | 0.00 | 0 | 0 | 0.00 | 0 | 0 | 0.00 | 1 | 6 | 7 | 0.58 | 0 | 0 | 16.0 |
| 9 | Slaughter, Zoe | 12 | 0 | 0.00 | 0 | 0 | .000 | 2 | 0.17 | 1 | 4 | 0.08 | 1 | 19 | 1.58 | 0 | 0 | 0 | 0.00 | 0 | 0 | 1.0 |
| 10 | Barrett, Jackie | 12 | 9 | 0.75 | 1 | 21 | .381 | 93 | 7.75 | 2 | 4 | 0.17 | 0 | 34 | 2.83 | 0 | 4 | 4 | 0.33 | 2 | 0 | 13.0 |
| 12 | Zimmerman, Bel | 12 | 0 | 0.00 | 3 | 5 | -.600 | 1 | 0.08 | 4 | 6 | 0.33 | 1 | 2 | 0.17 | 0 | 0 | 0 | 0.00 | 0 | 0 | 4.0 |
| 13 | Thibault, Paige | 12 | 0 | 0.00 | 0 | 2 | .000 | 4 | 0.33 | 1 | 7 | 0.08 | 5 | 22 | 1.83 | 0 | 0 | 0 | 0.00 | 0 | 0 | 1.0 |
| 14 | Harmon, Chelsey | 12 | 12 | 1.00 | 4 | 25 | .320 | 0 | 0.00 | 0 | 0 | 0.00 | 0 | 4 | 0.33 | 0 | 12 | 12 | 1.00 | 2 | 0 | 18.0 |
| AUBURN | | 12 | 127 | 10.58 | 66 | 410 | .149 | 114 | 9.50 | 12 | 40 | 1.00 | 16 | 160 | 13.33 | 2 | 37 | 20.5 | 1.71 | 5 | 0 | 159.5 |
| Opponents | | 12 | 141 | 11.75 | 60 | 392 | .207 | 131 | 10.92 | 16 | 36 | 1.33 | 12 | 186 | 15.50 | 3 | 46 | 26 | 2.17 | 2 | 3 | 183.0 |

Team statistics

| | AUB | OPP |
|-------------------------|--------|--------|
| ATTACK | | |
| Kills | 127 | 141 |
| Errors | 66 | 60 |
| Total Attacks | 410 | 392 |
| Attack Pct | .149 | .207 |
| Kills/Set | 10.58 | 11.75 |
| SET | | |
| Assists | 114 | 131 |
| Attempts | 404 | 400 |
| Assist Pct | .282 | .328 |
| Assists/Set | 9.50 | 10.92 |
| SERVE | | |
| Aces | 12 | 16 |
| Errors | 40 | 36 |
| Attempts | 241 | 267 |
| Serve Pct | .834 | .865 |
| Aces/Set | 1.00 | 1.33 |
| SERVE RECEPTIONS | | |
| Errors | 16 | 12 |
| Errors/Set | 1.33 | 1.00 |
| Attempts | 231 | 201 |
| Reception Pct | .931 | .995 |
| DEFENSE | | |
| Digs | 160 | 186 |
| Digs/Set | 13.33 | 15.50 |
| BLOCKING | | |
| Block solo | 2 | 3 |
| Block Assist | 37 | 46 |
| Total Blocks | 20.5 | 26 |
| Blocks/Set | 1.71 | 2.17 |
| Block Errors | 5 | 2 |
| Ball handling errors | 0 | 3 |
| ATTENDANCE | | |
| Total | 3521 | 1374 |
| Dates/Avg Per Date | 2/1761 | 1/1374 |
| Neutral Site #/Avg | 0/0 | - |
| Current win streak | 0 | - |
| Home win streak | 0 | - |

Team Results

| Date | Opponent | Score | Score-by-set | Att. |
|--------------|-------------|-------|-------------------------------|------|
| * 09/22/2023 | Florida | L 2-3 | 25-20,24-26,26-24,19-25,15-17 | 2393 |
| * 09/24/2023 | Ole Miss | W 3-1 | 21-25,25-21,25-10,27-25 | 1128 |
| * 09/27/2023 | at Arkansas | L 0-3 | 18-25,10-25,6-25 | 1374 |

2023 STATISTICAL LEADERS

Attack (by PCT)

| # | Player | S | K | K/S | E | TA | PCT |
|----|------------------|----|-----|------|----|-----|------|
| 7 | Dunn, Peyton | 6 | 4 | 0.67 | 1 | 7 | .429 |
| 10 | Barrett, Jackie | 49 | 35 | 0.71 | 5 | 73 | .411 |
| 8 | Kemp, Kendal | 40 | 67 | 1.68 | 18 | 122 | .402 |
| 14 | Harmon, Chelsey | 29 | 27 | 0.93 | 6 | 53 | .396 |
| 5 | Bell, Bella | 34 | 88 | 2.59 | 27 | 207 | .295 |
| 2 | Morton, Sarah | 41 | 2 | 0.05 | 0 | 7 | .286 |
| 12 | Zimmerman, Bel | 47 | 94 | 2.00 | 30 | 256 | .250 |
| 13 | Thibault, Paige | 35 | 1 | 0.03 | 0 | 4 | .250 |
| 1 | Scheer, Madison | 51 | 152 | 2.98 | 52 | 410 | .244 |
| 6 | Swanson, Kyla | 52 | 68 | 1.31 | 30 | 173 | .220 |
| 3 | Anderson, Akasha | 43 | 162 | 3.77 | 71 | 463 | .197 |
| 4 | Lanham, Fallan | 27 | 0 | 0.00 | 0 | 2 | .000 |
| 17 | Tanton, Cassidy | 1 | 1 | 1.00 | 1 | 5 | .000 |
| 9 | Slaughter, Zoe | 54 | 0 | 0.00 | 0 | 8 | .000 |
| 22 | Handel, Sydney | 13 | 0 | 0.00 | 0 | 1 | .000 |

Kill (by K)

| # | Player | S | K | K/S |
|----|------------------|----|-----|------|
| 3 | Anderson, Akasha | 43 | 162 | 3.77 |
| 1 | Scheer, Madison | 51 | 152 | 2.98 |
| 12 | Zimmerman, Bel | 47 | 94 | 2.00 |
| 5 | Bell, Bella | 34 | 88 | 2.59 |
| 6 | Swanson, Kyla | 52 | 68 | 1.31 |
| 8 | Kemp, Kendal | 40 | 67 | 1.68 |
| 10 | Barrett, Jackie | 49 | 35 | 0.71 |
| 14 | Harmon, Chelsey | 29 | 27 | 0.93 |
| 7 | Dunn, Peyton | 6 | 4 | 0.67 |
| 2 | Morton, Sarah | 41 | 2 | 0.05 |
| 13 | Thibault, Paige | 35 | 1 | 0.03 |
| 17 | Tanton, Cassidy | 1 | 1 | 1.00 |
| 4 | Lanham, Fallan | 27 | 0 | 0.00 |
| 9 | Slaughter, Zoe | 54 | 0 | 0.00 |
| 22 | Handel, Sydney | 13 | 0 | 0.00 |

Set (by A/S)

| # | Player | S | A | A/S | TA | PCT |
|----|------------------|----|-----|------|------|------|
| 7 | Dunn, Peyton | 6 | 59 | 9.83 | 141 | .411 |
| 10 | Barrett, Jackie | 49 | 458 | 9.35 | 1204 | .375 |
| 2 | Morton, Sarah | 41 | 38 | 0.93 | 146 | .233 |
| 9 | Slaughter, Zoe | 54 | 21 | 0.39 | 67 | .299 |
| 13 | Thibault, Paige | 35 | 11 | 0.31 | 31 | .323 |
| 4 | Lanham, Fallan | 27 | 6 | 0.22 | 26 | .231 |
| 12 | Zimmerman, Bel | 47 | 7 | 0.15 | 23 | .261 |
| 3 | Anderson, Akasha | 43 | 6 | 0.14 | 38 | .105 |
| 14 | Harmon, Chelsey | 29 | 4 | 0.14 | 15 | .267 |
| 6 | Swanson, Kyla | 52 | 4 | 0.08 | 26 | .038 |
| 1 | Scheer, Madison | 51 | 3 | 0.06 | 19 | .105 |
| 5 | Bell, Bella | 34 | 2 | 0.06 | 9 | .222 |
| 8 | Kemp, Kendal | 40 | 0 | 0.00 | 8 | .000 |
| 17 | Tanton, Cassidy | 1 | 0 | 0.00 | 0 | .000 |
| 22 | Handel, Sydney | 13 | 0 | 0.00 | 4 | .000 |

Serve (by SA/S)

| # | Player | S | SA | SE | SA/S | TA | PCT |
|----|------------------|----|----|----|------|-----|-------|
| 12 | Zimmerman, Bel | 47 | 19 | 28 | 0.40 | 162 | .827 |
| 3 | Anderson, Akasha | 43 | 14 | 25 | 0.33 | 152 | .836 |
| 10 | Barrett, Jackie | 49 | 15 | 11 | 0.31 | 181 | .939 |
| 14 | Harmon, Chelsey | 29 | 8 | 7 | 0.28 | 79 | .911 |
| 4 | Lanham, Fallan | 27 | 6 | 6 | 0.22 | 107 | .944 |
| 7 | Dunn, Peyton | 6 | 1 | 7 | 0.17 | 15 | .533 |
| 13 | Thibault, Paige | 35 | 5 | 16 | 0.14 | 94 | .830 |
| 9 | Slaughter, Zoe | 54 | 5 | 19 | 0.09 | 197 | .904 |
| 2 | Morton, Sarah | 41 | 3 | 28 | 0.07 | 142 | .803 |
| 6 | Swanson, Kyla | 52 | 3 | 13 | 0.06 | 59 | .780 |
| 8 | Kemp, Kendal | 40 | 1 | 3 | 0.03 | 6 | .500 |
| 1 | Scheer, Madison | 51 | 0 | 0 | 0.00 | 2 | 1.000 |
| 5 | Bell, Bella | 34 | 0 | 0 | 0.00 | 1 | 1.000 |
| 17 | Tanton, Cassidy | 1 | 0 | 0 | 0.00 | 0 | .000 |
| 22 | Handel, Sydney | 13 | 0 | 5 | 0.00 | 33 | .848 |

Block (by BLK/S)

| # | Player | S | BS | BA | TOTAL | BLK/S |
|----|------------------|----|----|----|-------|-------|
| 8 | Kemp, Kendal | 40 | 6 | 46 | 52.0 | 1.30 |
| 14 | Harmon, Chelsey | 29 | 1 | 27 | 28.0 | 0.97 |
| 6 | Swanson, Kyla | 52 | 4 | 46 | 50.0 | 0.96 |
| 5 | Bell, Bella | 34 | 1 | 23 | 24.0 | 0.71 |
| 10 | Barrett, Jackie | 49 | 1 | 27 | 28.0 | 0.57 |
| 3 | Anderson, Akasha | 43 | 1 | 18 | 19.0 | 0.44 |
| 12 | Zimmerman, Bel | 47 | 2 | 18 | 20.0 | 0.43 |
| 1 | Scheer, Madison | 51 | 1 | 19 | 20.0 | 0.39 |
| 7 | Dunn, Peyton | 6 | 0 | 2 | 2.0 | 0.33 |
| 4 | Lanham, Fallan | 27 | 0 | 0 | 0.0 | 0.00 |
| 13 | Thibault, Paige | 35 | 0 | 0 | 0.0 | 0.00 |
| 9 | Slaughter, Zoe | 54 | 0 | 0 | 0.0 | 0.00 |
| 2 | Morton, Sarah | 41 | 0 | 0 | 0.0 | 0.00 |
| 17 | Tanton, Cassidy | 1 | 0 | 0 | 0.0 | 0.00 |
| 22 | Handel, Sydney | 13 | 0 | 0 | 0.0 | 0.00 |

Defense (by DIG/S)

| # | Player | S | DIG | DIG/S | BHE |
|----|------------------|----|-----|-------|-----|
| 2 | Morton, Sarah | 41 | 131 | 3.20 | 0 |
| 10 | Barrett, Jackie | 49 | 118 | 2.41 | 3 |
| 9 | Slaughter, Zoe | 54 | 118 | 2.19 | 0 |
| 3 | Anderson, Akasha | 43 | 87 | 2.02 | 0 |
| 4 | Lanham, Fallan | 27 | 52 | 1.93 | 0 |
| 13 | Thibault, Paige | 35 | 60 | 1.71 | 0 |
| 7 | Dunn, Peyton | 6 | 8 | 1.33 | 0 |
| 12 | Zimmerman, Bel | 47 | 52 | 1.11 | 0 |
| 22 | Handel, Sydney | 13 | 10 | 0.77 | 0 |
| 1 | Scheer, Madison | 51 | 20 | 0.39 | 0 |
| 5 | Bell, Bella | 34 | 12 | 0.35 | 0 |
| 14 | Harmon, Chelsey | 29 | 8 | 0.28 | 0 |
| 6 | Swanson, Kyla | 52 | 13 | 0.25 | 0 |
| 8 | Kemp, Kendal | 40 | 4 | 0.10 | 0 |
| 17 | Tanton, Cassidy | 1 | 0 | 0.00 | 0 |

Points (by POINTS/S)

| # | Player | S | POINTS | POINTS/S |
|----|------------------|----|--------|----------|
| 3 | Anderson, Akasha | 43 | 186.0 | 4.33 |
| 1 | Scheer, Madison | 51 | 162.5 | 3.19 |
| 5 | Bell, Bella | 34 | 100.5 | 2.96 |
| 12 | Zimmerman, Bel | 47 | 124.0 | 2.64 |
| 8 | Kemp, Kendal | 40 | 97.0 | 2.43 |
| 6 | Swanson, Kyla | 52 | 98.0 | 1.88 |
| 14 | Harmon, Chelsey | 29 | 49.5 | 1.71 |
| 10 | Barrett, Jackie | 49 | 64.5 | 1.32 |
| 7 | Dunn, Peyton | 6 | 6.0 | 1.00 |
| 17 | Tanton, Cassidy | 1 | 1.0 | 1.00 |
| 4 | Lanham, Fallan | 27 | 6.0 | 0.22 |
| 13 | Thibault, Paige | 35 | 6.0 | 0.17 |
| 2 | Morton, Sarah | 41 | 5.0 | 0.12 |
| 9 | Slaughter, Zoe | 54 | 5.0 | 0.09 |
| 22 | Handel, Sydney | 13 | 0.0 | 0.00 |

Receptions (by PCT)

| # | Player | S | RE | RE/S | TA | PCT |
|----|------------------|----|----|------|-----|-------|
| 8 | Kemp, Kendal | 40 | 0 | 0.00 | 1 | 1.000 |
| 6 | Swanson, Kyla | 52 | 0 | 0.00 | 1 | 1.000 |
| 10 | Barrett, Jackie | 49 | 0 | 0.00 | 2 | 1.000 |
| 4 | Lanham, Fallan | 27 | 1 | 0.04 | 83 | .988 |
| 2 | Morton, Sarah | 41 | 7 | 0.17 | 166 | .958 |
| 9 | Slaughter, Zoe | 54 | 10 | 0.19 | 203 | .951 |
| 13 | Thibault, Paige | 35 | 7 | 0.20 | 130 | .946 |
| 1 | Scheer, Madison | 51 | 4 | 0.08 | 73 | .945 |
| 3 | Anderson, Akasha | 43 | 13 | 0.30 | 190 | .932 |
| 12 | Zimmerman, Bel | 47 | 8 | 0.17 | 114 | .930 |
| 22 | Handel, Sydney | 13 | 1 | 0.08 | 14 | .929 |
| 17 | Tanton, Cassidy | 1 | 1 | 1.00 | 4 | .750 |
| 5 | Bell, Bella | 34 | 1 | 0.03 | 2 | .500 |
| 14 | Harmon, Chelsey | 29 | 0 | 0.00 | 0 | .000 |
| 7 | Dunn, Peyton | 6 | 0 | 0.00 | 0 | .000 |
| TM | TEAM | - | 15 | 0.28 | - | - |

TEAM KILLS - SIDOUT ERA

| | KILLS | OPPONENT (SETS) | DATE |
|-----|-------|---------------------------|----------|
| 1. | 114 | vs. Kentucky (5) | 10/5/97 |
| 2. | 107 | at Tulane (5) | 11/10/90 |
| 3. | 99 | vs. Georgia Tech (5) | 9/14/95 |
| 4. | 96 | vs. Butler (5) | 9/10/94 |
| 5. | 95 | vs. Pittsburgh (5) | 9/13/91 |
| 6. | 94 | vs. Lamar (5) | 9/24/88 |
| 7. | 91 | vs. LSU (5) | 11/13/94 |
| 8. | 90 | at Ole Miss (5) | 10/13/96 |
| 9. | 89 | vs. Arkansas (4) | 10/20/96 |
| 10. | 88 | at Rhode Island (5) | 9/5/97 |
| | 88 | vs. Mississippi State (4) | 10/24/97 |
| | 88 | vs. Mississippi State (5) | 11/12/00 |

TEAM KILLS - RALLY ERA

| | KILLS | OPPONENT (SETS) | DATE |
|----|-------|--------------------------|----------|
| 1. | 84 | vs. Virginia Tech (5) | 9/2/06 |
| | 84 | at Georgia (5) | 9/17/06 |
| 3. | 82 | vs. Georgia Southern (5) | 9/2/05 |
| 4. | 81 | at Mercer (5) | 9/8/04 |
| 5. | 80 | vs. Kentucky (5) | 10/1/06 |
| | 80 | vs. Ole Miss (5) | 10/24/03 |
| 7. | 79 | at Alabama (5) | 10/30/11 |
| 8. | 77 | vs. Ole Miss (5) | 10/26/18 |
| 9. | 75 | at South Carolina (5) | 11/16/14 |
| | 75 | at Georgia (5) | 11/2/14 |
| | 75 | vs. Green Bay (5) | 9/5/13 |
| | 75 | vs. Tennessee State (4) | 8/25/07 |
| | 75 | vs. Arkansas (5) | 10/8/04 |
| | 75 | at LSU (5) | 10/25/15 |

TEAM ASSISTS - RALLY ERA

| | AST. | OPPONENT (SETS) | DATE |
|----|------|--------------------------|----------|
| 1. | 79 | vs. Georgia Southern (5) | 9/2/05 |
| 2. | 77 | at Mercer (5) | 9/8/04 |
| 3. | 76 | at Georgia (5) | 9/17/06 |
| 4. | 74 | vs. South Carolina (5) | 10/5/14 |
| | 74 | at Alabama (5) | 10/30/11 |
| | 74 | vs. Ole Miss (5) | 9/24/03 |
| 7. | 72 | at Georgia (5) | 11/2/14 |
| | 72 | vs. Tennessee State (4) | 8/25/07 |
| | 72 | at LSU (5) | 10/25/15 |
| | 72 | vs. Ole Miss (5) | 10/26/18 |

TEAM DIGS - RALLY ERA

| | DIGS | OPPONENT (SETS) | DATE |
|-----|------------|-----------------------------|----------------|
| 1. | 112 | at LSU (5) | 11/15/13 |
| 2. | 109 | at LSU (5) | 10/25/15 |
| 3. | 107 | vs. Northwestern State (5) | 9/20/14 |
| 4. | 105 | vs. Nicholls St. (4) | 9/17/21 |
| 5. | 99 | at Ole Miss (5) | 10/18/16 |
| 6. | 97 | vs. Georgia (4) | 11/7/07 |
| | 97 | vs. LSU (5) | 10/5/15 |
| | 97 | at Tennessee (5) | 10/4/17 |
| 9. | 94 | at Tennessee (5) | 11/16/12 |
| 10. | 93 | at Georgia (5) | 9/17/06 |
| | 93 | vs. Tennessee (4) | 11/9/17 |

TEAM ACES - RALLY ERA

| | ACES | OPPONENT (SETS) | DATE |
|-----|-----------|--------------------------------|----------------|
| 1. | 18 | vs. Delaware State (3) | 9/13/03 |
| 2. | 16 | vs. Tennessee State (4) | 8/25/07 |
| | 16 | vs. Southeastern Louisiana (3) | 9/9/06 |
| 4. | 14 | at South Alabama (5) | 9/14/23 |
| | 14 | vs. Troy (3) | 8/27/10 |
| | 14 | vs. Alabama State (3) | 9/5/03 |
| 7. | 13 | vs. Tennessee State (5) | 8/30/19 |
| | 13 | at SMU (5) | 8/26/06 |
| | 13 | vs. Mississippi State (5) | 10/26/03 |
| 10. | 12 | vs. Louisiana Tech (4) | 9/7/07 |
| | 12 | at Lafayette (3) | 9/12/03 |
| | 12 | vs. Grambling State (3) | 9/1/05 |

TEAM TOTAL BLOCKS - RALLY ERA

| | BLK | OPPONENT (SETS) | DATE |
|-----|-------------|------------------------------|-----------------|
| 1. | 19.0 | vs. UAB (4) | 9/15/23 |
| 2. | 18.0 | vs. Georgia (5) | 10/9/22 |
| | 18.0 | vs. Alabama (5) | 10/2/21 |
| | 18.0 | vs. South Florida (5) | 9/13/14 |
| 5. | 17.0 | vs. Troy (4) | 9/10/22 |
| | 17.0 | at Arkansas (5) | 10/10/21 |
| | 17.0 | at South Carolina (4) | 10/29/20 |
| | 17.0 | at Georgia Southern (5) | 9/12/09 |
| | 17.0 | vs. Mississippi State (5) | 11/5/04 |
| 10. | 16.5 | at Alabama (4) | 9/24/22 |

TEAM HITTING - ALL ERAS

| | PCT. | OPPONENT (SETS) | DATE |
|-----|------------------|---------------------------|----------|
| 1. | .530 (41-6-66) | vs. LSU (3) | 11/2/97 |
| 2. | .514 (65-11-105) | at Ole Miss (3) | 10/18/98 |
| 3. | .489 (52-6-94) | vs. Alabama A&M (3) | 8/29/09 |
| 4. | .487 (46-8-78) | vs. Navy (3) | 9/15/00 |
| 5. | .485 (38-6-66) | vs. Drexel (3) | 9/10/93 |
| | .485 (53-5-99) | vs. Eastern Illinois (3) | 9/1/18 |
| 7. | .474 (52-7-95) | at South Carolina (3) | 10/26/12 |
| 8. | .472 (40-6-72) | vs. Delaware State (3) | 9/13/03 |
| 9. | .471 (54-5-104) | vs. Mississippi State (3) | 11/29/14 |
| 10. | .469 (35-5-64) | vs. Alabama A&M (3) | 8/28/09 |
| 11. | .468 (N/A) | vs. Alabama State (3) | 10/8/87 |
| 12. | .462 (52-9-93) | at Georgia State (3) | 8/28/07 |
| 13. | .455 (55-9-101) | vs. Alabama (3) | 11/10/98 |
| 14. | .450 (42-6-80) | vs. Mercer (3) | 9/5/13 |
| 15. | .448 (50-11-87) | vs. Grambling (3) | 9/1/05 |
| 16. | .440 (43-10-75) | vs. Chicago State (3) | 9/11/99 |
| | .440 (55-11-100) | vs. UAB (3) | 9/3/00 |
| 18. | .429 (49-10-91) | at LSU (3) | 9/26/97 |
| 19. | .420 (45-8-88) | vs. Lipscomb (3) | 9/20/03 |
| 20. | .422 (43-8-83) | at Georgia Tech (3) | 8/25/17 |

Records set in the Brent Crouch era are listed in **BOLD**.

TEAM MATCH RECORDS (BY SET)**KILLS**

| SETS | KILLS | OPPONENT | DATE |
|------|-------|--------------|----------|
| 3s | 76 | vs. LSU | 10/18/96 |
| 4s | 89 | vs. Arkansas | 10/20/9 |
| 5s | 114 | vs. Kentucky | 10/5/97 |

ATTACKS

| SETS | ATT. | OPPONENT | DATE |
|------|------|--------------------|----------|
| 3s | 160 | vs. South Carolina | 10/19/97 |
| 4s | 213 | at Ole Miss | 10/3/93 |
| 5s | 229 | at LSU | 11/15/13 |

HITTING PERCENTAGE (MIN. 10 KILLS)

| SETS | PCT. | OPPONENT | DATE |
|------|------------------|--------------|---------|
| 3s | .530 (41-6-66) | vs. LSU | 11/2/97 |
| 4s | .365 (70-20-137) | vs. Alabama | 11/6/97 |
| 5s | .362 (74-20-149) | at Minnesota | 9/19/98 |

BLOCKS - SOLO

| SETS | BLK | OPPONENT | DATE |
|------|--------|-------------------|----------|
| 3s | 8 (3x) | last, vs. IUPUI | 9/4/98 |
| 4s | 10 | at Tennessee Tech | 10/14/88 |
| 5s | 13 | vs. NC State | 9/21/91 |

BLOCKS - ASSISTS

| SETS | BLK | OPPONENT | DATE |
|------|-----------|-----------------------------|----------------|
| 3s | 27 | at Samford | 10/3/00 |
| 4s | 34 | vs UAB | 9/15/23 |
| 5s | 28 (3x) | last, vs. Mississippi State | 11/12/00 |

TOTAL BLOCKS

| SETS | BLK | OPPONENT | DATE |
|------|-------------|--------------------|----------------|
| 3s | 15.0 | vs. Alabama | 11/5/93 |
| | 15.0 | at South Carolina | 10/17/10 |
| 4s | 19.0 | vs UAB | 9/15/23 |
| 5s | 18.0 | vs. Georgia | 10/9/22 |
| | 18.0 | vs. South Florida | 9/13/14 |

DIGS

| SETS | DIGS | OPPONENT | DATE |
|------|------|---------------------|----------|
| 3s | 76 | at Ole Miss | 11/16/07 |
| 4s | 115 | vs. NE Louisiana | 9/12/86 |
| 5s | 117 | vs. Central Florida | 11/8/86 |

ASSISTS

| SETS | AST | OPPONENT | DATE |
|------|-----|-----------------------|----------|
| 3s | 60 | vs. Pittsburgh | 8/31/97 |
| 4s | 77 | vs. Mississippi State | 10/24/97 |
| 5s | 100 | vs. Kentucky | 10/5/97 |

SERVICE ACES

| SETS | ACE | OPPONENT | DATE |
|------|-----------|-------------------------|----------------|
| 3s | 18 | vs. Delaware State | 9/13/03 |
| 4s | 16 | vs. Tennessee State | 8/25/07 |
| 5s | 14 | at South Alabama | 9/14/23 |

INDIVIDUAL KILLS

| | KILLS | PLAYER-OPPONENT (SETS) | DATE |
|----|-------|---|----------------|
| 1. | 30 | Ashlee Johns vs. Arkansas (5) | 10/8/04 |
| 2. | 29 | Rebekah Rath at Arkansas (4) | 10/9/21 |
| 3. | 27 | Kelly Fidero at Alabama (5) | 10/30/11 |
| 4. | 26 | Akasha Anderson at South Alabama (5) | 9/14/23 |
| | 26 | Akasha Anderson vs Mississippi St. (5) | 9/28/22 |
| | 26 | Jessica Glover at Georgia (5) | 9/17/06 |
| | 26 | Camila Lago vs. Mississippi State (5) | 10/26/03 |
| 8. | 25 | Macy Reece vs. South Florida (5) | 9/13/14 |
| | 25 | Rachel Shanks vs. Georgia (4) | 11/7/07 |
| | 25 | Jelena Sekulic at Arkansas (5) | 10/7/07 |
| | 25 | Rachel Shanks vs. Virginia Tech (5) | 9/2/06 |
| | 25 | Jennifer Amobi vs. Tennessee (4) | 11/19/04 |
| | 25 | Rebekah Rath at Georgia St. (4) | 8/26/22 |

INDIVIDUAL HITTING PCT. (MIN. 12 KILLS)

| | PCT. | PLAYER-OPPONENT (SETS) | DATE |
|-----|-----------------------|---|----------------|
| 1. | .773 (17-0-22) | Ashlee Johns vs. Delaware State (3) | 9/13/03 |
| 2. | .722 (14-1-18) | Jonelle Wallace vs. Beth.-Cook. (3) | 9/5/08 |
| 3. | .706 (12-0-17) | Chelsey Harmon vs. Jackson St. (3) | 9/17/22 |
| 4. | .688 (12-1-16) | Shaina White vs. American (3) | 9/8/18 |
| 5. | .667 (16-0-24) | Jonelle Wallace at Georgia (5) | 11/24/10 |
| 6. | .650 (13-0-20) | Breanna Barksdale at Arkansas (5) | 10/30/15 |
| 7. | .647 (13-1-17) | Alyssa Davis vs. Jacksonville State (5) | 9/8/09 |
| 8. | .632 (12-0-19) | Courtney McDonald vs. Kentucky (5) | 10/23/11 |
| | .632 (12-0-19) | Camila Jersonsky vs. Austin Peay (4) | 9/3/11 |
| 10. | .619 (14-1-21) | Camila Jersonsky vs. Miss. State (3) | 11/3/13 |
| | .619 (14-1-21) | Breanna Barksdale vs. Samford (4) | 8/29/15 |
| | .619 (14-1-21) | Shaina White vs. Furman (4) | 8/26/17 |

INDIVIDUAL TOTAL BLOCKS

| | BLK (S-A) | PLAYER-OPPONENT (SETS) | DATE |
|----|-----------|--|----------------|
| 1. | 12 (2-10) | Tatum Shipes vs Alabama (4) | 10/2/21 |
| | 11 (4-7) | Breanna Barksdale at Florida (4) | 11/23/16 |
| 3. | 10 (1-9) | Kendal Kemp vs UAB (4) | 9/15/23 |
| | 10 (1-9) | Kendal Kemp vs. Georgia (5) | 10/9/22 |
| | 10 (1-9) | Kendal Kemp vs. Georgia (4) | 10/8/22 |
| | 10 (2-8) | Chelsey Harmon vs Troy (4) | 9/10/22 |
| | 10 (1-9) | Tatum Shipes at Arkansas (4) | 10/9/21 |
| | 10 (0-10) | Stephanie Campbell vs. St. John's (5) | 9/19/15 |
| | 10 (2-8) | Julie Bosler vs. South Carolina (5) | 9/15/06 |
| | 10 (3-7) | Julie Bosler vs. Mississippi State (5) | 11/5/04 |
| | 10 (2-8) | Julie Bosler vs. Mississippi State (5) | 10/2/03 |
| | 10 (1-9) | Bailey Veit vs. Mercer (5) | 9/20/03 |

INDIVIDUAL SERVICE ACES

| | ACES | PLAYER-OPPONENT (SETS) | DATE |
|----|------|--|----------------|
| 1. | 7 | Katherine Culwell vs. Tennessee (3) | 11/22/13 |
| | 7 | Maira Magallon vs. Delaware State (3) | 9/13/03 |
| 3. | 6 | Brenna McIlroy at Missouri (4) | 10/19/18 |
| | 6 | Whitney Jacob vs. Arkansas (5) | 10/15/06 |
| 5. | 5 | Jackie Barrett at South Alabama (5) | 9/14/23 |
| | 5 | Jackie Barrett vs Mercer (3) | 9/9/23 |
| | 5 | Rebekah Rath at Texas A&M (5) | 11/5/21 |
| | 5 | Jesse Earl at Florida State (5) | 9/16/17 |
| | 5 | Jesse Earl at Georgia (4) | 10/2/16 |
| | 5 | Alexa Filley vs. LSU (5) | 10/4/15 |
| | 5 | Liz Crouch vs. Troy (3) | 8/27/10 |
| | 5 | Rachel Shanks at South Alabama (3) | 9/9/06 |
| | 5 | Whitney Jacob vs. Louisiana-Monroe (3) | 8/25/06 |
| | 5 | Whitney Jacob vs. Mississippi State (4) | 10/23/05 |
| | 5 | Rachel Shanks vs. Clemson (3) | 9/17/05 |
| | 5 | Whitney Jacob vs. Grambling (3) | 9/1/05 |
| | 5 | Maira Magallon vs. Mississippi State (5) | 10/26/03 |
| | 5 | Maira Magallon at Lafayette (3) | 9/12/03 |
| | 5 | Maira Magallon vs. Bethune-Cookman (4) | 9/6/03 |
| | 5 | Jennifer Buckert vs. Alabama State (3) | 9/5/03 |
| | 5 | Brittany Diaz vs. Marist (4) | 9/7/02 |
| | 5 | Laura Hastings vs. Western Michigan (3) | 9/1/01 |
| | 5 | Grace Boyd at South Carolina (3) | 10/26/01 |

INDIVIDUAL ASSISTS

| | AST | PLAYER-OPPONENT (SETS) | DATE |
|----|-----|--|----------|
| 1. | 76 | Jordan Elliott at Mercer (5) | 9/8/04 |
| 2. | 71 | Maira Magallon vs. Ole Miss (5) | 10/24/03 |
| 3. | 68 | Michele Ashmore vs. Georgia Southern (5) | 9/2/05 |
| 4. | 66 | Joanna Pappas at Georgia (5) | 9/17/06 |
| 5. | 65 | Maira Magallon vs. Arkansas (5) | 10/8/04 |
| | 65 | Nicki Gerig vs. Tennessee State (4) | 8/25/07 |
| 7. | 64 | Jordan Elliott vs. Iowa State (5) | 9/4/04 |
| 8. | 63 | Alexa Filley vs. South Carolina (5) | 10/5/14 |
| | 63 | Maira Magallon vs. Xavier (4) | 11/26/04 |
| | 63 | Sara Shanks at Arkansas (5) | 10/7/07 |

INDIVIDUAL DIGS

| | DIGS | PLAYER-OPPONENT (SETS) | DATE |
|-----|------|---|-----------------|
| 1. | 37 | Payton White vs. Butler (5) | 8/31/19 |
| 2. | 36 | Jelena Sekulic at Kentucky (5) | 11/17/06 |
| | 36 | Jesse Earl at Tennessee (5) | 10/4/17 |
| 4. | 34 | Bailey Veit vs. Georgia Southern (5) | 9/2/05 |
| | 34 | Jesse Earl at Mississippi State (5) | 11/13/15 |
| 6. | 33 | Bella Rosenthal vs. Missouri (5) | 10/17/21 |
| 7. | 33 | Sarah Wroblecky at LSU (5) | 11/15/13 |
| | 33 | Jesse Earl at LSU (4) | 11/15/17 |
| 9. | 31 | Liz Crouch at Mississippi State (3) | 9/18/09 |
| 10. | 30 | Liz Crouch vs. Georgia (4) | 11/7/07 |
| | 30 | Jesse Earl at Florida State (5) | 9/16/17 |

Records set in the Brent Crouch era are listed in **BOLD**

INDIVIDUAL MATCH RECORDS (BY SET)

KILLS

| SETS | KILLS | PLAYER-OPPONENT | DATE |
|------|-------|---------------------------|----------|
| 3s | 25 | Brooke McCarley vs. UAB | 9/7/99 |
| 4s | 29 | Rebekah Rath at Arkansas | 10/9/21 |
| | 29 | Brooke McCarley at Kansas | 9/11/99 |
| 5s | 34 | Bridgitte Sims vs. Tulane | 11/10/90 |

ATTACKS

| SETS | ATT. | PLAYER-OPPONENT | DATE |
|------|------|-----------------------------|---------|
| 3s | 56 | Allyson Beecroft at Florida | 9/30/94 |
| 4s | 75 | Rebekah Rath at Arkansas | 10/9/21 |
| 5s | 84 | Rebekah Rath at Texas A&M | 11/4/17 |

HITTING PERCENTAGE (MIN. 10 KILLS)

| SETS | PCT. | PLAYER | DATE |
|------|----------------|----------------------|---------|
| 3s | .773 (17-0-22) | Ashlee Johns | 9/13/03 |
| 4s | .813 (13-0-16) | Laura Cookley | 9/28/91 |
| 5s | .714 (10-0-14) | Dalia Naidzinaviciut | 9/2/05 |

BLOCKS - SOLO

| SETS | BLK | PLAYER-OPPONENT | DATE |
|------|-----|-------------------------------|----------|
| 3s | 5 | Gina Thomas vs. Georgetown | 9/13/90 |
| 4s | 5 | Gina Thomas vs. Florida | 10/12/90 |
| 5s | 6 | Tory Gutierrez vs. Louisville | 10/21/89 |
| | 6 | Lisa Harvey vs. Tuskegee | 10/7/86 |

BLOCKS - ASSISTS

| SETS | BLK | PLAYER-OPPONENT | DATE |
|------|--------------------|---------------------------------------|----------------|
| 3s | 9 (3x) last | Kendal Kemp vs Belmont | 8/26/22 |
| 4s | 11 | Tory Gutierrez vs. Georgia State | 10/3/89 |
| 5s | 10 | Jaunelle Hamilton vs. Mississippi St. | 11/12/00 |
| | 10 | Stephanie Campbell vs. St. John's | 9/19/15 |

TOTAL BLOCKS

| SETS | BLK | PLAYER-OPPONENT | DATE |
|------|--------------------|---------------------------------------|----------------|
| 3s | 9 (4x) last | Kendal Kemp vs. Belmont | 8/26/22 |
| 4s | 14 | Tory Gutierrez vs. Georgia State | 10/3/89 |
| 5s | 12 | Jaunelle Hamilton vs. Mississippi St. | 11/12/00 |
| | 12 | La'Toi Finley at Georgia Tech | 9/14/95 |

DIGS

| SETS | DIGS | PLAYER-OPPONENT | DATE |
|------|------|---------------------------------|---------|
| 3s | 31 | Liz Crouch at Mississippi State | 9/18/09 |
| 4s | 34 | Gretchen Thompson vs. ULM | 9/12/86 |
| 5s | 37 | Payton White vs. Butler | 8/31/19 |

ASSISTS

| SETS | AST | PLAYER-OPPONENT | DATE |
|------|-----|--------------------------|----------|
| 3s | 64 | Piper Craig vs. LSU | 10/18/96 |
| 4s | 76 | Piper Craig vs. Arkansas | 10/20/96 |
| 5s | 92 | Piper Craig vs. Kentucky | 10/5/97 |

SERVICE ACES

| SETS | ACE | PLAYER-OPPONENT | DATE |
|------|-----|---------------------------|---------|
| 3s | 10 | Jenifer Kleyn vs. Seneca | 10/5/90 |
| 4s | 8 | Terri Duckworth at UAB | 11/1/88 |
| 5s | 10 | Jenifer Kleyn at Ole Miss | 9/28/90 |



#1 MADISON SCHEER

**PIN HITTER | 6-1 | SOPHOMORE
EUREKA, MO. (EUREKA)**

SCHEER'S HIGHLIGHTS:

- 2022 SEC All-Freshman Team
- Career-high 22 kills on .409 hitting versus Jacksonville State
- Named SEC Freshman of the Week and Player of the Week 9/26
- Hit over .300 11 times, over .400 seven times and over .500 twice in 2022
- Made her collegiate debut on Aug. 26 vs. Belmont

| CATEGORY | CAREER HIGH | OPPONENT/DATE |
|-----------------------------------|-------------|---------------------------------|
| Kills | 22 | at Jacksonville State (9/17/22) |
| Attempts | 47 | vs Georgia (10/9/22) |
| Hitting Percentage (Min. 10 ATT.) | .563 | vs Alabama A&M (9/6/22) |
| Assists | 1 (6x) | last vs Florida (9/22/23) |
| Digs | 4 | at LSU (10/5/22) |
| Blocks | 6 | at Alabama (9/24/22) |
| Aces | -- | -- |
| Points | 23.0 | at Jacksonville State (9/17/22) |

| CATEGORY | SEASON HIGH | OPPONENT/DATE |
|-----------------------------------|-------------|--------------------------------------|
| Kills | 18 | vs SMU (9/2/23) |
| Attempts | 44 | vs Florida (9/22/23) |
| Hitting Percentage (Min. 10 ATT.) | .343 | vs Charleston Southern (9/8/23) |
| Assists | 1 (3x) | last vs Florida (9/22/23) |
| Digs | 3 (3x) | last vs Ole Miss (9/24/23) |
| Blocks | 4 (2x) | last vs Charleston Southern (9/8/23) |
| Aces | -- | -- |
| Points | 18.5 | vs Coppin State (8/25/23) |

GAME BY GAME

| Date | Opponent | SP | Attack | | | | Set | | | Serve | | | | Recept | | | Blocking | | | | Team | | | | |
|---------------|------------------|-----------|------------|-----------|------------|-------------|----------|-----------|-------------|----------|----------|----------|--------------|----------|-----------|-------------|-----------|----------|-----------|----------|-------------|----------|--------------|-------|-------|
| | | | K | E | TA | PCT | A | TA | PCT | SA | SE | TA | PCT | RE | TA | PCT | DIG | BS | BA | BE | TOTAL | BHE | POINTS | HIT% | SCORE |
| 08/25/2023 | Coppin St. | 4 | 16 | 4 | 41 | .293 | 0 | 1 | .000 | 0 | 0 | 0 | .000 | 0 | 3 | 1.000 | 3 | 1 | 3 | 0 | 4.0 | 0 | 18.5 | .309 | 3-1 |
| 08/26/2023 | Jacksonville St. | 3 | 8 | 2 | 21 | .286 | 1 | 1 | 1.000 | 0 | 0 | 0 | .000 | 0 | 3 | 1.000 | 0 | 0 | 0 | 0 | 0.0 | 0 | 8.0 | .395 | 3-0 |
| 09/02/2023 | vs SMU | 4 | 18 | 6 | 37 | .324 | 0 | 0 | .000 | 0 | 0 | 0 | .000 | 0 | 9 | 1.000 | 1 | 0 | 0 | 0 | 0.0 | 0 | 18.0 | .316 | 3-1 |
| 09/03/2023 | at Florida St. | 4 | 14 | 3 | 33 | .333 | 1 | 2 | .500 | 0 | 0 | 0 | .000 | 0 | 3 | 1.000 | 0 | 0 | 2 | 1 | 2.0 | 0 | 15.0 | .356 | 3-1 |
| 09/07/2023 | Middle Tenn. | 4 | 8 | 2 | 28 | .214 | 0 | 2 | .000 | 0 | 0 | 1 | 1.000 | 0 | 1 | 1.000 | 2 | 0 | 3 | 0 | 3.0 | 0 | 9.5 | .221 | 1-3 |
| 09/08/2023 | Charleston So. | *4 | 15 | 3 | 35 | .343 | 0 | 0 | .000 | 0 | 0 | 0 | .000 | 1 | 7 | .857 | 2 | 0 | 4 | 0 | 4.0 | 0 | 17.0 | .245 | 3-1 |
| 09/09/2023 | Mercer | 3 | 12 | 4 | 28 | .286 | 0 | 2 | .000 | 0 | 0 | 0 | .000 | 0 | 8 | 1.000 | 0 | 0 | 1 | 0 | 1.0 | 0 | 12.5 | .346 | 3-0 |
| 09/14/2023 | at South Alabama | 5 | 10 | 7 | 39 | .077 | 0 | 0 | .000 | 0 | 0 | 0 | .000 | 1 | 9 | .889 | 3 | 0 | 1 | 0 | 1.0 | 0 | 10.5 | .191 | 3-2 |
| 09/15/2023 | vs UAB | 4 | 7 | 5 | 21 | .095 | 0 | 0 | .000 | 0 | 0 | 0 | .000 | 0 | 0 | .000 | 3 | 0 | 4 | 0 | 4.0 | 0 | 9.0 | .189 | 3-1 |
| 09/16/2023 | vs Samford | *4 | 13 | 5 | 27 | .296 | 0 | 3 | .000 | 0 | 0 | 0 | .000 | 1 | 1 | .000 | 0 | 0 | 0 | 0 | 0.0 | 0 | 13.0 | .386 | 3-1 |
| 09/22/2023 | Florida | 5 | 15 | 6 | 44 | .205 | 1 | 2 | .500 | 0 | 0 | 1 | 1.000 | 0 | 16 | 1.000 | 2 | 0 | 0 | 0 | 0.0 | 0 | 15.0 | .196 | 2-3 |
| 09/24/2023 | Ole Miss | 4 | 12 | 2 | 34 | .294 | 0 | 4 | .000 | 0 | 0 | 0 | .000 | 0 | 9 | 1.000 | 3 | 0 | 1 | 0 | 1.0 | 0 | 12.5 | .199 | 3-1 |
| 09/27/2023 | at Arkansas | 3 | 4 | 3 | 22 | .045 | 0 | 2 | .000 | 0 | 0 | 0 | .000 | 1 | 4 | .750 | 1 | 0 | 0 | 0 | 0.0 | 0 | 4.0 | -.049 | 0-3 |
| Totals | | 51 | 152 | 52 | 410 | .244 | 3 | 19 | .158 | 0 | 0 | 2 | 1.000 | 4 | 73 | .945 | 20 | 1 | 19 | 1 | 20.0 | 0 | 162.5 | | |

Player Averages

| Sets Played | Kills per set | Assists per set | Service aces per set | Digs per set | Blocks per set | Points per set |
|-------------|---------------|-----------------|----------------------|--------------|----------------|----------------|
| 51 | 2.98 | 0.06 | 0.00 | 0.39 | 0.39 | 3.19 |

CAREER STATS

| SEASON | TEAM | SM-MP | K | K/S | E | TA | PCT | A | A/S | SA | SA/S | SE | DIG | D/S | RE | BS | BA | TB | B/S | BE | BHE | PTS | PTS/S |
|--------------|------|-----------------|------------|-------------|------------|-------------|-------------|----------|-------------|----------|-------------|----------|-----------|-------------|----------|----------|-----------|-----------|-------------|----------|----------|--------------|-------------|
| 2022-23 | AUB | 118-30 | 361 | 3.06 | 120 | 956 | .252 | 3 | 0.03 | 0 | 0.00 | 0 | 45 | 0.38 | 3 | 3 | 46 | 49 | 0.42 | 4 | 2 | 387.0 | 3.28 |
| 2023-24 | AUB | 51-13 | 152 | 2.98 | 52 | 410 | .244 | 3 | 0.06 | 0 | 0.00 | 0 | 20 | 0.39 | 4 | 1 | 19 | 20 | 0.39 | 1 | 0 | 162.5 | 3.19 |
| TOTAL | | 169 - 43 | 513 | 3.04 | 172 | 1366 | .250 | 6 | 0.04 | 0 | 0.00 | 0 | 65 | 0.38 | 7 | 4 | 65 | 69 | 0.41 | 5 | 2 | 549.5 | 3.25 |



#2 SARAH MORTON

LIBERO | 5-7 | SOPHOMORE
MUNSTER, IND. (MUNSTER)

MORTON'S HIGHLIGHTS:

- Recorded 10+ digs in 26 of the 29 matches she's played in 2022
- Grabbed a career-high 26 digs vs Georgia on Oct. 9
- Named SEC Defensive Player of the Week 9/26
- Has started every game at libero when in the lineup
- Made her collegiate debut on Aug. 26 vs. Belmont

| CATEGORY | CAREER HIGH | OPPONENT/DATE |
|-----------------------------------|-------------|--------------------------------|
| Kills | 1 (3x) | last vs Coppin State (8/25/23) |
| Attempts | 3 | vs Coppin State (8/25/23) |
| Hitting Percentage (Min. 10 ATT.) | -- | -- |
| Assists | 9 (2x) | last vs SMU (9/2/23) |
| Digs | 26 | vs Georgia (10/9/22) |
| Blocks | -- | -- |
| Aces | 3 (4x) | last at Missouri (10/15/22) |
| Points | 3 (4x) | last at Missouri (10/15/22) |

| CATEGORY | SEASON HIGH | OPPONENT/DATE |
|-----------------------------------|-------------|---------------------------|
| Kills | 1 (2x) | last vs Florida (9/22/23) |
| Attempts | 3 | vs Coppin State (8/25/23) |
| Hitting Percentage (Min. 10 ATT.) | -- | -- |
| Assists | 9 | vs SMU (9/2/23) |
| Digs | 24 | vs Coppin State (8/25/23) |
| Blocks | -- | -- |
| Aces | 1 (3x) | last vs Florida (9/22/23) |
| Points | 2 | vs Florida (9/22/23) |

GAME BY GAME

| Date | Opponent | SP | Attack | | | | Set | | | Serve | | | | Receipt | | | Blocking | | | | Team | | | | |
|---------------|------------------|-----------|----------|----------|----------|-------------|-----------|------------|-------------|----------|-----------|------------|-------------|----------|------------|-------------|------------|----------|----------|----------|------------|----------|------------|-------|-------|
| | | | K | E | TA | PCT | A | TA | PCT | SA | SE | TA | PCT | RE | TA | PCT | DIG | BS | BA | BE | TOTAL | BHE | POINTS | HIT% | SCORE |
| 08/25/2023 | Coppin St. | 4 | 1 | 0 | 3 | .333 | 4 | 12 | .333 | 0 | 2 | 20 | .900 | 0 | 13 | 1.000 | 24 | 0 | 0 | 0 | 0.0 | 0 | 1.0 | .309 | 3-1 |
| 08/26/2023 | McNeese | 3 | 0 | 0 | 0 | .000 | 3 | 11 | .273 | 0 | 1 | 7 | .857 | 0 | 8 | 1.000 | 5 | 0 | 0 | 0 | 0.0 | 0 | 0.0 | .333 | 3-0 |
| 08/26/2023 | Jacksonville St. | 3 | 0 | 0 | 0 | .000 | 3 | 8 | .375 | 1 | 0 | 13 | 1.000 | 0 | 8 | 1.000 | 3 | 0 | 0 | 0 | 0.0 | 0 | 1.0 | .395 | 3-0 |
| 09/02/2023 | vs SMU | 4 | 0 | 0 | 1 | .000 | 9 | 20 | .450 | 0 | 2 | 15 | .867 | 1 | 14 | .929 | 17 | 0 | 0 | 0 | 0.0 | 0 | 0.0 | .316 | 3-1 |
| 09/03/2023 | at Florida St. | 4 | 0 | 0 | 1 | .000 | 5 | 16 | .313 | 1 | 2 | 16 | .875 | 2 | 31 | .935 | 8 | 0 | 0 | 0 | 0.0 | 0 | 1.0 | .356 | 3-1 |
| 09/07/2023 | Middle Tenn. | 4 | 0 | 0 | 1 | .000 | 0 | 11 | .000 | 0 | 6 | 14 | .571 | 2 | 27 | .926 | 10 | 0 | 0 | 0 | 0.0 | 0 | 0.0 | .221 | 1-3 |
| 09/08/2023 | Charleston So. | 4 | 0 | 0 | 0 | .000 | 2 | 14 | .143 | 0 | 2 | 15 | .867 | 0 | 16 | 1.000 | 14 | 0 | 0 | 0 | 0.0 | 0 | 0.0 | .245 | 3-1 |
| 09/09/2023 | Mercer | 3 | 0 | 0 | 0 | .000 | 1 | 4 | .250 | 0 | 3 | 7 | .571 | 0 | 10 | 1.000 | 10 | 0 | 0 | 0 | 0.0 | 0 | 0.0 | .346 | 3-0 |
| 09/22/2023 | Florida | 5 | 1 | 0 | 1 | 1.000 | 5 | 17 | .294 | 1 | 5 | 18 | .722 | 0 | 16 | 1.000 | 13 | 0 | 0 | 0 | 0.0 | 0 | 2.0 | .196 | 2-3 |
| 09/24/2023 | Ole Miss | 4 | 0 | 0 | 0 | .000 | 5 | 20 | .250 | 0 | 1 | 12 | .917 | 1 | 15 | .933 | 20 | 0 | 0 | 0 | 0.0 | 0 | 0.0 | .199 | 3-1 |
| 09/27/2023 | at Arkansas | 3 | 0 | 0 | 0 | .000 | 1 | 13 | .077 | 0 | 4 | 5 | .200 | 1 | 8 | .875 | 7 | 0 | 0 | 0 | 0.0 | 0 | 0.0 | -.049 | 0-3 |
| Totals | | 41 | 2 | 0 | 7 | .286 | 38 | 146 | .260 | 3 | 28 | 142 | .803 | 7 | 166 | .958 | 131 | 0 | 0 | 0 | 0.0 | 0 | 5.0 | | |

Player Averages

| Sets Played | Kills per set | Assists per set | Service aces per set | Digs per set | Blocks per set | Points per set |
|-------------|---------------|-----------------|----------------------|--------------|----------------|----------------|
| 41 | 0.05 | 0.93 | 0.07 | 3.20 | 0.00 | 0.12 |

CAREER STATS

| SEASON | TEAM | SM-MP | K | K/S | E | TA | PCT | A | A/S | SA | SA/S | SE | DIG | D/S | RE | BS | BA | TB | B/S | BE | BHE | PTS | PTS/S |
|--------------|------|-----------------|----------|-------------|----------|-----------|-------------|------------|-------------|-----------|-------------|-----------|------------|-------------|-----------|----------|----------|----------|-------------|----------|----------|-------------|-------------|
| 2022-23 | AUB | 119-30 | 2 | 0.02 | 1 | 11 | .091 | 110 | 0.92 | 30 | 0.25 | 31 | 457 | 3.84 | 21 | 0 | 0 | 0 | 0.00 | 0 | 1 | 32.0 | 0.27 |
| 2023-24 | AUB | 41-11 | 2 | 0.05 | 0 | 7 | .286 | 38 | 0.93 | 3 | 0.07 | 28 | 131 | 3.20 | 7 | 0 | 0 | 0 | 0.00 | 0 | 0 | 5.0 | 0.12 |
| TOTAL | | 160 - 41 | 4 | 0.03 | 1 | 18 | .167 | 148 | 0.93 | 33 | 0.21 | 59 | 588 | 3.68 | 28 | 0 | 0 | 0 | 0.00 | 0 | 1 | 37.0 | 0.23 |

#3 AKASHA ANDERSON

PIN HITTER | 6-3 | FRESHMAN
RESTON, VA. (HERNDON)



ANDERSON'S HIGHLIGHTS:

- Named to All-SEC Team and All-Freshman Team
- Named AVCA South Region Freshman of the Year in 2022
- Had career-high 26 kills in win over Mississippi State
- Hit .526 with a team-high 12 kills vs. Marist
- Recorded 24 kills and 14 digs at UAB for first double-double
- Had eight double-doubles in 2022
- 2x SEC Freshman of the Week
- Made her collegiate debut on Aug. 26 vs. Belmont

| CATEGORY | CAREER HIGH | OPPONENT/DATE |
|-----------------------------------|-------------|-------------------------------------|
| Kills | 26 (2x) | last at South Alabama (9/14/23) |
| Attempts | 77 | at LSU (10/5/22) |
| Hitting Percentage (Min. 10 ATT.) | .526 | vs Marist (8/27/22) |
| Assists | 3 (2x) | last at Florida State (9/3/23) |
| Digs | 18 | at Alabama (9/25/22) |
| Blocks | 5 | vs Troy (9/10/22) |
| Aces | 4 (3x) | last vs McNeese (8/26/23) |
| Points | 29.5 (2x) | last vs Mississippi State (9/28/22) |

| CATEGORY | SEASON HIGH | OPPONENT/DATE |
|-----------------------------------|-------------|----------------------------|
| Kills | 26 | at South Alabama (9/14/23) |
| Attempts | 69 | at South Alabama (9/14/23) |
| Hitting Percentage (Min. 10 ATT.) | .410 | vs Samford (9/16/23) |
| Assists | 3 | at Florida State (9/3/23) |
| Digs | 11 (2x) | last vs UAB (9/15/23) |
| Blocks | 4 | vs UAB (9/15/23) |
| Aces | 4 | vs McNeese (8/26/23) |
| Points | 28.5 | at South Alabama (9/14/23) |

GAME BY GAME

| Date | Opponent | SP | Attack | | | | Set | | | Serve | | | | Recept | | | Blocking | | | | Team | | | | |
|---------------|------------------|-----------|------------|-----------|------------|-------------|----------|-----------|-------------|-----------|-----------|------------|-------------|-----------|------------|-------------|-----------|----------|-----------|----------|-------------|----------|--------------|------|-------|
| | | | K | E | TA | PCT | A | TA | PCT | SA | SE | TA | PCT | RE | TA | PCT | DIG | BS | BA | BE | TOTAL | BHE | POINTS | HIT% | SCORE |
| 08/25/2023 | Coppin St. | *4 | 16 | 4 | 41 | .293 | 0 | 3 | .000 | 0 | 3 | 7 | .571 | 0 | 16 | 1.000 | 5 | 0 | 1 | 0 | 1.0 | 0 | 16.5 | .309 | 3-1 |
| 08/26/2023 | McNeese | *3 | 14 | 5 | 35 | .257 | 0 | 3 | .000 | 4 | 3 | 13 | .769 | 0 | 15 | 1.000 | 8 | 0 | 0 | 0 | 0.0 | 0 | 18.0 | .333 | 3-0 |
| 08/26/2023 | Jacksonville St. | *3 | 10 | 1 | 23 | .391 | 0 | 1 | .000 | 1 | 1 | 12 | .917 | 1 | 5 | .800 | 4 | 1 | 0 | 1.0 | 0 | 12.0 | .395 | 3-0 | |
| 09/02/2023 | vs SMU | *4 | 12 | 7 | 41 | .122 | 0 | 4 | .000 | 2 | 3 | 22 | .864 | 0 | 13 | 1.000 | 7 | 0 | 2 | 2.0 | 0 | 15.0 | .316 | 3-1 | |
| 09/03/2023 | at Florida St. | *4 | 15 | 4 | 35 | .314 | 3 | 7 | .429 | 0 | 2 | 11 | .818 | 1 | 14 | .929 | 6 | 0 | 1 | 1.0 | 0 | 15.5 | .356 | 3-1 | |
| 09/14/2023 | at South Alabama | *5 | 26 | 10 | 69 | .232 | 0 | 3 | .000 | 2 | 1 | 15 | .933 | 3 | 25 | .880 | 11 | 0 | 1 | 1.0 | 0 | 28.5 | .191 | 3-2 | |
| 09/15/2023 | vs UAB | *4 | 11 | 10 | 37 | .027 | 2 | 5 | .400 | 1 | 2 | 22 | .909 | 3 | 27 | .889 | 11 | 0 | 4 | 4.0 | 0 | 14.0 | .189 | 3-1 | |
| 09/16/2023 | vs Samford | *4 | 19 | 3 | 39 | .410 | 0 | 4 | .000 | 1 | 1 | 14 | .929 | 1 | 26 | .962 | 9 | 0 | 2 | 2.0 | 0 | 21.0 | .386 | 3-1 | |
| 09/22/2023 | Florida | *5 | 18 | 11 | 60 | .117 | 0 | 4 | .000 | 2 | 5 | 17 | .706 | 0 | 18 | 1.000 | 10 | 0 | 3 | 3.0 | 0 | 21.5 | .196 | 2-3 | |
| 09/24/2023 | Ole Miss | *4 | 20 | 12 | 60 | .133 | 1 | 4 | .250 | 1 | 2 | 14 | .857 | 0 | 13 | 1.000 | 9 | 0 | 2 | 2.0 | 0 | 22.0 | .199 | 3-1 | |
| 09/27/2023 | at Arkansas | *3 | 1 | 4 | 23 | -.130 | 0 | 0 | .000 | 0 | 2 | 5 | .600 | 4 | 18 | .778 | 7 | 0 | 2 | 2.0 | 0 | 2.0 | -.049 | 0-3 | |
| Totals | | 43 | 162 | 71 | 463 | .197 | 6 | 38 | .158 | 14 | 25 | 152 | .836 | 13 | 190 | .932 | 87 | 1 | 18 | 2 | 19.0 | 0 | 186.0 | | |

Player Averages

| Sets Played | Kills per set | Assists per set | Service aces per set | Digs per set | Blocks per set | Points per set |
|-------------|---------------|-----------------|----------------------|--------------|----------------|----------------|
| 43 | 3.77 | 0.14 | 0.33 | 2.02 | 0.44 | 4.33 |

CAREER STATS

| SEASON | TEAM | SM-MP | K | K/S | E | TA | PCT | A | A/S | SA | SA/S | SE | DIG | D/S | RE | BS | BA | TB | B/S | BE | BHE | PTS | PTS/S |
|--------------|------|-----------------|------------|-------------|------------|-------------|-------------|-----------|-------------|-----------|-------------|-----------|------------|-------------|-----------|----------|-----------|-----------|-------------|----------|----------|--------------|-------------|
| 2022-23 | AUB | 121-31 | 428 | 3.54 | 211 | 1240 | .175 | 13 | 0.11 | 27 | 0.22 | 41 | 225 | 1.86 | 50 | 4 | 56 | 60 | 0.50 | 5 | 0 | 487.0 | 4.02 |
| 2023-24 | AUB | 43-11 | 162 | 3.77 | 71 | 463 | .197 | 6 | 0.14 | 14 | 0.33 | 25 | 87 | 2.02 | 13 | 1 | 18 | 19 | 0.44 | 2 | 0 | 186.0 | 4.33 |
| TOTAL | | 164 - 42 | 590 | 3.60 | 282 | 1703 | .181 | 19 | 0.12 | 41 | 0.25 | 66 | 312 | 1.90 | 63 | 5 | 74 | 79 | 0.48 | 7 | 0 | 673.0 | 4.10 |

#4 FALLAN LANHAM

LIBERO | 5-8 | JUNIOR
LOUISVILLE, KY. (MERCY ACADEMY)



LANHAM'S HIGHLIGHTS:

- Grabbed a career-high 20 digs at LSU
- Recorded a career-high four aces at UAB
- Earned first collegiate start in Auburn's season opener versus Tennessee Tech on August 27

| CATEGORY | CAREER HIGH | OPPONENT/DATE |
|-----------------------------------|-------------|--------------------------------------|
| Kills | 2 | vs. Missouri (9/12/21) |
| Attempts | 8 | at Arkansas (10/9/21) |
| Hitting Percentage (Min. 10 ATT.) | | |
| Assists | 3 (4x) | last vs Charleston Southern (9/8/23) |
| Digs | 20 | at LSU (10/5/22) |
| Blocks | 1 | at Georgia (10/22/21) |
| Aces | 4 | at UAB (9/9/22) |
| Points | 4.0 | at UAB (9/9/22) |

| CATEGORY | SEASON HIGH | OPPONENT/DATE |
|-----------------------------------|-------------|---------------------------------|
| Kills | -- | -- |
| Attempts | 1 (2x) | last at Florida State (9/3/23) |
| Hitting Percentage (Min. 10 ATT.) | -- | -- |
| Assists | 3 | vs Charleston Southern (9/8/23) |
| Digs | 11 | vs Jacksonville State (8/26/23) |
| Blocks | -- | -- |
| Aces | 2 | vs Jacksonville State (8/26/23) |
| Points | 2.0 | vs Jacksonville State (8/26/23) |

GAME BY GAME

| Date | Opponent | SP | Attack | | | | Set | | | Serve | | | | Receipt | | | Blocking | | | | Team | | | | |
|---------------|------------------|-----------|----------|----------|----------|-------------|----------|-----------|-------------|----------|----------|------------|-------------|----------|-----------|-------------|-----------|----------|----------|----------|------------|----------|------------|------|-------|
| | | | K | E | TA | PCT | A | TA | PCT | SA | SE | TA | PCT | RE | TA | PCT | DIG | BS | BA | TB | TOTAL | BHE | POINTS | HIT% | SCORE |
| 08/25/2023 | Coppin St. | 3 | 0 | 0 | 0 | .000 | 0 | 1 | .000 | 0 | 0 | 8 | 1.000 | 0 | 6 | 1.000 | 0 | 0 | 0 | 0 | 0.0 | 0 | 0.0 | .309 | 3-1 |
| 08/26/2023 | McNeese | 1 | 0 | 0 | 0 | .000 | 0 | 1 | .000 | 0 | 0 | 3 | 1.000 | 0 | 2 | 1.000 | 2 | 0 | 0 | 0 | 0.0 | 0 | 0.0 | .333 | 3-0 |
| 08/26/2023 | Jacksonville St. | 3 | 0 | 0 | 0 | .000 | 1 | 5 | .200 | 2 | 1 | 18 | 1.000 | 1 | 8 | .875 | 11 | 0 | 0 | 0 | 0.0 | 0 | 2.0 | .395 | 3-0 |
| 09/02/2023 | vs SMU | 4 | 0 | 0 | 1 | .000 | 2 | 3 | .667 | 1 | 1 | 16 | .938 | 0 | 25 | 1.000 | 4 | 0 | 0 | 0 | 0.0 | 0 | 1.0 | .316 | 3-1 |
| 09/03/2023 | at Florida St. | 4 | 0 | 0 | 1 | .000 | 0 | 1 | .000 | 1 | 1 | 19 | .947 | 0 | 13 | 1.000 | 9 | 0 | 0 | 0 | 0.0 | 0 | 1.0 | .356 | 3-1 |
| 09/07/2023 | Middle Tenn. | 4 | 0 | 0 | 0 | .000 | 0 | 4 | .000 | 1 | 2 | 17 | .882 | 0 | 11 | 1.000 | 10 | 0 | 0 | 0 | 0.0 | 0 | 1.0 | .221 | 1-3 |
| 09/08/2023 | Charleston So. | *4 | 0 | 0 | 0 | .000 | 3 | 6 | .500 | 1 | 1 | 14 | .929 | 0 | 11 | 1.000 | 8 | 0 | 0 | 0 | 0.0 | 0 | 1.0 | .245 | 3-1 |
| 09/09/2023 | Mercer | *3 | 0 | 0 | 0 | .000 | 0 | 4 | .000 | 0 | 1 | 10 | .900 | 0 | 4 | 1.000 | 4 | 0 | 0 | 0 | 0.0 | 0 | 0.0 | .346 | 3-0 |
| 09/14/2023 | at South Alabama | *1 | 0 | 0 | 0 | .000 | 0 | 1 | .000 | 0 | 0 | 2 | 1.000 | 0 | 3 | 1.000 | 4 | 0 | 0 | 0 | 0.0 | 0 | 0.0 | .191 | 3-2 |
| Totals | | 27 | 0 | 0 | 2 | .000 | 6 | 26 | .231 | 6 | 6 | 107 | .944 | 1 | 83 | .988 | 52 | 0 | 0 | 0 | 0.0 | 0 | 6.0 | | |

Player Averages

| Sets Played | Kills per set | Assists per set | Service aces per set | Digs per set | Blocks per set | Points per set |
|-------------|---------------|-----------------|----------------------|--------------|----------------|----------------|
| 27 | 0.00 | 0.22 | 0.22 | 1.93 | 0.00 | 0.22 |

CAREER STATS

| SEASON | TEAM | SM-MP | K | K/S | E | TA | PCT | A | A/S | SA | SA/S | SE | DIG | D/S | RE | BS | BA | TB | B/S | BE | BHE | PTS | PTS/S |
|--------------|------|-----------------|----------|-------------|----------|------------|--------------|-----------|-------------|-----------|-------------|-----------|------------|-------------|-----------|----------|----------|----------|-------------|----------|----------|-------------|-------------|
| 2021-22 | AUB | 103-28 | 7 | 0.07 | 8 | 85 | -.012 | 17 | 0.17 | 5 | 0.05 | 15 | 192 | 1.86 | 21 | 0 | 1 | 1 | 0.01 | 0 | 0 | 12.5 | 0.12 |
| 2022-23 | AUB | 122-31 | 1 | 0.01 | 1 | 13 | .000 | 15 | 0.12 | 35 | 0.29 | 33 | 198 | 1.62 | 28 | 0 | 0 | 0 | 0.00 | 0 | 0 | 36.0 | 0.30 |
| 2023-24 | AUB | 27-9 | 0 | 0.00 | 0 | 2 | .000 | 6 | 0.22 | 6 | 0.22 | 6 | 52 | 1.93 | 1 | 0 | 0 | 0 | 0.00 | 0 | 0 | 6.0 | 0.22 |
| TOTAL | | 252 - 68 | 8 | 0.03 | 9 | 100 | -.010 | 38 | 0.15 | 46 | 0.18 | 54 | 442 | 1.75 | 50 | 0 | 1 | 1 | 0.00 | 0 | 0 | 54.5 | 0.22 |



#5 BELLA BELL

MIDDLE BLOCKER | 6-4 | GRADUATE
BLYTHEWOOD, S.C. (KENTUCKY)



BELL'S HIGHLIGHTS:

- Has hit over .400 in three matches this season
- National Champion in Kentucky
- Had the 3rd-highest hitting percentage in the SEC in 2022

| CATEGORY | CAREER HIGH | OPPONENT/DATE |
|-----------------------------------|-------------|---------------------------------|
| Kills | 14 | vs Coppin State (8/25/23) |
| Attempts | 30 | vs Ole Miss (9/24/23) |
| Hitting Percentage (Min. 10 ATT.) | .750 | vs Jacksonville State (8/26/23) |
| Assists | 1 (5x) | last vs Florida (9/22/23) |
| Digs | 4 | vs Ole Miss (9/24/23) |
| Blocks | 10 (2x) | at Arkansas (10/7/22) |
| Aces | 1 | vs South Carolina (11/25/22) |
| Points | 17.5 | at Missouri (9/28/22) |

| CATEGORY | SEASON HIGH | OPPONENT/DATE |
|-----------------------------------|-------------|---------------------------------|
| Kills | 14 | vs Coppin State (8/25/23) |
| Attempts | 30 | vs Ole Miss (9/24/23) |
| Hitting Percentage (Min. 10 ATT.) | .750 | vs Jacksonville State (8/26/23) |
| Assists | 1 (2x) | last vs Florida (9/22/23) |
| Digs | 4 | vs Ole Miss (9/24/23) |
| Blocks | 7 | vs Ole Miss (9/24/23) |
| Aces | -- | -- |
| Points | 15.5 | vs Coppin State (8/25/23) |

GAME BY GAME

| Date | Opponent | SP | Attack | | | | Set | | | Serve | | | Recept | | | Blocking | | | | Team | | | | | | |
|---------------|------------------|----|-----------|-----------|-----------|------------|-------------|----------|----------|-------------|----------|----------|----------|--------------|----------|----------|-------------|-----------|----------|-----------|----------|-------------|----------|--------------|-------|--|
| | | | K | E | TA | PCT | A | TA | PCT | SA | SE | TA | PCT | RE | TA | PCT | DIG | BS | BA | BE | TOTAL | BHE | POINTS | HIT% | SCORE | |
| 08/25/2023 | Coppin St. | *4 | 14 | 2 | 25 | .480 | 0 | 1 | .000 | 0 | 0 | 0 | .000 | 0 | 0 | .000 | 1 | 0 | 3 | 0 | 3.0 | 0 | 15.5 | .309 | 3-1 | |
| 08/26/2023 | McNeese | *3 | 11 | 3 | 22 | .364 | 0 | 0 | .000 | 0 | 0 | 0 | .000 | 0 | 0 | .000 | 0 | 0 | 2 | 0 | 2.0 | 0 | 12.0 | .333 | 3-0 | |
| 08/26/2023 | Jacksonville St. | *3 | 9 | 0 | 12 | .750 | 0 | 0 | .000 | 0 | 0 | 0 | .000 | 0 | 0 | .000 | 0 | 0 | 2 | 1 | 2.0 | 0 | 10.0 | .395 | 3-0 | |
| 09/02/2023 | vs SMU | *4 | 10 | 3 | 22 | .318 | 1 | 1 | 1.000 | 0 | 0 | 0 | .000 | 1 | 2 | .500 | 2 | 0 | 3 | 1 | 3.0 | 0 | 11.5 | .316 | 3-1 | |
| 09/03/2023 | at Florida St. | *4 | 13 | 1 | 29 | .414 | 0 | 2 | .000 | 0 | 0 | 1 | 1.000 | 0 | 0 | .000 | 2 | 0 | 2 | 0 | 2.0 | 0 | 14.0 | .356 | 3-1 | |
| 09/07/2023 | Middle Tenn. | *4 | 8 | 5 | 21 | .143 | 0 | 1 | .000 | 0 | 0 | 0 | .000 | 0 | 0 | .000 | 0 | 0 | 4 | 1 | 4.0 | 0 | 10.0 | .221 | 1-3 | |
| 09/22/2023 | Florida | *5 | 11 | 5 | 28 | .214 | 1 | 4 | .250 | 0 | 0 | 0 | .000 | 0 | 0 | .000 | 2 | 0 | 0 | 0 | 0.0 | 0 | 11.0 | .196 | 2-3 | |
| 09/24/2023 | Ole Miss | *4 | 9 | 4 | 30 | .167 | 0 | 0 | .000 | 0 | 0 | 0 | .000 | 0 | 0 | .000 | 4 | 1 | 6 | 0 | 7.0 | 0 | 13.0 | .199 | 3-1 | |
| 09/27/2023 | at Arkansas | *3 | 3 | 4 | 18 | -.056 | 0 | 0 | .000 | 0 | 0 | 0 | .000 | 0 | 0 | .000 | 1 | 0 | 1 | 1 | 1.0 | 0 | 3.5 | -.049 | 0-3 | |
| Totals | | | 34 | 88 | 27 | 207 | .295 | 2 | 9 | .222 | 0 | 0 | 1 | 1.000 | 1 | 2 | .500 | 12 | 1 | 23 | 4 | 24.0 | 0 | 100.5 | | |

Player Averages

| Sets Played | Kills per set | Assists per set | Service aces per set | Digs per set | Blocks per set | Points per set |
|-------------|---------------|-----------------|----------------------|--------------|----------------|----------------|
| 34 | 2.59 | 0.06 | 0.00 | 0.35 | 0.71 | 2.96 |

CAREER STATS

| SEASON | TEAM | SM-MP | K | K/S | E | TA | PCT | A | A/S | SA | SA/S | SE | DIG | D/S | RE | BS | BA | TB | B/S | BE | BHE | PTS | PTS/S |
|----------------------|------|-----------------|------------|-------------|-----------|------------|-------------|----------|-------------|----------|-------------|----------|-----------|-------------|----------|-----------|------------|------------|-------------|-----------|----------|--------------|-------------|
| 2020-21 | UK | 24-14 | 29 | 1.21 | 9 | 64 | .313 | 0 | 0.00 | 0 | 0.00 | 0 | 2 | 0.08 | 1 | 0 | 22 | 22 | 0.92 | 3 | 0 | 40.0 | 1.67 |
| 2021-22 | UK | 62-19 | 102 | 1.65 | 25 | 185 | .416 | 1 | 0.02 | 0 | 0.00 | 0 | 9 | 0.15 | 0 | 10 | 68 | 78 | 1.26 | 8 | 0 | 146.0 | 2.35 |
| 2022-23 | UK | 62-22 | 107 | 1.73 | 34 | 215 | .340 | 2 | 0.03 | 2 | 0.03 | 6 | 12 | 0.19 | 0 | 5 | 72 | 77 | 1.24 | 8 | 0 | 150.0 | 2.42 |
| 2023-24 | AUB | 34-9 | 88 | 2.59 | 27 | 207 | .295 | 2 | 0.06 | 0 | 0.00 | 0 | 12 | 0.35 | 1 | 1 | 23 | 24 | 0.71 | 4 | 0 | 100.5 | 2.96 |
| TOTAL FOR AUB | | 34 - 9 | 88 | 2.59 | 27 | 207 | .295 | 2 | 0.06 | 0 | 0.00 | 0 | 12 | 0.35 | 1 | 1 | 23 | 24 | 0.71 | 4 | 0 | 100.5 | 2.96 |
| TOTAL | | 182 - 64 | 326 | 1.79 | 95 | 671 | .344 | 5 | 0.03 | 2 | 0.01 | 6 | 35 | 0.19 | 2 | 16 | 185 | 201 | 1.10 | 23 | 0 | 436.5 | 2.40 |

#6 KYLA SWANSON

MIDDLE BLOCKER | 6-4 | GRADUATE
WAHOO, NEB. (ILLINOIS)



SWANSON'S HIGHLIGHTS:

- 2x Academic All-Big Ten
- Made the NCAA Sweet 16 with Illinois in 2021
- Has more than 170 blocks in her career
- Hit .727 at Penn State on Oct. 30, 2021

| CATEGORY | CAREER HIGH | OPPONENT/DATE |
|-----------------------------------|-------------|--------------------------------------|
| Kills | 10 (3x) | last vs SMU (9/2/23) |
| Attempts | 25 | vs Charleston Southern (9/8/23) |
| Hitting Percentage (Min. 10 ATT.) | .727 | at Penn State (10/30/21) |
| Assists | 2 | at Iowa (9/22/21) |
| Digs | 6 | at Tennessee (8/30/19) |
| Blocks | 10 | vs UC Santa Barbara (8/27/21) |
| Aces | 2 (2x) | last vs Jacksonville State (8/26/23) |
| Points | 15.5 | vs UC Santa Barbara (8/27/21) |

| CATEGORY | SEASON HIGH | OPPONENT/DATE |
|-----------------------------------|-------------|-----------------------------------|
| Kills | 10 | vs SMU (9/2/23) |
| Attempts | 25 | vs Charleston Southern (9/8/23) |
| Hitting Percentage (Min. 10 ATT.) | .500 | vs SMU (9/2/23) |
| Assists | 1 (4x) | last vs Mercer (9/9/23) |
| Digs | 2 (3x) | last vs Middle Tennessee (9/7/23) |
| Blocks | 8 | vs UAB (9/15/23) |
| Aces | 2 | vs Jacksonville State (8/26/23) |
| Points | 11.5 | vs SMU (9/2/23) |

GAME BY GAME

| Date | Opponent | SP | Attack | | | | Set | | | Serve | | | | Receipt | | | Blocking | | | | Team | | | | |
|---------------|------------------|----|-----------|-----------|-----------|-------------|----------|-----------|-------------|----------|-----------|-----------|-------------|----------|----------|--------------|-----------|----------|-----------|----------|-------------|----------|-------------|-------|-------|
| | | | K | E | TA | PCT | A | TA | PCT | SA | SE | TA | PCT | RE | TA | PCT | DIG | BS | BA | BE | TOTAL | BHE | POINTS | HIT% | SCORE |
| 08/25/2023 | Coppin St. | *4 | 3 | 2 | 6 | .167 | 0 | 1 | .000 | 2 | 4 | 17 | .765 | 0 | 0 | .000 | 1 | 1 | 5 | 0 | 6.0 | 0 | 8.5 | .309 | 3-1 |
| 08/26/2023 | McNeese | *3 | 6 | 2 | 12 | .333 | 0 | 1 | .000 | 0 | 4 | 11 | .636 | 0 | 0 | .000 | 1 | 0 | 1 | 1 | 1.0 | 0 | 6.5 | .333 | 3-0 |
| 08/26/2023 | Jacksonville St. | *3 | 3 | 1 | 7 | .286 | 1 | 3 | .333 | 0 | 1 | 4 | .750 | 0 | 0 | .000 | 2 | 1 | 2 | 0 | 3.0 | 0 | 5.0 | .395 | 3-0 |
| 09/02/2023 | vs SMU | *4 | 10 | 0 | 20 | .500 | 0 | 2 | .000 | 0 | 0 | 2 | 1.000 | 0 | 1 | 1.000 | 2 | 0 | 3 | 0 | 3.0 | 0 | 11.5 | .316 | 3-1 |
| 09/03/2023 | at Florida St. | *4 | 8 | 1 | 15 | .467 | 0 | 1 | .000 | 1 | 0 | 4 | 1.000 | 0 | 0 | .000 | 0 | 0 | 4 | 0 | 4.0 | 0 | 11.0 | .356 | 3-1 |
| 09/07/2023 | Middle Tenn. | *4 | 9 | 3 | 18 | .333 | 1 | 3 | .333 | 0 | 2 | 11 | .818 | 0 | 0 | .000 | 2 | 0 | 4 | 1 | 4.0 | 0 | 11.0 | .221 | 1-3 |
| 09/08/2023 | Charleston So. | 4 | 4 | 5 | 25 | -.040 | 1 | 2 | .500 | 0 | 0 | 0 | .000 | 0 | 0 | .000 | 1 | 0 | 3 | 0 | 3.0 | 0 | 5.5 | .245 | 3-1 |
| 09/09/2023 | Mercer | 3 | 1 | 3 | 5 | -.400 | 1 | 2 | .500 | 0 | 0 | 0 | .000 | 0 | 0 | .000 | 1 | 0 | 4 | 0 | 4.0 | 0 | 3.0 | .346 | 3-0 |
| 09/14/2023 | at South Alabama | *3 | 2 | 5 | 10 | -.300 | 0 | 3 | .000 | 0 | 2 | 9 | .778 | 0 | 0 | .000 | 2 | 0 | 4 | 0 | 4.0 | 0 | 4.0 | .191 | 3-2 |
| 09/15/2023 | vs UAB | *4 | 3 | 0 | 9 | .333 | 0 | 2 | .000 | 0 | 0 | 0 | .000 | 0 | 0 | .000 | 1 | 0 | 8 | 0 | 8.0 | 0 | 7.0 | .189 | 3-1 |
| 09/16/2023 | vs Samford | *4 | 7 | 1 | 9 | .667 | 0 | 2 | .000 | 0 | 0 | 0 | .000 | 0 | 0 | .000 | 0 | 1 | 2 | 0 | 3.0 | 0 | 9.0 | .386 | 3-1 |
| 09/22/2023 | Florida | *5 | 3 | 1 | 10 | .200 | 0 | 3 | .000 | 0 | 0 | 1 | 1.000 | 0 | 0 | .000 | 0 | 1 | 2 | 0 | 3.0 | 0 | 5.0 | .196 | 2-3 |
| 09/24/2023 | Ole Miss | *4 | 6 | 3 | 19 | .158 | 0 | 0 | .000 | 0 | 0 | 0 | .000 | 0 | 0 | .000 | 0 | 0 | 2 | 0 | 2.0 | 0 | 7.0 | .199 | 3-1 |
| 09/27/2023 | at Arkansas | *3 | 3 | 3 | 8 | .000 | 0 | 1 | .000 | 0 | 0 | 0 | .000 | 0 | 0 | .000 | 0 | 0 | 2 | 0 | 2.0 | 0 | 4.0 | -.049 | 0-3 |
| Totals | | | 52 | 68 | 30 | .220 | 4 | 26 | .154 | 3 | 13 | 59 | .780 | 0 | 1 | 1.000 | 13 | 4 | 46 | 2 | 50.0 | 0 | 98.0 | | |

Player Averages

| Sets Played | Kills per set | Assists per set | Service aces per set | Digs per set | Blocks per set | Points per set |
|-------------|---------------|-----------------|----------------------|--------------|----------------|----------------|
| 52 | 1.31 | 0.08 | 0.06 | 0.25 | 0.96 | 1.88 |

CAREER STATS

| SEASON | TEAM | SM-MP | K | K/S | E | TA | PCT | A | A/S | SA | SA/S | SE | DIG | D/S | RE | BS | BA | TB | B/S | BE | BHE | PTS | PTS/S |
|----------------------|--------|-----------------|------------|-------------|------------|------------|-------------|-----------|-------------|----------|-------------|-----------|-----------|-------------|----------|-----------|------------|------------|-------------|-----------|----------|--------------|-------------|
| 2019-20 | Illini | 16-5 | 7 | 0.44 | 3 | 29 | .138 | 1 | 0.06 | 0 | 0.00 | 3 | 7 | 0.44 | 0 | 0 | 11 | 11 | 0.69 | 1 | 1 | 12.5 | 0.78 |
| 2020-21 | Illini | 21-7 | 20 | 0.95 | 9 | 64 | .172 | 1 | 0.05 | 0 | 0.00 | 0 | 6 | 0.29 | 0 | 0 | 16 | 16 | 0.76 | 1 | 1 | 28.0 | 1.33 |
| 2021-22 | Illini | 101-27 | 149 | 1.48 | 45 | 316 | .329 | 3 | 0.03 | 0 | 0.00 | 0 | 13 | 0.13 | 2 | 9 | 97 | 106 | 1.05 | 9 | 2 | 206.5 | 2.04 |
| 2022-23 | Illini | 51-15 | 53 | 1.04 | 19 | 120 | .283 | 2 | 0.04 | 5 | 0.10 | 7 | 6 | 0.12 | 0 | 3 | 41 | 44 | 0.86 | 4 | 0 | 81.5 | 1.60 |
| 2023-24 | AUB | 52-14 | 68 | 1.31 | 30 | 173 | .220 | 4 | 0.08 | 3 | 0.06 | 13 | 13 | 0.25 | 0 | 4 | 46 | 50 | 0.96 | 2 | 0 | 98.0 | 1.88 |
| TOTAL FOR AUB | | 52 - 14 | 68 | 1.31 | 30 | 173 | .220 | 4 | 0.08 | 3 | 0.06 | 13 | 13 | 0.25 | 0 | 4 | 46 | 50 | 0.96 | 2 | 0 | 98.0 | 1.88 |
| TOTAL | | 241 - 68 | 297 | 1.23 | 106 | 702 | .272 | 11 | 0.05 | 8 | 0.03 | 23 | 45 | 0.19 | 2 | 16 | 211 | 227 | 0.94 | 17 | 4 | 426.5 | 1.77 |

#7 PEYTON DUNN

SETTER | 5-11 | REDSHIRT-SOPHOMORE
DECATUR, TEXAS (LEGEND)



SWANSON'S HIGHLIGHTS:

- 4x Big 12 Rookie of the Week
- All-Big 12 Rookie Team
- Had a career-high 54 assists vs Texas Tech on Oct. 14, 2021

| CATEGORY | CAREER HIGH | OPPONENT/DATE |
|-----------------------------------|-------------|--------------------------|
| Kills | 6 | vs Indiana (9/10/21) |
| Attempts | 11 (3x) | last at TCU (10/8/21) |
| Hitting Percentage (Min. 10 ATT.) | .500 | vs Indiana (9/10/21) |
| Assists | 54 | vs Texas Tech (10/14/21) |
| Digs | 18 | vs FIU (8/28/22) |
| Blocks | 6 (3x) | last at TCU (10/9/22) |
| Aces | 2 (4x) | last vs FIU (8/28/22) |
| Points | 7.0 | at TCU (10/9/21) |

| CATEGORY | SEASON HIGH | OPPONENT/DATE |
|-----------------------------------|-------------|--------------------------------------|
| Kills | 3 | vs Jacksonville State (8/26/23) |
| Attempts | 4 | vs Jacksonville State (8/26/23) |
| Hitting Percentage (Min. 10 ATT.) | -- | -- |
| Assists | 43 | vs Coppin State (8/25/23) |
| Digs | 4 (2x) | last vs Jacksonville State (8/26/23) |
| Blocks | 2 | vs Coppin State (8/25/23) |
| Aces | 1 | vs Coppin State (8/25/23) |
| Points | 3.0 (2x) | last vs Jacksonville State (8/26/23) |

GAME BY GAME

| Date | Opponent | SP | Attack | | | | Set | | | Serve | | | | Recept | | | Blocking | | | | Team | | | | |
|---------------|------------------|----------|----------|----------|----------|-------------|-----------|------------|-------------|----------|----------|-----------|-------------|----------|----------|-------------|----------|----------|----------|----------|------------|----------|------------|------|-------|
| | | | K | E | TA | PCT | A | TA | PCT | SA | SE | TA | PCT | RE | TA | PCT | DIG | BS | BA | BE | TOTAL | BHE | POINTS | HIT% | SCORE |
| 08/25/2023 | Coppin St. | *4 | 1 | 0 | 3 | .333 | 43 | 111 | .387 | 1 | 5 | 11 | .545 | 0 | 0 | .000 | 4 | 0 | 2 | 0 | 2.0 | 0 | 3.0 | .309 | 3-1 |
| 08/26/2023 | Jacksonville St. | 2 | 3 | 1 | 4 | .500 | 16 | 30 | .533 | 0 | 2 | 4 | .500 | 0 | 0 | .000 | 4 | 0 | 0 | 0 | 0.0 | 0 | 3.0 | .395 | 3-0 |
| Totals | | 6 | 4 | 1 | 7 | .429 | 59 | 141 | .418 | 1 | 7 | 15 | .533 | 0 | 0 | .000 | 8 | 0 | 2 | 0 | 2.0 | 0 | 6.0 | | |

Player Averages

| Sets Played | Kills per set | Assists per set | Service aces per set | Digs per set | Blocks per set | Points per set |
|-------------|---------------|-----------------|----------------------|--------------|----------------|----------------|
| 6 | 0.67 | 9.83 | 0.17 | 1.33 | 0.33 | 1.00 |

CAREER STATS

| SEASON | TEAM | SM-MP | K | K/S | E | TA | PCT | A | A/S | SA | SA/S | SE | DIG | D/S | RE | BS | BA | TB | B/S | BE | BHE | PTS | PTS/S |
|----------------------|-----------------|-----------|-------------|-----------|------------|-------------|-------------|-------------|-----------|-------------|-----------|------------|-------------|----------|----------|-----------|-----------|-------------|----------|----------|--------------|-------------|-------|
| 2021-22 | OU | 107-27 | 67 | 0.63 | 15 | 163 | .319 | 997 | 9.32 | 13 | 0.12 | 45 | 198 | 1.85 | 0 | 0 | 63 | 63 | 0.59 | 2 | 5 | 111.5 | 1.04 |
| 2022-23 | OU | 24-7 | 12 | 0.50 | 4 | 25 | .320 | 252 | 10.50 | 3 | 0.13 | 8 | 57 | 2.38 | 0 | 0 | 11 | 11 | 0.46 | 3 | 4 | 20.5 | 0.85 |
| 2023-24 | AUB | 6-2 | 4 | 0.67 | 1 | 7 | .429 | 59 | 9.83 | 1 | 0.17 | 7 | 8 | 1.33 | 0 | 0 | 2 | 2 | 0.33 | 0 | 0 | 6.0 | 1.00 |
| TOTAL FOR AUB | 6 - 2 | 4 | 0.67 | 1 | 7 | .429 | 59 | 9.83 | 1 | 0.17 | 7 | 8 | 1.33 | 0 | 0 | 2 | 2 | 0.33 | 0 | 0 | 6.0 | 1.00 | |
| TOTAL | 137 - 36 | 83 | 0.61 | 20 | 195 | .323 | 1308 | 9.55 | 17 | 0.12 | 60 | 263 | 1.92 | 0 | 0 | 76 | 76 | 0.55 | 5 | 9 | 138.0 | 1.01 | |

#8 KENDAL KEMP

MIDDLE BLOCKER | 6-6 | SOPHOMORE
EAGAN, MINN. (EAGAN)



KEMP'S HIGHLIGHTS:

- Has set the Auburn single-season record for total blocks, block assists and blocks per set
- Tied the program record for most blocks in a 3-set match with 9 vs. Belmont
- 2x SEC Freshman of the Week
- Named to the SEC All-Freshman Team
- Named AVCA South Region Honorable Mention
- Made her collegiate debut on Aug. 26 vs. Belmont

| CATEGORY | CAREER HIGH | OPPONENT/DATE |
|-----------------------------------|-------------|-----------------------------------|
| Kills | 13 | vs Charleston Southern (9/8/23) |
| Attempts | 21 (2x) | last at South Carolina (11/23/22) |
| Hitting Percentage (Min. 10 ATT.) | .714 | at Missouri (10/15/22) |
| Assists | 1 (2x) | last at LSU (10/5/22) |
| Digs | 2 (2x) | last at Kentucky (10/29/22) |
| Blocks | 10 (4x) | last vs UAB (9/15/22) |
| Aces | 3 | at Georgia State (8/26/22) |
| Points | 17.5 | at South Carolina (11/23/22) |

| CATEGORY | SEASON HIGH | OPPONENT/DATE |
|-----------------------------------|-------------|---------------------------------|
| Kills | 13 | vs Charleston Southern (9/8/23) |
| Attempts | 19 | vs Charleston Southern (9/8/23) |
| Hitting Percentage (Min. 10 ATT.) | .526 | vs Charleston Southern (9/8/23) |
| Assists | -- | -- |
| Digs | 1 (4x) | vs UAB (9/15/23) |
| Blocks | 10 | vs UAB (9/15/23) |
| Aces | 1 | vs Coppin State (8/25/23) |
| Points | 15.5 | vs Charleston Southern (9/8/23) |

GAME BY GAME

| Date | Opponent | SP | Attack | | | | Set | | | Serve | | | | Recept | | | Blocking | | | | Team | | | | |
|---------------|------------------|-----------|-----------|-----------|------------|-------------|----------|----------|-------------|----------|----------|----------|-------------|----------|----------|--------------|----------|----------|-----------|----------|-------------|----------|-------------|------|-------|
| | | | K | E | TA | PCT | A | TA | PCT | SA | SE | TA | PCT | RE | TA | PCT | DIG | BS | BA | BE | TOTAL | BHE | POINTS | HIT% | SCORE |
| 08/25/2023 | Coppin St. | *4 | 5 | 2 | 17 | .176 | 0 | 1 | .000 | 1 | 2 | 5 | .600 | 0 | 0 | .000 | 0 | 2 | 3 | 0 | 5.0 | 0 | 9.5 | .309 | 3-1 |
| 08/26/2023 | McNeese | *2 | 4 | 1 | 6 | .500 | 0 | 1 | .000 | 0 | 0 | 0 | .000 | 0 | 0 | .000 | 0 | 2 | 3 | 0 | 5.0 | 0 | 7.5 | .333 | 3-0 |
| 08/26/2023 | Jacksonville St. | *2 | 2 | 0 | 2 | 1.000 | 0 | 1 | .000 | 0 | 0 | 0 | .000 | 0 | 0 | .000 | 0 | 1 | 1 | 0 | 2.0 | 0 | 3.5 | .395 | 3-0 |
| 09/02/2023 | vs SMU | *4 | 4 | 0 | 7 | .571 | 0 | 0 | .000 | 0 | 0 | 0 | .000 | 0 | 0 | .000 | 0 | 0 | 4 | 2 | 4.0 | 0 | 6.0 | .316 | 3-1 |
| 09/03/2023 | at Florida St. | *4 | 9 | 3 | 13 | .462 | 0 | 1 | .000 | 0 | 0 | 0 | .000 | 0 | 0 | .000 | 1 | 0 | 4 | 3 | 4.0 | 0 | 11.0 | .356 | 3-1 |
| 09/07/2023 | Middle Tenn. | *4 | 5 | 2 | 9 | .333 | 0 | 1 | .000 | 0 | 0 | 0 | .000 | 0 | 0 | .000 | 1 | 0 | 5 | 0 | 5.0 | 0 | 7.5 | .221 | 1-3 |
| 09/08/2023 | Charleston So. | *4 | 13 | 3 | 19 | .526 | 0 | 1 | .000 | 0 | 0 | 0 | .000 | 0 | 0 | .000 | 0 | 0 | 5 | 0 | 5.0 | 0 | 15.5 | .245 | 3-1 |
| 09/09/2023 | Mercer | *3 | 6 | 1 | 10 | .500 | 0 | 0 | .000 | 0 | 1 | 1 | .000 | 0 | 1 | 1.000 | 0 | 0 | 7 | 0 | 7.0 | 0 | 9.5 | .346 | 3-0 |
| 09/14/2023 | at South Alabama | *5 | 6 | 1 | 11 | .455 | 0 | 0 | .000 | 0 | 0 | 0 | .000 | 0 | 0 | .000 | 1 | 0 | 3 | 0 | 3.0 | 0 | 7.5 | .191 | 3-2 |
| 09/15/2023 | vs UAB | *4 | 8 | 3 | 17 | .294 | 0 | 2 | .000 | 0 | 0 | 0 | .000 | 0 | 0 | .000 | 1 | 1 | 9 | 2 | 10.0 | 0 | 13.5 | .189 | 3-1 |
| 09/16/2023 | vs Samford | *4 | 5 | 2 | 11 | .273 | 0 | 0 | .000 | 0 | 0 | 0 | .000 | 0 | 0 | .000 | 0 | 0 | 2 | 0 | 2.0 | 0 | 6.0 | .386 | 3-1 |
| Totals | | 40 | 67 | 18 | 122 | .402 | 0 | 8 | .000 | 1 | 3 | 6 | .500 | 0 | 1 | 1.000 | 4 | 6 | 46 | 7 | 52.0 | 0 | 97.0 | | |

Player Averages

| Sets Played | Kills per set | Assists per set | Service aces per set | Digs per set | Blocks per set | Points per set |
|-------------|---------------|-----------------|----------------------|--------------|----------------|----------------|
| 40 | 1.68 | 0.00 | 0.03 | 0.10 | 1.30 | 2.43 |

CAREER STATS

| SEASON | TEAM | SM-MP | K | K/S | E | TA | PCT | A | A/S | SA | SA/S | SE | DIG | D/S | RE | BS | BA | TB | B/S | BE | BHE | PTS | PTS/S |
|--------------|------|-----------------|------------|-------------|-----------|------------|-------------|----------|-------------|----------|-------------|-----------|-----------|-------------|----------|-----------|------------|------------|-------------|-----------|----------|--------------|-------------|
| 2022-23 | AUB | 122-31 | 204 | 1.67 | 66 | 430 | .321 | 2 | 0.02 | 7 | 0.06 | 16 | 12 | 0.10 | 1 | 26 | 154 | 180 | 1.48 | 13 | 0 | 314.0 | 2.57 |
| 2023-24 | AUB | 40-11 | 67 | 1.68 | 18 | 122 | .402 | 0 | 0.00 | 1 | 0.03 | 3 | 4 | 0.10 | 0 | 6 | 46 | 52 | 1.30 | 7 | 0 | 97.0 | 2.43 |
| TOTAL | | 162 - 42 | 271 | 1.67 | 84 | 552 | .339 | 2 | 0.01 | 8 | 0.05 | 19 | 16 | 0.10 | 1 | 32 | 200 | 232 | 1.43 | 20 | 0 | 411.0 | 2.54 |

#9 ZOE SLAUGHTER

LIBERO | 5-7 | SOPHOMORE
HONOLULU, HAWAII (MOANALUA)



SLAUGHTER'S HIGHLIGHTS:

- Recorded 10+ digs in 10 matches last season
- Grabbed a career-high 22 digs at Alabama on Sept. 24, 2022
- Made her collegiate debut on Aug. 26 vs. Belmont

| CATEGORY | CAREER HIGH | OPPONENT/DATE |
|-----------------------------------|-------------|------------------------------|
| Kills | 1 (2x) | last at Missouri (10/15/22) |
| Attempts | 1 (4x) | last vs McNeese (8/26/23) |
| Hitting Percentage (Min. 10 ATT.) | -- | -- |
| Assists | 5 | at South Alabama (9/14/23) |
| Digs | 29 | at South Alabama (9/13/23) |
| Blocks | -- | -- |
| Aces | 3 (2x) | last vs Alabama A&M (9/6/22) |
| Points | 3.0 (3x) | last vs Troy (9/10/22) |

| CATEGORY | SEASON HIGH | OPPONENT/DATE |
|-----------------------------------|-------------|----------------------------|
| Kills | -- | -- |
| Attempts | 3 | vs Samford (9/16/23) |
| Hitting Percentage (Min. 10 ATT.) | -- | -- |
| Assists | 5 | at South Alabama (9/14/23) |
| Digs | 29 | at South Alabama (9/14/23) |
| Blocks | -- | -- |
| Aces | 2 | at Florida State (9/3/23) |
| Points | 2.0 | at Florida State (9/3/23) |

GAME BY GAME

| Date | Opponent | SP | Attack | | | Set | | | Serve | | | | Receipt | | | Blocking | | | | Team | | | |
|---------------|------------------|-----------|----------|----------|---------------|-----------|-----------|-------------|----------|-----------|-----------------|-----------|------------|-------------|------------|----------|----------|----------|------------|----------|------------|--------|------|
| | | | K | E | TA PCT | A | TA | PCT | SA | SE | TA | PCT | RE | TA | PCT | DIG | BS | BA | BE | TOTAL | BHE | POINTS | HIT% |
| 08/25/2023 | Coppin St. | 4 | 0 | 0 | 0 .000 | 1 | 2 | .500 | 1 | 4 | 17 .765 | 0 | 16 | 1.000 | 5 | 0 | 0 | 0 | 0.0 | 0 | 1.0 | .309 | 3-1 |
| 08/26/2023 | McNeese | 3 | 0 | 0 | 1 .000 | 1 | 4 | .250 | 0 | 0 | 12 1.000 | 0 | 11 | 1.000 | 6 | 0 | 0 | 0 | 0.0 | 0 | 0.0 | .333 | 3-0 |
| 08/26/2023 | Jacksonville St. | *3 | 0 | 0 | 0 .000 | 1 | 2 | .500 | 0 | 0 | 9 1.000 | 0 | 11 | 1.000 | 5 | 0 | 0 | 0 | 0.0 | 0 | 0.0 | .395 | 3-0 |
| 09/02/2023 | vs SMU | *4 | 0 | 0 | 0 .000 | 0 | 3 | .000 | 0 | 1 | 11 .909 | 0 | 16 | 1.000 | 2 | 0 | 0 | 0 | 0.0 | 0 | 0.0 | .316 | 3-1 |
| 09/03/2023 | at Florida St. | *4 | 0 | 0 | 1 .000 | 1 | 4 | .250 | 2 | 3 | 22 .864 | 1 | 28 | .964 | 10 | 0 | 0 | 0 | 0.0 | 0 | 2.0 | .356 | 3-1 |
| 09/07/2023 | Middle Tenn. | *4 | 0 | 0 | 0 .000 | 2 | 3 | .667 | 0 | 1 | 18 .944 | 0 | 10 | 1.000 | 3 | 0 | 0 | 0 | 0.0 | 0 | 0.0 | .221 | 1-3 |
| 09/08/2023 | Charleston So. | 4 | 0 | 0 | 0 .000 | 0 | 3 | .000 | 0 | 1 | 17 .941 | 0 | 9 | 1.000 | 7 | 0 | 0 | 0 | 0.0 | 0 | 0.0 | .245 | 3-1 |
| 09/09/2023 | Mercer | *3 | 0 | 0 | 0 .000 | 0 | 0 | .000 | 0 | 1 | 8 .875 | 0 | 6 | 1.000 | 5 | 0 | 0 | 0 | 0.0 | 0 | 0.0 | .346 | 3-0 |
| 09/14/2023 | at South Alabama | 5 | 0 | 0 | 2 .000 | 5 | 15 | .333 | 1 | 4 | 13 .692 | 5 | 29 | .828 | 29 | 0 | 0 | 0 | 0.0 | 0 | 1.0 | .191 | 3-2 |
| 09/15/2023 | vs UAB | 4 | 0 | 0 | 1 .000 | 4 | 13 | .308 | 0 | 0 | 18 1.000 | 0 | 12 | 1.000 | 11 | 0 | 0 | 0 | 0.0 | 0 | 0.0 | .189 | 3-1 |
| 09/16/2023 | vs Samford | 4 | 0 | 0 | 3 .000 | 4 | 9 | .444 | 0 | 0 | 13 1.000 | 3 | 23 | .870 | 16 | 0 | 0 | 0 | 0.0 | 0 | 0.0 | .386 | 3-1 |
| 09/22/2023 | Florida | 5 | 0 | 0 | 0 .000 | 1 | 3 | .333 | 0 | 1 | 20 .950 | 0 | 15 | 1.000 | 11 | 0 | 0 | 0 | 0.0 | 0 | 0.0 | .196 | 2-3 |
| 09/24/2023 | Ole Miss | 4 | 0 | 0 | 0 .000 | 1 | 3 | .333 | 0 | 2 | 13 .846 | 0 | 6 | 1.000 | 7 | 0 | 0 | 0 | 0.0 | 0 | 0.0 | .199 | 3-1 |
| 09/27/2023 | at Arkansas | 3 | 0 | 0 | 0 .000 | 0 | 3 | .000 | 1 | 1 | 6 .833 | 1 | 11 | .909 | 1 | 0 | 0 | 0 | 0.0 | 0 | 1.0 | -.049 | 0-3 |
| Totals | | 54 | 0 | 0 | 8 .000 | 21 | 67 | .313 | 5 | 19 | 197 .904 | 10 | 203 | .951 | 118 | 0 | 0 | 0 | 0.0 | 0 | 5.0 | | |

Player Averages

| Sets Played | Kills per set | Assists per set | Service aces per set | Digs per set | Blocks per set | Points per set |
|-------------|---------------|-----------------|----------------------|--------------|----------------|----------------|
| 54 | 0.00 | 0.39 | 0.09 | 2.19 | 0.00 | 0.09 |

CAREER STATS

| SEASON | TEAM | SM-MP | K | K/S | E | TA | PCT | A | A/S | SA | SA/S | SE | DIG | D/S | RE | BS | BA | TB | B/S | BE | BHE | PTS | PTS/S |
|--------------|------|-----------------|----------|-------------|----------|-----------|-------------|-----------|-------------|-----------|-------------|-----------|------------|-------------|-----------|----------|----------|----------|-------------|----------|----------|-------------|-------------|
| 2022-23 | AUB | 122-31 | 2 | 0.02 | 1 | 4 | .250 | 22 | 0.18 | 19 | 0.16 | 41 | 267 | 2.19 | 14 | 0 | 0 | 0 | 0.00 | 0 | 1 | 21.0 | 0.17 |
| 2023-24 | AUB | 54-14 | 0 | 0.00 | 0 | 8 | .000 | 21 | 0.39 | 5 | 0.09 | 19 | 118 | 2.19 | 10 | 0 | 0 | 0 | 0.00 | 0 | 0 | 5.0 | 0.09 |
| TOTAL | | 176 - 45 | 2 | 0.01 | 1 | 12 | .083 | 43 | 0.24 | 24 | 0.14 | 60 | 385 | 2.19 | 24 | 0 | 0 | 0 | 0.00 | 0 | 1 | 26.0 | 0.15 |

#10 JACKIE BARRETT

SETTER | 6-2 | SENIOR
HIGHLAND, CALIF. (CITRUS VALLEY)



BARRETT'S HIGHLIGHTS

- 2x SEC Setter of the Week
- Set a career-high in aces with 5 against Mercer
- Set her career-high in assists with 60 against LSU on Oct. 5, 2022

| CATEGORY | CAREER HIGH | OPPONENT/DATE |
|-----------------------------------|-------------|----------------------------------|
| Kills | 6 (2x) | last, at Alabama State (9/26/21) |
| Attempts | 20 | at Alabama State (9/26/21) |
| Hitting Percentage (Min. 10 ATT.) | .308 | vs. Florida A&M (9/17/21) |
| Assists | 60 | at LSU (10/5/22) |
| Digs | 28 | vs. Nicholls (9/17/21) |
| Blocks | 8.0 | at Arkansas (10/9/21) |
| Aces | 5 (2x) | at South Alabama (9/14/23) |
| Points | 10.0 | vs. Florida A&M (9/17/21) |

| CATEGORY | SEASON HIGH | OPPONENT/DATE |
|-----------------------------------|-------------|---------------------------------|
| Kills | 5 (3x) | last vs Florida (9/22/23) |
| Attempts | 10 | vs Ole Miss (9/24/23) |
| Hitting Percentage (Min. 10 ATT.) | .200 | vs Ole Miss (9/24/23) |
| Assists | 48 | at South Alabama (9/14/23) |
| Digs | 17 | vs Ole Miss (9/24/23) |
| Blocks | 5 | vs UAB (9/15/23) |
| Aces | 5 (2x) | last at South Alabama (9/14/23) |
| Points | 9.0 | vs Mercer (9/9/23) |

GAME BY GAME

| Date | Opponent | SP | Attack | | | | Set | | | Serve | | | Recept | | | Blocking | | | | Team | | | | | |
|---------------|------------------|-----------|-----------|----------|-----------|-------------|------------|-------------|-------------|-----------|-----------|------------|-------------|----------|----------|--------------|------------|----------|-----------|----------|-------------|----------|-------------|-------|-------|
| | | | K | E | TA | PCT | A | TA | PCT | SA | SE | TA | PCT | RE | TA | PCT | DIG | BS | BA | BE | TOTAL | BHE | POINTS | HIT% | SCORE |
| 08/26/2023 | McNeese | *3 | 1 | 0 | 4 | .250 | 31 | 72 | .431 | 0 | 1 | 15 | .933 | 0 | 0 | .000 | 6 | 0 | 2 | 0 | 2.0 | 0 | 2.0 | .333 | 3-0 |
| 08/26/2023 | Jacksonville St. | *2 | 1 | 0 | 2 | .500 | 14 | 25 | .560 | 0 | 0 | 1 | 1.000 | 0 | 0 | .000 | 2 | 0 | 1 | 0 | 1.0 | 0 | 1.5 | .395 | 3-0 |
| 09/02/2023 | vs SMU | *4 | 5 | 0 | 7 | .714 | 36 | 96 | .375 | 1 | 0 | 16 | 1.000 | 0 | 1 | 1.000 | 14 | 0 | 2 | 1 | 2.0 | 0 | 7.0 | .316 | 3-1 |
| 09/03/2023 | at Florida St. | *4 | 3 | 2 | 7 | .143 | 44 | 99 | .444 | 0 | 0 | 16 | 1.000 | 0 | 0 | .000 | 11 | 0 | 3 | 0 | 3.0 | 0 | 4.5 | .356 | 3-1 |
| 09/07/2023 | Middle Tenn. | *4 | 5 | 0 | 7 | .714 | 39 | 104 | .375 | 1 | 1 | 13 | .923 | 0 | 0 | .000 | 10 | 0 | 0 | 0 | 0.0 | 0 | 6.0 | .221 | 1-3 |
| 09/08/2023 | Charleston So. | *4 | 1 | 1 | 6 | .000 | 41 | 111 | .369 | 0 | 0 | 14 | 1.000 | 0 | 0 | .000 | 13 | 0 | 3 | 0 | 3.0 | 0 | 2.5 | .245 | 3-1 |
| 09/09/2023 | Mercer | *3 | 2 | 0 | 2 | 1.000 | 31 | 64 | .484 | 5 | 0 | 16 | 1.000 | 0 | 0 | .000 | 5 | 0 | 4 | 0 | 4.0 | 0 | 9.0 | .346 | 3-0 |
| 09/14/2023 | at South Alabama | *5 | 2 | 0 | 6 | .333 | 48 | 142 | .338 | 5 | 3 | 23 | .870 | 0 | 0 | .000 | 11 | 0 | 3 | 0 | 3.0 | 2 | 8.5 | .191 | 3-2 |
| 09/15/2023 | vs UAB | *4 | 3 | 1 | 6 | .333 | 35 | 98 | .357 | 0 | 1 | 14 | .929 | 0 | 0 | .000 | 6 | 0 | 5 | 0 | 5.0 | 0 | 5.5 | .189 | 3-1 |
| 09/16/2023 | vs Samford | *4 | 3 | 0 | 5 | .600 | 46 | 93 | .495 | 1 | 1 | 12 | .917 | 0 | 0 | .000 | 6 | 1 | 0 | 0 | 1.0 | 1 | 5.0 | .386 | 3-1 |
| 09/22/2023 | Florida | *5 | 5 | 0 | 9 | .556 | 40 | 122 | .328 | 1 | 3 | 15 | .800 | 0 | 1 | 1.000 | 12 | 0 | 2 | 1 | 2.0 | 0 | 7.0 | .196 | 2-3 |
| 09/24/2023 | Ole Miss | *4 | 3 | 1 | 10 | .200 | 42 | 119 | .353 | 1 | 0 | 20 | 1.000 | 0 | 0 | .000 | 17 | 0 | 1 | 0 | 1.0 | 0 | 4.5 | .199 | 3-1 |
| 09/27/2023 | at Arkansas | *3 | 1 | 0 | 2 | .500 | 11 | 59 | .186 | 0 | 1 | 6 | .833 | 0 | 0 | .000 | 5 | 0 | 1 | 1 | 1.0 | 0 | 1.5 | -.049 | 0-3 |
| Totals | | 49 | 35 | 5 | 73 | .411 | 458 | 1204 | .380 | 15 | 11 | 181 | .939 | 0 | 2 | 1.000 | 118 | 1 | 27 | 3 | 28.0 | 3 | 64.5 | | |

Player Averages

| Sets Played | Kills per set | Assists per set | Service aces per set | Digs per set | Blocks per set | Points per set |
|-------------|---------------|-----------------|----------------------|--------------|----------------|----------------|
| 49 | 0.71 | 9.35 | 0.31 | 2.41 | 0.57 | 1.32 |

CAREER STATS

| SEASON | TEAM | SM-MP | K | K/S | E | TA | PCT | A | A/S | SA | SA/S | SE | DIG | D/S | RE | BS | BA | TB | B/S | BE | BHE | PTS | PTS/S |
|--------------|------|-----------------|------------|-------------|-----------|------------|-------------|-------------|-------------|-----------|-------------|-----------|------------|-------------|----------|-----------|------------|------------|-------------|-----------|----------|--------------|-------------|
| 2020-21 | AUB | 19-6 | 9 | 0.47 | 6 | 44 | .068 | 144 | 7.58 | 3 | 0.16 | 8 | 33 | 1.74 | 0 | 0 | 11 | 11 | 0.58 | 1 | 0 | 17.5 | 0.92 |
| 2021-22 | AUB | 100-28 | 51 | 0.51 | 14 | 180 | .206 | 809 | 8.09 | 22 | 0.22 | 24 | 307 | 3.07 | 0 | 2 | 60 | 62 | 0.62 | 8 | 1 | 105.0 | 1.05 |
| 2022-23 | AUB | 106-28 | 41 | 0.39 | 8 | 116 | .284 | 1057 | 9.97 | 26 | 0.25 | 28 | 220 | 2.08 | 1 | 9 | 75 | 84 | 0.79 | 10 | 0 | 113.5 | 1.07 |
| 2023-24 | AUB | 49-13 | 35 | 0.71 | 5 | 73 | .411 | 458 | 9.35 | 15 | 0.31 | 11 | 118 | 2.41 | 0 | 1 | 27 | 28 | 0.57 | 3 | 3 | 64.5 | 1.32 |
| TOTAL | | 274 - 75 | 136 | 0.50 | 33 | 413 | .249 | 2468 | 9.01 | 66 | 0.24 | 71 | 678 | 2.47 | 1 | 12 | 173 | 185 | 0.68 | 22 | 4 | 300.5 | 1.10 |

#11 JORDAN SINNESS

SETTER | 5-9 | JUNIOR
SEBRING, FLA. (SEBRING)



SINNESS' HIGHLIGHTS:

- Recorded the Tigers' first double-double of the season at Georgia State with 42 assists and 12 digs.
- Grabbed a career-high 49 assists in 5-set win at UAB
- Made collegiate debut versus Cal State Fullerton (9/2), dishing out 16 assists, six digs, one kill and a block

| CATEGORY | CAREER HIGH | OPPONENT/DATE |
|-----------------------------------|-------------|-------------------------|
| Kills | 3 | vs Alabama A&M (9/6/22) |
| Attempts | 7 | at UAB (9/10/22) |
| Hitting Percentage (Min. 10 ATT.) | | |
| Assists | 49 | at UAB (9/10/22) |
| Digs | 14 | vs. Missouri (10/17/21) |
| Blocks | 5 | at UAB (9/10/22) |
| Aces | 3 | vs Alabama A&M (9/6/22) |
| Points | 7.0 | vs Alabama A&M (9/6/22) |

| CATEGORY | SEASON HIGH | OPPONENT/DATE |
|-----------------------------------|-------------|---------------|
| Kills | -- | -- |
| Attempts | -- | -- |
| Hitting Percentage (Min. 10 ATT.) | -- | -- |
| Assists | -- | -- |
| Digs | -- | -- |
| Blocks | -- | -- |
| Aces | -- | -- |
| Points | -- | -- |

GAME BY GAME

CAREER STATS

| SEASON | TEAM | SM-MP | K | K/S | E | TA | PCT | A | A/S | SA | SA/S | SE | DIG | D/S | RE | BS | BA | TB | B/S | BE | BHE | PTS | PTS/S |
|--------------|------|----------------|----------|-------------|----------|-----------|-------------|------------|-------------|-----------|-------------|-----------|-----------|-------------|----------|----------|-----------|-----------|-------------|----------|----------|-------------|-------------|
| 2021-22 | AUB | 50-15 | 2 | 0.04 | 1 | 6 | .167 | 64 | 1.28 | 6 | 0.12 | 7 | 33 | 0.66 | 0 | 0 | 3 | 3 | 0.06 | 0 | 2 | 9.5 | 0.19 |
| 2022-23 | AUB | 49-14 | 5 | 0.10 | 0 | 15 | .333 | 163 | 3.33 | 16 | 0.33 | 22 | 51 | 1.04 | 0 | 2 | 13 | 15 | 0.31 | 1 | 0 | 29.5 | 0.60 |
| TOTAL | | 99 - 29 | 7 | 0.07 | 1 | 21 | .286 | 227 | 2.29 | 22 | 0.22 | 29 | 84 | 0.85 | 0 | 2 | 16 | 18 | 0.18 | 1 | 2 | 39.0 | 0.39 |

#12 BEL ZIMMERMAN

**PIN HITTER | 6-2 | SOPHOMORE
LIBERTY, MO. (LIBERTY NORTH)**



ZIMMERMAN'S HIGHLIGHTS:

- Set career highs in kills (17) and digs (16) against Charleston Southern for her first-career double-double
- Hit .692 with 8 kills vs. Marist
- Had a career-high 13 kills at Jacksonville State
- Made her collegiate debut on Aug. 26 at Georgia State

| CATEGORY | CAREER HIGH | OPPONENT/DATE |
|-----------------------------------|-------------|---------------------------------|
| Kills | 17 | vs Charleston Southern (9/8/23) |
| Attempts | 36 | vs UAB (9/15/23) |
| Hitting Percentage (Min. 10 ATT.) | .692 | vs Marist (8/27/22) |
| Assists | 1 (9x) | last vs Florida (9/22/23) |
| Digs | 16 | vs Charleston Southern (9/8/23) |
| Blocks | 6 (2x) | last at South Alabama (9/14/23) |
| Aces | 4 | at South Alabama (9/14/23) |
| Points | 21.0 | vs UAB (9/15/23) |

| CATEGORY | SEASON HIGH | OPPONENT/DATE |
|-----------------------------------|-------------|---------------------------------|
| Kills | 17 | vs Charleston Southern (9/8/23) |
| Attempts | 36 | vs UAB (9/15/23) |
| Hitting Percentage (Min. 10 ATT.) | .400 | vs McNeese (8/26/23) |
| Assists | 1 (7x) | last vs Florida (9/22/23) |
| Digs | 16 | vs Charleston Southern (9/8/23) |
| Blocks | 6 | at South Alabama (9/14/23) |
| Aces | 4 | at South Alabama (9/14/23) |
| Points | 21.0 | vs UAB (9/15/23) |

GAME BY GAME

| Date | Opponent | SP | Attack | | | | Set | | | Serve | | | | Recept | | | Blocking | | | | Team | | | | |
|---------------|------------------|-----------|-----------|-----------|------------|-------------|----------|-----------|-------------|-----------|-----------|------------|-------------|----------|------------|-------------|-----------|----------|-----------|----------|-------------|----------|--------------|-------|-------|
| | | | K | E | TA | PCT | A | TA | PCT | SA | SE | TA | PCT | RE | TA | PCT | DIG | BS | BA | BE | TOTAL | BHE | POINTS | HIT% | SCORE |
| 08/26/2023 | McNeese | 3 | 8 | 0 | 20 | .400 | 1 | 3 | .333 | 0 | 2 | 8 | .750 | 0 | 7 | 1.000 | 2 | 0 | 2 | 0 | 2.0 | 0 | 9.0 | .333 | 3-0 |
| 08/26/2023 | Jacksonville St. | 2 | 2 | 3 | 8 | -.125 | 0 | 0 | .000 | 3 | 2 | 7 | .714 | 0 | 3 | 1.000 | 1 | 0 | 0 | 2 | 0.0 | 0 | 5.0 | .395 | 3-0 |
| 09/02/2023 | vs SMU | 2 | 0 | 0 | 0 | .000 | 0 | 0 | .000 | 0 | 2 | 3 | .333 | 0 | 0 | .000 | 0 | 0 | 0 | 0 | 0.0 | 0 | 0.0 | .316 | 3-1 |
| 09/03/2023 | at Florida St. | 4 | 0 | 0 | 0 | .000 | 0 | 1 | .000 | 0 | 0 | 9 | 1.000 | 0 | 0 | .000 | 0 | 0 | 0 | 0 | 0.0 | 0 | 0.0 | .356 | 3-1 |
| 09/07/2023 | Middle Tenn. | *4 | 11 | 6 | 40 | .125 | 0 | 0 | .000 | 0 | 3 | 11 | .727 | 2 | 19 | .895 | 4 | 0 | 2 | 1 | 2.0 | 0 | 12.0 | .221 | 1-3 |
| 09/08/2023 | Charleston So. | *4 | 17 | 5 | 50 | .240 | 1 | 1 | 1.000 | 2 | 2 | 22 | .909 | 0 | 20 | 1.000 | 16 | 0 | 2 | 0 | 2.0 | 0 | 20.0 | .245 | 3-1 |
| 09/09/2023 | Mercer | *3 | 14 | 3 | 30 | .367 | 1 | 3 | .333 | 3 | 3 | 15 | .800 | 0 | 13 | 1.000 | 2 | 0 | 1 | 1 | 1.0 | 0 | 17.5 | .346 | 3-0 |
| 09/14/2023 | at South Alabama | *5 | 11 | 3 | 34 | .235 | 1 | 6 | .167 | 4 | 2 | 23 | .913 | 0 | 10 | 1.000 | 2 | 1 | 5 | 1 | 6.0 | 0 | 18.5 | .191 | 3-2 |
| 09/15/2023 | vs UAB | *4 | 16 | 5 | 36 | .306 | 1 | 3 | .333 | 2 | 3 | 14 | .786 | 2 | 22 | .909 | 12 | 1 | 4 | 1 | 5.0 | 0 | 21.0 | .189 | 3-1 |
| 09/16/2023 | vs Samford | *4 | 15 | 2 | 33 | .394 | 1 | 2 | .500 | 1 | 3 | 12 | .750 | 3 | 17 | .824 | 11 | 0 | 2 | 0 | 2.0 | 0 | 17.0 | .386 | 3-1 |
| 09/22/2023 | Florida | 5 | 0 | 0 | 0 | .000 | 1 | 3 | .333 | 0 | 3 | 16 | .813 | 0 | 0 | .000 | 1 | 0 | 0 | 0 | 0.0 | 0 | 0.0 | .196 | 2-3 |
| 09/24/2023 | Ole Miss | 4 | 0 | 0 | 0 | .000 | 0 | 0 | .000 | 3 | 2 | 17 | .882 | 0 | 0 | .000 | 1 | 0 | 0 | 0 | 0.0 | 0 | 3.0 | .199 | 3-1 |
| 09/27/2023 | at Arkansas | 3 | 0 | 3 | 5 | -.600 | 0 | 1 | .000 | 1 | 1 | 5 | .800 | 1 | 3 | .667 | 0 | 0 | 0 | 0 | 0.0 | 0 | 1.0 | -.049 | 0-3 |
| Totals | | 47 | 94 | 30 | 256 | .250 | 7 | 23 | .304 | 19 | 28 | 162 | .827 | 8 | 114 | .930 | 52 | 2 | 18 | 6 | 20.0 | 0 | 124.0 | | |

Player Averages

| Sets Played | Kills per set | Assists per set | Service aces per set | Digs per set | Blocks per set | Points per set |
|-------------|---------------|-----------------|----------------------|--------------|----------------|----------------|
| 47 | 2.00 | 0.15 | 0.40 | 1.11 | 0.43 | 2.64 |

CAREER STATS

| SEASON | TEAM | SM-MP | K | K/S | E | TA | PCT | A | A/S | SA | SA/S | SE | DIG | D/S | RE | BS | BA | TB | B/S | BE | BHE | PTS | PTS/S |
|--------------|------|-----------------|------------|-------------|------------|------------|-------------|----------|-------------|-----------|-------------|-----------|------------|-------------|-----------|----------|-----------|-----------|-------------|-----------|----------|--------------|-------------|
| 2022-23 | AUB | 114-29 | 220 | 1.93 | 98 | 607 | .201 | 2 | 0.02 | 4 | 0.04 | 11 | 54 | 0.47 | 3 | 3 | 63 | 66 | 0.58 | 10 | 0 | 258.5 | 2.27 |
| 2023-24 | AUB | 47-13 | 94 | 2.00 | 30 | 256 | .250 | 7 | 0.15 | 19 | 0.40 | 28 | 52 | 1.11 | 8 | 2 | 18 | 20 | 0.43 | 6 | 0 | 124.0 | 2.64 |
| TOTAL | | 161 - 42 | 314 | 1.95 | 128 | 863 | .216 | 9 | 0.06 | 23 | 0.14 | 39 | 106 | 0.66 | 11 | 5 | 81 | 86 | 0.53 | 16 | 0 | 382.5 | 2.38 |

#13 PAIGE THIBAUT

LIBERO | 5-8 | JUNIOR

WATERTOWN, MINN. (WATERTOWN-MAYER)



THIBAUT'S HIGHLIGHTS:

- Compiled a career-high 20 digs against Dayton on Sept. 3, 2022
- Hit .462 vs Arizona State on Sept. 2, 2022
- 2021 All-Crossroads League Honorable Mention
- 2021 Crossroads League All-Freshman Team

| CATEGORY | CAREER HIGH | OPPONENT/DATE |
|-----------------------------------|-------------|----------------------------|
| Kills | 9 | at FAU (10/28/22) |
| Attempts | 35 | at UTSA (10/23/22) |
| Hitting Percentage (Min. 10 ATT.) | .462 | vs Arizona State (9/2/22) |
| Assists | 2 (5x) | last vs Ole Miss (9/24/23) |
| Digs | 20 | vs Dayton (9/3/22) |
| Blocks | 4 | vs UAB (10/7/22) |
| Aces | 3 | vs Little Rock (9/8/22) |
| Points | 9.0 (2x) | last at FAU (10/28/22) |

| CATEGORY | SEASON HIGH | OPPONENT/DATE |
|-----------------------------------|-------------|----------------------------|
| Kills | 1 | at South Alabama (9/14/23) |
| Attempts | 2 | at South Alabama (9/14/23) |
| Hitting Percentage (Min. 10 ATT.) | -- | -- |
| Assists | 2 (4x) | last vs Ole Miss (9/24/23) |
| Digs | 11 | vs Ole Miss (9/24/23) |
| Blocks | -- | -- |
| Aces | 2 (2x) | last vs Samford (9/16/23) |
| Points | 2.0 (2x) | last vs Samford (9/16/23) |

GAME BY GAME

| Date | Opponent | SP | Attack | | | | Set | | | Serve | | | | Recept | | | Blocking | | | | | Team | | | |
|---------------|------------------|-----------|----------|----------|----------|-------------|-----------|-----------|-------------|----------|-----------|-----------|-------------|----------|------------|-------------|-----------|----------|----------|----------|------------|----------|------------|--------|------|
| | | | K | E | TA | PCT | A | TA | PCT | SA | SE | TA | PCT | RE | TA | PCT | DIG | BS | BA | TB | BE | TOTAL | BHE | POINTS | HIT% |
| 08/25/2023 | Coppin St. | *4 | 0 | 0 | 0 | .000 | 2 | 3 | .667 | 0 | 3 | 13 | .769 | 0 | 15 | 1.000 | 10 | 0 | 0 | 0 | 0.0 | 0 | 0.0 | .309 | 3-1 |
| 08/26/2023 | McNeese | *2 | 0 | 0 | 0 | .000 | 0 | 1 | .000 | 0 | 0 | 0 | .000 | 0 | 5 | 1.000 | 2 | 0 | 0 | 0 | 0.0 | 0 | 0.0 | .333 | 3-0 |
| 09/07/2023 | Middle Tenn. | 4 | 0 | 0 | 0 | .000 | 2 | 2 | 1.000 | 0 | 1 | 1 | .000 | 1 | 7 | .857 | 2 | 0 | 0 | 0 | 0.0 | 0 | 0.0 | .221 | 1-3 |
| 09/14/2023 | at South Alabama | 5 | 1 | 0 | 2 | .500 | 0 | 3 | .000 | 0 | 0 | 0 | .000 | 0 | 12 | 1.000 | 8 | 0 | 0 | 0 | 0.0 | 0 | 1.0 | .191 | 3-2 |
| 09/15/2023 | vs UAB | *4 | 0 | 0 | 0 | .000 | 2 | 3 | .667 | 2 | 3 | 17 | .824 | 1 | 11 | .909 | 9 | 0 | 0 | 0 | 0.0 | 0 | 2.0 | .189 | 3-1 |
| 09/16/2023 | vs Samford | 4 | 0 | 0 | 0 | .000 | 1 | 4 | .250 | 2 | 2 | 22 | .909 | 0 | 4 | 1.000 | 7 | 0 | 0 | 0 | 0.0 | 0 | 2.0 | .386 | 3-1 |
| 09/22/2023 | Florida | *5 | 0 | 0 | 1 | .000 | 1 | 7 | .143 | 0 | 3 | 18 | .833 | 1 | 23 | .957 | 9 | 0 | 0 | 0 | 0.0 | 0 | 0.0 | .196 | 2-3 |
| 09/24/2023 | Ole Miss | *4 | 0 | 0 | 1 | .000 | 2 | 7 | .286 | 1 | 3 | 18 | .833 | 2 | 34 | .941 | 11 | 0 | 0 | 0 | 0.0 | 0 | 1.0 | .199 | 3-1 |
| 09/27/2023 | at Arkansas | *3 | 0 | 0 | 0 | .000 | 1 | 1 | 1.000 | 0 | 1 | 5 | .800 | 2 | 19 | .895 | 2 | 0 | 0 | 0 | 0.0 | 0 | 0.0 | -.049 | 0-3 |
| Totals | | 35 | 1 | 0 | 4 | .250 | 11 | 31 | .355 | 5 | 16 | 94 | .830 | 7 | 130 | .946 | 60 | 0 | 0 | 0 | 0.0 | 0 | 6.0 | | |

Player Averages

| Sets Played | Kills per set | Assists per set | Service aces per set | Digs per set | Blocks per set | Points per set |
|-------------|---------------|-----------------|----------------------|--------------|----------------|----------------|
| 35 | 0.03 | 0.31 | 0.14 | 1.71 | 0.00 | 0.17 |

CAREER STATS

| SEASON | TEAM | SM-MP | K | K/S | E | TA | PCT | A | A/S | SA | SA/S | SE | DIG | D/S | RE | BS | BA | TB | B/S | BE | BHE | PTS | PTS/S |
|----------------------|------|-----------------|-----------|-------------|-----------|------------|-------------|-----------|-------------|-----------|-------------|-----------|------------|-------------|-----------|----------|----------|----------|-------------|----------|----------|-------------|-------------|
| 2022-23 | FIU | 105-28 | 47 | 0.45 | 28 | 216 | .088 | 14 | 0.13 | 23 | 0.22 | 30 | 221 | 2.10 | 21 | 1 | 7 | 8 | 0.08 | 0 | 0 | 74.5 | 0.71 |
| 2023-24 | AUB | 35-9 | 1 | 0.03 | 0 | 4 | .250 | 11 | 0.31 | 5 | 0.14 | 16 | 60 | 1.71 | 7 | 0 | 0 | 0 | 0.00 | 0 | 0 | 6.0 | 0.17 |
| TOTAL FOR AUB | | 35 - 9 | 1 | 0.03 | 0 | 4 | .250 | 11 | 0.31 | 5 | 0.14 | 16 | 60 | 1.71 | 7 | 0 | 0 | 0 | 0.00 | 0 | 0 | 6.0 | 0.17 |
| TOTAL | | 140 - 37 | 48 | 0.34 | 28 | 220 | .091 | 25 | 0.18 | 28 | 0.20 | 46 | 281 | 2.01 | 28 | 1 | 7 | 8 | 0.06 | 0 | 0 | 80.5 | 0.58 |

#14 CHELSEY HARMON

MIDDLE BLOCKER | 6-3 | SENIOR
PUYALLUP, WASH. (PORTLAND)



HARMON'S HIGHLIGHTS:

- 3rd best hitting percentage in program history (.706) against Jackson State.
- Currently holds the sixth-best hitting percentage in single-season program history (.344)
- Made her Auburn debut on Aug. 26 vs. Belmont

| CATEGORY | CAREER HIGH | OPPONENT/DATE |
|-----------------------------------|-------------|--------------------------------------|
| Kills | 16 | vs San Francisco (10/16/21) |
| Attempts | 23 | at LSU (10/5/22) |
| Hitting Percentage (Min. 10 ATT.) | .706 | vs Jackson State (9/17/22) |
| Assists | 2 (3x) | last vs Samford (9/16/23) |
| Digs | 4 (2x) | last at Santa Clara (3/9/21) |
| Blocks | 10 | vs Troy (9/10/22) |
| Aces | 2 (3x) | last vs Eastern Washington (8/28/21) |
| Points | 15.5 | at LSU (10/5/22) |

| CATEGORY | SEASON HIGH | OPPONENT/DATE |
|-----------------------------------|-------------|---------------------------------|
| Kills | 6 | vs Ole Miss (9/24/23) |
| Attempts | 12 (2x) | last vs Ole Miss (9/24/23) |
| Hitting Percentage (Min. 10 ATT.) | .417 | vs Ole Miss (9/24/23) |
| Assists | 2 | last vs Samford (9/16/23) |
| Digs | 2 (2x) | last vs Ole Miss (9/24/23) |
| Blocks | 8 | vs Ole Miss (9/24/23) |
| Aces | 4 | vs Charleston Southern (9/8/23) |
| Points | 12.5 | vs Charleston Southern (9/8/23) |

GAME BY GAME

| Date | Opponent | SP | Attack | | | | Set | | | Serve | | | | Recept | | | Blocking | | | | Team | | | | |
|---------------|------------------|-----------|-----------|----------|-----------|-------------|----------|-----------|-------------|----------|----------|-----------|-------------|----------|----------|-------------|----------|----------|-----------|----------|-------------|----------|-------------|-------|-------|
| | | | K | E | TA | PCT | A | TA | PCT | SA | SE | TA | PCT | RE | TA | PCT | DIG | BS | BA | BE | TOTAL | BHE | POINTS | HIT% | SCORE |
| 08/26/2023 | McNeese | 1 | 1 | 0 | 2 | .500 | 1 | 2 | .500 | 0 | 0 | 4 | 1.000 | 0 | 0 | .000 | 1 | 0 | 2 | 0 | 2.0 | 0 | 2.0 | .333 | 3-0 |
| 08/26/2023 | Jacksonville St. | 1 | 2 | 0 | 2 | 1.000 | 0 | 1 | .000 | 0 | 0 | 6 | 1.000 | 0 | 0 | .000 | 0 | 0 | 0 | 0 | 0.0 | 0 | 2.0 | .395 | 3-0 |
| 09/07/2023 | Middle Tenn. | 1 | 1 | 0 | 2 | .500 | 0 | 0 | .000 | 0 | 0 | 0 | .000 | 0 | 0 | .000 | 0 | 0 | 0 | 0 | 0.0 | 0 | 1.0 | .221 | 1-3 |
| 09/08/2023 | Charleston So. | *4 | 5 | 2 | 12 | .250 | 0 | 3 | .000 | 4 | 2 | 15 | .867 | 0 | 0 | .000 | 2 | 0 | 7 | 1 | 7.0 | 0 | 12.5 | .245 | 3-1 |
| 09/09/2023 | Mercer | *3 | 4 | 0 | 6 | .667 | 1 | 3 | .333 | 1 | 3 | 14 | .786 | 0 | 0 | .000 | 1 | 1 | 3 | 0 | 4.0 | 0 | 7.5 | .346 | 3-0 |
| 09/14/2023 | at South Alabama | 3 | 2 | 0 | 4 | .500 | 0 | 1 | .000 | 2 | 0 | 9 | 1.000 | 0 | 0 | .000 | 0 | 0 | 3 | 1 | 3.0 | 0 | 5.5 | .191 | 3-2 |
| 09/16/2023 | vs Samford | 4 | 0 | 0 | 0 | .000 | 2 | 3 | .667 | 1 | 2 | 22 | .909 | 0 | 0 | .000 | 0 | 0 | 0 | 0 | 0.0 | 0 | 1.0 | .386 | 3-1 |
| 09/22/2023 | Florida | *5 | 4 | 2 | 10 | .200 | 0 | 2 | .000 | 0 | 0 | 3 | 1.000 | 0 | 0 | .000 | 1 | 0 | 2 | 2 | 2.0 | 0 | 5.0 | .196 | 2-3 |
| 09/24/2023 | Ole Miss | *4 | 6 | 1 | 12 | .417 | 0 | 0 | .000 | 0 | 0 | 3 | 1.000 | 0 | 0 | .000 | 2 | 0 | 8 | 0 | 8.0 | 0 | 10.0 | .199 | 3-1 |
| 09/27/2023 | at Arkansas | *3 | 2 | 1 | 3 | .333 | 0 | 0 | .000 | 0 | 0 | 3 | 1.000 | 0 | 0 | .000 | 1 | 0 | 2 | 0 | 2.0 | 0 | 3.0 | -.049 | 0-3 |
| Totals | | 29 | 27 | 6 | 53 | .396 | 4 | 15 | .267 | 8 | 7 | 79 | .911 | 0 | 0 | .000 | 8 | 1 | 27 | 4 | 28.0 | 0 | 49.5 | | |

Player Averages

| Sets Played | Kills per set | Assists per set | Service aces per set | Digs per set | Blocks per set | Points per set |
|-------------|---------------|-----------------|----------------------|--------------|----------------|----------------|
| 29 | 0.93 | 0.14 | 0.28 | 0.28 | 0.97 | 1.71 |

CAREER STATS

| SEASON | TEAM | SM-MP | K | K/S | E | TA | PCT | A | A/S | SA | SA/S | SE | DIG | D/S | RE | BS | BA | TB | B/S | BE | BHE | PTS | PTS/S |
|----------------------|-----------------|------------|-------------|-----------|------------|-------------|-----------|-------------|-----------|-------------|-----------|-----------|-------------|----------|-----------|------------|------------|-------------|-----------|----------|--------------|-------------|-------|
| 2020-21 | UP | 34-12 | 20 | 0.59 | 11 | 62 | .145 | 4 | 0.12 | 5 | 0.15 | 7 | 19 | 0.56 | 1 | 2 | 21 | 23 | 0.68 | 0 | 0 | 37.5 | 1.10 |
| 2021-22 | UP | 78-22 | 108 | 1.38 | 31 | 246 | .313 | 1 | 0.01 | 4 | 0.05 | 5 | 13 | 0.17 | 1 | 6 | 42 | 48 | 0.62 | 9 | 1 | 139.0 | 1.78 |
| 2022-23 | AUB | 122-31 | 176 | 1.44 | 48 | 372 | .344 | 5 | 0.04 | 0 | 0.00 | 4 | 17 | 0.14 | 1 | 4 | 103 | 107 | 0.88 | 6 | 0 | 231.5 | 1.90 |
| 2023-24 | AUB | 29-10 | 27 | 0.93 | 6 | 53 | .396 | 4 | 0.14 | 8 | 0.28 | 7 | 8 | 0.28 | 0 | 1 | 27 | 28 | 0.97 | 4 | 0 | 49.5 | 1.71 |
| TOTAL FOR AUB | 151 - 41 | 203 | 1.34 | 54 | 425 | .351 | 9 | 0.06 | 8 | 0.05 | 11 | 25 | 0.17 | 1 | 5 | 130 | 135 | 0.89 | 10 | 0 | 281.0 | 1.86 | |
| TOTAL | 263 - 75 | 331 | 1.26 | 96 | 733 | .321 | 14 | 0.05 | 17 | 0.06 | 23 | 57 | 0.22 | 3 | 13 | 193 | 206 | 0.78 | 19 | 1 | 457.5 | 1.74 | |

#17 CASSIDY TANTON

**PIN HITTER | 6-0 | REDSHIRT-SOPHOMORE
STONEVILLE, N.C. (DALTON MCMICHAEL)**



TANTON'S HIGHLIGHTS:

- Picked up a career-high 10 kills vs. Marist, hitting .348
- Made her season debut on Aug. 26 vs. Belmont

| CATEGORY | CAREER HIGH | OPPONENT/DATE |
|-----------------------------------|-------------|---------------------------------|
| Kills | 10 | vs Marist (8/27/22) |
| Attempts | 23 | vs Marist (8/27/22) |
| Hitting Percentage (Min. 10 ATT.) | .348 | vs Marist (8/27/22) |
| Assists | -- | -- |
| Digs | 6 | vs Marist (8/27/22) |
| Blocks | -- | -- |
| Aces | 2(3x) | last vs Southern Miss (9/16/22) |
| Points | 12.0 | vs Marist (8/27/22) |

| CATEGORY | SEASON HIGH | OPPONENT/DATE |
|-----------------------------------|-------------|------------------------------|
| Kills | 1 | vs Middle Tennessee (9/7/23) |
| Attempts | 5 | vs Middle Tennessee (9/7/23) |
| Hitting Percentage (Min. 10 ATT.) | -- | -- |
| Assists | -- | -- |
| Digs | -- | -- |
| Blocks | -- | -- |
| Aces | -- | -- |
| Points | 1.0 | vs Middle Tennessee (9/7/23) |

GAME BY GAME

| Date | Opponent | SP | Attack | | | | Set | | | Serve | | | | Recept | | | | Blocking | | | | Team | | | |
|---------------|--------------|----------|----------|----------|----------|-------------|----------|----------|-------------|----------|----------|----------|-------------|----------|----------|-------------|----------|----------|----------|----------|------------|----------|------------|------|-------|
| | | | K | E | TA | PCT | A | TA | PCT | SA | SE | TA | PCT | RE | TA | PCT | DIG | BS | BA | BE | TOTAL | BHE | POINTS | HIT% | SCORE |
| 09/07/2023 | Middle Tenn. | 1 | 1 | 1 | 5 | .000 | 0 | 0 | .000 | 0 | 0 | 0 | .000 | 1 | 4 | .750 | 0 | 0 | 0 | 0 | 0.0 | 0 | 1.0 | .221 | 1-3 |
| Totals | | 1 | 1 | 1 | 5 | .000 | 0 | 0 | .000 | 0 | 0 | 0 | .000 | 1 | 4 | .750 | 0 | 0 | 0 | 0 | 0.0 | 0 | 1.0 | | |

Player Averages

| Sets Played | Kills per set | Assists per set | Service aces per set | Digs per set | Blocks per set | Points per set |
|-------------|---------------|-----------------|----------------------|--------------|----------------|----------------|
| 1 | 1.00 | 0.00 | 0.00 | 0.00 | 0.00 | 1.00 |

CAREER STATS

| SEASON | TEAM | SM-MP | K | K/S | E | TA | PCT | A | A/S | SA | SA/S | SE | DIG | D/S | RE | BS | BA | TB | B/S | BE | BHE | PTS | PTS/S |
|--------------|------|----------------|-----------|-------------|----------|-----------|-------------|----------|-------------|-----------|-------------|-----------|-----------|-------------|----------|----------|----------|----------|-------------|----------|----------|-------------|-------------|
| 2022-23 | AUB | 58-19 | 12 | 0.21 | 7 | 34 | .147 | 0 | 0.00 | 11 | 0.19 | 28 | 19 | 0.33 | 2 | 0 | 0 | 0 | 0.00 | 0 | 0 | 23.0 | 0.40 |
| 2023-24 | AUB | 1-1 | 1 | 1.00 | 1 | 5 | .000 | 0 | 0.00 | 0 | 0.00 | 0 | 0 | 0.00 | 1 | 0 | 0 | 0 | 0.00 | 0 | 0 | 1.0 | 1.00 |
| TOTAL | | 59 - 20 | 13 | 0.22 | 8 | 39 | .128 | 0 | 0.00 | 11 | 0.19 | 28 | 19 | 0.32 | 3 | 0 | 0 | 0 | 0.00 | 0 | 0 | 24.0 | 0.41 |



#19 JASMINE OKEOMA
MIDDLE BLOCKER | 6-3 | FRESHMAN
WOODBIDGE, VA. (FOREST PARK)

OKEOMA'S HIGHLIGHTS:

| CATEGORY | CAREER HIGH | OPPONENT/DATE |
|-----------------------------------|-------------|---------------|
| Kills | -- | -- |
| Attempts | -- | -- |
| Hitting Percentage (Min. 10 ATT.) | -- | -- |
| Assists | -- | -- |
| Digs | -- | -- |
| Blocks | -- | -- |
| Aces | -- | -- |
| Points | -- | -- |

| CATEGORY | SEASON HIGH | OPPONENT/DATE |
|-----------------------------------|-------------|---------------|
| Kills | -- | -- |
| Attempts | -- | -- |
| Hitting Percentage (Min. 10 ATT.) | -- | -- |
| Assists | -- | -- |
| Digs | -- | -- |
| Blocks | -- | -- |
| Aces | -- | -- |
| Points | -- | -- |

GAME BY GAME

CAREER STATS

#22 SYDNEY HANDEL

DEFENSIVE SPECIALIST | 6-0 | SOPHOMORE
LEE'S SUMMIT, MO. (LEE'S SUMMIT WEST)



HANDEL'S HIGHLIGHTS:

- Set career-highs in aces (3) and digs (6) in the NCAA Tournament against Houston
- Made her collegiate debut against Alabama A&M

| CATEGORY | CAREER HIGH | OPPONENT/DATE |
|-----------------------------------|-------------|---------------------------------|
| Kills | 1 | vs Middle Tennessee (9/7/23) |
| Attempts | 1 (2x) | last at South Alabama (9/14/23) |
| Hitting Percentage (Min. 10 ATT.) | -- | -- |
| Assists | -- | -- |
| Digs | 10 | at South Alabama (9/14/23) |
| Blocks | -- | -- |
| Aces | 3 | vs Houston (12/3/22) |
| Points | 3.0 | vs Houston (12/3/22) |

| CATEGORY | SEASON HIGH | OPPONENT/DATE |
|-----------------------------------|-------------|----------------------------|
| Kills | -- | -- |
| Attempts | 1 | at South Alabama (9/14/23) |
| Hitting Percentage (Min. 10 ATT.) | -- | -- |
| Assists | -- | -- |
| Digs | 10 | at South Alabama (9/14/23) |
| Blocks | -- | -- |
| Aces | -- | -- |
| Points | -- | -- |

GAME BY GAME

| Date | Opponent | SP | Attack | | | | Set | | | Serve | | | | Recept | | | Blocking | | | | Team | | | | |
|---------------|------------------|-----------|----------|----------|----------|-------------|----------|----------|-------------|----------|----------|-----------|-------------|----------|-----------|-------------|-----------|----------|----------|----------|------------|----------|------------|------|-------|
| | | | K | E | TA | PCT | A | TA | PCT | SA | SE | TA | PCT | RE | TA | PCT | DIG | BS | BA | BE | TOTAL | BHE | POINTS | HIT% | SCORE |
| 09/02/2023 | vs SMU | 2 | 0 | 0 | 0 | .000 | 0 | 0 | .000 | 0 | 2 | 6 | .667 | 0 | 0 | .000 | 0 | 0 | 0 | 0 | 0.0 | 0 | 0.0 | .316 | 3-1 |
| 09/09/2023 | Mercer | 1 | 0 | 0 | 0 | .000 | 0 | 0 | .000 | 0 | 0 | 2 | 1.000 | 0 | 0 | .000 | 0 | 0 | 0 | 0 | 0.0 | 0 | 0.0 | .346 | 3-0 |
| 09/14/2023 | at South Alabama | 5 | 0 | 0 | 1 | .000 | 0 | 2 | .000 | 0 | 1 | 14 | .929 | 1 | 10 | .900 | 10 | 0 | 0 | 0 | 0.0 | 0 | 0.0 | .191 | 3-2 |
| 09/15/2023 | vs UAB | 4 | 0 | 0 | 0 | .000 | 0 | 0 | .000 | 0 | 2 | 11 | .818 | 0 | 0 | .000 | 0 | 0 | 0 | 0 | 0.0 | 0 | 0.0 | .189 | 3-1 |
| 09/16/2023 | vs Samford | 1 | 0 | 0 | 0 | .000 | 0 | 2 | .000 | 0 | 0 | 0 | .000 | 0 | 4 | 1.000 | 0 | 0 | 0 | 0 | 0.0 | 0 | 0.0 | .386 | 3-1 |
| Totals | | 13 | 0 | 0 | 1 | .000 | 0 | 4 | .000 | 0 | 5 | 33 | .848 | 1 | 14 | .929 | 10 | 0 | 0 | 0 | 0.0 | 0 | 0.0 | | |

Player Averages

| Sets Played | Kills per set | Assists per set | Service aces per set | Digs per set | Blocks per set | Points per set |
|-------------|---------------|-----------------|----------------------|--------------|----------------|----------------|
| 13 | 0.00 | 0.00 | 0.00 | 0.77 | 0.00 | 0.00 |

CAREER STATS

| SEASON | TEAM | SM-MP | K | K/S | E | TA | PCT | A | A/S | SA | SA/S | SE | DIG | D/S | RE | BS | BA | TB | B/S | BE | BHE | PTS | PTS/S |
|--------------|------|----------------|----------|-------------|----------|----------|-------------|----------|-------------|----------|-------------|-----------|-----------|-------------|----------|----------|----------|----------|-------------|----------|----------|------------|-------------|
| 2022-23 | AUB | 19-6 | 0 | 0.00 | 0 | 1 | .000 | 0 | 0.00 | 6 | 0.32 | 11 | 10 | 0.53 | 3 | 0 | 0 | 0 | 0.00 | 0 | 0 | 6.0 | 0.32 |
| 2023-24 | AUB | 13-5 | 0 | 0.00 | 0 | 1 | .000 | 0 | 0.00 | 0 | 0.00 | 5 | 10 | 0.77 | 1 | 0 | 0 | 0 | 0.00 | 0 | 0 | 0.0 | 0.00 |
| TOTAL | | 32 - 11 | 0 | 0.00 | 0 | 2 | .000 | 0 | 0.00 | 6 | 0.19 | 16 | 20 | 0.63 | 4 | 0 | 0 | 0 | 0.00 | 0 | 0 | 6.0 | 0.19 |



#25 LAKIN LAURENDINE

PIN HITTER | 6-1 | FRESHMAN
JACKSON, MISS. (JACKSON ACADEMY)



LAURENDINE'S HIGHLIGHTS:

| CATEGORY | CAREER HIGH | OPPONENT/DATE |
|-----------------------------------|-------------|---------------|
| Kills | -- | -- |
| Attempts | -- | -- |
| Hitting Percentage (Min. 10 ATT.) | -- | -- |
| Assists | -- | -- |
| Digs | -- | -- |
| Blocks | -- | -- |
| Aces | -- | -- |
| Points | -- | -- |

| CATEGORY | SEASON HIGH | OPPONENT/DATE |
|-----------------------------------|-------------|---------------|
| Kills | -- | -- |
| Attempts | -- | -- |
| Hitting Percentage (Min. 10 ATT.) | -- | -- |
| Assists | -- | -- |
| Digs | -- | -- |
| Blocks | -- | -- |
| Aces | -- | -- |
| Points | -- | -- |

GAME BY GAME

CAREER STATS