



2023 VOLLEYBALL MATCH NOTES

AUBURN ATHLETICS COMMUNICATIONS: 392 SOUTH DONAHUE DRIVE || AUBURN, AL 36830 || AUBURNTIGERS.COM || @AUBURNVB

2023 SCHEDULE/RESULTS

10-2 OVERALL | 0-1 SEC
5-2 HOME | 2-0 AWAY | 3-0 NEUTRAL

DATE	OPPONENT	TV	TIME/RESULT
Aug. 25	vs Coppin State!	SECN+	W, 3-1
Aug. 26	vs McNeese State!	SECN+	W, 3-0
Aug. 26	vs Jacksonville State!	SECN+	W, 3-0
Sept. 2	vs SMU@	N/A	W, 3-1
Sept. 3	at Florida State@	ACCN+	W, 3-1
Sept. 7	vs Middle Tennessee\$	SECN+	L, 1-3
Sept. 8	vs Charleston Southern\$	SECN+	W, 3-1
Sept. 9	vs Mercer\$	SECN+	W, 3-0
Sept. 14	at South Alabama%	ESPN+	W, 3-2
Sept. 15	vs UAB%	N/A	W, 3-1
Sept. 16	vs Samford%	N/A	W, 3-1
Sept. 22	vs #3 Florida*	SECN+	L, 2-3
Sept. 24	vs Ole Miss*	SECN+	2 p.m. CT
Sept. 27	at Arkansas*	SEC Network	7 p.m. CT
Oct. 1	vs Georgia*	ESPN2	Noon CT
Oct. 6	at Florida*	SECN+	6 p.m. CT
Oct. 8	at South Carolina*	ESPNU	1 p.m. CT
Oct. 13	at Tennessee*	SECN+	5:30 p.m. CT
Oct. 20	vs Missouri*	SEC Network	8 p.m. CT
Oct. 22	vs South Carolina*	SECN+	1 p.m. CT
Oct. 27	at Georgia*	SECN+	6 p.m. CT
Oct. 29	at Alabama	SEC Network	11 a.m. CT
Nov. 5	at Texas A&M	SEC Network	3 p.m. CT
Nov. 8	vs Kentucky	SECN+	6:30 p.m. CT
Nov. 12	at Missouri	SECN+	3 p.m. CT
Nov. 15	at Mississippi State	SECN+	6 p.m. CT
Nov. 19	vs LSU	SECN+	2 p.m. CT
Nov. 22	vs Alabama	SECN+	6:30 p.m. CT
Nov. 24	vs Arkansas	SECN+	3 p.m. CT

BOLD indicates home contest | All time Central and subject to change
! - War Eagle Invite | @ - Seminole Invite | S - Tiger Invite | % - Alabama Showdown
* - Southeastern Conference Game | # - NCAA Tournament

AUBURN ATHLETICS COMMUNICATIONS

Office Phone 334-844-9800
Kirk Sampson Associate AD
sampska@auburn.edu
Thomas Hoffman Volleyball Contact
tgh0024@auburn.edu
C: 503-302-9592

FOLLOW ALONG

Web AuburnTigers.com
X @AuburnVB
Instagram @auburnvolleyball

MATCH

13

OLE MISS

Friday, Sept. 22 | 6:30 p.m. CT

Auburn, Ala. | Neville Arena | SEC Network+



AUBURN

AVCA Coaches Poll _____ 24
2023 Record _____ 10-1 | 0-1 SEC
Head Coach _____ Brent Crouch
Career Record (Year) _____ 140-125 (10th)
Record at Auburn (Year) _____ 45-34 (4th)

OLE MISS

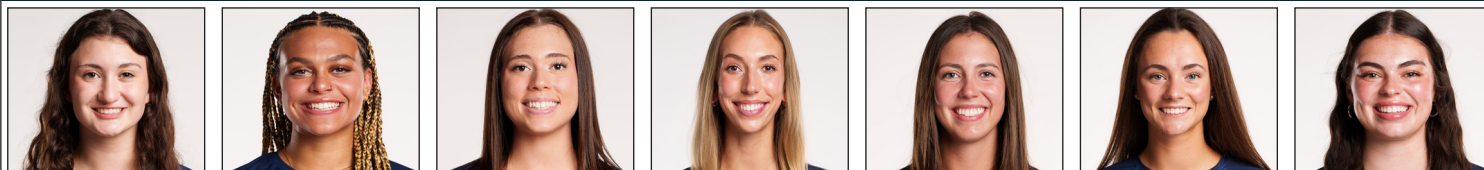
AVCA Coaches Poll _____ 3
2023 Record _____ 7-5 | 1-0 SEC
Head Coach _____ Bre Henry
Career Record (Year) _____ 8-12 (2nd)
Record at Ole Miss (Year) _____ Same

Site _____ Auburn, Ala.
Venue _____ Neville Arena
Live Stats _____ Statbroadcast
Twitter _____ @AuburnVB
Series Record _____ Ole Miss leads 36-32
Last Meeting _____ Nov. 11, 2022 Auburn 3, Ole Miss 1 (27-25, 15-25, 25-15, 25-23)
Last Auburn Win _____ Nov. 11, 2022 Auburn 3, Ole Miss 1 (27-25, 15-25, 25-15, 25-23)

QUICK HITS

- Sophomore outside hitter Madison Scheer is barreling in on 500 career kills. The Eureka, Missouri native sits at 497 entering Sunday's match against Ole Miss. She'd be the second sophomore in her class to achieve the feat behind Akasha Anderson.
- Anderson has played in nine matches this season and has reached at least 10 kills in each of her appearances. The sophomore has also had at lead 15 kills in five of those matches, including tying her career high with 26 kills against South Alabama.
- Last season, setter Jackie Barrett led the Orange and Blue with 12 double-doubles in 31 matches. Following Friday's double-double against No. 3 Florida, the Highland, California native has already collected six in the first 12 matches of 2023. Barrett's 9.64 assists per set also rank seventh in the conference.
- Transfer Bella Bell has started to settle into a newfound position on the right side. Bell has totaled double-digit kills in five matches this season and her .358 hitting percentage ranks eighth in the SEC. Among active attacked in the conference, Bell's .364 career hitting percentage ranks No. 2.
- As a team, the Tigers are hitting .279, the fourth-best percentage in the conference
- Sarah Morton continues to flex her muscles in the back row. The Munster, Indiana product has compiled at least 10 digs in six of the nine matches she's appeared in this season, including a 24 dig performance against Coppin State. Morton's 3.06 digs per set ranks 10th in the conference and top 15 in the country.
- Fellow back row members Zoe Slaughter and Paige Thibault are each trending in the right direction. Slaughter has picked up double-digit dig totals in four straight matches, including a career-high 29 against South Alabama. Thibault has grabbed at least seven digs in each of her last four matches.
- Auburn's two set wins against Florida marked the first time the Tigers had won a set over the Gators since 2018.

AUBURN'S POTENTIAL STARTING SEVEN



SARAH MORTON

AKASHA ANDERSON

BELLA BELL

KYLA SWANSON

JACKIE BARRETT

PAIGE THIBAULT

CHELSEY HARMON

#2 • DS/L • SO. • 5-8	#3 • PH • SO. • 6-3	#5 • RS • SR. • 6-4	#6 • MB • SR. • 6-4	#10 • S • SR. • 6-2	#13 • DS/L • JR. • 5-7	#14 • MB • SR. • 6-3
D/S: 3.06	K/S: 3.92	K/S: 2.81	K/S: 1.31	D/S: 2.29	D/S: 1.68	K/S: 0.86
A/S: 0.94	HIT%: .226	HIT%: .358	HIT%: .240	A/S: 9.64	A/S: 0.29	HIT%: .395
SA/S: 0.09	D/S: 1.97	D/S: 0.26	D/S: 0.29	SA/S: 0.33	SA/S: 0.14	D/S: 0.23
P/S: 0.15	B/S: 0.42	B/S: 0.59	B/S: 1.02	P/S: 1.39	P/S: 0.18	B/S: 0.82
	SA/S: 0.36	SA/S: 0.00	SA/S: 0.07			SA/S: 0.36
	P/S: 4.50	P/S: 3.11	P/S: 1.93			P/S: 1.66

K/S: kills per set • HIT%: hitting percentage • D/S: digs per set • B/S: blocks per set • A/S: assists per set • SA/S: aces per set • P/S: points per set



#1 MADISON SCHEER
So. | PH | 6-1



#2 SARAH MORTON
So. | L | 5-8



#3 AKASHA ANDERSON
So. | PH | 6-3



#4 FALLAN LANHAM
Jr. | L | 5-8



#5 BELLA BELL
Gr. | MB | 6-4



#6 KYLA SWANSON
Gr. | MB | 6-4



#7 PEYTON DUNN
R-So. | S | 5-11



#8 KENDAL KEMP
So. | MB | 6-6



#9 ZOE SLAUGHTER
So. | L | 5-7



#10 JACKIE BARRETT
Sr. | S | 6-2



#11 JORDAN SINNESS
Jr. | S | 5-9



#12 BEL ZIMMERMAN
So. | PH | 6-2



#13 PAIGE THIBAULT
Jr. | L | 5-7



#14 CHELSEY HARMON
Sr. | MB | 6-3



#17 CASSIDY TANTON
R-So. | PH | 6-0



#19 JASMINE OKEOMA
Fr. | MB | 6-3



#22 SYDNEY HANDEL
So. | L | 6-0



#22 LAKIN LAURENDINE
Fr. | PH | 6-1

#WarEagle



AuburnTigers.com

@AuburnVB | @AuburnTigers
@AuburnVBCoach



/AuburnVB
/AuburnTigers

TEAM SCHEDULE AND MEDIA AVAILABILITY >> WEEK OF SEPT. 18 - 24

MONDAY September 18	TUESDAY September 19	WEDNESDAY September 20	THURSDAY September 21	FRIDAY September 22	SATURDAY September 23	SUNDAY September 24
PRACTICE: 3:45 p.m. - 6 p.m. SAC	PRACTICE: 3:45 p.m. - 6 p.m. SAC	PRACTICE: 3:45 p.m. - 6 p.m. SAC	PRACTICE: 3:45 p.m. - 6 p.m. SAC	MATCH: 6:30 p.m. CT vs Florida Auburn, Ala.	PRACTICE: 3:45 p.m. - 6 p.m. SAC	MATCH: 2 p.m. CT vs Ole Miss Auburn, Ala.
INTERVIEWS BY REQUEST	INTERVIEWS BY REQUEST	INTERVIEWS BY REQUEST	INTERVIEWS BY REQUEST	INTERVIEWS POST MATCH	INTERVIEWS POST MATCH	INTERVIEWS POST MATCH

AUBURN ATHLETICS COMMUNICATIONS

QUICK FACTS

AUBURNTIGERS.COM

For updated game notes, statistics, safety protocols and latest information on Auburn volleyball and Auburn Athletics, visit AuburnTigers.com.

INTERVIEW POLICY

Coach Crouch, assistant coaches and student-athletes are available for interviews by contacting Thomas Hoffman in the communications office. All interviews during the week will be conducted via phone or ZOOM. Post-match interviews will be conducted in the media room at Auburn Arena following a brief cooling-off period.

CREDENTIALS

Anyone wishing to cover an Auburn volleyball match should contact Thomas Hoffman in the communications office at least 24 hours in advance to make arrangements.

MATCH DAY SERVICES

Printed copies of notes, flip cards and statistics will be available upon request. Digital copies will be emailed out prior to the match and will be available on AuburnTigers.com. Media members are permitted to bring their own printed materials. Stats will not printed between sets or after matches. Live stats will be provided during the match and final statistics will be emailed out and posted on AuburnTigers.com. All post-match interviews will be conducted in the media room. Wireless internet is available in the Arena; ask Thomas Hoffman for the password. Match highlights, photos and postgame interviews will be available on Imagen following matches.

VIDEO SERVICES

FTP feeds of selected Auburn volleyball highlights are available for the media. A number of studio and satellite services may be arranged for electronic media by contacting Cody Baker in War Eagle Productions at jcb0101@auburn.edu.

PHOTO SERVICES

For photos of Auburn volleyball or any Olympic sports, contact Zach Bland at zdb007@auburn.edu.

COMMUNICATIONS STAFF

Thomas Hoffman Volleyball Contact
cell: 503-302-9592
email: tgh0024@auburn.edu

Kirk Sampson Associate AD
cell: 334-750-1385
email: sampska@auburn.edu

UNIVERSITY INFORMATION

City / Zip _____ Auburn, Ala. / 36831
 Founded _____ Oct. 1, 1856
 Enrollment _____ 30,737
 Nickname _____ Tigers
 Colors _____ Navy Blue & Burnt Orange
 Affiliation _____ NCAA Division I
 Conference _____ Southeastern Conference
 Home Court _____ Neville Arena (9,121)
 President _____ Dr. Chris Roberts
 Athletics Director _____ John Cohen
 Sport Administrator _____ Joy Vrbka (Florida, 2003)

TEAM INFORMATION

Letterwinners Returning/Lost _____ 12/0
 Starters Returning/Lost _____ 6+libero/0
 Newcomers _____ 6
 2022 Overall Record _____ 22-9
 2022 Conference Record/Finish _____ 10-8/6th

PROGRAM HISTORY

First Year of Volleyball _____ 1967
 _____ Program discontinued 1981; Reinstated 1986
 Seasons of Auburn Volleyball _____ 45th
 All-Time Overall Record _____ 701-701-4 (.500)
 in Neville Arena (Since 2013) _____ 73-61 (.535)
 Total Home Record _____ 245-214 (.531)
 All-Time SEC Record _____ 198-369 (.350)
 NCAA Tournament Appearances _____ 2/2010, 2022
 SEC Championships/Last _____ 1/Co-West Champions (1996)

STAFF INFORMATION

Head Coach _ Brent Crouch, 1st Season (Texas A&M , '98 & '00; Oregon '06)
 Career Record _____ 140-125 (.514)/10th Season
 Record at Auburn _____ 45-34 (.523)/4th Season
 Assistant Coach/Recruiting Coordinator _____ Rachel Corbelli (2nd Season)
 Assistant Coach _____ Keith Smith (2nd Season)
 Assistant Coach _____ Jack Burton (1st Season)
 Technical Coordinator _____ Mackenna Basore (2nd Season)
 Strength & Conditioning _____ Bethany Gainey
 Athletic Trainer _____ Nate Warner
 Equipment Manager _____ Brian Maddox

ATHLETIC COMMUNICATIONS

Associate AD/Communications _____ Kirk Sampson
 Assistant Director/Volleyball Contact _____ Thomas Hoffman
 Email _____ tgh0024@auburn.edu
 Phone _____ 503-302-9592
 Mailing Address _____ Auburn Athletics Complex
 _____ 392 S. Donahue Drive
 Website _____ AuburnTigers.com

GAMEDAY EXPERIENCE: NEVILLE ARENA

>> Neville Arena is in its seventh season as home of Auburn volleyball. The Tigers are 73-61 since moving to the Arena in 2013. The facility seats approximately 9,121.



LAST TIME OUT

» For the first time since 2018, Auburn took a set off the Florida Gators as the Tigers went toe-to-toe with the No. 3 team in the country on Friday. In an instant five-set classic, it was Florida, though, who managed to prevail and escape the Plains with a win.

SCOUTING OLE MISS

» After taking the reigns late in 2022, Bre Henry begins her second season at Ole Miss. The Rebels arrive in Neville Arena with a 7-5 overall record, including a 1-0 mark in the SEC thanks to a sweep over Alabama on Friday.

Sophomore setter Aly Borellis has distributed the offense well to begin 2023. The Rebels are hitting .247 as a team and her 10.9 assists per set rank third in the SEC and No. 13 in the country.

Ole Miss' middle blocking duo of Sasha Ratliff and Payton Brgoch have been difficult to stop. Both are hitting north of .400 this season. In fact, Brgoch's .437 average is No. 1 in the conference and 18th in the nation.

Libero Cammy Niesen has also done her part defensively. At 4.56 digs per set, Niesen is No. 1 in the Southeastern Conference. As a team, the Rebels are also tops in the SEC at 14.73 digs per set.

AUBURN-OLE MISS SERIES

» Ole miss owns a 36-32 record against the Tigers. However, the Tigers are 14-11 on the Plains and have won seven of the last 10 matchups. Last season, Auburn took down the Rebels in four sets in Oxford.

MR. 300

» Three hundreds appears to be the perfect number for head coach Brent Crouch. All-time, when his teams manage a .300 hitting percentage, he carries an undefeated record of 35-0, including an 15-0 mark at Auburn. The Tigers have accomplished the feat seven different times already in 2023.

NO PLACE LIKE NEVILLE

» Auburn is now 24-16 at home under head coach Brent Crouch, including wins in 24 of it's last 36 games at home. All-time Auburn is 73-61 in Neville.

STAYING ACTIVE

» Bella Bell, Kendal Kemp, Jackie Barrett and Akasha Anderson are all amongst the SEC's top active career leaders. Bell (.364) and Kemp (.339) are both inside the top five in hitting percentage. Kemp's 1.43 blocks per set is currently second in the conference. Anderson ranks in the top 10 in both kills per set (3.62) and points per set (.413). Barrett's 9.04 assists per set is seventh and Morton ranks fifth in digs per set (3.67).

PLAYER TO WATCH: AKASHA ANDERSON

» The AVCA South Region Freshman of the Year was up to no good last season. With 569 career kills, Anderson leads the Tigers in both kills and kills per set (3.62).



RANK YOU VERY MUCH

» Welcome to the top 25 Auburn Volleyball. After wins over SMU and Florida State, the Tigers earned the program's first-ever ranking at No. 25.

A week later, Auburn moved up to No. 24 following a 2-1 showing at the Tiger Invitational. Auburn is currently riding a three-week streak inside the top-25.

BLOCKERS BEWARE

» Thanks to steady passing from Sarah Morton and the back row, the Auburn attack has managed to be one of the least-blocked teams in the SEC. On average Auburn allows just 1.53 blocks per set, the second-best in the conference.

KASH MONEY

» Sophomore Akasha Anderson has eclipsed 500 career kills in her young career, doing so in just 37 matches.

500 CLUB

» Sophomore libero Sarah Morton earned her 500th dig of her young career against Florida State.

Eureka, Missouri native Madison Scheer is also barreling toward her 500th kill. The sophomore sits at 497 entering the weekend.

SEEING DOUBLE

» Jackie Barrett posted Auburn's first double-doubles of the season, piling up 36 assists and 14 digs against SMU. A day later, the Highland, California native grabbed 44 assists with 11 digs. Barrett posted a team-high 12 double-doubles in 2022. Barret owns a team-leading six double-doubles in 2023.

Speaking of double-doubles, Bel Zimmerman earned the feat for the first time in her career with 17 kills and 16 digs against Charleston Southern. Zimmerman added her second and third double-double against UAB and Samford during the Alabama Showdown.

KEMP ROOFING CO.

» After setting records in 2022, sophomore middle blocker Kendal Kemp is back to her old tricks this season. In eight matches this season, the Eagan Minnesota native is averaging 1.30 blocks per set. The mark is fourth in the SEC and No. 39 in nation.

Kemp also posted a career-high 13 kills on a season-high .526 hitting percentage in the Tigers' win over Charleston Southern.

AARP ELIGIBLE?

» Brent Crouch is on a collision course for 50 wins on the Plains. Should Crouch accomplish the feat this season,

SEC STANDINGS & SCHEDULE

2023 STANDINGS

	CONF	OVERALL	HOME	ROAD	NTRL	STRL
Tennessee	1-0	10-1	6-0	3-1	1-0	-
Florida	1-0	9-1	4-1	4-0	1-0	-
Arkansas	1-0	11-2	5-2	2-0	4-0	-
Texas A&M	1-0	9-2	4-2	2-0	3-0	-
Ole Miss	1-0	7-5	4-0	1-2	2-3	-
Kentucky	1-0	3-6	1-1	1-5	1-0	-
Georgia	0-0	9-3	5-1	2-0	2-2	-
Alabama	0-1	10-2	4-0	3-1	3-1	-
Auburn	0-1	10-2	5-2	2-0	3-0	-
Missouri	0-1	8-4	5-1	2-2	1-1	-
Mississippi St	0-1	7-4	5-0	0-3	2-1	-
South Carolina	0-1	6-4	4-1	1-3	1-0	-
LSU	0-1	5-6	2-2	0-3	3-1	-

THIS WEEK IN THE SEC...

Wednesday, Sept. 20

Tennessee 3, Missouri 0
Texas A&M 3, Mississippi State 0

Friday, Sept. 22

Arkansas 3, South Carolina 0
Kentucky 3, LSU 1
Ole Miss 3, Alabama 0
Florida 3, Auburn 2

Sunday, Sept. 24

Tennessee at Kentucky, 3 p.m.
Ole Miss at Auburn, 3 p.m.
Texas A&M at Arkansas, 4 p.m.
South Carolina at Missouri, 4 p.m.
Alabama at Mississippi St., 5 p.m.
Georgia at Florida, 7 p.m.

*All times ET

2022 FINAL NCAA RPI REPORT

RK	TEAM	RECORD	AU RESULT
8	Kentucky	22-8	L, 3-0 & L, 3-0
12	Florida	25-6	L, 3-0
15	Creighton	27-4	W, 3-2
17	Houston	30-4	L, 3-0
22	Arkansas	21-9	L, 3-0 & L, 3-0
32	Georgia	23-8	W, 3-1 & W, 3-2
37	AUBURN	22-9	
41	LSU	16-14	L, 3-2
57	Tennessee	17-14	W, 3-1
62	Jacksonville State	24-6	W, 3-2
65	Mississippi State	15-13	W, 3-2
75	Texas A&M	13-16	W, 3-1 & W, 3-1
94	South Carolina	13-15	L, 3-2
107	Troy	18-13	W, 3-1
117	Ole Miss	11-17	W, 3-1
122	Southern Miss	21-12	W, 3-0
143	North Florida	12-17	W, 3-0
149	Alabama	10-20	W, 3-1 & W, 3-1
151	UAB	12-15	W, 3-2
160	Missouri	9-19	W, 3-2 & L, 3-1
218	Alabama State	20-14	W, 3-0
224	Marist	18-11	W, 3-1
287	Belmont	8-23	W, 3-0
292	Jackson State	13-17	W, 3-0
304	Georgia State	7-22	W, 3-1
334	Alabama A&M	7-26	W, 3-0

AUBURN OPPONENTS ONLY

AVCA COACHES POLL

RK	TEAM	POINTS	RECORD
1	Wisconsin [62]	1,595	9-0
2	Nebraska [2]	1,515	9-0
3	Florida	1,437	8-1
4	Stanford	1,427	7-2
5	Louisville	1,365	9-1
6	Oregon	1,265	10-1
7	Washington State	1,160	10-1
8	Pittsburgh	1,137	8-2
9	Texas	1,073	5-3
10	BYU	1,042	11-1
11	Creighton	928	9-2
12	Minnesota	865	4-4
13	Georgia Tech	806	9-1
14	Tennessee	742	9-1
15	Penn State	691	6-3
16	Arkansas	684	10-2
17	Kansas	510	9-1
18	Baylor	499	5-4
19	Purdue	450	6-3
20	Houston	343	7-2
21	Ohio State	282	3-6
22	Kentucky	264	2-6
23	Dayton	153	11-2
24	Auburn	129	10-1
25-T	Iowa State	57	9-2
25-T	Western Kentucky	57	10-4

Others receiving votes: Arizona State 52; Marquette 34; Southern California 33; Duke 32; UCF 26; UCLA 22; Washington 20; James Madison 17; Rice 15; Hawai'i 14; Loyola Marymount 14; TCU 7; Texas A&M 4; Colorado State 3; SMU 3

INSIDE THE MATCH-UPS

MISSISSIPPI (OLE MISS) 32-36 (.471)

14-11 H • 17-15 A • 1-10 N

YEAR	SITE	RESULT	MATCH SCORE
1974	NEUTRAL	W	2-0
1977	NEUTRAL	L	0-2
1977	NEUTRAL	L	0-2
1978	NEUTRAL	L	0-2
1978	NEUTRAL	L	0-2
1979	NEUTRAL	L	0-2
1979	NEUTRAL	L	0-2
1980	NEUTRAL	L	1-2
1980	NEUTRAL	L	1-2
1980	NEUTRAL	L	0-2
1987	NEUTRAL	L	0-3
1987	AWAY	L	1-3
1988	AWAY	W	3-0
1989	HOME	L	1-3
1990	AWAY	W	3-2
1991	HOME	W	3-2
1991	AWAY	W	3-1
1992	AWAY	W	3-1
1993	AWAY	W	3-1
1993	HOME	W	3-0
1994	AWAY	L	0-3
1994	HOME	W	3-1
1995	HOME	L	1-3
1995	AWAY	L	2-3
1996	AWAY	W	3-2
1996	HOME	W	3-0
1997	HOME	W	3-2
1997	AWAY	W	3-2
1998	AWAY	W	3-0
1998	HOME	W	3-0
1999	HOME	W	3-1

he'd be the quickest to 50 wins in the 25-point rally-scoring era.

KILL OR BE KILLED

» Auburn enters the weekend averaging 13.67 kills per set. The mark is the third-highest in the SEC and currently ranks No. 32 in the nation.

RING THE BEL

» Not only did Bel Zimmerman post the first double-double of her career but her hitting efficiency spiked during the Tiger Invitational. After hitting .367 against Mercer, the Liberty, Missouri native is averaging .236 on the season, up .035 points from 2022.

ON THE OFFENSIVE

» The Auburn offense is firing at all cylinders to begin the 2023 campaign. The Tigers are hitting .279 after 12 matches, the fourth-highest in the SEC and No. 15 in the nation. Auburn's 13.67 kills per set also rank third in the conference.

CAN YOU DIG IT?

» In the first match of the season, libero Sarah Morton is already making waves. With 24 digs against Coppin State, the Muenster, Indiana native posted the most digs in a four-set match so far in the SEC this season.

STREAKING

» In each of Auburn's first five matches this season, the Tigers managed to hit north of .300, marking the only such streak in the 25-point rally-scoring era.

SOAKING UP SUMMER HEAT

» August has been good to Brent Crouch over the years. In nine years of coaching, Crouch is 22-3 in the month of August, including a 9-0 mark at Auburn.

QUEEN KEMP

» Minnesota native Kendal Kemp announced herself to the collegiate volleyball world in 2022. Kemp set single-season program records in solo blocks (26), block assists (154), total blocks (180) and blocks per set (1.48). Earning AVCA South Region Honorable Mention, Kemp totals were also second in the Southeastern Conference and her 180 total blocks were the second-most in the country.

BLOCK PARTY

» Speaking of blocks, Auburn's team totals were nothing short of brilliant. In the rally-scoring era, the 2022 Tiger team set single-season records in block assists (520), total blocks (312) and blocks per set (2.56).

PLAYER TO WATCH: BELLA BELL

» Senior transfer Bella Bell is set to return to the lineup this weekend. Coming into her own at right side, Bell is second on the team in hitting percentage, swinging .358.

**THE JACK BURTON**

» NCAA rules have allowed for an additional coach for volleyball programs. Crouch has added Jack Burton to his staff.

Following a prolific playing career at Grand Canyon University, Burton stopped over in Dayton for two seasons and most recently helped FGCU to a 26-7 record and the school's third trip to the NCAA Tournament.

AUBURN PICKED 7th IN PRESEASON POLL

» After a sixth-place finish in 2022, the Auburn Tigers have been selected to finish seventh in the 2023 preseason poll.

NEW KIDS ON THE BLOCK

» All 12 student-athletes from a year ago return to the Auburn Volleyball roster. Head coach Brent Crouch added six new faces to bolster the squad in 2023. Four transfers (Bella Bell, Kyla Swanson, Peyton Dunn and Paige Thibault) make their debut in the Orange and Blue this season. Freshmen Jasmin Okeoma and Lakin Laurendine have also found a new home on the Plains.

INSIDE THE MATCH-UPS CONT...

1999	AWAY	W	3-1
2000	AWAY	L	1-3
2000	HOME	L	2-3
2001	HOME	L	2-3
2001	AWAY	L	2-3
2002	AWAY	L	0-3
2002	HOME	L	0-3
2003	HOME	L	2-3
2003	AWAY	L	1-3
2004	AWAY	W	3-2
2004	HOME	W	3-1
2005	AWAY	L	0-3
2006	AWAY	L	1-3
2006	HOME	L	2-3
2007	HOME	L	0-3
2007	AWAY	L	0-3
2008	HOME	L	0-3
2008	AWAY	L	1-3
2009	HOME	W	3-1
2009	AWAY	W	3-1
2010	AWAY	L	0-3
2010	HOME	L	2-3
2011	HOME	W	3-0
2011	AWAY	L	1-3
2012	AWAY	W	3-0
2013	AWAY	W	3-1
2013	HOME	W	3-1
2014	HOME	L	0-3
2015	HOME	W	3-2
2016	AWAY	W	3-2
2016	HOME	W	3-2

2017	AWAY	W	3-1
2018	AWAY	W	3-1
2018	HOME	W	3-2
2019	AWAY	L	0-3
2021	HOME	L	1-3
2022	AWAY	W	3-1

HEAD COACH BRENT CROUCH

QUICK FACTS

College ___ Texas A&M ('98, '00)
 ___ Oregon ('06)
 Wife ___ Marcy
 Sons ___ Jonathan and William

COACHING RECORD

Head Coaching Career _ 10th Season
 Career Record ___ 140-125
 NCAA Appearances ___ 3

COACHING CAPSULE

2020-Pr. Auburn 45-34
 2018-19 Southern California 40-25
 2014-17 Portland 55-66

YEAR-BY-YEAR RESULTS

2023	Auburn	7-1
2022	Auburn	22-9
2021	Auburn	13-15
2020	Auburn	0-8
2019	USC	18-14
2018	USC	22-11
2017	Portland	15-15
2016	Portland	17-13
2015	Portland	16-15
2014	Portland	7-23



Brent Crouch begins his fourth season at the helm of the Auburn Volleyball program in 2023. Crouch and the Tigers look to reset the bar after a record-breaking 2022 campaign that saw success on the Plains unseen for more than a decade.

Last season, Auburn earned a berth into the NCAA Tournament for just the second time in school history and the first since 2010. A first-round victory over host and No. 14 Creighton provided the program with its second postseason win and first triumph over a nationally-ranked opponent since 2017.

The feat came on the heels of a historic season that saw the Tigers begin the season with a record mark of 14-0 and a record start to SEC play at 3-0. The 22 total victories on the season were the most in the 25-point rally-scoring era and the most since 1998. The Tigers also picked up its first win in Columbia, Missouri.

Under Crouch's guidance, Akasha Anderson, Madison Scheer and Kendal Kemp each garnered All-Conference Honors. Anderson and Kemp also picked up AVCA postseason accolades with Anderson grabbing South Region Freshman of the Year and All-Region. Meanwhile, Kemp solidified Honorable Mention. Auburn Volleyball student-athletes also picked up a record 10 SEC weekly awards.

Crouch wasn't left out of the postseason awards season, securing AVCA South Region Coach of the Year, the first such award for the Tiger Volleyball program.

Fans on the Plains saw Auburn become one of the most potent blocking teams in the Southeastern Conference in 2022. Crouch's guidance helped the Tigers break records for most block assists in a single season (520), total blocks (312.0) and tie for the most blocks in a four-set match (17 vs. Troy).

The Orange and Blue wall's foundation was laid by then-freshman Kendal Kemp. The Egan, Minnesota product shattered single-season records for solo blocks (26), block assists (154), total blocks (180) and blocks per set (1.48).

During his first full season leading the Auburn program in 2021, Crouch's leadership had an immediate effect. The Tigers opened the season winning 17 consecutive sets to tie the program record for most sweeps to begin a season (5), matching the 1974 Auburn team. Crouch led the team to a 13-15 record with a 5-13 mark in the SEC, picking up a season sweep over Alabama, the first Auburn win over Missouri since 1996 and the program's first victory in College State with a win over Texas A&M.

Crouch's expertise led to six total SEC weekly honors, splitting three on offense and three on defense. Individually, the Tigers also set nine individual records during the 2021 campaign.

Individually, it was Rebekah Rath and Tatum Shipies who benefited the most from Crouch's development. Shipies led the SEC in blocking and set records in blocks, block assists and blocks per set. Meanwhile, Rath led the SEC in five offensive categories, setting records in kills and kills per set.

Crouch made his Auburn coaching debut against No. 4 Florida on Oct. 21, 2020, to open the shortened fall volleyball schedule. Crouch led the Tigers on the court for eight total matches and his impact on the Plains was noticeable almost immediately, tying the record for most blocks in a four-set with 17 at South Carolina.

Prior to Auburn, Crouch served as the head coach at the University of South California, compiling a 40-25 record. He would lead the Trojans to the second round of the NCAA Tournament in both years in Los Angeles. In 2018, Crouch's Trojans earned the No. 11 overall seed in the Tournament and the No. 21 ranking in the final AVCA Coaches poll of the year.

Before leading the Trojans, Crouch spent four seasons as head coach of the University of Portland. The 2016 West Coast Conference Coach of the Year inherited a winless program and guided the Pilots to its winningest season in 25 years just two seasons later. His 48 victories in his final three years in the Rose City was the best three-season total since 1984-86. He put Portland on the WCC map, earning wins over top-10, top-15 and top-25 opponents while in charge of the Pilots. Crouch coached three All-WCC First Team selections, a WCC All-Freshman Team honoree and three WCC All-Academic First Teamers. He also established Beach Volleyball as a varsity sport at Portland in 2016.

Crouch arrived at Portland after four seasons (2010-13) at Saint Mary's College, where he was an assistant with the indoor program and head coach of the beach team.

Brent and his wife Marcy have two sons, Jonathan and William.

2023 AUBURN VOLLEYBALL ROSTER

No.	Name	Year	Pos.	Ht.	Hometown (High School/Previous School)
1	MADISON SCHEER	SO.	PH	6-1	EUREKA, MO. (EUREKA)
2	SARAH MORTON	SO.	L	5-7	MUNSTER, IND. (MUNSTER)
3	AKASHA ANDERSON	SO.	PH	6-3	RESTON, VA. (HERNDON)
4	FALLAN LANHAM	JR.	L	5-8	LOUISVILLE, KY. (MERCY ACADEMY)
5	BELLA BELL	SR.	MB	6-4	BLYTHEWOOD, S.C. (KENTUCKY)
6	KYLA SWANSON	GR.	MB	6-4	WAHOO, NEB. (ILLINOIS)
7	PEYTON DUNN	R-SO.	S	5-11	DECATUR, TEXAS (OKLAHOMA)
8	KENDAL KEMP	SO.	MB	6-6	EAGAN, MINN. (EAGAN)
9	ZOE SLAUGHTER	SO.	L	5-7	HONOLULU, HAWAII (MOANALUA)
10	JACKIE BARRETT	SR.	S	6-2	HIGHLAND, CALIF. (CITRUS VALLEY)
11	JORDAN SINNESS	JR.	S	5-9	SEBRING, FLA. (SEBRING)
12	BEL ZIMMERMAN	SO.	PH	6-2	LIBERTY, MO. (LIBERTY NORTH)
13	PAIGE THIBAUT	JR.	L	5-6	WATERTOWN, MINN. (FIU)
14	CHELSEY HARMON	SR.	MB	6-3	PUYALLUP, WASH. (PORTLAND)
17	CASSIDY TANTON	R-SO.	PH	6-0	STONEVILLE, N.C. (DALTON MCMICHAEL)
19	JASMINE OKEOMA	FR.	MB	6-3	WOODBIDGE, VA. (FOREST PARK)
22	SYDNEY HANDEL	SO.	PH	6-0	LEE'S SUMMIT, MO. (LEE'S SUMMIT WEST)
25	LAKIN LAURENDINE	FR.	PH	6-1	JACKSON, MISS. (JACKSON ACADEMY)

HEAD COACH | BRENT CROUCH (4TH SEASON)

ASSISTANT COACH | KEITH SMITH (2ND SEASON)

ASSISTANT COACH/RECRUITING COORDINATOR | RACHEL CORBELLI (2ND SEASON)

ASSISTANT COACH | JACK BURTON (1ST SEASON)

PRONUNCIATION GUIDE:

MADISON SCHEER – SHEER FALLAN LANHAM – FAL(LIKE PAL)-AN LAN-EM SYDNEY HANDEL – HON-DELL
 PAIGE THIBAUT – THEE-BALT JASMINE OKEOMA – OKAY-AH-MUH LAKIN LAURENDINE – LAY-KIN LOR-EN-DEAN
 RACHEL CORBELLI – CORE-BELL-EE

INSIDE THE 2023 NUMBERS


Old Miss

CATEGORY	AUBURN	OLE MISS
Kills	631	601
Per Set	13.4	13.7
Errors	200	223
Total Attacks	1544	1519
Hitting Pct.	.279	.249
Assists	555	564
Per Set	11.8	12.8
Service Aces	72	64
Per Set	1.5	1.5
Service Errors	148	94
Reception Errors	55	56
Per Set	1.2	1.3
Digs	592	655
Per Set	12.6	14.9
Solo Blocks	16	24
Block Assists	198	151
Total Blocks	115.0	99.5
Per Set	2.4	2.3

WEEKLY AWARDS

2023 INDIVIDUAL HIGHS BY SET

THREE SETS

HITTING PERCENTAGE (MIN. 12 KILLS) _____ .367, Bel Zimmerman vs Mercer (Sept. 9)
 KILLS _____ 14, 2 times (last Bel Zimmerman vs Mercer, Sept. 9)
 TOTAL ATTEMPTS _____ 35, Akasha Anderson vs McNeese (Aug. 26)
 ASSISTS _____ 31, 2 times (last Jackie Barrett vs Mercer, Sept. 9)
 DIGS _____ 11, Fallan Lanham vs Jacksonville St. (Aug. 26)
 ACES _____ 5, Jackie Barrett vs Mercer, Sept. 9
 BLOCKS _____ 7, Kendal Kemp vs Mercer (Sept. 9)

FOUR SETS

HITTING PERCENTAGE (MIN. 12 KILLS) _____ .526, Kendal Kemp vs Charleston Southern (Sept. 8)
 KILLS _____ 19, Akasha Anderson vs Samford (Sept. 16)
 TOTAL ATTEMPTS _____ 50, Bel Zimmerman vs Charleston Southern (Sept. 8)
 ASSISTS _____ 46, Jackie Barrett vs Samford (Sept. 16)
 DIGS _____ 24, Sarah Morton vs Coppin St. (Aug. 25)
 ACES _____ 4, Chelsey Harmon vs Charleston Southern (Sept. 8)
 BLOCKS _____ 7, Chelsey Harmon vs Charleston Southern (Sept. 8)

FIVE SETS

HITTING PERCENTAGE (MIN. 12 KILLS) _____ .235, Bel Zimmerman at South Alabama (Sept. 14)
 KILLS _____ 26, Akasha Anderson at South Alabama (Sept. 14)
 TOTAL ATTEMPTS _____ 69, Akasha Anderson at South Alabama (Sept. 14)
 ASSISTS _____ 48, Jackie Barrett at South Alabama (Sept. 14)
 DIGS _____ 29, Zoe Slaughter at South Alabama (Sept. 14)
 ACES _____ 5, Jackie Barrett at South Alabama (Sept. 14)
 BLOCKS _____ 6, Bel Zimmerman at South Alabama (Sept. 14)

2023 TEAM HIGHS BY SET

THREE SETS

HITTING PERCENTAGE (MIN. 12 KILLS) _____ .395, vs Jacksonville St. (Aug. 26)
 KILLS _____ 45, vs McNeese (Aug. 26)
 TOTAL ATTEMPTS _____ 102, vs McNeese (Aug. 26)
 ASSISTS _____ 37, vs McNeese (Aug. 26)
 DIGS _____ 33, vs McNeese (Aug. 26)
 ACES _____ 9, vs Mercer (Sept. 9)
 BLOCKS _____ 11.0, vs Mercer (Sept. 9)

FOUR SETS

HITTING PERCENTAGE (MIN. 12 KILLS) _____ .386, vs Samford (Sept. 16)
 KILLS _____ 62, at Florida St. (Sept. 3)
 TOTAL ATTEMPTS _____ 147, vs Charleston Southern (Sept. 8)
 ASSISTS _____ 54, at Florida St. (Sept. 3)
 DIGS _____ 63, vs Charleston Southern (Sept. 8)
 ACES _____ 7, vs Charleston Southern (Sept. 8)
 BLOCKS _____ 19.0, vs UAB (Sept. 15)

FIVE SETS

HITTING PERCENTAGE (MIN. 12 KILLS) _____ .196, vs Florida (Sept. 22)
 KILLS _____ 60, at South Alabama (Sept. 14)
 TOTAL ATTEMPTS _____ 178, at South Alabama (Sept. 14)
 ASSISTS _____ 54, at South Alabama (Sept. 14)
 DIGS _____ 81, at South Alabama (Sept. 14)
 ACES _____ 14, at South Alabama (Sept. 14)
 BLOCKS _____ 11.0, at South Alabama (Sept. 14)

THE LAST TIME AUBURN...

Won in three sets _____ Sept. 9, 2023 vs Mercer (25-15, 25-20, 25-11)
 Won in four sets _____ Sept. 16, 2023 vs Samford (25-19, 20-25, 26-24, 25-11)
 Won in five sets _____ Sept. 14, 2023 at South Alabama (27-25, 23-25, 19-25, 25-23, 15-8)
 Lost in three sets _____ Nov 26, 2022 vs Arkansas (21-25, 17-25, 17-25)
 Lost in four sets _____ Oct. 16, 2022 at Missouri (25-15, 21-25, 15-25, 27-29)
 Lost in five sets _____ Sept. 22, 2023 vs Florida (20-25, 26-24, 24-26, 25-19, 17-15)
 Lost first set in a win _____ Sept. 8, 2023 vs Charleston So. (23-25, 25-16, 25-9, 25-19)
 Won first set in a loss _____ Sept. 22, 2023 vs Florida (20-25, 26-24, 24-26, 25-19, 17-15)
 Lost first two sets in a win _____ Oct. 15, 2022 at Missouri (21-25, 21-25, 25-17, 25-17, 15-12)
 Won first two sets in a loss _____ Oct. 10, 2021 at Arkansas (25-20, 25-23, 15-25, 17-25, 7-15)
 Beat a ranked opponent Dec. 2, 2022 vs #14 Creighton (21-25, 25-21, 25-20, 16-25, 15-11)
 Hit .300-.399 in a match _____ Sept. 16, 2023 vs Samford (.386)
 Hit .400-.499 in a match _____ Sept. 6, 2022 vs Alabama A&M (.400)
 Hit .500 or better in a match _____ Oct. 18, 1998 at Ole Miss (.514)
 Held opponent to .000-.100 in a match _____ Aug. 26, 2023 vs McNeese (.097)
 Held opponent to a negative hitting percentage _____ Sept. 9, 2023 vs Mercer (-.053)
 Had 70-79 kills in a match _____ Oct. 26, 2018 vs. Ole Miss (77)
 Had 80+ kills in a match _____ Sept. 17, 2006 at Georgia (84)
 Had 80-99 digs in a match _____ Sept. 14, 2022 at South Alabama (81)
 Had 100+ digs in a match _____ Sept. 17, 2021 vs. Nicholls (105)
 Had 15+ blocks in a match _____ Sept. 15, 2023 vs UAB (19.0)
 Had 10+ service aces in a match _____ Sept. 14, 2023 at South Alabama (14)
 Had a player(s) with 20-24 kills in a match _____ Nov. 6, 2022 Akasha Anderson vs Texas A&M (21)
 Had a player(s) with 25-29 kills in a match _____ Sept. 14, 2023, Akasha Anderson at South Ala. (26)
 Had a player(s) with 30+ kills in a match _____ Oct. 8, 2004, Ashlee Johns vs. Arkansas (30)
 Had a player(s) with 10+ blocks in a match _____ Sept. 15, 2023 Kendal Kemp vs UAB (10)
 Had a player(s) with 25-29 digs in a match _____ Sept. 14, 2023, Zoe Slaughter at South Ala. (29)
 Had a player(s) with 30+ digs in a match _____ Oct. 17, 2021, Bella Rosenthal vs. Missouri(33)
 Had a player(s) with 50+ assists in a match _____ Oct. 9, 2022 Jackie Barrett vs Georgia (51)
 Had a player(s) with 60+ assists in a match _____ Oct. 5, 2022, Jackie Barrett at LSU (60)
 Had a player(s) with 5+ aces in a match _____ Sept. 14, 2023, Jackie Barrett at South Ala. (5)

AUBURN DOUBLE-DOUBLES IN 2023

PLAYER	OPPONENT (SETS)	DATE	STATS
Jackie Barrett (6)	vs SMU (4)	Sept. 2	36 assists, 14 digs
	at Florida St. (4)	Sept. 3	44 assists, 11 digs
	vs MTSU (4)	Sept. 7	39 assists, 10 digs
	vs Charleston So. (4)	Sept. 8	41 assists, 13 digs
	at South Alabama (5)	Sept. 14	48 assists, 11 digs
	vs #3 Florida (5)	Sept. 22	40 assists, 12 digs
Akasha Anderson (3)	at South Alabama (5)	Sept. 14	26 kills, 11 digs
	vs UAB (4)	Sept. 15	11 kills, 11 digs
	vs #3 Florida (5)	Sept. 22	18 kills, 10 digs
Bel Zimmerman (3)	vs Charleston So. (4)	Sept. 8	17 kills, 16 digs
	vs UAB (4)	Sept. 15	16 kills, 12 digs
	vs Samford (4)	Sept. 16	15 kills, 11 digs

AUBURN'S 2023 RECORD WHEN...

OVERALL	10-2
SEC-	0-1
NON-CONFERENCE	10-1
RANKED OPPONENTS	0-1
HOME	5-2
AWAY	2-0
NEUTRAL	3-0
BY SETS	
THREE SETS	3-0
FOUR SETS	6-1
FIVE SETS	1-1
WON FIRST SET	8-2
LOST FIRST SET	2-0
WON SECOND SET	7-1
LOST SECOND SET	3-1
WON FIRST TWO SETS	5-0
LOST FIRST TWO SETS	0-0
SITUATIONAL	
MORE KILLS THAN OPPONENT	9-0
FEWER KILLS THAN OPPONENT	1-2
KILLS ARE TIED	0-0
MORE DIGS THAN OPPONENT	4-0
FEWER DIGS THAN OPPONENT	5-2
DIGS ARE TIED	1-0
MORE ACES THAN OPPONENT	7-1
FEWER ACES THAN OPPONENT	2-1
ACES ARE TIED	1-0
HIGHER HITTING PERCENTAGE THAN OPPONENT	10-0
LOWER HITTING PERCENTAGE THAN OPPONENT	0-2
HITTING PERCENTAGE TIED	0-0
HITTING PERCENTAGE	
.400 OR ABOVE	0-0
.300-.399	7-0
.200-.299	1-1
.100-.199	2-1
.000-.099	0-0
NEGATIVE	0-0
OPPONENTS' HITTING PERCENTAGE	
.400 OR ABOVE	0-0
.300-.399	1-0
.200-.299	2-2
.100-.199	4-0
.000-.099	2-0
NEGATIVE	1-0
BY DAY	
MONDAY	0-0
TUESDAY	0-0
WEDNESDAY	0-0
THURSDAY	1-1
FRIDAY	3-1
SATURDAY	5-0
SUNDAY	1-0
DAY MATCHES (FIRST SERVE BEFORE 6 P.M.)	5-0
NIGHT MATCHES (FIRST SERVE AFTER 6 P.M.)	5-2
BY MONTH	
AUGUST	3-0
SEPTEMBER	7-2
OCTOBER	0-0
NOVEMBER	0-0
DECEMBER	0-0
JERSEY COLOR	
NAVY w/POWER STRIPE	0-0
NAVY SOLID	0-0
NAVY SLEEVELESS	3-0
ORANGE w/POWER STRIPE	4-2
ORANGE SOLID	3-0

2023 AUBURN MATCH-BY-MATCH STARTERS

DATE	OPPONENT	RESULT	OUTSIDE	MIDDLE	RIGHT SIDE/DS	OUTSIDE/DS	MIDDLE	LIBERO	SETTER
Aug. 25	vs Coppin State	W, 3-1	Akasha Anderson	Kendal Kemp	Bella Bell	Paige Thibault	Kyla Swanson	Sarah Morton	Peyton Dunn
Aug. 26	vs McNeese	W, 3-0	Akasha Anderson	Kendal Kemp	Bella Bell	Paige Thibault	Kyla Swanson	Sarah Morton	Jackie Barrett
Aug. 26	vs Jacksonville State	W, 3-0	Akasha Anderson	Kendal Kemp	Bella Bell	Zoe Slaughter	Kyla Swanson	Sarah Morton	Jackie Barrett
Sept. 2	vs SMU	W, 3-1	Akasha Anderson	Kendal Kemp	Bella Bell	Zoe Slaughter	Kyla Swanson	Sarah Morton	Jackie Barrett
Sept. 3	at Florida State	W, 3-1	Akasha Anderson	Kendal Kemp	Bella Bell	Zoe Slaughter	Kyla Swanson	Sarah Morton	Jackie Barrett
Sept. 7	vs Middle Tennessee	L, 1-3	Bel Zimmerman	Kendal Kemp	Bella Bell	Zoe Slaughter	Kyla Swanson	Sarah Morton	Jackie Barrett
Sept. 8	vs Charleston Southern	W, 3-1	Madison Scheer	Kendal Kemp	Bel Zimmerman	Fallan Lanham	Chelsey Harmon	Sarah Morton	Jackie Barrett
Sept. 9	vs Mercer	W, 3-0	Bel Zimmerman	Kendal Kemp	Zoe Slaughter	Fallan Lanham	Chelsey Harmon	Sarah Morton	Jackie Barrett
Sept. 14	at South Alabama	W, 3-2	Akasha Anderson	Kendal Kemp	Bel Zimmerman	Fallan Lanham	Kyla Swanson	Zoe Slaughter	Jackie Barrett
Sept. 15	vs UAB	W, 3-1	Akasha Anderson	Kendal Kemp	Bel Zimmerman	Paige Thibault	Kyla Swanson	Zoe Slaughter	Jackie Barrett
Sept. 16	vs Samford	W, 3-1	Akasha Anderson	Kendal Kemp	Bel Zimmerman	Madison Scheer	Kyla Swanson	Zoe Slaughter	Jackie Barrett
Sept. 22	vs #3 Florida	L, 2-3	Akasha Anderson	Kyla Swanson	Bella Bell	Paige Thibault	Chelsey Harmon	Sarah Morton	Jackie Barrett

2023 AUBURN MATCH-BY-MATCH LEADERS

DATE	OPPONENT	RESULT	KILLS	ASSISTS	ACES	DIGS	BLOCKS	HIT PCT. (MIN 10 ATT.)
Aug. 25	vs Coppin State	W, 3-1	Scheer/Anderson (16)	Dunn (43)	Swanson (2)	Morton (24)	Swanson (6)	Bell (.480)
Aug. 26	vs McNeese	W, 3-0	Anderson (14)	Barrett (31)	Anderson (4)	Anderson (8)	Kemp (5)	Zimmerman (.400)
Aug. 26	vs Jacksonville State	W, 3-0	Anderson (10)	Dunn (16)	Zimmerman (3)	Lanham (11)	Swanson (3)	Bell (.750)
Sept. 2	vs SMU	W, 3-1	Scheer (18)	Barrett (36)	Anderson (2)	Morton (17)	Kemp (4)	Swanson (.500)
Sept. 3	at Florida State	W, 3-1	Anderson (15)	Barrett (44)	Slaughter (2)	Barrett (11)	Swanson/Barrett (4)	Swanson (.467)
Sept. 7	vs Middle Tennessee	L, 1-3	Zimmerman (11)	Barrett (39)	Barrett/Lanham (1)	3 players (10)	Kemp (5)	Swanson (.333)
Sept. 8	vs Charleston Southern	W, 3-1	Zimmerman (17)	Barrett (41)	Harmon (4)	Zimmerman (16)	Harmon (7)	Kemp (.526)
Sept. 9	vs Mercer	W, 3-0	Zimmerman (14)	Barrett (31)	Barrett (5)	Morton (10)	Kemp (7)	Kemp (.500)
Sept. 14	at South Alabama	W, 3-2	Anderson (26)	Barrett (48)	Barrett (5)	Slaughter (29)	Zimmerman (6)	Kemp (.455)
Sept. 15	vs UAB	W, 3-1	Zimmerman (16)	Barrett (35)	Zimmerman/Thibault (2)	Zimmerman (12)	Kemp (10)	Zimmerman (.306)
Sept. 16	vs Samford	W, 3-1	Anderson (19)	Barrett (46)	Thibault (2)	Slaughter (16)	Swanson (3)	Anderson (.410)
Sept. 22	vs #3 Florida	L, 2-3	Anderson (18)	Barrett (40)	Anderson (2)	Morton (13)	Swanson/Anderson (3)	Bell (.214)

2023 OVERALL STATISTICS

Game Records

Overall	Conference	Home	Away	Neutral
10 - 2	0 - 1	5 - 2	2 - 0	3 - 0

Team Box Score

#	Player	SP	Attack					Set		Serve			Dig			Blocking					PTS	
			K	K/S	E	TA	PCT	A	A/S	SA	SE	SA/S	RE	DIG	DIG/S	BS	BA	TOT/S	BLK/S	BE		BHE
1	Scheer, Madison	44	136	3.09	47	354	.251	3	0.07	0	0	0.00	3	16	0.36	1	18	19	0.43	1	0	146.0
2	Morton, Sarah	34	2	0.06	0	7	.286	32	0.94	3	23	0.09	5	104	3.06	0	0	0	0.00	0	0	5.0
3	Anderson, Akasha	36	141	3.92	55	380	.226	5	0.14	13	21	0.36	9	71	1.97	1	14	15	0.42	2	0	162.0
4	Lanham, Fallan	27	0	0.00	0	2	.000	6	0.22	6	6	0.22	1	52	1.93	0	0	0	0.00	0	0	6.0
5	Bell, Bella	27	76	2.81	19	159	.358	2	0.07	0	0	0.00	1	7	0.26	0	16	16	0.59	3	0	84.0
6	Swanson, Kyla	45	59	1.31	24	146	.240	4	0.09	3	13	0.07	0	13	0.29	4	42	46	1.02	2	0	87.0
7	Dunn, Peyton	6	4	0.67	1	7	.429	59	9.83	1	7	0.17	0	8	1.33	0	2	2	0.33	0	0	6.0
8	Kemp, Kendal	40	67	1.68	18	122	.402	0	0.00	1	3	0.03	0	4	0.10	6	46	52	1.30	7	0	97.0
9	Slaughter, Zoe	47	0	0.00	0	8	.000	20	0.43	4	16	0.09	9	110	2.34	0	0	0	0.00	0	0	4.0
10	Barrett, Jackie	42	31	0.74	4	61	.443	405	9.64	14	10	0.33	0	96	2.29	1	25	26	0.62	2	3	58.5
12	Zimmerman, Bel	40	94	2.35	27	251	.267	7	0.18	15	25	0.38	7	51	1.28	2	18	20	0.50	6	0	120.0
13	Thibault, Paige	28	1	0.04	0	3	.333	8	0.29	4	12	0.14	3	47	1.68	0	0	0	0.00	0	0	5.0
14	Harmon, Chelsey	22	19	0.86	4	38	.395	4	0.18	8	7	0.36	0	5	0.23	1	17	18	0.82	4	0	36.5
17	Tanton, Cassidy	1	1	1.00	1	5	.000	0	0.00	0	0	0.00	1	0	0.00	0	0	0	0.00	0	0	1.0
22	Handel, Sydney	13	0	0.00	0	1	.000	0	0.00	0	5	0.00	1	10	0.77	0	0	0	0.00	0	0	0.0
AUBURN		47	631	13.43	200	1544	.279	555	11.81	72	148	1.53	55	594	12.64	16	198	115	2.45	27	3	818.0
Opponents		47	524	11.15	267	1494	.172	488	10.38	55	105	1.17	72	616	13.11	14	116	72	1.53	37	11	651.0

Team statistics

	AUB	OPP
ATTACK		
Kills	631	524
Errors	200	267
Total Attacks	1544	1494
Attack Pct	.279	.172
Kills/Set	13.43	11.15
SET		
Assists	555	488
Attempts	1520	1547
Assist Pct	.365	.315
Assists/Set	11.81	10.38
SERVE		
Aces	72	55
Errors	148	105
Attempts	1098	963
Serve Pct	.865	.891
Aces/Set	1.53	1.17
SERVE RECEPTIONS		
Errors	55	72
Errors/Set	1.17	1.53
Attempts	858	950
Reception Pct	.936	.998
DEFENSE		
Digs	594	616
Digs/Set	12.64	13.11
BLOCKING		
Block solo	16	14
Block Assist	198	116
Total Blocks	115	72
Blocks/Set	2.45	1.53
Block Errors	27	37
Ball handling errors	3	11
ATTENDANCE		
Total	8041	1579
Dates/Avg Per Date	7/1149	2/790
Neutral Site #/Avg	3/67	-
Current win streak	0	-
Home win streak	0	-

Team Results

Date	Opponent		Score	Score-by-set	Att.
08/25/2023	Coppin St.	W	3-1	24-26,25-17,25-15,25-18	1124
08/26/2023	McNeese	W	3-0	25-15,25-15,25-22	579
08/26/2023	Jacksonville St.	W	3-0	25-12,25-11,26-24	1125
09/02/2023	vs SMU	W	3-1	25-22,17-25,25-20,25-21	50
09/03/2023	at Florida St.	W	3-1	30-28,25-21,19-25,25-23	361
09/07/2023	Middle Tenn.	L	1-3	25-22,15-25,23-25,22-25	790
09/08/2023	Charleston So.	W	3-1	23-25,25-16,25-9,25-19	1063
09/09/2023	Mercer	W	3-0	25-15,25-20,25-11	967
09/14/2023	at South Alabama	W	3-2	27-25,23-25,19-25,25-23,15-8	1218
09/15/2023	vs UAB	W	3-1	25-15,26-24,21-25,25-19	87
09/16/2023	vs Samford	W	3-1	25-19,20-25,26-24,25-11	65
* 09/22/2023	Florida	L	2-3	25-20,24-26,26-24,19-25,15-17	2393

2023 SEC STATISTICS

Game Records

Overall	Conference	Home	Away	Neutral
0 - 1	0 - 1	0 - 1	0 - 0	0 - 0

Team Box Score

##	Player	SP	Attack					Set		Serve			Dig		Blocking					PTS		
			K	K/S	E	TA	PCT	A	A/S	SA	SE	SA/S	RE	DIG	DIG/S	BS	BA	TOT/S	BLK/S		BE	BHE
1	Scheer, Madison	5	15	3.00	6	44	.205	1	0.20	0	0	0.00	0	2	0.40	0	0	0	0.00	0	0	15.0
2	Morton, Sarah	5	1	0.20	0	1	1.000	5	1.00	1	5	0.20	0	13	2.60	0	0	0	0.00	0	0	2.0
3	Anderson, Akasha	5	18	3.60	11	60	.117	0	0.00	2	5	0.40	0	10	2.00	0	3	3	0.60	0	0	21.5
5	Bell, Bella	5	11	2.20	5	28	.214	1	0.20	0	0	0.00	0	2	0.40	0	0	0	0.00	0	0	11.0
6	Swanson, Kyla	5	3	0.60	1	10	.200	0	0.00	0	0	0.00	0	0	0.00	1	2	3	0.60	0	0	5.0
9	Slaughter, Zoe	5	0	0.00	0	0	.000	1	0.20	0	1	0.00	0	11	2.20	0	0	0	0.00	0	0	0.0
10	Barrett, Jackie	5	5	1.00	0	9	.556	40	8.00	1	3	0.20	0	12	2.40	0	2	2	0.40	1	0	7.0
12	Zimmerman, Bel	5	0	0.00	0	0	.000	1	0.20	0	3	0.00	0	1	0.20	0	0	0	0.00	0	0	0.0
13	Thibault, Paige	5	0	0.00	0	1	.000	1	0.20	0	3	0.00	1	9	1.80	0	0	0	0.00	0	0	0.0
14	Harmon, Chelsey	5	4	0.80	2	10	.200	0	0.00	0	0	0.00	0	1	0.20	0	2	2	0.40	2	0	5.0
AUBURN		5	57	11.40	25	163	.196	50	10.00	4	20	0.80	3	61	12.20	1	9	5.5	1.10	3	0	66.5
Opponents		5	59	11.80	27	159	.201	55	11.00	3	20	0.60	4	65	13.00	0	22	11	2.20	1	0	73.0

Team statistics

	AUB	OPP
ATTACK		
Kills	57	59
Errors	25	27
Total Attacks	163	159
Attack Pct	.196	.201
Kills/Set	11.40	11.80
SET		
Assists	50	55
Attempts	167	157
Assist Pct	.299	.350
Assists/Set	10.00	11.00
SERVE		
Aces	4	3
Errors	20	20
Attempts	109	111
Serve Pct	.817	.820
Aces/Set	0.80	0.60
SERVE RECEPTIONS		
Errors	3	4
Errors/Set	0.60	0.80
Attempts	91	89
Reception Pct	.967	.991
DEFENSE		
Digs	61	65
Digs/Set	12.20	13.00
BLOCKING		
Block solo	1	0
Block Assist	9	22
Total Blocks	5.5	11
Blocks/Set	1.10	2.20
Block Errors	3	1
Ball handling errors	0	0
ATTENDANCE		
Total	2393	0
Dates/Avg Per Date	1/2393	0/0
Neutral Site #/Avg	0/0	-
Current win streak	0	-
Home win streak	0	-

Team Results

Date	Opponent	Score	Score-by-set	Att.
* 09/22/2023	Florida	L 2-3	25-20,24-26,26-24,19-25,15-17	2393

2023 STATISTICAL LEADERS

Attack (by PCT)

#	Player	S	K	K/S	E	TA	PCT
10	Barrett, Jackie	42	31	0.74	4	61	.443
7	Dunn, Peyton	6	4	0.67	1	7	.429
8	Kemp, Kendal	40	67	1.68	18	122	.402
14	Harmon, Chelsey	22	19	0.86	4	38	.395
5	Bell, Bella	27	76	2.81	19	159	.358
13	Thibault, Paige	28	1	0.04	0	3	.333
2	Morton, Sarah	34	2	0.06	0	7	.286
12	Zimmerman, Bel	40	94	2.35	27	251	.267
1	Scheer, Madison	44	136	3.09	47	354	.251
6	Swanson, Kyla	45	59	1.31	24	146	.240
3	Anderson, Akasha	36	141	3.92	55	380	.226
4	Lanham, Fallan	27	0	0.00	0	2	.000
17	Tanton, Cassidy	1	1	1.00	1	5	.000
9	Slaughter, Zoe	47	0	0.00	0	8	.000
22	Handel, Sydney	13	0	0.00	0	1	.000

Kill (by K)

#	Player	S	K	K/S
3	Anderson, Akasha	36	141	3.92
1	Scheer, Madison	44	136	3.09
12	Zimmerman, Bel	40	94	2.35
5	Bell, Bella	27	76	2.81
8	Kemp, Kendal	40	67	1.68
6	Swanson, Kyla	45	59	1.31
10	Barrett, Jackie	42	31	0.74
14	Harmon, Chelsey	22	19	0.86
7	Dunn, Peyton	6	4	0.67
2	Morton, Sarah	34	2	0.06
13	Thibault, Paige	28	1	0.04
17	Tanton, Cassidy	1	1	1.00
4	Lanham, Fallan	27	0	0.00
9	Slaughter, Zoe	47	0	0.00
22	Handel, Sydney	13	0	0.00

Set (by A/S)

#	Player	S	A	A/S	TA	PCT
7	Dunn, Peyton	6	59	9.83	141	.411
10	Barrett, Jackie	42	405	9.64	1026	.388
2	Morton, Sarah	34	32	0.94	113	.248
9	Slaughter, Zoe	47	20	0.43	61	.311
13	Thibault, Paige	28	8	0.29	23	.304
4	Lanham, Fallan	27	6	0.22	26	.231
14	Harmon, Chelsey	22	4	0.18	15	.267
12	Zimmerman, Bel	40	7	0.18	22	.273
3	Anderson, Akasha	36	5	0.14	34	.088
6	Swanson, Kyla	45	4	0.09	25	.040
5	Bell, Bella	27	2	0.07	9	.222
1	Scheer, Madison	44	3	0.07	13	.154
8	Kemp, Kendal	40	0	0.00	8	.000
17	Tanton, Cassidy	1	0	0.00	0	.000
22	Handel, Sydney	13	0	0.00	4	.000

Serve (by SA/S)

#	Player	S	SA	SE	SA/S	TA	PCT
12	Zimmerman, Bel	40	15	25	0.38	140	.821
14	Harmon, Chelsey	22	8	7	0.36	73	.904
3	Anderson, Akasha	36	13	21	0.36	133	.842
10	Barrett, Jackie	42	14	10	0.33	155	.935
4	Lanham, Fallan	27	6	6	0.22	107	.944
7	Dunn, Peyton	6	1	7	0.17	15	.533
13	Thibault, Paige	28	4	12	0.14	71	.831
2	Morton, Sarah	34	3	23	0.09	125	.816
9	Slaughter, Zoe	47	4	16	0.09	178	.910
6	Swanson, Kyla	45	3	13	0.07	59	.780
8	Kemp, Kendal	40	1	3	0.03	6	.500
5	Bell, Bella	27	0	0	0.00	1	1.000
1	Scheer, Madison	44	0	0	0.00	2	1.000
17	Tanton, Cassidy	1	0	0	0.00	0	.000
22	Handel, Sydney	13	0	5	0.00	33	.848

Block (by BLK/S)

#	Player	S	BS	BA	TOTAL	BLK/S
8	Kemp, Kendal	40	6	46	52.0	1.30
6	Swanson, Kyla	45	4	42	46.0	1.02
14	Harmon, Chelsey	22	1	17	18.0	0.82
10	Barrett, Jackie	42	1	25	26.0	0.62
5	Bell, Bella	27	0	16	16.0	0.59
12	Zimmerman, Bel	40	2	18	20.0	0.50
1	Scheer, Madison	44	1	18	19.0	0.43
3	Anderson, Akasha	36	1	14	15.0	0.42
7	Dunn, Peyton	6	0	2	2.0	0.33
4	Lanham, Fallan	27	0	0	0.0	0.00
13	Thibault, Paige	28	0	0	0.0	0.00
2	Morton, Sarah	34	0	0	0.0	0.00
9	Slaughter, Zoe	47	0	0	0.0	0.00
17	Tanton, Cassidy	1	0	0	0.0	0.00
22	Handel, Sydney	13	0	0	0.0	0.00

Defense (by DIG/S)

#	Player	S	DIG	DIG/S	BHE
2	Morton, Sarah	34	104	3.06	0
9	Slaughter, Zoe	47	110	2.34	0
10	Barrett, Jackie	42	96	2.29	3
3	Anderson, Akasha	36	71	1.97	0
4	Lanham, Fallan	27	52	1.93	0
13	Thibault, Paige	28	47	1.68	0
7	Dunn, Peyton	6	8	1.33	0
12	Zimmerman, Bel	40	51	1.28	0
22	Handel, Sydney	13	10	0.77	0
1	Scheer, Madison	44	16	0.36	0
6	Swanson, Kyla	45	13	0.29	0
5	Bell, Bella	27	7	0.26	0
14	Harmon, Chelsey	22	5	0.23	0
8	Kemp, Kendal	40	4	0.10	0
17	Tanton, Cassidy	1	0	0.00	0

Points (by POINTS/S)

#	Player	S	POINTS	POINTS/S
3	Anderson, Akasha	36	162.0	4.50
1	Scheer, Madison	44	146.0	3.32
5	Bell, Bella	27	84.0	3.11
12	Zimmerman, Bel	40	120.0	3.00
8	Kemp, Kendal	40	97.0	2.43
6	Swanson, Kyla	45	87.0	1.93
14	Harmon, Chelsey	22	36.5	1.66
10	Barrett, Jackie	42	58.5	1.39
7	Dunn, Peyton	6	6.0	1.00
17	Tanton, Cassidy	1	1.0	1.00
4	Lanham, Fallan	27	6.0	0.22
13	Thibault, Paige	28	5.0	0.18
2	Morton, Sarah	34	5.0	0.15
9	Slaughter, Zoe	47	4.0	0.09
22	Handel, Sydney	13	0.0	0.00

Receptions (by PCT)

#	Player	S	RE	RE/S	TA	PCT
8	Kemp, Kendal	40	0	0.00	1	1.000
6	Swanson, Kyla	45	0	0.00	1	1.000
10	Barrett, Jackie	42	0	0.00	2	1.000
4	Lanham, Fallan	27	1	0.04	83	.988
2	Morton, Sarah	34	5	0.15	143	.965
13	Thibault, Paige	28	3	0.11	77	.961
9	Slaughter, Zoe	47	9	0.19	186	.952
1	Scheer, Madison	44	3	0.07	60	.950
3	Anderson, Akasha	36	9	0.25	159	.943
12	Zimmerman, Bel	40	7	0.18	111	.937
22	Handel, Sydney	13	1	0.08	14	.929
17	Tanton, Cassidy	1	1	1.00	4	.750
5	Bell, Bella	27	1	0.04	2	.500
14	Harmon, Chelsey	22	0	0.00	0	.000
7	Dunn, Peyton	6	0	0.00	0	.000
TM	TEAM	-	15	0.32	-	-

TEAM KILLS - SIDOUT ERA

	KILLS	OPPONENT (SETS)	DATE
1.	114	vs. Kentucky (5)	10/5/97
2.	107	at Tulane (5)	11/10/90
3.	99	vs. Georgia Tech (5)	9/14/95
4.	96	vs. Butler (5)	9/10/94
5.	95	vs. Pittsburgh (5)	9/13/91
6.	94	vs. Lamar (5)	9/24/88
7.	91	vs. LSU (5)	11/13/94
8.	90	at Ole Miss (5)	10/13/96
9.	89	vs. Arkansas (4)	10/20/96
10.	88	at Rhode Island (5)	9/5/97
	88	vs. Mississippi State (4)	10/24/97
	88	vs. Mississippi State (5)	11/12/00

TEAM KILLS - RALLY ERA

	KILLS	OPPONENT (SETS)	DATE
1.	84	vs. Virginia Tech (5)	9/2/06
	84	at Georgia (5)	9/17/06
3.	82	vs. Georgia Southern (5)	9/2/05
4.	81	at Mercer (5)	9/8/04
5.	80	vs. Kentucky (5)	10/1/06
	80	vs. Ole Miss (5)	10/24/03
7.	79	at Alabama (5)	10/30/11
8.	77	vs. Ole Miss (5)	10/26/18
9.	75	at South Carolina (5)	11/16/14
	75	at Georgia (5)	11/2/14
	75	vs. Green Bay (5)	9/5/13
	75	vs. Tennessee State (4)	8/25/07
	75	vs. Arkansas (5)	10/8/04
	75	at LSU (5)	10/25/15

TEAM ASSISTS - RALLY ERA

	AST.	OPPONENT (SETS)	DATE
1.	79	vs. Georgia Southern (5)	9/2/05
2.	77	at Mercer (5)	9/8/04
3.	76	at Georgia (5)	9/17/06
4.	74	vs. South Carolina (5)	10/5/14
	74	at Alabama (5)	10/30/11
	74	vs. Ole Miss (5)	9/24/03
7.	72	at Georgia (5)	11/2/14
	72	vs. Tennessee State (4)	8/25/07
	72	at LSU (5)	10/25/15
	72	vs. Ole Miss (5)	10/26/18

TEAM DIGS - RALLY ERA

	DIGS	OPPONENT (SETS)	DATE
1.	112	at LSU (5)	11/15/13
2.	109	at LSU (5)	10/25/15
3.	107	vs. Northwestern State (5)	9/20/14
4.	105	vs. Nicholls St. (4)	9/17/21
5.	99	at Ole Miss (5)	10/18/16
6.	97	vs. Georgia (4)	11/7/07
	97	vs. LSU (5)	10/5/15
	97	at Tennessee (5)	10/4/17
9.	94	at Tennessee (5)	11/16/12
10.	93	at Georgia (5)	9/17/06
	93	vs. Tennessee (4)	11/9/17

TEAM ACES - RALLY ERA

	ACES	OPPONENT (SETS)	DATE
1.	18	vs. Delaware State (3)	9/13/03
2.	16	vs. Tennessee State (4)	8/25/07
	16	vs. Southeastern Louisiana (3)	9/9/06
4.	14	at South Alabama (5)	9/14/23
	14	vs. Troy (3)	8/27/10
	14	vs. Alabama State (3)	9/5/03
7.	13	vs. Tennessee State (5)	8/30/19
	13	at SMU (5)	8/26/06
	13	vs. Mississippi State (5)	10/26/03
10.	12	vs. Louisiana Tech (4)	9/7/07
	12	at Lafayette (3)	9/12/03
	12	vs. Grambling State (3)	9/1/05

TEAM TOTAL BLOCKS - RALLY ERA

	BLK	OPPONENT (SETS)	DATE
1.	19.0	vs. UAB (4)	9/15/23
2.	18.0	vs. Georgia (5)	10/9/22
	18.0	vs. Alabama (5)	10/2/21
	18.0	vs. South Florida (5)	9/13/14
5.	17.0	vs. Troy (4)	9/10/22
	17.0	at Arkansas (5)	10/10/21
	17.0	at South Carolina (4)	10/29/20
	17.0	at Georgia Southern (5)	9/12/09
	17.0	vs. Mississippi State (5)	11/5/04
10.	16.5	at Alabama (4)	9/24/22

TEAM HITTING - ALL ERAS

	PCT.	OPPONENT (SETS)	DATE
1.	.530 (41-6-66)	vs. LSU (3)	11/2/97
2.	.514 (65-11-105)	at Ole Miss (3)	10/18/98
3.	.489 (52-6-94)	vs. Alabama A&M (3)	8/29/09
4.	.487 (46-8-78)	vs. Navy (3)	9/15/00
5.	.485 (38-6-66)	vs. Drexel (3)	9/10/93
	.485 (53-5-99)	vs. Eastern Illinois (3)	9/1/18
7.	.474 (52-7-95)	at South Carolina (3)	10/26/12
8.	.472 (40-6-72)	vs. Delaware State (3)	9/13/03
9.	.471 (54-5-104)	vs. Mississippi State (3)	11/29/14
10.	.469 (35-5-64)	vs. Alabama A&M (3)	8/28/09
11.	.468 (N/A)	vs. Alabama State (3)	10/8/87
12.	.462 (52-9-93)	at Georgia State (3)	8/28/07
13.	.455 (55-9-101)	vs. Alabama (3)	11/10/98
14.	.450 (42-6-80)	vs. Mercer (3)	9/5/13
15.	.448 (50-11-87)	vs. Grambling (3)	9/1/05
16.	.440 (43-10-75)	vs. Chicago State (3)	9/11/99
	.440 (55-11-100)	vs. UAB (3)	9/3/00
18.	.429 (49-10-91)	at LSU (3)	9/26/97
19.	.420 (45-8-88)	vs. Lipscomb (3)	9/20/03
20.	.422 (43-8-83)	at Georgia Tech (3)	8/25/17

Records set in the Brent Crouch era are listed in **BOLD**.

TEAM MATCH RECORDS (BY SET)**KILLS**

SETS	KILLS	OPPONENT	DATE
3s	76	vs. LSU	10/18/96
4s	89	vs. Arkansas	10/20/9
5s	114	vs. Kentucky	10/5/97

ATTACKS

SETS	ATT.	OPPONENT	DATE
3s	160	vs. South Carolina	10/19/97
4s	213	at Ole Miss	10/3/93
5s	229	at LSU	11/15/13

HITTING PERCENTAGE (MIN. 10 KILLS)

SETS	PCT.	OPPONENT	DATE
3s	.530 (41-6-66)	vs. LSU	11/2/97
4s	.365 (70-20-137)	vs. Alabama	11/6/97
5s	.362 (74-20-149)	at Minnesota	9/19/98

BLOCKS - SOLO

SETS	BLK	OPPONENT	DATE
3s	8 (3x)	last, vs. IUPUI	9/4/98
4s	10	at Tennessee Tech	10/14/88
5s	13	vs. NC State	9/21/91

BLOCKS - ASSISTS

SETS	BLK	OPPONENT	DATE
3s	27	at Samford	10/3/00
4s	34	vs UAB	9/15/23
5s	28 (3x)	last, vs. Mississippi State	11/12/00

TOTAL BLOCKS

SETS	BLK	OPPONENT	DATE
3s	15.0	vs. Alabama	11/5/93
	15.0	at South Carolina	10/17/10
4s	19.0	vs UAB	9/15/23
5s	18.0	vs. Georgia	10/9/22
	18.0	vs. South Florida	9/13/14

DIGS

SETS	DIGS	OPPONENT	DATE
3s	76	at Ole Miss	11/16/07
4s	115	vs. NE Louisiana	9/12/86
5s	117	vs. Central Florida	11/8/86

ASSISTS

SETS	AST	OPPONENT	DATE
3s	60	vs. Pittsburgh	8/31/97
4s	77	vs. Mississippi State	10/24/97
5s	100	vs. Kentucky	10/5/97

SERVICE ACES

SETS	ACE	OPPONENT	DATE
3s	18	vs. Delaware State	9/13/03
4s	16	vs. Tennessee State	8/25/07
5s	14	at South Alabama	9/14/23

INDIVIDUAL KILLS

	KILLS	PLAYER-OPPONENT (SETS)	DATE
1.	30	Ashlee Johns vs. Arkansas (5)	10/8/04
2.	29	Rebekah Rath at Arkansas (4)	10/9/21
3.	27	Kelly Fidero at Alabama (5)	10/30/11
4.	26	Akasha Anderson at South Alabama (5)	9/14/23
	26	Akasha Anderson vs Mississippi St. (5)	9/28/22
	26	Jessica Glover at Georgia (5)	9/17/06
	26	Camila Lago vs. Mississippi State (5)	10/26/03
8.	25	Macy Reece vs. South Florida (5)	9/13/14
	25	Rachel Shanks vs. Georgia (4)	11/7/07
	25	Jelena Sekulic at Arkansas (5)	10/7/07
	25	Rachel Shanks vs. Virginia Tech (5)	9/2/06
	25	Jennifer Amobi vs. Tennessee (4)	11/19/04
	25	Rebekah Rath at Georgia St. (4)	8/26/22

INDIVIDUAL HITTING PCT. (MIN. 12 KILLS)

	PCT.	PLAYER-OPPONENT (SETS)	DATE
1.	.773 (17-0-22)	Ashlee Johns vs. Delaware State (3)	9/13/03
2.	.722 (14-1-18)	Jonelle Wallace vs. Beth.-Cook. (3)	9/5/08
3.	.706 (12-0-17)	Chelsey Harmon vs. Jackson St. (3)	9/17/22
4.	.688 (12-1-16)	Shaina White vs. American (3)	9/8/18
5.	.667 (16-0-24)	Jonelle Wallace at Georgia (5)	11/24/10
6.	.650 (13-0-20)	Breanna Barksdale at Arkansas (5)	10/30/15
7.	.647 (13-1-17)	Alyssa Davis vs. Jacksonville State (5)	9/8/09
8.	.632 (12-0-19)	Courtney McDonald vs. Kentucky (5)	10/23/11
	.632 (12-0-19)	Camila Jersonsky vs. Austin Peay (4)	9/3/11
10.	.619 (14-1-21)	Camila Jersonsky vs. Miss. State (3)	11/3/13
	.619 (14-1-21)	Breanna Barksdale vs. Samford (4)	8/29/15
	.619 (14-1-21)	Shaina White vs. Furman (4)	8/26/17

INDIVIDUAL TOTAL BLOCKS

	BLK (S-A)	PLAYER-OPPONENT (SETS)	DATE
1.	12 (2-10)	Tatum Shipes vs Alabama (4)	10/2/21
	11 (4-7)	Breanna Barksdale at Florida (4)	11/23/16
3.	10 (1-9)	Kendal Kemp vs UAB (4)	9/15/23
	10 (1-9)	Kendal Kemp vs. Georgia (5)	10/9/22
	10 (1-9)	Kendal Kemp vs. Georgia (4)	10/8/22
	10 (2-8)	Chelsey Harmon vs Troy (4)	9/10/22
	10 (1-9)	Tatum Shipes at Arkansas (4)	10/9/21
	10 (0-10)	Stephanie Campbell vs. St. John's (5)	9/19/15
	10 (2-8)	Julie Bosler vs. South Carolina (5)	9/15/06
	10 (3-7)	Julie Bosler vs. Mississippi State (5)	11/5/04
	10 (2-8)	Julie Bosler vs. Mississippi State (5)	10/2/03
	10 (1-9)	Bailey Veit vs. Mercer (5)	9/20/03

INDIVIDUAL SERVICE ACES

	ACES	PLAYER-OPPONENT (SETS)	DATE
1.	7	Katherine Culwell vs. Tennessee (3)	11/22/13
	7	Maira Magallon vs. Delaware State (3)	9/13/03
3.	6	Brenna McIlroy at Missouri (4)	10/19/18
	6	Whitney Jacob vs. Arkansas (5)	10/15/06
5.	5	Jackie Barrett at South Alabama (5)	9/14/23
	5	Jackie Barrett vs Mercer (3)	9/9/23
	5	Rebekah Rath at Texas A&M (5)	11/5/21
	5	Jesse Earl at Florida State (5)	9/16/17
	5	Jesse Earl at Georgia (4)	10/2/16
	5	Alexa Filley vs. LSU (5)	10/4/15
	5	Liz Crouch vs. Troy (3)	8/27/10
	5	Rachel Shanks at South Alabama (3)	9/9/06
	5	Whitney Jacob vs. Louisiana-Monroe (3)	8/25/06
	5	Whitney Jacob vs. Mississippi State (4)	10/23/05
	5	Rachel Shanks vs. Clemson (3)	9/17/05
	5	Whitney Jacob vs. Grambling (3)	9/1/05
	5	Maira Magallon vs. Mississippi State (5)	10/26/03
	5	Maira Magallon at Lafayette (3)	9/12/03
	5	Maira Magallon vs. Bethune-Cookman (4)	9/6/03
	5	Jennifer Buckert vs. Alabama State (3)	9/5/03
	5	Brittany Diaz vs. Marist (4)	9/7/02
	5	Laura Hastings vs. Western Michigan (3)	9/1/01
	5	Grace Boyd at South Carolina (3)	10/26/01

INDIVIDUAL ASSISTS

	AST	PLAYER-OPPONENT (SETS)	DATE
1.	76	Jordan Elliott at Mercer (5)	9/8/04
2.	71	Maira Magallon vs. Ole Miss (5)	10/24/03
3.	68	Michele Ashmore vs. Georgia Southern (5)	9/2/05
4.	66	Joanna Pappas at Georgia (5)	9/17/06
5.	65	Maira Magallon vs. Arkansas (5)	10/8/04
	65	Nicki Gerig vs. Tennessee State (4)	8/25/07
7.	64	Jordan Elliott vs. Iowa State (5)	9/4/04
8.	63	Alexa Filley vs. South Carolina (5)	10/5/14
	63	Maira Magallon vs. Xavier (4)	11/26/04
	63	Sara Shanks at Arkansas (5)	10/7/07

INDIVIDUAL DIGS

	DIGS	PLAYER-OPPONENT (SETS)	DATE
1.	37	Payton White vs. Butler (5)	8/31/19
2.	36	Jelena Sekulic at Kentucky (5)	11/17/06
	36	Jesse Earl at Tennessee (5)	10/4/17
4.	34	Bailey Veit vs. Georgia Southern (5)	9/2/05
	34	Jesse Earl at Mississippi State (5)	11/13/15
6.	33	Bella Rosenthal vs. Missouri (5)	10/17/21
7.	33	Sarah Wroblecky at LSU (5)	11/15/13
	33	Jesse Earl at LSU (4)	11/15/17
9.	31	Liz Crouch at Mississippi State (3)	9/18/09
10.	30	Liz Crouch vs. Georgia (4)	11/7/07
	30	Jesse Earl at Florida State (5)	9/16/17

Records set in the Brent Crouch era are listed in **BOLD**

INDIVIDUAL MATCH RECORDS (BY SET)

KILLS

SETS	KILLS	PLAYER-OPPONENT	DATE
3s	25	Brooke McCarley vs. UAB	9/7/99
4s	29	Rebekah Rath at Arkansas	10/9/21
	29	Brooke McCarley at Kansas	9/11/99
5s	34	Bridgitte Sims vs. Tulane	11/10/90

ATTACKS

SETS	ATT.	PLAYER-OPPONENT	DATE
3s	56	Allyson Beecroft at Florida	9/30/94
4s	75	Rebekah Rath at Arkansas	10/9/21
5s	84	Rebekah Rath at Texas A&M	11/4/17

HITTING PERCENTAGE (MIN. 10 KILLS)

SETS	PCT.	PLAYER	DATE
3s	.773 (17-0-22)	Ashlee Johns	9/13/03
4s	.813 (13-0-16)	Laura Cookley	9/28/91
5s	.714 (10-0-14)	Dalia Naidzinaviciut	9/2/05

BLOCKS - SOLO

SETS	BLK	PLAYER-OPPONENT	DATE
3s	5	Gina Thomas vs. Georgetown	9/13/90
4s	5	Gina Thomas vs. Florida	10/12/90
5s	6	Tory Gutierrez vs. Louisville	10/21/89
	6	Lisa Harvey vs. Tuskegee	10/7/86

BLOCKS - ASSISTS

SETS	BLK	PLAYER-OPPONENT	DATE
3s	9 (3x) last	Kendal Kemp vs Belmont	8/26/22
4s	11	Tory Gutierrez vs. Georgia State	10/3/89
5s	10	Jaunelle Hamilton vs. Mississippi St.	11/12/00
	10	Stephanie Campbell vs. St. John's	9/19/15

TOTAL BLOCKS

SETS	BLK	PLAYER-OPPONENT	DATE
3s	9 (4x) last	Kendal Kemp vs. Belmont	8/26/22
4s	14	Tory Gutierrez vs. Georgia State	10/3/89
5s	12	Jaunelle Hamilton vs. Mississippi St.	11/12/00
	12	La'Toi Finley at Georgia Tech	9/14/95

DIGS

SETS	DIGS	PLAYER-OPPONENT	DATE
3s	31	Liz Crouch at Mississippi State	9/18/09
4s	34	Gretchen Thompson vs. ULM	9/12/86
5s	37	Payton White vs. Butler	8/31/19

ASSISTS

SETS	AST	PLAYER-OPPONENT	DATE
3s	64	Piper Craig vs. LSU	10/18/96
4s	76	Piper Craig vs. Arkansas	10/20/96
5s	92	Piper Craig vs. Kentucky	10/5/97

SERVICE ACES

SETS	ACE	PLAYER-OPPONENT	DATE
3s	10	Jenifer Kleyn vs. Seneca	10/5/90
4s	8	Terri Duckworth at UAB	11/1/88
5s	10	Jenifer Kleyn at Ole Miss	9/28/90



#1 MADISON SCHEER

**PIN HITTER | 6-1 | SOPHOMORE
EUREKA, MO. (EUREKA)**

SCHEER'S HIGHLIGHTS:

- 2022 SEC All-Freshman Team
- Career-high 22 kills on .409 hitting versus Jacksonville State
- Named SEC Freshman of the Week and Player of the Week 9/26
- Hit over .300 11 times, over .400 seven times and over .500 twice in 2022
- Made her collegiate debut on Aug. 26 vs. Belmont

CATEGORY	CAREER HIGH	OPPONENT/DATE
Kills	22	at Jacksonville State (9/17/22)
Attempts	47	vs Georgia (10/9/22)
Hitting Percentage (Min. 10 ATT.)	.563	vs Alabama A&M (9/6/22)
Assists	1 (6x)	last vs Florida (9/22/23)
Digs	4	at LSU (10/5/22)
Blocks	6	at Alabama (9/24/22)
Aces	--	--
Points	23.0	at Jacksonville State (9/17/22)

CATEGORY	SEASON HIGH	OPPONENT/DATE
Kills	18	vs SMU (9/2/23)
Attempts	44	vs Florida (9/22/23)
Hitting Percentage (Min. 10 ATT.)	.343	vs Charleston Southern (9/8/23)
Assists	1 (3x)	last vs Florida (9/22/23)
Digs	3 (2x)	last vs UAB (9/15/23)
Blocks	4 (2x)	last vs Charleston Southern (9/8/23)
Aces	--	--
Points	18.5	vs Coppin State (8/25/23)

GAME BY GAME

Date	Opponent	SP	Attack				Set			Serve				Recept			Blocking				Team				
			K	E	TA	PCT	A	TA	PCT	SA	SE	TA	PCT	RE	TA	PCT	DIG	BS	BA	BE	TOTAL	BHE	POINTS	HIT%	SCORE
08/25/2023	Coppin St.	4	16	4	41	.293	0	1	.000	0	0	0	.000	0	3	1.000	3	1	3	0	4.0	0	18.5	.309	3-1
08/26/2023	Jacksonville St.	3	8	2	21	.286	1	1	1.000	0	0	0	.000	0	3	1.000	0	0	0	0	0.0	0	8.0	.395	3-0
09/02/2023	vs SMU	4	18	6	37	.324	0	0	.000	0	0	0	.000	0	9	1.000	1	0	0	0	0.0	0	18.0	.316	3-1
09/03/2023	at Florida St.	4	14	3	33	.333	1	2	.500	0	0	0	.000	0	3	1.000	0	0	2	1	2.0	0	15.0	.356	3-1
09/07/2023	Middle Tenn.	4	8	2	28	.214	0	2	.000	0	0	1	1.000	0	1	1.000	2	0	3	0	3.0	0	9.5	.221	1-3
09/08/2023	Charleston So.	*4	15	3	35	.343	0	0	.000	0	0	0	.000	1	7	.857	2	0	4	0	4.0	0	17.0	.245	3-1
09/09/2023	Mercer	3	12	4	28	.286	0	2	.000	0	0	0	.000	0	8	1.000	0	0	1	0	1.0	0	12.5	.346	3-0
09/14/2023	at South Alabama	5	10	7	39	.077	0	0	.000	0	0	0	.000	1	9	.889	3	0	1	0	1.0	0	10.5	.191	3-2
09/15/2023	vs UAB	4	7	5	21	.095	0	0	.000	0	0	0	.000	0	0	.000	3	0	4	0	4.0	0	9.0	.189	3-1
09/16/2023	vs Samford	*4	13	5	27	.296	0	3	.000	0	0	0	.000	1	1	.000	0	0	0	0	0.0	0	13.0	.386	3-1
09/22/2023	Florida	5	15	6	44	.205	1	2	.500	0	0	1	1.000	0	16	1.000	2	0	0	0	0.0	0	15.0	.196	2-3
Totals		44	136	47	354	.251	3	13	.231	0	0	2	1.000	3	60	.950	16	1	18	1	19.0	0	146.0		

Player Averages

Sets Played	Kills per set	Assists per set	Service aces per set	Digs per set	Blocks per set	Points per set
44	3.09	0.07	0.00	0.36	0.43	3.32

CAREER STATS

SEASON	TEAM	SM-MP	K	K/S	E	TA	PCT	A	A/S	SA	SA/S	SE	DIG	D/S	RE	BS	BA	TB	B/S	BE	BHE	PTS	PTS/S
2022-23	AUB	118-30	361	3.06	120	956	.252	3	0.03	0	0.00	0	45	0.38	3	3	46	49	0.42	4	2	387.0	3.28
2023-24	AUB	44-11	136	3.09	47	354	.251	3	0.07	0	0.00	0	16	0.36	3	1	18	19	0.43	1	0	146.0	3.32
TOTAL		162 - 41	497	3.07	167	1310	.252	6	0.04	0	0.00	0	61	0.38	6	4	64	68	0.42	5	2	533.0	3.29



#2 SARAH MORTON

**LIBERO | 5-7 | SOPHOMORE
MUNSTER, IND. (MUNSTER)**

MORTON'S HIGHLIGHTS:

- Recorded 10+ digs in 26 of the 29 matches she's played in 2022
- Grabbed a career-high 26 digs vs Georgia on Oct. 9
- Named SEC Defensive Player of the Week 9/26
- Has started every game at libero when in the lineup
- Made her collegiate debut on Aug. 26 vs. Belmont

CATEGORY	CAREER HIGH	OPPONENT/DATE
Kills	1 (3x)	last vs Coppin State (8/25/23)
Attempts	3	vs Coppin State (8/25/23)
Hitting Percentage (Min. 10 ATT.)	--	--
Assists	9 (2x)	last vs SMU (9/2/23)
Digs	26	vs Georgia (10/9/22)
Blocks	--	--
Aces	3 (4x)	last at Missouri (10/15/22)
Points	3 (4x)	last at Missouri (10/15/22)

CATEGORY	SEASON HIGH	OPPONENT/DATE
Kills	1 (2x)	last vs Florida (9/22/23)
Attempts	3	vs Coppin State (8/25/23)
Hitting Percentage (Min. 10 ATT.)	--	--
Assists	9	vs SMU (9/2/23)
Digs	24	vs Coppin State (8/25/23)
Blocks	--	--
Aces	1 (3x)	last vs Florida (9/22/23)
Points	2	vs Florida (9/22/23)

GAME BY GAME

Date	Opponent	SP	Attack				Set			Serve				Recept			Blocking				Team				
			K	E	TA	PCT	A	TA	PCT	SA	SE	TA	PCT	RE	TA	PCT	DIG	BS	BA	BE	TOTAL	BHE	POINTS	HIT%	SCORE
08/25/2023	Coppin St.	4	1	0	3	.333	4	12	.333	0	2	20	.900	0	13	1.000	24	0	0	0	0.0	0	1.0	.309	3-1
08/26/2023	McNeese	3	0	0	0	.000	3	11	.273	0	1	7	.857	0	8	1.000	5	0	0	0	0.0	0	0.0	.333	3-0
08/26/2023	Jacksonville St.	3	0	0	0	.000	3	8	.375	1	0	13	1.000	0	8	1.000	3	0	0	0	0.0	0	1.0	.395	3-0
09/02/2023	vs SMU	4	0	0	1	.000	9	20	.450	0	2	15	.867	1	14	.929	17	0	0	0	0.0	0	0.0	.316	3-1
09/03/2023	at Florida St.	4	0	0	1	.000	5	16	.313	1	2	16	.875	2	31	.935	8	0	0	0	0.0	0	1.0	.356	3-1
09/07/2023	Middle Tenn.	4	0	0	1	.000	0	11	.000	0	6	14	.571	2	27	.926	10	0	0	0	0.0	0	0.0	.221	1-3
09/08/2023	Charleston So.	4	0	0	0	.000	2	14	.143	0	2	15	.867	0	16	1.000	14	0	0	0	0.0	0	0.0	.245	3-1
09/09/2023	Mercer	3	0	0	0	.000	1	4	.250	0	3	7	.571	0	10	1.000	10	0	0	0	0.0	0	0.0	.346	3-0
09/22/2023	Florida	5	1	0	1	1.000	5	17	.294	1	5	18	.722	0	16	1.000	13	0	0	0	0.0	0	2.0	.196	2-3
Totals		34	2	0	7	.286	32	113	.283	3	23	125	.816	5	143	.965	104	0	0	0	0.0	0	5.0		

Player Averages

Sets Played	Kills per set	Assists per set	Service aces per set	Digs per set	Blocks per set	Points per set
34	0.06	0.94	0.09	3.06	0.00	0.15

CAREER STATS

SEASON	TEAM	SM-MP	K	K/S	E	TA	PCT	A	A/S	SA	SA/S	SE	DIG	D/S	RE	BS	BA	TB	B/S	BE	BHE	PTS	PTS/S
2022-23	AUB	119-30	2	0.02	1	11	.091	110	0.92	30	0.25	31	457	3.84	21	0	0	0	0.00	0	1	32.0	0.27
2023-24	AUB	34-9	2	0.06	0	7	.286	32	0.94	3	0.09	23	104	3.06	5	0	0	0	0.00	0	0	5.0	0.15
TOTAL		153 - 39	4	0.03	1	18	.167	142	0.93	33	0.22	54	561	3.67	26	0	0	0	0.00	0	1	37.0	0.24

#3 AKASHA ANDERSON

PIN HITTER | 6-3 | FRESHMAN
RESTON, VA. (HERNDON)



ANDERSON'S HIGHLIGHTS:

- Named to All-SEC Team and All-Freshman Team
- Named AVCA South Region Freshman of the Year in 2022
- Had career-high 26 kills in win over Mississippi State
- Hit .526 with a team-high 12 kills vs. Marist
- Recorded 24 kills and 14 digs at UAB for first double-double
- Had eight double-doubles in 2022
- 2x SEC Freshman of the Week
- Made her collegiate debut on Aug. 26 vs. Belmont

CATEGORY	CAREER HIGH	OPPONENT/DATE
Kills	26 (2x)	last at South Alabama (9/14/23)
Attempts	77	at LSU (10/5/22)
Hitting Percentage (Min. 10 ATT.)	.526	vs Marist (8/27/22)
Assists	3 (2x)	last at Florida State (9/3/23)
Digs	18	at Alabama (9/25/22)
Blocks	5	vs Troy (9/10/22)
Aces	4 (3x)	last vs McNeese (8/26/23)
Points	29.5 (2x)	last vs Mississippi State (9/28/22)

CATEGORY	SEASON HIGH	OPPONENT/DATE
Kills	26	at South Alabama (9/14/23)
Attempts	69	at South Alabama (9/14/23)
Hitting Percentage (Min. 10 ATT.)	.410	vs Samford (9/16/23)
Assists	3	at Florida State (9/3/23)
Digs	11 (2x)	last vs UAB (9/15/23)
Blocks	4	vs UAB (9/15/23)
Aces	4	vs McNeese (8/26/23)
Points	28.5	at South Alabama (9/14/23)

GAME BY GAME

Date	Opponent	SP	Attack				Set			Serve				Receipt			Blocking				Team				
			K	E	TA	PCT	A	TA	PCT	SA	SE	TA	PCT	RE	TA	PCT	DIG	BS	BA	BE	TOTAL	BHE	POINTS	HIT%	SCORE
08/25/2023	Coppin St.	*4	16	4	41	.293	0	3	.000	0	3	7	.571	0	16	1.000	5	0	1	0	1.0	0	16.5	.309	3-1
08/26/2023	McNeese	*3	14	5	35	.257	0	3	.000	4	3	13	.769	0	15	1.000	8	0	0	0	0.0	0	18.0	.333	3-0
08/26/2023	Jacksonville St.	*3	10	1	23	.391	0	1	.000	1	1	12	.917	1	5	.800	4	1	0	0	1.0	0	12.0	.395	3-0
09/02/2023	vs SMU	*4	12	7	41	.122	0	4	.000	2	3	22	.864	0	13	1.000	7	0	2	2.0	0	15.0	.316	3-1	
09/03/2023	at Florida St.	*4	15	4	35	.314	3	7	.429	0	2	11	.818	1	14	.929	6	0	1	0	1.0	0	15.5	.356	3-1
09/14/2023	at South Alabama	*5	26	10	69	.232	0	3	.000	2	1	15	.933	3	25	.880	11	0	1	0	1.0	0	28.5	.191	3-2
09/15/2023	vs UAB	*4	11	10	37	.027	2	5	.400	1	2	22	.909	3	27	.889	11	0	4	0	4.0	0	14.0	.189	3-1
09/16/2023	vs Samford	*4	19	3	39	.410	0	4	.000	1	1	14	.929	1	26	.962	9	0	2	0	2.0	0	21.0	.386	3-1
09/22/2023	Florida	*5	18	11	60	.117	0	4	.000	2	5	17	.706	0	18	1.000	10	0	3	0	3.0	0	21.5	.196	2-3
Totals		36	141	55	380	.226	5	34	.147	13	21	133	.842	9	159	.943	71	1	14	2	15.0	0	162.0		

Player Averages

Sets Played	Kills per set	Assists per set	Service aces per set	Digs per set	Blocks per set	Points per set
36	3.92	0.14	0.36	1.97	0.42	4.50

CAREER STATS

SEASON	TEAM	SM-MP	K	K/S	E	TA	PCT	A	A/S	SA	SA/S	SE	DIG	D/S	RE	BS	BA	TB	B/S	BE	BHE	PTS	PTS/S
2022-23	AUB	121-31	428	3.54	211	1240	.175	13	0.11	27	0.22	41	225	1.86	50	4	56	60	0.50	5	0	487.0	4.02
2023-24	AUB	36-9	141	3.92	55	380	.226	5	0.14	13	0.36	21	71	1.97	9	1	14	15	0.42	2	0	162.0	4.50
TOTAL		157 - 40	569	3.62	266	1620	.187	18	0.11	40	0.25	62	296	1.89	59	5	70	75	0.48	7	0	649.0	4.13

#4 FALLAN LANHAM

LIBERO | 5-8 | JUNIOR
LOUISVILLE, KY. (MERCY ACADEMY)



LANHAM'S HIGHLIGHTS:

- Grabbed a career-high 20 digs at LSU
- Recorded a career-high four aces at UAB
- Earned first collegiate start in Auburn's season opener versus Tennessee Tech on August 27

CATEGORY	CAREER HIGH	OPPONENT/DATE
Kills	2	vs. Missouri (9/12/21)
Attempts	8	at Arkansas (10/9/21)
Hitting Percentage (Min. 10 ATT.)		
Assists	3 (4x)	last vs Charleston Southern (9/8/23)
Digs	20	at LSU (10/5/22)
Blocks	1	at Georgia (10/22/21)
Aces	4	at UAB (9/9/22)
Points	4.0	at UAB (9/9/22)

CATEGORY	SEASON HIGH	OPPONENT/DATE
Kills	--	--
Attempts	1 (2x)	last at Florida State (9/3/23)
Hitting Percentage (Min. 10 ATT.)	--	--
Assists	3	vs Charleston Southern (9/8/23)
Digs	11	vs Jacksonville State (8/26/23)
Blocks	--	--
Aces	2	vs Jacksonville State (8/26/23)
Points	2.0	vs Jacksonville State (8/26/23)

GAME BY GAME

Date	Opponent	SP	Attack				Set			Serve				Receipt			Blocking				Team				
			K	E	TA	PCT	A	TA	PCT	SA	SE	TA	PCT	RE	TA	PCT	DIG	BS	BA	TB	TOTAL	BHE	POINTS	HIT%	SCORE
08/25/2023	Coppin St.	3	0	0	0	.000	0	1	.000	0	0	8	1.000	0	6	1.000	0	0	0	0	0.0	0	0.0	.309	3-1
08/26/2023	McNeese	1	0	0	0	.000	0	1	.000	0	0	3	1.000	0	2	1.000	2	0	0	0	0.0	0	0.0	.333	3-0
08/26/2023	Jacksonville St.	3	0	0	0	.000	1	5	.200	2	1	18	1.000	1	8	.875	11	0	0	0	0.0	0	2.0	.395	3-0
09/02/2023	vs SMU	4	0	0	1	.000	2	3	.667	1	1	16	.938	0	25	1.000	4	0	0	0	0.0	0	1.0	.316	3-1
09/03/2023	at Florida St.	4	0	0	1	.000	0	1	.000	1	1	19	.947	0	13	1.000	9	0	0	0	0.0	0	1.0	.356	3-1
09/07/2023	Middle Tenn.	4	0	0	0	.000	0	4	.000	1	2	17	.882	0	11	1.000	10	0	0	0	0.0	0	1.0	.221	1-3
09/08/2023	Charleston So.	*4	0	0	0	.000	3	6	.500	1	1	14	.929	0	11	1.000	8	0	0	0	0.0	0	1.0	.245	3-1
09/09/2023	Mercer	*3	0	0	0	.000	0	4	.000	0	1	10	.900	0	4	1.000	4	0	0	0	0.0	0	0.0	.346	3-0
09/14/2023	at South Alabama	*1	0	0	0	.000	0	1	.000	0	0	2	1.000	0	3	1.000	4	0	0	0	0.0	0	0.0	.191	3-2
Totals		27	0	0	2	.000	6	26	.231	6	6	107	.944	1	83	.988	52	0	0	0	0.0	0	6.0		

Player Averages

Sets Played	Kills per set	Assists per set	Service aces per set	Digs per set	Blocks per set	Points per set
27	0.00	0.22	0.22	1.93	0.00	0.22

CAREER STATS

SEASON	TEAM	SM-MP	K	K/S	E	TA	PCT	A	A/S	SA	SA/S	SE	DIG	D/S	RE	BS	BA	TB	B/S	BE	BHE	PTS	PTS/S
2021-22	AUB	103-28	7	0.07	8	85	-.012	17	0.17	5	0.05	15	192	1.86	21	0	1	1	0.01	0	0	12.5	0.12
2022-23	AUB	122-31	1	0.01	1	13	.000	15	0.12	35	0.29	33	198	1.62	28	0	0	0	0.00	0	0	36.0	0.30
2023-24	AUB	27-9	0	0.00	0	2	.000	6	0.22	6	0.22	6	52	1.93	1	0	0	0	0.00	0	0	6.0	0.22
TOTAL		252 - 68	8	0.03	9	100	-.010	38	0.15	46	0.18	54	442	1.75	50	0	1	1	0.00	0	0	54.5	0.22



#5 BELLA BELL

MIDDLE BLOCKER | 6-4 | GRADUATE
BLYTHEWOOD, S.C. (KENTUCKY)



BELL'S HIGHLIGHTS:

- Has hit over .400 in three matches this season
- National Champion at Kentucky
- Had the 3rd-highest hitting percentage in the SEC in 2022

CATEGORY	CAREER HIGH	OPPONENT/DATE
Kills	14	vs Coppin State (8/25/23)
Attempts	29	at Florida State (9/3/23)
Hitting Percentage (Min. 10 ATT.)	.750	vs Jacksonville State (8/26/23)
Assists	1 (5x)	last vs Florida (9/22/23)
Digs	2 (5x)	last vs Florida (9/22/23)
Blocks	10 (2x)	at Arkansas (10/7/22)
Aces	1	vs South Carolina (11/25/22)
Points	17.5	at Missouri (9/28/22)

CATEGORY	SEASON HIGH	OPPONENT/DATE
Kills	14	vs Coppin State (8/25/23)
Attempts	29	at Florida State (9/3/23)
Hitting Percentage (Min. 10 ATT.)	.750	vs Jacksonville State (8/26/23)
Assists	1 (2x)	last vs Florida (9/22/23)
Digs	2 (3x)	last vs Florida (9/22/23)
Blocks	4	vs Charleston Southern (9/8/23)
Aces	--	--
Points	15.5	vs Coppin State (8/25/23)

GAME BY GAME

Date	Opponent	SP	Attack				Set			Serve			Recept			Blocking				Team					
			K	E	TA	PCT	A	TA	PCT	SA	SE	TA	PCT	RE	TA	PCT	DIG	BS	BA	BE	TOTAL	BHE	POINTS	HIT%	SCORE
08/25/2023	Coppin St.	*4	14	2	25	.480	0	1	.000	0	0	0	.000	0	0	.000	1	0	3	0	3.0	0	15.5	.309	3-1
08/26/2023	McNeese	*3	11	3	22	.364	0	0	.000	0	0	0	.000	0	0	.000	0	0	2	0	2.0	0	12.0	.333	3-0
08/26/2023	Jacksonville St.	*3	9	0	12	.750	0	0	.000	0	0	0	.000	0	0	.000	0	0	2	1	2.0	0	10.0	.395	3-0
09/02/2023	vs SMU	*4	10	3	22	.318	1	1	1.000	0	0	0	.000	1	2	.500	2	0	3	1	3.0	0	11.5	.316	3-1
09/03/2023	at Florida St.	*4	13	1	29	.414	0	2	.000	0	0	1	1.000	0	0	.000	2	0	2	0	2.0	0	14.0	.356	3-1
09/07/2023	Middle Tenn.	*4	8	5	21	.143	0	1	.000	0	0	0	.000	0	0	.000	0	0	4	1	4.0	0	10.0	.221	1-3
09/22/2023	Florida	*5	11	5	28	.214	1	4	.250	0	0	0	.000	0	0	.000	2	0	0	0	0.0	0	11.0	.196	2-3
Totals		27	76	19	159	.358	2	9	.222	0	0	1	1.000	1	2	.500	7	0	16	3	16.0	0	84.0		

Player Averages

Sets Played	Kills per set	Assists per set	Service aces per set	Digs per set	Blocks per set	Points per set
27	2.81	0.07	0.00	0.26	0.59	3.11

CAREER STATS

SEASON	TEAM	SM-MP	K	K/S	E	TA	PCT	A	A/S	SA	SA/S	SE	DIG	D/S	RE	BS	BA	TB	B/S	BE	BHE	PTS	PTS/S
2020-21	UK	24-14	29	1.21	9	64	.313	0	0.00	0	0.00	0	2	0.08	1	0	22	22	0.92	3	0	40.0	1.67
2021-22	UK	62-19	102	1.65	25	185	.416	1	0.02	0	0.00	0	9	0.15	0	10	68	78	1.26	8	0	146.0	2.35
2022-23	UK	62-22	107	1.73	34	215	.340	2	0.03	2	0.03	6	12	0.19	0	5	72	77	1.24	8	0	150.0	2.42
2023-24	AUB	27-7	76	2.81	19	159	.358	2	0.07	0	0.00	0	7	0.26	1	0	16	16	0.59	3	0	84.0	3.11
TOTAL FOR AUB	27 - 7	76	2.81	19	159	.358	2	0.07	0	0.00	0	7	0.26	1	0	16	16	0.59	3	0	84.0	3.11	
TOTAL	175 - 62	314	1.79	87	623	.364	5	0.03	2	0.01	6	30	0.17	2	15	178	193	1.10	22	0	420.0	2.40	

#6 KYLA SWANSON

MIDDLE BLOCKER | 6-4 | GRADUATE
WAHOO, NEB. (ILLINOIS)



SWANSON'S HIGHLIGHTS:

- 2x Academic All-Big Ten
- Made the NCAA Sweet 16 with Illinois in 2021
- Has more than 170 blocks in her career
- Hit .727 at Penn State on Oct. 30, 2021

CATEGORY	CAREER HIGH	OPPONENT/DATE
Kills	10 (3x)	last vs SMU (9/2/23)
Attempts	25	vs Charleston Southern (9/8/23)
Hitting Percentage (Min. 10 ATT.)	.727	at Penn State (10/30/21)
Assists	2	at Iowa (9/22/21)
Digs	6	at Tennessee (8/30/19)
Blocks	10	vs UC Santa Barbara (8/27/21)
Aces	2 (2x)	last vs Jacksonville State (8/26/23)
Points	15.5	vs UC Santa Barbara (8/27/21)

CATEGORY	SEASON HIGH	OPPONENT/DATE
Kills	10	vs SMU (9/2/23)
Attempts	25	vs Charleston Southern (9/8/23)
Hitting Percentage (Min. 10 ATT.)	.500	vs SMU (9/2/23)
Assists	1 (4x)	last vs Mercer (9/9/23)
Digs	2 (3x)	last vs Middle Tennessee (9/7/23)
Blocks	8	vs UAB (9/15/23)
Aces	2	vs Jacksonville State (8/26/23)
Points	11.5	vs SMU (9/2/23)

GAME BY GAME

Date	Opponent	SP	Attack				Set			Serve				Receipt			Blocking				Team				
			K	E	TA	PCT	A	TA	PCT	SA	SE	TA	PCT	RE	TA	PCT	DIG	BS	BA	BE	TOTAL	BHE	POINTS	HIT%	SCORE
08/25/2023	Coppin St.	*4	3	2	6	.167	0	1	.000	2	4	17	.765	0	0	.000	1	1	5	0	6.0	0	8.5	.309	3-1
08/26/2023	McNeese	*3	6	2	12	.333	0	1	.000	0	4	11	.636	0	0	.000	1	0	1	1	1.0	0	6.5	.333	3-0
08/26/2023	Jacksonville St.	*3	3	1	7	.286	1	3	.333	0	1	4	.750	0	0	.000	2	1	2	0	3.0	0	5.0	.395	3-0
09/02/2023	vs SMU	*4	10	0	20	.500	0	2	.000	0	0	2	1.000	0	1	1.000	2	0	3	0	3.0	0	11.5	.316	3-1
09/03/2023	at Florida St.	*4	8	1	15	.467	0	1	.000	1	0	4	1.000	0	0	.000	0	0	4	0	4.0	0	11.0	.356	3-1
09/07/2023	Middle Tenn.	*4	9	3	18	.333	1	3	.333	0	2	11	.818	0	0	.000	2	0	4	1	4.0	0	11.0	.221	1-3
09/08/2023	Charleston So.	4	4	5	25	-.040	1	2	.500	0	0	0	.000	0	0	.000	1	0	3	0	3.0	0	5.5	.245	3-1
09/09/2023	Mercer	3	1	3	5	-.400	1	2	.500	0	0	0	.000	0	0	.000	1	0	4	0	4.0	0	3.0	.346	3-0
09/14/2023	at South Alabama	*3	2	5	10	-.300	0	3	.000	0	2	9	.778	0	0	.000	2	0	4	0	4.0	0	4.0	.191	3-2
09/15/2023	vs UAB	*4	3	0	9	.333	0	2	.000	0	0	0	.000	0	0	.000	1	0	8	0	8.0	0	7.0	.189	3-1
09/16/2023	vs Samford	*4	7	1	9	.667	0	2	.000	0	0	0	.000	0	0	.000	0	1	2	0	3.0	0	9.0	.386	3-1
09/22/2023	Florida	*5	3	1	10	.200	0	3	.000	0	0	1	1.000	0	0	.000	0	1	2	0	3.0	0	5.0	.196	2-3
Totals		45	59	24	146	.240	4	25	.160	3	13	59	.780	0	1	1.000	13	4	42	2	46.0	0	87.0		

Player Averages

Sets Played	Kills per set	Assists per set	Service aces per set	Digs per set	Blocks per set	Points per set
45	1.31	0.09	0.07	0.29	1.02	1.93

CAREER STATS

SEASON	TEAM	SM-MP	K	K/S	E	TA	PCT	A	A/S	SA	SA/S	SE	DIG	D/S	RE	BS	BA	TB	B/S	BE	BHE	PTS	PTS/S
2019-20	Illini	16-5	7	0.44	3	29	.138	1	0.06	0	0.00	3	7	0.44	0	0	11	11	0.69	1	1	12.5	0.78
2020-21	Illini	21-7	20	0.95	9	64	.172	1	0.05	0	0.00	0	6	0.29	0	0	16	16	0.76	1	1	28.0	1.33
2021-22	Illini	101-27	149	1.48	45	316	.329	3	0.03	0	0.00	0	13	0.13	2	9	97	106	1.05	9	2	206.5	2.04
2022-23	Illini	51-15	53	1.04	19	120	.283	2	0.04	5	0.10	7	6	0.12	0	3	41	44	0.86	4	0	81.5	1.60
2023-24	AUB	45-12	59	1.31	24	146	.240	4	0.09	3	0.07	13	13	0.29	0	4	42	46	1.02	2	0	87.0	1.93
TOTAL FOR AUB		45 - 12	59	1.31	24	146	.240	4	0.09	3	0.07	13	13	0.29	0	4	42	46	1.02	2	0	87.0	1.93
TOTAL		234 - 66	288	1.23	100	675	.279	11	0.05	8	0.03	23	45	0.19	2	16	207	223	0.95	17	4	415.5	1.78

#7 PEYTON DUNN

SETTER | 5-11 | REDSHIRT-SOPHOMORE
DECATUR, TEXAS (LEGEND)



SWANSON'S HIGHLIGHTS:

- 4x Big 12 Rookie of the Week
- All-Big 12 Rookie Team
- Had a career-high 54 assists vs Texas Tech on Oct. 14, 2021

CATEGORY	CAREER HIGH	OPPONENT/DATE
Kills	6	vs Indiana (9/10/21)
Attempts	11 (3x)	last at TCU (10/8/21)
Hitting Percentage (Min. 10 ATT.)	.500	vs Indiana (9/10/21)
Assists	54	vs Texas Tech (10/14/21)
Digs	18	vs FIU (8/28/22)
Blocks	6 (3x)	last at TCU (10/9/22)
Aces	2 (4x)	last vs FIU (8/28/22)
Points	7.0	at TCU (10/9/21)

CATEGORY	SEASON HIGH	OPPONENT/DATE
Kills	3	vs Jacksonville State (8/26/23)
Attempts	4	vs Jacksonville State (8/26/23)
Hitting Percentage (Min. 10 ATT.)	--	--
Assists	43	vs Coppin State (8/25/23)
Digs	4 (2x)	last vs Jacksonville State (8/26/23)
Blocks	2	vs Coppin State (8/25/23)
Aces	1	vs Coppin State (8/25/23)
Points	3.0 (2x)	last vs Jacksonville State (8/26/23)

GAME BY GAME

Date	Opponent	SP	Attack				Set			Serve				Recept			Blocking				Team				
			K	E	TA	PCT	A	TA	PCT	SA	SE	TA	PCT	RE	TA	PCT	DIG	BS	BA	BE	TOTAL	BHE	POINTS	HIT%	SCORE
08/25/2023	Coppin St.	*4	1	0	3	.333	43	111	.387	1	5	11	.545	0	0	.000	4	0	2	0	2.0	0	3.0	.309	3-1
08/26/2023	Jacksonville St.	2	3	1	4	.500	16	30	.533	0	2	4	.500	0	0	.000	4	0	0	0	0.0	0	3.0	.395	3-0
Totals		6	4	1	7	.429	59	141	.418	1	7	15	.533	0	0	.000	8	0	2	0	2.0	0	6.0		

Player Averages

Sets Played	Kills per set	Assists per set	Service aces per set	Digs per set	Blocks per set	Points per set
6	0.67	9.83	0.17	1.33	0.33	1.00

CAREER STATS

SEASON	TEAM	SM-MP	K	K/S	E	TA	PCT	A	A/S	SA	SA/S	SE	DIG	D/S	RE	BS	BA	TB	B/S	BE	BHE	PTS	PTS/S
2021-22	OU	107-27	67	0.63	15	163	.319	997	9.32	13	0.12	45	198	1.85	0	0	63	63	0.59	2	5	111.5	1.04
2022-23	OU	24-7	12	0.50	4	25	.320	252	10.50	3	0.13	8	57	2.38	0	0	11	11	0.46	3	4	20.5	0.85
2023-24	AUB	6-2	4	0.67	1	7	.429	59	9.83	1	0.17	7	8	1.33	0	0	2	2	0.33	0	0	6.0	1.00
TOTAL FOR AUB		6 - 2	4	0.67	1	7	.429	59	9.83	1	0.17	7	8	1.33	0	0	2	2	0.33	0	0	6.0	1.00
TOTAL		137 - 36	83	0.61	20	195	.323	1308	9.55	17	0.12	60	263	1.92	0	0	76	76	0.55	5	9	138.0	1.01

#8 KENDAL KEMP

MIDDLE BLOCKER | 6-6 | SOPHOMORE
EAGAN, MINN. (EAGAN)



KEMP'S HIGHLIGHTS:

- Has set the Auburn single-season record for total blocks, block assists and blocks per set
- Tied the program record for most blocks in a 3-set match with 9 vs. Belmont
- 2x SEC Freshman of the Week
- Named to the SEC All-Freshman Team
- Named AVCA South Region Honorable Mention
- Made her collegiate debut on Aug. 26 vs. Belmont

CATEGORY	CAREER HIGH	OPPONENT/DATE
Kills	13	vs Charleston Southern (9/8/23)
Attempts	21 (2x)	last at South Carolina (11/23/22)
Hitting Percentage (Min. 10 ATT.)	.714	at Missouri (10/15/22)
Assists	1 (2x)	last at LSU (10/5/22)
Digs	2 (2x)	last at Kentucky (10/29/22)
Blocks	10 (4x)	last vs UAB (9/15/22)
Aces	3	at Georgia State (8/26/22)
Points	17.5	at South Carolina (11/23/22)

CATEGORY	SEASON HIGH	OPPONENT/DATE
Kills	13	vs Charleston Southern (9/8/23)
Attempts	19	vs Charleston Southern (9/8/23)
Hitting Percentage (Min. 10 ATT.)	.526	vs Charleston Southern (9/8/23)
Assists	--	--
Digs	1 (4x)	vs UAB (9/15/23)
Blocks	10	vs UAB (9/15/23)
Aces	1	vs Coppin State (8/25/23)
Points	15.5	vs Charleston Southern (9/8/23)

GAME BY GAME

Date	Opponent	SP	Attack				Set			Serve				Recept			Blocking				Team				
			K	E	TA	PCT	A	TA	PCT	SA	SE	TA	PCT	RE	TA	PCT	DIG	BS	BA	BE	TOTAL	BHE	POINTS	HIT%	SCORE
08/25/2023	Coppin St.	*4	5	2	17	.176	0	1	.000	1	2	5	.600	0	0	.000	0	2	3	0	5.0	0	9.5	.309	3-1
08/26/2023	McNeese	*2	4	1	6	.500	0	1	.000	0	0	0	.000	0	0	.000	0	2	3	0	5.0	0	7.5	.333	3-0
08/26/2023	Jacksonville St.	*2	2	0	2	1.000	0	1	.000	0	0	0	.000	0	0	.000	0	1	1	0	2.0	0	3.5	.395	3-0
09/02/2023	vs SMU	*4	4	0	7	.571	0	0	.000	0	0	0	.000	0	0	.000	0	0	4	2	4.0	0	6.0	.316	3-1
09/03/2023	at Florida St.	*4	9	3	13	.462	0	1	.000	0	0	0	.000	0	0	.000	1	0	4	3	4.0	0	11.0	.356	3-1
09/07/2023	Middle Tenn.	*4	5	2	9	.333	0	1	.000	0	0	0	.000	0	0	.000	1	0	5	0	5.0	0	7.5	.221	1-3
09/08/2023	Charleston So.	*4	13	3	19	.526	0	1	.000	0	0	0	.000	0	0	.000	0	0	5	0	5.0	0	15.5	.245	3-1
09/09/2023	Mercer	*3	6	1	10	.500	0	0	.000	0	1	1	.000	0	1	1.000	0	0	7	0	7.0	0	9.5	.346	3-0
09/14/2023	at South Alabama	*5	6	1	11	.455	0	0	.000	0	0	0	.000	0	0	.000	1	0	3	0	3.0	0	7.5	.191	3-2
09/15/2023	vs UAB	*4	8	3	17	.294	0	2	.000	0	0	0	.000	0	0	.000	1	1	9	2	10.0	0	13.5	.189	3-1
09/16/2023	vs Samford	*4	5	2	11	.273	0	0	.000	0	0	0	.000	0	0	.000	0	0	2	0	2.0	0	6.0	.386	3-1
Totals		40	67	18	122	.402	0	8	.000	1	3	6	.500	0	1	1.000	4	6	46	7	52.0	0	97.0		

Player Averages

Sets Played	Kills per set	Assists per set	Service aces per set	Digs per set	Blocks per set	Points per set
40	1.68	0.00	0.03	0.10	1.30	2.43

CAREER STATS

SEASON	TEAM	SM-MP	K	K/S	E	TA	PCT	A	A/S	SA	SA/S	SE	DIG	D/S	RE	BS	BA	TB	B/S	BE	BHE	PTS	PTS/S
2022-23	AUB	122-31	204	1.67	66	430	.321	2	0.02	7	0.06	16	12	0.10	1	26	154	180	1.48	13	0	314.0	2.57
2023-24	AUB	40-11	67	1.68	18	122	.402	0	0.00	1	0.03	3	4	0.10	0	6	46	52	1.30	7	0	97.0	2.43
TOTAL		162 - 42	271	1.67	84	552	.339	2	0.01	8	0.05	19	16	0.10	1	32	200	232	1.43	20	0	411.0	2.54

#9 ZOE SLAUGHTER

LIBERO | 5-7 | SOPHOMORE
HONOLULU, HAWAII (MOANALUA)



SLAUGHTER'S HIGHLIGHTS:

- Recorded 10+ digs in 10 matches last season
- Grabbed a career-high 22 digs at Alabama on Sept. 24, 2022
- Made her collegiate debut on Aug. 26 vs. Belmont

CATEGORY	CAREER HIGH	OPPONENT/DATE
Kills	1 (2x)	last at Missouri (10/15/22)
Attempts	1 (4x)	last vs McNeese (8/26/23)
Hitting Percentage (Min. 10 ATT.)	--	--
Assists	5	at South Alabama (9/14/23)
Digs	29	at South Alabama (9/13/23)
Blocks	--	--
Aces	3 (2x)	last vs Alabama A&M (9/6/22)
Points	3.0 (3x)	last vs Troy (9/10/22)

CATEGORY	SEASON HIGH	OPPONENT/DATE
Kills	--	--
Attempts	3	vs Samford (9/16/23)
Hitting Percentage (Min. 10 ATT.)	--	--
Assists	5	at South Alabama (9/14/23)
Digs	29	at South Alabama (9/14/23)
Blocks	--	--
Aces	2	at Florida State (9/3/23)
Points	2.0	at Florida State (9/3/23)

GAME BY GAME

Date	Opponent	SP	Attack			Set			Serve				Receipt			Blocking				Team					
			K	E	TA	PCT	A	TA	PCT	SA	SE	TA	PCT	RE	TA	PCT	DIG	BS	BA	TB	TOTAL	BHE	POINTS	HIT%	SCORE
08/25/2023	Coppin St.	4	0	0	0	.000	1	2	.500	1	4	17	.765	0	16	1.000	5	0	0	0	0.0	0	1.0	.309	3-1
08/26/2023	McNeese	3	0	0	1	.000	1	4	.250	0	0	12	1.000	0	11	1.000	6	0	0	0	0.0	0	0.0	.333	3-0
08/26/2023	Jacksonville St.	*3	0	0	0	.000	1	2	.500	0	0	9	1.000	0	11	1.000	5	0	0	0	0.0	0	0.0	.395	3-0
09/02/2023	vs SMU	*4	0	0	0	.000	0	3	.000	0	1	11	.909	0	16	1.000	2	0	0	0	0.0	0	0.0	.316	3-1
09/03/2023	at Florida St.	*4	0	0	1	.000	1	4	.250	2	3	22	.864	1	28	.964	10	0	0	0	0.0	0	2.0	.356	3-1
09/07/2023	Middle Tenn.	*4	0	0	0	.000	2	3	.667	0	1	18	.944	0	10	1.000	3	0	0	0	0.0	0	0.0	.221	1-3
09/08/2023	Charleston So.	4	0	0	0	.000	0	3	.000	0	1	17	.941	0	9	1.000	7	0	0	0	0.0	0	0.0	.245	3-1
09/09/2023	Mercer	*3	0	0	0	.000	0	0	.000	0	1	8	.875	0	6	1.000	5	0	0	0	0.0	0	0.0	.346	3-0
09/14/2023	at South Alabama	5	0	0	2	.000	5	15	.333	1	4	13	.692	5	29	.828	29	0	0	0	0.0	0	1.0	.191	3-2
09/15/2023	vs UAB	4	0	0	1	.000	4	13	.308	0	0	18	1.000	0	12	1.000	11	0	0	0	0.0	0	0.0	.189	3-1
09/16/2023	vs Samford	4	0	0	3	.000	4	9	.444	0	0	13	1.000	3	23	.870	16	0	0	0	0.0	0	0.0	.386	3-1
09/22/2023	Florida	5	0	0	0	.000	1	3	.333	0	1	20	.950	0	15	1.000	11	0	0	0	0.0	0	0.0	.196	2-3
Totals		47	0	0	8	.000	20	61	.328	4	16	178	.910	9	186	.952	110	0	0	0	0.0	0	4.0		

Player Averages

Sets Played	Kills per set	Assists per set	Service aces per set	Digs per set	Blocks per set	Points per set
47	0.00	0.43	0.09	2.34	0.00	0.09

CAREER STATS

SEASON	TEAM	SM-MP	K	K/S	E	TA	PCT	A	A/S	SA	SA/S	SE	DIG	D/S	RE	BS	BA	TB	B/S	BE	BHE	PTS	PTS/S
2022-23	AUB	122-31	2	0.02	1	4	.250	22	0.18	19	0.16	41	267	2.19	14	0	0	0	0.00	0	1	21.0	0.17
2023-24	AUB	47-12	0	0.00	0	8	.000	20	0.43	4	0.09	16	110	2.34	9	0	0	0	0.00	0	0	4.0	0.09
TOTAL		169 - 43	2	0.01	1	12	.083	42	0.25	23	0.14	57	377	2.23	23	0	0	0	0.00	0	1	25.0	0.15

#10 JACKIE BARRETT

SETTER | 6-2 | SENIOR
HIGHLAND, CALIF. (CITRUS VALLEY)



BARRETT'S HIGHLIGHTS

- 2x SEC Setter of the Week
- Set a career-high in aces with 5 against Mercer
- Set her career-high in assists with 60 against LSU on Oct. 5, 2022

CATEGORY	CAREER HIGH	OPPONENT/DATE
Kills	6 (2x)	last, at Alabama State (9/26/21)
Attempts	20	at Alabama State (9/26/21)
Hitting Percentage (Min. 10 ATT.)	.308	vs. Florida A&M (9/17/21)
Assists	60	at LSU (10/5/22)
Digs	28	vs. Nicholls (9/17/21)
Blocks	8.0	at Arkansas (10/9/21)
Aces	5 (2x)	at South Alabama (9/14/23)
Points	10.0	vs. Florida A&M (9/17/21)

CATEGORY	SEASON HIGH	OPPONENT/DATE
Kills	5 (3x)	last vs Florida (9/22/23)
Attempts	9	vs Florida (9/22/23)
Hitting Percentage (Min. 10 ATT.)	--	--
Assists	48	at South Alabama (9/14/23)
Digs	14	vs SMU (9/2/23)
Blocks	5	vs UAB (9/15/23)
Aces	5 (2x)	last at South Alabama (9/14/23)
Points	9.0	vs Mercer (9/9/23)

GAME BY GAME

Date	Opponent	SP	Attack				Set			Serve				Recept			Blocking				Team					
			K	E	TA	PCT	A	TA	PCT	SA	SE	TA	PCT	RE	TA	PCT	DIG	BS	BA	BE	TOTAL	BHE	POINTS	HIT%	SCORE	
08/26/2023	McNeese	*3	1	0	4	.250	31	72	.431	0	1	15	.933	0	0	.000	6	0	2	0	2.0	0	2.0	.333	3-0	
08/26/2023	Jacksonville St.	*2	1	0	2	.500	14	25	.560	0	0	1	1.000	0	0	.000	2	0	1	0	1.0	0	1.5	.395	3-0	
09/02/2023	vs SMU	*4	5	0	7	.714	36	96	.375	1	0	16	1.000	0	1	1.000	14	0	2	1	2.0	0	7.0	.316	3-1	
09/03/2023	at Florida St.	*4	3	2	7	.143	44	99	.444	0	0	16	1.000	0	0	.000	11	0	3	0	3.0	0	4.5	.356	3-1	
09/07/2023	Middle Tenn.	*4	5	0	7	.714	39	104	.375	1	1	13	.923	0	0	.000	10	0	0	0	0.0	0	6.0	.221	1-3	
09/08/2023	Charleston So.	*4	1	1	6	.000	41	111	.369	0	0	14	1.000	0	0	.000	13	0	3	0	3.0	0	2.5	.245	3-1	
09/09/2023	Mercer	*3	2	0	2	1.000	31	64	.484	5	0	16	1.000	0	0	.000	5	0	4	0	4.0	0	9.0	.346	3-0	
09/14/2023	at South Alabama	*5	2	0	6	.333	48	142	.338	5	3	23	.870	0	0	.000	11	0	3	0	3.0	2	8.5	.191	3-2	
09/15/2023	vs UAB	*4	3	1	6	.333	35	98	.357	0	1	14	.929	0	0	.000	6	0	5	0	5.0	0	5.5	.189	3-1	
09/16/2023	vs Samford	*4	3	0	5	.600	46	93	.495	1	1	12	.917	0	0	.000	6	1	0	0	1.0	1	5.0	.386	3-1	
09/22/2023	Florida	*5	5	0	9	.556	40	122	.328	1	3	15	.800	0	1	1.000	12	0	2	1	2.0	0	7.0	.196	2-3	
Totals			42	31	4	.61	.443	405	1026	.395	14	10	155	.935	0	2	1.000	96	1	25	2	26.0	3	58.5		

Player Averages

Sets Played	Kills per set	Assists per set	Service aces per set	Digs per set	Blocks per set	Points per set
42	0.74	9.64	0.33	2.29	0.62	1.39

CAREER STATS

SEASON	TEAM	SM-MP	K	K/S	E	TA	PCT	A	A/S	SA	SA/S	SE	DIG	D/S	RE	BS	BA	TB	B/S	BE	BHE	PTS	PTS/S
2020-21	AUB	19-6	9	0.47	6	44	.068	144	7.58	3	0.16	8	33	1.74	0	0	11	11	0.58	1	0	17.5	0.92
2021-22	AUB	100-28	51	0.51	14	180	.206	809	8.09	22	0.22	24	307	3.07	0	2	60	62	0.62	8	1	105.0	1.05
2022-23	AUB	106-28	41	0.39	8	116	.284	1057	9.97	26	0.25	28	220	2.08	1	9	75	84	0.79	10	0	113.5	1.07
2023-24	AUB	42-11	31	0.74	4	61	.443	405	9.64	14	0.33	10	96	2.29	0	1	25	26	0.62	2	3	58.5	1.39
TOTAL		267 - 73	132	0.49	32	401	.249	2415	9.04	65	0.24	70	656	2.46	1	12	171	183	0.69	21	4	294.5	1.10

#11 JORDAN SINNESS

SETTER | 5-9 | JUNIOR
SEBRING, FLA. (SEBRING)



SINNESS' HIGHLIGHTS:

- Recorded the Tigers' first double-double of the season at Georgia State with 42 assists and 12 digs.
- Grabbed a career-high 49 assists in 5-set win at UAB
- Made collegiate debut versus Cal State Fullerton (9/2), dishing out 16 assists, six digs, one kill and a block

CATEGORY	CAREER HIGH	OPPONENT/DATE
Kills	3	vs Alabama A&M (9/6/22)
Attempts	7	at UAB (9/10/22)
Hitting Percentage (Min. 10 ATT.)		
Assists	49	at UAB (9/10/22)
Digs	14	vs. Missouri (10/17/21)
Blocks	5	at UAB (9/10/22)
Aces	3	vs Alabama A&M (9/6/22)
Points	7.0	vs Alabama A&M (9/6/22)

CATEGORY	SEASON HIGH	OPPONENT/DATE
Kills	--	--
Attempts	--	--
Hitting Percentage (Min. 10 ATT.)	--	--
Assists	--	--
Digs	--	--
Blocks	--	--
Aces	--	--
Points	--	--

GAME BY GAME

CAREER STATS

SEASON	TEAM	SM-MP	K	K/S	E	TA	PCT	A	A/S	SA	SA/S	SE	DIG	D/S	RE	BS	BA	TB	B/S	BE	BHE	PTS	PTS/S
2021-22	AUB	50-15	2	0.04	1	6	.167	64	1.28	6	0.12	7	33	0.66	0	0	3	3	0.06	0	2	9.5	0.19
2022-23	AUB	49-14	5	0.10	0	15	.333	163	3.33	16	0.33	22	51	1.04	0	2	13	15	0.31	1	0	29.5	0.60
TOTAL		99 - 29	7	0.07	1	21	.286	227	2.29	22	0.22	29	84	0.85	0	2	16	18	0.18	1	2	39.0	0.39

#12 BEL ZIMMERMAN

**PIN HITTER | 6-2 | SOPHOMORE
LIBERTY, MO. (LIBERTY NORTH)**



ZIMMERMAN'S HIGHLIGHTS:

- Set career highs in kills (17) and digs (16) against Charleston Southern for her first-career double-double
- Hit .692 with 8 kills vs. Marist
- Had a career-high 13 kills at Jacksonville State
- Made her collegiate debut on Aug. 26 at Georgia State

CATEGORY	CAREER HIGH	OPPONENT/DATE
Kills	17	vs Charleston Southern (9/8/23)
Attempts	36	vs UAB (9/15/23)
Hitting Percentage (Min. 10 ATT.)	.692	vs Marist (8/27/22)
Assists	1 (8x)	last vs Samford (9/16/23)
Digs	16	vs Charleston Southern (9/8/23)
Blocks	6 (2x)	last at South Alabama (9/14/23)
Aces	4	at South Alabama (9/14/23)
Points	21.0	vs UAB (9/15/23)

CATEGORY	SEASON HIGH	OPPONENT/DATE
Kills	17	vs Charleston Southern (9/8/23)
Attempts	36	vs UAB (9/15/23)
Hitting Percentage (Min. 10 ATT.)	.400	vs McNeese (8/26/23)
Assists	1 (6x)	last vs Samford (9/16/23)
Digs	16	vs Charleston Southern (9/8/23)
Blocks	6	at South Alabama (9/14/23)
Aces	4	at South Alabama (9/14/23)
Points	21.0	vs UAB (9/15/23)

GAME BY GAME

Date	Opponent	SP	Attack				Set			Serve				Receipt			Blocking				Team				
			K	E	TA	PCT	A	TA	PCT	SA	SE	TA	PCT	RE	TA	PCT	DIG	BS	BA	BE	TOTAL	BHE	POINTS	HIT%	SCORE
08/26/2023	McNeese	3	8	0	20	.400	1	3	.333	0	2	8	.750	0	7	1.000	2	0	2	0	2.0	0	9.0	.333	3-0
08/26/2023	Jacksonville St.	2	2	3	8	.125	0	0	.000	3	2	7	.714	0	3	1.000	1	0	0	2	0.0	0	5.0	.395	3-0
09/02/2023	vs SMU	2	0	0	0	.000	0	0	.000	0	2	3	.333	0	0	.000	0	0	0	0	0.0	0	0.0	.316	3-1
09/03/2023	at Florida St.	4	0	0	0	.000	0	1	.000	0	0	9	1.000	0	0	.000	0	0	0	0	0.0	0	0.0	.356	3-1
09/07/2023	Middle Tenn.	*4	11	6	40	.125	0	0	.000	0	3	11	.727	2	19	.895	4	0	2	1	2.0	0	12.0	.221	1-3
09/08/2023	Charleston So.	*4	17	5	50	.240	1	1	1.000	2	2	22	.909	0	20	1.000	16	0	2	0	2.0	0	20.0	.245	3-1
09/09/2023	Mercer	*3	14	3	30	.367	1	3	.333	3	3	15	.800	0	13	1.000	2	0	1	1	1.0	0	17.5	.346	3-0
09/14/2023	at South Alabama	*5	11	3	34	.235	1	6	.167	4	2	23	.913	0	10	1.000	2	1	5	1	6.0	0	18.5	.191	3-2
09/15/2023	vs UAB	*4	16	5	36	.306	1	3	.333	2	3	14	.786	2	22	.909	12	1	4	1	5.0	0	21.0	.189	3-1
09/16/2023	vs Samford	*4	15	2	33	.394	1	2	.500	1	3	12	.750	3	17	.824	11	0	2	0	2.0	0	17.0	.386	3-1
09/22/2023	Florida	5	0	0	0	.000	1	3	.333	0	3	16	.813	0	0	.000	1	0	0	0	0.0	0	0.0	.196	2-3
Totals		40	94	27	251	.267	7	22	.318	15	25	140	.821	7	111	.937	51	2	18	6	20.0	0	120.0		

Player Averages

Sets Played	Kills per set	Assists per set	Service aces per set	Digs per set	Blocks per set	Points per set
40	2.35	0.18	0.38	1.28	0.50	3.00

CAREER STATS

SEASON	TEAM	SM-MP	K	K/S	E	TA	PCT	A	A/S	SA	SA/S	SE	DIG	D/S	RE	BS	BA	TB	B/S	BE	BHE	PTS	PTS/S
2022-23	AUB	114-29	220	1.93	98	607	.201	2	0.02	4	0.04	11	54	0.47	3	3	63	66	0.58	10	0	258.5	2.27
2023-24	AUB	40-11	94	2.35	27	251	.267	7	0.18	15	0.38	25	51	1.28	7	2	18	20	0.50	6	0	120.0	3.00
TOTAL		154 - 40	314	2.04	125	858	.220	9	0.06	19	0.12	36	105	0.68	10	5	81	86	0.56	16	0	378.5	2.46

#13 PAIGE THIBAUT

LIBERO | 5-8 | JUNIOR

WATERTOWN, MINN. (WATERTOWN-MAYER)



THIBAUT'S HIGHLIGHTS:

- Compiled a career-high 20 digs against Dayton on Sept. 3, 2022
- Hit .462 vs Arizona State on Sept. 2, 2022
- 2021 All-Crossroads League Honorable Mention
- 2021 Crossroads League All-Freshman Team

CATEGORY	CAREER HIGH	OPPONENT/DATE
Kills	9	at FAU (10/28/22)
Attempts	35	at UTSA (10/23/22)
Hitting Percentage (Min. 10 ATT.)	.462	vs Arizona State (9/2/22)
Assists	2 (4x)	last vs UAB (9/15/23)
Digs	20	vs Dayton (9/3/22)
Blocks	4	vs UAB (10/7/22)
Aces	3	vs Little Rock (9/8/22)
Points	9.0 (2x)	last at FAU (10/28/22)

CATEGORY	SEASON HIGH	OPPONENT/DATE
Kills	1	at South Alabama (9/14/23)
Attempts	2	at South Alabama (9/14/23)
Hitting Percentage (Min. 10 ATT.)	--	--
Assists	2 (3x)	last vs UAB (9/15/23)
Digs	10	vs Coppin State (8/25/23)
Blocks	--	--
Aces	2 (2x)	last vs Samford (9/16/23)
Points	2.0 (2x)	last vs Samford (9/16/23)

GAME BY GAME

Date	Opponent	SP	Attack				Set			Serve				Recept			Blocking				Team				
			K	E	TA	PCT	A	TA	PCT	SA	SE	TA	PCT	RE	TA	PCT	DIG	BS	BA	TB	B/S	BE	BHE	POINTS	HIT%
08/25/2023	Coppin St.	*4	0	0	0	.000	2	3	.667	0	3	13	.769	0	15	1.000	10	0	0	0	0.0	0	0.0	.309	3-1
08/26/2023	McNeese	*2	0	0	0	.000	0	1	.000	0	0	0	.000	0	5	1.000	2	0	0	0	0.0	0	0.0	.333	3-0
09/07/2023	Middle Tenn.	4	0	0	0	.000	2	2	1.000	0	1	1	.000	1	7	.857	2	0	0	0	0.0	0	0.0	.221	1-3
09/14/2023	at South Alabama	5	1	0	2	.500	0	3	.000	0	0	0	.000	0	12	1.000	8	0	0	0	0.0	0	1.0	.191	3-2
09/15/2023	vs UAB	*4	0	0	0	.000	2	3	.667	2	3	17	.824	1	11	.909	9	0	0	0	0.0	0	2.0	.189	3-1
09/16/2023	vs Samford	4	0	0	0	.000	1	4	.250	2	2	22	.909	0	4	1.000	7	0	0	0	0.0	0	2.0	.386	3-1
09/22/2023	Florida	*5	0	0	1	.000	1	7	.143	0	3	18	.833	1	23	.957	9	0	0	0	0.0	0	0.0	.196	2-3
Totals		28	1	0	3	.333	8	23	.348	4	12	71	.831	3	77	.961	47	0	0	0	0.0	0	5.0		

Player Averages

Sets Played	Kills per set	Assists per set	Service aces per set	Digs per set	Blocks per set	Points per set
28	0.04	0.29	0.14	1.68	0.00	0.18

CAREER STATS

SEASON	TEAM	SM-MP	K	K/S	E	TA	PCT	A	A/S	SA	SA/S	SE	DIG	D/S	RE	BS	BA	TB	B/S	BE	BHE	PTS	PTS/S
2022-23	FIU	105-28	47	0.45	28	216	.088	14	0.13	23	0.22	30	221	2.10	21	1	7	8	0.08	0	0	74.5	0.71
2023-24	AUB	28-7	1	0.04	0	3	.333	8	0.29	4	0.14	12	47	1.68	3	0	0	0	0.00	0	0	5.0	0.18
TOTAL FOR AUB	28 - 7	1	0.04	0	3	.333	8	0.29	4	0.14	12	47	1.68	3	0	0	0	0.00	0	0	5.0	0.18	
TOTAL	133 - 35	48	0.36	28	219	.091	22	0.17	27	0.20	42	268	2.02	24	1	7	8	0.06	0	0	79.5	0.60	

#14 CHELSEY HARMON

MIDDLE BLOCKER | 6-3 | SENIOR
PUYALLUP, WASH. (PORTLAND)



HARMON'S HIGHLIGHTS:

- 3rd best hitting percentage in program history (.706) against Jackson State.
- Currently holds the sixth-best hitting percentage in single-season program history (.344)
- Made her Auburn debut on Aug. 26 vs. Belmont

CATEGORY	CAREER HIGH	OPPONENT/DATE
Kills	16	vs San Francisco (10/16/21)
Attempts	23	at LSU (10/5/22)
Hitting Percentage (Min. 10 ATT.)	.706	vs Jackson State (9/17/22)
Assists	2 (3x)	last vs Samford (9/16/23)
Digs	4 (2x)	last at Santa Clara (3/9/21)
Blocks	10	vs Troy (9/10/22)
Aces	2 (3x)	last vs Eastern Washington (8/28/21)
Points	15.5	at LSU (10/5/22)

CATEGORY	SEASON HIGH	OPPONENT/DATE
Kills	5	vs Charleston Southern (9/8/23)
Attempts	12	vs Charleston Southern (9/8/23)
Hitting Percentage (Min. 10 ATT.)	.250	vs Charleston Southern (9/8/23)
Assists	2	last vs Samford (9/16/23)
Digs	2	vs Charleston Southern (9/8/23)
Blocks	7	vs Charleston Southern (9/8/23)
Aces	4	vs Charleston Southern (9/8/23)
Points	12.5	vs Charleston Southern (9/8/23)

GAME BY GAME

Date	Opponent	SP	Attack				Set			Serve				Recept			Blocking				Team				
			K	E	TA	PCT	A	TA	PCT	SA	SE	TA	PCT	RE	TA	PCT	DIG	BS	BA	BE	TOTAL	BHE	POINTS	HIT%	SCORE
08/26/2023	McNeese	1	1	0	2	.500	1	2	.500	0	0	4	1.000	0	0	.000	1	0	2	0	2.0	0	2.0	.333	3-0
08/26/2023	Jacksonville St.	1	2	0	2	1.000	0	1	.000	0	0	6	1.000	0	0	.000	0	0	0	0	0.0	0	2.0	.395	3-0
09/07/2023	Middle Tenn.	1	1	0	2	.500	0	0	.000	0	0	0	.000	0	0	.000	0	0	0	0	0.0	0	1.0	.221	1-3
09/08/2023	Charleston So.	*4	5	2	12	.250	0	3	.000	4	2	15	.867	0	0	.000	2	0	7	1	7.0	0	12.5	.245	3-1
09/09/2023	Mercer	*3	4	0	6	.667	1	3	.333	1	3	14	.786	0	0	.000	1	1	3	0	4.0	0	7.5	.346	3-0
09/14/2023	at South Alabama	3	2	0	4	.500	0	1	.000	2	0	9	1.000	0	0	.000	0	0	3	1	3.0	0	5.5	.191	3-2
09/16/2023	vs Samford	4	0	0	0	.000	2	3	.667	1	2	22	.909	0	0	.000	0	0	0	0	0.0	0	1.0	.386	3-1
09/22/2023	Florida	*5	4	2	10	.200	0	2	.000	0	0	3	1.000	0	0	.000	1	0	2	2	2.0	0	5.0	.196	2-3
Totals		22	19	4	38	.395	4	15	.267	8	7	73	.904	0	0	.000	5	1	17	4	18.0	0	36.5		

Player Averages

Sets Played	Kills per set	Assists per set	Service aces per set	Digs per set	Blocks per set	Points per set
22	0.86	0.18	0.36	0.23	0.82	1.66

CAREER STATS

SEASON	TEAM	SM-MP	K	K/S	E	TA	PCT	A	A/S	SA	SA/S	SE	DIG	D/S	RE	BS	BA	TB	B/S	BE	BHE	PTS	PTS/S
2020-21	UP	34-12	20	0.59	11	62	.145	4	0.12	5	0.15	7	19	0.56	1	2	21	23	0.68	0	0	37.5	1.10
2021-22	UP	78-22	108	1.38	31	246	.313	1	0.01	4	0.05	5	13	0.17	1	6	42	48	0.62	9	1	139.0	1.78
2022-23	AUB	122-31	176	1.44	48	372	.344	5	0.04	0	0.00	4	17	0.14	1	4	103	107	0.88	6	0	231.5	1.90
2023-24	AUB	22-8	19	0.86	4	38	.395	4	0.18	8	0.36	7	5	0.23	0	1	17	18	0.82	4	0	36.5	1.66
TOTAL FOR AUB	144 - 39	195	1.35	52	410	.349	9	0.06	8	0.06	11	22	0.15	1	5	120	125	0.87	10	0	268.0	1.86	
TOTAL	256 - 73	323	1.26	94	718	.319	14	0.05	17	0.07	23	54	0.21	3	13	183	196	0.77	19	1	444.5	1.74	

#17 CASSIDY TANTON

**PIN HITTER | 6-0 | REDSHIRT-SOPHOMORE
STONEVILLE, N.C. (DALTON MCMICHAEL)**



TANTON'S HIGHLIGHTS:

- Picked up a career-high 10 kills vs. Marist, hitting .348
- Made her season debut on Aug. 26 vs. Belmont

CATEGORY	CAREER HIGH	OPPONENT/DATE
Kills	10	vs Marist (8/27/22)
Attempts	23	vs Marist (8/27/22)
Hitting Percentage (Min. 10 ATT.)	.348	vs Marist (8/27/22)
Assists	--	--
Digs	6	vs Marist (8/27/22)
Blocks	--	--
Aces	2(3x)	last vs Southern Miss (9/16/22)
Points	12.0	vs Marist (8/27/22)

CATEGORY	SEASON HIGH	OPPONENT/DATE
Kills	1	vs Middle Tennessee (9/7/23)
Attempts	5	vs Middle Tennessee (9/7/23)
Hitting Percentage (Min. 10 ATT.)	--	--
Assists	--	--
Digs	--	--
Blocks	--	--
Aces	--	--
Points	1.0	vs Middle Tennessee (9/7/23)

GAME BY GAME

Date	Opponent	SP	Attack				Set		Serve				Recept			Blocking				Team					
			K	E	TA	PCT	A	TA	PCT	SA	SE	TA	PCT	RE	TA	PCT	DIG	BS	BA	BE	TOTAL	BHE	POINTS	HIT%	SCORE
09/07/2023	Middle Tenn.	1	1	1	5	.000	0	0	.000	0	0	0	.000	1	4	.750	0	0	0	0	0.0	0	1.0	.221	1-3
Totals		1	1	1	5	.000	0	0	.000	0	0	0	.000	1	4	.750	0	0	0	0	0.0	0	1.0		

Player Averages

Sets Played	Kills per set	Assists per set	Service aces per set	Digs per set	Blocks per set	Points per set
1	1.00	0.00	0.00	0.00	0.00	1.00

CAREER STATS

SEASON	TEAM	SM-MP	K	K/S	E	TA	PCT	A	A/S	SA	SA/S	SE	DIG	D/S	RE	BS	BA	TB	B/S	BE	BHE	PTS	PTS/S
2022-23	AUB	58-19	12	0.21	7	34	.147	0	0.00	11	0.19	28	19	0.33	2	0	0	0	0.00	0	0	23.0	0.40
2023-24	AUB	1-1	1	1.00	1	5	.000	0	0.00	0	0.00	0	0	0.00	1	0	0	0	0.00	0	0	1.0	1.00
TOTAL		59 - 20	13	0.22	8	39	.128	0	0.00	11	0.19	28	19	0.32	3	0	0	0	0.00	0	0	24.0	0.41



#19 JASMINE OKEOMA
MIDDLE BLOCKER | 6-3 | FRESHMAN
WOODBIDGE, VA. (FOREST PARK)



OKEOMA'S HIGHLIGHTS:

CATEGORY	CAREER HIGH	OPPONENT/DATE
Kills	--	--
Attempts	--	--
Hitting Percentage (Min. 10 ATT.)	--	--
Assists	--	--
Digs	--	--
Blocks	--	--
Aces	--	--
Points	--	--

CATEGORY	SEASON HIGH	OPPONENT/DATE
Kills	--	--
Attempts	--	--
Hitting Percentage (Min. 10 ATT.)	--	--
Assists	--	--
Digs	--	--
Blocks	--	--
Aces	--	--
Points	--	--

GAME BY GAME

CAREER STATS

#22 SYDNEY HANDEL

DEFENSIVE SPECIALIST | 6-0 | SOPHOMORE
LEE'S SUMMIT, MO. (LEE'S SUMMIT WEST)



HANDEL'S HIGHLIGHTS:

- Set career-highs in aces (3) and digs (6) in the NCAA Tournament against Houston
- Made her collegiate debut against Alabama A&M

CATEGORY	CAREER HIGH	OPPONENT/DATE
Kills	1	vs Middle Tennessee (9/7/23)
Attempts	1 (2x)	last at South Alabama (9/14/23)
Hitting Percentage (Min. 10 ATT.)	--	--
Assists	--	--
Digs	10	at South Alabama (9/14/23)
Blocks	--	--
Aces	3	vs Houston (12/3/22)
Points	3.0	vs Houston (12/3/22)

CATEGORY	SEASON HIGH	OPPONENT/DATE
Kills	--	--
Attempts	1	at South Alabama (9/14/23)
Hitting Percentage (Min. 10 ATT.)	--	--
Assists	--	--
Digs	10	at South Alabama (9/14/23)
Blocks	--	--
Aces	--	--
Points	--	--

GAME BY GAME

Date	Opponent	SP	Attack				Set			Serve				Recept			Blocking				Team				
			K	E	TA	PCT	A	TA	PCT	SA	SE	TA	PCT	RE	TA	PCT	DIG	BS	BA	BE	TOTAL	BHE	POINTS	HIT%	SCORE
09/02/2023	vs SMU	2	0	0	0	.000	0	0	.000	0	2	6	.667	0	0	.000	0	0	0	0	0.0	0	0.0	.316	3-1
09/09/2023	Mercer	1	0	0	0	.000	0	0	.000	0	0	2	1.000	0	0	.000	0	0	0	0	0.0	0	0.0	.346	3-0
09/14/2023	at South Alabama	5	0	0	1	.000	0	2	.000	0	1	14	.929	1	10	.900	10	0	0	0	0.0	0	0.0	.191	3-2
09/15/2023	vs UAB	4	0	0	0	.000	0	0	.000	0	2	11	.818	0	0	.000	0	0	0	0	0.0	0	0.0	.189	3-1
09/16/2023	vs Samford	1	0	0	0	.000	0	2	.000	0	0	0	.000	0	4	1.000	0	0	0	0	0.0	0	0.0	.386	3-1
Totals		13	0	0	1	.000	0	4	.000	0	5	33	.848	1	14	.929	10	0	0	0	0.0	0	0.0		

Player Averages

Sets Played	Kills per set	Assists per set	Service aces per set	Digs per set	Blocks per set	Points per set
13	0.00	0.00	0.00	0.77	0.00	0.00

CAREER STATS

SEASON	TEAM	SM-MP	K	K/S	E	TA	PCT	A	A/S	SA	SA/S	SE	DIG	D/S	RE	BS	BA	TB	B/S	BE	BHE	PTS	PTS/S
2022-23	AUB	19-6	0	0.00	0	1	.000	0	0.00	6	0.32	11	10	0.53	3	0	0	0	0.00	0	0	6.0	0.32
2023-24	AUB	13-5	0	0.00	0	1	.000	0	0.00	0	0.00	5	10	0.77	1	0	0	0	0.00	0	0	0.0	0.00
TOTAL		32 - 11	0	0.00	0	2	.000	0	0.00	6	0.19	16	20	0.63	4	0	0	0	0.00	0	0	6.0	0.19



#25 LAKIN LAURENDINE

PIN HITTER | 6-1 | FRESHMAN
JACKSON, MISS. (JACKSON ACADEMY)

LAURENDINE'S HIGHLIGHTS:

CATEGORY	CAREER HIGH	OPPONENT/DATE
Kills	--	--
Attempts	--	--
Hitting Percentage (Min. 10 ATT.)	--	--
Assists	--	--
Digs	--	--
Blocks	--	--
Aces	--	--
Points	--	--

CATEGORY	SEASON HIGH	OPPONENT/DATE
Kills	--	--
Attempts	--	--
Hitting Percentage (Min. 10 ATT.)	--	--
Assists	--	--
Digs	--	--
Blocks	--	--
Aces	--	--
Points	--	--

GAME BY GAME

CAREER STATS