



# 2023 VOLLEYBALL MATCH NOTES

AUBURN ATHLETICS COMMUNICATIONS: 392 SOUTH DONAHUE DRIVE || AUBURN, AL 36830 || AUBURNTIGERS.COM || @AUBURNVB

## 2023 SCHEDULE/RESULTS

**3-0 OVERALL | 0-0 SEC**  
3-0 HOME | 0-0 AWAY | 0-0 NEUTRAL

DATE	OPPONENT	TV	TIME/RESULT
Aug. 25	vs Coppin State!	SECN+	W, 3-1
Aug. 26	vs McNeese State!	SECN+	W, 3-0
Aug. 26	vs Jacksonville State!	SECN+	W, 3-0
Sept. 2	vs SMU@	N/A	Noon CT
Sept. 3	at Florida State@	ACCN+	Noon CT
Sept. 7	vs Middle Tennessee\$	SECN+	6 p.m. CT
Sept. 8	vs Charleston Southern\$	SECN+	7 p.m. CT
Sept. 9	vs Mercer\$	SECN+	7 p.m. CT
Sept. 14	at South Alabama%	TBA	6 p.m. CT
Sept. 15	vs UAB%	N/A	2:30 p.m. CT
Sept. 16	vs Samford%	N/A	Noon CT
Sept. 22	vs Florida*	SECN+	6:30 p.m. CT
Sept. 24	vs Ole Miss*	SECN+	2 p.m. CT
Sept. 27	at Arkansas*	SEC Network	7 p.m. CT
Oct. 1	vs Georgia*	ESPN2	Noon CT
Oct. 6	at Florida*	SECN+	6 p.m. CT
Oct. 8	at South Carolina*	ESPNU	1 p.m. CT
Oct. 13	at Tennessee*	SECN+	5:30 p.m. CT
Oct. 20	vs Missouri*	SEC Network	8 p.m. CT
Oct. 22	vs South Carolina*	SECN+	1 p.m. CT
Oct. 27	at Georgia*	SECN+	6 p.m. CT
Oct. 29	at Alabama	SEC Network	11 a.m. CT
Nov. 5	at Texas A&M	SEC Network	3 p.m. CT
Nov. 8	vs Kentucky	SECN+	6:30 p.m. CT
Nov. 12	at Missouri	SECN+	3 p.m. CT
Nov. 15	at Mississippi State	SECN+	6 p.m. CT
Nov. 19	vs LSU	SECN+	2 p.m. CT
Nov. 22	vs Alabama	SECN+	6:30 p.m. CT
Nov. 24	vs Arkansas	SECN+	3 p.m. CT

**BOLD** indicates home contest | All time Central and subject to change  
! - War Eagle Invite | @ - Seminole Invite | S - Tiger Invite | % - Alabama Showdown  
\* - Southeastern Conference Game | # - NCAA Tournament

### MATCH

# 4

## SMU

Saturday, Sept. 2 | Noon CT  
Tallahassee, Fla. | Tully Gymnasium



### MATCH

# 5

## RV FLORIDA STATE

Sunday, Sept. 3 | Noon CT  
Tallahassee, Fla. | Tully Gymnasium | ACCN+



**AUBURN**

**SMU**

**FLORIDA STATE**

AVCA Coaches Poll _____	RV	AVCA Coaches Poll _____	RV
2023 Record _____	3-0   0-0 SEC	2023 Record _____	3-0   0-0 ACC
Head Coach _____	Brent Crouch	Head Coach _____	Chris Poole
Career Record (Year) _____	133-123 (10th)	Career Record (Year) _____	898-346 (37th)
Record at Auburn (Year) _____	38-32 (4th)	Record at Florida State (Year) _____	348-116 (16th)
AVCA Coaches Poll _____	N/R	AVCA Coaches Poll _____	N/R
2023 Record _____	1-2   0-0 AAC	2023 Record _____	1-2   0-0 AAC
Head Coach _____	Sam Erger	Head Coach _____	Sam Erger
Career Record (Year) _____	23-12 (2nd)	Career Record (Year) _____	23-12 (2nd)
Record at SMU (Year) _____	Same	Record at SMU (Year) _____	Same

Site \_\_\_\_\_ Auburn, Ala.  
 Venue \_\_\_\_\_ Neville Arena  
 Live Stats \_\_\_\_\_ Statbroadcast  
 Twitter \_\_\_\_\_ @AuburnVB  
 Series Record \_\_\_\_\_ vs SMU, Series tied 2-2 | vs Florida State, FSU leads 13-2  
 Last Meeting \_\_\_\_\_ Sept. 8, 2012 Auburn 3, SMU 0 (25-20, 25-16, 25-19)  
 \_\_\_\_\_ Sept. 16, 2018 Auburn 3, Florida State 1 (25-20, 28-26, 16-25, 25-23)

## QUICK HITS

- Auburn's offense has been red-hot to begin 2023. The Tigers have hit north of .300 in each of its first three matches, marking the first time in the Brent Crouch era the team has done so.
- Crouch's squad has also started the season 3-0 once again with wins over Coppin State, McNeese and Jacksonville State. It's the third straight season Crouch has aided his team to a 3-0 start to a campaign.
- The Auburn defense was just as stout during the War Eagle Invitational. Holding both Coppin State and McNeese below .100 hitting, the Tigers equaled the amount of times they accomplished the feat during the whole 2022 campaign.
- Blocking queen Kendal Kemp has picked up where she left off from her record-setting 2022 season. The Eagan, Minnesota native stacked up 1.50 blocks per set across her three matches over the weekend.
- Transfer Bella Bell has found her rhythm on the right side. In her Auburn debut, Bell recorded a career-best 14 kills on an astounding .480 hitting. After three games in the Orange and Blue, the Blythewood, S.C. product is hitting .492, which ranks second in the SEC and 24th in the Nation.

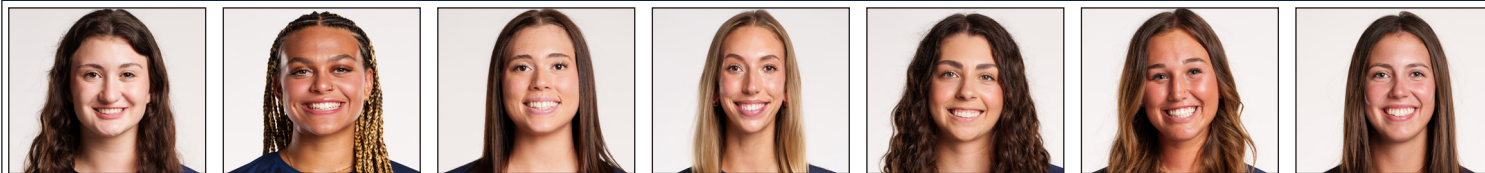
## AUBURN ATHLETICS COMMUNICATIONS

Office Phone \_\_\_\_\_ 334-844-9800  
 Kirk Sampson \_\_\_\_\_ Associate AD  
 \_\_\_\_\_ sampska@auburn.edu  
 Thomas Hoffman \_\_\_\_\_ Volleyball Contact  
 \_\_\_\_\_ tgh0024@auburn.edu  
 C: 503-302-9592

## FOLLOW ALONG

Web \_\_\_\_\_ AuburnTigers.com  
 X \_\_\_\_\_ @AuburnVB  
 Instagram \_\_\_\_\_ @auburnvolleyball

## AUBURN'S POTENTIAL STARTING SEVEN



SARAH MORTON	AKASHA ANDERSON	BELLA BELL	KYLA SWANSON	KENDAL KEMP	ZOE SLAUGHTER	JACKIE BARRETT
#2 • DS/L • SO. • 5-7	#3 • PH • SO. • 6-3	#5 • MB/RS • GR. • 6-4	#6 • MB • SR. • 6-4	#8 • MB • SO. • 6-6	#9 • L/DS • SO. • 5-9	#10 • S • SR. • 6-2
D/S: 3.20	K/S: 4.00	K/S: 3.40	K/S: 1.20	K/S: 1.38	D/S: 1.60	D/S: 1.60
A/S: 1.00	HIT%: .303	HIT%: .492	HIT%: .200	HIT%: .320	A/S: 0.30	A/S: 9.00
SA/S: 0.10	D/S: 1.70	D/S: 0.10	D/S: 0.40	D/S: 0.00	SA/S: 0.10	SA/S: 0.00
P/S: 0.20	B/S: 0.20	B/S: 0.70	B/S: 1.00	B/S: 1.50	P/S: 0.10	P/S: 0.70
SA/S: 0.50	SA/S: 0.00	SA/S: 0.20	SA/S: 0.20	SA/S: 0.13		
P/S: 4.65	P/S: 3.75	P/S: 2.00	P/S: 2.00	P/S: 2.56		

K/S: kills per set • HIT%: hitting percentage • D/S: digs per set • B/S: blocks per set • A/S: assists per set • SA/S: aces per set • P/S: points per set



**#1 MADISON SCHEER**  
So. | PH | 6-1



**#2 SARAH MORTON**  
So. | L | 5-8



**#3 AKASHA ANDERSON**  
So. | PH | 6-3



**#4 FALLAN LANHAM**  
Jr. | L | 5-8



**#5 BELLA BELL**  
Gr. | MB | 6-4



**#6 KYLA SWANSON**  
Gr. | MB | 6-4



**#7 PEYTON DUNN**  
R-So. | S | 5-11



**#8 KENDAL KEMP**  
So. | MB | 6-6



**#9 ZOE SLAUGHTER**  
So. | L | 5-7



**#10 JACKIE BARRETT**  
Sr. | S | 6-2



**#11 JORDAN SINNESS**  
Jr. | S | 5-9



**#12 BEL ZIMMERMAN**  
So. | PH | 6-2



**#13 PAIGE THIBAUT**  
Jr. | L | 5-7



**#14 CHELSEY HARMON**  
Sr. | MB | 6-3



**#17 CASSIDY TANTON**  
R-So. | PH | 6-0



**#19 JASMINE OKEOMA**  
Fr. | MB | 6-3



**#22 SYDNEY HANDEL**  
So. | L | 6-0



**#22 LAKIN LAURENDINE**  
Fr. | PH | 6-1



#WarEagle



AuburnTigers.com

@AuburnVB | @AuburnTigers  
@AuburnVBCoach



/AuburnVB  
/AuburnTigers

**TEAM SCHEDULE AND MEDIA AVAILABILITY >> WEEK OF AUGUST 28 - SEPT. 3**

MONDAY August 28	TUESDAY August 29	WEDNESDAY August 30	THURSDAY August 31	FRIDAY Sept. 1	SATURDAY Sept. 2	SUNDAY Sept. 3
<b>PRACTICE:</b> 3:45 p.m. - 6 p.m.	<b>PRACTICE:</b> 3:45 p.m. - 6 p.m.	<b>PRACTICE:</b> 3:45 p.m. - 6 p.m.	<b>PRACTICE:</b> 3:45 p.m. - 6 p.m.	<b>TRAVEL</b> 6 p.m. CT	<b>MATCH:</b> Noon CT	<b>MATCH:</b> Noon CT
SAC	SAC	SAC	SAC	vs Coppin State Auburn, Ala.	vs SMU Tallahassee, Fla.	vs SMU Tallahassee, Fla.
INTERVIEWS BY REQUEST	INTERVIEWS BY REQUEST	INTERVIEWS BY REQUEST	INTERVIEWS BY REQUEST	INTERVIEWS BY REQUEST	INTERVIEWS POST MATCH	INTERVIEWS POST MATCH

**AUBURN ATHLETICS COMMUNICATIONS**

**QUICK FACTS**

**AUBURNTIGERS.COM**

For updated game notes, statistics, safety protocols and latest information on Auburn volleyball and Auburn Athletics, visit AuburnTigers.com.

**INTERVIEW POLICY**

Coach Crouch, assistant coaches and student-athletes are available for interviews by contacting Thomas Hoffman in the communications office. All interviews during the week will be conducted via phone or ZOOM. Post-match interviews will be conducted in the media room at Auburn Arena following a brief cooling-off period.

**CREDENTIALS**

Anyone wishing to cover an Auburn volleyball match should contact Thomas Hoffman in the communications office at least 24 hours in advance to make arrangements.

**MATCH DAY SERVICES**

Printed copies of notes, flip cards and statistics will be available upon request. Digital copies will be emailed out prior to the match and will be available on AuburnTigers.com. Media members are permitted to bring their own printed materials. Stats will not printed between sets or after matches. Live stats will be provided during the match and final statistics will be emailed out and posted on AuburnTigers.com. All post-match interviews will be conducted in the media room. Wireless internet is available in the Arena; ask Thomas Hoffman for the password. Match highlights, photos and postgame interviews will be available on Imagen following matches.

**VIDEO SERVICES**

FTP feeds of selected Auburn volleyball highlights are available for the media. A number of studio and satellite services may be arranged for electronic media by contacting Cody Baker in War Eagle Productions at jcb0101@auburn.edu.

**PHOTO SERVICES**

For photos of Auburn volleyball or any Olympic sports, contact Zach Bland at zdb007@auburn.edu.

**COMMUNICATIONS STAFF**

Thomas Hoffman  
Volleyball Contact  
cell: 503-302-9592  
email: tgh0024@auburn.edu

Kirk Sampson  
Associate AD  
cell: 334-750-1385  
email: sampska@auburn.edu

**UNIVERSITY INFORMATION**

City / Zip \_\_\_\_\_ Auburn, Ala. / 36831  
 Founded \_\_\_\_\_ Oct. 1, 1856  
 Enrollment \_\_\_\_\_ 30,737  
 Nickname \_\_\_\_\_ Tigers  
 Colors \_\_\_\_\_ Navy Blue & Burnt Orange  
 Affiliation \_\_\_\_\_ NCAA Division I  
 Conference \_\_\_\_\_ Southeastern Conference  
 Home Court \_\_\_\_\_ Neville Arena (9,121)  
 President \_\_\_\_\_ Dr. Chris Roberts  
 Athletics Director \_\_\_\_\_ John Cohen  
 Sport Administrator \_\_\_\_\_ Joy Vrbka (Florida, 2003)

**TEAM INFORMATION**

Letterwinners Returning/Lost \_\_\_\_\_ 12/0  
 Starters Returning/Lost \_\_\_\_\_ 6+libero/0  
 Newcomers \_\_\_\_\_ 6  
 2022 Overall Record \_\_\_\_\_ 22-9  
 2022 Conference Record/Finish \_\_\_\_\_ 10-8/6th

**PROGRAM HISTORY**

First Year of Volleyball \_\_\_\_\_ 1967  
 \_\_\_\_\_ Program discontinued 1981; Reinstated 1986  
 Seasons of Auburn Volleyball \_\_\_\_\_ 45th  
 All-Time Overall Record \_\_\_\_\_ 694-699-4 (.497)  
 in Neville Arena (Since 2013) \_\_\_\_\_ 71-59 (.535)  
 Total Home Record \_\_\_\_\_ 243-212 (.531)  
 All-Time SEC Record \_\_\_\_\_ 198-368 (.350)  
 NCAA Tournament Appearances \_\_\_\_\_ 2/2010, 2022  
 SEC Championships/Last \_\_\_\_\_ 1/Co-West Champions (1996)

**STAFF INFORMATION**

Head Coach \_ Brent Crouch, 1st Season (Texas A&M , '98 & '00; Oregon '06)  
 Career Record \_\_\_\_\_ 133-123 (.514)/10th Season  
 Record at Auburn \_\_\_\_\_ 38-32 (.523)/4th Season  
 Assistant Coach/Recruiting Coordinator \_\_\_\_\_ Rachel Corbelli (2nd Season)  
 Assistant Coach \_\_\_\_\_ Keith Smith (2nd Season)  
 Assistant Coach \_\_\_\_\_ Jack Burton (1st Season)  
 Technical Coordinator \_\_\_\_\_ Mackenna Basore (2nd Season)  
 Strength & Conditioning \_\_\_\_\_ Bethany Gainey  
 Athletic Trainer \_\_\_\_\_ Nate Warner  
 Equipment Manager \_\_\_\_\_ Brian Maddox

**ATHLETIC COMMUNICATIONS**

Associate AD/Communications \_\_\_\_\_ Kirk Sampson  
 Assistant Director/Volleyball Contact \_\_\_\_\_ Thomas Hoffman  
 Email \_\_\_\_\_ tgh0024@auburn.edu  
 Phone \_\_\_\_\_ 503-302-9592  
 Mailing Address \_\_\_\_\_ Auburn Athletics Complex  
 \_\_\_\_\_ 392 S. Donahue Drive  
 Website \_\_\_\_\_ AuburnTigers.com

**GAMEDAY EXPERIENCE: AUBURN ARENA**

>> Neville Arena is in its seventh season as home of Auburn volleyball. The Tigers are 71-59 since moving to the Arena in 2013. The facility seats approximately 2,000 fans for volleyball and 9,121 for basketball.



**LAST TIME OUT**

» Akasha Anderson piled up 40 kills and Bella Bell swung for a monstrous hitting percentage of .492 as Auburn began the season 3-0 with wins over Coppin State, McNeese and Jacksonville State.

**SCOUTING SMU**

» Sam Erger leads the Lady Mustangs in her second season after being named head coach of the women's volleyball team last year. In her first campaign, the team finished with a record of 22-10 overall and third overall in league play. Erger also led the way for players Marieke van der Mark and Jamison Wheeler to make the cut to be a part of the first team All-AAC honors.

This year, the Lady Mustangs were projected to win the AAC in the Preseason Coaches Poll. Not only picked to win, Jamison Wheeler was chosen as the AAC Preseason Player of the Year along with two other of her teammates, Emma Clothier and Celia Cullen, named Preseason All-Conference Selections.

Wheeler alone had 385 kills, 1,051 attacks, and 48 aces, and 38 blocks. Last year, she broke single-season records for the second straight year.

**SCOUTING FLORIDA STATE**

» Chris Poole is on his 16th season coaching the Seminoles and plans to stay through the 2024 season. Since his time at Florida State, FSU has continuously had one of the most challenging schedules for the past 10 years. Despite an injury-plagued 2022 season, the Seminoles were able to finish 19-11 overall and 11-7 in the ACC.

The Seminoles battled it out to begin their season playing in the Classic City Clash in Athens, Georgia. Facing Western Carolina, Georgia, and UConn, the Seminoles swept all three of its opponents.

A player to be on the lookout for this season is number nine, Audrey Rothman. Last Weekend, Rothman led the team with a total of 24 kills. In the 2022 season, she was awarded ACC All Freshman Team, finishing overall with 149 kills, and ACC Freshman of the Week honors.

**AUBURN-SMU SERIES**

» The Tigers will face SMU for the first time since 2012 when the Auburn swept the Mustangs, 3-0. The two programs have met four time (1996, 2002 and 2006) with an even record of 2-2.

**AUBURN-FLORIDA STATE SERIES**

» Auburn meets FSU in Tallahassee for the first time since 2017 when the Tigers dropped a heart-breaking five-set affair. However, the last time these two schools met it was the Tigers who emerged victorious in four sets

in 2018. The historic series dates back to 1974 with FSU owning an all-time record 13-2-1.

**KASH MONEY**

» Sophomore Akasha Anderson is barreling toward 500 career kills. The Herndon, Va. product has 468 through just 34 matches in the Orange and Blue.

**OFFENSE TO DEFENSE**

» The Auburn offense is firing at all cylinders to begin the 2023 campaign. The Tigers are hitting .339 after three matches, the fourth-highest in the SEC and No. 8 in the nation.

» Defensively, Crouch's squad is equally as impressive. Auburn is holding opponents to just .090, ranking third in the conference and No. 16 in the country.

**MR. 300**

» Three hundreds appears to be the perfect number for head coach Brent Crouch. All-time, when his teams manage a .300 hitting percentage, he carries an undefeated record of 31-0, including an 11-0 mark at Auburn.

**SOAKING UP SUMMER HEAT**

» August has been good to Brent Crouch over the years. In nine years of coaching, Crouch is 22-3 in the month of August, including a 9-0 mark at Auburn.

**NO PLACE LIKE NEVILLE**

» Auburn is now 22-14 at home under head coach Brent Crouch, including wins in 22 of it's last 32 games at home. All-time Auburn is 71-59 in Neville.

**VOTE AUBURN**

» For the second time under Crouch, the Tigers are receiving 56 votes in the AVCA/Taraflex Top-25 Coaches Poll. Auburn finished the 2022 campaign with 29 votes and opened up 2023 with 62.

**EVERYTHING IS COMING UP ACES**

» Matches are won and lost on serve-serve and numbers are there to prove it. Crouch's teams are 95-37 when delivering more aces than its opponent. While at Auburn, Crouch is 29-5 when achieving the same metric.

**QUEEN KEMP**

» Minnesota native Kendal Kemp announced herself to the collegiate volleyball world in 2022. Kemp set single-season program records in solo blocks (26), block assists (154), total blocks (180) and blocks per set (1.48). Earning AVCA South Region Honorable Mention, Kemp totals were also second in the Southeastern Conference and her 180 total blocks were the second-most in the country.

**PLAYER TO WATCH: AKASHA ANDERSON**

» The AVCA South Region Freshman of the Year was up to no good last season. With 438 kills, Anderson led the Tigers in both kills and kills per set (3.49).



**SEC STANDINGS & SCHEDULE**

2023 STANDINGS

	CONF	OVERALL	HOME	ROAD	NTRL	STRK
Alabama	0-0	3-0	3-0	0-0	0-0	-
<b>Auburn</b>	<b>0-0</b>	<b>3-0</b>	<b>3-0</b>	<b>0-0</b>	<b>0-0</b>	-
Mississippi St	0-0	3-0	3-0	0-0	0-0	-
Missouri	0-0	3-0	3-0	0-0	0-0	-
Tennessee	0-0	3-0	3-0	0-0	0-0	-
Arkansas	0-0	2-0	2-0	0-0	0-0	-
Florida	0-0	2-0	0-0	1-0	1-0	-
Texas A&M	0-0	2-0	0-0	1-0	1-0	-
Georgia	0-0	2-1	2-1	0-0	0-0	-
Kentucky	0-0	1-1	0-0	1-1	0-0	-
LSU	0-0	1-1	1-1	0-0	0-0	-
South Carolina	0-0	1-1	1-1	0-0	0-0	-
Ole Miss	0-0	0-3	0-0	0-1	0-2	-

**THIS WEEK IN THE SEC...**

**Friday, Sept. 1**

Georgia vs North Florida, 10 a.m.  
 LSU vs Northern Iowa, 4:30 p.m.  
 Georgia vs TCU, 5 p.m.  
 Texas A&M vs Bowling Green, 6 p.m.  
 Kentucky vs Pitt, 7 p.m.  
 Tennessee vs Boston College, 7 p.m.  
 Missouri vs N. Kentucky, 7 p.m.  
 South Carolina vs Miami, 7 p.m.  
 Ole Miss vs Tennessee St., 7 p.m.  
 Mississippi St. vs UCF, 7 p.m.  
 Alabama vs Tulane, 7:30 p.m.  
 Arkansas vs Colorado St., 8 p.m.

**Sunday, Sept. 3**

Florida vs Minnesota, Noon  
 Arkansas vs Michigan, Noon  
 Kentucky vs Pitt, Noon  
 Alabama vs Sam Houston, Noon  
 LSU vs Ball State, 1 p.m.  
 South Carolina vs Troy, 1 p.m.  
**Auburn vs Florida St., 1 p.m.**  
 Tennessee vs Wisconsin, 2 p.m.  
 Missouri vs Louisville, 3:30 p.m.

\*All times ET

**Saturday, Sept. 2**

Texas A&M vs Loyola Chicago, 11 a.m.  
 Alabama vs Alabama A&M, Noon  
**Auburn vs SMU, 1 p.m.**  
 Georgia vs Coastal Carolina, 3 p.m.  
 Missouri vs South Dakota, 3:30 p.m.  
 Mississippi St. vs FIU, 5 p.m.  
 LSU vs Creighton, 6 p.m.

**2022 FINAL NCAA RPI REPORT**

RK	TEAM	RECORD	AU RESULT
8	Kentucky	22-8	L, 3-0 & L, 3-0
12	Florida	25-6	L, 3-0
15	Creighton	27-4	W, 3-2
17	Houston	30-4	L, 3-0
22	Arkansas	21-9	L, 3-0 & L, 3-0
32	Georgia	23-8	W, 3-1 & W, 3-2
<b>37</b>	<b>AUBURN</b>	<b>22-9</b>	
41	LSU	16-14	L, 3-2
57	Tennessee	17-14	W, 3-1
62	Jacksonville State	24-6	W, 3-2
65	Mississippi State	15-13	W, 3-2
75	Texas A&M	13-16	W, 3-1 & W, 3-1
94	South Carolina	13-15	L, 3-2
107	Troy	18-13	W, 3-1
117	Ole Miss	11-17	W, 3-1
122	Southern Miss	21-12	W, 3-0
143	North Florida	12-17	W, 3-0
149	Alabama	10-20	W, 3-1 & W, 3-1
151	UAB	12-15	W, 3-2
160	Missouri	9-19	W, 3-2 & L, 3-1
218	Alabama State	20-14	W, 3-0
224	Marist	18-11	W, 3-1
287	Belmont	8-23	W, 3-0
292	Jackson State	13-17	W, 3-0
304	Georgia State	7-22	W, 3-1
334	Alabama A&M	7-26	W, 3-0

AUBURN OPPONENTS ONLY



## AVCA COACHES POLL

RK	TEAM	POINTS	RECORD
1	Wisconsin [50]	1582	2-0
2	Stanford [11]	1513	2-0
3	Louisville [2]	1468	3-0
4	Nebraska	1379	3-0
5	Minnesota	1291	2-0
6	Oregon	1253	3-0
7	Texas [1]	1235	1-1
<b>8</b>	<b>Florida</b>	<b>1109</b>	<b>2-0</b>
9	BYU	1078	3-0
10	Pittsburgh	1006	2-1
11	Georgia Tech	876	2-0
12	Ohio State	821	3-0
13	Houston	742	3-0
14	Penn State	630	0-2
<b>15</b>	<b>Kentucky</b>	<b>609</b>	<b>1-1</b>
16	Baylor	580	0-2
17	Washington State	483	2-1
18	Rice	457	2-0
19	Marquette	428	2-1
20	Creighton	416	2-1
<b>21</b>	<b>Arkansas</b>	<b>294</b>	<b>2-0</b>
22	Western Kentucky	256	2-1
23	Kansas	199	2-0
<b>24</b>	<b>Tennessee</b>	<b>181</b>	<b>3-0</b>
25	Purdue	177	1-2

Others receiving votes: Hawai'i 162; Colorado State 82; San Diego 82; **Auburn** 56; **Florida State** 56; Miami (FL) 49; Dayton 34; UCF 32; Long Beach State 29; Iowa State 25; Loyola (Ill.) 23; Loyola Marymount 20; **LSU** 13; Southern California 13; Washington 6; Duke 3

## INSIDE THE MATCH-UPS

**SOUTHERN METHODIST 2-2 (.500)**

0-0 H • 2-1 A • 0-1 N

YEAR	SITE	RESULT	MATCH SCORE	1996
AWAY	W	3-0		
2002	NEUTRAL	L		0-3
2006	AWAY	L		2-3
2012	AWAY	W		3-0

**FLORIDA STATE 2-13-1 (.125)**

2-1 H • 0-6 A • 0-5-1 N

YEAR	SITE	RESULT	MATCH SCORE
1974	NEUTRAL	L	0-2
1974	AWAY	L	1-2
1974	NEUTRAL	L	0-2
1975	NEUTRAL	L	0-2
1975	NEUTRAL	T	1-1
1979	NEUTRAL	L	0-2
1979	AWAY	L	0-2
1980	NEUTRAL	L	0-2
1990	AWAY	L	0-3
1993	AWAY	L	0-3
1996	HOME	W	3-0
1999	AWAY	L	2-3
2013	HOME	L	2-3
2014	AWAY	L	2-3
2017	AWAY	L	2-3
2018	HOME	W	3-1

## WEEKLY AWARDS

**BLOCK PARTY**

» Speaking of blocks, Auburn's team totals were nothing short of brilliant. In the rally-scoring era, the 2022 Tiger team set single-season records in block assists (520), total blocks (312) and blocks per set (2.56).

**THE JACK BURTON**

» NCAA rules have allowed for an additional coach for volleyball programs. Crouch has added Jack Burton to his staff.

Following a prolific playing career at Grand Canyon University, Burton stopped over in Dayton for two seasons and most recently helped FGCU to a 26-7 record and the school's third trip to the NCAA Tournament.

**AUBURN PICKED 7th IN PRESEASON POLL**

» After a sixth-place finish in 2022, the Auburn Tigers have been selected to finish seventh in the 2023 preseason poll.

**PLAYER TO WATCH: BELLA BELL**

» Making the move to right side, Bella Bell is starting to find comfortability in her new position. The transfer from Kentucky is hitting .492 and has already toppled her single-match career-high with 14 kills against Coppin State.



HEAD COACH BRENT CROUCH

QUICK FACTS

College \_\_\_ Texas A&M ('98, '00)  
 \_\_\_ Oregon ('06)  
 Wife \_\_\_\_\_ Marcy  
 Sons \_\_\_ Jonathan and William

COACHING RECORD

Head Coaching Career \_ 10th Season  
 Career Record \_\_\_\_\_ 133-123  
 NCAA Appearances \_\_\_\_\_ 3

COACHING CAPSULE

2020-Pr. Auburn 38-32  
 2018-19 Southern California 40-25  
 2014-17 Portland 55-66

YEAR-BY-YEAR RESULTS

2023	Auburn	3-0
2022	Auburn	22-9
2021	Auburn	13-15
2020	Auburn	0-8
2019	USC	18-14
2018	USC	22-11
2017	Portland	15-15
2016	Portland	17-13
2015	Portland	16-15
2014	Portland	7-23



Brent Crouch begins his fourth season at the helm of the Auburn Volleyball program in 2023. Crouch and the Tigers look to reset the bar after a record-breaking 2022 campaign that saw success on the Plains unseen for more than a decade.

Last season, Auburn earned a berth into the NCAA Tournament for just the second time in school history and the first since 2010. A first-round victory over host and No. 14 Creighton provided the program with its second postseason win and first triumph over a nationally-ranked opponent since 2017.

The feat came on the heels of a historic season that saw the Tigers begin the season with a record mark of 14-0 and a record start to SEC play at 3-0. The 22 total victories on the season were the most in the 25-point rally-scoring era and the most since 1998. The Tigers also picked up its first win in Columbia, Missouri.

Under Crouch's guidance, Akasha Anderson, Madison Scheer and Kendal Kemp each garnered All-Conference Honors. Anderson and Kemp also picked up AVCA postseason accolades with Anderson grabbing South Region Freshman of the Year and All-Region. Meanwhile, Kemp solidified Honorable Mention. Auburn Volleyball student-athletes also picked up a record 10 SEC weekly awards.

Crouch wasn't left out of the postseason awards season, securing AVCA South Region Coach of the Year, the first such award for the Tiger Volleyball program.

Fans on the Plains saw Auburn become one of the most potent blocking teams in the Southeastern Conference in 2022. Crouch's guidance helped the Tigers break records for most block assists in a single season (520), total blocks (312.0) and tie for the most blocks in a four-set match (17 vs. Troy).

The Orange and Blue wall's foundation was laid by then-freshman Kendal Kemp. The Egan, Minnesota product shattered single-season records for solo blocks (26), block assists (154), total blocks (180) and blocks per set (1.48).

During his first full season leading the Auburn program in 2021, Crouch's leadership had an immediate effect. The Tigers opened the season winning 17 consecutive sets to tie the program record for most sweeps to begin a season (5), matching the 1974 Auburn team. Crouch led the team to a 13-15 record with a 5-13 mark in the SEC, picking up a season sweep over Alabama, the first Auburn win over Missouri since 1996 and the program's first victory in College State with a win over Texas A&M.

Crouch's expertise led to six total SEC weekly honors, splitting three on offense and three on defense. Individually, the Tigers also set nine individual records during the 2021 campaign.

Individually, it was Rebekah Rath and Tatum Shippey who benefited the most from Crouch's development. Shippey led the SEC in blocking and set records in blocks, block assists and blocks per set. Meanwhile, Rath led the SEC in five offensive categories, setting records in kills and kills per set.

Crouch made his Auburn coaching debut against No. 4 Florida on Oct. 21, 2020, to open the shortened fall volleyball schedule. Crouch led the Tigers on the court for eight total matches and his impact on the Plains was noticeable almost immediately, tying the record for most blocks in a four-set with 17 at South Carolina.

Prior to Auburn, Crouch served as the head coach at the University of South California, compiling a 40-25 record. He would lead the Trojans to the second round of the NCAA Tournament in both years in Los Angeles. In 2018, Crouch's Trojans earned the No. 11 overall seed in the Tournament and the No. 21 ranking in the final AVCA Coaches poll of the year.

Before leading the Trojans, Crouch spent four seasons as head coach of the University of Portland. The 2016 West Coast Conference Coach of the Year inherited a winless program and guided the Pilots to its winningest season in 25 years just two seasons later. His 48 victories in his final three years in the Rose City was the best three-season total since 1984-86. He put Portland on the WCC map, earning wins over top-10, top-15 and top-25 opponents while in charge of the Pilots. Crouch coached three All-WCC First Team selections, a WCC All-Freshman Team honoree and three WCC All-Academic First Teamers. He also established Beach Volleyball as a varsity sport at Portland in 2016.

Crouch arrived at Portland after four seasons (2010-13) at Saint Mary's College, where he was an assistant with the indoor program and head coach of the beach team.

Brent and his wife Marcy have two sons, Jonathan and William.

2023 AUBURN VOLLEYBALL ROSTER

No.	Name	Year	Pos.	Ht.	Hometown (High School/Previous School)
1	MADISON SCHEER	SO.	PH	6-1	EUREKA, MO. (EUREKA)
2	SARAH MORTON	SO.	L	5-7	MUNSTER, IND. (MUNSTER)
3	AKASHA ANDERSON	SO.	PH	6-3	RESTON, VA. (HERNDON)
4	FALLAN LANHAM	JR.	L	5-8	LOUISVILLE, KY. (MERCY ACADEMY)
5	BELLA BELL	SR.	MB	6-4	BLYTHEWOOD, S.C. (KENTUCKY)
6	KYLA SWANSON	GR.	MB	6-4	WAHOO, NEB. (ILLINOIS)
7	PEYTON DUNN	R-SO.	S	5-11	DECATUR, TEXAS (OKLAHOMA)
8	KENDAL KEMP	SO.	MB	6-6	EAGAN, MINN. (EAGAN)
9	ZOE SLAUGHTER	SO.	L	5-7	HONOLULU, HAWAII (MOANALUA)
10	JACKIE BARRETT	SR.	S	6-2	HIGHLAND, CALIF. (CITRUS VALLEY)
11	JORDAN SINNESS	JR.	S	5-9	SEBRING, FLA. (SEBRING)
12	BEL ZIMMERMAN	SO.	PH	6-2	LIBERTY, MO. (LIBERTY NORTH)
13	PAIGE THIBAUT	JR.	L	5-6	WATERTOWN, MINN. (FIU)
14	CHELSEY HARMON	SR.	MB	6-3	PUYALLUP, WASH. (PORTLAND)
17	CASSIDY TANTON	R-SO.	PH	6-0	STONEVILLE, N.C. (DALTON MCMICHAEL)
19	JASMINE OKEOMA	FR.	MB	6-3	WOODBIDGE, VA. (FOREST PARK)
22	SYDNEY HANDEL	SO.	PH	6-0	LEE'S SUMMIT, MO. (LEE'S SUMMIT WEST)
25	LAKIN LAURENDINE	FR.	PH	6-1	JACKSON, MISS. (JACKSON ACADEMY)

HEAD COACH | BRENT CROUCH (4TH SEASON)

ASSISTANT COACH | KEITH SMITH (2ND SEASON)

ASSISTANT COACH/RECRUITING COORDINATOR | RACHEL CORBELLI (2ND SEASON)

ASSISTANT COACH | JACK BURTON (1ST SEASON)

PRONUNCIATION GUIDE:

MADISON SCHEER – SHEER      FALLAN LANHAM – FAL(LIKE PAL)-AN LAN-EM      SYDNEY HANDEL – HON-DELL  
 PAIGE THIBAUT – THEE-BALT      JASMINE OKEOMA – OKAY-AH-MUH      LAKIN LAURENDINE – LAY-KIN LOR-EN-DEAN  
 RACHEL CORBELLI – CORE-BELL-EE



INSIDE THE 2023 NUMBERS



CATEGORY	AUBURN	SMU
Kills	141	104
Per Set	14.1	10.4
Errors	33	57
Total Attacks	319	353
Hitting Pct.	.339	.133
Assists	124	91
Per Set	12.4	9.1
Service Aces	16	11
Per Set	1.6	1.1
Service Errors	40	31
Reception Errors	6	11
Per Set	0.6	1.1
Digs	118	151
Per Set	11.8	15.1
Solo Blocks	9	4
Block Assists	35	40
Total Blocks	26.5	24.0
Per Set	2.7	2.4



CATEGORY	FLORIDA STATE
Kills	140
Per Set	15.6
Errors	23
Total Attacks	266
Hitting Pct.	.440
Assists	131
Per Set	14.6
Service Aces	24
Per Set	2.7
Service Errors	15
Reception Errors	5
Per Set	0.6
Digs	119
Per Set	13.2
Solo Blocks	1
Block Assists	37
Total Blocks	19.5
Per Set	2.2

2023 INDIVIDUAL HIGHS BY SET

THREE SETS

HITTING PERCENTAGE (MIN. 12 KILLS) \_\_\_\_\_ .257, Akasha Anderson vs McNeese (Aug. 26)  
 KILLS \_\_\_\_\_ 14, Akasha Anderson vs McNeese (Aug. 26)  
 TOTAL ATTEMPTS \_\_\_\_\_ 35, Akasha Anderson vs McNeese (Aug. 26)  
 ASSISTS \_\_\_\_\_ 31, Jackie Barrett vs McNeese (Aug. 26)  
 DIGS \_\_\_\_\_ 11, Fallan Lanham vs Jacksonville St. (Aug. 26)  
 ACES \_\_\_\_\_ 4, Akasha Anderson vs McNeese (Aug. 26)  
 BLOCKS \_\_\_\_\_ 5, Kendal Kemp vs McNeese (Aug. 26)

FOUR SETS

HITTING PERCENTAGE (MIN. 12 KILLS) \_\_\_\_\_ .480, Bella Bell vs Coppin St. (Aug. 25)  
 KILLS \_\_\_\_\_ 16, Akasha Anderson & Madison Scheer vs Coppin St. (Aug. 25)  
 TOTAL ATTEMPTS \_\_\_\_\_ 41, Akasha Anderson & Madison Scheer vs Coppin St. (Aug. 25)  
 ASSISTS \_\_\_\_\_ 43, Peyton Dunn vs Coppin St. (Aug. 25)  
 DIGS \_\_\_\_\_ 24, Sarah Morton vs Coppin St. (Aug. 25)  
 ACES \_\_\_\_\_ 2, Kyla Swanson vs Coppin St. (Aug. 25)  
 BLOCKS \_\_\_\_\_ 6, Kyla Swanson vs Coppin St. (Aug. 25)

FIVE SETS

HITTING PERCENTAGE (MIN. 12 KILLS) \_\_\_\_\_ --  
 KILLS \_\_\_\_\_ --  
 TOTAL ATTEMPTS \_\_\_\_\_ --  
 ASSISTS \_\_\_\_\_ --  
 DIGS \_\_\_\_\_ --  
 ACES \_\_\_\_\_ --  
 BLOCKS \_\_\_\_\_ --

2023 TEAM HIGHS BY SET

THREE SETS

HITTING PERCENTAGE (MIN. 12 KILLS) \_\_\_\_\_ .395, vs Jacksonville St. (Aug. 26)  
 KILLS \_\_\_\_\_ 45, vs McNeese (Aug. 26)  
 TOTAL ATTEMPTS \_\_\_\_\_ 102, vs McNeese (Aug. 26)  
 ASSISTS \_\_\_\_\_ 37, vs McNeese (Aug. 26)  
 DIGS \_\_\_\_\_ 33, vs McNeese (Aug. 26)  
 ACES \_\_\_\_\_ 7, vs Jacksonville St. (Aug. 26)  
 BLOCKS \_\_\_\_\_ 8.0, vs McNeese (Aug. 26)

FOUR SETS

HITTING PERCENTAGE (MIN. 12 KILLS) \_\_\_\_\_ .309, vs Coppin St. (Aug. 25)  
 KILLS \_\_\_\_\_ 56, vs Coppin St. (Aug. 25)  
 TOTAL ATTEMPTS \_\_\_\_\_ 136, vs Coppin St. (Aug. 25)  
 ASSISTS \_\_\_\_\_ 50, vs Coppin St. (Aug. 25)  
 DIGS \_\_\_\_\_ 53, vs Coppin St. (Aug. 25)  
 ACES \_\_\_\_\_ 5, vs Coppin St. (Aug. 25)  
 BLOCKS \_\_\_\_\_ 12.5, vs Coppin St. (Aug. 25)

FIVE SETS

HITTING PERCENTAGE (MIN. 12 KILLS) \_\_\_\_\_ --  
 KILLS \_\_\_\_\_ --  
 TOTAL ATTEMPTS \_\_\_\_\_ --  
 ASSISTS \_\_\_\_\_ --  
 DIGS \_\_\_\_\_ --  
 ACES \_\_\_\_\_ --  
 BLOCKS \_\_\_\_\_ --

### THE LAST TIME AUBURN...

Won in three sets \_\_\_\_\_ Aug. 26, 2023 vs Jacksonville State (25-12, 25-11, 26-24)  
 Won in four sets \_\_\_\_\_ Aug. 25, 2023 vs Coppin St. (24-26, 25-17, 25-15, 25-18)  
 Won in five sets \_\_\_\_\_ Dec. 2, 2022 vs #14 Creighton (21-25, 25-21, 25-20, 16-25, 15-11)  
 Lost in three sets \_\_\_\_\_ Nov 26, 2022 vs Arkansas (21-25, 17-25, 17-25)  
 Lost in four sets \_\_\_\_\_ Oct. 16, 2022 at Missouri (25-15, 21-25, 15-25, 27-29)  
 Lost in five sets \_\_\_\_\_ Dec. 3, 2022 vs Houston (27-25, 15-25, 25-12, 23-25, 8-15)  
 Lost first set in a win \_\_\_\_\_ Aug. 25, 2023 vs Coppin St. (24-26, 25-17, 25-15, 25-18)  
 Won first set in a loss \_\_\_\_\_ Dec. 3, 2022 vs Houston (27-25, 15-25, 25-12, 23-25, 8-15)  
 Lost first two sets in a win \_\_\_\_\_ Oct. 15, 2022 at Missouri (21-25, 21-25, 25-17, 25-17, 15-12)  
 Won first two sets in a loss \_\_\_\_\_ Oct. 10, 2021 at Arkansas (25-20, 25-23, 15-25, 17-25, 7-15)  
 Beat a ranked opponent Dec. 2, 2022 vs #14 Creighton (21-25, 25-21, 25-20, 16-25, 15-11)  
 Hit .300-.399 in a match \_\_\_\_\_ Aug. 26, 2023 vs Jacksonville St. (.395)  
 Hit .400-.499 in a match \_\_\_\_\_ Sept. 6, 2022 vs Alabama A&M (.400)  
 Hit .500 or better in a match \_\_\_\_\_ Oct. 18, 1998 at Ole Miss (.514)  
 Held opponent to .000-.100 in a match \_\_\_\_\_ Aug. 26, 2023 vs McNeese (.097)  
 Held opponent to a negative hitting percentage \_\_\_\_\_ Sept. 6, 2022 vs Alabama A&M (-.063)  
 Had 70-79 kills in a match \_\_\_\_\_ Oct. 26, 2018 vs. Ole Miss (77)  
 Had 80+ kills in a match \_\_\_\_\_ Sept. 17, 2006 at Georgia (84)  
 Had 80-99 digs in a match \_\_\_\_\_ Oct. 5, 2022 at LSU (85)  
 Had 100+ digs in a match \_\_\_\_\_ Sept. 17, 2021 vs. Nicholls (105)  
 Had 15+ blocks in a match \_\_\_\_\_ Sept. 28, 2022 vs Mississippi State (15.0)  
 Had 10+ service aces in a match \_\_\_\_\_ Oct. 15, 2022 at Missouri (11)  
 Had a player(s) with 20-24 kills in a match \_\_\_\_\_ Nov. 6, 2022 Akasha Anderson vs Texas A&M (21)  
 Had a player(s) with 25-29 kills in a match \_\_\_\_\_ Sept. 28, 2022, Akasha Anderson vs Miss. St. (25)  
 Had a player(s) with 30+ kills in a match \_\_\_\_\_ Oct. 8, 2004, Ashlee Johns vs. Arkansas (30)  
 Had a player(s) with 10+ blocks in a match \_\_\_\_\_ Nov. 23, 2022 Kendal Kemp at South Carolina (10)  
 Had a player(s) with 25-29 digs in a match \_\_\_\_\_ Oct. 9, 2022, Sarah Morton vs Georgia (26)  
 Had a player(s) with 30+ digs in a match \_\_\_\_\_ Oct. 17, 2021, Bella Rosenthal vs. Missouri (33)  
 Had a player(s) with 50+ assists in a match \_\_\_\_\_ Oct. 9, 2022 Jackie Barrett vs Georgia (51)  
 Had a player(s) with 60+ assists in a match \_\_\_\_\_ Oct. 5, 2022, Jackie Barrett at LSU (60)  
 Had a player(s) with 5+ aces in a match \_\_\_\_\_ Nov. 5, 2021, Rebekah Rath at Texas A&M (5)

### AUBURN DOUBLE-DOUBLES IN 2023

PLAYER	OPPONENT (SETS)	DATE	STATS
--------	-----------------	------	-------

### AUBURN'S 2023 RECORD WHEN...

**OVERALL** \_\_\_\_\_ 3-0  
**SEC-** \_\_\_\_\_ 0-0  
**NON-CONFERENCE** \_\_\_\_\_ 3-0  
**RANKED OPPONENTS** \_\_\_\_\_ 0-0  
**HOME** \_\_\_\_\_ 3-0  
**AWAY** \_\_\_\_\_ 0-0  
**NEUTRAL** \_\_\_\_\_ 0-0  
  
**BY SETS**  
**THREE SETS** \_\_\_\_\_ 2-0  
**FOUR SETS** \_\_\_\_\_ 1-0  
**FIVE SETS** \_\_\_\_\_ 0-0  
**WON FIRST SET** \_\_\_\_\_ 2-0  
**LOST FIRST SET** \_\_\_\_\_ 1-0  
**WON SECOND SET** \_\_\_\_\_ 3-0  
**LOST SECOND SET** \_\_\_\_\_ 0-0  
**WON FIRST TWO SETS** \_\_\_\_\_ 2-0  
**LOST FIRST TWO SETS** \_\_\_\_\_ 0-0  
  
**SITUATIONAL**  
**MORE KILLS THAN OPPONENT** \_\_\_\_\_ 3-0  
**FEWER KILLS THAN OPPONENT** \_\_\_\_\_ 0-0  
**KILLS ARE TIED** \_\_\_\_\_ 0-0  
**MORE DIGS THAN OPPONENT** \_\_\_\_\_ 1-0  
**FEWER DIGS THAN OPPONENT** \_\_\_\_\_ 2-0  
**DIGS ARE TIED** \_\_\_\_\_ 0-0  
**MORE ACES THAN OPPONENT** \_\_\_\_\_ 3-0  
**FEWER ACES THAN OPPONENT** \_\_\_\_\_ 0-0  
**ACES ARE TIED** \_\_\_\_\_ 0-0  
**HIGHER HITTING PERCENTAGE THAN OPPONENT** \_\_\_\_\_ 3-0  
**LOWER HITTING PERCENTAGE THAN OPPONENT** \_\_\_\_\_ 0-0  
**HITTING PERCENTAGE TIED** \_\_\_\_\_ 0-0  
  
**HITTING PERCENTAGE**  
**.400 OR ABOVE** \_\_\_\_\_ 0-0  
**.300-.399** \_\_\_\_\_ 3-0  
**.200-.299** \_\_\_\_\_ 0-0  
**.100-.199** \_\_\_\_\_ 0-0  
**.000-.099** \_\_\_\_\_ 0-0  
**NEGATIVE** \_\_\_\_\_ 0-0  
  
**OPPONENTS' HITTING PERCENTAGE**  
**.400 OR ABOVE** \_\_\_\_\_ 0-0  
**.300-.399** \_\_\_\_\_ 0-0  
**.200-.299** \_\_\_\_\_ 0-0  
**.100-.199** \_\_\_\_\_ 1-0  
**.000-.099** \_\_\_\_\_ 2-0  
**NEGATIVE** \_\_\_\_\_ 0-0  
  
**BY DAY**  
**MONDAY** \_\_\_\_\_ 0-0  
**TUESDAY** \_\_\_\_\_ 0-0  
**WEDNESDAY** \_\_\_\_\_ 0-0  
**THURSDAY** \_\_\_\_\_ 0-0  
**FRIDAY** \_\_\_\_\_ 1-0  
**SATURDAY** \_\_\_\_\_ 2-0  
**SUNDAY** \_\_\_\_\_ 0-0  
  
**DAY MATCHES (FIRST SERVE BEFORE 6 P.M.)** \_\_\_\_\_ 1-0  
**NIGHT MATCHES (FIRST SERVE AFTER 6 P.M.)** \_\_\_\_\_ 2-0  
  
**BY MONTH**  
**AUGUST** \_\_\_\_\_ 3-0  
**SEPTEMBER** \_\_\_\_\_ 0-0  
**OCTOBER** \_\_\_\_\_ 0-0  
**NOVEMBER** \_\_\_\_\_ 0-0  
**DECEMBER** \_\_\_\_\_ 0-0  
  
**JERSEY COLOR**  
**NAVY w/POWER STRIPE** \_\_\_\_\_ 0-0  
**NAVY SOLID** \_\_\_\_\_ 0-0  
**NAVY SLEEVELESS** \_\_\_\_\_ 1-0  
**ORANGE w/POWER STRIPE** \_\_\_\_\_ 1-0  
**ORANGE SOLID** \_\_\_\_\_ 1-0



**2023 AUBURN MATCH-BY-MATCH STARTERS**

DATE	OPPONENT	RESULT	OUTSIDE	MIDDLE	RIGHT SIDE	OUTSIDE/DS	MIDDLE	LIBERO	SETTER
Aug. 25	vs Coppin State	W, 3-1	Akasha Anderson	Kendal Kemp	Bella Bell	Paige Thibault	Kyla Swanson	Sarah Morton	Peyton Dunn
Aug. 26	vs McNeese	W, 3-0	Akasha Anderson	Kendal Kemp	Bella Bell	Paige Thibault	Kyla Swanson	Sarah Morton	Jackie Barrett
Aug. 26	vs Jacksonville State	W, 3-0	Akasha Anderson	Kendal Kemp	Bella Bell	Zoe Slaughter	Kyla Swanson	Sarah Morton	Jackie Barrett

**2023 AUBURN MATCH-BY-MATCH LEADERS**

DATE	OPPONENT	RESULT	KILLS	ASSISTS	ACES	DIGS	BLOCKS	HIT PCT. (MIN 10 ATT.)
Aug. 25	vs Coppin State	W, 3-1	Scheer, Anderson (16)	Dunn (43)	Swanson (2)	Morton (24)	Swanson (6)	Bell (.480)
Aug. 26	vs McNeese	W, 3-0	Anderson (14)	Barrett (31)	Anderson (4)	Anderson (8)	Kemp (5)	Zimmerman (.400)
Aug. 26	vs Jacksonville State	W, 3-0	Anderson (10)	Dunn (16)	Zimmerman (3)	Lanham (11)	Swanson (3)	Bell (.750)

### 2023 OVERALL STATISTICS

**Game Records**

Overall	Conference	Home	Away	Neutral
3 - 0	0 - 0	3 - 0	0 - 0	0 - 0

**Team Box Score**

#	Player	SP	Attack					Set		Serve			Dig			Blocking					PTS	
			K	K/S	E	TA	PCT	A	A/S	SA	SE	SA/S	RE	DIG	DIG/S	BS	BA	TOT/S	BLK/S	BE		BHE
1	Scheer, Madison	7	24	3.43	6	62	.290	1	0.14	0	0	0.00	0	3	0.43	1	3	4	0.57	0	0	26.5
2	Morton, Sarah	10	1	0.10	0	3	.333	10	1.00	1	3	0.10	0	32	3.20	0	0	0	0.00	0	0	2.0
3	Anderson, Akasha	10	40	4.00	10	99	.303	0	0.00	5	7	0.50	1	17	1.70	1	1	2	0.20	0	0	46.5
4	Lanham, Fallan	7	0	0.00	0	0	.000	1	0.14	2	0	0.29	1	13	1.86	0	0	0	0.00	0	0	2.0
5	Bell, Bella	10	34	3.40	5	59	.492	0	0.00	0	0	0.00	0	1	0.10	0	7	7	0.70	1	0	37.5
6	Swanson, Kyla	10	12	1.20	5	25	.280	1	0.10	2	9	0.20	0	4	0.40	2	8	10	1.00	1	0	20.0
7	Dunn, Peyton	6	4	0.67	1	7	.429	59	9.83	1	7	0.17	0	8	1.33	0	2	2	0.33	0	0	6.0
8	Kemp, Kendal	8	11	1.38	3	25	.320	0	0.00	1	2	0.13	0	0	0.00	5	7	12	1.50	0	0	20.5
9	Slaughter, Zoe	10	0	0.00	0	1	.000	3	0.30	1	4	0.10	0	16	1.60	0	0	0	0.00	0	0	1.0
10	Barrett, Jackie	5	2	0.40	0	6	.333	45	9.00	0	1	0.00	0	8	1.60	0	3	3	0.60	0	0	3.5
12	Zimmerman, Bel	5	10	2.00	3	28	.250	1	0.20	3	4	0.60	0	3	0.60	0	2	2	0.40	2	0	14.0
13	Thibault, Paige	6	0	0.00	0	0	.000	2	0.33	0	3	0.00	0	12	2.00	0	0	0	0.00	0	0	0.0
14	Harmon, Chelsey	2	3	1.50	0	4	.750	1	0.50	0	0	0.00	0	1	0.50	0	2	2	1.00	0	0	4.0
<b>AUBURN</b>		<b>10</b>	<b>141</b>	<b>14.10</b>	<b>33</b>	<b>319</b>	<b>.339</b>	<b>124</b>	<b>12.40</b>	<b>16</b>	<b>40</b>	<b>1.60</b>	<b>6</b>	<b>118</b>	<b>11.80</b>	<b>9</b>	<b>35</b>	<b>26.5</b>	<b>2.65</b>	<b>4</b>	<b>0</b>	<b>183.5</b>
<b>Opponents</b>		<b>10</b>	<b>93</b>	<b>9.30</b>	<b>66</b>	<b>301</b>	<b>.090</b>	<b>87</b>	<b>8.70</b>	<b>6</b>	<b>21</b>	<b>0.60</b>	<b>16</b>	<b>120</b>	<b>12.00</b>	<b>5</b>	<b>12</b>	<b>11</b>	<b>1.10</b>	<b>6</b>	<b>1</b>	<b>110.0</b>

**Team statistics**

	AUB	OPP
<b>ATTACK</b>		
Kills	141	93
Errors	33	66
Total Attacks	319	301
Attack Pct	.339	.090
Kills/Set	14.10	9.30
<b>SET</b>		
Assists	124	87
Attempts	312	324
Assist Pct	.397	.269
Assists/Set	12.40	8.70
<b>SERVE</b>		
Aces	16	6
Errors	40	21
Attempts	245	180
Serve Pct	.837	.883
Aces/Set	1.60	0.60
<b>SERVE RECEPTIONS</b>		
Errors	6	16
Errors/Set	0.60	1.60
Attempts	159	205
Reception Pct	.962	.992
<b>DEFENSE</b>		
Digs	118	120
Digs/Set	11.80	12.00
<b>BLOCKING</b>		
Block solo	9	5
Block Assist	35	12
Total Blocks	26.5	11
Blocks/Set	2.65	1.10
Block Errors	4	6
Ball handling errors	0	1
<b>ATTENDANCE</b>		
Total	2828	0
Dates/Avg Per Date	3/943	0/0
Neutral Site #/Avg	0/0	-
Current win streak	0	-
Home win streak	0	-

**Team Results**

Date	Opponent	Score	Score-by-set	Att.
08/25/2023	Coppin St.	W 3-1	24-26,25-17,25-15,25-18	1124
08/26/2023	McNeese	W 3-0	25-15,25-15,25-22	579
08/26/2023	Jacksonville St.	W 3-0	25-12,25-11,26-24	1125



## 2023 STATISTICAL LEADERS

## Attack (by PCT)

#	Player	S	K	K/S	E	TA	PCT
14	Harmon, Chelsey	2	3	1.50	0	4	.750
5	Bell, Bella	10	34	3.40	5	59	.492
7	Dunn, Peyton	6	4	0.67	1	7	.429
10	Barrett, Jackie	5	2	0.40	0	6	.333
2	Morton, Sarah	10	1	0.10	0	3	.333
8	Kemp, Kendal	8	11	1.38	3	25	.320
3	Anderson, Akasha	10	40	4.00	10	99	.303
1	Scheer, Madison	7	24	3.43	6	62	.290
6	Swanson, Kyla	10	12	1.20	5	25	.280
12	Zimmerman, Bel	5	10	2.00	3	28	.250
4	Lanham, Fallan	7	0	0.00	0	0	.000
9	Slaughter, Zoe	10	0	0.00	0	1	.000
13	Thibault, Paige	6	0	0.00	0	0	.000

## Kill (by K)

#	Player	S	K	K/S
3	Anderson, Akasha	10	40	4.00
5	Bell, Bella	10	34	3.40
1	Scheer, Madison	7	24	3.43
6	Swanson, Kyla	10	12	1.20
8	Kemp, Kendal	8	11	1.38
12	Zimmerman, Bel	5	10	2.00
7	Dunn, Peyton	6	4	0.67
14	Harmon, Chelsey	2	3	1.50
10	Barrett, Jackie	5	2	0.40
2	Morton, Sarah	10	1	0.10
4	Lanham, Fallan	7	0	0.00
9	Slaughter, Zoe	10	0	0.00
13	Thibault, Paige	6	0	0.00

## Set (by A/S)

#	Player	S	A	A/S	TA	PCT
7	Dunn, Peyton	6	59	9.83	141	.411
10	Barrett, Jackie	5	45	9.00	97	.454
2	Morton, Sarah	10	10	1.00	31	.323
14	Harmon, Chelsey	2	1	0.50	3	.333
13	Thibault, Paige	6	2	0.33	4	.500
9	Slaughter, Zoe	10	3	0.30	8	.375
12	Zimmerman, Bel	5	1	0.20	3	.333
1	Scheer, Madison	7	1	0.14	2	.500
4	Lanham, Fallan	7	1	0.14	7	.143
6	Swanson, Kyla	10	1	0.10	5	.000
3	Anderson, Akasha	10	0	0.00	7	.000
5	Bell, Bella	10	0	0.00	1	.000
8	Kemp, Kendal	8	0	0.00	3	.000

## Serve (by SA/S)

#	Player	S	SA	SE	SA/S	TA	PCT
12	Zimmerman, Bel	5	3	4	0.60	15	.733
3	Anderson, Akasha	10	5	7	0.50	32	.781
4	Lanham, Fallan	7	2	0	0.29	29	1.000
6	Swanson, Kyla	10	2	9	0.20	32	.719
7	Dunn, Peyton	6	1	7	0.17	15	.533
8	Kemp, Kendal	8	1	2	0.13	5	.600
2	Morton, Sarah	10	1	3	0.10	40	.925
9	Slaughter, Zoe	10	1	4	0.10	38	.895
10	Barrett, Jackie	5	0	1	0.00	16	.938
14	Harmon, Chelsey	2	0	0	0.00	10	1.000
13	Thibault, Paige	6	0	3	0.00	13	.769
1	Scheer, Madison	7	0	0	0.00	0	.000
5	Bell, Bella	10	0	0	0.00	0	.000

## Block (by BLK/S)

#	Player	S	BS	BA	TOTAL	BLK/S
8	Kemp, Kendal	8	5	7	12.0	1.50
6	Swanson, Kyla	10	2	8	10.0	1.00
14	Harmon, Chelsey	2	0	2	2.0	1.00
5	Bell, Bella	10	0	7	7.0	0.70
10	Barrett, Jackie	5	0	3	3.0	0.60
1	Scheer, Madison	7	1	3	4.0	0.57
12	Zimmerman, Bel	5	0	2	2.0	0.40
7	Dunn, Peyton	6	0	2	2.0	0.33
3	Anderson, Akasha	10	1	1	2.0	0.20
4	Lanham, Fallan	7	0	0	0.0	0.00
2	Morton, Sarah	10	0	0	0.0	0.00
9	Slaughter, Zoe	10	0	0	0.0	0.00
13	Thibault, Paige	6	0	0	0.0	0.00

## Defense (by DIG/S)

#	Player	S	DIG	DIG/S	BHE
2	Morton, Sarah	10	32	3.20	0
13	Thibault, Paige	6	12	2.00	0
4	Lanham, Fallan	7	13	1.86	0
3	Anderson, Akasha	10	17	1.70	0
10	Barrett, Jackie	5	8	1.60	0
9	Slaughter, Zoe	10	16	1.60	0
7	Dunn, Peyton	6	8	1.33	0
12	Zimmerman, Bel	5	3	0.60	0
14	Harmon, Chelsey	2	1	0.50	0
1	Scheer, Madison	7	3	0.43	0
6	Swanson, Kyla	10	4	0.40	0
5	Bell, Bella	10	1	0.10	0
8	Kemp, Kendal	8	0	0.00	0

## Points (by POINTS/S)

#	Player	S	POINTS	POINTS/S
3	Anderson, Akasha	10	46.5	4.65
1	Scheer, Madison	7	26.5	3.79
5	Bell, Bella	10	37.5	3.75
12	Zimmerman, Bel	5	14.0	2.80
8	Kemp, Kendal	8	20.5	2.56
14	Harmon, Chelsey	2	4.0	2.00
6	Swanson, Kyla	10	20.0	2.00
7	Dunn, Peyton	6	6.0	1.00
10	Barrett, Jackie	5	3.5	0.70
4	Lanham, Fallan	7	2.0	0.29
2	Morton, Sarah	10	2.0	0.20
9	Slaughter, Zoe	10	1.0	0.10
13	Thibault, Paige	6	0.0	0.00

## Receptions (by PCT)

#	Player	S	RE	RE/S	TA	PCT
1	Scheer, Madison	7	0	0.00	6	1.000
12	Zimmerman, Bel	5	0	0.00	10	1.000
2	Morton, Sarah	10	0	0.00	29	1.000
9	Slaughter, Zoe	10	0	0.00	38	1.000
13	Thibault, Paige	6	0	0.00	20	1.000
3	Anderson, Akasha	10	1	0.10	36	.972
4	Lanham, Fallan	7	1	0.14	16	.938
5	Bell, Bella	10	0	0.00	0	.000
8	Kemp, Kendal	8	0	0.00	0	.000
14	Harmon, Chelsey	2	0	0.00	0	.000
6	Swanson, Kyla	10	0	0.00	0	.000
7	Dunn, Peyton	6	0	0.00	0	.000
10	Barrett, Jackie	5	0	0.00	0	.000
TM	TEAM	-	4	0.40	-	-

**TEAM KILLS - SIDEOUT ERA**

	KILLS	OPPONENT (SETS)	DATE
1.	114	vs. Kentucky (5)	10/5/97
2.	107	at Tulane (5)	11/10/90
3.	99	vs. Georgia Tech (5)	9/14/95
4.	96	vs. Butler (5)	9/10/94
5.	95	vs. Pittsburgh (5)	9/13/91
6.	94	vs. Lamar (5)	9/24/88
7.	91	vs. LSU (5)	11/13/94
8.	90	at Ole Miss (5)	10/13/96
9.	89	vs. Arkansas (4)	10/20/96
10.	88	at Rhode Island (5)	9/5/97
	88	vs. Mississippi State (4)	10/24/97
	88	vs. Mississippi State (5)	11/12/00

**TEAM KILLS - RALLY ERA**

	KILLS	OPPONENT (SETS)	DATE
1.	84	vs. Virginia Tech (5)	9/2/06
	84	at Georgia (5)	9/17/06
3.	82	vs. Georgia Southern (5)	9/2/05
4.	81	at Mercer (5)	9/8/04
5.	80	vs. Kentucky (5)	10/1/06
	80	vs. Ole Miss (5)	10/24/03
7.	79	at Alabama (5)	10/30/11
8.	77	vs. Ole Miss (5)	10/26/18
9.	75	at South Carolina (5)	11/16/14
	75	at Georgia (5)	11/2/14
	75	vs. Green Bay (5)	9/5/13
	75	vs. Tennessee State (4)	8/25/07
	75	vs. Arkansas (5)	10/8/04
	75	at LSU (5)	10/25/15

**TEAM ASSISTS - RALLY ERA**

	AST.	OPPONENT (SETS)	DATE
1.	79	vs. Georgia Southern (5)	9/2/05
2.	77	at Mercer (5)	9/8/04
3.	76	at Georgia (5)	9/17/06
4.	74	vs. South Carolina (5)	10/5/14
	74	at Alabama (5)	10/30/11
	74	vs. Ole Miss (5)	9/24/03
7.	72	at Georgia (5)	11/2/14
	72	vs. Tennessee State (4)	8/25/07
	72	at LSU (5)	10/25/15
	72	vs. Ole Miss (5)	10/26/18

**TEAM DIGS - RALLY ERA**

	DIGS	OPPONENT (SETS)	DATE
1.	112	at LSU (5)	11/15/13
2.	109	at LSU (5)	10/25/15
3.	107	vs. Northwestern State (5)	9/20/14
4.	<b>105</b>	<b>vs. Nicholls St. (4)</b>	<b>9/17/21</b>
5.	99	at Ole Miss (5)	10/18/16
6.	97	vs. Georgia (4)	11/7/07
	97	vs. LSU (5)	10/5/15
	97	at Tennessee (5)	10/4/17
9.	94	at Tennessee (5)	11/16/12
10.	93	at Georgia (5)	9/17/06
	93	vs. Tennessee (4)	11/9/17

**TEAM ACES - RALLY ERA**

	ACES	OPPONENT (SETS)	DATE
1.	18	vs. Delaware State (3)	9/13/03
2.	16	vs. Tennessee State (4)	8/25/07
	16	vs. Southeastern Louisiana (3)	9/9/06
4.	14	vs. Troy (3)	8/27/10
	14	vs. Alabama State (3)	9/5/03
6.	13	vs. Tennessee State (5)	8/30/19
	13	at SMU (5)	8/26/06
	13	vs. Mississippi State (5)	10/26/03
9.	12	vs. Louisiana Tech (4)	9/7/07
	12	at Lafayette (3)	9/12/03
	12	vs. Grambling State (3)	9/1/05

**TEAM TOTAL BLOCKS - RALLY ERA**

	BLK	OPPONENT (SETS)	DATE
1.	<b>18.0</b>	<b>vs. Georgia (5)</b>	<b>10/9/22</b>
	<b>18.0</b>	<b>vs. Alabama (5)</b>	<b>10/2/21</b>
	18.0	vs. South Florida (5)	9/13/14
4.	<b>17.0</b>	<b>vs. Troy (4)</b>	<b>9/10/22</b>
	<b>17.0</b>	<b>at Arkansas (5)</b>	<b>10/10/21</b>
	<b>17.0</b>	<b>at South Carolina (4)</b>	<b>10/29/20</b>
	17.0	at Georgia Southern (5)	9/12/09
	17.0	vs. Mississippi State (5)	11/5/04
9.	<b>16.5</b>	<b>at Alabama (4)</b>	<b>9/24/22</b>
10.	16.0	vs. Tennessee (4)	11/9/14
	16.0	vs. Ole Miss (5)	10/24/03

**TEAM HITTING - ALL ERAS**

	PCT.	OPPONENT (SETS)	DATE
1.	.530 (41-6-66)	vs. LSU (3)	11/2/97
2.	.514 (65-11-105)	at Ole Miss (3)	10/18/98
3.	.489 (52-6-94)	vs. Alabama A&M (3)	8/29/09
4.	.487 (46-8-78)	vs. Navy (3)	9/15/00
5.	.485 (38-6-66)	vs. Drexel (3)	9/10/93
	.485 (53-5-99)	vs. Eastern Illinois (3)	9/1/18
7.	.474 (52-7-95)	at South Carolina (3)	10/26/12
8.	.472 (40-6-72)	vs. Delaware State (3)	9/13/03
9.	.471 (54-5-104)	vs. Mississippi State (3)	11/29/14
10.	.469 (35-5-64)	vs. Alabama A&M (3)	8/28/09
11.	.468 (N/A)	vs. Alabama State (3)	10/8/87
12.	.462 (52-9-93)	at Georgia State (3)	8/28/07
13.	.455 (55-9-101)	vs. Alabama (3)	11/10/98
14.	.450 (42-6-80)	vs. Mercer (3)	9/5/13
15.	.448 (50-11-87)	vs. Grambling (3)	9/1/05
16.	.440 (43-10-75)	vs. Chicago State (3)	9/11/99
	.440 (55-11-100)	vs. UAB (3)	9/3/00
18.	.429 (49-10-91)	at LSU (3)	9/26/97
19.	.420 (45-8-88)	vs. Lipscomb (3)	9/20/03
20.	.422 (43-8-83)	at Georgia Tech (3)	8/25/17

Records set in the Brent Crouch era are listed in **BOLD**.

**TEAM MATCH RECORDS (BY SET)**

**KILLS**

SETS	KILLS	OPPONENT	DATE
3s	76	vs. LSU	10/18/96
4s	89	vs. Arkansas	10/20/9
5s	114	vs. Kentucky	10/5/97

**ATTACKS**

SETS	ATT.	OPPONENT	DATE
3s	160	vs. South Carolina	10/19/97
4s	213	at Ole Miss	10/3/93
5s	229	at LSU	11/15/13

**HITTING PERCENTAGE (MIN. 10 KILLS)**

SETS	PCT.	OPPONENT	DATE
3s	.530 (41-6-66)	vs. LSU	11/2/97
4s	.365 (70-20-137)	vs. Alabama	11/6/97
5s	.362 (74-20-149)	at Minnesota	9/19/98

**BLOCKS - SOLO**

SETS	BLK	OPPONENT	DATE
3s	8 (3x)	last, vs. IUPUI	9/4/98
4s	10	at Tennessee Tech	10/14/88
5s	13	vs. NC State	9/21/91

**BLOCKS - ASSISTS**

SETS	BLK	OPPONENT	DATE
3s	27	at Samford	10/3/00
4s	<b>32</b>	<b>at South Carolina</b>	<b>10/29/20</b>
5s	28 (3x)	last, vs. Mississippi State	11/12/00

**TOTAL BLOCKS**

SETS	BLK	OPPONENT	DATE
3s	15.0	vs. Alabama	11/5/93
	15.0	at South Carolina	10/17/10
4s	<b>17.0</b>	<b>vs. Troy</b>	<b>9/10/22</b>
	<b>17.0</b>	<b>at South Carolina</b>	<b>10/29/20</b>
5s	<b>18.0</b>	<b>vs. Georgia</b>	<b>10/9/22</b>
	18.0	vs. South Florida	9/13/14

**DIGS**

SETS	DIGS	OPPONENT	DATE
3s	76	at Ole Miss	11/16/07
4s	115	vs. NE Louisiana	9/12/86
5s	117	vs. Central Florida	11/8/86

**ASSISTS**

SETS	AST	OPPONENT	DATE
3s	60	vs. Pittsburgh	8/31/97
4s	77	vs. Mississippi State	10/24/97
5s	100	vs. Kentucky	10/5/97

**SERVICE ACES**

SETS	ACE	OPPONENT	DATE
3s	18	vs. Delaware State	9/13/03
4s	16	vs. Tennessee State	8/25/07
5s	13	vs. Tennessee State	8/30/19
	13	vs. Mississippi State	10/26/03

## INDIVIDUAL KILLS

	KILLS	PLAYER-OPPONENT (SETS)	DATE
1.	30	Ashlee Johns vs. Arkansas (5)	10/8/04
2.	29	<b>Rebekah Rath at Arkansas (4)</b>	<b>10/9/21</b>
3.	27	Kelly Fidero at Alabama (5)	10/30/11
4.	26	<b>Akasha Anderson vs Mississippi St. (5)</b>	<b>9/28/22</b>
	26	Jessica Glover at Georgia (5)	9/17/06
	26	Camila Lago vs. Mississippi State (5)	10/26/03
7.	25	Macy Reece vs. South Florida (5)	9/13/14
	25	Rachel Shanks vs. Georgia (4)	11/7/07
	25	Jelena Sekulic at Arkansas (5)	10/7/07
	25	Rachel Shanks vs. Virginia Tech (5)	9/2/06
	25	Jennifer Amobi vs. Tennessee (4)	11/19/04
	25	<b>Rebekah Rath at Georgia St. (4)</b>	<b>8/26/22</b>

## INDIVIDUAL HITTING PCT. (MIN. 12 KILLS)

	PCT.	PLAYER-OPPONENT (SETS)	DATE
1.	.773 (17-0-22)	Ashlee Johns vs. Delaware State (3)	9/13/03
2.	.722 (14-1-18)	Jonelle Wallace vs. Beth.-Cook. (3)	9/5/08
3.	<b>.706 (12-0-17)</b>	<b>Chelsey Harmon vs. Jackson St. (3)</b>	<b>9/17/22</b>
4.	.688 (12-1-16)	Shaina White vs. American (3)	9/8/18
5.	.667 (16-0-24)	Jonelle Wallace at Georgia (5)	11/24/10
6.	.650 (13-0-20)	Breanna Barksdale at Arkansas (5)	10/30/15
7.	.647 (13-1-17)	Alyssa Davis vs Jacksonville State (5)	9/8/09
8.	.632 (12-0-19)	Courtney McDonald vs. Kentucky (5)	10/23/11
	.632 (12-0-19)	Camila Jersonsky vs. Austin Peay (4)	9/3/11
10.	.619 (14-1-21)	Camila Jersonsky vs. Miss. State (3)	11/3/13
	.619 (14-1-21)	Breanna Barksdale vs. Samford (4)	8/29/15
	.619 (14-1-21)	Shaina White vs. Furman (4)	8/26/17

## INDIVIDUAL TOTAL BLOCKS

	BLK (S-A)	PLAYER-OPPONENT (SETS)	DATE
1.	12 (2-10)	<b>Tatum Shipes vs Alabama (4)</b>	<b>10/2/21</b>
	11 (4-7)	Breanna Barksdale at Florida (4)	11/23/16
3.	10 (1-9)	<b>Kendal Kemp vs. Georgia (5)</b>	<b>10/9/22</b>
	10 (1-9)	<b>Kendal Kemp vs. Georgia (4)</b>	<b>10/8/22</b>
	10 (2-8)	<b>Chelsey Harmon vs Troy (4)</b>	<b>9/10/22</b>
	10 (1-9)	<b>Tatum Shipes at Arkansas (4)</b>	<b>10/9/21</b>
7.	10 (0-10)	Stephanie Campbell vs. St. John's (5)	9/19/15
	10 (2-8)	Julie Bosler vs. South Carolina (5)	9/15/06
	10 (3-7)	Julie Bosler vs. Mississippi State (5)	11/5/04
	10 (2-8)	Julie Bosler vs. Mississippi State (5)	10/2/03
	10 (1-9)	Bailey Veit vs. Mercer (5)	9/20/03

## INDIVIDUAL SERVICE ACES

	ACES	PLAYER-OPPONENT (SETS)	DATE
1.	7	Katherine Culwell vs. Tennessee (3)	11/22/13
	7	Maira Magallon vs. Delaware State (3)	9/13/03
3.	6	Brenna McLroy at Mississee (4)	10/19/18
	6	Whitney Jacob vs. Arkansas (5)	10/15/06
5.	5	Rebekah Rath at Texas A&M (5)	11/5/21
6.	5	Jesse Earl at Florida State (5)	9/16/17
	5	Jesse Earl at Georgia (4)	10/2/16
	5	Alexa Filley vs. LSU (5)	10/4/15
	5	Liz Crouch vs. Troy (3)	8/27/10
	5	Rachel Shanks at South Alabama (3)	9/9/06
	5	Whitney Jacob vs. Louisiana-Monroe (3)	8/25/06
	5	Whitney Jacob vs. Mississippi State (4)	10/23/05
	5	Rachel Shanks vs. Clemson (3)	9/17/05
	5	Whitney Jacob vs. Grambling (3)	9/1/05
	5	Maira Magallon vs. Mississippi State (5)	10/26/03
	5	Maira Magallon at Lafayette (3)	9/12/03
	5	Maira Magallon vs. Bethune-Cookman (4)	9/6/03
	5	Jennifer Buckert vs. Alabama State (3)	9/5/03
	5	Brittany Diaz vs. Marist (4)	9/7/02
	5	Laura Hastings vs. Western Michigan (3)	9/1/01
	5	Grace Boyd at South Carolina (3)	10/26/01

## INDIVIDUAL ASSISTS

	AST	PLAYER-OPPONENT (SETS)	DATE
1.	76	Jordan Elliott at Mercer (5)	9/8/04
2.	71	Maira Magallon vs. Ole Miss (5)	10/24/03
3.	68	Michele Ashmore vs. Georgia Southern (5)	9/2/05
4.	66	Joanna Pappas at Georgia (5)	9/17/06
5.	65	Maira Magallon vs. Arkansas (5)	10/8/04
	65	Nicki Gerig vs. Tennessee State (4)	8/25/07
7.	64	Jordan Elliott vs. Iowa State (5)	9/4/04
8.	63	Alexa Filley vs. South Carolina (5)	10/5/14
	63	Maira Magallon vs. Xavier (4)	11/26/04
	63	Sara Shanks at Arkansas (5)	10/7/07

## INDIVIDUAL DIGS

	DIGS	PLAYER-OPPONENT (SETS)	DATE
1.	37	Payton White vs. Butler (5)	8/31/19
2.	36	Jelena Sekulic at Kentucky (5)	11/17/06
	36	Jesse Earl at Tennessee (5)	10/4/17
4.	34	Bailey Veit vs. Georgia Southern (5)	9/2/05
	34	Jesse Earl at Mississippi State (5)	11/13/15
6.	33	<b>Bella Rosenthal vs. Missouri (5)</b>	<b>10/17/21</b>
7.	33	Sarah Wroblecky at LSU (5)	11/15/13
	33	Jesse Earl at LSU (4)	11/15/17
9.	31	Liz Crouch at Mississippi State (3)	9/18/09
10.	30	Liz Crouch vs. Georgia (4)	11/7/07
	30	Jesse Earl at Florida State (5)	9/16/17

Records set in the Brent Crouch era are listed in **BOLD**

## INDIVIDUAL MATCH RECORDS (BY SET)

## KILLS

SETS	KILLS	PLAYER-OPPONENT	DATE
3s	25	Brooke McCarley vs. UAB	9/7/99
4s	29	Rebekah Rath at Arkansas	10/9/21
	29	Brooke McCarley at Kansas	9/11/99
5s	34	Bridgitte Sims vs. Tulane	11/10/90

## ATTACKS

SETS	ATT.	PLAYER-OPPONENT	DATE
3s	56	Allyson Beecroft at Florida	9/30/94
4s	75	Rebekah Rath at Arkansas	10/9/21
5s	84	Rebekah Rath at Texas A&M	11/4/17

## HITTING PERCENTAGE (MIN. 10 KILLS)

SETS	PCT.	PLAYER	DATE
3s	.773 (17-0-22)	Ashlee Johns	9/13/03
4s	.813 (13-0-16)	Laura Cookley	9/28/91
5s	.714 (10-0-14)	Dalia Naidzinaviciut	9/2/05

## BLOCKS - SOLO

SETS	BLK	PLAYER-OPPONENT	DATE
3s	5	Gina Thomas vs. Georgetown	9/13/90
4s	5	Gina Thomas vs. Florida	10/12/90
5s	6	Tory Gutierrez vs. Louisville	10/21/89
	6	Lisa Harvey vs. Tuskegee	10/7/86

## BLOCKS - ASSISTS

SETS	BLK	PLAYER-OPPONENT	DATE
3s	<b>9 (3x) last</b>	<b>Kendal Kemp vs Belmont</b>	<b>8/26/22</b>
4s	11	Tory Gutierrez vs. Georgia State	10/3/89
5s	10	Jaunelle Hamilton vs. Mississippi St.	11/12/00
	10	Stephanie Campbell vs. St. John's	9/19/15

## TOTAL BLOCKS

SETS	BLK	PLAYER-OPPONENT	DATE
3s	<b>9 (4x) last</b>	<b>Kendal Kemp vs. Belmont</b>	<b>8/26/22</b>
4s	14	Tory Gutierrez vs. Georgia State	10/3/89
5s	12	Jaunelle Hamilton vs. Mississippi St.	11/12/00
	12	La'Toi Finley at Georgia Tech	9/14/95

## DIGS

SETS	DIGS	PLAYER-OPPONENT	DATE
3s	31	Liz Crouch at Mississippi State	9/18/09
4s	34	Gretchen Thompson vs. ULM	9/12/86
5s	37	Payton White vs. Butler	8/31/19

## ASSISTS

SETS	AST	PLAYER-OPPONENT	DATE
3s	64	Piper Craig vs. LSU	10/18/96
4s	76	Piper Craig vs. Arkansas	10/20/96
5s	92	Piper Craig vs. Kentucky	10/5/97

## SERVICE ACES

SETS	ACE	PLAYER-OPPONENT	DATE
3s	10	Jenifer Kleyn vs. Seneca	10/5/90
4s	8	Terri Duckworth at UAB	11/1/88
5s	10	Jenifer Kleyn at Ole Miss	9/28/90

# #1 MADISON SCHEER

**PIN HITTER | 6-1 | SOPHOMORE  
EUREKA, MO. (EUREKA)**



### SCHEER'S HIGHLIGHTS:

- 2022 SEC All-Freshman Team
- Career-high 22 kills on .409 hitting versus Jacksonville State
- Named SEC Freshman of the Week and Player of the Week 9/26
- Hit over .300 11 times, over .400 seven times and over .500 twice in 2022
- Made her collegiate debut on Aug. 26 vs. Belmont

CATEGORY	CAREER HIGH	OPPONENT/DATE
Kills	22	at Jacksonville State (9/17/22)
Attempts	47	vs Georgia (10/9/22)
Hitting Percentage (Min. 10 ATT.)	.563	vs Alabama A&M (9/6/22)
Assists	1 (3x)	last vs Georgia (10/9/22)
Digs	4	at LSU (10/5/22)
Blocks	6	at Alabama (9/24/22)
Aces	--	--
Points	23.0	at Jacksonville State (9/17/22)

CATEGORY	SEASON HIGH	OPPONENT/DATE
Kills	16	vs Coppin State (8/25/23)
Attempts	41	vs Coppin State (8/25/23)
Hitting Percentage (Min. 10 ATT.)	.293	vs Coppin State (8/25/23)
Assists	1	vs Jacksonville State (8/26/23)
Digs	3	vs Coppin State (8/25/23)
Blocks	4	vs Coppin State (8/25/23)
Aces	--	--
Points	18.5	vs Coppin State (8/25/23)

### GAME BY GAME

Date	Opponent	SP	Attack				Set			Serve				Recept			Blocking				Team				
			K	E	TA	PCT	A	TA	PCT	SA	SE	TA	PCT	RE	TA	PCT	DIG	BS	BA	BE	TOTAL	BHE	POINTS	HIT%	SCORE
08/25/2023	Coppin St.	4	16	4	41	.293	0	1	.000	0	0	0	.000	0	3	1.000	3	1	3	0	4.0	0	18.5	.309	3-1
08/26/2023	Jacksonville St.	3	8	2	21	.286	1	1	1.000	0	0	0	.000	0	3	1.000	0	0	0	0	0.0	0	8.0	.395	3-0
<b>Totals</b>		<b>7</b>	<b>24</b>	<b>6</b>	<b>62</b>	<b>.290</b>	<b>1</b>	<b>2</b>	<b>.500</b>	<b>0</b>	<b>0</b>	<b>0</b>	<b>.000</b>	<b>0</b>	<b>6</b>	<b>1.000</b>	<b>3</b>	<b>1</b>	<b>3</b>	<b>0</b>	<b>4.0</b>	<b>0</b>	<b>26.5</b>		

### Player Averages

Sets Played	Kills per set	Assists per set	Service aces per set	Digs per set	Blocks per set	Points per set
7	3.43	0.14	0.00	0.43	0.57	3.79

### CAREER STATS

SEASON	TEAM	SM-MP	K	K/S	E	TA	PCT	A	A/S	SA	SA/S	SE	DIG	D/S	RE	BS	BA	TB	B/S	BE	BHE	PTS	PTS/S
2022-23	AUB	118-30	361	3.06	120	956	.252	3	0.03	0	0.00	0	45	0.38	3	3	46	49	0.42	4	2	387.0	3.28
2023-24	AUB	7-2	24	3.43	6	62	.290	1	0.14	0	0.00	0	3	0.43	0	1	3	4	0.57	0	0	26.5	3.79
<b>TOTAL</b>		<b>125 - 32</b>	<b>385</b>	<b>3.08</b>	<b>126</b>	<b>1018</b>	<b>.254</b>	<b>4</b>	<b>0.03</b>	<b>0</b>	<b>0.00</b>	<b>0</b>	<b>48</b>	<b>0.38</b>	<b>3</b>	<b>4</b>	<b>49</b>	<b>53</b>	<b>0.42</b>	<b>4</b>	<b>2</b>	<b>413.5</b>	<b>3.31</b>





# #2 SARAH MORTON

LIBERO | 5-7 | SOPHOMORE  
MUNSTER, IND. (MUNSTER)



### MORTON'S HIGHLIGHTS:

- Recorded 10+ digs in 26 of the 29 matches she's played in 2022
- Grabbed a career-high 26 digs vs Georgia on Oct. 9
- Named SEC Defensive Player of the Week 9/26
- Has started every game at libero when in the lineup
- Made her collegiate debut on Aug. 26 vs. Belmont

CATEGORY	CAREER HIGH	OPPONENT/DATE
Kills	1 (3x)	last vs Coppin State (8/25/23)
Attempts	3	vs Coppin State (8/25/23)
Hitting Percentage (Min. 10 ATT.)	--	--
Assists	9	at Georgia State (8/26/22)
Digs	26	vs Georgia (10/9/22)
Blocks	--	--
Aces	3 (4x)	last at Missouri (10/15/22)
Points	3 (4x)	last at Missouri (10/15/22)

CATEGORY	SEASON HIGH	OPPONENT/DATE
Kills	1	vs Coppin State (8/25/23)
Attempts	3	vs Coppin State (8/25/23)
Hitting Percentage (Min. 10 ATT.)	--	--
Assists	4	vs Coppin State (8/25/23)
Digs	24	vs Coppin State (8/25/23)
Blocks	--	--
Aces	1	vs Jacksonville State (8/26/23)
Points	1 (2x)	last vs Jacksonville State (8/26/23)

### GAME BY GAME

Date	Opponent	SP	Attack				Set			Serve				Recept			Blocking				Team				
			K	E	TA	PCT	A	TA	PCT	SA	SE	TA	PCT	RE	TA	PCT	DIG	BS	BA	BE	TOTAL	BHE	POINTS	HIT%	SCORE
08/25/2023	Coppin St.	4	1	0	3	.333	4	12	.333	0	2	20	.900	0	13	1.000	24	0	0	0	0.0	0	1.0	.309	3-1
08/26/2023	McNeese	3	0	0	0	.000	3	11	.273	0	1	7	.857	0	8	1.000	5	0	0	0	0.0	0	0.0	.333	3-0
08/26/2023	Jacksonville St.	3	0	0	0	.000	3	8	.375	1	0	13	1.000	0	8	1.000	3	0	0	0	0.0	0	1.0	.395	3-0
<b>Totals</b>		<b>10</b>	<b>1</b>	<b>0</b>	<b>3</b>	<b>.333</b>	<b>10</b>	<b>31</b>	<b>.323</b>	<b>1</b>	<b>3</b>	<b>40</b>	<b>.925</b>	<b>0</b>	<b>29</b>	<b>1.000</b>	<b>32</b>	<b>0</b>	<b>0</b>	<b>0</b>	<b>0.0</b>	<b>0</b>	<b>2.0</b>		

### Player Averages

Sets Played	Kills per set	Assists per set	Service aces per set	Digs per set	Blocks per set	Points per set
10	0.10	1.00	0.10	3.20	0.00	0.20

### CAREER STATS

SEASON	TEAM	SM-MP	K	K/S	E	TA	PCT	A	A/S	SA	SA/S	SE	DIG	D/S	RE	BS	BA	TB	B/S	BE	BHE	PTS	PTS/S
2022-23	AUB	119-30	2	0.02	1	11	.091	110	0.92	30	0.25	31	457	3.84	21	0	0	0	0.00	0	1	32.0	0.27
2023-24	AUB	10-3	1	0.10	0	3	.333	10	1.00	1	0.10	3	32	3.20	0	0	0	0	0.00	0	0	2.0	0.20
<b>TOTAL</b>		<b>129 - 33</b>	<b>3</b>	<b>0.02</b>	<b>1</b>	<b>14</b>	<b>.143</b>	<b>120</b>	<b>0.93</b>	<b>31</b>	<b>0.24</b>	<b>34</b>	<b>489</b>	<b>3.79</b>	<b>21</b>	<b>0</b>	<b>0</b>	<b>0</b>	<b>0.00</b>	<b>0</b>	<b>1</b>	<b>34.0</b>	<b>0.26</b>



# #3 AKASHA ANDERSON

**PIN HITTER | 6-3 | FRESHMAN  
RESTON, VA. (HERNDON)**

### ANDERSON'S HIGHLIGHTS:

- Named to All-SEC Team and All-Freshman Team
- Named AVCA South Region Freshman of the Year in 2022
- Had career-high 26 kills in win over Mississippi State
- Hit .526 with a team-high 12 kills vs. Marist
- Recorded 24 kills and 14 digs at UAB for first double-double
- Had eight double-doubles in 2022
- 2x SEC Freshman of the Week
- Made her collegiate debut on Aug. 26 vs. Belmont

CATEGORY	CAREER HIGH	OPPONENT/DATE
Kills	26	vs Mississippi State (9/28/22)
Attempts	77	at LSU (10/5/22)
Hitting Percentage (Min. 10 ATT.)	.526	vs Marist (8/27/22)
Assists	3	at Missouri (10/15/22)
Digs	18	at Alabama (9/25/22)
Blocks	5	vs Troy (9/10/22)
Aces	4 (3x)	last vs McNeese (8/26/23)
Points	29.5 (2x)	last vs Mississippi State (9/28/22)

CATEGORY	SEASON HIGH	OPPONENT/DATE
Kills	16	vs Coppin State (8/25/23)
Attempts	41	vs Coppin State (8/25/23)
Hitting Percentage (Min. 10 ATT.)	.391	vs Jacksonville State (8/26/23)
Assists	--	--
Digs	8	vs McNeese (8/26/23)
Blocks	1 (2x)	last vs Jacksonville State (8/26/23)
Aces	4	vs McNeese (8/26/23)
Points	18.0	vs McNeese (8/26/23)

### GAME BY GAME

Date	Opponent	SP	Attack				Set			Serve				Receipt			Blocking				Team				
			K	E	TA	PCT	A	TA	PCT	SA	SE	TA	PCT	RE	TA	PCT	DIG	BS	BA	BE	TOTAL	BHE	POINTS	HIT%	SCORE
08/25/2023	Coppin St.	*4	16	4	41	.293	0	3	.000	0	3	7	.571	0	16	1.000	5	0	1	0	1.0	0	16.5	.309	3-1
08/26/2023	McNeese	*3	14	5	35	.257	0	3	.000	4	3	13	.769	0	15	1.000	8	0	0	0	0.0	0	18.0	.333	3-0
08/26/2023	Jacksonville St.	*3	10	1	23	.391	0	1	.000	1	1	12	.917	1	5	.800	4	1	0	0	1.0	0	12.0	.395	3-0
<b>Totals</b>			<b>10</b>	<b>40</b>	<b>10</b>	<b>.303</b>	<b>0</b>	<b>7</b>	<b>.000</b>	<b>5</b>	<b>7</b>	<b>32</b>	<b>.781</b>	<b>1</b>	<b>36</b>	<b>.972</b>	<b>17</b>	<b>1</b>	<b>1</b>	<b>0</b>	<b>2.0</b>	<b>0</b>	<b>46.5</b>		

### Player Averages

Sets Played	Kills per set	Assists per set	Service aces per set	Digs per set	Blocks per set	Points per set
10	4.00	0.00	0.50	1.70	0.20	4.65

### CAREER STATS

SEASON	TEAM	SM-MP	K	K/S	E	TA	PCT	A	A/S	SA	SA/S	SE	DIG	D/S	RE	BS	BA	TB	B/S	BE	BHE	PTS	PTS/S
2022-23	AUB	121-31	428	3.54	211	1240	.175	13	0.11	27	0.22	41	225	1.86	50	4	56	60	0.50	5	0	487.0	4.02
2023-24	AUB	10-3	40	4.00	10	99	.303	0	0.00	5	0.50	7	17	1.70	1	1	1	2	0.20	0	0	46.5	4.65
<b>TOTAL</b>		<b>131 - 34</b>	<b>468</b>	<b>3.57</b>	<b>221</b>	<b>1339</b>	<b>.184</b>	<b>13</b>	<b>0.10</b>	<b>32</b>	<b>0.24</b>	<b>48</b>	<b>242</b>	<b>1.85</b>	<b>51</b>	<b>5</b>	<b>57</b>	<b>62</b>	<b>0.47</b>	<b>5</b>	<b>0</b>	<b>533.5</b>	<b>4.07</b>

# #4 FALLAN LANHAM

LIBERO | 5-8 | JUNIOR  
LOUISVILLE, KY. (MERCY ACADEMY)



### LANHAM'S HIGHLIGHTS:

- Grabbed a career-high 20 digs at LSU
- Recorded a career-high four aces at UAB
- Earned first collegiate start in Auburn's season opener versus Tennessee Tech on August 27

CATEGORY	CAREER HIGH	OPPONENT/DATE
Kills	2	vs. Missouri (9/12/21)
Attempts	8	at Arkansas (10/9/21)
Hitting Percentage (Min. 10 ATT.)		
Assists	3 (3x)	last, vs Marist (8/27/22)
Digs	20	at LSU (10/5/22)
Blocks	1	at Georgia (10/22/21)
Aces	4	at UAB (9/9/22)
Points	4.0	at UAB (9/9/22)

CATEGORY	SEASON HIGH	OPPONENT/DATE
Kills	--	--
Attempts	--	--
Hitting Percentage (Min. 10 ATT.)	--	--
Assists	1	vs Jacksonville State (8/26/23)
Digs	11	vs Jacksonville State (8/26/23)
Blocks	--	--
Aces	2	vs Jacksonville State (8/26/23)
Points	2.0	vs Jacksonville State (8/26/23)

### GAME BY GAME

Date	Opponent	SP	Attack				Set			Serve				Receipt			Blocking				Team				
			K	E	TA	PCT	A	TA	PCT	SA	SE	TA	PCT	RE	TA	PCT	DIG	BS	BA	BE	TOTAL	BHE	POINTS	HIT%	SCORE
08/25/2023	Coppin St.	3	0	0	0	.000	0	1	.000	0	0	8	1.000	0	6	1.000	0	0	0	0	0.0	0	0.0	.309	3-1
08/26/2023	McNeese	1	0	0	0	.000	0	1	.000	0	0	3	1.000	0	2	1.000	2	0	0	0	0.0	0	0.0	.333	3-0
08/26/2023	Jacksonville St.	3	0	0	0	.000	1	5	.200	2	0	18	1.000	1	8	.875	11	0	0	0	0.0	0	2.0	.395	3-0
<b>Totals</b>		<b>7</b>	<b>0</b>	<b>0</b>	<b>0</b>	<b>.000</b>	<b>1</b>	<b>7</b>	<b>.143</b>	<b>2</b>	<b>0</b>	<b>29</b>	<b>1.000</b>	<b>1</b>	<b>16</b>	<b>.938</b>	<b>13</b>	<b>0</b>	<b>0</b>	<b>0</b>	<b>0.0</b>	<b>0</b>	<b>2.0</b>		

### Player Averages

Sets Played	Kills per set	Assists per set	Service aces per set	Digs per set	Blocks per set	Points per set
7	0.00	0.14	0.29	1.86	0.00	0.29

### CAREER STATS

SEASON	TEAM	SM-MP	K	K/S	E	TA	PCT	A	A/S	SA	SA/S	SE	DIG	D/S	RE	BS	BA	TB	B/S	BE	BHE	PTS	PTS/S
2021-22	AUB	103-28	7	0.07	8	85	-.012	17	0.17	5	0.05	15	192	1.86	21	0	1	1	0.01	0	0	12.5	0.12
2022-23	AUB	122-31	1	0.01	1	13	.000	15	0.12	35	0.29	33	198	1.62	28	0	0	0	0.00	0	0	36.0	0.30
2023-24	AUB	7-3	0	0.00	0	0	.000	1	0.14	2	0.29	0	13	1.86	1	0	0	0	0.00	0	0	2.0	0.29
<b>TOTAL</b>		<b>232 - 62</b>	<b>8</b>	<b>0.03</b>	<b>9</b>	<b>98</b>	<b>-.010</b>	<b>33</b>	<b>0.14</b>	<b>42</b>	<b>0.18</b>	<b>48</b>	<b>403</b>	<b>1.74</b>	<b>50</b>	<b>0</b>	<b>1</b>	<b>1</b>	<b>0.00</b>	<b>0</b>	<b>0</b>	<b>50.5</b>	<b>0.22</b>



# #5 BELLA BELL

MIDDLE BLOCKER | 6-4 | GRADUATE  
BLYTHEWOOD, S.C. (KENTUCKY)

**BELL'S HIGHLIGHTS:**

- National Champion at Kentucky
- Had the 3rd-highest hitting percentage in the SEC in 2022

CATEGORY	CAREER HIGH	OPPONENT/DATE
Kills	14	vs Coppin State (8/25/23)
Attempts	25	vs Coppin State (8/25/23)
Hitting Percentage (Min. 10 ATT.)	.750	vs Jacksonville State (8/26/23)
Assists	1 (3x)	last at Arkansas (10/8/22)
Digs	2 (4x)	last at Arkansas (10/8/22)
Blocks	10 (2x)	at Arkansas (10/7/22)
Aces	1	vs South Carolina (11/25/22)
Points	17.5	at Missouri (9/28/22)

CATEGORY	SEASON HIGH	OPPONENT/DATE
Kills	14	vs Coppin State (8/25/23)
Attempts	25	vs Coppin State (8/25/23)
Hitting Percentage (Min. 10 ATT.)	.750	vs Jacksonville State (8/26/23)
Assists	--	--
Digs	1	vs Coppin State (8/25/23)
Blocks	3	vs Coppin State (8/25/23)
Aces	--	--
Points	15.5	vs Coppin State (8/25/23)

**GAME BY GAME**

Date	Opponent	SP	Attack				Set			Serve				Receipt			Blocking				Team				
			K	E	TA	PCT	A	TA	PCT	SA	SE	TA	PCT	RE	TA	PCT	DIG	BS	BA	BE	TOTAL	BHE	POINTS	HIT%	SCORE
08/25/2023	Coppin St.	*4	14	2	25	.480	0	1	.000	0	0	0	.000	0	0	.000	1	0	3	0	3.0	0	15.5	.309	3-1
08/26/2023	McNeese	*3	11	3	22	.364	0	0	.000	0	0	0	.000	0	0	.000	0	0	2	0	2.0	0	12.0	.333	3-0
08/26/2023	Jacksonville St.	*3	9	0	12	.750	0	0	.000	0	0	0	.000	0	0	.000	0	0	2	1	2.0	0	10.0	.395	3-0
<b>Totals</b>		<b>10</b>	<b>34</b>	<b>5</b>	<b>59</b>	<b>.492</b>	<b>0</b>	<b>1</b>	<b>.000</b>	<b>0</b>	<b>0</b>	<b>0</b>	<b>.000</b>	<b>0</b>	<b>0</b>	<b>.000</b>	<b>1</b>	<b>0</b>	<b>7</b>	<b>1</b>	<b>7.0</b>	<b>0</b>	<b>37.5</b>		

**Player Averages**

Sets Played	Kills per set	Assists per set	Service aces per set	Digs per set	Blocks per set	Points per set
10	3.40	0.00	0.00	0.10	0.70	3.75

**CAREER STATS**

SEASON	TEAM	SM-MP	K	K/S	E	TA	PCT	A	A/S	SA	SA/S	SE	DIG	D/S	RE	BS	BA	TB	B/S	BE	BHE	PTS	PTS/S
2020-21	UK	24-14	29	1.21	9	64	.313	0	0.00	0	0.00	0	2	0.08	1	0	22	22	0.92	3	0	40.0	1.67
2021-22	UK	62-19	102	1.65	25	185	.416	1	0.02	0	0.00	0	9	0.15	0	10	68	78	1.26	8	0	146.0	2.35
2022-23	UK	62-22	107	1.73	34	215	.340	2	0.03	2	0.03	6	12	0.19	0	5	72	77	1.24	8	0	150.0	2.42
2023-24	AUB	10-3	34	3.40	5	59	.492	0	0.00	0	0.00	0	1	0.10	0	0	7	7	0.70	1	0	37.5	3.75
<b>TOTAL FOR AUB</b>	<b>10 - 3</b>	<b>34</b>	<b>3.40</b>	<b>5</b>	<b>59</b>	<b>.492</b>	<b>0</b>	<b>0.00</b>	<b>0</b>	<b>0.00</b>	<b>0</b>	<b>0</b>	<b>1</b>	<b>0.10</b>	<b>0</b>	<b>0</b>	<b>7</b>	<b>7</b>	<b>0.70</b>	<b>1</b>	<b>0</b>	<b>37.5</b>	<b>3.75</b>
<b>TOTAL</b>	<b>158 - 58</b>	<b>272</b>	<b>1.72</b>	<b>73</b>	<b>523</b>	<b>.380</b>	<b>3</b>	<b>0.02</b>	<b>2</b>	<b>0.01</b>	<b>6</b>	<b>24</b>	<b>0.15</b>	<b>1</b>	<b>15</b>	<b>169</b>	<b>184</b>	<b>1.16</b>	<b>20</b>	<b>0</b>	<b>373.5</b>	<b>2.36</b>	



# #6 KYLA SWANSON

MIDDLE BLOCKER | 6-4 | GRADUATE  
WAHOO, NEB. (ILLINOIS)



### SWANSON'S HIGHLIGHTS:

- 2x Academic All-Big Ten
- Made the NCAA Sweet 16 with Illinois in 2021
- Has more than 170 blocks in her career
- Hit .727 at Penn State on Oct. 30, 2021

CATEGORY	CAREER HIGH	OPPONENT/DATE
Kills	10 (2x)	last vs West Virginia (12/3/21)
Attempts	23	vs UC Santa Barbara (8/27/21)
Hitting Percentage (Min. 10 ATT.)	.727	at Penn State (10/30/21)
Assists	2	at Iowa (9/22/21)
Digs	6	at Tennessee (8/30/19)
Blocks	10	vs UC Santa Barbara (8/27/21)
Aces	2 (2x)	last vs Jacksonville State (8/26/23)
Points	15.5	vs UC Santa Barbara (8/27/21)

CATEGORY	SEASON HIGH	OPPONENT/DATE
Kills	6	vs McNeese (8/26/23)
Attempts	12	vs McNeese (8/26/23)
Hitting Percentage (Min. 10 ATT.)	.333	vs McNeese (8/26/23)
Assists	1	vs Jacksonville State (8/26/23)
Digs	2	vs Jacksonville State (8/26/23)
Blocks	6	vs Coppin State (8/25/23)
Aces	2	vs Jacksonville State (8/26/23)
Points	8.5	vs Coppin State (8/25/23)

### GAME BY GAME

Date	Opponent	SP	Attack				Set			Serve				Receipt			Blocking				Team				
			K	E	TA	PCT	A	TA	PCT	SA	SE	TA	PCT	RE	TA	PCT	DIG	BS	BA	BE	TOTAL	BHE	POINTS	HIT%	SCORE
08/25/2023	Coppin St.	*4	3	2	6	.167	0	1	.000	2	4	17	.765	0	0	.000	1	1	5	0	6.0	0	8.5	.309	3-1
08/26/2023	McNeese	*3	6	2	12	.333	0	1	.000	0	4	11	.636	0	0	.000	1	0	1	1	1.0	0	6.5	.333	3-0
08/26/2023	Jacksonville St.	*3	3	1	7	.286	1	3	.333	0	1	4	.750	0	0	.000	2	1	2	0	3.0	0	5.0	.395	3-0
<b>Totals</b>		<b>10</b>	<b>12</b>	<b>5</b>	<b>25</b>	<b>.280</b>	<b>1</b>	<b>5</b>	<b>.200</b>	<b>2</b>	<b>9</b>	<b>32</b>	<b>.719</b>	<b>0</b>	<b>0</b>	<b>.000</b>	<b>4</b>	<b>2</b>	<b>8</b>	<b>1</b>	<b>10.0</b>	<b>0</b>	<b>20.0</b>		

### Player Averages

Sets Played	Kills per set	Assists per set	Service aces per set	Digs per set	Blocks per set	Points per set
10	1.20	0.10	0.20	0.40	1.00	2.00

### CAREER STATS

SEASON	TEAM	SM-MP	K	K/S	E	TA	PCT	A	A/S	SA	SA/S	SE	DIG	D/S	RE	BS	BA	TB	B/S	BE	BHE	PTS	PTS/S
2019-20	Illini	16-5	7	0.44	3	29	.138	1	0.06	0	0.00	3	7	0.44	0	0	11	11	0.69	1	1	12.5	0.78
2020-21	Illini	21-7	20	0.95	9	64	.172	1	0.05	0	0.00	0	6	0.29	0	0	16	16	0.76	1	1	28.0	1.33
2021-22	Illini	101-27	149	1.48	45	316	.329	3	0.03	0	0.00	0	13	0.13	2	9	97	106	1.05	9	2	206.5	2.04
2022-23	Illini	51-15	53	1.04	19	120	.283	2	0.04	5	0.10	7	6	0.12	0	3	41	44	0.86	4	0	81.5	1.60
2023-24	AUB	10-3	12	1.20	5	25	.280	1	0.10	2	0.20	9	4	0.40	0	2	8	10	1.00	1	0	20.0	2.00
<b>TOTAL FOR AUB</b>		<b>10 - 3</b>	<b>12</b>	<b>1.20</b>	<b>5</b>	<b>25</b>	<b>.280</b>	<b>1</b>	<b>0.10</b>	<b>2</b>	<b>0.20</b>	<b>9</b>	<b>4</b>	<b>0.40</b>	<b>0</b>	<b>2</b>	<b>8</b>	<b>10</b>	<b>1.00</b>	<b>1</b>	<b>0</b>	<b>20.0</b>	<b>2.00</b>
<b>TOTAL</b>		<b>199 - 57</b>	<b>241</b>	<b>1.21</b>	<b>81</b>	<b>554</b>	<b>.289</b>	<b>8</b>	<b>0.04</b>	<b>7</b>	<b>0.04</b>	<b>19</b>	<b>36</b>	<b>0.18</b>	<b>2</b>	<b>14</b>	<b>173</b>	<b>187</b>	<b>0.94</b>	<b>16</b>	<b>4</b>	<b>348.5</b>	<b>1.75</b>

# #7 PEYTON DUNN

SETTER | 5-11 | REDSHIRT-SOPHOMORE  
DECATUR, TEXAS (LEGEND)



### SWANSON'S HIGHLIGHTS:

- 4x Big 12 Rookie of the Week
- All-Big 12 Rookie Team
- Had a career-high 54 assists vs Texas Tech on Oct. 14, 2021

CATEGORY	CAREER HIGH	OPPONENT/DATE
Kills	6	vs Indiana (9/10/21)
Attempts	11 (3x)	last at TCU (10/8/21)
Hitting Percentage (Min. 10 ATT.)	.500	vs Indiana (9/10/21)
Assists	54	vs Texas Tech (10/14/21)
Digs	18	vs FIU (8/28/22)
Blocks	6 (3x)	last at TCU (10/9/22)
Aces	2 (4x)	last vs FIU (8/28/22)
Points	7.0	at TCU (10/9/21)

CATEGORY	SEASON HIGH	OPPONENT/DATE
Kills	3	vs Jacksonville State (8/26/23)
Attempts	4	vs Jacksonville State (8/26/23)
Hitting Percentage (Min. 10 ATT.)	--	--
Assists	43	vs Coppin State (8/25/23)
Digs	4 (2x)	last vs Jacksonville State (8/26/23)
Blocks	2	vs Coppin State (8/25/23)
Aces	1	vs Coppin State (8/25/23)
Points	3.0 (2x)	last vs Jacksonville State (8/26/23)

### GAME BY GAME

Date	Opponent	SP	Attack				Set			Serve				Recept			Blocking				Team				
			K	E	TA	PCT	A	TA	PCT	SA	SE	TA	PCT	RE	TA	PCT	DIG	BS	BA	BE	TOTAL	BHE	POINTS	HIT%	SCORE
08/25/2023	Coppin St.	*4	1	0	3	.333	43	111	.387	1	5	11	.545	0	0	.000	4	0	2	0	2.0	0	3.0	.309	3-1
08/26/2023	Jacksonville St.	2	3	1	4	.500	16	30	.533	0	2	4	.500	0	0	.000	4	0	0	0	0.0	0	3.0	.395	3-0
<b>Totals</b>		<b>6</b>	<b>4</b>	<b>1</b>	<b>7</b>	<b>.429</b>	<b>59</b>	<b>141</b>	<b>.418</b>	<b>1</b>	<b>7</b>	<b>15</b>	<b>.533</b>	<b>0</b>	<b>0</b>	<b>.000</b>	<b>8</b>	<b>0</b>	<b>2</b>	<b>0</b>	<b>2.0</b>	<b>0</b>	<b>6.0</b>		

### Player Averages

Sets Played	Kills per set	Assists per set	Service aces per set	Digs per set	Blocks per set	Points per set
6	0.67	9.83	0.17	1.33	0.33	1.00

### CAREER STATS

SEASON	TEAM	SM-MP	K	K/S	E	TA	PCT	A	A/S	SA	SA/S	SE	DIG	D/S	RE	BS	BA	TB	B/S	BE	BHE	PTS	PTS/S
2021-22	OU	107-27	67	0.63	15	163	.319	997	9.32	13	0.12	45	198	1.85	0	0	63	63	0.59	2	5	111.5	1.04
2022-23	OU	24-7	12	0.50	4	25	.320	252	10.50	3	0.13	8	57	2.38	0	0	11	11	0.46	3	4	20.5	0.85
2023-24	AUB	6-2	4	0.67	1	7	.429	59	9.83	1	0.17	7	8	1.33	0	0	2	2	0.33	0	0	6.0	1.00
<b>TOTAL FOR AUB</b>	<b>6 - 2</b>	<b>4</b>	<b>0.67</b>	<b>1</b>	<b>7</b>	<b>.429</b>	<b>59</b>	<b>9.83</b>	<b>1</b>	<b>0.17</b>	<b>7</b>	<b>7</b>	<b>8</b>	<b>1.33</b>	<b>0</b>	<b>0</b>	<b>2</b>	<b>2</b>	<b>0.33</b>	<b>0</b>	<b>0</b>	<b>6.0</b>	<b>1.00</b>
<b>TOTAL</b>	<b>137 - 36</b>	<b>83</b>	<b>0.61</b>	<b>20</b>	<b>195</b>	<b>.323</b>	<b>1308</b>	<b>9.55</b>	<b>17</b>	<b>0.12</b>	<b>60</b>	<b>263</b>	<b>1.92</b>	<b>0</b>	<b>0</b>	<b>76</b>	<b>76</b>	<b>0.55</b>	<b>5</b>	<b>9</b>	<b>138.0</b>	<b>1.01</b>	

# #8 KENDAL KEMP

MIDDLE BLOCKER | 6-6 | SOPHOMORE  
EAGAN, MINN. (EAGAN)



## KEMP'S HIGHLIGHTS:

- Has set the Auburn single-season record for total blocks, block assists and blocks per set
- Tied the program record for most blocks in a 3-set match with 9 vs. Belmont
- 2x SEC Freshman of the Week
- Named to the SEC All-Freshman Team
- Named AVCA South Region Honorable Mention
- Made her collegiate debut on Aug. 26 vs. Belmont

CATEGORY	CAREER HIGH	OPPONENT/DATE
Kills	12	at South Carolina (11/23/22)
Attempts	21 (2x)	last at South Carolina (11/23/22)
Hitting Percentage (Min. 10 ATT.)	.714	at Missouri (10/15/22)
Assists	1 (2x)	last at LSU (10/5/22)
Digs	2 (2x)	last at Kentucky (10/29/22)
Blocks	10 (3x)	last at South Carolina (11/23/22)
Aces	3	at Georgia State (8/26/22)
Points	17.5	at South Carolina (11/23/22)

CATEGORY	SEASON HIGH	OPPONENT/DATE
Kills	5	vs Coppin State (8/25/23)
Attempts	17	vs Coppin State (8/25/23)
Hitting Percentage (Min. 10 ATT.)	.176	vs Coppin State (8/25/23)
Assists	--	--
Digs	--	--
Blocks	5 (2x)	last vs McNeese (8/26/23)
Aces	1	vs Coppin State (8/25/23)
Points	9.5	vs Coppin State (8/25/23)

## GAME BY GAME

Date	Opponent	SP	Attack				Set			Serve				Recept			Blocking				Team				
			K	E	TA	PCT	A	TA	PCT	SA	SE	TA	PCT	RE	TA	PCT	DIG	BS	BA	BE	TOTAL	BHE	POINTS	HIT%	SCORE
08/25/2023	Coppin St.	*4	5	2	17	.176	0	1	.000	1	2	5	.600	0	0	.000	0	2	3	0	5.0	0	9.5	.309	3-1
08/26/2023	McNeese	*2	4	1	6	.500	0	1	.000	0	0	0	.000	0	0	.000	0	2	3	0	5.0	0	7.5	.333	3-0
08/26/2023	Jacksonville St.	*2	2	0	2	1.000	0	1	.000	0	0	0	.000	0	0	.000	0	1	1	0	2.0	0	3.5	.395	3-0
<b>Totals</b>		<b>8</b>	<b>11</b>	<b>3</b>	<b>25</b>	<b>.320</b>	<b>0</b>	<b>3</b>	<b>.000</b>	<b>1</b>	<b>2</b>	<b>5</b>	<b>.600</b>	<b>0</b>	<b>0</b>	<b>.000</b>	<b>0</b>	<b>5</b>	<b>7</b>	<b>0</b>	<b>12.0</b>	<b>0</b>	<b>20.5</b>		

## Player Averages

Sets Played	Kills per set	Assists per set	Service aces per set	Digs per set	Blocks per set	Points per set
8	1.38	0.00	0.13	0.00	1.50	2.56

## CAREER STATS

SEASON	TEAM	SM-MP	K	K/S	E	TA	PCT	A	A/S	SA	SA/S	SE	DIG	D/S	RE	BS	BA	TB	B/S	BE	BHE	PTS	PTS/S
2022-23	AUB	122-31	204	1.67	66	430	.321	2	0.02	7	0.06	16	12	0.10	1	26	154	180	1.48	13	0	314.0	2.57
2023-24	AUB	8-3	11	1.38	3	25	.320	0	0.00	1	0.13	2	0	0.00	0	5	7	12	1.50	0	0	20.5	2.56
<b>TOTAL</b>		<b>130 - 34</b>	<b>215</b>	<b>1.65</b>	<b>69</b>	<b>455</b>	<b>.321</b>	<b>2</b>	<b>0.02</b>	<b>8</b>	<b>0.06</b>	<b>18</b>	<b>12</b>	<b>0.09</b>	<b>1</b>	<b>31</b>	<b>161</b>	<b>192</b>	<b>1.48</b>	<b>13</b>	<b>0</b>	<b>334.5</b>	<b>2.57</b>

# #9 ZOE SLAUGHTER

LIBERO | 5-7 | SOPHOMORE  
HONOLULU, HAWAII (MOANALUA)



### SLAUGHTER'S HIGHLIGHTS:

- Recorded 10+ digs in 10 matches this season
- Grabbed a career-high 22 digs at Alabama
- Made her collegiate debut on Aug. 26 vs. Belmont

CATEGORY	CAREER HIGH	OPPONENT/DATE
Kills	1 (2x)	last at Missouri (10/15/22)
Attempts	1 (4x)	last vs McNeese (8/26/23)
Hitting Percentage (Min. 10 ATT.)	--	--
Assists	2 (4x)	last at Missouri (10/15/22)
Digs	22	at Alabama (9/24/22)
Blocks	--	--
Aces	3 (2x)	last vs Alabama A&M (9/6/22)
Points	3.0 (3x)	last vs Troy (9/10/22)

CATEGORY	SEASON HIGH	OPPONENT/DATE
Kills	--	--
Attempts	1	vs McNeese (8/26/23)
Hitting Percentage (Min. 10 ATT.)	--	--
Assists	1 (3x)	last vs Jacksonville State (8/26/23)
Digs	6	vs McNeese (8/26/23)
Blocks	--	--
Aces	1	vs Coppin State (8/25/23)
Points	1.0	vs Coppin State (8/25/23)

### GAME BY GAME

Date	Opponent	SP	Attack				Set		Serve				Receipt			Blocking				Team					
			K	E	TA	PCT	A	TA	PCT	SA	SE	TA	PCT	RE	TA	PCT	DIG	BS	BA	BE	TOTAL	BHE	POINTS	HIT%	SCORE
08/25/2023	Coppin St.	4	0	0	0	.000	1	2	.500	1	4	17	.765	0	16	1.000	5	0	0	0	0.0	0	1.0	.309	3-1
08/26/2023	McNeese	3	0	0	1	.000	1	4	.250	0	0	12	1.000	0	11	1.000	6	0	0	0	0.0	0	0.0	.333	3-0
08/26/2023	Jacksonville St.	*3	0	0	0	.000	1	2	.500	0	0	9	1.000	0	11	1.000	5	0	0	0	0.0	0	0.0	.395	3-0
<b>Totals</b>		<b>10</b>	<b>0</b>	<b>0</b>	<b>1</b>	<b>.000</b>	<b>3</b>	<b>8</b>	<b>.375</b>	<b>1</b>	<b>4</b>	<b>38</b>	<b>.895</b>	<b>0</b>	<b>38</b>	<b>1.000</b>	<b>16</b>	<b>0</b>	<b>0</b>	<b>0</b>	<b>0.0</b>	<b>0</b>	<b>1.0</b>		

### Player Averages

Sets Played	Kills per set	Assists per set	Service aces per set	Digs per set	Blocks per set	Points per set
10	0.00	0.30	0.10	1.60	0.00	0.10

### CAREER STATS

SEASON	TEAM	SM-MP	K	K/S	E	TA	PCT	A	A/S	SA	SA/S	SE	DIG	D/S	RE	BS	BA	TB	B/S	BE	BHE	PTS	PTS/S
2022-23	AUB	122-31	2	0.02	1	4	.250	22	0.18	19	0.16	41	267	2.19	14	0	0	0	0.00	0	1	21.0	0.17
2023-24	AUB	10-3	0	0.00	0	1	.000	3	0.30	1	0.10	4	16	1.60	0	0	0	0	0.00	0	0	1.0	0.10
<b>TOTAL</b>		<b>132 - 34</b>	<b>2</b>	<b>0.02</b>	<b>1</b>	<b>5</b>	<b>.200</b>	<b>25</b>	<b>0.19</b>	<b>20</b>	<b>0.15</b>	<b>45</b>	<b>283</b>	<b>2.14</b>	<b>14</b>	<b>0</b>	<b>0</b>	<b>0</b>	<b>0.00</b>	<b>0</b>	<b>1</b>	<b>22.0</b>	<b>0.17</b>



# #10 JACKIE BARRETT

SETTER | 6-2 | SENIOR  
HIGHLAND, CALIF. (CITRUS VALLEY)



## BARRETT'S HIGHLIGHTS

- 2x SEC Setter of the Week
- Tied her career-high in aces with three vs. Alabama State with three
- Set her career-high in assists with 60 against LSU

CATEGORY	CAREER HIGH	OPPONENT/DATE
Kills	6 (2x)	last, at Alabama State (9/26/21)
Attempts	20	at Alabama State (9/26/21)
Hitting Percentage (Min. 10 ATT.)	.308	vs. Florida A&M (9/17/21)
Assists	60	at LSU (10/5/22)
Digs	28	vs. Nicholls (9/17/21)
Blocks	8.0	at Arkansas (10/9/21)
Aces	4	vs Houston (12/3/22)
Points	10.0	vs. Florida A&M (9/17/21)

CATEGORY	SEASON HIGH	OPPONENT/DATE
Kills	1 (2x)	last vs Jacksonville State (8/26/23)
Attempts	4	vs McNeese (8/26/23)
Hitting Percentage (Min. 10 ATT.)	--	--
Assists	31	vs McNeese (8/26/23)
Digs	6	vs McNeese (8/26/23)
Blocks	2	vs McNeese (8/26/23)
Aces	--	--
Points	2.0	vs McNeese (8/26/23)

## GAME BY GAME

Date	Opponent	SP	Attack				Set			Serve				Receipt			Blocking				Team				
			K	E	TA	PCT	A	TA	PCT	SA	SE	TA	PCT	RE	TA	PCT	DIG	BS	BA	BE	TOTAL	BHE	POINTS	HIT%	SCORE
08/26/2023	McNeese	*3	1	0	4	.250	31	72	.431	0	1	15	.933	0	0	.000	6	0	2	0	2.0	0	2.0	.333	3-0
08/26/2023	Jacksonville St.	*2	1	0	2	.500	14	25	.560	0	0	1	1.000	0	0	.000	2	0	1	0	1.0	0	1.5	.395	3-0
<b>Totals</b>			<b>5</b>	<b>2</b>	<b>0</b>	<b>.333</b>	<b>45</b>	<b>97</b>	<b>.464</b>	<b>0</b>	<b>1</b>	<b>16</b>	<b>.938</b>	<b>0</b>	<b>0</b>	<b>.000</b>	<b>8</b>	<b>0</b>	<b>3</b>	<b>0</b>	<b>3.0</b>	<b>0</b>	<b>3.5</b>		

## Player Averages

Sets Played	Kills per set	Assists per set	Service aces per set	Digs per set	Blocks per set	Points per set
5	0.40	9.00	0.00	1.60	0.60	0.70

## CAREER STATS

SEASON	TEAM	SM-MP	K	K/S	E	TA	PCT	A	A/S	SA	SA/S	SE	DIG	D/S	RE	BS	BA	TB	B/S	BE	BHE	PTS	PTS/S
2020-21	AUB	19-6	9	0.47	6	44	.068	144	7.58	3	0.16	8	33	1.74	0	0	11	11	0.58	1	0	17.5	0.92
2021-22	AUB	100-28	51	0.51	14	180	.206	809	8.09	22	0.22	24	307	3.07	0	2	60	62	0.62	8	1	105.0	1.05
2022-23	AUB	106-28	41	0.39	8	116	.284	1057	9.97	26	0.25	28	220	2.08	1	9	75	84	0.79	10	0	113.5	1.07
2023-24	AUB	5-2	2	0.40	0	6	.333	45	9.00	0	0.00	1	8	1.60	0	0	3	3	0.60	0	0	3.5	0.70
<b>TOTAL</b>		<b>230 - 64</b>	<b>103</b>	<b>0.45</b>	<b>28</b>	<b>346</b>	<b>.217</b>	<b>2055</b>	<b>8.93</b>	<b>51</b>	<b>0.22</b>	<b>61</b>	<b>568</b>	<b>2.47</b>	<b>1</b>	<b>11</b>	<b>149</b>	<b>160</b>	<b>0.70</b>	<b>19</b>	<b>1</b>	<b>239.5</b>	<b>1.04</b>

# #11 JORDAN SINNESS

SETTER | 5-9 | JUNIOR  
SEBRING, FLA. (SEBRING)



## SINNESS' HIGHLIGHTS:

- Recorded the Tigers' first double-double of the season at Georgia State with 42 assists and 12 digs.
- Grabbed a career-high 49 assists in 5-set win at UAB
- Made collegiate debut versus Cal State Fullerton (9/2), dishing out 16 assists, six digs, one kill and a block

CATEGORY	CAREER HIGH	OPPONENT/DATE
Kills	3	vs Alabama A&M (9/6/22)
Attempts	7	at UAB (9/10/22)
Hitting Percentage (Min. 10 ATT.)		
Assists	49	at UAB (9/10/22)
Digs	14	vs. Missouri (10/17/21)
Blocks	5	at UAB (9/10/22)
Aces	3	vs Alabama A&M (9/6/22)
Points	7.0	vs Alabama A&M (9/6/22)

CATEGORY	SEASON HIGH	OPPONENT/DATE
Kills	--	--
Attempts	--	--
Hitting Percentage (Min. 10 ATT.)	--	--
Assists	--	--
Digs	--	--
Blocks	--	--
Aces	--	--
Points	--	--

## GAME BY GAME

## CAREER STATS

SEASON	TEAM	SM-MP	K	K/S	E	TA	PCT	A	A/S	SA	SA/S	SE	DIG	D/S	RE	BS	BA	TB	B/S	BE	BHE	PTS	PTS/S
2021-22	AUB	50-15	2	0.04	1	6	.167	64	1.28	6	0.12	7	33	0.66	0	0	3	3	0.06	0	2	9.5	0.19
2022-23	AUB	49-14	5	0.10	0	15	.333	163	3.33	16	0.33	22	51	1.04	0	2	13	15	0.31	1	0	29.5	0.60
<b>TOTAL</b>		<b>99 - 29</b>	<b>7</b>	<b>0.07</b>	<b>1</b>	<b>21</b>	<b>.286</b>	<b>227</b>	<b>2.29</b>	<b>22</b>	<b>0.22</b>	<b>29</b>	<b>84</b>	<b>0.85</b>	<b>0</b>	<b>2</b>	<b>16</b>	<b>18</b>	<b>0.18</b>	<b>1</b>	<b>2</b>	<b>39.0</b>	<b>0.39</b>



# #12 BEL ZIMMERMAN

**PIN HITTER | 6-2 | SOPHOMORE  
LIBERTY, MO. (LIBERTY NORTH)**

### ZIMMERMAN'S HIGHLIGHTS:

- Hit .692 with 8 kills vs. Marist
- Had a career-high 13 kills at Jacksonville State
- Made her collegiate debut on Aug. 26 at Georgia State

CATEGORY	CAREER HIGH	OPPONENT/DATE
Kills	13	at Jacksonville State (9/17/22)
Attempts	31	at LSU (10/5/22)
Hitting Percentage (Min. 10 ATT.)	.692	vs Marist (8/27/22)
Assists	1 (2x)	last vs McNeese (8/26/23)
Digs	5 (2x)	last at LSU (10/5/22)
Blocks	6	at Alabama (9/24/22)
Aces	3 (2x)	last vs Jacksonville State (8/26/23)
Points	14.0	at Jacksonville State (9/17/22)

CATEGORY	SEASON HIGH	OPPONENT/DATE
Kills	8	vs McNeese (8/26/23)
Attempts	20	vs McNeese (8/26/23)
Hitting Percentage (Min. 10 ATT.)	.400	vs McNeese (8/26/23)
Assists	1	vs McNeese (8/26/23)
Digs	2	vs McNeese (8/26/23)
Blocks	2	vs McNeese (8/26/23)
Aces	3	vs Jacksonville State (8/26/23)
Points	9.0	vs McNeese (8/26/23)

### GAME BY GAME

Date	Opponent	SP	Attack				Set			Serve				Receipt			Blocking				Team				
			K	E	TA	PCT	A	TA	PCT	SA	SE	TA	PCT	RE	TA	PCT	DIG	BS	BA	BE	TOTAL	BHE	POINTS	HIT%	SCORE
08/26/2023	McNeese	3	8	0	20	.400	1	3	.333	0	2	8	.750	0	7	1.000	2	0	2	0	2.0	0	9.0	.333	3-0
08/26/2023	Jacksonville St.	2	2	3	8	-.125	0	0	.000	3	2	7	.714	0	3	1.000	1	0	0	2	0.0	0	5.0	.395	3-0
<b>Totals</b>		<b>5</b>	<b>10</b>	<b>3</b>	<b>28</b>	<b>.250</b>	<b>1</b>	<b>3</b>	<b>.333</b>	<b>3</b>	<b>4</b>	<b>15</b>	<b>.733</b>	<b>0</b>	<b>10</b>	<b>1.000</b>	<b>3</b>	<b>0</b>	<b>2</b>	<b>2</b>	<b>2.0</b>	<b>0</b>	<b>14.0</b>		

### Player Averages

Sets Played	Kills per set	Assists per set	Service aces per set	Digs per set	Blocks per set	Points per set
5	2.00	0.20	0.60	0.60	0.40	2.80

### CAREER STATS

SEASON	TEAM	SM-MP	K	K/S	E	TA	PCT	A	A/S	SA	SA/S	SE	DIG	D/S	RE	BS	BA	TB	B/S	BE	BHE	PTS	PTS/S
2022-23	AUB	114-29	220	1.93	98	607	.201	2	0.02	4	0.04	11	54	0.47	3	3	63	66	0.58	10	0	258.5	2.27
2023-24	AUB	5-2	10	2.00	3	28	.250	1	0.20	3	0.60	4	3	0.60	0	0	2	2	0.40	2	0	14.0	2.80
<b>TOTAL</b>		<b>119 - 31</b>	<b>230</b>	<b>1.93</b>	<b>101</b>	<b>635</b>	<b>.203</b>	<b>3</b>	<b>0.03</b>	<b>7</b>	<b>0.06</b>	<b>15</b>	<b>57</b>	<b>0.48</b>	<b>3</b>	<b>3</b>	<b>65</b>	<b>68</b>	<b>0.57</b>	<b>12</b>	<b>0</b>	<b>272.5</b>	<b>2.29</b>

# #13 PAIGE THIBAUT

LIBERO | 5-8 | JUNIOR

WATERTOWN, MINN. (WATERTOWN-MAYER)



### THIBAUT'S HIGHLIGHTS:

- Compiled a career-high 20 digs against Dayton on Sept. 3, 2022
- Hit .462 vs Arizona State on Sept. 2, 2022
- 2021 All-Crossroads League Honorable Mention
- 2021 Crossroads League All-Freshman Team

CATEGORY	CAREER HIGH	OPPONENT/DATE
Kills	9	at FAU (10/28/22)
Attempts	35	at UTSA (10/23/22)
Hitting Percentage (Min. 10 ATT.)	.462	vs Arizona State (9/2/22)
Assists	2	vs Little Rock (9/8/22)
Digs	20	vs Dayton (9/3/22)
Blocks	4	vs UAB (10/7/22)
Aces	3	vs Little Rock (9/8/22)
Points	9.0 (2x)	last at FAU (10/28/22)

CATEGORY	SEASON HIGH	OPPONENT/DATE
Kills	--	--
Attempts	--	--
Hitting Percentage (Min. 10 ATT.)	--	--
Assists	2	vs Coppin State (8/25/23)
Digs	10	vs Coppin State (8/25/23)
Blocks	--	--
Aces	--	--
Points	--	--

### GAME BY GAME

Date	Opponent	SP	Attack				Set			Serve				Receipt			Blocking				Team				
			K	E	TA	PCT	A	TA	PCT	SA	SE	TA	PCT	RE	TA	PCT	DIG	BS	BA	BE	TOTAL	BHE	POINTS	HIT%	SCORE
08/25/2023	Coppin St.	*4	0	0	0	.000	2	3	.667	0	3	13	.769	0	15	1.000	10	0	0	0	0.0	0	0.0	.309	3-1
08/26/2023	McNeese	*2	0	0	0	.000	0	1	.000	0	0	0	.000	0	5	1.000	2	0	0	0	0.0	0	0.0	.333	3-0
<b>Totals</b>		<b>6</b>	<b>0</b>	<b>0</b>	<b>0</b>	<b>.000</b>	<b>2</b>	<b>4</b>	<b>.500</b>	<b>0</b>	<b>3</b>	<b>13</b>	<b>.769</b>	<b>0</b>	<b>20</b>	<b>1.000</b>	<b>12</b>	<b>0</b>	<b>0</b>	<b>0</b>	<b>0.0</b>	<b>0</b>	<b>0.0</b>		

### Player Averages

Sets Played	Kills per set	Assists per set	Service aces per set	Digs per set	Blocks per set	Points per set
6	0.00	0.33	0.00	2.00	0.00	0.00

### CAREER STATS

SEASON	TEAM	SM-MP	K	K/S	E	TA	PCT	A	A/S	SA	SA/S	SE	DIG	D/S	RE	BS	BA	TB	B/S	BE	BHE	PTS	PTS/S
2022-23	FIU	105-28	47	0.45	28	216	.088	14	0.13	23	0.22	30	221	2.10	21	1	7	8	0.08	0	0	74.5	0.71
2023-24	AUB	6-2	0	0.00	0	0	.000	2	0.33	0	0.00	3	12	2.00	0	0	0	0	0.00	0	0	0.0	0.00
<b>TOTAL FOR AUB</b>	<b>6 - 2</b>		<b>0</b>	<b>0.00</b>	<b>0</b>	<b>0</b>	<b>.000</b>	<b>2</b>	<b>0.33</b>	<b>0</b>	<b>0.00</b>	<b>3</b>	<b>12</b>	<b>2.00</b>	<b>0</b>	<b>0</b>	<b>0</b>	<b>0</b>	<b>0.00</b>	<b>0</b>	<b>0</b>	<b>0.0</b>	<b>0.00</b>
<b>TOTAL</b>		<b>111 - 30</b>	<b>47</b>	<b>0.42</b>	<b>28</b>	<b>216</b>	<b>.088</b>	<b>16</b>	<b>0.14</b>	<b>23</b>	<b>0.21</b>	<b>33</b>	<b>233</b>	<b>2.10</b>	<b>21</b>	<b>1</b>	<b>7</b>	<b>8</b>	<b>0.07</b>	<b>0</b>	<b>0</b>	<b>74.5</b>	<b>0.67</b>



# #14 CHELSEY HARMON

MIDDLE BLOCKER | 6-3 | SENIOR  
PUYALLUP, WASH. (PORTLAND)



### HARMON'S HIGHLIGHTS:

- 3rd best hitting percentage in program history (.706) against Jackson State.
- Currently holds the sixth-best hitting percentage in single-season program history (.344)
- Made her Auburn debut on Aug. 26 vs. Belmont

CATEGORY	CAREER HIGH	OPPONENT/DATE
Kills	16	vs San Francisco (10/16/21)
Attempts	23	at LSU (10/5/22)
Hitting Percentage (Min. 10 ATT.)	.706	vs Jackson State (9/17/22)
Assists	2 (2x)	last at Georgia State (8/26/22)
Digs	4 (2x)	last at Santa Clara (3/9/21)
Blocks	10	vs Troy (9/10/22)
Aces	2 (3x)	last vs Eastern Washington (8/28/21)
Points	15.5	at LSU (10/5/22)

CATEGORY	SEASON HIGH	OPPONENT/DATE
Kills	2	vs Jacksonville State (8/26/23)
Attempts	2 (2x)	last vs Jacksonville State (8/26/23)
Hitting Percentage (Min. 10 ATT.)	--	--
Assists	1	vs McNeese (8/26/23)
Digs	1	vs McNeese (8/26/23)
Blocks	2	vs McNeese (8/26/23)
Aces	--	--
Points	2.0	vs McNeese (8/26/23)

### GAME BY GAME

Date	Opponent	SP	Attack				Set			Serve				Recept			Blocking				Team				
			K	E	TA	PCT	A	TA	PCT	SA	SE	TA	PCT	RE	TA	PCT	DIG	BS	BA	BE	TOTAL	BHE	POINTS	HIT%	SCORE
08/26/2023	McNeese	1	1	0	2	.500	1	2	.500	0	0	4	1.000	0	0	.000	1	0	2	0	2.0	0	2.0	.333	3-0
08/26/2023	Jacksonville St.	1	2	0	2	1.000	0	1	.000	0	0	6	1.000	0	0	.000	0	0	0	0	0.0	0	2.0	.395	3-0
<b>Totals</b>		<b>2</b>	<b>3</b>	<b>0</b>	<b>4</b>	<b>.750</b>	<b>1</b>	<b>3</b>	<b>.333</b>	<b>0</b>	<b>0</b>	<b>10</b>	<b>1.000</b>	<b>0</b>	<b>0</b>	<b>.000</b>	<b>1</b>	<b>0</b>	<b>2</b>	<b>0</b>	<b>2.0</b>	<b>0</b>	<b>4.0</b>		

### Player Averages

Sets Played	Kills per set	Assists per set	Service aces per set	Digs per set	Blocks per set	Points per set
2	1.50	0.50	0.00	0.50	1.00	2.00

### CAREER STATS

SEASON	TEAM	SM-MP	K	K/S	E	TA	PCT	A	A/S	SA	SA/S	SE	DIG	D/S	RE	BS	BA	TB	B/S	BE	BHE	PTS	PTS/S
2020-21	UP	34-12	20	0.59	11	62	.145	4	0.12	5	0.15	7	19	0.56	1	2	21	23	0.68	0	0	37.5	1.10
2021-22	UP	78-22	108	1.38	31	246	.313	1	0.01	4	0.05	5	13	0.17	1	6	42	48	0.62	9	1	139.0	1.78
2022-23	AUB	122-31	176	1.44	48	372	.344	5	0.04	0	0.00	4	17	0.14	1	4	103	107	0.88	6	0	231.5	1.90
2023-24	AUB	2-2	3	1.50	0	4	.750	1	0.50	0	0.00	0	1	0.50	0	0	2	2	1.00	0	0	4.0	2.00
<b>TOTAL FOR AUB</b>	<b>124 - 33</b>	<b>179</b>	<b>1.44</b>	<b>48</b>	<b>376</b>	<b>.348</b>	<b>6</b>	<b>0.05</b>	<b>0</b>	<b>0.00</b>	<b>4</b>	<b>18</b>	<b>0.15</b>	<b>1</b>	<b>4</b>	<b>105</b>	<b>109</b>	<b>0.88</b>	<b>6</b>	<b>0</b>	<b>235.5</b>	<b>1.90</b>	
<b>TOTAL</b>	<b>236 - 67</b>	<b>307</b>	<b>1.30</b>	<b>90</b>	<b>684</b>	<b>.317</b>	<b>11</b>	<b>0.05</b>	<b>9</b>	<b>0.04</b>	<b>16</b>	<b>50</b>	<b>0.21</b>	<b>3</b>	<b>12</b>	<b>168</b>	<b>180</b>	<b>0.76</b>	<b>15</b>	<b>1</b>	<b>412.0</b>	<b>1.75</b>	

# #17 CASSIDY TANTON

**PIN HITTER | 6-0 | REDSHIRT-SOPHOMORE  
STONEVILLE, N.C. (DALTON MCMICHAEL)**



### TANTON'S HIGHLIGHTS:

- Picked up a career-high 10 kills vs. Marist, hitting .348
- Made her season debut on Aug. 26 vs. Belmont

CATEGORY	CAREER HIGH	OPPONENT/DATE
Kills	10	vs Marist (8/27/22)
Attempts	23	vs Marist (8/27/22)
Hitting Percentage (Min. 10 ATT.)	.348	vs Marist (8/27/22)
Assists	--	--
Digs	6	vs Marist (8/27/22)
Blocks	--	--
Aces	2(3x)	last vs Southern Miss (9/16/22)
Points	12.0	vs Marist (8/27/22)

CATEGORY	SEASON HIGH	OPPONENT/DATE
Kills	--	--
Attempts	--	--
Hitting Percentage (Min. 10 ATT.)	--	--
Assists	--	--
Digs	--	--
Blocks	--	--
Aces	--	--
Points	--	--

### GAME BY GAME

### CAREER STATS

SEASON	TEAM	SM-MP	K	K/S	E	TA	PCT	A	A/S	SA	SA/S	SE	DIG	D/S	RE	BS	BA	TB	B/S	BE	BHE	PTS	PTS/S
2022-23	AUB	58-19	12	0.21	7	34	.147	0	0.00	11	0.19	28	19	0.33	2	0	0	0	0.00	0	0	23.0	0.40
<b>TOTAL</b>		<b>58 - 19</b>	<b>12</b>	<b>0.21</b>	<b>7</b>	<b>34</b>	<b>.147</b>	<b>0</b>	<b>0.00</b>	<b>11</b>	<b>0.19</b>	<b>28</b>	<b>19</b>	<b>0.33</b>	<b>2</b>	<b>0</b>	<b>0</b>	<b>0</b>	<b>0.00</b>	<b>0</b>	<b>0</b>	<b>23.0</b>	<b>0.40</b>



**#19 JASMINE OKEOMA**  
**MIDDLE BLOCKER | 6-3 | FRESHMAN**  
**WOODBIDGE, VA. (FOREST PARK)**



**OKEOMA'S HIGHLIGHTS:**

CATEGORY	CAREER HIGH	OPPONENT/DATE
Kills	--	--
Attempts	--	--
Hitting Percentage (Min. 10 ATT.)	--	--
Assists	--	--
Digs	--	--
Blocks	--	--
Aces	--	--
Points	--	--
CATEGORY	SEASON HIGH	OPPONENT/DATE
Kills	--	--
Attempts	--	--
Hitting Percentage (Min. 10 ATT.)	--	--
Assists	--	--
Digs	--	--
Blocks	--	--
Aces	--	--
Points	--	--

**GAME BY GAME**

**CAREER STATS**

# #22 SYDNEY HANDEL

DEFENSIVE SPECIALIST | 6-0 | SOPHOMORE  
LEE'S SUMMIT, MO. (LEE'S SUMMIT WEST)



**HANDEL'S HIGHLIGHTS:**

- Set career-highs in aces (3) and digs (6) in the NCAA Tournament against Houston
- Made her collegiate debut against Alabama A&M

CATEGORY	CAREER HIGH	OPPONENT/DATE
Kills	--	--
Attempts	1	vs Houston (12/3/22)
Hitting Percentage (Min. 10 ATT.)	--	--
Assists	--	--
Digs	6	vs Houston (12/3/22)
Blocks	--	--
Aces	3	vs Houston (12/3/22)
Points	3.0	vs Houston (12/3/22)
CATEGORY	SEASON HIGH	OPPONENT/DATE
Kills	--	--
Attempts	--	--
Hitting Percentage (Min. 10 ATT.)	--	--
Assists	--	--
Digs	--	--
Blocks	--	--
Aces	--	--
Points	--	--

**GAME BY GAME**

**CAREER STATS**

SEASON	TEAM	SM-MP	K	K/S	E	TA	PCT	A	A/S	SA	SA/S	SE	DIG	D/S	RE	BS	BA	TB	B/S	BE	BHE	PTS	PTS/S
2022-23	AUB	19-6	0	0.00	0	1	.000	0	0.00	6	0.32	11	10	0.53	3	0	0	0	0.00	0	0	6.0	0.32
<b>TOTAL</b>		<b>19 - 6</b>	<b>0</b>	<b>0.00</b>	<b>0</b>	<b>1</b>	<b>.000</b>	<b>0</b>	<b>0.00</b>	<b>6</b>	<b>0.32</b>	<b>11</b>	<b>10</b>	<b>0.53</b>	<b>3</b>	<b>0</b>	<b>0</b>	<b>0</b>	<b>0.00</b>	<b>0</b>	<b>0</b>	<b>6.0</b>	<b>0.32</b>





# #25 LAKIN LAURENDINE

**PIN HITTER | 6-1 | FRESHMAN**  
**JACKSON, MISS. (JACKSON ACADEMY)**



## LAURENDINE'S HIGHLIGHTS:

CATEGORY	CAREER HIGH	OPPONENT/DATE
Kills	--	--
Attempts	--	--
Hitting Percentage (Min. 10 ATT.)	--	--
Assists	--	--
Digs	--	--
Blocks	--	--
Aces	--	--
Points	--	--

CATEGORY	SEASON HIGH	OPPONENT/DATE
Kills	--	--
Attempts	--	--
Hitting Percentage (Min. 10 ATT.)	--	--
Assists	--	--
Digs	--	--
Blocks	--	--
Aces	--	--
Points	--	--

## GAME BY GAME

## CAREER STATS