



2023 VOLLEYBALL MATCH NOTES

AUBURN ATHLETICS COMMUNICATIONS: 392 SOUTH DONAHUE DRIVE || AUBURN, AL 36830 || AUBURNTIGERS.COM || @AUBURNVB

2023 SCHEDULE/RESULTS

0-0 OVERALL | 0-0 SEC

0-0 HOME | 0-0 AWAY | 0-0 NEUTRAL

DATE	OPPONENT	TV	TIME/RESULT
Aug. 25	vs Coppin State!	SECN+	6 p.m. CT
Aug. 26	vs McNeese State!	SECN+	10 a.m. CT
Aug. 26	vs Jacksonville State!	SECN+	7 p.m. CT
Sept. 2	vs SMU@	N/A	Noon CT
Sept. 3	at Florida State@	ACCN+	Noon CT
Sept. 7	vs Middle Tennessee\$	SECN+	6 p.m. CT
Sept. 8	vs Charleston Southern\$	SECN+	7 p.m. CT
Sept. 9	vs Mercer\$	SECN+	7 p.m. CT
Sept. 14	at South Alabama%	TBA	6 p.m. CT
Sept. 15	vs UAB%	N/A	2:30 p.m. CT
Sept. 16	vs Samford%	N/A	Noon CT
Sept. 22	vs Florida*	SECN+	6:30 p.m. CT
Sept. 24	vs Ole Miss*	SECN+	2 p.m. CT
Sept. 27	at Arkansas*	SEC Network	7 p.m. CT
Oct. 1	vs Georgia*	ESPN2	Noon CT
Oct. 6	at Florida*	SECN+	6 p.m. CT
Oct. 8	at South Carolina*	ESPNU	1 p.m. CT
Oct. 13	at Tennessee*	SECN+	5:30 p.m. CT
Oct. 20	vs Missouri*	SEC Network	8 p.m. CT
Oct. 22	vs South Carolina*	SECN+	1 p.m. CT
Oct. 27	at Georgia*	SECN+	6 p.m. CT
Oct. 29	at Alabama	SEC Network	11 a.m. CT
Nov. 5	at Texas A&M	SEC Network	3 p.m. CT
Nov. 8	vs Kentucky	SECN+	6:30 p.m. CT
Nov. 12	at Missouri	SECN+	3 p.m. CT
Nov. 15	at Mississippi State	SECN+	6 p.m. CT
Nov. 19	vs LSU	SECN+	2 p.m. CT
Nov. 22	vs Alabama	SECN+	6:30 p.m. CT
Nov. 24	vs Arkansas	SECN+	3 p.m. CT

BOLD indicates home contest | All time Central and subject to change
! - War Eagle Invite | @ - Seminole Invite | S - Tiger Invite | % - Alabama Showdown
* - Southeastern Conference Game | # - NCAA Tournament

AUBURN ATHLETICS COMMUNICATIONS

Office Phone 334-844-9800
 Kirk Sampson Associate AD
sampska@auburn.edu
 Thomas Hoffman Volleyball Contact
tgh0024@auburn.edu
C: 503-302-9592

FOLLOW ALONG

Web AuburnTigers.com
 X @AuburnVB
 Instagram @auburnvolleyball

MATCH 1

COPPIN STATE

Friday, Aug. 25 | 6 p.m. CT
Auburn, Ala. | Neville Arena | SECN+



MATCH 2

MCNEESE STATE

Saturday, Aug. 26 | 10 a.m. CT
Auburn, Ala. | Neville Arena | SECN+



MATCH 3

JACKSONVILLE STATE

Saturday, Aug. 26 | 7 p.m. CT
Auburn, Ala. | Neville Arena | SECN+



AUBURN
MCNEESE STATE
JACKSONVILLE ST.

AVCA Coaches Poll	RV
2022 Record	22-9 10-8 SEC
Head Coach	Brent Crouch
Career Record (Year)	130-123 (10th)
Record at Auburn (Year)	35-32 (3rd)
AVCA Coaches Poll	N/R
2022 Record	18-16 13-5 Southland
Head Coach	Sasha Karelev
Career Record (Year)	18-16 (2nd)
Record at McNeese State (Year)	Same

COPPIN STATE
JACKSONVILLE ST.

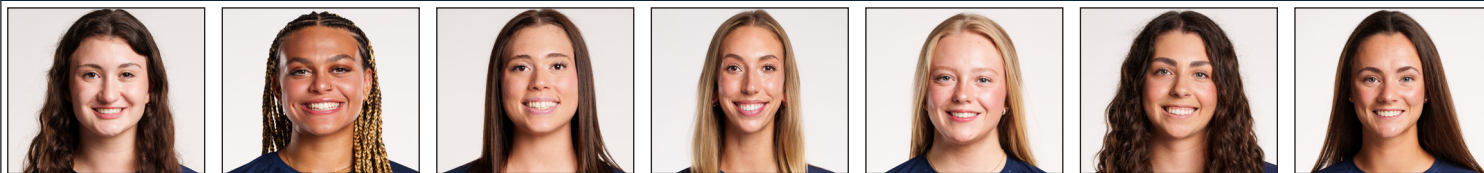
AVCA Coaches Poll	NR
2022 Record	23-11 12-2 MEAC
Head Coach	Tim Walsh
Career Record (Year)	104-128 (9th)
Record at Coppin State (Year)	79-92 (7th)
AVCA Coaches Poll	NR
2022 Record	24-6 12-4 CUSA
Head Coach	Todd Garvey
Career Record (Year)	250-176 (15th)
Record at Jacksonville State (Year)	0-0 (1st)

Site Auburn, Ala.
 Venue Neville Arena
 Live Stats Statbroadcast
 Twitter @AuburnVB
 Series Record First meeting vs. Coppin State | McNeese State leads, 1-0 | Auburn leads 8-2
 Last Meeting First meeting vs. Coppin State
Aug. 29, 2003 McNeese State 3, Auburn 0 (30-26, 30-26, 30-19)
Sept. 17, 2020 Auburn 3, Jacksonville State 0 (25-19, 25-20, 19-25, 23-25, 15-11)

QUICK HITS

- Head coach Brent Crouch begins his fourth season on the Plains. In 2021, Crouch led the Tigers to arguably its best season in program history, reaching the second round of the NCAA Tournament and finishing with a 22-9 record with a 10-8 mark in the SEC.
- Auburn returns all 12 of its student-athletes from the 2022 campaign and adds six new faces to bolster the roster. Transfers Bella Bell, Kyla Swanson, Peyton Dunn and Paige Thibault will all debut in the Orange and Blue. Freshmen Jasmine Okeoma and Lakin Laurendine have each made their way to Neville to begin their respective careers.

AUBURN'S POTENTIAL STARTING SEVEN



SARAH MORTON	AKASHA ANDERSON	BELLA BELL	KYLA SWANSON	PEYTON DUNN	KENDAL KEMP	PAIGE THIBAULT
#2 • DS/L • SO. • 5-7	#3 • PH • SO. • 6-3	#5 • MB/RS • GR. • 6-4	#6 • MB • SR. • 6-4	#7 • S • R-SO. • 5-11	#8 • MB • SO. • 6-6	#13 • DS/L • JR. • 5-6
D/S: 3.84	K/S: 3.54	K/S: 1.73	K/S: 1.04	D/S: 2.38	K/S: 1.67	D/S: 2.10
A/S: 0.92	HIT%: .175	HIT%: .340	HIT%: .283	A/S: 10.50	HIT%: .321	A/S: 0.13
SA/S: 0.25	D/S: 1.86	D/S: 0.19	D/S: 0.12	SA/S: 0.13	D/S: 0.10	SA/S: 0.22
P/S: 0.27	B/S: 0.50	B/S: 0.50	B/S: 0.86	P/S: 0.85	B/S: 1.48	P/S: 0.71
	SA/S: 0.22	SA/S: 0.03	SA/S: 0.10		SA/S: 0.06	
	P/S: 4.02	P/S: 2.42	P/S: 1.60		P/S: 2.57	

K/S: kills per set • HIT%: hitting percentage • D/S: digs per set • B/S: blocks per set • A/S: assists per set • SA/S: aces per set • P/S: points per set



#1 MADISON SCHEER
So. | PH | 6-1



#2 SARAH MORTON
So. | L | 5-8



#3 AKASHA ANDERSON
So. | PH | 6-3



#4 FALLAN LANHAM
Jr. | L | 5-8



#5 BELLA BELL
Gr. | MB | 6-4



#6 KYLA SWANSON
Gr. | MB | 6-4



#7 PEYTON DUNN
R-So. | S | 5-11



#8 KENDAL KEMP
So. | MB | 6-6



#9 ZOE SLAUGHTER
So. | L | 5-7



#10 JACKIE BARRETT
Sr. | S | 6-2



#11 JORDAN SINNESS
Jr. | S | 5-9



#12 BEL ZIMMERMAN
So. | PH | 6-2



#13 PAIGE THIBAUT
Jr. | L | 5-7



#14 CHELSEY HARMON
Sr. | MB | 6-3



#17 CASSIDY TANTON
R-So. | PH | 6-0



#19 JASMINE OKEOMA
Fr. | MB | 6-3



#22 SYDNEY HANDEL
So. | L | 6-0



#22 LAKIN LAURENDINE
Fr. | PH | 6-1

#WarEagle



AuburnTigers.com

@AuburnVB | @AuburnTigers
@AuburnVBCoach



/AuburnVB
/AuburnTigers

TEAM SCHEDULE AND MEDIA AVAILABILITY >> WEEK OF AUGUST 21-27

MONDAY August 21	TUESDAY August 22	WEDNESDAY August 23	THURSDAY August 24	FRIDAY August 25	SATURDAY August 26	SUNDAY August 27
PRACTICE: 3:45 p.m. - 6 p.m.	PRACTICE: 3:45 p.m. - 6 p.m.	PRACTICE: 3:45 p.m. - 6 p.m.	PRACTICE: 3:45 p.m. - 6 p.m.	MATCH: 6 p.m. CT vs Coppin State Auburn, Ala.	MATCH: 10 a.m. CT vs McNeese State Auburn, Ala. 7 p.m. CT vs Jacksonville State Auburn, Ala.	OFF
SAC	SAC	SAC	SAC	SAC	SAC	SAC
INTERVIEWS BY REQUEST	INTERVIEWS BY REQUEST	INTERVIEWS BY REQUEST	INTERVIEWS BY REQUEST	INTERVIEWS POST MATCH	INTERVIEWS POST MATCH	NO INTERVIEWS

AUBURN ATHLETICS COMMUNICATIONS

QUICK FACTS

AUBURNTIGERS.COM

For updated game notes, statistics, safety protocols and latest information on Auburn volleyball and Auburn Athletics, visit AuburnTigers.com.

INTERVIEW POLICY

Coach Crouch, assistant coaches and student-athletes are available for interviews by contacting Thomas Hoffman in the communications office. All interviews during the week will be conducted via phone or ZOOM. Post-match interviews will be conducted in the media room at Auburn Arena following a brief cooling-off period.

CREDENTIALS

Anyone wishing to cover an Auburn volleyball match should contact Thomas Hoffman in the communications office at least 24 hours in advance to make arrangements.

MATCH DAY SERVICES

Printed copies of notes, flip cards and statistics will be available upon request. Digital copies will be emailed out prior to the match and will be available on AuburnTigers.com. Media members are permitted to bring their own printed materials. Stats will not printed between sets or after matches. Live stats will be provided during the match and final statistics will be emailed out and posted on AuburnTigers.com. All post-match interviews will be conducted in the media room. Wireless internet is available in the Arena; ask Thomas Hoffman for the password. Match highlights, photos and postgame interviews will be available on Imagen following matches.

VIDEO SERVICES

FTP feeds of selected Auburn volleyball highlights are available for the media. A number of studio and satellite services may be arranged for electronic media by contacting Cody Baker in War Eagle Productions at jcb0101@auburn.edu.

PHOTO SERVICES

For photos of Auburn volleyball or any Olympic sports, contact Zach Bland at zdb007@auburn.edu.

COMMUNICATIONS STAFF

Thomas Hoffman
Volleyball Contact
cell: 503-302-9592
email: tgh0024@auburn.edu

Kirk Sampson
Associate AD
cell: 334-750-1385
email: sampska@auburn.edu

UNIVERSITY INFORMATION

City / Zip _____ Auburn, Ala. / 36831
 Founded _____ Oct. 1, 1856
 Enrollment _____ 30,737
 Nickname _____ Tigers
 Colors _____ Navy Blue & Burnt Orange
 Affiliation _____ NCAA Division I
 Conference _____ Southeastern Conference
 Home Court _____ Neville Arena (9,121)
 President _____ Dr. Chris Roberts
 Athletics Director _____ John Cohen
 Sport Administrator _____ Joy Vrbka (Florida, 2003)

TEAM INFORMATION

Letterwinners Returning/Lost _____ 12/0
 Starters Returning/Lost _____ 6+libero/0
 Newcomers _____ 6
 2022 Overall Record _____ 22-9
 2022 Conference Record/Finish _____ 10-8/6th

PROGRAM HISTORY

First Year of Volleyball _____ 1967
 _____ Program discontinued 1981; Reinstated 1986
 Seasons of Auburn Volleyball _____ 45th
 All-Time Overall Record _____ 691-699-4 (.497)
 in Neville Arena (Since 2013) _____ 68-59 (.535)
 Total Home Record _____ 240-212 (.531)
 All-Time SEC Record _____ 198-368 (.350)
 NCAA Tournament Appearances _____ 2/2010, 2022
 SEC Championships/Last _____ 1/Co-West Champions (1996)

STAFF INFORMATION

Head Coach _ Brent Crouch, 1st Season (Texas A&M , '98 & '00; Oregon '06)
 Career Record _____ 130-123 (.514)/10th Season
 Record at Auburn _____ 35-32 (.523)/4th Season
 Assistant Coach/Recruiting Coordinator _____ Rachel Corbelli (2nd Season)
 Assistant Coach _____ Keith Smith (2nd Season)
 Assistant Coach _____ Jack Burton (1st Season)
 Technical Coordinator _____ Mackenna Basore (2nd Season)
 Strength & Conditioning _____ Bethany Gainey
 Athletic Trainer _____ Nate Warner
 Equipment Manager _____ Brian Maddox

ATHLETIC COMMUNICATIONS

Associate AD/Communications _____ Kirk Sampson
 Assistant Director/Volleyball Contact _____ Thomas Hoffman
 Email _____ tgh0024@auburn.edu
 Phone _____ 503-302-9592
 Mailing Address _____ Auburn Athletics Complex
 _____ 392 S. Donahue Drive
 Website _____ AuburnTigers.com

GAMEDAY EXPERIENCE: AUBURN ARENA

>> Neville Arena is in its seventh season as home of Auburn volleyball. The Tigers are 68-59 since moving to the Arena in 2013. The facility seats approximately 2,000 fans for volleyball and 9,121 for basketball.



LAST TIME OUT

» The last time fans saw Auburn in an official match, the Tigers went toe-to-toe with then No. 23 Houston in the second round of the NCAA Tournament. Madison Scheer's 17 kills were the most by a Tiger in the NCAA Tournament, both Jackie Barrett and Akasha Anderson each snagged a double-double and Kendal Kemp capped the Auburn single-season block record at 180.

SCOUTING COPPIN STATE

» Seventh-year head coach Tim Walsh has his program rolling. Last year, the Eagles finished 23-11 with a 12-2 mark in conference to win the MEAC regular-season title. Despite falling to Delaware State in the MEAC Tournament, Coppin State earned the program's first postseason berth in the National Invitational Volleyball Championship (NIVC).

The Eagles enter the season as the favorite to repeat as regular-season champs. Ashley Roman, Andrea Tzvetanova and Ammaarah Williams each picked up preseason honors as well.

Roman is a four time All-MEAC selection and holds the program record in digs with 1,944. Tzvetanova returns as the reigning Co-Setter of the Year following a league-leading 1,198 assists (also a school record) and was named a VolleyMag.com All-American. Williams on the other hand, is a three-time All-MEAC selection after leading the conference in points with 415.5.

SCOUTING MCNEESE STATE

» Sasha Karelov embarks on her second season at the helm of the Cowgirl Volleyball program. Last year, McNeese finished with a 18-16 record with a 13-5 mark in conference. The Cowgirls swept Texas A&M-Commerce before falling to Southeastern in the Southland Tournament semifinals.

Entering the 2023, McNeese was picked to finish fourth in the Southland. Libero Bailey Tillman and Middle Blocker Sanni Rantanen also picked up preseason All-Conference honors.

Tillman racked up a 5.09 digs per set and collected 630 digs last season. Meanwhile, Rantanen was third in the SLC with a .348 hitting percentage, fifth in blocks per set a 1.00 and seventh in aces per set with 0.36.

SCOUTING JACKSONVILLE STATE

» It's a new era in many respects for the Gamecocks. Not only does Derek Schroeder takeover a sturdy program in Jacksonville, he does so in the team's first expedition in Conference USA.

Schroeder inherits a program that won titles in both the Ohio Valley and ASUN conferences. After a 24-6

record in 2022, Schroeder will be looking to keep the momentum going this fall.

Brooklyn Schifflì is the lone returner who logged a start last season for the Gamecocks. The Indianapolis, Indiana native played in 30 matches, piling up 250 digs and 18 aces last season.

The rest of the squad is built with transfers Clarke Adams, Ellie Garrett, Kaylee Moseley, Stavroula Papazoglou and Katelyn Crofts as well as freshmen Hana Aiana and Selin Sakiroglu.

AUBURN-COPPIN STATE SERIES

» Friday will mark the first time the Tigers and Eagles have clashed on the volleyball court.

AUBURN-MCNEESE STATE SERIES

» Auburn will be looking to avenge a 2003 loss to the Cowgirls, the only time the two programs have met. McNeese won in straight sets during the Heritage Classic in Ames, Iowa.

AUBURN-JACKSONVILLE STATE SERIES

» The Tigers welcome the Gamecocks to Neville for the first time since 2014. Last season, Auburn emerged victorious in a thrilling five-setter up in Jacksonville. All-Time, the Orange and Blue are 8-2 against JSU and 5-1 in matches played on the Plains.

WITH A WIN

» A win on Friday would give Auburn its third consecutive win to the open a season. Head coach Brent Crouch is 2-1 on opening day, with his only loss coming during the shortened 2020 season.

The last time Auburn won on opening day in three straight seasons was 2012-15 when the Tigers won its first match four years in a row.

VOTE AUBURN

» For the second time under Crouch, the Tigers are receiving votes in the AVCA/Taralex Top-25 Coaches Poll. Auburn finished the 2022 campaign with 29 votes and have opened up 2023 with 62. The Tigers are one of seven SEC programs to feature either inside the top-25 or receive votes. Kentucky (10th), Florida (11th), Arkansas (25th) and Tennessee (84 votes) were the only conference foes to tally more than Auburn.

EVERYTHING IS COMING UP ACES

» Matches are won and lost on serve-serve and numbers are there to prove it. Crouch's teams are 92-37 when delivering more aces than its opponent. While at Auburn, Crouch is 26-5 when achieving the same metric.

SEC STANDINGS & SCHEDULE

2022 STANDINGS

	CONF	OVERALL	HOME	ROAD	NTRL	STRK
Florida	15-3	23-5	14-3	9-2	0-0	-
Kentucky	15-3	20-7	10-5	7-2	3-0	-
Georgia	13-5	22-7	13-3	7-4	2-0	-
Arkansas	11-7	20-8	13-3	5-5	2-0	-
Tennessee	11-7	17-13	12-4	4-7	1-2	-
Auburn	10-8	21-8	8-3	7-5	6-0	-
LSU	9-9	15-13	8-7	5-6	2-0	-
Mississippi St	8-10	15-13	6-6	6-6	3-1	-
South Carolina	7-11	13-15	11-3	2-11	0-1	-
Ole Miss	7-11	11-17	4-7	4-8	3-2	-
Texas A&M	5-13	13-16	5-9	5-6	3-1	-
Alabama	4-14	10-20	6-6	1-11	3-3	-
Missouri	2-16	9-19	5-7	1-11	3-1	-

THIS WEEK IN THE SEC...

Friday, August 25

Alabama vs Miss Valley St, 1:30 p.m.
 Ole Miss vs St. Johns, 4 p.m.
 South Carolina vs Towson, 6 p.m.
 Tennessee vs Texas St, 6:30 p.m.
 Georgia vs UConn, 6:30 p.m.
Auburn vs Coppin St, 7 p.m.
 Missouri vs Illinois St, 7 p.m.
 LSU vs UCLA, 7:30 p.m.
 Florida vs Penn St, 8 p.m.
 Arkansas vs Michigan St, 8 p.m.
 Alabama vs Saint Louis, 8 p.m.
 Texas A&M vs Omaha, 8 p.m.
 Mississippi St vs E. Kentucky, 8 p.m.
 Kentucky vs Colorado St, 9 p.m.

Ole Miss vs FGCU, 6 p.m.
 Tennessee vs UT Martin, 6:30 p.m.
 Georgia vs Florida St, 7 p.m.
 Mississippi St vs NWestern St, 7 p.m.
 Florida vs South Florida, 8 p.m.
 Kentucky vs N. Colorado, 8 p.m.
Auburn vs Jax State, 8 p.m.
 Missouri vs C. Arkansas, 8 p.m.

Sunday, August 27

Ole Miss vs Arizona St, 11 a.m.
 Missouri vs Colgate, 1 p.m.
 Mississippi St vs Louisiana, 2 p.m.
 Arkansas vs Tulsa, 3 p.m.

*All times ET

Saturday, August 26

Georgia vs W. Carolina, 10:30 a.m.
Auburn vs McNeese St, 11 a.m.
 Tennessee vs Marist, 12:30 p.m.
 South Carolina vs Towson, 2 p.m.
 Alabama vs Mercer, 3 p.m.
 Texas A&M vs Pepperdine, 3:30 p.m.
 LSU vs UCLA, 6 p.m.

2022 FINAL NCAA RPI REPORT

RK	TEAM	RECORD	AU RESULT
8	Kentucky	22-8	L, 3-0 & L, 3-0
12	Florida	25-6	L, 3-0
15	Creighton	27-4	W, 3-2
17	Houston	30-4	L, 3-0
22	Arkansas	21-9	L, 3-0 & L, 3-0
32	Georgia	23-8	W, 3-1 & W, 3-2
37	AUBURN	22-9	
41	LSU	16-14	L, 3-2
57	Tennessee	17-14	W, 3-1
62	Jacksonville State	24-6	W, 3-2
65	Mississippi State	15-13	W, 3-2
75	Texas A&M	13-16	W, 3-1 & W, 3-1
94	South Carolina	13-15	L, 3-2
107	Troy	18-13	W, 3-1
117	Ole Miss	11-17	W, 3-1
122	Southern Miss	21-12	W, 3-0
143	North Florida	12-17	W, 3-0
149	Alabama	10-20	W, 3-1 & W, 3-1
151	UAB	12-15	W, 3-2
160	Missouri	9-19	W, 3-2 & L, 3-1
218	Alabama State	20-14	W, 3-0
224	Marist	18-11	W, 3-1
287	Belmont	8-23	W, 3-0
292	Jackson State	13-17	W, 3-0
304	Georgia State	7-22	W, 3-1
334	Alabama A&M	7-26	W, 3-0

AUBURN OPPONENTS ONLY

PLAYER TO WATCH: AKASHA ANDERSON

» The AVCA South Region Freshman of the Year was up to no good last season. With 438 kills, Anderson led the Tigers in both kills and kills per set (3.49).



AVCA COACHES POLL

RK	TEAM	POINTS	RECORD
1	Texas [44]	1564	0-0
2	Wisconsin [7]	1489	0-0
3	Stanford [13]	1449	0-0
4	Louisville	1388	0-0
5-T	Nebraska	1294	0-0
5-T	Pittsburgh	1294	0-0
7	Minnesota	1105	0-0
8	Penn State	1091	0-0
9	Oregon	1067	0-0
10	Kentucky	899	0-0
11	Florida	841	0-0
12	Marquette	768	0-0
13	San Diego	760	0-0
14	Ohio State	745	0-0
15	Baylor	694	0-0
16	Purdue	644	0-0
17	BYU	617	0-0
18	Creighton	546	0-0
19	Houston	421	0-0
20	Georgia Tech	394	0-0
21	Washington State	359	0-0
22	Southern California	204	0-0
23	Rice	192	0-0
24	Western Kentucky	181	0-0
25	Arkansas	122	0-0

Others receiving votes: Kansas 99; **Tennessee 84**; Washington 63; **Auburn 62**; UCF 53; Hawai'i 49; Miami (FL) 45; **Georgia 35**; **LSU 28**; TCU 20; Illinois 18; Utah 18; Iowa State 14; Loyola Marymount 14; Pepperdine 14; **Florida State 12**; James Madison 5

INSIDE THE MATCH-UPS

COPPIN STATE 0-0 (.000)

0-0 H • 0-0 A • 0-0 N

YEAR	SITE	RESULT	MATCH SCORE
N/A			

MCNEESE STATE 0-1 (.000)

0-0 H • 0-0 A • 0-1 N

YEAR	SITE	RESULT	MATCH SCORE
2003	NEUTRAL	L	0-3

JACKSONVILLE STATE 8-2 (.800)

5-1 H • 3-1 A • 0-0 N

YEAR	SITE	RESULT	MATCH SCORE	1998
AWAY	W	3-0		
1999	HOME	W	3-0	
2000	AWAY	W	3-1	
2003	HOME	W	3-2	
2008	AWAY	L	2-3	
2009	HOME	L	2-3	
2012	HOME	W	3-0	
2013	HOME	W	3-0	
2014	HOME	W	3-0	
2022	AWAY	W	3-2	

WEEKLY AWARDS

QUEEN KEMP

» Minnesota native Kendal Kemp announced herself to the collegiate volleyball world in 2022. Kemp set single-season program records in solo blocks (26), block assists (154), total blocks (180) and blocks per set (1.48). Earning AVCA South Region Honorable Mention, Kemp totals were also second in the Southeastern Conference and her 180 total blocks were the second-most in the country.

BLOCK PARTY

» Speaking of blocks, Auburn's team totals were nothing short of brilliant. In the rally-scoring era, the 2022 Tiger team set single-season records in block assists (520), total blocks (312) and blocks per set (2.56).

SOAKING UP SUMMER HEAT

» August has been good to Brent Crouch over the years. In nine years of coaching, Crouch is 19-3 in the month of August, including a 6-0 mark at Auburn.

NO PLACE LIKE NEVILLE

» Auburn is now 19-14 at home under head coach Brent Crouch, including wins in 19 of it's last 29 games at home. All-time Auburn is 68-59 in Neville.

THE JACK BURTON

» NCAA rules have allowed for an additional coach for volleyball programs. Crouch has added Jack Burton to his staff.

Following a prolific playing career at Grand Canyon University, Burton stopped over in Dayton for two seasons and most recently helped FGCU to a 26-7 record and the school's third trip to the NCAA Tournament.

AUBURN PICKED 7th IN PRESEASON POLL

» After a sixth-place finish in 2022, the Auburn Tigers have been selected to finish seventh in the 2023 preseason poll.

PLAYER TO WATCH: BELLA BELL

» The six-foot-five middle blocks arrives on the Plains with championships pedigree. A National Champion with Kentucky, Bell also holds a blistering career hitting percentage of .362.



HEAD COACH BRENT CROUCH

QUICK FACTS

College ___ Texas A&M ('98, '00)
 _____ Oregon ('06)
 Wife _____ Marcy
 Sons ___ Jonathan and William

COACHING RECORD

Head Coaching Career _ 10th Season
 Career Record _____ 130-123
 NCAA Appearances _____ 3

COACHING CAPSULE

2020-Pr. Auburn 35-32
 2018-19 Southern California 40-25
 2014-17 Portland 55-66

YEAR-BY-YEAR RESULTS

2022 Auburn 22-9
 2021 Auburn 13-15
 2020 Auburn 0-8
 2019 USC 18-14
 2018 USC 22-11
 2017 Portland 15-15
 2016 Portland 17-13
 2015 Portland 16-15
 2014 Portland 7-23



Brent Crouch begins his fourth season at the helm of the Auburn Volleyball program in 2023. Crouch and the Tigers look to reset the bar after a record-breaking 2022 campaign that saw success on the Plains unseen for more than a decade.

Last season, Auburn earned a berth into the NCAA Tournament for just the second time in school history and the first since 2010. A first-round victory over host and No. 14 Creighton provided the program with its second postseason win and first triumph over a nationally-ranked opponent since 2017.

The feat came on the heels of a historic season that saw the Tigers begin the season with a record mark of 14-0 and a record start to SEC play at 3-0. The 22 total victories on the season were the most in the 25-point rally-scoring era and the most since 1998. The Tigers also picked up its first win in Columbia, Missouri.

Under Crouch's guidance, Akasha Anderson, Madison Scheer and Kendal Kemp each garnered All-Conference Honors. Anderson and Kemp also picked up AVCA postseason accolades with Anderson grabbing South Region Freshman of the Year and All-Region. Meanwhile, Kemp solidified Honorable Mention. Auburn Volleyball student-athletes also picked up a record 10 SEC weekly awards.

Crouch wasn't left out of the postseason awards season, securing AVCA South Region Coach of the Year, the first such award for the Tiger Volleyball program.

Fans on the Plains saw Auburn become one of the most potent blocking teams in the Southeastern Conference in 2022. Crouch's guidance helped the Tigers break records for most block assists in a single season (520), total blocks (312.0) and tie for the most blocks in a four-set match (17 vs. Troy).

The Orange and Blue wall's foundation was laid by then-freshman Kendal Kemp. The Egan, Minnesota product shattered single-season records for solo blocks (26), block assists (154), total blocks (180) and blocks per set (1.48).

During his first full season leading the Auburn program in 2021, Crouch's leadership had an immediate effect. The Tigers opened the season winning 17 consecutive sets to tie the program record for most sweeps to begin a season (5), matching the 1974 Auburn team. Crouch led the team to a 13-15 record with a 5-13 mark in the SEC, picking up a season sweep over Alabama, the first Auburn win over Missouri since 1996 and the program's first victory in College State with a win over Texas A&M.

Crouch's expertise led to six total SEC weekly honors, splitting three on offense and three on defense. Individually, the Tigers also set nine individual records during the 2021 campaign.

Individually, it was Rebekah Rath and Tatum Shipes who benefited the most from Crouch's development. Shipes led the SEC in blocking and set records in blocks, block assists and blocks per set. Meanwhile, Rath led the SEC in five offensive categories, setting records in kills and kills per set.

Crouch made his Auburn coaching debut against No. 4 Florida on Oct. 21, 2020, to open the shortened fall volleyball schedule. Crouch led the Tigers on the court for eight total matches and his impact on the Plains was noticeable almost immediately, tying the record for most blocks in a four-set with 17 at South Carolina.

Prior to Auburn, Crouch served as the head coach at the University of South California, compiling a 40-25 record. He would lead the Trojans to the second round of the NCAA Tournament in both years in Los Angeles. In 2018, Crouch's Trojans earned the No. 11 overall seed in the Tournament and the No. 21 ranking in the final AVCA Coaches poll of the year.

Before leading the Trojans, Crouch spent four seasons as head coach of the University of Portland. The 2016 West Coast Conference Coach of the Year inherited a winless program and guided the Pilots to its winningest season in 25 years just two seasons later. His 48 victories in his final three years in the Rose City was the best three-season total since 1984-86. He put Portland on the WCC map, earning wins over top-10, top-15 and top-25 opponents while in charge of the Pilots. Crouch coached three All-WCC First Team selections, a WCC All-Freshman Team honoree and three WCC All-Academic First Teamers. He also established Beach Volleyball as a varsity sport at Portland in 2016.

Crouch arrived at Portland after four seasons (2010-13) at Saint Mary's College, where he was an assistant with the indoor program and head coach of the beach team.

Brent and his wife Marcy have two sons, Jonathan and William.

2023 AUBURN VOLLEYBALL ROSTER

No.	Name	Year	Pos.	Ht.	Hometown (High School/Previous School)
1	MADISON SCHEER	SO.	PH	6-1	EUREKA, MO. (EUREKA)
2	SARAH MORTON	SO.	L	5-7	MUNSTER, IND. (MUNSTER)
3	AKASHA ANDERSON	SO.	PH	6-3	RESTON, VA. (HERNDON)
4	FALLAN LANHAM	JR.	L	5-8	LOUISVILLE, KY. (MERCY ACADEMY)
5	BELLA BELL	SR.	MB	6-4	BLYTHEWOOD, S.C. (KENTUCKY)
6	KYLA SWANSON	GR.	MB	6-4	WAHOO, NEB. (ILLINOIS)
7	PEYTON DUNN	R-SO.	S	5-11	DECATUR, TEXAS (OKLAHOMA)
8	KENDAL KEMP	SO.	MB	6-6	EAGAN, MINN. (EAGAN)
9	ZOE SLAUGHTER	SO.	L	5-7	HONOLULU, HAWAII (MOANALUA)
10	JACKIE BARRETT	SR.	S	6-2	HIGHLAND, CALIF. (CITRUS VALLEY)
11	JORDAN SINNESS	JR.	S	5-9	SEBRING, FLA. (SEBRING)
12	BEL ZIMMERMAN	SO.	PH	6-2	LIBERTY, MO. (LIBERTY NORTH)
13	PAIGE THIBAUT	JR.	L	5-6	WATERTOWN, MINN. (FIU)
14	CHELSEY HARMON	SR.	MB	6-3	PUYALLUP, WASH. (PORTLAND)
17	CASSIDY TANTON	R-SO.	PH	6-0	STONEVILLE, N.C. (DALTON MCMICHAEL)
19	JASMINE OKEOMA	FR.	MB	6-3	WOODBIDGE, VA. (FOREST PARK)
22	SYDNEY HANDEL	SO.	PH	6-0	LEE'S SUMMIT, MO. (LEE'S SUMMIT WEST)
25	LAKIN LAURENDINE	FR.	PH	6-1	JACKSON, MISS. (JACKSON ACADEMY)

HEAD COACH | BRENT CROUCH (4TH SEASON)

ASSISTANT COACH | KEITH SMITH (2ND SEASON)

ASSISTANT COACH/RECRUITING COORDINATOR | RACHEL CORBELLI (2ND SEASON)

ASSISTANT COACH | JACK BURTON (1ST SEASON)

PRONUNCIATION GUIDE:

MADISON SCHEER – SHEER FALLAN LANHAM – FAL(LIKE PAL)-AN LAN-EM SYDNEY HANDEL – HON-DELL
 PAIGE THIBAUT – THEE-BALT JASMINE OKEOMA – OKAY-AH-MUH LAKIN LAURENDINE – LAY-KIN LOR-EN-DEAN
 RACHEL CORBELLI – CORE-BELL-EE

INSIDE THE 2022 NUMBERS



CATEGORY	AUBURN	COPPIN STATE
Kills	1505	1535
Per Set	12.3	11.5
Errors	581	694
Total Attacks	3933	4325
Hitting Pct.	.235	.194
Assists	1393	1404
Per Set	11.4	10.6
Service Aces	184	286
Per Set	1.5	2.2
Service Errors	272	274
Reception Errors	165	199
Per Set	1.4	1.5
Digs	1589	1891
Per Set	13.0	14.2
Solo Blocks	52	32
Block Assists	520	418
Total Blocks	312.0	241.0
Per Set	2.6	1.8



CATEGORY	MCNEESE ST.	JACKSONVILLE ST.
Kills	1609	1494
Per Set	12.3	13.6
Errors	683	472
Total Attacks	5056	3564
Hitting Pct.	.183	.287
Assists	1473	1392
Per Set	11.2	12.7
Service Aces	156	186
Per Set	1.2	1.7
Service Errors	208	233
Reception Errors	153	129
Per Set	1.2	1.2
Digs	2428	1554
Per Set	18.5	14.1
Solo Blocks	70	65
Block Assists	462	276
Total Blocks	301.0	203.0
Per Set	2.3	1.8

2022 INDIVIDUAL HIGHS BY SET

THREE SETS

HITTING PERCENTAGE (MIN. 12 KILLS) _____ .706, Chelsey Harmon vs Jackson State (Sept. 17)
 KILLS _____ 15, Akasha Anderson vs Troy (Sept. 10)
 TOTAL ATTEMPTS _____ 38, Rebekah Rath vs Belmont (Aug. 26)
 ASSISTS _____ 41, Jackie Barrett vs Jackson State (Sept. 17)
 DIGS _____ 16, Sarah Morton (2x) last vs North Florida (Sept. 11)
 ACES _____ 3, 2 players vs Alabama A&M (Sept. 6)
 BLOCKS _____ 9, Kendal Kemp vs Belmont (Aug. 26)

FOUR SETS

HITTING PERCENTAGE (MIN. 12 KILLS) _____ .526, Akasha Anderson vs Marist (Aug. 27)
 KILLS _____ 25, Rebekah Rath at Georgia State (Aug. 26)
 TOTAL ATTEMPTS _____ 60, Rebekah Rath at Georgia State (Aug. 26)
 ASSISTS _____ 48, Jackie Barrett vs Texas A&M (Nov. 6)
 DIGS _____ 25, Sarah Morton vs Troy (Sept. 10)
 ACES _____ 4, Akasha Anderson at Missouri (Oct. 16)
 BLOCKS _____ 10 (3x), last Kendal Kemp vs Georgia (Oct. 8)

FIVE SETS

HITTING PERCENTAGE (MIN. 12 KILLS) _____ .435, Chelsey Harmon at LSU (Oct. 5)
 KILLS _____ 26, Akasha Anderson vs Mississippi State (Sept. 28)
 TOTAL ATTEMPTS _____ 77, Akasha Anderson at LSU (Oct. 5)
 ASSISTS _____ 60, Jackie Barrett at LSU (Oct. 5)
 DIGS _____ 26, Sarah Morton vs Georgia (Oct. 9)
 ACES _____ 4, Multiple times
 BLOCKS _____ 10 (3x), last Kendal Kemp at South Carolina (Nov. 23)

2022 TEAM HIGHS BY SET

THREE SETS

HITTING PERCENTAGE (MIN. 12 KILLS) _____ .400, vs Alabama A&M (Sept. 6)
 KILLS _____ 48, vs Jackson State (Sept. 17)
 TOTAL ATTEMPTS _____ 108, vs Jackson State (Sept. 17)
 ASSISTS _____ 45, vs Jackson State (Sept. 17)
 DIGS _____ 45, vs Jackson State (Sept. 17)
 ACES _____ 11, vs Alabama A&M (Sept. 6)
 BLOCKS _____ 13.5, vs Belmont (Aug. 26)

FOUR SETS

HITTING PERCENTAGE (MIN. 12 KILLS) _____ .356, vs Marist (Aug. 27)
 KILLS _____ 62, vs Texas A&M (Nov. 6)
 TOTAL ATTEMPTS _____ 154, vs Texas A&M (Nov. 6)
 ASSISTS _____ 57, vs Texas A&M (Nov. 6)
 DIGS _____ 66, at Alabama (Sept. 24)
 ACES _____ 11(3x), last at Missouri (Oct. 15)
 BLOCKS _____ 17.0, vs Troy (Sept. 10)

FIVE SETS

HITTING PERCENTAGE (MIN. 12 KILLS) _____ .321, at Missouri (Oct. 15)
 KILLS _____ 67, at LSU (Oct. 5)
 TOTAL ATTEMPTS _____ 189, at LSU (Oct. 5)
 ASSISTS _____ 65, at LSU (Oct. 5)
 DIGS _____ 85, at LSU (Oct. 5)
 ACES _____ 11, at Missouri (Oct. 15)
 BLOCKS _____ 18.0, vs Georgia (Oct. 9)

THE LAST TIME AUBURN...

Won in three sets _____ Sept. 17, 2022 vs Jackson State (25-20, 26-24, 25-16)
 Won in four sets _____ Nov. 11, 2022 vs Ole Miss (27-25, 15-25, 25-25, 25-23)
 Won in five sets _____ Dec. 2, 2022 vs #14 Creighton (21-25, 25-21, 25-20, 16-25, 15-11)
 Lost in three sets _____ Nov 26, 2022 vs Arkansas (21-25, 17-25, 17-25)
 Lost in four sets _____ Oct. 16, 2022 at Missouri (25-15, 21-25, 15-25, 27-29)
 Lost in five sets _____ Dec. 3, 2022 vs Houston (27-25, 15-25, 25-12, 23-25, 8-15)
 Lost first set in a win _____ Dec. 2, 2022 vs #14 Creighton (21-25, 25-21, 25-20, 16-25, 15-11)
 Won first set in a loss _____ Dec. 3, 2022 vs Houston (27-25, 15-25, 25-12, 23-25, 8-15)
 Lost first two sets in a win _____ Oct. 15, 2022 at Missouri (21-25, 21-25, 25-17, 25-17, 15-12)
 Won first two sets in a loss _____ Oct. 10, 2021 at Arkansas (25-20, 25-23, 15-25, 17-25, 7-15)
 Beat a ranked opponent Dec. 2, 2022 vs #14 Creighton (21-25, 25-21, 25-20, 16-25, 15-11)
 Hit .300-.399 in a match _____ Oct. 21, 2022 vs Tennessee (.320)
 Hit .400-.499 in a match _____ Sept. 6, 2022 vs Alabama A&M (.400)
 Hit .500 or better in a match _____ Oct. 18, 1998 at Ole Miss (.514)
 Held opponent to .000-.100 in a match _____ Sept. 11, 2022 vs North Florida (.073)
 Held opponent to a negative hitting percentage _____ Sept. 6, 2022 vs Alabama A&M (-.063)
 Had 70-79 kills in a match _____ Oct. 26, 2018 vs. Ole Miss (77)
 Had 80+ kills in a match _____ Sept. 17, 2006 at Georgia (84)
 Had 80-99 digs in a match _____ Oct. 5, 2022 at LSU (85)
 Had 100+ digs in a match _____ Sept. 17, 2021 vs. Nicholls (105)
 Had 15+ blocks in a match _____ Sept. 28, 2022 vs Mississippi State (15.0)
 Had 10+ service aces in a match _____ Oct. 15, 2022 at Missouri (11)
 Had a player(s) with 20-24 kills in a match _____ Nov. 6, 2022 Akasha Anderson vs Texas A&M (21)
 Had a player(s) with 25-29 kills in a match _____ Sept. 28, 2022, Akasha Anderson vs Miss. St. (25)
 Had a player(s) with 30+ kills in a match _____ Oct. 8, 2004, Ashlee Johns vs. Arkansas (30)
 Had a player(s) with 10+ blocks in a match Nov. 23, 2022 Kendal Kemp at South Carolina (10)
 Had a player(s) with 25-29 digs in a match _____ Oct. 9, 2022, Sarah Morton vs Georgia (26)
 Had a player(s) with 30+ digs in a match _____ Oct. 17, 2021, Bella Rosenthal vs. Missouri(33)
 Had a player(s) with 50+ assists in a match _____ Oct. 9, 2022 Jackie Barrett vs Georgia (51)
 Had a player(s) with 60+ assists in a match _____ Oct. 5, 2022, Jackie Barrett at LSU (60)
 Had a player(s) with 5+ aces in a match _____ Nov. 5, 2021, Rebekah Rath at Texas A&M (5)

AUBURN DOUBLE-DOUBLES IN 2022

PLAYER	OPPONENT (SETS)	DATE	STATS
Jackie Barrett (12)	vs North Florida (3)	Sept. 11	28 assists, 10 digs
	at Jacksonville State (5)	Sept. 17	57 assists, 11 digs
	vs Mississippi State (5)	Sept. 28	47 assists, 12 digs
	at LSU (5)	Oct. 5	60 assists, 14 digs
	vs Georgia (4)	Oct. 8	41 assists, 10 digs
	vs Tennessee (4)	Oct. 21	39 assists, 11 digs
	vs Texas A&M (4)	Nov. 5	44 assists, 10 digs
	vs Texas A&M (4)	Nov. 6	48 assists, 13 digs
	at South Carolina (5)	Nov. 23	47 assists, 10 digs
	vs Arkansas (3)	Nov. 25	21 assists, 11 digs
	vs #14 Creighton (5)	Dec. 2	44 assists, 10 digs
	vs #23 Houston (5)	Dec. 3	43 assists, 12 digs
Akasha Anderson (9)	at UAB (5)	Sept. 9	24 kills, 14 digs
	at Alabama (4)	Sept. 24	16 kills, 15 digs
	at Alabama (4)	Sept. 25	12 kills, 18 digs
	vs Mississippi State (5)	Sept. 28	26 kills, 10 digs
	at LSU (5)	Oct. 5	22 kills, 11 digs
	vs Georgia (5)	Oct. 9	21 kills, 11 digs
	at South Carolina (5)	Nov. 23	12 kills, 10 digs
	vs #14 Creighton (5)	Dec. 2	15 kills, 13 digs
	vs #23 Houston (5)	Dec. 3	13 kills, 10 digs
Jordan Sinness (2)	at Georgia State (4)	Aug. 26	42 assists, 12 digs
	vs Troy (4)	Sept. 10	29 assists, 10 digs
Kendal Kemp (1)	at South Carolina (5)	Aug. 26	42 assists, 12 digs

AUBURN'S 2022 RECORD WHEN...

OVERALL	22-9
SEC-	10-8
NON-CONFERENCE	11-1
RANKED OPPONENTS	1-4
HOME	8-3
AWAY	7-5
NEUTRAL	7-1
BY SETS	
THREE SETS	6-5
FOUR SETS	10-1
FIVE SETS	6-3
WON FIRST SET	10-3
LOST FIRST SET	7-6
WON SECOND SET	18-1
LOST SECOND SET	4-8
WON FIRST TWO SETS	14-0
LOST FIRST TWO SETS	1-5
SITUATIONAL	
MORE KILLS THAN OPPONENT	13-1
FEWER KILLS THAN OPPONENT	5-5
KILLS ARE TIED	4-1
MORE DIGS THAN OPPONENT	14-2
FEWER DIGS THAN OPPONENT	7-5
DIGS ARE TIED	2-0
MORE ACES THAN OPPONENT	17-2
FEWER ACES THAN OPPONENT	6-4
ACES ARE TIED	4-2
HIGHER HITTING PERCENTAGE THAN OPPONENT	20-0
LOWER HITTING PERCENTAGE THAN OPPONENT	2-8
HITTING PERCENTAGE TIED	0-0
HITTING PERCENTAGE	
.400 OR ABOVE	1-0
.300-.399	6-0
.200-.299	12-1
.100-.199	3-6
.000-.099	0-2
NEGATIVE	0-0
OPPONENTS' HITTING PERCENTAGE	
.400 OR ABOVE	0-2
.300-.399	1-3
.200-.299	6-3
.100-.199	12-1
.000-.099	2-0
NEGATIVE	1-0
BY DAY	
MONDAY	0-0
TUESDAY	1-0
WEDNESDAY	2-3
THURSDAY	0-0
FRIDAY	7-1
SATURDAY	8-3
SUNDAY	4-2
DAY MATCHES (FIRST SERVE BEFORE 6 P.M.)	14-5
NIGHT MATCHES (FIRST SERVE AFTER 6 P.M.)	8-4
BY MONTH	
AUGUST	4-0
SEPTEMBER	10-0
OCTOBER	4-5
NOVEMBER	4-3
DECEMBER	1-1
JERSEY COLOR	
NAVY w/POWER STRIPE	5-5
NAVY SOLID	3-1
ORANGE w/POWER STRIPE	8-2
ORANGE SOLID	5-1
PINK	1-0

2022 AUBURN MATCH-BY-MATCH STARTERS

DATE	OPPONENT	RESULT	OUTSIDE	MIDDLE	RIGHT SIDE	OUTSIDE/DS	MIDDLE	LIBERO	SETTER
Aug. 26	vs Belmont	W, 3-0	Rebekah Rath	Kendal Kemp	Madison Scheer	Fallan Lanham	Chelsey Harmon	Sarah Morton	Jackie Barrett
Aug. 26	at Georgia State	W, 3-1	Rebekah Rath	Kendal Kemp	Madison Scheer	Fallan Lanham	Chelsey Harmon	Sarah Morton	Jordan Sinness
Aug. 27	vs Marist	W, 3-1	Rebekah Rath	Kendal Kemp	Bel Zimmerman	Fallan Lanham	Chelsey Harmon	Sarah Morton	Jordan Sinness
Aug. 31	vs Alabama State	W, 3-0	Rebekah Rath	Kendal Kemp	Madison Scheer	Fallan Lanham	Chelsey Harmon	Sarah Morton	Jackie Barrett
Sept. 6	vs Alabama A&M	W, 3-0	Akasha Anderson	Kendal Kemp	Madison Scheer	Zoe Slaughter	Chelsey Harmon	Sarah Morton	Jordan Sinness
Sept. 9	at UAB	W, 3-2	Akasha Anderson	Kendal Kemp	Madison Scheer	Zoe Slaughter	Chelsey Harmon	Sarah Morton	Jordan Sinness
Sept. 10	vs Troy	W, 3-1	Akasha Anderson	Kendal Kemp	Bel Zimmerman	Fallan Lanham	Chelsey Harmon	Sarah Morton	Jordan Sinness
Sept. 11	vs North Florida	W, 3-0	Akasha Anderson	Kendal Kemp	Madison Scheer	Bel Zimmerman	Chelsey Harmon	Sarah Morton	Jackie Barrett
Sept. 16	vs Southern Miss	W, 3-0	Akasha Anderson	Kendal Kemp	Bel Zimmerman	Fallan Lanham	Chelsey Harmon	Sarah Morton	Jackie Barrett
Sept. 17	vs Jackson State	W, 3-0	Akasha Anderson	Kendal Kemp	Bel Zimmerman	Fallan Lanham	Chelsey Harmon	Sarah Morton	Jackie Barrett
Sept. 17	at Jacksonville State	W, 3-2	Akasha Anderson	Kendal Kemp	Bel Zimmerman	Fallan Lanham	Chelsey Harmon	Sarah Morton	Jackie Barrett
Sept. 24	at Alabama	W, 3-1	Akasha Anderson	Kendal Kemp	Bel Zimmerman	Fallan Lanham	Chelsey Harmon	Sarah Morton	Jackie Barrett
Sept. 25	at Alabama	W, 3-1	Akasha Anderson	Kendal Kemp	Bel Zimmerman	Fallan Lanham	Chelsey Harmon	Sarah Morton	Jackie Barrett
Sept. 28	vs Mississippi State	W, 3-2	Akasha Anderson	Kendal Kemp	Bel Zimmerman	Madison Scheer	Chelsey Harmon	Sarah Morton	Jackie Barrett
Oct. 5	at LSU	L, 3-2	Akasha Anderson	Kendal Kemp	Bel Zimmerman	Fallan Lanham	Chelsey Harmon	Sarah Morton	Jackie Barrett
Oct. 8	vs Georgia	W, 3-1	Akasha Anderson	Kendal Kemp	Bel Zimmerman	Madison Scheer	Chelsey Harmon	Sarah Morton	Jackie Barrett
Oct. 9	vs Georgia	W, 3-2	Akasha Anderson	Kendal Kemp	Bel Zimmerman	Madison Scheer	Chelsey Harmon	Sarah Morton	Jackie Barrett
Oct. 15	at Missouri	W, 3-2	Akasha Anderson	Kendal Kemp	Bel Zimmerman	Fallan Lanham	Chelsey Harmon	Sarah Morton	Jackie Barrett
Oct. 16	at Missouri	L, 3-1	Akasha Anderson	Kendal Kemp	Bel Zimmerman	Fallan Lanham	Chelsey Harmon	Sarah Morton	Jackie Barrett
Oct. 21	vs Tennessee	W, 3-1	Akasha Anderson	Kendal Kemp	Bel Zimmerman	Fallan Lanham	Chelsey Harmon	Sarah Morton	Jackie Barrett
Oct. 26	vs #14 Florida	L, 3-0	Akasha Anderson	Kendal Kemp	Bel Zimmerman	Fallan Lanham	Chelsey Harmon	Sarah Morton	Jackie Barrett
Oct. 29	at #20 Kentucky	L, 3-0	Akasha Anderson	Kendal Kemp	Bel Zimmerman	Fallan Lanham	Chelsey Harmon	Sarah Morton	Jackie Barrett
Oct. 30	at #20 Kentucky	L, 3-0	Akasha Anderson	Kendal Kemp	Bel Zimmerman	Fallan Lanham	Chelsey Harmon	Zoe Slaughter	Jackie Barrett
Nov. 5	vs Texas A&M	W, 3-1	Akasha Anderson	Kendal Kemp	Bel Zimmerman	Fallan Lanham	Chelsey Harmon	Sarah Morton	Jackie Barrett
Nov. 6	vs Texas A&M	W, 3-1	Akasha Anderson	Kendal Kemp	Bel Zimmerman	Fallan Lanham	Chelsey Harmon	Sarah Morton	Jackie Barrett
Nov. 11	at Ole Miss	W, 3-1	Akasha Anderson	Kendal Kemp	Bel Zimmerman	Fallan Lanham	Chelsey Harmon	Sarah Morton	Jackie Barrett
Nov. 23	at South Carolina	L, 3-2	Akasha Anderson	Kendal Kemp	Madison Scheer	Zoe Slaughter	Chelsey Harmon	Sarah Morton	Jackie Barrett
Nov. 25	vs Arkansas	L, 3-0	Akasha Anderson	Kendal Kemp	Bel Zimmerman	Fallan Lanham	Chelsey Harmon	Sarah Morton	Jackie Barrett
Nov. 26	vs Arkansas	L, 3-0	Akasha Anderson	Kendal Kemp	Bel Zimmerman	Fallan Lanham	Chelsey Harmon	Sarah Morton	Jackie Barrett
Dec. 2	vs #14 Creighton	W, 3-2	Akasha Anderson	Kendal Kemp	Bel Zimmerman	Fallan Lanham	Chelsey Harmon	Sarah Morton	Jackie Barrett
Dec. 3	vs #23 Houston	L, 3-2	Akasha Anderson	Kendal Kemp	Bel Zimmerman	Fallan Lanham	Chelsey Harmon	Sarah Morton	Jackie Barrett

2022 AUBURN MATCH-BY-MATCH LEADERS

DATE	OPPONENT	RESULT	KILLS	ASSISTS	ACES	DIGS	BLOCKS	HIT PCT. (MIN 10 ATT.)
Aug. 26	vs Belmont	W, 3-0	Rath (11)	Barrett (30)	Rath/Slaughter (2)	Morton (15)	Kemp (9)	Scheer (.467)
Aug. 26	at Georgia State	W, 3-1	Rath (25)	Sinness (42)	3 players (3)	Morton (16)	Kemp (5)	Zimmerman (.467)
Aug. 27	vs Marist	W, 3-1	Anderson (12)	Barrett (22)	Lanham (3)	Lanham (8)	Kemp (9)	Zimmerman (.692)
Aug. 31	vs Alabama State	W, 3-0	Rath (14)	Barrett (32)	Barrett/Morton (3)	Morton (10)	Rath (4)	Scheer (.500)
Sept. 6	vs Alabama A&M	W, 3-0	Zimmerman (11)	Sinness (29)	3 players (3)	Morton (14)	Kemp (4)	Scheer (.563)
Sept. 9	at UAB	W, 3-2	Anderson (24)	Sinness (49)	Anderson/Lanham (4)	Morton (18)	Kemp (7)	Harmon (.500)
Sept. 10	vs Troy	W, 3-1	Scheer (17)	Sinness (29)	Sinness/Slaughter (2)	Morton (25)	Harmon (10)	Scheer (.308)
Sept. 11	vs North Florida	W, 3-0	Anderson (15)	Barrett (28)	Barrett/Tanton (2)	Morton (16)	Kemp (4)	Scheer (.450)
Sept. 16	vs Southern Miss	W, 3-0	Anderson (14)	Barrett (33)	Tanton/Anderson (2)	Morton (16)	Harmon (3)	Zimmerman (.400)
Sept. 17	vs Jackson State	W, 3-0	3 players (12)	Barrett (41)	3 players (1)	Morton (10)	Kemp (3)	Harmon (.706)
Sept. 17	at Jacksonville State	W, 3-2	Scheer (22)	Barrett (57)	Lanham (3)	Morton (15)	Barrett (5)	Kemp (.563)
Sept. 24	at Alabama*	W, 3-1	Scheer (19)	Barrett (45)	Tanton/Morton (1)	Slaughter (22)	Harmon (7)	Scheer (.405)
Sept. 25	at Alabama*	W, 3-1	Scheer (20)	Barrett (39)	Lanham/Morton (3)	Morton (20)	Kemp (4)	Scheer (.486)
Sept. 28	vs Mississippi State*	W, 3-2	Anderson (26)	Barrett (47)	Anderson (2)	Morton (25)	Kemp (8)	Kemp (.500)
Oct. 5	at LSU*	L, 3-2	Anderson (22)	Barrett (60)	Barrett (2)	Morton (21)	Harmon (7)	Kemp (.471)
Oct. 8	vs Georgia*	W, 3-1	Scheer/Anderson (13)	Barrett (41)	Barrett (2)	Barrett (10)	Kemp (10)	Harmon (.583)
Oct. 9	vs Georgia*	W, 3-2	Anderson (21)	Barrett (60)	3 players (1)	Morton (26)	Kemp (10)	Harmon (.400)
Oct. 15	at Missouri*	W, 3-2	Anderson (20)	Barrett (46)	Lanham/Morton (3)	Morton (15)	Scheer/Kemp (3)	Kemp (.714)
Oct. 16	at Missouri*	L, 3-1	Anderson (22)	Barrett (46)	Anderson (4)	Morton (14)	Kemp (3)	Kemp (.381)
Oct. 21	vs Tennessee*	W, 3-1	Anderson (20)	Barrett (39)	Zimmerman (3)	Morton (12)	Kemp (8)	Kemp (.375)
Oct. 26	vs #14 Florida*	L, 3-0	Anderson (10)	Barrett (26)	Slaughter (2)	Morton (11)	Kemp (4)	Anderson (.172)
Oct. 29	at #20 Kentucky*	L, 3-0	Anderson (14)	Barrett (28)	Morton (2)	Morton (11)	3 players (2)	Harmon (.333)
Oct. 30	at #20 Kentucky*	L, 3-0	Anderson (10)	Barrett (27)	Lanham/Handel (1)	Slaughter (11)	Kemp (4)	Zimmerman (.455)
Nov. 5	vs Texas A&M*	W, 3-1	Anderson (13)	Barrett (44)	3 players (1)	Barrett (10)	Harmon (5)	Kemp (.467)
Nov. 6	vs Texas A&M*	W, 3-1	Anderson (21)	Barrett (48)	3 players (2)	Lanham (14)	Kemp (8)	Harmon (.353)
Nov. 11	at Ole Miss*	W, 3-1	Scheer (15)	Barrett (41)	Anderson (2)	Morton (12)	Kemp (9)	Kemp (.600)
Nov. 23	at South Carolina*	L, 3-2	Anderson (12)	Barrett (47)	Barrett (2)	Morton (16)	Kemp (10)	Harmon (.500)
Nov. 25	vs Arkansas*	L, 3-0	Anderson (9)	Barrett (21)	None	Barrett (11)	Kemp (8)	Zimmerman (.136)
Nov. 26	vs Arkansas*	L, 3-0	Scheer (9)	Barrett (25)	3 players (1)	Morton (13)	Kemp (5)	Kemp (.400)
Dec. 2	vs #14 Creighton	W, 3-2	Scheer (17)	Barrett (44)	Morton/Handel (2)	Morton (19)	Harmon (8)	Harmon (.389)
Dec. 3	vs #23 Houston	L, 3-2	Scheer (17)	Barrett (43)	Barrett (4)	Morton (22)	Kemp (7)	Kemp (.294)

2022 OVERALL STATISTICS

Game Records

Overall	Conference	Home	Away	Neutral
22 - 9	10 - 8	8 - 3	8 - 5	6 - 1

Team Box Score

##	Player	SP	Attack				Set			Serve			Dig			Blocking				PTS		
			K	K/S	E	TA	PCT	A	A/S	SA	SE	SA/S	RE	DIG	DIG/S	BS	BA	TOT/S	BLK/S		BE	BHE
1	Scheer, Madison	118	361	3.06	120	956	.252	3	0.03	0	0	0.00	3	45	0.38	3	46	49	0.42	4	2	387.0
2	Morton, Sarah	119	2	0.02	1	11	.091	110	0.92	30	31	0.25	21	457	3.84	0	0	0	0.00	0	1	32.0
3	Anderson, Akasha	121	428	3.54	211	1240	.175	13	0.11	27	41	0.22	50	225	1.86	4	56	60	0.50	5	0	487.0
4	Lanham, Fallan	122	1	0.01	1	13	.000	15	0.12	35	33	0.29	28	198	1.62	0	0	0	0.00	0	0	36.0
7	Rath, Rebekah	13	53	4.08	20	134	.246	1	0.08	3	6	0.23	2	14	1.08	1	10	11	0.85	0	0	62.0
8	Kemp, Kendal	122	204	1.67	66	430	.321	2	0.02	7	16	0.06	1	12	0.10	26	154	180	1.48	13	0	314.0
9	Slaughter, Zoe	122	2	0.02	1	4	.250	22	0.18	19	41	0.16	14	267	2.19	0	0	0	0.00	0	1	21.0
10	Barrett, Jackie	106	41	0.39	8	116	.284	1057	9.97	26	28	0.25	1	220	2.08	9	75	84	0.79	10	0	113.5
11	Sinness, Jordan	49	5	0.10	0	15	.333	163	3.33	16	22	0.33	0	51	1.04	2	13	15	0.31	1	0	29.5
12	Zimmerman, Bel	114	220	1.93	98	607	.201	2	0.02	4	11	0.04	3	54	0.47	3	63	66	0.58	10	0	258.5
14	Harmon, Chelsey	122	176	1.44	48	372	.344	5	0.04	0	4	0.00	1	17	0.14	4	103	107	0.88	6	0	231.5
17	Tanton, Cassidy	58	12	0.21	7	34	.147	0	0.00	11	28	0.19	2	19	0.33	0	0	0	0.00	0	0	23.0
22	Handel, Sydney	19	0	0.00	0	1	.000	0	0.00	6	11	0.32	3	10	0.53	0	0	0	0.00	0	0	6.0
AUBURN		122	1505	12.34	581	3933	.235	1393	11.42	184	272	1.51	165	1589	13.02	52	520	312	2.56	49	4	2,001.0
Opponents		122	1517	12.43	695	4102	.200	1395	11.43	165	267	1.35	184	1597	13.09	51	373	237.5	1.95	39	39	1,919.5

Team statistics

	AUB	OPP
ATTACK		
Kills	1505	1517
Errors	581	695
Total Attacks	3933	4102
Attack Pct	.235	.200
Kills/Set	12.34	12.43
SET		
Assists	1393	1395
Attempts	3919	4140
Assist Pct	.355	.337
Assists/Set	11.42	11.43
SERVE		
Aces	184	165
Errors	272	267
Attempts	2712	2578
Serve Pct	.900	.896
Aces/Set	1.51	1.35
SERVE RECEPTIONS		
Errors	165	184
Errors/Set	1.35	1.51
Attempts	2311	2440
Reception Pct	.929	.999
DEFENSE		
Digs	1589	1597
Digs/Set	13.02	13.09
BLOCKING		
Block solo	52	51
Block Assist	520	373
Total Blocks	312	237.5
Blocks/Set	2.56	1.95
Block Errors	49	39
Ball handling errors	4	39
ATTENDANCE		
Total	12970	16365
Dates/Avg Per Date	11/1179	13/1259
Neutral Site #/Avg	7/424	-
Current win streak	0	-
Home win streak	0	-

Team Results

Date	Opponent	Score	Score-by-set	Att.
08/26/2022	vs Belmont	W 3-0	25-23,25-19,25-19	106
08/26/2022	at Georgia St.	W 3-1	22-25,26-24,30-28,26-24	567
08/27/2022	vs Marist	W 3-1	25-20,16-25,25-9,25-12	109
08/31/2022	Alabama St.	W 3-0	25-17,25-16,25-18	1095
09/06/2022	Alabama A&M	W 3-0	25-9,25-14,25-13	637
09/09/2022	at UAB	W 3-2	22-25,25-22,25-18,23-25,15-7	425
09/10/2022	vs Troy	W 3-1	25-16,25-23,23-25,25-18	125
09/11/2022	vs North Florida	W 3-0	25-18,25-16,25-19	101
09/16/2022	vs Southern Miss.	W 3-0	25-23,25-21,25-21	193
09/17/2022	vs Jackson St.	W 3-0	25-20,26-24,25-16	182
09/17/2022	at Jacksonville St.	W 3-2	25-19,25-20,19-25,23-25,15-11	1256
* 09/24/2022	at Alabama	W 3-1	26-28,25-22,25-15,25-15	843
* 09/25/2022	at Alabama	W 3-1	16-25,25-16,25-14,25-14	1507
* 09/28/2022	Mississippi St.	W 3-2	19-25,25-18,23-25,25-16,15-7	1156
* 10/05/2022	at LSU	L 2-3	22-25,25-20,25-20,21-25,12-15	1207
* 10/08/2022	Georgia	W 3-1	25-22,26-24,23-25,25-23	998
* 10/09/2022	Georgia	W 3-2	25-22,25-21,15-25,24-26,16-14	1154
* 10/15/2022	at Missouri	W 3-2	21-25,21-25,25-17,25-17,15-12	450
* 10/16/2022	at Missouri	L 1-3	25-15,21-25,15-25,27-29	1100
* 10/21/2022	Tennessee	W 3-1	25-15,25-13,27-29,27-25	1528
* 10/26/2022	Florida	L 0-3	23-25,18-25,15-25	1654
* 10/29/2022	at Kentucky	L 0-3	21-25,19-25,16-25	2472
* 10/30/2022	at Kentucky	L 0-3	13-25,20-25,15-25	2355
* 11/05/2022	Texas A&M	W 3-1	25-22,25-22,22-25,25-21	1143
* 11/06/2022	Texas A&M	W 3-1	25-21,29-27,24-26,33-31	1237
* 11/11/2022	at Ole Miss	W 3-1	27-25,15-25,25-15,25-23	612
* 11/23/2022	at South Carolina	L 2-3	26-24,18-25,25-20,16-25,10-15	918
* 11/25/2022	Arkansas	L 0-3	18-25,10-25,23-25	1357
* 11/26/2022	Arkansas	L 0-3	21-25,17-25,17-25	1011
12/02/2022	at Creighton	W 3-2	21-25,25-21,25-20,16-25,15-11	2653
12/03/2022	vs Houston	L 2-3	27-25,15-25,25-12,23-25,8-15	2150

2022 CONFERENCE STATISTICS

Game Records

Overall	Conference	Home	Away	Neutral
10 - 8	10 - 8	6 - 3	4 - 5	0 - 0

Team Box Score

##	Player	SP	Attack					Set		Serve			Dig		Blocking					PTS		
			K	K/S	E	TA	PCT	A	A/S	SA	SE	SA/S	RE	DIG	DIG/S	BS	BA	TOT/S	BLK/S		BE	BHE
1	Scheer, Madison	72	211	2.93	86	605	.207	1	0.01	0	0	0.00	2	27	0.38	2	33	35	0.49	1	1	229.5
2	Morton, Sarah	69	2	0.03	0	5	.400	49	0.71	14	21	0.20	11	254	3.68	0	0	0	0.00	0	1	16.0
3	Anderson, Akasha	72	271	3.76	143	794	.161	12	0.17	17	27	0.24	23	146	2.03	2	32	34	0.47	3	0	306.0
4	Lanham, Fallan	72	1	0.01	1	6	.000	8	0.11	18	22	0.25	12	118	1.64	0	0	0	0.00	0	0	19.0
7	Rath, Rebekah	1	0	0.00	0	0	.000	0	0.00	0	0	0.00	0	0	0.00	0	0	0	0.00	0	0	0.0
8	Kemp, Kendal	72	138	1.92	39	266	.372	1	0.01	0	1	0.00	0	8	0.11	18	92	110	1.53	9	0	202.0
9	Slaughter, Zoe	72	1	0.01	1	2	.000	16	0.22	9	27	0.13	11	165	2.29	0	0	0	0.00	0	0	10.0
10	Barrett, Jackie	72	31	0.43	4	80	.338	721	10.01	14	19	0.19	0	153	2.13	5	50	55	0.76	6	0	75.0
11	Sinness, Jordan	31	0	0.00	0	1	.000	0	0.00	10	15	0.32	0	12	0.39	0	0	0	0.00	0	0	10.0
12	Zimmerman, Bel	72	124	1.72	67	377	.151	2	0.03	3	3	0.04	2	31	0.43	3	37	40	0.56	4	0	148.5
14	Harmon, Chelsey	72	102	1.42	35	221	.303	1	0.01	0	4	0.00	1	7	0.10	0	57	57	0.79	3	0	130.5
17	Tanton, Cassidy	29	0	0.00	0	1	.000	0	0.00	3	16	0.10	0	5	0.17	0	0	0	0.00	0	0	3.0
22	Handel, Sydney	7	0	0.00	0	0	.000	0	0.00	1	3	0.14	3	2	0.29	0	0	0	0.00	0	0	1.0
AUBURN		72	881	12.24	376	2358	.214	811	11.26	89	158	1.24	98	928	12.89	30	301	180.5	2.51	26	2	1,150.5
Opponents		72	940	13.06	390	2417	.228	859	11.93	98	165	1.36	89	950	13.19	29	275	166.5	2.31	29	22	1,204.5

Team statistics

	AUB	OPP
ATTACK		
Kills	881	940
Errors	376	390
Total Attacks	2358	2417
Attack Pct	.214	.228
Kills/Set	12.24	13.06
SET		
Assists	811	859
Attempts	2340	2418
Assist Pct	.347	.355
Assists/Set	11.26	11.93
SERVE		
Aces	89	98
Errors	158	165
Attempts	1566	1587
Serve Pct	.899	.896
Aces/Set	1.24	1.36
SERVE RECEPTIONS		
Errors	98	89
Errors/Set	1.36	1.24
Attempts	1422	1408
Reception Pct	.931	.999
DEFENSE		
Digs	928	950
Digs/Set	12.89	13.19
BLOCKING		
Block solo	30	29
Block Assist	301	275
Total Blocks	180.5	166.5
Blocks/Set	2.51	2.31
Block Errors	26	29
Ball handling errors	2	22
ATTENDANCE		
Total	11238	11464
Dates/Avg Per Date	9/1249	9/1274
Neutral Site #/Avg	0/0	-
Current win streak	0	-
Home win streak	0	-

Team Results

Date	Opponent	Score	Score-by-set	Att.
* 09/24/2022	at Alabama	W 3-1	26-28,25-22,25-15,25-15	843
* 09/25/2022	at Alabama	W 3-1	16-25,25-16,25-14,25-14	1507
* 09/28/2022	Mississippi St.	W 3-2	19-25,25-18,23-25,25-16,15-7	1156
* 10/05/2022	at LSU	L 2-3	22-25,25-20,25-20,21-25,12-15	1207
* 10/08/2022	Georgia	W 3-1	25-22,26-24,23-25,25-23	998
* 10/09/2022	Georgia	W 3-2	25-22,25-21,15-25,24-26,16-14	1154
* 10/15/2022	at Missouri	W 3-2	21-25,21-25,25-17,25-17,15-12	450
* 10/16/2022	at Missouri	L 1-3	25-15,21-25,15-25,27-29	1100
* 10/21/2022	Tennessee	W 3-1	25-15,25-13,27-29,27-25	1528
* 10/26/2022	Florida	L 0-3	23-25,18-25,15-25	1654
* 10/29/2022	at Kentucky	L 0-3	21-25,19-25,16-25	2472
* 10/30/2022	at Kentucky	L 0-3	13-25,20-25,15-25	2355
* 11/05/2022	Texas A&M	W 3-1	25-22,25-22,22-25,25-21	1143
* 11/06/2022	Texas A&M	W 3-1	25-21,29-27,24-26,33-31	1237
* 11/11/2022	at Ole Miss	W 3-1	27-25,15-25,25-15,25-23	612
* 11/23/2022	at South Carolina	L 2-3	26-24,18-25,25-20,16-25,10-15	918
* 11/25/2022	Arkansas	L 0-3	18-25,10-25,23-25	1357
* 11/26/2022	Arkansas	L 0-3	21-25,17-25,17-25	1011

2022 STATISTICAL LEADERS

Attack (by PCT)

#	Player	S	K	K/S	E	TA	PCT
14	Harmon, Chelsey	122	176	1.44	48	372	.344
11	Sinness, Jordan	49	5	0.10	0	15	.333
8	Kemp, Kendal	122	204	1.67	66	430	.321
10	Barrett, Jackie	106	41	0.39	8	116	.284
1	Scheer, Madison	118	361	3.06	120	956	.252
9	Slaughter, Zoe	122	2	0.02	1	4	.250
7	Rath, Rebekah	13	53	4.08	20	134	.246
12	Zimmerman, Bel	114	220	1.93	98	607	.201
3	Anderson, Akasha	121	428	3.54	211	1240	.175
17	Tanton, Cassidy	58	12	0.21	7	34	.147
2	Morton, Sarah	119	2	0.02	1	11	.091
4	Lanham, Fallan	122	1	0.01	1	13	.000
22	Handel, Sydney	19	0	0.00	0	1	.000

Kill (by K)

#	Player	S	K	K/S
3	Anderson, Akasha	121	428	3.54
1	Scheer, Madison	118	361	3.06
12	Zimmerman, Bel	114	220	1.93
8	Kemp, Kendal	122	204	1.67
14	Harmon, Chelsey	122	176	1.44
7	Rath, Rebekah	13	53	4.08
10	Barrett, Jackie	106	41	0.39
17	Tanton, Cassidy	58	12	0.21
11	Sinness, Jordan	49	5	0.10
9	Slaughter, Zoe	122	2	0.02
2	Morton, Sarah	119	2	0.02
4	Lanham, Fallan	122	1	0.01
22	Handel, Sydney	19	0	0.00

Set (by A/S)

#	Player	S	A	A/S	TA	PCT
10	Barrett, Jackie	106	1057	9.97	2717	.385
11	Sinness, Jordan	49	163	3.33	450	.353
2	Morton, Sarah	119	110	0.92	397	.270
9	Slaughter, Zoe	122	22	0.18	72	.306
4	Lanham, Fallan	122	15	0.12	80	.175
3	Anderson, Akasha	121	13	0.11	75	.147
7	Rath, Rebekah	13	1	0.08	7	.143
14	Harmon, Chelsey	122	5	0.04	40	.125
1	Scheer, Madison	118	3	0.03	29	.103
12	Zimmerman, Bel	114	2	0.02	30	.067
8	Kemp, Kendal	122	2	0.02	17	.059
17	Tanton, Cassidy	58	0	0.00	3	.000
22	Handel, Sydney	19	0	0.00	2	.000

Serve (by SA/S)

#	Player	S	SA	SE	SA/S	TA	PCT
11	Sinness, Jordan	49	16	22	0.33	161	.863
22	Handel, Sydney	19	6	11	0.32	64	.828
4	Lanham, Fallan	122	35	33	0.29	496	.933
2	Morton, Sarah	119	30	31	0.25	450	.931
10	Barrett, Jackie	106	26	28	0.25	337	.917
7	Rath, Rebekah	13	3	6	0.23	48	.875
3	Anderson, Akasha	121	27	41	0.22	390	.895
17	Tanton, Cassidy	58	11	28	0.19	170	.835
9	Slaughter, Zoe	122	19	41	0.16	389	.895
8	Kemp, Kendal	122	7	16	0.06	67	.761
12	Zimmerman, Bel	114	4	11	0.04	73	.849
14	Harmon, Chelsey	122	0	4	0.00	63	.937
1	Scheer, Madison	118	0	0	0.00	4	1.000

Block (by BLK/S)

#	Player	S	BS	BA	TOTAL	BLK/S
8	Kemp, Kendal	122	26	154	180.0	1.48
14	Harmon, Chelsey	122	4	103	107.0	0.88
7	Rath, Rebekah	13	1	10	11.0	0.85
10	Barrett, Jackie	106	9	75	84.0	0.79
12	Zimmerman, Bel	114	3	63	66.0	0.58
3	Anderson, Akasha	121	4	56	60.0	0.50
1	Scheer, Madison	118	3	46	49.0	0.42
11	Sinness, Jordan	49	2	13	15.0	0.31
22	Handel, Sydney	19	0	0	0.0	0.00
4	Lanham, Fallan	122	0	0	0.0	0.00
2	Morton, Sarah	119	0	0	0.0	0.00
17	Tanton, Cassidy	58	0	0	0.0	0.00
9	Slaughter, Zoe	122	0	0	0.0	0.00

Defense (by DIG/S)

#	Player	S	DIG	DIG/S	BHE
2	Morton, Sarah	119	457	3.84	1
9	Slaughter, Zoe	122	267	2.19	1
10	Barrett, Jackie	106	220	2.08	0
3	Anderson, Akasha	121	225	1.86	0
4	Lanham, Fallan	122	198	1.62	0
7	Rath, Rebekah	13	14	1.08	0
11	Sinness, Jordan	49	51	1.04	0
22	Handel, Sydney	19	10	0.53	0
12	Zimmerman, Bel	114	54	0.47	0
1	Scheer, Madison	118	45	0.38	2
17	Tanton, Cassidy	58	19	0.33	0
14	Harmon, Chelsey	122	17	0.14	0
8	Kemp, Kendal	122	12	0.10	0

Points (by POINTS/S)

#	Player	S	POINTS	POINTS/S
7	Rath, Rebekah	13	62.0	4.77
3	Anderson, Akasha	121	487.0	4.02
1	Scheer, Madison	118	387.0	3.28
8	Kemp, Kendal	122	314.0	2.57
12	Zimmerman, Bel	114	258.5	2.27
14	Harmon, Chelsey	122	231.5	1.90
10	Barrett, Jackie	106	113.5	1.07
11	Sinness, Jordan	49	29.5	0.60
17	Tanton, Cassidy	58	23.0	0.40
22	Handel, Sydney	19	6.0	0.32
4	Lanham, Fallan	122	36.0	0.30
2	Morton, Sarah	119	32.0	0.27
9	Slaughter, Zoe	122	21.0	0.17

Receptions (by PCT)

#	Player	S	RE	RE/S	TA	PCT
9	Slaughter, Zoe	122	14	0.11	518	.973
12	Zimmerman, Bel	114	3	0.03	82	.963
2	Morton, Sarah	119	21	0.18	542	.961
4	Lanham, Fallan	122	28	0.23	466	.940
1	Scheer, Madison	118	3	0.03	37	.919
3	Anderson, Akasha	121	50	0.41	545	.908
7	Rath, Rebekah	13	2	0.15	21	.905
8	Kemp, Kendal	122	1	0.01	9	.889
22	Handel, Sydney	19	3	0.16	25	.880
14	Harmon, Chelsey	122	1	0.01	8	.875
17	Tanton, Cassidy	58	2	0.03	16	.875
10	Barrett, Jackie	106	1	0.01	6	.833
11	Sinness, Jordan	49	0	0.00	0	.000
TM	TEAM	-	36	0.30	-	-

TEAM KILLS - SIDEOUT ERA

	KILLS	OPPONENT (SETS)	DATE
1.	114	vs. Kentucky (5)	10/5/97
2.	107	at Tulane (5)	11/10/90
3.	99	vs. Georgia Tech (5)	9/14/95
4.	96	vs. Butler (5)	9/10/94
5.	95	vs. Pittsburgh (5)	9/13/91
6.	94	vs. Lamar (5)	9/24/88
7.	91	vs. LSU (5)	11/13/94
8.	90	at Ole Miss (5)	10/13/96
9.	89	vs. Arkansas (4)	10/20/96
10.	88	at Rhode Island (5)	9/5/97
	88	vs. Mississippi State (4)	10/24/97
	88	vs. Mississippi State (5)	11/12/00

TEAM KILLS - RALLY ERA

	KILLS	OPPONENT (SETS)	DATE
1.	84	vs. Virginia Tech (5)	9/2/06
	84	at Georgia (5)	9/17/06
3.	82	vs. Georgia Southern (5)	9/2/05
4.	81	at Mercer (5)	9/8/04
5.	80	vs. Kentucky (5)	10/1/06
	80	vs. Ole Miss (5)	10/24/03
7.	79	at Alabama (5)	10/30/11
8.	77	vs. Ole Miss (5)	10/26/18
9.	75	at South Carolina (5)	11/16/14
	75	at Georgia (5)	11/2/14
	75	vs. Green Bay (5)	9/5/13
	75	vs. Tennessee State (4)	8/25/07
	75	vs. Arkansas (5)	10/8/04
	75	at LSU (5)	10/25/15

TEAM ASSISTS - RALLY ERA

	AST.	OPPONENT (SETS)	DATE
1.	79	vs. Georgia Southern (5)	9/2/05
2.	77	at Mercer (5)	9/8/04
3.	76	at Georgia (5)	9/17/06
4.	74	vs. South Carolina (5)	10/5/14
	74	at Alabama (5)	10/30/11
	74	vs. Ole Miss (5)	9/24/03
7.	72	at Georgia (5)	11/2/14
	72	vs. Tennessee State (4)	8/25/07
	72	at LSU (5)	10/25/15
	72	vs. Ole Miss (5)	10/26/18

TEAM DIGS - RALLY ERA

	DIGS	OPPONENT (SETS)	DATE
1.	112	at LSU (5)	11/15/13
2.	109	at LSU (5)	10/25/15
3.	107	vs. Northwestern State (5)	9/20/14
4.	105	vs. Nicholls St. (4)	9/17/21
5.	99	at Ole Miss (5)	10/18/16
6.	97	vs. Georgia (4)	11/7/07
	97	vs. LSU (5)	10/5/15
	97	at Tennessee (5)	10/4/17
9.	94	at Tennessee (5)	11/16/12
10.	93	at Georgia (5)	9/17/06
	93	vs. Tennessee (4)	11/9/17

TEAM ACES - RALLY ERA

	ACES	OPPONENT (SETS)	DATE
1.	18	vs. Delaware State (3)	9/13/03
2.	16	vs. Tennessee State (4)	8/25/07
	16	vs. Southeastern Louisiana (3)	9/9/06
4.	14	vs. Troy (3)	8/27/10
	14	vs. Alabama State (3)	9/5/03
6.	13	vs. Tennessee State (5)	8/30/19
	13	at SMU (5)	8/26/06
	13	vs. Mississippi State (5)	10/26/03
9.	12	vs. Louisiana Tech (4)	9/7/07
	12	at Lafayette (3)	9/12/03
	12	vs. Grambling State (3)	9/1/05

TEAM TOTAL BLOCKS - RALLY ERA

	BLK	OPPONENT (SETS)	DATE
1.	18.0	vs. Georgia (5)	10/9/22
	18.0	vs. Alabama (5)	10/2/21
	18.0	vs. South Florida (5)	9/13/14
4.	17.0	vs. Troy (4)	9/10/22
	17.0	at Arkansas (5)	10/10/21
	17.0	at South Carolina (4)	10/29/20
	17.0	at Georgia Southern (5)	9/12/09
	17.0	vs. Mississippi State (5)	11/5/04
9.	16.5	at Alabama (4)	9/24/22
10.	16.0	vs. Tennessee (4)	11/9/14
	16.0	vs. Ole Miss (5)	10/24/03

TEAM HITTING - ALL ERAS

	PCT.	OPPONENT (SETS)	DATE
1.	.530 (41-6-66)	vs. LSU (3)	11/2/97
2.	.514 (65-11-105)	at Ole Miss (3)	10/18/98
3.	.489 (52-6-94)	vs. Alabama A&M (3)	8/29/09
4.	.487 (46-8-78)	vs. Navy (3)	9/15/00
5.	.485 (38-6-66)	vs. Drexel (3)	9/10/93
	.485 (53-5-99)	vs. Eastern Illinois (3)	9/1/18
7.	.474 (52-7-95)	at South Carolina (3)	10/26/12
8.	.472 (40-6-72)	vs. Delaware State (3)	9/13/03
9.	.471 (54-5-104)	vs. Mississippi State (3)	11/29/14
10.	.469 (35-5-64)	vs. Alabama A&M (3)	8/28/09
11.	.468 (N/A)	vs. Alabama State (3)	10/8/87
12.	.462 (52-9-93)	at Georgia State (3)	8/28/07
13.	.455 (55-9-101)	vs. Alabama (3)	11/10/98
14.	.450 (42-6-80)	vs. Mercer (3)	9/5/13
15.	.448 (50-11-87)	vs. Grambling (3)	9/1/05
16.	.440 (43-10-75)	vs. Chicago State (3)	9/11/99
	.440 (55-11-100)	vs. UAB (3)	9/3/00
18.	.429 (49-10-91)	at LSU (3)	9/26/97
19.	.420 (45-8-88)	vs. Lipscomb (3)	9/20/03
20.	.422 (43-8-83)	at Georgia Tech (3)	8/25/17

Records set in the Brent Crouch era are listed in **BOLD**.

TEAM MATCH RECORDS (BY SET)

KILLS

SETS	KILLS	OPPONENT	DATE
3s	76	vs. LSU	10/18/96
4s	89	vs. Arkansas	10/20/9
5s	114	vs. Kentucky	10/5/97

ATTACKS

SETS	ATT.	OPPONENT	DATE
3s	160	vs. South Carolina	10/19/97
4s	213	at Ole Miss	10/3/93
5s	229	at LSU	11/15/13

HITTING PERCENTAGE (MIN. 10 KILLS)

SETS	PCT.	OPPONENT	DATE
3s	.530 (41-6-66)	vs. LSU	11/2/97
4s	.365 (70-20-137)	vs. Alabama	11/6/97
5s	.362 (74-20-149)	at Minnesota	9/19/98

BLOCKS - SOLO

SETS	BLK	OPPONENT	DATE
3s	8 (3x)	last, vs. IUPUI	9/4/98
4s	10	at Tennessee Tech	10/14/88
5s	13	vs. NC State	9/21/91

BLOCKS - ASSISTS

SETS	BLK	OPPONENT	DATE
3s	27	at Samford	10/3/00
4s	32	at South Carolina	10/29/20
5s	28 (3x)	last, vs. Mississippi State	11/12/00

TOTAL BLOCKS

SETS	BLK	OPPONENT	DATE
3s	15.0	vs. Alabama	11/5/93
	15.0	at South Carolina	10/17/10
4s	17.0	vs. Troy	9/10/22
	17.0	at South Carolina	10/29/20
5s	18.0	vs. Georgia	10/9/22
	18.0	vs. South Florida	9/13/14

DIGS

SETS	DIGS	OPPONENT	DATE
3s	76	at Ole Miss	11/16/07
4s	115	vs. NE Louisiana	9/12/86
5s	117	vs. Central Florida	11/8/86

ASSISTS

SETS	AST	OPPONENT	DATE
3s	60	vs. Pittsburgh	8/31/97
4s	77	vs. Mississippi State	10/24/97
5s	100	vs. Kentucky	10/5/97

SERVICE ACES

SETS	ACE	OPPONENT	DATE
3s	18	vs. Delaware State	9/13/03
4s	16	vs. Tennessee State	8/25/07
5s	13	vs. Tennessee State	8/30/19
	13	vs. Mississippi State	10/26/03

INDIVIDUAL KILLS

KILLS	PLAYER-OPPONENT (SETS)	DATE
1. 30	Ashlee Johns vs. Arkansas (5)	10/8/04
2. 29	Rebekah Rath at Arkansas (4)	10/9/21
3. 27	Kelly Fidero at Alabama (5)	10/30/11
4. 26	Akasha Anderson vs Mississippi St. (5)	9/28/22
	Jessica Glover at Georgia (5)	9/17/06
	Camila Lago vs. Mississippi State (5)	10/26/03
7. 25	Macy Reece vs. South Florida (5)	9/13/14
	Rachel Shanks vs. Georgia (4)	11/7/07
	Jelena Sekulic at Arkansas (5)	10/7/07
	Rachel Shanks vs. Virginia Tech (5)	9/2/06
	Jennifer Amobi vs. Tennessee (4)	11/19/04
25	Rebekah Rath at Georgia St. (4)	8/26/22

INDIVIDUAL HITTING PCT. (MIN. 12 KILLS)

PCT.	PLAYER-OPPONENT (SETS)	DATE	
1. .773 (17-0-22)	Ashlee Johns vs. Delaware State (3)	9/13/03	
2. .722 (14-1-18)	Jonelle Wallace vs. Beth.-Cook. (3)	9/5/08	
3. .706 (12-0-17)	Chelsey Harmon vs. Jackson St. (3)	9/17/22	
4. .688 (12-1-16)	Shaina White vs. American (3)	9/8/18	
5. .667 (16-0-24)	Jonelle Wallace at Georgia (5)	11/24/10	
6. .650 (13-0-20)	Breanna Barksdale at Arkansas (5)	10/30/15	
7. .647 (13-1-17)	Alyssa Davis vs Jacksonville State (5)	9/8/09	
8. .632 (12-0-19)	Courtney McDonald vs. Kentucky (5)	10/23/11	
	Camila Jersonsky vs. Austin Peay (4)	9/3/11	
10. .619 (14-1-21)	Camila Jersonsky vs. Miss. State (3)	11/3/13	
	Breanna Barksdale vs. Samford (4)	8/29/15	
	.619 (14-1-21)	Shaina White vs. Furman (4)	8/26/17

INDIVIDUAL TOTAL BLOCKS

BLK (S-A)	PLAYER-OPPONENT (SETS)	DATE	
1. 12 (2-10)	Tatum Shipes vs Alabama (4)	10/2/21	
	Breanna Barksdale at Florida (4)	11/23/16	
3. 10 (1-9)	Kendal Kemp vs. Georgia (5)	10/9/22	
	10 (1-9) Kendal Kemp vs. Georgia (4)	10/8/22	
	10 (2-8) Chelsey Harmon vs Troy (4)	9/10/22	
	10 (1-9) Tatum Shipes at Arkansas (4)	10/9/21	
7. 10 (0-10)	Stephanie Campbell vs. St. John's (5)	9/19/15	
	Julie Bosler vs. South Carolina (5)	9/15/06	
	Julie Bosler vs. Mississippi State (5)	11/5/04	
	Julie Bosler vs. Mississippi State (5)	10/2/03	
	10 (1-9)	Bailey Veit vs. Mercer (5)	9/20/03

INDIVIDUAL SERVICE ACES

ACES	PLAYER-OPPONENT (SETS)	DATE	
1. 7	Katherine Culwell vs. Tennessee (3)	11/22/13	
	Maira Magallon vs. Delaware State (3)	9/13/03	
3. 6	Brenna McLroy at Missouri (4)	10/19/18	
	6	Whitney Jacob vs. Arkansas (5)	10/15/06
5. 5	Rebekah Rath at Texas A&M (5)	11/5/21	
6. 5	Jesse Earl at Florida State (5)	9/16/17	
	5	Jesse Earl at Georgia (4)	10/2/16
	5	Alexa Filley vs. LSU (5)	10/4/15
	5	Liz Crouch vs. Troy (3)	8/27/10
	5	Rachel Shanks at South Alabama (3)	9/9/06
	5	Whitney Jacob vs. Louisiana-Monroe (3)	8/25/06
	5	Whitney Jacob vs. Mississippi State (4)	10/23/05
	5	Rachel Shanks vs. Clemson (3)	9/17/05
	5	Whitney Jacob vs. Grambling (3)	9/1/05
	5	Maira Magallon vs. Mississippi State (5)	10/26/03
	5	Maira Magallon at Lafayette (3)	9/12/03
	5	Maira Magallon vs. Bethune-Cookman (4)	9/6/03
	5	Jennifer Buckert vs. Alabama State (3)	9/5/03
	5	Brittany Diaz vs. Marist (4)	9/7/02
	5	Laura Hastings vs. Western Michigan (3)	9/1/01
	5	Grace Boyd at South Carolina (3)	10/26/01

INDIVIDUAL ASSISTS

AST	PLAYER-OPPONENT (SETS)	DATE	
1. 76	Jordan Elliott at Mercer (5)	9/8/04	
2. 71	Maira Magallon vs. Ole Miss (5)	10/24/03	
3. 68	Michele Ashmore vs. Georgia Southern (5)	9/2/05	
4. 66	Joanna Pappas at Georgia (5)	9/17/06	
5. 65	Maira Magallon vs. Arkansas (5)	10/8/04	
	65	Nicki Gerig vs. Tennessee State (4)	8/25/07
7. 64	Jordan Elliott vs. Iowa State (5)	9/4/04	
8. 63	Alexa Filley vs. South Carolina (5)	10/5/14	
	63	Maira Magallon vs. Xavier (4)	11/26/04
	63	Sara Shanks at Arkansas (5)	10/7/07

INDIVIDUAL DIGS

DIGS	PLAYER-OPPONENT (SETS)	DATE	
1. 37	Payton White vs. Butler (5)	8/31/19	
2. 36	Jelena Sekulic at Kentucky (5)	11/17/06	
	Jesse Earl at Tennessee (5)	10/4/17	
4. 34	Bailey Veit vs. Georgia Southern (5)	9/2/05	
	34	Jesse Earl at Mississippi State (5)	11/13/15
6. 33	Bella Rosenthal vs. Missouri (5)	10/17/21	
7. 33	Sarah Wroblecky at LSU (5)	11/15/13	
	33	Jesse Earl at LSU (4)	11/15/17
9. 31	Liz Crouch at Mississippi State (3)	9/18/09	
10. 30	Liz Crouch vs. Georgia (4)	11/7/07	
	30	Jesse Earl at Florida State (5)	9/16/17

Records set in the Brent Crouch era are listed in **BOLD**

INDIVIDUAL MATCH RECORDS (BY SET)

KILLS

SETS	KILLS	PLAYER-OPPONENT	DATE
3s	25	Brooke McCarley vs. UAB	9/7/99
4s	29	Rebekah Rath at Arkansas	10/9/21
	29	Brooke McCarley at Kansas	9/11/99
5s	34	Bridgitte Sims vs. Tulane	11/10/90

ATTACKS

SETS	ATT.	PLAYER-OPPONENT	DATE
3s	56	Allyson Beecroft at Florida	9/30/94
4s	75	Rebekah Rath at Arkansas	10/9/21
5s	84	Rebekah Rath at Texas A&M	11/4/17

HITTING PERCENTAGE (MIN. 10 KILLS)

SETS	PCT.	PLAYER	DATE
3s	.773 (17-0-22)	Ashlee Johns	9/13/03
4s	.813 (13-0-16)	Laura Cookley	9/28/91
5s	.714 (10-0-14)	Dalia Naidzinaviciut	9/2/05

BLOCKS - SOLO

SETS	BLK	PLAYER-OPPONENT	DATE
3s	5	Gina Thomas vs. Georgetown	9/13/90
4s	5	Gina Thomas vs. Florida	10/12/90
5s	6	Tory Gutierrez vs. Louisville	10/21/89
	6	Lisa Harvey vs. Tuskegee	10/7/86

BLOCKS - ASSISTS

SETS	BLK	PLAYER-OPPONENT	DATE
3s	9 (3x)	last, Kendal Kemp vs Belmont	8/26/22
4s	11	Tory Gutierrez vs. Georgia State	10/3/89
5s	10	Jaunelle Hamilton vs. Mississippi St.	11/12/00
	10	Stephanie Campbell vs. St. John's	9/19/15

TOTAL BLOCKS

SETS	BLK	PLAYER-OPPONENT	DATE
3s	9 (4x)	last, Kendal Kemp vs. Belmont	8/26/22
4s	14	Tory Gutierrez vs. Georgia State	10/3/89
5s	12	Jaunelle Hamilton vs. Mississippi St.	11/12/00
	12	La'Toi Finley at Georgia Tech	9/14/95

DIGS

SETS	DIGS	PLAYER-OPPONENT	DATE
3s	31	Liz Crouch at Mississippi State	9/18/09
4s	34	Gretchen Thompson vs. ULM	9/12/86
5s	37	Payton White vs. Butler	8/31/19

ASSISTS

SETS	AST	PLAYER-OPPONENT	DATE
3s	64	Piper Craig vs. LSU	10/18/96
4s	76	Piper Craig vs. Arkansas	10/20/96
5s	92	Piper Craig vs. Kentucky	10/5/97

SERVICE ACES

SETS	ACE	PLAYER-OPPONENT	DATE
3s	10	Jennifer Kleyn vs. Seneca	10/5/90
4s	8	Terri Duckworth at UAB	11/1/88
5s	10	Jennifer Kleyn at Ole Miss	9/28/90



#1 MADISON SCHEER

**PIN HITTER | 6-1 | SOPHOMORE
EUREKA, MO. (EUREKA)**

SCHEER'S HIGHLIGHTS:

- 2022 SEC All-Freshman Team
- Career-high 22 kills on .409 hitting versus Jacksonville State
- Named SEC Freshman of the Week and Player of the Week 9/26
- Hit over .300 11 times, over .400 seven times and over .500 twice in 2022
- Made her collegiate debut on Aug. 26 vs. Belmont

CATEGORY	CAREER HIGH	OPPONENT/DATE
Kills	22	at Jacksonville State (9/17/22)
Attempts	47	vs Georgia (10/9/22)
Hitting Percentage (Min. 10 ATT.)	.563	vs Alabama A&M (9/6/22)
Assists	1 (3x)	last vs Georgia (10/9/22)
Digs	4	at LSU (10/5/22)
Blocks	6	at Alabama (9/24/22)
Aces	--	--
Points	23.0	at Jacksonville State (9/17/22)

CATEGORY	SEASON HIGH	OPPONENT/DATE
Kills	--	--
Attempts	--	--
Hitting Percentage (Min. 10 ATT.)	--	--
Assists	--	--
Digs	--	--
Blocks	--	--
Aces	--	--
Points	--	--

GAME BY GAME

CAREER STATS

SEASON	TEAM	SM-MP	K	K/S	E	TA	PCT	A	A/S	SA	SA/S	SE	DIG	D/S	RE	BS	BA	TB	B/S	BE	BHE	PTS	PTS/S
2022-23	AUB	118-30	361	3.06	120	956	.252	3	0.03	0	0.00	0	45	0.38	3	3	46	49	0.42	4	2	387.0	3.28
TOTAL		118 - 30	361	3.06	120	956	.252	3	0.03	0	0.00	0	45	0.38	3	3	46	49	0.42	4	2	387.0	3.28



#2 SARAH MORTON

**LIBERO | 5-7 | SOPHOMORE
MUNSTER, IND. (MUNSTER)**

MORTON'S HIGHLIGHTS:

- Recorded 10+ digs in 26 of the 29 matches she's played in 2022
- Grabbed a career-high 26 digs vs Georgia on Oct. 9
- Named SEC Defensive Player of the Week 9/26
- Has started every game at libero when in the lineup
- Made her collegiate debut on Aug. 26 vs. Belmont

CATEGORY	CAREER HIGH	OPPONENT/DATE
Kills	1 (2x)	last at Kentucky (10/29/22)
Attempts	2 (2x)	last at Missouri (10/15/22)
Hitting Percentage (Min. 10 ATT.)	--	--
Assists	9	at Georgia State (8/26/22)
Digs	26	vs Georgia (10/9/22)
Blocks	--	--
Aces	3 (4x)	last at Missouri (10/15/22)
Points	3 (4x)	last at Missouri (10/15/22)

CATEGORY	SEASON HIGH	OPPONENT/DATE
Kills	--	--
Attempts	--	--
Hitting Percentage (Min. 10 ATT.)	--	--
Assists	--	--
Digs	--	--
Blocks	--	--
Aces	--	--
Points	--	--

GAME BY GAME

CAREER STATS

SEASON	TEAM	SM-MP	K	K/S	E	TA	PCT	A	A/S	SA	SA/S	SE	DIG	D/S	RE	BS	BA	TB	B/S	BE	BHE	PTS	PTS/S
2022-23	AUB	119-30	2	0.02	1	11	.091	110	0.92	30	0.25	31	457	3.84	21	0	0	0	0.00	0	1	32.0	0.27
TOTAL		119 - 30	2	0.02	1	11	.091	110	0.92	30	0.25	31	457	3.84	21	0	0	0	0.00	0	1	32.0	0.27



#3 AKASHA ANDERSON

**PIN HITTER | 6-3 | FRESHMAN
RESTON, VA. (HERNDON)**



ANDERSON'S HIGHLIGHTS:

- Named to All-SEC Team and All-Freshman Team
- Named AVCA South Region Freshman of the Year in 2022
- Had career-high 26 kills in win over Mississippi State
- Hit .526 with a team-high 12 kills vs. Marist
- Recorded 24 kills and 14 digs at UAB for first double-double
- Had eight double-doubles in 2022
- 2x SEC Freshman of the Week
- Made her collegiate debut on Aug. 26 vs. Belmont

CATEGORY	CAREER HIGH	OPPONENT/DATE
Kills	26	vs Mississippi State (9/28/22)
Attempts	77	at LSU (10/5/22)
Hitting Percentage (Min. 10 ATT.)	.526	vs Marist (8/27/22)
Assists	3	at Missouri (10/15/22)
Digs	18	at Alabama (9/25/22)
Blocks	5	vs Troy (9/10/22)
Aces	4 (2x)	last at Missouri (10/15/22)
Points	29.5 (2x)	last vs Mississippi State (9/28/22)

CATEGORY	SEASON HIGH	OPPONENT/DATE
Kills	--	--
Attempts	--	--
Hitting Percentage (Min. 10 ATT.)	--	--
Assists	--	--
Digs	--	--
Blocks	--	--
Aces	--	--
Points	--	--

GAME BY GAME

CAREER STATS

SEASON	TEAM	SM-MP	K	K/S	E	TA	PCT	A	A/S	SA	SA/S	SE	DIG	D/S	RE	BS	BA	TB	B/S	BE	BHE	PTS	PTS/S
2022-23	AUB	121-31	428	3.54	211	1240	.175	13	0.11	27	0.22	41	225	1.86	50	4	56	60	0.50	5	0	487.0	4.02
TOTAL		121 - 31	428	3.54	211	1240	.175	13	0.11	27	0.22	41	225	1.86	50	4	56	60	0.50	5	0	487.0	4.02

#4 FALLAN LANHAM

LIBERO | 5-8 | JUNIOR
LOUISVILLE, KY. (MERCY ACADEMY)



LANHAM'S HIGHLIGHTS:

- Grabbed a career-high 20 digs at LSU
- Recorded a career-high four aces at UAB
- Earned first collegiate start in Auburn's season opener versus Tennessee Tech on August 27

CATEGORY	CAREER HIGH	OPPONENT/DATE
Kills	2	vs. Missouri (9/12/21)
Attempts	8	at Arkansas (10/9/21)
Hitting Percentage (Min. 10 ATT.)		
Assists	3 (3x)	last, vs Marist (8/27/22)
Digs	20	at LSU (10/5/22)
Blocks	1	at Georgia (10/22/21)
Aces	4	at UAB (9/9/22)
Points	4.0	at UAB (9/9/22)

CATEGORY	SEASON HIGH	OPPONENT/DATE
Kills	--	--
Attempts	--	--
Hitting Percentage (Min. 10 ATT.)	--	--
Assists	--	--
Digs	--	--
Blocks	--	--
Aces	--	--
Points	--	--

GAME BY GAME

CAREER STATS

SEASON	TEAM	SM-MP	K	K/S	E	TA	PCT	A	A/S	SA	SA/S	SE	DIG	D/S	RE	BS	BA	TB	B/S	BE	BHE	PTS	PTS/S
2021-22	AUB	103-28	7	0.07	8	85	-.012	17	0.17	5	0.05	15	192	1.86	21	0	1	1	0.01	0	0	12.5	0.12
2022-23	AUB	122-31	1	0.01	1	13	.000	15	0.12	35	0.29	33	198	1.62	28	0	0	0	0.00	0	0	36.0	0.30
TOTAL		225 - 59	8	0.04	9	98	-.010	32	0.14	40	0.18	48	390	1.73	49	0	1	1	0.00	0	0	48.5	0.22



#5 BELLA BELL
MIDDLE BLOCKER | 6-4 | GRADUATE
BLYTHEWOOD, S.C. (KENTUCKY)



BELL'S HIGHLIGHTS:

- National Champion at Kentucky
- Had the 3rd-highest hitting percentage in the SEC in 2022

CATEGORY	CAREER HIGH	OPPONENT/DATE
Kills	13	at Missouri (9/28/22)
Attempts	20	at Arkansas (10/7/22)
Hitting Percentage (Min. 10 ATT.)	.632	at Missouri (9/28/22)
Assists	1 (3x)	last at Arkansas (10/8/22)
Digs	2 (4x)	last at Arkansas (10/8/22)
Blocks	10 (2x)	at Arkansas (10/7/22)
Aces	1	vs South Carolina (11/25/22)
Points	17.5	at Missouri (9/28/22)

CATEGORY	SEASON HIGH	OPPONENT/DATE
Kills	--	--
Attempts	--	--
Hitting Percentage (Min. 10 ATT.)	--	--
Assists	--	--
Digs	--	--
Blocks	--	--
Aces	--	--
Points	--	--

GAME BY GAME

CAREER STATS

SEASON	TEAM	SM-MP	K	K/S	E	TA	PCT	A	A/S	SA	SA/S	SE	DIG	D/S	RE	BS	BA	TB	B/S	BE	BHE	PTS	PTS/S
2020-21	UK	24-14	29	1.21	9	64	.313	0	0.00	0	0.00	0	2	0.08	1	0	22	22	0.92	3	0	40.0	1.67
2021-22	UK	62-19	102	1.65	25	185	.416	1	0.02	0	0.00	0	9	0.15	0	10	68	78	1.26	8	0	146.0	2.35
2022-23	UK	62-22	107	1.73	34	215	.340	2	0.03	2	0.03	6	12	0.19	0	5	72	77	1.24	8	0	150.0	2.42
TOTAL FOR AUB	-	-	0.00			.000	0.00	0.00		0.00		0.00		0.00					0.00			0.0	0.00
TOTAL	148 - 55		238	1.61	68	464	.366	3	0.02	2	0.01	6	23	0.16	1	15	162	177	1.20	19	0	336.0	2.27

#6 KYLA SWANSON

MIDDLE BLOCKER | 6-4 | GRADUATE
WAHOO, NEB. (ILLINOIS)



SWANSON'S HIGHLIGHTS:

- 2x Academic All-Big Ten
- Made the NCAA Sweet 16 with Illinois in 2021
- Has more than 170 blocks in her career
- Hit .727 at Penn State on Oct. 30, 2021

CATEGORY	CAREER HIGH	OPPONENT/DATE
Kills	10 (2x)	last vs West Virginia (12/3/21)
Attempts	23	vs UC Santa Barbara (8/27/21)
Hitting Percentage (Min. 10 ATT.)	.727	at Penn St. (10/30/21)
Assists	2	at Iowa (9/22/21)
Digs	6	at Tennessee (8/30/19)
Blocks	10	vs UC Santa Barbara (8/27/21)
Aces	2	vs Missouri St. (9/9/22)
Points	15.5	vs UC Santa Barbara (8/27/21)

CATEGORY	SEASON HIGH	OPPONENT/DATE
Kills	--	--
Attempts	--	--
Hitting Percentage (Min. 10 ATT.)	--	--
Assists	--	--
Digs	--	--
Blocks	--	--
Aces	--	--
Points	--	--

GAME BY GAME

CAREER STATS

SEASON	TEAM	SM-MP	K	K/S	E	TA	PCT	A	A/S	SA	SA/S	SE	DIG	D/S	RE	BS	BA	TB	B/S	BE	BHE	PTS	PTS/S
2019-20	Illini	16-5	7	0.44	3	29	.138	1	0.06	0	0.00	3	7	0.44	0	0	11	11	0.69	1	1	12.5	0.78
2020-21	Illini	21-7	20	0.95	9	64	.172	1	0.05	0	0.00	0	6	0.29	0	0	16	16	0.76	1	1	28.0	1.33
2021-22	Illini	101-27	149	1.48	45	316	.329	3	0.03	0	0.00	0	13	0.13	2	9	97	106	1.05	9	2	206.5	2.04
2022-23	Illini	51-15	53	1.04	19	120	.283	2	0.04	5	0.10	7	6	0.12	0	3	41	44	0.86	4	0	81.5	1.60
TOTAL FOR AUB		-		0.00			.000	0.00	0.00	0.00			0.00						0.00			0.0	0.00
TOTAL		189 - 54	229	1.21	76	529	.289	7	0.04	5	0.03	10	32	0.17	2	12	165	177	0.94	15	4	328.5	1.74

#7 PEYTON DUNN

SETTER | 5-11 | REDSHIRT-SOPHOMORE
DECATUR, TEXAS (LEGEND)



SWANSON'S HIGHLIGHTS:

- 4x Big 12 Rookie of the Week
- All-Big 12 Rookie Team
- Had a career-high 54 assists vs Texas Tech on Oct. 14, 2021

CATEGORY	CAREER HIGH	OPPONENT/DATE
Kills	6	vs Indiana (9/10/21)
Attempts	11 (3x)	last at TCU (10/8/21)
Hitting Percentage (Min. 10 ATT.)	.500	vs Indiana (9/10/21)
Assists	54	vs Texas Tech (10/14/21)
Digs	18	vs FIU (8/28/22)
Blocks	6 (3x)	last at TCU (10/9/22)
Aces	2 (4x)	last vs FIU (8/28/22)
Points	7.0	at TCU (10/9/21)

CATEGORY	SEASON HIGH	OPPONENT/DATE
Kills	--	--
Attempts	--	--
Hitting Percentage (Min. 10 ATT.)	--	--
Assists	--	--
Digs	--	--
Blocks	--	--
Aces	--	--
Points	--	--

GAME BY GAME

CAREER STATS

SEASON	TEAM	SM-MP	K	K/S	E	TA	PCT	A	A/S	SA	SA/S	SE	DIG	D/S	RE	BS	BA	TB	B/S	BE	BHE	PTS	PTS/S	
2021-22	OU	107-27	67	0.63	15	163	.319	997	9.32	13	0.12	45	198	1.85	0	0	63	63	0.59	2	5	111.5	1.04	
2022-23	OU	24-7	12	0.50	4	25	.320	252	10.50	3	0.13	8	57	2.38	0	0	11	11	0.46	3	4	20.5	0.85	
TOTAL FOR AUB			-	0.00			.000		0.00	0.00			0.00					0.00				0.0	0.00	
TOTAL			131 - 34	79	0.60	19	188	.319	1249	9.53	16	0.12	53	255	1.95	0	0	74	74	0.56	5	9	132.0	1.01

#8 KENDAL KEMP

MIDDLE BLOCKER | 6-6 | SOPHOMORE
EAGAN, MINN. (EAGAN)



KEMP'S HIGHLIGHTS:

- Has set the Auburn single-season record for total blocks, block assists and blocks per set
- Tied the program record for most blocks in a 3-set match with 9 vs. Belmont
- 2x SEC Freshman of the Week
- Named to the SEC All-Freshman Team
- Named AVCA South Region Honorable Mention
- Made her collegiate debut on Aug. 26 vs. Belmont

CATEGORY	CAREER HIGH	OPPONENT/DATE
Kills	12	at South Carolina (11/23/22)
Attempts	21 (2x)	last at South Carolina (11/23/22)
Hitting Percentage (Min. 10 ATT.)	.714	at Missouri (10/15/22)
Assists	1 (2x)	last at LSU (10/5/22)
Digs	2 (2x)	last at Kentucky (10/29/22)
Blocks	10 (3x)	last at South Carolina (11/23/22)
Aces	3	at Georgia State (8/26/22)
Points	17.5	at South Carolina (11/23/22)

CATEGORY	SEASON HIGH	OPPONENT/DATE
Kills	--	--
Attempts	--	--
Hitting Percentage (Min. 10 ATT.)	--	--
Assists	--	--
Digs	--	--
Blocks	--	--
Aces	--	--
Points	--	--

GAME BY GAME

CAREER STATS

SEASON	TEAM	SM-MP	K	K/S	E	TA	PCT	A	A/S	SA	SA/S	SE	DIG	D/S	RE	BS	BA	TB	B/S	BE	BHE	PTS	PTS/S
2022-23	AUB	122-31	204	1.67	66	430	.321	2	0.02	7	0.06	16	12	0.10	1	26	154	180	1.48	13	0	314.0	2.57
TOTAL		122 - 31	204	1.67	66	430	.321	2	0.02	7	0.06	16	12	0.10	1	26	154	180	1.48	13	0	314.0	2.57

#9 ZOE SLAUGHTER

LIBERO | 5-7 | SOPHOMORE
HONOLULU, HAWAII (MOANALUA)



SLAUGHTER'S HIGHLIGHTS:

- Recorded 10+ digs in 10 matches this season
- Grabbed a career-high 22 digs at Alabama
- Made her collegiate debut on Aug. 26 vs. Belmont

CATEGORY	CAREER HIGH	OPPONENT/DATE
Kills	1 (2x)	last at Missouri (10/15/22)
Attempts	1 (3x)	last at Missouri (10/15/22)
Hitting Percentage (Min. 10 ATT.)	--	--
Assists	2 (4x)	last at Missouri (10/15/22)
Digs	22	at Alabama (9/24/22)
Blocks	--	--
Aces	3 (2x)	last vs Alabama A&M (9/6/22)
Points	3.0 (3x)	last vs Troy (9/10/22)

CATEGORY	SEASON HIGH	OPPONENT/DATE
Kills	--	--
Attempts	--	--
Hitting Percentage (Min. 10 ATT.)	--	--
Assists	--	--
Digs	--	--
Blocks	--	--
Aces	--	--
Points	--	--

GAME BY GAME

CAREER STATS

SEASON	TEAM	SM-MP	K	K/S	E	TA	PCT	A	A/S	SA	SA/S	SE	DIG	D/S	RE	BS	BA	TB	B/S	BE	BHE	PTS	PTS/S
2022-23	AUB	122-31	2	0.02	1	4	.250	22	0.18	19	0.16	41	267	2.19	14	0	0	0	0.00	0	1	21.0	0.17
TOTAL		122 - 31	2	0.02	1	4	.250	22	0.18	19	0.16	41	267	2.19	14	0	0	0	0.00	0	1	21.0	0.17

#10 JACKIE BARRETT

SETTER | 6-2 | SENIOR

HIGHLAND, CALIF. (CITRUS VALLEY)



BARRETT'S HIGHLIGHTS

- 2x SEC Setter of the Week
- Tied her career-high in aces with three vs. Alabama State with three
- Set her career-high in assists with 60 against LSU

CATEGORY	CAREER HIGH	OPPONENT/DATE
Kills	6 (2x)	last, at Alabama State (9/26/21)
Attempts	20	at Alabama State (9/26/21)
Hitting Percentage (Min. 10 ATT.)	.308	vs. Florida A&M (9/17/21)
Assists	60	at LSU (10/5/22)
Digs	28	vs. Nicholls (9/17/21)
Blocks	8.0	at Arkansas (10/9/21)
Aces	4	vs Houston (12/3/22)
Points	10.0	vs. Florida A&M (9/17/21)

CATEGORY	SEASON HIGH	OPPONENT/DATE
Kills	--	--
Attempts	--	--
Hitting Percentage (Min. 10 ATT.)	--	--
Assists	--	--
Digs	--	--
Blocks	--	--
Aces	--	--
Points	--	--

GAME BY GAME

CAREER STATS

SEASON	TEAM	SM-MP	K	K/S	E	TA	PCT	A	A/S	SA	SA/S	SE	DIG	D/S	RE	BS	BA	TB	B/S	BE	BHE	PTS	PTS/S
2020-21	AUB	19-6	9	0.47	6	44	.068	144	7.58	3	0.16	8	33	1.74	0	0	11	11	0.58	1	0	17.5	0.92
2021-22	AUB	100-28	51	0.51	14	180	.206	809	8.09	22	0.22	24	307	3.07	0	2	60	62	0.62	8	1	105.0	1.05
2022-23	AUB	106-28	41	0.39	8	116	.284	1057	9.97	26	0.25	28	220	2.08	1	9	75	84	0.79	10	0	113.5	1.07
TOTAL		225 - 62	101	0.45	28	340	.215	2010	8.93	51	0.23	60	560	2.49	1	11	146	157	0.70	19	1	236.0	1.05

#11 JORDAN SINNESS

SETTER | 5-9 | JUNIOR
SEBRING, FLA. (SEBRING)



SINNESS' HIGHLIGHTS:

- Recorded the Tigers' first double-double of the season at Georgia State with 42 assists and 12 digs.
- Grabbed a career-high 49 assists in 5-set win at UAB
- Made collegiate debut versus Cal State Fullerton (9/2), dishing out 16 assists, six digs, one kill and a block

CATEGORY	CAREER HIGH	OPPONENT/DATE
Kills	3	vs Alabama A&M (9/6/22)
Attempts	7	at UAB (9/10/22)
Hitting Percentage (Min. 10 ATT.)		
Assists	49	at UAB (9/10/22)
Digs	14	vs. Missouri (10/17/21)
Blocks	5	at UAB (9/10/22)
Aces	3	vs Alabama A&M (9/6/22)
Points	7.0	vs Alabama A&M (9/6/22)

CATEGORY	SEASON HIGH	OPPONENT/DATE
Kills	--	--
Attempts	--	--
Hitting Percentage (Min. 10 ATT.)	--	--
Assists	--	--
Digs	--	--
Blocks	--	--
Aces	--	--
Points	--	--

GAME BY GAME

CAREER STATS

SEASON	TEAM	SM-MP	K	K/S	E	TA	PCT	A	A/S	SA	SA/S	SE	DIG	D/S	RE	BS	BA	TB	B/S	BE	BHE	PTS	PTS/S
2021-22	AUB	50-15	2	0.04	1	6	.167	64	1.28	6	0.12	7	33	0.66	0	0	3	3	0.06	0	2	9.5	0.19
2022-23	AUB	49-14	5	0.10	0	15	.333	163	3.33	16	0.33	22	51	1.04	0	2	13	15	0.31	1	0	29.5	0.60
TOTAL		99 - 29	7	0.07	1	21	.286	227	2.29	22	0.22	29	84	0.85	0	2	16	18	0.18	1	2	39.0	0.39



#12 BEL ZIMMERMAN

PIN HITTER | 6-2 | SOPHOMORE
LIBERTY, MO. (LIBERTY NORTH)



ZIMMERMAN'S HIGHLIGHTS:

- Hit .692 with 8 kills vs. Marist
- Had a career-high 13 kills at Jacksonville State
- Made her collegiate debut on Aug. 26 at Georgia State

CATEGORY	CAREER HIGH	OPPONENT/DATE
Kills	13	at Jacksonville State (9/17/22)
Attempts	31	at LSU (10/5/22)
Hitting Percentage (Min. 10 ATT.)	.692	vs Marist (8/27/22)
Assists	1	at Alabama (9/24/22)
Digs	5 (2x)	last at LSU (10/5/22)
Blocks	6	at Alabama (9/24/22)
Aces	3	vs Tennessee (10/21/22)
Points	14.0	at Jacksonville State (9/17/22)

CATEGORY	SEASON HIGH	OPPONENT/DATE
Kills	--	--
Attempts	--	--
Hitting Percentage (Min. 10 ATT.)	--	--
Assists	--	--
Digs	--	--
Blocks	--	--
Aces	--	--
Points	--	--

GAME BY GAME

CAREER STATS

SEASON	TEAM	SM-MP	K	K/S	E	TA	PCT	A	A/S	SA	SA/S	SE	DIG	D/S	RE	BS	BA	TB	B/S	BE	BHE	PTS	PTS/S
2022-23	AUB	114-29	220	1.93	98	607	.201	2	0.02	4	0.04	11	54	0.47	3	3	63	66	0.58	10	0	258.5	2.27
TOTAL		114 - 29	220	1.93	98	607	.201	2	0.02	4	0.04	11	54	0.47	3	3	63	66	0.58	10	0	258.5	2.27

#13 PAIGE THIBAUT

LIBERO | 5-8 | JUNIOR

WATERTOWN, MINN. (WATERTOWN-MAYER)



THIBAUT'S HIGHLIGHTS:

- Compiled a career-high 20 digs against Dayton on Sept. 3, 2022
- Hit .462 vs Arizona State on Sept. 2, 2022
- 2021 All-Crossroads League Honorable Mention
- 2021 Crossroads League All-Freshman Team

CATEGORY	CAREER HIGH	OPPONENT/DATE
Kills	9	at FAU (10/28/22)
Attempts	35	at UTSA (10/23/22)
Hitting Percentage (Min. 10 ATT.)	.462	vs Arizona State (9/2/22)
Assists	2	vs Little Rock (9/8/22)
Digs	20	vs Dayton (9/3/22)
Blocks	4	vs UAB (10/7/22)
Aces	3	vs Little Rock (9/8/22)
Points	9.0 (2x)	last at FAU (10/28/22)

CATEGORY	SEASON HIGH	OPPONENT/DATE
Kills	--	--
Attempts	--	--
Hitting Percentage (Min. 10 ATT.)	--	--
Assists	--	--
Digs	--	--
Blocks	--	--
Aces	--	--
Points	--	--

GAME BY GAME

CAREER STATS

SEASON	TEAM	SM-MP	K	K/S	E	TA	PCT	A	A/S	SA	SA/S	SE	DIG	D/S	RE	BS	BA	TB	B/S	BE	BHE	PTS	PTS/S
2022-23	FIU	105-28	47	0.45	28	216	.088	14	0.13	23	0.22	30	221	2.10	21	1	7	8	0.08	0	0	74.5	0.71
TOTAL FOR AUB		-		0.00			.000		0.00		0.00			0.00					0.00			0.0	0.00
TOTAL		105 - 28	47	0.45	28	216	.088	14	0.13	23	0.22	30	221	2.10	21	1	7	8	0.08	0	0	74.5	0.71

#14 CHELSEY HARMON

MIDDLE BLOCKER | 6-3 | SENIOR
PUYALLUP, WASH. (PORTLAND)



HARMON'S HIGHLIGHTS:

- 3rd best hitting percentage in program history (.706) against Jackson State.
- Currently holds the sixth-best hitting percentage in single-season program history (.344)
- Made her Auburn debut on Aug. 26 vs. Belmont

CATEGORY	CAREER HIGH	OPPONENT/DATE
Kills	16	vs San Francisco (10/16/21)
Attempts	23	at LSU (10/5/22)
Hitting Percentage (Min. 10 ATT.)	.706	vs Jackson State (9/17/22)
Assists	2 (2x)	last at Georgia State (8/26/22)
Digs	4 (2x)	last at Santa Clara (3/9/21)
Blocks	10	vs Troy (9/10/22)
Aces	2 (3x)	last vs Eastern Washington (8/28/21)
Points	15.5	at LSU (10/5/22)

CATEGORY	SEASON HIGH	OPPONENT/DATE
Kills	--	--
Attempts	--	--
Hitting Percentage (Min. 10 ATT.)	--	--
Assists	--	--
Digs	--	--
Blocks	--	--
Aces	--	--
Points	--	--

GAME BY GAME

CAREER STATS

SEASON	TEAM	SM-MP	K	K/S	E	TA	PCT	A	A/S	SA	SA/S	SE	DIG	D/S	RE	BS	BA	TB	B/S	BE	BHE	PTS	PTS/S
2020-21	UP	34-12	20	0.59	11	62	.145	4	0.12	5	0.15	7	19	0.56	1	2	21	23	0.68	0	0	37.5	1.10
2021-22	UP	78-22	108	1.38	31	246	.313	1	0.01	4	0.05	5	13	0.17	1	6	42	48	0.62	9	1	139.0	1.78
2022-23	AUB	122-31	176	1.44	48	372	.344	5	0.04	0	0.00	4	17	0.14	1	4	103	107	0.88	6	0	231.5	1.90
TOTAL FOR AUB		122 - 31	176	1.44	48	372	.344	5	0.04	0	0.00	4	17	0.14	1	4	103	107	0.88	6	0	231.5	1.90
TOTAL		234 - 65	304	1.30	90	680	.315	10	0.04	9	0.04	16	49	0.21	3	12	166	178	0.76	15	1	408.0	1.74

#17 CASSIDY TANTON

**PIN HITTER | 6-0 | REDSHIRT-SOPHOMORE
STONEVILLE, N.C. (DALTON MCMICHAEL)**



TANTON'S HIGHLIGHTS:

- Picked up a career-high 10 kills vs. Marist, hitting .348
- Made her season debut on Aug. 26 vs. Belmont

CATEGORY	CAREER HIGH	OPPONENT/DATE
Kills	10	vs Marist (8/27/22)
Attempts	23	vs Marist (8/27/22)
Hitting Percentage (Min. 10 ATT.)	.348	vs Marist (8/27/22)
Assists	--	--
Digs	6	vs Marist (8/27/22)
Blocks	--	--
Aces	2(3x)	last vs Southern Miss (9/16/22)
Points	12.0	vs Marist (8/27/22)

CATEGORY	SEASON HIGH	OPPONENT/DATE
Kills	--	--
Attempts	--	--
Hitting Percentage (Min. 10 ATT.)	--	--
Assists	--	--
Digs	--	--
Blocks	--	--
Aces	--	--
Points	--	--

GAME BY GAME

CAREER STATS

SEASON	TEAM	SM-MP	K	K/S	E	TA	PCT	A	A/S	SA	SA/S	SE	DIG	D/S	RE	BS	BA	TB	B/S	BE	BHE	PTS	PTS/S
2022-23	AUB	58-19	12	0.21	7	34	.147	0	0.00	11	0.19	28	19	0.33	2	0	0	0	0.00	0	0	23.0	0.40
TOTAL		58 - 19	12	0.21	7	34	.147	0	0.00	11	0.19	28	19	0.33	2	0	0	0	0.00	0	0	23.0	0.40

#22 SYDNEY HANDEL

DEFENSIVE SPECIALIST | 6-0 | SOPHOMORE
LEE'S SUMMIT, MO. (LEE'S SUMMIT WEST)



HANDEL'S HIGHLIGHTS:

- Set career-highs in aces (3) and digs (6) in the NCAA Tournament against Houston
- Made her collegiate debut against Alabama A&M

CATEGORY	CAREER HIGH	OPPONENT/DATE
Kills	--	--
Attempts	1	vs Houston (12/3/22)
Hitting Percentage (Min. 10 ATT.)	--	--
Assists	--	--
Digs	6	vs Houston (12/3/22)
Blocks	--	--
Aces	3	vs Houston (12/3/22)
Points	3.0	vs Houston (12/3/22)

CATEGORY	SEASON HIGH	OPPONENT/DATE
Kills	--	--
Attempts	--	--
Hitting Percentage (Min. 10 ATT.)	--	--
Assists	--	--
Digs	--	--
Blocks	--	--
Aces	--	--
Points	--	--

GAME BY GAME

CAREER STATS

SEASON	TEAM	SM-MP	K	K/S	E	TA	PCT	A	A/S	SA	SA/S	SE	DIG	D/S	RE	BS	BA	TB	B/S	BE	BHE	PTS	PTS/S
2022-23	AUB	19-6	0	0.00	0	1	.000	0	0.00	6	0.32	11	10	0.53	3	0	0	0	0.00	0	0	6.0	0.32
TOTAL		19 - 6	0	0.00	0	1	.000	0	0.00	6	0.32	11	10	0.53	3	0	0	0	0.00	0	0	6.0	0.32