



# 2023 VOLLEYBALL MATCH NOTES

AUBURN ATHLETICS COMMUNICATIONS: 392 SOUTH DONAHUE DRIVE || AUBURN, AL 36830 || AUBURNTIGERS.COM || @AUBURNVB

## 2023 SCHEDULE/RESULTS

**18-5 OVERALL | 8-4 SEC**  
8-3 HOME | 7-2 AWAY | 3-0 NEUTRAL

DATE	OPPONENT	TV	TIME/RESULT
Aug. 25	vs Coppin State!	SECN+	W, 3-1
Aug. 26	vs McNeese State!	SECN+	W, 3-0
Aug. 26	vs Jacksonville State!	SECN+	W, 3-0
Sept. 2	vs SMU@	N/A	W, 3-1
Sept. 3	at Florida State@	ACCN+	W, 3-1
Sept. 7	vs Middle Tennessee\$	SECN+	L, 1-3
Sept. 8	vs Charleston Southern\$	SECN+	W, 3-1
Sept. 9	vs Mercer\$	SECN+	W, 3-0
Sept. 14	at South Alabama%	ESPN+	W, 3-2
Sept. 15	vs UAB%	N/A	W, 3-1
Sept. 16	vs Samford%	N/A	W, 3-1
Sept. 22	vs #3 Florida*	SECN+	L, 2-3
Sept. 24	vs Ole Miss*	SECN+	W, 3-1
Sept. 27	at #14 Arkansas*	SEC Network	L, 0-3
Oct. 1	vs Georgia*	ESPN	W, 3-1
Oct. 6	at #9 Florida*	SECN+	W, 3-0
Oct. 8	at South Carolina*	ESPNU	W, 3-2
Oct. 13	at #10 Tennessee*	SECN+	L, 1-3
Oct. 20	vs Missouri*	SEC Network	L, 0-3
Oct. 22	vs South Carolina*	SECN+	W, 3-2
Oct. 27	at Georgia*	SECN+	W, 3-2
Oct. 29	at Alabama*	SEC Network	W, 3-1
Nov. 5	at Texas A&M*	SEC Network	W, 3-2
Nov. 8	vs #13 Kentucky*	SECN+	6:30 p.m. CT
Nov. 12	at Missouri*	SECN+	3 p.m. CT
Nov. 15	at Mississippi State*	SECN+	6 p.m. CT
Nov. 19	vs LSU*	SECN+	2 p.m. CT
Nov. 22	vs Alabama*	SECN+	6:30 p.m. CT
Nov. 24	vs Arkansas*	SECN+	3 p.m. CT

**BOLD** indicates home contest | All time Central and subject to change  
! - War Eagle Invite | @ - Seminole Invite | S - Tiger Invite | % - Alabama Showdown  
\* - Southeastern Conference Game | # - NCAA Tournament

## AUBURN ATHLETICS COMMUNICATIONS

Office Phone 334-844-9800  
Kirk Sampson Associate AD  
sampska@auburn.edu  
Thomas Hoffman Volleyball Contact  
tgh0024@auburn.edu  
C: 503-302-9592

## FOLLOW ALONG

Web AuburnTigers.com  
X @AuburnVB  
Instagram @auburnvolleyball

## MATCH 24

# No. 13 KENTUCKY

Wednesday, Nov. 8 | 6:30 p.m. CT  
Auburn, Alabama | Neville Arena | SEC Network+



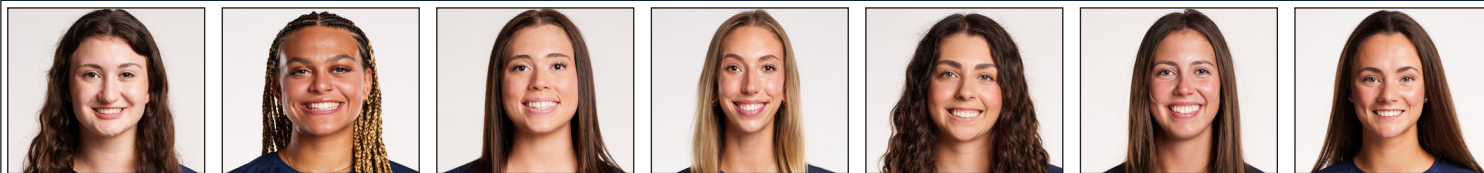
AUBURN	KENTUCKY
AVCA Coaches Poll	24
2023 Record	18-5   8-4 SEC
Head Coach	Brent Crouch
Career Record (Year)	148-128 (10th)
Record at Auburn (Year)	53-37 (4th)
AVCA Coaches Poll	13
2023 Record	13-7   11-1 SEC
Head Coach	Craig Skinner
Career Record (Year)	437-146 (19th)
Record at Kentucky (Year)	Same

Site Auburn, Alabama  
Venue Neville Arena  
Live Stats Statbroadcast  
Broadcast Crew Wiley Ballard (play-by-play) | Kele Eveland (analyst)  
Series Record | Current Streak Kentucky leads, 48-10 | Kentucky W21  
First Meeting 1977 Kentucky 2, Auburn 0  
Last Meeting Oct. 29, 2022 Kentucky 3, Auburn 0 (25-13, 25-20, 25-15)  
Last Auburn Win Sept. 24, 2010 Auburn 3, Kentucky 2 (25-27, 25-16, 20-25, 25-17, 15-12)  
Last Kentucky Win Oct. 29, 2022 Kentucky 3, Auburn 0 (25-13, 25-20, 25-15)

## QUICK HITS

- The Tigers came in at No. 24 in the latest AVCA/TARAFLEX Coaches Poll, marking the 10th straight week Auburn has appeared in the Top 25.
- Wednesday's match will also signal the second top 25 matchup in Neville Arena history. The Tigers went toe-to-toe with then-No. 3 Florida in a dramatic five-set thriller back on Sept. 22 of this year.
- Speaking of five sets, Brent Crouch's teams have seen remarkable success when going the distance. This season, the Orange and Blue are 5-1 in five-set matches and 11-4 over the last two seasons. Crouch is 14-10 since arriving on the Plains and 41-32 over the course of his career.
- During Auburn's latest five-set win at Texas A&M, the Tigers out blocked the best blocking team in the SEC thanks to the three-headed monster of Kendal Kemp (8), Bella Bell (6) and Kyla Swanson (4). Kemp's 1.31 blocks per set ranks third in the conference and No. 26 in the country. Both Kemp and Swanson have now stacked up over 100 rejections throughout the season.
- Offensively, the trio was just as productive. Kemp grabbed nine kills on .500 hitting, Swanson snagged eight kills on .413 and Bell put down 11 kills on .429.
- As a team, the Tigers' 2.53 blocks per set are second in the SEC and No. 32 in the nation. Auburn also ranks second in the SEC total blocks (233).
- The Tigers' back row wasn't going to be outdone. Paige Thibault (11), Zoe Slaughter (11) and Sarah Morton (15) all reached double figures in dig totals.

## AUBURN'S POTENTIAL STARTING SEVEN



SARAH MORTON	AKASHA ANDERSON	BELLA BELL	KYLA SWANSON	KENDAL KEMP	JACKIE BARRETT	PAIGE THIBAUT
#2 • DS/L • SO. • 5-8	#3 • PH • SO. • 6-3	#5 • RS • SR. • 6-4	#6 • MB • SR. • 6-4	#8 • MB • SO. • 6-6	#10 • S • SR. • 6-2	#13 • DS/L • JR. • 5-7
D/S: 3.22	K/S: 3.43	K/S: 2.34	K/S: 1.19	K/S: 1.51	D/S: 2.33	D/S: 2.21
A/S: 0.94	HIT%: .173	HIT%: .300	HIT%: .260	HIT%: .398	A/S: 9.51	A/S: 0.52
SA/S: 0.09	D/S: 2.11	D/S: 0.27	D/S: 0.21	D/S: 0.08	SA/S: 0.30	SA/S: 0.11
P/S: 0.12	B/S: 0.47	B/S: 0.80	B/S: 1.12	B/S: 1.31	P/S: 1.25	P/S: 0.12
SA/S: 0.25	SA/S: 0.00	SA/S: 0.03	SA/S: 0.01			
P/S: 3.92	P/S: 2.75	P/S: 1.83	P/S: 2.23			

K/S: kills per set • HIT%: hitting percentage • D/S: digs per set • B/S: blocks per set • A/S: assists per set • SA/S: aces per set • P/S: points per set



**#1 MADISON SCHEER**  
So. | PH | 6-1



**#2 SARAH MORTON**  
So. | L | 5-8



**#3 AKASHA ANDERSON**  
So. | PH | 6-3



**#4 FALLAN LANHAM**  
Jr. | L | 5-8



**#5 BELLA BELL**  
Gr. | MB | 6-4



**#6 KYLA SWANSON**  
Gr. | MB | 6-4



**#7 PEYTON DUNN**  
R-So. | S | 5-11



**#8 KENDAL KEMP**  
So. | MB | 6-6



**#9 ZOE SLAUGHTER**  
So. | L | 5-7



**#10 JACKIE BARRETT**  
Sr. | S | 6-2



**#11 JORDAN SINNESS**  
Jr. | S | 5-9



**#12 BEL ZIMMERMAN**  
So. | PH | 6-2



**#13 PAIGE THIBAUT**  
Jr. | L | 5-7



**#14 CHELSEY HARMON**  
Sr. | MB | 6-3



**#17 CASSIDY TANTON**  
R-So. | PH | 6-0



**#19 JASMINE OKEOMA**  
Fr. | MB | 6-3



**#22 SYDNEY HANDEL**  
So. | L | 6-0



**#22 LAKIN LAURENDINE**  
Fr. | PH | 6-1

#WarEagle



AuburnTigers.com

@AuburnVB | @AuburnTigers  
@AuburnVBCoach



/AuburnVB  
/AuburnTigers

**TEAM SCHEDULE AND MEDIA AVAILABILITY >> WEEK OF NOV. 6 - NOV. 12**

MONDAY November 6	TUESDAY November 7	WEDNESDAY November 8	THURSDAY November 9	FRIDAY November 10	SATURDAY November 11	SUNDAY November 12
<b>PRACTICE:</b> 3:45 p.m. - 6 p.m.  SAC	<b>PRACTICE:</b> 3:45 p.m. - 6 p.m.  SAC	<b>MATCH:</b> 6:30 p.m. CT vs Kentucky Auburn, AL	<b>OFF</b>	<b>PRACTICE:</b> 3:45 p.m. - 6 p.m.  SAC	<b>TRAVEL</b>	<b>MATCH:</b> 3 p.m. CT at Missouri Columbia, MO
INTERVIEWS BY REQUEST	INTERVIEWS BY REQUEST	INTERVIEWS POST MATCH	NO INTERVIEWS	INTERVIEWS BY REQUEST	INTERVIEWS BY REQUEST	INTERVIEWS POST MATCH

**AUBURN ATHLETICS COMMUNICATIONS**

**QUICK FACTS**

**AUBURNTIGERS.COM**

For updated game notes, statistics, safety protocols and latest information on Auburn volleyball and Auburn Athletics, visit AuburnTigers.com.

**INTERVIEW POLICY**

Coach Crouch, assistant coaches and student-athletes are available for interviews by contacting Thomas Hoffman in the communications office. All interviews during the week will be conducted via phone or ZOOM. Post-match interviews will be conducted in the media room at Auburn Arena following a brief cooling-off period.

**CREDENTIALS**

Anyone wishing to cover an Auburn volleyball match should contact Thomas Hoffman in the communications office at least 24 hours in advance to make arrangements.

**MATCH DAY SERVICES**

Printed copies of notes, flip cards and statistics will be available upon request. Digital copies will be emailed out prior to the match and will be available on AuburnTigers.com. Media members are permitted to bring their own printed materials. Stats will not printed between sets or after matches. Live stats will be provided during the match and final statistics will be emailed out and posted on AuburnTigers.com. All post-match interviews will be conducted in the media room. Wireless internet is available in the Arena; ask Thomas Hoffman for the password. Match highlights, photos and postgame interviews will be available on Imagen following matches.

**PHOTO SERVICES**

For photos of Auburn volleyball or any Olympic sports, contact Zach Bland at zdb007@auburn.edu.

**COMMUNICATIONS STAFF**

Thomas Hoffman Volleyball Contact  
cell: 503-302-9592  
email: tgh0024@auburn.edu

Kirk Sampson Associate AD  
cell: 334-750-1385  
email: sampska@auburn.edu

**UNIVERSITY INFORMATION**

City / Zip \_\_\_\_\_ Auburn, Ala. / 36831  
 Founded \_\_\_\_\_ Oct. 1, 1856  
 Enrollment \_\_\_\_\_ 30,737  
 Nickname \_\_\_\_\_ Tigers  
 Colors \_\_\_\_\_ Navy Blue & Burnt Orange  
 Affiliation \_\_\_\_\_ NCAA Division I  
 Conference \_\_\_\_\_ Southeastern Conference  
 Home Court \_\_\_\_\_ Neville Arena (9,121)  
 President \_\_\_\_\_ Dr. Chris Roberts  
 Athletics Director \_\_\_\_\_ John Cohen  
 Sport Administrator \_\_\_\_\_ Joy Vrbka (Florida, 2003)

**TEAM INFORMATION**

Letterwinners Returning/Lost \_\_\_\_\_ 12/0  
 Starters Returning/Lost \_\_\_\_\_ 6+libero/0  
 Newcomers \_\_\_\_\_ 6  
 2022 Overall Record \_\_\_\_\_ 22-9  
 2022 Conference Record/Finish \_\_\_\_\_ 10-8/6th

**PROGRAM HISTORY**

First Year of Volleyball \_\_\_\_\_ 1967  
 \_\_\_\_\_ Program discontinued 1981; Reinstated 1986  
 Seasons of Auburn Volleyball \_\_\_\_\_ 45th  
 All-Time Overall Record \_\_\_\_\_ 709-703-4 (.501)  
 in Neville Arena (Since 2013) \_\_\_\_\_ 76-62 (.535)  
 Total Home Record \_\_\_\_\_ 248-215 (.531)  
 All-Time SEC Record \_\_\_\_\_ 206-372 (.350)  
 NCAA Tournament Appearances \_\_\_\_\_ 2/2010, 2022  
 SEC Championships/Last \_\_\_\_\_ 1/Co-West Champions (1996)

**STAFF INFORMATION**

Head Coach \_\_\_\_\_ Brent Crouch (Texas A&M, '98 & '00; Oregon '06)  
 Career Record \_\_\_\_\_ 148-128 (.514)/10th Season  
 Record at Auburn \_\_\_\_\_ 53-37 (.523)/4th Season  
 Assistant Coach/Recruiting Coordinator \_\_\_\_\_ Rachel Corbelli (2nd Season)  
 Assistant Coach \_\_\_\_\_ Keith Smith (2nd Season)  
 Assistant Coach \_\_\_\_\_ Jack Burton (1st Season)  
 Technical Coordinator \_\_\_\_\_ Mackenna Basore (2nd Season)  
 Director of Operations \_\_\_\_\_ Emily Houle (2nd Season)  
 Strength & Conditioning \_\_\_\_\_ Bethany Gainey  
 Athletic Trainer \_\_\_\_\_ Nate Warner  
 Equipment Manager \_\_\_\_\_ Brian Maddox

**ATHLETIC COMMUNICATIONS**

Associate AD/Communications \_\_\_\_\_ Kirk Sampson  
 Assistant Director/Volleyball Contact \_\_\_\_\_ Thomas Hoffman  
 Email \_\_\_\_\_ tgh0024@auburn.edu  
 Phone \_\_\_\_\_ 503-302-9592  
 Mailing Address \_\_\_\_\_ Auburn Athletics Complex  
 \_\_\_\_\_ 392 S. Donahue Drive  
 Website \_\_\_\_\_ AuburnTigers.com

**GAMEDAY EXPERIENCE: NEVILLE ARENA**

>> Neville Arena is in its seventh season as home of Auburn volleyball. The Tigers are 75-62 since moving to the Arena in 2013. The facility seats approximately 9,121.



**LAST TIME OUT VS KENTUCKY**

» Akasha Anderson tallied double-digit kills in back-to-back matches against the Wildcats a season ago. However, Auburn was unable to come away with a win in two tough matchups in Lexington.

**SCOUTING KENTUCKY**

» Kentucky has put up an 'L' in the loss column for almost a month. Since falling to Tennessee on the opening night of SEC play, the Wildcats have rattled off 10 consecutive wins as Craig Skinner seems to be pushing the right buttons in his 19th year at the helm of the program.

Junior setter Emma Grome is coming off her fifth SEC Setter of the Week honors and third SEC Player of the Week award of 2023. Grome averaged 12.63 assists per set and delivered an ace in both of Kentucky's wins over the weekend. The Loveland, Ohio native ranks first in the SEC in assists per set (11.88) and third in the country.

Fifth-year middle blocker Azhani Tealer hasn't slowed down in her final year in Lexington. Tealer's .387 hitting percentage leads the conference and ranks 36th in the nation.

On the outsides, the Wildcats are riding the efforts of senior Reagan Rutherford and freshman Brooklyn DeLeye. Rutherford is bringing in 3.45 kills per set while the rookie is right behind at 3.44.

Don't sleep on libero Eleanor Beavin either. At 3.95 digs per set, Beavin is fifth-best in the conference.

**AUBURN-KENTUCKY SERIES**

» Kentucky enters Wednesday's matchup with a 48-10 record and has won each of the last 21 contests. A win over the Wildcats would be the first since 2010.

**MR. 300**

» Three hundred appears to be the perfect number for head coach Brent Crouch. All-time, when his teams manage a .300 hitting percentage, he carries an undefeated record of 37-0, including an 17-0 mark at Auburn. The Tigers have accomplished the feat nine different times in 2023.

**SECOND SET MAGIC**

» Auburn is 11-2 this season when winning the second set of matches. Over the last two years, Crouch's teams are 29-2 when claiming the second frame.

**OPEN ON SUNDAYS**

» The Tigers have had no trouble showing up for Sunday matches in 2023. So far, Auburn is 7-0 in matches played on Sunday.

**PLAYER TO WATCH: AKASHA ANDERSON**

» The AVCA South Region Freshman of the Year was up to no good last season. This year, Anderson is averaging a team-high 3.45 kills per set.



**BELOW THE 200 LINE**

» In 2023, 200 is the magic number for the Auburn defense. When keeping opponents below .200 or better, the Tigers are a perfect 12-0 in such matches.

**RIVALRY REWARDS**

» Brent Crouch knows how to coach in rivalry matchup. Since arriving on the Plains, Crouch is a perfect 5-0 against Alabama and 5-1 versus Georgia.

**THE ZIMMERMAN ZING**

» Sophomore Bel Zimmerman's serving has been a huge lift for the Tigers this season. Her team-leading 29 aces this season are seven-fold more than her freshman campaign as the Liberty, Missouri product approaches top-10 numbers for a single season.

Zimmerman has been directly responsible for some of Auburn's largest runs this season because of her stellar serving. The 8-1 start against Mercer featured seven Zimmerman serves in a row. The 25-10 set win over Ole Miss saw Zimmerman step to the service line 10 times in a row. Auburn fans also won't forget her clutch ace at the end of Set No. 4 at South Alabama that send the match into a decisive fifth set.

**THIBAUT OF LIGHTNING**

» Since stepping into the libero role in a depleting back-row for the Tigers, junior Paige Thibault has been nothing short of brilliant. Across back-to-back wins over South Carolina and Georgia, the Watertown, Minnesota native has ran down a career-best 23 digs.

**THE CROUCH HISTORICAL SOCIETY**

- » Since his arrival on the Plains, head coach Brent Crouch has led the Tigers to a number of firsts:
- First top-25 ranking
  - First top-10 win
  - First win in Gainesville over Florida
  - First win in College Station over Texas A&M
  - First win in Columbia over Missouri
  - Best start to a season in program history (14-0)
  - Best start to SEC Play in program history (3-0)
  - Most wins in a season in rally-scoring era (22)

**AARP ELIGIBLE**

» With his victory over South Carolina on Oct. 22, Brent Crouch reached the 50 win mark as an Auburn Tiger, becoming the fastest to do so in the rally-scoring era.

**NO PLACE LIKE NEVILLE**

» Auburn is now 27-17 at home under head coach Brent Crouch, including wins in 27 of it's last 40 games at home. All-time Auburn is 76-62 in Neville.

**SEC STANDINGS & SCHEDULE**

2023 STANDINGS

	CONF	OVERALL	HOME	ROAD	NTRL	STRK
Kentucky	11-1	13-7	4-2	8-5	1-0	-
Arkansas	11-2	21-4	11-2	6-2	4-0	-
Tennessee	10-2	19-3	9-2	9-1	1-0	-
<b>Auburn</b>	<b>8-4</b>	<b>18-5</b>	<b>8-3</b>	<b>7-2</b>	<b>3-0</b>	-
Texas A&M	7-6	15-8	6-6	6-2	3-0	-
Missouri	7-6	15-9	9-3	5-5	1-1	-
Florida	6-6	14-7	6-6	7-1	1-0	-
Georgia	6-6	15-9	9-3	4-4	2-2	-
LSU	5-7	10-12	6-5	1-6	3-1	-
Mississippi St	4-9	11-12	8-3	1-8	2-1	-
Ole Miss	4-10	10-15	7-3	1-9	2-3	-
South Carolina	3-10	9-13	7-5	1-8	1-0	-
Alabama	0-13	10-14	4-6	3-7	3-1	-

**THIS WEEK IN THE SEC...**

**Wednesday, Nov. 8**  
**Kentucky at Auburn, 7:30 p.m.**  
 South Carolina at Mississippi St., 8 p.m.

**Friday, Nov. 10**  
 Georgia at Tennessee, 6:30 p.m.  
 LSU at Florida, 7 p.m.  
 Arkansas at Alabama, 7 p.m.  
 Texas A&M at Missouri, 7 p.m.

**Sunday, Nov. 5**  
 Georgia at Kentucky, 1 p.m.  
 Ole Miss at Tennessee, 2 p.m.  
 LSU at South Carolina, 2 p.m.  
**Auburn at Missouri, 4 p.m.**  
 Florida at Alabama, 5 p.m.

\*All times ET

**2023 NCAA RPI REPORT**

RK	TEAM	RECORD	AU RESULT
8	Tennessee	19-3	L, 1-3
9	Arkansas	21-4	L, 0-3
12	Kentucky		
14	Florida	14-7	L, 2-3
	Florida		W, 3-0
19	SMU	19-6	W, 3-1
28	Texas A&M	15-8	W, 3-2
30	Florida St.	18-8	W, 3-2
32	Missouri	15-9	L, 0-3
	Missouri		
43	Georgia	15-9	W, 3-1
	Georgia		W, 3-2
59	South Alabama	19-7	W, 3-2
73	Mississippi St.		
74	LSU		
90	South Carolina	9-13	W, 3-2
	South Carolina		W, 3-2
107	Middle Tenn.	20-6	L, 1-3
133	Coppin St.	22-4	W, 3-1
136	Ole Miss	10-15	W, 3-1
159	Mercer	14-11	W, 3-0
199	Samford	13-13	W, 3-1
209	McNeese	15-14	W, 3-0
220	Alabama	10-14	W, 3-1
	Alabama		
244	Jacksonville St.	5-19	W, 3-0
264	Charleston So.	9-18	W, 3-1
266	UAB	4-23	W, 3-1

AUBURN OPPONENTS ONLY

AVCA COACHES POLL

RK	TEAM	POINTS	RECORD	PREV.
1	Nebraska [64]	1,600	23-0	1
2	Wisconsin	1,535	22-1	2
3	Texas	1,436	18-3	4
4	Stanford	1,424	20-3	5
5	Louisville	1,314	21-3	3
6	Oregon	1,285	21-4	7
7	Pittsburgh	1,147	21-4	6
8	Georgia Tech	1,121	21-3	10
9	Washington State	1,043	19-6	9
10	Tennessee	985	19-3	11
11	Arkansas	954	21-4	8
12	BYU	893	20-5	12
13	Kentucky	872	13-7	13
14	Kansas	785	18-4	14
15	Creighton	635	21-4	17
16	Purdue	590	15-8	19
17	Arizona State	547	22-4	15
18	Dayton	529	27-2	18
19	Penn State	509	15-8	16
20	Baylor	380	14-9	21
21	Florida	299	14-7	20
22	Houston	274	14-7	22
23	Western Kentucky	261	24-4	23
24	Auburn	147	18-5	24
25	Southern California	54	16-8	NR

Others receiving votes and listed on two or more ballots: Marquette 41; Minnesota 40; UC Santa Barbara 24; Florida State 22; Pepperdine 16; UCF 6; SMU 4; Utah State 4; James Madison 3

INSIDE THE MATCH-UPS

KENTUCKY 10-48 (.172)

7-11 H • 3-22 A • 0-5 N

YEAR	SITE	RESULT	MATCH SCORE
1977	NEUTRAL	L	0-2
1978	NEUTRAL	L	0-2
1980	AWAY	L	0-2
1987	HOME	L	0-3
1988	HOME	L	0-3
1989	AWAY	L	0-3
1990	HOME	L	0-3
1991	HOME	W	3-1
1991	AWAY	L	1-3
1991	NEUTRAL	L	0-3
1992	HOME	L	0-3
1992	NEUTRAL	L	1-3
1993	HOME	L	0-3
1993	NEUTRAL	L	1-3
1994	AWAY	L	1-3
1995	HOME	W	3-0
1996	AWAY	W	3-0
1997	HOME	W	3-2
1998	HOME	L	1-3
1999	AWAY	L	0-3
2000	HOME	W	3-2
2001	AWAY	L	0-3
2002	AWAY	L	0-3
2002	HOME	L	0-3
2003	HOME	L	1-3
2004	AWAY	W	3-1
2004	HOME	W	3-1
2005	AWAY	W	3-0
2006	HOME	W	3-2
2006	AWAY	L	2-3
2007	HOME	L	1-3

NATIONWIDE AND ON OUR SIDE

» Following 33 kills .472 hitting with 53 attempts across wins over No. 9 Florida and South Carolina, sophomore Madison Scheer earned AVCA/GameChanger National Player of the Week. It was the second such award for the Auburn Volleyball program. Rani Whitson earned the honor in 1996. For Crouch, it was also the second player in his head-coaching career (Khalia Lanier, 2019).

RANK YOU VERY MUCH

» Welcome to the top 25 Auburn Volleyball. After wins over SMU and Florida State, the Tigers earned the program's first-ever ranking at No. 25.

A week later, Auburn moved up to No. 24 following a 2-1 showing at the Tiger Invitational. Auburn is currently riding a 10-week streak inside the top-25.

STAYING ACTIVE

» Bella Bell, Kendal Kemp, Jackie Barrett and Akasha Anderson are all amongst the SEC's top active career leaders. Bell (.340) and Kemp (.347) are both inside the top five in hitting percentage. Kemp's 1.41 blocks per set is currently second in the conference. Anderson ranks in the top 10 in both kills per set (3.50) and points per set (3.98). Barrett's 9.09 assists per set is eighth and Morton ranks sixth in digs per set (3.62).

BLOCKERS BEWARE

» Thanks to steady passing from Sarah Morton and the back row, the Auburn attack has managed to be one of the least-blocked teams in the SEC. On average Auburn allows just 1.60 blocks per set, the best in the conference.

500 CLUB

» Sophomore Akasha Anderson has eclipsed 500 career kills in her young career, doing so in just 37 matches.

Sophomore libero Sarah Morton earned her 500th dig of her young career against Florida State.

Eureka, Missouri native Madison Scheer is also barreling toward her 500th kill. The sophomore sits at 497 entering the weekend.

SEEING DOUBLE

» Jackie Barrett posted Auburn's first double-doubles of the season, piling up 36 assists and 14 digs against SMU. A day later, the Highland, California native grabbed 44 assists with 11 digs. Barrett posted a team-high 12 double-doubles in 2022. Barrett owns a team-leading 13 double-doubles in 2023.

Speaking of double-doubles, Bel Zimmerman earned

the feat for the first time in her career with 17 kills and 16 digs against Charleston Southern. Zimmerman added her second and third double-double against UAB and Samford during the Alabama Showdown.

KEMP ROOFING CO.

» After setting records in 2022, sophomore middle blocker Kendal Kemp is back to her old tricks this season. In eight matches this season, the Eagan Minnesota native is averaging 1.31 blocks per set. The mark is third in the SEC and No. 26 in nation.

SOAKING UP SUMMER HEAT

» August has been good to Brent Crouch over the years. In nine years of coaching, Crouch is 22-3 in the month of August, including a 9-0 mark at Auburn.

STREAKING

» In each of Auburn's first five matches this season, the Tigers managed to hit north of .300, marking the only such streak in the 25-point rally-scoring era.

CAN YOU DIG IT?

» In the first match of the season, libero Sarah Morton is already making waves. With 24 digs against Coppin State, the Muenster, Indiana native posted the third-most digs in a four-set match so far in the SEC this season.

QUEEN KEMP

» Minnesota native Kendal Kemp announced herself to the collegiate volleyball world in 2022. Kemp set single-season program records in solo blocks (26), block assists (154), total blocks (180) and blocks per set (1.48). Earning AVCA South Region Honorable Mention, Kemp totals were also second in the Southeastern Conference and her 180 total blocks were the second-most in the country.

BLOCK PARTY

» Speaking of blocks, Auburn's team totals were nothing short of brilliant. In the rally-scoring era, the 2022 Tiger team set single-season records in block assists (520), total blocks (312) and blocks per set (2.56).

THE JACK BURTON

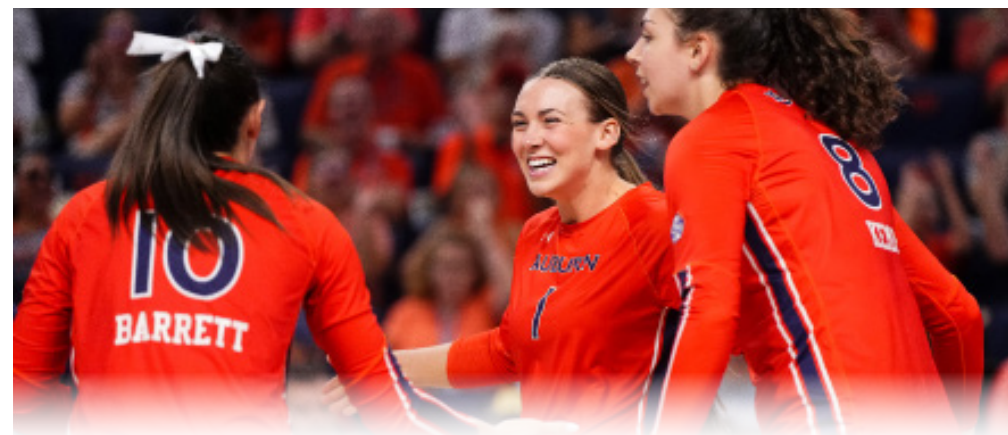
» NCAA rules have allowed for an additional coach for volleyball programs. Crouch has added Jack Burton to his staff.

Following a prolific playing career at Grand Canyon University, Burton stopped over in Dayton for two seasons and most recently helped FGCU to a 26-7 record and the school's third trip to the NCAA Tournament.

Including his stop at Florida Gulf Coast, Burton owns a 16-3 record in the Sunshine State.

PLAYER TO WATCH: MADISON SCHEER

» Sophomore outside hitter Madison Scheer has been brilliant this season for the Tigers. The Eureka, Missouri product has drove home at least 20 kills in each of the last three matches.



INSIDE THE MATCH-UPS CONT...

2007	AWAY	L	1-3
2008	AWAY	L	0-3
2008	HOME	L	0-3
2009	AWAY	L	0-3
2009	HOME	L	1-3
2010	HOME	W	3-2
2010	AWAY	L	0-3
2011	AWAY	L	0-3
2011	HOME	L	2-3
2012	AWAY	L	1-3
2012	HOME	L	0-3
2013	HOME	L	0-3
2014	AWAY	L	0-3
2014	HOME	L	1-3
2015	HOME	L	2-3
2015	AWAY	L	2-3
2016	HOME	L	2-3
2017	AWAY	L	1-3
2017	HOME	L	0-3
2018	AWAY	L	0-3
2019	HOME	L	0-3
2020	AWAY	L	0-3
2020	AWAY	L	0-3
2021	HOME	L	0-3
2021	HOME	L	0-3
2022	AWAY	L	0-3
2022	AWAY	L	0-3

AUBURN PICKED 7th IN PRESEASON POLL

>> After a sixth-place finish in 2022, the Auburn Tigers have been selected to finish seventh in the 2023 preseason poll.

NEW KIDS ON THE BLOCK

>> All 12 student-athletes from a year ago return to the Auburn Volleyball roster. Head coach Brent Crouch added six new faces to bolster the squad in 2023. Four transfers (Bella Bell, Kyla Swanson, Peyton Dunn and Paige Thibault) make their debut in the Orange and Blue this season. Freshmen Jasmin Okeoma and Lakin Laurendine have also found a new home on the Plains.

HEAD COACH BRENT CROUCH

QUICK FACTS

College \_\_\_ Texas A&M ('98, '00)  
 \_\_\_ Oregon ('06)  
 Wife \_\_\_\_\_ Marcy  
 Sons \_\_\_ Jonathan and William

COACHING RECORD

Head Coaching Career \_ 10th Season  
 Career Record \_\_\_\_\_ 148-128  
 NCAA Appearances \_\_\_\_\_ 3

COACHING CAPSULE

2020-Pr. Auburn 53-37  
 2018-19 Southern California 40-25  
 2014-17 Portland 55-66

YEAR-BY-YEAR RESULTS

2023	Auburn	18-5
2022	Auburn	22-9
2021	Auburn	13-15
2020	Auburn	0-8
2019	USC	18-14
2018	USC	22-11
2017	Portland	15-15
2016	Portland	17-13
2015	Portland	16-15
2014	Portland	7-23



Brent Crouch begins his fourth season at the helm of the Auburn Volleyball program in 2023. Crouch and the Tigers look to reset the bar after a record-breaking 2022 campaign that saw success on the Plains unseen for more than a decade.

Last season, Auburn earned a berth into the NCAA Tournament for just the second time in school history and the first since 2010. A first-round victory over host and No. 14 Creighton provided the program with its second postseason win and first triumph over a nationally-ranked opponent since 2017.

The feat came on the heels of a historic season that saw the Tigers begin the season with a record mark of 14-0 and a record start to SEC play at 3-0. The 22 total victories on the season were the most in the 25-point rally-scoring era and the most since 1998. The Tigers also picked up its first win in Columbia, Missouri.

Under Crouch's guidance, Akasha Anderson, Madison Scheer and Kendal Kemp each garnered All-Conference Honors. Anderson and Kemp also picked up AVCA postseason accolades with Anderson grabbing South Region Freshman of the Year and All-Region. Meanwhile, Kemp solidified Honorable Mention. Auburn Volleyball student-athletes also picked up a record 10 SEC weekly awards.

Crouch wasn't left out of the postseason awards season, securing AVCA South Region Coach of the Year, the first such award for the Tiger Volleyball program.

Fans on the Plains saw Auburn become one of the most potent blocking teams in the Southeastern Conference in 2022. Crouch's guidance helped the Tigers break records for most block assists in a single season (520), total blocks (312.0) and tie for the most blocks in a four-set match (17 vs. Troy).

The Orange and Blue wall's foundation was laid by then-freshman Kendal Kemp. The Egan, Minnesota product shattered single-season records for solo blocks (26), block assists (154), total blocks (180) and blocks per set (1.48).

During his first full season leading the Auburn program in 2021, Crouch's leadership had an immediate effect. The Tigers opened the season winning 17 consecutive sets to tie the program record for most sweeps to begin a season (5), matching the 1974 Auburn team. Crouch led the team to a 13-15 record with a 5-13 mark in the SEC, picking up a season sweep over Alabama, the first Auburn win over Missouri since 1996 and the program's first victory in College State with a win over Texas A&M.

Crouch's expertise led to six total SEC weekly honors, splitting three on offense and three on defense. Individually, the Tigers also set nine individual records during the 2021 campaign.

Individually, it was Rebekah Rath and Tatum Shippey who benefited the most from Crouch's development. Shippey led the SEC in blocking and set records in blocks, block assists and blocks per set. Meanwhile, Rath led the SEC in five offensive categories, setting records in kills and kills per set.

Crouch made his Auburn coaching debut against No. 4 Florida on Oct. 21, 2020, to open the shortened fall volleyball schedule. Crouch led the Tigers on the court for eight total matches and his impact on the Plains was noticeable almost immediately, tying the record for most blocks in a four-set with 17 at South Carolina.

Prior to Auburn, Crouch served as the head coach at the University of South California, compiling a 40-25 record. He would lead the Trojans to the second round of the NCAA Tournament in both years in Los Angeles. In 2018, Crouch's Trojans earned the No. 11 overall seed in the Tournament and the No. 21 ranking in the final AVCA Coaches poll of the year.

Before leading the Trojans, Crouch spent four seasons as head coach of the University of Portland. The 2016 West Coast Conference Coach of the Year inherited a winless program and guided the Pilots to its winningest season in 25 years just two seasons later. His 48 victories in his final three years in the Rose City was the best three-season total since 1984-86. He put Portland on the WCC map, earning wins over top-10, top-15 and top-25 opponents while in charge of the Pilots. Crouch coached three All-WCC First Team selections, a WCC All-Freshman Team honoree and three WCC All-Academic First Teamers. He also established Beach Volleyball as a varsity sport at Portland in 2016.

Crouch arrived at Portland after four seasons (2010-13) at Saint Mary's College, where he was an assistant with the indoor program and head coach of the beach team.

Brent and his wife Marcy have two sons, Jonathan and William.

2023 AUBURN VOLLEYBALL ROSTER

No.	Name	Year	Pos.	Ht.	Hometown (High School/Previous School)
1	MADISON SCHEER	SO.	PH	6-1	EUREKA, MO. (EUREKA)
2	SARAH MORTON	SO.	L	5-7	MUNSTER, IND. (MUNSTER)
3	AKASHA ANDERSON	SO.	PH	6-3	RESTON, VA. (HERNDON)
4	FALLAN LANHAM	JR.	L	5-8	LOUISVILLE, KY. (MERCY ACADEMY)
5	BELLA BELL	SR.	RS	6-4	BLYTHEWOOD, S.C. (KENTUCKY)
6	KYLA SWANSON	GR.	MB	6-4	WAHOO, NEB. (ILLINOIS)
7	PEYTON DUNN	R-SO.	S	5-11	DECATUR, TEXAS (OKLAHOMA)
8	KENDAL KEMP	SO.	MB	6-6	EAGAN, MINN. (EAGAN)
9	ZOE SLAUGHTER	SO.	L	5-7	HONOLULU, HAWAII (MOANALUA)
10	JACKIE BARRETT	SR.	S	6-2	HIGHLAND, CALIF. (CITRUS VALLEY)
11	JORDAN SINNESS	JR.	S	5-9	SEBRING, FLA. (SEBRING)
12	BEL ZIMMERMAN	SO.	PH	6-2	LIBERTY, MO. (LIBERTY NORTH)
13	PAIGE THIBAUT	JR.	L	5-6	WATERTOWN, MINN. (FIU)
14	CHELSEY HARMON	SR.	MB	6-3	PUYALLUP, WASH. (PORTLAND)
17	CASSIDY TANTON	R-SO.	PH	6-0	STONEVILLE, N.C. (DALTON MCMICHAEL)
19	JASMINE OKEOMA	FR.	MB	6-3	WOODBIDGE, VA. (FOREST PARK)
22	SYDNEY HANDEL	SO.	PH	6-0	LEE'S SUMMIT, MO. (LEE'S SUMMIT WEST)
25	LAKIN LAURENDINE	FR.	PH	6-1	JACKSON, MISS. (JACKSON ACADEMY)

HEAD COACH | BRENT CROUCH (4TH SEASON)

ASSISTANT COACH | KEITH SMITH (2ND SEASON)

ASSISTANT COACH/RECRUITING COORDINATOR | RACHEL CORBELLI (2ND SEASON)

ASSISTANT COACH | JACK BURTON (1ST SEASON)

PRONUNCIATION GUIDE:

MADISON SCHEER – SHEER      FALLAN LANHAM – FAL(LIKE PAL)-AN LAN-EM      SYDNEY HANDEL – HON-DELL  
 PAIGE THIBAUT – THEE-BALT      JASMINE OKEOMA – OKAY-AH-MUH      LAKIN LAURENDINE – LAY-KIN LOR-EN-DEAN  
 RACHEL CORBELLI – CORE-BELL-EE

## INSIDE THE 2023 NUMBERS



CATEGORY	AUBURN	KENTUCKY
Kills	1163	1093
Per Set	12.6	14.1
Errors	412	375
Total Attacks	3007	2688
Hitting Pct.	.250	.267
Assists	1053	1016
Per Set	11.4	13.1
Service Aces	131	112
Per Set	1.4	1.4
Service Errors	287	212
Reception Errors	125	70
Per Set	1.4	0.9
Digs	1150	1036
Per Set	12.5	13.4
Solo Blocks	25	23
Block Assists	416	246
Total Blocks	233.0	146
Per Set	2.5	1.9

## 2023 INDIVIDUAL HIGHS BY SET

**THREE SETS**

HITTING PERCENTAGE (MIN. 12 KILLS) \_\_\_\_\_ .667, Madison Scheer 47, at Florida (Oct. 6)  
 KILLS \_\_\_\_\_ 18, Akasha Anderson 47, at Florida (Oct. 6)  
 TOTAL ATTEMPTS \_\_\_\_\_ 35, Akasha Anderson vs McNeese (Aug. 26)  
 ASSISTS \_\_\_\_\_ 37, Jackie Barrett 47, at Florida (Oct. 6)  
 DIGS \_\_\_\_\_ 11, Fallan Lanham vs Jacksonville St. (Aug. 26)  
 ACES \_\_\_\_\_ 5, Jackie Barrett vs Mercer, Sept. 9)  
 BLOCKS \_\_\_\_\_ 7, 2 times (last Kyla Swanson vs Missouri Oct. 20))

**FOUR SETS**

HITTING PERCENTAGE (MIN. 12 KILLS) \_\_\_\_\_ .526, Kendal Kemp vs Charleston Southern (Sept. 8)  
 KILLS \_\_\_\_\_ 21, Madison Scheer at Alabama (Oct. 29)  
 TOTAL ATTEMPTS \_\_\_\_\_ 60, Akasha Anderson vs Ole Miss (Sept. 24)  
 ASSISTS \_\_\_\_\_ 46, Jackie Barrett vs Samford (Sept. 16)  
 DIGS \_\_\_\_\_ 24, Sarah Morton vs Coppin St. (Aug. 25)  
 ACES \_\_\_\_\_ 4, Chelsey Harmon vs Charleston Southern (Sept. 8)  
 BLOCKS \_\_\_\_\_ 10, Kendal Kemp vs UAB (Sept. 15)

**FIVE SETS**

HITTING PERCENTAGE (MIN. 12 KILLS) \_\_\_\_\_ .371, Madison Scheer 56, at South Carolina (Oct. 8)  
 KILLS \_\_\_\_\_ 26, Akasha Anderson at South Alabama (Sept. 14)  
 TOTAL ATTEMPTS \_\_\_\_\_ 69, Akasha Anderson at South Alabama (Sept. 14)  
 ASSISTS \_\_\_\_\_ 50, Jackie Barrett at Texas A&M (Nov. 5)  
 DIGS \_\_\_\_\_ 29, Zoe Slaughter at South Alabama (Sept. 14)  
 ACES \_\_\_\_\_ 5, Jackie Barrett at South Alabama (Sept. 14)  
 BLOCKS \_\_\_\_\_ 11, Kyla Swanson 11, vs South Carolina (Oct. 22)

## WEEKLY AWARDS

**SEC Weekly Awards**

10/9 - Madison Scheer (SEC Overall POTW/Offensive POW)

10/30 - Madison Scheer (Offensive POW)

**National Weekly Awards**

10/10 - Madison Scheer (AVCA National Player of the Week)

## 2023 TEAM HIGHS BY SET

**THREE SETS**

HITTING PERCENTAGE (MIN. 12 KILLS) \_\_\_\_\_ .395, vs Jacksonville St. (Aug. 26)  
 KILLS \_\_\_\_\_ 47, at Florida (Oct. 6)  
 TOTAL ATTEMPTS \_\_\_\_\_ 102, vs McNeese (Aug. 26)  
 ASSISTS \_\_\_\_\_ 43, at Florida (Oct. 6)  
 DIGS \_\_\_\_\_ 37, vs Missouri (Oct. 20)  
 ACES \_\_\_\_\_ 9, vs Mercer (Sept. 9)  
 BLOCKS \_\_\_\_\_ 11.0, vs Mercer (Sept. 9)

**FOUR SETS**

HITTING PERCENTAGE (MIN. 12 KILLS) \_\_\_\_\_ .386, vs Samford (Sept. 16)  
 KILLS \_\_\_\_\_ 62, at Florida St. (Sept. 3)  
 TOTAL ATTEMPTS \_\_\_\_\_ 166, vs Ole Miss (Sept. 24)  
 ASSISTS \_\_\_\_\_ 54, 2 times (last vs Samford Sept. 16)  
 DIGS \_\_\_\_\_ 74, vs Ole Miss (Sept. 24)  
 ACES \_\_\_\_\_ 7, vs Charleston Southern (Sept. 8)  
 BLOCKS \_\_\_\_\_ 19.0, vs UAB (Sept. 15)

**FIVE SETS**

HITTING PERCENTAGE (MIN. 12 KILLS) \_\_\_\_\_ .320, at Texas A&M (Nov. 5)  
 KILLS \_\_\_\_\_ 62, at Texas A&M (Nov. 5)  
 TOTAL ATTEMPTS \_\_\_\_\_ 178, at South Alabama (Sept. 14)  
 ASSISTS \_\_\_\_\_ 57, 2 times last at Texas A&M (Nov. 5)  
 DIGS \_\_\_\_\_ 81, at South Alabama (Sept. 14)  
 ACES \_\_\_\_\_ 14, at South Alabama (Sept. 14)  
 BLOCKS \_\_\_\_\_ 17.0, 56, at South Carolina (Oct. 8)

**THE LAST TIME AUBURN...**

**Won in three sets** \_\_\_\_\_ Oct. 6, 2023 at #9 Florida (25-23, 25-20, 25-17)  
**Won in four sets** \_\_\_\_\_ Oct. 29, 2023 at Alabama (25-18, 22-25, 25-23, 25-22)  
**Won in five sets** \_\_\_\_\_ Nov. 5, 2023 at Texas A&M (21-25, 25-19, 23-25, 25-22, 15-12)  
**Lost in three sets** \_\_\_\_\_ Oct. 20, 2023 vs Missouri (23-25, 21-25, 18-25)  
**Lost in four sets** \_\_\_\_\_ Oct. 13, 2023 vs #10 Tennessee (25-19, 21-25, 25-21, 25-17)  
**Lost in five sets** \_\_\_\_\_ Sept. 22, 2023 vs Florida (20-25, 26-24, 24-26, 25-19, 17-15)  
**Lost first set in a win** \_\_\_\_\_ Nov. 5, 2023 at Texas A&M (21-25, 25-19, 23-25, 25-22, 15-12)  
**Won first set in a loss** \_\_\_\_\_ Sept. 22, 2023 vs Florida (20-25, 26-24, 24-26, 25-19, 17-15)  
**Lost first two sets in a win** \_\_\_\_\_ Oct. 27, 2023 vs Georgia (22-25, 18-25, 25-23, 25-18, 15-11)  
**Won first two sets in a loss** \_\_\_\_\_ Oct. 10, 2021 at Arkansas (25-20, 25-23, 15-25, 17-25, 7-15)  
**Beat a ranked opponent** \_\_\_\_\_ Oct. 6, 2023 at #9 Florida (25-23, 25-20, 25-17)  
**Hit .300-.399 in a match** \_\_\_\_\_ Nov. 5, 2023 at Texas A&M (.320)  
**Hit .400-.499 in a match** \_\_\_\_\_ Sept. 6, 2022 vs Alabama A&M (.400)  
**Hit .500 or better in a match** \_\_\_\_\_ Oct. 18, 1998 at Ole Miss (.514)  
**Held opponent to .000-.100 in a match** \_\_\_\_\_ Aug. 26, 2023 vs McNeese (.097)  
**Held opponent to a negative hitting percentage** \_\_\_\_\_ Sept. 9, 2023 vs Mercer (-.053)  
**Had 70-79 kills in a match** \_\_\_\_\_ Oct. 26, 2018 vs. Ole Miss (77)  
**Had 80+ kills in a match** \_\_\_\_\_ Sept. 17, 2006 at Georgia (84)  
**Had 80-99 digs in a match** \_\_\_\_\_ Sept. 14, 2022 at South Alabama (81)  
**Had 100+ digs in a match** \_\_\_\_\_ Sept. 17, 2021 vs. Nicholls (105)  
**Had 15+ blocks in a match** \_\_\_\_\_ Oct. 22, 2023 vs South Carolina (16.0)  
**Had 10+ service aces in a match** \_\_\_\_\_ Sept. 14, 2023 at South Alabama (14)  
**Had a player(s) with 20-24 kills in a match** \_\_\_\_\_ Oct. 29, 2023 Madison Scheer at Alabama (21)  
**Had a player(s) with 25-29 kills in a match** \_\_\_\_\_ Sept. 14, 2023, Akasha Anderson at South Ala. (26)  
**Had a player(s) with 30+ kills in a match** \_\_\_\_\_ Oct. 8, 2004, Ashlee Johns vs. Arkansas (30)  
**Had a player(s) with 10+ blocks in a match** \_\_\_\_\_ Oct. 22, 2023 Kyla Swanson vs South Carolina (11)  
**Had a player(s) with 25-29 digs in a match** \_\_\_\_\_ Sept. 14, 2023, Zoe Slaughter at South Ala. (29)  
**Had a player(s) with 30+ digs in a match** \_\_\_\_\_ Oct. 17, 2021, Bella Rosenthal vs. Missouri(33)  
**Had a player(s) with 50+ assists in a match** \_\_\_\_\_ Nov. 5, 2023 Jackie Barrett at Texas A&M (50)  
**Had a player(s) with 60+ assists in a match** \_\_\_\_\_ Oct. 5, 2022, Jackie Barrett at LSU (60)  
**Had a player(s) with 5+ aces in a match** \_\_\_\_\_ Sept. 14, 2023, Jackie Barrett at South Ala. (5)

**AUBURN DOUBLE-DOUBLES IN 2023**

PLAYER	OPPONENT (SETS)	DATE	STATS
Jackie Barrett (13)	vs SMU (4)	Sept. 2	36 assists, 14 digs
	at Florida St. (4)	Sept. 3	44 assists, 11 digs
	vs MTSU (4)	Sept. 7	39 assists, 10 digs
	vs Charleston So. (4)	Sept. 8	41 assists, 13 digs
	at South Alabama (5)	Sept. 14	48 assists, 11 digs
	vs #3 Florida (5)	Sept. 22	40 assists, 12 digs
	vs Ole Miss (4)	Sept. 24	42 assists, 17 digs
	at South Carolina (5)	Oct. 8	46 assists, 12 digs
	at #10 Tennessee (4)	Oct. 13	31 assists, 11 digs
	vs Missouri (3)	Oct. 20	27 assists, 10 digs
	vs South Carolina (5)	Oct. 22	46 assists, 10 digs
	at Georgia (5)	Oct. 27	46 assists, 12 digs
	at Alabama (4)	Oct. 29	44 assists, 11 digs
Akasha Anderson (5)	at South Alabama (5)	Sept. 14	26 kills, 11 digs
	vs UAB (4)	Sept. 15	11 kills, 11 digs
	vs #3 Florida (5)	Sept. 22	18 kills, 10 digs
	at South Carolina (5)	Oct. 8	14 kills, 15 digs
	vs South Carolina (5)	Oct. 22	11 kills, 14 digs
Bel Zimmerman (3)	vs Charleston So. (4)	Sept. 8	17 kills, 16 digs
	vs UAB (4)	Sept. 15	16 kills, 12 digs
	vs Samford (4)	Sept. 16	15 kills, 11 digs

**AUBURN'S 2023 RECORD WHEN...**

OVERALL	18-5
SEC	8-4
NON-CONFERENCE	10-1
RANKED OPPONENTS	1-3
HOME	8-3
AWAY	7-2
NEUTRAL	3-0
<b>BY SETS</b>	
THREE SETS	4-2
FOUR SETS	9-2
FIVE SETS	5-1
WON FIRST SET	13-2
LOST FIRST SET	5-3
WON SECOND SET	11-2
LOST SECOND SET	7-3
SPLIT FIRST TWO SETS	10-2
WON FIRST TWO SETS	7-0
LOST FIRST TWO SETS	1-2
<b>SITUATIONAL</b>	
MORE KILLS THAN OPPONENT	13-0
FEWER KILLS THAN OPPONENT	4-5
KILLS ARE TIED	1-0
MORE DIGS THAN OPPONENT	6-0
FEWER DIGS THAN OPPONENT	11-5
DIGS ARE TIED	1-0
MORE ACES THAN OPPONENT	11-1
FEWER ACES THAN OPPONENT	6-4
ACES ARE TIED	1-0
HIGHER HITTING PERCENTAGE THAN OPPONENT	17-0
LOWER HITTING PERCENTAGE THAN OPPONENT	1-5
HITTING PERCENTAGE TIED	0-0
<b>HITTING PERCENTAGE</b>	
.400 OR ABOVE	0-0
.300-.399	9-0
.200-.299	5-1
.100-.199	4-3
.000-.099	0-0
NEGATIVE	0-1
<b>OPPONENTS' HITTING PERCENTAGE</b>	
.400 OR ABOVE	0-1
.300-.399	1-0
.200-.299	5-4
.100-.199	9-0
.000-.099	2-0
NEGATIVE	1-0
<b>BY DAY</b>	
MONDAY	0-0
TUESDAY	0-0
WEDNESDAY	0-1
THURSDAY	1-1
FRIDAY	5-3
SATURDAY	5-0
SUNDAY	7-0
DAY MATCHES (FIRST SERVE BEFORE 6 P.M.)	11-0
NIGHT MATCHES (FIRST SERVE AFTER 6 P.M.)	7-5
<b>BY MONTH</b>	
AUGUST	3-0
SEPTEMBER	8-3
OCTOBER	6-2
NOVEMBER	1-0
DECEMBER	0-0
<b>JERSEY COLOR</b>	
NAVY w/POWER STRIPE	3-0
NAVY SOLID	0-0
NAVY SLEEVELESS	5-2
ORANGE w/POWER STRIPE	5-2
ORANGE SOLID	4-0
PINK	1-1



## 2023 AUBURN MATCH-BY-MATCH STARTERS

DATE	OPPONENT	RESULT	OUTSIDE	MIDDLE	RIGHT SIDE/DS	OUTSIDE/DS	MIDDLE	LIBERO	SETTER
Aug. 25	vs Coppin State	W, 3-1	Akasha Anderson	Kendal Kemp	Bella Bell	Paige Thibault	Kyla Swanson	Sarah Morton	Peyton Dunn
Aug. 26	vs McNeese	W, 3-0	Akasha Anderson	Kendal Kemp	Bella Bell	Paige Thibault	Kyla Swanson	Sarah Morton	Jackie Barrett
Aug. 26	vs Jacksonville State	W, 3-0	Akasha Anderson	Kendal Kemp	Bella Bell	Zoe Slaughter	Kyla Swanson	Sarah Morton	Jackie Barrett
Sept. 2	vs SMU	W, 3-1	Akasha Anderson	Kendal Kemp	Bella Bell	Zoe Slaughter	Kyla Swanson	Sarah Morton	Jackie Barrett
Sept. 3	at Florida State	W, 3-1	Akasha Anderson	Kendal Kemp	Bella Bell	Zoe Slaughter	Kyla Swanson	Sarah Morton	Jackie Barrett
Sept. 7	vs Middle Tennessee	L, 1-3	Bel Zimmerman	Kendal Kemp	Bella Bell	Zoe Slaughter	Kyla Swanson	Sarah Morton	Jackie Barrett
Sept. 8	vs Charleston Southern	W, 3-1	Madison Scheer	Kendal Kemp	Bel Zimmerman	Fallan Lanham	Chelsey Harmon	Sarah Morton	Jackie Barrett
Sept. 9	vs Mercer	W, 3-0	Bel Zimmerman	Kendal Kemp	Zoe Slaughter	Fallan Lanham	Chelsey Harmon	Sarah Morton	Jackie Barrett
Sept. 14	at South Alabama	W, 3-2	Akasha Anderson	Kendal Kemp	Bel Zimmerman	Fallan Lanham	Kyla Swanson	Zoe Slaughter	Jackie Barrett
Sept. 15	vs UAB	W, 3-1	Akasha Anderson	Kendal Kemp	Bel Zimmerman	Paige Thibault	Kyla Swanson	Zoe Slaughter	Jackie Barrett
Sept. 16	vs Samford	W, 3-1	Akasha Anderson	Kendal Kemp	Bel Zimmerman	Madison Scheer	Kyla Swanson	Zoe Slaughter	Jackie Barrett
Sept. 22	vs #3 Florida	L, 2-3	Akasha Anderson	Kyla Swanson	Bella Bell	Paige Thibault	Chelsey Harmon	Sarah Morton	Jackie Barrett
Sept. 24	vs Ole Miss	W, 3-1	Akasha Anderson	Kyla Swanson	Bella Bell	Paige Thibault	Chelsey Harmon	Sarah Morton	Jackie Barrett
Sept. 27	at #14 Arkansas	L, 0-3	Akasha Anderson	Kyla Swanson	Bella Bell	Paige Thibault	Chelsey Harmon	Sarah Morton	Jackie Barrett
Oct. 1	vs Georgia	W, 3-1	Akasha Anderson	Kyla Swanson	Bel Zimmerman	Paige Thibault	Kendal Kemp	Sarah Morton	Jackie Barrett
Oct. 6	at #9 Florida	W, 3-0	Akasha Anderson	Kyla Swanson	Bel Zimmerman	Paige Thibault	Kendal Kemp	Sarah Morton	Jackie Barrett
Oct. 8	at South Carolina	W, 3-2	Akasha Anderson	Kyla Swanson	Bel Zimmerman	Paige Thibault	Kendal Kemp	Sarah Morton	Jackie Barrett
Oct. 13	at #10 Tennessee	L, 1-3	Akasha Anderson	Chelsey Harmon	Bel Zimmerman	Paige Thibault	Kendal Kemp	Sarah Morton	Jackie Barrett
Oct. 20	vs Missouri	L, 0-3	Akasha Anderson	Kendal Kemp	Bella Bell	Paige Thibault	Kyla Swanson	Sarah Morton	Jackie Barrett
Oct. 22	vs South Carolina	W, 3-2	Akasha Anderson	Kendal Kemp	Bella Bell	Bel Zimmerman	Kyla Swanson	Paige Thibault	Jackie Barrett
Oct. 27	at Georgia	W, 3-2	Akasha Anderson	Kendal Kemp	Bella Bell	Bel Zimmerman	Kyla Swanson	Paige Thibault	Jackie Barrett
Oct. 29	at Alabama	W, 3-1	Akasha Anderson	Kendal Kemp	Bella Bell	Bel Zimmerman	Kyla Swanson	Paige Thibault	Jackie Barrett
Nov. 5	at Texas A&M	W, 3-2	Akasha Anderson	Kendal Kemp	Zoe Slaughter	Madison Scheer	Kyla Swanson	Sarah Morton	Jackie Barrett

## 2023 AUBURN MATCH-BY-MATCH LEADERS

DATE	OPPONENT	RESULT	KILLS	ASSISTS	ACES	DIGS	BLOCKS	HIT PCT. (MIN 10 ATT.)
Aug. 25	vs Coppin State	W, 3-1	Scheer/Anderson (16)	Dunn (43)	Swanson (2)	Morton (24)	Swanson (6)	Bell (.480)
Aug. 26	vs McNeese	W, 3-0	Anderson (14)	Barrett (31)	Anderson (4)	Anderson (8)	Kemp (5)	Zimmerman (.400)
Aug. 26	vs Jacksonville State	W, 3-0	Anderson (10)	Dunn (16)	Zimmerman (3)	Lanham (11)	Swanson (3)	Bell (.750)
Sept. 2	vs SMU	W, 3-1	Scheer (18)	Barrett (36)	Anderson (2)	Morton (17)	Kemp (4)	Swanson (.500)
Sept. 3	at Florida State	W, 3-1	Anderson (15)	Barrett (44)	Slaughter (2)	Barrett (11)	Swanson/Barrett (4)	Swanson (.467)
Sept. 7	vs Middle Tennessee	L, 1-3	Zimmerman (11)	Barrett (39)	Barrett/Lanham (1)	3 players (10)	Kemp (5)	Swanson (.333)
Sept. 8	vs Charleston Southern	W, 3-1	Zimmerman (17)	Barrett (41)	Harmon (4)	Zimmerman (16)	Harmon (7)	Kemp (.526)
Sept. 9	vs Mercer	W, 3-0	Zimmerman (14)	Barrett (31)	Barrett (5)	Morton (10)	Kemp (7)	Kemp (.500)
Sept. 14	at South Alabama	W, 3-2	Anderson (26)	Barrett (48)	Barrett (5)	Slaughter (29)	Zimmerman (6)	Kemp (.455)
Sept. 15	vs UAB	W, 3-1	Zimmerman (16)	Barrett (35)	Zimmerman/Thibault (2)	Zimmerman (12)	Kemp (10)	Zimmerman (.306)
Sept. 16	vs Samford	W, 3-1	Anderson (19)	Barrett (46)	Thibault (2)	Slaughter (16)	Swanson (3)	Anderson (.410)
Sept. 22	vs #3 Florida	L, 2-3	Anderson (18)	Barrett (40)	Anderson (2)	Morton (13)	Swanson/Anderson (3)	Bell (.214)
Sept. 24	vs Ole Miss	W, 3-1	Anderson (20)	Barrett (42)	Zimmerman (3)	Morton (20)	Harmon (8)	Harmon (.417)
Sept. 27	at #14 Arkansas	L, 0-3	Scheer (4)	Barrett (11)	Slaughter/Zimmerman (1)	Anderson/Morton (7)	3 players (2)	Scheer (.045)
Oct. 1	vs Georgia	W, 3-1	Anderson (17)	Barrett (42)	Harmon (2)	Thibault (10)	Kemp (4)	Kemp (.667)
Oct. 6	at #9 Florida	W, 3-0	Anderson (18)	Barrett (37)	Barrett/Harmon (2)	Morton/Anderson (8)	Kemp (3)	Scheer (.667)
Oct. 8	at South Carolina	W, 3-2	Scheer (19)	Barrett (46)	Anderson (4)	Morton (18)	Kemp (9)	Kemp (.455)
Oct. 13	at #10 Tennessee	L, 1-3	Scheer (11)	Barrett (31)	Harmon/Thibault (1)	Morton (18)	Kemp (9)	Kemp (.467)
Oct. 20	vs Missouri	L, 0-3	Scheer/Anderson (10)	Barrett (27)	Barrett/Zimmerman (1)	Morton (11)	Swanson (7)	Swanson (.400)
Oct. 22	vs South Carolina	W, 3-2	Scheer (24)	Barrett (46)	Barrett (3)	Thibault (23)	Swanson (11)	Bell (.350)
Oct. 27	at Georgia	W, 3-2	Scheer (24)	Barrett (46)	Zimmerman (4)	Thibault (23)	Swanson/Kemp (7)	Scheer (.302)
Oct. 29	at Alabama	W, 3-1	Scheer (21)	Barrett (44)	Barrett (4)	Thibault (15)	Swanson (5)	Bell (.435)
Nov. 5	at Texas A&M	W, 3-2	Scheer/Anderson (16)	Barrett (50)	3 players (1)	Morton (15)	Kemp (8)	Kemp (.500)

## 2023 OVERALL STATISTICS

### Game Records

Overall	Conference	Home	Away	Neutral
18 - 5	8 - 4	8 - 3	7 - 2	3 - 0

### Team Box Score

##	Player	SP	Attack					Set			Serve			Dig			Blocking					PTS
			K	K/S	E	TA	PCT	A	A/S	SA	SE	SA/S	RE	DIG	DIG/S	BS	BA	TOT/S	BLK/S	BE	BHE	
1	Scheer, Madison	89	305	3.43	96	774	.270	4	0.04	0	0	0.00	12	30	0.34	2	42	44	0.49	1	0	328.0
2	Morton, Sarah	65	2	0.03	2	9	.000	61	0.94	6	37	0.09	12	209	3.22	0	0	0	0.00	0	0	8.0
3	Anderson, Akasha	81	278	3.43	133	836	.173	10	0.12	20	54	0.25	30	171	2.11	1	37	38	0.47	4	1	317.5
4	Lanham, Fallan	27	0	0.00	0	2	.000	6	0.22	6	6	0.22	1	52	1.93	0	0	0	0.00	0	0	6.0
5	Bell, Bella	56	131	2.34	39	307	.300	2	0.04	0	0	0.00	1	15	0.27	1	44	45	0.80	6	0	154.0
6	Swanson, Kyla	90	107	1.19	39	262	.260	9	0.10	3	14	0.03	0	19	0.21	8	93	101	1.12	6	0	164.5
7	Dunn, Peyton	6	4	0.67	1	7	.429	59	9.83	1	7	0.17	0	8	1.33	0	2	2	0.33	0	0	6.0
8	Kemp, Kendal	78	118	1.51	32	216	.398	2	0.03	1	3	0.01	0	6	0.08	8	94	102	1.31	8	0	174.0
9	Slaughter, Zoe	80	0	0.00	1	9	-.111	23	0.29	8	24	0.10	12	150	1.88	0	0	0	0.00	0	0	8.0
10	Barrett, Jackie	87	53	0.61	9	122	.361	827	9.51	26	19	0.30	0	203	2.33	2	56	58	0.67	5	6	109.0
12	Zimmerman, Bel	82	136	1.66	53	399	.208	8	0.10	29	61	0.35	13	93	1.13	2	21	23	0.28	9	0	177.5
13	Thibault, Paige	73	1	0.01	0	4	.250	38	0.52	8	34	0.11	17	161	2.21	0	0	0	0.00	0	0	9.0
14	Harmon, Chelsey	65	27	0.42	6	54	.389	4	0.06	21	18	0.32	0	16	0.25	1	27	28	0.43	4	0	62.5
17	Tanton, Cassidy	1	1	1.00	1	5	.000	0	0.00	0	0	0.00	1	0	0.00	0	0	0	0.00	0	0	1.0
22	Handel, Sydney	19	0	0.00	0	1	.000	0	0.00	2	10	0.11	1	17	0.89	0	0	0	0.00	0	0	2.0
<b>AUBURN</b>		<b>92</b>	<b>1163</b>	<b>12.64</b>	<b>412</b>	<b>3007</b>	<b>.250</b>	<b>1053</b>	<b>11.45</b>	<b>131</b>	<b>287</b>	<b>1.42</b>	<b>125</b>	<b>1150</b>	<b>12.50</b>	<b>25</b>	<b>416</b>	<b>233</b>	<b>2.53</b>	<b>43</b>	<b>7</b>	<b>1,527.0</b>
<b>Opponents</b>		<b>92</b>	<b>1083</b>	<b>11.77</b>	<b>520</b>	<b>2976</b>	<b>.189</b>	<b>1012</b>	<b>11.00</b>	<b>125</b>	<b>215</b>	<b>1.36</b>	<b>131</b>	<b>1244</b>	<b>13.52</b>	<b>29</b>	<b>236</b>	<b>147</b>	<b>1.60</b>	<b>54</b>	<b>21</b>	<b>1,355.0</b>

### Team statistics

	AUB	OPP
<b>ATTACK</b>		
Kills	1163	1083
Errors	412	520
Total Attacks	3007	2976
Attack Pct	.250	.189
Kills/Set	12.64	11.77
<b>SET</b>		
Assists	1053	1012
Attempts	2980	3069
Assist Pct	.353	.330
Assists/Set	11.45	11.00
<b>SERVE</b>		
Aces	131	125
Errors	287	215
Attempts	2069	1957
Serve Pct	.861	.890
Aces/Set	1.42	1.36
<b>SERVE RECEPTIONS</b>		
Errors	125	131
Errors/Set	1.36	1.42
Attempts	1742	1782
Reception Pct	.928	.999
<b>DEFENSE</b>		
Digs	1150	1244
Digs/Set	12.50	13.52
<b>BLOCKING</b>		
Block solo	25	29
Block Assist	416	236
Total Blocks	233	147
Blocks/Set	2.53	1.60
Block Errors	43	54
Ball handling errors	7	21
<b>ATTENDANCE</b>		
Total	14906	16831
Dates/Avg Per Date	11/1355	9/1870
Neutral Site #/Avg	3/67	-
Current win streak	0	-
Home win streak	0	-

### Team Results

Date	Opponent		Score	Score-by-set	Att.
08/25/2023	Coppin St.	W	3-1	24-26,25-17,25-15,25-18	1124
08/26/2023	McNeese	W	3-0	25-15,25-15,25-22	579
08/26/2023	Jacksonville St.	W	3-0	25-12,25-11,26-24	1125
09/02/2023	vs SMU	W	3-1	25-22,17-25,25-20,25-21	50
09/03/2023	at Florida St.	W	3-1	30-28,25-21,19-25,25-23	361
09/07/2023	Middle Tenn.	L	1-3	25-22,15-25,23-25,22-25	790
09/08/2023	Charleston So.	W	3-1	23-25,25-16,25-9,25-19	1063
09/09/2023	Mercer	W	3-0	25-15,25-20,25-11	967
09/14/2023	at South Alabama	W	3-2	27-25,23-25,19-25,25-23,15-8	1218
09/15/2023	vs UAB	W	3-1	25-15,26-24,21-25,25-19	87
09/16/2023	vs Samford	W	3-1	25-19,20-25,26-24,25-11	65
* 09/22/2023	Florida	L	2-3	25-20,24-26,26-24,19-25,15-17	2393
* 09/24/2023	Ole Miss	W	3-1	21-25,25-21,25-10,27-25	1128
* 09/27/2023	at Arkansas	L	0-3	18-25,10-25,6-25	1374
* 10/01/2023	Georgia	W	3-1	25-23,25-23,18-25,25-20	2016
* 10/06/2023	at Florida	W	3-0	25-23,25-20,25-17	4150
* 10/08/2023	at South Carolina	W	3-2	25-23,22-25,22-25,25-23,15-13	1930
* 10/13/2023	at Tennessee	L	1-3	19-25,25-21,21-25,17-25	2575
* 10/20/2023	Missouri	L	0-3	23-25,21-25,18-25	1889
* 10/22/2023	South Carolina	W	3-2	25-22,19-25,25-23,24-26,17-15	1832
* 10/27/2023	at Georgia	W	3-2	22-25,18-25,25-23,25-18,15-11	933
* 10/29/2023	at Alabama	W	3-1	25-18,22-25,25-23,25-22	1153
* 11/05/2023	at Texas A&M	W	3-2	21-25,25-19,23-25,25-22,15-12	3137

## 2023 SEC STATISTICS

### Game Records

Overall	Conference	Home	Away	Neutral
8 - 4	8 - 4	3 - 2	5 - 2	0 - 0

### Team Box Score

#	Player	SP	Attack					Set		Serve			Dig			Blocking				PTS		
			K	K/S	E	TA	PCT	A	A/S	SA	SE	SA/S	RE	DIG	DIG/S	BS	BA	TOT/S	BLK/S		BE	BHE
1	Scheer, Madison	50	184	3.68	55	464	.278	2	0.04	0	0	0.00	9	16	0.32	1	24	25	0.50	0	0	197.0
2	Morton, Sarah	36	1	0.03	2	3	-.333	34	0.94	4	19	0.11	7	118	3.28	0	0	0	0.00	0	0	5.0
3	Anderson, Akasha	50	155	3.10	89	516	.128	5	0.10	9	38	0.18	21	110	2.20	0	26	26	0.52	2	1	177.0
5	Bell, Bella	34	66	1.94	25	176	.233	1	0.03	0	0	0.00	0	10	0.29	1	28	29	0.85	3	0	81.0
6	Swanson, Kyla	50	51	1.02	16	126	.278	5	0.10	0	1	0.00	0	6	0.12	5	53	58	1.16	4	0	82.5
8	Kemp, Kendal	38	51	1.34	14	94	.394	2	0.05	0	0	0.00	0	2	0.05	2	48	50	1.32	1	0	77.0
9	Slaughter, Zoe	38	0	0.00	1	1	-1.000	4	0.11	4	9	0.11	3	51	1.34	0	0	0	0.00	0	0	4.0
10	Barrett, Jackie	50	27	0.54	5	70	.314	462	9.24	13	12	0.26	0	119	2.38	1	33	34	0.68	4	3	57.5
12	Zimmerman, Bel	47	42	0.89	26	148	.108	2	0.04	14	39	0.30	6	43	0.91	0	3	3	0.06	3	0	57.5
13	Thibault, Paige	50	0	0.00	0	2	.000	31	0.62	4	25	0.08	15	123	2.46	0	0	0	0.00	0	0	4.0
14	Harmon, Chelsey	48	12	0.25	4	26	.308	0	0.00	13	11	0.27	0	12	0.25	0	12	12	0.25	2	0	31.0
22	Handel, Sydney	6	0	0.00	0	0	.000	0	0.00	2	5	0.33	0	7	1.17	0	0	0	0.00	0	0	2.0
<b>AUBURN</b>		<b>50</b>	<b>589</b>	<b>11.78</b>	<b>237</b>	<b>1626</b>	<b>.216</b>	<b>548</b>	<b>10.96</b>	<b>63</b>	<b>159</b>	<b>1.26</b>	<b>73</b>	<b>617</b>	<b>12.34</b>	<b>10</b>	<b>227</b>	<b>123.5</b>	<b>2.47</b>	<b>19</b>	<b>4</b>	<b>775.5</b>
<b>Opponents</b>		<b>50</b>	<b>618</b>	<b>12.36</b>	<b>280</b>	<b>1641</b>	<b>.206</b>	<b>579</b>	<b>11.58</b>	<b>73</b>	<b>130</b>	<b>1.46</b>	<b>63</b>	<b>693</b>	<b>13.86</b>	<b>15</b>	<b>142</b>	<b>86</b>	<b>1.72</b>	<b>18</b>	<b>10</b>	<b>777.0</b>

### Team statistics

	AUB	OPP
<b>ATTACK</b>		
Kills	589	618
Errors	237	280
Total Attacks	1626	1641
Attack Pct	.216	.206
Kills/Set	11.78	12.36
<b>SET</b>		
Assists	548	579
Attempts	1627	1679
Assist Pct	.337	.345
Assists/Set	10.96	11.58
<b>SERVE</b>		
Aces	63	73
Errors	159	130
Attempts	1080	1105
Serve Pct	.853	.882
Aces/Set	1.26	1.46
<b>SERVE RECEPTIONS</b>		
Errors	73	63
Errors/Set	1.46	1.26
Attempts	975	921
Reception Pct	.925	.999
<b>DEFENSE</b>		
Digs	617	693
Digs/Set	12.34	13.86
<b>BLOCKING</b>		
Block solo	10	15
Block Assist	227	142
Total Blocks	123.5	86
Blocks/Set	2.47	1.72
Block Errors	19	18
Ball handling errors	4	10
<b>ATTENDANCE</b>		
Total	9258	15252
Dates/Avg Per Date	5/1852	7/2179
Neutral Site #/Avg	0/0	-
Current win streak	0	-
Home win streak	0	-

### Team Results

Date	Opponent	Score	Score-by-set	Att.
* 09/22/2023	Florida	L 2-3	25-20,24-26,26-24,19-25,15-17	2393
* 09/24/2023	Ole Miss	W 3-1	21-25,25-21,25-10,27-25	1128
* 09/27/2023	at Arkansas	L 0-3	18-25,10-25,6-25	1374
* 10/01/2023	Georgia	W 3-1	25-23,25-23,18-25,25-20	2016
* 10/06/2023	at Florida	W 3-0	25-23,25-20,25-17	4150
* 10/08/2023	at South Carolina	W 3-2	25-23,22-25,22-25,25-23,15-13	1930
* 10/13/2023	at Tennessee	L 1-3	19-25,25-21,21-25,17-25	2575
* 10/20/2023	Missouri	L 0-3	23-25,21-25,18-25	1889
* 10/22/2023	South Carolina	W 3-2	25-22,19-25,25-23,24-26,17-15	1832
* 10/27/2023	at Georgia	W 3-2	22-25,18-25,25-23,25-18,15-11	933
* 10/29/2023	at Alabama	W 3-1	25-18,22-25,25-23,25-22	1153
* 11/05/2023	at Texas A&M	W 3-2	21-25,25-19,23-25,25-22,15-12	3137

## 2023 STATISTICAL LEADERS

## Attack (by PCT)

#	Player	S	K	K/S	E	TA	PCT
7	Dunn, Peyton	6	4	0.67	1	7	.429
8	Kemp, Kendal	78	118	1.51	32	216	.398
14	Harmon, Chelsey	65	27	0.42	6	54	.389
10	Barrett, Jackie	87	53	0.61	9	122	.361
5	Bell, Bella	56	131	2.34	39	307	.300
1	Scheer, Madison	89	305	3.43	96	774	.270
6	Swanson, Kyla	90	107	1.19	39	262	.260
13	Thibault, Paige	73	1	0.01	0	4	.250
12	Zimmerman, Bel	82	136	1.66	53	399	.208
3	Anderson, Akasha	81	278	3.43	133	836	.173
4	Lanham, Fallan	27	0	0.00	0	2	.000
17	Tanton, Cassidy	1	1	1.00	1	5	.000
2	Morton, Sarah	65	2	0.03	2	9	.000
22	Handel, Sydney	19	0	0.00	0	1	.000
9	Slaughter, Zoe	80	0	0.00	1	9	-.111

## Kill (by K)

#	Player	S	K	K/S
1	Scheer, Madison	89	305	3.43
3	Anderson, Akasha	81	278	3.43
12	Zimmerman, Bel	82	136	1.66
5	Bell, Bella	56	131	2.34
8	Kemp, Kendal	78	118	1.51
6	Swanson, Kyla	90	107	1.19
10	Barrett, Jackie	87	53	0.61
14	Harmon, Chelsey	65	27	0.42
7	Dunn, Peyton	6	4	0.67
2	Morton, Sarah	65	2	0.03
13	Thibault, Paige	73	1	0.01
17	Tanton, Cassidy	1	1	1.00
4	Lanham, Fallan	27	0	0.00
22	Handel, Sydney	19	0	0.00
9	Slaughter, Zoe	80	0	0.00

## Set (by A/S)

#	Player	S	A	A/S	TA	PCT
7	Dunn, Peyton	6	59	9.83	141	.411
10	Barrett, Jackie	87	827	9.51	2150	.379
2	Morton, Sarah	65	61	0.94	218	.261
13	Thibault, Paige	73	38	0.52	113	.327
9	Slaughter, Zoe	80	23	0.29	78	.282
4	Lanham, Fallan	27	6	0.22	26	.231
3	Anderson, Akasha	81	10	0.12	85	.094
6	Swanson, Kyla	90	9	0.10	38	.158
12	Zimmerman, Bel	82	8	0.10	33	.212
14	Harmon, Chelsey	65	4	0.06	21	.190
1	Scheer, Madison	89	4	0.04	34	.059
5	Bell, Bella	56	2	0.04	17	.059
8	Kemp, Kendal	78	2	0.03	19	.105
17	Tanton, Cassidy	1	0	0.00	0	.000
22	Handel, Sydney	19	0	0.00	7	.000

## Serve (by SA/S)

#	Player	S	SA	SE	SA/S	TA	PCT
12	Zimmerman, Bel	82	29	61	0.35	289	.789
14	Harmon, Chelsey	65	21	18	0.32	198	.909
10	Barrett, Jackie	87	26	19	0.30	327	.942
3	Anderson, Akasha	81	20	54	0.25	296	.818
4	Lanham, Fallan	27	6	6	0.22	107	.944
7	Dunn, Peyton	6	1	7	0.17	15	.533
13	Thibault, Paige	73	8	34	0.11	222	.847
22	Handel, Sydney	19	2	10	0.11	55	.818
9	Slaughter, Zoe	80	8	24	0.10	250	.904
2	Morton, Sarah	65	6	37	0.09	238	.845
6	Swanson, Kyla	90	3	14	0.03	63	.778
8	Kemp, Kendal	78	1	3	0.01	6	.500
1	Scheer, Madison	89	0	0	0.00	2	1.000
5	Bell, Bella	56	0	0	0.00	1	1.000
17	Tanton, Cassidy	1	0	0	0.00	0	.000

## Block (by BLK/S)

#	Player	S	BS	BA	TOTAL	BLK/S
8	Kemp, Kendal	78	8	94	102.0	1.31
6	Swanson, Kyla	90	8	93	101.0	1.12
5	Bell, Bella	56	1	44	45.0	0.80
10	Barrett, Jackie	87	2	56	58.0	0.67
1	Scheer, Madison	89	2	42	44.0	0.49
3	Anderson, Akasha	81	1	37	38.0	0.47
14	Harmon, Chelsey	65	1	27	28.0	0.43
7	Dunn, Peyton	6	0	2	2.0	0.33
12	Zimmerman, Bel	82	2	21	23.0	0.28
4	Lanham, Fallan	27	0	0	0.0	0.00
13	Thibault, Paige	73	0	0	0.0	0.00
22	Handel, Sydney	19	0	0	0.0	0.00
9	Slaughter, Zoe	80	0	0	0.0	0.00
2	Morton, Sarah	65	0	0	0.0	0.00
17	Tanton, Cassidy	1	0	0	0.0	0.00

## Defense (by DIG/S)

#	Player	S	DIG	DIG/S	BHE
2	Morton, Sarah	65	209	3.22	0
10	Barrett, Jackie	87	203	2.33	6
13	Thibault, Paige	73	161	2.21	0
3	Anderson, Akasha	81	171	2.11	1
4	Lanham, Fallan	27	52	1.93	0
9	Slaughter, Zoe	80	150	1.88	0
7	Dunn, Peyton	6	8	1.33	0
12	Zimmerman, Bel	82	93	1.13	0
22	Handel, Sydney	19	17	0.89	0
1	Scheer, Madison	89	30	0.34	0
5	Bell, Bella	56	15	0.27	0
14	Harmon, Chelsey	65	16	0.25	0
6	Swanson, Kyla	90	19	0.21	0
8	Kemp, Kendal	78	6	0.08	0
17	Tanton, Cassidy	1	0	0.00	0

## Points (by POINTS/S)

#	Player	S	POINTS	POINTS/S
3	Anderson, Akasha	81	317.5	3.92
1	Scheer, Madison	89	328.0	3.69
5	Bell, Bella	56	154.0	2.75
8	Kemp, Kendal	78	174.0	2.23
12	Zimmerman, Bel	82	177.5	2.16
6	Swanson, Kyla	90	164.5	1.83
10	Barrett, Jackie	87	109.0	1.25
7	Dunn, Peyton	6	6.0	1.00
17	Tanton, Cassidy	1	1.0	1.00
14	Harmon, Chelsey	65	62.5	0.96
4	Lanham, Fallan	27	6.0	0.22
13	Thibault, Paige	73	9.0	0.12
2	Morton, Sarah	65	8.0	0.12
22	Handel, Sydney	19	2.0	0.11
9	Slaughter, Zoe	80	8.0	0.10

## Receptions (by PCT)

#	Player	S	RE	RE/S	TA	PCT
8	Kemp, Kendal	78	0	0.00	2	1.000
6	Swanson, Kyla	90	0	0.00	3	1.000
10	Barrett, Jackie	87	0	0.00	5	1.000
4	Lanham, Fallan	27	1	0.04	83	.988
22	Handel, Sydney	19	1	0.05	36	.972
9	Slaughter, Zoe	80	12	0.15	291	.959
2	Morton, Sarah	65	12	0.18	248	.952
13	Thibault, Paige	73	17	0.23	329	.948
3	Anderson, Akasha	81	30	0.37	422	.929
12	Zimmerman, Bel	82	13	0.16	171	.924
1	Scheer, Madison	89	12	0.13	121	.901
17	Tanton, Cassidy	1	1	1.00	4	.750
5	Bell, Bella	56	1	0.02	2	.500
7	Dunn, Peyton	6	0	0.00	0	.000
14	Harmon, Chelsey	65	0	0.00	0	.000
TM	TEAM	-	25	0.27	-	-

**TEAM KILLS - SIDOUT ERA**

	KILLS	OPPONENT (SETS)	DATE
1.	114	vs. Kentucky (5)	10/5/97
2.	107	at Tulane (5)	11/10/90
3.	99	vs. Georgia Tech (5)	9/14/95
4.	96	vs. Butler (5)	9/10/94
5.	95	vs. Pittsburgh (5)	9/13/91
6.	94	vs. Lamar (5)	9/24/88
7.	91	vs. LSU (5)	11/13/94
8.	90	at Ole Miss (5)	10/13/96
9.	89	vs. Arkansas (4)	10/20/96
10.	88	at Rhode Island (5)	9/5/97
	88	vs. Mississippi State (4)	10/24/97
	88	vs. Mississippi State (5)	11/12/00

**TEAM KILLS - RALLY ERA**

	KILLS	OPPONENT (SETS)	DATE
1.	84	vs. Virginia Tech (5)	9/2/06
	84	at Georgia (5)	9/17/06
3.	82	vs. Georgia Southern (5)	9/2/05
4.	81	at Mercer (5)	9/8/04
5.	80	vs. Kentucky (5)	10/1/06
	80	vs. Ole Miss (5)	10/24/03
7.	79	at Alabama (5)	10/30/11
8.	77	vs. Ole Miss (5)	10/26/18
9.	75	at South Carolina (5)	11/16/14
	75	at Georgia (5)	11/2/14
	75	vs. Green Bay (5)	9/5/13
	75	vs. Tennessee State (4)	8/25/07
	75	vs. Arkansas (5)	10/8/04
	75	at LSU (5)	10/25/15

**TEAM ASSISTS - RALLY ERA**

	AST.	OPPONENT (SETS)	DATE
1.	79	vs. Georgia Southern (5)	9/2/05
2.	77	at Mercer (5)	9/8/04
3.	76	at Georgia (5)	9/17/06
4.	74	vs. South Carolina (5)	10/5/14
	74	at Alabama (5)	10/30/11
	74	vs. Ole Miss (5)	9/24/03
7.	72	at Georgia (5)	11/2/14
	72	vs. Tennessee State (4)	8/25/07
	72	at LSU (5)	10/25/15
	72	vs. Ole Miss (5)	10/26/18

**TEAM DIGS - RALLY ERA**

	DIGS	OPPONENT (SETS)	DATE
1.	112	at LSU (5)	11/15/13
2.	109	at LSU (5)	10/25/15
3.	107	vs. Northwestern State (5)	9/20/14
4.	<b>105</b>	<b>vs. Nicholls St. (4)</b>	<b>9/17/21</b>
5.	99	at Ole Miss (5)	10/18/16
6.	97	vs. Georgia (4)	11/7/07
	97	vs. LSU (5)	10/5/15
	97	at Tennessee (5)	10/4/17
9.	94	at Tennessee (5)	11/16/12
10.	93	at Georgia (5)	9/17/06
	93	vs. Tennessee (4)	11/9/17

**TEAM ACES - RALLY ERA**

	ACES	OPPONENT (SETS)	DATE
1.	18	vs. Delaware State (3)	9/13/03
2.	16	vs. Tennessee State (4)	8/25/07
	16	vs. Southeastern Louisiana (3)	9/9/06
4.	<b>14</b>	<b>at South Alabama (5)</b>	<b>9/14/23</b>
	14	vs. Troy (3)	8/27/10
	14	vs. Alabama State (3)	9/5/03
7.	13	vs. Tennessee State (5)	8/30/19
	13	at SMU (5)	8/26/06
	13	vs. Mississippi State (5)	10/26/03
10.	12	vs. Louisiana Tech (4)	9/7/07
	12	at Lafayette (3)	9/12/03
	12	vs. Grambling State (3)	9/1/05

**TEAM TOTAL BLOCKS - RALLY ERA**

	BLK	OPPONENT (SETS)	DATE
1.	<b>19.0</b>	<b>vs. UAB (4)</b>	<b>9/15/23</b>
2.	<b>18.0</b>	<b>vs. Georgia (5)</b>	<b>10/9/22</b>
	<b>18.0</b>	<b>vs. Alabama (5)</b>	<b>10/2/21</b>
	18.0	vs. South Florida (5)	9/13/14
5.	<b>17.0</b>	<b>vs. Troy (4)</b>	<b>9/10/22</b>
	<b>17.0</b>	<b>at Arkansas (5)</b>	<b>10/10/21</b>
	<b>17.0</b>	<b>at South Carolina (4)</b>	<b>10/29/20</b>
	17.0	at Georgia Southern (5)	9/12/09
	17.0	vs. Mississippi State (5)	11/5/04
10.	<b>17.0</b>	<b>at South Carolina (5)</b>	<b>10/8/23</b>

**TEAM HITTING - ALL ERAS**

	PCT.	OPPONENT (SETS)	DATE
1.	.530 (41-6-66)	vs. LSU (3)	11/2/97
2.	.514 (65-11-105)	at Ole Miss (3)	10/18/98
3.	.489 (52-6-94)	vs. Alabama A&M (3)	8/29/09
4.	.487 (46-8-78)	vs. Navy (3)	9/15/00
5.	.485 (38-6-66)	vs. Drexel (3)	9/10/93
	.485 (53-5-99)	vs. Eastern Illinois (3)	9/1/18
7.	.474 (52-7-95)	at South Carolina (3)	10/26/12
8.	.472 (40-6-72)	vs. Delaware State (3)	9/13/03
9.	.471 (54-5-104)	vs. Mississippi State (3)	11/29/14
10.	.469 (35-5-64)	vs. Alabama A&M (3)	8/28/09
11.	.468 (N/A)	vs. Alabama State (3)	10/8/87
12.	.462 (52-9-93)	at Georgia State (3)	8/28/07
13.	.455 (55-9-101)	vs. Alabama (3)	11/10/98
14.	.450 (42-6-80)	vs. Mercer (3)	9/5/13
15.	.448 (50-11-87)	vs. Grambling (3)	9/1/05
16.	.440 (43-10-75)	vs. Chicago State (3)	9/11/99
	.440 (55-11-100)	vs. UAB (3)	9/3/00
18.	.429 (49-10-91)	at LSU (3)	9/26/97
19.	.420 (45-8-88)	vs. Lipscomb (3)	9/20/03
20.	.422 (43-8-83)	at Georgia Tech (3)	8/25/17

Records set in the Brent Crouch era are listed in **BOLD**.

**TEAM MATCH RECORDS (BY SET)****KILLS**

SETS	KILLS	OPPONENT	DATE
3s	76	vs. LSU	10/18/96
4s	89	vs. Arkansas	10/20/97
5s	114	vs. Kentucky	10/5/97

**ATTACKS**

SETS	ATT.	OPPONENT	DATE
3s	160	vs. South Carolina	10/19/97
4s	213	at Ole Miss	10/3/93
5s	229	at LSU	11/15/13

**HITTING PERCENTAGE (MIN. 10 KILLS)**

SETS	PCT.	OPPONENT	DATE
3s	.530 (41-6-66)	vs. LSU	11/2/97
4s	.365 (70-20-137)	vs. Alabama	11/6/97
5s	.362 (74-20-149)	at Minnesota	9/19/98

**BLOCKS - SOLO**

SETS	BLK	OPPONENT	DATE
3s	8 (3x)	last, vs. IUPUI	9/4/98
4s	10	at Tennessee Tech	10/14/88
5s	13	vs. NC State	9/21/91

**BLOCKS - ASSISTS**

SETS	BLK	OPPONENT	DATE
3s	27	at Samford	10/3/00
4s	34	<b>vs UAB</b>	<b>9/15/23</b>
5s	28 (3x)	last, vs. Mississippi State	11/12/00

**TOTAL BLOCKS**

SETS	BLK	OPPONENT	DATE
3s	15.0	vs. Alabama	11/5/93
	15.0	at South Carolina	10/17/10
4s	<b>19.0</b>	<b>vs UAB</b>	<b>9/15/23</b>
5s	<b>18.0</b>	<b>vs. Georgia</b>	<b>10/9/22</b>
	18.0	vs. South Florida	9/13/14

**DIGS**

SETS	DIGS	OPPONENT	DATE
3s	76	at Ole Miss	11/16/07
4s	115	vs. NE Louisiana	9/12/86
5s	117	vs. Central Florida	11/8/86

**ASSISTS**

SETS	AST	OPPONENT	DATE
3s	60	vs. Pittsburgh	8/31/97
4s	77	vs. Mississippi State	10/24/97
5s	100	vs. Kentucky	10/5/97

**SERVICE ACES**

SETS	ACE	OPPONENT	DATE
3s	18	vs. Delaware State	9/13/03
4s	16	vs. Tennessee State	8/25/07
5s	<b>14</b>	<b>at South Alabama</b>	<b>9/14/23</b>

**INDIVIDUAL KILLS**

	KILLS	PLAYER-OPPONENT (SETS)	DATE
1.	30	Ashlee Johns vs. Arkansas (5)	10/8/04
2.	29	<b>Rebekah Rath at Arkansas (4)</b>	<b>10/9/21</b>
3.	27	Kelly Fidero at Alabama (5)	10/30/11
4.	26	<b>Akasha Anderson at South Alabama (5)</b>	<b>9/14/23</b>
	26	<b>Akasha Anderson vs Mississippi St. (5)</b>	<b>9/28/22</b>
	26	Jessica Glover at Georgia (5)	9/17/06
	26	Camila Lago vs. Mississippi State (5)	10/26/03
8.	25	Macy Reece vs. South Florida (5)	9/13/14
	25	Rachel Shanks vs. Georgia (4)	11/7/07
	25	Jelena Sekulic at Arkansas (5)	10/7/07
	25	Rachel Shanks vs. Virginia Tech (5)	9/2/06
	25	Jennifer Amobi vs. Tennessee (4)	11/19/04
	25	<b>Rebekah Rath at Georgia St. (4)</b>	<b>8/26/22</b>

**INDIVIDUAL HITTING PCT. (MIN. 12 KILLS)**

PCT.	PLAYER-OPPONENT (SETS)	DATE
1.	.773 (17-0-22) Ashlee Johns vs. Delaware State (3)	9/13/03
2.	.722 (14-1-18) Jonelle Wallace vs. Beth.-Cook. (3)	9/5/08
3.	<b>.706 (12-0-17) Chelsey Harmon vs. Jackson St. (3)</b>	<b>9/17/22</b>
4.	.688 (12-1-16) Shaina White vs. American (3)	9/8/18
5.	<b>.667 (14-2-18) Madison Scheer at Florida (3)</b>	<b>10/6/23</b>
	.667 (16-0-24) Jonelle Wallace at Georgia (5)	11/24/10
7.	.650 (13-0-20) Breanna Barksdale at Arkansas (5)	10/30/15
8.	.647 (13-1-17) Alyssa Davis vs Jacksonville State (5)	9/8/09
9.	.632 (12-0-19) Courtney McDonald vs. Kentucky (5)	10/23/11
	.632 (12-0-19) Camila Jersonsky vs. Austin Peay (4)	9/3/11

**INDIVIDUAL TOTAL BLOCKS**

BLK (S-A)	PLAYER-OPPONENT (SETS)	DATE
1.	12 (2-10) <b>Tatum Shiples vs Alabama (4)</b>	<b>10/2/21</b>
2.	11 (1-10) <b>Kyla Swanson vs South Carolina (5)</b>	<b>10/22/23</b>
	11 (4-7) Breanna Barksdale at Florida (4)	11/23/16
3.	10 (1-9) <b>Kendal Kemp vs UAB (4)</b>	<b>9/15/23</b>
	10 (1-9) <b>Kendal Kemp vs. Georgia (5)</b>	<b>10/9/22</b>
	10 (1-9) <b>Kendal Kemp vs. Georgia (4)</b>	<b>10/8/22</b>
	10 (2-8) <b>Chelsey Harmon vs Troy (4)</b>	<b>9/10/22</b>
	10 (1-9) <b>Tatum Shiples at Arkansas (4)</b>	<b>10/9/21</b>
	10 (0-10) Stephanie Campbell vs. St. John's (5)	9/19/15
	10 (2-8) Julie Bosler vs. South Carolina (5)	9/15/06
	10 (3-7) Julie Bosler vs. Mississippi State (5)	11/5/04
	10 (2-8) Julie Bosler vs. Mississippi State (5)	10/2/03
	10 (1-9) Bailey Veit vs. Mercer (5)	9/20/03

**INDIVIDUAL SERVICE ACES**

ACES	PLAYER-OPPONENT (SETS)	DATE
1.	7 Katherine Culwell vs. Tennessee (3)	11/22/13
	7 Maira Magallon vs. Delaware State (3)	9/13/03
3.	6 Brenna McIlroy at Missouri (4)	10/19/18
	6 Whitney Jacob vs. Arkansas (5)	10/15/06
5.	5 <b>Jackie Barrett at South Alabama (5)</b>	<b>9/14/23</b>
	5 <b>Jackie Barrett vs Mercer (3)</b>	<b>9/9/23</b>
	5 Rebekah Rath at Texas A&M (5)	11/5/21
	5 Jesse Earl at Florida State (5)	9/16/17
	5 Jesse Earl at Georgia (4)	10/2/16
	5 Alexa Filley vs. LSU (5)	10/4/15
	5 Liz Crouch vs. Troy (3)	8/27/10
	5 Rachel Shanks at South Alabama (3)	9/9/06
	5 Whitney Jacob vs. Louisiana-Monroe (3)	8/25/06
	5 Whitney Jacob vs. Mississippi State (4)	10/23/05
	5 Rachel Shanks vs. Clemson (3)	9/17/05
	5 Whitney Jacob vs. Grambling (3)	9/1/05
	5 Maira Magallon vs. Mississippi State (5)	10/26/03
	5 Maira Magallon at Lafayette (3)	9/12/03
	5 Maira Magallon vs. Bethune-Cookman (4)	9/6/03
	5 Jennifer Buckert vs. Alabama State (3)	9/5/03
	5 Brittany Diaz vs. Marist (4)	9/7/02
	5 Laura Hastings vs. Western Michigan (3)	9/1/01
	5 Grace Boyd at South Carolina (3)	10/26/01

**INDIVIDUAL ASSISTS**

AST	PLAYER-OPPONENT (SETS)	DATE
1.	76 Jordan Elliott at Mercer (5)	9/8/04
2.	71 Maira Magallon vs. Ole Miss (5)	10/24/03
3.	68 Michele Ashmore vs. Georgia Southern (5)	9/2/05
4.	66 Joanna Pappas at Georgia (5)	9/17/06
5.	65 Maira Magallon vs. Arkansas (5)	10/8/04
	65 Nicki Gerig vs. Tennessee State (4)	8/25/07
7.	64 Jordan Elliott vs. Iowa State (5)	9/4/04
8.	63 Alexa Filley vs. South Carolina (5)	10/5/14
	63 Maira Magallon vs. Xavier (4)	11/26/04
	63 Sara Shanks at Arkansas (5)	10/7/07

**INDIVIDUAL DIGS**

DIGS	PLAYER-OPPONENT (SETS)	DATE
1.	37 Payton White vs. Butler (5)	8/31/19
2.	36 Jelena Sekulic at Kentucky (5)	11/17/06
	36 Jesse Earl at Tennessee (5)	10/4/17
4.	34 Bailey Veit vs. Georgia Southern (5)	9/2/05
	34 Jesse Earl at Mississippi State (5)	11/13/15
6.	33 <b>Bella Rosenthal vs. Missouri (5)</b>	<b>10/17/21</b>
7.	33 Sarah Wroblecky at LSU (5)	11/15/13
	33 Jesse Earl at LSU (4)	11/15/17
9.	31 Liz Crouch at Mississippi State (3)	9/18/09
10.	30 Liz Crouch vs. Georgia (4)	11/7/07
	30 Jesse Earl at Florida State (5)	9/16/17

Records set in the Brent Crouch era are listed in **BOLD**

**INDIVIDUAL MATCH RECORDS (BY SET)**

**KILLS**

SETS	KILLS	PLAYER-OPPONENT	DATE
3s	25	Brooke McCarley vs. UAB	9/7/99
4s	29	Rebekah Rath at Arkansas	10/9/21
	29	Brooke McCarley at Kansas	9/11/99
5s	34	Bridgitte Sims vs. Tulane	11/10/90

**ATTACKS**

SETS	ATT.	PLAYER-OPPONENT	DATE
3s	56	Allyson Beecroft at Florida	9/30/94
4s	75	Rebekah Rath at Arkansas	10/9/21
5s	84	Rebekah Rath at Texas A&M	11/4/17

**HITTING PERCENTAGE (MIN. 10 KILLS)**

SETS	PCT.	PLAYER	DATE
3s	.773 (17-0-22)	Ashlee Johns	9/13/03
4s	.813 (13-0-16)	Laura Cookley	9/28/91
5s	.714 (10-0-14)	Dalia Naidzinaviciut	9/2/05

**BLOCKS - SOLO**

SETS	BLK	PLAYER-OPPONENT	DATE
3s	5	Gina Thomas vs. Georgetown	9/13/90
4s	5	Gina Thomas vs. Florida	10/12/90
5s	6	Tory Gutierrez vs. Louisville	10/21/89
	6	Lisa Harvey vs. Tuskegee	10/7/86

**BLOCKS - ASSISTS**

SETS	BLK	PLAYER-OPPONENT	DATE
3s	<b>9 (3x) last</b>	<b>Kendal Kemp vs Belmont</b>	<b>8/26/22</b>
4s	11	Tory Gutierrez vs. Georgia State	10/3/89
5s	10	Jaunelle Hamilton vs. Mississippi St.	11/12/00
	10	Stephanie Campbell vs. St. John's	9/19/15

**TOTAL BLOCKS**

SETS	BLK	PLAYER-OPPONENT	DATE
3s	<b>9 (4x) last</b>	<b>Kendal Kemp vs. Belmont</b>	<b>8/26/22</b>
4s	14	Tory Gutierrez vs. Georgia State	10/3/89
5s	12	Jaunelle Hamilton vs. Mississippi St.	11/12/00
	12	La'Toi Finley at Georgia Tech	9/14/95

**DIGS**

SETS	DIGS	PLAYER-OPPONENT	DATE
3s	31	Liz Crouch at Mississippi State	9/18/09
4s	34	Gretchen Thompson vs. ULM	9/12/86
5s	37	Payton White vs. Butler	8/31/19

**ASSISTS**

SETS	AST	PLAYER-OPPONENT	DATE
3s	64	Piper Craig vs. LSU	10/18/96
4s	76	Piper Craig vs. Arkansas	10/20/96
5s	92	Piper Craig vs. Kentucky	10/5/97

**SERVICE ACES**

SETS	ACE	PLAYER-OPPONENT	DATE
3s	10	Jenifer Kleyn vs. Seneca	10/5/90
4s	8	Terri Duckworth at UAB	11/1/88
5s	10	Jenifer Kleyn at Ole Miss	9/28/90



# #1 MADISON SCHEER

**PIN HITTER | 6-1 | SOPHOMORE**  
**EUREKA, MO. (EUREKA)**

### SCHEER'S HIGHLIGHTS:

- Earned SEC Player of the Week (10/30/23) after back-to-back 20-kill performances against Georgia and Alabama.
- Named National Player of the Week (10/10/23) after 33 kills on .472 hitting against No. 9 Florida and South Carolina
- Career-high 24 kills on .333 hitting vs South Carolina (10/22/23)
- Tied her career-high with 24 kills at Georgia (10/27/23)
- 2022 SEC All-Freshman Team
- Named SEC Freshman of the Week and Player of the Week 9/26
- Hit over .300 11 times, over .400 seven times and over .500 twice in 2022
- Made her collegiate debut on Aug. 26 vs. Belmont

CATEGORY	CAREER HIGH	OPPONENT/DATE
Kills	24 (2x)	last at Georgia (10/27/23)
Attempts	63	at Georgia (10/27/23)
Hitting Percentage (Min. 10 ATT.)	.667	at Florida (10/6/23)
Assists	1 (7x)	last at South Carolina (10/8/23)
Digs	5	at Tennessee (10/13/23)
Blocks	6 (2x)	last at Tennessee (10/13/23)
Aces	--	--
Points	26.0 (2x)	at Georgia (10/27/23)

CATEGORY	SEASON HIGH	OPPONENT/DATE
Kills	24 (2x)	last at Georgia (10/27/23)
Attempts	63	at Georgia (10/27/23)
Hitting Percentage (Min. 10 ATT.)	.667	at Florida (10/6/23)
Assists	1 (4x)	last at South Carolina (10/8/23)
Digs	5	at Tennessee (10/13/23)
Blocks	6	at Tennessee (10/13/23)
Aces	--	--
Points	26.0 (2x)	at Georgia (10/27/23)

### GAME BY GAME

Date	Opponent	SP	Attack				Set			Serve				Recept			Blocking				Team				
			K	E	TA	PCT	A	TA	PCT	SA	SE	TA	PCT	RE	TA	PCT	DIG	BS	BA	BE	TOTAL	BHE	POINTS	HIT%	SCORE
08/25/2023	Coppin St.	4	16	4	41	.293	0	1	.000	0	0	0	.000	0	3	1.000	3	1	3	0	4.0	0	18.5	.309	3-1
08/26/2023	Jacksonville St.	3	8	2	21	.286	1	1	1.000	0	0	0	.000	0	3	1.000	0	0	0	0	0.0	0	8.0	.395	3-0
09/02/2023	vs SMU	4	18	6	37	.324	0	0	.000	0	0	0	.000	0	9	1.000	1	0	0	0	0.0	0	18.0	.316	3-1
09/03/2023	at Florida St.	4	14	3	33	.333	1	2	.500	0	0	0	.000	0	3	1.000	0	0	2	1	2.0	0	15.0	.356	3-1
09/07/2023	Middle Tenn.	4	8	2	28	.214	0	2	.000	0	0	1	1.000	0	1	1.000	2	0	3	0	3.0	0	9.5	.221	1-3
09/08/2023	Charleston So.	*4	15	3	35	.343	0	0	.000	0	0	0	.000	1	7	.857	2	0	4	0	4.0	0	17.0	.245	3-1
09/09/2023	Mercer	3	12	4	28	.286	0	2	.000	0	0	0	.000	0	8	1.000	0	0	1	0	1.0	0	12.5	.346	3-0
09/14/2023	at South Alabama	5	10	7	39	.077	0	0	.000	0	0	0	.000	1	9	.889	3	0	1	0	1.0	0	10.5	.191	3-2
09/15/2023	vs UAB	4	7	5	21	.095	0	0	.000	0	0	0	.000	0	0	.000	3	0	4	0	4.0	0	9.0	.189	3-1
09/16/2023	vs Samford	*4	13	5	27	.296	0	3	.000	0	0	0	.000	1	1	.000	0	0	0	0	0.0	0	13.0	.386	3-1
09/22/2023	Florida	5	15	6	44	.205	1	2	.500	0	0	1	1.000	0	16	1.000	2	0	0	0	0.0	0	15.0	.196	2-3
09/24/2023	Ole Miss	4	12	2	34	.294	0	4	.000	0	0	0	.000	0	9	1.000	3	0	1	0	1.0	0	12.5	.199	3-1
09/27/2023	at Arkansas	3	4	3	22	.045	0	2	.000	0	0	0	.000	1	4	.750	1	0	0	0	0.0	0	4.0	-.049	0-3
10/01/2023	Georgia	4	14	2	29	.414	0	2	.000	0	0	0	.000	0	5	1.000	0	0	1	0	1.0	0	14.5	.262	3-1
10/06/2023	at Florida	3	14	2	18	.667	0	0	.000	0	0	0	.000	0	5	1.000	0	0	1	0	1.0	0	14.5	.387	3-0
10/08/2023	at South Carolina	5	19	6	35	.371	1	5	.200	0	0	0	.000	1	5	.800	1	0	2	0	2.0	0	20.0	.197	3-2
10/13/2023	at Tennessee	4	11	9	45	.044	0	0	.000	0	0	0	.000	1	2	.500	5	1	5	0	6.0	0	14.5	.122	1-3
10/20/2023	Missouri	3	10	4	26	.231	0	1	.000	0	0	0	.000	0	0	.000	0	0	2	0	2.0	0	11.0	.168	0-3
10/22/2023	South Carolina	*5	24	6	54	.333	0	2	.000	0	0	0	.000	2	8	.750	2	0	4	0	4.0	0	26.0	.241	3-2
10/27/2023	at Georgia	*5	24	5	63	.302	0	4	.000	0	0	0	.000	2	12	.833	1	0	4	0	4.0	0	26.0	.243	3-2
10/29/2023	at Alabama	*4	21	6	49	.306	0	0	.000	0	0	0	.000	1	3	.667	1	0	2	0	2.0	0	22.0	.248	3-1
11/05/2023	at Texas A&M	*5	16	4	45	.267	0	1	.000	0	0	0	.000	1	8	.875	0	0	2	0	2.0	0	17.0	.320	3-2
<b>Totals</b>		<b>89</b>	<b>305</b>	<b>96</b>	<b>774</b>	<b>.270</b>	<b>4</b>	<b>34</b>	<b>.118</b>	<b>0</b>	<b>0</b>	<b>2</b>	<b>1.000</b>	<b>12</b>	<b>121</b>	<b>.901</b>	<b>30</b>	<b>2</b>	<b>42</b>	<b>1</b>	<b>44.0</b>	<b>0</b>	<b>328.0</b>		

### Player Averages

Sets Played	Kills per set	Assists per set	Service aces per set	Digs per set	Blocks per set	Points per set
89	3.43	0.04	0.00	0.34	0.49	3.69

### CAREER STATS

SEASON	TEAM	SM-MP	K	K/S	E	TA	PCT	A	A/S	SA	SA/S	SE	DIG	D/S	RE	BS	BA	TB	B/S	BE	BHE	PTS	PTS/S
2022-23	AUB	118-30	361	3.06	120	956	.252	3	0.03	0	0.00	0	45	0.38	3	3	46	49	0.42	4	2	387.0	3.28
2023-24	AUB	89-22	305	3.43	96	774	.270	4	0.04	0	0.00	0	30	0.34	12	2	42	44	0.49	1	0	328.0	3.69
<b>TOTAL</b>		<b>207 - 52</b>	<b>666</b>	<b>3.22</b>	<b>216</b>	<b>1730</b>	<b>.260</b>	<b>7</b>	<b>0.03</b>	<b>0</b>	<b>0.00</b>	<b>0</b>	<b>75</b>	<b>0.36</b>	<b>15</b>	<b>5</b>	<b>88</b>	<b>93</b>	<b>0.45</b>	<b>5</b>	<b>2</b>	<b>715.0</b>	<b>3.45</b>



# #2 SARAH MORTON

LIBERO | 5-7 | SOPHOMORE  
MUNSTER, IND. (MUNSTER)

### MORTON'S HIGHLIGHTS:

- Recorded 10+ digs in 26 of the 29 matches she's played in 2022
- Grabbed a career-high 26 digs vs Georgia on Oct. 9
- Named SEC Defensive Player of the Week 9/26
- Has started every game at libero when in the lineup
- Made her collegiate debut on Aug. 26 vs. Belmont

CATEGORY	CAREER HIGH	OPPONENT/DATE
Kills	1 (3x)	last vs Coppin State (8/25/23)
Attempts	3	vs Coppin State (8/25/23)
Hitting Percentage (Min. 10 ATT.)	--	--
Assists	9 (2x)	last vs SMU (9/2/23)
Digs	26	vs Georgia (10/9/22)
Blocks	--	--
Aces	3 (4x)	last at Missouri (10/15/22)
Points	3 (4x)	last at Missouri (10/15/22)

CATEGORY	SEASON HIGH	OPPONENT/DATE
Kills	1 (2x)	last vs Florida (9/22/23)
Attempts	3	vs Coppin State (8/25/23)
Hitting Percentage (Min. 10 ATT.)	--	--
Assists	9	vs SMU (9/2/23)
Digs	24	vs Coppin State (8/25/23)
Blocks	--	--
Aces	1 (6x)	last at South Carolina (10/8/23)
Points	2	vs Florida (9/22/23)

### GAME BY GAME

Date	Opponent	Attack				Set			Serve				Receipt			Blocking				Team					
		SP	K	E	TA	PCT	A	TA	PCT	SA	SE	TA	PCT	RE	TA	PCT	DIG	BS	BA	BE	TOTAL	BHE	POINTS	HIT%	SCORE
08/25/2023	Coppin St.	4	1	0	3	.333	4	12	.333	0	2	20	.900	0	13	1.000	24	0	0	0	0.0	0	1.0	.309	3-1
08/26/2023	McNeese	3	0	0	0	.000	3	11	.273	0	1	7	.857	0	8	1.000	5	0	0	0	0.0	0	0.0	.333	3-0
08/26/2023	Jacksonville St.	3	0	0	0	.000	3	8	.375	1	0	13	1.000	0	8	1.000	3	0	0	0	0.0	0	1.0	.395	3-0
09/02/2023	vs SMU	4	0	0	1	.000	9	20	.450	0	2	15	.867	1	14	.929	17	0	0	0	0.0	0	0.0	.316	3-1
09/03/2023	at Florida St.	4	0	0	1	.000	5	16	.313	1	2	16	.875	2	31	.935	8	0	0	0	0.0	0	1.0	.356	3-1
09/07/2023	Middle Tenn.	4	0	0	1	.000	0	11	.000	0	6	14	.571	2	27	.926	10	0	0	0	0.0	0	0.0	.221	1-3
09/08/2023	Charleston So.	4	0	0	0	.000	2	14	.143	0	2	15	.867	0	16	1.000	14	0	0	0	0.0	0	0.0	.245	3-1
09/09/2023	Mercer	3	0	0	0	.000	1	4	.250	0	3	7	.571	0	10	1.000	10	0	0	0	0.0	0	0.0	.346	3-0
09/22/2023	Florida	5	1	0	1	1.000	5	17	.294	1	5	18	.722	0	16	1.000	13	0	0	0	0.0	0	2.0	.196	2-3
09/24/2023	Ole Miss	4	0	0	0	.000	5	20	.250	0	1	12	.917	1	15	.933	20	0	0	0	0.0	0	0.0	.199	3-1
09/27/2023	at Arkansas	3	0	0	0	.000	1	13	.077	0	4	5	.200	1	8	.875	7	0	0	0	0.0	0	0.0	-.049	0-3
10/01/2023	Georgia	4	0	0	0	.000	4	13	.308	1	1	18	.944	0	18	1.000	8	0	0	0	0.0	0	1.0	.262	3-1
10/06/2023	at Florida	3	0	0	0	.000	4	10	.400	1	2	10	.800	0	6	1.000	8	0	0	0	0.0	0	1.0	.387	3-0
10/08/2023	at South Carolina	5	0	1	1	-1.000	6	17	.353	1	0	20	1.000	0	11	1.000	18	0	0	0	0.0	0	1.0	.197	3-2
10/13/2023	at Tennessee	4	0	0	0	.000	2	12	.167	0	2	11	.818	0	18	1.000	18	0	0	0	0.0	0	0.0	.122	1-3
10/20/2023	Missouri	3	0	0	0	.000	4	9	.444	0	0	15	1.000	1	4	.750	11	0	0	0	0.0	0	0.0	.168	0-3
11/05/2023	at Texas A&M	5	0	1	1	-1.000	3	11	.273	0	4	22	.818	4	25	.840	15	0	0	0	0.0	0	0.0	.320	3-2
<b>Totals</b>		<b>65</b>	<b>2</b>	<b>2</b>	<b>9</b>	<b>.000</b>	<b>61</b>	<b>218</b>	<b>.280</b>	<b>6</b>	<b>37</b>	<b>238</b>	<b>.845</b>	<b>12</b>	<b>248</b>	<b>.952</b>	<b>209</b>	<b>0</b>	<b>0</b>	<b>0</b>	<b>0.0</b>	<b>0</b>	<b>8.0</b>		

### Player Averages

Sets Played	Kills per set	Assists per set	Service aces per set	Digs per set	Blocks per set	Points per set
65	0.03	0.94	0.09	3.22	0.00	0.12

### CAREER STATS

SEASON	TEAM	SM-MP	K	K/S	E	TA	PCT	A	A/S	SA	SA/S	SE	DIG	D/S	RE	BS	BA	TB	B/S	BE	BHE	PTS	PTS/S
2022-23	AUB	119-30	2	0.02	1	11	.091	110	0.92	30	0.25	31	457	3.84	21	0	0	0	0.00	0	1	32.0	0.27
2023-24	AUB	65-17	2	0.03	2	9	.000	61	0.94	6	0.09	37	209	3.22	12	0	0	0	0.00	0	0	8.0	0.12
<b>TOTAL</b>		<b>184 - 47</b>	<b>4</b>	<b>0.02</b>	<b>3</b>	<b>20</b>	<b>.050</b>	<b>171</b>	<b>0.93</b>	<b>36</b>	<b>0.20</b>	<b>68</b>	<b>666</b>	<b>3.62</b>	<b>33</b>	<b>0</b>	<b>0</b>	<b>0</b>	<b>0.00</b>	<b>0</b>	<b>1</b>	<b>40.0</b>	<b>0.22</b>





# #3 AKASHA ANDERSON

**PIN HITTER | 6-3 | FRESHMAN**  
**RESTON, VA. (HERNDON)**

## ANDERSON'S HIGHLIGHTS:

- Named to All-SEC Team and All-Freshman Team
- Named AVCA South Region Freshman of the Year in 2022
- Had career-high 26 kills in win over Mississippi State
- Hit .526 with a team-high 12 kills vs. Marist
- Recorded 24 kills and 14 digs at UAB for first double-double
- Had eight double-doubles in 2022
- 2x SEC Freshman of the Week
- Made her collegiate debut on Aug. 26 vs. Belmont

CATEGORY	CAREER HIGH	OPPONENT/DATE
Kills	26 (2x)	last at South Alabama (9/14/23)
Attempts	77	at LSU (10/5/22)
Hitting Percentage (Min. 10 ATT.)	.526	vs Marist (8/27/22)
Assists	3 (2x)	last at Florida State (9/3/23)
Digs	18	at Alabama (9/25/22)
Blocks	6	at South Carolina (10/8/23)
Aces	4 (4x)	last at South Carolina (10/8/23)
Points	29.5 (2x)	last vs Mississippi State (9/28/22)

CATEGORY	SEASON HIGH	OPPONENT/DATE
Kills	26	at South Alabama (9/14/23)
Attempts	69	at South Alabama (9/14/23)
Hitting Percentage (Min. 10 ATT.)	.410	vs Samford (9/16/23)
Assists	3	at Florida State (9/3/23)
Digs	15	at South Carolina (10/8/23)
Blocks	6	at South Carolina (10/8/23)
Aces	4 (2x)	last at South Carolina (10/8/23)
Points	28.5	at South Alabama (9/14/23)

## GAME BY GAME

Date	Opponent	SP	Attack				Set			Serve				Recept			Blocking				Team				
			K	E	TA	PCT	A	TA	PCT	SA	SE	TA	PCT	RE	TA	PCT	DIG	BS	BA	BE	TOTAL	BHE	POINTS	HIT%	SCORE
08/25/2023	Coppin St.	*4	16	4	41	.293	0	3	.000	0	3	7	.571	0	16	1.000	5	0	1	0	1.0	0	16.5	.309	3-1
08/26/2023	McNeese	*3	14	5	35	.257	0	3	.000	4	3	13	.769	0	15	1.000	8	0	0	0	0.0	0	18.0	.333	3-0
08/26/2023	Jacksonville St.	*3	10	1	23	.391	0	1	.000	1	1	12	.917	1	5	.800	4	1	0	0	1.0	0	12.0	.395	3-0
09/02/2023	vs SMU	*4	12	7	41	.122	0	4	.000	2	3	22	.864	0	13	1.000	7	0	2	2	2.0	0	15.0	.316	3-1
09/03/2023	at Florida St.	*4	15	4	35	.314	3	7	.429	0	2	11	.818	1	14	.929	6	0	1	0	1.0	0	15.5	.356	3-1
09/14/2023	at South Alabama	*5	26	10	69	.232	0	3	.000	2	1	15	.933	3	25	.880	11	0	1	0	1.0	0	28.5	.191	3-2
09/15/2023	vs UAB	*4	11	10	37	.027	2	5	.400	1	2	22	.909	3	27	.889	11	0	4	0	4.0	0	14.0	.189	3-1
09/16/2023	vs Samford	*4	19	3	39	.410	0	4	.000	1	1	14	.929	1	26	.962	9	0	2	0	2.0	0	21.0	.386	3-1
09/22/2023	Florida	*5	18	11	60	.117	0	4	.000	2	5	17	.706	0	18	1.000	10	0	3	0	3.0	0	21.5	.196	2-3
09/24/2023	Ole Miss	*4	20	12	60	.133	1	4	.250	1	2	14	.857	0	13	1.000	9	0	2	0	2.0	0	22.0	.199	3-1
09/27/2023	at Arkansas	*3	1	4	23	-.130	0	0	.000	0	2	5	.600	4	18	.778	7	0	2	0	2.0	0	2.0	-.049	0-3
10/01/2023	Georgia	*4	17	11	56	.107	1	4	.250	1	5	14	.643	4	28	.857	6	0	3	0	3.0	0	19.5	.262	3-1
10/06/2023	at Florida	*3	18	4	35	.400	0	3	.000	0	2	13	.846	0	7	1.000	8	0	1	0	1.0	0	18.5	.387	3-0
10/08/2023	at South Carolina	*5	14	11	54	.056	1	9	.111	4	1	22	.955	2	33	.939	15	0	6	0	6.0	0	21.0	.197	3-2
10/13/2023	at Tennessee	*4	10	7	47	.064	0	6	.000	0	3	17	.824	0	22	1.000	8	0	3	0	3.0	0	11.5	.122	1-3
10/20/2023	Missouri	*3	10	5	30	.167	0	1	.000	0	3	7	.571	0	19	1.000	6	0	0	0	0.0	0	10.0	.168	0-3
10/22/2023	South Carolina	*5	11	7	39	.103	0	7	.000	0	3	13	.769	4	23	.826	14	0	2	1	2.0	0	12.0	.241	3-2
10/27/2023	at Georgia	*5	11	4	36	.194	1	9	.111	1	4	22	.818	4	41	.902	7	0	2	0	2.0	0	13.0	.243	3-2
10/29/2023	at Alabama	*4	9	8	32	.031	0	4	.000	0	3	23	.870	0	25	1.000	12	0	0	0	0.0	1	9.0	.248	3-1
11/05/2023	at Texas A&M	*5	16	5	44	.250	1	4	.250	0	5	13	.615	3	34	.912	8	0	2	1	2.0	0	17.0	.320	3-2
<b>Totals</b>		<b>81</b>	<b>278</b>	<b>133</b>	<b>836</b>	<b>.173</b>	<b>10</b>	<b>85</b>	<b>.118</b>	<b>20</b>	<b>54</b>	<b>296</b>	<b>.818</b>	<b>30</b>	<b>422</b>	<b>.929</b>	<b>171</b>	<b>1</b>	<b>37</b>	<b>4</b>	<b>38.0</b>	<b>1</b>	<b>317.5</b>		

## Player Averages

Sets Played	Kills per set	Assists per set	Service aces per set	Digs per set	Blocks per set	Points per set
81	3.43	0.12	0.25	2.11	0.47	3.92

## CAREER STATS

SEASON	TEAM	SM-MP	K	K/S	E	TA	PCT	A	A/S	SA	SA/S	SE	DIG	D/S	RE	BS	BA	TB	B/S	BE	BHE	PTS	PTS/S
2022-23	AUB	121-31	428	3.54	211	1240	.175	13	0.11	27	0.22	41	225	1.86	50	4	56	60	0.50	5	0	487.0	4.02
2023-24	AUB	81-20	278	3.43	133	836	.173	10	0.12	20	0.25	54	171	2.11	30	1	37	38	0.47	4	1	317.5	3.92
<b>TOTAL</b>		<b>202 - 51</b>	<b>706</b>	<b>3.50</b>	<b>344</b>	<b>2076</b>	<b>.174</b>	<b>23</b>	<b>0.11</b>	<b>47</b>	<b>0.23</b>	<b>95</b>	<b>396</b>	<b>1.96</b>	<b>80</b>	<b>5</b>	<b>93</b>	<b>98</b>	<b>0.49</b>	<b>9</b>	<b>1</b>	<b>804.5</b>	<b>3.98</b>

# #4 FALLAN LANHAM

LIBERO | 5-8 | JUNIOR  
LOUISVILLE, KY. (MERCY ACADEMY)



**LANHAM'S HIGHLIGHTS:**

- Grabbed a career-high 20 digs at LSU
- Recorded a career-high four aces at UAB
- Earned first collegiate start in Auburn's season opener versus Tennessee Tech on August 27

CATEGORY	CAREER HIGH	OPPONENT/DATE
Kills	2	vs. Missouri (9/12/21)
Attempts	8	at Arkansas (10/9/21)
Hitting Percentage (Min. 10 ATT.)		
Assists	3 (4x)	last vs Charleston Southern (9/8/23)
Digs	20	at LSU (10/5/22)
Blocks	1	at Georgia (10/22/21)
Aces	4	at UAB (9/9/22)
Points	4.0	at UAB (9/9/22)

CATEGORY	SEASON HIGH	OPPONENT/DATE
Kills	--	--
Attempts	1 (2x)	last at Florida State (9/3/23)
Hitting Percentage (Min. 10 ATT.)	--	--
Assists	3	vs Charleston Southern (9/8/23)
Digs	11	vs Jacksonville State (8/26/23)
Blocks	--	--
Aces	2	vs Jacksonville State (8/26/23)
Points	2.0	vs Jacksonville State (8/26/23)

**GAME BY GAME**

Date	Opponent	SP	Attack				Set			Serve				Receipt			Blocking				Team				
			K	E	TA	PCT	A	TA	PCT	SA	SE	TA	PCT	RE	TA	PCT	DIG	BS	BA	TB	BE	TOTAL	BHE	POINTS	HIT%
08/25/2023	Coppin St.	3	0	0	0	.000	0	1	.000	0	0	8	1.000	0	6	1.000	0	0	0	0	0.0	0	0.0	.309	3-1
08/26/2023	McNeese	1	0	0	0	.000	0	1	.000	0	0	3	1.000	0	2	1.000	2	0	0	0	0.0	0	0.0	.333	3-0
08/26/2023	Jacksonville St.	3	0	0	0	.000	1	5	.200	2	0	18	1.000	1	8	.875	11	0	0	0	0.0	0	2.0	.395	3-0
09/02/2023	vs SMU	4	0	0	1	.000	2	3	.667	1	1	16	.938	0	25	1.000	4	0	0	0	0.0	0	1.0	.316	3-1
09/03/2023	at Florida St.	4	0	0	1	.000	0	1	.000	1	1	19	.947	0	13	1.000	9	0	0	0	0.0	0	1.0	.356	3-1
09/07/2023	Middle Tenn.	4	0	0	0	.000	0	4	.000	1	2	17	.882	0	11	1.000	10	0	0	0	0.0	0	1.0	.221	1-3
09/08/2023	Charleston So.	*4	0	0	0	.000	3	6	.500	1	1	14	.929	0	11	1.000	8	0	0	0	0.0	0	1.0	.245	3-1
09/09/2023	Mercer	*3	0	0	0	.000	0	4	.000	0	1	10	.900	0	4	1.000	4	0	0	0	0.0	0	0.0	.346	3-0
09/14/2023	at South Alabama	*1	0	0	0	.000	0	1	.000	0	0	2	1.000	0	3	1.000	4	0	0	0	0.0	0	0.0	.191	3-2
<b>Totals</b>		<b>27</b>	<b>0</b>	<b>0</b>	<b>2</b>	<b>.000</b>	<b>6</b>	<b>26</b>	<b>.231</b>	<b>6</b>	<b>6</b>	<b>107</b>	<b>.944</b>	<b>1</b>	<b>83</b>	<b>.988</b>	<b>52</b>	<b>0</b>	<b>0</b>	<b>0</b>	<b>0.0</b>	<b>0</b>	<b>6.0</b>		

**Player Averages**

Sets Played	Kills per set	Assists per set	Service aces per set	Digs per set	Blocks per set	Points per set
27	0.00	0.22	0.22	1.93	0.00	0.22

**CAREER STATS**

SEASON	TEAM	SM-MP	K	K/S	E	TA	PCT	A	A/S	SA	SA/S	SE	DIG	D/S	RE	BS	BA	TB	B/S	BE	BHE	PTS	PTS/S
2021-22	AUB	103-28	7	0.07	8	85	-.012	17	0.17	5	0.05	15	192	1.86	21	0	1	1	0.01	0	0	12.5	0.12
2022-23	AUB	122-31	1	0.01	1	13	.000	15	0.12	35	0.29	33	198	1.62	28	0	0	0	0.00	0	0	36.0	0.30
2023-24	AUB	27-9	0	0.00	0	2	.000	6	0.22	6	0.22	6	52	1.93	1	0	0	0	0.00	0	0	6.0	0.22
<b>TOTAL</b>		<b>252 - 68</b>	<b>8</b>	<b>0.03</b>	<b>9</b>	<b>100</b>	<b>-.010</b>	<b>38</b>	<b>0.15</b>	<b>46</b>	<b>0.18</b>	<b>54</b>	<b>442</b>	<b>1.75</b>	<b>50</b>	<b>0</b>	<b>1</b>	<b>1</b>	<b>0.00</b>	<b>0</b>	<b>0</b>	<b>54.5</b>	<b>0.22</b>

# #5 BELLA BELL

MIDDLE BLOCKER | 6-4 | GRADUATE  
 BLYTHEWOOD, S.C. (KENTUCKY)



### BELL'S HIGHLIGHTS:

- Has hit over .400 in three matches this season
- National Champion in Kentucky
- Had the 3rd-highest hitting percentage in the SEC in 2022

CATEGORY	CAREER HIGH	OPPONENT/DATE
Kills	14	vs Coppin State (8/25/23)
Attempts	30	vs Ole Miss (9/24/23)
Hitting Percentage (Min. 10 ATT.)	.750	vs Jacksonville State (8/26/23)
Assists	1 (5x)	last vs Florida (9/22/23)
Digs	4	vs Ole Miss (9/24/23)
Blocks	10 (2x)	at Arkansas (10/7/22)
Aces	1	vs South Carolina (11/25/22)
Points	17.5	at Missouri (9/28/22)

CATEGORY	SEASON HIGH	OPPONENT/DATE
Kills	14	vs Coppin State (8/25/23)
Attempts	30	vs Ole Miss (9/24/23)
Hitting Percentage (Min. 10 ATT.)	.750	vs Jacksonville State (8/26/23)
Assists	1 (2x)	last vs Florida (9/22/23)
Digs	4	vs Ole Miss (9/24/23)
Blocks	7	vs Ole Miss (9/24/23)
Aces	--	--
Points	15.5	vs Coppin State (8/25/23)

### GAME BY GAME

Date	Opponent	SP	Attack				Set			Serve				Recept			Blocking				Team				
			K	E	TA	PCT	A	TA	PCT	SA	SE	TA	PCT	RE	TA	PCT	DIG	BS	BA	BE	TOTAL	BHE	POINTS	HIT%	SCORE
08/25/2023	Coppin St.	*4	14	2	25	.480	0	1	.000	0	0	0	.000	0	0	.000	1	0	3	0	3.0	0	15.5	.309	3-1
08/26/2023	McNeese	*3	11	3	22	.364	0	0	.000	0	0	0	.000	0	0	.000	0	0	2	0	2.0	0	12.0	.333	3-0
08/26/2023	Jacksonville St.	*3	9	0	12	.750	0	0	.000	0	0	0	.000	0	0	.000	0	0	2	1	2.0	0	10.0	.395	3-0
09/02/2023	vs SMU	*4	10	3	22	.318	1	1	1.000	0	0	0	.000	1	2	.500	2	0	3	1	3.0	0	11.5	.316	3-1
09/03/2023	at Florida St.	*4	13	1	29	.414	0	2	.000	0	0	1	1.000	0	0	.000	2	0	2	0	2.0	0	14.0	.356	3-1
09/07/2023	Middle Tenn.	*4	8	5	21	.143	0	1	.000	0	0	0	.000	0	0	.000	0	0	4	1	4.0	0	10.0	.221	1-3
09/22/2023	Florida	*5	11	5	28	.214	1	4	.250	0	0	0	.000	0	0	.000	2	0	0	0	0.0	0	11.0	.196	2-3
09/24/2023	Ole Miss	*4	9	4	30	.167	0	0	.000	0	0	0	.000	0	0	.000	4	1	6	0	7.0	0	13.0	.199	3-1
09/27/2023	at Arkansas	*3	3	4	18	-.056	0	0	.000	0	0	0	.000	0	0	.000	1	0	1	1	1.0	0	3.5	-.049	0-3
10/20/2023	Missouri	*3	5	4	17	.059	0	2	.000	0	0	0	.000	0	0	.000	0	0	3	1	3.0	0	6.5	.168	0-3
10/22/2023	South Carolina	5	8	1	20	.350	0	3	.000	0	0	0	.000	0	0	.000	1	0	6	0	6.0	0	11.0	.241	3-2
10/27/2023	at Georgia	5	7	3	19	.211	0	1	.000	0	0	0	.000	0	0	.000	0	0	3	0	3.0	0	8.5	.243	3-2
10/29/2023	at Alabama	4	12	2	23	.435	0	0	.000	0	0	0	.000	0	0	.000	2	0	3	1	3.0	0	13.5	.248	3-1
11/05/2023	at Texas A&M	5	11	2	21	.429	0	2	.000	0	0	0	.000	0	0	.000	0	0	6	0	6.0	0	14.0	.320	3-2
<b>Totals</b>		<b>56</b>	<b>131</b>	<b>39</b>	<b>307</b>	<b>.300</b>	<b>2</b>	<b>17</b>	<b>.118</b>	<b>0</b>	<b>0</b>	<b>1</b>	<b>1.000</b>	<b>1</b>	<b>2</b>	<b>.500</b>	<b>15</b>	<b>1</b>	<b>44</b>	<b>6</b>	<b>45.0</b>	<b>0</b>	<b>154.0</b>		

### Player Averages

Sets Played	Kills per set	Assists per set	Service aces per set	Digs per set	Blocks per set	Points per set
56	2.34	0.04	0.00	0.27	0.80	2.75

### CAREER STATS

SEASON	TEAM	SM-MP	K	K/S	E	TA	PCT	A	A/S	SA	SA/S	SE	DIG	D/S	RE	BS	BA	TB	B/S	BE	BHE	PTS	PTS/S
2020-21	UK	24-14	29	1.21	9	64	.313	0	0.00	0	0.00	0	2	0.08	1	0	22	22	0.92	3	0	40.0	1.67
2021-22	UK	62-19	102	1.65	25	185	.416	1	0.02	0	0.00	0	9	0.15	0	10	68	78	1.26	8	0	146.0	2.35
2022-23	UK	62-22	107	1.73	34	215	.340	2	0.03	2	0.03	6	12	0.19	0	5	72	77	1.24	8	0	150.0	2.42
2023-24	AUB	56-14	131	2.34	39	307	.300	2	0.04	0	0.00	0	15	0.27	1	1	44	45	0.80	6	0	154.0	2.75
<b>TOTAL FOR AUB</b>		<b>56 - 14</b>	<b>131</b>	<b>2.34</b>	<b>39</b>	<b>307</b>	<b>.300</b>	<b>2</b>	<b>0.04</b>	<b>0</b>	<b>0.00</b>	<b>0</b>	<b>15</b>	<b>0.27</b>	<b>1</b>	<b>1</b>	<b>44</b>	<b>45</b>	<b>0.80</b>	<b>6</b>	<b>0</b>	<b>154.0</b>	<b>2.75</b>
<b>TOTAL</b>		<b>204 - 69</b>	<b>369</b>	<b>1.81</b>	<b>107</b>	<b>771</b>	<b>.340</b>	<b>5</b>	<b>0.02</b>	<b>2</b>	<b>0.01</b>	<b>6</b>	<b>38</b>	<b>0.19</b>	<b>2</b>	<b>16</b>	<b>206</b>	<b>222</b>	<b>1.09</b>	<b>25</b>	<b>0</b>	<b>490.0</b>	<b>2.40</b>

# #6 KYLA SWANSON

MIDDLE BLOCKER | 6-4 | GRADUATE  
WAHOO, NEB. (ILLINOIS)



### SWANSON'S HIGHLIGHTS:

- 2x Academic All-Big Ten
- Made the NCAA Sweet 16 with Illinois in 2021
- Has more than 170 blocks in her career
- Hit .727 at Penn State on Oct. 30, 2021

CATEGORY	CAREER HIGH	OPPONENT/DATE
Kills	10 (3x)	last vs SMU (9/2/23)
Attempts	25	vs Charleston Southern (9/8/23)
Hitting Percentage (Min. 10 ATT.)	.727	at Penn State (10/30/21)
Assists	2 (2x)	last at Texas A&M (11/5/23)
Digs	6	at Tennessee (8/30/19)
Blocks	11	vs South Carolina (10/22/23)
Aces	2 (2x)	last vs Jacksonville State (8/26/23)
Points	15.5	vs UC Santa Barbara (8/27/21)

CATEGORY	SEASON HIGH	OPPONENT/DATE
Kills	10	vs SMU (9/2/23)
Attempts	25	vs Charleston Southern (9/8/23)
Hitting Percentage (Min. 10 ATT.)	.500	vs SMU (9/2/23)
Assists	2	at Texas A&M (11/5/23)
Digs	3	at Texas A&M (11/5/23)
Blocks	11	vs South Carolina (10/22/23)
Aces	2	vs Jacksonville State (8/26/23)
Points	12.0	vs South Carolina (10/22/23)

### GAME BY GAME

Date	Opponent	SP	Attack				Set			Serve				Recept			Blocking				Team				
			K	E	TA	PCT	A	TA	PCT	SA	SE	TA	PCT	RE	TA	PCT	DIG	BS	BA	BE	TOTAL	BHE	POINTS	HIT%	SCORE
08/25/2023	Coppin St.	*4	3	2	6	.167	0	1	.000	2	4	17	.765	0	0	.000	1	1	5	0	6.0	0	8.5	.309	3-1
08/26/2023	McNeese	*3	6	2	12	.333	0	1	.000	0	4	11	.636	0	0	.000	1	0	1	1	1.0	0	6.5	.333	3-0
08/26/2023	Jacksonville St.	*3	3	1	7	.286	1	3	.333	0	1	4	.750	0	0	.000	2	1	2	0	3.0	0	5.0	.395	3-0
09/02/2023	vs SMU	*4	10	0	20	.500	0	2	.000	0	0	2	1.000	0	1	1.000	2	0	3	0	3.0	0	11.5	.316	3-1
09/03/2023	at Florida St.	*4	8	1	15	.467	0	1	.000	1	0	4	1.000	0	0	.000	0	0	4	0	4.0	0	11.0	.356	3-1
09/07/2023	Middle Tenn.	*4	9	3	18	.333	1	3	.333	0	2	11	.818	0	0	.000	2	0	4	1	4.0	0	11.0	.221	1-3
09/08/2023	Charleston So.	4	4	5	25	-.040	1	2	.500	0	0	0	.000	0	0	.000	1	0	3	0	3.0	0	5.5	.245	3-1
09/09/2023	Mercer	3	1	3	5	-.400	1	2	.500	0	0	0	.000	0	0	.000	1	0	4	0	4.0	0	3.0	.346	3-0
09/14/2023	at South Alabama	*3	2	5	10	-.300	0	3	.000	0	2	9	.778	0	0	.000	2	0	4	0	4.0	0	4.0	.191	3-2
09/15/2023	vs UAB	*4	3	0	9	.333	0	2	.000	0	0	0	.000	0	0	.000	1	0	8	0	8.0	0	7.0	.189	3-1
09/16/2023	vs Samford	*4	7	1	9	.667	0	2	.000	0	0	0	.000	0	0	.000	0	1	2	0	3.0	0	9.0	.386	3-1
09/22/2023	Florida	*5	3	1	10	.200	0	3	.000	0	0	1	1.000	0	0	.000	0	1	2	0	3.0	0	5.0	.196	2-3
09/24/2023	Ole Miss	*4	6	3	19	.158	0	0	.000	0	0	0	.000	0	0	.000	0	0	2	0	2.0	0	7.0	.199	3-1
09/27/2023	at Arkansas	*3	3	3	8	.000	0	1	.000	0	0	0	.000	0	0	.000	0	0	2	0	2.0	0	4.0	-.049	0-3
10/01/2023	Georgia	*4	5	1	12	.333	0	0	.000	0	0	0	.000	0	0	.000	0	1	2	0	3.0	0	7.0	.262	3-1
10/06/2023	at Florida	*3	2	1	6	.167	0	0	.000	0	0	0	.000	0	0	.000	1	0	2	0	2.0	0	3.0	.387	3-0
10/08/2023	at South Carolina	*5	5	0	8	.625	0	0	.000	0	0	0	.000	0	0	.000	0	1	7	2	8.0	0	9.5	.197	3-2
10/13/2023	at Tennessee	4	2	2	9	.000	1	2	.500	0	0	0	.000	0	1	1.000	0	0	4	1	4.0	0	4.0	.122	1-3
10/20/2023	Missouri	*3	4	0	10	.400	1	2	.500	0	1	2	.500	0	0	.000	0	1	6	0	7.0	0	8.0	.168	0-3
10/22/2023	South Carolina	*5	6	3	12	.250	1	2	.500	0	0	0	.000	0	0	.000	0	1	10	0	11.0	0	12.0	.241	3-2
10/27/2023	at Georgia	*5	5	0	8	.625	0	2	.000	0	0	0	.000	0	0	.000	2	0	7	1	7.0	0	8.5	.243	3-2
11/09/2023	at Alabama	*4	2	1	7	.143	0	1	.000	0	0	0	.000	0	1	1.000	0	5	0	5.0	0	4.5	.248	3-1	
11/25/2023	at Texas A&M	*5	8	1	17	.412	2	3	.667	0	0	2	1.000	0	0	.000	3	0	4	0	4.0	0	10.0	.320	3-2
<b>Totals</b>		<b>90</b>	<b>107</b>	<b>39</b>	<b>262</b>	<b>.260</b>	<b>9</b>	<b>38</b>	<b>.237</b>	<b>3</b>	<b>14</b>	<b>63</b>	<b>.778</b>	<b>0</b>	<b>3</b>	<b>1.000</b>	<b>19</b>	<b>8</b>	<b>93</b>	<b>6</b>	<b>101.0</b>	<b>0</b>	<b>164.5</b>		

### Player Averages

Sets Played	Kills per set	Assists per set	Service aces per set	Digs per set	Blocks per set	Points per set
90	1.19	0.10	0.03	0.21	1.12	1.83

### CAREER STATS

SEASON	TEAM	SM-MP	K	K/S	E	TA	PCT	A	A/S	SA	SA/S	SE	DIG	D/S	RE	BS	BA	TB	B/S	BE	BHE	PTS	PTS/S
2019-20	Illini	16-5	7	0.44	3	29	.138	1	0.06	0	0.00	3	7	0.44	0	0	11	11	0.69	1	1	12.5	0.78
2020-21	Illini	21-7	20	0.95	9	64	.172	1	0.05	0	0.00	0	6	0.29	0	0	16	16	0.76	1	1	28.0	1.33
2021-22	Illini	101-27	149	1.48	45	316	.329	3	0.03	0	0.00	0	13	0.13	2	9	97	106	1.05	9	2	206.5	2.04
2022-23	Illini	51-15	53	1.04	19	120	.283	2	0.04	5	0.10	7	6	0.12	0	3	41	44	0.86	4	0	81.5	1.60
2023-24	AUB	90-23	107	1.19	39	262	.260	9	0.10	3	0.03	14	19	0.21	0	8	93	101	1.12	6	0	164.5	1.83
<b>TOTAL FOR AUB</b>	<b>90 - 23</b>	<b>107</b>	<b>1.19</b>	<b>39</b>	<b>262</b>	<b>.260</b>	<b>9</b>	<b>0.10</b>	<b>3</b>	<b>0.03</b>	<b>14</b>	<b>19</b>	<b>0.21</b>	<b>0</b>	<b>8</b>	<b>93</b>	<b>101</b>	<b>1.12</b>	<b>6</b>	<b>0</b>	<b>164.5</b>	<b>1.83</b>	
<b>TOTAL</b>	<b>279 - 77</b>	<b>336</b>	<b>1.20</b>	<b>115</b>	<b>791</b>	<b>.279</b>	<b>16</b>	<b>0.06</b>	<b>8</b>	<b>0.03</b>	<b>24</b>	<b>51</b>	<b>0.18</b>	<b>2</b>	<b>20</b>	<b>258</b>	<b>278</b>	<b>1.00</b>	<b>21</b>	<b>4</b>	<b>493.0</b>	<b>1.77</b>	

# #7 PEYTON DUNN

SETTER | 5-11 | REDSHIRT-SOPHOMORE  
DECATUR, TEXAS (LEGEND)



### SWANSON'S HIGHLIGHTS:

- 4x Big 12 Rookie of the Week
- All-Big 12 Rookie Team
- Had a career-high 54 assists vs Texas Tech on Oct. 14, 2021

CATEGORY	CAREER HIGH	OPPONENT/DATE
Kills	6	vs Indiana (9/10/21)
Attempts	11 (3x)	last at TCU (10/8/21)
Hitting Percentage (Min. 10 ATT.)	.500	vs Indiana (9/10/21)
Assists	54	vs Texas Tech (10/14/21)
Digs	18	vs FIU (8/28/22)
Blocks	6 (3x)	last at TCU (10/9/22)
Aces	2 (4x)	last vs FIU (8/28/22)
Points	7.0	at TCU (10/9/21)

CATEGORY	SEASON HIGH	OPPONENT/DATE
Kills	3	vs Jacksonville State (8/26/23)
Attempts	4	vs Jacksonville State (8/26/23)
Hitting Percentage (Min. 10 ATT.)	--	--
Assists	43	vs Coppin State (8/25/23)
Digs	4 (2x)	last vs Jacksonville State (8/26/23)
Blocks	2	vs Coppin State (8/25/23)
Aces	1	vs Coppin State (8/25/23)
Points	3.0 (2x)	last vs Jacksonville State (8/26/23)

### GAME BY GAME

Date	Opponent	SP	Attack				Set			Serve				Recept			Blocking				Team				
			K	E	TA	PCT	A	TA	PCT	SA	SE	TA	PCT	RE	TA	PCT	DIG	BS	BA	BE	TOTAL	BHE	POINTS	HIT%	SCORE
08/25/2023	Coppin St.	*4	1	0	3	.333	43	111	.387	1	5	11	.545	0	0	.000	4	0	2	0	2.0	0	3.0	.309	3-1
08/26/2023	Jacksonville St.	2	3	1	4	.500	16	30	.533	0	2	4	.500	0	0	.000	4	0	0	0	0.0	0	3.0	.395	3-0
<b>Totals</b>			<b>6</b>	<b>4</b>	<b>1</b>	<b>.429</b>	<b>59</b>	<b>141</b>	<b>.418</b>	<b>1</b>	<b>7</b>	<b>15</b>	<b>.533</b>	<b>0</b>	<b>0</b>	<b>.000</b>	<b>8</b>	<b>0</b>	<b>2</b>	<b>0</b>	<b>2.0</b>	<b>0</b>	<b>6.0</b>		

### Player Averages

Sets Played	Kills per set	Assists per set	Service aces per set	Digs per set	Blocks per set	Points per set
6	0.67	9.83	0.17	1.33	0.33	1.00

### CAREER STATS

SEASON	TEAM	SM-MP	K	K/S	E	TA	PCT	A	A/S	SA	SA/S	SE	DIG	D/S	RE	BS	BA	TB	B/S	BE	BHE	PTS	PTS/S
2021-22	OU	107-27	67	0.63	15	163	.319	997	9.32	13	0.12	45	198	1.85	0	0	63	63	0.59	2	5	111.5	1.04
2022-23	OU	24-7	12	0.50	4	25	.320	252	10.50	3	0.13	8	57	2.38	0	0	11	11	0.46	3	4	20.5	0.85
2023-24	AUB	6-2	4	0.67	1	7	.429	59	9.83	1	0.17	7	8	1.33	0	0	2	2	0.33	0	0	6.0	1.00
<b>TOTAL FOR AUB</b>		<b>6 - 2</b>	<b>4</b>	<b>0.67</b>	<b>1</b>	<b>7</b>	<b>.429</b>	<b>59</b>	<b>9.83</b>	<b>1</b>	<b>0.17</b>	<b>7</b>	<b>8</b>	<b>1.33</b>	<b>0</b>	<b>0</b>	<b>2</b>	<b>2</b>	<b>0.33</b>	<b>0</b>	<b>0</b>	<b>6.0</b>	<b>1.00</b>
<b>TOTAL</b>		<b>137 - 36</b>	<b>83</b>	<b>0.61</b>	<b>20</b>	<b>195</b>	<b>.323</b>	<b>1308</b>	<b>9.55</b>	<b>17</b>	<b>0.12</b>	<b>60</b>	<b>263</b>	<b>1.92</b>	<b>0</b>	<b>0</b>	<b>76</b>	<b>76</b>	<b>0.55</b>	<b>5</b>	<b>9</b>	<b>138.0</b>	<b>1.01</b>

# #8 KENDAL KEMP

MIDDLE BLOCKER | 6-6 | SOPHOMORE  
EAGAN, MINN. (EAGAN)



### KEMP'S HIGHLIGHTS:

- Has set the Auburn single-season record for total blocks, block assists and blocks per set
- Tied the program record for most blocks in a 3-set match with 9 vs. Belmont
- 2x SEC Freshman of the Week
- Named to the SEC All-Freshman Team
- Named AVCA South Region Honorable Mention
- Made her collegiate debut on Aug. 26 vs. Belmont

CATEGORY	CAREER HIGH	OPPONENT/DATE
Kills	13	vs Charleston Southern (9/8/23)
Attempts	21 (2x)	last at South Carolina (11/23/22)
Hitting Percentage (Min. 10 ATT.)	.714	at Missouri (10/15/22)
Assists	1 (4x)	last at Alabama (10/29/23)
Digs	2 (2x)	last at Kentucky (10/29/22)
Blocks	10 (4x)	last vs UAB (9/15/22)
Aces	3	at Georgia State (8/26/22)
Points	17.5	at South Carolina (11/23/22)

CATEGORY	SEASON HIGH	OPPONENT/DATE
Kills	13	vs Charleston Southern (9/8/23)
Attempts	19	vs Charleston Southern (9/8/23)
Hitting Percentage (Min. 10 ATT.)	.667	vs Georgia (10/1/23)
Assists	1 (2x)	last at Alabama (10/29/23)
Digs	1 (6x)	last at Texas A&M (11/5/23)
Blocks	10	vs UAB (9/15/23)
Aces	1	vs Coppin State (8/25/23)
Points	15.5	vs Charleston Southern (9/8/23)

### GAME BY GAME

Date	Opponent	SP	Attack				Set			Serve				Recept			Blocking				Team				
			K	E	TA	PCT	A	TA	PCT	SA	SE	TA	PCT	RE	TA	PCT	DIG	BS	BA	BE	TOTAL	BHE	POINTS	HIT%	SCORE
08/25/2023	Coppin St.	*4	5	2	17	.176	0	1	.000	1	2	5	.600	0	0	.000	0	2	3	0	5.0	0	9.5	.309	3-1
08/26/2023	McNeese	*2	4	1	6	.500	0	1	.000	0	0	0	.000	0	0	.000	0	2	3	0	5.0	0	7.5	.333	3-0
08/26/2023	Jacksonville St.	*2	2	0	2	1.000	0	1	.000	0	0	0	.000	0	0	.000	0	1	1	0	2.0	0	3.5	.395	3-0
09/02/2023	vs SMU	*4	4	0	7	.571	0	0	.000	0	0	0	.000	0	0	.000	0	0	4	2	4.0	0	6.0	.316	3-1
09/03/2023	at Florida St.	*4	9	3	13	.462	0	1	.000	0	0	0	.000	0	0	.000	1	0	4	3	4.0	0	11.0	.356	3-1
09/07/2023	Middle Tenn.	*4	5	2	9	.333	0	1	.000	0	0	0	.000	0	0	.000	1	0	5	0	5.0	0	7.5	.221	1-3
09/08/2023	Charleston So.	*4	13	3	19	.526	0	1	.000	0	0	0	.000	0	0	.000	0	0	5	0	5.0	0	15.5	.245	3-1
09/09/2023	Mercer	*3	6	1	10	.500	0	0	.000	0	1	1	.000	0	1	1.000	0	0	7	0	7.0	0	9.5	.346	3-0
09/14/2023	at South Alabama	*5	6	1	11	.455	0	0	.000	0	0	0	.000	0	0	.000	1	0	3	0	3.0	0	7.5	.191	3-2
09/15/2023	vs UAB	*4	8	3	17	.294	0	2	.000	0	0	0	.000	0	0	.000	1	1	9	2	10.0	0	13.5	.189	3-1
09/16/2023	vs Samford	*4	5	2	11	.273	0	0	.000	0	0	0	.000	0	0	.000	0	0	2	0	2.0	0	6.0	.386	3-1
10/01/2023	Georgia	*4	8	0	12	.667	0	1	.000	0	0	0	.000	0	1	1.000	1	0	4	0	4.0	0	10.0	.262	3-1
10/06/2023	at Florida	*3	4	1	7	.429	0	1	.000	0	0	0	.000	0	0	.000	0	0	3	0	3.0	0	5.5	.387	3-0
10/08/2023	at South Carolina	*5	6	1	11	.455	0	1	.000	0	0	0	.000	0	0	.000	0	0	9	0	9.0	0	10.5	.197	3-2
10/13/2023	at Tennessee	*4	9	2	15	.467	1	2	.500	0	0	0	.000	0	0	.000	0	1	8	0	9.0	0	14.0	.122	1-3
10/20/2023	Missouri	*3	2	2	4	.000	0	0	.000	0	0	0	.000	0	0	.000	0	0	2	0	2.0	0	3.0	.168	0-3
10/22/2023	South Carolina	*5	4	2	10	.200	0	3	.000	0	0	0	.000	0	0	.000	0	1	4	1	5.0	0	7.0	.241	3-2
10/27/2023	at Georgia	*5	3	2	7	.143	0	2	.000	0	0	0	.000	0	0	.000	0	0	7	0	7.0	0	6.5	.243	3-2
10/29/2023	at Alabama	*4	6	2	14	.286	1	1	1.000	0	0	0	.000	0	0	.000	0	0	3	0	3.0	0	7.5	.248	3-1
11/05/2023	at Texas A&M	*5	9	2	14	.500	0	0	.000	0	0	0	.000	0	0	.000	1	0	8	0	8.0	0	13.0	.320	3-2
<b>Totals</b>		<b>78</b>	<b>118</b>	<b>32</b>	<b>216</b>	<b>.398</b>	<b>2</b>	<b>19</b>	<b>.105</b>	<b>1</b>	<b>3</b>	<b>6</b>	<b>.500</b>	<b>0</b>	<b>2</b>	<b>1.000</b>	<b>6</b>	<b>8</b>	<b>94</b>	<b>8</b>	<b>102.0</b>	<b>0</b>	<b>174.0</b>		

### Player Averages

Sets Played	Kills per set	Assists per set	Service aces per set	Digs per set	Blocks per set	Points per set
78	1.51	0.03	0.01	0.08	1.31	2.23

### CAREER STATS

SEASON	TEAM	SM-MP	K	K/S	E	TA	PCT	A	A/S	SA	SA/S	SE	DIG	D/S	RE	BS	BA	TB	B/S	BE	BHE	PTS	PTS/S
2022-23	AUB	122-31	204	1.67	66	430	.321	2	0.02	7	0.06	16	12	0.10	1	26	154	180	1.48	13	0	314.0	2.57
2023-24	AUB	78-20	118	1.51	32	216	.398	2	0.03	1	0.01	3	6	0.08	0	8	94	102	1.31	8	0	174.0	2.23
<b>TOTAL</b>		<b>200 - 51</b>	<b>322</b>	<b>1.61</b>	<b>98</b>	<b>646</b>	<b>.347</b>	<b>4</b>	<b>0.02</b>	<b>8</b>	<b>0.04</b>	<b>19</b>	<b>18</b>	<b>0.09</b>	<b>1</b>	<b>34</b>	<b>248</b>	<b>282</b>	<b>1.41</b>	<b>21</b>	<b>0</b>	<b>488.0</b>	<b>2.44</b>

# #9 ZOE SLAUGHTER

LIBERO | 5-7 | SOPHOMORE  
HONOLULU, HAWAII (MOANALUA)



## SLAUGHTER'S HIGHLIGHTS:

- Recorded 10+ digs in 10 matches last season
- Grabbed a career-high 22 digs at Alabama on Sept. 24, 2022
- Made her collegiate debut on Aug. 26 vs. Belmont

CATEGORY	CAREER HIGH	OPPONENT/DATE
Kills	1 (2x)	last at Missouri (10/15/22)
Attempts	1 (4x)	last vs McNeese (8/26/23)
Hitting Percentage (Min. 10 ATT.)	--	--
Assists	5	at South Alabama (9/14/23)
Digs	29	at South Alabama (9/13/23)
Blocks	--	--
Aces	3 (2x)	last vs Alabama A&M (9/6/22)
Points	3.0 (3x)	last vs Troy (9/10/22)

CATEGORY	SEASON HIGH	OPPONENT/DATE
Kills	--	--
Attempts	3	vs Samford (9/16/23)
Hitting Percentage (Min. 10 ATT.)	--	--
Assists	5	at South Alabama (9/14/23)
Digs	29	at South Alabama (9/14/23)
Blocks	--	--
Aces	2	at Florida State (9/3/23)
Points	2.0	at Florida State (9/3/23)

## GAME BY GAME

Date	Opponent	Attack				Set			Serve				Receipt			Blocking				Team					
		SP	K	E	TA	PCT	A	TA	PCT	SA	SE	TA	PCT	RE	TA	PCT	DIG	BS	BA	BE	TOTAL	BHE	POINTS	HIT%	SCORE
08/25/2023	Coppin St.	4	0	0	0	.000	1	2	.500	1	4	17	.765	0	16	1.000	5	0	0	0	0.0	0	1.0	.309	3-1
08/26/2023	McNeese	3	0	0	1	.000	1	4	.250	0	0	12	1.000	0	11	1.000	6	0	0	0	0.0	0	0.0	.333	3-0
08/26/2023	Jacksonville St.	*3	0	0	0	.000	1	2	.500	0	0	9	1.000	0	11	1.000	5	0	0	0	0.0	0	0.0	.395	3-0
09/02/2023	vs SMU	*4	0	0	0	.000	0	3	.000	0	1	11	.909	0	16	1.000	2	0	0	0	0.0	0	0.0	.316	3-1
09/03/2023	at Florida St.	*4	0	0	1	.000	1	4	.250	2	3	22	.864	1	28	.964	10	0	0	0	0.0	0	2.0	.356	3-1
09/07/2023	Middle Tenn.	*4	0	0	0	.000	2	3	.667	0	1	18	.944	0	10	1.000	3	0	0	0	0.0	0	0.0	.221	1-3
09/08/2023	Charleston So.	4	0	0	0	.000	0	3	.000	0	1	17	.941	0	9	1.000	7	0	0	0	0.0	0	0.0	.245	3-1
09/09/2023	Mercer	*3	0	0	0	.000	0	0	.000	0	1	8	.875	0	6	1.000	5	0	0	0	0.0	0	0.0	.346	3-0
09/14/2023	at South Alabama	5	0	0	2	.000	5	15	.333	1	4	13	.692	5	29	.828	29	0	0	0	0.0	0	1.0	.191	3-2
09/15/2023	vs UAB	4	0	0	1	.000	4	13	.308	0	0	18	1.000	0	12	1.000	11	0	0	0	0.0	0	0.0	.189	3-1
09/16/2023	vs Samford	4	0	0	3	.000	4	9	.444	0	0	13	1.000	3	23	.870	16	0	0	0	0.0	0	0.0	.386	3-1
09/22/2023	Florida	5	0	0	0	.000	1	3	.333	0	1	20	.950	0	15	1.000	11	0	0	0	0.0	0	0.0	.196	2-3
09/24/2023	Ole Miss	4	0	0	0	.000	1	3	.333	0	2	13	.846	0	6	1.000	7	0	0	0	0.0	0	0.0	.199	3-1
09/27/2023	at Arkansas	3	0	0	0	.000	0	3	.000	1	1	6	.833	1	11	.909	1	0	0	0	0.0	0	1.0	-.049	0-3
10/06/2023	at Florida	3	0	0	0	.000	0	0	.000	0	0	0	.000	0	2	1.000	2	0	0	0	0.0	0	0.0	.387	3-0
10/08/2023	at South Carolina	5	0	0	0	.000	1	2	.500	1	1	3	.667	0	21	1.000	3	0	0	0	0.0	0	1.0	.197	3-2
10/13/2023	at Tennessee	4	0	0	0	.000	0	1	.000	0	0	0	.000	0	15	1.000	3	0	0	0	0.0	0	0.0	.122	1-3
10/27/2023	at Georgia	5	0	1	1	-1.000	1	2	.500	1	2	19	.895	0	16	1.000	3	0	0	0	0.0	0	1.0	.243	3-2
10/29/2023	at Alabama	4	0	0	0	.000	0	2	.000	0	1	13	.923	1	19	.947	10	0	0	0	0.0	0	0.0	.248	3-1
11/05/2023	at Texas A&M	*5	0	0	0	.000	0	4	.000	1	1	18	.944	1	15	.933	11	0	0	0	0.0	0	1.0	.320	3-2
<b>Totals</b>		<b>80</b>	<b>0</b>	<b>1</b>	<b>9</b>	<b>-.111</b>	<b>23</b>	<b>78</b>	<b>.295</b>	<b>8</b>	<b>24</b>	<b>250</b>	<b>.904</b>	<b>12</b>	<b>291</b>	<b>.959</b>	<b>150</b>	<b>0</b>	<b>0</b>	<b>0</b>	<b>0.0</b>	<b>0</b>	<b>8.0</b>		

### Player Averages

Sets Played	Kills per set	Assists per set	Service aces per set	Digs per set	Blocks per set	Points per set
80	0.00	0.29	0.10	1.88	0.00	0.10

## CAREER STATS

SEASON	TEAM	SM-MP	K	K/S	E	TA	PCT	A	A/S	SA	SA/S	SE	DIG	D/S	RE	BS	BA	TB	B/S	BE	BHE	PTS	PTS/S
2022-23	AUB	122-31	2	0.02	1	4	.250	22	0.18	19	0.16	41	267	2.19	14	0	0	0	0.00	0	1	21.0	0.17
2023-24	AUB	80-20	0	0.00	1	9	-.111	23	0.29	8	0.10	24	150	1.88	12	0	0	0	0.00	0	0	8.0	0.10
<b>TOTAL</b>	<b>202 - 51</b>	<b>2</b>	<b>0.01</b>	<b>2</b>	<b>13</b>	<b>.000</b>	<b>45</b>	<b>0.22</b>	<b>27</b>	<b>0.13</b>	<b>65</b>	<b>417</b>	<b>2.06</b>	<b>26</b>	<b>0</b>	<b>0</b>	<b>0</b>	<b>0.00</b>	<b>0</b>	<b>1</b>	<b>29.0</b>	<b>0.14</b>	

# #10 JACKIE BARRETT

SETTER | 6-2 | SENIOR

HIGHLAND, CALIF. (CITRUS VALLEY)



## BARRETT'S HIGHLIGHTS

- 2x SEC Setter of the Week
- Set a career-high in aces with 5 against Mercer
- Set her career-high in assists with 60 against LSU on Oct. 5, 2022

CATEGORY	CAREER HIGH	OPPONENT/DATE
Kills	6 (2x)	last, at Alabama State (9/26/21)
Attempts	20	at Alabama State (9/26/21)
Hitting Percentage (Min. 10 ATT.)	.308	vs. Florida A&M (9/17/21)
Assists	60	at LSU (10/5/22)
Digs	28	vs. Nicholls (9/17/21)
Blocks	8 (2x)	last at South Carolina (10/8/23)
Aces	5 (2x)	at South Alabama (9/14/23)
Points	10.5	at Alabama (10/29/23)

CATEGORY	SEASON HIGH	OPPONENT/DATE
Kills	5 (3x)	last vs Florida (9/22/23)
Attempts	10	vs Ole Miss (9/24/23)
Hitting Percentage (Min. 10 ATT.)	.200	vs Ole Miss (9/24/23)
Assists	50	at Texas A&M (11/5/23)
Digs	17	vs Ole Miss (9/24/23)
Blocks	8	at South Carolina (10/8/23)
Aces	5 (2x)	last at South Alabama (9/14/23)
Points	10.5	at Alabama (10/29/23)

## GAME BY GAME

Date	Opponent	SP	Attack				Set			Serve				Receipt			Blocking				Team				
			K	E	TA	PCT	A	TA	PCT	SA	SE	TA	PCT	RE	TA	PCT	DIG	BS	BA	BE	TOTAL	BHE	POINTS	HIT%	SCORE
08/26/2023	McNeese	*3	1	0	4	.250	31	72	.431	0	1	15	.933	0	0	.000	6	0	2	0	2.0	0	2.0	.333	3-0
08/26/2023	Jacksonville St.	*2	1	0	2	.500	14	25	.560	0	0	1	1.000	0	0	.000	2	0	1	0	1.0	0	1.5	.395	3-0
09/02/2023	vs SMU	*4	5	0	7	.714	36	96	.375	1	0	16	1.000	0	1	1.000	14	0	2	1	2.0	0	7.0	.316	3-1
09/03/2023	at Florida St.	*4	3	2	7	.143	44	99	.444	0	0	16	1.000	0	0	.000	11	0	3	0	3.0	0	4.5	.356	3-1
09/07/2023	Middle Tenn.	*4	5	0	7	.714	39	104	.375	1	1	13	.923	0	0	.000	10	0	0	0	0.0	0	6.0	.221	1-3
09/08/2023	Charleston So.	*4	1	1	6	.000	41	111	.369	0	0	14	1.000	0	0	.000	13	0	3	0	3.0	0	2.5	.245	3-1
09/09/2023	Mercer	*3	2	0	2	1.000	31	64	.484	5	0	16	1.000	0	0	.000	5	0	4	0	4.0	0	9.0	.346	3-0
09/14/2023	at South Alabama	*5	2	0	6	.333	48	142	.338	5	3	23	.870	0	0	.000	11	0	3	0	3.0	2	8.5	.191	3-2
09/15/2023	vs UAB	*4	3	1	6	.333	35	98	.357	0	1	14	.929	0	0	.000	6	0	5	0	5.0	0	5.5	.189	3-1
09/16/2023	vs Samford	*4	3	0	5	.600	46	93	.495	1	1	12	.917	0	0	.000	6	1	0	0	1.0	1	5.0	.386	3-1
09/22/2023	Florida	*5	5	0	9	.556	40	122	.328	1	3	15	.800	0	1	1.000	12	0	2	1	2.0	0	7.0	.196	2-3
09/24/2023	Ole Miss	*4	3	1	10	.200	42	119	.353	1	0	20	1.000	0	0	.000	17	0	1	0	1.0	0	4.5	.199	3-1
09/27/2023	at Arkansas	*3	1	0	2	.500	11	59	.186	0	1	6	.833	0	0	.000	5	0	1	1	1.0	0	1.5	-.049	0-3
10/01/2023	Georgia	*4	0	0	3	.000	42	104	.404	0	0	10	1.000	0	0	.000	8	0	1	0	1.0	0	0.5	.262	3-1
10/06/2023	at Florida	*3	3	0	8	.375	37	71	.521	2	1	11	.909	0	0	.000	5	0	2	0	2.0	0	6.0	.387	3-0
10/08/2023	at South Carolina	*5	4	1	7	.429	46	117	.393	0	1	18	.944	0	1	1.000	12	0	8	1	8.0	1	8.0	.197	3-2
10/13/2023	at Tennessee	*4	0	0	3	.000	31	115	.270	0	0	16	1.000	0	0	.000	11	0	3	0	3.0	1	1.5	.122	1-3
10/20/2023	Missouri	*3	0	1	3	-.333	27	80	.338	1	1	12	.917	0	0	.000	10	0	3	0	3.0	0	2.5	.168	0-3
10/22/2023	South Carolina	*5	4	1	9	.333	46	119	.387	3	3	23	.870	0	1	1.000	10	0	2	0	2.0	0	8.0	.241	3-2
10/27/2023	at Georgia	*5	1	1	4	.000	46	115	.400	0	1	18	.944	0	0	.000	12	0	5	0	5.0	0	3.5	.243	3-2
10/29/2023	at Alabama	*4	4	0	7	.571	44	111	.396	4	0	21	1.000	0	1	1.000	11	1	3	1	4.0	0	10.5	.248	3-1
11/05/2023	at Texas A&M	*5	2	0	5	.400	50	114	.439	1	1	17	.941	0	0	.000	6	0	2	0	2.0	1	4.0	.320	3-2
<b>Totals</b>			<b>87</b>	<b>53</b>	<b>9</b>	<b>.361</b>	<b>827</b>	<b>2150</b>	<b>.385</b>	<b>26</b>	<b>19</b>	<b>327</b>	<b>.942</b>	<b>0</b>	<b>5</b>	<b>1.000</b>	<b>203</b>	<b>2</b>	<b>56</b>	<b>5</b>	<b>58.0</b>	<b>6</b>	<b>109.0</b>		

### Player Averages

Sets Played	Kills per set	Assists per set	Service aces per set	Digs per set	Blocks per set	Points per set
87	0.61	9.51	0.30	2.33	0.67	1.25

## CAREER STATS

SEASON	TEAM	SM-MP	K	K/S	E	TA	PCT	A	A/S	SA	SA/S	SE	DIG	D/S	RE	BS	BA	TB	B/S	BE	BHE	PTS	PTS/S
2020-21	AUB	19-6	9	0.47	6	44	.068	144	7.58	3	0.16	8	33	1.74	0	0	11	11	0.58	1	0	17.5	0.92
2021-22	AUB	100-28	51	0.51	14	180	.206	809	8.09	22	0.22	24	307	3.07	0	2	60	62	0.62	8	1	105.0	1.05
2022-23	AUB	106-28	41	0.39	8	116	.284	1057	9.97	26	0.25	28	220	2.08	1	9	75	84	0.79	10	0	113.5	1.07
2023-24	AUB	87-22	53	0.61	9	122	.361	827	9.51	26	0.30	19	203	2.33	0	2	56	58	0.67	5	6	109.0	1.25
<b>TOTAL</b>		<b>312 - 84</b>	<b>154</b>	<b>0.49</b>	<b>37</b>	<b>462</b>	<b>.253</b>	<b>2837</b>	<b>9.09</b>	<b>77</b>	<b>0.25</b>	<b>79</b>	<b>763</b>	<b>2.45</b>	<b>1</b>	<b>13</b>	<b>202</b>	<b>215</b>	<b>0.69</b>	<b>24</b>	<b>7</b>	<b>345.0</b>	<b>1.11</b>



# #11 JORDAN SINNESS

SETTER | 5-9 | JUNIOR  
SEBRING, FLA. (SEBRING)



### SINNESS' HIGHLIGHTS:

- Recorded the Tigers' first double-double of the season at Georgia State with 42 assists and 12 digs.
- Grabbed a career-high 49 assists in 5-set win at UAB
- Made collegiate debut versus Cal State Fullerton (9/2), dishing out 16 assists, six digs, one kill and a block

CATEGORY	CAREER HIGH	OPPONENT/DATE
Kills	3	vs Alabama A&M (9/6/22)
Attempts	7	at UAB (9/10/22)
Hitting Percentage (Min. 10 ATT.)		
Assists	49	at UAB (9/10/22)
Digs	14	vs. Missouri (10/17/21)
Blocks	5	at UAB (9/10/22)
Aces	3	vs Alabama A&M (9/6/22)
Points	7.0	vs Alabama A&M (9/6/22)

CATEGORY	SEASON HIGH	OPPONENT/DATE
Kills	--	--
Attempts	--	--
Hitting Percentage (Min. 10 ATT.)	--	--
Assists	--	--
Digs	--	--
Blocks	--	--
Aces	--	--
Points	--	--

### GAME BY GAME

### CAREER STATS

SEASON	TEAM	SM-MP	K	K/S	E	TA	PCT	A	A/S	SA	SA/S	SE	DIG	D/S	RE	BS	BA	TB	B/S	BE	BHE	PTS	PTS/S
2021-22	AUB	50-15	2	0.04	1	6	.167	64	1.28	6	0.12	7	33	0.66	0	0	3	3	0.06	0	2	9.5	0.19
2022-23	AUB	49-14	5	0.10	0	15	.333	163	3.33	16	0.33	22	51	1.04	0	2	13	15	0.31	1	0	29.5	0.60
<b>TOTAL</b>		<b>99 - 29</b>	<b>7</b>	<b>0.07</b>	<b>1</b>	<b>21</b>	<b>.286</b>	<b>227</b>	<b>2.29</b>	<b>22</b>	<b>0.22</b>	<b>29</b>	<b>84</b>	<b>0.85</b>	<b>0</b>	<b>2</b>	<b>16</b>	<b>18</b>	<b>0.18</b>	<b>1</b>	<b>2</b>	<b>39.0</b>	<b>0.39</b>

# #12 BEL ZIMMERMAN

**PIN HITTER | 6-2 | SOPHOMORE  
LIBERTY, MO. (LIBERTY NORTH)**



## ZIMMERMAN'S HIGHLIGHTS:

- Set career highs in kills (17) and digs (16) against Charleston Southern for her first-career double-double
- Hit .692 with 8 kills vs. Marist
- Had a career-high 13 kills at Jacksonville State
- Made her collegiate debut on Aug. 26 at Georgia State

CATEGORY	CAREER HIGH	OPPONENT/DATE
Kills	17	vs Charleston Southern (9/8/23)
Attempts	36	vs UAB (9/15/23)
Hitting Percentage (Min. 10 ATT.)	.692	vs Marist (8/27/22)
Assists	1 (10x)	last vs South Carolina (10/22/23)
Digs	16	vs Charleston Southern (9/8/23)
Blocks	6 (2x)	last at South Alabama (9/14/23)
Aces	4 (2x)	last at Georgia (10/27/23)
Points	21.0	vs UAB (9/15/23)

CATEGORY	SEASON HIGH	OPPONENT/DATE
Kills	17	vs Charleston Southern (9/8/23)
Attempts	41	at South Carolina (10/8/23)
Hitting Percentage (Min. 10 ATT.)	.400	vs McNeese (8/26/23)
Assists	1 (8x)	last vs South Carolina (10/22/23)
Digs	16	vs Charleston Southern (9/8/23)
Blocks	6	at South Alabama (9/14/23)
Aces	4 (2x)	last at Georgia (10/27/23)
Points	21.0	vs UAB (9/15/23)

## GAME BY GAME

Date	Opponent	SP	Attack				Set			Serve				Receipt			Blocking				Team				
			K	E	TA	PCT	A	TA	PCT	SA	SE	TA	PCT	RE	TA	PCT	DIG	BS	BA	BE	TOTAL	BHE	POINTS	HIT%	SCORE
08/26/2023	McNeese	3	8	0	20	.400	1	3	.333	0	2	8	.750	0	7	1.000	2	0	2	0	2.0	0	9.0	.333	3-0
08/26/2023	Jacksonville St.	2	2	3	8	.125	0	0	.000	3	2	7	.714	0	3	1.000	1	0	0	2	0.0	0	5.0	.395	3-0
09/02/2023	vs SMU	2	0	0	0	.000	0	0	.000	0	2	3	.333	0	0	.000	0	0	0	0	0.0	0	0.0	.316	3-1
09/03/2023	at Florida St.	4	0	0	0	.000	0	1	.000	0	0	9	1.000	0	0	.000	0	0	0	0	0.0	0	0.0	.356	3-1
09/07/2023	Middle Tenn.	*4	11	6	40	.125	0	0	.000	0	3	11	.727	2	19	.895	4	0	2	1	2.0	0	12.0	.221	1-3
09/08/2023	Charleston So.	*4	17	5	50	.240	1	1	1.000	2	2	22	.909	0	20	1.000	16	0	2	0	2.0	0	20.0	.245	3-1
09/09/2023	Mercer	*3	14	3	30	.367	1	3	.333	3	3	15	.800	0	13	1.000	2	0	1	1	1.0	0	17.5	.346	3-0
09/14/2023	at South Alabama	*5	11	3	34	.235	1	6	.167	4	2	23	.913	0	10	1.000	2	1	5	1	6.0	0	18.5	.191	3-2
09/15/2023	vs UAB	*4	16	5	36	.306	1	3	.333	2	3	14	.786	2	22	.909	12	1	4	1	5.0	0	21.0	.189	3-1
09/16/2023	vs Samford	*4	15	2	33	.394	1	2	.500	1	3	12	.750	3	17	.824	11	0	2	0	2.0	0	17.0	.386	3-1
09/22/2023	Florida	5	0	0	0	.000	1	3	.333	0	3	16	.813	0	0	.000	1	0	0	0	0.0	0	0.0	.196	2-3
09/24/2023	Ole Miss	4	0	0	0	.000	0	0	.000	3	2	17	.882	0	0	.000	1	0	0	0	0.0	0	3.0	.199	3-1
09/27/2023	at Arkansas	3	0	3	5	-.600	0	1	.000	1	1	5	.800	1	3	.667	0	0	0	0	0.0	0	1.0	-.049	0-3
10/01/2023	Georgia	*4	5	2	14	.214	0	3	.000	0	5	20	.750	0	15	1.000	6	0	1	2	1.0	0	5.5	.262	3-1
10/06/2023	at Florida	*3	6	3	18	.167	0	0	.000	1	6	15	.600	0	7	1.000	2	0	1	0	1.0	0	7.5	.387	3-0
10/08/2023	at South Carolina	*5	10	7	41	.073	0	1	.000	1	4	18	.778	0	3	1.000	2	0	0	1	0.0	0	11.0	.197	3-2
10/13/2023	at Tennessee	*4	9	3	28	.214	0	1	.000	0	2	11	.818	1	11	.909	5	0	1	0	1.0	0	9.5	.122	1-3
10/20/2023	Missouri	3	2	1	5	.200	0	0	.000	1	1	12	.917	2	9	.778	8	0	0	0	0.0	0	3.0	.168	0-3
10/22/2023	South Carolina	*5	2	1	14	.071	1	1	1.000	2	4	18	.778	1	7	.857	5	0	0	0	0.0	0	4.0	.241	3-2
10/27/2023	at Georgia	*5	4	3	10	.100	0	2	.000	4	3	15	.800	1	5	.800	4	0	0	0	0.0	0	8.0	.243	3-2
10/29/2023	at Alabama	*4	4	3	13	.077	0	2	.000	1	5	12	.583	0	0	.000	9	0	0	0	0.0	0	5.0	.248	3-1
11/05/2023	at Texas A&M	2	0	0	0	.000	0	0	.000	0	3	6	.500	0	0	.000	0	0	0	0	0.0	0	0.0	.320	3-2
<b>Totals</b>		<b>82</b>	<b>136</b>	<b>53</b>	<b>399</b>	<b>.208</b>	<b>8</b>	<b>33</b>	<b>.242</b>	<b>29</b>	<b>61</b>	<b>289</b>	<b>.789</b>	<b>13</b>	<b>171</b>	<b>.924</b>	<b>93</b>	<b>2</b>	<b>21</b>	<b>9</b>	<b>23.0</b>	<b>0</b>	<b>177.5</b>		

## Player Averages

Sets Played	Kills per set	Assists per set	Service aces per set	Digs per set	Blocks per set	Points per set
82	1.66	0.10	0.35	1.13	0.28	2.16

## CAREER STATS

SEASON	TEAM	SM-MP	K	K/S	E	TA	PCT	A	A/S	SA	SA/S	SE	DIG	D/S	RE	BS	BA	TB	B/S	BE	BHE	PTS	PTS/S
2022-23	AUB	114-29	220	1.93	98	607	.201	2	0.02	4	0.04	11	54	0.47	3	3	63	66	0.58	10	0	258.5	2.27
2023-24	AUB	82-22	136	1.66	53	399	.208	8	0.10	29	0.35	61	93	1.13	13	2	21	23	0.28	9	0	177.5	2.16
<b>TOTAL</b>		<b>196 - 51</b>	<b>356</b>	<b>1.82</b>	<b>151</b>	<b>1006</b>	<b>.204</b>	<b>10</b>	<b>0.05</b>	<b>33</b>	<b>0.17</b>	<b>72</b>	<b>147</b>	<b>0.75</b>	<b>16</b>	<b>5</b>	<b>84</b>	<b>89</b>	<b>0.45</b>	<b>19</b>	<b>0</b>	<b>436.0</b>	<b>2.22</b>

# #13 PAIGE THIBAUT

LIBERO | 5-8 | JUNIOR

WATERTOWN, MINN. (WATERTOWN-MAYER)



### THIBAUT'S HIGHLIGHTS:

- Compiled a career-high 20 digs against Dayton on Sept. 3, 2022
- Hit .462 vs Arizona State on Sept. 2, 2022
- 2021 All-Crossroads League Honorable Mention
- 2021 Crossroads League All-Freshman Team

CATEGORY	CAREER HIGH	OPPONENT/DATE
Kills	9	at FAU (10/28/22)
Attempts	35	at UTSA (10/23/22)
Hitting Percentage (Min. 10 ATT.)	.462	vs Arizona State (9/2/22)
Assists	9	vs South Carolina (10/22/23)
Digs	23 (2x)	last at Georgia (10/27/23)
Blocks	4	vs UAB (10/7/22)
Aces	3	vs Little Rock (9/8/22)
Points	9.0 (2x)	last at FAU (10/28/22)

CATEGORY	SEASON HIGH	OPPONENT/DATE
Kills	1	at South Alabama (9/14/23)
Attempts	2	at South Alabama (9/14/23)
Hitting Percentage (Min. 10 ATT.)	--	--
Assists	9	vs South Carolina (10/22/23)
Digs	23 (2x)	last at Georgia (10/27/23)
Blocks	--	--
Aces	2 (2x)	last vs Samford (9/16/23)
Points	2.0 (2x)	last vs Samford (9/16/23)

### GAME BY GAME

Date	Opponent	SP	Attack				Set			Serve				Receipt			Blocking				Team				
			K	E	TA	PCT	A	TA	PCT	SA	SE	TA	PCT	RE	TA	PCT	DIG	BS	BA	TB	TOTAL	BHE	POINTS	HIT%	SCORE
08/25/2023	Coppin St.	*4	0	0	0	.000	2	3	.667	0	3	13	.769	0	15	1.000	10	0	0	0	0.0	0	0.0	.309	3-1
08/26/2023	McNeese	*2	0	0	0	.000	0	1	.000	0	0	0	.000	0	5	1.000	2	0	0	0	0.0	0	0.0	.333	3-0
09/07/2023	Middle Tenn.	4	0	0	0	.000	2	2	1.000	0	1	1	.000	1	7	.857	2	0	0	0	0.0	0	0.0	.221	1-3
09/14/2023	at South Alabama	5	1	0	2	.500	0	3	.000	0	0	0	.000	0	12	1.000	8	0	0	0	0.0	0	1.0	.191	3-2
09/15/2023	vs UAB	*4	0	0	0	.000	2	3	.667	2	3	17	.824	1	11	.909	9	0	0	0	0.0	0	2.0	.189	3-1
09/16/2023	vs Samford	4	0	0	0	.000	1	4	.250	2	2	22	.909	0	4	1.000	7	0	0	0	0.0	0	2.0	.386	3-1
09/22/2023	Florida	*5	0	0	1	.000	1	7	.143	0	3	18	.833	1	23	.957	9	0	0	0	0.0	0	0.0	.196	2-3
09/24/2023	Ole Miss	*4	0	0	1	.000	2	7	.286	1	3	18	.833	2	34	.941	11	0	0	0	0.0	0	1.0	.199	3-1
09/27/2023	at Arkansas	*3	0	0	0	.000	1	1	1.000	0	1	5	.800	2	19	.895	2	0	0	0	0.0	0	0.0	-.049	0-3
10/01/2023	Georgia	*4	0	0	0	.000	1	3	.333	0	2	12	.833	0	9	1.000	10	0	0	0	0.0	0	0.0	.262	3-1
10/06/2023	at Florida	*3	0	0	0	.000	2	2	1.000	1	2	13	.846	1	22	.955	6	0	0	0	0.0	0	1.0	.387	3-0
10/08/2023	at South Carolina	*5	0	0	0	.000	1	5	.200	0	1	13	.923	1	24	.958	6	0	0	0	0.0	0	0.0	.197	3-2
10/13/2023	at Tennessee	*4	0	0	0	.000	0	6	.000	1	1	15	.933	0	12	1.000	5	0	0	0	0.0	0	1.0	.122	1-3
10/20/2023	Missouri	*3	0	0	0	.000	0	2	.000	0	0	9	1.000	1	31	.968	2	0	0	0	0.0	0	0.0	.168	0-3
10/22/2023	South Carolina	5	0	0	0	.000	9	23	.391	0	3	18	.833	3	38	.921	23	0	0	0	0.0	0	0.0	.241	3-2
10/27/2023	at Georgia	5	0	0	0	.000	6	19	.316	0	3	17	.824	2	18	.889	23	0	0	0	0.0	0	0.0	.243	3-2
10/29/2023	at Alabama	4	0	0	0	.000	7	20	.350	0	3	14	.786	1	34	.971	15	0	0	0	0.0	0	0.0	.248	3-1
11/05/2023	at Texas A&M	5	0	0	0	.000	1	2	.500	1	3	17	.824	1	11	.909	11	0	0	0	0.0	0	1.0	.320	3-2
<b>Totals</b>		<b>73</b>	<b>1</b>	<b>0</b>	<b>4</b>	<b>.250</b>	<b>38</b>	<b>113</b>	<b>.336</b>	<b>8</b>	<b>34</b>	<b>222</b>	<b>.847</b>	<b>17</b>	<b>329</b>	<b>.948</b>	<b>161</b>	<b>0</b>	<b>0</b>	<b>0</b>	<b>0.0</b>	<b>0</b>	<b>9.0</b>		

### Player Averages

Sets Played	Kills per set	Assists per set	Service aces per set	Digs per set	Blocks per set	Points per set
73	0.01	0.52	0.11	2.21	0.00	0.12

### CAREER STATS

SEASON	TEAM	SM-MP	K	K/S	E	TA	PCT	A	A/S	SA	SA/S	SE	DIG	D/S	RE	BS	BA	TB	B/S	BE	BHE	PTS	PTS/S
2022-23	FIU	105-28	47	0.45	28	216	.088	14	0.13	23	0.22	30	221	2.10	21	1	7	8	0.08	0	0	74.5	0.71
2023-24	AUB	73-18	1	0.01	0	4	.250	38	0.52	8	0.11	34	161	2.21	17	0	0	0	0.00	0	0	9.0	0.12
<b>TOTAL FOR AUB</b>	<b>73 - 18</b>		<b>1</b>	<b>0.01</b>	<b>0</b>	<b>4</b>	<b>.250</b>	<b>38</b>	<b>0.52</b>	<b>8</b>	<b>0.11</b>	<b>34</b>	<b>161</b>	<b>2.21</b>	<b>17</b>	<b>0</b>	<b>0</b>	<b>0</b>	<b>0.00</b>	<b>0</b>	<b>0</b>	<b>9.0</b>	<b>0.12</b>
<b>TOTAL</b>	<b>178 - 46</b>		<b>48</b>	<b>0.27</b>	<b>28</b>	<b>220</b>	<b>.091</b>	<b>52</b>	<b>0.29</b>	<b>31</b>	<b>0.17</b>	<b>64</b>	<b>382</b>	<b>2.15</b>	<b>38</b>	<b>1</b>	<b>7</b>	<b>8</b>	<b>0.04</b>	<b>0</b>	<b>0</b>	<b>83.5</b>	<b>0.47</b>

# #14 CHELSEY HARMON

MIDDLE BLOCKER | 6-3 | SENIOR  
PUYALLUP, WASH. (PORTLAND)



## HARMON'S HIGHLIGHTS:

- 3rd best hitting percentage in program history (.706) against Jackson State.
- Currently holds the sixth-best hitting percentage in single-season program history (.344)
- Made her Auburn debut on Aug. 26 vs. Belmont

CATEGORY	CAREER HIGH	OPPONENT/DATE
Kills	16	vs San Francisco (10/16/21)
Attempts	23	at LSU (10/5/22)
Hitting Percentage (Min. 10 ATT.)	.706	vs Jackson State (9/17/22)
Assists	2 (3x)	last vs Samford (9/16/23)
Digs	4 (2x)	last at Santa Clara (3/9/21)
Blocks	10	vs Troy (9/10/22)
Aces	2 (3x)	last vs Eastern Washington (8/28/21)
Points	15.5	at LSU (10/5/22)
CATEGORY	SEASON HIGH	OPPONENT/DATE
Kills	6	vs Ole Miss (9/24/23)
Attempts	12 (2x)	last vs Ole Miss (9/24/23)
Hitting Percentage (Min. 10 ATT.)	.417	vs Ole Miss (9/24/23)
Assists	2	last vs Samford (9/16/23)
Digs	2 (3x)	last vs South Carolina (10/22/23)
Blocks	8	vs Ole Miss (9/24/23)
Aces	4	vs Charleston Southern (9/8/23)
Points	12.5	vs Charleston Southern (9/8/23)

## GAME BY GAME

Date	Opponent	SP	Attack				Set			Serve				Recept			Blocking				Team				
			K	E	TA	PCT	A	TA	PCT	SA	SE	TA	PCT	RE	TA	PCT	DIG	BS	BA	BE	TOTAL	BHE	POINTS	HIT%	SCORE
08/26/2023	McNeese	1	1	0	2	.500	1	2	.500	0	0	4	1.000	0	0	.000	1	0	2	0	2.0	0	2.0	.333	3-0
08/26/2023	Jacksonville St.	1	2	0	2	1.000	0	1	.000	0	0	6	1.000	0	0	.000	0	0	0	0	0.0	0	2.0	.395	3-0
09/07/2023	Middle Tenn.	1	1	0	2	.500	0	0	.000	0	0	0	.000	0	0	.000	0	0	0	0	0.0	0	1.0	.221	1-3
09/08/2023	Charleston So.	*4	5	2	12	.250	0	3	.000	4	2	15	.867	0	0	.000	2	0	7	1	7.0	0	12.5	.245	3-1
09/09/2023	Mercer	*3	4	0	6	.667	1	3	.333	1	3	14	.786	0	0	.000	1	1	3	0	4.0	0	7.5	.346	3-0
09/14/2023	at South Alabama	3	2	0	4	.500	0	1	.000	2	0	9	1.000	0	0	.000	0	0	3	1	3.0	0	5.5	.191	3-2
09/16/2023	vs Samford	4	0	0	0	.000	2	3	.667	1	2	22	.909	0	0	.000	0	0	0	0	0.0	0	1.0	.386	3-1
09/22/2023	Florida	*5	4	2	10	.200	0	2	.000	0	0	3	1.000	0	0	.000	1	0	2	2	2.0	0	5.0	.196	2-3
09/24/2023	Ole Miss	*4	6	1	12	.417	0	0	.000	0	0	3	1.000	0	0	.000	2	0	8	0	8.0	0	10.0	.199	3-1
09/27/2023	at Arkansas	*3	2	1	3	.333	0	0	.000	0	0	3	1.000	0	0	.000	1	0	2	0	2.0	0	3.0	-.049	0-3
10/01/2023	Georgia	4	0	0	0	.000	0	0	.000	2	0	18	1.000	0	0	.000	1	0	0	0	0.0	0	2.0	.262	3-1
10/06/2023	at Florida	3	0	0	1	.000	0	0	.000	2	1	12	.917	0	0	.000	1	0	0	0	0.0	0	2.0	.387	3-0
10/08/2023	at South Carolina	5	0	0	0	.000	0	0	.000	2	2	15	.867	0	0	.000	1	0	0	0	0.0	0	2.0	.197	3-2
10/13/2023	at Tennessee	*4	0	0	0	.000	0	2	.000	1	2	13	.846	0	0	.000	0	0	0	0	0.0	0	1.0	.122	1-3
10/20/2023	Missouri	2	0	0	0	.000	0	0	.000	0	1	4	.750	0	0	.000	0	0	0	0	0.0	0	0.0	.168	0-3
10/22/2023	South Carolina	5	0	0	0	.000	0	2	.000	1	1	18	.944	0	0	.000	2	0	0	0	0.0	0	1.0	.241	3-2
10/27/2023	at Georgia	5	0	0	0	.000	0	0	.000	3	1	13	.923	0	0	.000	1	0	0	0	0.0	0	3.0	.243	3-2
10/29/2023	at Alabama	4	0	0	0	.000	0	1	.000	2	2	13	.846	0	0	.000	1	0	0	0	0.0	0	2.0	.248	3-1
11/05/2023	at Texas A&M	4	0	0	0	.000	0	1	.000	0	1	13	.923	0	0	.000	1	0	0	0	0.0	0	0.0	.320	3-2
<b>Totals</b>		<b>65</b>	<b>27</b>	<b>6</b>	<b>54</b>	<b>.389</b>	<b>4</b>	<b>21</b>	<b>.190</b>	<b>21</b>	<b>18</b>	<b>198</b>	<b>.909</b>	<b>0</b>	<b>0</b>	<b>.000</b>	<b>16</b>	<b>1</b>	<b>27</b>	<b>4</b>	<b>28.0</b>	<b>0</b>	<b>62.5</b>		

## Player Averages

Sets Played	Kills per set	Assists per set	Service aces per set	Digs per set	Blocks per set	Points per set
65	0.42	0.06	0.32	0.25	0.43	0.96

## CAREER STATS

SEASON	TEAM	SM-MP	K	K/S	E	TA	PCT	A	A/S	SA	SA/S	SE	DIG	D/S	RE	BS	BA	TB	B/S	BE	BHE	PTS	PTS/S
2020-21	UP	34-12	20	0.59	11	62	.145	4	0.12	5	0.15	7	19	0.56	1	2	21	23	0.68	0	0	37.5	1.10
2021-22	UP	78-22	108	1.38	31	246	.313	1	0.01	4	0.05	5	13	0.17	1	6	42	48	0.62	9	1	139.0	1.78
2022-23	AUB	122-31	176	1.44	48	372	.344	5	0.04	0	0.00	4	17	0.14	1	4	103	107	0.88	6	0	231.5	1.90
2023-24	AUB	65-19	27	0.42	6	54	.389	4	0.06	21	0.32	18	16	0.25	0	1	27	28	0.43	4	0	62.5	0.96
<b>TOTAL FOR AUB</b>		<b>187 - 50</b>	<b>203</b>	<b>1.09</b>	<b>54</b>	<b>426</b>	<b>.350</b>	<b>9</b>	<b>0.05</b>	<b>21</b>	<b>0.11</b>	<b>22</b>	<b>33</b>	<b>0.18</b>	<b>1</b>	<b>5</b>	<b>130</b>	<b>135</b>	<b>0.72</b>	<b>10</b>	<b>0</b>	<b>294.0</b>	<b>1.57</b>
<b>TOTAL</b>		<b>299 - 84</b>	<b>331</b>	<b>1.11</b>	<b>96</b>	<b>734</b>	<b>.320</b>	<b>14</b>	<b>0.05</b>	<b>30</b>	<b>0.10</b>	<b>34</b>	<b>65</b>	<b>0.22</b>	<b>3</b>	<b>13</b>	<b>193</b>	<b>206</b>	<b>0.69</b>	<b>19</b>	<b>1</b>	<b>470.5</b>	<b>1.57</b>

# #17 CASSIDY TANTON

**PIN HITTER | 6-0 | REDSHIRT-SOPHOMORE  
STONEVILLE, N.C. (DALTON MCMICHAEL)**



### TANTON'S HIGHLIGHTS:

- Picked up a career-high 10 kills vs. Marist, hitting .348
- Made her season debut on Aug. 26 vs. Belmont

CATEGORY	CAREER HIGH	OPPONENT/DATE
Kills	10	vs Marist (8/27/22)
Attempts	23	vs Marist (8/27/22)
Hitting Percentage (Min. 10 ATT.)	.348	vs Marist (8/27/22)
Assists	--	--
Digs	6	vs Marist (8/27/22)
Blocks	--	--
Aces	2(3x)	last vs Southern Miss (9/16/22)
Points	12.0	vs Marist (8/27/22)

CATEGORY	SEASON HIGH	OPPONENT/DATE
Kills	1	vs Middle Tennessee (9/7/23)
Attempts	5	vs Middle Tennessee (9/7/23)
Hitting Percentage (Min. 10 ATT.)	--	--
Assists	--	--
Digs	--	--
Blocks	--	--
Aces	--	--
Points	1.0	vs Middle Tennessee (9/7/23)

### GAME BY GAME

Date	Opponent	SP	Attack				Set		Serve				Recept			Blocking				Team					
			K	E	TA	PCT	A	TA	PCT	SA	SE	TA	PCT	RE	TA	PCT	DIG	BS	BA	BE	TOTAL	BHE	POINTS	HIT%	SCORE
09/07/2023	Middle Tenn.	1	1	1	5	.000	0	0	.000	0	0	0	.000	1	4	.750	0	0	0	0	0.0	0	1.0	.221	1-3
<b>Totals</b>		<b>1</b>	<b>1</b>	<b>1</b>	<b>5</b>	<b>.000</b>	<b>0</b>	<b>0</b>	<b>.000</b>	<b>0</b>	<b>0</b>	<b>0</b>	<b>.000</b>	<b>1</b>	<b>4</b>	<b>.750</b>	<b>0</b>	<b>0</b>	<b>0</b>	<b>0</b>	<b>0.0</b>	<b>0</b>	<b>1.0</b>		

### Player Averages

Sets Played	Kills per set	Assists per set	Service aces per set	Digs per set	Blocks per set	Points per set
1	1.00	0.00	0.00	0.00	0.00	1.00

### CAREER STATS

SEASON	TEAM	SM-MP	K	K/S	E	TA	PCT	A	A/S	SA	SA/S	SE	DIG	D/S	RE	BS	BA	TB	B/S	BE	BHE	PTS	PTS/S
2022-23	AUB	58-19	12	0.21	7	34	.147	0	0.00	11	0.19	28	19	0.33	2	0	0	0	0.00	0	0	23.0	0.40
2023-24	AUB	1-1	1	1.00	1	5	.000	0	0.00	0	0.00	0	0	0.00	1	0	0	0	0.00	0	0	1.0	1.00
<b>TOTAL</b>		<b>59 - 20</b>	<b>13</b>	<b>0.22</b>	<b>8</b>	<b>39</b>	<b>.128</b>	<b>0</b>	<b>0.00</b>	<b>11</b>	<b>0.19</b>	<b>28</b>	<b>19</b>	<b>0.32</b>	<b>3</b>	<b>0</b>	<b>0</b>	<b>0</b>	<b>0.00</b>	<b>0</b>	<b>0</b>	<b>24.0</b>	<b>0.41</b>



**#19 JASMINE OKEOMA**  
**MIDDLE BLOCKER | 6-3 | FRESHMAN**  
**WOODBIDGE, VA. (FOREST PARK)**



**OKEOMA'S HIGHLIGHTS:**

CATEGORY	CAREER HIGH	OPPONENT/DATE
Kills	--	--
Attempts	--	--
Hitting Percentage (Min. 10 ATT.)	--	--
Assists	--	--
Digs	--	--
Blocks	--	--
Aces	--	--
Points	--	--

CATEGORY	SEASON HIGH	OPPONENT/DATE
Kills	--	--
Attempts	--	--
Hitting Percentage (Min. 10 ATT.)	--	--
Assists	--	--
Digs	--	--
Blocks	--	--
Aces	--	--
Points	--	--

**GAME BY GAME**

**CAREER STATS**

# #22 SYDNEY HANDEL

DEFENSIVE SPECIALIST | 6-0 | SOPHOMORE  
LEE'S SUMMIT, MO. (LEE'S SUMMIT WEST)



### HANDEL'S HIGHLIGHTS:

- Set career-highs in aces (3) and digs (6) in the NCAA Tournament against Houston
- Made her collegiate debut against Alabama A&M

CATEGORY	CAREER HIGH	OPPONENT/DATE
Kills	1	vs Middle Tennessee (9/7/23)
Attempts	1 (2x)	last at South Alabama (9/14/23)
Hitting Percentage (Min. 10 ATT.)	--	--
Assists	--	--
Digs	10	at South Alabama (9/14/23)
Blocks	--	--
Aces	3	vs Houston (12/3/22)
Points	3.0	vs Houston (12/3/22)

CATEGORY	SEASON HIGH	OPPONENT/DATE
Kills	--	--
Attempts	1	at South Alabama (9/14/23)
Hitting Percentage (Min. 10 ATT.)	--	--
Assists	--	--
Digs	10	at South Alabama (9/14/23)
Blocks	--	--
Aces	2	vs South Carolina (10/22/23)
Points	2.0	vs South Carolina (10/22/23)

### GAME BY GAME

Date	Opponent	Attack				Set			Serve				Recept			Blocking				Team					
		SP	K	E	TA	PCT	A	TA	PCT	SA	SE	TA	PCT	RE	TA	PCT	DIG	BS	BA	BE	TOTAL	BHE	POINTS	HIT%	SCORE
09/02/2023	vs SMU	2	0	0	0	.000	0	0	.000	0	2	6	.667	0	0	.000	0	0	0	0	0.0	0	0.0	.316	3-1
09/09/2023	Mercer	1	0	0	0	.000	0	0	.000	0	0	2	1.000	0	0	.000	0	0	0	0	0.0	0	0.0	.346	3-0
09/14/2023	at South Alabama	5	0	0	1	.000	0	2	.000	0	1	14	.929	1	10	.900	10	0	0	0	0.0	0	0.0	.191	3-2
09/15/2023	vs UAB	4	0	0	0	.000	0	0	.000	0	2	11	.818	0	0	.000	0	0	0	0	0.0	0	0.0	.189	3-1
09/16/2023	vs Samford	1	0	0	0	.000	0	2	.000	0	0	0	.000	0	4	1.000	0	0	0	0	0.0	0	0.0	.386	3-1
10/20/2023	Missouri	1	0	0	0	.000	0	1	.000	0	1	3	.667	0	0	.000	0	0	0	0	0.0	0	0.0	.168	0-3
10/22/2023	South Carolina	5	0	0	0	.000	0	2	.000	2	4	19	.789	0	22	1.000	7	0	0	0	0.0	0	2.0	.241	3-2
<b>Totals</b>		<b>19</b>	<b>0</b>	<b>0</b>	<b>1</b>	<b>.000</b>	<b>0</b>	<b>7</b>	<b>.000</b>	<b>2</b>	<b>10</b>	<b>55</b>	<b>.818</b>	<b>1</b>	<b>36</b>	<b>.972</b>	<b>17</b>	<b>0</b>	<b>0</b>	<b>0</b>	<b>0.0</b>	<b>0</b>	<b>2.0</b>		

### Player Averages

Sets Played	Kills per set	Assists per set	Service aces per set	Digs per set	Blocks per set	Points per set
19	0.00	0.00	0.11	0.89	0.00	0.11

### CAREER STATS

SEASON	TEAM	SM-MP	K	K/S	E	TA	PCT	A	A/S	SA	SA/S	SE	DIG	D/S	RE	BS	BA	TB	B/S	BE	BHE	PTS	PTS/S
2022-23	AUB	19-6	0	0.00	0	1	.000	0	0.00	6	0.32	11	10	0.53	3	0	0	0	0.00	0	0	6.0	0.32
2023-24	AUB	19-7	0	0.00	0	1	.000	0	0.00	2	0.11	10	17	0.89	1	0	0	0	0.00	0	0	2.0	0.11
<b>TOTAL</b>		<b>38 - 13</b>	<b>0</b>	<b>0.00</b>	<b>0</b>	<b>2</b>	<b>.000</b>	<b>0</b>	<b>0.00</b>	<b>8</b>	<b>0.21</b>	<b>21</b>	<b>27</b>	<b>0.71</b>	<b>4</b>	<b>0</b>	<b>0</b>	<b>0</b>	<b>0.00</b>	<b>0</b>	<b>0</b>	<b>8.0</b>	<b>0.21</b>



# #25 LAKIN LAURENDINE

**PIN HITTER | 6-1 | FRESHMAN**  
**JACKSON, MISS. (JACKSON ACADEMY)**



## LAURENDINE'S HIGHLIGHTS:

CATEGORY	CAREER HIGH	OPPONENT/DATE
Kills	--	--
Attempts	--	--
Hitting Percentage (Min. 10 ATT.)	--	--
Assists	--	--
Digs	--	--
Blocks	--	--
Aces	--	--
Points	--	--

CATEGORY	SEASON HIGH	OPPONENT/DATE
Kills	--	--
Attempts	--	--
Hitting Percentage (Min. 10 ATT.)	--	--
Assists	--	--
Digs	--	--
Blocks	--	--
Aces	--	--
Points	--	--

## GAME BY GAME

## CAREER STATS