



# 2023 VOLLEYBALL MATCH NOTES

AUBURN ATHLETICS COMMUNICATIONS: 392 SOUTH DONAHUE DRIVE || AUBURN, AL 36830 || AUBURNTIGERS.COM || @AUBURNVB

## 2023 SCHEDULE/RESULTS

**20-9 OVERALL | 10-8 SEC**  
10-5 HOME | 7-4 AWAY | 3-0 NEUTRAL

DATE	OPPONENT	TV	TIME/RESULT
Aug. 25	vs Coppin State!	SECN+	W, 3-1
Aug. 26	vs McNeese State!	SECN+	W, 3-0
Aug. 26	vs Jacksonville State!	SECN+	W, 3-0
Sept. 2	vs SMU@	N/A	W, 3-1
Sept. 3	at Florida State@	ACCN+	W, 3-1
Sept. 7	vs Middle Tennessee\$	SECN+	L, 1-3
Sept. 8	vs Charleston Southern\$	SECN+	W, 3-1
Sept. 9	vs Mercer\$	SECN+	W, 3-0
Sept. 14	at South Alabama%	ESPN+	W, 3-2
Sept. 15	vs UAB%	N/A	W, 3-1
Sept. 16	vs Samford%	N/A	W, 3-1
Sept. 22	vs #3 Florida*	SECN+	L, 2-3
Sept. 24	vs Ole Miss*	SECN+	W, 3-1
Sept. 27	at #14 Arkansas*	SEC Network	L, 0-3
Oct. 1	vs Georgia*	ESPN	W, 3-1
Oct. 6	at #9 Florida*	SECN+	W, 3-0
Oct. 8	at South Carolina*	ESPNU	W, 3-2
Oct. 13	at #10 Tennessee*	SECN+	L, 1-3
Oct. 20	vs Missouri*	SEC Network	L, 0-3
Oct. 22	vs South Carolina*	SECN+	W, 3-2
Oct. 27	at Georgia*	SECN+	W, 3-2
Oct. 29	at Alabama*	SEC Network	W, 3-1
Nov. 5	at Texas A&M*	SEC Network	W, 3-2
Nov. 8	vs #13 Kentucky*	SECN+	L, 0-3
Nov. 12	at Missouri*	SECN+	L, 1-3
Nov. 15	at Mississippi State*	SECN+	L, 2-3
Nov. 19	vs LSU*	SECN+	W, 3-0
Nov. 22	vs Alabama*	SECN+	W, 3-0
Nov. 24	vs #9 Arkansas*	SECN+	L, 2-3
Nov. 30	vs Western Michigan#	ESPN+	3 p.m. CT

**BOLD** indicates home contest | All time Central and subject to change  
! - War Eagle Invite | @ - Seminoles Invite | S - Tiger Invite | % - Alabama Showdown  
\* - Southeastern Conference Game | # - NCAA Tournament

## AUBURN ATHLETICS COMMUNICATIONS

Office Phone 334-844-9800  
Kirk Sampson Associate AD  
sampska@auburn.edu  
Thomas Hoffman Volleyball Contact  
tgh0024@auburn.edu  
C: 503-302-9592

## FOLLOW ALONG

Web AuburnTigers.com  
X @AuburnVB  
Instagram @auburnvolleyball

## MATCH

# 30

## WESTERN MICHIGAN

Thursday, Nov. 30 | 3 p.m. CT  
Louisville, KY | KFC YUM! Center | ESPN+



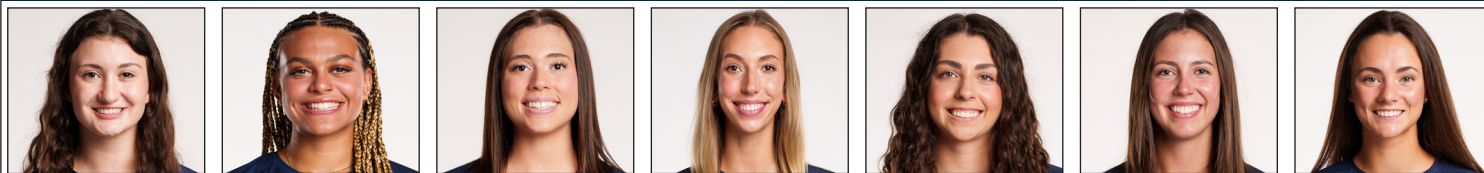
AUBURN	RV	W. MICHIGAN	NR
AVCA Coaches Poll	_____	_____	_____
2023 Record	20-9   10-8 SEC	_____	30-2   18-0 MAC
Head Coach	Brent Crouch	_____	Colleen Munson
Career Record (Year)	150-132 (10th)	_____	431-321 (24th)
Record at Auburn (Year)	55-42 (4th)	_____	379-222 (19th)

Site \_\_\_\_\_ Louisville, Kentucky  
Venue (capacity) \_\_\_\_\_ KFC YUM! Center (22,090)  
Live Stats \_\_\_\_\_ Statbroadcast  
Broadcast Crew \_\_\_\_\_ Jeff Milby (play-by-play) | Stephanie Cantway (analyst)  
Series Record | Current Streak \_\_\_\_\_ Auburn leads, 2-1 | Auburn W1  
First Meeting \_\_\_\_\_ Sept. 5, 1998 Auburn 3, Western Michigan 1 (15-11, 15-9, 10-15, 15-6)  
Last Meeting \_\_\_\_\_ Sept. 27, 2023 Arkansas 3, Auburn 0 (25-18, 25-10, 25-6)  
Last Auburn Win \_\_\_\_\_ Sept. 20, 2019 Auburn 3, Western Michigan (28-26, 25-20, 25-18)  
Last Western Michigan Win \_\_\_\_\_ Sept. 1, 2001 Western Michigan 3, Auburn 0 (30-26, 30-22, 33-31)

## QUICK HITS

>> Auburn received its third berth to the NCAA Tournament on Sunday. It's the first time in program history the Tiger head to the tournament in back-to-back years. The Orange and Blue carry a 2-2 record all-time in the big dance.  
>> Sophomore outside hitter Madison Scheer was named All-SEC on Sunday. The Eureka, Missouri native closed out the regular season with career-highs in kills (374), kills per set (3.34), points per set (3.60), hitting percentage (.262) and blocks per set (0.48).  
>> Jackie Barrett reached yet another milestone in her Auburn career. The senior setter reached 3,000 career assists last Friday against Arkansas, becoming just the fifth player in program history to reach the mark.  
>> Usually known for her powerful arm, Akasha Anderson has been filling up the stat sheet in other ways lately. The Reston, Virginia product has produced four straight double-doubles, including a career-best 20 dig performance last Friday against Arkansas.  
>> Auburn's front row has earned the right to be amongst the nation's elite blocking units. At 2.51 blocks per set ranks third in the SEC and No. 35 in the country. With 289 total blocks, the Tigers are No. 1 in the conference and No. 22 in the nation.  
>> Kendal Kemp and Kyla Swanson are responsible for the majority of Auburn rejections. The duo each averages north of 1.00 blocks per set with Kemp leading the charge at 1.28, the fourth-highest mark in the SEC.  
>> Don't leave out Bella Bell when talking about blocking. The transfer from Kentucky tied her career-high with 10 against Arkansas.

## AUBURN'S POTENTIAL STARTING SEVEN



SARAH MORTON	AKASHA ANDERSON	BELLA BELL	KYLA SWANSON	KENDAL KEMP	JACKIE BARRETT	PAIGE THIBAUT
#2 • DS/L • SO. • 5-8	#3 • PH • SO. • 6-3	#5 • RS • SR. • 6-4	#6 • MB • SR. • 6-4	#8 • MB • SO. • 6-6	#10 • S • SR. • 6-2	#13 • DS/L • JR. • 5-7
D/S: 3.44	K/S: 3.37	K/S: 2.10	K/S: 1.30	K/S: 1.44	D/S: 2.30	D/S: 2.18
A/S: 0.90	HIT%: .169	HIT%: .252	HIT%: .297	HIT%: .366	A/S: 9.34	A/S: 0.48
SA/S: 0.14	D/S: 2.30	D/S: 0.29	D/S: 0.22	D/S: 0.11	SA/S: 0.27	SA/S: 0.09
P/S: 0.16	B/S: 0.45	B/S: 0.85	B/S: 1.11	B/S: 1.28	P/S: 1.14	P/S: 0.11
	SA/S: 0.26	SA/S: 0.00	SA/S: 0.04	SA/S: 0.01		
	P/S: 3.87	P/S: 2.53	P/S: 1.93	P/S: 2.15		

K/S: kills per set • HIT%: hitting percentage • D/S: digs per set • B/S: blocks per set • A/S: assists per set • SA/S: aces per set • P/S: points per set



#1 MADISON SCHEER  
So. | PH | 6-1



#2 SARAH MORTON  
So. | L | 5-8



#3 AKASHA ANDERSON  
So. | PH | 6-3



#4 FALLAN LANHAM  
Jr. | L | 5-8



#5 BELLA BELL  
Gr. | MB | 6-4



#6 KYLA SWANSON  
Gr. | MB | 6-4



#7 PEYTON DUNN  
R-So. | S | 5-11



#8 KENDAL KEMP  
So. | MB | 6-6



#9 ZOE SLAUGHTER  
So. | L | 5-7



#10 JACKIE BARRETT  
Sr. | S | 6-2



#11 JORDAN SINNESS  
Jr. | S | 5-9



#12 BEL ZIMMERMAN  
So. | PH | 6-2



#13 PAIGE THIBAUT  
Jr. | L | 5-7



#14 CHELSEY HARMON  
Sr. | MB | 6-3



#17 CASSIDY TANTON  
R-So. | PH | 6-0



#19 JASMINE OKEOMA  
Fr. | MB | 6-3



#22 SYDNEY HANDEL  
So. | L | 6-0



#22 LAKIN LAURENDINE  
Fr. | PH | 6-1

#WarEagle



AuburnTigers.com

@AuburnVB | @AuburnTigers  
@AuburnVBCoach



/AuburnVB  
/AuburnTigers

**TEAM SCHEDULE AND MEDIA AVAILABILITY >> WEEK OF NOV. 27 - DEC. 3**

MONDAY November 27	TUESDAY November 28	WEDNESDAY November 29	THURSDAY November 30	FRIDAY December 1	SATURDAY December 2	SUNDAY December 3
<b>PRACTICE:</b> 3:45 p.m. - 6 p.m.	<b>TRAVEL</b>	<b>PRACTICE:</b> TBA	<b>MATCH:</b> 3 p.m. CT vs Western Michigan Louisville, KY	<b>MATCH IF WIN:</b> 6 p.m. CT vs TBA Louisville, KY	<b>TRAVEL</b>	<b>OFF</b>
SAC		TBA				
INTERVIEWS BY REQUEST	INTERVIEWS BY REQUEST	INTERVIEWS BY REQUEST	INTERVIEWS POST MATCH	INTERVIEWS POST MATCH	INTERVIEWS BY REQUEST	NO INTERVIEWS

**AUBURN ATHLETICS COMMUNICATIONS**

**QUICK FACTS**

**AUBURNTIGERS.COM**

For updated game notes, statistics, safety protocols and latest information on Auburn volleyball and Auburn Athletics, visit AuburnTigers.com.

**INTERVIEW POLICY**

Coach Crouch, assistant coaches and student-athletes are available for interviews by contacting Thomas Hoffman in the communications office. All interviews during the week will be conducted via phone or ZOOM. Post-match interviews will be conducted in the media room at Auburn Arena following a brief cooling-off period.

**CREDENTIALS**

Anyone wishing to cover an Auburn volleyball match should contact Thomas Hoffman in the communications office at least 24 hours in advance to make arrangements.

**MATCH DAY SERVICES**

Printed copies of notes, flip cards and statistics will be available upon request. Digital copies will be emailed out prior to the match and will be available on AuburnTigers.com. Media members are permitted to bring their own printed materials. Stats will not printed between sets or after matches. Live stats will be provided during the match and final statistics will be emailed out and posted on AuburnTigers.com. All post-match interviews will be conducted in the media room. Wireless internet is available in the Arena; ask Thomas Hoffman for the password. Match highlights, photos and postgame interviews will be available on Imagen following matches.

**PHOTO SERVICES**

For photos of Auburn volleyball or any Olympic sports, contact Zach Bland at zdb007@auburn.edu.

**COMMUNICATIONS STAFF**

Thomas Hoffman      Volleyball Contact  
cell: 503-302-9592  
email: tgh0024@auburn.edu

Kirk Sampson      Associate AD  
cell: 334-750-1385  
email: sampska@auburn.edu

**UNIVERSITY INFORMATION**

City / Zip \_\_\_\_\_ Auburn, Ala. / 36831  
 Founded \_\_\_\_\_ Oct. 1, 1856  
 Enrollment \_\_\_\_\_ 30,737  
 Nickname \_\_\_\_\_ Tigers  
 Colors \_\_\_\_\_ Navy Blue & Burnt Orange  
 Affiliation \_\_\_\_\_ NCAA Division I  
 Conference \_\_\_\_\_ Southeastern Conference  
 Home Court \_\_\_\_\_ Neville Arena (9,121)  
 President \_\_\_\_\_ Dr. Chris Roberts  
 Athletics Director \_\_\_\_\_ John Cohen  
 Sport Administrator \_\_\_\_\_ Joy Vrbka (Florida, 2003)

**TEAM INFORMATION**

Letterwinners Returning/Lost \_\_\_\_\_ 12/0  
 Starters Returning/Lost \_\_\_\_\_ 6+libero/0  
 Newcomers \_\_\_\_\_ 6  
 2022 Overall Record \_\_\_\_\_ 22-9  
 2022 Conference Record/Finish \_\_\_\_\_ 10-8/6th

**PROGRAM HISTORY**

First Year of Volleyball \_\_\_\_\_ 1967  
 \_\_\_\_\_ Program discontinued 1981; Reinstated 1986  
 Seasons of Auburn Volleyball \_\_\_\_\_ 45th  
 All-Time Overall Record \_\_\_\_\_ 711-707-4 (.501)  
 in Neville Arena (Since 2013) \_\_\_\_\_ 78-64 (.535)  
 Total Home Record \_\_\_\_\_ 250-217 (.531)  
 All-Time SEC Record \_\_\_\_\_ 208-376 (.350)  
 NCAA Tournament Appearances \_\_\_\_\_ 2/2010, 2022  
 SEC Championships/Last \_\_\_\_\_ 1/Co-West Champions (1996)

**STAFF INFORMATION**

Head Coach \_\_\_\_\_ Brent Crouch (Texas A&M, '98 & '00; Oregon '06)  
 Career Record \_\_\_\_\_ 150-132 (.514)/10th Season  
 Record at Auburn \_\_\_\_\_ 55-41 (.523)/4th Season  
 Assistant Coach/Recruiting Coordinator \_\_\_\_\_ Rachel Corbelli (2nd Season)  
 Assistant Coach \_\_\_\_\_ Keith Smith (2nd Season)  
 Assistant Coach \_\_\_\_\_ Jack Burton (1st Season)  
 Technical Coordinator \_\_\_\_\_ Mackenna Basore (2nd Season)  
 Director of Operations \_\_\_\_\_ Emily Houle (2nd Season)  
 Strength & Conditioning \_\_\_\_\_ Bethany Gainey  
 Athletic Trainer \_\_\_\_\_ Nate Warner  
 Equipment Manager \_\_\_\_\_ Brian Maddox

**ATHLETIC COMMUNICATIONS**

Associate AD/Communications \_\_\_\_\_ Kirk Sampson  
 Assistant Director/Volleyball Contact \_\_\_\_\_ Thomas Hoffman  
 Email \_\_\_\_\_ tgh0024@auburn.edu  
 Phone \_\_\_\_\_ 503-302-9592  
 Mailing Address \_\_\_\_\_ Auburn Athletics Complex  
 \_\_\_\_\_ 392 S. Donahue Drive  
 Website \_\_\_\_\_ AuburnTigers.com

**GAMEDAY EXPERIENCE: NEVILLE ARENA**

>> Neville Arena is in its seventh season as home of Auburn volleyball. The Tigers are 78-64 since moving to the Arena in 2013. The facility seats approximately 9,121.



**LAST TIME OUT VS WESTERN MICHIGAN**

» In an early tournament in Kalamazoo, Michigan in 2019, Chesney McClellan went for 12 digs while Payton White gobbled up 21 digs as the Tigers made quick work of the Broncos, 3-0 (28-26, 25-20, 25-18).

**SCOUTING WESTERN MICHIGAN**

» Head coach Colleen Munson has spent 19 years in Kalamazoo at the helm of the Western Michigan program. This year, her Bronco squad is just one of two teams to boast 30 wins entering the NCAA Tournament. Western Michigan is also riding a 20-match winning streak, its longest since 1983.

Senior setter Logan Case leads the charge for WMU. The MAC Player of the Year and Setter of the Year averages 11.87 assists per set, the second-highest mark in the country.

Case has a trio of experienced attackers to choose from offensively. Graduate outside hitter Maggie King paces the team in kills per set (3.69) and points per set (4.10). Keona Salesman and Anna Calcagno aren't too far behind. Salesman averages a robust 3.45 kills per set while Calcagno comes in at 3.00.

Western Michigan's defense is captained by Michigan native Andelyn Simkins. The senior libero took home MAC Defensive Player of the Year honors, averaging 4.89 digs per set.

**AUBURN-WESTERN MICHIGAN SERIES**

» Auburn and Western Michigan first met in 1998. The Tigers have won both matchups in Kalamazoo (1998 & 2019) while the Broncos claimed the win in 2001 in an early season tournament in Ann Arbor, Michigan.

**BLOCKERS BEWARE**

» Thanks to steady passing from Sarah Morton and the back row, the Auburn attack has managed to be one of the least-blocked teams in the SEC. On average Auburn allows just 1.56 blocks per set, the best in the conference.

**MR. 300**

» Three hundred appears to be the perfect number for head coach Brent Crouch. All-time, when his teams manage a .300 hitting percentage, he carries an undefeated record of 38-0, including an 18-0 mark at Auburn. The Tigers have accomplished the feat nine different times in 2023.

**SECOND SET MAGIC**

» Auburn is 13-3 this season when winning the second set of matches. Over the last two years, Crouch's teams are 31-3 when claiming the second frame.

**PLAYER TO WATCH: AKASHA ANDERSON**

» Akasha Anderson has always had a prolific arm but its been her defense that's been turning heads at the end of the regular season. Anderson is averaging a career-best 2.30 digs per set and has notched nine double-doubles this season.



**BELOW THE 200 LINE**

» In 2023, 200 is the magic number for the Auburn defense. When keeping opponents below .200 or better, the Tigers are 14-2 in such matches.

**THE CROUCH HISTORICAL SOCIETY**

- » Since his arrival on the Plains, head coach Brent Crouch has led the Tigers to a number of firsts:
- First back-to-back trips to NCAA Tournament
  - First top-25 ranking
  - First top-10 win
  - First win in Gainesville over Florida
  - First back-to-back 20-win season since 1991-92
  - First win over LSU since 2016
  - First sweep over LSU since 1999
  - Largest crowd in Neville history (2,529)
  - First win in College Station over Texas A&M
  - First win in Columbia over Missouri
  - Best start to a season in program history (14-0)
  - Best start to SEC Play in program history (3-0)
  - Most wins in a season in rally-scoring era (22)

**DEPTH CHART**

» There are few teams in the country who have dealt with more injuries than Auburn. The Tigers' starting rotation has combined to miss 46 matches in 2023 due to injury. Crouch has been forced to throw out 16 different starting lineup combinations in response. Still, Auburn has produced its best season in program history, earning a seed in the NCAA Tournament for the first time.

**TIGERS IN THE TOURNAMENT**

- » **#1 Madison Scheer (2 matches)**  
3.40 K/S, .291 PCT, 0.70 D/S, 0.40 B/S, 3.60 P/S
- #2 Sarah Morton (2 matches)**  
1.10 A/S, 0.30 SA/S, 4.10 D/S
- #3 Akasha Anderson (2 matches)**  
2.80 K/S, .139 PCT, 2.30 D/S, 0.80 B/S, 3.20 P/S
- #4 Fallan Lanham (2 matches)**  
1.30 D/S
- #5 Bella Bell**  
1.94 K/S, .470 PCT, 1.25 B/S
- #6 Kyla Swanson (3 matches)**  
2.00 K/S, .439 PCT, 1.18 B/S, 2.64 P/S
- #8 Kendal Kemp (2 matches)**  
1.30 K/S, .219 PCT, 1.30 B/S, 2.05 P/S
- #9 Zoe Slaughter (2 matches)**  
0.10 A/S, 2.60 D/S
- #10 Jackie Barrett (2 matches)**  
0.20 K/S, 8.70 A/S, 0.40 SA/S, 2.20 D/S, 0.50 B/S
- #12 Bel Zimmerman (2 matches)**  
1.80 K/S, .148 PCT, 0.70 D/S, 0.60 B/S, 2.10 P/S
- #14 Chelsey Harmon (2 matches)**  
1.30 K/S, .310 PCT, 0.40 D/S, 1.30 B/S, 2.00 P/S
- #22 Sydney Handel (2 matches)**  
0.50 SA/S, 0.80 D/S

**SEC STANDINGS & SCHEDULE**

2023 STANDINGS

	CONF	OVERALL	HOME	ROAD	NTRL	STRK
Kentucky	17-1	19-7	8-2	10-5	1-0	-
Tennessee	15-3	24-4	12-2	11-2	1-0	-
Arkansas	15-3	25-5	12-3	9-2	4-0	-
<b>Auburn</b>	<b>10-8</b>	<b>20-9</b>	<b>10-5</b>	<b>7-4</b>	<b>3-0</b>	-
Florida	10-8	18-9	8-6	9-3	1-0	-
Georgia	10-8	19-11	12-3	5-6	2-2	-
Missouri	9-9	17-12	11-4	5-7	1-1	-
Texas A&M	8-10	16-12	7-7	6-5	3-0	-
Mississippi St	6-12	13-15	10-4	1-10	2-1	-
LSU	6-12	11-17	6-7	2-9	3-1	-
South Carolina	5-13	11-16	8-6	2-10	1-0	-
Ole Miss	5-13	11-18	8-4	1-11	2-3	-
Alabama	1-17	11-18	5-8	3-9	3-1	-

**THIS WEEK IN THE SEC...**

**Thursday, Nov. 30**

Auburn vs. Western Michigan, 4 p.m.  
Texas A&M at Texas, 7 p.m.  
Florida vs FGCU, 7 p.m.  
Kentucky vs Wofford, 7:30 p.m.

**Friday, Dec. 1**

Missouri vs Delaware, 5:30 p.m.  
Tennessee vs High Point, 6:30 p.m.  
Georgia vs Arizona State, 6:30 p.m.  
Arkansas vs SFA, 8 p.m.

\*All times ET

**2023 NCAA RPI REPORT (AUBURN - 30)**

RK	TEAM	RECORD	AU RESULT
7	Kentucky	19-7	L, 0-3
10	Arkansas	25-5	L, 0-3
	Arkansas		L, 2-3
11	Tennessee	24-4	L, 1-3
19	Florida	18-9	L, 2-3
	Florida		W, 3-0
24	SMU	25-6	W, 3-1
26	Florida St.	23-8	W, 3-2
32	South Alabama	22-8	W, 3-2
34	Missouri	17-12	L, 0-3
	Missouri		L, 1-3
37	Texas A&M	16-12	W, 3-2
47	Georgia	19-11	W, 3-1
	Georgia		W, 3-2
83	LSU	11-17	W, 3-0
85	Mississippi St.	13-15	L, 2-3
96	South Carolina	11-16	W, 3-2
	South Carolina		W, 3-2
126	Middle Tenn.	20-9	L, 1-3
131	Coppin St.	27-4	W, 3-1
144	Ole Miss	11-18	W, 3-1
155	Mercer	16-12	W, 3-0
165	Samford	16-15	W, 3-1
208	Alabama	11-18	W, 3-1
	Alabama		W, 3-0
212	McNeese	16-17	W, 3-0
260	Jacksonville St.	5-22	W, 3-0
264	UAB	5-26	W, 3-1
286	Charleston So.	9-19	W, 3-1

AUBURN OPPONENTS ONLY

## AVCA COACHES POLL

RK	TEAM	POINTS	RECORD	PREV.
1	Nebraska [64]	1,600	27-0	1
2	Stanford	1,534	24-3	2
3	Pittsburgh	1,367	23-4	7
4	Texas	1,360	21-4	5
5	Wisconsin	1,348	24-3	3
6	Oregon	1,319	24-5	6
7	Louisville	1,266	23-4	4
8	Tennessee	1,108	23-3	8
9	Arkansas	1,042	24-4	10
10	Kentucky	969	17-7	12
11	Washington State	951	22-7	11
12	Georgia Tech	823	22-5	9
13	Purdue	802	19-8	16
14	Penn State	748	19-8	14
15	Kansas	728	21-5	17
16	BYU	699	22-6	13
17	Creighton	638	25-4	15
18	Arizona State	498	25-5	18
19	Dayton	475	31-2	19
20	Florida	344	17-8	20
21	Western Kentucky	322	29-4	22
22	Houston	200	17-8	21
23	Florida State	158	22-8	25
24	Southern California	138	18-10	24
25	Baylor	122	15-12	23

Others receiving votes and listed on two or more ballots: Marquette 47; UC Santa Barbara 33; Minnesota 29; **Auburn 24**; Utah State 17; Iowa State 16; SMU 16; Kansas State 14; Pepperdine 10

## INSIDE THE MATCH-UPS

## WESTERN MICHIGAN 2-1 (.667)

0-0 H • 2-0 A • 0-1 N

YEAR	SITE	RESULT	MATCH SCORE
1998	AWAY	W	3-1
2001	NEUTRAL	L	0-3
2019	AWAY	W	3-0

## CROUCH IN THE TOURNAMENT

» Thursday will mark Brent Crouch's fourth trip to the NCAA Tournament and the second trip as head coach of the Tigers. He previously took two of his USC teams to the big dance. Crouch enters the matchup with a 3-3 overall record.

## RIVALRY REWARDS

» Brent Crouch knows how to coach in rivalry matchup. Since arriving on the Plains, Crouch is a perfect 6-0 against Alabama and 5-1 versus Georgia.

## NO PLACE LIKE NEVILLE

» Auburn is now 29-19 at home under head coach Brent Crouch. All-time Auburn is 78-64 in Neville.

## THE ZIMMERMAN ZING

» Sophomore Bel Zimmerman's serving has been a huge lift for the Tigers this season. Her team-leading 29 aces this season are seven-fold more than her freshman campaign as the Liberty, Missouri product approaches top-10 numbers for a single season.

Zimmerman has been directly responsible for some of Auburn's largest runs this season because of her stellar serving. The 8-1 start against Mercer featured seven Zimmerman serves in a row. The 25-10 set win over Ole Miss saw Zimmerman step to the service line 10 times in a row. Auburn fans also won't forget her clutch ace at the end of Set No. 4 at South Alabama that send the match into a decisive fifth set.

## THIBAUT OF LIGHTNING

» Stepping into the libero role in a depleted back-row for the Tigers, junior Paige Thibault was been nothing short of brilliant. Across back-to-back wins over South Carolina and Georgia, the Watertown, Minnesota native has ran down a career-best 23 digs.

## AARP ELIGIBLE

» With his victory over South Carolina on Oct. 22, Brent Crouch reached the 50 win mark as an Auburn Tiger, becoming the fastest to do so in the rally-scoring era.

## OPEN ON SUNDAYS

» The Tigers have had no trouble showing up for Sunday matches in 2023. So far, Auburn is 8-1 in matches played on Sunday.

## NATIONWIDE AND ON OUR SIDE

» Following 33 kills .472 hitting with 53 attempts across wins over No. 9 Florida and South Carolina, sophomore Madison Scheer earned AVCA/GameChanger National Player of the Week. It was the second such award for the Auburn Volleyball program. Rani Whitson earned the

honor in 1996. For Crouch, it was also the second player in his head-coaching career (Khalia Lanier, 2019).

## RANK YOU VERY MUCH

» Welcome to the top 25 Auburn Volleyball. After wins over SMU and Florida State, the Tigers earned the program's first-ever ranking at No. 25.

A week later, Auburn moved up to No. 24 following a 2-1 showing at the Tiger Invitational. Auburn spent 10 straight weeks in the top-25.

## STAYING ACTIVE

» Bella Bell, Kendal Kemp, Jackie Barrett and Akasha Anderson are all amongst the SEC's top active career leaders. Kemp (.339) ranks fifth in hitting percentage. HER 1.39 blocks per set is currently second in the conference. Anderson ranks in the top 10 in both kills per set (3.46) and points per set (3.95). Barrett's 9.07 assists per set is eighth and Morton ranks sixth in digs per set (3.67).

## 500 CLUB

» Sophomore Akasha Anderson has eclipsed 500 career kills in her young career, doing so in just 37 matches.

Sophomore libero Sarah Morton earned her 500th dig of her young career against Florida State.

Eureka, Missouri native Madison Scheer is also eclipsed the 500 kill mark.

## SEEING DOUBLE

» Jackie Barrett posted Auburn's first double-doubles of the season, piling up 36 assists and 14 digs against SMU. A day later, the Highland, California native grabbed 44 assists with 11 digs. Barrett posted a team-high 12 double-doubles in 2022. Barret owns a team-leading 15 double-doubles in 2023.

Speaking of double-doubles, Bel Zimmerman earned the feat for the first time in her career with 17 kills and 16 digs against Charleston Southern. Zimmerman added her second and third double-double against UAB and Samford during the Alabama Showdown.

## KEMP ROOFING CO.

» After setting records in 2022, sophomore middle blocker Kendal Kemp is back to her old tricks this season. In eight matches this season, the Egan Minnesota native is averaging 1.27 blocks per set. The mark is fourth in the SEC and No. 51 in nation.

## SOAKING UP SUMMER HEAT

» August has been good to Brent Crouch over the years. In nine years of coaching, Crouch is 22-3 in the month of

## PLAYER TO WATCH: MADISON SCHEER

» The All-SEC honoree is downright unstoppable on most nights. The Eureka, Missouri Native is averaging career highs in kills (374), kills per set (3.34), points per set (3.60), hitting percentage (.262) and blocks per set (0.48).



August, including a 9-0 mark at Auburn.

**STREAKING**

>> In each of Auburn's first five matches this season, the Tigers managed to hit north of .300, marking the only such streak in the 25-point rally-scoring era.

**QUEEN KEMP**

>> Minnesota native Kendal Kemp announced herself to the collegiate volleyball world in 2022. Kemp set single-season program records in solo blocks (26), block assists (154), total blocks (180) and blocks per set (1.48). Earning AVCA South Region Honorable Mention, Kemp totals were also second in the Southeastern Conference and her 180 total blocks were the second-most in the country.

**AUBURN PICKED 7th IN PRESEASON POLL**

>> After a sixth-place finish in 2022, the Auburn Tigers have been selected to finish seventh in the 2023 preseason poll.

**NEW KIDS ON THE BLOCK**

>> All 12 student-athletes from a year ago return to the Auburn Volleyball roster. Head coach Brent Crouch added six new faces to bolster the squad in 2023. Four transfers (Bella Bell, Kyla Swanson, Peyton Dunn and Paige Thibault) make their debut in the Orange and Blue this season. Freshmen Jasmin Okeoma and Lakin Laurendine have also found a new home on the Plains.

**HEAD COACH BRENT CROUCH**

**QUICK FACTS**

College \_\_\_ Texas A&M ('98, '00)  
 \_\_\_ Oregon ('06)  
 Wife \_\_\_\_\_ Marcy  
 Sons \_\_\_ Jonathan and William

**COACHING RECORD**

Head Coaching Career \_ 10th Season  
 Career Record \_\_\_\_\_ 150-132  
 NCAA Appearances \_\_\_\_\_ 3

**COACHING CAPSULE**

2020-Pr. Auburn 55-41  
 2018-19 Southern California 40-25  
 2014-17 Portland 55-66

**YEAR-BY-YEAR RESULTS**

2023 Auburn 20-9  
 2022 Auburn 22-9  
 2021 Auburn 13-15  
 2020 Auburn 0-8  
 2019 USC 18-14  
 2018 USC 22-11  
 2017 Portland 15-15  
 2016 Portland 17-13  
 2015 Portland 16-15  
 2014 Portland 7-23



Brent Crouch begins his fourth season at the helm of the Auburn Volleyball program in 2023. Crouch and the Tigers look to reset the bar after a record-breaking 2022 campaign that saw success on the Plains unseen for more than a decade.

Last season, Auburn earned a berth into the NCAA Tournament for just the second time in school history and the first since 2010. A first-round victory over host and No. 14 Creighton provided the program with its second postseason win and first triumph over a nationally-ranked opponent since 2017.

The feat came on the heels of a historic season that saw the Tigers begin the season with a record mark of 14-0 and a record start to SEC play at 3-0. The 22 total victories on the season were the most in the 25-point rally-scoring era and the most since 1998. The Tigers also picked up its first win in Columbia, Missouri.

Under Crouch's guidance, Akasha Anderson, Madison Scheer and Kendal Kemp each garnered All-Conference Honors. Anderson and Kemp also picked up AVCA postseason accolades with Anderson grabbing South Region Freshman of the Year and All-Region. Meanwhile, Kemp solidified Honorable Mention. Auburn Volleyball student-athletes also picked up a record 10 SEC weekly awards.

Crouch wasn't left out of the postseason awards season, securing AVCA South Region Coach of the Year, the first such award for the Tiger Volleyball program.

Fans on the Plains saw Auburn become one of the most potent blocking teams in the Southeastern Conference in 2022. Crouch's guidance helped the Tigers break records for most block assists in a single season (520), total blocks (312.0) and tie for the most blocks in a four-set match (17 vs. Troy).

The Orange and Blue wall's foundation was laid by then-freshman Kendal Kemp. The Egan, Minnesota product shattered single-season records for solo blocks (26), block assists (154), total blocks (180) and blocks per set (1.48).

During his first full season leading the Auburn program in 2021, Crouch's leadership had an immediate effect. The Tigers opened the season winning 17 consecutive sets to tie the program record for most sweeps to begin a season (5), matching the 1974 Auburn team. Crouch led the team to a 13-15 record with a 5-13 mark in the SEC, picking up a season sweep over Alabama, the first Auburn win over Missouri since 1996 and the program's first victory in College State with a win over Texas A&M.

Crouch's expertise led to six total SEC weekly honors, splitting three on offense and three on defense. Individually, the Tigers also set nine individual records during the 2021 campaign.

Individually, it was Rebekah Rath and Tatum Shipies who benefited the most from Crouch's development. Shipies led the SEC in blocking and set records in blocks, block assists and blocks per set. Meanwhile, Rath led the SEC in five offensive categories, setting records in kills and kills per set.

Crouch made his Auburn coaching debut against No. 4 Florida on Oct. 21, 2020, to open the shortened fall volleyball schedule. Crouch led the Tigers on the court for eight total matches and his impact on the Plains was noticeable almost immediately, tying the record for most blocks in a four-set with 17 at South Carolina.

Prior to Auburn, Crouch served as the head coach at the University of South California, compiling a 40-25 record. He would lead the Trojans to the second round of the NCAA Tournament in both years in Los Angeles. In 2018, Crouch's Trojans earned the No. 11 overall seed in the Tournament and the No. 21 ranking in the final AVCA Coaches poll of the year.

Before leading the Trojans, Crouch spent four seasons as head coach of the University of Portland. The 2016 West Coast Conference Coach of the Year inherited a winless program and guided the Pilots to its winningest season in 25 years just two seasons later. His 48 victories in his final three years in the Rose City was the best three-season total since 1984-86. He put Portland on the WCC map, earning wins over top-10, top-15 and top-25 opponents while in charge of the Pilots. Crouch coached three All-WCC First Team selections, a WCC All-Freshman Team honoree and three WCC All-Academic First Teamers. He also established Beach Volleyball as a varsity sport at Portland in 2016.

Crouch arrived at Portland after four seasons (2010-13) at Saint Mary's College, where he was an assistant with the indoor program and head coach of the beach team.

Brent and his wife Marcy have two sons, Jonathan and William.

**2023 AUBURN VOLLEYBALL ROSTER**

No.	Name	Year	Pos.	Ht.	Hometown (High School/Previous School)
1	MADISON SCHEER	SO.	PH	6-1	EUREKA, MO. (EUREKA)
2	SARAH MORTON	SO.	L	5-7	MUNSTER, IND. (MUNSTER)
3	AKASHA ANDERSON	SO.	PH	6-3	RESTON, VA. (HERNDON)
4	FALLAN LANHAM	JR.	L	5-8	LOUISVILLE, KY. (MERCY ACADEMY)
5	BELLA BELL	SR.	RS	6-4	BLYTHEWOOD, S.C. (KENTUCKY)
6	KYLA SWANSON	GR.	MB	6-4	WAHOO, NEB. (ILLINOIS)
7	PEYTON DUNN	R-SO.	S	5-11	DECATUR, TEXAS (OKLAHOMA)
8	KENDAL KEMP	SO.	MB	6-6	EAGAN, MINN. (EAGAN)
9	ZOE SLAUGHTER	SO.	L	5-7	HONOLULU, HAWAII (MOANALUA)
10	JACKIE BARRETT	SR.	S	6-2	HIGHLAND, CALIF. (CITRUS VALLEY)
11	JORDAN SINNESS	JR.	S	5-9	SEBRING, FLA. (SEBRING)
12	BEL ZIMMERMAN	SO.	PH	6-2	LIBERTY, MO. (LIBERTY NORTH)
13	PAIGE THIBAULT	JR.	L	5-6	WATERTOWN, MINN. (FIU)
14	CHELSEY HARMON	SR.	MB	6-3	PUYALLUP, WASH. (PORTLAND)
17	CASSIDY TANTON	R-SO.	PH	6-0	STONEVILLE, N.C. (DALTON MCMICHAEL)
19	JASMINE OKEOMA	FR.	MB	6-3	WOODBIDGE, VA. (FOREST PARK)
22	SYDNEY HANDEL	SO.	PH	6-0	LEE'S SUMMIT, MO. (LEE'S SUMMIT WEST)
25	LAKIN LAURENDINE	FR.	PH	6-1	JACKSON, MISS. (JACKSON ACADEMY)

**HEAD COACH | BRENT CROUCH (4TH SEASON)**

**ASSISTANT COACH | KEITH SMITH (2ND SEASON)**

**ASSISTANT COACH/RECRUITING COORDINATOR | RACHEL CORBELLI (2ND SEASON)**

**ASSISTANT COACH | JACK BURTON (1ST SEASON)**

**PRONUNCIATION GUIDE:**

MADISON SCHEER – SHEER      FALLAN LANHAM – FAL(LIKE PAL)-AN LAN-EM      SYDNEY HANDEL – HON-DELL  
 PAIGE THIBAULT – THEE-BALT      JASMINE OKEOMA – OKAY-AH-MUH      LAKIN LAURENDINE – LAY-KIN LOR-EN-DEAN  
 RACHEL CORBELLI – CORE-BELL-EE

## INSIDE THE 2023 NUMBERS



CATEGORY	AUBURN	W. MICHIGAN
Kills	1416	1616
Per Set	12.3	14.3
Errors	512	497
Total Attacks	3768	4122
Hitting Pct.	.240	.271
Assists	1289	1519
Per Set	11.2	13.4
Service Aces	159	169
Per Set	1.4	1.5
Service Errors	340	183
Reception Errors	158	121
Per Set	1.4	1.1
Digs	1483	1813
Per Set	12.9	16.0
Solo Blocks	36	46
Block Assists	506	308
Total Blocks	289.0	200.0
Per Set	2.5	1.8

## WEEKLY AWARDS

## SEC Weekly Awards

10/9 - Madison Scheer (SEC Overall POTW/Offensive POW)

10/30 - Madison Scheer (Offensive POW)

## National Weekly Awards

10/10 - Madison Scheer (AVCA National Player of the Week)

## 2023 INDIVIDUAL HIGHS BY SET

## THREE SETS

HITTING PERCENTAGE (MIN. 12 KILLS) \_\_\_\_\_ .667, Madison Scheer at Florida (Oct. 6)  
 KILLS \_\_\_\_\_ 18, Akasha Anderson at Florida (Oct. 6)  
 TOTAL ATTEMPTS \_\_\_\_\_ 43, Akasha Anderson vs Alabama (Nov. 22)  
 POINTS \_\_\_\_\_ 18.5, Akasha Anderson at Florida (Oct. 6)  
 ASSISTS \_\_\_\_\_ 37, Jackie Barrett at Florida (Oct. 6)  
 DIGS \_\_\_\_\_ 19, Sarah Morton vs Alabama (Nov. 22)  
 ACES \_\_\_\_\_ 5, Jackie Barrett vs Mercer (Sept. 9)  
 BLOCKS \_\_\_\_\_ 7, 3 times (last Kyla Swanson vs LSU, Nov. 19)

## FOUR SETS

HITTING PERCENTAGE (MIN. 12 KILLS) \_\_\_\_\_ .526, Kendal Kemp vs Charleston Southern (Sept. 8)  
 KILLS \_\_\_\_\_ 21, Madison Scheer at Alabama (Oct. 29)  
 TOTAL ATTEMPTS \_\_\_\_\_ 60, Akasha Anderson vs Ole Miss (Sept. 24)  
 POINTS \_\_\_\_\_ 22, 2 times (last Madison Scheer at Alabama, Oct. 29)  
 ASSISTS \_\_\_\_\_ 46, Jackie Barrett vs Samford (Sept. 16)  
 DIGS \_\_\_\_\_ 24, Sarah Morton vs Coppin St. (Aug. 25)  
 ACES \_\_\_\_\_ 4, Chelsey Harmon vs Charleston Southern (Sept. 8)  
 BLOCKS \_\_\_\_\_ 10, Kendal Kemp vs UAB (Sept. 15)

## FIVE SETS

HITTING PERCENTAGE (MIN. 12 KILLS) \_\_\_\_\_ .371, Madison Scheer at South Carolina (Oct. 8)  
 KILLS \_\_\_\_\_ 26, Akasha Anderson at South Alabama (Sept. 14)  
 POINTS \_\_\_\_\_ 28.5, Akasha Anderson at South Alabama (Sept. 14)  
 TOTAL ATTEMPTS \_\_\_\_\_ 69, Akasha Anderson at South Alabama (Sept. 14)  
 ASSISTS \_\_\_\_\_ 50, Jackie Barrett at Texas A&M (Nov. 5)  
 DIGS \_\_\_\_\_ 29, Zoe Slaughter at South Alabama (Sept. 14)  
 ACES \_\_\_\_\_ 5, Jackie Barrett at South Alabama (Sept. 14)  
 BLOCKS \_\_\_\_\_ 11, Kyla Swanson vs South Carolina (Oct. 22)

## 2023 TEAM HIGHS BY SET

## THREE SETS

HITTING PERCENTAGE (MIN. 12 KILLS) \_\_\_\_\_ .395, vs Jacksonville St. (Aug. 26)  
 KILLS \_\_\_\_\_ 47, at Florida (Oct. 6)  
 TOTAL ATTEMPTS \_\_\_\_\_ 111, vs Alabama (Nov. 22)  
 ASSISTS \_\_\_\_\_ 43, at Florida (Oct. 6)  
 DIGS \_\_\_\_\_ 57, vs Alabama (Nov. 22)  
 ACES \_\_\_\_\_ 9, vs Mercer (Sept. 9)  
 BLOCKS \_\_\_\_\_ 12.5, vs LSU (Nov. 19)

## FOUR SETS

HITTING PERCENTAGE (MIN. 12 KILLS) \_\_\_\_\_ .386, vs Samford (Sept. 16)  
 KILLS \_\_\_\_\_ 62, at Florida St. (Sept. 3)  
 TOTAL ATTEMPTS \_\_\_\_\_ 166, vs Ole Miss (Sept. 24)  
 ASSISTS \_\_\_\_\_ 54, 2 times (last vs Samford Sept. 16)  
 DIGS \_\_\_\_\_ 74, vs Ole Miss (Sept. 24)  
 ACES \_\_\_\_\_ 8, at Missouri (Sept. 12)  
 BLOCKS \_\_\_\_\_ 19.0, vs UAB (Sept. 15)

## FIVE SETS

HITTING PERCENTAGE (MIN. 12 KILLS) \_\_\_\_\_ .320, at Texas A&M (Nov. 5)  
 KILLS \_\_\_\_\_ 62, at Texas A&M (Nov. 5)  
 TOTAL ATTEMPTS \_\_\_\_\_ 181, vs Arkansas (Nov. 24)  
 ASSISTS \_\_\_\_\_ 57, 2 times last at Texas A&M (Nov. 5)  
 DIGS \_\_\_\_\_ 82, vs Arkansas (Nov. 24)  
 ACES \_\_\_\_\_ 14, at South Alabama (Sept. 14)  
 BLOCKS \_\_\_\_\_ 17.0, at South Carolina (Oct. 8)

## INDIVIDUAL NCAA TOURNAMENT SUPERLATIVES

### THREE SETS

HITTING PERCENTAGE (MIN. 12 KILLS)	.364, Morgan Johns vs Missouri State (Dec. 2, 2010)
KILLS	12, Sarah Bullock vs Missouri State (Dec. 2, 2010)
TOTAL ATTEMPTS	34, Sarah Bullock at Nebraska (Dec. 3, 2010)
POINTS	15, Sarah Bullock vs Missouri State (Dec. 2, 2010)
ASSISTS	25, Christina Solverson vs Missouri State (Dec. 2, 2010)
DIGS	18, Liz Crouch vs Missouri State (Dec. 2, 2010)
ACES	2, Chelsea Wintzinger vs Missouri State (Dec. 2, 2010)
BLOCKS	9, Camila Jersonsky vs Missouri State (Dec. 2, 2010)

### FOUR SETS

HITTING PERCENTAGE (MIN. 12 KILLS)	--
KILLS	--
TOTAL ATTEMPTS	--
POINTS	--
ASSISTS	--
DIGS	--
ACES	--
BLOCKS	--

### FIVE SETS

HITTING PERCENTAGE (MIN. 12 KILLS)	.389, Chelsey Harmon, at Creighton (Dec. 2, 2022)
KILLS	17, 2 times (last Madison Scheer vs Houston, Dec. 3, 2022)
TOTAL ATTEMPTS	57, Akasha Anderson vs Houston (Dec. 3, 2022)
POINTS	19, Madison Scheer at Creighton (Dec. 2, 2022)
ASSISTS	44, Jackie Barrett at Creighton (Dec. 2, 2022)
DIGS	22, Sarah Morton vs Houston (Dec. 3, 2022)
ACES	4, Jackie Barrett vs Houston (Dec. 3, 2022)
BLOCKS	8, Chelsey Harmon at Creighton (Dec. 2, 2022)

## TEAM NCAA TOURNAMENT SUPERLATIVES

### THREE SETS

HITTING PERCENTAGE (MIN. 12 KILLS)	.231, vs Missouri State (Dec. 2, 2010)
KILLS	42, vs Missouri State (Dec. 2, 2010)
TOTAL ATTEMPTS	104, vs Missouri State (Dec. 2, 2010)
ASSISTS	42, vs Missouri State (Dec. 2, 2010)
DIGS	43, vs Missouri State (Dec. 2, 2010)
ACES	6, vs Missouri State (Dec. 2, 2010)
BLOCKS	11, vs Missouri State (Dec. 2, 2010)

### FOUR SETS

HITTING PERCENTAGE (MIN. 12 KILLS)	--
KILLS	--
TOTAL ATTEMPTS	--
ASSISTS	--
DIGS	--
ACES	--
BLOCKS	--

### FIVE SETS

HITTING PERCENTAGE (MIN. 12 KILLS)	.231, at Creighton (Dec. 2, 2022)
KILLS	57, at Creighton (Dec. 2, 2022)
TOTAL ATTEMPTS	163, vs Houston (Dec. 3, 2022)
ASSISTS	52, at Creighton (Dec. 2, 2022)
DIGS	77, vs Houston (Dec. 3, 2022)
ACES	8, vs Houston (Dec. 3, 2022)
BLOCKS	14, at Creighton (Dec. 2, 2022)



### THE LAST TIME AUBURN...

**Won in three sets** \_\_\_\_\_ Nov. 22, 2023 vs Alabama (25-14, 25-20, 25-18)  
**Won in four sets** \_\_\_\_\_ Oct. 29, 2023 at Alabama (25-18, 22-25, 25-23, 25-22)  
**Won in five sets** \_\_\_\_\_ Nov. 5, 2023 at Texas A&M (21-25, 25-19, 23-25, 25-22, 15-12)  
**Lost in three sets** \_\_\_\_\_ Nov. 8, 2023 vs #13 Kentucky (14-25, 11-25, 14-25)  
**Lost in four sets** \_\_\_\_\_ Nov. 12, 2023 at Missouri (25-19, 25-23, 23-25, 25-12)  
**Lost in five sets** \_\_\_\_\_ Nov. 24, 2023 vs #9 Arkansas (21-25, 25-16, 19-25, 25-21, 17-15)  
**Lost first set in a win** \_\_\_\_\_ Nov. 5, 2023 at Texas A&M (21-25, 25-19, 23-25, 25-22, 15-12)  
**Won first set in a loss** \_\_\_\_\_ Nov. 24, 2023 vs #9 Arkansas (21-25, 25-16, 19-25, 25-21, 17-15)  
**Lost first two sets in a win** \_\_\_\_\_ Oct. 27, 2023 vs Georgia (22-25, 18-25, 25-23, 25-18, 15-11)  
**Won first two sets in a loss** \_\_\_\_\_ Oct. 10, 2021 at Arkansas (25-20, 25-23, 15-25, 17-25, 7-15)  
**Beat a ranked opponent** \_\_\_\_\_ Oct. 6, 2023 at #9 Florida (25-23, 25-20, 25-17)  
**Hit .300-.399 in a match** \_\_\_\_\_ Nov. 19, 2023 vs LSU (.344)  
**Hit .400-.499 in a match** \_\_\_\_\_ Sept. 6, 2022 vs Alabama A&M (.400)  
**Hit .500 or better in a match** \_\_\_\_\_ Oct. 18, 1998 at Ole Miss (.514)  
**Held opponent to .000-.100 in a match** \_\_\_\_\_ Nov. 22, 2023 vs Alabama (.075)  
**Held opponent to a negative hitting percentage** \_\_\_\_\_ Sept. 9, 2023 vs Mercer (-.053)  
**Had 70-79 kills in a match** \_\_\_\_\_ Oct. 26, 2018 vs. Ole Miss (77)  
**Had 80+ kills in a match** \_\_\_\_\_ Sept. 17, 2006 at Georgia (84)  
**Had 80-99 digs in a match** \_\_\_\_\_ Nov. 24, 2023 vs #9 Arkansas (82)  
**Had 100+ digs in a match** \_\_\_\_\_ Sept. 17, 2021 vs. Nicholls (105)  
**Had 15+ blocks in a match** \_\_\_\_\_ Nov. 24, 2023 vs #9 Arkansas (15.0)  
**Had 10+ service aces in a match** \_\_\_\_\_ Sept. 14, 2023 at South Alabama (14)  
**Had a player(s) with 20-24 kills in a match** \_\_\_\_\_ Nov. 15, 2023 Akasha Anderson at Miss St. (20)  
**Had a player(s) with 25-29 kills in a match** \_\_\_\_\_ Sept. 14, 2023, Akasha Anderson at South Ala. (26)  
**Had a player(s) with 30+ kills in a match** \_\_\_\_\_ Oct. 8, 2004, Ashlee Johns vs. Arkansas (30)  
**Had a player(s) with 10+ blocks in a match** \_\_\_\_\_ Nov. 24, 2023 Bella Bell vs Arkansas (10)  
**Had a player(s) with 25-29 digs in a match** \_\_\_\_\_ Sept. 24, 2023 Sarah Morton vs Arkansas (25)  
**Had a player(s) with 30+ digs in a match** \_\_\_\_\_ Oct. 17, 2021, Bella Rosenthal vs. Missouri(33)  
**Had a player(s) with 50+ assists in a match** \_\_\_\_\_ Nov. 5, 2023 Jackie Barrett at Texas A&M (50)  
**Had a player(s) with 60+ assists in a match** \_\_\_\_\_ Oct. 5, 2022, Jackie Barrett at LSU (60)  
**Had a player(s) with 5+ aces in a match** \_\_\_\_\_ Sept. 14, 2023, Jackie Barrett at South Ala. (5)

### AUBURN DOUBLE-DOUBLES IN 2023

PLAYER	OPPONENT (SETS)	DATE	STATS
Jackie Barrett (15)	vs SMU (4)	Sept. 2	36 assists, 14 digs
	at Florida St. (4)	Sept. 3	44 assists, 11 digs
	vs MTSU (4)	Sept. 7	39 assists, 10 digs
	vs Charleston So. (4)	Sept. 8	41 assists, 13 digs
	at South Alabama (5)	Sept. 14	48 assists, 11 digs
	vs #3 Florida (5)	Sept. 22	40 assists, 12 digs
	vs Ole Miss (4)	Sept. 24	42 assists, 17 digs
	at South Carolina (5)	Oct. 8	46 assists, 12 digs
	at #10 Tennessee (4)	Oct. 13	31 assists, 11 digs
	vs Missouri (3)	Oct. 20	27 assists, 10 digs
	vs South Carolina (5)	Oct. 22	46 assists, 10 digs
	at Georgia (5)	Oct. 27	46 assists, 12 digs
	at Alabama (4)	Oct. 29	44 assists, 11 digs
	at Mississippi State (5)	Nov. 15	45 assists, 10 digs
	vs #9 Arkansas (5)	Nov. 24	40 assists, 11 digs
Akasha Anderson (9)	at South Alabama (5)	Sept. 14	26 kills, 11 digs
	vs UAB (4)	Sept. 15	11 kills, 11 digs
	vs #3 Florida (5)	Sept. 22	18 kills, 10 digs
	at South Carolina (5)	Oct. 8	14 kills, 15 digs
	vs South Carolina (5)	Oct. 22	11 kills, 14 digs
	at Mississippi State (5)	Nov. 15	20 kills, 14 digs
	vs LSU (3)	Nov. 19	14 kills, 11 digs
	vs Alabama (3)	Nov. 22	15 kills, 10 digs
	vs #9 Arkansas (5)	Nov. 24	13 kills, 20 digs
	Bel Zimmerman (3)	vs Charleston So. (4)	Sept. 8
vs UAB (4)		Sept. 15	16 kills, 12 digs
vs Samford (4)		Sept. 16	15 kills, 11 digs

### AUBURN'S 2023 RECORD WHEN...

OVERALL	20-9
SEC	10-8
NON-CONFERENCE	10-1
RANKED OPPONENTS	1-5
HOME	10-5
AWAY	7-4
NEUTRAL	3-0
<b>BY SETS</b>	
THREE SETS	6-3
FOUR SETS	9-3
FIVE SETS	5-3
WON FIRST SET	15-3
LOST FIRST SET	5-6
WON SECOND SET	13-3
LOST SECOND SET	7-6
SPLIT FIRST TWO SETS	10-4
WON FIRST TWO SETS	9-0
LOST FIRST TWO SETS	1-3
<b>SITUATIONAL</b>	
MORE KILLS THAN OPPONENT	15-0
FEWER KILLS THAN OPPONENT	4-9
KILLS ARE TIED	1-0
MORE DIGS THAN OPPONENT	8-1
FEWER DIGS THAN OPPONENT	11-8
DIGS ARE TIED	1-0
MORE ACES THAN OPPONENT	13-3
FEWER ACES THAN OPPONENT	6-6
ACES ARE TIED	1-0
HIGHER HITTING PERCENTAGE THAN OPPONENT	19-0
LOWER HITTING PERCENTAGE THAN OPPONENT	1-9
HITTING PERCENTAGE TIED	0-0
<b>HITTING PERCENTAGE</b>	
.400 OR ABOVE	0-0
.300-.399	10-0
.200-.299	6-2
.100-.199	4-5
.000-.099	0-1
NEGATIVE	0-1
<b>OPPONENTS' HITTING PERCENTAGE</b>	
.400 OR ABOVE	0-1
.300-.399	1-2
.200-.299	5-4
.100-.199	9-2
.000-.099	4-0
NEGATIVE	1-0
<b>BY DAY</b>	
MONDAY	0-0
TUESDAY	0-0
WEDNESDAY	1-3
THURSDAY	1-1
FRIDAY	5-4
SATURDAY	5-0
SUNDAY	8-1
DAY MATCHES (FIRST SERVE BEFORE 6 P.M.)	12-2
NIGHT MATCHES (FIRST SERVE AFTER 6 P.M.)	8-7
<b>BY MONTH</b>	
AUGUST	3-0
SEPTEMBER	8-3
OCTOBER	6-2
NOVEMBER	3-4
DECEMBER	0-0
<b>JERSEY COLOR</b>	
NAVY w/POWER STRIPE	3-1
NAVY SOLID	0-0
NAVY SLEEVELESS	5-3
ORANGE w/POWER STRIPE	7-4
ORANGE SOLID	4-0
PINK	1-1

### 2023 AUBURN MATCH-BY-MATCH STARTERS

DATE	OPPONENT	RESULT	OUTSIDE	MIDDLE	RIGHT SIDE/DS	OUTSIDE/DS/SERVE	MIDDLE	LIBERO	SETTER
Aug. 25	vs Coppin State	W, 3-1	Akasha Anderson	Kendal Kemp	Bella Bell	Paige Thibault	Kyla Swanson	Sarah Morton	Peyton Dunn
Aug. 26	vs McNeese	W, 3-0	Akasha Anderson	Kendal Kemp	Bella Bell	Paige Thibault	Kyla Swanson	Sarah Morton	Jackie Barrett
Aug. 26	vs Jacksonville State	W, 3-0	Akasha Anderson	Kendal Kemp	Bella Bell	Zoe Slaughter	Kyla Swanson	Sarah Morton	Jackie Barrett
Sept. 2	vs SMU	W, 3-1	Akasha Anderson	Kendal Kemp	Bella Bell	Zoe Slaughter	Kyla Swanson	Sarah Morton	Jackie Barrett
Sept. 3	at Florida State	W, 3-1	Akasha Anderson	Kendal Kemp	Bella Bell	Zoe Slaughter	Kyla Swanson	Sarah Morton	Jackie Barrett
Sept. 7	vs Middle Tennessee	L, 1-3	Bel Zimmerman	Kendal Kemp	Bella Bell	Zoe Slaughter	Kyla Swanson	Sarah Morton	Jackie Barrett
Sept. 8	vs Charleston Southern	W, 3-1	Madison Scheer	Kendal Kemp	Bel Zimmerman	Fallan Lanham	Chelsey Harmon	Sarah Morton	Jackie Barrett
Sept. 9	vs Mercer	W, 3-0	Bel Zimmerman	Kendal Kemp	Zoe Slaughter	Fallan Lanham	Chelsey Harmon	Sarah Morton	Jackie Barrett
Sept. 14	at South Alabama	W, 3-2	Akasha Anderson	Kendal Kemp	Bel Zimmerman	Fallan Lanham	Kyla Swanson	Zoe Slaughter	Jackie Barrett
Sept. 15	vs UAB	W, 3-1	Akasha Anderson	Kendal Kemp	Bel Zimmerman	Paige Thibault	Kyla Swanson	Zoe Slaughter	Jackie Barrett
Sept. 16	vs Samford	W, 3-1	Akasha Anderson	Kendal Kemp	Bel Zimmerman	Madison Scheer	Kyla Swanson	Zoe Slaughter	Jackie Barrett
Sept. 22	vs #3 Florida	L, 2-3	Akasha Anderson	Kyla Swanson	Bella Bell	Paige Thibault	Chelsey Harmon	Sarah Morton	Jackie Barrett
Sept. 24	vs Ole Miss	W, 3-1	Akasha Anderson	Kyla Swanson	Bella Bell	Paige Thibault	Chelsey Harmon	Sarah Morton	Jackie Barrett
Sept. 27	at #14 Arkansas	L, 0-3	Akasha Anderson	Kendal Kemp	Bella Bell	Paige Thibault	Chelsey Harmon	Sarah Morton	Jackie Barrett
Oct. 1	vs Georgia	W, 3-1	Akasha Anderson	Kyla Swanson	Bel Zimmerman	Paige Thibault	Kendal Kemp	Sarah Morton	Jackie Barrett
Oct. 6	at #9 Florida	W, 3-0	Akasha Anderson	Kyla Swanson	Bel Zimmerman	Paige Thibault	Kendal Kemp	Sarah Morton	Jackie Barrett
Oct. 8	at South Carolina	W, 3-2	Akasha Anderson	Kyla Swanson	Bel Zimmerman	Paige Thibault	Kendal Kemp	Sarah Morton	Jackie Barrett
Oct. 13	at #10 Tennessee	L, 1-3	Akasha Anderson	Chelsey Harmon	Bel Zimmerman	Paige Thibault	Kendal Kemp	Sarah Morton	Jackie Barrett
Oct. 20	vs Missouri	L, 0-3	Akasha Anderson	Kendal Kemp	Bella Bell	Paige Thibault	Kyla Swanson	Sarah Morton	Jackie Barrett
Oct. 22	vs South Carolina	W, 3-2	Akasha Anderson	Kendal Kemp	Bella Bell	Bel Zimmerman	Kyla Swanson	Paige Thibault	Jackie Barrett
Oct. 27	at Georgia	W, 3-2	Akasha Anderson	Kendal Kemp	Bella Bell	Bel Zimmerman	Kyla Swanson	Paige Thibault	Jackie Barrett
Oct. 29	at Alabama	W, 3-1	Akasha Anderson	Kendal Kemp	Bella Bell	Bel Zimmerman	Kyla Swanson	Paige Thibault	Jackie Barrett
Nov. 5	at Texas A&M	W, 3-2	Akasha Anderson	Kendal Kemp	Zoe Slaughter	Madison Scheer	Kyla Swanson	Sarah Morton	Jackie Barrett
Nov. 8	vs #13 Kentucky	L, 0-3	Akasha Anderson	Kendal Kemp	Bella Bell	Paige Thibault	Kyla Swanson	Sarah Morton	Jackie Barrett
Nov. 12	at Missouri	L, 1-3	Akasha Anderson	Kendal Kemp	Madison Scheer	Paige Thibault	Kyla Swanson	Sarah Morton	Jackie Barrett
Nov. 15	at Mississippi State	L, 2-3	Akasha Anderson	Kendal Kemp	Bella Bell	Paige Thibault	Kyla Swanson	Sarah Morton	Jackie Barrett
Nov. 19	vs LSU	W, 3-0	Akasha Anderson	Kendal Kemp	Bella Bell	Chelsey Harmon	Kyla Swanson	Sarah Morton	Jackie Barrett
Nov. 22	vs Alabama	W, 3-0	Akasha Anderson	Kendal Kemp	Bella Bell	Chelsey Harmon	Kyla Swanson	Sarah Morton	Jackie Barrett
Nov. 24	vs #9 Arkansas	L, 2-3	Akasha Anderson	Kendal Kemp	Bella Bell	Chelsey Harmon	Kyla Swanson	Sarah Morton	Jackie Barrett

### 2023 AUBURN MATCH-BY-MATCH LEADERS

DATE	OPPONENT	RESULT	KILLS	ASSISTS	ACES	DIGS	BLOCKS	HIT PCT. (MIN 10 ATT.)
Aug. 25	vs Coppin State	W, 3-1	Scheer/Anderson (16)	Dunn (43)	Swanson (2)	Morton (24)	Swanson (6)	Bell (.480)
Aug. 26	vs McNeese	W, 3-0	Anderson (14)	Barrett (31)	Anderson (4)	Anderson (8)	Kemp (5)	Zimmerman (.400)
Aug. 26	vs Jacksonville State	W, 3-0	Anderson (10)	Dunn (16)	Zimmerman (3)	Lanham (11)	Swanson (3)	Bell (.750)
Sept. 2	vs SMU	W, 3-1	Scheer (18)	Barrett (36)	Anderson (2)	Morton (17)	Kemp (4)	Swanson (.500)
Sept. 3	at Florida State	W, 3-1	Anderson (15)	Barrett (44)	Slaughter (2)	Barrett (11)	Swanson/Barrett (4)	Swanson (.467)
Sept. 7	vs Middle Tennessee	L, 1-3	Zimmerman (11)	Barrett (39)	Barrett/Lanham (1)	3 players (10)	Kemp (5)	Swanson (.333)
Sept. 8	vs Charleston Southern	W, 3-1	Zimmerman (17)	Barrett (41)	Harmon (4)	Zimmerman (16)	Harmon (7)	Kemp (.526)
Sept. 9	vs Mercer	W, 3-0	Zimmerman (14)	Barrett (31)	Barrett (5)	Morton (10)	Kemp (7)	Kemp (.500)
Sept. 14	at South Alabama	W, 3-2	Anderson (26)	Barrett (48)	Barrett (5)	Slaughter (29)	Zimmerman (6)	Kemp (.455)
Sept. 15	vs UAB	W, 3-1	Zimmerman (16)	Barrett (35)	Zimmerman/Thibault (2)	Zimmerman (12)	Kemp (10)	Zimmerman (.306)
Sept. 16	vs Samford	W, 3-1	Anderson (19)	Barrett (46)	Thibault (2)	Slaughter (16)	Swanson (3)	Anderson (.410)
Sept. 22	vs #3 Florida	L, 2-3	Anderson (18)	Barrett (40)	Anderson (2)	Morton (13)	Swanson/Anderson (3)	Bell (.214)
Sept. 24	vs Ole Miss	W, 3-1	Anderson (20)	Barrett (42)	Zimmerman (3)	Morton (20)	Harmon (8)	Harmon (.417)
Sept. 27	at #14 Arkansas	L, 0-3	Scheer (4)	Barrett (11)	Slaughter/Zimmerman (1)	Anderson/Morton (7)	3 players (2)	Scheer (.045)
Oct. 1	vs Georgia	W, 3-1	Anderson (17)	Barrett (42)	Harmon (2)	Thibault (10)	Kemp (4)	Kemp (.667)
Oct. 6	at #9 Florida	W, 3-0	Anderson (18)	Barrett (37)	Barrett/Harmon (2)	Morton/Anderson (8)	Kemp (3)	Scheer (.667)
Oct. 8	at South Carolina	W, 3-2	Scheer (19)	Barrett (46)	Anderson (4)	Morton (18)	Kemp (9)	Kemp (.455)
Oct. 13	at #10 Tennessee	L, 1-3	Scheer (11)	Barrett (31)	Harmon/Thibault (1)	Morton (18)	Kemp (9)	Kemp (.467)
Oct. 20	vs Missouri	L, 0-3	Scheer/Anderson (10)	Barrett (27)	Barrett/Zimmerman (1)	Morton (11)	Swanson (7)	Swanson (.400)
Oct. 22	vs South Carolina	W, 3-2	Scheer (24)	Barrett (46)	Barrett (3)	Thibault (23)	Swanson (11)	Bell (.350)
Oct. 27	at Georgia	W, 3-2	Scheer (24)	Barrett (46)	Zimmerman (4)	Thibault (23)	Swanson/Kemp (7)	Scheer (.302)
Oct. 29	at Alabama	W, 3-1	Scheer (21)	Barrett (44)	Barrett (4)	Thibault (15)	Swanson (5)	Bell (.435)
Nov. 5	at Texas A&M	W, 3-2	Scheer/Anderson (16)	Barrett (50)	3 players (1)	Morton (15)	Kemp (8)	Kemp (.500)
Nov. 8	vs #14 Kentucky	L, 0-3	Swanson (6)	Barrett (16)	Anderson (1)	Morton (10)	Swanson (2)	Swanson (.500)
Nov. 12	at Missouri	L, 1-3	Scheer (13)	Barrett (32)	Anderson (3)	Slaughter/Thibault (9)	Swanson (2)	Swanson (.526)
Nov. 15	at Mississippi State	L, 2-3	Anderson (20)	Barrett (45)	Lanham/Anderson (2)	Morton (22)	Kemp (10)	Kemp (.357)
Nov. 19	vs LSU	W, 3-0	Anderson (14)	Barrett (31)	Barrett (2)	Morton (12)	Swanson (7)	Anderson (.448)
Nov. 22	vs Alabama	W, 3-0	Anderson (15)	Barrett (36)	4 players (1)	Morton (19)	Swanson (6)	Scheer (.333)
Nov. 24	vs #9 Arkansas	L, 2-3	Scheer (17)	Barrett (40)	Morton (2)	Morton (25)	Bell (10)	Swanson (.467)

## 2023 OVERALL STATISTICS

### Game Records

Overall	Conference	Home	Away	Neutral
20 - 9	10 - 8	10 - 5	7 - 4	3 - 0

### Team Box Score

##	Player	SP	Attack					Set		Serve			Dig			Blocking				PTS		
			K	K/S	E	TA	PCT	A	A/S	SA	SE	SA/S	RE	DIG	DIG/S	BS	BA	TOT/S	BLK/S		BE	BHE
1	Scheer, Madison	112	374	3.34	118	978	.262	4	0.04	0	0	0.00	15	33	0.29	4	50	54	0.48	1	0	403.0
2	Morton, Sarah	88	2	0.02	2	12	.000	79	0.90	12	41	0.14	18	303	3.44	0	0	0.00	0	0	14.0	
3	Anderson, Akasha	104	350	3.37	168	1080	.169	12	0.12	27	71	0.26	38	239	2.30	3	44	47	0.45	4	1	402.0
4	Lanham, Fallan	44	0	0.00	1	3	-.333	9	0.20	11	11	0.25	1	88	2.00	0	0	0.00	0	0	11.0	
5	Bell, Bella	79	166	2.10	58	429	.252	2	0.03	0	0	0.00	1	23	0.29	1	66	67	0.85	10	1	200.0
6	Swanson, Kyla	113	147	1.30	46	340	.297	10	0.09	4	21	0.04	1	25	0.22	10	115	125	1.11	7	0	218.5
7	Dunn, Peyton	6	4	0.67	1	7	.429	59	9.83	1	7	0.17	0	8	1.33	0	2	2	0.33	0	0	6.0
8	Kemp, Kendal	101	145	1.44	41	284	.366	2	0.02	1	3	0.01	0	11	0.11	13	116	129	1.28	9	0	217.0
9	Slaughter, Zoe	92	0	0.00	1	10	-.100	26	0.28	10	27	0.11	16	163	1.77	0	0	0.00	0	0	10.0	
10	Barrett, Jackie	110	61	0.55	13	153	.314	1027	9.34	30	25	0.27	0	253	2.30	2	65	67	0.61	6	8	125.5
12	Zimmerman, Bel	90	138	1.53	56	407	.201	9	0.10	30	66	0.33	13	94	1.04	2	21	23	0.26	9	0	180.5
13	Thibault, Paige	95	1	0.01	0	4	.250	46	0.48	9	37	0.09	21	207	2.18	0	0	0.00	0	0	10.0	
14	Harmon, Chelsey	78	27	0.35	6	55	.382	4	0.05	22	21	0.28	0	19	0.24	1	27	28	0.36	4	0	63.5
17	Tanton, Cassidy	1	1	1.00	1	5	.000	0	0.00	0	0	0.00	1	0	0.00	0	0	0.00	0	0	1.0	
22	Handel, Sydney	19	0	0.00	0	1	.000	0	0.00	2	10	0.11	1	17	0.89	0	0	0.00	0	0	2.0	
AUBURN		115	1416	12.31	512	3768	.240	1289	11.21	159	340	1.38	158	1483	12.90	36	506	289	2.51	50	10	1,864.0
Opponents		115	1375	11.96	646	3800	.192	1283	11.16	158	270	1.37	159	1599	13.90	40	278	179	1.56	65	25	1,712.0

### Team statistics

	AUB	OPP
<b>ATTACK</b>		
Kills	1416	1375
Errors	512	646
Total Attacks	3768	3800
Attack Pct	.240	.192
Kills/Set	12.31	11.96
<b>SET</b>		
Assists	1289	1283
Attempts	3745	3885
Assist Pct	.344	.330
Assists/Set	11.21	11.16
<b>SERVE</b>		
Aces	159	158
Errors	340	270
Attempts	2541	2442
Serve Pct	.866	.889
Aces/Set	1.38	1.37
<b>SERVE RECEPTIONS</b>		
Errors	158	159
Errors/Set	1.37	1.38
Attempts	2172	2201
Reception Pct	.927	.999
<b>DEFENSE</b>		
Digs	1483	1599
Digs/Set	12.90	13.90
<b>BLOCKING</b>		
Block solo	36	40
Block Assist	506	278
Total Blocks	289	179
Blocks/Set	2.51	1.56
Block Errors	50	65
Ball handling errors	10	25
<b>ATTENDANCE</b>		
Total	24008	20717
Dates/Avg Per Date	15/1601	11/1883
Neutral Site #/Avg	3/67	-
Current win streak	0	-
Home win streak	0	-

### Team Results

Date	Opponent	Score	Score-by-set	Att.
08/25/2023	Coppin St.	W 3-1	24-26,25-17,25-15,25-18	1124
08/26/2023	McNeese	W 3-0	25-15,25-15,25-22	579
08/26/2023	Jacksonville St.	W 3-0	25-12,25-11,26-24	1125
09/02/2023	vs SMU	W 3-1	25-22,17-25,25-20,25-21	50
09/03/2023	at Florida St.	W 3-1	30-28,25-21,19-25,25-23	361
09/07/2023	Middle Tenn.	L 1-3	25-22,15-25,23-25,22-25	790
09/08/2023	Charleston So.	W 3-1	23-25,25-16,25-9,25-19	1063
09/09/2023	Mercer	W 3-0	25-15,25-20,25-11	967
09/14/2023	at South Alabama	W 3-2	27-25,23-25,19-25,25-23,15-8	1218
09/15/2023	vs UAB	W 3-1	25-15,26-24,21-25,25-19	87
09/16/2023	vs Samford	W 3-1	25-19,20-25,26-24,25-11	65
* 09/22/2023	Florida	L 2-3	25-20,24-26,26-24,19-25,15-17	2393
* 09/24/2023	Ole Miss	W 3-1	21-25,25-21,25-10,27-25	1128
* 09/27/2023	at Arkansas	L 0-3	18-25,10-25,6-25	1374
* 10/01/2023	Georgia	W 3-1	25-23,25-23,18-25,25-20	2016
* 10/06/2023	at Florida	W 3-0	25-23,25-20,25-17	4150
* 10/08/2023	at South Carolina	W 3-2	25-23,22-25,22-25,25-23,15-13	1930
* 10/13/2023	at Tennessee	L 1-3	19-25,25-21,21-25,17-25	2575
* 10/20/2023	Missouri	L 0-3	23-25,21-25,18-25	1889
* 10/22/2023	South Carolina	W 3-2	25-22,19-25,25-23,24-26,17-15	1832
* 10/27/2023	at Georgia	W 3-2	22-25,18-25,25-23,25-18,15-11	933
* 10/29/2023	at Alabama	W 3-1	25-18,22-25,25-23,25-22	1153
* 11/05/2023	at Texas A&M	W 3-2	21-25,25-19,23-25,25-22,15-12	3137
* 11/08/2023	Kentucky	L 0-3	14-25,11-25,14-25	2529
* 11/12/2023	at Missouri	L 1-3	19-25,23-25,25-23,12-25	3501
* 11/15/2023	at Mississippi St.	L 2-3	17-25,25-16,21-25,26-24,12-15	385
* 11/19/2023	LSU	W 3-0	25-12,25-14,25-23	1529
* 11/22/2023	Alabama	W 3-0	25-14,25-20,25-18	2333
* 11/24/2023	Arkansas	L 2-3	25-21,16-25,25-19,21-25,15-17	2711

## 2023 SEC STATISTICS

### Game Records

Overall	Conference	Home	Away	Neutral
10 - 8	10 - 8	5 - 4	5 - 4	0 - 0

### Team Box Score

##	Player	SP	Attack					Set		Serve			Dig		Blocking					PTS		
			K	K/S	E	TA	PCT	A	A/S	SA	SE	SA/S	RE	DIG	DIG/S	BS	BA	TOT/S	BLK/S		BE	BHE
1	Scheer, Madison	73	253	3.47	77	668	.263	2	0.03	0	0	0.00	12	19	0.26	3	32	35	0.48	0	0	272.0
2	Morton, Sarah	59	1	0.02	2	6	-.167	52	0.88	10	23	0.17	13	212	3.59	0	0	0	0.00	0	0	11.0
3	Anderson, Akasha	73	227	3.11	124	760	.136	7	0.10	16	55	0.22	29	178	2.44	2	33	35	0.48	2	1	261.5
4	Lanham, Fallan	17	0	0.00	1	1	-1.000	3	0.18	5	5	0.29	0	36	2.12	0	0	0	0.00	0	0	5.0
5	Bell, Bella	57	101	1.77	44	298	.191	1	0.02	0	0	0.00	0	18	0.32	1	50	51	0.89	7	1	127.0
6	Swanson, Kyla	73	91	1.25	23	204	.333	6	0.08	1	8	0.01	1	12	0.16	7	75	82	1.12	5	0	136.5
8	Kemp, Kendal	61	78	1.28	23	162	.340	2	0.03	0	0	0.00	0	7	0.11	7	70	77	1.26	2	0	120.0
9	Slaughter, Zoe	50	0	0.00	1	2	-.500	7	0.14	6	12	0.12	7	64	1.28	0	0	0	0.00	0	0	6.0
10	Barrett, Jackie	73	35	0.48	9	101	.257	662	9.07	17	18	0.23	0	169	2.32	1	42	43	0.59	5	5	74.0
12	Zimmerman, Bel	55	44	0.80	29	156	.096	3	0.05	15	44	0.27	6	44	0.80	0	3	3	0.05	3	0	60.5
13	Thibault, Paige	72	0	0.00	0	2	.000	39	0.54	5	28	0.07	19	169	2.35	0	0	0	0.00	0	0	5.0
14	Harmon, Chelsey	61	12	0.20	4	27	.296	0	0.00	14	14	0.23	0	15	0.25	0	12	12	0.20	2	0	32.0
22	Handel, Sydney	6	0	0.00	0	0	.000	0	0.00	2	5	0.33	0	7	1.17	0	0	0	0.00	0	0	2.0
<b>AUBURN</b>		<b>73</b>	<b>842</b>	<b>11.53</b>	<b>337</b>	<b>2387</b>	<b>.212</b>	<b>784</b>	<b>10.74</b>	<b>91</b>	<b>212</b>	<b>1.25</b>	<b>106</b>	<b>950</b>	<b>13.01</b>	<b>21</b>	<b>317</b>	<b>179.5</b>	<b>2.46</b>	<b>26</b>	<b>7</b>	<b>1,112.5</b>
<b>Opponents</b>		<b>73</b>	<b>910</b>	<b>12.47</b>	<b>406</b>	<b>2465</b>	<b>.204</b>	<b>850</b>	<b>11.64</b>	<b>106</b>	<b>185</b>	<b>1.45</b>	<b>91</b>	<b>1048</b>	<b>14.36</b>	<b>26</b>	<b>184</b>	<b>118</b>	<b>1.62</b>	<b>29</b>	<b>14</b>	<b>1,134.0</b>

### Team statistics

	AUB	OPP
<b>ATTACK</b>		
Kills	842	910
Errors	337	406
Total Attacks	2387	2465
Attack Pct	.212	.204
Kills/Set	11.53	12.47
<b>SET</b>		
Assists	784	850
Attempts	2392	2495
Assist Pct	.328	.341
Assists/Set	10.74	11.64
<b>SERVE</b>		
Aces	91	106
Errors	212	185
Attempts	1552	1590
Serve Pct	.863	.884
Aces/Set	1.25	1.45
<b>SERVE RECEPTIONS</b>		
Errors	106	91
Errors/Set	1.45	1.25
Attempts	1405	1340
Reception Pct	.925	.999
<b>DEFENSE</b>		
Digs	950	1048
Digs/Set	13.01	14.36
<b>BLOCKING</b>		
Block solo	21	26
Block Assist	317	184
Total Blocks	179.5	118
Blocks/Set	2.46	1.62
Block Errors	26	29
Ball handling errors	7	14
<b>ATTENDANCE</b>		
Total	18360	19138
Dates/Avg Per Date	9/2040	9/2126
Neutral Site #/Avg	0/0	-
Current win streak	0	-
Home win streak	0	-

### Team Results

Date	Opponent	Score	Score-by-set	Att.
* 09/22/2023	Florida	L 2-3	25-20,24-26,26-24,19-25,15-17	2393
* 09/24/2023	Ole Miss	W 3-1	21-25,25-21,25-10,27-25	1128
* 09/27/2023	at Arkansas	L 0-3	18-25,10-25,6-25	1374
* 10/01/2023	Georgia	W 3-1	25-23,25-23,18-25,25-20	2016
* 10/06/2023	at Florida	W 3-0	25-23,25-20,25-17	4150
* 10/08/2023	at South Carolina	W 3-2	25-23,22-25,22-25,25-23,15-13	1930
* 10/13/2023	at Tennessee	L 1-3	19-25,25-21,21-25,17-25	2575
* 10/20/2023	Missouri	L 0-3	23-25,21-25,18-25	1889
* 10/22/2023	South Carolina	W 3-2	25-22,19-25,25-23,24-26,17-15	1832
* 10/27/2023	at Georgia	W 3-2	22-25,18-25,25-23,25-18,15-11	933
* 10/29/2023	at Alabama	W 3-1	25-18,22-25,25-23,25-22	1153
* 11/05/2023	at Texas A&M	W 3-2	21-25,25-19,23-25,25-22,15-12	3137
* 11/08/2023	Kentucky	L 0-3	14-25,11-25,14-25	2529
* 11/12/2023	at Missouri	L 1-3	19-25,23-25,25-23,12-25	3501
* 11/15/2023	at Mississippi St.	L 2-3	17-25,25-16,21-25,26-24,12-15	385
* 11/19/2023	LSU	W 3-0	25-12,25-14,25-23	1529
* 11/22/2023	Alabama	W 3-0	25-14,25-20,25-18	2333
* 11/24/2023	Arkansas	L 2-3	25-21,16-25,25-19,21-25,15-17	2711

## 2023 STATISTICAL LEADERS

## Attack (by PCT)

#	Player	S	K	K/S	E	TA	PCT
7	Dunn, Peyton	6	4	0.67	1	7	.429
14	Harmon, Chelsey	78	27	0.35	6	55	.382
8	Kemp, Kendal	101	145	1.44	41	284	.366
10	Barrett, Jackie	110	61	0.55	13	153	.314
6	Swanson, Kyla	113	147	1.30	46	340	.297
1	Scheer, Madison	112	374	3.34	118	978	.262
5	Bell, Bella	79	166	2.10	58	429	.252
13	Thibault, Paige	95	1	0.01	0	4	.250
12	Zimmerman, Bel	90	138	1.53	56	407	.201
3	Anderson, Akasha	104	350	3.37	168	1080	.169
17	Tanton, Cassidy	1	1	1.00	1	5	.000
2	Morton, Sarah	88	2	0.02	2	12	.000
22	Handel, Sydney	19	0	0.00	0	1	.000
9	Slaughter, Zoe	92	0	0.00	1	10	-.100
4	Lanham, Fallan	44	0	0.00	1	3	-.333

## Kill (by K)

#	Player	S	K	K/S
1	Scheer, Madison	112	374	3.34
3	Anderson, Akasha	104	350	3.37
5	Bell, Bella	79	166	2.10
6	Swanson, Kyla	113	147	1.30
8	Kemp, Kendal	101	145	1.44
12	Zimmerman, Bel	90	138	1.53
10	Barrett, Jackie	110	61	0.55
14	Harmon, Chelsey	78	27	0.35
7	Dunn, Peyton	6	4	0.67
2	Morton, Sarah	88	2	0.02
13	Thibault, Paige	95	1	0.01
17	Tanton, Cassidy	1	1	1.00
22	Handel, Sydney	19	0	0.00
9	Slaughter, Zoe	92	0	0.00
4	Lanham, Fallan	44	0	0.00

## Set (by A/S)

#	Player	S	A	A/S	TA	PCT
7	Dunn, Peyton	6	59	9.83	141	.411
10	Barrett, Jackie	110	1027	9.34	2741	.370
2	Morton, Sarah	88	79	0.90	295	.254
13	Thibault, Paige	95	46	0.48	139	.324
9	Slaughter, Zoe	92	26	0.28	83	.301
4	Lanham, Fallan	44	9	0.20	44	.182
3	Anderson, Akasha	104	12	0.12	102	.098
12	Zimmerman, Bel	90	9	0.10	34	.235
6	Swanson, Kyla	113	10	0.09	46	.152
14	Harmon, Chelsey	78	4	0.05	24	.167
1	Scheer, Madison	112	4	0.04	40	.000
5	Bell, Bella	79	2	0.03	25	.040
8	Kemp, Kendal	101	2	0.02	24	.083
17	Tanton, Cassidy	1	0	0.00	0	.000
22	Handel, Sydney	19	0	0.00	7	.000

## Serve (by SA/S)

#	Player	S	SA	SE	SA/S	TA	PCT
12	Zimmerman, Bel	90	30	66	0.33	306	.784
14	Harmon, Chelsey	78	22	21	0.28	239	.912
10	Barrett, Jackie	110	30	25	0.27	398	.937
3	Anderson, Akasha	104	27	71	0.26	366	.806
4	Lanham, Fallan	44	11	11	0.25	173	.936
7	Dunn, Peyton	6	1	7	0.17	15	.533
2	Morton, Sarah	88	12	41	0.14	319	.871
9	Slaughter, Zoe	92	10	27	0.11	285	.905
22	Handel, Sydney	19	2	10	0.11	55	.818
13	Thibault, Paige	95	9	37	0.09	251	.853
6	Swanson, Kyla	113	4	21	0.04	125	.832
8	Kemp, Kendal	101	1	3	0.01	6	.500
1	Scheer, Madison	112	0	0	0.00	2	1.000
5	Bell, Bella	79	0	0	0.00	1	1.000
17	Tanton, Cassidy	1	0	0	0.00	0	.000

## Block (by BLK/S)

#	Player	S	BS	BA	TOTAL	BLK/S
8	Kemp, Kendal	101	13	116	129.0	1.28
6	Swanson, Kyla	113	10	115	125.0	1.11
5	Bell, Bella	79	1	66	67.0	0.85
10	Barrett, Jackie	110	2	65	67.0	0.61
1	Scheer, Madison	112	4	50	54.0	0.48
3	Anderson, Akasha	104	3	44	47.0	0.45
14	Harmon, Chelsey	78	1	27	28.0	0.36
7	Dunn, Peyton	6	0	2	2.0	0.33
12	Zimmerman, Bel	90	2	21	23.0	0.26
4	Lanham, Fallan	44	0	0	0.0	0.00
2	Morton, Sarah	88	0	0	0.0	0.00
9	Slaughter, Zoe	92	0	0	0.0	0.00
22	Handel, Sydney	19	0	0	0.0	0.00
13	Thibault, Paige	95	0	0	0.0	0.00
17	Tanton, Cassidy	1	0	0	0.0	0.00

## Defense (by DIG/S)

#	Player	S	DIG	DIG/S	BHE
2	Morton, Sarah	88	303	3.44	0
10	Barrett, Jackie	110	253	2.30	8
3	Anderson, Akasha	104	239	2.30	1
13	Thibault, Paige	95	207	2.18	0
4	Lanham, Fallan	44	88	2.00	0
9	Slaughter, Zoe	92	163	1.77	0
7	Dunn, Peyton	6	8	1.33	0
12	Zimmerman, Bel	90	94	1.04	0
22	Handel, Sydney	19	17	0.89	0
1	Scheer, Madison	112	33	0.29	0
5	Bell, Bella	79	23	0.29	1
14	Harmon, Chelsey	78	19	0.24	0
6	Swanson, Kyla	113	25	0.22	0
8	Kemp, Kendal	101	11	0.11	0
17	Tanton, Cassidy	1	0	0.00	0

## Points (by POINTS/S)

#	Player	S	POINTS	POINTS/S
3	Anderson, Akasha	104	402.0	3.87
1	Scheer, Madison	112	403.0	3.60
5	Bell, Bella	79	200.0	2.53
8	Kemp, Kendal	101	217.0	2.15
12	Zimmerman, Bel	90	180.5	2.01
6	Swanson, Kyla	113	218.5	1.93
10	Barrett, Jackie	110	125.5	1.14
7	Dunn, Peyton	6	6.0	1.00
17	Tanton, Cassidy	1	1.0	1.00
14	Harmon, Chelsey	78	63.5	0.81
4	Lanham, Fallan	44	11.0	0.25
2	Morton, Sarah	88	14.0	0.16
9	Slaughter, Zoe	92	10.0	0.11
13	Thibault, Paige	95	10.0	0.11
22	Handel, Sydney	19	2.0	0.11

## Receptions (by PCT)

#	Player	S	RE	RE/S	TA	PCT
8	Kemp, Kendal	101	0	0.00	4	1.000
10	Barrett, Jackie	110	0	0.00	6	1.000
4	Lanham, Fallan	44	1	0.02	130	.992
22	Handel, Sydney	19	1	0.05	36	.972
9	Slaughter, Zoe	92	16	0.17	336	.952
13	Thibault, Paige	95	21	0.22	413	.949
2	Morton, Sarah	88	18	0.20	345	.948
3	Anderson, Akasha	104	38	0.37	525	.928
12	Zimmerman, Bel	90	13	0.14	177	.927
6	Swanson, Kyla	113	1	0.01	11	.909
1	Scheer, Madison	112	15	0.13	151	.901
17	Tanton, Cassidy	1	1	1.00	4	.750
5	Bell, Bella	79	1	0.01	2	.500
7	Dunn, Peyton	6	0	0.00	0	.000
14	Harmon, Chelsey	78	0	0.00	0	.000
TM	TEAM	-	32	0.28	-	-

**TEAM KILLS - SIDOUT ERA**

	KILLS	OPPONENT (SETS)	DATE
1.	114	vs. Kentucky (5)	10/5/97
2.	107	at Tulane (5)	11/10/90
3.	99	vs. Georgia Tech (5)	9/14/95
4.	96	vs. Butler (5)	9/10/94
5.	95	vs. Pittsburgh (5)	9/13/91
6.	94	vs. Lamar (5)	9/24/88
7.	91	vs. LSU (5)	11/13/94
8.	90	at Ole Miss (5)	10/13/96
9.	89	vs. Arkansas (4)	10/20/96
10.	88	at Rhode Island (5)	9/5/97
	88	vs. Mississippi State (4)	10/24/97
	88	vs. Mississippi State (5)	11/12/00

**TEAM KILLS - RALLY ERA**

	KILLS	OPPONENT (SETS)	DATE
1.	84	vs. Virginia Tech (5)	9/2/06
	84	at Georgia (5)	9/17/06
3.	82	vs. Georgia Southern (5)	9/2/05
4.	81	at Mercer (5)	9/8/04
5.	80	vs. Kentucky (5)	10/1/06
	80	vs. Ole Miss (5)	10/24/03
7.	79	at Alabama (5)	10/30/11
8.	77	vs. Ole Miss (5)	10/26/18
9.	75	at South Carolina (5)	11/16/14
	75	at Georgia (5)	11/2/14
	75	vs. Green Bay (5)	9/5/13
	75	vs. Tennessee State (4)	8/25/07
	75	vs. Arkansas (5)	10/8/04
	75	at LSU (5)	10/25/15

**TEAM ASSISTS - RALLY ERA**

	AST.	OPPONENT (SETS)	DATE
1.	79	vs. Georgia Southern (5)	9/2/05
2.	77	at Mercer (5)	9/8/04
3.	76	at Georgia (5)	9/17/06
4.	74	vs. South Carolina (5)	10/5/14
	74	at Alabama (5)	10/30/11
	74	vs. Ole Miss (5)	9/24/03
7.	72	at Georgia (5)	11/2/14
	72	vs. Tennessee State (4)	8/25/07
	72	at LSU (5)	10/25/15
	72	vs. Ole Miss (5)	10/26/18

**TEAM DIGS - RALLY ERA**

	DIGS	OPPONENT (SETS)	DATE
1.	112	at LSU (5)	11/15/13
2.	109	at LSU (5)	10/25/15
3.	107	vs. Northwestern State (5)	9/20/14
4.	<b>105</b>	<b>vs. Nicholls St. (4)</b>	<b>9/17/21</b>
5.	99	at Ole Miss (5)	10/18/16
6.	97	vs. Georgia (4)	11/7/07
	97	vs. LSU (5)	10/5/15
	97	at Tennessee (5)	10/4/17
9.	94	at Tennessee (5)	11/16/12
10.	93	at Georgia (5)	9/17/06
	93	vs. Tennessee (4)	11/9/17

**TEAM ACES - RALLY ERA**

	ACES	OPPONENT (SETS)	DATE
1.	18	vs. Delaware State (3)	9/13/03
2.	16	vs. Tennessee State (4)	8/25/07
	16	vs. Southeastern Louisiana (3)	9/9/06
4.	<b>14</b>	<b>at South Alabama (5)</b>	<b>9/14/23</b>
	14	vs. Troy (3)	8/27/10
	14	vs. Alabama State (3)	9/5/03
7.	13	vs. Tennessee State (5)	8/30/19
	13	at SMU (5)	8/26/06
	13	vs. Mississippi State (5)	10/26/03
10.	12	vs. Louisiana Tech (4)	9/7/07
	12	at Lafayette (3)	9/12/03
	12	vs. Grambling State (3)	9/1/05

**TEAM TOTAL BLOCKS - RALLY ERA**

	BLK	OPPONENT (SETS)	DATE
1.	<b>19.0</b>	<b>vs. UAB (4)</b>	<b>9/15/23</b>
2.	<b>18.0</b>	<b>vs. Georgia (5)</b>	<b>10/9/22</b>
	<b>18.0</b>	<b>vs. Alabama (5)</b>	<b>10/2/21</b>
	18.0	vs. South Florida (5)	9/13/14
5.	<b>17.0</b>	<b>vs. Troy (4)</b>	<b>9/10/22</b>
	<b>17.0</b>	<b>at Arkansas (5)</b>	<b>10/10/21</b>
	<b>17.0</b>	<b>at South Carolina (4)</b>	<b>10/29/20</b>
	17.0	at Georgia Southern (5)	9/12/09
	17.0	vs. Mississippi State (5)	11/5/04
10.	<b>17.0</b>	<b>at South Carolina (5)</b>	<b>10/8/23</b>

**TEAM HITTING - ALL ERAS**

	PCT.	OPPONENT (SETS)	DATE
1.	.530 (41-6-66)	vs. LSU (3)	11/2/97
2.	.514 (65-11-105)	at Ole Miss (3)	10/18/98
3.	.489 (52-6-94)	vs. Alabama A&M (3)	8/29/09
4.	.487 (46-8-78)	vs. Navy (3)	9/15/00
5.	.485 (38-6-66)	vs. Drexel (3)	9/10/93
	.485 (53-5-99)	vs. Eastern Illinois (3)	9/1/18
7.	.474 (52-7-95)	at South Carolina (3)	10/26/12
8.	.472 (40-6-72)	vs. Delaware State (3)	9/13/03
9.	.471 (54-5-104)	vs. Mississippi State (3)	11/29/14
10.	.469 (35-5-64)	vs. Alabama A&M (3)	8/28/09
11.	.468 (N/A)	vs. Alabama State (3)	10/8/87
12.	.462 (52-9-93)	at Georgia State (3)	8/28/07
13.	.455 (55-9-101)	vs. Alabama (3)	11/10/98
14.	.450 (42-6-80)	vs. Mercer (3)	9/5/13
15.	.448 (50-11-87)	vs. Grambling (3)	9/1/05
16.	.440 (43-10-75)	vs. Chicago State (3)	9/11/99
	.440 (55-11-100)	vs. UAB (3)	9/3/00
18.	.429 (49-10-91)	at LSU (3)	9/26/97
19.	.420 (45-8-88)	vs. Lipscomb (3)	9/20/03
20.	.422 (43-8-83)	at Georgia Tech (3)	8/25/17

Records set in the Brent Crouch era are listed in **BOLD**.

**TEAM MATCH RECORDS (BY SET)**

**KILLS**

SETS	KILLS	OPPONENT	DATE
3s	76	vs. LSU	10/18/96
4s	89	vs. Arkansas	10/20/9
5s	114	vs. Kentucky	10/5/97

**ATTACKS**

SETS	ATT.	OPPONENT	DATE
3s	160	vs. South Carolina	10/19/97
4s	213	at Ole Miss	10/3/93
5s	229	at LSU	11/15/13

**HITTING PERCENTAGE (MIN. 10 KILLS)**

SETS	PCT.	OPPONENT	DATE
3s	.530 (41-6-66)	vs. LSU	11/2/97
4s	.365 (70-20-137)	vs. Alabama	11/6/97
5s	.362 (74-20-149)	at Minnesota	9/19/98

**BLOCKS - SOLO**

SETS	BLK	OPPONENT	DATE
3s	8 (3x)	last, vs. IUPUI	9/4/98
4s	10	at Tennessee Tech	10/14/88
5s	13	vs. NC State	9/21/91

**BLOCKS - ASSISTS**

SETS	BLK	OPPONENT	DATE
3s	27	at Samford	10/3/00
4s	<b>34</b>	<b>vs UAB</b>	<b>9/15/23</b>
5s	28 (3x)	last, vs. Mississippi State	11/12/00

**TOTAL BLOCKS**

SETS	BLK	OPPONENT	DATE
3s	15.0	vs. Alabama	11/5/93
	15.0	at South Carolina	10/17/10
4s	<b>19.0</b>	<b>vs UAB</b>	<b>9/15/23</b>
5s	<b>18.0</b>	<b>vs. Georgia</b>	<b>10/9/22</b>
	18.0	vs. South Florida	9/13/14

**DIGS**

SETS	DIGS	OPPONENT	DATE
3s	76	at Ole Miss	11/16/07
4s	115	vs. NE Louisiana	9/12/86
5s	117	vs. Central Florida	11/8/86

**ASSISTS**

SETS	AST	OPPONENT	DATE
3s	60	vs. Pittsburgh	8/31/97
4s	77	vs. Mississippi State	10/24/97
5s	100	vs. Kentucky	10/5/97

**SERVICE ACES**

SETS	ACE	OPPONENT	DATE
3s	18	vs. Delaware State	9/13/03
4s	16	vs. Tennessee State	8/25/07
5s	<b>14</b>	<b>at South Alabama</b>	<b>9/14/23</b>

## INDIVIDUAL KILLS

	KILLS	PLAYER-OPPONENT (SETS)	DATE
1.	30	Ashlee Johns vs. Arkansas (5)	10/8/04
2.	29	<b>Rebekah Rath at Arkansas (4)</b>	<b>10/9/21</b>
3.	27	Kelly Fidero at Alabama (5)	10/30/11
4.	26	<b>Akasha Anderson at South Alabama (5)</b>	<b>9/14/23</b>
	26	<b>Akasha Anderson vs Mississippi St. (5)</b>	<b>9/28/22</b>
	26	Jessica Glover at Georgia (5)	9/17/06
	26	Camila Lago vs. Mississippi State (5)	10/26/03
8.	25	Macy Reece vs. South Florida (5)	9/13/14
	25	Rachel Shanks vs. Georgia (4)	11/7/07
	25	Jelena Sekulic at Arkansas (5)	10/7/07
	25	Rachel Shanks vs. Virginia Tech (5)	9/2/06
	25	Jennifer Amobi vs. Tennessee (4)	11/19/04
	25	<b>Rebekah Rath at Georgia St. (4)</b>	<b>8/26/22</b>

## INDIVIDUAL HITTING PCT. (MIN. 12 KILLS)

	PCT.	PLAYER-OPPONENT (SETS)	DATE
1.	.773 (17-0-22)	Ashlee Johns vs. Delaware State (3)	9/13/03
2.	.722 (14-1-18)	Jonelle Wallace vs. Beth.-Cook. (3)	9/5/08
3.	<b>.706 (12-0-17)</b>	<b>Chelsey Harmon vs. Jackson St. (3)</b>	<b>9/17/22</b>
4.	.688 (12-1-16)	Shaina White vs. American (3)	9/8/18
5.	<b>.667 (14-2-18)</b>	<b>Madison Scheer at Florida (3)</b>	<b>10/6/23</b>
	.667 (16-0-24)	Jonelle Wallace at Georgia (5)	11/24/10
7.	.650 (13-0-20)	Breanna Barksdale at Arkansas (5)	10/30/15
8.	.647 (13-1-17)	Alyssa Davis vs Jacksonville State (5)	9/8/09
9.	.632 (12-0-19)	Courtney McDonald vs. Kentucky (5)	10/23/11
	.632 (12-0-19)	Camila Jersonsky vs. Austin Peay (4)	9/3/11

## INDIVIDUAL TOTAL BLOCKS

	BLK (S-A)	PLAYER-OPPONENT (SETS)	DATE
1.	12 (2-10)	<b>Tatum Shipes vs Alabama (4)</b>	<b>10/2/21</b>
2.	11 (1-10)	<b>Kyla Swanson vs South Carolina (5)</b>	<b>10/22/23</b>
	11 (4-7)	Breanna Barksdale at Florida (4)	11/23/16
3.	10 (0-10)	<b>Bella Bell vs Arkansas (5)</b>	<b>11/24/23</b>
	10 (5-5)	<b>Kendal Kemp at Miss. St. (5)</b>	<b>11/15/23</b>
	10 (1-9)	<b>Kendal Kemp vs UAB (4)</b>	<b>9/15/23</b>
	10 (1-9)	<b>Kendal Kemp vs. Georgia (5)</b>	<b>10/9/22</b>
	10 (1-9)	<b>Kendal Kemp vs. Georgia (4)</b>	<b>10/8/22</b>
	10 (2-8)	<b>Chelsey Harmon vs Troy (4)</b>	<b>9/10/22</b>
	10 (1-9)	<b>Tatum Shipes at Arkansas (4)</b>	<b>10/9/21</b>
	10 (0-10)	Stephanie Campbell vs. St. John's (5)	9/19/15
	10 (2-8)	Julie Bosler vs. South Carolina (5)	9/15/06
	10 (3-7)	Julie Bosler vs. Mississippi State (5)	11/5/04
	10 (2-8)	Julie Bosler vs. Mississippi State (5)	10/2/03
	10 (1-9)	Bailey Veit vs. Mercer (5)	9/20/03

## INDIVIDUAL SERVICE ACES

	ACES	PLAYER-OPPONENT (SETS)	DATE
1.	7	Katherine Culwell vs. Tennessee (3)	11/22/13
	7	Maira Magallon vs. Delaware State (3)	9/13/03
3.	6	Brenna McLroy at Missouri (4)	10/19/18
	6	Whitney Jacob vs. Arkansas (5)	10/15/06
5.	5	<b>Jackie Barrett at South Alabama (5)</b>	<b>9/14/23</b>
	5	<b>Jackie Barrett vs Mercer (3)</b>	<b>9/9/23</b>
	5	Rebekah Rath at Texas A&M (5)	11/5/21
	5	Jesse Earl at Florida State (5)	9/16/17
	5	Jesse Earl at Georgia (4)	10/2/16
	5	Alexa Filley vs. LSU (5)	10/4/15
	5	Liz Crouch vs. Troy (3)	8/27/10
	5	Rachel Shanks at South Alabama (3)	9/9/06
	5	Whitney Jacob vs. Louisiana-Monroe (3)	8/25/06
	5	Whitney Jacob vs. Mississippi State (4)	10/23/05
	5	Rachel Shanks vs. Clemson (3)	9/17/05
	5	Whitney Jacob vs. Grambling (3)	9/1/05
	5	Maira Magallon vs. Mississippi State (5)	10/26/03
	5	Maira Magallon at Lafayette (3)	9/12/03
	5	Maira Magallon vs. Bethune-Cookman (4)	9/6/03
	5	Jennifer Buckert vs. Alabama State (3)	9/5/03
	5	Brittany Diaz vs. Marist (4)	9/7/02
	5	Laura Hastings vs. Western Michigan (3)	9/1/01
	5	Grace Boyd at South Carolina (3)	10/26/01

## INDIVIDUAL ASSISTS

	AST	PLAYER-OPPONENT (SETS)	DATE
1.	76	Jordan Elliott at Mercer (5)	9/8/04
2.	71	Maira Magallon vs. Ole Miss (5)	10/24/03
3.	68	Michele Ashmore vs. Georgia Southern (5)	9/2/05
4.	66	Joanna Pappas at Georgia (5)	9/17/06
5.	65	Maira Magallon vs. Arkansas (5)	10/8/04
	65	Nicki Gerig vs. Tennessee State (4)	8/25/07
7.	64	Jordan Elliott vs. Iowa State (5)	9/4/04
8.	63	Alexa Filley vs. South Carolina (5)	10/5/14
	63	Maira Magallon vs. Xavier (4)	11/26/04
	63	Sara Shanks at Arkansas (5)	10/7/07

## INDIVIDUAL DIGS

	DIGS	PLAYER-OPPONENT (SETS)	DATE
1.	37	Payton White vs. Butler (5)	8/31/19
2.	36	Jelena Sekulic at Kentucky (5)	11/17/06
	36	Jesse Earl at Tennessee (5)	10/4/17
4.	34	Bailey Veit vs. Georgia Southern (5)	9/2/05
	34	Jesse Earl at Mississippi State (5)	11/13/15
6.	<b>33</b>	<b>Bella Rosenthal vs. Missouri (5)</b>	<b>10/17/21</b>
7.	33	Sarah Wroblecky at LSU (5)	11/15/13
	33	Jesse Earl at LSU (4)	11/15/17
9.	31	Liz Crouch at Mississippi State (3)	9/18/09
10.	30	Liz Crouch vs. Georgia (4)	11/7/07
	30	Jesse Earl at Florida State (5)	9/16/17

Records set in the Brent Crouch era are listed in **BOLD**

## INDIVIDUAL MATCH RECORDS (BY SET)

## KILLS

SETS	KILLS	PLAYER-OPPONENT	DATE
3s	25	Brooke McCarley vs. UAB	9/7/99
4s	29	Rebekah Rath at Arkansas	10/9/21
	29	Brooke McCarley at Kansas	9/11/99
5s	34	Bridgitte Sims vs. Tulane	11/10/90

## ATTACKS

SETS	ATT.	PLAYER-OPPONENT	DATE
3s	56	Allyson Beecroft at Florida	9/30/94
4s	75	Rebekah Rath at Arkansas	10/9/21
5s	84	Rebekah Rath at Texas A&M	11/4/17

## HITTING PERCENTAGE (MIN. 10 KILLS)

SETS	PCT.	PLAYER	DATE
3s	.773 (17-0-22)	Ashlee Johns	9/13/03
4s	.813 (13-0-16)	Laura Cookley	9/28/91
5s	.714 (10-0-14)	Dalia Naidzinaviciut	9/2/05

## BLOCKS - SOLO

SETS	BLK	PLAYER-OPPONENT	DATE
3s	5	Gina Thomas vs. Georgetown	9/13/90
4s	5	Gina Thomas vs. Florida	10/12/90
5s	6	Tory Gutierrez vs. Louisville	10/21/89
	6	Lisa Harvey vs. Tuskegee	10/7/86

## BLOCKS - ASSISTS

SETS	BLK	PLAYER-OPPONENT	DATE
3s	<b>9 (3x)</b>	<b>Last, Kendal Kemp vs Belmont</b>	<b>8/26/22</b>
4s	11	Tory Gutierrez vs. Georgia State	10/3/89
5s	10	Jannelle Hamilton vs. Mississippi St.	11/12/00
	10	Stephanie Campbell vs. St. John's	9/19/15

## TOTAL BLOCKS

SETS	BLK	PLAYER-OPPONENT	DATE
3s	<b>9 (4x)</b>	<b>Last, Kendal Kemp vs. Belmont</b>	<b>8/26/22</b>
4s	14	Tory Gutierrez vs. Georgia State	10/3/89
5s	12	Jannelle Hamilton vs. Mississippi St.	11/12/00
	12	La'Toi Finley at Georgia Tech	9/14/95

## DIGS

SETS	DIGS	PLAYER-OPPONENT	DATE
3s	31	Liz Crouch at Mississippi State	9/18/09
4s	34	Gretchen Thompson vs. ULM	9/12/86
5s	37	Payton White vs. Butler	8/31/19

## ASSISTS

SETS	AST	PLAYER-OPPONENT	DATE
3s	64	Piper Craig vs. LSU	10/18/96
4s	76	Piper Craig vs. Arkansas	10/20/96
5s	92	Piper Craig vs. Kentucky	10/5/97

## SERVICE ACES

SETS	ACE	PLAYER-OPPONENT	DATE
3s	10	Jenifer Kleyn vs. Seneca	10/5/90
4s	8	Terri Duckworth at UAB	11/1/88
5s	10	Jenifer Kleyn at Ole Miss	9/28/90

# #1 MADISON SCHEER

**PIN HITTER | 6-1 | SOPHOMORE**  
**EUREKA, MO. (EUREKA)**



### SCHEER'S HIGHLIGHTS:

- Earned SEC Player of the Week (10/30/23) after back-to-back 20-kill performances against Georgia and Alabama.
- Named National Player of the Week (10/10/23) after 33 kills on .472 hitting against No. 9 Florida and South Carolina
- Career-high 24 kills on .333 hitting vs South Carolina (10/22/23)
- Tied her career-high with 24 kills at Georgia (10/27/23)
- 2022 SEC All-Freshman Team
- Named SEC Freshman of the Week and Player of the Week 9/26
- Hit over .300 11 times, over .400 seven times and over .500 twice in 2022
- Made her collegiate debut on Aug. 26 vs. Belmont

CATEGORY	CAREER HIGH	OPPONENT/DATE
Kills	24 (2x)	last at Georgia (10/27/23)
Attempts	63	at Georgia (10/27/23)
Hitting Percentage (Min. 10 ATT.)	.667	at Florida (10/6/23)
Assists	1 (7x)	last at South Carolina (10/8/23)
Digs	5	at Tennessee (10/13/23)
Blocks	6 (2x)	last at Tennessee (10/13/23)
Aces	--	--
Points	26.0 (2x)	at Georgia (10/27/23)

CATEGORY	SEASON HIGH	OPPONENT/DATE
Kills	24 (2x)	last at Georgia (10/27/23)
Attempts	63	at Georgia (10/27/23)
Hitting Percentage (Min. 10 ATT.)	.667	at Florida (10/6/23)
Assists	1 (4x)	last at South Carolina (10/8/23)
Digs	5	at Tennessee (10/13/23)
Blocks	6	at Tennessee (10/13/23)
Aces	--	--
Points	26.0 (2x)	at Georgia (10/27/23)

### GAME BY GAME

Date	Opponent	SP	Attack				Set			Serve				Receipt			Blocking					Team			
			K	E	TA	PCT	A	TA	PCT	SA	SE	TA	PCT	RE	TA	PCT	DIG	BS	BA	BE	TOTAL	BHE	POINTS	HIT%	SCORE
08/25/2023	Coppin St.	4	16	4	41	.293	0	1	.000	0	0	0	.000	0	3	1.000	3	1	3	0	4.0	0	18.5	.309	3-1
08/26/2023	Jacksonville St.	3	8	2	21	.286	1	1	1.000	0	0	0	.000	0	3	1.000	0	0	0	0	0.0	0	8.0	.395	3-0
09/02/2023	vs SMU	4	18	6	37	.324	0	0	.000	0	0	0	.000	0	9	1.000	1	0	0	0	0.0	0	18.0	.316	3-1
09/03/2023	at Florida St.	4	14	3	33	.333	1	2	.500	0	0	0	.000	0	3	1.000	0	0	2	1	2.0	0	15.0	.356	3-1
09/07/2023	Middle Tenn.	4	8	2	28	.214	0	2	.000	0	0	1	1.000	0	1	1.000	2	0	3	0	3.0	0	9.5	.221	1-3
09/08/2023	Charleston So.	*4	15	3	35	.343	0	0	.000	0	0	0	.000	1	7	.857	2	0	4	0	4.0	0	17.0	.245	3-1
09/09/2023	Mercer	3	12	4	28	.286	0	2	.000	0	0	0	.000	0	8	1.000	0	0	1	0	1.0	0	12.5	.346	3-0
09/14/2023	at South Alabama	5	10	7	39	.077	0	0	.000	0	0	0	.000	1	9	.889	3	0	1	0	1.0	0	10.5	.191	3-2
09/15/2023	vs UAB	4	7	5	21	.095	0	0	.000	0	0	0	.000	0	0	.000	3	0	4	0	4.0	0	9.0	.189	3-1
09/16/2023	vs Samford	*4	13	5	27	.296	0	3	.000	0	0	0	.000	1	1	.000	0	0	0	0	0.0	0	13.0	.386	3-1
09/22/2023	Florida	5	15	6	44	.205	1	2	.500	0	0	1	1.000	0	16	1.000	2	0	0	0	0.0	0	15.0	.196	2-3
09/24/2023	Ole Miss	4	12	2	34	.294	0	4	.000	0	0	0	.000	0	9	1.000	3	0	1	0	1.0	0	12.5	.199	3-1
09/27/2023	at Arkansas	3	4	3	22	.045	0	2	.000	0	0	0	.000	1	4	.750	1	0	0	0	0.0	0	4.0	-.049	0-3
10/01/2023	Georgia	4	14	2	29	.414	0	2	.000	0	0	0	.000	0	5	1.000	0	0	1	0	1.0	0	14.5	.262	3-1
10/06/2023	at Florida	3	14	2	18	.667	0	0	.000	0	0	0	.000	0	5	1.000	0	0	1	0	1.0	0	14.5	.387	3-0
10/08/2023	at South Carolina	5	19	6	35	.371	1	5	.200	0	0	0	.000	1	5	.800	1	0	2	0	2.0	0	20.0	.197	3-2
10/13/2023	at Tennessee	4	11	9	45	.044	0	0	.000	0	0	0	.000	1	2	.500	5	1	5	0	6.0	0	14.5	.122	1-3
10/20/2023	Missouri	3	10	4	26	.231	0	1	.000	0	0	0	.000	0	0	.000	0	0	2	0	2.0	0	11.0	.168	0-3
10/22/2023	South Carolina	*5	24	6	54	.333	0	2	.000	0	0	0	.000	2	8	.750	2	0	4	0	4.0	0	26.0	.241	3-2
10/27/2023	at Georgia	*5	24	5	63	.302	0	4	.000	0	0	0	.000	2	12	.833	1	0	4	0	4.0	0	26.0	.243	3-2
10/29/2023	at Alabama	*4	21	6	49	.306	0	0	.000	0	0	0	.000	1	3	.667	1	0	2	0	2.0	0	22.0	.248	3-1
11/05/2023	at Texas A&M	*5	16	4	45	.267	0	1	.000	0	0	0	.000	1	8	.875	0	0	2	0	2.0	0	17.0	.320	3-2
11/08/2023	Kentucky	3	4	2	19	.105	0	0	.000	0	0	0	.000	1	3	.667	0	0	1	0	1.0	0	4.5	.095	0-3
11/12/2023	at Missouri	*4	13	5	41	.195	0	1	.000	0	0	0	.000	0	7	1.000	1	0	1	0	1.0	0	13.5	.242	1-3
11/15/2023	at Mississippi St.	5	13	3	44	.227	0	2	.000	0	0	0	.000	1	4	.750	1	0	0	0	0.0	0	13.0	.175	2-3
11/19/2023	LSU	3	10	2	23	.348	0	1	.000	0	0	0	.000	0	4	1.000	0	1	3	0	4.0	0	12.5	.344	3-0
11/22/2023	Alabama	3	12	3	27	.333	0	0	.000	0	0	0	.000	1	5	.800	0	0	3	0	3.0	0	13.5	.252	3-0
11/24/2023	Arkansas	5	17	7	50	.200	0	2	.000	0	0	0	.000	0	7	1.000	1	1	0	0	1.0	0	18.0	.144	2-3
<b>Totals</b>		<b>112</b>	<b>374</b>	<b>118</b>	<b>978</b>	<b>.262</b>	<b>4</b>	<b>40</b>	<b>.100</b>	<b>0</b>	<b>0</b>	<b>2</b>	<b>1.000</b>	<b>15</b>	<b>151</b>	<b>.901</b>	<b>33</b>	<b>4</b>	<b>50</b>	<b>1</b>	<b>54.0</b>	<b>0</b>	<b>403.0</b>		

### Player Averages

Sets Played	Kills per set	Assists per set	Service aces per set	Digs per set	Blocks per set	Points per set
112	3.34	0.04	0.00	0.29	0.48	3.60

### CAREER STATS

SEASON	TEAM	SM-MP	K	K/S	E	TA	PCT	A	A/S	SA	SA/S	SE	DIG	D/S	RE	BS	BA	TB	B/S	BE	BHE	PTS	PTS/S
2022-23	AUB	118-30	361	3.06	120	956	.252	3	0.03	0	0.00	0	45	0.38	3	3	46	49	0.42	4	2	387.0	3.28
2023-24	AUB	112-28	374	3.34	118	978	.262	4	0.04	0	0.00	0	33	0.29	15	4	50	54	0.48	1	0	403.0	3.60
<b>TOTAL</b>		<b>230 - 58</b>	<b>735</b>	<b>3.20</b>	<b>238</b>	<b>1934</b>	<b>.257</b>	<b>7</b>	<b>0.03</b>	<b>0</b>	<b>0.00</b>	<b>0</b>	<b>78</b>	<b>0.34</b>	<b>18</b>	<b>7</b>	<b>96</b>	<b>103</b>	<b>0.45</b>	<b>5</b>	<b>2</b>	<b>790.0</b>	<b>3.43</b>





# #2 SARAH MORTON

LIBERO | 5-7 | SOPHOMORE  
MUNSTER, IND. (MUNSTER)



### MORTON'S HIGHLIGHTS:

- Recorded 10+ digs in 26 of the 29 matches she's played in 2022
- Grabbed a career-high 26 digs vs Georgia on Oct. 9
- Named SEC Defensive Player of the Week 9/26
- Has started every game at libero when in the lineup
- Made her collegiate debut on Aug. 26 vs. Belmont

CATEGORY	CAREER HIGH	OPPONENT/DATE
Kills	1 (3x)	last vs Coppin State (8/25/23)
Attempts	3	vs Coppin State (8/25/23)
Hitting Percentage (Min. 10 ATT.)	--	--
Assists	9 (2x)	last vs SMU (9/2/23)
Digs	26	vs Georgia (10/9/22)
Blocks	--	--
Aces	3 (4x)	last at Missouri (10/15/22)
Points	3 (4x)	last at Missouri (10/15/22)

CATEGORY	SEASON HIGH	OPPONENT/DATE
Kills	1 (2x)	last vs Florida (9/22/23)
Attempts	3	vs Coppin State (8/25/23)
Hitting Percentage (Min. 10 ATT.)	--	--
Assists	9	vs SMU (9/2/23)
Digs	25	vs Arkansas (11/24/23)
Blocks	--	--
Aces	2 (2x)	last vs Arkansas (11/24/23)
Points	2 (3x)	last vs Arkansas (11/24/23)

### GAME BY GAME

Date	Opponent	Attack				Set			Serve				Receipt			Blocking				Team					
		SP	K	E	TA	PCT	A	TA	PCT	SA	SE	TA	PCT	RE	TA	PCT	DIG	BS	BA	BE	TOTAL	BHE	POINTS	HIT%	SCORE
08/25/2023	Coppin St.	4	1	0	3	.333	4	12	.333	0	2	20	.900	0	13	1.000	24	0	0	0	0.0	0	1.0	.309	3-1
08/26/2023	McNeese	3	0	0	0	.000	3	11	.273	0	1	7	.857	0	8	1.000	5	0	0	0	0.0	0	0.0	.333	3-0
08/26/2023	Jacksonville St.	3	0	0	0	.000	3	8	.375	1	0	13	1.000	0	8	1.000	3	0	0	0	0.0	0	1.0	.395	3-0
09/02/2023	vs SMU	4	0	0	1	.000	9	20	.450	0	2	15	.867	1	14	.929	17	0	0	0	0.0	0	0.0	.316	3-1
09/03/2023	at Florida St.	4	0	0	1	.000	5	16	.313	1	2	16	.875	2	31	.935	8	0	0	0	0.0	0	1.0	.356	3-1
09/07/2023	Middle Tenn.	4	0	0	1	.000	0	11	.000	0	6	14	.571	2	27	.926	10	0	0	0	0.0	0	0.0	.221	1-3
09/08/2023	Charleston So.	4	0	0	0	.000	2	14	.143	0	2	15	.867	0	16	1.000	14	0	0	0	0.0	0	0.0	.245	3-1
09/09/2023	Mercer	3	0	0	0	.000	1	4	.250	0	3	7	.571	0	10	1.000	10	0	0	0	0.0	0	0.0	.346	3-0
09/22/2023	Florida	5	1	0	1	1.000	5	17	.294	1	5	18	.722	0	16	1.000	13	0	0	0	0.0	0	2.0	.196	2-3
09/24/2023	Ole Miss	4	0	0	0	.000	5	20	.250	0	1	12	.917	1	15	.933	20	0	0	0	0.0	0	0.0	.199	3-1
09/27/2023	at Arkansas	3	0	0	0	.000	1	13	.077	0	4	5	.200	1	8	.875	7	0	0	0	0.0	0	0.0	-.049	0-3
10/01/2023	Georgia	4	0	0	0	.000	4	13	.308	1	1	18	.944	0	18	1.000	8	0	0	0	0.0	0	1.0	.262	3-1
10/06/2023	at Florida	3	0	0	0	.000	4	10	.400	1	2	10	.800	0	6	1.000	8	0	0	0	0.0	0	1.0	.387	3-0
10/08/2023	at South Carolina	5	0	1	1	-1.000	6	17	.353	1	0	20	1.000	0	11	1.000	18	0	0	0	0.0	0	1.0	.197	3-2
10/13/2023	at Tennessee	4	0	0	0	.000	2	12	.167	0	2	11	.818	0	18	1.000	18	0	0	0	0.0	0	0.0	.122	1-3
10/20/2023	Missouri	3	0	0	0	.000	4	9	.444	0	0	15	1.000	1	4	.750	11	0	0	0	0.0	0	0.0	.168	0-3
11/05/2023	at Texas A&M	5	0	1	1	-1.000	3	11	.273	0	4	22	.818	4	25	.840	15	0	0	0	0.0	0	0.0	.320	3-2
11/08/2023	Kentucky	3	0	0	0	.000	1	7	.143	0	2	6	.667	2	16	.875	10	0	0	0	0.0	0	0.0	.095	0-3
11/12/2023	at Missouri	4	0	0	3	.000	3	13	.231	2	1	19	.947	3	10	.700	6	0	0	0	0.0	0	2.0	.242	1-3
11/15/2023	at Mississippi St.	5	0	0	0	.000	2	12	.167	1	0	14	1.000	1	20	.950	22	0	0	0	0.0	0	1.0	.175	2-3
11/19/2023	LSU	3	0	0	0	.000	5	11	.455	0	1	12	.917	0	13	1.000	12	0	0	0	0.0	0	0.0	.344	3-0
11/22/2023	Alabama	3	0	0	0	.000	2	10	.200	1	0	11	1.000	0	10	1.000	19	0	0	0	0.0	0	1.0	.252	3-0
11/24/2023	Arkansas	5	0	0	0	.000	5	24	.208	2	0	19	1.000	0	28	1.000	25	0	0	0	0.0	0	2.0	.144	2-3
<b>Totals</b>		<b>88</b>	<b>2</b>	<b>2</b>	<b>12</b>	<b>.000</b>	<b>79</b>	<b>295</b>	<b>.268</b>	<b>12</b>	<b>41</b>	<b>319</b>	<b>.871</b>	<b>18</b>	<b>345</b>	<b>.948</b>	<b>303</b>	<b>0</b>	<b>0</b>	<b>0</b>	<b>0.0</b>	<b>0</b>	<b>14.0</b>		

### Player Averages

Sets Played	Kills per set	Assists per set	Service aces per set	Digs per set	Blocks per set	Points per set
88	0.02	0.90	0.14	3.44	0.00	0.16

### CAREER STATS

SEASON	TEAM	SM-MP	K	K/S	E	TA	PCT	A	A/S	SA	SA/S	SE	DIG	D/S	RE	BS	BA	TB	B/S	BE	BHE	PTS	PTS/S
2022-23	AUB	119-30	2	0.02	1	11	.091	110	0.92	30	0.25	31	457	3.84	21	0	0	0	0.00	0	1	32.0	0.27
2023-24	AUB	88-23	2	0.02	2	12	.000	79	0.90	12	0.14	41	303	3.44	18	0	0	0	0.00	0	0	14.0	0.16
<b>TOTAL</b>		<b>207 - 53</b>	<b>4</b>	<b>0.02</b>	<b>3</b>	<b>23</b>	<b>.043</b>	<b>189</b>	<b>0.91</b>	<b>42</b>	<b>0.20</b>	<b>72</b>	<b>760</b>	<b>3.67</b>	<b>39</b>	<b>0</b>	<b>0</b>	<b>0</b>	<b>0.00</b>	<b>0</b>	<b>1</b>	<b>46.0</b>	<b>0.22</b>

# #3 AKASHA ANDERSON

**PIN HITTER | 6-3 | FRESHMAN**  
**RESTON, VA. (HERNDON)**



### ANDERSON'S HIGHLIGHTS:

- Named to All-SEC Team and All-Freshman Team
- Named AVCA South Region Freshman of the Year in 2022
- Had career-high 26 kills in win over Mississippi State
- Hit .526 with a team-high 12 kills vs. Marist
- Recorded 24 kills and 14 digs at UAB for first double-double
- Had eight double-doubles in 2022
- 2x SEC Freshman of the Week
- Made her collegiate debut on Aug. 26 vs. Belmont

CATEGORY	CAREER HIGH	OPPONENT/DATE
Kills	26 (2x)	last at South Alabama (9/14/23)
Attempts	77	at LSU (10/5/22)
Hitting Percentage (Min. 10 ATT.)	.526	vs Marist (8/27/22)
Assists	3 (2x)	last at Florida State (9/3/23)
Digs	20	vs Arkansas (11/24/23)
Blocks	6	at South Carolina (10/8/23)
Aces	4 (4x)	last at South Carolina (10/8/23)
Points	29.5 (2x)	last vs Mississippi State (9/28/22)

CATEGORY	SEASON HIGH	OPPONENT/DATE
Kills	26	at South Alabama (9/14/23)
Attempts	69	at South Alabama (9/14/23)
Hitting Percentage (Min. 10 ATT.)	.448	vs LSU (11/19/23)
Assists	3	at Florida State (9/3/23)
Digs	20	vs Arkansas (11/24/23)
Blocks	6	at South Carolina (10/8/23)
Aces	4 (2x)	last at South Carolina (10/8/23)
Points	28.5	at South Alabama (9/14/23)

### GAME BY GAME

Date	Opponent	SP	Attack				Set			Serve				Recept			Blocking				Team					
			K	E	TA	PCT	A	TA	PCT	SA	SE	TA	PCT	RE	TA	PCT	DIG	BS	BA	BE	TOTAL	BHE	POINTS	HIT%	SCORE	
08/25/2023	Coppin St.	*4	16	4	41	.293	0	3	.000	0	3	7	.571	0	16	1.000	5	0	1	0	1.0	0	16.5	.309	3-1	
08/26/2023	McNeese	*3	14	5	35	.257	0	3	.000	4	3	13	.769	0	15	1.000	8	0	0	0	0.0	0	18.0	.333	3-0	
08/26/2023	Jacksonville St.	*3	10	1	23	.391	0	1	.000	1	1	12	.917	1	5	.800	4	1	0	0	1.0	0	12.0	.395	3-0	
09/02/2023	vs SMU	*4	12	7	41	.122	0	4	.000	2	3	22	.864	0	13	1.000	7	0	2	2	2.0	0	15.0	.316	3-1	
09/03/2023	at Florida St.	*4	15	4	35	.314	3	7	.429	0	2	11	.818	1	14	.929	6	0	1	0	1.0	0	15.5	.356	3-1	
09/14/2023	at South Alabama	*5	26	10	69	.232	0	3	.000	2	1	15	.933	3	25	.880	11	0	1	0	1.0	0	28.5	.191	3-2	
09/15/2023	vs UAB	*4	11	10	37	.027	2	5	.400	1	2	22	.909	3	27	.889	11	0	4	0	4.0	0	14.0	.189	3-1	
09/16/2023	vs Samford	*4	19	3	39	.410	0	4	.000	1	1	14	.929	1	26	.962	9	0	2	0	2.0	0	21.0	.386	3-1	
09/22/2023	Florida	*5	18	11	60	.117	0	4	.000	2	5	17	.706	0	18	1.000	10	0	3	0	3.0	0	21.5	.196	2-3	
09/24/2023	Ole Miss	*4	20	12	60	.133	1	4	.250	1	2	14	.857	0	13	1.000	9	0	2	0	2.0	0	22.0	.199	3-1	
09/27/2023	at Arkansas	*3	1	4	23	-.130	0	0	.000	0	2	5	.600	4	18	.778	7	0	2	0	2.0	0	2.0	-.049	0-3	
10/01/2023	Georgia	*4	17	11	56	.107	1	4	.250	1	5	14	.643	4	28	.857	6	0	3	0	3.0	0	19.5	.262	3-1	
10/06/2023	at Florida	*3	18	4	35	.400	0	3	.000	0	2	13	.846	0	7	1.000	8	0	1	0	1.0	0	18.5	.387	3-0	
10/08/2023	at South Carolina	*5	14	11	54	.056	1	9	.111	4	1	22	.955	2	33	.939	15	0	6	0	6.0	0	21.0	.197	3-2	
10/13/2023	at Tennessee	*4	10	7	47	.064	0	6	.000	0	3	17	.824	0	22	1.000	8	0	3	0	3.0	0	11.5	.122	1-3	
10/20/2023	Missouri	*3	10	5	30	.167	0	1	.000	0	3	7	.571	0	19	1.000	6	0	0	0	0.0	0	10.0	.168	0-3	
10/22/2023	South Carolina	*5	11	7	39	.103	0	7	.000	0	3	13	.769	4	23	.826	14	0	2	1	2.0	0	12.0	.241	3-2	
10/27/2023	at Georgia	*5	11	4	36	.194	1	9	.111	1	4	22	.818	4	41	.902	7	0	2	0	2.0	0	13.0	.243	3-2	
10/29/2023	at Alabama	*4	9	8	32	.031	0	4	.000	0	3	23	.870	0	25	1.000	12	0	0	0	0.0	1	9.0	.248	3-1	
11/05/2023	at Texas A&M	*5	16	5	44	.250	1	4	.250	0	5	13	.615	3	34	.912	8	0	2	1	2.0	0	17.0	.320	3-2	
11/08/2023	Kentucky	*3	2	5	24	-.125	0	2	.000	1	2	6	.667	2	12	.833	6	0	1	0	1.0	0	3.5	.095	0-3	
11/12/2023	at Missouri	*4	8	3	29	.172	1	6	.167	3	4	14	.714	3	14	.786	7	0	0	0	0.0	0	11.0	.242	1-3	
11/15/2023	at Mississippi St.	*5	20	10	55	.182	0	2	.000	2	3	13	.769	2	29	.931	14	1	1	0	2.0	0	23.5	.175	2-3	
11/19/2023	LSU	*3	14	1	29	.448	0	1	.000	0	2	8	.750	0	9	1.000	11	0	3	0	3.0	0	15.5	.344	3-0	
11/22/2023	Alabama	*3	15	5	43	.233	0	2	.000	1	2	10	.800	0	14	1.000	10	1	0	0	1.0	0	17.0	.252	3-0	
11/24/2023	Arkansas	*5	13	11	64	.031	1	4	.250	0	4	19	.789	1	25	.960	20	0	2	0	2.0	0	14.0	.144	2-3	
<b>Totals</b>			<b>104</b>	<b>350</b>	<b>168</b>	<b>1080</b>	<b>.169</b>	<b>12</b>	<b>102</b>	<b>.118</b>	<b>27</b>	<b>71</b>	<b>366</b>	<b>.806</b>	<b>38</b>	<b>525</b>	<b>.928</b>	<b>239</b>	<b>3</b>	<b>44</b>	<b>4</b>	<b>47.0</b>	<b>1</b>	<b>402.0</b>		

### Player Averages

Sets Played	Kills per set	Assists per set	Service aces per set	Digs per set	Blocks per set	Points per set
104	3.37	0.12	0.26	2.30	0.45	3.87

### CAREER STATS

SEASON	TEAM	SM-MP	K	K/S	E	TA	PCT	A	A/S	SA	SA/S	SE	DIG	D/S	RE	BS	BA	TB	B/S	BE	BHE	PTS	PTS/S
2022-23	AUB	121-31	428	3.54	211	1240	.175	13	0.11	27	0.22	41	225	1.86	50	4	56	60	0.50	5	0	487.0	4.02
2023-24	AUB	104-26	350	3.37	168	1080	.169	12	0.12	27	0.26	71	239	2.30	38	3	44	47	0.45	4	1	402.0	3.87
<b>TOTAL</b>		<b>225 - 57</b>	<b>778</b>	<b>3.46</b>	<b>379</b>	<b>2320</b>	<b>.172</b>	<b>25</b>	<b>0.11</b>	<b>54</b>	<b>0.24</b>	<b>112</b>	<b>464</b>	<b>2.06</b>	<b>88</b>	<b>7</b>	<b>100</b>	<b>107</b>	<b>0.48</b>	<b>9</b>	<b>1</b>	<b>889.0</b>	<b>3.95</b>

# #4 FALLAN LANHAM

LIBERO | 5-8 | JUNIOR  
LOUISVILLE, KY. (MERCY ACADEMY)



### LANHAM'S HIGHLIGHTS:

- Grabbed a career-high 20 digs at LSU
- Recorded a career-high four aces at UAB
- Earned first collegiate start in Auburn's season opener versus Tennessee Tech on August 27

CATEGORY	CAREER HIGH	OPPONENT/DATE
Kills	2	vs. Missouri (9/12/21)
Attempts	8	at Arkansas (10/9/21)
Hitting Percentage (Min. 10 ATT.)		
Assists	3 (4x)	last vs Charleston Southern (9/8/23)
Digs	20	at LSU (10/5/22)
Blocks	1	at Georgia (10/22/21)
Aces	4	at UAB (9/9/22)
Points	4.0	at UAB (9/9/22)

CATEGORY	SEASON HIGH	OPPONENT/DATE
Kills	--	--
Attempts	1 (3x)	last at Mississippi State (11/15/23)
Hitting Percentage (Min. 10 ATT.)	--	--
Assists	3	vs Charleston Southern (9/8/23)
Digs	16	vs Arkansas (11/24/23)
Blocks	--	--
Aces	2 (2x)	last at Mississippi State (11/15/23)
Points	2.0 (2x)	last at Mississippi State (11/15/23)

### GAME BY GAME

Date	Opponent	SP	Attack				Set			Serve				Recept			Blocking				Team				
			K	E	TA	PCT	A	TA	PCT	SA	SE	TA	PCT	RE	TA	PCT	DIG	BS	BA	BE	TOTAL	BHE	POINTS	HIT%	SCORE
08/25/2023	Coppin St.	3	0	0	0	.000	0	1	.000	0	0	8	1.000	0	6	1.000	0	0	0	0	0.0	0	0.0	.309	3-1
08/26/2023	McNeese	1	0	0	0	.000	0	1	.000	0	0	3	1.000	0	2	1.000	2	0	0	0	0.0	0	0.0	.333	3-0
08/26/2023	Jacksonville St.	3	0	0	0	.000	1	5	.200	2	0	18	1.000	1	8	.875	11	0	0	0	0.0	0	2.0	.395	3-0
09/02/2023	vs SMU	4	0	0	1	.000	2	3	.667	1	1	16	.938	0	25	1.000	4	0	0	0	0.0	0	1.0	.316	3-1
09/03/2023	at Florida St.	4	0	0	1	.000	0	1	.000	1	1	19	.947	0	13	1.000	9	0	0	0	0.0	0	1.0	.356	3-1
09/07/2023	Middle Tenn.	4	0	0	0	.000	0	4	.000	1	2	17	.882	0	11	1.000	10	0	0	0	0.0	0	1.0	.221	1-3
09/08/2023	Charleston So.	*4	0	0	0	.000	3	6	.500	1	1	14	.929	0	11	1.000	8	0	0	0	0.0	0	1.0	.245	3-1
09/09/2023	Mercer	*3	0	0	0	.000	0	4	.000	0	1	10	.900	0	4	1.000	4	0	0	0	0.0	0	0.0	.346	3-0
09/14/2023	at South Alabama	*1	0	0	0	.000	0	1	.000	0	0	2	1.000	0	3	1.000	4	0	0	0	0.0	0	0.0	.191	3-2
11/12/2023	at Missouri	1	0	0	0	.000	0	0	.000	0	0	0	.000	0	0	.000	0	0	0	0	0.0	0	0.0	.242	1-3
11/15/2023	at Mississippi St.	5	0	1	1	-1.000	1	8	.125	2	2	24	.917	0	15	1.000	12	0	0	0	0.0	0	2.0	.175	2-3
11/19/2023	LSU	3	0	0	0	.000	1	2	.500	1	1	13	.923	0	11	1.000	4	0	0	0	0.0	0	1.0	.344	3-0
11/22/2023	Alabama	3	0	0	0	.000	0	1	.000	1	1	14	.929	0	6	1.000	4	0	0	0	0.0	0	1.0	.252	3-0
11/24/2023	Arkansas	5	0	0	0	.000	1	7	.143	1	1	15	.933	0	15	1.000	16	0	0	0	0.0	0	1.0	.144	2-3
<b>Totals</b>		<b>44</b>	<b>0</b>	<b>1</b>	<b>3</b>	<b>-.333</b>	<b>9</b>	<b>44</b>	<b>.205</b>	<b>11</b>	<b>11</b>	<b>173</b>	<b>.936</b>	<b>1</b>	<b>130</b>	<b>.992</b>	<b>88</b>	<b>0</b>	<b>0</b>	<b>0</b>	<b>0.0</b>	<b>0</b>	<b>11.0</b>		

### Player Averages

Sets Played	Kills per set	Assists per set	Service aces per set	Digs per set	Blocks per set	Points per set
44	0.00	0.20	0.25	2.00	0.00	0.25

### CAREER STATS

SEASON	TEAM	SM-MP	K	K/S	E	TA	PCT	A	A/S	SA	SA/S	SE	DIG	D/S	RE	BS	BA	TB	B/S	BE	BHE	PTS	PTS/S
2021-22	AUB	103-28	7	0.07	8	85	-.012	17	0.17	5	0.05	15	192	1.86	21	0	1	1	0.01	0	0	12.5	0.12
2022-23	AUB	122-31	1	0.01	1	13	.000	15	0.12	35	0.29	33	198	1.62	28	0	0	0	0.00	0	0	36.0	0.30
2023-24	AUB	44-14	0	0.00	1	3	-.333	9	0.20	11	0.25	11	88	2.00	1	0	0	0	0.00	0	0	11.0	0.25
<b>TOTAL</b>		<b>269 - 73</b>	<b>8</b>	<b>0.03</b>	<b>10</b>	<b>101</b>	<b>-.020</b>	<b>41</b>	<b>0.15</b>	<b>51</b>	<b>0.19</b>	<b>59</b>	<b>478</b>	<b>1.78</b>	<b>50</b>	<b>0</b>	<b>1</b>	<b>1</b>	<b>0.00</b>	<b>0</b>	<b>0</b>	<b>59.5</b>	<b>0.22</b>

# #5 BELLA BELL

MIDDLE BLOCKER | 6-4 | GRADUATE  
BLYTHEWOOD, S.C. (KENTUCKY)



### BELL'S HIGHLIGHTS:

- Has hit over .400 in three matches this season
- National Champion in Kentucky
- Had the 3rd-highest hitting percentage in the SEC in 2022

CATEGORY	CAREER HIGH	OPPONENT/DATE
Kills	14	vs Coppin State (8/25/23)
Attempts	30	vs Ole Miss (9/24/23)
Hitting Percentage (Min. 10 ATT.)	.750	vs Jacksonville State (8/26/23)
Assists	1 (5x)	last vs Florida (9/22/23)
Digs	4	vs Ole Miss (9/24/23)
Blocks	10 (3x)	last vs Arkansas (11/24/23)
Aces	1	vs South Carolina (11/25/22)
Points	17.5	at Missouri (9/28/22)

CATEGORY	SEASON HIGH	OPPONENT/DATE
Kills	14	vs Coppin State (8/25/23)
Attempts	30	vs Ole Miss (9/24/23)
Hitting Percentage (Min. 10 ATT.)	.750	vs Jacksonville State (8/26/23)
Assists	1 (2x)	last vs Florida (9/22/23)
Digs	4	vs Ole Miss (9/24/23)
Blocks	10	vs Arkansas (11/24/23)
Aces	--	--
Points	15.5	vs Coppin State (8/25/23)

### GAME BY GAME

Date	Opponent	SP	Attack				Set			Serve				Recept			Blocking				Team				
			K	E	TA	PCT	A	TA	PCT	SA	SE	TA	PCT	RE	TA	PCT	DIG	BS	BA	BE	TOTAL	BHE	POINTS	HIT%	SCORE
08/25/2023	Coppin St.	*4	14	2	25	.480	0	1	.000	0	0	0	.000	0	0	.000	1	0	3	0	3.0	0	15.5	.309	3-1
08/26/2023	McNeese	*3	11	3	22	.364	0	0	.000	0	0	0	.000	0	0	.000	0	0	2	0	2.0	0	12.0	.333	3-0
08/26/2023	Jacksonville St.	*3	9	0	12	.750	0	0	.000	0	0	0	.000	0	0	.000	0	0	2	1	2.0	0	10.0	.395	3-0
09/02/2023	vs SMU	*4	10	3	22	.318	1	1	1.000	0	0	0	.000	1	2	.500	2	0	3	1	3.0	0	11.5	.316	3-1
09/03/2023	at Florida St.	*4	13	1	29	.414	0	2	.000	0	0	1	1.000	0	0	.000	2	0	2	0	2.0	0	14.0	.356	3-1
09/07/2023	Middle Tenn.	*4	8	5	21	.143	0	1	.000	0	0	0	.000	0	0	.000	0	0	4	1	4.0	0	10.0	.221	1-3
09/22/2023	Florida	*5	11	5	28	.214	1	4	.250	0	0	0	.000	0	0	.000	2	0	0	0	0.0	0	11.0	.196	2-3
09/24/2023	Ole Miss	*4	9	4	30	.167	0	0	.000	0	0	0	.000	0	0	.000	4	1	6	0	7.0	0	13.0	.199	3-1
09/27/2023	at Arkansas	*3	3	4	18	-.056	0	0	.000	0	0	0	.000	0	0	.000	1	0	1	1	1.0	0	3.5	-.049	0-3
10/20/2023	Missouri	*3	5	4	17	.059	0	2	.000	0	0	0	.000	0	0	.000	0	0	3	1	3.0	0	6.5	.168	0-3
10/22/2023	South Carolina	5	8	1	20	.350	0	3	.000	0	0	0	.000	0	0	.000	1	0	6	0	6.0	0	11.0	.241	3-2
10/27/2023	at Georgia	5	7	3	19	.211	0	1	.000	0	0	0	.000	0	0	.000	0	0	3	0	3.0	0	8.5	.243	3-2
10/29/2023	at Alabama	4	12	2	23	.435	0	0	.000	0	0	0	.000	0	0	.000	2	0	3	1	3.0	0	13.5	.248	3-1
11/05/2023	at Texas A&M	5	11	2	21	.429	0	2	.000	0	0	0	.000	0	0	.000	0	0	6	0	6.0	0	14.0	.320	3-2
11/08/2023	Kentucky	*3	5	3	19	.105	0	0	.000	0	0	0	.000	0	0	.000	2	0	0	0	0.0	0	5.0	.095	0-3
11/12/2023	at Missouri	4	5	2	18	.167	0	4	.000	0	0	0	.000	0	0	.000	1	0	1	1	1.0	0	5.5	.242	1-3
11/15/2023	at Mississippi St.	*5	7	3	24	.167	0	2	.000	0	0	0	.000	0	0	.000	1	0	1	0	1.0	0	7.5	.175	2-3
11/19/2023	LSU	*3	7	4	18	.167	0	1	.000	0	0	0	.000	0	0	.000	1	0	6	0	6.0	1	10.0	.344	3-0
11/22/2023	Alabama	*3	6	4	17	.118	0	1	.000	0	0	0	.000	0	0	.000	2	0	4	1	4.0	0	8.0	.252	3-0
11/24/2023	Arkansas	*5	5	3	26	.077	0	0	.000	0	0	0	.000	0	0	.000	1	0	10	2	10.0	0	10.0	.144	2-3
<b>Totals</b>		<b>79</b>	<b>166</b>	<b>58</b>	<b>429</b>	<b>.252</b>	<b>2</b>	<b>25</b>	<b>.080</b>	<b>0</b>	<b>0</b>	<b>1</b>	<b>1.000</b>	<b>1</b>	<b>2</b>	<b>.500</b>	<b>23</b>	<b>1</b>	<b>66</b>	<b>10</b>	<b>67.0</b>	<b>1</b>	<b>200.0</b>		

### Player Averages

Sets Played	Kills per set	Assists per set	Service aces per set	Digs per set	Blocks per set	Points per set
79	2.10	0.03	0.00	0.29	0.85	2.53

### CAREER STATS

SEASON	TEAM	SM-MP	K	K/S	E	TA	PCT	A	A/S	SA	SA/S	SE	DIG	D/S	RE	BS	BA	TB	B/S	BE	BHE	PTS	PTS/S
2020-21	UK	24-14	29	1.21	9	64	.313	0	0.00	0	0.00	0	2	0.08	1	0	22	22	0.92	3	0	40.0	1.67
2021-22	UK	62-19	102	1.65	25	185	.416	1	0.02	0	0.00	0	9	0.15	0	10	68	78	1.26	8	0	146.0	2.35
2022-23	UK	62-22	107	1.73	34	215	.340	2	0.03	2	0.03	6	12	0.19	0	5	72	77	1.24	8	0	150.0	2.42
2023-24	AUB	79-20	166	2.10	58	429	.252	2	0.03	0	0.00	0	23	0.29	1	1	66	67	0.85	10	1	200.0	2.53
<b>TOTAL FOR AUB</b>		<b>79 - 20</b>	<b>166</b>	<b>2.10</b>	<b>58</b>	<b>429</b>	<b>.252</b>	<b>2</b>	<b>0.03</b>	<b>0</b>	<b>0.00</b>	<b>0</b>	<b>23</b>	<b>0.29</b>	<b>1</b>	<b>1</b>	<b>66</b>	<b>67</b>	<b>0.85</b>	<b>10</b>	<b>1</b>	<b>200.0</b>	<b>2.53</b>
<b>TOTAL</b>		<b>227 - 75</b>	<b>404</b>	<b>1.78</b>	<b>126</b>	<b>893</b>	<b>.311</b>	<b>5</b>	<b>0.02</b>	<b>2</b>	<b>0.01</b>	<b>6</b>	<b>46</b>	<b>0.20</b>	<b>2</b>	<b>16</b>	<b>228</b>	<b>244</b>	<b>1.07</b>	<b>29</b>	<b>1</b>	<b>536.0</b>	<b>2.36</b>

# #6 KYLA SWANSON

MIDDLE BLOCKER | 6-4 | GRADUATE  
WAHOO, NEB. (ILLINOIS)



### SWANSON'S HIGHLIGHTS:

- 2x Academic All-Big Ten
- Made the NCAA Sweet 16 with Illinois in 2021
- Has more than 170 blocks in her career
- Hit .727 at Penn State on Oct. 30, 2021

CATEGORY	CAREER HIGH	OPPONENT/DATE
Kills	10 (3x)	last vs SMU (9/2/23)
Attempts	25	vs Charleston Southern (9/8/23)
Hitting Percentage (Min. 10 ATT.)	.727	at Penn State (10/30/21)
Assists	2 (2x)	last at Texas A&M (11/5/23)
Digs	6	at Tennessee (8/30/19)
Blocks	11	vs South Carolina (10/22/23)
Aces	2 (2x)	last vs Jacksonville State (8/26/23)
Points	15.5	vs UC Santa Barbara (8/27/21)

CATEGORY	SEASON HIGH	OPPONENT/DATE
Kills	10	vs SMU (9/2/23)
Attempts	25	vs Charleston Southern (9/8/23)
Hitting Percentage (Min. 10 ATT.)	.526	at Missouri (11/12/23)
Assists	2	at Texas A&M (11/5/23)
Digs	3 (2x)	last at Mississippi State (11/15/23)
Blocks	11	vs South Carolina (10/22/23)
Aces	2	vs Jacksonville State (8/26/23)
Points	12.0	vs South Carolina (10/22/23)

### GAME BY GAME

Date	Opponent	SP	Attack				Set			Serve				Recept			Blocking				Team				
			K	E	TA	PCT	A	TA	PCT	SA	SE	TA	PCT	RE	TA	PCT	DIG	BS	BA	BE	TOTAL	BHE	POINTS	HIT%	SCORE
08/25/2023	Coppin St.	*4	3	2	6	.167	0	1	.000	2	4	17	.765	0	0	.000	1	1	5	0	6.0	0	8.5	.309	3-1
08/26/2023	McNeese	*3	6	2	12	.333	0	1	.000	0	4	11	.636	0	0	.000	1	0	1	1	1.0	0	6.5	.333	3-0
08/26/2023	Jacksonville St.	*3	3	1	7	.286	1	3	.333	0	1	4	.750	0	0	.000	2	1	2	0	3.0	0	5.0	.395	3-0
09/02/2023	vs SMU	*4	10	0	20	.500	0	2	.000	0	0	2	1.000	0	1	1.000	2	0	3	0	3.0	0	11.5	.316	3-1
09/03/2023	at Florida St.	*4	8	1	15	.467	0	1	.000	1	0	4	1.000	0	0	.000	0	0	4	0	4.0	0	11.0	.356	3-1
09/07/2023	Middle Tenn.	*4	9	3	18	.333	1	3	.333	0	2	11	.818	0	0	.000	2	0	4	1	4.0	0	11.0	.221	1-3
09/08/2023	Charleston So.	4	4	5	25	-.040	1	2	.500	0	0	0	.000	0	0	.000	1	0	3	0	3.0	0	5.5	.245	3-1
09/09/2023	Mercer	3	1	3	5	-.400	1	2	.500	0	0	0	.000	0	0	.000	1	0	4	0	4.0	0	3.0	.346	3-0
09/14/2023	at South Alabama	*3	2	5	10	-.300	0	3	.000	0	2	9	.778	0	0	.000	2	0	4	0	4.0	0	4.0	.191	3-2
09/15/2023	vs UAB	*4	3	0	9	.333	0	2	.000	0	0	0	.000	0	0	.000	1	0	8	0	8.0	0	7.0	.189	3-1
09/16/2023	vs Samford	*4	7	1	9	.667	0	2	.000	0	0	0	.000	0	0	.000	0	1	2	0	3.0	0	9.0	.386	3-1
09/22/2023	Florida	*5	3	1	10	.200	0	3	.000	0	0	1	1.000	0	0	.000	0	1	2	0	3.0	0	5.0	.196	2-3
09/24/2023	Ole Miss	*4	6	3	19	.158	0	0	.000	0	0	0	.000	0	0	.000	0	0	2	0	2.0	0	7.0	.199	3-1
09/27/2023	at Arkansas	*3	3	3	8	.000	0	1	.000	0	0	0	.000	0	0	.000	0	0	2	0	2.0	0	4.0	-.049	0-3
10/01/2023	Georgia	*4	5	1	12	.333	0	0	.000	0	0	0	.000	0	0	.000	0	1	2	0	3.0	0	7.0	.262	3-1
10/06/2023	at Florida	*3	2	1	6	.167	0	0	.000	0	0	0	.000	0	0	.000	1	0	2	0	2.0	0	3.0	.387	3-0
10/08/2023	at South Carolina	*5	5	0	8	.625	0	0	.000	0	0	0	.000	0	0	.000	0	1	7	2	8.0	0	9.5	.197	3-2
10/13/2023	at Tennessee	4	2	2	9	.000	1	2	.500	0	0	0	.000	0	1	1.000	0	0	4	1	4.0	0	4.0	.122	1-3
10/20/2023	Missouri	*3	4	0	10	.400	1	2	.500	0	1	2	.500	0	0	.000	0	1	6	0	7.0	0	8.0	.168	0-3
10/22/2023	South Carolina	*5	6	3	12	.250	1	2	.500	0	0	0	.000	0	0	.000	0	1	10	0	11.0	0	12.0	.241	3-2
10/27/2023	at Georgia	*5	5	0	8	.625	0	2	.000	0	0	0	.000	0	0	.000	2	0	7	1	7.0	0	8.5	.243	3-2
10/29/2023	at Alabama	*4	2	1	7	.143	0	1	.000	0	0	0	.000	0	1	1.000	0	0	5	0	5.0	0	4.5	.248	3-1
11/05/2023	at Texas A&M	*5	8	1	17	.412	2	3	.667	0	0	2	1.000	0	0	.000	3	0	4	0	4.0	0	10.0	.320	3-2
11/08/2023	Kentucky	*3	6	1	10	.500	0	0	.000	0	0	0	.000	0	4	1.000	0	0	2	1	2.0	0	7.0	.095	0-3
11/12/2023	at Missouri	*4	9	0	18	.500	0	1	.000	0	0	0	.000	0	1	1.000	0	0	2	0	2.0	0	10.0	.242	1-3
11/15/2023	at Mississippi St.	*5	7	2	17	.294	0	3	.000	1	2	11	.818	0	1	1.000	3	0	2	0	2.0	0	9.0	.175	2-3
11/19/2023	LSU	*3	5	1	7	.571	1	1	1.000	0	3	12	.750	1	1	.000	0	0	7	0	7.0	0	8.5	.344	3-0
11/22/2023	Alabama	*3	5	2	11	.273	0	2	.000	0	2	17	.882	0	0	.000	2	2	4	0	6.0	0	9.0	.252	3-0
11/24/2023	Arkansas	*5	8	1	15	.467	0	1	.000	0	0	22	1.000	0	1	1.000	1	0	5	0	5.0	0	10.5	.144	2-3
<b>Totals</b>			<b>113</b>	<b>147</b>	<b>46</b>	<b>340</b>	<b>.297</b>	<b>10</b>	<b>46</b>	<b>.217</b>	<b>4</b>	<b>21</b>	<b>125</b>	<b>.832</b>	<b>1</b>	<b>11</b>	<b>.909</b>	<b>25</b>	<b>10</b>	<b>115</b>	<b>7</b>	<b>125.0</b>	<b>0</b>	<b>218.5</b>	

### Player Averages

Sets Played	Kills per set	Assists per set	Service aces per set	Digs per set	Blocks per set	Points per set
113	1.30	0.09	0.04	0.22	1.11	1.93

### CAREER STATS

SEASON	TEAM	SM-MP	K	K/S	E	TA	PCT	A	A/S	SA	SA/S	SE	DIG	D/S	RE	BS	BA	TB	B/S	BE	BHE	PTS	PTS/S
2019-20	Illini	16-5	7	0.44	3	29	.138	1	0.06	0	0.00	3	7	0.44	0	0	11	11	0.69	1	1	12.5	0.78
2020-21	Illini	21-7	20	0.95	9	64	.172	1	0.05	0	0.00	0	6	0.29	0	0	16	16	0.76	1	1	28.0	1.33
2021-22	Illini	101-27	149	1.48	45	316	.329	3	0.03	0	0.00	0	13	0.13	2	9	97	106	1.05	9	2	206.5	2.04
2022-23	Illini	51-15	53	1.04	19	120	.283	2	0.04	5	0.10	7	6	0.12	0	3	41	44	0.86	4	0	81.5	1.60
2023-24	AUB	113-29	147	1.30	46	340	.297	10	0.09	4	0.04	21	25	0.22	1	10	115	125	1.11	7	0	218.5	1.93
<b>TOTAL FOR AUB</b>		<b>113 - 29</b>	<b>147</b>	<b>1.30</b>	<b>46</b>	<b>340</b>	<b>.297</b>	<b>10</b>	<b>0.09</b>	<b>4</b>	<b>0.04</b>	<b>21</b>	<b>25</b>	<b>0.22</b>	<b>1</b>	<b>10</b>	<b>115</b>	<b>125</b>	<b>1.11</b>	<b>7</b>	<b>0</b>	<b>218.5</b>	<b>1.93</b>
<b>TOTAL</b>		<b>302 - 83</b>	<b>376</b>	<b>1.25</b>	<b>122</b>	<b>869</b>	<b>.292</b>	<b>17</b>	<b>0.06</b>	<b>9</b>	<b>0.03</b>	<b>31</b>	<b>57</b>	<b>0.19</b>	<b>3</b>	<b>22</b>	<b>280</b>	<b>302</b>	<b>1.00</b>	<b>22</b>	<b>4</b>	<b>547.0</b>	<b>1.81</b>

# #7 PEYTON DUNN

SETTER | 5-11 | REDSHIRT-SOPHOMORE  
DECATUR, TEXAS (LEGEND)



### DUNN'S HIGHLIGHTS:

- 4x Big 12 Rookie of the Week
- All-Big 12 Rookie Team
- Had a career-high 54 assists vs Texas Tech on Oct. 14, 2021

CATEGORY	CAREER HIGH	OPPONENT/DATE
Kills	6	vs Indiana (9/10/21)
Attempts	11 (3x)	last at TCU (10/8/21)
Hitting Percentage (Min. 10 ATT.)	.500	vs Indiana (9/10/21)
Assists	54	vs Texas Tech (10/14/21)
Digs	18	vs FIU (8/28/22)
Blocks	6 (3x)	last at TCU (10/9/22)
Aces	2 (4x)	last vs FIU (8/28/22)
Points	7.0	at TCU (10/9/21)

CATEGORY	SEASON HIGH	OPPONENT/DATE
Kills	3	vs Jacksonville State (8/26/23)
Attempts	4	vs Jacksonville State (8/26/23)
Hitting Percentage (Min. 10 ATT.)	--	--
Assists	43	vs Coppin State (8/25/23)
Digs	4 (2x)	last vs Jacksonville State (8/26/23)
Blocks	2	vs Coppin State (8/25/23)
Aces	1	vs Coppin State (8/25/23)
Points	3.0 (2x)	last vs Jacksonville State (8/26/23)

### GAME BY GAME

Date	Opponent	SP	Attack				Set			Serve				Recept			Blocking				Team				
			K	E	TA	PCT	A	TA	PCT	SA	SE	TA	PCT	RE	TA	PCT	DIG	BS	BA	BE	TOTAL	BHE	POINTS	HIT%	SCORE
08/25/2023	Coppin St.	*4	1	0	3	.333	43	111	.387	1	5	11	.545	0	0	.000	4	0	2	0	2.0	0	3.0	.309	3-1
08/26/2023	Jacksonville St.	2	3	1	4	.500	16	30	.533	0	2	4	.500	0	0	.000	4	0	0	0	0.0	0	3.0	.395	3-0
<b>Totals</b>			<b>6</b>	<b>4</b>	<b>1</b>	<b>.429</b>	<b>59</b>	<b>141</b>	<b>.418</b>	<b>1</b>	<b>7</b>	<b>15</b>	<b>.533</b>	<b>0</b>	<b>0</b>	<b>.000</b>	<b>8</b>	<b>0</b>	<b>2</b>	<b>0</b>	<b>2.0</b>	<b>0</b>	<b>6.0</b>		

### Player Averages

Sets Played	Kills per set	Assists per set	Service aces per set	Digs per set	Blocks per set	Points per set
6	0.67	9.83	0.17	1.33	0.33	1.00

### CAREER STATS

SEASON	TEAM	SM-MP	K	K/S	E	TA	PCT	A	A/S	SA	SA/S	SE	DIG	D/S	RE	BS	BA	TB	B/S	BE	BHE	PTS	PTS/S
2021-22	OU	107-27	67	0.63	15	163	.319	997	9.32	13	0.12	45	198	1.85	0	0	63	63	0.59	2	5	111.5	1.04
2022-23	OU	24-7	12	0.50	4	25	.320	252	10.50	3	0.13	8	57	2.38	0	0	11	11	0.46	3	4	20.5	0.85
2023-24	AUB	6-2	4	0.67	1	7	.429	59	9.83	1	0.17	7	8	1.33	0	0	2	2	0.33	0	0	6.0	1.00
<b>TOTAL FOR AUB</b>		<b>6 - 2</b>	<b>4</b>	<b>0.67</b>	<b>1</b>	<b>7</b>	<b>.429</b>	<b>59</b>	<b>9.83</b>	<b>1</b>	<b>0.17</b>	<b>7</b>	<b>8</b>	<b>1.33</b>	<b>0</b>	<b>0</b>	<b>2</b>	<b>2</b>	<b>0.33</b>	<b>0</b>	<b>0</b>	<b>6.0</b>	<b>1.00</b>
<b>TOTAL</b>		<b>137 - 36</b>	<b>83</b>	<b>0.61</b>	<b>20</b>	<b>195</b>	<b>.323</b>	<b>1308</b>	<b>9.55</b>	<b>17</b>	<b>0.12</b>	<b>60</b>	<b>263</b>	<b>1.92</b>	<b>0</b>	<b>0</b>	<b>76</b>	<b>76</b>	<b>0.55</b>	<b>5</b>	<b>9</b>	<b>138.0</b>	<b>1.01</b>

# #8 KENDAL KEMP

MIDDLE BLOCKER | 6-6 | SOPHOMORE  
EAGAN, MINN. (EAGAN)



### KEMP'S HIGHLIGHTS:

- Has set the Auburn single-season record for total blocks, block assists and blocks per set
- Tied the program record for most blocks in a 3-set match with 9 vs. Belmont
- 2x SEC Freshman of the Week
- Named to the SEC All-Freshman Team
- Named AVCA South Region Honorable Mention
- Made her collegiate debut on Aug. 26 vs. Belmont

CATEGORY	CAREER HIGH	OPPONENT/DATE
Kills	13	vs Charleston Southern (9/8/23)
Attempts	21 (2x)	last at South Carolina (11/23/22)
Hitting Percentage (Min. 10 ATT.)	.714	at Missouri (10/15/22)
Assists	1 (4x)	last at Alabama (10/29/23)
Digs	2 (4x)	last vs Alabama (11/22/23)
Blocks	10 (4x)	last vs UAB (9/15/22)
Aces	3	at Georgia State (8/26/22)
Points	17.5	at South Carolina (11/23/22)

CATEGORY	SEASON HIGH	OPPONENT/DATE
Kills	13	vs Charleston Southern (9/8/23)
Attempts	19	vs Charleston Southern (9/8/23)
Hitting Percentage (Min. 10 ATT.)	.667	vs Georgia (10/1/23)
Assists	1 (2x)	last at Alabama (10/29/23)
Digs	2 (2x)	last vs Alabama (11/22/23)
Blocks	10 (2x)	last at Mississippi State (11/15/23)
Aces	1	vs Coppin State (8/25/23)
Points	15.5	vs Charleston Southern (9/8/23)

### GAME BY GAME

Date	Opponent	SP	Attack				Set			Serve				Receipt			Blocking				Team				
			K	E	TA	PCT	A	TA	PCT	SA	SE	TA	PCT	RE	TA	PCT	DIG	BS	BA	BE	TOTAL	BHE	POINTS	HIT%	SCORE
08/25/2023	Coppin St.	*4	5	2	17	.176	0	1	.000	1	2	5	.600	0	0	.000	0	2	3	0	5.0	0	9.5	.309	3-1
08/26/2023	McNeese	*2	4	1	6	.500	0	1	.000	0	0	0	.000	0	0	.000	0	2	3	0	5.0	0	7.5	.333	3-0
08/26/2023	Jacksonville St.	*2	2	0	2	1.000	0	1	.000	0	0	0	.000	0	0	.000	0	1	1	0	2.0	0	3.5	.395	3-0
09/02/2023	vs SMU	*4	4	0	7	.571	0	0	.000	0	0	0	.000	0	0	.000	0	0	4	2	4.0	0	6.0	.316	3-1
09/03/2023	at Florida St.	*4	9	3	13	.462	0	1	.000	0	0	0	.000	0	0	.000	1	0	4	3	4.0	0	11.0	.356	3-1
09/07/2023	Middle Tenn.	*4	5	2	9	.333	0	1	.000	0	0	0	.000	0	0	.000	1	0	5	0	5.0	0	7.5	.221	1-3
09/08/2023	Charleston So.	*4	13	3	19	.526	0	1	.000	0	0	0	.000	0	0	.000	0	0	5	0	5.0	0	15.5	.245	3-1
09/09/2023	Mercer	*3	6	1	10	.500	0	0	.000	0	1	1	.000	0	1	1.000	0	0	7	0	7.0	0	9.5	.346	3-0
09/14/2023	at South Alabama	*5	6	1	11	.455	0	0	.000	0	0	0	.000	0	0	.000	1	0	3	0	3.0	0	7.5	.191	3-2
09/15/2023	vs UAB	*4	8	3	17	.294	0	2	.000	0	0	0	.000	0	0	.000	1	1	9	2	10.0	0	13.5	.189	3-1
09/16/2023	vs Samford	*4	5	2	11	.273	0	0	.000	0	0	0	.000	0	0	.000	0	0	2	0	2.0	0	6.0	.386	3-1
10/01/2023	Georgia	*4	8	0	12	.667	0	1	.000	0	0	0	.000	0	1	1.000	1	0	4	0	4.0	0	10.0	.262	3-1
10/06/2023	at Florida	*3	4	1	7	.429	0	1	.000	0	0	0	.000	0	0	.000	0	0	3	0	3.0	0	5.5	.387	3-0
10/08/2023	at South Carolina	*5	6	1	11	.455	0	1	.000	0	0	0	.000	0	0	.000	0	0	9	0	9.0	0	10.5	.197	3-2
10/13/2023	at Tennessee	*4	9	2	15	.467	1	2	.500	0	0	0	.000	0	0	.000	0	1	8	0	9.0	0	14.0	.122	1-3
10/20/2023	Missouri	*3	2	2	4	.000	0	0	.000	0	0	0	.000	0	0	.000	0	0	2	0	2.0	0	3.0	.168	0-3
10/22/2023	South Carolina	*5	4	2	10	.200	0	3	.000	0	0	0	.000	0	0	.000	0	1	4	1	5.0	0	7.0	.241	3-2
10/27/2023	at Georgia	*5	3	2	7	.143	0	2	.000	0	0	0	.000	0	0	.000	0	0	7	0	7.0	0	6.5	.243	3-2
10/29/2023	at Alabama	*4	6	2	14	.286	1	1	1.000	0	0	0	.000	0	0	.000	0	0	3	0	3.0	0	7.5	.248	3-1
11/05/2023	at Texas A&M	*5	9	2	14	.500	0	0	.000	0	0	0	.000	0	0	.000	1	0	8	0	8.0	0	13.0	.320	3-2
11/08/2023	Kentucky	*3	4	2	10	.200	0	1	.000	0	0	0	.000	0	1	1.000	2	0	1	0	1.0	0	4.5	.095	0-3
11/12/2023	at Missouri	*4	6	1	10	.500	0	1	.000	0	0	0	.000	0	0	.000	0	0	1	0	1.0	0	6.5	.242	1-3
11/15/2023	at Mississippi St.	*5	7	2	14	.357	0	3	.000	0	0	0	.000	0	0	.000	1	5	5	0	10.0	0	14.5	.175	2-3
11/19/2023	LSU	*3	3	2	11	.091	0	0	.000	0	0	0	.000	0	0	.000	0	0	4	1	4.0	0	5.0	.344	3-0
11/22/2023	Alabama	*3	3	0	7	.429	0	0	.000	0	0	0	.000	0	1	1.000	2	0	2	0	2.0	0	4.0	.252	3-0
11/24/2023	Arkansas	*5	4	2	16	.125	0	0	.000	0	0	0	.000	0	0	.000	0	0	9	0	9.0	0	8.5	.144	2-3
<b>Totals</b>			<b>101</b>	<b>145</b>	<b>41</b>	<b>284</b>	<b>.366</b>	<b>2</b>	<b>24</b>	<b>.083</b>	<b>1</b>	<b>3</b>	<b>6</b>	<b>.500</b>	<b>0</b>	<b>4</b>	<b>1.000</b>	<b>11</b>	<b>13</b>	<b>116</b>	<b>9</b>	<b>129.0</b>	<b>0</b>	<b>217.0</b>	

### Player Averages

Sets Played	Kills per set	Assists per set	Service aces per set	Digs per set	Blocks per set	Points per set
101	1.44	0.02	0.01	0.11	1.28	2.15

### CAREER STATS

SEASON	TEAM	SM-MP	K	K/S	E	TA	PCT	A	A/S	SA	SA/S	SE	DIG	D/S	RE	BS	BA	TB	B/S	BE	BHE	PTS	PTS/S
2022-23	AUB	122-31	204	1.67	66	430	.321	2	0.02	7	0.06	16	12	0.10	1	26	154	180	1.48	13	0	314.0	2.57
2023-24	AUB	101-26	145	1.44	41	284	.366	2	0.02	1	0.01	3	11	0.11	0	13	116	129	1.28	9	0	217.0	2.15
<b>TOTAL</b>		<b>223 - 57</b>	<b>349</b>	<b>1.57</b>	<b>107</b>	<b>714</b>	<b>.339</b>	<b>4</b>	<b>0.02</b>	<b>8</b>	<b>0.04</b>	<b>19</b>	<b>23</b>	<b>0.10</b>	<b>1</b>	<b>39</b>	<b>270</b>	<b>309</b>	<b>1.39</b>	<b>22</b>	<b>0</b>	<b>531.0</b>	<b>2.38</b>

# #9 ZOE SLAUGHTER

LIBERO | 5-7 | SOPHOMORE  
HONOLULU, HAWAII (MOANALUA)



### SLAUGHTER'S HIGHLIGHTS:

- Recorded 10+ digs in 10 matches last season
- Grabbed a career-high 22 digs at Alabama on Sept. 24, 2022
- Made her collegiate debut on Aug. 26 vs. Belmont

CATEGORY	CAREER HIGH	OPPONENT/DATE
Kills	1 (2x)	last at Missouri (10/15/22)
Attempts	1 (4x)	last vs McNeese (8/26/23)
Hitting Percentage (Min. 10 ATT.)	--	--
Assists	5	at South Alabama (9/14/23)
Digs	29	at South Alabama (9/13/23)
Blocks	--	--
Aces	3 (2x)	last vs Alabama A&M (9/6/22)
Points	3.0 (3x)	last vs Troy (9/10/22)

CATEGORY	SEASON HIGH	OPPONENT/DATE
Kills	--	--
Attempts	3	vs Samford (9/16/23)
Hitting Percentage (Min. 10 ATT.)	--	--
Assists	5	at South Alabama (9/14/23)
Digs	29	at South Alabama (9/14/23)
Blocks	--	--
Aces	2 (2x)	last at Missouri (11/12/23)
Points	2.0 (2x)	last at Missouri (11/12/23)

### GAME BY GAME

Date	Opponent	SP	Attack				Set			Serve				Recept			Blocking				Team				
			K	E	TA	PCT	A	TA	PCT	SA	SE	TA	PCT	RE	TA	PCT	DIG	BS	BA	BE	TOTAL	BHE	POINTS	HIT%	SCORE
08/25/2023	Coppin St.	4	0	0	0	.000	1	2	.500	1	4	17	.765	0	16	1.000	5	0	0	0	0.0	0	1.0	.309	3-1
08/26/2023	McNeese	3	0	0	1	.000	1	4	.250	0	0	12	1.000	0	11	1.000	6	0	0	0	0.0	0	0.0	.333	3-0
08/26/2023	Jacksonville St.	*3	0	0	0	.000	1	2	.500	0	0	9	1.000	0	11	1.000	5	0	0	0	0.0	0	0.0	.395	3-0
09/02/2023	vs SMU	*4	0	0	0	.000	0	3	.000	0	1	11	.909	0	16	1.000	2	0	0	0	0.0	0	0.0	.316	3-1
09/03/2023	at Florida St.	*4	0	0	1	.000	1	4	.250	2	3	22	.864	1	28	.964	10	0	0	0	0.0	0	2.0	.356	3-1
09/07/2023	Middle Tenn.	*4	0	0	0	.000	2	3	.667	0	1	18	.944	0	10	1.000	3	0	0	0	0.0	0	0.0	.221	1-3
09/08/2023	Charleston So.	4	0	0	0	.000	0	3	.000	0	1	17	.941	0	9	1.000	7	0	0	0	0.0	0	0.0	.245	3-1
09/09/2023	Mercer	*3	0	0	0	.000	0	0	.000	0	1	8	.875	0	6	1.000	5	0	0	0	0.0	0	0.0	.346	3-0
09/14/2023	at South Alabama	5	0	0	2	.000	5	15	.333	1	4	13	.692	5	29	.828	29	0	0	0	0.0	0	1.0	.191	3-2
09/15/2023	vs UAB	4	0	0	1	.000	4	13	.308	0	0	18	1.000	0	12	1.000	11	0	0	0	0.0	0	0.0	.189	3-1
09/16/2023	vs Samford	4	0	0	3	.000	4	9	.444	0	0	13	1.000	3	23	.870	16	0	0	0	0.0	0	0.0	.386	3-1
09/22/2023	Florida	5	0	0	0	.000	1	3	.333	0	1	20	.950	0	15	1.000	11	0	0	0	0.0	0	0.0	.196	2-3
09/24/2023	Ole Miss	4	0	0	0	.000	1	3	.333	0	2	13	.846	0	6	1.000	7	0	0	0	0.0	0	0.0	.199	3-1
09/27/2023	at Arkansas	3	0	0	0	.000	0	3	.000	1	1	6	.833	1	11	.909	1	0	0	0	0.0	0	1.0	-.049	0-3
10/06/2023	at Florida	3	0	0	0	.000	0	0	.000	0	0	0	.000	0	2	1.000	2	0	0	0	0.0	0	0.0	.387	3-0
10/08/2023	at South Carolina	5	0	0	0	.000	1	2	.500	1	1	3	.667	0	21	1.000	3	0	0	0	0.0	0	1.0	.197	3-2
10/13/2023	at Tennessee	4	0	0	0	.000	0	1	.000	0	0	0	.000	0	15	1.000	3	0	0	0	0.0	0	0.0	.122	1-3
10/27/2023	at Georgia	5	0	1	1	-1.000	1	2	.500	1	2	19	.895	0	16	1.000	3	0	0	0	0.0	0	1.0	.243	3-2
10/29/2023	at Alabama	4	0	0	0	.000	0	2	.000	0	1	13	.923	1	19	.947	10	0	0	0	0.0	0	0.0	.248	3-1
11/05/2023	at Texas A&M	*5	0	0	0	.000	0	4	.000	1	1	18	.944	1	15	.933	11	0	0	0	0.0	0	1.0	.320	3-2
11/08/2023	Kentucky	3	0	0	0	.000	0	0	.000	0	1	8	.875	2	11	.818	2	0	0	0	0.0	0	0.0	.095	0-3
11/12/2023	at Missouri	*4	0	0	1	.000	2	3	.667	2	0	11	1.000	2	28	.929	9	0	0	0	0.0	0	2.0	.242	1-3
11/22/2023	Alabama	1	0	0	0	.000	0	0	.000	0	0	5	1.000	0	0	.000	1	0	0	0	0.0	0	0.0	.252	3-0
11/24/2023	Arkansas	4	0	0	0	.000	1	2	.500	0	2	11	.818	0	6	1.000	1	0	0	0	0.0	0	0.0	.144	2-3
<b>Totals</b>		<b>92</b>	<b>0</b>	<b>1</b>	<b>10</b>	<b>-.100</b>	<b>26</b>	<b>83</b>	<b>.313</b>	<b>10</b>	<b>27</b>	<b>285</b>	<b>.905</b>	<b>16</b>	<b>336</b>	<b>.952</b>	<b>163</b>	<b>0</b>	<b>0</b>	<b>0</b>	<b>0.0</b>	<b>0</b>	<b>10.0</b>		

### Player Averages

Sets Played	Kills per set	Assists per set	Service aces per set	Digs per set	Blocks per set	Points per set
92	0.00	0.28	0.11	1.77	0.00	0.11

### CAREER STATS

SEASON	TEAM	SM-MP	K	K/S	E	TA	PCT	A	A/S	SA	SA/S	SE	DIG	D/S	RE	BS	BA	TB	B/S	BE	BHE	PTS	PTS/S
2022-23	AUB	122-31	2	0.02	1	4	.250	22	0.18	19	0.16	41	267	2.19	14	0	0	0	0.00	0	1	21.0	0.17
2023-24	AUB	92-24	0	0.00	1	10	-.100	26	0.28	10	0.11	27	163	1.77	16	0	0	0	0.00	0	0	10.0	0.11
<b>TOTAL</b>		<b>214 - 55</b>	<b>2</b>	<b>0.01</b>	<b>2</b>	<b>14</b>	<b>.000</b>	<b>48</b>	<b>0.22</b>	<b>29</b>	<b>0.14</b>	<b>68</b>	<b>430</b>	<b>2.01</b>	<b>30</b>	<b>0</b>	<b>0</b>	<b>0</b>	<b>0.00</b>	<b>0</b>	<b>1</b>	<b>31.0</b>	<b>0.14</b>



# #10 JACKIE BARRETT

SETTER | 6-2 | SENIOR

HIGHLAND, CALIF. (CITRUS VALLEY)



## BARRETT'S HIGHLIGHTS

- 2x SEC Setter of the Week
- Set a career-high in aces with 5 against Mercer
- Set her career-high in assists with 60 against LSU on Oct. 5, 2022

CATEGORY	CAREER HIGH	OPPONENT/DATE
Kills	6 (2x)	last, at Alabama State (9/26/21)
Attempts	20	at Alabama State (9/26/21)
Hitting Percentage (Min. 10 ATT.)	.308	vs. Florida A&M (9/17/21)
Assists	60	at LSU (10/5/22)
Digs	28	vs. Nicholls (9/17/21)
Blocks	8 (2x)	last at South Carolina (10/8/23)
Aces	5 (2x)	at South Alabama (9/14/23)
Points	10.5	at Alabama (10/29/23)

CATEGORY	SEASON HIGH	OPPONENT/DATE
Kills	5 (3x)	last vs Florida (9/22/23)
Attempts	10	vs Ole Miss (9/24/23)
Hitting Percentage (Min. 10 ATT.)	.300	vs Arkansas (11/24/23)
Assists	50	at Texas A&M (11/5/23)
Digs	17	vs Ole Miss (9/24/23)
Blocks	8	at South Carolina (10/8/23)
Aces	5 (2x)	last at South Alabama (9/14/23)
Points	10.5	at Alabama (10/29/23)

## GAME BY GAME

Date	Opponent	SP	Attack				Set			Serve				Recept			Blocking				Team				
			K	E	TA	PCT	A	TA	PCT	SA	SE	TA	PCT	RE	TA	PCT	DIG	BS	BA	BE	TOTAL	BHE	POINTS	HIT%	SCORE
08/26/2023	McNeese	*3	1	0	4	.250	31	72	.431	0	1	15	.933	0	0	.000	6	0	2	0	2.0	0	2.0	.333	3-0
08/26/2023	Jacksonville St.	*2	1	0	2	.500	14	25	.560	0	0	1	1.000	0	0	.000	2	0	1	0	1.0	0	1.5	.395	3-0
09/02/2023	vs SMU	*4	5	0	7	.714	36	96	.375	1	0	16	1.000	0	1	1.000	14	0	2	1	2.0	0	7.0	.316	3-1
09/03/2023	at Florida St.	*4	3	2	7	.143	44	99	.444	0	0	16	1.000	0	0	.000	11	0	3	0	3.0	0	4.5	.356	3-1
09/07/2023	Middle Tenn.	*4	5	0	7	.714	39	104	.375	1	1	13	.923	0	0	.000	10	0	0	0	0.0	0	6.0	.221	1-3
09/08/2023	Charleston So.	*4	1	1	6	.000	41	111	.369	0	0	14	1.000	0	0	.000	13	0	3	0	3.0	0	2.5	.245	3-1
09/09/2023	Mercer	*3	2	0	2	1.000	31	64	.484	5	0	16	1.000	0	0	.000	5	0	4	0	4.0	0	9.0	.346	3-0
09/14/2023	at South Alabama	*5	2	0	6	.333	48	142	.338	5	3	23	.870	0	0	.000	11	0	3	0	3.0	2	8.5	.191	3-2
09/15/2023	vs UAB	*4	3	1	6	.333	35	98	.357	0	1	14	.929	0	0	.000	6	0	5	0	5.0	0	5.5	.189	3-1
09/16/2023	vs Samford	*4	3	0	5	.600	46	93	.495	1	1	12	.917	0	0	.000	6	1	0	0	1.0	1	5.0	.386	3-1
09/22/2023	Florida	*5	5	0	9	.556	40	122	.328	1	3	15	.800	0	1	1.000	12	0	2	1	2.0	0	7.0	.196	2-3
09/24/2023	Ole Miss	*4	3	1	10	.200	42	119	.353	1	0	20	1.000	0	0	.000	17	0	1	0	1.0	0	4.5	.199	3-1
09/27/2023	at Arkansas	*3	1	0	2	.500	11	59	.186	0	1	6	.833	0	0	.000	5	0	1	1	1.0	0	1.5	-.049	0-3
10/01/2023	Georgia	*4	0	0	3	.000	42	104	.404	0	0	10	1.000	0	0	.000	8	0	1	0	1.0	0	0.5	.262	3-1
10/06/2023	at Florida	*3	3	0	8	.375	37	71	.521	2	1	11	.909	0	0	.000	5	0	2	0	2.0	0	6.0	.387	3-0
10/08/2023	at South Carolina	*5	4	1	7	.429	46	117	.393	0	1	18	.944	0	1	1.000	12	0	8	1	8.0	1	8.0	.197	3-2
10/13/2023	at Tennessee	*4	0	0	3	.000	31	115	.270	0	0	16	1.000	0	0	.000	11	0	3	0	3.0	1	1.5	.122	1-3
10/20/2023	Missouri	*3	0	1	3	-.333	27	80	.338	1	1	12	.917	0	0	.000	10	0	3	0	3.0	0	2.5	.168	0-3
10/22/2023	South Carolina	*5	4	1	9	.333	46	119	.387	3	3	23	.870	0	1	1.000	10	0	2	0	2.0	0	8.0	.241	3-2
10/27/2023	at Georgia	*5	1	1	4	.000	46	115	.400	0	1	18	.944	0	0	.000	12	0	5	0	5.0	0	3.5	.243	3-2
10/29/2023	at Alabama	*4	4	0	7	.571	44	111	.396	4	0	21	1.000	0	1	1.000	11	1	3	1	4.0	0	10.5	.248	3-1
11/05/2023	at Texas A&M	*5	2	0	5	.400	50	114	.439	1	1	17	.941	0	0	.000	6	0	2	0	2.0	1	4.0	.320	3-2
11/08/2023	Kentucky	*3	0	0	2	.000	16	70	.229	0	1	8	.875	0	1	1.000	3	0	1	0	1.0	0	0.5	.095	0-3
11/12/2023	at Missouri	*4	1	1	3	.000	32	90	.356	0	1	11	.909	0	0	.000	8	0	1	0	1.0	0	1.5	.242	1-3
11/15/2023	at Mississippi St.	*5	0	2	8	-.250	45	132	.341	0	2	13	.846	0	0	.000	10	0	4	0	4.0	0	2.0	.175	2-3
11/19/2023	LSU	*3	2	0	2	1.000	31	76	.408	2	0	13	1.000	0	0	.000	9	0	0	1	0.0	0	4.0	.344	3-0
11/22/2023	Alabama	*3	1	0	6	.167	36	82	.439	1	1	12	.917	0	0	.000	9	0	1	0	1.0	0	2.5	.252	3-0
11/24/2023	Arkansas	*5	4	1	10	.300	40	141	.284	1	1	14	.929	0	0	.000	11	0	2	0	2.0	2	6.0	.144	2-3
<b>Totals</b>			<b>110</b>	<b>61</b>	<b>13</b>	<b>153</b>	<b>.314</b>	<b>1027</b>	<b>2741</b>	<b>.375</b>	<b>30</b>	<b>25</b>	<b>398</b>	<b>.937</b>	<b>0</b>	<b>6</b>	<b>1.000</b>	<b>253</b>	<b>2</b>	<b>65</b>	<b>6</b>	<b>67.0</b>	<b>8</b>	<b>125.5</b>	

## Player Averages

Sets Played	Kills per set	Assists per set	Service aces per set	Digs per set	Blocks per set	Points per set
110	0.55	9.34	0.27	2.30	0.61	1.14

## CAREER STATS

SEASON	TEAM	SM-MP	K	K/S	E	TA	PCT	A	A/S	SA	SA/S	SE	DIG	D/S	RE	BS	BA	TB	B/S	BE	BHE	PTS	PTS/S
2020-21	AUB	19-6	9	0.47	6	44	.068	144	7.58	3	0.16	8	33	1.74	0	0	11	11	0.58	1	0	17.5	0.92
2021-22	AUB	100-28	51	0.51	14	180	.206	809	8.09	22	0.22	24	307	3.07	0	2	60	62	0.62	8	1	105.0	1.05
2022-23	AUB	106-28	41	0.39	8	116	.284	1057	9.97	26	0.25	28	220	2.08	1	9	75	84	0.79	10	0	113.5	1.07
2023-24	AUB	110-28	61	0.55	13	153	.314	1027	9.34	30	0.27	25	253	2.30	0	2	65	67	0.61	6	8	125.5	1.14
<b>TOTAL</b>		<b>335 - 90</b>	<b>162</b>	<b>0.48</b>	<b>41</b>	<b>493</b>	<b>.245</b>	<b>3037</b>	<b>9.07</b>	<b>81</b>	<b>0.24</b>	<b>85</b>	<b>813</b>	<b>2.43</b>	<b>1</b>	<b>13</b>	<b>211</b>	<b>224</b>	<b>0.67</b>	<b>25</b>	<b>9</b>	<b>361.5</b>	<b>1.08</b>

# #11 JORDAN SINNESS

SETTER | 5-9 | JUNIOR  
SEBRING, FLA. (SEBRING)



**SINNESS' HIGHLIGHTS:**

- Recorded the Tigers' first double-double of the season at Georgia State with 42 assists and 12 digs.
- Grabbed a career-high 49 assists in 5-set win at UAB
- Made collegiate debut versus Cal State Fullerton (9/2), dishing out 16 assists, six digs, one kill and a block

CATEGORY	CAREER HIGH	OPPONENT/DATE
Kills	3	vs Alabama A&M (9/6/22)
Attempts	7	at UAB (9/10/22)
Hitting Percentage (Min. 10 ATT.)		
Assists	49	at UAB (9/10/22)
Digs	14	vs. Missouri (10/17/21)
Blocks	5	at UAB (9/10/22)
Aces	3	vs Alabama A&M (9/6/22)
Points	7.0	vs Alabama A&M (9/6/22)

CATEGORY	SEASON HIGH	OPPONENT/DATE
Kills	--	--
Attempts	--	--
Hitting Percentage (Min. 10 ATT.)	--	--
Assists	--	--
Digs	--	--
Blocks	--	--
Aces	--	--
Points	--	--

**GAME BY GAME**

**CAREER STATS**

SEASON	TEAM	SM-MP	K	K/S	E	TA	PCT	A	A/S	SA	SA/S	SE	DIG	D/S	RE	BS	BA	TB	B/S	BE	BHE	PTS	PTS/S
2021-22	AUB	50-15	2	0.04	1	6	.167	64	1.28	6	0.12	7	33	0.66	0	0	3	3	0.06	0	2	9.5	0.19
2022-23	AUB	49-14	5	0.10	0	15	.333	163	3.33	16	0.33	22	51	1.04	0	2	13	15	0.31	1	0	29.5	0.60
<b>TOTAL</b>		<b>99 - 29</b>	<b>7</b>	<b>0.07</b>	<b>1</b>	<b>21</b>	<b>.286</b>	<b>227</b>	<b>2.29</b>	<b>22</b>	<b>0.22</b>	<b>29</b>	<b>84</b>	<b>0.85</b>	<b>0</b>	<b>2</b>	<b>16</b>	<b>18</b>	<b>0.18</b>	<b>1</b>	<b>2</b>	<b>39.0</b>	<b>0.39</b>



# #12 BEL ZIMMERMAN

**PIN HITTER | 6-2 | SOPHOMORE  
LIBERTY, MO. (LIBERTY NORTH)**

### ZIMMERMAN'S HIGHLIGHTS:

- Set career highs in kills (17) and digs (16) against Charleston Southern for her first-career double-double
- Hit .692 with 8 kills vs. Marist
- Had a career-high 13 kills at Jacksonville State
- Made her collegiate debut on Aug. 26 at Georgia State

CATEGORY	CAREER HIGH	OPPONENT/DATE
Kills	17	vs Charleston Southern (9/8/23)
Attempts	36	vs UAB (9/15/23)
Hitting Percentage (Min. 10 ATT.)	.692	vs Marist (8/27/22)
Assists	1 (10x)	last vs South Carolina (10/22/23)
Digs	16	vs Charleston Southern (9/8/23)
Blocks	6 (2x)	last at South Alabama (9/14/23)
Aces	4 (2x)	last at Georgia (10/27/23)
Points	21.0	vs UAB (9/15/23)

CATEGORY	SEASON HIGH	OPPONENT/DATE
Kills	17	vs Charleston Southern (9/8/23)
Attempts	41	at South Carolina (10/8/23)
Hitting Percentage (Min. 10 ATT.)	.400	vs McNeese (8/26/23)
Assists	1 (9x)	last at Mississippi State (11/15/23)
Digs	16	vs Charleston Southern (9/8/23)
Blocks	6	at South Alabama (9/14/23)
Aces	4 (2x)	last at Georgia (10/27/23)
Points	21.0	vs UAB (9/15/23)

### GAME BY GAME

Date	Opponent	SP	Attack				Set			Serve				Receipt			Blocking				Team				
			K	E	TA	PCT	A	TA	PCT	SA	SE	TA	PCT	RE	TA	PCT	DIG	BS	BA	BE	TOTAL	BHE	POINTS	HIT%	SCORE
08/26/2023	McNeese	3	8	0	20	.400	1	3	.333	0	2	8	.750	0	7	1.000	2	0	2	0	2.0	0	9.0	.333	3-0
08/26/2023	Jacksonville St.	2	2	3	8	.125	0	0	.000	3	2	7	.714	0	3	1.000	1	0	0	2	0.0	0	5.0	.395	3-0
09/02/2023	vs SMU	2	0	0	0	.000	0	0	.000	0	2	3	.333	0	0	.000	0	0	0	0	0.0	0	0.0	.316	3-1
09/03/2023	at Florida St.	4	0	0	0	.000	0	1	.000	0	0	9	1.000	0	0	.000	0	0	0	0	0.0	0	0.0	.356	3-1
09/07/2023	Middle Tenn.	*4	11	6	40	.125	0	0	.000	0	3	11	.727	2	19	.895	4	0	2	1	2.0	0	12.0	.221	1-3
09/08/2023	Charleston So.	*4	17	5	50	.240	1	1	1.000	2	2	22	.909	0	20	1.000	16	0	2	0	2.0	0	20.0	.245	3-1
09/09/2023	Mercer	*3	14	3	30	.367	1	3	.333	3	3	15	.800	0	13	1.000	2	0	1	1	1.0	0	17.5	.346	3-0
09/14/2023	at South Alabama	*5	11	3	34	.235	1	6	.167	4	2	23	.913	0	10	1.000	2	1	5	1	6.0	0	18.5	.191	3-2
09/15/2023	vs UAB	*4	16	5	36	.306	1	3	.333	2	3	14	.786	2	22	.909	12	1	4	1	5.0	0	21.0	.189	3-1
09/16/2023	vs Samford	*4	15	2	33	.394	1	2	.500	1	3	12	.750	3	17	.824	11	0	2	0	2.0	0	17.0	.386	3-1
09/22/2023	Florida	5	0	0	0	.000	1	3	.333	0	3	16	.813	0	0	.000	1	0	0	0	0.0	0	0.0	.196	2-3
09/24/2023	Ole Miss	4	0	0	0	.000	0	0	.000	3	2	17	.882	0	0	.000	1	0	0	0	0.0	0	3.0	.199	3-1
09/27/2023	at Arkansas	3	0	3	5	-.600	0	1	.000	1	1	5	.800	1	3	.667	0	0	0	0	0.0	0	1.0	-.049	0-3
10/01/2023	Georgia	*4	5	2	14	.214	0	3	.000	0	5	20	.750	0	15	1.000	6	0	1	2	1.0	0	5.5	.262	3-1
10/06/2023	at Florida	*3	6	3	18	.167	0	0	.000	1	6	15	.600	0	7	1.000	2	0	1	0	1.0	0	7.5	.387	3-0
10/08/2023	at South Carolina	*5	10	7	41	.073	0	1	.000	1	4	18	.778	0	3	1.000	2	0	0	1	0.0	0	11.0	.197	3-2
10/13/2023	at Tennessee	*4	9	3	28	.214	0	1	.000	0	2	11	.818	1	11	.909	5	0	1	0	1.0	0	9.5	.122	1-3
10/20/2023	Missouri	3	2	1	5	.200	0	0	.000	1	1	12	.917	2	9	.778	8	0	0	0	0.0	0	3.0	.168	0-3
10/22/2023	South Carolina	*5	2	1	14	.071	1	1	1.000	2	4	18	.778	1	7	.857	5	0	0	0	0.0	0	4.0	.241	3-2
10/27/2023	at Georgia	*5	4	3	10	.100	0	2	.000	4	3	15	.800	1	5	.800	4	0	0	0	0.0	0	8.0	.243	3-2
10/29/2023	at Alabama	*4	4	3	13	.077	0	2	.000	1	5	12	.583	0	0	.000	9	0	0	0	0.0	0	5.0	.248	3-1
11/05/2023	at Texas A&M	2	0	0	0	.000	0	0	.000	0	3	6	.500	0	0	.000	0	0	0	0	0.0	0	0.0	.320	3-2
11/08/2023	Kentucky	3	0	0	0	.000	0	0	.000	0	2	7	.714	0	0	.000	0	0	0	0	0.0	0	0.0	.095	0-3
11/15/2023	at Mississippi St.	5	2	3	8	.125	1	1	1.000	1	3	10	.700	0	6	1.000	1	0	0	0	0.0	0	3.0	.175	2-3
<b>Totals</b>		<b>90</b>	<b>138</b>	<b>56</b>	<b>407</b>	<b>.201</b>	<b>9</b>	<b>34</b>	<b>.265</b>	<b>30</b>	<b>66</b>	<b>306</b>	<b>.784</b>	<b>13</b>	<b>177</b>	<b>.927</b>	<b>94</b>	<b>2</b>	<b>21</b>	<b>9</b>	<b>23.0</b>	<b>0</b>	<b>180.5</b>		

### Player Averages

Sets Played	Kills per set	Assists per set	Service aces per set	Digs per set	Blocks per set	Points per set
90	1.53	0.10	0.33	1.04	0.26	2.01

### CAREER STATS

SEASON	TEAM	SM-MP	K	K/S	E	TA	PCT	A	A/S	SA	SA/S	SE	DIG	D/S	RE	BS	BA	TB	B/S	BE	BHE	PTS	PTS/S
2022-23	AUB	114-29	220	1.93	98	607	.201	2	0.02	4	0.04	11	54	0.47	3	3	63	66	0.58	10	0	258.5	2.27
2023-24	AUB	90-24	138	1.53	56	407	.201	9	0.10	30	0.33	66	94	1.04	13	2	21	23	0.26	9	0	180.5	2.01
<b>TOTAL</b>		<b>204 - 53</b>	<b>358</b>	<b>1.75</b>	<b>154</b>	<b>1014</b>	<b>.201</b>	<b>11</b>	<b>0.05</b>	<b>34</b>	<b>0.17</b>	<b>77</b>	<b>148</b>	<b>0.73</b>	<b>16</b>	<b>5</b>	<b>84</b>	<b>89</b>	<b>0.44</b>	<b>19</b>	<b>0</b>	<b>439.0</b>	<b>2.15</b>

# #13 PAIGE THIBAUT

LIBERO | 5-8 | JUNIOR

WATERTOWN, MINN. (WATERTOWN-MAYER)



### THIBAUT'S HIGHLIGHTS:

- Compiled a career-high 20 digs against Dayton on Sept. 3, 2022
- Hit .462 vs Arizona State on Sept. 2, 2022
- 2021 All-Crossroads League Honorable Mention
- 2021 Crossroads League All-Freshman Team

CATEGORY	CAREER HIGH	OPPONENT/DATE
Kills	9	at FAU (10/28/22)
Attempts	35	at UTSA (10/23/22)
Hitting Percentage (Min. 10 ATT.)	.462	vs Arizona State (9/2/22)
Assists	9	vs South Carolina (10/22/23)
Digs	23 (2x)	last at Georgia (10/27/23)
Blocks	4	vs UAB (10/7/22)
Aces	3	vs Little Rock (9/8/22)
Points	9.0 (2x)	last at FAU (10/28/22)

CATEGORY	SEASON HIGH	OPPONENT/DATE
Kills	1	at South Alabama (9/14/23)
Attempts	2	at South Alabama (9/14/23)
Hitting Percentage (Min. 10 ATT.)	--	--
Assists	9	vs South Carolina (10/22/23)
Digs	23 (2x)	last at Georgia (10/27/23)
Blocks	--	--
Aces	2 (2x)	last vs Samford (9/16/23)
Points	2.0 (2x)	last vs Samford (9/16/23)

### GAME BY GAME

Date	Opponent	SP	Attack				Set			Serve				Receipt			Blocking				Team				
			K	E	TA	PCT	A	TA	PCT	SA	SE	TA	PCT	RE	TA	PCT	DIG	BS	BA	TB	TOTAL	BHE	POINTS	HIT%	SCORE
08/25/2023	Coppin St.	*4	0	0	0	.000	2	3	.667	0	3	13	.769	0	15	1.000	10	0	0	0	0.0	0	0.0	.309	3-1
08/26/2023	McNeese	*2	0	0	0	.000	0	1	.000	0	0	0	.000	0	5	1.000	2	0	0	0	0.0	0	0.0	.333	3-0
09/07/2023	Middle Tenn.	4	0	0	0	.000	2	2	1.000	0	1	1	.000	1	7	.857	2	0	0	0	0.0	0	0.0	.221	1-3
09/14/2023	at South Alabama	5	1	0	2	.500	0	3	.000	0	0	0	.000	0	12	1.000	8	0	0	0	0.0	0	1.0	.191	3-2
09/15/2023	vs UAB	*4	0	0	0	.000	2	3	.667	2	3	17	.824	1	11	.909	9	0	0	0	0.0	0	2.0	.189	3-1
09/16/2023	vs Samford	4	0	0	0	.000	1	4	.250	2	2	22	.909	0	4	1.000	7	0	0	0	0.0	0	2.0	.386	3-1
09/22/2023	Florida	*5	0	0	1	.000	1	7	.143	0	3	18	.833	1	23	.957	9	0	0	0	0.0	0	0.0	.196	2-3
09/24/2023	Ole Miss	*4	0	0	1	.000	2	7	.286	1	3	18	.833	2	34	.941	11	0	0	0	0.0	0	1.0	.199	3-1
09/27/2023	at Arkansas	*3	0	0	0	.000	1	1	1.000	0	1	5	.800	2	19	.895	2	0	0	0	0.0	0	0.0	-.049	0-3
10/01/2023	Georgia	*4	0	0	0	.000	1	3	.333	0	2	12	.833	0	9	1.000	10	0	0	0	0.0	0	0.0	.262	3-1
10/06/2023	at Florida	*3	0	0	0	.000	2	2	1.000	1	2	13	.846	1	22	.955	6	0	0	0	0.0	0	1.0	.387	3-0
10/08/2023	at South Carolina	*5	0	0	0	.000	1	5	.200	0	1	13	.923	1	24	.958	6	0	0	0	0.0	0	0.0	.197	3-2
10/13/2023	at Tennessee	*4	0	0	0	.000	0	6	.000	1	1	15	.933	0	12	1.000	5	0	0	0	0.0	0	1.0	.122	1-3
10/20/2023	Missouri	*3	0	0	0	.000	0	2	.000	0	0	9	1.000	1	31	.968	2	0	0	0	0.0	0	0.0	.168	0-3
10/22/2023	South Carolina	5	0	0	0	.000	9	23	.391	0	3	18	.833	3	38	.921	23	0	0	0	0.0	0	0.0	.241	3-2
10/27/2023	at Georgia	5	0	0	0	.000	6	19	.316	0	3	17	.824	2	18	.889	23	0	0	0	0.0	0	0.0	.243	3-2
10/29/2023	at Alabama	4	0	0	0	.000	7	20	.350	0	3	14	.786	1	34	.971	15	0	0	0	0.0	0	0.0	.248	3-1
11/05/2023	at Texas A&M	5	0	0	0	.000	1	2	.500	1	3	17	.824	1	11	.909	11	0	0	0	0.0	0	1.0	.320	3-2
11/08/2023	Kentucky	*3	0	0	0	.000	0	2	.000	0	1	5	.800	1	14	.929	3	0	0	0	0.0	0	0.0	.095	0-3
11/12/2023	at Missouri	4	0	0	0	.000	1	1	1.000	1	1	15	.933	1	23	.957	9	0	0	0	0.0	0	1.0	.242	1-3
11/15/2023	at Mississippi St.	*5	0	0	0	.000	1	7	.143	0	1	9	.889	1	19	.947	12	0	0	0	0.0	0	0.0	.175	2-3
11/19/2023	LSU	3	0	0	0	.000	0	2	.000	0	0	0	.000	0	6	1.000	8	0	0	0	0.0	0	0.0	.344	3-0
11/22/2023	Alabama	3	0	0	0	.000	3	8	.375	0	0	0	.000	0	11	1.000	8	0	0	0	0.0	0	0.0	.252	3-0
11/24/2023	Arkansas	4	0	0	0	.000	3	6	.500	0	0	0	.000	1	11	.909	6	0	0	0	0.0	0	0.0	.144	2-3
<b>Totals</b>		<b>95</b>	<b>1</b>	<b>0</b>	<b>4</b>	<b>.250</b>	<b>46</b>	<b>139</b>	<b>.331</b>	<b>9</b>	<b>37</b>	<b>251</b>	<b>.853</b>	<b>21</b>	<b>413</b>	<b>.949</b>	<b>207</b>	<b>0</b>	<b>0</b>	<b>0</b>	<b>0.0</b>	<b>0</b>	<b>10.0</b>		

### Player Averages

Sets Played	Kills per set	Assists per set	Service aces per set	Digs per set	Blocks per set	Points per set
95	0.01	0.48	0.09	2.18	0.00	0.11

### CAREER STATS

SEASON	TEAM	SM-MP	K	K/S	E	TA	PCT	A	A/S	SA	SA/S	SE	DIG	D/S	RE	BS	BA	TB	B/S	BE	BHE	PTS	PTS/S
2022-23	FIU	105-28	47	0.45	28	216	.088	14	0.13	23	0.22	30	221	2.10	21	1	7	8	0.08	0	0	74.5	0.71
2023-24	AUB	95-24	1	0.01	0	4	.250	46	0.48	9	0.09	37	207	2.18	21	0	0	0	0.00	0	0	10.0	0.11
<b>TOTAL FOR AUB</b>	<b>95 - 24</b>	<b>1</b>	<b>0.01</b>	<b>0</b>	<b>4</b>	<b>.250</b>	<b>46</b>	<b>0.48</b>	<b>9</b>	<b>0.09</b>	<b>37</b>	<b>207</b>	<b>2.18</b>	<b>21</b>	<b>0</b>	<b>0</b>	<b>0</b>	<b>0.00</b>	<b>0</b>	<b>0</b>	<b>10.0</b>	<b>0.11</b>	
<b>TOTAL</b>	<b>200 - 52</b>	<b>48</b>	<b>0.24</b>	<b>28</b>	<b>220</b>	<b>.091</b>	<b>60</b>	<b>0.30</b>	<b>32</b>	<b>0.16</b>	<b>67</b>	<b>428</b>	<b>2.14</b>	<b>42</b>	<b>1</b>	<b>7</b>	<b>8</b>	<b>0.04</b>	<b>0</b>	<b>0</b>	<b>84.5</b>	<b>0.42</b>	

# #14 CHELSEY HARMON

MIDDLE BLOCKER | 6-3 | SENIOR  
PUYALLUP, WASH. (PORTLAND)



### HARMON'S HIGHLIGHTS:

- 3rd best hitting percentage in program history (.706) against Jackson State.
- Currently holds the sixth-best hitting percentage in single-season program history (.344)
- Made her Auburn debut on Aug. 26 vs. Belmont

CATEGORY	CAREER HIGH	OPPONENT/DATE
Kills	16	vs San Francisco (10/16/21)
Attempts	23	at LSU (10/5/22)
Hitting Percentage (Min. 10 ATT.)	.706	vs Jackson State (9/17/22)
Assists	2 (3x)	last vs Samford (9/16/23)
Digs	4 (2x)	last at Santa Clara (3/9/21)
Blocks	10	vs Troy (9/10/22)
Aces	2 (3x)	last vs Eastern Washington (8/28/21)
Points	15.5	at LSU (10/5/22)

CATEGORY	SEASON HIGH	OPPONENT/DATE
Kills	6	vs Ole Miss (9/24/23)
Attempts	12 (2x)	last vs Ole Miss (9/24/23)
Hitting Percentage (Min. 10 ATT.)	.417	vs Ole Miss (9/24/23)
Assists	2	last vs Samford (9/16/23)
Digs	2 (3x)	last vs South Carolina (10/22/23)
Blocks	8	vs Ole Miss (9/24/23)
Aces	4	vs Charleston Southern (9/8/23)
Points	12.5	vs Charleston Southern (9/8/23)

### GAME BY GAME

Date	Opponent	SP	Attack				Set			Serve				Recept			Blocking				Team				
			K	E	TA	PCT	A	TA	PCT	SA	SE	TA	PCT	RE	TA	PCT	DIG	BS	BA	BE	TOTAL	BHE	POINTS	HIT%	SCORE
08/26/2023	McNeese	1	1	0	2	.500	1	2	.500	0	0	4	1.000	0	0	.000	1	0	2	0	2.0	0	2.0	.333	3-0
08/26/2023	Jacksonville St.	1	2	0	2	1.000	0	1	.000	0	0	6	1.000	0	0	.000	0	0	0	0	0.0	0	2.0	.395	3-0
09/07/2023	Middle Tenn.	1	1	0	2	.500	0	0	.000	0	0	0	.000	0	0	.000	0	0	0	0	0.0	0	1.0	.221	1-3
09/08/2023	Charleston So.	*4	5	2	12	.250	0	3	.000	4	2	15	.867	0	0	.000	2	0	7	1	7.0	0	12.5	.245	3-1
09/09/2023	Mercer	*3	4	0	6	.667	1	3	.333	1	3	14	.786	0	0	.000	1	1	3	0	4.0	0	7.5	.346	3-0
09/14/2023	at South Alabama	3	2	0	4	.500	0	1	.000	2	0	9	1.000	0	0	.000	0	0	3	1	3.0	0	5.5	.191	3-2
09/16/2023	vs Samford	4	0	0	0	.000	2	3	.667	1	2	22	.909	0	0	.000	0	0	0	0	0.0	0	1.0	.386	3-1
09/22/2023	Florida	*5	4	2	10	.200	0	2	.000	0	0	3	1.000	0	0	.000	1	0	2	2	2.0	0	5.0	.196	2-3
09/24/2023	Ole Miss	*4	6	1	12	.417	0	0	.000	0	0	3	1.000	0	0	.000	2	0	8	0	8.0	0	10.0	.199	3-1
09/27/2023	at Arkansas	*3	2	1	3	.333	0	0	.000	0	0	3	1.000	0	0	.000	1	0	2	0	2.0	0	3.0	-.049	0-3
10/01/2023	Georgia	4	0	0	0	.000	0	0	.000	2	0	18	1.000	0	0	.000	1	0	0	0	0.0	0	2.0	.262	3-1
10/06/2023	at Florida	3	0	0	1	.000	0	0	.000	2	1	12	.917	0	0	.000	1	0	0	0	0.0	0	2.0	.387	3-0
10/08/2023	at South Carolina	5	0	0	0	.000	0	0	.000	2	2	15	.867	0	0	.000	1	0	0	0	0.0	0	2.0	.197	3-2
10/13/2023	at Tennessee	*4	0	0	0	.000	0	2	.000	1	2	13	.846	0	0	.000	0	0	0	0	0.0	0	1.0	.122	1-3
10/20/2023	Missouri	2	0	0	0	.000	0	0	.000	0	1	4	.750	0	0	.000	0	0	0	0	0.0	0	0.0	.168	0-3
10/22/2023	South Carolina	5	0	0	0	.000	0	2	.000	1	1	18	.944	0	0	.000	2	0	0	0	0.0	0	1.0	.241	3-2
10/27/2023	at Georgia	5	0	0	0	.000	0	0	.000	3	1	13	.923	0	0	.000	1	0	0	0	0.0	0	3.0	.243	3-2
10/29/2023	at Alabama	4	0	0	0	.000	0	1	.000	2	2	13	.846	0	0	.000	1	0	0	0	0.0	0	2.0	.248	3-1
11/05/2023	at Texas A&M	4	0	0	0	.000	0	1	.000	0	1	13	.923	0	0	.000	1	0	0	0	0.0	0	0.0	.320	3-2
11/12/2023	at Missouri	4	0	0	1	.000	0	2	.000	0	1	10	.900	0	0	.000	2	0	0	0	0.0	0	0.0	.242	1-3
11/15/2023	at Mississippi St.	3	0	0	0	.000	0	0	.000	1	0	7	1.000	0	0	.000	0	0	0	0	0.0	0	1.0	.175	2-3
11/19/2023	LSU	*3	0	0	0	.000	0	0	.000	0	2	16	.875	0	0	.000	1	0	0	0	0.0	0	0.0	.344	3-0
11/22/2023	Alabama	*2	0	0	0	.000	0	1	.000	0	0	5	1.000	0	0	.000	0	0	0	0	0.0	0	0.0	.252	3-0
11/24/2023	Arkansas	*1	0	0	0	.000	0	0	.000	0	0	3	1.000	0	0	.000	0	0	0	0	0.0	0	0.0	.144	2-3
<b>Totals</b>		<b>78</b>	<b>27</b>	<b>6</b>	<b>55</b>	<b>.382</b>	<b>4</b>	<b>24</b>	<b>.167</b>	<b>22</b>	<b>21</b>	<b>239</b>	<b>.912</b>	<b>0</b>	<b>0</b>	<b>.000</b>	<b>19</b>	<b>1</b>	<b>27</b>	<b>4</b>	<b>28.0</b>	<b>0</b>	<b>63.5</b>		

### Player Averages

Sets Played	Kills per set	Assists per set	Service aces per set	Digs per set	Blocks per set	Points per set
78	0.35	0.05	0.28	0.24	0.36	0.81

### CAREER STATS

SEASON	TEAM	SM-MP	K	K/S	E	TA	PCT	A	A/S	SA	SA/S	SE	DIG	D/S	RE	BS	BA	TB	B/S	BE	BHE	PTS	PTS/S
2020-21	UP	34-12	20	0.59	11	62	.145	4	0.12	5	0.15	7	19	0.56	1	2	21	23	0.68	0	0	37.5	1.10
2021-22	UP	78-22	108	1.38	31	246	.313	1	0.01	4	0.05	5	13	0.17	1	6	42	48	0.62	9	1	139.0	1.78
2022-23	AUB	122-31	176	1.44	48	372	.344	5	0.04	0	0.00	4	17	0.14	1	4	103	107	0.88	6	0	231.5	1.90
2023-24	AUB	78-24	27	0.35	6	55	.382	4	0.05	22	0.28	21	19	0.24	0	1	27	28	0.36	4	0	63.5	0.81
<b>TOTAL FOR AUB</b>		<b>200 - 55</b>	<b>203</b>	<b>1.02</b>	<b>54</b>	<b>427</b>	<b>.349</b>	<b>9</b>	<b>0.05</b>	<b>22</b>	<b>0.11</b>	<b>25</b>	<b>36</b>	<b>0.18</b>	<b>1</b>	<b>5</b>	<b>130</b>	<b>135</b>	<b>0.68</b>	<b>10</b>	<b>0</b>	<b>295.0</b>	<b>1.48</b>
<b>TOTAL</b>		<b>312 - 89</b>	<b>331</b>	<b>1.06</b>	<b>96</b>	<b>735</b>	<b>.320</b>	<b>14</b>	<b>0.04</b>	<b>31</b>	<b>0.10</b>	<b>37</b>	<b>68</b>	<b>0.22</b>	<b>3</b>	<b>13</b>	<b>193</b>	<b>206</b>	<b>0.66</b>	<b>19</b>	<b>1</b>	<b>471.5</b>	<b>1.51</b>

# #17 CASSIDY TANTON

**PIN HITTER | 6-0 | REDSHIRT-SOPHOMORE  
STONEVILLE, N.C. (DALTON MCMICHAEL)**



### TANTON'S HIGHLIGHTS:

- Picked up a career-high 10 kills vs. Marist, hitting .348
- Made her season debut on Aug. 26 vs. Belmont

CATEGORY	CAREER HIGH	OPPONENT/DATE
Kills	10	vs Marist (8/27/22)
Attempts	23	vs Marist (8/27/22)
Hitting Percentage (Min. 10 ATT.)	.348	vs Marist (8/27/22)
Assists	--	--
Digs	6	vs Marist (8/27/22)
Blocks	--	--
Aces	2(3x)	last vs Southern Miss (9/16/22)
Points	12.0	vs Marist (8/27/22)

CATEGORY	SEASON HIGH	OPPONENT/DATE
Kills	1	vs Middle Tennessee (9/7/23)
Attempts	5	vs Middle Tennessee (9/7/23)
Hitting Percentage (Min. 10 ATT.)	--	--
Assists	--	--
Digs	--	--
Blocks	--	--
Aces	--	--
Points	1.0	vs Middle Tennessee (9/7/23)

### GAME BY GAME

Date	Opponent	SP	Attack			Set			Serve			Recept			Blocking				Team						
			K	E	TA	PCT	A	TA	PCT	SA	SE	TA	PCT	RE	TA	PCT	DIG	BS	BA	BE	TOTAL	BHE	POINTS	HIT%	SCORE
09/07/2023	Middle Tenn.	1	1	1	5	.000	0	0	.000	0	0	0	.000	1	4	.750	0	0	0	0	0.0	0	1.0	.221	1-3
<b>Totals</b>		<b>1</b>	<b>1</b>	<b>1</b>	<b>5</b>	<b>.000</b>	<b>0</b>	<b>0</b>	<b>.000</b>	<b>0</b>	<b>0</b>	<b>0</b>	<b>.000</b>	<b>1</b>	<b>4</b>	<b>.750</b>	<b>0</b>	<b>0</b>	<b>0</b>	<b>0</b>	<b>0.0</b>	<b>0</b>	<b>1.0</b>		

### Player Averages

Sets Played	Kills per set	Assists per set	Service aces per set	Digs per set	Blocks per set	Points per set
1	1.00	0.00	0.00	0.00	0.00	1.00

### CAREER STATS

SEASON	TEAM	SM-MP	K	K/S	E	TA	PCT	A	A/S	SA	SA/S	SE	DIG	D/S	RE	BS	BA	TB	B/S	BE	BHE	PTS	PTS/S
2022-23	AUB	58-19	12	0.21	7	34	.147	0	0.00	11	0.19	28	19	0.33	2	0	0	0	0.00	0	0	23.0	0.40
2023-24	AUB	1-1	1	1.00	1	5	.000	0	0.00	0	0.00	0	0	0.00	1	0	0	0	0.00	0	0	1.0	1.00
<b>TOTAL</b>		<b>59 - 20</b>	<b>13</b>	<b>0.22</b>	<b>8</b>	<b>39</b>	<b>.128</b>	<b>0</b>	<b>0.00</b>	<b>11</b>	<b>0.19</b>	<b>28</b>	<b>19</b>	<b>0.32</b>	<b>3</b>	<b>0</b>	<b>0</b>	<b>0</b>	<b>0.00</b>	<b>0</b>	<b>0</b>	<b>24.0</b>	<b>0.41</b>



**#19 JASMINE OKEOMA**  
**MIDDLE BLOCKER | 6-3 | FRESHMAN**  
**WOODBIDGE, VA. (FOREST PARK)**



**OKEOMA'S HIGHLIGHTS:**

CATEGORY	CAREER HIGH	OPPONENT/DATE
Kills	--	--
Attempts	--	--
Hitting Percentage (Min. 10 ATT.)	--	--
Assists	--	--
Digs	--	--
Blocks	--	--
Aces	--	--
Points	--	--

CATEGORY	SEASON HIGH	OPPONENT/DATE
Kills	--	--
Attempts	--	--
Hitting Percentage (Min. 10 ATT.)	--	--
Assists	--	--
Digs	--	--
Blocks	--	--
Aces	--	--
Points	--	--

**GAME BY GAME**

**CAREER STATS**

# #22 SYDNEY HANDEL

DEFENSIVE SPECIALIST | 6-0 | SOPHOMORE  
LEE'S SUMMIT, MO. (LEE'S SUMMIT WEST)



### HANDEL'S HIGHLIGHTS:

- Set career-highs in aces (3) and digs (6) in the NCAA Tournament against Houston
- Made her collegiate debut against Alabama A&M

CATEGORY	CAREER HIGH	OPPONENT/DATE
Kills	1	vs Middle Tennessee (9/7/23)
Attempts	1 (2x)	last at South Alabama (9/14/23)
Hitting Percentage (Min. 10 ATT.)	--	--
Assists	--	--
Digs	10	at South Alabama (9/14/23)
Blocks	--	--
Aces	3	vs Houston (12/3/22)
Points	3.0	vs Houston (12/3/22)

CATEGORY	SEASON HIGH	OPPONENT/DATE
Kills	--	--
Attempts	1	at South Alabama (9/14/23)
Hitting Percentage (Min. 10 ATT.)	--	--
Assists	--	--
Digs	10	at South Alabama (9/14/23)
Blocks	--	--
Aces	2	vs South Carolina (10/22/23)
Points	2.0	vs South Carolina (10/22/23)

### GAME BY GAME

Date	Opponent	Attack				Set			Serve				Recept			Blocking				Team					
		SP	K	E	TA	PCT	A	TA	PCT	SA	SE	TA	PCT	RE	TA	PCT	DIG	BS	BA	BE	TOTAL	BHE	POINTS	HIT%	SCORE
09/02/2023	vs SMU	2	0	0	0	.000	0	0	.000	0	2	6	.667	0	0	.000	0	0	0	0	0.0	0	0.0	.316	3-1
09/09/2023	Mercer	1	0	0	0	.000	0	0	.000	0	0	2	1.000	0	0	.000	0	0	0	0	0.0	0	0.0	.346	3-0
09/14/2023	at South Alabama	5	0	0	1	.000	0	2	.000	0	1	14	.929	1	10	.900	10	0	0	0	0.0	0	0.0	.191	3-2
09/15/2023	vs UAB	4	0	0	0	.000	0	0	.000	0	2	11	.818	0	0	.000	0	0	0	0	0.0	0	0.0	.189	3-1
09/16/2023	vs Samford	1	0	0	0	.000	0	2	.000	0	0	0	.000	0	4	1.000	0	0	0	0	0.0	0	0.0	.386	3-1
10/20/2023	Missouri	1	0	0	0	.000	0	1	.000	0	1	3	.667	0	0	.000	0	0	0	0	0.0	0	0.0	.168	0-3
10/22/2023	South Carolina	5	0	0	0	.000	0	2	.000	2	4	19	.789	0	22	1.000	7	0	0	0	0.0	0	2.0	.241	3-2
<b>Totals</b>		<b>19</b>	<b>0</b>	<b>0</b>	<b>1</b>	<b>.000</b>	<b>0</b>	<b>7</b>	<b>.000</b>	<b>2</b>	<b>10</b>	<b>55</b>	<b>.818</b>	<b>1</b>	<b>36</b>	<b>.972</b>	<b>17</b>	<b>0</b>	<b>0</b>	<b>0</b>	<b>0.0</b>	<b>0</b>	<b>2.0</b>		

### Player Averages

Sets Played	Kills per set	Assists per set	Service aces per set	Digs per set	Blocks per set	Points per set
19	0.00	0.00	0.11	0.89	0.00	0.11

### CAREER STATS

SEASON	TEAM	SM-MP	K	K/S	E	TA	PCT	A	A/S	SA	SA/S	SE	DIG	D/S	RE	BS	BA	TB	B/S	BE	BHE	PTS	PTS/S
2022-23	AUB	19-6	0	0.00	0	1	.000	0	0.00	6	0.32	11	10	0.53	3	0	0	0	0.00	0	0	6.0	0.32
2023-24	AUB	19-7	0	0.00	0	1	.000	0	0.00	2	0.11	10	17	0.89	1	0	0	0	0.00	0	0	2.0	0.11
<b>TOTAL</b>		<b>38 - 13</b>	<b>0</b>	<b>0.00</b>	<b>0</b>	<b>2</b>	<b>.000</b>	<b>0</b>	<b>0.00</b>	<b>8</b>	<b>0.21</b>	<b>21</b>	<b>27</b>	<b>0.71</b>	<b>4</b>	<b>0</b>	<b>0</b>	<b>0</b>	<b>0.00</b>	<b>0</b>	<b>0</b>	<b>8.0</b>	<b>0.21</b>





# #25 LAKIN LAURENDINE

**PIN HITTER | 6-1 | FRESHMAN**  
**JACKSON, MISS. (JACKSON ACADEMY)**

## LAURENDINE'S HIGHLIGHTS:

CATEGORY	CAREER HIGH	OPPONENT/DATE
Kills	--	--
Attempts	--	--
Hitting Percentage (Min. 10 ATT.)	--	--
Assists	--	--
Digs	--	--
Blocks	--	--
Aces	--	--
Points	--	--

CATEGORY	SEASON HIGH	OPPONENT/DATE
Kills	--	--
Attempts	--	--
Hitting Percentage (Min. 10 ATT.)	--	--
Assists	--	--
Digs	--	--
Blocks	--	--
Aces	--	--
Points	--	--

## GAME BY GAME

## CAREER STATS