



2023 VOLLEYBALL MATCH NOTES

AUBURN ATHLETICS COMMUNICATIONS: 392 SOUTH DONAHUE DRIVE || AUBURN, AL 36830 || AUBURNTIGERS.COM || @AUBURNVB

2023 SCHEDULE/RESULTS

18-8 OVERALL | 8-7 SEC

8-4 HOME | 7-4 AWAY | 3-0 NEUTRAL

DATE	OPPONENT	TV	TIME/RESULT
Aug. 25	vs Coppin State!	SECN+	W, 3-1
Aug. 26	vs McNeese State!	SECN+	W, 3-0
Aug. 26	vs Jacksonville State!	SECN+	W, 3-0
Sept. 2	vs SMU@	N/A	W, 3-1
Sept. 3	at Florida State@	ACCN+	W, 3-1
Sept. 7	vs Middle Tennessee\$	SECN+	L, 1-3
Sept. 8	vs Charleston Southern\$	SECN+	W, 3-1
Sept. 9	vs Mercer\$	SECN+	W, 3-0
Sept. 14	at South Alabama%	ESPN+	W, 3-2
Sept. 15	vs UAB%	N/A	W, 3-1
Sept. 16	vs Samford%	N/A	W, 3-1
Sept. 22	vs #3 Florida*	SECN+	L, 2-3
Sept. 24	vs Ole Miss*	SECN+	W, 3-1
Sept. 27	at #14 Arkansas*	SEC Network	L, 0-3
Oct. 1	vs Georgia*	ESPN	W, 3-1
Oct. 6	at #9 Florida*	SECN+	W, 3-0
Oct. 8	at South Carolina*	ESPNU	W, 3-2
Oct. 13	at #10 Tennessee*	SECN+	L, 1-3
Oct. 20	vs Missouri*	SEC Network	L, 0-3
Oct. 22	vs South Carolina*	SECN+	W, 3-2
Oct. 27	at Georgia*	SECN+	W, 3-2
Oct. 29	at Alabama*	SEC Network	W, 3-1
Nov. 5	at Texas A&M*	SEC Network	W, 3-2
Nov. 8	vs #13 Kentucky*	SECN+	L, 0-3
Nov. 12	at Missouri*	SECN+	L, 1-3
Nov. 15	at Mississippi State*	SECN+	L, 2-3
Nov. 19	vs LSU*	SECN+	2 p.m. CT
Nov. 22	vs Alabama*	SECN+	6:30 p.m. CT
Nov. 24	vs Arkansas*	SECN+	3 p.m. CT

BOLD indicates home contest | All time Central and subject to change
! - War Eagle Invite | @ - Seminole Invite | S - Tiger Invite | % - Alabama Showdown
* - Southeastern Conference Game | # - NCAA Tournament

AUBURN ATHLETICS COMMUNICATIONS

Office Phone 334-844-9800
Kirk Sampson Associate AD
sampska@auburn.edu
Thomas Hoffman Volleyball Contact
tgh0024@auburn.edu
C: 503-302-9592

FOLLOW ALONG

Web AuburnTigers.com
X @AuburnVB
Instagram @auburnvolleyball

MATCH 27 LSU

Sunday, Nov. 19 | 2 p.m. CT
Auburn, Alabama | Neville Arena | SEC Network+



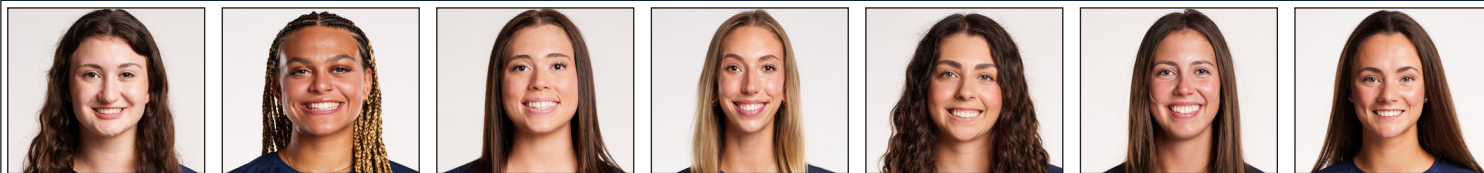
AUBURN	RV	LSU	NR
AVCA Coaches Poll	_____	_____	_____
2023 Record	18-8 8-7 SEC	_____	11-13 6-8 SEC
Head Coach	Brent Crouch	_____	Tonya Johnson
Career Record (Year)	148-131 (10th)	_____	112-99 (7th)
Record at Auburn (Year)	53-40 (4th)	_____	27-27 (2nd)

Site Auburn, Alabama
Venue Neville Arena
Live Stats Statbroadcast
Broadcast Crew SEC Network+
Series Record | Current Streak Auburn leads, 41-25 | LSU W7
First Meeting 1977 LSU 2, Auburn 0
Last Meeting Oct. 5, 2022 LSU 3, Auburn 0 (25-22, 20-25, 20-25, 25-21, 15-12)
Last Auburn Win Sept. 28, 2022 Auburn 3, Mississippi St. 2 (19-25, 25-18, 23-25, 25-16, 15-7)
Last LSU Win Sept. 23, 2016 Auburn 3, LSU 2 (25-22, 25-22, 23-25, 23-25, 15-9)

QUICK HITS

- >> Sophomore outside hitter Akasha Anderson registered 20 kills in her last outing against Mississippi State. The feat marked the 11th time the Reston, Virginia native piled up at least 20 kills in her young career.
- >> Fellow sophomore Kendal Kemp went on a blocking bonanza in Starkville. The Eagan, Minnesota product stacked up 10 blocks, tying her season-best in 2023. She now has 294 career blocks, needing just six more to become the eighth Tiger in program history to reach 300. Kemp enters Sunday's matchup averaging 1.27 blocks per set, ranking fifth in the Southeastern Conference. Amongst active hitters in the conference, Kemp's .347 hitting percentage ranks second.
- >> As a team, Auburn's 2.42 blocks per set is the fourth-best mark in the conference and No. 52 in the nation. The team's 251.5 total blocks are the second-most in the SEC.
- >> Junior defensive specialist Fallan Lanham jumped back into the lineup after missing two months due to injury. Lanham's 12 digs marked the third time she reached double-digits this season and signaled a new season-best.
- >> Liberty, Missouri product Bel Zimmerman enters Sunday's contest averaging 0.33 aces per set. Her mark not only leads the team but also ranks eighth in the SEC.
- >> The magic number for the Auburn defense appears to be 200. When holding opponents to .200 hitting or lower, the Tigers are 12-1 in such matches.
- >> With 148 wins throughout his 10-year career, head coach Brent Crouch is just two wins away from reaching 150.

AUBURN'S POTENTIAL STARTING SEVEN



SARAH MORTON	AKASHA ANDERSON	BELLA BELL	KYLA SWANSON	KENDAL KEMP	JACKIE BARRETT	PAIGE THIBAUT
#2 • DS/L • SO. • 5-8	#3 • PH • SO. • 6-3	#5 • RS • SR. • 6-4	#6 • MB • SR. • 6-4	#8 • MB • SO. • 6-6	#10 • S • SR. • 6-2	#13 • DS/L • JR. • 5-7
D/S: 3.21	K/S: 3.31	K/S: 2.18	K/S: 1.26	1.50	D/S: 2.26	D/S: 2.18
A/S: 0.87	HIT%: .166	HIT%: .274	HIT%: .283	.392	A/S: 9.29	A/S: 0.47
SA/S: 0.12	D/S: 2.13	D/S: 0.28	D/S: 0.22	D/S: 0.10	SA/S: 0.26	SA/S: 0.11
P/S: 0.14	B/S: 0.44	B/S: 0.69	B/S: 1.05	B/S: 1.27	P/S: 1.14	P/S: 0.12
	SA/S: 0.28	SA/S: 0.00	SA/S: 0.04	SA/S: 0.01		
	P/S: 3.82	P/S: 2.53	P/S: 1.87	P/S: 2.22		

K/S: kills per set • HIT%: hitting percentage • D/S: digs per set • B/S: blocks per set • A/S: assists per set • SA/S: aces per set • P/S: points per set



#1 MADISON SCHEER
So. | PH | 6-1



#2 SARAH MORTON
So. | L | 5-8



#3 AKASHA ANDERSON
So. | PH | 6-3



#4 FALLAN LANHAM
Jr. | L | 5-8



#5 BELLA BELL
Gr. | MB | 6-4



#6 KYLA SWANSON
Gr. | MB | 6-4



#7 PEYTON DUNN
R-So. | S | 5-11



#8 KENDAL KEMP
So. | MB | 6-6



#9 ZOE SLAUGHTER
So. | L | 5-7



#10 JACKIE BARRETT
Sr. | S | 6-2



#11 JORDAN SINNESS
Jr. | S | 5-9



#12 BEL ZIMMERMAN
So. | PH | 6-2



#13 PAIGE THIBAULT
Jr. | L | 5-7



#14 CHELSEY HARMON
Sr. | MB | 6-3



#17 CASSIDY TANTON
R-So. | PH | 6-0



#19 JASMINE OKEOMA
Fr. | MB | 6-3



#22 SYDNEY HANDEL
So. | L | 6-0



#22 LAKIN LAURENDINE
Fr. | PH | 6-1

#WarEagle



AuburnTigers.com

@AuburnVB | @AuburnTigers
@AuburnVBCoach



/AuburnVB
/AuburnTigers

TEAM SCHEDULE AND MEDIA AVAILABILITY >> WEEK OF NOV. 13 - NOV. 19

MONDAY November 13	TUESDAY November 14	WEDNESDAY November 15	THURSDAY November 16	FRIDAY November 17	SATURDAY November 18	SUNDAY November 19
PRACTICE: 3:45 p.m. - 6 p.m. SAC	TRAVEL	MATCH: 6 p.m. CT at Mississippi St. Starkville, MS	OFF	PRACTICE: 3:45 p.m. - 6 p.m. SAC	PRACTICE: 3:45 p.m. - 6 p.m. SAC	MATCH: 2 p.m. CT vs LSU Auburn, AL
INTERVIEWS BY REQUEST	INTERVIEWS BY REQUEST	INTERVIEWS POST MATCH	NO INTERVIEWS	INTERVIEWS BY REQUEST	INTERVIEWS BY REQUEST	INTERVIEWS POST MATCH

AUBURN ATHLETICS COMMUNICATIONS

QUICK FACTS

AUBURNTIGERS.COM

For updated game notes, statistics, safety protocols and latest information on Auburn volleyball and Auburn Athletics, visit AuburnTigers.com.

INTERVIEW POLICY

Coach Crouch, assistant coaches and student-athletes are available for interviews by contacting Thomas Hoffman in the communications office. All interviews during the week will be conducted via phone or ZOOM. Post-match interviews will be conducted in the media room at Auburn Arena following a brief cooling-off period.

CREDENTIALS

Anyone wishing to cover an Auburn volleyball match should contact Thomas Hoffman in the communications office at least 24 hours in advance to make arrangements.

MATCH DAY SERVICES

Printed copies of notes, flip cards and statistics will be available upon request. Digital copies will be emailed out prior to the match and will be available on AuburnTigers.com. Media members are permitted to bring their own printed materials. Stats will not printed between sets or after matches. Live stats will be provided during the match and final statistics will be emailed out and posted on AuburnTigers.com. All post-match interviews will be conducted in the media room. Wireless internet is available in the Arena; ask Thomas Hoffman for the password. Match highlights, photos and postgame interviews will be available on Imagen following matches.

PHOTO SERVICES

For photos of Auburn volleyball or any Olympic sports, contact Zach Bland at zdb007@auburn.edu.

COMMUNICATIONS STAFF

Thomas Hoffman Volleyball Contact
cell: 503-302-9592
email: tgh0024@auburn.edu

Kirk Sampson Associate AD
cell: 334-750-1385
email: sampska@auburn.edu

UNIVERSITY INFORMATION

City / Zip _____ Auburn, Ala. / 36831
 Founded _____ Oct. 1, 1856
 Enrollment _____ 30,737
 Nickname _____ Tigers
 Colors _____ Navy Blue & Burnt Orange
 Affiliation _____ NCAA Division I
 Conference _____ Southeastern Conference
 Home Court _____ Neville Arena (9,121)
 President _____ Dr. Chris Roberts
 Athletics Director _____ John Cohen
 Sport Administrator _____ Joy Vrbka (Florida, 2003)

TEAM INFORMATION

Letterwinners Returning/Lost _____ 12/0
 Starters Returning/Lost _____ 6+libero/0
 Newcomers _____ 6
 2022 Overall Record _____ 22-9
 2022 Conference Record/Finish _____ 10-8/6th

PROGRAM HISTORY

First Year of Volleyball _____ 1967
 _____ Program discontinued 1981; Reinstated 1986
 Seasons of Auburn Volleyball _____ 45th
 All-Time Overall Record _____ 709-706-4 (.501)
 in Neville Arena (Since 2013) _____ 76-63 (.535)
 Total Home Record _____ 248-216 (.531)
 All-Time SEC Record _____ 206-375 (.350)
 NCAA Tournament Appearances _____ 2/2010, 2022
 SEC Championships/Last _____ 1/Co-West Champions (1996)

STAFF INFORMATION

Head Coach _____ Brent Crouch (Texas A&M, '98 & '00; Oregon '06)
 Career Record _____ 148-131 (.514)/10th Season
 Record at Auburn _____ 53-40 (.523)/4th Season
 Assistant Coach/Recruiting Coordinator _____ Rachel Corbelli (2nd Season)
 Assistant Coach _____ Keith Smith (2nd Season)
 Assistant Coach _____ Jack Burton (1st Season)
 Technical Coordinator _____ Mackenna Basore (2nd Season)
 Director of Operations _____ Emily Houle (2nd Season)
 Strength & Conditioning _____ Bethany Gainey
 Athletic Trainer _____ Nate Warner
 Equipment Manager _____ Brian Maddox

ATHLETIC COMMUNICATIONS

Associate AD/Communications _____ Kirk Sampson
 Assistant Director/Volleyball Contact _____ Thomas Hoffman
 Email _____ tgh0024@auburn.edu
 Phone _____ 503-302-9592
 Mailing Address _____ Auburn Athletics Complex
 _____ 392 S. Donahue Drive
 Website _____ AuburnTigers.com

GAMEDAY EXPERIENCE: NEVILLE ARENA

>> Neville Arena is in its seventh season as home of Auburn volleyball. The Tigers are 75-63 since moving to the Arena in 2013. The facility seats approximately 9,121.



LAST TIME OUT VS LSU

» Akasha Anderson went for 22 kills while Jackie Barrett grabbed a career-high 60 assists in a five-set thriller last season in Baton Rouge. However, it was LSU who snagged the come-from-behind victory to give Auburn its first loss of the 2022 season.

SCOUTING LSU

» Tonya Johnson enters her second year as head coach of the LSU Tigers in Baton Rouge. Entering Sunday, her squad carries an 11-14 record with a 6-9 mark in conference play. LSU's signature wins came early in 2023, sporting victories over UCLA, Texas Tech and Missouri.

Graduate middle blocker Anita Anwusi continues to be a force offensively in the SEC. Her .370 hitting percentage is the second-best in the conference and No. 54 in the nation. Anwusi is also third on her team, averaging 2.06 kills per set.

The LSU attack is led by freshman Jurnee Robinson, whose 3.86 kills per set rank sixth in the SEC and No. 58 in the country. Robinson is also sixth in points per set at 4.49. Fellow outside hitter Sanaa Dotson's 2.16 kills per set are second for the Tigers.

AUBURN-LSU SERIES

» Entering Sunday's matchup, LSU owns a 48-15 record over Auburn, with a 17-10 mark on the Plains. The last win for the Orange and Blue came via a five-set win in Neville Arena in 2016.

BLOCKERS BEWARE

» Thanks to steady passing from Sarah Morton and the back row, the Auburn attack has managed to be one of the least-blocked teams in the SEC. On average Auburn allows just 1.55 blocks per set, the best in the conference.

MR. 300

» Three hundred appears to be the perfect number for head coach Brent Crouch. All-time, when his teams manage a .300 hitting percentage, he carries an undefeated record of 37-0, including an 17-0 mark at Auburn. The Tigers have accomplished the feat nine different times in 2023.

SECOND SET MAGIC

» Auburn is 11-3 this season when winning the second set of matches. Over the last two years, Crouch's teams are 29-3 when claiming the second frame.

OPEN ON SUNDAYS

» The Tigers have had no trouble showing up for Sunday matches in 2023. So far, Auburn is 7-2 in matches played on Sunday.

PLAYER TO WATCH: AKASHA ANDERSON

» The AVCA South Region Freshman of the Year was up to no good last season. This year, Anderson is 3.31 kills per set and a career-high 2.13 digs per set.



BELOW THE 200 LINE

» In 2023, 200 is the magic number for the Auburn defense. When keeping opponents below .200 or better, the Tigers are 12-1 in such matches.

RIVALRY REWARDS

» Brent Crouch knows how to coach in rivalry matchup. Since arriving on the Plains, Crouch is a perfect 5-0 against Alabama and 5-1 versus Georgia.

THE ZIMMERMAN ZING

» Sophomore Bel Zimmerman's serving has been a huge lift for the Tigers this season. Her team-leading 29 aces this season are seven-fold more than her freshman campaign as the Liberty, Missouri product approaches top-10 numbers for a single season.

Zimmerman has been directly responsible for some of Auburn's largest runs this season because of her stellar serving. The 8-1 start against Mercer featured seven Zimmerman serves in a row. The 25-10 set win over Ole Miss saw Zimmerman step to the service line 10 times in a row. Auburn fans also won't forget her clutch ace at the end of Set No. 4 at South Alabama that send the match into a decisive fifth set.

THIBAUT OF LIGHTNING

» Since stepping into the libero role in a depleting back-row for the Tigers, junior Paige Thibault has been nothing short of brilliant. Across back-to-back wins over South Carolina and Georgia, the Watertown, Minnesota native has ran down a career-best 23 digs.

THE CROUCH HISTORICAL SOCIETY

» Since his arrival on the Plains, head coach Brent Crouch has led the Tigers to a number of firsts:

- First top-25 ranking
- First top-10 win
- First win in Gainesville over Florida
- First win in College Station over Texas A&M
- First win in Columbia over Missouri
- Best start to a season in program history (14-0)
- Best start to SEC Play in program history (3-0)
- Most wins in a season in rally-scoring era (22)

AARP ELIGIBLE

» With his victory over South Carolina on Oct. 22, Brent Crouch reached the 50 win mark as an Auburn Tiger, becoming the fastest to do so in the rally-scoring era.

NO PLACE LIKE NEVILLE

» Auburn is now 27-18 at home under head coach Brent Crouch, including wins in 27 of it's last 41 games at home. All-time Auburn is 76-63 in Neville.

SEC STANDINGS & SCHEDULE

2023 STANDINGS

	CONF	OVERALL	HOME	ROAD	NTRL	STRK
Kentucky	14-1	16-7	6-2	9-5	1-0	-
Tennessee	13-2	22-3	11-2	10-1	1-0	-
Arkansas	13-2	23-4	11-2	8-2	4-0	-
Florida	9-6	17-7	7-6	9-1	1-0	-
Missouri	9-7	17-10	11-4	5-5	1-1	-
Auburn	8-7	18-8	8-4	7-4	3-0	-
Texas A&M	7-8	15-10	6-6	6-4	3-0	-
Georgia	7-8	16-11	10-3	4-6	2-2	-
LSU	6-9	11-14	6-6	2-7	3-1	-
Mississippi St	5-10	12-13	9-4	1-8	2-1	-
South Carolina	4-12	10-15	7-6	2-9	1-0	-
Ole Miss	4-12	10-17	7-4	1-10	2-3	-
Alabama	0-15	10-16	4-8	3-7	3-1	-

THIS WEEK IN THE SEC...

Wednesday, Nov. 15
Mississippi State 3, Auburn 2
Arkansas 3, Ole Miss 2

Thursday, Nov. 16
Kentucky 3, Texas A&M 1

Friday, Nov. 17
Georgia 3, South Carolina 1
Florida 3, Missouri 0
Tennessee 3, LSU 0

Sunday, Nov. 5
Missouri at Kentucky, 1:30 p.m.
Tennessee at Texas A&M, 2 p.m.
Alabama at Georgia, 2 p.m.
LSU at Auburn, 3 p.m.
Florida at Arkansas, 4 p.m.
Mississippi St. at Ole Miss, 4 p.m.

*All times ET

2023 NCAA RPI REPORT

RK	TEAM	RECORD	AU RESULT
7	Tennessee	21-3	L, 1-3
9	Kentucky	15-7	L, 0-3
10	Arkansas	22-4	L, 0-3
18	Florida	16-7	L, 2-3
25	SMU	21-6	W, 3-1
28	Texas A&M	15-9	W, 3-2
29	Missouri	17-9	L, 0-3
30	Florida St.	20-8	W, 3-2
37	South Alabama	21-7	W, 3-2
50	Georgia	15-11	W, 3-1
66	LSU		W, 3-2
85	Mississippi St.	11-13	L, 2-3
99	South Carolina	10-14	W, 3-2
106	Middle Tenn.	20-8	L, 1-3
138	Ole Miss	10-16	W, 3-1
145	Coppin St.	24-4	W, 3-1
146	Mercer	16-11	W, 3-0
192	Samford	14-14	W, 3-1
209	McNeese	15-16	W, 3-0
211	Alabama	10-16	W, 3-1
262	Jacksonville St.	5-21	W, 3-0
273	UAB	4-25	W, 3-1
278	Charleston So.	9-19	W, 3-1

AUBURN OPPONENTS ONLY

AVCA COACHES POLL

RK	TEAM	POINTS	RECORD	PREV.
1	Nebraska [64]	1,600	25-0	1
2	Stanford	1,514	22-3	4
3	Wisconsin	1,449	23-2	2
4	Louisville	1,410	23-3	5
5	Texas	1,291	19-4	3
6	Oregon	1,280	22-5	6
7	Pittsburgh	1,261	22-4	7
8	Tennessee	1,066	21-3	10
9	Georgia Tech	1,043	21-4	8
10	Arkansas	992	22-4	11
11	Washington State	914	20-7	9
12	Kentucky	907	15-7	13
13	BYU	896	22-5	12
14	Penn State	714	17-8	19
15	Creighton	662	23-4	15
16	Purdue	629	17-8	16
17	Kansas	590	19-5	14
18	Arizona State	574	24-4	17
19	Dayton	492	29-2	18
20	Florida	337	16-7	21
21	Houston	300	16-7	22
22	Western Kentucky	294	26-4	23
23	Baylor	155	14-11	20
24	Southern California	118	17-9	25
25	Florida State	69	20-8	NR

Others receiving votes and listed on two or more ballots: Marquette 54; Auburn 48; UC Santa Barbara 36; Pepperdine 31; Minnesota 29; Kansas State 9; Iowa State 7; Utah State 6; SMU 5; TCU 3

INSIDE THE MATCH-UPS

LOUISIANA STATE (LSU) 15-48 (.238)

10-17 H • 5-26 A • 0-5 N

YEAR	SITE	RESULT	MATCH SCORE
1977	NEUTRAL	L	0-2
1979	NEUTRAL	L	0-2
1980	NEUTRAL	L	0-2
1986	NEUTRAL	L	0-3
1987	HOME	L	0-3
1987	NEUTRAL	L	0-3
1988	HOME	L	1-3
1989	AWAY	L	0-3
1990	AWAY	L	1-3
1991	HOME	L	0-3
1991	AWAY	L	0-3
1992	AWAY	L	0-3
1993	AWAY	L	0-3
1993	HOME	W	3-0
1994	HOME	W	3-2
1994	AWAY	L	2-3
1995	AWAY	L	2-3
1995	HOME	W	3-1
1996	HOME	W	3-0
1996	AWAY	W	3-0
1997	AWAY	W	3-1
1997	HOME	W	3-0
1998	HOME	W	3-1
1998	AWAY	L	2-3
1999	AWAY	W	3-1
1999	HOME	W	3-0
2000	HOME	L	2-3
2000	AWAY	W	3-1
2001	AWAY	L	0-3
2001	HOME	L	0-3
2002	HOME	L	0-3

NATIONWIDE AND ON OUR SIDE

» Following 33 kills .472 hitting with 53 attempts across wins over No. 9 Florida and South Carolina, sophomore Madison Scheer earned AVCA/GameChanger National Player of the Week. It was the second such award for the Auburn Volleyball program. Rani Whitson earned the honor in 1996. For Crouch, it was also the second player in his head-coaching career (Khalia Lanier, 2019).

RANK YOU VERY MUCH

» Welcome to the top 25 Auburn Volleyball. After wins over SMU and Florida State, the Tigers earned the program's first-ever ranking at No. 25.

A week later, Auburn moved up to No. 24 following a 2-1 showing at the Tiger Invitational. Auburn spent 10 straight weeks in the top-25.

STAYING ACTIVE

» Bella Bell, Kendal Kemp, Jackie Barrett and Akasha Anderson are all amongst the SEC's top active career leaders. Bell (.340) and Kemp (.347) are both inside the top five in hitting percentage. Kemp's 1.41 blocks per set is currently second in the conference. Anderson ranks in the top 10 in both kills per set (3.50) and points per set (3.98). Barrett's 9.09 assists per set is eighth and Morton ranks sixth in digs per set (3.62).

500 CLUB

» Sophomore Akasha Anderson has eclipsed 500 career kills in her young career, doing so in just 37 matches.

Sophomore libero Sarah Morton earned her 500th dig of her young career against Florida State.

Eureka, Missouri native Madison Scheer is also eclipsed the 500 kill mark.

SEEING DOUBLE

» Jackie Barrett posted Auburn's first double-doubles of the season, piling up 36 assists and 14 digs against SMU. A day later, the Highland, California native grabbed 44 assists with 11 digs. Barrett posted a team-high 12 double-doubles in 2022. Barret owns a team-leading 14 double-doubles in 2023.

Speaking of double-doubles, Bel Zimmerman earned the feat for the first time in her career with 17 kills and 16 digs against Charleston Southern. Zimmerman added her second and third double-double against UAB and Samford during the Alabama Showdown.

PLAYER TO WATCH: MADISON SCHEER

» Sophomore outside hitter Madison Scheer has been brilliant this season for the Tigers. The Eureka, Missouri product has drove home at least 20 kills in three straight matches and is averaging a career-best 3.32 kills per set.



KEMP ROOFING CO.

» After setting records in 2022, sophomore middle blocker Kendal Kemp is back to her old tricks this season. In eight matches this season, the Eagan Minnesota native is averaging 1.27 blocks per set. The mark is fourth in the SEC and No. 51 in nation.

SOAKING UP SUMMER HEAT

» August has been good to Brent Crouch over the years. In nine years of coaching, Crouch is 22-3 in the month of August, including a 9-0 mark at Auburn.

STREAKING

» In each of Auburn's first five matches this season, the Tigers managed to hit north of .300, marking the only such streak in the 25-point rally-scoring era.

CAN YOU DIG IT?

» In the first match of the season, libero Sarah Morton is already making waves. With 24 digs against Coppin State, the Muenster, Indiana native posted the third-most digs in a four-set match so far in the SEC this season.

QUEEN KEMP

» Minnesota native Kendal Kemp announced herself to the collegiate volleyball world in 2022. Kemp set single-season program records in solo blocks (26), block assists (154), total blocks (180) and blocks per set (1.48). Earning AVCA South Region Honorable Mention, Kemp totals were also second in the Southeastern Conference and her 180 total blocks were the second-most in the country.

AUBURN PICKED 7th IN PRESEASON POLL

» After a sixth-place finish in 2022, the Auburn Tigers have been selected to finish seventh in the 2023 preseason poll.

NEW KIDS ON THE BLOCK

» All 12 student-athletes from a year ago return to the Auburn Volleyball roster. Head coach Brent Crouch added six new faces to bolster the squad in 2023. Four transfers (Bella Bell, Kyla Swanson, Peyton Dunn and Paige Thibault) make their debut in the Orange and Blue this season. Freshmen Jasmin Okeoma and Lakin Laurendine have also found a new home on the Plains.

INSIDE THE MATCH-UPS CONT...

2002	AWAY	L	0-3
2003	AWAY	L	2-3
2004	HOME	L	1-3
2004	AWAY	L	0-3
2005	HOME	L	1-3
2005	AWAY	L	0-3
2006	HOME	L	0-3
2006	AWAY	L	2-3
2007	HOME	L	1-3
2007	AWAY	L	0-3
2008	HOME	L	0-3
2008	AWAY	L	2-3
2009	HOME	L	0-3
2009	AWAY	L	0-3
2010	AWAY	L	1-3
2010	HOME	L	0-3
2011	AWAY	L	1-3
2011	HOME	L	1-3
2012	HOME	L	1-3
2013	HOME	W	3-1
2013	AWAY	W	3-2
2014	AWAY	L	0-3
2015	HOME	W	3-2
2015	AWAY	L	2-3
2016	HOME	W	3-2
2017	HOME	L	0-3
2017	AWAY	L	1-3
2018	AWAY	L	0-3
2019	AWAY	L	0-3
2019	HOME	L	0-3
2021	AWAY	L	0-3

2022 AWAY L 2-3

HEAD COACH BRENT CROUCH

QUICK FACTS

College ___ Texas A&M ('98, '00)
 ___ Oregon ('06)
 Wife ___ Marcy
 Sons ___ Jonathan and William

COACHING RECORD

Head Coaching Career _ 10th Season
 Career Record ___ 148-131
 NCAA Appearances ___ 3

COACHING CAPSULE

2020-Pr. Auburn 53-40
 2018-19 Southern California 40-25
 2014-17 Portland 55-66

YEAR-BY-YEAR RESULTS

2023	Auburn	18-8
2022	Auburn	22-9
2021	Auburn	13-15
2020	Auburn	0-8
2019	USC	18-14
2018	USC	22-11
2017	Portland	15-15
2016	Portland	17-13
2015	Portland	16-15
2014	Portland	7-23



Brent Crouch begins his fourth season at the helm of the Auburn Volleyball program in 2023. Crouch and the Tigers look to reset the bar after a record-breaking 2022 campaign that saw success on the Plains unseen for more than a decade.

Last season, Auburn earned a berth into the NCAA Tournament for just the second time in school history and the first since 2010. A first-round victory over host and No. 14 Creighton provided the program with its second postseason win and first triumph over a nationally-ranked opponent since 2017.

The feat came on the heels of a historic season that saw the Tigers begin the season with a record mark of 14-0 and a record start to SEC play at 3-0. The 22 total victories on the season were the most in the 25-point rally-scoring era and the most since 1998. The Tigers also picked up its first win in Columbia, Missouri.

Under Crouch's guidance, Akasha Anderson, Madison Scheer and Kendal Kemp each garnered All-Conference Honors. Anderson and Kemp also picked up AVCA postseason accolades with Anderson grabbing South Region Freshman of the Year and All-Region. Meanwhile, Kemp solidified Honorable Mention. Auburn Volleyball student-athletes also picked up a record 10 SEC weekly awards.

Crouch wasn't left out of the postseason awards season, securing AVCA South Region Coach of the Year, the first such award for the Tiger Volleyball program.

Fans on the Plains saw Auburn become one of the most potent blocking teams in the Southeastern Conference in 2022. Crouch's guidance helped the Tigers break records for most block assists in a single season (520), total blocks (312.0) and tie for the most blocks in a four-set match (17 vs. Troy).

The Orange and Blue wall's foundation was laid by then-freshman Kendal Kemp. The Egan, Minnesota product shattered single-season records for solo blocks (26), block assists (154), total blocks (180) and blocks per set (1.48).

During his first full season leading the Auburn program in 2021, Crouch's leadership had an immediate effect. The Tigers opened the season winning 17 consecutive sets to tie the program record for most sweeps to begin a season (5), matching the 1974 Auburn team. Crouch led the team to a 13-15 record with a 5-13 mark in the SEC, picking up a season sweep over Alabama, the first Auburn win over Missouri since 1996 and the program's first victory in College State with a win over Texas A&M.

Crouch's expertise led to six total SEC weekly honors, splitting three on offense and three on defense. Individually, the Tigers also set nine individual records during the 2021 campaign.

Individually, it was Rebekah Rath and Tatum Shipies who benefited the most from Crouch's development. Shipies led the SEC in blocking and set records in blocks, block assists and blocks per set. Meanwhile, Rath led the SEC in five offensive categories, setting records in kills and kills per set.

Crouch made his Auburn coaching debut against No. 4 Florida on Oct. 21, 2020, to open the shortened fall volleyball schedule. Crouch led the Tigers on the court for eight total matches and his impact on the Plains was noticeable almost immediately, tying the record for most blocks in a four-set with 17 at South Carolina.

Prior to Auburn, Crouch served as the head coach at the University of South California, compiling a 40-25 record. He would lead the Trojans to the second round of the NCAA Tournament in both years in Los Angeles. In 2018, Crouch's Trojans earned the No. 11 overall seed in the Tournament and the No. 21 ranking in the final AVCA Coaches poll of the year.

Before leading the Trojans, Crouch spent four seasons as head coach of the University of Portland. The 2016 West Coast Conference Coach of the Year inherited a winless program and guided the Pilots to its winningest season in 25 years just two seasons later. His 48 victories in his final three years in the Rose City was the best three-season total since 1984-86. He put Portland on the WCC map, earning wins over top-10, top-15 and top-25 opponents while in charge of the Pilots. Crouch coached three All-WCC First Team selections, a WCC All-Freshman Team honoree and three WCC All-Academic First Teamers. He also established Beach Volleyball as a varsity sport at Portland in 2016.

Crouch arrived at Portland after four seasons (2010-13) at Saint Mary's College, where he was an assistant with the indoor program and head coach of the beach team.

Brent and his wife Marcy have two sons, Jonathan and William.

2023 AUBURN VOLLEYBALL ROSTER

No.	Name	Year	Pos.	Ht.	Hometown (High School/Previous School)
1	MADISON SCHEER	SO.	PH	6-1	EUREKA, MO. (EUREKA)
2	SARAH MORTON	SO.	L	5-7	MUNSTER, IND. (MUNSTER)
3	AKASHA ANDERSON	SO.	PH	6-3	RESTON, VA. (HERNDON)
4	FALLAN LANHAM	JR.	L	5-8	LOUISVILLE, KY. (MERCY ACADEMY)
5	BELLA BELL	SR.	RS	6-4	BLYTHEWOOD, S.C. (KENTUCKY)
6	KYLA SWANSON	GR.	MB	6-4	WAHOO, NEB. (ILLINOIS)
7	PEYTON DUNN	R-SO.	S	5-11	DECATUR, TEXAS (OKLAHOMA)
8	KENDAL KEMP	SO.	MB	6-6	EAGAN, MINN. (EAGAN)
9	ZOE SLAUGHTER	SO.	L	5-7	HONOLULU, HAWAII (MOANALUA)
10	JACKIE BARRETT	SR.	S	6-2	HIGHLAND, CALIF. (CITRUS VALLEY)
11	JORDAN SINNESS	JR.	S	5-9	SEBRING, FLA. (SEBRING)
12	BEL ZIMMERMAN	SO.	PH	6-2	LIBERTY, MO. (LIBERTY NORTH)
13	PAIGE THIBAUT	JR.	L	5-6	WATERTOWN, MINN. (FIU)
14	CHELSEY HARMON	SR.	MB	6-3	PUYALLUP, WASH. (PORTLAND)
17	CASSIDY TANTON	R-SO.	PH	6-0	STONEVILLE, N.C. (DALTON MCMICHAEL)
19	JASMINE OKEOMA	FR.	MB	6-3	WOODBIDGE, VA. (FOREST PARK)
22	SYDNEY HANDEL	SO.	PH	6-0	LEE'S SUMMIT, MO. (LEE'S SUMMIT WEST)
25	LAKIN LAURENDINE	FR.	PH	6-1	JACKSON, MISS. (JACKSON ACADEMY)

HEAD COACH | BRENT CROUCH (4TH SEASON)

ASSISTANT COACH | KEITH SMITH (2ND SEASON)

ASSISTANT COACH/RECRUITING COORDINATOR | RACHEL CORBELLI (2ND SEASON)

ASSISTANT COACH | JACK BURTON (1ST SEASON)

PRONUNCIATION GUIDE:

MADISON SCHEER – SHEER FALLAN LANHAM – FAL(LIKE PAL)-AN LAN-EM SYDNEY HANDEL – HON-DELL
 PAIGE THIBAUT – THEE-BALT JASMINE OKEOMA – OKAY-AH-MUH LAKIN LAURENDINE – LAY-KIN LOR-EN-DEAN
 RACHEL CORBELLI – CORE-BELL-EE

INSIDE THE 2023 NUMBERS



LSU

CATEGORY	AUBURN	LSU
Kills	1282	1128
Per Set	12.3	12.6
Errors	463	427
Total Attacks	3386	2921
Hitting Pct.	.242	.240
Assists	1159	1059
Per Set	11.1	11.9
Service Aces	148	130
Per Set	1.4	1.5
Service Errors	317	236
Reception Errors	154	107
Per Set	1.5	1.2
Digs	1298	1137
Per Set	12.5	12.7
Solo Blocks	31	47
Block Assists	441	256
Total Blocks	251.5	175.0
Per Set	2.4	1.9

WEEKLY AWARDS

SEC Weekly Awards

10/9 - Madison Scheer (SEC Overall POTW/Offensive POW)

10/30 - Madison Scheer (Offensive POW)

National Weekly Awards

10/10 - Madison Scheer (AVCA National Player of the Week)

2023 INDIVIDUAL HIGHS BY SET

THREE SETS

HITTING PERCENTAGE (MIN. 12 KILLS) _____ .667, Madison Scheer 47, at Florida (Oct. 6)
 KILLS _____ 18, Akasha Anderson 47, at Florida (Oct. 6)
 TOTAL ATTEMPTS _____ 35, Akasha Anderson vs McNeese (Aug. 26)
 ASSISTS _____ 37, Jackie Barrett 47, at Florida (Oct. 6)
 DIGS _____ 11, Fallan Lanham vs Jacksonville St. (Aug. 26)
 ACES _____ 5, Jackie Barrett vs Mercer, Sept. 9
 BLOCKS _____ 7, 2 times (last Kyla Swanson vs Missouri Oct. 20)

FOUR SETS

HITTING PERCENTAGE (MIN. 12 KILLS) _____ .526, Kendal Kemp vs Charleston Southern (Sept. 8)
 KILLS _____ 21, Madison Scheer at Alabama (Oct. 29)
 TOTAL ATTEMPTS _____ 60, Akasha Anderson vs Ole Miss (Sept. 24)
 ASSISTS _____ 46, Jackie Barrett vs Samford (Sept. 16)
 DIGS _____ 24, Sarah Morton vs Coppin St. (Aug. 25)
 ACES _____ 4, Chelsey Harmon vs Charleston Southern (Sept. 8)
 BLOCKS _____ 10, Kendal Kemp vs UAB (Sept. 15)

FIVE SETS

HITTING PERCENTAGE (MIN. 12 KILLS) _____ .371, Madison Scheer 56, at South Carolina (Oct. 8)
 KILLS _____ 26, Akasha Anderson at South Alabama (Sept. 14)
 TOTAL ATTEMPTS _____ 69, Akasha Anderson at South Alabama (Sept. 14)
 ASSISTS _____ 50, Jackie Barrett at Texas A&M (Nov. 5)
 DIGS _____ 29, Zoe Slaughter at South Alabama (Sept. 14)
 ACES _____ 5, Jackie Barrett at South Alabama (Sept. 14)
 BLOCKS _____ 11, Kyla Swanson 11, vs South Carolina (Oct. 22)

2023 TEAM HIGHS BY SET

THREE SETS

HITTING PERCENTAGE (MIN. 12 KILLS) _____ .395, vs Jacksonville St. (Aug. 26)
 KILLS _____ 47, at Florida (Oct. 6)
 TOTAL ATTEMPTS _____ 102, vs McNeese (Aug. 26)
 ASSISTS _____ 43, at Florida (Oct. 6)
 DIGS _____ 37, vs Missouri (Oct. 20)
 ACES _____ 9, vs Mercer (Sept. 9)
 BLOCKS _____ 11.0, vs Mercer (Sept. 9)

FOUR SETS

HITTING PERCENTAGE (MIN. 12 KILLS) _____ .386, vs Samford (Sept. 16)
 KILLS _____ 62, at Florida St. (Sept. 3)
 TOTAL ATTEMPTS _____ 166, vs Ole Miss (Sept. 24)
 ASSISTS _____ 54, 2 times (last vs Samford Sept. 16)
 DIGS _____ 74, vs Ole Miss (Sept. 24)
 ACES _____ 8, at Missouri (Sept. 12)
 BLOCKS _____ 19.0, vs UAB (Sept. 15)

FIVE SETS

HITTING PERCENTAGE (MIN. 12 KILLS) _____ .320, at Texas A&M (Nov. 5)
 KILLS _____ 62, at Texas A&M (Nov. 5)
 TOTAL ATTEMPTS _____ 178, at South Alabama (Sept. 14)
 ASSISTS _____ 57, 2 times last at Texas A&M (Nov. 5)
 DIGS _____ 81, at South Alabama (Sept. 14)
 ACES _____ 14, at South Alabama (Sept. 14)
 BLOCKS _____ 17.0, 56, at South Carolina (Oct. 8)

THE LAST TIME AUBURN...

Won in three sets _____ Oct. 6, 2023 at #9 Florida (25-23, 25-20, 25-17)
Won in four sets _____ Oct. 29, 2023 at Alabama (25-18, 22-25, 25-23, 25-22)
Won in five sets _____ Nov. 5, 2023 at Texas A&M (21-25, 25-19, 23-25, 25-22, 15-12)
Lost in three sets _____ Nov. 8, 2023 vs #13 Kentucky (14-25, 11-25, 14-25)
Lost in four sets _____ Nov. 12, 2023 at Missouri (25-19, 25-23, 23-25, 25-12)
Lost in five sets _____ Nov. 15, 2023 at Mississippi State (17-25, 25-16, 21-25, 26-24, 25-12)
Lost first set in a win _____ Nov. 5, 2023 at Texas A&M (21-25, 25-19, 23-25, 25-22, 15-12)
Won first set in a loss _____ Sept. 22, 2023 vs Florida (20-25, 26-24, 24-26, 25-19, 17-15)
Lost first two sets in a win _____ Oct. 27, 2023 vs Georgia (22-25, 18-25, 25-23, 25-18, 15-11)
Won first two sets in a loss _____ Oct. 10, 2021 at Arkansas (25-20, 25-23, 15-25, 17-25, 7-15)
Beat a ranked opponent _____ Oct. 6, 2023 at #9 Florida (25-23, 25-20, 25-17)
Hit .300-.399 in a match _____ Nov. 5, 2023 at Texas A&M (.320)
Hit .400-.499 in a match _____ Sept. 6, 2022 vs Alabama A&M (.400)
Hit .500 or better in a match _____ Oct. 18, 1998 at Ole Miss (.514)
Held opponent to .000-.100 in a match _____ Aug. 26, 2023 vs McNeese (.097)
Held opponent to a negative hitting percentage _____ Sept. 9, 2023 vs Mercer (-.053)
Had 70-79 kills in a match _____ Oct. 26, 2018 vs. Ole Miss (77)
Had 80+ kills in a match _____ Sept. 17, 2006 at Georgia (84)
Had 80-99 digs in a match _____ Sept. 14, 2022 at South Alabama (81)
Had 100+ digs in a match _____ Sept. 17, 2021 vs. Nicholls (105)
Had 15+ blocks in a match _____ Oct. 22, 2023 vs South Carolina (16.0)
Had 10+ service aces in a match _____ Sept. 14, 2023 at South Alabama (14)
Had a player(s) with 20-24 kills in a match Nov. 15, 2023 Akasha Anderson at Miss St. (20)
Had a player(s) with 25-29 kills in a match Sept. 14, 2023, Akasha Anderson at South Ala. (26)
Had a player(s) with 30+ kills in a match _____ Oct. 8, 2004, Ashlee Johns vs. Arkansas (30)
Had a player(s) with 10+ blocks in a match _____ Nov. 15, 2023 Kendal Kemp at Miss St. (10)
Had a player(s) with 25-29 digs in a match Sept. 14, 2023, Zoe Slaughter at South Ala. (29)
Had a player(s) with 30+ digs in a match _____ Oct. 17, 2021, Bella Rosenthal vs. Missouri(33)
Had a player(s) with 50+ assists in a match _____ Nov. 5, 2023 Jackie Barrett at Texas A&M (50)
Had a player(s) with 60+ assists in a match _____ Oct. 5, 2022, Jackie Barrett at LSU (60)
Had a player(s) with 5+ aces in a match _____ Sept. 14, 2023, Jackie Barrett at South Ala. (5)

AUBURN DOUBLE-DOUBLES IN 2023

PLAYER	OPPONENT (SETS)	DATE	STATS
Jackie Barrett (14)	vs SMU (4)	Sept. 2	36 assists, 14 digs
	at Florida St. (4)	Sept. 3	44 assists, 11 digs
	vs MTSU (4)	Sept. 7	39 assists, 10 digs
	vs Charleston So. (4)	Sept. 8	41 assists, 13 digs
	at South Alabama (5)	Sept. 14	48 assists, 11 digs
	vs #3 Florida (5)	Sept. 22	40 assists, 12 digs
	vs Ole Miss (4)	Sept. 24	42 assists, 17 digs
	at South Carolina (5)	Oct. 8	46 assists, 12 digs
	at #10 Tennessee (4)	Oct. 13	31 assists, 11 digs
	vs Missouri (3)	Oct. 20	27 assists, 10 digs
	vs South Carolina (5)	Oct. 22	46 assists, 10 digs
	at Georgia (5)	Oct. 27	46 assists, 12 digs
	at Alabama (4)	Oct. 29	44 assists, 11 digs
	at Mississippi State (5)	Nov. 15	45 assists, 10 digs
Akasha Anderson (6)	at South Alabama (5)	Sept. 14	26 kills, 11 digs
	vs UAB (4)	Sept. 15	11 kills, 11 digs
	vs #3 Florida (5)	Sept. 22	18 kills, 10 digs
	at South Carolina (5)	Oct. 8	14 kills, 15 digs
	vs South Carolina (5)	Oct. 22	11 kills, 14 digs
Bel Zimmerman (3)	at Mississippi State (5)	Nov. 15	20 kills, 14 digs
	vs Charleston So. (4)	Sept. 8	17 kills, 16 digs
	vs UAB (4)	Sept. 15	16 kills, 12 digs
	vs Samford (4)	Sept. 16	15 kills, 11 digs

AUBURN'S 2023 RECORD WHEN...

OVERALL	18-8
SEC	8-7
NON-CONFERENCE	10-1
RANKED OPPONENTS	1-4
HOME	8-4
AWAY	7-4
NEUTRAL	3-0
BY SETS	
THREE SETS	4-3
FOUR SETS	9-3
FIVE SETS	5-2
WON FIRST SET	13-2
LOST FIRST SET	5-6
WON SECOND SET	11-3
LOST SECOND SET	7-5
SPLIT FIRST TWO SETS	10-3
WON FIRST TWO SETS	7-0
LOST FIRST TWO SETS	1-3
SITUATIONAL	
MORE KILLS THAN OPPONENT	13-0
FEWER KILLS THAN OPPONENT	4-8
KILLS ARE TIED	1-0
MORE DIGS THAN OPPONENT	6-1
FEWER DIGS THAN OPPONENT	11-7
DIGS ARE TIED	1-0
MORE ACES THAN OPPONENT	11-2
FEWER ACES THAN OPPONENT	6-6
ACES ARE TIED	1-0
HIGHER HITTING PERCENTAGE THAN OPPONENT	17-0
LOWER HITTING PERCENTAGE THAN OPPONENT	1-8
HITTING PERCENTAGE TIED	0-0
HITTING PERCENTAGE	
.400 OR ABOVE	0-0
.300-.399	9-0
.200-.299	5-2
.100-.199	4-4
.000-.099	0-1
NEGATIVE	0-1
OPPONENTS' HITTING PERCENTAGE	
.400 OR ABOVE	0-1
.300-.399	1-2
.200-.299	5-4
.100-.199	9-1
.000-.099	2-0
NEGATIVE	1-0
BY DAY	
MONDAY	0-0
TUESDAY	0-0
WEDNESDAY	0-3
THURSDAY	1-1
FRIDAY	5-3
SATURDAY	5-0
SUNDAY	7-1
DAY MATCHES (FIRST SERVE BEFORE 6 P.M.)	11-1
NIGHT MATCHES (FIRST SERVE AFTER 6 P.M.)	7-7
BY MONTH	
AUGUST	3-0
SEPTEMBER	8-3
OCTOBER	6-2
NOVEMBER	1-3
DECEMBER	0-0
JERSEY COLOR	
NAVY w/POWER STRIPE	3-1
NAVY SOLID	0-0
NAVY SLEEVELESS	5-3
ORANGE w/POWER STRIPE	5-3
ORANGE SOLID	4-0
PINK	1-1

2023 AUBURN MATCH-BY-MATCH STARTERS

DATE	OPPONENT	RESULT	OUTSIDE	MIDDLE	RIGHT SIDE/DS	OUTSIDE/DS	MIDDLE	LIBERO	SETTER
Aug. 25	vs Coppin State	W, 3-1	Akasha Anderson	Kendal Kemp	Bella Bell	Paige Thibault	Kyla Swanson	Sarah Morton	Peyton Dunn
Aug. 26	vs McNeese	W, 3-0	Akasha Anderson	Kendal Kemp	Bella Bell	Paige Thibault	Kyla Swanson	Sarah Morton	Jackie Barrett
Aug. 26	vs Jacksonville State	W, 3-0	Akasha Anderson	Kendal Kemp	Bella Bell	Zoe Slaughter	Kyla Swanson	Sarah Morton	Jackie Barrett
Sept. 2	vs SMU	W, 3-1	Akasha Anderson	Kendal Kemp	Bella Bell	Zoe Slaughter	Kyla Swanson	Sarah Morton	Jackie Barrett
Sept. 3	at Florida State	W, 3-1	Akasha Anderson	Kendal Kemp	Bella Bell	Zoe Slaughter	Kyla Swanson	Sarah Morton	Jackie Barrett
Sept. 7	vs Middle Tennessee	L, 1-3	Bel Zimmerman	Kendal Kemp	Bella Bell	Zoe Slaughter	Kyla Swanson	Sarah Morton	Jackie Barrett
Sept. 8	vs Charleston Southern	W, 3-1	Madison Scheer	Kendal Kemp	Bel Zimmerman	Fallan Lanham	Chelsey Harmon	Sarah Morton	Jackie Barrett
Sept. 9	vs Mercer	W, 3-0	Bel Zimmerman	Kendal Kemp	Zoe Slaughter	Fallan Lanham	Chelsey Harmon	Sarah Morton	Jackie Barrett
Sept. 14	at South Alabama	W, 3-2	Akasha Anderson	Kendal Kemp	Bel Zimmerman	Fallan Lanham	Kyla Swanson	Zoe Slaughter	Jackie Barrett
Sept. 15	vs UAB	W, 3-1	Akasha Anderson	Kendal Kemp	Bel Zimmerman	Paige Thibault	Kyla Swanson	Zoe Slaughter	Jackie Barrett
Sept. 16	vs Samford	W, 3-1	Akasha Anderson	Kendal Kemp	Bel Zimmerman	Madison Scheer	Kyla Swanson	Zoe Slaughter	Jackie Barrett
Sept. 22	vs #3 Florida	L, 2-3	Akasha Anderson	Kyla Swanson	Bella Bell	Paige Thibault	Chelsey Harmon	Sarah Morton	Jackie Barrett
Sept. 24	vs Ole Miss	W, 3-1	Akasha Anderson	Kyla Swanson	Bella Bell	Paige Thibault	Chelsey Harmon	Sarah Morton	Jackie Barrett
Sept. 27	at #14 Arkansas	L, 0-3	Akasha Anderson	Kyla Swanson	Bella Bell	Paige Thibault	Chelsey Harmon	Sarah Morton	Jackie Barrett
Oct. 1	vs Georgia	W, 3-1	Akasha Anderson	Kyla Swanson	Bel Zimmerman	Paige Thibault	Kendal Kemp	Sarah Morton	Jackie Barrett
Oct. 6	at #9 Florida	W, 3-0	Akasha Anderson	Kyla Swanson	Bel Zimmerman	Paige Thibault	Kendal Kemp	Sarah Morton	Jackie Barrett
Oct. 8	at South Carolina	W, 3-2	Akasha Anderson	Kyla Swanson	Bel Zimmerman	Paige Thibault	Kendal Kemp	Sarah Morton	Jackie Barrett
Oct. 13	at #10 Tennessee	L, 1-3	Akasha Anderson	Chelsey Harmon	Bel Zimmerman	Paige Thibault	Kendal Kemp	Sarah Morton	Jackie Barrett
Oct. 20	vs Missouri	L, 0-3	Akasha Anderson	Kendal Kemp	Bella Bell	Paige Thibault	Kyla Swanson	Sarah Morton	Jackie Barrett
Oct. 22	vs South Carolina	W, 3-2	Akasha Anderson	Kendal Kemp	Bella Bell	Bel Zimmerman	Kyla Swanson	Paige Thibault	Jackie Barrett
Oct. 27	at Georgia	W, 3-2	Akasha Anderson	Kendal Kemp	Bella Bell	Bel Zimmerman	Kyla Swanson	Paige Thibault	Jackie Barrett
Oct. 29	at Alabama	W, 3-1	Akasha Anderson	Kendal Kemp	Bella Bell	Bel Zimmerman	Kyla Swanson	Paige Thibault	Jackie Barrett
Nov. 5	at Texas A&M	W, 3-2	Akasha Anderson	Kendal Kemp	Zoe Slaughter	Madison Scheer	Kyla Swanson	Sarah Morton	Jackie Barrett
Nov. 8	vs #13 Kentucky	L, 0-3	Akasha Anderson	Kendal Kemp	Bella Bell	Paige Thibault	Kyla Swanson	Sarah Morton	Jackie Barrett
Nov. 12	at Missouri	L, 1-3	Akasha Anderson	Kendal Kemp	Madison Scheer	Paige Thibault	Kyla Swanson	Sarah Morton	Jackie Barrett
Nov. 14	at Mississippi State	L, 2-3	Akasha Anderson	Kendal Kemp	Bella Bell	Paige Thibault	Kyla Swanson	Sarah Morton	Jackie Barrett

2023 AUBURN MATCH-BY-MATCH LEADERS

DATE	OPPONENT	RESULT	KILLS	ASSISTS	ACES	DIGS	BLOCKS	HIT PCT. (MIN 10 ATT.)
Aug. 25	vs Coppin State	W, 3-1	Scheer/Anderson (16)	Dunn (43)	Swanson (2)	Morton (24)	Swanson (6)	Bell (.480)
Aug. 26	vs McNeese	W, 3-0	Anderson (14)	Barrett (31)	Anderson (4)	Anderson (8)	Kemp (5)	Zimmerman (.400)
Aug. 26	vs Jacksonville State	W, 3-0	Anderson (10)	Dunn (16)	Zimmerman (3)	Lanham (11)	Swanson (3)	Bell (.750)
Sept. 2	vs SMU	W, 3-1	Scheer (18)	Barrett (36)	Anderson (2)	Morton (17)	Kemp (4)	Swanson (.500)
Sept. 3	at Florida State	W, 3-1	Anderson (15)	Barrett (44)	Slaughter (2)	Barrett (11)	Swanson/Barrett (4)	Swanson (.467)
Sept. 7	vs Middle Tennessee	L, 1-3	Zimmerman (11)	Barrett (39)	Barrett/Lanham (1)	3 players (10)	Kemp (5)	Swanson (.333)
Sept. 8	vs Charleston Southern	W, 3-1	Zimmerman (17)	Barrett (41)	Harmon (4)	Zimmerman (16)	Harmon (7)	Kemp (.526)
Sept. 9	vs Mercer	W, 3-0	Zimmerman (14)	Barrett (31)	Barrett (5)	Morton (10)	Kemp (7)	Kemp (.500)
Sept. 14	at South Alabama	W, 3-2	Anderson (26)	Barrett (48)	Barrett (5)	Slaughter (29)	Zimmerman (6)	Kemp (.455)
Sept. 15	vs UAB	W, 3-1	Zimmerman (16)	Barrett (35)	Zimmerman/Thibault (2)	Zimmerman (12)	Kemp (10)	Zimmerman (.306)
Sept. 16	vs Samford	W, 3-1	Anderson (19)	Barrett (46)	Thibault (2)	Slaughter (16)	Swanson (3)	Anderson (.410)
Sept. 22	vs #3 Florida	L, 2-3	Anderson (18)	Barrett (40)	Anderson (2)	Morton (13)	Swanson/Anderson (3)	Bell (.214)
Sept. 24	vs Ole Miss	W, 3-1	Anderson (20)	Barrett (42)	Zimmerman (3)	Morton (20)	Harmon (8)	Harmon (.417)
Sept. 27	at #14 Arkansas	L, 0-3	Scheer (4)	Barrett (11)	Slaughter/Zimmerman (1)	Anderson/Morton (7)	3 players (2)	Scheer (.045)
Oct. 1	vs Georgia	W, 3-1	Anderson (17)	Barrett (42)	Harmon (2)	Thibault (10)	Kemp (4)	Kemp (.667)
Oct. 6	at #9 Florida	W, 3-0	Anderson (18)	Barrett (37)	Barrett/Harmon (2)	Morton/Anderson (8)	Kemp (3)	Scheer (.667)
Oct. 8	at South Carolina	W, 3-2	Scheer (19)	Barrett (46)	Anderson (4)	Morton (18)	Kemp (9)	Kemp (.455)
Oct. 13	at #10 Tennessee	L, 1-3	Scheer (11)	Barrett (31)	Harmon/Thibault (1)	Morton (18)	Kemp (9)	Kemp (.467)
Oct. 20	vs Missouri	L, 0-3	Scheer/Anderson (10)	Barrett (27)	Barrett/Zimmerman (1)	Morton (11)	Swanson (7)	Swanson (.400)
Oct. 22	vs South Carolina	W, 3-2	Scheer (24)	Barrett (46)	Barrett (3)	Thibault (23)	Swanson (11)	Bell (.350)
Oct. 27	at Georgia	W, 3-2	Scheer (24)	Barrett (46)	Zimmerman (4)	Thibault (23)	Swanson/Kemp (7)	Scheer (.302)
Oct. 29	at Alabama	W, 3-1	Scheer (21)	Barrett (44)	Barrett (4)	Thibault (15)	Swanson (5)	Bell (.435)
Nov. 5	at Texas A&M	W, 3-2	Scheer/Anderson (16)	Barrett (50)	3 players (1)	Morton (15)	Kemp (8)	Kemp (.500)
Nov. 8	vs #14 Kentucky	L, 0-3	Swanson (6)	Barrett (16)	Anderson (1)	Morton (10)	Swanson (2)	Swanson (.500)
Nov. 12	at Missouri	L, 1-3	Scheer (13)	Barrett (32)	Anderson (3)	Slaughter/Thibault (9)	Swanson (2)	Swanson (.526)
Nov. 15	at Mississippi State	L, 2-3	Anderson (20)	Barrett (45)	Lanham/Anderson (2)	Morton (22)	Kemp (10)	Kemp (.357)

2023 OVERALL STATISTICS

Game Records

Overall	Conference	Home	Away	Neutral
18 - 8	8 - 7	8 - 4	7 - 4	3 - 0

Team Box Score

##	Player	SP	Attack					Set		Serve			Dig			Blocking					PTS	
			K	K/S	E	TA	PCT	A	A/S	SA	SE	SA/S	RE	DIG	DIG/S	BS	BA	TOT/S	BLK/S	BE		BHE
1	Scheer, Madison	101	335	3.32	106	878	.261	4	0.04	0	0	0.00	14	32	0.32	2	44	46	0.46	1	0	359.0
2	Morton, Sarah	77	2	0.03	2	12	.000	67	0.87	9	40	0.12	18	247	3.21	0	0	0	0.00	0	0	11.0
3	Anderson, Akasha	93	308	3.31	151	944	.166	11	0.12	26	63	0.28	37	198	2.13	2	39	41	0.44	4	1	355.5
4	Lanham, Fallan	33	0	0.00	1	3	-.333	7	0.21	8	8	0.24	1	64	1.94	0	0	0	0.00	0	0	8.0
5	Bell, Bella	68	148	2.18	47	368	.274	2	0.03	0	0	0.00	1	19	0.28	1	46	47	0.69	7	0	172.0
6	Swanson, Kyla	102	129	1.26	42	307	.283	9	0.09	4	16	0.04	0	22	0.22	8	99	107	1.05	7	0	190.5
7	Dunn, Peyton	6	4	0.67	1	7	.429	59	9.83	1	7	0.17	0	8	1.33	0	2	2	0.33	0	0	6.0
8	Kemp, Kendal	90	135	1.50	37	250	.392	2	0.02	1	3	0.01	0	9	0.10	13	101	114	1.27	8	0	199.5
9	Slaughter, Zoe	87	0	0.00	1	10	-.100	25	0.29	10	25	0.11	16	161	1.85	0	0	0	0.00	0	0	10.0
10	Barrett, Jackie	99	54	0.55	12	135	.311	920	9.29	26	23	0.26	0	224	2.26	2	62	64	0.65	5	6	113.0
12	Zimmerman, Bel	90	138	1.53	56	407	.201	9	0.10	30	66	0.33	13	94	1.04	2	21	23	0.26	9	0	180.5
13	Thibault, Paige	85	1	0.01	0	4	.250	40	0.47	9	37	0.11	20	185	2.18	0	0	0	0.00	0	0	10.0
14	Harmon, Chelsey	72	27	0.38	6	55	.382	4	0.06	22	19	0.31	0	18	0.25	1	27	28	0.39	4	0	63.5
17	Tanton, Cassidy	1	1	1.00	1	5	.000	0	0.00	0	0	0.00	1	0	0.00	0	0	0	0.00	0	0	1.0
22	Handel, Sydney	19	0	0.00	0	1	.000	0	0.00	2	10	0.11	1	17	0.89	0	0	0	0.00	0	0	2.0
AUBURN		104	1282	12.33	463	3386	.242	1159	11.14	148	317	1.42	154	1298	12.48	31	441	251.5	2.42	45	7	1,681.5
Opponents		104	1247	11.99	569	3375	.201	1164	11.19	154	245	1.48	148	1425	13.70	38	246	161	1.55	54	21	1,562.0

Team statistics

	AUB	OPP
ATTACK		
Kills	1282	1247
Errors	463	569
Total Attacks	3386	3375
Attack Pct	.242	.201
Kills/Set	12.33	11.99
SET		
Assists	1159	1164
Attempts	3356	3457
Assist Pct	.345	.337
Assists/Set	11.14	11.19
SERVE		
Aces	148	154
Errors	317	245
Attempts	2290	2233
Serve Pct	.862	.890
Aces/Set	1.42	1.48
SERVE RECEPTIONS		
Errors	154	148
Errors/Set	1.48	1.42
Attempts	1988	1973
Reception Pct	.923	.999
DEFENSE		
Digs	1298	1425
Digs/Set	12.48	13.70
BLOCKING		
Block solo	31	38
Block Assist	441	246
Total Blocks	251.5	161
Blocks/Set	2.42	1.55
Block Errors	45	54
Ball handling errors	7	21
ATTENDANCE		
Total	17435	20717
Dates/Avg Per Date	12/1453	11/1883
Neutral Site #/Avg	3/67	-
Current win streak	0	-
Home win streak	0	-

Team Results

Date	Opponent	Score	Score-by-set	Att.
08/25/2023	Coppin St.	W 3-1	24-26,25-17,25-15,25-18	1124
08/26/2023	McNeese	W 3-0	25-15,25-15,25-22	579
08/26/2023	Jacksonville St.	W 3-0	25-12,25-11,26-24	1125
09/02/2023	vs SMU	W 3-1	25-22,17-25,25-20,25-21	50
09/03/2023	at Florida St.	W 3-1	30-28,25-21,19-25,25-23	361
09/07/2023	Middle Tenn.	L 1-3	25-22,15-25,23-25,22-25	790
09/08/2023	Charleston So.	W 3-1	23-25,25-16,25-9,25-19	1063
09/09/2023	Mercer	W 3-0	25-15,25-20,25-11	967
09/14/2023	at South Alabama	W 3-2	27-25,23-25,19-25,25-23,15-8	1218
09/15/2023	vs UAB	W 3-1	25-15,26-24,21-25,25-19	87
09/16/2023	vs Samford	W 3-1	25-19,20-25,26-24,25-11	65
* 09/22/2023	Florida	L 2-3	25-20,24-26,26-24,19-25,15-17	2393
* 09/24/2023	Ole Miss	W 3-1	21-25,25-21,25-10,27-25	1128
* 09/27/2023	at Arkansas	L 0-3	18-25,10-25,6-25	1374
* 10/01/2023	Georgia	W 3-1	25-23,25-23,18-25,25-20	2016
* 10/06/2023	at Florida	W 3-0	25-23,25-20,25-17	4150
* 10/08/2023	at South Carolina	W 3-2	25-23,22-25,22-25,25-23,15-13	1930
* 10/13/2023	at Tennessee	L 1-3	19-25,25-21,21-25,17-25	2575
* 10/20/2023	Missouri	L 0-3	23-25,21-25,18-25	1889
* 10/22/2023	South Carolina	W 3-2	25-22,19-25,25-23,24-26,17-15	1832
* 10/27/2023	at Georgia	W 3-2	22-25,18-25,25-23,25-18,15-11	933
* 10/29/2023	at Alabama	W 3-1	25-18,22-25,25-23,25-22	1153
* 11/05/2023	at Texas A&M	W 3-2	21-25,25-19,23-25,25-22,15-12	3137
* 11/08/2023	Kentucky	L 0-3	14-25,11-25,14-25	2529
* 11/12/2023	at Missouri	L 1-3	19-25,23-25,25-23,12-25	3501
* 11/15/2023	at Mississippi St.	L 2-3	17-25,25-16,21-25,26-24,12-15	385

2023 SEC STATISTICS

Game Records

Overall	Conference	Home	Away	Neutral
8 - 7	8 - 7	3 - 3	5 - 4	0 - 0

Team Box Score

#	Player	SP	Attack				Set		Serve			Dig			Blocking					PTS		
			K	K/S	E	TA	PCT	A	A/S	SA	SE	SA/S	RE	DIG	DIG/S	BS	BA	TOT/S	BLK/S		BE	BHE
1	Scheer, Madison	62	214	3.45	65	568	.262	2	0.03	0	0	0.00	11	18	0.29	1	26	27	0.44	0	0	228.0
2	Morton, Sarah	48	1	0.02	2	6	-.167	40	0.83	7	22	0.15	13	156	3.25	0	0	0	0.00	0	0	8.0
3	Anderson, Akasha	62	185	2.98	107	624	.125	6	0.10	15	47	0.24	28	137	2.21	1	28	29	0.47	2	1	215.0
4	Lanham, Fallan	6	0	0.00	1	1	-1.000	1	0.17	2	2	0.33	0	12	2.00	0	0	0	0.00	0	0	2.0
5	Bell, Bella	46	83	1.80	33	237	.211	1	0.02	0	0	0.00	0	14	0.30	1	30	31	0.67	4	0	99.0
6	Swanson, Kyla	62	73	1.18	19	171	.316	5	0.08	1	3	0.02	0	9	0.15	5	59	64	1.03	5	0	108.5
8	Kemp, Kendal	50	68	1.36	19	128	.383	2	0.04	0	0	0.00	0	5	0.10	7	55	62	1.24	1	0	102.5
9	Slaughter, Zoe	45	0	0.00	1	2	-.500	6	0.13	6	10	0.13	7	62	1.38	0	0	0	0.00	0	0	6.0
10	Barrett, Jackie	62	28	0.45	8	83	.241	555	8.95	13	16	0.21	0	140	2.26	1	39	40	0.65	4	3	61.5
12	Zimmerman, Bel	55	44	0.80	29	156	.096	3	0.05	15	44	0.27	6	44	0.80	0	3	3	0.05	3	0	60.5
13	Thibault, Paige	62	0	0.00	0	2	.000	33	0.53	5	28	0.08	18	147	2.37	0	0	0	0.00	0	0	5.0
14	Harmon, Chelsey	55	12	0.22	4	27	.296	0	0.00	14	12	0.25	0	14	0.25	0	12	12	0.22	2	0	32.0
22	Handel, Sydney	6	0	0.00	0	0	.000	0	0.00	2	5	0.33	0	7	1.17	0	0	0	0.00	0	0	2.0
AUBURN		62	708	11.42	288	2005	.209	654	10.55	80	189	1.29	102	765	12.34	16	252	142	2.29	21	4	930.0
Opponents		62	782	12.61	329	2040	.222	731	11.79	102	160	1.65	80	874	14.10	24	152	100	1.61	18	10	984.0

Team statistics

	AUB	OPP
ATTACK		
Kills	708	782
Errors	288	329
Total Attacks	2005	2040
Attack Pct	.209	.222
Kills/Set	11.42	12.61
SET		
Assists	654	731
Attempts	2003	2067
Assist Pct	.327	.354
Assists/Set	10.55	11.79
SERVE		
Aces	80	102
Errors	189	160
Attempts	1301	1381
Serve Pct	.855	.884
Aces/Set	1.29	1.65
SERVE RECEPTIONS		
Errors	102	80
Errors/Set	1.65	1.29
Attempts	1221	1112
Reception Pct	.916	.999
DEFENSE		
Digs	765	874
Digs/Set	12.34	14.10
BLOCKING		
Block solo	16	24
Block Assist	252	152
Total Blocks	142	100
Blocks/Set	2.29	1.61
Block Errors	21	18
Ball handling errors	4	10
ATTENDANCE		
Total	11787	19138
Dates/Avg Per Date	6/1965	9/2126
Neutral Site #/Avg	0/0	-
Current win streak	0	-
Home win streak	0	-

Team Results

Date	Opponent	Score	Score-by-set	Att.
* 09/22/2023	Florida	L 2-3	25-20,24-26,26-24,19-25,15-17	2393
* 09/24/2023	Ole Miss	W 3-1	21-25,25-21,25-10,27-25	1128
* 09/27/2023	at Arkansas	L 0-3	18-25,10-25,6-25	1374
* 10/01/2023	Georgia	W 3-1	25-23,25-23,18-25,25-20	2016
* 10/06/2023	at Florida	W 3-0	25-23,25-20,25-17	4150
* 10/08/2023	at South Carolina	W 3-2	25-23,22-25,22-25,25-23,15-13	1930
* 10/13/2023	at Tennessee	L 1-3	19-25,25-21,21-25,17-25	2575
* 10/20/2023	Missouri	L 0-3	23-25,21-25,18-25	1889
* 10/22/2023	South Carolina	W 3-2	25-22,19-25,25-23,24-26,17-15	1832
* 10/27/2023	at Georgia	W 3-2	22-25,18-25,25-23,25-18,15-11	933
* 10/29/2023	at Alabama	W 3-1	25-18,22-25,25-23,25-22	1153
* 11/05/2023	at Texas A&M	W 3-2	21-25,25-19,23-25,25-22,15-12	3137
* 11/08/2023	Kentucky	L 0-3	14-25,11-25,14-25	2529
* 11/12/2023	at Missouri	L 1-3	19-25,23-25,25-23,12-25	3501
* 11/15/2023	at Mississippi St.	L 2-3	17-25,25-16,21-25,26-24,12-15	385

2023 STATISTICAL LEADERS

Attack (by PCT)

#	Player	S	K	K/S	E	TA	PCT
7	Dunn, Peyton	6	4	0.67	1	7	.429
8	Kemp, Kendal	90	135	1.50	37	250	.392
14	Harmon, Chelsey	72	27	0.38	6	55	.382
10	Barrett, Jackie	99	54	0.55	12	135	.311
6	Swanson, Kyla	102	129	1.26	42	307	.283
5	Bell, Bella	68	148	2.18	47	368	.274
1	Scheer, Madison	101	335	3.32	106	878	.261
13	Thibault, Paige	85	1	0.01	0	4	.250
12	Zimmerman, Bel	90	138	1.53	56	407	.201
3	Anderson, Akasha	93	308	3.31	151	944	.166
17	Tanton, Cassidy	1	1	1.00	1	5	.000
2	Morton, Sarah	77	2	0.03	2	12	.000
22	Handel, Sydney	19	0	0.00	0	1	.000
9	Slaughter, Zoe	87	0	0.00	1	10	-.100
4	Lanham, Fallan	33	0	0.00	1	3	-.333

Kill (by K)

#	Player	S	K	K/S
1	Scheer, Madison	101	335	3.32
3	Anderson, Akasha	93	308	3.31
5	Bell, Bella	68	148	2.18
12	Zimmerman, Bel	90	138	1.53
8	Kemp, Kendal	90	135	1.50
6	Swanson, Kyla	102	129	1.26
10	Barrett, Jackie	99	54	0.55
14	Harmon, Chelsey	72	27	0.38
7	Dunn, Peyton	6	4	0.67
2	Morton, Sarah	77	2	0.03
13	Thibault, Paige	85	1	0.01
17	Tanton, Cassidy	1	1	1.00
22	Handel, Sydney	19	0	0.00
9	Slaughter, Zoe	87	0	0.00
4	Lanham, Fallan	33	0	0.00

Set (by A/S)

#	Player	S	A	A/S	TA	PCT
7	Dunn, Peyton	6	59	9.83	141	.411
10	Barrett, Jackie	99	920	9.29	2442	.371
2	Morton, Sarah	77	67	0.87	250	.252
13	Thibault, Paige	85	40	0.47	123	.317
9	Slaughter, Zoe	87	25	0.29	81	.296
4	Lanham, Fallan	33	7	0.21	34	.176
3	Anderson, Akasha	93	11	0.12	95	.095
12	Zimmerman, Bel	90	9	0.10	34	.235
6	Swanson, Kyla	102	9	0.09	42	.143
14	Harmon, Chelsey	72	4	0.06	23	.174
1	Scheer, Madison	101	4	0.04	37	.000
5	Bell, Bella	68	2	0.03	23	.043
8	Kemp, Kendal	90	2	0.02	24	.083
17	Tanton, Cassidy	1	0	0.00	0	.000
22	Handel, Sydney	19	0	0.00	7	.000

Serve (by SA/S)

#	Player	S	SA	SE	SA/S	TA	PCT
12	Zimmerman, Bel	90	30	66	0.33	306	.784
14	Harmon, Chelsey	72	22	19	0.31	215	.912
3	Anderson, Akasha	93	26	63	0.28	329	.809
10	Barrett, Jackie	99	26	23	0.26	359	.936
4	Lanham, Fallan	33	8	8	0.24	131	.939
7	Dunn, Peyton	6	1	7	0.17	15	.533
2	Morton, Sarah	77	9	40	0.12	277	.856
9	Slaughter, Zoe	87	10	25	0.11	269	.907
13	Thibault, Paige	85	9	37	0.11	251	.853
22	Handel, Sydney	19	2	10	0.11	55	.818
6	Swanson, Kyla	102	4	16	0.04	74	.784
8	Kemp, Kendal	90	1	3	0.01	6	.500
1	Scheer, Madison	101	0	0	0.00	2	1.000
5	Bell, Bella	68	0	0	0.00	1	1.000
17	Tanton, Cassidy	1	0	0	0.00	0	.000

Block (by BLK/S)

#	Player	S	BS	BA	TOTAL	BLK/S
8	Kemp, Kendal	90	13	101	114.0	1.27
6	Swanson, Kyla	102	8	99	107.0	1.05
5	Bell, Bella	68	1	46	47.0	0.69
10	Barrett, Jackie	99	2	62	64.0	0.65
1	Scheer, Madison	101	2	44	46.0	0.46
3	Anderson, Akasha	93	2	39	41.0	0.44
14	Harmon, Chelsey	72	1	27	28.0	0.39
7	Dunn, Peyton	6	0	2	2.0	0.33
12	Zimmerman, Bel	90	2	21	23.0	0.26
4	Lanham, Fallan	33	0	0	0.0	0.00
2	Morton, Sarah	77	0	0	0.0	0.00
9	Slaughter, Zoe	87	0	0	0.0	0.00
13	Thibault, Paige	85	0	0	0.0	0.00
22	Handel, Sydney	19	0	0	0.0	0.00
17	Tanton, Cassidy	1	0	0	0.0	0.00

Defense (by DIG/S)

#	Player	S	DIG	DIG/S	BHE
2	Morton, Sarah	77	247	3.21	0
10	Barrett, Jackie	99	224	2.26	6
13	Thibault, Paige	85	185	2.18	0
3	Anderson, Akasha	93	198	2.13	1
4	Lanham, Fallan	33	64	1.94	0
9	Slaughter, Zoe	87	161	1.85	0
7	Dunn, Peyton	6	8	1.33	0
12	Zimmerman, Bel	90	94	1.04	0
22	Handel, Sydney	19	17	0.89	0
1	Scheer, Madison	101	32	0.32	0
5	Bell, Bella	68	19	0.28	0
14	Harmon, Chelsey	72	18	0.25	0
6	Swanson, Kyla	102	22	0.22	0
8	Kemp, Kendal	90	9	0.10	0
17	Tanton, Cassidy	1	0	0.00	0

Points (by POINTS/S)

#	Player	S	POINTS	POINTS/S
3	Anderson, Akasha	93	355.5	3.82
1	Scheer, Madison	101	359.0	3.55
5	Bell, Bella	68	172.0	2.53
8	Kemp, Kendal	90	199.5	2.22
12	Zimmerman, Bel	90	180.5	2.01
6	Swanson, Kyla	102	190.5	1.87
10	Barrett, Jackie	99	113.0	1.14
7	Dunn, Peyton	6	6.0	1.00
17	Tanton, Cassidy	1	1.0	1.00
14	Harmon, Chelsey	72	63.5	0.88
4	Lanham, Fallan	33	8.0	0.24
2	Morton, Sarah	77	11.0	0.14
13	Thibault, Paige	85	10.0	0.12
9	Slaughter, Zoe	87	10.0	0.11
22	Handel, Sydney	19	2.0	0.11

Receptions (by PCT)

#	Player	S	RE	RE/S	TA	PCT
8	Kemp, Kendal	90	0	0.00	3	1.000
6	Swanson, Kyla	102	0	0.00	9	1.000
10	Barrett, Jackie	99	0	0.00	6	1.000
4	Lanham, Fallan	33	1	0.03	98	.990
22	Handel, Sydney	19	1	0.05	36	.972
9	Slaughter, Zoe	87	16	0.18	330	.952
13	Thibault, Paige	85	20	0.24	385	.948
2	Morton, Sarah	77	18	0.23	294	.939
12	Zimmerman, Bel	90	13	0.14	177	.927
3	Anderson, Akasha	93	37	0.40	477	.922
1	Scheer, Madison	101	14	0.14	135	.896
17	Tanton, Cassidy	1	1	1.00	4	.750
5	Bell, Bella	68	1	0.01	2	.500
7	Dunn, Peyton	6	0	0.00	0	.000
14	Harmon, Chelsey	72	0	0.00	0	.000
TM	TEAM	-	32	0.31	-	-

TEAM KILLS - SIDOUT ERA

	KILLS	OPPONENT (SETS)	DATE
1.	114	vs. Kentucky (5)	10/5/97
2.	107	at Tulane (5)	11/10/90
3.	99	vs. Georgia Tech (5)	9/14/95
4.	96	vs. Butler (5)	9/10/94
5.	95	vs. Pittsburgh (5)	9/13/91
6.	94	vs. Lamar (5)	9/24/88
7.	91	vs. LSU (5)	11/13/94
8.	90	at Ole Miss (5)	10/13/96
9.	89	vs. Arkansas (4)	10/20/96
10.	88	at Rhode Island (5)	9/5/97
	88	vs. Mississippi State (4)	10/24/97
	88	vs. Mississippi State (5)	11/12/00

TEAM KILLS - RALLY ERA

	KILLS	OPPONENT (SETS)	DATE
1.	84	vs. Virginia Tech (5)	9/2/06
	84	at Georgia (5)	9/17/06
3.	82	vs. Georgia Southern (5)	9/2/05
4.	81	at Mercer (5)	9/8/04
5.	80	vs. Kentucky (5)	10/1/06
	80	vs. Ole Miss (5)	10/24/03
7.	79	at Alabama (5)	10/30/11
8.	77	vs. Ole Miss (5)	10/26/18
9.	75	at South Carolina (5)	11/16/14
	75	at Georgia (5)	11/2/14
	75	vs. Green Bay (5)	9/5/13
	75	vs. Tennessee State (4)	8/25/07
	75	vs. Arkansas (5)	10/8/04
	75	at LSU (5)	10/25/15

TEAM ASSISTS - RALLY ERA

	AST.	OPPONENT (SETS)	DATE
1.	79	vs. Georgia Southern (5)	9/2/05
2.	77	at Mercer (5)	9/8/04
3.	76	at Georgia (5)	9/17/06
4.	74	vs. South Carolina (5)	10/5/14
	74	at Alabama (5)	10/30/11
	74	vs. Ole Miss (5)	9/24/03
7.	72	at Georgia (5)	11/2/14
	72	vs. Tennessee State (4)	8/25/07
	72	at LSU (5)	10/25/15
	72	vs. Ole Miss (5)	10/26/18

TEAM DIGS - RALLY ERA

	DIGS	OPPONENT (SETS)	DATE
1.	112	at LSU (5)	11/15/13
2.	109	at LSU (5)	10/25/15
3.	107	vs. Northwestern State (5)	9/20/14
4.	105	vs. Nicholls St. (4)	9/17/21
5.	99	at Ole Miss (5)	10/18/16
6.	97	vs. Georgia (4)	11/7/07
	97	vs. LSU (5)	10/5/15
	97	at Tennessee (5)	10/4/17
9.	94	at Tennessee (5)	11/16/12
10.	93	at Georgia (5)	9/17/06
	93	vs. Tennessee (4)	11/9/17

TEAM ACES - RALLY ERA

	ACES	OPPONENT (SETS)	DATE
1.	18	vs. Delaware State (3)	9/13/03
2.	16	vs. Tennessee State (4)	8/25/07
	16	vs. Southeastern Louisiana (3)	9/9/06
4.	14	at South Alabama (5)	9/14/23
	14	vs. Troy (3)	8/27/10
	14	vs. Alabama State (3)	9/5/03
7.	13	vs. Tennessee State (5)	8/30/19
	13	at SMU (5)	8/26/06
	13	vs. Mississippi State (5)	10/26/03
10.	12	vs. Louisiana Tech (4)	9/7/07
	12	at Lafayette (3)	9/12/03
	12	vs. Grambling State (3)	9/1/05

TEAM TOTAL BLOCKS - RALLY ERA

	BLK	OPPONENT (SETS)	DATE
1.	19.0	vs. UAB (4)	9/15/23
2.	18.0	vs. Georgia (5)	10/9/22
	18.0	vs. Alabama (5)	10/2/21
	18.0	vs. South Florida (5)	9/13/14
5.	17.0	vs. Troy (4)	9/10/22
	17.0	at Arkansas (5)	10/10/21
	17.0	at South Carolina (4)	10/29/20
	17.0	at Georgia Southern (5)	9/12/09
	17.0	vs. Mississippi State (5)	11/5/04
10.	17.0	at South Carolina (5)	10/8/23

TEAM HITTING - ALL ERAS

	PCT.	OPPONENT (SETS)	DATE
1.	.530 (41-6-66)	vs. LSU (3)	11/2/97
2.	.514 (65-11-105)	at Ole Miss (3)	10/18/98
3.	.489 (52-6-94)	vs. Alabama A&M (3)	8/29/09
4.	.487 (46-8-78)	vs. Navy (3)	9/15/00
5.	.485 (38-6-66)	vs. Drexel (3)	9/10/93
	.485 (53-5-99)	vs. Eastern Illinois (3)	9/1/18
7.	.474 (52-7-95)	at South Carolina (3)	10/26/12
8.	.472 (40-6-72)	vs. Delaware State (3)	9/13/03
9.	.471 (54-5-104)	vs. Mississippi State (3)	11/29/14
10.	.469 (35-5-64)	vs. Alabama A&M (3)	8/28/09
11.	.468 (N/A)	vs. Alabama State (3)	10/8/87
12.	.462 (52-9-93)	at Georgia State (3)	8/28/07
13.	.455 (55-9-101)	vs. Alabama (3)	11/10/98
14.	.450 (42-6-80)	vs. Mercer (3)	9/5/13
15.	.448 (50-11-87)	vs. Grambling (3)	9/1/05
16.	.440 (43-10-75)	vs. Chicago State (3)	9/11/99
	.440 (55-11-100)	vs. UAB (3)	9/3/00
18.	.429 (49-10-91)	at LSU (3)	9/26/97
19.	.420 (45-8-88)	vs. Lipscomb (3)	9/20/03
20.	.422 (43-8-83)	at Georgia Tech (3)	8/25/17

Records set in the Brent Crouch era are listed in **BOLD**.

TEAM MATCH RECORDS (BY SET)**KILLS**

SETS	KILLS	OPPONENT	DATE
3s	76	vs. LSU	10/18/96
4s	89	vs. Arkansas	10/20/9
5s	114	vs. Kentucky	10/5/97

ATTACKS

SETS	ATT.	OPPONENT	DATE
3s	160	vs. South Carolina	10/19/97
4s	213	at Ole Miss	10/3/93
5s	229	at LSU	11/15/13

HITTING PERCENTAGE (MIN. 10 KILLS)

SETS	PCT.	OPPONENT	DATE
3s	.530 (41-6-66)	vs. LSU	11/2/97
4s	.365 (70-20-137)	vs. Alabama	11/6/97
5s	.362 (74-20-149)	at Minnesota	9/19/98

BLOCKS - SOLO

SETS	BLK	OPPONENT	DATE
3s	8 (3x)	last, vs. IUPUI	9/4/98
4s	10	at Tennessee Tech	10/14/88
5s	13	vs. NC State	9/21/91

BLOCKS - ASSISTS

SETS	BLK	OPPONENT	DATE
3s	27	at Samford	10/3/00
4s	34	vs UAB	9/15/23
5s	28 (3x)	last, vs. Mississippi State	11/12/00

TOTAL BLOCKS

SETS	BLK	OPPONENT	DATE
3s	15.0	vs. Alabama	11/5/93
	15.0	at South Carolina	10/17/10
4s	19.0	vs UAB	9/15/23
5s	18.0	vs. Georgia	10/9/22
	18.0	vs. South Florida	9/13/14

DIGS

SETS	DIGS	OPPONENT	DATE
3s	76	at Ole Miss	11/16/07
4s	115	vs. NE Louisiana	9/12/86
5s	117	vs. Central Florida	11/8/86

ASSISTS

SETS	AST	OPPONENT	DATE
3s	60	vs. Pittsburgh	8/31/97
4s	77	vs. Mississippi State	10/24/97
5s	100	vs. Kentucky	10/5/97

SERVICE ACES

SETS	ACE	OPPONENT	DATE
3s	18	vs. Delaware State	9/13/03
4s	16	vs. Tennessee State	8/25/07
5s	14	at South Alabama	9/14/23

INDIVIDUAL KILLS

	KILLS	PLAYER-OPPONENT (SETS)	DATE
1.	30	Ashlee Johns vs. Arkansas (5)	10/8/04
2.	29	Rebekah Rath at Arkansas (4)	10/9/21
3.	27	Kelly Fidero at Alabama (5)	10/30/11
4.	26	Akasha Anderson at South Alabama (5)	9/14/23
	26	Akasha Anderson vs Mississippi St. (5)	9/28/22
	26	Jessica Glover at Georgia (5)	9/17/06
	26	Camila Lago vs. Mississippi State (5)	10/26/03
8.	25	Macy Reece vs. South Florida (5)	9/13/14
	25	Rachel Shanks vs. Georgia (4)	11/7/07
	25	Jelena Sekulic at Arkansas (5)	10/7/07
	25	Rachel Shanks vs. Virginia Tech (5)	9/2/06
	25	Jennifer Amobi vs. Tennessee (4)	11/19/04
	25	Rebekah Rath at Georgia St. (4)	8/26/22

INDIVIDUAL HITTING PCT. (MIN. 12 KILLS)

	PCT.	PLAYER-OPPONENT (SETS)	DATE
1.	.773 (17-0-22)	Ashlee Johns vs. Delaware State (3)	9/13/03
2.	.722 (14-1-18)	Jonelle Wallace vs. Beth.-Cook. (3)	9/5/08
3.	.706 (12-0-17)	Chelsey Harmon vs. Jackson St. (3)	9/17/22
4.	.688 (12-1-16)	Shaina White vs. American (3)	9/8/18
5.	.667 (14-2-18)	Madison Scheer at Florida (3)	10/6/23
	.667 (16-0-24)	Jonelle Wallace at Georgia (5)	11/24/10
7.	.650 (13-0-20)	Breanna Barksdale at Arkansas (5)	10/30/15
8.	.647 (13-1-17)	Alyssa Davis vs Jacksonville State (5)	9/8/09
9.	.632 (12-0-19)	Courtney McDonald vs. Kentucky (5)	10/23/11
	.632 (12-0-19)	Camila Jersonsky vs. Austin Peay (4)	9/3/11

INDIVIDUAL TOTAL BLOCKS

	BLK (S-A)	PLAYER-OPPONENT (SETS)	DATE
1.	12 (2-10)	Tatum Shipes vs Alabama (4)	10/2/21
2.	11 (1-10)	Kyla Swanson vs South Carolina (5)	10/22/23
	11 (4-7)	Breanna Barksdale at Florida (4)	11/23/16
3.	10 (1-9)	Kendal Kemp vs UAB (4)	9/15/23
	10 (1-9)	Kendal Kemp vs. Georgia (5)	10/9/22
	10 (1-9)	Kendal Kemp vs. Georgia (4)	10/8/22
	10 (2-8)	Chelsey Harmon vs Troy (4)	9/10/22
	10 (1-9)	Tatum Shipes at Arkansas (4)	10/9/21
	10 (0-10)	Stephanie Campbell vs. St. John's (5)	9/19/15
	10 (2-8)	Julie Bosler vs. South Carolina (5)	9/15/06
	10 (3-7)	Julie Bosler vs. Mississippi State (5)	11/5/04
	10 (2-8)	Julie Bosler vs. Mississippi State (5)	10/2/03
	10 (1-9)	Bailey Veit vs. Mercer (5)	9/20/03

INDIVIDUAL SERVICE ACES

	ACES	PLAYER-OPPONENT (SETS)	DATE
1.	7	Katherine Culwell vs. Tennessee (3)	11/22/13
	7	Maira Magallon vs. Delaware State (3)	9/13/03
3.	6	Brenna McLroy at Missouri (4)	10/19/18
	6	Whitney Jacob vs. Arkansas (5)	10/15/06
5.	5	Jackie Barrett at South Alabama (5)	9/14/23
	5	Jackie Barrett vs Mercer (3)	9/9/23
	5	Rebekah Rath at Texas A&M (5)	11/5/21
	5	Jesse Earl at Florida State (5)	9/16/17
	5	Jesse Earl at Georgia (4)	10/2/16
	5	Alexa Filley vs. LSU (5)	10/4/15
	5	Liz Crouch vs. Troy (3)	8/27/10
	5	Rachel Shanks at South Alabama (3)	9/9/06
	5	Whitney Jacob vs. Louisiana-Monroe (3)	8/25/06
	5	Whitney Jacob vs. Mississippi State (4)	10/23/05
	5	Rachel Shanks vs. Clemson (3)	9/17/05
	5	Whitney Jacob vs. Grambling (3)	9/1/05
	5	Maira Magallon vs. Mississippi State (5)	10/26/03
	5	Maira Magallon at Lafayette (3)	9/12/03
	5	Maira Magallon vs. Bethune-Cookman (4)	9/6/03
	5	Jennifer Buckert vs. Alabama State (3)	9/5/03
	5	Brittany Diaz vs. Marist (4)	9/7/02
	5	Laura Hastings vs. Western Michigan (3)	9/1/01
	5	Grace Boyd at South Carolina (3)	10/26/01

INDIVIDUAL ASSISTS

	AST	PLAYER-OPPONENT (SETS)	DATE
1.	76	Jordan Elliott at Mercer (5)	9/8/04
2.	71	Maira Magallon vs. Ole Miss (5)	10/24/03
3.	68	Michele Ashmore vs. Georgia Southern (5)	9/2/05
4.	66	Joanna Pappas at Georgia (5)	9/17/06
5.	65	Maira Magallon vs. Arkansas (5)	10/8/04
	65	Nicki Gerig vs. Tennessee State (4)	8/25/07
7.	64	Jordan Elliott vs. Iowa State (5)	9/4/04
8.	63	Alexa Filley vs. South Carolina (5)	10/5/14
	63	Maira Magallon vs. Xavier (4)	11/26/04
	63	Sara Shanks at Arkansas (5)	10/7/07

INDIVIDUAL DIGS

	DIGS	PLAYER-OPPONENT (SETS)	DATE
1.	37	Payton White vs. Butler (5)	8/31/19
2.	36	Jelena Sekulic at Kentucky (5)	11/17/06
	36	Jesse Earl at Tennessee (5)	10/4/17
4.	34	Bailey Veit vs. Georgia Southern (5)	9/2/05
	34	Jesse Earl at Mississippi State (5)	11/13/15
6.	33	Bella Rosenthal vs. Missouri (5)	10/17/21
7.	33	Sarah Wroblecky at LSU (5)	11/15/13
	33	Jesse Earl at LSU (4)	11/15/17
9.	31	Liz Crouch at Mississippi State (3)	9/18/09
10.	30	Liz Crouch vs. Georgia (4)	11/7/07
	30	Jesse Earl at Florida State (5)	9/16/17

Records set in the Brent Crouch era are listed in **BOLD**

INDIVIDUAL MATCH RECORDS (BY SET)

KILLS

SETS	KILLS	PLAYER-OPPONENT	DATE
3s	25	Brooke McCarley vs. UAB	9/7/99
4s	29	Rebekah Rath at Arkansas	10/9/21
	29	Brooke McCarley at Kansas	9/11/99
5s	34	Bridgitte Sims vs. Tulane	11/10/90

ATTACKS

SETS	ATT.	PLAYER-OPPONENT	DATE
3s	56	Allyson Beecroft at Florida	9/30/94
4s	75	Rebekah Rath at Arkansas	10/9/21
5s	84	Rebekah Rath at Texas A&M	11/4/17

HITTING PERCENTAGE (MIN. 10 KILLS)

SETS	PCT.	PLAYER	DATE
3s	.773 (17-0-22)	Ashlee Johns	9/13/03
4s	.813 (13-0-16)	Laura Cookley	9/28/91
5s	.714 (10-0-14)	Dalia Naidzinaviciut	9/2/05

BLOCKS - SOLO

SETS	BLK	PLAYER-OPPONENT	DATE
3s	5	Gina Thomas vs. Georgetown	9/13/90
4s	5	Gina Thomas vs. Florida	10/12/90
5s	6	Tory Gutierrez vs. Louisville	10/21/89
	6	Lisa Harvey vs. Tuskegee	10/7/86

BLOCKS - ASSISTS

SETS	BLK	PLAYER-OPPONENT	DATE
3s	9 (3x)	last, Kendal Kemp vs Belmont	8/26/22
4s	11	Tory Gutierrez vs. Georgia State	10/3/89
5s	10	Jaunelle Hamilton vs. Mississippi St.	11/12/00
	10	Stephanie Campbell vs. St. John's	9/19/15

TOTAL BLOCKS

SETS	BLK	PLAYER-OPPONENT	DATE
3s	9 (4x)	last, Kendal Kemp vs. Belmont	8/26/22
4s	14	Tory Gutierrez vs. Georgia State	10/3/89
5s	12	Jaunelle Hamilton vs. Mississippi St.	11/12/00
	12	La'Toi Finley at Georgia Tech	9/14/95

DIGS

SETS	DIGS	PLAYER-OPPONENT	DATE
3s	31	Liz Crouch at Mississippi State	9/18/09
4s	34	Gretchen Thompson vs. ULM	9/12/86
5s	37	Payton White vs. Butler	8/31/19

ASSISTS

SETS	AST	PLAYER-OPPONENT	DATE
3s	64	Piper Craig vs. LSU	10/18/96
4s	76	Piper Craig vs. Arkansas	10/20/96
5s	92	Piper Craig vs. Kentucky	10/5/97

SERVICE ACES

SETS	ACE	PLAYER-OPPONENT	DATE
3s	10	Jenifer Kleyn vs. Seneca	10/5/90
4s	8	Terri Duckworth at UAB	11/1/88
5s	10	Jenifer Kleyn at Ole Miss	9/28/90



#1 MADISON SCHEER

**PIN HITTER | 6-1 | SOPHOMORE
EUREKA, MO. (EUREKA)**

SCHEER'S HIGHLIGHTS:

- Earned SEC Player of the Week (10/30/23) after back-to-back 20-kill performances against Georgia and Alabama.
- Named National Player of the Week (10/10/23) after 33 kills on .472 hitting against No. 9 Florida and South Carolina
- Career-high 24 kills on .333 hitting vs South Carolina (10/22/23)
- Tied her career-high with 24 kills at Georgia (10/27/23)
- 2022 SEC All-Freshman Team
- Named SEC Freshman of the Week and Player of the Week 9/26
- Hit over .300 11 times, over .400 seven times and over .500 twice in 2022
- Made her collegiate debut on Aug. 26 vs. Belmont

CATEGORY	CAREER HIGH	OPPONENT/DATE
Kills	24 (2x)	last at Georgia (10/27/23)
Attempts	63	at Georgia (10/27/23)
Hitting Percentage (Min. 10 ATT.)	.667	at Florida (10/6/23)
Assists	1 (7x)	last at South Carolina (10/8/23)
Digs	5	at Tennessee (10/13/23)
Blocks	6 (2x)	last at Tennessee (10/13/23)
Aces	--	--
Points	26.0 (2x)	at Georgia (10/27/23)

CATEGORY	SEASON HIGH	OPPONENT/DATE
Kills	24 (2x)	last at Georgia (10/27/23)
Attempts	63	at Georgia (10/27/23)
Hitting Percentage (Min. 10 ATT.)	.667	at Florida (10/6/23)
Assists	1 (4x)	last at South Carolina (10/8/23)
Digs	5	at Tennessee (10/13/23)
Blocks	6	at Tennessee (10/13/23)
Aces	--	--
Points	26.0 (2x)	at Georgia (10/27/23)

GAME BY GAME

Date	Opponent	SP	Attack				Set			Serve				Recept			Blocking				Team				
			K	E	TA	PCT	A	TA	PCT	SA	SE	TA	PCT	RE	TA	PCT	DIG	BS	BA	BE	TOTAL	BHE	POINTS	HIT%	SCORE
08/25/2023	Coppin St.	4	16	4	41	.293	0	1	.000	0	0	0	.000	0	3	1.000	3	1	3	0	4.0	0	18.5	.309	3-1
08/26/2023	Jacksonville St.	3	8	2	21	.286	1	1	1.000	0	0	0	.000	0	3	1.000	0	0	0	0	0.0	0	8.0	.395	3-0
09/02/2023	vs SMU	4	18	6	37	.324	0	0	.000	0	0	0	.000	0	9	1.000	1	0	0	0	0.0	0	18.0	.316	3-1
09/03/2023	at Florida St.	4	14	3	33	.333	1	2	.500	0	0	0	.000	0	3	1.000	0	0	2	1	2.0	0	15.0	.356	3-1
09/07/2023	Middle Tenn.	4	8	2	28	.214	0	2	.000	0	0	1	1.000	0	1	1.000	2	0	3	0	3.0	0	9.5	.221	1-3
09/08/2023	Charleston So.	*4	15	3	35	.343	0	0	.000	0	0	0	.000	1	7	.857	2	0	4	0	4.0	0	17.0	.245	3-1
09/09/2023	Mercer	3	12	4	28	.286	0	2	.000	0	0	0	.000	0	8	1.000	0	0	1	0	1.0	0	12.5	.346	3-0
09/14/2023	at South Alabama	5	10	7	39	.077	0	0	.000	0	0	0	.000	1	9	.889	3	0	1	0	1.0	0	10.5	.191	3-2
09/15/2023	vs UAB	4	7	5	21	.095	0	0	.000	0	0	0	.000	0	0	.000	3	0	4	0	4.0	0	9.0	.189	3-1
09/16/2023	vs Samford	*4	13	5	27	.296	0	3	.000	0	0	0	.000	1	1	.000	0	0	0	0	0.0	0	13.0	.386	3-1
09/22/2023	Florida	5	15	6	44	.205	1	2	.500	0	0	1	1.000	0	16	1.000	2	0	0	0	0.0	0	15.0	.196	2-3
09/24/2023	Ole Miss	4	12	2	34	.294	0	4	.000	0	0	0	.000	0	9	1.000	3	0	1	0	1.0	0	12.5	.199	3-1
09/27/2023	at Arkansas	3	4	3	22	.045	0	2	.000	0	0	0	.000	1	4	.750	1	0	0	0	0.0	0	4.0	-.049	0-3
10/01/2023	Georgia	4	14	2	29	.414	0	2	.000	0	0	0	.000	0	5	1.000	0	0	1	0	1.0	0	14.5	.262	3-1
10/06/2023	at Florida	3	14	2	18	.667	0	0	.000	0	0	0	.000	0	5	1.000	0	0	1	0	1.0	0	14.5	.387	3-0
10/08/2023	at South Carolina	5	19	6	35	.371	1	5	.200	0	0	0	.000	1	5	.800	1	0	2	0	2.0	0	20.0	.197	3-2
10/13/2023	at Tennessee	4	11	9	45	.044	0	0	.000	0	0	0	.000	1	2	.500	5	1	5	0	6.0	0	14.5	.122	1-3
10/20/2023	Missouri	3	10	4	26	.231	0	1	.000	0	0	0	.000	0	0	.000	0	0	2	0	2.0	0	11.0	.168	0-3
10/22/2023	South Carolina	*5	24	6	54	.333	0	2	.000	0	0	0	.000	2	8	.750	2	0	4	0	4.0	0	26.0	.241	3-2
10/27/2023	at Georgia	*5	24	5	63	.302	0	4	.000	0	0	0	.000	2	12	.833	1	0	4	0	4.0	0	26.0	.243	3-2
10/29/2023	at Alabama	*4	21	6	49	.306	0	0	.000	0	0	0	.000	1	3	.667	1	0	2	0	2.0	0	22.0	.248	3-1
11/05/2023	at Texas A&M	*5	16	4	45	.267	0	1	.000	0	0	0	.000	1	8	.875	0	0	2	0	2.0	0	17.0	.320	3-2
11/08/2023	Kentucky	3	4	2	19	.105	0	0	.000	0	0	0	.000	1	3	.667	0	0	1	0	1.0	0	4.5	.095	0-3
11/12/2023	at Missouri	*4	13	5	41	.195	0	1	.000	0	0	0	.000	0	7	1.000	1	0	1	0	1.0	0	13.5	.242	1-3
11/15/2023	at Mississippi St.	5	13	3	44	.227	0	2	.000	0	0	0	.000	1	4	.750	1	0	0	0	0.0	0	13.0	.175	2-3
Totals		101	335	106	878	.261	4	37	.108	0	0	2	1.000	14	135	.896	32	2	44	1	46.0	0	359.0		

Player Averages

Sets Played	Kills per set	Assists per set	Service aces per set	Digs per set	Blocks per set	Points per set
101	3.32	0.04	0.00	0.32	0.46	3.55

CAREER STATS

SEASON	TEAM	SM-MP	K	K/S	E	TA	PCT	A	A/S	SA	SA/S	SE	DIG	D/S	RE	BS	BA	TB	B/S	BE	BHE	PTS	PTS/S
2022-23	AUB	118-30	361	3.06	120	956	.252	3	0.03	0	0.00	0	45	0.38	3	3	46	49	0.42	4	2	387.0	3.28
2023-24	AUB	101-25	335	3.32	106	878	.261	4	0.04	0	0.00	0	32	0.32	14	2	44	46	0.46	1	0	359.0	3.55
TOTAL		219 - 55	696	3.18	226	1834	.256	7	0.03	0	0.00	0	77	0.35	17	5	90	95	0.43	5	2	746.0	3.41



#2 SARAH MORTON

LIBERO | 5-7 | SOPHOMORE
MUNSTER, IND. (MUNSTER)

MORTON'S HIGHLIGHTS:

- Recorded 10+ digs in 26 of the 29 matches she's played in 2022
- Grabbed a career-high 26 digs vs Georgia on Oct. 9
- Named SEC Defensive Player of the Week 9/26
- Has started every game at libero when in the lineup
- Made her collegiate debut on Aug. 26 vs. Belmont

CATEGORY	CAREER HIGH	OPPONENT/DATE
Kills	1 (3x)	last vs Coppin State (8/25/23)
Attempts	3	vs Coppin State (8/25/23)
Hitting Percentage (Min. 10 ATT.)	--	--
Assists	9 (2x)	last vs SMU (9/2/23)
Digs	26	vs Georgia (10/9/22)
Blocks	--	--
Aces	3 (4x)	last at Missouri (10/15/22)
Points	3 (4x)	last at Missouri (10/15/22)

CATEGORY	SEASON HIGH	OPPONENT/DATE
Kills	1 (2x)	last vs Florida (9/22/23)
Attempts	3	vs Coppin State (8/25/23)
Hitting Percentage (Min. 10 ATT.)	--	--
Assists	9	vs SMU (9/2/23)
Digs	24	vs Coppin State (8/25/23)
Blocks	--	--
Aces	2	at Missouri (11/12/23)
Points	2 (2x)	at Missouri (11/12/23)

GAME BY GAME

Date	Opponent	Attack				Set			Serve				Receipt			Blocking				Team					
		SP	K	E	TA	PCT	A	TA	PCT	SA	SE	TA	PCT	RE	TA	PCT	DIG	BS	BA	BE	TOTAL	BHE	POINTS	HIT%	SCORE
08/25/2023	Coppin St.	4	1	0	3	.333	4	12	.333	0	2	20	.900	0	13	1.000	24	0	0	0	0.0	0	1.0	.309	3-1
08/26/2023	McNeese	3	0	0	0	.000	3	11	.273	0	1	7	.857	0	8	1.000	5	0	0	0	0.0	0	0.0	.333	3-0
08/26/2023	Jacksonville St.	3	0	0	0	.000	3	8	.375	1	0	13	1.000	0	8	1.000	3	0	0	0	0.0	0	1.0	.395	3-0
09/02/2023	vs SMU	4	0	0	1	.000	9	20	.450	0	2	15	.867	1	14	.929	17	0	0	0	0.0	0	0.0	.316	3-1
09/03/2023	at Florida St.	4	0	0	1	.000	5	16	.313	1	2	16	.875	2	31	.935	8	0	0	0	0.0	0	1.0	.356	3-1
09/07/2023	Middle Tenn.	4	0	0	1	.000	0	11	.000	0	6	14	.571	2	27	.926	10	0	0	0	0.0	0	0.0	.221	1-3
09/08/2023	Charleston So.	4	0	0	0	.000	2	14	.143	0	2	15	.867	0	16	1.000	14	0	0	0	0.0	0	0.0	.245	3-1
09/09/2023	Mercer	3	0	0	0	.000	1	4	.250	0	3	7	.571	0	10	1.000	10	0	0	0	0.0	0	0.0	.346	3-0
09/22/2023	Florida	5	1	0	1	1.000	5	17	.294	1	5	18	.722	0	16	1.000	13	0	0	0	0.0	0	2.0	.196	2-3
09/24/2023	Ole Miss	4	0	0	0	.000	5	20	.250	0	1	12	.917	1	15	.933	20	0	0	0	0.0	0	0.0	.199	3-1
09/27/2023	at Arkansas	3	0	0	0	.000	1	13	.077	0	4	5	.200	1	8	.875	7	0	0	0	0.0	0	0.0	-.049	0-3
10/01/2023	Georgia	4	0	0	0	.000	4	13	.308	1	1	18	.944	0	18	1.000	8	0	0	0	0.0	0	1.0	.262	3-1
10/06/2023	at Florida	3	0	0	0	.000	4	10	.400	1	2	10	.800	0	6	1.000	8	0	0	0	0.0	0	1.0	.387	3-0
10/08/2023	at South Carolina	5	0	1	1	-1.000	6	17	.353	1	0	20	1.000	0	11	1.000	18	0	0	0	0.0	0	1.0	.197	3-2
10/13/2023	at Tennessee	4	0	0	0	.000	2	12	.167	0	2	11	.818	0	18	1.000	18	0	0	0	0.0	0	0.0	.122	1-3
10/20/2023	Missouri	3	0	0	0	.000	4	9	.444	0	0	15	1.000	1	4	.750	11	0	0	0	0.0	0	0.0	.168	0-3
11/05/2023	at Texas A&M	5	0	1	1	-1.000	3	11	.273	0	4	22	.818	4	25	.840	15	0	0	0	0.0	0	0.0	.320	3-2
11/08/2023	Kentucky	3	0	0	0	.000	1	7	.143	0	2	6	.667	2	16	.875	10	0	0	0	0.0	0	0.0	.095	0-3
11/12/2023	at Missouri	4	0	0	3	.000	3	13	.231	2	1	19	.947	3	10	.700	6	0	0	0	0.0	0	2.0	.242	1-3
11/15/2023	at Mississippi St.	5	0	0	0	.000	2	12	.167	1	0	14	1.000	1	20	.950	22	0	0	0	0.0	0	1.0	.175	2-3
Totals		77	2	2	12	.000	67	250	.268	9	40	277	.856	18	294	.939	247	0	0	0	0.0	0	11.0		

Player Averages

Sets Played	Kills per set	Assists per set	Service aces per set	Digs per set	Blocks per set	Points per set
77	0.03	0.87	0.12	3.21	0.00	0.14

CAREER STATS

SEASON	TEAM	SM-MP	K	K/S	E	TA	PCT	A	A/S	SA	SA/S	SE	DIG	D/S	RE	BS	BA	TB	B/S	BE	BHE	PTS	PTS/S
2022-23	AUB	119-30	2	0.02	1	11	.091	110	0.92	30	0.25	31	457	3.84	21	0	0	0	0.00	0	1	32.0	0.27
2023-24	AUB	77-20	2	0.03	2	12	.000	67	0.87	9	0.12	40	247	3.21	18	0	0	0	0.00	0	0	11.0	0.14
TOTAL		196 - 50	4	0.02	3	23	.043	177	0.90	39	0.20	71	704	3.59	39	0	0	0	0.00	0	1	43.0	0.22

#3 AKASHA ANDERSON

PIN HITTER | 6-3 | FRESHMAN
RESTON, VA. (HERNDON)



ANDERSON'S HIGHLIGHTS:

- Named to All-SEC Team and All-Freshman Team
- Named AVCA South Region Freshman of the Year in 2022
- Had career-high 26 kills in win over Mississippi State
- Hit .526 with a team-high 12 kills vs. Marist
- Recorded 24 kills and 14 digs at UAB for first double-double
- Had eight double-doubles in 2022
- 2x SEC Freshman of the Week
- Made her collegiate debut on Aug. 26 vs. Belmont

CATEGORY	CAREER HIGH	OPPONENT/DATE
Kills	26 (2x)	last at South Alabama (9/14/23)
Attempts	77	at LSU (10/5/22)
Hitting Percentage (Min. 10 ATT.)	.526	vs Marist (8/27/22)
Assists	3 (2x)	last at Florida State (9/3/23)
Digs	18	at Alabama (9/25/22)
Blocks	6	at South Carolina (10/8/23)
Aces	4 (4x)	last at South Carolina (10/8/23)
Points	29.5 (2x)	last vs Mississippi State (9/28/22)

CATEGORY	SEASON HIGH	OPPONENT/DATE
Kills	26	at South Alabama (9/14/23)
Attempts	69	at South Alabama (9/14/23)
Hitting Percentage (Min. 10 ATT.)	.410	vs Samford (9/16/23)
Assists	3	at Florida State (9/3/23)
Digs	15	at South Carolina (10/8/23)
Blocks	6	at South Carolina (10/8/23)
Aces	4 (2x)	last at South Carolina (10/8/23)
Points	28.5	at South Alabama (9/14/23)

GAME BY GAME

Date	Opponent	SP	Attack				Set			Serve				Recept			Blocking				Team					
			K	E	TA	PCT	A	TA	PCT	SA	SE	TA	PCT	RE	TA	PCT	DIG	BS	BA	BE	TOTAL	BHE	POINTS	HIT%	SCORE	
08/25/2023	Coppin St.	*4	16	4	41	.293	0	3	.000	0	3	7	.571	0	16	1.000	5	0	1	0	1.0	0	16.5	.309	3-1	
08/26/2023	McNeese	*3	14	5	35	.257	0	3	.000	4	3	13	.769	0	15	1.000	8	0	0	0	0.0	0	18.0	.333	3-0	
08/26/2023	Jacksonville St.	*3	10	1	23	.391	0	1	.000	1	1	12	.917	1	5	.800	4	1	0	0	1.0	0	12.0	.395	3-0	
09/02/2023	vs SMU	*4	12	7	41	.122	0	4	.000	2	3	22	.864	0	13	1.000	7	0	2	2	2.0	0	15.0	.316	3-1	
09/03/2023	at Florida St.	*4	15	4	35	.314	3	7	.429	0	2	11	.818	1	14	.929	6	0	1	0	1.0	0	15.5	.356	3-1	
09/14/2023	at South Alabama	*5	26	10	69	.232	0	3	.000	2	1	15	.933	3	25	.880	11	0	1	0	1.0	0	28.5	.191	3-2	
09/15/2023	vs UAB	*4	11	10	37	.027	2	5	.400	1	2	22	.909	3	27	.889	11	0	4	0	4.0	0	14.0	.189	3-1	
09/16/2023	vs Samford	*4	19	3	39	.410	0	4	.000	1	1	14	.929	1	26	.962	9	0	2	0	2.0	0	21.0	.386	3-1	
09/22/2023	Florida	*5	18	11	60	.117	0	4	.000	2	5	17	.706	0	18	1.000	10	0	3	0	3.0	0	21.5	.196	2-3	
09/24/2023	Ole Miss	*4	20	12	60	.133	1	4	.250	1	2	14	.857	0	13	1.000	9	0	2	0	2.0	0	22.0	.199	3-1	
09/27/2023	at Arkansas	*3	1	4	23	-.130	0	0	.000	0	2	5	.600	4	18	.778	7	0	2	0	2.0	0	2.0	-.049	0-3	
10/01/2023	Georgia	*4	17	11	56	.107	1	4	.250	1	5	14	.643	4	28	.857	6	0	3	0	3.0	0	19.5	.262	3-1	
10/06/2023	at Florida	*3	18	4	35	.400	0	3	.000	0	2	13	.846	0	7	1.000	8	0	1	0	1.0	0	18.5	.387	3-0	
10/08/2023	at South Carolina	*5	14	11	54	.056	1	9	.111	4	1	22	.955	2	33	.939	15	0	6	0	6.0	0	21.0	.197	3-2	
10/13/2023	at Tennessee	*4	10	7	47	.064	0	6	.000	0	3	17	.824	0	22	1.000	8	0	3	0	3.0	0	11.5	.122	1-3	
10/20/2023	Missouri	*3	10	5	30	.167	0	1	.000	0	3	7	.571	0	19	1.000	6	0	0	0	0.0	0	10.0	.168	0-3	
10/22/2023	South Carolina	*5	11	7	39	.103	0	7	.000	0	3	13	.769	4	23	.826	14	0	2	1	2.0	0	12.0	.241	3-2	
10/27/2023	at Georgia	*5	11	4	36	.194	1	9	.111	1	4	22	.818	4	41	.902	7	0	2	0	2.0	0	13.0	.243	3-2	
10/29/2023	at Alabama	*4	9	8	32	.031	0	4	.000	0	3	23	.870	0	25	1.000	12	0	0	0	0.0	1	9.0	.248	3-1	
11/05/2023	at Texas A&M	*5	16	5	44	.250	1	4	.250	0	5	13	.615	3	34	.912	8	0	2	1	2.0	0	17.0	.320	3-2	
11/08/2023	Kentucky	*3	2	5	24	-.125	0	2	.000	1	2	6	.667	2	12	.833	6	0	1	0	1.0	0	3.5	.095	0-3	
11/12/2023	at Missouri	*4	8	3	29	.172	1	6	.167	3	4	14	.714	3	14	.786	7	0	0	0	0.0	0	11.0	.242	1-3	
11/15/2023	at Mississippi St.	*5	20	10	55	.182	0	2	.000	2	3	13	.769	2	29	.931	14	1	1	0	2.0	0	23.5	.175	2-3	
Totals			93	308	151	944	.166	11	95	.116	26	63	329	.809	37	477	.922	198	2	39	4	41.0	1	355.5		

Player Averages

Sets Played	Kills per set	Assists per set	Service aces per set	Digs per set	Blocks per set	Points per set
93	3.31	0.12	0.28	2.13	0.44	3.82

CAREER STATS

SEASON	TEAM	SM-MP	K	K/S	E	TA	PCT	A	A/S	SA	SA/S	SE	DIG	D/S	RE	BS	BA	TB	B/S	BE	BHE	PTS	PTS/S
2022-23	AUB	121-31	428	3.54	211	1240	.175	13	0.11	27	0.22	41	225	1.86	50	4	56	60	0.50	5	0	487.0	4.02
2023-24	AUB	93-23	308	3.31	151	944	.166	11	0.12	26	0.28	63	198	2.13	37	2	39	41	0.44	4	1	355.5	3.82
TOTAL		214 - 54	736	3.44	362	2184	.171	24	0.11	53	0.25	104	423	1.98	87	6	95	101	0.47	9	1	842.5	3.94

#4 FALLAN LANHAM

LIBERO | 5-8 | JUNIOR
LOUISVILLE, KY. (MERCY ACADEMY)



LANHAM'S HIGHLIGHTS:

- Grabbed a career-high 20 digs at LSU
- Recorded a career-high four aces at UAB
- Earned first collegiate start in Auburn's season opener versus Tennessee Tech on August 27

CATEGORY	CAREER HIGH	OPPONENT/DATE
Kills	2	vs. Missouri (9/12/21)
Attempts	8	at Arkansas (10/9/21)
Hitting Percentage (Min. 10 ATT.)		
Assists	3 (4x)	last vs Charleston Southern (9/8/23)
Digs	20	at LSU (10/5/22)
Blocks	1	at Georgia (10/22/21)
Aces	4	at UAB (9/9/22)
Points	4.0	at UAB (9/9/22)

CATEGORY	SEASON HIGH	OPPONENT/DATE
Kills	--	--
Attempts	1 (3x)	last at Mississippi State (11/15/23)
Hitting Percentage (Min. 10 ATT.)	--	--
Assists	3	vs Charleston Southern (9/8/23)
Digs	12	at Mississippi State (11/15/23)
Blocks	--	--
Aces	2 (2x)	last at Mississippi State (11/15/23)
Points	2.0 (2x)	last at Mississippi State (11/15/23)

GAME BY GAME

Date	Opponent	SP	Attack				Set			Serve				Receipt			Blocking				Team				
			K	E	TA	PCT	A	TA	PCT	SA	SE	TA	PCT	RE	TA	PCT	DIG	BS	BA	BE	TOTAL	BHE	POINTS	HIT%	SCORE
08/25/2023	Coppin St.	3	0	0	0	.000	0	1	.000	0	0	8	1.000	0	6	1.000	0	0	0	0	0.0	0	0.0	.309	3-1
08/26/2023	McNeese	1	0	0	0	.000	0	1	.000	0	0	3	1.000	0	2	1.000	2	0	0	0	0.0	0	0.0	.333	3-0
08/26/2023	Jacksonville St.	3	0	0	0	.000	1	5	.200	2	0	18	1.000	1	8	.875	11	0	0	0	0.0	0	2.0	.395	3-0
09/02/2023	vs SMU	4	0	0	1	.000	2	3	.667	1	1	16	.938	0	25	1.000	4	0	0	0	0.0	0	1.0	.316	3-1
09/03/2023	at Florida St.	4	0	0	1	.000	0	1	.000	1	1	19	.947	0	13	1.000	9	0	0	0	0.0	0	1.0	.356	3-1
09/07/2023	Middle Tenn.	4	0	0	0	.000	0	4	.000	1	2	17	.882	0	11	1.000	10	0	0	0	0.0	0	1.0	.221	1-3
09/08/2023	Charleston So.	*4	0	0	0	.000	3	6	.500	1	1	14	.929	0	11	1.000	8	0	0	0	0.0	0	1.0	.245	3-1
09/09/2023	Mercer	*3	0	0	0	.000	0	4	.000	0	1	10	.900	0	4	1.000	4	0	0	0	0.0	0	0.0	.346	3-0
09/14/2023	at South Alabama	*1	0	0	0	.000	0	1	.000	0	0	2	1.000	0	3	1.000	4	0	0	0	0.0	0	0.0	.191	3-2
11/12/2023	at Missouri	1	0	0	0	.000	0	0	.000	0	0	0	.000	0	0	.000	0	0	0	0	0.0	0	0.0	.242	1-3
11/15/2023	at Mississippi St.	5	0	1	1	-1.000	1	8	.125	2	2	24	.917	0	15	1.000	12	0	0	0	0.0	0	2.0	.175	2-3
Totals		33	0	1	3	-.333	7	34	.206	8	8	131	.939	1	98	.990	64	0	0	0	0.0	0	8.0		

Player Averages

Sets Played	Kills per set	Assists per set	Service aces per set	Digs per set	Blocks per set	Points per set
33	0.00	0.21	0.24	1.94	0.00	0.24

CAREER STATS

SEASON	TEAM	SM-MP	K	K/S	E	TA	PCT	A	A/S	SA	SA/S	SE	DIG	D/S	RE	BS	BA	TB	B/S	BE	BHE	PTS	PTS/S
2021-22	AUB	103-28	7	0.07	8	85	-.012	17	0.17	5	0.05	15	192	1.86	21	0	1	1	0.01	0	0	12.5	0.12
2022-23	AUB	122-31	1	0.01	1	13	.000	15	0.12	35	0.29	33	198	1.62	28	0	0	0	0.00	0	0	36.0	0.30
2023-24	AUB	33-11	0	0.00	1	3	-.333	7	0.21	8	0.24	8	64	1.94	1	0	0	0	0.00	0	0	8.0	0.24
TOTAL		258 - 70	8	0.03	10	101	-.020	39	0.15	48	0.19	56	454	1.76	50	0	1	1	0.00	0	0	56.5	0.22

#5 BELLA BELL

MIDDLE BLOCKER | 6-4 | GRADUATE
BLYTHEWOOD, S.C. (KENTUCKY)



BELL'S HIGHLIGHTS:

- Has hit over .400 in three matches this season
- National Champion at Kentucky
- Had the 3rd-highest hitting percentage in the SEC in 2022

CATEGORY	CAREER HIGH	OPPONENT/DATE
Kills	14	vs Coppin State (8/25/23)
Attempts	30	vs Ole Miss (9/24/23)
Hitting Percentage (Min. 10 ATT.)	.750	vs Jacksonville State (8/26/23)
Assists	1 (5x)	last vs Florida (9/22/23)
Digs	4	vs Ole Miss (9/24/23)
Blocks	10 (2x)	at Arkansas (10/7/22)
Aces	1	vs South Carolina (11/25/22)
Points	17.5	at Missouri (9/28/22)

CATEGORY	SEASON HIGH	OPPONENT/DATE
Kills	14	vs Coppin State (8/25/23)
Attempts	30	vs Ole Miss (9/24/23)
Hitting Percentage (Min. 10 ATT.)	.750	vs Jacksonville State (8/26/23)
Assists	1 (2x)	last vs Florida (9/22/23)
Digs	4	vs Ole Miss (9/24/23)
Blocks	7	vs Ole Miss (9/24/23)
Aces	--	--
Points	15.5	vs Coppin State (8/25/23)

GAME BY GAME

Date	Opponent	SP	Attack				Set			Serve				Receipt			Blocking				Team				
			K	E	TA	PCT	A	TA	PCT	SA	SE	TA	PCT	RE	TA	PCT	DIG	BS	BA	BE	TOTAL	BHE	POINTS	HIT%	SCORE
08/25/2023	Coppin St.	*4	14	2	25	.480	0	1	.000	0	0	0	.000	0	0	.000	1	0	3	0	3.0	0	15.5	.309	3-1
08/26/2023	McNeese	*3	11	3	22	.364	0	0	.000	0	0	0	.000	0	0	.000	0	0	2	0	2.0	0	12.0	.333	3-0
08/26/2023	Jacksonville St.	*3	9	0	12	.750	0	0	.000	0	0	0	.000	0	0	.000	0	0	2	1	2.0	0	10.0	.395	3-0
09/02/2023	vs SMU	*4	10	3	22	.318	1	1	1.000	0	0	0	.000	1	2	.500	2	0	3	1	3.0	0	11.5	.316	3-1
09/03/2023	at Florida St.	*4	13	1	29	.414	0	2	.000	0	0	1	1.000	0	0	.000	2	0	2	0	2.0	0	14.0	.356	3-1
09/07/2023	Middle Tenn.	*4	8	5	21	.143	0	1	.000	0	0	0	.000	0	0	.000	0	0	4	1	4.0	0	10.0	.221	1-3
09/22/2023	Florida	*5	11	5	28	.214	1	4	.250	0	0	0	.000	0	0	.000	2	0	0	0	0.0	0	11.0	.196	2-3
09/24/2023	Ole Miss	*4	9	4	30	.167	0	0	.000	0	0	0	.000	0	0	.000	4	1	6	0	7.0	0	13.0	.199	3-1
09/27/2023	at Arkansas	*3	3	4	18	-.056	0	0	.000	0	0	0	.000	0	0	.000	1	0	1	1	1.0	0	3.5	-.049	0-3
10/20/2023	Missouri	*3	5	4	17	.059	0	2	.000	0	0	0	.000	0	0	.000	0	0	3	1	3.0	0	6.5	.168	0-3
10/22/2023	South Carolina	5	8	1	20	.350	0	3	.000	0	0	0	.000	0	0	.000	1	0	6	0	6.0	0	11.0	.241	3-2
10/27/2023	at Georgia	5	7	3	19	.211	0	1	.000	0	0	0	.000	0	0	.000	0	0	3	0	3.0	0	8.5	.243	3-2
10/29/2023	at Alabama	4	12	2	23	.435	0	0	.000	0	0	0	.000	0	0	.000	2	0	3	1	3.0	0	13.5	.248	3-1
11/05/2023	at Texas A&M	5	11	2	21	.429	0	2	.000	0	0	0	.000	0	0	.000	0	0	6	0	6.0	0	14.0	.320	3-2
11/08/2023	Kentucky	*3	5	3	19	.105	0	0	.000	0	0	0	.000	0	0	.000	2	0	0	0	0.0	0	5.0	.095	0-3
11/12/2023	at Missouri	4	5	2	18	.167	0	4	.000	0	0	0	.000	0	0	.000	1	0	1	1	1.0	0	5.5	.242	1-3
11/15/2023	at Mississippi St.	*5	7	3	24	.167	0	2	.000	0	0	0	.000	0	0	.000	1	0	1	0	1.0	0	7.5	.175	2-3
Totals		68	148	47	368	.274	2	23	.087	0	0	1	1.000	1	2	.500	19	1	46	7	47.0	0	172.0		

Player Averages

Sets Played	Kills per set	Assists per set	Service aces per set	Digs per set	Blocks per set	Points per set
68	2.18	0.03	0.00	0.28	0.69	2.53

CAREER STATS

SEASON	TEAM	SM-MP	K	K/S	E	TA	PCT	A	A/S	SA	SA/S	SE	DIG	D/S	RE	BS	BA	TB	B/S	BE	BHE	PTS	PTS/S
2020-21	UK	24-14	29	1.21	9	64	.313	0	0.00	0	0.00	0	2	0.08	1	0	22	22	0.92	3	0	40.0	1.67
2021-22	UK	62-19	102	1.65	25	185	.416	1	0.02	0	0.00	0	9	0.15	0	10	68	78	1.26	8	0	146.0	2.35
2022-23	UK	62-22	107	1.73	34	215	.340	2	0.03	2	0.03	6	12	0.19	0	5	72	77	1.24	8	0	150.0	2.42
2023-24	AUB	68-17	148	2.18	47	368	.274	2	0.03	0	0.00	0	19	0.28	1	1	46	47	0.69	7	0	172.0	2.53
TOTAL FOR AUB	68 - 17		148	2.18	47	368	.274	2	0.03	0	0.00	0	19	0.28	1	1	46	47	0.69	7	0	172.0	2.53
TOTAL		216 - 72	386	1.79	115	832	.326	5	0.02	2	0.01	6	42	0.19	2	16	208	224	1.04	26	0	508.0	2.35

#6 KYLA SWANSON

MIDDLE BLOCKER | 6-4 | GRADUATE
WAHOO, NEB. (ILLINOIS)



SWANSON'S HIGHLIGHTS:

- 2x Academic All-Big Ten
- Made the NCAA Sweet 16 with Illinois in 2021
- Has more than 170 blocks in her career
- Hit .727 at Penn State on Oct. 30, 2021

CATEGORY	CAREER HIGH	OPPONENT/DATE
Kills	10 (3x)	last vs SMU (9/2/23)
Attempts	25	vs Charleston Southern (9/8/23)
Hitting Percentage (Min. 10 ATT.)	.727	at Penn State (10/30/21)
Assists	2 (2x)	last at Texas A&M (11/5/23)
Digs	6	at Tennessee (8/30/19)
Blocks	11	vs South Carolina (10/22/23)
Aces	2 (2x)	last vs Jacksonville State (8/26/23)
Points	15.5	vs UC Santa Barbara (8/27/21)

CATEGORY	SEASON HIGH	OPPONENT/DATE
Kills	10	vs SMU (9/2/23)
Attempts	25	vs Charleston Southern (9/8/23)
Hitting Percentage (Min. 10 ATT.)	.526	at Missouri (11/12/23)
Assists	2	at Texas A&M (11/5/23)
Digs	3 (2x)	last at Mississippi State (11/15/23)
Blocks	11	vs South Carolina (10/22/23)
Aces	2	vs Jacksonville State (8/26/23)
Points	12.0	vs South Carolina (10/22/23)

GAME BY GAME

Date	Opponent	SP	Attack				Set			Serve				Recept			Blocking				Team				
			K	E	TA	PCT	A	TA	PCT	SA	SE	TA	PCT	RE	TA	PCT	DIG	BS	BA	BE	TOTAL	BHE	POINTS	HIT%	SCORE
08/25/2023	Coppin St.	*4	3	2	6	.167	0	1	.000	2	4	17	.765	0	0	.000	1	1	5	0	6.0	0	8.5	.309	3-1
08/26/2023	McNeese	*3	6	2	12	.333	0	1	.000	0	4	11	.636	0	0	.000	1	0	1	1	1.0	0	6.5	.333	3-0
08/26/2023	Jacksonville St.	*3	3	1	7	.286	1	3	.333	0	1	4	.750	0	0	.000	2	1	2	0	3.0	0	5.0	.395	3-0
09/02/2023	vs SMU	*4	10	0	20	.500	0	2	.000	0	0	2	1.000	0	1	1.000	2	0	3	0	3.0	0	11.5	.316	3-1
09/03/2023	at Florida St.	*4	8	1	15	.467	0	1	.000	1	0	4	1.000	0	0	.000	0	0	4	0	4.0	0	11.0	.356	3-1
09/07/2023	Middle Tenn.	*4	9	3	18	.333	1	3	.333	0	2	11	.818	0	0	.000	2	0	4	1	4.0	0	11.0	.221	1-3
09/08/2023	Charleston So.	4	4	5	25	-.040	1	2	.500	0	0	0	.000	0	0	.000	1	0	3	0	3.0	0	5.5	.245	3-1
09/09/2023	Mercer	3	1	3	5	-.400	1	2	.500	0	0	0	.000	0	0	.000	1	0	4	0	4.0	0	3.0	.346	3-0
09/14/2023	at South Alabama	*3	2	5	10	-.300	0	3	.000	0	2	9	.778	0	0	.000	2	0	4	0	4.0	0	4.0	.191	3-2
09/15/2023	vs UAB	*4	3	0	9	.333	0	2	.000	0	0	0	.000	0	0	.000	1	0	8	0	8.0	0	7.0	.189	3-1
09/16/2023	vs Samford	*4	7	1	9	.667	0	2	.000	0	0	0	.000	0	0	.000	0	1	2	0	3.0	0	9.0	.386	3-1
09/22/2023	Florida	*5	3	1	10	.200	0	3	.000	0	0	1	1.000	0	0	.000	0	1	2	0	3.0	0	5.0	.196	2-3
10/20/2023	Ole Miss	*4	6	3	19	.158	0	0	.000	0	0	0	.000	0	0	.000	0	0	2	0	2.0	0	7.0	.199	3-1
09/27/2023	at Arkansas	*3	3	3	8	.000	0	1	.000	0	0	0	.000	0	0	.000	0	0	2	0	2.0	0	4.0	-.049	0-3
10/01/2023	Georgia	*4	5	1	12	.333	0	0	.000	0	0	0	.000	0	0	.000	0	1	2	0	3.0	0	7.0	.262	3-1
10/06/2023	at Florida	*3	2	1	6	.167	0	0	.000	0	0	0	.000	0	0	.000	1	0	2	0	2.0	0	3.0	.387	3-0
10/08/2023	at South Carolina	*5	5	0	8	.625	0	0	.000	0	0	0	.000	0	0	.000	0	1	7	2	8.0	0	9.5	.197	3-2
10/13/2023	at Tennessee	4	2	2	9	.000	1	2	.500	0	0	0	.000	0	1	1.000	0	0	4	1	4.0	0	4.0	.122	1-3
10/20/2023	Missouri	*3	4	0	10	.400	1	2	.500	0	1	2	.500	0	0	.000	0	1	6	0	7.0	0	8.0	.168	0-3
10/22/2023	South Carolina	*5	6	3	12	.250	1	2	.500	0	0	0	.000	0	0	.000	0	1	10	0	11.0	0	12.0	.241	3-2
10/27/2023	at Georgia	*5	5	0	8	.625	0	2	.000	0	0	0	.000	0	0	.000	2	0	7	1	7.0	0	8.5	.243	3-2
10/29/2023	at Alabama	*4	2	1	7	.143	0	1	.000	0	0	0	.000	0	1	1.000	0	0	5	0	5.0	0	4.5	.248	3-1
11/05/2023	at Texas A&M	*5	8	1	17	.412	2	3	.667	0	0	2	1.000	0	0	.000	3	0	4	0	4.0	0	10.0	.320	3-2
11/08/2023	Kentucky	*3	6	1	10	.500	0	0	.000	0	0	0	.000	0	4	1.000	0	0	2	1	2.0	0	7.0	.095	0-3
11/12/2023	at Missouri	*4	9	0	18	.500	0	1	.000	0	0	0	.000	0	1	1.000	0	0	2	0	2.0	0	10.0	.242	1-3
11/15/2023	at Mississippi St.	*5	7	2	17	.294	0	3	.000	1	2	11	.818	0	1	1.000	3	0	2	0	2.0	0	9.0	.175	2-3
Totals		102	129	42	307	.283	9	42	.214	4	16	74	.784	0	9	1.000	22	8	99	7	107.0	0	190.5		

Player Averages

Sets Played	Kills per set	Assists per set	Service aces per set	Digs per set	Blocks per set	Points per set
102	1.26	0.09	0.04	0.22	1.05	1.87

CAREER STATS

SEASON	TEAM	SM-MP	K	K/S	E	TA	PCT	A	A/S	SA	SA/S	SE	DIG	D/S	RE	BS	BA	TB	B/S	BE	BHE	PTS	PTS/S
2019-20	Illini	16-5	7	0.44	3	29	.138	1	0.06	0	0.00	3	7	0.44	0	0	11	11	0.69	1	1	12.5	0.78
2020-21	Illini	21-7	20	0.95	9	64	.172	1	0.05	0	0.00	0	6	0.29	0	0	16	16	0.76	1	1	28.0	1.33
2021-22	Illini	101-27	149	1.48	45	316	.329	3	0.03	0	0.00	0	13	0.13	2	9	97	106	1.05	9	2	206.5	2.04
2022-23	Illini	51-15	53	1.04	19	120	.283	2	0.04	5	0.10	7	6	0.12	0	3	41	44	0.86	4	0	81.5	1.60
2023-24	AUB	102-26	129	1.26	42	307	.283	9	0.09	4	0.04	16	22	0.22	0	8	99	107	1.05	7	0	190.5	1.87
TOTAL FOR AUB		102 - 26	129	1.26	42	307	.283	9	0.09	4	0.04	16	22	0.22	0	8	99	107	1.05	7	0	190.5	1.87
TOTAL		291 - 80	358	1.23	118	836	.287	16	0.05	9	0.03	26	54	0.19	2	20	264	284	0.98	22	4	519.0	1.78

#7 PEYTON DUNN

SETTER | 5-11 | REDSHIRT-SOPHOMORE
DECATUR, TEXAS (LEGEND)



DUNN'S HIGHLIGHTS:

- 4x Big 12 Rookie of the Week
- All-Big 12 Rookie Team
- Had a career-high 54 assists vs Texas Tech on Oct. 14, 2021

CATEGORY	CAREER HIGH	OPPONENT/DATE
Kills	6	vs Indiana (9/10/21)
Attempts	11 (3x)	last at TCU (10/8/21)
Hitting Percentage (Min. 10 ATT.)	.500	vs Indiana (9/10/21)
Assists	54	vs Texas Tech (10/14/21)
Digs	18	vs FIU (8/28/22)
Blocks	6 (3x)	last at TCU (10/9/22)
Aces	2 (4x)	last vs FIU (8/28/22)
Points	7.0	at TCU (10/9/21)

CATEGORY	SEASON HIGH	OPPONENT/DATE
Kills	3	vs Jacksonville State (8/26/23)
Attempts	4	vs Jacksonville State (8/26/23)
Hitting Percentage (Min. 10 ATT.)	--	--
Assists	43	vs Coppin State (8/25/23)
Digs	4 (2x)	last vs Jacksonville State (8/26/23)
Blocks	2	vs Coppin State (8/25/23)
Aces	1	vs Coppin State (8/25/23)
Points	3.0 (2x)	last vs Jacksonville State (8/26/23)

GAME BY GAME

Date	Opponent	SP	Attack				Set			Serve				Recept			Blocking				Team				
			K	E	TA	PCT	A	TA	PCT	SA	SE	TA	PCT	RE	TA	PCT	DIG	BS	BA	BE	TOTAL	BHE	POINTS	HIT%	SCORE
08/25/2023	Coppin St.	*4	1	0	3	.333	43	111	.387	1	5	11	.545	0	0	.000	4	0	2	0	2.0	0	3.0	.309	3-1
08/26/2023	Jacksonville St.	2	3	1	4	.500	16	30	.533	0	2	4	.500	0	0	.000	4	0	0	0	0.0	0	3.0	.395	3-0
Totals		6	4	1	7	.429	59	141	.418	1	7	15	.533	0	0	.000	8	0	2	0	2.0	0	6.0		

Player Averages

Sets Played	Kills per set	Assists per set	Service aces per set	Digs per set	Blocks per set	Points per set
6	0.67	9.83	0.17	1.33	0.33	1.00

CAREER STATS

SEASON	TEAM	SM-MP	K	K/S	E	TA	PCT	A	A/S	SA	SA/S	SE	DIG	D/S	RE	BS	BA	TB	B/S	BE	BHE	PTS	PTS/S
2021-22	OU	107-27	67	0.63	15	163	.319	997	9.32	13	0.12	45	198	1.85	0	0	63	63	0.59	2	5	111.5	1.04
2022-23	OU	24-7	12	0.50	4	25	.320	252	10.50	3	0.13	8	57	2.38	0	0	11	11	0.46	3	4	20.5	0.85
2023-24	AUB	6-2	4	0.67	1	7	.429	59	9.83	1	0.17	7	8	1.33	0	0	2	2	0.33	0	0	6.0	1.00
TOTAL FOR AUB	6 - 2		4	0.67	1	7	.429	59	9.83	1	0.17	7	8	1.33	0	0	2	2	0.33	0	0	6.0	1.00
TOTAL		137 - 36	83	0.61	20	195	.323	1308	9.55	17	0.12	60	263	1.92	0	0	76	76	0.55	5	9	138.0	1.01

#8 KENDAL KEMP

MIDDLE BLOCKER | 6-6 | SOPHOMORE
EAGAN, MINN. (EAGAN)



KEMP'S HIGHLIGHTS:

- Has set the Auburn single-season record for total blocks, block assists and blocks per set
- Tied the program record for most blocks in a 3-set match with 9 vs. Belmont
- 2x SEC Freshman of the Week
- Named to the SEC All-Freshman Team
- Named AVCA South Region Honorable Mention
- Made her collegiate debut on Aug. 26 vs. Belmont

CATEGORY	CAREER HIGH	OPPONENT/DATE
Kills	13	vs Charleston Southern (9/8/23)
Attempts	21 (2x)	last at South Carolina (11/23/22)
Hitting Percentage (Min. 10 ATT.)	.714	at Missouri (10/15/22)
Assists	1 (4x)	last at Alabama (10/29/23)
Digs	2 (3x)	last vs Kentucky (11/8/23)
Blocks	10 (4x)	last vs UAB (9/15/22)
Aces	3	at Georgia State (8/26/22)
Points	17.5	at South Carolina (11/23/22)

CATEGORY	SEASON HIGH	OPPONENT/DATE
Kills	13	vs Charleston Southern (9/8/23)
Attempts	19	vs Charleston Southern (9/8/23)
Hitting Percentage (Min. 10 ATT.)	.667	vs Georgia (10/1/23)
Assists	1 (2x)	last at Alabama (10/29/23)
Digs	2	vs Kentucky (11/8/23)
Blocks	10 (2x)	last at Mississippi State (11/15/23)
Aces	1	vs Coppin State (8/25/23)
Points	15.5	vs Charleston Southern (9/8/23)

GAME BY GAME

Date	Opponent	SP	Attack				Set			Serve			Recept			Blocking				Team					
			K	E	TA	PCT	A	TA	PCT	SA	SE	TA	PCT	RE	TA	PCT	DIG	BS	BA	BE	TOTAL	BHE	POINTS	HIT%	SCORE
08/25/2023	Coppin St.	*4	5	2	17	.176	0	1	.000	1	2	5	.600	0	0	.000	0	2	3	0	5.0	0	9.5	.309	3-1
08/26/2023	McNeese	*2	4	1	6	.500	0	1	.000	0	0	0	.000	0	0	.000	0	2	3	0	5.0	0	7.5	.333	3-0
08/26/2023	Jacksonville St.	*2	2	0	2	1.000	0	1	.000	0	0	0	.000	0	0	.000	0	1	1	0	2.0	0	3.5	.395	3-0
09/02/2023	vs SMU	*4	4	0	7	.571	0	0	.000	0	0	0	.000	0	0	.000	0	0	4	2	4.0	0	6.0	.316	3-1
09/03/2023	at Florida St.	*4	9	3	13	.462	0	1	.000	0	0	0	.000	0	0	.000	1	0	4	3	4.0	0	11.0	.356	3-1
09/07/2023	Middle Tenn.	*4	5	2	9	.333	0	1	.000	0	0	0	.000	0	0	.000	1	0	5	0	5.0	0	7.5	.221	1-3
09/08/2023	Charleston So.	*4	13	3	19	.526	0	1	.000	0	0	0	.000	0	0	.000	0	0	5	0	5.0	0	15.5	.245	3-1
09/09/2023	Mercer	*3	6	1	10	.500	0	0	.000	0	1	1	.000	0	1	1.000	0	0	7	0	7.0	0	9.5	.346	3-0
09/14/2023	at South Alabama	*5	6	1	11	.455	0	0	.000	0	0	0	.000	0	0	.000	1	0	3	0	3.0	0	7.5	.191	3-2
09/15/2023	vs UAB	*4	8	3	17	.294	0	2	.000	0	0	0	.000	0	0	.000	1	1	9	2	10.0	0	13.5	.189	3-1
09/16/2023	vs Samford	*4	5	2	11	.273	0	0	.000	0	0	0	.000	0	0	.000	0	0	2	0	2.0	0	6.0	.386	3-1
10/01/2023	Georgia	*4	8	0	12	.667	0	1	.000	0	0	0	.000	0	1	1.000	1	0	4	0	4.0	0	10.0	.262	3-1
10/06/2023	at Florida	*3	4	1	7	.429	0	1	.000	0	0	0	.000	0	0	.000	0	0	3	0	3.0	0	5.5	.387	3-0
10/08/2023	at South Carolina	*5	6	1	11	.455	0	1	.000	0	0	0	.000	0	0	.000	0	0	9	0	9.0	0	10.5	.197	3-2
10/13/2023	at Tennessee	*4	9	2	15	.467	1	2	.500	0	0	0	.000	0	0	.000	0	1	8	0	9.0	0	14.0	.122	1-3
10/20/2023	Missouri	*3	2	2	4	.000	0	0	.000	0	0	0	.000	0	0	.000	0	0	2	0	2.0	0	3.0	.168	0-3
10/22/2023	South Carolina	*5	4	2	10	.200	0	3	.000	0	0	0	.000	0	0	.000	0	1	4	1	5.0	0	7.0	.241	3-2
10/27/2023	at Georgia	*5	3	2	7	.143	0	2	.000	0	0	0	.000	0	0	.000	0	0	7	0	7.0	0	6.5	.243	3-2
10/29/2023	at Alabama	*4	6	2	14	.286	1	1	1.000	0	0	0	.000	0	0	.000	0	0	3	0	3.0	0	7.5	.248	3-1
11/05/2023	at Texas A&M	*5	9	2	14	.500	0	0	.000	0	0	0	.000	0	0	.000	1	0	8	0	8.0	0	13.0	.320	3-2
11/08/2023	Kentucky	*3	4	2	10	.200	0	1	.000	0	0	0	.000	0	1	1.000	2	0	1	0	1.0	0	4.5	.095	0-3
11/12/2023	at Missouri	*4	6	1	10	.500	0	1	.000	0	0	0	.000	0	0	.000	0	0	1	0	1.0	0	6.5	.242	1-3
11/15/2023	at Mississippi St.	*5	7	2	14	.357	0	3	.000	0	0	0	.000	0	0	.000	1	5	5	0	10.0	0	14.5	.175	2-3
Totals		90	135	37	250	.392	2	24	.083	1	3	6	.500	0	3	1.000	9	13	101	8	114.0	0	199.5		

Player Averages

Sets Played	Kills per set	Assists per set	Service aces per set	Digs per set	Blocks per set	Points per set
90	1.50	0.02	0.01	0.10	1.27	2.22

CAREER STATS

SEASON	TEAM	SM-MP	K	K/S	E	TA	PCT	A	A/S	SA	SA/S	SE	DIG	D/S	RE	BS	BA	TB	B/S	BE	BHE	PTS	PTS/S
2022-23	AUB	122-31	204	1.67	66	430	.321	2	0.02	7	0.06	16	12	0.10	1	26	154	180	1.48	13	0	314.0	2.57
2023-24	AUB	90-23	135	1.50	37	250	.392	2	0.02	1	0.01	3	9	0.10	0	13	101	114	1.27	8	0	199.5	2.22
TOTAL		212 - 54	339	1.60	103	680	.347	4	0.02	8	0.04	19	21	0.10	1	39	255	294	1.39	21	0	513.5	2.42

#9 ZOE SLAUGHTER

LIBERO | 5-7 | SOPHOMORE
HONOLULU, HAWAII (MOANALUA)



SLAUGHTER'S HIGHLIGHTS:

- Recorded 10+ digs in 10 matches last season
- Grabbed a career-high 22 digs at Alabama on Sept. 24, 2022
- Made her collegiate debut on Aug. 26 vs. Belmont

CATEGORY	CAREER HIGH	OPPONENT/DATE
Kills	1 (2x)	last at Missouri (10/15/22)
Attempts	1 (4x)	last vs McNeese (8/26/23)
Hitting Percentage (Min. 10 ATT.)	--	--
Assists	5	at South Alabama (9/14/23)
Digs	29	at South Alabama (9/13/23)
Blocks	--	--
Aces	3 (2x)	last vs Alabama A&M (9/6/22)
Points	3.0 (3x)	last vs Troy (9/10/22)

CATEGORY	SEASON HIGH	OPPONENT/DATE
Kills	--	--
Attempts	3	vs Samford (9/16/23)
Hitting Percentage (Min. 10 ATT.)	--	--
Assists	5	at South Alabama (9/14/23)
Digs	29	at South Alabama (9/14/23)
Blocks	--	--
Aces	2 (2x)	last at Missouri (11/12/23)
Points	2.0 (2x)	last at Missouri (11/12/23)

GAME BY GAME

Date	Opponent	SP	Attack				Set			Serve				Receipt			Blocking				Team				
			K	E	TA	PCT	A	TA	PCT	SA	SE	TA	PCT	RE	TA	PCT	DIG	BS	BA	BE	TOTAL	BHE	POINTS	HIT%	SCORE
08/25/2023	Coppin St.	4	0	0	0	.000	1	2	.500	1	4	17	.765	0	16	1.000	5	0	0	0	0.0	0	1.0	.309	3-1
08/26/2023	McNeese	3	0	0	1	.000	1	4	.250	0	0	12	1.000	0	11	1.000	6	0	0	0	0.0	0	0.0	.333	3-0
08/26/2023	Jacksonville St.	*3	0	0	0	.000	1	2	.500	0	0	9	1.000	0	11	1.000	5	0	0	0	0.0	0	0.0	.395	3-0
09/02/2023	vs SMU	*4	0	0	0	.000	0	3	.000	0	1	11	.909	0	16	1.000	2	0	0	0	0.0	0	0.0	.316	3-1
09/03/2023	at Florida St.	*4	0	0	1	.000	1	4	.250	2	3	22	.864	1	28	.964	10	0	0	0	0.0	0	2.0	.356	3-1
09/07/2023	Middle Tenn.	*4	0	0	0	.000	2	3	.667	0	1	18	.944	0	10	1.000	3	0	0	0	0.0	0	0.0	.221	1-3
09/08/2023	Charleston So.	4	0	0	0	.000	0	3	.000	0	1	17	.941	0	9	1.000	7	0	0	0	0.0	0	0.0	.245	3-1
09/09/2023	Mercer	*3	0	0	0	.000	0	0	.000	0	1	8	.875	0	6	1.000	5	0	0	0	0.0	0	0.0	.346	3-0
09/14/2023	at South Alabama	5	0	0	2	.000	5	15	.333	1	4	13	.692	5	29	.828	29	0	0	0	0.0	0	1.0	.191	3-2
09/15/2023	vs UAB	4	0	0	1	.000	4	13	.308	0	0	18	1.000	0	12	1.000	11	0	0	0	0.0	0	0.0	.189	3-1
09/16/2023	vs Samford	4	0	0	3	.000	4	9	.444	0	0	13	1.000	3	23	.870	16	0	0	0	0.0	0	0.0	.386	3-1
09/22/2023	Florida	5	0	0	0	.000	1	3	.333	0	1	20	.950	0	15	1.000	11	0	0	0	0.0	0	0.0	.196	2-3
09/24/2023	Ole Miss	4	0	0	0	.000	1	3	.333	0	2	13	.846	0	6	1.000	7	0	0	0	0.0	0	0.0	.199	3-1
09/27/2023	at Arkansas	3	0	0	0	.000	0	3	.000	1	1	6	.833	1	11	.909	1	0	0	0	0.0	0	1.0	-.049	0-3
10/06/2023	at Florida	3	0	0	0	.000	0	0	.000	0	0	0	.000	0	2	1.000	2	0	0	0	0.0	0	0.0	.387	3-0
10/08/2023	at South Carolina	5	0	0	0	.000	1	2	.500	1	1	3	.667	0	21	1.000	3	0	0	0	0.0	0	1.0	.197	3-2
10/13/2023	at Tennessee	4	0	0	0	.000	0	1	.000	0	0	0	.000	0	15	1.000	3	0	0	0	0.0	0	0.0	.122	1-3
10/27/2023	at Georgia	5	0	1	1	-1.000	1	2	.500	1	2	19	.895	0	16	1.000	3	0	0	0	0.0	0	1.0	.243	3-2
10/29/2023	at Alabama	4	0	0	0	.000	0	2	.000	0	1	13	.923	1	19	.947	10	0	0	0	0.0	0	0.0	.248	3-1
11/05/2023	at Texas A&M	*5	0	0	0	.000	0	4	.000	1	1	18	.944	1	15	.933	11	0	0	0	0.0	0	1.0	.320	3-2
11/08/2023	Kentucky	3	0	0	0	.000	0	0	.000	0	1	8	.875	2	11	.818	2	0	0	0	0.0	0	0.0	.095	0-3
11/12/2023	at Missouri	*4	0	0	1	.000	2	3	.667	2	0	11	1.000	2	28	.929	9	0	0	0	0.0	0	2.0	.242	1-3
Totals		87	0	1	10	-.100	25	81	.309	10	25	269	.907	16	330	.952	161	0	0	0	0.0	0	10.0		

Player Averages

Sets Played	Kills per set	Assists per set	Service aces per set	Digs per set	Blocks per set	Points per set
87	0.00	0.29	0.11	1.85	0.00	0.11

CAREER STATS

SEASON	TEAM	SM-MP	K	K/S	E	TA	PCT	A	A/S	SA	SA/S	SE	DIG	D/S	RE	BS	BA	TB	B/S	BE	BHE	PTS	PTS/S
2022-23	AUB	122-31	2	0.02	1	4	.250	22	0.18	19	0.16	41	267	2.19	14	0	0	0	0.00	0	1	21.0	0.17
2023-24	AUB	87-22	0	0.00	1	10	-.100	25	0.29	10	0.11	25	161	1.85	16	0	0	0	0.00	0	0	10.0	0.11
TOTAL		209 - 53	2	0.01	2	14	.000	47	0.22	29	0.14	66	428	2.05	30	0	0	0	0.00	0	1	31.0	0.15

#10 JACKIE BARRETT

SETTER | 6-2 | SENIOR
HIGHLAND, CALIF. (CITRUS VALLEY)



BARRETT'S HIGHLIGHTS

- 2x SEC Setter of the Week
- Set a career-high in aces with 5 against Mercer
- Set her career-high in assists with 60 against LSU on Oct. 5, 2022

CATEGORY	CAREER HIGH	OPPONENT/DATE
Kills	6 (2x)	last, at Alabama State (9/26/21)
Attempts	20	at Alabama State (9/26/21)
Hitting Percentage (Min. 10 ATT.)	.308	vs. Florida A&M (9/17/21)
Assists	60	at LSU (10/5/22)
Digs	28	vs. Nicholls (9/17/21)
Blocks	8 (2x)	last at South Carolina (10/8/23)
Aces	5 (2x)	at South Alabama (9/14/23)
Points	10.5	at Alabama (10/29/23)

CATEGORY	SEASON HIGH	OPPONENT/DATE
Kills	5 (3x)	last vs Florida (9/22/23)
Attempts	10	vs Ole Miss (9/24/23)
Hitting Percentage (Min. 10 ATT.)	.200	vs Ole Miss (9/24/23)
Assists	50	at Texas A&M (11/5/23)
Digs	17	vs Ole Miss (9/24/23)
Blocks	8	at South Carolina (10/8/23)
Aces	5 (2x)	last at South Alabama (9/14/23)
Points	10.5	at Alabama (10/29/23)

GAME BY GAME

Date	Opponent	SP	Attack				Set			Serve				Recept			Blocking				Team				
			K	E	TA	PCT	A	TA	PCT	SA	SE	TA	PCT	RE	TA	PCT	DIG	BS	BA	BE	TOTAL	BHE	POINTS	HIT%	SCORE
08/26/2023	McNeese	*3	1	0	4	.250	31	72	.431	0	1	15	.933	0	0	.000	6	0	2	0	2.0	0	2.0	.333	3-0
08/26/2023	Jacksonville St.	*2	1	0	2	.500	14	25	.560	0	0	1	1.000	0	0	.000	2	0	1	0	1.0	0	1.5	.395	3-0
09/02/2023	vs SMU	*4	5	0	7	.714	36	96	.375	1	0	16	1.000	0	1	1.000	14	0	2	1	2.0	0	7.0	.316	3-1
09/03/2023	at Florida St.	*4	3	2	7	.143	44	99	.444	0	0	16	1.000	0	0	.000	11	0	3	0	3.0	0	4.5	.356	3-1
09/07/2023	Middle Tenn.	*4	5	0	7	.714	39	104	.375	1	1	13	.923	0	0	.000	10	0	0	0	0.0	0	6.0	.221	1-3
09/08/2023	Charleston So.	*4	1	1	6	.000	41	111	.369	0	0	14	1.000	0	0	.000	13	0	3	0	3.0	0	2.5	.245	3-1
09/09/2023	Mercer	*3	2	0	2	1.000	31	64	.484	5	0	16	1.000	0	0	.000	5	0	4	0	4.0	0	9.0	.346	3-0
09/14/2023	at South Alabama	*5	2	0	6	.333	48	142	.338	5	3	23	.870	0	0	.000	11	0	3	0	3.0	2	8.5	.191	3-2
09/15/2023	vs UAB	*4	3	1	6	.333	35	98	.357	0	1	14	.929	0	0	.000	6	0	5	0	5.0	0	5.5	.189	3-1
09/16/2023	vs Samford	*4	3	0	5	.600	46	93	.495	1	1	12	.917	0	0	.000	6	1	0	0	1.0	1	5.0	.386	3-1
09/22/2023	Florida	*5	5	0	9	.556	40	122	.328	1	3	15	.800	0	1	1.000	12	0	2	1	2.0	0	7.0	.196	2-3
09/24/2023	Ole Miss	*4	3	1	10	.200	42	119	.353	1	0	20	1.000	0	0	.000	17	0	1	0	1.0	0	4.5	.199	3-1
09/27/2023	at Arkansas	*3	1	0	2	.500	11	59	.186	0	1	6	.833	0	0	.000	5	0	1	1	1.0	0	1.5	-.049	0-3
10/01/2023	Georgia	*4	0	0	3	.000	42	104	.404	0	0	10	1.000	0	0	.000	8	0	1	0	1.0	0	0.5	.262	3-1
10/06/2023	at Florida	*3	3	0	8	.375	37	71	.521	2	1	11	.909	0	0	.000	5	0	2	0	2.0	0	6.0	.387	3-0
10/08/2023	at South Carolina	*5	4	1	7	.429	46	117	.393	0	1	18	.944	0	1	1.000	12	0	8	1	8.0	1	8.0	.197	3-2
10/13/2023	at Tennessee	*4	0	0	3	.000	31	115	.270	0	0	16	1.000	0	0	.000	11	0	3	0	3.0	1	1.5	.122	1-3
10/20/2023	Missouri	*3	0	1	3	-.333	27	80	.338	1	1	12	.917	0	0	.000	10	0	3	0	3.0	0	2.5	.168	0-3
10/22/2023	South Carolina	*5	4	1	9	.333	46	119	.387	3	3	23	.870	0	1	1.000	10	0	2	0	2.0	0	8.0	.241	3-2
10/27/2023	at Georgia	*5	1	1	4	.000	46	115	.400	0	1	18	.944	0	0	.000	12	0	5	0	5.0	0	3.5	.243	3-2
10/29/2023	at Alabama	*4	4	0	7	.571	44	111	.396	4	0	21	1.000	0	1	1.000	11	1	3	1	4.0	0	10.5	.248	3-1
11/05/2023	at Texas A&M	*5	2	0	5	.400	50	114	.439	1	1	17	.941	0	0	.000	6	0	2	0	2.0	1	4.0	.320	3-2
11/08/2023	Kentucky	*3	0	0	2	.000	16	70	.229	0	1	8	.875	0	1	1.000	3	0	1	0	1.0	0	0.5	.095	0-3
11/12/2023	at Missouri	*4	1	1	3	.000	32	90	.356	0	1	11	.909	0	0	.000	8	0	1	0	1.0	0	1.5	.242	1-3
11/15/2023	at Mississippi St.	*5	0	2	8	-.250	45	132	.341	0	2	13	.846	0	0	.000	10	0	4	0	4.0	0	2.0	.175	2-3
Totals			99	54	12	135	.311	920	2442	.377	26	23	359	.936	0	6	1.000	224	2	62	5	64.0	6	113.0	

Player Averages

Sets Played	Kills per set	Assists per set	Service aces per set	Digs per set	Blocks per set	Points per set
-------------	---------------	-----------------	----------------------	--------------	----------------	----------------

CAREER STATS

SEASON	TEAM	SM-MP	K	K/S	E	TA	PCT	A	A/S	SA	SA/S	SE	DIG	D/S	RE	BS	BA	TB	B/S	BE	BHE	PTS	PTS/S
2020-21	AUB	19-6	9	0.47	6	44	.068	144	7.58	3	0.16	8	33	1.74	0	0	11	11	0.58	1	0	17.5	0.92
2021-22	AUB	100-28	51	0.51	14	180	.206	809	8.09	22	0.22	24	307	3.07	0	2	60	62	0.62	8	1	105.0	1.05
2022-23	AUB	106-28	41	0.39	8	116	.284	1057	9.97	26	0.25	28	220	2.08	1	9	75	84	0.79	10	0	113.5	1.07
2023-24	AUB	99-25	54	0.55	12	135	.311	920	9.29	26	0.26	23	224	2.26	0	2	62	64	0.65	5	6	113.0	1.14
TOTAL		324 - 87	155	0.48	40	475	.242	2930	9.04	77	0.24	83	784	2.42	1	13	208	221	0.68	24	7	349.0	1.08

#11 JORDAN SINNESS

SETTER | 5-9 | JUNIOR
SEBRING, FLA. (SEBRING)



SINNESS' HIGHLIGHTS:

- Recorded the Tigers' first double-double of the season at Georgia State with 42 assists and 12 digs.
- Grabbed a career-high 49 assists in 5-set win at UAB
- Made collegiate debut versus Cal State Fullerton (9/2), dishing out 16 assists, six digs, one kill and a block

CATEGORY	CAREER HIGH	OPPONENT/DATE
Kills	3	vs Alabama A&M (9/6/22)
Attempts	7	at UAB (9/10/22)
Hitting Percentage (Min. 10 ATT.)		
Assists	49	at UAB (9/10/22)
Digs	14	vs. Missouri (10/17/21)
Blocks	5	at UAB (9/10/22)
Aces	3	vs Alabama A&M (9/6/22)
Points	7.0	vs Alabama A&M (9/6/22)

CATEGORY	SEASON HIGH	OPPONENT/DATE
Kills	--	--
Attempts	--	--
Hitting Percentage (Min. 10 ATT.)	--	--
Assists	--	--
Digs	--	--
Blocks	--	--
Aces	--	--
Points	--	--

GAME BY GAME

CAREER STATS

SEASON	TEAM	SM-MP	K	K/S	E	TA	PCT	A	A/S	SA	SA/S	SE	DIG	D/S	RE	BS	BA	TB	B/S	BE	BHE	PTS	PTS/S
2021-22	AUB	50-15	2	0.04	1	6	.167	64	1.28	6	0.12	7	33	0.66	0	0	3	3	0.06	0	2	9.5	0.19
2022-23	AUB	49-14	5	0.10	0	15	.333	163	3.33	16	0.33	22	51	1.04	0	2	13	15	0.31	1	0	29.5	0.60
TOTAL		99 - 29	7	0.07	1	21	.286	227	2.29	22	0.22	29	84	0.85	0	2	16	18	0.18	1	2	39.0	0.39

#12 BEL ZIMMERMAN

**PIN HITTER | 6-2 | SOPHOMORE
LIBERTY, MO. (LIBERTY NORTH)**



ZIMMERMAN'S HIGHLIGHTS:

- Set career highs in kills (17) and digs (16) against Charleston Southern for her first-career double-double
- Hit .692 with 8 kills vs. Marist
- Had a career-high 13 kills at Jacksonville State
- Made her collegiate debut on Aug. 26 at Georgia State

CATEGORY	CAREER HIGH	OPPONENT/DATE
Kills	17	vs Charleston Southern (9/8/23)
Attempts	36	vs UAB (9/15/23)
Hitting Percentage (Min. 10 ATT.)	.692	vs Marist (8/27/22)
Assists	1 (10x)	last vs South Carolina (10/22/23)
Digs	16	vs Charleston Southern (9/8/23)
Blocks	6 (2x)	last at South Alabama (9/14/23)
Aces	4 (2x)	last at Georgia (10/27/23)
Points	21.0	vs UAB (9/15/23)

CATEGORY	SEASON HIGH	OPPONENT/DATE
Kills	17	vs Charleston Southern (9/8/23)
Attempts	41	at South Carolina (10/8/23)
Hitting Percentage (Min. 10 ATT.)	.400	vs McNeese (8/26/23)
Assists	1 (9x)	last at Mississippi State (11/15/23)
Digs	16	vs Charleston Southern (9/8/23)
Blocks	6	at South Alabama (9/14/23)
Aces	4 (2x)	last at Georgia (10/27/23)
Points	21.0	vs UAB (9/15/23)

GAME BY GAME

Date	Opponent	SP	Attack				Set			Serve				Receipt			Blocking				Team				
			K	E	TA	PCT	A	TA	PCT	SA	SE	TA	PCT	RE	TA	PCT	DIG	BS	BA	BE	TOTAL	BHE	POINTS	HIT%	SCORE
08/26/2023	McNeese	3	8	0	20	.400	1	3	.333	0	2	8	.750	0	7	1.000	2	0	2	0	2.0	0	9.0	.333	3-0
08/26/2023	Jacksonville St.	2	2	3	8	.125	0	0	.000	3	2	7	.714	0	3	1.000	1	0	0	2	0.0	0	5.0	.395	3-0
09/02/2023	vs SMU	2	0	0	0	.000	0	0	.000	0	2	3	.333	0	0	.000	0	0	0	0	0.0	0	0.0	.316	3-1
09/03/2023	at Florida St.	4	0	0	0	.000	0	1	.000	0	0	9	1.000	0	0	.000	0	0	0	0	0.0	0	0.0	.356	3-1
09/07/2023	Middle Tenn.	*4	11	6	40	.125	0	0	.000	0	3	11	.727	2	19	.895	4	0	2	1	2.0	0	12.0	.221	1-3
09/08/2023	Charleston So.	*4	17	5	50	.240	1	1	1.000	2	2	22	.909	0	20	1.000	16	0	2	0	2.0	0	20.0	.245	3-1
09/09/2023	Mercer	*3	14	3	30	.367	1	3	.333	3	3	15	.800	0	13	1.000	2	0	1	1	1.0	0	17.5	.346	3-0
09/14/2023	at South Alabama	*5	11	3	34	.235	1	6	.167	4	2	23	.913	0	10	1.000	2	1	5	1	6.0	0	18.5	.191	3-2
09/15/2023	vs UAB	*4	16	5	36	.306	1	3	.333	2	3	14	.786	2	22	.909	12	1	4	1	5.0	0	21.0	.189	3-1
09/16/2023	vs Samford	*4	15	2	33	.394	1	2	.500	1	3	12	.750	3	17	.824	11	0	2	0	2.0	0	17.0	.386	3-1
09/22/2023	Florida	5	0	0	0	.000	1	3	.333	0	3	16	.813	0	0	.000	1	0	0	0	0.0	0	0.0	.196	2-3
09/24/2023	Ole Miss	4	0	0	0	.000	0	0	.000	3	2	17	.882	0	0	.000	1	0	0	0	0.0	0	3.0	.199	3-1
09/27/2023	at Arkansas	3	0	3	5	-.600	0	1	.000	1	1	5	.800	1	3	.667	0	0	0	0	0.0	0	1.0	-.049	0-3
10/01/2023	Georgia	*4	5	2	14	.214	0	3	.000	0	5	20	.750	0	15	1.000	6	0	1	2	1.0	0	5.5	.262	3-1
10/06/2023	at Florida	*3	6	3	18	.167	0	0	.000	1	6	15	.600	0	7	1.000	2	0	1	0	1.0	0	7.5	.387	3-0
10/08/2023	at South Carolina	*5	10	7	41	.073	0	1	.000	1	4	18	.778	0	3	1.000	2	0	0	1	0.0	0	11.0	.197	3-2
10/13/2023	at Tennessee	*4	9	3	28	.214	0	1	.000	0	2	11	.818	1	11	.909	5	0	1	0	1.0	0	9.5	.122	1-3
10/20/2023	Missouri	3	2	1	5	.200	0	0	.000	1	1	12	.917	2	9	.778	8	0	0	0	0.0	0	3.0	.168	0-3
10/22/2023	South Carolina	*5	2	1	14	.071	1	1	1.000	2	4	18	.778	1	7	.857	5	0	0	0	0.0	0	4.0	.241	3-2
10/27/2023	at Georgia	*5	4	3	10	.100	0	2	.000	4	3	15	.800	1	5	.800	4	0	0	0	0.0	0	8.0	.243	3-2
10/29/2023	at Alabama	*4	4	3	13	.077	0	2	.000	1	5	12	.583	0	0	.000	9	0	0	0	0.0	0	5.0	.248	3-1
11/05/2023	at Texas A&M	2	0	0	0	.000	0	0	.000	0	3	6	.500	0	0	.000	0	0	0	0	0.0	0	0.0	.320	3-2
11/08/2023	Kentucky	3	0	0	0	.000	0	0	.000	0	2	7	.714	0	0	.000	0	0	0	0	0.0	0	0.0	.095	0-3
11/15/2023	at Mississippi St.	5	2	3	8	.125	1	1	1.000	1	3	10	.700	0	6	1.000	1	0	0	0	0.0	0	3.0	.175	2-3
Totals		90	138	56	407	.201	9	34	.265	30	66	306	.784	13	177	.927	94	2	21	9	23.0	0	180.5		

Player Averages

Sets Played	Kills per set	Assists per set	Service aces per set	Digs per set	Blocks per set	Points per set
90	1.53	0.10	0.33	1.04	0.26	2.01

CAREER STATS

SEASON	TEAM	SM-MP	K	K/S	E	TA	PCT	A	A/S	SA	SA/S	SE	DIG	D/S	RE	BS	BA	TB	B/S	BE	BHE	PTS	PTS/S
2022-23	AUB	114-29	220	1.93	98	607	.201	2	0.02	4	0.04	11	54	0.47	3	3	63	66	0.58	10	0	258.5	2.27
2023-24	AUB	90-24	138	1.53	56	407	.201	9	0.10	30	0.33	66	94	1.04	13	2	21	23	0.26	9	0	180.5	2.01
TOTAL		204 - 53	358	1.75	154	1014	.201	11	0.05	34	0.17	77	148	0.73	16	5	84	89	0.44	19	0	439.0	2.15

#13 PAIGE THIBAUT

LIBERO | 5-8 | JUNIOR

WATERTOWN, MINN. (WATERTOWN-MAYER)



THIBAUT'S HIGHLIGHTS:

- Compiled a career-high 20 digs against Dayton on Sept. 3, 2022
- Hit .462 vs Arizona State on Sept. 2, 2022
- 2021 All-Crossroads League Honorable Mention
- 2021 Crossroads League All-Freshman Team

CATEGORY	CAREER HIGH	OPPONENT/DATE
Kills	9	at FAU (10/28/22)
Attempts	35	at UTSA (10/23/22)
Hitting Percentage (Min. 10 ATT.)	.462	vs Arizona State (9/2/22)
Assists	9	vs South Carolina (10/22/23)
Digs	23 (2x)	last at Georgia (10/27/23)
Blocks	4	vs UAB (10/7/22)
Aces	3	vs Little Rock (9/8/22)
Points	9.0 (2x)	last at FAU (10/28/22)

CATEGORY	SEASON HIGH	OPPONENT/DATE
Kills	1	at South Alabama (9/14/23)
Attempts	2	at South Alabama (9/14/23)
Hitting Percentage (Min. 10 ATT.)	--	--
Assists	9	vs South Carolina (10/22/23)
Digs	23 (2x)	last at Georgia (10/27/23)
Blocks	--	--
Aces	2 (2x)	last vs Samford (9/16/23)
Points	2.0 (2x)	last vs Samford (9/16/23)

GAME BY GAME

Date	Opponent	SP	Attack				Set			Serve				Receipt			Blocking				Team				
			K	E	TA	PCT	A	TA	PCT	SA	SE	TA	PCT	RE	TA	PCT	DIG	BS	BA	TB	B/TOTAL	B/E	POINTS	HIT%	SCORE
08/25/2023	Coppin St.	*4	0	0	0	.000	2	3	.667	0	3	13	.769	0	15	1.000	10	0	0	0	0.0	0	0.0	.309	3-1
08/26/2023	McNeese	*2	0	0	0	.000	0	1	.000	0	0	0	.000	0	5	1.000	2	0	0	0	0.0	0	0.0	.333	3-0
09/07/2023	Middle Tenn.	4	0	0	0	.000	2	2	1.000	0	1	1	.000	1	7	.857	2	0	0	0	0.0	0	0.0	.221	1-3
09/14/2023	at South Alabama	5	1	0	2	.500	0	3	.000	0	0	0	.000	0	12	1.000	8	0	0	0	0.0	0	1.0	.191	3-2
09/15/2023	vs UAB	*4	0	0	0	.000	2	3	.667	2	3	17	.824	1	11	.909	9	0	0	0	0.0	0	2.0	.189	3-1
09/16/2023	vs Samford	4	0	0	0	.000	1	4	.250	2	2	22	.909	0	4	1.000	7	0	0	0	0.0	0	2.0	.386	3-1
09/22/2023	Florida	*5	0	0	1	.000	1	7	.143	0	3	18	.833	1	23	.957	9	0	0	0	0.0	0	0.0	.196	2-3
09/24/2023	Ole Miss	*4	0	0	1	.000	2	7	.286	1	3	18	.833	2	34	.941	11	0	0	0	0.0	0	1.0	.199	3-1
09/27/2023	at Arkansas	*3	0	0	0	.000	1	1	1.000	0	1	5	.800	2	19	.895	2	0	0	0	0.0	0	0.0	-.049	0-3
10/01/2023	Georgia	*4	0	0	0	.000	1	3	.333	0	2	12	.833	0	9	1.000	10	0	0	0	0.0	0	0.0	.262	3-1
10/06/2023	at Florida	*3	0	0	0	.000	2	2	1.000	1	2	13	.846	1	22	.955	6	0	0	0	0.0	0	1.0	.387	3-0
10/08/2023	at South Carolina	*5	0	0	0	.000	1	5	.200	0	1	13	.923	1	24	.958	6	0	0	0	0.0	0	0.0	.197	3-2
10/13/2023	at Tennessee	*4	0	0	0	.000	0	6	.000	1	1	15	.933	0	12	1.000	5	0	0	0	0.0	0	1.0	.122	1-3
10/20/2023	Missouri	*3	0	0	0	.000	0	2	.000	0	0	9	1.000	1	31	.968	2	0	0	0	0.0	0	0.0	.168	0-3
10/22/2023	South Carolina	5	0	0	0	.000	9	23	.391	0	3	18	.833	3	38	.921	23	0	0	0	0.0	0	0.0	.241	3-2
10/27/2023	at Georgia	5	0	0	0	.000	6	19	.316	0	3	17	.824	2	18	.889	23	0	0	0	0.0	0	0.0	.243	3-2
10/29/2023	at Alabama	4	0	0	0	.000	7	20	.350	0	3	14	.786	1	34	.971	15	0	0	0	0.0	0	0.0	.248	3-1
11/05/2023	at Texas A&M	5	0	0	0	.000	1	2	.500	1	3	17	.824	1	11	.909	11	0	0	0	0.0	0	1.0	.320	3-2
11/08/2023	Kentucky	*3	0	0	0	.000	0	2	.000	0	1	5	.800	1	14	.929	3	0	0	0	0.0	0	0.0	.095	0-3
11/12/2023	at Missouri	4	0	0	0	.000	1	1	1.000	1	1	15	.933	1	23	.957	9	0	0	0	0.0	0	1.0	.242	1-3
11/15/2023	at Mississippi St.	*5	0	0	0	.000	1	7	.143	0	1	9	.889	1	19	.947	12	0	0	0	0.0	0	0.0	.175	2-3
Totals		85	1	0	4	.250	40	123	.325	9	37	251	.853	20	385	.948	185	0	0	0	0.0	0	10.0		

Player Averages

Sets Played	Kills per set	Assists per set	Service aces per set	Digs per set	Blocks per set	Points per set
85	0.01	0.47	0.11	2.18	0.00	0.12

CAREER STATS

SEASON	TEAM	SM-MP	K	K/S	E	TA	PCT	A	A/S	SA	SA/S	SE	DIG	D/S	RE	BS	BA	TB	B/S	BE	BHE	PTS	PTS/S
2022-23	FIU	105-28	47	0.45	28	216	.088	14	0.13	23	0.22	30	221	2.10	21	1	7	8	0.08	0	0	74.5	0.71
2023-24	AUB	85-21	1	0.01	0	4	.250	40	0.47	9	0.11	37	185	2.18	20	0	0	0	0.00	0	0	10.0	0.12
TOTAL FOR AUB	85 - 21	1	0.01	0	4	.250	40	0.47	9	0.11	37	185	2.18	20	0	0	0	0.00	0	0	10.0	0.12	
TOTAL	190 - 49	48	0.25	28	220	.091	54	0.28	32	0.17	67	406	2.14	41	1	7	8	0.04	0	0	84.5	0.44	

#14 CHELSEY HARMON

MIDDLE BLOCKER | 6-3 | SENIOR
PUYALLUP, WASH. (PORTLAND)



HARMON'S HIGHLIGHTS:

- 3rd best hitting percentage in program history (.706) against Jackson State.
- Currently holds the sixth-best hitting percentage in single-season program history (.344)
- Made her Auburn debut on Aug. 26 vs. Belmont

CATEGORY	CAREER HIGH	OPPONENT/DATE
Kills	16	vs San Francisco (10/16/21)
Attempts	23	at LSU (10/5/22)
Hitting Percentage (Min. 10 ATT.)	.706	vs Jackson State (9/17/22)
Assists	2 (3x)	last vs Samford (9/16/23)
Digs	4 (2x)	last at Santa Clara (3/9/21)
Blocks	10	vs Troy (9/10/22)
Aces	2 (3x)	last vs Eastern Washington (8/28/21)
Points	15.5	at LSU (10/5/22)

CATEGORY	SEASON HIGH	OPPONENT/DATE
Kills	6	vs Ole Miss (9/24/23)
Attempts	12 (2x)	last vs Ole Miss (9/24/23)
Hitting Percentage (Min. 10 ATT.)	.417	vs Ole Miss (9/24/23)
Assists	2	last vs Samford (9/16/23)
Digs	2 (3x)	last vs South Carolina (10/22/23)
Blocks	8	vs Ole Miss (9/24/23)
Aces	4	vs Charleston Southern (9/8/23)
Points	12.5	vs Charleston Southern (9/8/23)

GAME BY GAME

Date	Opponent	SP	Attack				Set			Serve				Recept			Blocking				Team				
			K	E	TA	PCT	A	TA	PCT	SA	SE	TA	PCT	RE	TA	PCT	DIG	BS	BA	BE	TOTAL	BHE	POINTS	HIT%	SCORE
08/26/2023	McNeese	1	1	0	2	.500	1	2	.500	0	0	4	1.000	0	0	.000	1	0	2	0	2.0	0	2.0	.333	3-0
08/26/2023	Jacksonville St.	1	2	0	2	1.000	0	1	.000	0	0	6	1.000	0	0	.000	0	0	0	0	0.0	0	2.0	.395	3-0
09/07/2023	Middle Tenn.	1	1	0	2	.500	0	0	.000	0	0	0	.000	0	0	.000	0	0	0	0	0.0	0	1.0	.221	1-3
09/08/2023	Charleston So.	*4	5	2	12	.250	0	3	.000	4	2	15	.867	0	0	.000	2	0	7	1	7.0	0	12.5	.245	3-1
09/09/2023	Mercer	*3	4	0	6	.667	1	3	.333	1	3	14	.786	0	0	.000	1	1	3	0	4.0	0	7.5	.346	3-0
09/14/2023	at South Alabama	3	2	0	4	.500	0	1	.000	2	0	9	1.000	0	0	.000	0	0	3	1	3.0	0	5.5	.191	3-2
09/16/2023	vs Samford	4	0	0	0	.000	2	3	.667	1	2	22	.909	0	0	.000	0	0	0	0	0.0	0	1.0	.386	3-1
09/22/2023	Florida	*5	4	2	10	.200	0	2	.000	0	0	3	1.000	0	0	.000	1	0	2	2	2.0	0	5.0	.196	2-3
09/24/2023	Ole Miss	*4	6	1	12	.417	0	0	.000	0	0	3	1.000	0	0	.000	2	0	8	0	8.0	0	10.0	.199	3-1
09/27/2023	at Arkansas	*3	2	1	3	.333	0	0	.000	0	0	3	1.000	0	0	.000	1	0	2	0	2.0	0	3.0	-.049	0-3
10/01/2023	Georgia	4	0	0	0	.000	0	0	.000	2	0	18	1.000	0	0	.000	1	0	0	0	0.0	0	2.0	.262	3-1
10/06/2023	at Florida	3	0	0	1	.000	0	0	.000	2	1	12	.917	0	0	.000	1	0	0	0	0.0	0	2.0	.387	3-0
10/08/2023	at South Carolina	5	0	0	0	.000	0	0	.000	2	2	15	.867	0	0	.000	1	0	0	0	0.0	0	2.0	.197	3-2
10/13/2023	at Tennessee	*4	0	0	0	.000	0	2	.000	1	2	13	.846	0	0	.000	0	0	0	0	0.0	0	1.0	.122	1-3
10/20/2023	Missouri	2	0	0	0	.000	0	0	.000	0	1	4	.750	0	0	.000	0	0	0	0	0.0	0	0.0	.168	0-3
10/22/2023	South Carolina	5	0	0	0	.000	0	2	.000	1	1	18	.944	0	0	.000	2	0	0	0	0.0	0	1.0	.241	3-2
10/27/2023	at Georgia	5	0	0	0	.000	0	0	.000	3	1	13	.923	0	0	.000	1	0	0	0	0.0	0	3.0	.243	3-2
10/29/2023	at Alabama	4	0	0	0	.000	0	1	.000	2	2	13	.846	0	0	.000	1	0	0	0	0.0	0	2.0	.248	3-1
11/05/2023	at Texas A&M	4	0	0	0	.000	0	1	.000	0	1	13	.923	0	0	.000	1	0	0	0	0.0	0	0.0	.320	3-2
11/12/2023	at Missouri	4	0	0	1	.000	0	2	.000	0	1	10	.900	0	0	.000	2	0	0	0	0.0	0	0.0	.242	1-3
11/15/2023	at Mississippi St.	3	0	0	0	.000	0	0	.000	1	0	7	1.000	0	0	.000	0	0	0	0	0.0	0	1.0	.175	2-3
Totals		72	27	6	55	.382	4	23	.174	22	19	215	.912	0	0	.000	18	1	27	4	28.0	0	63.5		

Player Averages

Sets Played	Kills per set	Assists per set	Service aces per set	Digs per set	Blocks per set	Points per set
72	0.38	0.06	0.31	0.25	0.39	0.88

CAREER STATS

SEASON	TEAM	SM-MP	K	K/S	E	TA	PCT	A	A/S	SA	SA/S	SE	DIG	D/S	RE	BS	BA	TB	B/S	BE	BHE	PTS	PTS/S
2020-21	UP	34-12	20	0.59	11	62	.145	4	0.12	5	0.15	7	19	0.56	1	2	21	23	0.68	0	0	37.5	1.10
2021-22	UP	78-22	108	1.38	31	246	.313	1	0.01	4	0.05	5	13	0.17	1	6	42	48	0.62	9	1	139.0	1.78
2022-23	AUB	122-31	176	1.44	48	372	.344	5	0.04	0	0.00	4	17	0.14	1	4	103	107	0.88	6	0	231.5	1.90
2023-24	AUB	72-21	27	0.38	6	55	.382	4	0.06	22	0.31	19	18	0.25	0	1	27	28	0.39	4	0	63.5	0.88
TOTAL FOR AUB		194 - 52	203	1.05	54	427	.349	9	0.05	22	0.11	23	35	0.18	1	5	130	135	0.70	10	0	295.0	1.52
TOTAL		306 - 86	331	1.08	96	735	.320	14	0.05	31	0.10	35	67	0.22	3	13	193	206	0.67	19	1	471.5	1.54

#17 CASSIDY TANTON

**PIN HITTER | 6-0 | REDSHIRT-SOPHOMORE
STONEVILLE, N.C. (DALTON MCMICHAEL)**



TANTON'S HIGHLIGHTS:

- Picked up a career-high 10 kills vs. Marist, hitting .348
- Made her season debut on Aug. 26 vs. Belmont

CATEGORY	CAREER HIGH	OPPONENT/DATE
Kills	10	vs Marist (8/27/22)
Attempts	23	vs Marist (8/27/22)
Hitting Percentage (Min. 10 ATT.)	.348	vs Marist (8/27/22)
Assists	--	--
Digs	6	vs Marist (8/27/22)
Blocks	--	--
Aces	2(3x)	last vs Southern Miss (9/16/22)
Points	12.0	vs Marist (8/27/22)

CATEGORY	SEASON HIGH	OPPONENT/DATE
Kills	1	vs Middle Tennessee (9/7/23)
Attempts	5	vs Middle Tennessee (9/7/23)
Hitting Percentage (Min. 10 ATT.)	--	--
Assists	--	--
Digs	--	--
Blocks	--	--
Aces	--	--
Points	1.0	vs Middle Tennessee (9/7/23)

GAME BY GAME

Date	Opponent	SP	Attack				Set		Serve				Recept			Blocking				Team					
			K	E	TA	PCT	A	TA	PCT	SA	SE	TA	PCT	RE	TA	PCT	DIG	BS	BA	BE	TOTAL	BHE	POINTS	HIT%	SCORE
09/07/2023	Middle Tenn.	1	1	1	5	.000	0	0	.000	0	0	0	.000	1	4	.750	0	0	0	0	0.0	0	1.0	.221	1-3
Totals		1	1	1	5	.000	0	0	.000	0	0	0	.000	1	4	.750	0	0	0	0	0.0	0	1.0		

Player Averages

Sets Played	Kills per set	Assists per set	Service aces per set	Digs per set	Blocks per set	Points per set
1	1.00	0.00	0.00	0.00	0.00	1.00

CAREER STATS

SEASON	TEAM	SM-MP	K	K/S	E	TA	PCT	A	A/S	SA	SA/S	SE	DIG	D/S	RE	BS	BA	TB	B/S	BE	BHE	PTS	PTS/S
2022-23	AUB	58-19	12	0.21	7	34	.147	0	0.00	11	0.19	28	19	0.33	2	0	0	0	0.00	0	0	23.0	0.40
2023-24	AUB	1-1	1	1.00	1	5	.000	0	0.00	0	0.00	0	0	0.00	1	0	0	0	0.00	0	0	1.0	1.00
TOTAL		59 - 20	13	0.22	8	39	.128	0	0.00	11	0.19	28	19	0.32	3	0	0	0	0.00	0	0	24.0	0.41



#19 JASMINE OKEOMA
MIDDLE BLOCKER | 6-3 | FRESHMAN
WOODBIDGE, VA. (FOREST PARK)



OKEOMA'S HIGHLIGHTS:

CATEGORY	CAREER HIGH	OPPONENT/DATE
Kills	--	--
Attempts	--	--
Hitting Percentage (Min. 10 ATT.)	--	--
Assists	--	--
Digs	--	--
Blocks	--	--
Aces	--	--
Points	--	--

CATEGORY	SEASON HIGH	OPPONENT/DATE
Kills	--	--
Attempts	--	--
Hitting Percentage (Min. 10 ATT.)	--	--
Assists	--	--
Digs	--	--
Blocks	--	--
Aces	--	--
Points	--	--

GAME BY GAME

CAREER STATS

#22 SYDNEY HANDEL

DEFENSIVE SPECIALIST | 6-0 | SOPHOMORE
LEE'S SUMMIT, MO. (LEE'S SUMMIT WEST)



HANDEL'S HIGHLIGHTS:

- Set career-highs in aces (3) and digs (6) in the NCAA Tournament against Houston
- Made her collegiate debut against Alabama A&M

CATEGORY	CAREER HIGH	OPPONENT/DATE
Kills	1	vs Middle Tennessee (9/7/23)
Attempts	1 (2x)	last at South Alabama (9/14/23)
Hitting Percentage (Min. 10 ATT.)	--	--
Assists	--	--
Digs	10	at South Alabama (9/14/23)
Blocks	--	--
Aces	3	vs Houston (12/3/22)
Points	3.0	vs Houston (12/3/22)

CATEGORY	SEASON HIGH	OPPONENT/DATE
Kills	--	--
Attempts	1	at South Alabama (9/14/23)
Hitting Percentage (Min. 10 ATT.)	--	--
Assists	--	--
Digs	10	at South Alabama (9/14/23)
Blocks	--	--
Aces	2	vs South Carolina (10/22/23)
Points	2.0	vs South Carolina (10/22/23)

GAME BY GAME

Date	Opponent	Attack				Set			Serve				Recept			Blocking				Team					
		SP	K	E	TA	PCT	A	TA	PCT	SA	SE	TA	PCT	RE	TA	PCT	DIG	BS	BA	BE	TOTAL	BHE	POINTS	HIT%	SCORE
09/02/2023	vs SMU	2	0	0	0	.000	0	0	.000	0	2	6	.667	0	0	.000	0	0	0	0	0.0	0	0.0	.316	3-1
09/09/2023	Mercer	1	0	0	0	.000	0	0	.000	0	0	2	1.000	0	0	.000	0	0	0	0	0.0	0	0.0	.346	3-0
09/14/2023	at South Alabama	5	0	0	1	.000	0	2	.000	0	1	14	.929	1	10	.900	10	0	0	0	0.0	0	0.0	.191	3-2
09/15/2023	vs UAB	4	0	0	0	.000	0	0	.000	0	2	11	.818	0	0	.000	0	0	0	0	0.0	0	0.0	.189	3-1
09/16/2023	vs Samford	1	0	0	0	.000	0	2	.000	0	0	0	.000	0	4	1.000	0	0	0	0	0.0	0	0.0	.386	3-1
10/20/2023	Missouri	1	0	0	0	.000	0	1	.000	0	1	3	.667	0	0	.000	0	0	0	0	0.0	0	0.0	.168	0-3
10/22/2023	South Carolina	5	0	0	0	.000	0	2	.000	2	4	19	.789	0	22	1.000	7	0	0	0	0.0	0	2.0	.241	3-2
Totals		19	0	0	1	.000	0	7	.000	2	10	55	.818	1	36	.972	17	0	0	0	0.0	0	2.0		

Player Averages

Sets Played	Kills per set	Assists per set	Service aces per set	Digs per set	Blocks per set	Points per set
19	0.00	0.00	0.11	0.89	0.00	0.11

CAREER STATS

SEASON	TEAM	SM-MP	K	K/S	E	TA	PCT	A	A/S	SA	SA/S	SE	DIG	D/S	RE	BS	BA	TB	B/S	BE	BHE	PTS	PTS/S
2022-23	AUB	19-6	0	0.00	0	1	.000	0	0.00	6	0.32	11	10	0.53	3	0	0	0	0.00	0	0	6.0	0.32
2023-24	AUB	19-7	0	0.00	0	1	.000	0	0.00	2	0.11	10	17	0.89	1	0	0	0	0.00	0	0	2.0	0.11
TOTAL		38 - 13	0	0.00	0	2	.000	0	0.00	8	0.21	21	27	0.71	4	0	0	0	0.00	0	0	8.0	0.21



#25 LAKIN LAURENDINE

PIN HITTER | 6-1 | FRESHMAN
JACKSON, MISS. (JACKSON ACADEMY)



LAURENDINE'S HIGHLIGHTS:

CATEGORY	CAREER HIGH	OPPONENT/DATE
Kills	--	--
Attempts	--	--
Hitting Percentage (Min. 10 ATT.)	--	--
Assists	--	--
Digs	--	--
Blocks	--	--
Aces	--	--
Points	--	--

CATEGORY	SEASON HIGH	OPPONENT/DATE
Kills	--	--
Attempts	--	--
Hitting Percentage (Min. 10 ATT.)	--	--
Assists	--	--
Digs	--	--
Blocks	--	--
Aces	--	--
Points	--	--

GAME BY GAME

CAREER STATS