



2023 VOLLEYBALL MATCH NOTES

AUBURN ATHLETICS COMMUNICATIONS: 392 SOUTH DONAHUE DRIVE || AUBURN, AL 36830 || AUBURNTIGERS.COM || @AUBURNVB

2023 SCHEDULE/RESULTS

13-3 OVERALL | 3-2 SEC

7-2 HOME | 3-1 AWAY | 3-0 NEUTRAL

DATE	OPPONENT	TV	TIME/RESULT
Aug. 25	vs Coppin State!	SECN+	W, 3-1
Aug. 26	vs McNeese State!	SECN+	W, 3-0
Aug. 26	vs Jacksonville State!	SECN+	W, 3-0
Sept. 2	vs SMU@	N/A	W, 3-1
Sept. 3	at Florida State@	ACCN+	W, 3-1
Sept. 7	vs Middle Tennessee\$	SECN+	L, 1-3
Sept. 8	vs Charleston Southern\$	SECN+	W, 3-1
Sept. 9	vs Mercer\$	SECN+	W, 3-0
Sept. 14	at South Alabama%	ESPN+	W, 3-2
Sept. 15	vs UAB%	N/A	W, 3-1
Sept. 16	vs Samford%	N/A	W, 3-1
Sept. 22	vs #3 Florida*	SECN+	L, 2-3
Sept. 24	vs Ole Miss*	SECN+	W, 3-1
Sept. 27	at Arkansas*	SEC Network	L, 0-3
Oct. 1	vs Georgia*	ESPN	W, 3-1
Oct. 6	at Florida*	SECN+	W, 3-0
Oct. 8	at South Carolina*	ESPNU	3 p.m. CT
Oct. 13	at Tennessee*	SECN+	5:30 p.m. CT
Oct. 20	vs Missouri*	SEC Network	8 p.m. CT
Oct. 22	vs South Carolina*	SECN+	1 p.m. CT
Oct. 27	at Georgia*	SECN+	6 p.m. CT
Oct. 29	at Alabama	SEC Network	11 a.m. CT
Nov. 5	at Texas A&M	SEC Network	3 p.m. CT
Nov. 8	vs Kentucky	SECN+	6:30 p.m. CT
Nov. 12	at Missouri	SECN+	3 p.m. CT
Nov. 15	at Mississippi State	SECN+	6 p.m. CT
Nov. 19	vs LSU	SECN+	2 p.m. CT
Nov. 22	vs Alabama	SECN+	6:30 p.m. CT
Nov. 24	vs Arkansas	SECN+	3 p.m. CT

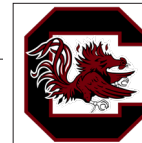
BOLD indicates home contest | All time Central and subject to change
! - War Eagle Invite | @ - Seminole Invite | S - Tiger Invite | % - Alabama Showdown
* - Southeastern Conference Game | # - NCAA Tournament



SOUTH CAROLINA

Sunday, Oct. 8 | 3 p.m. CT

Columbia, S.C. | Carolina Volleyball Center | ESPN



AUBURN	AVCA Coaches Poll	25	SOUTH CAROLINA	AVCA Coaches Poll	N/A
2023 Record	13-3 3-2 SEC		2023 Record	6-7 0-4 SEC	
Head Coach	Brent Crouch		Head Coach	Tom Mendoza	
Career Record (Year)	143-126 (10th)		Career Record (Year)	132-87 (8th)	
Record at Auburn (Year)	48-35 (4th)		Record at South Carolina (Year)	85-69 (6th)	

Site	Columbia, South Carolina
Venue	Carolina Volleyball Center
Live Stats	Statbroadcast
Broadcast Crew	Danny Waugh (Play-by-play) Kelly Burke (Analyst)
Series Record	South Carolina leads 30-19
Last Meeting	Nov. 23, 2022 South Carolina 3, Auburn 2 (26-24, 18-25, 25-20, 16-25, 10-15)
Last Annual Win	Oct. 29, 2017 Auburn 3, South Carolina 1 (20-25, 29-27, 25-18, 25-22)

QUICK HITS

- Auburn's win over No. 9 Florida was the program's first victory in Gainesville and the first top-10 victory for the Tigers. It was also the first triumph over a ranked opponent since the Orange and Blue knocked off then-No. 14 Creighton in the NCAA Tournament last December.
- The 3-0 sweep was also the first for head coach Brent Crouch since Auburn cleaned out Georgia in Athens on Oct. 21, 2021.
- Madison Scheer's .667 (14-2-18) hitting percentage was not only a career-high for the sophomore but the Eureka, Missouri native also produced the fifth-best performance in Auburn Volleyball history. It was also tied for the third-highest mark in any SEC match this year. Scheer has hit over .300 in five matches this season and over .400 in each of the last two.
- Fellow second-year standout Akasha Anderson was nearly just as stellar as Scheer versus the Gators. Anderson swung for 18 kills on an even .400 hitting to go along with eight digs. The Reston, Virginia native has managed double-digit kills in all but one match this season, has hit above .300 twice and has eclipsed .400 two other times. Her 18 kills were also the most of any Tiger in a three-set match this year.
- Senior setter Jackie Barrett directed a dynamic offense in Gainesville on Friday. Auburn hit a preposterous .387, marking the second-highest hitting percentage for the Tigers in 2023. It was also the eighth time this season Barrett has led the Orange and Blue to a percentage north of .300. Barrett's 37 assists against the Gators were also the most for the Tigers in a three-set match this year.
- Kendal Kemp's production at the net continues to climb. Following another highly efficient performance against Florida, the Minnesota native is now hitting .426 on the season which is tops in the Southeastern Conference.

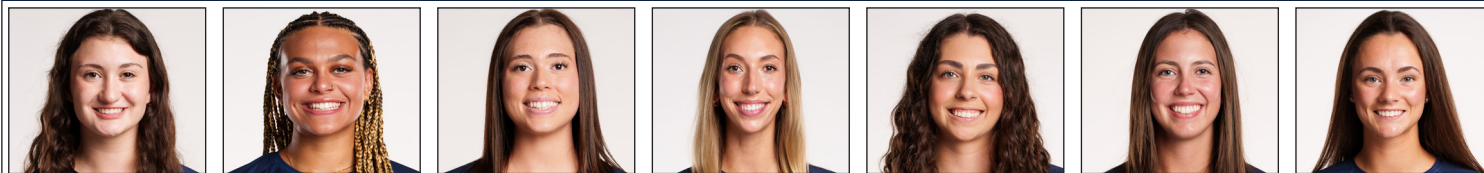
AUBURN ATHLETICS COMMUNICATIONS

Office Phone 334-844-9800
 Kirk Sampson Associate AD
sampska@auburn.edu
 Thomas Hoffman Volleyball Contact
tgh0024@auburn.edu
C: 503-302-9592

FOLLOW ALONG

Web AuburnTigers.com
 X @AuburnVB
 Instagram @auburnvolleyball

AUBURN'S POTENTIAL STARTING SEVEN



SARAH MORTON	AKASHA ANDERSON	BELLA BELL	KYLA SWANSON	KENDAL KEMP	JACKIE BARRETT	PAIGE THIBAUT
#2 • DS/L • SO. • 5-8	#3 • PH • SO. • 6-3	#5 • RS • SR. • 6-4	#6 • MB • SR. • 6-4	#8 • MB • SO. • 6-6	#10 • S • SR. • 6-2	#13 • DS/L • JR. • 5-7
D/S: 3.06	K/S: 3.94	K/S: 2.59	K/S: 1.27	K/S: 1.68	D/S: 2.34	D/S: 1.81
A/S: 0.96	HIT%: .200	HIT%: .295	HIT%: .225	HIT%: .426	A/S: 9.59	A/S: 0.33
SA/S: 0.10	D/S: 2.02	D/S: 0.35	D/S: 0.24	D/S: 0.11	SA/S: 0.30	SA/S: 0.14
P/S: 0.15	B/S: 0.46	B/S: 0.71	B/S: 0.93	B/S: 1.26	P/S: 1.27	P/S: 0.17
	SA/S: 0.30	SA/S: 0.00	SA/S: 0.05	SA/S: 0.02		
	P/S: 4.48	P/S: 2.96	P/S: 1.83	P/S: 2.39		

K/S: kills per set • HIT%: hitting percentage • D/S: digs per set • B/S: blocks per set • A/S: assists per set • SA/S: aces per set • P/S: points per set



#1 MADISON SCHEER
So. | PH | 6-1



#2 SARAH MORTON
So. | L | 5-8



#3 AKASHA ANDERSON
So. | PH | 6-3



#4 FALLAN LANHAM
Jr. | L | 5-8



#5 BELLA BELL
Gr. | MB | 6-4



#6 KYLA SWANSON
Gr. | MB | 6-4



#7 PEYTON DUNN
R-So. | S | 5-11



#8 KENDAL KEMP
So. | MB | 6-6



#9 ZOE SLAUGHTER
So. | L | 5-7



#10 JACKIE BARRETT
Sr. | S | 6-2



#11 JORDAN SINNESS
Jr. | S | 5-9



#12 BEL ZIMMERMAN
So. | PH | 6-2



#13 PAIGE THIBAUT
Jr. | L | 5-7



#14 CHELSEY HARMON
Sr. | MB | 6-3



#17 CASSIDY TANTON
R-So. | PH | 6-0



#19 JASMINE OKEOMA
Fr. | MB | 6-3



#22 SYDNEY HANDEL
So. | L | 6-0



#22 LAKIN LAURENDINE
Fr. | PH | 6-1

#WarEagle



AuburnTigers.com

@AuburnVB | @AuburnTigers
@AuburnVBCoach



/AuburnVB
/AuburnTigers

TEAM SCHEDULE AND MEDIA AVAILABILITY >> WEEK OF OCT. 2 - 8

MONDAY October 2	TUESDAY October 3	WEDNESDAY October 4	THURSDAY October 5	FRIDAY October 6	SATURDAY October 7	SUNDAY October 8
OFF	PRACTICE: 3:45 p.m. - 6 p.m.	PRACTICE: 3:45 p.m. - 6 p.m.	TRAVEL	MATCH: 6 p.m. CT at Florida Gainesville, FL	TRAVEL	MATCH: 3 p.m. CT at South Carolina Columbia, SC
NO INTERVIEWS	INTERVIEWS BY REQUEST	INTERVIEWS BY REQUEST	INTERVIEWS BY REQUEST	INTERVIEWS POST MATCH	INTERVIEWS BY REQUEST	INTERVIEWS POST MATCH

AUBURN ATHLETICS COMMUNICATIONS

QUICK FACTS

AUBURNTIGERS.COM

For updated game notes, statistics, safety protocols and latest information on Auburn volleyball and Auburn Athletics, visit AuburnTigers.com.

INTERVIEW POLICY

Coach Crouch, assistant coaches and student-athletes are available for interviews by contacting Thomas Hoffman in the communications office. All interviews during the week will be conducted via phone or ZOOM. Post-match interviews will be conducted in the media room at Auburn Arena following a brief cooling-off period.

CREDENTIALS

Anyone wishing to cover an Auburn volleyball match should contact Thomas Hoffman in the communications office at least 24 hours in advance to make arrangements.

MATCH DAY SERVICES

Printed copies of notes, flip cards and statistics will be available upon request. Digital copies will be emailed out prior to the match and will be available on AuburnTigers.com. Media members are permitted to bring their own printed materials. Stats will not printed between sets or after matches. Live stats will be provided during the match and final statistics will be emailed out and posted on AuburnTigers.com. All post-match interviews will be conducted in the media room. Wireless internet is available in the Arena; ask Thomas Hoffman for the password. Match highlights, photos and postgame interviews will be available on Imagen following matches.

VIDEO SERVICES

FTP feeds of selected Auburn volleyball highlights are available for the media. A number of studio and satellite services may be arranged for electronic media by contacting Cody Baker in War Eagle Productions at jcb0101@auburn.edu.

PHOTO SERVICES

For photos of Auburn volleyball or any Olympic sports, contact Zach Bland at zdb007@auburn.edu.

COMMUNICATIONS STAFF

Thomas Hoffman Volleyball Contact
cell: 503-302-9592
email: tgh0024@auburn.edu

Kirk Sampson Associate AD
cell: 334-750-1385
email: sampska@auburn.edu

UNIVERSITY INFORMATION

City / Zip _____ Auburn, Ala. / 36831
 Founded _____ Oct. 1, 1856
 Enrollment _____ 30,737
 Nickname _____ Tigers
 Colors _____ Navy Blue & Burnt Orange
 Affiliation _____ NCAA Division I
 Conference _____ Southeastern Conference
 Home Court _____ Neville Arena (9,121)
 President _____ Dr. Chris Roberts
 Athletics Director _____ John Cohen
 Sport Administrator _____ Joy Vrbka (Florida, 2003)

TEAM INFORMATION

Letterwinners Returning/Lost _____ 12/0
 Starters Returning/Lost _____ 6+libero/0
 Newcomers _____ 6
 2022 Overall Record _____ 22-9
 2022 Conference Record/Finish _____ 10-8/6th

PROGRAM HISTORY

First Year of Volleyball _____ 1967
 _____ Program discontinued 1981; Reinstated 1986
 Seasons of Auburn Volleyball _____ 45th
 All-Time Overall Record _____ 704-702-4 (.501)
 in Neville Arena (Since 2013) _____ 75-61 (.535)
 Total Home Record _____ 247-214 (.531)
 All-Time SEC Record _____ 201-370 (.350)
 NCAA Tournament Appearances _____ 2/2010, 2022
 SEC Championships/Last _____ 1/Co-West Champions (1996)

STAFF INFORMATION

Head Coach _____ Brent Crouch (Texas A&M, '98 & '00; Oregon '06)
 Career Record _____ 143-126 (.514)/10th Season
 Record at Auburn _____ 48-35 (.523)/4th Season
 Assistant Coach/Recruiting Coordinator _____ Rachel Corbelli (2nd Season)
 Assistant Coach _____ Keith Smith (2nd Season)
 Assistant Coach _____ Jack Burton (1st Season)
 Technical Coordinator _____ Mackenna Basore (2nd Season)
 Director of Operations _____ Emily Houle (2nd Season)
 Strength & Conditioning _____ Bethany Gainey
 Athletic Trainer _____ Nate Warner
 Equipment Manager _____ Brian Maddox

ATHLETIC COMMUNICATIONS

Associate AD/Communications _____ Kirk Sampson
 Assistant Director/Volleyball Contact _____ Thomas Hoffman
 Email _____ tgh0024@auburn.edu
 Phone _____ 503-302-9592
 Mailing Address _____ Auburn Athletics Complex
 _____ 392 S. Donahue Drive
 Website _____ AuburnTigers.com

GAMEDAY EXPERIENCE: NEVILLE ARENA

>> Neville Arena is in its seventh season as home of Auburn volleyball. The Tigers are 75-61 since moving to the Arena in 2013. The facility seats approximately 9,121.



LAST TIME OUT VS SOUTH CAROLINA

» Last November, the Tigers fell in a five-set thriller in Columbia. Kendal Kemp posted a double-double with 12 kills and 10 blocks while Sarah Morton, Zoe Slaughter and Akasha Anderson all had double-digit dig totals. It wasn't quite enough, though, as Auburn fell in five.

SCOUTING SOUTH CAROLINA

» Tom Mendoza is in his sixth season at the helm of the Gamecock Volleyball. South Carolina enters the weekend with a 6-7 overall record and a 0-4 mark in the SEC.

One thing USC excels in is blocking. As a team, South Carolina averages an astounding 2.61 blocks per set. The mark is the third-highest in the Southeastern Conference and No. 24 in the nation.

Individually, the Gamecocks rely on the play of Oby Analdi and Ellie Ruprich. Analdi is averaging 1.29 blocks per set while Ruprich is operating at 1.14. Both marks are among the top-10 in the conference.

Defensively, libero Morgan Carter has been busy keeping balls off the floor. At 4.47 digs per set, Carter ranks fourth in the SEC and 66th in the country.

AUBURN-USC SERIES

» The Gamecocks own a 30-19 record against Auburn and have won each of the last each of the last seven meetings. The Tigers' last win came in Columbia in October of 2017.

SECOND SET MAGIC

» Auburn is 10-1 this season when winning the second set of matches. Over the last two years, Crouch's teams are 28-1 when claiming the second frame.

BARRETT MEANS BUSINESS

» Senior setter Jackie Barrett is currently sitting on 2,547 assists. She needs just 108 more to become 5th all-time in Auburn history.

THE ZIMMERMAN ZING

» Sophomore Bel Zimmerman has been directly responsible for some of Auburn's largest runs this season because of her stellar serving. The 8-1 start against Mercer featured seven Zimmerman serves in a row. The 25-10 set win over Ole Miss saw Zimmerman step to the service line 10 times in a row. Auburn fans also won't forget her clutch ace at the end of Set No. 4 at South Alabama that send the match into a decisive fifth set. Zimmerman's 19 aces this season are more than triple her production a season ago.

MR. 300

» Three hundred appears to be the perfect number

PLAYER TO WATCH: AKASHA ANDERSON

» The AVCA South Region Freshman of the Year was up to no good last season. With 607 career kills, Anderson leads the Tigers in both kills and kills per set (3.61).



for head coach Brent Crouch. All-time, when his teams manage a .300 hitting percentage, he carries an undefeated record of 36-0, including an 16-0 mark at Auburn. The Tigers have accomplished the feat seven different times already in 2023.

NO PLACE LIKE NEVILLE

» Auburn is now 26-16 at home under head coach Brent Crouch, including wins in 26 of it's last 38 games at home. All-time Auburn is 75-61 in Neville.

STAYING ACTIVE

» Bella Bell, Kendal Kemp, Jackie Barrett and Akasha Anderson are all amongst the SEC's top active career leaders. Bell (.344) and Kemp (.346) are both inside the top five in hitting percentage. Kemp's 1.42 blocks per set is currently second in the conference. Anderson ranks in the top 10 in both kills per set (3.61) and points per set (4.12). Barrett's 9.03 assists per set is seventh and Morton ranks fifth in digs per set (3.63).

RANK YOU VERY MUCH

» Welcome to the top 25 Auburn Volleyball. After wins over SMU and Florida State, the Tigers earned the program's first-ever ranking at No. 25.

A week later, Auburn moved up to No. 24 following a 2-1 showing at the Tiger Invitational. Auburn is currently riding a five-week streak inside the top-25.

BLOCKERS BEWARE

» Thanks to steady passing from Sarah Morton and the back row, the Auburn attack has managed to be one of the least-blocked teams in the SEC. On average Auburn allows just 1.60 blocks per set, the second-best in the conference.

500 CLUB

» Sophomore Akasha Anderson has eclipsed 500 career kills in her young career, doing so in just 37 matches.

Sophomore libero Sarah Morton earned her 500th dig of her young career against Florida State.

Eureka, Missouri native Madison Scheer is also barreling toward her 500th kill. The sophomore sits at 497 entering the weekend.

SEEING DOUBLE

» Jackie Barrett posted Auburn's first double-doubles of the season, piling up 36 assists and 14 digs against SMU. A day later, the Highland, California native grabbed 44 assists with 11 digs. Barrett posted a team-high 12 double-doubles in 2022. Barrett owns a team-leading seven double-doubles in 2023.

SEC STANDINGS & SCHEDULE

2023 STANDINGS

	CONF	OVERALL	HOME	ROAD	NTRL	STRK
Tennessee	5-0	14-1	6-0	7-1	1-0	-
Arkansas	4-0	14-2	7-2	3-0	4-0	-
Kentucky	4-1	6-7	1-2	4-5	1-0	-
Auburn	3-2	13-3	7-2	3-1	3-0	-
Florida	3-2	11-3	5-3	5-0	1-0	-
Texas A&M	3-2	11-4	4-3	4-1	3-0	-
LSU	2-2	7-7	4-3	0-3	3-1	-
Missouri	2-3	10-6	6-2	3-3	1-1	-
Ole Miss	2-3	8-8	5-2	1-3	2-3	-
Georgia	1-3	10-6	5-2	3-2	2-2	-
Mississippi St	1-4	8-7	6-2	0-4	2-1	-
Alabama	0-4	10-5	4-2	3-2	3-1	-
South Carolina	0-4	6-7	4-2	1-5	1-0	-

THIS WEEK IN THE SEC...

Wednesday, Oct. 4

Arkansas 3, LSU 0
Tennessee 3, Alabama 0

Friday, Oct. 6

Auburn 3, Florida 0
Georgia 3, Mississippi St. 0
Texas A&M 3, Ole Miss 1
Kentucky 3, Missouri 1

Sunday, Oct. 1

Alabama at Florida, 1 p.m.
LSU at Tennessee, 1 p.m.
Ole Miss at Kentucky, 1:30 p.m.
Texas A&M at Mississippi St., 3 p.m.
Missouri at Arkansas, 4 p.m.
Auburn at South Carolina, 4 p.m.

*All times ET

2023 NCAA RPI REPORT

RK	TEAM	RECORD	AU RESULT
6	Florida	11-2	L, 2-3
	Florida	11-3	W, 3-0
11	Arkansas	13-2	L, 0-3
	Arkansas		
13	Tennessee	13-1	
25	Texas A&M	10-4	
29	Missouri	10-5	
	Missouri		
36	Mississippi St	8-6	
39	SMU	10-6	W, 3-1
44	Kentucky	5-7	
47	Florida St	10-6	W, 3-1
59	LSU	7-6	
73	South Carolina	6-7	
	South Carolina		
85	South Alabama	13-3	W, 3-2
90	Georgia	9-6	W, 3-1
	Georgia		
105	Middle Tenn.	10-5	L, 1-3
117	Ole Miss	8-7	W, 3-1
143	Coppin St	14-3	W, 3-1
195	Alabama	10-4	
	Alabama		
201	Mercer	6-9	W, 3-0
221	Samford	6-10	W, 3-1
223	UAB	2-15	W, 3-1
238	Charleston So	7-10	W, 3-1
251	McNeese	6-12	W, 3-0
252	Jacksonville St	4-10	W, 3-0

AUBURN OPPONENTS ONLY

AVCA COACHES POLL

RK	TEAM	POINTS	RECORD	PREV.
1	Wisconsin [60]	1,595	13-0	1
2	Nebraska [4]	1,538	13-0	2
3	Stanford	1,473	11-2	3
4	Washington State	1,383	14-1	7
5	Oregon	1,262	13-2	6
6	Louisville	1,211	12-2	5
7	Pittsburgh	1,182	13-2	8
8	Texas	1,170	9-3	10
9	Florida	1,165	11-2	4
10	BYU	994	13-3	9
11	Georgia Tech	953	13-1	11
12	Tennessee	914	13-1	12
13	Arkansas	824	13-2	14
14	Penn State	798	10-3	15
15	Creighton	677	12-3	16
16	Minnesota	655	6-6	13
17	Kansas	550	12-2	19
18	Baylor	434	7-6	18
19	Purdue	390	8-5	17
20	Dayton	323	15-2	21
21	Houston	240	7-5	20
22	Kentucky	199	5-7	23
23	Arizona State	165	15-1	25
24	Ohio State	156	5-8	22
25T	Auburn	110	12-3	24
25T	Iowa State	110	12-3	NR

Others receiving votes and listed on two or more ballots: Western Kentucky 81; Southern California 56; UCF 55; James Madison 34; North Carolina State 11; Marquette 10; Rice 10; Texas A&M 8; UC Santa Barbara 8; Pepperdine 6

INSIDE THE MATCH-UPS

SOUTH CAROLINA 19-30 (.388)

9-13 H • 10-16 A • 0-1 N

YEAR	SITE	RESULT	MATCH SCORE
1978	NEUTRAL	L	0-2
1990	AWAY	W	3-1
1991	AWAY	W	3-2
1992	HOME	W	3-1
1992	AWAY	W	3-0
1993	AWAY	L	1-3
1994	AWAY	W	3-2
1995	HOME	W	3-0
1996	AWAY	L	2-3
1997	HOME	L	0-3
1998	AWAY	L	0-3
1999	HOME	L	1-3
2000	HOME	L	0-3
2001	AWAY	L	0-3
2002	AWAY	L	0-3
2002	HOME	L	0-3
2003	HOME	L	0-3
2004	HOME	L	0-3
2005	HOME	L	1-3
2005	AWAY	L	1-3
2006	AWAY	L	2-3
2006	HOME	L	2-3
2007	AWAY	W	3-2
2007	HOME	L	0-3
2008	HOME	L	1-3
2008	AWAY	L	1-3
2009	HOME	W	3-1
2009	AWAY	L	0-3
2010	AWAY	W	3-0
2010	HOME	W	3-0
2011	HOME	W	3-0

Speaking of double-doubles, Bel Zimmerman earned the feat for the first time in her career with 17 kills and 16 digs against Charleston Southern. Zimmerman added her second and third double-double against UAB and Samford during the Alabama Showdown.

KEMP ROOFING CO.

» After setting records in 2022, sophomore middle blocker Kendal Kemp is back to her old tricks this season. In eight matches this season, the Eagan Minnesota native is averaging 1.27 blocks per set. The mark is fourth in the SEC and No. 42 in nation.

Kemp also posted a career-high 13 kills on a season-high .526 hitting percentage in the Tigers' win over Charleston Southern.

AARP ELIGIBLE?

» Brent Crouch is on a collision course for 50 wins on the Plains. Should Crouch accomplish the feat this season, he'd be the quickest to 50 wins in the 25-point rally-scoring era.

RING THE BEL

» Not only did Bel Zimmerman post the first double-double of her career but her hitting efficiency spiked during the Tiger Invitational. After hitting .367 against Mercer, the Liberty, Missouri native is averaging .250 on the season.

CAN YOU DIG IT?

» In the first match of the season, libero Sarah Morton is already making waves. With 24 digs against Coppin State, the Muenster, Indiana native posted the third-most digs in a four-set match so far in the SEC this season.

STREAKING

» In each of Auburn's first five matches this season, the Tigers managed to hit north of .300, marking the only such streak in the 25-point rally-scoring era.

SOAKING UP SUMMER HEAT

» August has been good to Brent Crouch over the years. In nine years of coaching, Crouch is 22-3 in the month of August, including a 9-0 mark at Auburn.

QUEEN KEMP

» Minnesota native Kendal Kemp announced herself to the collegiate volleyball world in 2022. Kemp set single-season program records in solo blocks (26), block assists (154), total blocks (180) and blocks per set (1.48). Earning AVCA South Region Honorable Mention, Kemp totals were also second in the Southeastern Conference and her 180 total blocks were the second-most in the country.

PLAYER TO WATCH: MADISON SCHEER

» Sophomore outside hitter Madison Scheer has been brilliant this season for the Tigers. The Eureka, Missouri product is averaging a career-best 3.02 kills per set at a .255 hitting percentage.



BLOCK PARTY

» Speaking of blocks, Auburn's team totals were nothing short of brilliant. In the rally-scoring era, the 2022 Tiger team set single-season records in block assists (520), total blocks (312) and blocks per set (2.56).

THE JACK BURTON

» NCAA rules have allowed for an additional coach for volleyball programs. Crouch has added Jack Burton to his staff.

Following a prolific playing career at Grand Canyon University, Burton stopped over in Dayton for two seasons and most recently helped FGCU to a 26-7 record and the school's third trip to the NCAA Tournament.

AUBURN PICKED 7th IN PRESEASON POLL

» After a sixth-place finish in 2022, the Auburn Tigers have been selected to finish seventh in the 2023 preseason poll.

NEW KIDS ON THE BLOCK

» All 12 student-athletes from a year ago return to the Auburn Volleyball roster. Head coach Brent Crouch added six new faces to bolster the squad in 2023. Four transfers (Bella Bell, Kyla Swanson, Peyton Dunn and Paige Thibault) make their debut in the Orange and Blue this season. Freshmen Jasmin Okeoma and Lakin Laurendine have also found a new home on the Plains.

INSIDE THE MATCH-UPS CONT...

2011	AWAY	L	1-3
2012	HOME	W	3-1
2012	AWAY	W	3-0
2013	AWAY	W	3-0
2014	HOME	L	2-3
2014	AWAY	W	3-2
2015	AWAY	W	3-0
2015	HOME	W	3-1
2016	HOME	W	3-0
2017	HOME	L	1-3
2017	AWAY	W	3-1
2018	AWAY	L	1-3
2019	AWAY	L	0-3
2019	HOME	L	0-3
2020	AWAY	L	0-3
2020	AWAY	L	1-3
2021	HOME	L	0-3
2022	AWAY	L	2-3

HEAD COACH BRENT CROUCH

QUICK FACTS

College ___ Texas A&M ('98, '00)
 ___ Oregon ('06)
 Wife ___ Marcy
 Sons ___ Jonathan and William

COACHING RECORD

Head Coaching Career _ 10th Season
 Career Record ___ 143-126
 NCAA Appearances ___ 3

COACHING CAPSULE

2020-Pr. Auburn 48-35
 2018-19 Southern California 40-25
 2014-17 Portland 55-66

YEAR-BY-YEAR RESULTS

2023	Auburn	13-3
2022	Auburn	22-9
2021	Auburn	13-15
2020	Auburn	0-8
2019	USC	18-14
2018	USC	22-11
2017	Portland	15-15
2016	Portland	17-13
2015	Portland	16-15
2014	Portland	7-23



Brent Crouch begins his fourth season at the helm of the Auburn Volleyball program in 2023. Crouch and the Tigers look to reset the bar after a record-breaking 2022 campaign that saw success on the Plains unseen for more than a decade.

Last season, Auburn earned a berth into the NCAA Tournament for just the second time in school history and the first since 2010. A first-round victory over host and No. 14 Creighton provided the program with its second postseason win and first triumph over a nationally-ranked opponent since 2017.

The feat came on the heels of a historic season that saw the Tigers begin the season with a record mark of 14-0 and a record start to SEC play at 3-0. The 22 total victories on the season were the most in the 25-point rally-scoring era and the most since 1998. The Tigers also picked up its first win in Columbia, Missouri.

Under Crouch's guidance, Akasha Anderson, Madison Scheer and Kendal Kemp each garnered All-Conference Honors. Anderson and Kemp also picked up AVCA postseason accolades with Anderson grabbing South Region Freshman of the Year and All-Region. Meanwhile, Kemp solidified Honorable Mention. Auburn Volleyball student-athletes also picked up a record 10 SEC weekly awards.

Crouch wasn't left out of the postseason awards season, securing AVCA South Region Coach of the Year, the first such award for the Tiger Volleyball program.

Fans on the Plains saw Auburn become one of the most potent blocking teams in the Southeastern Conference in 2022. Crouch's guidance helped the Tigers break records for most block assists in a single season (520), total blocks (312.0) and tie for the most blocks in a four-set match (17 vs. Troy).

The Orange and Blue wall's foundation was laid by then-freshman Kendal Kemp. The Egan, Minnesota product shattered single-season records for solo blocks (26), block assists (154), total blocks (180) and blocks per set (1.48).

During his first full season leading the Auburn program in 2021, Crouch's leadership had an immediate effect. The Tigers opened the season winning 17 consecutive sets to tie the program record for most sweeps to begin a season (5), matching the 1974 Auburn team. Crouch led the team to a 13-15 record with a 5-13 mark in the SEC, picking up a season sweep over Alabama, the first Auburn win over Missouri since 1996 and the program's first victory in College State with a win over Texas A&M.

Crouch's expertise led to six total SEC weekly honors, splitting three on offense and three on defense. Individually, the Tigers also set nine individual records during the 2021 campaign.

Individually, it was Rebekah Rath and Tatum Shipies who benefited the most from Crouch's development. Shipies led the SEC in blocking and set records in blocks, block assists and blocks per set. Meanwhile, Rath led the SEC in five offensive categories, setting records in kills and kills per set.

Crouch made his Auburn coaching debut against No. 4 Florida on Oct. 21, 2020, to open the shortened fall volleyball schedule. Crouch led the Tigers on the court for eight total matches and his impact on the Plains was noticeable almost immediately, tying the record for most blocks in a four-set with 17 at South Carolina.

Prior to Auburn, Crouch served as the head coach at the University of South California, compiling a 40-25 record. He would lead the Trojans to the second round of the NCAA Tournament in both years in Los Angeles. In 2018, Crouch's Trojans earned the No. 11 overall seed in the Tournament and the No. 21 ranking in the final AVCA Coaches poll of the year.

Before leading the Trojans, Crouch spent four seasons as head coach of the University of Portland. The 2016 West Coast Conference Coach of the Year inherited a winless program and guided the Pilots to its winningest season in 25 years just two seasons later. His 48 victories in his final three years in the Rose City was the best three-season total since 1984-86. He put Portland on the WCC map, earning wins over top-10, top-15 and top-25 opponents while in charge of the Pilots. Crouch coached three All-WCC First Team selections, a WCC All-Freshman Team honoree and three WCC All-Academic First Teamers. He also established Beach Volleyball as a varsity sport at Portland in 2016.

Crouch arrived at Portland after four seasons (2010-13) at Saint Mary's College, where he was an assistant with the indoor program and head coach of the beach team.

Brent and his wife Marcy have two sons, Jonathan and William.

2023 AUBURN VOLLEYBALL ROSTER

No.	Name	Year	Pos.	Ht.	Hometown (High School/Previous School)
1	MADISON SCHEER	SO.	PH	6-1	EUREKA, MO. (EUREKA)
2	SARAH MORTON	SO.	L	5-7	MUNSTER, IND. (MUNSTER)
3	AKASHA ANDERSON	SO.	PH	6-3	RESTON, VA. (HERNDON)
4	FALLAN LANHAM	JR.	L	5-8	LOUISVILLE, KY. (MERCY ACADEMY)
5	BELLA BELL	SR.	RS	6-4	BLYTHEWOOD, S.C. (KENTUCKY)
6	KYLA SWANSON	GR.	MB	6-4	WAHOO, NEB. (ILLINOIS)
7	PEYTON DUNN	R-SO.	S	5-11	DECATUR, TEXAS (OKLAHOMA)
8	KENDAL KEMP	SO.	MB	6-6	EAGAN, MINN. (EAGAN)
9	ZOE SLAUGHTER	SO.	L	5-7	HONOLULU, HAWAII (MOANALUA)
10	JACKIE BARRETT	SR.	S	6-2	HIGHLAND, CALIF. (CITRUS VALLEY)
11	JORDAN SINNESS	JR.	S	5-9	SEBRING, FLA. (SEBRING)
12	BEL ZIMMERMAN	SO.	PH	6-2	LIBERTY, MO. (LIBERTY NORTH)
13	PAIGE THIBAUT	JR.	L	5-6	WATERTOWN, MINN. (FIU)
14	CHELSEY HARMON	SR.	MB	6-3	PUYALLUP, WASH. (PORTLAND)
17	CASSIDY TANTON	R-SO.	PH	6-0	STONEVILLE, N.C. (DALTON MCMICHAEL)
19	JASMINE OKEOMA	FR.	MB	6-3	WOODBIDGE, VA. (FOREST PARK)
22	SYDNEY HANDEL	SO.	PH	6-0	LEE'S SUMMIT, MO. (LEE'S SUMMIT WEST)
25	LAKIN LAURENDINE	FR.	PH	6-1	JACKSON, MISS. (JACKSON ACADEMY)

HEAD COACH | BRENT CROUCH (4TH SEASON)

ASSISTANT COACH | KEITH SMITH (2ND SEASON)

ASSISTANT COACH/RECRUITING COORDINATOR | RACHEL CORBELLI (2ND SEASON)

ASSISTANT COACH | JACK BURTON (1ST SEASON)

PRONUNCIATION GUIDE:

MADISON SCHEER – SHEER FALLAN LANHAM – FAL(LIKE PAL)-AN LAN-EM SYDNEY HANDEL – HON-DELL
 PAIGE THIBAUT – THEE-BALT JASMINE OKEOMA – OKAY-AH-MUH LAKIN LAURENDINE – LAY-KIN LOR-EN-DEAN
 RACHEL CORBELLI – CORE-BELL-EE

INSIDE THE 2023 NUMBERS



CATEGORY	AUBURN	SOUTH CAROLINA
Kills	797	470
Per Set	13.1	12.4
Errors	268	223
Total Attacks	2010	1376
Hitting Pct.	.263	.180
Assists	710	444
Per Set	11.6	11.7
Service Aces	91	47
Per Set	1.5	1.2
Service Errors	195	62
Reception Errors	75	43
Per Set	1.2	1.1
Digs	766	559
Per Set	12.6	14.7
Solo Blocks	18	30
Block Assists	248	157
Total Blocks	142.0	108.5
Per Set	2.3	2.9

WEEKLY AWARDS

2023 INDIVIDUAL HIGHS BY SET

THREE SETS

HITTING PERCENTAGE (MIN. 12 KILLS) _____ .667, Madison Scheer 47, at Florida (Oct. 6)
 KILLS _____ 18, Akasha Anderson 47, at Florida (Oct. 6)
 TOTAL ATTEMPTS _____ 35, Akasha Anderson vs McNeese (Aug. 26)
 ASSISTS _____ 37, Jackie Barrett 47, at Florida (Oct. 6)
 DIGS _____ 11, Fallan Lanham vs Jacksonville St. (Aug. 26)
 ACES _____ 5, Jackie Barrett vs Mercer, Sept. 9)
 BLOCKS _____ 7, Kendal Kemp vs Mercer (Sept. 9)

FOUR SETS

HITTING PERCENTAGE (MIN. 12 KILLS) _____ .526, Kendal Kemp vs Charleston Southern (Sept. 8)
 KILLS _____ 20, Akasha Anderson vs Ole Miss (Sept. 24)
 TOTAL ATTEMPTS _____ 60, Akasha Anderson vs Ole Miss (Sept. 24)
 ASSISTS _____ 46, Jackie Barrett vs Samford (Sept. 16)
 DIGS _____ 24, Sarah Morton vs Coppin St. (Aug. 25)
 ACES _____ 4, Chelsey Harmon vs Charleston Southern (Sept. 8)
 BLOCKS _____ 10, Kendal Kemp vs UAB (Sept. 15)

FIVE SETS

HITTING PERCENTAGE (MIN. 12 KILLS) _____ .235, Bel Zimmerman at South Alabama (Sept. 14)
 KILLS _____ 26, Akasha Anderson at South Alabama (Sept. 14)
 TOTAL ATTEMPTS _____ 69, Akasha Anderson at South Alabama (Sept. 14)
 ASSISTS _____ 48, Jackie Barrett at South Alabama (Sept. 14)
 DIGS _____ 29, Zoe Slaughter at South Alabama (Sept. 14)
 ACES _____ 5, Jackie Barrett at South Alabama (Sept. 14)
 BLOCKS _____ 6, Bel Zimmerman at South Alabama (Sept. 14)

2023 TEAM HIGHS BY SET

THREE SETS

HITTING PERCENTAGE (MIN. 12 KILLS) _____ .395, vs Jacksonville St. (Aug. 26)
 KILLS _____ 47, at Florida (Oct. 6)
 TOTAL ATTEMPTS _____ 102, vs McNeese (Aug. 26)
 ASSISTS _____ 43, at Florida (Oct. 6)
 DIGS _____ 33, 2 times (last 47, at Florida Oct. 6)
 ACES _____ 9, vs Mercer (Sept. 9)
 BLOCKS _____ 11.0, vs Mercer (Sept. 9)

FOUR SETS

HITTING PERCENTAGE (MIN. 12 KILLS) _____ .386, vs Samford (Sept. 16)
 KILLS _____ 62, at Florida St. (Sept. 3)
 TOTAL ATTEMPTS _____ 166, vs Ole Miss (Sept. 24)
 ASSISTS _____ 54, 2 times (last vs Samford Sept. 16)
 DIGS _____ 74, vs Ole Miss (Sept. 24)
 ACES _____ 7, vs Charleston Southern (Sept. 8)
 BLOCKS _____ 19.0, vs UAB (Sept. 15)

FIVE SETS

HITTING PERCENTAGE (MIN. 12 KILLS) _____ .196, vs Florida (Sept. 22)
 KILLS _____ 60, at South Alabama (Sept. 14)
 TOTAL ATTEMPTS _____ 178, at South Alabama (Sept. 14)
 ASSISTS _____ 54, at South Alabama (Sept. 14)
 DIGS _____ 81, at South Alabama (Sept. 14)
 ACES _____ 14, at South Alabama (Sept. 14)
 BLOCKS _____ 11.0, at South Alabama (Sept. 14)

THE LAST TIME AUBURN...

Won in three sets _____ Oct. 6, 2023 at #9 Florida (25-23, 25-20, 25-17)
 Won in four sets _____ Oct. 1, 2023 vs Georgia (25-23, 25-23, 18-25, 25-20)
 Won in five sets _____ Sept. 14, 2023 at South Alabama (27-25, 23-25, 19-25, 25-23, 15-8)
 Lost in three sets _____ Sept. 27, 2023 vs Arkansas (18-25, 10-25, 6-25)
 Lost in four sets _____ Sept. 7, 2023 vs Middle Tennessee (22-25, 25-15, 25-23, 25-22)
 Lost in five sets _____ Sept. 22, 2023 vs Florida (20-25, 26-24, 24-26, 25-19, 17-15)
 Lost first set in a win _____ Sept. 24, 2023 vs Ole Miss (21-25, 25-21, 25-10, 27-25)
 Won first set in a loss _____ Sept. 22, 2023 vs Florida (20-25, 26-24, 24-26, 25-19, 17-15)
 Lost first two sets in a win _____ Oct. 15, 2022 at Missouri (21-25, 21-25, 25-17, 25-17, 15-12)
 Won first two sets in a loss _____ Oct. 10, 2021 at Arkansas (25-20, 25-23, 15-25, 17-25, 7-15)
 Beat a ranked opponent _____ Oct. 6, 2023 at #9 Florida (25-23, 25-20, 25-17)
 Hit .300-.399 in a match _____ Oct. 6, 2023 at #9 Florida (.387)
 Hit .400-.499 in a match _____ Sept. 6, 2022 vs Alabama A&M (.400)
 Hit .500 or better in a match _____ Oct. 18, 1998 at Ole Miss (.514)
 Held opponent to .000-.100 in a match _____ Aug. 26, 2023 vs McNeese (.097)
 Held opponent to a negative hitting percentage _____ Sept. 9, 2023 vs Mercer (-.053)
 Had 70-79 kills in a match _____ Oct. 26, 2018 vs. Ole Miss (77)
 Had 80+ kills in a match _____ Sept. 17, 2006 at Georgia (84)
 Had 80-99 digs in a match _____ Sept. 14, 2022 at South Alabama (81)
 Had 100+ digs in a match _____ Sept. 17, 2021 vs. Nicholls (105)
 Had 15+ blocks in a match _____ Sept. 15, 2023 vs UAB (19.0)
 Had 10+ service aces in a match _____ Sept. 14, 2023 at South Alabama (14)
 Had a player(s) with 20-24 kills in a match _____ Sept. 24, 2023 Akasha Anderson vs Ole Miss (20)
 Had a player(s) with 25-29 kills in a match _____ Sept. 14, 2023, Akasha Anderson at South Ala. (26)
 Had a player(s) with 30+ kills in a match _____ Oct. 8, 2004, Ashlee Johns vs. Arkansas (30)
 Had a player(s) with 10+ blocks in a match _____ Sept. 15, 2023 Kendal Kemp vs UAB (10)
 Had a player(s) with 25-29 digs in a match _____ Sept. 14, 2023, Zoe Slaughter at South Ala. (29)
 Had a player(s) with 30+ digs in a match _____ Oct. 17, 2021, Bella Rosenthal vs. Missouri(33)
 Had a player(s) with 50+ assists in a match _____ Oct. 9, 2022 Jackie Barrett vs Georgia (51)
 Had a player(s) with 60+ assists in a match _____ Oct. 5, 2022, Jackie Barrett at LSU (60)
 Had a player(s) with 5+ aces in a match _____ Sept. 14, 2023, Jackie Barrett at South Ala. (5)

AUBURN DOUBLE-DOUBLES IN 2023

PLAYER	OPPONENT (SETS)	DATE	STATS
Jackie Barrett (7)	vs SMU (4)	Sept. 2	36 assists, 14 digs
	at Florida St. (4)	Sept. 3	44 assists, 11 digs
	vs MTSU (4)	Sept. 7	39 assists, 10 digs
	vs Charleston So. (4)	Sept. 8	41 assists, 13 digs
	at South Alabama (5)	Sept. 14	48 assists, 11 digs
	vs #3 Florida (5)	Sept. 22	40 assists, 12 digs
	vs Ole Miss (4)	Sept. 24	42 assists, 17 digs
Akasha Anderson (3)	at South Alabama (5)	Sept. 14	26 kills, 11 digs
	vs UAB (4)	Sept. 15	11 kills, 11 digs
	vs #3 Florida (5)	Sept. 22	18 kills, 10 digs
Bel Zimmerman (3)	vs Charleston So. (4)	Sept. 8	17 kills, 16 digs
	vs UAB (4)	Sept. 15	16 kills, 12 digs
	vs Samford (4)	Sept. 16	15 kills, 11 digs

AUBURN'S 2023 RECORD WHEN...

OVERALL	13-3
SEC-	3-2
NON-CONFERENCE	10-1
RANKED OPPONENTS	1-2
HOME	7-2
AWAY	3-1
NEUTRAL	3-0
BY SETS	
THREE SETS	4-1
FOUR SETS	8-1
FIVE SETS	1-1
WON FIRST SET	10-2
LOST FIRST SET	3-1
WON SECOND SET	10-1
LOST SECOND SET	3-2
WON FIRST TWO SETS	7-0
LOST FIRST TWO SETS	0-1
SITUATIONAL	
MORE KILLS THAN OPPONENT	11-0
FEWER KILLS THAN OPPONENT	2-3
KILLS ARE TIED	0-0
MORE DIGS THAN OPPONENT	5-0
FEWER DIGS THAN OPPONENT	7-3
DIGS ARE TIED	1-0
MORE ACES THAN OPPONENT	9-1
FEWER ACES THAN OPPONENT	3-2
ACES ARE TIED	1-0
HIGHER HITTING PERCENTAGE THAN OPPONENT	13-0
LOWER HITTING PERCENTAGE THAN OPPONENT	0-3
HITTING PERCENTAGE TIED	0-0
HITTING PERCENTAGE	
.400 OR ABOVE	0-0
.300-.399	8-0
.200-.299	2-1
.100-.199	3-1
.000-.099	0-0
NEGATIVE	0-1
OPPONENTS' HITTING PERCENTAGE	
.400 OR ABOVE	0-1
.300-.399	1-0
.200-.299	4-2
.100-.199	5-0
.000-.099	2-0
NEGATIVE	1-0
BY DAY	
MONDAY	0-0
TUESDAY	0-0
WEDNESDAY	0-1
THURSDAY	1-1
FRIDAY	4-1
SATURDAY	5-0
SUNDAY	3-0
DAY MATCHES (FIRST SERVE BEFORE 6 P.M.)	7-0
NIGHT MATCHES (FIRST SERVE AFTER 6 P.M.)	6-3
BY MONTH	
AUGUST	3-0
SEPTEMBER	8-3
OCTOBER	2-0
NOVEMBER	0-0
DECEMBER	0-0
JERSEY COLOR	
NAVY w/POWER STRIPE	0-0
NAVY SOLID	0-0
NAVY SLEEVELESS	4-1
ORANGE w/POWER STRIPE	5-2
ORANGE SOLID	4-0

2023 AUBURN MATCH-BY-MATCH STARTERS

DATE	OPPONENT	RESULT	OUTSIDE	MIDDLE	RIGHT SIDE/DS	OUTSIDE/DS	MIDDLE	LIBERO	SETTER
Aug. 25	vs Coppin State	W, 3-1	Akasha Anderson	Kendal Kemp	Bella Bell	Paige Thibault	Kyla Swanson	Sarah Morton	Peyton Dunn
Aug. 26	vs McNeese	W, 3-0	Akasha Anderson	Kendal Kemp	Bella Bell	Paige Thibault	Kyla Swanson	Sarah Morton	Jackie Barrett
Aug. 26	vs Jacksonville State	W, 3-0	Akasha Anderson	Kendal Kemp	Bella Bell	Zoe Slaughter	Kyla Swanson	Sarah Morton	Jackie Barrett
Sept. 2	vs SMU	W, 3-1	Akasha Anderson	Kendal Kemp	Bella Bell	Zoe Slaughter	Kyla Swanson	Sarah Morton	Jackie Barrett
Sept. 3	at Florida State	W, 3-1	Akasha Anderson	Kendal Kemp	Bella Bell	Zoe Slaughter	Kyla Swanson	Sarah Morton	Jackie Barrett
Sept. 7	vs Middle Tennessee	L, 1-3	Bel Zimmerman	Kendal Kemp	Bella Bell	Zoe Slaughter	Kyla Swanson	Sarah Morton	Jackie Barrett
Sept. 8	vs Charleston Southern	W, 3-1	Madison Scheer	Kendal Kemp	Bel Zimmerman	Fallan Lanham	Chelsey Harmon	Sarah Morton	Jackie Barrett
Sept. 9	vs Mercer	W, 3-0	Bel Zimmerman	Kendal Kemp	Zoe Slaughter	Fallan Lanham	Chelsey Harmon	Sarah Morton	Jackie Barrett
Sept. 14	at South Alabama	W, 3-2	Akasha Anderson	Kendal Kemp	Bel Zimmerman	Fallan Lanham	Kyla Swanson	Zoe Slaughter	Jackie Barrett
Sept. 15	vs UAB	W, 3-1	Akasha Anderson	Kendal Kemp	Bel Zimmerman	Paige Thibault	Kyla Swanson	Zoe Slaughter	Jackie Barrett
Sept. 16	vs Samford	W, 3-1	Akasha Anderson	Kendal Kemp	Bel Zimmerman	Madison Scheer	Kyla Swanson	Zoe Slaughter	Jackie Barrett
Sept. 22	vs #3 Florida	L, 2-3	Akasha Anderson	Kyla Swanson	Bella Bell	Paige Thibault	Chelsey Harmon	Sarah Morton	Jackie Barrett
Sept. 24	vs Ole Miss	W, 3-1	Akasha Anderson	Kyla Swanson	Bella Bell	Paige Thibault	Chelsey Harmon	Sarah Morton	Jackie Barrett
Sept. 27	at #14 Arkansas	L, 0-3	Akasha Anderson	Kyla Swanson	Bella Bell	Paige Thibault	Chelsey Harmon	Sarah Morton	Jackie Barrett
Oct. 1	vs Georgia	W, 3-1	Akasha Anderson	Kyla Swanson	Bel Zimmerman	Paige Thibault	Chelsey Harmon	Sarah Morton	Jackie Barrett
Oct. 6	at #9 Florida	W, 3-0	Akasha Anderson	Kyla Swanson	Bel Zimmerman	Paige Thibault	Chelsey Harmon	Sarah Morton	Jackie Barrett

2023 AUBURN MATCH-BY-MATCH LEADERS

DATE	OPPONENT	RESULT	KILLS	ASSISTS	ACES	DIGS	BLOCKS	HIT PCT. (MIN 10 ATT.)
Aug. 25	vs Coppin State	W, 3-1	Scheer/Anderson (16)	Dunn (43)	Swanson (2)	Morton (24)	Swanson (6)	Bell (.480)
Aug. 26	vs McNeese	W, 3-0	Anderson (14)	Barrett (31)	Anderson (4)	Anderson (8)	Kemp (5)	Zimmerman (.400)
Aug. 26	vs Jacksonville State	W, 3-0	Anderson (10)	Dunn (16)	Zimmerman (3)	Lanham (11)	Swanson (3)	Bell (.750)
Sept. 2	vs SMU	W, 3-1	Scheer (18)	Barrett (36)	Anderson (2)	Morton (17)	Kemp (4)	Swanson (.500)
Sept. 3	at Florida State	W, 3-1	Anderson (15)	Barrett (44)	Slaughter (2)	Barrett (11)	Swanson/Barrett (4)	Swanson (.467)
Sept. 7	vs Middle Tennessee	L, 1-3	Zimmerman (11)	Barrett (39)	Barrett/Lanham (1)	3 players (10)	Kemp (5)	Swanson (.333)
Sept. 8	vs Charleston Southern	W, 3-1	Zimmerman (17)	Barrett (41)	Harmon (4)	Zimmerman (16)	Harmon (7)	Kemp (.526)
Sept. 9	vs Mercer	W, 3-0	Zimmerman (14)	Barrett (31)	Barrett (5)	Morton (10)	Kemp (7)	Kemp (.500)
Sept. 14	at South Alabama	W, 3-2	Anderson (26)	Barrett (48)	Barrett (5)	Slaughter (29)	Zimmerman (6)	Kemp (.455)
Sept. 15	vs UAB	W, 3-1	Zimmerman (16)	Barrett (35)	Zimmerman/Thibault (2)	Zimmerman (12)	Kemp (10)	Zimmerman (.306)
Sept. 16	vs Samford	W, 3-1	Anderson (19)	Barrett (46)	Thibault (2)	Slaughter (16)	Swanson (3)	Anderson (.410)
Sept. 22	vs #3 Florida	L, 2-3	Anderson (18)	Barrett (40)	Anderson (2)	Morton (13)	Swanson/Anderson (3)	Bell (.214)
Sept. 24	vs Ole Miss	W, 3-1	Anderson (20)	Barrett (42)	Zimmerman (3)	Morton (20)	Harmon (8)	Harmon (.417)
Sept. 27	at #14 Arkansas	L, 0-3	Scheer (4)	Barrett (11)	Slaughter/Zimmerman (1)	Anderson/Morton (7)	3 players (2)	Scheer (.045)
Oct. 1	vs Georgia	W, 3-1	Anderson (17)	Barrett (42)	Harmon (2)	Thibault (10)	Kemp (4)	Kemp (.667)
Oct. 6	at #9 Florida	W, 3-0	Anderson (18)	Barrett (37)	Barrett/Harmon (2)	Morton/Anderson (8)	Kemp (3)	Scheer (.667)

2023 OVERALL STATISTICS

Game Records

Overall	Conference	Home	Away	Neutral
13 - 3	3 - 2	7 - 2	3 - 1	3 - 0

Team Box Score

#	Player	SP	Attack				Set		Serve			Dig		Blocking					PTS			
			K	K/S	E	TA	PCT	A	A/S	SA	SE	SA/S	RE	DIG	DIG/S	BS	BA	TOT/S		BLK/S	BE	BHE
1	Scheer, Madison	58	180	3.10	56	457	.271	3	0.05	0	0	0.00	4	20	0.34	1	21	22	0.38	1	0	191.5
2	Morton, Sarah	48	2	0.04	0	7	.286	46	0.96	5	31	0.10	7	147	3.06	0	0	0	0.00	0	0	7.0
3	Anderson, Akasha	50	197	3.94	86	554	.200	7	0.14	15	32	0.30	17	101	2.02	1	22	23	0.46	2	0	224.0
4	Lanham, Fallan	27	0	0.00	0	2	.000	6	0.22	6	6	0.22	1	52	1.93	0	0	0	0.00	0	0	6.0
5	Bell, Bella	34	88	2.59	27	207	.295	2	0.06	0	0	0.00	1	12	0.35	1	23	24	0.71	4	0	100.5
6	Swanson, Kyla	59	75	1.27	32	191	.225	4	0.07	3	13	0.05	0	14	0.24	5	50	55	0.93	2	0	108.0
7	Dunn, Peyton	6	4	0.67	1	7	.429	59	9.83	1	7	0.17	0	8	1.33	0	2	2	0.33	0	0	6.0
8	Kemp, Kendal	47	79	1.68	19	141	.426	0	0.00	1	3	0.02	0	5	0.11	6	53	59	1.26	7	0	112.5
9	Slaughter, Zoe	57	0	0.00	0	8	.000	21	0.37	5	19	0.09	10	120	2.11	0	0	0	0.00	0	0	5.0
10	Barrett, Jackie	56	38	0.68	5	84	.393	537	9.59	17	12	0.30	0	131	2.34	1	30	31	0.55	3	3	71.0
12	Zimmerman, Bel	54	105	1.94	35	288	.243	7	0.13	20	39	0.37	8	60	1.11	2	20	22	0.41	8	0	137.0
13	Thibault, Paige	42	1	0.02	0	4	.250	14	0.33	6	20	0.14	8	76	1.81	0	0	0	0.00	0	0	7.0
14	Harmon, Chelsey	36	27	0.75	6	54	.389	4	0.11	12	8	0.33	0	10	0.28	1	27	28	0.78	4	0	53.5
17	Tanton, Cassidy	1	1	1.00	1	5	.000	0	0.00	0	0	0.00	1	0	0.00	0	0	0	0.00	0	0	1.0
22	Handel, Sydney	13	0	0.00	0	1	.000	0	0.00	0	5	0.00	1	10	0.77	0	0	0	0.00	0	0	0.0
AUBURN		61	797	13.07	268	2010	.263	710	11.64	91	195	1.49	75	766	12.56	18	248	142	2.33	31	3	1,030.0
Opponents		61	694	11.38	334	1936	.186	649	10.64	75	147	1.23	91	818	13.41	18	154	95	1.56	41	15	864.0

Team statistics

	AUB	OPP
ATTACK		
Kills	797	694
Errors	268	334
Total Attacks	2010	1936
Attack Pct	.263	.186
Kills/Set	13.07	11.38
SET		
Assists	710	649
Attempts	1974	2010
Assist Pct	.360	.323
Assists/Set	11.64	10.64
SERVE		
Aces	91	75
Errors	195	147
Attempts	1396	1272
Serve Pct	.860	.884
Aces/Set	1.49	1.23
SERVE RECEPTIONS		
Errors	75	91
Errors/Set	1.23	1.49
Attempts	1125	1201
Reception Pct	.933	.999
DEFENSE		
Digs	766	818
Digs/Set	12.56	13.41
BLOCKING		
Block solo	18	18
Block Assist	248	154
Total Blocks	142	95
Blocks/Set	2.33	1.56
Block Errors	31	41
Ball handling errors	3	15
ATTENDANCE		
Total	11185	7103
Dates/Avg Per Date	9/1243	4/1776
Neutral Site #/Avg	3/67	-
Current win streak	0	-
Home win streak	0	-

Team Results

Date	Opponent	Score	Score-by-set	Att.
08/25/2023	Coppin St.	W 3-1	24-26,25-17,25-15,25-18	1124
08/26/2023	McNeese	W 3-0	25-15,25-15,25-22	579
08/26/2023	Jacksonville St.	W 3-0	25-12,25-11,26-24	1125
09/02/2023	vs SMU	W 3-1	25-22,17-25,25-20,25-21	50
09/03/2023	at Florida St.	W 3-1	30-28,25-21,19-25,25-23	361
09/07/2023	Middle Tenn.	L 1-3	25-22,15-25,23-25,22-25	790
09/08/2023	Charleston So.	W 3-1	23-25,25-16,25-9,25-19	1063
09/09/2023	Mercer	W 3-0	25-15,25-20,25-11	967
09/14/2023	at South Alabama	W 3-2	27-25,23-25,19-25,25-23,15-8	1218
09/15/2023	vs UAB	W 3-1	25-15,26-24,21-25,25-19	87
09/16/2023	vs Samford	W 3-1	25-19,20-25,26-24,25-11	65
* 09/22/2023	Florida	L 2-3	25-20,24-26,26-24,19-25,15-17	2393
* 09/24/2023	Ole Miss	W 3-1	21-25,25-21,25-10,27-25	1128
* 09/27/2023	at Arkansas	L 0-3	18-25,10-25,6-25	1374
* 10/01/2023	Georgia	W 3-1	25-23,25-23,18-25,25-20	2016
* 10/06/2023	at Florida	W 3-0	25-23,25-20,25-17	4150

2023 SEC STATISTICS

Game Records

Overall	Conference	Home	Away	Neutral
3 - 2	3 - 2	2 - 1	1 - 1	0 - 0

Team Box Score

##	Player	SP	Attack				Set		Serve			Dig			Blocking				PTS			
			K	K/S	E	TA	PCT	A	A/S	SA	SE	SA/S	RE	DIG	DIG/S	BS	BA	TOT/S		BLK/S	BE	BHE
1	Scheer, Madison	19	59	3.11	15	147	.299	1	0.05	0	0	0.00	1	6	0.32	0	3	3	0.16	0	0	60.5
2	Morton, Sarah	19	1	0.05	0	1	1.000	19	1.00	3	13	0.16	2	56	2.95	0	0	0	0.00	0	0	4.0
3	Anderson, Akasha	19	74	3.89	42	234	.137	2	0.11	4	16	0.21	8	40	2.11	0	11	11	0.58	0	0	83.5
5	Bell, Bella	12	23	1.92	13	76	.132	1	0.08	0	0	0.00	0	7	0.58	1	7	8	0.67	1	0	27.5
6	Swanson, Kyla	19	19	1.00	9	55	.182	0	0.00	0	0	0.00	0	1	0.05	2	10	12	0.63	0	0	26.0
8	Kemp, Kendal	7	12	1.71	1	19	.579	0	0.00	0	0	0.00	0	1	0.14	0	7	7	1.00	0	0	15.5
9	Slaughter, Zoe	15	0	0.00	0	0	.000	2	0.13	1	4	0.07	1	21	1.40	0	0	0	0.00	0	0	1.0
10	Barrett, Jackie	19	12	0.63	1	32	.344	172	9.05	4	5	0.21	0	47	2.47	0	7	7	0.37	2	0	19.5
12	Zimmerman, Bel	19	11	0.58	8	37	.081	1	0.05	5	17	0.26	1	10	0.53	0	2	2	0.11	2	0	17.0
13	Thibault, Paige	19	0	0.00	0	2	.000	7	0.37	2	11	0.11	6	38	2.00	0	0	0	0.00	0	0	2.0
14	Harmon, Chelsey	19	12	0.63	4	26	.308	0	0.00	4	1	0.21	0	6	0.32	0	12	12	0.63	2	0	22.0
AUBURN		19	223	11.74	93	629	.207	205	10.79	23	67	1.21	23	233	12.26	3	59	32.5	1.71	7	0	278.5
Opponents		19	229	12.05	94	601	.225	216	11.37	23	62	1.21	23	267	14.05	4	60	34	1.79	5	4	286.0

Team statistics

	AUB	OPP
ATTACK		
Kills	223	229
Errors	93	94
Total Attacks	629	601
Attack Pct	.207	.225
Kills/Set	11.74	12.05
SET		
Assists	205	216
Attempts	621	620
Assist Pct	.330	.348
Assists/Set	10.79	11.37
SERVE		
Aces	23	23
Errors	67	62
Attempts	407	420
Serve Pct	.835	.852
Aces/Set	1.21	1.21
SERVE RECEPTIONS		
Errors	23	23
Errors/Set	1.21	1.21
Attempts	358	340
Reception Pct	.936	.996
DEFENSE		
Digs	233	267
Digs/Set	12.26	14.05
BLOCKING		
Block solo	3	4
Block Assist	59	60
Total Blocks	32.5	34
Blocks/Set	1.71	1.79
Block Errors	7	5
Ball handling errors	0	4
ATTENDANCE		
Total	5537	5524
Dates/Avg Per Date	3/1846	2/2762
Neutral Site #/Avg	0/0	-
Current win streak	0	-
Home win streak	0	-

Team Results

Date	Opponent	Score	Score-by-set	Att.
* 09/22/2023	Florida	L 2-3	25-20,24-26,26-24,19-25,15-17	2393
* 09/24/2023	Ole Miss	W 3-1	21-25,25-21,25-10,27-25	1128
* 09/27/2023	at Arkansas	L 0-3	18-25,10-25,6-25	1374
* 10/01/2023	Georgia	W 3-1	25-23,25-23,18-25,25-20	2016
* 10/06/2023	at Florida	W 3-0	25-23,25-20,25-17	4150

2023 STATISTICAL LEADERS

Attack (by PCT)

#	Player	S	K	K/S	E	TA	PCT
7	Dunn, Peyton	6	4	0.67	1	7	.429
8	Kemp, Kendal	47	79	1.68	19	141	.426
10	Barrett, Jackie	56	38	0.68	5	84	.393
14	Harmon, Chelsey	36	27	0.75	6	54	.389
5	Bell, Bella	34	88	2.59	27	207	.295
2	Morton, Sarah	48	2	0.04	0	7	.286
1	Scheer, Madison	58	180	3.10	56	457	.271
13	Thibault, Paige	42	1	0.02	0	4	.250
12	Zimmerman, Bel	54	105	1.94	35	288	.243
6	Swanson, Kyla	59	75	1.27	32	191	.225
3	Anderson, Akasha	50	197	3.94	86	554	.200
4	Lanham, Fallan	27	0	0.00	0	2	.000
17	Tanton, Cassidy	1	1	1.00	1	5	.000
9	Slaughter, Zoe	57	0	0.00	0	8	.000
22	Handel, Sydney	13	0	0.00	0	1	.000

Kill (by K)

#	Player	S	K	K/S
3	Anderson, Akasha	50	197	3.94
1	Scheer, Madison	58	180	3.10
12	Zimmerman, Bel	54	105	1.94
5	Bell, Bella	34	88	2.59
8	Kemp, Kendal	47	79	1.68
6	Swanson, Kyla	59	75	1.27
10	Barrett, Jackie	56	38	0.68
14	Harmon, Chelsey	36	27	0.75
7	Dunn, Peyton	6	4	0.67
2	Morton, Sarah	48	2	0.04
13	Thibault, Paige	42	1	0.02
17	Tanton, Cassidy	1	1	1.00
4	Lanham, Fallan	27	0	0.00
9	Slaughter, Zoe	57	0	0.00
22	Handel, Sydney	13	0	0.00

Set (by A/S)

#	Player	S	A	A/S	TA	PCT
7	Dunn, Peyton	6	59	9.83	141	.411
10	Barrett, Jackie	56	537	9.59	1379	.384
2	Morton, Sarah	48	46	0.96	169	.249
9	Slaughter, Zoe	57	21	0.37	67	.299
13	Thibault, Paige	42	14	0.33	36	.361
4	Lanham, Fallan	27	6	0.22	26	.231
3	Anderson, Akasha	50	7	0.14	45	.111
12	Zimmerman, Bel	54	7	0.13	26	.231
14	Harmon, Chelsey	36	4	0.11	15	.267
6	Swanson, Kyla	59	4	0.07	26	.038
5	Bell, Bella	34	2	0.06	9	.222
1	Scheer, Madison	58	3	0.05	21	.048
8	Kemp, Kendal	47	0	0.00	10	.000
17	Tanton, Cassidy	1	0	0.00	0	.000
22	Handel, Sydney	13	0	0.00	4	.000

Serve (by SA/S)

#	Player	S	SA	SE	SA/S	TA	PCT
12	Zimmerman, Bel	54	20	39	0.37	197	.802
14	Harmon, Chelsey	36	12	8	0.33	109	.927
10	Barrett, Jackie	56	17	12	0.30	202	.941
3	Anderson, Akasha	50	15	32	0.30	179	.821
4	Lanham, Fallan	27	6	6	0.22	107	.944
7	Dunn, Peyton	6	1	7	0.17	15	.533
13	Thibault, Paige	42	6	20	0.14	119	.832
2	Morton, Sarah	48	5	31	0.10	170	.818
9	Slaughter, Zoe	57	5	19	0.09	197	.904
6	Swanson, Kyla	59	3	13	0.05	59	.780
8	Kemp, Kendal	47	1	3	0.02	6	.500
5	Bell, Bella	34	0	0	0.00	1	1.000
1	Scheer, Madison	58	0	0	0.00	2	1.000
17	Tanton, Cassidy	1	0	0	0.00	0	.000
22	Handel, Sydney	13	0	5	0.00	33	.848

Block (by BLK/S)

#	Player	S	BS	BA	TOTAL	BLK/S
8	Kemp, Kendal	47	6	53	59.0	1.26
6	Swanson, Kyla	59	5	50	55.0	0.93
14	Harmon, Chelsey	36	1	27	28.0	0.78
5	Bell, Bella	34	1	23	24.0	0.71
10	Barrett, Jackie	56	1	30	31.0	0.55
3	Anderson, Akasha	50	1	22	23.0	0.46
12	Zimmerman, Bel	54	2	20	22.0	0.41
1	Scheer, Madison	58	1	21	22.0	0.38
7	Dunn, Peyton	6	0	2	2.0	0.33
4	Lanham, Fallan	27	0	0	0.0	0.00
13	Thibault, Paige	42	0	0	0.0	0.00
2	Morton, Sarah	48	0	0	0.0	0.00
9	Slaughter, Zoe	57	0	0	0.0	0.00
17	Tanton, Cassidy	1	0	0	0.0	0.00
22	Handel, Sydney	13	0	0	0.0	0.00

Defense (by DIG/S)

#	Player	S	DIG	DIG/S	BHE
2	Morton, Sarah	48	147	3.06	0
10	Barrett, Jackie	56	131	2.34	3
9	Slaughter, Zoe	57	120	2.11	0
3	Anderson, Akasha	50	101	2.02	0
4	Lanham, Fallan	27	52	1.93	0
13	Thibault, Paige	42	76	1.81	0
7	Dunn, Peyton	6	8	1.33	0
12	Zimmerman, Bel	54	60	1.11	0
22	Handel, Sydney	13	10	0.77	0
5	Bell, Bella	34	12	0.35	0
1	Scheer, Madison	58	20	0.34	0
14	Harmon, Chelsey	36	10	0.28	0
6	Swanson, Kyla	59	14	0.24	0
8	Kemp, Kendal	47	5	0.11	0
17	Tanton, Cassidy	1	0	0.00	0

Points (by POINTS/S)

#	Player	S	POINTS	POINTS/S
3	Anderson, Akasha	50	224.0	4.48
1	Scheer, Madison	58	191.5	3.30
5	Bell, Bella	34	100.5	2.96
12	Zimmerman, Bel	54	137.0	2.54
8	Kemp, Kendal	47	112.5	2.39
6	Swanson, Kyla	59	108.0	1.83
14	Harmon, Chelsey	36	53.5	1.49
10	Barrett, Jackie	56	71.0	1.27
7	Dunn, Peyton	6	6.0	1.00
17	Tanton, Cassidy	1	1.0	1.00
4	Lanham, Fallan	27	6.0	0.22
13	Thibault, Paige	42	7.0	0.17
2	Morton, Sarah	48	7.0	0.15
9	Slaughter, Zoe	57	5.0	0.09
22	Handel, Sydney	13	0.0	0.00

Receptions (by PCT)

#	Player	S	RE	RE/S	TA	PCT
8	Kemp, Kendal	47	0	0.00	2	1.000
6	Swanson, Kyla	59	0	0.00	1	1.000
10	Barrett, Jackie	56	0	0.00	2	1.000
4	Lanham, Fallan	27	1	0.04	83	.988
2	Morton, Sarah	48	7	0.15	190	.963
1	Scheer, Madison	58	4	0.07	83	.952
9	Slaughter, Zoe	57	10	0.18	205	.951
13	Thibault, Paige	42	8	0.19	161	.950
12	Zimmerman, Bel	54	8	0.15	136	.941
22	Handel, Sydney	13	1	0.08	14	.929
3	Anderson, Akasha	50	17	0.34	225	.924
17	Tanton, Cassidy	1	1	1.00	4	.750
5	Bell, Bella	34	1	0.03	2	.500
14	Harmon, Chelsey	36	0	0.00	0	.000
7	Dunn, Peyton	6	0	0.00	0	.000
TM	TEAM	-	17	0.28	-	-

TEAM KILLS - SIDEOUT ERA

	KILLS	OPPONENT (SETS)	DATE
1.	114	vs. Kentucky (5)	10/5/97
2.	107	at Tulane (5)	11/10/90
3.	99	vs. Georgia Tech (5)	9/14/95
4.	96	vs. Butler (5)	9/10/94
5.	95	vs. Pittsburgh (5)	9/13/91
6.	94	vs. Lamar (5)	9/24/88
7.	91	vs. LSU (5)	11/13/94
8.	90	at Ole Miss (5)	10/13/96
9.	89	vs. Arkansas (4)	10/20/96
10.	88	at Rhode Island (5)	9/5/97
	88	vs. Mississippi State (4)	10/24/97
	88	vs. Mississippi State (5)	11/12/00

TEAM KILLS - RALLY ERA

	KILLS	OPPONENT (SETS)	DATE
1.	84	vs. Virginia Tech (5)	9/2/06
	84	at Georgia (5)	9/17/06
3.	82	vs. Georgia Southern (5)	9/2/05
4.	81	at Mercer (5)	9/8/04
5.	80	vs. Kentucky (5)	10/1/06
	80	vs. Ole Miss (5)	10/24/03
7.	79	at Alabama (5)	10/30/11
8.	77	vs. Ole Miss (5)	10/26/18
9.	75	at South Carolina (5)	11/16/14
	75	at Georgia (5)	11/2/14
	75	vs. Green Bay (5)	9/5/13
	75	vs. Tennessee State (4)	8/25/07
	75	vs. Arkansas (5)	10/8/04
	75	at LSU (5)	10/25/15

TEAM ASSISTS - RALLY ERA

	AST.	OPPONENT (SETS)	DATE
1.	79	vs. Georgia Southern (5)	9/2/05
2.	77	at Mercer (5)	9/8/04
3.	76	at Georgia (5)	9/17/06
4.	74	vs. South Carolina (5)	10/5/14
	74	at Alabama (5)	10/30/11
	74	vs. Ole Miss (5)	9/24/03
7.	72	at Georgia (5)	11/2/14
	72	vs. Tennessee State (4)	8/25/07
	72	at LSU (5)	10/25/15
	72	vs. Ole Miss (5)	10/26/18

TEAM DIGS - RALLY ERA

	DIGS	OPPONENT (SETS)	DATE
1.	112	at LSU (5)	11/15/13
2.	109	at LSU (5)	10/25/15
3.	107	vs. Northwestern State (5)	9/20/14
4.	105	vs. Nicholls St. (4)	9/17/21
5.	99	at Ole Miss (5)	10/18/16
6.	97	vs. Georgia (4)	11/7/07
	97	vs. LSU (5)	10/5/15
	97	at Tennessee (5)	10/4/17
9.	94	at Tennessee (5)	11/16/12
10.	93	at Georgia (5)	9/17/06
	93	vs. Tennessee (4)	11/9/17

TEAM ACES - RALLY ERA

	ACES	OPPONENT (SETS)	DATE
1.	18	vs. Delaware State (3)	9/13/03
2.	16	vs. Tennessee State (4)	8/25/07
	16	vs. Southeastern Louisiana (3)	9/9/06
4.	14	at South Alabama (5)	9/14/23
	14	vs. Troy (3)	8/27/10
	14	vs. Alabama State (3)	9/5/03
7.	13	vs. Tennessee State (5)	8/30/19
	13	at SMU (5)	8/26/06
	13	vs. Mississippi State (5)	10/26/03
10.	12	vs. Louisiana Tech (4)	9/7/07
	12	at Lafayette (3)	9/12/03
	12	vs. Grambling State (3)	9/1/05

TEAM TOTAL BLOCKS - RALLY ERA

	BLK	OPPONENT (SETS)	DATE
1.	19.0	vs. UAB (4)	9/15/23
2.	18.0	vs. Georgia (5)	10/9/22
	18.0	vs. Alabama (5)	10/2/21
	18.0	vs. South Florida (5)	9/13/14
5.	17.0	vs. Troy (4)	9/10/22
	17.0	at Arkansas (5)	10/10/21
	17.0	at South Carolina (4)	10/29/20
	17.0	at Georgia Southern (5)	9/12/09
	17.0	vs. Mississippi State (5)	11/5/04
10.	16.5	at Alabama (4)	9/24/22

TEAM HITTING - ALL ERAS

	PCT.	OPPONENT (SETS)	DATE
1.	.530 (41-6-66)	vs. LSU (3)	11/2/97
2.	.514 (65-11-105)	at Ole Miss (3)	10/18/98
3.	.489 (52-6-94)	vs. Alabama A&M (3)	8/29/09
4.	.487 (46-8-78)	vs. Navy (3)	9/15/00
5.	.485 (38-6-66)	vs. Drexel (3)	9/10/93
	.485 (53-5-99)	vs. Eastern Illinois (3)	9/1/18
7.	.474 (52-7-95)	at South Carolina (3)	10/26/12
8.	.472 (40-6-72)	vs. Delaware State (3)	9/13/03
9.	.471 (54-5-104)	vs. Mississippi State (3)	11/29/14
10.	.469 (35-5-64)	vs. Alabama A&M (3)	8/28/09
11.	.468 (N/A)	vs. Alabama State (3)	10/8/87
12.	.462 (52-9-93)	at Georgia State (3)	8/28/07
13.	.455 (55-9-101)	vs. Alabama (3)	11/10/98
14.	.450 (42-6-80)	vs. Mercer (3)	9/5/13
15.	.448 (50-11-87)	vs. Grambling (3)	9/1/05
16.	.440 (43-10-75)	vs. Chicago State (3)	9/11/99
	.440 (55-11-100)	vs. UAB (3)	9/3/00
18.	.429 (49-10-91)	at LSU (3)	9/26/97
19.	.420 (45-8-88)	vs. Lipscomb (3)	9/20/03
20.	.422 (43-8-83)	at Georgia Tech (3)	8/25/17

Records set in the Brent Crouch era are listed in **BOLD**.

TEAM MATCH RECORDS (BY SET)**KILLS**

SETS	KILLS	OPPONENT	DATE
3s	76	vs. LSU	10/18/96
4s	89	vs. Arkansas	10/20/9
5s	114	vs. Kentucky	10/5/97

ATTACKS

SETS	ATT.	OPPONENT	DATE
3s	160	vs. South Carolina	10/19/97
4s	213	at Ole Miss	10/3/93
5s	229	at LSU	11/15/13

HITTING PERCENTAGE (MIN. 10 KILLS)

SETS	PCT.	OPPONENT	DATE
3s	.530 (41-6-66)	vs. LSU	11/2/97
4s	.365 (70-20-137)	vs. Alabama	11/6/97
5s	.362 (74-20-149)	at Minnesota	9/19/98

BLOCKS - SOLO

SETS	BLK	OPPONENT	DATE
3s	8 (3x)	last, vs. IUPUI	9/4/98
4s	10	at Tennessee Tech	10/14/88
5s	13	vs. NC State	9/21/91

BLOCKS - ASSISTS

SETS	BLK	OPPONENT	DATE
3s	27	at Samford	10/3/00
4s	34	vs UAB	9/15/23
5s	28 (3x)	last, vs. Mississippi State	11/12/00

TOTAL BLOCKS

SETS	BLK	OPPONENT	DATE
3s	15.0	vs. Alabama	11/5/93
	15.0	at South Carolina	10/17/10
4s	19.0	vs UAB	9/15/23
5s	18.0	vs. Georgia	10/9/22
	18.0	vs. South Florida	9/13/14

DIGS

SETS	DIGS	OPPONENT	DATE
3s	76	at Ole Miss	11/16/07
4s	115	vs. NE Louisiana	9/12/86
5s	117	vs. Central Florida	11/8/86

ASSISTS

SETS	AST	OPPONENT	DATE
3s	60	vs. Pittsburgh	8/31/97
4s	77	vs. Mississippi State	10/24/97
5s	100	vs. Kentucky	10/5/97

SERVICE ACES

SETS	ACE	OPPONENT	DATE
3s	18	vs. Delaware State	9/13/03
4s	16	vs. Tennessee State	8/25/07
5s	14	at South Alabama	9/14/23

INDIVIDUAL KILLS

	KILLS	PLAYER-OPPONENT (SETS)	DATE
1.	30	Ashlee Johns vs. Arkansas (5)	10/8/04
2.	29	Rebekah Rath at Arkansas (4)	10/9/21
3.	27	Kelly Fidero at Alabama (5)	10/30/11
4.	26	Akasha Anderson at South Alabama (5)	9/14/23
	26	Akasha Anderson vs Mississippi St. (5)	9/28/22
	26	Jessica Glover at Georgia (5)	9/17/06
	26	Camila Lago vs. Mississippi State (5)	10/26/03
8.	25	Macy Reece vs. South Florida (5)	9/13/14
	25	Rachel Shanks vs. Georgia (4)	11/7/07
	25	Jelena Sekulic at Arkansas (5)	10/7/07
	25	Rachel Shanks vs. Virginia Tech (5)	9/2/06
	25	Jennifer Amobi vs. Tennessee (4)	11/19/04
	25	Rebekah Rath at Georgia St. (4)	8/26/22

INDIVIDUAL HITTING PCT. (MIN. 12 KILLS)

	PCT.	PLAYER-OPPONENT (SETS)	DATE
1.	.773 (17-0-22)	Ashlee Johns vs. Delaware State (3)	9/13/03
2.	.722 (14-1-18)	Jonelle Wallace vs. Beth.-Cook. (3)	9/5/08
3.	.706 (12-0-17)	Chelsey Harmon vs. Jackson St. (3)	9/17/22
4.	.688 (12-1-16)	Shaina White vs. American (3)	9/8/18
5.	.667 (14-2-18)	Madison Scheer at Florida (3)	10/6/23
	.667 (16-0-24)	Jonelle Wallace at Georgia (5)	11/24/10
7.	.650 (13-0-20)	Breanna Barksdale at Arkansas (5)	10/30/15
8.	.647 (13-1-17)	Alyssa Davis vs Jacksonville State (5)	9/8/09
9.	.632 (12-0-19)	Courtney McDonald vs. Kentucky (5)	10/23/11
	.632 (12-0-19)	Camila Jersonsky vs. Austin Peay (4)	9/3/11

INDIVIDUAL TOTAL BLOCKS

	BLK (S-A)	PLAYER-OPPONENT (SETS)	DATE
1.	12 (2-10)	Tatum Shipes vs Alabama (4)	10/2/21
	11 (4-7)	Breanna Barksdale at Florida (4)	11/23/16
3.	10 (1-9)	Kendal Kemp vs UAB (4)	9/15/23
	10 (1-9)	Kendal Kemp vs. Georgia (5)	10/9/22
	10 (1-9)	Kendal Kemp vs. Georgia (4)	10/8/22
	10 (2-8)	Chelsey Harmon vs Troy (4)	9/10/22
	10 (1-9)	Tatum Shipes at Arkansas (4)	10/9/21
	10 (0-10)	Stephanie Campbell vs. St. John's (5)	9/19/15
	10 (2-8)	Julie Bosler vs. South Carolina (5)	9/15/06
	10 (3-7)	Julie Bosler vs. Mississippi State (5)	11/5/04
	10 (2-8)	Julie Bosler vs. Mississippi State (5)	10/2/03
	10 (1-9)	Bailey Veit vs. Mercer (5)	9/20/03

INDIVIDUAL SERVICE ACES

	ACES	PLAYER-OPPONENT (SETS)	DATE
1.	7	Katherine Culwell vs. Tennessee (3)	11/22/13
	7	Maira Magallon vs. Delaware State (3)	9/13/03
3.	6	Brenna McIlroy at Missouri (4)	10/19/18
	6	Whitney Jacob vs. Arkansas (5)	10/15/06
5.	5	Jackie Barrett at South Alabama (5)	9/14/23
	5	Jackie Barrett vs Mercer (3)	9/9/23
	5	Rebekah Rath at Texas A&M (5)	11/5/21
	5	Jesse Earl at Florida State (5)	9/16/17
	5	Jesse Earl at Georgia (4)	10/2/16
	5	Alexa Filley vs. LSU (5)	10/4/15
	5	Liz Crouch vs. Troy (3)	8/27/10
	5	Rachel Shanks at South Alabama (3)	9/9/06
	5	Whitney Jacob vs. Louisiana-Monroe (3)	8/25/06
	5	Whitney Jacob vs. Mississippi State (4)	10/23/05
	5	Rachel Shanks vs. Clemson (3)	9/17/05
	5	Whitney Jacob vs. Grambling (3)	9/1/05
	5	Maira Magallon vs. Mississippi State (5)	10/26/03
	5	Maira Magallon at Lafayette (3)	9/12/03
	5	Maira Magallon vs. Bethune-Cookman (4)	9/6/03
	5	Jennifer Buckert vs. Alabama State (3)	9/5/03
	5	Brittany Diaz vs. Marist (4)	9/7/02
	5	Laura Hastings vs. Western Michigan (3)	9/1/01
	5	Grace Boyd at South Carolina (3)	10/26/01

INDIVIDUAL ASSISTS

	AST	PLAYER-OPPONENT (SETS)	DATE
1.	76	Jordan Elliott at Mercer (5)	9/8/04
2.	71	Maira Magallon vs. Ole Miss (5)	10/24/03
3.	68	Michele Ashmore vs. Georgia Southern (5)	9/2/05
4.	66	Joanna Pappas at Georgia (5)	9/17/06
5.	65	Maira Magallon vs. Arkansas (5)	10/8/04
	65	Nicki Gerig vs. Tennessee State (4)	8/25/07
7.	64	Jordan Elliott vs. Iowa State (5)	9/4/04
8.	63	Alexa Filley vs. South Carolina (5)	10/5/14
	63	Maira Magallon vs. Xavier (4)	11/26/04
	63	Sara Shanks at Arkansas (5)	10/7/07

INDIVIDUAL DIGS

	DIGS	PLAYER-OPPONENT (SETS)	DATE
1.	37	Payton White vs. Butler (5)	8/31/19
2.	36	Jelena Sekulic at Kentucky (5)	11/17/06
	36	Jesse Earl at Tennessee (5)	10/4/17
4.	34	Bailey Veit vs. Georgia Southern (5)	9/2/05
	34	Jesse Earl at Mississippi State (5)	11/13/15
6.	33	Bella Rosenthal vs. Missouri (5)	10/17/21
7.	33	Sarah Wroblecky at LSU (5)	11/15/13
	33	Jesse Earl at LSU (4)	11/15/17
9.	31	Liz Crouch at Mississippi State (3)	9/18/09
10.	30	Liz Crouch vs. Georgia (4)	11/7/07
	30	Jesse Earl at Florida State (5)	9/16/17

Records set in the Brent Crouch era are listed in **BOLD**

INDIVIDUAL MATCH RECORDS (BY SET)

KILLS

SETS	KILLS	PLAYER-OPPONENT	DATE
3s	25	Brooke McCarley vs. UAB	9/7/99
4s	29	Rebekah Rath at Arkansas	10/9/21
	29	Brooke McCarley at Kansas	9/11/99
5s	34	Bridgitte Sims vs. Tulane	11/10/90

ATTACKS

SETS	ATT.	PLAYER-OPPONENT	DATE
3s	56	Allyson Beecroft at Florida	9/30/94
4s	75	Rebekah Rath at Arkansas	10/9/21
5s	84	Rebekah Rath at Texas A&M	11/4/17

HITTING PERCENTAGE (MIN. 10 KILLS)

SETS	PCT.	PLAYER	DATE
3s	.773 (17-0-22)	Ashlee Johns	9/13/03
4s	.813 (13-0-16)	Laura Cookley	9/28/91
5s	.714 (10-0-14)	Dalia Naidzinaviciut	9/2/05

BLOCKS - SOLO

SETS	BLK	PLAYER-OPPONENT	DATE
3s	5	Gina Thomas vs. Georgetown	9/13/90
4s	5	Gina Thomas vs. Florida	10/12/90
5s	6	Tory Gutierrez vs. Louisville	10/21/89
	6	Lisa Harvey vs. Tuskegee	10/7/86

BLOCKS - ASSISTS

SETS	BLK	PLAYER-OPPONENT	DATE
3s	9 (3x)	last, Kendal Kemp vs Belmont	8/26/22
4s	11	Tory Gutierrez vs. Georgia State	10/3/89
5s	10	Jaunelle Hamilton vs. Mississippi St.	11/12/00
	10	Stephanie Campbell vs. St. John's	9/19/15

TOTAL BLOCKS

SETS	BLK	PLAYER-OPPONENT	DATE
3s	9 (4x)	last, Kendal Kemp vs. Belmont	8/26/22
4s	14	Tory Gutierrez vs. Georgia State	10/3/89
5s	12	Jaunelle Hamilton vs. Mississippi St.	11/12/00
	12	La'Toi Finley at Georgia Tech	9/14/95

DIGS

SETS	DIGS	PLAYER-OPPONENT	DATE
3s	31	Liz Crouch at Mississippi State	9/18/09
4s	34	Gretchen Thompson vs. ULM	9/12/86
5s	37	Payton White vs. Butler	8/31/19

ASSISTS

SETS	AST	PLAYER-OPPONENT	DATE
3s	64	Piper Craig vs. LSU	10/18/96
4s	76	Piper Craig vs. Arkansas	10/20/96
5s	92	Piper Craig vs. Kentucky	10/5/97

SERVICE ACES

SETS	ACE	PLAYER-OPPONENT	DATE
3s	10	Jenifer Kleyn vs. Seneca	10/5/90
4s	8	Terri Duckworth at UAB	11/1/88
5s	10	Jenifer Kleyn at Ole Miss	9/28/90

#1 MADISON SCHEER

**PIN HITTER | 6-1 | SOPHOMORE
EUREKA, MO. (EUREKA)**



SCHEER'S HIGHLIGHTS:

- 2022 SEC All-Freshman Team
- Career-high 22 kills on .409 hitting versus Jacksonville State
- Named SEC Freshman of the Week and Player of the Week 9/26
- Hit over .300 11 times, over .400 seven times and over .500 twice in 2022
- Made her collegiate debut on Aug. 26 vs. Belmont

CATEGORY	CAREER HIGH	OPPONENT/DATE
Kills	22	at Jacksonville State (9/17/22)
Attempts	47	vs Georgia (10/9/22)
Hitting Percentage (Min. 10 ATT.)	.667	at Florida (10/6/23)
Assists	1 (6x)	last vs Florida (9/22/23)
Digs	4	at LSU (10/5/22)
Blocks	6	at Alabama (9/24/22)
Aces	--	--
Points	23.0	at Jacksonville State (9/17/22)

CATEGORY	SEASON HIGH	OPPONENT/DATE
Kills	18	vs SMU (9/2/23)
Attempts	44	vs Florida (9/22/23)
Hitting Percentage (Min. 10 ATT.)	.667	at Florida (10/6/23)
Assists	1 (3x)	last vs Florida (9/22/23)
Digs	3 (3x)	last vs Ole Miss (9/24/23)
Blocks	4 (2x)	last vs Charleston Southern (9/8/23)
Aces	--	--
Points	18.5	vs Coppin State (8/25/23)

GAME BY GAME

Date	Opponent	SP	Attack				Set			Serve				Recept			Blocking				Team				
			K	E	TA	PCT	A	TA	PCT	SA	SE	TA	PCT	RE	TA	PCT	DIG	BS	BA	BE	TOTAL	BHE	POINTS	HIT%	SCORE
08/25/2023	Coppin St.	4	16	4	41	.293	0	1	.000	0	0	0	.000	0	3	1.000	3	1	3	0	4.0	0	18.5	.309	3-1
08/26/2023	Jacksonville St.	3	8	2	21	.286	1	1	1.000	0	0	0	.000	0	3	1.000	0	0	0	0	0.0	0	8.0	.395	3-0
09/02/2023	vs SMU	4	18	6	37	.324	0	0	.000	0	0	0	.000	0	9	1.000	1	0	0	0	0.0	0	18.0	.316	3-1
09/03/2023	at Florida St.	4	14	3	33	.333	1	2	.500	0	0	0	.000	0	3	1.000	0	0	2	1	2.0	0	15.0	.356	3-1
09/07/2023	Middle Tenn.	4	8	2	28	.214	0	2	.000	0	0	1	1.000	0	1	1.000	2	0	3	0	3.0	0	9.5	.221	1-3
09/08/2023	Charleston So.	*4	15	3	35	.343	0	0	.000	0	0	0	.000	1	7	.857	2	0	4	0	4.0	0	17.0	.245	3-1
09/09/2023	Mercer	3	12	4	28	.286	0	2	.000	0	0	0	.000	0	8	1.000	0	0	1	0	1.0	0	12.5	.346	3-0
09/14/2023	at South Alabama	5	10	7	39	.077	0	0	.000	0	0	0	.000	1	9	.889	3	0	1	0	1.0	0	10.5	.191	3-2
09/15/2023	vs UAB	4	7	5	21	.095	0	0	.000	0	0	0	.000	0	0	.000	3	0	4	0	4.0	0	9.0	.189	3-1
09/16/2023	vs Samford	*4	13	5	27	.296	0	3	.000	0	0	0	.000	1	1	.000	0	0	0	0	0.0	0	13.0	.386	3-1
09/22/2023	Florida	5	15	6	44	.205	1	2	.500	0	0	1	1.000	0	16	1.000	2	0	0	0	0.0	0	15.0	.196	2-3
09/24/2023	Ole Miss	4	12	2	34	.294	0	4	.000	0	0	0	.000	0	9	1.000	3	0	1	0	1.0	0	12.5	.199	3-1
09/27/2023	at Arkansas	3	4	3	22	.045	0	2	.000	0	0	0	.000	1	4	.750	1	0	0	0	0.0	0	4.0	-.049	0-3
10/01/2023	Georgia	4	14	2	29	.414	0	2	.000	0	0	0	.000	0	5	1.000	0	0	1	0	1.0	0	14.5	.262	3-1
10/06/2023	at Florida	3	14	2	18	.667	0	0	.000	0	0	0	.000	0	5	1.000	0	0	1	0	1.0	0	14.5	.387	3-0
Totals		58	180	56	457	.271	3	21	.143	0	0	2	1.000	4	83	.952	20	1	21	1	22.0	0	191.5		

Player Averages

Sets Played	Kills per set	Assists per set	Service aces per set	Digs per set	Blocks per set	Points per set
58	3.10	0.05	0.00	0.34	0.38	3.30

CAREER STATS

SEASON	TEAM	SM-MP	K	K/S	E	TA	PCT	A	A/S	SA	SA/S	SE	DIG	D/S	RE	BS	BA	TB	B/S	BE	BHE	PTS	PTS/S
2022-23	AUB	118-30	361	3.06	120	956	.252	3	0.03	0	0.00	0	45	0.38	3	3	46	49	0.42	4	2	387.0	3.28
2023-24	AUB	58-15	180	3.10	56	457	.271	3	0.05	0	0.00	0	20	0.34	4	1	21	22	0.38	1	0	191.5	3.30
TOTAL		176 - 45	541	3.07	176	1413	.258	6	0.03	0	0.00	0	65	0.37	7	4	67	71	0.40	5	2	578.5	3.29



#2 SARAH MORTON

LIBERO | 5-7 | SOPHOMORE
MUNSTER, IND. (MUNSTER)



MORTON'S HIGHLIGHTS:

- Recorded 10+ digs in 26 of the 29 matches she's played in 2022
- Grabbed a career-high 26 digs vs Georgia on Oct. 9
- Named SEC Defensive Player of the Week 9/26
- Has started every game at libero when in the lineup
- Made her collegiate debut on Aug. 26 vs. Belmont

CATEGORY	CAREER HIGH	OPPONENT/DATE
Kills	1 (3x)	last vs Coppin State (8/25/23)
Attempts	3	vs Coppin State (8/25/23)
Hitting Percentage (Min. 10 ATT.)	--	--
Assists	9 (2x)	last vs SMU (9/2/23)
Digs	26	vs Georgia (10/9/22)
Blocks	--	--
Aces	3 (4x)	last at Missouri (10/15/22)
Points	3 (4x)	last at Missouri (10/15/22)

CATEGORY	SEASON HIGH	OPPONENT/DATE
Kills	1 (2x)	last vs Florida (9/22/23)
Attempts	3	vs Coppin State (8/25/23)
Hitting Percentage (Min. 10 ATT.)	--	--
Assists	9	vs SMU (9/2/23)
Digs	24	vs Coppin State (8/25/23)
Blocks	--	--
Aces	1 (5x)	last at Florida (10/6/23)
Points	2	vs Florida (9/22/23)

GAME BY GAME

Date	Opponent	SP	Attack				Set			Serve				Receipt			Blocking				Team				
			K	E	TA	PCT	A	TA	PCT	SA	SE	TA	PCT	RE	TA	PCT	DIG	BS	BA	BE	TOTAL	BHE	POINTS	HIT%	SCORE
08/25/2023	Coppin St.	4	1	0	3	.333	4	12	.333	0	2	20	.900	0	13	1.000	24	0	0	0	0.0	0	1.0	.309	3-1
08/26/2023	McNeese	3	0	0	0	.000	3	11	.273	0	1	7	.857	0	8	1.000	5	0	0	0	0.0	0	0.0	.333	3-0
08/26/2023	Jacksonville St.	3	0	0	0	.000	3	8	.375	1	0	13	1.000	0	8	1.000	3	0	0	0	0.0	0	1.0	.395	3-0
09/02/2023	vs SMU	4	0	0	1	.000	9	20	.450	0	2	15	.867	1	14	.929	17	0	0	0	0.0	0	0.0	.316	3-1
09/03/2023	at Florida St.	4	0	0	1	.000	5	16	.313	1	2	16	.875	2	31	.935	8	0	0	0	0.0	0	1.0	.356	3-1
09/07/2023	Middle Tenn.	4	0	0	1	.000	0	11	.000	0	6	14	.571	2	27	.926	10	0	0	0	0.0	0	0.0	.221	1-3
09/08/2023	Charleston So.	4	0	0	0	.000	2	14	.143	0	2	15	.867	0	16	1.000	14	0	0	0	0.0	0	0.0	.245	3-1
09/09/2023	Mercer	3	0	0	0	.000	1	4	.250	0	3	7	.571	0	10	1.000	10	0	0	0	0.0	0	0.0	.346	3-0
09/22/2023	Florida	5	1	0	1	1.000	5	17	.294	1	5	18	.722	0	16	1.000	13	0	0	0	0.0	0	2.0	.196	2-3
09/24/2023	Ole Miss	4	0	0	0	.000	5	20	.250	0	1	12	.917	1	15	.933	20	0	0	0	0.0	0	0.0	.199	3-1
09/27/2023	at Arkansas	3	0	0	0	.000	1	13	.077	0	4	5	.200	1	8	.875	7	0	0	0	0.0	0	0.0	-.049	0-3
10/01/2023	Georgia	4	0	0	0	.000	4	13	.308	1	1	18	.944	0	18	1.000	8	0	0	0	0.0	0	1.0	.262	3-1
10/06/2023	at Florida	3	0	0	0	.000	4	10	.400	1	2	10	.800	0	6	1.000	8	0	0	0	0.0	0	1.0	.387	3-0
Totals		48	2	0	7	.286	46	169	.272	5	31	170	.818	7	190	.963	147	0	0	0	0.0	0	7.0		

Player Averages

Sets Played	Kills per set	Assists per set	Service aces per set	Digs per set	Blocks per set	Points per set
48	0.04	0.96	0.10	3.06	0.00	0.15

CAREER STATS

SEASON	TEAM	SM-MP	K	K/S	E	TA	PCT	A	A/S	SA	SA/S	SE	DIG	D/S	RE	BS	BA	TB	B/S	BE	BHE	PTS	PTS/S
2022-23	AUB	119-30	2	0.02	1	11	.091	110	0.92	30	0.25	31	457	3.84	21	0	0	0	0.00	0	1	32.0	0.27
2023-24	AUB	48-13	2	0.04	0	7	.286	46	0.96	5	0.10	31	147	3.06	7	0	0	0	0.00	0	0	7.0	0.15
TOTAL		167 - 43	4	0.02	1	18	.167	156	0.93	35	0.21	62	604	3.62	28	0	0	0	0.00	0	1	39.0	0.23

#3 AKASHA ANDERSON

PIN HITTER | 6-3 | FRESHMAN
RESTON, VA. (HERNDON)



ANDERSON'S HIGHLIGHTS:

- Named to All-SEC Team and All-Freshman Team
- Named AVCA South Region Freshman of the Year in 2022
- Had career-high 26 kills in win over Mississippi State
- Hit .526 with a team-high 12 kills vs. Marist
- Recorded 24 kills and 14 digs at UAB for first double-double
- Had eight double-doubles in 2022
- 2x SEC Freshman of the Week
- Made her collegiate debut on Aug. 26 vs. Belmont

CATEGORY	CAREER HIGH	OPPONENT/DATE
Kills	26 (2x)	last at South Alabama (9/14/23)
Attempts	77	at LSU (10/5/22)
Hitting Percentage (Min. 10 ATT.)	.526	vs Marist (8/27/22)
Assists	3 (2x)	last at Florida State (9/3/23)
Digs	18	at Alabama (9/25/22)
Blocks	5	vs Troy (9/10/22)
Aces	4 (3x)	last vs McNeese (8/26/23)
Points	29.5 (2x)	last vs Mississippi State (9/28/22)

CATEGORY	SEASON HIGH	OPPONENT/DATE
Kills	26	at South Alabama (9/14/23)
Attempts	69	at South Alabama (9/14/23)
Hitting Percentage (Min. 10 ATT.)	.410	vs Samford (9/16/23)
Assists	3	at Florida State (9/3/23)
Digs	11 (2x)	last vs UAB (9/15/23)
Blocks	4	vs UAB (9/15/23)
Aces	4	vs McNeese (8/26/23)
Points	28.5	at South Alabama (9/14/23)

GAME BY GAME

Date	Opponent	SP	Attack				Set			Serve				Receipt			Blocking				Team				
			K	E	TA	PCT	A	TA	PCT	SA	SE	TA	PCT	RE	TA	PCT	DIG	BS	BA	BE	TOTAL	BHE	POINTS	HIT%	SCORE
08/25/2023	Coppin St.	*4	16	4	41	.293	0	3	.000	0	3	7	.571	0	16	1.000	5	0	1	0	1.0	0	16.5	.309	3-1
08/26/2023	McNeese	*3	14	5	35	.257	0	3	.000	4	3	13	.769	0	15	1.000	8	0	0	0	0.0	0	18.0	.333	3-0
08/26/2023	Jacksonville St.	*3	10	1	23	.391	0	1	.000	1	1	12	.917	1	5	.800	4	1	0	0	1.0	0	12.0	.395	3-0
09/02/2023	vs SMU	*4	12	7	41	.122	0	4	.000	2	3	22	.864	0	13	1.000	7	0	2	2	2.0	0	15.0	.316	3-1
09/03/2023	at Florida St.	*4	15	4	35	.314	3	7	.429	0	2	11	.818	1	14	.929	6	0	1	0	1.0	0	15.5	.356	3-1
09/14/2023	at South Alabama	*5	26	10	69	.232	0	3	.000	2	1	15	.933	3	25	.880	11	0	1	0	1.0	0	28.5	.191	3-2
09/15/2023	vs UAB	*4	11	10	37	.027	2	5	.400	1	2	22	.909	3	27	.889	11	0	4	0	4.0	0	14.0	.189	3-1
09/16/2023	vs Samford	*4	19	3	39	.410	0	4	.000	1	1	14	.929	1	26	.962	9	0	2	0	2.0	0	21.0	.386	3-1
09/22/2023	Florida	*5	18	11	60	.117	0	4	.000	2	5	17	.706	0	18	1.000	10	0	3	0	3.0	0	21.5	.196	2-3
09/24/2023	Ole Miss	*4	20	12	60	.133	1	4	.250	1	2	14	.857	0	13	1.000	9	0	2	0	2.0	0	22.0	.199	3-1
09/27/2023	at Arkansas	*3	1	4	23	-.130	0	0	.000	0	2	5	.600	4	18	.778	7	0	2	0	2.0	0	2.0	-.049	0-3
10/01/2023	Georgia	*4	17	11	56	.107	1	4	.250	1	5	14	.643	4	28	.857	6	0	3	0	3.0	0	19.5	.262	3-1
10/06/2023	at Florida	*3	18	4	35	.400	0	3	.000	0	2	13	.846	0	7	1.000	8	0	1	0	1.0	0	18.5	.387	3-0
Totals		50	197	86	554	.200	7	45	.156	15	32	179	.821	17	225	.924	101	1	22	2	23.0	0	224.0		

Player Averages

Sets Played	Kills per set	Assists per set	Service aces per set	Digs per set	Blocks per set	Points per set
50	3.94	0.14	0.30	2.02	0.46	4.48

CAREER STATS

SEASON	TEAM	SM-MP	K	K/S	E	TA	PCT	A	A/S	SA	SA/S	SE	DIG	D/S	RE	BS	BA	TB	B/S	BE	BHE	PTS	PTS/S
2022-23	AUB	121-31	428	3.54	211	1240	.175	13	0.11	27	0.22	41	225	1.86	50	4	56	60	0.50	5	0	487.0	4.02
2023-24	AUB	50-13	197	3.94	86	554	.200	7	0.14	15	0.30	32	101	2.02	17	1	22	23	0.46	2	0	224.0	4.48
TOTAL		171 - 44	625	3.65	297	1794	.183	20	0.12	42	0.25	73	326	1.91	67	5	78	83	0.49	7	0	711.0	4.16

#4 FALLAN LANHAM

LIBERO | 5-8 | JUNIOR
LOUISVILLE, KY. (MERCY ACADEMY)



LANHAM'S HIGHLIGHTS:

- Grabbed a career-high 20 digs at LSU
- Recorded a career-high four aces at UAB
- Earned first collegiate start in Auburn's season opener versus Tennessee Tech on August 27

CATEGORY	CAREER HIGH	OPPONENT/DATE
Kills	2	vs. Missouri (9/12/21)
Attempts	8	at Arkansas (10/9/21)
Hitting Percentage (Min. 10 ATT.)		
Assists	3 (4x)	last vs Charleston Southern (9/8/23)
Digs	20	at LSU (10/5/22)
Blocks	1	at Georgia (10/22/21)
Aces	4	at UAB (9/9/22)
Points	4.0	at UAB (9/9/22)

CATEGORY	SEASON HIGH	OPPONENT/DATE
Kills	--	--
Attempts	1 (2x)	last at Florida State (9/3/23)
Hitting Percentage (Min. 10 ATT.)	--	--
Assists	3	vs Charleston Southern (9/8/23)
Digs	11	vs Jacksonville State (8/26/23)
Blocks	--	--
Aces	2	vs Jacksonville State (8/26/23)
Points	2.0	vs Jacksonville State (8/26/23)

GAME BY GAME

Date	Opponent	SP	Attack				Set			Serve				Recept			Blocking					Team			
			K	E	TA	PCT	A	TA	PCT	SA	SE	TA	PCT	RE	TA	PCT	DIG	BS	BA	TB	BE	TOTAL	BHE	POINTS	HIT%
08/25/2023	Coppin St.	3	0	0	0	.000	0	1	.000	0	0	8	1.000	0	6	1.000	0	0	0	0	0.0	0	0.0	.309	3-1
08/26/2023	McNeese	1	0	0	0	.000	0	1	.000	0	0	3	1.000	0	2	1.000	2	0	0	0	0.0	0	0.0	.333	3-0
08/26/2023	Jacksonville St.	3	0	0	0	.000	1	5	.200	2	0	18	1.000	1	8	.875	11	0	0	0	0.0	0	2.0	.395	3-0
09/02/2023	vs SMU	4	0	0	1	.000	2	3	.667	1	1	16	.938	0	25	1.000	4	0	0	0	0.0	0	1.0	.316	3-1
09/03/2023	at Florida St.	4	0	0	1	.000	0	1	.000	1	1	19	.947	0	13	1.000	9	0	0	0	0.0	0	1.0	.356	3-1
09/07/2023	Middle Tenn.	4	0	0	0	.000	0	4	.000	1	2	17	.882	0	11	1.000	10	0	0	0	0.0	0	1.0	.221	1-3
09/08/2023	Charleston So.	*4	0	0	0	.000	3	6	.500	1	1	14	.929	0	11	1.000	8	0	0	0	0.0	0	1.0	.245	3-1
09/09/2023	Mercer	*3	0	0	0	.000	0	4	.000	0	1	10	.900	0	4	1.000	4	0	0	0	0.0	0	0.0	.346	3-0
09/14/2023	at South Alabama	*1	0	0	0	.000	0	1	.000	0	0	2	1.000	0	3	1.000	4	0	0	0	0.0	0	0.0	.191	3-2
Totals		27	0	0	2	.000	6	26	.231	6	6	107	.944	1	83	.988	52	0	0	0	0.0	0	6.0		

Player Averages

Sets Played	Kills per set	Assists per set	Service aces per set	Digs per set	Blocks per set	Points per set
27	0.00	0.22	0.22	1.93	0.00	0.22

CAREER STATS

SEASON	TEAM	SM-MP	K	K/S	E	TA	PCT	A	A/S	SA	SA/S	SE	DIG	D/S	RE	BS	BA	TB	B/S	BE	BHE	PTS	PTS/S
2021-22	AUB	103-28	7	0.07	8	85	-.012	17	0.17	5	0.05	15	192	1.86	21	0	1	1	0.01	0	0	12.5	0.12
2022-23	AUB	122-31	1	0.01	1	13	.000	15	0.12	35	0.29	33	198	1.62	28	0	0	0	0.00	0	0	36.0	0.30
2023-24	AUB	27-9	0	0.00	0	2	.000	6	0.22	6	0.22	6	52	1.93	1	0	0	0	0.00	0	0	6.0	0.22
TOTAL		252 - 68	8	0.03	9	100	-.010	38	0.15	46	0.18	54	442	1.75	50	0	1	1	0.00	0	0	54.5	0.22



#5 BELLA BELL

MIDDLE BLOCKER | 6-4 | GRADUATE
BLYTHEWOOD, S.C. (KENTUCKY)



BELL'S HIGHLIGHTS:

- Has hit over .400 in three matches this season
- National Champion in Kentucky
- Had the 3rd-highest hitting percentage in the SEC in 2022

CATEGORY	CAREER HIGH	OPPONENT/DATE
Kills	14	vs Coppin State (8/25/23)
Attempts	30	vs Ole Miss (9/24/23)
Hitting Percentage (Min. 10 ATT.)	.750	vs Jacksonville State (8/26/23)
Assists	1 (5x)	last vs Florida (9/22/23)
Digs	4	vs Ole Miss (9/24/23)
Blocks	10 (2x)	at Arkansas (10/7/22)
Aces	1	vs South Carolina (11/25/22)
Points	17.5	at Missouri (9/28/22)

CATEGORY	SEASON HIGH	OPPONENT/DATE
Kills	14	vs Coppin State (8/25/23)
Attempts	30	vs Ole Miss (9/24/23)
Hitting Percentage (Min. 10 ATT.)	.750	vs Jacksonville State (8/26/23)
Assists	1 (2x)	last vs Florida (9/22/23)
Digs	4	vs Ole Miss (9/24/23)
Blocks	7	vs Ole Miss (9/24/23)
Aces	--	--
Points	15.5	vs Coppin State (8/25/23)

GAME BY GAME

Date	Opponent	SP	Attack				Set			Serve			Recept			Blocking				Team					
			K	E	TA	PCT	A	TA	PCT	SA	SE	TA	PCT	RE	TA	PCT	DIG	BS	BA	BE	TOTAL	BHE	POINTS	HIT%	SCORE
08/25/2023	Coppin St.	*4	14	2	25	.480	0	1	.000	0	0	0	.000	0	0	.000	1	0	3	0	3.0	0	15.5	.309	3-1
08/26/2023	McNeese	*3	11	3	22	.364	0	0	.000	0	0	0	.000	0	0	.000	0	0	2	0	2.0	0	12.0	.333	3-0
08/26/2023	Jacksonville St.	*3	9	0	12	.750	0	0	.000	0	0	0	.000	0	0	.000	0	0	2	1	2.0	0	10.0	.395	3-0
09/02/2023	vs SMU	*4	10	3	22	.318	1	1	1.000	0	0	0	.000	1	2	.500	2	0	3	1	3.0	0	11.5	.316	3-1
09/03/2023	at Florida St.	*4	13	1	29	.414	0	2	.000	0	0	1	1.000	0	0	.000	2	0	2	0	2.0	0	14.0	.356	3-1
09/07/2023	Middle Tenn.	*4	8	5	21	.143	0	1	.000	0	0	0	.000	0	0	.000	0	0	4	1	4.0	0	10.0	.221	1-3
09/22/2023	Florida	*5	11	5	28	.214	1	4	.250	0	0	0	.000	0	0	.000	2	0	0	0	0.0	0	11.0	.196	2-3
09/24/2023	Ole Miss	*4	9	4	30	.167	0	0	.000	0	0	0	.000	0	0	.000	4	1	6	0	7.0	0	13.0	.199	3-1
09/27/2023	at Arkansas	*3	3	4	18	-.056	0	0	.000	0	0	0	.000	0	0	.000	1	0	1	1	1.0	0	3.5	-.049	0-3
Totals		34	88	27	207	.295	2	9	.222	0	0	1	1.000	1	2	.500	12	1	23	4	24.0	0	100.5		

Player Averages

Sets Played	Kills per set	Assists per set	Service aces per set	Digs per set	Blocks per set	Points per set
34	2.59	0.06	0.00	0.35	0.71	2.96

CAREER STATS

SEASON	TEAM	SM-MP	K	K/S	E	TA	PCT	A	A/S	SA	SA/S	SE	DIG	D/S	RE	BS	BA	TB	B/S	BE	BHE	PTS	PTS/S
2020-21	UK	24-14	29	1.21	9	64	.313	0	0.00	0	0.00	0	2	0.08	1	0	22	22	0.92	3	0	40.0	1.67
2021-22	UK	62-19	102	1.65	25	185	.416	1	0.02	0	0.00	0	9	0.15	0	10	68	78	1.26	8	0	146.0	2.35
2022-23	UK	62-22	107	1.73	34	215	.340	2	0.03	2	0.03	6	12	0.19	0	5	72	77	1.24	8	0	150.0	2.42
2023-24	AUB	34-9	88	2.59	27	207	.295	2	0.06	0	0.00	0	12	0.35	1	1	23	24	0.71	4	0	100.5	2.96
TOTAL FOR AUB		34 - 9	88	2.59	27	207	.295	2	0.06	0	0.00	0	12	0.35	1	1	23	24	0.71	4	0	100.5	2.96
TOTAL		182 - 64	326	1.79	95	671	.344	5	0.03	2	0.01	6	35	0.19	2	16	185	201	1.10	23	0	436.5	2.40

#6 KYLA SWANSON

MIDDLE BLOCKER | 6-4 | GRADUATE
WAHOO, NEB. (ILLINOIS)



SWANSON'S HIGHLIGHTS:

- 2x Academic All-Big Ten
- Made the NCAA Sweet 16 with Illinois in 2021
- Has more than 170 blocks in her career
- Hit .727 at Penn State on Oct. 30, 2021

CATEGORY	CAREER HIGH	OPPONENT/DATE
Kills	10 (3x)	last vs SMU (9/2/23)
Attempts	25	vs Charleston Southern (9/8/23)
Hitting Percentage (Min. 10 ATT.)	.727	at Penn State (10/30/21)
Assists	2	at Iowa (9/22/21)
Digs	6	at Tennessee (8/30/19)
Blocks	10	vs UC Santa Barbara (8/27/21)
Aces	2 (2x)	last vs Jacksonville State (8/26/23)
Points	15.5	vs UC Santa Barbara (8/27/21)

CATEGORY	SEASON HIGH	OPPONENT/DATE
Kills	10	vs SMU (9/2/23)
Attempts	25	vs Charleston Southern (9/8/23)
Hitting Percentage (Min. 10 ATT.)	.500	vs SMU (9/2/23)
Assists	1 (4x)	last vs Mercer (9/9/23)
Digs	2 (3x)	last vs Middle Tennessee (9/7/23)
Blocks	8	vs UAB (9/15/23)
Aces	2	vs Jacksonville State (8/26/23)
Points	11.5	vs SMU (9/2/23)

GAME BY GAME

Date	Opponent	SP	Attack				Set			Serve				Receipt			Blocking					Team			
			K	E	TA	PCT	A	TA	PCT	SA	SE	TA	PCT	RE	TA	PCT	DIG	BS	BA	BE	TOTAL	BHE	POINTS	HIT%	SCORE
08/25/2023	Coppin St.	*4	3	2	6	.167	0	1	.000	2	4	17	.765	0	0	.000	1	1	5	0	6.0	0	8.5	.309	3-1
08/26/2023	McNeese	*3	6	2	12	.333	0	1	.000	0	4	11	.636	0	0	.000	1	0	1	1	1.0	0	6.5	.333	3-0
08/26/2023	Jacksonville St.	*3	3	1	7	.286	1	3	.333	0	1	4	.750	0	0	.000	2	1	2	0	3.0	0	5.0	.395	3-0
09/02/2023	vs SMU	*4	10	0	20	.500	0	2	.000	0	0	2	1.000	0	1	1.000	2	0	3	0	3.0	0	11.5	.316	3-1
09/03/2023	at Florida St.	*4	8	1	15	.467	0	1	.000	1	0	4	1.000	0	0	.000	0	4	0	4.0	0	11.0	.356	3-1	
09/07/2023	Middle Tenn.	*4	9	3	18	.333	1	3	.333	0	2	11	.818	0	0	.000	2	0	4	1	4.0	0	11.0	.221	1-3
09/08/2023	Charleston So.	4	4	5	25	-.040	1	2	.500	0	0	0	.000	0	0	.000	1	0	3	0	3.0	0	5.5	.245	3-1
09/09/2023	Mercer	3	1	3	5	-.400	1	2	.500	0	0	0	.000	0	0	.000	1	0	4	0	4.0	0	3.0	.346	3-0
09/14/2023	at South Alabama	*3	2	5	10	-.300	0	3	.000	0	2	9	.778	0	0	.000	2	0	4	0	4.0	0	4.0	.191	3-2
09/15/2023	vs UAB	*4	3	0	9	.333	0	2	.000	0	0	0	.000	0	0	.000	1	0	8	0	8.0	0	7.0	.189	3-1
09/16/2023	vs Samford	*4	7	1	9	.667	0	2	.000	0	0	0	.000	0	0	.000	0	1	2	0	3.0	0	9.0	.386	3-1
09/22/2023	Florida	*5	3	1	10	.200	0	3	.000	0	0	1	1.000	0	0	.000	0	1	2	0	3.0	0	5.0	.196	2-3
09/24/2023	Ole Miss	*4	6	3	19	.158	0	0	.000	0	0	0	.000	0	0	.000	0	0	2	0	2.0	0	7.0	.199	3-1
09/27/2023	at Arkansas	*3	3	3	8	.000	0	1	.000	0	0	0	.000	0	0	.000	0	0	2	0	2.0	0	4.0	-.049	0-3
10/01/2023	Georgia	*4	5	1	12	.333	0	0	.000	0	0	0	.000	0	0	.000	0	1	2	0	3.0	0	7.0	.262	3-1
10/06/2023	at Florida	*3	2	1	6	.167	0	0	.000	0	0	0	.000	0	0	.000	1	0	2	0	2.0	0	3.0	.387	3-0
Totals		59	75	32	191	.225	4	26	.154	3	13	59	.780	0	1	1.000	14	5	50	2	55.0	0	108.0		

Player Averages

Sets Played	Kills per set	Assists per set	Service aces per set	Digs per set	Blocks per set	Points per set
59	1.27	0.07	0.05	0.24	0.93	1.83

CAREER STATS

SEASON	TEAM	SM-MP	K	K/S	E	TA	PCT	A	A/S	SA	SA/S	SE	DIG	D/S	RE	BS	BA	TB	B/S	BE	BHE	PTS	PTS/S
2019-20	Illini	16-5	7	0.44	3	29	.138	1	0.06	0	0.00	3	7	0.44	0	0	11	11	0.69	1	1	12.5	0.78
2020-21	Illini	21-7	20	0.95	9	64	.172	1	0.05	0	0.00	0	6	0.29	0	0	16	16	0.76	1	1	28.0	1.33
2021-22	Illini	101-27	149	1.48	45	316	.329	3	0.03	0	0.00	0	13	0.13	2	9	97	106	1.05	9	2	206.5	2.04
2022-23	Illini	51-15	53	1.04	19	120	.283	2	0.04	5	0.10	7	6	0.12	0	3	41	44	0.86	4	0	81.5	1.60
2023-24	AUB	59-16	75	1.27	32	191	.225	4	0.07	3	0.05	13	14	0.24	0	5	50	55	0.93	2	0	108.0	1.83
TOTAL FOR AUB		59 - 16	75	1.27	32	191	.225	4	0.07	3	0.05	13	14	0.24	0	5	50	55	0.93	2	0	108.0	1.83
TOTAL		248 - 70	304	1.23	108	720	.272	11	0.04	8	0.03	23	46	0.19	2	17	215	232	0.94	17	4	436.5	1.76

#7 PEYTON DUNN

SETTER | 5-11 | REDSHIRT-SOPHOMORE
DECATUR, TEXAS (LEGEND)



SWANSON'S HIGHLIGHTS:

- 4x Big 12 Rookie of the Week
- All-Big 12 Rookie Team
- Had a career-high 54 assists vs Texas Tech on Oct. 14, 2021

CATEGORY	CAREER HIGH	OPPONENT/DATE
Kills	6	vs Indiana (9/10/21)
Attempts	11 (3x)	last at TCU (10/8/21)
Hitting Percentage (Min. 10 ATT.)	.500	vs Indiana (9/10/21)
Assists	54	vs Texas Tech (10/14/21)
Digs	18	vs FIU (8/28/22)
Blocks	6 (3x)	last at TCU (10/9/22)
Aces	2 (4x)	last vs FIU (8/28/22)
Points	7.0	at TCU (10/9/21)

CATEGORY	SEASON HIGH	OPPONENT/DATE
Kills	3	vs Jacksonville State (8/26/23)
Attempts	4	vs Jacksonville State (8/26/23)
Hitting Percentage (Min. 10 ATT.)	--	--
Assists	43	vs Coppin State (8/25/23)
Digs	4 (2x)	last vs Jacksonville State (8/26/23)
Blocks	2	vs Coppin State (8/25/23)
Aces	1	vs Coppin State (8/25/23)
Points	3.0 (2x)	last vs Jacksonville State (8/26/23)

GAME BY GAME

Date	Opponent	SP	Attack				Set			Serve				Recept			Blocking				Team				
			K	E	TA	PCT	A	TA	PCT	SA	SE	TA	PCT	RE	TA	PCT	DIG	BS	BA	BE	TOTAL	BHE	POINTS	HIT%	SCORE
08/25/2023	Coppin St.	*4	1	0	3	.333	43	111	.387	1	5	11	.545	0	0	.000	4	0	2	0	2.0	0	3.0	.309	3-1
08/26/2023	Jacksonville St.	2	3	1	4	.500	16	30	.533	0	2	4	.500	0	0	.000	4	0	0	0	0.0	0	3.0	.395	3-0
Totals		6	4	1	7	.429	59	141	.418	1	7	15	.533	0	0	.000	8	0	2	0	2.0	0	6.0		

Player Averages

Sets Played	Kills per set	Assists per set	Service aces per set	Digs per set	Blocks per set	Points per set
6	0.67	9.83	0.17	1.33	0.33	1.00

CAREER STATS

SEASON	TEAM	SM-MP	K	K/S	E	TA	PCT	A	A/S	SA	SA/S	SE	DIG	D/S	RE	BS	BA	TB	B/S	BE	BHE	PTS	PTS/S
2021-22	OU	107-27	67	0.63	15	163	.319	997	9.32	13	0.12	45	198	1.85	0	0	63	63	0.59	2	5	111.5	1.04
2022-23	OU	24-7	12	0.50	4	25	.320	252	10.50	3	0.13	8	57	2.38	0	0	11	11	0.46	3	4	20.5	0.85
2023-24	AUB	6-2	4	0.67	1	7	.429	59	9.83	1	0.17	7	8	1.33	0	0	2	2	0.33	0	0	6.0	1.00
TOTAL FOR AUB	6 - 2		4	0.67	1	7	.429	59	9.83	1	0.17	7	8	1.33	0	0	2	2	0.33	0	0	6.0	1.00
TOTAL		137 - 36	83	0.61	20	195	.323	1308	9.55	17	0.12	60	263	1.92	0	0	76	76	0.55	5	9	138.0	1.01

#8 KENDAL KEMP

MIDDLE BLOCKER | 6-6 | SOPHOMORE
EAGAN, MINN. (EAGAN)



KEMP'S HIGHLIGHTS:

- Has set the Auburn single-season record for total blocks, block assists and blocks per set
- Tied the program record for most blocks in a 3-set match with 9 vs. Belmont
- 2x SEC Freshman of the Week
- Named to the SEC All-Freshman Team
- Named AVCA South Region Honorable Mention
- Made her collegiate debut on Aug. 26 vs. Belmont

CATEGORY	CAREER HIGH	OPPONENT/DATE
Kills	13	vs Charleston Southern (9/8/23)
Attempts	21 (2x)	last at South Carolina (11/23/22)
Hitting Percentage (Min. 10 ATT.)	.714	at Missouri (10/15/22)
Assists	1 (2x)	last at LSU (10/5/22)
Digs	2 (2x)	last at Kentucky (10/29/22)
Blocks	10 (4x)	last vs UAB (9/15/22)
Aces	3	at Georgia State (8/26/22)
Points	17.5	at South Carolina (11/23/22)

CATEGORY	SEASON HIGH	OPPONENT/DATE
Kills	13	vs Charleston Southern (9/8/23)
Attempts	19	vs Charleston Southern (9/8/23)
Hitting Percentage (Min. 10 ATT.)	.667	vs Georgia (10/1/23)
Assists	--	--
Digs	1 (5x)	last vs Georgia (10/1/23)
Blocks	10	vs UAB (9/15/23)
Aces	1	vs Coppin State (8/25/23)
Points	15.5	vs Charleston Southern (9/8/23)

GAME BY GAME

Date	Opponent	SP	Attack				Set			Serve				Recept			Blocking					Team			
			K	E	TA	PCT	A	TA	PCT	SA	SE	TA	PCT	RE	TA	PCT	DIG	BS	BA	BE	TOTAL	BHE	POINTS	HIT%	SCORE
08/25/2023	Coppin St.	*4	5	2	17	.176	0	1	.000	1	2	5	.600	0	0	.000	0	2	3	0	5.0	0	9.5	.309	3-1
08/26/2023	McNeese	*2	4	1	6	.500	0	1	.000	0	0	0	.000	0	0	.000	0	2	3	0	5.0	0	7.5	.333	3-0
08/26/2023	Jacksonville St.	*2	2	0	2	1.000	0	1	.000	0	0	0	.000	0	0	.000	0	1	1	0	2.0	0	3.5	.395	3-0
09/02/2023	vs SMU	*4	4	0	7	.571	0	0	.000	0	0	0	.000	0	0	.000	0	0	4	2	4.0	0	6.0	.316	3-1
09/03/2023	at Florida St.	*4	9	3	13	.462	0	1	.000	0	0	0	.000	0	0	.000	1	0	4	3	4.0	0	11.0	.356	3-1
09/07/2023	Middle Tenn.	*4	5	2	9	.333	0	1	.000	0	0	0	.000	0	0	.000	1	0	5	0	5.0	0	7.5	.221	1-3
09/08/2023	Charleston So.	*4	13	3	19	.526	0	1	.000	0	0	0	.000	0	0	.000	0	0	5	0	5.0	0	15.5	.245	3-1
09/09/2023	Mercer	*3	6	1	10	.500	0	0	.000	0	1	1	.000	0	1	1.000	0	0	7	0	7.0	0	9.5	.346	3-0
09/14/2023	at South Alabama	*5	6	1	11	.455	0	0	.000	0	0	0	.000	0	0	.000	1	0	3	0	3.0	0	7.5	.191	3-2
09/15/2023	vs UAB	*4	8	3	17	.294	0	2	.000	0	0	0	.000	0	0	.000	1	1	9	2	10.0	0	13.5	.189	3-1
09/16/2023	vs Samford	*4	5	2	11	.273	0	0	.000	0	0	0	.000	0	0	.000	0	0	2	0	2.0	0	6.0	.386	3-1
10/01/2023	Georgia	*4	8	0	12	.667	0	1	.000	0	0	0	.000	0	1	1.000	1	0	4	0	4.0	0	10.0	.262	3-1
10/06/2023	at Florida	*3	4	1	7	.429	0	1	.000	0	0	0	.000	0	0	.000	0	0	3	0	3.0	0	5.5	.387	3-0
Totals		47	79	19	141	.426	0	10	.000	1	3	6	.500	0	2	1.000	5	6	53	7	59.0	0	112.5		

Player Averages

Sets Played	Kills per set	Assists per set	Service aces per set	Digs per set	Blocks per set	Points per set
47	1.68	0.00	0.02	0.11	1.26	2.39

CAREER STATS

SEASON	TEAM	SM-MP	K	K/S	E	TA	PCT	A	A/S	SA	SA/S	SE	DIG	D/S	RE	BS	BA	TB	B/S	BE	BHE	PTS	PTS/S
2022-23	AUB	122-31	204	1.67	66	430	.321	2	0.02	7	0.06	16	12	0.10	1	26	154	180	1.48	13	0	314.0	2.57
2023-24	AUB	47-13	79	1.68	19	141	.426	0	0.00	1	0.02	3	5	0.11	0	6	53	59	1.26	7	0	112.5	2.39
TOTAL		169 - 44	283	1.67	85	571	.347	2	0.01	8	0.05	19	17	0.10	1	32	207	239	1.41	20	0	426.5	2.52

#9 ZOE SLAUGHTER

LIBERO | 5-7 | SOPHOMORE
HONOLULU, HAWAII (MOANALUA)



SLAUGHTER'S HIGHLIGHTS:

- Recorded 10+ digs in 10 matches last season
- Grabbed a career-high 22 digs at Alabama on Sept. 24, 2022
- Made her collegiate debut on Aug. 26 vs. Belmont

CATEGORY	CAREER HIGH	OPPONENT/DATE
Kills	1 (2x)	last at Missouri (10/15/22)
Attempts	1 (4x)	last vs McNeese (8/26/23)
Hitting Percentage (Min. 10 ATT.)	--	--
Assists	5	at South Alabama (9/14/23)
Digs	29	at South Alabama (9/13/23)
Blocks	--	--
Aces	3 (2x)	last vs Alabama A&M (9/6/22)
Points	3.0 (3x)	last vs Troy (9/10/22)

CATEGORY	SEASON HIGH	OPPONENT/DATE
Kills	--	--
Attempts	3	vs Samford (9/16/23)
Hitting Percentage (Min. 10 ATT.)	--	--
Assists	5	at South Alabama (9/14/23)
Digs	29	at South Alabama (9/14/23)
Blocks	--	--
Aces	2	at Florida State (9/3/23)
Points	2.0	at Florida State (9/3/23)

GAME BY GAME

Date	Opponent	SP	Attack			Set			Serve				Receipt			DIG	Blocking				Team				
			K	E	TA	PCT	A	TA	PCT	SA	SE	TA	PCT	RE	TA		PCT	BS	BA	BE	TOTAL	BHE	POINTS	HIT%	SCORE
08/25/2023	Coppin St.	4	0	0	0	.000	1	2	.500	1	4	17	.765	0	16	1.000	5	0	0	0	0.0	0	1.0	.309	3-1
08/26/2023	McNeese	3	0	0	1	.000	1	4	.250	0	0	12	1.000	0	11	1.000	6	0	0	0	0.0	0	0.0	.333	3-0
08/26/2023	Jacksonville St.	*3	0	0	0	.000	1	2	.500	0	0	9	1.000	0	11	1.000	5	0	0	0	0.0	0	0.0	.395	3-0
09/02/2023	vs SMU	*4	0	0	0	.000	0	3	.000	0	1	11	.909	0	16	1.000	2	0	0	0	0.0	0	0.0	.316	3-1
09/03/2023	at Florida St.	*4	0	0	1	.000	1	4	.250	2	3	22	.864	1	28	.964	10	0	0	0	0.0	0	2.0	.356	3-1
09/07/2023	Middle Tenn.	*4	0	0	0	.000	2	3	.667	0	1	18	.944	0	10	1.000	3	0	0	0	0.0	0	0.0	.221	1-3
09/08/2023	Charleston So.	4	0	0	0	.000	0	3	.000	0	1	17	.941	0	9	1.000	7	0	0	0	0.0	0	0.0	.245	3-1
09/09/2023	Mercer	*3	0	0	0	.000	0	0	.000	0	1	8	.875	0	6	1.000	5	0	0	0	0.0	0	0.0	.346	3-0
09/14/2023	at South Alabama	5	0	0	2	.000	5	15	.333	1	4	13	.692	5	29	.828	29	0	0	0	0.0	0	1.0	.191	3-2
09/15/2023	vs UAB	4	0	0	1	.000	4	13	.308	0	0	18	1.000	0	12	1.000	11	0	0	0	0.0	0	0.0	.189	3-1
09/16/2023	vs Samford	4	0	0	3	.000	4	9	.444	0	0	13	1.000	3	23	.870	16	0	0	0	0.0	0	0.0	.386	3-1
09/22/2023	Florida	5	0	0	0	.000	1	3	.333	0	1	20	.950	0	15	1.000	11	0	0	0	0.0	0	0.0	.196	2-3
09/24/2023	Ole Miss	4	0	0	0	.000	1	3	.333	0	2	13	.846	0	6	1.000	7	0	0	0	0.0	0	0.0	.199	3-1
09/27/2023	at Arkansas	3	0	0	0	.000	0	3	.000	1	1	6	.833	1	11	.909	1	0	0	0	0.0	0	1.0	-.049	0-3
10/06/2023	at Florida	3	0	0	0	.000	0	0	.000	0	0	0	.000	0	2	1.000	2	0	0	0	0.0	0	0.0	.387	3-0
Totals		57	0	0	8	.000	21	67	.313	5	19	197	.904	10	205	.951	120	0	0	0	0.0	0	5.0		

Player Averages

Sets Played	Kills per set	Assists per set	Service aces per set	Digs per set	Blocks per set	Points per set
57	0.00	0.37	0.09	2.11	0.00	0.09

CAREER STATS

SEASON	TEAM	SM-MP	K	K/S	E	TA	PCT	A	A/S	SA	SA/S	SE	DIG	D/S	RE	BS	BA	TB	B/S	BE	BHE	PTS	PTS/S
2022-23	AUB	122-31	2	0.02	1	4	.250	22	0.18	19	0.16	41	267	2.19	14	0	0	0	0.00	0	1	21.0	0.17
2023-24	AUB	57-15	0	0.00	0	8	.000	21	0.37	5	0.09	19	120	2.11	10	0	0	0	0.00	0	0	5.0	0.09
TOTAL		179 - 46	2	0.01	1	12	.083	43	0.24	24	0.13	60	387	2.16	24	0	0	0	0.00	0	1	26.0	0.15

#10 JACKIE BARRETT

SETTER | 6-2 | SENIOR
HIGHLAND, CALIF. (CITRUS VALLEY)



BARRETT'S HIGHLIGHTS

- 2x SEC Setter of the Week
- Set a career-high in aces with 5 against Mercer
- Set her career-high in assists with 60 against LSU on Oct. 5, 2022

CATEGORY	CAREER HIGH	OPPONENT/DATE
Kills	6 (2x)	last, at Alabama State (9/26/21)
Attempts	20	at Alabama State (9/26/21)
Hitting Percentage (Min. 10 ATT.)	.308	vs. Florida A&M (9/17/21)
Assists	60	at LSU (10/5/22)
Digs	28	vs. Nicholls (9/17/21)
Blocks	8.0	at Arkansas (10/9/21)
Aces	5 (2x)	at South Alabama (9/14/23)
Points	10.0	vs. Florida A&M (9/17/21)

CATEGORY	SEASON HIGH	OPPONENT/DATE
Kills	5 (3x)	last vs Florida (9/22/23)
Attempts	10	vs Ole Miss (9/24/23)
Hitting Percentage (Min. 10 ATT.)	.200	vs Ole Miss (9/24/23)
Assists	48	at South Alabama (9/14/23)
Digs	17	vs Ole Miss (9/24/23)
Blocks	5	vs UAB (9/15/23)
Aces	5 (2x)	last at South Alabama (9/14/23)
Points	9.0	vs Mercer (9/9/23)

GAME BY GAME

Date	Opponent	SP	Attack			Set			Serve			Recept			Blocking				Team							
			K	E	TA	PCT	A	TA	PCT	SA	SE	TA	PCT	RE	TA	PCT	DIG	BS	BA	BE	TOTAL	BHE	POINTS	HIT%	SCORE	
08/26/2023	McNeese	*3	1	0	4	.250	31	72	.431	0	1	15	.933	0	0	.000	6	0	2	0	2.0	0	2.0	.333	3-0	
08/26/2023	Jacksonville St.	*2	1	0	2	.500	14	25	.560	0	0	1	1.000	0	0	.000	2	0	1	0	1.0	0	1.5	.395	3-0	
09/02/2023	vs SMU	*4	5	0	7	.714	36	96	.375	1	0	16	1.000	0	1	1.000	14	0	2	1	2.0	0	7.0	.316	3-1	
09/03/2023	at Florida St.	*4	3	2	7	.143	44	99	.444	0	0	16	1.000	0	0	.000	11	0	3	0	3.0	0	4.5	.356	3-1	
09/07/2023	Middle Tenn.	*4	5	0	7	.714	39	104	.375	1	1	13	.923	0	0	.000	10	0	0	0	0.0	0	6.0	.221	1-3	
09/08/2023	Charleston So.	*4	1	1	6	.000	41	111	.369	0	0	14	1.000	0	0	.000	13	0	3	0	3.0	0	2.5	.245	3-1	
09/09/2023	Mercer	*3	2	0	2	1.000	31	64	.484	5	0	16	1.000	0	0	.000	5	0	4	0	4.0	0	9.0	.346	3-0	
09/14/2023	at South Alabama	*5	2	0	6	.333	48	142	.338	5	3	23	.870	0	0	.000	11	0	3	0	3.0	2	8.5	.191	3-2	
09/15/2023	vs UAB	*4	3	1	6	.333	35	98	.357	0	1	14	.929	0	0	.000	6	0	5	0	5.0	0	5.5	.189	3-1	
09/16/2023	vs Samford	*4	3	0	5	.600	46	93	.495	1	1	12	.917	0	0	.000	6	1	0	0	1.0	1	5.0	.386	3-1	
09/22/2023	Florida	*5	5	0	9	.556	40	122	.328	1	3	15	.800	0	1	1.000	12	0	2	1	2.0	0	7.0	.196	2-3	
09/24/2023	Ole Miss	*4	3	1	10	.200	42	119	.353	1	0	20	1.000	0	0	.000	17	0	1	0	1.0	0	4.5	.199	3-1	
09/27/2023	at Arkansas	*3	1	0	2	.500	11	59	.186	0	1	6	.833	0	0	.000	5	0	1	1	1.0	0	1.5	-.049	0-3	
10/01/2023	Georgia	*4	0	0	3	.000	42	104	.404	0	0	10	1.000	0	0	.000	8	0	1	0	1.0	0	0.5	.262	3-1	
10/06/2023	at Florida	*3	3	0	8	.375	37	71	.521	2	1	11	.909	0	0	.000	5	0	2	0	2.0	0	6.0	.387	3-0	
Totals			56	38	5	84	.393	537	1379	.389	17	12	202	.941	0	2	1.000	131	1	30	3	31.0	3	71.0		

Player Averages

Sets Played	Kills per set	Assists per set	Service aces per set	Digs per set	Blocks per set	Points per set
56	0.68	9.59	0.30	2.34	0.55	1.27

CAREER STATS

SEASON	TEAM	SM-MP	K	K/S	E	TA	PCT	A	A/S	SA	SA/S	SE	DIG	D/S	RE	BS	BA	TB	B/S	BE	BHE	PTS	PTS/S
2020-21	AUB	19-6	9	0.47	6	44	.068	144	7.58	3	0.16	8	33	1.74	0	0	11	11	0.58	1	0	17.5	0.92
2021-22	AUB	100-28	51	0.51	14	180	.206	809	8.09	22	0.22	24	307	3.07	0	2	60	62	0.62	8	1	105.0	1.05
2022-23	AUB	106-28	41	0.39	8	116	.284	1057	9.97	26	0.25	28	220	2.08	1	9	75	84	0.79	10	0	113.5	1.07
2023-24	AUB	56-15	38	0.68	5	84	.393	537	9.59	17	0.30	12	131	2.34	0	1	30	31	0.55	3	3	71.0	1.27
TOTAL		281 - 77	139	0.49	33	424	.250	2547	9.06	68	0.24	72	691	2.46	1	12	176	188	0.67	22	4	307.0	1.09

#11 JORDAN SINNESS

SETTER | 5-9 | JUNIOR
SEBRING, FLA. (SEBRING)



SINNESS' HIGHLIGHTS:

- Recorded the Tigers' first double-double of the season at Georgia State with 42 assists and 12 digs.
- Grabbed a career-high 49 assists in 5-set win at UAB
- Made collegiate debut versus Cal State Fullerton (9/2), dishing out 16 assists, six digs, one kill and a block

CATEGORY	CAREER HIGH	OPPONENT/DATE
Kills	3	vs Alabama A&M (9/6/22)
Attempts	7	at UAB (9/10/22)
Hitting Percentage (Min. 10 ATT.)		
Assists	49	at UAB (9/10/22)
Digs	14	vs. Missouri (10/17/21)
Blocks	5	at UAB (9/10/22)
Aces	3	vs Alabama A&M (9/6/22)
Points	7.0	vs Alabama A&M (9/6/22)

CATEGORY	SEASON HIGH	OPPONENT/DATE
Kills	--	--
Attempts	--	--
Hitting Percentage (Min. 10 ATT.)	--	--
Assists	--	--
Digs	--	--
Blocks	--	--
Aces	--	--
Points	--	--

GAME BY GAME

CAREER STATS

SEASON	TEAM	SM-MP	K	K/S	E	TA	PCT	A	A/S	SA	SA/S	SE	DIG	D/S	RE	BS	BA	TB	B/S	BE	BHE	PTS	PTS/S
2021-22	AUB	50-15	2	0.04	1	6	.167	64	1.28	6	0.12	7	33	0.66	0	0	3	3	0.06	0	2	9.5	0.19
2022-23	AUB	49-14	5	0.10	0	15	.333	163	3.33	16	0.33	22	51	1.04	0	2	13	15	0.31	1	0	29.5	0.60
TOTAL		99 - 29	7	0.07	1	21	.286	227	2.29	22	0.22	29	84	0.85	0	2	16	18	0.18	1	2	39.0	0.39

#12 BEL ZIMMERMAN

**PIN HITTER | 6-2 | SOPHOMORE
LIBERTY, MO. (LIBERTY NORTH)**



ZIMMERMAN'S HIGHLIGHTS:

- Set career highs in kills (17) and digs (16) against Charleston Southern for her first-career double-double
- Hit .692 with 8 kills vs. Marist
- Had a career-high 13 kills at Jacksonville State
- Made her collegiate debut on Aug. 26 at Georgia State

CATEGORY	CAREER HIGH	OPPONENT/DATE
Kills	17	vs Charleston Southern (9/8/23)
Attempts	36	vs UAB (9/15/23)
Hitting Percentage (Min. 10 ATT.)	.692	vs Marist (8/27/22)
Assists	1 (9x)	last vs Florida (9/22/23)
Digs	16	vs Charleston Southern (9/8/23)
Blocks	6 (2x)	last at South Alabama (9/14/23)
Aces	4	at South Alabama (9/14/23)
Points	21.0	vs UAB (9/15/23)

CATEGORY	SEASON HIGH	OPPONENT/DATE
Kills	17	vs Charleston Southern (9/8/23)
Attempts	36	vs UAB (9/15/23)
Hitting Percentage (Min. 10 ATT.)	.400	vs McNeese (8/26/23)
Assists	1 (7x)	last vs Florida (9/22/23)
Digs	16	vs Charleston Southern (9/8/23)
Blocks	6	at South Alabama (9/14/23)
Aces	4	at South Alabama (9/14/23)
Points	21.0	vs UAB (9/15/23)

GAME BY GAME

Date	Opponent	SP	Attack				Set			Serve				Receipt			Blocking				Team				
			K	E	TA	PCT	A	TA	PCT	SA	SE	TA	PCT	RE	TA	PCT	DIG	BS	BA	BE	TOTAL	BHE	POINTS	HIT%	SCORE
08/26/2023	McNeese	3	8	0	20	.400	1	3	.333	0	2	8	.750	0	7	1.000	2	0	2	0	2.0	0	9.0	.333	3-0
08/26/2023	Jacksonville St.	2	2	3	8	-.125	0	0	.000	3	2	7	.714	0	3	1.000	1	0	0	2	0.0	0	5.0	.395	3-0
09/02/2023	vs SMU	2	0	0	0	.000	0	0	.000	0	2	3	.333	0	0	.000	0	0	0	0	0.0	0	0.0	.316	3-1
09/03/2023	at Florida St.	4	0	0	0	.000	0	1	.000	0	0	9	1.000	0	0	.000	0	0	0	0	0.0	0	0.0	.356	3-1
09/07/2023	Middle Tenn.	*4	11	6	40	.125	0	0	.000	0	3	11	.727	2	19	.895	4	0	2	1	2.0	0	12.0	.221	1-3
09/08/2023	Charleston So.	*4	17	5	50	.240	1	1	1.000	2	2	22	.909	0	20	1.000	16	0	2	0	2.0	0	20.0	.245	3-1
09/09/2023	Mercer	*3	14	3	30	.367	1	3	.333	3	3	15	.800	0	13	1.000	2	0	1	1	1.0	0	17.5	.346	3-0
09/14/2023	at South Alabama	*5	11	3	34	.235	1	6	.167	4	2	23	.913	0	10	1.000	2	1	5	1	6.0	0	18.5	.191	3-2
09/15/2023	vs UAB	*4	16	5	36	.306	1	3	.333	2	3	14	.786	2	22	.909	12	1	4	1	5.0	0	21.0	.189	3-1
09/16/2023	vs Samford	*4	15	2	33	.394	1	2	.500	1	3	12	.750	3	17	.824	11	0	2	0	2.0	0	17.0	.386	3-1
09/22/2023	Florida	5	0	0	0	.000	1	3	.333	0	3	16	.813	0	0	.000	1	0	0	0	0.0	0	0.0	.196	2-3
09/24/2023	Ole Miss	4	0	0	0	.000	0	0	.000	3	2	17	.882	0	0	.000	1	0	0	0	0.0	0	3.0	.199	3-1
09/27/2023	at Arkansas	3	0	3	5	-.600	0	1	.000	1	1	5	.800	1	3	.667	0	0	0	0	0.0	0	1.0	-.049	0-3
10/01/2023	Georgia	*4	5	2	14	.214	0	3	.000	0	5	20	.750	0	15	1.000	6	0	1	2	1.0	0	5.5	.262	3-1
10/06/2023	at Florida	*3	6	3	18	.167	0	0	.000	1	6	15	.600	0	7	1.000	2	0	1	0	1.0	0	7.5	.387	3-0
Totals		54	105	35	288	.243	7	26	.269	20	39	197	.802	8	136	.941	60	2	20	8	22.0	0	137.0		

Player Averages

Sets Played	Kills per set	Assists per set	Service aces per set	Digs per set	Blocks per set	Points per set
54	1.94	0.13	0.37	1.11	0.41	2.54

CAREER STATS

SEASON	TEAM	SM-MP	K	K/S	E	TA	PCT	A	A/S	SA	SA/S	SE	DIG	D/S	RE	BS	BA	TB	B/S	BE	BHE	PTS	PTS/S
2022-23	AUB	114-29	220	1.93	98	607	.201	2	0.02	4	0.04	11	54	0.47	3	3	63	66	0.58	10	0	258.5	2.27
2023-24	AUB	54-15	105	1.94	35	288	.243	7	0.13	20	0.37	39	60	1.11	8	2	20	22	0.41	8	0	137.0	2.54
TOTAL		168 - 44	325	1.93	133	895	.215	9	0.05	24	0.14	50	114	0.68	11	5	83	88	0.52	18	0	395.5	2.35

#13 PAIGE THIBAUT

LIBERO | 5-8 | JUNIOR

WATERTOWN, MINN. (WATERTOWN-MAYER)



THIBAUT'S HIGHLIGHTS:

- Compiled a career-high 20 digs against Dayton on Sept. 3, 2022
- Hit .462 vs Arizona State on Sept. 2, 2022
- 2021 All-Crossroads League Honorable Mention
- 2021 Crossroads League All-Freshman Team

CATEGORY	CAREER HIGH	OPPONENT/DATE
Kills	9	at FAU (10/28/22)
Attempts	35	at UTSA (10/23/22)
Hitting Percentage (Min. 10 ATT.)	.462	vs Arizona State (9/2/22)
Assists	2 (6x)	last at Florida (10/6/23)
Digs	20	vs Dayton (9/3/22)
Blocks	4	vs UAB (10/7/22)
Aces	3	vs Little Rock (9/8/22)
Points	9.0 (2x)	last at FAU (10/28/22)

CATEGORY	SEASON HIGH	OPPONENT/DATE
Kills	1	at South Alabama (9/14/23)
Attempts	2	at South Alabama (9/14/23)
Hitting Percentage (Min. 10 ATT.)
Assists	2 (5x)	last at Florida (10/6/23)
Digs	11	vs Ole Miss (9/24/23)
Blocks
Aces	2 (2x)	last vs Samford (9/16/23)
Points	2.0 (2x)	last vs Samford (9/16/23)

GAME BY GAME

Date	Opponent	SP	Attack				Set			Serve				Recept			Blocking				Team				
			K	E	TA	PCT	A	TA	PCT	SA	SE	TA	PCT	RE	TA	PCT	DIG	BS	BA	TB	TOTAL	BHE	POINTS	HIT%	SCORE
08/25/2023	Coppin St.	*4	0	0	0	.000	2	3	.667	0	3	13	.769	0	15	1.000	10	0	0	0	0.0	0	0.0	.309	3-1
08/26/2023	McNeese	*2	0	0	0	.000	0	1	.000	0	0	0	.000	0	5	1.000	2	0	0	0	0.0	0	0.0	.333	3-0
09/07/2023	Middle Tenn.	4	0	0	0	.000	2	2	1.000	0	1	1	.000	1	7	.857	2	0	0	0	0.0	0	0.0	.221	1-3
09/14/2023	at South Alabama	5	1	0	2	.500	0	3	.000	0	0	0	.000	0	12	1.000	8	0	0	0	0.0	0	1.0	.191	3-2
09/15/2023	vs UAB	*4	0	0	0	.000	2	3	.667	2	3	17	.824	1	11	.909	9	0	0	0	0.0	0	2.0	.189	3-1
09/16/2023	vs Samford	4	0	0	0	.000	1	4	.250	2	2	22	.909	0	4	1.000	7	0	0	0	0.0	0	2.0	.386	3-1
09/22/2023	Florida	*5	0	0	1	.000	1	7	.143	0	3	18	.833	1	23	.957	9	0	0	0	0.0	0	0.0	.196	2-3
09/24/2023	Ole Miss	*4	0	0	1	.000	2	7	.286	1	3	18	.833	2	34	.941	11	0	0	0	0.0	0	1.0	.199	3-1
09/27/2023	at Arkansas	*3	0	0	0	.000	1	1	1.000	0	1	5	.800	2	19	.895	2	0	0	0	0.0	0	0.0	-.049	0-3
10/01/2023	Georgia	*4	0	0	0	.000	1	3	.333	0	2	12	.833	0	9	1.000	10	0	0	0	0.0	0	0.0	.262	3-1
10/06/2023	at Florida	*3	0	0	0	.000	2	2	1.000	1	2	13	.846	1	22	.955	6	0	0	0	0.0	0	1.0	.387	3-0
Totals		42	1	0	4	.250	14	36	.389	6	20	119	.832	8	161	.950	76	0	0	0	0.0	0	7.0		

Player Averages

Sets Played	Kills per set	Assists per set	Service aces per set	Digs per set	Blocks per set	Points per set
42	0.02	0.33	0.14	1.81	0.00	0.17

CAREER STATS

SEASON	TEAM	SM-MP	K	K/S	E	TA	PCT	A	A/S	SA	SA/S	SE	DIG	D/S	RE	BS	BA	TB	B/S	BE	BHE	PTS	PTS/S
2022-23	FIU	105-28	47	0.45	28	216	.088	14	0.13	23	0.22	30	221	2.10	21	1	7	8	0.08	0	0	74.5	0.71
2023-24	AUB	42-11	1	0.02	0	4	.250	14	0.33	6	0.14	20	76	1.81	8	0	0	0	0.00	0	0	7.0	0.17
TOTAL FOR AUB	42 - 11	1	0.02	0	4	.250	14	0.33	6	0.14	20	76	1.81	8	0	0	0	0.00	0	0	7.0	0.17	
TOTAL	147 - 39	48	0.33	28	220	.091	28	0.19	29	0.20	50	297	2.02	29	1	7	8	0.05	0	0	81.5	0.55	

#14 CHELSEY HARMON

MIDDLE BLOCKER | 6-3 | SENIOR
PUYALLUP, WASH. (PORTLAND)



HARMON'S HIGHLIGHTS:

- 3rd best hitting percentage in program history (.706) against Jackson State.
- Currently holds the sixth-best hitting percentage in single-season program history (.344)
- Made her Auburn debut on Aug. 26 vs. Belmont

CATEGORY	CAREER HIGH	OPPONENT/DATE
Kills	16	vs San Francisco (10/16/21)
Attempts	23	at LSU (10/5/22)
Hitting Percentage (Min. 10 ATT.)	.706	vs Jackson State (9/17/22)
Assists	2 (3x)	last vs Samford (9/16/23)
Digs	4 (2x)	last at Santa Clara (3/9/21)
Blocks	10	vs Troy (9/10/22)
Aces	2 (3x)	last vs Eastern Washington (8/28/21)
Points	15.5	at LSU (10/5/22)

CATEGORY	SEASON HIGH	OPPONENT/DATE
Kills	6	vs Ole Miss (9/24/23)
Attempts	12 (2x)	last vs Ole Miss (9/24/23)
Hitting Percentage (Min. 10 ATT.)	.417	vs Ole Miss (9/24/23)
Assists	2	last vs Samford (9/16/23)
Digs	2 (2x)	last vs Ole Miss (9/24/23)
Blocks	8	vs Ole Miss (9/24/23)
Aces	4	vs Charleston Southern (9/8/23)
Points	12.5	vs Charleston Southern (9/8/23)

GAME BY GAME

Date	Opponent	SP	Attack				Set			Serve				Receipt			Blocking				Team				
			K	E	TA	PCT	A	TA	PCT	SA	SE	TA	PCT	RE	TA	PCT	DIG	BS	BA	BE	TOTAL	BHE	POINTS	HIT%	SCORE
08/26/2023	McNeese	1	1	0	2	.500	1	2	.500	0	0	4	1.000	0	0	.000	1	0	2	0	2.0	0	2.0	.333	3-0
08/26/2023	Jacksonville St.	1	2	0	2	1.000	0	1	.000	0	0	6	1.000	0	0	.000	0	0	0	0	0.0	0	2.0	.395	3-0
09/07/2023	Middle Tenn.	1	1	0	2	.500	0	0	.000	0	0	0	.000	0	0	.000	0	0	0	0	0.0	1.0	.221	1-3	
09/08/2023	Charleston So.	*4	5	2	12	.250	0	3	.000	4	2	15	.867	0	0	.000	2	0	7	1	7.0	0	12.5	.245	3-1
09/09/2023	Mercer	*3	4	0	6	.667	1	3	.333	1	3	14	.786	0	0	.000	1	1	3	0	4.0	0	7.5	.346	3-0
09/14/2023	at South Alabama	3	2	0	4	.500	0	1	.000	2	0	9	1.000	0	0	.000	0	0	3	1	3.0	0	5.5	.191	3-2
09/16/2023	vs Samford	4	0	0	0	.000	2	3	.667	1	2	22	.909	0	0	.000	0	0	0	0	0.0	0	1.0	.386	3-1
09/22/2023	Florida	*5	4	2	10	.200	0	2	.000	0	0	3	1.000	0	0	.000	1	0	2	2	2.0	0	5.0	.196	2-3
09/24/2023	Ole Miss	*4	6	1	12	.417	0	0	.000	0	0	3	1.000	0	0	.000	2	0	8	0	8.0	0	10.0	.199	3-1
09/27/2023	at Arkansas	*3	2	1	3	.333	0	0	.000	0	0	3	1.000	0	0	.000	1	0	2	0	2.0	0	3.0	-.049	0-3
10/01/2023	Georgia	4	0	0	0	.000	0	0	.000	2	0	18	1.000	0	0	.000	1	0	0	0	0.0	0	2.0	.262	3-1
10/06/2023	at Florida	3	0	0	1	.000	0	0	.000	2	1	12	.917	0	0	.000	1	0	0	0	0.0	0	2.0	.387	3-0
Totals		36	27	6	54	.389	4	15	.267	12	8	109	.927	0	0	.000	10	1	27	4	28.0	0	53.5		

Player Averages

Sets Played	Kills per set	Assists per set	Service aces per set	Digs per set	Blocks per set	Points per set
36	0.75	0.11	0.33	0.28	0.78	1.49

CAREER STATS

SEASON	TEAM	SM-MP	K	K/S	E	TA	PCT	A	A/S	SA	SA/S	SE	DIG	D/S	RE	BS	BA	TB	B/S	BE	BHE	PTS	PTS/S
2020-21	UP	34-12	20	0.59	11	62	.145	4	0.12	5	0.15	7	19	0.56	1	2	21	23	0.68	0	0	37.5	1.10
2021-22	UP	78-22	108	1.38	31	246	.313	1	0.01	4	0.05	5	13	0.17	1	6	42	48	0.62	9	1	139.0	1.78
2022-23	AUB	122-31	176	1.44	48	372	.344	5	0.04	0	0.00	4	17	0.14	1	4	103	107	0.88	6	0	231.5	1.90
2023-24	AUB	36-12	27	0.75	6	54	.389	4	0.11	12	0.33	8	10	0.28	0	1	27	28	0.78	4	0	53.5	1.49
TOTAL FOR AUB	158 - 43	203	1.28	54	426	.350	9	0.06	12	0.08	12	27	0.17	1	5	130	135	0.85	10	0	285.0	1.80	
TOTAL	270 - 77	331	1.23	96	734	.320	14	0.05	21	0.08	24	59	0.22	3	13	193	206	0.76	19	1	461.5	1.71	

#17 CASSIDY TANTON

**PIN HITTER | 6-0 | REDSHIRT-SOPHOMORE
STONEVILLE, N.C. (DALTON MCMICHAEL)**



TANTON'S HIGHLIGHTS:

- Picked up a career-high 10 kills vs. Marist, hitting .348
- Made her season debut on Aug. 26 vs. Belmont

CATEGORY	CAREER HIGH	OPPONENT/DATE
Kills	10	vs Marist (8/27/22)
Attempts	23	vs Marist (8/27/22)
Hitting Percentage (Min. 10 ATT.)	.348	vs Marist (8/27/22)
Assists	--	--
Digs	6	vs Marist (8/27/22)
Blocks	--	--
Aces	2(3x)	last vs Southern Miss (9/16/22)
Points	12.0	vs Marist (8/27/22)

CATEGORY	SEASON HIGH	OPPONENT/DATE
Kills	1	vs Middle Tennessee (9/7/23)
Attempts	5	vs Middle Tennessee (9/7/23)
Hitting Percentage (Min. 10 ATT.)	--	--
Assists	--	--
Digs	--	--
Blocks	--	--
Aces	--	--
Points	1.0	vs Middle Tennessee (9/7/23)

GAME BY GAME

Date	Opponent	SP	Attack				Set		Serve				Recept			Blocking				Team					
			K	E	TA	PCT	A	TA	PCT	SA	SE	TA	PCT	RE	TA	PCT	DIG	BS	BA	BE	TOTAL	BHE	POINTS	HIT%	SCORE
09/07/2023	Middle Tenn.	1	1	1	5	.000	0	0	.000	0	0	0	.000	1	4	.750	0	0	0	0	0.0	0	1.0	.221	1-3
Totals		1	1	1	5	.000	0	0	.000	0	0	0	.000	1	4	.750	0	0	0	0	0.0	0	1.0		

Player Averages

Sets Played	Kills per set	Assists per set	Service aces per set	Digs per set	Blocks per set	Points per set
1	1.00	0.00	0.00	0.00	0.00	1.00

CAREER STATS

SEASON	TEAM	SM-MP	K	K/S	E	TA	PCT	A	A/S	SA	SA/S	SE	DIG	D/S	RE	BS	BA	TB	B/S	BE	BHE	PTS	PTS/S
2022-23	AUB	58-19	12	0.21	7	34	.147	0	0.00	11	0.19	28	19	0.33	2	0	0	0	0.00	0	0	23.0	0.40
2023-24	AUB	1-1	1	1.00	1	5	.000	0	0.00	0	0.00	0	0	0.00	1	0	0	0	0.00	0	0	1.0	1.00
TOTAL		59 - 20	13	0.22	8	39	.128	0	0.00	11	0.19	28	19	0.32	3	0	0	0	0.00	0	0	24.0	0.41



#19 JASMINE OKEOMA
MIDDLE BLOCKER | 6-3 | FRESHMAN
WOODBIDGE, VA. (FOREST PARK)



OKEOMA'S HIGHLIGHTS:

CATEGORY	CAREER HIGH	OPPONENT/DATE
Kills	--	--
Attempts	--	--
Hitting Percentage (Min. 10 ATT.)	--	--
Assists	--	--
Digs	--	--
Blocks	--	--
Aces	--	--
Points	--	--

CATEGORY	SEASON HIGH	OPPONENT/DATE
Kills	--	--
Attempts	--	--
Hitting Percentage (Min. 10 ATT.)	--	--
Assists	--	--
Digs	--	--
Blocks	--	--
Aces	--	--
Points	--	--

GAME BY GAME

CAREER STATS

#22 SYDNEY HANDEL

DEFENSIVE SPECIALIST | 6-0 | SOPHOMORE
LEE'S SUMMIT, MO. (LEE'S SUMMIT WEST)



HANDEL'S HIGHLIGHTS:

- Set career-highs in aces (3) and digs (6) in the NCAA Tournament against Houston
- Made her collegiate debut against Alabama A&M

CATEGORY	CAREER HIGH	OPPONENT/DATE
Kills	1	vs Middle Tennessee (9/7/23)
Attempts	1 (2x)	last at South Alabama (9/14/23)
Hitting Percentage (Min. 10 ATT.)	--	--
Assists	--	--
Digs	10	at South Alabama (9/14/23)
Blocks	--	--
Aces	3	vs Houston (12/3/22)
Points	3.0	vs Houston (12/3/22)

CATEGORY	SEASON HIGH	OPPONENT/DATE
Kills	--	--
Attempts	1	at South Alabama (9/14/23)
Hitting Percentage (Min. 10 ATT.)	--	--
Assists	--	--
Digs	10	at South Alabama (9/14/23)
Blocks	--	--
Aces	--	--
Points	--	--

GAME BY GAME

Date	Opponent	SP	Attack				Set			Serve				Recept			Blocking				Team				
			K	E	TA	PCT	A	TA	PCT	SA	SE	TA	PCT	RE	TA	PCT	DIG	BS	BA	BE	TOTAL	BHE	POINTS	HIT%	SCORE
09/02/2023	vs SMU	2	0	0	0	.000	0	0	.000	0	2	6	.667	0	0	.000	0	0	0	0	0.0	0	0.0	.316	3-1
09/09/2023	Mercer	1	0	0	0	.000	0	0	.000	0	0	2	1.000	0	0	.000	0	0	0	0	0.0	0	0.0	.346	3-0
09/14/2023	at South Alabama	5	0	0	1	.000	0	2	.000	0	1	14	.929	1	10	.900	10	0	0	0	0.0	0	0.0	.191	3-2
09/15/2023	vs UAB	4	0	0	0	.000	0	0	.000	0	2	11	.818	0	0	.000	0	0	0	0	0.0	0	0.0	.189	3-1
09/16/2023	vs Samford	1	0	0	0	.000	0	2	.000	0	0	0	.000	0	4	1.000	0	0	0	0	0.0	0	0.0	.386	3-1
Totals		13	0	0	1	.000	0	4	.000	0	5	33	.848	1	14	.929	10	0	0	0	0.0	0	0.0		

Player Averages

Sets Played	Kills per set	Assists per set	Service aces per set	Digs per set	Blocks per set	Points per set
13	0.00	0.00	0.00	0.77	0.00	0.00

CAREER STATS

SEASON	TEAM	SM-MP	K	K/S	E	TA	PCT	A	A/S	SA	SA/S	SE	DIG	D/S	RE	BS	BA	TB	B/S	BE	BHE	PTS	PTS/S
2022-23	AUB	19-6	0	0.00	0	1	.000	0	0.00	6	0.32	11	10	0.53	3	0	0	0	0.00	0	0	6.0	0.32
2023-24	AUB	13-5	0	0.00	0	1	.000	0	0.00	0	0.00	5	10	0.77	1	0	0	0	0.00	0	0	0.0	0.00
TOTAL		32 - 11	0	0.00	0	2	.000	0	0.00	6	0.19	16	20	0.63	4	0	0	0	0.00	0	0	6.0	0.19



#25 LAKIN LAURENDINE

PIN HITTER | 6-1 | FRESHMAN
JACKSON, MISS. (JACKSON ACADEMY)

LAURENDINE'S HIGHLIGHTS:

CATEGORY	CAREER HIGH	OPPONENT/DATE
Kills	--	--
Attempts	--	--
Hitting Percentage (Min. 10 ATT.)	--	--
Assists	--	--
Digs	--	--
Blocks	--	--
Aces	--	--
Points	--	--

CATEGORY	SEASON HIGH	OPPONENT/DATE
Kills	--	--
Attempts	--	--
Hitting Percentage (Min. 10 ATT.)	--	--
Assists	--	--
Digs	--	--
Blocks	--	--
Aces	--	--
Points	--	--

GAME BY GAME

CAREER STATS