



2023 VOLLEYBALL MATCH NOTES

AUBURN ATHLETICS COMMUNICATIONS: 392 SOUTH DONAHUE DRIVE || AUBURN, AL 36830 || AUBURNTIGERS.COM || @AUBURNVB

2023 SCHEDULE/RESULTS

15-5 OVERALL | 5-4 SEC
8-3 HOME | 4-2 AWAY | 3-0 NEUTRAL

DATE	OPPONENT	TV	TIME/RESULT
Aug. 25	vs Coppin State!	SECN+	W, 3-1
Aug. 26	vs McNeese State!	SECN+	W, 3-0
Aug. 26	vs Jacksonville State!	SECN+	W, 3-0
Sept. 2	vs SMU@	N/A	W, 3-1
Sept. 3	at Florida State@	ACCN+	W, 3-1
Sept. 7	vs Middle Tennessee\$	SECN+	L, 1-3
Sept. 8	vs Charleston Southern\$	SECN+	W, 3-1
Sept. 9	vs Mercer\$	SECN+	W, 3-0
Sept. 14	at South Alabama%	ESPN+	W, 3-2
Sept. 15	vs UAB%	N/A	W, 3-1
Sept. 16	vs Samford%	N/A	W, 3-1
Sept. 22	vs #3 Florida*	SECN+	L, 2-3
Sept. 24	vs Ole Miss*	SECN+	W, 3-1
Sept. 27	at #14 Arkansas*	SEC Network	L, 0-3
Oct. 1	vs Georgia*	ESPN	W, 3-1
Oct. 6	at #9 Florida*	SECN+	W, 3-0
Oct. 8	at South Carolina*	ESPNU	W, 3-2
Oct. 13	at #10 Tennessee*	SECN+	L, 1-3
Oct. 20	vs Missouri*	SEC Network	L, 0-3
Oct. 22	vs South Carolina*	SECN+	W, 3-2
Oct. 27	at Georgia*	SECN+	6 p.m. CT
Oct. 29	at Alabama	SEC Network	11 a.m. CT
Nov. 5	at Texas A&M	SEC Network	3 p.m. CT
Nov. 8	vs Kentucky	SECN+	6:30 p.m. CT
Nov. 12	at Missouri	SECN+	3 p.m. CT
Nov. 15	at Mississippi State	SECN+	6 p.m. CT
Nov. 19	vs LSU	SECN+	2 p.m. CT
Nov. 22	vs Alabama	SECN+	6:30 p.m. CT
Nov. 24	vs Arkansas	SECN+	3 p.m. CT

BOLD indicates home contest | All time Central and subject to change
! - War Eagle Invite | @ - Seminole Invite | S - Tiger Invite | % - Alabama Showdown
* - Southeastern Conference Game | # - NCAA Tournament

AUBURN ATHLETICS COMMUNICATIONS

Office Phone 334-844-9800
Kirk Sampson Associate AD
sampska@auburn.edu
Thomas Hoffman Volleyball Contact
tgh0024@auburn.edu
C: 503-302-9592

FOLLOW ALONG

Web AuburnTigers.com
X @AuburnVB
Instagram @auburnvolleyball

MATCH

21

GEORGIA

Friday, Oct. 27 | 6 p.m. CT

Athens, Ga. | Stegemen Coliseum | SEC Network+



AUBURN

AVCA Coaches Poll _____ 24
2023 Record _____ 15-5 | 5-4 SEC
Head Coach _____ Brent Crouch
Career Record (Year) _____ 145-128 (10th)
Record at Auburn (Year) _____ 50-37 (4th)

GEORGIA

AVCA Coaches Poll _____ NR
2023 Record _____ 13-7 | 4-4 SEC
Head Coach _____ Tom Black
Career Record (Year) _____ 356-187 (19th)
Record at Georgia (Year) _____ 114-82 (7th)

Site _____ Athens, Georgia
Venue _____ Stegemen Coliseum
Live Stats _____ Statbroadcast
Broadcast Crew _____ SEC Network+
Series Record _____ Georgia leads, 39-24
First Meeting _____ 1975 Auburn 2, Georgia 1 (15-9, 9-15, 15-4)
Last Meeting _____ Oct. 1, 2023 Auburn 3, Georgia 1 (25-23, 25-23, 18-25, 25-20)
Last Auburn Win _____ Oct. 1, 2023 Auburn 3, Georgia 1 (25-23, 25-23, 18-25, 25-20)
Last South Carolina Win _____ Oct. 22, 2021 Georgia 3, Auburn 0 (25-14, 25-18, 25-23)

QUICK HITS

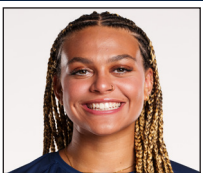
- Head coach Brent Crouch has enjoyed a bevy of success in rivalry matches on the Plains. Since his arrival in Auburn, Crouch is 4-1 versus Georgia and a perfect 4-0 against the Crimson Tide.
- Graduate Kyla Swanson has put up an absolute wall lately. The Wahoo, Nebraska native collected 18 blocks last weekend against Missouri and South Carolina. In the victory over the Gamecocks, Swanson rejected a career-high 11 USC attacks.
- Speaking of career-highs, Madison Scheer set a new best for kills (24) in the win over South Carolina. Already with a National Player of the Week award to her name, Scheer hit .333 on 50 swings to topple the Gamecocks in a five-set thriller.
- Not to be outdone, junior Paige Thibault stepped into the starting libero role and rose to the occasion. A strong point in a depleted back row for the Tigers, Thibault ran down a career-high 23 digs.
- There's no question Auburn is among the elite blocking teams in the nation. At 2.54 blocks per set, the Tigers rank third in the SEC and No. 31 in the country entering the weekend. Crouch's squad is also second in the conference with 198 total blocks.
- Senior setter Jackie Barrett continues to etch her name in Auburn Volleyball history. Now at 2,697 assists, Barrett ranks fifth all-time and sits. She needs 545 more to move past Mary Orndorff for fourth.
- Barrett has led an offense that is averaging a .246 hitting percentage. If the season ended today, the mark with would be a new school record for the Tigers.

AUBURN'S POTENTIAL STARTING SEVEN



SARAH MORTON

#2 • DS/L • SO. • 5-8



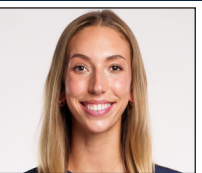
AKASHA ANDERSON

#3 • PH • SO. • 6-3



BELLA BELL

#5 • RS • SR. • 6-4



KYLA SWANSON

#6 • MB • SR. • 6-4



KENDAL KEMP

#8 • MB • SO. • 6-6



JACKIE BARRETT

#10 • S • SR. • 6-2



PAIGE THIBAUT

#13 • DS/L • JR. • 5-7

D/S:	3.23	K/S:	3.61	K/S:	2.40	K/S:	1.21	1.56	D/S:	2.38	D/S:	1.90	
A/S:	0.97	HIT%:	.174	HIT%:	.283	HIT%:	.239	HIT%:	.409	A/S:	9.41	A/S:	0.41
SA/S:	0.10	D/S:	2.15	D/S:	0.31	D/S:	0.18	D/S:	0.08	SA/S:	0.29	SA/S:	0.12
P/S:	0.13	B/S:	0.51	B/S:	0.79	B/S:	1.12	B/S:	1.31	P/S:	1.25	P/S:	0.14
		SA/S:	0.28	SA/S:	0.00	SA/S:	0.04	SA/S:	0.02				
		P/S:	4.16	P/S:	2.81	P/S:	1.86	P/S:	2.30				

K/S: kills per set • HIT%: hitting percentage • D/S: digs per set • B/S: blocks per set • A/S: assists per set • SA/S: aces per set • P/S: points per set



#1 MADISON SCHEER
So. | PH | 6-1



#2 SARAH MORTON
So. | L | 5-8



#3 AKASHA ANDERSON
So. | PH | 6-3



#4 FALLAN LANHAM
Jr. | L | 5-8



#5 BELLA BELL
Gr. | MB | 6-4



#6 KYLA SWANSON
Gr. | MB | 6-4



#7 PEYTON DUNN
R-So. | S | 5-11



#8 KENDAL KEMP
So. | MB | 6-6



#9 ZOE SLAUGHTER
So. | L | 5-7



#10 JACKIE BARRETT
Sr. | S | 6-2



#11 JORDAN SINNESS
Jr. | S | 5-9



#12 BEL ZIMMERMAN
So. | PH | 6-2



#13 PAIGE THIBAUT
Jr. | L | 5-7



#14 CHELSEY HARMON
Sr. | MB | 6-3



#17 CASSIDY TANTON
R-So. | PH | 6-0



#19 JASMINE OKEOMA
Fr. | MB | 6-3



#22 SYDNEY HANDEL
So. | L | 6-0



#22 LAKIN LAURENDINE
Fr. | PH | 6-1

#WarEagle



AuburnTigers.com

@AuburnVB | @AuburnTigers
@AuburnVBCoach



/AuburnVB
/AuburnTigers

TEAM SCHEDULE AND MEDIA AVAILABILITY >> WEEK OF OCT. 23 - 29

MONDAY October 23	TUESDAY October 24	WEDNESDAY October 25	THURSDAY October 26	FRIDAY October 27	SATURDAY October 28	SUNDAY October 29
OFF	PRACTICE: 3:45 p.m. - 6 p.m. SAC	PRACTICE: 3:45 p.m. - 6 p.m. SAC	TRAVEL	MATCH: 6 p.m. CT at Georgia Athens, GA	TRAVEL	MATCH: 11 a.m. CT at Alabama Tuscaloosa, AL
INTERVIEWS BY REQUEST	INTERVIEWS BY REQUEST	INTERVIEWS BY REQUEST	INTERVIEWS BY REQUEST	INTERVIEWS POST MATCH	INTERVIEWS BY REQUEST	INTERVIEWS POST MATCH

AUBURN ATHLETICS COMMUNICATIONS

QUICK FACTS

AUBURNTIGERS.COM

For updated game notes, statistics, safety protocols and latest information on Auburn volleyball and Auburn Athletics, visit AuburnTigers.com.

INTERVIEW POLICY

Coach Crouch, assistant coaches and student-athletes are available for interviews by contacting Thomas Hoffman in the communications office. All interviews during the week will be conducted via phone or ZOOM. Post-match interviews will be conducted in the media room at Auburn Arena following a brief cooling-off period.

CREDENTIALS

Anyone wishing to cover an Auburn volleyball match should contact Thomas Hoffman in the communications office at least 24 hours in advance to make arrangements.

MATCH DAY SERVICES

Printed copies of notes, flip cards and statistics will be available upon request. Digital copies will be emailed out prior to the match and will be available on AuburnTigers.com. Media members are permitted to bring their own printed materials. Stats will not printed between sets or after matches. Live stats will be provided during the match and final statistics will be emailed out and posted on AuburnTigers.com. All post-match interviews will be conducted in the media room. Wireless internet is available in the Arena; ask Thomas Hoffman for the password. Match highlights, photos and postgame interviews will be available on Imagen following matches.

PHOTO SERVICES

For photos of Auburn volleyball or any Olympic sports, contact Zach Bland at zdb007@auburn.edu.

COMMUNICATIONS STAFF

Thomas Hoffman Volleyball Contact
cell: 503-302-9592
email: tgh0024@auburn.edu

Kirk Sampson Associate AD
cell: 334-750-1385
email: sampska@auburn.edu

UNIVERSITY INFORMATION

City / Zip _____ Auburn, Ala. / 36831
 Founded _____ Oct. 1, 1856
 Enrollment _____ 30,737
 Nickname _____ Tigers
 Colors _____ Navy Blue & Burnt Orange
 Affiliation _____ NCAA Division I
 Conference _____ Southeastern Conference
 Home Court _____ Neville Arena (9,121)
 President _____ Dr. Chris Roberts
 Athletics Director _____ John Cohen
 Sport Administrator _____ Joy Vrbka (Florida, 2003)

TEAM INFORMATION

Letterwinners Returning/Lost _____ 12/0
 Starters Returning/Lost _____ 6+libero/0
 Newcomers _____ 6
 2022 Overall Record _____ 22-9
 2022 Conference Record/Finish _____ 10-8/6th

PROGRAM HISTORY

First Year of Volleyball _____ 1967
 _____ Program discontinued 1981; Reinstated 1986
 Seasons of Auburn Volleyball _____ 45th
 All-Time Overall Record _____ 706-703-4 (.501)
 in Neville Arena (Since 2013) _____ 76-62 (.535)
 Total Home Record _____ 248-215 (.531)
 All-Time SEC Record _____ 203-372 (.350)
 NCAA Tournament Appearances _____ 2/2010, 2022
 SEC Championships/Last _____ 1/Co-West Champions (1996)

STAFF INFORMATION

Head Coach _____ Brent Crouch (Texas A&M, '98 & '00; Oregon '06)
 Career Record _____ 145-128 (.514)/10th Season
 Record at Auburn _____ 50-37 (.523)/4th Season
 Assistant Coach/Recruiting Coordinator _____ Rachel Corbelli (2nd Season)
 Assistant Coach _____ Keith Smith (2nd Season)
 Assistant Coach _____ Jack Burton (1st Season)
 Technical Coordinator _____ Mackenna Basore (2nd Season)
 Director of Operations _____ Emily Houle (2nd Season)
 Strength & Conditioning _____ Bethany Gainey
 Athletic Trainer _____ Nate Warner
 Equipment Manager _____ Brian Maddox

ATHLETIC COMMUNICATIONS

Associate AD/Communications _____ Kirk Sampson
 Assistant Director/Volleyball Contact _____ Thomas Hoffman
 Email _____ tgh0024@auburn.edu
 Phone _____ 503-302-9592
 Mailing Address _____ Auburn Athletics Complex
 _____ 392 S. Donahue Drive
 Website _____ AuburnTigers.com

GAMEDAY EXPERIENCE: NEVILLE ARENA

>> Neville Arena is in its seventh season as home of Auburn volleyball. The Tigers are 75-62 since moving to the Arena in 2013. The facility seats approximately 9,121.



LAST TIME OUT VS GEORGIA

» Akasha Anderson snagged a match-high 17 kills while Madison Scheer added 14 of her own in a four-set win over the Bulldogs. Paige Thibault led the Tigers with 10 digs while Jackie Barrett directed an offense that hit .262. The victory marked the third straight against Georgia.

SCOUTING GEORGIA

» Even though Auburn handed the Bulldogs its third straight loss at the beginning of October, Georgia is riding a three-match winning streak, including an impressive sweep over a Texas A&M squad that's receiving votes in the AVCA top 25 Coaches Poll.

As a team, the Bulldogs rely heavily on forcing their opponents out of system from the service line. Entering the weekend, Georgia ranks second in the SEC in aces per set with 1.79. The mark is also No. 48 in the country.

Senior middle blocker Sophie Fischer is in elite company this season. The South Carolina native ranks third in the conference in blocks per set (1.30), ninth in hitting percentage (.326), fifth in kills per set (4.00), first in points per set (5.14) and fourth in aces (30).

Clara Bower is the one serving up the balls for Fischer to kill. The junior setter is averaging an even 10.00 assists per set, aiding Fischer's big season as well as outside hitting Kacie Evans, who's managing 3.37 kills per set herself.

AUBURN-GEORGIA SERIES

» Auburn enters the weekend with a 24-39 record against its rival to the east. However, Crouch has guided the Tigers to wins in four of the last five matches, including each of the last three. The last time Auburn played in Athens, the Tigers split a pair of matches played back-to-back in 2021.

THE CROUCH HISTORICAL SOCIETY

» Since his arrival on the Plains, head coach Brent Crouch has led the Tigers to a number of firsts:

- First top-25 ranking
- First top-10 win
- First win in Gainesville over Florida
- First win in College Station over Texas A&M
- First win in Columbia over Missouri
- Best start to a season in program history (14-0)
- Best start to SEC Play in program history (3-0)
- Most wins in a season in rally-scoring era (22)

AARP ELIGIBLE

» With his victory over South Carolina on Oct. 22, Brent Crouch reached the 50 win mark as an Auburn Tiger, becoming the fastest to do so in the rally-scoring era.

PLAYER TO WATCH: AKASHA ANDERSON

» The AVCA South Region Freshman of the Year was up to no good last season. This year, Anderson is averaging a team-high 3.61 kills per set.



SECOND SET MAGIC

» Auburn is 10-2 this season when winning the second set of matches. Over the last two years, Crouch's teams are 28-2 when claiming the second frame.

NO PLACE LIKE NEVILLE

» Auburn is now 27-17 at home under head coach Brent Crouch, including wins in 27 of its last 40 games at home. All-time Auburn is 76-62 in Neville.

NATIONWIDE AND ON OUR SIDE

» Following 33 kills .472 hitting with 53 attempts across wins over No. 9 Florida and South Carolina, sophomore Madison Scheer earned AVCA/ GameChanger National Player of the Week. It was the second such award for the Auburn Volleyball program. Rani Whitson earned the honor in 1996. For Crouch, it was also the second player in his head-coaching career (Khalia Lanier, 2019).

RANK YOU VERY MUCH

» Welcome to the top 25 Auburn Volleyball. After wins over SMU and Florida State, the Tigers earned the program's first-ever ranking at No. 25.

A week later, Auburn moved up to No. 24 following a 2-1 showing at the Tiger Invitational. Auburn is currently riding a eight-week streak inside the top-25.

MR. 300

» Three hundred appears to be the perfect number for head coach Brent Crouch. All-time, when his teams manage a .300 hitting percentage, he carries an undefeated record of 36-0, including an 16-0 mark at Auburn. The Tigers have accomplished the feat seven different times already in 2023.

THE ZIMMERMAN ZING

» Sophomore Bel Zimmerman has been directly responsible for some of Auburn's largest runs this season because of her stellar serving. The 8-1 start against Mercer featured seven Zimmerman serves in a row. The 25-10 set win over Ole Miss saw Zimmerman step to the service line 10 times in a row. Auburn fans also won't forget her clutch ace at the end of Set No. 4 at South Alabama that send the match into a decisive fifth set. Zimmerman's 22 aces this season are more than triple her production a season ago.

STAYING ACTIVE

» Bella Bell, Kendal Kemp, Jackie Barrett and Akasha Anderson are all amongst the SEC's top active career leaders. Bell (.338) and Kemp (.347) are both inside the top five in hitting percentage. Kemp's 1.42 blocks per set is currently second in the conference. Anderson ranks in the top 10 in both kills per set (3.56) and points per set

SEC STANDINGS & SCHEDULE

2023 STANDINGS

	CONF	OVERALL	HOME	ROAD	NTRL	STRK
Arkansas	8-0	18-2	10-2	4-0	4-0	-
Kentucky	7-1	9-7	3-2	5-5	1-0	-
Tennessee	7-2	16-3	8-2	7-1	1-0	-
Texas A&M	6-3	14-5	5-4	6-1	3-0	-
Florida	5-3	13-4	6-3	6-1	1-0	-
Missouri	5-4	13-7	7-2	5-4	1-1	-
Auburn	4-4	14-5	7-3	4-2	3-0	-
Georgia	3-4	12-7	7-2	3-3	2-2	-
LSU	2-5	7-10	4-4	0-5	3-1	-
Mississippi St	2-6	9-9	7-3	0-5	2-1	-
South Carolina	2-6	8-9	6-3	1-6	1-0	-
Ole Miss	2-7	8-12	5-2	1-7	2-3	-
Alabama	0-8	10-9	4-3	3-5	3-1	-

THIS WEEK IN THE SEC...

Wednesday, Oct. 18

Florida 3, Ole Miss 0
Tennessee 3, Missouri 1

Friday, Oct. 20

Arkansas at South Carolina, 7 p.m.
Mississippi St. at Alabama, 7 p.m.
Auburn at Georgia, 7 p.m.
Kentucky at LSU, 9 p.m.

Sunday, Oct. 22

Auburn at Alabama, Noon

Arkansas at Florida, 1 p.m.
Texas A&M at Tennessee, 2 p.m.
South Carolina at LSU, 2 p.m.
Mississippi St. at Georgia, 2 p.m.
Missouri at Ole Miss, 2:30 p.m.

*All times ET

2023 NCAA RPI REPORT

RK	TEAM	RECORD	AU RESULT
9	Arkansas	18-3	L, 0-3
10	Arkansas		
	Florida	13-4	L, 2-3
	Florida		W, 3-0
14	Tennessee	16-3	L, 1-3
16	Kentucky		
22	SMU	16-6	W, 3-1
26	Texas A&M	14-6	
30	Missouri	13-7	L, 0-3
	Missouri		
33	Florida St	15-7	W, 3-1
53	Mississippi St		
55	Georgia	13-7	W, 3-1
	Georgia		
61	LSU		
73	South Carolina	8-10	W, 3-2
	South Carolina		W, 3-2
78	South Alabama	17-5	W, 3-2
108	Coppin St	18-3	W, 3-1
142	Middle Tenn.	16-6	L, 1-3
149	Ole Miss	8-13	W, 3-1
163	Mercer	12-9	W, 3-0
193	Alabama		
	Alabama		
215	Samford	10-12	W, 3-1
229	Jacksonville St	5-15	W, 3-0
234	McNeese	10-14	W, 3-0
258	UAB	3-20	W, 3-1
256	Charleston So.	8-15	W, 3-1

AUBURN OPPONENTS ONLY

AVCA COACHES POLL

RK	TEAM	POINTS	RECORD	PREV.
1	Nebraska [63]	1,599	19-0	2
2	Wisconsin [1]	1,533	18-1	1
3	Stanford	1,476	17-2	3
4	Louisville	1,379	18-2	5
5	Texas	1,333	14-3	6
6	Washington State	1,241	18-3	4
7	Pittsburgh	1,218	18-3	7
8	BYU	1,143	18-3	9
9	Oregon	1,125	17-4	8
10	Arkansas	983	18-3	10
11	Georgia Tech	898	17-3	13
12	Tennessee	815	16-3	12
13	Penn State	783	14-5	11
14	Kansas	694	14-4	14
15	Kentucky	629	10-7	20
16	Purdue	588	13-6	19
17	Creighton	581	17-4	15
18	Dayton	542	22-2	16
19	Florida	521	13-4	17-T
20	Baylor	429	12-7	21
21	Arizona State	338	19-3	17-T
22	Houston	271	11-7	22
23	Western Kentucky	219	20-4	25
24	Auburn	94	15-5	23
25	UC Santa Barbara	76	20-2	NR

Others receiving votes and listed on two or more ballots: Minnesota 70; UCF 63; Marquette 31; Indiana 30; Southern California 27; Iowa State 16; Ohio State 16; James Madison 5; Texas A&M 3

INSIDE THE MATCH-UPS

GEORGIA 24-39 (.371)

12-16 H • 8-19 A • 4-4 N

YEAR	SITE	RESULT	MATCH SCORE
1975	NEUTRAL	W	2-1
1975	NEUTRAL	L	1-2
1978	HOME	W	2-0
1978	AWAY	L	1-2
1978	NEUTRAL	W	2-0
1979	AWAY	W	2-1
1979	NEUTRAL	L	1-2
1987	HOME	L	1-3
1988	AWAY	L	2-3
1988	HOME	L	1-3
1989	NEUTRAL	L	0-3
1990	HOME	L	0-3
1990	HOME	L	1-3
1990	AWAY	L	2-3
1991	AWAY	L	0-3
1992	HOME	L	1-3
1992	AWAY	L	1-3
1993	AWAY	L	0-3
1994	HOME	L	0-3
1995	AWAY	L	1-3
1995	NEUTRAL	W	3-1
1996	HOME	W	3-1
1997	AWAY	L	0-3
1997	NEUTRAL	L	1-3
1998	AWAY	W	3-1
1998	NEUTRAL	W	3-2
1999	HOME	W	3-1
2000	AWAY	L	2-3
2001	HOME	L	0-3
2002	HOME	L	0-3
2003	AWAY	L	1-3

(4.07). Barrett's 9.05 assists per set is seventh and Morton ranks sixth in digs per set (3.64).

BLOCKERS BEWARE

» Thanks to steady passing from Sarah Morton and the back row, the Auburn attack has managed to be one of the least-blocked teams in the SEC. On average Auburn allows just 1.60 blocks per set, the best in the conference.

500 CLUB

» Sophomore Akasha Anderson has eclipsed 500 career kills in her young career, doing so in just 37 matches.

Sophomore libero Sarah Morton earned her 500th dig of her young career against Florida State.

Eureka, Missouri native Madison Scheer is also barreling toward her 500th kill. The sophomore sits at 497 entering the weekend.

SEEING DOUBLE

» Jackie Barrett posted Auburn's first double-doubles of the season, piling up 36 assists and 14 digs against SMU. A day later, the Highland, California native grabbed 44 assists with 11 digs. Barrett posted a team-high 12 double-doubles in 2022. Barret owns a team-leading 11 double-doubles in 2023.

Speaking of double-doubles, Bel Zimmerman earned the feat for the first time in her career with 17 kills and 16 digs against Charleston Southern. Zimmerman added her second and third double-double against UAB and Samford during the Alabama Showdown.

KEMP ROOFING CO.

» After setting records in 2022, sophomore middle blocker Kendal Kemp is back to her old tricks this season. In eight matches this season, the Eagan Minnesota native is averaging 1.38 blocks per set. The mark is second in the SEC and No. 25 in nation.

Kemp has been equally as effective offensively. The Minnesota native is currently swinging at a career-high .421 hitting percentage.

CAN YOU DIG IT?

» In the first match of the season, libero Sarah Morton is already making waves. With 24 digs against Coppin State, the Muenster, Indiana native posted the third-most digs in a four-set match so far in the SEC this season.

STREAKING

» In each of Auburn's first five matches this season, the Tigers managed to hit north of .300, marking the only such

streak in the 25-point rally-scoring era.

SOAKING UP SUMMER HEAT

» August has been good to Brent Crouch over the years. In nine years of coaching, Crouch is 22-3 in the month of August, including a 9-0 mark at Auburn.

QUEEN KEMP

» Minnesota native Kendal Kemp announced herself to the collegiate volleyball world in 2022. Kemp set single-season program records in solo blocks (26), block assists (154), total blocks (180) and blocks per set (1.48). Earning AVCA South Region Honorable Mention, Kemp totals were also second in the Southeastern Conference and her 180 total blocks were the second-most in the country.

BLOCK PARTY

» Speaking of blocks, Auburn's team totals were nothing short of brilliant. In the rally-scoring era, the 2022 Tiger team set single-season records in block assists (520), total blocks (312) and blocks per set (2.56).

THE JACK BURTON

» NCAA rules have allowed for an additional coach for volleyball programs. Crouch has added Jack Burton to his staff.

Following a prolific playing career at Grand Canyon University, Burton stopped over in Dayton for two seasons and most recently helped FGCU to a 26-7 record and the school's third trip to the NCAA Tournament.

Including his stop at Florida Gulf Coast, Burton owns a 16-3 record in the Sunshine State.

AUBURN PICKED 7th IN PRESEASON POLL

» After a sixth-place finish in 2022, the Auburn Tigers have been selected to finish seventh in the 2023 preseason poll.

NEW KIDS ON THE BLOCK

» All 12 student-athletes from a year ago return to the Auburn Volleyball roster. Head coach Brent Crouch added six new faces to bolster the squad in 2023. Four transfers (Bella Bell, Kyla Swanson, Peyton Dunn and Paige Thibault) make their debut in the Orange and Blue this season. Freshmen Jasmin Okeoma and Lakin Laurendine have also found a new home on the Plains.

PLAYER TO WATCH: MADISON SCHEER

» Sophomore outside hitter Madison Scheer has been brilliant this season for the Tigers. The Eureka, Missouri product is averaging a career-best 3.13 kills per set at a .257 hitting percentage.



INSIDE THE MATCH-UPS CONT...

2003	HOME	L	0-3
2004	AWAY	L	0-3
2005	HOME	L	1-3
2006	AWAY	W	3-2
2006	HOME	L	1-3
2007	AWAY	L	0-3
2007	HOME	L	1-3
2008	HOME	L	2-3
2008	AWAY	L	1-3
2009	AWAY	L	2-3
2009	HOME	L	2-3
2010	HOME	W	3-0
2010	AWAY	W	3-2
2011	AWAY	L	1-3
2011	HOME	W	3-0
2012	AWAY	L	0-3
2012	HOME	W	3-1
2013	AWAY	L	1-3
2014	HOME	W	3-1
2014	AWAY	L	2-3
2015	HOME	W	3-0
2016	AWAY	W	3-1
2016	HOME	W	3-0
2017	AWAY	W	3-0
2018	HOME	L	2-3
2018	AWAY	W	3-0
2019	HOME	L	1-3
2021	AWAY	W	3-0
2021	AWAY	L	0-3
2022	HOME	W	3-1
2022	HOME	W	3-2

2023 HOME W 3-2

HEAD COACH BRENT CROUCH

QUICK FACTS

College ___ Texas A&M ('98, '00)
 ___ Oregon ('06)
 Wife ___ Marcy
 Sons ___ Jonathan and William

COACHING RECORD

Head Coaching Career _ 10th Season
 Career Record ___ 145-128
 NCAA Appearances ___ 3

COACHING CAPSULE

2020-Pr. Auburn 50-37
 2018-19 Southern California 40-25
 2014-17 Portland 55-66

YEAR-BY-YEAR RESULTS

2023	Auburn	15-5
2022	Auburn	22-9
2021	Auburn	13-15
2020	Auburn	0-8
2019	USC	18-14
2018	USC	22-11
2017	Portland	15-15
2016	Portland	17-13
2015	Portland	16-15
2014	Portland	7-23



Brent Crouch begins his fourth season at the helm of the Auburn Volleyball program in 2023. Crouch and the Tigers look to reset the bar after a record-breaking 2022 campaign that saw success on the Plains unseen for more than a decade.

Last season, Auburn earned a berth into the NCAA Tournament for just the second time in school history and the first since 2010. A first-round victory over host and No. 14 Creighton provided the program with its second postseason win and first triumph over a nationally-ranked opponent since 2017.

The feat came on the heels of a historic season that saw the Tigers begin the season with a record mark of 14-0 and a record start to SEC play at 3-0. The 22 total victories on the season were the most in the 25-point rally-scoring era and the most since 1998. The Tigers also picked up its first win in Columbia, Missouri.

Under Crouch's guidance, Akasha Anderson, Madison Scheer and Kendal Kemp each garnered All-Conference Honors. Anderson and Kemp also picked up AVCA postseason accolades with Anderson grabbing South Region Freshman of the Year and All-Region. Meanwhile, Kemp solidified Honorable Mention. Auburn Volleyball student-athletes also picked up a record 10 SEC weekly awards.

Crouch wasn't left out of the postseason awards season, securing AVCA South Region Coach of the Year, the first such award for the Tiger Volleyball program.

Fans on the Plains saw Auburn become one of the most potent blocking teams in the Southeastern Conference in 2022. Crouch's guidance helped the Tigers break records for most block assists in a single season (520), total blocks (312.0) and tie for the most blocks in a four-set match (17 vs. Troy).

The Orange and Blue wall's foundation was laid by then-freshman Kendal Kemp. The Egan, Minnesota product shattered single-season records for solo blocks (26), block assists (154), total blocks (180) and blocks per set (1.48).

During his first full season leading the Auburn program in 2021, Crouch's leadership had an immediate effect. The Tigers opened the season winning 17 consecutive sets to tie the program record for most sweeps to begin a season (5), matching the 1974 Auburn team. Crouch led the team to a 13-15 record with a 5-13 mark in the SEC, picking up a season sweep over Alabama, the first Auburn win over Missouri since 1996 and the program's first victory in College State with a win over Texas A&M.

Crouch's expertise led to six total SEC weekly honors, splitting three on offense and three on defense. Individually, the Tigers also set nine individual records during the 2021 campaign.

Individually, it was Rebekah Rath and Tatum Shipies who benefited the most from Crouch's development. Shipies led the SEC in blocking and set records in blocks, block assists and blocks per set. Meanwhile, Rath led the SEC in five offensive categories, setting records in kills and kills per set.

Crouch made his Auburn coaching debut against No. 4 Florida on Oct. 21, 2020, to open the shortened fall volleyball schedule. Crouch led the Tigers on the court for eight total matches and his impact on the Plains was noticeable almost immediately, tying the record for most blocks in a four-set with 17 at South Carolina.

Prior to Auburn, Crouch served as the head coach at the University of South California, compiling a 40-25 record. He would lead the Trojans to the second round of the NCAA Tournament in both years in Los Angeles. In 2018, Crouch's Trojans earned the No. 11 overall seed in the Tournament and the No. 21 ranking in the final AVCA Coaches poll of the year.

Before leading the Trojans, Crouch spent four seasons as head coach of the University of Portland. The 2016 West Coast Conference Coach of the Year inherited a winless program and guided the Pilots to its winningest season in 25 years just two seasons later. His 48 victories in his final three years in the Rose City was the best three-season total since 1984-86. He put Portland on the WCC map, earning wins over top-10, top-15 and top-25 opponents while in charge of the Pilots. Crouch coached three All-WCC First Team selections, a WCC All-Freshman Team honoree and three WCC All-Academic First Teamers. He also established Beach Volleyball as a varsity sport at Portland in 2016.

Crouch arrived at Portland after four seasons (2010-13) at Saint Mary's College, where he was an assistant with the indoor program and head coach of the beach team.

Brent and his wife Marcy have two sons, Jonathan and William.

2023 AUBURN VOLLEYBALL ROSTER

No.	Name	Year	Pos.	Ht.	Hometown (High School/Previous School)
1	MADISON SCHEER	SO.	PH	6-1	EUREKA, MO. (EUREKA)
2	SARAH MORTON	SO.	L	5-7	MUNSTER, IND. (MUNSTER)
3	AKASHA ANDERSON	SO.	PH	6-3	RESTON, VA. (HERNDON)
4	FALLAN LANHAM	JR.	L	5-8	LOUISVILLE, KY. (MERCY ACADEMY)
5	BELLA BELL	SR.	RS	6-4	BLYTHEWOOD, S.C. (KENTUCKY)
6	KYLA SWANSON	GR.	MB	6-4	WAHOO, NEB. (ILLINOIS)
7	PEYTON DUNN	R-SO.	S	5-11	DECATUR, TEXAS (OKLAHOMA)
8	KENDAL KEMP	SO.	MB	6-6	EAGAN, MINN. (EAGAN)
9	ZOE SLAUGHTER	SO.	L	5-7	HONOLULU, HAWAII (MOANALUA)
10	JACKIE BARRETT	SR.	S	6-2	HIGHLAND, CALIF. (CITRUS VALLEY)
11	JORDAN SINNESS	JR.	S	5-9	SEBRING, FLA. (SEBRING)
12	BEL ZIMMERMAN	SO.	PH	6-2	LIBERTY, MO. (LIBERTY NORTH)
13	PAIGE THIBAUT	JR.	L	5-6	WATERTOWN, MINN. (FIU)
14	CHELSEY HARMON	SR.	MB	6-3	PUYALLUP, WASH. (PORTLAND)
17	CASSIDY TANTON	R-SO.	PH	6-0	STONEVILLE, N.C. (DALTON MCMICHAEL)
19	JASMINE OKEOMA	FR.	MB	6-3	WOODBIDGE, VA. (FOREST PARK)
22	SYDNEY HANDEL	SO.	PH	6-0	LEE'S SUMMIT, MO. (LEE'S SUMMIT WEST)
25	LAKIN LAURENDINE	FR.	PH	6-1	JACKSON, MISS. (JACKSON ACADEMY)

HEAD COACH | BRENT CROUCH (4TH SEASON)

ASSISTANT COACH | KEITH SMITH (2ND SEASON)

ASSISTANT COACH/RECRUITING COORDINATOR | RACHEL CORBELLI (2ND SEASON)

ASSISTANT COACH | JACK BURTON (1ST SEASON)

PRONUNCIATION GUIDE:

MADISON SCHEER – SHEER FALLAN LANHAM – FAL(LIKE PAL)-AN LAN-EM SYDNEY HANDEL – HON-DELL
 PAIGE THIBAUT – THEE-BALT JASMINE OKEOMA – OKAY-AH-MUH LAKIN LAURENDINE – LAY-KIN LOR-EN-DEAN
 RACHEL CORBELLI – CORE-BELL-EE

INSIDE THE 2023 NUMBERS



CATEGORY	AUBURN	GEORGIA
Kills	988	936
Per Set	12.7	12.8
Errors	356	378
Total Attacks	2567	2380
Hitting Pct.	.246	.234
Assists	890	875
Per Set	11.4	12.0
Service Aces	112	131
Per Set	1.4	1.8
Service Errors	241	215
Reception Errors	101	89
Per Set	1.3	1.2
Digs	980	947
Per Set	12.6	13.0
Solo Blocks	24	27
Block Assists	348	279
Total Blocks	198.0	166.5
Per Set	2.5	2.3

WEEKLY AWARDS

SEC Weekly Awards

10/9 - Madison Scheer (SEC Overall POTW/Offensive POW)

National Weekly Awards

10/10 - Madison Scheer (AVCA National Player of the Week)

2023 INDIVIDUAL HIGHS BY SET

THREE SETS

HITTING PERCENTAGE (MIN. 12 KILLS) _____ .667, Madison Scheer 47, at Florida (Oct. 6)
 KILLS _____ 18, Akasha Anderson 47, at Florida (Oct. 6)
 TOTAL ATTEMPTS _____ 35, Akasha Anderson vs McNeese (Aug. 26)
 ASSISTS _____ 37, Jackie Barrett 47, at Florida (Oct. 6)
 DIGS _____ 11, Fallan Lanham vs Jacksonville St. (Aug. 26)
 ACES _____ 5, Jackie Barrett vs Mercer, Sept. 9
 BLOCKS _____ 7, 2 times (last Kyla Swanson vs Missouri Oct. 20)

FOUR SETS

HITTING PERCENTAGE (MIN. 12 KILLS) _____ .526, Kendal Kemp vs Charleston Southern (Sept. 8)
 KILLS _____ 20, Akasha Anderson vs Ole Miss (Sept. 24)
 TOTAL ATTEMPTS _____ 60, Akasha Anderson vs Ole Miss (Sept. 24)
 ASSISTS _____ 46, Jackie Barrett vs Samford (Sept. 16)
 DIGS _____ 24, Sarah Morton vs Coppin St. (Aug. 25)
 ACES _____ 4, Chelsey Harmon vs Charleston Southern (Sept. 8)
 BLOCKS _____ 10, Kendal Kemp vs UAB (Sept. 15)

FIVE SETS

HITTING PERCENTAGE (MIN. 12 KILLS) _____ .371, Madison Scheer 56, at South Carolina (Oct. 8)
 KILLS _____ 26, Akasha Anderson at South Alabama (Sept. 14)
 TOTAL ATTEMPTS _____ 69, Akasha Anderson at South Alabama (Sept. 14)
 ASSISTS _____ 48, Jackie Barrett at South Alabama (Sept. 14)
 DIGS _____ 29, Zoe Slaughter at South Alabama (Sept. 14)
 ACES _____ 5, Jackie Barrett at South Alabama (Sept. 14)
 BLOCKS _____ 11, Kyla Swanson 11, vs South Carolina (Oct. 22)

2023 TEAM HIGHS BY SET

THREE SETS

HITTING PERCENTAGE (MIN. 12 KILLS) _____ .395, vs Jacksonville St. (Aug. 26)
 KILLS _____ 47, at Florida (Oct. 6)
 TOTAL ATTEMPTS _____ 102, vs McNeese (Aug. 26)
 ASSISTS _____ 43, at Florida (Oct. 6)
 DIGS _____ 37, vs Missouri (Oct. 20)
 ACES _____ 9, vs Mercer (Sept. 9)
 BLOCKS _____ 11.0, vs Mercer (Sept. 9)

FOUR SETS

HITTING PERCENTAGE (MIN. 12 KILLS) _____ .386, vs Samford (Sept. 16)
 KILLS _____ 62, at Florida St. (Sept. 3)
 TOTAL ATTEMPTS _____ 166, vs Ole Miss (Sept. 24)
 ASSISTS _____ 54, 2 times (last vs Samford Sept. 16)
 DIGS _____ 74, vs Ole Miss (Sept. 24)
 ACES _____ 7, vs Charleston Southern (Sept. 8)
 BLOCKS _____ 19.0, vs UAB (Sept. 15)

FIVE SETS

HITTING PERCENTAGE (MIN. 12 KILLS) _____ .196, vs Florida (Sept. 22)
 KILLS _____ 60, at South Alabama (Sept. 14)
 TOTAL ATTEMPTS _____ 178, at South Alabama (Sept. 14)
 ASSISTS _____ 57, vs South Carolina (Oct. 22)
 DIGS _____ 81, at South Alabama (Sept. 14)
 ACES _____ 14, at South Alabama (Sept. 14)
 BLOCKS _____ 17.0, 56, at South Carolina (Oct. 8)

THE LAST TIME AUBURN...

Won in three sets _____ Oct. 6, 2023 at #9 Florida (25-23, 25-20, 25-17)
Won in four sets _____ Oct. 1, 2023 vs Georgia (25-23, 25-23, 18-25, 25-20)
Won in five sets _____ Oct. 22, 2023 vs South Carolina (25-22, 19-25, 25-23, 24-26, 17-15)
Lost in three sets _____ Oct. 20, 2023 vs Missouri (23-25, 21-25, 18-25)
Lost in four sets _____ Oct. 13, 2023 vs #10 Tennessee (25-19, 21-25, 25-21, 25-17)
Lost in five sets _____ Sept. 22, 2023 vs Florida (20-25, 26-24, 24-26, 25-19, 17-15)
Lost first set in a win _____ Sept. 24, 2023 vs Ole Miss (21-25, 25-21, 25-10, 27-25)
Won first set in a loss _____ Sept. 22, 2023 vs Florida (20-25, 26-24, 24-26, 25-19, 17-15)
Lost first two sets in a win _____ Oct. 15, 2022 at Missouri (21-25, 21-25, 25-17, 25-17, 15-12)
Won first two sets in a loss _____ Oct. 10, 2021 at Arkansas (25-20, 25-23, 15-25, 17-25, 7-15)
Beat a ranked opponent _____ Oct. 6, 2023 at #9 Florida (25-23, 25-20, 25-17)
Hit .300-.399 in a match _____ Oct. 6, 2023 at #9 Florida (.387)
Hit .400-.499 in a match _____ Sept. 6, 2022 vs Alabama A&M (.400)
Hit .500 or better in a match _____ Oct. 18, 1998 at Ole Miss (.514)
Held opponent to .000-.100 in a match _____ Aug. 26, 2023 vs McNeese (.097)
Held opponent to a negative hitting percentage _____ Sept. 9, 2023 vs Mercer (-.053)
Had 70-79 kills in a match _____ Oct. 26, 2018 vs. Ole Miss (77)
Had 80+ kills in a match _____ Sept. 17, 2006 at Georgia (84)
Had 80-99 digs in a match _____ Sept. 14, 2022 at South Alabama (81)
Had 100+ digs in a match _____ Sept. 17, 2021 vs. Nicholls (105)
Had 15+ blocks in a match _____ Oct. 22, 2023 vs South Carolina (16.0)
Had 10+ service aces in a match _____ Sept. 14, 2023 at South Alabama (14)
Had a player(s) with 20-24 kills in a match _____ Oct. 22, 2023 Madison Scheer vs South Carolina (24)
Had a player(s) with 25-29 kills in a match _____ Sept. 14, 2023, Akasha Anderson at South Ala. (26)
Had a player(s) with 30+ kills in a match _____ Oct. 8, 2004, Ashlee Johns vs. Arkansas (30)
Had a player(s) with 10+ blocks in a match _____ Oct. 22, 2023 Kyla Swanson vs South Carolina (11)
Had a player(s) with 25-29 digs in a match _____ Sept. 14, 2023, Zoe Slaughter at South Ala. (29)
Had a player(s) with 30+ digs in a match _____ Oct. 17, 2021, Bella Rosenthal vs. Missouri(33)
Had a player(s) with 50+ assists in a match _____ Oct. 9, 2022 Jackie Barrett vs Georgia (51)
Had a player(s) with 60+ assists in a match _____ Oct. 5, 2022, Jackie Barrett at LSU (60)
Had a player(s) with 5+ aces in a match _____ Sept. 14, 2023, Jackie Barrett at South Ala. (5)

AUBURN DOUBLE-DOUBLES IN 2023

PLAYER	OPPONENT (SETS)	DATE	STATS
Jackie Barrett (11)	vs SMU (4)	Sept. 2	36 assists, 14 digs
	at Florida St. (4)	Sept. 3	44 assists, 11 digs
	vs MTSU (4)	Sept. 7	39 assists, 10 digs
	vs Charleston So. (4)	Sept. 8	41 assists, 13 digs
	at South Alabama (5)	Sept. 14	48 assists, 11 digs
	vs #3 Florida (5)	Sept. 22	40 assists, 12 digs
	vs Ole Miss (4)	Sept. 24	42 assists, 17 digs
	at South Carolina (5)	Oct. 8	46 assists, 12 digs
	at #10 Tennessee (4)	Oct. 13	31 assists, 11 digs
	vs Missouri (3)	Oct. 20	27 assists, 10 digs
	vs South Carolina (5)	Oct. 22	46 assists, 10 digs
Akasha Anderson (5)	at South Alabama (5)	Sept. 14	26 kills, 11 digs
	vs UAB (4)	Sept. 15	11 kills, 11 digs
	vs #3 Florida (5)	Sept. 22	18 kills, 10 digs
	at South Carolina (5)	Oct. 8	14 kills, 15 digs
	vs South Carolina (5)	Oct. 22	11 kills, 14 digs
Bel Zimmerman (3)	vs Charleston So. (4)	Sept. 8	17 kills, 16 digs
	vs UAB (4)	Sept. 15	16 kills, 12 digs
	vs Samford (4)	Sept. 16	15 kills, 11 digs

AUBURN'S 2023 RECORD WHEN...

OVERALL	15-5
SEC	5-4
NON-CONFERENCE	10-1
RANKED OPPONENTS	1-3
HOME	8-3
AWAY	4-2
NEUTRAL	3-0
BY SETS	
THREE SETS	4-2
FOUR SETS	8-2
FIVE SETS	3-1
WON FIRST SET	12-2
LOST FIRST SET	3-3
WON SECOND SET	10-2
LOST SECOND SET	5-3
SPLIT FIRST TWO SETS	8-2
WON FIRST TWO SETS	7-0
LOST FIRST TWO SETS	0-2
SITUATIONAL	
MORE KILLS THAN OPPONENT	11-0
FEWER KILLS THAN OPPONENT	3-5
KILLS ARE TIED	1-0
MORE DIGS THAN OPPONENT	5-0
FEWER DIGS THAN OPPONENT	9-5
DIGS ARE TIED	1-0
MORE ACES THAN OPPONENT	10-1
FEWER ACES THAN OPPONENT	4-4
ACES ARE TIED	1-0
HIGHER HITTING PERCENTAGE THAN OPPONENT	14-0
LOWER HITTING PERCENTAGE THAN OPPONENT	1-5
HITTING PERCENTAGE TIED	0-0
HITTING PERCENTAGE	
.400 OR ABOVE	0-0
.300-.399	8-0
.200-.299	3-1
.100-.199	4-3
.000-.099	0-0
NEGATIVE	0-1
OPPONENTS' HITTING PERCENTAGE	
.400 OR ABOVE	0-1
.300-.399	1-0
.200-.299	5-4
.100-.199	6-0
.000-.099	2-0
NEGATIVE	1-0
BY DAY	
MONDAY	0-0
TUESDAY	0-0
WEDNESDAY	0-1
THURSDAY	1-1
FRIDAY	4-3
SATURDAY	5-0
SUNDAY	5-0
DAY MATCHES (FIRST SERVE BEFORE 6 P.M.)	9-0
NIGHT MATCHES (FIRST SERVE AFTER 6 P.M.)	6-5
BY MONTH	
AUGUST	3-0
SEPTEMBER	8-3
OCTOBER	4-2
NOVEMBER	0-0
DECEMBER	0-0
JERSEY COLOR	
NAVY w/POWER STRIPE	1-0
NAVY SOLID	0-0
NAVY SLEEVELESS	4-2
ORANGE w/POWER STRIPE	5-2
ORANGE SOLID	4-0
PINK	1-1

2023 AUBURN MATCH-BY-MATCH STARTERS

DATE	OPPONENT	RESULT	OUTSIDE	MIDDLE	RIGHT SIDE/DS	OUTSIDE/DS	MIDDLE	LIBERO	SETTER
Aug. 25	vs Coppin State	W, 3-1	Akasha Anderson	Kendal Kemp	Bella Bell	Paige Thibault	Kyla Swanson	Sarah Morton	Peyton Dunn
Aug. 26	vs McNeese	W, 3-0	Akasha Anderson	Kendal Kemp	Bella Bell	Paige Thibault	Kyla Swanson	Sarah Morton	Jackie Barrett
Aug. 26	vs Jacksonville State	W, 3-0	Akasha Anderson	Kendal Kemp	Bella Bell	Zoe Slaughter	Kyla Swanson	Sarah Morton	Jackie Barrett
Sept. 2	vs SMU	W, 3-1	Akasha Anderson	Kendal Kemp	Bella Bell	Zoe Slaughter	Kyla Swanson	Sarah Morton	Jackie Barrett
Sept. 3	at Florida State	W, 3-1	Akasha Anderson	Kendal Kemp	Bella Bell	Zoe Slaughter	Kyla Swanson	Sarah Morton	Jackie Barrett
Sept. 7	vs Middle Tennessee	L, 1-3	Bel Zimmerman	Kendal Kemp	Bella Bell	Zoe Slaughter	Kyla Swanson	Sarah Morton	Jackie Barrett
Sept. 8	vs Charleston Southern	W, 3-1	Madison Scheer	Kendal Kemp	Bel Zimmerman	Fallan Lanham	Chelsey Harmon	Sarah Morton	Jackie Barrett
Sept. 9	vs Mercer	W, 3-0	Bel Zimmerman	Kendal Kemp	Zoe Slaughter	Fallan Lanham	Chelsey Harmon	Sarah Morton	Jackie Barrett
Sept. 14	at South Alabama	W, 3-2	Akasha Anderson	Kendal Kemp	Bel Zimmerman	Fallan Lanham	Kyla Swanson	Zoe Slaughter	Jackie Barrett
Sept. 15	vs UAB	W, 3-1	Akasha Anderson	Kendal Kemp	Bel Zimmerman	Paige Thibault	Kyla Swanson	Zoe Slaughter	Jackie Barrett
Sept. 16	vs Samford	W, 3-1	Akasha Anderson	Kendal Kemp	Bel Zimmerman	Madison Scheer	Kyla Swanson	Zoe Slaughter	Jackie Barrett
Sept. 22	vs #3 Florida	L, 2-3	Akasha Anderson	Kyla Swanson	Bella Bell	Paige Thibault	Chelsey Harmon	Sarah Morton	Jackie Barrett
Sept. 24	vs Ole Miss	W, 3-1	Akasha Anderson	Kyla Swanson	Bella Bell	Paige Thibault	Chelsey Harmon	Sarah Morton	Jackie Barrett
Sept. 27	at #14 Arkansas	L, 0-3	Akasha Anderson	Kyla Swanson	Bella Bell	Paige Thibault	Chelsey Harmon	Sarah Morton	Jackie Barrett
Oct. 1	vs Georgia	W, 3-1	Akasha Anderson	Kyla Swanson	Bel Zimmerman	Paige Thibault	Kendal Kemp	Sarah Morton	Jackie Barrett
Oct. 6	at #9 Florida	W, 3-0	Akasha Anderson	Kyla Swanson	Bel Zimmerman	Paige Thibault	Kendal Kemp	Sarah Morton	Jackie Barrett
Oct. 8	at South Carolina	W, 3-2	Akasha Anderson	Kyla Swanson	Bel Zimmerman	Paige Thibault	Kendal Kemp	Sarah Morton	Jackie Barrett
Oct. 13	at #10 Tennessee	L, 1-3	Akasha Anderson	Chelsey Harmon	Bel Zimmerman	Paige Thibault	Kendal Kemp	Sarah Morton	Jackie Barrett
Oct. 20	vs Missouri	L, 0-3	Akasha Anderson	Kendal Kemp	Bella Bell	Paige Thibault	Kyla Swanson	Sarah Morton	Jackie Barrett
Oct. 22	vs South Carolina	W, 3-2	Akasha Anderson	Kendal Kemp	Bella Bell	Bel Zimmerman	Kyla Swanson	Paige Thibault	Jackie Barrett

2023 AUBURN MATCH-BY-MATCH LEADERS

DATE	OPPONENT	RESULT	KILLS	ASSISTS	ACES	DIGS	BLOCKS	HIT PCT. (MIN 10 ATT.)
Aug. 25	vs Coppin State	W, 3-1	Scheer/Anderson (16)	Dunn (43)	Swanson (2)	Morton (24)	Swanson (6)	Bell (.480)
Aug. 26	vs McNeese	W, 3-0	Anderson (14)	Barrett (31)	Anderson (4)	Anderson (8)	Kemp (5)	Zimmerman (.400)
Aug. 26	vs Jacksonville State	W, 3-0	Anderson (10)	Dunn (16)	Zimmerman (3)	Lanham (11)	Swanson (3)	Bell (.750)
Sept. 2	vs SMU	W, 3-1	Scheer (18)	Barrett (36)	Anderson (2)	Morton (17)	Kemp (4)	Swanson (.500)
Sept. 3	at Florida State	W, 3-1	Anderson (15)	Barrett (44)	Slaughter (2)	Barrett (11)	Swanson/Barrett (4)	Swanson (.467)
Sept. 7	vs Middle Tennessee	L, 1-3	Zimmerman (11)	Barrett (39)	Barrett/Lanham (1)	3 players (10)	Kemp (5)	Swanson (.333)
Sept. 8	vs Charleston Southern	W, 3-1	Zimmerman (17)	Barrett (41)	Harmon (4)	Zimmerman (16)	Harmon (7)	Kemp (.526)
Sept. 9	vs Mercer	W, 3-0	Zimmerman (14)	Barrett (31)	Barrett (5)	Morton (10)	Kemp (7)	Kemp (.500)
Sept. 14	at South Alabama	W, 3-2	Anderson (26)	Barrett (48)	Barrett (5)	Slaughter (29)	Zimmerman (6)	Kemp (.455)
Sept. 15	vs UAB	W, 3-1	Zimmerman (16)	Barrett (35)	Zimmerman/Thibault (2)	Zimmerman (12)	Kemp (10)	Zimmerman (.306)
Sept. 16	vs Samford	W, 3-1	Anderson (19)	Barrett (46)	Thibault (2)	Slaughter (16)	Swanson (3)	Anderson (.410)
Sept. 22	vs #3 Florida	L, 2-3	Anderson (18)	Barrett (40)	Anderson (2)	Morton (13)	Swanson/Anderson (3)	Bell (.214)
Sept. 24	vs Ole Miss	W, 3-1	Anderson (20)	Barrett (42)	Zimmerman (3)	Morton (20)	Harmon (8)	Harmon (.417)
Sept. 27	at #14 Arkansas	L, 0-3	Scheer (4)	Barrett (11)	Slaughter/Zimmerman (1)	Anderson/Morton (7)	3 players (2)	Scheer (.045)
Oct. 1	vs Georgia	W, 3-1	Anderson (17)	Barrett (42)	Harmon (2)	Thibault (10)	Kemp (4)	Kemp (.667)
Oct. 6	at #9 Florida	W, 3-0	Anderson (18)	Barrett (37)	Barrett/Harmon (2)	Morton/Anderson (8)	Kemp (3)	Scheer (.667)
Oct. 8	at South Carolina	W, 3-2	Scheer (19)	Barrett (46)	Anderson (4)	Morton (18)	Kemp (9)	Kemp (.455)
Oct. 13	at #10 Tennessee	L, 1-3	Scheer (11)	Barrett (31)	Harmon/Thibault (1)	Morton (18)	Kemp (9)	Kemp (.467)
Oct. 20	vs Missouri	L, 0-3	Scheer/Anderson (10)	Barrett (27)	Barrett/Zimmerman (1)	Morton (11)	Swanson (7)	Swanson (.400)
Oct. 22	vs South Carolina	W, 3-2	Scheer (24)	Barrett (46)	Barrett (3)	Thibault (23)	Swanson (11)	Bell (.350)

2023 OVERALL STATISTICS

Game Records

Overall	Conference	Home	Away	Neutral
15 - 5	5 - 4	8 - 3	4 - 2	3 - 0

Team Box Score

#	Player	SP	Attack				Set		Serve			Dig			Blocking					PTS		
			K	K/S	E	TA	PCT	A	A/S	SA	SE	SA/S	RE	DIG	DIG/S	BS	BA	TOT/S	BLK/S		BE	BHE
1	Scheer, Madison	75	244	3.25	81	617	.264	4	0.05	0	0	0.00	8	28	0.37	2	34	36	0.48	1	0	263.0
2	Morton, Sarah	60	2	0.03	1	8	.125	58	0.97	6	33	0.10	8	194	3.23	0	0	0	0.00	0	0	8.0
3	Anderson, Akasha	67	242	3.61	116	724	.174	8	0.12	19	42	0.28	23	144	2.15	1	33	34	0.51	3	0	278.5
4	Lanham, Fallan	27	0	0.00	0	2	.000	6	0.22	6	6	0.22	1	52	1.93	0	0	0	0.00	0	0	6.0
5	Bell, Bella	42	101	2.40	32	244	.283	2	0.05	0	0	0.00	1	13	0.31	1	32	33	0.79	5	0	118.0
6	Swanson, Kyla	76	92	1.21	37	230	.239	7	0.09	3	14	0.04	0	14	0.18	8	77	85	1.12	5	0	141.5
7	Dunn, Peyton	6	4	0.67	1	7	.429	59	9.83	1	7	0.17	0	8	1.33	0	2	2	0.33	0	0	6.0
8	Kemp, Kendal	64	100	1.56	26	181	.409	1	0.02	1	3	0.02	0	5	0.08	8	76	84	1.31	8	0	147.0
9	Slaughter, Zoe	66	0	0.00	0	8	.000	22	0.33	6	20	0.09	10	126	1.91	0	0	0	0.00	0	0	6.0
10	Barrett, Jackie	73	46	0.63	8	106	.358	687	9.41	21	17	0.29	0	174	2.38	1	46	47	0.64	4	5	91.0
12	Zimmerman, Bel	71	128	1.80	47	376	.215	8	0.11	24	50	0.34	12	80	1.13	2	21	23	0.32	9	0	164.5
13	Thibault, Paige	59	1	0.02	0	4	.250	24	0.41	7	25	0.12	13	112	1.90	0	0	0	0.00	0	0	8.0
14	Harmon, Chelsey	52	27	0.52	6	54	.389	4	0.08	16	14	0.31	0	13	0.25	1	27	28	0.54	4	0	57.5
17	Tanton, Cassidy	1	1	1.00	1	5	.000	0	0.00	0	0	0.00	1	0	0.00	0	0	0	0.00	0	0	1.0
22	Handel, Sydney	19	0	0.00	0	1	.000	0	0.00	2	10	0.11	1	17	0.89	0	0	0	0.00	0	0	2.0
AUBURN		78	988	12.67	356	2567	.246	890	11.41	112	241	1.44	101	980	12.56	24	348	198	2.54	39	5	1,298.0
Opponents		78	920	11.79	438	2527	.191	858	11.00	101	189	1.29	112	1060	13.59	25	200	125	1.60	46	18	1,146.0

Team statistics

	AUB	OPP
ATTACK		
Kills	988	920
Errors	356	438
Total Attacks	2567	2527
Attack Pct	.246	.191
Kills/Set	12.67	11.79
SET		
Assists	890	858
Attempts	2540	2601
Assist Pct	.350	.330
Assists/Set	11.41	11.00
SERVE		
Aces	112	101
Errors	241	189
Attempts	1761	1661
Serve Pct	.863	.886
Aces/Set	1.44	1.29
SERVE RECEPTIONS		
Errors	101	112
Errors/Set	1.29	1.44
Attempts	1472	1520
Reception Pct	.931	.999
DEFENSE		
Digs	980	1060
Digs/Set	12.56	13.59
BLOCKING		
Block solo	24	25
Block Assist	348	200
Total Blocks	198	125
Blocks/Set	2.54	1.60
Block Errors	39	46
Ball handling errors	5	18
ATTENDANCE		
Total	14906	11608
Dates/Avg Per Date	11/1355	6/1935
Neutral Site #/Avg	3/67	-
Current win streak	0	-
Home win streak	0	-

Team Results

Date	Opponent	Score	Score-by-set	Att.
08/25/2023	Coppin St.	W 3-1	24-26,25-17,25-15,25-18	1124
08/26/2023	McNeese	W 3-0	25-15,25-15,25-22	579
08/26/2023	Jacksonville St.	W 3-0	25-12,25-11,26-24	1125
09/02/2023	vs SMU	W 3-1	25-22,17-25,25-20,25-21	50
09/03/2023	at Florida St.	W 3-1	30-28,25-21,19-25,25-23	361
09/07/2023	Middle Tenn.	L 1-3	25-22,15-25,23-25,22-25	790
09/08/2023	Charleston So.	W 3-1	23-25,25-16,25-9,25-19	1063
09/09/2023	Mercer	W 3-0	25-15,25-20,25-11	967
09/14/2023	at South Alabama	W 3-2	27-25,23-25,19-25,25-23,15-8	1218
09/15/2023	vs UAB	W 3-1	25-15,26-24,21-25,25-19	87
09/16/2023	vs Samford	W 3-1	25-19,20-25,26-24,25-11	65
* 09/22/2023	Florida	L 2-3	25-20,24-26,26-24,19-25,15-17	2393
* 09/24/2023	Ole Miss	W 3-1	21-25,25-21,25-10,27-25	1128
* 09/27/2023	at Arkansas	L 0-3	18-25,10-25,6-25	1374
* 10/01/2023	Georgia	W 3-1	25-23,25-23,18-25,25-20	2016
* 10/06/2023	at Florida	W 3-0	25-23,25-20,25-17	4150
* 10/08/2023	at South Carolina	W 3-2	25-23,22-25,22-25,25-23,15-13	1930
* 10/13/2023	at Tennessee	L 1-3	19-25,25-21,21-25,17-25	2575
* 10/20/2023	Missouri	L 0-3	23-25,21-25,18-25	1889
* 10/22/2023	South Carolina	W 3-2	25-22,19-25,25-23,24-26,17-15	1832

2023 SEC STATISTICS

Game Records

Overall	Conference	Home	Away	Neutral
5 - 4	5 - 4	3 - 2	2 - 2	0 - 0

Team Box Score

##	Player	SP	Attack					Set		Serve			Dig		Blocking					PTS		
			K	K/S	E	TA	PCT	A	A/S	SA	SE	SA/S	RE	DIG	DIG/S	BS	BA	TOT/S	BLK/S		BE	BHE
1	Scheer, Madison	36	123	3.42	40	307	.270	2	0.06	0	0	0.00	5	14	0.39	1	16	17	0.47	0	0	132.0
2	Morton, Sarah	31	1	0.03	1	2	.000	31	1.00	4	15	0.13	3	103	3.32	0	0	0	0.00	0	0	5.0
3	Anderson, Akasha	36	119	3.31	72	404	.116	3	0.08	8	26	0.22	14	83	2.31	0	22	22	0.61	1	0	138.0
5	Bell, Bella	20	36	1.80	18	113	.159	1	0.05	0	0	0.00	0	8	0.40	1	16	17	0.85	2	0	45.0
6	Swanson, Kyla	36	36	1.00	14	94	.234	3	0.08	0	1	0.00	0	1	0.03	5	37	42	1.17	3	0	59.5
8	Kemp, Kendal	24	33	1.38	8	59	.424	1	0.04	0	0	0.00	0	1	0.04	2	30	32	1.33	1	0	50.0
9	Slaughter, Zoe	24	0	0.00	0	0	.000	3	0.13	2	5	0.08	1	27	1.13	0	0	0	0.00	0	0	2.0
10	Barrett, Jackie	36	20	0.56	4	54	.296	322	8.94	8	10	0.22	0	90	2.50	0	23	23	0.64	3	2	39.5
12	Zimmerman, Bel	36	34	0.94	20	125	.112	2	0.06	9	28	0.25	5	30	0.83	0	3	3	0.08	3	0	44.5
13	Thibault, Paige	36	0	0.00	0	2	.000	17	0.47	3	16	0.08	11	74	2.06	0	0	0	0.00	0	0	3.0
14	Harmon, Chelsey	35	12	0.34	4	26	.308	0	0.00	8	7	0.23	0	9	0.26	0	12	12	0.34	2	0	26.0
22	Handel, Sydney	6	0	0.00	0	0	.000	0	0.00	2	5	0.33	0	7	1.17	0	0	0	0.00	0	0	2.0
AUBURN		36	414	11.50	181	1186	.196	385	10.69	44	113	1.22	49	447	12.42	9	159	88.5	2.46	15	2	546.5
Opponents		36	455	12.64	198	1192	.216	425	11.81	49	104	1.36	44	509	14.14	11	106	64	1.78	10	7	568.0

Team statistics

	AUB	OPP
ATTACK		
Kills	414	455
Errors	181	198
Total Attacks	1186	1192
Attack Pct	.196	.216
Kills/Set	11.50	12.64
SET		
Assists	385	425
Attempts	1187	1211
Assist Pct	.324	.351
Assists/Set	10.69	11.81
SERVE		
Aces	44	49
Errors	113	104
Attempts	772	809
Serve Pct	.854	.871
Aces/Set	1.22	1.36
SERVE RECEPTIONS		
Errors	49	44
Errors/Set	1.36	1.22
Attempts	705	659
Reception Pct	.930	.998
DEFENSE		
Digs	447	509
Digs/Set	12.42	14.14
BLOCKING		
Block solo	9	11
Block Assist	159	106
Total Blocks	88.5	64
Blocks/Set	2.46	1.78
Block Errors	15	10
Ball handling errors	2	7
ATTENDANCE		
Total	9258	10029
Dates/Avg Per Date	5/1852	4/2507
Neutral Site #/Avg	0/0	-
Current win streak	0	-
Home win streak	0	-

Team Results

Date	Opponent	Score	Score-by-set	Att.
* 09/22/2023	Florida	L 2-3	25-20,24-26,26-24,19-25,15-17	2393
* 09/24/2023	Ole Miss	W 3-1	21-25,25-21,25-10,27-25	1128
* 09/27/2023	at Arkansas	L 0-3	18-25,10-25,6-25	1374
* 10/01/2023	Georgia	W 3-1	25-23,25-23,18-25,25-20	2016
* 10/06/2023	at Florida	W 3-0	25-23,25-20,25-17	4150
* 10/08/2023	at South Carolina	W 3-2	25-23,22-25,22-25,25-23,15-13	1930
* 10/13/2023	at Tennessee	L 1-3	19-25,25-21,21-25,17-25	2575
* 10/20/2023	Missouri	L 0-3	23-25,21-25,18-25	1889
* 10/22/2023	South Carolina	W 3-2	25-22,19-25,25-23,24-26,17-15	1832

2023 STATISTICAL LEADERS

Attack (by PCT)

#	Player	S	K	K/S	E	TA	PCT
7	Dunn, Peyton	6	4	0.67	1	7	.429
8	Kemp, Kendal	64	100	1.56	26	181	.409
14	Harmon, Chelsey	52	27	0.52	6	54	.389
10	Barrett, Jackie	73	46	0.63	8	106	.358
5	Bell, Bella	42	101	2.40	32	244	.283
1	Scheer, Madison	75	244	3.25	81	617	.264
13	Thibault, Paige	59	1	0.02	0	4	.250
6	Swanson, Kyla	76	92	1.21	37	230	.239
12	Zimmerman, Bel	71	128	1.80	47	376	.215
3	Anderson, Akasha	67	242	3.61	116	724	.174
2	Morton, Sarah	60	2	0.03	1	8	.125
4	Lanham, Fallan	27	0	0.00	0	2	.000
17	Tanton, Cassidy	1	1	1.00	1	5	.000
9	Slaughter, Zoe	66	0	0.00	0	8	.000
22	Handel, Sydney	19	0	0.00	0	1	.000

Kill (by K)

#	Player	S	K	K/S
1	Scheer, Madison	75	244	3.25
3	Anderson, Akasha	67	242	3.61
12	Zimmerman, Bel	71	128	1.80
5	Bell, Bella	42	101	2.40
8	Kemp, Kendal	64	100	1.56
6	Swanson, Kyla	76	92	1.21
10	Barrett, Jackie	73	46	0.63
14	Harmon, Chelsey	52	27	0.52
7	Dunn, Peyton	6	4	0.67
2	Morton, Sarah	60	2	0.03
13	Thibault, Paige	59	1	0.02
17	Tanton, Cassidy	1	1	1.00
4	Lanham, Fallan	27	0	0.00
9	Slaughter, Zoe	66	0	0.00
22	Handel, Sydney	19	0	0.00

Set (by A/S)

#	Player	S	A	A/S	TA	PCT
7	Dunn, Peyton	6	59	9.83	141	.411
10	Barrett, Jackie	73	687	9.41	1810	.374
2	Morton, Sarah	60	58	0.97	207	.261
13	Thibault, Paige	59	24	0.41	72	.319
9	Slaughter, Zoe	66	22	0.33	70	.300
4	Lanham, Fallan	27	6	0.22	26	.231
3	Anderson, Akasha	67	8	0.12	68	.088
12	Zimmerman, Bel	71	8	0.11	29	.241
6	Swanson, Kyla	76	7	0.09	32	.125
14	Harmon, Chelsey	52	4	0.08	19	.211
1	Scheer, Madison	75	4	0.05	29	.069
5	Bell, Bella	42	2	0.05	14	.071
8	Kemp, Kendal	64	1	0.02	16	.063
17	Tanton, Cassidy	1	0	0.00	0	.000
22	Handel, Sydney	19	0	0.00	7	.000

Serve (by SA/S)

#	Player	S	SA	SE	SA/S	TA	PCT
12	Zimmerman, Bel	71	24	50	0.34	256	.805
14	Harmon, Chelsey	52	16	14	0.31	159	.912
10	Barrett, Jackie	73	21	17	0.29	271	.937
3	Anderson, Akasha	67	19	42	0.28	238	.824
4	Lanham, Fallan	27	6	6	0.22	107	.944
7	Dunn, Peyton	6	1	7	0.17	15	.533
13	Thibault, Paige	59	7	25	0.12	174	.856
22	Handel, Sydney	19	2	10	0.11	55	.818
2	Morton, Sarah	60	6	33	0.10	216	.847
9	Slaughter, Zoe	66	6	20	0.09	200	.900
6	Swanson, Kyla	76	3	14	0.04	61	.770
8	Kemp, Kendal	64	1	3	0.02	6	.500
1	Scheer, Madison	75	0	0	0.00	2	1.000
5	Bell, Bella	42	0	0	0.00	1	1.000
17	Tanton, Cassidy	1	0	0	0.00	0	.000

Block (by BLK/S)

#	Player	S	BS	BA	TOTAL	BLK/S
8	Kemp, Kendal	64	8	76	84.0	1.31
6	Swanson, Kyla	76	8	77	85.0	1.12
5	Bell, Bella	42	1	32	33.0	0.79
10	Barrett, Jackie	73	1	46	47.0	0.64
14	Harmon, Chelsey	52	1	27	28.0	0.54
3	Anderson, Akasha	67	1	33	34.0	0.51
1	Scheer, Madison	75	2	34	36.0	0.48
7	Dunn, Peyton	6	0	2	2.0	0.33
12	Zimmerman, Bel	71	2	21	23.0	0.32
4	Lanham, Fallan	27	0	0	0.0	0.00
13	Thibault, Paige	59	0	0	0.0	0.00
22	Handel, Sydney	19	0	0	0.0	0.00
2	Morton, Sarah	60	0	0	0.0	0.00
9	Slaughter, Zoe	66	0	0	0.0	0.00
17	Tanton, Cassidy	1	0	0	0.0	0.00

Defense (by DIG/S)

#	Player	S	DIG	DIG/S	BHE
2	Morton, Sarah	60	194	3.23	0
10	Barrett, Jackie	73	174	2.38	5
3	Anderson, Akasha	67	144	2.15	0
4	Lanham, Fallan	27	52	1.93	0
9	Slaughter, Zoe	66	126	1.91	0
13	Thibault, Paige	59	112	1.90	0
7	Dunn, Peyton	6	8	1.33	0
12	Zimmerman, Bel	71	80	1.13	0
22	Handel, Sydney	19	17	0.89	0
1	Scheer, Madison	75	28	0.37	0
5	Bell, Bella	42	13	0.31	0
14	Harmon, Chelsey	52	13	0.25	0
6	Swanson, Kyla	76	14	0.18	0
8	Kemp, Kendal	64	5	0.08	0
17	Tanton, Cassidy	1	0	0.00	0

Points (by POINTS/S)

#	Player	S	POINTS	POINTS/S
3	Anderson, Akasha	67	278.5	4.16
1	Scheer, Madison	75	263.0	3.51
5	Bell, Bella	42	118.0	2.81
12	Zimmerman, Bel	71	164.5	2.32
8	Kemp, Kendal	64	147.0	2.30
6	Swanson, Kyla	76	141.5	1.86
10	Barrett, Jackie	73	91.0	1.25
14	Harmon, Chelsey	52	57.5	1.11
7	Dunn, Peyton	6	6.0	1.00
17	Tanton, Cassidy	1	1.0	1.00
4	Lanham, Fallan	27	6.0	0.22
13	Thibault, Paige	59	8.0	0.14
2	Morton, Sarah	60	8.0	0.13
22	Handel, Sydney	19	2.0	0.11
9	Slaughter, Zoe	66	6.0	0.09

Receptions (by PCT)

#	Player	S	RE	RE/S	TA	PCT
8	Kemp, Kendal	64	0	0.00	2	1.000
6	Swanson, Kyla	76	0	0.00	2	1.000
10	Barrett, Jackie	73	0	0.00	4	1.000
4	Lanham, Fallan	27	1	0.04	83	.988
22	Handel, Sydney	19	1	0.05	36	.972
2	Morton, Sarah	60	8	0.13	223	.964
9	Slaughter, Zoe	66	10	0.15	241	.959
13	Thibault, Paige	59	13	0.22	266	.951
3	Anderson, Akasha	67	23	0.34	322	.929
12	Zimmerman, Bel	71	12	0.17	166	.928
1	Scheer, Madison	75	8	0.11	98	.918
17	Tanton, Cassidy	1	1	1.00	4	.750
5	Bell, Bella	42	1	0.02	2	.500
14	Harmon, Chelsey	52	0	0.00	0	.000
7	Dunn, Peyton	6	0	0.00	0	.000
TM	TEAM	-	23	0.29	-	-

TEAM KILLS - SIDEOUT ERA

	KILLS	OPPONENT (SETS)	DATE
1.	114	vs. Kentucky (5)	10/5/97
2.	107	at Tulane (5)	11/10/90
3.	99	vs. Georgia Tech (5)	9/14/95
4.	96	vs. Butler (5)	9/10/94
5.	95	vs. Pittsburgh (5)	9/13/91
6.	94	vs. Lamar (5)	9/24/88
7.	91	vs. LSU (5)	11/13/94
8.	90	at Ole Miss (5)	10/13/96
9.	89	vs. Arkansas (4)	10/20/96
10.	88	at Rhode Island (5)	9/5/97
	88	vs. Mississippi State (4)	10/24/97
	88	vs. Mississippi State (5)	11/12/00

TEAM KILLS - RALLY ERA

	KILLS	OPPONENT (SETS)	DATE
1.	84	vs. Virginia Tech (5)	9/2/06
	84	at Georgia (5)	9/17/06
3.	82	vs. Georgia Southern (5)	9/2/05
4.	81	at Mercer (5)	9/8/04
5.	80	vs. Kentucky (5)	10/1/06
	80	vs. Ole Miss (5)	10/24/03
7.	79	at Alabama (5)	10/30/11
8.	77	vs. Ole Miss (5)	10/26/18
9.	75	at South Carolina (5)	11/16/14
	75	at Georgia (5)	11/2/14
	75	vs. Green Bay (5)	9/5/13
	75	vs. Tennessee State (4)	8/25/07
	75	vs. Arkansas (5)	10/8/04
	75	at LSU (5)	10/25/15

TEAM ASSISTS - RALLY ERA

	AST.	OPPONENT (SETS)	DATE
1.	79	vs. Georgia Southern (5)	9/2/05
2.	77	at Mercer (5)	9/8/04
3.	76	at Georgia (5)	9/17/06
4.	74	vs. South Carolina (5)	10/5/14
	74	at Alabama (5)	10/30/11
	74	vs. Ole Miss (5)	9/24/03
7.	72	at Georgia (5)	11/2/14
	72	vs. Tennessee State (4)	8/25/07
	72	at LSU (5)	10/25/15
	72	vs. Ole Miss (5)	10/26/18

TEAM DIGS - RALLY ERA

	DIGS	OPPONENT (SETS)	DATE
1.	112	at LSU (5)	11/15/13
2.	109	at LSU (5)	10/25/15
3.	107	vs. Northwestern State (5)	9/20/14
4.	105	vs. Nicholls St. (4)	9/17/21
5.	99	at Ole Miss (5)	10/18/16
6.	97	vs. Georgia (4)	11/7/07
	97	vs. LSU (5)	10/5/15
	97	at Tennessee (5)	10/4/17
9.	94	at Tennessee (5)	11/16/12
10.	93	at Georgia (5)	9/17/06
	93	vs. Tennessee (4)	11/9/17

TEAM ACES - RALLY ERA

	ACES	OPPONENT (SETS)	DATE
1.	18	vs. Delaware State (3)	9/13/03
2.	16	vs. Tennessee State (4)	8/25/07
	16	vs. Southeastern Louisiana (3)	9/9/06
4.	14	at South Alabama (5)	9/14/23
	14	vs. Troy (3)	8/27/10
	14	vs. Alabama State (3)	9/5/03
7.	13	vs. Tennessee State (5)	8/30/19
	13	at SMU (5)	8/26/06
	13	vs. Mississippi State (5)	10/26/03
10.	12	vs. Louisiana Tech (4)	9/7/07
	12	at Lafayette (3)	9/12/03
	12	vs. Grambling State (3)	9/1/05

TEAM TOTAL BLOCKS - RALLY ERA

	BLK	OPPONENT (SETS)	DATE
1.	19.0	vs. UAB (4)	9/15/23
2.	18.0	vs. Georgia (5)	10/9/22
	18.0	vs. Alabama (5)	10/2/21
	18.0	vs. South Florida (5)	9/13/14
5.	17.0	vs. Troy (4)	9/10/22
	17.0	at Arkansas (5)	10/10/21
	17.0	at South Carolina (4)	10/29/20
	17.0	at Georgia Southern (5)	9/12/09
	17.0	vs. Mississippi State (5)	11/5/04
10.	17.0	at South Carolina (5)	10/8/23

TEAM HITTING - ALL ERAS

	PCT.	OPPONENT (SETS)	DATE
1.	.530 (41-6-66)	vs. LSU (3)	11/2/97
2.	.514 (65-11-105)	at Ole Miss (3)	10/18/98
3.	.489 (52-6-94)	vs. Alabama A&M (3)	8/29/09
4.	.487 (46-8-78)	vs. Navy (3)	9/15/00
5.	.485 (38-6-66)	vs. Drexel (3)	9/10/93
	.485 (53-5-99)	vs. Eastern Illinois (3)	9/1/18
7.	.474 (52-7-95)	at South Carolina (3)	10/26/12
8.	.472 (40-6-72)	vs. Delaware State (3)	9/13/03
9.	.471 (54-5-104)	vs. Mississippi State (3)	11/29/14
10.	.469 (35-5-64)	vs. Alabama A&M (3)	8/28/09
11.	.468 (N/A)	vs. Alabama State (3)	10/8/87
12.	.462 (52-9-93)	at Georgia State (3)	8/28/07
13.	.455 (55-9-101)	vs. Alabama (3)	11/10/98
14.	.450 (42-6-80)	vs. Mercer (3)	9/5/13
15.	.448 (50-11-87)	vs. Grambling (3)	9/1/05
16.	.440 (43-10-75)	vs. Chicago State (3)	9/11/99
	.440 (55-11-100)	vs. UAB (3)	9/3/00
18.	.429 (49-10-91)	at LSU (3)	9/26/97
19.	.420 (45-8-88)	vs. Lipscomb (3)	9/20/03
20.	.422 (43-8-83)	at Georgia Tech (3)	8/25/17

Records set in the Brent Crouch era are listed in **BOLD**.

TEAM MATCH RECORDS (BY SET)**KILLS**

SETS	KILLS	OPPONENT	DATE
3s	76	vs. LSU	10/18/96
4s	89	vs. Arkansas	10/20/9
5s	114	vs. Kentucky	10/5/97

ATTACKS

SETS	ATT.	OPPONENT	DATE
3s	160	vs. South Carolina	10/19/97
4s	213	at Ole Miss	10/3/93
5s	229	at LSU	11/15/13

HITTING PERCENTAGE (MIN. 10 KILLS)

SETS	PCT.	OPPONENT	DATE
3s	.530 (41-6-66)	vs. LSU	11/2/97
4s	.365 (70-20-137)	vs. Alabama	11/6/97
5s	.362 (74-20-149)	at Minnesota	9/19/98

BLOCKS - SOLO

SETS	BLK	OPPONENT	DATE
3s	8 (3x)	last, vs. IUPUI	9/4/98
4s	10	at Tennessee Tech	10/14/88
5s	13	vs. NC State	9/21/91

BLOCKS - ASSISTS

SETS	BLK	OPPONENT	DATE
3s	27	at Samford	10/3/00
4s	34	vs UAB	9/15/23
5s	28 (3x)	last, vs. Mississippi State	11/12/00

TOTAL BLOCKS

SETS	BLK	OPPONENT	DATE
3s	15.0	vs. Alabama	11/5/93
	15.0	at South Carolina	10/17/10
4s	19.0	vs UAB	9/15/23
5s	18.0	vs. Georgia	10/9/22
	18.0	vs. South Florida	9/13/14

DIGS

SETS	DIGS	OPPONENT	DATE
3s	76	at Ole Miss	11/16/07
4s	115	vs. NE Louisiana	9/12/86
5s	117	vs. Central Florida	11/8/86

ASSISTS

SETS	AST	OPPONENT	DATE
3s	60	vs. Pittsburgh	8/31/97
4s	77	vs. Mississippi State	10/24/97
5s	100	vs. Kentucky	10/5/97

SERVICE ACES

SETS	ACE	OPPONENT	DATE
3s	18	vs. Delaware State	9/13/03
4s	16	vs. Tennessee State	8/25/07
5s	14	at South Alabama	9/14/23

INDIVIDUAL KILLS

	KILLS	PLAYER-OPPONENT (SETS)	DATE
1.	30	Ashlee Johns vs. Arkansas (5)	10/8/04
2.	29	Rebekah Rath at Arkansas (4)	10/9/21
3.	27	Kelly Fidero at Alabama (5)	10/30/11
4.	26	Akasha Anderson at South Alabama (5)	9/14/23
	26	Akasha Anderson vs Mississippi St. (5)	9/28/22
	26	Jessica Glover at Georgia (5)	9/17/06
	26	Camila Lago vs. Mississippi State (5)	10/26/03
8.	25	Macy Reece vs. South Florida (5)	9/13/14
	25	Rachel Shanks vs. Georgia (4)	11/7/07
	25	Jelena Sekulic at Arkansas (5)	10/7/07
	25	Rachel Shanks vs. Virginia Tech (5)	9/2/06
	25	Jennifer Amobi vs. Tennessee (4)	11/19/04
	25	Rebekah Rath at Georgia St. (4)	8/26/22

INDIVIDUAL HITTING PCT. (MIN. 12 KILLS)

	PCT.	PLAYER-OPPONENT (SETS)	DATE
1.	.773 (17-0-22)	Ashlee Johns vs. Delaware State (3)	9/13/03
2.	.722 (14-1-18)	Jonelle Wallace vs. Beth.-Cook. (3)	9/5/08
3.	.706 (12-0-17)	Chelsey Harmon vs. Jackson St. (3)	9/17/22
4.	.688 (12-1-16)	Shaina White vs. American (3)	9/8/18
5.	.667 (14-2-18)	Madison Scheer at Florida (3)	10/6/23
	.667 (16-0-24)	Jonelle Wallace at Georgia (5)	11/24/10
7.	.650 (13-0-20)	Breanna Barksdale at Arkansas (5)	10/30/15
8.	.647 (13-1-17)	Alyssa Davis vs Jacksonville State (5)	9/8/09
9.	.632 (12-0-19)	Courtney McDonald vs. Kentucky (5)	10/23/11
	.632 (12-0-19)	Camila Jersonsky vs. Austin Peay (4)	9/3/11

INDIVIDUAL TOTAL BLOCKS

	BLK (S-A)	PLAYER-OPPONENT (SETS)	DATE
1.	12 (2-10)	Tatum Shipes vs Alabama (4)	10/2/21
2.	11 (1-10)	Kyla Swanson vs South Carolina (5)	10/22/23
	11 (4-7)	Breanna Barksdale at Florida (4)	11/23/16
3.	10 (1-9)	Kendal Kemp vs UAB (4)	9/15/23
	10 (1-9)	Kendal Kemp vs. Georgia (5)	10/9/22
	10 (1-9)	Kendal Kemp vs. Georgia (4)	10/8/22
	10 (2-8)	Chelsey Harmon vs Troy (4)	9/10/22
	10 (1-9)	Tatum Shipes at Arkansas (4)	10/9/21
	10 (0-10)	Stephanie Campbell vs. St. John's (5)	9/19/15
	10 (2-8)	Julie Bosler vs. South Carolina (5)	9/15/06
	10 (3-7)	Julie Bosler vs. Mississippi State (5)	11/5/04
	10 (2-8)	Julie Bosler vs. Mississippi State (5)	10/2/03
	10 (1-9)	Bailey Veit vs. Mercer (5)	9/20/03

INDIVIDUAL SERVICE ACES

	ACES	PLAYER-OPPONENT (SETS)	DATE
1.	7	Katherine Culwell vs. Tennessee (3)	11/22/13
	7	Maira Magallon vs. Delaware State (3)	9/13/03
3.	6	Brenna McIlroy at Missouri (4)	10/19/18
	6	Whitney Jacob vs. Arkansas (5)	10/15/06
5.	5	Jackie Barrett at South Alabama (5)	9/14/23
	5	Jackie Barrett vs Mercer (3)	9/9/23
	5	Rebekah Rath at Texas A&M (5)	11/5/21
	5	Jesse Earl at Florida State (5)	9/16/17
	5	Jesse Earl at Georgia (4)	10/2/16
	5	Alexa Filley vs. LSU (5)	10/4/15
	5	Liz Crouch vs. Troy (3)	8/27/10
	5	Rachel Shanks at South Alabama (3)	9/9/06
	5	Whitney Jacob vs. Louisiana-Monroe (3)	8/25/06
	5	Whitney Jacob vs. Mississippi State (4)	10/23/05
	5	Rachel Shanks vs. Clemson (3)	9/17/05
	5	Whitney Jacob vs. Grambling (3)	9/1/05
	5	Maira Magallon vs. Mississippi State (5)	10/26/03
	5	Maira Magallon at Lafayette (3)	9/12/03
	5	Maira Magallon vs. Bethune-Cookman (4)	9/6/03
	5	Jennifer Buckert vs. Alabama State (3)	9/5/03
	5	Brittany Diaz vs. Marist (4)	9/7/02
	5	Laura Hastings vs. Western Michigan (3)	9/1/01
	5	Grace Boyd at South Carolina (3)	10/26/01

INDIVIDUAL ASSISTS

	AST	PLAYER-OPPONENT (SETS)	DATE
1.	76	Jordan Elliott at Mercer (5)	9/8/04
2.	71	Maira Magallon vs. Ole Miss (5)	10/24/03
3.	68	Michele Ashmore vs. Georgia Southern (5)	9/2/05
4.	66	Joanna Pappas at Georgia (5)	9/17/06
5.	65	Maira Magallon vs. Arkansas (5)	10/8/04
	65	Nicki Gerig vs. Tennessee State (4)	8/25/07
7.	64	Jordan Elliott vs. Iowa State (5)	9/4/04
8.	63	Alexa Filley vs. South Carolina (5)	10/5/14
	63	Maira Magallon vs. Xavier (4)	11/26/04
	63	Sara Shanks at Arkansas (5)	10/7/07

INDIVIDUAL DIGS

	DIGS	PLAYER-OPPONENT (SETS)	DATE
1.	37	Payton White vs. Butler (5)	8/31/19
2.	36	Jelena Sekulic at Kentucky (5)	11/17/06
	36	Jesse Earl at Tennessee (5)	10/4/17
4.	34	Bailey Veit vs. Georgia Southern (5)	9/2/05
	34	Jesse Earl at Mississippi State (5)	11/13/15
6.	33	Bella Rosenthal vs. Missouri (5)	10/17/21
7.	33	Sarah Wroblecky at LSU (5)	11/15/13
	33	Jesse Earl at LSU (4)	11/15/17
9.	31	Liz Crouch at Mississippi State (3)	9/18/09
10.	30	Liz Crouch vs. Georgia (4)	11/7/07
	30	Jesse Earl at Florida State (5)	9/16/17

Records set in the Brent Crouch era are listed in **BOLD**

INDIVIDUAL MATCH RECORDS (BY SET)

KILLS

SETS	KILLS	PLAYER-OPPONENT	DATE
3s	25	Brooke McCarley vs. UAB	9/7/99
4s	29	Rebekah Rath at Arkansas	10/9/21
	29	Brooke McCarley at Kansas	9/11/99
5s	34	Bridgitte Sims vs. Tulane	11/10/90

ATTACKS

SETS	ATT.	PLAYER-OPPONENT	DATE
3s	56	Allyson Beecroft at Florida	9/30/94
4s	75	Rebekah Rath at Arkansas	10/9/21
5s	84	Rebekah Rath at Texas A&M	11/4/17

HITTING PERCENTAGE (MIN. 10 KILLS)

SETS	PCT.	PLAYER	DATE
3s	.773 (17-0-22)	Ashlee Johns	9/13/03
4s	.813 (13-0-16)	Laura Cookley	9/28/91
5s	.714 (10-0-14)	Dalia Naidzinaviciut	9/2/05

BLOCKS - SOLO

SETS	BLK	PLAYER-OPPONENT	DATE
3s	5	Gina Thomas vs. Georgetown	9/13/90
4s	5	Gina Thomas vs. Florida	10/12/90
5s	6	Tory Gutierrez vs. Louisville	10/21/89
	6	Lisa Harvey vs. Tuskegee	10/7/86

BLOCKS - ASSISTS

SETS	BLK	PLAYER-OPPONENT	DATE
3s	9 (3x)	Last, Kendal Kemp vs Belmont	8/26/22
4s	11	Tory Gutierrez vs. Georgia State	10/3/89
5s	10	Jaunelle Hamilton vs. Mississippi St.	11/12/00
	10	Stephanie Campbell vs. St. John's	9/19/15

TOTAL BLOCKS

SETS	BLK	PLAYER-OPPONENT	DATE
3s	9 (4x)	Last, Kendal Kemp vs. Belmont	8/26/22
4s	14	Tory Gutierrez vs. Georgia State	10/3/89
5s	12	Jaunelle Hamilton vs. Mississippi St.	11/12/00
	12	La'Toi Finley at Georgia Tech	9/14/95

DIGS

SETS	DIGS	PLAYER-OPPONENT	DATE
3s	31	Liz Crouch at Mississippi State	9/18/09
4s	34	Gretchen Thompson vs. ULM	9/12/86
5s	37	Payton White vs. Butler	8/31/19

ASSISTS

SETS	AST	PLAYER-OPPONENT	DATE
3s	64	Piper Craig vs. LSU	10/18/96
4s	76	Piper Craig vs. Arkansas	10/20/96
5s	92	Piper Craig vs. Kentucky	10/5/97

SERVICE ACES

SETS	ACE	PLAYER-OPPONENT	DATE
3s	10	Jenifer Kleyn vs. Seneca	10/5/90
4s	8	Terri Duckworth at UAB	11/1/88
5s	10	Jenifer Kleyn at Ole Miss	9/28/90



#1 MADISON SCHEER

**PIN HITTER | 6-1 | SOPHOMORE
EUREKA, MO. (EUREKA)**

SCHEER'S HIGHLIGHTS:

- Named National Player of the Week (10/10/23) after 33 kills on .472 hitting against No. 9 Florida and South Carolina
- Career-high 24 kills on .333 hitting vs South Carolina (10/22/23)
- 2022 SEC All-Freshman Team
- Named SEC Freshman of the Week and Player of the Week 9/26
- Hit over .300 11 times, over .400 seven times and over .500 twice in 2022
- Made her collegiate debut on Aug. 26 vs. Belmont

CATEGORY	CAREER HIGH	OPPONENT/DATE
Kills	24	vs South Carolina (10/22/23)
Attempts	54	vs South Carolina (10/22/23)
Hitting Percentage (Min. 10 ATT.)	.667	at Florida (10/6/23)
Assists	1 (7x)	last at South Carolina (10/8/23)
Digs	5	at Tennessee (10/13/23)
Blocks	6 (2x)	last at Tennessee (10/13/23)
Aces	--	--
Points	26.0	vs South Carolina (10/22/23)

CATEGORY	SEASON HIGH	OPPONENT/DATE
Kills	24	vs South Carolina (10/22/23)
Attempts	54	vs South Carolina (10/22/23)
Hitting Percentage (Min. 10 ATT.)	.667	at Florida (10/6/23)
Assists	1 (4x)	last at South Carolina (10/8/23)
Digs	5	at Tennessee (10/13/23)
Blocks	6	at Tennessee (10/13/23)
Aces	--	--
Points	26.0	vs South Carolina (10/22/23)

GAME BY GAME

Date	Opponent	SP	Attack				Set			Serve				Recept			Blocking				Team				
			K	E	TA	PCT	A	TA	PCT	SA	SE	TA	PCT	RE	TA	PCT	DIG	BS	BA	BE	TOTAL	BHE	POINTS	HIT%	SCORE
08/25/2023	Coppin St.	4	16	4	41	.293	0	1	.000	0	0	0	.000	0	3	1.000	3	1	3	0	4.0	0	18.5	.309	3-1
08/26/2023	Jacksonville St.	3	8	2	21	.286	1	1	1.000	0	0	0	.000	0	3	1.000	0	0	0	0	0.0	0	8.0	.395	3-0
09/02/2023	vs SMU	4	18	6	37	.324	0	0	.000	0	0	0	.000	0	9	1.000	1	0	0	0	0.0	0	18.0	.316	3-1
09/03/2023	at Florida St.	4	14	3	33	.333	1	2	.500	0	0	0	.000	0	3	1.000	0	0	2	1	2.0	0	15.0	.356	3-1
09/07/2023	Middle Tenn.	4	8	2	28	.214	0	2	.000	0	0	1	1.000	0	1	1.000	2	0	3	0	3.0	0	9.5	.221	1-3
09/08/2023	Charleston So.	*4	15	3	35	.343	0	0	.000	0	0	0	.000	1	7	.857	2	0	4	0	4.0	0	17.0	.245	3-1
09/09/2023	Mercer	3	12	4	28	.286	0	2	.000	0	0	0	.000	0	8	1.000	0	0	1	0	1.0	0	12.5	.346	3-0
09/14/2023	at South Alabama	5	10	7	39	.077	0	0	.000	0	0	0	.000	1	9	.889	3	0	1	0	1.0	0	10.5	.191	3-2
09/15/2023	vs UAB	4	7	5	21	.095	0	0	.000	0	0	0	.000	0	0	.000	3	0	4	0	4.0	0	9.0	.189	3-1
09/16/2023	vs Samford	*4	13	5	27	.296	0	3	.000	0	0	0	.000	1	1	.000	0	0	0	0	0.0	0	13.0	.386	3-1
09/22/2023	Florida	5	15	6	44	.205	1	2	.500	0	0	1	1.000	0	16	1.000	2	0	0	0	0.0	0	15.0	.196	2-3
09/24/2023	Ole Miss	4	12	2	34	.294	0	4	.000	0	0	0	.000	0	9	1.000	3	0	1	0	1.0	0	12.5	.199	3-1
09/27/2023	at Arkansas	3	4	3	22	.045	0	2	.000	0	0	0	.000	1	4	.750	1	0	0	0	0.0	0	4.0	-.049	0-3
10/01/2023	Georgia	4	14	2	29	.414	0	2	.000	0	0	0	.000	0	5	1.000	0	0	1	0	1.0	0	14.5	.262	3-1
10/06/2023	at Florida	3	14	2	18	.667	0	0	.000	0	0	0	.000	0	5	1.000	0	0	1	0	1.0	0	14.5	.387	3-0
10/08/2023	at South Carolina	5	19	6	35	.371	1	5	.200	0	0	0	.000	1	5	.800	1	0	2	0	2.0	0	20.0	.197	3-2
10/13/2023	at Tennessee	4	11	9	45	.044	0	0	.000	0	0	0	.000	1	2	.500	5	1	5	0	6.0	0	14.5	.122	1-3
10/20/2023	Missouri	3	10	4	26	.231	0	1	.000	0	0	0	.000	0	0	.000	0	0	2	0	2.0	0	11.0	.168	0-3
10/22/2023	South Carolina	*5	24	6	54	.333	0	2	.000	0	0	0	.000	2	8	.750	2	0	4	0	4.0	0	26.0	.241	3-2
Totals		75	244	81	617	.264	4	29	.138	0	0	2	1.000	8	98	.918	28	2	34	1	36.0	0	263.0		

Player Averages

Sets Played	Kills per set	Assists per set	Service aces per set	Digs per set	Blocks per set	Points per set
75	3.25	0.05	0.00	0.37	0.48	3.51

CAREER STATS

SEASON	TEAM	SM-MP	K	K/S	E	TA	PCT	A	A/S	SA	SA/S	SE	DIG	D/S	RE	BS	BA	TB	B/S	BE	BHE	PTS	PTS/S
2022-23	AUB	118-30	361	3.06	120	956	.252	3	0.03	0	0.00	0	45	0.38	3	3	46	49	0.42	4	2	387.0	3.28
2023-24	AUB	75-19	244	3.25	81	617	.264	4	0.05	0	0.00	0	28	0.37	8	2	34	36	0.48	1	0	263.0	3.51
TOTAL		193 - 49	605	3.13	201	1573	.257	7	0.04	0	0.00	0	73	0.38	11	5	80	85	0.44	5	2	650.0	3.37



#2 SARAH MORTON

LIBERO | 5-7 | SOPHOMORE
MUNSTER, IND. (MUNSTER)

MORTON'S HIGHLIGHTS:

- Recorded 10+ digs in 26 of the 29 matches she's played in 2022
- Grabbed a career-high 26 digs vs Georgia on Oct. 9
- Named SEC Defensive Player of the Week 9/26
- Has started every game at libero when in the lineup
- Made her collegiate debut on Aug. 26 vs. Belmont

CATEGORY	CAREER HIGH	OPPONENT/DATE
Kills	1 (3x)	last vs Coppin State (8/25/23)
Attempts	3	vs Coppin State (8/25/23)
Hitting Percentage (Min. 10 ATT.)	--	--
Assists	9 (2x)	last vs SMU (9/2/23)
Digs	26	vs Georgia (10/9/22)
Blocks	--	--
Aces	3 (4x)	last at Missouri (10/15/22)
Points	3 (4x)	last at Missouri (10/15/22)

CATEGORY	SEASON HIGH	OPPONENT/DATE
Kills	1 (2x)	last vs Florida (9/22/23)
Attempts	3	vs Coppin State (8/25/23)
Hitting Percentage (Min. 10 ATT.)	--	--
Assists	9	vs SMU (9/2/23)
Digs	24	vs Coppin State (8/25/23)
Blocks	--	--
Aces	1 (6x)	last at South Carolina (10/8/23)
Points	2	vs Florida (9/22/23)

GAME BY GAME

Date	Opponent	SP	Attack			Set			Serve				Receipt			Blocking				Team					
			K	E	TA	PCT	A	TA	PCT	SA	SE	TA	PCT	RE	TA	PCT	DIG	BS	BA	BE	TOTAL	BHE	POINTS	HIT%	SCORE
08/25/2023	Coppin St.	4	1	0	3	.333	4	12	.333	0	2	20	.900	0	13	1.000	24	0	0	0	0.0	0	1.0	.309	3-1
08/26/2023	McNeese	3	0	0	0	.000	3	11	.273	0	1	7	.857	0	8	1.000	5	0	0	0	0.0	0	0.0	.333	3-0
08/26/2023	Jacksonville St.	3	0	0	0	.000	3	8	.375	1	0	13	1.000	0	8	1.000	3	0	0	0	0.0	0	1.0	.395	3-0
09/02/2023	vs SMU	4	0	0	1	.000	9	20	.450	0	2	15	.867	1	14	.929	17	0	0	0	0.0	0	0.0	.316	3-1
09/03/2023	at Florida St.	4	0	0	1	.000	5	16	.313	1	2	16	.875	2	31	.935	8	0	0	0	0.0	0	1.0	.356	3-1
09/07/2023	Middle Tenn.	4	0	0	1	.000	0	11	.000	0	6	14	.571	2	27	.926	10	0	0	0	0.0	0	0.0	.221	1-3
09/08/2023	Charleston So.	4	0	0	0	.000	2	14	.143	0	2	15	.867	0	16	1.000	14	0	0	0	0.0	0	0.0	.245	3-1
09/09/2023	Mercer	3	0	0	0	.000	1	4	.250	0	3	7	.571	0	10	1.000	10	0	0	0	0.0	0	0.0	.346	3-0
09/22/2023	Florida	5	1	0	1	1.000	5	17	.294	1	5	18	.722	0	16	1.000	13	0	0	0	0.0	0	2.0	.196	2-3
09/24/2023	Ole Miss	4	0	0	0	.000	5	20	.250	0	1	12	.917	1	15	.933	20	0	0	0	0.0	0	0.0	.199	3-1
09/27/2023	at Arkansas	3	0	0	0	.000	1	13	.077	0	4	5	.200	1	8	.875	7	0	0	0	0.0	0	0.0	-.049	0-3
10/01/2023	Georgia	4	0	0	0	.000	4	13	.308	1	1	18	.944	0	18	1.000	8	0	0	0	0.0	0	1.0	.262	3-1
10/06/2023	at Florida	3	0	0	0	.000	4	10	.400	1	2	10	.800	0	6	1.000	8	0	0	0	0.0	0	1.0	.387	3-0
10/08/2023	at South Carolina	5	0	1	1	-1.000	6	17	.353	1	0	20	1.000	0	11	1.000	18	0	0	0	0.0	0	1.0	.197	3-2
10/13/2023	at Tennessee	4	0	0	0	.000	2	12	.167	0	2	11	.818	0	18	1.000	18	0	0	0	0.0	0	0.0	.122	1-3
10/20/2023	Missouri	3	0	0	0	.000	4	9	.444	0	0	15	1.000	1	4	.750	11	0	0	0	0.0	0	0.0	.168	0-3
Totals		60	2	1	8	.125	58	207	.280	6	33	216	.847	8	223	.964	194	0	0	0	0.0	0	8.0		

Player Averages

Sets Played	Kills per set	Assists per set	Service aces per set	Digs per set	Blocks per set	Points per set
60	0.03	0.97	0.10	3.23	0.00	0.13

CAREER STATS

SEASON	TEAM	SM-MP	K	K/S	E	TA	PCT	A	A/S	SA	SA/S	SE	DIG	D/S	RE	BS	BA	TB	B/S	BE	BHE	PTS	PTS/S
2022-23	AUB	119-30	2	0.02	1	11	.091	110	0.92	30	0.25	31	457	3.84	21	0	0	0	0.00	0	1	32.0	0.27
2023-24	AUB	60-16	2	0.03	1	8	.125	58	0.97	6	0.10	33	194	3.23	8	0	0	0	0.00	0	0	8.0	0.13
TOTAL		179 - 46	4	0.02	2	19	.105	168	0.94	36	0.20	64	651	3.64	29	0	0	0	0.00	0	1	40.0	0.22

#4 FALLAN LANHAM

LIBERO | 5-8 | JUNIOR
LOUISVILLE, KY. (MERCY ACADEMY)



LANHAM'S HIGHLIGHTS:

- Grabbed a career-high 20 digs at LSU
- Recorded a career-high four aces at UAB
- Earned first collegiate start in Auburn's season opener versus Tennessee Tech on August 27

CATEGORY	CAREER HIGH	OPPONENT/DATE
Kills	2	vs. Missouri (9/12/21)
Attempts	8	at Arkansas (10/9/21)
Hitting Percentage (Min. 10 ATT.)		
Assists	3 (4x)	last vs Charleston Southern (9/8/23)
Digs	20	at LSU (10/5/22)
Blocks	1	at Georgia (10/22/21)
Aces	4	at UAB (9/9/22)
Points	4.0	at UAB (9/9/22)

CATEGORY	SEASON HIGH	OPPONENT/DATE
Kills	--	--
Attempts	1 (2x)	last at Florida State (9/3/23)
Hitting Percentage (Min. 10 ATT.)	--	--
Assists	3	vs Charleston Southern (9/8/23)
Digs	11	vs Jacksonville State (8/26/23)
Blocks	--	--
Aces	2	vs Jacksonville State (8/26/23)
Points	2.0	vs Jacksonville State (8/26/23)

GAME BY GAME

Date	Opponent	SP	Attack				Set			Serve				Receipt			Blocking				Team				
			K	E	TA	PCT	A	TA	PCT	SA	SE	TA	PCT	RE	TA	PCT	DIG	BS	BA	TB	TOTAL	BHE	POINTS	HIT%	SCORE
08/25/2023	Coppin St.	3	0	0	0	.000	0	1	.000	0	0	8	1.000	0	6	1.000	0	0	0	0	0.0	0	0.0	.309	3-1
08/26/2023	McNeese	1	0	0	0	.000	0	1	.000	0	0	3	1.000	0	2	1.000	2	0	0	0	0.0	0	0.0	.333	3-0
08/26/2023	Jacksonville St.	3	0	0	0	.000	1	5	.200	2	1	18	1.000	1	8	.875	11	0	0	0	0.0	0	2.0	.395	3-0
09/02/2023	vs SMU	4	0	0	1	.000	2	3	.667	1	1	16	.938	0	25	1.000	4	0	0	0	0.0	0	1.0	.316	3-1
09/03/2023	at Florida St.	4	0	0	1	.000	0	1	.000	1	1	19	.947	0	13	1.000	9	0	0	0	0.0	0	1.0	.356	3-1
09/07/2023	Middle Tenn.	4	0	0	0	.000	0	4	.000	1	2	17	.882	0	11	1.000	10	0	0	0	0.0	0	1.0	.221	1-3
09/08/2023	Charleston So.	*4	0	0	0	.000	3	6	.500	1	1	14	.929	0	11	1.000	8	0	0	0	0.0	0	1.0	.245	3-1
09/09/2023	Mercer	*3	0	0	0	.000	0	4	.000	0	1	10	.900	0	4	1.000	4	0	0	0	0.0	0	0.0	.346	3-0
09/14/2023	at South Alabama	*1	0	0	0	.000	0	1	.000	0	0	2	1.000	0	3	1.000	4	0	0	0	0.0	0	0.0	.191	3-2
Totals		27	0	0	2	.000	6	26	.231	6	6	107	.944	1	83	.988	52	0	0	0	0.0	0	6.0		

Player Averages

Sets Played	Kills per set	Assists per set	Service aces per set	Digs per set	Blocks per set	Points per set
27	0.00	0.22	0.22	1.93	0.00	0.22

CAREER STATS

SEASON	TEAM	SM-MP	K	K/S	E	TA	PCT	A	A/S	SA	SA/S	SE	DIG	D/S	RE	BS	BA	TB	B/S	BE	BHE	PTS	PTS/S
2021-22	AUB	103-28	7	0.07	8	85	-.012	17	0.17	5	0.05	15	192	1.86	21	0	1	1	0.01	0	0	12.5	0.12
2022-23	AUB	122-31	1	0.01	1	13	.000	15	0.12	35	0.29	33	198	1.62	28	0	0	0	0.00	0	0	36.0	0.30
2023-24	AUB	27-9	0	0.00	0	2	.000	6	0.22	6	0.22	6	52	1.93	1	0	0	0	0.00	0	0	6.0	0.22
TOTAL		252 - 68	8	0.03	9	100	-.010	38	0.15	46	0.18	54	442	1.75	50	0	1	1	0.00	0	0	54.5	0.22

#5 BELLA BELL

MIDDLE BLOCKER | 6-4 | GRADUATE
BLYTHEWOOD, S.C. (KENTUCKY)



BELL'S HIGHLIGHTS:

- Has hit over .400 in three matches this season
- National Champion in Kentucky
- Had the 3rd-highest hitting percentage in the SEC in 2022

CATEGORY	CAREER HIGH	OPPONENT/DATE
Kills	14	vs Coppin State (8/25/23)
Attempts	30	vs Ole Miss (9/24/23)
Hitting Percentage (Min. 10 ATT.)	.750	vs Jacksonville State (8/26/23)
Assists	1 (5x)	last vs Florida (9/22/23)
Digs	4	vs Ole Miss (9/24/23)
Blocks	10 (2x)	at Arkansas (10/7/22)
Aces	1	vs South Carolina (11/25/22)
Points	17.5	at Missouri (9/28/22)
CATEGORY	SEASON HIGH	OPPONENT/DATE
Kills	14	vs Coppin State (8/25/23)
Attempts	30	vs Ole Miss (9/24/23)
Hitting Percentage (Min. 10 ATT.)	.750	vs Jacksonville State (8/26/23)
Assists	1 (2x)	last vs Florida (9/22/23)
Digs	4	vs Ole Miss (9/24/23)
Blocks	7	vs Ole Miss (9/24/23)
Aces	--	--
Points	15.5	vs Coppin State (8/25/23)

GAME BY GAME

Date	Opponent	SP	Attack				Set			Serve				Recept			Blocking				Team				
			K	E	TA	PCT	A	TA	PCT	SA	SE	TA	PCT	RE	TA	PCT	DIG	BS	BA	BE	TOTAL	BHE	POINTS	HIT%	SCORE
08/25/2023	Coppin St.	*4	14	2	25	.480	0	1	.000	0	0	0	.000	0	0	.000	1	0	3	0	3.0	0	15.5	.309	3-1
08/26/2023	McNeese	*3	11	3	22	.364	0	0	.000	0	0	0	.000	0	0	.000	0	0	2	0	2.0	0	12.0	.333	3-0
08/26/2023	Jacksonville St.	*3	9	0	12	.750	0	0	.000	0	0	0	.000	0	0	.000	0	0	2	1	2.0	0	10.0	.395	3-0
09/02/2023	vs SMU	*4	10	3	22	.318	1	1	1.000	0	0	0	.000	1	2	.500	2	0	3	1	3.0	0	11.5	.316	3-1
09/03/2023	at Florida St.	*4	13	1	29	.414	0	2	.000	0	0	1	1.000	0	0	.000	2	0	2	0	2.0	0	14.0	.356	3-1
09/07/2023	Middle Tenn.	*4	8	5	21	.143	0	1	.000	0	0	0	.000	0	0	.000	0	0	4	1	4.0	0	10.0	.221	1-3
09/22/2023	Florida	*5	11	5	28	.214	1	4	.250	0	0	0	.000	0	0	.000	2	0	0	0	0.0	0	11.0	.196	2-3
09/24/2023	Ole Miss	*4	9	4	30	.167	0	0	.000	0	0	0	.000	0	0	.000	4	1	6	0	7.0	0	13.0	.199	3-1
09/27/2023	at Arkansas	*3	3	4	18	-.056	0	0	.000	0	0	0	.000	0	0	.000	1	0	1	1	1.0	0	3.5	-.049	0-3
10/20/2023	Missouri	*3	5	4	17	.059	0	2	.000	0	0	0	.000	0	0	.000	0	0	3	1	3.0	0	6.5	.168	0-3
10/22/2023	South Carolina	5	8	1	20	.350	0	3	.000	0	0	0	.000	0	0	.000	1	0	6	0	6.0	0	11.0	.241	3-2
Totals		42	101	32	244	.283	2	14	.143	0	0	1	1.000	1	2	.500	13	1	32	5	33.0	0	118.0		

Player Averages

Sets Played	Kills per set	Assists per set	Service aces per set	Digs per set	Blocks per set	Points per set
42	2.40	0.05	0.00	0.31	0.79	2.81

CAREER STATS

SEASON	TEAM	SM-MP	K	K/S	E	TA	PCT	A	A/S	SA	SA/S	SE	DIG	D/S	RE	BS	BA	TB	B/S	BE	BHE	PTS	PTS/S
2020-21	UK	24-14	29	1.21	9	64	.313	0	0.00	0	0.00	0	2	0.08	1	0	22	22	0.92	3	0	40.0	1.67
2021-22	UK	62-19	102	1.65	25	185	.416	1	0.02	0	0.00	0	9	0.15	0	10	68	78	1.26	8	0	146.0	2.35
2022-23	UK	62-22	107	1.73	34	215	.340	2	0.03	2	0.03	6	12	0.19	0	5	72	77	1.24	8	0	150.0	2.42
2023-24	AUB	42-11	101	2.40	32	244	.283	2	0.05	0	0.00	0	13	0.31	1	1	32	33	0.79	5	0	118.0	2.81
TOTAL FOR AUB	42 - 11		101	2.40	32	244	.283	2	0.05	0	0.00	0	13	0.31	1	1	32	33	0.79	5	0	118.0	2.81
TOTAL		190 - 66	339	1.78	100	708	.338	5	0.03	2	0.01	6	36	0.19	2	16	194	210	1.11	24	0	454.0	2.39

#7 PEYTON DUNN

SETTER | 5-11 | REDSHIRT-SOPHOMORE
DECATUR, TEXAS (LEGEND)



SWANSON'S HIGHLIGHTS:

- 4x Big 12 Rookie of the Week
- All-Big 12 Rookie Team
- Had a career-high 54 assists vs Texas Tech on Oct. 14, 2021

CATEGORY	CAREER HIGH	OPPONENT/DATE
Kills	6	vs Indiana (9/10/21)
Attempts	11 (3x)	last at TCU (10/8/21)
Hitting Percentage (Min. 10 ATT.)	.500	vs Indiana (9/10/21)
Assists	54	vs Texas Tech (10/14/21)
Digs	18	vs FIU (8/28/22)
Blocks	6 (3x)	last at TCU (10/9/22)
Aces	2 (4x)	last vs FIU (8/28/22)
Points	7.0	at TCU (10/9/21)

CATEGORY	SEASON HIGH	OPPONENT/DATE
Kills	3	vs Jacksonville State (8/26/23)
Attempts	4	vs Jacksonville State (8/26/23)
Hitting Percentage (Min. 10 ATT.)	--	--
Assists	43	vs Coppin State (8/25/23)
Digs	4 (2x)	last vs Jacksonville State (8/26/23)
Blocks	2	vs Coppin State (8/25/23)
Aces	1	vs Coppin State (8/25/23)
Points	3.0 (2x)	last vs Jacksonville State (8/26/23)

GAME BY GAME

Date	Opponent	SP	Attack				Set			Serve				Recept			Blocking				Team				
			K	E	TA	PCT	A	TA	PCT	SA	SE	TA	PCT	RE	TA	PCT	DIG	BS	BA	BE	TOTAL	BHE	POINTS	HIT%	SCORE
08/25/2023	Coppin St.	*4	1	0	3	.333	43	111	.387	1	5	11	.545	0	0	.000	4	0	2	0	2.0	0	3.0	.309	3-1
08/26/2023	Jacksonville St.	2	3	1	4	.500	16	30	.533	0	2	4	.500	0	0	.000	4	0	0	0	0.0	0	3.0	.395	3-0
Totals			6	4	1	.429	59	141	.418	1	7	15	.533	0	0	.000	8	0	2	0	2.0	0	6.0		

Player Averages

Sets Played	Kills per set	Assists per set	Service aces per set	Digs per set	Blocks per set	Points per set
6	0.67	9.83	0.17	1.33	0.33	1.00

CAREER STATS

SEASON	TEAM	SM-MP	K	K/S	E	TA	PCT	A	A/S	SA	SA/S	SE	DIG	D/S	RE	BS	BA	TB	B/S	BE	BHE	PTS	PTS/S
2021-22	OU	107-27	67	0.63	15	163	.319	997	9.32	13	0.12	45	198	1.85	0	0	63	63	0.59	2	5	111.5	1.04
2022-23	OU	24-7	12	0.50	4	25	.320	252	10.50	3	0.13	8	57	2.38	0	0	11	11	0.46	3	4	20.5	0.85
2023-24	AUB	6-2	4	0.67	1	7	.429	59	9.83	1	0.17	7	8	1.33	0	0	2	2	0.33	0	0	6.0	1.00
TOTAL FOR AUB		6 - 2	4	0.67	1	7	.429	59	9.83	1	0.17	7	8	1.33	0	0	2	2	0.33	0	0	6.0	1.00
TOTAL		137 - 36	83	0.61	20	195	.323	1308	9.55	17	0.12	60	263	1.92	0	0	76	76	0.55	5	9	138.0	1.01

#11 JORDAN SINNESS

SETTER | 5-9 | JUNIOR
SEBRING, FLA. (SEBRING)



SINNESS' HIGHLIGHTS:

- Recorded the Tigers' first double-double of the season at Georgia State with 42 assists and 12 digs.
- Grabbed a career-high 49 assists in 5-set win at UAB
- Made collegiate debut versus Cal State Fullerton (9/2), dishing out 16 assists, six digs, one kill and a block

CATEGORY	CAREER HIGH	OPPONENT/DATE
Kills	3	vs Alabama A&M (9/6/22)
Attempts	7	at UAB (9/10/22)
Hitting Percentage (Min. 10 ATT.)		
Assists	49	at UAB (9/10/22)
Digs	14	vs. Missouri (10/17/21)
Blocks	5	at UAB (9/10/22)
Aces	3	vs Alabama A&M (9/6/22)
Points	7.0	vs Alabama A&M (9/6/22)

CATEGORY	SEASON HIGH	OPPONENT/DATE
Kills	--	--
Attempts	--	--
Hitting Percentage (Min. 10 ATT.)	--	--
Assists	--	--
Digs	--	--
Blocks	--	--
Aces	--	--
Points	--	--

GAME BY GAME

CAREER STATS

SEASON	TEAM	SM-MP	K	K/S	E	TA	PCT	A	A/S	SA	SA/S	SE	DIG	D/S	RE	BS	BA	TB	B/S	BE	BHE	PTS	PTS/S
2021-22	AUB	50-15	2	0.04	1	6	.167	64	1.28	6	0.12	7	33	0.66	0	0	3	3	0.06	0	2	9.5	0.19
2022-23	AUB	49-14	5	0.10	0	15	.333	163	3.33	16	0.33	22	51	1.04	0	2	13	15	0.31	1	0	29.5	0.60
TOTAL		99 - 29	7	0.07	1	21	.286	227	2.29	22	0.22	29	84	0.85	0	2	16	18	0.18	1	2	39.0	0.39

#12 BEL ZIMMERMAN

PIN HITTER | 6-2 | SOPHOMORE
LIBERTY, MO. (LIBERTY NORTH)



ZIMMERMAN'S HIGHLIGHTS:

- Set career highs in kills (17) and digs (16) against Charleston Southern for her first-career double-double
- Hit .692 with 8 kills vs. Marist
- Had a career-high 13 kills at Jacksonville State
- Made her collegiate debut on Aug. 26 at Georgia State

CATEGORY	CAREER HIGH	OPPONENT/DATE
Kills	17	vs Charleston Southern (9/8/23)
Attempts	36	vs UAB (9/15/23)
Hitting Percentage (Min. 10 ATT.)	.692	vs Marist (8/27/22)
Assists	1 (10x)	last vs South Carolina (10/22/23)
Digs	16	vs Charleston Southern (9/8/23)
Blocks	6 (2x)	last at South Alabama (9/14/23)
Aces	4	at South Alabama (9/14/23)
Points	21.0	vs UAB (9/15/23)

CATEGORY	SEASON HIGH	OPPONENT/DATE
Kills	17	vs Charleston Southern (9/8/23)
Attempts	41	at South Carolina (10/8/23)
Hitting Percentage (Min. 10 ATT.)	.400	vs McNeese (8/26/23)
Assists	1 (8x)	last vs South Carolina (10/22/23)
Digs	16	vs Charleston Southern (9/8/23)
Blocks	6	at South Alabama (9/14/23)
Aces	4	at South Alabama (9/14/23)
Points	21.0	vs UAB (9/15/23)

GAME BY GAME

Date	Opponent	SP	Attack				Set			Serve				Receipt			Blocking				Team				
			K	E	TA	PCT	A	TA	PCT	SA	SE	TA	PCT	RE	TA	PCT	DIG	BS	BA	BE	TOTAL	BHE	POINTS	HIT%	SCORE
08/26/2023	McNeese	3	8	0	20	.400	1	3	.333	0	2	8	.750	0	7	1.000	2	0	2	0	2.0	0	9.0	.333	3-0
08/26/2023	Jacksonville St.	2	2	3	8	.125	0	0	.000	3	2	7	.714	0	3	1.000	1	0	0	2	0.0	0	5.0	.395	3-0
09/02/2023	vs SMU	2	0	0	0	.000	0	0	.000	0	2	3	.333	0	0	.000	0	0	0	0	0.0	0	0.0	.316	3-1
09/03/2023	at Florida St.	4	0	0	0	.000	0	1	.000	0	0	9	1.000	0	0	.000	0	0	0	0	0.0	0	0.0	.356	3-1
09/07/2023	Middle Tenn.	*4	11	6	40	.125	0	0	.000	0	3	11	.727	2	19	.895	4	0	2	1	2.0	0	12.0	.221	1-3
09/08/2023	Charleston So.	*4	17	5	50	.240	1	1	1.000	2	2	22	.909	0	20	1.000	16	0	2	0	2.0	0	20.0	.245	3-1
09/09/2023	Mercer	*3	14	3	30	.367	1	3	.333	3	3	15	.800	0	13	1.000	2	0	1	1	1.0	0	17.5	.346	3-0
09/14/2023	at South Alabama	*5	11	3	34	.235	1	6	.167	4	2	23	.913	0	10	1.000	2	1	5	1	6.0	0	18.5	.191	3-2
09/15/2023	vs UAB	*4	16	5	36	.306	1	3	.333	2	3	14	.786	2	22	.909	12	1	4	1	5.0	0	21.0	.189	3-1
09/16/2023	vs Samford	*4	15	2	33	.394	1	2	.500	1	3	12	.750	3	17	.824	11	0	2	0	2.0	0	17.0	.386	3-1
09/22/2023	Florida	5	0	0	0	.000	1	3	.333	0	3	16	.813	0	0	.000	1	0	0	0	0.0	0	0.0	.196	2-3
09/24/2023	Ole Miss	4	0	0	0	.000	0	0	.000	3	2	17	.882	0	0	.000	1	0	0	0	0.0	0	3.0	.199	3-1
09/27/2023	at Arkansas	3	0	3	5	-.600	0	1	.000	1	1	5	.800	1	3	.667	0	0	0	0	0.0	0	1.0	-.049	0-3
10/01/2023	Georgia	*4	5	2	14	.214	0	3	.000	0	5	20	.750	0	15	1.000	6	0	1	2	1.0	0	5.5	.262	3-1
10/06/2023	at Florida	*3	6	3	18	.167	0	0	.000	1	6	15	.600	0	7	1.000	2	0	1	0	1.0	0	7.5	.387	3-0
10/08/2023	at South Carolina	*5	10	7	41	.073	0	1	.000	1	4	18	.778	0	3	1.000	2	0	0	1	0.0	0	11.0	.197	3-2
10/13/2023	at Tennessee	*4	9	3	28	.214	0	1	.000	0	2	11	.818	1	11	.909	5	0	1	0	1.0	0	9.5	.122	1-3
10/20/2023	Missouri	3	2	1	5	.200	0	0	.000	1	1	12	.917	2	9	.778	8	0	0	0	0.0	0	3.0	.168	0-3
10/22/2023	South Carolina	*5	2	1	14	.071	1	1	1.000	2	4	18	.778	1	7	.857	5	0	0	0	0.0	0	4.0	.241	3-2
Totals		71	128	47	376	.215	8	29	.276	24	50	256	.805	12	166	.928	80	2	21	9	23.0	0	164.5		

Player Averages

Sets Played	Kills per set	Assists per set	Service aces per set	Digs per set	Blocks per set	Points per set
71	1.80	0.11	0.34	1.13	0.32	2.32

CAREER STATS

SEASON	TEAM	SM-MP	K	K/S	E	TA	PCT	A	A/S	SA	SA/S	SE	DIG	D/S	RE	BS	BA	TB	B/S	BE	BHE	PTS	PTS/S
2022-23	AUB	114-29	220	1.93	98	607	.201	2	0.02	4	0.04	11	54	0.47	3	3	63	66	0.58	10	0	258.5	2.27
2023-24	AUB	71-19	128	1.80	47	376	.215	8	0.11	24	0.34	50	80	1.13	12	2	21	23	0.32	9	0	164.5	2.32
TOTAL		185 - 48	348	1.88	145	983	.207	10	0.05	28	0.15	61	134	0.72	15	5	84	89	0.48	19	0	423.0	2.29

#13 PAIGE THIBAUT

LIBERO | 5-8 | JUNIOR

WATERTOWN, MINN. (WATERTOWN-MAYER)



THIBAUT'S HIGHLIGHTS:

- Compiled a career-high 20 digs against Dayton on Sept. 3, 2022
- Hit .462 vs Arizona State on Sept. 2, 2022
- 2021 All-Crossroads League Honorable Mention
- 2021 Crossroads League All-Freshman Team

CATEGORY	CAREER HIGH	OPPONENT/DATE
Kills	9	at FAU (10/28/22)
Attempts	35	at UTSA (10/23/22)
Hitting Percentage (Min. 10 ATT.)	.462	vs Arizona State (9/2/22)
Assists	9	vs South Carolina (10/22/23)
Digs	23	vs South Carolina (10/22/23)
Blocks	4	vs UAB (10/7/22)
Aces	3	vs Little Rock (9/8/22)
Points	9.0 (2x)	last at FAU (10/28/22)

CATEGORY	SEASON HIGH	OPPONENT/DATE
Kills	1	at South Alabama (9/14/23)
Attempts	2	at South Alabama (9/14/23)
Hitting Percentage (Min. 10 ATT.)	--	--
Assists	9	vs South Carolina (10/22/23)
Digs	23	vs South Carolina (10/22/23)
Blocks	--	--
Aces	2 (2x)	last vs Samford (9/16/23)
Points	2.0 (2x)	last vs Samford (9/16/23)

GAME BY GAME

Date	Opponent	SP	Attack				Set			Serve				Recept			Blocking					Team			
			K	E	TA	PCT	A	TA	PCT	SA	SE	TA	PCT	RE	TA	PCT	DIG	BS	BA	TB	B/S	BE	BHE	POINTS	HIT%
08/25/2023	Coppin St.	*4	0	0	0	.000	2	3	.667	0	3	13	.769	0	15	1.000	10	0	0	0	0.0	0	0.0	.309	3-1
08/26/2023	McNeese	*2	0	0	0	.000	0	1	.000	0	0	0	.000	0	5	1.000	2	0	0	0	0.0	0	0.0	.333	3-0
09/07/2023	Middle Tenn.	4	0	0	0	.000	2	2	1.000	0	1	1	.000	1	7	.857	2	0	0	0	0.0	0	0.0	.221	1-3
09/14/2023	at South Alabama	5	1	0	2	.500	0	3	.000	0	0	0	.000	0	12	1.000	8	0	0	0	0.0	0	1.0	.191	3-2
09/15/2023	vs UAB	*4	0	0	0	.000	2	3	.667	2	3	17	.824	1	11	.909	9	0	0	0	0.0	0	2.0	.189	3-1
09/16/2023	vs Samford	4	0	0	0	.000	1	4	.250	2	2	22	.909	0	4	1.000	7	0	0	0	0.0	0	2.0	.386	3-1
09/22/2023	Florida	*5	0	0	1	.000	1	7	.143	0	3	18	.833	1	23	.957	9	0	0	0	0.0	0	0.0	.196	2-3
09/24/2023	Ole Miss	*4	0	0	1	.000	2	7	.286	1	3	18	.833	2	34	.941	11	0	0	0	0.0	0	1.0	.199	3-1
09/27/2023	at Arkansas	*3	0	0	0	.000	1	1	1.000	0	1	5	.800	2	19	.895	2	0	0	0	0.0	0	0.0	-.049	0-3
10/01/2023	Georgia	*4	0	0	0	.000	1	3	.333	0	2	12	.833	0	9	1.000	10	0	0	0	0.0	0	0.0	.262	3-1
10/06/2023	at Florida	*3	0	0	0	.000	2	2	1.000	1	2	13	.846	1	22	.955	6	0	0	0	0.0	0	1.0	.387	3-0
10/08/2023	at South Carolina	*5	0	0	0	.000	1	5	.200	0	1	13	.923	1	24	.958	6	0	0	0	0.0	0	0.0	.197	3-2
10/13/2023	at Tennessee	*4	0	0	0	.000	0	6	.000	1	1	15	.933	0	12	1.000	5	0	0	0	0.0	0	1.0	.122	1-3
10/20/2023	Missouri	*3	0	0	0	.000	0	2	.000	0	0	9	1.000	1	31	.968	2	0	0	0	0.0	0	0.0	.168	0-3
10/22/2023	South Carolina	5	0	0	0	.000	9	23	.391	0	3	18	.833	3	38	.921	23	0	0	0	0.0	0	0.0	.241	3-2
Totals		59	1	0	4	.250	24	72	.333	7	25	174	.856	13	266	.951	112	0	0	0	0.0	0	8.0		

Player Averages

Sets Played	Kills per set	Assists per set	Service aces per set	Digs per set	Blocks per set	Points per set
59	0.02	0.41	0.12	1.90	0.00	0.14

CAREER STATS

SEASON	TEAM	SM-MP	K	K/S	E	TA	PCT	A	A/S	SA	SA/S	SE	DIG	D/S	RE	BS	BA	TB	B/S	BE	BHE	PTS	PTS/S
2022-23	FIU	105-28	47	0.45	28	216	.088	14	0.13	23	0.22	30	221	2.10	21	1	7	8	0.08	0	0	74.5	0.71
2023-24	AUB	59-15	1	0.02	0	4	.250	24	0.41	7	0.12	25	112	1.90	13	0	0	0	0.00	0	0	8.0	0.14
TOTAL FOR AUB	59 - 15	1	0.02	0	4	.250	24	0.41	7	0.12	25	112	1.90	13	0	0	0	0.00	0	0	8.0	0.14	
TOTAL	164 - 43	48	0.29	28	220	.091	38	0.23	30	0.18	55	333	2.03	34	1	7	8	0.05	0	0	82.5	0.50	

#14 CHELSEY HARMON

MIDDLE BLOCKER | 6-3 | SENIOR
PUYALLUP, WASH. (PORTLAND)



HARMON'S HIGHLIGHTS:

- 3rd best hitting percentage in program history (.706) against Jackson State.
- Currently holds the sixth-best hitting percentage in single-season program history (.344)
- Made her Auburn debut on Aug. 26 vs. Belmont

CATEGORY	CAREER HIGH	OPPONENT/DATE
Kills	16	vs San Francisco (10/16/21)
Attempts	23	at LSU (10/5/22)
Hitting Percentage (Min. 10 ATT.)	.706	vs Jackson State (9/17/22)
Assists	2 (3x)	last vs Samford (9/16/23)
Digs	4 (2x)	last at Santa Clara (3/9/21)
Blocks	10	vs Troy (9/10/22)
Aces	2 (3x)	last vs Eastern Washington (8/28/21)
Points	15.5	at LSU (10/5/22)

CATEGORY	SEASON HIGH	OPPONENT/DATE
Kills	6	vs Ole Miss (9/24/23)
Attempts	12 (2x)	last vs Ole Miss (9/24/23)
Hitting Percentage (Min. 10 ATT.)	.417	vs Ole Miss (9/24/23)
Assists	2	last vs Samford (9/16/23)
Digs	2 (3x)	last vs South Carolina (10/22/23)
Blocks	8	vs Ole Miss (9/24/23)
Aces	4	vs Charleston Southern (9/8/23)
Points	12.5	vs Charleston Southern (9/8/23)

GAME BY GAME

Date	Opponent	SP	Attack				Set			Serve				Receipt			Blocking				Team				
			K	E	TA	PCT	A	TA	PCT	SA	SE	TA	PCT	RE	TA	PCT	DIG	BS	BA	BE	TOTAL	BHE	POINTS	HIT%	SCORE
08/26/2023	McNeese	1	1	0	2	.500	1	2	.500	0	0	4	1.000	0	0	.000	1	0	2	0	2.0	0	2.0	.333	3-0
08/26/2023	Jacksonville St.	1	2	0	2	1.000	0	1	.000	0	0	6	1.000	0	0	.000	0	0	0	0	0.0	0	2.0	.395	3-0
09/07/2023	Middle Tenn.	1	1	0	2	.500	0	0	.000	0	0	0	.000	0	0	.000	0	0	0	0	0.0	0	1.0	.221	1-3
09/08/2023	Charleston So.	*4	5	2	12	.250	0	3	.000	4	2	15	.867	0	0	.000	2	0	7	1	7.0	0	12.5	.245	3-1
09/09/2023	Mercer	*3	4	0	6	.667	1	3	.333	1	3	14	.786	0	0	.000	1	1	3	0	4.0	0	7.5	.346	3-0
09/14/2023	at South Alabama	3	2	0	4	.500	0	1	.000	2	0	9	1.000	0	0	.000	0	0	3	1	3.0	0	5.5	.191	3-2
09/16/2023	vs Samford	4	0	0	0	.000	2	3	.667	1	2	22	.909	0	0	.000	0	0	0	0	0.0	0	1.0	.386	3-1
09/22/2023	Florida	*5	4	2	10	.200	0	2	.000	0	0	3	1.000	0	0	.000	1	0	2	2	2.0	0	5.0	.196	2-3
09/24/2023	Ole Miss	*4	6	1	12	.417	0	0	.000	0	0	3	1.000	0	0	.000	2	0	8	0	8.0	0	10.0	.199	3-1
09/27/2023	at Arkansas	*3	2	1	3	.333	0	0	.000	0	0	3	1.000	0	0	.000	1	0	2	0	2.0	0	3.0	-.049	0-3
10/01/2023	Georgia	4	0	0	0	.000	0	0	.000	2	0	18	1.000	0	0	.000	1	0	0	0	0.0	0	2.0	.262	3-1
10/06/2023	at Florida	3	0	0	1	.000	0	0	.000	2	1	12	.917	0	0	.000	1	0	0	0	0.0	0	2.0	.387	3-0
10/08/2023	at South Carolina	5	0	0	0	.000	0	0	.000	2	2	15	.867	0	0	.000	1	0	0	0	0.0	0	2.0	.197	3-2
10/13/2023	at Tennessee	*4	0	0	0	.000	0	2	.000	1	2	13	.846	0	0	.000	0	0	0	0	0.0	0	1.0	.122	1-3
10/20/2023	Missouri	2	0	0	0	.000	0	0	.000	0	1	4	.750	0	0	.000	0	0	0	0	0.0	0	0.0	.168	0-3
10/22/2023	South Carolina	5	0	0	0	.000	0	2	.000	1	1	18	.944	0	0	.000	2	0	0	0	0.0	0	1.0	.241	3-2
Totals		52	27	6	54	.389	4	19	.211	16	14	159	.912	0	0	.000	13	1	27	4	28.0	0	57.5		

Player Averages

Sets Played	Kills per set	Assists per set	Service aces per set	Digs per set	Blocks per set	Points per set
52	0.52	0.08	0.31	0.25	0.54	1.11

CAREER STATS

SEASON	TEAM	SM-MP	K	K/S	E	TA	PCT	A	A/S	SA	SA/S	SE	DIG	D/S	RE	BS	BA	TB	B/S	BE	BHE	PTS	PTS/S
2020-21	UP	34-12	20	0.59	11	62	.145	4	0.12	5	0.15	7	19	0.56	1	2	21	23	0.68	0	0	37.5	1.10
2021-22	UP	78-22	108	1.38	31	246	.313	1	0.01	4	0.05	5	13	0.17	1	6	42	48	0.62	9	1	139.0	1.78
2022-23	AUB	122-31	176	1.44	48	372	.344	5	0.04	0	0.00	4	17	0.14	1	4	103	107	0.88	6	0	231.5	1.90
2023-24	AUB	52-16	27	0.52	6	54	.389	4	0.08	16	0.31	14	13	0.25	0	1	27	28	0.54	4	0	57.5	1.11
TOTAL FOR AUB		174 - 47	203	1.17	54	426	.350	9	0.05	16	0.09	18	30	0.17	1	5	130	135	0.78	10	0	289.0	1.66
TOTAL		286 - 81	331	1.16	96	734	.320	14	0.05	25	0.09	30	62	0.22	3	13	193	206	0.72	19	1	465.5	1.63

#17 CASSIDY TANTON

**PIN HITTER | 6-0 | REDSHIRT-SOPHOMORE
STONEVILLE, N.C. (DALTON MCMICHAEL)**



TANTON'S HIGHLIGHTS:

- Picked up a career-high 10 kills vs. Marist, hitting .348
- Made her season debut on Aug. 26 vs. Belmont

CATEGORY	CAREER HIGH	OPPONENT/DATE
Kills	10	vs Marist (8/27/22)
Attempts	23	vs Marist (8/27/22)
Hitting Percentage (Min. 10 ATT.)	.348	vs Marist (8/27/22)
Assists	--	--
Digs	6	vs Marist (8/27/22)
Blocks	--	--
Aces	2(3x)	last vs Southern Miss (9/16/22)
Points	12.0	vs Marist (8/27/22)

CATEGORY	SEASON HIGH	OPPONENT/DATE
Kills	1	vs Middle Tennessee (9/7/23)
Attempts	5	vs Middle Tennessee (9/7/23)
Hitting Percentage (Min. 10 ATT.)	--	--
Assists	--	--
Digs	--	--
Blocks	--	--
Aces	--	--
Points	1.0	vs Middle Tennessee (9/7/23)

GAME BY GAME

Date	Opponent	SP	Attack				Set		Serve				Recept			Blocking				Team					
			K	E	TA	PCT	A	TA	PCT	SA	SE	TA	PCT	RE	TA	PCT	DIG	BS	BA	BE	TOTAL	BHE	POINTS	HIT%	SCORE
09/07/2023	Middle Tenn.	1	1	1	5	.000	0	0	.000	0	0	0	.000	1	4	.750	0	0	0	0	0.0	0	1.0	.221	1-3
Totals		1	1	1	5	.000	0	0	.000	0	0	0	.000	1	4	.750	0	0	0	0	0.0	0	1.0		

Player Averages

Sets Played	Kills per set	Assists per set	Service aces per set	Digs per set	Blocks per set	Points per set
1	1.00	0.00	0.00	0.00	0.00	1.00

CAREER STATS

SEASON	TEAM	SM-MP	K	K/S	E	TA	PCT	A	A/S	SA	SA/S	SE	DIG	D/S	RE	BS	BA	TB	B/S	BE	BHE	PTS	PTS/S
2022-23	AUB	58-19	12	0.21	7	34	.147	0	0.00	11	0.19	28	19	0.33	2	0	0	0	0.00	0	0	23.0	0.40
2023-24	AUB	1-1	1	1.00	1	5	.000	0	0.00	0	0.00	0	0	0.00	1	0	0	0	0.00	0	0	1.0	1.00
TOTAL		59 - 20	13	0.22	8	39	.128	0	0.00	11	0.19	28	19	0.32	3	0	0	0	0.00	0	0	24.0	0.41



#19 JASMINE OKEOMA
MIDDLE BLOCKER | 6-3 | FRESHMAN
WOODBIDGE, VA. (FOREST PARK)



OKEOMA'S HIGHLIGHTS:

CATEGORY	CAREER HIGH	OPPONENT/DATE
Kills	--	--
Attempts	--	--
Hitting Percentage (Min. 10 ATT.)	--	--
Assists	--	--
Digs	--	--
Blocks	--	--
Aces	--	--
Points	--	--

CATEGORY	SEASON HIGH	OPPONENT/DATE
Kills	--	--
Attempts	--	--
Hitting Percentage (Min. 10 ATT.)	--	--
Assists	--	--
Digs	--	--
Blocks	--	--
Aces	--	--
Points	--	--

GAME BY GAME

CAREER STATS

#22 SYDNEY HANDEL

DEFENSIVE SPECIALIST | 6-0 | SOPHOMORE
LEE'S SUMMIT, MO. (LEE'S SUMMIT WEST)



HANDEL'S HIGHLIGHTS:

- Set career-highs in aces (3) and digs (6) in the NCAA Tournament against Houston
- Made her collegiate debut against Alabama A&M

CATEGORY	CAREER HIGH	OPPONENT/DATE
Kills	1	vs Middle Tennessee (9/7/23)
Attempts	1 (2x)	last at South Alabama (9/14/23)
Hitting Percentage (Min. 10 ATT.)	--	--
Assists	--	--
Digs	10	at South Alabama (9/14/23)
Blocks	--	--
Aces	3	vs Houston (12/3/22)
Points	3.0	vs Houston (12/3/22)

CATEGORY	SEASON HIGH	OPPONENT/DATE
Kills	--	--
Attempts	1	at South Alabama (9/14/23)
Hitting Percentage (Min. 10 ATT.)	--	--
Assists	--	--
Digs	10	at South Alabama (9/14/23)
Blocks	--	--
Aces	2	vs South Carolina (10/22/23)
Points	2.0	vs South Carolina (10/22/23)

GAME BY GAME

Date	Opponent	Attack				Set			Serve				Recept			Blocking				Team					
		SP	K	E	TA	PCT	A	TA	PCT	SA	SE	TA	PCT	RE	TA	PCT	DIG	BS	BA	BE	TOTAL	BHE	POINTS	HIT%	SCORE
09/02/2023	vs SMU	2	0	0	0	.000	0	0	.000	0	2	6	.667	0	0	.000	0	0	0	0	0.0	0	0.0	.316	3-1
09/09/2023	Mercer	1	0	0	0	.000	0	0	.000	0	0	2	1.000	0	0	.000	0	0	0	0	0.0	0	0.0	.346	3-0
09/14/2023	at South Alabama	5	0	0	1	.000	0	2	.000	0	1	14	.929	1	10	.900	10	0	0	0	0.0	0	0.0	.191	3-2
09/15/2023	vs UAB	4	0	0	0	.000	0	0	.000	0	2	11	.818	0	0	.000	0	0	0	0	0.0	0	0.0	.189	3-1
09/16/2023	vs Samford	1	0	0	0	.000	0	2	.000	0	0	0	.000	0	4	1.000	0	0	0	0	0.0	0	0.0	.386	3-1
10/20/2023	Missouri	1	0	0	0	.000	0	1	.000	0	1	3	.667	0	0	.000	0	0	0	0	0.0	0	0.0	.168	0-3
10/22/2023	South Carolina	5	0	0	0	.000	0	2	.000	2	4	19	.789	0	22	1.000	7	0	0	0	0.0	0	2.0	.241	3-2
Totals		19	0	0	1	.000	0	7	.000	2	10	55	.818	1	36	.972	17	0	0	0	0.0	0	2.0		

Player Averages

Sets Played	Kills per set	Assists per set	Service aces per set	Digs per set	Blocks per set	Points per set
19	0.00	0.00	0.11	0.89	0.00	0.11

CAREER STATS

SEASON	TEAM	SM-MP	K	K/S	E	TA	PCT	A	A/S	SA	SA/S	SE	DIG	D/S	RE	BS	BA	TB	B/S	BE	BHE	PTS	PTS/S
2022-23	AUB	19-6	0	0.00	0	1	.000	0	0.00	6	0.32	11	10	0.53	3	0	0	0	0.00	0	0	6.0	0.32
2023-24	AUB	19-7	0	0.00	0	1	.000	0	0.00	2	0.11	10	17	0.89	1	0	0	0	0.00	0	0	2.0	0.11
TOTAL		38 - 13	0	0.00	0	2	.000	0	0.00	8	0.21	21	27	0.71	4	0	0	0	0.00	0	0	8.0	0.21



#25 LAKIN LAURENDINE

PIN HITTER | 6-1 | FRESHMAN
JACKSON, MISS. (JACKSON ACADEMY)



LAURENDINE'S HIGHLIGHTS:

CATEGORY	CAREER HIGH	OPPONENT/DATE
Kills	--	--
Attempts	--	--
Hitting Percentage (Min. 10 ATT.)	--	--
Assists	--	--
Digs	--	--
Blocks	--	--
Aces	--	--
Points	--	--

CATEGORY	SEASON HIGH	OPPONENT/DATE
Kills	--	--
Attempts	--	--
Hitting Percentage (Min. 10 ATT.)	--	--
Assists	--	--
Digs	--	--
Blocks	--	--
Aces	--	--
Points	--	--

GAME BY GAME

CAREER STATS