



2023 VOLLEYBALL MATCH NOTES

AUBURN ATHLETICS COMMUNICATIONS: 392 SOUTH DONAHUE DRIVE || AUBURN, AL 36830 || AUBURNTIGERS.COM || @AUBURNVB

2023 SCHEDULE/RESULTS

14-5 OVERALL | 4-4 SEC
7-3 HOME | 4-2 AWAY | 3-0 NEUTRAL

DATE	OPPONENT	TV	TIME/RESULT
Aug. 25	vs Coppin State!	SECN+	W, 3-1
Aug. 26	vs McNeese State!	SECN+	W, 3-0
Aug. 26	vs Jacksonville State!	SECN+	W, 3-0
Sept. 2	vs SMU@	N/A	W, 3-1
Sept. 3	at Florida State@	ACCN+	W, 3-1
Sept. 7	vs Middle Tennessee\$	SECN+	L, 1-3
Sept. 8	vs Charleston Southern\$	SECN+	W, 3-1
Sept. 9	vs Mercer\$	SECN+	W, 3-0
Sept. 14	at South Alabama%	ESPN+	W, 3-2
Sept. 15	vs UAB%	N/A	W, 3-1
Sept. 16	vs Samford%	N/A	W, 3-1
Sept. 22	vs #3 Florida*	SECN+	L, 2-3
Sept. 24	vs Ole Miss*	SECN+	W, 3-1
Sept. 27	at #14 Arkansas*	SEC Network	L, 0-3
Oct. 1	vs Georgia*	ESPN	W, 3-1
Oct. 6	at #9 Florida*	SECN+	W, 3-0
Oct. 8	at South Carolina*	ESPNU	W, 3-2
Oct. 13	at #10 Tennessee*	SECN+	L, 1-3
Oct. 20	vs Missouri*	SEC Network	L, 0-3
Oct. 22	vs South Carolina*	SECN+	1 p.m. CT
Oct. 27	at Georgia*	SECN+	6 p.m. CT
Oct. 29	at Alabama	SEC Network	11 a.m. CT
Nov. 5	at Texas A&M	SEC Network	3 p.m. CT
Nov. 8	vs Kentucky	SECN+	6:30 p.m. CT
Nov. 12	at Missouri	SECN+	3 p.m. CT
Nov. 15	at Mississippi State	SECN+	6 p.m. CT
Nov. 19	vs LSU	SECN+	2 p.m. CT
Nov. 22	vs Alabama	SECN+	6:30 p.m. CT
Nov. 24	vs Arkansas	SECN+	3 p.m. CT

BOLD indicates home contest | All time Central and subject to change
! - War Eagle Invite | @ - Seminole Invite | S - Tiger Invite | % - Alabama Showdown
* - Southeastern Conference Game | # - NCAA Tournament

AUBURN ATHLETICS COMMUNICATIONS

Office Phone 334-844-9800
Kirk Sampson Associate AD
sampska@auburn.edu
Thomas Hoffman Volleyball Contact
tgh0024@auburn.edu
C: 503-302-9592

FOLLOW ALONG

Web AuburnTigers.com
X @AuburnVB
Instagram @auburnvolleyball

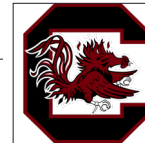
MATCH

20

SOUTH CAROLINA

Sunday, Oct. 22 | 1 p.m. CT

Auburn, Ala. | Neville Arena | SEC Network+



AUBURN

AVCA Coaches Poll _____ 23
2023 Record _____ 14-4 | 4-3 SEC
Head Coach _____ Brent Crouch
Career Record (Year) _____ 144-128 (10th)
Record at Auburn (Year) _____ 49-37 (4th)

SOUTH CAROLINA

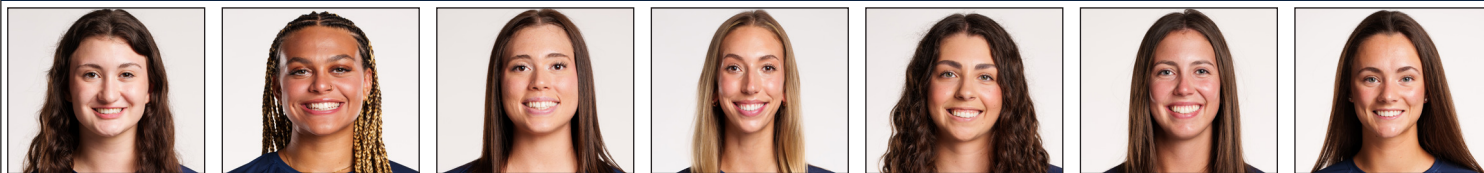
AVCA Coaches Poll _____ NR
2023 Record _____ 7-9 | 2-6 SEC
Head Coach _____ Tom Mendoza
Career Record (Year) _____ 134-89 (8th)
Record at South Carolina (Year) _____ 87-71 (6th)

Site _____ Auburn, Alabama
Venue _____ Neville Arena
Live Stats _____ Statbroadcast
Broadcast Crew _____ Graham Doty (play-by-play) | Paige Wetzel (analyst)
Series Record _____ South Carolina leads 30-20
First Meeting _____ Nov. 4, 1978 South Carolina 2, Auburn 0 (15-3, 15-10)
Last Meeting _____ Oct. 8, 2023 Auburn 3, South Carolina 2 (25-23, 22-25, 22-25, 25-23, 15-13)
Last Auburn Win _____ Oct. 8, 2023 Auburn 3, South Carolina 2 (25-23, 22-25, 22-25, 25-23, 15-13)
Last South Carolina Win _____ Nov. 23, 2022 South Carolina 3, Auburn 2 (24-26, 25-18, 20-25, 25-16, 15-10)

QUICK HITS

- Senior setter Jackie Barrett is just five assists away from reaching fifth all time in Auburn Volleyball program history.
- Sophomore middle blocker Kendal Kemp loves playing against the Gamecocks. In her two matches versus South Carolina, Kemp is averaging 9.5 blocks and is swinging .394 on 33 attempts.
- Kemp missed three matches due to injury. However, her .421 hitting percentage would be leading the SEC if she had played in those matchups. If the season ended today, the number would be a career high for the Minnesota native and go down as an Auburn program record.
- She hasn't forgotten how to block either. At 1.38 blocks per set, Kemp ranks second in the conference and No. 21 in the country.
- Speaking of blocks, Illinois transfer Kyla Swanson has been starting to find some rhythm at the net. Over the last three matches, Swanson is averaging 6.33 total blocks and 1.58 per set.
- As a team, Auburn's 2.49 blocks per set is the fourth-highest average in the conference and not too far behind the school record 2.56 the team averaged during the 2022 season.
- The Orange and Blue wall on the front row is a major factor in the .191 opponent hitting percentage Auburn is averaging this year, a mark that is No. 4 in the SEC.
- With 22 aces on the season, Bel Zimmerman leads the Tigers and is on pace to jump into the top-10 for the most in a single season. Fallan Lanham tied for sixth a year ago with 35.
- Akasha Anderson still ranks amongst the top offensive players in the SEC. The Virginia native sits seventh in both kills per set (3.73) and points per set (4.30).

AUBURN'S POTENTIAL STARTING SEVEN



SARAH MORTON		AKASHA ANDERSON		BELLA BELL		KYLA SWANSON		KENDAL KEMP		JACKIE BARRETT		PAIGE THIBAUT			
#2 • DS/L • SO. • 5-8	3.23 K/S:	3.73 K/S:	#3 • PH • SO. • 6-3	1.21 K/S:	1.21 K/S:	#5 • RS • SR. • 6-4	1.63 D/S:	1.63 D/S:	#8 • MB • SO. • 6-6	2.41 D/S:	2.41 D/S:	#13 • DS/L • JR. • 5-7	1.65 D/S:		
A/S:	0.97 HIT%:	.178 HIT%:	.277 HIT%:	.239 HIT%:	.421 A/S:	9.43 A/S:	0.28 A/S:	0.13 SA/S:	0.10 D/S:	2.10 D/S:	0.32 D/S:	0.20 D/S:	0.08 SA/S:	0.26 SA/S:	0.13 SA/S:
P/S:	0.13 B/S:	0.52 B/S:	0.73 B/S:	1.04 B/S:	1.34 P/S:	1.22 P/S:	0.15 P/S:	0.02 SA/S:	0.31 SA/S:	0.00 SA/S:	0.04 SA/S:	0.02 SA/S:	0.02 SA/S:	0.02 SA/S:	0.02 SA/S:
	P/S:	4.30 P/S:	2.89 P/S:	1.82 P/S:	2.37 P/S:	2.37 P/S:									

K/S: kills per set • HIT%: hitting percentage • D/S: digs per set • B/S: blocks per set • A/S: assists per set • SA/S: aces per set • P/S: points per set



#1 MADISON SCHEER
So. | PH | 6-1



#2 SARAH MORTON
So. | L | 5-8



#3 AKASHA ANDERSON
So. | PH | 6-3



#4 FALLAN LANHAM
Jr. | L | 5-8



#5 BELLA BELL
Gr. | MB | 6-4



#6 KYLA SWANSON
Gr. | MB | 6-4



#7 PEYTON DUNN
R-So. | S | 5-11



#8 KENDAL KEMP
So. | MB | 6-6



#9 ZOE SLAUGHTER
So. | L | 5-7



#10 JACKIE BARRETT
Sr. | S | 6-2



#11 JORDAN SINNESS
Jr. | S | 5-9



#12 BEL ZIMMERMAN
So. | PH | 6-2



#13 PAIGE THIBAUT
Jr. | L | 5-7



#14 CHELSEY HARMON
Sr. | MB | 6-3



#17 CASSIDY TANTON
R-So. | PH | 6-0



#19 JASMINE OKEOMA
Fr. | MB | 6-3



#22 SYDNEY HANDEL
So. | L | 6-0



#22 LAKIN LAURENDINE
Fr. | PH | 6-1

#WarEagle



AuburnTigers.com

@AuburnVB | @AuburnTigers
@AuburnVBCoach



/AuburnVB
/AuburnTigers

TEAM SCHEDULE AND MEDIA AVAILABILITY >> WEEK OF OCT. 16 - 22

MONDAY October 16	TUESDAY October 17	WEDNESDAY October 18	THURSDAY October 19	FRIDAY October 20	SATURDAY October 21	SUNDAY October 22
PRACTICE: 3:45 p.m. - 6 p.m.	PRACTICE: 3:45 p.m. - 6 p.m.	PRACTICE: 3:45 p.m. - 6 p.m.	PRACTICE: 3:45 p.m. - 6 p.m.	MATCH: 6 p.m. CT	PRACTICE: 3:45 p.m. - 6 p.m.	MATCH: 1 p.m. CT
SAC	SAC	SAC	SAC	vs Missouri Auburn, AL	ARENA	vs South Carolina Auburn, AL
INTERVIEWS BY REQUEST	INTERVIEWS BY REQUEST	INTERVIEWS BY REQUEST	INTERVIEWS BY REQUEST	INTERVIEWS POST MATCH	INTERVIEWS BY REQUEST	INTERVIEWS POST MATCH

AUBURN ATHLETICS COMMUNICATIONS

QUICK FACTS

AUBURNTIGERS.COM

For updated game notes, statistics, safety protocols and latest information on Auburn volleyball and Auburn Athletics, visit AuburnTigers.com.

INTERVIEW POLICY

Coach Crouch, assistant coaches and student-athletes are available for interviews by contacting Thomas Hoffman in the communications office. All interviews during the week will be conducted via phone or ZOOM. Post-match interviews will be conducted in the media room at Auburn Arena following a brief cooling-off period.

CREDENTIALS

Anyone wishing to cover an Auburn volleyball match should contact Thomas Hoffman in the communications office at least 24 hours in advance to make arrangements.

MATCH DAY SERVICES

Printed copies of notes, flip cards and statistics will be available upon request. Digital copies will be emailed out prior to the match and will be available on AuburnTigers.com. Media members are permitted to bring their own printed materials. Stats will not printed between sets or after matches. Live stats will be provided during the match and final statistics will be emailed out and posted on AuburnTigers.com. All post-match interviews will be conducted in the media room. Wireless internet is available in the Arena; ask Thomas Hoffman for the password. Match highlights, photos and postgame interviews will be available on Imagen following matches.

PHOTO SERVICES

For photos of Auburn volleyball or any Olympic sports, contact Zach Bland at zdb007@auburn.edu.

COMMUNICATIONS STAFF

Thomas Hoffman Volleyball Contact
cell: 503-302-9592
email: tgh0024@auburn.edu

Kirk Sampson Associate AD
cell: 334-750-1385
email: sampska@auburn.edu

UNIVERSITY INFORMATION

City / Zip _____ Auburn, Ala. / 36831
 Founded _____ Oct. 1, 1856
 Enrollment _____ 30,737
 Nickname _____ Tigers
 Colors _____ Navy Blue & Burnt Orange
 Affiliation _____ NCAA Division I
 Conference _____ Southeastern Conference
 Home Court _____ Neville Arena (9,121)
 President _____ Dr. Chris Roberts
 Athletics Director _____ John Cohen
 Sport Administrator _____ Joy Vrbka (Florida, 2003)

TEAM INFORMATION

Letterwinners Returning/Lost _____ 12/0
 Starters Returning/Lost _____ 6+libero/0
 Newcomers _____ 6
 2022 Overall Record _____ 22-9
 2022 Conference Record/Finish _____ 10-8/6th

PROGRAM HISTORY

First Year of Volleyball _____ 1967
 _____ Program discontinued 1981; Reinstated 1986
 Seasons of Auburn Volleyball _____ 45th
 All-Time Overall Record _____ 705-703-4 (.501)
 in Neville Arena (Since 2013) _____ 75-62 (.535)
 Total Home Record _____ 247-215 (.531)
 All-Time SEC Record _____ 202-372 (.350)
 NCAA Tournament Appearances _____ 2/2010, 2022
 SEC Championships/Last _____ 1/Co-West Champions (1996)

STAFF INFORMATION

Head Coach _____ Brent Crouch (Texas A&M, '98 & '00; Oregon '06)
 Career Record _____ 144-128 (.514)/10th Season
 Record at Auburn _____ 49-37 (.523)/4th Season
 Assistant Coach/Recruiting Coordinator _____ Rachel Corbelli (2nd Season)
 Assistant Coach _____ Keith Smith (2nd Season)
 Assistant Coach _____ Jack Burton (1st Season)
 Technical Coordinator _____ Mackenna Basore (2nd Season)
 Director of Operations _____ Emily Houle (2nd Season)
 Strength & Conditioning _____ Bethany Gainey
 Athletic Trainer _____ Nate Warner
 Equipment Manager _____ Brian Maddox

ATHLETIC COMMUNICATIONS

Associate AD/Communications _____ Kirk Sampson
 Assistant Director/Volleyball Contact _____ Thomas Hoffman
 Email _____ tgh0024@auburn.edu
 Phone _____ 503-302-9592
 Mailing Address _____ Auburn Athletics Complex
 _____ 392 S. Donahue Drive
 Website _____ AuburnTigers.com

GAMEDAY EXPERIENCE: NEVILLE ARENA

>> Neville Arena is in its seventh season as home of Auburn volleyball. The Tigers are 75-61 since moving to the Arena in 2013. The facility seats approximately 9,121.



LAST TIME OUT VS SOUTH CAROLINA

» For the second time in as many seasons, Auburn and South Carolina went the full five sets in Columbia. Madison Scheer Scheer's 19 kills solidified her National Player of the Week campaign. Kendal Kemp rejected nine Gamecock attacks and Jackie Barrett's 46 assists and 12 digs gave the senior her eighth double-double of the season. All totaled, it added up a thrilling Auburn victory that closed out a difficult road trip that included the Tiger's first top-10 victory over then No. 9 Florida in Gainesville.

SCOUTING SOUTH CAROLINA

» Tom Mendoza's Gamecocks are starting to find some wins after a difficult opening schedule to their SEC campaign. Since dropping the five-setter to Auburn, South Carolina has posted wins over Georgia and Alabama.

As a team, the Gamecocks remain one of the best blocking teams in the conference. USC enters the weekend at 2.60 blocks per set, the No. 2 mark in the SEC and No. 25 in the country.

Oby Anadi and Ellie Ruprich are the dynamic blocking duo for South Carolina. Onadi's 1.34 blocks per set is the third-highest average in the conference while Ruprich's 1.08 ranks 10th.

In the back row, libero Morgan Carter is busy keeping balls from hitting the floor. At 4.18 digs per set, Carter sits fourth in the SEC.

AUBURN-SOUTH SERIES

» Auburn's win over South Carolina earlier in October marked the Tigers' first triumph against the Gamecocks since 2017. All-time, South Carolina owns a 30-20 record, including a 13-8 mark on the Plains. Auburn's last win at home came in sweeping fashion in 2016.

SECOND SET MAGIC

» Auburn is 10-2 this season when winning the second set of matches. Over the last two years, Crouch's teams are 28-2 when claiming the second frame.

NO PLACE LIKE NEVILLE

» Auburn is now 26-17 at home under head coach Brent Crouch, including wins in 26 of its last 39 games at home. All-time Auburn is 75-62 in Neville.

NATIONWIDE AND ON OUR SIDE

» Following 33 kills .472 hitting with 53 attempts across wins over No. 9 Florida and South Carolina, sophomore Madison Scheer earned AVCA/ GameChanger National Player of the Week. It was the second such award for the Auburn Volleyball program. Rani Whitson earned the honor in 1996. For Crouch, it

was also the second player in his head-coaching career (Khalia Lanier, 2019).

BARRETT MEANS BUSINESS

» Senior setter Jackie Barrett is currently sitting on 2,624 assists. She needs just four more to become 5th all-time in Auburn history.

RANK YOU VERY MUCH

» Welcome to the top 25 Auburn Volleyball. After wins over SMU and Florida State, the Tigers earned the program's first-ever ranking at No. 25.

A week later, Auburn moved up to No. 24 following a 2-1 showing at the Tiger Invitational. Auburn is currently riding a seven-week streak inside the top-25.

AARP ELIGIBLE?

» Brent Crouch is on a collision course for 50 wins on the Plains, needing just one more. Should Crouch accomplish the feat this season, he'd be the quickest to 50 wins in the 25-point rally-scoring era.

MR. 300

» Three hundred appears to be the perfect number for head coach Brent Crouch. All-time, when his teams manage a .300 hitting percentage, he carries an undefeated record of 36-0, including an 16-0 mark at Auburn. The Tigers have accomplished the feat seven different times already in 2023.

THE CROUCH HISTORICAL SOCIETY

» Since his arrival on the Plains, head coach Brent Crouch has led the Tigers to a number of firsts:

- First top-25 ranking
- First top-10 win
- First win in Gainesville over Florida
- First win in College Station over Texas A&M
- First win in Columbia over Missouri
- Best start to a season in program history (14-0)
- Best start to SEC Play in program history (3-0)
- Most wins in a season in rally-scoring era (22)

THE ZIMMERMAN ZING

» Sophomore Bel Zimmerman has been directly responsible for some of Auburn's largest runs this season because of her stellar serving. The 8-1 start against Mercer featured seven Zimmerman serves in a row. The 25-10 set win over Ole Miss saw Zimmerman step to the service line 10 times in a row. Auburn fans also won't forget her clutch ace at the end of Set No. 4 at South Alabama that send the match into a decisive fifth set. Zimmerman's 22 aces this season are more than triple her production a season ago.

STAYING ACTIVE

» Bella Bell, Kendal Kemp, Jackie Barrett and Akasha

SEC STANDINGS & SCHEDULE

2023 STANDINGS

	CONF	OVERALL	HOME	ROAD	NTRL	STRK
Arkansas	8-0	18-2	10-2	4-0	4-0	-
Kentucky	7-1	9-7	3-2	5-5	1-0	-
Tennessee	7-2	16-3	8-2	7-1	1-0	-
Texas A&M	6-3	14-5	5-4	6-1	3-0	-
Florida	5-3	13-4	6-3	6-1	1-0	-
Missouri	5-4	13-7	7-2	5-4	1-1	-
Auburn	4-4	14-5	7-3	4-2	3-0	-
Georgia	3-4	12-7	7-2	3-3	2-2	-
LSU	2-5	7-10	4-4	0-5	3-1	-
Mississippi St	2-6	9-9	7-3	0-5	2-1	-
South Carolina	2-6	8-9	6-3	1-6	1-0	-
Ole Miss	2-7	8-12	5-2	1-7	2-3	-
Alabama	0-8	10-9	4-3	3-5	3-1	-

THIS WEEK IN THE SEC...

Wednesday, Oct. 18

South Carolina 3, Alabama 1
Georgia 3, Ole Miss 2

Friday, Oct. 20

Arkansas 3, Tennessee 1
Kentucky 3, Mississippi St. 0
Missouri 3, Auburn 0
Florida 3, Texas A&M 1

Sunday, Oct. 22

Arkansas at Kentucky, 1 p.m.
LSU at Alabama, 2 p.m.
Georgia at Texas A&M, 3 p.m.
South Carolina at Auburn, 3 p.m.
Ole Miss at Mississippi St., 3 p.m.

*All times ET

2023 NCAA RPI REPORT

RK	TEAM	RECORD	AU RESULT
7	Arkansas	17-2	L, 0-3
10	Florida	12-4	L, 2-3
13	Tennessee	16-2	L, 1-3
19	Texas A&M	14-4	
24	Kentucky		
30	SMU	14-6	W, 3-1
32	Florida St	13-7	W, 3-1
34	Missouri	13-7	L, 0-3
42	Mississippi St		
55	South Alabama	17-3	W, 3-2
64	LSU		
67	South Carolina	7-9	W, 3-2
72	Georgia	11-7	W, 3-1
123	Middle Tenn.	15-6	L, 1-3
129	Ole Miss	8-11	W, 3-1
136	Coppin St	16-3	W, 3-1
170	Mercer	10-9	W, 3-0
171	Alabama		
212	Samford	9-11	W, 3-1
234	McNeese	9-13	W, 3-0
245	Jacksonville St	4-14	W, 3-0
256	Charleston So.	8-13	W, 3-1
263	UAB	2-19	W, 3-1

AUBURN OPPONENTS ONLY

PLAYER TO WATCH: AKASHA ANDERSON

» The AVCA South Region Freshman of the Year was up to no good last season. With 649 career kills, Anderson leads the Tigers in both kills and kills per set (3.61).



AVCA COACHES POLL

RK	TEAM	POINTS	RECORD	PREV.
1	Wisconsin [59]	1,594	17-0	1
2	Nebraska [5]	1,539	17-0	2
3	Stanford	1,475	15-2	3
4	Washington State	1,380	17-2	4
5	Louisville	1,338	16-2	6
6	Texas	1,277	13-3	7
7	Pittsburgh	1,175	16-3	8
8	Oregon	1,141	16-3	5
9	BYU	1,087	16-3	9
10	Arkansas	1,004	17-2	12
11	Penn State	935	13-4	13
12	Tennessee	884	16-2	10
13	Georgia Tech	761	15-3	11
14	Kansas	688	13-4	16
15	Creighton	588	15-4	17
16	Dayton	517	20-2	18
17-T	Arizona State	504	18-2	19
17-T	Florida	504	12-4	14
19	Purdue	455	11-6	15
20	Kentucky	429	8-7	23
21	Baylor	389	10-7	20
22	Houston	255	9-7	21
23	Auburn	241	14-4	22
24	UCF	162	16-2	NR
25	Western Kentucky	151	18-4	NR

Others receiving votes and listed on two or more ballots: Minnesota 101; James Madison 40; Iowa State 33; UC Santa Barbara 32; Indiana 30; Ohio State 27; Texas A&M 24; Marquette 15

INSIDE THE MATCH-UPS

SOUTH CAROLINA 20-30 (.400)

8-13 H • 11-15 A • 0-1 N

YEAR	SITE	RESULT	MATCH SCORE
1978	NEUTRAL	L	0-2
1990	AWAY	W	3-1
1991	AWAY	W	3-2
1992	HOME	W	3-1
1992	AWAY	W	3-0
1993	AWAY	L	1-3
1994	AWAY	W	3-2
1995	HOME	W	3-0
1996	AWAY	L	2-3
1997	HOME	L	0-3
1998	AWAY	L	0-3
1999	HOME	L	1-3
2000	HOME	L	0-3
2001	AWAY	L	0-3
2002	AWAY	L	0-3
2002	HOME	L	0-3
2003	HOME	L	0-3
2004	HOME	L	0-3
2005	HOME	L	1-3
2005	AWAY	L	1-3
2006	AWAY	L	2-3
2006	HOME	L	2-3
2007	AWAY	W	3-2
2007	HOME	L	0-3
2008	HOME	L	1-3
2008	AWAY	L	1-3
2009	HOME	W	3-1
2009	AWAY	L	0-3
2010	AWAY	W	3-0
2010	HOME	W	3-0
2011	HOME	W	3-0

Anderson are all amongst the SEC's top active career leaders. Bell (.344) and Kemp (.352) are both inside the top five in hitting percentage. Kemp's 1.44 blocks per set is currently second in the conference. Anderson ranks in the top 10 in both kills per set (3.61) and points per set (4.13). Barrett's 9.05 assists per set is seventh and Morton ranks sixth in digs per set (3.64).

BLOCKERS BEWARE

» Thanks to steady passing from Sarah Morton and the back row, the Auburn attack has managed to be one of the least-blocked teams in the SEC. On average Auburn allows just 1.62 blocks per set, the best in the conference.

500 CLUB

» Sophomore Akasha Anderson has eclipsed 500 career kills in her young career, doing so in just 37 matches.

Sophomore libero Sarah Morton earned her 500th dig of her young career against Florida State.

Eureka, Missouri native Madison Scheer is also barreling toward her 500th kill. The sophomore sits at 497 entering the weekend.

SEEING DOUBLE

» Jackie Barrett posted Auburn's first double-doubles of the season, piling up 36 assists and 14 digs against SMU. A day later, the Highland, California native grabbed 44 assists with 11 digs. Barrett posted a team-high 12 double-doubles in 2022. Barrett owns a team-leading 10 double-doubles in 2023.

Speaking of double-doubles, Bel Zimmerman earned the feat for the first time in her career with 17 kills and 16 digs against Charleston Southern. Zimmerman added her second and third double-double against UAB and Samford during the Alabama Showdown.

KEMP ROOFING CO.

» After setting records in 2022, sophomore middle blocker Kendal Kemp is back to her old tricks this season. In eight matches this season, the Eagan Minnesota native is averaging 1.38 blocks per set. The mark is second in the SEC and No. 25 in nation.

Kemp has been equally as effective offensively. The Minnesota native is currently swinging at a career-high .421 hitting percentage.

CAN YOU DIG IT?

» In the first match of the season, libero Sarah Morton is already making waves. With 24 digs against Coppin State, the Muenster, Indiana native posted the third-most

digs in a four-set match so far in the SEC this season.

STREAKING

» In each of Auburn's first five matches this season, the Tigers managed to hit north of .300, marking the only such streak in the 25-point rally-scoring era.

SOAKING UP SUMMER HEAT

» August has been good to Brent Crouch over the years. In nine years of coaching, Crouch is 22-3 in the month of August, including a 9-0 mark at Auburn.

QUEEN KEMP

» Minnesota native Kendal Kemp announced herself to the collegiate volleyball world in 2022. Kemp set single-season program records in solo blocks (26), block assists (154), total blocks (180) and blocks per set (1.48). Earning AVCA South Region Honorable Mention, Kemp totals were also second in the Southeastern Conference and her 180 total blocks were the second-most in the country.

BLOCK PARTY

» Speaking of blocks, Auburn's team totals were nothing short of brilliant. In the rally-scoring era, the 2022 Tiger team set single-season records in block assists (520), total blocks (312) and blocks per set (2.56).

THE JACK BURTON

» NCAA rules have allowed for an additional coach for volleyball programs. Crouch has added Jack Burton to his staff.

Following a prolific playing career at Grand Canyon University, Burton stopped over in Dayton for two seasons and most recently helped FGCU to a 26-7 record and the school's third trip to the NCAA Tournament.

Including his stop at Florida Gulf Coast, Burton owns a 16-3 record in the Sunshine State.

AUBURN PICKED 7th IN PRESEASON POLL

» After a sixth-place finish in 2022, the Auburn Tigers have been selected to finish seventh in the 2023 preseason poll.

NEW KIDS ON THE BLOCK

» All 12 student-athletes from a year ago return to the Auburn Volleyball roster. Head coach Brent Crouch added six new faces to bolster the squad in 2023. Four transfers (Bella Bell, Kyla Swanson, Peyton Dunn and Paige Thibault) make their debut in the Orange and Blue this season. Freshmen Jasmin Okeoma and Lakin Laurendine have also found a new home on the Plains.

PLAYER TO WATCH: MADISON SCHEER

» Sophomore outside hitter Madison Scheer has been brilliant this season for the Tigers. The Eureka, Missouri product is averaging a career-best 3.13 kills per set at a .259 hitting percentage.



INSIDE THE MATCH-UPS CONT...

2011	AWAY	L	1-3
2012	HOME	W	3-1
2012	AWAY	W	3-0
2013	AWAY	W	3-0
2014	HOME	L	2-3
2014	AWAY	W	3-2
2015	AWAY	W	3-0
2015	HOME	W	3-1
2016	HOME	W	3-0
2017	HOME	L	1-3
2017	AWAY	W	3-1
2018	AWAY	L	1-3
2019	AWAY	L	0-3
2019	HOME	L	0-3
2020	AWAY	L	0-3
2020	AWAY	L	1-3
2021	HOME	L	0-3
2022	AWAY	L	2-3
2023	AWAY	W	3-2

HEAD COACH BRENT CROUCH

QUICK FACTS

College ___ Texas A&M ('98, '00)
 ___ Oregon ('06)
 Wife ___ Marcy
 Sons ___ Jonathan and William

COACHING RECORD

Head Coaching Career _ 10th Season
 Career Record ___ 144-128
 NCAA Appearances ___ 3

COACHING CAPSULE

2020-Pr. Auburn 49-37
 2018-19 Southern California 40-25
 2014-17 Portland 55-66

YEAR-BY-YEAR RESULTS

2023	Auburn	14-5
2022	Auburn	22-9
2021	Auburn	13-15
2020	Auburn	0-8
2019	USC	18-14
2018	USC	22-11
2017	Portland	15-15
2016	Portland	17-13
2015	Portland	16-15
2014	Portland	7-23



Brent Crouch begins his fourth season at the helm of the Auburn Volleyball program in 2023. Crouch and the Tigers look to reset the bar after a record-breaking 2022 campaign that saw success on the Plains unseen for more than a decade.

Last season, Auburn earned a berth into the NCAA Tournament for just the second time in school history and the first since 2010. A first-round victory over host and No. 14 Creighton provided the program with its second postseason win and first triumph over a nationally-ranked opponent since 2017.

The feat came on the heels of a historic season that saw the Tigers begin the season with a record mark of 14-0 and a record start to SEC play at 3-0. The 22 total victories on the season were the most in the 25-point rally-scoring era and the most since 1998. The Tigers also picked up its first win in Columbia, Missouri.

Under Crouch's guidance, Akasha Anderson, Madison Scheer and Kendal Kemp each garnered All-Conference Honors. Anderson and Kemp also picked up AVCA postseason accolades with Anderson grabbing South Region Freshman of the Year and All-Region. Meanwhile, Kemp solidified Honorable Mention. Auburn Volleyball student-athletes also picked up a record 10 SEC weekly awards.

Crouch wasn't left out of the postseason awards season, securing AVCA South Region Coach of the Year, the first such award for the Tiger Volleyball program.

Fans on the Plains saw Auburn become one of the most potent blocking teams in the Southeastern Conference in 2022. Crouch's guidance helped the Tigers break records for most block assists in a single season (520), total blocks (312.0) and tie for the most blocks in a four-set match (17 vs. Troy).

The Orange and Blue wall's foundation was laid by then-freshman Kendal Kemp. The Egan, Minnesota product shattered single-season records for solo blocks (26), block assists (154), total blocks (180) and blocks per set (1.48).

During his first full season leading the Auburn program in 2021, Crouch's leadership had an immediate effect. The Tigers opened the season winning 17 consecutive sets to tie the program record for most sweeps to begin a season (5), matching the 1974 Auburn team. Crouch led the team to a 13-15 record with a 5-13 mark in the SEC, picking up a season sweep over Alabama, the first Auburn win over Missouri since 1996 and the program's first victory in College State with a win over Texas A&M.

Crouch's expertise led to six total SEC weekly honors, splitting three on offense and three on defense. Individually, the Tigers also set nine individual records during the 2021 campaign.

Individually, it was Rebekah Rath and Tatum Shippey who benefited the most from Crouch's development. Shippey led the SEC in blocking and set records in blocks, block assists and blocks per set. Meanwhile, Rath led the SEC in five offensive categories, setting records in kills and kills per set.

Crouch made his Auburn coaching debut against No. 4 Florida on Oct. 21, 2020, to open the shortened fall volleyball schedule. Crouch led the Tigers on the court for eight total matches and his impact on the Plains was noticeable almost immediately, tying the record for most blocks in a four-set with 17 at South Carolina.

Prior to Auburn, Crouch served as the head coach at the University of South California, compiling a 40-25 record. He would lead the Trojans to the second round of the NCAA Tournament in both years in Los Angeles. In 2018, Crouch's Trojans earned the No. 11 overall seed in the Tournament and the No. 21 ranking in the final AVCA Coaches poll of the year.

Before leading the Trojans, Crouch spent four seasons as head coach of the University of Portland. The 2016 West Coast Conference Coach of the Year inherited a winless program and guided the Pilots to its winningest season in 25 years just two seasons later. His 48 victories in his final three years in the Rose City was the best three-season total since 1984-86. He put Portland on the WCC map, earning wins over top-10, top-15 and top-25 opponents while in charge of the Pilots. Crouch coached three All-WCC First Team selections, a WCC All-Freshman Team honoree and three WCC All-Academic First Teamers. He also established Beach Volleyball as a varsity sport at Portland in 2016.

Crouch arrived at Portland after four seasons (2010-13) at Saint Mary's College, where he was an assistant with the indoor program and head coach of the beach team.

Brent and his wife Marcy have two sons, Jonathan and William.

2023 AUBURN VOLLEYBALL ROSTER

No.	Name	Year	Pos.	Ht.	Hometown (High School/Previous School)
1	MADISON SCHEER	SO.	PH	6-1	EUREKA, MO. (EUREKA)
2	SARAH MORTON	SO.	L	5-7	MUNSTER, IND. (MUNSTER)
3	AKASHA ANDERSON	SO.	PH	6-3	RESTON, VA. (HERNDON)
4	FALLAN LANHAM	JR.	L	5-8	LOUISVILLE, KY. (MERCY ACADEMY)
5	BELLA BELL	SR.	RS	6-4	BLYTHEWOOD, S.C. (KENTUCKY)
6	KYLA SWANSON	GR.	MB	6-4	WAHOO, NEB. (ILLINOIS)
7	PEYTON DUNN	R-SO.	S	5-11	DECATUR, TEXAS (OKLAHOMA)
8	KENDAL KEMP	SO.	MB	6-6	EAGAN, MINN. (EAGAN)
9	ZOE SLAUGHTER	SO.	L	5-7	HONOLULU, HAWAII (MOANALUA)
10	JACKIE BARRETT	SR.	S	6-2	HIGHLAND, CALIF. (CITRUS VALLEY)
11	JORDAN SINNESS	JR.	S	5-9	SEBRING, FLA. (SEBRING)
12	BEL ZIMMERMAN	SO.	PH	6-2	LIBERTY, MO. (LIBERTY NORTH)
13	PAIGE THIBAUT	JR.	L	5-6	WATERTOWN, MINN. (FIU)
14	CHELSEY HARMON	SR.	MB	6-3	PUYALLUP, WASH. (PORTLAND)
17	CASSIDY TANTON	R-SO.	PH	6-0	STONEVILLE, N.C. (DALTON MCMICHAEL)
19	JASMINE OKEOMA	FR.	MB	6-3	WOODBIDGE, VA. (FOREST PARK)
22	SYDNEY HANDEL	SO.	PH	6-0	LEE'S SUMMIT, MO. (LEE'S SUMMIT WEST)
25	LAKIN LAURENDINE	FR.	PH	6-1	JACKSON, MISS. (JACKSON ACADEMY)

HEAD COACH | BRENT CROUCH (4TH SEASON)

ASSISTANT COACH | KEITH SMITH (2ND SEASON)

ASSISTANT COACH/RECRUITING COORDINATOR | RACHEL CORBELLI (2ND SEASON)

ASSISTANT COACH | JACK BURTON (1ST SEASON)

PRONUNCIATION GUIDE:

MADISON SCHEER – SHEER FALLAN LANHAM – FAL(LIKE PAL)-AN LAN-EM SYDNEY HANDEL – HON-DELL
 PAIGE THIBAUT – THEE-BALT JASMINE OKEOMA – OKAY-AH-MUH LAKIN LAURENDINE – LAY-KIN LOR-EN-DEAN
 RACHEL CORBELLI – CORE-BELL-EE

INSIDE THE 2023 NUMBERS



CATEGORY	AUBURN	SOUTH CAROLINA
Kills	929	799
Per Set	12.7	12.7
Errors	355	357
Total Attacks	2409	2230
Hitting Pct.	.247	.198
Assists	833	758
Per Set	11.4	12.0
Service Aces	104	71
Per Set	1.4	1.1
Service Errors	223	110
Reception Errors	90	83
Per Set	1.2	1.3
Digs	916	890
Per Set	12.5	14.1
Solo Blocks	22	46
Block Assists	320	232
Total Blocks	182.0	162.0
Per Set	2.5	2.6

WEEKLY AWARDS

SEC Weekly Awards

10/9 - Madison Scheer (SEC Overall POTW/Offensive POW)

National Weekly Awards

10/10 - Madison Scheer (AVCA National Player of the Week)

2023 INDIVIDUAL HIGHS BY SET

THREE SETS

HITTING PERCENTAGE (MIN. 12 KILLS) _____ .667, Madison Scheer 47, at Florida (Oct. 6)
 KILLS _____ 18, Akasha Anderson 47, at Florida (Oct. 6)
 TOTAL ATTEMPTS _____ 35, Akasha Anderson vs McNeese (Aug. 26)
 ASSISTS _____ 37, Jackie Barrett 47, at Florida (Oct. 6)
 DIGS _____ 11, Fallan Lanham vs Jacksonville St. (Aug. 26)
 ACES _____ 5, Jackie Barrett vs Mercer, Sept. 9
 BLOCKS _____ 7, 2 times (last Kyla Swanson vs Missouri Oct. 20)

FOUR SETS

HITTING PERCENTAGE (MIN. 12 KILLS) _____ .526, Kendal Kemp vs Charleston Southern (Sept. 8)
 KILLS _____ 20, Akasha Anderson vs Ole Miss (Sept. 24)
 TOTAL ATTEMPTS _____ 60, Akasha Anderson vs Ole Miss (Sept. 24)
 ASSISTS _____ 46, Jackie Barrett vs Samford (Sept. 16)
 DIGS _____ 24, Sarah Morton vs Coppin St. (Aug. 25)
 ACES _____ 4, Chelsey Harmon vs Charleston Southern (Sept. 8)
 BLOCKS _____ 10, Kendal Kemp vs UAB (Sept. 15)

FIVE SETS

HITTING PERCENTAGE (MIN. 12 KILLS) _____ .371, Madison Scheer 56, at South Carolina (Oct. 8)
 KILLS _____ 26, Akasha Anderson at South Alabama (Sept. 14)
 TOTAL ATTEMPTS _____ 69, Akasha Anderson at South Alabama (Sept. 14)
 ASSISTS _____ 48, Jackie Barrett at South Alabama (Sept. 14)
 DIGS _____ 29, Zoe Slaughter at South Alabama (Sept. 14)
 ACES _____ 5, Jackie Barrett at South Alabama (Sept. 14)
 BLOCKS _____ 9, Kendal Kemp 56, at South Carolina (Oct. 8)

2023 TEAM HIGHS BY SET

THREE SETS

HITTING PERCENTAGE (MIN. 12 KILLS) _____ .395, vs Jacksonville St. (Aug. 26)
 KILLS _____ 47, at Florida (Oct. 6)
 TOTAL ATTEMPTS _____ 102, vs McNeese (Aug. 26)
 ASSISTS _____ 43, at Florida (Oct. 6)
 DIGS _____ 37, vs Missouri (Oct. 20)
 ACES _____ 9, vs Mercer (Sept. 9)
 BLOCKS _____ 11.0, vs Mercer (Sept. 9)

FOUR SETS

HITTING PERCENTAGE (MIN. 12 KILLS) _____ .386, vs Samford (Sept. 16)
 KILLS _____ 62, at Florida St. (Sept. 3)
 TOTAL ATTEMPTS _____ 166, vs Ole Miss (Sept. 24)
 ASSISTS _____ 54, 2 times (last vs Samford Sept. 16)
 DIGS _____ 74, vs Ole Miss (Sept. 24)
 ACES _____ 7, vs Charleston Southern (Sept. 8)
 BLOCKS _____ 19.0, vs UAB (Sept. 15)

FIVE SETS

HITTING PERCENTAGE (MIN. 12 KILLS) _____ .196, vs Florida (Sept. 22)
 KILLS _____ 60, at South Alabama (Sept. 14)
 TOTAL ATTEMPTS _____ 178, at South Alabama (Sept. 14)
 ASSISTS _____ 56, at South Carolina (Oct. 8)
 DIGS _____ 81, at South Alabama (Sept. 14)
 ACES _____ 14, at South Alabama (Sept. 14)
 BLOCKS _____ 17.0, 56, at South Carolina (Oct. 8)

THE LAST TIME AUBURN...

Won in three sets _____ Oct. 6, 2023 at #9 Florida (25-23, 25-20, 25-17)
 Won in four sets _____ Oct. 1, 2023 vs Georgia (25-23, 25-23, 18-25, 25-20)
 Won in five sets _____ Oct. 8, 2023 at South Carolina (25-23, 22-25, 22-25, 25-23, 15-13)
 Lost in three sets _____ Oct. 20, 2023 vs Missouri (23-25, 21-25, 18-25)
 Lost in four sets _____ Oct. 13, 2023 vs #10 Tennessee (25-19, 21-25, 25-21, 25-17)
 Lost in five sets _____ Sept. 22, 2023 vs Florida (20-25, 26-24, 24-26, 25-19, 17-15)
 Lost first set in a win _____ Sept. 24, 2023 vs Ole Miss (21-25, 25-21, 25-10, 27-25)
 Won first set in a loss _____ Sept. 22, 2023 vs Florida (20-25, 26-24, 24-26, 25-19, 17-15)
 Lost first two sets in a win _____ Oct. 15, 2022 at Missouri (21-25, 21-25, 25-17, 25-17, 15-12)
 Won first two sets in a loss _____ Oct. 10, 2021 at Arkansas (25-20, 25-23, 15-25, 17-25, 7-15)
 Beat a ranked opponent _____ Oct. 6, 2023 at #9 Florida (25-23, 25-20, 25-17)
 Hit .300-.399 in a match _____ Oct. 6, 2023 at #9 Florida (.387)
 Hit .400-.499 in a match _____ Sept. 6, 2022 vs Alabama A&M (.400)
 Hit .500 or better in a match _____ Oct. 18, 1998 at Ole Miss (.514)
 Held opponent to .000-.100 in a match _____ Aug. 26, 2023 vs McNeese (.097)
 Held opponent to a negative hitting percentage _____ Sept. 9, 2023 vs Mercer (-.053)
 Had 70-79 kills in a match _____ Oct. 26, 2018 vs. Ole Miss (77)
 Had 80+ kills in a match _____ Sept. 17, 2006 at Georgia (84)
 Had 80-99 digs in a match _____ Sept. 14, 2022 at South Alabama (81)
 Had 100+ digs in a match _____ Sept. 17, 2021 vs. Nicholls (105)
 Had 15+ blocks in a match _____ Oct. 8, 2023 at South Carolina (17.0)
 Had 10+ service aces in a match _____ Sept. 14, 2023 at South Alabama (14)
 Had a player(s) with 20-24 kills in a match _____ Sept. 24, 2023 Akasha Anderson vs Ole Miss (20)
 Had a player(s) with 25-29 kills in a match _____ Sept. 14, 2023, Akasha Anderson at South Ala. (26)
 Had a player(s) with 30+ kills in a match _____ Oct. 8, 2004, Ashlee Johns vs. Arkansas (30)
 Had a player(s) with 10+ blocks in a match _____ Sept. 15, 2023 Kendal Kemp vs UAB (10)
 Had a player(s) with 25-29 digs in a match _____ Sept. 14, 2023, Zoe Slaughter at South Ala. (29)
 Had a player(s) with 30+ digs in a match _____ Oct. 17, 2021, Bella Rosenthal vs. Missouri(33)
 Had a player(s) with 50+ assists in a match _____ Oct. 9, 2022 Jackie Barrett vs Georgia (51)
 Had a player(s) with 60+ assists in a match _____ Oct. 5, 2022, Jackie Barrett at LSU (60)
 Had a player(s) with 5+ aces in a match _____ Sept. 14, 2023, Jackie Barrett at South Ala. (5)

AUBURN DOUBLE-DOUBLES IN 2023

PLAYER	OPPONENT (SETS)	DATE	STATS
Jackie Barrett (10)	vs SMU (4)	Sept. 2	36 assists, 14 digs
	at Florida St. (4)	Sept. 3	44 assists, 11 digs
	vs MTSU (4)	Sept. 7	39 assists, 10 digs
	vs Charleston So. (4)	Sept. 8	41 assists, 13 digs
	at South Alabama (5)	Sept. 14	48 assists, 11 digs
	vs #3 Florida (5)	Sept. 22	40 assists, 12 digs
	vs Ole Miss (4)	Sept. 24	42 assists, 17 digs
	at South Carolina (5)	Oct. 8	46 assists, 12 digs
	at #10 Tennessee (4)	Oct. 13	31 assists, 11 digs
	vs Missouri (3)	Oct. 20	27 assists, 10 digs
Akasha Anderson (4)	at South Alabama (5)	Sept. 14	26 kills, 11 digs
	vs UAB (4)	Sept. 15	11 kills, 11 digs
	vs #3 Florida (5)	Sept. 22	18 kills, 10 digs
	at South Carolina (5)	Oct. 8	14 kills, 15 digs
Bel Zimmerman (3)	vs Charleston So. (4)	Sept. 8	17 kills, 16 digs
	vs UAB (4)	Sept. 15	16 kills, 12 digs
	vs Samford (4)	Sept. 16	15 kills, 11 digs

AUBURN'S 2023 RECORD WHEN...

OVERALL _____ 14-5
SEC- _____ 4-4
 NON-CONFERENCE _____ 10-1
 RANKED OPPONENTS _____ 1-3
 HOME _____ 7-3
 AWAY _____ 4-2
 NEUTRAL _____ 3-0

BY SETS
 THREE SETS _____ 4-2
 FOUR SETS _____ 8-2
 FIVE SETS _____ 2-1
 WON FIRST SET _____ 11-2
 LOST FIRST SET _____ 3-3
 WON SECOND SET _____ 10-2
 LOST SECOND SET _____ 4-3
 SPLIT FIRST TWO SETS _____ 7-2
 WON FIRST TWO SETS _____ 7-0
 LOST FIRST TWO SETS _____ 0-2

SITUATIONAL
 MORE KILLS THAN OPPONENT _____ 11-0
 FEWER KILLS THAN OPPONENT _____ 3-5
 KILLS ARE TIED _____ 0-0
 MORE DIGS THAN OPPONENT _____ 5-0
 FEWER DIGS THAN OPPONENT _____ 8-5
 DIGS ARE TIED _____ 1-0
 MORE ACES THAN OPPONENT _____ 10-1
 FEWER ACES THAN OPPONENT _____ 3-4
 ACES ARE TIED _____ 1-0
 HIGHER HITTING PERCENTAGE THAN OPPONENT _____ 13-0
 LOWER HITTING PERCENTAGE THAN OPPONENT _____ 1-5
 HITTING PERCENTAGE TIED _____ 0-0

HITTING PERCENTAGE
 .400 OR ABOVE _____ 0-0
 .300-.399 _____ 8-0
 .200-.299 _____ 2-1
 .100-.199 _____ 4-3
 .000-.099 _____ 0-0
 NEGATIVE _____ 0-1

OPPONENTS' HITTING PERCENTAGE
 .400 OR ABOVE _____ 0-1
 .300-.399 _____ 1-0
 .200-.299 _____ 5-4
 .100-.199 _____ 5-0
 .000-.099 _____ 2-0
 NEGATIVE _____ 1-0

BY DAY
 MONDAY _____ 0-0
 TUESDAY _____ 0-0
 WEDNESDAY _____ 0-1
 THURSDAY _____ 1-1
 FRIDAY _____ 4-3
 SATURDAY _____ 5-0
 SUNDAY _____ 4-0

 DAY MATCHES (FIRST SERVE BEFORE 6 P.M.) _____ 8-0
 NIGHT MATCHES (FIRST SERVE AFTER 6 P.M.) _____ 6-5

BY MONTH
 AUGUST _____ 3-0
 SEPTEMBER _____ 8-3
 OCTOBER _____ 3-2
 NOVEMBER _____ 0-0
 DECEMBER _____ 0-0

JERSEY COLOR
 NAVY w/POWER STRIPE _____ 1-0
 NAVY SOLID _____ 0-0
 NAVY SLEEVELESS _____ 4-2
 ORANGE w/POWER STRIPE _____ 5-2
 ORANGE SOLID _____ 4-0
 PINK _____ 0-1

2023 AUBURN MATCH-BY-MATCH STARTERS

DATE	OPPONENT	RESULT	OUTSIDE	MIDDLE	RIGHT SIDE/DS	OUTSIDE/DS	MIDDLE	LIBERO	SETTER
Aug. 25	vs Coppin State	W, 3-1	Akasha Anderson	Kendal Kemp	Bella Bell	Paige Thibault	Kyla Swanson	Sarah Morton	Peyton Dunn
Aug. 26	vs McNeese	W, 3-0	Akasha Anderson	Kendal Kemp	Bella Bell	Paige Thibault	Kyla Swanson	Sarah Morton	Jackie Barrett
Aug. 26	vs Jacksonville State	W, 3-0	Akasha Anderson	Kendal Kemp	Bella Bell	Zoe Slaughter	Kyla Swanson	Sarah Morton	Jackie Barrett
Sept. 2	vs SMU	W, 3-1	Akasha Anderson	Kendal Kemp	Bella Bell	Zoe Slaughter	Kyla Swanson	Sarah Morton	Jackie Barrett
Sept. 3	at Florida State	W, 3-1	Akasha Anderson	Kendal Kemp	Bella Bell	Zoe Slaughter	Kyla Swanson	Sarah Morton	Jackie Barrett
Sept. 7	vs Middle Tennessee	L, 1-3	Bel Zimmerman	Kendal Kemp	Bella Bell	Zoe Slaughter	Kyla Swanson	Sarah Morton	Jackie Barrett
Sept. 8	vs Charleston Southern	W, 3-1	Madison Scheer	Kendal Kemp	Bel Zimmerman	Fallan Lanham	Chelsey Harmon	Sarah Morton	Jackie Barrett
Sept. 9	vs Mercer	W, 3-0	Bel Zimmerman	Kendal Kemp	Zoe Slaughter	Fallan Lanham	Chelsey Harmon	Sarah Morton	Jackie Barrett
Sept. 14	at South Alabama	W, 3-2	Akasha Anderson	Kendal Kemp	Bel Zimmerman	Fallan Lanham	Kyla Swanson	Zoe Slaughter	Jackie Barrett
Sept. 15	vs UAB	W, 3-1	Akasha Anderson	Kendal Kemp	Bel Zimmerman	Paige Thibault	Kyla Swanson	Zoe Slaughter	Jackie Barrett
Sept. 16	vs Samford	W, 3-1	Akasha Anderson	Kendal Kemp	Bel Zimmerman	Madison Scheer	Kyla Swanson	Zoe Slaughter	Jackie Barrett
Sept. 22	vs #3 Florida	L, 2-3	Akasha Anderson	Kyla Swanson	Bella Bell	Paige Thibault	Chelsey Harmon	Sarah Morton	Jackie Barrett
Sept. 24	vs Ole Miss	W, 3-1	Akasha Anderson	Kyla Swanson	Bella Bell	Paige Thibault	Chelsey Harmon	Sarah Morton	Jackie Barrett
Sept. 27	at #14 Arkansas	L, 0-3	Akasha Anderson	Kyla Swanson	Bella Bell	Paige Thibault	Chelsey Harmon	Sarah Morton	Jackie Barrett
Oct. 1	vs Georgia	W, 3-1	Akasha Anderson	Kyla Swanson	Bel Zimmerman	Paige Thibault	Kendal Kemp	Sarah Morton	Jackie Barrett
Oct. 6	at #9 Florida	W, 3-0	Akasha Anderson	Kyla Swanson	Bel Zimmerman	Paige Thibault	Kendal Kemp	Sarah Morton	Jackie Barrett
Oct. 8	at South Carolina	W, 3-2	Akasha Anderson	Kyla Swanson	Bel Zimmerman	Paige Thibault	Kendal Kemp	Sarah Morton	Jackie Barrett
Oct. 13	at #10 Tennessee	L, 1-3	Akasha Anderson	Chelsey Harmon	Bel Zimmerman	Paige Thibault	Kendal Kemp	Sarah Morton	Jackie Barrett
Oct. 20	vs Missouri	L, 0-2	Akasha Anderson	Kendal Kemp	Bella Bell	Paige Thibault	Kyla Swanson	Sarah Morton	Jackie Barrett

2023 AUBURN MATCH-BY-MATCH LEADERS

DATE	OPPONENT	RESULT	KILLS	ASSISTS	ACES	DIGS	BLOCKS	HIT PCT. (MIN 10 ATT.)
Aug. 25	vs Coppin State	W, 3-1	Scheer/Anderson (16)	Dunn (43)	Swanson (2)	Morton (24)	Swanson (6)	Bell (.480)
Aug. 26	vs McNeese	W, 3-0	Anderson (14)	Barrett (31)	Anderson (4)	Anderson (8)	Kemp (5)	Zimmerman (.400)
Aug. 26	vs Jacksonville State	W, 3-0	Anderson (10)	Dunn (16)	Zimmerman (3)	Lanham (11)	Swanson (3)	Bell (.750)
Sept. 2	vs SMU	W, 3-1	Scheer (18)	Barrett (36)	Anderson (2)	Morton (17)	Kemp (4)	Swanson (.500)
Sept. 3	at Florida State	W, 3-1	Anderson (15)	Barrett (44)	Slaughter (2)	Barrett (11)	Swanson/Barrett (4)	Swanson (.467)
Sept. 7	vs Middle Tennessee	L, 1-3	Zimmerman (11)	Barrett (39)	Barrett/Lanham (1)	3 players (10)	Kemp (5)	Swanson (.333)
Sept. 8	vs Charleston Southern	W, 3-1	Zimmerman (17)	Barrett (41)	Harmon (4)	Zimmerman (16)	Harmon (7)	Kemp (.526)
Sept. 9	vs Mercer	W, 3-0	Zimmerman (14)	Barrett (31)	Barrett (5)	Morton (10)	Kemp (7)	Kemp (.500)
Sept. 14	at South Alabama	W, 3-2	Anderson (26)	Barrett (48)	Barrett (5)	Slaughter (29)	Zimmerman (6)	Kemp (.455)
Sept. 15	vs UAB	W, 3-1	Zimmerman (16)	Barrett (35)	Zimmerman/Thibault (2)	Zimmerman (12)	Kemp (10)	Zimmerman (.306)
Sept. 16	vs Samford	W, 3-1	Anderson (19)	Barrett (46)	Thibault (2)	Slaughter (16)	Swanson (3)	Anderson (.410)
Sept. 22	vs #3 Florida	L, 2-3	Anderson (18)	Barrett (40)	Anderson (2)	Morton (13)	Swanson/Anderson (3)	Bell (.214)
Sept. 24	vs Ole Miss	W, 3-1	Anderson (20)	Barrett (42)	Zimmerman (3)	Morton (20)	Harmon (8)	Harmon (.417)
Sept. 27	at #14 Arkansas	L, 0-3	Scheer (4)	Barrett (11)	Slaughter/Zimmerman (1)	Anderson/Morton (7)	3 players (2)	Scheer (.045)
Oct. 1	vs Georgia	W, 3-1	Anderson (17)	Barrett (42)	Harmon (2)	Thibault (10)	Kemp (4)	Kemp (.667)
Oct. 6	at #9 Florida	W, 3-0	Anderson (18)	Barrett (37)	Barrett/Harmon (2)	Morton/Anderson (8)	Kemp (3)	Scheer (.667)
Oct. 8	at South Carolina	W, 3-2	Scheer (19)	Barrett (46)	Anderson (4)	Morton (18)	Kemp (9)	Kemp (.455)
Oct. 13	at #10 Tennessee	L, 1-3	Scheer (11)	Barrett (31)	Harmon/Thibault (1)	Morton (18)	Kemp (9)	Kemp (.467)
Oct. 20	vs Missouri	L, 0-3	Scheer/Anderson (10)	Barrett (27)	Barrett/Zimmerman (1)	Morton (11)	Swanson (7)	Swanson (.400)

2023 OVERALL STATISTICS

Game Records

Overall	Conference	Home	Away	Neutral
14 - 5	4 - 4	7 - 3	4 - 2	3 - 0

Team Box Score

#	Player	SP	Attack					Set		Serve			Dig			Blocking					PTS	
			K	K/S	E	TA	PCT	A	A/S	SA	SE	SA/S	RE	DIG	DIG/S	BS	BA	TOT/S	BLK/S	BE		BHE
1	Scheer, Madison	70	220	3.14	75	563	.258	4	0.06	0	0	0.00	6	26	0.37	2	30	32	0.46	1	0	237.0
2	Morton, Sarah	60	2	0.03	1	8	.125	58	0.97	6	33	0.10	8	194	3.23	0	0	0	0.00	0	0	8.0
3	Anderson, Akasha	62	231	3.73	109	685	.178	8	0.13	19	39	0.31	19	130	2.10	1	31	32	0.52	2	0	266.5
4	Lanham, Fallan	27	0	0.00	0	2	.000	6	0.22	6	6	0.22	1	52	1.93	0	0	0	0.00	0	0	6.0
5	Bell, Bella	37	93	2.51	31	224	.277	2	0.05	0	0	0.00	1	12	0.32	1	26	27	0.73	5	0	107.0
6	Swanson, Kyla	71	86	1.21	34	218	.239	6	0.08	3	14	0.04	0	14	0.20	7	67	74	1.04	5	0	129.5
7	Dunn, Peyton	6	4	0.67	1	7	.429	59	9.83	1	7	0.17	0	8	1.33	0	2	2	0.33	0	0	6.0
8	Kemp, Kendal	59	96	1.63	24	171	.421	1	0.02	1	3	0.02	0	5	0.08	7	72	79	1.34	7	0	140.0
9	Slaughter, Zoe	66	0	0.00	0	8	.000	22	0.33	6	20	0.09	10	126	1.91	0	0	0	0.00	0	0	6.0
10	Barrett, Jackie	68	42	0.62	7	97	.361	641	9.43	18	14	0.26	0	164	2.41	1	44	45	0.66	4	5	83.0
12	Zimmerman, Bel	66	126	1.91	46	362	.221	7	0.11	22	46	0.33	11	75	1.14	2	21	23	0.35	9	0	160.5
13	Thibault, Paige	54	1	0.02	0	4	.250	15	0.28	7	22	0.13	10	89	1.65	0	0	0	0.00	0	0	8.0
14	Harmon, Chelsey	47	27	0.57	6	54	.389	4	0.09	15	13	0.32	0	11	0.23	1	27	28	0.60	4	0	56.5
17	Tanton, Cassidy	1	1	1.00	1	5	.000	0	0.00	0	0	0.00	1	0	0.00	0	0	0	0.00	0	0	1.0
22	Handel, Sydney	14	0	0.00	0	1	.000	0	0.00	0	6	0.00	1	10	0.71	0	0	0	0.00	0	0	0.0
AUBURN		73	929	12.73	335	2409	.247	833	11.41	104	223	1.42	90	916	12.55	22	320	182	2.49	37	5	1,215.0
Opponents		73	861	11.79	409	2362	.191	802	10.99	90	177	1.23	104	994	13.62	24	188	118	1.62	45	17	1,069.0

Team statistics

	AUB	OPP
ATTACK		
Kills	929	861
Errors	335	409
Total Attacks	2409	2362
Attack Pct	.247	.191
Kills/Set	12.73	11.79
SET		
Assists	833	802
Attempts	2376	2432
Assist Pct	.351	.330
Assists/Set	11.41	10.99
SERVE		
Aces	104	90
Errors	223	177
Attempts	1652	1549
Serve Pct	.865	.886
Aces/Set	1.42	1.23
SERVE RECEPTIONS		
Errors	90	104
Errors/Set	1.23	1.42
Attempts	1372	1429
Reception Pct	.934	.999
DEFENSE		
Digs	916	994
Digs/Set	12.55	13.62
BLOCKING		
Block solo	22	24
Block Assist	320	188
Total Blocks	182	118
Blocks/Set	2.49	1.62
Block Errors	37	45
Ball handling errors	5	17
ATTENDANCE		
Total	13074	11608
Dates/Avg Per Date	10/1307	6/1935
Neutral Site #/Avg	3/67	-
Current win streak	0	-
Home win streak	0	-

Team Results

Date	Opponent	Score	Score-by-set	Att.
08/25/2023	Coppin St.	W 3-1	24-26,25-17,25-15,25-18	1124
08/26/2023	McNeese	W 3-0	25-15,25-15,25-22	579
08/26/2023	Jacksonville St.	W 3-0	25-12,25-11,26-24	1125
09/02/2023	vs SMU	W 3-1	25-22,17-25,25-20,25-21	50
09/03/2023	at Florida St.	W 3-1	30-28,25-21,19-25,25-23	361
09/07/2023	Middle Tenn.	L 1-3	25-22,15-25,23-25,22-25	790
09/08/2023	Charleston So.	W 3-1	23-25,25-16,25-9,25-19	1063
09/09/2023	Mercer	W 3-0	25-15,25-20,25-11	967
09/14/2023	at South Alabama	W 3-2	27-25,23-25,19-25,25-23,15-8	1218
09/15/2023	vs UAB	W 3-1	25-15,26-24,21-25,25-19	87
09/16/2023	vs Samford	W 3-1	25-19,20-25,26-24,25-11	65
* 09/22/2023	Florida	L 2-3	25-20,24-26,26-24,19-25,15-17	2393
* 09/24/2023	Ole Miss	W 3-1	21-25,25-21,25-10,27-25	1128
* 09/27/2023	at Arkansas	L 0-3	18-25,10-25,6-25	1374
* 10/01/2023	Georgia	W 3-1	25-23,25-23,18-25,25-20	2016
* 10/06/2023	at Florida	W 3-0	25-23,25-20,25-17	4150
* 10/08/2023	at South Carolina	W 3-2	25-23,22-25,22-25,25-23,15-13	1930
* 10/13/2023	at Tennessee	L 1-3	19-25,25-21,21-25,17-25	2575
* 10/20/2023	Missouri	L 0-3	23-25,21-25,18-25	1889

2023 SEC STATISTICS

Game Records

Overall	Conference	Home	Away	Neutral
4 - 4	4 - 4	2 - 2	2 - 2	0 - 0

Team Box Score

##	Player	SP	Attack					Set		Serve			Dig			Blocking					PTS	
			K	K/S	E	TA	PCT	A	A/S	SA	SE	SA/S	RE	DIG	DIG/S	BS	BA	TOT/S	BLK/S	BE		BHE
1	Scheer, Madison	31	99	3.19	34	253	.257	2	0.06	0	0	0.00	3	12	0.39	1	12	13	0.42	0	0	106.0
2	Morton, Sarah	31	1	0.03	1	2	.000	31	1.00	4	15	0.13	3	103	3.32	0	0	0	0.00	0	0	5.0
3	Anderson, Akasha	31	108	3.48	65	365	.118	3	0.10	8	23	0.26	10	69	2.23	0	20	20	0.65	0	0	126.0
5	Bella, Bella	15	28	1.87	17	93	.118	1	0.07	0	0	0.00	0	7	0.47	1	10	11	0.73	2	0	34.0
6	Swanson, Kyla	31	30	0.97	11	82	.232	2	0.06	0	1	0.00	0	1	0.03	4	27	31	1.00	3	0	47.5
8	Kemp, Kendal	19	29	1.53	6	49	.469	1	0.05	0	0	0.00	0	1	0.05	1	26	27	1.42	0	0	43.0
9	Slaughter, Zoe	24	0	0.00	0	0	.000	3	0.13	2	5	0.08	1	27	1.13	0	0	0	0.00	0	0	2.0
10	Barrett, Jackie	31	16	0.52	3	45	.289	276	8.90	5	7	0.16	0	80	2.58	0	21	21	0.68	3	2	31.5
12	Zimmerman, Bel	31	32	1.03	19	111	.117	1	0.03	7	24	0.23	4	25	0.81	0	3	3	0.10	3	0	40.5
13	Thibault, Paige	31	0	0.00	0	2	.000	8	0.26	3	13	0.10	8	51	1.65	0	0	0	0.00	0	0	3.0
14	Harmon, Chelsey	30	12	0.40	4	26	.308	0	0.00	7	6	0.23	0	7	0.23	0	12	12	0.40	2	0	25.0
22	Handel, Sydney	1	0	0.00	0	0	.000	0	0.00	0	1	0.00	0	0	0.00	0	0	0	0.00	0	0	0.0
AUBURN		31	355	11.45	160	1028	.190	328	10.58	36	95	1.16	38	383	12.35	7	131	72.5	2.34	13	2	463.5
Opponents		31	396	12.77	169	1027	.221	369	11.90	38	92	1.23	36	443	14.29	10	94	57	1.84	9	6	491.0

Team statistics

	AUB	OPP
ATTACK		
Kills	355	396
Errors	160	169
Total Attacks	1028	1027
Attack Pct	.190	.221
Kills/Set	11.45	12.77
SET		
Assists	328	369
Attempts	1023	1042
Assist Pct	.321	.354
Assists/Set	10.58	11.90
SERVE		
Aces	36	38
Errors	95	92
Attempts	663	697
Serve Pct	.857	.868
Aces/Set	1.16	1.23
SERVE RECEPTIONS		
Errors	38	36
Errors/Set	1.23	1.16
Attempts	605	568
Reception Pct	.937	.998
DEFENSE		
Digs	383	443
Digs/Set	12.35	14.29
BLOCKING		
Block solo	7	10
Block Assist	131	94
Total Blocks	72.5	57
Blocks/Set	2.34	1.84
Block Errors	13	9
Ball handling errors	2	6
ATTENDANCE		
Total	7426	10029
Dates/Avg Per Date	4/1857	4/2507
Neutral Site #/Avg	0/0	-
Current win streak	0	-
Home win streak	0	-

Team Results

Date	Opponent	Score	Score-by-set	Att.
* 09/22/2023	Florida	L 2-3	25-20,24-26,26-24,19-25,15-17	2393
* 09/24/2023	Ole Miss	W 3-1	21-25,25-21,25-10,27-25	1128
* 09/27/2023	at Arkansas	L 0-3	18-25,10-25,6-25	1374
* 10/01/2023	Georgia	W 3-1	25-23,25-23,18-25,25-20	2016
* 10/06/2023	at Florida	W 3-0	25-23,25-20,25-17	4150
* 10/08/2023	at South Carolina	W 3-2	25-23,22-25,22-25,25-23,15-13	1930
* 10/13/2023	at Tennessee	L 1-3	19-25,25-21,21-25,17-25	2575
* 10/20/2023	Missouri	L 0-3	23-25,21-25,18-25	1889

2023 STATISTICAL LEADERS

Attack (by PCT)

#	Player	S	K	K/S	E	TA	PCT
7	Dunn, Peyton	6	4	0.67	1	7	.429
8	Kemp, Kendal	59	96	1.63	24	171	.421
14	Harmon, Chelsey	47	27	0.57	6	54	.389
10	Barrett, Jackie	68	42	0.62	7	97	.361
5	Bell, Bella	37	93	2.51	31	224	.277
1	Scheer, Madison	70	220	3.14	75	563	.258
13	Thibault, Paige	54	1	0.02	0	4	.250
6	Swanson, Kyla	71	86	1.21	34	218	.239
12	Zimmerman, Bel	66	126	1.91	46	362	.221
3	Anderson, Akasha	62	231	3.73	109	685	.178
2	Morton, Sarah	60	2	0.03	1	8	.125
4	Lanham, Fallan	27	0	0.00	0	2	.000
17	Tanton, Cassidy	1	1	1.00	1	5	.000
9	Slaughter, Zoe	66	0	0.00	0	8	.000
22	Handel, Sydney	14	0	0.00	0	1	.000

Kill (by K)

#	Player	S	K	K/S
3	Anderson, Akasha	62	231	3.73
1	Scheer, Madison	70	220	3.14
12	Zimmerman, Bel	66	126	1.91
8	Kemp, Kendal	59	96	1.63
5	Bell, Bella	37	93	2.51
6	Swanson, Kyla	71	86	1.21
10	Barrett, Jackie	68	42	0.62
14	Harmon, Chelsey	47	27	0.57
7	Dunn, Peyton	6	4	0.67
2	Morton, Sarah	60	2	0.03
13	Thibault, Paige	54	1	0.02
17	Tanton, Cassidy	1	1	1.00
4	Lanham, Fallan	27	0	0.00
9	Slaughter, Zoe	66	0	0.00
22	Handel, Sydney	14	0	0.00

Set (by A/S)

#	Player	S	A	A/S	TA	PCT
7	Dunn, Peyton	6	59	9.83	141	.411
10	Barrett, Jackie	68	641	9.43	1691	.374
2	Morton, Sarah	60	58	0.97	207	.261
9	Slaughter, Zoe	66	22	0.33	70	.300
13	Thibault, Paige	54	15	0.28	49	.286
4	Lanham, Fallan	27	6	0.22	26	.231
3	Anderson, Akasha	62	8	0.13	61	.098
12	Zimmerman, Bel	66	7	0.11	28	.214
14	Harmon, Chelsey	47	4	0.09	17	.235
6	Swanson, Kyla	71	6	0.08	30	.100
1	Scheer, Madison	70	4	0.06	27	.074
5	Bell, Bella	37	2	0.05	11	.182
8	Kemp, Kendal	59	1	0.02	13	.077
17	Tanton, Cassidy	1	0	0.00	0	.000
22	Handel, Sydney	14	0	0.00	5	.000

Serve (by SA/S)

#	Player	S	SA	SE	SA/S	TA	PCT
12	Zimmerman, Bel	66	22	46	0.33	238	.807
14	Harmon, Chelsey	47	15	13	0.32	141	.908
3	Anderson, Akasha	62	19	39	0.31	225	.827
10	Barrett, Jackie	68	18	14	0.26	248	.944
4	Lanham, Fallan	27	6	6	0.22	107	.944
7	Dunn, Peyton	6	1	7	0.17	15	.533
13	Thibault, Paige	54	7	22	0.13	156	.859
2	Morton, Sarah	60	6	33	0.10	216	.847
9	Slaughter, Zoe	66	6	20	0.09	200	.900
6	Swanson, Kyla	71	3	14	0.04	61	.770
8	Kemp, Kendal	59	1	3	0.02	6	.500
1	Scheer, Madison	70	0	0	0.00	2	1.000
5	Bell, Bella	37	0	0	0.00	1	1.000
17	Tanton, Cassidy	1	0	0	0.00	0	.000
22	Handel, Sydney	14	0	6	0.00	36	.833

Block (by BLK/S)

#	Player	S	BS	BA	TOTAL	BLK/S
8	Kemp, Kendal	59	7	72	79.0	1.34
6	Swanson, Kyla	71	7	67	74.0	1.04
5	Bell, Bella	37	1	26	27.0	0.73
10	Barrett, Jackie	68	1	44	45.0	0.66
14	Harmon, Chelsey	47	1	27	28.0	0.60
3	Anderson, Akasha	62	1	31	32.0	0.52
1	Scheer, Madison	70	2	30	32.0	0.46
12	Zimmerman, Bel	66	2	21	23.0	0.35
7	Dunn, Peyton	6	0	2	2.0	0.33
4	Lanham, Fallan	27	0	0	0.0	0.00
13	Thibault, Paige	54	0	0	0.0	0.00
2	Morton, Sarah	60	0	0	0.0	0.00
9	Slaughter, Zoe	66	0	0	0.0	0.00
17	Tanton, Cassidy	1	0	0	0.0	0.00
22	Handel, Sydney	14	0	0	0.0	0.00

Defense (by DIG/S)

#	Player	S	DIG	DIG/S	BHE
2	Morton, Sarah	60	194	3.23	0
10	Barrett, Jackie	68	164	2.41	5
3	Anderson, Akasha	62	130	2.10	0
4	Lanham, Fallan	27	52	1.93	0
9	Slaughter, Zoe	66	126	1.91	0
13	Thibault, Paige	54	89	1.65	0
7	Dunn, Peyton	6	8	1.33	0
12	Zimmerman, Bel	66	75	1.14	0
22	Handel, Sydney	14	10	0.71	0
1	Scheer, Madison	70	26	0.37	0
5	Bell, Bella	37	12	0.32	0
14	Harmon, Chelsey	47	11	0.23	0
6	Swanson, Kyla	71	14	0.20	0
8	Kemp, Kendal	59	5	0.08	0
17	Tanton, Cassidy	1	0	0.00	0

Points (by POINTS/S)

#	Player	S	POINTS	POINTS/S
3	Anderson, Akasha	62	266.5	4.30
1	Scheer, Madison	70	237.0	3.39
5	Bell, Bella	37	107.0	2.89
12	Zimmerman, Bel	66	160.5	2.43
8	Kemp, Kendal	59	140.0	2.37
6	Swanson, Kyla	71	129.5	1.82
10	Barrett, Jackie	68	83.0	1.22
14	Harmon, Chelsey	47	56.5	1.20
7	Dunn, Peyton	6	6.0	1.00
17	Tanton, Cassidy	1	1.0	1.00
4	Lanham, Fallan	27	6.0	0.22
13	Thibault, Paige	54	8.0	0.15
2	Morton, Sarah	60	8.0	0.13
9	Slaughter, Zoe	66	6.0	0.09
22	Handel, Sydney	14	0.0	0.00

Receptions (by PCT)

#	Player	S	RE	RE/S	TA	PCT
8	Kemp, Kendal	59	0	0.00	2	1.000
6	Swanson, Kyla	71	0	0.00	2	1.000
10	Barrett, Jackie	68	0	0.00	3	1.000
4	Lanham, Fallan	27	1	0.04	83	.988
2	Morton, Sarah	60	8	0.13	223	.964
9	Slaughter, Zoe	66	10	0.15	241	.959
13	Thibault, Paige	54	10	0.19	228	.956
3	Anderson, Akasha	62	19	0.31	299	.936
1	Scheer, Madison	70	6	0.09	90	.933
12	Zimmerman, Bel	66	11	0.17	159	.931
22	Handel, Sydney	14	1	0.07	14	.929
17	Tanton, Cassidy	1	1	1.00	4	.750
5	Bell, Bella	37	1	0.03	2	.500
14	Harmon, Chelsey	47	0	0.00	0	.000
7	Dunn, Peyton	6	0	0.00	0	.000
TM	TEAM	-	22	0.30	-	-

TEAM KILLS - SIDEOUT ERA

	KILLS	OPPONENT (SETS)	DATE
1.	114	vs. Kentucky (5)	10/5/97
2.	107	at Tulane (5)	11/10/90
3.	99	vs. Georgia Tech (5)	9/14/95
4.	96	vs. Butler (5)	9/10/94
5.	95	vs. Pittsburgh (5)	9/13/91
6.	94	vs. Lamar (5)	9/24/88
7.	91	vs. LSU (5)	11/13/94
8.	90	at Ole Miss (5)	10/13/96
9.	89	vs. Arkansas (4)	10/20/96
10.	88	at Rhode Island (5)	9/5/97
	88	vs. Mississippi State (4)	10/24/97
	88	vs. Mississippi State (5)	11/12/00

TEAM KILLS - RALLY ERA

	KILLS	OPPONENT (SETS)	DATE
1.	84	vs. Virginia Tech (5)	9/2/06
	84	at Georgia (5)	9/17/06
3.	82	vs. Georgia Southern (5)	9/2/05
4.	81	at Mercer (5)	9/8/04
5.	80	vs. Kentucky (5)	10/1/06
	80	vs. Ole Miss (5)	10/24/03
7.	79	at Alabama (5)	10/30/11
8.	77	vs. Ole Miss (5)	10/26/18
9.	75	at South Carolina (5)	11/16/14
	75	at Georgia (5)	11/2/14
	75	vs. Green Bay (5)	9/5/13
	75	vs. Tennessee State (4)	8/25/07
	75	vs. Arkansas (5)	10/8/04
	75	at LSU (5)	10/25/15

TEAM ASSISTS - RALLY ERA

	AST.	OPPONENT (SETS)	DATE
1.	79	vs. Georgia Southern (5)	9/2/05
2.	77	at Mercer (5)	9/8/04
3.	76	at Georgia (5)	9/17/06
4.	74	vs. South Carolina (5)	10/5/14
	74	at Alabama (5)	10/30/11
	74	vs. Ole Miss (5)	9/24/03
7.	72	at Georgia (5)	11/2/14
	72	vs. Tennessee State (4)	8/25/07
	72	at LSU (5)	10/25/15
	72	vs. Ole Miss (5)	10/26/18

TEAM DIGS - RALLY ERA

	DIGS	OPPONENT (SETS)	DATE
1.	112	at LSU (5)	11/15/13
2.	109	at LSU (5)	10/25/15
3.	107	vs. Northwestern State (5)	9/20/14
4.	105	vs. Nicholls St. (4)	9/17/21
5.	99	at Ole Miss (5)	10/18/16
6.	97	vs. Georgia (4)	11/7/07
	97	vs. LSU (5)	10/5/15
	97	at Tennessee (5)	10/4/17
9.	94	at Tennessee (5)	11/16/12
10.	93	at Georgia (5)	9/17/06
	93	vs. Tennessee (4)	11/9/17

TEAM ACES - RALLY ERA

	ACES	OPPONENT (SETS)	DATE
1.	18	vs. Delaware State (3)	9/13/03
2.	16	vs. Tennessee State (4)	8/25/07
	16	vs. Southeastern Louisiana (3)	9/9/06
4.	14	at South Alabama (5)	9/14/23
	14	vs. Troy (3)	8/27/10
	14	vs. Alabama State (3)	9/5/03
7.	13	vs. Tennessee State (5)	8/30/19
	13	at SMU (5)	8/26/06
	13	vs. Mississippi State (5)	10/26/03
10.	12	vs. Louisiana Tech (4)	9/7/07
	12	at Lafayette (3)	9/12/03
	12	vs. Grambling State (3)	9/1/05

TEAM TOTAL BLOCKS - RALLY ERA

	BLK	OPPONENT (SETS)	DATE
1.	19.0	vs. UAB (4)	9/15/23
2.	18.0	vs. Georgia (5)	10/9/22
	18.0	vs. Alabama (5)	10/2/21
	18.0	vs. South Florida (5)	9/13/14
5.	17.0	vs. Troy (4)	9/10/22
	17.0	at Arkansas (5)	10/10/21
	17.0	at South Carolina (4)	10/29/20
	17.0	at Georgia Southern (5)	9/12/09
	17.0	vs. Mississippi State (5)	11/5/04
10.	17.0	at South Carolina (5)	10/8/23

TEAM HITTING - ALL ERAS

	PCT.	OPPONENT (SETS)	DATE
1.	.530 (41-6-66)	vs. LSU (3)	11/2/97
2.	.514 (65-11-105)	at Ole Miss (3)	10/18/98
3.	.489 (52-6-94)	vs. Alabama A&M (3)	8/29/09
4.	.487 (46-8-78)	vs. Navy (3)	9/15/00
5.	.485 (38-6-66)	vs. Drexel (3)	9/10/93
	.485 (53-5-99)	vs. Eastern Illinois (3)	9/1/18
7.	.474 (52-7-95)	at South Carolina (3)	10/26/12
8.	.472 (40-6-72)	vs. Delaware State (3)	9/13/03
9.	.471 (54-5-104)	vs. Mississippi State (3)	11/29/14
10.	.469 (35-5-64)	vs. Alabama A&M (3)	8/28/09
11.	.468 (N/A)	vs. Alabama State (3)	10/8/87
12.	.462 (52-9-93)	at Georgia State (3)	8/28/07
13.	.455 (55-9-101)	vs. Alabama (3)	11/10/98
14.	.450 (42-6-80)	vs. Mercer (3)	9/5/13
15.	.448 (50-11-87)	vs. Grambling (3)	9/1/05
16.	.440 (43-10-75)	vs. Chicago State (3)	9/11/99
	.440 (55-11-100)	vs. UAB (3)	9/3/00
18.	.429 (49-10-91)	at LSU (3)	9/26/97
19.	.420 (45-8-88)	vs. Lipscomb (3)	9/20/03
20.	.422 (43-8-83)	at Georgia Tech (3)	8/25/17

Records set in the Brent Crouch era are listed in **BOLD**.

TEAM MATCH RECORDS (BY SET)**KILLS**

SETS	KILLS	OPPONENT	DATE
3s	76	vs. LSU	10/18/96
4s	89	vs. Arkansas	10/20/9
5s	114	vs. Kentucky	10/5/97

ATTACKS

SETS	ATT.	OPPONENT	DATE
3s	160	vs. South Carolina	10/19/97
4s	213	at Ole Miss	10/3/93
5s	229	at LSU	11/15/13

HITTING PERCENTAGE (MIN. 10 KILLS)

SETS	PCT.	OPPONENT	DATE
3s	.530 (41-6-66)	vs. LSU	11/2/97
4s	.365 (70-20-137)	vs. Alabama	11/6/97
5s	.362 (74-20-149)	at Minnesota	9/19/98

BLOCKS - SOLO

SETS	BLK	OPPONENT	DATE
3s	8 (3x)	last, vs. IUPUI	9/4/98
4s	10	at Tennessee Tech	10/14/88
5s	13	vs. NC State	9/21/91

BLOCKS - ASSISTS

SETS	BLK	OPPONENT	DATE
3s	27	at Samford	10/3/00
4s	34	vs UAB	9/15/23
5s	28 (3x)	last, vs. Mississippi State	11/12/00

TOTAL BLOCKS

SETS	BLK	OPPONENT	DATE
3s	15.0	vs. Alabama	11/5/93
	15.0	at South Carolina	10/17/10
4s	19.0	vs UAB	9/15/23
5s	18.0	vs. Georgia	10/9/22
	18.0	vs. South Florida	9/13/14

DIGS

SETS	DIGS	OPPONENT	DATE
3s	76	at Ole Miss	11/16/07
4s	115	vs. NE Louisiana	9/12/86
5s	117	vs. Central Florida	11/8/86

ASSISTS

SETS	AST	OPPONENT	DATE
3s	60	vs. Pittsburgh	8/31/97
4s	77	vs. Mississippi State	10/24/97
5s	100	vs. Kentucky	10/5/97

SERVICE ACES

SETS	ACE	OPPONENT	DATE
3s	18	vs. Delaware State	9/13/03
4s	16	vs. Tennessee State	8/25/07
5s	14	at South Alabama	9/14/23

INDIVIDUAL KILLS

	KILLS	PLAYER-OPPONENT (SETS)	DATE
1.	30	Ashlee Johns vs. Arkansas (5)	10/8/04
2.	29	Rebekah Rath at Arkansas (4)	10/9/21
3.	27	Kelly Fidero at Alabama (5)	10/30/11
4.	26	Akasha Anderson at South Alabama (5)	9/14/23
	26	Akasha Anderson vs Mississippi St. (5)	9/28/22
	26	Jessica Glover at Georgia (5)	9/17/06
	26	Camila Lago vs. Mississippi State (5)	10/26/03
8.	25	Macy Reece vs. South Florida (5)	9/13/14
	25	Rachel Shanks vs. Georgia (4)	11/7/07
	25	Jelena Sekulic at Arkansas (5)	10/7/07
	25	Rachel Shanks vs. Virginia Tech (5)	9/2/06
	25	Jennifer Amobi vs. Tennessee (4)	11/19/04
	25	Rebekah Rath at Georgia St. (4)	8/26/22

INDIVIDUAL HITTING PCT. (MIN. 12 KILLS)

PCT.	PLAYER-OPPONENT (SETS)	DATE	
1. .773 (17-0-22)	Ashlee Johns vs. Delaware State (3)	9/13/03	
2. .722 (14-1-18)	Jonelle Wallace vs. Beth.-Cook. (3)	9/5/08	
3. .706 (12-0-17)	Chelsey Harmon vs. Jackson St. (3)	9/17/22	
4. .688 (12-1-16)	Shaina White vs. American (3)	9/8/18	
5. .667 (14-2-18)	Madison Scheer at Florida (3)	10/6/23	
	.667 (16-0-24)	Jonelle Wallace at Georgia (5)	11/24/10
7. .650 (13-0-20)	Breanna Barksdale at Arkansas (5)	10/30/15	
8. .647 (13-1-17)	Alyssa Davis vs Jacksonville State (5)	9/8/09	
9. .632 (12-0-19)	Courtney McDonald vs. Kentucky (5)	10/23/11	
	.632 (12-0-19)	Camila Jersonsky vs. Austin Peay (4)	9/3/11

INDIVIDUAL TOTAL BLOCKS

BLK (S-A)	PLAYER-OPPONENT (SETS)	DATE	
1. 12 (2-10)	Tatum Shipes vs Alabama (4)	10/2/21	
	11 (4-7)	Breanna Barksdale at Florida (4)	11/23/16
3. 10 (1-9)	Kendal Kemp vs UAB (4)	9/15/23	
	10 (1-9)	Kendal Kemp vs. Georgia (5)	10/9/22
	10 (1-9)	Kendal Kemp vs. Georgia (4)	10/8/22
	10 (2-8)	Chelsey Harmon vs Troy (4)	9/10/22
	10 (1-9)	Tatum Shipes at Arkansas (4)	10/9/21
	10 (0-10)	Stephanie Campbell vs. St. John's (5)	9/19/15
	10 (2-8)	Julie Bosler vs. South Carolina (5)	9/15/06
	10 (3-7)	Julie Bosler vs. Mississippi State (5)	11/5/04
	10 (2-8)	Julie Bosler vs. Mississippi State (5)	10/2/03
	10 (1-9)	Bailey Veit vs. Mercer (5)	9/20/03

INDIVIDUAL SERVICE ACES

ACES	PLAYER-OPPONENT (SETS)	DATE	
1. 7	Katherine Culwell vs. Tennessee (3)	11/22/13	
	7	Maira Magallon vs. Delaware State (3)	9/13/03
3. 6	Brenna McIlroy at Missouri (4)	10/19/18	
	6	Whitney Jacob vs. Arkansas (5)	10/15/06
5. 5	Jackie Barrett at South Alabama (5)	9/14/23	
	5	Jackie Barrett vs Mercer (3)	9/9/23
	5	Rebekah Rath at Texas A&M (5)	11/5/21
	5	Jesse Earl at Florida State (5)	9/16/17
	5	Jesse Earl at Georgia (4)	10/2/16
	5	Alexa Filley vs. LSU (5)	10/4/15
	5	Liz Crouch vs. Troy (3)	8/27/10
	5	Rachel Shanks at South Alabama (3)	9/9/06
	5	Whitney Jacob vs. Louisiana-Monroe (3)	8/25/06
	5	Whitney Jacob vs. Mississippi State (4)	10/23/05
	5	Rachel Shanks vs. Clemson (3)	9/17/05
	5	Whitney Jacob vs. Grambling (3)	9/1/05
	5	Maira Magallon vs. Mississippi State (5)	10/26/03
	5	Maira Magallon at Lafayette (3)	9/12/03
	5	Maira Magallon vs. Bethune-Cookman (4)	9/6/03
	5	Jennifer Buckert vs. Alabama State (3)	9/5/03
	5	Brittany Diaz vs. Marist (4)	9/7/02
	5	Laura Hastings vs. Western Michigan (3)	9/1/01
	5	Grace Boyd at South Carolina (3)	10/26/01

INDIVIDUAL ASSISTS

AST	PLAYER-OPPONENT (SETS)	DATE	
1. 76	Jordan Elliott at Mercer (5)	9/8/04	
2. 71	Maira Magallon vs. Ole Miss (5)	10/24/03	
3. 68	Michele Ashmore vs. Georgia Southern (5)	9/2/05	
4. 66	Joanna Pappas at Georgia (5)	9/17/06	
5. 65	Maira Magallon vs. Arkansas (5)	10/8/04	
	65	Nicki Gerig vs. Tennessee State (4)	8/25/07
7. 64	Jordan Elliott vs. Iowa State (5)	9/4/04	
8. 63	Alexa Filley vs. South Carolina (5)	10/5/14	
	63	Maira Magallon vs. Xavier (4)	11/26/04
	63	Sara Shanks at Arkansas (5)	10/7/07

INDIVIDUAL DIGS

DIGS	PLAYER-OPPONENT (SETS)	DATE	
1. 37	Payton White vs. Butler (5)	8/31/19	
2. 36	Jelena Sekulic at Kentucky (5)	11/17/06	
	36	Jesse Earl at Tennessee (5)	10/4/17
4. 34	Bailey Veit vs. Georgia Southern (5)	9/2/05	
	34	Jesse Earl at Mississippi State (5)	11/13/15
6. 33	Bella Rosenthal vs. Missouri (5)	10/17/21	
7. 33	Sarah Wroblecky at LSU (5)	11/15/13	
	33	Jesse Earl at LSU (4)	11/15/17
9. 31	Liz Crouch at Mississippi State (3)	9/18/09	
10. 30	Liz Crouch vs. Georgia (4)	11/7/07	
	30	Jesse Earl at Florida State (5)	9/16/17

Records set in the Brent Crouch era are listed in **BOLD**

INDIVIDUAL MATCH RECORDS (BY SET)

KILLS

SETS	KILLS	PLAYER-OPPONENT	DATE
3s	25	Brooke McCarley vs. UAB	9/7/99
4s	29	Rebekah Rath at Arkansas	10/9/21
	29	Brooke McCarley at Kansas	9/11/99
5s	34	Bridgitte Sims vs. Tulane	11/10/90

ATTACKS

SETS	ATT.	PLAYER-OPPONENT	DATE
3s	56	Allyson Beecroft at Florida	9/30/94
4s	75	Rebekah Rath at Arkansas	10/9/21
5s	84	Rebekah Rath at Texas A&M	11/4/17

HITTING PERCENTAGE (MIN. 10 KILLS)

SETS	PCT.	PLAYER	DATE
3s	.773 (17-0-22)	Ashlee Johns	9/13/03
4s	.813 (13-0-16)	Laura Cookley	9/28/91
5s	.714 (10-0-14)	Dalia Naidzinaviciut	9/2/05

BLOCKS - SOLO

SETS	BLK	PLAYER-OPPONENT	DATE
3s	5	Gina Thomas vs. Georgetown	9/13/90
4s	5	Gina Thomas vs. Florida	10/12/90
5s	6	Tory Gutierrez vs. Louisville	10/21/89
	6	Lisa Harvey vs. Tuskegee	10/7/86

BLOCKS - ASSISTS

SETS	BLK	PLAYER-OPPONENT	DATE
3s	9 (3x)	last, Kendal Kemp vs Belmont	8/26/22
4s	11	Tory Gutierrez vs. Georgia State	10/3/89
5s	10	Jaunelle Hamilton vs. Mississippi St.	11/12/00
	10	Stephanie Campbell vs. St. John's	9/19/15

TOTAL BLOCKS

SETS	BLK	PLAYER-OPPONENT	DATE
3s	9 (4x)	last, Kendal Kemp vs. Belmont	8/26/22
4s	14	Tory Gutierrez vs. Georgia State	10/3/89
5s	12	Jaunelle Hamilton vs. Mississippi St.	11/12/00
	12	La'Toi Finley at Georgia Tech	9/14/95

DIGS

SETS	DIGS	PLAYER-OPPONENT	DATE
3s	31	Liz Crouch at Mississippi State	9/18/09
4s	34	Gretchen Thompson vs. ULM	9/12/86
5s	37	Payton White vs. Butler	8/31/19

ASSISTS

SETS	AST	PLAYER-OPPONENT	DATE
3s	64	Piper Craig vs. LSU	10/18/96
4s	76	Piper Craig vs. Arkansas	10/20/96
5s	92	Piper Craig vs. Kentucky	10/5/97

SERVICE ACES

SETS	ACE	PLAYER-OPPONENT	DATE
3s	10	Jenifer Kleyn vs. Seneca	10/5/90
4s	8	Terri Duckworth at UAB	11/1/88
5s	10	Jenifer Kleyn at Ole Miss	9/28/90

#1 MADISON SCHEER

**PIN HITTER | 6-1 | SOPHOMORE
EUREKA, MO. (EUREKA)**



SCHEER'S HIGHLIGHTS:

- Named National Player of the Week (10/10/23) after 33 kills on .472 hitting against No. 9 Florida and South Carolina
- 2022 SEC All-Freshman Team
- Career-high 22 kills on .409 hitting versus Jacksonville State
- Named SEC Freshman of the Week and Player of the Week 9/26
- Hit over .300 11 times, over .400 seven times and over .500 twice in 2022
- Made her collegiate debut on Aug. 26 vs. Belmont

CATEGORY	CAREER HIGH	OPPONENT/DATE
Kills	22	at Jacksonville State (9/17/22)
Attempts	47	vs Georgia (10/9/22)
Hitting Percentage (Min. 10 ATT.)	.667	at Florida (10/6/23)
Assists	1 (7x)	last at South Carolina (10/8/23)
Digs	5	at Tennessee (10/13/23)
Blocks	6 (2x)	last at Tennessee (10/13/23)
Aces	--	--
Points	23.0	at Jacksonville State (9/17/22)

CATEGORY	SEASON HIGH	OPPONENT/DATE
Kills	19	at South Carolina (10/8/23)
Attempts	45	at Tennessee (10/13/23)
Hitting Percentage (Min. 10 ATT.)	.667	at Florida (10/6/23)
Assists	1 (4x)	last at South Carolina (10/8/23)
Digs	5	at Tennessee (10/13/23)
Blocks	6	at Tennessee (10/13/23)
Aces	--	--
Points	20.0	at South Carolina (10/8/23)

GAME BY GAME

Date	Opponent	SP	Attack				Set			Serve				Recept			Blocking				Team				
			K	E	TA	PCT	A	TA	PCT	SA	SE	TA	PCT	RE	TA	PCT	DIG	BS	BA	BE	TOTAL	BHE	POINTS	HIT%	SCORE
08/25/2023	Coppin St.	4	16	4	41	.293	0	1	.000	0	0	0	.000	0	3	1.000	3	1	3	0	4.0	0	18.5	.309	3-1
08/26/2023	Jacksonville St.	3	8	2	21	.286	1	1	1.000	0	0	0	.000	0	3	1.000	0	0	0	0	0.0	0	8.0	.395	3-0
09/02/2023	vs SMU	4	18	6	37	.324	0	0	.000	0	0	0	.000	0	9	1.000	1	0	0	0	0.0	0	18.0	.316	3-1
09/03/2023	at Florida St.	4	14	3	33	.333	1	2	.500	0	0	0	.000	0	3	1.000	0	0	2	1	2.0	0	15.0	.356	3-1
09/07/2023	Middle Tenn.	4	8	2	28	.214	0	2	.000	0	0	1	1.000	0	1	1.000	2	0	3	0	3.0	0	9.5	.221	1-3
09/08/2023	Charleston So.	*4	15	3	35	.343	0	0	.000	0	0	0	.000	1	7	.857	2	0	4	0	4.0	0	17.0	.245	3-1
09/09/2023	Mercer	3	12	4	28	.286	0	2	.000	0	0	0	.000	0	8	1.000	0	0	1	0	1.0	0	12.5	.346	3-0
09/14/2023	at South Alabama	5	10	7	39	.077	0	0	.000	0	0	0	.000	1	9	.889	3	0	1	0	1.0	0	10.5	.191	3-2
09/15/2023	vs UAB	4	7	5	21	.095	0	0	.000	0	0	0	.000	0	0	.000	3	0	4	0	4.0	0	9.0	.189	3-1
09/16/2023	vs Samford	*4	13	5	27	.296	0	3	.000	0	0	0	.000	1	1	.000	0	0	0	0	0.0	0	13.0	.386	3-1
09/22/2023	Florida	5	15	6	44	.205	1	2	.500	0	0	1	1.000	0	16	1.000	2	0	0	0	0.0	0	15.0	.196	2-3
09/24/2023	Ole Miss	4	12	2	34	.294	0	4	.000	0	0	0	.000	0	9	1.000	3	0	1	0	1.0	0	12.5	.199	3-1
09/27/2023	at Arkansas	3	4	3	22	.045	0	2	.000	0	0	0	.000	1	4	.750	1	0	0	0	0.0	0	4.0	-.049	0-3
10/01/2023	Georgia	4	14	2	29	.414	0	2	.000	0	0	0	.000	0	5	1.000	0	0	1	0	1.0	0	14.5	.262	3-1
10/06/2023	at Florida	3	14	2	18	.667	0	0	.000	0	0	0	.000	0	5	1.000	0	0	1	0	1.0	0	14.5	.387	3-0
10/08/2023	at South Carolina	5	19	6	35	.371	1	5	.200	0	0	0	.000	1	5	.800	1	0	2	0	2.0	0	20.0	.197	3-2
10/13/2023	at Tennessee	4	11	9	45	.044	0	0	.000	0	0	0	.000	1	2	.500	5	1	5	0	6.0	0	14.5	.122	1-3
10/20/2023	Missouri	3	10	4	26	.231	0	1	.000	0	0	0	.000	0	0	.000	0	0	2	0	2.0	0	11.0	.168	0-3
Totals		70	220	75	563	.258	4	27	.148	0	0	2	1.000	6	90	.933	26	2	30	1	32.0	0	237.0		

Player Averages

Sets Played	Kills per set	Assists per set	Service aces per set	Digs per set	Blocks per set	Points per set
70	3.14	0.06	0.00	0.37	0.46	3.39

CAREER STATS

SEASON	TEAM	SM-MP	K	K/S	E	TA	PCT	A	A/S	SA	SA/S	SE	DIG	D/S	RE	BS	BA	TB	B/S	BE	BHE	PTS	PTS/S
2022-23	AUB	118-30	361	3.06	120	956	.252	3	0.03	0	0.00	0	45	0.38	3	3	46	49	0.42	4	2	387.0	3.28
2023-24	AUB	70-18	220	3.14	75	563	.258	4	0.06	0	0.00	0	26	0.37	6	2	30	32	0.46	1	0	237.0	3.39
TOTAL		188 - 48	581	3.09	195	1519	.254	7	0.04	0	0.00	0	71	0.38	9	5	76	81	0.43	5	2	624.0	3.32



#2 SARAH MORTON

LIBERO | 5-7 | SOPHOMORE
MUNSTER, IND. (MUNSTER)



MORTON'S HIGHLIGHTS:

- Recorded 10+ digs in 26 of the 29 matches she's played in 2022
- Grabbed a career-high 26 digs vs Georgia on Oct. 9
- Named SEC Defensive Player of the Week 9/26
- Has started every game at libero when in the lineup
- Made her collegiate debut on Aug. 26 vs. Belmont

CATEGORY	CAREER HIGH	OPPONENT/DATE
Kills	1 (3x)	last vs Coppin State (8/25/23)
Attempts	3	vs Coppin State (8/25/23)
Hitting Percentage (Min. 10 ATT.)	--	--
Assists	9 (2x)	last vs SMU (9/2/23)
Digs	26	vs Georgia (10/9/22)
Blocks	--	--
Aces	3 (4x)	last at Missouri (10/15/22)
Points	3 (4x)	last at Missouri (10/15/22)

CATEGORY	SEASON HIGH	OPPONENT/DATE
Kills	1 (2x)	last vs Florida (9/22/23)
Attempts	3	vs Coppin State (8/25/23)
Hitting Percentage (Min. 10 ATT.)	--	--
Assists	9	vs SMU (9/2/23)
Digs	24	vs Coppin State (8/25/23)
Blocks	--	--
Aces	1 (6x)	last at South Carolina (10/8/23)
Points	2	vs Florida (9/22/23)

GAME BY GAME

Date	Opponent	SP	Attack			Set			Serve				Receipt			Blocking				Team					
			K	E	TA	PCT	A	TA	PCT	SA	SE	TA	PCT	RE	TA	PCT	DIG	BS	BA	BE	TOTAL	BHE	POINTS	HIT%	SCORE
08/25/2023	Coppin St.	4	1	0	3	.333	4	12	.333	0	2	20	.900	0	13	1.000	24	0	0	0	0.0	0	1.0	.309	3-1
08/26/2023	McNeese	3	0	0	0	.000	3	11	.273	0	1	7	.857	0	8	1.000	5	0	0	0	0.0	0	0.0	.333	3-0
08/26/2023	Jacksonville St.	3	0	0	0	.000	3	8	.375	1	0	13	1.000	0	8	1.000	3	0	0	0	0.0	0	1.0	.395	3-0
09/02/2023	vs SMU	4	0	0	1	.000	9	20	.450	0	2	15	.867	1	14	.929	17	0	0	0	0.0	0	0.0	.316	3-1
09/03/2023	at Florida St.	4	0	0	1	.000	5	16	.313	1	2	16	.875	2	31	.935	8	0	0	0	0.0	0	1.0	.356	3-1
09/07/2023	Middle Tenn.	4	0	0	1	.000	0	11	.000	0	6	14	.571	2	27	.926	10	0	0	0	0.0	0	0.0	.221	1-3
09/08/2023	Charleston So.	4	0	0	0	.000	2	14	.143	0	2	15	.867	0	16	1.000	14	0	0	0	0.0	0	0.0	.245	3-1
09/09/2023	Mercer	3	0	0	0	.000	1	4	.250	0	3	7	.571	0	10	1.000	10	0	0	0	0.0	0	0.0	.346	3-0
09/22/2023	Florida	5	1	0	1	1.000	5	17	.294	1	5	18	.722	0	16	1.000	13	0	0	0	0.0	0	2.0	.196	2-3
09/24/2023	Ole Miss	4	0	0	0	.000	5	20	.250	0	1	12	.917	1	15	.933	20	0	0	0	0.0	0	0.0	.199	3-1
09/27/2023	at Arkansas	3	0	0	0	.000	1	13	.077	0	4	5	.200	1	8	.875	7	0	0	0	0.0	0	0.0	-.049	0-3
10/01/2023	Georgia	4	0	0	0	.000	4	13	.308	1	1	18	.944	0	18	1.000	8	0	0	0	0.0	0	1.0	.262	3-1
10/06/2023	at Florida	3	0	0	0	.000	4	10	.400	1	2	10	.800	0	6	1.000	8	0	0	0	0.0	0	1.0	.387	3-0
10/08/2023	at South Carolina	5	0	1	1	-1.000	6	17	.353	1	0	20	1.000	0	11	1.000	18	0	0	0	0.0	0	1.0	.197	3-2
10/13/2023	at Tennessee	4	0	0	0	.000	2	12	.167	0	2	11	.818	0	18	1.000	18	0	0	0	0.0	0	0.0	.122	1-3
10/20/2023	Missouri	3	0	0	0	.000	4	9	.444	0	0	15	1.000	1	4	.750	11	0	0	0	0.0	0	0.0	.168	0-3
Totals		60	2	1	8	.125	58	207	.280	6	33	216	.847	8	223	.964	194	0	0	0	0.0	0	8.0		

Player Averages

Sets Played	Kills per set	Assists per set	Service aces per set	Digs per set	Blocks per set	Points per set
60	0.03	0.97	0.10	3.23	0.00	0.13

CAREER STATS

SEASON	TEAM	SM-MP	K	K/S	E	TA	PCT	A	A/S	SA	SA/S	SE	DIG	D/S	RE	BS	BA	TB	B/S	BE	BHE	PTS	PTS/S
2022-23	AUB	119-30	2	0.02	1	11	.091	110	0.92	30	0.25	31	457	3.84	21	0	0	0	0.00	0	1	32.0	0.27
2023-24	AUB	60-16	2	0.03	1	8	.125	58	0.97	6	0.10	33	194	3.23	8	0	0	0	0.00	0	0	8.0	0.13
TOTAL		179 - 46	4	0.02	2	19	.105	168	0.94	36	0.20	64	651	3.64	29	0	0	0	0.00	0	1	40.0	0.22

#3 AKASHA ANDERSON

PIN HITTER | 6-3 | FRESHMAN
RESTON, VA. (HERNDON)



ANDERSON'S HIGHLIGHTS:

- Named to All-SEC Team and All-Freshman Team
- Named AVCA South Region Freshman of the Year in 2022
- Had career-high 26 kills in win over Mississippi State
- Hit .526 with a team-high 12 kills vs. Marist
- Recorded 24 kills and 14 digs at UAB for first double-double
- Had eight double-doubles in 2022
- 2x SEC Freshman of the Week
- Made her collegiate debut on Aug. 26 vs. Belmont

CATEGORY	CAREER HIGH	OPPONENT/DATE
Kills	26 (2x)	last at South Alabama (9/14/23)
Attempts	77	at LSU (10/5/22)
Hitting Percentage (Min. 10 ATT.)	.526	vs Marist (8/27/22)
Assists	3 (2x)	last at Florida State (9/3/23)
Digs	18	at Alabama (9/25/22)
Blocks	6	at South Carolina (10/8/23)
Aces	4 (4x)	last at South Carolina (10/8/23)
Points	29.5 (2x)	last vs Mississippi State (9/28/22)

CATEGORY	SEASON HIGH	OPPONENT/DATE
Kills	26	at South Alabama (9/14/23)
Attempts	69	at South Alabama (9/14/23)
Hitting Percentage (Min. 10 ATT.)	.410	vs Samford (9/16/23)
Assists	3	at Florida State (9/3/23)
Digs	15	at South Carolina (10/8/23)
Blocks	6	at South Carolina (10/8/23)
Aces	4 (2x)	last at South Carolina (10/8/23)
Points	28.5	at South Alabama (9/14/23)

GAME BY GAME

Date	Opponent	SP	Attack				Set			Serve				Receipt			Blocking				Team				
			K	E	TA	PCT	A	TA	PCT	SA	SE	TA	PCT	RE	TA	PCT	DIG	BS	BA	BE	TOTAL	BHE	POINTS	HIT%	SCORE
08/25/2023	Coppin St.	*4	16	4	41	.293	0	3	.000	0	3	7	.571	0	16	1.000	5	0	1	0	1.0	0	16.5	.309	3-1
08/26/2023	McNeese	*3	14	5	35	.257	0	3	.000	4	3	13	.769	0	15	1.000	8	0	0	0	0.0	0	18.0	.333	3-0
08/26/2023	Jacksonville St.	*3	10	1	23	.391	0	1	.000	1	1	12	.917	1	5	.800	4	1	0	0	1.0	0	12.0	.395	3-0
09/02/2023	vs SMU	*4	12	7	41	.122	0	4	.000	2	3	22	.864	0	13	1.000	7	0	2	2	2.0	0	15.0	.316	3-1
09/03/2023	at Florida St.	*4	15	4	35	.314	3	7	.429	0	2	11	.818	1	14	.929	6	0	1	0	1.0	0	15.5	.356	3-1
09/14/2023	at South Alabama	*5	26	10	69	.232	0	3	.000	2	1	15	.933	3	25	.880	11	0	1	0	1.0	0	28.5	.191	3-2
09/15/2023	vs UAB	*4	11	10	37	.027	2	5	.400	1	2	22	.909	3	27	.889	11	0	4	0	4.0	0	14.0	.189	3-1
09/16/2023	vs Samford	*4	19	3	39	.410	0	4	.000	1	1	14	.929	1	26	.962	9	0	2	0	2.0	0	21.0	.386	3-1
09/22/2023	Florida	*5	18	11	60	.117	0	4	.000	2	5	17	.706	0	18	1.000	10	0	3	0	3.0	0	21.5	.196	2-3
09/24/2023	Ole Miss	*4	20	12	60	.133	1	4	.250	1	2	14	.857	0	13	1.000	9	0	2	0	2.0	0	22.0	.199	3-1
09/27/2023	at Arkansas	*3	1	4	23	-.130	0	0	.000	0	2	5	.600	4	18	.778	7	0	2	0	2.0	0	2.0	-.049	0-3
10/01/2023	Georgia	*4	17	11	56	.107	1	4	.250	1	5	14	.643	4	28	.857	6	0	3	0	3.0	0	19.5	.262	3-1
10/06/2023	at Florida	*3	18	4	35	.400	0	3	.000	0	2	13	.846	0	7	1.000	8	0	1	0	1.0	0	18.5	.387	3-0
10/08/2023	at South Carolina	*5	14	11	54	.056	1	9	.111	4	1	22	.955	2	33	.939	15	0	6	0	6.0	0	21.0	.197	3-2
10/13/2023	at Tennessee	*4	10	7	47	.064	0	6	.000	0	3	17	.824	0	22	1.000	8	0	3	0	3.0	0	11.5	.122	1-3
10/20/2023	Missouri	*3	10	5	30	.167	0	1	.000	0	3	7	.571	0	19	1.000	6	0	0	0	0.0	0	10.0	.168	0-3
Totals		62	231	109	685	.178	8	61	.131	19	39	225	.827	19	299	.936	130	1	31	2	32.0	0	266.5		

Player Averages

Sets Played	Kills per set	Assists per set	Service aces per set	Digs per set	Blocks per set	Points per set
62	3.73	0.13	0.31	2.10	0.52	4.30

CAREER STATS

SEASON	TEAM	SM-MP	K	K/S	E	TA	PCT	A	A/S	SA	SA/S	SE	DIG	D/S	RE	BS	BA	TB	B/S	BE	BHE	PTS	PTS/S
2022-23	AUB	121-31	428	3.54	211	1240	.175	13	0.11	27	0.22	41	225	1.86	50	4	56	60	0.50	5	0	487.0	4.02
2023-24	AUB	62-16	231	3.73	109	685	.178	8	0.13	19	0.31	39	130	2.10	19	1	31	32	0.52	2	0	266.5	4.30
TOTAL		183 - 47	659	3.60	320	1925	.176	21	0.11	46	0.25	80	355	1.94	69	5	87	92	0.50	7	0	753.5	4.12

#4 FALLAN LANHAM

LIBERO | 5-8 | JUNIOR
LOUISVILLE, KY. (MERCY ACADEMY)



LANHAM'S HIGHLIGHTS:

- Grabbed a career-high 20 digs at LSU
- Recorded a career-high four aces at UAB
- Earned first collegiate start in Auburn's season opener versus Tennessee Tech on August 27

CATEGORY	CAREER HIGH	OPPONENT/DATE
Kills	2	vs. Missouri (9/12/21)
Attempts	8	at Arkansas (10/9/21)
Hitting Percentage (Min. 10 ATT.)		
Assists	3 (4x)	last vs Charleston Southern (9/8/23)
Digs	20	at LSU (10/5/22)
Blocks	1	at Georgia (10/22/21)
Aces	4	at UAB (9/9/22)
Points	4.0	at UAB (9/9/22)

CATEGORY	SEASON HIGH	OPPONENT/DATE
Kills	--	--
Attempts	1 (2x)	last at Florida State (9/3/23)
Hitting Percentage (Min. 10 ATT.)	--	--
Assists	3	vs Charleston Southern (9/8/23)
Digs	11	vs Jacksonville State (8/26/23)
Blocks	--	--
Aces	2	vs Jacksonville State (8/26/23)
Points	2.0	vs Jacksonville State (8/26/23)

GAME BY GAME

Date	Opponent	SP	Attack				Set			Serve				Receipt			Blocking				Team				
			K	E	TA	PCT	A	TA	PCT	SA	SE	TA	PCT	RE	TA	PCT	DIG	BS	BA	TB	TOTAL	BHE	POINTS	HIT%	SCORE
08/25/2023	Coppin St.	3	0	0	0	.000	0	1	.000	0	0	8	1.000	0	6	1.000	0	0	0	0	0.0	0	0.0	.309	3-1
08/26/2023	McNeese	1	0	0	0	.000	0	1	.000	0	0	3	1.000	0	2	1.000	2	0	0	0	0.0	0	0.0	.333	3-0
08/26/2023	Jacksonville St.	3	0	0	0	.000	1	5	.200	2	0	18	1.000	1	8	.875	11	0	0	0	0.0	0	2.0	.395	3-0
09/02/2023	vs SMU	4	0	0	1	.000	2	3	.667	1	1	16	.938	0	25	1.000	4	0	0	0	0.0	0	1.0	.316	3-1
09/03/2023	at Florida St.	4	0	0	1	.000	0	1	.000	1	1	19	.947	0	13	1.000	9	0	0	0	0.0	0	1.0	.356	3-1
09/07/2023	Middle Tenn.	4	0	0	0	.000	0	4	.000	1	2	17	.882	0	11	1.000	10	0	0	0	0.0	0	1.0	.221	1-3
09/08/2023	Charleston So.	*4	0	0	0	.000	3	6	.500	1	1	14	.929	0	11	1.000	8	0	0	0	0.0	0	1.0	.245	3-1
09/09/2023	Mercer	*3	0	0	0	.000	0	4	.000	0	1	10	.900	0	4	1.000	4	0	0	0	0.0	0	0.0	.346	3-0
09/14/2023	at South Alabama	*1	0	0	0	.000	0	1	.000	0	0	2	1.000	0	3	1.000	4	0	0	0	0.0	0	0.0	.191	3-2
Totals		27	0	0	2	.000	6	26	.231	6	6	107	.944	1	83	.988	52	0	0	0	0.0	0	6.0		

Player Averages

Sets Played	Kills per set	Assists per set	Service aces per set	Digs per set	Blocks per set	Points per set
27	0.00	0.22	0.22	1.93	0.00	0.22

CAREER STATS

SEASON	TEAM	SM-MP	K	K/S	E	TA	PCT	A	A/S	SA	SA/S	SE	DIG	D/S	RE	BS	BA	TB	B/S	BE	BHE	PTS	PTS/S
2021-22	AUB	103-28	7	0.07	8	85	-.012	17	0.17	5	0.05	15	192	1.86	21	0	1	1	0.01	0	0	12.5	0.12
2022-23	AUB	122-31	1	0.01	1	13	.000	15	0.12	35	0.29	33	198	1.62	28	0	0	0	0.00	0	0	36.0	0.30
2023-24	AUB	27-9	0	0.00	0	2	.000	6	0.22	6	0.22	6	52	1.93	1	0	0	0	0.00	0	0	6.0	0.22
TOTAL		252 - 68	8	0.03	9	100	-.010	38	0.15	46	0.18	54	442	1.75	50	0	1	1	0.00	0	0	54.5	0.22



#5 BELLA BELL

MIDDLE BLOCKER | 6-4 | GRADUATE
BLYTHEWOOD, S.C. (KENTUCKY)

BELL'S HIGHLIGHTS:

- Has hit over .400 in three matches this season
- National Champion in Kentucky
- Had the 3rd-highest hitting percentage in the SEC in 2022

CATEGORY	CAREER HIGH	OPPONENT/DATE
Kills	14	vs Coppin State (8/25/23)
Attempts	30	vs Ole Miss (9/24/23)
Hitting Percentage (Min. 10 ATT.)	.750	vs Jacksonville State (8/26/23)
Assists	1 (5x)	last vs Florida (9/22/23)
Digs	4	vs Ole Miss (9/24/23)
Blocks	10 (2x)	at Arkansas (10/7/22)
Aces	1	vs South Carolina (11/25/22)
Points	17.5	at Missouri (9/28/22)

CATEGORY	SEASON HIGH	OPPONENT/DATE
Kills	14	vs Coppin State (8/25/23)
Attempts	30	vs Ole Miss (9/24/23)
Hitting Percentage (Min. 10 ATT.)	.750	vs Jacksonville State (8/26/23)
Assists	1 (2x)	last vs Florida (9/22/23)
Digs	4	vs Ole Miss (9/24/23)
Blocks	7	vs Ole Miss (9/24/23)
Aces	--	--
Points	15.5	vs Coppin State (8/25/23)

GAME BY GAME

Date	Opponent	SP	Attack				Set			Serve			Recept			Blocking				Team					
			K	E	TA	PCT	A	TA	PCT	SA	SE	TA	PCT	RE	TA	PCT	DIG	BS	BA	BE	TOTAL	BHE	POINTS	HIT%	SCORE
08/25/2023	Coppin St.	*4	14	2	25	.480	0	1	.000	0	0	0	.000	0	0	.000	1	0	3	0	3.0	0	15.5	.309	3-1
08/26/2023	McNeese	*3	11	3	22	.364	0	0	.000	0	0	0	.000	0	0	.000	0	0	2	0	2.0	0	12.0	.333	3-0
08/26/2023	Jacksonville St.	*3	9	0	12	.750	0	0	.000	0	0	0	.000	0	0	.000	0	0	2	1	2.0	0	10.0	.395	3-0
09/02/2023	vs SMU	*4	10	3	22	.318	1	1	1.000	0	0	0	.000	1	2	.500	2	0	3	1	3.0	0	11.5	.316	3-1
09/03/2023	at Florida St.	*4	13	1	29	.414	0	2	.000	0	0	1	1.000	0	0	.000	2	0	2	0	2.0	0	14.0	.356	3-1
09/07/2023	Middle Tenn.	*4	8	5	21	.143	0	1	.000	0	0	0	.000	0	0	.000	0	0	4	1	4.0	0	10.0	.221	1-3
09/22/2023	Florida	*5	11	5	28	.214	1	4	.250	0	0	0	.000	0	0	.000	2	0	0	0	0.0	0	11.0	.196	2-3
09/24/2023	Ole Miss	*4	9	4	30	.167	0	0	.000	0	0	0	.000	0	0	.000	4	1	6	0	7.0	0	13.0	.199	3-1
09/27/2023	at Arkansas	*3	3	4	18	-.056	0	0	.000	0	0	0	.000	0	0	.000	1	0	1	1	1.0	0	3.5	-.049	0-3
10/20/2023	Missouri	*3	5	4	17	.059	0	2	.000	0	0	0	.000	0	0	.000	0	0	3	1	3.0	0	6.5	.168	0-3
Totals		37	93	31	224	.277	2	11	.182	0	0	1	1.000	1	2	.500	12	1	26	5	27.0	0	107.0		

Player Averages

Sets Played	Kills per set	Assists per set	Service aces per set	Digs per set	Blocks per set	Points per set
37	2.51	0.05	0.00	0.32	0.73	2.89

CAREER STATS

SEASON	TEAM	SM-MP	K	K/S	E	TA	PCT	A	A/S	SA	SA/S	SE	DIG	D/S	RE	BS	BA	TB	B/S	BE	BHE	PTS	PTS/S
2020-21	UK	24-14	29	1.21	9	64	.313	0	0.00	0	0.00	0	2	0.08	1	0	22	22	0.92	3	0	40.0	1.67
2021-22	UK	62-19	102	1.65	25	185	.416	1	0.02	0	0.00	0	9	0.15	0	10	68	78	1.26	8	0	146.0	2.35
2022-23	UK	62-22	107	1.73	34	215	.340	2	0.03	2	0.03	6	12	0.19	0	5	72	77	1.24	8	0	150.0	2.42
2023-24	AUB	37-10	93	2.51	31	224	.277	2	0.05	0	0.00	0	12	0.32	1	1	26	27	0.73	5	0	107.0	2.89
TOTAL FOR AUB	37 - 10	93	2.51	31	224	.277	2	0.05	0	0.00	0	12	0.32	1	1	26	27	0.73	5	0	107.0	2.89	
TOTAL	185 - 65	331	1.79	99	688	.337	5	0.03	2	0.01	6	35	0.19	2	16	188	204	1.10	24	0	443.0	2.39	

#6 KYLA SWANSON

MIDDLE BLOCKER | 6-4 | GRADUATE
WAHOO, NEB. (ILLINOIS)



SWANSON'S HIGHLIGHTS:

- 2x Academic All-Big Ten
- Made the NCAA Sweet 16 with Illinois in 2021
- Has more than 170 blocks in her career
- Hit .727 at Penn State on Oct. 30, 2021

CATEGORY	CAREER HIGH	OPPONENT/DATE
Kills	10 (3x)	last vs SMU (9/2/23)
Attempts	25	vs Charleston Southern (9/8/23)
Hitting Percentage (Min. 10 ATT.)	.727	at Penn State (10/30/21)
Assists	2	at Iowa (9/22/21)
Digs	6	at Tennessee (8/30/19)
Blocks	10	vs UC Santa Barbara (8/27/21)
Aces	2 (2x)	last vs Jacksonville State (8/26/23)
Points	15.5	vs UC Santa Barbara (8/27/21)

CATEGORY	SEASON HIGH	OPPONENT/DATE
Kills	10	vs SMU (9/2/23)
Attempts	25	vs Charleston Southern (9/8/23)
Hitting Percentage (Min. 10 ATT.)	.500	vs SMU (9/2/23)
Assists	1 (6x)	last vs Missouri (10/20/23)
Digs	2 (3x)	last vs Middle Tennessee (9/7/23)
Blocks	8 (2x)	last at South Carolina (10/8/23)
Aces	2	vs Jacksonville State (8/26/23)
Points	11.5	vs SMU (9/2/23)

GAME BY GAME

Date	Opponent	SP	Attack				Set			Serve				Receipt			Blocking					Team				
			K	E	TA	PCT	A	TA	PCT	SA	SE	TA	PCT	RE	TA	PCT	DIG	BS	BA	BE	TOTAL	BHE	POINTS	HIT%	SCORE	
08/25/2023	Coppin St.	*4	3	2	6	.167	0	1	.000	2	4	17	.765	0	0	.000	1	1	5	0	6.0	0	8.5	.309	3-1	
08/26/2023	McNeese	*3	6	2	12	.333	0	1	.000	0	4	11	.636	0	0	.000	1	0	1	1	1.0	0	6.5	.333	3-0	
08/26/2023	Jacksonville St.	*3	3	1	7	.286	1	3	.333	0	1	4	.750	0	0	.000	2	1	2	0	3.0	0	5.0	.395	3-0	
09/02/2023	vs SMU	*4	10	0	20	.500	0	2	.000	0	0	2	1.000	0	1	1.000	2	0	3	0	3.0	0	11.5	.316	3-1	
09/03/2023	at Florida St.	*4	8	1	15	.467	0	1	.000	1	0	4	1.000	0	0	.000	0	4	0	4	0	4.0	0	11.0	.356	3-1
09/07/2023	Middle Tenn.	*4	9	3	18	.333	1	3	.333	0	2	11	.818	0	0	.000	2	0	4	1	4.0	0	11.0	.221	1-3	
09/08/2023	Charleston So.	4	4	5	25	-.040	1	2	.500	0	0	0	.000	0	0	.000	1	0	3	0	3.0	0	5.5	.245	3-1	
09/09/2023	Mercer	3	1	3	5	-.400	1	2	.500	0	0	0	.000	0	0	.000	1	0	4	0	4.0	0	3.0	.346	3-0	
09/14/2023	at South Alabama	*3	2	5	10	-.300	0	3	.000	0	2	9	.778	0	0	.000	2	0	4	0	4.0	0	4.0	.191	3-2	
09/15/2023	vs UAB	*4	3	0	9	.333	0	2	.000	0	0	0	.000	0	0	.000	1	0	8	0	8.0	0	7.0	.189	3-1	
09/16/2023	vs Samford	*4	7	1	9	.667	0	2	.000	0	0	0	.000	0	0	.000	0	1	2	0	3.0	0	9.0	.386	3-1	
09/22/2023	Florida	*5	3	1	10	.200	0	3	.000	0	0	1	1.000	0	0	.000	0	1	2	0	3.0	0	5.0	.196	2-3	
09/24/2023	Ole Miss	*4	6	3	19	.158	0	0	.000	0	0	0	.000	0	0	.000	0	0	2	0	2.0	0	7.0	.199	3-1	
09/27/2023	at Arkansas	*3	3	3	8	.000	0	1	.000	0	0	0	.000	0	0	.000	0	0	2	0	2.0	0	4.0	-.049	0-3	
10/01/2023	Georgia	*4	5	1	12	.333	0	0	.000	0	0	0	.000	0	0	.000	0	1	2	0	3.0	0	7.0	.262	3-1	
10/06/2023	at Florida	*3	2	1	6	.167	0	0	.000	0	0	0	.000	0	0	.000	1	0	2	0	2.0	0	3.0	.387	3-0	
10/08/2023	at South Carolina	*5	5	0	8	.625	0	0	.000	0	0	0	.000	0	0	.000	0	1	7	2	8.0	0	9.5	.197	3-2	
10/13/2023	at Tennessee	4	2	2	9	.000	1	2	.500	0	0	0	.000	0	1	1.000	0	0	4	1	4.0	0	4.0	.122	1-3	
10/20/2023	Missouri	*3	4	0	10	.400	1	2	.500	0	1	2	.500	0	0	.000	0	1	6	0	7.0	0	8.0	.168	0-3	
Totals			71	86	34	218	.239	6	30	.200	3	14	61	.770	0	2	1.000	14	7	67	5	74.0	0	129.5		

Player Averages

Sets Played	Kills per set	Assists per set	Service aces per set	Digs per set	Blocks per set	Points per set
71	1.21	0.08	0.04	0.20	1.04	1.82

CAREER STATS

SEASON	TEAM	SM-MP	K	K/S	E	TA	PCT	A	A/S	SA	SA/S	SE	DIG	D/S	RE	BS	BA	TB	B/S	BE	BHE	PTS	PTS/S
2019-20	Illini	16-5	7	0.44	3	29	.138	1	0.06	0	0.00	3	7	0.44	0	0	11	11	0.69	1	1	12.5	0.78
2020-21	Illini	21-7	20	0.95	9	64	.172	1	0.05	0	0.00	0	6	0.29	0	0	16	16	0.76	1	1	28.0	1.33
2021-22	Illini	101-27	149	1.48	45	316	.329	3	0.03	0	0.00	0	13	0.13	2	9	97	106	1.05	9	2	206.5	2.04
2022-23	Illini	51-15	53	1.04	19	120	.283	2	0.04	5	0.10	7	6	0.12	0	3	41	44	0.86	4	0	81.5	1.60
2023-24	AUB	71-19	86	1.21	34	218	.239	6	0.08	3	0.04	14	14	0.20	0	7	67	74	1.04	5	0	129.5	1.82
TOTAL FOR AUB		71 - 19	86	1.21	34	218	.239	6	0.08	3	0.04	14	14	0.20	0	7	67	74	1.04	5	0	129.5	1.82
TOTAL		260 - 73	315	1.21	110	747	.274	13	0.05	8	0.03	24	46	0.18	2	19	232	251	0.97	20	4	458.0	1.76

#7 PEYTON DUNN

SETTER | 5-11 | REDSHIRT-SOPHOMORE
DECATUR, TEXAS (LEGEND)



SWANSON'S HIGHLIGHTS:

- 4x Big 12 Rookie of the Week
- All-Big 12 Rookie Team
- Had a career-high 54 assists vs Texas Tech on Oct. 14, 2021

CATEGORY	CAREER HIGH	OPPONENT/DATE
Kills	6	vs Indiana (9/10/21)
Attempts	11 (3x)	last at TCU (10/8/21)
Hitting Percentage (Min. 10 ATT.)	.500	vs Indiana (9/10/21)
Assists	54	vs Texas Tech (10/14/21)
Digs	18	vs FIU (8/28/22)
Blocks	6 (3x)	last at TCU (10/9/22)
Aces	2 (4x)	last vs FIU (8/28/22)
Points	7.0	at TCU (10/9/21)

CATEGORY	SEASON HIGH	OPPONENT/DATE
Kills	3	vs Jacksonville State (8/26/23)
Attempts	4	vs Jacksonville State (8/26/23)
Hitting Percentage (Min. 10 ATT.)	--	--
Assists	43	vs Coppin State (8/25/23)
Digs	4 (2x)	last vs Jacksonville State (8/26/23)
Blocks	2	vs Coppin State (8/25/23)
Aces	1	vs Coppin State (8/25/23)
Points	3.0 (2x)	last vs Jacksonville State (8/26/23)

GAME BY GAME

Date	Opponent	SP	Attack				Set			Serve				Recept			Blocking				Team				
			K	E	TA	PCT	A	TA	PCT	SA	SE	TA	PCT	RE	TA	PCT	DIG	BS	BA	BE	TOTAL	BHE	POINTS	HIT%	SCORE
08/25/2023	Coppin St.	*4	1	0	3	.333	43	111	.387	1	5	11	.545	0	0	.000	4	0	2	0	2.0	0	3.0	.309	3-1
08/26/2023	Jacksonville St.	2	3	1	4	.500	16	30	.533	0	2	4	.500	0	0	.000	4	0	0	0	0.0	0	3.0	.395	3-0
Totals		6	4	1	7	.429	59	141	.418	1	7	15	.533	0	0	.000	8	0	2	0	2.0	0	6.0		

Player Averages

Sets Played	Kills per set	Assists per set	Service aces per set	Digs per set	Blocks per set	Points per set
6	0.67	9.83	0.17	1.33	0.33	1.00

CAREER STATS

SEASON	TEAM	SM-MP	K	K/S	E	TA	PCT	A	A/S	SA	SA/S	SE	DIG	D/S	RE	BS	BA	TB	B/S	BE	BHE	PTS	PTS/S
2021-22	OU	107-27	67	0.63	15	163	.319	997	9.32	13	0.12	45	198	1.85	0	0	63	63	0.59	2	5	111.5	1.04
2022-23	OU	24-7	12	0.50	4	25	.320	252	10.50	3	0.13	8	57	2.38	0	0	11	11	0.46	3	4	20.5	0.85
2023-24	AUB	6-2	4	0.67	1	7	.429	59	9.83	1	0.17	7	8	1.33	0	0	2	2	0.33	0	0	6.0	1.00
TOTAL FOR AUB	6 - 2		4	0.67	1	7	.429	59	9.83	1	0.17	7	8	1.33	0	0	2	2	0.33	0	0	6.0	1.00
TOTAL		137 - 36	83	0.61	20	195	.323	1308	9.55	17	0.12	60	263	1.92	0	0	76	76	0.55	5	9	138.0	1.01

#8 KENDAL KEMP

MIDDLE BLOCKER | 6-6 | SOPHOMORE
EAGAN, MINN. (EAGAN)



KEMP'S HIGHLIGHTS:

- Has set the Auburn single-season record for total blocks, block assists and blocks per set
- Tied the program record for most blocks in a 3-set match with 9 vs. Belmont
- 2x SEC Freshman of the Week
- Named to the SEC All-Freshman Team
- Named AVCA South Region Honorable Mention
- Made her collegiate debut on Aug. 26 vs. Belmont

CATEGORY	CAREER HIGH	OPPONENT/DATE
Kills	13	vs Charleston Southern (9/8/23)
Attempts	21 (2x)	last at South Carolina (11/23/22)
Hitting Percentage (Min. 10 ATT.)	.714	at Missouri (10/15/22)
Assists	1 (3x)	last at Tennessee (10/13/23)
Digs	2 (2x)	last at Kentucky (10/29/22)
Blocks	10 (4x)	last vs UAB (9/15/22)
Aces	3	at Georgia State (8/26/22)
Points	17.5	at South Carolina (11/23/22)

CATEGORY	SEASON HIGH	OPPONENT/DATE
Kills	13	vs Charleston Southern (9/8/23)
Attempts	19	vs Charleston Southern (9/8/23)
Hitting Percentage (Min. 10 ATT.)	.667	vs Georgia (10/1/23)
Assists	1	at Tennessee (10/13/23)
Digs	1 (5x)	last vs Georgia (10/1/23)
Blocks	10	vs UAB (9/15/23)
Aces	1	vs Coppin State (8/25/23)
Points	15.5	vs Charleston Southern (9/8/23)

GAME BY GAME

Date	Opponent	SP	Attack				Set			Serve				Recept			Blocking					Team				
			K	E	TA	PCT	A	TA	PCT	SA	SE	TA	PCT	RE	TA	PCT	DIG	BS	BA	BE	TOTAL	BHE	POINTS	HIT%	SCORE	
08/25/2023	Coppin St.	*4	5	2	17	.176	0	1	.000	1	2	5	.600	0	0	.000	0	2	3	0	5.0	0	9.5	.309	3-1	
08/26/2023	McNeese	*2	4	1	6	.500	0	1	.000	0	0	0	.000	0	0	.000	0	2	3	0	5.0	0	7.5	.333	3-0	
08/26/2023	Jacksonville St.	*2	2	0	2	1.000	0	1	.000	0	0	0	.000	0	0	.000	0	1	1	0	2.0	0	3.5	.395	3-0	
09/02/2023	vs SMU	*4	4	0	7	.571	0	0	.000	0	0	0	.000	0	0	.000	0	0	4	2	4.0	0	6.0	.316	3-1	
09/03/2023	at Florida St.	*4	9	3	13	.462	0	1	.000	0	0	0	.000	0	0	.000	1	0	4	3	4.0	0	11.0	.356	3-1	
09/07/2023	Middle Tenn.	*4	5	2	9	.333	0	1	.000	0	0	0	.000	0	0	.000	1	0	5	0	5.0	0	7.5	.221	1-3	
09/08/2023	Charleston So.	*4	13	3	19	.526	0	1	.000	0	0	0	.000	0	0	.000	0	0	5	0	5.0	0	15.5	.245	3-1	
09/09/2023	Mercer	*3	6	1	10	.500	0	0	.000	0	1	1	.000	0	1	1.000	0	0	7	0	7.0	0	9.5	.346	3-0	
09/14/2023	at South Alabama	*5	6	1	11	.455	0	0	.000	0	0	0	.000	0	0	.000	1	0	3	0	3.0	0	7.5	.191	3-2	
09/15/2023	vs UAB	*4	8	3	17	.294	0	2	.000	0	0	0	.000	0	0	.000	1	1	9	2	10.0	0	13.5	.189	3-1	
09/16/2023	vs Samford	*4	5	2	11	.273	0	0	.000	0	0	0	.000	0	0	.000	0	0	2	0	2.0	0	6.0	.386	3-1	
10/01/2023	Georgia	*4	8	0	12	.667	0	1	.000	0	0	0	.000	0	1	1.000	1	0	4	0	4.0	0	10.0	.262	3-1	
10/06/2023	at Florida	*3	4	1	7	.429	0	1	.000	0	0	0	.000	0	0	.000	0	0	3	0	3.0	0	5.5	.387	3-0	
10/08/2023	at South Carolina	*5	6	1	11	.455	0	1	.000	0	0	0	.000	0	0	.000	0	0	9	0	9.0	0	10.5	.197	3-2	
10/13/2023	at Tennessee	*4	9	2	15	.467	1	2	.500	0	0	0	.000	0	0	.000	0	1	8	0	9.0	0	14.0	.122	1-3	
10/20/2023	Missouri	*3	2	2	4	.000	0	0	.000	0	0	0	.000	0	0	.000	0	0	2	0	2.0	0	3.0	.168	0-3	
Totals			59	96	24	171	.421	1	13	.077	1	3	6	.500	0	2	1.000	5	7	72	7	79.0	0	140.0		

Player Averages

Sets Played	Kills per set	Assists per set	Service aces per set	Digs per set	Blocks per set	Points per set
59	1.63	0.02	0.02	0.08	1.34	2.37

CAREER STATS

SEASON	TEAM	SM-MP	K	K/S	E	TA	PCT	A	A/S	SA	SA/S	SE	DIG	D/S	RE	BS	BA	TB	B/S	BE	BHE	PTS	PTS/S
2022-23	AUB	122-31	204	1.67	66	430	.321	2	0.02	7	0.06	16	12	0.10	1	26	154	180	1.48	13	0	314.0	2.57
2023-24	AUB	59-16	96	1.63	24	171	.421	1	0.02	1	0.02	3	5	0.08	0	7	72	79	1.34	7	0	140.0	2.37
TOTAL		181 - 47	300	1.66	90	601	.349	3	0.02	8	0.04	19	17	0.09	1	33	226	259	1.43	20	0	454.0	2.51

#9 ZOE SLAUGHTER

LIBERO | 5-7 | SOPHOMORE
HONOLULU, HAWAII (MOANALUA)



SLAUGHTER'S HIGHLIGHTS:

- Recorded 10+ digs in 10 matches last season
- Grabbed a career-high 22 digs at Alabama on Sept. 24, 2022
- Made her collegiate debut on Aug. 26 vs. Belmont

CATEGORY	CAREER HIGH	OPPONENT/DATE
Kills	1 (2x)	last at Missouri (10/15/22)
Attempts	1 (4x)	last vs McNeese (8/26/23)
Hitting Percentage (Min. 10 ATT.)	--	--
Assists	5	at South Alabama (9/14/23)
Digs	29	at South Alabama (9/13/23)
Blocks	--	--
Aces	3 (2x)	last vs Alabama A&M (9/6/22)
Points	3.0 (3x)	last vs Troy (9/10/22)

CATEGORY	SEASON HIGH	OPPONENT/DATE
Kills	--	--
Attempts	3	vs Samford (9/16/23)
Hitting Percentage (Min. 10 ATT.)	--	--
Assists	5	at South Alabama (9/14/23)
Digs	29	at South Alabama (9/14/23)
Blocks	--	--
Aces	2	at Florida State (9/3/23)
Points	2.0	at Florida State (9/3/23)

GAME BY GAME

Date	Opponent	SP	Attack			Set			Serve				Receipt			DIG	Blocking				Team				
			K	E	TA	PCT	A	TA	PCT	SA	SE	TA	PCT	RE	TA		PCT	BS	BA	TB	TOTAL	BHE	POINTS	HIT%	SCORE
08/25/2023	Coppin St.	4	0	0	0	.000	1	2	.500	1	4	17	.765	0	16	1.000	5	0	0	0	0.0	0	1.0	.309	3-1
08/26/2023	McNeese	3	0	0	1	.000	1	4	.250	0	0	12	1.000	0	11	1.000	6	0	0	0	0.0	0	0.0	.333	3-0
08/26/2023	Jacksonville St.	*3	0	0	0	.000	1	2	.500	0	0	9	1.000	0	11	1.000	5	0	0	0	0.0	0	0.0	.395	3-0
09/02/2023	vs SMU	*4	0	0	0	.000	0	3	.000	0	1	11	.909	0	16	1.000	2	0	0	0	0.0	0	0.0	.316	3-1
09/03/2023	at Florida St.	*4	0	0	1	.000	1	4	.250	2	3	22	.864	1	28	.964	10	0	0	0	0.0	0	2.0	.356	3-1
09/07/2023	Middle Tenn.	*4	0	0	0	.000	2	3	.667	0	1	18	.944	0	10	1.000	3	0	0	0	0.0	0	0.0	.221	1-3
09/08/2023	Charleston So.	4	0	0	0	.000	0	3	.000	0	1	17	.941	0	9	1.000	7	0	0	0	0.0	0	0.0	.245	3-1
09/09/2023	Mercer	*3	0	0	0	.000	0	0	.000	0	1	8	.875	0	6	1.000	5	0	0	0	0.0	0	0.0	.346	3-0
09/14/2023	at South Alabama	5	0	0	2	.000	5	15	.333	1	4	13	.692	5	29	.828	29	0	0	0	0.0	0	1.0	.191	3-2
09/15/2023	vs UAB	4	0	0	1	.000	4	13	.308	0	0	18	1.000	0	12	1.000	11	0	0	0	0.0	0	0.0	.189	3-1
09/16/2023	vs Samford	4	0	0	3	.000	4	9	.444	0	0	13	1.000	3	23	.870	16	0	0	0	0.0	0	0.0	.386	3-1
09/22/2023	Florida	5	0	0	0	.000	1	3	.333	0	1	20	.950	0	15	1.000	11	0	0	0	0.0	0	0.0	.196	2-3
09/24/2023	Ole Miss	4	0	0	0	.000	1	3	.333	0	2	13	.846	0	6	1.000	7	0	0	0	0.0	0	0.0	.199	3-1
09/27/2023	at Arkansas	3	0	0	0	.000	0	3	.000	1	1	6	.833	1	11	.909	1	0	0	0	0.0	0	1.0	-.049	0-3
10/06/2023	at Florida	3	0	0	0	.000	0	0	.000	0	0	0	.000	0	2	1.000	2	0	0	0	0.0	0	0.0	.387	3-0
10/08/2023	at South Carolina	5	0	0	0	.000	1	2	.500	1	1	3	.667	0	21	1.000	3	0	0	0	0.0	0	1.0	.197	3-2
10/13/2023	at Tennessee	4	0	0	0	.000	0	1	.000	0	0	0	.000	0	15	1.000	3	0	0	0	0.0	0	0.0	.122	1-3
Totals		66	0	0	8	.000	22	70	.314	6	20	200	.900	10	241	.959	126	0	0	0	0.0	0	6.0		

Player Averages

Sets Played	Kills per set	Assists per set	Service aces per set	Digs per set	Blocks per set	Points per set
66	0.00	0.33	0.09	1.91	0.00	0.09

CAREER STATS

SEASON	TEAM	SM-MP	K	K/S	E	TA	PCT	A	A/S	SA	SA/S	SE	DIG	D/S	RE	BS	BA	TB	B/S	BE	BHE	PTS	PTS/S
2022-23	AUB	122-31	2	0.02	1	4	.250	22	0.18	19	0.16	41	267	2.19	14	0	0	0	0.00	0	1	21.0	0.17
2023-24	AUB	66-17	0	0.00	0	8	.000	22	0.33	6	0.09	20	126	1.91	10	0	0	0	0.00	0	0	6.0	0.09
TOTAL		188 - 48	2	0.01	1	12	.083	44	0.23	25	0.13	61	393	2.09	24	0	0	0	0.00	0	1	27.0	0.14

#10 JACKIE BARRETT

SETTER | 6-2 | SENIOR

HIGHLAND, CALIF. (CITRUS VALLEY)



BARRETT'S HIGHLIGHTS

- 2x SEC Setter of the Week
- Set a career-high in aces with 5 against Mercer
- Set her career-high in assists with 60 against LSU on Oct. 5, 2022

CATEGORY	CAREER HIGH	OPPONENT/DATE
Kills	6 (2x)	last, at Alabama State (9/26/21)
Attempts	20	at Alabama State (9/26/21)
Hitting Percentage (Min. 10 ATT.)	.308	vs. Florida A&M (9/17/21)
Assists	60	at LSU (10/5/22)
Digs	28	vs. Nicholls (9/17/21)
Blocks	8 (2x)	last at South Carolina (10/8/23)
Aces	5 (2x)	at South Alabama (9/14/23)
Points	10.0	vs. Florida A&M (9/17/21)

CATEGORY	SEASON HIGH	OPPONENT/DATE
Kills	5 (3x)	last vs Florida (9/22/23)
Attempts	10	vs Ole Miss (9/24/23)
Hitting Percentage (Min. 10 ATT.)	.200	vs Ole Miss (9/24/23)
Assists	48	at South Alabama (9/14/23)
Digs	17	vs Ole Miss (9/24/23)
Blocks	8	at South Carolina (10/8/23)
Aces	5 (2x)	last at South Alabama (9/14/23)
Points	9.0	vs Mercer (9/9/23)

GAME BY GAME

Date	Opponent	SP	Attack			Set			Serve			Recept			Blocking				Team						
			K	E	TA	PCT	A	TA	PCT	SA	SE	TA	PCT	RE	TA	PCT	DIG	BS	BA	BE	TOTAL	BHE	POINTS	HIT%	SCORE
08/26/2023	McNeese	*3	1	0	4	.250	31	72	.431	0	1	15	.933	0	0	.000	6	0	2	0	2.0	0	2.0	.333	3-0
08/26/2023	Jacksonville St.	*2	1	0	2	.500	14	25	.560	0	0	1	1.000	0	0	.000	2	0	1	0	1.0	0	1.5	.395	3-0
09/02/2023	vs SMU	*4	5	0	7	.714	36	96	.375	1	0	16	1.000	0	1	1.000	14	0	2	1	2.0	0	7.0	.316	3-1
09/03/2023	at Florida St.	*4	3	2	7	.143	44	99	.444	0	0	16	1.000	0	0	.000	11	0	3	0	3.0	0	4.5	.356	3-1
09/07/2023	Middle Tenn.	*4	5	0	7	.714	39	104	.375	1	1	13	.923	0	0	.000	10	0	0	0	0.0	0	6.0	.221	1-3
09/08/2023	Charleston So.	*4	1	1	6	.000	41	111	.369	0	0	14	1.000	0	0	.000	13	0	3	0	3.0	0	2.5	.245	3-1
09/09/2023	Mercer	*3	2	0	2	1.000	31	64	.484	5	0	16	1.000	0	0	.000	5	0	4	0	4.0	0	9.0	.346	3-0
09/14/2023	at South Alabama	*5	2	0	6	.333	48	142	.338	5	3	23	.870	0	0	.000	11	0	3	0	3.0	2	8.5	.191	3-2
09/15/2023	vs UAB	*4	3	1	6	.333	35	98	.357	0	1	14	.929	0	0	.000	6	0	5	0	5.0	0	5.5	.189	3-1
09/16/2023	vs Samford	*4	3	0	5	.600	46	93	.495	1	1	12	.917	0	0	.000	6	1	0	0	1.0	1	5.0	.386	3-1
09/22/2023	Florida	*5	5	0	9	.556	40	122	.328	1	3	15	.800	0	1	1.000	12	0	2	1	2.0	0	7.0	.196	2-3
09/24/2023	Ole Miss	*4	3	1	10	.200	42	119	.353	1	0	20	1.000	0	0	.000	17	0	1	0	1.0	0	4.5	.199	3-1
09/27/2023	at Arkansas	*3	1	0	2	.500	11	59	.186	0	1	6	.833	0	0	.000	5	0	1	1	1.0	0	1.5	-.049	0-3
10/01/2023	Georgia	*4	0	0	3	.000	42	104	.404	0	0	10	1.000	0	0	.000	8	0	1	0	1.0	0	0.5	.262	3-1
10/06/2023	at Florida	*3	3	0	8	.375	37	71	.521	2	1	11	.909	0	0	.000	5	0	2	0	2.0	0	6.0	.387	3-0
10/08/2023	at South Carolina	*5	4	1	7	.429	46	117	.393	0	1	18	.944	0	1	1.000	12	0	8	1	8.0	1	8.0	.197	3-2
10/13/2023	at Tennessee	*4	0	0	3	.000	31	115	.270	0	0	16	1.000	0	0	.000	11	0	3	0	3.0	1	1.5	.122	1-3
10/20/2023	Missouri	*3	0	1	3	-.333	27	80	.338	1	1	12	.917	0	0	.000	10	0	3	0	3.0	0	2.5	.168	0-3
Totals			68	42	7	.97	.361	641	1691	.379	18	14	248	.944	0	3	1.000	164	1	44	4	45.0	5	83.0	

Player Averages

Sets Played	Kills per set	Assists per set	Service aces per set	Digs per set	Blocks per set	Points per set
68	0.62	9.43	0.26	2.41	0.66	1.22

CAREER STATS

SEASON	TEAM	SM-MP	K	K/S	E	TA	PCT	A	A/S	SA	SA/S	SE	DIG	D/S	RE	BS	BA	TB	B/S	BE	BHE	PTS	PTS/S
2020-21	AUB	19-6	9	0.47	6	44	.068	144	7.58	3	0.16	8	33	1.74	0	0	11	11	0.58	1	0	17.5	0.92
2021-22	AUB	100-28	51	0.51	14	180	.206	809	8.09	22	0.22	24	307	3.07	0	2	60	62	0.62	8	1	105.0	1.05
2022-23	AUB	106-28	41	0.39	8	116	.284	1057	9.97	26	0.25	28	220	2.08	1	9	75	84	0.79	10	0	113.5	1.07
2023-24	AUB	68-18	42	0.62	7	97	.361	641	9.43	18	0.26	14	164	2.41	0	1	44	45	0.66	4	5	83.0	1.22
TOTAL		293 - 80	143	0.49	35	437	.247	2651	9.05	69	0.24	74	724	2.47	1	12	190	202	0.69	23	6	319.0	1.09

#11 JORDAN SINNESS

SETTER | 5-9 | JUNIOR
SEBRING, FLA. (SEBRING)



SINNESS' HIGHLIGHTS:

- Recorded the Tigers' first double-double of the season at Georgia State with 42 assists and 12 digs.
- Grabbed a career-high 49 assists in 5-set win at UAB
- Made collegiate debut versus Cal State Fullerton (9/2), dishing out 16 assists, six digs, one kill and a block

CATEGORY	CAREER HIGH	OPPONENT/DATE
Kills	3	vs Alabama A&M (9/6/22)
Attempts	7	at UAB (9/10/22)
Hitting Percentage (Min. 10 ATT.)		
Assists	49	at UAB (9/10/22)
Digs	14	vs. Missouri (10/17/21)
Blocks	5	at UAB (9/10/22)
Aces	3	vs Alabama A&M (9/6/22)
Points	7.0	vs Alabama A&M (9/6/22)

CATEGORY	SEASON HIGH	OPPONENT/DATE
Kills	--	--
Attempts	--	--
Hitting Percentage (Min. 10 ATT.)	--	--
Assists	--	--
Digs	--	--
Blocks	--	--
Aces	--	--
Points	--	--

GAME BY GAME

CAREER STATS

SEASON	TEAM	SM-MP	K	K/S	E	TA	PCT	A	A/S	SA	SA/S	SE	DIG	D/S	RE	BS	BA	TB	B/S	BE	BHE	PTS	PTS/S
2021-22	AUB	50-15	2	0.04	1	6	.167	64	1.28	6	0.12	7	33	0.66	0	0	3	3	0.06	0	2	9.5	0.19
2022-23	AUB	49-14	5	0.10	0	15	.333	163	3.33	16	0.33	22	51	1.04	0	2	13	15	0.31	1	0	29.5	0.60
TOTAL		99 - 29	7	0.07	1	21	.286	227	2.29	22	0.22	29	84	0.85	0	2	16	18	0.18	1	2	39.0	0.39

#12 BEL ZIMMERMAN

**PIN HITTER | 6-2 | SOPHOMORE
LIBERTY, MO. (LIBERTY NORTH)**



ZIMMERMAN'S HIGHLIGHTS:

- Set career highs in kills (17) and digs (16) against Charleston Southern for her first-career double-double
- Hit .692 with 8 kills vs. Marist
- Had a career-high 13 kills at Jacksonville State
- Made her collegiate debut on Aug. 26 at Georgia State

CATEGORY	CAREER HIGH	OPPONENT/DATE
Kills	17	vs Charleston Southern (9/8/23)
Attempts	36	vs UAB (9/15/23)
Hitting Percentage (Min. 10 ATT.)	.692	vs Marist (8/27/22)
Assists	1 (9x)	last vs Florida (9/22/23)
Digs	16	vs Charleston Southern (9/8/23)
Blocks	6 (2x)	last at South Alabama (9/14/23)
Aces	4	at South Alabama (9/14/23)
Points	21.0	vs UAB (9/15/23)

CATEGORY	SEASON HIGH	OPPONENT/DATE
Kills	17	vs Charleston Southern (9/8/23)
Attempts	41	at South Carolina (10/8/23)
Hitting Percentage (Min. 10 ATT.)	.400	vs McNeese (8/26/23)
Assists	1 (7x)	last vs Florida (9/22/23)
Digs	16	vs Charleston Southern (9/8/23)
Blocks	6	at South Alabama (9/14/23)
Aces	4	at South Alabama (9/14/23)
Points	21.0	vs UAB (9/15/23)

GAME BY GAME

Date	Opponent	SP	Attack				Set			Serve				Receipt			Blocking				Team				
			K	E	TA	PCT	A	TA	PCT	SA	SE	TA	PCT	RE	TA	PCT	DIG	BS	BA	BE	TOTAL	BHE	POINTS	HIT%	SCORE
08/26/2023	McNeese	3	8	0	20	.400	1	3	.333	0	2	8	.750	0	7	1.000	2	0	2	0	2.0	0	9.0	.333	3-0
08/26/2023	Jacksonville St.	2	2	3	8	.125	0	0	.000	3	2	7	.714	0	3	1.000	1	0	0	2	0.0	0	5.0	.395	3-0
09/02/2023	vs SMU	2	0	0	0	.000	0	0	.000	0	2	3	.333	0	0	.000	0	0	0	0	0.0	0	0.0	.316	3-1
09/03/2023	at Florida St.	4	0	0	0	.000	0	1	.000	0	0	9	1.000	0	0	.000	0	0	0	0	0.0	0	0.0	.356	3-1
09/07/2023	Middle Tenn.	*4	11	6	40	.125	0	0	.000	0	3	11	.727	2	19	.895	4	0	2	1	2.0	0	12.0	.221	1-3
09/08/2023	Charleston So.	*4	17	5	50	.240	1	1	1.000	2	2	22	.909	0	20	1.000	16	0	2	0	2.0	0	20.0	.245	3-1
09/09/2023	Mercer	*3	14	3	30	.367	1	3	.333	3	3	15	.800	0	13	1.000	2	0	1	1	1.0	0	17.5	.346	3-0
09/14/2023	at South Alabama	*5	11	3	34	.235	1	6	.167	4	2	23	.913	0	10	1.000	2	1	5	1	6.0	0	18.5	.191	3-2
09/15/2023	vs UAB	*4	16	5	36	.306	1	3	.333	2	3	14	.786	2	22	.909	12	1	4	1	5.0	0	21.0	.189	3-1
09/16/2023	vs Samford	*4	15	2	33	.394	1	2	.500	1	3	12	.750	3	17	.824	11	0	2	0	2.0	0	17.0	.386	3-1
09/22/2023	Florida	5	0	0	0	.000	1	3	.333	0	3	16	.813	0	0	.000	1	0	0	0	0.0	0	0.0	.196	2-3
09/24/2023	Ole Miss	4	0	0	0	.000	0	0	.000	3	2	17	.882	0	0	.000	1	0	0	0	0.0	0	3.0	.199	3-1
09/27/2023	at Arkansas	3	0	3	5	-.600	0	1	.000	1	1	5	.800	1	3	.667	0	0	0	0	0.0	0	1.0	-.049	0-3
10/01/2023	Georgia	*4	5	2	14	.214	0	3	.000	0	5	20	.750	0	15	1.000	6	0	1	2	1.0	0	5.5	.262	3-1
10/06/2023	at Florida	*3	6	3	18	.167	0	0	.000	1	6	15	.600	0	7	1.000	2	0	1	0	1.0	0	7.5	.387	3-0
10/08/2023	at South Carolina	*5	10	7	41	.073	0	1	.000	1	4	18	.778	0	3	1.000	2	0	0	1	0.0	0	11.0	.197	3-2
10/13/2023	at Tennessee	*4	9	3	28	.214	0	1	.000	0	2	11	.818	1	11	.909	5	0	1	0	1.0	0	9.5	.122	1-3
10/20/2023	Missouri	3	2	1	5	.200	0	0	.000	1	1	12	.917	2	9	.778	8	0	0	0	0.0	0	3.0	.168	0-3
Totals		66	126	46	362	.221	7	28	.250	22	46	238	.807	11	159	.931	75	2	21	9	23.0	0	160.5		

Player Averages

Sets Played	Kills per set	Assists per set	Service aces per set	Digs per set	Blocks per set	Points per set
66	1.91	0.11	0.33	1.14	0.35	2.43

CAREER STATS

SEASON	TEAM	SM-MP	K	K/S	E	TA	PCT	A	A/S	SA	SA/S	SE	DIG	D/S	RE	BS	BA	TB	B/S	BE	BHE	PTS	PTS/S
2022-23	AUB	114-29	220	1.93	98	607	.201	2	0.02	4	0.04	11	54	0.47	3	3	63	66	0.58	10	0	258.5	2.27
2023-24	AUB	66-18	126	1.91	46	362	.221	7	0.11	22	0.33	46	75	1.14	11	2	21	23	0.35	9	0	160.5	2.43
TOTAL		180 - 47	346	1.92	144	969	.208	9	0.05	26	0.14	57	129	0.72	14	5	84	89	0.49	19	0	419.0	2.33

#13 PAIGE THIBAUT

LIBERO | 5-8 | JUNIOR

WATERTOWN, MINN. (WATERTOWN-MAYER)



THIBAUT'S HIGHLIGHTS:

- Compiled a career-high 20 digs against Dayton on Sept. 3, 2022
- Hit .462 vs Arizona State on Sept. 2, 2022
- 2021 All-Crossroads League Honorable Mention
- 2021 Crossroads League All-Freshman Team

CATEGORY	CAREER HIGH	OPPONENT/DATE
Kills	9	at FAU (10/28/22)
Attempts	35	at UTSA (10/23/22)
Hitting Percentage (Min. 10 ATT.)	.462	vs Arizona State (9/2/22)
Assists	2 (6x)	last at Florida (10/6/23)
Digs	20	vs Dayton (9/3/22)
Blocks	4	vs UAB (10/7/22)
Aces	3	vs Little Rock (9/8/22)
Points	9.0 (2x)	last at FAU (10/28/22)

CATEGORY	SEASON HIGH	OPPONENT/DATE
Kills	1	at South Alabama (9/14/23)
Attempts	2	at South Alabama (9/14/23)
Hitting Percentage (Min. 10 ATT.)	--	--
Assists	2 (5x)	last at Florida (10/6/23)
Digs	11	vs Ole Miss (9/24/23)
Blocks	--	--
Aces	2 (2x)	last vs Samford (9/16/23)
Points	2.0 (2x)	last vs Samford (9/16/23)

GAME BY GAME

Date	Opponent	SP	Attack				Set			Serve				Receipt			Blocking				Team				
			K	E	TA	PCT	A	TA	PCT	SA	SE	TA	PCT	RE	TA	PCT	DIG	BS	BA	TB	TOTAL	BHE	POINTS	HIT%	SCORE
08/25/2023	Coppin St.	*4	0	0	0	.000	2	3	.667	0	3	13	.769	0	15	1.000	10	0	0	0	0.0	0	0.0	.309	3-1
08/26/2023	McNeese	*2	0	0	0	.000	0	1	.000	0	0	0	.000	0	5	1.000	2	0	0	0	0.0	0	0.0	.333	3-0
09/07/2023	Middle Tenn.	4	0	0	0	.000	2	2	1.000	0	1	1	.000	1	7	.857	2	0	0	0	0.0	0	0.0	.221	1-3
09/14/2023	at South Alabama	5	1	0	2	.500	0	3	.000	0	0	0	.000	0	12	1.000	8	0	0	0	0.0	0	1.0	.191	3-2
09/15/2023	vs UAB	*4	0	0	0	.000	2	3	.667	2	3	17	.824	1	11	.909	9	0	0	0	0.0	0	2.0	.189	3-1
09/16/2023	vs Samford	4	0	0	0	.000	1	4	.250	2	2	22	.909	0	4	1.000	7	0	0	0	0.0	0	2.0	.386	3-1
09/22/2023	Florida	*5	0	0	1	.000	1	7	.143	0	3	18	.833	1	23	.957	9	0	0	0	0.0	0	0.0	.196	2-3
09/24/2023	Ole Miss	*4	0	0	1	.000	2	7	.286	1	3	18	.833	2	34	.941	11	0	0	0	0.0	0	1.0	.199	3-1
09/27/2023	at Arkansas	*3	0	0	0	.000	1	1	1.000	0	1	5	.800	2	19	.895	2	0	0	0	0.0	0	0.0	-.049	0-3
10/01/2023	Georgia	*4	0	0	0	.000	1	3	.333	0	2	12	.833	0	9	1.000	10	0	0	0	0.0	0	0.0	.262	3-1
10/06/2023	at Florida	*3	0	0	0	.000	2	2	1.000	1	2	13	.846	1	22	.955	6	0	0	0	0.0	0	1.0	.387	3-0
10/08/2023	at South Carolina	*5	0	0	0	.000	1	5	.200	0	1	13	.923	1	24	.958	6	0	0	0	0.0	0	0.0	.197	3-2
10/13/2023	at Tennessee	*4	0	0	0	.000	0	6	.000	1	1	15	.933	0	12	1.000	5	0	0	0	0.0	0	1.0	.122	1-3
10/20/2023	Missouri	*3	0	0	0	.000	0	2	.000	0	0	9	1.000	1	31	.968	2	0	0	0	0.0	0	0.0	.168	0-3
Totals		54	1	0	4	.250	15	49	.306	7	22	156	.859	10	228	.956	89	0	0	0	0.0	0	8.0		

Player Averages

Sets Played	Kills per set	Assists per set	Service aces per set	Digs per set	Blocks per set	Points per set
54	0.02	0.28	0.13	1.65	0.00	0.15

CAREER STATS

SEASON	TEAM	SM-MP	K	K/S	E	TA	PCT	A	A/S	SA	SA/S	SE	DIG	D/S	RE	BS	BA	TB	B/S	BE	BHE	PTS	PTS/S
2022-23	FIU	105-28	47	0.45	28	216	.088	14	0.13	23	0.22	30	221	2.10	21	1	7	8	0.08	0	0	74.5	0.71
2023-24	AUB	54-14	1	0.02	0	4	.250	15	0.28	7	0.13	22	89	1.65	10	0	0	0	0.00	0	0	8.0	0.15
TOTAL FOR AUB	54 - 14	1	0.02	0	4	.250	15	0.28	7	0.13	22	89	1.65	10	0	0	0	0.00	0	0	8.0	0.15	
TOTAL	159 - 42	48	0.30	28	220	.091	29	0.18	30	0.19	52	310	1.95	31	1	7	8	0.05	0	0	82.5	0.52	

#14 CHELSEY HARMON

MIDDLE BLOCKER | 6-3 | SENIOR
PUYALLUP, WASH. (PORTLAND)



HARMON'S HIGHLIGHTS:

- 3rd best hitting percentage in program history (.706) against Jackson State.
- Currently holds the sixth-best hitting percentage in single-season program history (.344)
- Made her Auburn debut on Aug. 26 vs. Belmont

CATEGORY	CAREER HIGH	OPPONENT/DATE
Kills	16	vs San Francisco (10/16/21)
Attempts	23	at LSU (10/5/22)
Hitting Percentage (Min. 10 ATT.)	.706	vs Jackson State (9/17/22)
Assists	2 (3x)	last vs Samford (9/16/23)
Digs	4 (2x)	last at Santa Clara (3/9/21)
Blocks	10	vs Troy (9/10/22)
Aces	2 (3x)	last vs Eastern Washington (8/28/21)
Points	15.5	at LSU (10/5/22)

CATEGORY	SEASON HIGH	OPPONENT/DATE
Kills	6	vs Ole Miss (9/24/23)
Attempts	12 (2x)	last vs Ole Miss (9/24/23)
Hitting Percentage (Min. 10 ATT.)	.417	vs Ole Miss (9/24/23)
Assists	2	last vs Samford (9/16/23)
Digs	2 (2x)	last vs Ole Miss (9/24/23)
Blocks	8	vs Ole Miss (9/24/23)
Aces	4	vs Charleston Southern (9/8/23)
Points	12.5	vs Charleston Southern (9/8/23)

GAME BY GAME

Date	Opponent	SP	Attack				Set			Serve				Recept			Blocking				Team				
			K	E	TA	PCT	A	TA	PCT	SA	SE	TA	PCT	RE	TA	PCT	DIG	BS	BA	BE	TOTAL	BHE	POINTS	HIT%	SCORE
08/26/2023	McNeese	1	1	0	2	.500	1	2	.500	0	0	4	1.000	0	0	.000	1	0	2	0	2.0	0	2.0	.333	3-0
08/26/2023	Jacksonville St.	1	2	0	2	1.000	0	1	.000	0	0	6	1.000	0	0	.000	0	0	0	0	0.0	0	2.0	.395	3-0
09/07/2023	Middle Tenn.	1	1	0	2	.500	0	0	.000	0	0	0	.000	0	0	.000	0	0	0	0	0.0	0	1.0	.221	1-3
09/08/2023	Charleston So.	*4	5	2	12	.250	0	3	.000	4	2	15	.867	0	0	.000	2	0	7	1	7.0	0	12.5	.245	3-1
09/09/2023	Mercer	*3	4	0	6	.667	1	3	.333	1	3	14	.786	0	0	.000	1	1	3	0	4.0	0	7.5	.346	3-0
09/14/2023	at South Alabama	3	2	0	4	.500	0	1	.000	2	0	9	1.000	0	0	.000	0	0	3	1	3.0	0	5.5	.191	3-2
09/16/2023	vs Samford	4	0	0	0	.000	2	3	.667	1	2	22	.909	0	0	.000	0	0	0	0	0.0	0	1.0	.386	3-1
09/22/2023	Florida	*5	4	2	10	.200	0	2	.000	0	0	3	1.000	0	0	.000	1	0	2	2	2.0	0	5.0	.196	2-3
09/24/2023	Ole Miss	*4	6	1	12	.417	0	0	.000	0	0	3	1.000	0	0	.000	2	0	8	0	8.0	0	10.0	.199	3-1
09/27/2023	at Arkansas	*3	2	1	3	.333	0	0	.000	0	0	3	1.000	0	0	.000	1	0	2	0	2.0	0	3.0	-.049	0-3
10/01/2023	Georgia	4	0	0	0	.000	0	0	.000	2	0	18	1.000	0	0	.000	1	0	0	0	0.0	0	2.0	.262	3-1
10/06/2023	at Florida	3	0	0	1	.000	0	0	.000	2	1	12	.917	0	0	.000	1	0	0	0	0.0	0	2.0	.387	3-0
10/08/2023	at South Carolina	5	0	0	0	.000	0	0	.000	2	2	15	.867	0	0	.000	1	0	0	0	0.0	0	2.0	.197	3-2
10/13/2023	at Tennessee	*4	0	0	0	.000	0	2	.000	1	2	13	.846	0	0	.000	0	0	0	0	0.0	0	1.0	.122	1-3
10/20/2023	Missouri	2	0	0	0	.000	0	0	.000	0	1	4	.750	0	0	.000	0	0	0	0	0.0	0	0.0	.168	0-3
Totals		47	27	6	54	.389	4	17	.235	15	13	141	.908	0	0	.000	11	1	27	4	28.0	0	56.5		

Player Averages

Sets Played	Kills per set	Assists per set	Service aces per set	Digs per set	Blocks per set	Points per set
47	0.57	0.09	0.32	0.23	0.60	1.20

CAREER STATS

SEASON	TEAM	SM-MP	K	K/S	E	TA	PCT	A	A/S	SA	SA/S	SE	DIG	D/S	RE	BS	BA	TB	B/S	BE	BHE	PTS	PTS/S
2020-21	UP	34-12	20	0.59	11	62	.145	4	0.12	5	0.15	7	19	0.56	1	2	21	23	0.68	0	0	37.5	1.10
2021-22	UP	78-22	108	1.38	31	246	.313	1	0.01	4	0.05	5	13	0.17	1	6	42	48	0.62	9	1	139.0	1.78
2022-23	AUB	122-31	176	1.44	48	372	.344	5	0.04	0	0.00	4	17	0.14	1	4	103	107	0.88	6	0	231.5	1.90
2023-24	AUB	47-15	27	0.57	6	54	.389	4	0.09	15	0.32	13	11	0.23	0	1	27	28	0.60	4	0	56.5	1.20
TOTAL FOR AUB		169 - 46	203	1.20	54	426	.350	9	0.05	15	0.09	17	28	0.17	1	5	130	135	0.80	10	0	288.0	1.70
TOTAL		281 - 80	331	1.18	96	734	.320	14	0.05	24	0.09	29	60	0.21	3	13	193	206	0.73	19	1	464.5	1.65

#17 CASSIDY TANTON

**PIN HITTER | 6-0 | REDSHIRT-SOPHOMORE
STONEVILLE, N.C. (DALTON MCMICHAEL)**



TANTON'S HIGHLIGHTS:

- Picked up a career-high 10 kills vs. Marist, hitting .348
- Made her season debut on Aug. 26 vs. Belmont

CATEGORY	CAREER HIGH	OPPONENT/DATE
Kills	10	vs Marist (8/27/22)
Attempts	23	vs Marist (8/27/22)
Hitting Percentage (Min. 10 ATT.)	.348	vs Marist (8/27/22)
Assists	--	--
Digs	6	vs Marist (8/27/22)
Blocks	--	--
Aces	2(3x)	last vs Southern Miss (9/16/22)
Points	12.0	vs Marist (8/27/22)

CATEGORY	SEASON HIGH	OPPONENT/DATE
Kills	1	vs Middle Tennessee (9/7/23)
Attempts	5	vs Middle Tennessee (9/7/23)
Hitting Percentage (Min. 10 ATT.)	--	--
Assists	--	--
Digs	--	--
Blocks	--	--
Aces	--	--
Points	1.0	vs Middle Tennessee (9/7/23)

GAME BY GAME

Date	Opponent	SP	Attack				Set		Serve				Recept			Blocking				Team					
			K	E	TA	PCT	A	TA	PCT	SA	SE	TA	PCT	RE	TA	PCT	DIG	BS	BA	BE	TOTAL	BHE	POINTS	HIT%	SCORE
09/07/2023	Middle Tenn.	1	1	1	5	.000	0	0	.000	0	0	0	.000	1	4	.750	0	0	0	0	0.0	0	1.0	.221	1-3
Totals		1	1	1	5	.000	0	0	.000	0	0	0	.000	1	4	.750	0	0	0	0	0.0	0	1.0		

Player Averages

Sets Played	Kills per set	Assists per set	Service aces per set	Digs per set	Blocks per set	Points per set
1	1.00	0.00	0.00	0.00	0.00	1.00

CAREER STATS

SEASON	TEAM	SM-MP	K	K/S	E	TA	PCT	A	A/S	SA	SA/S	SE	DIG	D/S	RE	BS	BA	TB	B/S	BE	BHE	PTS	PTS/S
2022-23	AUB	58-19	12	0.21	7	34	.147	0	0.00	11	0.19	28	19	0.33	2	0	0	0	0.00	0	0	23.0	0.40
2023-24	AUB	1-1	1	1.00	1	5	.000	0	0.00	0	0.00	0	0	0.00	1	0	0	0	0.00	0	0	1.0	1.00
TOTAL		59 - 20	13	0.22	8	39	.128	0	0.00	11	0.19	28	19	0.32	3	0	0	0	0.00	0	0	24.0	0.41



#19 JASMINE OKEOMA
MIDDLE BLOCKER | 6-3 | FRESHMAN
WOODBIDGE, VA. (FOREST PARK)



OKEOMA'S HIGHLIGHTS:

CATEGORY	CAREER HIGH	OPPONENT/DATE
Kills	--	--
Attempts	--	--
Hitting Percentage (Min. 10 ATT.)	--	--
Assists	--	--
Digs	--	--
Blocks	--	--
Aces	--	--
Points	--	--

CATEGORY	SEASON HIGH	OPPONENT/DATE
Kills	--	--
Attempts	--	--
Hitting Percentage (Min. 10 ATT.)	--	--
Assists	--	--
Digs	--	--
Blocks	--	--
Aces	--	--
Points	--	--

GAME BY GAME

CAREER STATS

#22 SYDNEY HANDEL

DEFENSIVE SPECIALIST | 6-0 | SOPHOMORE
LEE'S SUMMIT, MO. (LEE'S SUMMIT WEST)



HANDEL'S HIGHLIGHTS:

- Set career-highs in aces (3) and digs (6) in the NCAA Tournament against Houston
- Made her collegiate debut against Alabama A&M

CATEGORY	CAREER HIGH	OPPONENT/DATE
Kills	1	vs Middle Tennessee (9/7/23)
Attempts	1 (2x)	last at South Alabama (9/14/23)
Hitting Percentage (Min. 10 ATT.)	--	--
Assists	--	--
Digs	10	at South Alabama (9/14/23)
Blocks	--	--
Aces	3	vs Houston (12/3/22)
Points	3.0	vs Houston (12/3/22)

CATEGORY	SEASON HIGH	OPPONENT/DATE
Kills	--	--
Attempts	1	at South Alabama (9/14/23)
Hitting Percentage (Min. 10 ATT.)	--	--
Assists	--	--
Digs	10	at South Alabama (9/14/23)
Blocks	--	--
Aces	--	--
Points	--	--

GAME BY GAME

Date	Opponent	SP	Attack				Set			Serve				Recept			Blocking				Team				
			K	E	TA	PCT	A	TA	PCT	SA	SE	TA	PCT	RE	TA	PCT	DIG	BS	BA	BE	TOTAL	BHE	POINTS	HIT%	SCORE
09/02/2023	vs SMU	2	0	0	0	.000	0	0	.000	0	2	6	.667	0	0	.000	0	0	0	0	0.0	0	0.0	.316	3-1
09/09/2023	Mercer	1	0	0	0	.000	0	0	.000	0	0	2	1.000	0	0	.000	0	0	0	0	0.0	0	0.0	.346	3-0
09/14/2023	at South Alabama	5	0	0	1	.000	0	2	.000	0	1	14	.929	1	10	.900	10	0	0	0	0.0	0	0.0	.191	3-2
09/15/2023	vs UAB	4	0	0	0	.000	0	0	.000	0	2	11	.818	0	0	.000	0	0	0	0	0.0	0	0.0	.189	3-1
09/16/2023	vs Samford	1	0	0	0	.000	0	2	.000	0	0	0	.000	0	4	1.000	0	0	0	0	0.0	0	0.0	.386	3-1
10/20/2023	Missouri	1	0	0	0	.000	0	1	.000	0	1	3	.667	0	0	.000	0	0	0	0	0.0	0	0.0	.168	0-3
Totals		14	0	0	1	.000	0	5	.000	0	6	36	.833	1	14	.929	10	0	0	0	0.0	0	0.0		

Player Averages

Sets Played	Kills per set	Assists per set	Service aces per set	Digs per set	Blocks per set	Points per set
14	0.00	0.00	0.00	0.71	0.00	0.00

CAREER STATS

SEASON	TEAM	SM-MP	K	K/S	E	TA	PCT	A	A/S	SA	SA/S	SE	DIG	D/S	RE	BS	BA	TB	B/S	BE	BHE	PTS	PTS/S
2022-23	AUB	19-6	0	0.00	0	1	.000	0	0.00	6	0.32	11	10	0.53	3	0	0	0	0.00	0	0	6.0	0.32
2023-24	AUB	14-6	0	0.00	0	1	.000	0	0.00	0	0.00	6	10	0.71	1	0	0	0	0.00	0	0	0.0	0.00
TOTAL		33 - 12	0	0.00	0	2	.000	0	0.00	6	0.18	17	20	0.61	4	0	0	0	0.00	0	0	6.0	0.18



#25 LAKIN LAURENDINE

PIN HITTER | 6-1 | FRESHMAN
JACKSON, MISS. (JACKSON ACADEMY)

LAURENDINE'S HIGHLIGHTS:

CATEGORY	CAREER HIGH	OPPONENT/DATE
Kills	--	--
Attempts	--	--
Hitting Percentage (Min. 10 ATT.)	--	--
Assists	--	--
Digs	--	--
Blocks	--	--
Aces	--	--
Points	--	--

CATEGORY	SEASON HIGH	OPPONENT/DATE
Kills	--	--
Attempts	--	--
Hitting Percentage (Min. 10 ATT.)	--	--
Assists	--	--
Digs	--	--
Blocks	--	--
Aces	--	--
Points	--	--

GAME BY GAME

CAREER STATS