



# 2022-23 AUBURN WOMEN'S BASKETBALL

AUBURN ATHLETICS COMMUNICATIONS: 392 SOUTH DONAHUE DRIVE || AUBURN, AL 36830 || AUBURNTIGERS.COM || @AUBURNWBB

## 2022-23 SCHEDULE/RESULTS 10-4, 0-2 SEC

DATE	OPPONENT	TIME/TV/RESULT
Nov. 3	TUSKEGEE (exh.)	W 81-59
Nov. 8	SAM HOUSTON	W 90-76
Nov. 10	SOUTH ALABAMA	W 71-62
Nov. 16	GEORGIA TECH	L 51-57
Nov. 20	ALABAMA STATE	W 88-49
Nov. 25	1-vs. #6/5 Indiana	L 81-96
Nov. 26	1-vs. Colorado State	W 74-73
Nov. 30	LITTLE ROCK	W 70-48
Dec. 3	UCF	W 86-46
Dec. 11	LOUISIANA-LAFAYETTE	W 81-41
Dec. 15	NORTH CAROLINA A&T	W 79-63
Dec. 18	SAMFORD	W 91-37
Dec. 20	NORTH FLORIDA	W 77-49
Dec. 29	*at Ole Miss	L 47-79
Jan. 1	*MISSOURI	L 56-62
Jan. 5	*at #1 South Carolina	+ 6 pm
Jan. 8	*ALABAMA	SECN 4 pm
Jan. 15	*at #7 LSU	+ 2 pm
Jan. 19	*at Mississippi State	+ 7 pm
Jan. 22	*OLE MISS	SECN 4 pm
Jan. 26	*at Kentucky	+ 6 pm
Jan. 30	*FLORIDA	SECN 6 pm
Feb. 5	*ARKANSAS	SECN 2 pm
Feb. 9	*#1 SOUTH CAROLINA	+ 6 pm
Feb. 12	*at Alabama	SECN 4 pm
Feb. 16	*TEXAS A&M	+ 7 pm
Feb. 19	*at Tennessee	SECN/ESPN2 11 am
Feb. 23	*at Georgia	+ 6 pm
Feb. 26	*VANDERBILT	SECN 3 pm
Mar. 1-5	SEC Tournament	Greenville

All times Central. Home Games in **BOLD CAPS**.  
\* SEC Game  
+ = SEC Network + / ESPN3.com  
1-Las Vegas Invitational (Las Vegas, Nev.)

### AUBURN ATHLETICS COMMUNICATIONS

WES TODD .....Assistant Director/WBB Contact  
.....wlt0006@auburn.edu  
.....C: 334-750-5682  
KIRK SAMPSON ..... Associate AD  
.....kirk@auburn.edu

Web .....AuburnTigers.com  
Twitter .....@AuburnWBB  
Facebook ...../AuburnWBB  
Instagram .....@AuburnWBB  
Office Phone .....(334) 844-9800



## GAME 15

## #1 South Carolina (14-0, 2-0)

Thursday, Jan. 5, 2023 • 6 p.m. CT



Site .....Columbia, S.C.  
Venue .....Colonial Life Arena (18,000)  
TV .....SEC Network + (Dave Weinstein, Brett Ball)  
Radio .....WQSI 93.9 FM (Brit Bowen)  
Live Audio .....AuburnTigers.com  
Live Stats .....GamecocksOnline.com  
Twitter .....@AuburnWBB  
Series Record .....South Carolina leads 27-21  
at Columbia .....South Carolina leads 14-7  
Last Meeting .....#1 South Carolina 75, Auburn 38 (Feb. 17, 2022, in Columbia, S.C.)

### GAMEDAY BREAKDOWN

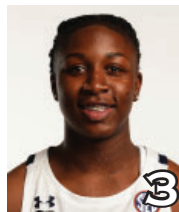
#### AUBURN TIGERS

Rankings ..... AP: NR | Coaches: NR  
2022-23 Record ..... 10-4  
SEC ..... 0-2  
Home ..... 9-2  
Away ..... 0-1  
Neutral ..... 1-1  
Streak ..... L2  
Head Coach ..... Johnnie Harris  
Record at AU (Yrs.) ..... 20-22 (2nd)  
Overall Record (Yrs.) ..... Same  
Record vs. South Carolina ..... 0-1  
Last Game ..... lost to Missouri, 62-56

#### CAROLINA GAMECOCKS

Rankings ..... AP: 1 | Coaches: 1  
2022-23 Record ..... 14-0  
SEC ..... 2-0  
Home ..... 8-0  
Away ..... 5-0  
Neutral ..... 1-0  
Streak ..... W20  
Head Coach ..... Dawn Staley  
Record at SC (Yrs.) ..... 380-105 (15th)  
Overall Record (Yrs.) ..... 552-185 (23rd)  
Record vs. Auburn ..... 15-3  
Last Game ..... def. Georgia, 68-51

### POSSIBLE AUBURN STARTERS (based on last game)



**JAKAYLA JOHNSON**  
G • JR • 5-9  
Clinton, Miss.

PPG: 4.0  
RPG: 2.5  
APG: 0.8



**AICHA COULIBALY**  
G/F • JR • 6-0  
Mali

PPG: 16.7  
RPG: 6.1  
APG: 1.8



**SYDNEY SHAW**  
G • FR • 5-9  
Miami, Fla.

PPG: 8.4  
RPG: 2.4  
APG: 3.6



**ROMI LEVY**  
G/F • R-SO • 6-3  
Herzliya, Israel

PPG: 8.5  
RPG: 5.3  
APG: 1.5



**KHARYSSA RICHARDSON**  
F • FR • 6-2  
Douglasville, Ga.

PPG: 6.0  
RPG: 5.5  
APG: 0.1

### OFF THE BENCH

No.	Pos.	Name	Ht.	Year	PPG	RPG	Hometown
0	G	Amoura Graves	6-0	So.	1.7	2.0	Ponchatoula, La.
1	G	Mya Pratcher	6-1	Fr.	2.8	3.2	Memphis, Tenn.
2	G	Sania Wells	5-7	Sr.	5.7	2.0	Moss Point, Miss.
4	G	Kaitlyn Duhon	5-10	Fr.	6.0	2.9	Houston, Texas
12	G	Mar'Shaun Bostic	5-8	So.	4.8	1.6	St. Louis, Mo.
20	C	Oyindamola Akinbolawa	6-5	Fr.	0.0	0.0	Lagos, Nigeria
^21	G	Audia Young	5-7	Fr.	--	--	Tallahassee, Fla.
23	G	Honesty Scott-Grayson	5-8	R-Sr.	15.8	3.8	Brick, N.J.
24	G	Carson McFadden	5-7	So.	1.2	1.0	Fairview, Texas
51	C	Precious Johnson	6-5	Jr.	3.9	3.3	Baytown, Texas

^out for season (injured)

**Head Coach:** Johnnie Harris (2nd season at Auburn)

**Assistants:** Fred Williams, Damitria Buchanan, Ketara Chapel

#WarEagle  
#LGTW



AuburnTigers.com



@AuburnWBB | @AuburnTigers  
@CoachJ\_AU | @coachjharris



/AuburnWBB  
/AuburnTigers

**TEAM SCHEDULE AND MEDIA AVAILABILITY >> JANUARY 2-8** (times Central unless noted otherwise)

MONDAY January 2	TUESDAY January 3	WEDNESDAY January 4	THURSDAY January 5	FRIDAY January 6	SATURDAY January 7	SUNDAY January 8
<b>OFF DAY</b>	<b>PRACTICE</b> 12-3 p.m. Neville Arena	<b>PRACTICE</b> 11 am-2 pm Neville Arena	<b>GAME</b> 6:00 Auburn at South Carolina	<b>PRACTICE</b> 11 am-2 pm Neville Arena	<b>PRACTICE</b> 1-4 pm Neville Arena	<b>GAME</b> 4:00 Auburn vs. Alabama (SEC Network)
<b>COACH J SHOW</b> 6-7 p.m. Baumhower's 93.9 FM		<b>TRAVEL</b> to Columbia, S.C.	<b>Interviews postgame</b> <b>Return to Auburn</b>		MBB vs. Arkansas 7:30	<b>Interviews postgame</b>

**AUBURN ATHLETICS COMMUNICATIONS SERVICES**

**QUICK FACTS**

**AUBURNTIGERS.COM**

For updated game notes, statistics and all the latest information on Auburn basketball and gameday activities, go to AuburnTigers.com.

**INTERVIEW POLICIES**

--Practices are open to the public and media; however, media are strongly encouraged to notify Wes Todd if they are planning to attend.  
--Coach Harris, assistant coaches and student-athletes are available for phone, virtual and in-person interviews by contacting Wes Todd in the athletic communications office.  
--Following home games, interviews with Coach Harris and selected players will be conducted following a 10-minute cooling-off period. Visiting players and coaches should be requested through the opponent SID. **Interviews for 2022-23 will take place in Super Suite 2 on the second level of Neville Arena.**  
--Interviews following road contests will be conducted by request of the home team; postgame interviews with Coach Harris can be heard on the Auburn Sports Network radio broadcast.

**CREDENTIALS**

Anyone wishing to cover Auburn women's basketball should contact Wes Todd in the communications office at least one day in advance. Game credentials will be held at media will call, **which will be at the north main entrance for the 2022-23 season.** There will be no season credentials. Parking passes are not needed.

**GAME DAY SERVICES**

--Printed flip cards will be available at each media seat. All other information (game notes, stats, etc.) will be available on AuburnTigers.com and StatBroadcast.com. Wireless internet (AU Open) is available in the Arena.  
--Media may access the floor and media work room with their credentials. Water and soft drinks will be available in the media room throughout the game. Concession vouchers are available at media will call.

**VIDEO SERVICES**

FTP feeds of selected Auburn basketball highlights are available for the media. Highlights and postgame press conference video will be posted following each game to ImagenCloud; visit auburn.imagencloud.com to register.

**COMMUNICATIONS STAFF**

Wes Todd Women's Basketball contact  
cell: 334-750-5682  
email: wlt0006@auburn.edu  
Kirk Sampson Associate AD  
cell: 334-750-1385  
email: sampska@auburn.edu

**GENERAL INFORMATION**

Location..... Auburn, Ala.  
Founded .....1856  
Enrollment..... 31,526  
Nickname ..... Tigers  
Colors..... Burnt Orange and Navy Blue  
Facility (Capacity) ..... Neville Arena (9,121)  
President .....Dr. Christopher Roberts  
Director of Athletics ..... John Cohen  
WBB Administrator/SWA ..... Djenane Paul  
Faculty Representative ..... Dr. Beverly Marshall

**WOMEN'S BASKETBALL HISTORY**

First Year of Women's Basketball .....1971  
All-Time Record (Years).....972-540 (52nd)  
All-Time SEC Record (since 1981) ..... 242-279  
All-Time Home Record ..... 462-140  
at Neville Arena (since 2010)..... 115-71  
NCAA Tournament Appearances ..... 21  
Last NCAA App./Result.....2019 - First Round  
SEC Regular-Season Championships ..... 5  
..... 1981, 1987, 1988, 1989, 2009  
SEC Tournament Championships..... 4  
..... 1981, 1987, 1990, 1997

**COACHING & SUPPORT STAFF**

Head Coach.....Johnnie Harris  
Alma Mater, Year ..... Arkansas Baptist, 1996  
Overall Record .....20-22 / 2nd year  
Auburn Record .....20-22 / 2nd year  
Associate Head Coach (Year) ..... Fred Williams (1st)  
Associate Head Coach (Year) ..... Damitria Buchanan (2nd)  
Assistant Coach (Year) ..... Ketara Chapel (2nd)  
Strength & Conditioning Coach ..... Jen Jones  
Director of Basketball Operations ..... Alex Stewart  
Asst. Director of Operations ..... Tra'Cee Tanner  
Director of Recruiting Operations..... Connor Putnam  
Director of Player Development..... Savannah Carter  
Special Asst. to the Head Coach..... Reneisha Bolden  
Athletic Trainer..... Faith Baxter  
Graduate Assistant..... DeQuann "DQ" Gordon

**GAMEDAY EXPERIENCE: NEVILLE ARENA**

>> Neville Arena is in its 13th season as home of Auburn Basketball. The Tigers are 115-71 since moving to the Arena in 2010-11. The facility seats 9,121 for basketball and also hosts Auburn volleyball and gymnastics.



**TEAM INFORMATION**

2021-22 Record .....10-18  
2021-22 SEC Record ..... 2-14  
SEC Finish..... 14th  
Starters Returning/Lost .....3/2  
Letterwinners Returning/Lost ..... 8/6  
Newcomers..... 7

# AUBURN TIGERS SPEED CHART

Overall: 10-4 SEC: 0-2

Head Coach: Johnnie Harris (20-22, 2nd season)

## PRONUNCIATION GUIDE

Oyindamola Akinbolawa - o-WIN-dah-MO-lah  
 a-KIN-bo-LA-wah  
 Aicha Coulibaly - ay-EE-sha coo-li-BALL-ee  
 Amoura Graves - ah-MOOR-ah

Romi Levy - RO-mee LEV-ee  
 Sania Wells - sa-NYE-uh

		Pts	Reb	Ast	Stl	Blk		
0	<b>AMOURA GRAVES</b> G/F • 6-0 • So. • Ponchatoula, La. • Ponchatoula HS	Season High	5	4	3	1	2	
		Career High	8	5	2	2	2	
		PPG	1.7	2.0	1.0	.333	.250	-
		22-23	1.7	2.0	1.0	.333	.250	-
							<b>LAST GAME (vs MIZ):</b> DNP • Career-high 8 pts, 4 reb at Vandy (1/30/22), 2-2 3FG • Played 26 gms in 21-22; 1.8 ppg, 1.8 rpg • Averaged 22.4 points as a HS senior	
1	<b>MYA PRATCHER</b> F • 6-1 • Fr. • Memphis, Tenn. • Bartlett HS	Season High	8	10	1	1	2	
		Career High	8	10	1	1	2	
		PPG	2.8	3.2	0.3	.290	.000	.720
		22-23	2.8	3.2	0.3	.290	.000	.720
							<b>LAST GAME (vs MIZ):</b> 5 points, 3 reb, 1 ast, 1 stl, 5-6 FT • Season-high 8 points on 8-10 FT vs. Samford (12/18) • Season-high 10 rebounds vs. Georgia Tech (11/16) • Averaged 7.6 pts, 5.2 reb, 1.8 stl, 1.5 ast as HS senior • #4 player in Tenn. class of '22 by Prep Girls Hoops	
2	<b>SANIA WELLS</b> G • 5-7 • Sr. • Moss Point, Miss. • East Central HS	Season High	12	8	4	3	3	
		Career High	20	8	7	3	3	
		PPG	5.7	2.0	1.2	.341	.306	.647
		22-23	5.7	2.0	1.2	.341	.306	.647
							<b>LAST GAME (vs MIZ):</b> 8 points, 1 rebound, 1 steal • 10+ points 4 times so far in 22-23 • Career-high 8 rebounds, 3 steals vs. Samford (12/18) • Led SEC in FT% (76-84, 90.5%) in 21-22; 6th NCAA • Career-high 20 pts at Mizzou (1/6/22)	
3	<b>JAKAYLA JOHNSON</b> G • 5-9 • Jr. • Clinton, Miss. • Jones College	Season High	9	6	4	2	2	
		Career High	9	6	4	2	2	
		PPG	4.0	2.5	0.7	.409	.417	.846
		22-23	4.0	2.5	0.7	.409	.417	.846
							<b>LAST GAME (vs MIZ):</b> 9 points, 6 rebounds, 4 assists • Career-high 9 pts, 6 reb, 4 ast vs MIZ; played PG 1st time • Enrolled at AU in spring '22 to rehab after knee injury • Avg. 16.8 pts, 2.8 reb, 3.0 ast, 2.8 stl at Jones in '21-22 • 2021 WBCA 2-Year College Coaches All-American	
4	<b>KAITLYN DUHON</b> G • 5-10 • Fr. • Houston, Texas • Summer Creek HS	Season High	17	8	1	3	3	
		Career High	17	8	1	3	3	
		PPG	6.0	2.9	0.6	.436	.125	.750
		22-23	6.0	2.9	0.6	.436	.125	.750
							<b>LAST GAME (vs MIZ):</b> 2 points, 1 rebound, 1 steal • Scored 17 pts w/ 7 reb, 3 stl, 2 blk vs. S. Alabama (11/10) • Avg. 17 pts, 7 reb, 3 stl, 49% FG as HS senior • Named Greater Houston POY by Houston Chronicle • State runner-up in long jump (19-8.25)	
5	<b>AICHA COULIBALY</b> G/F • 6-0 • Jr. • Mali • IMG Academy (Fla.)	Season High	24	10	5	6	2	
		Career High	27	13	5	6	3	
		PPG	16.7	6.1	1.8	.428	.222	.761
		22-23	16.7	6.1	1.8	.428	.222	.761
							<b>LAST GAME (vs MIZ):</b> 20 points, 7 rebounds, 1 assist • Preseason All-SEC 2nd Team • 7th career D-D vs. UCF (17 pts/12 reb); 2nd in 22-23 • Led AU w/ 17.1 ppg, 7.5 rpg in 2021-22 • Scored 20+ pts in 9 games in 21-22; career-hi 27 vs CSU	
10	<b>SYDNEY SHAW</b> G • 5-9 • Fr. • Miami, Fla. • DME Academy	Season High	15	4	6	4	2	
		Career High	15	4	6	4	2	
		PPG	8.4	2.4	3.6	.381	.375	.875
		22-23	8.4	2.4	3.6	.381	.375	.875
							<b>LAST GAME (vs MIZ):</b> 3 rebounds, 2 assists • Leads SEC freshmen with 3.8 assists/game (9th overall) • Season-high 15 points, 6 assists vs. ULL (12/11) • No. 43 overall in class of 2022 by ESPN HoopGurlz • Avg. 12.5 pts, 4.6 reb, 3.0 ast, 2.3 stl as HS senior	
11	<b>ROMI LEVY</b> F • 6-2 • R-So. • Herzliya, Israel • Hof Hasharon HS	Season High	18	13	5	5	3	
		Career High	18	13	7	6	3	
		PPG	8.5	5.3	1.5	.519	.400	.667
		22-23	8.5	5.3	1.5	.519	.400	.667
							<b>LAST GAME (vs MIZ):</b> 6 points, 2 reb, 1 ast, 1 blk • Career-hi 18 pts, 13 reb for 2nd D-D vs. Little Rock (11/30) • Missed 2021-22 season with torn ACL • 2021 SEC All-Freshman Team (5.4 pts, 3.9 rebs) • First AU WBB player from Israel	
12	<b>MAR'SHAUN BOSTIC</b> G • 5-8 • So. • St. Louis, Mo. • Vashon HS	Season High	9	3	4	2	1	
		Career High	9	4	4	4	1	
		PPG	4.8	1.6	1.7	.421	.500	.621
		22-23	4.8	1.6	1.7	.421	.500	.621
							<b>LAST GAME (vs MIZ):</b> 2 points, 2 steals • Matched career-high w/ 9 pts, 4 ast vs. Sam Houston • Avg. 3.3 pts, 1.9 reb in 27 gms in 2021-22 • 2nd on team with 2.2 assists/gm • Career-hi 9 pts, 4 stl vs. Tenn; +25 in 15 mins off bench	
20	<b>OYINDAMOLA AKINBOLAWA</b> C • 6-5 • Fr. • Lagos, Nigeria	Season High	-	-	-	-	-	
		Career High	-	-	-	-	-	
		PPG	0.0	0.0	0.0	-	-	-
		22-23	0.0	0.0	0.0	-	-	-
							<b>LAST GAME (vs MIZ):</b> DNP • Made collegiate debut vs. North Florida, played 2 mins. • Arrived in United States Dec. 14	
21	<b>AUDIA YOUNG</b> F • 5-9 • Fr. • Tallahassee, Fla. • Florida State Univ. HS	Season High	-	-	-	-	-	
		Career High	-	-	-	-	-	
		PPG	-	-	-	-	-	-
		22-23	-	-	-	-	-	-
							• Will miss 2022-23 season with torn achilles • Avg. 16.2 pts, 3.1 reb, 2.7 ast, 1.9 stl as HS senior • Daughter of AU All-American & SEC POY Carolyn Jones-Young (88-91); will wear her mom's retired #21	
23	<b>HONESTY SCOTT-GRAYSON</b> G • 5-8 • R-Sr. • Brick, N.J. • Baylor	Season High	31	6	5	5	1	
		Career High	31	14	6	5	4	
		PPG	15.8	3.8	2.3	.479	.490	.756
		22-23	15.8	3.8	2.3	.479	.490	.756
							<b>LAST GAME (vs MIZ):</b> DNP • Missed last 2 games with minor injuries • Career-high 31 pts vs. N.C. A&T (12/15) • Led AU scoring 7 times; 20+ in 4 games • Started 27 of 28 games in 2021-22; 13.0 ppg, 5.7 ppg	
24	<b>CARSEN McFADDEN</b> G • 5-7 • Jr. • Lucas, Texas • Lovejoy HS	Season High	4	3	1	2	-	
		Career High	4	3	3	2	-	
		PPG	1.2	1.0	0.1	.267	.200	.667
		22-23	1.2	1.0	0.1	.267	.200	.667
							<b>LAST GAME (vs MIZ):</b> DNP • Career-high 4 points vs. ULL (12/3), Samford (12/18) • Hit 1st career 3-pointer vs. ASU (11/20) • Played in 8 games in 2021-22 • Joined Tigers as walk-on in August 2020	
33	<b>KHARYSSA RICHARDSON</b> F • 6-2 • Fr. • Douglasville, Ga. • New Manchester HS	Season High	10	9	1	3	2	
		Career High	10	9	1	3	2	
		PPG	6.0	5.5	0.1	.431	.000	.739
		22-23	6.0	5.5	0.1	.431	.000	.739
							<b>LAST GAME (vs MIZ):</b> 2 points, 3 rebounds, 1 block • Career-high 3 steals, 2 blocks vs. Samford (12/18) • Returned 12/15 vs. NCAT; 8 pts, 6 reb in 23 mins. • Season-hi 9 rebs vs. Colo. St.; left game w/ injury in 4Q • Avg. 18.3 pts, 8.9 reb, 1.9 stl, 1.9 blk, 1.2 ast as HS senior	
51	<b>PRECIOUS JOHNSON</b> C • 6-5 • Jr. • Baytown, Texas • Texas	Season High	11	7	-	1	1	
		Career High	18	10	-	3	3	
		PPG	3.9	3.3	0.0	.545	-	.611
		22-23	3.9	3.3	0.0	.545	-	.611
							<b>LAST GAME (vs MIZ):</b> 2 points • 1st career double-double; 18 pts, 10 reb at UK (2/27/22) • Played 12 games (8 starts) for AU in 2021-22 • Avg. 5.2 pts, 4.0 reb, 1.1 blk as sophomore • Enrolled at Auburn in Jan. 2022; transfer from Texas	

Inside the Matchup

**Auburn vs. South Carolina 21-27 (.438)**

In Auburn: 12-11  
 --At Auburn Arena: 2-5  
 In Columbia: 7-14  
 Neutral Sites: 2-2  
 Trend: South Carolina has won 12 straight

Jan. 12, 1980	L	50-77	Auburn
Feb. 16, 1981	L	69-91	Columbia, S.C.
Jan. 11, 1982	W	65-50	Auburn
Feb. 5, 1983	W	56-38	Auburn
Jan. 30, 1984	L	64-65	Columbia, S.C.
Jan. 9, 1985	W	61-50	Columbia, S.C.
Nov. 28, 1987	W	88-52	Orlando, Fla.
Nov. 28, 1989	W	78-61	Auburn
Dec. 29, 1990	L	76-83	Columbia, S.C.
Mar. 1, 1992	W	71-44	Auburn
Feb. 27, 1993	L	47-59	Columbia, S.C.
Jan. 5, 1994	L	55-64	Auburn
Jan. 3, 1995	W	77-43	Columbia, S.C.
Dec. 10, 1995	W	56-50	Auburn
Feb. 19, 1997	W	81-51	Columbia, S.C.
Jan. 1, 1998	W	70-65	Auburn
Jan. 3, 1999	W	62-50	Columbia, S.C.
Jan. 9, 2000	W	73-50	Auburn
Feb. 3, 2000	W	71-62	Columbia, S.C.
Jan. 7, 2001	L	60-87	Columbia, S.C.
Feb. 1, 2001	L	65-71	Auburn
Feb. 21, 2002	W	67-49	Auburn
Feb. 23, 2003	L	64-65	Columbia, S.C.
Feb. 15, 2004	W	69-58	Auburn
Feb. 6, 2005	W	56-47	Columbia, S.C.
Feb. 16, 2006	L	46-58	Auburn
Mar. 2, 2006	W	64-48	Little Rock, Ark.*
Feb. 15, 2007	L	61-70	Columbia, S.C.
Mar. 1, 2007	L	63-65	Duluth, Ga.*
Feb. 17, 2008	W	83-72	Auburn
Jan. 8, 2009	W	80-76	Columbia, S.C.
Jan. 17, 2010	L	49-63	Columbia, S.C.
Feb. 4, 2010	L	58-61	Auburn
Jan. 30, 2011	W	54-47	Auburn
Feb. 20, 2011	L	49-65	Columbia, S.C.
Jan. 19, 2012	W	53-49	Auburn
Feb. 3, 2013	L	51-59	Columbia, S.C.
Jan. 12, 2014	L	60-72	Auburn
Jan. 2, 2015	L	58-77	Columbia, S.C.
Jan. 21, 2016	L	58-74	Auburn
Mar. 4, 2016	L	48-57	Jacksonville, Fla.*
Jan. 5, 2017	L	47-73	Auburn
Feb. 9, 2017	L	41-60	Columbia, S.C.
Jan. 11, 2018	L	63-71	Columbia, S.C.
Feb. 28, 2019	L	66-73	Auburn
Feb. 13, 2020	L	53-79	Columbia, S.C.
Feb. 4, 2021	L	58-77	Auburn
Feb. 17, 2022	L	38-75	Columbia, S.C.

\*SEC Tournament

**Auburn Women's Basketball Quick Hitters**

- This is the 49th meeting between Auburn and South Carolina in women's basketball, the first of two this season
- South Carolina leads the series 27-21 and has won the last 12 meetings
- The Gamecocks won 75-38 last season in Columbia
- The Tigers rank 7th nationally with 5.9 blocks per game; two players (Coulibaly, Levy) are averaging at least 1.0 block per game
- Auburn tied a school record with 24 steals vs. Samford (12/18); the Tigers also forced 36 turnovers, the most since the 2016-17 season opener when Troy had 38
- The Tigers' 91 points vs. Samford tied the most under Johnnie Harris (also 91 vs. Charleston Southern last season), and the 37 points by Samford were the first time holding an opponent under 40 since defeating Alabama 77-38 in 2019
- Auburn's 54-point win over Samford was its largest margin of victory since 2008 when they defeated Sam Houston 119-54
- Honesty Scott-Grayson scored a career-high 31 points in Auburn's win over North Carolina A&T (12/15); she also had 5 rebounds, 5 steals and 3 assists in the win
- Scott-Grayson has topped the 20-point mark 5 times in the last 9 games and led Auburn in scoring in 7 of those 9
- Scott-Grayson is shooting 49.0% on 3-pointers (25-of-51) and has made at least three 3-pointers in five of the last eight games
- Freshman Sydney Shaw ranks 10th overall and first among freshmen in the SEC with 3.6 assists/game
- Shaw has had 4+ assists in four of the last six games
- Romi Levy had 18 points and 13 rebounds - both career highs - for her second career double-double in Auburn's 70-48 win over Little Rock Nov. 30
- Levy's first double-double came in the win over Alabama State with 16 points and 11 rebounds
- Levy filled the stat sheet against Samford with 13 points, 7 rebounds, 5 assists, 5 steals and 2 blocks
- Freshman Kharyssa Richardson returned with 8 points and 6 rebounds vs. N.C. A&T after missing the last three games with an injury sustained vs. Colorado State in Las Vegas; she scored a career-high 10 points vs. North Florida
- Coulibaly has two double-doubles this season - 24 pts, 10 reb vs. Sam Houston (11/8); 17 pts, 12 reb vs. UCF (12/3)
- Mar'Shaun Bostic scored a career-high 10 points in the win over UCF (12/3)
- Freshman Kaitlyn Duhon had a huge game vs. South Alabama with 17 points, 7 rebounds, 3 steals and 2 blocks
- Kaitlyn Duhon, Kharyssa Richardson and Sydney Shaw were in the starting lineup for the season-opener vs. Sam Houston; it is believed to be the first time Auburn has started three true freshmen in a season-opener
- Auburn is in its 52nd season of women's basketball and has 972 program wins
- Sania Wells was the SEC's leading free-throw shooter in 2021-22 at 90.5% (76-84)
- Auburn returns three starters and eight letterwinners from the 2021-22 season; the Tigers welcome 7 newcomers
- Auburn earned three wins over top-25 opponents in 2021-22 (#4 Tennessee, #18 Georgia Tech, #21 Georgia)
- Johnnie Harris is in her second season as head coach at Auburn
- In SEC preseason polls, Auburn was picked to finish 13th by both the media and the league's coaches

**Moving On Up (Auburn Career Milestone Watch) . . .**

- **Honesty Scott-Grayson** needs 26 points for 1,000 in her career (Auburn + Baylor)
- **Honesty Scott-Grayson** is 11th in the SEC among active career leaders with 900 points (at Auburn)
- **Honesty Scott-Grayson** is 9th in the SEC among active career leaders with 109 steals (at Auburn)
- **Aicha Coulibaly** is 18th in the SEC among active career leaders with 780 points
- **Aicha Coulibaly** is 19th in the SEC among active career leaders with 347 rebounds
- **Sania Wells** is at 80.4% free-throw shooting for her career (115-143); needs to attempt 7 more free throws to qualify for the Auburn career top 10 list (would currently rank 2nd)

**INDIVIDUAL CATEGORY LEADERS**

Auburn	South Carolina
Aicha Coulibaly - 16.7	Zia Cooke - 15.3
Aicha Coulibaly - 6.1	Aliyah Boston - 8.9
Sydney Shaw - 3.6	Raven Johnson - 3.0
Aicha Coulibaly - 1.9	Laeticia Amihere - 1.3
Aicha Coulibaly/Romi Levy - 1.0	Kamilla Cardoso - 1.8
Aicha Coulibaly - 28.9	Zia Cooke - 24.1
Romi Levy - .519	Sania Feagin - .635
Honesty Scott-Grayson - .490	Brea Beal - .405
Aicha Coulibaly - .761	Zia Cooke - .800

**OPENING TIP**

» Auburn continues SEC play with its second road contest of the year when they travel to Columbia, S.C., to take on the top-ranked South Carolina Gamecocks. Game time is 6 p.m. CT Thursday at Colonial Life Arena.

» Auburn is 10-4 overall, 0-2 in SEC play, after coming up just short to Missouri 62-56 Sunday at home.

» South Carolina is 14-0, 2-0, after rallying for a 68-51 win at Georgia Monday night.

**ON THE AIR**

» Brit Bowen will have the radio call on WQSI 93.9 FM beginning at 5:45 p.m. The broadcast can also be heard on AuburnTigers.com and the Auburn Athletics app.

» Thursday's game can be seen on SEC Network + with Dave Weinstein and Brett Ball calling the action.

**LAST TIME OUT**

» Aicha Coulibaly led Auburn with 20 points and seven rebounds, but Missouri made 4 of 5 3-pointers in the fourth quarter to hold off Auburn, winning 62-56 on New Year's Day at Neville Arena.

» Missouri broke open a close game in the third quarter when Katlyn Gilbert made five layups and scored 11 points en route to a 10-point lead before Sania Wells' 3-point play cut the deficit to 48-41 heading to the final quarter.

» Jakayla Johnson scored nine points and led Auburn with four assists with only one turnover while making her point guard debut. Wells added eight points.

» Auburn played its second straight game without second-leading scorer Honesty Scott-Grayson, who is day to day with injuries. Scott-Grayson averages 15.8 points per game and shoots 49-percent from 3-point range.

**UP NEXT**

» Auburn is back home Sunday to take on cross-state rival Alabama. Game time is 4 p.m. CT with the broadcast on SEC Network. It's Alumni Weekend as the Tigers will welcome back former players for a reception Saturday and on-court recognition at Sunday's game.

**AN AUBURN WIN WOULD...**

» Surpass the Tigers' win total from the entire 2021-22 season with their 11th of the year.

» Snap a 12-game skid against South Carolina.

» Be Auburn's first win over a ranked opponent this season.

» Be Auburn's first SEC road win since Feb. 27, 2020 (95-82 at Missouri).

» Be Auburn's first win over a No. 1 team since the 1990 Final Four (81-69 over Louisiana Tech).

**AUBURN-SOUTH CAROLINA SERIES**

» Auburn is 21-27 all-time against South Carolina, but the Gamecocks have won the last 12 meetings dating back to 2013. Carolina owns a 14-7 edge in games played in Columbia.

**LAST MEETING: Feb. 17, 2022, at Columbia**

**#1 South Carolina 75, Auburn 38**

» Top-ranked South Carolina lived up to its billing as Auburn fell 75-38 at Colonial Life Arena.

» Aicha Coulibaly led Auburn with nine points and nine rebounds. Honesty Scott-Grayson added

eight points.

» The Gamecocks pulled down 62 rebounds to Auburn's 25 and turned 24 offensive boards into 21 second-chance points. Carolina shot 43 percent from the field (32-74) while Auburn was 29 percent (18-62). On a better note, the Tigers had a season-low seven turnovers.

**AUBURN VS. NUMBER ONE**

» This will mark Auburn's 20th contest against the nation's top-ranked team (AP or Coaches' polls) in history. The Tigers are 2-17 all-time against teams carrying the No. 1 ranking. It will be the fifth time for Auburn to face South Carolina when the Gamecocks are atop a national poll.

» Auburn's last win over a No. 1 team came on March 30, 1990, when the Tigers defeated top-ranked Louisiana Tech 81-69 in the 1990 Final Four in Knoxville, Tenn.

» The Tigers' last four meetings with a No. 1 team also came against South Carolina - 2022 in Columbia (L, 38-75), 2021 in Auburn (L, 58-77), 2020 in Columbia (L, 53-79) and in 2015 in Columbia (L, 58-77). Auburn also faced Dawn Staley as a player in a matchup with No. 1 Virginia on Jan. 5, 1992, in Auburn; UVA won 77-70.

Date	Opponent	Location	Result
3/25/83	Louisiana Tech*	Ruston	L 54-81
2/6/84	Louisiana Tech	Auburn	L 68-80
1/7/89	Tennessee	Auburn	W 67-59
4/2/89	Tennessee*	Tacoma	L 60-76
3/30/90	Louisiana Tech*	Knoxville	W 81-69
1/5/92	Virginia	Auburn	L 70-77
1/15/94	Tennessee	Knoxville	L 46-58
2/16/94	Alabama	Tuscaloosa	L 71-84
1/14/95	Tennessee	Auburn	L 43-68
2/14/98	Tennessee	Knoxville	L 63-79
2/14/99	Tennessee	Auburn	L 63-71
2/25/01	Tennessee	Auburn	L 49-63
1/30/05	LSU	Baton Rouge	L 52-57
2/20/05	LSU	Auburn	L 57-62
11/27/05	Duke	Durham	L 37-69
1/2/15	South Carolina	Columbia	L 58-77
2/13/20	South Carolina	Columbia	L 53-79
2/4/21	South Carolina	Auburn	L 58-77
2/17/22	South Carolina	Columbia	L 38-75

**SCOUTING THE GAMECOCKS**

» South Carolina is 14-0 overall, 2-0 in SEC play, ranked No. 1 team in the AP and coaches polls, and defending national champions.

» The Gamecocks average 81.6 points per game and hold opponents to a nation-leading 43.6 points/game. Carolina also leads the nation in blocks per game (9.9), field goal defense (26.7%), 3-point defense (20.3%) and rank second in scoring margin (+37.9) and rebound margin (+21.1).

» Zia Cooke leads Carolina with 15.3 points per game, and reigning national player of the year Aliyah Boston has collected eight double-doubles this season.

**SCOUTING AUBURN**

» Auburn is 10-4 overall, 0-2 in SEC play after falling at home to Missouri on Sunday. The Tigers won seven straight to close out non-conference play, the last six coming at home. The Tigers are 9-2 at home this season.

» The Tigers rank 7th nationally with 5.9 blocks per game. Auburn is also top-50 nationally in 3-point percentage at 35.3% (45th), turnovers

**SEC STANDINGS & SCHEDULE**

	<i>(thru games of Jan. 2)</i>					
	SEC Games			All Games		
	W	L	Pct.	W	L	Pct.
LSU	2	0	1.000	14	0	1.000
Ole Miss	2	0	1.000	13	2	.867
Missouri	2	0	1.000	13	2	.867
South Carolina	2	0	1.000	14	0	1.000
Tennessee	2	0	1.000	10	6	.625
Alabama	1	1	.500	12	3	.800
Arkansas	1	1	.500	14	3	.824
Florida	1	1	.500	12	3	.800
Mississippi St.	1	1	.500	12	3	.800
AUBURN	0	2	.000	10	4	.714
Georgia	0	2	.000	11	5	.688
Kentucky	0	2	.000	8	6	.571
Texas A&M	0	2	.000	5	7	.417
Vanderbilt	0	2	.000	9	7	.563

**Sunday, Jan. 1**

- \*Tennessee 89, Alabama 76
- \*Arkansas 71, Kentucky 50
- \*Florida 55, Texas A&M 48
- \*LSU 88, Vanderbilt 63
- \*Missouri 62, Auburn 56
- \*Ole Miss 61, Mississippi State 50

**Monday, Jan. 2**

- \*South Carolina 68, Georgia 51



**Thursday, Jan. 5**

- \*Mississippi State at Tennessee, 5:30 pm (+)
- \*Missouri at Alabama, 6 pm (+)
- \*Auburn at South Carolina, 6 pm (+)
- \*Florida at Arkansas, 6 pm (+)
- \*Kentucky at Georgia, 6 pm (SECN)
- \*Vanderbilt at Ole Miss, 6 pm (+)
- \*Texas A&M at LSU, 8 pm (SECN)

**Sunday, Jan. 8**

- \*Alabama at Auburn, 4 pm (SECN)
- \*Arkansas at Missouri, 1 pm (+)
- \*Georgia at Florida, 11 am (ESPNU)
- \*Kentucky at LSU, 1 pm (+)
- \*Ole Miss at Texas A&M, 2 pm (SECN)
- \*South Carolina at Miss. State, Noon (ESPN2/SECN)
- \*Tennessee at Vanderbilt, Noon (ESPN2/SECN)

**Inside the Numbers**

		
CATEGORY	AUBURN	CAROLINA
Points Per Game	74.4	81.6
Scoring Margin	+14.6	+37.9
Field Goal %	42.5%	47.2%
Opp. Field Goal %	36.1%	26.7%
3 pt Field Goal %	35.3%	30.8%
Opp. 3FG %	29.0%	20.3%
Rebounds	38.6	51.0
Opp. Rebounds	37.9	29.9
Rebound Margin	+0.8	+21.1
Turnovers	16.4	13.8
Opp. Turnovers	21.4	16.9
Steals	10.8	8.9
Opp. Steals	7.6	5.9
Blocks	5.9	9.9
Opp. Blocks	1.9	3.2

**Associated Press Top 25**

(Week 9: Jan. 2)

Rk	Team	Record	Prev
1	<b>South Carolina (28)</b>	<b>13-0</b>	<b>1</b>
2	Stanford	14-1	2
3	Ohio State	15-0	3
4	Notre Dame	12-1	5
5	Connecticut	11-2	8
6	<b>Indiana 13-1</b>	<b>4</b>	<b>4</b>
7	<b>LSU 14-0</b>	<b>9</b>	<b>9</b>
8	Utah	14-0	11
9	Virginia Tech	12-2	7
10	NC State	12-2	6
11	Iowa State	9-2	15
12	UCLA	13-2	10
13	Maryland	11-3	16
14	Michigan	12-2	14
15	Arizona	12-1	18
16	Iowa	11-4	12
17	Oklahoma	11-1	20
18	Oregon	11-3	17
19	Duke	13-1	NR
20	Gonzaga	14-2	19
21	Kansas	11-1	22
22	North Carolina	9-4	13
23	Baylor	10-3	23
24	St. John's	13-0	25
25	Creighton	9-4	21

**Also receiving votes:** Illinois, Florida State, **Arkansas**, Villanova, Middle Tennessee, Texas, Columbia, South Florida, **Tennessee**, Nebraska.

**USA TODAY Coaches' Top 25**

(Week 9: Jan. 3)

Rk	Team	Record	Prev
1	<b>South Carolina (32)</b>	<b>14-0</b>	<b>1</b>
2	Stanford	15-1	2
3	Ohio State	15-0	3
4	Notre Dame	12-1	5
5	Connecticut	11-2	8
6	<b>LSU 14-0</b>	<b>9</b>	<b>9</b>
7	<b>Indiana 13-1</b>	<b>3</b>	<b>3</b>
8	Utah	14-0	11
9	NC State	12-2	6
10	Virginia Tech	12-2	7
11	Iowa State	9-2	14
12	Iowa	11-4	10
13	Arizona	12-2	15
14	Maryland	12-3	17
15	UCLA	13-2	13
16	Oklahoma	11-1	18
17	Oregon	11-3	16
18	North Carolina	9-4	12
19	Michigan	12-2	19
20	Gonzaga	14-2	20
21	Baylor	10-3	22
22	Duke	13-1	NR
23	St. John's	13-0	24
24	Creighton	9-4	21
25	Kansas	11-1	25

**Also receiving votes:** **Arkansas**, Illinois, Florida Gulf Coast, Florida State, Virginia, South Florida, Texas, Middle Tennessee, Louisville, **Tennessee**, Villanova, Texas Tech, Columbia, Drexel.

forced per game at 21.4 (20th), turnover margin at +5.1 (31st), and steals per game at 10.8 (37th).

» Junior Aicha Coulibaly is fifth in the SEC in scoring (16.7 ppg) and 11th in steals (1.9 spg). She has two double-doubles this season, with her last coming against UCF Dec. 3 (17 points, 12 rebounds). She was a preseason All-SEC Second Team selection. Coulibaly missed the Tigers' last three games of non-conference but came back with 13 points at Ole Miss (12/29) and 20 vs. Missouri (1/1).

» Honesty Scott-Grayson averages 15.8 points to rank second on the team and 8th in the SEC. She led Auburn in scoring in seven of the last eight games she played, topping the 20-point mark four times including a career-high 31 against North Carolina A&T. She is also the Tigers' top 3-point shooter, hitting 49.0% from long range (25-51) to rank 11th nationally. She has missed the first two games of SEC play with minor injuries.

» Redshirt sophomore Romi Levy recorded double-doubles against both Alabama State and Little Rock. Against Little Rock, she had career-highs in points (18) and rebounds (13) for her second career double-double.

» Freshman point guard Sydney Shaw leads the Tigers with 3.6 assists/game, which ranks 10th in the SEC and leads all SEC freshmen. She scored a career-high 15 points and matched a season-best with 6 assists in the win over Louisiana-Lafayette, and she scored at least 14 points in 3 of the last 4 non-conference games.

» Auburn's newcomers have all made an immediate impact with three freshmen - Kaitlyn Duhon, Sydney Shaw and Kharyssa Richardson - starting each of the first four games. Duhon scored 17 points in the win over South Alabama. Richardson had a season-high 9 rebounds vs. Colorado State before leaving the game with injury. Junior Jakayla Johnson has earned five starts, scoring 8+ points in three of the five.

**IT'S A BLOCK PARTY**

» Auburn has recorded 82 blocked shots through 14 games (5.9/game), which ranks seventh in the nation and fourth in the SEC. That number is more than three-fourths of the way to the total from all of last season (96) and surpasses the total from 2020-21 (53) and 2019-20 (58).

» Two players - Aicha Coulibaly, Romi Levy - are averaging at least one block per game.

**LETTING IT FLY**

» Auburn's 3-point shooting was among the nation's best through the non-conference portion of the season. The Tigers averaged 6.3 3-pointers made per game and hit 36.4% of their attempts from long-range heading into league play.

» Honesty Scott-Grayson has been a sharpshooter for the Tigers, hitting 49.0% of her 3-point attempts (25-of-51). She has made at least one trey in each of the last nine games she's played, making two or more in the last six. Scott-Grayson has hit a career-high four 3-pointers twice this year against Indiana and North Carolina A&T.

» As a team, the Tigers have hit at least five 3-pointers in 8 of 13 games this year with a season-high of 12 against Louisiana-Lafayette. That performance came up just two triples shy of the program record of 14, set Dec. 22, 2018, at Elon.

**SCORING IN BUNCHES**

» The Tigers' scoring offense currently ranks 61st nationally at 74.4 points per game. Auburn has scored at least 70 points in 11 of 14 games, topped the 80-point mark six times and scored 90-plus twice.

» Auburn scored a season-high in a 91-37 win over Samford; it tied the highest scoring output of the Johnnie Harris era (also scored 91 points against Charleston Southern in 2021-22). The Tigers' 54-point margin of victory that day was their largest since a 65-point win over Sam Houston State (119-54) in 2008.

» With 32 points in the third quarter vs. North Carolina A&T, and 31 in the second period against Samford, Auburn had its first two 30-point quarters since the 2019-20 season.

**AUBURN HONOR ROLL**

» **Aicha Coulibaly** - Preseason All-SEC Second Team

» **Sydney Shaw** - SEC Freshman of the Week (12/28)

**SEEING DOUBLE**

» Junior Aicha Coulibaly recorded the Tigers' first double-double of the season with 24 points and 10 rebounds in the season-opener vs. Sam Houston. It was the sixth of Coulibaly's career.

» Redshirt sophomore Romi Levy made the most of her second appearance of the season, scoring a career-high 16 points along with 11 rebounds in Auburn's win over Alabama State on Nov. 20 for the first double-double of her career.

» Levy picked up her second double-double of the season and of her career with 18 points and 13 rebounds - both career-highs - in Auburn's win over Little Rock Nov. 30.

» Coulibaly grabbed her second double-double of the year and seventh of her career with 17 points and 12 rebounds in the Tigers' win over UCF Dec. 3.

**DEFENSE CREATING OFFENSE**

» Auburn forced Sam Houston into 33 turnovers in the season opener Nov. 8, turning those into 31 points. The 33 turnovers were the most by an Auburn opponent since the 2017-18 season when ULM had 35.

» It was another turnover feast against Samford when the Tigers forced 36, the most since the 2016 season-opener when Troy had 38. Auburn turned those 36 turnovers into a season-high 50 points.

» Auburn is 32-0 all-time when forcing 30 or more turnovers in a game.

» The Tigers have forced 20 or more turnovers in 8 of 12 games this year; Auburn is 7-1 in those games.

**CUTTING IT CLOSE...**

» With Honesty Scott-Grayson's free throw with one second to play, the Tigers defeated Colorado State 74-73 in Las Vegas Nov. 26. It was Auburn's first one-point win since a 53-52 victory over Alabama in the 2019 SEC Tournament.

» Auburn is 4-2 in its last six one-point games:

Date	Opponent	Location	Result
11/26/22	vs. Colorado St.	Las Vegas	W 74-73
3/1/20	Tennessee	Auburn	L 55-56
12/1/19	vs. Drake	Estero, Fla.	L 82-83
3/7/19	vs. Alabama	Greenville	W 53-52
2/3/19	Georgia	Auburn (OT)	W 59-58
11/23/16	vs. Marist	Savannah	W 52-51

**WORKING OVERTIME**

>> Auburn is 22-22 all-time in overtime games. The Tigers' last OT game was a 72-63 loss at Missouri in 2022.

**LAST 10 OVERTIME GAMES**

Date	Opponent	Location	Result
1/6/22	Missouri	Columbia	L 63-72
2/20/20	Mississippi State	Auburn	L 85-92
11/30/19	Dayton	Estero, Fla.	W 76-74
2/3/19	Georgia	Auburn	W 59-58
12/20/18	North Carolina	Myrtle Beach	W 86-81
2/20/17	Alabama	Auburn	L 61-63
12/18/16	Virginia Tech	Auburn	L 87-92
1/24/16	Arkansas	Auburn	W 71-60
12/13/15	Marquette	Milwaukee	L 69-70
11/28/15	Minnesota	San Juan, PR	W 81-79

**ON THIS DATE**

>> Auburn is 10-4 all-time on Jan. 5. The Tigers' last game on this date was an 86-70 loss to Arkansas in 2020.

**TIGERS IN THE PROS**

>> DeWanna Bonner, a 2009 Auburn graduate, completed her 13th season in the WNBA in 2022, her third with the Connecticut Sun. She helped lead the Sun to the WNBA finals, where they fell to the Las Vegas Aces.

>> Former Tiger Charlene Thomas-Swinson, who played at Auburn from 1984-87, was an assistant coach for the Las Vegas Aces, who won the 2022 WNBA title. Joining her in the WNBA coaching ranks is former All-SEC performer Le'Coe Willingham, who just completed her second season as an assistant for the Dallas Wings.

>> Unique Thompson, a 2021 graduate, averaged 29.7 points and 15.1 rebounds for the Albury-Wodonga Bandits of Australia's NBL1 over the (northern hemisphere) summer. She is currently playing for Nadezhda Orenburg in Russia. Thompson was the No. 19 pick in the 2021 WNBA Draft by the Indiana Fever, and she signed a training camp contract with the Dallas Wings in 2022, but has not played in a WNBA regular-season game.

**ROLLING WITH COACH D**

>> With three players and head coach Johnnie Harris unavailable for the Tigers' game Nov. 10 vs. South Alabama due to illness, associate head coach Damitria Buchanan assumed the role of acting head coach. She also was called upon to fill in as Harris was ill again Nov. 30 as the Tigers played Little Rock. With the two wins, she remains undefeated as a head coach - her 7th grade team at A&M Consolidated Middle School in College Station, Texas, won every game they played during the 2010-11 season, right after she graduated from Texas A&M.

**WELCOME TO THE FAMILY**

>> Auburn signed two highly-rated post players in the early signing period in November. The Tigers will welcome Timya Thurman (6-4, Linden, Ala.) and Savannah Scott (6-5, Conway, Ark.) to the Plains for the 2023-24 school year.

**IT DIDN'T COUNT, BUT...**

>> The Tigers earned an 81-59 win over Tuskegee in an exhibition game at Neville Arena on Nov. 3. Honesty Scott-Grayson led three players in double

figures with 17 points; Aicha Coulibaly had a double-double with 16 points and 12 rebounds.

**Auburn in the SEC & NCAA Stats**

*(Thru games of 1/2/23)*

Category	Value	SEC	NCAA
Scoring Offense	74.4	6th	61st
Scoring Defense	59.9	9th	97th
Scoring Margin	+14.6	6th	45th
Free Throw Pct.	.723	3rd	125th
Field Goal Pct.	.425	10th	110th
Field Goal Pct. Def.	.361	6th	49th
3-pt FG Pct.	.353	4th	46th
3-pt FG Pct. Def.	.290	9th	114th
Rebounds	38.6	9th	122nd
Rebound Margin	+0.8	11th	179th
Blocks	5.9	4th	7th
Assists	13.1	12th	178th
Steals	10.8	3rd	37th
Turnover Margin	+5.1	2nd	31st
Turnovers Forced	21.4	2nd	20th
Assist/Turnover	0.8	13th	176th

**INDIVIDUALS (All Games)**

**Scoring**

Aicha Coulibaly	16.7	5th	88th
Honesty Scott-Grayson	15.8	8th	122nd

**Field Goal Pct.**

Honesty Scott-Grayson	.479	6th	104th
Aicha Coulibaly	.428	10th	186th

**Assists**

Sydney Shaw	3.6	10th	187th
-------------	-----	------	-------

**Free Throw Pct.**

Aicha Coulibaly	.761	10th	226th
Honesty Scott-Grayson	.756	11th	239th

**Steals**

Aicha Coulibaly	1.9	11th	196th
Honesty Scott-Grayson	1.8	12th	222nd

**3-Point FG Made**

Honesty Scott-Grayson	2.1	9th	147th
-----------------------	-----	-----	-------

**3-Point FG Pct.**

Honesty Scott-Grayson	.490	1st	8th
-----------------------	------	-----	-----

**Blocked Shots**

Aicha Coulibaly	1.0	--	198th
Romi Levy	1.0	--	198th

**Assist/Turnover Ratio**

Sydney Shaw	1.5	11th	170th
-------------	-----	------	-------

**NCAA NET Report (AU & Opponents)**

*(as of 1/3/23)*

Rk	Team	Record	AU Result
1	South Carolina	14-0	--
2	LSU	14-0	--
6	Indiana	12-1	L
14	Tennessee	10-6	--
20	Alabama	12-3	--
35	Ole Miss	13-2	L
37	Mississippi State	12-3	--
40	Arkansas	14-3	--
45	Missouri	13-2	L
46	Georgia	11-5	--
70	AUBURN	10-4	--
71	Georgia Tech	9-5	L
75	Colorado State	6-5	W
77	Florida	12-3	--
92	Vanderbilt	9-7	--
104	Kentucky	8-6	--
127	UCF	9-3	W
134	Texas A&M	5-7	--
198	Sam Houston	3-6	W
225	Louisiana-Lafayette	4-7	W
232	North Carolina A&T	5-5	W
259	Samford	3-9	W
260	Little Rock	5-8	W
299	Alabama State	3-8	W
317	South Alabama	3-9	W
341	North Florida	1-8	W

TIGERS' RECORD WHEN...

	2022-23	Harris Era
At Home.....	9-2	17-9
On the Road.....	0-1	2-11
At a Neutral Site.....	1-1	1-2
When wearing white.....	9-3	17-10
When wearing orange.....	0-0	0-0
When wearing blue "Auburn".....	0-0	2-10
When wearing blue "Tigers".....	1-1	1-1
When wearing pink.....	0-0	0-1
Leading at the half.....	10-0	19-4
Trailing at the half.....	0-4	1-18
Tied at the half.....	0-0	0-0
Scores 100+ points.....	0-0	0-0
Scores 90-99 points.....	2-0	3-0
Scores 80-89 points.....	3-1	4-1
Scores 70-79 points.....	5-0	10-1
Scores 60-69 points.....	0-0	2-9
Scores fewer than 60 points.....	0-3	1-11
Holds opponent to 41-50 points.....	5-0	7-0
Holds opponent to 31-40 points.....	1-0	1-0
Holds opponent to under 30 points.....	0-0	0-0
Force 25 or more turnovers.....	3-0	4-0
Shoots 50% FG or better.....	4-0	6-0
Shoots 40-49% FG.....	5-1	11-8
Shoots 39.9% or under FG.....	1-3	3-14
Holds opponent under 30% FG.....	4-0	6-0
Shoots higher FG% than opponent.....	9-0	17-3
Shoots lower FG% than opponent.....	1-4	3-19
Shoots same FG% as opponent.....	0-0	0-0
Shoots higher FT% than opponent.....	7-3	11-8
Shoots lower FT% than opponent.....	3-1	8-14
Shoots same FT% as opponent.....	0-0	1-0
Out-rebounds opponent.....	4-1	10-6
Out-rebounded by opponent.....	5-3	9-14
Tied in rebounds.....	1-0	1-2
Versus ranked opponent.....	0-1	3-4
In overtime.....	0-0	0-1
Games decided by 3 points or less.....	1-0	1-3
Games decided by 4-5 points.....	0-0	1-2
Games decided by 6-10 points.....	1-2	6-7
Games decided by 11-20 points.....	2-1	3-6
Games decided by 21-30 points.....	2-0	4-2
Games decided by 30+ points.....	4-1	5-2
In November.....	5-2	9-5
In December.....	5-1	9-1
In January.....	0-1	1-9
In February.....	0-0	1-6
In March.....	0-0	0-1

2022-23 Auburn Superlatives...

First Half

Most points scored in the first quarter.....	23 vs. Indiana (11/25/22)
Most points scored in the second quarter.....	31 vs. Samford (12/18/22)
Most points scored in the first half.....	47 vs. Sam Houston (11/8/22) & vs. Samford (12/18/22)
Fewest points scored in the first half.....	23 at Ole Miss (12/29/22)
Fewest points allowed in the first half.....	11 vs. Samford (12/18/22)
Most points allowed in the first half.....	51 vs. Indiana (11/25/22)
Best FG % in the first half.....	.563 vs. Samford (12/18/22)
Worst FG % in the first half.....	.270 vs. Georgia Tech (11/16/22)
Best FG % by an opponent in the first half.....	.619 vs. Georgia Tech (11/16/22)
Worst FG % by an opponent in the first half.....	.185 vs. Samford (12/18/22)
Most rebounds in the first half.....	27 vs. UCF (12/3/22)
Fewest rebounds in the first half.....	14 vs. Colorado State (11/26/22) & vs. North Florida (12/20/22)
Most rebounds by an opponent in the first half.....	28 vs. Little Rock (11/30/22)
Fewest rebounds by an opponent in the first half.....	13 vs. Georgia Tech (11/16/22) & Colorado State (11/26/22)

Second Half

Most points scored in the third quarter.....	32 vs. North Carolina AGT (12/15/22)
Most points scored in the fourth quarter.....	28 vs. Alabama State (11/20/22)
Most points scored in an overtime period.....	
Most points scored in the second half.....	46 vs. Alabama State (11/20/22) & vs. North Carolina AGT (12/15/22)
Fewest points scored in the second half.....	24 at Ole Miss (12/29/22)
Fewest points allowed in the second half.....	19 vs. UL-Lafayette (12/11/22)
Most points allowed in the second half.....	45 vs. Indiana (11/25/22)
Best FG % in the second half.....	.714 vs. UL-Lafayette (12/11/22)
Worst FG % in the second half.....	.229 at Ole Miss (12/29/22)
Best FG % by an opponent in the second half.....	.552 vs. Indiana (11/25/22)
Worst FG % by an opponent in the second half.....	.222 vs. UCF (12/3/22)
Most rebounds in the second half.....	27 vs. Georgia Tech (11/16/22)
Fewest rebounds in the second half.....	10 vs. Missouri (1/1/23)
Most rebounds by an opponent in the second half.....	34 at Ole Miss (12/29/22)
Fewest rebounds by an opponent in the second half.....	12 vs. Indiana (11/25/22) & vs. UL-Lafayette (12/11/22)

Game

Most points scored.....	91 vs. Samford (12/18/22)
Fewest points scored.....	47 at Ole Miss (12/29/22)
Most points allowed.....	96 vs. Indiana (11/25/22)
Fewest points allowed.....	37 vs. Samford (12/18/22)
Best FG %.....	.563 vs. UL-Lafayette (12/11/22)
Worst FG %.....	.250 at Ole Miss (12/29/22)
Best FG % by an opponent.....	.541 vs. Indiana (11/25/22)
Worst FG % by an opponent.....	.224 vs. UCF (12/3/22)
Most rebounds.....	51 vs. Georgia Tech (11/16/22) & vs. UCF (12/3/22)
Fewest rebounds.....	28 vs. Missouri (1/1/23)
Most rebounds by an opponent.....	53 at Ole Miss (12/29/22)
Fewest rebounds by an opponent.....	25 vs. Colorado State (11/26/22)

Miscellaneous

Highest-scoring quarter.....	32, 3Q vs. North Carolina AGT (12/15/22)
Lowest-scoring quarter.....	5, 1Q vs. Georgia Tech (11/16/22)
Highest-scoring opponent quarter.....	28, 4Q vs. Indiana (11/25/22)
Lowest-scoring opponent quarter.....	3, 3Q vs. UL-Lafayette (12/11/22)
Largest margin in a single quarter.....	+26 (31-5), 2Q vs. Samford (12/18/22)
Largest margin of victory.....	54 vs. Samford (12/18/22)
Smallest margin of victory.....	1 vs. Colorado State (11/26/22)
Largest margin of defeat.....	32 at Ole Miss (12/29/22)
Smallest margin of defeat.....	6 vs. Georgia Tech (11/16/22) & vs. Missouri (1/1/23)
Largest halftime lead.....	36 vs. Samford (12/18/22)
Smallest halftime lead.....	3 vs. Colorado State (11/26/22)
Times tied at halftime.....	
Largest halftime deficit.....	16 at Ole Miss (12/29/22)
Smallest halftime deficit.....	1 vs. Missouri (1/1/23)
Largest rebounding margin.....	+18 vs. UCF (12/3/22)
Smallest rebounding margin.....	+6 vs. Colorado State (11/26/22)
Last time tied in rebounding.....	1 - 35-35 vs. Samford (12/18/22)
Largest rebounding deficit.....	-16 at Ole Miss (12/29/22)
Smallest rebounding deficit.....	-1 vs. Indiana (11/25/22)
Largest deficit overcome to win game.....	8 vs. Colorado State (11/26/22)
Largest lead lost.....	3 vs. Georgia Tech (11/16/22) & vs. Missouri (1/1/23)



MISCELLANEOUS STATISTICS

Double-Doubles	Season	Career
Romi Levy	2	2
Aicha Coulibaly	1	6
Honesty Scott-Grayson	0	3
Precious Johnson	0	1

30+ Point Games	Season	Career
Honesty Scott-Grayson	1	2

20+ Point Games	Season	Career
Honesty Scott-Grayson	4	13
Aicha Coulibaly	4	13
Sania Wells	0	1

10+ Rebound Games	Season	Career
Aicha Coulibaly	2	7
Romi Levy	2	4
Mya Pratcher	1	1
Honesty Scott-Grayson	0	3
Precious Johnson	0	1

10+ Assist Games	Season	Career
Honesty Scott-Grayson	2	6
Aicha Coulibaly	1	3
Romi Levy	1	3

5+ Steal Games	Season	Career
Honesty Scott-Grayson	2	6
Aicha Coulibaly	1	3
Romi Levy	1	3

5+ Block Games	Season	Career

GAMES LED AUBURN IN...

Scoring	Season	Career
Aicha Coulibaly	9	27
Honesty Scott-Grayson	8	25
Sydney Shaw	1	1
Sania Wells	0	3
Precious Johnson	0	1

Rebounding	Season	Career
Khayssa Richardson	4	4
Romi Levy	3	40
Aicha Coulibaly	3	18
Kaitlyn Duhon	2	2
Honesty Scott-Grayson	1	13
Sania Wells	1	2
Mya Pratcher	1	1
Precious Johnson	0	3

Assists	Season	Career
Sydney Shaw	8	8
Aicha Coulibaly	3	8
Honesty Scott-Grayson	2	15
Mar'Shaun Bostic	1	10
Jakayla Johnson	1	1
Sania Wells	0	12
Romi Levy	0	4
Carsen McFadden	0	1

(includes games where lead was shared)

2022-23 DOUBLE-DOUBLES

- Aicha Coulibaly - 24 pts, 10 reb vs. Sam Houston
- Romi Levy - 16 pts, 11 reb vs. Alabama State
- Romi Levy - 18 pts, 13 reb vs. Little Rock
- Aicha Coulibaly - 17 pts, 12 reb vs. UCF

Last Time an Auburn Team...

Scored 90 points	Auburn 91, Samford 37, in Auburn, Ala. (Dec. 18, 2022)
Scored 90 points in an SEC game	Auburn 95, Missouri 82, in Columbia, Mo. (Feb. 27, 2020)
Scored 100 points	Auburn 119, Sam Houston State 54, in Auburn, Ala. (Dec. 5, 2008)
Scored 100 points against an SEC opponent	Auburn 102, Tennessee 96, SEC Tournament in Albany, Ga. (Mar. 6, 1987)
Scored 100 points in an SEC regular-season game	Auburn 111, Vanderbilt 67, in Auburn, Ala. (Feb. 18, 1987)
Scored 100 points at home	Auburn 119, Sam Houston State 54, in Auburn, Ala. (Dec. 5, 2008)
Scored 100 points in a true road game	Auburn 103, Mercer 29, in Macon, Ga. (Feb. 23, 1987)
Scored 110+ points	Auburn 119, Sam Houston State 54, in Auburn, Ala. (Dec. 5, 2008)
Scored 80 points and lost	Indiana 96, Auburn 81, in Las Vegas, Nev. (Nov. 25, 2022)
Scored 90 points and lost	Kentucky 91, Auburn 90 [2OT], in Auburn, Ala. (Feb. 2, 1986)
Scored 100 points and lost	Never
Scored 50-59 points in a half	51 (1st half) vs. Charleston Southern in Auburn, Ala. (Nov. 26, 2021)
Scored 60 or more points in a half	62 (2nd half) vs. Drake in New Orleans, La. (Dec. 21, 2016)
Scored 30 or more points in a quarter	31 (2nd quarter) vs. Samford in Auburn, Ala. (Dec. 18, 2022)
Scored 50 points or less in a game	Ole Miss 79, Auburn 47, in Oxford, Miss. (Dec. 29, 2022)
Scored 50 points or less and won	Auburn 47, Missouri 45 [SEC] in Jacksonville, Fla. (March 3, 2016)
Scored 40 points or less in a game	South Carolina 75, Auburn 38, in Columbia, S.C. (Feb. 17, 2022)
Scored less than 10 points in a quarter	5 points (1st quarter) vs. Georgia Tech in Auburn, Ala. (Nov. 16, 2022)
Scored less than 20 points in a 1st half	15 points vs. Ole Miss in Auburn, Ala. (Feb. 24, 2022)
Scored less than 20 points in a 2nd half	17 points at South Carolina in Columbia, S.C. (Feb. 17, 2022)
Had 35+ rebound margin	36 - (52-16) vs. Alabama A&M in Normal, Ala. (Nov. 19, 2013)
Had 25+ rebound margin	33 - (53-26) vs. Grambling State in Auburn, Ala. (Nov. 6, 2018)
Had 20+ rebound margin	20 (51-31) vs. Alabama State in Auburn, Ala. (Nov. 16, 2021)
Attempted 30 free throws	30 - vs. Grambling in Auburn, Ala. (Dec. 18, 2021)
Attempted 35 free throws	35 - vs. Charleston Southern in Auburn, Ala. (Nov. 26, 2021)
Attempted 40 free throws	41 - vs. Alabama State in Auburn, Ala. (Nov. 15, 2006)
Attempted 5 free throws or less	3 - at Texas A&M in College Station, Texas (Feb. 23, 2020)
Did not attempt a free throw	Never
Made 20-24 free throws	21 - vs. South Alabama in Auburn, Ala. (Nov. 10, 2022)
Made 25+ free throws	26 - vs. Charleston Southern in Auburn, Ala. (Nov. 26, 2021)
Made 30 free throws	31 - vs. Northwestern State (31-43) (Dec. 30, 2003)
Had 25 assists	25 - vs. Ole Miss in Auburn, Ala. (Jan. 8, 2017)
Had 25 turnovers	27 - vs. Georgia in Auburn, Ala. (Jan. 3, 2021)
Had 10 turnovers or less	9 - vs. Little Rock in Auburn, Ala. (Nov. 30, 2022)
Had 25+ steals	Never
Had 20-24 steals	24 - vs. Samford in Auburn, Ala. (Dec. 18, 2022)
Had 15-19 steals	15 - vs. North Florida in Auburn, Ala. (Dec. 20, 2022)
Had 10-14 blocks	10 - vs. Louisiana Tech in Auburn, Ala. (Nov. 19, 2017)
Had 15+ blocks	15 - at Florida International in Miami, Fla. (Dec. 29, 2014)
Won an overtime game	Auburn 74, Dayton 72 [1OT] in Estero, Fla. (Nov. 30, 2019)
Lost an overtime game	Missouri 72, Auburn 63 [1OT] in Columbia, Mo. (Jan. 6, 2022)
Played a double overtime game	Auburn 70, Alabama 65 [2OT] in Auburn, Ala. (Feb. 27, 2014)
Played three or more overtimes	Never
Shot 70% for a half	71.4% (15-of-21), 2nd half vs. UL-Lafayette in Auburn, Ala. (Dec. 11, 2022)
Shot 60% for a game	60.4% (29-of-48) vs. Oklahoma State in Auburn, Ala. (Dec. 5, 2021)
Shot less than 30% for a game	25.0% (15-of-60) at Ole Miss in Oxford, Miss. (Dec. 29, 2022)
Shot 90-99.9% from the free throw line (min. 10 attempts)	90.5% (19-of-21) at Arkansas in Fayetteville, Ark. (Jan. 31, 2021)
Shot 100% from the free throw line (min. 10 attempts)	100% (16-of-16) vs. Texas A&M in Auburn, Ala. (Jan. 7, 2018)
Shot 50% on 3-pointers (minimum 5 attempts)	50.0% (6-of-12) vs. North Florida in Auburn, Ala. (Dec. 20, 2022)
Shot 20-30% in a half	22.9% (8-of-35), 2nd half at Ole Miss in Oxford, Miss. (Dec. 29, 2022)
Shot less than 20% in a half	19.4% (7-of-36), 1st half vs. South Carolina in Auburn, Ala. (Feb. 4, 2021)
Shot 55% or better and lost	58.1% (25-of-43) vs. Tennessee (Jan. 20, 2005)
Made 10+ 3-point field goals	10-of-20 vs. Samford in Auburn, Ala. (Dec. 18, 2022)
Failed to make a 3-point field goal	0-of-10 at Ole Miss in Oxford, Miss. (Dec. 29, 2022)
Had 60+ rebounds	61 - vs. Stephen F. Austin in Auburn, Ala. (Dec. 17, 2007)
Had 50-59 rebounds	51 vs. UCF in Auburn, Ala. (Dec. 3, 2022)
Defeated a Top-25 opponent	Auburn 65, #21 Georgia 60, in Auburn, Ala. (Feb. 20, 2022)
Defeated a Top-10 opponent	Auburn 71, #4 Tennessee 61, in Auburn, Ala. (Jan. 27, 2022)
Defeated a Top-25 opponent on the road	Auburn 59, #18 Georgia Tech 51, in Atlanta, Ga. (Nov. 21, 2021)

Last Time an Auburn Player...

Scored 25-29 points	26 - Aicha Coulibaly vs. Tennessee in Auburn, Ala. (Jan. 27, 2022)
Scored 30-34 points	31 - Honesty Scott-Grayson vs. North Carolina A&T in Auburn, Ala. (Dec. 15, 2022)
Scored 35 points	35 - DeWanna Bonner vs. Tennessee in Auburn, Ala. (Jan. 25, 2009)
Scored 40 points	41 - Conswella Sparrow vs. South Alabama (Feb. 17, 1998)
Had 15-19 rebounds	18 - Unique Thompson vs. Arkansas in Auburn, Ala. (Feb. 25, 2021)
Had 20+ rebounds	23 - Unique Thompson vs. Belmont in Auburn, Ala. (Dec. 20, 2020)
Had 10 assists	10 - Daisa Alexander vs. LSU in Auburn, Ala. (Feb. 16, 2020)
Had 15 assists	18 - Martha Monk vs. Alabama State (Feb. 18, 1981)
Had 5 blocks	6 - Unique Thompson vs. Louisiana Tech in Auburn, Ala. (Nov. 19, 2017)
Had 7 blocks	7 - Jassany Williams vs. Duke (Nov. 18, 2011)
Had 10 blocks	13 - Marita Payne vs. Arkansas (Feb. 3, 2005)
Had 5 steals	5 - Romi Levy vs. Samford in Auburn, Ala. (Dec. 18, 2022)
Had 8 steals	8 - Brandy Montgomery vs. East Carolina in Auburn, Ala. (Dec. 5, 2015)
Had 10 steals	10 - Kristen Mulligan vs. Northeast Illinois in Auburn, Ala. (Dec. 18, 1992)
Made 10 field goals	10 - Honesty Scott-Grayson vs. North Carolina A&T in Auburn, Ala. (Dec. 15, 2022)
Made 15 field goals	15 - Conswella Sparrow (15-16) vs. South Alabama (Feb. 17, 1998)
Attempted 20-24 field goals	20 - Aicha Coulibaly at Kentucky in Lexington, Ky. (Feb. 27, 2022)
Attempted 25 field goals	25 - Unique Thompson (7-25) at Georgia in Athens, Ga. (Feb. 11, 2021)
Made 5+ three-point field goals	5 - Annie Hughes vs. Charleston Southern in Auburn, Ala. (Nov. 26, 2021)
Made 8 three-point field goals	8 - Tiffany Krantz vs. Troy State in Auburn, Ala. (Nov. 21, 1997)
Attempted 10 three-point field goals	14 - Lauren Hansen vs. Drake in Estero, Fla. (Dec. 1, 2019)
Attempted 15 three-point field goals	16 - Brandy Montgomery at Marquette in Milwaukee, Wis. (Dec. 13, 2015)
Made 10 free throws	11 - Aicha Coulibaly vs. Charleston Southern in Auburn, Ala. (Nov. 26, 2021)
Made 15 free throws	Never
Shot 100% from the field (min. 5 attempts)	Romi Levy (6-6) vs. North Florida in Auburn, Ala. (Dec. 20, 2022)

**SEC PRESEASON POLL (Media Vote)**

**Order of Finish**

1. South Carolina
2. Tennessee
3. LSU
4. Arkansas
5. Ole Miss
6. Florida
7. Kentucky
8. Mississippi State
9. Georgia
10. Alabama
11. Texas A&M
12. Missouri
13. Auburn
14. Vanderbilt

**Player of the Year**

Aliyah Boston, South Carolina

**All-SEC First Team**

Aliyah Boston, South Carolina  
 Zia Cooke, South Carolina  
 Rickea Jackson, Tennessee  
 Jordan Horston, Tennessee  
 Tamari Key, Tennessee

**Preseason All-SEC Second-Team**

Brittany Davis, Alabama  
 Alexis Morris, LSU  
 Angel Reese, LSU  
 Jessika Carter, Mississippi State  
 Anastasia Hayes, Mississippi State  
 Hayley Frank, Missouri

**SEC PRESEASON POLL (Coaches' Vote)**

**Order of Finish**

1. South Carolina
2. Tennessee
3. LSU
4. Alabama
5. Arkansas
6. Mississippi State
7. Florida
8. Ole Miss
9. Georgia
10. Kentucky
11. Texas A&M
12. Missouri
13. Auburn
14. Vanderbilt

**Player of the Year**

Aliyah Boston, South Carolina

**All-SEC First Team**

Brittany Davis, Alabama  
 Alexis Morris, LSU  
 Angel Reese, LSU  
 Anastasia Hayes, Mississippi State  
 Aliyah Boston, South Carolina  
 Zia Cooke, South Carolina  
 Jordan Horston, Tennessee  
 Tamari Key, Tennessee

**All-SEC Second Team**

Makayla Daniels, Arkansas  
 Aicha Coulibaly, Auburn  
 Diamond Battles, Georgia  
 Madison Scott, Ole Miss  
 Jessika Carter, Mississippi State  
 Hayley Frank, Missouri  
 Victoria Saxton, South Carolina  
 Rickea Jackson, Tennessee

Shot 100% at the free throw line (min. 10 attempts)	12-12 - Daisa Alexander vs. Mississippi State (Feb. 20, 2020)
<b>Had a double-double</b>	<b>Aicha Coulibaly (17 pts/12 reb) vs. UCF in Auburn, Ala. (Dec. 3, 2022)</b>
Had 2 consecutive double-doubles	Aicha Coulibaly: 23/11 vs. Kennesaw, 17/12 at Alabama (Dec. 20, 2021-Jan. 2, 2022)
Had 3 consecutive double-doubles	Unique Thompson: 14/14 at Florida, 22/10 vs. Kentucky, 10/10 at Alabama (Jan. 17-24, 2021)
Had 13 consecutive double-doubles	Unique Thompson: First vs. BYU; last at Vandy (March 23, 2019-Jan. 2, 2020)
Had 18 consecutive double-doubles (AU record)	Lauretta Freeman: First vs. Furman, Last vs. Oral Roberts (Dec. 29, 1992-Feb. 23, 1993)
Had a double-double at halftime	Unique Thompson (16 pts/10 rebs) at Iowa State in Ames, Iowa (Nov. 13, 2018)
Two players had a double-double	Aicha Coulibaly (18p/10r) & Precious Johnson (18p/10r) at Kentucky (Feb. 27, 2022)
Recorded a double-double with points and assists	Janiah McKay (16 pts/10 assists) vs. Grambling State (Nov. 6, 2018)
Scored 20 points & had 20 rebounds	Unique Thompson (20 pts/23 reb) vs. Belmont in Auburn, Ala. (Dec. 20, 2020)
Had a triple-double	Whitney Boddie (24 pts./11 rebs./12 ast.) vs. Sam Houston State (Dec. 5, 2008)
<b>Two or more players scored 20 points</b>	<b>Coulibaly (22) &amp; Scott-Grayson (22) vs. Indiana in Las Vegas, Nev. (Nov. 25, 2022)</b>
Three players scored 20 points	Benton (23), Howard (22), Alexander (21) at Missouri in Columbia, Mo. (Feb. 27, 2020)
Two players scored 30 points	Laticia Morris (33) & Tara Williams (30) vs. South Alabama (Jan. 14, 1997)
Had 2 straight 25-point games	Janiah McKay: 27 at South Carolina, 26 vs. Arkansas (Jan. 11-14, 2018)
Had 3 straight 25-point games	Janiah McKay: 25 pts vs. Texas A&M, 27 pts at South Carolina, 26 pts vs. Arkansas (Jan. 7-14, 2018)
Zero players scored in double figures	at South Carolina in Columbia, S.C. (Feb. 17, 2022)
<b>Only one player scored in double figures</b>	<b>Aicha Coulibaly (20) vs. Missouri in Auburn, Ala. (Jan. 1, 2023)</b>
Five players scored in double figures	Thompson (19), Hughes (17), Scott-Grayson (16), Levy (12), Jordan (11) vs. N. Florida (Dec. 17, 2020)
Six players scored in double figures	McKay/Benton (16), Primm (15), Thompson (14), Alexander/Jones (13) vs. Grambling (Nov. 6, 2018)
Seven players scored in double figures	Carrier (19 pts.), Bonner (18 pts.), Smalley (16 pts.), Boddie (13 pts.), R. Hobbs (13 pts.), Hilliard (13 pts.) & S. Hobbs (10 pts.) vs. Sam Houston State (Dec. 5, 2008)
Two players had 10 rebounds	Aicha Coulibaly (10) and Precious Johnson (10) at Kentucky in Lexington, Ky. (Feb. 27, 2022)
Three players had 10 rebounds	J. Greenleaf (12 rebs.), D. Bonner (12 rebs.) & W. Boddie (10 rebs.) vs. Oakland (Nov. 21, 2007)
Played every minute	Honesty Scott-Grayson (40:00) at Alabama in Tuscaloosa, Ala. (Jan. 2, 2022)
Played 40 or more minutes in OT game	S. Wells (43:38) & H. Scott-Grayson (43:00) at Missouri in Columbia, Mo. (Jan. 6, 2022)
Attempted a slam dunk	Hasina Muhammad vs. St. John's in Auburn, Ala. (Dec. 6, 2013)
Made a shot from half-court or beyond	Brooke Moore (end 2nd quarter) vs. Alabama State in Auburn, Ala. (Dec. 29, 2018)
<b>Every Auburn player dressed scored</b>	<b>11 players vs. Samford in Auburn, Ala. (Dec. 18, 2022)</b>

**Last Time an Auburn Opponent...**

Shot less than 30% in a game (SEC)	Ole Miss - 27.4% (17-of-62) in Auburn, Ala. (Jan. 23, 2020)
<b>Shot less than 30% in a game (Non-conf)</b>	<b>Samford - 27.3% (15-of-55) in Auburn, Ala. (Dec. 18, 2022)</b>
Shot 60% or better in a game	Florida - 61.5% (32-of-52) in Auburn, Ala. (Jan. 9, 2020)
<b>Scored 90 points</b>	<b>Indiana 96, Auburn 81, in Las Vegas, Nev. (Nov. 25, 2022)</b>
Scored 100 points	Georgia 102, Auburn 72 in Athens, Ga. (Mar. 3, 1984)
Scored 100 points at Auburn	Tuskegee 105, Auburn 98 (2OT) (Feb. 12, 1979)
Had 25+ rebound margin	37 - South Carolina (62-25) in Columbia, S.C. (Feb. 17, 2022)
Had a 20-24 rebound margin	22 - Ole Miss (43-21) in Auburn, Ala. (Feb. 24, 2022)
<b>Scored 5 points or less in a quarter</b>	<b>5 - Samford (2nd quarter) in Auburn, Ala. (Dec. 18, 2022)</b>
<b>Scored less than 10 points in a quarter</b>	<b>9 - Samford (3rd quarter) in Auburn, Ala. (Dec. 18, 2022)</b>
Scored less than 10 points in all four quarters	Winthrop (9-8-8-8) in Auburn, Ala. (Dec. 16, 2015)
Scored 30 or more points in a quarter	30 - Kentucky (1st quarter) in Lexington, Ky. (Feb. 27, 2022)
Scored less than 10 points in a half	9 - USC Upstate (1st half) in Auburn, Ala. (Nov. 25, 2020)
<b>Scored less than 20 points in a 1st half</b>	<b>11 - Samford in Auburn, Ala. (Dec. 18, 2022)</b>
<b>Scored less than 20 points in a 2nd half</b>	<b>19 - UL-Lafayette in Auburn, Ala. (Dec. 11, 2022)</b>
Had 50 rebounds	62 - South Carolina in Columbia, S.C. (Feb. 17, 2022)
Had 25 assists	25 - Alabama in Auburn, Ala. (Feb. 14, 2021)
<b>Had 25-29 turnovers</b>	<b>27 - North Carolina A&amp;T in Auburn, Ala. (Dec. 15, 2022)</b>
<b>Had 30-34 turnovers</b>	<b>33 - Sam Houston in Auburn, Ala. (Nov. 8, 2022)</b>
<b>Had 35+ turnovers</b>	<b>36 - Samford in Auburn, Ala. (Dec. 18, 2022)</b>
Had 15 steals	21 - Belmont in Auburn, Ala. (Dec. 20, 2020)
Had 10 blocks	13 - LSU in Auburn, Ala. (Jan. 9, 2022)
<b>Failed to make a 3-point field goal</b>	<b>UCF (0-8) in Auburn, Ala. (Dec. 3, 2022)</b>
<b>Attempted 35 free throws</b>	<b>43 - Sam Houston in Auburn, Ala. (Nov. 8, 2022)</b>
Made 30 free throws	30 - Arkansas (Jan. 22, 1995)
Made 10+ three-point field goals	10 - Kentucky in Lexington, Ky. (Feb. 27, 2022)
Made 15+ three-point field goals	15 - Alabama in Auburn, Ala. (Feb. 14, 2021)
<b>Scored 41-50 points in a game</b>	<b>49 - North Florida in Auburn, Ala. (Dec. 20, 2022)</b>
<b>Scored 31-40 points in a game</b>	<b>37 - Samford in Auburn, Ala. (Dec. 18, 2022)</b>
Scored 30 points or less	26 - Georgia in Athens, Ga. (Feb. 22, 2015)
Scored 25 points or less	25 - Puerto Rico-Mayaguez (Dec. 17, 2000)

**Last Time an Opposing Player...**

Scored 30+ points (non-conference)	35 - Ajah Wayne of Old Dominion in Auburn, Ala. (Nov. 14, 2019)
Scored 30+ points (SEC)	32 - Rhynne Howard of Kentucky in Lexington, Ky. (Feb. 27, 2022)
Scored 35+ points (all games)	41 - Jasmine Walker of Alabama in Auburn, Ala. (Feb. 14, 2021)
Scored 40+ points (all games)	41 - Jasmine Walker of Alabama in Auburn, Ala. (Feb. 14, 2021)
Attempted 25 field goals	27 - Jantel Lavender (9-27) of Ohio State (Nov. 23, 2008)
Scored 20 points & had 20 rebounds	Young of Baylor in the WNIT Championship Game, (20 pts./25 rebs.) (Apr. 4, 2003)
Two players scored 20 points	Rhynne Howard (32) and Dre'una Edwards (25) of Kentucky in Lexington, Ky. (Feb. 27, 2022)
Three players scored 20 points	by LSU in Baton Rouge, Chatman (22 pts), Johnson (21 pts) & Lowery (20 pts) (Jan. 12, 1991)
<b>Five players scored in double figures</b>	<b>Holmes (26), Garzon (21), Parris (16), McNeil (16), Scalia (12) of Indiana (Nov. 25, 2022)</b>
Six players scored in double figures	Williams (10), Lewis (13), Bonds (18), Peoples (10), Miller (12), Svete (12) of Florida (Jan. 26, 2014)
<b>Recorded a double-double</b>	<b>Mackenzie Holmes (26 pts/12 reb) of Indiana in Las Vegas, Nev. (Nov. 25, 2022)</b>
Recorded a double-double with points and assists	Tyasha Harris (12 pts/11 ast) of South Carolina in Columbia, S.C. (Jan. 11, 2018)
Recorded a triple-double	Ceira Ricketts (14 pts./13 rebs./12 ast.) of Arkansas (Jan. 18, 2009)
Two players recorded a double-double	I. Allen (21p/15r) & A. Wayne (19p/11r) of Old Dominion in Norfolk, Va. (Nov. 14, 2021)
Committed 10+ turnovers	10 - Shaquera Wade of Alabama in Greenville, S.C. (March 7, 2019)
Had 15-19 rebounds	15 - by N'dea Jones of Texas A&M in Auburn, Ala. (Jan. 24, 2019)
Had 20+ rebounds	21 - Ayana Mitchell of LSU in Baton Rouge, La. (March 3, 2019)
Had 10 assists	10 - Jazmine Massengill of Kentucky in Lexington, Ky. (Feb. 27, 2022)
Had 15 assists	16 - Cindy McMahan of Alabama-Huntsville (Nov. 24, 1980)
Had 5 blocks	6 - Jenna Staiti of Georgia in Athens, Ga. (Feb. 11, 2021)
Had 10 blocks	Never
<b>Had 5 steals</b>	<b>5 - Lanay Wheaton of UL-Lafayette in Auburn, Ala. (Dec. 11, 2022)</b>
Made 15 field goals	15 - Chamique Holdsclaw (15-21) of Tennessee (Feb. 1, 1998)
Made 10 3-point field goals	11 - Morgan Eye (11-18) of Missouri in Columbia, Mo. (Jan. 6, 2013)

**Specialty Statistics (Auburn-Opponent)**

Opponent	Points in the Paint	Points off Turnovers	2nd-Chance Points	Fast-Break Points	Bench Points
Sam Houston	50-24	31-25	20-24	27-18	28-40
South Alabama	34-26	28-10	15-18	10-5	12-43
Georgia Tech	32-26	14-10	22-12	8-3	16-12
Alabama State	40-30	27-6	22-14	19-0	42-11
vs. Indiana	32-46	15-11	16-11	9-10	20-20
vs. Colorado State	26-26	12-8	6-7	17-11	25-15
Little Rock	32-28	12-6	8-8	14-3	16-13
UCF	42-24	26-14	13-9	23-7	33-17
UL-Lafayette	26-22	25-17	2-5	13-4	31-9
North Carolina A&T	28-26	29-14	18-17	18-19	10-22
Samford	34-20	50-12	13-4	24-7	45-28
North Florida	28-8	25-11	4-10	20-2	19-12
at Ole Miss	20-52	8-19	9-12	5-13	15-21
Missouri	20-28	13-6	3-4	9-14	19-17

**Lead-Deficit Comparison**

Opponent	Largest Lead	Largest Deficit	Lead Changes	Ties	Result
Sam Houston	26 (3rd, 3:32)	1 (1st, 6:25)	4	2	W, 90-76
South Alabama	15 (3rd, 5:56)	4 (2nd, 8:44)	2	4	W, 71-62
Georgia Tech	3 (1st, 9:22)	15 (2nd, 4:53)	3	1	L, 51-57
Alabama State	39 (4th, 0:44)	3 (1st, 8:59)	1	1	W, 88-49
vs. Indiana	2 (1st, 6:47)	15 (2nd, 3:55)	6	5	L, 81-96
vs. Colorado State	6 (3rd, 6:09)	8 (2nd, 7:12)	18	8	W, 74-73
Little Rock	26 (3rd, 3:56)	--	0	0	W, 70-48
UCF	43 (4th, 3:06)	2 (1st, 8:48)	1	1	W, 86-46
UL-Lafayette	40 (4th, 0:09)	--	0	0	W, 81-41
North Carolina A&T	29 (3rd, 6:30)	--	0	0	W, 79-63
Samford	56 (4th, 5:01)	--	0	0	W, 91-37
North Florida	28 (4th, 0:09)	1 (1st, 4:54)	2	2	W, 77-49
at Ole Miss	--	35 (4th, 2:22)	0	1	L, 47-79
Missouri	3 (1st, 3:42)	10 (3rd, 2:48)	9	4	L, 56-62

**Scoring Breakdown**

(Percentage of total points in parentheses)

Opponent	Sr.	Jr.	So.	Fr.	Starters	Bench	2-pt FG	3-pt FG	FTs
Sam Houston	24	26	9	31	62 (68.9)	28 (31.1)	58 (64.4)	12 (13.3)	20 (22.2)
South Alabama	10	21	6	34	59 (83.1)	12 (16.9)	38 (53.5)	12 (16.9)	21 (29.6)
Georgia Tech	11	19	2	19	35 (68.6)	16 (31.4)	36 (70.6)	6 (11.8)	9 (17.6)
Alabama State	16	28	23	21	46 (52.2)	42 (47.8)	56 (63.6)	24 (27.3)	8 (9.1)
vs. Indiana	27	30	7	17	61 (75.3)	20 (24.7)	42 (51.9)	24 (29.6)	15 (18.5)
vs. Colorado State	25	25	7	17	49 (66.2)	25 (33.8)	44 (59.5)	15 (20.3)	15 (20.3)
Little Rock	24	12	20	14	56 (80.0)	14 (20.0)	48 (68.6)	12 (17.1)	10 (14.2)
UCF	23	29	15	19	53 (61.6)	33 (38.4)	54 (62.8)	18 (20.9)	14 (16.3)
UL-Lafayette	23	27	9	22	50 (61.7)	31 (29.3)	30 (37.0)	36 (44.4)	15 (18.5)
North Carolina A&T	31	3	16	29	69 (87.3)	10 (12.7)	44 (55.7)	21 (26.6)	14 (17.7)
Samford	24	23	18	26	46 (50.5)	45 (49.5)	44 (48.4)	30 (33.0)	17 (18.7)
North Florida	24	5	18	30	58 (75.3)	19 (24.7)	48 (62.3)	18 (23.4)	11 (14.8)
at Ole Miss	0	15	16	16	32 (68.1)	15 (31.9)	30 (63.8)	0 (0.0)	17 (36.2)
Missouri	8	31	8	9	37 (66.1)	19 (33.9)	32 (57.1)	6 (10.7)	18 (32.1)

**Comparison Statistics (Auburn/Opponent)**

Opponent	1st	2nd	Score	Mar	Total FG	FG Pct	3-Pointers	3FG Pct	Free Throws	FT Pct	Reb.	Mar	Assist	TO	Blk	Stl	Fouls
Sam Houston	47-36	43-40	90-76	+14	33-71/21-56	.465/.375	4-7/5-15	.571/.333	20-25/29-43	.800/.674	40/45	(5)	19/10	23/33	9/5	13/14	30/27
South Alabama	35-27	36-35	71-62	+9	23-61/21-65	.377/.323	4-20/5-19	.200/.263	21-26/15-21	.808/.714	41/47	(6)	9/7	15/20	9/0	9/7	16/24
Georgia Tech	25-32	26-25	51-57	(6)	20-76/20-50	.263/.400	2-19/4-8	.105/.500	9-12/13-22	.750/.591	51/39	+12	8/8	19/22	4/2	9/8	20/18
Alabama State	42-23	46-26	88-49	+39	36-71/20-57	.507/.351	8-19/3-14	.421/.214	8-15/6-10	.533/.600	43/32	+11	18/5	13/26	5/2	15/5	19/14
Indiana	39-51	42-45	81-96	(15)	29-69/33-61	.420/.541	8-20/8-23	.400/.348	15-24/22-25	.625/.880	32/33	(1)	11/18	14/12	7/3	4/7	20/17
Colorado State	42-39	32-34	74-73	+1	27-59/24-51	.458/.471	5-14/8-21	.357/.381	15-20/17-20	.750/.850	31/25	+6	13/15	13/11	1/0	3/8	18/13
Little Rock	37-24	33-24	70-48	+22	28-68/18-61	.412/.295	4-11/0-3	.364/.000	10-14/12-21	.714/.571	41/48	(7)	6/8	9/17	8/1	9/3	17/17
UCF	46-17	40-29	86-46	+40	33-69/13-58	.478/.224	6-13/0-8	.462/.000	14-19/20-28	.737/.714	51/33	+18	13/0	17/18	9/2	10/7	22/14
UL-Lafayette	36-22	45-19	81-41	+40	27-48/15-52	.563/.288	12-22/1-8	.545/.125	15-23/10-24	.652/.417	39/29	+10	19/4	24/20	9/2	11/12	26/21
N.C. A&T	33-22	46-41	79-63	+16	29-72/17-52	.403/.327	7-22/3-10	.318/.300	14-20/26-33	.700/.788	39/44	(5)	14/8	14/27	3/3	13/7	26/19
Samford	47-11	44-26	91-37	+54	32-63/15-55	.508/.273	10-20/3-19	.500/.158	17-20/4-5	.850/.800	35/35	0	22/5	17/36	8/2	24/13	13/22
North Florida	38-23	39-26	77-49	+28	30-57/16-55	.526/.291	6-12/7-18	.500/.389	11-15/10-16	.733/.625	33-34	(1)	13/7	20/25	7/0	15/7	16/16
Ole Miss	23-39	24-40	47-79	(32)	15-60/31-68	.250/.456	0-10/4-13	.000/.308	17-28/13-22	.607/.591	37-53	(16)	7/15	18/15	2/3	6/5	19/23
Missouri	28-29	28-33	56-62	(6)	18-50/23-53	.360/.434	2-12/7-21	.167/.333	18-21/9-14	.857/.643	28/33	(5)	9/9	15/16	2/1	5/8	16/22

**Game-by-Game Leaders**

	Points	Rebounds	Assists	Steals	Blocked Shots
Sam Houston	24-Aicha Coulibaly	10-Aicha Coulibaly	5-Honesty Scott-Grayson	5-Honesty Scott-Grayson	3-Kaitlyn Duhon
South Alabama	19-Aicha Coulibaly	7-Richardson/Duhon	3-Scott-Grayson/Shaw	3-Kaitlyn Duhon	2-Duhon/Graves
Georgia Tech	11-Coulibaly/Scott-Grayson	10-Mya Pratcher	4-Aicha Coulibaly	4-Aicha Coulibaly	1-(four players)
Alabama State	21-Aicha Coulibaly	11-Romi Levy	6-Sydney Shaw	6-Aicha Coulibaly	2-Wells/Levy
vs. Indiana	22-Coulibaly/Scott-Grayson	6-Honesty Scott-Grayson	5-Sydney Shaw	3-Aicha Coulibaly	2-Coulibaly/Pratcher
vs. Colorado State	16-Coulibaly/Scott-Grayson	9-Kharyssa Richardson	5-Aicha Coulibaly	2-Coulibaly/Bostic	(none)
Little Rock	20-Honesty Scott-Grayson	13-Romi Levy	3-Sydney Shaw	3-Kaitlyn Duhon	3-Kaitlyn Duhon
UCF	22-Honesty Scott-Grayson	12-Aicha Coulibaly	4-Aicha Coulibaly	2-(three players)	3-Sania Wells
UL-Lafayette	15-Shaw/Coulibaly	8-Romi Levy	6-Sydney Shaw	2-Duhon/Scott-Grayson	3-Levy/Coulibaly
North Carolina A&T	31-Honesty Scott-Grayson	6-Kharyssa Richardson	5-Sydney Shaw	5-Honesty Scott-Grayson	2-Kharyssa Richardson
Samford	14-Honesty Scott-Grayson	8-Sania Wells	6-Sydney Shaw	5-Romi Levy	2-(three players)
North Florida	17-Honesty Scott-Grayson	7-Kaitlyn Duhon	4-Sydney Shaw	4-Sydney Shaw	2-Mya Pratcher
at Ole Miss	13-Aicha Coulibaly	8-Kharyssa Richardson	3-Mar'Shaun Bostic	2-Mar'Shaun Bostic	1-Richardson/Bostic
Missouri	20-Aicha Coulibaly	7-Aicha Coulibaly	4-Jakayla Johnson	2-Mar'Shaun Bostic	1-Levy/Richardson

**2022-23 Starting Lineups**

	Point Guard (1)	Wing (2)	Wing (3)	Wing (4)	Post (5)
Sam Houston	Shaw	Scott-Grayson	Duhon	Coulibaly	Richardson
South Alabama	Shaw	Scott-Grayson	Duhon	Coulibaly	Richardson
Georgia Tech	Shaw	Scott-Grayson	Duhon	Coulibaly	Richardson
Alabama State	Shaw	Scott-Grayson	Duhon	Coulibaly	Richardson
vs. Indiana	Shaw	Scott-Grayson	Duhon	Coulibaly	Richardson
vs. Colorado State	Shaw	Scott-Grayson	Duhon	Coulibaly	Richardson
Little Rock	Shaw	Scott-Grayson	J. Johnson	Levy	Coulibaly
UCF	Wells	Scott-Grayson	J. Johnson	Levy	Coulibaly
UL-Lafayette	Shaw	Scott-Grayson	J. Johnson	Levy	Coulibaly
North Carolina A&T	Shaw	Scott-Grayson	Bostic	Levy	Richardson
Samford	Shaw	Scott-Grayson	Bostic	Levy	Richardson
North Florida	Shaw	Scott-Grayson	J. Johnson	Levy	Richardson
at Ole Miss	Shaw	P. Johnson	Coulibaly	Levy	Richardson
Missouri	Shaw	J. Johnson	Coulibaly	Levy	Richardson

**Record by Starting Lineup**

Shaw, Scott-Grayson, Duhon, Coulibaly, Richardson .....	4-2 (.667)
Shaw, Scott-Grayson, J. Johnson, Coulibaly, Levy .....	2-0 (1.000)
Wells, Scott-Grayson, J. Johnson, Coulibaly, Levy .....	1-0 (1.000)
Shaw, Scott-Grayson, Bostic, Levy, Richardson .....	2-0 (1.000)
Shaw, Scott-Grayson, J. Johnson, Levy, Richardson .....	1-0 (1.000)
Shaw, P. Johnson, Coulibaly, Levy, Richardson .....	0-1 (.000)
Shaw, J. Johnson, Coulibaly, Levy, Richardson .....	0-1 (.000)



# Johnnie HARRIS

Head Coach

Second Season at Auburn • 24th Season in college coaching

Pine Bluff, Ark. • Arkansas Baptist, 1996

Johnnie Harris enters her second year as head coach for Auburn women's basketball in 2022-23. A long-time Southeastern Conference assistant and 2018 WBCA National Assistant Coach of the Year, Harris was named Auburn women's basketball head coach on April 3, 2021.

Her first season on the Plains saw Auburn double its win total from the previous season and pick up three victories over nationally ranked opponents. Her first top-25 win came Nov. 21 with a 59-51 win at Georgia Tech, Auburn's first road win over a ranked foe since 2014. The biggest win of the season, and one of Auburn's biggest in decades, came Jan. 27 when the Tigers shocked No. 4 Tennessee 71-61 at home for their first SEC win of the season and their first win over a top-5 opponent since 1997. The Tigers added one more top-25 win, a 65-60 victory over No. 21 Georgia on Feb. 20. Sophomore Aicha Coulibaly was named to the All-SEC Second Team, and the Tigers landed a consensus top-25 recruiting class for 2022-23.

Prior to her arrival at Auburn, Harris spent 16 years combined at Arkansas, Texas A&M and Mississippi State, and spent the 2020-21 season as the Associate Head Coach at the University of Texas. She helped Texas to an Elite Eight appearance during the 2020-21 season, and she worked alongside Longhorn head coach Vic Schaefer the previous 10 years assisting Mississippi State to a pair of NCAA Championship game appearances. She was a central part of Mississippi State's success those eight seasons and is considered one of the nation's top recruiters.

Harris helped lead Mississippi State to a 221-62 [.781] record and five NCAA Tournament berths, including NCAA Championship Game appearances in 2017 and 2018. During that time, the Bulldogs also won the program's first Southeastern Conference regular-season championship and SEC Tournament Championship.

Harris' pupils in the past were some of the best in Mississippi State school history, led by Teaira McCowan, who Harris mentored during McCowan's record-setting junior and senior campaigns from 2017-19. The 2019 SEC Player of the Year and a consensus First-Team All-American, McCowan finished her career as Mississippi State's leader in rebounds and field-goal percentage, while ranking second in blocks and fourth in points and field-goals made.

The individual development McCowan showed during Mississippi State's run to a second consecutive national title game caught the attention of the coaching community, as Harris was tabbed the WBCA National Assistant Coach of the Year for the 2017-18 season.

In 2018-19, Harris helped transfer forward Anriel Howard combine with McCowan to create one of the best front courts in the country. In her lone season with the Bulldogs, Howard earned first-team All-SEC recognition by the AP and league coaches after averaging 16.4 points and 8.4 rebounds per game. Both McCowan [No. 3, Indiana Fever] and Howard [No. 24, Seattle Storm] were selected in the 2019 WNBA Draft.

Another Harris product, Chinwe Okorie, was an integral part of the Bulldogs' runs to the Final Four and 2016 Sweet 16 and finished her MSU career sixth in program annals in field-goal percentage, shooting 52.1 percent over 109 games. She raised her scoring average and field goal percentage each season of her three-year career, capped by her 7.5 ppg average on 56.4 percent shooting as a senior.

Harris helped guide Texas A&M to four Sweet 16 appearances in her five seasons, including the program's first national championship in 2010-11. During her tenure with the Aggies, Harris helped sign and mentor junior college All-Americans Danielle Adams and Tanisha Smith.

Prior to her stop in College Station, Harris spent three seasons at Arkansas, landing some of the Lady Razorbacks' top recruiting classes in program history. She signed Laura Ervin, a junior college All-American who went on to garner Second Team All-SEC accolades, as well as Freshman All-SEC selection Donica Cosby.

Harris has had the opportunity to learn from some of the game's top coaches, including Hall of Famer Kay Yow at N.C. State. She joined the program in the 2003-04 season and assisted the squad to the NCAA Tournament for the first time in two years. Her first recruiting class in Raleigh was rated as one of the best in the nation. She also garnered a commitment from Gillian Goring, the nation's No. 1 post player who went on to play for the Washington Mystics.

Prior to jumping to the Division I level, Harris made her mark on the junior college level as an assistant coach at Arkansas-Fort Smith, where she brought in key players who led the school to the NJCAA Final Four in 2004. In two seasons coaching under the legendary Louis Whorton, she inked the nation's No. 1 class and a 34-8 record. UAFS's 2002-03 team went 26-2 and won a share of the Bi-State Conference championship.

The Arkansas-Fort Smith position kept the Pine Bluff native in her home state after she started her coaching career as a graduate assistant at Little Rock. Her hard work at UALR earned her a promotion to a full-time assistant position in 2000.

Harris is the mother of two children, Marcus and Kiera, and the legal guardian of Lily. She also has two grandchildren, Samarah and Kaiden.

## Harris Year-by-Year

### Arkansas-Little Rock, Assistant Coach (1999-2001)

Year	Record	Conf.	Other Information
1999-00	5-23	1-15	
2000-01	6-22	0-16	

### Arkansas-Fort Smith, Assistant Coach (2001-03)

Year	Record	Conf.	Other Information
2001-02	26-2		
2002-03	34-8		Conference Champions

### NC State, Assistant Coach (2003-04)

Year	Record	Conf.	Other Information
2003-04	17-15	8-8	NCAA First Round

### Arkansas, Assistant Coach (2004-07)

Year	Record	Conf.	Other Information
2004-05	17-14	3-11	WNIT Second Round
2005-06	13-15	5-9	
2006-07	18-13	3-11	

### Texas A&M, Assistant Coach (2007-12)

Year	Record	Conf.	Other Information
2007-08	29-8	11-5	NCAA Elite Eight Big 12 Tournament Champions
2008-09	27-8	11-5	NCAA Sweet 16
2009-10	26-8	10-6	NCAA Second Round Big 12 Tournament Champions
2010-11	33-5	13-3	National Champions
2011-12	24-11	11-7	NCAA Sweet 16

### Mississippi State, Associate Head Coach (2013-20)

Year	Record	Conf.	Other Information
2012-13	13-17	5-11	
2013-14	22-14	5-11	WNIT Quarterfinals
2014-15	27-7	11-5	NCAA Second Round
2015-16	28-8	11-5	NCAA Sweet 16
2016-17	34-5	13-3	National Runner-Up
2017-18	37-2	16-0	National Runner-Up SEC Regular Season Champions
2018-19	33-3	15-1	NCAA Elite Eight SEC Regular Season & Tournament Champions
2019-20	27-6	13-3	(no postseason; pandemic)

### Texas, Associate Head Coach (2020-21)

Year	Record	Conf.	Other Information
2020-21	21-10	11-7	NCAA Elite Eight

### Auburn, Head Coach (2021-)

Year	Record	Conf.	Other Information
2021-22	10-18	2-14	
2022-23	10-4	0-2	



# Amoura GRAVES

# #0

Sophomore • Guard/Forward • 6-0  
Ponchatoula, La. • Ponchatoula HS

- Season-high 5 points, career-high 3 assists in win over Alabama State (11/20)
- 4 rebounds, 2 blocks in 17 minutes off the bench in win over South Alabama (11/10)
- Averaged 1.8 points, 1.8 rebounds, 0.5 steals over 26 games as a freshman
- Career-high 8 points, 4 rebounds, 2 steals, 2 assists at Vanderbilt (1/30/22)
- 2020 LSWA All-State First Team; averaged 23.5 points/game as HS junior
- Led Ponchatoula HS to 31-1 record and state No. 1 ranking as a senior
- Ranked No. 203 overall prospect nationally by Prospects Nation

### SEASON HIGHS

Points	5	vs Alabama State	11/20/22
Rebounds	4	vs South Alabama	11/10/22
Assists	3	vs Alabama State	11/20/22
Blocks	2	vs South Alabama	11/10/22
Steals	1	vs Alabama State	11/20/22
Field Goals	2	vs Alabama State	11/20/22
Field Goal Attempts	3	vs South Alabama	11/10/22
3-Point Field Goals	1	vs Alabama State	11/20/22
3-Point FG Attempts	3	vs South Alabama	11/10/22
Free Throws			
Free Throw Attempts			

Opponent	Start	Min.	FG-A	3PT-A	FT-A	O-D-T	PF	Ast.	TO	Blk.	St.	Pts.
SAM HOUSTON		10	0-1	0-0	0-0	0-0-0	2	0	1	0	0	0
SOUTH ALABAMA		17	0-3	0-3	0-0	1-3-4	1	0	2	2	0	0
GEORGIA TECH						--DNP--						
ALABAMA STATE		13	2-2	1-1	0-0	1-1-2	1	3	0	0	1	5
vs. Indiana						--DNP--						
vs. Colorado State						--DNP--						
LITTLE ROCK						--DNP--						
UCF						--DNP--						
UL-LAFAYETTE						--DNP--						
NORTH CAROLINA A&T						--DNP--						
SAMFORD						--DNP--						
NORTH FLORIDA						--DNP--						
at Ole Miss						--DNP--						
MISSOURI						--DNP--						
at South Carolina												
ALABAMA												
at LSU												
at Mississippi State												
OLE MISS												
at Kentucky												
FLORIDA												
ARKANSAS												
SOUTH CAROLINA												
at Alabama												
TEXAS A&M												
at Tennessee												
at Georgia												
VANDERBILT												

### CAREER HIGHS

Points	8	2x; last at Vanderbilt	1/30/22
Rebounds	5	at Arkansas	2/10/22
Assists	3	vs Alabama State	11/20/22
Blocks	2	2x; last vs Alabama State	11/20/22
Steals	2	4x; last at Vanderbilt	1/30/22
Field Goals	3	2x; last at Vanderbilt	1/30/22
Field Goal Attempts	5	at Vanderbilt	1/30/22
3-Point Field Goals	2	2x; last at Vanderbilt	1/30/22
3-Point FG Attempts	3	3x; last vs South Alabama	11/10/22
Free Throws	2	2x; last at Arkansas	2/10/22
Free Throw Attempts	2	4x; last at Arkansas	2/10/22

### GRAVES' CAREER STATISTICS

SEASON	TEAM	GP-GS	MIN/AVG	Field Goals		3-Point		F-Throws		Rebounds				Scoring						
				FG-FGA	FG%	3FG-3FGA	3FG%	FT-FTA	FT%	OFF	DEF	TOT	AVG	PF-FO	A	TO	BLK	STL	PTS	AVG
2021-22	AUB	26-0	308/11.8	17-51	.333	7-22	.318	5-9	.556	23	23	46	1.8	19-0	7	7	3	12	46	1.8
2022-23	AUB	3-0	41/13.5	2-6	.333	1-4	.250	0-0	.000	2	4	6	2.0	4-0	3	3	2	1	5	1.7
<b>TOTAL</b>		<b>29-0</b>	<b>348/12.0</b>	<b>19-57</b>	<b>.333</b>	<b>8-26</b>	<b>.308</b>	<b>5-9</b>	<b>.556</b>	<b>25</b>	<b>27</b>	<b>52</b>	<b>1.8</b>	<b>23-0</b>	<b>10</b>	<b>10</b>	<b>5</b>	<b>13</b>	<b>51</b>	<b>1.8</b>



# Mya PRATCHER

# #1

Freshman • Forward • 6-1  
Memphis, Tenn. • Bartlett HS

- Season-high 8 points, all from the free-throw line, vs. Samford (12/18)
- Grabbed season-high 10 rebounds vs. Georgia Tech (11/16)
- Scored 5 points in Auburn debut vs. Sam Houston (11/8)
- Averaged 7.6 points, 5.2 rebounds, 1.8 steals, 1.5 assists as high school senior at Bartlett HS in Memphis
- No. 4-ranked player in Tennessee class of 2022 by Prep Girls Hoops
- 2021 All-Metro Division I team as a junior

#### SEASON/CAREER HIGHS

Points		
8	vs Samford	12/18/22
Rebounds		
10	vs Georgia Tech	11/16/22
Assists		
1	2x; last vs. Missouri	1/1/23
Blocks		
2	3x; last vs. North Florida	12/20/22
Steals		
1	6x; last vs. Missouri	1/1/23
Field Goals		
3	vs Georgia Tech	11/16/22
Field Goal Attempts		
7	vs Georgia Tech	11/16/22
3-Point Field Goals		
3-Point FG Attempts		
1	vs Georgia Tech	11/16/22
Free Throws		
8	vs Samford	12/18/22
Free Throw Attempts		
10	vs Samford	12/18/22

Opponent	Start	Min.	FG-A	3PT-A	FT-A	O-D-T	PF	Ast.	TO	Blk.	St.	Pts.
SAM HOUSTON		16	1-2	0-0	3-3	0-1-1	3	0	1	0	0	5
SOUTH ALABAMA						--DNP--						
GEORGIA TECH		18	3-7	0-1	0-0	6-4-10	2	0	2	0	1	6
ALABAMA STATE		13	1-4	0-0	0-0	0-3-3	0	0	2	0	0	2
vs. Indiana		7	0-1	0-0	0-0	1-1-2	0	0	0	2	0	0
vs. Colorado State		5	0-0	0-0	0-0	0-2-2	0	0	1	0	0	0
LITTLE ROCK		18	0-2	0-0	0-2	2-3-5	2	0	3	1	1	0
UCF		9	2-2	0-0	0-0	0-2-2	3	0	1	2	1	4
UL-LAFAYETTE		13	1-2	0-0	1-2	0-2-2	1	0	0	0	1	3
NORTH CAROLINA A&T		18	1-2	0-0	1-2	4-0-4	4	0	0	0	0	3
SAMFORD		14	0-0	0-0	8-10	1-2-3	3	1	2	1	1	8
NORTH FLORIDA		18	0-2	0-0	0-0	0-3-3	1	0	3	2	0	0
at Ole Miss		11	1-2	0-0	0-0	0-1-1	2	0	0	0	0	2
MISSOURI		20	0-4	0-0	5-6	1-2-3	1	1	2	0	1	5
at South Carolina												
ALABAMA												
at LSU												
at Mississippi State												
OLE MISS												
at Kentucky												
FLORIDA												
ARKANSAS												
SOUTH CAROLINA												
at Alabama												
TEXAS A&M												
at Tennessee												
at Georgia												
VANDERBILT												

#### PRATCHER'S CAREER STATISTICS

SEASON	TEAM	GP-GS	MIN/AVG	Field Goals		3-Point		F-Throws		Rebounds				Scoring						
				FG-FGA	FG%	3FG-3FGA	3FG%	FT-FTA	FT%	OFF	DEF	TOT	AVG	PF-FO	A	TO	BLK	STL	PTS	AVG
2022-23	AUB	13-0	180/13.9	9-31	.290	0-1	.000	18-25	.720	12	29	41	3.2	21-0	4	20	8	8	36	2.8
<b>TOTAL</b>		<b>13-0</b>	<b>180/13.9</b>	<b>9-31</b>	<b>.290</b>	<b>0-1</b>	<b>.000</b>	<b>18-25</b>	<b>.720</b>	<b>12</b>	<b>29</b>	<b>41</b>	<b>3.2</b>	<b>21-0</b>	<b>4</b>	<b>20</b>	<b>8</b>	<b>8</b>	<b>36</b>	<b>2.8</b>



# Sania WELLS

# #2

Senior • Guard • 5-7  
Moss Point, Miss. • East Central HS

- Career-high 8 rebounds along with 10 points, 3 assists, 3 steals vs. Samford (12/18)
- Scored 12 points and had 4 assists off the bench in season-opener vs. Sam Houston (11/8)
- Set Auburn single-season record and led SEC in free-throw percentage in 2021-22, hitting 90.5% (76-84) at the free throw line; ranked 7th in NCAA
- Started 25 games, played in 27 as a junior; averaged 9.1 points, 2.3 rebounds, 2.6 assists, 1.1 steals
- Matched career-high with 3 steals, had 11 points and was 6-6 FTs in win over #4 Tennessee (1/27)
- Career-high 20 points in OT loss at Missouri (1/6)
- Career-high 7 assists, 6-6 FT in win over Alabama State (11/16)

**SEASON HIGHS**

Points	12	vs Sam Houston	11/8/22
Rebounds	8	vs Samford	12/18/22
Assists	4	vs Sam Houston	11/8/22
Blocks	3	vs. UCF	12/3/22
Steals	3	vs Samford	12/18/22
Field Goals	4	3x; last vs Samford	12/18/22
Field Goal Attempts	10	vs Sam Houston	11/8/22
3-Point Field Goals	3	vs. UL-Lafayette	12/11/22
3-Point FG Attempts	5	4x; last vs. Missouri	1/1/23
Free Throws	3	vs Sam Houston	11/8/22
Free Throw Attempts	4	vs. UCF	12/3/22

Opponent	Start	Min.	FG-A	3PT-A	FT-A	0-D-T	PF	Ast.	TO	Blk.	St.	Pts.
SAM HOUSTON		22	4-10	1-2	3-3	0-1-1	2	4	1	1	0	12
SOUTH ALABAMA		14	1-6	0-2	2-2	1-0-1	1	2	0	1	1	4
GEORGIA TECH		4	0-1	0-1	0-0	1-0-1	1	0	2	0	0	0
ALABAMA STATE		15	3-7	2-5	2-3	0-3-3	0	0	1	2	0	10
vs. Indiana		8	2-2	1-1	0-0	0-1-1	0	0	0	0	0	5
vs. Colorado State		20	4-5	0-0	1-2	1-1-2	1	2	0	0	1	9
LITTLE ROCK		21	2-9	0-2	0-0	0-1-1	2	1	0	0	1	4
UCF	*	29	0-5	0-1	1-4	0-2-2	1	3	1	3	2	1
UL-LAFAYETTE		11	3-5	3-5	1-2	1-1-2	2	1	3	0	1	10
NORTH CAROLINA A&T		17	0-7	0-3	0-0	1-2-3	1	0	3	0	2	0
SAMFORD		18	4-9	2-5	0-0	1-7-8	2	3	3	0	3	10
NORTH FLORIDA		19	3-5	1-3	0-0	0-0-0	2	1	4	0	1	7
at Ole Miss		19	0-6	0-1	0-0	0-2-2	4	0	0	0	1	0
MISSOURI		26	3-8	1-5	1-1	0-1-1	2	0	1	0	1	8
at South Carolina												
ALABAMA												
at LSU												
at Mississippi State												
OLE MISS												
at Kentucky												
FLORIDA												
ARKANSAS												
SOUTH CAROLINA												
at Alabama												
TEXAS A&M												
at Tennessee												
at Georgia												
VANDERBILT												

**CAREER HIGHS**

Points	20	at Missouri	1/6/22
Rebounds	8	vs Samford	12/18/22
Assists	7	vs Alabama State	11/16/21
Blocks	3	vs. UCF	12/3/22
Steals	3	4x; last vs Samford	12/18/22
Field Goals	9	at Missouri	1/6/22
Field Goal Attempts	20	at Missouri	1/6/22
3-Point Field Goals	3	2x; last vs. UL-Lafayette	12/11/22
3-Point FG Attempts	6	vs. South Alabama	12/13/20
Free Throws	8	vs North Florida	11/30/21
Free Throw Attempts	8	vs North Florida	11/30/21

**WELLS' CAREER STATISTICS**

SEASON	TEAM	GP-GS	MIN/AVG	Field Goals		3-Point		F-Throws		Rebounds				Scoring						
				FG-FGA	FG%	3FG-3FGA	3FG%	FT-FTA	FT%	OFF	DEF	TOT	AVG	PF-FO	A	TO	BLK	STL	PTS	AVG
2019-20	AUB	25-0	214/8.6	14-47	.298	3-17	.176	10-14	.714	5	15	20	0.8	26-0	13	17	0	5	41	1.6
2020-21	AUB	23-1	331/14.4	23-95	.242	11-42	.262	18-28	.643	6	13	19	0.8	33-0	18	18	1	9	75	3.3
2021-22	AUB	27-25	770/28.5	77-230	.335	15-57	.263	76-84	.905	12	51	63	2.3	64-2	70	45	6	29	245	9.1
2022-23	AUB	14-1	241/17.2	29-85	.341	11-36	.306	11-17	.647	6	22	28	2.0	21-0	17	20	7	14	80	5.7
<b>TOTAL</b>		<b>89-27</b>	<b>1556/17.5</b>	<b>143-457</b>	<b>.313</b>	<b>40-152</b>	<b>.263</b>	<b>115-143</b>	<b>.804</b>	<b>29</b>	<b>101</b>	<b>130</b>	<b>1.5</b>	<b>144-2</b>	<b>118</b>	<b>100</b>	<b>14</b>	<b>57</b>	<b>441</b>	<b>5.0</b>





# Jakayla JOHNSON

# #3

Junior • Guard • 5-9  
Clinton, Miss. • Clinton HS • Jones College

- Season-high 9 points, 6 rebounds, 4 assists while playing PG for first time vs. Missouri (1/1)
- Scored 8 points on 2-2 3FG vs. Samford (12/18); also had season-best 3 assists
- Season-high 8 points along with 2 steals, 2 rebounds in win over UCF (12/3)
- Made first Division 1 start vs. Little Rock (11/30); scored 4 points with 1 block, 1 rebound, 1 steal
- Transferred to Auburn in spring of 2022 but did not play while rehabbing knee injury
- Played five games in 2021-22 at Jones College, averaging 16.8 pts, 2.8 rebs, 3.0 asts, 2.8 stls; suffered season-ending injury in December
- 2021 WBCA Two-Year College Coaches All-American; First Team All-Mississippi Association Community Colleges
- Led Jones College to first-ever NJCAA No. 1 national ranking in 2020-21

**SEASON/CAREER HIGHS**

Points		
9	vs. Missouri	1/1/23
Rebounds		
6	vs. Missouri	1/1/23
Assists		
4	vs. Missouri	1/1/23
Blocks		
2	vs Sam Houston	11/8/22
Steals		
2	3x; last vs. North Florida	12/20/22
Field Goals		
3	2x; last vs Samford	12/18/22
Field Goal Attempts		
5	vs. UCF	12/3/22
3-Point Field Goals		
2	vs Samford	12/18/22
3-Point FG Attempts		
2	3x; last vs. Missouri	1/1/23
Free Throws		
4	vs. Missouri	1/1/23
Free Throw Attempts		
4	vs. Missouri	1/1/23

Opponent	Start	Min.	FG-A	3PT-A	FT-A	O-D-T	PF	Ast.	TO	Blk.	St.	Pts.
SAM HOUSTON		11	0-4	0-0	2-2	0-2-2	4	0	1	2	2	2
SOUTH ALABAMA		10	0-1	0-0	2-2	0-0-0	0	0	0	0	0	2
GEORGIA TECH		20	2-3	0-0	0-1	2-3-5	1	0	0	0	0	4
ALABAMA STATE		8	1-1	0-0	0-0	0-1-1	3	0	0	0	1	2
vs. Indiana		8	0-4	0-1	0-0	2-0-2	2	0	1	0	0	0
vs. Colorado State		14	2-4	1-2	0-0	1-2-3	0	0	0	0	0	5
LITTLE ROCK	*	21	2-6	0-1	0-0	0-1-1	0	0	0	1	1	4
UCF	*	20	3-5	0-1	2-2	2-0-2	1	1	1	0	2	8
UL-LAFAYETTE	*	15	1-1	1-1	0-0	2-1-3	2	1	1	0	1	3
NORTH CAROLINA A&T						--DNP--						
SAMFORD		17	3-4	2-2	0-0	1-1-2	1	3	2	1	1	8
NORTH FLORIDA	*	19	1-4	0-1	1-2	0-1-1	0	1	0	1	2	3
at Ole Miss		22	1-4	0-1	0-0	0-4-4	0	0	3	0	1	2
MISSOURI	*	34	2-3	1-2	4-4	2-4-6	4	4	1	0	0	9
at South Carolina												
ALABAMA												
at LSU												
at Mississippi State												
OLE MISS												
at Kentucky												
FLORIDA												
ARKANSAS												
SOUTH CAROLINA												
at Alabama												
TEXAS A&M												
at Tennessee												
at Georgia												
VANDERBILT												

**JOHNSON'S CAREER STATISTICS**

SEASON	TEAM	GP-GS	MIN/AVG	Field Goals		3-Point		F-Throws		Rebounds				Scoring						
				FG-FGA	FG%	3FG-3FGA	3FG%	FT-FTA	FT%	OFF	DEF	TOT	AVG	PF-FO	A	TO	BLK	STL	PTS	AVG
2022-23	AUB	13-5	218/16.8	18-44	.409	5-12	.417	11-13	.846	12	20	32	2.5	18-0	10	10	4	11	52	4.0
<b>TOTAL</b>		<b>13-5</b>	<b>218/16.8</b>	<b>18-44</b>	<b>.409</b>	<b>5-12</b>	<b>.417</b>	<b>11-13</b>	<b>.846</b>	<b>12</b>	<b>20</b>	<b>32</b>	<b>2.5</b>	<b>18-0</b>	<b>10</b>	<b>10</b>	<b>4</b>	<b>11</b>	<b>52</b>	<b>4.0</b>



# Kaitlyn DUHON

# #4

Freshman • Guard • 5-10  
Houston, Texas. • Summer Creek HS

- Monster game vs. South Alabama with 17 points (7-11 FG), 7 rebounds, 3 steals (11/10)
- Equaled season-highs with 3 blocks and 3 steals vs. Little Rock (11/30); also had 8 points and 3 rebounds
- Had 9 points, 8 rebounds, 3 blocks in Auburn debut vs. Sam Houston (11/8)
- Fast, aggressive, lock-down defender
- Averaged 17 points, 7 rebounds, 3 steals, 49% FG as high school senior
- All-Greater Houston Player of the Year in 2022 by Houston Chronicle
- Led Summer Creek HS to region championship and state semifinals as a senior
- State runner-up in long jump (19 feet, 8.25 inches)

### SEASON/CAREER HIGHS

Points	17	vs South Alabama	11/10/22
Rebounds	8	vs Sam Houston	11/8/22
Assists	2	vs. UL-Lafayette	12/11/22
Blocks	3	2x; last vs. Little Rock	11/30/22
Steals	3	2x; last vs. Little Rock	11/30/22
Field Goals	7	vs South Alabama	11/10/22
Field Goal Attempts	11	vs South Alabama	11/10/22
3-Point Field Goals	1	vs. Indiana	11/25/22
3-Point FG Attempts	3	vs. Indiana	11/25/22
Free Throws	3	2x; last vs South Alabama	11/10/22
Free Throw Attempts	4	2x; last vs South Alabama	11/10/22

Opponent	Start	Min.	FG-A	3PT-A	FT-A	O-D-T	PF	Ast.	TO	Blk.	St.	Pts.
SAM HOUSTON	*	28	3-9	0-0	3-4	3-5-8	3	0	2	3	1	9
SOUTH ALABAMA	*	26	7-11	0-2	3-4	5-2-7	3	0	1	2	3	17
GEORGIA TECH	*	22	3-9	0-1	0-0	3-0-3	3	0	2	0	0	6
ALABAMA STATE	*	16	1-6	0-1	1-2	1-0-1	3	1	1	0	0	3
vs. Indiana	*	15	2-7	1-3	2-2	1-2-3	2	1	0	0	0	7
vs. Colorado State	*	17	2-6	0-0	0-2	1-1-2	4	1	1	0	0	4
LITTLE ROCK		21	3-4	0-0	2-2	1-2-3	3	0	0	3	3	8
UCF		13	3-5	0-0	0-0	1-1-2	4	0	0	0	2	6
UL-LAFAYETTE		14	2-2	0-0	0-0	0-0-0	2	2	2	1	2	4
NORTH CAROLINA A&T		17	3-5	0-0	0-0	1-2-3	4	1	1	1	1	6
SAMFORD		15	1-3	0-0	2-2	0-0-0	1	1	1	0	0	4
NORTH FLORIDA		17	3-8	0-1	0-0	1-6-7	0	0	2	1	0	6
at Ole Miss		7	0-1	0-0	2-2	0-1-1	0	1	0	0	1	2
MISSOURI		11	1-2	0-0	0-0	0-1-1	0	0	2	0	1	2
at South Carolina												
ALABAMA												
at LSU												
at Mississippi State												
OLE MISS												
at Kentucky												
FLORIDA												
ARKANSAS												
SOUTH CAROLINA												
at Alabama												
TEXAS A&M												
at Tennessee												
at Georgia												
VANDERBILT												

### DUHON'S CAREER STATISTICS

SEASON	TEAM	GP-GS	MIN/AVG	Field Goals		3-Point		F-Throws		Rebounds				Scoring						
				FG-FGA	FG%	3FG-3FGA	3FG%	FT-FTA	FT%	OFF	DEF	TOT	AVG	PF	FO	A	TO	BLK	STL	PTS
2022-23	AUB	14-6	240/17.1	34-78	.436	1-8	.125	15-20	.750	18	23	41	2.9	32-0	8	15	11	14	84	6.0
<b>TOTAL</b>		<b>14-6</b>	<b>240/17.1</b>	<b>34-78</b>	<b>.436</b>	<b>1-8</b>	<b>.125</b>	<b>15-20</b>	<b>.750</b>	<b>18</b>	<b>23</b>	<b>41</b>	<b>2.9</b>	<b>32-0</b>	<b>8</b>	<b>15</b>	<b>11</b>	<b>14</b>	<b>84</b>	<b>6.0</b>



# Aicha COULIBALY

# #5

Junior • Guard/Forward • 6-0

Mali • IMG Academy (Fla.)

• **2022-23 Preseason All-SEC Second Team selection; 2022 All-SEC Second Team**

- Missed final three games of non-conference with injury; returned to lineup 12/29, led Tigers in scoring in first two SEC games
- Two double-doubles this season; 24/10 vs. Sam Houston, 17/12 vs. UCF
- Started all 28 games as a sophomore; led Auburn with 17.1 points, 7.5 rebounds, 2.2 steals per game
- Recorded five double-doubles in 2022-23; had nine games with 20+ points with a career-high of 27 vs. Charleston Southern
- Played for Mali's national team at FIBA U16 African Championships in 2017, leading her team to tournament championship
- Is Auburn's third women's basketball player from Africa, along with Crispina Correia (Cape Verde, 2001-03) and Khady Dieng (Senegal, 2013-17)

**SEASON HIGHS**

Points	24	vs Sam Houston	11/8/22
Rebounds	12	vs. UCF	12/3/22
Assists	5	vs. Colorado State	11/26/22
Blocks	3	vs. UL-Lafayette	12/11/22
Steals	6	vs Alabama State	11/20/22
Field Goals	10	vs Sam Houston	11/8/22
Field Goal Attempts	18	vs. UCF	12/3/22
3-Point Field Goals	2	vs South Alabama	11/10/22
3-Point FG Attempts	5	vs South Alabama	11/10/22
Free Throws	9	vs South Alabama	11/10/22
Free Throw Attempts	11	2x; last vs. Indiana	11/25/22

Opponent	Start	Min.	FG-A	3PT-A	FT-A	O-D-T	PF	Ast.	TO	Blk.	St.	Pts.
SAM HOUSTON	*	31	10-15	1-1	3-3	3-7-10	3	3	1	1	2	24
SOUTH ALABAMA	*	31	4-12	2-5	9-11	1-4-5	3	0	1	1	2	19
GEORGIA TECH	*	33	2-13	0-3	7-9	4-3-7	1	4	1	1	4	11
ALABAMA STATE	*	26	8-15	1-2	4-8	3-4-7	1	1	3	0	6	21
vs. Indiana	*	37	7-17	0-2	8-11	3-0-3	3	1	4	2	3	22
vs. Colorado State	*	29	5-11	0-3	6-6	0-2-2	0	5	2	0	2	16
LITTLE ROCK	*	11	2-6	0-0	2-2	0-2-2	3	0	1	0	1	6
UCF	*	32	7-18	1-3	2-2	3-9-12	1	4	1	2	1	17
UL-LAFAYETTE	*	29	6-12	1-3	2-3	1-6-7	4	0	3	3	0	15
NORTH CAROLINA A&T						--DNP--						
SAMFORD						--DNP--						
NORTH FLORIDA						--DNP--						
at Ole Miss	*	28	4-11	0-2	5-8	2-3-5	2	1	2	0	0	13
MISSOURI	*	31	7-15	0-3	6-8	1-6-7	2	1	2	0	0	20
at South Carolina												
ALABAMA												
at LSU												
at Mississippi State												
OLE MISS												
at Kentucky												
FLORIDA												
ARKANSAS												
SOUTH CAROLINA												
at Alabama												
TEXAS A&M												
at Tennessee												
at Georgia												
VANDERBILT												

**CAREER HIGHS**

Points	27	vs. Charleston So.	11/26/21
Rebounds	13	at Old Dominion	11/14/21
Assists	5	vs. Colorado State	11/26/22
Blocks	3	2x; last vs. UL-Lafayette	12/11/22
Steals	6	2x; last vs Alabama State	11/20/22
Field Goals	10	5x; last vs Sam Houston	11/8/22
Field Goal Attempts	21	vs. Charleston So.	11/26/21
3-Point Field Goals	2	3x; last vs South Alabama	11/10/22
3-Point FG Attempts	5	vs South Alabama	11/10/22
Free Throws	11	vs. Charleston So.	11/26/21
Free Throw Attempts	14	vs. Charleston So.	11/26/21

**COULIBALY'S CAREER STATISTICS**

SEASON	TEAM	GP-GS	MIN/AVG	Field Goals		3-Point		F-Throws		Rebounds				Scoring						
				FG-FGA	FG%	3FG-3FGA	3FG%	FT-FTA	FT%	OFF	DEF	TOT	AVG	PF-FO	A	TO	BLK	STL	PTS	AVG
2020-21	AUB	23-7	436/19.0	45-128	.352	5-33	.152	23-37	.622	22	49	71	3.1	38-0	19	24	10	20	118	5.1
2021-22	AUB	28-28	908/32.4	175-397	.441	13-58	.224	115-177	.650	77	132	209	7.5	82-2	45	101	19	61	478	17.1
2022-23	AUB	11-11	318/28.9	62-145	.428	6-27	.222	54-71	.761	21	46	67	6.1	23-0	20	21	11	21	184	16.7
<b>TOTAL</b>		<b>62-46</b>	<b>1661/26.8</b>	<b>282-670</b>	<b>.421</b>	<b>24-118</b>	<b>.203</b>	<b>192-285</b>	<b>.674</b>	<b>120</b>	<b>227</b>	<b>347</b>	<b>5.6</b>	<b>143-2</b>	<b>84</b>	<b>146</b>	<b>40</b>	<b>102</b>	<b>780</b>	<b>12.6</b>



# Sydney SHAW

# #10

Freshman • Guard • 5-9  
Miami, Fla. • DME Academy

- Named SEC Freshman of the Week (12/28) after 14-point, 4-assist, 4-steal effort vs. North Florida (12/20)
- Season-best 4 steals, matched season-high with 6 assists vs. Samford (12/18)
- Career-high 15 points on 5-7 FG plus 6 assists in win over Louisiana-Lafayette (12/11); followed up with a 14-point, 5 assist night vs. N.C. A&T
- 8 points, season-high 6 assists in win over Alabama State (11/20)
- 12 points on 5-8 shooting (2-2 3FG), 3 assists, 1 blocks in Auburn debut vs. Sam Houston (11/8)
- No. 43 overall prospect on signing day in class of 2022 by ESPN HoopGurlz
- Averaged 12.5 points, 4.6 rebounds, 3.0 assists, 2.3 steals as HS senior at DME Academy
- Led American Heritage HS to fourth straight 5A state title as a junior in 2021

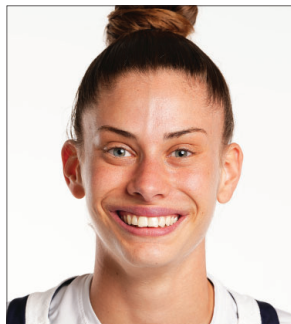
**SEASON/CAREER HIGHS**

Points	15	vs. UL-Lafayette	12/11/22
Rebounds	4	2x; last at Ole Miss	12/29/22
Assists	6	3x; last vs Samford	12/18/22
Blocks	1	4x; last vs UL-Lafayette	12/11/22
Steals	4	2x; last vs. North Florida	12/20/22
Field Goals	5	4x; last vs. North Florida	12/20/22
Field Goal Attempts	14	vs Georgia Tech	11/16/22
3-Point Field Goals	3	2x; last vs. North Florida	12/20/22
3-Point FG Attempts	6	3x; last vs. N.C. A&T	12/15/22
Free Throws	2	3x; last vs. N.C. A&T	12/15/22
Free Throw Attempts	2	4x; last vs. North Florida	12/20/22

Opponent	Start	Min.	FG-A	3PT-A	FT-A	0-D-T	PF	Ast.	TO	Blk.	St.	Pts.
SAM HOUSTON	*	17	5-8	2-2	0-0	1-1-2	2	3	4	1	0	12
SOUTH ALABAMA	*	29	3-9	0-4	2-2	0-3-3	0	3	3	1	1	8
GEORGIA TECH	*	24	2-14	1-5	0-0	1-3-4	2	3	3	1	1	5
ALABAMA STATE	*	24	3-8	2-6	0-0	0-1-1	1	6	1	0	2	8
vs. Indiana	*	33	3-8	2-6	0-0	0-2-2	1	5	2	0	0	8
vs. Colorado State	*	23	3-7	3-5	0-0	0-3-3	2	0	1	0	0	9
LITTLE ROCK	*	22	3-5	0-1	0-0	0-2-2	0	3	1	0	0	6
UCF		16	4-7	1-2	0-0	0-3-3	1	2	2	0	0	9
UL-LAFAYETTE	*	30	5-7	3-4	2-2	0-1-1	0	6	4	1	1	15
NORTH CAROLINA A&T	*	33	5-12	2-6	2-2	0-3-3	2	5	1	0	0	14
SAMFORD	*	23	2-6	2-5	0-0	0-1-1	0	6	2	0	4	6
NORTH FLORIDA	*	30	5-12	3-5	1-2	0-2-2	1	4	2	0	4	14
at Ole Miss	*	24	2-9	0-3	0-0	1-3-4	1	2	6	0	0	4
MISSOURI	*	26	0-6	0-2	0-0	0-3-3	0	2	1	0	0	0
at South Carolina												
ALABAMA												
at LSU												
at Mississippi State												
OLE MISS												
at Kentucky												
FLORIDA												
ARKANSAS												
SOUTH CAROLINA												
at Alabama												
TEXAS A&M												
at Tennessee												
at Georgia												
VANDERBILT												

**SHAW'S CAREER STATISTICS**

SEASON	TEAM	GP-GS	MIN/AVG	Field Goals		3-Point		F-Throws		Rebounds				Scoring						
				FG-FGA	FG%	3FG-3FGA	3FG%	FT-FTA	FT%	OFF	DEF	TOT	AVG	PF-FO	A	TO	BLK	STL	PTS	AVG
2022-23	AUB	14-13	355/25.4	45-118	.381	21-56	.375	7-8	.875	3	31	34	2.4	13-0	50	33	4	13	118	8.4
<b>TOTAL</b>		<b>14-13</b>	<b>355/25.4</b>	<b>45-118</b>	<b>.381</b>	<b>21-56</b>	<b>.375</b>	<b>7-8</b>	<b>.875</b>	<b>3</b>	<b>31</b>	<b>34</b>	<b>2.4</b>	<b>13-0</b>	<b>50</b>	<b>33</b>	<b>4</b>	<b>13</b>	<b>118</b>	<b>8.4</b>



# Romi LEVY

# #11

Redshirt Sophomore • Forward • 6-2  
Herzliya, Israel • Hof Hasharon HS

- Huge game vs. Samford with 14 points, 7 rebounds, season-high 5 assists and 5 steals vs. Samford (12/18)
- Filled stat sheet with 4 points, 8 rebounds, 4 assists, 3 blocks, 1 steal in win over UL-Lafayette (12/11)
- Career-highs with 18 points and 13 rebounds in first start of season vs. Little Rock (11/30); 2nd career double-double
- First career double-double with 16 points, 11 rebounds along with 2 assists, 2 blocks, 3 steals vs. Alabama State (11/20)
- Made first regular-season appearance since March 2021 with 15 minutes against Georgia Tech (11/16)
- Missed 2021-22 season with torn ACL suffered in final week of preseason practice
- 2021 SEC All-Freshman Team selection; averaged 5.4 points, 3.9 rebounds in 22.1 minutes/game
- Completed mandatory national service in Israel before enrolling at Auburn; first AU player from Israel

### SEASON HIGHS

Points	18	vs. Little Rock	11/30/22
Rebounds	13	vs. Little Rock	11/30/22
Assists	5	vs Samford	12/18/22
Blocks	3	vs. UL-Lafayette	12/11/22
Steals	5	vs Samford	12/18/22
Field Goals	7	vs Alabama State	11/20/22
Field Goal Attempts	13	vs. N.C. AGT	12/15/22
3-Point Field Goals	1	6x; last vs Samford	12/18/22
3-Point FG Attempts	3	vs. N.C. AGT	12/15/22
Free Throws	5	vs. Little Rock	11/30/22
Free Throw Attempts	7	at Ole Miss	12/29/22

Opponent	Start	Min.	FG-A	3PT-A	FT-A	O-D-T	PF	Ast.	TO	Blk.	St.	Pts.
SAM HOUSTON						--DNP--						
SOUTH ALABAMA						--DNP--						
GEORGIA TECH		15	1-2	0-1	0-0	0-0-0	1	0	1	1	1	2
ALABAMA STATE		20	7-10	1-1	1-2	4-7-11	1	2	2	2	3	16
vs. Indiana		18	2-4	0-1	0-0	2-0-2	4	2	0	1	0	4
vs. Colorado State		17	0-4	0-0	0-0	0-3-3	3	0	2	0	0	0
LITTLE ROCK	*	31	6-12	1-2	5-6	2-11-13	0	0	2	1	0	18
UCF	*	19	2-4	1-2	0-0	1-3-4	4	0	3	0	0	5
UL-LAFAYETTE	*	25	1-3	1-2	1-2	1-7-8	2	4	2	3	1	4
NORTH CAROLINA A&T	*	28	5-13	1-3	2-3	3-1-4	1	2	1	0	1	13
SAMFORD	*	25	5-6	1-1	2-2	3-4-7	0	5	0	2	5	13
NORTH FLORIDA	*	20	6-6	0-0	2-2	1-4-5	1	2	2	1	2	14
at Ole Miss	*	24	2-9	0-2	3-7	2-2-4	0	0	1	0	0	7
MISSOURI	*	19	3-4	0-0	0-0	0-2-2	3	1	5	1	0	6
at South Carolina												
ALABAMA												
at LSU												
at Mississippi State												
OLE MISS												
at Kentucky												
FLORIDA												
ARKANSAS												
SOUTH CAROLINA												
at Alabama												
TEXAS A&M												
at Tennessee												
at Georgia												
VANDERBILT												

### CAREER HIGHS

Points	18	vs. Little Rock	11/30/22
Rebounds	13	vs. Little Rock	11/30/22
Assists	7	vs. Kentucky	1/21/21
Blocks	3	vs. UL-Lafayette	12/11/22
Steals	6	vs. Georgia	1/2/21
Field Goals	7	vs Alabama State	11/20/22
Field Goal Attempts	12	at LSU	12/31/20
3-Point Field Goals	3	vs. South Carolina	2/4/21
3-Point FG Attempts	6	at Florida	1/17/21
Free Throws	5	vs. Little Rock	11/30/22
Free Throw Attempts	7	at Ole Miss	12/29/22

### LEVY'S CAREER STATISTICS

SEASON	TEAM	GP-GS	MIN/AVG	Field Goals		3-Point		F-Throws		Rebounds				Scoring						
				FG-FGA	FG%	3FG-3FGA	3FG%	FT-FTA	FT%	OFF	DEF	TOT	AVG	PF-FO	A	TO	BLK	STL	PTS	AVG
2020-21	AUB	23-14	508/22.1	52-145	.359	16-63	.254	5-14	.357	24	65	89	3.9	43-0	34	32	10	33	125	5.4
2022-23	AUB	12-8	261/21.7	40-77	.519	6-15	.400	16-24	.667	19	44	63	5.3	20-0	18	21	12	13	102	8.5
<b>TOTAL</b>		<b>35-22</b>	<b>769/22.0</b>	<b>92-222</b>	<b>.414</b>	<b>22-78</b>	<b>.282</b>	<b>21-38</b>	<b>.553</b>	<b>43</b>	<b>109</b>	<b>152</b>	<b>4.3</b>	<b>63-0</b>	<b>52</b>	<b>53</b>	<b>22</b>	<b>46</b>	<b>227</b>	<b>6.5</b>



# Mar'Shaun BOSTIC

# #12

Sophomore • Guard • 5-8  
St. Louis, Mo. • Vashon HS

- Has had 2 steals in 4 straight games
- Career-high 10 points on 4-4 FG in win over UCF (12/3)
- Played in 27 games, starting four; averaged 3.3 points, 1.9 rebounds, 2.2 assists, 1.5 steals in 16.5 minutes/game
- Season-high 9 points, 4 steals in win over #4 Tennessee; was +25 in 15 minutes off the bench (1/27)
- Matched season-high with 4 assists and no turnovers in 20 minutes vs. Kennesaw State (12/20)
- First-team all-metro by St. Louis Post Dispatch as HS senior; helped Vashon HS to 3rd place in state tournament
- No. 14 in Prep Girls Hoops Missouri Class of 2021 rankings
- Scored 1,352 points in high school career

**SEASON HIGHS**

Points	10	vs. UCF	12/3/22
Rebounds	4	vs. Little Rock	11/30/22
Assists	4	2x; last vs. Colorado State	11/26/22
Blocks	1	3x; last at Ole Miss	12/29/22
Steals	2	5x; last vs. Missouri	1/1/23
Field Goals	3	2x; last vs. Colorado State	11/26/22
Field Goal Attempts	10	at Ole Miss	12/29/22
3-Point Field Goals	1	vs Samford	12/18/22
3-Point FG Attempts	1	2x; last vs Samford	12/18/22
Free Throws	5	at Ole Miss	12/29/22
Free Throw Attempts	9	at Ole Miss	12/29/22

Opponent	Start	Min.	FG-A	3PT-A	FT-A	O-D-T	PF	Ast.	TO	Blk.	St.	Pts.
SAM HOUSTON		20	3-5	0-0	3-6	1-1-2	3	4	4	0	1	9
SOUTH ALABAMA		16	2-4	0-0	2-3	0-1-1	2	1	2	1	0	6
GEORGIA TECH		5	0-2	0-0	0-0	1-0-1	1	0	2	0	0	0
ALABAMA STATE		11	1-1	0-0	0-0	0-0-0	1	1	0	0	1	2
vs. Indiana		10	1-5	0-0	1-2	1-2-3	1	1	0	1	0	3
vs. Colorado State		19	2-4	0-1	3-4	0-0-0	2	4	1	0	2	7
LITTLE ROCK		11	1-7	0-0	0-0	3-1-4	3	2	0	0	1	2
UCF		13	4-4	0-0	2-2	1-1-2	3	1	1	0	1	10
UL-LAFAYETTE		12	2-3	0-0	1-1	0-1-1	3	2	1	0	1	5
NORTH CAROLINA A&T	*	18	1-2	0-0	1-2	0-2-2	4	1	2	0	1	3
SAMFORD	*	19	2-5	1-1	0-0	0-2-2	1	1	2	0	2	5
NORTH FLORIDA		9	2-2	0-0	0-0	0-1-1	4	3	1	0	2	4
at Ole Miss		21	2-10	0-0	5-9	2-1-3	2	3	2	1	2	9
MISSOURI		9	1-3	0-0	0-0	0-0-0	2	0	0	0	2	2
at South Carolina												
ALABAMA												
at LSU												
at Mississippi State												
OLE MISS												
at Kentucky												
FLORIDA												
ARKANSAS												
SOUTH CAROLINA												
at Alabama												
TEXAS A&M												
at Tennessee												
at Georgia												
VANDERBILT												

**CAREER HIGHS**

Points	10	vs. UCF	12/3/22
Rebounds	4	6x; last vs. Little Rock	11/30/22
Assists	4	7x; last vs Sam Houston	11/8/22
Blocks	1	6x; last at Ole Miss	12/29/22
Steals	4	vs. Tennessee	1/27/22
Field Goals	4	at Vanderbilt	1/30/22
Field Goal Attempts	10	at Ole Miss	12/29/22
3-Point Field Goals	1	vs Samford	12/18/22
3-Point FG Attempts	1	vs Samford	12/18/22
Free Throws	5	at Ole Miss	12/29/22
Free Throw Attempts	9	at Ole Miss	12/29/22

**BOSTIC'S CAREER STATISTICS**

SEASON	TEAM	GP-GS	MIN/AVG	Field Goals			3-Point		F-Throws		Rebounds				Scoring					
				FG-FGA	FG%	3FG-3FGA	3FG%	FT-FTA	FT%	OFF	DEF	TOT	AVG	PF-FO	A	TO	BLK	STL	PTS	AVG
2021-22	AUB	27-4	446/16.5	36-87	.414	0-0	.000	17-28	.607	10	40	50	1.9	64-1	60	56	5	40	89	3.3
2022-23	AUB	14-2	195/13.9	24-57	.421	1-2	.500	18-29	.621	9	13	22	1.6	32-0	24	18	3	16	67	4.8
<b>TOTAL</b>		<b>41-6</b>	<b>641/15.6</b>	<b>60-144</b>	<b>.417</b>	<b>1-2</b>	<b>.500</b>	<b>35-57</b>	<b>.614</b>	<b>19</b>	<b>53</b>	<b>72</b>	<b>1.8</b>	<b>96-1</b>	<b>84</b>	<b>74</b>	<b>8</b>	<b>56</b>	<b>156</b>	<b>3.8</b>



# Oyindamola AKINBOLAWA

# #20

Freshman • Center • 6-5  
Lagos, Nigeria

- Made collegiate debut vs. North Florida (12/20); played two minutes
- Arrived in the U.S. on December 14; was cleared to practice and play later that week, dressed for first time vs. North Florida
- Fourth Auburn women's basketball player from Africa, first from Nigeria

**SEASON/CAREER HIGHS**

- Points
- Rebounds
- Assists
- Blocks
- Steals
- Field Goals
- Field Goal Attempts
- 3-Point Field Goals
- 3-Point FG Attempts
- Free Throws
- Free Throw Attempts

Opponent	Start	Min.	FG-A	3PT-A	FT-A	O-D-T	PF	Ast.	TO	Blk.	St.	Pts.
SAM HOUSTON						--DNP--						
SOUTH ALABAMA						--DNP--						
GEORGIA TECH						--DNP--						
ALABAMA STATE						--DNP--						
vs. Indiana						--DNP--						
vs. Colorado State						--DNP--						
LITTLE ROCK						--DNP--						
UCF						--DNP--						
UL-LAFAYETTE						--DNP--						
NORTH CAROLINA A&T						--DNP--						
SAMFORD						--DNP--						
NORTH FLORIDA		2	0-0	0-0	0-0	0-0-0	1	0	2	0	0	0
at Ole Miss						--DNP--						
MISSOURI						--DNP--						
at South Carolina												
ALABAMA												
at LSU												
at Mississippi State												
OLE MISS												
at Kentucky												
FLORIDA												
ARKANSAS												
SOUTH CAROLINA												
at Alabama												
TEXAS A&M												
at Tennessee												
at Georgia												
VANDERBILT												

**OYINDAMOLA'S CAREER STATISTICS**

				Field Goals		3-Point		F-Throws		Rebounds				Scoring							
SEASON	TEAM	GP-GS	MIN/AVG	FG-FGA	FG%	3FG-3FGA	3FG%	FT-FTA	FT%	OFF	DEF	TOT	AVG	PF	FO	A	TO	BLK	STL	PTS	AVG
2022-23	AUB	1-0	2/2.0	0-0	.000	0-0	.000	0-0	.000	0	0	0	0.0	1-0	0	2	0	0	0	0	0.0
<b>TOTAL</b>		<b>1-0</b>	<b>2/2.0</b>	<b>0-0</b>	<b>.000</b>	<b>0-0</b>	<b>.000</b>	<b>0-0</b>	<b>.000</b>	<b>0</b>	<b>0</b>	<b>0</b>	<b>0.0</b>	<b>1-0</b>	<b>0</b>	<b>2</b>	<b>0</b>	<b>0</b>	<b>0</b>	<b>0</b>	<b>0.0</b>



# Audia YOUNG

# #21

Freshman • Guard • 5-9  
Tallahassee, Fla. • Florida State University HS

- Will miss 2022-23 season after suffering torn achilles in preseason practice
- Averaged 16.2 points, 3.1 rebounds, 2.7 assists, 1.9 steals per game as high school senior
- Daughter of former Auburn All-American Carolyn Jones-Young and Missouri men's basketball assistant coach CY Young
- Will wear her mother's No. 21, which was retired by Auburn following Jones' storied career

**SEASON/CAREER HIGHS**

- Points
- Rebounds
- Assists
- Blocks
- Steals
- Field Goals
- Field Goal Attempts
- 3-Point Field Goals
- 3-Point FG Attempts
- Free Throws
- Free Throw Attempts

Opponent	Start	Min.	FG-A	3PT-A	FT-A	O-D-T	PF	Ast.	TO	Blk.	St.	Pts.
SAM HOUSTON												
SOUTH ALABAMA												
GEORGIA TECH												
ALABAMA STATE												
vs. Indiana												
vs. Colorado State												
LITTLE ROCK												
UCF												
UL-LAFAYETTE												
NORTH CAROLINA A&T												
SAMFORD												
NORTH FLORIDA												
at Ole Miss												
MISSOURI												
at South Carolina												
ALABAMA												
at LSU												
at Mississippi State												
OLE MISS												
at Kentucky												
FLORIDA												
ARKANSAS												
SOUTH CAROLINA												
at Alabama												
TEXAS A&M												
at Tennessee												
at Georgia												
VANDERBILT												

--OUT FOR 2022-23 SEASON--

**YOUNG'S CAREER STATISTICS**





# Honesty SCOTT-GRAYSON

# #23

Redshirt Senior • Guard • 5-8

Brick, N.J. • Riverdale Baptist HS (Md.) • Baylor

- Missed first two SEC games while recovering from minor injuries sustained in car accident over holiday break
- Career-high 31 points on 10-18 FG, 4-8 3FG, 7-9 FT along with season-best 5 steals vs. North Carolina A&T (12/15)
- Scored 22 points against Indiana; averaged 18.0 points, 5.5 rebounds in two games in Las Vegas (11/25-26)
- Career-high 5 steals along with 12 points, 4 assists in season-opening win over Sam Houston (11/8)
- Played in all 28 games as a junior, starting 27; averaged 13.0 points, 5.7 rebounds, 1.9 assists, 1.3 steals in 2021-22
- Recorded three double-doubles as a junior, including 21 points and a career-high 14 rebounds against Florida (2/14/22)
- 2018 McDonald's All-American & 2018 Jordan Brand Classic All-American

**SEASON HIGHS**

Points	31 vs. N.C. A&T	12/15/22
Rebounds	6 vs. Indiana	11/25/22
Assists	5 vs Sam Houston	11/8/22
Blocks	2 vs. UCF	12/3/22
Steals	5 2x; last vs. N.C. A&T	12/15/22
Field Goals	10 vs. N.C. A&T	12/15/22
Field Goal Attempts	18 2x; last vs. N.C. A&T	12/15/22
3-Point Field Goals	4 2x; last vs. N.C. A&T	12/15/22
3-Point FG Attempts	8 vs. N.C. A&T	12/15/22
Free Throws	7 2x; last vs. N.C. A&T	12/15/22
Free Throw Attempts	9 2x; last vs. N.C. A&T	12/15/22

Opponent	Start	Min.	FG-A	3PT-A	FT-A	O-D-T	PF	Ast.	TO	Blk.	St.	Pts.
SAM HOUSTON	*	20	5-7	0-1	2-2	0-3-3	5	5	4	0	5	12
SOUTH ALABAMA	*	26	2-7	2-3	0-0	1-4-5	3	3	1	0	1	6
GEORGIA TECH	*	33	4-18	1-5	2-2	0-3-3	3	1	4	0	1	11
ALABAMA STATE	*	15	3-6	0-2	0-0	0-0-0	2	3	1	0	0	6
vs. Indiana	*	31	8-15	4-6	2-3	2-4-6	4	1	4	1	0	22
vs. Colorado State	*	26	6-14	1-3	3-4	2-3-5	3	3	1	0	1	16
LITTLE ROCK	*	24	8-11	3-5	1-2	0-4-4	2	0	2	1	1	20
UCF	*	25	6-12	3-3	7-9	0-5-5	2	2	4	2	1	22
UL-LAFAYETTE	*	32	4-10	3-7	2-4	1-4-5	2	3	4	1	2	13
NORTH CAROLINA A&T	*	32	10-18	4-8	7-9	1-4-5	2	3	3	0	5	31
SAMFORD	*	19	5-13	2-6	2-2	0-3-3	1	1	1	2	3	14
NORTH FLORIDA	*	24	6-9	2-2	3-4	0-2-2	3	2	0	1	2	17

at Ole Miss --DNP--  
 MISSOURI --DNP--  
 at South Carolina  
 ALABAMA  
 at LSU  
 at Mississippi State  
 OLE MISS  
 at Kentucky  
 FLORIDA  
 ARKANSAS  
 SOUTH CAROLINA  
 at Alabama  
 TEXAS A&M  
 at Tennessee  
 at Georgia  
 VANDERBILT

**CAREER HIGHS (incl. 18-19 at Baylor)**

Points	31 vs. N.C. A&T	12/15/22
Rebounds	14 vs. Florida	2/14/22
Assists	6 vs. Charleston So.	11/26/21
Blocks	4 at Alabama	1/2/22
Steals	5 6x; last vs. N.C. A&T	12/15/22
Field Goals	10 3x; last vs. N.C. A&T	12/15/22
Field Goal Attempts	20 vs. Florida	2/14/22
3-Point Field Goals	4 5x; last vs. N.C. A&T	12/15/22
3-Point FG Attempts	8 3x; last vs. N.C. A&T	12/15/22
Free Throws	8 at Arkansas	1/31/21
Free Throw Attempts	9 3x; last vs. N.C. A&T	12/15/22

**SCOTT-GRAYSON'S CAREER STATISTICS**

SEASON	TEAM	GP-GS	MIN/AVG	Field Goals		3-Point		F-Throws		Rebounds				Scoring						
				FG-FGA	FG%	3FG-3FGA	3FG%	FT-FTA	FT%	OFF	DEF	TOT	AVG	PF-FO	A	TO	BLK	STL	PTS	AVG
2018-19	Baylor	29-0	193/6.7	25-51	.490	5-11	.455	19-26	.731	10	15	25	0.9	26-1	24	24	3	9	74	2.6
2020-21	AUB	24-24	680/28.4	129-318	.406	22-73	.301	67-88	.761	21	78	99	4.1	58-0	41	47	5	50	347	14.5
2021-22	AUB	28-27	870/31.1	135-342	.395	19-74	.257	74-110	.673	34	125	159	5.7	76-3	53	68	10	37	363	13.0
2022-23	AUB	12-12	306/25.5	67-140	.479	25-51	.490	31-41	.756	7	39	46	3.8	32-1	27	29	8	22	190	15.8
<b>TOTAL FOR AUB</b>		<b>64-63</b>	<b>1856/29.0</b>	<b>331-800</b>	<b>.414</b>	<b>66-198</b>	<b>.333</b>	<b>172-239</b>	<b>.720</b>	<b>62</b>	<b>242</b>	<b>304</b>	<b>4.8</b>	<b>166-4</b>	<b>121</b>	<b>144</b>	<b>23</b>	<b>109</b>	<b>900</b>	<b>14.1</b>
<b>TOTAL</b>		<b>93-63</b>	<b>2050/22.0</b>	<b>356-851</b>	<b>.418</b>	<b>71-209</b>	<b>.340</b>	<b>191-265</b>	<b>.721</b>	<b>72</b>	<b>257</b>	<b>329</b>	<b>3.5</b>	<b>192-5</b>	<b>145</b>	<b>168</b>	<b>26</b>	<b>118</b>	<b>974</b>	<b>10.5</b>



# Carsen McFADDEN

# #24

Junior • Guard • 5-7  
Fairview, Texas • Lovejoy HS

- Career-high 4 points in 4 minutes against UL-Lafayette (12/11); matched that along with career-high 2 steals vs. Samford (12/18)
- Career-high 3 rebounds while playing 6 minutes vs. UCF (12/3)
- Made first career 3-pointer in final minute vs. Alabama State; also had 1 rebound and 1 assist (11/20)
- Played in 8 games as a sophomore, averaging 3.6 minutes per game
- Appeared in 6 games as a freshman in 2020-21
- All-state selection at Lovejoy HS as a senior and two-year team captain
- Owns high school records for rebounds in a single game (19), season (340) and career (1,047) and steals in a game (15), season (145) and career (418)
- Has a twin sister, Claire, who also attends Auburn

**SEASON HIGHS**

Points	4	2x; last vs Samford	12/18/22
Rebounds	3	vs. UCF	12/3/22
Assists	1	vs Alabama State	11/20/22
Blocks			
Steals	2	vs Samford	12/18/22
Field Goals	2	vs Samford	12/18/22
Field Goal Attempts	5	vs. UCF	12/3/22
3-Point Field Goals	1	vs Alabama State	11/20/22
3-Point FG Attempts	2	vs. N.C. A&T	12/15/22
Free Throws	2	vs. UL-Lafayette	12/11/22
Free Throw Attempts	3	vs. UL-Lafayette	12/11/22

Opponent	Start	Min.	FG-A	3PT-A	FT-A	O-D-T	PF	Ast.	TO	Blk.	St.	Pts.
SAM HOUSTON		2	0-1	0-1	0-0	0-0-0	0	0	0	0	0	0
SOUTH ALABAMA						--DNP--						
GEORGIA TECH						--DNP--						
ALABAMA STATE		5	1-2	1-1	0-0	0-1-1	2	1	0	0	0	3
vs. Indiana						--DNP--						
vs. Colorado State						--DNP--						
LITTLE ROCK		2	0-1	0-0	0-0	0-0-0	0	0	0	0	0	0
UCF		6	0-5	0-1	0-0	2-1-3	0	0	0	0	0	0
UL-LAFAYETTE		4	1-1	0-0	2-3	2-0-2	0	0	0	0	0	4
NORTH CAROLINA A&T		3	0-2	0-2	0-0	0-1-1	2	0	0	0	0	0
SAMFORD		10	2-3	0-0	0-0	0-0-0	0	0	1	0	2	4
NORTH FLORIDA		4	0-0	0-0	0-0	1-1-2	0	0	0	0	0	0
at Ole Miss		3	0-0	0-0	0-0	0-0-0	1	0	0	0	0	0
MISSOURI						--DNP--						
at South Carolina												
ALABAMA												
at LSU												
at Mississippi State												
OLE MISS												
at Kentucky												
FLORIDA												
ARKANSAS												
SOUTH CAROLINA												
at Alabama												
TEXAS A&M												
at Tennessee												
at Georgia												
VANDERBILT												

**CAREER HIGHS**

Points	4	2x; last vs Samford	12/18/22
Rebounds	3	vs. UCF	12/3/22
Assists	3	vs. South Alabama	12/13/20
Blocks			
Steals	2	vs Samford	12/18/22
Field Goals	2	vs Samford	12/18/22
Field Goal Attempts	5	vs. UCF	12/3/22
3-Point Field Goals	1	vs Alabama State	11/20/22
3-Point FG Attempts	2	vs. N.C. A&T	12/15/22
Free Throws	2	vs. UL-Lafayette	12/11/22
Free Throw Attempts	3	vs. UL-Lafayette	12/11/22

**McFADDEN'S CAREER STATISTICS**

SEASON	TEAM	GP-GS	MIN/AVG	Field Goals		3-Point		F-Throws		Rebounds				Scoring						
				FG-FGA	FG%	3FG-3FGA	3FG%	FT-FTA	FT%	OFF	DEF	TOT	AVG	PF	FO	A	TO	BLK	STL	PTS
2020-21	AUB	6-0	20/3.3	1-3	.333	0-0	.000	1-2	.500	2	1	3	0.5	0-0	4	1	0	1	3	0.5
2021-22	AUB	8-0	29/3.6	1-6	.167	0-1	.000	0-0	.000	0	4	4	0.5	6-0	1	4	0	0	2	0.3
2022-23	AUB	9-0	39/4.3	4-15	.267	1-5	.200	2-3	.667	5	4	9	1.0	5-0	1	1	0	2	11	1.2
<b>TOTAL</b>		<b>23-0</b>	<b>88/3.8</b>	<b>6-24</b>	<b>.250</b>	<b>1-6</b>	<b>.167</b>	<b>3-5</b>	<b>.600</b>	<b>7</b>	<b>9</b>	<b>16</b>	<b>0.7</b>	<b>11-0</b>	<b>6</b>	<b>6</b>	<b>0</b>	<b>3</b>	<b>16</b>	<b>0.7</b>



# Kharyssa RICHARDSON

# #33

Freshman • Forward • 6-2

Douglasville, Ga. • New Manchester HS

- Season-high 10 points along with 6 rebounds in win over North Florida (12/20)
- Returned after missing 3 games with injury vs. North Carolina A&T; had 8 points, 6 rebounds and season-high 2 blocks
- Season-high 9 rebounds vs. Colorado State (11/26) before leaving game with injury late in 4th quarter
- Started in Auburn debut vs. Sam Houston with 5 points, 7 rebounds, 2 steals (11/8)
- Averaged 18.3 points, 8.9 rebounds, 1.9 steals, 1.9 blocks, 1.2 assists as a high school senior
- Georgia Class 5A all-state selection in 2021 as a junior
- In 103 high school games, averaged 13.1 points, 7.5 rebounds, 1.8 blocks, 1.7 steals, 1.0 assists

#### SEASON/CAREER HIGHS

Points		
10	vs. North Florida	12/20/22
Rebounds		
9	vs. Colorado State	11/26/22
Assists		
1	vs Samford	12/18/22
Blocks		
2	2x; last vs Samford	12/18/22
Steals		
3	vs Samford	12/18/22
Field Goals		
4	4x; last vs Samford	12/18/22
Field Goal Attempts		
9	2x; last vs Samford	12/18/22
3-Point Field Goals		
3-Point FG Attempts		
2	vs Georgia Tech	11/16/22
Free Throws		
4	vs. North Florida	12/20/22
Free Throw Attempts		
5	vs. North Florida	12/20/22

Opponent	Start	Min.	FG-A	3PT-A	FT-A	O-D-T	PF	Ast.	TO	Blk.	St.	Pts.
SAM HOUSTON	*	24	2-9	0-0	1-2	4-3-7	3	0	3	1	2	5
SOUTH ALABAMA	*	33	4-8	0-1	1-2	3-4-7	3	0	5	1	1	9
GEORGIA TECH	*	10	1-3	0-2	0-0	0-2-2	1	0	0	0	1	2
ALABAMA STATE	*	18	4-5	0-0	0-0	5-1-6	2	0	1	1	0	8
vs. Indiana	*	9	1-2	0-0	0-0	0-2-2	2	0	1	0	1	2
vs. Colorado State	*	21	2-3	0-0	0-0	2-7-9	3	0	2	0	1	4
LITTLE ROCK						--DNP--						
UCF						--DNP--						
UL-LAFAYETTE						--DNP--						
NORTH CAROLINA A&T	*	23	4-8	0-0	0-0	2-4-6	3	0	0	2	1	8
SAMFORD	*	22	4-9	0-0	0-0	2-2-4	3	1	1	2	3	8
NORTH FLORIDA	*	26	3-6	0-0	4-5	0-6-6	3	0	2	0	1	10
at Ole Miss	*	31	3-8	0-1	2-2	6-2-8	2	0	2	1	1	8
MISSOURI	*	13	0-4	0-0	2-2	0-3-3	2	0	0	1	0	2
at South Carolina												
ALABAMA												
at LSU												
at Mississippi State												
OLE MISS												
at Kentucky												
FLORIDA												
ARKANSAS												
SOUTH CAROLINA												
at Alabama												
TEXAS A&M												
at Tennessee												
at Georgia												
VANDERBILT												

#### RICHARDSON'S CAREER STATISTICS

SEASON	TEAM	GP-GS	MIN/AVG	Field Goals		3-Point		F-Throws		Rebounds				Scoring						
				FG-FGA	FG%	3FG-3FGA	3FG%	FT-FTA	FT%	OFF	DEF	TOT	AVG	PF	FO A	TO	BLK	STL	PTS	AVG
2022-23	AUB	11-11	230/20.9	28-65	.431	0-4	.000	10-13	.769	24	36	60	5.5	27-0	1	17	9	12	66	6.0
<b>TOTAL</b>		<b>11-11</b>	<b>230/20.9</b>	<b>28-65</b>	<b>.431</b>	<b>0-4</b>	<b>.000</b>	<b>10-13</b>	<b>.769</b>	<b>24</b>	<b>36</b>	<b>60</b>	<b>5.5</b>	<b>27-0</b>	<b>1</b>	<b>17</b>	<b>9</b>	<b>12</b>	<b>66</b>	<b>6.0</b>



# Precious JOHNSON

# #51

Junior • Center • 6-5  
 Baytown, Texas • Sterling HS • Texas

- Season-high 11 points on 4-5 FG in win over Samford (12/18)
- 4 points, 7 rebounds in first action of 2022-23 season vs. Georgia Tech (11/16); missed first two games with illness
- Played in 12 games, earning 8 starts in 2021-22; averaged 5.2 points, 4.0 rebounds, 1.2 blocks, 0.7 steals
- Enrolled at Auburn for spring 2022 semester; finished fall semester at Texas after signing with Auburn in October
- First double-double with career-high 18 points and 10 rebounds at Kentucky (2/27)
- Appeared in nine games at Texas as a freshman in 2020-21; averaged 4.0 minutes per appearance
- Ranked as No. 33 post player in class of 2020 by ESPN HoopGurlz

**SEASON HIGHS**

Points	11	vs Samford	12/18/22
Rebounds	7	2x; last vs. UCF	12/3/22
Assists			
Blocks	1	2x; last vs. Little Rock	11/30/22
Steals	1	4x; last vs. North Florida	12/20/22
Field Goals	4	vs Samford	12/18/22
Field Goal Attempts	5	2x; last vs Samford	12/18/22
3-Point Field Goals			
3-Point FG Attempts			
Free Throws	3	2x; last vs Samford	12/18/22
Free Throw Attempts	6	vs. Indiana	11/25/22

Opponent	Start	Min.	FG-A	3PT-A	FT-A	O-D-T	PF	Ast.	TO	Blk.	St.	Pts.
SAM HOUSTON						--DNP--						
SOUTH ALABAMA						--DNP--						
GEORGIA TECH		17	2-4	0-0	0-0	6-1-7	4	0	2	1	0	4
ALABAMA STATE		14	1-4	0-0	0-0	1-2-3	2	0	1	0	1	2
vs. Indiana		23	3-4	0-0	2-6	4-1-5	1	0	2	0	0	8
vs. Colorado State		7	1-1	0-0	2-2	0-0-0	0	0	0	0	1	4
LITTLE ROCK		17	1-5	0-0	0-0	3-0-3	2	0	0	1	0	2
UCF		19	2-2	0-0	0-0	4-3-7	2	0	3	0	0	4
UL-LAFAYETTE		15	1-2	0-0	3-4	2-0-2	3	0	1	0	1	5
NORTH CAROLINA A&T		12	1-2	0-0	1-2	4-0-4	4	0	0	0	0	3
SAMFORD		18	4-5	0-0	3-4	2-3-5	1	0	2	0	0	11
NORTH FLORIDA		12	1-3	0-0	0-0	1-0-1	0	0	1	1	1	2
at Ole Miss	*	11	0-0	0-0	0-0	0-2-2	5	0	1	0	0	0
MISSOURI		9	1-1	0-0	0-0	0-0-0	0	0	0	0	0	2
at South Carolina												
ALABAMA												
at LSU												
at Mississippi State												
OLE MISS												
at Kentucky												
FLORIDA												
ARKANSAS												
SOUTH CAROLINA												
at Alabama												
TEXAS A&M												
at Tennessee												
at Georgia												
VANDERBILT												

**CAREER HIGHS**

Points	18	at Kentucky	2/27/22
Rebounds	10	at Kentucky	2/27/22
Assists			
Blocks	3	vs. Alabama	1/23/22
Steals	1	10x; last vs. North Florida	12/20/22
Field Goals	6	at Kentucky	2/27/22
Field Goal Attempts	14	at Kentucky	2/27/22
3-Point Field Goals			
3-Point FG Attempts			
Free Throws	6	at Kentucky	2/27/22
Free Throw Attempts	8	at Kentucky	2/27/22

**JOHNSON'S CAREER STATISTICS**

SEASON	TEAM	GP-GS	MIN/AVG	Field Goals		3-Point		F-Throws		Rebounds				Scoring						
				FG-FGA	FG%	3FG-3FGA	3FG%	FT-FTA	FT%	OFF	DEF	TOT	AVG	PF	FO	A	TO	BLK	STL	PTS
2020-21	UT	9-0	36/4.0	0-4	.000	0-0	.000	2-4	.500	2	3	5	0.6	9-0	0	2	1	1	2	0.2
2021-22	AUB	12-8	242/20.1	24-53	.453	0-0	.000	14-28	.500	24	24	48	4.0	39-0	0	17	14	8	62	5.2
2022-23	AUB	12-1	174/14.5	18-33	.545	0-0	.000	11-18	.611	27	12	39	3.3	24-1	0	13	3	4	47	3.9
<b>TOTAL FOR AUB</b>		<b>24-9</b>	<b>416/17.3</b>	<b>42-86</b>	<b>.488</b>	<b>0-0</b>	<b>.000</b>	<b>25-46</b>	<b>.543</b>	<b>51</b>	<b>36</b>	<b>87</b>	<b>3.6</b>	<b>63-1</b>	<b>0</b>	<b>30</b>	<b>17</b>	<b>12</b>	<b>109</b>	<b>4.5</b>
<b>TOTAL</b>		<b>33-9</b>	<b>451/13.7</b>	<b>42-90</b>	<b>.467</b>	<b>0-0</b>	<b>.000</b>	<b>27-50</b>	<b>.540</b>	<b>53</b>	<b>39</b>	<b>92</b>	<b>2.8</b>	<b>72-1</b>	<b>0</b>	<b>32</b>	<b>18</b>	<b>13</b>	<b>111</b>	<b>3.4</b>

Exhibition | Nov. 3, 2022 | Auburn, Ala. Auburn 81, Tuskegee 59

NCAA logo, Official Basketball Box Score - Final, Tuskegee at Auburn, 11/03/22 Neville Arena, Auburn, Ala., 2022-23 Women's Basketball, Game Time: 7:00 PM, Game Duration: 2:07, Officials: Kyle Galloway, Stephanie Barksdale, Timothy Greene

Box score for Auburn vs Tuskegee. Includes player stats (NO. Name, Min, FG, 3P, FT, Rebounds, Fouls, TP, AS, TO, ST, Blocks, +/-) and team totals. Shooting by period and technical fouls are also listed.

Box score for Auburn vs Auburn. Includes player stats and team totals. Shooting by period and technical fouls are also listed.

Summary statistics for Auburn vs Auburn, including Biggest lead, Best Scoring Run, Lead Changes, Times Tied, Time with Lead, Points from Turnovers, Paint, Second Chance, Fast Breaks, Bench, and Period by Period Scoring.

Game 1 | Nov. 8, 2022 | Auburn, Ala. Auburn 90, Sam Houston 76

NCAA logo, Official Basketball Box Score - Final, Sam Houston at Auburn, 11/08/22 Neville Arena, Auburn, Ala., 2022-23 Women's Basketball, Game Time: 7:00 PM, Game Duration: 2:22, Attendance: 1,913, Officials: Chaney Muench, Teresa Stuck, Kaz Beverley

Box score for Auburn vs Sam Houston. Includes player stats and team totals. Shooting by period and technical fouls are also listed.

Box score for Auburn vs Auburn. Includes player stats and team totals. Shooting by period and technical fouls are also listed.

Summary statistics for Auburn vs Auburn, including Biggest lead, Best Scoring Run, Lead Changes, Times Tied, Time with Lead, Points from Turnovers, Paint, Second Chance, Fast Breaks, Bench, and Period by Period Scoring.

Game 2 | Nov. 10, 2022 | Auburn, Ala. Auburn 71, South Alabama 62

NCAA logo, Official Basketball Box Score - Final, South Alabama at Auburn, 11/10/22 Neville Arena, Auburn, Ala., 2022-23 Women's Basketball, Game Time: 7:00 PM, Game Duration: 2:05, Attendance: 1,955, Officials: Katie Lukanich, Roy Gulbeyan, Natasha Camry

Box score for Auburn vs South Alabama. Includes player stats and team totals. Shooting by period and technical fouls are also listed.

Box score for Auburn vs Auburn. Includes player stats and team totals. Shooting by period and technical fouls are also listed.

Summary statistics for Auburn vs Auburn, including Biggest lead, Best Scoring Run, Lead Changes, Times Tied, Time with Lead, Points from Turnovers, Paint, Second Chance, Fast Breaks, Bench, and Period by Period Scoring.

Game 3 | Nov. 16, 2022 | Auburn, Ala. Georgia Tech 57, Auburn 51

NCAA logo, Official Basketball Box Score - Final, Georgia Tech at Auburn, 11/16/22 Neville Arena, Auburn, Ala., 2022-23 Women's Basketball, Game Time: 7:00 PM, Game Duration: 2:06, Attendance: 1,932, Officials: Maj Forsberg, Eric Brewster, Meadow Overstreet

Box score for Auburn vs Georgia Tech. Includes player stats and team totals. Shooting by period and technical fouls are also listed.

Box score for Auburn vs Auburn. Includes player stats and team totals. Shooting by period and technical fouls are also listed.

Summary statistics for Auburn vs Auburn, including Biggest lead, Best Scoring Run, Lead Changes, Times Tied, Time with Lead, Points from Turnovers, Paint, Second Chance, Fast Breaks, Bench, and Period by Period Scoring.

Game 4 | Nov. 20, 2022 | Auburn, Ala. Auburn 88, Alabama State 49

Official Basketball Box Score - Final Auburn St. at Auburn. Game Time: 2:00 PM. Game Duration: 1:58. Attendance: 2,065. Shooting By Period: 1st FG% 5-13 38.5%, 3PT% 0-4 0.0%, FT% 1-2 50.0%.

Auburn - 88 Record: 3-1. Shooting By Period: 1st FG% 7-16 43.8%, 3PT% 2-5 40.0%, FT% 6-13 46.2%. Technical Fouls: NONE.

Summary statistics for Auburn vs Alabama State. Biggest lead: 3 (1st 8:59). Best Scoring Run: 5 (2nd 8:23). Lead Changes: 1. Times Tied: 1. Time with Lead: 03:07.

Game 5 | Nov. 25, 2022 | Las Vegas, Nev. #6/5 Indiana 96, Auburn 81

Official Basketball Box Score - Final Indiana at Auburn. Game Time: 5:45 PM. Game Duration: 2:01. Attendance: 2,971. Shooting By Period: 1st FG% 9-14 64.3%, 3PT% 2-6 33.3%, FT% 5-6 83.3%.

Auburn - 81 Record: 3-2. Shooting By Period: 1st FG% 7-16 43.8%, 3PT% 2-5 40.0%, FT% 6-13 46.2%. Technical Fouls: NONE.

Summary statistics for Auburn vs Indiana. Biggest lead: 15 (2nd 3:55). Best Scoring Run: 11 (2nd 4:57). Lead Changes: 6. Times Tied: 5. Time with Lead: 35:50.

Game 6 | Nov. 26, 2022 | Las Vegas, Nev. Auburn 74, Colorado State 73

Official Basketball Box Score - Final Auburn at Colorado St. Game Time: 3:30 PM. Game Duration: 2:51. Attendance: 2,511. Shooting By Period: 1st FG% 7-16 43.8%, 3PT% 2-4 50.0%, FT% 2-4 50.0%.

Auburn - 74 Record: 4-2. Shooting By Period: 1st FG% 7-16 43.8%, 3PT% 2-4 50.0%, FT% 2-4 50.0%. Technical Fouls: NONE.

Summary statistics for Auburn vs Colorado State. Biggest lead: 6 (3rd 6:09). Best Scoring Run: 6 (3rd 8:34). Lead Changes: 18. Times Tied: 8. Time with Lead: 19:39.

Game 7 | Nov. 30, 2022 | Auburn, Ala. Auburn vs. Little Rock

Official Basketball Box Score - Final Little Rock at Auburn. Game Time: 12:00 PM. Game Duration: 1:55. Attendance: 1,855. Shooting By Period: 1st FG% 3-13 23.1%, 3PT% 0-1 0.0%, FT% 2-2 100.0%.

Little Rock - 48 Record: 1-4. Shooting By Period: 1st FG% 3-13 23.1%, 3PT% 0-1 0.0%, FT% 2-2 100.0%. Technical Fouls: NONE.

Summary statistics for Auburn vs Little Rock. Biggest lead: 0 (1st 10:00). Best Scoring Run: 4 (1st 3:24). Lead Changes: 0. Times Tied: 0. Time with Lead: 00:00.

2022-23 AUBURN WOMEN'S BASKETBALL

21 NCAA Tournaments • 3 Final Fours • 5 SEC Titles • 4 SEC Tournament Titles

Game 8 | Dec. 3, 2022 | Auburn, Ala. Auburn 86, UCF 46

Game 9 | Dec. 11, 2022 | Auburn, Ala. Auburn 81, Louisiana-Lafayette 41

Official Basketball Box Score - Final UCF at Auburn. Game Time: 2:00 PM. Game Duration: 2:06. Attendance: 1,892. UCF - 46 Record: 6-1. Shooting By Period: 1st FG% 31.5, 2nd FG% 41.6, 3rd FG% 4.4, 4th FG% 2.1.

Official Basketball Box Score - Final Louisiana at Auburn. Game Time: 2:00 PM. Game Duration: 2:06. Attendance: 2,447. Louisiana - 41 Record: 5-5. Shooting By Period: 1st FG% 25.0, 2nd FG% 41.2, 3rd FG% 4.1, 4th FG% 2.1.

Auburn - 86 Record: 6-2. Shooting By Period: 1st FG% 51.7, 2nd FG% 50.0, 3rd FG% 6.1, 4th FG% 10.9. Technical Fouls: NONE. Dead Ball Rebounds: 4, 0.

Auburn - 81 Record: 7-2. Shooting By Period: 1st FG% 47.1, 2nd FG% 50.0, 3rd FG% 6.1, 4th FG% 10.9. Technical Fouls: NONE. Dead Ball Rebounds: 4, 1.

UCF Auburn comparison table for game 8. Biggest lead: 2 (1st 8:48), 43 (4th 3:06). Best Scoring Run: 7 (3rd 7:55), 15 (2nd 8:14). Lead Changes: 1. Times Tied: 1. Time with Lead: 00:22, 37:50.

Points from Turnovers, Paint, Second Chance, Fast Breaks, Bench for UCF and Auburn.

Period by Period Scoring for UCF and Auburn.

Cajuns Tigers comparison table for game 9. Biggest lead: 0 (1st 10:00), 40 (4th 0:09). Best Scoring Run: 6 (4th 8:35), 12 (3rd 6:45). Lead Changes: 0. Times Tied: 0. Time with Lead: 00:00, 39:41.

Points from Turnovers, Paint, Second Chance, Fast Breaks, Bench for Cajuns and Tigers.

Period by Period Scoring for Cajuns and Tigers.

Game 10 | Dec. 15, 2022 | Auburn, Ala. Auburn 79, North Carolina A&T 63

Game 11 | Dec. 18, 2022 | Auburn, Ala. Auburn 91, Samford 37

Official Basketball Box Score - Final N.C. A&T at Auburn. Game Time: 7:00 PM. Game Duration: 2:04. Attendance: 2,795. N.C. A&T - 63 Record: 5-4. Shooting By Period: 1st FG% 51.3, 2nd FG% 41.2, 3rd FG% 4.1, 4th FG% 2.1.

Official Basketball Box Score - Final Samford at Auburn. Game Time: 12:00 PM. Game Duration: 1:51. Attendance: 2,013. Samford - 37 Record: 4-9. Shooting By Period: 1st FG% 25.0, 2nd FG% 41.2, 3rd FG% 4.1, 4th FG% 2.1.

Auburn - 79 Record: 8-2. Shooting By Period: 1st FG% 51.7, 2nd FG% 50.0, 3rd FG% 6.1, 4th FG% 10.9. Technical Fouls: NONE. Dead Ball Rebounds: 5, 0.

Auburn - 91 Record: 9-2. Shooting By Period: 1st FG% 47.1, 2nd FG% 50.0, 3rd FG% 6.1, 4th FG% 10.9. Technical Fouls: NONE. Dead Ball Rebounds: 2, 0.

NCAT Auburn comparison table for game 10. Biggest lead: 0 (1st 10:00), 29 (3rd 6:30). Best Scoring Run: 9 (3rd 4:08), 11 (3rd 7:59). Lead Changes: 0. Times Tied: 0. Time with Lead: 00:00, 39:03.

Points from Turnovers, Paint, Second Chance, Fast Breaks, Bench for NCAT and Auburn.

Period by Period Scoring for NCAT and Auburn.

SAM Auburn comparison table for game 11. Biggest lead: 0 (1st 10:00), 56 (4th 5:01). Best Scoring Run: 5 (3rd 9:26), 16 (2nd 5:55). Lead Changes: 0. Times Tied: 0. Time with Lead: 00:00, 38:59.

Points from Turnovers, Paint, Second Chance, Fast Breaks, Bench for SAM and Auburn.

Period by Period Scoring for SAM and Auburn.

Game 12 | Dec. 20, 2022 | Auburn, Ala. Auburn 77, North Florida 49

Official Basketball Box Score - Final North Florida at Auburn. Game Time: 12:00 PM. Attendance: 1,984. Includes player stats for North Florida - 49 and Auburn - 77, shooting percentages, and technical fouls.

Technical Fouls: NONE. Dead Ball Rebounds: 6, 1. Includes a summary table for UNF vs Auburn with categories like Biggest lead, Best Scoring Run, and Time with Lead.

Game 13 | Dec. 29, 2022 | Oxford, Miss. Ole Miss 79, Auburn 47

Official Basketball Box Score - Final Auburn at Ole Miss. Game Time: 6:00 PM. Attendance: 2,369. Includes player stats for Auburn - 47 and Ole Miss - 79, shooting percentages, and technical fouls.

Technical Fouls: NONE. Dead Ball Rebounds: 5, 0. Includes a summary table for Ole Miss - 79 vs Auburn - 47 with categories like Biggest lead, Best Scoring Run, and Time with Lead.

Game 14 | Jan. 1, 2023 | Auburn, Ala. Missouri 62, Auburn 56

Official Basketball Box Score - Final Missouri at Auburn. Game Time: 3:00 PM. Attendance: 2,131. Includes player stats for Missouri - 62 and Auburn - 56, shooting percentages, and technical fouls.

Technical Fouls: NONE. Dead Ball Rebounds: 2, 2. Includes a summary table for Missouri - 62 vs Auburn - 56 with categories like Biggest lead, Best Scoring Run, and Time with Lead.

Game 15 | Jan. 5, 2023 | Columbia, S.C. Auburn at #1 South Carolina

Summary table for Missouri - 62 vs Auburn - 56 with categories like Biggest lead, Best Scoring Run, Lead Changes, and Time with Lead.

Summary table for Ole Miss - 79 vs Auburn - 47 with categories like Biggest lead, Best Scoring Run, Lead Changes, and Time with Lead.





## 2022-23 Auburn Women's Basketball Combined Team Statistics All games

Page 1/1  
as of Jan 02, 2023

### Game Records

Record	Overall	Home	Away	Neutral
ALL GAMES	10-4	9-2	0-1	1-1
CONFERENCE	0-2	0-1	0-1	0-0
NON-CONFERENCE	10-2	9-1	0-0	1-1

### Score by Periods

Team	1st	2nd	3rd	4th	OT	TOT
Auburn	245	273	274	250	0	1042
Opponents	182	213	213	230	0	838

### Team Box Score

No.	Player				Total		3-Point		F-Throw		Rebounds											
		GP-GS	MIN	AVG	FG-FGA	FG%	3FG-3FGA	3FG%	FT-FTA	FT%	OFF	DEF	TOT	AVG	PF	DQ	A	TO	BLK	STL	PTS	AVG
5	COULIBALY, Aicha	11-11	317:41	28.9	62-145	.428	6-27	.222	54-71	.761	21	46	67	6.1	23	0	20	21	11	21	184	16.7
23	SCOTT-GRAYSON, Honesty	12-12	306:23	25.5	67-140	.479	25-51	.490	31-41	.756	7	39	46	3.8	32	1	27	29	8	22	190	15.8
11	LEVY, Romi	12-8	260:59	21.7	40-77	.519	6-15	.400	16-24	.667	19	44	63	5.3	20	0	18	21	12	13	102	8.5
10	SHAW, Sydney	14-13	355:17	25.4	45-118	.381	21-56	.375	7-8	.875	3	31	34	2.4	13	0	50	33	4	13	118	8.4
33	RICHARDSON, Kharyssa	11-11	229:58	20.9	28-65	.431	0-4	.000	10-13	.769	24	36	60	5.5	27	0	1	17	9	12	66	6.0
4	DUHON, Kaitlyn	14-6	239:54	17.1	34-78	.436	1-8	.125	15-20	.750	18	23	41	2.9	32	0	8	15	11	14	84	6.0
2	WELLS, Sania	14-1	240:47	17.2	29-85	.341	11-36	.306	11-17	.647	6	22	28	2.0	21	0	17	20	7	14	80	5.7
12	BOSTIC, Mar'shaun	14-2	195:11	13.9	24-57	.421	1-2	.500	18-29	.621	9	13	22	1.6	32	0	24	18	3	16	67	4.8
3	JOHNSON, Jakayla	13-5	218:04	16.8	18-44	.409	5-12	.417	11-13	.846	12	20	32	2.5	18	0	10	10	4	11	52	4.0
51	JOHNSON, Precious	12-1	174:05	14.5	18-33	.545	0-0	.000	11-18	.611	27	12	39	3.3	24	1	0	13	3	4	47	3.9
1	PRATCHER, Mya	13-0	180:20	13.9	9-31	.290	0-1	.000	18-25	.720	12	29	41	3.2	21	0	4	20	8	8	36	2.8
0	GRAVES, Amoura	3-0	40:36	13.5	2-6	.333	1-4	.250	0-0	.000	2	4	6	2.0	4	0	3	3	2	1	5	1.7
24	MCFADDEN, Carsen	9-0	38:45	4.3	4-15	.267	1-5	.200	2-3	.667	5	4	9	1.0	5	0	1	1	0	2	11	1.2
20	AKINBOLAWA, Oyindamola	1-0	02:00	2.0	0-0	.000	0-0	.000	0-0	.000	0	0	0	0.0	1	0	0	2	0	0	0	0.0
Team											22	31	53				6					
<b>Total</b>		<b>14</b>	<b>2800</b>		<b>380-894</b>	<b>.425</b>	<b>78-221</b>	<b>.353</b>	<b>204-282</b>	<b>.723</b>	<b>187</b>	<b>354</b>	<b>541</b>	<b>38.6</b>	<b>273</b>	<b>2</b>	<b>183</b>	<b>229</b>	<b>82</b>	<b>151</b>	<b>1042</b>	<b>74.4</b>
<b>Opponents</b>		<b>14</b>	<b>2798</b>		<b>287-794</b>	<b>.361</b>	<b>58-200</b>	<b>.290</b>	<b>206-304</b>	<b>.678</b>	<b>183</b>	<b>347</b>	<b>530</b>	<b>37.9</b>	<b>272</b>	<b>6</b>	<b>117</b>	<b>300</b>	<b>27</b>	<b>106</b>	<b>838</b>	<b>59.9</b>

### Team Statistics

	AUB	OPP
<b>Scoring</b>	<b>1042</b>	<b>838</b>
Points per game	74.4	59.9
Scoring margin	+14.6	-
<b>Field goals-att</b>	<b>380-894</b>	<b>287-794</b>
Field goal pct	.425	.361
<b>3 point fg-att</b>	<b>78-221</b>	<b>58-200</b>
3-point FG pct	.353	.290
3-pt FG made per game	5.6	4.1
<b>Free throws-att</b>	<b>204-282</b>	<b>206-304</b>
Free throw pct	.723	.678
F-Throws made per game	14.6	14.7
<b>Rebounds</b>	<b>541</b>	<b>530</b>
Rebounds per game	38.6	37.9
Rebounding margin	+0.8	-
<b>Assists</b>	<b>183</b>	<b>117</b>
Assists per game	13.1	8.4
<b>Turnovers</b>	<b>229</b>	<b>300</b>
Turnovers per game	16.4	21.4
Turnover margin	+5.1	-
Assist/turnover ratio	0.8	0.4
<b>Steals</b>	<b>151</b>	<b>106</b>
Steals per game	10.8	7.6
<b>Blocks</b>	<b>82</b>	<b>27</b>
Blocks per game	5.9	1.9
<b>Winning streak</b>	<b>0</b>	<b>-</b>
Home win streak	0	-
<b>Attendance</b>	<b>21982</b>	<b>2369</b>
Home games-Avg/Game	11-1998	1-2369
Neutral site-Avg/Game	-	2-547

### Team Results

Date	Opponent		Score	Att.
11/08/2022	Sam Houston	W	90-76	1913
11/10/2022	South Alabama	W	71-62	1955
11/16/2022	Georgia Tech	L	51-57	1932
11/20/2022	Alabama St.	W	88-49	2065
11/25/2022	vs Indiana	L	81-96	0
11/26/2022	vs Colorado St.	W	74-73	1093
11/30/2022	Little Rock	W	70-48	1855
12/03/2022	UCF	W	86-46	1892
12/11/2022	Louisiana	W	81-41	2447
12/15/2022	N.C. A&T	W	79-63	1795
12/18/2022	Samford	W	91-37	2013
12/20/2022	North Florida	W	77-49	1984
12/29/2022	at Ole Miss	L	47-79	2369
01/01/2023	Missouri	L	56-62	2131



## 2022-23 Auburn Women's Basketball Combined Team Statistics In Conference games

Page 1/1  
as of Jan 02, 2023

**Game Records**

Record	Overall	Home	Away	Neutral
ALL GAMES	0-2	0-1	0-1	0-0
CONFERENCE	0-2	0-1	0-1	0-0
NON-CONFERENCE	0-0	0-0	0-0	0-0

**Score by Periods**

Team	1st	2nd	3rd	4th	OT	TOT
Auburn	24	27	26	26	0	103
Opponents	29	39	45	28	0	141

**Team Box Score**

No.	Player	Total			3-Point			F-Throw		Rebounds												
		GP-GS	MIN	AVG	FG-FGA	FG%	3FG-3FGA	3FG%	FT-FTA	FT%	OFF	DEF	TOT	AVG	PF	DQ	A	TO	BLK	STL	PTS	AVG
5	COULIBALY, Aicha	2-2	58:50	29.4	11-26	.423	0-5	.000	11-16	.688	3	9	12	6.0	4	0	2	4	0	0	33	16.5
11	LEVY, Romi	2-2	42:54	21.5	5-13	.385	0-2	.000	3-7	.429	2	4	6	3.0	3	0	1	6	1	0	13	6.5
3	JOHNSON, Jakayla	2-1	55:32	27.8	3-7	.429	1-3	.333	4-4	1.000	2	8	10	5.0	4	0	4	4	0	1	11	5.5
12	BOSTIC, Mar'shaun	2-0	30:52	15.4	3-13	.231	0-0	.000	5-9	.556	2	1	3	1.5	4	0	3	2	1	4	11	5.5
33	RICHARDSON, Kharyssa	2-2	44:11	22.1	3-12	.250	0-1	.000	4-4	1.000	6	5	11	5.5	4	0	0	2	2	1	10	5.0
2	WELLS, Sania	2-0	45:23	22.7	3-14	.214	1-6	.167	1-1	1.000	0	3	3	1.5	6	0	0	2	0	2	8	4.0
1	PRATCHER, Mya	2-0	31:21	15.7	1-6	.167	0-0	.000	5-6	.833	1	3	4	2.0	3	0	1	2	0	1	7	3.5
10	SHAW, Sydney	2-2	49:50	24.9	2-15	.133	0-5	.000	0-0	.000	1	6	7	3.5	1	0	4	7	0	0	4	2.0
4	DUHON, Kaitlyn	2-0	18:32	9.3	1-3	.333	0-0	.000	2-2	1.000	0	2	2	1.0	0	0	1	2	0	2	4	2.0
51	JOHNSON, Precious	2-1	19:53	9.9	1-1	1.000	0-0	.000	0-0	.000	0	2	2	1.0	5	1	0	1	0	0	2	1.0
24	MCFADDEN, Carsen	1-0	02:42	2.7	0-0	.000	0-0	.000	0-0	.000	0	0	0	0.0	1	0	0	0	0	0	0	0.0
Team											1	4	5					1				
<b>Total</b>		<b>2</b>	<b>400</b>		<b>33-110</b>	<b>.300</b>	<b>2-22</b>	<b>.091</b>	<b>35-49</b>	<b>.714</b>	<b>18</b>	<b>47</b>	<b>65</b>	<b>32.5</b>	<b>35</b>	<b>1</b>	<b>16</b>	<b>33</b>	<b>4</b>	<b>11</b>	<b>103</b>	<b>51.5</b>
<b>Opponents</b>		<b>2</b>	<b>400</b>		<b>54-121</b>	<b>.446</b>	<b>11-34</b>	<b>.324</b>	<b>22-36</b>	<b>.611</b>	<b>24</b>	<b>62</b>	<b>86</b>	<b>43.0</b>	<b>45</b>	<b>0</b>	<b>24</b>	<b>31</b>	<b>4</b>	<b>13</b>	<b>141</b>	<b>70.5</b>

**Team Statistics**

	AUB	OPP
<b>Scoring</b>	<b>103</b>	<b>141</b>
Points per game	51.5	70.5
Scoring margin	-19.0	-
<b>Field goals-att</b>	<b>33-110</b>	<b>54-121</b>
Field goal pct	.300	.446
<b>3 point fg-att</b>	<b>2-22</b>	<b>11-34</b>
3-point FG pct	.091	.324
3-pt FG made per game	1.0	5.5
<b>Free throws-att</b>	<b>35-49</b>	<b>22-36</b>
Free throw pct	.714	.611
F-Throws made per game	17.5	11.0
<b>Rebounds</b>	<b>65</b>	<b>86</b>
Rebounds per game	32.5	43.0
Rebounding margin	-10.5	-
<b>Assists</b>	<b>16</b>	<b>24</b>
Assists per game	8.0	12.0
<b>Turnovers</b>	<b>33</b>	<b>31</b>
Turnovers per game	16.5	15.5
Turnover margin	-1.0	-
Assist/turnover ratio	0.5	0.8
<b>Steals</b>	<b>11</b>	<b>13</b>
Steals per game	5.5	6.5
<b>Blocks</b>	<b>4</b>	<b>4</b>
Blocks per game	2.0	2.0
<b>Winning streak</b>	<b>0</b>	<b>-</b>
Home win streak	0	-
<b>Attendance</b>	<b>2131</b>	<b>2369</b>
Home games-Avg/Game	1-2131	1-2369
Neutral site-Avg/Game	-	0-0

**Team Results**

Date	Opponent		Score	Att.
12/29/2022	at Ole Miss	L	47-79	2369
01/01/2023	Missouri	L	56-62	2131



**Amoura Graves**  
Sophomore • G • 6-0  
Ponchatoula, La.  
Ponchatoula HS



**Mya Pratcher**  
Freshman • F • 6-1  
Memphis, Tenn.  
Bartlett HS



**Sania Wells**  
Senior • G • 5-7  
Moss Point, Miss.  
East Central HS



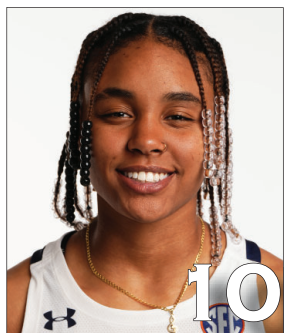
**Jakayla Johnson**  
Junior • G • 5-9  
Clinton, Miss.  
Jones College



**Kaitlyn Duhon**  
Freshman • G • 5-10  
Houston, Texas  
Summer Creek HS



**Aicha Coulibaly**  
Junior • G • 6-0  
Mali  
IMG Academy (Fla.)



**Sydney Shaw**  
Freshman • G • 5-9  
Macungie, Pa.  
Emmaus HS



**Romi Levy**  
R-Sophomore • F • 6-3  
Herzliya, Israel  
Hof Hasharon HS



**Mar'Shaun Bostic**  
Sophomore • G • 5-8  
St. Louis, Mo.  
Vashon HS



**Oyindamola Akinbolawa**  
Freshman • C • 6-5  
Lagos, Nigeria



**Audia Young**  
Freshman • G • 5-9  
Tallahassee, Fla.  
Florida State Univ. HS



**Honesty Scott-Grayson**  
R-Senior • G • 5-9  
Brick, N.J.  
Baylor



**Carsen McFadden**  
Junior • G • 5-7  
Fairview, Texas  
Lovejoy HS



**Kharyssa Richardson**  
Freshman • F • 6-2  
Douglasville, Ga.  
New Manchester HS



**Precious Johnson**  
Junior • C • 6-5  
Baytown, Texas  
Texas



**Johnnie Harris**  
Head Coach (2nd year)  
Pine Bluff, Ark.  
Arkansas Baptist (1996)



**Fred Williams**  
Associate Head Coach  
Inglewood, Calif.  
Boise State (1979)



**Damitria Buchanan**  
Associate Head Coach  
Houston, Texas  
Texas A&M (2010)



**Ketara Chapel**  
Assistant Coach  
Temple, Texas  
Mississippi State (2017)