



Indiana at Auburn

11/25/22 Mirage, Las Vegas
2022-23 Women's Basketball

Officials: Eric Brewton, Doug Night, Ashley Birch

Indiana - 96

Record: 6-0

NO.	Name	F	Min	FG			3P			FT			Rebounds			Fouls		TP	AS	TO	ST	Blocks		+/-
				M-A	M-A	M-A	OR	DR	TOT	PF	FD	OR	DR	TOT	BS	BA								
54	Mackenzie Holmes	F	29:55	10-10	0-0	6-6	4	8	12	4	5	26	0	2	3	2	0	0	0	0	2	0	13	
12	Yarden Garzon	G	33:52	8-17	4-7	1-1	0	6	6	3	1	21	6	2	0	0	0	2	0	0	2	15		
14	Sara Scalia	G	39:16	3-12	2-6	4-6	0	2	2	1	5	12	1	3	0	0	1	16	0	0	1	16		
22	Chloe Moore-McNeil	G	36:35	5-8	0-3	5-6	2	0	2	2	3	15	6	2	1	1	1	18	0	0	0	0		
34	Grace Berger	G	01:14	1-1	0-0	0-0	0	0	0	0	1	2	0	0	0	0	0	0	0	0	0	0		
33	Sydney Parrish		36:08	4-9	2-5	6-6	2	7	9	5	5	16	3	2	3	0	2	11	0	0	2	11		
3	Kaitlin Peterson		09:58	1-3	0-2	0-0	0	0	0	0	0	2	2	0	0	0	1	7	0	0	0	7		
32	Alyssa Geary		10:04	1-1	0-0	0-0	0	1	1	1	0	2	0	0	0	0	0	3	0	0	0	3		
1	Lexus Bargesser		02:57	0-0	0-0	0-0	0	0	0	0	0	0	0	0	0	0	0	-7	0	0	0	-7		
52	Lilly Meister		00:01	0-0	0-0	0-0	0	0	0	1	0	0	0	0	0	0	0	-1	0	0	0	-1		
Team							0	1	1			0			1									
Totals					33-61	8-23	22-25	8	25	33	17	20	96	18	12	7	3	7	15					

Technical Fouls::NONE

Shooting By Period		
1st FG%	9-14	64.3%
3PT%	2-6	33.3%
FT%	5-6	83.3%
2nd FG%	8-18	44.4%
3PT%	4-9	44.4%
FT%	6-7	85.7%
3rd FG%	7-15	46.7%
3PT%	1-6	16.7%
FT%	2-2	100%
4th FG%	9-14	64.3%
3PT%	1-2	50.0%
FT%	9-10	90%
GM FG%	33-61	54.1%
3PT%	8-23	34.8%
FT%	22-25	88.0%

Dead Ball Rebounds: 6, 1

Auburn - 81

Record: 3-2

NO.	Name	F	Min	FG			3P			FT			Rebounds			Fouls		TP	AS	TO	ST	Blocks		+/-
				M-A	M-A	M-A	OR	DR	TOT	PF	FD	OR	DR	TOT	BS	BA								
33	Kharyssa Richardson	F	09:16	1-2	0-0	0-0	0	2	2	2	0	2	0	2	0	1	1	0	0	1	0	0	1	
4	Kaitlyn Duhon	G	15:15	2-7	1-3	2-2	1	2	3	2	2	7	1	0	0	0	0	-13	0	0	0	0	-13	
5	Aicha Coulibaly	G	36:37	7-17	0-2	8-11	3	0	3	3	7	22	1	4	3	2	1	-14	0	0	1	-14		
10	Sydney Shaw	G	33:28	3-8	2-6	0-0	0	2	2	1	1	8	5	2	0	0	0	-2	0	0	0	0	-2	
23	Honesty Scott-Grayson	G	31:13	8-15	4-6	2-3	2	4	6	4	0	22	1	4	0	1	1	-7	0	0	1	1	-7	
11	Romi Levy		17:42	2-4	0-1	0-0	2	0	2	4	0	4	2	0	0	1	0	0	0	0	0	0	0	
51	Precious Johnson		23:06	3-4	0-0	2-6	4	1	5	1	4	8	0	2	0	0	0	-12	0	0	0	0	-12	
3	Jakayla Johnson		08:13	0-4	0-1	0-0	2	0	2	2	1	0	0	1	0	0	0	0	0	0	0	0	0	
2	Sania Wells		07:31	2-2	1-1	0-0	0	1	1	0	0	5	0	0	0	0	0	-11	0	0	0	0	-11	
1	Mya Pratcher		07:16	0-1	0-0	0-0	1	1	2	0	0	0	0	0	0	0	2	0	0	0	0	0	-9	
12	Mar'shaun Bostic		10:23	1-5	0-0	1-2	1	2	3	1	2	3	1	0	0	1	1	-8	0	0	1	1	-8	
Team							0	1	1			0			0									
Totals					29-69	8-20	15-24	16	16	32	20	17	81	11	14	4	7	3	-15					

Technical Fouls::NONE

Shooting By Period		
1st FG%	8-16	50.0%
3PT%	3-5	60.0%
FT%	4-8	50%
2nd FG%	6-20	30.0%
3PT%	1-7	14.3%
FT%	3-6	50%
3rd FG%	8-15	53.3%
3PT%	2-4	50.0%
FT%	3-4	75%
4th FG%	7-18	38.9%
3PT%	2-4	50.0%
FT%	5-6	83.3%
GM FG%	29-69	42.0%
3PT%	8-20	40.0%
FT%	15-24	62.5%

Dead Ball Rebounds: 7, 1

	IND	AUB
Biggest lead	15 (2 nd 3:55)	2 (1 st 6:47)
Best Scoring Run	11 (2 nd 4:57)	6 (3 rd 0:14)
Lead Changes	6	
Times Tied	5	
Time with Lead	35:50	01:03

Points from	IND	AUB
Turnovers	11	15
Paint	46	32
Second Chance	11	16
Fast Breaks	10	9
Bench	20	20

	Period by Period Scoring				
	1st	2nd	3rd	4th	TOT
IND	25	26	17	28	96
AUB	23	16	21	21	81



Indiana at Auburn

11/25/22 Mirage, Las Vegas
2022-23 Women's Basketball

Officials: Eric Brewton, Doug Night, Ashley Birch

Period 1

Quarter Starters:

AUB	4 Duhon K	5 Coulibaly A	10 Shaw S	23 Scott-Grayson H	33 Richardson K
IND	12 Garzon Y	14 Scalia S	22 Moore-McNeil C	34 Berger G	54 Holmes M

Game Time	AUB	Score	Diff	IND
10:00	33 RICHARDSON K jumpball lost			54 HOLMES M jumpball won
09:45		0-2	-2	34 BERGER G 2pt FG outside the paint, jump shot made (2)
09:25	5 COULIBALY A 2pt FG in the paint, driving layup made (2)	2-2	0	
09:13				14 SCALIA S 3pt FG , jump shot missed
09:09	33 RICHARDSON K defensive rebound (1)			
08:57	4 DUHON K 2pt FG outside the paint, jump shot missed			
08:54				14 SCALIA S defensive rebound (1)
08:46	33 RICHARDSON K foul personal (1 - 1)			34 BERGER G foul drawn (1)
08:46				34 BERGER G substitution out
08:46				33 PARRISH S substitution in
08:33		2-4	-2	54 HOLMES M 2pt FG in the paint, layup made (2)
08:18	4 DUHON K 3pt FG , jump shot made (3)	5-4	1	
08:18	10 SHAW S assist (1)			
07:58		5-7	-2	12 GARZON Y 3pt FG , jump shot made (3)
07:58				33 PARRISH S assist (1)
07:41	5 COULIBALY A 2pt FG in the paint, layup made (4)	7-7	0	
07:41	10 SHAW S assist (2)			
07:30				12 GARZON Y 2pt FG outside the paint, jump shot missed
07:24				54 HOLMES M offensive rebound (1)
07:21		7-10	-3	33 PARRISH S 3pt FG second chance, jump shot made (3)
07:21				12 GARZON Y assist (1)
07:04	4 DUHON K 2pt FG in the paint, layup made (5)	9-10	-1	
06:54				33 PARRISH S 3pt FG , jump shot missed
06:51	10 SHAW S defensive rebound (1)			
06:47	23 SCOTT-GRAYSON H 3pt FG fast break, jump shot made (3)	12-10	2	
06:47	10 SHAW S assist (3)			
06:28	10 SHAW S foul shooting (1 - 2)			54 HOLMES M foul drawn (1)
06:28	4 DUHON K substitution out			
06:28	11 LEVY R substitution in			
06:28				12 GARZON Y substitution out
06:28				3 PETERSON K substitution in
06:28		12-11	1	54 HOLMES M free throw 1 - 2 made (3)
06:28		12-12	0	54 HOLMES M free throw 2 - 2 made (4)
06:08	5 COULIBALY A 3pt FG , jump shot missed			
06:05				33 PARRISH S defensive rebound (1)
05:54	33 RICHARDSON K foul personal (2 - 3)			54 HOLMES M foul drawn (2)
05:54	33 RICHARDSON K substitution out			
05:54	51 JOHNSON P substitution in			
05:52		12-14	-2	14 SCALIA S 2pt FG outside the paint, jump shot made (2)
05:52				22 MOORE-MCNEIL C assist (1)
05:34	51 JOHNSON P 2pt FG in the paint, hook shot missed			
05:30				54 HOLMES M defensive rebound (2)



Indiana at Auburn

11/25/22 Mirage, Las Vegas
2022-23 Women's Basketball

Officials: Eric Brewton, Doug Night, Ashley Birch

Game Time	AUB	Score	Diff	IND
05:14		12-16	-4	22 MOORE-MCNEIL C 2pt FG in the paint, turnaround jump shot made (2)
04:53	10 SHAW S foul drawn (1)			22 MOORE-MCNEIL C foul shooting (1 - 1)
04:53	Timeout media			
04:53				3 PETERSON K substitution out
04:53				12 GARZON Y substitution in
04:53	23 SCOTT-GRAYSON H free throw 1 - 3 made (4)	13-16	-3	
04:53	23 SCOTT-GRAYSON H free throw 2 - 3 missed			
04:53	offensive dead ball rebound (1)			
04:53	23 SCOTT-GRAYSON H free throw 3 - 3 made (5)	14-16	-2	
04:38	11 LEVY R foul shooting (1 - 4)			33 PARRISH S foul drawn (1)
04:38		14-17	-3	33 PARRISH S free throw 1 - 2 made (4)
04:38		14-18	-4	33 PARRISH S free throw 2 - 2 made (5)
04:24	11 LEVY R 2pt FG outside the paint, jump shot missed			
04:20				54 HOLMES M defensive rebound (3)
04:12		14-20	-6	22 MOORE-MCNEIL C 2pt FG in the paint, driving layup made (4)
03:56	51 JOHNSON P turnover lost ball (1)			54 HOLMES M steal (1)
03:49				14 SCALIA S 3pt FG from turnover, jump shot missed
03:48	51 JOHNSON P defensive rebound (1)			
03:48	51 JOHNSON P foul drawn (1)			54 HOLMES M foul personal (1 - 2)
03:45	Timeout 60 Sec			
03:45				54 HOLMES M substitution out
03:45				32 GEARY A substitution in
03:26	23 SCOTT-GRAYSON H 2pt FG outside the paint, step back jump shot made (7)	16-20	-4	
03:09	5 COULIBALY A foul drawn (1)			14 SCALIA S foul offensive (1 - 3)
03:09				14 SCALIA S turnover offensive (1)
02:55	5 COULIBALY A 2pt FG from turnover in the paint, layup missed			
02:51				33 PARRISH S defensive rebound (2)
02:48	23 SCOTT-GRAYSON H foul personal (1 - 5)			22 MOORE-MCNEIL C foul drawn (1)
02:48				22 MOORE-MCNEIL C free throw fast break 1 - 2 missed
02:48				offensive dead ball rebound (1)
02:48		16-21	-5	22 MOORE-MCNEIL C free throw fast break 2 - 2 made (5)
02:48				22 MOORE-MCNEIL C substitution out
02:48				3 PETERSON K substitution in
02:31	23 SCOTT-GRAYSON H turnover bad pass (1)			
02:16				14 SCALIA S turnover bad pass (2)
02:06	5 COULIBALY A foul drawn (2)			12 GARZON Y foul shooting (1 - 4)
02:06				32 GEARY A substitution out
02:06				54 HOLMES M substitution in
02:06				3 PETERSON K substitution out
02:06				1 BARGESSER L substitution in
02:06	5 COULIBALY A free throw 1 - 2 made (5)	17-21	-4	
02:06	5 COULIBALY A free throw 2 - 2 missed			
02:03				33 PARRISH S defensive rebound (3)
02:02	5 COULIBALY A steal (1)			33 PARRISH S turnover bad pass (1)
02:02	5 COULIBALY A 2pt FG from turnover in the paint, layup made (7)	19-21	-2	
02:02	5 COULIBALY A foul drawn (3)			33 PARRISH S foul shooting (1 - 5)



Indiana at Auburn

11/25/22 Mirage, Las Vegas
2022-23 Women's Basketball

Officials: Eric Brewton, Doug Night, Ashley Birch

Game Time	AUB	Score	Diff	IND
02:02	5 COULIBALY A free throw 1 - 1 missed			
02:00	23 SCOTT-GRAYSON H offensive rebound (1)			
01:59	23 SCOTT-GRAYSON H 2pt FG second chance in the paint, layup missed			
01:52				33 PARRISH S defensive rebound (4)
01:46		19-23	-4	54 HOLMES M 2pt FG in the paint, layup made (6)
01:46				14 SCALIA S assist (1)
01:32	23 SCOTT-GRAYSON H 3pt FG , jump shot made (10)	22-23	-1	
01:32	5 COULIBALY A assist (1)			
01:08		22-25	-3	54 HOLMES M 2pt FG in the paint, layup made (8)
00:54	10 SHAW S 3pt FG , jump shot missed			
00:50	11 LEVY R offensive rebound (1)			
00:38	5 COULIBALY A 2pt FG second chance in the paint, layup missed			
00:37	51 JOHNSON P offensive rebound (2)			
00:37	51 JOHNSON P foul drawn (2)			12 GARZON Y foul shooting (2 - 6)
00:37				12 GARZON Y substitution out
00:37				22 MOORE-MCNEIL C substitution in
00:37	51 JOHNSON P free throw 1 - 2 made (1)	23-25	-2	
00:37	51 JOHNSON P free throw 2 - 2 missed			
00:37				defensive rebound (9)
00:12				54 HOLMES M turnover travel (1)
00:12				54 HOLMES M substitution out
00:12				32 GEARY A substitution in
00:04	51 JOHNSON P turnover travel (2)			
00:01				22 MOORE-MCNEIL C 3pt FG from turnover, jump shot blocked
00:01	11 LEVY R block (1)			
00:01				22 MOORE-MCNEIL C offensive rebound (1)
END OF PERIOD				
AUB 23-25 IND				



Indiana at Auburn

11/25/22 Mirage, Las Vegas
2022-23 Women's Basketball

Officials: Eric Brewton, Doug Night, Ashley Birch

Indiana - 25

NO.	Name	F	Min	FG			Rebounds			Fouls		TP	AS	TO	ST	Blocks		+/-
				M-A	3P	FT	OR	DR	TOT	PF	FD					BS	BA	
54	Mackenzie Holmes	F	08:08	3-3	0-0	2-2	1	2	3	1	2	8	0	1	1	0	0	3
12	Yarden Garzon	G	07:48	1-2	1-1	0-0	0	0	0	2	0	3	1	0	0	0	0	-3
14	Sara Scalia	G	10:00	1-3	0-2	0-0	0	1	1	1	0	2	1	2	0	0	0	2
22	Chloe Moore-McNeil	G	07:49	2-3	0-1	1-2	1	0	1	1	1	5	1	0	0	0	1	4
34	Grace Berger	G	01:14	1-1	0-0	0-0	0	0	0	0	1	2	0	0	0	0	0	0
33	Sydney Parrish		08:46	1-2	1-2	2-2	0	4	4	1	1	5	1	1	0	0	0	2
3	Kaitlin Peterson		02:17	0-0	0-0	0-0	0	0	0	0	0	0	0	0	0	0	0	6
32	Alyssa Geary		01:52	0-0	0-0	0-0	0	0	0	0	0	0	0	0	0	0	0	-1
1	Lexus Bargesser		02:06	0-0	0-0	0-0	0	0	0	0	0	0	0	0	0	0	0	-3
Team							0	1	1			0		0				
Totals				9-14	2-6	5-6	2	8	10	6	5	25	4	4	1	0	1	2

Shooting By Period		
1st FG%	9-14	64.3%
3PT%	2-6	33.3%
FT%	5-6	83.3%
GM FG%	9-14	64.3%
3PT%	2-6	33.3%
FT%	5-6	83.3%

Dead Ball Rebounds: 1, 0

Technical Fouls::NONE

Auburn - 23

NO.	Name	F	Min	FG			Rebounds			Fouls		TP	AS	TO	ST	Blocks		+/-
				M-A	3P	FT	OR	DR	TOT	PF	FD					BS	BA	
33	Kharyssa Richardson	F	04:06	0-0	0-0	0-0	0	1	1	2	0	0	0	0	0	0	0	0
4	Kaitlyn Duhon	G	03:32	2-3	1-1	0-0	0	0	0	0	0	5	0	0	0	0	0	2
5	Aicha Coulibaly	G	10:00	3-6	0-1	1-3	0	0	0	0	3	7	1	0	1	0	0	-2
10	Sydney Shaw	G	10:00	0-1	0-1	0-0	0	1	1	1	1	0	3	0	0	0	0	-2
23	Honesty Scott-Grayson	G	10:00	3-4	2-2	2-3	1	0	1	1	0	10	0	1	0	0	0	-2
11	Romi Levy		06:28	0-1	0-0	0-0	1	0	1	1	0	0	0	0	0	1	0	-4
51	Precious Johnson		05:54	0-1	0-0	1-2	1	1	2	0	2	1	0	2	0	0	0	-2
Team							0	0	0			0		0				
Totals				8-16	3-5	4-8	3	3	6	5	6	23	4	3	1	1	0	-2

Shooting By Period		
1st FG%	8-16	50.0%
3PT%	3-5	60.0%
FT%	4-8	50%
GM FG%	8-16	50.0%
3PT%	3-5	60.0%
FT%	4-8	50.0%

Dead Ball Rebounds: 1, 0

Technical Fouls::NONE

	IND	AUB
Biggest lead	6 (1 st 4:12)	2 (1 st 6:47)
Best Scoring Run	6(1 st 5:14)	5(1 st 6:47)
Lead Changes	4	
Times Tied	3	
Time with Lead	07:18	00:39

Points from	IND	AUB
Turnovers	0	3
Paint	10	8
Second Chance	3	1
Fast Breaks	1	3
Bench	5	1

	Period by Period Scoring				
	1st	2nd	3rd	4th	TOT
IND	25	26	17	28	96
AUB	23	16	21	21	81



Indiana at Auburn

11/25/22 Mirage, Las Vegas
2022-23 Women's Basketball

Officials: Eric Brewton, Doug Night, Ashley Birch

Period 2

Quarter Starters:

AUB	3 Johnson J	5 Coulibaly A	10 Shaw S	11 Levy R	51 Johnson P
IND	1 Bargesser L	14 Scalia S	22 Moore-McNeil C	33 Parrish S	54 Holmes M

Game Time	AUB	Score	Diff	IND
10:00	23 SCOTT-GRAYSON H substitution out			
10:00	3 JOHNSON J substitution in			
10:00				32 GEARY A substitution out
10:00				54 HOLMES M substitution in
09:46	3 JOHNSON J 3pt FG , jump shot missed			
09:43	offensive dead ball rebound (2)			
09:34	51 JOHNSON P 2pt FG second chance in the paint, layup made (3)	25-25	0	
09:34	11 LEVY R assist (1)			
09:20	5 COULIBALY A steal (2)			22 MOORE-MCNEIL C turnover bad pass (1)
09:16	5 COULIBALY A 2pt FG fast break from turnover in the paint, driving layup made (9)	27-25	2	
09:09				1 BARGESSER L substitution out
09:09				12 GARZON Y substitution in
08:53	11 LEVY R foul shooting (2 - 1)			33 PARRISH S foul drawn (2)
08:52	11 LEVY R substitution out			
08:52	4 DUHON K substitution in			
08:52		27-26	1	33 PARRISH S free throw 1 - 2 made (6)
08:52		27-27	0	33 PARRISH S free throw 2 - 2 made (7)
08:41	10 SHAW S 2pt FG in the paint, floating jump shot missed			
08:32	5 COULIBALY A offensive rebound (1)			
08:23	10 SHAW S 3pt FG second chance, jump shot missed			
08:19				54 HOLMES M defensive rebound (4)
08:19	jump ball situation			
08:06		27-29	-2	12 GARZON Y 2pt FG in the paint, driving layup made (5)
08:06	3 JOHNSON J foul shooting (1 - 2)			12 GARZON Y foul drawn (1)
08:06	3 JOHNSON J substitution out			
08:06	2 WELLS S substitution in			
08:06		27-30	-3	12 GARZON Y free throw 1 - 1 made (6)
08:06	10 SHAW S substitution out			
08:06	3 JOHNSON J substitution in			
07:38	2 WELLS S 2pt FG outside the paint, pull up jump shot made (2)	29-30	-1	
07:28		29-33	-4	12 GARZON Y 3pt FG , jump shot made (9)
07:28				33 PARRISH S assist (2)
07:06	4 DUHON K 3pt FG , jump shot missed			
07:03	5 COULIBALY A offensive rebound (2)			
07:01	5 COULIBALY A 2pt FG second chance in the paint, layup blocked			
07:01				54 HOLMES M block (1)
06:55	3 JOHNSON J offensive rebound (1)			
06:54	3 JOHNSON J 2pt FG second chance in the paint, layup missed			
06:51				12 GARZON Y defensive rebound (1)
06:50		29-36	-7	12 GARZON Y 3pt FG fast break, jump shot made (12)
06:50				22 MOORE-MCNEIL C assist (2)



Indiana at Auburn

11/25/22 Mirage, Las Vegas
2022-23 Women's Basketball

Officials: Eric Brewton, Doug Night, Ashley Birch

Game Time	AUB	Score	Diff	IND
06:31	3 JOHNSON J 2pt FG in the paint, jump shot missed			
06:27	3 JOHNSON J offensive rebound (2)			
06:26	3 JOHNSON J turnover lost ball (1)			54 HOLMES M steal (2)
06:20				33 PARRISH S 3pt FG from turnover, jump shot missed
06:15	2 WELLS S defensive rebound (1)			
06:09	4 DUHON K 2pt FG in the paint, layup missed			
06:05	51 JOHNSON P offensive rebound (3)			
06:03	jump ball situation			
06:03	3 JOHNSON J substitution out			
06:03	51 JOHNSON P substitution out			
06:03	1 PRATCHER M substitution in			
06:03	23 SCOTT-GRAYSON H substitution in			
06:03				54 HOLMES M substitution out
06:03				32 GEARY A substitution in
05:49	23 SCOTT-GRAYSON H 2pt FG second chance outside the paint, jump shot missed			
05:45				12 GARZON Y defensive rebound (2)
05:38		29-39	-10	33 PARRISH S 3pt FG , jump shot made (10)
05:38				22 MOORE-MCNEIL C assist (3)
05:09	5 COULIBALY A turnover 3 seconds (1)			
05:09	2 WELLS S substitution out			
05:09	12 BOSTIC M substitution in			
05:09	5 COULIBALY A substitution out			
05:09	51 JOHNSON P substitution in			
04:57		29-41	-12	22 MOORE-MCNEIL C 2pt FG from turnover in the paint, driving layup made (7)
04:43	51 JOHNSON P 2pt FG in the paint, layup made (5)	31-41	-10	
04:34		31-43	-12	32 GEARY A 2pt FG in the paint, layup made (2)
04:34				12 GARZON Y assist (2)
04:11	23 SCOTT-GRAYSON H turnover travel (2)			
03:55		31-46	-15	14 SCALIA S 3pt FG from turnover, jump shot made (5)
03:41	4 DUHON K 3pt FG , jump shot missed			
03:35				12 GARZON Y defensive rebound (3)
03:35	4 DUHON K foul drawn (1)			33 PARRISH S foul offensive (2 - 1)
03:35				33 PARRISH S turnover offensive (2)
03:25				32 GEARY A substitution out
03:25				54 HOLMES M substitution in
03:25	51 JOHNSON P foul drawn (3)			54 HOLMES M foul shooting (2 - 2)
03:20	51 JOHNSON P free throw 1 - 2 missed			
03:20	offensive dead ball rebound (3)			
03:20	51 JOHNSON P free throw 2 - 2 missed			
03:20				54 HOLMES M defensive rebound (5)
03:20	4 DUHON K foul personal (1 - 3)			54 HOLMES M foul drawn (3)
03:06				12 GARZON Y 3pt FG , jump shot missed
03:03	12 BOSTIC M defensive rebound (1)			
02:59	23 SCOTT-GRAYSON H 3pt FG , jump shot made (13)	34-46	-12	
02:54				33 PARRISH S substitution out
02:54				54 HOLMES M substitution out
02:54				3 PETERSON K substitution in
02:54				32 GEARY A substitution in



Indiana at Auburn

11/25/22 Mirage, Las Vegas
2022-23 Women's Basketball

Officials: Eric Brewton, Doug Night, Ashley Birch

Game Time	AUB	Score	Diff	IND
02:54	51 JOHNSON P substitution out			
02:54	10 SHAW S substitution in			
02:54	5 COULIBALY A substitution in			
02:54	1 PRATCHER M substitution out			
02:46	4 DUHON K foul personal (2 - 4)			14 SCALIA S foul drawn (1)
02:46	4 DUHON K substitution out			
02:46	5 COULIBALY A substitution out			
02:46	1 PRATCHER M substitution in			
02:46	51 JOHNSON P substitution in			
02:41				12 GARZON Y 3pt FG , jump shot missed
02:36				22 MOORE-MCNEIL C offensive rebound (2)
02:33				3 PETERSON K 3pt FG second chance, jump shot blocked
02:33	23 SCOTT-GRAYSON H block (1)			
02:32				offensive dead ball rebound (2)
02:29				12 GARZON Y 2pt FG second chance outside the paint, jump shot blocked
02:29	12 BOSTIC M block (1)			
02:29				offensive dead ball rebound (3)
02:27				12 GARZON Y 2pt FG second chance in the paint, layup missed
02:24	23 SCOTT-GRAYSON H defensive rebound (2)			
02:24	jump ball situation			
02:24	23 SCOTT-GRAYSON H turnover lost ball (3)			22 MOORE-MCNEIL C steal (1)
02:22				12 GARZON Y substitution out
02:22				33 PARRISH S substitution in
02:22	1 PRATCHER M substitution out			
02:22	5 COULIBALY A substitution in			
02:20				14 SCALIA S 2pt FG from turnover outside the paint, jump shot missed
02:17	23 SCOTT-GRAYSON H defensive rebound (3)			
02:10	5 COULIBALY A foul drawn (4)			32 GEARY A foul shooting (1 - 3)
02:10	5 COULIBALY A free throw 1 - 2 made (10)	35-46	-11	
02:10	5 COULIBALY A free throw 2 - 2 made (11)	36-46	-10	
02:01	12 BOSTIC M foul personal (1 - 5)			22 MOORE-MCNEIL C foul drawn (2)
02:01		36-47	-11	22 MOORE-MCNEIL C free throw 1 - 2 made (8)
02:01		36-48	-12	22 MOORE-MCNEIL C free throw 2 - 2 made (9)
01:48	1 PRATCHER M substitution in			
01:48	12 BOSTIC M substitution out			
01:48	23 SCOTT-GRAYSON H 3pt FG , jump shot missed			
01:45	1 PRATCHER M offensive rebound (1)			
01:44	1 PRATCHER M 2pt FG second chance in the paint, jump shot missed			
01:42				14 SCALIA S defensive rebound (2)
01:42	5 COULIBALY A foul personal (1 - 6)			14 SCALIA S foul drawn (2)
01:42		36-49	-13	14 SCALIA S free throw fast break 1 - 2 made (6)
01:42				14 SCALIA S free throw fast break 2 - 2 missed
01:42	1 PRATCHER M defensive rebound (2)			
01:24	5 COULIBALY A 3pt FG , jump shot missed			
01:14				32 GEARY A defensive rebound (1)
01:11				14 SCALIA S 2pt FG in the paint, floating jump shot missed
01:06	23 SCOTT-GRAYSON H defensive rebound (4)			



Indiana at Auburn

11/25/22 Mirage, Las Vegas
2022-23 Women's Basketball

Officials: Eric Brewton, Doug Night, Ashley Birch

Game Time	AUB	Score	Diff	IND
00:50	23 SCOTT-GRAYSON H 2pt FG in the paint, pull up jump shot missed			
00:45	23 SCOTT-GRAYSON H offensive rebound (5)			
00:45	23 SCOTT-GRAYSON H 2pt FG second chance in the paint, layup made (15)	38-49	-11	
00:27				3 PETERSON K 3pt FG , jump shot missed
00:21				33 PARRISH S offensive rebound (5)
00:21				33 PARRISH S 2pt FG second chance in the paint, layup blocked
00:21	1 PRATCHER M block (1)			
00:18				33 PARRISH S offensive rebound (6)
00:17		38-51	-13	33 PARRISH S 2pt FG second chance in the paint, layup made (12)
00:01				3 PETERSON K substitution out
00:01				52 MEISTER L substitution in
00:01	5 COULIBALY A substitution out			
00:01	12 BOSTIC M substitution in			
00:01				32 GEARY A substitution out
00:01				3 PETERSON K substitution in
00:01	12 BOSTIC M substitution out			
00:01	5 COULIBALY A substitution in			
00:01	5 COULIBALY A foul drawn (5)			52 MEISTER L foul shooting (1 - 4)
00:00	51 JOHNSON P free throw 1 - 2 made (6)	39-51	-12	
00:00	51 JOHNSON P free throw 2 - 2 missed			
00:00				33 PARRISH S defensive rebound (7)
END OF PERIOD				
AUB 39-51 IND				



Indiana at Auburn

11/25/22 Mirage, Las Vegas
2022-23 Women's Basketball

Officials: Eric Brewton, Doug Night, Ashley Birch

Indiana - 26

NO.	Name	F	Min	FG			Rebounds			Fouls		TP	AS	TO	ST	Blocks		+/-
				M-A	M-A	M-A	OR	DR	TOT	PF	FD					BS	BA	
54	Mackenzie Holmes	F	04:28	0-0	0-0	0-0	0	2	2	1	1	0	0	0	1	1	0	2
12	Yarden Garzon	G	06:47	3-7	2-4	1-1	0	3	3	0	1	9	1	0	0	0	1	14
14	Sara Scalia	G	10:00	1-3	1-1	1-2	0	1	1	0	2	4	0	0	0	0	0	10
22	Chloe Moore-McNeil	G	10:00	1-1	0-0	2-2	1	0	1	0	1	4	2	1	1	0	0	10
34	Grace Berger	G	00:00	0-0	0-0	0-0	0	0	0	0	0	0	0	0	0	0	0	0
1	Lexus Bargesser		00:51	0-0	0-0	0-0	0	0	0	0	0	0	0	0	0	0	0	-4
32	Alyssa Geary		05:31	1-1	0-0	0-0	0	1	1	1	0	2	0	0	0	0	0	9
3	Kaitlin Peterson		02:54	0-2	0-2	0-0	0	0	0	0	0	0	0	0	0	0	1	0
33	Sydney Parrish		09:28	2-4	1-2	2-2	2	1	3	1	1	7	1	1	0	0	1	10
52	Lilly Meister		00:01	0-0	0-0	0-0	0	0	0	1	0	0	0	0	0	0	0	-1
Team							0	0	0			0						
Totals				8-18	4-9	6-7	3	8	11	4	6	26	4	2	2	1	3	10

Shooting By Period		
2 nd FG%	8-18	44.4%
3PT%	4-9	44.4%
FT%	6-7	85.7%
GM FG%	8-18	44.4%
3PT%	4-9	44.4%
FT%	6-7	85.7%

Dead Ball Rebounds: 2, 0

Technical Fouls::NONE

Auburn - 16

NO.	Name	F	Min	FG			Rebounds			Fouls		TP	AS	TO	ST	Blocks		+/-
				M-A	M-A	M-A	OR	DR	TOT	PF	FD					BS	BA	
33	Kharyssa Richardson	F	00:00	0-0	0-0	0-0	0	0	0	0	0	0	0	0	0	0	0	0
4	Kaitlyn Duhon	G	06:06	0-3	0-2	0-0	0	0	0	2	1	0	0	0	0	0	0	-14
5	Aicha Coulibaly	G	07:21	1-3	0-1	2-2	2	0	2	1	2	4	0	1	1	0	1	-8
10	Sydney Shaw	G	04:48	0-2	0-1	0-0	0	0	0	0	0	0	0	0	0	0	0	-1
23	Honesty Scott-Grayson	G	06:03	2-5	1-2	0-0	1	3	4	0	0	5	0	2	0	1	0	-5
11	Romi Levy		01:08	0-0	0-0	0-0	0	0	0	1	0	0	1	0	0	0	0	4
3	Jakayla Johnson		03:57	0-3	0-1	0-0	2	0	2	1	0	0	0	1	0	0	0	-4
2	Sania Wells		02:57	1-1	0-0	0-0	0	1	1	0	0	2	0	0	0	0	0	-8
1	Mya Pratcher		05:21	0-1	0-0	0-0	1	1	2	0	0	0	0	0	0	1	0	-5
12	Mar'shaun Bostic		03:21	0-0	0-0	0-0	0	1	1	1	0	0	0	0	0	1	0	-2
51	Precious Johnson		08:58	2-2	0-0	1-4	1	0	1	0	1	5	0	0	0	0	0	-7
Team							0	0	0			0						
Totals				6-20	1-7	3-6	7	6	13	6	4	16	1	4	1	3	1	-10

Shooting By Period		
2 nd FG%	6-20	30.0%
3PT%	1-7	14.3%
FT%	3-6	50%
GM FG%	6-20	30.0%
3PT%	1-7	14.3%
FT%	3-6	50.0%

Dead Ball Rebounds: 2, 0

Technical Fouls::NONE

	IND	AUB
Biggest lead	15 (2 nd 3:55)	2 (2 nd 9:16)
Best Scoring Run	11(2 nd 4:57)	5(2 nd 2:10)
Lead Changes	2	
Times Tied	2	
Time with Lead	08:18	00:24

Points from	IND	AUB
Turnovers	5	2
Paint	8	8
Second Chance	2	4
Fast Breaks	4	2
Bench	9	7

Period by Period Scoring					
	1st	2nd	3rd	4th	TOT
IND	25	26	17	28	96
AUB	23	16	21	21	81



Indiana at Auburn

11/25/22 Mirage, Las Vegas
2022-23 Women's Basketball

Game Time: 5:45 PM
Game Duration: 2:01

Officials: Eric Brewton, Doug Night, Ashley Birch

Indiana - 51

NO.	Name	Min	FG			Rebounds			Fouls		TP	AS	TO	ST	Blocks		+/-
			M-A	3P	FT	OR	DR	TOT	PF	FD					BS	BA	
54	Mackenzie Holmes	F 12:36	3-3	0-0	2-2	1	4	5	2	3	8	0	1	2	1	0	5
12	Yarden Garzon	G 14:35	4-9	3-5	1-1	0	3	3	2	1	12	2	0	0	0	1	11
14	Sara Scalia	G 20:00	2-6	1-3	1-2	0	2	2	1	2	6	1	2	0	0	0	12
22	Chloe Moore-McNeil	G 17:49	3-4	0-1	3-4	2	0	2	1	2	9	3	1	1	0	1	14
34	Grace Berger	G 01:14	1-1	0-0	0-0	0	0	0	0	1	2	0	0	0	0	0	0
33	Sydney Parrish	18:14	3-6	2-4	4-4	2	5	7	2	2	12	2	2	0	0	1	12
3	Kaitlin Peterson	05:11	0-2	0-2	0-0	0	0	0	0	0	0	0	0	0	0	1	6
32	Alyssa Geary	07:23	1-1	0-0	0-0	0	1	1	1	0	2	0	0	0	0	0	8
1	Lexus Bargesser	02:57	0-0	0-0	0-0	0	0	0	0	0	0	0	0	0	0	0	-7
52	Lilly Meister	00:01	0-0	0-0	0-0	0	0	0	1	0	0	0	0	0	0	0	-1
Team						0	1	1			0						
Totals			17-32	6-15	11-13	5	16	21	10	11	51	8	6	3	1	4	12

Shooting By Period		
1st FG%	9-14	64.3%
3PT%	2-6	33.3%
FT%	5-6	83.3%
2nd FG%	8-18	44.4%
3PT%	4-9	44.4%
FT%	6-7	85.7%
GM FG%	17-32	53.1%
3PT%	6-15	40.0%
FT%	11-13	84.6%

Dead Ball Rebounds: 3, 0

Technical Fouls::NONE

Auburn - 39

NO.	Name	Min	FG			Rebounds			Fouls		TP	AS	TO	ST	Blocks		+/-
			M-A	3P	FT	OR	DR	TOT	PF	FD					BS	BA	
33	Kharyssa Richardson	F 04:06	0-0	0-0	0-0	0	1	1	2	0	0	0	0	0	0	0	0
4	Kaitlyn Duhon	G 09:38	2-6	1-3	0-0	0	0	0	2	1	5	0	0	0	0	0	-12
5	Aicha Coulibaly	G 17:21	4-9	0-2	3-5	2	0	2	1	5	11	1	1	2	0	1	-10
10	Sydney Shaw	G 14:48	0-3	0-2	0-0	0	1	1	1	1	0	3	0	0	0	0	-3
23	Honesty Scott-Grayson	G 16:03	5-9	3-4	2-3	2	3	5	1	0	15	0	3	0	1	0	-7
11	Romi Levy	07:36	0-1	0-0	0-0	1	0	1	2	0	0	1	0	0	1	0	0
51	Precious Johnson	14:52	2-3	0-0	2-6	2	1	3	0	3	6	0	2	0	0	0	-9
3	Jakayla Johnson	03:57	0-3	0-1	0-0	2	0	2	1	0	0	0	1	0	0	0	-4
2	Sania Wells	02:57	1-1	0-0	0-0	0	1	1	0	0	2	0	0	0	0	0	-8
1	Mya Pratcher	05:21	0-1	0-0	0-0	1	1	2	0	0	0	0	0	0	1	0	-5
12	Mar'shaun Bostic	03:21	0-0	0-0	0-0	0	1	1	1	0	0	0	0	0	1	0	-2
Team						0	0	0			0						
Totals			14-36	4-12	7-14	10	9	19	11	10	39	5	7	2	4	1	-12

Shooting By Period		
1st FG%	8-16	50.0%
3PT%	3-5	60.0%
FT%	4-8	50%
2nd FG%	6-20	30.0%
3PT%	1-7	14.3%
FT%	3-6	50%
GM FG%	14-36	38.9%
3PT%	4-12	33.3%
FT%	7-14	50.0%

Dead Ball Rebounds: 3, 0

Technical Fouls::NONE

	IND	AUB
Biggest lead	15 (2 nd 3:55)	2 (1 st 6:47)
Best Scoring Run	11 (2 nd 4:57)	5 (1 st 6:47)
Lead Changes	6	
Times Tied	5	
Time with Lead	15:50	01:03

Points from	IND	AUB
Turnovers	5	5
Paint	18	16
Second Chance	5	5
Fast Breaks	5	5
Bench	14	8

	Period by Period Scoring				
	1st	2nd	3rd	4th	TOT
IND	25	26	17	28	96
AUB	23	16	21	21	81



Indiana at Auburn

11/25/22 Mirage, Las Vegas
2022-23 Women's Basketball

Officials: Eric Brewton, Doug Night, Ashley Birch

Period 3

Quarter Starters:

AUB	4 Duhon K	5 Coulibaly A	10 Shaw S	23 Scott-Grayson H	33 Richardson K
IND	12 Garzon Y	14 Scalia S	22 Moore-McNeil C	33 Parrish S	54 Holmes M

Game Time	AUB	Score	Diff	IND
10:00	1 PRATCHER M substitution out			
10:00	51 JOHNSON P substitution out			
10:00	4 DUHON K substitution in			
10:00	33 RICHARDSON K substitution in			
10:00				3 PETERSON K substitution out
10:00				52 MEISTER L substitution out
10:00				12 GARZON Y substitution in
10:00				54 HOLMES M substitution in
09:40	33 RICHARDSON K turnover lost ball (1)			33 PARRISH S steal (1)
09:26		39-53	-14	12 GARZON Y 2pt FG from turnover in the paint, driving layup made (14)
09:11	10 SHAW S turnover bad pass (1)			54 HOLMES M steal (3)
09:02				22 MOORE-MCNEIL C 3pt FG from turnover, jump shot missed
08:59	4 DUHON K defensive rebound (1)			
08:53	5 COULIBALY A 2pt FG in the paint, layup missed			
08:51				54 HOLMES M defensive rebound (6)
08:51	23 SCOTT-GRAYSON H foul personal (2 - 1)			33 PARRISH S foul drawn (3)
08:39	33 RICHARDSON K steal (1)			22 MOORE-MCNEIL C turnover bad pass (2)
08:35	33 RICHARDSON K 2pt FG fast break from turnover in the paint, driving layup made (2)	41-53	-12	
08:17				12 GARZON Y 3pt FG , jump shot missed
08:13				54 HOLMES M offensive rebound (7)
08:11		41-55	-14	54 HOLMES M 2pt FG second chance in the paint, layup made (10)
07:52	23 SCOTT-GRAYSON H 2pt FG in the paint, layup made (17)	43-55	-12	
07:32		43-57	-14	54 HOLMES M 2pt FG in the paint, layup made (12)
07:32				33 PARRISH S assist (3)
07:12	10 SHAW S 3pt FG , jump shot missed			
07:08	5 COULIBALY A offensive rebound (3)			
07:07	5 COULIBALY A 2pt FG second chance in the paint, jump shot made (13)	45-57	-12	
06:46		45-59	-14	12 GARZON Y 2pt FG in the paint, layup made (16)
06:26	4 DUHON K 2pt FG outside the paint, pull up jump shot missed			
06:23	4 DUHON K offensive rebound (2)			
06:23	4 DUHON K foul drawn (2)			22 MOORE-MCNEIL C foul shooting (2 - 1)
06:23				54 HOLMES M substitution out
06:23				32 GEARY A substitution in
06:23	4 DUHON K free throw 1 - 2 made (6)	46-59	-13	
06:23	4 DUHON K free throw 2 - 2 made (7)	47-59	-12	
06:12				14 SCALIA S 2pt FG outside the paint, pull up jump shot missed
06:08	4 DUHON K defensive rebound (3)			
06:03	10 SHAW S 3pt FG , jump shot made (3)	50-59	-9	
06:03	4 DUHON K assist (1)			
05:36				33 PARRISH S 3pt FG , jump shot missed



Indiana at Auburn

11/25/22 Mirage, Las Vegas
2022-23 Women's Basketball

Officials: Eric Brewton, Doug Night, Ashley Birch

Game Time	AUB	Score	Diff	IND
05:32	33 RICHARDSON K defensive rebound (2)			
05:16	33 RICHARDSON K 2pt FG in the paint, jump shot missed			
05:12				33 PARRISH S defensive rebound (8)
05:11				14 SCALIA S 2pt FG in the paint, layup blocked
05:11	5 COULIBALY A block (1)			
05:11				offensive dead ball rebound (4)
05:11	5 COULIBALY A substitution out			
05:11	11 LEVY R substitution in			
05:11				14 SCALIA S substitution out
05:11				32 GEARY A substitution out
05:11				3 PETERSON K substitution in
05:11				54 HOLMES M substitution in
05:09		50-61	-11	33 PARRISH S 2pt FG second chance in the paint, layup made (14)
04:50	Timeout media			
04:50	4 DUHON K substitution out			
04:50	33 RICHARDSON K substitution out			
04:50	3 JOHNSON J substitution in			
04:50	51 JOHNSON P substitution in			
04:41	23 SCOTT-GRAYSON H 3pt FG , jump shot made (20)	53-61	-8	
04:41	10 SHAW S assist (4)			
04:27	23 SCOTT-GRAYSON H substitution out			
04:27	5 COULIBALY A substitution in			
04:27				33 PARRISH S substitution out
04:27				14 SCALIA S substitution in
04:05		53-63	-10	3 PETERSON K 2pt FG in the paint, layup made (2)
03:46	5 COULIBALY A foul drawn (6)			54 HOLMES M foul shooting (3 - 2)
03:46				12 GARZON Y substitution out
03:46				33 PARRISH S substitution in
03:46	5 COULIBALY A free throw 1 - 2 missed			
03:46	offensive dead ball rebound (4)			
03:46	5 COULIBALY A free throw 2 - 2 made (14)	54-63	-9	
03:46	5 COULIBALY A foul personal (2 - 2)			14 SCALIA S foul drawn (3)
03:36	3 JOHNSON J foul shooting (2 - 3)			22 MOORE-MCNEIL C foul drawn (3)
03:36				54 HOLMES M substitution out
03:36				32 GEARY A substitution in
03:36		54-64	-10	22 MOORE-MCNEIL C free throw 1 - 2 made (10)
03:36		54-65	-11	22 MOORE-MCNEIL C free throw 2 - 2 made (11)
03:27	10 SHAW S 2pt FG outside the paint, pull up jump shot made (5)	56-65	-9	
03:07				14 SCALIA S 3pt FG , jump shot missed
03:03	defensive dead ball rebound (5)			
03:03				3 PETERSON K substitution out
03:03				12 GARZON Y substitution in
02:41	3 JOHNSON J 2pt FG outside the paint, jump shot missed			
02:37				33 PARRISH S defensive rebound (9)
02:30				22 MOORE-MCNEIL C 3pt FG , jump shot missed
02:28	defensive rebound (25)			
02:28	51 JOHNSON P foul drawn (4)			33 PARRISH S foul personal (3 - 3)
02:16	5 COULIBALY A turnover travel (2)			



Indiana at Auburn

11/25/22 Mirage, Las Vegas
2022-23 Women's Basketball

Officials: Eric Brewton, Doug Night, Ashley Birch

Game Time	AUB	Score	Diff	IND
02:07				32 GEARY A substitution out
02:07				54 HOLMES M substitution in
02:07				Timeout 30 Sec
02:07	Timeout media			
02:07	11 LEVY R substitution out			
02:07	23 SCOTT-GRAYSON H substitution in			
01:51				12 GARZON Y 2pt FG from turnover in the paint, jump shot missed
01:51				54 HOLMES M offensive rebound (8)
01:51	jump ball situation			
01:39	5 COULIBALY A steal (3)			14 SCALIA S turnover bad pass (3)
01:19	23 SCOTT-GRAYSON H 2pt FG from turnover in the paint, layup missed			
01:16				12 GARZON Y defensive rebound (4)
01:14				54 HOLMES M turnover travel (2)
01:14				22 MOORE-MCNEIL C substitution out
01:14				3 PETERSON K substitution in
01:01	10 SHAW S 3pt FG from turnover, jump shot missed			
00:58	offensive dead ball rebound (6)			
00:50	5 COULIBALY A 2pt FG from turnover second chance in the paint, layup made (16)	58-65	-7	
00:34	3 JOHNSON J foul drawn (1)			12 GARZON Y foul offensive (3 - 4)
00:34				12 GARZON Y turnover offensive (1)
00:34	3 JOHNSON J substitution out			
00:34	11 LEVY R substitution in			
00:14	11 LEVY R 2pt FG from turnover in the paint, jump shot made (2)	60-65	-5	
00:02		60-68	-8	12 GARZON Y 3pt FG , jump shot made (19)
00:02				3 PETERSON K assist (1)
END OF PERIOD				
AUB 60-68 IND				



Indiana at Auburn

11/25/22 Mirage, Las Vegas
2022-23 Women's Basketball

Game Time: 5:45 PM
Game Duration: 2:01

Officials: Eric Brewton, Doug Night, Ashley Birch

Indiana - 17

NO.	Name	Min	FG			Rebounds			Fouls		TP	AS	TO	ST	Blocks		+/-
			M-A	3P	FT	OR	DR	TOT	PF	FD					BS	BA	
54	Mackenzie Holmes	F 07:19	2-2	0-0	0-0	2	1	3	1	0	4	0	1	1	0	0	1
12	Yarden Garzon	G 09:17	3-5	1-2	0-0	0	1	1	1	0	7	0	1	0	0	0	-3
14	Sara Scalia	G 09:16	0-3	0-1	0-0	0	0	0	0	1	0	0	1	0	0	1	-3
22	Chloe Moore-McNeil	G 08:46	0-2	0-2	2-2	0	0	0	1	1	2	0	1	0	0	0	-3
34	Grace Berger	G 00:00	0-0	0-0	0-0	0	0	0	0	0	0	0	0	0	0	0	0
52	Lilly Meister	00:00	0-0	0-0	0-0	0	0	0	0	0	0	0	0	0	0	0	0
32	Alyssa Geary	02:41	0-0	0-0	0-0	0	0	0	0	0	0	0	0	0	0	0	-5
3	Kaitlin Peterson	03:22	1-1	0-0	0-0	0	0	0	0	0	2	1	0	0	0	0	-1
33	Sydney Parrish	09:19	1-2	0-1	0-0	0	2	2	1	1	2	1	0	1	0	0	-6
Team						0	0	0			0		0				
Totals			7-15	1-6	2-2	2	4	6	4	3	17	2	4	2	0	1	-4

Shooting By Period		
3rd FG%	7-15	46.7%
3PT%	1-6	16.7%
FT%	2-2	100%
GM FG%	7-15	46.7%
3PT%	1-6	16.7%
FT%	2-2	100.0%

Dead Ball Rebounds: 1, 0

Technical Fouls::NONE

Auburn - 12

NO.	Name	Min	FG			Rebounds			Fouls		TP	AS	TO	ST	Blocks		+/-
			M-A	3P	FT	OR	DR	TOT	PF	FD					BS	BA	
33	Kharyssa Richardson	F 05:10	1-2	0-0	0-0	0	1	1	0	0	2	0	1	1	0	0	1
4	Kaitlyn Duhon	G 05:10	0-1	0-0	2-2	1	2	3	0	1	2	1	0	0	0	0	1
5	Aicha Coulibaly	G 09:16	2-3	0-0	1-2	1	0	1	1	1	5	0	1	1	1	0	3
10	Sydney Shaw	G 10:00	2-4	1-3	0-0	0	0	0	0	0	5	1	1	0	0	0	4
23	Honesty Scott-Grayson	G 07:40	2-3	1-1	0-0	0	0	0	1	0	5	0	0	0	0	0	5
1	Mya Pratcher	00:00	0-0	0-0	0-0	0	0	0	0	0	0	0	0	0	0	0	0
11	Romi Levy	03:38	1-1	0-0	0-0	0	0	0	0	0	2	0	0	0	0	0	-1
3	Jakayla Johnson	04:16	0-1	0-0	0-0	0	0	0	1	1	0	0	0	0	0	0	4
51	Precious Johnson	04:50	0-0	0-0	0-0	0	0	0	0	1	0	0	0	0	0	0	3
Team						0	1	1			0		0				
Totals			8-15	2-4	3-4	2	4	6	3	4	21	2	3	2	1	0	4

Shooting By Period		
3rd FG%	8-15	53.3%
3PT%	2-4	50.0%
FT%	3-4	75%
GM FG%	8-15	53.3%
3PT%	2-4	50.0%
FT%	3-4	75.0%

Dead Ball Rebounds: 2, 1

Technical Fouls::NONE

	IND	AUB
Biggest lead	14 (3 rd 9:26)	0 (1 st 10:00)
Best Scoring Run	3(3 rd 0:02)	6(3 rd 0:14)
Lead Changes	0	
Times Tied	0	
Time with Lead	09:26	00:00

Points from	IND	AUB
Turnovers	2	6
Paint	12	10
Second Chance	4	6
Fast Breaks	0	2
Bench	4	2

Period by Period Scoring					
	1st	2nd	3rd	4th	TOT
IND	25	26	17	28	96
AUB	23	16	21	21	81



Indiana at Auburn

11/25/22 Mirage, Las Vegas
2022-23 Women's Basketball

Officials: Eric Brewton, Doug Night, Ashley Birch

Period 4

Quarter Starters:

AUB	5 Coulibaly A	10 Shaw S	11 Levy R	23 Scott-Grayson H	51 Johnson P
IND	12 Garzon Y	14 Scalia S	22 Moore-McNeil C	33 Parrish S	54 Holmes M

Game Time	AUB	Score	Diff	IND
10:00				3 PETERSON K substitution out
10:00				22 MOORE-MCNEIL C substitution in
09:42	11 LEVY R 3pt FG , jump shot missed			
09:38				54 HOLMES M defensive rebound (9)
09:21		60-70	-10	54 HOLMES M 2pt FG in the paint, layup made (14)
09:21				22 MOORE-MCNEIL C assist (4)
09:07	10 SHAW S 3pt FG , jump shot made (8)	63-70	-7	
08:44		63-73	-10	14 SCALIA S 3pt FG , jump shot made (9)
08:44				12 GARZON Y assist (3)
08:21	23 SCOTT-GRAYSON H turnover lost ball (4)			33 PARRISH S steal (2)
08:13	51 JOHNSON P substitution out			
08:13	2 WELLS S substitution in			
08:11				12 GARZON Y 2pt FG from turnover outside the paint, jump shot missed
08:07	23 SCOTT-GRAYSON H defensive rebound (6)			
08:04	23 SCOTT-GRAYSON H 2pt FG fast break in the paint, layup made (22)	65-73	-8	
07:43		65-75	-10	22 MOORE-MCNEIL C 2pt FG in the paint, turnaround jump shot made (13)
07:27	2 WELLS S 3pt FG , jump shot made (5)	68-75	-7	
07:27	10 SHAW S assist (5)			
07:02	11 LEVY R foul shooting (3 - 1)			54 HOLMES M foul drawn (4)
07:02		68-76	-8	54 HOLMES M free throw 1 - 2 made (15)
07:02		68-77	-9	54 HOLMES M free throw 2 - 2 made (16)
07:02	23 SCOTT-GRAYSON H substitution out			
07:02	12 BOSTIC M substitution in			
06:44	5 COULIBALY A turnover travel (3)			
06:11				14 SCALIA S 3pt FG from turnover, jump shot missed
06:11				offensive dead ball rebound (5)
06:11				turnover shot clock (11)
05:56	11 LEVY R 2pt FG from turnover outside the paint, jump shot made (4)	70-77	-7	
05:56	12 BOSTIC M assist (1)			
05:39		70-79	-9	54 HOLMES M 2pt FG in the paint, layup made (18)
05:39				22 MOORE-MCNEIL C assist (5)
05:34	11 LEVY R substitution out			
05:34	1 PRATCHER M substitution in			
05:12	5 COULIBALY A 2pt FG in the paint, jump shot missed			
05:08				54 HOLMES M defensive rebound (10)
04:54				33 PARRISH S 2pt FG in the paint, layup blocked
04:54	1 PRATCHER M block (2)			
04:52	10 SHAW S defensive rebound (2)			
04:52	jump ball situation			
04:52	10 SHAW S turnover lost ball (2)			33 PARRISH S steal (3)



Indiana at Auburn

11/25/22 Mirage, Las Vegas
2022-23 Women's Basketball

Officials: Eric Brewton, Doug Night, Ashley Birch

Game Time	AUB	Score	Diff	IND
04:52	Timeout media			
04:48		70-81	-11	12 GARZON Y 2pt FG from turnover in the paint, layup made (21)
04:48				22 MOORE-MCNEIL C assist (6)
04:32	5 COULIBALY A foul drawn (7)			33 PARRISH S foul shooting (4 - 1)
04:32	10 SHAW S substitution out			
04:32	23 SCOTT-GRAYSON H substitution in			
04:32	5 COULIBALY A free throw 1 - 2 made (17)	71-81	-10	
04:32	5 COULIBALY A free throw 2 - 2 made (18)	72-81	-9	
04:19		72-83	-11	54 HOLMES M 2pt FG in the paint, layup made (20)
04:19				12 GARZON Y assist (4)
04:08	23 SCOTT-GRAYSON H 3pt FG , jump shot missed			
04:04				12 GARZON Y defensive rebound (5)
03:46		72-85	-13	54 HOLMES M 2pt FG in the paint, layup made (22)
03:46				12 GARZON Y assist (5)
03:39	Timeout 30 Sec			
03:39	1 PRATCHER M substitution out			
03:39	2 WELLS S substitution out			
03:39	10 SHAW S substitution in			
03:39	11 LEVY R substitution in			
03:25	23 SCOTT-GRAYSON H 2pt FG in the paint, layup blocked			
03:25				54 HOLMES M block (2)
03:17				54 HOLMES M defensive rebound (11)
03:03				12 GARZON Y turnover travel (2)
02:52	12 BOSTIC M 2pt FG from turnover in the paint, layup missed			
02:51	offensive dead ball rebound (7)			
02:49	5 COULIBALY A 2pt FG from turnover second chance in the paint, layup missed			
02:45	12 BOSTIC M offensive rebound (2)			
02:45	12 BOSTIC M 2pt FG from turnover second chance in the paint, layup blocked			
02:45				22 MOORE-MCNEIL C block (1)
02:42	11 LEVY R offensive rebound (2)			
02:39	5 COULIBALY A 2pt FG from turnover second chance outside the paint, jump shot made (20)	74-85	-11	
02:39	11 LEVY R assist (2)			
02:13				14 SCALIA S 2pt FG in the paint, driving layup missed
02:10	12 BOSTIC M defensive rebound (3)			
02:04	5 COULIBALY A foul offensive (3 - 2)			33 PARRISH S foul drawn (4)
02:04	5 COULIBALY A turnover offensive (4)			
02:03	Timeout 30 Sec			
01:37	11 LEVY R foul shooting (4 - 3)			33 PARRISH S foul drawn (5)
01:37	11 LEVY R substitution out			
01:37	51 JOHNSON P substitution in			
01:37		74-86	-12	33 PARRISH S free throw 1 - 2 made (15)
01:37		74-87	-13	33 PARRISH S free throw 2 - 2 made (16)
01:25	12 BOSTIC M foul drawn (1)			33 PARRISH S foul shooting (5 - 2)
01:25				33 PARRISH S substitution out
01:25				3 PETERSON K substitution in
01:25	5 COULIBALY A free throw 1 - 2 made (21)	75-87	-12	



Indiana at Auburn

11/25/22 Mirage, Las Vegas
2022-23 Women's Basketball

Officials: Eric Brewton, Doug Night, Ashley Birch

Game Time	AUB	Score	Diff	IND
01:25	5 COULIBALY A free throw 2 - 2 made (22)	76-87	-11	
01:25	10 SHAW S substitution out			
01:25	4 DUHON K substitution in			
01:10				12 GARZON Y 2pt FG in the paint, layup blocked
01:10	5 COULIBALY A block (2)			
01:07				54 HOLMES M offensive rebound (12)
01:07	51 JOHNSON P foul shooting (1 - 4)			54 HOLMES M foul drawn (5)
01:07	4 DUHON K substitution out			
01:07	10 SHAW S substitution in			
01:07		76-88	-12	54 HOLMES M free throw 1 - 2 made (23)
01:07		76-89	-13	54 HOLMES M free throw 2 - 2 made (24)
01:01	12 BOSTIC M 2pt FG in the paint, layup missed			
01:01				defensive dead ball rebound (6)
01:01	10 SHAW S substitution out			
01:01	4 DUHON K substitution in			
00:54		76-91	-15	54 HOLMES M 2pt FG fast break in the paint, layup made (26)
00:54				12 GARZON Y assist (6)
00:52	4 DUHON K substitution out			
00:52	10 SHAW S substitution in			
00:45	12 BOSTIC M 2pt FG in the paint, layup made (2)	78-91	-13	
00:45	23 SCOTT-GRAYSON H assist (1)			
00:37	23 SCOTT-GRAYSON H foul personal (3 - 5)			14 SCALIA S foul drawn (4)
00:37				14 SCALIA S free throw fast break 1 - 2 missed
00:37				offensive dead ball rebound (7)
00:37		78-92	-14	14 SCALIA S free throw fast break 2 - 2 made (10)
00:32	12 BOSTIC M 2pt FG in the paint, layup missed			
00:30	51 JOHNSON P offensive rebound (4)			
00:30	jump ball situation			
00:29	5 COULIBALY A 2pt FG second chance in the paint, alleyoop missed			
00:27				12 GARZON Y defensive rebound (6)
00:25	12 BOSTIC M foul drawn (2)			54 HOLMES M foul shooting (4 - 3)
00:25	12 BOSTIC M free throw 1 - 2 missed			
00:25	offensive dead ball rebound (8)			
00:25	12 BOSTIC M free throw 2 - 2 made (3)	79-92	-13	
00:25				Timeout 30 Sec
00:16		79-94	-15	22 MOORE-MCNEIL C 2pt FG in the paint, layup made (15)
00:16				3 PETERSON K assist (2)
00:06	5 COULIBALY A 2pt FG outside the paint, jump shot missed			
00:02	51 JOHNSON P offensive rebound (5)			
00:02	51 JOHNSON P 2pt FG second chance in the paint, layup made (8)	81-94	-13	
00:02	23 SCOTT-GRAYSON H foul personal (4 - 6)			14 SCALIA S foul drawn (5)
00:02		81-95	-14	14 SCALIA S free throw fast break 1 - 2 made (11)
00:02		81-96	-15	14 SCALIA S free throw fast break 2 - 2 made (12)
END OF GAME				
AUB 81-96 IND				



Indiana at Auburn

11/25/22 Mirage, Las Vegas
2022-23 Women's Basketball

Officials: Eric Brewton, Doug Night, Ashley Birch

Indiana - 28

NO.	Name	F	Min	FG	3P	FT	Rebounds			Fouls		TP	AS	TO	ST	Blocks		+/-	
				M-A	M-A	M-A	OR	DR	TOT	PF	FD					BS	BA		
54	Mackenzie Holmes	F	10:00	5-5	0-0	4-4	1	3	4	1	2	14	0	0	0	1	0	7	
12	Yarden Garzon	G	10:00	1-3	0-0	0-0	0	2	2	0	0	2	4	1	0	0	1	7	
14	Sara Scalia	G	10:00	1-3	1-2	3-4	0	0	0	0	2	6	0	0	0	0	0	7	
22	Chloe Moore-McNeil	G	10:00	2-2	0-0	0-0	0	0	0	0	0	4	3	0	0	1	0	7	
34	Grace Berger	G	00:00	0-0	0-0	0-0	0	0	0	0	0	0	0	0	0	0	0	0	
33	Sydney Parrish		08:35	0-1	0-0	2-2	0	0	0	2	2	2	0	0	2	0	1	5	
3	Kaitlin Peterson		01:25	0-0	0-0	0-0	0	0	0	0	0	0	1	0	0	0	0	2	
Team							0	0	0			0		1					
Totals				9-14	1-2	9-10	1	5	6	3	6	28	8	2	2	2	2	2	7

Shooting By Period		
4 th FG%	9-14	64.3%
3PT%	1-2	50.0%
FT%	9-10	90%
GM FG%	9-14	64.3%
3PT%	1-2	50.0%
FT%	9-10	90.0%

Dead Ball Rebounds: 2, 1

Technical Fouls::NONE

Auburn - 21

NO.	Name	F	Min	FG	3P	FT	Rebounds			Fouls		TP	AS	TO	ST	Blocks		+/-
				M-A	M-A	M-A	OR	DR	TOT	PF	FD					BS	BA	
33	Kharyssa Richardson	F	00:00	0-0	0-0	0-0	0	0	0	0	0	0	0	0	0	0	0	0
4	Kaitlyn Duhon	G	00:27	0-0	0-0	0-0	0	0	0	0	0	0	0	0	0	0	0	-2
5	Aicha Coulibaly	G	10:00	1-5	0-0	4-4	0	0	0	1	1	6	0	2	0	1	0	-7
10	Sydney Shaw	G	08:40	1-1	1-1	0-0	0	1	1	0	0	3	1	1	0	0	0	-3
23	Honesty Scott-Grayson	G	07:30	1-3	0-1	0-0	0	1	1	2	0	2	1	1	0	0	1	-5
2	Sania Wells		04:34	1-1	1-1	0-0	0	0	0	0	0	3	0	0	0	0	0	-3
12	Mar'shaun Bostic		07:02	1-5	0-0	1-2	1	1	2	0	2	3	1	0	0	0	1	-6
1	Mya Pratcher		01:55	0-0	0-0	0-0	0	0	0	0	0	0	0	0	0	1	0	-4
11	Romi Levy		06:28	1-2	0-1	0-0	1	0	1	2	0	2	1	0	0	0	0	1
51	Precious Johnson		03:24	1-1	0-0	0-0	2	0	2	1	0	2	0	0	0	0	0	-6
Team							0	0	0			0		0				
Totals				7-18	2-4	5-6	4	3	7	6	3	21	4	4	0	2	2	-7

Shooting By Period		
4 th FG%	7-18	38.9%
3PT%	2-4	50.0%
FT%	5-6	83.3%
GM FG%	7-18	38.9%
3PT%	2-4	50.0%
FT%	5-6	83.3%

Dead Ball Rebounds: 2, 0

Technical Fouls::NONE

	IND	AUB
Biggest lead	15 (4 th 0:54)	0 (1 st 10:00)
Best Scoring Run	4(4 th 4:48)	3(4 th 9:07)
Lead Changes	0	
Times Tied	0	
Time with Lead	09:42	00:00

	IND	AUB
Points from		
Turnovers	4	4
Paint	16	6
Second Chance	2	5
Fast Breaks	5	2
Bench	2	10

Period by Period Scoring					
	1st	2nd	3rd	4th	TOT
IND	25	26	17	28	96
AUB	23	16	21	21	81



Indiana at Auburn

11/25/22 Mirage, Las Vegas
2022-23 Women's Basketball

Officials: Eric Brewton, Doug Night, Ashley Birch

Indiana - 45

NO.	Name	F	Min	FG	3P	FT	Rebounds			Fouls		TP	AS	TO	ST	Blocks		+/-
				M-A	M-A	M-A	OR	DR	TOT	PF	FD					BS	BA	
54	Mackenzie Holmes	F	17:19	7-7	0-0	4-4	3	4	7	2	2	18	0	1	1	1	0	8
12	Yarden Garzon	G	19:17	4-8	1-2	0-0	0	3	3	1	0	9	4	2	0	0	1	4
14	Sara Scalia	G	19:16	1-6	1-3	3-4	0	0	0	0	3	6	0	1	0	0	1	4
22	Chloe Moore-McNeil	G	18:46	2-4	0-2	2-2	0	0	0	1	1	6	3	1	0	1	0	4
34	Grace Berger	G	00:00	0-0	0-0	0-0	0	0	0	0	0	0	0	0	0	0	0	0
52	Lilly Meister		00:00	0-0	0-0	0-0	0	0	0	0	0	0	0	0	0	0	0	0
32	Alyssa Geary		02:41	0-0	0-0	0-0	0	0	0	0	0	0	0	0	0	0	0	-5
3	Kaitlin Peterson		04:47	1-1	0-0	0-0	0	0	0	0	0	2	2	0	0	0	0	1
33	Sydney Parrish		17:54	1-3	0-1	2-2	0	2	2	3	3	4	1	0	3	0	1	-1
Team							0	0	0			0		1				
Totals				16-29	2-8	11-12	3	9	12	7	9	45	10	6	4	2	3	3

Shooting By Period		
3 rd FG%	7-15	46.7%
3PT%	1-6	16.7%
FT%	2-2	100%
4 th FG%	9-14	64.3%
3PT%	1-2	50.0%
FT%	9-10	90%
GM FG%	16-29	55.2%
3PT%	2-8	25.0%
FT%	11-12	91.7%

Dead Ball Rebounds: 3, 1

Technical Fouls::NONE

Auburn - 42

NO.	Name	F	Min	FG	3P	FT	Rebounds			Fouls		TP	AS	TO	ST	Blocks		+/-
				M-A	M-A	M-A	OR	DR	TOT	PF	FD					BS	BA	
33	Kharyssa Richardson	F	05:10	1-2	0-0	0-0	0	1	1	0	0	2	0	1	1	0	0	1
4	Kaitlyn Duhon	G	05:37	0-1	0-0	2-2	1	2	3	0	1	2	1	0	0	0	0	-1
5	Aicha Coulibaly	G	19:16	3-8	0-0	5-6	1	0	1	2	2	11	0	3	1	2	0	-4
10	Sydney Shaw	G	18:40	3-5	2-4	0-0	0	1	1	0	0	8	2	2	0	0	0	1
23	Honesty Scott-Grayson	G	15:10	3-6	1-2	0-0	0	1	1	3	0	7	1	1	0	0	1	0
11	Romi Levy		10:06	2-3	0-1	0-0	1	0	1	2	0	4	1	0	0	0	0	0
3	Jakayla Johnson		04:16	0-1	0-0	0-0	0	0	0	1	1	0	0	0	0	0	0	4
51	Precious Johnson		08:14	1-1	0-0	0-0	2	0	2	1	1	2	0	0	0	0	0	-3
2	Sania Wells		04:34	1-1	1-1	0-0	0	0	0	0	0	3	0	0	0	0	0	-3
12	Mar'shaun Bostic		07:02	1-5	0-0	1-2	1	1	2	0	2	3	1	0	0	0	1	-6
1	Mya Pratcher		01:55	0-0	0-0	0-0	0	0	0	0	0	0	0	0	0	1	0	-4
Team							0	1	1			0		0				
Totals				15-33	4-8	8-10	6	7	13	9	7	42	6	7	2	3	2	-3

Shooting By Period		
3 rd FG%	8-15	53.3%
3PT%	2-4	50.0%
FT%	3-4	75%
4 th FG%	7-18	38.9%
3PT%	2-4	50.0%
FT%	5-6	83.3%
GM FG%	15-33	45.5%
3PT%	4-8	50.0%
FT%	8-10	80.0%

Dead Ball Rebounds: 4, 1

Technical Fouls::NONE

	IND	AUB
Biggest lead	15 (4 th 0:54)	0 (1 st 10:00)
Best Scoring Run	5(4 th 9:21)	6(3 rd 0:14)
Lead Changes	0	
Times Tied	0	
Time with Lead	19:26	00:00

	IND	AUB
Points from		
Turnovers	6	10
Paint	28	16
Second Chance	6	11
Fast Breaks	5	4
Bench	6	12

Period by Period Scoring					
	1st	2nd	3rd	4th	TOT
IND	25	26	17	28	96
AUB	23	16	21	21	81



Indiana at Auburn

11/25/22 Mirage, Las Vegas
2022-23 Women's Basketball

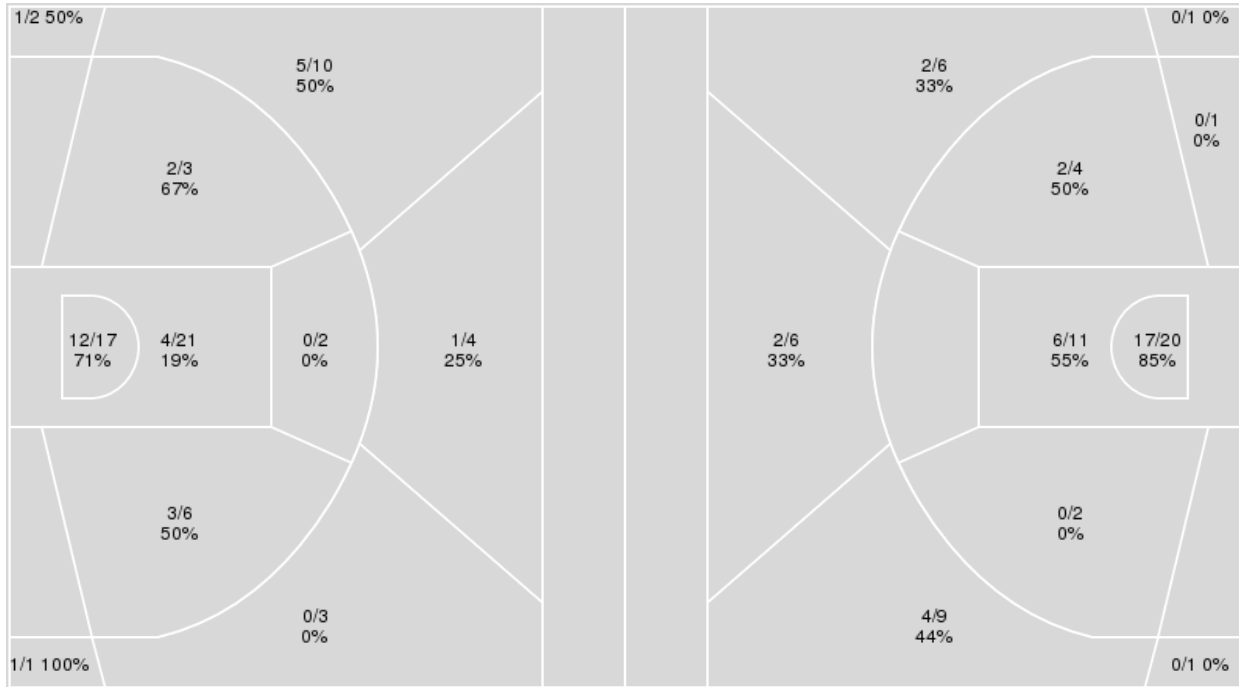
Officials: Eric Brewton, Doug Night, Ashley Birch

{ Players => 0, 1, 2, 3, 4, 5, 10, 11, 12, 20, 21, 23, 24, 33, 51; } FG
Types => All; Results => All;

{ Players => 1, 3, 12, 14, 21, 22, 23, 24, 25, 32, 33, 34, 52, 54; } FG
Types => All; Results => All;

Auburn

Indiana



Auburn	M/A	%
Field Goals	29/69	42
2 Points	21/49	43
3 Points	8/20	40
Free Throws	15/24	62

Indiana	M/A	%
Field Goals	33/61	54
2 Points	25/38	66
3 Points	8/23	35
Free Throws	22/25	88



Indiana at Auburn

11/25/22 Mirage, Las Vegas
2022-23 Women's Basketball

Officials: Eric Brewton, Doug Night, Ashley Birch

Indiana

No	Name	Mins		Score		Points Diff		Points per Min		Assists		Rebounds		Steals		Turnovers	
		On	Off	On	Off	On	Off	On	Off	On	Off	On	Off	On	Off	On	Off
1	Lexus Bargesser	02:57	37:03	4 - 11	92 - 70	-7	22	1.36	2.48	1	17	4	29	0	7	3	9
3	Kaitlin Peterson	09:58	30:02	29 - 22	67 - 59	7	8	2.91	2.23	4	14	10	23	1	6	2	10
12	Yarden Garzon	33:52	06:08	83 - 68	13 - 13	15	0	2.45	2.12	17	1	24	9	7	0	10	2
14	Sara Scalia	39:16	00:44	94 - 78	2 - 3	16	-1	2.39	2.73	18	0	33	0	7	0	12	0
22	Chloe Moore-McNeil	36:35	03:25	89 - 71	7 - 10	18	-3	2.43	2.05	16	2	31	2	7	0	9	3
32	Alyssa Geary	10:04	29:56	18 - 15	78 - 66	3	12	1.79	2.61	2	16	11	22	1	6	3	9
33	Sydney Parrish	36:08	03:52	83 - 72	13 - 9	11	4	2.30	3.36	16	2	29	4	6	1	12	0
34	Grace Berger	01:14	38:46	2 - 2	94 - 79	0	15	1.62	2.42	0	18	1	32	0	7	0	12
52	Lilly Meister	00:01	39:59	0 - 1	96 - 80	-1	16	0.00	2.40	0	18	1	32	0	7	0	12
54	Mackenzie Holmes	29:55	10:05	78 - 65	18 - 16	13	2	2.61	1.79	16	2	21	12	6	1	9	3

Auburn

No	Name	Mins		Score		Points Diff		Points per Min		Assists		Rebounds		Steals		Turnovers	
		On	Off	On	Off	On	Off	On	Off	On	Off	On	Off	On	Off	On	Off
1	Mya Pratcher	07:16	32:44	10 - 19	71 - 77	-9	-6	1.38	2.17	0	11	7	25	0	4	4	10
2	Sania Wells	07:31	32:29	11 - 22	70 - 74	-11	-4	1.46	2.15	2	9	7	25	0	4	4	10
3	Jakayla Johnson	08:13	31:47	14 - 14	67 - 82	0	-15	1.70	2.11	2	9	7	25	2	2	2	12
4	Kaitlyn Duhon	15:15	24:45	30 - 43	51 - 53	-13	-2	1.97	2.06	4	7	14	18	1	3	5	9
5	Aicha Coulibaly	36:37	03:23	73 - 87	8 - 9	-14	-1	1.99	2.36	10	1	30	2	4	0	12	2
10	Sydney Shaw	33:28	06:32	72 - 74	9 - 22	-2	-13	2.15	1.38	11	0	26	6	4	0	11	3
11	Romi Levy	17:42	22:18	35 - 35	46 - 61	0	-15	1.98	2.06	6	5	9	23	2	2	7	7
12	Mar'shaun Bostic	10:23	29:37	20 - 28	61 - 68	-8	-7	1.93	2.06	3	8	9	23	0	4	5	9
23	Honesty Scott-Grayson	31:13	08:47	70 - 77	11 - 19	-7	-8	2.24	1.25	9	2	24	8	3	1	10	4
33	Kharyssa Richardson	09:16	30:44	23 - 22	58 - 74	1	-16	2.48	1.89	4	7	7	25	1	3	2	12
51	Precious Johnson	23:06	16:54	47 - 59	34 - 37	-12	-3	2.03	2.01	4	7	20	12	3	1	8	6



Indiana at Auburn

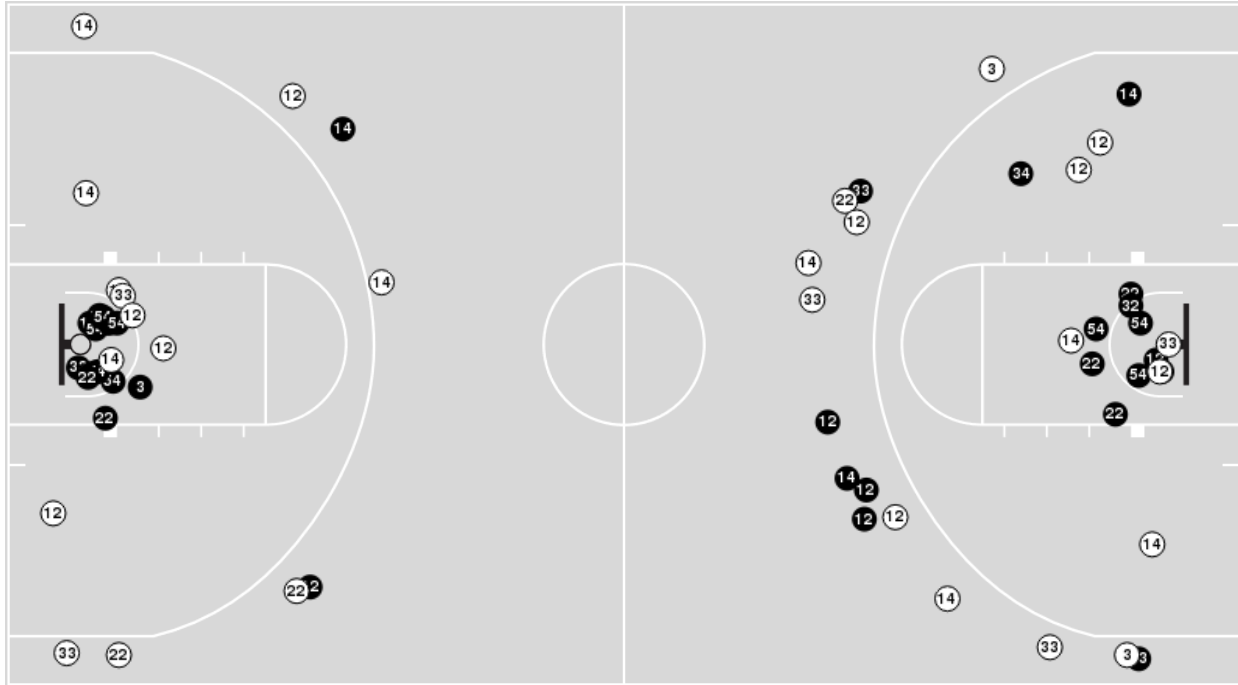
11/25/22 Mirage, Las Vegas
2022-23 Women's Basketball

Officials: Eric Brewton, Doug Night, Ashley Birch

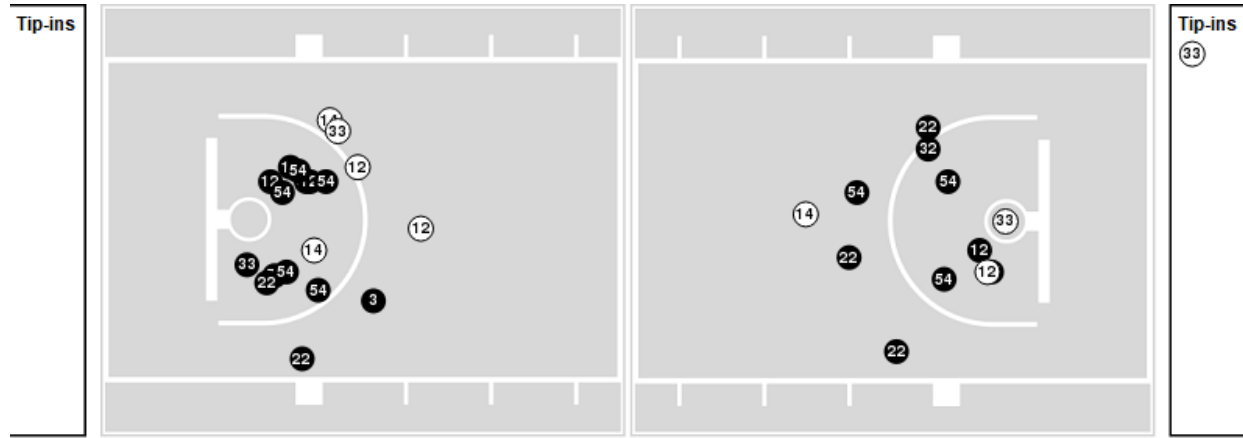
Players => 1, 3, 12, 14, 21, 22, 23, 24, 25, 32, 33, 34, 52, 54 FG Types=>All Results=>All

Indiana

All Field Goals



Blow Up Chart



● Made ○ Missed N - Player Number

Indiana	M/A	%
Field Goals	33/61	54
2 Points	25/38	66
3 Points	8/23	35
Free Throws	22/25	88

Indiana	M/A	%
Points in the Paint	46 (23 / 31)	74
Fast Break Points	10 (7/10)	70
Second Chance Points	11 (6/10)	60
Effective FG%	61	



Indiana at Auburn

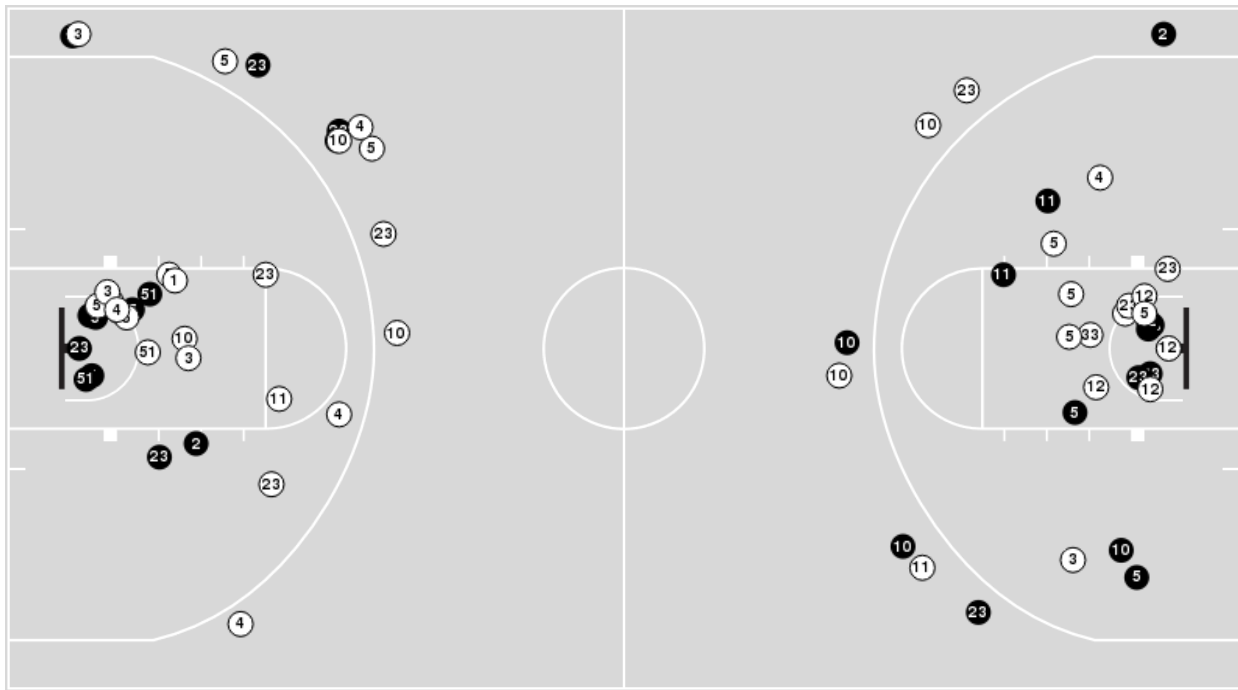
11/25/22 Mirage, Las Vegas
2022-23 Women's Basketball

Officials: Eric Brewton, Doug Night, Ashley Birch

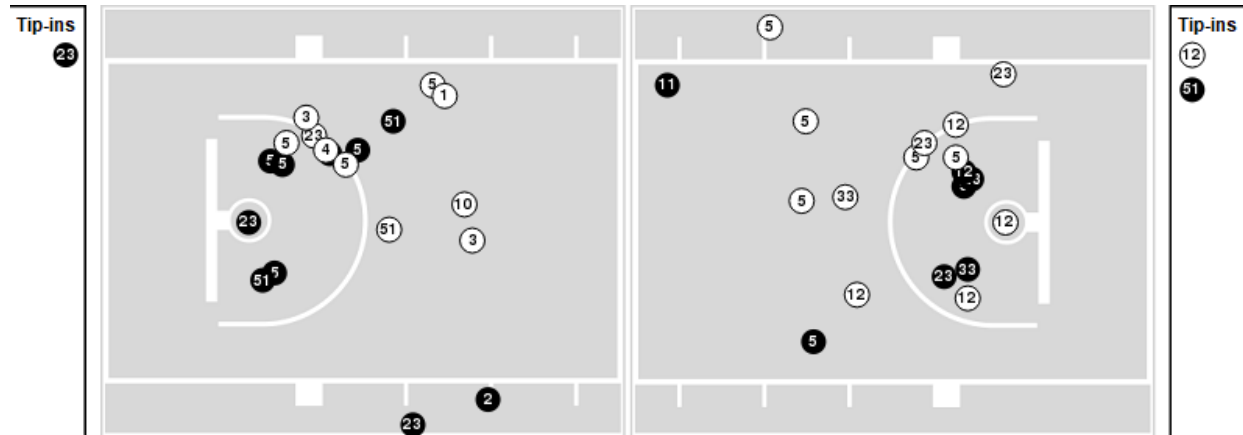
Players => 0, 1, 2, 3, 4, 5, 10, 11, 12, 20, 21, 23, 24, 33, 51 FG Types=>All Results=>All

Auburn

All Field Goals



Blow Up Chart



● Made ○ Missed N - Player Number

Auburn	M/A	%
Field Goals	29/69	42
2 Points	21/49	43
3 Points	8/20	40
Free Throws	15/24	62

Auburn	M/A	%
Points in the Paint	32 (16 / 38)	42
Fast Break Points	9 (4/4)	100
Second Chance Points	16 (10/22)	45
Effective FG%	48	



Indiana at Auburn

11/25/22 Mirage, Las Vegas
2022-23 Women's Basketball

Officials: Eric Brewton, Doug Night, Ashley Birch

Indiana

Lineup	Quarter On	Time On	Quarter Off	Time Off	Time on Court	Score	Score Diff	Reb	Stl	Tov	Ass	PPP
12- Garzon Y/ 14- Scalia S/ 22- Moore-McNeil C/ 34- Berger G/ 54- Holmes M/	1	10:00	1	08:46	01:14	2-2	0	1	0	0	0	1.0000
12- Garzon Y/ 14- Scalia S/ 22- Moore-McNeil C/ 33- Parrish S/ 54- Holmes M/	1	08:46	1	06:28	02:18	8-10	-2	1	0	0	2	2.0000
3- Peterson K/ 14- Scalia S/ 22- Moore-McNeil C/ 33- Parrish S/ 54- Holmes M/	1	06:28	1	04:53	01:35	6-0	6	2	0	0	1	2.0833
12- Garzon Y/ 14- Scalia S/ 22- Moore-McNeil C/ 33- Parrish S/ 54- Holmes M/	1	04:53	1	03:45	01:08	4-2	2	1	1	0	0	1.3889
12- Garzon Y/ 14- Scalia S/ 22- Moore-McNeil C/ 32- Geary A/ 33- Parrish S/	1	03:45	1	02:48	00:57	1-2	-1	1	0	1	0	0.5319
3- Peterson K/ 12- Garzon Y/ 14- Scalia S/ 32- Geary A/ 33- Parrish S/	1	02:48	1	02:06	00:42	0-0	0	0	0	1	0	0.0000
3- Peterson K/ 12- Garzon Y/ 14- Scalia S/ 33- Parrish S/ 54- Holmes M/	1	02:06	1	02:06	00:00	0-0	0	0	0	0	0	0.0000
1- Bargesser L/ 12- Garzon Y/ 14- Scalia S/ 33- Parrish S/ 54- Holmes M/	1	02:06	1	00:37	01:29	4-6	-2	2	0	1	1	1.3333
1- Bargesser L/ 14- Scalia S/ 22- Moore-McNeil C/ 33- Parrish S/ 54- Holmes M/	1	00:37	1	00:12	00:24	0-1	-1	1	0	1	0	0.0000
1- Bargesser L/ 14- Scalia S/ 22- Moore-McNeil C/ 32- Geary A/ 33- Parrish S/	1	00:12	2	10:00	00:13	0-0	0	1	0	0	0	0.0000
1- Bargesser L/ 14- Scalia S/ 22- Moore-McNeil C/ 33- Parrish S/ 54- Holmes M/	2	10:00	2	09:09	00:51	0-4	-4	0	0	1	0	0.0000
12- Garzon Y/ 14- Scalia S/ 22- Moore-McNeil C/ 33- Parrish S/ 54- Holmes M/	2	09:09	2	06:03	03:06	11-2	9	2	1	0	2	2.0677
12- Garzon Y/ 14- Scalia S/ 22- Moore-McNeil C/ 32- Geary A/ 33- Parrish S/	2	06:03	2	03:25	02:38	10-2	8	2	0	1	2	2.0000
12- Garzon Y/ 14- Scalia S/ 22- Moore-McNeil C/ 33- Parrish S/ 54- Holmes M/	2	03:25	2	02:54	00:31	0-3	-3	1	0	0	0	0.0000
3- Peterson K/ 12- Garzon Y/ 14- Scalia S/ 22- Moore-McNeil C/ 32- Geary A/	2	02:54	2	02:22	00:32	0-0	0	1	1	0	0	0.0000
3- Peterson K/ 14- Scalia S/ 22- Moore-McNeil C/ 32- Geary A/ 33- Parrish S/	2	02:22	2	00:01	02:21	5-4	1	4	0	0	0	1.0504
14- Scalia S/ 22- Moore-McNeil C/ 32- Geary A/ 33- Parrish S/ 52- Meister L/	2	00:01	2	00:01	00:00	0-0	0	0	0	0	0	0.0000
3- Peterson K/ 14- Scalia S/ 22- Moore-McNeil C/ 33- Parrish S/ 52- Meister L/	2	00:01	3	10:00	00:01	0-1	-1	1	0	0	0	0.0000
12- Garzon Y/ 14- Scalia S/ 22- Moore-McNeil C/ 33- Parrish S/ 54- Holmes M/	3	10:00	3	06:23	03:37	8-6	2	2	2	1	1	1.3333
12- Garzon Y/ 14- Scalia S/ 22- Moore-McNeil C/ 32- Geary A/ 33- Parrish S/	3	06:23	3	05:11	01:12	0-5	-5	1	0	0	0	0.0000
3- Peterson K/ 12- Garzon Y/ 22- Moore-McNeil C/ 33- Parrish S/ 54- Holmes M/	3	05:11	3	04:27	00:44	2-3	-1	0	0	0	0	2.0000
3- Peterson K/ 12- Garzon Y/ 14- Scalia S/ 22- Moore-McNeil C/ 54- Holmes M/	3	04:27	3	03:46	00:41	2-0	2	0	0	0	0	2.0000
3- Peterson K/ 14- Scalia S/ 22- Moore-McNeil C/ 33- Parrish S/ 54- Holmes M/	3	03:46	3	03:36	00:10	0-1	-1	0	0	0	0	0.0000
3- Peterson K/ 14- Scalia S/ 22- Moore-McNeil C/ 32- Geary A/ 33- Parrish S/	3	03:36	3	03:03	00:33	2-2	0	0	0	0	0	1.0638
12- Garzon Y/ 14- Scalia S/ 22- Moore-McNeil C/ 32- Geary A/ 33- Parrish S/	3	03:03	3	02:07	00:56	0-0	0	1	0	0	0	0.0000
12- Garzon Y/ 14- Scalia S/ 22- Moore-McNeil C/ 33- Parrish S/ 54- Holmes M/	3	02:07	3	01:14	00:53	0-0	0	2	0	2	0	0.0000
3- Peterson K/ 12- Garzon Y/ 14- Scalia S/ 33- Parrish S/ 54- Holmes M/	3	01:14	4	10:00	01:14	3-4	-1	0	0	1	1	1.5000
12- Garzon Y/ 14- Scalia S/ 22- Moore-McNeil C/ 33- Parrish S/ 54- Holmes M/	4	10:00	4	01:25	08:35	19-14	5	4	2	2	6	1.2873
3- Peterson K/ 12- Garzon Y/ 14- Scalia S/ 22- Moore-McNeil C/ 54- Holmes M/	4	01:25	4	00:00	01:25	9-7	2	2	0	0	2	1.9397



Indiana at Auburn

11/25/22 Mirage, Las Vegas
2022-23 Women's Basketball

Officials: Eric Brewton, Doug Night, Ashley Birch

Auburn

Lineup	Quarter On	Time On	Quarter Off	Time Off	Time on Court	Score	Score Diff	Reb	Stl	Tov	Ass	PPP
4- Duhon K/ 5- Coulibaly A/ 10- Shaw S/ 23- Scott-Grayson H/ 33- Richardson K/	1	10:00	1	06:28	03:32	12-10	2	2	0	0	3	2.0000
5- Coulibaly A/ 10- Shaw S/ 11- Levy R/ 23- Scott-Grayson H/ 33- Richardson K/	1	06:28	1	05:54	00:34	0-2	-2	0	0	0	0	0.0000
5- Coulibaly A/ 10- Shaw S/ 11- Levy R/ 23- Scott-Grayson H/ 51- Johnson P/	1	05:54	2	10:00	05:54	11-13	-2	4	1	3	1	0.8786
3- Johnson J/ 5- Coulibaly A/ 10- Shaw S/ 11- Levy R/ 51- Johnson P/	2	10:00	2	08:52	01:08	4-0	4	0	1	0	1	1.3333
3- Johnson J/ 4- Duhon K/ 5- Coulibaly A/ 10- Shaw S/ 51- Johnson P/	2	08:52	2	08:06	00:46	0-4	-4	1	0	0	0	0.0000
2- Wells S/ 4- Duhon K/ 5- Coulibaly A/ 10- Shaw S/ 51- Johnson P/	2	08:06	2	08:06	00:00	0-1	-1	0	0	0	0	0.0000
2- Wells S/ 3- Johnson J/ 4- Duhon K/ 5- Coulibaly A/ 51- Johnson P/	2	08:06	2	06:03	02:03	2-6	-4	5	0	1	0	0.6667
1- Pratcher M/ 2- Wells S/ 4- Duhon K/ 5- Coulibaly A/ 23- Scott-Grayson H/	2	06:03	2	05:09	00:54	0-3	-3	0	0	1	0	0.0000
1- Pratcher M/ 4- Duhon K/ 5- Coulibaly A/ 12- Bostic M/ 23- Scott-Grayson H/	2	05:09	2	05:09	00:00	0-0	0	0	0	0	0	0.0000
1- Pratcher M/ 4- Duhon K/ 12- Bostic M/ 23- Scott-Grayson H/ 51- Johnson P/	2	05:09	2	02:54	02:15	5-7	-2	1	0	1	0	1.0246
4- Duhon K/ 5- Coulibaly A/ 10- Shaw S/ 12- Bostic M/ 23- Scott-Grayson H/	2	02:54	2	02:46	00:08	0-0	0	0	0	0	0	0.0000
1- Pratcher M/ 10- Shaw S/ 12- Bostic M/ 23- Scott-Grayson H/ 51- Johnson P/	2	02:46	2	02:22	00:24	0-0	0	1	0	1	0	0.0000
5- Coulibaly A/ 10- Shaw S/ 12- Bostic M/ 23- Scott-Grayson H/ 51- Johnson P/	2	02:22	2	01:48	00:34	2-2	0	1	0	0	0	2.2727
1- Pratcher M/ 5- Coulibaly A/ 10- Shaw S/ 23- Scott-Grayson H/ 51- Johnson P/	2	01:48	2	00:01	01:47	2-3	-1	4	0	0	0	0.6667
1- Pratcher M/ 10- Shaw S/ 12- Bostic M/ 23- Scott-Grayson H/ 51- Johnson P/	2	00:01	2	00:01	00:00	0-0	0	0	0	0	0	0.0000
1- Pratcher M/ 5- Coulibaly A/ 10- Shaw S/ 23- Scott-Grayson H/ 51- Johnson P/	2	00:01	3	10:00	00:01	1-0	1	0	0	0	0	1.1364
4- Duhon K/ 5- Coulibaly A/ 10- Shaw S/ 23- Scott-Grayson H/ 33- Richardson K/	3	10:00	3	05:11	04:49	11-8	3	5	1	2	1	1.2387
4- Duhon K/ 10- Shaw S/ 11- Levy R/ 23- Scott-Grayson H/ 33- Richardson K/	3	05:11	3	04:50	00:21	0-2	-2	0	0	0	0	0.0000
3- Johnson J/ 10- Shaw S/ 11- Levy R/ 23- Scott-Grayson H/ 51- Johnson P/	3	04:50	3	04:27	00:23	3-0	3	0	0	0	1	3.0000
3- Johnson J/ 5- Coulibaly A/ 10- Shaw S/ 11- Levy R/ 51- Johnson P/	3	04:27	3	02:07	02:20	3-4	-1	1	0	1	0	0.7732
3- Johnson J/ 5- Coulibaly A/ 10- Shaw S/ 23- Scott-Grayson H/ 51- Johnson P/	3	02:07	3	00:34	01:33	2-0	2	0	1	0	0	0.6667
5- Coulibaly A/ 10- Shaw S/ 11- Levy R/ 23- Scott-Grayson H/ 51- Johnson P/	3	00:34	4	08:13	02:21	5-8	-3	0	0	1	0	1.2500
2- Wells S/ 5- Coulibaly A/ 10- Shaw S/ 11- Levy R/ 23- Scott-Grayson H/	4	08:13	4	07:02	01:11	5-4	1	1	0	0	1	2.5000
2- Wells S/ 5- Coulibaly A/ 10- Shaw S/ 11- Levy R/ 12- Bostic M/	4	07:02	4	05:34	01:28	2-2	0	0	0	1	1	1.0000
1- Pratcher M/ 2- Wells S/ 5- Coulibaly A/ 10- Shaw S/ 12- Bostic M/	4	05:34	4	04:32	01:02	0-2	-2	1	0	1	0	0.0000
1- Pratcher M/ 2- Wells S/ 5- Coulibaly A/ 12- Bostic M/ 23- Scott-Grayson H/	4	04:32	4	03:39	00:53	2-4	-2	0	0	0	0	1.0638
5- Coulibaly A/ 10- Shaw S/ 11- Levy R/ 12- Bostic M/ 23- Scott-Grayson H/	4	03:39	4	01:37	02:02	2-0	2	3	0	1	1	0.5000
5- Coulibaly A/ 10- Shaw S/ 12- Bostic M/ 23- Scott-Grayson H/ 51- Johnson P/	4	01:37	4	01:25	00:12	2-2	0	0	0	0	0	2.2727
4- Duhon K/ 5- Coulibaly A/ 12- Bostic M/ 23- Scott-Grayson H/ 51- Johnson P/	4	01:25	4	01:07	00:18	0-0	0	0	0	0	0	0.0000
5- Coulibaly A/ 10- Shaw S/ 12- Bostic M/ 23- Scott-Grayson H/ 51- Johnson P/	4	01:07	4	01:01	00:06	0-2	-2	0	0	0	0	0.0000
4- Duhon K/ 5- Coulibaly A/ 12- Bostic M/ 23- Scott-Grayson H/ 51- Johnson P/	4	01:01	4	00:52	00:09	0-2	-2	0	0	0	0	0.0000
5- Coulibaly A/ 10- Shaw S/ 12- Bostic M/ 23- Scott-Grayson H/ 51- Johnson P/	4	00:52	4	00:00	00:52	5-5	0	2	0	0	1	1.2887



Indiana at Auburn

11/25/22 Mirage, Las Vegas
2022-23 Women's Basketball

Game Time: 5:45 PM
Game Duration: 2:01

Officials: Eric Brewton, Doug Night, Ashley Birch

Indiana

Lineup	Time	Score	Score Diff	Pts/Min	Reb	Stl	Tov	Ass	PPP
12- Garzon Y/ 14- Scalia S/ 22- Moore-McNeil C/ 33- Parrish S/ 54- Holmes M/	20:08	50-37	13	2.4834	13	6	5	11	1.3904
12- Garzon Y/ 14- Scalia S/ 22- Moore-McNeil C/ 32- Geary A/ 33- Parrish S/	05:43	11-9	2	1.9242	5	0	2	2	1.0110
3- Peterson K/ 14- Scalia S/ 22- Moore-McNeil C/ 32- Geary A/ 33- Parrish S/	02:54	7-6	1	2.4138	4	0	0	0	1.0542
3- Peterson K/ 12- Garzon Y/ 14- Scalia S/ 22- Moore-McNeil C/ 54- Holmes M/	02:06	11-7	4	5.2381	2	0	0	2	1.9504
3- Peterson K/ 14- Scalia S/ 22- Moore-McNeil C/ 33- Parrish S/ 54- Holmes M/	01:45	6-1	5	3.4286	2	0	0	1	2.0833
1- Bargesser L/ 12- Garzon Y/ 14- Scalia S/ 33- Parrish S/ 54- Holmes M/	01:29	4-6	-2	2.6966	2	0	1	1	1.3333
1- Bargesser L/ 14- Scalia S/ 22- Moore-McNeil C/ 33- Parrish S/ 54- Holmes M/	01:15	0-5	-5	0.0000	1	0	2	0	0.0000
12- Garzon Y/ 14- Scalia S/ 22- Moore-McNeil C/ 34- Berger G/ 54- Holmes M/	01:14	2-2	0	1.6216	1	0	0	0	1.0000
3- Peterson K/ 12- Garzon Y/ 14- Scalia S/ 33- Parrish S/ 54- Holmes M/	01:14	3-4	-1	2.4324	0	0	1	1	1.5000
3- Peterson K/ 12- Garzon Y/ 22- Moore-McNeil C/ 33- Parrish S/ 54- Holmes M/	00:44	2-3	-1	2.7273	0	0	0	0	2.0000
3- Peterson K/ 12- Garzon Y/ 14- Scalia S/ 32- Geary A/ 33- Parrish S/	00:42	0-0	0	0.0000	0	0	1	0	0.0000
3- Peterson K/ 12- Garzon Y/ 14- Scalia S/ 22- Moore-McNeil C/ 32- Geary A/	00:32	0-0	0	0.0000	1	1	0	0	0.0000
1- Bargesser L/ 14- Scalia S/ 22- Moore-McNeil C/ 32- Geary A/ 33- Parrish S/	00:13	0-0	0	0.0000	1	0	0	0	0.0000
3- Peterson K/ 14- Scalia S/ 22- Moore-McNeil C/ 33- Parrish S/ 52- Meister L/	00:01	0-1	-1	0.0000	1	0	0	0	0.0000
14- Scalia S/ 22- Moore-McNeil C/ 32- Geary A/ 33- Parrish S/ 52- Meister L/	00:00	0-0	0	NaN	0	0	0	0	0.0000



Indiana at Auburn

11/25/22 Mirage, Las Vegas
2022-23 Women's Basketball

Officials: Eric Brewton, Doug Night, Ashley Birch

Auburn

Lineup	Time	Score	Score Diff	Pts/Min	Reb	Stl	Tov	Ass	PPP
4- Duhon K/ 5- Coulibaly A/ 10- Shaw S/ 23- Scott-Grayson H/ 33- Richardson K/	08:21	23-18	5	2.7545	7	1	2	4	1.5457
5- Coulibaly A/ 10- Shaw S/ 11- Levy R/ 23- Scott-Grayson H/ 51- Johnson P/	08:15	16-21	-5	1.9394	4	1	4	1	0.9685
3- Johnson J/ 5- Coulibaly A/ 10- Shaw S/ 11- Levy R/ 51- Johnson P/	03:28	7-4	3	2.0192	1	1	1	1	1.0174
1- Pratcher M/ 4- Duhon K/ 12- Bostic M/ 23- Scott-Grayson H/ 51- Johnson P/	02:15	5-7	-2	2.2222	1	0	1	0	1.0246
2- Wells S/ 3- Johnson J/ 4- Duhon K/ 5- Coulibaly A/ 51- Johnson P/	02:03	2-6	-4	0.9756	5	0	1	0	0.6667
5- Coulibaly A/ 10- Shaw S/ 11- Levy R/ 12- Bostic M/ 23- Scott-Grayson H/	02:02	2-0	2	0.9836	3	0	1	1	0.5000
1- Pratcher M/ 5- Coulibaly A/ 10- Shaw S/ 23- Scott-Grayson H/ 51- Johnson P/	01:48	3-3	0	1.6667	4	0	0	0	0.7732
5- Coulibaly A/ 10- Shaw S/ 12- Bostic M/ 23- Scott-Grayson H/ 51- Johnson P/	01:44	9-11	-2	5.1923	3	0	0	1	1.3554
3- Johnson J/ 5- Coulibaly A/ 10- Shaw S/ 23- Scott-Grayson H/ 51- Johnson P/	01:33	2-0	2	1.2903	0	1	0	0	0.6667
2- Wells S/ 5- Coulibaly A/ 10- Shaw S/ 11- Levy R/ 12- Bostic M/	01:28	2-2	0	1.3636	0	0	1	1	1.0000
2- Wells S/ 5- Coulibaly A/ 10- Shaw S/ 11- Levy R/ 23- Scott-Grayson H/	01:11	5-4	1	4.2254	1	0	0	1	2.5000
1- Pratcher M/ 2- Wells S/ 5- Coulibaly A/ 10- Shaw S/ 12- Bostic M/	01:02	0-2	-2	0.0000	1	0	1	0	0.0000
1- Pratcher M/ 2- Wells S/ 4- Duhon K/ 5- Coulibaly A/ 23- Scott-Grayson H/	00:54	0-3	-3	0.0000	0	0	1	0	0.0000
1- Pratcher M/ 2- Wells S/ 5- Coulibaly A/ 12- Bostic M/ 23- Scott-Grayson H/	00:53	2-4	-2	2.2642	0	0	0	0	1.0638
3- Johnson J/ 4- Duhon K/ 5- Coulibaly A/ 10- Shaw S/ 51- Johnson P/	00:46	0-4	-4	0.0000	1	0	0	0	0.0000
5- Coulibaly A/ 10- Shaw S/ 11- Levy R/ 23- Scott-Grayson H/ 33- Richardson K/	00:34	0-2	-2	0.0000	0	0	0	0	0.0000
4- Duhon K/ 5- Coulibaly A/ 12- Bostic M/ 23- Scott-Grayson H/ 51- Johnson P/	00:27	0-2	-2	0.0000	0	0	0	0	0.0000
1- Pratcher M/ 10- Shaw S/ 12- Bostic M/ 23- Scott-Grayson H/ 51- Johnson P/	00:24	0-0	0	0.0000	1	0	1	0	0.0000
3- Johnson J/ 10- Shaw S/ 11- Levy R/ 23- Scott-Grayson H/ 51- Johnson P/	00:23	3-0	3	7.8261	0	0	0	1	3.0000
4- Duhon K/ 10- Shaw S/ 11- Levy R/ 23- Scott-Grayson H/ 33- Richardson K/	00:21	0-2	-2	0.0000	0	0	0	0	0.0000
4- Duhon K/ 5- Coulibaly A/ 10- Shaw S/ 12- Bostic M/ 23- Scott-Grayson H/	00:08	0-0	0	0.0000	0	0	0	0	0.0000
2- Wells S/ 4- Duhon K/ 5- Coulibaly A/ 10- Shaw S/ 51- Johnson P/	00:00	0-1	-1	NaN	0	0	0	0	0.0000
1- Pratcher M/ 4- Duhon K/ 5- Coulibaly A/ 12- Bostic M/ 23- Scott-Grayson H/	00:00	0-0	0	NaN	0	0	0	0	0.0000