



2020-21 AUBURN WOMEN'S BASKETBALL

AUBURN ATHLETICS COMMUNICATIONS: 392 SOUTH DONAHUE DRIVE || AUBURN, AL 36830 || AUBURNTIGERS.COM || @AUBURNWBB

2020-21 SCHEDULE/RESULTS

5-16, 0-13 SEC

DATE	OPPONENT	TIME/TV/RESULT
Nov. 25	USC UPSTATE	W 82-41
Nov. 28	SAMFORD	W 66-64
Dec. 1	GARDNER-WEBB	W 97-61
Dec. 5	at Houston	L 61-71
Dec. 8	BELMONT	PPD
Dec. 13	SOUTH ALABAMA	W 74-66
Dec. 16	STEPHEN F. AUSTIN	L 54-67
Dec. 17	NORTH FLORIDA	W 94-81
Dec. 20	BELMONT	L 57-78
Dec. 31	*at LSU	L 43-56
Jan. 3	*GEORGIA	L 44-76
Jan. 7	*at Ole Miss	L 58-62
Jan. 10	*MISSOURI	PPD
Jan. 14	*#12 KENTUCKY	PPD
Jan. 17	*at Florida	L 54-68
Jan. 21	*#12 KENTUCKY	L 71-76
Jan. 24	*at Alabama	L 55-67
Jan. 28	*#8/7 TEXAS A&M	L 69-84
Jan. 31	*at #19/18 Arkansas	L 67-77
Feb. 4	*#2/1 SOUTH CAROLINA	L 58-77
Feb. 7	*MISSOURI	L 75-85
Feb. 11	*at #24/25 Georgia	L 54-74
Feb. 14	*ALABAMA	L 78-92
Feb. 18	*at Mississippi State	PPD
Feb. 21	*VANDERBILT	Canceled
Feb. 23	*at Mississippi State	L 68-81
Feb. 25	*#16 ARKANSAS	SECN 8 pm
Feb. 28	*at #20 Tennessee	SECN 1 pm
Mar. 3-7	SEC Tournament	Greenville
M19-22	NCAA First-Second Rounds	TBD
M26-29	NCAA Regionals	TBD
Apr 2-4	Women's Final Four	San Antonio

All times Central. Home Games in **BOLD CAPS**.

* SEC Game

+ = SEC Network + / ESPN3.com

AUBURN ATHLETICS COMMUNICATIONS

WES TODDAssistant Director/WBB Contact
 wlt0006@auburn.edu
C: 334-750-5682

KIRK SAMPSON Associate AD
 kirk@auburn.edu

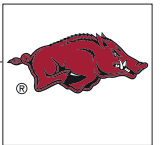
WebAuburnTigers.com
 Twitter @AuburnWBB
 Facebook/AuburnWBB
 Instagram@AuburnWBB
 Office Phone (334) 844-9800



GAME 22

#16 Arkansas (17-7, 7-6)

Thursday, Feb. 25, 2021 • 8 p.m. CT
Senior Night



Site Auburn, Ala.
 Venue Auburn Arena
 TV SEC Network (Eric Frede, Tamika Catchings)
 Radio WQSI 93.9 FM (Brit Bowen, Larry DiChiara)
 Audio Webcast AuburnTigers.com / Auburn Athletics app
 Live Stats StatBroadcast
 Twitter @AuburnWBB
 Series Record Auburn leads 23-18
 in Auburn Auburn leads 11-7
 Last Meeting #19 Arkansas 77, Auburn 67 (Jan. 31, 2021, in Fayetteville)

GAMEDAY BREAKDOWN

AUBURN TIGERS

Rankings AP: NR | Coaches: NR
 2020-21 Record 5-16
 SEC 0-13
 Home 5-8
 Away 0-8
 Neutral 0-0
 Streak L14
 Head Coach Terri Williams-Flournoy
 Record at AU (Yrs.) 140-135 (9th)
 Overall Record (Yrs.) 283-239 (17th)
 Record vs. Arkansas 4-6

ARKANSAS RAZORBACKS

Rankings AP: 16 | Coaches: 16
 2020-21 Record 17-7
 SEC 7-6
 Home 11-1
 Away 5-5
 Neutral 1-1
 Streak W3
 Head Coach Mike Neighbors
 Record at ARK (Yrs.) 76-48 (4th)
 Overall Record (Yrs.) 174-89 (8th)
 Record vs. Auburn 4-1

AUBURN PROJECTED STARTERS (based on last game)



ALYCIA REESE
G • JR • 5-9
Columbus, Ga.

PPG: 2.5
RPG: 0.8
APG: 0.4



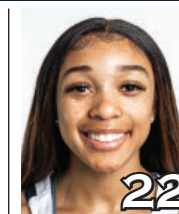
ROMI LEVY
F • FR • 6-2
Herzliya, Israel

PPG: 5.5
RPG: 4.0
APG: 1.5



UNIQUE THOMPSON
F • SR • 6-3
Theodore, Ala.

PPG: 18.0
RPG: 13.1
APG: 1.2



ALAINA RICE
G • SO • 5-8
Rockledge, Fla.

PPG: 4.4
RPG: 2.1
APG: 1.9



HONESTY SCOTT-GRAYSON
G • R-SO • 5-8
Brick, N.J.

PPG: 14.8
RPG: 4.1
APG: 1.7

OFF THE BENCH

No.	Pos.	Name	Ht.	Year	PPG	RPG	Hometown
1	G	Keya Patton	5-6	Jr.	6.0	1.7	Indianapolis, Ind.
2	G	Sania Wells	5-7	So.	2.9	0.8	Moss Point, Miss.
3	G	Annie Hughes	5-9	So.	3.2	2.0	Dutton, Ala.
4	G	Riley Donahue	5-10	Fr.	1.0	0.0	Atlanta, Ga.
5	F	Aicha Coulibaly	6-0	Fr.	5.1	3.2	Mali
10	F	Kiyae' White	6-2	R-Jr.	0.0	3.0	Macungie, Pa.
13	G	Kira Lowery	5-6	Jr.	2.8	1.1	Memphis, Tenn.
14	F	Jala Jordan	6-2	R-So.	7.2	3.2	Philadelphia, Pa.
24	G	Carsen McFadden	5-7	Fr.	0.5	0.5	Lucas, Texas
30	G	Morgan Robinson-Nwagwu	5-8	So.	1.8	1.1	Norcross, Ga.

Head Coach: Terri Williams-Flournoy

Assistants: La'Keshia Frett Meredith, Clarisse Garcia, Reneisha Hobbs

#WarEagle
#TeamOfExcellence



AuburnTigers.com



@AuburnWBB | @AuburnTigers
@AUCoachFlo



/AuburnWBB
/AuburnTigers

TEAM SCHEDULE AND MEDIA AVAILABILITY >> FEBRUARY 22-28 (times Central unless noted otherwise)

MONDAY February 22	TUESDAY February 23	WEDNESDAY February 24	THURSDAY February 25	FRIDAY February 26	SATURDAY February 27	SUNDAY February 28
PRACTICE 2-4 pm Auburn Arena	GAME 5:00 Auburn at Mississippi State	PRACTICE 2:30-6 pm Auburn Arena	GAME 8:00 Auburn vs. Arkansas (Senior Night)	PRACTICE 2:30-5 pm Auburn Arena	PRACTICE 11 am-2 pm Auburn Arena	GAME 1:00 Auburn at Tennessee
TRAVEL to Starkville, Miss.	Interviews Postgame via Zoom Return to Auburn		Interviews Postgame via Zoom		TRAVEL to Knoxville, Tenn.	Interviews Postgame via Zoom Return to Auburn

AUBURN ATHLETICS COMMUNICATIONS SERVICES (COVID-19 EDITION)

QUICK FACTS

AUBURNTIGERS.COM

For updated game notes, statistics and all the latest information on Auburn basketball and gameday activities, go to AuburnTigers.com.

INTERVIEW POLICIES

--Coach Williams-Flournoy, assistant coaches and selected athletes are available for phone and virtual interviews by contacting Wes Todd in the athletic communications office.

--Following home games, interviews with Coach Flo and selected players will be conducted **via Zoom** following a 10-minute cooling-off period. Visiting coaches and players, if requested, will be available.

--**Interviews following road contests will be conducted via Zoom; the visiting SID will send out links beforehand.**

--**Practices are closed to the public and media until further notice.**

CREDENTIALS

Anyone wishing to cover Auburn women's basketball should contact Wes Todd in the communications office at least one day in advance in order to make the proper arrangements. Game credentials will be held at media will call, **which will be at the north main entrance for the 2020-21 season.** There will be no season credentials. Parking passes are not needed.

GAME DAY SERVICES

--Printed flip cards will be available at each media seat. All other information (game notes, stats, etc.) will be available on AuburnTigers.com and StatBroadcast.com. Wireless internet is available in the Arena.

--Media will only be permitted to access the concourse level of the arena. With the exception of an extremely limited number of photographers/videographers, access to the playing floor by persons not subject to the SEC's COVID-19 testing protocol is strictly prohibited.

--Pool photos and video will be available on the SEC FTP site following all home games.

VIDEO SERVICES

FTP feeds of selected Auburn basketball highlights are available for the media. Highlights and postgame press conference video will be posted following each game to ImagenCloud and the SEC FTP site.

COMMUNICATIONS STAFF

Wes Todd Women's Basketball contact
cell: 334-750-5682
email: wlt0006@auburn.edu
Kirk Sampson Associate AD
cell: 334-750-1385
email: sampska@auburn.edu

GENERAL INFORMATION

Location..... Auburn, Ala.
Founded1856
Enrollment.....30,440
Nickname Tigers
Colors..... Burnt Orange and Navy Blue
Facility (Capacity) Auburn Arena (9,121)
2020-21 Reduced Capacity1,438
President Dr. Jay Gogue
Director of Athletics Allen Greene
Sr. Assoc. AD/SWA..... Monique Holland

WOMEN'S BASKETBALL HISTORY

First Year of Women's Basketball1971
All-Time Record (Years).....952-513 (50th)
All-Time SEC Record (since 1981) 240-261
All-Time Home Record 445-132
at Auburn Arena (since 2010)..... 98-61
NCAA Tournament Appearances21
Last NCAA App./Result.....2019 - First Round
SEC Regular-Season Championships 5
..... 1981, 1987, 1988, 1989, 2009
SEC Tournament Championships..... 4
..... 1981, 1987, 1990, 1997

COACHING & SUPPORT STAFF

Head Coach..... Terri Williams-Flournoy
Alma Mater, YearPenn State, 1991
Overall Record 283-239 (.542) / 17th year
Auburn Record 140-135 (.509) / 9th year
Assistant Coach (Year) La'Keshia Frett Meredith (2nd)
Alma Mater, YearGeorgia (1997)
Assistant Coach (Year at Auburn) Clarisse Garcia (5th)
Alma Mater, Year Villanova (2007)
Special Asst. to the Head Coach..... Reneisha Hobbs
Strength & Conditioning Coach Lee Taylor
Director of Basketball Operations Bianca Webb
Director of Basketball Services Justin Peak
Athletic Trainer..... Cathy Gordon
Grad. Student Mgrs Sean Holmes, AK Prestridge
Manager..... Trey Larrimore

GAMEDAY EXPERIENCE: AUBURN ARENA

>> Auburn Arena is in its 11th season as home of Auburn Basketball. The Tigers are 98-61 since moving to the Arena in 2010-11. The facility seats 9,121 for basketball and also hosts Auburn volleyball and gymnastics.



TEAM INFORMATION

2019-20 Record..... 11-18
2019-20 SEC Record..... 4-12
SEC Finish..... T-12th
Starters Returning/Lost1/4
Letterwinners Returning/Lost 5/8
Redshirts Returning 2
Newcomers..... 8

AUBURN TIGERS SPEED CHART

Overall: 5-16 SEC: 0-13

Head Coach: Terri Williams-Flournoy (9th Season)

Aicha Coulibaly - ay-EE-sha coo-li-BALL-ee
 Jala Jordan - JAY-lah
 Romi Levy - RO-mee LEV-ee
 Kira Lowery - KYE-rah
 Alycia Reese - a-LEE-see-ah

Morgan Robinson-Nwagwu - WAH-goo
 Sania Wells - sa-NYE-uh
 Kiyae'White - kye-YAY
 Terri Williams-Flournoy - FluH-NOY

		Pts	Reb	Ast	Stl	Blk		
0	ALYCIA REESE G • 5-9 • Jr. • Columbus, Ga. • Chattahoochee Valley CC	Season High	10	4	1	1	-	
		Career High	10	4	1	1	-	
		PPG	2.5	0.8	0.4	.333	.304	1.000
		20-21	2.5	0.8	0.4	.333	.304	1.000
							LAST GAME (at MSU): 3 pts, 1 reb, 1 ast, 1 stl • First career start at MSU (2/23) • 10 pts, 2-3 3FG in 16 mins at Houston (12/5) • 4 points in Auburn debut vs. USC Upstate (11/25) • Played 2 seasons at CVCC in Phenix City; avg. 12.8p, 3.8r	
1	KEYA PATTON G • 5-6 • Jr. • Indianapolis, Ind. • Wabash Valley College	Season High	14	5	2	2	1	
		Career High	14	5	2	2	1	
		PPG	6.0	1.7	0.7	.327	.237	.792
		20-21	6.0	1.7	0.7	.327	.237	.792
							LAST GAME (at MSU): DNP • Season-high 14 points in win over Gardner-Webb • Two-time NJCAA All-American; 1st team in 2020 • Avg. 20.8 pts, 6.8 reb, 6.4 ast, 2.9 stl as JC sophomore • Scored 1,000+ points in two JC seasons	
2	SANIA WELLS G • 5-7 • So. • Moss Point, Miss. • East Central HS	Season High	11	5	2	1	1	
		Career High	11	5	3	2	1	
		PPG	2.9	0.8	0.6	.207	.257	.636
		20-21	2.9	0.8	0.6	.207	.257	.636
							LAST GAME (at MSU): DNP • Career-high 5 rebounds at Florida (1/17) • Career-high 11 points w/ 3 3FG vs. S. Alabama (12/13) • Played in 25 games as freshman; 8.6 mins/game • Scored 4 points in Auburn debut at UAB	
3	ANNIE HUGHES G • 5-9 • So. • Dutton, Ala. • Pisgah HS	Season High	17	7	1	3	1	
		Career High	17	7	4	3	1	
		PPG	3.2	2.0	0.6	.371	.267	.583
		20-21	3.2	2.0	0.6	.371	.267	.583
							LAST GAME (at MSU): 2 pts, 2 reb, 1 ast, 1 stl • Career-high 17 pts, 7 reb, 3 stl vs. North Florida (12/17) • Scored SEC-best 8 points at Missouri (2/27/20) • Played in all 29 games in '19-20; started 7	
4	RILEY DONAHUE G • 5-10 • Fr. • Atlanta, Ga. • Marist School	Season High	3	-	-	-	-	
		Career High	3	-	-	-	-	
		PPG	1.0	0.0	0.0	1.000	1.000	-
		20-21	1.0	0.0	0.0	1.000	1.000	-
							LAST GAME (at MSU): DNP • Scored first AU points on 3FG in last minute vs. GWU • Joined Tigers as walk-on in August • First-team GHSA all-region selection as HS senior	
5	AICHA COULIBALY G/F • 6-0 • Fr. • Mali • IMG Academy (Fla.)	Season High	13	6	3	4	2	
		Career High	13	6	3	4	2	
		PPG	5.1	3.2	0.9	.358	.130	.625
		20-21	5.1	3.2	0.9	.358	.130	.625
							LAST GAME (at MSU): 7 pts, 3 reb, 1 ast, 4 stl, 1 blk • Career-hi 13 pts, 3 ast vs. Alabama (2/14) • Started 1st 3 gms; 10 pts, 6 reb vs. GWU • Played for Mali U16 National Team at '17 African Champ. • 3rd AU WBB player from Africa (C. Correia; K. Dieng)	
10	KIYAE' WHITE F • 6-2 • R-Jr. • Macungie, Pa. • Emmaus HS	Season High	-	3	-	-	-	
		Career High	15	11	4	3	1	
		PPG	0.0	3.0	0.0	.000	-	-
		20-21	0.0	3.0	0.0	.000	-	-
							LAST GAME (at MSU): DNP • Made '20-21 debut vs. South Alabama, 3 rebs in 4 mins • Played all 29 games, started 14 in 2019-20 • Career-high 15 points in SEC Tourn. vs. Arkansas • Career-high 11 rebs in '19-20 opener vs. Wofford	
11	ROMI LEVY F • 6-2 • Fr. • Herzliya, Israel • Hof Hasharon HS	Season High	12	12	7	6	2	
		Career High	12	12	7	6	2	
		PPG	5.5	4.0	1.5	.372	.268	.333
		20-21	5.5	4.0	1.5	.372	.268	.333
							LAST GAME (at MSU): 2 pts, 4 reb, 2 ast, 1 stl, 1 blk • 8 pts, season-hi 12 reb at Arkansas (1/31) • 7 assists vs. Kentucky (1/21); most by AU player in 20-21 • Season-high 13 pts at Ole Miss (1/7) • First AU WBB player from Israel	
13	KIRA LOWERY G • 5-6 • Jr. • Memphis, Tenn. • Dyersburg State CC	Season High	12	5	5	3	1	
		Career High	12	5	5	3	1	
		PPG	2.8	1.1	1.6	.486	.200	.739
		20-21	2.8	1.1	1.6	.486	.200	.739
							LAST GAME (at MSU): 1 pt, 1 reb, 2 ast • Missed UF, UK games; returned at Alabama (1/24) • Led AU w/ 5 assists, 3 steals in win over UNF (12/17) • 12 points in 2nd AU game vs. Samford (11/28) • Third-team NJCAA All-American in '20	
14	JALA JORDAN F • 6-2 • R-So. • Philadelphia, Pa. • West Virginia	Season High	16	8	4	2	3	
		Career High	16	8	4	2	3	
		PPG	7.2	3.2	0.7	.345	.283	.682
		20-21	7.2	3.2	0.7	.345	.283	.682
							LAST GAME (at MSU): DNP • Career-hi 3 blocks in 1st career start vs. S. Ala. (12/13) • Shared AU lead w/ 16 pts in season-opener vs. USCU • Redshirted 2019-20 season after transfer from WVU • Appeared in 25 games as freshman at WVU	
20	UNIQUE THOMPSON F • 6-3 • Sr. • Theodore, Ala. • Faith Academy	Season High	26	23	3	5	2	
		Career High	31	23	6	5	6	
		PPG	18.0	13.1	2.5	.508	1.000	.758
		20-21	18.0	13.1	2.5	.508	1.000	.758
							LAST GAME (at MSU): 22 pts, 14 reb, 2 ast, 4 stl • Preseason All-SEC; McClain, Wooden Watch Lists • 2 20-20 gms: 26/23 at HOU (12/5), 20/23 vs. BEL (12/20) • AU career leader in rebs (1,123), double-doubles (56) • NCAA leader in off. rebs (5.7), 2nd rebounds (13.1)	
22	ALAINA RICE G • 5-8 • So. • Rockledge, Fla. • Florida A&M	Season High	13	4	9	2	1	
		Career High	22	11	9	5	2	
		PPG	4.4	2.1	1.9	.278	.290	.769
		20-21	4.4	2.1	1.9	.278	.290	.769
							LAST GAME (at MSU): 7 pts, 2 reb, 3 ast • Career-high 9 assists vs. Alabama (2/14) • Season-high 13 pts, 5 ast, 2 stl vs. Texas A&M (1/28) • 2020 MEAC Rookie of the Year at FAMU • Averaged 10.3 pts, 4.7 reb., 2.4 ast. as freshman in '20	
23	HONESTY SCOTT-GRAYSON G • 5-8 • R-So. • Brick, N.J. • Baylor	Season High	30	7	4	5	1	
		Career High	30	7	5	5	1	
		PPG	14.8	4.1	1.7	.416	.324	.759
		20-21	14.8	4.1	1.7	.416	.324	.759
							LAST GAME (at MSU): 24 pts, 7 reb, 1 stl, 9-16 FG, 6-7 FT • Career-high 30 pts vs. Mizou (2/7); 1st 30-pt AU gm of yr • Avg. 27.5 pts in last 2 home gms (30 vs MIZ, 25 vs ALA) • SEC play: 17.4 ppg, 4.8 rpg, 2.0 spg, 1.7 apg, 37.5% 3FG • Redshirted '19-20 after transfer from Baylor	
24	CARSEN McFADDEN G • 5-7 • Fr. • Fairview, Texas • Lovejoy HS	Season High	3	1	3	1	-	
		Career High	3	1	3	1	-	
		PPG	0.5	0.5	0.7	.333	-	500
		20-21	0.5	0.5	0.7	.333	-	500
							LAST GAME (at MSU): DNP • 1st AU points, led AU w/ 3 ast vs. S. Ala. (12/13) • Had a rebound and an assist in final minute vs. GWU • Joined Tigers as walk-on in August • Had 1,047 rebounds and 418 steals in HS career	
30	MORGAN ROBINSON-NWAGWU G • 5-8 • So. • Norcross, Ga. • Norcross HS	Season High	9	4	6	4	1	
		Career High	9	4	6	4	1	
		PPG	1.8	1.1	1.4	.267	.100	.889
		20-21	1.8	1.1	1.4	.267	.100	.889
							LAST GAME (at MSU): DNP • 1st career start at UF; scored career-high 9 pts (1/17) • Career-high 6 assists at Ole Miss (1/7) • Career-high 4 steals in season-opener vs. USC Upstate • Played in all 29 games as a freshman; 10.9 mins/game	

Inside the Matchup

Auburn vs. Arkansas 23-18 (.561)

In Auburn: 11-7
 --At Auburn Arena: 2-4
 In Fayetteville: 10-9
 Neutral Sites: 2-2
 Trend: Arkansas has won 4 of the last 5

Nov. 24, 1984	W	70-65	Sanford, Fla. (37)
Dec. 14, 1989	W	84-69	Fayetteville, Ark.
Jan. 11, 1992	L	56-67	Fayetteville, Ark.
Jan. 9, 1993	W	68-49	Auburn
Jan. 22, 1994	W	66-57	Fayetteville, Ark.
Jan. 22, 1995	L	73-80	Auburn
Feb. 20, 1996	L	72-73 (OT)	Fayetteville, Ark.
Feb. 9, 1997	W	85-77	Auburn
Feb. 8, 1998	L	63-71	Fayetteville, Ark.
Feb. 26, 1998	L	43-59	Columbus, Ga.*
Feb. 7, 1999	W	66-46	Auburn
Feb. 17, 2000	W	73-56	Auburn
Feb. 24, 2000	W	71-58	Fayetteville, Ark.
Jan. 28, 2001	L	68-77	Fayetteville, Ark.
Feb. 22, 2001	W	68-60	Auburn
Feb. 17, 2002	L	65-88	Fayetteville, Ark.
Jan. 26, 2003	W	64-36	Auburn
Jan. 25, 2004	W	71-44	Fayetteville, Ark.
Feb. 3, 2005	W	62-51	Auburn
Jan. 12, 2006	L	60-64	Fayetteville, Ark.
Jan. 14, 2007	L	62-65	Auburn
Feb. 10, 2008	W	73-68	Fayetteville, Ark.
Mar. 2, 2008	W	74-57	Auburn
Mar. 6, 2008	W	73-51	Nashville, Tenn.*
Jan. 18, 2009	W	70-61	Fayetteville, Ark.
March 1, 2009	W	94-57	Auburn
Feb. 11, 2010	L	58-73	Auburn
Feb. 13, 2011	W	64-59	Fayetteville, Ark.
Jan. 15, 2012	L	39-59	Fayetteville, Ark.
Feb. 12, 2012	L	48-51	Auburn
Jan. 6, 2013	W	50-47	Auburn
Feb. 2, 2014	W	56-48	Fayetteville, Ark.
Jan. 29, 2015	L	47-52	Fayetteville, Ark.
Feb. 15, 2015	L	36-54	Auburn
Jan. 24, 2016	W	71-60 (OT)	Auburn
Feb. 26, 2017	W	70-64	Fayetteville, Ark.
Jan. 14, 2018	L	58-68	Auburn
Feb. 10, 2019	W	75-72	Fayetteville, Ark.
Jan. 5, 2020	L	70-86	Auburn
March 5, 2020	L	68-90	Greenville, S.C.*
Jan. 31, 2021	L	67-77	Fayetteville, Ark.

*SEC Tournament

Auburn Women's Basketball Quick Hitters

- Auburn and Arkansas are meeting for the 42nd time in women's basketball
- Auburn leads the series 23-18, but Arkansas has won 4 of the last 5
- The Razorbacks won this season's earlier meeting, 77-67, in Fayetteville on Jan. 31
- Unique Thompson broke Becky Jackson's all-time career rebounding record Feb. 23 at Mississippi State, pulling down her 1,119th career rebound with 5:28 left in the third quarter
- Thompson is the nation's active career leader in double-doubles (56) and the SEC's active leader in rebounds (1,123) and steals (182)
- Thompson needs one double-double to move into the SEC's all-time top 10, tying for 8th with Chamique Holdsclaw, Armintie Price and Alaina Coates
- Thompson leads the nation in offensive rebounds per game (5.7) and is 2nd in rebounds per game (13.1)
- Thompson's 26-point, 23-rebound game at Houston was Auburn's first 20-20 game since Lauretta Freeman had 30 points, 21 rebounds vs. Alabama on Feb. 17, 1993; she followed that up with 20 points, 23 rebounds vs. Belmont (12/20); she is one of just two players nationwide with two 20-20 games this season
- Thompson's 23 rebounds at Houston and vs. Belmont were a career-high and tied for the third-most in Auburn history (Sharon Stewart, 23 at Vanderbilt, Feb. 28, 1988)
- Honesty Scott-Grayson had a career-high 30 points against Missouri, Auburn's first 30-point effort of the season
- Scott-Grayson's 30 points vs. Missouri were the most by an Auburn player at home since Brandy Montgomery had 30 against Alabama in 2015
- Scott-Grayson has topped the 20-point mark five times in SEC play: 30 vs. Missouri, 25 vs. Alabama, 24 at Mississippi State, 23 at Ole Miss, 21 vs. Texas A&M
- In SEC play, Scott-Grayson averages 17.4 points, 4.8 rebounds, 2.0 steals and 1.7 assists per game
- Freshman Aicha Coulibaly had a career-high 13 points against Alabama
- Sophomore Alaina Rice's 9 assists vs. Alabama were a career-high and the most by an Auburn player since Daisa Alexander had 10 vs. LSU last season
- Freshman Romi Levy had a career-high 12 rebounds at Arkansas, most by a player not named Unique Thompson this season; she also had career-highs 7 assists vs. Kentucky and 13 points at Ole Miss
- Auburn has utilized nine different starting lineups through 21 games; 12 of 13 scholarship players have started at least one game and 9 players have made their first Division I starts
- Annie Hughes scored a career-high 17 points with 7 rebounds in the win over North Florida
- Auburn's 97 points in their win over Gardner-Webb tied the most scored by the Tigers under Terri Williams-Flournoy
- The Gardner-Webb win was Auburn's eighth 90-point game in the Williams-Flournoy era; the UNF win was the 9th
- Auburn's 41-point margin of victory over USC Upstate was its largest since a 56-point win at Elon (96-44) on Dec. 22, 2018; it tied for the fifth-largest winning margin at Auburn Arena

Moving On Up (Auburn Career Milestone Watch) . . .

- **Unique Thompson** has 56 career double-doubles, is Auburn's all-time leader and SEC and NCAA active career leader
- **Unique Thompson** needs 1 double-double to tie for 10th in SEC history (Alaina Coates, Chamique Holdsclaw, Armintie Price, 57)
- **Unique Thompson** has 1,123 career rebounds, is Auburn's all-time leader and SEC active career leader
- **Unique Thompson** is 1st in career rebounding average at 10.6; Marianne Merritt (1975-79) is 2nd at 10.0
- **Unique Thompson** is 13th in career scoring with 1,494 points; needs 21 to tie for 12th (Tyrese Tanner, 1,515)
- **Unique Thompson** is 8th in career free throws made with 317; needs 23 to tie for 7th (Becky Jackson, 340)
- **Unique Thompson** has 588 career made field goals; needs 11 to enter the Auburn top 10 (Alli Smalley, 599)

INDIVIDUAL CATEGORY LEADERS

Auburn	Arkansas
Unique Thompson - 18.0	Chelsea Dungee - 22.5
Unique Thompson - 13.1	Taylah Thomas - 6.3
Alaina Rice - 1.9	Destiny Slocum - 3.9
Unique Thompson - 2.5	Makayla Daniels - 1.6
Jala Jordan - 0.7	Erynn Barnum - 0.8
Unique Thompson - 31.9	Amber Ramirez - 31.7
Unique Thompson - .508	Erynn Barnum - .582
Honesty Scott-Grayson - .324	Amber Ramirez - .444
Honesty Scott-Grayson - .759	Amber Ramirez - .826

OPENING TIP

» It's Senior Night at Auburn Arena as the Tigers host No. 16 Arkansas Thursday. Game time is 8 p.m. CT with a national broadcast on SEC Network.

» Auburn is 5-16 overall, 0-13 in SEC play. The Tigers fell at Mississippi State 81-68 on Tuesday.

» Arkansas is 17-7 overall, 7-6 in SEC play. The Razorbacks beat LSU 74-64 on Sunday.

LAST TIME OUT

» Auburn senior Unique Thompson set the all-time career rebounding record for Auburn and had a 22-point, 14-rebound night, but the Tigers let a halftime lead slip away in an 81-68 loss at Mississippi State Tuesday night.

» Thompson's 1,119th career rebound came with 5:28 to play in the third quarter, moving her past Becky Jackson for the top spot in the Auburn record book. She will head into her Senior Night with 1,123 career boards.

» Thompson's big night, along with a 24-point performance from Honesty Scott-Grayson, kept the Tigers in the game until late. But fatigue set in for the shorthanded Tigers – who dressed just eight players as a result of injuries and suspensions – and the Bulldogs pulled away late.

» The Tigers led by as many as 10 in the second quarter and held a 42-36 lead at the half. But MSU outscored Auburn 21-8 in the third quarter to take a 57-50 lead after three. The Tigers would get as close as three points at 67-64 with 5:22 to play as they cut into a 10-point deficit with a 9-2 run. But Auburn would make just one field goal over the final five-plus minutes.

» Auburn shot 38 percent from the field (25-66) to MSU's 46 percent (32-69). State out-rebounded Auburn 46-40 and had 23 second-chance points on 15 offensive rebounds.

UP NEXT

» Auburn closes out the 2020-21 regular season Sunday on the road, traveling to Knoxville to face the 20th-ranked Tennessee Lady Volunteers. Game time is 1 p.m. CT with a national broadcast on SEC Network.

AN AUBURN WIN WOULD...

» Improve Auburn to 7-2 on Senior Day under Coach Flo.

» Be the 99th women's basketball victory at Auburn Arena.

AUBURN-ARKANSAS SERIES

» Auburn is 23-18 all-time against Arkansas, including an 11-7 edge in Auburn. The Razorbacks have won the last three meetings between the teams and three of the last four at Auburn Arena.

LAST MEETING: Jan. 31, 2021, in Fayetteville #19 Arkansas 77, Auburn 67

» Unique Thompson finished with 18 points and 19 rebounds, but a great start for Auburn gave way to a hot-shooting Arkansas team as the Tigers fell to the 19th-ranked Razorbacks 77-67 Sunday afternoon.

» The Tigers led by as many as 13 points midway through the first half, but a big run by the Razorbacks in the second quarter gave Arkansas a lead it would not relinquish.

» Thompson's 18-point, 19-rebound effort was her 11th double-double of the season and 53rd of her career. Honesty Scott-Grayson added 17 points

and led Auburn with three assists, and Keya Patton scored 10. Romi Levy had a career-high 12 rebounds along with eight points.

» The Tigers pulled down a season-high 50 rebounds to Arkansas' 30 and turned 20 offensive boards into 20 second-chance points, both season-highs. But the Tigers shot 34 percent from the floor (23-67) while Arkansas was at 44 percent (26-59), and the Razorbacks hit 11 3-pointers to Auburn's two. Auburn had a great night at the free-throw line, hitting 19-of-21.

SCOUTING ARKANSAS

» Arkansas is 17-7 overall, 7-6 in SEC play. The Razorbacks have one of the season's signature wins in women's basketball with a victory over UConn on Jan. 28.

» Arkansas leads the SEC and ranks 6th nationally in scoring offense with 84.0 points/game. They're the nation's 7th-best team in 3-point shooting (39.2%) and third-best in fewest turnovers per game (10.6).

» Chelsea Dungee leads the SEC and is 13th nationally with 22.5 points/game; she's the nation's leader in free throws made (155) and attempted (194). Four Razorbacks average double-digit scoring.

SCOUTING AUBURN

» Senior forward Unique Thompson leads the SEC and is 2nd in the nation with 13.1 rebounds per game this year, and she leads Auburn with 18.0 points/game. She has 14 double-doubles on the season, which leads the SEC and is fourth nationally. Thompson pulled down her 1,000th career rebound against Belmont on Dec. 20 and is one of two active players nationally with over 1,000 career rebounds.

» She set the Auburn career record in rebounds with her 1,119th on Feb. 23 at Mississippi State. The previous record of 1,118 by Becky Jackson had stood since 1984.

» Thompson was unavailable the first three games of SEC play with medical issues, but made her return at Florida Jan. 17 and has recorded double-doubles in seven of 10 games since.

» Redshirt sophomore Honesty Scott-Grayson, a Baylor transfer who sat out 2019-20, has started all 21 games, averaging 14.8 points/game. She had a career-high 30 points against Missouri, added 25 against Alabama and has topped the 20-point mark five times. In SEC play, Scott-Grayson averages 17.4 points, 4.8 rebounds, 2.0 steals and 1.8 assists per game.

» Freshman Romi Levy and sophomore Alaina Rice have worked their way into the starting lineup. Levy averages 5.5 points and 4.0 rebounds; she had 12 rebounds the last meeting with Arkansas. Rice averages 5.4 points and a team-leading 2.3 assists in SEC play, including a career-high 9 assists vs. Alabama.

ALL THE NEW FACES

» Of the 15 players on the roster, 10 of them wore an Auburn uniform for the first time in game action vs. USC Upstate. All 10 newcomers saw the floor in the Tigers' 82-41 win on Nov. 25 and again vs. Gardner-Webb on Dec. 1.

» Auburn added three junior college transfers during the offseason, including two NJCAA All-Americans:

» Kira Lowery came to Auburn from Dyersburg

SEC STANDINGS & SCHEDULE*(thru games of Feb. 23)*

	SEC Games			All Games		
	W	L	Pct.	W	L	Pct.
South Carolina	13	1	.929	18	3	.857
Texas A&M	11	1	.917	20	1	.952
Georgia	9	4	.692	17	4	.810
Tennessee	7	4	.636	13	6	.684
Kentucky	8	5	.615	15	6	.714
Alabama	8	6	.571	15	6	.714
Arkansas	7	6	.538	17	7	.708
LSU	6	7	.462	8	11	.421
Mississippi St.	4	6	.400	9	7	.562
Missouri	4	8	.333	8	9	.471
Ole Miss	3	9	.250	9	9	.500
Florida	3	10	.231	10	11	.476
Auburn	0	13	.000	5	16	.238
[^] Vanderbilt	0	3	.000	4	4	.500

Thursday, Feb. 18

Alabama 77, Florida 70
Tennessee 75, South Carolina 67

Friday, Feb. 19

Arkansas 84, Ole Miss 74

Sunday, Feb. 21

Mississippi State 71, Alabama 63
Georgia 57, Tennessee 55
Arkansas 74, LSU 64
Texas A&M 66, Ole Miss 55
Missouri 96, Florida 80
South Carolina 76, Kentucky 55

Tuesday, Feb. 23

Mississippi State 81, Auburn 68

Thursday, Feb. 25

*Noon - Ole Miss at South Carolina (+)
*6:00 - Texas A&M at Alabama (+)
*6:00 - Kentucky at Georgia (SEC Network)
*6:00 - Mississippi State at LSU (+)
*7:00 - Tennessee at Missouri (+)
*8:00 - Arkansas at Auburn (SEC Network)

Inside the Numbers

CATEGORY	AUBURN	ARKANSAS
Points Per Game	65.7	84.0
Scoring Margin	-6.0	+9.5
Field Goal %	38.2%	45.3%
Opp. Field Goal %	44.7%	43.8%
3 pt Field Goal %	27.0%	39.2%
Opp. 3FG %	36.3%	33.1%
Rebounds	37.6	33.3
Opp. Rebounds	38.4	41.1
Rebound Margin	-0.8	-7.8
Turnovers	15.6	10.6
Opp. Turnovers	18.2	17.5
Steals	10.8	8.2
Opp. Steals	8.6	4.3
Blocks	2.2	2.6
Opp. Blocks	2.9	3.1



Associated Press Top 25

(Week 13: Feb. 22)

Rk	Team	Record	Prev
1	Connecticut (28)	18-1	1
2	NC State	15-2	4
3	Texas A&M (1)	20-1	5
4	Stanford (1)	20-2	6
5	South Carolina	18-3	2
6	Louisville	20-2	3
7	Baylor	17-2	7
8	Maryland	16-2	9
9	Arizona	15-2	10
10	UCLA	13-4	8
11	Indiana	14-4	14
12	Michigan	13-2	11
13	South Florida	13-1	12
14	Oregon	13-6	13
15	Ohio State	13-4	15
16	Arkansas	17-7	18
17	Georgia	17-4	22
18	West Virginia	17-3	19
19	Kentucky	15-6	17
20	Tennessee	13-6	21
21	Gonzaga	19-3	16
22	South Dakota State	19-2	23
23	Missouri State	15-2	25
24	DePaul	13-5	19
25	Rutgers	10-3	NR

Also receiving votes: Oklahoma State, Northwestern, Florida Gulf Coast, **Stephen F. Austin**, Virginia Tech, South Dakota, Georgia Tech, Marquette.

USA TODAY Coaches' Top 25

(Week 13: Feb. 23)

Rk	Team	Record	Prev
1	Connecticut (30)	18-1	1
2	Stanford	21-2	4
3	Texas A&M (2)	20-1	5
4	NC State	15-2	6
5	Louisville	20-2	2
6	South Carolina	18-3	3
7	Baylor	17-2	8
8	Maryland	16-2	10
9	Arizona	15-3	7
10	UCLA	13-4	9
11	Indiana	14-4	12
12	Michigan	13-2	11
13	South Florida	13-1	15
14	Ohio State	13-4	13
15	Oregon	13-6	13
16	Arkansas	17-7	18
17	Kentucky	15-6	17
18	Georgia	17-4	23
19	Missouri State	15-2	20
19	Gonzaga	19-3	16
21	Tennessee	13-6	21
22	West Virginia	17-3	24
23	DePaul	13-5	19
24	South Dakota State	19-2	25
25	Northwestern	12-5	22

Also receiving votes: Florida Gulf Coast, Rutgers, Iowa, Oregon State, **Mississippi State**, Washington State, Texas, Oklahoma State, Georgia Tech, Dayton, Rice, Marquette, **Alabama**.

State CC (Tenn.) where she ranked third in the nation in scoring (23.3 ppg) and second in steals (4.0/game) and was an NJCAA All-American in 2020. Lowery has started eight games at PG.

» Keya Patton was a two-time All-American at Wabash Valley College (Ill.), where she scored over 1,000 points in two seasons and averaged 20.8 points, 6.8 rebounds and 6.4 steals as a sophomore. She scored a season-best 14 points vs. Gardner-Webb (12/1) and made her first Auburn start vs. Georgia (1/3).

» Alycia Reese joins the Tigers from just down the road at Chattahoochee Valley CC in Phenix City, where she led the team with 12.8 points/game last season. Reese scored 10 points and hit Auburn's only two 3-pointers at Houston (12/5).

» Sophomore Alaina Rice joined the Tigers in June after transferring from Florida A&M. Rice was MEAC Rookie of the Year in 2020 at FAMU where she averaged 10.3 points and 4.7 rebounds. Rice led Auburn with 5 assists in the season-opener and scored 9 points at Alabama. She had a career-high 9 assists at home against Alabama on Feb. 14.

» The Tigers signed two freshmen during the offseason: Romi Levy (6-2, F, Herzliya, Israel) and Aicha Coulibaly (6-0, F/G, Mali). Two others joined Auburn as walk-ons: Riley Donahue (5-10, G, Atlanta, Ga.) and Carsen McFadden (5-7, G, Fairview, Texas). Coulibaly scored a career-high 13 points against Alabama. McFadden played significant minutes in the win over South Alabama, sharing the team lead with three assists, and she played in her first road game at Florida.

HONESTY IS OUR POLICY

» Through 13 games of SEC play, redshirt sophomore Honesty Scott-Grayson is second on the team in scoring (17.4 ppg), rebounds (4.8/gm) and assists (1.7/gm) and shares the team lead in steals (2.0/gm).

» She has topped the 20-point mark five times in SEC play: 30 vs. Missouri (2/7), 25 vs. Alabama (2/14), 24 at Mississippi State (2/23), 23 at Ole Miss (1/7) and 21 vs. Texas A&M (1/28).

» Her 30-point effort against Missouri was a career-high and the Tigers' first 30-point game since Unique Thompson scored 31 at TCU in the 2019-20 season. It was the seventh 30-point game of the Coach Flo era:

Date	Player	Opponent	Points
2/7/21	Honesty Scott-Grayson	Missouri	30
12/5/19	Unique Thompson	at TCU	31
2/5/17	Katie Frerking	at Texas A&M	32
12/14/16	Katie Frerking	at Louisiana Tech	30
3/1/15	Brandy Montgomery	Alabama	30
11/17/14	Tra'Ce'e Tanner	Grambling	31
3/3/13	Blanche Alverson	Mississippi State	32

UNIQUE LEADS THE WAY

» Through games of Feb. 23, Unique Thompson is 2nd nationally in rebounds per game (13.1), leads the nation in offensive rebounds per game (5.7), and is fourth nationally in double-doubles (14). She leads the SEC in both rebounding categories and in double-doubles; she missed the Tigers' first three games of SEC play and the next two were postponed.

» In addition to being the SEC and national active career leader in double-doubles, Unique Thompson is the SEC active leader in career rebounds (1,123) and career steals (182), and she is fourth among active SEC players in career scoring

(1,495).

» Last season, Thompson was second in the SEC and 10th nationally in rebounding (11.4/game), led the SEC and was 8th nationally in offensive rebounds (4.4/game), and was third in the SEC and 15th nationally in field goal percentage (58.2%).

SEEING DOUBLE

» With 14 double-doubles this season, Unique Thompson has 56 career double-doubles, the all-time Auburn career record. She surpassed Auburn great DeWanna Bonner's record with her 41st double-double at Missouri on Feb. 27, 2020.

» Unique needs 1 more double-double to enter the SEC's all-time top 10.

» In 2019-20, Thompson had 22 double-doubles to lead the SEC and finish second overall nationally. She is the nation's leading returner in double-doubles.

» Thompson has averaged a double-double for two straight seasons and for her career, the first Auburn player to accomplish that feat. She will be the second player in Auburn history to average a double-double for her career (Marianne Merritt, 20.4 pts, 10.0 rebs; 1975-79).

» Thompson is first among active SEC players in career double-doubles (as of Feb. 23):

Player (School)	20-21	Career
Unique Thompson (Auburn)	14	56
N'dea Jones (Texas A&M)	12	38
Rennia Davis (Tennessee)	7	36
Aliyah Boston (South Carolina)	10	24
Shakira Austin (Ole Miss)	8	23

20-20 VISION

» With 26 points and 23 rebounds at Houston (12/5), Thompson was the first Auburn player to record a 20-20 game since Laretta Freeman had 30 points and 21 rebounds at Alabama on Feb. 17, 1993. Her 23 rebounds tied for the third-most in Auburn history.

» Thompson reprised the feat two weeks later with a 20-point, 23-rebound effort against Belmont at home.

» She is one of two players nationally to have two 20-20 games this season; the other is about 100 miles up the road (UAB's Zakiya Weathersby).

» Auburn women's basketball has now had seven 20-20 games in its history; Freeman was responsible for three of them, including two in back-to-back games in 1993:

Date	Player	Opponent	Stats
12/20/20	Unique Thompson	Belmont	20 pts/23 reb
12/5/20	Unique Thompson	at Houston	26 pts/23 reb
2/17/93	Laretta Freeman	Alabama	30 pts/21 reb
2/14/93	Laretta Freeman	at Florida	24 pts/20 reb
11/29/91	Laretta Freeman	Wisconsin	20 pts/20 reb
11/26/89	Linda Godby	Oregon	25 pts/21 reb
2/28/88	Sharon Stewart	at Vanderbilt	28 pts/23 reb

HITTING THE ROAD = HITTING THE BOARDS

» In her four seasons, Unique Thompson has put up 13 performances with at least 15 rebounds (four this season). Ten of those 13 have come away from Auburn Arena.

Rebs	Opponent (Location)	Date
23	at Houston	12/5/20
23	vs. Belmont	12/20/20
19	at Arkansas	1/31/21
19	at UAB	11/21/19
19	at New Mexico	11/11/18
19	vs. BYU (at Stanford)	3/23/19

18	vs. North Florida	12/17/20
18	vs. North Carolina (at Myrtle Beach)	12/20/18
17	vs. Oklahoma	12/2/18
16	at Virginia Tech	11/13/17
15	at TCU	12/7/19
15	at Kentucky	1/27/20
15	vs. Arkansas (at Greenville)	3/5/20

AUBURN HONOR ROLL

» Unique Thompson was a consensus All-SEC First Team selection by the league's coaches and media.

» Thompson was also one of 20 players nationwide named to the Katrina McClain Award watch list, then she earned a spot on the McClain Award Top 10 released on Feb. 4. She was also named to the John R. Wooden Award Preseason Top 30 and Midseason Top 25, and she was named the 20th-best player in the country by ESPN in preseason rankings.

» Thompson is one of 30 players nominated for the Senior CLASS Award and one of 10 finalists.

STARTING ON DAY ONE

» Three players making their Auburn debuts were in the starting lineup for the season opener vs. USC Upstate on Nov. 25: true freshman Aicha Coulibaly, redshirt sophomore Honesty Scott-Grayson and junior Kira Lowery.

» Coulibaly became the eighth Auburn freshman since 2005 to earn a start in her collegiate debut. She was the fourth true freshman under Terri Williams-Flournoy to be in the starting lineup on night one.

Year	Freshman Starter	Opponent	Stats
2020	Aicha Coulibaly	USC Upstate	4 pts, 6 reb
2019	Annie Hughes	Wofford	10 pts, 4 ast
2017	Unique Thompson	@Va. Tech	9 pts, 16 reb
2013	Katie Frerking	Ga. Southern	8 pts, 3 reb
2011	Hasina Muhammad	@Mercer	12 pts, 2 reb
2008	Morgan Jennings	@Ala. A&M	4 pts, 4 reb
2005	Sherell Hobbs	UT Pan-Am.	6 pts, 5 reb
2005	DeWanna Bonner	UT Pan-Am.	19 pts, 4 reb

ON THIS DATE

» Auburn is 6-3 all-time on Feb. 25. The Tigers' last game on this date was a 60-55 win over Ole Miss in 2018. The last 3 games on Feb. 25 have all been against Ole Miss, for some reason.

TIGERS IN THE PROS

» DeWanna Bonner completed her 11th season in the WNBA in 2020, her first with the Connecticut Sun. It was one of her best in her pro career as she led the Sun to the WNBA semifinals while averaging 19.7 points and a career-best 7.8 rebounds per game. She was an all-WNBA second-team selection for the second time in her career. Bonner has gained North Macedonian citizenship and is competing with North Macedonia's national team in EuroBasket qualifying. She played several games for Elitzur Ramla in Israel and recently signed with Atomeromu KSC Szekszard in Hungary.

» Daisa Alexander, who graduated in 2020, is playing for Etzella Ettelbruck in Luxembourg. This is her first year as a professional.

WORKING OVERTIME

» Auburn is 22-21 all-time in overtime games. The Tigers are 6-5 in the Coach Flo era when games have gone to an extra period.

OVERTIME GAMES UNDER COACH FLO

Date	Opponent	Location	Result
2/20/20	Mississippi St.	Auburn	L 85-92
11/30/19	Dayton	Estero, Fla.	W 76-74
2/3/19	Georgia	Auburn	W 59-58
12/20/18	North Carolina	Myrtle Beach, S.C.	W 86-81
2/20/17	Alabama	Auburn	L 61-63
12/18/16	Virginia Tech	Auburn	L 87-92
1/24/16	Arkansas	Auburn	W 71-60
12/13/15	Marquette	Milwaukee, Wis.	L 69-70
11/28/15	Minnesota	Guaynabo, P.R.	W 81-79
3/2/14	Ole Miss	Oxford, Miss.	L 71-73
2/27/14	Alabama	Auburn	(2OT) W 70-65

THIS, THAT AND THE OTHER

» Auburn has utilized nine different starting lineups in 2020-21. Of the 13 scholarship players on Auburn's roster, 12 have started at least one game this year.

» Nine players - Aicha Coulibaly, Jala Jordan, Romi Levy, Kira Lowery, Keya Patton, Alycia Reese, Morgan Robinson-Nwagwu, Honesty Scott-Grayson and Sania Wells - have made their first Division I starts this season.

» Auburn's 97 points in the win over Gardner-Webb (12/1) tied for the highest-scoring output of the Terri Williams-Flournoy era. It was the eighth 90-point game for Auburn under Coach Flo. Auburn got its 9th 90-point game of the Coach Flo era with 94 points against North Florida.

» Auburn's last five women's basketball games played the same day as an Iron Bowl have been decided by a combined nine points - two-point wins over Samford (2020), Dayton (2019) and Minnesota (2015) along with a one-point loss to Northwestern (2017) and a two-point loss at Winthrop (2014).

Auburn in the SEC & NCAA Stats*(Thru games of 2/15/21)*

Category	Value	SEC	NCAA
Scoring Offense	65.7	13th	156th
Scoring Defense	71.6	12th	281st
Scoring Margin	-6.0	14th	245th
Free Throw Pct.	.722	5th	104th
Field Goal Pct.	.382	14th	249th
Field Goal Pct. Def.	.447	14th	314th
3-pt FG Pct.	.270	13th	289th
3-pt FG Pct. Def.	.363	14th	325th
Rebounds	37.6	10th	159th
Rebound Margin	-0.8	10th	191st
Assists	11.8	11th	233rd
Assist/Turnover	0.8	12th	196th
Blocks	2.2	13th	274th
Turnover Margin	+2.6	4th	68th
Turnovers Forced	18.2	3rd	66th
Steals	10.8	1st	19th

INDIVIDUALS (All Games)**Scoring**

Unique Thompson	18.0	7th	74th
Honesty Scott-Grayson	14.8	18th	207th

Rebounding

Unique Thompson	13.1	1st	2nd
-----------------	------	-----	-----

Field Goal Pct.

Unique Thompson	.508	4th	59th
-----------------	------	-----	------

Free Throw Pct.

Honesty Scott-Grayson	.759	13th	213th
Unique Thompson	.758	14th	217th

Steals

Unique Thompson	2.5	2nd	47th
Honesty Scott-Grayson	2.1	6th	116th

Offensive Rebounds

Unique Thompson	5.7	1st	1st
-----------------	-----	-----	-----

Defensive Rebounds

Unique Thompson	7.3	4th	28th
-----------------	-----	-----	------

Double-Doubles

Unique Thompson	14	1st	4th
-----------------	----	-----	-----

Career Record Updates

Auburn Career Scoring

No.	Player	Years	Points
1.	DeWanna Bonner	2005-09	2,162
2.	Becky Jackson	1980-84	2,068
3.	Vickie Orr	1985-89	2,035
4.	Marianne Merritt	1975-79	1,979
5.	Carolyn Jones	1988-91	1,831
6.	Natasha Brackett	2001-05	1,716
7.	Janiah McKay	2015-19	1,647
8.	Brandy Montgomery	2013-17	1,644
9.	Mae Ola Bolton	1984-88	1,616
10.	Alli Smalley	2007-11	1,601
11.	Angie Hannah	1978-82	1,583
12.	Tyrese Tanner	2010-14	1,515
13.	Unique Thompson	2017-present	1,494
14.	Le'Coe Willingham	1999-03	1,475
15.	Lori Monroe	1979-83	1,415
16.	Tasha Hamilton	1997-01	1,402
17.	Sherell Hobbs	2005-09	1,372
18.	Linda Godby	1986-90	1,365
19.	Tra'Cee Tanner	2012-16	1,327
20.	Debra Larkin	1981-85	1,310
21.	C.C. Hayden	1989-92	1,306
22.	Katie Frerking	2013-17	1,271
23.	Conswella Sparrow	1997-00	1,249
24.	Blanche Alverson	2009-13	1,244
25.	Brenda Hill	1981-85	1,222
26.	Daisa Alexander	2016-20	1,215
27.	Monique Morehouse	1992-96	1,191
28.	Lauretta Freeman	1989-93	1,188
29.	Hasina Muhammad	2001-15	1,184
	Sharon Stewart	1984-88	1,184

Auburn Career Double-Doubles

No.	Player	Years	D-Ds
1.	Unique Thompson	2017-present	56
2.	DeWanna Bonner	2005-09	40
3.	Lauretta Freeman	1989-93	38
4.	C.C. Hayden	1989-92	30
5.	Le'Coe Willingham	1999-04	29
6.	Vickie Orr	1985-89	27
7.	Monique Morehouse	1992-96	24
8.	Becky Jackson	1980-84	19
9.	Conswella Sparrow	1997-00	15
10.	Tra'Cee Tanner	2012-16	14
11.	Tasha Hamilton	1997-01	13
	Sharon Stewart	1984-88	13
13.	Daniellette Coleman	1992-94	12
	Marita Payne	2002-06	12
15.	Whitney Boddie	2005-09	11
	KeKe Carrier	2005-10	11

Auburn Career Field Goals Made

No.	Player	Years	FG
1.	Becky Jackson	1980-84	864
	Vickie Orr	1985-89	864
3.	Marianne Merritt	1975-79	837
4.	DeWanna Bonner	2005-09	744
5.	Angie Hannah	1979-82	735
6.	Mae Ola Bolton	1984-88	697
7.	Carolyn Jones	1988-91	645
8.	Natasha Brackett	2001-05	641
9.	Brandy Montgomery	2013-17	627
10.	Alli Smalley	2007-11	599
--	Unique Thompson	2017-pres.	588

Auburn Career Field Goal Percentage

No.	Player	Years	FG%
1.	Becky Jackson	1980-84	.602 (864-1435)
2.	Conswella Sparrow	1997-00	.590 (451-764)
3.	Vickie Orr	1985-89	.565 (864-1528)
4.	Tra'Cee Tanner	2012-16	.564 (540-957)
5.	KeKe Carrier	2005-10	.555 (417-751)
6.	Linda Godby	1986-90	.550 (590-1072)
7.	Sharon Stewart	1984-88	.543 (458-843)
8.	Unique Thompson	2017-pres.	.536 (588-1097)
9.	Charlene Thomas	1983-87	.536 (428-799)
10.	Angie Hannah	1979-82	.527 (735-1396)

Auburn Career Scoring Average

No.	Player	Years	FG%
1.	Marianne Merritt	1975-79	20.4
2.	Carolyn Jones	1988-91	18.3
3.	Becky Jackson	1980-84	17.8
4.	DeWanna Bonner	2005-09	17.2
5.	Vickie Orr	1985-89	15.5
6.	Conswella Sparrow	1997-2000	14.5
7.	Unique Thompson	2017-present	14.1
8.	Natasha Brackett	2001-05	14.0
9.	C.C. Hayden	1989-92	13.6
10.	Angie Hannah	1978-82	13.3
	Brenda Hill	1981-85	13.3

SEC Career Double-Doubles

No.	Player	Years	D-Ds
1.	Sylvia Fowles, LSU	2004-08	86
2.	Janet Harris, Georgia	1982-85	78
3.	Teaira McCowan, Miss. State	2016-19	70
4.	Julie Gross, LSU	1978-80	68
5.	Valerie Still, Kentucky	1980-83	67
6.	Murriel Page, Florida	1995-98	65
7.	Quientella Bonner, Florida	1976-81	58
8.	Alaina Coats, South Carolina	2013-17	57
	Armintie Price, Ole Miss	2003-07	57
	Charnique Holdscaw, Tenn.	1996-99	57
11.	Unique Thompson, Auburn	2017-pres.	56
	Katrina McClain, Georgia	1984-87	56

Auburn Career Free Throws Made

No.	Player	Years	FT
1.	DeWanna Bonner	2005-09	600
2.	Janiah McKay	2015-19	443
3.	Carolyn Jones	1988-91	438
4.	Tyrese Tanner	2010-14	376
5.	Conswella Sparrow	1997-00	346
	Le'Coe Willingham	1999-04	346
7.	Becky Jackson	1980-84	340
8.	Unique Thompson	2017-pres.	317
9.	Vickie Orr	1985-89	307
	Marianne Merritt	1975-79	305

Auburn Career Rebounding

No.	Player	Years	Rebounds
1.	Unique Thompson	2017-present	1,123
2.	Becky Jackson	1980-84	1,118
3.	DeWanna Bonner	2005-09	1,047
4.	Lori Monroe	1979-83	1,015
5.	Vickie Orr	1985-89	1,006
6.	Lauretta Freeman	1989-93	976
7.	Marianne Merritt	1975-79	972
8.	Le'Coe Willingham	1999-03	927
9.	Monique Morehouse	1992-96	792
10.	Jordan Greenleaf	2006-11	761
	Charlene Thomas	1984-87	761
12.	Tra'Cee Tanner	2012-16	758
13.	Sharon Stewart	1984-88	757
14.	C.C. Hayden	1989-92	749
	Kendall Mago	1988-92	749
16.	Tasha Hamilton	1997-01	663
	Mae Ola Bolton	1984-88	653
18.	Marita Payne	2002-06	630
19.	Katie Frerking	2013-17	627
20.	Sherell Hobbs	2005-09	612
21.	Brenda Hill	1982-85	604
22.	Blanche Alverson	2009-13	602
23.	KeKe Carrier	2005-10	600
24.	Angie Hannah	1978-82	588
	Linda Godby	1986-90	580
26.	Tyrese Tanner	2010-14	572
	Conswella Sparrow	1997-00	572
28.	Diann McNeil	1984-88	498
29.	Samantha Williams	1991-96	495
	Hasina Muhammad	2011-15	494

TIGERS' RECORD WHEN...

	2020-21	Under Coach Flo
At Home.....	5-8	82-48
On the Road.....	0-8	37-69
At a Neutral Site.....	0-0	21-18
When wearing white.....	5-9	82-45
When wearing blue "Auburn".....	0-5	44-72
When wearing blue "Tigers".....	0-1	0-1
When wearing orange.....	0-0	7-10
When wearing pink.....	0-1	7-7
Leading at the half.....	4-2	110-27
Trailing at the half.....	1-13	30-100
Tied at the half.....	0-1	0-8
Scores 100+ points.....	0-0	0-0
Scores 90-99 points.....	2-0	9-0
Scores 80-89 points.....	1-0	28-3
Scores 70-79 points.....	1-3	41-13
Scores 60-69 points.....	1-4	41-36
Scores fewer than 60 points.....	0-9	19-83
Holds opponent to 41-50 points.....	1-0	33-3
Holds opponent to 31-40 points.....	0-0	7-0
Holds opponent to under 30 points.....	0-0	2-0
Force 25 or more turnovers.....	1-1	54-11
Shoots 50% FG or better.....	1-1	36-4
Shoots 40-49% FG.....	2-3	69-37
Shoots 39.9% or under FG.....	2-11	34-94
Holds opponent under 30% FG.....	2-0	28-2
Shoots higher FG% than opponent.....	2-0	107-23
Shoots lower FG% than opponent.....	3-15	33-106
Shoots same FG% as opponent.....	0-1	0-4
Shoots higher FT% than opponent.....	2-8	61-50
Shoots lower FT% than opponent.....	3-7	76-82
Shoots same FT% as opponent.....	0-1	2-4
Out-rebounds opponent.....	5-6	88-39
Out-rebounded by opponent.....	0-10	48-95
Tied in rebounds.....	0-0	5-2
Versus ranked opponent.....	0-5	5-59
In overtime.....	0-0	6-5
Games decided by 3 points or less.....	1-0	15-18
Games decided by 4-5 points.....	0-2	14-18
Games decided by 6-10 points.....	1-3	33-34
Games decided by 11-20 points.....	1-9	39-40
Games decided by 21-30 points.....	0-1	23-17
Games decided by 30+ points.....	2-1	16-8
On Television/Digital.....	5-16	76-97
In November.....	2-0	35-16
In December.....	3-4	44-14
In January.....	0-7	18-51
In February.....	0-5	26-38
In March.....	0-0	14-15

2020-21 Auburn Superlatives...

First Half

Most points scored in the first quarter.....	28 vs. Gardner-Webb (12/1/20)
Most points scored in the second quarter.....	25 vs. Missouri (2/7/21)
Most points scored in the first half.....	49 vs. Gardner-Webb (12/1/20)
Fewest points scored in the first half.....	17 at Houston (12/5/20)
Fewest points allowed in the first half.....	9 vs. USC Upstate (11/25/20)
Most points allowed in the first half.....	47 vs. South Carolina (2/4/21)
Best FG % in the first half.....	.514 vs. Gardner-Webb (12/1/20)
Worst FG % in the first half.....	.194 at Florida (1/17/21) & vs. South Carolina (2/4/21)
Best FG % by an opponent in the first half.....	.581 vs. Georgia (1/3/21) & vs. South Carolina (2/4/21)
Worst FG % by an opponent in the first half.....	.143, vs. USC Upstate (11/25/20)
Most rebounds in the first half.....	29 at Arkansas (1/31/21)
Fewest rebounds in the first half.....	14 at Georgia (2/11/21)
Most rebounds by an opponent in the first half.....	28 vs. South Carolina (2/4/21) & at Georgia (2/11/21)
Fewest rebounds by an opponent in the first half.....	10 vs. Samford (11/28/20)

Second Half

Most points scored in the third quarter.....	25 vs. South Alabama (12/13/20)
Most points scored in the fourth quarter.....	29 vs. Alabama (2/14/21)
Most points scored in an overtime period.....	
Most points scored in the second half.....	51 vs. Alabama (2/14/21)
Fewest points scored in the second half.....	16 at LSU (12/31/20)
Fewest points allowed in the second half.....	30 at Ole Miss (1/7/21) & vs. South Carolina (2/4/21)
Most points allowed in the second half.....	53 vs. Alabama (2/14/21)
Best FG % in the second half.....	.647 vs. Alabama (2/14/21)
Worst FG % in the second half.....	.240 vs. Georgia (1/3/21)
Best FG % by an opponent in the second half.....	.690 vs. Texas A&M (1/28/21)
Worst FG % by an opponent in the second half.....	.263 vs. Gardner-Webb (12/1/20)
Most rebounds in the second half.....	27 vs. Gardner-Webb (12/1/20)
Fewest rebounds in the second half.....	9 vs. Alabama (2/14/21)
Most rebounds by an opponent in the second half.....	26 at Georgia (2/11/21) & at Mississippi State (2/23/21)
Fewest rebounds by an opponent in the second half.....	11, vs. USC Upstate (11/25/20)

Game

Most points scored.....	97 vs. Gardner-Webb (12/1/20)
Fewest points scored.....	43 at LSU (12/31/20)
Most points allowed.....	92 vs. Alabama (2/14/21)
Fewest points allowed.....	41 vs. USC Upstate (11/25/20)
Best FG %.....	.534 vs. Gardner-Webb (12/1/20)
Worst FG %.....	.279 at Florida (1/17/21)
Best FG % by an opponent.....	.557 vs. Missouri (2/7/21)
Worst FG % by an opponent.....	.286, vs. USC Upstate (11/25/20)
Most rebounds.....	50 at Arkansas (1/31/21)
Fewest rebounds.....	24 vs. Alabama (2/14/21)
Most rebounds by an opponent.....	54 at Georgia (2/11/21)
Fewest rebounds by an opponent.....	26, vs. USC Upstate (11/25/20)

Miscellaneous

Highest-scoring quarter.....	29, 4Q vs. Alabama (2/14/21)
Lowest-scoring quarter.....	6, 4Q at LSU (12/31/20); 3Q vs. Georgia (1/3/21); 1Q vs. South Carolina (2/4/21)
Highest-scoring opponent quarter.....	31, 1Q vs. Missouri (2/7/21)
Lowest-scoring opponent quarter.....	2, 1Q vs. USC Upstate (11/25/20)
Largest margin in a single quarter.....	+19 (28-9) vs. Gardner-Webb (12/1/20)
Largest margin of victory.....	41, vs. USC Upstate (11/25/20)
Smallest margin of victory.....	2 vs. Samford (11/28/20)
Largest margin of defeat.....	32 vs. Georgia (1/3/21)
Smallest margin of defeat.....	4 at Ole Miss (1/7/21)
Largest halftime lead.....	31, vs. USC Upstate (11/25/20)
Smallest halftime lead.....	8 at LSU (12/31/20)
Times tied at halftime.....	1 - 27-27 vs. Stephen F. Austin (12/16/20)
Largest halftime deficit.....	29 vs. South Carolina (2/4/21)
Smallest halftime deficit.....	5 at Arkansas (1/31/21)
Largest rebounding margin.....	+20 at Arkansas (1/31/21)
Smallest rebounding margin.....	+1 vs. Samford (11/28/20)
Last time tied in rebounding.....	
Largest rebounding deficit.....	-23 at Georgia (2/11/21)
Smallest rebounding deficit.....	-4 at LSU (12/31/20)
Largest deficit overcome to win game.....	12 vs. South Alabama (12/13/20)
Largest lead lost.....	13 at LSU (12/31/20) & at Arkansas (1/31/21)

MISCELLANEOUS STATISTICS

Category	Season	Career
Double-Doubles		
Unique Thompson	14	56
30+ Point Games		
Honesty Scott-Grayson	1	1
Unique Thompson	0	1
20+ Point Games		
Unique Thompson	8	23
Honesty Scott-Grayson	5	5
10+ Rebound Games		
Unique Thompson	14	65
Romi Levy	2	2
Kiyae' White	0	1
10+ Assist Games		
5+ Steal Games		
Unique Thompson	2	2
Romi Levy	2	2
Honesty Scott-Grayson	2	2
5+ Block Games		
Unique Thompson	0	1

GAMES LED AUBURN IN...

Category	Season	Career
Scoring		
Unique Thompson	10	35
Honesty Scott-Grayson	9	9
Aicha Coulibaly	1	1
Jala Jordan	1	1
Keya Patton	1	1

Category	Season	Career
Rebounding		
Unique Thompson	18	92
Honesty Scott-Grayson	2	2
Romi Levy	1	1
Alaina Rice	1	1
Kiyae' White	0	1

Category	Season	Career
Assists		
Honesty Scott-Grayson	6	6
Alaina Rice	5	5
Romi Levy	4	4
Kira Lowery	4	4
Unique Thompson	3	13
Morgan Robinson-Nwagwu	1	4
Aicha Coulibaly	1	1
Jala Jordan	1	1
Carsen McFadden	1	1
Annie Hughes	0	2
Sanja Wells	0	2
Kiyae' White	0	2

(includes games where lead was shared)

2020-21 DOUBLE-DOUBLES

- Unique Thompson vs. Samford (16 pts, 11 reb)
- Unique Thompson vs. Gardner-Webb (21 pts, 12 reb)
- Unique Thompson at Houston (26 pts, 23 reb)
- Unique Thompson vs S. Alabama (21 pts, 15 reb)
- Unique Thompson vs. SFA (11 pts, 14 reb)
- Unique Thompson vs. N. Florida (19 pts, 18 reb)
- Unique Thompson vs. Belmont (20 pts, 23 reb)
- Unique Thompson at Florida (14 pts, 14 reb)
- Unique Thompson vs. Kentucky (22 pts, 10 reb)
- Unique Thompson at Alabama (10 pts, 10 reb)
- Unique Thompson at Arkansas (18 pts, 19 reb)
- Unique Thompson vs. Missouri (14 pts, 13 reb)
- Unique Thompson at Georgia (22 pts, 12 reb)
- Unique Thompson at Mississippi St. (22 pts, 14 reb)

Last Time an Auburn Team...

Scored 90 points	Auburn 94, North Florida 81 in Auburn, Ala. (Dec. 17, 2020)
Scored 90 points in an SEC game.....	Auburn 95, Missouri 82, in Columbia, Mo. (Feb. 27, 2020)
Scored 100 points.....	Auburn 119, Sam Houston State 54, in Auburn, Ala. (Dec. 5, 2008)
Scored 100 points against an SEC opponent.....	Auburn 102, Tennessee 96, SEC Tournament in Albany, Ga. (Mar. 6, 1987)
Scored 100 points in an SEC regular-season game.....	Auburn 111, Vanderbilt 67, in Auburn, Ala. (Feb. 18, 1987)
Scored 100 points at home.....	Auburn 119, Sam Houston State 54, in Auburn, Ala. (Dec. 5, 2008)
Scored 100 points in a true road game.....	Auburn 103, Mercer 29, in Macon, Ga. (Feb. 23, 1987)
Scored 110+ points.....	Auburn 119, Sam Houston State 54, in Auburn, Ala. (Dec. 5, 2008)
Scored 80 points and lost.....	Mississippi State 92, Auburn 85 [OT] in Auburn, Ala. (Feb. 20, 2020)
Scored 90 points and lost.....	Kentucky 91, Auburn 90 [2OT], in Auburn, Ala. (Feb. 2, 1986)
Scored 100 points and lost.....	Never
Scored 50-59 points in a half	51 (2nd half) vs. Alabama in Auburn, Ala. (Feb. 14, 2021)
Scored 60 or more points in a half.....	62 (2nd half) vs. Drake in New Orleans, La. (Dec. 21, 2016)
Scored 30 or more points in a quarter.....	34 (3rd quarter) - at Missouri in Columbia, Mo. (Feb. 27, 2020)
Scored 50 points or less in a game	44 - vs. Georgia in Auburn, Ala. (Jan. 3, 2021)
Scored 50 points or less and won.....	Auburn 47, Missouri 45 [SEC] in Jacksonville, Fla. (March 3, 2016)
Scored 40 points or less in a game.....	Georgia 63, Auburn 30, in Athens, Ga. (Jan. 28, 2016)
Scored less than 10 points in a quarter	8 points (3rd quarter) at Mississippi State in Starkville, Miss. (Feb. 23, 2021)
Scored less than 20 points in a 1st half	16 points vs. South Carolina in Auburn, Ala. (Feb. 4, 2021)
Scored less than 20 points in a 2nd half	16 points at LSU in Baton Rouge, La. (Dec. 31, 2020)
Had 35+ rebound margin.....	36 - (52-16) vs. Alabama A&M in Normal, Ala. (Nov. 19, 2013)
Had 25+ rebound margin.....	33 - (53-26) vs. Grambling State in Auburn, Ala. (Nov. 6, 2018)
Had 20+ rebound margin.....	33 - (53-26) vs. Grambling State in Auburn, Ala. (Nov. 6, 2018)
Attempted 30 free throws.....	31 - vs. Mississippi State in Auburn, Ala. (Feb. 20, 2020)
Attempted 35 free throws.....	36 - vs. Alabama State in Auburn, Ala. (Dec. 29, 2018)
Attempted 40 free throws.....	41 - vs. Alabama State in Auburn, Ala. (Nov. 15, 2006)
Attempted 5 free throws or less.....	3 - at Texas A&M in College Station, Texas (Feb. 23, 2020)
Did not attempt a free throw.....	Never
Made 20-24 free throws	20 - vs. South Alabama in Auburn, Ala. (Dec. 13, 2020)
Made 25+ free throws.....	28 - vs. Mississippi State in Auburn, Ala. (28-31) (Feb. 20, 2020)
Made 30 free throws.....	31 - vs. Northwestern State (31-43) (Dec. 30, 2003)
Had 25 assists.....	25 - vs. Ole Miss in Auburn, Ala. (Jan. 8, 2017)
Had 25 turnovers	27 - vs. Georgia in Auburn, Ala. (Jan. 3, 2021)
Had 10 turnovers or less	7 - vs. Alabama in Auburn, Ala. (Feb. 14, 2021)
Had 25+ steals.....	Never
Had 20-24 steals.....	21 - vs. Georgia in Auburn, Ala. (Feb. 3, 2019)
Had 15-19 steals	16 - at Georgia in Athens, Ga. (Feb. 11, 2021)
Had 10-14 blocks.....	10 - vs. Louisiana Tech in Auburn, Ala. (Nov. 19, 2017)
Had 15+ blocks.....	15 - at Florida International in Miami, Fla. (Dec. 29, 2014)
Won an overtime game.....	Auburn 74, Dayton 72 [10T] in Estero, Fla. (Nov. 30, 2019)
Lost an overtime game.....	Mississippi State 92, Auburn 85 [10T] in Auburn, Ala. (Feb. 20, 2020)
Played a double overtime game.....	Auburn 70, Alabama 65 [20T] in Auburn, Ala. (Feb. 27, 2014)
Played three or more overtimes.....	Never
Shot 70% for a half.....	70.4% (19-of-27), 2nd half at Elon in Elon, N.C. (Dec. 22, 2018)
Shot 60% for a game.....	63.3% (38-of-60) at Elon in Elon, N.C. (Dec. 22, 2018)
Shot less than 30% for a game	28.1% (18-64) at Georgia in Athens, Ga. (Feb. 11, 2021)
Shot 90-99.9% from the free throw line (min. 10 attempts)	90.5% (19-of-21) at Arkansas in Fayetteville, Ark. (Jan. 31, 2021)
Shot 100% from the free throw line (min. 10 attempts).....	100% (16-of-16) vs. Texas A&M in Auburn, Ala. (Jan. 7, 2018)
Shot 50% on 3-pointers (minimum 5 attempts).....	50.0% (8-of-16) vs. LSU in Auburn, Ala. (Feb. 16, 2020)
Shot 20-30% in a half	26.5% (9-34), 2nd half, at Georgia in Athens, Ga. (Feb. 11, 2021)
Shot less than 20% in a half	19.4% (7-of-36), 1st half vs. South Carolina in Auburn, Ala. (Feb. 4, 2021)
Shot 55% or better and lost.....	58.1% (25-of-43) vs. Tennessee (Jan. 20, 2005)
Made 10+ 3-point field goals	10-of-35 vs. Texas A&M in Auburn, Ala. (Jan. 28, 2021)
Failed to make a 3-point field goal.....	0-of-5 vs. Southern in Auburn, Ala. (Dec. 9, 2017)
Had 60+ rebounds.....	61 - vs. Stephen F. Austin in Auburn, Ala. (Dec. 17, 2007)
Had 50-59 rebounds.....	55 vs. Ole Miss in Auburn, Ala. (Jan. 23, 2020)
Defeated a Top-25 opponent.....	Auburn 58, #25 Missouri 54, in Auburn, Ala. (Feb. 24, 2019)
Defeated a Top-10 opponent.....	Auburn 66, #7 Kentucky 61, in Auburn, Ala. (Jan. 3, 2016)
Defeated a Top-25 opponent on the road.....	Auburn 68, #16 Vanderbilt 62, in Nashville, Tenn. (Feb. 13, 2014)

Last Time an Auburn Player...

Scored 25-29 points	25 - Honesty Scott-Grayson vs. Alabama in Auburn, Ala. (Feb. 14, 2021)
Scored 30-34 points	30 - Honesty Scott-Grayson vs. Missouri in Auburn, Ala. (Feb. 7, 2021)
Scored 35 points.....	35 - DeWanna Bonner vs. Tennessee in Auburn, Ala. (Jan. 25, 2009)
Scored 40 points.....	41 - Conswella Sparrow vs. South Alabama (Feb. 17, 1998)
Had 15-19 rebounds	19 - Unique Thompson at Arkansas in Fayetteville, Ark. (Jan. 31, 2021)
Had 20+ rebounds	23 - Unique Thompson vs. Belmont in Auburn, Ala. (Dec. 20, 2020)
Had 10 assists.....	10 - Daisa Alexander vs. LSU in Auburn, Ala. (Feb. 16, 2020)
Had 15 assists.....	18 - Martha Monk vs. Alabama State (Feb. 18, 1981)
Had 5 blocks.....	6 - Unique Thompson vs. Louisiana Tech in Auburn, Ala. (Nov. 19, 2017)
Had 7 blocks.....	7 - Jassany Williams vs. Duke (Nov. 18, 2011)
Had 10 blocks.....	13 - Marita Payne vs. Arkansas (Feb. 3, 2005)
Had 5 steals	5 - Honesty Scott-Grayson at Alabama in Tuscaloosa, Ala. (Jan. 24, 2021)
Had 8 steals.....	8 - Brandy Montgomery vs. East Carolina in Auburn, Ala. (Dec. 5, 2015)
Had 10 steals.....	10 - Kristen Mulligan vs. Northeast Illinois in Auburn, Ala. (Dec. 18, 1992)
Made 10 field goals	12 - Unique Thompson/10 - Honesty Scott-Grayson vs. Alabama in Auburn, Ala. (Feb. 14, 2021)
Made 15 field goals.....	15 - Conswella Sparrow (15-16) vs. South Alabama (Feb. 17, 1998)
Attempted 20-24 field goals.....	21 - Daisa Alexander vs. Vanderbilt in Greenville, S.C. (March 4, 2020)
Attempted 25 field goals	25 - Unique Thompson (7-25) at Georgia in Athens, Ga. (Feb. 11, 2021)
Made 5+ three-point field goals.....	5 - Erin Howard vs. Vanderbilt in Greenville, S.C. (March 4, 2020)
Made 8 three-point field goals.....	8 - Tiffany Krantz vs. Troy State in Auburn, Ala. (Nov. 21, 1997)
Attempted 10 three-point field goals.....	14 - Lauren Hansen vs. Drake in Estero, Fla. (Dec. 1, 2019)
Attempted 15 three-point field goals.....	16 - Brandy Montgomery at Marquette in Milwaukee, Wis. (Dec. 13, 2015)
Made 10 free throws.....	12 - Daisa Alexander vs. Mississippi State (Feb. 20, 2020)
Made 15 free throws.....	Never
Shot 100% at the free throw line (min. 10 attempts).....	12-12 - Daisa Alexander vs. Mississippi State (Feb. 20, 2020)

SEC PRESEASON POLL (Media Vote)**Order of Finish**

1. South Carolina
2. Mississippi State
3. Kentucky
4. Texas A&M
5. Arkansas
6. Tennessee
7. LSU
8. Georgia
9. Alabama
10. Florida
11. Missouri
12. Vanderbilt
13. Auburn
14. Ole Miss

Player of the Year

Rhyne Howard, Kentucky

All-SEC Team

Unique Thompson, Auburn
 Rhyne Howard, Kentucky
 Rickea Jackson, Mississippi State
 Aliyah Boston, South Carolina
 Renna Davis, Tennessee
 N'dea Jones, Texas A&M

SEC PRESEASON POLL (Coaches' Vote)**Order of Finish**

1. South Carolina
2. Kentucky
3. Texas A&M
4. Arkansas
5. Mississippi State
6. Tennessee
7. LSU
8. Alabama
9. Georgia
10. Missouri
11. Ole Miss
12. Florida
13. Vanderbilt
14. Auburn

Player of the Year

Rhyne Howard, Kentucky

All-SEC First Team

Chelsea Dungee, Arkansas
 Unique Thompson, Auburn
 Rhyne Howard, Kentucky
 Khayla Pointer, LSU
 Rickea Jackson, Mississippi State
 Aliyah Boston, South Carolina
 Renna Davis, Tennessee
 N'dea Jones, Texas A&M

All-SEC Second Team

Jasmine Walker, Alabama
 Destiny Slocum, Arkansas
 Lavender Briggs, Florida
 Shakira Austin, Ole Miss
 Jessika Carter, Mississippi State
 Aijha Blackwell, Missouri
 Zia Cooke, South Carolina
 Kayla Wells, Texas A&M

Had a double-double..... Unique Thompson (22 pts/42 reb) at Mississippi State in Starkville, Miss. (Feb. 23, 2021)
 Had 2 consecutive double-doubles Unique Thompson: 14/13 vs. Missouri, 22/12 at Georgia (Feb. 7-11, 2021)
 Had 3 consecutive double-doubles..... Unique Thompson: 14/14 at Florida, 22/10 vs. Kentucky, 10/10 at Alabama (Jan. 17-24, 2021)
 ...Had 10 consecutive double-doubles..... Unique Thompson: First vs. Samford; last at Alabama (Nov. 28, 2020-Jan. 24, 2021)
 Had 13 consecutive double-doubles Unique Thompson: First vs. BYU; last at Vandy (March 23, 2019-Jan. 2, 2020)
 Had 18 consecutive double-doubles (AU record)..... Lauretta Freeman: First vs. Furman, Last vs. Oral Roberts (Dec. 29, 1992-Feb. 23, 1993)
 Had a double-double at halftime Unique Thompson (16 pts/10 rebs) at Iowa State in Ames, Iowa (Nov. 13, 2018)
 Two players had a double-double Unique Thompson (14 p/13 r) & Jariah McKay (16 p/10 a) vs. Grambling State (Nov. 6, 2018)
 Recorded a double-double with points and assists Jariah McKay (16 pts/10 assists) vs. Grambling State (Nov. 6, 2018)
Scored 20 points & had 20 rebounds..... Unique Thompson (20 pts/23 reb) vs. Belmont in Auburn, Ala. (Dec. 20, 2020)
 Had a triple-double..... Whitney Boddie (24 pts./11 rebs./12 asst.) vs. Sam Houston State (Dec. 5, 2008)
Two or more players scored 20 points Scott-Grayson (24) & Thompson (22) at Mississippi State in Starkville, Miss. (Feb. 23, 2021)
 Three players scored 20 points Benton (23), Howard (22), Alexander (21) at Missouri in Columbia, Mo. (Feb. 27, 2020)
 Two players scored 20 points Laticia Morris (33) & Tara Williams (30) vs. South Alabama (Jan. 14, 1997)
 Had 2 straight 25-point games Jariah McKay: 27 at South Carolina, 26 vs. Arkansas (Jan. 11-14, 2018)
 Had 3 straight 25-point games Jariah McKay: 25 pts vs. Texas A&M, 27 pts at South Carolina, 26 pts vs. Arkansas (Jan. 7-14, 2018)
 Zero players scored in double figures at Georgia in Athens, Ga. (Jan. 28, 2016)
Only one player scored in double figures Keya Patton (12) vs. Georgia in Auburn, Ala. (Jan. 3, 2021)
Five players scored in double figures Thompson (19), Hughes (17), Scott-Grayson (16), Levy (12), Jordan (11) vs. N. Florida (Dec. 17, 2020)
 Six players scored in double figures McKay/Benton (16), Primm (15), Thompson (14), Alexander/Jones (13) vs. Grambling (Nov. 6, 2018)
 Seven players scored in double figures Carrier (19 pts.), Bonner (18 pts.), Smalley (16 pts.), Boddie (13 pts.)
 R. Hobbs (13 pts.), Hilliard (13 pts.) & S. Hobbs (10 pts.) vs. Sam Houston State (Dec. 5, 2008)
 Two players had 10 rebounds Unique Thompson (13) and Daisa Alexander (10) vs. Ole Miss in Auburn, Ala. (Jan. 23, 2020)
 Three players had 10 rebounds J. Greenleaf (12 rebs.), D. Bonner (12 rebs.) & W. Boddie (10 rebs.) vs. Oakland (Nov. 21, 2007)
 Played every minute Jordan Greenleaf (40 mins.) vs. Florida in Duluth, Ga. [SEC] (Mar. 4, 2010)
 Played 40 or more minutes in OT game Unique Thompson (43 mins.) vs. Georgia in Auburn, Ala. (Feb. 3, 2019)
 Attempted a slam dunk Hasina Muhammad vs. St. John's in Auburn, Ala. (Dec. 6, 2013)
 Made a shot from half-court or beyond Brooke Moore (end 2nd quarter) vs. Alabama State in Auburn, Ala. (Dec. 29, 2018)

Last Time an Auburn Opponent...

Shot less than 30% in a game (SEC) Ole Miss - 27.4% (17-of-62) in Auburn, Ala. (Jan. 23, 2020)
Shot less than 30% in a game (Non-conf) Gardner-Webb - 29.4% (20-of-68) in Auburn, Ala. (Dec. 1, 2020)
 Shot 60% or better in a game Florida - 61.5% (32-of-52) in Auburn, Ala. (Jan. 9, 2020)
Scored 90 points Alabama 92, Auburn 78, in Auburn, Ala. (Feb. 14, 2021)
 Scored 100 points Georgia 102, Auburn 72 in Athens, Ga. (Mar. 3, 1984)
 Scored 100 points at Auburn Tuskegee 105, Auburn 98 (20T) (Feb. 12, 1979)
 Had 25+ rebound margin Never
Had a 20+ rebound margin 23 - Georgia (54-31) in Athens, Ga. (Feb. 11, 2021)
Scored less than 5 points in a quarter 2 - USC Upstate (1st quarter) in Auburn, Ala. (Nov. 25, 2020)
Scored less than 10 points in a quarter 9 - Arkansas (1st quarter) in Fayetteville, Ark. (Jan. 31, 2021)
 Scored less than 10 points in all four quarters Winthrop (9-8-8-8) in Auburn, Ala. (Dec. 16, 2015)
Scored 30 or more points in a quarter 31 - Missouri (4th quarter) in Auburn, Ala. (Feb. 7, 2021)
Scored less than 10 points in a half 9 - USC Upstate (1st half) in Auburn, Ala. (Nov. 25, 2020)
Scored less than 20 points in a 1st half 19 - LSU in Baton Rouge, La. (Dec. 31, 2020)
 Scored less than 20 points in a 2nd half 19 - Florida in Auburn, Ala. (Dec. 31, 2017)
 Had 50 rebounds 56 - Alabama in Auburn, Ala. (Feb. 20, 2017)
Had 25 assists 25 - Alabama in Auburn, Ala. (Feb. 14, 2021)
Had 25-29 turnovers 28 - Georgia in Athens, Ga. (Feb. 11, 2021)
 Had 30-34 turnovers 30 - XULA in Auburn, Ala. (Dec. 28, 2017)
 Had 35+ turnovers 35 - ULM in Auburn, Ala. (Nov. 27, 2017)
Had 15 steals 21 - Belmont in Auburn, Ala. (Dec. 20, 2020)
 Had 10 blocks 10 - Georgia in Athens, Ga. (Jan. 19, 2020)
 Failed to make a 3-point field goal LSU (0-6) in Baton Rouge, La. (Feb. 1, 2016)
 Attempted 35 free throws 35 - Florida in Gainesville, Fla. (Feb. 28, 2016)
 Made 30 free throws 30 - Arkansas (Jan. 22, 1995)
Made 10-14 three-point field goals 10 - Georgia in Athens, Ga. (Feb. 11, 2021)
Made 15+ three-point field goals 15 - Alabama in Auburn, Ala. (Feb. 14, 2021)
Scored 41-50 points in a game 41 - USC Upstate in Auburn, Ala. (Nov. 25, 2020)
 Scored 31-40 points in a game 38 - Alabama in Auburn, Ala. (Feb. 17, 2019)
 Scored 30 points or less 26 - Georgia in Athens, Ga. (Feb. 22, 2015)
 Scored 25 points or less 25 - Puerto Rico-Mayaguez (Dec. 17, 2000)

Last Time an Opposing Player...

Scored 30+ points (non-conference) 35 - Ajah Wayne of Old Dominion in Auburn, Ala. (Nov. 14, 2019)
Scored 30+ points (SEC) 41 - Jasmine Walker of Alabama in Auburn, Ala. (Feb. 14, 2021)
Scored 35+ points (all games) 41 - Jasmine Walker of Alabama in Auburn, Ala. (Feb. 14, 2021)
Scored 40+ points (all games) 41 - Jasmine Walker of Alabama in Auburn, Ala. (Feb. 14, 2021)
 Attempted 25 field goals 27 - Jantel Lavender (9-27) of Ohio State (Nov. 23, 2008)
 Scored 20 points & had 20 rebounds Young of Baylor in the WNIT Championship Game, (20 pts./25 rebs.) (Apr. 4, 2003)
Two players scored 20 points Jazmine Walker (41) & Ariyah Copeland (21) of Alabama in Auburn, Ala. (Feb. 14, 2021)
 Three players scored 20 points by LSU in Baton Rouge, Chatman (22 pts), Johnson (21 pts) & Lowery (20 pts) (Jan. 12, 1991)
Five players scored in double figures Williams (19), Dickson/Troup (13), Blackwell/Frank (12) of Missouri in Auburn, Ala. (Feb. 7, 2021)
 Six players scored in double figures Williams (10), Lewis (13), Bonds (18), Peoples (10), Miller (12), Svetle (12) of Florida (Jan. 26, 2014)
Recorded a double-double J. Walker (41 pts/15 reb) & A. Copeland (21 pts/11 reb) of Alabama in Auburn, Ala. (Feb. 14, 2021)
 Recorded a double-double with points and assists Tyasha Harris (12 pts/11 ast) of South Carolina in Columbia, S.C. (Jan. 11, 2018)
 Recorded a triple-double Ceira Ricketts (14 pts./13 rebs./12 ast.) of Arkansas (Jan. 18, 2009)
Two players recorded a double-double J. Walker (41 pts/15 reb) & A. Copeland (21 pts/11 reb) of Alabama in Auburn, Ala. (Feb. 14, 2021)
 Committed 10+ turnovers 10 - Shaquera Wade of Alabama in Greenville, S.C. (March 7, 2019)
 Had 15-19 rebounds 15 - by N'dea Jones of Texas A&M in Auburn, Ala. (Jan. 24, 2019)
 Had 20+ rebounds 21 - Ayana Mitchell of LSU in Baton Rouge, La. (March 3, 2019)
Had 10 assists 11 - Hannah Barber of Alabama in Auburn, Ala. (Feb. 14, 2021)
 Had 15 assists 16 - Cindy McMahan of Alabama-Huntsville (Nov. 24, 1980)
Had 5 blocks 6 - Jenna Staiti of Georgia in Athens, Ga. (Feb. 11, 2021)
 Had 10 blocks Never
Had 5 steals 5 - N'dea Jones of Texas A&M in Auburn, Ala. (Jan. 28, 2021)
 Made 15 field goals 15 - Chamique Holdsclaw (15-21) of Tennessee (Feb. 1, 1998)
 Made 10 3-point field goals 11 - Morgan Eye (11-18) of Missouri in Columbia, Mo. (Jan. 6, 2013)

2020-21 Auburn Individual Highs...**First Half**

Points.....	20, Honesty Scott-Grayson vs. Missouri (2/7/21)
Field Goals Made.....	7, Unique Thompson vs. Gardner-Webb (12/1/20)
Field Goal Attempts.....	16, Unique Thompson at Georgia (2/11/21)
3-Point Field Goals Made	4, Honesty Scott-Grayson vs. Missouri (2/7/21)
3-Point Field Goal Attempts	7, Annie Hughes vs. North Florida (12/17/20)
Free Throws Made	5, Honesty Scott-Grayson vs. Belmont (12/20/20)
Free Throws Attempted	7, Honesty Scott-Grayson vs. Belmont (12/20/20)
Rebounds	11, Unique Thompson vs. Belmont (12/20/20)
Assists	4, Romi Levy vs. Kentucky (1/21/21)
Blocked Shots.....	2, 3x; last, Unique Thompson vs. Kentucky (1/21/21)
Steals	4, Romi Levy at LSU (12/31/20)

Second Half

Points.....	22, Unique Thompson at Houston (12/5/20)
Field Goals Made.....	8, 2x; last, Unique Thompson vs. Kentucky (1/21/21)
Field Goal Attempts.....	13, Unique Thompson at Mississippi State (2/23/21)
3-Point Field Goals Made	3, Honesty Scott-Grayson at Ole Miss (1/7/21)
3-Point Field Goal Attempts	4, 4x; A. Rice/H. Scott-Grayson vs. Texas A&M (1/28/21)
Free Throws Made	9, Unique Thompson vs. South Alabama (12/13/20)
Free Throws Attempted	9, Unique Thompson vs. South Alabama (12/13/20)
Rebounds	15, Unique Thompson at Houston (12/5/20)
Assists	4, 2x; last, Honesty Scott-Grayson at Alabama (1/24/21)
Blocked Shots.....	2, 2x; last, Jala Jordan vs. North Florida (12/17/20)
Steals	3, 4x; last, Honesty Scott-Grayson vs. Texas A&M (1/28/21)

Game

Points.....	30, Honesty Scott-Grayson vs. Missouri (2/7/21)
Field Goals Made.....	10, 2x; last, Honesty Scott-Grayson vs. Missouri (2/7/21)
Field Goal Attempts.....	25, Unique Thompson at Georgia (2/11/21)
3-Point Field Goals Made	4, 3x; Honesty Scott-Grayson vs. Missouri (2/7/21)
3-Point Field Goal Attempts	8, 2x; Honesty Scott-Grayson vs. Texas A&M (1/28/21)
Free Throws Made	9, Unique Thompson vs. South Alabama (12/13/20)
Free Throws Attempted	11, Unique Thompson at Georgia (2/11/21)
Rebounds	23, Unique Thompson at Houston (12/5/20) & vs. Belmont (12/20/20)
Assists	7, Romi Levy vs. Kentucky (1/21/21)
Blocked Shots.....	3, Jala Jordan vs. South Alabama (12/13/20)
Steals	6, Romi Levy vs. Georgia (1/3/21)

2020-21 Auburn Team Highs...**First Half**

Points.....	49 vs. Gardner-Webb (12/1/20)
Field Goals Made.....	19 vs. Gardner-Webb (12/1/20)
Field Goal Attempts.....	43 vs. North Florida (12/17/20)
3-Point Field Goals Made	7 vs. North Florida (12/17/20)
3-Point Field Goal Attempts	21 vs. Texas A&M (1/28/21)
Free Throws Made	11 vs. Gardner-Webb (12/1/20)
Free Throws Attempted	16 vs. Gardner-Webb (12/1/20)
Rebounds	27 at Houston (12/5/20) & vs. North Florida (12/17/20)
Assists	9 vs. Samford (11/28/20) & vs. Gardner-Webb (12/1/20)
Blocked Shots.....	4 at Houston (12/5/20)
Steals	12 at Georgia (2/11/21)

Second Half

Points.....	50 vs. North Florida (12/17/20)
Field Goals Made.....	20 vs. Gardner-Webb (12/1/20)
Field Goal Attempts.....	37 vs. North Florida (12/17/20) & vs. Kentucky (1/21/21)
3-Point Field Goals Made	5 at Ole Miss (1/7/21) & vs. Texas A&M (1/28/21)
3-Point Field Goal Attempts	14 vs. Texas A&M (1/28/21)
Free Throws Made	17 vs. South Alabama (12/13/20)
Free Throws Attempted	21 vs. South Alabama (12/13/20)
Rebounds	27 vs. Gardner-Webb (12/1/20)
Assists	11 vs. USC Upstate (11/25/20)
Blocked Shots.....	3 vs. SFA (12/16/20) & vs. North Florida (12/17/20)
Steals	8, 4x; last vs. Georgia (1/3/21)

Game

Points.....	97 vs. Gardner-Webb (12/1/20)
Field Goals Made.....	39 vs. Gardner-Webb (12/1/20)
Field Goal Attempts.....	80 vs. North Florida (12/17/20)
3-Point Field Goals Made	11 vs. North Florida (12/17/20)
3-Point Field Goal Attempts	35 vs. Texas A&M (1/28/21)
Free Throws Made	20 vs. South Alabama (12/13/20)
Free Throws Attempted	29 vs. Gardner-Webb (12/1/20)
Rebounds	50 at Arkansas (1/31/21)
Assists	19 vs. USC Upstate (11/25/20)
Blocked Shots.....	5 vs. Stephen F. Austin (12/16/20)
Steals	16 vs. Gardner-Webb (12/1/20), vs. North Florida (12/17/20), at Georgia (2/11/21)
Turnovers Forced.....	28 at Georgia (2/11/21)

Specialty Statistics (Auburn-Opponent)

Opponent	Points in the Paint	Points off Turnovers	2nd-Chance Points	Fast-Break Points	Bench Points
USC Upstate	42-6	21-7	15-2	8-0	51-23
Samford	28-28	22-16	15-5	11-5	24-1
Gardner-Webb	62-18	25-14	20-18	14-7	43-24
at Houston	34-30	19-21	19-9	7-6	29-25
South Alabama	24-28	15-14	16-12	14-10	22-10
Stephen F. Austin	28-30	18-18	7-7	10-5	12-17
North Florida	40-38	26-17	19-4	15-12	29-13
Belmont	30-34	15-31	9-14	6-8	12-19
at LSU	22-30	7-22	12-16	6-12	19-25
Georgia	30-42	14-26	4-15	12-14	14-32
at Ole Miss	16-26	17-14	4-8	6-3	10-18
at Florida	24-28	20-14	2-5	15-14	5-12
Kentucky	38-28	16-17	12-6	10-10	27-27
at Alabama	30-36	16-19	12-9	13-9	20-0
Texas A&M	26-46	13-22	7-14	8-4	6-25
at Arkansas	32-28	14-12	20-5	6-8	8-16
South Carolina	28-44	11-5	6-16	0-9	12-25
Missouri	36- 48	14-16	7-7	13-9	14-27
at Georgia	24-24	21-16	9-11	10-13	10-28
Alabama	44-30	13-2	17-9	13-8	20-12
at Mississippi State	34- 48	19-22	6- 23	20-22	10-19

Lead-Deficit Comparison

Opponent	Largest Lead	Largest Deficit	Lead Changes	Ties	Result
USC Upstate	43 (4th, 0:26)	--	0	0	W, 82-41
Samford	16 (3rd, 9:03)	3 (1st, 9:01)	3	1	W, 66-64
Gardner-Webb	36 (4th, 0:19)	3 (1st, 9:25)	1	0	W, 97-61
at Houston	--	17 (2nd, 3:53)	0	0	L, 61-71
South Alabama	12 (4th, 1:01)	12 (2nd, 6:04)	2	1	W, 74-66
Stephen F. Austin	7 (1st, 1:57)	13 (4th, 0:16)	3	7	L, 54-67
North Florida	17 (2nd, 9:05)	8 (1st, 7:09)	3	2	W, 94-81
Belmont	2 (1st, 9:16)	21 (4th, 0:23)	3	4	L, 57-78
at LSU	13 (3rd, 7:14)	13 (4th, 1:54)	2	2	L, 43-56
Georgia	--	37 (3rd, 1:43)	0	1	L, 44-76
at Ole Miss	--	13 (3rd, 5:49)	0	0	L, 58-62
at Florida	--	18 (3rd, 5:39)	0	0	L, 54-68
Kentucky	2 (1st, 6:02)	14 (3rd, 5:41)	8	3	L, 71-76
at Alabama	--	14 (3rd, 4:31)	0	0	L, 55-67
Texas A&M	1 (1st, 7:23)	15 (4th, 5:43)	4	3	L, 69-84
at Arkansas	13 (2nd, 7:44)	14 (4th, 5:17)	5	2	L, 67-77
South Carolina	--	32 (4th, 8:15)	0	0	L, 58-77
Missouri	1 (1st, 9:27)	19 (3rd, 5:47)	6	1	L, 75-85
at Georgia	4 (1st, 8:55)	23 (4th, 7:35)	3	0	L, 54-74
Alabama	--	20 (2nd, 7:00)	0	0	L, 78-92
at Mississippi State	10 (2nd, 3:49)	15 (4th, 0:26)	5	7	L, 68-81

Scoring Breakdown

(Percentage of total points in parentheses)

Opponent	Front Court	Back Court	Sr.	Jr.	So.	Fr.	Starters	Bench
USC Upstate	44	38	16	14	24	12	31	51
Samford	34	32	16	21	19	10	42	24
Gardner-Webb	51	46	21	19	35	22	54	43
at Houston	39	22	26	18	17	0	32	29
South Alabama	35	39	21	10	32	11	52	22
Stephen F. Austin	23	31	11	2	37	4	42	12
North Florida	44	50	19	2	59	14	65	29
Belmont	24	33	20	0	33	4	45	12
at LSU	25	18	-	5	18	20	24	19
Georgia	18	26	-	15	26	6	30	14
at Ole Miss	21	37	-	6	35	17	48	10
at Florida	16	38	14	0	38	2	49	5
Kentucky	45	26	22	3	34	12	44	27
at Alabama	26	29	10	12	25	8	35	20
Texas A&M	30	39	18	5	34	12	63	6
at Arkansas	30	37	18	14	23	12	59	8
South Carolina	23	35	10	6	29	13	46	12
Missouri	25	50	14	16	34	11	61	14
at Georgia	32	22	22	8	14	10	44	10
Alabama	37	41	24	12	29	13	58	20
at Mississippi State	31	37	22	4	33	9	58	10

Comparison Statistics (Auburn/Opponent)

Opponent	1st	2nd	Score	Mar	Total FG	FG Pct	3-Pointers	3FG Pct	Free Throws	FT Pct	Reb.	Mar	Assist	TO	Blk	Stl	Fouls
USC Upstate	40-9	42-32	82-41	+41	30-65/14-49	.462/.286	8-20/7-21	.400/.333	14-17/6-6	.824/1.000	45/26	+19	19/13	14/25	1/0	13/9	7/19
Samford	38-26	28-38	66-64	+2	22-60/25-48	.367/.521	7-25/8-22	.280/.364	15-23/6-10	.652/.600	33/32	+1	11/14	12/21	1/2	14/7	14/19
Gardner-Webb	49-28	48-33	97-61	+36	39-73/20-68	.534/.294	2-11/9-37	.182/.243	12-17/17-29	.706/.586	47/41	+6	16/11	11/24	3/2	16/7	17/23
at Houston	17-34	44-37	61-71	(10)	22-61/26-64	.361/.406	2-12/10-30	.333/.167	15-20/9-12	.750/.750	45/34	+11	9/18	23/17	4/1	10/11	18/21
South Alabama	28-34	46-32	74-66	+8	23-65/21-56	.356/.375	8-22/7-19	.364/.368	20-26/17-27	.769/.630	44/37	+7	10/11	16/21	3/5	12/15	20/21
Stephen F. Austin	27-27	27-40	54-67	(13)	19-56/22-54	.339/.407	2-15/7-25	.133/.280	14-23/16-21	.609/.762	34/43	(9)	7/12	19/24	5/2	14/7	23/21
North Florida	44-32	50-47	94-81	+13	34-80/32-65	.425/.492	11-28/10-31	.393/.323	15-18/7-8	.833/.875	48/34	+14	16/17	15/22	3/0	16/8	16/18
Belmont	28-45	29-33	57-78	(21)	22-60/30-62	.367/.484	3-17/11-22	.176/.500	10-17/7-11	.588/.636	47/30	+17	13/18	27/16	1/0	8/21	12/19
at LSU	27-19	16-37	43-56	(13)	17-60/21-60	.283/.350	3-18/0-9	.167/.000	6-8/14-15	.750/.933	39/43	(4)	7/10	24/19	4/3	10/11	18/13
Georgia	23-43	21-33	44-76	(32)	16-52/31-62	.308/.500	1-11/5-14	.091/.357	9-13/11-18	.611/.692	27/43	(16)	2/18	27/22	2/6	12/13	13/16
at Ole Miss	23-32	35-30	58-62	(4)	23-55/22-49	.418/.375	6-21/5-12	.286/.417	6-8/13-18	.750/.722	28/34	(6)	18/19	17/19	0/4	12/10	15/11
at Florida	21-35	33-33	54-68	(14)	19-68/25-59	.279/.424	4-23/7-22	.174/.318	12-15/11-14	.800/.786	44/41	+3	10/12	14/12	3/1	8/9	12/16
Kentucky	32-40	39-36	71-76	(5)	27-68/28-59	.397/.475	5-19/10-28	.263/.357	12-16/10-15	.750/.667	41/38	+3	13/20	14/15	2/2	7/9	15/14
at Alabama	22-31	33-36	55-67	(12)	22-62/26-56	.355/.464	4-19/7-21	.211/.333	7-8/8-10	.875/.800	38/33	+5	13/16	15/14	2/2	11/5	15/9
Texas A&M	27-33	42-51	69-84	(15)	26-63/31-60	.413/.517	10-35/8-18	.286/.444	7-8/14-18	.875/.778	28/41	(13)	15/15	14/16	0/1	9/8	19/14
at Arkansas	28-33	39-44	67-77	(10)	23-67/26-59	.343/.441	2-14/11-32	.143/.344	19-21/14-18	.905/.778	50/30	+20	8/17	13/9	0/2	6/5	18/19
South Carolina	18-47	40-30	58-77	(19)	23-66/31-63	.348/.492	7-15/6-12	.467/.500	5-10/9-14	.500/.643	29/51	(22)	11/15	9/17	3/6	7/4	15/12
Missouri	42-45	33-40	75-85	(10)	27-57/34-61	.474/.557	5-13/9-17	.385/.529	16-21/8-12	.762/.667	27/35	(8)	11/20	10/13	3/1	7/7	12/18
at Georgia	27-38	27-36	54-74	(20)	18-64/27-58	.281/.466	2-11/10-23	.182/.435	16-21/10-16	.762/.625	31/54	(23)	9/20	14/28	1/10	16/7	13/17
Alabama	27-39	51-53	78-92	(14)	32-63/30-59	.508/.508	6-15/15-28	.400/.536	8-11/17-22	.727/.773	24/40	(16)	18/25	7/13	3/1	7/3	20/11
at Mississippi St.	42-36	26-45	68-81	(13)	25-66/32-69	.379/.464	3-10/6-20	.300/.300	15-22/11-18	.682/.611	40/46	(6)	12/20	14/15	2/9	12/4	15/19

Game-by-Game Leaders

	Points	Rebounds	Assists	Steals	Blocked Shots
USC Upstate	16-Thompson/Jordan	7-Unique Thompson	5-Alaina Rice	4-M. Robinson-Nwagwu	1-Aicha Coulibaly
Samford	16-Unique Thompson	11-Unique Thompson	4-Kira Lowery	5-Unique Thompson	1-Jala Jordan
Gardner-Webb	21-Unique Thompson	12-Unique Thompson	4-Jala Jordan	5-Honesty Scott-Grayson	2-Romi Levy
at Houston	26-Unique Thompson	23-Unique Thompson	2-Thompson/Coulibaly	2-(four players)	2-Romi Levy
South Alabama	21-Unique Thompson	14-Unique Thompson	3-Levy/McFadden	5-Unique Thompson	3-Jala Jordan
Stephen F. Austin	16-Honesty Scott-Grayson	14-Unique Thompson	2-Honesty Scott-Grayson	4-Unique Thompson	2-Unique Thompson
North Florida	19-Unique Thompson	18-Unique Thompson	5-Kira Lowery	3-(three players)	2-Unique Thompson
Belmont	20-Unique Thompson	23-Unique Thompson	4-Honesty Scott-Grayson	3-Honesty Scott-Grayson	1-Annie Hughes
at LSU	12-Aicha Coulibaly	11-Romi Levy	2-(three players)	5-Romi Levy	1-(four players)
Georgia	12-Keya Patton	4-Rice/Scott-Grayson	1-Scott-Grayson/Lowery	6-Romi Levy	1-Jordan/Coulibaly
at Ole Miss	23-Honesty Scott-Grayson	5-Honesty Scott-Grayson	6-M. Robinson-Nwagwu	3-Scott-Grayson/Rob.-Nw.	(none)
at Florida	18-Honesty Scott-Grayson	14-Unique Thompson	4-Unique Thompson	2-Thompson/Scott-Grayson	2-Aicha Coulibaly
Kentucky	22-Unique Thompson	10-Unique Thompson	7-Romi Levy	3-Honesty Scott-Grayson	2-Unique Thompson
at Alabama	17-Honesty Scott-Grayson	10-Unique Thompson	4-Honesty Scott-Grayson	5-Honesty Scott-Grayson	1-Jordan/Hughes
Texas A&M	21-Honesty Scott-Grayson	7-Unique Thompson	5-Alaina Rice	3-Thompson/Scott-Grayson	(none)
at Arkansas	18-Unique Thompson	19-Unique Thompson	3-Honesty Scott-Grayson	2-Patton/Lowery	(none)
South Carolina	15-Honesty Scott-Grayson	8-Unique Thompson	3-Romi Levy	3-Unique Thompson	1-(three players)
Missouri	30-Honesty Scott-Grayson	13-Unique Thompson	3-Unique Thompson	2-Thompson/Scott-Grayson	1-(three players)
at Georgia	22-Unique Thompson	12-Unique Thompson	4-Kira Lowery	4-Unique Thompson	1-Unique Thompson
Alabama	25-Honesty Scott-Grayson	6-Unique Thompson	9-Alaina Rice	2-Patton/Scott-Grayson	1-(three players)
at Mississippi State	24-Honesty Scott-Grayson	14-Unique Thompson	3-Alaina Rice	4-Thompson/Coulibaly	1-Levy/Coulibaly

2020-21 Starting Lineups

	Point Guard (1)	Wing (2)	Wing (3)	Wing (4)	Post (5)
USC Upstate	Kira Lowery	Annie Hughes	Honesty Scott-Grayson	Aicha Coulibaly	Unique Thompson
Samford	Kira Lowery	Annie Hughes	Honesty Scott-Grayson	Aicha Coulibaly	Unique Thompson
Gardner-Webb	Kira Lowery	Annie Hughes	Honesty Scott-Grayson	Aicha Coulibaly	Unique Thompson
at Houston	Kira Lowery	Romi Levy	Honesty Scott-Grayson	Aicha Coulibaly	Unique Thompson
South Alabama	Kira Lowery	Annie Hughes	Honesty Scott-Grayson	Jala Jordan	Unique Thompson
Stephen F. Austin	Kira Lowery	Annie Hughes	Honesty Scott-Grayson	Jala Jordan	Unique Thompson
North Florida	Kira Lowery	Annie Hughes	Honesty Scott-Grayson	Jala Jordan	Unique Thompson
Belmont	Kira Lowery	Annie Hughes	Honesty Scott-Grayson	Jala Jordan	Unique Thompson
at LSU	Alaina Rice	Sania Wells	Honesty Scott-Grayson	Romi Levy	Jala Jordan
Georgia	Alaina Rice	Keya Patton	Honesty Scott-Grayson	Romi Levy	Jala Jordan
at Ole Miss	Alaina Rice	Keya Patton	Honesty Scott-Grayson	Romi Levy	Jala Jordan
at Florida	M.Robinson-Nwagwu	Annie Hughes	Honesty Scott-Grayson	Romi Levy	Unique Thompson
Kentucky	M.Robinson-Nwagwu	Annie Hughes	Honesty Scott-Grayson	Romi Levy	Unique Thompson
at Alabama	M.Robinson-Nwagwu	Annie Hughes	Honesty Scott-Grayson	Romi Levy	Unique Thompson
Texas A&M	Alaina Rice	Keya Patton	Honesty Scott-Grayson	Romi Levy	Unique Thompson
at Arkansas	Alaina Rice	Keya Patton	Honesty Scott-Grayson	Romi Levy	Unique Thompson
South Carolina	Alaina Rice	Keya Patton	Honesty Scott-Grayson	Romi Levy	Unique Thompson
Missouri	Alaina Rice	Keya Patton	Honesty Scott-Grayson	Romi Levy	Unique Thompson
at Georgia	Kira Lowery	Keya Patton	Honesty Scott-Grayson	Romi Levy	Unique Thompson
Alabama	Alaina Rice	Keya Patton	Honesty Scott-Grayson	Romi Levy	Unique Thompson
at Mississippi State	Alaina Rice	Alycia Reese	Honesty Scott-Grayson	Romi Levy	Unique Thompson

Record by Starting Lineup

Lowery, Hughes, Scott-Grayson, Coulibaly, Thompson	3-0 (.000)
Lowery, Levy, Scott-Grayson, Coulibaly, Thompson	0-1 (.000)
Lowery, Hughes, Scott-Grayson, Jordan, Thompson	3-1 (.750)
Rice, Wells, Scott-Grayson, Levy, Jordan.....	0-1 (.000)
.....	0-2 (.000)
Rice, Patton, Scott-Grayson, Levy, Jordan.....	0-3 (.000)
.....	0-3 (.000)
Robinson-Nwagwu, Hughes, Scott-Grayson, Levy, Thompson.....	0-3 (.000)
Rice, Patton, Scott-Grayson, Levy, Thompson....	0-5 (.000)
.....	0-5 (.000)
Lowery, Patton, Scott-Grayson, Levy, Thompson	0-1 (.000)
Lowery, Reese, Scott-Grayson, Levy, Thompson	0-1 (.000)



Terri

WILLIAMS-FLOURNOY

Head Coach

Ninth Season at Auburn • 17th as a Head Coach • 29th Season in coaching

Hampton, Va. • Penn State, 1991

- *Has taken her teams to postseason appearances in nine of the last 12 years, including six NCAA Tournament appearances*

- *Has had seven players selected to All-SEC teams*
- *Auburn has forced an average of 20.0+ turnovers per game under Coach Flo*
- *Led Auburn to the postseason in five of eight seasons, advancing to WNIT Quarterfinals in 2013 and Third Round in 2014, along with NCAA Tournament in 2016, 2017 and 2019*
- *Won her 100th game at Auburn on Feb. 8, 2018, defeating LSU 70-62*
- *Picked up her 200th career head coaching victory Dec. 5, 2015 at home vs. East Carolina*
- *Won 250th career game at Xavier (La.) on Nov. 28, 2018*
- *Recorded her 400th career win as a collegiate coach in Auburn's 68-58 win over Hofstra on Dec. 9, 2012*
- *Won her 500th game as a collegiate coach with victory over Louisiana-Lafayette on Nov. 25, 2018*

- *Picked up first SEC win in 50-47 win over #23 Arkansas in 2013*
- *Earned second win over ranked opponent at Auburn and snapped 21-game skid to #16 Vanderbilt with 68-62 win in Nashville on Feb. 13, 2014*
- *Picked up first top-10 win with a 66-61 victory over #7 Kentucky on Jan. 3, 2016*
- *Has 283 wins as a head coach and 251 as an assistant for a .603 winning percentage over 29 years as a collegiate coach*
- *Has been part of six conference championships and 21 post-season appearances as an assistant and head coach*
- *2010 Black Coaches Association Coach of the Year*
- *Served as an assistant coach for Team USA that won a gold medal at the 2011 World University Games in Shenzhen, China*
- *Coached teams to 15 NCAA Tournament appearances, nine as an assistant and six as a head coach*
- *Has coached 25 players that have gone on to the professional ranks, including seven in the WNBA*
- *As an assistant, helped coach Georgia to an NCAA Final Four appearance and two NCAA Elite Eight appearances*
- *Coached three Georgetown players to three all-conference honors and one All-America award*
- *Has a 622-390 record in 33 seasons as a head coach, assistant coach and player*
- *Helped coach Georgetown to a Big East title in 1992*
- *As an assistant coach at Southwest Missouri State, helped the team to two straight NCAA Tournaments and two consecutive Missouri Valley Conference Tournament titles*

All-time record as player and coach:	622-390 (.615)	33 seasons
Record as collegiate player:	88-36 (.709)	4 seasons
Record as collegiate coach:	534-354 (.602)	29 seasons
Record as collegiate assistant coach:	251-117 (.683)	12 seasons
Record as collegiate head coach:	283-239 (.543)	17 seasons
Record as Auburn head coach:	140-135 (.511)	9 seasons

Williams-FLOURNOY Year-by-Year

Penn State, Player (1987-91)

Year	Record	Conf.	Other Information
1987-88	20-13	11-7	NCAA Second Round
1988-89	14-14	12-6	
1989-90	25-7	15-3	NCAA Second Round
1990-91	29-2	17-1	NCAA Second Round

Georgetown, Assistant Coach (1992-96)

Year	Record	Conf.	Other Information
1992-93	23-7	15-3	Big East Champions NCAA Sweet 16
1993-94	12-15	6-12	
1994-95	11-17	6-12	
1995-96	12-15	7-11	

Georgia, Assistant Coach (1996-2002)

Year	Record	Conf.	Other Information
1996-97	25-6	11-1	SEC Champions NCAA Elite Eight
1997-98	17-11	8-6	NCAA First Round
1998-99	27-7	9-5	NCAA Final Four
1999-2000	32-4	13-1	SEC Champions NCAA Elite Eight
2000-01	27-6	11-3	SEC Tournament Champions NCAA Second Round
2001-02	19-11	6-8	NCAA First Round

Southwest Missouri State, Assistant Coach (2002-04)

Year	Record	Conf.	Other Information
2002-03	18-13	11-7	MVC Tournament Champions NCAA First Round
2003-04	28-4	16-2	Missouri Valley Champions MVC Tournament Champions NCAA First Round

Georgetown, Head Coach (2004-12)

Year	Record	Conf.	Other Information
2004-05	12-16	7-9	
2005-06	10-17	3-13	
2006-07	13-16	3-13	
2007-08	15-14	5-11	
2008-09	20-14	7-9	WNIT Quarterfinals
2009-10	26-7	13-3	NCAA Second Round
2010-11	24-11	9-7	NCAA Sweet 16
2011-12	23-9	11-5	NCAA Second Round

Auburn, Head Coach (2012-present)

Year	Record	Conf.	Other Information
2012-13	19-15	5-11	WNIT Quarterfinals
2013-14	19-15	7-9	WNIT Third Round
2014-15	13-18	3-13	
2015-16	20-13	8-8	NCAA Second Round
2016-17	17-15	7-9	NCAA First Round
2017-18	14-15	5-11	
2018-19	22-10	9-7	NCAA First Round
2019-20	11-18	4-12	
2020-21	5-16	0-13	



Alycia REESE

#0

Junior • Guard • 5-9

Columbus, Ga.

Carver HS | Chattahoochee Valley CC (Ala.)

- First Auburn start at Mississippi State (2/23)
- Hit a pair of 3-pointers and played 17 minutes vs. Alabama (2/14)
- Scored season-best 10 points on 4-6 shooting, hit Auburn's only two 3-pointers at Houston (12/5)
- Hit four free throws, had one rebound in Auburn debut vs. USC Upstate (11/25)
- Signed with Auburn in the spring of 2020
- Played two seasons at CVCC in Phenix City; appeared in all 24 games as a sophomore in 2019-20; first-team all-conference selection
- Led CVCC with 12.8 points along with 3.8 rebounds, 1.6 assists, 1.5 steals per game in 2019-20
- All-state selection at Carver HS as a junior in 2017; led team to state runner-up finish
- Has a 3-year-old son, Andrew

SEASON/CAREER HIGHS

Points	10	at Houston	12/5/20
Rebounds	4	vs. Kentucky	1/21/21
Assists	1	5x; last at Mississippi St.	2/23/21
Blocks			
Steals	1	4x; last at Mississippi St.	2/23/21
Field Goals	4	at Houston	12/5/20
Field Goal Attempts	6	2x; last at Alabama	1/24/21
3-Point Field Goals	2	2x; last vs. Alabama	2/14/21
3-Point FG Attempts	5	at Alabama	1/24/21
Free Throws	4	vs. USC Upstate	11/25/20
Free Throw Attempts	4	vs. USC Upstate	11/25/20

Opponent	Start	Min.	FG-A	3PT-A	FT-A	0-D-T	PF	Ast.	TO	Blk.	St.	Pts.
USC UPSTATE		4	0-1	0-1	4-4	0-1-1	1	0	0	0	0	4
SAMFORD						--DNP--						
GARDNER-WEBB		9	1-1	0-0	0-0	0-0-0	0	0	1	0	0	2
at Houston		16	4-6	2-3	0-0	0-1-1	0	1	1	0	1	10
SOUTH ALABAMA						--DNP--						
STEPHEN F. AUSTIN						--DNP--						
NORTH FLORIDA						--DNP--						
BELMONT						--DNP--						
at LSU		8	0-0	0-0	2-2	0-1-1	0	0	0	0	0	2
GEORGIA		5	0-0	0-0	0-0	0-0-0	0	0	0	0	0	0
at Ole Miss		4	0-2	0-2	0-0	0-0-0	0	1	0	0	0	0
at Florida						--DNP--						
KENTUCKY		21	1-4	1-4	0-0	1-3-4	1	0	2	0	0	3
at Alabama		19	1-6	1-5	0-0	1-0-1	3	0	1	0	1	3
TEXAS A&M		8	0-2	0-2	0-0	0-0-0	0	1	0	0	0	0
at Arkansas		4	0-0	0-0	0-0	1-0-1	0	0	0	0	0	0
SOUTH CAROLINA		4	0-0	0-0	0-0	0-0-0	1	0	0	0	0	0
MISSOURI						--DNP--						
at Georgia						--DNP--						
ALABAMA		17	2-4	2-3	0-0	0-0-0	2	1	0	0	1	6
at Mississippi State	*	31	1-4	1-3	0-0	1-0-1	2	1	1	0	1	3
ARKANSAS												
at Tennessee												

REESE'S CAREER STATISTICS (at Auburn)

Season	gp-gs	min/avg	Total		3-Point		F-Throws		Rebounds				Scoring							
			fg-fga	pct	fg-fga	pct	ft-fta	pct	off	def	tot	avg	pf	fo	ast	to	blk	stl	pts	avg
2020-21	13-1	149/11.5	10-30	.333	7-23	.304	6-6	1.000	4	6	10	0.8	10	0	5	6	0	4	33	2.5
TOTAL	13-1	149/11.5	10-30	.333	7-23	.304	6-6	1.000	4	6	10	0.8	10	0	5	6	0	4	33	2.5



Keya PATTON

#1

Junior • Guard • 5-6

Indianapolis, Ind.

Cathedral HS | Wabash Valley College (Ill.)

- Made first Auburn start vs. Georgia (1/3); scored 12 points in season-high 27 minutes
- Scored 14 points off the bench in win over Gardner-Webb (12/1)
- Scored 6 points, had 5 rebounds and 2 steals in Auburn debut vs. USC Upstate (11/25)
- Two-time NJCAA All-American at Wabash Valley College; first-team in 2020, third-team in 2019; 2020 regional player of the year
- Scored over 1,000 points in two junior college seasons; set school record with 46 points vs. Olney Central College
- Averaged 20.8 points, 6.8 rebounds, 6.4 assists and 2.9 steals as a sophomore; had 10 double-doubles and a triple double
- Led Wabash Valley to 63-3 record in two seasons; sophomore postseason run cut short by pandemic
- Scored over 1,700 points in four-year high school career at Cathedral HS in Indianapolis; two-time first-team all-state selection

SEASON/CAREER HIGHS

Points	14	vs. Gardner-Webb	12/1/20
Rebounds	5	vs. USC Upstate	11/25/20
Assists	2	2x; last vs. Texas A&M	1/28/21
Blocks	1	vs. Missouri	2/7/21
Steals	2	4x; last vs. Alabama	2/14/21
Field Goals	5	2x; last at Arkansas	1/31/21
Field Goal Attempts	16	at Arkansas	1/31/21
3-Point Field Goals	3	vs. Samford	11/28/20
3-Point FG Attempts	7	2x; last vs. Texas A&M	1/28/21
Free Throws	6	vs. Georgia	1/3/21
Free Throw Attempts	7	vs. Georgia	1/3/21

Opponent	Start	Min.	FG-A	3PT-A	FT-A	O-D-T	PF	Ast.	TO	Blk.	St.	Pts.
USC UPSTATE		18	2-6	1-2	1-2	2-3-5	0	1	1	0	2	6
SAMFORD		20	3-9	3-7	0-0	0-1-1	2	0	1	0	0	9
GARDNER-WEBB		16	5-9	0-2	4-6	1-0-1	0	2	0	0	1	14
at Houston		22	2-10	0-2	2-2	1-0-1	2	1	2	0	2	6
SOUTH ALABAMA						--DNP--						
STEPHEN F. AUSTIN		11	0-2	0-0	0-0	0-2-2	1	0	0	0	0	0
NORTH FLORIDA		3	0-0	0-0	0-0	0-0-0	1	0	2	0	0	0
BELMONT		10	0-1	0-1	0-0	0-0-0	1	1	2	0	0	0
at LSU		24	1-4	1-3	0-0	1-1-2	3	0	2	0	1	3
GEORGIA	*	27	3-9	0-1	6-7	2-1-3	1	0	2	0	1	12
at Ole Miss	*	28	2-6	2-4	0-0	0-2-2	2	1	2	0	0	6
at Florida						--DNP--						
KENTUCKY						--DNP--						
at Alabama						--DNP--						
TEXAS A&M	*	30	1-8	0-7	3-3	0-1-1	0	2	0	0	0	5
at Arkansas	*	32	5-16	0-2	0-0	1-1-2	2	1	1	0	2	10
SOUTH CAROLINA	*	25	2-7	0-1	0-0	1-2-3	1	1	0	0	0	4
MISSOURI	*	30	3-6	0-1	2-3	0-1-1	3	1	1	1	1	8
at Georgia	*	27	3-8	2-4	0-0	0-3-3	0	0	1	0	1	8
ALABAMA	*	13	2-3	0-1	1-1	0-0-0	2	0	0	0	2	5
at Mississippi State						--DNP--						
ARKANSAS												
at Tennessee												

PATTON'S CAREER STATISTICS (at Auburn)

Season	gp-gs	min/avg	Total		3-Point		F-Throws		Rebounds				Scoring							
			fg-fga	pct	fg-fga	pct	ft-fta	pct	off	def	tot	avg	pf	fo	ast	to	blk	stl	pts	avg
2020-21	16-8	360/22.5	34-104	.327	9-38	.237	19-24	.792	9	18	27	1.7	21	0	11	17	1	13	96	6.0
TOTAL	16-8	360/22.5	34-104	.327	9-38	.237	19-24	.792	9	18	27	1.7	21	0	11	17	1	13	96	6.0



Sania WELLS

#2

Sophomore • Guard • 5-7

Moss Point, Miss.

East Central HS

- Career-high 11 points, 3-6 on 3FG in 25 minutes off the bench in win over South Alabama (12/13)
- Scored 7 points in season-opener vs. USC Upstate (11/25)
- Played in 25 games as a freshman, averaging 8.6 minutes/game
- Averaged 1.6 points, 0.8 rebounds, 0.5 assists in 2019-20
- Scored season-high 8 points at Mississippi State (1/30/20) in return to her home state; career-high 21 minutes off the bench
- Ranked as No. 27 point guard nationally out of high school by ESPN HoopGurlz
- USA Today All-Mississippi Team as HS senior
- Averaged 27 points, 5 rebounds, 4 steals as HS senior

SEASON HIGHS

Points	11	vs. South Alabama	12/13/20
Rebounds	5	at Florida	1/17/21
Assists	2	3x; last vs. Alabama	2/14/21
Blocks	1	vs. South Carolina	2/4/21
Steals	1	8x; last at Georgia	2/11/21
Field Goals	3	2x; last vs. South Alabama	12/13/20
Field Goal Attempts	11	at Florida	1/17/21
3-Point Field Goals	3	vs. South Alabama	12/13/20
3-Point FG Attempts	6	vs. South Alabama	12/13/20
Free Throws	3	vs. Belmont	12/20/20
Free Throw Attempts	4	3x; last vs. Belmont	12/20/20

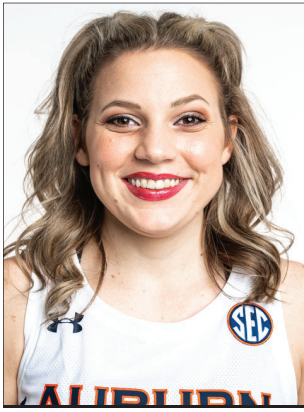
Opponent	Start	Min.	FG-A	3PT-A	FT-A	O-D-T	PF	Ast.	TO	Blk.	St.	Pts.
USC UPSTATE		12	3-6	1-3	0-0	0-0-0	0	1	0	0	0	7
SAMFORD		3	0-0	0-0	0-0	0-0-0	0	0	0	0	0	0
GARDNER-WEBB		14	0-2	0-1	2-2	0-1-1	3	2	2	0	1	2
at Houston		16	0-5	0-1	0-0	1-0-1	1	0	0	0	0	0
SOUTH ALABAMA		25	3-10	3-6	2-4	1-0-1	0	2	2	0	0	11
STEPHEN F. AUSTIN		19	1-6	0-3	2-4	0-0-0	3	0	1	0	1	4
NORTH FLORIDA		13	2-5	2-4	0-0	0-0-0	1	2	0	0	0	6
BELMONT		23	2-7	1-3	3-4	0-0-0	0	1	2	0	0	8
at LSU	*	16	0-5	0-3	0-0	0-2-2	2	1	2	0	1	0
GEORGIA		10	0-1	0-0	0-0	0-0-0	0	0	1	0	0	0
at Ole Miss		11	1-4	0-0	2-2	0-0-0	0	1	0	0	1	4
at Florida		26	2-11	0-2	1-2	2-3-5	1	0	2	0	1	5
KENTUCKY		13	0-4	0-2	0-0	0-0-0	0	0	1	0	0	0
at Alabama		9	0-4	0-1	0-0	0-2-2	1	0	1	0	0	0
TEXAS A&M		4	0-1	0-1	0-0	0-0-0	1	0	0	0	0	0
at Arkansas		7	0-1	0-0	0-0	1-0-1	4	1	1	0	0	0
SOUTH CAROLINA		15	2-4	2-3	0-2	0-1-1	2	1	2	1	1	6
MISSOURI		10	1-4	0-1	0-0	0-0-0	2	0	0	0	1	2
at Georgia		13	0-0	0-0	2-2	0-1-1	2	0	1	0	1	2
ALABAMA		20	0-2	0-1	0-0	1-0-1	4	2	0	0	1	0
at Mississippi State												--DNP--
ARKANSAS												
at Tennessee												

CAREER HIGHS

Points	11	vs. South Alabama	12/13/20
Rebounds	5	at Florida	1/17/21
Assists	3	vs. Middle Tennessee	11/29/19
Blocks	1	vs. South Carolina	2/4/21
Steals	2	vs. Alabama	1/12/20
Field Goals	3	3x; last vs. South Alabama	12/13/20
Field Goal Attempts	11	at Florida	1/17/21
3-Point Field Goals	3	vs. South Alabama	12/13/20
3-Point FG Attempts	6	vs. South Alabama	12/13/20
Free Throws	3	vs. Belmont	12/20/20
Free Throw Attempts	4	4x; last vs. Belmont	12/20/20

WELLS' CAREER STATISTICS

Season	gp-gs	min/avg	Total		3-Point		F-Throws		Rebounds					Scoring						
			fg-fga	pct	fg-fga	pct	ft-fta	pct	off	def	tot	avg	pf	fo	ast	to	blk	stl	pts	avg
2019-20	25-0	214/8.6	14-47	.298	3-17	.176	10-14	.714	5	15	20	0.8	26	0	13	17	0	5	41	1.6
2020-21	20-1	272/13.6	17-82	.207	9-35	.257	14-22	.636	6	10	16	0.8	27	0	14	18	1	9	57	2.9
TOTAL	45-1	486/10.8	31-129	.240	12-52	.231	24-36	.667	11	25	36	0.8	53	0	27	35	1	14	98	2.2



Annie HUGHES

#3

Sophomore • Guard • 5-9

Dutton, Ala.

Pisgah HS

- Career-high 17 points, 7 rebounds, 3 steals in win over North Florida (12/17)
- Season-high 11 points, career-high three 3-pointers in win over South Alabama (12/13)
- Scored 6 points in first five minutes vs. Gardner-Webb (12/1); also added 4 rebounds, 1 assists, 1 steal
- Appeared in all 29 games as a freshman, earning 7 starts
- Averaged 3.6 points, 1.3 rebounds, 0.7 assists, 0.5 steals while playing 16.8 minutes/game
- Shot 45.2% from the field (42-93) and 34.2% (13-38) from 3-point range as a freshman
- Earned start in first collegiate game vs. Wofford (11/6/19); scored 10 points along with 4 assists and 3 steals
- 2019 Alabama Miss Basketball, first to attend Auburn since Whitney Boddie in 2005
- Averaged 21.4 points, 7.0 rebounds, 4.2 assists, 3.5 steals as HS senior; led Pisgah HS to back-to-back state titles in '18 and '19

SEASON HIGHS

Points	17	vs. North Florida	12/17/20
Rebounds	7	vs. North Florida	12/17/20
Assists	1	10x; last at Georgia	2/11/21
Blocks	1	2x; last at Alabama	1/24/21
Steals	3	vs. North Florida	12/17/20
Field Goals	7	vs. North Florida	12/17/20
Field Goal Attempts	16	vs. North Florida	12/17/20
3-Point Field Goals	3	2x; last vs. North Florida	12/17/20
3-Point FG Attempts	8	vs. North Florida	12/17/20
Free Throws	2	vs. Gardner-Webb	12/1/20
Free Throw Attempts	3	vs. Samford	11/28/20

CAREER HIGHS

Points	17	vs. North Florida	12/17/20
Rebounds	7	2x; last vs. North Florida	12/17/20
Assists	4	vs. Wofford	11/6/19
Blocks	1	2x; last at Alabama	1/24/21
Steals	3	2x; last vs. North Florida	12/17/20
Field Goals	7	vs. North Florida	12/17/20
Field Goal Attempts	16	vs. North Florida	12/17/20
3-Point Field Goals	3	2x; last vs. North Florida	12/17/20
3-Point FG Attempts	8	vs. North Florida	12/17/20
Free Throws	2	2x; last vs. Gardner-Webb	12/1/20
Free Throw Attempts	4	vs. Middle Tennessee	11/29/19

Opponent	Start	Min.	FG-A	3PT-A	FT-A	O-D-T	PF	Ast.	TO	Blk.	St.	Pts.
USC UPSTATE	*	10	0-1	0-0	0-0	1-0-1	0	0	0	0	0	0
SAMFORD	*	21	2-7	0-3	1-3	1-0-1	2	1	1	0	1	5
GARDNER-WEBB	*	20	2-4	0-0	2-2	1-3-4	1	1	1	0	1	6
at Houston		13	0-0	0-0	0-0	1-2-3	0	1	1	0	0	0
SOUTH ALABAMA	*	32	4-8	3-5	0-0	0-3-3	3	0	0	0	2	11
STEPHEN F. AUSTIN	*	25	2-4	0-2	1-2	3-0-3	2	0	0	0	2	5
NORTH FLORIDA	*	31	7-16	3-8	0-0	4-3-7	3	1	1	0	3	17
BELMONT	*	25	3-6	1-2	0-0	2-2-4	2	1	3	1	1	7
at LSU		6	1-1	0-0	0-0	0-0-0	0	0	2	0	0	2
GEORGIA		23	1-2	0-0	1-2	0-3-3	1	0	3	0	1	3
at Ole Miss		12	0-0	0-0	0-0	0-1-1	0	1	1	0	2	0
at Florida	*	30	2-10	1-5	1-2	1-2-3	1	1	0	0	1	6
KENTUCKY	*	17	1-2	0-1	1-1	0-0-0	1	0	0	0	1	3
at Alabama	*	18	0-0	0-0	0-0	2-1-3	0	1	1	1	0	0
TEXAS A&M		2	0-1	0-1	0-0	0-0-0	1	0	1	0	0	0
at Arkansas		5	0-0	0-0	0-0	0-1-1	0	0	0	0	0	0
SOUTH CAROLINA		13	0-2	0-0	0-0	0-2-2	0	1	0	0	1	0
MISSOURI		2	0-1	0-1	0-0	0-0-0	0	0	0	0	0	0
at Georgia		12	0-1	0-1	0-0	0-1-1	1	1	0	0	1	0
ALABAMA		9	0-3	0-1	0-0	0-0-0	0	1	0	0	0	0
at Mississippi State		14	1-1	0-0	0-0	1-1-2	1	1	0	0	1	2
ARKANSAS												
at Tennessee												

HUGHES' CAREER STATISTICS

Season	gp-gs	min/avg	Total		3-Point		F-Throws		Rebounds				Scoring							
			fg-fga	pct	fg-fga	pct	ft-fa	pct	off	def	tot	avg	pf	fo	ast	to	blk	stl	pts	avg
2019-20	29-7	491/16.9	42-93	.452	13-38	.342	6-13	.462	20	17	37	1.3	29	0	19	21	0	14	103	3.6
2020-21	21-10	339/16.1	26-70	.371	8-30	.267	7-12	.583	17	25	42	2.0	19	0	12	15	2	18	67	3.2
TOTAL	50-17	830/16.6	68-163	.417	21-68	.309	13-25	.520	37	42	79	1.6	48	0	31	36	2	32	170	3.4



Riley DONAHUE

#4

Freshman • Guard • 5-10

Atlanta, Ga.

Marist School

- Hit first collegiate shot attempt, a 3-pointer, in final minute vs. Gardner-Webb (12/1)
- Made collegiate debut with one minute of action vs. USC Upstate (11/25)
- Joined Auburn as a walk-on in summer of 2020
- Was a GHSA first-team all-region selection as a senior

SEASON/CAREER HIGHS

Points	3	vs. Gardner-Webb	12/1/20
Rebounds			
Assists			
Blocks			
Steals			
Field Goals	1	vs. Gardner-Webb	12/1/20
Field Goal Attempts	1	vs. Gardner-Webb	12/1/20
3-Point Field Goals	1	vs. Gardner-Webb	12/1/20
3-Point FG Attempts	1	vs. Gardner-Webb	12/1/20
Free Throws			
Free Throw Attempts			

Opponent	Start	Min.	FG-A	3PT-A	FT-A	O-D-T	PF	Ast.	TO	Blk.	St.	Pts.
USC UPSTATE		1	0-0	0-0	0-0	0-0-0	0	0	0	0	0	0
SAMFORD						--DNP--						
GARDNER-WEBB		2	1-1	1-1	0-0	0-0-0	0	0	1	0	0	3
at Houston						--DNP--						
SOUTH ALABAMA		1	0-0	0-0	0-0	0-0-0	1	0	0	0	0	0
STEPHEN F. AUSTIN						--DNP--						
NORTH FLORIDA						--DNP--						
BELMONT						--DNP--						
at LSU						--DNP--						
GEORGIA						--DNP--						
at Ole Miss						--DNP--						
at Florida						--DNP--						
KENTUCKY						--DNP--						
at Alabama						--DNP--						
TEXAS A&M						--DNP--						
at Arkansas						--DNP--						
SOUTH CAROLINA						--DNP--						
MISSOURI						--DNP--						
at Georgia						--DNP--						
ALABAMA						--DNP--						
at Mississippi State						--DNP--						
ARKANSAS						--DNP--						
at Tennessee						--DNP--						

DONAHUE'S CAREER STATISTICS

Season	gp-gs	min/avg	Total		3-Point		F-Throws		Rebounds				Scoring							
			fg-fga	pct	fg-fga	pct	ft-fta	pct	off	def	tot	avg	pf	fo	ast	to	blk	stl	pts	avg
2020-21	3-0	2/0.7	1-1	1.000	1-1	1.000	0-0	.000	0	0	0	0.0	1	0	0	1	0	0	3	1.0
TOTAL	3-0	2/0.7	1-1	1.000	1-1	1.000	0-0	.000	0	0	0	0.0	1	0	0	1	0	0	3	1.0



Aicha COULIBALY

#5

Freshman • Guard/Forward • 6-0

Mali

IMG Academy (Fla.)

- Scored career-high 13 points vs. Alabama on 5-8 shooting; also had career-high 3 assists (2/14)
- Led Auburn with season-high 12 points along with 5 rebounds at LSU (12/31)
- Scored 10 points along with 6 rebounds in win over Gardner-Webb (12/1)
- Earned start in first collegiate game vs. USC Upstate (11/25); finished with 4 points, 6 rebounds, 2 assists
- Played for Mali's national team at FIBA U16 African Championships in 2017, leading her team to tournament championship
- Named tournament MVP after scoring 21.8 points/game in that event
- Played high school basketball at IMG Academy in Florida
- Is Auburn's third women's basketball player from Africa, along with Crispina Correia (Cape Verde, 2001-03) and Khady Dieng (Senegal, 2013-17)

SEASON/CAREER HIGHS

Points	13	vs. Alabama	2/14/21
Rebounds	6	vs. Gardner-Webb	12/1/20
Assists	3	vs. Alabama	2/14/21
Blocks	2	at Florida	1/17/21
Steals	4	at Mississippi St.	2/23/21
Field Goals	5	vs. Alabama	2/14/21
Field Goal Attempts	9	at Mississippi St.	2/23/21
3-Point Field Goals	1	2x; last vs. Alabama	2/14/21
3-Point FG Attempts	3	at LSU	12/31/20
Free Throws	4	at Georgia	2/11/21
Free Throw Attempts	6	vs. Gardner-Webb	12/1/20

Opponent	Start	Min.	FG-A	3PT-A	FT-A	O-D-T	PF	Ast.	TO	Blk.	St.	Pts.
USC UPSTATE	*	19	2-8	0-2	0-0	1-5-6	2	2	2	1	1	4
SAMFORD	*	15	2-5	0-2	0-0	2-2-4	1	1	0	0	0	4
GARDNER-WEBB	*	22	4-7	0-1	2-6	3-3-6	1	0	1	0	0	10
at Houston	*	12	0-2	0-0	0-2	1-2-3	3	2	1	1	0	0
SOUTH ALABAMA						--DNP--						
STEPHEN F. AUSTIN		19	2-5	0-2	0-1	0-4-4	1	1	2	1	1	4
NORTH FLORIDA		9	0-3	0-1	2-2	1-1-2	0	0	0	0	0	2
BELMONT		8	1-4	0-0	0-0	1-0-1	1	0	0	0	0	2
at LSU		24	4-8	1-3	3-4	2-3-5	1	0	1	0	0	12
GEORGIA		24	3-7	0-1	0-1	0-2-2	2	0	1	1	2	6
at Ole Miss		15	2-6	0-0	0-0	1-1-2	1	1	1	0	0	4
at Florida		16	0-1	0-1	0-0	1-0-1	0	0	2	2	1	0
KENTUCKY		17	3-4	0-0	1-2	2-2-4	2	1	1	0	0	7
at Alabama		13	0-2	0-1	0-0	0-3-3	3	0	2	0	0	0
TEXAS A&M		24	3-6	0-2	0-0	1-2-3	2	1	1	0	1	6
at Arkansas		19	1-3	0-0	2-2	0-4-4	2	0	0	0	0	4
SOUTH CAROLINA		18	2-7	0-0	0-0	0-2-2	3	1	1	0	1	4
MISSOURI		18	1-8	0-2	2-2	2-1-3	0	2	0	1	1	4
at Georgia		25	2-6	0-1	4-5	0-2-2	2	1	2	0	2	8
ALABAMA		23	5-8	1-2	2-3	2-1-3	3	3	0	1	0	13
at Mississippi State		24	2-9	1-2	2-2	0-3-3	1	1	2	1	4	7
ARKANSAS												
at Tennessee												

COULIBALY'S CAREER STATISTICS

Season	gp-gs	min/avg	Total		3-Point		F-Throws		Rebounds				Scoring							
			fg-fga	pct	fg-fga	pct	ft-fta	pct	off	def	tot	avg	pf	fo	ast	to	blk	stl	pts	avg
2020-21	20-4	363/18.2	39-109	.358	3-23	.130	20-32	.625	20	43	63	3.2	31	0	17	20	9	14	101	5.1
TOTAL	20-4	363/18.2	39-109	.358	3-23	.130	20-32	.625	20	43	63	3.2	31	0	17	20	9	14	101	5.1



Kiyae' WHITE

#10

Redshirt Junior • Forward • 6-2

Macungie, Pa.

Emmaus HS

- Made season debut vs. South Alabama; grabbed 3 rebounds in 4 minutes (12/13)
- Played in all 29 games as a redshirt sophomore, earning 14 starts; averaged 4.0 points, 4.8 rebounds in '19-20
- Shot 57.3% from the field (43-75) in 2019-20
- Scored career-high 15 points in season finale vs. Arkansas in 2020 SEC Tournament; also had 8 rebounds, 4 assists
- Had then-career high 12 points vs. St. Joseph's (11/24/19); was 3-4 from the field and 6-8 at FT line
- Career-high 11 rebounds in 2019-20 season-opener vs. Wofford while playing just 16 minutes
- Has two brothers that play in the NFL: Kevin White (49ers), Kyzir White (Chargers)

SEASON HIGHS

Points		
Rebounds		
3	vs. South Alabama	12/13/20
Assists		
Blocks		
Steals		
Field Goals		
Field Goal Attempts		
2	vs. South Alabama	12/13/20
3-Point Field Goals		
3-Point FG Attempts		
Free Throws		
Free Throw Attempts		

Opponent	Start	Min.	FG-A	3PT-A	FT-A	O-D-T	PF	Ast.	TO	Blk.	St.	Pts.
USC UPSTATE						--DNP--						
SAMFORD						--DNP--						
GARDNER-WEBB						--DNP--						
at Houston						--DNP--						
SOUTH ALABAMA	4		0-2	0-0	0-0	1-2-3	1	0	0	0	0	0
STEPHEN F. AUSTIN						--DNP--						
NORTH FLORIDA						--DNP--						
BELMONT						--DNP--						
at LSU						--DNP--						
GEORGIA						--DNP--						
at Ole Miss						--DNP--						
at Florida						--DNP--						
KENTUCKY						--DNP--						
at Alabama						--DNP--						
TEXAS A&M						--DNP--						
at Arkansas						--DNP--						
SOUTH CAROLINA						--DNP--						
MISSOURI						--DNP--						
at Georgia						--DNP--						
ALABAMA						--DNP--						
at Mississippi State						--DNP--						
ARKANSAS						--DNP--						
at Tennessee						--DNP--						

CAREER HIGHS

Points		
15	vs. Arkansas	3/5/20
Rebounds		
11	vs. Wofford	11/6/19
Assists		
4	vs. Wofford	11/6/19
Blocks		
1	8x; last at Mississippi State	1/30/20
Steals		
3	2x; last vs. Tennessee	3/1/20
Field Goals		
7	vs. Arkansas	3/5/20
Field Goal Attempts		
9	vs. Arkansas	3/5/20
3-Point Field Goals		
3-Point FG Attempts		
1	at South Carolina	2/13/20
Free Throws		
6	vs. St. Joseph's	11/24/19
Free Throw Attempts		
8	vs. St. Joseph's	11/24/19

WHITE'S CAREER STATISTICS

Season	gp-gs	min/avg	Total		3-Point		F-Throws		Rebounds					Scoring						
			fg-fga	pct	fg-fga	pct	ft-fa	pct	off	def	tot	avg	pf	fo	ast	to	blk	stl	pts	avg
2018-19	29-0	199/6.9	15-39	.385	0-0	.000	8-14	.571	23	28	51	1.8	27	0	9	10	1	2	38	1.3
2019-20	29-14	532/18.3	43-75	.573	0-1	.000	29-56	.518	47	93	140	4.8	63	0	21	36	10	24	115	4.0
2020-21	1-0	4/4.0	0-2	.000	0-0	.000	0-0	.000	1	2	3	3.0	1	0	0	0	0	0	0	0.0
TOTAL	59-14	735/12.5	58-116	.500	0-1	.000	37-70	.529	71	123	194	3.3	91	0	30	46	11	26	153	2.6



Romi LEVY

#11

Freshman • Forward • 6-2

Herzliya, Israel

Hof Hasharon HS

- Pulled down career-high 12 rebounds; missed double-double by 2 points at Arkansas (1/31)
- Had career-high 7 assists vs. Kentucky (1/21), most by an Auburn player so far in 2020-21
- Made second start at LSU, led team with 11 rebounds and 5 steals along with 8 points (12/31)
- Career-high 6 steals vs. Georgia (1/3)
- Career-high 12 points along with 5 rebounds in win over North Florida (12/17)
- Made collegiate debut vs. USC Upstate (11/25); finished with 8 points, 3 rebounds, 2 assists, 2 steals
- Competed in 2018 U18 Women's European Championships with Israeli national team
- Helped lead team to bronze medal, scoring 14 points in win over Lithuania and 13 points vs. Albania
- Completed mandatory national service in Israel before enrolling at Auburn

SEASON/CAREER HIGHS

Points	13	at Ole Miss	1/7/21
Rebounds	12	at Arkansas	1/31/21
Assists	7	vs. Kentucky	1/21/21
Blocks	2	2x; last at Houston	12/5/20
Steals	6	vs. Georgia	1/2/21
Field Goals	6	at Ole Miss	1/7/21
Field Goal Attempts	12	at LSU	12/31/20
3-Point Field Goals	3	vs. South Carolina	2/4/21
3-Point FG Attempts	6	at Florida	1/17/21
Free Throws	2	2x; last vs. North Florida	12/17/20
Free Throw Attempts	2	6x; last at Arkansas	1/31/21

Opponent	Start	Min.	FG-A	3PT-A	FT-A	O-D-T	PF	Ast.	TO	Blk.	St.	Pts.
USC UPSTATE		19	3-5	2-4	0-2	0-3-3	0	2	0	0	2	8
SAMFORD		26	2-5	1-3	1-2	1-2-3	2	1	2	0	3	6
GARDNER-WEBB		17	4-6	1-1	0-2	0-2-2	1	1	2	2	2	9
at Houston	*	15	0-2	0-1	0-0	0-1-1	2	0	2	2	0	0
SOUTH ALABAMA		24	3-6	0-2	2-2	4-3-7	1	3	2	0	3	8
STEPHEN F. AUSTIN		16	0-1	0-0	0-0	0-1-1	2	1	1	1	1	0
NORTH FLORIDA		19	5-11	2-4	0-0	2-3-5	2	1	1	0	1	12
BELMONT		14	1-4	0-2	0-0	2-1-3	2	0	2	0	1	2
at LSU	*	31	4-12	0-2	0-0	4-7-11	2	2	5	1	5	8
GEORGIA	*	34	0-7	0-4	0-0	0-3-3	2	0	2	0	6	0
at Ole Miss	*	33	6-10	1-5	0-0	0-4-4	3	2	0	0	2	13
at Florida	*	24	1-10	0-6	0-0	0-3-3	1	1	0	0	0	2
KENTUCKY	*	23	2-6	1-2	0-2	1-3-4	1	7	1	0	1	5
at Alabama	*	25	4-7	0-1	0-0	2-1-3	1	1	1	0	1	8
TEXAS A&M	*	16	2-6	2-5	0-0	1-3-4	4	2	0	0	0	6
at Arkansas	*	29	3-9	1-4	1-2	4-8-12	2	0	1	0	0	8
SOUTH CAROLINA	*	27	3-7	3-5	0-0	1-4-5	2	3	1	1	1	9
MISSOURI	*	25	3-5	1-2	0-0	0-1-1	3	1	1	1	0	7
at Georgia	*	19	1-4	0-1	0-0	0-5-5	3	0	0	0	1	2
ALABAMA	*	15	0-2	0-0	0-0	0-1-1	0	1	3	0	0	0
at Mississippi State	*	18	1-4	0-2	0-0	0-4-4	3	2	3	1	1	2
ARKANSAS												
at Tennessee												

LEVY'S CAREER STATISTICS

Season	gp-gs	min/avg	Total		3-Point		F-Throws		Rebounds					Scoring						
			fg-fga	pct	fg-fga	pct	ft-fta	pct	off	def	tot	avg	pf	fo	ast	to	blk	stl	pts	avg
2020-21	21-14	461/22.0	48-129	.372	15-56	.268	4-12	.333	22	63	85	4.0	39	0	31	30	9	31	115	5.5
TOTAL	21-14	461/22.0	48-129	.372	15-56	.268	4-12	.333	22	63	85	4.0	39	0	31	30	9	31	115	5.5



Kira LOWERY

#13

Junior • Guard • 5-6

Memphis, Tenn.

Southwind HS | Dyersburg State CC (Tenn.)

- Led Auburn with career-high 5 assists, 3 steals in win over North Florida (12/17)
- Scored 12 points with team-best 4 assists, hit clutch free throws in win over Samford (11/28)
- Earned start in first Division I game vs. USC Upstate (11/25); finished with 4 points, 5 rebounds, 4 assists in team-best 24 minutes
- Was a third-team NJCAA All-American in 2020 at Dyersburg State CC in Tennessee
- Ranked third nationally in scoring with 23.3 points/game; second in the nation in steals with 4.0 points/game
- Led DSCC to a 24-8 record and 3rd-place finish in Tennessee Community College Athletic Association; named TCCAA's top offensive player
- Played high school ball at Southwind High School in Memphis; scored over 1,000 career points

SEASON/CAREER HIGHS

Points	12	vs. Samford	11/28/20
Rebounds	5	vs. USC Upstate	11/25/20
Assists	5	vs. North Florida	12/17/20
Blocks	1	2x; last vs. North Florida	12/17/20
Steals	3	vs. North Florida	12/17/20
Field Goals	4	vs. Samford	11/28/20
Field Goal Attempts	7	vs. South Alabama	12/13/20
3-Point Field Goals	1	vs. Samford	11/28/20
3-Point FG Attempts	2	vs. Samford	11/28/20
Free Throws	4	vs. South Alabama	12/13/20
Free Throw Attempts	5	vs. South Alabama	12/13/20

Opponent	Start	Min.	FG-A	3PT-A	FT-A	O-D-T	PF	Ast.	TO	Blk.	St.	Pts.
USC UPSTATE	*	24	1-2	0-0	2-2	0-5-5	0	4	4	0	0	4
SAMFORD	*	24	4-6	1-2	3-4	0-0-0	0	4	1	0	2	12
GARDNER-WEBB	*	19	1-4	0-0	1-1	1-0-1	0	0	1	0	0	3
at Houston	*	21	1-3	0-1	0-0	0-1-1	0	0	3	0	1	2
SOUTH ALABAMA	*	28	3-7	0-0	4-5	1-1-2	1	0	2	0	2	10
STEPHEN F. AUSTIN	*	20	1-2	0-0	0-0	0-1-1	4	1	4	1	2	2
NORTH FLORIDA	*	18	0-0	0-0	2-2	0-0-0	0	5	3	1	3	2
BELMONT	*	15	0-0	0-0	0-0	0-1-1	2	3	4	0	0	0
at LSU		2	0-0	0-0	0-0	0-0-0	0	0	2	0	0	0
GEORGIA		13	1-1	0-0	1-3	0-1-1	0	1	5	0	0	3
at Ole Miss		12	0-1	0-0	0-0	0-1-1	2	1	0	0	0	0
at Florida						--DNP--						
KENTUCKY						--DNP--						
at Alabama		5	0-0	0-0	0-0	0-1-1	1	1	1	0	1	0
TEXAS A&M		5	0-0	0-0	0-0	0-1-1	0	1	0	0	0	0
at Arkansas		15	2-4	0-1	0-0	0-0-0	2	1	1	0	2	4
SOUTH CAROLINA		10	1-2	0-1	0-0	0-0-0	0	1	1	0	0	2
MISSOURI		23	3-3	0-0	2-2	0-0-0	0	1	2	0	0	8
at Georgia	*	24	0-0	0-0	0-0	1-0-1	0	4	4	0	2	0
ALABAMA		15	0-2	0-0	1-2	0-3-3	0	0	0	0	0	1
at Mississippi State		12	0-0	0-0	1-2	0-1-1	1	2	0	0	0	1
ARKANSAS												
at Tennessee												

LOWERY'S CAREER STATISTICS (at Auburn)

Season	gp-gs	min/avg	Total		3-Point		F-Throws		Rebounds				Scoring							
			fg-fga	pct	fg-fga	pct	ft-fta	pct	off	def	tot	avg	pf	fo	ast	to	blk	stl	pts	avg
2020-21	19-9	304/16.0	18-37	.486	1-5	.200	17-23	.739	3	17	20	1.1	13	0	30	37	2	15	54	2.8
TOTAL	19-9	304/16.0	18-37	.486	1-5	.200	17-23	.739	3	17	20	1.1	13	0	30	37	2	15	54	2.8



Jala JORDAN

#14

Redshirt Sophomore • Forward • 6-2

Philadelphia, Pa.

IMG Academy (Fla.) | West Virginia

- Made first career start vs. South Alabama (12/13); had career-high 3 blocks along with 6 points, 5 rebounds, 2 assists
- Led Auburn with 4 assists vs. Gardner-Webb; also scored 11 points and had 5 rebounds (12/1)
- Tied for team lead with 16 points off the bench in season-opener vs. USC Upstate (11/25); was 4-6 on 3-pointers
- Sat out 2019-20 season per NCAA rules after transferring to Auburn from West Virginia in the 2019 offseason
- Appeared in 25 games as a freshman for WVU, averaging 1.7 points and 1.4 rebounds while playing 6.4 minutes/game
- Had season-high 6 points and 2 blocks at Texas Tech
- Rated No. 14 wing in class of 2018 by ESPN HoopGurlz
- Graduated from IMG Academy; also played at St. Francis (Ga.) HS, leading them to two GHSA state titles

SEASON HIGHS

Points	16	vs. USC Upstate	11/25/20
Rebounds	8	vs. North Florida	12/17/20
Assists	4	vs. Gardner-Webb	12/1/20
Blocks	3	vs. South Alabama	12/13/20
Steals	2	at Houston	12/5/20
Field Goals	5	2x; last vs. Gardner-Webb	12/1/20
Field Goal Attempts	14	vs. Georgia	1/2/21
3-Point Field Goals	4	vs. USC Upstate	11/25/20
3-Point FG Attempts	6	2x; last vs. South Alabama	12/13/20
Free Throws	5	at Houston	12/5/20
Free Throw Attempts	5	at Houston	12/5/20

Opponent	Start	Min.	FG-A	3PT-A	FT-A	O-D-T	PF	Ast.	TO	Blk.	St.	Pts.
USC UPSTATE		20	5-9	4-6	2-2	3-0-3	0	0	2	0	1	16
SAMFORD		13	3-4	1-2	1-2	2-2-4	3	0	1	1	0	8
GARDNER-WEBB		23	5-10	0-4	1-1	1-4-5	4	4	0	1	1	11
at Houston		26	4-11	0-4	5-5	2-3-5	5	1	3	1	2	13
SOUTH ALABAMA	*	24	2-8	1-6	1-2	1-4-5	4	2	4	3	0	6
STEPHEN F. AUSTIN	*	12	3-8	1-2	1-1	1-1-2	0	0	0	0	0	8
NORTH FLORIDA	*	20	3-10	2-4	2-4	2-6-8	3	0	1	2	1	11
BELMONT	*	14	0-5	0-2	0-0	2-1-3	1	0	3	0	1	0
at LSU	*	20	1-10	0-5	1-2	1-3-4	3	0	1	1	0	3
GEORGIA	*	18	4-14	1-5	0-1	1-0-1	3	0	3	1	0	9
at Ole Miss	*	27	2-5	0-3	0-2	1-3-4	3	1	1	0	0	4
at Florida		7	0-2	0-1	0-0	0-1-1	1	0	1	0	0	0
KENTUCKY		12	4-9	3-5	0-0	0-1-1	1	0	0	0	0	11
at Alabama		13	3-6	2-3	0-0	0-2-2	2	3	3	1	1	8
TEXAS A&M		4	0-2	0-1	0-0	0-0-0	2	0	0	0	0	0
at Arkansas						--DNP--						
SOUTH CAROLINA						--DNP--						
MISSOURI						--DNP--						
at Georgia						--DNP--						
ALABAMA						--DNP--						
at Mississippi State						--DNP--						
ARKANSAS						--DNP--						
at Tennessee						--DNP--						

CAREER HIGHS (incl. 18-19 at WVU)

Points	16	vs. USC Upstate	11/25/20
Rebounds	8	vs. North Florida	12/17/20
Assists	4	vs. Gardner-Webb	12/1/20
Blocks	3	vs. South Alabama	12/13/20
Steals	2	2x; last at Houston	12/5/20
Field Goals	5	2x; last vs. Gardner-Webb	12/1/20
Field Goal Attempts	14	vs. Georgia	1/2/21
3-Point Field Goals	4	vs. USC Upstate	11/25/20
3-Point FG Attempts	6	2x; last vs. South Alabama	12/13/20
Free Throws	5	at Houston	12/5/20
Free Throw Attempts	5	at Houston	12/5/20

JORDAN'S CAREER STATISTICS

Season	gp-gs	min/avg	Total		3-Point		F-Throws		Rebounds				Scoring							
			fg-fga	pct	fg-fga	pct	ft-fa	pct	off	def	tot	avg	pf	fo	ast	to	blk	stl	pts	avg
2018-19*	27-0	163/6.0	14-40	.350	4-11	.364	11-16	.688	8	21	29	1.1	21	0	3	5	8	8	43	1.6
2020-21	15-7	249/16.6	39-113	.345	15-53	.283	15-22	.682	17	31	48	3.2	35	1	11	23	11	7	108	7.2
TOTAL	15-7	249/16.6	39-113	.345	15-53	.283	15-22	.682	17	31	48	3.2	35	1	11	23	11	7	108	7.2



Unique THOMPSON

#20

Senior • Forward • 6-3

****2020 AP Honorable Mention All-American****

Theodore, Ala.

****2020 All-SEC First Team****

Faith Academy

- Preseason All-SEC First Team (media & coaches); 2021 Katrina McClain Award Top 10; 2021 Wooden Award Midseason Top 25
- Auburn all-time leader with 56 career double-doubles and 1,123 career rebounds
- Broke Becky Jackson's career rebounding record at Mississippi State (2/23); 10th rebound of game gave her 1,119 for her career
- Leads nation in offensive rebounds (5.7/game); leads SEC and 2nd nationally in total rebounds (13.1/game)
- 14 double-doubles this season, 56 in her career (as of 2/23); is SEC and national leader in active career double-doubles
- Next double-double will move her into SEC all-time top 10 (T-8th: Charnique Holdsclaw, Armintie Price, Alaina Coates)
- Had second 20-20 game of season with 20 points, 23 rebounds vs. Belmont (12/20); also grabbed 1,000th career rebound in game
- 26 points, 23 rebounds at Houston (12/5); first 20-20 game for Auburn since 2/17/1993 (Lauretta Freeman, 30 pts/21 rebs vs. Alabama)
- Career-high 5 steals vs. Samford (11/28) and South Alabama (12/13); added 4 more vs. Gardner-Webb (12/1)

SEASON HIGHS

Points	26	at Houston	12/5/20
Rebounds	23	2x; last vs. Belmont	12/20/20
Assists	4	at Florida	1/17/21
Blocks	2	2x; last vs. Kentucky	1/21/21
Steals	5	2x; last vs. South Alabama	12/13/20
Field Goals	10	at Houston	12/5/20
Field Goal Attempts	25	at Georgia	2/11/21
3-Point Field Goals	1	vs. Texas A&M	1/28/21
3-Point FG Attempts	1	vs. Texas A&M	1/28/21
Free Throws	9	vs. South Alabama	12/13/20
Free Throw Attempts	11	at Georgia	2/11/21

Opponent	Start	Min.	FG-A	3PT-A	FT-A	O-D-T	PF	Ast.	TO	Blk.	St.	Pts.
USC UPSTATE	*	22	7-9	0-0	2-2	4-3-7	3	0	1	0	2	16
SAMFORD	*	33	4-10	0-0	8-10	5-6-11	2	1	3	0	5	16
GARDNER-WEBB	*	20	9-12	0-0	3-4	5-7-12	2	0	1	0	4	21
at Houston	*	32	10-18	0-0	6-7	10-13-23	3	2	7	0	2	26
SOUTH ALABAMA	*	31	6-14	0-0	9-9	7-7-14	5	0	4	0	5	21
STEPHEN F. AUSTIN	*	34	3-9	0-0	5-8	3-11-14	3	1	1	2	4	11
NORTH FLORIDA	*	32	8-12	0-0	3-3	8-10-18	2	3	3	0	2	19
BELMONT	*	34	9-14	0-0	2-6	9-14-23	0	1	1	0	1	20
at LSU						--DNP--						
GEORGIA						--DNP--						
at Ole Miss						--DNP--						
at Florida	*	33	6-14	0-0	2-2	7-7-14	4	4	1	1	2	14
KENTUCKY	*	29	9-14	0-0	4-4	6-4-10	4	2	1	2	1	22
at Alabama	*	29	5-10	0-0	0-0	2-8-10	2	0	1	0	0	10
TEXAS A&M	*	36	7-10	1-1	3-3	3-4-7	3	0	6	0	3	18
at Arkansas	*	32	7-15	0-0	4-4	10-9-19	2	1	4	0	1	18
SOUTH CAROLINA	*	35	4-13	0-0	2-3	4-4-8	3	1	3	0	3	10
MISSOURI	*	37	5-12	0-0	4-5	2-11-13	2	3	1	0	2	14
at Georgia	*	35	7-25	0-0	8-11	10-2-12	3	0	2	1	4	22
ALABAMA	*	37	12-18	0-0	0-1	2-4-6	3	0	3	1	0	24
at Mississippi State	*	35	9-21	0-0	4-9	6-8-14	1	2	1	0	4	22
ARKANSAS												
at Tennessee												

CAREER HIGHS

Points	31	at TCU	12/7/19
Rebounds	23	2x; last vs. Belmont	12/20/20
Assists	6	vs. Arkansas	1/5/20
Blocks	6	vs. Louisiana Tech	11/19/17
Steals	5	2x; last vs. South Alabama	12/13/20
Field Goals	12	at TCU	12/7/19
Field Goal Attempts	25	at Georgia	2/11/21
3-Point Field Goals	1	vs. Texas A&M	1/28/21
3-Point FG Attempts	1	vs. Texas A&M	1/28/21
Free Throws	10	at Ole Miss	1/31/19
Free Throw Attempts	12	at Ole Miss	1/31/19

THOMPSON'S CAREER STATISTICS

Season	gp-gs	min/avg	Total		3-Point		F-Throws		Rebounds				Scoring							
			fg-fga	pct	fg-fga	pct	ft-fga	pct	off	def	tot	avg	pf	fo	ast	to	blk	stl	pts	avg
2017-18	27-27	811/30.0	131-271	.483	0-0	.000	49-87	.563	112	115	227	8.4	63	0	28	66	21	32	311	11.5
2018-19	32-32	996/31.1	153-272	.563	0-0	.000	83-136	.610	143	187	330	10.3	71	1	35	63	20	57	389	12.2
2019-20	29-29	948/32.7	177-304	.582	0-0	.000	116-168	.690	128	203	331	11.4	63	0	51	81	12	48	470	16.2
2020-21	18-18	569/31.6	127-250	.508	1-1	1.000	69-91	.758	103	132	235	13.1	47	1	21	44	7	45	324	18.0
TOTAL	106-106	3324/31.4	588-1097	.536	1-1	1.000	317-482	.658	486	637	1123	10.6	244	2	135	254	60	182	1494	14.1



Alaina RICE

#22

Sophomore • Guard • 5-8

Rockledge, Fla.

IMG Academy | Florida A&M

- Career-high 9 assists vs. Alabama (2/14); most by Auburn player since Daisa Alexander had 10 vs. LSU in 2020
- Made first Auburn start at LSU, finished with 5 points, 5 rebounds, 2 assists (12/31)
- Season-high 9 points, 2 steals, first two Auburn 3-pointers in win over North Florida (12/17)
- Matched career-high, led team with 5 assists in Auburn debut vs. USC Upstate (11/25)
- Transferred from Florida A&M to Auburn in 2020 offseason; granted immediate eligibility by NCAA in November 2020
- Named MEAC Rookie of the Year in 2020 after averaging 10.3 points, 4.7 rebounds, 2.4 assists in 27 games as a freshman
- Scored in double-figures 17 times, including a career-high 22 points at Howard

SEASON HIGHS

Points	13 vs. Texas A&M	1/28/21
Rebounds	5 at LSU	12/31/20
Assists	9 vs. Alabama	2/14/21
Blocks		
Steals	3 at Georgia	2/11/21
Field Goals	5 vs. Texas A&M	1/28/21
Field Goal Attempts	11 2x; last at Mississippi St.	2/23/21
3-Point Field Goals	3 vs. Texas A&M	1/28/21
3-Point FG Attempts	7 vs. Texas A&M	1/28/21
Free Throws	4 2x; last at Arkansas	1/31/21
Free Throw Attempts	5 at Arkansas	1/31/21

Opponent	Start	Min.	FG-A	3PT-A	FT-A	O-D-T	PF	Ast.	TO	Blk.	St.	Pts.
USC UPSTATE		16	1-5	0-1	2-2	3-1-4	0	5	2	0	0	4
SAMFORD		11	0-1	0-0	1-2	2-0-2	0	1	1	0	0	1
GARDNER-WEBB		6	0-1	0-0	0-0	0-1-1	1	0	1	0	0	0
at Houston		3	0-1	0-0	0-0	0-0-0	0	0	0	0	0	0
SOUTH ALABAMA						--DNP--						
STEPHEN F. AUSTIN		20	0-3	0-1	4-4	0-0-0	4	1	6	0	1	4
NORTH FLORIDA		17	3-6	2-4	1-2	0-0-0	1	1	0	0	2	9
BELMONT		19	0-5	0-2	0-0	1-1-2	1	3	0	0	0	0
at LSU	*	24	2-6	1-1	0-0	4-1-5	3	2	4	0	1	5
GEORGIA	*	19	1-5	0-0	1-2	2-2-4	1	0	5	0	0	3
at Ole Miss	*	14	1-4	0-2	0-0	1-2-3	0	1	4	0	1	2
at Florida						--DNP--						
KENTUCKY		22	2-5	0-0	2-3	1-2-3	1	0	1	0	1	6
at Alabama		24	4-9	1-3	0-0	1-1-2	1	2	2	0	2	9
TEXAS A&M	*	32	5-11	3-7	0-0	0-3-3	3	5	1	0	2	13
at Arkansas	*	26	1-6	0-2	4-5	1-2-3	2	1	4	0	0	6
SOUTH CAROLINA	*	27	3-8	1-2	1-2	0-1-1	0	0	1	0	0	8
MISSOURI	*	15	1-1	0-0	0-0	0-0-0	1	2	4	0	0	2
at Georgia		16	0-5	0-2	0-0	1-0-1	1	2	1	0	3	0
ALABAMA	*	25	1-4	0-1	2-2	1-2-3	2	9	0	1	1	4
at Mississippi State	*	31	2-11	1-3	2-2	1-1-2	4	3	3	0	0	7
ARKANSAS												
at Tennessee												

CAREER HIGHS (incl. 19-20 at FAMU)

Points	22 at Howard	1/25/20
Rebounds	11 at S.C. State	1/18/20
Assists	9 vs. Alabama	2/14/21
Blocks	2 at Howard	1/25/20
Steals	5 vs. Coppin State	1/13/20
Field Goals	7 at Bethune-Cookman	3/5/20
Field Goal Attempts	17 vs. Morgan State	1/11/20
3-Point Field Goals	5 at UMES	2/17/20
3-Point FG Attempts	8 at Howard	1/25/20
Free Throws	8 at Howard	1/25/20
Free Throw Attempts	15 at Howard	1/25/20

RICE'S CAREER STATISTICS

Season	gp-gs	min/avg	Total		3-Point		F-Throws		Rebounds				Scoring							
			fg-fga	pct	fg-fga	pct	ft-fta	pct	off	def	tot	avg	pf	fo	ast	to	blk	stl	pts	avg
2019-20*	27-23	731/27.1	91-286	.318	34-106	.321	63-99	.636	41	85	126	4.7	64	1	64	142	6	43	279	10.3
2020-21	19-9	366/19.3	27-97	.278	9-31	.290	20-26	.769	19	20	39	2.1	26	0	36	43	1	14	83	4.4
TOTAL	19-9	366/19.3	27-97	.278	9-31	.290	20-26	.769	19	20	39	2.1	26	0	36	43	1	14	83	4.4
All*	46-32	1097/23.8	118-383	.308	43-137	.314	83-125	.664	60	105	165	3.6	90	1	100	185	7	57	362	7.9



Honesty SCOTT-GRAYSON

#23

RS Sophomore • Guard • 5-8

Brick, N.J.

Paul VI HS | Baylor

- Career-high 30 points vs. Missouri (2/7); first 30-point home game by Auburn player since Brandy Montgomery vs. Alabama in 2015
- Has topped 20-point mark five times in SEC play (30 vs. Missouri, 25 vs. Alabama, 24 at MSU, 23 at Ole Miss, 21 vs. Texas A&M)
- In SEC play, averages 17.4 points, 4.8 rebounds, 2.0 steals, 1.7 assists
- Scored 16 points in back-to-back games vs. SFA and North Florida (12/16-17)
- 14 points, 7 rebounds, 5 steals in win over Gardner-Webb (12/1)
- Sat out the 2019-20 season under NCAA rules after transferring to Auburn from Baylor
- Played in 28 games as a freshman at Baylor, averaging 6.9 minutes/game, 2.5 points, 0.9 rebounds, 0.9 assists
- 2018 McDonald's All-American & 2018 Jordan Brand Classic All-American
- Ranked as No. 20 overall player and No. 3 guard by ESPN out of high school

SEASON HIGHS

Points	30 vs. Missouri	2/7/21
Rebounds	9 at LSU	12/31/20
Assists	4 2x; last at Alabama	1/24/21
Blocks	1 2x; last vs. South Carolina	2/4/21
Steals	5 2x; last at Alabama	1/24/21
Field Goals	10 2x; last vs. Alabama	2/14/21
Field Goal Attempts	17 2x; last vs. Alabama	2/14/21
3-Point Field Goals	4 2x; last vs. Missouri	2/7/21
3-Point FG Attempts	8 vs. Texas A&M	1/28/21
Free Throws	8 at Arkansas	1/31/21
Free Throw Attempts	9 vs. Missouri	2/7/21

Opponent	Start	Min.	FG-A	3PT-A	FT-A	O-D-T	PF	Ast.	TO	Blk.	St.	Pts.
USC UPSTATE	*	17	3-8	0-0	1-1	0-1-1	0	2	1	0	1	7
SAMFORD	*	25	2-12	1-5	0-0	0-0-0	1	1	0	0	2	5
GARDNER-WEBB	*	21	6-13	0-1	2-5	2-5-7	3	3	0	0	5	14
at Houston	*	25	1-3	0-0	2-4	0-3-3	2	1	2	0	2	4
SOUTH ALABAMA	*	24	1-8	1-3	1-2	0-3-3	4	0	2	0	0	4
STEPHEN F. AUSTIN	*	25	7-16	1-5	1-3	1-2-3	3	2	4	0	2	16
NORTH FLORIDA	*	31	6-15	0-2	4-5	0-2-2	3	1	3	0	3	16
BELMONT	*	31	6-13	1-4	5-7	3-1-4	2	4	5	0	3	18
at LSU	*	34	4-12	0-0	0-0	2-7-9	3	2	1	1	2	8
GEORGIA	*	16	2-5	0-0	2-2	1-3-4	2	1	0	0	1	6
at Ole Miss	*	29	9-16	3-5	2-2	1-4-5	4	2	4	0	3	23
at Florida	*	31	6-14	2-5	4-4	1-4-5	1	2	1	0	2	18
KENTUCKY	*	29	4-16	0-4	2-2	2-6-8	4	1	3	0	3	10
at Alabama	*	34	5-16	0-4	7-8	0-3-3	1	4	1	0	5	17
TEXAS A&M	*	36	8-15	4-8	1-2	1-3-4	3	3	3	0	3	21
at Arkansas	*	32	4-13	1-5	8-8	0-4-4	2	3	1	0	1	17
SOUTH CAROLINA	*	24	6-14	1-3	2-3	2-2-4	3	1	0	1	0	15
MISSOURI	*	38	10-17	4-6	6-9	1-3-4	1	1	1	0	2	30
at Georgia	*	28	5-15	0-2	2-3	0-3-3	3	1	2	0	1	12
ALABAMA	*	27	10-17	3-6	2-2	1-2-3	4	1	1	0	2	25
at Mississippi State	*	35	9-16	0-0	6-7	0-7-7	2	0	4	0	1	24
ARKANSAS												
at Tennessee												

CAREER HIGHS (incl. 18-19 at Baylor)

Points	30 vs. Missouri	2/7/21
Rebounds	9 at LSU	12/31/20
Assists	5 vs. St. Francis	11/8/18
Blocks	1 3x; last vs. South Carolina	2/4/21
Steals	5 2x; last at Alabama	1/24/21
Field Goals	10 vs. Missouri	2/7/21
Field Goal Attempts	17 vs. Missouri	2/7/21
3-Point Field Goals	4 2x; last vs. Missouri	2/7/21
3-Point FG Attempts	8 vs. Texas A&M	1/28/21
Free Throws	8 at Arkansas	1/31/21
Free Throw Attempts	9 vs. Missouri	2/7/21

SCOTT-GRAYSON'S CAREER STATISTICS

Season	gp-gs	min/avg	Total		3-Point		F-Throws		Rebounds				Scoring							
			fg-fga	pct	fg-fga	pct	ft-fta	pct	off	def	tot	avg	pf	fo	ast	to	blk	stl	pts	avg
2018-19*	29-0	193/6.7	25-51	.490	5-11	.455	19-26	.731	10	15	25	0.9	26	1	24	24	3	9	74	2.6
2020-21	21-21	590/28.1	114-274	.416	22-68	.324	60-79	.759	18	68	86	4.1	50	0	36	39	2	44	310	14.8
TOTAL	21-21	590/28.1	114-274	.416	22-68	.324	60-79	.759	18	68	86	4.1	50	0	36	39	2	44	310	14.8
All*	50-21	783/15.7	139-325	.428	27-79	.342	79-105	.752	28	83	111	2.2	76	1	60	63	5	53	384	7.7



Carsen McFADDEN

#24

Freshman • Guard • 5-7

Fairview, Texas

Lovejoy HS

- Played 9 minutes vs. South Alabama; scored first 3 collegiate points and shared team lead with 3 assists (12/13)
- Made Auburn debut vs. USC Upstate (11/25); pulled down a rebound in final minute of game
- Joined Auburn as a walk-on in the summer of 2020
- All-state selection at Lovejoy HS as a senior and two-year team captain
- Owns high school records for rebounds in a single game (19), season (340) and career (1,047) and steals in a game (15), season (145) and career (418)
- Also competed in track & field
- Has a twin sister, Claire, who also attends Auburn

SEASON/CAREER HIGHS

Points	3	vs. South Alabama	12/13/20
Rebounds	1	3x; last at Florida	1/17/21
Assists	3	vs. South Alabama	12/13/20
Blocks			
Steals	1	vs. North Florida	12/17/20
Field Goals	1	vs. South Alabama	12/13/20
Field Goal Attempts	2	vs. South Alabama	12/13/20
3-Point Field Goals			
3-Point FG Attempts			
Free Throws	1	vs. South Alabama	12/13/20
Free Throw Attempts	2	vs. South Alabama	12/13/20

Opponent	Start	Min.	FG-A	3PT-A	FT-A	0-D-T	PF	Ast.	TO	Blk.	St.	Pts.
USC UPSTATE		1	0-0	0-0	0-0	0-1-1	0	0	0	0	0	0
SAMFORD						--DNP--						
GARDNER-WEBB at Houston		2	0-0	0-0	0-0	1-0-1	0	1	0	0	0	0
SOUTH ALABAMA		9	1-2	0-0	1-2	0-0-0	0	3	0	0	0	3
STEPHEN F. AUSTIN						--DNP--						
NORTH FLORIDA		2	0-1	0-0	0-0	0-0-0	0	0	0	0	1	0
BELMONT at LSU						--DNP--						
GEORGIA at Ole Miss		4	0-0	0-0	0-0	0-0-0	0	0	1	0	0	0
at Florida		2	0-0	0-0	0-0	1-0-1	0	0	0	0	0	0
KENTUCKY at Alabama						--DNP--						
TEXAS A&M at Arkansas						--DNP--						
SOUTH CAROLINA MISSOURI						--DNP--						
at Georgia						--DNP--						
ALABAMA at Mississippi State						--DNP--						
ARKANSAS at Tennessee						--DNP--						

McFADDEN'S CAREER STATISTICS

Season	gp-gs	min/avg	Total		3-Point		F-Throws		Rebounds				Scoring							
			fg-fga	pct	fg-fga	pct	ft-fa	pct	off	def	tot	avg	pf	fo	ast	to	blk	stl	pts	avg
2020-21	6-0	21/3.5	1-3	.333	0-0	.000	1-2	.500	2	1	3	0.5	0	0	4	1	0	1	3	0.5
TOTAL	6-0	21/3.5	1-3	.333	0-0	.000	1-2	.500	2	1	3	0.5	0	0	4	1	0	1	3	0.5



Morgan ROBINSON-NWAGWU

#30

Sophomore • Guard • 5-8

Norcross, Ga.

Norcross HS

- Scored career-high 9 points in first career start at Florida (1/17)
- Missed 3 games with ankle injury suffered in pregame warmups at Houston; returned to action vs. North Florida
- Career-high 4 steals; tied career-high with 6 points, 4 rebounds off the bench vs. USC Upstate (11/25)
- Played in all 29 games as a freshman; averaged 1.3 points, 1.3 rebounds, 1.5 assists, 0.7 steals in 10.9 minutes/game
- Scored season-high 6 points vs. Bethune-Cookman (12/15) and Florida (1/9)
- Season-high 4 rebounds twice, vs. ODU (11/14) and vs. Alabama (1/12)
- Recorded 3 rebounds, 2 assists, 2 steals at Missouri (2/27)
- Season-high 4 assists at TCU (12/7)
- Ranked as No. 28 guard nationally by ESPN HoopGurlz; first-team all-state selection at Norcross HS by Atlanta Journal-Constitution

SEASON HIGHS

Points	9	at Florida	1/17/21
Rebounds	4	vs. USC Upstate	11/25/20
Assists	6	at Ole Miss	1/7/21
Blocks	1	at LSU	12/31/20
Steals	4	vs. USC Upstate	11/25/20
Field Goals	3	vs. USC Upstate	11/25/20
Field Goal Attempts	6	at Florida	1/17/21
3-Point Field Goals	1	at Florida	1/17/21
3-Point FG Attempts	3	at Florida	1/17/21
Free Throws	4	at Florida	1/17/21
Free Throw Attempts	5	at Florida	1/17/21

Opponent	Start	Min.	FG-A	3PT-A	FT-A	O-D-T	PF	Ast.	TO	Blk.	St.	Pts.
USC UPSTATE		17	3-5	0-1	0-0	0-4-4	1	2	1	0	4	6
SAMFORD		9	0-1	0-1	0-0	0-0-0	1	1	2	0	1	0
GARDNER-WEBB		10	1-3	0-0	0-0	0-2-2	1	2	1	0	1	2
at Houston						--DNP--						
SOUTH ALABAMA						--DNP--						
STEPHEN F. AUSTIN						--DNP--						
NORTH FLORIDA		6	0-1	0-1	0-0	0-1-1	0	2	1	0	0	0
BELMONT		6	0-1	0-1	0-0	0-1-1	0	1	2	0	1	0
at LSU		13	0-2	0-1	0-0	0-0-0	1	0	2	1	0	0
GEORGIA		9	1-1	0-0	0-0	0-1-1	1	0	3	0	1	2
at Ole Miss		13	0-1	0-0	2-2	0-0-0	0	6	2	0	3	2
at Florida	*	31	2-6	1-3	4-5	1-2-3	2	2	6	0	1	9
KENTUCKY	*	18	1-4	0-1	2-2	1-1-2	0	2	4	0	0	4
at Alabama	*	11	0-2	0-1	0-0	0-1-1	0	1	1	0	0	0
TEXAS A&M		2	0-1	0-0	0-0	0-0-0	0	0	2	0	0	0
at Arkansas						--DNP--						
SOUTH CAROLINA		3	0-2	0-0	0-0	0-0-0	0	1	0	0	0	0
MISSOURI		2	0-0	0-0	0-0	0-0-0	0	0	0	0	0	0
at Georgia						--DNP--						
ALABAMA						--DNP--						
at Mississippi State						--DNP--						
ARKANSAS						--DNP--						
at Tennessee						--DNP--						

CAREER HIGHS

Points	9	at Florida	1/17/21
Rebounds	4	3x; last vs. USC Upstate	11/25/20
Assists	6	at Ole Miss	1/7/21
Blocks	1	3x; last at LSU	12/31/20
Steals	4	vs. USC Upstate	11/25/20
Field Goals	3	2x; last vs. USC Upstate	11/25/20
Field Goal Attempts	12	vs. Florida	1/9/20
3-Point Field Goals	1	3x; last at Florida	1/17/21
3-Point FG Attempts	5	vs. Florida	1/9/20
Free Throws	4	at Florida	1/17/21
Free Throw Attempts	5	at Florida	1/17/21

ROBINSON-NWAGWU'S CAREER STATISTICS

Season	gp-gs	min/avg	Total		3-Point		F-Throws		Rebounds				Scoring							
			fg-fga	pct	fg-fga	pct	ft-fta	pct	off	def	tot	avg	pf	fo	ast	to	blk	stl	pts	avg
2019-20	29-0	314/10.8	13-64	.203	2-10	.200	11-21	.524	13	25	38	1.3	32	1	44	46	2	19	39	1.3
2020-21	14-3	151/10.8	8-30	.267	1-10	.100	8-9	.889	2	13	15	1.1	7	0	20	27	1	12	25	1.8
TOTAL	43-3	465/10.8	21-94	.223	3-20	.150	19-30	.633	15	38	53	1.2	39	1	64	73	3	31	64	1.5

Game 1: Nov. 25, 2020
Auburn 82, USC Upstate 41
Auburn Arena
Auburn, Ala.

Official Basketball Box Score - Game Totals - Final Statistics
USC Upstate vs Auburn
11/25/20 6:00 pm at Auburn, AL

USC Upstate 41 • 0-1, 0-0 Big Sou

Table with 10 columns: # Player, FG, 3-Pt, FT, Rebounds, PF, TP, A TO Blk Stl, Min. Includes player stats for Marnicha Prudent, Michaela Gibbons, Demishia Wilson, etc.

Auburn 82 • 1-0, 0-0 SEC

Table with 10 columns: # Player, FG, 3-Pt, FT, Rebounds, PF, TP, A TO Blk Stl, Min. Includes player stats for Unique Thompson, Annie Hughes, Aicha Coulibaly, etc.

USC Upstate 41 • 0-1, 0-0 SEC

Table with 10 columns: # Player, FG, 3-Pt, FT, Rebounds, PF, TP, A TO Blk Stl, Min. Includes player stats for Aishlee Goodie, Kylie Galloway, Michael McConnell, etc.

Auburn-- The new-look Auburn women's basketball team showcased its depth, speed and balance in their season-opener...

Game 2: Nov. 28, 2020
Auburn 66, Samford 64
Auburn Arena
Auburn, Ala.

Official Basketball Box Score - Game Totals - Final Statistics
Samford vs Auburn
11/28/20 6:00 pm at Auburn, AL

Samford 64 • 0-2, 0-0 SoCon

Table with 10 columns: # Player, FG, 3-Pt, FT, Rebounds, PF, TP, A TO Blk Stl, Min. Includes player stats for Annie Ramiel, Natalie Armstrong, Shaunta Battle, etc.

Auburn 66 • 2-0, 0-0 SEC

Table with 10 columns: # Player, FG, 3-Pt, FT, Rebounds, PF, TP, A TO Blk Stl, Min. Includes player stats for Unique Thompson, Annie Hughes, Aicha Coulibaly, etc.

Samford 64 • 0-2, 0-0 SEC

Table with 10 columns: # Player, FG, 3-Pt, FT, Rebounds, PF, TP, A TO Blk Stl, Min. Includes player stats for Safi Esho, Maggie Tione, Felicia Grinter, etc.

Auburn-- Senior Unique Thompson picked up her first double-double of the season, and Auburn was able to fend off a late 3-point flurry from Samford...

Game 3: Dec. 1, 2020
Auburn 97, Gardner-Webb 61
Auburn Arena
Auburn, Ala.

Official Basketball Box Score - Game Totals - Final Statistics
Gardner-Webb vs Auburn
12/01/20 6:00 pm at Auburn, AL

Gardner-Webb 61 • 0-2, 0-0 Big Sou

Table with 10 columns: # Player, FG, 3-Pt, FT, Rebounds, PF, TP, A TO Blk Stl, Min. Includes player stats for Alexis Hueston, Jyressia Deans, Kf'Arri Cain, etc.

Auburn 97 • 3-0, 0-0 SEC

Table with 10 columns: # Player, FG, 3-Pt, FT, Rebounds, PF, TP, A TO Blk Stl, Min. Includes player stats for Unique Thompson, Annie Hughes, Aicha Coulibaly, etc.

Gardner-Webb 61 • 0-2, 0-0 SEC

Table with 10 columns: # Player, FG, 3-Pt, FT, Rebounds, PF, TP, A TO Blk Stl, Min. Includes player stats for Roy Gulbeyan, Brian Garland, Tina Nasier, etc.

Auburn-- Five Auburn players scored in double-figures, and Auburn's defense helped lead the charge as the Tigers ran away from Gardner-Webb...

Score by periods: 1st 2nd 3rd 4th Total

Table with 5 columns: Period, Auburn, USC Upstate. Shows scores for each quarter and total.

Points: In Off 2nd Fast Bench; In Off 2nd Fast Bench; In Off 2nd Fast Bench

Attendance: 588
2020-21 Women's Basketball. Round: 0. Auburn vs USC Upstate. Played at Auburn

Score by periods: 1st 2nd 3rd 4th Total

Table with 5 columns: Period, Auburn, Samford. Shows scores for each quarter and total.

Points: In Off 2nd Fast Bench; In Off 2nd Fast Bench; In Off 2nd Fast Bench

Attendance: 540
2020-21 Women's Basketball. Round: 0. Auburn vs Samford. Played at Auburn Aren

Score by periods: 1st 2nd 3rd 4th Total

Table with 5 columns: Period, Auburn, Gardner-Webb. Shows scores for each quarter and total.

Points: In Off 2nd Fast Bench; In Off 2nd Fast Bench; In Off 2nd Fast Bench

Attendance: 487
2020-21 Women's Basketball. Round: 0. Auburn vs Gardner-Webb. Played at Auburn

Game 4: Dec. 5, 2020
Houston 71, Auburn 61
Fertitta Center
Houston, Texas

Official Basketball Box Score - Game Totals - Final Statistics
Auburn vs Houston
12/05/20 12:00 pm at Houston, TX

Auburn 61 • 3-1-0-0 SEC

Box score table for Auburn vs Houston. Columns include Player, FG-FGA, 3-PT, Rebounds, FT-FTA, PF, TP, A TO Bk Stl Min.

Summary statistics table for Auburn vs Houston. Columns include FG %, 3PT %, FT %, TP %, A TO Bk Stl, Deadball Rebounds.

Houston 71 • 2-1-0-0 AAC

Box score table for Houston vs Auburn. Columns include Player, FG-FGA, 3-PT, Rebounds, FT-FTA, PF, TP, A TO Bk Stl Min.

Summary statistics table for Houston vs Auburn. Columns include FG %, 3PT %, FT %, TP %, A TO Bk Stl, Deadball Rebounds.

Officials: Paulani Sparlock-Welch, Tom Deaneher, Joseph Vasily
Attendance: 509
2020-21 Women's Basketball. Round: 0. Auburn vs Houston. Played at Fertitta Ce

Score by periods table for Auburn vs Houston. Columns include 1st, 2nd, 3rd, 4th, Total.

Last FG - AU 4th-00:55, UH 4th-00:43.
Largest lead - AU None, UH by 17 2nd-03:53.
AU led for 00:00, UH led for 38:15. Game was tied for 01:26.

HOUSTON-- Auburn senior Unique Thompson scored 26 points and had 23 rebounds, but the Tigers were unable to climb out of a deep first-half hole as Auburn fell for the first time this season, 71-61 at Houston.

The Tigers (3-1) had turnover trouble early, went cold for a large portion of the second quarter, and dealt with foul trouble to key contributors as Houston (2-1) took a 34-17 halftime lead. But Auburn fought back in the second half, cutting the deficit to as few as six points before running out of time to complete the comeback.

Thompson's career night was the first 20-point, 20-rebound game by an Auburn player since 1993, when Lauretta Freeman had 30 points and 21 rebounds against Alabama. Thompson's 23 rebounds tied for the third-most in a game in Auburn history, the most since Sharon Stewart had 23 against Vanderbilt in 1988. She now has three double-doubles in four games this year and 45 for her career.

But the rest of Auburn's offense struggled as the Tigers shot 36 percent for the game (22-of-61) and hit just two 3-pointers. Both of those treys came from junior Alycia Reese, the Chattanoogaec Valley CC transfer, who scored 10 points off the bench. Jala Jordan added 13 points and five rebounds, hitting 5-of-5 free throws.

Auburn turned the ball over 10 times in the first quarter and finished with 23 for the game, which turned into 21 Houston points. The Cougars led 22-9 after one, then with Thompson on the bench in foul trouble, both teams went cold to start the second before Houston took a 34-17 lead to the break.

The Tigers started chipping away, cutting the deficit to 14 at the end of the quarter and getting within single digits with 6:47 to play. It would be as close as six points at 59-53 with 4:18 to play after a Jordan layup. But every time Auburn threatened to get within striking distance, Houston answered. The Cougars hit four of their final five shots in the game to extinguish Auburn's comeback hopes.

Game 5: Dec. 13, 2020
Auburn 74, South Alabama 66
Auburn Arena
Auburn, Ala.

Official Basketball Box Score - Game Totals - Final Statistics
South Alabama vs Auburn
12/13/20 3:00 pm at Auburn, AL

South Alabama 66 • 3-2-0-0 Sun Belt

Box score table for South Alabama vs Auburn. Columns include Player, FG-FGA, 3-PT, Rebounds, FT-FTA, PF, TP, A TO Bk Stl Min.

Summary statistics table for South Alabama vs Auburn. Columns include FG %, 3PT %, FT %, TP %, A TO Bk Stl, Deadball Rebounds.

Auburn 74 • 4-1-0-0 SEC

Box score table for Auburn vs South Alabama. Columns include Player, FG-FGA, 3-PT, Rebounds, FT-FTA, PF, TP, A TO Bk Stl Min.

Summary statistics table for Auburn vs South Alabama. Columns include FG %, 3PT %, FT %, TP %, A TO Bk Stl, Deadball Rebounds.

Officials: Ashley Goode, Meadow Overstreet, Beverly Roberts
Attendance: 520
2020-21 Women's Basketball. Round: 0. Auburn vs South Alabama. Played at Auburn

Score by periods table for Auburn vs South Alabama. Columns include 1st, 2nd, 3rd, 4th, Total.

Last FG - USA 4th-00:47, AU 4th-02:04.
Largest lead - USA by 12 2nd-05:04, AU by 12 4th-01:01.
USA led for 25:47, AU led for 12:56. Game was tied for 00:43.

AUBURN-- A shorthanded Auburn women's basketball team fought its way back from an early double-digit deficit to earn a 74-66 win over South Alabama Sunday afternoon at Auburn Arena.

Led by 21 points and 14 rebounds from senior Unique Thompson, four players scored in double-figures as the Tigers (4-1) trailed by as many as 12 and led by as many as 12 in a game that was truly a tale of two halves.

A flurry of 3-pointers to open the game gave South Alabama (3-2) an early lead, and a cold streak by the Tigers to open the second period pushed the Jaguars' lead to as many as 12 points at 24-12 with 6:04 to play in the half. But Auburn knocked down five straight 3-pointers in the final four minutes of the period to cut the halftime deficit to just six at 34-28.

With the Jaguars still holding the lead as the teams traded buckets the first six minutes of the second half, Auburn turned USA turnovers into points in a 9-0 run that spanned 82 seconds late in the quarter to take a 49-46 lead, its first since it was 2-0 to start the game. The Tigers would never trail again, pushing their lead to as many as 12 points with just over a minute to play.

Thompson's double-double was her fourth of the season and 46th of her career; she's totaled 47 points and 37 rebounds over her last two games. Sophomore Sania Wells added a career-high 11 points, knocking down three 3-pointers and a pair of free throws to go along with a pair of assists.

Sophomore Annie Hughes also poured in 11 points with a career-high three 3-pointers, and junior Kira Lowery added 10 points on the night. Freshman Romi Levy also had a strong performance with 8 points, 7 rebounds, 3 assists and 3 steals.

Auburn missed its first 11 3-point attempts of the night but made eight of its final 11 to finish at 36 percent. Overall, Auburn was 23-of-65 (35%) from the field and had a strong night at the free-throw line, going 20-for-26 (77%). The Tigers out-rebounded the Jags 44-37 and turned 21 USA turnovers into 15 points. Meanwhile, the Jags hit their first five 3-point attempts of the night but went just 2-of-14 from long range the rest of the way.

Game 6: Dec. 16, 2020
Stephen F. Austin 67, Auburn 54
Auburn Arena
Auburn, Ala.

Official Basketball Box Score - Game Totals - Final Statistics
SFA vs Auburn
12/16/20 6:00 pm at Auburn, AL

SFA 67 • 6-2-0-0 Southlan

Box score table for SFA vs Auburn. Columns include Player, FG-FGA, 3-PT, Rebounds, FT-FTA, PF, TP, A TO Bk Stl Min.

Summary statistics table for SFA vs Auburn. Columns include FG %, 3PT %, FT %, TP %, A TO Bk Stl, Deadball Rebounds.

Auburn 54 • 4-2-0-0 SEC

Box score table for Auburn vs SFA. Columns include Player, FG-FGA, 3-PT, Rebounds, FT-FTA, PF, TP, A TO Bk Stl Min.

Summary statistics table for Auburn vs SFA. Columns include FG %, 3PT %, FT %, TP %, A TO Bk Stl, Deadball Rebounds.

Officials: Karen Preato, Gina Cross, Tina Napier
Attendance: 445
2020-21 Women's Basketball. Round: 0. Auburn vs SFA. Played at Auburn Arena.

Score by periods table for Auburn vs SFA. Columns include 1st, 2nd, 3rd, 4th, Total.

Last FG - SFA 4th-04:12, AU 4th-04:30.
Largest lead - SFA by 13 4th-00:16, AU by 7 1st-01:57.
SFA led for 16:30, AU led for 19:48. Game was tied for 03:42.

AUBURN-- Auburn and Stephen F. Austin traded blows for 35-plus minutes Wednesday night, but the Tigers went cold over the final five as the Ladyjacks pulled away late for a 67-54 win at Auburn Arena.

The Tigers (4-2) led throughout much of the first half, fell behind in the third period and briefly regained the lead midway through the fourth. But a tie game with less than five minutes to play got away from Auburn as SFA (6-2), the preseason pick to win the Southland Conference, ended the game on a 13-0 run.

Redshirt sophomore Honesty Scott-Grayson led the Tigers with a career-high 16 points and a pair of assists. Senior Unique Thompson picked up her fifth straight double-double with 15 points and 14 rebounds; she also led Auburn with four steals and a pair of blocks.

But baskets were tough to come by as the Tigers shot a season-low 33.9 percent (19-of-56), including 2-of-15 (13.3%) from 3-point range. Normally steady at the charity stripe, Auburn also struggled at the free-throw line, hitting 14-of-23 attempts (60.9%). Auburn was also out-rebounded for the first time this season, 43-34. The Tigers were able to force SFA into 24 turnovers, converting those into 18 points.

Auburn jumped out to a 6-0 lead and led 17-12 at the end of one. Both teams were ice cold for the next several minutes, but SFA started clawing its way back late in the half with three straight 3-pointers over a 90-second stretch to cut the Tigers' lead. A Ladyjack layup at the buzzer would tie the game 27-27 at the half.

SFA took the lead early in the third and led 45-39 with a minute to play. But Auburn picked up the pressure and ended the quarter on a 6-0 run to tie it up 45-45 headed to the fourth. The Tigers moved back ahead 52-51 with 5:46 to play on an old-fashioned 3-point play by Scott-Grayson, but the Tigers would manage just one basket the rest of the way, missing their final eight shots of the game.

Game 7: Dec. 17, 2020
Auburn 94, North Florida 81
Auburn Arena
Auburn, Ala.

Game 8: Dec. 20, 2020
Belmont 78, Auburn 57
Auburn Arena
Auburn, Ala.

Game 9: Dec. 31, 2020
LSU 56, Auburn 43
Pete Maravich Assembly Center
Baton Rouge, La.

Official Basketball Box Score - Game Totals - Final Statistics
North Florida vs Auburn
12/17/20 6:00 pm at Auburn, AL

Table with columns: Player, FG, 3-PT, Rebounds, PF, TP, A TO Blk, Stl, Min. Rows include Jazael Bond, Erin Jones, Emma Broermann, Marissa Mackins, etc.

Summary statistics table for Auburn 94 vs North Florida 81, including FG %, 3-PT %, Rebounds, etc.

Table with columns: Player, FG, 3-PT, Rebounds, PF, TP, A TO Blk, Stl, Min. Rows include Jala Jordan, Unique Thompson, Annie Hughes, etc.

Summary statistics table for Auburn 94 vs North Florida 81, including FG %, 3-PT %, Rebounds, etc.

Officials: Kristen Bell, Bianca Burns, Felicia Grinter
Technical fouls: North Florida-None. Auburn-None.
Attendance: 449
2020-21 Women's Basketball. Round: 0. Auburn vs North Florida. Played at Auburn

Official Basketball Box Score - Game Totals - Final Statistics
Belmont vs Auburn
12/20/20 2:00 pm at Auburn, AL

Table with columns: Player, FG, 3-PT, Rebounds, PF, TP, A TO Blk, Stl, Min. Rows include Allison Luly, Conley Chinn, Tusti Jones, etc.

Summary statistics table for Belmont 78 vs Auburn 57, including FG %, 3-PT %, Rebounds, etc.

Table with columns: Player, FG, 3-PT, Rebounds, PF, TP, A TO Blk, Stl, Min. Rows include Jala Jordan, Unique Thompson, Annie Hughes, etc.

Summary statistics table for Belmont 78 vs Auburn 57, including FG %, 3-PT %, Rebounds, etc.

Officials: Carmen Portorreal, Marcus Clayton, Douglas Knight
Technical fouls: Belmont-None. Auburn-None.
Attendance: 515
2020-21 Women's Basketball. Round: 0. Auburn vs Belmont. Played at Auburn Arena

Official Basketball Box Score - Game Totals - Final Statistics
Auburn vs LSU
12/31/20 6:00 pm at Baton Rouge, LA

Table with columns: Player, FG, 3-PT, Rebounds, PF, TP, A TO Blk, Stl, Min. Rows include Romi Levy, Jala Jordan, Sania Wells, etc.

Summary statistics table for Auburn 43 vs LSU 56, including FG %, 3-PT %, Rebounds, etc.

Table with columns: Player, FG, 3-PT, Rebounds, PF, TP, A TO Blk, Stl, Min. Rows include Awa Trasi, Faustine Aifuwa, Khayla Pointer, etc.

Summary statistics table for Auburn 43 vs LSU 56, including FG %, 3-PT %, Rebounds, etc.

Officials: Saff Esho, Maggie Tieman, Billy Smith
Technical fouls: Auburn-None. LSU-None.
Attendance: 667
2020-21 Women's Basketball. Round: 0. Auburn vs LSU. Played at Maravich Assem

AUBURN-- Five Tigers scored in double-figures as Auburn topped the 90-point mark for the second time this season with a 94-81 win over North Florida Thursday night at Auburn Arena.

The Tigers (5-2) were able to bounce back from their offensive night Wednesday in their loss to SFA with their second-highest scoring total of the season, getting big nights from senior Unique Thompson and sophomore Annie Hughes to lead the way.

Thompson led Auburn with 19 points and 18 rebounds, her sixth straight double-double and the 48th of her career. Her 18 rebounds were the most in a home game in her Auburn career; she also contributed three assists and two steals. Hughes hit for a career-high 17 points and matched a career-high with seven rebounds, knocking down three 3-pointers for the second time in three games.

She also shared the team lead with three steals. Redshirt sophomore Honesty Scott-Grayson scored 16 points for the second straight night, matching her career high from Wednesday's game. She also had three steals. Freshman Romi Levy also had a career-high 12 points along with five rebounds, and Jala Jordan came up just short of her first career double-double with 11 points and eight rebounds.

Alaina Rice added nine points off the bench, her best at Auburn, and Kira Lowery led the Tigers with five assists and a career-best three steals. Auburn shot 42.5 percent for the game, hitting 34 of a season-high 80 shots. The Tigers also hit a season-best 11 3-pointers, three from Hughes and two each from Jordan, Levy, Rice and Sania Wells. It was also a much-improved night at the free-throw line as the Tigers hit 15-of-18 attempts (83.3%). Auburn out-rebounded UNF 48-34 and forced the Ospreys into 22 turnovers, leading to 26 points.

Auburn maintained its double-digit lead throughout the third as the Ospreys kept launching 3-pointers, but the Tigers increased their lead by one more point to 66-53 headed to the fourth. Taking advantage of tired legs on the part of Auburn, UNF cut the lead to as few as seven points, shooting 58 percent in the fourth. But Auburn got big buckets from Thompson, Levy and Rice down the stretch to hold off the Ospreys' comeback bid.

AUBURN-- Auburn senior Unique Thompson had 20 points, 23 rebounds and hit a major milestone with her 1,000th career rebound, but the Tigers could not overcome turnover troubles in a 78-57 loss to Belmont Sunday afternoon at Auburn Arena.

Thompson became the fifth player at Auburn to surpass the 1,000-rebound mark for her career with her 13th board of the day. With 23 rebounds in the contest, Thompson now sits fourth in career rebounds with 1,010, passing Vickie Orr (1,006).

But Auburn (5-3), playing its third game in five days, turned the ball over a season-high 27 times, leading to 31 points for Belmont (4-2). The Tigers also saw the Bruins hit 11 3-pointers and shoot 50 percent from long range.

Thompson's effort was her second 20-point, 20-rebound game of the season; Auburn had only had five such games in program history heading into the year. Her 23 rebounds tied her career-high, which also ranks as the third-most in a single game in Auburn history. It was also her seventh straight double-double and 49th of her career as she continues to lead the nation in that category.

Redshirt sophomore Honesty Scott-Grayson also had her third straight strong performance with a career-high 18 points along with four rebounds, four assists and a team-leading three steals. Sania Wells added eight points, and Annie Hughes had seven.

The Tigers out-rebounded Belmont 47-30, but the Bruins controlled nearly every other statistical category. Auburn shot 37 percent (22-60) from the field and just 3-of-17 (18%) from 3-point range. Auburn fell behind 26-14 after one quarter, thanks in large part to 10 turnovers in the first 10 minutes. The Tigers would get as close as eight points, but seemingly every time the Tigers would chip away, Belmont would answer with a big shot of its own. The Bruins led 45-28 at the half.

Conley Chinn led four Bruins in double figures with 21 points while Destinee Wells added 15. Jamilyn Kinney added 11 steals.

BATON ROUGE, La.-- Auburn got strong play from its freshmen in their first SEC road game, but second-half turnover troubles plagued Auburn in a 56-43 loss at LSU Thursday night.

Auburn (5-4, 0-1 SEC) led by eight at halftime and got a combined 20 points and 16 rebounds from freshmen Romi Levy and Aicha Coulibaly, but relentless pressure from LSU (3-4, 1-0) led to 24 turnovers that LSU converted into 22 points.

Coulibaly led Auburn with a career-high 12 points. Levy added eight points and a career-high 11 rebounds, along with 5 steals.

As a team, Auburn shot a season-low 28.3 percent from the field (17-60) and 3-of-18 (16.7%) from 3-point range. Auburn pulled down 39 rebounds to LSU's 43 and forced LSU into 19 turnovers.

The Auburn rookies contributed more than half of the team's first-half points as Auburn took a 27-19 lead at the break. Levy had six points and nine rebounds in the opening half while Coulibaly had 10 points, including her first career 3-pointer. Auburn also forced LSU into 12 first-half turnovers.

But in the second half, Auburn struggled to get the ball across half court with 13 turnovers leading to 17 LSU points. A seven-point lead quickly turned into a two-point deficit late in the third quarter as Auburn went nearly six minutes without a basket, and LSU continued to turn up the pressure in the fourth as Auburn again struggled to score.

Auburn was without the services of leading scorer and rebounder Unique Thompson, who missed the game for medical reasons.

Khayla Pointer led LSU with 14 points. Tiara Young and Jailin Cherry added eight apiece.

Game 13: Jan. 21, 2021
#12 Kentucky 76, Auburn 71
Auburn Arena
Auburn, Ala.

Official Basketball Box Score - Game Totals - Final Statistics
Kentucky vs Auburn
01/21/21 7:30 pm at Auburn, AL
Kentucky 76 • 11-3,4-2 SEC

Auburn 71 • 5-8,0-5 SEC
Player stats for Auburn: Romi Levy, Unique Thompson, Annie Hughes, H. Scott-Grayson, M. Robinson-Nwagwu, Alycia Reese, Samia Wells, Aicha Coulibaly, Jala Jordan, Alaina Rice.

Officials: Douglas Knight, Brian Garland, Angelica Sufferin
Technical fouls: Kentucky-None, Auburn-None.
Attendance: 578
2020-21 Women's Basketball. Round: 0. Auburn vs Kentucky. Played at Auburn Arena

Score by periods table for Kentucky vs Auburn game.

Last FG - UK 4th-02:43; AU 4th-00:21.
Largest lead - UK by 14 3rd-05:51; AU by 2 1st-06:02.
UK led for 36:29; AU led for 01:52. Game was tied for 01:39.

AUBURN-- Auburn battled the nation's 12th-ranked team for a full 40 minutes Thursday night, but a late rally fell just short in a 76-71 loss to No. 12 Kentucky at Auburn Arena.

The Tigers got 22 points from senior Unique Thompson - 13 of them in the fourth quarter - and never let the Wildcats out of their sights in Auburn's most complete effort so far in SEC play.

Auburn was nearly at full strength with 12 players dressed for Thursday's game, and the added depth was readily apparent as the Tigers' bench scored 27 points, their most since dropping 29 against North Florida on Dec. 17.

Thompson led all scorers with 22 points and picked up her ninth straight double-double with 10 rebounds as well. Jala Jordan had her best performance in SEC play with 11 points, and Honesty Scott-Grayson added 10 points and eight rebounds. Romi Levy contributed a career-high seven assists, the most by an Auburn player this year, along with five points and four rebounds.

Auburn shot 40 percent from the field (27-68) and hit five 3-pointers, in addition to going 12-of-16 at the free-throw line. The Tigers forced Kentucky into 15 turnovers, converting those into 16 points, and Auburn out-rebounded the Wildcats 41-38. Auburn scored 38 of its 71 points in the paint and turned 17 offensive rebounds into 12 second-chance points.

Kentucky, however, had the hot hand early, finishing at 47 percent for the game (28-59), including 10 3-pointers that proved to be the difference.

The teams traded leads throughout the first quarter with Kentucky going on an 11-3 run late that gave the Wildcats a 22-17 lead after 10 minutes. The lead grew to as many as 11, but Auburn cut it to eight at the half, holding UK to just one bucket in the final 2:30 of the half to make it 40-32 at the break.

Kentucky's lead grew as large as 14 in the third quarter, but Thompson took over in the fourth, willing Auburn back into the ballgame with a personal 5-0 run over a 30-second stretch to cut a 10-point deficit to 72-67 with just over a minute to play.

Game 14: Jan. 24, 2021
Alabama 67, Auburn 55
Coleman Coliseum
Tuscaloosa, Ala.

Official Basketball Box Score - Game Totals - Final Statistics
Alabama vs Auburn
01/24/21 1:00 pm at Tuscaloosa, AL
Alabama 67 • 5-9,0-6 SEC

Auburn 55 • 10-22, 11-27, 38-14, 76-20, 15-2-9, 200
Player stats for Auburn: Romi Levy, Unique Thompson, Annie Hughes, H. Scott-Grayson, M. Robinson-Nwagwu, Alycia Reese, Samia Wells, Aicha Coulibaly, Jala Jordan, Alaina Rice.

Officials: Pualani Spurlock-Welsh, Angelica Sufferin, Giss Cross
Technical fouls: Auburn-None, Alabama-None.
Attendance: 522
2020-21 Women's Basketball. Round: 0. Alabama vs Auburn. Played at Coleman Col

Score by periods table for Alabama vs Auburn game.

Last FG - AU 4th-00:04; BAMA 4th-00:02.
Largest lead - AU None, BAMA by 14 3rd-04:31.
AU led for 00:00; BAMA led for 39:55. Game was tied for 00:25.

TUSCALOOSA-- Auburn's Honesty Scott-Grayson scored 17 points, but Alabama started fast and pulled away late for a 67-55 women's basketball win Sunday afternoon at Coleman Coliseum.

The Tigers once again dug themselves an early hole, fought back to keep within striking distance, but could not finish off the comeback in the first of two meetings with the Crimson Tide this season.

Scott-Grayson's 17 points included a 7-for-8 day at the free throw line; she was the only Auburn player to attempt a free throw in the game. She also led the Tigers with four assists and matched a career-high with five steals. Unique Thompson picked up her 10th straight double-double and 52nd of her career with 10 points and 10 rebounds on the day. Alaina Rice matched a season-high with nine points, and Jala Jordan and Romi Levy added eight apiece.

Shots would not fall for the Tigers early as Auburn finished the day at 35 percent from the floor (22-62) and just 4-of-19 on 3-pointers (21%). Alabama, meanwhile, hit 26-of-56 from the floor (46%) and knocked down seven treys. Auburn out-rebounded Alabama 38-33 and turned 14 offensive rebounds into 12 second-chance points, and the Tigers got 20 points off their bench.

Alabama hit six of its first seven shots to jump out to an 11-0 lead, but the Tigers righted the ship and got within seven after one quarter, 21-14. It would get as close as a two-point game at 24-22 late in the second quarter before the Tide finished the period on 7-0 run to take a 31-22 lead at the break.

An 8-2 Auburn run to close the third quarter cut the Alabama lead to 45-38, and buckets from Jordan and Scott-Grayson got Auburn within four at 49-45. But moments later, a foul on a made layup at the other end, an offensive rebound and a corner 3-pointer from Jasmine Walker gave Alabama a five-point possession and a nine-point lead.

Game 15: Jan. 28, 2021
#8 Texas A-M 84, Auburn 69
Auburn Arena
Auburn, Ala.

Official Basketball Box Score - Game Totals - Final Statistics
Texas A&M vs Auburn
01/28/21 7:30 pm at Auburn, AL
Texas A&M 84 • 15-1,6-1 SEC

Auburn 69 • 5-10,0-7 SEC
Player stats for Auburn: Romi Levy, Unique Thompson, Keya Patton, Alaina Rice, H. Scott-Grayson, Alycia Reese, Samia Wells, Annie Hughes, Aicha Coulibaly, Jala Jordan, M. Robinson-Nwagwu.

Officials: Eric Koch, Carla Fountain, Roy Gulbeyan
Technical fouls: Texas A&M-None, Auburn-None.
Attendance: 578
2020-21 Women's Basketball. Round: 0. Auburn vs Texas A&M. Played at Auburn Ar

Score by periods table for Texas A&M vs Auburn game.

Last FG - TAMU 4th-00:15; AU 4th-01:14.
Largest lead - TAMU by 15 4th-05:43; AU by 1 1st-07:23.
TAMU led for 37:17; AU led for 01:52. Game was tied for 00:51.

AUBURN-- Auburn got 21 points from Honesty Scott-Grayson and 18 from Unique Thompson, but No. 8 Texas A&M shot lights-out in the second half as the Tigers fell 84-69 Thursday night at Auburn Arena.

The Tigers kept the Aggies in their sights through three-plus quarters and had one of their best shooting nights in SEC play, but A&M shot 69 percent in the second half and 83 percent in the fourth quarter to pull away in the closing minutes.

For the night, Auburn shot 41.3 percent (26-63) and hit 10 3-pointers, their best in SEC play. But Texas A&M hit for 51.7 percent (31-60), including 67 percent from the second quarter on. The Aggies also made the most of 18 trips to the free-throw line, knocking down 14; Auburn was 7-for-8.

Scott-Grayson topped the 20-point mark for the second time in SEC play; she had a career-high 23 at Ole Miss. She and Thompson shared the Auburn lead with three steals apiece. Thompson saw her streak of 10 straight double-doubles come to an end but led the Tigers with seven rebounds. She also made her first career 3-pointer late in the fourth quarter for Auburn's final points of the night.

Thompson moved into second place all-time at Auburn in rebounds, passing DeWanna Bonner with her fourth rebound of the night. She now has 1,051 career rebounds, 67 shy of the all-time Auburn record.

Sophomore Alaina Rice had a season-best 13 points and led the Tigers with five assists as she moved back into the starting lineup.

2020-21 Auburn Women's Basketball
Auburn Combined Team Statistics (as of Feb 23, 2021)
All games

RECORD:	OVERALL	HOME	AWAY	NEUTRAL
ALL GAMES	5-16	5-8	0-8	0-0
CONFERENCE	0-13	0-6	0-7	0-0
NON-CONFERENCE	5-3	5-2	0-1	0-0

##	Player	gp-gs	min	avg	Total		3-Point		F-Throw		Rebounds				a	to	blk	stl	pts	avg			
					fg-fga	fg%	3fg-fga	3fg%	ft-fa	ft%	off	def	tot	avg							pf	dq	
20	Unique Thompson	18-18	569	31.6	127-250	.508	1-1	1.000	69-91	.758	103	132	235	13.1	47	1	21	44	7	45	324	18.0	
23	H. Scott-Grayson	21-21	590	28.1	114-274	.416	22-68	.324	60-79	.759	18	68	86	4.1	50	0	36	39	2	44	310	14.8	
14	Jala Jordan	15-7	249	16.6	39-113	.345	15-53	.283	15-22	.682	17	31	48	3.2	35	1	11	23	11	7	108	7.2	
01	Keya Patton	16-8	360	22.5	34-104	.327	9-38	.237	19-24	.792	9	18	27	1.7	21	0	11	17	1	13	96	6.0	
11	Romi Levy	21-14	461	22.0	48-129	.372	15-56	.268	4-12	.333	22	63	85	4.0	39	0	31	30	9	31	115	5.5	
05	Aicha Coulibaly	20-4	363	18.2	39-109	.358	3-23	.130	20-32	.625	20	43	63	3.2	31	0	17	20	9	14	101	5.1	
22	Alaina Rice	19-9	366	19.3	27-97	.278	9-31	.290	20-26	.769	19	20	39	2.1	26	0	36	43	1	14	83	4.4	
03	Annie Hughes	21-10	339	16.1	26-70	.371	8-30	.267	7-12	.583	17	25	42	2.0	19	0	12	15	2	18	67	3.2	
02	Sania Wells	20-1	272	13.6	17-82	.207	9-35	.257	14-22	.636	6	10	16	0.8	27	0	14	18	1	9	57	2.9	
13	Kira Lowery	19-9	304	16.0	18-37	.486	1-5	.200	17-23	.739	3	17	20	1.1	13	0	30	37	2	15	54	2.8	
00	Alycia Reese	13-1	149	11.5	10-30	.333	7-23	.304	6-6	1.000	4	6	10	0.8	10	0	5	6	0	4	33	2.5	
30	M. Robinson-Nwagwu	14-3	151	10.8	8-30	.267	1-10	.100	8-9	.889	2	13	15	1.1	7	0	20	27	1	12	25	1.8	
04	Riley Donahue	3-0	2	0.7	1-1	1.000	1-1	1.000	0-0	.000	0	0	0	0.0	1	0	0	1	0	0	3	1.0	
24	Carsen McFadden	6-0	21	3.5	1-3	.333	0-0	.000	1-2	.500	2	1	3	0.5	0	0	4	1	0	1	3	0.5	
10	Kiyae' White	1-0	4	4.0	0-2	.000	0-0	.000	0-0	.000	1	2	3	3.0	1	0	0	0	0	0	0	0.0	
Team											50	47	97										
Total.....		21	4200		509-1331	.382	101-374	.270	260-360	.722	293	496	789	37.6	327	2	248	328	46	227	1379	65.7	
Opponents.....		21	4200		554-1240	.447	168-463	.363	228-315	.724	229	577	806	38.4	351	-	341	382	60	180	1504	71.6	

TEAM STATISTICS	AU	OPP	Date	Opponent	Score	Att.
SCORING	1379	1504	11/25/20	USC UPSTATE	w 82-41	588
Points per game	65.7	71.6	11/28/20	SAMFORD	w 66-64	540
Scoring margin	-6.0	-	12/01/20	GARDNER-WEBB	w 97-61	487
FIELD GOALS-ATT	509-1331	554-1240	12/05/20	at Houston	L 61-71	509
Field goal pct	.382	.447	12/13/20	SOUTH ALABAMA	w 74-66	520
3 POINT FG-ATT	101-374	168-463	12/16/20	SFA	L 54-67	445
3-point FG pct	.270	.363	12/17/20	NORTH FLORIDA	w 94-81	449
3-pt FG made per game	4.8	8.0	12/20/20	BELMONT	L 57-78	515
FREE THROWS-ATT	260-360	228-315	* 12/31/20	at LSU	L 43-56	687
Free throw pct	.722	.724	* 01/03/21	GEORGIA	L 44-76	657
F-Throws made per game	12.4	10.9	* 01/07/21	at Ole Miss	L 58-62	851
REBOUNDS	789	806	* 01/17/21	at Florida	L 54-68	702
Rebounds per game	37.6	38.4	* 01/21/21	KENTUCKY	L 71-76	578
Rebounding margin	-0.8	-	* 01/24/21	at Alabama	L 55-67	922
ASSISTS	248	341	* 01/28/21	TEXAS A&M	L 69-84	578
Assists per game	11.8	16.2	* 01/31/21	at Arkansas	L 67-77	2133
TURNOVERS	328	382	* 02/04/21	SOUTH CAROLINA	L 58-77	608
Turnovers per game	15.6	18.2	* 02/07/21	MISSOURI	L 75-85	539
Turnover margin	+2.6	-	* 02/11/21	at Georgia	L 54-74	835
Assist/turnover ratio	0.8	0.9	* 02/14/21	ALABAMA	L 78-92	841
STEALS	227	180	* 02/23/21	at Mississippi St.	L 68-81	1000
Steals per game	10.8	8.6				
BLOCKS	46	60	* - Conference game			
Blocks per game	2.2	2.9				
ATTENDANCE	7345	7639				
Home games-Avg/Game	13-565	8-955				
Neutral site-Avg/Game	-	0-0				

Score by Periods	1st	2nd	3rd	4th	Totals
Auburn	302	328	366	383	1379
Opponents	366	340	409	389	1504

2020-21 Auburn Women's Basketball
Auburn Combined Team Statistics (as of Feb 23, 2021)
Conference games only

RECORD:	OVERALL	HOME	AWAY	NEUTRAL
ALL GAMES	0-13	0-6	0-7	0-0
CONFERENCE	0-13	0-6	0-7	0-0
NON-CONFERENCE	0-0	0-0	0-0	0-0

##	Player	gp-gs	min	avg	Total		3-Point		F-Throw		Rebounds				pf	dq	a	to	blk	stl	pts	avg			
					fg-fga	fg%	3fg-fga	3fg%	ft-fa	ft%	off	def	tot	avg											
20	Unique Thompson	10-10	337	33.7	71-152	.467	1-1	1.000	31-42	.738	52	61	113	11.3	27	0	13	23	5	20	174	17.4			
23	H. Scott-Grayson	13-13	392	30.2	82-186	.441	18-48	.375	44-52	.846	12	51	63	4.8	33	0	22	22	2	26	226	17.4			
01	Keya Patton	9-8	237	26.3	22-67	.328	5-24	.208	12-14	.857	5	12	17	1.9	14	0	6	9	1	8	61	6.8			
05	Aicha Coulibaly	13-0	260	20.0	28-75	.373	3-15	.200	16-21	.762	11	26	37	2.8	22	0	11	14	6	12	75	5.8			
22	Alaina Rice	12-9	276	23.0	23-75	.307	7-23	.304	12-16	.750	13	17	30	2.5	19	0	27	30	1	11	65	5.4			
11	Romi Levy	13-13	315	24.2	30-89	.337	9-39	.231	1-4	.250	13	47	60	4.6	27	0	22	18	4	18	70	5.4			
14	Jala Jordan	7-3	100	14.3	14-48	.292	6-23	.261	1-5	.200	3	10	13	1.9	15	0	4	9	3	1	35	5.0			
30	M. Robinson-Nwagwu	9-3	104	11.6	4-19	.211	1-6	.167	8-9	.889	2	5	7	0.8	4	0	12	20	1	5	17	1.9			
13	Kira Lowery	11-1	136	12.4	7-13	.538	0-2	.000	5-9	.556	1	8	9	0.8	6	0	13	16	0	5	19	1.7			
00	Alycia Reese	10-1	120	12.0	5-22	.227	5-19	.263	2-2	1.000	4	4	8	0.8	9	0	4	4	0	3	17	1.7			
02	Sania Wells	12-1	152	12.7	6-41	.146	2-14	.143	5-8	.625	4	9	13	1.1	19	0	6	11	1	7	19	1.6			
03	Annie Hughes	13-3	164	12.6	6-24	.250	1-10	.100	3-5	.600	4	12	16	1.2	6	0	7	8	1	8	16	1.2			
24	Carsen McFadden	2-0	7	3.5	0-0	.000	0-0	.000	0-0	.000	1	0	1	0.5	0	0	0	1	0	0	0	0.0			
Team											32	27	59												6
Total.....		13	2600		298-811	.367	58-224	.259	140-187	.749	157	289	446	34.3	201	0	147	191	25	124	794	61.1			
Opponents.....		13	2600		364-774	.470	99-256	.387	148-203	.729	149	380	529	40.7	190	-	227	212	48	95	975	75.0			

TEAM STATISTICS	AU	OPP	Date	Opponent	Score	Att.
SCORING	794	975	* 12/31/20	at LSU	L 43-56	687
Points per game	61.1	75.0	* 01/03/21	GEORGIA	L 44-76	657
Scoring margin	-13.9	-	* 01/07/21	at Ole Miss	L 58-62	851
FIELD GOALS-ATT	298-811	364-774	* 01/17/21	at Florida	L 54-68	702
Field goal pct	.367	.470	* 01/21/21	KENTUCKY	L 71-76	578
3 POINT FG-ATT	58-224	99-256	* 01/24/21	at Alabama	L 55-67	922
3-point FG pct	.259	.387	* 01/28/21	TEXAS A&M	L 69-84	578
3-pt FG made per game	4.5	7.6	* 01/31/21	at Arkansas	L 67-77	2133
FREE THROWS-ATT	140-187	148-203	* 02/04/21	SOUTH CAROLINA	L 58-77	608
Free throw pct	.749	.729	* 02/07/21	MISSOURI	L 75-85	539
F-Throws made per game	10.8	11.4	* 02/11/21	at Georgia	L 54-74	835
REBOUNDS	446	529	* 02/14/21	ALABAMA	L 78-92	841
Rebounds per game	34.3	40.7	* 02/23/21	at Mississippi St.	L 68-81	1000
Rebounding margin	-6.4	-	* - Conference game			
ASSISTS	147	227				
Assists per game	11.3	17.5				
TURNOVERS	191	212				
Turnovers per game	14.7	16.3				
Turnover margin	+1.6	-				
Assist/turnover ratio	0.8	1.1				
STEALS	124	95				
Steals per game	9.5	7.3				
BLOCKS	25	48				
Blocks per game	1.9	3.7				
ATTENDANCE	3801	7130				
Home games-Avg/Game	6-634	7-1019				
Neutral site-Avg/Game	-	0-0				

Score by Periods	1st	2nd	3rd	4th	Totals
Auburn	157	202	202	233	794
Opponents	246	225	262	242	975



Alycia Reese
Junior • G • 5-9
Columbus, Ga.
Chattahoochee Valley CC



Keya Patton
Junior • G • 5-6
Indianapolis, Ind.
Wabash Valley CC



Sania Wells
Sophomore • G • 5-7
Moss Point, Miss.
East Central HS



Annie Hughes
Sophomore • G • 5-9
Dutton, Ala.
Pisgah HS



Riley Donahue
Freshman • G • 5-10
Atlanta, Ga.
Marist School



Aicha Coulibaly
Freshman • G/F • 6-0
Mali
IMG Academy (Fla.)



Kiyae' White
RS Junior • F • 6-2
Macungie, Pa.
Emmaus HS



Romi Levy
Freshman • F • 6-2
Herzliya, Israel
Hof Hasharon HS



Kira Lowery
Junior • G • 5-6
Memphis, Tenn.
Dyersburg State CC



Jala Jordan
RS Sophomore • F • 6-2
Philadelphia, Pa.
West Virginia



Unique Thompson
Senior • F • 6-3
Theodore, Ala.
Faith Academy



Alaina Rice
Sophomore • G • 5-8
Rockledge, Fla.
Florida A&M



Honesty Scott-Grayson
RS Sophomore • G • 5-9
Brick, N.J.
Baylor



Carsen McFadden
Freshman • G • 5-7
Lucas, Texas
Lovejoy HS



Morgan Robinson-Nwagwu
Sophomore • G • 5-8
Norcross, Ga.
Norcross HS



Terri Williams-Flournoy
Head Coach
Penn State (1991)
Ninth Season



Clarisse Garcia
Assistant Coach
Villanova (2007)
Fourth Season



La'Keshia Frett Meredith
Assistant Coach
Georgia (1997)
Second Season