



# 2021 VOLLEYBALL MATCH NOTES

AUBURN ATHLETICS COMMUNICATIONS: 392 SOUTH DONAHUE DRIVE || AUBURN, AL 36830 || AUBURNTIGERS.COM || @AUBURNVB

## 2021 SCHEDULE/RESULTS

13-10 OVERALL | 5-8 SEC

11-4 HOME | 1-5 AWAY | 0-0 NEUTRAL

DATE	OPONENT	TV	TIME/RESULT
Aug. 27	^ TENNESSEE TECH	SEC Network+	W, 3-0
Aug. 28	^ JACKSON STATE	SEC Network+	W, 3-0
Sept. 2	% CAL STATE FULLERTON		W, 3-0
Sept. 3	% SOUTHEASTERN LOUISIANA		W, 3-0
Sept. 9	NORTH ALABAMA	SEC Network+	W, 3-0
Sept. 12	SANTA CLARA		W, 3-2
Sept. 17	! FLORIDA A&M		L, 2-3
Sept. 17	! NICHOLLS	SEC Network+	W, 3-1
Sept. 18	! BELMONT	SEC Network+	W, 3-0
Sept. 22	* (RV) OLE MISS	ESPNU	L, 1-3
Sept. 26	at Alabama State		L, 2-3
Sept. 29	* at #20 Tennessee	SEC Network	L, 0-3
Oct. 2	* ALABAMA	SEC Network+	W, 3-2
Oct. 3	* ALABAMA	ESPNU	W, 3-0
Oct. 9	* at Arkansas	SEC Network+	L, 1-3
Oct. 10	* at Arkansas	SEC Network+	L, 2-3
Oct. 16	* MISSOURI	SEC Network+	W, 3-0
Oct. 17	* MISSOURI	SEC Network+	L, 2-3
Oct. 21	* at Georgia	SEC Network+	W, 3-0
Oct. 22	* at Georgia	SEC Network+	L, 0-3
Oct. 29	* (RV) LSU	SEC Network+	L, 0-3
Nov. 4	* at Texas A&M	SEC Network+	L, 2-3
Nov. 5	* at Texas A&M	SEC Network+	W, 3-2
Nov. 10	* (RV) SOUTH CAROLINA	SEC Network	8 p.m. CT
Nov. 17	* at Florida	SEC Network+	6 p.m. CT
Nov. 20	* KENTUCKY	SEC Network+	4:30 p.m. CT
Nov. 21	* KENTUCKY	SEC Network+	1 p.m. CT
Nov. 26	* at Mississippi State	SEC Network+	4 p.m. CT

BOLD indicates home contest | All time Central and subject to change  
^ - War Eagle Invitational | % - SLU-Fullerton Tournament | % - Home Tournament | \* - Southeastern Conference Game

## AUBURN ATHLETICS COMMUNICATIONS

Office Phone \_\_\_\_\_ 334-844-9800  
 Kirk Sampson \_\_\_\_\_ Associate AD  
 \_\_\_\_\_ sampska@auburn.edu  
 Taylor Shirey \_\_\_\_\_ Volleyball Contact  
 \_\_\_\_\_ trs0010@auburn.edu  
 \_\_\_\_\_ C: 334-750-0710

## FOLLOW ALONG

Web \_\_\_\_\_ AuburnTigers.com  
 Twitter \_\_\_\_\_ @AuburnVB  
 Instagram \_\_\_\_\_ @auburnvolleyball

## MATCH

# 24

## SOUTH CAROLINA

Wednesday, Nov. 10 | 8 p.m. CT

Auburn, Ala. | Auburn Arena | SEC Network



AUBURN

SOUTH CAROLINA

AVCA Coaches Poll \_\_\_\_\_ N/R  
 2021 Record \_\_\_\_\_ 13-10 | 5-8 SEC  
 Head Coach \_\_\_\_\_ Brent Crouch  
 Career Record (Year) \_\_\_\_\_ 108-109 (8th)  
 Record at Auburn (Year) \_\_\_\_\_ 13-18 (2nd)

AVCA Coaches Poll \_\_\_\_\_ RV  
 2021 Record \_\_\_\_\_ 13-11 | 5-9 SEC  
 Head Coach \_\_\_\_\_ Tom Mendoza  
 Career Record (Year) \_\_\_\_\_ 112-61 (6th)  
 Record at South Carolina (Year) \_\_\_\_\_ 65-43 (4th)

Site \_\_\_\_\_ Auburn, Ala.  
 Venue \_\_\_\_\_ Auburn Arena  
 Live Stats \_\_\_\_\_ Sidearm Stats  
 Twitter \_\_\_\_\_ @AuburnVB

Series Record \_\_\_\_\_ South Carolina leads 28-19  
 Last Meeting \_\_\_\_\_ Oct. 29, 2020 at Columbia, S.C.  
 \_\_\_\_\_ Auburn 1, South Carolina 3 (22-25, 25-21, 20-25, 23-25)

## BY THE NUMBERS

**27** With five matches remaining in the regular season, Rebekah Rath is just 27 kills shy of breaking Jessica Glover's single-season record of 410. The record has stood since 2008.

**13** With 13 wins under its belt, Auburn has recorded the most victories in a season since the 2017 squad closed the year with a 15-12 overall record.

**1** The Tigers are coming off a historic program victory as Auburn knocked off Texas A&M for the first time in College Station. The victory also snapped a nine-match losing skid to the Aggies.

## QUICK HITS

- With the final home midweek match on deck, Auburn welcomes South Carolina in a nationally televised showdown. The Tigers are searching for their first victory over the Gamecocks since 2017 and their first home victory in the series since 2016.
- Defense has been the name of the game for the Tigers this season. Auburn enters Wednesday's match ranked second in the SEC in digs per set (16.52) and blocks (2.63). Auburn has held opponents to a .149 hitting percentage - the lowest in the league and the 11th lowest in the country.
- After totaling over 40 kills in Auburn's two-match series at Texas A&M, junior Rebekah Rath continues her stranglehold as the top offensive player in the SEC as she currently leads the league in six offensive categories, including: attacks per set, kills per set, points, points per set, total attacks and total kills.
- The block party continues to roll as the season winds down as senior Tatum Shiples enters Wednesday's match with the single-season record for blocks per set at 1.48. Senior Elif Yavuz is also racking up the blocks as she ranks sixth in school history with a 0.91 blocks per set average this season.

## AUBURN'S POTENTIAL STARTING SEVEN



**BELLA ROSENTHAL**

#6 • DS/L • SR. • 5-5



**REBEKAH RATH**

#7 • OH • JR. • 6-0



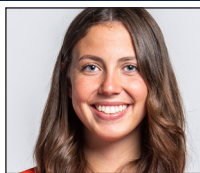
**LIZ REICH**

#8 • OPP • GR. • 6-1



**FALLAN LANHAM**

#4 • DS • FR. • 5-8



**JACKIE BARRETT**

#10 • S • SO. • 6-1



**ELIF SU YAVUZ**

#19 • MB • SR. • 6-3



**TATUM SHIPLES**

#21 • MB • SR. • 6-4

K/S:	4.93	K/S:	4.36	K/S:	2.78	K/S:	0.06	K/S:	0.53	K/S:	0.76	K/S:	1.13
A/S:	1.24	HIT%:	.200	HIT%:	.275	A/S:	0.13	A/S:	8.42	HIT%:	.373	HIT%:	.230
SA/S:	0.13	D/S:	2.01	A/S:	0.03	SA/S:	0.06	SA/S:	0.26	B/S:	0.91	D/S:	0.49
P/S:	0.14	B/S:	0.82	D/S:	0.57	D/S:	1.97	D/S:	3.19	D/S:	0.38	B/S:	1.48
		SA/S:	0.28	B/S:	0.56	P/S:	0.12	B/S:	0.67	P/S:	1.31	SA/S:	0.05
		P/S:	5.13	P/S:	3.06			P/S:	1.14			P/S:	2.04

K/S: kills per set • HIT%: hitting percentage • D/S: digs per set • B/S: blocks per set • A/S: assists per set • SA/S: aces per set • P/S: points per set

#WarEagle



AuburnTigers.com



@AuburnVB | @AuburnTigers  
@AuburnVBCoach



/AuburnVB  
/AuburnTigers

**TEAM SCHEDULE AND MEDIA AVAILABILITY >> WEEK OF NOVEMBER 8-14**

MONDAY November 8	TUESDAY November 9	WEDNESDAY November 10	THURSDAY November 11	FRIDAY November 12	SATURDAY November 13	SUNDAY November 7
<b>PRACTICE:</b> 3:30-6:30 p.m.	SAC	<b>PRACTICE:</b> 3:30-6:30 p.m.	SAC	<b>MATCH:</b> 8:00 p.m. vs. South Carolina Auburn Arena	<b>OFF DAY</b>	<b>PRACTICE:</b> 3:30-6:30 p.m.
SAC						
INTERVIEWS BY REQUEST	INTERVIEWS BY REQUEST	INTERVIEWS POSTMATCH	NO INTERVIEWS	INTERVIEWS BY REQUEST	INTERVIEWS BY REQUEST	INTERVIEWS BY REQUEST

**AUBURN ATHLETICS COMMUNICATIONS**

**QUICK FACTS**

**AUBURNTIGERS.COM**

For updated game notes, statistics, safety protocols and latest information on Auburn volleyball and Auburn Athletics, visit AuburnTigers.com.

**INTERVIEW POLICY**

Coch Crouch, assistant coaches and student-athletes are available for interviews by contacting Taylor Shirey in the communications office. All interviews during the week will be conducted via phone or ZOOM. Post-match interviews will be conducted in the media room at Auburn Arena following a brief cooling-off period.

**CREDENTIALS**

Anyone wishing to cover an Auburn volleyball match should contact Taylor Shirey in the communications office at least 24 hours in advance to make arrangements. Due to COVID-19 safety guidelines, space within Auburn Arena will be limited. All media members will be required to wear masks inside Auburn Arena as part of Auburn University's mask mandate.

**MATCH DAY SERVICES**

Due to safety concerns related to COVID-19, printed copies of notes, flip cards and statistics will NOT be available. Digital copies will be emailed out prior to the match and will be available on AuburnTigers.com. Media members are permitted to bring their own printed materials. Stats will not printed between sets or after matches. Live stats will be provided during the match and final statistics will be emailed out and posted on AuburnTigers.com. All post-match interviews will be conducted

via ZOOM. Wireless internet is available in the Arena; ask Taylor Shirey for the password. Match highlights, photos and postgame interviews will be available on Imagen following matches.

**VIDEO SERVICES**

FTP feeds of selected Auburn volleyball highlights are available for the media. A number of studio and satellite services may be arranged for electronic media by contacting Cody Baker in War Eagle Productions at jcb0101@auburn.edu.

**PHOTO SERVICES**

For photos of Auburn volleyball or any Olympic sports, contact Shanna Lockwood at sal0002@auburn.edu.

**COMMUNICATIONS STAFF**

Taylor Shirey                      Volleyball Contact  
cell: 334-750-07010  
email: trs0010@auburn.edu

Kirk Sampson                      Associate AD  
cell: 334-750-1385  
email: sampska@auburn.edu

**UNIVERSITY INFORMATION**

City / Zip \_\_\_\_\_ Auburn, Ala. / 36831  
 Founded \_\_\_\_\_ Oct. 1, 1856  
 Enrollment \_\_\_\_\_ 30,737  
 Nickname \_\_\_\_\_ Tigers  
 Colors \_\_\_\_\_ Navy Blue & Burnt Orange  
 Affiliation \_\_\_\_\_ NCAA Division I  
 Conference \_\_\_\_\_ Southeastern Conference  
 Home Court \_\_\_\_\_ Auburn Arena (9,121)  
 President \_\_\_\_\_ Dr. Jay Gogue (Auburn, 1969)  
 Athletic Director \_\_\_\_\_ Allen Green (Notre Dame, 1998)  
 Sport Administrator \_\_\_\_\_ Joy Vrbka (Florida, 2003)

**TEAM INFORMATION**

Letterwinners Returning/Lost \_\_\_\_\_ 7/8  
 Starters Returning/Lost \_\_\_\_\_ 5/3+Libero  
 Newcomers \_\_\_\_\_ 6  
 2020 Overall Record \_\_\_\_\_ 0-8  
 2020 Conference Record/Finish \_\_\_\_\_ 0-8/13th

**PROGRAM HISTORY**

First Year of Volleyball \_\_\_\_\_ 1967  
 \_\_\_\_\_ Program discontinued 1981; Reinstated 1986  
 Seasons of Auburn Volleyball \_\_\_\_\_ 49th  
 All-Time Overall Record \_\_\_\_\_ 668-685-4 (.494)  
     in Auburn Arena (Since 2013) \_\_\_\_\_ 60-53 (.531)  
     Total Home Record \_\_\_\_\_ 232-206 (.530)  
 All-Time SEC Record \_\_\_\_\_ 188-355 (.346)  
 NCAA Tournament Appearances \_\_\_\_\_ 1/2010  
 SEC Championships/Last \_\_\_\_\_ 1/Co-West Champions (1996)

**STAFF INFORMATION**

Head Coach \_ Brent Crouch, 1st Season (Texas A&M , '98 & '00; Oregon '06)  
 Career Record \_\_\_\_\_ 108-109 (.498)/8th Season  
 Record at Auburn \_\_\_\_\_ 13-18 (.419)/2nd Season  
 Associate Head Coach/Recruiting Coordinator \_\_\_\_\_ Alex Dunphy  
 Assistant Coach \_\_\_\_\_ Rick Moller  
 Volunteer Assistant Coach \_\_\_\_\_ Taylor Hammond  
 Director of Volleyball Operations/Technical Coordinator \_\_\_\_\_ Madi Wilkerson  
 Strength & Conditioning \_\_\_\_\_ Bethany Gainey  
 Interim Athletic Trainer \_\_\_\_\_ Sydney Kinder  
 Equipment Manager \_\_\_\_\_ Tra' Cee Tanner

**ATHLETIC COMMUNICATIONS**

Associate AD/Communications \_\_\_\_\_ Kirk Sampson  
 Assistant Director/Volleyball Contact \_\_\_\_\_ Taylor Shirey  
 Email \_\_\_\_\_ trs0010@auburn.edu  
 Phone \_\_\_\_\_ 334-750-0710  
 Mailing Address \_\_\_\_\_ Auburn Athletics Complex  
     \_\_\_\_\_ 392 S. Donahue Drive  
 Website \_\_\_\_\_ AuburnTigers.com

**GAMEDAY EXPERIENCE: AUBURN ARENA**

>> Auburn Arena is in its seventh season as home of Auburn volleyball. The Tigers are 60-53 since moving to the Arena in 2013. The facility seats approximately 2,000 fans for volleyball and 9,121 for basketball.



**FIRST SERVE**

» Riding high off the momentum of the program's first victory over Texas A&M in College Station, Auburn looks to continue to flip the script as the Tigers (13-10, 5-7 SEC) look to snap a five-match losing skid to South Carolina (13-11, 5-9 SEC) on Wednesday night. The match is Auburn's final home midweek contest of the regular season.

» Wednesday's match is the finale nationally televised broadcast of the regular season as the match up against the Gamecocks will air on the SEC Network. First serve is scheduled for 8 p.m. CT. Eric Frede and Jennifer Hoffman will have the call Wednesday night. Fans can also hear the match locally on WEGT 91.1.

» In its 49th full season of volleyball, Auburn's all-time record stands at 668-685-4 (.494).

» Brent Crouch (13-18) enters his second season as the head coach for the Tigers after a two-year stint at USC. Entering his eighth overall season as a head coach, Crouch holds an 108-109 career record. He's the 11th head coach in Auburn program history.

» Auburn's 2021 schedule features four 2020-21 NCAA Volleyball Tournament participants: Jackson State, Missouri, Florida and reigning national champion Kentucky.

» The Tiger roster features a wealth of fresh faces as six of Auburn's 12 total student-athletes on roster will be taking the court in Blue and Orange for the first time in their careers with a combination of four true freshmen and two transfers.

**UP NEXT**

» The Tigers hit the road for a top-25 test as Auburn treks to No. 22 Florida on Wednesday, Nov. 17. First serve on the SEC Network is slated for 6 p.m. CT.

**LAST TIME OUT**

» After the Tigers (13-10, 5-8 SEC) took the opening two sets, Texas A&M (12-10, 5-7 SEC) responded to force a decisive fifth set that saw Auburn volleyball come from behind (25-15, 25-22, 19-25, 20-25, 15-12) to knock off the Aggies Friday night at Reed Arena for a historic program victory.

» The victory was the program's first win over the Aggies in College Station and snapped a 10-match losing skid to Texas A&M. It was just Auburn second victory in the series history and the first since 2013.

» Auburn's offense turned in one of its most balanced performances as four Tigers closed the night with double-digit kills. Rebekah Rath topped the offense with 19 kills for her 19th double-digit kill performance of her junior season.

» The performance jumped Rath to second in Auburn single-season history in the rally scoring era as she has recorded 384 kills this season, the most by any Tiger since 2012.

» Rath chipped in 13 digs for her seventh double-

double. She was also credited with a block and one assist. Rath was lethal at the service line, recording five of Auburn's 11 service aces in the match. She is the first Tiger to record at least five aces in a single match since Breanna McIlroy at Missouri on Oct. 19, 2018.

» Senior Val Green totaled 10 kills in the match for her 10th double-digit kill output in 2021. Green added one block and seven digs. Graduate student Liz Reich was solid across the board with 10 kills, two blocks and six digs.

» Rounding out the offense was Elif Yavuz. The senior recorded a career high 10 kills and was errorless in her 17 attempts for a .588 hitting percentage. Yavuz added an ace, five digs and led the Tigers with four blocks.

» Sophomore setter Jackie Barrett dished out 43 assists in the victory while adding 16 digs for her team-leading 15th double-double. Barrett added one kill, two blocks and contributed to Auburn's phenomenal serving performance with three, tying her career high.

» Senior Tatum Shipes was credited with three blocks in the match with one solo stuff and two assists. She is now just three block assists shy of setting the program's single-season record for the rally-scoring era. Shipes added a pair of kills and five digs.

» Defensively, all nine Tigers that saw the court recorded at least five digs in the match with five finishing with at least 10. Joining Rath and Barret in double figures were freshmen Kate Curtis and Fallan Lanham as the recorded 13 and 15, respectively.

» Senior Bella Rosenthal paced the offense with 17 total digs. With 434, Rosenthal is now tied for seventh in Auburn single-season history for total digs with Alyssa Ivey (2014).

**SEC REVAMPS CONFERENCE SCHEDULING FORMAT FOR 2021 CAMPAIGN**

» The Southeastern Conference announced a new scheduling format for its conference slate ahead of the 2021 campaign.

» The SEC schedule consists of 18 matches in which each member institution will play each other at least once. The order of opponents for each team was determined by a random computer draw.

» Two-match series may be played Wednesday/Thursday, Thursday/Friday, Friday/Saturday or Saturday/Sunday per the league office.

**SCOUTING SOUTH CAROLINA**

» After delivering No. 7 Kentucky its first loss in SEC play with a two-match split with the Wildcats, South Carolina enters Wednesday's match with a 13-11 overall record and a 5-9 mark in SEC play. The Gamecocks are receiving votes in the latest AVCA Coaches Poll after the victory. South Carolina boasts the 25th toughest schedule in the country and have picked up victories over then ranked No. 18 Washington State and No. 23 Rice earlier this season. In league action, the Gamecocks have

**SEC STANDINGS & SCHEDULE**

	2021 SEC RECORD			2021 OVERALL		
	W	L	Pct.	W	L	Pct.
Kentucky	9	0	1.000	16	3	.842
Mississippi State	8	2	.800	17	5	.773
Florida	8	2	.800	14	6	.700
Tennessee	8	3	.727	16	5	.762
Arkansas	6	4	.600	15	6	.714
Ole Miss	6	5	.545	17	5	.773
LSU	6	7	.462	10	12	.455
Texas A&M	4	6	.400	11	9	.550
<b>AUBURN</b>	<b>4</b>	<b>7</b>	<b>.364</b>	<b>12</b>	<b>9</b>	<b>.571</b>
Georgia	4	7	.364	8	14	.364
South Carolina	4	8	.333	12	10	.545
Alabama	2	9	.182	10	13	.435
Missouri	1	10	.091	4	20	.167

**THIS WEEK IN THE SEC...**

**Wednesday, Nov. 10**

Georgia at Kentucky 5 p.m.  
**SOUTH CAROLINA AT AUBURN 8 P.M.**

**Thursday, Nov. 11**

LSU at Ole Miss 6 p.m.

**Friday, Nov. 12**

LSU at Ole Miss 6 p.m.  
 Florida at Arkansas 7 p.m.

**Saturday, Nov. 13**

Missouri at Georgia 1 p.m.  
 Tennessee at Mississippi State 1 p.m.  
 Texas A&M at Kentucky 3 p.m.  
 Florida at Arkansas 5 p.m.

**Sunday, Nov. 14**

Missouri at Georgia 11 a.m.  
 Texas A&M at Kentucky 1 p.m.  
 Tennessee at Mississippi State 1 p.m.

**2021 NCAA RPI REPORT**

RK	TEAM	RECORD	AU RESULT
7	Kentucky	17-4	
12	Tennessee	17-6	L
23	Florida	15-6	
32	Mississippi State	20-5	
36	Arkansas	17-6	L   L
37	South Carolina	13-11	
39	Ole Miss	17-6	L
40	Texas A&M	12-10	L   W
68	LSU	10-12	L
75	Georgia	8-14	W   L
<b>148</b>	<b>AUBURN</b>	<b>13-10</b>	-----
150	Tennessee Tech	14-13	W
152	Alabama	10-16	W   W
181	Missouri	4-22	W   L
195	Santa Clara	9-14	W
218	Cal State Fullerton	9-12	W
199	Florida A&M	20-6	L
242	Nicholls	9-15	W
243	Belmont	9-17	W
253	Jackson State	13-12	W
266	Alabama State	15-14	L
286	Southeastern Louisiana	8-17	W
318	North Alabama	9-18	W

AUBURN OPPONENTS ONLY

**PLAYER TO WATCH: REBEKAH RATH**

» The SEC leader in six offensive categories, including kills and points per set, Rebekah Rath remains on pace to set the program's single-season kills record as she needs 27 kills over the final five matches of the regular season.





AVCA COACHES POLL

RK	TEAM	RECORD	PREVIOUS
1.	Louisville (59)	23-0	2
2.	Texas (5)	18-1	1
3.	Pittsburgh	22-2	3
4.	Wisconsin	20-2	4
5.	BYU	23-1	6
6.	Baylor	14-5	10
<b>7.</b>	<b>Kentucky</b>	<b>17-4</b>	<b>5</b>
8.	Minnesota	16-6	11
9.	Purdue	18-5	8
10.	Ohio State	19-5	7
11.	Nebraska	17-6	9
12.	UCLA	19-3	13
13.	Washington	18-4	12
14.	Georgia Tech	21-3	14
15.	Penn State	17-7	15
16.	Utah	16-7	16
17.	Oregon	18-6	17
18.	Western Kentucky	24-1	18
19.	San Diego	18-4	20
20.	Stanford	13-9	19
21.	Washington State	15-8	21
<b>22.</b>	<b>Florida</b>	<b>15-6</b>	<b>23</b>
23.	Creighton	24-3	24
<b>24.</b>	<b>Tennessee</b>	<b>17-6</b>	<b>22</b>
25.	Illinois	16-9	25

Others receiving votes: Pepperdine; Miami (FL); Marquette; Florida State; Arizona State; Michigan; Rice; **Mississippi State; South Carolina.**

INSIDE THE MATCH-UP

**SOUTH CAROLINA 19-28 (.404)**

8-12 H • 10-14 A • 0-1 N

SERIES HISTORY

YEAR	SITE	RESULT	MATCH SCORE
2015	AWAY	W	3-0
2015	HOME	W	3-1
2016	HOME	W	3-0
2017	HOME	L	1-3
2017	AWAY	W	3-1
2018	AWAY	L	1-3
2019	AWAY	L	0-3
2019	HOME	L	0-3
2020	AWAY	L	0-3
2020	AWAY	L	1-3

added victories over Georgia, Missouri and Alabama.

» As an offense, South Carolina is ranked middle of the pack in almost every offensive category. The Gamecocks rank fifth in the league with a .253 hitting percentage and in total kills (1,123). South Carolina's 12.76 kills per set mark ranks ninth in the SEC. Graduate student and outside hitter Kyla Manning leads the team with a 3.40 kills per set average, which ranks 12th in the SEC. Manning has totaled 296 kills the season and the leads the team with 341.5 points to rank ninth in the league with a 3.93 points per set average. Sophomore outside hitter Riley Whitesides is second on the squad in kills with 208 total and averages 2.39 per set. Mikayla Robinson ranks fifth in the league with a blistering .358 hitting percentage this season.

» South Carolina utilizes a pair of setters to run its offense. Graduate student Mallory Dixon has started 19 of the 22 matches she has appeared this season. She has dished out 423 assists to average 5.42 per set. Freshman Clair Wilson has appeared in 24 matches and has started four for South Carolina. She leads the team with 473 assists for a 5.38 per set average. Wilson is the more offensive threat of the two as she has totaled 40 kills this season. Dixon has taken 25 swings with 16 landing for kills. She holds a .600 hitting percentage.

» Tough at the service line, five Gamecocks have recorded double-digit aces this season. Freshman outside hitter Lauren McCutcheon leads the charge at the line with 26 to average 0.30 per set. Manning has totaled 20 aces this season.

» Defense has been the weakness for South Carolina as they rank last in the league with an 11.84 digs per set mark. The Gamecocks do have five student-athletes with at least 100 digs this season and are led by freshman libero Morgan Carter. Carter has racked up 261 kills this season to average 3.35 per set. McCutcheon has totaled 192 digs this season to rank second on the squad.

» At the net, the Gamecocks are sixth in the league with 199.0 total blocks this season while their 2.26 blocks per set average is good for eighth in the conference. Sophomore middle blocker Ellie Ruprich leads the team with 92.0 blocks, ranking 10th in the league with a 1.06 per set average. Robinson stands 16th with a 0.95 average, totaling 74 total blocks this season.

**A WIN OVER SOUTH CAROLINA...**

» Would snap Auburn's first in the series since 2018, snapping a five-match losing skid.

» Would be Auburn's first home win in the series since 2016.

**AUBURN-SOUTH CAROLINA SERIES**

» South Carolina leads the all time series 28-19 and have held the edge of late winning six of the last 10 meetings with a five-match win streak. The Gamecocks also hold a 12-8 advantage in matches played on the Plains.

**PLAYER TO WATCH: TATUM SHIPES**

» Making the move to middle blocker has been an easy transition to Tatum Shipes. Shipes enters the weekend leading the SEC in total blocks and blocks per set. She has shattered Auburn's single-season total blocks record with 126 this season.

» Auburn's last victory in the series came on the road in 2017 as the Tigers knocked off South Carolina, 3-1. Auburn's last home victory came via a sweep in 2016.

**REICH BECOMES THE REICH-ER**

» Turning in her best performance in league action to date in Auburn's two-match series at Georgia, opposite hitter Liz Reich was selected as Southeastern Conference Offensive Player of the Week

» The recognition is the first for Reich this season. Her recognition marks the first time in program history Auburn has had multiple student-athletes named SEC Offensive Player of the Week as junior Rebekah Rath has won the award twice earlier this season. Auburn has now won the award a program-record three times in 2021.

» The Colorado Springs, Colo., native totaled 11 kills on 27 attempts in the series opener at Athens. Committing just three errors in the match, Reich recorded a .296 hitting percentage. She added six blocks to tie her season high.

» In the series finale, Reich powered the offense with 12 kills on 22 attempts, attacking at a blistering .409 clip. She set a season high for kills in a conference match with her performance. Defensively, she recorded one dig and a pair of blocks.

» Reich led the Tiger offense with 23 total kills over the two-match series, while attacking at a .347 clip. The graduate student averaged 3.83 kills per set and 4.50 points per set to pace the Tigers.

**OH SHIPES! IT'S A BLOCK PARTY**

» As the season progresses, Auburn's play at the net continues to improve as highlighted by a record-breaking performance against Alabama. As a team, the Tigers totaled 18.0 team blocks in Auburn's 3-2 victory against the Crimson Tide on Oct. 2. The mark tied the program's record for blocks in a match. The Tigers also totaled 18.0 team blocks against South Florida on Sept. 13, 2014.

» Auburn enters the weekend ranked second in the Southeastern Conference and 18th nationally with a 2.63 blocks per set average. The mark is currently the third highest team average recorded in a single-season. Play at the net combined with Auburn's digging performance has helped the Tigers hold opponents to a minuscule .149 hitting percentage, the 11th lowest mark in the country.

» An SEC Defensive Player of the Week selection this season, Tatum Shipes recorded 12.0 total blocks in the five-set match against the Tide to help Auburn to its first SEC home victory since 2018. The mark set the program's single-match record for blocks in the rally scoring era. The previous record of 11.0 was set on Nov. 23, 2017 by Breanna Barksdale at Florida.

» Her record-setting performance continue against LSU (10/29) as Shipes chipped in three blocks to bring her season total to 120, breaking the program's single-season record for the rally-scoring era. The previous mark of 119 was set by Camila Jersonsky in 2012.





» Shipes continues to lead Auburn with her impressive play at the net since moving to middle blocker. Shipes leads the SEC in both total blocks (120) and blocks per set (1.48), while ranking seventh and third respectively, in both categories nationally. With two single-season records to her credit, Shipes has her sights on two more blocking records.

**BLOCKS - SOLO**

	PLAYER	YEAR	BLOCKS
1.	Katherine Culwell	2012	25
2.	Tatum Shipes	2021	20

**BLOCKS - ASSISTS**

	PLAYER	YEAR	BLOCKS
1.	Camila Jersonsky	2012	108
2.	Tatum Shipes	2021	106

**TOTAL BLOCKS**

	PLAYER	YEAR	BLOCKS
1.	Tatum Shipes	2021	126
2.	Camila Jersonsky	2012	119

**BLOCKS PER SET (MIN. 50 BLOCKS)**

	PLAYER	YEAR	BLOCKS
1.	Tatum Shipes	2021	1.48
2.	Anna Stevenson	2018	1.15
3.	Camila Jersonsky	2012	1.09

**THE CROUCH EFFECT**

» After COVID-19 derailed the process last season, Brent Crouch's overhaul of the program took into effect since the season opener and has continued into the early portion of Southeastern Conference play.

» The Tigers opened the season with 17 consecutive set victories before dropping its first set of the season. Auburn tied the program record for most sweeps to begin a season with five. The record was first set by the 1974 squad.

» Auburn's 6-0 start is the best for the Tigers since the 2012 team began the season 8-0. Auburn has recorded 10 victories through its first 14 matches of the season. It is the most wins by the Tigers since the 2018 team closed the year with 12.

» Sweeping Alabama to earn the program's first SEC victories of the season, the Tigers have now won back-to-back SEC games for the first time since knocking off Georgia and Mississippi State in November of 2018.

Auburn has now won three straight matches against Alabama. It is the longest win streak against the Crimson Tide since the Tigers won six straight from 2009 to 2012.

» Auburn opened its two-match series against Missouri with a sweep, picking up the program's first victory in the series since 1996. It also mark the first time in program history that Auburn had defeated Missouri since Missouri joined the SEC.

» The Tigers continue their impressive run by edging out Texas A&M, 3-2, to snap a nine-match losing skid to the Aggies. The match was Auburn's first victory over in the Aggies in College Station in program history.

» With five matches still remaining during the regular season, Auburn has racked up the most conference victories in a season since 2018 while the team's 13 overall victories are the most since 2017. The Tigers have also seen dramatic improvement on the defensive side of the court.

**DEFENSE**

- Auburn's digs per set average of 16.52 currently ranks sixth in single-season history and is the highest team average since 2012.
- The Tigers have totaled 381 block assists this season, the 10th most in a single season and the most by any squad since 2006.
- Auburn currently holds the third high team blocks per set average for a single season at 2.63.

**CAN YOU DIG IT?**

» Behind a career performance at the Auburn Invitational, Bella Rosenthal was selected as the SEC's Defensive Player of the Week for the second consecutive week. She is the first Tiger in program history to win the award in back-to-back weeks. She is also the first Tiger to win the award multiple times in a season since Camila Jersonsky in 2012.

» Rosenthal has paced the Tigers this season, recording at least 10 digs in 21 of Auburn's 23 matches to being the season. She has chipped in at least 20 digs in 10 matches for the Tigers while totaling at least 30 digs three time.

» She set a then career high with 31 digs. She is the first Tiger to record at least 30 digs in a match since Payton White versus Butler on Aug. 31, 2019.

» Behind her match-leading 30 digs in the series opener at Arkansas (10/9), she became just the 15th Tiger in program history to record 1,000 career digs.

**HEAD COACH BRENT CROUCH**

**QUICK FACTS**

College \_\_\_ Texas A&M ('98, '00)  
 \_\_\_ Oregon ('06)  
 Wife \_\_\_ Marcy  
 Sons \_\_\_ Jonathan and William

**COACHING RECORD**

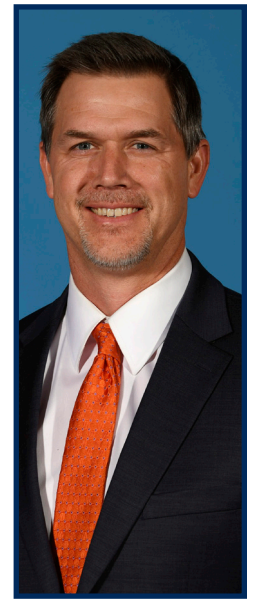
Head Coaching Career \_\_\_ 8th Season  
 Career Record \_\_\_ 108-109  
 NCAA Appearances \_\_\_ 2

**COACHING CAPSULE**

2020-Pt. Auburn 13-18  
 2018-19 Southern California 40-25  
 2014-17 Portland 55-66

**YEAR-BY-YEAR RESULTS**

2021	Auburn	13-10
2020	Auburn	0-8
2019	USC	18-14
2018	USC	22-11
2017	Portland	15-15
2016	Portland	17-13
2015	Portland	16-15
2014	Portland	7-23



Brent Crouch enters his second season as the head coach of the Auburn volleyball team after guiding the program through the challenges of the COVID-19 pandemic during his first season on The Plains.

Crouch made his Auburn coaching debut against No. 4 Florida on Oct. 21, 2020, to open the shortened fall volleyball schedule. Crouch led the Tigers on the court for eight total matches.

The fall season was highlighted by Auburn setting the program record for blocks in a four-set match as the Tigers recorded 17 at South Carolina on Oct. 29, 2020. The previous mark of 14 was set on Nov. 9, 2014 against Tennessee. The total tied for the second-most blocks in a match in Auburn program history as was the most by the Tigers since 2009.

Due to injuries and opt-out, the Tigers were unable to compete in the spring portion of the amended 2020-21 schedule.

Crouch previously served as the head coach at the University of Southern California. In two seasons at USC, Crouch led the program to consecutive NCAA second round appearances, including a second-place finish in the Pac-12, and a No. 21 ranking in the season's final AVCA poll in his first season on campus in 2018. This past season, the Trojans were 18-14, while outside hitter Kholia Lanier became the fifth player in Pac-12 history to record 2,000 kills and 1,000 digs in career.

Under Crouch in 2018, the Trojans finished 22-11 overall with a 13-7 record in Pac-12 matches. USC played one of the toughest schedules in the nation and faced 18 ranked opponents in the regular season and were awarded the No. 11 overall seed in the NCAA Tournament. Setter Raquel Lázaro was named the Pac-12 Freshman of the Year and outside hitter Brooke Borikin was chosen for second-team AVCA All-America honors. Lázaro and Lanier were each tabbed for All-America honorable mention.

Under Crouch's tutelage, outside hitter Emilia Weske was tabbed to the Pac-12's All-Freshman Team while middle blocker Jasmine Gross added All-Pac 12 honors.

Prior to arriving at Troy, Crouch was the 2016 West Coast Conference Coach of the Year. He inherited a winless Portland program and within two seasons guided the Pilots to their winningest season in 25 years. Crouch first took over at Portland in 2014 after the Pilots went 0-27 the previous season. After going 7-23 in his debut season, he guided the Pilots to a 16-15 mark in 2015 (its most victories since 1991) and then improved upon that in 2016 with a 17-13 mark. His 2017 team, which was hampered by injuries, was 15-15, with five losses coming in five-set matches. His overall four-year record at Portland was 55-66.

The 48 victories in his final three years was Portland's best three-season total since 1984-86. The Pilots' 10-8 third place WCC finish in 2016 was its most league wins since 1985 and highest conference finish since 1989. He led Portland to the program's first-ever victories over Top 10, Top 15, and Top 25 opponents. Crouch coached three All-WCC first team players and a WCC All-Freshman team pick, along with three WCC All-Academic first teamers. He also helped establish beach volleyball as a varsity sport at Portland in 2016.

Crouch arrived at Portland after four seasons (2010-13) at Saint Mary's College, where he was an assistant with the indoor program and head coach of the beach team.

During his time at SMC, the Goels' indoor team went 73-40 overall, finished in the top three in the WCC standings each season by winning 73.4 percent of its league matches (47-17) and earned a berth into the NCAA Tournament in 2012, advancing to the second round. Besides being involved in the team's offense and defense, recruiting, scouting, practice planning, statistical and video analysis and scheduling, he provided academic support, as he mentored several WCC All-Academic honorees and helped the team to the athletic department's highest grade point average, an NCAA Public Recognition Award, and an AVCA academic award.

Crouch also coached the inaugural Saint Mary's beach team in 2013, guiding the Goels to an 8-2 record, the best mark among all Northern California teams, as well as a No. 9 national ranking and a bid to the AVCA national championship for the program's top pairs team.

**2020-21 AUBURN VOLLEYBALL ROSTER**

No.	Name	Year	Pos.	Ht.	Hometown (High School/Previous School)
4	Fallan Lanham	Fr.	DS/L	5-8	Louisville, Ky. (Mercy Academy)
5	Audrey Douglas	So.	OH/OPP	6-4	Winter Park, Fla. (Hagerty)
6	Bella Rosenthal	Sr.	DS/L	5-5	Yorktown, Ind. (Yorktown)
7	Rebekah Rath	Jr.	OH	6-0	Altamonte Springs, Fla. (Oviedo/Maryland)
8	Liz Reich	Gr.	OPP	6-1	Colorado Springs, Colo. (Lewis-Palmer/Portland)
10	Jackie Barrett	So.	S	6-1	Highland, Calif. (Citrus Valley)
11	Jordan Sinness	Fr.	S	5-9	Sebring, Fla. (Sebring)
15	Kate Curtis	Fr.	DS/L	5-6	Anderson, S.C. (T.L. Hanna)
16	Val Green	Sr.	OH	6-2	Oxford, Ohio (Talawanda)
17	Cassidy Tanton	Fr.	OH	6-0	Stoneville, N.C. (Dalton McMichael)
19	Elif Su Yavuz	Sr.	MB	6-3	Ankara, Turkey (Gazi University)
21	Tatum Shipes	Sr.	OH	6-4	Buford, Ga. (Buford)

**HEAD COACH | BRENT CROUCH (SECOND SEASON)**

**ASSOCIATE HEAD COACH/RECRUITING COORDINATOR | ALEX DUNPHY (SECOND SEASON)**

**ASSISTANT COACH | RICK MOLLER (SECOND AS ASSISTANT COACH/THIRD SEASON OVERALL)**

**DIRECTOR OF VOLLEYBALL OPERATIONS/TECHNICAL COORDINATOR | MADI WILKERSON (SECOND SEASON)**

**PRONUNCIATION GUIDE:**

FALLAN LANHAM (FOUL-an LAN-UM)

JORDAN SINNESS (SIN-es)

ELIF SU YAVUZ (e-LEAF SUE Yah-vous)

LIZ REICH (RICH)

CASSIDY TANTON (TAN-tun)

TATUM SHIPES (SHY-PS)

Crouch also has coaching experience with the USA Volleyball program, including working with U.S. Women's National Team head coach Karch Kiraly, being an assistant with the U.S. Collegiate National Team that captured a gold medal at the 2016 U22 Global Challenge and serving as both an indoor and beach coach in the USA Volleyball High Performance program.

Crouch played for Texas A&M's club team from 1993 to 1997. He earned his bachelor's degree in history in 1998 and his master's in philosophy in 2000, both from Texas A&M, then a doctorate in philosophy from Oregon in 2006.

He competed on the beach from 2005 to 2007 in AVP and CBVA events and placed second at the 2005 California Cup state championship.

He has held various teaching positions in philosophy at Oregon, San Diego City College, and Saint Mary's College since 2000.

Crouch and his wife Marcy have two sons, Jonathan and William.

INSIDE THE NUMBERS



CATEGORY	AUBURN	SOUTH CAROLINA
Kills	1047	1123
Per Set	11.9	12.8
Errors	377	405
Total Attacks	3150	2836
Hitting Pct.	.213	.253
Assists	939	1029
Per Set	10.7	11.7
Service Aces	95	112
Per Set	1.1	1.3
Service Errors	159	198
Reception Errors	111	106
Per Set	1.3	1.2
Digs	1454	1042
Per Set	16.5	11.8
Solo Blocks	41	61
Block Assists	381	276
Total Blocks	231.5	199.0
Per Set	2.6	2.3

2021 AUBURN INDIVIDUAL MATCH HIGHS (BY SET)

THREE SETS

HITTING PERCENTAGE (MIN. 12 KILLS) \_\_\_\_\_ .500, Liz Reich vs. Jackson State (August 28, 2021)  
 KILLS \_\_\_\_\_ 17, Rebekah Rath vs. Missouri (October 16, 2021)  
 TOTAL ATTEMPTS \_\_\_\_\_ 50, Rebekah Rath vs. LSU (October 29, 2021)  
 ASSISTS \_\_\_\_\_ 34, Jackie Barrett vs. Alabama (October 3, 2021)  
 DIGS \_\_\_\_\_ 25, Bella Rosenthal vs. North Alabama (September 9, 2021)  
 ACES \_\_\_\_\_ 3, Elif Yavuz at Georgia (October 21, 2021)  
 BLOCKS \_\_\_\_\_ 8 (3x), last Tatum Shipes at Georgia (October 21, 2021)

FOUR SETS

HITTING PERCENTAGE (MIN. 12 KILLS) \_\_\_\_\_ .288, Rebekah Rath vs. Ole Miss (September 22, 2021)  
 KILLS \_\_\_\_\_ 29, Rebekah Rath at Arkansas (October 9, 2021)  
 TOTAL ATTEMPTS \_\_\_\_\_ 75, Rebekah Rath at Arkansas (October 9, 2021)  
 ASSISTS \_\_\_\_\_ 40, Jackie Barrett vs. Nicholls (September 17, 2021)  
 DIGS \_\_\_\_\_ 31, Bella Rosenthal vs. Nicholls (September 17, 2021)  
 ACES \_\_\_\_\_ 3, Jackie Barrett vs. Nicholls (September 17, 2021)  
 BLOCKS \_\_\_\_\_ 10.0, Tatum Shipes at Arkansas (October 9, 2021)

FIVE SETS

HITTING PERCENTAGE (MIN. 12 KILLS) \_\_\_\_\_ .378, Liz Reich vs. Florida A&M (September 17, 2021)  
 KILLS \_\_\_\_\_ 24 (2x), last, Rebekah Rath at Alabama State (September 26, 2021)  
 TOTAL ATTEMPTS \_\_\_\_\_ 84, Rebekah Rath at Texas A&M (November 4, 2021)  
 ASSISTS \_\_\_\_\_ 48, Jackie Barrett vs. Florida A&M (September 17, 2021)  
 DIGS \_\_\_\_\_ 33, Bella Rosenthal vs. Missouri (October 16, 2021)  
 ACES \_\_\_\_\_ 5, Rebekah Rath at Texas A&M (November 5, 2021)  
 BLOCKS \_\_\_\_\_ 12, Tatum Shipes vs. Alabama State (October 2, 2021)

2021 AUBURN TEAM MATCH HIGHS (BY SET)

THREE SETS

HITTING PERCENTAGE \_\_\_\_\_ .457, vs. Jackson State (August 28, 2021)  
 KILLS \_\_\_\_\_ 42 (3x), last at Georgia (October 21, 2021)  
 TOTAL ATTEMPTS \_\_\_\_\_ 122, vs. Cal State Fullerton (September 2, 2021)  
 ASSISTS \_\_\_\_\_ 39, at Georgia (October 21, 2021)  
 DIGS \_\_\_\_\_ 66, vs. Alabama (October 3, 2021)  
 ACES \_\_\_\_\_ 6 (4x), last at Georgia (October 21, 2021)  
 BLOCKS \_\_\_\_\_ 14.0, vs. Jackson State (August 28, 2021)

FOUR SETS

HITTING PERCENTAGE \_\_\_\_\_ .196, vs. Ole Miss (September 22, 2021)  
 KILLS \_\_\_\_\_ 51, vs. Nicholls (September 17, 2021)  
 TOTAL ATTEMPTS \_\_\_\_\_ 175, vs. Nicholls (September 17, 2021)  
 ASSISTS \_\_\_\_\_ 47, vs. Ole Miss (September 22, 2021)  
 DIGS \_\_\_\_\_ 105, vs. Nicholls (September 17, 2021)  
 ACES \_\_\_\_\_ 4 (2x), vs. Ole Miss (September 22, 2021)  
 BLOCKS \_\_\_\_\_ 14.0, at Arkansas (October 9, 2021)

FIVE SETS

HITTING PERCENTAGE \_\_\_\_\_ .260, vs. Santa Clara (September 12, 2021)  
 KILLS \_\_\_\_\_ 69, vs. Florida A&M (September 17, 2021)  
 TOTAL ATTEMPTS \_\_\_\_\_ 188, vs. Florida A&M (September 17, 2021)  
 ASSISTS \_\_\_\_\_ 63, vs. Florida A&M (September 17, 2021)  
 DIGS \_\_\_\_\_ 97, at Texas A&M (November 5, 2021)  
 ACES \_\_\_\_\_ 11, at Texas A&M (November 5, 2021)  
 BLOCKS \_\_\_\_\_ 18.0, vs. Alabama (October 2, 2021)

Rosenthal is the first Tiger to hit the mark since Brenna McIlroy in 2018.

» Rosenthal would shatter that mark with a 33-dig performance in the series finale against Missouri (10/17), a career high for the senior. The mark is the sixth most ever recorded by a Tiger in a single match.

» She currently leads the SEC with a 4.93 digs/set average and in total digs with 434. She is on pace to turn in one of the best dig performances in school history as she already in the top seven in both total digs and digs per set with five matches remaining in the regular season.

#### DIGS

	PLAYER	YEAR	DIGS
1.	Jesse Earl	2016	612
2.	Jesse Earl	2017	529
3.	Jesse Earl	2015	516
4.	Sarah Wroblecky	2013	481
5.	Liz Crouch	2010	469
6.	Liz Crouch	2009	453
7.	Alyssa Ivey	2014	434
	<b>Bella Rosenthal</b>	<b>2021</b>	<b>434</b>

#### DIGS PER SET (MIN. 100 DIGS)

	PLAYER	YEAR	AVG.
1.	Jesse Earl	2017	5.19
2.	Jesse Earl	2016	4.98
3.	<b>Bella Rosenthal</b>	<b>2021</b>	<b>4.93</b>

» With 1,150 career digs to her credit, Rosenthal currently ranks 112nd among all active Division I student-athletes in career digs. She has already added her name to Auburn's career record book in both dig categories with her senior-year performance.

#### DIGS

	PLAYER	YEARS	DIGS
1.	Liz Crouch	2007-10	1,703
2.	Jesse Earl	2015-17	1,657
3.	Gretchen Thompson	1986-89	1,495
4.	Alexa Filley	2014-17	1,315
5.	Allyson Beecroft	1993-96	1,249
6.	Sarah Wroblecky	2010-13	1,238
7.	Sarah Bullock	2009-12	1,210
8.	Rachel Shanks	2004-07	1,185
9.	<b>Bella Rosenthal</b>	<b>2018-Pr.</b>	<b>1,150</b>

#### DIGS PER SET (MIN. 500 DIGS)

	PLAYER	YEARS	AVG.
1.	Jesse Earl	2015-17	4.79
2.	Liz Crouch	2007-10	4.00
3.	Sarah Wroblecky	2010-13	3.65
4.	<b>Bella Rosenthal</b>	<b>2018-Pr.</b>	<b>3.61</b>
5.	Gretchen Thompson	1986-89	3.26

#### FEEL THE RATH

» Behind one of the program's best offensive performances in almost two decades, junior outside hitter Rebekah Rath was selected as Southeastern Conference Co-Offensive Player of the Week, sharing the honor with LSU's Kylie Deberg.

» The recognition was the second for Rath this season. Rath is the first Tiger in program history to be named SEC Offensive Player of the Week twice in the same season. The SEC began distributing the award in 2004.

» In an epic performance in game one against Arkansas (10/9), Rath was virtually unstoppable on offense with 29 total kills. Rath attacked on a .240 hit percentage, committing just 11 errors in her 75 swings.

» Rath's 29 kills were the second most recorded by a Tiger during the rally-scoring era. Her 29 kills were the most totaled in a single match by a Tiger since Ashlee Johns' single-match record of 30, which was totaled in a five-set contest at Arkansas on Oct. 8, 2004. Her 29 kills are the most recorded in a four-set match by any SEC student-athlete this season.

» Rath currently leads the SEC in attacks per set (13.34), kills per set (4.36), points (451.0), points per set (5.12), total attacks (1,174) and total kills (384), while ranking in the top 30 nationally in all six categories.

» The junior as recorded at least 10 kills in 19 of Auburn's 23 matches. In Auburn's five-set thriller versus Santa Clara, Rath led the team with 24 kills to become the first Tiger to record at least 20 kills in a match since Tatum Shipes in 2018. Rath also chipped in 24 kills in Auburn's five-set contest at Alabama State on Sept. 26 before shattering the mark at Arkansas.

» Rath's was named SEC Offensive Player of the Week on Sept. 7. The Altamonte Springs, Fla., native is the first Auburn Tiger to be named SEC Offensive Player of the Week since Brenna McIlroy won the award on Oct. 30, 2017.

» Her efforts have also won her all-tournament team honors at both the War Eagle Invitational and the Auburn Invitational.

» Rath's 4.36 kills per set average is currently the highest by a Tiger in single-season

history (rally scoring era). She added a second single-season record in the series finale at Texas A&M (11/5), breaking the record for attacks. Zeroing in on Auburn's single-season kill performances in the rally-scoring era, Rath need 27 kills over the remaining five matches of the season to break the record.

#### KILLS

	PLAYER	YEAR	KILLS
1.	Jessica Glover	2008	410
2.	<b>Rebekah Rath</b>	<b>2021</b>	<b>384</b>

#### KILLS PER SET (MIN. 100 KILLS)

	PLAYER	YEAR	AVG.
1.	<b>Rebekah Rath</b>	<b>2021</b>	<b>4.36</b>
2.	Sarah Bullock	2012	3.50
3.	Jessica Glover	2008	3.45

#### ATTACKS

	PLAYER	YEAR	ATTACKS
1.	<b>Rebekah Rath</b>	<b>2021</b>	<b>1,174</b>
2.	Brenna McIlroy	2016	1,113

#### AUBURN PICKED 13th IN PRESEASON POLL

» Auburn was selected to finish 13th in the Southeastern Conference in the annual preseason coaches' poll. The Tigers earned 12 points from the league's coaches.

» Reigning national champion Kentucky (139 pts) edged out Florida (138 pts) by one point as the favorite to win the SEC Championship. Kentucky secured seven first-place votes. Florida finished with six.

» LSU was tabbed to finished third, while Tennessee and Arkansas rounded out the top five.

#### TIGER TRACKS

» Air Green! Val Green set Takawanda High School's high jump record. She's also a second generation collegiate volleyball athlete. Her mother, Paula, played at Miami-Ohio.

» Tatum Shipes holds a wealth of athletic talent in her family's history. Her mother, Laurel, played basketball at Kentucky. Her father lettered in basketball at The Master's University. Her brother, T.J., was a member of Georgia State's basketball team. Her grandfather, Don Hudgens, and great grandparents, Ira and Opal, all played collegiate basketball.

» Jackie Barrett is the daughter of Martin J. Barrett, a former football star at the University of Buffalo. Martin was a two-time AP All-American and set 14 career UB records as a quarterback. He was inducted into Buffalo's Hall of Fame in 1989.

» Full Circle Moment: Liz Reich was originally recruited to Portland and competed her freshman season under Brent Crouch.

» Audrey Douglas is fluent in American Sign Language.

» Jordan Sinness is not the first member of her family to play collegiate sports in the state of Alabama. Her older sister, Jade, plays softball at Troy University.

» Associate head coach Alex Dunphy is the daughter of Volleyball Hall of Famer and American Volleyball Coaches Association Hall of Famer, Marv Dunphy. Dunphy has led Pepperdine to five NCAA Men's Division I Championships. Marv was an assistant coach for Team USA Women's Volleyball at the 2020 Tokyo Olympics, helping the squad to a gold medal.



**THE LAST TIME AUBURN...**

**Won in three sets** \_\_\_\_\_ Oct. 21, 2021 at Georgia (25-21, 25-19, 25-20)  
**Won in four sets** \_\_\_\_\_ Sept. 17, 2021 vs. Nicholls (25-8, 25-15, 26-28, 25-15)  
**Won in five sets** \_\_\_\_\_ Nov. 5, 2021 at Texas A&M (25-15, 25-22, 19-25, 20-25, 15-12)  
**Lost in three sets** \_\_\_\_\_ Oct. 29, 2021 vs. LSU (16-25, 23-25, 17-25)  
**Lost in four sets** \_\_\_\_\_ Oct. 9, 2021 at Arkansas (27-25, 18-25, 23-25, 22-25)  
**Lost in five sets** \_\_\_\_\_ Nov. 4, 2021 at Texas A&M (29-27, 17-25, 25-20, 14-25, 12-15)  
 Lost first set in a win \_\_\_\_\_ Sept. 8, 2019 vs. George Washington (21-25, 25-13, 25-22, 25-13)  
**Won first set in a loss** \_\_\_\_\_ Nov. 4, 2021 at Texas A&M (29-27, 17-25, 25-20, 14-25, 12-15)  
 Lost first two sets in a win \_\_\_\_\_ Sept. 11, 2018 at Kennesaw State (23-25, 20-25, 28-26, 26-24, 15-9)  
**Won first two sets in a loss** \_\_\_\_\_ Oct. 10, 2021 at Arkansas (25-20, 25-23, 15-25, 17-25, 7-15)  
 Beat a ranked opponent \_\_\_\_\_ Sept. 2, 2017 vs. #16 North Carolina (25-23, 25-22, 25-27, 25-21)  
**Hit .300-.399 in a match** \_\_\_\_\_ Sept. 18, 2021 vs. Belmont (.345)  
**Hit .400-.499 in a match** \_\_\_\_\_ Aug. 28, 2021 vs. Jackson State (.457)  
 Hit .500 or better in a match \_\_\_\_\_ Oct. 18, 1998 at Ole Miss (.514)  
**Held opponent to .000-.100 in a match** \_\_\_\_\_ Oct. 16, 2021 vs. Missouri (.097)  
**Held opponent to a negative hitting percentage** \_\_\_\_\_ Sept. 18, 2014 vs. Belmont (-.093)  
 Had 70-79 kills in a match \_\_\_\_\_ Oct. 26, 2018 vs. Ole Miss (77)  
 Had 80+ kills in a match \_\_\_\_\_ Sept. 17, 2006 at Georgia (84)  
**Had 80-99 digs in a match** \_\_\_\_\_ Nov. 5, 2021 at Texas A&M (97)  
**Had 100+ digs in a match** \_\_\_\_\_ Sept. 17, 2021 vs. Nicholls (105)  
**Had 15+ blocks in a match** \_\_\_\_\_ Oct. 10, 2021 at Arkansas (17.0)  
**Had 10+ service aces in a match** \_\_\_\_\_ Nov. 5, 2021 at Texas A&M (11)  
**Had a player(s) with 20-24 kills in a match** \_\_\_\_\_ Nov. 4, 2021, Rebekah Rath at Texas A&M (22)  
**Had a player(s) with 25-29 kills in a match** \_\_\_\_\_ Oct. 9, 2021, Rebekah Rath at Arkansas (29)  
 Had a player(s) with 30+ kills in a match \_\_\_\_\_ Oct. 8, 2004, Ashlee Johns vs. Arkansas (30)  
**Had a player(s) with 10+ blocks in a match** \_\_\_\_\_ Oct. 9, 2021, Tatum Shipes at Arkansas (10.0)  
**Had a player(s) with 25-29 digs in a match** \_\_\_\_\_ Oct. 3, 2021, Bella Rosenthal vs. Alabama (21)  
**Had a player(s) with 30+ digs in a match** \_\_\_\_\_ Oct. 17, 2021, Bella Rosenthal vs. Missouri(33)  
 Had a player(s) with 50+ assists in a match \_\_\_\_\_ Aug. 31, 2019, Marissa Hines (50)  
 Had a player(s) with 60+ assists in a match \_\_\_\_\_ Oct. 28, 2018, Mica Allison vs. Ole Miss (61)  
**Had a player(s) with 5+ aces in a match** \_\_\_\_\_ Nov. 5, 2021, Rebekah Rath at Texas A&M (5)

**AUBURN DOUBLE-DOUBLES IN 2021**

PLAYER	OPPONENT (SETS)	DATE	STATS
Jackie Barrett (15)	vs. Tennessee Tech (3)	August 27	25 assists, 12 digs
	vs. Santa Clara (5)	September 12	44 assists, 11 digs
	vs. Florida A&M (5)	September 17	48 assists, 15 digs
	vs. Nicholls (4)	September 17	40 assists, 28 digs
	vs. Belmont (3)	September 18	24 assists, 19 digs
	vs. Ole Miss (4)	September 22	34 assists, 12 digs
	at #20 Tennessee (3)	September 29	18 assists, 12 digs
	vs. Alabama (5)	October 2	43 assists, 14 digs
	vs. Alabama (3)	October 3	34 assists, 11 digs
	at Arkansas (4)	October 9	36 assists, 13 digs
	at Arkansas (5)	October 10	36 assists, 16 digs
	at Georgia (3)	October 21	27 assists, 17 digs
	vs. LSU (3)	October 29	22 assists, 13 digs
	at Texas A&M (5)	November 4	38 assists, 13 digs
	at Texas A&M (5)	November 5	43 assists, 16 digs
Rebekah Rath (8)	vs. Cal State Fullerton (3)	September 2	16 kills, 10 digs
	vs. Santa Clara (5)	September 12	24 kills, 10 digs
	at Alabama State (5)	September 26	24 kills, 13 digs
	vs. Alabama (5)	October 2	22 kills, 11 digs
	vs. Alabama (3)	October 3	16 kills, 11 digs
	at Arkansas (5)	October 10	20 kills, 10 digs
	vs. Missouri (5)	October 20	22 kills, 12 digs
at Texas A&M	November 5	19 kills, 13 digs	
Jordan Sinness (1)	vs. Missouri (5)	October 20	35 assists, 14 digs

**AUBURN'S 2021 RECORD WHEN...**

OVERALL	13-10
SEC	5-8
NON-CONFERENCE	10-2
RANKED OPPONENTS	0-1
HOME	11-4
AWAY	2-6
NEUTRAL	0-0
<b>BY SETS</b>	
THREE SETS	9-3
FOUR SETS	1-2
FIVE SETS	3-6
WON FIRST SET	13-5
LOST FIRST SET	0-5
WON SECOND SET	12-3
LOST SECOND SET	1-7
WON FIRST TWO SETS	12-1
LOST FIRST TWO SETS	0-2
<b>SITUATIONAL</b>	
MORE KILLS THAN OPPONENT	9-2
FEWER KILLS THAN OPPONENT	4-8
KILLS ARE TIED	0-0
MORE DIGS THAN OPPONENT	8-1
FEWER DIGS THAN OPPONENT	4-9
DIGS ARE TIED	1-0
MORE ACES THAN OPPONENT	9-2
FEWER ACES THAN OPPONENT	3-8
ACES ARE TIED	1-0
HIGHER HITTING PERCENTAGE THAN OPPONENT	13-2
LOWER HITTING PERCENTAGE THAN OPPONENT	0-8
HITTING PERCENTAGE TIED	0-0
<b>HITTING PERCENTAGE</b>	
.400 OR ABOVE	1-0
.300-.399	2-0
.200-.299	7-3
.100-.199	3-6
.000-.099	0-1
NEGATIVE	0-0
<b>OPPONENTS' HITTING PERCENTAGE</b>	
.400 OR ABOVE	0-0
.300-.399	0-0
.200-.299	1-8
.100-.199	3-2
.000-.099	8-0
NEGATIVE	1-0
<b>BY DAY</b>	
MONDAY	0-0
TUESDAY	0-0
WEDNESDAY	0-2
THURSDAY	3-1
FRIDAY	4-3
SATURDAY	4-1
SUNDAY	2-3
DAY MATCHES (FIRST SERVE BEFORE 6 P.M.)	5-5
NIGHT MATCHES (FIRST SERVE AFTER 6 P.M.)	8-5
<b>BY MONTH</b>	
AUGUST	2-0
SEPTEMBER	6-4
OCTOBER	4-5
NOVEMBER	1-1
<b>JERSEY COLOR</b>	
NAVY	3-3
NAVY w/ORANGE SLEEVE	2-2
ORANGE	4-5
ORANGE w/NAVY SLEEVE	4-0
PINK	0-0

## 2021 AUBURN MATCH-BY-MATCH STARTERS

DATE	OPPONENT	RESULT	OUTSIDE	MIDDLE	RIGHT SIDE	OUTSIDE/DS	MIDDLE	LIBERO	SETTER
8/28	TENNESSEE TECH	W, 3-0	Rath	Shipes	Reich	Lanham (DS)	Yavuz	Rosenthal	Barrett
8/28	JACKSON STATE	W, 3-0	Rath	Shipes	Reich	Green (OH)	Yavuz	Rosenthal	Barrett
9/2	CAL STATE FULLERTON	W, 3-0	Rath	Shipes	Reich	Green (OH)	Yavuz	Rosenthal	Barrett
9/3	SOUTHEASTERN LOUISIANA	W, 3-0	Rath	Shipes	Reich	Green (OH)	Yavuz	Rosenthal	Barrett
9/9	NORTH ALABAMA	W, 3-0	Rath	Shipes	Reich	Green (OH)	Yavuz	Rosenthal	Barrett
9/12	SANTA CLARA	W, 3-2	Rath	Shipes	Reich	Green (OH)	Yavuz	Rosenthal	Barrett
9/17	FLORIDA A&M	L, 2-3	Rath	Shipes	Reich	Green (OH)	Yavuz	Rosenthal	Barrett
9/17	NICHOLLS	W, 3-1	Rath	Shipes	Reich	Green (OH)	Yavuz	Rosenthal	Barrett
9/18	BELMONT	W, 3-0	Rath	Shipes	Reich	Green (OH)	Yavuz	Rosenthal	Barrett
9/22	OLE MISS	L, 1-3	Rath	Shipes	Reich	Green (OH)	Yavuz	Rosenthal	Barrett
9/26	at Alabama State	L, 2-3	Rath	Shipes	Reich	Lanham (DS)	Yavuz	Rosenthal	Barrett
9/29	at Tennessee	L, 0-3	Rath	Shipes	Reich	Lanham (DS)	Yavuz	Rosenthal	Barrett
10/2	ALABAMA	W, 3-2	Rath	Shipes	Reich	Lanham (DS)	Yavuz	Rosenthal	Barrett
10/3	ALABAMA	W, 3-0	Rath	Shipes	Reich	Lanham (DS)	Yavuz	Rosenthal	Barrett
10/9	at Arkansas	L, 1-3	Rath	Shipes	Reich	Lanham (DS)	Yavuz	Rosenthal	Barrett
10/10	at Arkansas	L, 2-3	Rath	Shipes	Reich	Lanham (DS)	Yavuz	Rosenthal	Barrett
10/16	MISSOURI	W, 3-0	Rath	Shipes	Reich	Lanham (DS)	Yavuz	Rosenthal	Barrett
10/17	MISSOURI	L, 2-3	Rath	Shipes	Reich	Lanham (DS)	Yavuz	Rosenthal	Barrett
10/22	at Georgia	W, 3-0	Rath	Shipes	Reich	Lanham (DS)	Yavuz	Rosenthal	Barrett
10/23	at Georgia	L, 0-3	Rath	Shipes	Reich	Lanham (DS)	Yavuz	Rosenthal	Barrett
10/29	LSU	L, 0-3	Rath	Shipes	Reich	Lanham (DS)	Yavuz	Rosenthal	Barrett
11/4	at Texas A&M	L, 2-3	Rath	Shipes	Reich	Lanham (DS)	Yavuz	Rosenthal	Barrett
11/5	at Texas A&M	W, 3-2	Rath	Shipes	Reich	Lanham (DS)	Yavuz	Rosenthal	Barrett
11/10	SOUTH CAROLINA								
11/17	at Florida								
11/20	KENTUCKY								
11/21	KENTUCKY								
11/26	at Mississippi State								

## 2021 AUBURN MATCH-BY-MATCH LEADERS

DATE	OPPONENT	RESULT	KILLS	ASSISTS	ACES	DIGS	BLOCKS	HIT PCT. (MIN 10 ATT.)
8/28	TENNESSEE TECH	W, 3-0	Rath (13)	Barrett (25)	Barrett/Rath/Curtis (1)	Rosenthal (17)	Shipes (7)	Shipes (.462)
8/28	JACKSON STATE	W, 3-0	Rath (16)	Barrett (27)	Barrett/Rath (2)	Rosenthal (14)	Yavuz (8)	Reich (.500)
9/2	CAL STATE FULLERTON	W, 3-0	Rath (16)	Barrett/Sinness (16)	Rath (1)	Rosenthal (17)	Shipes (3)	Reich (.409)
9/3	SOUTHEASTERN LOUISIANA	W, 3-0	Rath (16)	Barrett (28)	Barrett (2)	Rosenthal (16)	Shipes (8)	Reich (.458)
9/9	NORTH ALABAMA	W, 3-0	Green (12)	Barrett (30)	Barrett/Green/Rath (1)	Rosenthal (25)	Barrett (4)	Green (.375)
9/12	SANTA CLARA	W, 3-2	Rath (24)	Barrett (44)	Barrett/Sinness (2)	Rosenthal (20)	Shipes/Barrett (5)	Shipes (.357)
9/17	FLORIDA A&M	L, 2-3	Green (19)	Barrett (48)	Barrett (2)	Rosenthal (20)	Douglas/Barrett/Yavuz (4)	Yavuz (.571)
9/17	NICHOLLS	W, 3-1	Rath (18)	Barrett (40)	Barrett (3)	Rosenthal (28)	Shipes (9)	Rath (.211)
9/18	BELMONT	W, 3-0	Rath (14)	Barrett (24)	Rosenthal (2)	Rosenthal/Barrett (19)	Shipes (7)	Rath (.429)
9/22	OLE MISS	L, 1-3	Rath (19)	Barrett (34)	Green (2)	Rosenthal (13)	Shipes/Yavuz (3)	Rath (.288)
9/26	at Alabama State	L, 2-3	Rath (24)	Barrett (36)	Rath/Sinness (2)	Rosenthal (27)	Rath (4)	Shipes (.400)
9/29	at Tennessee	L, 0-3	Rath (9)	Barrett (18)	Lanham (1)	Barrett (12)	Shipes (6)	Reich (.217)
10/2	ALABAMA	W, 3-2	Rath (22)	Barrett (43)	Curtis (1)	Rosenthal (24)	Shipes (12)	Shipes (.231)
10/3	ALABAMA	W, 3-0	Rath (16)	Barrett (34)	Curtis/Rath (2)	Rosenthal (21)	Shipes (7)	Reich (.435)
10/9	at Arkansas	L, 1-3	Rath (29)	Barrett (36)	Barrett/Rath (1)	Rosenthal (30)	Shipes (10)	Rath (.240)
10/10	at Arkansas	L, 2-3	Rath (20)	Barrett (36)	Shipes (2)	Rosenthal (20)	Shipes (9)	Green (.231)
10/16	MISSOURI	W, 3-0	Rath (17)	Barrett (25)	Four Athletes (1)	Rosenthal (19)	Rath (4)	Rath (.277)
10/17	MISSOURI	L, 2-3	Rath (22)	Sinness (35)	Rath/Lanham/Curtis (1)	Rosenthal (33)	Shipes (6)	Yavuz (.385)
10/22	at Georgia	W, 3-0	Green (16)	Barrett (27)	Yavuz (3)	Barrett (17)	Shipes (8)	Green (.469)
10/23	at Georgia	L, 0-3	Rath (16)	Barrett (30)	NONE	Rosenthal (12)	Shipes/Rath/Yavuz (3)	Reich (.409)
10/29	LSU	L, 0-3	Rath/Reich (8)	Barrett (22)	NONE	Barrett (13)	Yavuz (4)	Shipes (.364)
11/4	at Texas A&M	L, 2-3	Rath (22)	Barrett (38)	Rath (3)	Lanham (17)	Shipes/Yavuz (3)	Yavuz (.385)
11/5	at Texas A&M	W, 3-2	Rath (19)	Barrett (43)	Rath (5)	Rosenthal (17)	Yavuz (4)	Yavuz (.588)
11/10	SOUTH CAROLINA							
11/17	at Florida							
11/20	KENTUCKY							
11/21	KENTUCKY							
11/26	at Mississippi State							

### 2021 OVERALL STATISTICS

Overall: 13-10 • SEC: 5-8 • Home: 11-4 • Away: 2-6 • Neutral: 0-0

#	PLAYER	SP	K	K/S	E	TA	Pct	A	A/S	SA	SE	SA/S	RE	DIG	DIG/S	BS	BA	BLK	BLK/S	BE	BHE	PTS	PT/S
7	Rath, Rebekah	88	384	4.36	149	1174	.200	13	0.15	25	59	0.28	25	177	2.01	12	60	72.0	0.82	2	0	451.0	5.13
8	Reich, Liz	88	245	2.78	70	637	.275	3	0.03	0	1	0.00	1	50	0.57	0	49	49.0	0.56	3	0	269.5	3.06
16	Green, Val	88	197	2.24	83	672	.170	4	0.05	6	8	0.07	5	69	0.78	2	28	30.0	0.34	1	0	219.0	2.49
21	Shipes, Tatum	85	96	1.13	37	256	.230	7	0.08	4	7	0.05	0	42	0.49	20	106	126.0	1.48	5	3	173.0	2.04
19	Yavuz, Elif	88	67	0.76	14	142	.373	2	0.02	6	12	0.07	2	33	0.38	5	75	80.0	0.91	7	1	115.5	1.31
10	Barrett, Jackie	85	45	0.53	12	158	.209	716	8.42	22	19	0.26	0	271	3.19	2	55	57.0	0.67	8	1	96.5	1.14
4	Lanham, Fallon	88	5	0.06	8	74	-.041	11	0.13	5	13	0.06	14	173	1.97	0	1	1.0	0.01	0	0	10.5	0.12
5	Douglas, Audrey	5	4	0.80	3	12	.083	0	0.00	0	0	0.00	0	0	0.00	0	4	4.0	0.80	0	0	6.0	1.20
11	Sinness, Jordan	48	2	0.04	1	5	.200	52	1.08	6	5	0.13	0	32	0.67	0	3	3.0	0.06	0	2	9.5	0.20
6	Rosenthal, Bella	88	1	0.01	0	15	.067	109	1.24	11	19	0.13	20	434	4.93	0	0	0.0	0.00	0	0	12.0	0.14
15	Curtis, Kate	88	1	0.01	0	5	.200	22	0.25	10	16	0.11	17	173	1.97	0	0	0.0	0.00	0	0	11.0	0.13
17	Tanton, Cassidy	1	0	0.00	0	0	.000	0	0.00	0	0	0.00	0	0	0.00	0	0	0.0	0.00	0	0	0.0	0.00
TEAM														27									
AUBURN		88	1047	11.90	377	3150	.213	939	10.67	95	159	1.08	111	1454	16.52	41	381	231.5	2.63	26	7	1373.5	15.61
OPONENTS		88	1076	12.23	573	3379	.149	992	11.27	111	167	1.26	95	1529	17.38	41	175	128.5	1.46	39	16	1315.5	14.95

### 2021 CONFERENCE ONLY STATISTICS

SEC: 5-8 • Home: 3-3 • Away: 2-4

#	PLAYER	SP	K	K/S	E	TA	Pct	A	A/S	SA	SE	SA/S	RE	DIG	DIG/S	BS	BA	BLK	BLK/S	BE	BHE	PTS	PT/S
7	Rath, Rebekah	51	224	4.39	101	752	.164	8	0.16	14	36	0.27	15	111	2.18	5	37	42.0	0.82	1	0	261.5	5.13
8	Reich, Liz	51	123	2.41	43	355	.225	0	0.00	0	0	0.00	1	33	0.65	0	27	27.0	0.53	3	0	136.5	2.68
16	Green, Val	51	114	2.24	53	385	.158	3	0.06	2	1	0.04	3	36	0.71	0	18	18.0	0.35	0	0	125.0	2.45
21	Shipes, Tatum	51	46	0.90	21	141	.177	4	0.08	3	4	0.06	0	30	0.59	12	64	76.0	1.49	3	2	93.0	1.82
19	Yavuz, Elif	51	39	0.76	9	90	.333	2	0.04	6	12	0.12	2	26	0.51	3	46	49.0	0.96	4	1	71.0	1.39
10	Barrett, Jackie	48	23	0.48	7	90	.178	398	8.29	8	12	0.17	0	155	3.23	2	32	34.0	0.71	4	0	49.0	1.02
4	Lanham, Fallon	51	3	0.06	5	42	-.048	5	0.10	5	12	0.10	8	102	2.00	0	1	1.0	0.02	0	0	8.5	0.17
6	Rosenthal, Bella	51	1	0.02	0	2	.500	61	1.20	5	10	0.10	13	228	4.47	0	0	0.0	0.00	0	0	6.0	0.12
11	Sinness, Jordan	21	1	0.05	0	3	.333	35	1.67	1	2	0.05	0	20	0.95	0	2	2.0	0.10	0	1	3.0	0.14
15	Curtis, Kate	51	1	0.02	0	2	.500	15	0.29	6	12	0.12	11	112	2.20	0	0	0.0	0.00	0	0	7.0	0.14
TEAM														20									
AUBURN		51	575	11.27	239	1865	.180	531	10.41	50	101	0.98	73	853	16.73	22	227	135.5	2.66	15	4	760.5	14.91
OPONENTS		51	673	13.20	316	1997	.179	622	12.20	73	89	1.43	50	936	18.35	21	131	86.5	1.70	21	10	832.5	16.30

### 2021 STATISTICAL LEADERS

#### KILLS (PER SET)

Rebekah Rath	384 (4.36)
Liz Reich	245 (2.78)
Val Green	197 (2.24)
Tatum Shipes	96 (1.13)
Elif Yavuz	67 (0.76)

#### TOTAL ATTACKS

Rebekah Rath	1174
Val Green	672
Liz Reich	637
Tatum Shipes	256
Jackie Barrett	158

#### HITTING PERCENTAGE (MIN 260 ATT.)

Liz Reich	.275
Rebekah Rath	.200
Val Green	.170

#### ASSISTS (PER SET)

Jackie Barrett	716 (8.42)
Bella Rosenthal	109 (1.24)
Jordan Sinness	52 (1.08)
Kate Curtis	22 (0.25)
Rebekah Rath	13 (0.15)

#### ACES (PER SET)

Rebekah Rath	25 (0.28)
Jackie Barrett	22 (0.26)
Bella Rosenthal	11 (0.13)
Kate Curtis	10 (0.11)
Jordan Sinness	6 (0.13)
Val Green	6 (0.07)
Elif Yavuz	6 (0.07)

#### DIGS (PER SET)

Bella Rosenthal	434 (4.93)
Jackie Barrett	271 (3.19)
Rebekah Rath	177 (2.01)
Fallon Lanham	173 (1.97)
Kate Curtis	173 (1.97)

#### BLOCK | SOLOS

Tatum Shipes	20
Rebekah Rath	12
Elif Yavuz	5
Val Green	2
Jackie Barrett	2

#### BLOCK | ASSISTS

Tatum Shipes	106
Elif Yavuz	75
Rebekah Rath	60
Jackie Barrett	55
Liz Reich	49

#### TOTAL BLOCKS (PER SET)

Tatum Shipes	126 (1.48)
Elif Yavuz	80 (0.91)
Rebekah Rath	72 (0.82)
Jackie Barrett	57 (0.67)
Liz Reich	49 (0.56)



## AUBURN VOLLEYBALL SINGLE-SEASON INDIVIDUAL RECORDS (25-POINT RALLY SCORING ERA)

## OFFENSIVE RECORDS

## KILLS

	PLAYER	YEAR	KILLS
1.	Jessica Glover	2008	410
2.	<b>Rebekah Rath</b>	<b>2021</b>	<b>384</b>
3.	Sarah Bullock	2012	371
4.	Sarah Bullock	2010	354
5.	Brenna McIlroy	2016	351
6.	Kelly Fidero	2011	341
7.	Courtney Crable	2015	333
	Brenna McIlroy	2015	333
9.	Katherine Culwell	2012	330
10.	Katherine Culwell	2013	326

## KILLS PER SET (MIN. 100 KILLS)

	PLAYER	YEAR	AVG.
1.	<b>Rebekah Rath</b>	<b>2021</b>	<b>4.36</b>
2.	Sarah Bullock	2012	3.50
3.	Jessica Glover	2008	3.45
4.	Kelly Fidero	2011	3.22
5.	Brenna McIlroy	2016	3.13
	Katherine Culwell	2013	3.13
7.	Katherine Culwell	2012	3.03
	Sarah Bullock	2010	3.03
9.	Brenna McIlroy	2018	3.00
10.	Brenna McIlroy	2017	2.86
12.	Courtney Crable	2015	2.82
	Taylor Rowland	2018	2.82

## ATTACK PERCENTAGE (MIN. 250 ATT.)

	PLAYER	YEAR	PCT.
1.	Shaina White	2017	.367
2.	Camila Jersonsky	2012	.356
	Camila Jersonsky	2011	.356
4.	Camila Jersonsky	2010	.354
5.	Camila Jersonsky	2013	.351
6.	Alyssa Davis	2009	.316
7.	Morgan Johns	2010	.305
8.	Stephanie Campbell	2013	.281
9.	Stephanie Campbell	2015	.280
10.	Stephanie Campbell	2014	.279

## ATTACKS

	PLAYER	YEAR	ATTACKS
1.	<b>Rebekah Rath</b>	<b>2021</b>	<b>1,174</b>
2.	Brenna McIlroy	2016	1,113
3.	Sarah Bullock	2012	1,090
4.	Courtney Crable	2014	1,062
5.	Brenna McIlroy	2015	1,043
6.	Katherine Culwell	2012	1,033
7.	Sarah Bullock	2010	993
8.	Jessica Glover	2008	988
9.	Katherine Culwell	2013	981
10.	Brenna McIlroy	2017	938

## ASSISTS

	PLAYER	YEAR	ASSISTS
1.	Alexa Filley	2016	1,227
2.	Alexa Filley	2015	1,226
3.	Alexa Filley	2014	1,175
4.	Alexa Filley	2017	1,093
5.	Mica Allison	2018	1,055
6.	Sara Shanks	2008	995
7.	Chelsea Wintzinger	2011	791
8.	Christina Solverson	2010	740
9.	<b>Jackie Barrett</b>	<b>2021</b>	<b>716</b>

10. Chelsea Wintzinger 2012 680

## ASSISTS PER SET (MIN. 200 ASSISTS)

	PLAYER	YEAR	AVG.
1.	Alexa Filley	2017	10.72
2.	Alexa Filley	2014	10.22
3.	Alexa Filley	2015	10.13
4.	Mica Allison	2018	10.05
5.	Alexa Filley	2016	9.98
7.	Sara Shanks	2008	8.43
8.	<b>Jackie Barrett</b>	<b>2021</b>	<b>8.42</b>
9.	Marissa Hines	2019	7.51
10.	Chelsea Wintzinger	2011	7.39
11.	Morgan Kull	2019	6.94
12.	Chelsea Wintzinger	2012	6.24

## ACES

	PLAYER	YEAR	ACES
1.	Brenna McIlroy	2018	48
2.	Jesse Earl	2016	46
3.	Jesse Earl	2017	42
4.	Jesse Earl	2015	39
5.	Brenna McIlroy	2016	36
6.	Chelsea Wintzinger	2013	35
7.	Courtney Crable	2014	33
8.	Brenna McIlroy	2015	32
9.	Sara Shanks	2008	30
	Alexa Filley	2015	30

## ACES PER SET (MIN. 15 ACES)

	PLAYER	YEAR	AVG.
1.	Brenna McIlroy	2018	0.46
2.	Jesse Earl	2017	0.41
3.	Jesse Earl	2016	0.37
4.	Chelsea Wintzinger	2013	0.34
5.	Jesse Earl	2015	0.32
	Brenna McIlroy	2016	0.32
7.	<b>Rebekah Rath</b>	<b>2021</b>	<b>0.28</b>
8.	Courtney Crable	2014	0.27
9.	Brenna McIlroy	2015	0.26
	<b>Jackie Barrett</b>	<b>2021</b>	<b>0.26</b>
11.	Alexa Filley	2015	0.25
	Sara Shanks	2008	0.25
	Kelly Stewart	2016	0.25

## DEFENSIVE RECORDS

## DIGS

	PLAYER	YEAR	DIGS
1.	Jesse Earl	2016	612
2.	Jesse Earl	2017	529
3.	Jesse Earl	2015	516
4.	Sarah Wroblecky	2013	481
5.	Liz Crouch	2010	469
6.	Liz Crouch	2009	453
7.	<b>Bella Rosenthal</b>	<b>2021</b>	<b>434</b>
	Alyssa Ivey	2014	434
9.	Sarah Wroblecky	2012	431
10.	Liz Crouch	2008	389

## DIGS PER SET (MIN. 100 DIGS)

	PLAYER	YEAR	AVG.
1.	Jesse Earl	2017	5.19
2.	Jesse Earl	2016	4.98
3.	<b>Bella Rosenthal</b>	<b>2021</b>	<b>4.93</b>
4.	Sarah Wroblecky	2013	4.62
5.	Jesse Earl	2015	4.26

6.	Liz Crouch	2009	4.08
7.	Alyssa Ivey	2014	4.02
8.	Liz Crouch	2010	4.01
9.	Sarah Wroblecky	2012	3.99
10.	Liz Crouch	2008	3.70
11.	Sarah Bullock	2012	3.31

## BLOCKS - SOLO

	PLAYER	YEAR	BLOCKS
1.	Katherine Culwell	2012	25
2.	<b>Tatum Shipes</b>	<b>2021</b>	<b>20</b>
3.	Sarah Bullock	2012	18
	Jessica Glover	2008	18
	Anna Stevenson	2018	18
6.	Kelly Fidero	2011	17
	Sarah Bullock	2011	17
8.	Katherine Culwell	2013	16
	Camila Jersonsky	2013	16
10.	Camila Jersonsky	2011	15
	Jaeden Brown	2019	15

## BLOCKS - ASSISTS

	PLAYER	YEAR	BLOCKS
1.	Camila Jersonsky	2012	108
2.	<b>Tatum Shipes</b>	<b>2021</b>	<b>106</b>
3.	Lauren Mellor	2009	90
4.	Camila Jersonsky	2013	89
5.	Breanna Barksdale	2014	87
6.	Courtney McDonald	2012	84
7.	Breanna Barksdale	2016	83
8.	Breanna Barksdale	2015	82
9.	<b>Elif Su Yavuz</b>	<b>2021</b>	<b>75</b>
10.	Anna Stevenson	2018	73

## TOTAL BLOCKS

	PLAYER	YEAR	BLOCKS
1.	<b>Tatum Shipes</b>	<b>2021</b>	<b>126</b>
2.	Camila Jersonsky	2012	119
3.	Camila Jersonsky	2013	105
4.	Breanna Barksdale	2014	101
5.	Lauren Mellor	2009	97
	Breanna Barksdale	2016	97
7.	Breanna Barksdale	2015	94
8.	Anna Stevenson	2018	91
9.	Courtney McDonald	2012	89
10.	Stephanie Campbell	2014	86

## BLOCKS PER SET (MIN. 50 BLOCKS)

	PLAYER	YEAR	BLOCKS
1.	<b>Tatum Shipes</b>	<b>2021</b>	<b>1.48</b>
2.	Anna Stevenson	2018	1.15
3.	Camila Jersonsky	2012	1.09
4.	Camila Jersonsky	2013	1.01
5.	Chloe Rowand	2011	0.97
6.	<b>Elif Yavuz</b>	<b>2021</b>	<b>0.91</b>
	Breanna Barksdale	2014	0.91
8.	Stephanie Campbell	2015	0.90
9.	Camila Jersonsky	2011	0.89
	Lauren Mellor	2009	0.88
11.	Breanna Barksdale	2016	0.84
12.	<b>Rebekah Rath</b>	<b>2021</b>	<b>0.88</b>
	Shaina White	2019	0.82
	Courtney McDonald	2012	0.82
	Lauren Mellor	2010	0.82

Active student-athletes are listed in **BOLD**.

## AUBURN VOLLEYBALL CAREER RECORDS (SIDEOUT + RALLY ERA)

## OFFENSIVE RECORDS

## KILLS

	PLAYER	YEARS	KILLS
1.	Jaunelle Hamilton	1997-00	1,848
2.	Allyson Beecroft	1993-96	1,727
3.	Brooke McCarley	1997-00	1,704
4.	Gina Thomas	1988-92	1,467
5.	Rachel Shanks	2004-07	1,319
6.	Brenna McIlroy	2015-18	1,288
7.	Sarah Bullock	2009-12	1,272
8.	Bridgitte Sims	1989-91	1,149
9.	Jessica Glover	2005-08	1,137
10.	Rani Whitson	1993-96	1,102

## KILLS PER SET (MIN. 500 KILLS)

	PLAYER	YEARS	AVG.
1.	Brooke McCarley	1997-00	4.40
2.	Jaunelle Hamilton	1997-00	4.23
3.	Allyson Beecroft	1993-96	4.00
4.	Ashlee Johns	2003-04	3.82
5.	Terri Duckworth	1987-88	3.63
6.	Jennifer Amobi	2003-05	3.57
7.	Rachel Shanks	2004-07	3.43
8.	Bridgitte Sims	1989-91	3.40
9.	Jessica Glover	2005-08	3.17
10.	Sarah Bullock	2009-12	2.93
	Brenna McIlroy	2015-18	2.93

## ATTACK PERCENTAGE (MIN. 1,000 ATT.)

	PLAYER	YEARS	K	E	ATT. PCT.
1.	Camila Jersonsky	2010-13	894	237	1.853 .355
2.	Jaunelle Hamilton	1997-00	1,848	532	3.827 .344
3.	Brooke McCarley	1997-00	1,704	455	3.847 .325
4.	Terri Duckworth	1987-99	876	291	1.860 .315
5.	Shaina White	2017-19	512	121	1.267 .309
6.	Rani Whitson	1993-96	1,102	383	2.562 .281
7.	Julie Bosley	2003-06	558	178	1.359 .280
8.	Gina Thomas	1988-92	1,467	540	3.319 .279
9.	Stephanie Campbell	2013-16	673	205	1.669 .276
10.	Whitney Jacob	2004-07	1,093	428	2.522 .264

## ATTACKS

	PLAYER	YEARS	ATTACKS
1.	Allyson Beecroft	1993-96	4,349
2.	Brenna McIlroy	2015-18	4,027
3.	Brooke McCarley	1997-00	3,847
4.	Jaunelle Hamilton	1997-00	3,827
5.	Sarah Bullock	2009-12	3,774
6.	Rachel Shanks	2004-07	3,703
7.	Gina Thomas	1988-92	3,319
8.	Katherine Culwell	2009-13	3,130
	Jessica Glover	2005-08	3,130
10.	Jenifer Kleyn	1988-91	3,107

## ASSISTS

	PLAYER	YEARS	ASSISTS
1.	Piper Craig	1995-98	5,053
2.	Alexa Filley	2014-17	4,721
3.	Janel Newkirk	1989-92	4,071
4.	Mary Orndorff	1986-89	3,242
5.	Chelsea Wintzinger	2010-13	2,654

6.	Tama English	1991-94	2,535
7.	Joanna Pappas	2005-06	2,073

## ASSISTS PER SET (MIN. 500 ASSISTS)

	PLAYER	YEARS	AVG.
1.	Piper Craig	1995-98	12.86
2.	Traci Price	1999-00	11.77
3.	Maira Mogallon	2003-04	11.38
4.	Chris Murphy	1993-96	11.35
5.	Joanna Pappas	2005-06	11.15
6.	Alexa Filley	2014-17	10.24
7.	Mica Allison	2018	10.05
8.	<b>Jackie Barrett</b>	<b>2020-Pr.</b>	<b>8.27</b>
9.	Morgan Kull	2017-19	5.26

## ACES

	PLAYER	YEARS	ACES
1.	Jenifer Kleyn	1988-91	338
2.	Lori Russell	1989-92	201
3.	Gretchen Thompson	1986-89	164
4.	Tory Gutierrez	1989-92	160
5.	Terri Duckworth	1987-88	158
6.	Jaunelle Hamilton	1997-00	148
7.	Allyson Beecroft	1993-96	138
8.	Brenna McIlroy	2015-18	137
9.	Whitney Jacob	2004-07	134
10.	Janel Newkirk	1989-92	129

## ACES PER SET (MIN. 40 ACES)

	PLAYER	YEARS	AVG.
1.	Jenifer Kleyn	1988-91	0.71
2.	Terri Duckworth	1987-88	0.66
3.	Lori Russell	1989-92	0.46
4.	Jenny Fisler	1987-88	0.40
5.	Bridgitte Sims	1989-91	0.37
	Jesse Earl	2015-17	0.37
7.	Gretchen Thompson	1986-89	0.36
8.	Maira Mogallon	2003-04	0.35
	Tory Gutierrez	1989-92	0.35
10.	Jaunelle Hamilton	1997-00	0.34

## DEFENSIVE RECORDS

## DIGS

	PLAYER	YEARS	DIGS
1.	Liz Crouch	2007-10	1,703
2.	Jesse Earl	2015-17	1,657
3.	Gretchen Thompson	1986-89	1,495
4.	Alexa Filley	2014-17	1,315
5.	Allyson Beecroft	1993-96	1,249
6.	Sarah Wroblicky	2010-13	1,238
7.	Sarah Bullock	2009-12	1,210
8.	Rachel Shanks	2004-07	1,185
9.	<b>Bella Rosenthal</b>	<b>2018-Pr.</b>	<b>1,150</b>
10.	Brenna McIlroy	2015-18	1,078

## DIGS PER SET (MIN. 500 DIGS)

	PLAYER	YEARS	AVG.
1.	Jesse Earl	2015-17	4.79
2.	Liz Crouch	2007-10	4.00
3.	Sarah Wroblicky	2010-13	3.65
4.	<b>Bella Rosenthal</b>	<b>2018-Pr.</b>	<b>3.61</b>

5.	Gretchen Thompson	1986-89	3.26
6.	Rachel Shanks	2004-07	3.08
7.	Allyson Beecroft	1993-96	2.89
8.	Alexa Filley	2014-17	2.85
9.	Bailey Veit	2002-05	2.80
	Emily Suter	1995-98	2.80

## BLOCKS - SOLO

	PLAYER	YEARS	BLOCKS
1.	Gina Thomas	1988-92	159
2.	Tory Gutierrez	1989-92	157
3.	Jaunelle Hamilton	1997-00	106
4.	Julie Bosler	2003-06	98
5.	Rani Whitson	1993-96	61
6.	Katherine Culwell	2009-13	59
7.	Mary Olks	1986-89	58
8.	Whitney Jacob	2004-07	56
9.	Sarah Bullock	2009-12	54
10.	Camila Jersonsky	2010-13	51

## BLOCKS - ASSISTS

	PLAYER	YEARS	BLOCKS
1.	Jaunelle Hamilton	1997-00	465
2.	Rani Whitson	1993-96	426
3.	Gina Thomas	1988-92	360
4.	Whitney Jacob	2004-07	351
5.	Tory Gutierrez	1989-92	318
6.	Camila Jersonsky	2010-13	317
7.	Julie Bosley	2003-06	265
8.	La'Toi Finley	1994-97	261
	Krista Singleton	1994-97	261
10.	Breanna Barksdale	2014-16	252

## TOTAL BLOCKS

	PLAYER	YEARS	BLOCKS
1.	Jaunelle Hamilton	1997-00	571
2.	Gina Thomas	1988-92	519
3.	Rani Whitson	1993-96	487
4.	Tory Gutierrez	1989-92	475
5.	Whitney Jacob	2004-07	407
6.	Camila Jersonsky	2010-13	368
7.	Julie Bosler	2003-06	363
8.	Breanna Barksdale	2014-16	292
9.	La'Toi Finley	1994-97	289
10.	Krista Singleton	1994-97	276

## BLOCKS PER SET (MIN. 100 BLOCKS)

	PLAYER	YEARS	AVG.
1.	Jaunelle Hamilton	1997-00	1.31
2.	Rani Whitson	1993-96	1.16
3.	Julie Bosler	2003-06	1.06
4.	Tory Gutierrez	1989-92	1.03
5.	Gina Thomas	1988-92	0.98
6.	Whitney Jacob	2004-07	0.96
7.	Camila Jersonsky	2009-13	0.92
8.	Anna Stevenson	2017-18	0.90
	Heather Franey	1995-96,98	0.90
10.	La'Toi Finley	1994-97	0.88

Active student-athletes are listed in **BOLD**.



# #4 FALLAN LANHAM

DEFENSIVE SPECIALIST/LIBERO | 5-8 | FRESHMAN  
LOUISVILLE, KY. (MERCY ACADEMY)

### LANHAM'S HIGHLIGHTS:

- Recorded double-digit digs in eight matches this season
- Earned first collegiate start in Auburn's season opener versus Tennessee Tech on August 27
- Returned to the service line at No. 20 Tennessee (9/29), recording her first collegiate ace
- Turned in her best offensive performance of the season versus Missouri (10/17) with a career high two kills and a service ace to tally 3.0 points
- Delivered a season high two aces in series opener at Georgia (10/21) before being credited with her first collegiate block in the finale against the Bulldogs (10/22)
- Shattered her career highs in both assists (3) and digs (17) at Texas A&M (11/4)

CATEGORY	CAREER HIGH	OPPONENT/DATE
Kills	2	vs. Missouri (9/12/21)
Attempts	8	at Arkansas (10/9/21)
Hitting Percentage (Min. 10 ATT.)		
Assists	3	at Texas A&M (11/4/21)
Digs	17	at Texas A&M (11/4/21)
Blocks	1	at Georgia (10/22/21)
Aces	2	at Georgia (10/21/21)
Points	3.0	last, vs. Missouri (10/17/21)

CATEGORY	SEASON HIGH	OPPONENT/DATE
Kills	2	vs. Missouri (9/12/21)
Attempts	8	at Arkansas (10/9/21)
Hitting Percentage (Min. 10 ATT.)		
Assists	3	at Texas A&M (11/4/21)
Digs	17	at Texas A&M (11/4/21)
Blocks	1	at Georgia (10/22/21)
Aces	2	at Georgia (10/21/21)
Points	3.0	last, vs. Missouri (10/17/21)

DATE	OPPONENT	SP	ATTACK				SET			SERVE				RECEIPT			BLOCKING				TEAM		HIT%	SCORE	
			K	E	TA	PCT.	A	TA	PCT.	SA	SE	TA	PCT.	RE	TA	PCT.	DIG	BS	BA	BE	TOTAL	BHE			POINTS
August 27	TENNESSEE TECH	3	0	0	3	.000	0	2	.000	0	1	5	.800	0	9	1.000	4	0	0	0	0.0	0	0.0	.292	3-0
August 28	JACKSON STATE	3	0	0	0	.000	0	1	.000	0	0	0	.000	1	10	.900	4	0	0	0	0.0	0	0.0	.457	3-0
September 2	CAL STATE FULLERTON	3	0	0	2	.000	0	3	.000	0	0	0	.000	0	7	1.000	5	0	0	0	0.0	0	0.0	.221	3-0
September 3	SOUTHEASTERN LA.	3	0	0	1	.000	1	1	1.000	0	0	0	.000	0	7	1.000	10	0	0	0	0.0	0	0.0	.300	3-0
September 9	NORTH ALABAMA	3	0	1	2	-.500	0	0	.000	0	0	0	.000	1	13	.923	3	0	0	0	0.0	0	0.0	.265	3-0
September 12	SANTA CLARA	5	1	0	6	.167	2	7	.286	0	0	0	.000	1	20	.950	14	0	0	0	0.0	0	1.0	.260	3-2
September 17	FLORIDA A&M	5	0	1	5	-.200	1	4	.250	0	0	0	.000	1	31	.968	10	0	0	0	0.0	0	0.0	.245	2-3
September 17	NICHOLLS	4	0	0	6	.000	0	3	.000	0	0	0	.000	1	11	.909	14	0	0	0	0.0	0	0.0	.183	3-1
September 18	BELMONT	3	0	1	1	-1.000	1	1	1.000	0	0	0	.000	0	4	1.000	4	0	0	0	0.0	0	0.0	.345	3-0
September 22	OLE MISS	4	1	1	3	.000	0	3	.000	0	0	0	.000	0	14	1.000	9	0	0	0	0.0	0	1.0	.196	1-3
September 26	at Alabama State	5	1	0	6	.167	1	9	.111	0	0	0	.000	1	16	.938	3	0	0	0	0.0	0	1.0	.209	2-3
September 29	at Tennessee	3	0	1	2	-.500	0	2	.000	1	0	10	1.000	0	20	1.000	5	0	0	0	0.0	0	1.0	.076	0-3
October 2	ALABAMA	5	0	0	2	.000	0	0	.000	0	2	14	.857	0	15	1.000	6	0	0	0	0.0	0	0.0	.183	3-2
October 3	ALABAMA	3	0	0	6	.000	1	3	.333	0	0	14	1.000	0	16	1.000	10	0	0	0	0.0	0	0.0	.248	3-0
October 9	at Arkansas	4	0	1	8	-.125	0	3	.000	0	0	16	1.000	1	13	.923	7	0	0	0	0.0	0	0.0	.158	1-3
October 10	at Arkansas	5	0	2	7	-.286	0	3	.000	0	0	14	1.000	2	21	.905	10	0	0	0	0.0	0	0.0	.144	2-3
October 16	MISSOURI	3	0	0	1	.000	1	3	.333	0	0	18	1.000	0	10	1.000	6	0	0	0	0.0	0	0.0	.232	3-0
October 17	MISSOURI	5	2	0	7	.286	0	4	.000	1	1	18	.944	0	17	1.000	9	0	0	0	0.0	0	3.0	.235	2-3
October 21	at Georgia	3	0	0	1	.000	0	2	.000	2	2	12	.833	1	6	.833	2	0	0	0	0.0	0	2.0	.241	3-0
October 22	at Georgia	3	0	0	0	.000	0	1	.000	0	2	11	.818	1	14	.929	4	0	1	0	1.0	0	0.5	.183	0-3
October 29	LSU	3	0	0	0	.000	0	5	.000	0	2	12	.833	3	16	.812	2	0	0	0	0.0	0	0.0	.121	0-3
November 4	at Texas A&M	5	0	0	4	.000	3	9	.333	0	1	16	.938	0	16	1.000	17	0	0	0	0.0	0	0.0	.132	2-3
November 5	at Texas A&M	5	0	0	1	.000	0	5	.000	1	2	20	.900	0	15	1.000	15	0	0	0	0.0	0	1.0	.186	3-2
<b>TOTALS</b>		<b>88</b>	<b>5</b>	<b>8</b>	<b>74</b>	<b>-.041</b>	<b>11</b>	<b>74</b>	<b>.149</b>	<b>5</b>	<b>13</b>	<b>180</b>	<b>.928</b>	<b>14</b>	<b>321</b>	<b>.956</b>	<b>173</b>	<b>0</b>	<b>1</b>	<b>0</b>	<b>1.0</b>	<b>0</b>	<b>10.5</b>	<b>.213</b>	

SETS PLAYED: 88  
KILLS PER SET: 0.06  
ASSISTS PER SET: 0.12

SERVICE ACES PER SET: 0.06  
DIGS PER SET: 1.87  
BLOCKS PER SET: 0.01

POINTS PER SET: 0.12

### LANHAM'S OVERALL CAREER STATISTICS

YEAR	SETS	MP	KILLS	K/S	E	TA	PCT.	AST	A/S	SA	SA/S	SE	DIGS	D/S	RE	BS	BA	TB	B/S	PTS	PT/S
2021	88	23	5	0.06	8	74	-.041	11	.13	5	.06	13	173	1.97	14	0	1	1	.01	10.5	0.12
<b>TOTAL</b>	<b>88</b>	<b>23</b>	<b>5</b>	<b>0.06</b>	<b>8</b>	<b>74</b>	<b>-.041</b>	<b>11</b>	<b>.13</b>	<b>5</b>	<b>.06</b>	<b>13</b>	<b>173</b>	<b>1.97</b>	<b>14</b>	<b>0</b>	<b>1</b>	<b>1</b>	<b>.01</b>	<b>10.5</b>	<b>0.12</b>

### LANHAM'S SEC CAREER STATISTICS

YEAR	SETS	MP	KILLS	K/S	E	TA	PCT.	AST	A/S	SA	SA/S	SE	DIGS	D/S	RE	BS	BA	TB	B/S	PTS	PT/S
2021	51	13	3	0.06	5	42	-.048	5	.10	5	.10	12	102	2.00	8	0	1	1	.02	8.5	0.16
<b>TOTAL</b>	<b>51</b>	<b>13</b>	<b>3</b>	<b>0.06</b>	<b>5</b>	<b>42</b>	<b>-.048</b>	<b>5</b>	<b>.10</b>	<b>5</b>	<b>.10</b>	<b>12</b>	<b>102</b>	<b>2.00</b>	<b>8</b>	<b>0</b>	<b>1</b>	<b>1</b>	<b>.02</b>	<b>8.5</b>	<b>0.16</b>





# #5 AUDREY DOUGLAS

OUTSIDE/OPPOSITE HITTER | 6-4 | SOPHOMORE  
WINTER PARK, FLA. (HAGERTY)

### DOUGLAS'S HIGHLIGHTS:

- Did not see action over the first three weeks of play due to a concussion
- Made her season debut versus Florida A&M (9/17), racking up four kills and adding a career high 4.0 blocks

CATEGORY	CAREER HIGH	OPPONENT/DATE
Kills	6	at #2 Kentucky (11/8/20)
Attempts	16	vs. #4 Florida (10/21/20)
Hitting Percentage (Min. 10 ATT.)	.545	at #2 Kentucky (11/8/20)
Assists	1	vs. #4 Florida (10/22/20)
Digs	1 (2x)	last, at #2 Kentucky (11/7/20)
Blocks	4.0	vs. Florida A&M (9/17/21)
Aces		
Points	6.5	at #2 Kentucky (11/8/20)

CATEGORY	SEASON HIGH	OPPONENT/DATE
Kills	4	vs. Florida A&M (9/17/21)
Attempts	12	vs. Florida A&M (9/17/21)
Hitting Percentage (Min. 10 ATT.)	.083	vs. Florida A&M (9/17/21)
Assists		
Digs		
Blocks	4.0	vs. Florida A&M (9/17/21)
Aces		
Points	6.0	vs. Florida A&M (9/17/21)

DATE	OPPONENT	SP	ATTACK				SET			SERVE				RECEIPT			BLOCKING				BHE	POINTS	TEAM		
			K	E	TA	PCT	A	TA	PCT.	SA	SE	TA	PCT.	RE	TA	PCT.	DIG	BS	BA	BE			TOTAL	HIT%	SCORE
September 17	FLORIDA A&M	4	4	3	12	.083	0	1	.000	0	0	0	.000	0	0	.000	0	0	4	0	4.0	0	6.0	.245	2-3
September 26	at Alabama State	1	0	0	0	.000	0	0	.000	0	0	0	.000	0	0	.000	0	0	0	0	0.0	0	0.0	.209	2-3
<b>TOTALS</b>		<b>5</b>	<b>4</b>	<b>3</b>	<b>12</b>	<b>.083</b>	<b>0</b>	<b>1</b>	<b>.000</b>	<b>0</b>	<b>0</b>	<b>0</b>	<b>.000</b>	<b>0</b>	<b>0</b>	<b>.000</b>	<b>0</b>	<b>0</b>	<b>4</b>	<b>0</b>	<b>4.0</b>	<b>0</b>	<b>6.0</b>	<b>.213</b>	

### DOUGLAS' OVERALL CAREER STATISTICS

YEAR	SETS	MP	KILLS	K/S	E	TA	PCT.	AST	A/S	SA	SA/S	SE	DIGS	D/S	RE	BS	BA	TB	B/S	PTS	PT/S
2021	5	1	4	0.80	3	12	.083	0	.00	0	.00	0	0	.00	0	0	4	4.0	0.80	6.0	1.20
2020	20	7	20	1.00	8	69	.174	1	.05	0	.00	0	2	.10	0	0	11	11.0	0.55	25.5	1.28
<b>TOTAL</b>	<b>25</b>	<b>8</b>	<b>24</b>	<b>0.96</b>	<b>11</b>	<b>81</b>	<b>.160</b>	<b>1</b>	<b>.04</b>	<b>0</b>	<b>.00</b>	<b>0</b>	<b>2</b>	<b>.08</b>	<b>0</b>	<b>0</b>	<b>15</b>	<b>15.0</b>	<b>0.60</b>	<b>31.5</b>	<b>1.26</b>

### DOUGLAS' SEC CAREER STATISTICS

YEAR	SETS	MP	KILLS	K/S	E	TA	PCT.	AST	A/S	SA	SA/S	SE	DIGS	D/S	RE	BS	BA	TB	B/S	PTS	PT/S
2021	0	0	0	0.0	0	0	.000	0	.00	0	.00	0	0	.00	0	0	0	0.0	.00	0.0	0.00
2020	20	7	20	1.00	8	69	.174	1	.05	0	.00	0	2	.10	0	0	11	11.0	.55	25.5	1.28
<b>TOTAL</b>	<b>20</b>	<b>7</b>	<b>20</b>	<b>1.00</b>	<b>8</b>	<b>69</b>	<b>.174</b>	<b>1</b>	<b>.05</b>	<b>0</b>	<b>.00</b>	<b>0</b>	<b>2</b>	<b>.10</b>	<b>0</b>	<b>0</b>	<b>11</b>	<b>11.0</b>	<b>.55</b>	<b>25.5</b>	<b>1.28</b>



**#6 BELLA ROSENTHALL**  
**DEFENSIVE SPECIALIST/LIBERO | 5-5 | SENIOR**  
**YORKTOWN, IND. (YORKTOWN)**

**ROSENTHALL'S HIGHLIGHTS:**

- Named SEC Defensive Player of the Week twice (9/13 and 9/20) to become the first player in program history to win the award in back-to-back weeks
- First Tiger to win the award multiple times in a single season since Camila Jersonsky in 2012
- War Eagle Invitational and Auburn Invitational All-Tournament Team selection
- Leads the SEC in both digs per set (4.93) and total digs (434).
- Ranks 112nd among all active NCAA Division I athletes in career digs (1,150)
- Enters Wednesday's match with the third highest digs per set average and the seventh most total digs by a Tiger in single-season history
- Stands in ninth place in Auburn history in career total digs, while her career digs per set average of 3.61 is good for fourth overall
- Totaled 52 career double-digit dig performances, including 17 matches with 20+ dig
- Totaled 25 digs versus North Alabama (9/9) to become the first player to record 25+ digs in a match since she totaled 26 versus Georgia on Oct. 20, 2019
- Totaled 31 digs versus Nicholls (9/17) to become the first Tiger to record at least 30 digs in a match since Payton White versus Butler on Aug. 31, 2019
- Behind her 30 digs at Arkansas (10/9), became just the 15th Tiger in program history to record 1,000 career digs and is the first Tiger to hit the mark since Brenna McIlroy in 2018
- Shattered career high with 33 digs versus Missouri (10/17), the sixth most digs ever recorded by a Tiger in a single match

CATEGORY	CAREER HIGH	OPPONENT/DATE
Kills	1 (5x)	last, at Arkansas (10/10/21)
Attempts	8	at Alabama State (9/26/21)
Hitting Percentage (Min. 10 ATT.)		
Assists	10	vs. #4 Florida (10/22/20)
Digs	33	vs. Missouri (10/17/21)
Blocks	1.0	vs. #4 Florida (10/22/20)
Aces	3 (2x)	last, vs. Tennessee State (8/30/19)
Points	3.0 (2x)	last, vs. Tennessee State (8/30/19)

CATEGORY	SEASON HIGH	OPPONENT/DATE
Kills	1	at Arkansas (10/10/21)
Attempts	8	at Alabama State (9/26/21)
Hitting Percentage (Min. 10 ATT.)		
Assists	9	vs. Florida A&M (9/17/21)
Digs	33	vs. Missouri (10/17/21)
Blocks		
Aces	2	vs. Belmont (9/18/21)
Points	2.0 (2x)	last, at Arkansas (10/10/21)

DATE	OPPONENT	SP	ATTACK			SET			SERVE			RECEIPT			BLOCKING			BHE	POINTS	TEAM HIT%	SCORE				
			K	E	TA	PCT.	A	TA	PCT.	SA	SE	TA	PCT.	RE	TA	PCT.	DIG					BS	BA	BE	TOTAL
August 27	TENNESSEE TECH	3	0	0	0	.000	4	14	.286	0	0	22	1.000	0	5	1.000	17	0	0	0	0.0	0	0.0	.292	3-0
August 28	JACKSON STATE	3	0	0	0	.000	6	12	.500	1	1	14	.929	0	6	1.000	14	0	0	0	0.0	0	1.0	.457	3-0
September 2	CAL STATE FULLERTON	3	0	0	0	.000	5	14	.357	0	0	11	1.000	0	12	1.000	17	0	0	0	0.0	0	0.0	.221	3-0
September 3	SOUTHEASTERN LA.	3	0	0	0	.000	2	12	.250	0	2	14	.857	1	16	.938	16	0	0	0	0.0	0	0.0	.300	3-0
September 9	NORTH ALABAMA	3	0	0	0	.000	0	11	.000	0	1	11	.909	0	10	1.000	25	0	0	0	0.0	0	0.0	.265	3-0
September 12	SANTA CLARA	5	0	0	1	.000	8	24	.333	0	1	22	.955	3	21	.857	20	0	0	0	0.0	0	0.0	.260	3-2
September 17	FLORIDA A&M	5	0	0	1	.000	9	24	.375	1	1	20	.950	1	22	.955	20	0	0	0	0.0	0	0.0	.245	2-3
September 17	NICHOLLS	4	0	0	0	.000	2	28	.071	1	1	25	.960	0	19	1.000	31	0	0	0	0.0	0	1.0	.183	3-1
September 18	BELMONT	3	0	0	0	.000	8	20	.400	2	0	17	1.000	0	5	1.000	19	0	0	0	0.0	0	2.0	.345	3-0
September 22	OLE MISS	4	0	0	0	.000	8	25	.320	1	0	17	1.000	2	32	.938	13	0	0	0	0.0	0	1.0	.196	1-3
September 26	at Alabama State	5	0	0	8	.000	3	17	.176	1	2	21	.905	2	32	.938	27	0	0	0	0.0	0	1.0	.209	2-3
September 29	at Tennessee	3	0	0	0	.000	4	22	.182	0	2	12	.833	2	23	.913	6	0	0	0	0.0	0	0.0	.076	0-3
October 2	ALABAMA	5	0	0	0	.000	4	32	.125	0	0	20	1.000	0	16	1.000	24	0	0	0	0.0	0	0.0	.183	3-2
October 3	ALABAMA	3	0	0	0	.000	2	19	.105	0	1	11	.909	0	11	1.000	21	0	0	0	0.0	0	0.0	.248	3-0
October 9	at Arkansas	4	0	0	0	.000	5	17	.294	0	1	16	.938	0	34	1.000	30	0	0	0	0.0	0	0.0	.158	1-3
October 10	at Arkansas	5	1	0	1	1.000	6	22	.273	1	2	17	.882	2	21	.905	20	0	0	0	0.0	0	2.0	.144	2-3
October 16	MISSOURI	3	0	0	0	.000	5	10	.500	1	0	11	1.000	0	13	1.000	19	0	0	0	0.0	0	1.0	.232	3-0
October 17	MISSOURI	5	0	0	0	.000	8	22	.364	0	1	21	.952	0	21	1.000	33	0	0	0	0.0	0	0.0	.235	2-3
October 21	at Georgia	3	0	0	0	.000	8	23	.348	0	0	7	1.000	0	18	1.000	14	0	0	0	0.0	0	0.0	.241	3-0
October 22	at Georgia	3	0	0	1	.000	1	15	.067	0	0	6	1.000	0	18	1.000	12	0	0	0	0.0	0	0.0	.183	0-3
October 29	LSU	3	0	0	0	.000	4	15	.267	0	0	7	1.000	2	20	.900	7	0	0	0	0.0	0	0.0	.121	0-3
November 4	at Texas A&M	5	0	0	1	.000	2	12	.167	1	1	10	.900	1	32	.969	12	0	0	0	0.0	0	1.0	.132	2-3
November 5	at Texas A&M	5	0	0	2	.000	4	18	.222	1	2	17	.882	4	22	.818	17	0	0	0	0.0	0	1.0	.186	3-2
<b>TOTALS</b>		<b>88</b>	<b>1</b>	<b>0</b>	<b>15</b>	<b>.067</b>	<b>109</b>	<b>428</b>	<b>.255</b>	<b>11</b>	<b>19</b>	<b>349</b>	<b>.946</b>	<b>20</b>	<b>429</b>	<b>.953</b>	<b>434</b>	<b>0</b>	<b>0</b>	<b>0</b>	<b>0.0</b>	<b>0</b>	<b>12.0</b>	<b>.213</b>	

SETS PLAYED: 88      SERVICE ACES PER SET: 0.12      POINTS PER SET: 0.14  
 KILLS PER SET: 0.01      DIGS PER SET: 4.93  
 ASSISTS PER SET: 1.24

**ROSENTHALL'S OVERALL CAREER STATISTICS**

YEAR	SETS	MP	KILLS	K/S	E	TA	PCT.	AST	A/S	SA	SA/S	SE	DIGS	D/S	RE	BS	BA	TB	B/S	PTS	PT/S
2021	88	23	1	.01	0	15	.067	109	1.24	11	.13	19	434	4.93	20	0	0	0	.00	12.0	.14
2020	25	8	1	.04	0	3	.333	20	0.80	2	.08	9	70	2.80	5	0	1	1	.04	3.5	.14
2019	103	29	2	.02	0	5	.400	38	0.37	12	.12	24	307	2.98	17	0	0	0	.00	14.0	.14
2018	103	28	1	.01	0	6	.167	65	0.63	16	.16	23	339	3.29	26	0	0	0	.00	17.0	.17
<b>TOTAL</b>	<b>319</b>	<b>88</b>	<b>5</b>	<b>.02</b>	<b>0</b>	<b>29</b>	<b>.172</b>	<b>232</b>	<b>0.73</b>	<b>41</b>	<b>.13</b>	<b>75</b>	<b>1150</b>	<b>3.61</b>	<b>68</b>	<b>0</b>	<b>1</b>	<b>1</b>	<b>.00</b>	<b>46.5</b>	<b>.15</b>

**ROSENTHALL'S SEC CAREER STATISTICS**

YEAR	SETS	MP	KILLS	K/S	E	TA	PCT.	AST	A/S	SA	SA/S	SE	DIGS	D/S	RE	BS	BA	TB	B/S	PTS	PT/S
2021	51	13	1	.02	0	5	.200	61	1.20	5	.10	10	228	4.47	13	0	0	0	.00	6.0	.12
2020	25	8	1	.04	0	3	.333	20	0.80	2	.08	9	70	2.80	5	0	1	1	.04	3.5	.12
2019	59	18	1	.02	0	4	.250	31	0.53	7	.12	15	232	3.93	12	0	0	0	.00	8.0	.14
2018	67	18	1	.01	0	5	.200	39	0.58	11	.16	12	192	2.87	19	0	0	0	.00	12.0	.18
<b>TOTAL</b>	<b>202</b>	<b>57</b>	<b>4</b>	<b>.02</b>	<b>0</b>	<b>17</b>	<b>.235</b>	<b>151</b>	<b>0.75</b>	<b>25</b>	<b>.12</b>	<b>46</b>	<b>722</b>	<b>3.57</b>	<b>49</b>	<b>0</b>	<b>1</b>	<b>1</b>	<b>.00</b>	<b>29.5</b>	<b>0.14</b>



**#7 REBEKAH RATH**  
**OUTSIDE HITTER | 6-0 | JUNIOR**  
**ALTAMONTE SPRINGS, FLA. (MARYLAND)**

**RATH'S HIGHLIGHTS:**

- Named SEC Offensive Player of the Week twice (9/7 and 10/11) to become the first Tiger in program history to win the award twice in the same season
- War Eagle Invitational and Auburn Invitational All-Tournament Team selection
- Leads the SEC in attacks per set (13.34), kills per set (4.36), points (451.0), points per set (5.12), total attacks (1,174) and total kills (384), while ranking in the top 30 in all six categories nationally
- Enters Wednesday's match with the program's single-season records for kills per set and total attacks, while ranking second in total kills and seventh in aces per set (0.28)
- Chipped in a season high 24 kills versus Santa Clara (9/12) to become first Tiger to record at least 20 kills in a match since Tatum Shipes versus Ole Miss on Oct. 26, 2018
- Set career highs in kills (29), attempts (75) and points (32.0) at Arkansas (10/9) in one of the best offensive performances by a Tiger in almost two decades
- Her 29 kills were the second most recorded in a match by a Tiger in the rally scoring era and the most in a single match since Ashlee Johns' single-match record of 30, which was totaled in a five-set contest at Arkansas on Oct. 8, 2004
- Her 29 kills are the most recorded in a four-set match by any SEC student-athlete this season
- Totaled a season high five aces at Texas A&M (11/5) to become the first Tiger to record at least five aces in a single match since Breanna McIlroy at Missouri on Oct. 19, 2018

CATEGORY	CAREER HIGH	OPPONENT/DATE
Kills	29	at Arkansas (10/9/21)
Attempts	84	at Texas A&M (11/4/21)
Hitting Percentage (Min. 10 ATT.)	.433	vs. Jackson State (8/28/21)
Assists	2 (3x)	last, vs. Missouri (10/17/21)
Digs	13 (2x)	last, at Texas A&M (11/5/21)
Blocks	6.0 (2x)	last, vs. Alabama (10/2/21)
Aces	5	at Texas A&M (11/5/21)
Points	32.0	at Arkansas (10/9/21)

CATEGORY	SEASON HIGH	OPPONENT/DATE
Kills	29	at Arkansas (10/9/21)
Attempts	84	at Texas A&M (11/4/21)
Hitting Percentage (Min. 10 ATT.)	.433	vs. Jackson State (8/28/21)
Assists	2 (3x)	last, vs. Missouri (10/17/21)
Digs	13 (2x)	last, at Texas A&M (11/5/21)
Blocks	6.0 (2x)	last, vs. Alabama (10/2/21)
Aces	5	at Texas A&M (11/5/21)
Points	32.0	at Arkansas (10/9/21)

DATE	OPPONENT	SP	ATTACK				SET			SERVE				RECEIPT			BLOCKING				BHE	TEAM POINTS	HIT%	SCORE	
			K	E	TA	PCT.	A	TA	PCT.	SA	SE	TA	PCT.	RE	TA	PCT.	DIG	BS	BA	BE					TOTAL
August 27	TENNESSEE TECH	3	13	3	31	.323	0	1	.000	1	2	10	.800	2	8	.750	3	0	4	0	4.0	0	16.0	.292	3-0
August 28	JACKSON STATE	3	16	3	30	.433	0	0	.000	2	2	9	.778	0	5	1.000	3	1	4	0	5.0	0	21.0	.457	3-0
September 2	CAL STATE FULLERTON	3	16	5	42	.262	0	1	.000	1	2	9	.778	0	24	1.000	10	0	0	0	0.0	0	17.0	.221	3-0
September 3	SOUTHEASTERN LA	3	16	5	40	.275	0	1	.000	1	2	7	.714	1	14	.929	7	0	4	0	4.0	0	19.0	.300	3-0
September 9	NORTH ALABAMA	3	7	7	28	.000	0	1	.000	1	1	14	.929	2	11	.818	8	0	0	0	0.0	0	8.0	.265	3-0
September 12	SANTA CLARA	5	24	4	59	.339	1	3	.333	1	4	14	.714	2	14	.857	10	1	2	1	3.0	0	27.0	.260	3-2
September 17	FLORIDA A&M	5	12	6	47	.128	1	3	.333	1	4	12	.667	1	19	.947	4	0	1	0	1.0	0	13.5	.245	2-3
September 17	NICHOLLS	4	18	6	57	.211	2	6	.333	0	3	11	.727	0	13	1.000	6	2	4	0	6.0	0	22.0	.183	3-1
September 18	BELMONT	3	14	2	28	.429	0	1	.000	1	1	9	.889	0	16	1.000	2	1	2	0	3.0	0	17.0	.345	3-0
September 22	OLE MISS	4	19	4	52	.288	2	3	.667	0	3	10	.700	1	14	.929	6	0	0	0	0.0	0	19.0	.196	1-3
September 26	at Alabama State	5	24	7	60	.283	1	14	.071	2	2	16	.875	2	16	.875	13	2	2	0	4.0	0	29.0	.209	2-3
September 29	at Tennessee	3	9	7	43	.047	0	1	.000	0	2	8	.750	0	14	1.000	10	0	3	0	3.0	0	10.5	.076	0-3
October 2	ALABAMA	5	22	8	69	.203	1	5	.200	0	4	18	.778	1	32	.969	11	0	6	1	6.0	0	25.0	.183	3-2
October 3	ALABAMA	3	16	4	43	.279	0	0	.000	2	2	9	.778	0	11	1.000	11	1	4	0	5.0	0	21.0	.248	3-0
October 9	at Arkansas	4	29	11	75	.240	0	3	.000	1	3	11	.727	0	13	1.000	9	0	4	0	4.0	0	32.0	.158	1-3
October 10	at Arkansas	5	20	9	71	.155	0	4	.000	1	1	12	.917	2	24	.917	10	0	5	0	5.0	0	23.5	.144	2-3
October 16	MISSOURI	3	17	4	47	.277	1	4	.250	0	3	7	.571	2	8	.750	9	0	4	0	4.0	0	19.0	.232	3-0
October 17	MISSOURI	5	22	5	71	.239	2	5	.400	1	5	21	.762	1	20	.950	12	1	2	0	3.0	0	25.0	.235	2-3
October 21	at Georgia	3	5	9	32	-.125	1	4	.250	1	2	14	.857	0	18	1.000	8	0	3	0	3.0	0	7.5	.241	3-0
October 22	at Georgia	3	16	9	43	.163	0	2	.000	0	2	9	.778	1	22	.955	8	1	2	0	3.0	0	18.0	.183	0-3
October 29	LSU	3	8	10	50	-.040	0	4	.000	0	3	14	.786	2	3	.333	2	2	1	0	3.0	0	10.5	.121	0-3
November 4	at Texas A&M	5	22	12	84	.119	0	2	.000	3	3	16	.812	2	23	.913	3	0	2	0	2.0	0	26.0	.132	2-3
November 5	at Texas A&M	5	19	9	72	.139	1	1	1.000	5	3	19	.842	3	18	.833	13	0	1	0	1.0	0	24.5	.186	3-2
<b>TOTALS</b>		<b>88</b>	<b>384</b>	<b>149</b>	<b>1174</b>	<b>.200</b>	<b>13</b>	<b>69</b>	<b>.188</b>	<b>25</b>	<b>59</b>	<b>279</b>	<b>.789</b>	<b>25</b>	<b>360</b>	<b>.931</b>	<b>177</b>	<b>12</b>	<b>60</b>	<b>2</b>	<b>72.0</b>	<b>0</b>	<b>451.0</b>	<b>.213</b>	

SETS PLAYED: 88  
 KILLS PER SET: 4.36  
 ASSISTS PER SET: 0.15

SERVICE ACES PER SET: 0.28  
 DIGS PER SET: 2.01  
 BLOCKS PER SET: 0.82

POINTS PER SET: 5.12

**RATH'S OVERALL CAREER STATISTICS**

YEAR	SETS	MP	KILLS	K/S	E	TA	PCT.	AST	A/S	SA	SA/S	SE	DIGS	D/S	RE	BS	BA	TB	B/S	PTS	PT/S
2021	88	23	384	4.36	149	1174	.200	13	.15	25	.28	59	177	2.01	25	12	60	72	0.82	451.0	5.13
<b>TOTAL</b>	<b>88</b>	<b>23</b>	<b>384</b>	<b>4.36</b>	<b>149</b>	<b>1174</b>	<b>.200</b>	<b>13</b>	<b>.15</b>	<b>25</b>	<b>.28</b>	<b>59</b>	<b>177</b>	<b>2.01</b>	<b>25</b>	<b>12</b>	<b>60</b>	<b>72</b>	<b>0.82</b>	<b>451.0</b>	<b>5.13</b>

**RATH'S SEC CAREER STATISTICS**

YEAR	SETS	MP	KILLS	K/S	E	TA	PCT.	AST	A/S	SA	SA/S	SE	DIGS	D/S	RE	BS	BA	TB	B/S	PTS	PT/S
2021	51	13	224	4.39	101	752	.164	8	.16	14	.27	36	111	2.18	15	5	37	42	0.82	261.5	5.12
<b>TOTAL</b>	<b>51</b>	<b>13</b>	<b>224</b>	<b>4.39</b>	<b>101</b>	<b>752</b>	<b>.164</b>	<b>8</b>	<b>.16</b>	<b>14</b>	<b>.27</b>	<b>36</b>	<b>111</b>	<b>2.18</b>	<b>15</b>	<b>5</b>	<b>37</b>	<b>42</b>	<b>0.82</b>	<b>261.5</b>	<b>5.12</b>





# #8 LIZ REICH

**OPPOSITE HITTER | 6-1 | GRADUATE STUDENT**  
**COLORADO SPRINGS, COLO. (PORTLAND)**

### REICH'S HIGHLIGHTS:

- SEC Offensive Player of the Week (10/25)
- Ranks 59th among all active NCAA DI student-athletes in career sets played (479) and 133rd in career kills (1,065)
- Currently ranks 20th in the SEC in kills per set (2.78)
- Named to War Eagle Invitational and Auburn Invitational All-Tournament teams
- Set a season high with 17 kills versus Santa Clara (9/12) and Florida A&M (9/17)
- Tallied a career high six blocks at Arkansas (10/10)
- Behind her nine kills versus Missouri (10/16), tallied her 1,000th kill of her career
- Match season high in blocks in the series opener at Georgia (10/21) before turning in her best offensive performance in conference play in the finale (10/22) with 12 kills and a .409 hitting percentage

CATEGORY	CAREER HIGH	OPPONENT/DATE
Kills	17 (2x)	last, vs. Florida A&M (9/17/21)
Attempts	46	vs. Ole Miss (9/22/21)
Hitting Percentage (Min. 10 ATT.)	.500	vs. Jackson State (8/28/21)
Assists	1 (3x)	last, at Alabama State (9/26/21)
Digs	6 (2x)	last, at Texas A&M (11/5/21)
Blocks	6 (2x)	last, at Georgia (10/21/21)
Aces		
Points	18.5	vs. Florida A&M (9/17/21)

CATEGORY	SEASON HIGH	OPPONENT/DATE
Kills	17 (2x)	last, vs. Florida A&M (9/17/21)
Attempts	46	vs. Ole Miss (9/22/21)
Hitting Percentage (Min. 10 ATT.)	.500	vs. Jackson State (8/28/21)
Assists	1 (3x)	last, at Alabama State (9/26/21)
Digs	6 (2x)	last, at Texas A&M (11/5/21)
Blocks	6 (2x)	last, at Georgia (10/21/21)
Aces		
Points	18.5	vs. Florida A&M (9/17/21)

DATE	OPPONENT	SP	ATTACK				SET			SERVE				RECEIPT			BLOCKING				BHE	TEAM POINTS	HIT%	SCORE	
			K	E	TA	PCT.	A	TA	PCT.	SA	SE	TA	PCT.	RE	TA	PCT.	DIG	BS	BA	BE					TOTAL
August 27	TENNESSEE TECH	3	9	3	24	.250	0	1	.000	0	0	0	.000	0	1	1.000	4	0	1	0	1.0	0	9.5	.292	3-0
August 28	JACKSON STATE	3	13	1	24	.500	1	3	.333	0	0	0	.000	0	0	.000	1	0	5	0	5.0	0	15.5	.457	3-0
September 2	CAL STATE FULLERTON	3	11	2	22	.409	0	1	.000	0	0	0	.000	0	1	1.000	0	0	1	0	1.0	0	11.5	.221	3-0
September 3	SOUTHEASTERN LA.	3	13	2	24	.458	0	0	.000	0	0	0	.000	0	0	.000	0	0	4	0	4.0	0	15.0	.300	3-0
September 9	NORTH ALABAMA	3	8	2	21	.286	0	1	.000	0	0	0	.000	0	1	1.000	1	0	1	0	1.0	0	8.5	.265	3-0
September 12	SANTA CLARA	5	17	6	44	.250	0	1	.000	0	0	0	.000	0	2	1.000	2	0	0	0	0.0	0	17.0	.260	3-2
September 17	FLORIDA A&M	5	17	3	37	.378	0	2	.000	0	1	5	.800	0	0	.000	1	0	3	0	3.0	0	18.5	.245	2-3
September 17	NICHOLLS	4	10	3	37	.189	0	5	.000	0	0	0	.000	0	0	.000	5	0	4	0	4.0	0	12.0	.183	3-1
September 18	BELMONT	3	11	2	22	.409	1	1	1.000	0	0	0	.000	0	0	.000	1	0	2	0	2.0	0	12.0	.345	3-0
September 22	OLE MISS	4	10	5	46	.109	0	0	.000	0	0	0	.000	0	0	.000	4	0	2	0	2.0	0	11.0	.196	1-3
September 26	at Alabama State	5	13	3	27	.370	1	6	.167	0	0	1	1.000	0	0	.000	2	0	1	0	1.0	0	13.5	.209	2-3
September 29	at Tennessee	3	8	3	23	.217	0	2	.000	0	0	0	.000	0	0	.000	1	0	2	0	2.0	0	9.0	.076	0-3
October 2	ALABAMA	5	11	3	36	.222	0	2	.000	0	0	0	.000	1	1	.000	1	0	2	0	2.0	0	12.0	.183	3-2
October 3	ALABAMA	3	11	1	23	.435	0	2	.000	0	0	0	.000	0	0	.000	4	0	0	0	0.0	0	11.0	.248	3-0
October 9	at Arkansas	4	6	5	21	.048	0	0	.000	0	0	0	.000	0	1	1.000	4	0	1	2	1.0	0	6.5	.158	1-3
October 10	at Arkansas	5	8	3	24	.208	0	4	.000	0	0	0	.000	0	0	.000	1	0	6	0	6.0	0	11.0	.144	2-3
October 16	MISSOURI	3	9	3	24	.250	0	0	.000	0	0	0	.000	0	0	.000	3	0	1	0	1.0	0	9.5	.232	3-0
October 17	MISSOURI	5	10	2	31	.258	0	2	.000	0	0	0	.000	0	0	.000	2	0	1	0	1.0	0	10.5	.235	2-3
October 21	at Georgia	3	11	3	27	.296	0	1	.000	0	0	0	.000	0	0	.000	0	0	6	0	6.0	0	14.0	.241	3-0
October 22	at Georgia	3	12	3	22	.409	0	0	.000	0	0	0	.000	0	0	.000	1	0	2	0	2.0	0	13.0	.183	0-3
October 29	LSU	3	8	5	21	.143	0	0	.000	0	0	0	.000	0	0	.000	0	0	1	1	1.0	0	8.5	.121	0-3
November 4	at Texas A&M	5	9	5	27	.148	0	1	.000	0	0	0	.000	0	0	.000	6	0	1	0	1.0	0	9.5	.132	2-3
November 5	at Texas A&M	5	10	2	30	.267	0	1	.000	0	0	0	.000	0	0	.000	6	0	2	0	2.0	0	11.0	.186	3-2
<b>TOTALS</b>		<b>88</b>	<b>245</b>	<b>70</b>	<b>637</b>	<b>.275</b>	<b>3</b>	<b>36</b>	<b>.083</b>	<b>0</b>	<b>1</b>	<b>6</b>	<b>.833</b>	<b>1</b>	<b>7</b>	<b>.857</b>	<b>50</b>	<b>0</b>	<b>49</b>	<b>3</b>	<b>49.0</b>	<b>0</b>	<b>269.5</b>	<b>.213</b>	

SETS PLAYED: 88  
 KILLS PER SET: 2.78  
 ASSISTS PER SET: 0.03

DIGS PER SET: 0.57  
 BLOCKS PER SET: 0.55

POINTS PER SET: 3.06

### REICH'S OVERALL CAREER STATISTICS

YEAR	SETS	MP	KILLS	K/S	E	TA	PCT.	AST	A/S	SA	SA/S	SE	DIGS	D/S	RE	BS	BA	TB	B/S	PTS	PT/S
2021	88	23	245	2.78	70	637	.275	3	.03	0	.00	1	50	.57	1	0	49	46	0.56	269.5	3.06
<b>TOTAL</b>	<b>88</b>	<b>23</b>	<b>245</b>	<b>2.78</b>	<b>70</b>	<b>637</b>	<b>.275</b>	<b>3</b>	<b>.03</b>	<b>0</b>	<b>.00</b>	<b>1</b>	<b>50</b>	<b>.57</b>	<b>1</b>	<b>0</b>	<b>49</b>	<b>46</b>	<b>0.56</b>	<b>269.5</b>	<b>3.06</b>

### REICH'S SEC CAREER STATISTICS

YEAR	SETS	MP	KILLS	K/S	E	TA	PCT.	AST	A/S	SA	SA/S	SE	DIGS	D/S	RE	BS	BA	TB	B/S	PTS	PT/S
2021	51	13	123	2.41	43	355	.225	0	.00	0	.00	0	33	0.65	1	0	27	27	0.53	136.5	2.67
<b>TOTAL</b>	<b>51</b>	<b>13</b>	<b>123</b>	<b>2.41</b>	<b>43</b>	<b>355</b>	<b>.225</b>	<b>0</b>	<b>.00</b>	<b>0</b>	<b>.00</b>	<b>0</b>	<b>33</b>	<b>0.65</b>	<b>1</b>	<b>0</b>	<b>27</b>	<b>27</b>	<b>0.53</b>	<b>136.5</b>	<b>2.67</b>

# #10 JACKIE BARRETT

SETTER | 6-1 | SOPHOMORE  
HIGHLAND, CALIF. (CITRUS VALLEY)



## BARRETT'S HIGHLIGHTS

- Leads Auburn with 15 double-doubles this fall
- Enters the weekend ranked ninth in Auburn single-season history (rally scoring era) in total (716), eighth in assists per set (8.42) and tied for ninth in aces per set (0.26)
- Set career highs in kills (6), hitting percentage (.308), assists (48) and points (10.0) versus Florida A&M (9/17)
- Matched career high with three aces while shattering her career high in digs (28) versus Nicholls (9/17)
- Picked up first double-double in conference play with 18 assists and 12 digs at No. 20 Tennessee (9/29)
- Set a career high with eight blocks at Arkansas (10/9) while adding 36 assists and 13 digs to record a double-double
- Was lifted during the second set of game two versus Missouri (10/17) due to illness

CATEGORY	CAREER HIGH	OPPONENT/DATE
Kills	6 (2x)	last, at Alabama State (9/26/21)
Attempts	20	at Alabama State (9/26/21)
Hitting Percentage (Min. 10 ATT.)	.308	vs. Florida A&M (9/17/21)
Assists	48	vs. Florida A&M (9/17/21)
Digs	28	vs. Nicholls (9/17/21)
Blocks	8.0	at Arkansas (10/9/21)
Aces	3 (3x)	last, at Texas A&M (11/5/21)
Points	10.0	vs. Florida A&M (9/17/21)

CATEGORY	SEASON HIGH	OPPONENT/DATE
Kills	6 (2x)	last, at Alabama State (9/26/21)
Attempts	20	at Alabama State (9/26/21)
Hitting Percentage (Min. 10 ATT.)	.308	vs. Florida A&M (9/17/21)
Assists	48	vs. Florida A&M (9/17/21)
Digs	28	vs. Nicholls (9/17/21)
Blocks	8.0	at Arkansas (10/9/21)
Aces	3 (2x)	last, at Texas A&M (11/5/21)
Points	10.0	vs. Florida A&M (9/17/21)

DATE	OPPONENT	SP	ATTACK				SET			SERVE				RECEIPT			BLOCKING				TEAM		HIT%	SCORE	
			K	E	TA	PCT.	A	TA	PCT.	SA	SE	TA	PCT.	RE	TA	PCT.	DIG	BS	BA	BE	TOTAL	BHE			POINTS
August 27	TENNESSEE TECH	3	1	0	3	.333	25	63	.397	1	0	8	1.000	0	0	.000	12	0	0	1	0.0	0	2.0	.292	3-0
August 28	JACKSON STATE	3	2	0	2	1.000	27	59	.458	2	0	10	1.000	0	1	1.000	8	0	1	0	1.0	0	4.5	.457	3-0
September 2	CAL STATE FULLERTON	3	0	1	6	-.167	16	39	.410	0	0	9	1.000	0	0	.000	5	0	1	1	1.0	0	0.5	.221	3-0
September 3	SOUTHEASTERN LA.	3	3	0	5	.600	28	74	.378	2	1	9	.889	0	0	.000	6	0	2	2	2.0	1	6.0	.300	3-0
September 9	NORTH ALABAMA	3	0	1	2	-.500	30	71	.423	1	1	22	.955	0	0	.000	8	0	4	0	4.0	0	3.0	.265	3-0
September 12	SANTA CLARA	5	1	0	6	.167	44	126	.349	2	2	20	.900	0	2	1.000	11	0	5	0	5.0	0	5.5	.260	3-2
September 17	FLORIDA A&M	5	6	2	13	.308	48	130	.369	2	1	21	.952	0	0	.000	15	0	4	0	4.0	0	10.0	.245	2-3
September 17	NICHOLLS	4	2	0	8	.250	40	124	.323	3	0	21	1.000	0	0	.000	28	0	2	0	2.0	0	6.0	.183	3-1
September 18	BELMONT	3	1	0	3	.333	24	57	.421	1	1	11	.909	0	0	.000	19	0	3	0	3.0	0	3.5	.345	3-0
September 22	OLE MISS	4	1	0	4	.250	34	117	.291	1	2	13	.846	0	0	.000	12	1	1	0	2.0	0	3.5	.196	1-3
September 26	at Alabama State	5	6	1	20	.250	36	113	.319	0	1	19	.947	0	0	.000	4	0	1	0	1.0	0	6.5	.209	2-3
September 29	at Tennessee	3	1	1	4	.000	18	79	.228	0	2	6	.667	0	0	.000	12	0	2	0	2.0	0	2.0	.076	0-3
October 2	ALABAMA	5	1	0	10	.100	43	123	.350	0	0	14	1.000	0	0	.000	14	1	3	0	4.0	0	3.5	.183	3-2
October 3	ALABAMA	3	1	0	6	.167	34	90	.378	0	0	14	1.000	0	0	.000	11	0	2	0	2.0	0	2.0	.248	3-0
October 9	at Arkansas	4	3	0	8	.375	36	119	.303	1	0	15	1.000	0	0	.000	13	0	8	3	8.0	0	8.0	.158	1-3
October 10	at Arkansas	5	1	0	8	.125	36	122	.295	0	1	17	.941	0	0	.000	16	0	4	0	4.0	0	3.0	.144	2-3
October 16	MISSOURI	3	2	1	5	.200	25	80	.312	1	1	13	.923	0	0	.000	9	0	2	1	2.0	0	4.0	.232	3-0
October 17	MISSOURI	2	1	0	3	.333	12	29	.414	0	0	4	1.000	0	0	.000	3	0	2	0	2.0	0	2.0	.235	2-3
October 21	at Georgia	3	4	1	7	.429	27	74	.365	0	2	14	.857	0	0	.000	17	0	2	0	2.0	0	5.0	.241	3-0
October 22	at Georgia	3	3	1	10	.200	30	82	.366	0	1	6	.833	0	1	1.000	6	0	1	0	1.0	0	3.5	.183	0-3
October 29	LSU	3	2	1	5	.200	22	79	.278	0	0	7	1.000	0	0	.000	13	0	1	0	1.0	0	2.5	.121	0-3
November 4	at Texas A&M	5	2	1	8	.125	38	132	.288	2	1	22	.955	0	0	.000	13	0	2	0	2.0	0	5.0	.132	2-3
November 5	at Texas A&M	5	1	1	12	.000	43	138	.312	3	2	17	.882	0	0	.000	16	0	2	0	2.0	0	5.0	.186	3-2
<b>TOTALS</b>		<b>85</b>	<b>45</b>	<b>12</b>	<b>158</b>	<b>.209</b>	<b>716</b>	<b>2120</b>	<b>.338</b>	<b>22</b>	<b>19</b>	<b>312</b>	<b>.939</b>	<b>0</b>	<b>4</b>	<b>1.000</b>	<b>271</b>	<b>2</b>	<b>55</b>	<b>8</b>	<b>57.0</b>	<b>1</b>	<b>96.5</b>	<b>.213</b>	

SETS PLAYED: 85  
KILLS PER SET: 0.53  
ASSISTS PER SET: 8.42

SERVICE ACES PER SET: 0.26  
DIGS PER SET: 3.19  
BLOCKS PER SET: 0.67

POINTS PER SET: 1.14

## BARRETT'S OVERALL CAREER STATISTICS

YEAR	SETS	MP	KILLS	K/S	E	TA	PCT.	AST	A/S	SA	SA/S	SE	DIGS	D/S	RE	BS	BA	TB	B/S	PTS	PT/S
2021	85	23	45	0.53	12	158	.209	716	8.42	22	.26	19	271	3.19	0	2	55	57	0.67	96.5	1.14
2020	19	6	10	0.53	6	45	.089	144	7.58	3	.16	8	33	1.74	0	0	11	11	0.58	18.5	0.97
<b>TOTAL</b>	<b>104</b>	<b>29</b>	<b>55</b>	<b>0.53</b>	<b>18</b>	<b>203</b>	<b>.182</b>	<b>860</b>	<b>8.27</b>	<b>25</b>	<b>.24</b>	<b>27</b>	<b>304</b>	<b>2.92</b>	<b>0</b>	<b>2</b>	<b>66</b>	<b>68</b>	<b>0.65</b>	<b>115.0</b>	<b>1.11</b>

## BARRETT'S SEC CAREER STATISTICS

YEAR	SETS	MP	KILLS	K/S	E	TA	PCT.	AST	A/S	SA	SA/S	SE	DIGS	D/S	RE	BS	BA	TB	B/S	PTS	PT/S
2021	48	13	23	0.48	7	90	.178	398	8.29	8	.17	12	155	3.23	0	2	32	34	0.71	49.0	1.02
2020	19	6	10	0.53	6	45	.089	144	7.58	3	.16	8	33	1.74	0	0	11	11	0.58	18.5	0.95
<b>TOTAL</b>	<b>67</b>	<b>19</b>	<b>33</b>	<b>0.49</b>	<b>13</b>	<b>135</b>	<b>.148</b>	<b>542</b>	<b>8.09</b>	<b>11</b>	<b>.16</b>	<b>20</b>	<b>188</b>	<b>2.81</b>	<b>0</b>	<b>2</b>	<b>43</b>	<b>45</b>	<b>0.67</b>	<b>67.5</b>	<b>1.00</b>



# #11 JORDAN SINNESS

SETTER | 5-9 | FRESHMAN  
SEBRING, FLA. (SEBRING)

### SINNESS'S HIGHLIGHTS:

- Made collegiate debut versus Cal State Fullerton (9/2), dishing out 16 assists, six digs, one kill and a block
- Picked up a season high two aces from the service line versus Santa Clara (9/12)
- Matched season high with a pair of aces at Alabama State (9/26)
- Came off the bench versus Missouri (10/17) to take over as setter for an ill Jackie Barrett
- Picked up her first collegiate double-double with career highs in assists (35) and digs (14), while also adding a career high two blocks

CATEGORY	CAREER HIGH	OPPONENT/DATE
Kills	1 (2x)	last, vs. Missouri (10/17/21)
Attempts	3	vs. Missouri (10/17/21)
Hitting Percentage (Min. 10 ATT.)		
Assists	35	vs. Missouri (10/17/21)
Digs	14	vs. Missouri (10/17/21)
Blocks	2	vs. Missouri (10/17/21)
Aces	2 (2x)	last, at Alabama State (9/26/21)
Points	2.0 (3x)	last, vs. Missouri (10/17/21)

CATEGORY	SEASON HIGH	OPPONENT/DATE
Kills	1 (2x)	last, vs. Missouri (10/17/21)
Attempts	3	vs. Missouri (10/17/21)
Hitting Percentage (Min. 10 ATT.)		
Assists	35	vs. Missouri (10/17/21)
Digs	14	vs. Missouri (10/17/21)
Blocks	2	vs. Missouri (10/17/21)
Aces	2 (2x)	last, at Alabama State (9/26/21)
Points	2.0 (3x)	last, vs. Missouri (10/17/21)

DATE	OPPONENT	SP	ATTACK				SET			SERVE				RECEIPT			BLOCKING				POINTS	TEAM HIT%	SCORE		
			K	E	TA	PCT.	A	TA	PCT.	SA	SE	TA	PCT.	RE	TA	PCT.	DIG	BS	BA	BE				TOTAL	BHE
September 2	CAL STATE FULLERTON	2	1	1	2	.000	16	53	.302	0	0	3	1.000	0	0	.000	6	0	1	0	1.0	1	1.5	.221	3-0
September 9	NORTH ALABAMA	3	0	0	0	.000	0	0	.000	0	0	8	1.000	0	0	.000	0	0	0	0	0.0	0	0.0	.265	3-0
September 12	SANTA CLARA	5	0	0	0	.000	0	2	.000	2	1	17	.941	0	0	.000	1	0	0	0	0.0	0	2.0	.260	3-2
September 17	FLORIDA A&M	5	0	0	0	.000	0	3	.000	1	0	19	1.000	0	0	.000	2	0	0	0	0.0	0	1.0	.245	2-3
September 17	NICHOLLS	4	0	0	0	.000	0	0	.000	0	1	9	.889	0	0	.000	0	0	0	0	0.0	0	0.0	.183	3-1
September 18	BELMONT	3	0	0	0	.000	0	0	.000	0	1	5	.800	0	0	.000	2	0	0	0	0.0	0	0.0	.345	3-0
September 22	OLE MISS	4	0	0	0	.000	0	1	.000	0	0	15	1.000	0	0	.000	4	0	0	0	0.0	0	0.0	.196	1-3
September 26	at Alabama State	5	0	0	0	.000	1	2	.500	2	0	17	1.000	0	0	.000	1	0	0	0	0.0	0	2.0	.209	2-3
September 29	at Tennessee	3	0	0	0	.000	0	0	.000	0	0	8	1.000	0	0	.000	0	0	0	0	0.0	0	0.0	.076	0-3
October 2	ALABAMA	5	0	0	0	.000	0	1	.000	0	0	16	1.000	0	0	.000	2	0	0	0	0.0	0	0.0	.183	3-2
October 3	ALABAMA	3	0	0	0	.000	0	0	.000	1	1	9	.889	0	0	.000	0	0	0	0	0.0	0	1.0	.248	3-0
October 9	at Arkansas	2	0	0	0	.000	0	0	.000	0	0	3	1.000	0	0	.000	0	0	0	0	0.0	0	0.0	.158	1-3
October 17	MISSOURI	4	1	0	3	.333	35	111	.315	0	1	13	.923	0	0	.000	14	0	2	0	2.0	1	2.0	.235	2-3
<b>TOTALS</b>		<b>48</b>	<b>2</b>	<b>1</b>	<b>5</b>	<b>.200</b>	<b>52</b>	<b>173</b>	<b>.301</b>	<b>6</b>	<b>5</b>	<b>142</b>	<b>.965</b>	<b>0</b>	<b>0</b>	<b>.000</b>	<b>32</b>	<b>0</b>	<b>3</b>	<b>0</b>	<b>3.0</b>	<b>2</b>	<b>9.5</b>	<b>.213</b>	

SETS PLAYED: 48  
KILLS PER SET: 0.04  
ASSISTS PER SET: 1.08

SERVICE ACES PER SET: 0.12  
DIGS PER SET: 0.67  
BLOCKS PER SET: 0.06

POINTS PER SET: 0.20

### SINNESS'S OVERALL CAREER STATISTICS

YEAR	SETS	MP	KILLS	K/S	E	TA	PCT.	AST	A/S	SA	SA/S	SE	DIGS	D/S	RE	BS	BA	TB	B/S	PTS	PT/S
2021	48	13	2	0.04	1	5	.200	52	1.08	6	.13	5	32	0.67	0	0	3	3	.06	9.5	0.20
<b>TOTAL</b>	<b>48</b>	<b>13</b>	<b>2</b>	<b>0.04</b>	<b>1</b>	<b>5</b>	<b>.200</b>	<b>52</b>	<b>1.08</b>	<b>6</b>	<b>.13</b>	<b>5</b>	<b>32</b>	<b>0.67</b>	<b>0</b>	<b>0</b>	<b>3</b>	<b>3</b>	<b>.06</b>	<b>9.5</b>	<b>0.20</b>

### SINNESS'S SEC CAREER STATISTICS

YEAR	SETS	MP	KILLS	K/S	E	TA	PCT.	AST	A/S	SA	SA/S	SE	DIGS	D/S	RE	BS	BA	TB	B/S	PTS	PT/S
2021	21	6	1	0.05	0	3	.333	35	1.67	1	.05	2	20	0.95	0	0	2	2	.10	3.0	0.14
<b>TOTAL</b>	<b>21</b>	<b>6</b>	<b>1</b>	<b>0.05</b>	<b>0</b>	<b>3</b>	<b>.333</b>	<b>35</b>	<b>1.67</b>	<b>1</b>	<b>.05</b>	<b>2</b>	<b>20</b>	<b>0.95</b>	<b>0</b>	<b>0</b>	<b>2</b>	<b>2</b>	<b>.10</b>	<b>3.0</b>	<b>0.14</b>





# #15 KATE CURTIS

DEFENSIVE SPECIALIST/LIBERO | 5-6 | FRESHMAN  
ANDERSON, S.C. (T.L. HANNA)

### CURTIS'S HIGHLIGHTS:

- Recorded six double-digit dig performances this season and has turned in three consecutive 10+ dig matches entering Wednesday
- Set career high in assists versus Florida A&M (9/17)
- Turned in her first double-digit dig effort with a career best 14 versus Nicholls (9/17)
- Picked up a season high two aces from the service line versus Alabama (10/3)
- Recorded her first double-digit effort in Southeastern Conference play with 11 at Arkansas (10/10)
- Tallied her first collegiate kill at Georgia (10/21)

CATEGORY	CAREER HIGH	OPPONENT/DATE
Kills	1	at Georgia (10/21/21)
Attempts	3	at Alabama State (9/26/21)
Hitting Percentage (Min. 10 ATT.)		
Assists	4	vs. Florida A&M (9/17/21)
Digs	14	vs. Nicholls (9/17/21)
Blocks		
Aces	2	vs. Alabama (10/3/21)
Points	2.0	vs. Alabama (10/3/21)

CATEGORY	SEASON HIGH	OPPONENT/DATE
Kills	1	at Georgia (10/21/21)
Attempts	3	at Alabama State (9/26/21)
Hitting Percentage (Min. 10 ATT.)		
Assists	4	vs. Florida A&M (9/17/21)
Digs	14	vs. Nicholls (9/17/21)
Blocks		
Aces	2	vs. Alabama (10/3/21)
Points	2.0	vs. Alabama (10/3/21)

DATE	OPPONENT	SP	ATTACK				SET			SERVE				RECEIPT			BLOCKING				BHE	TEAM POINTS	HIT%	SCORE	
			K	E	TA	PCT.	A	TA	PCT.	SA	SE	TA	PCT.	RE	TA	PCT.	DIG	BS	BA	BE					TOTAL
August 27	TENNESSEE TECH	3	0	0	0	.000	0	0	.000	1	0	17	1.000	0	14	1.000	4	0	0	0	0.0	0	1.0	.292	3-0
August 28	JACKSON STATE	3	0	0	0	.000	0	0	.000	0	1	13	.923	0	6	1.000	3	0	0	0	0.0	0	0.0	.457	3-0
September 2	CAL STATE FULLERTON	3	0	0	0	.000	0	1	.000	0	0	17	1.000	0	10	1.000	6	0	0	0	0.0	0	0.0	.221	3-0
September 3	SOUTHEASTERN LA.	3	0	0	0	.000	0	3	.000	1	0	23	1.000	0	2	1.000	7	0	0	0	0.0	0	1.0	.300	3-0
September 9	NORTH ALABAMA	3	0	0	0	.000	0	3	.000	0	0	9	1.000	0	4	1.000	5	0	0	0	0.0	0	0.0	.265	3-0
September 12	SANTA CLARA	5	0	0	0	.000	1	2	.500	0	0	18	1.000	3	28	.893	5	0	0	0	0.0	0	0.0	.260	3-2
September 17	FLORIDA A&M	5	0	0	0	.000	4	6	.667	1	1	10	.900	1	28	.964	7	0	0	0	0.0	0	1.0	.245	2-3
September 17	NICHOLLS	4	0	0	0	.000	1	2	.500	0	0	21	1.000	1	14	.929	14	0	0	0	0.0	0	0.0	.183	3-1
September 18	BELMONT	3	0	0	0	.000	0	0	.000	1	1	13	.923	1	2	.500	4	0	0	0	0.0	0	1.0	.345	3-0
September 22	OLE MISS	4	0	0	0	.000	2	2	1.000	0	1	12	.917	1	20	.950	7	0	0	0	0.0	0	0.0	.196	1-3
September 26	at Alabama State	5	0	0	3	.000	1	3	.333	0	1	16	.938	0	14	1.000	6	0	0	0	0.0	0	0.0	.209	2-3
September 29	at Tennessee	3	0	0	0	.000	1	5	.200	0	1	9	.889	0	4	1.000	6	0	0	0	0.0	0	0.0	.076	0-3
October 2	ALABAMA	5	0	0	0	.000	1	3	.333	1	1	22	.955	1	22	.955	7	0	0	0	0.0	0	1.0	.183	3-2
October 3	ALABAMA	3	0	0	0	.000	1	5	.200	2	1	16	.938	0	4	1.000	4	0	0	0	0.0	0	2.0	.248	3-0
October 9	at Arkansas	4	0	0	0	.000	3	8	.375	0	2	20	.900	0	13	1.000	7	0	0	0	0.0	0	0.0	.158	1-3
October 10	at Arkansas	5	0	0	0	.000	0	3	.000	0	0	14	1.000	1	26	.962	11	0	0	0	0.0	0	0.0	.144	2-3
October 16	MISSOURI	3	0	0	0	.000	0	2	.000	1	1	17	.941	0	13	1.000	8	0	0	0	0.0	0	1.0	.232	3-0
October 17	MISSOURI	5	0	0	0	.000	0	3	.000	1	1	19	.947	3	28	.893	12	0	0	0	0.0	0	1.0	.235	2-3
October 21	at Georgia	3	1	0	1	1.000	2	5	.400	0	0	12	1.000	1	10	.900	7	0	0	0	0.0	0	1.0	.241	3-0
October 22	at Georgia	3	0	0	1	.000	1	3	.333	0	0	14	1.000	0	4	1.000	8	0	0	0	0.0	0	0.0	.183	0-3
October 29	LSU	3	0	0	0	.000	2	2	1.000	0	0	9	1.000	4	22	.818	11	0	0	0	0.0	0	0.0	.121	0-3
November 4	at Texas A&M	5	0	0	0	.000	1	6	.167	1	3	17	.824	0	17	1.000	11	0	0	0	0.0	0	1.0	.132	2-3
November 5	at Texas A&M	5	0	0	0	.000	1	5	.200	0	1	15	.933	0	17	1.000	13	0	0	0	0.0	0	0.0	.186	3-2
<b>TOTALS</b>		<b>88</b>	<b>1</b>	<b>0</b>	<b>5</b>	<b>.200</b>	<b>22</b>	<b>72</b>	<b>.306</b>	<b>10</b>	<b>16</b>	<b>353</b>	<b>.955</b>	<b>17</b>	<b>322</b>	<b>.947</b>	<b>173</b>	<b>0</b>	<b>0</b>	<b>0</b>	<b>0.0</b>	<b>0</b>	<b>11.0</b>	<b>.213</b>	

SETS PLAYED: 88  
KILLS PER SET: 0.01  
ASSISTS PER SET: 0.25

SERVICE ACES PER SET: 0.11  
DIGS PER SET: 1.97

POINTS PER SET: 0.12

### CURTIS'S OVERALL CAREER STATISTICS

YEAR	SETS	MP	KILLS	K/S	E	TA	PCT.	AST	A/S	SA	SA/S	SE	DIGS	D/S	RE	BS	BA	TB	B/S	PTS	PT/S
2021	88	23	1	0.01	0	5	.200	22	.25	10	.11	16	173	1.97	17	0	0	0	.00	11.0	0.13
<b>TOTAL</b>	<b>88</b>	<b>23</b>	<b>1</b>	<b>0.01</b>	<b>0</b>	<b>5</b>	<b>.200</b>	<b>22</b>	<b>.25</b>	<b>10</b>	<b>.11</b>	<b>16</b>	<b>173</b>	<b>1.97</b>	<b>17</b>	<b>0</b>	<b>0</b>	<b>0</b>	<b>.00</b>	<b>11.0</b>	<b>0.13</b>

### CURTIS'S SEC CAREER STATISTICS

YEAR	SETS	MP	KILLS	K/S	E	TA	PCT.	AST	A/S	SA	SA/S	SE	DIGS	D/S	RE	BS	BA	TB	B/S	PTS	PT/S
2021	51	13	1	0.02	0	2	.500	15	.29	6	.12	12	112	2.20	11	0	0	0	.00	7.0	0.14
<b>TOTAL</b>	<b>51</b>	<b>13</b>	<b>1</b>	<b>0.02</b>	<b>0</b>	<b>2</b>	<b>.500</b>	<b>15</b>	<b>.29</b>	<b>6</b>	<b>.12</b>	<b>12</b>	<b>112</b>	<b>2.20</b>	<b>11</b>	<b>0</b>	<b>0</b>	<b>0</b>	<b>.00</b>	<b>7.0</b>	<b>0.14</b>



**#16 VAL GREEN**  
**OUTSIDE HITTER | 6-2 | SENIOR**  
**OXFORD, OHIO (TALAWANDA)**

**GREEN'S HIGHLIGHTS:**

- Recorded 16 double-digit kill efforts during her Tiger career
- Chipped in 11 kills versus Cal State Fullerton (9/2) for her first 10+ kill match of the season
- Against Florida A&M (9/17), set career highs in kills (19) and points (21.5)
- Totaled a season high two aces from the service line versus Ole Miss (9/22)
- Recorded a career high 5.0 blocks against Alabama (10/2), helping Auburn to a team total of 18.0 to tie the program's single-match record
- Match season high for kills in a league match with 13 on the road at Arkansas (10/10)
- Shattered her career high attack percentage as she landed 16 kills on 32 swings with just one error at Georgia (10/21) for a .469 clip

CATEGORY	CAREER HIGH	OPPONENT/DATE
Kills	19	vs. Florida A&M (9/17/21)
Attempts	50	vs. Butler (8/31/19)
Hitting Percentage (Min. 10 ATT.)	.469	at Georgia (10/21/21)
Assists	2	at South Carolina (10/29/20)
Digs	10	at South Carolina (10/29/20)
Blocks	5.0	vs. Alabama (10/2/21)
Aces	4	at TCU (9/15/19)
Points	21.5	vs. Florida A&M (9/17/21)

CATEGORY	SEASON HIGH	OPPONENT/DATE
Kills	19	vs. Florida A&M (9/17/21)
Attempts	48	vs. Florida A&M (9/17/21)
Hitting Percentage (Min. 10 ATT.)	.469	at Georgia (10/21/21)
Assists	1 (4x)	last, at Texas A&M (11/4/21)
Digs	7 (2x)	last, at Texas A&M (11/5/21)
Blocks	5.0	vs. Alabama (10/2/21)
Aces	2	vs. Ole Miss (9/22/21)
Points	21.5	vs. Florida A&M (9/17/21)

DATE	OPPONENT	SP	ATTACK				SET			SERVE				RECEIPT			BLOCKING				TEAM POINTS	HIT%	SCORE		
			K	E	TA	PCT.	A	TA	PCT.	SA	SE	TA	PCT.	RE	TA	PCT.	DIG	BS	BA	BE				TOTAL	BHE
August 27	TENNESSEE TECH	3	5	1	20	.200	0	0	.000	0	0	6	1.000	0	2	1.000	1	0	3	0	3.0	0	6.5	.292	3-0
August 28	JACKSON STATE	3	3	1	10	.200	0	1	.000	1	0	24	1.000	0	0	.000	5	0	3	0	3.0	0	5.5	.457	3-0
September 2	CAL STATE FULLERTON	3	11	4	35	.200	0	2	.00	0	0	18	1.000	0	3	1.000	2	0	1	0	1.0	0	11.5	.221	3-0
September 3	SOUTHEASTERN LA.	3	2	1	18	.056	1	2	.500	1	2	14	.857	0	0	.000	4	0	1	0	1.0	0	3.5	.300	3-0
September 9	NORTH ALABAMA	3	12	0	32	.375	0	3	.000	1	0	9	1.000	0	2	1.000	2	0	0	1	0.0	0	13.0	.265	3-0
September 12	SANTA CLARA	5	12	3	41	.220	0	1	.000	0	0	17	1.000	2	9	.778	7	0	0	0	0.0	0	12.0	.260	3-2
September 17	FLORIDA A&M	5	19	5	48	.292	0	1	.000	0	2	16	.875	0	5	1.000	6	2	1	0	3.0	0	21.5	.245	2-3
September 17	NICHOLLS	4	12	6	41	.146	0	0	.000	0	1	13	.923	0	2	1.000	2	0	0	0	0.0	0	12.0	.183	3-1
September 18	BELMONT	3	4	2	16	.125	0	2	.000	1	0	18	1.000	0	2	1.000	0	0	0	0	0.0	0	5.0	.345	3-0
September 22	OLE MISS	4	13	6	34	.206	1	3	.333	2	1	15	.933	0	7	1.000	3	0	0	0	0.0	0	15.0	.196	1-3
September 26	at Alabama State	5	3	7	26	-.154	0	5	.000	0	2	17	.882	0	2	1.000	4	0	1	0	1.0	0	3.5	.209	2-3
September 29	at Tennessee	3	2	3	20	-.050	0	1	.000	0	0	0	.000	0	3	1.000	2	0	2	0	2.0	0	3.0	.076	0-3
October 2	ALABAMA	5	9	6	37	.081	0	1	.000	0	0	0	.000	0	5	1.000	2	0	5	0	5.0	0	11.5	.183	3-2
October 3	ALABAMA	3	7	3	27	.148	0	0	.000	0	0	0	.000	0	3	1.000	4	0	2	0	2.0	0	8.0	.248	3-0
October 9	at Arkansas	4	7	4	30	.100	0	2	.000	0	0	0	.000	0	12	1.000	1	0	1	0	1.0	0	7.5	.158	1-3
October 10	at Arkansas	5	13	4	39	.231	0	4	.000	0	0	0	.000	1	6	.833	3	0	2	0	2.0	0	14.0	.144	2-3
October 16	MISSOURI	3	2	1	14	.071	0	1	.000	0	0	0	.000	0	1	1.000	0	0	0	0	0.0	0	2.0	.232	3-0
October 17	MISSOURI	5	16	7	47	.191	1	6	.167	0	0	0	.000	0	7	1.000	2	0	1	0	1.0	0	16.5	.235	2-3
October 21	at Georgia	3	16	1	32	.469	0	0	.000	0	0	0	.000	0	2	1.000	3	0	1	0	1.0	0	16.5	.241	3-0
October 22	at Georgia	3	4	6	20	-.100	0	1	.000	0	0	0	.000	0	7	1.000	0	0	0	0	0.0	0	4.0	.183	0-3
October 29	LSU	3	7	1	17	.353	0	1	.000	0	0	0	.000	0	0	.000	2	0	2	0	2.0	0	8.0	.121	0-3
November 4	at Texas A&M	5	8	5	32	.094	1	4	.250	0	0	0	.000	1	17	.941	6	0	1	0	1.0	0	8.5	.132	2-3
November 5	at Texas A&M	5	10	6	36	.111	0	1	.000	0	0	0	.000	1	16	.938	7	0	1	0	1.0	0	10.5	.186	3-2
<b>TOTALS</b>		<b>88</b>	<b>197</b>	<b>83</b>	<b>672</b>	<b>.170</b>	<b>4</b>	<b>42</b>	<b>.095</b>	<b>6</b>	<b>8</b>	<b>167</b>	<b>.952</b>	<b>5</b>	<b>113</b>	<b>.956</b>	<b>69</b>	<b>2</b>	<b>28</b>	<b>1</b>	<b>30.0</b>	<b>0</b>	<b>219.0</b>	<b>.213</b>	

SETS PLAYED: 88      SERVICE ACES PER SET: 0.07      POINTS PER SET: 2.49  
 KILLS PER SET: 2.24      DIGS PER SET: 0.78  
 ASSISTS PER SET: 0.05      BLOCKS PER SET: 0.34

**GREEN'S OVERALL CAREER STATISTICS**

YEAR	SETS	MP	KILLS	K/S	E	TA	PCT.	AST	A/S	SA	SA/S	SE	DIGS	D/S	RE	BS	BA	TB	B/S	PTS	PT/S
2021	88	23	197	2.24	83	672	.170	4	.05	6	.07	8	69	0.78	5	2	28	30	0.34	219.0	2.49
2020	13	4	27	2.08	33	139	-.043	3	.23	1	.08	8	28	2.15	2	1	8	9	0.69	33.0	2.54
2019	67	24	146	2.18	103	506	.085	1	.01	13	.19	14	30	0.45	3	3	7	10	0.15	165.5	2.47
2018	1	1	0	0.00	0	0	.000	0	.00	0	.00	0	0	0.00	0	0	0	0	0.00	0.0	0.00
<b>TOTAL</b>	<b>169</b>	<b>52</b>	<b>370</b>	<b>2.19</b>	<b>219</b>	<b>1317</b>	<b>.115</b>	<b>8</b>	<b>.05</b>	<b>20</b>	<b>.12</b>	<b>31</b>	<b>127</b>	<b>0.75</b>	<b>10</b>	<b>6</b>	<b>43</b>	<b>49.0</b>	<b>0.29</b>	<b>417.5</b>	<b>2.47</b>

**GREEN'S SEC CAREER STATISTICS**

YEAR	SETS	MP	KILLS	K/S	E	TA	PCT.	AST	A/S	SA	SA/S	SE	DIGS	D/S	RE	BS	BA	TB	B/S	PTS	PT/S
2021	51	13	114	2.24	53	385	.158	3	.06	2	.04	1	36	0.71	3	0	18	18	.35	125.0	2.45
2020	13	4	27	2.08	33	139	-.043	3	.23	1	.08	8	28	2.15	2	1	8	9	.69	33.0	2.54
2019	28	13	52	1.86	45	211	.033	1	.04	1	.04	9	13	0.46	1	2	3	5	.18	56.5	2.00
2018	0	0	0	0.00	0	0	.000	0	.00	0	.00	0	0	0.00	0	0	0	0	.00	0.0	0.00
<b>TOTAL</b>	<b>92</b>	<b>30</b>	<b>193</b>	<b>2.10</b>	<b>131</b>	<b>735</b>	<b>.084</b>	<b>7</b>	<b>.08</b>	<b>4</b>	<b>.04</b>	<b>18</b>	<b>77</b>	<b>0.84</b>	<b>6</b>	<b>3</b>	<b>29</b>	<b>32</b>	<b>.35</b>	<b>214.5</b>	<b>2.33</b>



# #17 CASSIDY TANTON

**OUTSIDE HITTER | 6-0 | FRESHMAN**  
**STONEVILLE, N.C. (DALTON MCMICHAEL)**

### CURTIS'S HIGHLIGHTS:

- Did not see action during the first five weeks of play due to an ankle injury
- Made collegiate debut at Alabama State (9/26)

CATEGORY _____	CAREER HIGH _____	OPPONENT/DATE _____
Kills _____		
Attempts _____		
Hitting Percentage (Min. 10 ATT.) _____		
Assists _____		
Digs _____		
Blocks _____		
Aces _____		
Points _____		

CATEGORY _____	SEASON HIGH _____	OPPONENT/DATE _____
Kills _____		
Attempts _____		
Hitting Percentage (Min. 10 ATT.) _____		
Assists _____		
Digs _____		
Blocks _____		
Aces _____		
Points _____		

DATE	OPPONENT	SP	ATTACK				SET			SERVE				RECEIPT			BLOCKING				BHE	POINTS	TEAM		
			K	E	TA	PCT.	A	TA	PCT.	SA	SE	TA	PCT.	RE	TA	PCT.	DIG	BS	BA	BE			TOTAL	HIT%	SCORE
September 26	at Alabama State	1	0	0	0	.000	0	0	.000	0	0	0	.000	0	0	.000	0	0	0	0	0.0	0	0.0	.209	2-3
<b>TOTALS</b>		<b>1</b>	<b>0</b>	<b>0</b>	<b>0</b>	<b>.000</b>	<b>0</b>	<b>0</b>	<b>.000</b>	<b>0</b>	<b>0</b>	<b>0</b>	<b>.000</b>	<b>0</b>	<b>0</b>	<b>.000</b>	<b>0</b>	<b>0</b>	<b>0</b>	<b>0</b>	<b>0.0</b>	<b>0</b>	<b>0.0</b>	<b>.213</b>	

### TANTON'S OVERALL CAREER STATISTICS

YEAR	SETS	MP	KILLS	K/S	E	TA	PCT.	AST	A/S	SA	SA/S	SE	DIGS	D/S	RE	BS	BA	TB	B/S	PTS	PT/S
2021	1	0	0	0.0	0	0	.000	0	.00	0	.00	0	0	.00	0	0	0	0	.00	0.0	0.00
<b>TOTAL</b>	<b>1</b>	<b>0</b>	<b>0</b>	<b>0.0</b>	<b>0</b>	<b>0</b>	<b>.000</b>	<b>0</b>	<b>.00</b>	<b>0</b>	<b>.00</b>	<b>0</b>	<b>0</b>	<b>.00</b>	<b>0</b>	<b>0</b>	<b>0</b>	<b>0</b>	<b>.00</b>	<b>0.0</b>	<b>0.00</b>

### TANTON'S SEC CAREER STATISTICS

YEAR	SETS	MP	KILLS	K/S	E	TA	PCT.	AST	A/S	SA	SA/S	SE	DIGS	D/S	RE	BS	BA	TB	B/S	PTS	PT/S
2021	0	0	0	0.0	0	0	.000	0	.00	0	.00	0	0	.00	0	0	0	0	.00	0.0	0.00
<b>TOTAL</b>	<b>0</b>	<b>0</b>	<b>0</b>	<b>0.0</b>	<b>0</b>	<b>0</b>	<b>.000</b>	<b>0</b>	<b>.00</b>	<b>0</b>	<b>.00</b>	<b>0</b>	<b>0</b>	<b>.00</b>	<b>0</b>	<b>0</b>	<b>0</b>	<b>0</b>	<b>.00</b>	<b>0.0</b>	<b>0.00</b>





**#19 ELIF SU YAVUZ**  
**MIDDLE BLOCKER | 6-3 | SENIOR**  
**ANKARA, TURKEY (GAZI UNIVERSITY)**

**YAVUZ'S HIGHLIGHTS:**

- Ranks ninth in Auburn single-season history in block assists (75) and sixth in blocks per set
- Has recorded at least four blocks in 11 matches this season
- Made her Auburn debut, starting at middle blocker in the season opener versus Tennessee Tech (8/27)
- Set career high in total blocks (8.0) versus Jackson State (8/28)
- Match her career high in blocks while recording her first collegiate assist at Arkansas (10/10)
- In her first appearance at the service line this season, totaled three aces at Georgia (10/21)
- Turned in a career offensive performance at Texas A&M (11/5), setting highs in kills (10), hitting percentage (.588) and points (13.0)

CATEGORY	CAREER HIGH	OPPONENT/DATE
Kills	10	at Texas A&M (11/5/21)
Attempts	17	at Texas A&M (11/5/21)
Hitting Percentage (Min. 10 ATT.)	.588	at Texas A&M (11/5/21)
Assists	1 (2x)	last, vs. Missouri (10/16/21)
Digs	6	at Texas A&M (11/4/21)
Blocks	8.0 (2x)	last, at Arkansas (10/10/21)
Aces	3	at Georgia (10/21/21)
Points	13.0	at Texas A&M (11/5/21)

CATEGORY	SEASON HIGH	OPPONENT/DATE
Kills	10	at Texas A&M (11/5/21)
Attempts	17	at Texas A&M (11/5/21)
Hitting Percentage (Min. 10 ATT.)	.588	at Texas A&M (11/5/21)
Assists	1 (2x)	last, vs. Missouri (10/16/21)
Digs	6	at Texas A&M (11/4/21)
Blocks	8.0 (2x)	last, at Arkansas (10/10/21)
Aces	3	at Georgia (10/21/21)
Points	13.0	at Texas A&M (11/5/21)

DATE	OPPONENT	SP	ATTACK				SET			SERVE				RECEIPT			BLOCKING				TEAM POINTS	HIT%	SCORE		
			K	E	TA	PCT.	A	TA	PCT.	SA	SE	TA	PCT.	RE	TA	PCT.	DIG	BS	BA	TB				TOTAL	BHE
August 27	TENNESSEE TECH	3	1	0	2	.500	0	1	.000	0	0	0	.000	0	0	.000	0	0	2	0	2.0	0	2.0	.292	3-0
August 28	JACKSON STATE	3	4	0	6	.667	0	0	.000	0	0	0	.000	0	0	.000	0	0	8	0	8.0	0	8.0	.457	3-0
September 3	CAL STATE FULLERTON	3	2	1	4	.250	0	0	.000	0	0	0	.000	0	0	.000	0	2	1	2.0	0	3.0	.221	3-0	
September 4	SOUTHEASTERN LA.	3	1	0	1	1.000	0	0	.000	0	0	0	.000	0	0	.000	0	2	0	2.0	0	2.0	.300	3-0	
September 9	NORTH ALABAMA	3	4	0	6	.667	0	1	.000	0	0	0	.000	0	0	.000	0	1	2	1	3.0	0	6.0	.265	3-0
September 12	SANTA CLARA	5	1	2	6	-.167	0	1	.000	0	0	0	.000	0	0	.000	1	0	3	0	3.0	0	2.5	.260	3-2
September 17	FLORIDA A&M	5	8	0	14	.571	0	2	.000	0	0	0	.000	0	0	.000	4	1	3	0	4.0	0	10.5	.245	2-3
September 17	NICHOLLS	4	2	0	6	.333	0	1	.000	0	0	0	.000	0	1	1.000	2	0	2	1	2.0	0	3.0	.183	3-1
September 18	BELMONT	3	3	1	4	.500	0	0	.000	0	0	0	.000	0	0	.000	0	2	0	2.0	0	4.0	.345	3-0	
September 22	OLE MISS	4	2	1	5	.200	0	0	.000	0	0	0	.000	1	1	.000	0	1	2	1	3.0	0	4.0	.196	1-3
September 26	at Alabama State	5	2	1	3	.333	0	1	.000	0	0	0	.000	0	0	.000	0	0	3	0	3.0	0	3.5	.209	2-3
September 29	at Tennessee	3	1	0	3	.333	0	0	.000	0	0	0	.000	0	0	.000	0	4	0	4.0	0	3.0	.076	0-3	
October 2	ALABAMA	5	4	1	8	.375	0	0	.000	0	0	0	.000	0	0	.000	2	0	4	2	4.0	0	6.0	.183	3-2
October 3	ALABAMA	3	2	1	7	.143	0	1	.000	0	0	0	.000	0	0	.000	1	1	2	0	3.0	1	4.0	.248	3-0
October 9	at Arkansas	4	2	1	3	.333	0	1	.000	0	0	0	.000	0	0	.000	4	0	4	1	4.0	0	4.0	.158	1-3
October 10	at Arkansas	5	1	1	4	.000	1	3	.333	0	0	0	.000	0	0	.000	1	0	8	0	8.0	0	5.0	.144	2-3
October 16	MISSOURI	3	3	0	8	.375	1	1	1.000	0	0	0	.000	0	0	.000	3	0	2	0	2.0	0	4.0	.232	3-0
October 17	MISSOURI	5	6	1	13	.385	0	8	.000	0	0	0	.000	1	1	.000	1	0	2	0	2.0	0	7.0	.235	2-3
October 21	at Georgia	3	1	1	3	.000	0	1	.000	3	2	15	.867	0	0	.000	1	0	5	0	5.0	0	6.5	.241	3-0
October 22	at Georgia	3	0	1	3	-.333	0	0	.000	0	3	10	.700	0	1	1.000	0	0	3	0	3.0	0	1.5	.183	0-3
October 29	LSU	3	1	0	3	.333	0	0	.000	0	1	8	.875	0	5	1.000	2	1	3	0	4.0	0	3.5	.121	0-3
November 4	at Texas A&M	5	6	1	13	.385	0	4	.000	2	2	16	.875	0	0	.000	6	0	3	0	3.0	0	9.5	.132	2-3
November 5	at Texas A&M	5	10	0	17	.588	0	1	.000	1	4	16	.750	0	0	.000	5	0	4	0	4.0	0	13.0	.186	3-2
<b>TOTALS</b>		<b>88</b>	<b>67</b>	<b>14</b>	<b>142</b>	<b>.373</b>	<b>2</b>	<b>27</b>	<b>.074</b>	<b>6</b>	<b>12</b>	<b>65</b>	<b>.815</b>	<b>2</b>	<b>9</b>	<b>.778</b>	<b>33</b>	<b>5</b>	<b>75</b>	<b>7</b>	<b>80.0</b>	<b>1</b>	<b>115.5</b>	<b>.213</b>	

SETS PLAYED: 88  
 KILLS PER SET: 0.76  
 ASSISTS PER SET: 0.02

SERVICE ACES PER SET: 0.07  
 DIGS PER SET: 0.38  
 BLOCKS PER SET: 0.91

POINTS PER SET: 1.31

**YAVUZ'S OVERALL CAREER STATISTICS**

YEAR	SETS	MP	KILLS	K/S	E	TA	PCT.	AST	A/S	SA	SA/S	SE	DIGS	D/S	RE	BS	BA	TB	B/S	PTS	PT/S
2021	88	23	67	0.76	14	142	.373	2	.02	6	.07	12	33	0.38	2	5	75	80	0.91	115.5	1.31
<b>TOTAL</b>	<b>88</b>	<b>23</b>	<b>67</b>	<b>0.76</b>	<b>14</b>	<b>142</b>	<b>.373</b>	<b>2</b>	<b>.02</b>	<b>6</b>	<b>.07</b>	<b>12</b>	<b>33</b>	<b>0.38</b>	<b>2</b>	<b>5</b>	<b>75</b>	<b>80</b>	<b>0.91</b>	<b>115.5</b>	<b>1.31</b>

**YAVUZ'S SEC CAREER STATISTICS**

YEAR	SETS	MP	KILLS	K/S	E	TA	PCT.	AST	A/S	SA	SA/S	SE	DIGS	D/S	RE	BS	BA	TB	B/S	PTS	PT/S
2021	51	13	39	0.76	9	90	.333	2	.04	6	.12	12	26	0.51	2	3	46	49	0.96	71.0	1.39
<b>TOTAL</b>	<b>51</b>	<b>13</b>	<b>39</b>	<b>0.76</b>	<b>9</b>	<b>90</b>	<b>.333</b>	<b>2</b>	<b>.04</b>	<b>6</b>	<b>.12</b>	<b>12</b>	<b>26</b>	<b>0.51</b>	<b>2</b>	<b>3</b>	<b>46</b>	<b>49</b>	<b>0.96</b>	<b>71.0</b>	<b>1.39</b>



# #21 TATUM SHIPES

OUTSIDE HITTER/MIDDLE BLOCKER | 6-4 | SENIOR  
 BUFORD, GA. (BUFORD)

## SHIPES HIGHLIGHTS:

- SEC Defensive Player of the Week (10/4)
- Moved to middle blocker after spending her career as a pin hitter
- Leads the SEC in both total blocks (126) and blocks per set (1.48), while ranking seventh and third, respectively, in both categories nationally.
- Recorded at least five blocks in 11 matches this season
- Added 23 double-digit kill efforts and seven double-doubles as a Tiger
- Totaled 12.0 total blocks in Auburn's five-set victory against Alabama (10/2) to set the program's single-match record for blocks in the rally scoring era. The previous record of 11.0 was set on Nov. 23, 2017 by Breanna Barksdale at Florida
- Chipped in 10.0 blocks at Arkansas (10/9) for just her second double-digit blocking effort of her career
- Returned to the service line in Fayetteville (10/10) with a career high two ace
- Totaled three blocks versus LSU (10/29) to bring her season total to 120 to shatter Auburn's single-season total blocks record (rally scoring era). The previous record of 119 was set in 2012 by Camila Jersonsky.
- Enters the two-match series rank first single-season history (rally scoring era) in blocks per set (1.60) and second in solo blocks (19) and block assists (101)

CATEGORY	CAREER HIGH	OPPONENT/DATE
Kills	21	vs. Ole Miss (10/26/18)
Attempts	55	vs. Ole Miss (10/26/18)
Hitting Percentage (Min. 10 ATT.)	.462	vs. Tennessee Tech (8/27/21)
Assists	3 (4x)	last, at Texas A&M (11/13/19)
Digs	18 (2x)	last, at Tennessee (11/27/19)
Blocks	12.0	vs. Alabama (10/2/21)
Aces	3 (2x)	last, at Western Michigan (9/20/19)
Points	24.5	vs. Ole Miss (10/26/18)

CATEGORY	SEASON HIGH	OPPONENT/DATE
Kills	8	vs. Tennessee Tech (8/27/21)
Attempts	20	vs. Nicholls (9/17/21)
Hitting Percentage (Min. 10 ATT.)	.462	vs. Tennessee Tech (8/27/21)
Assists	1 (7x)	last, at Georgia (10/21/21)
Digs	5 (2x)	last, at Texas A&M (11/5/21)
Blocks	12.0	vs. Alabama (10/2/21)
Aces	2	at Arkansas (10/10/21)
Points	14.0	vs. Alabama (10/2/21)

DATE	OPPONENT	SP	ATTACK				SET			SERVE				RECEIPT			BLOCKING				TEAM POINTS	HIT%	SCORE		
			K	E	TA	PCT.	A	TA	PCT.	SA	SE	TA	PCT.	RE	TA	PCT.	DIG	BS	BA	BE				TOTAL	BHE
August 27	TENNESSEE TECH	3	8	2	13	.462	1	2	.500	0	1	5	.800	0	2	1.000	1	1	6	0	7.0	0	12.0	.292	3-0
August 28	JACKSON STATE	3	4	0	9	.444	0	0	.000	0	1	3	.667	0	0	.000	1	0	5	0	5.0	0	6.5	.457	3-0
September 2	CAL STATE FULLERTON	3	1	1	9	.000	0	1	.000	0	0	7	1.000	0	1	1.000	2	1	2	1	3.0	0	3.0	.221	3-0
September 3	SOUTHEASTERN LA.	3	4	1	11	.273	0	2	.000	1	1	6	.833	0	0	.000	2	0	8	0	8.0	0	9.0	.300	3-0
September 9	NORTH ALABAMA	3	6	0	7	.857	0	0	.000	0	0	0	.000	0	0	.000	1	0	3	0	3.0	0	6.0	.265	3-0
September 12	SANTA CLARA	5	7	2	14	.357	1	3	.333	0	0	0	.000	0	0	.000	1	1	4	1	5.0	1	10.0	.260	3-2
September 17	FLORIDA A&M	2	3	3	11	.000	0	0	.000	0	0	0	.000	0	0	.000	0	0	1	0	1.0	0	3.5	.245	2-3
September 17	NICHOLLS	4	7	4	20	.150	1	2	.500	0	0	0	.000	0	0	.000	3	2	7	0	9.0	0	12.5	.183	3-1
September 18	BELMONT	3	4	0	10	.400	0	1	.000	0	0	0	.000	0	0	.000	0	3	4	0	7.0	0	9.0	.345	3-0
September 22	OLE MISS	4	3	2	9	.111	0	1	.000	0	0	0	.000	0	1	1.000	3	2	1	0	3.0	0	5.5	.196	1-3
September 26	at Alabama State	5	6	2	10	.400	0	1	.000	0	0	0	.000	0	0	.000	1	0	2	0	2.0	0	7.0	.209	2-3
September 29	at Tennessee	3	3	1	10	.200	0	1	.000	0	0	0	.000	0	1	1.000	1	2	4	0	6.0	1	7.0	.076	0-3
October 2	ALABAMA	5	7	4	13	.231	1	2	.500	0	0	0	.000	0	0	.000	5	2	10	0	12.0	0	14.0	.183	3-2
October 3	ALABAMA	3	3	1	9	.222	0	0	.000	0	0	0	.000	0	0	.000	0	1	6	0	7.0	0	7.0	.248	3-0
October 9	at Arkansas	4	2	3	7	-.143	1	5	.200	0	0	10	1.000	0	0	.000	4	1	9	1	10.0	0	7.5	.158	1-3
October 10	at Arkansas	5	2	3	13	-.077	1	5	.200	2	2	16	.875	0	1	1.000	4	0	9	1	9.0	0	8.5	.144	2-3
October 16	MISSOURI	3	4	2	13	.154	0	2	.000	1	1	7	.857	0	0	.000	3	0	3	0	3.0	0	6.5	.232	3-0
October 17	MISSOURI	5	3	2	12	.083	0	2	.000	0	1	13	.923	0	0	.000	2	1	5	0	6.0	1	6.5	.235	2-3
October 21	at Georgia	3	4	0	9	.444	1	2	.500	0	0	0	.000	0	0	.000	0	1	7	0	8.0	0	8.5	.241	3-0
October 22	at Georgia	3	5	0	9	.556	0	0	.000	0	0	0	.000	0	0	.000	0	0	3	0	3.0	0	6.5	.183	0-3
October 29	LSU	3	4	0	11	.364	0	1	.000	0	0	0	.000	0	0	.000	1	1	2	0	3.0	0	6.0	.121	0-3
November 4	at Texas A&M	5	4	3	13	.077	0	2	.000	0	0	0	.000	0	1	1.000	2	0	3	1	3.0	0	5.5	.132	2-3
November 5	at Texas A&M	5	2	0	13	.154	0	1	.000	0	0	0	.000	0	2	1.000	5	1	2	0	3.0	0	4.0	.186	3-2
<b>TOTALS</b>		<b>85</b>	<b>96</b>	<b>36</b>	<b>255</b>	<b>.235</b>	<b>7</b>	<b>35</b>	<b>.200</b>	<b>4</b>	<b>7</b>	<b>67</b>	<b>.896</b>	<b>0</b>	<b>9</b>	<b>1.000</b>	<b>42</b>	<b>20</b>	<b>106</b>	<b>5</b>	<b>126.0</b>	<b>3</b>	<b>173.0</b>	<b>.213</b>	

SETS PLAYED: 85  
 KILLS PER SET: 1.13  
 ASSISTS PER SET: 0.08

SERVICE ACES SET: 0.05  
 DIGS PER SET: 0.49  
 BLOCKS PER SET: 1.48

POINTS PER SET: 2.04

## SHIPES' OVERALL CAREER STATISTICS

YEAR	SETS	MP	KILLS	K/S	E	TA	PCT.	AST	A/S	SA	SA/S	SE	DIGS	D/S	RE	BS	BA	TB	B/S	PTS	PT/S
2021	85	22	96	1.13	36	255	.235	7	.08	4	.05	7	42	0.49	0	20	106	126	1.48	173.0	2.04
2020	25	8	59	2.36	44	230	.065	3	.12	4	.16	12	47	1.88	10	1	15	16	0.64	71.5	2.86
2019	103	29	269	2.61	154	900	.127	29	.28	23	.22	52	246	2.39	28	14	55	69	0.67	333.5	3.24
2018	59	21	147	2.49	63	403	.208	1	.02	0	.00	0	30	0.51	4	6	18	24	0.41	162.0	2.75
<b>TOTAL</b>	<b>272</b>	<b>81</b>	<b>571</b>	<b>2.10</b>	<b>298</b>	<b>1788</b>	<b>.153</b>	<b>40</b>	<b>.15</b>	<b>31</b>	<b>.11</b>	<b>71</b>	<b>365</b>	<b>1.34</b>	<b>42</b>	<b>41</b>	<b>194</b>	<b>235</b>	<b>0.86</b>	<b>740.0</b>	<b>2.72</b>

## SHIPES' SEC CAREER STATISTICS

YEAR	SETS	MP	KILLS	K/S	E	TA	PCT.	AST	A/S	SA	SA/S	SE	DIGS	D/S	RE	BS	BA	TB	B/S	PTS	PT/S
2021	51	13	46	0.90	21	141	.177	4	.08	3	.06	4	30	0.59	0	12	64	76	1.49	93.0	1.82
2020	25	8	59	2.36	44	230	.065	3	.12	4	.16	12	47	1.88	10	1	15	16	0.64	71.5	2.84
2019	59	18	176	2.98	99	605	.127	15	.25	9	.15	28	164	2.78	18	11	26	37	0.63	209.0	3.54
2018	47	15	128	2.72	56	341	.211	1	.02	0	.00	0	26	0.55	4	5	16	21	0.45	141.0	3.00
<b>TOTAL</b>	<b>182</b>	<b>54</b>	<b>409</b>	<b>2.25</b>	<b>221</b>	<b>1318</b>	<b>.143</b>	<b>23</b>	<b>.13</b>	<b>16</b>	<b>.09</b>	<b>44</b>	<b>267</b>	<b>1.47</b>	<b>32</b>	<b>29</b>	<b>121</b>	<b>150</b>	<b>0.82</b>	<b>514.5</b>	<b>2.82</b>





#4 FALLAN LANHAM  
Fr. | DS/L | 5-8



#5 AUDREY DOUGLAS  
So. | OH/OPP | 6-4



#6 BELLA ROSENTHALL  
Sr. | DS/L | 5-5



#7 REBEKAH RATH  
Jr. | OH | 6-0



#8 LIZ REICH  
Gr. | OPP | 6-1



#10 JACKIE BARRETT  
So. | S | 6-1



#11 JORDAN SINNESS  
Fr. | S | 5-9



#15 KATE CURTIS  
Fr. | DS/L | 5-6



#16 VAL GREEN  
Sr. | OH | 6-4



#17 CASSIDY TANTON  
Fr. | OH | 6-0



#19 ELIF SU YAVUZ  
Sr. | MB | 6-3



#21 TATUM SHIPES  
Sr. | OH | 6-4



HEAD COACH  
BRENT CROUCH



ASSOCIATE HEAD COACH  
ALEX DUNPHY



ASSISTANT COACH  
RICK MOLLER