



2021 VOLLEYBALL MATCH NOTES

AUBURN ATHLETICS COMMUNICATIONS: 392 SOUTH DONAHUE DRIVE || AUBURN, AL 36830 || AUBURNTIGERS.COM || @AUBURNVB

2021 SCHEDULE/RESULTS

13-14 OVERALL | 5-12 SEC

11-7 HOME | 2-7 AWAY | 0-0 NEUTRAL

DATE	OPPONENT	TV	TIME/RESULT
Aug. 27	^ TENNESSEE TECH	SEC Network+	W, 3-0
Aug. 28	^ JACKSON STATE	SEC Network+	W, 3-0
Sept. 2	% CAL STATE FULLERTON		W, 3-0
Sept. 3	% SOUTHEASTERN LOUISIANA		W, 3-0
Sept. 9	NORTH ALABAMA	SEC Network+	W, 3-0
Sept. 12	SANTA CLARA		W, 3-2
Sept. 17	! FLORIDA A&M		L, 2-3
Sept. 17	! NICHOLLS	SEC Network+	W, 3-1
Sept. 18	! BELMONT	SEC Network+	W, 3-0
Sept. 22	* (RV) OLE MISS	ESPNU	L, 1-3
Sept. 26	at Alabama State		L, 2-3
Sept. 29	* at #20 Tennessee	SEC Network	L, 0-3
Oct. 2	* ALABAMA	SEC Network+	W, 3-2
Oct. 3	* ALABAMA	ESPNU	W, 3-0
Oct. 9	* at Arkansas	SEC Network+	L, 1-3
Oct. 10	* at Arkansas	SEC Network+	L, 2-3
Oct. 16	* MISSOURI	SEC Network+	W, 3-0
Oct. 17	* MISSOURI	SEC Network+	L, 2-3
Oct. 21	* at Georgia	SEC Network+	W, 3-0
Oct. 22	* at Georgia	SEC Network+	L, 0-3
Oct. 29	* (RV) LSU	SEC Network+	L, 0-3
Nov. 4	* at Texas A&M	SEC Network+	L, 2-3
Nov. 5	* at Texas A&M	SEC Network+	W, 3-2
Nov. 10	* (RV) SOUTH CAROLINA	SEC Network	L, 0-3
Nov. 17	* at #20 Florida	SEC Network+	L, 0-3
Nov. 20	* #8 KENTUCKY	SEC Network+	L, 0-3
Nov. 21	* #8 KENTUCKY	SEC Network+	L, 0-3
Nov. 26	* at #24 Mississippi State	SEC Network+	4 p.m. CT

BOLD indicates home contest | All time Central and subject to change
^ - War Eagle Invitational | % - SLU-Fullerton Tournament | % - Home Tournament | * - Southeastern Conference Game

AUBURN ATHLETICS COMMUNICATIONS

Office Phone _____ 334-844-9800
Kirk Sampson _____ Associate AD
_____ sampska@auburn.edu
Taylor Shirey _____ Volleyball Contact
_____ trs0010@auburn.edu
C: 334-750-0710

FOLLOW ALONG

Web _____ AuburnTigers.com
Twitter _____ @AuburnVB
Instagram _____ @auburnvolleyball

MATCH

28

#24 MISSISSIPPI STATE

Friday, Nov. 26 | 4 p.m. CT

Starkville, Miss. | Newell-Grisson Building | SEC Network+



AUBURN
MISSISSIPPI STATE

AVCA Coaches Poll _____ N/R
2021 Record _____ 13-14 | 5-12 SEC
Head Coach _____ Brent Crouch
Career Record (Year) _____ 108-113 (8th)
Record at Auburn (Year) _____ 13-22 (2nd)

AVCA Coaches Poll _____ 24
2021 Record _____ 24-5 | 15-2 SEC
Head Coach _____ Julie Darty Dennis
Career Record (Year) _____ 105-124 (8th)
Record at Mississippi State (Year) _____ 47-64 (4th)

Site _____ Starkville, Miss.
Venue _____ Newell-Grisson Building
Live Stats _____ Statbroadcast
Twitter _____ @AuburnVB
Series Record _____ Auburn leads 40-24
Last Meeting _____ Nov. 1, 2019 at Auburn, Ala.
_____ Auburn 0, Mississippi State 3 (25-27, 21-25, 22-25)

BY THE NUMBERS

1 Junior Rebekah Rath made program history over the weekend, shattering the program's record for single-season kills in the rally-scoring era. Rath enters the weekend with 426 kills, the second most in the SEC.

13 With 13 wins under its belt, Auburn has recorded the most victories in a season since the 2017 squad closed the year with a 15-12 overall record.

137 Senior Tatum Shipes has turned in one of the best blocking performances in almost two decades as her 137 total blocks this season is the most by any Tiger since 2000.

QUICK HITS

- Auburn concludes its regular-season slate on Friday with its fourth straight contest against a ranked opponent as the Tigers travel to Starkville to face No. 24 Mississippi State. Auburn has won six of the last 10 matches against the Bulldogs.
- Coming off her 23rd double-digit kill performance of the season, junior Rebekah Rath continues her stranglehold as one of the top offensive players in the SEC as she leads the league in five offensive categories: attacks per set, kills per set, points per set and total attacks.
- With the season coming to a close, the block party is still going strong as Tatum Shipes enters Friday's match with the program's single season records for total blocks, block assists and blocks per set in the rally-scoring era. Joining Shipes is fellow senior Elif Yavuz, who ranks 11th in school history with an 0.82 blocks per set average.
- The SEC digs leader, Bella Rosenthal is inching her way to one of the top-four digging performances of the rally-scoring era. Rosenthal needs just one digs in Friday's match to surpass Sarah Wroblicky (2010) for fourth outright.
- Auburn has made program history this season as the Tigers have one a total of six SEC weekly honors: Rebekah Rath (2), Bella Rosenthal (2), Liz Reich (1), Tatum Shipes (1).
- Defense has been the name of the game for the Tigers this season. Auburn enters the weekend second in the SEC in digs (15.92) and fourth in blocks (2.44). The Tigers have held opponents to a .170 hitting percentage - the lowest in the SEC and the 35th lowest mark in the country.

AUBURN'S POTENTIAL STARTING SEVEN



BELLA ROSENTHAL

#6 • DS/L • SR. • 5-5
D/S: 4.81 K/S: 4.26
A/S: 1.18 HIT%: .193
SA/S: 0.11 D/S: 1.90
P/S: 0.12 B/S: 0.74



REBEKAH RATH

#7 • OH • JR. • 6-0
K/S: 2.66
HIT%: .252
D/S: 0.56
P/S: 2.92



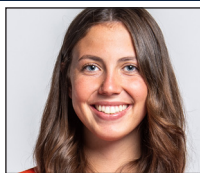
LIZ REICH

#8 • OPP • GR. • 6-1
K/S: 2.66
A/S: 0.07
SA/S: 0.05
P/S: 0.13



FALLAN LANHAM

#4 • DS • FR. • 5-8
K/S: 0.07
A/S: 0.16
SA/S: 0.05
P/S: 0.13



JACKIE BARRETT

#10 • S • SO. • 6-1
K/S: 0.51
A/S: 8.07
D/S: 3.07
P/S: 0.62



ELIF SU YAVUZ

#19 • MB • SR. • 6-3
K/S: 0.73
HIT%: .363
D/S: 0.82
P/S: 1.25



TATUM SHIPES

#21 • MB • SR. • 6-4
K/S: 1.14
HIT%: .237
D/S: 0.43
P/S: 2.01

K/S: kills per set • HIT%: hitting percentage • D/S: digs per set • B/S: blocks per set • A/S: assists per set • SA/S: aces per set • P/S: points per set

#WarEagle



AuburnTigers.com



@AuburnVB | @AuburnTigers
@AuburnVBCoach



/AuburnVB
/AuburnTigers

TEAM SCHEDULE AND MEDIA AVAILABILITY >> WEEK OF NOVEMBER 22-28

MONDAY November 22	TUESDAY November 23	WEDNESDAY November 24	THURSDAY November 25	FRIDAY November 26	SATURDAY November 27	SUNDAY November 28
OFF DAY	PRACTICE: 10:00 a.m.-12:30 p.m. SAC	PRACTICE: 10:00 a.m.-1:00 p.m. SAC	TRAVEL DAY	MATCH: 4:00 p.m. vs. Mississippi State Starkville, Miss.	OFF DAY	OFF DAY
NO INTERVIEWS	INTERVIEWS BY REQUEST	INTERVIEWS BY REQUEST	NO INTERVIEWS	INTERVIEWS POSTMATCH	NO INTERVIEWS	NO INTERVIEWS

AUBURN ATHLETICS COMMUNICATIONS

QUICK FACTS

AUBURNTIGERS.COM

For updated game notes, statistics, safety protocols and latest information on Auburn volleyball and Auburn Athletics, visit AuburnTigers.com.

INTERVIEW POLICY

Coch Crouch, assistant coaches and student-athletes are available for interviews by contacting Taylor Shirey in the communications office. All interviews during the week will be conducted via phone or ZOOM. Post-match interviews will be conducted in the media room at Auburn Arena following a brief cooling-off period.

CREDENTIALS

Anyone wishing to cover an Auburn volleyball match should contact Taylor Shirey in the communications office at least 24 hours in advance to make arrangements. Due to COVID-19 safety guidelines, space within Auburn Arena will be limited. All media members will be required to wear masks inside Auburn Arena as part of Auburn University's mask mandate.

MATCH DAY SERVICES

Due to safety concerns related to COVID-19, printed copies of notes, flip cards and statistics will NOT be available. Digital copies will be emailed out prior to the match and will be available on AuburnTigers.com. Media members are permitted to bring their own printed materials. Stats will not printed between sets or after matches. Live stats will be provided during the match and final statistics will be emailed out and posted on AuburnTigers.com. All post-match interviews will be conducted

via ZOOM. Wireless internet is available in the Arena; ask Taylor Shirey for the password. Match highlights, photos and postgame interviews will be available on Imagen following matches.

VIDEO SERVICES

FTP feeds of selected Auburn volleyball highlights are available for the media. A number of studio and satellite services may be arranged for electronic media by contacting Cody Baker in War Eagle Productions at jcb0101@auburn.edu.

PHOTO SERVICES

For photos of Auburn volleyball or any Olympic sports, contact Shanna Lockwood at sal0002@auburn.edu.

COMMUNICATIONS STAFF

Taylor Shirey	Volleyball Contact cell: 334-750-07010 email: trs0010@auburn.edu
Kirk Sampson	Associate AD cell: 334-750-1385 email: sampspa@auburn.edu

UNIVERSITY INFORMATION

City / Zip _____ Auburn, Ala. / 36831
 Founded _____ Oct. 1, 1856
 Enrollment _____ 30,737
 Nickname _____ Tigers
 Colors _____ Navy Blue & Burnt Orange
 Affiliation _____ NCAA Division I
 Conference _____ Southeastern Conference
 Home Court _____ Auburn Arena (9,121)
 President _____ Dr. Jay Gogue (Auburn, 1969)
 Athletic Director _____ Allen Green (Notre Dame, 1998)
 Sport Administrator _____ Joy Vrbka (Florida, 2003)

TEAM INFORMATION

Letterwinners Returning/Lost _____ 7/8
 Starters Returning/Lost _____ 5/3+Libero
 Newcomers _____ 6
 2020 Overall Record _____ 0-8
 2020 Conference Record/Finish _____ 0-8/13th

PROGRAM HISTORY

First Year of Volleyball _____ 1967
 _____ Program discontinued 1981; Reinstated 1986
 Seasons of Auburn Volleyball _____ 49th
 All-Time Overall Record _____ 668-689-4 (.492)
 in Auburn Arena (Since 2013) _____ 60-56 (.517)
 Total Home Record _____ 232-209 (.526)
 All-Time SEC Record _____ 188-359 (.344)
 NCAA Tournament Appearances _____ 1/2010
 SEC Championships/Last _____ 1/Co-West Champions (1996)

STAFF INFORMATION

Head Coach _ Brent Crouch, 1st Season (Texas A&M, '98 & '00; Oregon '06)
 Career Record _____ 108-113 (.489)/8th Season
 Record at Auburn _____ 13-22 (.371)/2nd Season
 Associate Head Coach/Recruiting Coordinator _____ Alex Dunphy
 Assistant Coach _____ Rick Moller
 Volunteer Assistant Coach _____ Taylor Hammond
 Director of Volleyball Operations/Technical Coordinator _____ Madi Wilkerson
 Strength & Conditioning _____ Bethany Gainey
 Interim Athletic Trainer _____ Sydney Kinder
 Equipment Manager _____ Tra' Cee Tanner

ATHLETIC COMMUNICATIONS

Associate AD/Communications _____ Kirk Sampson
 Assistant Director/Volleyball Contact _____ Taylor Shirey
 Email _____ trs0010@auburn.edu
 Phone _____ 334-750-0710
 Mailing Address _____ Auburn Athletics Complex
 _____ 392 S. Donahue Drive
 Website _____ AuburnTigers.com

GAMEDAY EXPERIENCE: AUBURN ARENA

>> Auburn Arena is in its seventh season as home of Auburn volleyball. The Tigers are 60-56 since moving to the Arena in 2013. The facility seats approximately 2,000 fans for volleyball and 9,121 for basketball.



FIRST SERVE

» The regular-season concludes with the fourth consecutive match against a ranked opponent for the Tigers (13-14, 5-12 SEC) as Auburn treks to Starkville, Miss., for a single match against No. 24 Mississippi State (24-5, 15-2 SEC).

» First serve on Friday is scheduled for 4 p.m. CT. The contest will air on the SEC Network+.

» In its 49th full season of volleyball, Auburn's all-time record stands at 668-689-4 (.492).

» Brent Crouch (13-22) enters his second season as the head coach for the Tigers after a two-year stint at USC. Entering his eighth overall season as a head coach, Crouch holds an 108-113 career record. He's the 11th head coach in Auburn program history.

» Auburn's 2021 schedule features four 2020-21 NCAA Volleyball Tournament participants: Jackson State, Missouri, Florida and reigning national champion Kentucky.

» The Tiger roster features a wealth of fresh faces as six of Auburn's 12 total student-athletes on roster will be taking the court in Blue and Orange for the first time in their careers with a combination of four true freshmen and two transfers.

LAST TIME OUT

» Ending the home portion of the regular-season schedule, Auburn volleyball (13-14, 5-12 SEC) fell in straight sets (21-25, 8-25, 12-25) to No. 8 Kentucky (22-4, 15-1 SEC) Sunday at Auburn Arena.

» Junior Rebekah Rath turned in her sixth consecutive match with double-digit kills as she totaled 12 against the Wildcats. Rath turned in a .226 hitting percentage in Sunday's finale. She has now recorded at least 10 kills in 23 of Auburn's 27 matches this season. She chipped in a pair of digs and one assist in the match.

» Graduate student Liz Reich added six kills for the Tiger offense with one dig to her credit. Senior Val Green contributed with five kills, one assist and a pair of digs. The Tigers' most efficient hitter of the match was senior Elif Yavuz, who landed two kills on five swings for a .400 hitting percentage. Yavuz was also credited with a dig.

» At the net, senior Tatum Shipes recorded Auburn's lone block of the match with her 21st solo stuff of the season. On the offensive side of the net, Shipes added a pair of kills.

» Sophomore Jackie Barrett dished out 21 assists as the Tigers' starting setter. She also added four digs and a kill.

» Defensively, senior Bella Rosenthal led the team with 10 digs. She is now tied with Sarah Wroblicky (2013) for most digs in a single season in the rally-scoring era with 481.

SEC REVAMPS CONFERENCE SCHEDULING FORMAT FOR 2021 CAMPAIGN

» The Southeastern Conference announced a new

PLAYER TO WATCH: REBEKAH RATH

» The SEC leader in five offensive categories, including kills and points per set, Rebekah Rath has set the program's single-season record for kills in the rally-scoring era with 426 to her credit in her debut season at Auburn.



scheduling format for its conference slate ahead of the 2021 campaign.

» The SEC schedule consists of 18 matches in which each member institution will play each other at least once. The order of opponents for each team was determined by a random computer draw.

» Two-match series may be played Wednesday/Thursday, Thursday/Friday, Friday/Saturday or Saturday/Sunday per the league office.

SCOUTING MISSISSIPPI STATE

» Entering Friday's match with its first top-25 ranking in program history, No. 24 Mississippi State stands second in the league standings with a 15-2 SEC record heading into the final week of regular-season play. The Bulldogs' lone losses in league action have come at the hands of Florida and SEC standings leader Kentucky. With its 24-5 overall record, Mississippi State has set a school record for wins in a season.

» Mississippi State currently leads the SEC in both team kills (1,611) and team attacks (4,133). The Bulldogs average 13.77 kills per set this season and rank sixth in the SEC with a .243 team hitting percentage. State splits the majority of its offense between senior middle blocker/right side Gabby Waden and junior outside hitter/right side Lauren Myrick. Waden leads the team and ranks third in the league with 399 total kills. She averages 3.41 per set. Waden also holds a team-leading .331 hitting percentage, the seventh-highest in the league. Taking the most swings on the squad, Myrick holds a 3.09 kills per set average. Myrick is also State's biggest threat at the service line with 35 aces to her credit, the fourth most in the SEC.

» The Bulldogs utilize a pair of setters to call their offense. The setting combo has the Bulldogs on top of the SEC with total assists. Senior Gabby Coulter has started 15 of State's 29 matches this season. She has totaled 613 assists to average 5.38 per set. Graduate student Margaret Dean has totaled 631 assists in her 13 starts. She holds a 5.39 per set average. Dean is more of an offensive threat between the pair as she has 19 kills on a .270 hitting percentage.

» Sophomore defensive specialist Lilly Gunter has carried the bulk of Mississippi State's defense with 455 digs, the third most in the SEC. Gunter averages 3.99 digs per set. Myrick is also a strong defensive option for the Bulldogs with 300 digs to her credit.

» At the net, Mississippi State averages 2.06 blocks per set at the team, a mark that ranks ninth in the SEC. Senior middle blocker Deja Robinson is the biggest target at the net with 133 blocks, ranking second only to Auburn's own Tatum Shipes for most blocks in the league. Robinson also ranks seventh in the SEC with a 1.17 blocks per set average.

A WIN OVER MISSISSIPPI STATE...

» Would be Auburn's first win in the series since 2018,

SEC STANDINGS & SCHEDULE

	2021 SEC RECORD			2021 OVERALL		
	W	L	Pct.	W	L	Pct.
Kentucky	15	1	.938	22	4	.846
Mississippi State	15	2	.882	24	5	.828
Florida	14	2	.875	20	6	.769
Tennessee	11	6	.647	19	8	.704
Arkansas	9	8	.529	18	10	.643
Ole Miss	8	8	.500	19	8	.704
LSU	8	8	.500	12	13	.480
Georgia	7	9	.438	11	16	.407
South Carolina	6	11	.353	14	13	.519
Texas A&M	5	11	.313	12	14	.462
AUBURN	5	12	.294	13	14	.481
Alabama	2	14	.125	10	18	.357
Missouri	1	14	.067	4	24	.143

THIS WEEK IN THE SEC...

Wednesday, Nov. 24

Tennessee at Missouri 7 p.m.

Friday, Nov. 26

Florida at Kentucky 12 p.m.

LSU at Georgia 1 p.m.

AUBURN AT MISSISSIPPI STATE 4 p.m.

Ole Miss at Alabama 6 p.m.

Arkansas at South Carolina 6 p.m.

Missouri at Texas A&M 6 p.m.

Saturday, Nov. 27

Florida at Kentucky 12 p.m.

LSU at Georgia 1 p.m.

Ole Miss at Alabama 2 p.m.

Missouri at Texas A&M 4 p.m.

2021 NCAA RPI REPORT

RK	TEAM	RECORD	AU RESULT
7	Kentucky	22-4	L L
15	Florida	20-6	L L
21	Tennessee	19-8	L
22	Mississippi State	24-5	
38	South Carolina	14-13	L
49	Texas A&M	12-14	L W
50	Ole Miss	19-8	L
46	Arkansas	18-10	L L
61	LSU	12-13	L
90	Georgia	11-16	W L
154	Tennessee Tech	16-14	W
167	AUBURN	13-14	----
170	Alabama	10-18	W W
206	Missouri	4-24	W L
174	Florida A&M	25-6	L
188	Santa Clara	11-15	W
227	Cal State Fullerton	10-15	W
240	Jackson State	17-13	W
252	Belmont	9-20	W
254	Nicholls	11-17	W
268	Alabama State	17-17	L
284	Southeastern Louisiana	9-18	W
323	North Alabama	9-20	W

AUBURN OPPONENTS ONLY

AVCA COACHES POLL

RK	TEAM	RECORD	PREVIOUS
1.	Louisville (62)	26-0	1
2.	Texas (2)	22-1	2
3.	Pittsburgh	26-2	3
4.	BYU	27-1	4
5.	Wisconsin	23-3	5
6.	Purdue	22-5	6
7.	Baylor	18-5	7
8.	Kentucky	22-4	8
9.	Ohio State	23-5	10
10.	Minnesota	17-8	9
11.	Nebraska	20-6	11
12.	Washington	22-4	12
13.	UCLA	22-4	T13
14.	Georgia Tech	21-5	T13
15.	Penn State	19-9	15
16.	Western Kentucky	27-1	18
17.	Utah	19-8	17
18.	Stanford	16-10	19
19.	Oregon	20-8	16
20.	Florida	20-6	20
21.	Washington State	18-9	22
22.	Creighton	28-3	21
23.	Illinois	19-10	24
24.	Mississippi State	24-5	NR
25.	Pepperdine	21-5	25

Others receiving votes: Miami (FL); **Tennessee**; San Diego; Marquette; Florida State; Rice.

INSIDE THE MATCH-UP

MISSISSIPPI STATE 40-24 (.625)

24-7 H • 15-14 A • 1-3 N

SERIES HISTORY [LAST 10 MEETINGS]

YEAR	SITE	RESULT	MATCH SCORE
2014	AWAY	W	3-1
2014	HOME	W	3-0
2015	AWAY	W	3-2
2016	AWAY	L	1-3
2016	HOME	W	3-2
2017	HOME	W	3-0
2018	AWAY	L	2-3
2018	HOME	W	3-2
2019	AWAY	L	1-3
2019	HOME	L	0-3

snapping a two-match losing skid.

» Would be Auburn's first win in Starkville since the 2015 season.

» Would be Auburn's first win over a ranked opponent since defeating No. 16 North Carolina on Sept. 2, 2017.

AUBURN-MISSISSIPPI STATE SERIES

» Auburn leads the all-time series 40-24 and have taken six of the last 10 matches against the Bulldogs. Mississippi State has the edge of late winning the last two meetings with a home-away sweep in 2019.

» The Tigers are searching for their first road win in the series since 2015. Auburn holds a 15-14 advantage in matches in Starkville.

REICH BECOMES THE REICH-ER

» Turning in her best performance in league action to date in Auburn's two-match series at Georgia, opposite hitter Liz Reich was selected as Southeastern Conference Offensive Player of the Week

» The recognition is the first for Reich this season. Her recognition marks the first time in program history Auburn has had multiple student-athletes named SEC Offensive Player of the Week as junior Rebekah Rath has won the award twice earlier this season. Auburn has now won the award a program-record three times in 2021.

» The Colorado Springs, Colo., native totaled 11 kills on 27 attempts in the series opener at Athens. Committing just three errors in the match, Reich recorded a .296 hitting percentage. She added six blocks to tie her season high.

» In the series finale, Reich powered the offense with 12 kills on 22 attempts, attacking at a blistering .409 clip. She set a season high for kills in a conference match with her performance. Defensively, she recorded one dig and a pair of blocks.

» Reich led the Tiger offense with 23 total kills over the two-match series, while attacking at a .347 clip. The graduate student averaged 3.83 kills per set and 4.50 points per set to pace the Tigers.

OH SHIPES! IT'S A BLOCK PARTY

» As the season progresses, Auburn's play at the net continues to improve as highlighted by a record-breaking performance against Alabama. As a team, the Tigers totaled 18.0 team blocks in Auburn's 3-2 victory against the Crimson Tide on Oct. 2. The mark tied the program's record for blocks in a match. The Tigers also totaled 18.0 team blocks against South Florida on Sept. 13, 2014.

» Auburn enters the season finale ranked fourth in the Southeastern Conference with a 2.44 blocks per set average. The mark is currently the seventh highest team average recorded in a single-season. Play at the net combined with Auburn's digging performance has helped the Tigers hold opponents to a minuscule .170 hitting percentage, the lowest in the SEC.

» An SEC Defensive Player of the Week selection this

PLAYER TO WATCH: TATUM SHIPES

» Making the move to middle blocker has been an easy transition to Tatum Shipes. Shipes enters the weekend leading the SEC in total blocks and blocks per set. Her 137 blocks are fifth in school history - regardless of era.

season, Tatum Shipes recorded 12.0 total blocks in the five-set match against the Tide to help Auburn to its first SEC home victory since 2018. The mark set the program's single-match record for blocks in the rally scoring era. The previous record of 11.0 was set on Nov. 23, 2017 by Breanna Barksdale at Florida.

» Her record-setting performance continue against LSU (10/29) as Shipes chipped in three blocks to bring her season total to 120, breaking the program's single-season record for the rally-scoring era. The previous mark of 119 was set by Camila Jersonsky in 2012. She added a second record to her resume against South Carolina (11/10) as she surpassed Jersonsky in block assists.

» Shipes continues to lead Auburn with her impressive play at the net since moving to middle blocker. Shipes leads the SEC in both total blocks (137) and blocks per set (1.41), while ranking 13th and fifth respectively, in both categories nationally. With three single-season records to her credit, Shipes has her sights on one more blocking record to run the table.

BLOCKS - SOLO (RALLY-SCORING)

PLAYER	YEAR	BLOCKS
1. Katherine Culwell	2012	25
2. Tatum Shipes	2021	21

BLOCKS - ASSISTS (RALLY-SCORING)

PLAYER	YEAR	BLOCKS
1. Tatum Shipes	2021	116
1. Camila Jersonsky	2012	108

TOTAL BLOCKS (RALLY-SCORING)

PLAYER	YEAR	BLOCKS
1. Tatum Shipes	2021	137
2. Camila Jersonsky	2012	119

BLOCKS PER SET (MIN. 50 BLOCKS/RALLY-SCORING)

PLAYER	YEAR	BLOCKS
1. Tatum Shipes	2021	1.41
2. Anna Stevenson	2018	1.15

» Not only are her blocking numbers the best in program history in the rally scoring era, Shipes has proved to be one of the best blockers in school history - regardless of which era you include.

BLOCKS - ASSISTS (OVERALL)

PLAYER	YEAR	BLOCKS
1. Jounelle Hamilton	1999	131
Rani Whitson	1995	131
3. Rani Whitson	1994	129
4. Gina Thomas	1989	123
5. Jounelle Hamilton	2000	116
Tatum Shipes	2021	116



TOTAL BLOCKS (OVERALL)

PLAYER	YEAR	BLOCKS
1. Jaunelle Hamilton	1999	162
2. Rani Whitson	1995	148
3. Jaunelle Hamilton	1997	143
4. Rani Whitson	1994	140
5. Julie Bosler	2006	137
Tatum Shipes	2021	137

BLOCKS PER SET (MIN. 40 BLOCKS/OVERALL)

PLAYER	YEAR	BLOCKS
1. Jaunelle Hamilton	1999	1.43
2. Tory Gutierrez	1989	1.41
Tatum Shipes	2021	1.41

THE CROUCH EFFECT

- >> After COVID-19 derailed the process last season, Brent Crouch's overhaul of the program took into effect since the season opener and has continued into the early portion of Southeastern Conference play.
- >> The Tigers opened the season with 17 consecutive set victories before dropping its first set of the season. Auburn tied the program record for most sweeps to begin a season with five. The record was first set by the 1974 squad.
- >> Auburn's 6-0 start is the best for the Tigers since the 2012 team began the season 8-0. Auburn has recorded 10 victories through its first 14 matches of the season. It is the most wins by the Tigers since the 2018 team closed the year with 12.
- >> Sweeping Alabama to earn the program's first SEC victories of the season, the Tigers have now won back-to-back SEC games for the first time since knocking off Georgia and Mississippi State in November of 2018. Auburn has now won three straight matches against Alabama. It is the longest win streak against the Crimson Tide since the Tigers won six straight from 2009 to 2012.
- >> Auburn opened its two-match series against Missouri with a sweep, picking up the program's first victory in the series since 1996. It also mark the first time in program history that Auburn had defeated Missouri since Missouri joined the SEC.
- >> The Tigers continue their impressive run by edging out Texas A&M, 3-2, to snap a nine-match losing skid to the Aggies. The match was Auburn's first victory over in the Aggies in College Station in program history.
- >> Auburn has racked up the most conference victories

in a season since 2018 while the team's 13 overall victories are the most since 2017. The Tigers have also seen dramatic improvement on the defensive side of the court.

DEFENSE

- Auburn's digs per set average of 15.92 currently ranks seventh in single-season history and is the highest team average since 2017.
- The Tigers have totaled 405 block assists this season, the sixth most in a single season and the most by any squad since 2000.
- Auburn currently holds the seventh high team blocks per set average for a single season at 2.44.

CAN YOU DIG IT?

- >> Behind a career performance at the Auburn Invitational, Bella Rosenthal was selected as the SEC's Defensive Player of the Week for the second consecutive week. She is the first Tiger in program history to win the award in back-to-back weeks. She is also the first Tiger to win the award multiple times in a season since Camila Jersonsky in 2012.
- >> Rosenthal has paced the Tigers this season, recording at least 10 digs in 24 of Auburn's 27 matches to being the season. She has chipped in at least 20 digs in 10 matches for the Tigers while totaling at least 30 digs three time.
- >> She set a then career high with 31 digs. She is the first Tiger to record at least 30 digs in a match since Payton White versus Butler on Aug. 31, 2019.
- >> Behind her match-leading 30 digs in the series opener at Arkansas (10/9), she became just the 15th Tiger in program history to record 1,000 career digs. Rosenthal is the first Tiger to hit the mark since Brenna McLroy in 2018.
- >> Rosenthal would shattered that mark with a 33-dig performance in the series finale against Missouri (10/17), a career high for the senior. The mark is the sixth most ever recorded by a Tiger in a single match.
- >> She currently leads the SEC with a 4.81 digs/set average and in total digs with 481. She is on pace to turn in one of the best dig performances in school history as she already in the top six in both total digs and digs per set.

2020-21 AUBURN VOLLEYBALL ROSTER

No.	Name	Year	Pos.	Ht.	Hometown (High School/Previous School)
4	Fallan Lanham	Fr.	DS/L	5-8	Louisville, Ky. (Mercy Academy)
5	Audrey Douglas	So.	OH/OPP	6-4	Winter Park, Fla. (Hagerty)
6	Bella Rosenthal	Sr.	DS/L	5-5	Yorktown, Ind. (Yorktown)
7	Rebekah Rath	Jr.	OH	6-0	Altamonte Springs, Fla. (Oviedo/Maryland)
8	Liz Reich	Gr.	OPP	6-1	Colorado Springs, Colo. (Lewis-Palmer/Portland)
10	Jackie Barrett	So.	S	6-1	Highland, Calif. (Citrus Valley)
11	Jordan Sinness	Fr.	S	5-9	Sebring, Fla. (Sebring)
15	Kate Curtis	Fr.	DS/L	5-6	Anderson, S.C. (T.L. Hanna)
16	Val Green	Sr.	OH	6-2	Oxford, Ohio (Talawanda)
17	Cassidy Tanton	Fr.	OH	6-0	Stoneville, N.C. (Dalton McMichael)
19	Elif Su Yavuz	Sr.	MB	6-3	Ankara, Turkey (Gazi University)
21	Tatum Shipes	Sr.	OH	6-4	Buford, Ga. (Buford)

HEAD COACH | BRENT CROUCH (SECOND SEASON)

ASSOCIATE HEAD COACH/RECRUITING COORDINATOR | ALEX DUNPHY (SECOND SEASON)

ASSISTANT COACH | RICK MOLLER (SECOND AS ASSISTANT COACH/THIRD SEASON OVERALL)

DIRECTOR OF VOLLEYBALL OPERATIONS/TECHNICAL COORDINATOR | MADI WILKERSON (SECOND SEASON)

PRONUNCIATION GUIDE:

FALLAN LANHAM (FOUL-an LAN-UM)

JORDAN SINNESS (SIN-es)

ELIF SU YAVUZ (e-LEAF SUE Yah-vous)

LIZ REICH (RICH)

CASSIDY TANTON (TAN-tun)

TATUM SHIPES (SHY-PS)

HEAD COACH BRENT CROUCH

QUICK FACTS

College ___ Texas A&M ('98, '00)
 ___ Oregon ('06)
 Wife _____ Marcy
 Sons ___ Jonathan and William

COACHING RECORD

Head Coaching Career ___ 8th Season
 Career Record _____ 108-113
 NCAA Appearances _____ 2

COACHING CAPSULE

2020-Pt. Auburn 13-22
 2018-19 Southern California 40-25
 2014-17 Portland 55-66

YEAR-BY-YEAR RESULTS

2021	Auburn	13-14
2020	Auburn	0-8
2019	USC	18-14
2018	USC	22-11
2017	Portland	15-15
2016	Portland	17-13
2015	Portland	16-15
2014	Portland	7-23



Brent Crouch enters his second season as the head coach of the Auburn volleyball team after guiding the program through the challenges of the COVID-19 pandemic during his first season on The Plains.

Crouch made his Auburn coaching debut against No. 4 Florida on Oct. 21, 2020, to open the shortened fall volleyball schedule. Crouch led the Tigers on the court for eight total matches.

The fall season was highlighted by Auburn setting the program record for blocks in a four-set match as the Tigers recorded 17 at South Carolina on Oct. 29, 2020. The previous mark of 14 was set on Nov. 9, 2014 against Tennessee. The total tied for the second-most blocks in a match in Auburn program history as was the most by the Tigers since 2009.

Due to injuries and opt-out, the Tigers were unable to compete in the spring portion of the amended 2020-21 schedule.

Crouch previously served as the head coach at the University of Southern California. In two seasons at USC, Crouch led the program to consecutive NCAA second round appearances, including a second-place finish in the Pac-12, and a No. 21 ranking in the season's final AVCA poll in his first season on campus in 2018. This past season, the Trojans were 18-14, while outside hitter Kholia Lanier became the fifth player in Pac-12 history to record 2,000 kills and 1,000 digs in career.

Under Crouch in 2018, the Trojans finished 22-11 overall with a 13-7 record in Pac-12 matches. USC played one of the toughest schedules in the nation and faced 18 ranked opponents in the regular season and were awarded the No. 11 overall seed in the NCAA Tournament. Setter Raquel Lázaro was named the Pac-12 Freshman of the Year and outside hitter Brooke Borikin was chosen for second-team AVCA All-America honors. Lázaro and Lanier were each tabbed for All-America honorable mention.

Under Crouch's tutelage, outside hitter Emilia Weske was tabbed to the Pac-12's All-Freshman Team while middle blocker Jasmine Gross added All-Pac-12 honors.

Prior to arriving at Troy, Crouch was the 2016 West Coast Conference Coach of the Year. He inherited a winless Portland program and within two seasons guided the Pilots to their winningest season in 25 years. Crouch first took over at Portland in 2014 after the Pilots went 0-27 the previous season. After going 7-23 in his debut season, he guided the Pilots to a 16-15 mark in 2015 (its most victories since 1991) and then improved upon that in 2016 with a 17-13 mark. His 2017 team, which was hampered by injuries, was 15-15, with five losses coming in five-set matches. His overall four-year record at Portland was 55-66.

The 48 victories in his final three years was Portland's best three-season total since 1984-86. The Pilots' 10-8 third place WCC finish in 2016 was its most league wins since 1985 and highest conference finish since 1989. He led Portland to the program's first-ever victories over Top 10, Top 15, and Top 25 opponents. Crouch coached three All-WCC first team players and a WCC All-Freshman team pick, along with three WCC All-Academic first teamers. He also helped establish beach volleyball as a varsity sport at Portland in 2016.

Crouch arrived at Portland after four seasons (2010-13) at Saint Mary's College, where he was an assistant with the indoor program and head coach of the beach team.

During his time at SMC, the Gaels' indoor team went 73-40 overall, finished in the top three in the WCC standings each season by winning 73.4 percent of its league matches (47-17) and earned a berth into the NCAA Tournament in 2012, advancing to the second round. Besides being involved in the team's offense and defense, recruiting, scouting, practice planning, statistical and video analysis and scheduling, he provided academic support, as he mentored several WCC All-Academic honorees and helped the team to the athletic department's highest grade point average, an NCAA Public Recognition Award, and an AVCA academic award.

Crouch also coached the inaugural Saint Mary's beach team in 2013, guiding the Gaels to an 8-2 record, the best mark among all Northern California teams, as well as a No. 9 national ranking and a bid to the AVCA national championship for the program's top pairs team.

Crouch also has coaching experience with the USA Volleyball program, including working with U.S. Women's National Team head coach Karch Kiraly, being an assistant with the U.S. Collegiate National Team that captured a gold medal at the 2016 U22 Global Challenge and serving as both an indoor and beach coach in the USA Volleyball High Performance program.

Crouch played for Texas A&M's club team from 1993 to 1997. He earned his bachelor's degree in history in 1998 and his master's in philosophy in 2000, both from Texas A&M, then a doctorate in philosophy from Oregon in 2006.

He competed on the beach from 2005 to 2007 in AVP and CBVA events and placed second at the 2005 California Cup state championship.

He has held various teaching positions in philosophy at Oregon, San Diego City College, and Saint Mary's College since 2000.

Crouch and his wife Marcy have two sons, Jonathan and William.

INSIDE THE NUMBERS



CATEGORY	AUBURN	MISSISSIPPI STATE
Kills	1154	1611
Per Set	11.5	13.8
Errors	440	607
Total Attacks	3542	4133
Hitting Pct.	.202	.243
Assists	1039	1464
Per Set	10.4	12.5
Service Aces	99	147
Per Set	1.0	1.3
Service Errors	189	242
Reception Errors	130	130
Per Set	1.3	1.1
Digs	1592	1691
Per Set	15.9	14.5
Solo Blocks	42	26
Block Assists	405	429
Total Blocks	244.5	240.5
Per Set	2.4	2.1

2021 AUBURN INDIVIDUAL MATCH HIGHS (BY SET)

THREE SETS

HITTING PERCENTAGE (MIN. 12 KILLS) _____ .500, Liz Reich vs. Jackson State (August 28, 2021)
 KILLS _____ 17, Rebekah Rath vs. Missouri (October 16, 2021)
 TOTAL ATTEMPTS _____ 50, Rebekah Rath vs. LSU (October 29, 2021)
 ASSISTS _____ 34, Jackie Barrett vs. Alabama (October 3, 2021)
 DIGS _____ 25, Bella Rosenthal vs. North Alabama (September 9, 2021)
 ACES _____ 3, Elif Yavuz at Georgia (October 21, 2021)
 BLOCKS _____ 8 (3x), last Tatum Shipes at Georgia (October 21, 2021)

FOUR SETS

HITTING PERCENTAGE (MIN. 12 KILLS) _____ .288, Rebekah Rath vs. Ole Miss (September 22, 2021)
 KILLS _____ 29, Rebekah Rath at Arkansas (October 9, 2021)
 TOTAL ATTEMPTS _____ 75, Rebekah Rath at Arkansas (October 9, 2021)
 ASSISTS _____ 40, Jackie Barrett vs. Nicholls (September 17, 2021)
 DIGS _____ 31, Bella Rosenthal vs. Nicholls (September 17, 2021)
 ACES _____ 3, Jackie Barrett vs. Nicholls (September 17, 2021)
 BLOCKS _____ 10.0, Tatum Shipes at Arkansas (October 9, 2021)

FIVE SETS

HITTING PERCENTAGE (MIN. 12 KILLS) _____ .378, Liz Reich vs. Florida A&M (September 17, 2021)
 KILLS _____ 24 (2x), last, Rebekah Rath at Alabama State (September 26, 2021)
 TOTAL ATTEMPTS _____ 84, Rebekah Rath at Texas A&M (November 4, 2021)
 ASSISTS _____ 48, Jackie Barrett vs. Florida A&M (September 17, 2021)
 DIGS _____ 33, Bella Rosenthal vs. Missouri (October 16, 2021)
 ACES _____ 5, Rebekah Rath at Texas A&M (November 5, 2021)
 BLOCKS _____ 12, Tatum Shipes vs. Alabama State (October 2, 2021)

2021 AUBURN TEAM MATCH HIGHS (BY SET)

THREE SETS

HITTING PERCENTAGE _____ .457, vs. Jackson State (August 28, 2021)
 KILLS _____ 42 (3x), last at Georgia (October 21, 2021)
 TOTAL ATTEMPTS _____ 122, vs. Cal State Fullerton (September 2, 2021)
 ASSISTS _____ 39, at Georgia (October 21, 2021)
 DIGS _____ 66, vs. Alabama (October 3, 2021)
 ACES _____ 6 (4x), last at Georgia (October 21, 2021)
 BLOCKS _____ 14.0, vs. Jackson State (August 28, 2021)

FOUR SETS

HITTING PERCENTAGE _____ .196, vs. Ole Miss (September 22, 2021)
 KILLS _____ 51, vs. Nicholls (September 17, 2021)
 TOTAL ATTEMPTS _____ 175, vs. Nicholls (September 17, 2021)
 ASSISTS _____ 47, vs. Ole Miss (September 22, 2021)
 DIGS _____ 105, vs. Nicholls (September 17, 2021)
 ACES _____ 4 (2x), vs. Ole Miss (September 22, 2021)
 BLOCKS _____ 14.0, at Arkansas (October 9, 2021)

FIVE SETS

HITTING PERCENTAGE _____ .260, vs. Santa Clara (September 12, 2021)
 KILLS _____ 69, vs. Florida A&M (September 17, 2021)
 TOTAL ATTEMPTS _____ 188, vs. Florida A&M (September 17, 2021)
 ASSISTS _____ 63, vs. Florida A&M (September 17, 2021)
 DIGS _____ 97, at Texas A&M (November 5, 2021)
 ACES _____ 11, at Texas A&M (November 5, 2021)
 BLOCKS _____ 18.0, vs. Alabama (October 2, 2021)

DIGS

	PLAYER	YEAR	DIGS
1.	Jesse Earl	2016	612
2.	Jesse Earl	2017	529
3.	Jesse Earl	2015	516
4.	Sarah Wroblicky	2013	481
	Bella Rosenthal	2021	481

DIGS PER SET (MIN. 100 DIGS)

	PLAYER	YEAR	AVG.
1.	Jesse Earl	2017	5.19
2.	Jesse Earl	2016	4.98
3.	Bella Rosenthal	2021	4.81

» With 1,197 career digs to her credit, Rosenthal currently ranks 109th among all active Division I student-athletes in career digs. She has added her name to Auburn's career record book in both dig categories with her senior-year performance.

DIGS

	PLAYER	YEARS	DIGS
1.	Liz Crouch	2007-10	1,703
2.	Jesse Earl	2015-17	1,657
3.	Gretchen Thompson	1986-89	1,495
4.	Alexa Filley	2014-17	1,315
5.	Allyson Beecroft	1993-96	1,249
6.	Sarah Wroblicky	2010-13	1,238
7.	Sarah Bullock	2009-12	1,210
8.	Bella Rosenthal	2018-Pr.	1,197

DIGS PER SET (MIN. 500 DIGS)

	PLAYER	YEARS	AVG.
1.	Jesse Earl	2015-17	4.79
2.	Liz Crouch	2007-10	4.00
3.	Sarah Wroblicky	2010-13	3.65
4.	Bella Rosenthal	2018-Pr.	3.62
5.	Gretchen Thompson	1986-89	3.26

FEEL THE RATH

» Behind one of the program's best offensive performances in almost two decades, junior outside hitter Rebekah Rath was selected as Southeastern Conference Co-Offensive Player of the Week, sharing the honor with LSU's Kylie Deberg.

» The recognition was the second for Rath this season. Rath is the first Tiger in program history to be named SEC Offensive Player of the Week twice in the same season. The SEC began distributing the award in 2004.

» In an epic performance in game one against Arkansas (10/9), Rath was virtually unstoppable on offense with 29 total kills. Rath attacked on a .240 hit percentage, committing just 11 errors in her 75 swings.

» Rath's 29 kills were the second most recorded by a Tiger during the rally-scoring era. Her 29 kills were the most totaled in a single match by a Tiger since Ashlee Johns' single-match record of 30, which was totaled in a five-set contest at Arkansas on Oct. 8, 2004.

» Rath currently leads the SEC in attacks per set (13.36), kills per set (4.26), points (494.0), points per set (4.94), total attacks (1,336) and ranks second in the league in total kills (426)

» The junior as recorded at least 10 kills in 23 of Auburn's 27 matches. In Auburn's five-set thriller versus Santa Clara, Rath led the team with 24 kills to become the first Tiger to record at least 20 kills in a match since Tatum Shipes in 2018. Rath also chipped in 24 kills in Auburn's five-set contest at Alabama State on Sept. 26 before shattering the mark at Arkansas.

» Rath's was named SEC Offensive Player of the Week on Sept. 7. The Altamonte Springs, Fla., native is the first Auburn Tiger to be named SEC Offensive Player of the Week since Brenna McLroy won the award on Oct. 30, 2017.

» Her efforts have also won her all-tournament team honors at both the War Eagle Invitational and the Auburn Invitational.

» Rath's 4.26 kills per set average is currently the highest by a Tiger in single-season history (rally scoring era). She added a second single-season record in the series finale at Texas A&M (11/5), breaking the record for attacks. In the series opener against No. 8 Kentucky (11/20), Rath made history yet again as she set the rally-scoring era record for total kills in a season.

KILLS

	PLAYER	YEAR	KILLS
1.	Rebekah Rath	2021	426
2.	Jessica Glover	2008	410

KILLS PER SET (MIN. 100 KILLS)

	PLAYER	YEAR	AVG.
1.	Rebekah Rath	2021	4.26
2.	Sarah Bullock	2012	3.50

3. Jessica Glover 2008 3.45

ATTACKS

	PLAYER	YEAR	ATTACKS
1.	Rebekah Rath	2021	1,336
2.	Brenna McLroy	2016	1,113

AUBURN PICKED 13th IN PRESEASON POLL

» Auburn was selected to finish 13th in the Southeastern Conference in the annual preseason coaches' poll. The Tigers earned 12 points from the league's coaches.

» Reigning national champion Kentucky (139 pts) edged out Florida (138 pts) by one point as the favorite to win the SEC Championship. Kentucky secured seven first-place votes. Florida finished with six.

» LSU was tabbed to finished third, while Tennessee and Arkansas rounded out the top five.

TIGER TRACKS

» Air Green! Val Green set Takawanda High School's high jump record. She's also a second generation collegiate volleyball athlete. Her mother, Paula, played at Miami-Ohio.

» Tatum Shipes holds a wealth of athletic talent in her family's history. Her mother, Laurel, played basketball at Kentucky. Her father lettered in basketball at The Master's University. Her brother, T.J., was a member of Georgia State's basketball team. Her grandfather, Don Hudgens, and great grandparents, Ira and Opal, all played collegiate basketball.

» Jackie Barrett is the daughter of Martin J. Barrett, a former football star at the University of Buffalo. Martin was a two-time AP All-American and set 14 career UB records as a quarterback. He was inducted into Buffalo's Hall of Fame in 1989.

» Full Circle Moment: Liz Reich was originally recruited to Portland and competed her freshman season under Brent Crouch.

» Audrey Douglas is fluent in American Sign Language.

» Jordan Sinness is not the first member of her family to play collegiate sports in the state of Alabama. Her older sister, Jade, plays softball at Troy University.

» Associate head coach Alex Dunphy is the daughter of Volleyball Hall of Famer and American Volleyball Coaches Association Hall of Famer, Marv Dunphy. Dunphy has led Pepperdine to five NCAA Men's Division I Championships. Marv was an assistant coach for Team USA Women's Volleyball at the 2020 Tokyo Olympics, helping the squad to a gold medal.

THE LAST TIME AUBURN...

Won in three sets _____ Oct. 21, 2021 at Georgia (25-21, 25-19, 25-20)
Won in four sets _____ Sept. 17, 2021 vs. Nicholls (25-8, 25-15, 26-28, 25-15)
Won in five sets _____ Nov. 5, 2021 at Texas A&M (25-15, 25-22, 19-25, 20-25, 15-12)
Lost in three sets _____ Nov. 21, 2021 vs. #8 Kentucky (21-25, 8-25, 12-25)
Lost in four sets _____ Oct. 9, 2021 at Arkansas (27-25, 18-25, 23-25, 22-25)
Lost in five sets _____ Nov. 4, 2021 at Texas A&M (29-27, 17-25, 25-20, 14-25, 12-15)
 Lost first set in a win _____ Sept. 8, 2019 vs. George Washington (21-25, 25-13, 25-22, 25-13)
Won first set in a loss _____ Nov. 4, 2021 at Texas A&M (29-27, 17-25, 25-20, 14-25, 12-15)
 Lost first two sets in a win _____ Sept. 11, 2018 at Kennesaw State (23-25, 20-25, 28-26, 26-24, 15-9)
Won first two sets in a loss _____ Oct. 10, 2021 at Arkansas (25-20, 25-23, 15-25, 17-25, 7-15)
 Beat a ranked opponent _____ Sept. 2, 2017 vs. #16 North Carolina (25-23, 25-22, 25-27, 25-21)
Hit .300-.399 in a match _____ Sept. 18, 2021 vs. Belmont (.345)
Hit .400-.499 in a match _____ Aug. 28, 2021 vs. Jackson State (.457)
 Hit .500 or better in a match _____ Oct. 18, 1998 at Ole Miss (.514)
Held opponent to .000-.100 in a match _____ Oct. 16, 2021 vs. Missouri (.097)
Held opponent to a negative hitting percentage _____ Sept. 18, 2014 vs. Belmont (-.093)
 Had 70-79 kills in a match _____ Oct. 26, 2018 vs. Ole Miss (77)
 Had 80+ kills in a match _____ Sept. 17, 2006 at Georgia (84)
Had 80-99 digs in a match _____ Nov. 5, 2021 at Texas A&M (97)
Had 100+ digs in a match _____ Sept. 17, 2021 vs. Nicholls (105)
Had 15+ blocks in a match _____ Oct. 10, 2021 at Arkansas (17.0)
Had 10+ service aces in a match _____ Nov. 5, 2021 at Texas A&M (11)
Had a player(s) with 20-24 kills in a match _____ Nov. 4, 2021, Rebekah Rath at Texas A&M (22)
Had a player(s) with 25-29 kills in a match _____ Oct. 9, 2021, Rebekah Rath at Arkansas (29)
 Had a player(s) with 30+ kills in a match _____ Oct. 8, 2004, Ashlee Johns vs. Arkansas (30)
Had a player(s) with 10+ blocks in a match _____ Oct. 9, 2021, Tatum Shipes at Arkansas (10.0)
Had a player(s) with 25-29 digs in a match _____ Oct. 3, 2021, Bella Rosenthal vs. Alabama (21)
Had a player(s) with 30+ digs in a match _____ Oct. 17, 2021, Bella Rosenthal vs. Missouri(33)
 Had a player(s) with 50+ assists in a match _____ Aug. 31, 2019, Marissa Hines (50)
 Had a player(s) with 60+ assists in a match _____ Oct. 28, 2018, Mica Allison vs. Ole Miss (61)
Had a player(s) with 5+ aces in a match _____ Nov. 5, 2021, Rebekah Rath at Texas A&M (5)

AUBURN DOUBLE-DOUBLES IN 2021

PLAYER	OPPONENT (SETS)	DATE	STATS
Jackie Barrett (16)	vs. Tennessee Tech (3)	August 27	25 assists, 12 digs
	vs. Santa Clara (5)	September 12	44 assists, 11 digs
	vs. Florida A&M (5)	September 17	48 assists, 15 digs
	vs. Nicholls (4)	September 17	40 assists, 28 digs
	vs. Belmont (3)	September 18	24 assists, 19 digs
	vs. Ole Miss (4)	September 22	34 assists, 12 digs
	at #20 Tennessee (3)	September 29	18 assists, 12 digs
	vs. Alabama (5)	October 2	43 assists, 14 digs
	vs. Alabama (3)	October 3	34 assists, 11 digs
	at Arkansas (4)	October 9	36 assists, 13 digs
	at Arkansas (5)	October 10	36 assists, 16 digs
	at Georgia (3)	October 21	27 assists, 17 digs
	vs. LSU (3)	October 29	22 assists, 13 digs
	at Texas A&M (5)	November 4	38 assists, 13 digs
	at Texas A&M (5)	November 5	43 assists, 16 digs
	vs. Kentucky (3)	November 20	18 assists, 12 digs
	Rebekah Rath (8)	vs. Cal State Fullerton (3)	September 2
vs. Santa Clara (5)		September 12	24 kills, 10 digs
at Alabama State (5)		September 26	24 kills, 13 digs
vs. Alabama (5)		October 2	22 kills, 11 digs
vs. Alabama (3)		October 3	16 kills, 11 digs
at Arkansas (5)		October 10	20 kills, 10 digs
Jordan Sinness (1)	vs. Missouri (5)	October 20	35 assists, 14 digs
	vs. Missouri (5)	October 20	35 assists, 14 digs

AUBURN'S 2021 RECORD WHEN...

OVERALL	13-14
SEC	5-12
NON-CONFERENCE	10-2
RANKED OPPONENTS	0-4
HOME	11-7
AWAY	2-7
NEUTRAL	0-0
BY SETS	
THREE SETS	9-7
FOUR SETS	1-2
FIVE SETS	3-6
WON FIRST SET	13-7
LOST FIRST SET	0-7
WON SECOND SET	12-5
LOST SECOND SET	1-9
WON FIRST TWO SETS	12-1
LOST FIRST TWO SETS	0-6
SITUATIONAL	
MORE KILLS THAN OPPONENT	9-2
FEWER KILLS THAN OPPONENT	4-12
KILLS ARE TIED	0-0
MORE DIGS THAN OPPONENT	8-1
FEWER DIGS THAN OPPONENT	4-13
DIGS ARE TIED	1-0
MORE ACES THAN OPPONENT	9-2
FEWER ACES THAN OPPONENT	3-11
ACES ARE TIED	1-1
HIGHER HITTING PERCENTAGE THAN OPPONENT	13-2
LOWER HITTING PERCENTAGE THAN OPPONENT	0-12
HITTING PERCENTAGE TIED	0-0
HITTING PERCENTAGE	
.400 OR ABOVE	1-0
.300-.399	2-0
.200-.299	7-4
.100-.199	3-7
.000-.099	0-3
NEGATIVE	0-0
OPPONENTS' HITTING PERCENTAGE	
.400 OR ABOVE	0-1
.300-.399	0-2
.200-.299	1-9
.100-.199	3-2
.000-.099	8-0
NEGATIVE	1-0
BY DAY	
MONDAY	0-0
TUESDAY	0-0
WEDNESDAY	0-4
THURSDAY	3-1
FRIDAY	4-3
SATURDAY	4-2
SUNDAY	2-4
DAY MATCHES (FIRST SERVE BEFORE 6 P.M.)	5-7
NIGHT MATCHES (FIRST SERVE AFTER 6 P.M.)	8-7
BY MONTH	
AUGUST	2-0
SEPTEMBER	6-4
OCTOBER	4-5
NOVEMBER	1-5
JERSEY COLOR	
NAVY	3-4
NAVY w/ORANGE SLEEVE	2-2
ORANGE	4-7
ORANGE w/NAVY SLEEVE	4-1
PINK	0-0

2021 AUBURN MATCH-BY-MATCH STARTERS

DATE	OPPONENT	RESULT	OUTSIDE	MIDDLE	RIGHT SIDE	OUTSIDE/DS	MIDDLE	LIBERO	SETTER
8/28	TENNESSEE TECH	W, 3-0	Rath	Shipes	Reich	Lanham (DS)	Yavuz	Rosenthal	Barrett
8/28	JACKSON STATE	W, 3-0	Rath	Shipes	Reich	Green (OH)	Yavuz	Rosenthal	Barrett
9/2	CAL STATE FULLERTON	W, 3-0	Rath	Shipes	Reich	Green (OH)	Yavuz	Rosenthal	Barrett
9/3	SOUTHEASTERN LOUISIANA	W, 3-0	Rath	Shipes	Reich	Green (OH)	Yavuz	Rosenthal	Barrett
9/9	NORTH ALABAMA	W, 3-0	Rath	Shipes	Reich	Green (OH)	Yavuz	Rosenthal	Barrett
9/12	SANTA CLARA	W, 3-2	Rath	Shipes	Reich	Green (OH)	Yavuz	Rosenthal	Barrett
9/17	FLORIDA A&M	L, 2-3	Rath	Shipes	Reich	Green (OH)	Yavuz	Rosenthal	Barrett
9/17	NICHOLLS	W, 3-1	Rath	Shipes	Reich	Green (OH)	Yavuz	Rosenthal	Barrett
9/18	BELMONT	W, 3-0	Rath	Shipes	Reich	Green (OH)	Yavuz	Rosenthal	Barrett
9/22	OLE MISS	L, 1-3	Rath	Shipes	Reich	Green (OH)	Yavuz	Rosenthal	Barrett
9/26	at Alabama State	L, 2-3	Rath	Shipes	Reich	Lanham (DS)	Yavuz	Rosenthal	Barrett
9/29	at Tennessee	L, 0-3	Rath	Shipes	Reich	Lanham (DS)	Yavuz	Rosenthal	Barrett
10/2	ALABAMA	W, 3-2	Rath	Shipes	Reich	Lanham (DS)	Yavuz	Rosenthal	Barrett
10/3	ALABAMA	W, 3-0	Rath	Shipes	Reich	Lanham (DS)	Yavuz	Rosenthal	Barrett
10/9	at Arkansas	L, 1-3	Rath	Shipes	Reich	Lanham (DS)	Yavuz	Rosenthal	Barrett
10/10	at Arkansas	L, 2-3	Rath	Shipes	Reich	Lanham (DS)	Yavuz	Rosenthal	Barrett
10/16	MISSOURI	W, 3-0	Rath	Shipes	Reich	Lanham (DS)	Yavuz	Rosenthal	Barrett
10/17	MISSOURI	L, 2-3	Rath	Shipes	Reich	Lanham (DS)	Yavuz	Rosenthal	Barrett
10/22	at Georgia	W, 3-0	Rath	Shipes	Reich	Lanham (DS)	Yavuz	Rosenthal	Barrett
10/23	at Georgia	L, 0-3	Rath	Shipes	Reich	Lanham (DS)	Yavuz	Rosenthal	Barrett
10/29	LSU	L, 0-3	Rath	Shipes	Reich	Lanham (DS)	Yavuz	Rosenthal	Barrett
11/4	at Texas A&M	L, 2-3	Rath	Shipes	Reich	Lanham (DS)	Yavuz	Rosenthal	Barrett
11/5	at Texas A&M	W, 3-2	Rath	Shipes	Reich	Lanham (DS)	Yavuz	Rosenthal	Barrett
11/10	SOUTH CAROLINA	L, 0-3	Rath	Shipes	Reich	Lanham (DS)	Yavuz	Rosenthal	Barrett
11/17	at Florida	L, 0-3	Rath	Shipes	Reich	Lanham (DS)	Yavuz	Rosenthal	Barrett
11/20	KENTUCKY	L, 0-3	Rath	Shipes	Reich	Lanham (DS)	Yavuz	Rosenthal	Barrett
11/21	KENTUCKY	L, 0-3	Rath	Shipes	Reich	Lanham (DS)	Yavuz	Rosenthal	Barrett
11/26	at Mississippi State								

2021 AUBURN MATCH-BY-MATCH LEADERS

DATE	OPPONENT	RESULT	KILLS	ASSISTS	ACES	DIGS	BLOCKS	HIT PCT. (MIN 10 ATT.)
8/28	TENNESSEE TECH	W, 3-0	Rath (13)	Barrett (25)	Barrett/Rath/Curtis (1)	Rosenthal (17)	Shipes (7)	Shipes (.462)
8/28	JACKSON STATE	W, 3-0	Rath (16)	Barrett (27)	Barrett/Rath (2)	Rosenthal (14)	Yavuz (8)	Reich (.500)
9/2	CAL STATE FULLERTON	W, 3-0	Rath (16)	Barrett/Sinness (16)	Rath (1)	Rosenthal (17)	Shipes (3)	Reich (.409)
9/3	SOUTHEASTERN LOUISIANA	W, 3-0	Rath (16)	Barrett (28)	Barrett (2)	Rosenthal (16)	Shipes (8)	Reich (.458)
9/9	NORTH ALABAMA	W, 3-0	Green (12)	Barrett (30)	Barrett/Green/Rath (1)	Rosenthal (25)	Barrett (4)	Green (.375)
9/12	SANTA CLARA	W, 3-2	Rath (24)	Barrett (44)	Barrett/Sinness (2)	Rosenthal (20)	Shipes/Barrett (5)	Shipes (.357)
9/17	FLORIDA A&M	L, 2-3	Green (19)	Barrett (48)	Barrett (2)	Rosenthal (20)	Douglas/Barrett/Yavuz (4)	Yavuz (.571)
9/17	NICHOLLS	W, 3-1	Rath (18)	Barrett (40)	Barrett (3)	Rosenthal (28)	Shipes (9)	Rath (.211)
9/18	BELMONT	W, 3-0	Rath (14)	Barrett (24)	Rosenthal (2)	Rosenthal/Barrett (19)	Shipes (7)	Rath (.429)
9/22	OLE MISS	L, 1-3	Rath (19)	Barrett (34)	Green (2)	Rosenthal (13)	Shipes/Yavuz (3)	Rath (.288)
9/26	at Alabama State	L, 2-3	Rath (24)	Barrett (36)	Rath/Sinness (2)	Rosenthal (27)	Rath (4)	Shipes (.400)
9/29	at Tennessee	L, 0-3	Rath (9)	Barrett (18)	Lanham (1)	Barrett (12)	Shipes (6)	Reich (.217)
10/2	ALABAMA	W, 3-2	Rath (22)	Barrett (43)	Curtis (1)	Rosenthal (24)	Shipes (12)	Shipes (.231)
10/3	ALABAMA	W, 3-0	Rath (16)	Barrett (34)	Curtis/Rath (2)	Rosenthal (21)	Shipes (7)	Reich (.435)
10/9	at Arkansas	L, 1-3	Rath (29)	Barrett (36)	Barrett/Rath (1)	Rosenthal (30)	Shipes (10)	Rath (.240)
10/10	at Arkansas	L, 2-3	Rath (20)	Barrett (36)	Shipes (2)	Rosenthal (20)	Shipes (9)	Green (.231)
10/16	MISSOURI	W, 3-0	Rath (17)	Barrett (25)	Four Athletes (1)	Rosenthal (19)	Rath (4)	Rath (.277)
10/17	MISSOURI	L, 2-3	Rath (22)	Sinness (35)	Rath/Lanham/Curtis (1)	Rosenthal (33)	Shipes (6)	Yavuz (.385)
10/22	at Georgia	W, 3-0	Green (16)	Barrett (27)	Yavuz (3)	Barrett (17)	Shipes (8)	Green (.469)
10/23	at Georgia	L, 0-3	Rath (16)	Barrett (30)	NONE	Rosenthal (12)	Shipes/Rath/Yavuz (3)	Reich (.409)
10/29	LSU	L, 0-3	Rath/Reich (8)	Barrett (22)	NONE	Barrett (13)	Yavuz (4)	Shipes (.364)
11/4	at Texas A&M	L, 2-3	Rath (22)	Barrett (38)	Rath (3)	Lanham (17)	Shipes/Yavuz (3)	Yavuz (.385)
11/5	at Texas A&M	W, 3-2	Rath (19)	Barrett (43)	Rath (5)	Rosenthal (17)	Yavuz (4)	Yavuz (.588)
11/10	SOUTH CAROLINA	L, 0-3	Rath (10)	Barrett/Sinness (12)	Yavuz/Curtis (1)	Rosenthal (13)	Shipes (4)	Green (.333)
11/17	at Florida	L, 0-3	Rath (10)	Barrett (16)	Yavuz (1)	Rosenthal (9)	Shipes (3)	Rath (.119)
11/20	KENTUCKY	L, 0-3	Rath (10)	Barrett (18)	Shipes (1)	Rosenthal (15)	Shipes (3)	Reich (.105)
11/21	KENTUCKY	L, 0-3	Rath (12)	Barrett (21)	NONE	Rosenthal (10)	Shipes (1)	Rath (.226)
11/26	at Mississippi State							

2021 OVERALL STATISTICS

Overall: 13-14 • SEC: 5-12 • Home: 11-7 • Away: 2-7 • Neutral: 0-0

#	PLAYER	SP	K	K/S	E	TA	Pct	A	A/S	SA	SE	SA/S	RE	DIG	DIG/S	BS	BA	BLK	BLK/S	BE	BHE	PTS	PT/S
7	Rath, Rebekah	100	426	4.26	168	1336	.193	14	0.14	25	64	0.25	27	190	1.90	12	62	74.0	0.74	3	0	494.0	4.94
8	Reich, Liz	100	266	2.66	87	709	.252	3	0.03	0	1	0.00	2	56	0.56	0	52	52.0	0.52	3	0	292.0	2.92
16	Green, Val	100	214	2.14	100	752	.152	6	0.06	6	8	0.06	7	76	0.76	2	32	34.0	0.34	1	0	238.0	2.38
21	Shipes, Tatum	97	111	1.14	43	287	.237	7	0.07	5	10	0.05	0	42	0.43	21	116	137.0	1.41	8	3	195.0	2.01
19	Yavuz, Elif	100	73	0.73	16	157	.363	4	0.04	8	17	0.08	2	38	0.38	5	77	82.0	0.82	8	1	124.5	1.25
10	Barrett, Jackie	97	49	0.51	14	176	.199	783	8.07	22	22	0.23	0	298	3.07	2	58	60.0	0.62	8	1	102.0	1.05
4	Lanham, Fallan	100	7	0.07	8	84	-.012	16	0.16	5	15	0.05	21	188	1.88	0	1	1.0	0.01	0	0	12.5	0.13
5	Douglas, Audrey	5	4	0.80	3	12	.083	0	0.00	0	0	0.00	0	0	0.00	0	4	4.0	0.80	0	0	6.0	1.20
11	Sinness, Jordan	50	2	0.04	1	6	.167	64	1.28	6	7	0.12	0	33	0.66	0	3	3.0	0.06	0	2	9.5	0.19
6	Rosenthal, Bella	100	1	0.01	0	18	.056	118	1.18	11	24	0.11	25	481	4.81	0	0	0.0	0.00	0	0	12.0	0.12
15	Curtis, Kate	100	1	0.01	0	5	.200	24	0.24	11	21	0.11	17	190	1.90	0	0	0.0	0.00	0	0	12.0	0.12
17	Tanton, Cassidy	1	0	0.00	0	0	.000	0	0.00	0	0	0.00	0	0	0.00	0	0	0.0	0.00	0	0	0.0	0.00
TEAM													29										
AUBURN		100	1154	11.54	440	3542	.202	1039	10.39	99	189	0.99	130	1594	15.92	42	405	244.5	2.45	31	7	1497.5	14.98
OPPONENTS		100	1262	12.62	621	3783	.169	1166	11.66	130	194	1.30	99	1725	17.25	45	219	154.5	1.55	45	17	1546.5	15.47

2021 CONFERENCE ONLY STATISTICS

SEC: 5-12 • Home: 3-6 • Away: 2-6

#	PLAYER	SP	K	K/S	E	TA	Pct	A	A/S	SA	SE	SA/S	RE	DIG	DIG/S	BS	BA	BLK	BLK/S	BE	BHE	PTS	PT/S
7	Rath, Rebekah	63	266	4.22	120	914	.160	9	0.14	14	41	0.22	17	124	1.97	5	39	44.0	0.70	2	0	304.5	4.83
8	Reich, Liz	63	144	2.29	60	427	.197	0	0.00	0	0	0.00	2	39	0.62	0	30	30.0	0.48	3	0	159.0	2.52
16	Green, Val	63	131	2.08	70	465	.131	5	0.08	2	1	0.03	5	43	0.68	0	22	22.0	0.35	0	0	144.0	2.29
21	Shipes, Tatum	63	61	0.97	27	172	.198	4	0.06	4	7	0.06	0	30	0.48	13	74	87.0	1.38	6	2	115.0	1.83
19	Yavuz, Elif	63	45	0.71	11	105	.324	4	0.06	8	17	0.13	2	31	0.49	3	48	51.0	0.81	5	1	80.0	1.27
10	Barrett, Jackie	60	27	0.45	9	108	.167	465	7.75	8	15	0.13	0	182	3.03	2	35	37.0	0.62	4	0	54.5	0.91
4	Lanham, Fallan	63	5	0.08	5	52	.000	10	0.16	5	14	0.08	15	117	1.86	0	1	1.0	0.02	0	0	10.5	0.17
15	Curtis, Kate	63	1	0.02	0	2	.500	17	0.27	7	17	0.11	11	129	2.05	0	0	0.0	0.00	0	0	8.0	0.13
6	Rosenthal, Bella	63	1	0.02	0	8	.125	70	1.11	5	15	0.08	18	275	4.37	0	0	0.0	0.00	0	0	6.0	0.10
11	Sinness, Jordan	23	1	0.04	0	4	.250	47	2.04	1	4	0.04	0	21	0.91	0	2	2.0	0.09	0	1	3.0	0.13
TEAM													22										
AUBURN		63	682	10.83	302	2257	.168	631	10.02	54	131	0.86	92	991	15.73	23	251	148.5	2.36	20	4	884.5	14.04
OPPONENTS		63	859	13.63	364	2401	.206	796	12.63	92	116	1.46	54	1132	17.97	25	175	112.5	1.79	27	11	1063.5	16.87

2021 STATISTICAL LEADERS

KILLS (PER SET)

Rebekah Rath	426 (4.26)
Liz Reich	266 (2.66)
Val Green	214 (2.14)
Tatum Shipes	111 (1.14)
Elif Yavuz	73 (0.73)

TOTAL ATTACKS

Rebekah Rath	1336
Val Green	752
Liz Reich	709
Tatum Shipes	287
Jackie Barrett	176

HITTING PERCENTAGE (MIN 295 ATT.)

Liz Reich	.252
Rebekah Rath	.193
Val Green	.152

ASSISTS (PER SET)

Jackie Barrett	783 (8.07)
Bella Rosenthal	118 (1.18)
Jordan Sinness	64 (1.28)
Kate Curtis	24 (0.24)
Fallan Lanham	16 (0.16)

ACES (PER SET)

Rebekah Rath	25 (0.25)
Jackie Barrett	22 (0.23)
Bella Rosenthal	11 (0.11)
Kate Curtis	11 (0.11)
Elif Yavuz	8 (0.08)

DIGS (PER SET)

Bella Rosenthal	481 (4.81)
Jackie Barrett	298 (3.07)
Rebekah Rath	190 (1.90)
Kate Curtis	190 (1.90)
Fallan Lanham	188 (1.88)

BLOCK | SOLOS

Tatum Shipes	21
Rebekah Rath	12
Elif Yavuz	5
Val Green	2
Jackie Barrett	2

BLOCK | ASSISTS

Tatum Shipes	116
Elif Yavuz	77
Rebekah Rath	62
Jackie Barrett	58
Liz Reich	52

TOTAL BLOCKS (PER SET)

Tatum Shipes	137 (1.41)
Elif Yavuz	82 (0.82)
Rebekah Rath	74 (0.74)
Jackie Barrett	60 (0.62)
Liz Reich	52 (0.52)

AUBURN VOLLEYBALL SINGLE-SEASON INDIVIDUAL RECORDS (25-POINT RALLY SCORING ERA)

OFFENSIVE RECORDS

KILLS

	PLAYER	YEAR	KILLS
1.	Rebekah Rath	2021	426
2.	Jessica Glover	2008	410
3.	Sarah Bullock	2012	371
4.	Sarah Bullock	2010	354
5.	Brenna McIlroy	2016	351
6.	Kelly Fidero	2011	341
7.	Courtney Crable	2015	333
	Brenna McIlroy	2015	333
9.	Katherine Culwell	2012	330
10.	Katherine Culwell	2013	326

KILLS PER SET (MIN. 100 KILLS)

	PLAYER	YEAR	AVG.
1.	Rebekah Rath	2021	4.26
2.	Sarah Bullock	2012	3.50
3.	Jessica Glover	2008	3.45
4.	Kelly Fidero	2011	3.22
5.	Brenna McIlroy	2016	3.13
	Katherine Culwell	2013	3.13
7.	Katherine Culwell	2012	3.03
	Sarah Bullock	2010	3.03
9.	Brenna McIlroy	2018	3.00
10.	Brenna McIlroy	2017	2.86
12.	Courtney Crable	2015	2.82
	Taylor Rowland	2018	2.82

ATTACK PERCENTAGE (MIN. 250 ATT.)

	PLAYER	YEAR	PCT.
1.	Shaina White	2017	.367
2.	Camila Jersonsky	2012	.356
	Camila Jersonsky	2011	.356
4.	Camila Jersonsky	2010	.354
5.	Camila Jersonsky	2013	.351
6.	Alyssa Davis	2009	.316
7.	Morgan Johns	2010	.305
8.	Stephanie Campbell	2013	.281
9.	Stephanie Campbell	2015	.280
10.	Stephanie Campbell	2014	.279

ATTACKS

	PLAYER	YEAR	ATTACKS
1.	Rebekah Rath	2021	1,336
2.	Brenna McIlroy	2016	1,113
3.	Sarah Bullock	2012	1,090
4.	Courtney Crable	2014	1,062
5.	Brenna McIlroy	2015	1,043
6.	Katherine Culwell	2012	1,033
7.	Sarah Bullock	2010	993
8.	Jessica Glover	2008	988
9.	Katherine Culwell	2013	981
10.	Brenna McIlroy	2017	938

ASSISTS

	PLAYER	YEAR	ASSISTS
1.	Alexa Filley	2016	1,227
2.	Alexa Filley	2015	1,226
3.	Alexa Filley	2014	1,175
4.	Alexa Filley	2017	1,093
5.	Mica Allison	2018	1,055
6.	Sara Shanks	2008	995
7.	Chelsea Wintzinger	2011	791
8.	Jackie Barrett	2021	783
9.	Christina Solverson	2010	740

10. Chelsea Wintzinger 2012 680

ASSISTS PER SET (MIN. 200 ASSISTS)

	PLAYER	YEAR	AVG.
1.	Alexa Filley	2017	10.72
2.	Alexa Filley	2014	10.22
3.	Alexa Filley	2015	10.13
4.	Mica Allison	2018	10.05
5.	Alexa Filley	2016	9.98
7.	Sara Shanks	2008	8.43
8.	Jackie Barrett	2021	8.07
9.	Marissa Hines	2019	7.51
10.	Chelsea Wintzinger	2011	7.39
11.	Morgan Kull	2019	6.94
12.	Chelsea Wintzinger	2012	6.24

ACES

	PLAYER	YEAR	ACES
1.	Brenna McIlroy	2018	48
2.	Jesse Earl	2016	46
3.	Jesse Earl	2017	42
4.	Jesse Earl	2015	39
5.	Brenna McIlroy	2016	36
6.	Chelsea Wintzinger	2013	35
7.	Courtney Crable	2014	33
8.	Brenna McIlroy	2015	32
9.	Sara Shanks	2008	30
	Alexa Filley	2015	30

ACES PER SET (MIN. 15 ACES)

	PLAYER	YEAR	AVG.
1.	Brenna McIlroy	2018	0.46
2.	Jesse Earl	2017	0.41
3.	Jesse Earl	2016	0.37
4.	Chelsea Wintzinger	2013	0.34
5.	Jesse Earl	2015	0.32
	Brenna McIlroy	2016	0.32
7.	Courtney Crable	2014	0.27
8.	Brenna McIlroy	2015	0.26
9.	Rebekah Rath	2021	0.25
	Alexa Filley	2015	0.25
	Sara Shanks	2008	0.25
	Kelly Stewart	2016	0.25

DEFENSIVE RECORDS

DIGS

	PLAYER	YEAR	DIGS
1.	Jesse Earl	2016	612
2.	Jesse Earl	2017	529
3.	Jesse Earl	2015	516
4.	Bella Rosenthal	2021	481
	Sarah Wroblicky	2013	481
6.	Liz Crouch	2010	469
7.	Liz Crouch	2009	453
9.	Alyssa Ivey	2014	434
9.	Sarah Wroblicky	2012	431
10.	Liz Crouch	2008	389

DIGS PER SET (MIN. 100 DIGS)

	PLAYER	YEAR	AVG.
1.	Jesse Earl	2017	5.19
2.	Jesse Earl	2016	4.98
3.	Bella Rosenthal	2021	4.81
4.	Sarah Wroblicky	2013	4.62
5.	Jesse Earl	2015	4.26
6.	Liz Crouch	2009	4.08

7.	Alyssa Ivey	2014	4.02
8.	Liz Crouch	2010	4.01
9.	Sarah Wroblicky	2012	3.99
10.	Liz Crouch	2008	3.70
11.	Sarah Bullock	2012	3.31

BLOCKS - SOLO

	PLAYER	YEAR	BLOCKS
1.	Katherine Culwell	2012	25
2.	Tatum Shipes	2021	21
3.	Sarah Bullock	2012	18
	Jessica Glover	2008	18
	Anna Stevenson	2018	18
6.	Kelly Fidero	2011	17
	Sarah Bullock	2011	17
8.	Katherine Culwell	2013	16
	Camila Jersonsky	2013	16
10.	Camila Jersonsky	2011	15
	Jaeden Brown	2019	15

BLOCKS - ASSISTS

	PLAYER	YEAR	BLOCKS
1.	Tatum Shipes	2021	116
2.	Camila Jersonsky	2012	108
3.	Lauren Mellor	2009	90
4.	Camila Jersonsky	2013	89
5.	Breanna Barksdale	2014	87
6.	Courtney McDonald	2012	84
7.	Breanna Barksdale	2016	83
8.	Breanna Barksdale	2015	82
9.	Elif Su Yavuz	2021	77
10.	Anna Stevenson	2018	73

TOTAL BLOCKS

	PLAYER	YEAR	BLOCKS
1.	Tatum Shipes	2021	137
2.	Camila Jersonsky	2012	119
3.	Camila Jersonsky	2013	105
4.	Breanna Barksdale	2014	101
5.	Lauren Mellor	2009	97
	Breanna Barksdale	2016	97
7.	Breanna Barksdale	2015	94
8.	Anna Stevenson	2018	91
9.	Courtney McDonald	2012	89
10.	Stephanie Campbell	2014	86

BLOCKS PER SET (MIN. 50 BLOCKS)

	PLAYER	YEAR	BLOCKS
1.	Tatum Shipes	2021	1.41
2.	Anna Stevenson	2018	1.15
3.	Camila Jersonsky	2012	1.09
4.	Camila Jersonsky	2013	1.01
5.	Chloe Rowand	2011	0.97
6.	Breanna Barksdale	2014	0.91
7.	Stephanie Campbell	2015	0.90
8.	Camila Jersonsky	2011	0.89
9.	Lauren Mellor	2009	0.88
10.	Breanna Barksdale	2016	0.84
11.	Elif Yavuz	2021	0.82
	Shaina White	2019	0.82
	Courtney McDonald	2012	0.82
	Lauren Mellor	2010	0.82

Active student-athletes are listed in **BOLD**.

AUBURN VOLLEYBALL CAREER RECORDS (SIDEOUT + RALLY ERA)

OFFENSIVE RECORDS

KILLS

	PLAYER	YEARS	KILLS
1.	Jaunelle Hamilton	1997-00	1,848
2.	Allyson Beecroft	1993-96	1,727
3.	Brooke McCarley	1997-00	1,704
4.	Gina Thomas	1988-92	1,467
5.	Rachel Shanks	2004-07	1,319
6.	Brenna McIlroy	2015-18	1,288
7.	Sarah Bullock	2009-12	1,272
8.	Bridgitte Sims	1989-91	1,149
9.	Jessica Glover	2005-08	1,137
10.	Rani Whitson	1993-96	1,102

KILLS PER SET (MIN. 500 KILLS)

	PLAYER	YEARS	AVG.
1.	Brooke McCarley	1997-00	4.40
2.	Jaunelle Hamilton	1997-00	4.23
3.	Allyson Beecroft	1993-96	4.00
4.	Ashlee Johns	2003-04	3.82
5.	Terri Duckworth	1987-88	3.63
6.	Jennifer Amobi	2003-05	3.57
7.	Rachel Shanks	2004-07	3.43
8.	Bridgitte Sims	1989-91	3.40
9.	Jessica Glover	2005-08	3.17
10.	Sarah Bullock	2009-12	2.93
	Brenna McIlroy	2015-18	2.93

ATTACK PERCENTAGE (MIN. 1,000 ATT.)

	PLAYER	YEARS	K	E	ATT. PCT.
1.	Camila Jersonsky	2010-13	894	237	1,853 .355
2.	Jaunelle Hamilton	1997-00	1,848	532	3,827 .344
3.	Brooke McCarley	1997-00	1,704	455	3,847 .325
4.	Terri Duckworth	1987-99	876	291	1,860 .315
5.	Shaina White	2017-19	512	121	1,267 .309
6.	Rani Whitson	1993-96	1,102	383	2,562 .281
7.	Julie Bosley	2003-06	558	178	1,359 .280
8.	Gina Thomas	1988-92	1,467	540	3,319 .279
9.	Stephanie Campbell	2013-16	673	205	1,669 .276
10.	Whitney Jacob	2004-07	1,093	428	2,522 .264

ATTACKS

	PLAYER	YEARS	ATTACKS
1.	Allyson Beecroft	1993-96	4,349
2.	Brenna McIlroy	2015-18	4,027
3.	Brooke McCarley	1997-00	3,847
4.	Jaunelle Hamilton	1997-00	3,827
5.	Sarah Bullock	2009-12	3,774
6.	Rachel Shanks	2004-07	3,703
7.	Gina Thomas	1988-92	3,319
8.	Katherine Culwell	2009-13	3,130
	Jessica Glover	2005-08	3,130
10.	Jenifer Kleyn	1988-91	3,107

ASSISTS

	PLAYER	YEARS	ASSISTS
1.	Piper Craig	1995-98	5,053
2.	Alexa Filley	2014-17	4,721
3.	Janel Newkirk	1989-92	4,071
4.	Mary Orndorff	1986-89	3,242
5.	Chelsea Wintzinger	2010-13	2,654

6.	Tama English	1991-94	2,535
7.	Joanna Pappas	2005-06	2,073

ASSISTS PER SET (MIN. 500 ASSISTS)

	PLAYER	YEARS	AVG.
1.	Piper Craig	1995-98	12.86
2.	Traci Price	1999-00	11.77
3.	Maira Mogallon	2003-04	11.38
4.	Chris Murphy	1993-96	11.35
5.	Joanna Pappas	2005-06	11.15
6.	Alexa Filley	2014-17	10.24
7.	Mica Allison	2018	10.05

ACES

	PLAYER	YEARS	ACES
1.	Jenifer Kleyn	1988-91	338
2.	Lori Russell	1989-92	201
3.	Gretchen Thompson	1986-89	164
4.	Tory Gutierrez	1989-92	160
5.	Terri Duckworth	1987-88	158
6.	Jaunelle Hamilton	1997-00	148
7.	Allyson Beecroft	1993-96	138
8.	Brenna McIlroy	2015-18	137
9.	Whitney Jacob	2004-07	134
10.	Janel Newkirk	1989-92	129

ACES PER SET (MIN. 40 ACES)

	PLAYER	YEARS	AVG.
1.	Jenifer Kleyn	1988-91	0.71
2.	Terri Duckworth	1987-88	0.66
3.	Lori Russell	1989-92	0.46
4.	Jenny Fisler	1987-88	0.40
5.	Bridgitte Sims	1989-91	0.37
	Jesse Earl	2015-17	0.37
7.	Gretchen Thompson	1986-89	0.36
8.	Maira Mogallon	2003-04	0.35
	Tory Gutierrez	1989-92	0.35
10.	Jaunelle Hamilton	1997-00	0.34

DEFENSIVE RECORDS

DIGS

	PLAYER	YEARS	DIGS
1.	Liz Crouch	2007-10	1,703
2.	Jesse Earl	2015-17	1,657
3.	Gretchen Thompson	1986-89	1,495
4.	Alexa Filley	2014-17	1,315
5.	Allyson Beecroft	1993-96	1,249
6.	Sarah Wroblicky	2010-13	1,238
7.	Sarah Bullock	2009-12	1,210
8.	Bella Rosenthal	2018-Pr.	1,197
9.	Rachel Shanks	2004-07	1,185
10.	Brenna McIlroy	2015-18	1,078

DIGS PER SET (MIN. 500 DIGS)

	PLAYER	YEARS	AVG.
1.	Jesse Earl	2015-17	4.79
2.	Liz Crouch	2007-10	4.00
3.	Sarah Wroblicky	2010-13	3.65
4.	Bella Rosenthal	2018-Pr.	3.62
5.	Gretchen Thompson	1986-89	3.26
6.	Rachel Shanks	2004-07	3.08

7.	Allyson Beecroft	1993-96	2.89
8.	Alexa Filley	2014-17	2.85
9.	Bailey Veit	2002-05	2.80
	Emily Suter	1995-98	2.80

BLOCKS - SOLO

	PLAYER	YEARS	BLOCKS
1.	Gina Thomas	1988-92	159
2.	Tory Gutierrez	1989-92	157
3.	Jaunelle Hamilton	1997-00	106
4.	Julie Bosler	2003-06	98
5.	Rani Whitson	1993-96	61
6.	Katherine Culwell	2009-13	59
7.	Mary Olks	1986-89	58
8.	Whitney Jacob	2004-07	56
9.	Sarah Bullock	2009-12	54
10.	Camila Jersonsky	2010-13	51

BLOCKS - ASSISTS

	PLAYER	YEARS	BLOCKS
1.	Jaunelle Hamilton	1997-00	465
2.	Rani Whitson	1993-96	426
3.	Gina Thomas	1988-92	360
4.	Whitney Jacob	2004-07	351
5.	Tory Gutierrez	1989-92	318
6.	Camila Jersonsky	2010-13	317
7.	Julie Bosley	2003-06	265
8.	La'Toi Finley	1994-97	261
	Krista Singleton	1994-97	261
10.	Breanna Barksdale	2014-16	252

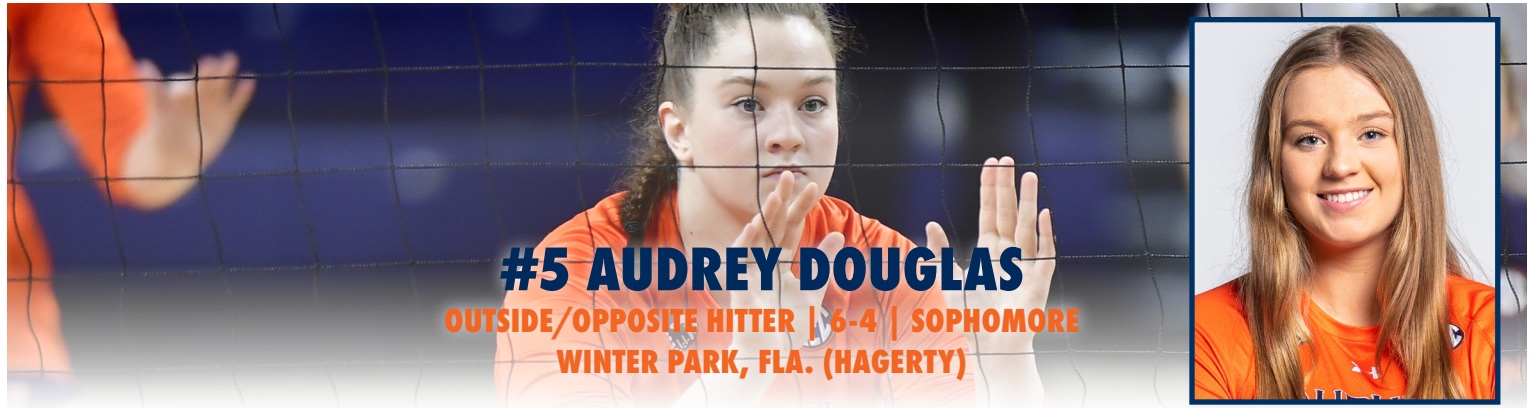
TOTAL BLOCKS

	PLAYER	YEARS	BLOCKS
1.	Jaunelle Hamilton	1997-00	571
2.	Gina Thomas	1988-92	519
3.	Rani Whitson	1993-96	487
4.	Tory Gutierrez	1989-92	475
5.	Whitney Jacob	2004-07	407
6.	Camila Jersonsky	2010-13	368
7.	Julie Bosler	2003-06	363
8.	Breanna Barksdale	2014-16	292
9.	La'Toi Finley	1994-97	289
10.	Krista Singleton	1994-97	276

BLOCKS PER SET (MIN. 100 BLOCKS)

	PLAYER	YEARS	AVG.
1.	Jaunelle Hamilton	1997-00	1.31
2.	Rani Whitson	1993-96	1.16
3.	Julie Bosler	2003-06	1.06
4.	Tory Gutierrez	1989-92	1.03
5.	Gina Thomas	1988-92	0.98
6.	Whitney Jacob	2004-07	0.96
7.	Camila Jersonsky	2009-13	0.92
8.	Anna Stevenson	2017-18	0.90
	Heather Franey	1995-96,98	0.90
10.	La'Toi Finley	1994-97	0.88

Active student-athletes are listed in **BOLD**.



#5 AUDREY DOUGLAS

OUTSIDE/OPPOSITE HITTER | 6-4 | SOPHOMORE
WINTER PARK, FLA. (HAGERTY)

DOUGLAS'S HIGHLIGHTS:

- Did not see action over the first three weeks of play due to a concussion
- Made her season debut versus Florida A&M (9/17), racking up four kills and adding a career high 4.0 blocks

CATEGORY	CAREER HIGH	OPPONENT/DATE
Kills	6	at #2 Kentucky (11/8/20)
Attempts	16	vs. #4 Florida (10/21/20)
Hitting Percentage (Min. 10 ATT.)	.545	at #2 Kentucky (11/8/20)
Assists	1	vs. #4 Florida (10/22/20)
Digs	1 (2x)	last, at #2 Kentucky (11/7/20)
Blocks	4.0	vs. Florida A&M (9/17/21)
Aces		
Points	6.5	at #2 Kentucky (11/8/20)

CATEGORY	SEASON HIGH	OPPONENT/DATE
Kills	4	vs. Florida A&M (9/17/21)
Attempts	12	vs. Florida A&M (9/17/21)
Hitting Percentage (Min. 10 ATT.)	.083	vs. Florida A&M (9/17/21)
Assists		
Digs		
Blocks	4.0	vs. Florida A&M (9/17/21)
Aces		
Points	6.0	vs. Florida A&M (9/17/21)

DATE	OPPONENT	SP	ATTACK				SET			SERVE				RECEIPT			BLOCKING				BHE	POINTS	TEAM		
			K	E	TA	PCT	A	TA	PCT.	SA	SE	TA	PCT.	RE	TA	PCT.	DIG	BS	BA	BE			TOTAL	HIT%	SCORE
September 17	FLORIDA A&M	4	4	3	12	.083	0	1	.000	0	0	0	.000	0	0	.000	0	0	4	0	4.0	0	6.0	.245	2-3
September 26	at Alabama State	1	0	0	0	.000	0	0	.000	0	0	0	.000	0	0	.000	0	0	0	0	0.0	0	0.0	.209	2-3
TOTALS		5	4	3	12	.083	0	1	.000	0	0	0	.000	0	0	.000	0	0	4	0	4.0	0	6.0	.202	

DOUGLAS' OVERALL CAREER STATISTICS

YEAR	SETS	MP	KILLS	K/S	E	TA	PCT.	AST	A/S	SA	SA/S	SE	DIGS	D/S	RE	BS	BA	TB	B/S	PTS	PT/S
2021	5	1	4	0.80	3	12	.083	0	.00	0	.00	0	0	.00	0	0	4	4.0	0.80	6.0	1.20
2020	20	7	20	1.00	8	69	.174	1	.05	0	.00	0	2	.10	0	0	11	11.0	0.55	25.5	1.28
TOTAL	25	8	24	0.96	11	81	.160	1	.04	0	.00	0	2	.08	0	0	15	15.0	0.60	31.5	1.26

DOUGLAS' SEC CAREER STATISTICS

YEAR	SETS	MP	KILLS	K/S	E	TA	PCT.	AST	A/S	SA	SA/S	SE	DIGS	D/S	RE	BS	BA	TB	B/S	PTS	PT/S
2021	0	0	0	0.0	0	0	.000	0	.00	0	.00	0	0	.00	0	0	0	0.0	.00	0.0	0.00
2020	20	7	20	1.00	8	69	.174	1	.05	0	.00	0	2	.10	0	0	11	11.0	.55	25.5	1.28
TOTAL	20	7	20	1.00	8	69	.174	1	.05	0	.00	0	2	.10	0	0	11	11.0	.55	25.5	1.28



#8 LIZ REICH

OPPOSITE HITTER | 6-1 | GRADUATE STUDENT
COLORADO SPRINGS, COLO. (PORTLAND)

REICH'S HIGHLIGHTS:

- SEC Offensive Player of the Week (10/25)
• Ranks 61st among all active NCAA DI student-athletes in career sets played (491) and 141st in career kills (1,086)
• Named to War Eagle Invitational and Auburn Invitational All-Tournament teams
• Set a season high with 17 kills versus Santa Clara (9/12) and Florida A&M (9/17)
• Tallied a career high six blocks at Arkansas (10/10)
• Behind her nine kills versus Missouri (10/16), tallied her 1,000th kill of her career
• Match season high in blocks in the series opener at Georgia (10/21) before turning in her best offensive performance in conference play in the finale (10/22) with 12 kills and a .409 hitting percentage

Table with 3 main sections: CAREER HIGH, SEASON HIGH, and OPPONENT/DATE. Columns include CATEGORY, numerical values, and opponent names with dates.

Main season statistics table with columns for DATE, OPPONENT, SP, K, E, TA, PCT, A, SA, SE, RE, TA, PCT, DIG, BS, BA, BE, TB, BHE, POINTS, HIT%, and SCORE. Includes a TOTALS row at the bottom.

SETS PLAYED: 100
KILLS PER SET: 2.66
ASSISTS PER SET: 0.03

SETS PER SET: 0.56
BLOCKS PER SET: 0.52

POINTS PER SET: 2.92

REICH'S OVERALL CAREER STATISTICS

Table showing overall career statistics for Liz Reich, including Year, Sets, MP, Kills, K/S, E, TA, PCT, AST, A/S, SA, SA/S, SE, DIGS, D/S, RE, BS, BA, TB, B/S, PTS, and PT/S.

REICH'S SEC CAREER STATISTICS

Table showing SEC career statistics for Liz Reich, including Year, Sets, MP, Kills, K/S, E, TA, PCT, AST, A/S, SA, SA/S, SE, DIGS, D/S, RE, BS, BA, TB, B/S, PTS, and PT/S.



#11 JORDAN SINNESS

SETTER | 5-9 | FRESHMAN
SEBRING, FLA. (SEBRING)



SINNESS'S HIGHLIGHTS:

- Made collegiate debut versus Cal State Fullerton (9/2), dishing out 16 assists, six digs, one kill and a block
- Picked up a season high two aces from the service line versus Santa Clara (9/12)
- Matched season high with a pair of aces at Alabama State (9/26)
- Came off the bench versus Missouri (10/17) to take over as setter for an ill Jackie Barrett
- Picked up her first collegiate double-double with career highs in assists (35) and digs (14), while also adding a career high two blocks

CATEGORY	CAREER HIGH	OPPONENT/DATE
Kills	1 (2x)	last, vs. Missouri (10/17/21)
Attempts	3	vs. Missouri (10/17/21)
Hitting Percentage (Min. 10 ATT.)		
Assists	35	vs. Missouri (10/17/21)
Digs	14	vs. Missouri (10/17/21)
Blocks	2	vs. Missouri (10/17/21)
Aces	2 (2x)	last, at Alabama State (9/26/21)
Points	2.0 (3x)	last, vs. Missouri (10/17/21)

CATEGORY	SEASON HIGH	OPPONENT/DATE
Kills	1 (2x)	last, vs. Missouri (10/17/21)
Attempts	3	vs. Missouri (10/17/21)
Hitting Percentage (Min. 10 ATT.)		
Assists	35	vs. Missouri (10/17/21)
Digs	14	vs. Missouri (10/17/21)
Blocks	2	vs. Missouri (10/17/21)
Aces	2 (2x)	last, at Alabama State (9/26/21)
Points	2.0 (3x)	last, vs. Missouri (10/17/21)

DATE	OPPONENT	SP	ATTACK				SET			SERVE				RECEIPT			BLOCKING				TEAM				
			K	E	TA	PCT.	A	TA	PCT.	SA	SE	TA	PCT.	RE	TA	PCT.	DIG	BS	BA	BE	TOTAL	BHE	POINTS	HIT%	SCORE
September 2	CAL STATE FULLERTON	2	1	1	2	.000	16	53	.302	0	0	3	1.000	0	0	.000	6	0	1	0	1.0	1	1.5	.221	3-0
September 9	NORTH ALABAMA	3	0	0	0	.000	0	0	.000	0	0	8	1.000	0	0	.000	0	0	0	0	0.0	0	0.0	.265	3-0
September 12	SANTA CLARA	5	0	0	0	.000	0	2	.000	2	1	17	.941	0	0	.000	1	0	0	0	0.0	0	2.0	.260	3-2
September 17	FLORIDA A&M	5	0	0	0	.000	0	3	.000	1	0	19	1.000	0	0	.000	2	0	0	0	0.0	0	1.0	.245	2-3
September 17	NICHOLLS	4	0	0	0	.000	0	0	.000	0	1	9	.889	0	0	.000	0	0	0	0	0.0	0	0.0	.183	3-1
September 18	BELMONT	3	0	0	0	.000	0	0	.000	0	1	5	.800	0	0	.000	2	0	0	0	0.0	0	0.0	.345	3-0
September 22	OLE MISS	4	0	0	0	.000	0	1	.000	0	0	15	1.000	0	0	.000	4	0	0	0	0.0	0	0.0	.196	1-3
September 26	at Alabama State	5	0	0	0	.000	1	2	.500	2	0	17	1.000	0	0	.000	1	0	0	0	0.0	0	2.0	.209	2-3
September 29	at Tennessee	3	0	0	0	.000	0	0	.000	0	0	8	1.000	0	0	.000	0	0	0	0	0.0	0	0.0	.076	0-3
October 2	ALABAMA	5	0	0	0	.000	0	1	.000	0	0	16	1.000	0	0	.000	2	0	0	0	0.0	0	0.0	.183	3-2
October 3	ALABAMA	3	0	0	0	.000	0	0	.000	1	1	9	.889	0	0	.000	0	0	0	0	0.0	0	1.0	.248	3-0
October 9	at Arkansas	2	0	0	0	.000	0	0	.000	0	0	3	1.000	0	0	.000	0	0	0	0	0.0	0	0.0	.158	1-3
October 17	MISSOURI	4	1	0	3	.333	35	111	.315	0	1	13	.923	0	0	.000	14	0	2	0	2.0	1	2.0	.235	2-3
November 10	SOUTH CAROLINA	1	0	0	1	.000	12	33	.364	0	2	4	.500	0	0	.000	1	0	0	0	0.0	0	0.0	.206	0-3
November 17	at Florida	1	0	0	0	.000	0	0	.000	0	0	0	.000	0	0	.000	0	0	0	0	0.0	0	0.0	.089	0-3
TOTALS		50	2	1	6	.167	64	206	.311	6	7	146	.952	0	0	.000	33	0	3	0	3.0	2	9.5	.202	

SETS PLAYED: 50 SERVICE ACES PER SET: 0.12 POINTS PER SET: 0.19
 KILLS PER SET: 0.04 DIGS PER SET: 0.66
 ASSISTS PER SET: 1.28 BLOCKS PER SET: 0.06

SINNESS'S OVERALL CAREER STATISTICS																					
YEAR	SETS	MP	KILLS	K/S	E	TA	PCT.	AST	A/S	SA	SA/S	SE	DIGS	D/S	RE	BS	BA	TB	B/S	PTS	PT/S
2021	50	15	2	0.04	1	6	.167	64	1.28	6	.12	7	33	0.66	0	0	3	3	.06	9.5	0.19
TOTAL	50	15	2	0.04	1	6	.167	64	1.28	6	.12	7	33	0.66	0	0	3	3	.06	9.5	0.19

SINNESS'S SEC CAREER STATISTICS																					
YEAR	SETS	MP	KILLS	K/S	E	TA	PCT.	AST	A/S	SA	SA/S	SE	DIGS	D/S	RE	BS	BA	TB	B/S	PTS	PT/S
2021	23	8	1	0.04	0	4	.250	47	2.04	1	.04	4	21	0.91	0	0	2	2	.09	3.0	0.13
TOTAL	23	8	1	0.04	0	4	.250	47	2.04	1	.04	4	21	0.91	0	0	2	2	.09	3.0	0.13



CURTIS'S HIGHLIGHTS:

- Recorded six double-digit dig performances this season
- Set career high in assists versus Florida A&M (9/17)
- Turned in her first double-digit dig effort with a career best 14 versus Nicholls (9/17)
- Picked up a season high two aces from the service line versus Alabama (10/3)
- Recorded her first double-digit effort in Southeastern Conference play with 11 at Arkansas (10/10)
- Tallied her first collegiate kill at Georgia (10/21)

CATEGORY	CAREER HIGH	OPPONENT/DATE
Kills	1	at Georgia (10/21/21)
Attempts	3	at Alabama State (9/26/21)
Hitting Percentage (Min. 10 ATT.)		
Assists	4	vs. Florida A&M (9/17/21)
Digs	14	vs. Nicholls (9/17/21)
Blocks		
Aces	2	vs. Alabama (10/3/21)
Points	2.0	vs. Alabama (10/3/21)

CATEGORY	SEASON HIGH	OPPONENT/DATE
Kills	1	at Georgia (10/21/21)
Attempts	3	at Alabama State (9/26/21)
Hitting Percentage (Min. 10 ATT.)		
Assists	4	vs. Florida A&M (9/17/21)
Digs	14	vs. Nicholls (9/17/21)
Blocks		
Aces	2	vs. Alabama (10/3/21)
Points	2.0	vs. Alabama (10/3/21)

DATE	OPPONENT	SP	ATTACK			SET			SERVE			RECEIPT			BLOCKING				TEAM POINTS	HIT%	SCORE				
			K	E	TA	PCT	A	TA	PCT.	SA	SE	TA	PCT.	RE	TA	PCT.	DIG	BS				BA	BE	TOTAL	BHE
August 27	TENNESSEE TECH	3	0	0	0	.000	0	0	.000	1	0	17	1.000	0	14	1.000	4	0	0	0	0.0	0	1.0	.292	3-0
August 28	JACKSON STATE	3	0	0	0	.000	0	0	.000	0	1	13	.923	0	6	1.000	3	0	0	0	0.0	0	0.0	.457	3-0
September 2	CAL STATE FULLERTON	3	0	0	0	.000	0	1	.000	0	0	17	1.000	0	10	1.000	6	0	0	0	0.0	0	0.0	.221	3-0
September 3	SOUTHEASTERN LA.	3	0	0	0	.000	0	3	.000	1	0	23	1.000	0	2	1.000	7	0	0	0	0.0	0	1.0	.300	3-0
September 9	NORTH ALABAMA	3	0	0	0	.000	0	3	.000	0	0	9	1.000	0	4	1.000	5	0	0	0	0.0	0	0.0	.265	3-0
September 12	SANTA CLARA	5	0	0	0	.000	1	2	.500	0	0	18	1.000	3	28	.893	5	0	0	0	0.0	0	0.0	.260	3-2
September 17	FLORIDA A&M	5	0	0	0	.000	4	6	.667	1	1	10	.900	1	28	.964	7	0	0	0	0.0	0	1.0	.245	2-3
September 17	NICHOLLS	4	0	0	0	.000	1	2	.500	0	0	21	1.000	1	14	.929	14	0	0	0	0.0	0	0.0	.183	3-1
September 18	BELMONT	3	0	0	0	.000	0	0	.000	1	1	13	.923	1	2	.500	4	0	0	0	0.0	0	1.0	.345	3-0
September 22	OLE MISS	4	0	0	0	.000	2	2	1.000	0	1	12	.917	1	20	.950	7	0	0	0	0.0	0	0.0	.196	1-3
September 26	at Alabama State	5	0	0	3	.000	1	3	.333	0	1	16	.938	0	14	1.000	6	0	0	0	0.0	0	0.0	.209	2-3
September 29	at Tennessee	3	0	0	0	.000	1	5	.200	0	1	9	.889	0	4	1.000	6	0	0	0	0.0	0	0.0	.076	0-3
October 2	ALABAMA	5	0	0	0	.000	1	3	.333	1	1	22	.955	1	22	.955	7	0	0	0	0.0	0	1.0	.183	3-2
October 3	ALABAMA	3	0	0	0	.000	1	5	.200	2	1	16	.938	0	4	1.000	4	0	0	0	0.0	0	2.0	.248	3-0
October 9	at Arkansas	4	0	0	0	.000	3	8	.375	0	2	20	.900	0	13	1.000	7	0	0	0	0.0	0	0.0	.158	1-3
October 10	at Arkansas	5	0	0	0	.000	0	3	.000	0	0	14	1.000	1	26	.962	11	0	0	0	0.0	0	0.0	.144	2-3
October 16	MISSOURI	3	0	0	0	.000	0	2	.000	1	1	17	.941	0	13	1.000	8	0	0	0	0.0	0	1.0	.232	3-0
October 17	MISSOURI	5	0	0	0	.000	0	3	.000	1	1	19	.947	3	28	.893	12	0	0	0	0.0	0	1.0	.235	2-3
October 21	at Georgia	3	1	0	1	1.000	2	5	.400	0	0	12	1.000	1	10	.900	7	0	0	0	0.0	0	1.0	.241	3-0
October 22	at Georgia	3	0	0	1	.000	1	3	.333	0	0	14	1.000	0	4	1.000	8	0	0	0	0.0	0	0.0	.183	0-3
October 29	LSU	3	0	0	0	.000	2	2	1.000	0	0	9	1.000	4	22	.818	11	0	0	0	0.0	0	0.0	.121	0-3
November 4	at Texas A&M	5	0	0	0	.000	1	6	.167	1	3	17	.824	0	17	1.000	11	0	0	0	0.0	0	1.0	.132	2-3
November 5	at Texas A&M	5	0	0	0	.000	1	5	.200	0	1	15	.933	0	17	1.000	13	0	0	0	0.0	0	0.0	.186	3-2
November 10	SOUTH CAROLINA	3	0	0	0	.000	1	2	.500	1	2	13	.846	0	10	1.000	8	0	0	0	0.0	0	1.0	.206	0-3
November 17	at Florida	3	0	0	0	.000	1	1	1.000	0	2	8	.750	0	6	1.000	4	0	0	0	0.0	0	0.0	.089	0-3
November 20	KENTUCKY	3	0	0	0	.000	0	1	.000	0	0	9	1.000	0	11	1.000	1	0	0	0	0.0	0	0.0	.028	0-3
November 21	KENTUCKY	3	0	0	0	.000	0	1	.000	0	1	7	.857	0	18	1.000	4	0	0	0	0.0	0	0.0	.124	0-3
TOTALS		100	1	0	5	.200	24	77	.312	11	21	390	.946	17	367	.954	190	0	0	0	0.0	0	12.0	.202	

SETS PLAYED: 100
 KILLS PER SET: 0.01
 ASSISTS PER SET: 0.24

SERVICE ACES PER SET: 0.11
 DIGS PER SET: 1.90

POINTS PER SET: 0.12

CURTIS'S OVERALL CAREER STATISTICS

YEAR	SETS	MP	KILLS	K/S	E	TA	PCT.	AST	A/S	SA	SA/S	SE	DIGS	D/S	RE	BS	BA	TB	B/S	PTS	PT/S
2021	100	27	1	0.01	0	5	.200	24	.24	11	.11	21	190	1.90	17	0	0	0	.00	12.0	0.12
TOTAL	100	27	1	0.01	0	5	.200	24	.24	11	.11	21	190	1.90	17	0	0	0	.00	12.0	0.12

CURTIS'S SEC CAREER STATISTICS

YEAR	SETS	MP	KILLS	K/S	E	TA	PCT.	AST	A/S	SA	SA/S	SE	DIGS	D/S	RE	BS	BA	TB	B/S	PTS	PT/S
2021	63	17	1	0.02	0	2	.500	17	.27	7	.11	17	129	2.05	11	0	0	0	.00	8.0	0.13
TOTAL	63	17	1	0.02	0	2	.500	17	.27	7	.11	17	129	2.05	11	0	0	0	.00	8.0	0.13



#17 CASSIDY TANTON

OUTSIDE HITTER | 6-0 | FRESHMAN
STONEVILLE, N.C. (DALTON MCMICHAEL)

CURTIS'S HIGHLIGHTS:

- Did not see action during the first five weeks of play due to an ankle injury
- Made collegiate debut at Alabama State (9/26)

CATEGORY _____	CAREER HIGH _____	OPPONENT/DATE _____
Kills _____		
Attempts _____		
Hitting Percentage (Min. 10 ATT.) _____		
Assists _____		
Digs _____		
Blocks _____		
Aces _____		
Points _____		

CATEGORY _____	SEASON HIGH _____	OPPONENT/DATE _____
Kills _____		
Attempts _____		
Hitting Percentage (Min. 10 ATT.) _____		
Assists _____		
Digs _____		
Blocks _____		
Aces _____		
Points _____		

DATE	OPPONENT	SP	ATTACK				SET			SERVE				RECEIPT			BLOCKING				BHE	POINTS	TEAM		
			K	E	TA	PCT	A	TA	PCT.	SA	SE	TA	PCT.	RE	TA	PCT.	DIG	BS	BA	BE			TOTAL	HIT%	SCORE
September 26	at Alabama State	1	0	0	0	.000	0	0	.000	0	0	0	.000	0	0	.000	0	0	0	0	0.0	0	0.0	.209	2-3
TOTALS		1	0	0	0	.000	0	0	.000	0	0	0	.000	0	0	.000	0	0	0	0	0.0	0	0.0	.202	

TANTON'S OVERALL CAREER STATISTICS

YEAR	SETS	MP	KILLS	K/S	E	TA	PCT.	AST	A/S	SA	SA/S	SE	DIGS	D/S	RE	BS	BA	TB	B/S	PTS	PT/S
2021	1	0	0	0.0	0	0	.000	0	.00	0	.00	0	0	.00	0	0	0	0	.00	0.0	0.00
TOTAL	1	0	0	0.0	0	0	.000	0	.00	0	.00	0	0	.00	0	0	0	0	.00	0.0	0.00

TANTON'S SEC CAREER STATISTICS

YEAR	SETS	MP	KILLS	K/S	E	TA	PCT.	AST	A/S	SA	SA/S	SE	DIGS	D/S	RE	BS	BA	TB	B/S	PTS	PT/S
2021	0	0	0	0.0	0	0	.000	0	.00	0	.00	0	0	.00	0	0	0	0	.00	0.0	0.00
TOTAL	0	0	0	0.0	0	0	.000	0	.00	0	.00	0	0	.00	0	0	0	0	.00	0.0	0.00



#4 FALLAN LANHAM
Fr. | DS/L | 5-8



#5 AUDREY DOUGLAS
So. | OH/OPP | 6-4



#6 BELLA ROSENTHALL
Sr. | DS/L | 5-5



#7 REBEKAH RATH
Jr. | OH | 6-0



#8 LIZ REICH
Gr. | OPP | 6-1



#10 JACKIE BARRETT
So. | S | 6-1



#11 JORDAN SINNESS
Fr. | S | 5-9



#15 KATE CURTIS
Fr. | DS/L | 5-6



#16 VAL GREEN
Sr. | OH | 6-4



#17 CASSIDY TANTON
Fr. | OH | 6-0



#19 ELIF SU YAVUZ
Sr. | MB | 6-3



#21 TATUM SHIPES
Sr. | OH | 6-4



HEAD COACH
BRENT CROUCH



ASSOCIATE HEAD COACH
ALEX DUNPHY



ASSISTANT COACH
RICK MOLLER