



2021 VOLLEYBALL MATCH NOTES

AUBURN ATHLETICS COMMUNICATIONS: 392 SOUTH DONAHUE DRIVE || AUBURN, AL 36830 || AUBURNTIGERS.COM || @AUBURNVB

2021 SCHEDULE/RESULTS

13-12 OVERALL | 5-10 SEC

11-5 HOME | 2-7 AWAY | 0-0 NEUTRAL

DATE	OPONENT	TV	TIME/RESULT
Aug. 27	^ TENNESSEE TECH	SEC Network+	W, 3-0
Aug. 28	^ JACKSON STATE	SEC Network+	W, 3-0
Sept. 2	% CAL STATE FULLERTON		W, 3-0
Sept. 3	% SOUTHEASTERN LOUISIANA		W, 3-0
Sept. 9	NORTH ALABAMA	SEC Network+	W, 3-0
Sept. 12	SANTA CLARA		W, 3-2
Sept. 17	! FLORIDA A&M		L, 2-3
Sept. 17	! NICHOLLS	SEC Network+	W, 3-1
Sept. 18	! BELMONT	SEC Network+	W, 3-0
Sept. 22	* (RV) OLE MISS	ESPNU	L, 1-3
Sept. 26	at Alabama State		L, 2-3
Sept. 29	* at #20 Tennessee	SEC Network	L, 0-3
Oct. 2	* ALABAMA	SEC Network+	W, 3-2
Oct. 3	* ALABAMA	ESPNU	W, 3-0
Oct. 9	* at Arkansas	SEC Network+	L, 1-3
Oct. 10	* at Arkansas	SEC Network+	L, 2-3
Oct. 16	* MISSOURI	SEC Network+	W, 3-0
Oct. 17	* MISSOURI	SEC Network+	L, 2-3
Oct. 21	* at Georgia	SEC Network+	W, 3-0
Oct. 22	* at Georgia	SEC Network+	L, 0-3
Oct. 29	* (RV) LSU	SEC Network+	L, 0-3
Nov. 4	* at Texas A&M	SEC Network+	L, 2-3
Nov. 5	* at Texas A&M	SEC Network+	W, 3-2
Nov. 10	* (RV) SOUTH CAROLINA	SEC Network	L, 0-3
Nov. 17	* at #20 Florida	SEC Network+	L, 0-3
Nov. 20	* #8 KENTUCKY	SEC Network+	4:30 p.m. CT
Nov. 21	* #8 KENTUCKY	SEC Network+	1 p.m. CT
Nov. 26	* at Mississippi State	SEC Network+	4 p.m. CT

BOLD indicates home contest | All time Central and subject to change
^ - War Eagle Invitational | % - SLU-Fullerton Tournament | % - Home Tournament | * - Southeastern Conference Game

AUBURN ATHLETICS COMMUNICATIONS

Office Phone _____ 334-844-9800
Kirk Sampson _____ Associate AD
_____ sampska@auburn.edu
Taylor Shirey _____ Volleyball Contact
_____ trs0010@auburn.edu
C: 334-750-0710

FOLLOW ALONG

Web _____ AuburnTigers.com
Twitter _____ @AuburnVB
Instagram _____ @auburnvolleyball

MATCH

26

#8 KENTUCKY

Saturday, Nov. 20 | 4:30 p.m. CT
Gainesville, Fla. | Auburn Arena | SEC Network+



MATCH

27

#8 KENTUCKY

Sunday, Nov. 21 | 1 p.m. CT
Gainesville, Fla. | Auburn Arena | SEC Network+



AUBURN

KENTUCKY

AVCA Coaches Poll _____	N/R
2021 Record _____	13-12 5-10 SEC
Head Coach _____	Brent Crouch
Career Record (Year) _____	108-111 (8th)
Record at Auburn (Year) _____	13-20 (2nd)
AVCA Coaches Poll _____	#8
2021 Record _____	20-4 13-1 SEC
Head Coach _____	Craig Skinner
Career Record (Year) _____	397-130 (17th)
Record at Kentucky (Year) _____	397-130 (17th)

Site _____ Auburn, Ala.
Venue _____ Auburn Arena
Live Stats _____ Statbroadcast
Twitter _____ @AuburnVB
Series Record _____ Kentucky leads 44-10
Last Meeting _____ Nov. 8, 2020 at Lexington, Ky.
_____ Auburn 0, Kentucky 3 (12-25, 19-25, 15-25)

BY THE NUMBERS

7 With three matches remaining in the regular season, Rebekah Rath is just seven kills shy of breaking Jessica Glover's single-season record of 410. The record has stood since 2008.

13 With 13 wins under its belt, Auburn has recorded the most victories in a season since the 2017 squad closed the year with a 15-12 overall record.

133 Senior Tatum Shiples has turned in one of the best blocking records in two decades as her 133 total blocks this season is the most by any Tiger since 2000.

QUICK HITS

- With November winding down, Auburn faces a tough test as its final four matches of the season coming against the top three teams in the SEC standings. The gauntlet continues this weekend with a pair of matches against the reigning national champion #8 Kentucky. Auburn is searching for its first win over the Wildcats since 2010.
- Defense has been the name of the game for the Tigers this season. Auburn enters the weekend second in the SEC in digs per set (16.21) and fourth in blocking (2.55 blocks/s). The Tigers have held opponents to a .157 hitting percentage - the lowest in the SEC and the 18th lowest mark in the country.
- Coming off her 21st double-digit kill performance of the season, junior Rebekah Rath continues her stranglehold as the top offensive player in the SEC as she currently leads the league in six offensive categories, including: attacks per set, kills per set, points, points per set, total attacks and total kills.

AUBURN'S POTENTIAL STARTING SEVEN



BELLA ROSENTHAL

#6 • DS/L • SR. • 5-5
D/S: 4.85 K/S: 4.30
A/S: 1.20 HIT%: .196
SA/S: 0.12 D/S: 1.94
P/S: 0.13 B/S: 0.79



REBEKAH RATH

#7 • OH • JR. • 6-0
K/S: 2.70
HIT%: .261
D/S: 0.56
P/S: 2.97



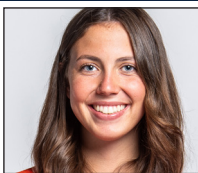
LIZ REICH

#8 • OPP • GR. • 6-1
K/S: 2.70
A/S: 0.15
SA/S: 0.05
P/S: 0.12



FALLAN LANHAM

#4 • DS • FR. • 5-8
K/S: 0.06
A/S: 0.15
SA/S: 0.05
P/S: 0.12



JACKIE BARRETT

#10 • S • SO. • 6-1
K/S: 0.53
A/S: 0.15
SA/S: 0.24
P/S: 0.65



ELIF SU YAVUZ

#19 • MB • SR. • 6-3
K/S: 0.73
A/S: 0.15
SA/S: 0.24
P/S: 1.10



TATUM SHIPLES

#21 • MB • SR. • 6-4
K/S: 1.16
A/S: 0.15
SA/S: 0.24
P/S: 2.05

K/S: kills per set • HIT%: hitting percentage • D/S: digs per set • B/S: blocks per set • A/S: assists per set • SA/S: aces per set • P/S: points per set

#WarEagle



AuburnTigers.com



@AuburnVB | @AuburnTigers
@AuburnVBCoach



/AuburnVB
/AuburnTigers

TEAM SCHEDULE AND MEDIA AVAILABILITY >> WEEK OF NOVEMBER 15-21

MONDAY November 15	TUESDAY November 16	WEDNESDAY November 17	THURSDAY November 18	FRIDAY November 19	SATURDAY November 20	SUNDAY November 21
OFF DAY	TRAVEL DAY	MATCH: 6:00 p.m. _____ at Florida Gainesville, Fla.	PRACTICE: 3:00-6:00 p.m. _____ SAC	PRACTICE: 3:00-7:00 p.m. _____ Auburn Arena	MATCH: 4:30 p.m. _____ vs. Kentucky Auburn Arena	MATCH: 1:00 p.m. _____ vs. Kentucky Auburn Arena
NO INTERVIEWS	NO INTERVIEWS	INTERVIEWS POSTMATCH	INTERVIEWS BY REQUEST	INTERVIEWS BY REQUEST	INTERVIEWS POSTMATCH	INTERVIEWS POSTMATCH

AUBURN ATHLETICS COMMUNICATIONS

QUICK FACTS

AUBURNTIGERS.COM

For updated game notes, statistics, safety protocols and latest information on Auburn volleyball and Auburn Athletics, visit AuburnTigers.com.

INTERVIEW POLICY

Coch Crouch, assistant coaches and student-athletes are available for interviews by contacting Taylor Shirey in the communications office. All interviews during the week will be conducted via phone or ZOOM. Post-match interviews will be conducted in the media room at Auburn Arena following a brief cooling-off period.

CREDENTIALS

Anyone wishing to cover an Auburn volleyball match should contact Taylor Shirey in the communications office at least 24 hours in advance to make arrangements. Due to COVID-19 safety guidelines, space within Auburn Arena will be limited. All media members will be required to wear masks inside Auburn Arena as part of Auburn University's mask mandate.

MATCH DAY SERVICES

Due to safety concerns related to COVID-19, printed copies of notes, flip cards and statistics will NOT be available. Digital copies will be emailed out prior to the match and will be available on AuburnTigers.com. Media members are permitted to bring their own printed materials. Stats will not printed between sets or after matches. Live stats will be provided during the match and final statistics will be emailed out and posted on AuburnTigers.com. All post-match interviews will be conducted

via ZOOM. Wireless internet is available in the Arena; ask Taylor Shirey for the password. Match highlights, photos and postgame interviews will be available on Imagen following matches.

VIDEO SERVICES

FTP feeds of selected Auburn volleyball highlights are available for the media. A number of studio and satellite services may be arranged for electronic media by contacting Cody Baker in War Eagle Productions at jcb0101@auburn.edu.

PHOTO SERVICES

For photos of Auburn volleyball or any Olympic sports, contact Shanna Lockwood at sal0002@auburn.edu.

COMMUNICATIONS STAFF

Taylor Shirey Volleyball Contact
cell: 334-750-07010
email: trs0010@auburn.edu

Kirk Sampson Associate AD
cell: 334-750-1385
email: sampska@auburn.edu

UNIVERSITY INFORMATION

City / Zip _____ Auburn, Ala. / 36831
 Founded _____ Oct. 1, 1856
 Enrollment _____ 30,737
 Nickname _____ Tigers
 Colors _____ Navy Blue & Burnt Orange
 Affiliation _____ NCAA Division I
 Conference _____ Southeastern Conference
 Home Court _____ Auburn Arena (9,121)
 President _____ Dr. Jay Gogue (Auburn, 1969)
 Athletic Director _____ Allen Green (Notre Dame, 1998)
 Sport Administrator _____ Joy Vrbka (Florida, 2003)

TEAM INFORMATION

Letterwinners Returning/Lost _____ 7/8
 Starters Returning/Lost _____ 5/3+Libero
 Newcomers _____ 6
 2020 Overall Record _____ 0-8
 2020 Conference Record/Finish _____ 0-8/13th

PROGRAM HISTORY

First Year of Volleyball _____ 1967
 _____ Program discontinued 1981; Reinstated 1986
 Seasons of Auburn Volleyball _____ 49th
 All-Time Overall Record _____ 668-687-4 (.493)
 in Auburn Arena (Since 2013) _____ 60-54 (.526)
 Total Home Record _____ 232-207 (.529)
 All-Time SEC Record _____ 188-357 (.345)
 NCAA Tournament Appearances _____ 1/2010
 SEC Championships/Last _____ 1/Co-West Champions (1996)

STAFF INFORMATION

Head Coach _ Brent Crouch, 1st Season (Texas A&M , '98 & '00; Oregon '06)
 Career Record _____ 108-111 (.493)/8th Season
 Record at Auburn _____ 13-20 (.394)/2nd Season
 Associate Head Coach/Recruiting Coordinator _____ Alex Dunphy
 Assistant Coach _____ Rick Moller
 Volunteer Assistant Coach _____ Taylor Hammond
 Director of Volleyball Operations/Technical Coordinator _____ Madi Wilkerson
 Strength & Conditioning _____ Bethany Gainey
 Interim Athletic Trainer _____ Sydney Kinder
 Equipment Manager _____ Tra' Cee Tanner

ATHLETIC COMMUNICATIONS

Associate AD/Communications _____ Kirk Sampson
 Assistant Director/Volleyball Contact _____ Taylor Shirey
 Email _____ trs0010@auburn.edu
 Phone _____ 334-750-0710
 Mailing Address _____ Auburn Athletics Complex
 _____ 392 S. Donahue Drive
 Website _____ AuburnTigers.com

GAMEDAY EXPERIENCE: AUBURN ARENA

>> Auburn Arena is in its seventh season as home of Auburn volleyball. The Tigers are 60-54 since moving to the Arena in 2013. The facility seats approximately 2,000 fans for volleyball and 9,121 for basketball.



FIRST SERVE

» The gauntlet continues as the Tigers (13-12, 5-10 SEC) return to Auburn Arena for the final time this season to host the defending national champions No. 8 Kentucky (20-4, 13-1 SEC) for a pair of matches this weekend.

» The weekend series with the Wildcats begins on Saturday at 4:30 p.m. CT. Auburn will honor its 2021 senior class of Val Green, Liz Reich, Bella Rosenthal, Tatum Shipes and Elif Yavuz in a special pre-match ceremony on Saturday. Sunday's finale is set for 1 p.m. CT.

» Both matches are slated to air on the SEC Network+. Graham Doty and Kele Eveland will have the call on Saturday. Eveland will be joined by Wiley Ballard for Sunday's finale. Fans can also hear both matches locally on WEGL 91.1.

» In its 49th full season of volleyball, Auburn's all-time record stands at 668-687-4 (.493).

» Brent Crouch (13-20) enters his second season as the head coach for the Tigers after a two-year stint at USC. Entering his eighth overall season as a head coach, Crouch holds an 108-111 career record. He's the 11th head coach in Auburn program history.

» Auburn's 2021 schedule features four 2020-21 NCAA Volleyball Tournament participants: Jackson State, Missouri, Florida and reigning national champion Kentucky.

» The Tiger roster features a wealth of fresh faces as six of Auburn's 12 total student-athletes on roster will be taking the court in Blue and Orange for the first time in their careers with a combination of four true freshmen and two transfers.

UP NEXT

» Auburn closes the regular season on Friday, Nov. 26 at Mississippi State. First serve on the SEC Network_ is set for 4 p.m. CT.

LAST TIME OUT

» Moving one step closer to history with a double-digit kill effort, junior Rebekah Rath led Auburn volleyball (13-12, 5-10 SEC) offensively Wednesday night at Exactech Arena, but #20 Florida (18-6, 12-2) claimed the match in straight sets (11-25, 15-25, 19-25).

» Returning to her home state, Rath turned in her 21st match of the season with at least 10 kills. The junior recorded 10 while adding three digs and a block defensively. Rath brought her season total to 404 to join Jessica Glover (2008) as the only two Tigers to record over 400 kills in a season during the rally-scoring era. Rath is just seven kills shy of overtaking Glover for the program record.

» Graduate student Liz Reich totaled four kills for the Tigers, while picking up one block assist and a pair of digs. Senior Tatum Shipes took seven offensive swings with three landing for kills.

» Shipes was credited with three blocks to bring

her season total to 133. Already holding the program's rally-scoring season record, Shipes is now tied for sixth in school history for total blocks in a season, regardless of era.

» Junior Jackie Barrett served as setter for the Tigers, dishing out 16 assists. Barrett's stat line included two kills, six digs and a block. Rounding out the offense was senior Val Green, who picked up a kill in the match. Green was also credited with an assist, three digs and a block.

» At the service line, senior Elif Su Yavuz earned the only Tiger ace in the match. She also recorded one dig and a block.

» Defensively, Auburn was led by senior Bella Rosenthal's nine digs, which moved Rosenthal to sixth in Auburn single-season history for total digs (rally-scoring era) at 456.

SEC REVAMPS CONFERENCE SCHEDULING FORMAT FOR 2021 CAMPAIGN

» The Southeastern Conference announced a new scheduling format for its conference slate ahead of the 2021 campaign.

» The SEC schedule consists of 18 matches in which each member institution will play each other at least once. The order of opponents for each team was determined by a random computer draw.

» Two-match series may be played Wednesday/Thursday, Thursday/Friday, Friday/Saturday or Saturday/Sunday per the league office.

SCOUTING KENTUCKY

» Entering the weekend on top of the SEC standings, Kentucky is 13-1 in SEC play this season. It's lone loss came at the hands of South Carolina as the Gamecocks took a five-set victory on Nov. 4. The reigning national champions hold a 20-4 overall record this season and were ranked seventh in the latest NCAA RPI report.

» The Wildcats boasts one of the most efficient offenses in the country as Kentucky ranks sixth nationally with a .294 hitting percentage. The Wildcats rank second in the SEC and 13th in the country with a 14.09 kills per set mark. The bulk of Kentucky's offense is evenly spread between sophomore Madi Skinner and senior Alli Stumler. Skinner ranks fifth in the SEC in both kills per set (3.79) and points per set (4.21). Stumler holds steady at seventh in the SEC in points per set (4.03) while ranking eighth in the league in kills per set (3.53).

» Freshman Emma Grome serves as the starting setter for the Wildcats, turning in an impressive debut season. Grome has dished out 989 assists and ranks sixth in the country with a 11.37 per set average. Offensively, Grome has added 28 kills and is also a threat at the service line.

» One of the top serving teams in the league, Kentucky is second with a 1.43 aces per set mark with seven Wildcats recording at least 10 service aces this season. Stumler leads the charge with 22 to her credit as she averages 0.25 aces per set.

PLAYER TO WATCH: REBEKAH RATH

» The SEC leader in six offensive categories, including kills and points per set, Rebekah Rath remains on pace to set the program's single-season kills record as she needs just seven kills over the final three matches of the regular season.



SEC STANDINGS & SCHEDULE

	2021 SEC RECORD			2021 OVERALL		
	W	L	Pct.	W	L	Pct.
Kentucky	13	1	.929	20	4	.833
Mississippi State	13	2	.867	22	5	.815
Florida	12	2	.857	18	6	.750
Tennessee	10	6	.625	18	8	.692
Arkansas	9	6	.600	18	8	.692
Ole Miss	8	7	.533	19	7	.731
LSU	7	8	.467	11	13	.458
South Carolina	6	9	.400	14	11	.560
Georgia	6	9	.400	10	16	.385
AUBURN	5	10	.333	13	12	.520
Texas A&M	5	10	.333	12	13	.480
Alabama	2	13	.133	10	17	.370
Missouri	1	14	.067	4	24	.143

THIS WEEK IN THE SEC...

Wednesday, Nov. 17
AUBURN 0; FLORIDA 3
 Arkansas 3; Texas A&M 0

Thursday, Nov. 18
 Tennessee 3; Alabama 0
 Ole Miss 3; Georgia 1

Friday, Nov. 19
 Alabama at Tennessee 5:30 p.m.
 Georgia at Ole Miss 6 p.m.

Saturday, Nov. 20
 South Carolina at Florida 3 p.m.
KENTUCKY AT AUBURN 4:30 P.M.
 Mississippi State at Arkansas 5 p.m.

Sunday, Nov. 21
KENTUCKY AT AUBURN 1 P.M.
 South Carolina at Florida 1 p.m.
 Texas A&M at LSU 1 p.m.
 Mississippi State at Arkansas 3 p.m.

2021 NCAA RPI REPORT

RK	TEAM	RECORD	AU RESULT
7	Kentucky	20-4	
17	Tennessee	17-8	L
18	Florida	17-6	L
27	Mississippi State	22-5	
34	South Carolina	14-11	L
37	Texas A&M	12-12	L W
44	Ole Miss	18-7	L
46	Arkansas	17-8	L L
53	LSU	11-13	L
87	Georgia	10-15	W L
148	Tennessee Tech	16-13	W
156	Alabama	10-16	W W
166	AUBURN	13-11	-----
203	Missouri	4-24	W L
197	Santa Clara	10-14	W
194	Florida A&M	22-6	L
216	Cal State Fullerton	10-13	W
248	Jackson State	15-12	W
250	Belmont	9-19	W
255	Nicholls	10-16	W
268	Alabama State	16-16	L
276	Southeastern Louisiana	9-17	W
323	North Alabama	9-20	W

AUBURN OPPONENTS ONLY

AVCA COACHES POLL

RK	TEAM	RECORD	PREVIOUS
1.	Louisville (61)	24-0	1
2.	Texas (3)	20-1	2
3.	Pittsburgh	24-2	3
4.	BYU	25-1	5
5.	Wisconsin	21-3	4
6.	Purdue	20-5	9
7.	Baylor	16-5	6
8.	Kentucky	20-4	7
9.	Minnesota	17-7	8
10.	Ohio State	21-5	10
11.	Nebraska	19-6	11
12.	Washington	20-4	13
T13.	Georgia Tech	21-4	14
T13.	UCLA	20-4	12
15.	Penn State	19-7	15
16.	Oregon	20-6	17
17.	Utah	18-7	16
18.	Western Kentucky	24-1	18
19.	Stanford	14-10	20
20.	Florida	17-6	22
21.	Creighton	26-3	23
22.	Washington State	16-9	21
23.	San Diego	19-5	19
24.	Illinois	17-10	25
25.	Pepperdine	19-5	NR

Others receiving votes: **Mississippi State**; Miami (FL); **Tennessee**; Marquette; Florida State; Rice; Arizona State; Michigan.

INSIDE THE MATCH-UP

KENTUCKY 10-44 (.185)

7-19 H • 3-20 A • 0-5 N

SERIES HISTORY [LAST 10 MEETINGS]

YEAR	SITE	RESULT	MATCH SCORE
2014	HOME	L	1-3
2015	HOME	L	2-3
2015	AWAY	L	2-3
2016	HOME	L	2-3
2017	AWAY	L	1-3
2017	HOME	L	0-3
2018	AWAY	L	0-3
2019	HOME	L	0-3
2020	AWAY	L	0-3
2020	AWAY	L	0-3

» Flipping to the defensive side of the net, Kentucky averages 13.87 digs per set this season with six Wildcats with over 100 digs to their credit. Freshman libero Eleanor Beavin is the digs leader for Kentucky. She's totaled 299 digs this season to average 3.44 per set. Stumler is second on the squad with a 2.29 digs per set mark.

» A strong blocking threat, the Wildcats are sixth in the league with a 2.42 per set average. Junior middle blocker Azhani Tealer ranks third in the SEC with a 1.25 blocks per set average while her total blocks number of 109 is sixth in the conference. Tealer is also an offensive threat as she ranks fifth nationally with a .444 hitting percentage. Tealer is 25th in the league as she averages 2.63 kills per set.

A WIN OVER KENTUCKY...

» Would be Auburn's first win in the series since 2010, snapping a 17-match losing skid.

» Would be Auburn's first win over a ranked opponent since defeating No. 16 North Carolina on Sept. 2, 2017.

AUBURN-KENTUCKY SERIES

» Kentucky leads the all-time series 44-10. The majority of Auburn's wins have come at Auburn Arena as Tigers have picked up seven of their 10 wins in the series at home.

» The Tigers are searching for their first win in the series since 2010 when the Auburn edges out Kentucky in five sets in Auburn. Auburn has not won a set in the series since 2017. Kentucky as picked up 10 sweeps in its current 17-match win streak.

REICH BECOMES THE REICH-ER

» Turning in her best performance in league action to date in Auburn's two-match series at Georgia, opposite hitter Liz Reich was selected as Southeastern Conference Offensive Player of the Week

» The recognition is the first for Reich this season. Her recognition marks the first time in program history Auburn has had multiple student-athletes named SEC Offensive Player of the Week as junior Rebekah Rath has won the award twice earlier this season. Auburn has now won the award a program-record three times in 2021.

» The Colorado Springs, Colo., native totaled 11 kills on 27 attempts in the series opener at Athens. Committing just three errors in the match, Reich recorded a .296 hitting percentage. She added six blocks to tie her season high.

» In the series finale, Reich powered the offense with 12 kills on 22 attempts, attacking at a blistering .409 clip. She set a season high for kills in a conference match with her performance. Defensively, she recorded one dig and a pair of blocks.

» Reich led the Tiger offense with 23 total kills over the two-match series, while attacking at a .347 clip. The graduate student averaged 3.83 kills per set and 4.50 points per set to pace the Tigers.

PLAYER TO WATCH: TATUM SHIPES

» Making the move to middle blocker has been an easy transition to Tatum Shipes. Shipes enters the weekend leading the SEC in total blocks and blocks per set. She has shattered Auburn's single-season total blocks record with 133 this season.

OH SHIPES! IT'S A BLOCK PARTY

» As the season progresses, Auburn's play at the net continues to improve as highlighted by a record-breaking performance against Alabama. As a team, the Tigers totaled 18.0 team blocks in Auburn's 3-2 victory against the Crimson Tide on Oct. 2. The mark tied the program's record for blocks in a match. The Tigers also totaled 18.0 team blocks against South Florida on Sept. 13, 2014.

» Auburn enters the weekend ranked fourth in the Southeastern Conference and 31st nationally with a 2.55 blocks per set average. The mark is currently the third highest team average recorded in a single-season. Play at the net combined with Auburn's digging performance has helped the Tigers hold opponents to a minuscule .157 hitting percentage, the 18th lowest mark in the country.

» An SEC Defensive Player of the Week selection this season, Tatum Shipes recorded 12.0 total blocks in the five-set match against the Tide to help Auburn to its first SEC home victory since 2018. The mark set the program's single-match record for blocks in the rally scoring era. The previous record of 11.0 was set on Nov. 23, 2017 by Breanna Barksdale at Florida.

» Her record-setting performance continue against LSU (10/29) as Shipes chipped in three blocks to bring her season total to 120, breaking the program's single-season record for the rally-scoring era. The previous mark of 119 was set by Camila Jersonsky in 2012. She added a second record to her resume against South Carolina (11/10) as she surpassed Jersonsky in block assists.

» Shipes continues to lead Auburn with her impressive play at the net since moving to middle blocker. Shipes leads the SEC in both total blocks (133) and blocks per set (1.46), while ranking 12th and third respectively, in both categories nationally. With three single-season records to her credit, Shipes has her sights on one more blocking record to run the table.

BLOCKS - SOLO (RALLY-SCORING)

PLAYER	YEAR	BLOCKS
1. Katherine Culwell	2012	25
2. Tatum Shipes	2021	20

BLOCKS - ASSISTS (RALLY-SCORING)

PLAYER	YEAR	BLOCKS
1. Tatum Shipes	2021	113
1. Camila Jersonsky	2012	108

TOTAL BLOCKS (RALLY-SCORING)

PLAYER	YEAR	BLOCKS
1. Tatum Shipes	2021	133
2. Camila Jersonsky	2012	119

BLOCKS PER SET (MIN. 50 BLOCKS/RALLY-SCORING)

PLAYER	YEAR	BLOCKS
1. Tatum Shipes	2021	1.46
2. Anna Stevenson	2018	1.15



» Not only are her blocking numbers the best in program history in the rally scoring era, Shipes has proved to be one of the best blockers in school history - regardless of which era you include.

BLOCKS - ASSISTIS (OVERALL)

PLAYER	YEAR	BLOCKS
1. Jaunelle Hamilton	1999	131
Rani Whitson	1995	131
3. Rani Whitson	1994	129
4. Gina Thomas	1989	123
5. Jaunelle Hamilton	2000	116
6. Jaunelle Hamilton	1997	115
7. Tatum Shipes	2021	113

TOTAL BLOCKS (OVERALL)

PLAYER	YEAR	BLOCKS
1. Jaunelle Hamilton	1999	162
2. Rani Whitson	1995	148
3. Jaunelle Hamilton	1997	143
4. Rani Whitson	1994	140
5. Julie Bosler	2006	137
6. Tatum Shipes	2021	133
Jaunelle Hamilton	1998	133
Jaunelle Hamilton	2000	133

BLOCKS PER SET (MIN. 40 BLOCKS/OVERALL)

PLAYER	YEAR	BLOCKS
1. Tatum Shipes	2021	1.46
2. Jaunelle Hamilton	1999	1.43
3. Tory Gutierrez	1989	1.41

THE CROUCH EFFECT

» After COVID-19 derailed the process last season, Brent Crouch's overhaul of the program took into effect since the season opener and has continued into the early portion of Southeastern Conference play.

» The Tigers opened the season with 17 consecutive set victories before dropping its first set of the season. Auburn tied the program record for most sweeps to begin a season with five. The record was first set by the 1974 squad.

» Auburn's 6-0 start is the best for the Tigers since the 2012 team began the season 8-0. Auburn has recorded 10 victories through its first 14 matches of the season. It is the most wins by the Tigers since the 2018 team closed the year with 12.

» Sweeping Alabama to earn the program's first SEC victories of the season, the Tigers have now won back-to-back SEC games for the first time since knocking off Georgia and Mississippi State in November of 2018. Auburn has now won three straight matches against Alabama. It is the longest win streak against the Crimson Tide since the Tigers won six straight from 2009 to 2012.

» Auburn opened its two-match series against Missouri with a sweep, picking up the program's first victory in the series since 1996. It also mark the first time in program history that Auburn had defeated Missouri since Missouri joined the SEC.

» The Tigers continue their impressive run by edging out Texas A&M, 3-2, to snap a nine-match losing skid to the Aggies. The match was Auburn's first victory over in the Aggies in College Station in program history.

» With three matches still remaining during the regular season, Auburn has racked up the most conference victories in a season since 2018 while the team's 13 overall victories are the most since 2017. The Tigers have also seen dramatic improvement on the defensive side of the court.

DEFENSE

- Auburn's digs per set average of 16.21 currently ranks sixth in single-season history and is the highest team average since 2012.
- The Tigers have totaled 397 block assists this season, the sixth most in a single season and the most by any squad since 2000.
- Auburn currently holds the third high team blocks per set average for a single season at 2.55.

CAN YOU DIG IT?

» Behind a career performance at the Auburn Invitational, Bella Rosenthal was selected as the SEC's Defensive Player of the Week for the second consecutive week. She is the first Tiger in program history to win the award in back-to-back weeks. She is also the first Tiger to win the award multiple times in a season since Camila Jersonsky in 2012.

» Rosenthal has paced the Tigers this season, recording at least 10 digs in 22 of Auburn's 25 matches to being the season. She has chipped in at least 20 digs in 10 matches for the Tigers while totaling at least 30 digs three time.

» She set a then career high with 31 digs. She is the

HEAD COACH BRENT CROUCH

QUICK FACTS

College ___ Texas A&M ('98, '00)
 ___ Oregon ('06)
 Wife ___ Marcy
 Sons ___ Jonathan and William

COACHING RECORD

Head Coaching Career ___ 8th Season
 Career Record ___ 108-111
 NCAA Appearances ___ 2

COACHING CAPSULE

2020-Pt. Auburn 13-20
 2018-19 Southern California 40-25
 2014-17 Portland 55-66

YEAR-BY-YEAR RESULTS

2021	Auburn	13-12
2020	Auburn	0-8
2019	USC	18-14
2018	USC	22-11
2017	Portland	15-15
2016	Portland	17-13
2015	Portland	16-15
2014	Portland	7-23



Brent Crouch enters his second season as the head coach of the Auburn volleyball team after guiding the program through the challenges of the COVID-19 pandemic during his first season on The Plains.

Crouch made his Auburn coaching debut against No. 4 Florida on Oct. 21, 2020, to open the shortened fall volleyball schedule. Crouch led the Tigers on the court for eight total matches.

The fall season was highlighted by Auburn setting the program record for blocks in a four-set match as the Tigers recorded 17 at South Carolina on Oct. 29, 2020. The previous mark of 14 was set on Nov. 9, 2014 against Tennessee. The total tied for the second-most blocks in a match in Auburn program history as was the most by the Tigers since 2009.

Due to injuries and opt-out, the Tigers were unable to compete in the spring portion of the amended 2020-21 schedule.

Crouch previously served as the head coach at the University of Southern California. In two seasons at USC, Crouch led the program to consecutive NCAA second round appearances, including a second-place finish in the Pac-12, and a No. 21 ranking in the season's final AVCA poll in his first season on campus in 2018. This past season, the Trojans were 18-14, while outside hitter Khatia Lanier became the fifth player in Pac-12 history to record 2,000 kills and 1,000 digs in career.

Under Crouch in 2018, the Trojans finished 22-11 overall with a 13-7 record in Pac-12 matches. USC played one of the toughest schedules in the nation and faced 18 ranked opponents in the regular season and were awarded the No. 11 overall seed in the NCAA Tournament. Setter Raquel Lázaro was named the Pac-12 Freshman of the Year and outside hitter Brooke Borikin was chosen for second-team AVCA All-America honors. Lázaro and Lanier were each tabbed for All-America honorable mention.

Under Crouch's tutelage, outside hitter Emilia Weske was tabbed to the Pac-12's All-Freshman Team while middle blocker Jasmine Gross added All-Pac 12 honors.

Prior to arriving at Troy, Crouch was the 2016 West Coast Conference Coach of the Year. He inherited a winless Portland program and within two seasons guided the Pilots to their winningest season in 25 years. Crouch first took over at Portland in 2014 after the Pilots went 0-27 the previous season. After going 7-23 in his debut season, he guided the Pilots to a 16-15 mark in 2015 (its most victories since 1991) and then improved upon that in 2016 with a 17-13 mark. His 2017 team, which was hampered by injuries, was 15-15, with five losses coming in five-set matches. His overall four-year record at Portland was 55-66.

The 48 victories in his final three years was Portland's best three-season total since 1984-86. The Pilots' 10-8 third place WCC finish in 2016 was its most league wins since 1985 and highest conference finish since 1989. He led Portland to the program's first-ever victories over Top 10, Top 15, and Top 25 opponents. Crouch coached three All-WCC first team players and a WCC All-Freshman team pick, along with three WCC All-Academic first teamers. He also helped establish beach volleyball as a varsity sport at Portland in 2016.

Crouch arrived at Portland after four seasons (2010-13) at Saint Mary's College, where he was an assistant with the indoor program and head coach of the beach team.

During his time at SMC, the Goels' indoor team went 73-40 overall, finished in the top three in the WCC standings each season by winning 73.4 percent of its league matches (47-17) and earned a berth into the NCAA Tournament in 2012, advancing to the second round. Besides being involved in the team's offense and defense, recruiting, scouting, practice planning, statistical and video analysis and scheduling, he provided academic support, as he mentored several WCC All-Academic honorees and helped the team to the athletic department's highest grade point average, an NCAA Public Recognition Award, and an AVCA academic award.

Crouch also coached the inaugural Saint Mary's beach team in 2013, guiding the Goels to an 8-2 record, the best mark among all Northern California teams, as well as a No. 9 national ranking and a bid to the AVCA national championship for the program's top pairs team.

2020-21 AUBURN VOLLEYBALL ROSTER

No.	Name	Year	Pos.	Ht.	Hometown (High School/Previous School)
4	Fallan Lanham	Fr.	DS/L	5-8	Louisville, Ky. (Mercy Academy)
5	Audrey Douglas	So.	OH/OPP	6-4	Winter Park, Fla. (Hagerty)
6	Bella Rosenthal	Sr.	DS/L	5-5	Yorktown, Ind. (Yorktown)
7	Rebekah Rath	Jr.	OH	6-0	Altamonte Springs, Fla. (Oviedo/Maryland)
8	Liz Reich	Gr.	OPP	6-1	Colorado Springs, Colo. (Lewis-Palmer/Portland)
10	Jackie Barrett	So.	S	6-1	Highland, Calif. (Citrus Valley)
11	Jordan Sinness	Fr.	S	5-9	Sebring, Fla. (Sebring)
15	Kate Curtis	Fr.	DS/L	5-6	Anderson, S.C. (T.L. Hanna)
16	Val Green	Sr.	OH	6-2	Oxford, Ohio (Talawanda)
17	Cassidy Tanton	Fr.	OH	6-0	Stoneville, N.C. (Dalton McMichael)
19	Elif Su Yavuz	Sr.	MB	6-3	Ankara, Turkey (Gazi University)
21	Tatum Shipes	Sr.	OH	6-4	Buford, Ga. (Buford)

HEAD COACH | BRENT CROUCH (SECOND SEASON)

ASSOCIATE HEAD COACH/RECRUITING COORDINATOR | ALEX DUNPHY (SECOND SEASON)

ASSISTANT COACH | RICK MOLLER (SECOND AS ASSISTANT COACH/THIRD SEASON OVERALL)

DIRECTOR OF VOLLEYBALL OPERATIONS/TECHNICAL COORDINATOR | MADI WILKERSON (SECOND SEASON)

PRONUNCIATION GUIDE:

FALLAN LANHAM (FOUL-an LAN-UM)

JORDAN SINNESS (SIN-es)

ELIF SU YAVUZ (e-LEAF SUE Yah-vous)

LIZ REICH (RICH)

CASSIDY TANTON (TAN-tun)

TATUM SHIPES (SHY-PS)

Crouch also has coaching experience with the USA Volleyball program, including working with U.S. Women's National Team head coach Karch Kiraly, being an assistant with the U.S. Collegiate National Team that captured a gold medal at the 2016 U22 Global Challenge and serving as both an indoor and beach coach in the USA Volleyball High Performance program.

Crouch played for Texas A&M's club team from 1993 to 1997. He earned his bachelor's degree in history in 1998 and his master's in philosophy in 2000, both from Texas A&M, then a doctorate in philosophy from Oregon in 2006.

He competed on the beach from 2005 to 2007 in AVP and CBVA events and placed second at the 2005 California Cup state championship.

He has held various teaching positions in philosophy at Oregon, San Diego City College, and Saint Mary's College since 2000.

Crouch and his wife Marcy have two sons, Jonathan and William.

2021 AUBURN INDIVIDUAL MATCH HIGHS (BY SET)

THREE SETS

HITTING PERCENTAGE (MIN. 12 KILLS) _____ .500, Liz Reich vs. Jackson State (August 28, 2021)
 KILLS _____ 17, Rebekah Rath vs. Missouri (October 16, 2021)
 TOTAL ATTEMPTS _____ 50, Rebekah Rath vs. LSU (October 29, 2021)
 ASSISTS _____ 34, Jackie Barrett vs. Alabama (October 3, 2021)
 DIGS _____ 25, Bella Rosenthal vs. North Alabama (September 9, 2021)
 ACES _____ 3, Elif Yavuz at Georgia (October 21, 2021)
 BLOCKS _____ 8 (3x), last Tatum Shipes at Georgia (October 21, 2021)

FOUR SETS

HITTING PERCENTAGE (MIN. 12 KILLS) _____ .288, Rebekah Rath vs. Ole Miss (September 22, 2021)
 KILLS _____ 29, Rebekah Rath at Arkansas (October 9, 2021)
 TOTAL ATTEMPTS _____ 75, Rebekah Rath at Arkansas (October 9, 2021)
 ASSISTS _____ 40, Jackie Barrett vs. Nicholls (September 17, 2021)
 DIGS _____ 31, Bella Rosenthal vs. Nicholls (September 17, 2021)
 ACES _____ 3, Jackie Barrett vs. Nicholls (September 17, 2021)
 BLOCKS _____ 10.0, Tatum Shipes at Arkansas (October 9, 2021)

FIVE SETS

HITTING PERCENTAGE (MIN. 12 KILLS) _____ .378, Liz Reich vs. Florida A&M (September 17, 2021)
 KILLS _____ 24 (2x), last, Rebekah Rath at Alabama State (September 26, 2021)
 TOTAL ATTEMPTS _____ 84, Rebekah Rath at Texas A&M (November 4, 2021)
 ASSISTS _____ 48, Jackie Barrett vs. Florida A&M (September 17, 2021)
 DIGS _____ 33, Bella Rosenthal vs. Missouri (October 16, 2021)
 ACES _____ 5, Rebekah Rath at Texas A&M (November 5, 2021)
 BLOCKS _____ 12, Tatum Shipes vs. Alabama State (October 2, 2021)

INSIDE THE NUMBERS



CATEGORY	AUBURN	KENTUCKY
Kills	1101	1226
Per Set	11.7	14.1
Errors	401	384
Total Attacks	3347	2865
Hitting Pct.	.209	.294
Assists	990	1122
Per Set	10.5	12.9
Service Aces	98	124
Per Set	1.0	1.4
Service Errors	178	171
Reception Errors	125	79
Per Set	1.3	0.9
Digs	1524	1207
Per Set	16.2	13.9
Solo Blocks	41	33
Block Assists	397	355
Total Blocks	239.5	210.5
Per Set	2.5	2.4

2021 AUBURN TEAM MATCH HIGHS (BY SET)

THREE SETS

HITTING PERCENTAGE _____ .457, vs. Jackson State (August 28, 2021)
 KILLS _____ 42 (3x), last at Georgia (October 21, 2021)
 TOTAL ATTEMPTS _____ 122, vs. Cal State Fullerton (September 2, 2021)
 ASSISTS _____ 39, at Georgia (October 21, 2021)
 DIGS _____ 66, vs. Alabama (October 3, 2021)
 ACES _____ 6 (4x), last at Georgia (October 21, 2021)
 BLOCKS _____ 14.0, vs. Jackson State (August 28, 2021)

FOUR SETS

HITTING PERCENTAGE _____ .196, vs. Ole Miss (September 22, 2021)
 KILLS _____ 51, vs. Nicholls (September 17, 2021)
 TOTAL ATTEMPTS _____ 175, vs. Nicholls (September 17, 2021)
 ASSISTS _____ 47, vs. Ole Miss (September 22, 2021)
 DIGS _____ 105, vs. Nicholls (September 17, 2021)
 ACES _____ 4 (2x), vs. Ole Miss (September 22, 2021)
 BLOCKS _____ 14.0, at Arkansas (October 9, 2021)

FIVE SETS

HITTING PERCENTAGE _____ .260, vs. Santa Clara (September 12, 2021)
 KILLS _____ 69, vs. Florida A&M (September 17, 2021)
 TOTAL ATTEMPTS _____ 188, vs. Florida A&M (September 17, 2021)
 ASSISTS _____ 63, vs. Florida A&M (September 17, 2021)
 DIGS _____ 97, at Texas A&M (November 5, 2021)
 ACES _____ 11, at Texas A&M (November 5, 2021)
 BLOCKS _____ 18.0, vs. Alabama (October 2, 2021)

first Tiger to record at least 30 digs in a match since Payton White versus Butler on Aug. 31, 2019.

» Behind her match-leading 30 digs in the series opener at Arkansas (10/9), she became just the 15th Tiger in program history to record 1,000 career digs. Rosenthal is the first Tiger to hit the mark since Brenna McIlroy in 2018.

» Rosenthal would shatter that mark with a 33-dig performance in the series finale against Missouri (10/17), a career high for the senior. The mark is the sixth most ever recorded by a Tiger in a single match.

» She currently leads the SEC with a 4.85 digs/set average and in total digs with 456. She is on pace to turn in one of the best dig performances in school history as she already in the top six in both total digs and digs per set with five matches remaining in the regular season.

DIGS

	PLAYER	YEAR	DIGS
1.	Jesse Earl	2016	612
2.	Jesse Earl	2017	529
3.	Jesse Earl	2015	516
4.	Sarah Wroblecky	2013	481
5.	Liz Crouch	2010	469
6.	Bella Rosenthal	2021	456

DIGS PER SET (MIN. 100 DIGS)

	PLAYER	YEAR	AVG.
1.	Jesse Earl	2017	5.19
2.	Jesse Earl	2016	4.98
3.	Bella Rosenthal	2021	4.85

» With 1,172 career digs to her credit, Rosenthal currently ranks 116th among all active Division I student-athletes in career digs. She has already added her name to Auburn's career record book in both dig categories with her senior-year performance.

DIGS

	PLAYER	YEARS	DIGS
1.	Liz Crouch	2007-10	1,703
2.	Jesse Earl	2015-17	1,657
3.	Gretchen Thompson	1986-89	1,495
4.	Alexa Filley	2014-17	1,315
5.	Allyson Beecroft	1993-96	1,249
6.	Sarah Wroblecky	2010-13	1,238
7.	Sarah Bullock	2009-12	1,210
8.	Rachel Shanks	2004-07	1,185
9.	Bella Rosenthal	2018-Pr.	1,172

DIGS PER SET (MIN. 500 DIGS)

	PLAYER	YEARS	AVG.
1.	Jesse Earl	2015-17	4.79
2.	Liz Crouch	2007-10	4.00
3.	Sarah Wroblecky	2010-13	3.65
4.	Bella Rosenthal	2018-Pr.	3.61
5.	Gretchen Thompson	1986-89	3.26

FEEL THE RATH

» Behind one of the program's best offensive performances in almost two decades, junior outside hitter Rebekah Rath was selected as Southeastern Conference Co-Offensive Player of the Week, sharing the honor with LSU's Kylie Deberg.

» The recognition was the second for Rath this season. Rath is the first Tiger in program history to be named SEC Offensive Player of the Week twice in the same season. The SEC began distributing the award in 2004.

» In an epic performance in game one against Arkansas (10/9), Rath was virtually unstoppable on offense with 29 total kills. Rath attacked on a .240 hit percentage, committing just 11 errors in her 75 swings.

» Rath's 29 kills were the second most recorded by a Tiger during the rally-scoring era. Her 29 kills were the most totaled in a single match by a Tiger since Ashlee Johns' single-match record of 30, which was totaled in a five-set contest at Arkansas on Oct. 8, 2004. Her 29 kills are the most recorded in a four-set match by any SEC student-athlete this season.

» Rath currently leads the SEC in attacks per set (13.38), kills per set (4.30), points (472.0), points per set (5.02), total attacks (1,258) and total kills (404), while ranking in the top 40 nationally in all six categories.

» The junior as recorded at least 10 kills in 21 of Auburn's 25 matches. In Auburn's five-set thriller versus Santa Clara, Rath led the team with 24 kills to become the first Tiger to record at least 20 kills in a match since Tatum Shipes in 2018. Rath also chipped in 24 kills in Auburn's five-set contest at Alabama State on Sept. 26 before shattering the mark at Arkansas.

» Rath's was named SEC Offensive Player of the Week on Sept. 7. The Altamonte Springs, Fla., native is the first Auburn Tiger to be named SEC Offensive Player of the Week since Brenna McIlroy won the award on Oct. 30, 2017.

» Her efforts have also won her all-tournament team honors at both the War Eagle

Invitational and the Auburn Invitational.

» Rath's 4.30 kills per set average is currently the highest by a Tiger in single-season history (rally scoring era). She added a second single-season record in the series finale at Texas A&M (11/5), breaking the record for attacks. Zeroing in on Auburn's single-season kill performances in the rally-scoring era, Rath need seven kills over the remaining three matches of the season to break the record.

KILLS

	PLAYER	YEAR	KILLS
1.	Jessica Glover	2008	410
2.	Rebekah Rath	2021	404

KILLS PER SET (MIN. 100 KILLS)

	PLAYER	YEAR	AVG.
1.	Rebekah Rath	2021	4.30
2.	Sarah Bullock	2012	3.50
3.	Jessica Glover	2008	3.45

ATTACKS

	PLAYER	YEAR	ATTACKS
1.	Rebekah Rath	2021	1,258
2.	Brenna McIlroy	2016	1,113

AUBURN PICKED 13th IN PRESEASON POLL

» Auburn was selected to finish 13th in the Southeastern Conference in the annual preseason coaches' poll. The Tigers earned 12 points from the league's coaches.

» Reigning national champion Kentucky (139 pts) edged out Florida (138 pts) by one point as the favorite to win the SEC Championship. Kentucky secured seven first-place votes. Florida finished with six.

» LSU was tabbed to finished third, while Tennessee and Arkansas rounded out the top five.

TIGER TRACKS

» Air Green! Val Green set Takawanda High School's high jump record. She's also a second generation collegiate volleyball athlete. Her mother, Paula, played at Miami-Ohio.

» Tatum Shipes holds a wealth of athletic talent in her family's history. Her mother, Laurel, played basketball at Kentucky. Her father lettered in basketball at The Master's University. Her brother, T.J., was a member of Georgia State's basketball team. Her grandfather, Don Hudgens, and great grandparents, Ira and Opal, all played collegiate basketball.

» Jackie Barrett is the daughter of Martin J. Barrett, a former football star at the University of Buffalo. Martin was a two-time AP All-American and set 14 career UB records as a quarterback. He was inducted into Buffalo's Hall of Fame in 1989.

» Full Circle Moment: Liz Reich was originally recruited to Portland and competed her freshman season under Brent Crouch.

» Audrey Douglas is fluent in American Sign Language.

» Jordan Sinness is not the first member of her family to play collegiate sports in the state of Alabama. Her older sister, Jade, plays softball at Troy University.

» Associate head coach Alex Dunphy is the daughter of Volleyball Hall of Famer and American Volleyball Coaches Association Hall of Famer, Marv Dunphy. Dunphy has led Pepperdine to five NCAA Men's Division I Championships. Marv was an assistant coach for Team USA Women's Volleyball at the 2020 Tokyo Olympics, helping the squad to a gold medal.

THE LAST TIME AUBURN...

Won in three sets _____ Oct. 21, 2021 at Georgia (25-21, 25-19, 25-20)
Won in four sets _____ Sept. 17, 2021 vs. Nicholls (25-8, 25-15, 26-28, 25-15)
Won in five sets _____ Nov. 5, 2021 at Texas A&M (25-15, 25-22, 19-25, 20-25, 15-12)
Lost in three sets _____ Nov. 17, 2021 at #20 Florida (11-25, 15-25, 19-25)
Lost in four sets _____ Oct. 9, 2021 at Arkansas (27-25, 18-25, 23-25, 22-25)
Lost in five sets _____ Nov. 4, 2021 at Texas A&M (29-27, 17-25, 25-20, 14-25, 12-15)
 Lost first set in a win _____ Sept. 8, 2019 vs. George Washington (21-25, 25-13, 25-22, 25-13)
Won first set in a loss _____ Nov. 4, 2021 at Texas A&M (29-27, 17-25, 25-20, 14-25, 12-15)
 Lost first two sets in a win _____ Sept. 11, 2018 at Kennesaw State (23-25, 20-25, 28-26, 26-24, 15-9)
Won first two sets in a loss _____ Oct. 10, 2021 at Arkansas (25-20, 25-23, 15-25, 17-25, 7-15)
 Beat a ranked opponent _____ Sept. 2, 2017 vs. #16 North Carolina (25-23, 25-22, 25-27, 25-21)
Hit .300-.399 in a match _____ Sept. 18, 2021 vs. Belmont (.345)
Hit .400-.499 in a match _____ Aug. 28, 2021 vs. Jackson State (.457)
 Hit .500 or better in a match _____ Oct. 18, 1998 at Ole Miss (.514)
Held opponent to .000-.100 in a match _____ Oct. 16, 2021 vs. Missouri (.097)
Held opponent to a negative hitting percentage _____ Sept. 18, 2014 vs. Belmont (-.093)
 Had 70-79 kills in a match _____ Oct. 26, 2018 vs. Ole Miss (77)
 Had 80+ kills in a match _____ Sept. 17, 2006 at Georgia (84)
Had 80-99 digs in a match _____ Nov. 5, 2021 at Texas A&M (97)
Had 100+ digs in a match _____ Sept. 17, 2021 vs. Nicholls (105)
Had 15+ blocks in a match _____ Oct. 10, 2021 at Arkansas (17.0)
Had 10+ service aces in a match _____ Nov. 5, 2021 at Texas A&M (11)
Had a player(s) with 20-24 kills in a match _____ Nov. 4, 2021, Rebekah Rath at Texas A&M (22)
Had a player(s) with 25-29 kills in a match _____ Oct. 9, 2021, Rebekah Rath at Arkansas (29)
 Had a player(s) with 30+ kills in a match _____ Oct. 8, 2004, Ashlee Johns vs. Arkansas (30)
Had a player(s) with 10+ blocks in a match _____ Oct. 9, 2021, Tatum Shipes at Arkansas (10.0)
Had a player(s) with 25-29 digs in a match _____ Oct. 3, 2021, Bella Rosenthal vs. Alabama (21)
Had a player(s) with 30+ digs in a match _____ Oct. 17, 2021, Bella Rosenthal vs. Missouri(33)
 Had a player(s) with 50+ assists in a match _____ Aug. 31, 2019, Marissa Hines (50)
 Had a player(s) with 60+ assists in a match _____ Oct. 28, 2018, Mica Allison vs. Ole Miss (61)
Had a player(s) with 5+ aces in a match _____ Nov. 5, 2021, Rebekah Rath at Texas A&M (5)

AUBURN DOUBLE-DOUBLES IN 2021

PLAYER	OPPONENT (SETS)	DATE	STATS
Jackie Barrett (15)	vs. Tennessee Tech (3)	August 27	25 assists, 12 digs
	vs. Santa Clara (5)	September 12	44 assists, 11 digs
	vs. Florida A&M (5)	September 17	48 assists, 15 digs
	vs. Nicholls (4)	September 17	40 assists, 28 digs
	vs. Belmont (3)	September 18	24 assists, 19 digs
	vs. Ole Miss (4)	September 22	34 assists, 12 digs
	at #20 Tennessee (3)	September 29	18 assists, 12 digs
	vs. Alabama (5)	October 2	43 assists, 14 digs
	vs. Alabama (3)	October 3	34 assists, 11 digs
	at Arkansas (4)	October 9	36 assists, 13 digs
	at Arkansas (5)	October 10	36 assists, 16 digs
	at Georgia (3)	October 21	27 assists, 17 digs
	vs. LSU (3)	October 29	22 assists, 13 digs
	at Texas A&M (5)	November 4	38 assists, 13 digs
at Texas A&M (5)	November 5	43 assists, 16 digs	
Rebekah Rath (8)	vs. Cal State Fullerton (3)	September 2	16 kills, 10 digs
	vs. Santa Clara (5)	September 12	24 kills, 10 digs
	at Alabama State (5)	September 26	24 kills, 13 digs
	vs. Alabama (5)	October 2	22 kills, 11 digs
	vs. Alabama (3)	October 3	16 kills, 11 digs
	at Arkansas (5)	October 10	20 kills, 10 digs
Jordan Sinness (1)	vs. Missouri (5)	October 20	35 assists, 14 digs

AUBURN'S 2021 RECORD WHEN...

OVERALL	13-12
SEC	5-10
NON-CONFERENCE	10-2
RANKED OPPONENTS	0-2
HOME	11-5
AWAY	2-7
NEUTRAL	0-0
BY SETS	
THREE SETS	9-5
FOUR SETS	1-2
FIVE SETS	3-6
WON FIRST SET	13-5
LOST FIRST SET	0-7
WON SECOND SET	12-3
LOST SECOND SET	1-9
WON FIRST TWO SETS	12-1
LOST FIRST TWO SETS	0-4
SITUATIONAL	
MORE KILLS THAN OPPONENT	9-2
FEWER KILLS THAN OPPONENT	4-10
KILLS ARE TIED	0-0
MORE DIGS THAN OPPONENT	8-1
FEWER DIGS THAN OPPONENT	4-11
DIGS ARE TIED	1-0
MORE ACES THAN OPPONENT	9-2
FEWER ACES THAN OPPONENT	3-10
ACES ARE TIED	1-0
HIGHER HITTING PERCENTAGE THAN OPPONENT	13-2
LOWER HITTING PERCENTAGE THAN OPPONENT	0-10
HITTING PERCENTAGE TIED	0-0
HITTING PERCENTAGE	
.400 OR ABOVE	1-0
.300-.399	2-0
.200-.299	7-4
.100-.199	3-6
.000-.099	0-2
NEGATIVE	0-0
OPPONENTS' HITTING PERCENTAGE	
.400 OR ABOVE	0-0
.300-.399	0-1
.200-.299	1-9
.100-.199	3-2
.000-.099	8-0
NEGATIVE	1-0
BY DAY	
MONDAY	0-0
TUESDAY	0-0
WEDNESDAY	0-4
THURSDAY	3-1
FRIDAY	4-3
SATURDAY	4-1
SUNDAY	2-3
DAY MATCHES (FIRST SERVE BEFORE 6 P.M.)	5-5
NIGHT MATCHES (FIRST SERVE AFTER 6 P.M.)	8-7
BY MONTH	
AUGUST	2-0
SEPTEMBER	6-4
OCTOBER	4-5
NOVEMBER	1-3
JERSEY COLOR	
NAVY	3-4
NAVY w/ORANGE SLEEVE	2-2
ORANGE	4-6
ORANGE w/NAVY SLEEVE	4-0
PINK	0-0

2021 AUBURN MATCH-BY-MATCH STARTERS

DATE	OPPONENT	RESULT	OUTSIDE	MIDDLE	RIGHT SIDE	OUTSIDE/DS	MIDDLE	LIBERO	SETTER
8/28	TENNESSEE TECH	W, 3-0	Rath	Shipes	Reich	Lanham (DS)	Yavuz	Rosenthal	Barrett
8/28	JACKSON STATE	W, 3-0	Rath	Shipes	Reich	Green (OH)	Yavuz	Rosenthal	Barrett
9/2	CAL STATE FULLERTON	W, 3-0	Rath	Shipes	Reich	Green (OH)	Yavuz	Rosenthal	Barrett
9/3	SOUTHEASTERN LOUISIANA	W, 3-0	Rath	Shipes	Reich	Green (OH)	Yavuz	Rosenthal	Barrett
9/9	NORTH ALABAMA	W, 3-0	Rath	Shipes	Reich	Green (OH)	Yavuz	Rosenthal	Barrett
9/12	SANTA CLARA	W, 3-2	Rath	Shipes	Reich	Green (OH)	Yavuz	Rosenthal	Barrett
9/17	FLORIDA A&M	L, 2-3	Rath	Shipes	Reich	Green (OH)	Yavuz	Rosenthal	Barrett
9/17	NICHOLLS	W, 3-1	Rath	Shipes	Reich	Green (OH)	Yavuz	Rosenthal	Barrett
9/18	BELMONT	W, 3-0	Rath	Shipes	Reich	Green (OH)	Yavuz	Rosenthal	Barrett
9/22	OLE MISS	L, 1-3	Rath	Shipes	Reich	Green (OH)	Yavuz	Rosenthal	Barrett
9/26	at Alabama State	L, 2-3	Rath	Shipes	Reich	Lanham (DS)	Yavuz	Rosenthal	Barrett
9/29	at Tennessee	L, 0-3	Rath	Shipes	Reich	Lanham (DS)	Yavuz	Rosenthal	Barrett
10/2	ALABAMA	W, 3-2	Rath	Shipes	Reich	Lanham (DS)	Yavuz	Rosenthal	Barrett
10/3	ALABAMA	W, 3-0	Rath	Shipes	Reich	Lanham (DS)	Yavuz	Rosenthal	Barrett
10/9	at Arkansas	L, 1-3	Rath	Shipes	Reich	Lanham (DS)	Yavuz	Rosenthal	Barrett
10/10	at Arkansas	L, 2-3	Rath	Shipes	Reich	Lanham (DS)	Yavuz	Rosenthal	Barrett
10/16	MISSOURI	W, 3-0	Rath	Shipes	Reich	Lanham (DS)	Yavuz	Rosenthal	Barrett
10/17	MISSOURI	L, 2-3	Rath	Shipes	Reich	Lanham (DS)	Yavuz	Rosenthal	Barrett
10/22	at Georgia	W, 3-0	Rath	Shipes	Reich	Lanham (DS)	Yavuz	Rosenthal	Barrett
10/23	at Georgia	L, 0-3	Rath	Shipes	Reich	Lanham (DS)	Yavuz	Rosenthal	Barrett
10/29	LSU	L, 0-3	Rath	Shipes	Reich	Lanham (DS)	Yavuz	Rosenthal	Barrett
11/4	at Texas A&M	L, 2-3	Rath	Shipes	Reich	Lanham (DS)	Yavuz	Rosenthal	Barrett
11/5	at Texas A&M	W, 3-2	Rath	Shipes	Reich	Lanham (DS)	Yavuz	Rosenthal	Barrett
11/10	SOUTH CAROLINA	L, 0-3	Rath	Shipes	Reich	Lanham (DS)	Yavuz	Rosenthal	Barrett
11/17	at Florida	L, 0-3	Rath	Shipes	Reich	Lanham (DS)	Yavuz	Rosenthal	Barrett
11/20	KENTUCKY								
11/21	KENTUCKY								
11/26	at Mississippi State								

2021 AUBURN MATCH-BY-MATCH LEADERS

DATE	OPPONENT	RESULT	KILLS	ASSISTS	ACES	DIGS	BLOCKS	HIT PCT. (MIN 10 ATT.)
8/28	TENNESSEE TECH	W, 3-0	Rath (13)	Barrett (25)	Barrett/Rath/Curtis (1)	Rosenthal (17)	Shipes (7)	Shipes (.462)
8/28	JACKSON STATE	W, 3-0	Rath (16)	Barrett (27)	Barrett/Rath (2)	Rosenthal (14)	Yavuz (8)	Reich (.500)
9/2	CAL STATE FULLERTON	W, 3-0	Rath (16)	Barrett/Sinness (16)	Rath (1)	Rosenthal (17)	Shipes (3)	Reich (.409)
9/3	SOUTHEASTERN LOUISIANA	W, 3-0	Rath (16)	Barrett (28)	Barrett (2)	Rosenthal (16)	Shipes (8)	Reich (.458)
9/9	NORTH ALABAMA	W, 3-0	Green (12)	Barrett (30)	Barrett/Green/Rath (1)	Rosenthal (25)	Barrett (4)	Green (.375)
9/12	SANTA CLARA	W, 3-2	Rath (24)	Barrett (44)	Barrett/Sinness (2)	Rosenthal (20)	Shipes/Barrett (5)	Shipes (.357)
9/17	FLORIDA A&M	L, 2-3	Green (19)	Barrett (48)	Barrett (2)	Rosenthal (20)	Douglas/Barrett/Yavuz (4)	Yavuz (.571)
9/17	NICHOLLS	W, 3-1	Rath (18)	Barrett (40)	Barrett (3)	Rosenthal (28)	Shipes (9)	Rath (.211)
9/18	BELMONT	W, 3-0	Rath (14)	Barrett (24)	Rosenthal (2)	Rosenthal/Barrett (19)	Shipes (7)	Rath (.429)
9/22	OLE MISS	L, 1-3	Rath (19)	Barrett (34)	Green (2)	Rosenthal (13)	Shipes/Yavuz (3)	Rath (.288)
9/26	at Alabama State	L, 2-3	Rath (24)	Barrett (36)	Rath/Sinness (2)	Rosenthal (27)	Rath (4)	Shipes (.400)
9/29	at Tennessee	L, 0-3	Rath (9)	Barrett (18)	Lanham (1)	Barrett (12)	Shipes (6)	Reich (.217)
10/2	ALABAMA	W, 3-2	Rath (22)	Barrett (43)	Curtis (1)	Rosenthal (24)	Shipes (12)	Shipes (.231)
10/3	ALABAMA	W, 3-0	Rath (16)	Barrett (34)	Curtis/Rath (2)	Rosenthal (21)	Shipes (7)	Reich (.435)
10/9	at Arkansas	L, 1-3	Rath (29)	Barrett (36)	Barrett/Rath (1)	Rosenthal (30)	Shipes (10)	Rath (.240)
10/10	at Arkansas	L, 2-3	Rath (20)	Barrett (36)	Shipes (2)	Rosenthal (20)	Shipes (9)	Green (.231)
10/16	MISSOURI	W, 3-0	Rath (17)	Barrett (25)	Four Athletes (1)	Rosenthal (19)	Rath (4)	Rath (.277)
10/17	MISSOURI	L, 2-3	Rath (22)	Sinness (35)	Rath/Lanham/Curtis (1)	Rosenthal (33)	Shipes (6)	Yavuz (.385)
10/22	at Georgia	W, 3-0	Green (16)	Barrett (27)	Yavuz (3)	Barrett (17)	Shipes (8)	Green (.469)
10/23	at Georgia	L, 0-3	Rath (16)	Barrett (30)	NONE	Rosenthal (12)	Shipes/Rath/Yavuz (3)	Reich (.409)
10/29	LSU	L, 0-3	Rath/Reich (8)	Barrett (22)	NONE	Barrett (13)	Yavuz (4)	Shipes (.364)
11/4	at Texas A&M	L, 2-3	Rath (22)	Barrett (38)	Rath (3)	Lanham (17)	Shipes/Yavuz (3)	Yavuz (.385)
11/5	at Texas A&M	W, 3-2	Rath (19)	Barrett (43)	Rath (5)	Rosenthal (17)	Yavuz (4)	Yavuz (.588)
11/10	SOUTH CAROLINA	L, 0-3	Rath (10)	Barrett/Sinness (12)	Yavuz/Curtis (1)	Rosenthal (13)	Shipes (4)	Green (.333)
11/17	at Florida	L, 0-3	Rath (10)	Barrett (16)	Yavuz (1)	Rosenthal (9)	Shipes (3)	Rath (.119)
11/20	KENTUCKY							
11/21	KENTUCKY							
11/26	at Mississippi State							

2021 OVERALL STATISTICS

Overall: 13-12 • SEC: 5-10 • Home: 11-5 • Away: 2-7 • Neutral: 0-0

#	PLAYER	SP	K	K/S	E	TA	Pct	A	A/S	SA	SE	SA/S	RE	DIG	DIG/S	BS	BA	BLK	BLK/S	BE	BHE	PTS	PT/S
7	Rath, Rebekah	94	404	4.30	157	1258	.196	13	0.14	25	63	0.27	27	182	1.94	12	62	74.0	0.79	3	0	472.0	5.02
8	Reich, Liz	94	254	2.70	78	674	.261	3	0.03	0	1	0.00	2	53	0.56	0	50	50.0	0.53	3	0	279.0	2.97
16	Green, Val	94	206	2.19	85	707	.171	5	0.05	6	8	0.06	6	72	0.77	2	31	33.0	0.35	1	0	229.5	2.44
21	Shipes, Tatum	91	106	1.16	38	271	.251	7	0.08	4	7	0.04	0	42	0.46	20	113	133.0	1.46	5	3	186.5	2.05
19	Yavuz, Elif	94	69	0.73	16	148	.358	3	0.03	8	15	0.09	2	36	0.38	5	76	81.0	0.86	7	1	120.0	1.28
10	Barrett, Jackie	91	48	0.53	14	169	.201	744	8.18	22	22	0.24	0	282	3.10	2	57	59.0	0.65	8	1	100.5	1.10
4	Lanham, Fallon	94	6	0.06	8	80	-.025	14	0.15	5	15	0.05	19	183	1.95	0	1	1.0	0.01	0	0	11.5	0.12
5	Douglas, Audrey	5	4	0.80	3	12	.083	0	0.00	0	0	0.00	0	0	0.00	0	4	4.0	0.80	0	0	6.0	1.20
11	Sinness, Jordan	50	2	0.04	1	6	.167	64	1.28	6	7	0.12	0	33	0.66	0	3	3.0	0.06	0	2	9.5	0.19
6	Rosenthal, Bella	94	1	0.01	0	16	.062	113	1.20	11	20	0.12	24	456	4.85	0	0	0.0	0.00	0	0	12.0	0.13
15	Curtis, Kate	94	1	0.01	0	5	.200	24	0.26	11	20	0.12	17	185	1.97	0	0	0.0	0.00	0	0	12.0	0.13
17	Tanton, Cassidy	1	0	0.00	0	0	.000	0	0.00	0	0	0.00	0	0	0.00	0	0	0.0	0.00	0	0	0.0	0.00
TEAM														28									
AUBURN		94	1101	11.71	400	3346	.210	990	10.53	98	178	1.04	125	1524	16.21	41	397	239.5	2.55	27	7	1438.5	15.30
OPONENTS		94	1169	12.44	605	3592	.157	1080	11.49	125	180	1.33	98	1632	17.36	44	189	138.5	1.47	41	17	1432.5	15.23

2021 CONFERENCE ONLY STATISTICS

SEC: 5-10 • Home: 3-4 • Away: 2-6

#	PLAYER	SP	K	K/S	E	TA	Pct	A	A/S	SA	SE	SA/S	RE	DIG	DIG/S	BS	BA	BLK	BLK/S	BE	BHE	PTS	PT/S
7	Rath, Rebekah	57	244	4.28	109	836	.161	8	0.14	14	40	0.25	17	116	2.04	5	39	44.0	0.77	2	0	282.5	4.96
8	Reich, Liz	57	132	2.32	51	392	.207	0	0.00	0	0	0.00	2	36	0.63	0	28	28.0	0.49	3	0	146.0	2.56
16	Green, Val	57	123	2.16	55	420	.162	4	0.07	2	1	0.04	4	39	0.68	0	21	21.0	0.37	0	0	135.5	2.38
21	Shipes, Tatum	57	56	0.98	23	157	.210	4	0.07	3	4	0.05	0	30	0.53	12	71	83.0	1.46	3	2	106.5	1.87
19	Yavuz, Elif	57	41	0.72	11	96	.312	3	0.05	8	15	0.14	2	29	0.51	3	47	50.0	0.88	4	1	75.5	1.32
10	Barrett, Jackie	54	26	0.48	9	101	.168	426	7.89	8	15	0.15	0	166	3.07	2	34	36.0	0.67	4	0	53.0	0.98
4	Lanham, Fallon	57	4	0.07	5	48	-.021	8	0.14	5	14	0.09	13	112	1.96	0	1	1.0	0.02	0	0	9.5	0.17
15	Curtis, Kate	57	1	0.02	0	2	.500	17	0.30	7	16	0.12	11	124	2.18	0	0	0.0	0.00	0	0	8.0	0.14
6	Rosenthal, Bella	57	1	0.02	0	6	.167	65	1.14	5	11	0.09	17	250	4.39	0	0	0.0	0.00	0	0	6.0	0.11
11	Sinness, Jordan	23	1	0.04	0	4	.250	47	2.04	1	4	0.04	0	21	0.91	0	2	2.0	0.09	0	1	3.0	0.13
TEAM														21									
AUBURN		57	629	11.04	263	2062	.177	582	10.21	53	120	0.93	87	923	16.19	22	243	143.5	2.52	16	4	825.5	14.48
OPONENTS		57	765	13.42	348	2209	.189	710	12.46	87	102	1.53	53	1039	18.23	24	145	96.5	1.69	23	11	948.5	16.62

2021 STATISTICAL LEADERS

KILLS (PER SET)

Rebekah Rath	404 (4.30)
Liz Reich	254 (2.70)
Val Green	206 (2.19)
Tatum Shipses	106 (1.16)
Elif Yavuz	69 (0.73)

TOTAL ATTACKS

Rebekah Rath	1258
Val Green	707
Liz Reich	674
Tatum Shipses	272
Jackie Barrett	169

HITTING PERCENTAGE (MIN 275 ATT.)

Liz Reich	.261
Rebekah Rath	.196
Val Green	.171

ASSISTS (PER SET)

Jackie Barrett	744 (8.18)
Bella Rosenthal	113 (1.20)
Jordan Sinness	64 (1.28)
Kate Curtis	24 (0.26)
Fallon Lanham	14 (0.15)

ACES (PER SET)

Rebekah Rath	25 (0.27)
Jackie Barrett	22 (0.24)
Bella Rosenthal	11 (0.12)
Kate Curtis	11 (0.12)
Elif Yavuz	8 (0.09)

DIGS (PER SET)

Bella Rosenthal	456 (4.85)
Jackie Barrett	282 (3.10)
Kate Curtis	185 (1.97)
Fallon Lanham	183 (1.95)
Rebekah Rath	182 (1.94)

BLOCK | SOLOS

Tatum Shipses	20
Rebekah Rath	12
Elif Yavuz	5
Val Green	2
Jackie Barrett	2

BLOCK | ASSISTS

Tatum Shipses	113
Elif Yavuz	76
Rebekah Rath	62
Jackie Barrett	57
Liz Reich	50

TOTAL BLOCKS (PER SET)

Tatum Shipses	133 (1.46)
Elif Yavuz	81 (0.86)
Rebekah Rath	74 (0.79)
Jackie Barrett	59 (0.65)
Liz Reich	50 (0.53)

AUBURN VOLLEYBALL SINGLE-SEASON INDIVIDUAL RECORDS (25-POINT RALLY SCORING ERA)

OFFENSIVE RECORDS

KILLS

	PLAYER	YEAR	KILLS
1.	Jessica Glover	2008	410
2.	Rebekah Rath	2021	404
3.	Sarah Bullock	2012	371
4.	Sarah Bullock	2010	354
5.	Brenna McLroy	2016	351
6.	Kelly Fidero	2011	341
7.	Courtney Crable	2015	333
	Brenna McLroy	2015	333
9.	Katherine Culwell	2012	330
10.	Katherine Culwell	2013	326

KILLS PER SET (MIN. 100 KILLS)

	PLAYER	YEAR	AVG.
1.	Rebekah Rath	2021	4.30
2.	Sarah Bullock	2012	3.50
3.	Jessica Glover	2008	3.45
4.	Kelly Fidero	2011	3.22
5.	Brenna McLroy	2016	3.13
	Katherine Culwell	2013	3.13
7.	Katherine Culwell	2012	3.03
	Sarah Bullock	2010	3.03
9.	Brenna McLroy	2018	3.00
10.	Brenna McLroy	2017	2.86
12.	Courtney Crable	2015	2.82
	Taylor Rowland	2018	2.82

ATTACK PERCENTAGE (MIN. 250 ATT.)

	PLAYER	YEAR	PCT.
1.	Shaina White	2017	.367
2.	Camila Jersonsky	2012	.356
	Camila Jersonsky	2011	.356
4.	Camila Jersonsky	2010	.354
5.	Camila Jersonsky	2013	.351
6.	Alyssa Davis	2009	.316
7.	Morgan Johns	2010	.305
8.	Stephanie Campbell	2013	.281
9.	Stephanie Campbell	2015	.280
10.	Stephanie Campbell	2014	.279

ATTACKS

	PLAYER	YEAR	ATTACKS
1.	Rebekah Rath	2021	1,258
2.	Brenna McLroy	2016	1,113
3.	Sarah Bullock	2012	1,090
4.	Courtney Crable	2014	1,062
5.	Brenna McLroy	2015	1,043
6.	Katherine Culwell	2012	1,033
7.	Sarah Bullock	2010	993
8.	Jessica Glover	2008	988
9.	Katherine Culwell	2013	981
10.	Brenna McLroy	2017	938

ASSISTS

	PLAYER	YEAR	ASSISTS
1.	Alexa Filley	2016	1,227
2.	Alexa Filley	2015	1,226
3.	Alexa Filley	2014	1,175
4.	Alexa Filley	2017	1,093
5.	Mica Allison	2018	1,055
6.	Sara Shanks	2008	995
7.	Chelsea Wintzinger	2011	791
8.	Jackie Barrett	2021	744
9.	Christina Solverson	2010	740

10.	Chelsea Wintzinger	2012	680
-----	--------------------	------	-----

ASSISTS PER SET (MIN. 200 ASSISTS)

	PLAYER	YEAR	AVG.
1.	Alexa Filley	2017	10.72
2.	Alexa Filley	2014	10.22
3.	Alexa Filley	2015	10.13
4.	Mica Allison	2018	10.05
5.	Alexa Filley	2016	9.98
7.	Sara Shanks	2008	8.43
8.	Jackie Barrett	2021	8.18
9.	Marissa Hines	2019	7.51
10.	Chelsea Wintzinger	2011	7.39
11.	Morgan Kull	2019	6.94
12.	Chelsea Wintzinger	2012	6.24

ACES

	PLAYER	YEAR	ACES
1.	Brenna McLroy	2018	48
2.	Jesse Earl	2016	46
3.	Jesse Earl	2017	42
4.	Jesse Earl	2015	39
5.	Brenna McLroy	2016	36
6.	Chelsea Wintzinger	2013	35
7.	Courtney Crable	2014	33
8.	Brenna McLroy	2015	32
9.	Sara Shanks	2008	30
	Alexa Filley	2015	30

ACES PER SET (MIN. 15 ACES)

	PLAYER	YEAR	AVG.
1.	Brenna McLroy	2018	0.46
2.	Jesse Earl	2017	0.41
3.	Jesse Earl	2016	0.37
4.	Chelsea Wintzinger	2013	0.34
5.	Jesse Earl	2015	0.32
	Brenna McLroy	2016	0.32
7.	Rebekah Rath	2021	0.27
	Courtney Crable	2014	0.27
9.	Brenna McLroy	2015	0.26
10.	Alexa Filley	2015	0.25
	Sara Shanks	2008	0.25
	Kelly Stewart	2016	0.25

DEFENSIVE RECORDS

DIGS

	PLAYER	YEAR	DIGS
1.	Jesse Earl	2016	612
2.	Jesse Earl	2017	529
3.	Jesse Earl	2015	516
4.	Sarah Wroblicky	2013	481
5.	Liz Crouch	2010	469
6.	Bella Rosenthal	2021	456
7.	Liz Crouch	2009	453
8.	Alyssa Ivey	2014	434
9.	Sarah Wroblicky	2012	431
10.	Liz Crouch	2008	389

DIGS PER SET (MIN. 100 DIGS)

	PLAYER	YEAR	AVG.
1.	Jesse Earl	2017	5.19
2.	Jesse Earl	2016	4.98
3.	Bella Rosenthal	2021	4.85
4.	Sarah Wroblicky	2013	4.62
5.	Jesse Earl	2015	4.26
6.	Liz Crouch	2009	4.08

7.	Alyssa Ivey	2014	4.02
8.	Liz Crouch	2010	4.01
9.	Sarah Wroblicky	2012	3.99
10.	Liz Crouch	2008	3.70
11.	Sarah Bullock	2012	3.31

BLOCKS - SOLO

	PLAYER	YEAR	BLOCKS
1.	Katherine Culwell	2012	25
2.	Tatum Shipes	2021	20
3.	Sarah Bullock	2012	18
	Jessica Glover	2008	18
	Anna Stevenson	2018	18
6.	Kelly Fidero	2011	17
	Sarah Bullock	2011	17
8.	Katherine Culwell	2013	16
	Camila Jersonsky	2013	16
10.	Camila Jersonsky	2011	15
	Jaeden Brown	2019	15

BLOCKS - ASSISTS

	PLAYER	YEAR	BLOCKS
1.	Tatum Shipes	2021	113
2.	Camila Jersonsky	2012	108
3.	Lauren Mellor	2009	90
4.	Camila Jersonsky	2013	89
5.	Breanna Barksdale	2014	87
6.	Courtney McDonald	2012	84
7.	Breanna Barksdale	2016	83
8.	Breanna Barksdale	2015	82
9.	Elif Su Yavuz	2021	76
10.	Anna Stevenson	2018	73

TOTAL BLOCKS

	PLAYER	YEAR	BLOCKS
1.	Tatum Shipes	2021	133
2.	Camila Jersonsky	2012	119
3.	Camila Jersonsky	2013	105
4.	Breanna Barksdale	2014	101
5.	Lauren Mellor	2009	97
	Breanna Barksdale	2016	97
7.	Breanna Barksdale	2015	94
8.	Anna Stevenson	2018	91
9.	Courtney McDonald	2012	89
10.	Stephanie Campbell	2014	86

BLOCKS PER SET (MIN. 50 BLOCKS)

	PLAYER	YEAR	BLOCKS
1.	Tatum Shipes	2021	1.46
2.	Anna Stevenson	2018	1.15
3.	Camila Jersonsky	2012	1.09
4.	Camila Jersonsky	2013	1.01
5.	Chloe Rowand	2011	0.97
6.	Breanna Barksdale	2014	0.91
7.	Stephanie Campbell	2015	0.90
8.	Camila Jersonsky	2011	0.89
9.	Lauren Mellor	2009	0.88
10.	Elif Yavuz	2021	0.86
11.	Breanna Barksdale	2016	0.84
12.	Shaina White	2019	0.82
	Courtney McDonald	2012	0.82
	Lauren Mellor	2010	0.82

Active student-athletes are listed in **BOLD**.

AUBURN VOLLEYBALL CAREER RECORDS (SIDEOUT + RALLY ERA)

OFFENSIVE RECORDS

KILLS

	PLAYER	YEARS	KILLS
1.	Jaunelle Hamilton	1997-00	1,848
2.	Allyson Beecroft	1993-96	1,727
3.	Brooke McCarley	1997-00	1,704
4.	Gina Thomas	1988-92	1,467
5.	Rachel Shanks	2004-07	1,319
6.	Brenna McIlroy	2015-18	1,288
7.	Sarah Bullock	2009-12	1,272
8.	Bridgitte Sims	1989-91	1,149
9.	Jessica Glover	2005-08	1,137
10.	Rani Whitson	1993-96	1,102

KILLS PER SET (MIN. 500 KILLS)

	PLAYER	YEARS	AVG.
1.	Brooke McCarley	1997-00	4.40
2.	Jaunelle Hamilton	1997-00	4.23
3.	Allyson Beecroft	1993-96	4.00
4.	Ashlee Johns	2003-04	3.82
5.	Terri Duckworth	1987-88	3.63
6.	Jennifer Amobi	2003-05	3.57
7.	Rachel Shanks	2004-07	3.43
8.	Bridgitte Sims	1989-91	3.40
9.	Jessica Glover	2005-08	3.17
10.	Sarah Bullock	2009-12	2.93
	Brenna McIlroy	2015-18	2.93

ATTACK PERCENTAGE (MIN. 1,000 ATT.)

	PLAYER	YEARS	K	E	ATT. PCT.
1.	Camila Jersonsky	2010-13	894	237	1,853 .355
2.	Jaunelle Hamilton	1997-00	1,848	532	3,827 .344
3.	Brooke McCarley	1997-00	1,704	455	3,847 .325
4.	Terri Duckworth	1987-99	876	291	1,860 .315
5.	Shaina White	2017-19	512	121	1,267 .309
6.	Rani Whitson	1993-96	1,102	383	2,562 .281
7.	Julie Bosley	2003-06	558	178	1,359 .280
8.	Gina Thomas	1988-92	1,467	540	3,319 .279
9.	Stephanie Campbell	2013-16	673	205	1,669 .276
10.	Whitney Jacob	2004-07	1,093	428	2,522 .264

ATTACKS

	PLAYER	YEARS	ATTACKS
1.	Allyson Beecroft	1993-96	4,349
2.	Brenna McIlroy	2015-18	4,027
3.	Brooke McCarley	1997-00	3,847
4.	Jaunelle Hamilton	1997-00	3,827
5.	Sarah Bullock	2009-12	3,774
6.	Rachel Shanks	2004-07	3,703
7.	Gina Thomas	1988-92	3,319
8.	Katherine Culwell	2009-13	3,130
	Jessica Glover	2005-08	3,130
10.	Jenifer Kleyn	1988-91	3,107

ASSISTS

	PLAYER	YEARS	ASSISTS
1.	Piper Craig	1995-98	5,053
2.	Alexa Filley	2014-17	4,721
3.	Janel Newkirk	1989-92	4,071
4.	Mary Orndorff	1986-89	3,242
5.	Chelsea Wintzinger	2010-13	2,654

6.	Tama English	1991-94	2,535
7.	Joanna Pappas	2005-06	2,073

ASSISTS PER SET (MIN. 500 ASSISTS)

	PLAYER	YEARS	AVG.
1.	Piper Craig	1995-98	12.86
2.	Traci Price	1999-00	11.77
3.	Maira Mogallon	2003-04	11.38
4.	Chris Murphy	1993-96	11.35
5.	Joanna Pappas	2005-06	11.15
6.	Alexa Filley	2014-17	10.24
7.	Mica Allison	2018	10.05

ACES

	PLAYER	YEARS	ACES
1.	Jenifer Kleyn	1988-91	338
2.	Lori Russell	1989-92	201
3.	Gretchen Thompson	1986-89	164
4.	Tory Gutierrez	1989-92	160
5.	Terri Duckworth	1987-88	158
6.	Jaunelle Hamilton	1997-00	148
7.	Allyson Beecroft	1993-96	138
8.	Brenna McIlroy	2015-18	137
9.	Whitney Jacob	2004-07	134
10.	Janel Newkirk	1989-92	129

ACES PER SET (MIN. 40 ACES)

	PLAYER	YEARS	AVG.
1.	Jenifer Kleyn	1988-91	0.71
2.	Terri Duckworth	1987-88	0.66
3.	Lori Russell	1989-92	0.46
4.	Jenny Fisler	1987-88	0.40
5.	Bridgitte Sims	1989-91	0.37
	Jesse Earl	2015-17	0.37
7.	Gretchen Thompson	1986-89	0.36
8.	Maira Mogallon	2003-04	0.35
	Tory Gutierrez	1989-92	0.35
10.	Jaunelle Hamilton	1997-00	0.34

DEFENSIVE RECORDS

DIGS

	PLAYER	YEARS	DIGS
1.	Liz Crouch	2007-10	1,703
2.	Jesse Earl	2015-17	1,657
3.	Gretchen Thompson	1986-89	1,495
4.	Alexa Filley	2014-17	1,315
5.	Allyson Beecroft	1993-96	1,249
6.	Sarah Wroblicky	2010-13	1,238
7.	Sarah Bullock	2009-12	1,210
8.	Rachel Shanks	2004-07	1,185
9.	Bella Rosenthal	2018-Pr.	1,172
10.	Brenna McIlroy	2015-18	1,078

DIGS PER SET (MIN. 500 DIGS)

	PLAYER	YEARS	AVG.
1.	Jesse Earl	2015-17	4.79
2.	Liz Crouch	2007-10	4.00
3.	Sarah Wroblicky	2010-13	3.65
4.	Bella Rosenthal	2018-Pr.	3.61
5.	Gretchen Thompson	1986-89	3.26
6.	Rachel Shanks	2004-07	3.08

7.	Allyson Beecroft	1993-96	2.89
8.	Alexa Filley	2014-17	2.85
9.	Bailey Veit	2002-05	2.80
	Emily Suter	1995-98	2.80

BLOCKS - SOLO

	PLAYER	YEARS	BLOCKS
1.	Gina Thomas	1988-92	159
2.	Tory Gutierrez	1989-92	157
3.	Jaunelle Hamilton	1997-00	106
4.	Julie Bosler	2003-06	98
5.	Rani Whitson	1993-96	61
6.	Katherine Culwell	2009-13	59
7.	Mary Olks	1986-89	58
8.	Whitney Jacob	2004-07	56
9.	Sarah Bullock	2009-12	54
10.	Camila Jersonsky	2010-13	51

BLOCKS - ASSISTS

	PLAYER	YEARS	BLOCKS
1.	Jaunelle Hamilton	1997-00	465
2.	Rani Whitson	1993-96	426
3.	Gina Thomas	1988-92	360
4.	Whitney Jacob	2004-07	351
5.	Tory Gutierrez	1989-92	318
6.	Camila Jersonsky	2010-13	317
7.	Julie Bosley	2003-06	265
8.	La'Toi Finley	1994-97	261
	Krista Singleton	1994-97	261
10.	Breanna Barksdale	2014-16	252

TOTAL BLOCKS

	PLAYER	YEARS	BLOCKS
1.	Jaunelle Hamilton	1997-00	571
2.	Gina Thomas	1988-92	519
3.	Rani Whitson	1993-96	487
4.	Tory Gutierrez	1989-92	475
5.	Whitney Jacob	2004-07	407
6.	Camila Jersonsky	2010-13	368
7.	Julie Bosler	2003-06	363
8.	Breanna Barksdale	2014-16	292
9.	La'Toi Finley	1994-97	289
10.	Krista Singleton	1994-97	276

BLOCKS PER SET (MIN. 100 BLOCKS)

	PLAYER	YEARS	AVG.
1.	Jaunelle Hamilton	1997-00	1.31
2.	Rani Whitson	1993-96	1.16
3.	Julie Bosler	2003-06	1.06
4.	Tory Gutierrez	1989-92	1.03
5.	Gina Thomas	1988-92	0.98
6.	Whitney Jacob	2004-07	0.96
7.	Camila Jersonsky	2009-13	0.92
8.	Anna Stevenson	2017-18	0.90
	Heather Franey	1995-96,98	0.90
10.	La'Toi Finley	1994-97	0.88

Active student-athletes are listed in **BOLD**.



#4 FALLAN LANHAM

DEFENSIVE SPECIALIST/LIBERO | 5-8 | FRESHMAN
LOUISVILLE, KY. (MERCY ACADEMY)

LANHAM'S HIGHLIGHTS:

- Recorded double-digit digs in eight matches this season
- Earned first collegiate start in Auburn's season opener versus Tennessee Tech on August 27
- Returned to the service line at No. 20 Tennessee (9/29), recording her first collegiate ace
- Turned in her best offensive performance of the season versus Missouri (10/17) with a career high two kills and a service ace to tally 3.0 points
- Delivered a season high two aces in series opener at Georgia (10/21) before being credited with her first collegiate block in the finale against the Bulldogs (10/22)
- Shattered her career highs in both assists (3) and digs (17) at Texas A&M (11/4)

CATEGORY	CAREER HIGH	OPPONENT/DATE
Kills	2	vs. Missouri (9/12/21)
Attempts	8	at Arkansas (10/9/21)
Hitting Percentage (Min. 10 ATT.)		
Assists	3 (2x)	last, vs. South Carolina (11/10/21)
Digs	17	at Texas A&M (11/4/21)
Blocks	1	at Georgia (10/22/21)
Aces	2	at Georgia (10/21/21)
Points	3.0	last, vs. Missouri (10/17/21)

CATEGORY	SEASON HIGH	OPPONENT/DATE
Kills	2	vs. Missouri (9/12/21)
Attempts	8	at Arkansas (10/9/21)
Hitting Percentage (Min. 10 ATT.)		
Assists	3 (2x)	last, vs. South Carolina (11/10/21)
Digs	17	at Texas A&M (11/4/21)
Blocks	1	at Georgia (10/22/21)
Aces	2	at Georgia (10/21/21)
Points	3.0	last, vs. Missouri (10/17/21)

DATE	OPPONENT	SP	ATTACK			SET			SERVE			RECEIPT			BLOCKING			TEAM POINTS	HIT%	SCORE					
			K	E	TA	PCT.	A	TA	PCT.	SA	SE	TA	PCT.	RE	TA	PCT.	DIG				BS	BA	BE	TOTAL	BHE
August 27	TENNESSEE TECH	3	0	0	3	.000	0	2	.000	0	1	5	.800	0	9	1.000	4	0	0	0	0.0	0	0.0	.292	3-0
August 28	JACKSON STATE	3	0	0	0	.000	0	1	.000	0	0	0	.000	1	10	.900	4	0	0	0	0.0	0	0.0	.457	3-0
September 2	CAL STATE FULLERTON	3	0	0	2	.000	0	3	.000	0	0	0	.000	0	7	1.000	5	0	0	0	0.0	0	0.0	.221	3-0
September 3	SOUTHEASTERN LA.	3	0	0	1	.000	1	1	1.000	0	0	0	.000	0	7	1.000	10	0	0	0	0.0	0	0.0	.300	3-0
September 9	NORTH ALABAMA	3	0	1	2	-.500	0	0	.000	0	0	0	.000	1	13	.923	3	0	0	0	0.0	0	0.0	.265	3-0
September 12	SANTA CLARA	5	1	0	6	.167	2	7	.286	0	0	0	.000	1	20	.950	14	0	0	0	0.0	0	1.0	.260	3-2
September 17	FLORIDA A&M	5	0	1	5	-.200	1	4	.250	0	0	0	.000	1	31	.968	10	0	0	0	0.0	0	0.0	.245	2-3
September 17	NICHOLLS	4	0	0	6	.000	0	3	.000	0	0	0	.000	1	11	.909	14	0	0	0	0.0	0	0.0	.183	3-1
September 18	BELMONT	3	0	1	1	-1.000	1	1	1.000	0	0	0	.000	0	4	1.000	4	0	0	0	0.0	0	0.0	.345	3-0
September 22	OLE MISS	4	1	1	3	.000	0	3	.000	0	0	0	.000	0	14	1.000	9	0	0	0	0.0	0	1.0	.196	1-3
September 26	at Alabama State	5	1	0	6	.167	1	9	.111	0	0	0	.000	1	16	.938	3	0	0	0	0.0	0	1.0	.209	2-3
September 29	at Tennessee	3	0	1	2	-.500	0	2	.000	1	0	10	1.000	0	20	1.000	5	0	0	0	0.0	0	1.0	.076	0-3
October 2	ALABAMA	5	0	0	2	.000	0	0	.000	0	2	14	.857	0	15	1.000	6	0	0	0	0.0	0	0.0	.183	3-2
October 3	ALABAMA	3	0	0	6	.000	1	3	.333	0	0	14	1.000	0	16	1.000	10	0	0	0	0.0	0	0.0	.248	3-0
October 9	at Arkansas	4	0	1	8	-.125	0	3	.000	0	0	16	1.000	1	13	.923	7	0	0	0	0.0	0	0.0	.158	1-3
October 10	at Arkansas	5	0	2	7	-.286	0	3	.000	0	0	14	1.000	2	21	.905	10	0	0	0	0.0	0	0.0	.144	2-3
October 16	MISSOURI	3	0	0	1	.000	1	3	.333	0	0	18	1.000	0	10	1.000	6	0	0	0	0.0	0	0.0	.232	3-0
October 17	MISSOURI	5	2	0	7	.286	0	4	.000	1	1	18	.944	0	17	1.000	9	0	0	0	0.0	0	3.0	.235	2-3
October 21	at Georgia	3	0	0	1	.000	0	2	.000	2	2	12	.833	1	6	.833	2	0	0	0	0.0	0	2.0	.241	3-0
October 22	at Georgia	3	0	0	0	.000	0	1	.000	0	2	11	.818	1	14	.929	4	0	1	0	1.0	0	0.5	.183	0-3
October 29	LSU	3	0	0	0	.000	0	5	.000	0	2	12	.833	3	16	.812	2	0	0	0	0.0	0	0.0	.121	0-3
November 4	at Texas A&M	5	0	0	4	.000	3	9	.333	0	1	16	.938	0	16	1.000	17	0	0	0	0.0	0	0.0	.132	2-3
November 5	at Texas A&M	5	0	0	1	.000	0	5	.000	1	2	20	.900	0	15	1.000	15	0	0	0	0.0	0	1.0	.186	3-2
November 10	SOUTH CAROLINA	3	1	0	3	.333	3	8	.375	0	1	9	.889	4	15	.733	8	0	0	0	0.0	0	1.0	.206	0-3
November 17	at Florida	3	0	0	3	.000	0	2	.000	0	1	6	.833	1	17	.941	2	0	0	0	0.0	0	0.0	.089	0-3
TOTALS		94	6	8	80	-.025	14	84	.167	5	15	195	.923	19	353	.946	183	0	1	0	1.0	0	11.5	.209	

SETS PLAYED: 94
 KILLS PER SET: 0.06
 ASSISTS PER SET: 0.15

SERVICE ACES PER SET: 0.05
 DIGS PER SET: 1.95
 BLOCKS PER SET: 0.01

POINTS PER SET: 0.12

LANHAM'S OVERALL CAREER STATISTICS

YEAR	SETS	MP	KILLS	K/S	E	TA	PCT.	AST	A/S	SA	SA/S	SE	DIGS	D/S	RE	BS	BA	TB	B/S	PTS	PT/S
2021	94	25	6	0.06	8	80	-.025	14	.15	5	.05	15	183	1.95	19	0	1	1	.01	11.5	0.12
TOTAL	94	25	6	0.06	8	80	-.025	14	.15	5	.05	15	183	1.95	19	0	1	1	.01	11.5	0.12

LANHAM'S SEC CAREER STATISTICS

YEAR	SETS	MP	KILLS	K/S	E	TA	PCT.	AST	A/S	SA	SA/S	SE	DIGS	D/S	RE	BS	BA	TB	B/S	PTS	PT/S
2021	57	15	4	0.07	5	48	-.021	8	.14	5	.09	14	112	1.96	13	0	1	1	.02	9.5	0.16
TOTAL	57	15	4	0.07	5	48	-.021	8	.14	5	.09	14	112	1.96	13	0	1	1	.02	9.5	0.16



#5 AUDREY DOUGLAS

OUTSIDE/OPPOSITE HITTER | 6-4 | SOPHOMORE
WINTER PARK, FLA. (HAGERTY)

DOUGLAS'S HIGHLIGHTS:

- Did not see action over the first three weeks of play due to a concussion
- Made her season debut versus Florida A&M (9/17), racking up four kills and adding a career high 4.0 blocks

CATEGORY	CAREER HIGH	OPPONENT/DATE
Kills	6	at #2 Kentucky (11/8/20)
Attempts	16	vs. #4 Florida (10/21/20)
Hitting Percentage (Min. 10 ATT.)	.545	at #2 Kentucky (11/8/20)
Assists	1	vs. #4 Florida (10/22/20)
Digs	1 (2x)	last, at #2 Kentucky (11/7/20)
Blocks	4.0	vs. Florida A&M (9/17/21)
Aces		
Points	6.5	at #2 Kentucky (11/8/20)

CATEGORY	SEASON HIGH	OPPONENT/DATE
Kills	4	vs. Florida A&M (9/17/21)
Attempts	12	vs. Florida A&M (9/17/21)
Hitting Percentage (Min. 10 ATT.)	.083	vs. Florida A&M (9/17/21)
Assists		
Digs		
Blocks	4.0	vs. Florida A&M (9/17/21)
Aces		
Points	6.0	vs. Florida A&M (9/17/21)

DATE	OPPONENT	SP	ATTACK				SET			SERVE				RECEIPT			BLOCKING				TEAM				
			K	E	TA	PCT	A	TA	PCT.	SA	SE	TA	PCT.	RE	TA	PCT.	DIG	BS	BA	BE	TOTAL	BHE	POINTS	HIT%	SCORE
September 17	FLORIDA A&M	4	4	3	12	.083	0	1	.000	0	0	0	.000	0	0	.000	0	0	4	0	4.0	0	6.0	.245	2-3
September 26	at Alabama State	1	0	0	0	.000	0	0	.000	0	0	0	.000	0	0	.000	0	0	0	0	0.0	0	0.0	.209	2-3
TOTALS		5	4	3	12	.083	0	1	.000	0	0	0	.000	0	0	.000	0	0	4	0	4.0	0	6.0	.209	

DOUGLAS' OVERALL CAREER STATISTICS

YEAR	SETS	MP	KILLS	K/S	E	TA	PCT.	AST	A/S	SA	SA/S	SE	DIGS	D/S	RE	BS	BA	TB	B/S	PTS	PT/S
2021	5	1	4	0.80	3	12	.083	0	.00	0	.00	0	0	.00	0	0	4	4.0	0.80	6.0	1.20
2020	20	7	20	1.00	8	69	.174	1	.05	0	.00	0	2	.10	0	0	11	11.0	0.55	25.5	1.28
TOTAL	25	8	24	0.96	11	81	.160	1	.04	0	.00	0	2	.08	0	0	15	15.0	0.60	31.5	1.26

DOUGLAS' SEC CAREER STATISTICS

YEAR	SETS	MP	KILLS	K/S	E	TA	PCT.	AST	A/S	SA	SA/S	SE	DIGS	D/S	RE	BS	BA	TB	B/S	PTS	PT/S
2021	0	0	0	0.0	0	0	.000	0	.00	0	.00	0	0	.00	0	0	0	0.0	.00	0.0	0.00
2020	20	7	20	1.00	8	69	.174	1	.05	0	.00	0	2	.10	0	0	11	11.0	.55	25.5	1.28
TOTAL	20	7	20	1.00	8	69	.174	1	.05	0	.00	0	2	.10	0	0	11	11.0	.55	25.5	1.28



#6 BELLA ROSENTHALL
DEFENSIVE SPECIALIST/LIBERO | 5-5 | SENIOR
YORKTOWN, IND. (YORKTOWN)

ROSENTHALL'S HIGHLIGHTS:

- Named SEC Defensive Player of the Week twice (9/13 and 9/20) to become the first player in program history to win the award in back-to-back weeks
- First Tiger to win the award multiple times in a single season since Camila Jersonsky in 2012
- War Eagle Invitational and Auburn Invitational All-Tournament Team selection
- Leads the SEC in both digs per set (4.85) and total digs (456)
- Ranks 116th among all active NCAA Division I athletes in career digs (1,172)
- Enters weekend with the third highest digs per set average and the sixth most total digs by a Tiger in single-season history
- Stands in ninth place in Auburn history in career total digs, while her career digs per set average of 3.61 is good for fourth overall
- Totaled 53 career double-digit dig performances, including 17 matches with 20+ dig
- Totaled 25 digs versus North Alabama (9/9) to become the first player to record 25+ digs in a match since she totaled 26 versus Georgia on Oct. 20, 2019
- Totaled 31 digs versus Nicholls (9/17) to become the first Tiger to record at least 30 digs in a match since Payton White versus Butler on Aug. 31, 2019
- Behind her 30 digs at Arkansas (10/9), became just the 15th Tiger in program history to record 1,000 career digs and is the first Tiger to hit the mark since Brenna McIlroy in 2018
- Shattered career high with 33 digs versus Missouri (10/17), the sixth most digs ever recorded by a Tiger in a single match

CATEGORY	CAREER HIGH	OPPONENT/DATE
Kills	1 (5x)	last, at Arkansas (10/10/21)
Attempts	8	at Alabama State (9/26/21)
Hitting Percentage (Min. 10 ATT.)		
Assists	10	vs. #4 Florida (10/22/20)
Digs	33	vs. Missouri (10/17/21)
Blocks	1.0	vs. #4 Florida (10/22/20)
Aces	3 (2x)	last, vs. Tennessee State (8/30/19)
Points	3.0 (2x)	last, vs. Tennessee State (8/30/19)

CATEGORY	SEASON HIGH	OPPONENT/DATE
Kills	1	at Arkansas (10/10/21)
Attempts	8	at Alabama State (9/26/21)
Hitting Percentage (Min. 10 ATT.)		
Assists	9	vs. Florida A&M (9/17/21)
Digs	33	vs. Missouri (10/17/21)
Blocks		
Aces	2	vs. Belmont (9/18/21)
Points	2.0 (2x)	last, at Arkansas (10/10/21)

DATE	OPPONENT	SP	K	E	TA	PCT	A	TA	PCT	SA	SE	TA	PCT	RE	TA	PCT	DIG	BS	BA	BE	TOTAL	BHE	POINTS	TEAM HIT%	SCORE
August 27	TENNESSEE TECH	3	0	0	0	.000	4	14	.286	0	0	22	1.000	0	5	1.000	17	0	0	0	0.0	0	0.0	.292	3-0
August 28	JACKSON STATE	3	0	0	0	.000	6	12	.500	1	1	14	.929	0	6	1.000	14	0	0	0	0.0	0	1.0	.457	3-0
September 2	CAL STATE FULLERTON	3	0	0	0	.000	5	14	.357	0	0	11	1.000	0	12	1.000	17	0	0	0	0.0	0	0.0	.221	3-0
September 3	SOUTHEASTERN LA.	3	0	0	0	.000	2	12	.250	0	2	14	.857	1	16	.938	16	0	0	0	0.0	0	0.0	.300	3-0
September 9	NORTH ALABAMA	3	0	0	0	.000	0	11	.000	0	1	11	.909	0	10	1.000	25	0	0	0	0.0	0	0.0	.265	3-0
September 12	SANTA CLARA	5	0	0	1	.000	8	24	.333	0	1	22	.955	3	21	.857	20	0	0	0	0.0	0	0.0	.260	3-2
September 17	FLORIDA A&M	5	0	0	1	.000	9	24	.375	1	1	20	.950	1	22	.955	20	0	0	0	0.0	0	0.0	.245	2-3
September 17	NICHOLLS	4	0	0	0	.000	2	28	.071	1	1	25	.960	0	19	1.000	31	0	0	0	0.0	0	1.0	.183	3-1
September 18	BELMONT	3	0	0	0	.000	8	20	.400	2	0	17	1.000	0	5	1.000	19	0	0	0	0.0	0	2.0	.345	3-0
September 22	OLE MISS	4	0	0	0	.000	8	25	.320	1	0	17	1.000	2	32	.938	13	0	0	0	0.0	0	1.0	.196	1-3
September 26	at Alabama State	5	0	0	8	.000	3	17	.176	1	2	21	.905	2	32	.938	27	0	0	0	0.0	0	1.0	.209	2-3
September 29	at Tennessee	3	0	0	0	.000	4	22	.182	0	2	12	.833	2	23	.913	6	0	0	0	0.0	0	0.0	.076	0-3
October 2	ALABAMA	5	0	0	0	.000	4	32	.125	0	0	20	1.000	0	16	1.000	24	0	0	0	0.0	0	0.0	.183	3-2
October 3	ALABAMA	3	0	0	0	.000	2	19	.105	0	1	11	.909	0	11	1.000	21	0	0	0	0.0	0	0.0	.248	3-0
October 9	at Arkansas	4	0	0	0	.000	5	17	.294	0	1	16	.938	0	34	1.000	30	0	0	0	0.0	0	0.0	.158	1-3
October 10	at Arkansas	5	1	0	1	1.000	6	22	.273	1	2	17	.882	2	21	.905	20	0	0	0	0.0	0	2.0	.144	2-3
October 16	MISSOURI	3	0	0	0	.000	5	10	.500	1	0	11	1.000	0	13	1.000	19	0	0	0	0.0	0	1.0	.232	3-0
October 17	MISSOURI	5	0	0	0	.000	8	22	.364	0	1	21	.952	0	21	1.000	33	0	0	0	0.0	0	0.0	.235	2-3
October 21	at Georgia	3	0	0	0	.000	8	23	.348	0	0	7	1.000	0	18	1.000	14	0	0	0	0.0	0	0.0	.241	3-0
October 22	at Georgia	3	0	0	1	.000	1	15	.067	0	0	6	1.000	0	18	1.000	12	0	0	0	0.0	0	0.0	.183	0-3
October 29	LSU	3	0	0	0	.000	4	15	.267	0	0	7	1.000	2	20	.900	7	0	0	0	0.0	0	0.0	.121	0-3
November 4	at Texas A&M	5	0	0	1	.000	2	12	.167	1	1	10	.900	1	32	.969	12	0	0	0	0.0	0	0.0	.132	2-3
November 5	at Texas A&M	5	0	0	2	.000	4	18	.222	1	2	17	.882	4	22	.818	17	0	0	0	0.0	0	1.0	.186	3-2
November 10	SOUTH CAROLINA	3	0	0	1	.000	3	8	.375	0	1	9	.889	2	26	.923	13	0	0	0	0.0	0	0.0	.206	0-3
November 17	at Florida	3	0	0	0	.000	1	11	.091	0	0	7	1.000	2	12	.833	9	0	0	0	0.0	0	0.0	.089	0-3
TOTALS		94	1	0	16	.062	113	447	.253	11	20	365	.945	24	467	.949	456	0	0	0	0.0	0	12.0	.209	

SETS PLAYED: 94 SERVICE ACES PER SET: 0.12 POINTS PER SET: 0.13
 KILLS PER SET: 0.01 DIGS PER SET: 4.85
 ASSISTS PER SET: 1.20

ROSENTHALL'S OVERALL CAREER STATISTICS

YEAR	SETS	MP	KILLS	K/S	E	TA	PCT.	AST	A/S	SA	SA/S	SE	DIGS	D/S	RE	BS	BA	TB	B/S	PTS	PT/S
2021	94	25	1	.01	0	16	.062	113	1.20	11	.12	20	456	4.85	24	0	0	0	.00	12.0	.13
2020	25	8	1	.04	0	3	.333	20	0.80	2	.08	9	70	2.80	5	0	1	1	.04	3.5	.14
2019	103	29	2	.02	0	5	.400	38	0.37	12	.12	24	307	2.98	17	0	0	0	.00	14.0	.14
2018	103	28	1	.01	0	6	.167	65	0.63	16	.16	23	339	3.29	26	0	0	0	.00	17.0	.17
TOTAL	325	90	5	.02	0	30	.167	236	0.73	41	.13	76	1172	3.61	72	0	1	1	.00	46.5	.14

ROSENTHALL'S SEC CAREER STATISTICS

YEAR	SETS	MP	KILLS	K/S	E	TA	PCT.	AST	A/S	SA	SA/S	SE	DIGS	D/S	RE	BS	BA	TB	B/S	PTS	PT/S
2021	57	15	1	.02	0	6	.167	65	1.14	5	.09	11	250	4.39	17	0	0	0	.00	6.0	.11
2020	25	8	1	.04	0	3	.333	20	0.80	2	.08	9	70	2.80	5	0	1	1	.04	3.5	.12
2019	59	18	1	.02	0	4	.250	31	0.53	7	.12	15	232	3.93	12	0	0	0	.00	8.0	.14
2018	67	18	1	.01	0	5	.200	39	0.58	11	.16	12	192	2.87	19	0	0	0	.00	12.0	.18
TOTAL	208	59	4	.02	0	18	.222	155	0.75	25	.12	47	744	3.58	53	0	1	1	.00	29.5	0.14



RATH'S HIGHLIGHTS:

- Named SEC Offensive Player of the Week twice (9/7 and 10/11) to become the first Tiger in program history to win the award twice in the same season
- War Eagle Invitational and Auburn Invitational All-Tournament Team selection
- Leads the SEC in attacks per set (13.38), kills per set (4.30), points (472.0), points per set (5.02), total attacks (1,258) and total kills (404), while ranking in the top 40 in all six categories nationally
- Enters the weekend with the program's single-season records for kills per set and total attacks, while ranking second in total kills and tied for seventh in aces per set (0.27)
- Chipped in a season high 24 kills versus Santa Clara (9/12) to become first Tiger to record at least 20 kills in a match since Tatum Shipes versus Ole Miss on Oct. 26, 2018
- Set career highs in kills (29), attempts (75) and points (32.0) at Arkansas (10/9) in one of the best offensive performances by a Tiger in almost two decades
- Her 29 kills were the second most recorded in a match by a Tiger in the rally scoring era and the most in a single match since Ashlee Johns' single-match record of 30, which was totaled in a five-set contest at Arkansas on Oct. 8, 2004
- Her 29 kills are the most recorded in a four-set match by any SEC student-athlete this season
- Totaled a season high five aces at Texas A&M (11/5) to become the first Tiger to record at least five aces in a single match since Breanna McIlroy at Missouri on Oct. 19, 2018

CATEGORY	CAREER HIGH	OPPONENT/DATE
Kills	29	at Arkansas (10/9/21)
Attempts	84	at Texas A&M (11/4/21)
Hitting Percentage (Min. 10 ATT.)	.433	vs. Jackson State (8/28/21)
Assists	2 (3x)	last, vs. Missouri (10/17/21)
Digs	13 (2x)	last, at Texas A&M (11/5/21)
Blocks	6.0 (2x)	last, vs. Alabama (10/2/21)
Aces	5	at Texas A&M (11/5/21)
Points	32.0	at Arkansas (10/9/21)

CATEGORY	SEASON HIGH	OPPONENT/DATE
Kills	29	at Arkansas (10/9/21)
Attempts	84	at Texas A&M (11/4/21)
Hitting Percentage (Min. 10 ATT.)	.433	vs. Jackson State (8/28/21)
Assists	2 (3x)	last, vs. Missouri (10/17/21)
Digs	13 (2x)	last, at Texas A&M (11/5/21)
Blocks	6.0 (2x)	last, vs. Alabama (10/2/21)
Aces	5	at Texas A&M (11/5/21)
Points	32.0	at Arkansas (10/9/21)

DATE	OPPONENT	SP	ATTACK			SET			SERVE			RECEIPT			BLOCKING			BHE	TEAM POINTS	HIT%	SCORE				
			K	E	TA	PCT.	A	TA	PCT.	SA	SE	TA	PCT.	RE	TA	PCT.	DIG					BS	BA	BE	TOTAL
August 27	TENNESSEE TECH	3	13	3	31	.323	0	1	.000	1	2	10	.800	2	8	.750	3	0	4	0	4.0	0	16.0	.292	3-0
August 28	JACKSON STATE	3	16	3	30	.433	0	0	.000	2	2	9	.778	0	5	1.000	3	1	4	0	5.0	0	21.0	.457	3-0
September 2	CAL STATE FULLERTON	3	16	5	42	.262	0	1	.000	1	2	9	.778	0	24	1.000	10	0	0	0	0.0	0	17.0	.221	3-0
September 3	SOUTHEASTERN LA	3	16	5	40	.275	0	1	.000	1	2	7	.714	1	14	.929	7	0	4	0	4.0	0	19.0	.300	3-0
September 9	NORTH ALABAMA	3	7	7	28	.000	0	1	.000	1	1	14	.929	2	11	.818	8	0	0	0	0.0	0	8.0	.265	3-0
September 12	SANTA CLARA	5	24	4	59	.339	1	3	.333	1	4	14	.714	2	14	.857	10	1	2	1	3.0	0	27.0	.260	3-2
September 17	FLORIDA A&M	5	12	6	47	.128	1	3	.333	1	4	12	.667	1	19	.947	4	0	1	0	1.0	0	13.5	.245	2-3
September 17	NICHOLLS	4	18	6	57	.211	2	6	.333	0	3	11	.727	0	13	1.000	6	2	4	0	6.0	0	22.0	.183	3-1
September 18	BELMONT	3	14	2	28	.429	0	1	.000	1	1	9	.889	0	16	1.000	2	1	2	0	3.0	0	17.0	.345	3-0
September 22	OLE MISS	4	19	4	52	.288	2	3	.667	0	3	10	.700	1	14	.929	6	0	0	0	0.0	0	19.0	.196	1-3
September 26	at Alabama State	5	24	7	60	.283	1	14	.071	2	2	16	.875	2	16	.875	13	2	2	0	4.0	0	29.0	.209	2-3
September 29	at Tennessee	3	9	7	43	.047	0	1	.000	0	2	8	.750	0	14	1.000	10	0	3	0	3.0	0	10.5	.076	0-3
October 2	ALABAMA	5	22	8	69	.203	1	5	.200	0	4	18	.778	1	32	.969	11	0	6	1	6.0	0	25.0	.183	3-2
October 3	ALABAMA	3	16	4	43	.279	0	0	.000	2	2	9	.778	0	11	1.000	11	1	4	0	5.0	0	21.0	.248	3-0
October 9	at Arkansas	4	29	11	75	.240	0	3	.000	1	3	11	.727	0	13	1.000	9	0	4	0	4.0	0	32.0	.158	1-3
October 10	at Arkansas	5	20	9	71	.155	0	4	.000	1	1	12	.917	2	24	.917	10	0	5	0	5.0	0	23.5	.144	2-3
October 16	MISSOURI	3	17	4	47	.277	1	4	.250	0	3	7	.571	2	8	.750	9	0	4	0	4.0	0	19.0	.232	3-0
October 17	MISSOURI	5	22	5	71	.239	2	5	.400	1	5	21	.762	1	20	.950	12	1	2	0	3.0	0	25.0	.235	2-3
October 21	at Georgia	3	5	9	32	-.125	1	4	.250	1	2	14	.857	0	18	1.000	8	0	3	0	3.0	0	7.5	.241	3-0
October 22	at Georgia	3	16	9	43	.163	0	2	.000	0	2	9	.778	1	22	.955	8	1	2	0	3.0	0	18.0	.183	0-3
October 29	LSU	3	8	10	50	-.040	0	4	.000	0	3	14	.786	2	3	.333	2	2	1	0	3.0	0	10.5	.121	0-3
November 4	at Texas A&M	5	22	12	84	.119	0	2	.000	3	3	16	.812	2	23	.913	3	0	2	0	2.0	0	26.0	.132	2-3
November 5	at Texas A&M	5	19	9	72	.139	1	1	1.000	5	3	19	.842	3	18	.833	13	0	1	0	1.0	0	24.5	.186	3-2
November 10	SOUTH CAROLINA	3	10	3	42	.167	0	2	.000	0	1	8	.875	2	10	.800	2	0	1	0	1.0	0	10.5	.206	0-3
November 17	at Florida	3	10	5	42	.119	0	0	.000	0	3	10	.700	0	16	1.000	3	0	1	1	1.0	0	10.5	.089	0-3
TOTALS		94	404	157	1258	.196	13	71	.183	25	63	297	.788	27	386	.930	182	12	62	3	74.0	0	472.0	.209	

SETS PLAYED: 94
 KILLS PER SET: 4.30
 ASSISTS PER SET: 0.14

SERVICE ACES PER SET: 0.27
 DIGS PER SET: 1.94
 BLOCKS PER SET: 0.79

POINTS PER SET: 5.02

RATH'S OVERALL CAREER STATISTICS

YEAR	SETS	MP	KILLS	K/S	E	TA	PCT.	AST	A/S	SA	SA/S	SE	DIGS	D/S	RE	BS	BA	TB	B/S	PTS	PT/S
2021	94	25	404	4.30	157	1258	.196	13	.14	25	.27	63	182	1.94	27	12	62	74	0.79	472.0	5.02
TOTAL	94	25	404	4.30	157	1258	.196	13	.14	25	.27	63	182	1.94	27	12	62	74	0.79	472.0	5.02

RATH'S SEC CAREER STATISTICS

YEAR	SETS	MP	KILLS	K/S	E	TA	PCT.	AST	A/S	SA	SA/S	SE	DIGS	D/S	RE	BS	BA	TB	B/S	PTS	PT/S
2021	57	15	244	4.28	109	836	.161	8	.14	14	.25	40	116	2.04	17	5	39	44	0.77	282.5	4.95
TOTAL	57	15	244	4.28	109	836	.161	8	.14	14	.25	40	116	2.04	17	5	39	44	0.77	282.5	4.95



#8 LIZ REICH

OPPOSITE HITTER | 6-1 | GRADUATE STUDENT
COLORADO SPRINGS, COLO. (PORTLAND)

REICH'S HIGHLIGHTS:

- SEC Offensive Player of the Week (10/25)
- Ranks 62nd among all active NCAA DI student-athletes in career sets played (485) and 138th in career kills (1,074)
- Currently ranks 21st in the SEC in kills per set (2.70)
- Named to War Eagle Invitational and Auburn Invitational All-Tournament teams
- Set a season high with 17 kills versus Santa Clara (9/12) and Florida A&M (9/17)
- Tallied a career high six blocks at Arkansas (10/10)
- Behind her nine kills versus Missouri (10/16), tallied her 1,000th kill of her career
- Match season high in blocks in the series opener at Georgia (10/21) before turning in her best offensive performance in conference play in the finale (10/22) with 12 kills and a .409 hitting percentage

CATEGORY	CAREER HIGH	OPPONENT/DATE
Kills	17 (2x)	last, vs. Florida A&M (9/17/21)
Attempts	46	vs. Ole Miss (9/22/21)
Hitting Percentage (Min. 10 ATT.)	.500	vs. Jackson State (8/28/21)
Assists	1 (3x)	last, at Alabama State (9/26/21)
Digs	6 (2x)	last, at Texas A&M (11/5/21)
Blocks	6 (2x)	last, at Georgia (10/21/21)
Aces		
Points	18.5	vs. Florida A&M (9/17/21)

CATEGORY	SEASON HIGH	OPPONENT/DATE
Kills	17 (2x)	last, vs. Florida A&M (9/17/21)
Attempts	46	vs. Ole Miss (9/22/21)
Hitting Percentage (Min. 10 ATT.)	.500	vs. Jackson State (8/28/21)
Assists	1 (3x)	last, at Alabama State (9/26/21)
Digs	6 (2x)	last, at Texas A&M (11/5/21)
Blocks	6 (2x)	last, at Georgia (10/21/21)
Aces		
Points	18.5	vs. Florida A&M (9/17/21)

DATE	OPPONENT	SP	ATTACK				SET			SERVE			RECEIPT			BLOCKING				TEAM POINTS	HIT%	SCORE			
			K	E	TA	PCT.	A	TA	PCT.	SA	SE	TA	PCT.	RE	TA	PCT.	DIG	BS	BA				BE	TOTAL	BHE
August 27	TENNESSEE TECH	3	9	3	24	.250	0	1	.000	0	0	0	.000	0	1	1.000	4	0	1	0	1.0	0	9.5	.292	3-0
August 28	JACKSON STATE	3	13	1	24	.500	1	3	.333	0	0	0	.000	0	0	.000	1	0	5	0	5.0	0	15.5	.457	3-0
September 2	CAL STATE FULLERTON	3	11	2	22	.409	0	1	.000	0	0	0	.000	0	1	1.000	0	0	1	0	1.0	0	11.5	.221	3-0
September 3	SOUTHEASTERN LA.	3	13	2	24	.458	0	0	.000	0	0	0	.000	0	0	.000	0	0	4	0	4.0	0	15.0	.300	3-0
September 9	NORTH ALABAMA	3	8	2	21	.286	0	1	.000	0	0	0	.000	0	1	1.000	1	0	1	0	1.0	0	8.5	.265	3-0
September 12	SANTA CLARA	5	17	6	44	.250	0	1	.000	0	0	0	.000	0	2	1.000	2	0	0	0	0.0	0	17.0	.260	3-2
September 17	FLORIDA A&M	5	17	3	37	.378	0	2	.000	0	1	5	.800	0	0	.000	1	0	3	0	3.0	0	18.5	.245	2-3
September 17	NICHOLLS	4	10	3	37	.189	0	5	.000	0	0	0	.000	0	0	.000	5	0	4	0	4.0	0	12.0	.183	3-1
September 18	BELMONT	3	11	2	22	.409	1	1	1.000	0	0	0	.000	0	0	.000	1	0	2	0	2.0	0	12.0	.345	3-0
September 22	OLE MISS	4	10	5	46	.109	0	0	.000	0	0	0	.000	0	0	.000	4	0	2	0	2.0	0	11.0	.196	1-3
September 26	at Alabama State	5	13	3	27	.370	1	6	.167	0	0	1	1.000	0	0	.000	2	0	1	0	1.0	0	13.5	.209	2-3
September 29	at Tennessee	3	8	3	23	.217	0	2	.000	0	0	0	.000	0	0	.000	1	0	2	0	2.0	0	9.0	.076	0-3
October 2	ALABAMA	5	11	3	36	.222	0	2	.000	0	0	0	.000	1	1	.000	1	0	2	0	2.0	0	12.0	.183	3-2
October 3	ALABAMA	3	11	1	23	.435	0	2	.000	0	0	0	.000	0	0	.000	4	0	0	0	0.0	0	11.0	.248	3-0
October 9	at Arkansas	4	6	5	21	.048	0	0	.000	0	0	0	.000	0	1	1.000	4	0	1	2	1.0	0	6.5	.158	1-3
October 10	at Arkansas	5	8	3	24	.208	0	4	.000	0	0	0	.000	0	0	.000	1	0	6	0	6.0	0	11.0	.144	2-3
October 16	MISSOURI	3	9	3	24	.250	0	0	.000	0	0	0	.000	0	0	.000	3	0	1	0	1.0	0	9.5	.232	3-0
October 17	MISSOURI	5	10	2	31	.258	0	2	.000	0	0	0	.000	0	0	.000	2	0	1	0	1.0	0	10.5	.235	2-3
October 21	at Georgia	3	11	3	27	.296	0	1	.000	0	0	0	.000	0	0	.000	0	0	6	0	6.0	0	14.0	.241	3-0
October 22	at Georgia	3	12	3	22	.409	0	0	.000	0	0	0	.000	0	0	.000	1	0	2	0	2.0	0	13.0	.183	0-3
October 29	LSU	3	8	5	21	.143	0	0	.000	0	0	0	.000	0	0	.000	0	0	1	1	1.0	0	8.5	.121	0-3
November 4	at Texas A&M	5	9	5	27	.148	0	1	.000	0	0	0	.000	0	0	.000	6	0	1	0	1.0	0	9.5	.132	2-3
November 5	at Texas A&M	5	10	2	30	.267	0	1	.000	0	0	0	.000	0	0	.000	6	0	2	0	2.0	0	11.0	.186	3-2
November 10	SOUTH CAROLINA	3	5	5	20	.000	0	1	.000	0	0	0	.000	0	0	.000	1	0	0	0	0.0	0	5.0	.206	0-3
November 17	at Florida	3	4	3	17	.059	0	1	.000	0	0	0	.000	1	1	.000	2	0	1	0	1.0	0	4.5	.089	0-3
TOTALS		94	254	78	674	.261	3	38	.079	0	1	6	.833	2	8	.750	53	0	50	3	50.0	0	279.0	.209	

SETS PLAYED: 94 DIGS PER SET: 0.56 POINTS PER SET: 2.97
 KILLS PER SET: 2.70 BLOCKS PER SET: 0.53
 ASSISTS PER SET: 0.03

REICH'S OVERALL CAREER STATISTICS

YEAR	SETS	MP	KILLS	K/S	E	TA	PCT.	AST	A/S	SA	SA/S	SE	DIGS	D/S	RE	BS	BA	TB	B/S	PTS	PT/S
2021	94	25	254	2.70	78	674	.261	3	.03	0	.00	1	53	.56	2	0	50	50	0.53	279.0	2.97
TOTAL	94	25	254	2.70	78	674	.261	3	.03	0	.00	1	53	.56	2	0	50	50	0.53	279.0	2.97

REICH'S SEC CAREER STATISTICS

YEAR	SETS	MP	KILLS	K/S	E	TA	PCT.	AST	A/S	SA	SA/S	SE	DIGS	D/S	RE	BS	BA	TB	B/S	PTS	PT/S
2021	57	15	132	2.32	51	392	.207	0	.00	0	.00	0	36	0.63	2	0	28	28	0.49	146.0	2.56
TOTAL	57	15	132	2.32	51	392	.207	0	.00	0	.00	0	36	0.63	2	0	28	28	0.49	146.0	2.56

#10 JACKIE BARRETT

SETTER | 6-1 | SOPHOMORE
HIGHLAND, CALIF. (CITRUS VALLEY)



BARRETT'S HIGHLIGHTS

- Leads Auburn with 15 double-doubles this fall
- Enters the weekend ranked eighth in Auburn single-season history (rally scoring era) in both total assists (744) and assists per set (8.18)
- Set career highs in kills (6), hitting percentage (.308), assists (48) and points (10.0) versus Florida A&M (9/17)
- Matched career high with three aces while shattering her career high in digs (28) versus Nicholls (9/17)
- Picked up first double-double in conference play with 18 assists and 12 digs at No. 20 Tennessee (9/29)
- Set a career high with eight blocks at Arkansas (10/9) while adding 36 assists and 13 digs to record a double-double
- Was lifted during the second set of game two versus Missouri (10/17) due to illness

CATEGORY	CAREER HIGH	OPPONENT/DATE
Kills	6 (2x)	last, at Alabama State (9/26/21)
Attempts	20	at Alabama State (9/26/21)
Hitting Percentage (Min. 10 ATT.)	.308	vs. Florida A&M (9/17/21)
Assists	48	vs. Florida A&M (9/17/21)
Digs	28	vs. Nicholls (9/17/21)
Blocks	8.0	at Arkansas (10/9/21)
Aces	3 (3x)	last, at Texas A&M (11/5/21)
Points	10.0	vs. Florida A&M (9/17/21)

CATEGORY	SEASON HIGH	OPPONENT/DATE
Kills	6 (2x)	last, at Alabama State (9/26/21)
Attempts	20	at Alabama State (9/26/21)
Hitting Percentage (Min. 10 ATT.)	.308	vs. Florida A&M (9/17/21)
Assists	48	vs. Florida A&M (9/17/21)
Digs	28	vs. Nicholls (9/17/21)
Blocks	8.0	at Arkansas (10/9/21)
Aces	3 (2x)	last, at Texas A&M (11/5/21)
Points	10.0	vs. Florida A&M (9/17/21)

DATE	OPPONENT	SP	ATTACK			SET			SERVE			RECEIPT			BLOCKING				TEAM POINTS	HIT%	SCORE				
			K	E	TA	PCT.	A	TA	PCT.	SA	SE	TA	PCT.	RE	TA	PCT.	DIG	BS				BA	BE	TOTAL	BHE
August 27	TENNESSEE TECH	3	1	0	3	.333	25	63	.397	1	0	8	1.000	0	0	.000	12	0	0	1	0.0	0	2.0	.292	3-0
August 28	JACKSON STATE	3	2	0	2	1.000	27	59	.458	2	0	10	1.000	0	1	1.000	8	0	1	0	1.0	0	4.5	.457	3-0
September 2	CAL STATE FULLERTON	3	0	1	6	-.167	16	39	.410	0	0	9	1.000	0	0	.000	5	0	1	1	1.0	0	0.5	.221	3-0
September 3	SOUTHEASTERN LA.	3	3	0	5	.600	28	74	.378	2	1	9	.889	0	0	.000	6	0	2	2	2.0	1	6.0	.300	3-0
September 9	NORTH ALABAMA	3	0	1	2	-.500	30	71	.423	1	1	22	.955	0	0	.000	8	0	4	0	4.0	0	3.0	.265	3-0
September 12	SANTA CLARA	5	1	0	6	.167	44	126	.349	2	2	20	.900	0	2	1.000	11	0	5	0	5.0	0	5.5	.260	3-2
September 17	FLORIDA A&M	5	6	2	13	.308	48	130	.369	2	1	21	.952	0	0	.000	15	0	4	0	4.0	0	10.0	.245	2-3
September 17	NICHOLLS	4	2	0	8	.250	40	124	.323	3	0	21	1.000	0	0	.000	28	0	2	0	2.0	0	6.0	.183	3-1
September 18	BELMONT	3	1	0	3	.333	24	57	.421	1	1	11	.909	0	0	.000	19	0	3	0	3.0	0	3.5	.345	3-0
September 22	OLE MISS	4	1	0	4	.250	34	117	.291	1	2	13	.846	0	0	.000	12	1	1	0	2.0	0	3.5	.196	1-3
September 26	at Alabama State	5	6	1	20	.250	36	113	.319	0	1	19	.947	0	0	.000	4	0	1	0	1.0	0	6.5	.209	2-3
September 29	at Tennessee	3	1	1	4	.000	18	79	.228	0	2	6	.667	0	0	.000	12	0	2	0	2.0	0	2.0	.076	0-3
October 2	ALABAMA	5	1	0	10	.100	43	123	.350	0	0	14	1.000	0	0	.000	14	1	3	0	4.0	0	3.5	.183	3-2
October 3	ALABAMA	3	1	0	6	.167	34	90	.378	0	0	14	1.000	0	0	.000	11	0	2	0	2.0	0	2.0	.248	3-0
October 9	at Arkansas	4	3	0	8	.375	36	119	.303	1	0	15	1.000	0	0	.000	13	0	8	3	8.0	0	8.0	.158	1-3
October 10	at Arkansas	5	1	0	8	.125	36	122	.295	0	1	17	.941	0	0	.000	16	0	4	0	4.0	0	3.0	.144	2-3
October 16	MISSOURI	3	2	1	5	.200	25	80	.312	1	1	13	.923	0	0	.000	9	0	2	1	2.0	0	4.0	.232	3-0
October 17	MISSOURI	2	1	0	3	.333	12	29	.414	0	0	4	1.000	0	0	.000	3	0	2	0	2.0	0	2.0	.235	2-3
October 21	at Georgia	3	4	1	7	.429	27	74	.365	0	2	14	.857	0	0	.000	17	0	2	0	2.0	0	5.0	.241	3-0
October 22	at Georgia	3	3	1	10	.200	30	82	.366	0	1	6	.833	0	1	1.000	6	0	1	0	1.0	0	3.5	.183	0-3
October 29	LSU	3	2	1	5	.200	22	79	.278	0	0	7	1.000	0	0	.000	13	0	1	0	1.0	0	2.5	.121	0-3
November 4	at Texas A&M	5	2	1	8	.125	38	132	.288	2	1	22	.955	0	0	.000	13	0	2	0	2.0	0	5.0	.132	2-3
November 5	at Texas A&M	5	1	1	12	.000	43	138	.312	3	2	17	.882	0	0	.000	16	0	2	0	2.0	0	5.0	.186	3-2
November 10	SOUTH CAROLINA	3	1	1	6	.000	12	49	.245	0	1	5	.800	0	0	.000	5	0	1	0	1.0	0	1.5	.206	0-3
November 17	at Florida	3	2	1	5	.200	16	76	.211	0	2	6	.667	0	0	.000	6	0	1	0	1.0	0	2.5	.089	0-3
TOTALS		91	48	14	169	.201	744	2245	.331	22	22	323	.932	0	4	1.000	282	2	57	8	59.0	1	100.5	.209	

SETS PLAYED: 91
KILLS PER SET: 0.53
ASSISTS PER SET: 8.18

SERVICE ACES PER SET: 0.24
DIGS PER SET: 3.10
BLOCKS PER SET: 0.65
POINTS PER SET: 1.10

BARRETT'S OVERALL CAREER STATISTICS

YEAR	SETS	MP	KILLS	K/S	E	TA	PCT.	AST	A/S	SA	SA/S	SE	DIGS	D/S	RE	BS	BA	TB	B/S	PTS	PT/S
2021	91	25	48	0.53	14	169	.201	744	8.18	22	.24	22	282	3.10	0	2	57	59	0.65	100.5	1.10
2020	19	6	10	0.53	6	45	.089	144	7.58	3	.16	8	33	1.74	0	0	11	11	0.58	18.5	0.97
TOTAL	110	31	58	0.53	20	214	.178	888	8.07	25	.23	30	315	2.86	0	2	68	70	0.64	119.0	1.08

BARRETT'S SEC CAREER STATISTICS

YEAR	SETS	MP	KILLS	K/S	E	TA	PCT.	AST	A/S	SA	SA/S	SE	DIGS	D/S	RE	BS	BA	TB	B/S	PTS	PT/S
2021	54	15	26	0.48	9	101	.168	426	7.89	8	.15	15	166	3.07	0	2	34	36	0.67	53.0	0.98
2020	19	6	10	0.53	6	45	.089	144	7.58	3	.16	8	33	1.74	0	0	11	11	0.58	18.5	0.95
TOTAL	73	21	36	0.49	15	146	.144	570	7.81	11	.15	23	199	2.73	0	2	45	47	0.64	71.5	0.97



#11 JORDAN SINNESS

SETTER | 5-9 | FRESHMAN
SEBRING, FLA. (SEBRING)

SINNESS'S HIGHLIGHTS:

- Made collegiate debut versus Cal State Fullerton (9/2), dishing out 16 assists, six digs, one kill and a block
- Picked up a season high two aces from the service line versus Santa Clara (9/12)
- Matched season high with a pair of aces at Alabama State (9/26)
- Came off the bench versus Missouri (10/17) to take over as setter for an ill Jackie Barrett
- Picked up her first collegiate double-double with career highs in assists (35) and digs (14), while also adding a career high two blocks

CATEGORY	CAREER HIGH	OPPONENT/DATE
Kills	1 (2x)	last, vs. Missouri (10/17/21)
Attempts	3	vs. Missouri (10/17/21)
Hitting Percentage (Min. 10 ATT.)		
Assists	35	vs. Missouri (10/17/21)
Digs	14	vs. Missouri (10/17/21)
Blocks	2	vs. Missouri (10/17/21)
Aces	2 (2x)	last, at Alabama State (9/26/21)
Points	2.0 (3x)	last, vs. Missouri (10/17/21)

CATEGORY	SEASON HIGH	OPPONENT/DATE
Kills	1 (2x)	last, vs. Missouri (10/17/21)
Attempts	3	vs. Missouri (10/17/21)
Hitting Percentage (Min. 10 ATT.)		
Assists	35	vs. Missouri (10/17/21)
Digs	14	vs. Missouri (10/17/21)
Blocks	2	vs. Missouri (10/17/21)
Aces	2 (2x)	last, at Alabama State (9/26/21)
Points	2.0 (3x)	last, vs. Missouri (10/17/21)

DATE	OPPONENT	SP	ATTACK				SET			SERVE				RECEIPT			BLOCKING				TEAM				
			K	E	TA	PCT.	A	TA	PCT.	SA	SE	TA	PCT.	RE	TA	PCT.	DIG	BS	BA	BE	TOTAL	BHE	POINTS	HIT%	SCORE
September 2	CAL STATE FULLERTON	2	1	1	2	.000	16	53	.302	0	0	3	1.000	0	0	.000	6	0	1	0	1.0	1	1.5	.221	3-0
September 9	NORTH ALABAMA	3	0	0	0	.000	0	0	.000	0	0	8	1.000	0	0	.000	0	0	0	0	0.0	0	0.0	.265	3-0
September 12	SANTA CLARA	5	0	0	0	.000	0	2	.000	2	1	17	.941	0	0	.000	1	0	0	0	0.0	0	2.0	.260	3-2
September 17	FLORIDA A&M	5	0	0	0	.000	0	3	.000	1	0	19	1.000	0	0	.000	2	0	0	0	0.0	0	1.0	.245	2-3
September 17	NICHOLLS	4	0	0	0	.000	0	0	.000	0	1	9	.889	0	0	.000	0	0	0	0	0.0	0	0.0	.183	3-1
September 18	BELMONT	3	0	0	0	.000	0	0	.000	0	1	5	.800	0	0	.000	2	0	0	0	0.0	0	0.0	.345	3-0
September 22	OLE MISS	4	0	0	0	.000	0	1	.000	0	0	15	1.000	0	0	.000	4	0	0	0	0.0	0	0.0	.196	1-3
September 26	at Alabama State	5	0	0	0	.000	1	2	.500	2	0	17	1.000	0	0	.000	1	0	0	0	0.0	0	2.0	.209	2-3
September 29	at Tennessee	3	0	0	0	.000	0	0	.000	0	0	8	1.000	0	0	.000	0	0	0	0	0.0	0	0.0	.076	0-3
October 2	ALABAMA	5	0	0	0	.000	0	1	.000	0	0	16	1.000	0	0	.000	2	0	0	0	0.0	0	0.0	.183	3-2
October 3	ALABAMA	3	0	0	0	.000	0	0	.000	1	1	9	.889	0	0	.000	0	0	0	0	0.0	0	1.0	.248	3-0
October 9	at Arkansas	2	0	0	0	.000	0	0	.000	0	0	3	1.000	0	0	.000	0	0	0	0	0.0	0	0.0	.158	1-3
October 17	MISSOURI	4	1	0	3	.333	35	111	.315	0	1	13	.923	0	0	.000	14	0	2	0	2.0	1	2.0	.235	2-3
November 10	SOUTH CAROLINA	1	0	0	1	.000	12	33	.364	0	2	4	.500	0	0	.000	1	0	0	0	0.0	0	0.0	.206	0-3
November 17	at Florida	1	0	0	0	.000	0	0	.000	0	0	0	.000	0	0	.000	0	0	0	0	0.0	0	0.0	.089	0-3
TOTALS		50	2	1	6	.167	64	206	.311	6	7	146	.952	0	0	.000	33	0	3	0	3.0	2	9.5	.209	

SETS PLAYED: 50
KILLS PER SET: 0.04
ASSISTS PER SET: 1.28

SERVICE ACES PER SET: 0.12
DIGS PER SET: 0.66
BLOCKS PER SET: 0.06

POINTS PER SET: 0.19

SINNESS'S OVERALL CAREER STATISTICS

YEAR	SETS	MP	KILLS	K/S	E	TA	PCT.	AST	A/S	SA	SA/S	SE	DIGS	D/S	RE	BS	BA	TB	B/S	PTS	PT/S
2021	50	15	2	0.04	1	6	.167	64	1.28	6	.12	7	33	0.66	0	0	3	3	.06	9.5	0.19
TOTAL	50	15	2	0.04	1	6	.167	64	1.28	6	.12	7	33	0.66	0	0	3	3	.06	9.5	0.19

SINNESS'S SEC CAREER STATISTICS

YEAR	SETS	MP	KILLS	K/S	E	TA	PCT.	AST	A/S	SA	SA/S	SE	DIGS	D/S	RE	BS	BA	TB	B/S	PTS	PT/S
2021	23	8	1	0.04	0	4	.250	47	2.04	1	.04	4	21	0.91	0	0	2	2	.09	3.0	0.13
TOTAL	23	8	1	0.04	0	4	.250	47	2.04	1	.04	4	21	0.91	0	0	2	2	.09	3.0	0.13



#15 KATE CURTIS

DEFENSIVE SPECIALIST/LIBERO | 5-6 | FRESHMAN
ANDERSON, S.C. (T.L. HANNA)

CURTIS'S HIGHLIGHTS:

- Recorded six double-digit dig performances this season
- Set career high in assists versus Florida A&M (9/17)
- Turned in her first double-digit dig effort with a career best 14 versus Nicholls (9/17)
- Picked up a season high two aces from the service line versus Alabama (10/3)
- Recorded her first double-digit effort in Southeastern Conference play with 11 at Arkansas (10/10)
- Tallied her first collegiate kill at Georgia (10/21)

CATEGORY	CAREER HIGH	OPPONENT/DATE
Kills	1	at Georgia (10/21/21)
Attempts	3	at Alabama State (9/26/21)
Hitting Percentage (Min. 10 ATT.)		
Assists	4	vs. Florida A&M (9/17/21)
Digs	14	vs. Nicholls (9/17/21)
Blocks		
Aces	2	vs. Alabama (10/3/21)
Points	2.0	vs. Alabama (10/3/21)

CATEGORY	SEASON HIGH	OPPONENT/DATE
Kills	1	at Georgia (10/21/21)
Attempts	3	at Alabama State (9/26/21)
Hitting Percentage (Min. 10 ATT.)		
Assists	4	vs. Florida A&M (9/17/21)
Digs	14	vs. Nicholls (9/17/21)
Blocks		
Aces	2	vs. Alabama (10/3/21)
Points	2.0	vs. Alabama (10/3/21)

DATE	OPPONENT	SP	ATTACK				SET			SERVE			RECEIPT			BLOCKING				TEAM POINTS	HIT%	SCORE			
			K	E	TA	PCT.	A	TA	PCT.	SA	SE	TA	PCT.	RE	TA	PCT.	DIG	BS	BA				BE	TOTAL	BHE
August 27	TENNESSEE TECH	3	0	0	0	.000	0	0	.000	1	0	17	1.000	0	14	1.000	4	0	0	0	0.0	0	1.0	.292	3-0
August 28	JACKSON STATE	3	0	0	0	.000	0	0	.000	0	1	13	.923	0	6	1.000	3	0	0	0	0.0	0	0.0	.457	3-0
September 2	CAL STATE FULLERTON	3	0	0	0	.000	0	1	.000	0	0	17	1.000	0	10	1.000	6	0	0	0	0.0	0	0.0	.221	3-0
September 3	SOUTHEASTERN LA.	3	0	0	0	.000	0	3	.000	1	0	23	1.000	0	2	1.000	7	0	0	0	0.0	0	1.0	.300	3-0
September 9	NORTH ALABAMA	3	0	0	0	.000	0	3	.000	0	0	9	1.000	0	4	1.000	5	0	0	0	0.0	0	0.0	.265	3-0
September 12	SANTA CLARA	5	0	0	0	.000	1	2	.500	0	0	18	1.000	3	28	.893	5	0	0	0	0.0	0	0.0	.260	3-2
September 17	FLORIDA A&M	5	0	0	0	.000	4	6	.667	1	1	10	.900	1	28	.964	7	0	0	0	0.0	0	1.0	.245	2-3
September 17	NICHOLLS	4	0	0	0	.000	1	2	.500	0	0	21	1.000	1	14	.929	14	0	0	0	0.0	0	0.0	.183	3-1
September 18	BELMONT	3	0	0	0	.000	0	0	.000	1	1	13	.923	1	2	.500	4	0	0	0	0.0	0	1.0	.345	3-0
September 22	OLE MISS	4	0	0	0	.000	2	2	1.000	0	1	12	.917	1	20	.950	7	0	0	0	0.0	0	0.0	.196	1-3
September 26	at Alabama State	5	0	0	3	.000	1	3	.333	0	1	16	.938	0	14	1.000	6	0	0	0	0.0	0	0.0	.209	2-3
September 29	at Tennessee	3	0	0	0	.000	1	5	.200	0	1	9	.889	0	4	1.000	6	0	0	0	0.0	0	0.0	.076	0-3
October 2	ALABAMA	5	0	0	0	.000	1	3	.333	1	1	22	.955	1	22	.955	7	0	0	0	0.0	0	1.0	.183	3-2
October 3	ALABAMA	3	0	0	0	.000	1	5	.200	2	1	16	.938	0	4	1.000	4	0	0	0	0.0	0	2.0	.248	3-0
October 9	at Arkansas	4	0	0	0	.000	3	8	.375	0	2	20	.900	0	13	1.000	7	0	0	0	0.0	0	0.0	.158	1-3
October 10	at Arkansas	5	0	0	0	.000	0	3	.000	0	0	14	1.000	1	26	.962	11	0	0	0	0.0	0	0.0	.144	2-3
October 16	MISSOURI	3	0	0	0	.000	0	2	.000	1	1	17	.941	0	13	1.000	8	0	0	0	0.0	0	1.0	.232	3-0
October 17	MISSOURI	5	0	0	0	.000	0	3	.000	1	1	19	.947	3	28	.893	12	0	0	0	0.0	0	1.0	.235	2-3
October 21	at Georgia	3	1	0	1	1.000	2	5	.400	0	0	12	1.000	1	10	.900	7	0	0	0	0.0	0	1.0	.241	3-0
October 22	at Georgia	3	0	0	1	.000	1	3	.333	0	0	14	1.000	0	4	1.000	8	0	0	0	0.0	0	0.0	.183	0-3
October 29	LSU	3	0	0	0	.000	2	2	1.000	0	0	9	1.000	4	22	.818	11	0	0	0	0.0	0	0.0	.121	0-3
November 4	at Texas A&M	5	0	0	0	.000	1	6	.167	1	3	17	.824	0	17	1.000	11	0	0	0	0.0	0	1.0	.132	2-3
November 5	at Texas A&M	5	0	0	0	.000	1	5	.200	0	1	15	.933	0	17	1.000	13	0	0	0	0.0	0	0.0	.186	3-2
November 10	SOUTH CAROLINA	3	0	0	0	.000	1	2	.500	1	2	13	.846	0	10	1.000	8	0	0	0	0.0	0	1.0	.206	0-3
November 17	at Florida	3	0	0	0	.000	1	1	1.000	0	2	8	.750	0	6	1.000	4	0	0	0	0.0	0	0.0	.089	0-3
TOTALS		94	1	0	5	.200	24	75	.320	11	20	374	.947	17	338	.950	185	0	0	0	0.0	0	12.0	.209	

SETS PLAYED: 94
KILLS PER SET: 0.01
ASSISTS PER SET: 0.26

SERVICE ACES PER SET: 0.12
DIGS PER SET: 1.97
POINTS PER SET: 0.13

CURTIS'S OVERALL CAREER STATISTICS

YEAR	SETS	MP	KILLS	K/S	E	TA	PCT.	AST	A/S	SA	SA/S	SE	DIGS	D/S	RE	BS	BA	TB	B/S	PTS	PT/S
2021	94	25	1	0.01	0	5	.200	24	.26	11	.12	20	185	1.97	17	0	0	0	.00	12.0	0.13
TOTAL	94	25	1	0.01	0	5	.200	24	.26	11	.12	20	185	1.97	17	0	0	0	.00	12.0	0.13

CURTIS'S SEC CAREER STATISTICS

YEAR	SETS	MP	KILLS	K/S	E	TA	PCT.	AST	A/S	SA	SA/S	SE	DIGS	D/S	RE	BS	BA	TB	B/S	PTS	PT/S
2021	57	15	1	0.02	0	2	.500	17	.30	7	.12	16	124	2.18	11	0	0	0	.00	8.0	0.14
TOTAL	57	15	1	0.02	0	2	.500	17	.30	7	.12	16	124	2.18	11	0	0	0	.00	8.0	0.14



#16 VAL GREEN
OUTSIDE HITTER | 6-2 | SENIOR
OXFORD, OHIO (TALAWANDA)

GREEN'S HIGHLIGHTS:

- Recorded 16 double-digit kill efforts during her Tiger career
- Chipped in 11 kills versus Cal State Fullerton (9/2) for her first 10+ kill match of the season
- Against Florida A&M (9/17), set career highs in kills (19) and points (21.5)
- Totaled a season high two aces from the service line versus Ole Miss (9/22)
- Recorded a career high 5.0 blocks against Alabama (10/2), helping Auburn to a team total of 18.0 to tie the program's single-match record
- Match season high for kills in a league match with 13 on the road at Arkansas (10/10)
- Shattered her career high attack percentage as she landed 16 kills on 32 swings with just one error at Georgia (10/21) for a .469 clip

CATEGORY	CAREER HIGH	OPPONENT/DATE
Kills	19	vs. Florida A&M (9/17/21)
Attempts	50	vs. Butler (8/31/19)
Hitting Percentage (Min. 10 ATT.)	.469	at Georgia (10/21/21)
Assists	2	at South Carolina (10/29/20)
Digs	10	at South Carolina (10/29/20)
Blocks	5.0	vs. Alabama (10/2/21)
Aces	4	at TCU (9/15/19)
Points	21.5	vs. Florida A&M (9/17/21)

CATEGORY	SEASON HIGH	OPPONENT/DATE
Kills	19	vs. Florida A&M (9/17/21)
Attempts	48	vs. Florida A&M (9/17/21)
Hitting Percentage (Min. 10 ATT.)	.469	at Georgia (10/21/21)
Assists	1 (5x)	last, at Florida (11/17/21)
Digs	7 (2x)	last, at Texas A&M (11/5/21)
Blocks	5.0	vs. Alabama (10/2/21)
Aces	2	vs. Ole Miss (9/22/21)
Points	21.5	vs. Florida A&M (9/17/21)

DATE	OPPONENT	SP	ATTACK				SET			SERVE			RECEIPT			BLOCKING				TEAM POINTS	HIT%	SCORE			
			K	E	TA	PCT.	A	TA	PCT.	SA	SE	TA	PCT.	RE	TA	PCT.	DIG	BS	BA				BE	TOTAL	BHE
August 27	TENNESSEE TECH	3	5	1	20	.200	0	0	.000	0	0	6	1.000	0	2	1.000	1	0	3	0	3.0	0	6.5	.292	3-0
August 28	JACKSON STATE	3	3	1	10	.200	0	1	.000	1	0	24	1.000	0	0	.000	5	0	3	0	3.0	0	5.5	.457	3-0
September 2	CAL STATE FULLERTON	3	11	4	35	.200	0	2	.000	0	0	18	1.000	0	3	1.000	2	0	1	0	1.0	0	11.5	.221	3-0
September 3	SOUTHEASTERN LA.	3	2	1	18	.056	1	2	.500	1	2	14	.857	0	0	.000	4	0	1	0	1.0	0	3.5	.300	3-0
September 9	NORTH ALABAMA	3	12	0	32	.375	0	3	.000	1	0	9	1.000	0	2	1.000	2	0	0	1	0.0	0	13.0	.265	3-0
September 12	SANTA CLARA	5	12	3	41	.220	0	1	.000	0	0	17	1.000	2	9	.778	7	0	0	0	0.0	0	12.0	.260	3-2
September 17	FLORIDA A&M	5	19	5	48	.292	0	1	.000	0	2	16	.875	0	5	1.000	6	2	1	0	3.0	0	21.5	.245	2-3
September 17	NICHOLLS	4	12	6	41	.146	0	0	.000	0	1	13	.923	0	2	1.000	2	0	0	0	0.0	0	12.0	.183	3-1
September 18	BELMONT	3	4	2	16	.125	0	2	.000	1	0	18	1.000	0	2	1.000	0	0	0	0	0.0	0	5.0	.345	3-0
September 22	OLE MISS	4	13	6	34	.206	1	3	.333	2	1	15	.933	0	7	1.000	3	0	0	0	0.0	0	15.0	.196	1-3
September 26	at Alabama State	5	3	7	26	-.154	0	5	.000	0	2	17	.882	0	2	1.000	4	0	1	0	1.0	0	3.5	.209	2-3
September 29	at Tennessee	3	2	3	20	-.050	0	1	.000	0	0	0	.000	0	3	1.000	2	0	2	0	2.0	0	3.0	.076	0-3
October 2	ALABAMA	5	9	6	37	.081	0	1	.000	0	0	0	.000	0	5	1.000	2	0	5	0	5.0	0	11.5	.183	3-2
October 3	ALABAMA	3	7	3	27	.148	0	0	.000	0	0	0	.000	0	3	1.000	4	0	2	0	2.0	0	8.0	.248	3-0
October 9	at Arkansas	4	7	4	30	.100	0	2	.000	0	0	0	.000	0	12	1.000	1	0	1	0	1.0	0	7.5	.158	1-3
October 10	at Arkansas	5	13	4	39	.231	0	4	.000	0	0	0	.000	1	6	.833	3	0	2	0	2.0	0	14.0	.144	2-3
October 16	MISSOURI	3	2	1	14	.071	0	1	.000	0	0	0	.000	0	1	1.000	0	0	0	0	0.0	0	2.0	.232	3-0
October 17	MISSOURI	5	16	7	47	.191	1	6	.167	0	0	0	.000	0	7	1.000	2	0	1	0	1.0	0	16.5	.235	2-3
October 21	at Georgia	3	16	1	32	.469	0	0	.000	0	0	0	.000	0	2	1.000	3	0	1	0	1.0	0	16.5	.241	3-0
October 22	at Georgia	3	4	6	20	-.100	0	1	.000	0	0	0	.000	0	7	1.000	0	0	0	0	0.0	0	4.0	.183	0-3
October 29	LSU	3	7	1	17	.353	0	1	.000	0	0	0	.000	0	0	.000	2	0	2	0	2.0	0	8.0	.121	0-3
November 4	at Texas A&M	5	8	5	32	.094	1	4	.250	0	0	0	.000	1	17	.941	6	0	1	0	1.0	0	8.5	.132	2-3
November 5	at Texas A&M	5	10	6	36	.111	0	1	.000	0	0	0	.000	1	16	.938	7	0	1	0	1.0	0	10.5	.186	3-2
November 10	SOUTH CAROLINA	3	8	1	21	.333	0	1	.000	0	0	0	.000	1	5	.800	0	0	2	0	2.0	0	9.0	.206	0-3
November 17	at Florida	3	1	1	14	.000	1	2	.500	0	0	0	.000	0	14	1.000	3	0	1	0	1.0	0	1.5	.089	0-3
TOTALS		94	206	85	707	.171	5	45	.111	6	8	167	.952	6	132	.955	72	2	31	1	33.0	0	229.5	.209	

SETS PLAYED: 94 SERVICE ACES PER SET: 0.06 POINTS PER SET: 2.44
 KILLS PER SET: 2.19 DIGS PER SET: 0.77
 ASSISTS PER SET: 0.05 BLOCKS PER SET: 0.35

GREEN'S OVERALL CAREER STATISTICS

YEAR	SETS	MP	KILLS	K/S	E	TA	PCT.	AST	A/S	SA	SA/S	SE	DIGS	D/S	RE	BS	BA	TB	B/S	PTS	PT/S
2021	94	25	206	2.19	85	707	.171	5	.05	6	.06	8	72	0.77	6	2	31	33	0.35	229.5	2.544
2020	13	4	27	2.08	33	139	-.043	3	.23	1	.08	8	28	2.15	2	1	8	9	0.69	33.0	2.54
2019	67	24	146	2.18	103	506	.085	1	.01	13	.19	14	30	0.45	3	3	7	10	0.15	165.5	2.47
2018	1	1	0	0.00	0	0	.000	0	.00	0	.00	1	0	0.00	0	0	0	0	0.00	0.0	0.00
TOTAL	175	54	379	2.17	221	1352	.117	9	.05	20	.11	31	130	0.74	11	6	46	52.0	0.30	428.0	2.45

GREEN'S SEC CAREER STATISTICS

YEAR	SETS	MP	KILLS	K/S	E	TA	PCT.	AST	A/S	SA	SA/S	SE	DIGS	D/S	RE	BS	BA	TB	B/S	PTS	PT/S
2021	57	15	123	2.16	55	420	.162	4	.07	2	.04	1	39	0.68	4	0	21	21	.37	135.5	2.37
2020	13	4	27	2.08	33	139	-.043	3	.23	1	.08	8	28	2.15	2	1	8	9	.69	33.0	2.54
2019	28	13	52	1.86	45	211	.033	1	.04	1	.04	9	13	0.46	1	2	3	5	.18	56.5	2.00
2018	0	0	0	0.00	0	0	.000	0	.00	0	.00	0	0	0.00	0	0	0	0	.00	0.0	0.0
TOTAL	98	32	202	2.06	133	770	.090	8	.08	4	.04	18	80	0.82	7	3	32	35	.36	225.0	2.30



#17 CASSIDY TANTON

OUTSIDE HITTER | 6-0 | FRESHMAN
STONEVILLE, N.C. (DALTON MCMICHAEL)

CURTIS'S HIGHLIGHTS:

- Did not see action during the first five weeks of play due to an ankle injury
- Made collegiate debut at Alabama State (9/26)

CATEGORY _____	CAREER HIGH _____	OPPONENT/DATE _____
Kills _____		
Attempts _____		
Hitting Percentage (Min. 10 ATT.) _____		
Assists _____		
Digs _____		
Blocks _____		
Aces _____		
Points _____		

CATEGORY _____	SEASON HIGH _____	OPPONENT/DATE _____
Kills _____		
Attempts _____		
Hitting Percentage (Min. 10 ATT.) _____		
Assists _____		
Digs _____		
Blocks _____		
Aces _____		
Points _____		

DATE	OPPONENT	SP	ATTACK				SET			SERVE				RECEIPT			BLOCKING				BHE	POINTS	TEAM		
			K	E	TA	PCT	A	TA	PCT.	SA	SE	TA	PCT.	RE	TA	PCT.	DIG	BS	BA	BE			TOTAL	HIT%	SCORE
September 26	at Alabama State	1	0	0	0	.000	0	0	.000	0	0	0	.000	0	0	.000	0	0	0	0	0.0	0	0.0	.209	2-3
TOTALS		1	0	0	0	.000	0	0	.000	0	0	0	.000	0	0	.000	0	0	0	0	0.0	0	0.0	.209	

TANTON'S OVERALL CAREER STATISTICS

YEAR	SETS	MP	KILLS	K/S	E	TA	PCT.	AST	A/S	SA	SA/S	SE	DIGS	D/S	RE	BS	BA	TB	B/S	PTS	PT/S
2021	1	0	0	0.0	0	0	.000	0	.00	0	.00	0	0	.00	0	0	0	0	.00	0.0	0.00
TOTAL	1	0	0	0.0	0	0	.000	0	.00	0	.00	0	0	.00	0	0	0	0	.00	0.0	0.00

TANTON'S SEC CAREER STATISTICS

YEAR	SETS	MP	KILLS	K/S	E	TA	PCT.	AST	A/S	SA	SA/S	SE	DIGS	D/S	RE	BS	BA	TB	B/S	PTS	PT/S
2021	0	0	0	0.0	0	0	.000	0	.00	0	.00	0	0	.00	0	0	0	0	.00	0.0	0.00
TOTAL	0	0	0	0.0	0	0	.000	0	.00	0	.00	0	0	.00	0	0	0	0	.00	0.0	0.00



#19 ELIF SU YAVUZ

MIDDLE BLOCKER | 6-3 | SENIOR
ANKARA, TURKEY (GAZI UNIVERSITY)

YAVUZ'S HIGHLIGHTS:

- Ranks ninth in Auburn single-season history in block assists and 10th in blocks per set
- Has recorded at least four blocks in 11 matches this season
- Made her Auburn debut, starting at middle blocker in the season opener versus Tennessee Tech (8/27)
- Set career high in total blocks (8.0) versus Jackson State (8/28)
- Match her career high in blocks while recording her first collegiate assist at Arkansas (10/10)
- In her first appearance at the service line this season, totaled three aces at Georgia (10/21)
- Turned in a career offensive performance at Texas A&M (11/5), setting highs in kills (10), hitting percentage (.588) and points (13.0)

CATEGORY	CAREER HIGH	OPPONENT/DATE
Kills	10	at Texas A&M (11/5/21)
Attempts	17	at Texas A&M (11/5/21)
Hitting Percentage (Min. 10 ATT.)	.588	at Texas A&M (11/5/21)
Assists	1 (3x)	last, vs. South Carolina (11/10/21)
Digs	6	at Texas A&M (11/4/21)
Blocks	8.0 (2x)	last, at Arkansas (10/10/21)
Aces	3	at Georgia (10/21/21)
Points	13.0	at Texas A&M (11/5/21)

CATEGORY	SEASON HIGH	OPPONENT/DATE
Kills	10	at Texas A&M (11/5/21)
Attempts	17	at Texas A&M (11/5/21)
Hitting Percentage (Min. 10 ATT.)	.588	at Texas A&M (11/5/21)
Assists	1 (3x)	last, vs. South Carolina (11/10/21)
Digs	6	at Texas A&M (11/4/21)
Blocks	8.0 (2x)	last, at Arkansas (10/10/21)
Aces	3	at Georgia (10/21/21)
Points	13.0	at Texas A&M (11/5/21)

DATE	OPPONENT	SP	ATTACK			SET			SERVE			RECEIPT			BLOCKING			TEAM POINTS	HIT%	SCORE					
			K	E	TA	PCT.	A	TA	PCT.	SA	SE	TA	PCT.	RE	TA	PCT.	DIG				BS	BA	BE	TOTAL	BHE
August 27	TENNESSEE TECH	3	1	0	2	.500	0	1	.000	0	0	0	.000	0	0	.000	0	0	2	0	2.0	0	2.0	.292	3-0
August 28	JACKSON STATE	3	4	0	6	.667	0	0	.000	0	0	0	.000	0	0	.000	0	0	8	0	8.0	0	8.0	.457	3-0
September 3	CAL STATE FULLERTON	3	2	1	4	.250	0	0	.000	0	0	0	.000	0	0	.000	0	0	2	1	2.0	0	3.0	.221	3-0
September 4	SOUTHEASTERN LA.	3	1	0	1	1.000	0	0	.000	0	0	0	.000	0	0	.000	0	0	2	0	2.0	0	2.0	.300	3-0
September 9	NORTH ALABAMA	3	4	0	6	.667	0	1	.000	0	0	0	.000	0	0	.000	0	1	2	1	3.0	0	6.0	.265	3-0
September 12	SANTA CLARA	5	1	2	6	-.167	0	1	.000	0	0	0	.000	0	0	.000	1	0	3	0	3.0	0	2.5	.260	3-2
September 17	FLORIDA A&M	5	8	0	14	.571	0	2	.000	0	0	0	.000	0	0	.000	4	1	3	0	4.0	0	10.5	.245	2-3
September 17	NICHOLLS	4	2	0	6	.333	0	1	.000	0	0	0	.000	0	1	1.000	2	0	2	1	2.0	0	3.0	.183	3-1
September 18	BELMONT	3	3	1	4	.500	0	0	.000	0	0	0	.000	0	0	.000	0	0	2	0	2.0	0	4.0	.345	3-0
September 22	OLE MISS	4	2	1	5	.200	0	0	.000	0	0	0	.000	1	1	.000	0	1	2	1	3.0	0	4.0	.196	1-3
September 26	at Alabama State	5	2	1	3	.333	0	1	.000	0	0	0	.000	0	0	.000	0	0	3	0	3.0	0	3.5	.209	2-3
September 29	at Tennessee	3	1	0	3	.333	0	0	.000	0	0	0	.000	0	0	.000	0	0	4	0	4.0	0	3.0	.076	0-3
October 2	ALABAMA	5	4	1	8	.375	0	0	.000	0	0	0	.000	0	0	.000	2	0	4	2	4.0	0	6.0	.183	3-2
October 3	ALABAMA	3	2	1	7	.143	0	1	.000	0	0	0	.000	0	0	.000	1	1	2	0	3.0	1	4.0	.248	3-0
October 9	at Arkansas	4	2	1	3	.333	0	1	.000	0	0	0	.000	0	0	.000	4	0	4	1	4.0	0	4.0	.158	1-3
October 10	at Arkansas	5	1	1	4	.000	1	3	.333	0	0	0	.000	0	0	.000	1	0	8	0	8.0	0	5.0	.144	2-3
October 16	MISSOURI	3	3	0	8	.375	1	1	1.000	0	0	0	.000	0	0	.000	3	0	2	0	2.0	0	4.0	.232	3-0
October 17	MISSOURI	5	6	1	13	.385	0	8	.000	0	0	0	.000	1	1	.000	1	0	2	0	2.0	0	7.0	.235	2-3
October 21	at Georgia	3	1	1	3	.000	0	1	.000	3	2	15	.867	0	0	.000	1	0	5	0	5.0	0	6.5	.241	3-0
October 22	at Georgia	3	0	1	3	-.333	0	0	.000	0	3	10	.700	0	1	1.000	0	0	3	0	3.0	0	1.5	.183	0-3
October 29	LSU	3	1	0	3	.333	0	0	.000	0	1	8	.875	0	5	1.000	2	1	3	0	4.0	0	3.5	.121	0-3
November 4	at Texas A&M	5	6	1	13	.385	0	4	.000	2	2	16	.875	0	0	.000	6	0	3	0	3.0	0	9.5	.132	2-3
November 5	at Texas A&M	5	10	0	17	.588	0	1	.000	1	4	16	.750	0	0	.000	5	0	4	0	4.0	0	13.0	.186	3-2
November 10	SOUTH CAROLINA	3	2	1	4	.250	1	2	.500	1	2	12	.833	0	0	.000	2	0	0	0	0.0	0	3.0	.206	0-3
November 17	at Florida	3	0	1	2	-.500	0	2	.000	1	1	9	.889	0	0	.000	1	0	1	0	1.0	0	1.5	.089	0-3
TOTALS		94	69	16	148	.358	3	31	.097	8	15	86	.826	2	9	.778	36	5	76	7	81.0	1	120.0	.209	

SETS PLAYED: 94 SERVICE ACES PER SET: 0.09 POINTS PER SET: 1.28
 KILLS PER SET: 0.73 DIGS PER SET: 0.38
 ASSISTS PER SET: 0.03 BLOCKS PER SET: 0.86

YAVUZ'S OVERALL CAREER STATISTICS

YEAR	SETS	MP	KILLS	K/S	E	TA	PCT.	AST	A/S	SA	SA/S	SE	DIGS	D/S	RE	BS	BA	TB	B/S	PTS	PT/S
2021	94	25	69	0.73	16	148	.358	3	.03	8	.09	15	36	0.38	2	5	76	81	0.86	120.0	1.28
TOTAL	94	25	69	0.73	16	148	.358	3	.03	8	.09	15	36	0.38	2	5	76	81	0.86	120.0	1.28

YAVUZ'S SEC CAREER STATISTICS

YEAR	SETS	MP	KILLS	K/S	E	TA	PCT.	AST	A/S	SA	SA/S	SE	DIGS	D/S	RE	BS	BA	TB	B/S	PTS	PT/S
2021	57	15	41	0.72	11	96	.312	3	.05	8	.14	15	29	0.51	2	3	47	50	0.88	75.5	1.32
TOTAL	57	15	41	0.72	11	96	.312	3	.05	8	.14	15	29	0.51	2	3	47	50	0.88	75.5	1.32



#21 TATUM SHIPES

OUTSIDE HITTER/MIDDLE BLOCKER | 6-4 | SENIOR
 BUFORD, GA. (BUFORD)

SHIPES HIGHLIGHTS:

- SEC Defensive Player of the Week (10/4)
- Moved to middle blocker after spending her career as a pin hitter
- Leads the SEC in both total blocks (133) and blocks per set (1.46), while ranking 12th and third, respectively, in both categories nationally.
- Recorded at least five blocks in 11 matches this season
- Added 23 double-digit kills and seven double-doubles as a Tiger
- Totaled 12.0 total blocks in Auburn's five-set victory against Alabama (10/2) to set the program's single-match record for blocks in the rally scoring era. The previous record of 11.0 was set on Nov. 23, 2017 by Breanna Barksdale at Florida
- Chipped in 10.0 blocks at Arkansas (10/9) for just her second double-digit blocking effort of her career
- Returned to the service line in Fayetteville (10/10) with a career high two ace
- Totaled three blocks versus LSU (10/29) to bring her season total to 120 to shatter Auburn's single-season total blocks record (rally scoring era). The previous record of 119 was set in 2012 by Camila Jersonsky.
- With four block assists against South Carolina (11/10) set the program's single-season record with 110 to surpass Camila Jersonsky (2012)
- Enters the weekend single-season records (rally scoring era) in blocks per set (1.46), total blocks (133) and block assists (113) and second in solo blocks (20)

CATEGORY	CAREER HIGH	OPPONENT/DATE
Kills	21	vs. Ole Miss (10/26/18)
Attempts	55	vs. Ole Miss (10/26/18)
Hitting Percentage (Min. 10 ATT.)	.462	vs. Tennessee Tech (8/27/21)
Assists	3 (4x)	last, at Texas A&M (11/13/19)
Digs	18 (2x)	last, at Tennessee (11/27/19)
Blocks	12.0	vs. Alabama (10/2/21)
Aces	3 (2x)	last, at Western Michigan (9/20/19)
Points	24.5	vs. Ole Miss (10/26/18)

CATEGORY	SEASON HIGH	OPPONENT/DATE
Kills	8	vs. Tennessee Tech (8/27/21)
Attempts	20	vs. Nicholls (9/17/21)
Hitting Percentage (Min. 10 ATT.)	.462	vs. Tennessee Tech (8/27/21)
Assists	1 (7x)	last, at Georgia (10/21/21)
Digs	5 (2x)	last, at Texas A&M (11/5/21)
Blocks	12.0	vs. Alabama (10/2/21)
Aces	2	at Arkansas (10/10/21)
Points	14.0	vs. Alabama (10/2/21)

DATE	OPPONENT	SP	ATTACK				SET			SERVE				RECEIPT			BLOCKING				TEAM	HIT%	SCORE		
			K	E	TA	PCT.	A	TA	PCT.	SA	SE	TA	PCT.	RE	TA	PCT.	DIG	BS	BA	BE	TOTAL	BHE	POINTS		
August 27	TENNESSEE TECH	3	8	2	13	.462	1	2	.500	0	1	5	.800	0	2	1.000	1	1	6	0	7.0	0	12.0	.292	3-0
August 28	JACKSON STATE	3	4	0	9	.444	0	0	.000	0	1	3	.667	0	0	.000	1	0	5	0	5.0	0	6.5	.457	3-0
September 2	CAL STATE FULLERTON	3	1	1	9	.000	0	1	.000	0	0	7	1.000	0	1	1.000	2	1	2	1	3.0	0	3.0	.221	3-0
September 3	SOUTHEASTERN LA.	3	4	1	11	.273	0	2	.000	1	1	6	.833	0	0	.000	2	0	8	0	8.0	0	9.0	.300	3-0
September 9	NORTH ALABAMA	3	6	0	7	.857	0	0	.000	0	0	0	.000	0	0	.000	1	0	3	0	3.0	0	6.0	.265	3-0
September 12	SANTA CLARA	5	7	2	14	.357	1	3	.333	0	0	0	.000	0	0	.000	1	1	4	1	5.0	1	10.0	.260	3-2
September 17	FLORIDA A&M	2	3	3	11	.000	0	0	.000	0	0	0	.000	0	0	.000	0	0	1	0	1.0	0	3.5	.245	2-3
September 17	NICHOLLS	4	7	4	20	.150	1	2	.500	0	0	0	.000	0	0	.000	3	2	7	0	9.0	0	12.5	.183	3-1
September 18	BELMONT	3	4	0	10	.400	0	0	.000	0	0	0	.000	0	0	.000	0	3	4	0	7.0	0	9.0	.345	3-0
September 22	OLE MISS	4	3	2	9	.111	0	1	.000	0	0	0	.000	0	1	1.000	3	2	1	0	3.0	0	5.5	.196	1-3
September 26	at Alabama State	5	6	2	10	.400	0	1	.000	0	0	0	.000	0	0	.000	1	0	2	0	2.0	0	7.0	.209	2-3
September 29	at Tennessee	3	3	1	10	.200	0	1	.000	0	0	0	.000	0	1	1.000	1	2	4	0	6.0	1	7.0	.076	0-3
October 2	ALABAMA	5	7	4	13	.231	1	2	.500	0	0	0	.000	0	0	.000	5	2	10	0	12.0	0	14.0	.183	3-2
October 3	ALABAMA	3	3	1	9	.222	0	0	.000	0	0	0	.000	0	0	.000	0	1	6	0	7.0	0	7.0	.248	3-0
October 9	at Arkansas	4	2	3	7	-.143	1	5	.200	0	0	10	1.000	0	0	.000	4	1	9	1	10.0	0	7.5	.158	1-3
October 10	at Arkansas	5	2	3	13	-.077	1	5	.200	2	2	16	.875	0	1	1.000	4	0	9	1	9.0	0	8.5	.144	2-3
October 16	MISSOURI	3	4	2	13	.154	0	2	.000	1	1	7	.857	0	0	.000	3	0	3	0	3.0	0	6.5	.232	3-0
October 17	MISSOURI	5	3	2	12	.083	0	2	.000	0	1	13	.923	0	0	.000	2	1	5	0	6.0	1	6.5	.235	2-3
October 21	at Georgia	3	4	0	9	.444	1	2	.500	0	0	0	.000	0	0	.000	0	1	7	0	8.0	0	8.5	.241	3-0
October 22	at Georgia	3	5	0	9	.556	0	0	.000	0	0	0	.000	0	0	.000	0	0	3	0	3.0	0	6.5	.183	0-3
October 29	LSU	3	4	0	11	.364	0	1	.000	0	0	0	.000	0	0	.000	1	1	2	0	3.0	0	6.0	.121	0-3
November 4	at Texas A&M	5	4	3	13	.077	0	2	.000	0	0	0	.000	0	1	1.000	2	0	3	1	3.0	0	5.5	.132	2-3
November 5	at Texas A&M	5	2	0	13	.154	0	1	.000	0	0	0	.000	0	2	1.000	5	1	2	0	3.0	0	4.0	.186	3-2
November 10	SOUTH CAROLINA	3	7	1	9	.667	0	0	.000	0	0	0	.000	0	0	.000	0	0	4	0	4.0	0	9.0	.206	0-3
November 17	at Florida	3	3	1	7	.286	0	2	.000	0	0	0	.000	0	1	1.000	0	0	3	0	3.0	0	4.5	.089	0-3
TOTALS		91	106	38	271	.251	7	37	.189	4	7	67	.896	0	10	1.000	42	20	113	5	133.0	3	186.5	.209	

SETS PLAYED: 91
 KILLS PER SET: 1.16
 ASSISTS PER SET: 0.08

SERVICE ACES SET: 0.04
 DIGS PER SET: 0.46
 BLOCKS PER SET: 1.46

POINTS PER SET: 2.05

SHIPES' OVERALL CAREER STATISTICS

YEAR	SETS	MP	KILLS	K/S	E	TA	PCT.	AST	A/S	SA	SA/S	SE	DIGS	D/S	RE	BS	BA	TB	B/S	PTS	PT/S
2021	91	25	106	1.16	38	271	.251	7	.08	4	.04	7	42	0.46	0	20	113	133	1.46	186.5	2.05
2020	25	8	59	2.36	44	230	.065	3	.12	4	.16	12	47	1.88	10	1	15	16	0.64	71.5	2.86
2019	103	29	269	2.61	154	900	.127	29	.28	23	.22	52	246	2.39	28	14	55	69	0.67	333.5	3.24
2018	59	21	147	2.49	63	403	.208	1	.02	0	.00	0	30	0.51	4	6	18	24	0.41	162.0	2.75
TOTAL	278	83	581	2.09	300	1804	.156	40	.14	31	.11	71	365	1.31	42	41	201	242	0.87	753.5	2.71

SHIPES' SEC CAREER STATISTICS

YEAR	SETS	MP	KILLS	K/S	E	TA	PCT.	AST	A/S	SA	SA/S	SE	DIGS	D/S	RE	BS	BA	TB	B/S	PTS	PT/S
2021	57	15	56	0.98	23	157	.210	4	.07	3	.05	4	30	0.53	0	12	71	83	1.46	106.5	1.86
2020	25	8	59	2.36	44	230	.065	3	.12	4	.16	12	47	1.88	10	1	15	16	0.64	71.5	2.84
2019	59	18	176	2.98	99	605	.127	15	.25	9	.15	28	164	2.78	18	11	26	37	0.63	209.0	3.54
2018	47	15	128	2.72	56	341	.211	1	.02	0	.00	0	26	0.55	4	5	16	21	0.45	141.0	3.00
TOTAL	188	56	419	2.23	226	1334	.147	23	.12	16	.09	44	267	1.42	32	29	128	157	0.84	528.0	2.81



#4 FALLAN LANHAM
Fr. | DS/L | 5-8



#5 AUDREY DOUGLAS
So. | OH/OPP | 6-4



#6 BELLA ROSENTHALL
Sr. | DS/L | 5-5



#7 REBEKAH RATH
Jr. | OH | 6-0



#8 LIZ REICH
Gr. | OPP | 6-1



#10 JACKIE BARRETT
So. | S | 6-1



#11 JORDAN SINNESS
Fr. | S | 5-9



#15 KATE CURTIS
Fr. | DS/L | 5-6



#16 VAL GREEN
Sr. | OH | 6-4



#17 CASSIDY TANTON
Fr. | OH | 6-0



#19 ELIF SU YAVUZ
Sr. | MB | 6-3



#21 TATUM SHIPES
Sr. | OH | 6-4



HEAD COACH
BRENT CROUCH



ASSOCIATE HEAD COACH
ALEX DUNPHY



ASSISTANT COACH
RICK MOLLER