



2021 VOLLEYBALL MATCH NOTES

AUBURN ATHLETICS COMMUNICATIONS: 392 SOUTH DONAHUE DRIVE || AUBURN, AL 36830 || AUBURNTIGERS.COM || @AUBURNVB

2021 SCHEDULE/RESULTS

10-4 OVERALL | 2-2 SEC

10-2 HOME | 0-2 AWAY | 0-0 NEUTRAL

DATE	OPPONENT	TV	TIME/RESULT
Aug. 27	^ TENNESSEE TECH	SEC Network+	W, 3-0
Aug. 28	^ JACKSON STATE	SEC Network+	W, 3-0
Sept. 2	% CAL STATE FULLERTON		W, 3-0
Sept. 3	% SOUTHEASTERN LOUISIANA		W, 3-0
Sept. 9	NORTH ALABAMA	SEC Network+	W, 3-0
Sept. 12	SANTA CLARA		W, 3-2
Sept. 17	! FLORIDA A&M		L, 2-3
Sept. 17	! NICHOLLS	SEC Network+	W, 3-1
Sept. 18	! BELMONT	SEC Network+	W, 3-0
Sept. 22	* (RV) OLE MISS	ESPNU	L, 1-3
Sept. 26	at Alabama State		L, 2-3
Sept. 29	* at #20 Tennessee	SEC Network	L, 0-3
Oct. 2	* ALABAMA	SEC Network+	W, 3-2
Oct. 3	* ALABAMA	ESPNU	W, 3-0
Oct. 9	* at Arkansas	SEC Network+	5 p.m. CT
Oct. 10	* at Arkansas	SEC Network+	3 p.m. CT
Oct. 16	* MISSOURI	SEC Network+	4:30 p.m. CT
Oct. 17	* MISSOURI	SEC Network+	1 p.m. CT
Oct. 21	* at Georgia	SEC Network+	6 p.m. CT
Oct. 22	* at Georgia	SEC Network+	6 p.m. CT
Oct. 29	* LSU	SEC Network+	6 p.m. CT
Nov. 4	* at Texas A&M	SEC Network+	6 p.m. CT
Nov. 5	* at Texas A&M	SEC Network+	6 p.m. CT
Nov. 10	* SOUTH CAROLINA	SEC Network	8 p.m. CT
Nov. 17	* at Florida	SEC Network+	6 p.m. CT
Nov. 20	* KENTUCKY	SEC Network+	4:30 p.m. CT
Nov. 21	* KENTUCKY	SEC Network+	1 p.m. CT
Nov. 26	* at Mississippi State	SEC Network+	4 p.m. CT

BOLD indicates home contest | All time Central and subject to change
^ - War Eagle Invitational | % - SLU-Fullerton Tournament | % - Home Tournament | * - Southeastern Conference Game

MATCH

15

ARKANSAS

Saturday, Oct. 9 | 5 p.m. CT

Fayetteville, Ark. | Barnhill Arena | SEC Network+



MATCH

16

ARKANSAS

Sunday, Oct. 10 | 3 p.m. CT

Fayetteville, Ark. | Barnhill Arena | SEC Network+



AUBURN
ARKANSAS

AVCA Coaches Poll _____ N/R
 2021 Record _____ 10-4 | 2-2 SEC
 Head Coach _____ Brent Crouch
 Career Record (Year) _____ 105-103 (8th)
 Record at Auburn (Year) _____ 10-12 (2nd)

Site _____ Fayetteville, Ark.
 Venue _____ Barnhill Arena
 Live Stats _____ Statbroadcast
 Twitter _____ @AuburnVB
 Series Record _____ Arkansas leads 37-12
 Last Meeting ___ Auburn 0; Arkansas 3 (22-25, 21-25, 18-25)
 _____ Oct. 27, 2019 in Fayetteville, Ark.

AVCA Coaches Poll _____ N/R
 2021 Record _____ 11-4 | 2-2 SEC
 Head Coach _____ Jason Watson
 Career Record (Year) _____ 275-228 (17th)
 Record at Arkansas (Year) _____ 75-80 (6th)

BY THE NUMBERS

14 Senior Bella Rosenthal enters the weekend series just 14 digs shy of recording 1,000 for her career. She would be just the 15th Tiger in program history to hit this mark.

12 The SEC leader in total blocks and blocks per set, senior Tatum Shipes added her named to the record book with a single-match record of 12.0 blocks against Alabama on Oct. 2.

3 With back-to-back conference wins under their belt, the Tigers are looking to win their third straight SEC contest. The last time Auburn has won three straight in league action was in 2017.

AUBURN ATHLETICS COMMUNICATIONS

Office Phone _____ 334-844-9800
 Kirk Sampson _____ Associate AD
 _____ sampsa@auburn.edu
 Taylor Shirey _____ Volleyball Contact
 _____ trs0010@auburn.edu
 _____ C: 334-750-0710

FOLLOW ALONG

Web _____ AuburnTigers.com
 Twitter _____ @AuburnVB
 Instagram _____ @auburnvolleyball

QUICK HITS

- Carrying the momentum of back-to-back SEC victories, Auburn looks to continue its winning ways with a two-match series at Arkansas. The Tigers are looking for their first win in Fayetteville since 2016.
- The "Block Party" was in rare form during Auburn's two-match sweep of Alabama as the Tigers tied the program's single-match record with 18.0 total team blocks against the Tide on Oct. 2. Senior Tatum Shipes led Auburn at the net shattering Auburn's individual single-match record with 12.0 blocks in the match.
- Leading the squad with nine double-doubles this season, sophomore Jackie Barrett has blossomed as the Tigers' starting setter. Her 447 total assists this season rank eighth overall in the SEC, while her 8.60 assists per set mark also ranks eighth in the conference.

AUBURN'S POTENTIAL STARTING SEVEN



BELLA ROSENTHALL	REBEKAH RATH	LIZ REICH	VAL GREEN	JACKIE BARRETT	ELIF SU YAVUZ	TATUM SHIPES
#6 • DS/L • SR. • 5-5	#7 • OH • JR. • 6-0	#8 • OPP • GR. • 6-1	#16 • OH • SR. • 6-2	#10 • S • SO. • 6-1	#19 • MB • SR. • 6-3	#21 • MB • SR. • 6-4
D/S: 5.19	K/S: 4.35	K/S: 3.12	K/S: 2.19	K/S: 0.50	K/S: 0.71	K/S: 1.35
A/S: 1.27	HIT%: .246	HIT%: .300	HIT%: .163	A/S: 8.60	HIT%: .387	HIT%: .269
SA/S: 0.13	D/S: 2.00	A/S: 0.06	SA/S: 0.12	SA/S: 0.29	B/S: 0.87	D/S: 0.43
P/S: 0.13	B/S: 0.85	D/S: 0.52	D/S: 0.87	D/S: 3.17	P/S: 1.18	B/S: 1.59
	SA/S: 0.25	B/S: 0.54	B/S: 0.40	B/S: 0.63	SA/S: 0.87	SA/S: 2.02
	P/S: 5.10	P/S: 3.38	P/S: 2.53	P/S: 1.13	P/S: 1.13	P/S: 2.32

K/S: kills per set • HIT%: hitting percentage • D/S: digs per set • B/S: blocks per set • A/S: assists per set • SA/S: aces per set • P/S: points per set

#WarEagle



AuburnTigers.com



@AuburnVB | @AuburnTigers
@AuburnVBCoach



/AuburnVB
/AuburnTigers

TEAM SCHEDULE AND MEDIA AVAILABILITY >> WEEK OF OCTOBER 9-10

MONDAY October 4	TUESDAY October 5	WEDNESDAY October 6	THURSDAY October 7	FRIDAY October 8	SATURDAY October 9	SUNDAY October 10
OFF DAY	PRACTICE: 3:30-6:00 p.m. SAC	PRACTICE: 3:30-7:00 p.m. SAC	PRACTICE: 4:15-6:30 p.m. SAC	TRAVEL DAY	MATCH: 5:00 p.m. at Arkansas Fayetteville, Ark.	MATCH: 3:00 p.m. at Arkansas Fayetteville, Ark.
NO INTERVIEWS	INTERVIEWS BY REQUEST	INTERVIEWS BY REQUEST	INTERVIEWS BY REQUEST	NO INTERVIEWS	INTERVIEWS POSTMATCH	INTERVIEWS POSTMATCH

AUBURN ATHLETICS COMMUNICATIONS

QUICK FACTS

AUBURNTIGERS.COM

For updated game notes, statistics, safety protocols and latest information on Auburn volleyball and Auburn Athletics, visit AuburnTigers.com.

INTERVIEW POLICY

Coch Crouch, assistant coaches and student-athletes are available for interviews by contacting Taylor Shirey in the communications office. All interviews during the week will be conducted via phone or ZOOM. Post-match interviews will be conducted in the media room at Auburn Arena following a brief cooling-off period.

CREDENTIALS

Anyone wishing to cover an Auburn volleyball match should contact Taylor Shirey in the communications office at least 24 hours in advance to make arrangements. Due to COVID-19 safety guidelines, space within Auburn Arena will be limited. All media members will be required to wear masks inside Auburn Arena as part of Auburn University's mask mandate.

MATCH DAY SERVICES

Due to safety concerns related to COVID-19, printed copies of notes, flip cards and statistics will NOT be available. Digital copies will be emailed out prior to the match and will be available on AuburnTigers.com. Media members are permitted to bring their own printed materials. Stats will not printed between sets or after matches. Live stats will be provided during the match and final statistics will be emailed out and posted on AuburnTigers.com. All post-match interviews will be conducted

via ZOOM. Wireless internet is available in the Arena; ask Taylor Shirey for the password. Match highlights, photos and postgame interviews will be available on Imagen following matches.

VIDEO SERVICES

FTP feeds of selected Auburn volleyball highlights are available for the media. A number of studio and satellite services may be arranged for electronic media by contacting Cody Baker in War Eagle Productions at jcb0101@auburn.edu.

PHOTO SERVICES

For photos of Auburn volleyball or any Olympic sports, contact Shanna Lockwood at sal0002@auburn.edu.

COMMUNICATIONS STAFF

Taylor Shirey Volleyball Contact
cell: 334-750-07010
email: trs0010@auburn.edu

Kirk Sampson Associate AD
cell: 334-750-1385
email: sampska@auburn.edu

UNIVERSITY INFORMATION

City / Zip _____ Auburn, Ala. / 36831
 Founded _____ Oct. 1, 1856
 Enrollment _____ 30,737
 Nickname _____ Tigers
 Colors _____ Navy Blue & Burnt Orange
 Affiliation _____ NCAA Division I
 Conference _____ Southeastern Conference
 Home Court _____ Auburn Arena (9,121)
 President _____ Dr. Jay Gogue (Auburn, 1969)
 Athletic Director _____ Allen Green (Notre Dame, 1998)
 Sport Administrator _____ Joy Vrbka (Florida, 2003)

TEAM INFORMATION

Letterwinners Returning/Lost _____ 7/8
 Starters Returning/Lost _____ 5/3+Libero
 Newcomers _____ 6
 2020 Overall Record _____ 0-8
 2020 Conference Record/Finish _____ 0-8/13th

PROGRAM HISTORY

First Year of Volleyball _____ 1967
 _____ Program discontinued 1981; Reinstated 1986
 Seasons of Auburn Volleyball _____ 49th
 All-Time Overall Record _____ 665-679-4 (.495)
 in Auburn Arena (Since 2013) _____ 59-51 (.536)
 Total Home Record _____ 231-204 (.531)
 All-Time SEC Record _____ 185-349 (.346)
 NCAA Tournament Appearances _____ 1/2010
 SEC Championships/Last _____ 1/Co-West Champions (1996)

STAFF INFORMATION

Head Coach _ Brent Crouch, 1st Season (Texas A&M, '98 & '00; Oregon '06)
 Career Record _____ 105-103 (.505)/8th Season
 Record at Auburn _____ 10-12 (.455)/2nd Season
 Associate Head Coach/Recruiting Coordinator _____ Alex Dunphy
 Assistant Coach _____ Rick Moller
 Volunteer Assistant Coach _____ Taylor Hammond
 Director of Volleyball Operations/Technical Coordinator _____ Madi Wilkerson
 Strength & Conditioning _____ Bethany Gainey
 Interim Athletic Trainer _____ Sydney Kinder
 Equipment Manager _____ Tra' Cee Tanner

ATHLETIC COMMUNICATIONS

Associate AD/Communications _____ Kirk Sampson
 Assistant Director/Volleyball Contact _____ Taylor Shirey
 Email _____ trs0010@auburn.edu
 Phone _____ 334-750-0710
 Mailing Address _____ Auburn Athletics Complex
 _____ 392 S. Donahue Drive
 Website _____ AuburnTigers.com

GAMEDAY EXPERIENCE: AUBURN ARENA

>> Auburn Arena is in its seventh season as home of Auburn volleyball. The Tigers are 59-51 since moving to the Arena in 2013. The facility seats approximately 2,000 fans for volleyball and 9,121 for basketball.



FIRST SERVE

» The Tigers continue Southeastern Conference action this weekend with its first two-match series in hostile territory as Auburn treks to Fayetteville, Ark., for a pair of matches with the Razorbacks.

» The series begins Saturday with a 5 p.m. CT first serve. Sunday's finale is scheduled for 3 p.m. CT. Both matches are set to air on the SEC Network + with Brett Dolan and Caitlin Donahue on the call.

» In its 49th full season of volleyball, Auburn's all-time record stands at 665-679-4 (.495).

» Brent Crouch (10-12) enters his second season as the head coach for the Tigers after a two-year stint at USC. Entering his eighth overall season as a head coach, Crouch holds an 105-103 career record. He's the 11th head coach in Auburn program history.

» Auburn's 2021 schedule features four 2020-21 NCAA Volleyball Tournament participants: Jackson State, Missouri, Florida and reigning national champion Kentucky.

» The Tiger roster features a wealth of fresh faces as six of Auburn's 12 total student-athletes on roster will be taking the court in Blue and Orange for the first time in their careers with a combination of four true freshmen and two transfers.

UP NEXT

» The Tigers return to Auburn Arena next weekend with a pair of matches set against Missouri. The series begins Oct. 16, Saturday at 4:30 p.m. CT with Oct. 17, Sunday's finale slated for 1 p.m. CT. Both matches will air on SEC Network+.

LAST TIME OUT

» Picking up its second victory in Southeastern Conference play in dominating fashion, Auburn volleyball (10-4, 2-2 SEC) claimed the series sweep over in-state rival Alabama (8-8, 0-4 SEC) by winning Sunday's finale in straight sets (25-19, 25-14, 25-18) at Auburn Arena.

» The Tigers have now won back-to-back SEC games for the first time since knocking off Georgia and Mississippi State in back-to-back matches in November of 2018. Auburn has now won three straight matches against Alabama. It is the longest win streak against the Crimson Tide since the Tigers won six straight from 2009 to 2012.

» Offensively, the Tigers executed more efficiently in their second game against the Tide, closing the match with a .248 team hitting percentage. Graduate student Liz Reich led the way as she attacked at a smoking .435 clip. Reich finished with 11 kills on 23 attempts with just one error to pick up her second straight match with double-digit kills. She closed the night with four digs.

» Senior Rebekah Rath earned her second consecutive double-double as she led the team with 16 kills while adding 11 digs. Rath was strong at the service line with a pair of aces while

also chipping in six blocks to close the match with 21.0 total points. Rath now has five double-doubles this season.

» Senior Val Green added seven kills while seniors Tatum Shipes and Elif Su Yavuz rounded out the offense, combining for five kills.

» Sophomore setter Jackie Barrett dished out 33 assists and added 11 digs for her ninth double-double for the season. Barrett was credited with a pair of blocks and one kill.

» Defensively, four Tigers closed the match with double-digit digs. Joining Rath and Barrett, were freshman Fallan Lanham (10) and senior Bella Rosenthal (21). Rosenthal picked up her 14th career match with at least 20 digs with her performance in Sunday's finale.

» Auburn's defense held Alabama to a 0.88 hitting percentage on Sunday. Contributing to that success once again was Auburn's play at the net. The Tigers totaled 11.0 team blocks, following its record-breaking performance on Saturday. Shipes once again led the team with seven total.

SEC REVAMPS CONFERENCE SCHEDULING FORMAT FOR 2021 CAMPAIGN

» The Southeastern Conference announced a new scheduling format for its conference slate ahead of the 2021 campaign.

» The SEC schedule consists of 18 matches in which each member institution will play each other at least once. The order of opponents for each team was determined by a random computer draw.

» Two-match series may be played Wednesday/Thursday, Thursday/Friday, Friday/Saturday or Saturday/Sunday per the league office.

SCOUTING ARKANSAS

» Returning to Fayetteville after picking up a road sweep over Ole Miss in Oxford, Arkansas enters the weekend with a 12-4 record with a 3-2 mark in Southeastern Conference play. Arkansas has also picked up victories over LSU and Georgia this season. Its lone losses in league action have both come from then-ranked No. 21 Tennessee.

» As a team, Arkansas ranks second in the SEC in total team kills (798) as the squad averages 13.76 per set, the fifth highest mark in the SEC. The Razorbacks enter the weekend with a .235 team hitting percentage. Arkansas relies heavily on the arm of Jillian Gillen. The junior outside hitter leads the SEC in attacks per set (12.33), kills per set (4.41), points (283.0), total attacks (685) and total kills (247). Sophomore outside hitter Taylor Head ranks fifth in the SEC with a 3.74 kills per set average. Her kills total of 213 is the fourth highest in the SEC.

» Arkansas ranks as the best serving team in the SEC, leading the conference in both aces per set (1.79) and total team service aces (104). Maggie Cartwright is the Razorbacks' best server, ranking second in the SEC with a 0.48 service aces

PLAYER TO WATCH: BELLA ROSENTHALL

» A two-time SEC Defensive Player of the Week, Bella Rosenthal leads the SEC with a 5.19 digs/set average. She has recorded at least 10 digs in 13 of 14 matches this season. She is just 14 digs shy of recording her 1,000th career dig.



SEC STANDINGS & SCHEDULE

	2021 SEC RECORD			2021 OVERALL		
	W	L	Pct.	W	L	Pct.
Kentucky	3	0	1.000	10	3	.769
Tennessee	4	1	.800	12	3	.800
Florida	4	1	.800	10	5	.667
South Carolina	3	1	.750	11	3	.786
Arkansas	3	2	.600	12	4	.750
Mississippi State	3	2	.600	12	5	.706
Texas A&M	3	2	.600	10	5	.667
AUBURN	2	2	.500	10	4	.714
LSU	2	3	.400	6	8	.429
Georgia	1	3	.250	5	10	.333
Ole Miss	1	4	.200	12	4	.750
Alabama	0	4	.000	8	8	.500
Missouri	0	4	.000	3	14	.176

THIS WEEK IN THE SEC...

Wednesday, Oct. 6

Mississippi State 1, #5 Kentucky 3
Arkansas 3, Ole Miss 0
Missouri 0, LSU 3

Thursday, Oct. 7

Georgia 3, Texas A&M 0

Friday, Oct. 8

#22 Tennessee at South Carolina 6 p.m.
Georgia at Texas A&M 7 p.m.

Saturday, Oct. 9

#5 Kentucky at Alabama 1 p.m.
#20 Florida at LSU 4 p.m.
#22 Tennessee at South Carolina 4 p.m.
AUBURN AT ARKANSAS 5 P.M.

Sunday, Oct. 10

#20 Florida at LSU 12 p.m.
AUBURN AT ARKANSAS 3 P.M.

2021 NCAA RPI REPORT

RK	TEAM	RECORD	AU RESULT
7	Tennessee	12-3	L
8	Kentucky	9-3	
20	South Carolina	11-3	
25	Texas A&M	10-4	
30	Florida	10-5	
42	Ole Miss	12-3	L
44	Arkansas	11-4	
51	Mississippi State	12-4	
93	Georgia	4-10	
117	AUBURN	10-4	----
122	Alabama	8-8	W W
126	Tennessee Tech	9-6	W
131	LSU	5-8	
146	Santa Clara	4-11	W
170	Missouri	3-13	
188	Florida A&M	10-5	L
219	Nicholls	7-8	W
226	Cal State Fullerton	4-7	W
255	Belmont	4-11	W
279	Jackson State	3-10	W
298	Alabama State	4-12	L
300	Southeastern Louisiana	3-11	W
324	North Alabama	6-12	W

AUBURN OPPONENTS ONLY

AVCA COACHES POLL

RK	TEAM	RECORD	PREVIOUS
1.	Texas (64)	11-0	1
2.	Pittsburgh	14-0	2
3.	Louisville	12-0	3
4.	Wisconsin	11-1	5
5.	Kentucky	9-3	6
6.	Purdue	11-2	4
7.	Ohio State	12-2	8
8.	Minnesota	7-4	7
9.	BYU	13-1	10
10.	Nebraska	10-3	12
11.	Washington	9-3	13
12.	Baylor	8-4	9
13.	Penn State	11-3	14
14.	Oregon	12-2	11
15.	Utah	10-3	19
16.	UCLA	10-2	19
17.	Stanford	8-4	17
18.	Georgia Tech	11-3	18
19.	Creighton	15-2	16
T20.	Florida	10-5	22
T20.	Western Kentucky	15-1	21
22.	Tennessee	12-3	20
23.	Pepperdine	12-1	23
24.	Colorado	11-2	24
25.	San Diego	10-3	25

Others receiving votes: Marquette; Illinois; Florida State; Washington State; Ole Miss; Rice; Maryland.

INSIDE THE MATCH-UP

ARKANSAS **12-37 (.245)**

8-16 H • 3-20 A • 0-1 N

SERIES HISTORY (LAST 10 MEETINGS)

YEAR	SITE	RESULT	MATCH SCORE
2013	AWAY	L	1-3
2013	HOME	W	3-1
2014	HOME	L	0-3
2015	AWAY	L	2-3
2015	HOME	W	3-0
2016	AWAY	W	3-1
2017	HOME	W	3-0
2017	AWAY	L	0-3
2018	HOME	W	3-0
2019	AWAY	L	0-3

per set mark. She has totaled 26 service aces from the line this season.

» Senior Gracie Ryan handles the setting duties for Arkansas. She ranks second in the SEC and ninth nationally with an 11.24 assists per set average. Ryan is also a strong defensive player for the Razorbacks with 30.0 total blocks and 171 total digs, the 13th most in the SEC.

» Defensively, Arkansas ranks fifth in the league with a 15.05 digs per set mark. The Razorback defense is spread fairly evenly as four players have totaled over 150 digs this season with Ryan leading the charge. Courtney Jackson ranks second on the team with 170 total digs.

» At the net, Arkansas has racked up 114.0 team blocks. Ellease Crumpton is the Razorbacks' most efficient blocker with 55.0 total blocks to her credit. Crumpton ranks 16th in the league with a 0.95 blocks per set mark.

A WIN OVER ARKANSAS...

» Would extend Auburn's win streak to three straight matches, the longest streak in league action since 2017

» Would be Auburn's win against Arkansas since 2018

» Would be Auburn's first win in Fayetteville since 2016.

AUBURN-ARKANSAS SERIES

» Arkansas leads the all-time series 37-12, but almost half of Auburn's wins in the series have come in the last eight years as the Tigers have won five of the last 10 meetings. This is the first time the two teams have met on the court since Arkansas swept the Tigers in Fayetteville on Oct. 27, 2019.

» Arkansas holds a 20-3 advantage in games played in Fayetteville. Auburn is searching for its first road win in the series since picking up a 3-1 victory on Oct. 23, 2016.

OH SHIPES! IT'S A BLOCK PARTY

» As the season progresses, Auburn's play at the net continues to improve as highlighted by a record-breaking performance against Alabama last weekend. As a team, the Tigers totaled 18.0 team blocks in Auburn's 3-2 victory against the Crimson Tide on Oct. 2. The mark tied the program's record for team blocks in a match. The Tigers also totaled 18.0 team blocks against South Florida on Sept. 13, 2014.

» The reigning SEC Defensive Player of the Week, Tatum Shipes recorded 12.0 total blocks to help Auburn to its first SEC home victory since 2018. The mark set the program's single-match record for blocks in the rally scoring era. The previous record of 11.0 was set on Nov. 23, 2017 by Breanna Barksdale at Florida.

» Auburn enters the weekend ranked third in the SEC and 15th among all Division I programs with a 2.74 blocks per set average. The team's block total of 142.5 is the third highest total in the SEC. Play at the net has helped Auburn hold opponents to

a minuscule .120 hitting percentage, the third lowest mark in the country.

» Shipes continues to lead Auburn with her impressive play at the net since moving to middle blocker to begin her senior season. Shipes leads the SEC and ranks seventh nationally with a 1.59 blocks/set average. Shipes also leads the SEC with 78.0 total blocks, the 14th highest overall total in the country.

» Shipes stands in a tie for ninth in Auburn single-season history with 15 solo stuffs to her credit. Her 1.59 blocks per set average currently stands as the highest blocks per set average in a single season in program history.

THE CROUCH EFFECT

» After COVID-19 derailed the process last season, Brent Crouch's overhaul of the program took into effect since the season opener and has continued into the early portion of Southeastern Conference play.

» The Tigers opened the season with 17 consecutive set victories before dropping its first set of the season. Auburn tied the program record for most sweeps to begin a season with five. The record was first set by the 1974 squad.

» Auburn's 6-0 start is the best for the Tigers since the 2012 team began the season 8-0. Auburn has recorded 10 victories through its first 14 matches of the season. It is the most wins by the Tigers since the 2018 team closed the year with 12.

» Sweeping Alabama to earn the program's first SEC victories of the season, the Tigers have now won back-to-back SEC games for the first time since knocking off Georgia and Mississippi State in November of 2018. Auburn has now won three straight matches against Alabama. It is the longest win streak against the Crimson Tide since the Tigers won six straight from 2009 to 2012.

CAN YOU DIG IT?

» Behind a career performance at the Auburn Invitational, Bella Rosenthal was selected as the SEC's Defensive Player of the Week for the second consecutive week. She is the first Tiger in program history to win the award in back-to-back weeks. She is also the first Tiger to win the award multiple times in a season since Camila Jersonsky in 2012.

» Rosenthal has paced the Tigers this season, recording at least 10 digs in 13 of Auburn's 14 matches to being the season. She has chipped in at least 20 digs in six matches for the Tigers. Rosenthal set a career high with 31 digs. She is the first Tiger to record at least 30 digs in a match since Payton White versus Butler on Aug. 31, 2019. Her 31 digs tied for the eighth most individual digs recorded by a Tiger in a single match.

» She currently leads the SEC with a 5.19 digs/set average a mark that is also good for 17th nationally. The mark is tied with Jesse Earl's (2017) for the highest recorded by a Tiger in a single season in the 25-point rally scoring era. She also currently ranks

PLAYER TO WATCH: TATUM SHIPES

» Making the move to middle blocker has been an easy transition to Tatum Shipes. Shipes enters the weekend leading the SEC and ranked seventh among all NCAA Division I athletes with a 1.59 blocks/set average.



second in the league with 270 total digs. She needs 97 digs over the last half of the season to jump on top Auburn's top 10 single-season dig performances in the rally-scoring era.

» With 986 career digs to her credit, Rosenthal is just 14 shy of becoming the 15th Tiger in program history to join the 1,000 digs club. Rosenthal would be the first Tiger to hit the mark since Brenna McIlroy in 2018. She currently ranks 132nd among all active Division I players in total digs.

» The Yorktown, Ind., native stands fourth in program history with a 3.48 career digs/set mark. With 50 more digs, Rosenthal would move into the top 10 in Auburn career history for digs.

FEEL THE RATH

» Rebekah Rath has made a statement in the early matches of debut season as a Tiger and put the league on notice that she is an offensive powerhouse that should be on everyone's radar.

» Rath has recorded at least 10 kills in 12 of Auburn's first 14 matches. In Auburn's five-set thriller versus Santa Clara, Rath led the team with 24 kills to become the first Tiger to record at least 20 kills in a match since Tatum Shipes in 2018. Rath also chipped in 24 kills in Auburn's five-set contest at Alabama State on Sept. 26.

» Rath's offensive presence has been recognized by the league as she was named SEC Offensive Player of the Week on Sept. 7. The Altamonte Springs, Fla., native is the first Auburn Tiger to be named SEC Offensive Player of the Week since Brenna McIlroy won the award on Oct. 30, 2017.

» Her efforts have also won her all-tournament team honors at both the War Eagle Invitational and the Auburn Invitational.

» Rath currently leads the SEC in points per set (5.10). She ranks second in the league in attacks per set (12.10), kills per set (4.35), total points (265.0). Rath ranks third in total attacks (447) and total kills (226).

» Rath's 4.35 kills per set average is currently the highest by a Tiger in single-season history in the 25-point rally scoring era. Zeroing in on Auburn's top 10 single-season kill performances in the rally-scoring era, Rath needs 99 kills over the remainder of the season to add her name to the list.

AUBURN PICKED 13th IN PRESEASON POLL

» Auburn was selected to finish 13th in the Southeastern Conference in the annual preseason coaches' poll. The Tigers earned 12 points from the league's coaches.

» Reigning national champion Kentucky (139 pts.) edged out Florida (138 pts) by one point as the favorite to win the SEC Championship. Kentucky secured seven first-place votes. Florida

finished with six.

» LSU was tabbed to finished third, while Tennessee and Arkansas rounded out the top five.

TIGER TRACKS

» Air Green! Val Green set Takawanda High School's high jump record. She's also a second generation collegiate volleyball athlete. Her mother, Paula, played at Miami-Ohio.

» Tatum Shipes holds a wealth of athletic talent in her family's history. Her mother, Laurel, played basketball at Kentucky. Her father lettered in basketball at The Master's University. Her brother, T.J., was a member of Georgia State's basketball team. Her grandfather, Don Hudgens, and great grandparents, Ira and Opal, all played collegiate basketball.

» Jackie Barrett is the daughter of Martin J. Barrett, a former football star at the University of Buffalo. Martin was a two-time AP All-American and set 14 career UB records as a quarterback. He was inducted into Buffalo's Hall of Fame in 1989.

» Full Circle Moment: Liz Reich was originally recruited to Portland and competed her freshman season under Brent Crouch.

» Audrey Douglas is fluent in American Sign Language.

» Jordan Sinness is not the first member of her family to play collegiate sports in the state of Alabama. Her older sister, Jade, plays softball at Troy University.

» Associate head coach Alex Dunphy is the daughter of Volleyball Hall of Famer and American Volleyball Coaches Association Hall of Famer, Marv Dunphy. Dunphy has led Pepperdine to five NCAA Men's Division I Championships. Marv was an assistant coach for Team USA Women's Volleyball at the 2020 Tokyo Olympics, helping the squad to a gold medal.

HEAD COACH BRENT CROUCH

QUICK FACTS

College ___ Texas A&M ('98, '00)
 ___ Oregon ('06)
 Wife ___ Marcy
 Sons ___ Jonathan and William

COACHING RECORD

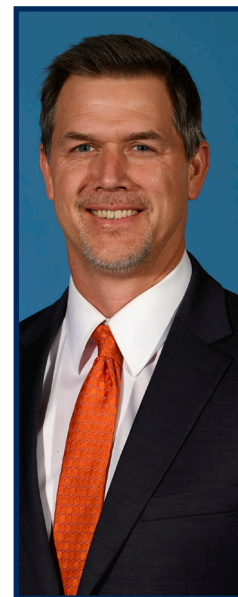
Head Coaching Career ___ 8th Season
 Career Record ___ 105-103
 NCAA Appearances ___ 2

COACHING CAPSULE

2020-Present Auburn 10-12
 2018-19 Southern California 40-25
 2014-17 Portland 55-66

YEAR-BY-YEAR RESULTS

2021	Auburn	10-4
2020	Auburn	0-8
2019	USC	18-14
2018	USC	22-11
2017	Portland	15-15
2016	Portland	17-13
2015	Portland	16-15
2014	Portland	7-23



Brent Crouch enters his second season as the head coach of the Auburn volleyball team after guiding the program through the challenges of the COVID-19 pandemic during his first season on The Plains.

Crouch made his Auburn coaching debut against No. 4 Florida on Oct. 21, 2020, to open the shortened fall volleyball schedule. Crouch led the Tigers on the court for eight total matches.

The fall season was highlighted by Auburn setting the program record for blocks in a four-set match as the Tigers recorded 17 at South Carolina on Oct. 29, 2020. The previous mark of 14 was set on Nov. 9, 2014 against Tennessee. The total tied for the second-most blocks in a match in Auburn program history as was the most by the Tigers since 2009.

Due to injuries and opt-out, the Tigers were unable to compete in the spring portion of the amended 2020-21 schedule.

Crouch previously served as the head coach at the University of Southern California. In two seasons at USC, Crouch led the program to consecutive NCAA second round appearances, including a second-place finish in the Pac-12, and a No. 21 ranking in the season's final AVCA poll in his first season on campus in 2018. This past season, the Trojans were 18-14, while outside hitter Kholia Lanier became the fifth player in Pac-12 history to record 2,000 kills and 1,000 digs in career.

Under Crouch in 2018, the Trojans finished 22-11 overall with a 13-7 record in Pac-12 matches. USC played one of the toughest schedules in the nation and faced 18 ranked opponents in the regular season and were awarded the No. 11 overall seed in the NCAA Tournament. Setter Raquel Lázaro was named the Pac-12 Freshman of the Year and outside hitter Brooke Borikin was chosen for second-team AVCA All-America honors. Lázaro and Lanier were each tabbed for All-America honorable mention.

Under Crouch's tutelage, outside hitter Emilia Weske was tabbed to the Pac-12's All-Freshman Team while middle blocker Jasmine Gross added All-Pac 12 honors.

Prior to arriving at Troy, Crouch was the 2016 West Coast Conference Coach of the Year. He inherited a winless Portland program and within two seasons guided the Pilots to their winningest season in 25 years. Crouch first took over at Portland in 2014 after the Pilots went 0-27 the previous season. After going 7-23 in his debut season, he guided the Pilots to a 16-15 mark in 2015 (its most victories since 1991) and then improved upon that in 2016 with a 17-13 mark. His 2017 team, which was hampered by injuries, was 15-15, with five losses coming in five-set matches. His overall four-year record at Portland was 55-66.

The 48 victories in his final three years was Portland's best three-season total since 1984-86. The Pilots' 10-8 third place WCC finish in 2016 was its most league wins since 1985 and highest conference finish since 1989. He led Portland to the program's first-ever victories over Top 10, Top 15, and Top 25 opponents. Crouch coached three All-WCC first team players and a WCC All-Freshman team pick, along with three WCC All-Academic first teamers. He also helped establish beach volleyball as a varsity sport at Portland in 2016.

Crouch arrived at Portland after four seasons (2010-13) at Saint Mary's College, where he was an assistant with the indoor program and head coach of the beach team.

During his time at SMC, the Gaels' indoor team went 73-40 overall, finished in the top three in the WCC standings each season by winning 73.4 percent of its league matches (47-17) and earned a berth into the NCAA Tournament in 2012, advancing to the second round. Besides being involved in the team's offense and defense, recruiting, scouting, practice planning, statistical and video analysis and scheduling, he provided academic support, as he mentored several WCC All-Academic honorees and helped the team to the athletic department's highest grade point average, an NCAA Public Recognition Award, and an AVCA academic award.

Crouch also coached the inaugural Saint Mary's beach team in 2013, guiding the Gaels to an 8-2 record, the best mark among all Northern California teams, as well as a No. 9 national ranking and a bid to the AVCA national championship for the program's top pairs team.

2020-21 AUBURN VOLLEYBALL ROSTER

No.	Name	Year	Pos.	Ht.	Hometown (High School/Previous School)
4	Fallan Lanham	Fr.	DS/L	5-8	Louisville, Ky. (Mercy Academy)
5	Audrey Douglas	So.	OH/OPP	6-4	Winter Park, Fla. (Hagerty)
6	Bella Rosenthal	Sr.	DS/L	5-5	Yorktown, Ind. (Yorktown)
7	Rebekah Rath	Jr.	OH	6-0	Altamonte Springs, Fla. (Oviedo/Maryland)
8	Liz Reich	Gr.	OPP	6-1	Colorado Springs, Colo. (Lewis-Palmer/Portland)
10	Jackie Barrett	So.	S	6-1	Highland, Calif. (Citrus Valley)
11	Jordan Sinness	Fr.	S	5-9	Sebring, Fla. (Sebring)
15	Kate Curtis	Fr.	DS/L	5-6	Anderson, S.C. (T.L. Hanna)
16	Val Green	Sr.	OH	6-2	Oxford, Ohio (Talawanda)
17	Cassidy Tanton	Fr.	OH	6-0	Stoneville, N.C. (Dalton McMichael)
19	Elif Su Yavuz	Sr.	MB	6-3	Ankara, Turkey (Gazi University)
21	Tatum Shipes	Sr.	OH	6-4	Buford, Ga. (Buford)

HEAD COACH | BRENT CROUCH (SECOND SEASON)

ASSOCIATE HEAD COACH/RECRUITING COORDINATOR | ALEX DUNPHY (SECOND SEASON)

ASSISTANT COACH | RICK MOLLER (SECOND AS ASSISTANT COACH/THIRD SEASON OVERALL)

DIRECTOR OF VOLLEYBALL OPERATIONS/TECHNICAL COORDINATOR | MADI WILKERSON (SECOND SEASON)

PRONUNCIATION GUIDE:

FALLAN LANHAM (FOUL-an LAN-UM)

JORDAN SINNESS (SIN-es)

ELIF SU YAVUZ (e-LEAF SUE Yah-vous)

LIZ REICH (RICH)

CASSIDY TANTON (TAN-tun)

TATUM SHIPES (SHY-PS)

Crouch also has coaching experience with the USA Volleyball program, including working with U.S. Women's National Team head coach Karch Kiraly, being an assistant with the U.S. Collegiate National Team that captured a gold medal at the 2016 U22 Global Challenge and serving as both an indoor and beach coach in the USA Volleyball High Performance program.

Crouch played for Texas A&M's club team from 1993 to 1997. He earned his bachelor's degree in history in 1998 and his master's in philosophy in 2000, both from Texas A&M, then a doctorate in philosophy from Oregon in 2006.

He competed on the beach from 2005 to 2007 in AVP and CBVA events and placed second at the 2005 California Cup state championship.

He has held various teaching positions in philosophy at Oregon, San Diego City College, and Saint Mary's College since 2000.

Crouch and his wife Marcy have two sons, Jonathan and William.

INSIDE THE NUMBERS



CATEGORY	AUBURN	ARKANSAS
Kills	639	757
Per Set	12.3	13.8
Errors	205	282
Total Attacks	1839	2036
Hitting Pct.	.236	.233
Assists	566	694
Per Set	10.9	12.6
Service Aces	56	97
Per Set	1.1	1.8
Service Errors	84	175
Reception Errors	55	51
Per Set	1.1	0.9
Digs	846	843
Per Set	16.3	15.3
Solo Blocks	31	16
Block Assists	223	196
Total Blocks	142.5	114.0
Per Set	2.7	2.1

2021 AUBURN INDIVIDUAL MATCH HIGHS (BY SET)

THREE SETS

HITTING PERCENTAGE (MIN. 12 KILLS) _____ .500, Liz Reich vs. Jackson State (August 28, 2021)
 KILLS _____ 16 (4x), last Rebekah Rath vs. Alabama (October 3, 2021)
 TOTAL ATTEMPTS _____ 43 (2x), last Rebekah Rath vs. Alabama (October 3, 2021)
 ASSISTS _____ 34, Rebekah Rath vs. Alabama (October 3, 2021)
 DIGS _____ 25, Bella Rosenthal vs. North Alabama (September 9, 2021)
 ACES _____ 2 (6x), last Kate Curtis/Rebekah Rath vs. Alabama (October 3, 2021)
 BLOCKS _____ 8 (2x), last Tatum Shipes vs. Southeastern Louisiana (September 3, 2021)

FOUR SETS

HITTING PERCENTAGE (MIN. 12 KILLS) _____ .288, Rebekah Rath vs. Ole Miss (September 22, 2021)
 KILLS _____ 19, Rebekah Rath vs. Ole Miss (September 22, 2021)
 TOTAL ATTEMPTS _____ 57, Rebekah Rath vs. Nicholls (September 17, 2021)
 ASSISTS _____ 40, Jackie Barrett vs. Nicholls (September 17, 2021)
 DIGS _____ 31, Bella Rosenthal vs. Nicholls (September 17, 2021)
 ACES _____ 3, Jackie Barrett vs. Nicholls (September 17, 2021)
 BLOCKS _____ 9.0, Tatum Shipes vs. Nicholls (September 17, 2021)

FIVE SETS

HITTING PERCENTAGE (MIN. 12 KILLS) _____ .378, Liz Reich vs. Florida A&M (September 17, 2021)
 KILLS _____ 24 (2x), last, Rebekah Rath at Alabama State (September 26, 2021)
 TOTAL ATTEMPTS _____ 69, Rebekah Rath vs. Alabama (October 2, 2021)
 ASSISTS _____ 48, Jackie Barrett vs. Florida A&M (September 17, 2021)
 DIGS _____ 27, Bella Rosenthal at Alabama State (September 26, 2021)
 ACES _____ 2 (5x), last Rebekah Rath & Jordan Sinness at Alabama State (September 26, 2021)
 BLOCKS _____ 12, Tatum Shipes vs. Alabama State (October 2, 2021)

2021 AUBURN TEAM MATCH HIGHS (BY SET)

THREE SETS

HITTING PERCENTAGE _____ .457, vs. Jackson State (August 28, 2021)
 KILLS _____ 42 (2x), last vs. Cal State Fullerton (September 2, 2021)
 TOTAL ATTEMPTS _____ 122, vs. Cal State Fullerton (September 2, 2021)
 ASSISTS _____ 38, vs. Alabama (October 3, 2021)
 DIGS _____ 66, vs. Alabama (October 3, 2021)
 ACES _____ 6 (3x), last vs. Belmont (September 18, 2021)
 BLOCKS _____ 14.0, vs. Jackson State (August 28, 2021)

FOUR SETS

HITTING PERCENTAGE _____ .196, vs. Ole Miss (September 22, 2021)
 KILLS _____ 51, vs. Nicholls (September 17, 2021)
 TOTAL ATTEMPTS _____ 175, vs. Nicholls (September 17, 2021)
 ASSISTS _____ 47, vs. Ole Miss (September 22, 2021)
 DIGS _____ 105, vs. Nicholls (September 17, 2021)
 ACES _____ 4 (2x), vs. Ole Miss (September 22, 2021)
 BLOCKS _____ 13.5, vs. Nicholls (September 17, 2021)

FIVE SETS

HITTING PERCENTAGE _____ .260, vs. Santa Clara (September 12, 2021)
 KILLS _____ 69, vs. Florida A&M (September 17, 2021)
 TOTAL ATTEMPTS _____ 188, vs. Florida A&M (September 17, 2021)
 ASSISTS _____ 63, vs. Florida A&M (September 17, 2021)
 DIGS _____ 74, vs. Alabama (October 2, 2021)
 ACES _____ 6, vs. Florida A&M (September 17, 2021)
 BLOCKS _____ 18.0, vs. Alabama (October 2, 2021)

THE LAST TIME AUBURN...

Won in three sets _____ **Oct. 3, 2021 vs. Alabama (25-19, 25-14, 25-18)**
Won in four sets _____ **Sept. 17, 2021 vs. Nicholls (25-8, 25-15, 26-28, 25-15)**
Won in five sets _____ **Oct. 2, 2021 vs. Alabama (25-21, 20-25, 25-21, 20-25, 15-5)**
Lost in three sets _____ **Sept. 29, 2021 at #20 Tennessee (16-25, 21-25, 14-25)**
Lost in four sets _____ **Sept. 22, 2021 vs. Ole Miss (25-20, 19-25, 19-25, 18-25)**
Lost in five sets _____ **Sept. 27, 2021 at Alabama State (20-25, 25-13, 25-15, 24-26, 14-16)**
Lost first set in a win _____ **Sept. 8, 2019 vs. George Washington (21-25, 25-13, 25-22, 25-13)**
Won first set in a loss _____ **Sept. 22, 2021 vs. Ole Miss (25-20, 19-25, 19-25, 18-25)**
Lost first two sets in a win _____ **Sept. 11, 2018 at Kennesaw State (23-25, 20-25, 28-26, 26-24, 15-9)**
Won first two sets in a loss _____ **Sept. 26, 2018 at Mississippi State (25-21, 25-12, 22-25, 23-25, 13-15)**
Beat a ranked opponent _____ **Sept. 2, 2017 vs. #16 North Carolina (25-23, 25-22, 25-27, 25-21)**
Hit .300-.399 in a match _____ **Sept. 18, 2021 vs. Belmont (.345)**
Hit .400-.499 in a match _____ **Aug. 28, 2021 vs. Jackson State (.457)**
Hit .500 or better in a match _____ **Oct. 18, 1998 at Ole Miss (.514)**
Held opponent to .000-.100 in a match _____ **Oct. 3, 2021 vs. Alabama (.088)**
Held opponent to a negative hitting percentage _____ **Sept. 18, 2014 vs. Belmont (-.093)**
Had 70-79 kills in a match _____ **Oct. 26, 2018 vs. Ole Miss (77)**
Had 80+ kills in a match _____ **Sept. 17, 2006 at Georgia (84)**
Had 80-99 digs in a match _____ **Sept. 27, 2019 at Tennessee (80)**
Had 100+ digs in a match _____ **Sept. 17, 2021 vs. Nicholls (105)**
Had 15+ blocks in a match _____ **Oct. 2, 2021 vs. Alabama (18.0)**
Had 10+ service aces in a match _____ **Sept. 15, 2019 at TCU (11)**
Had a player(s) with 20-24 kills in a match _____ **Oct. 2, 2021, Rebekah Rath vs. Alabama (22)**
Had a player(s) with 25-29 kills in a match _____ **Sept. 13, 2014, Macy Reece vs. USF (25)**
Had a player(s) with 30+ kills in a match _____ **Oct. 8, 2004, Ashlee Johns vs. Arkansas (30)**
Had a player(s) with 10+ blocks in a match _____ **Oct. 2, 2021, Tatum Shipes vs. Alabama (12.0)**
Had a player(s) with 25-29 digs in a match _____ **Oct. 3, 2021, Bella Rosenthal vs. Alabama (21)**
Had a player(s) with 30+ digs in a match _____ **Sept. 17, 2021, Bella Rosenthal vs. Nicholls (31)**
Had a player(s) with 50+ assists in a match _____ **Aug. 31, 2019, Marissa Hines (50)**
Had a player(s) with 60+ assists in a match _____ **Oct. 28, 2018, Mica Allison vs. Ole Miss (61)**
Had a player(s) with 5+ aces in a match _____ **Oct. 19, 2018, Brenna McIlroy at Missouri (6)**

AUBURN DOUBLE-DOUBLES IN 2021

PLAYER	OPPONENT (SETS)	DATE	STATS
Jackie Barrett (9)	vs. Tennessee Tech (3)	August 27	25 assists, 12 digs
	vs. Santa Clara (5)	September 12	44 assists, 11 digs
	vs. Florida A&M (5)	September 17	48 assists, 15 digs
	vs. Nicholls (4)	September 17	40 assists, 28 digs
	vs. Belmont (3)	September 18	24 assists, 19 digs
	vs. Ole Miss (4)	September 22	34 assists, 12 digs
	at #20 Tennessee (3)	September 29	18 assists, 12 digs
	vs. Alabama (5)	October 2	43 assists, 14 digs
	vs. Alabama (3)	October 3	34 assists, 11 digs
Rebekah Rath (5)	vs. Cal State Fullerton (3)	September 2	16 kills, 10 digs
	vs. Santa Clara (5)	September 12	24 kills, 10 digs
	at Alabama State (5)	September 26	24 kills, 13 digs
	vs. Alabama (5)	October 2	22 kills, 11 digs
	vs. Alabama (3)	October 3	16 kills, 11 digs

AUBURN'S 2021 RECORD WHEN...

OVERALL	10-4
SEC	2-2
NON-CONFERENCE	10-2
RANKED OPPONENTS	0-1
HOME	10-2
AWAY	0-2
NEUTRAL	0-0
BY SETS	
THREE SETS	7-1
FOUR SETS	1-1
FIVE SETS	2-2
WON FIRST SET	10-2
LOST FIRST SET	0-2
WON SECOND SET	9-1
LOST SECOND SET	1-3
WON FIRST TWO SETS	9-0
LOST FIRST TWO SETS	0-1
SITUATIONAL	
MORE KILLS THAN OPPONENT	7-1
FEWER KILLS THAN OPPONENT	3-3
KILLS ARE TIED	0-0
MORE DIGS THAN OPPONENT	7-0
FEWER DIGS THAN OPPONENT	3-4
DIGS ARE TIED	0-0
MORE ACES THAN OPPONENT	6-1
FEWER ACES THAN OPPONENT	3-3
ACES ARE TIED	1-0
HIGHER HITTING PERCENTAGE THAN OPPONENT	10-1
LOWER HITTING PERCENTAGE THAN OPPONENT	0-3
HITTING PERCENTAGE TIED	0-0
HITTING PERCENTAGE	
.400 OR ABOVE	1-0
.300-.399	2-0
.200-.299	5-2
.100-.199	2-1
.000-.099	0-1
NEGATIVE	0-0
OPPONENTS' HITTING PERCENTAGE	
.400 OR ABOVE	0-0
.300-.399	0-0
.200-.299	1-3
.100-.199	1-1
.000-.099	7-0
NEGATIVE	1-0
BY DAY	
MONDAY	0-0
TUESDAY	0-0
WEDNESDAY	0-2
THURSDAY	2-0
FRIDAY	3-1
SATURDAY	3-0
SUNDAY	2-1
DAY MATCHES (FIRST SERVE BEFORE 6 P.M.)	4-2
NIGHT MATCHES (FIRST SERVE AFTER 6 P.M.)	6-2
BY MONTH	
AUGUST	2-0
SEPTEMBER	6-4
OCTOBER	2-0
NOVEMBER	0-0
JERSEY COLOR	
NAVY	2-1
NAVY w/ORANGE SLEEVE	1-1
ORANGE	4-2
ORANGE w/NAVY SLEEVE	3-0
PINK	0-0

2021 AUBURN MATCH-BY-MATCH STARTERS

DATE	OPPONENT	RESULT	OUTSIDE	MIDDLE	RIGHT SIDE	OUTSIDE/DS	MIDDLE	LIBERO	SETTER
8/28	TENNESSEE TECH	W, 3-0	Rath	Shipes	Reich	Lanham (DS)	Yavuz	Rosenthal	Barrett
8/28	JACKSON STATE	W, 3-0	Rath	Shipes	Reich	Green (OH)	Yavuz	Rosenthal	Barrett
9/2	CAL STATE FULLERTON	W, 3-0	Rath	Shipes	Reich	Green (OH)	Yavuz	Rosenthal	Barrett
9/3	SOUTHEASTERN LOUISIANA	W, 3-0	Rath	Shipes	Reich	Green (OH)	Yavuz	Rosenthal	Barrett
9/9	NORTH ALABAMA	W, 3-0	Rath	Shipes	Reich	Green (OH)	Yavuz	Rosenthal	Barrett
9/12	SANTA CLARA	W, 3-2	Rath	Shipes	Reich	Green (OH)	Yavuz	Rosenthal	Barrett
9/17	FLORIDA A&M	L, 2-3	Rath	Shipes	Reich	Green (OH)	Yavuz	Rosenthal	Barrett
9/17	NICHOLLS	W, 3-1	Rath	Shipes	Reich	Green (OH)	Yavuz	Rosenthal	Barrett
9/18	BELMONT	W, 3-0	Rath	Shipes	Reich	Green (OH)	Yavuz	Rosenthal	Barrett
9/22	OLE MISS	L, 1-3	Rath	Shipes	Reich	Green (OH)	Yavuz	Rosenthal	Barrett
9/26	at Alabama State	L, 2-3	Rath	Shipes	Reich	Lanham (DS)	Yavuz	Rosenthal	Barrett
9/29	at Tennessee	L, 0-3	Rath	Shipes	Reich	Lanham (DS)	Yavuz	Rosenthal	Barrett
10/2	ALABAMA	W, 3-2	Rath	Shipes	Reich	Lanham (DS)	Yavuz	Rosenthal	Barrett
10/3	ALABAMA	W, 3-0	Rath	Shipes	Reich	Lanham (DS)	Yavuz	Rosenthal	Barrett
10/9	at Arkansas								
10/10	at Arkansas								
10/16	MISSOURI								
10/17	MISSOURI								
10/22	at Georgia								
10/23	at Georgia								
10/29	LSU								
11/4	at Texas A&M								
11/5	at Texas A&M								
11/10	SOUTH CAROLINA								
11/17	at Florida								
11/20	KENTUCKY								
11/21	KENTUCKY								
11/26	at Mississippi State								

2021 AUBURN MATCH-BY-MATCH LEADERS

DATE	OPPONENT	RESULT	KILLS	ASSISTS	ACES	DIGS	BLOCKS	HIT PCT. (MIN 10 ATT.)
8/28	TENNESSEE TECH	W, 3-0	Rath (13)	Barrett (25)	Barrett/Rath/Curtis (1)	Rosenthal (17)	Shipes (7)	Shipes (.462)
8/28	JACKSON STATE	W, 3-0	Rath (16)	Barrett (27)	Barrett/Rath (2)	Rosenthal (14)	Yavuz (8)	Reich (.500)
9/2	CAL STATE FULLERTON	W, 3-0	Rath (16)	Barrett/Sinness (16)	Rath (1)	Rosenthal (17)	Shipes (3)	Reich (.409)
9/3	SOUTHEASTERN LOUISIANA	W, 3-0	Rath (16)	Barrett (28)	Barrett (2)	Rosenthal (16)	Shipes (8)	Reich (.458)
9/9	NORTH ALABAMA	W, 3-0	Green (12)	Barrett (30)	Barrett/Green/Rath (1)	Rosenthal (25)	Barrett (4)	Green (.375)
9/12	SANTA CLARA	W, 3-2	Rath (24)	Barrett (44)	Barrett/Sinness (2)	Rosenthal (20)	Shipes/Barrett (5)	Shipes (.357)
9/17	FLORIDA A&M	L, 2-3	Green (19)	Barrett (48)	Barrett (2)	Rosenthal (20)	Douglas/Barrett/Yavuz (4)	Yavuz (.571)
9/17	NICHOLLS	W, 3-1	Rath (18)	Barrett (40)	Barrett (3)	Rosenthal (28)	Shipes (9)	Rath (.211)
9/18	BELMONT	W, 3-0	Rath (14)	Barrett (24)	Rosenthal (2)	Rosenthal/Barrett (19)	Shipes (7)	Rath (.429)
9/22	OLE MISS	L, 1-3	Rath (19)	Barrett (34)	Green (2)	Rosenthal (13)	Shipes/Yavuz (3)	Rath (.288)
9/26	at Alabama State	L, 2-3	Rath (24)	Barrett (36)	Rath/Sinness (2)	Rosenthal (27)	Rath (4)	Shipes (.400)
9/29	at Tennessee	L, 0-3	Rath (9)	Barrett (18)	Lanham (1)	Barrett (12)	Shipes (6)	Reich (.217)
10/2	ALABAMA	W, 3-2	Rath (22)	Barrett (43)	Curtis (1)	Rosenthal (24)	Shipes (12)	Shipes (.231)
10/3	ALABAMA	W, 3-0	Rath (16)	Barrett (34)	Curtis/Rath (2)	Rosenthal (21)	Shipes (7)	Reich (.435)
10/9	at Arkansas							
10/10	at Arkansas							
10/16	MISSOURI							
10/17	MISSOURI							
10/22	at Georgia							
10/23	at Georgia							
10/29	LSU							
11/4	at Texas A&M							
11/5	at Texas A&M							
11/10	SOUTH CAROLINA							
11/17	at Florida							
11/20	KENTUCKY							
11/21	KENTUCKY							
11/26	at Mississippi State							

2021 OVERALL STATISTICS

Overall: 10-4 • SEC: 2-2 • Home: 10-2 • Away: 0-2 • Neutral: 0-0

#	PLAYER	SP	K	K/S	E	TA	Pct	A	A/S	SA	SE	SA/S	RE	DIG	DIG/S	BS	BA	BLK	BLK/S	BE	BHE	PTS	PT/S
7	Rath, Rebekah	52	226	4.35	71	629	.246	8	0.15	13	34	0.25	12	104	2.00	8	36	44.0	0.85	2	0	265.0	5.10
8	Reich, Liz	52	162	3.12	39	410	.300	3	0.06	0	1	0.00	1	27	0.52	0	28	28.0	0.54	0	0	176.0	3.38
16	Green, Val	52	114	2.19	48	405	.163	2	0.04	6	8	0.12	2	45	0.87	2	19	21.0	0.40	1	0	131.5	2.53
21	Shipes, Tatum	49	66	1.35	24	156	.269	4	0.08	1	3	0.02	0	21	0.43	15	63	78.0	1.59	2	2	113.5	2.32
19	Yavuz, Elif	52	37	0.71	8	75	.387	0	0.00	0	0	0.00	1	10	0.19	4	41	45.0	0.87	6	1	61.5	1.18
10	Barrett, Jackie	52	26	0.50	6	92	.217	447	8.60	15	11	0.29	0	165	3.17	2	31	33.0	0.63	4	1	58.5	1.13
5	Douglas, Audrey	5	4	0.80	3	12	.083	0	0.00	0	0	0.00	0	0	0.00	0	4	4.0	0.80	0	0	6.0	1.20
4	Lanham, Fallan	52	3	0.06	5	45	-.044	7	0.13	1	3	0.02	6	101	1.94	0	0	0.0	0.00	0	0	4.0	0.08
11	Sinness, Jordan	42	1	0.02	1	2	.000	17	0.40	6	4	0.14	0	18	0.43	0	1	1.0	0.02	0	1	7.5	0.18
6	Rosenthal, Bella	52	0	0.00	0	10	.000	66	1.27	7	12	0.13	11	270	5.19	0	0	0.0	0.00	0	0	7.0	0.13
15	Curtis, Kate	52	0	0.00	0	3	.000	12	0.23	7	8	0.13	8	85	1.63	0	0	0.0	0.00	0	0	7.0	0.13
17	Tanton, Cassidy	1	0	0.00	0	0	.000	0	0.00	0	0	0.00	0	0	0.00	0	0	0.0	0.00	0	0	0.0	0.00
TEAM														14									
AUBURN		52	639	12.29	205	1839	.236	566	10.88	56	84	1.08	55	846	16.27	31	223	142.5	2.75	15	5	837.5	16.11
OPPONENTS		52	600	11.54	362	1938	.120	548	10.54	55	99	1.06	56	870	16.73	28	64	60.0	1.15	25	9	715.0	13.75

2021 CONFERENCE ONLY STATISTICS

SEC: 2-2 • Home: 2-1 • Away: 0-1

#	PLAYER	SP	K	K/S	E	TA	Pct	A	A/S	SA	SE	SA/S	RE	DIG	DIG/S	BS	BA	BLK	BLK/S	BE	BHE	PTS	PT/S
7	Rath, Rebekah	15	66	4.40	23	207	.208	3	0.20	2	11	0.13	2	38	2.53	1	13	14.0	0.93	1	0	75.5	5.03
8	Reich, Liz	15	40	2.67	12	128	.219	0	0.00	0	0	0.00	1	10	0.67	0	6	6.0	0.40	0	0	43.0	2.87
16	Green, Val	15	31	2.07	18	118	.110	1	0.07	2	1	0.13	0	12	0.80	0	9	9.0	0.60	0	0	37.5	2.50
21	Shipes, Tatum	15	16	1.07	9	42	.167	1	0.07	0	0	0.00	0	9	0.60	7	21	28.0	1.87	0	1	33.5	2.23
19	Yavuz, Elif	15	9	0.60	3	23	.261	0	0.00	0	0	0.00	1	3	0.20	2	12	14.0	0.93	3	1	17.0	1.13
10	Barrett, Jackie	15	2	0.27	1	24	.125	129	8.60	1	4	0.07	0	49	3.27	2	8	10.0	0.67	0	0	11.0	0.73
4	Lanham, Fallan	15	1	0.07	2	13	-.077	1	0.07	1	2	0.07	0	30	2.00	0	0	0.0	0.00	0	0	2.0	0.13
6	Rosenthal, Bella	15	0	0.00	0	0	.000	18	1.20	1	3	0.07	4	64	4.27	0	0	0.0	0.00	0	0	1.0	0.07
11	Sinness, Jordan	15	0	0.00	0	0	.000	0	0.00	1	1	0.07	0	6	0.40	0	0	0.0	0.00	0	0	1.0	0.07
15	Curtis, Kate	15	0	0.00	0	0	.000	5	0.33	3	4	0.20	2	24	1.60	0	0	0.0	0.00	0	0	3.0	0.20
TEAM														7									
AUBURN		15	167	11.13	68	555	.178	158	10.53	11	26	0.731	17	245	16.33	12	69	46.5	3.10	4	2	224.5	14.97
OPPONENTS		15	196	13.07	105	600	.152	178	11.87	17	21	1.13	11	277	18.47	8	20	18.0	1.20	7	3	231.0	15.40

2021 STATISTICAL LEADERS

KILLS (PER SET)

Rebekah Rath	226 (4.35)
Liz Reich	162 (3.12)
Val Green	114 (2.19)
Tatum Shipes	66 (1.35)
Elif Yavuz	37 (0.71)

TOTAL ATTACKS

Rebekah Rath	629
Liz Reich	410
Val Green	405
Tatum Shipes	156
Jackie Barrett	92

HITTING PERCENTAGE (MIN. 155 ATT.)

Liz Reich	.300
Tatum Shipes	.269
Rebekah Rath	.246
Val Green	.163

ASSISTS (PER SET)

Jackie Barrett	447 (8.60)
Bella Rosenthal	66 (1.27)
Jordan Sinness	17 (0.40)
Kate Curtis	12 (0.23)
Rebekah Rath	8 (0.15)

ACES (PER SET)

Jackie Barrett	15 (0.29)
Rebekah Rath	13 (0.25)
Bella Rosenthal	7 (0.13)
Kate Curtis	7 (0.13)
Val Green	6 (0.14)
Jordan Sinness	6 (0.12)

DIGS (PER SET)

Bella Rosenthal	270 (5.19)
Jackie Barrett	165 (3.17)
Rebekah Rath	104 (2.00)
Fallan Lanham	101 (1.94)
Kate Curtis	85 (1.63)

BLOCK | SOLOS

Tatum Shipes	15
Rebekah Rath	8
Elif Yavuz	4
Val Green	2
Jackie Barrett	2

BLOCK | ASSISTS

Tatum Shipes	63
Elif Yavuz	41
Rebekah Rath	36
Jackie Barrett	31
Liz Reich	28

TOTAL BLOCKS (PER SET)

Tatum Shipes	78 (1.59)
Elif Yavuz	45 (0.87)
Rebekah Rath	44 (0.85)
Jackie Barrett	33 (0.63)
Liz Reich	28 (0.54)

AUBURN VOLLEYBALL SINGLE-SEASON INDIVIDUAL RECORDS (25-POINT RALLY SCORING ERA)

OFFENSIVE RECORDS

KILLS

PLAYER	YEAR	KILLS
1. Jessica Glover	2008	410
2. Sarah Bullock	2012	371
3. Sarah Bullock	2010	354
4. Brenna McIlroy	2016	351
5. Kelly Fidero	2011	341
6. Courtney Crable	2015	333
Brenna McIlroy	2015	333
8. Katherine Culwell	2012	330
9. Katherine Culwell	2013	326
10. Morgan Johns	2010	325

KILLS PER SET (MIN. 100 KILLS)

PLAYER	YEAR	AVG.
1. Rebekah Rath	2021	4.35
2. Sarah Bullock	2012	3.50
3. Jessica Glover	2008	3.45
4. Kelly Fidero	2011	3.22
5. Brenna McIlroy	2016	3.13
Katherine Culwell	2013	3.13
7. Liz Reich	2021	3.12
8. Katherine Culwell	2012	3.03
Sarah Bullock	2010	3.03
10. Brenna McIlroy	2018	3.00
11. Brenna McIlroy	2017	2.86
12. Courtney Crable	2015	2.82
Taylor Rowland	2018	2.82

ATTACK PERCENTAGE (MIN. 250 ATT.)

PLAYER	YEAR	PCT.
1. Shaina White	2017	.367
2. Camila Jersonsky	2012	.356
Camila Jersonsky	2011	.356
4. Camila Jersonsky	2010	.354
5. Camila Jersonsky	2013	.351
6. Alyssa Davis	2009	.316
7. Morgan Johns	2010	.305
8. Liz Reich	2021	.300
9. Stephanie Campbell	2013	.281
10. Stephanie Campbell	2015	.280
11. Stephanie Campbell	2014	.279

ATTACKS

PLAYER	YEAR	ATTACKS
1. Brenna McIlroy	2016	1,113
2. Sarah Bullock	2012	1,090
3. Courtney Crable	2014	1,062
4. Brenna McIlroy	2015	1,043
5. Katherine Culwell	2012	1,033
6. Sarah Bullock	2010	993
7. Jessica Glover	2008	988
8. Katherine Culwell	2013	981
9. Brenna McIlroy	2017	938
10. Courtney Crable	2015	935

ASSISTS

PLAYER	YEAR	ASSISTS
1. Alexa Filley	(2016)	1,227
2. Alexa Filley	(2015)	1,226
3. Alexa Filley	(2014)	1,175
4. Alexa Filley	(2017)	1,093
5. Mica Allison	(2018)	1,055
6. Sara Shanks	(2008)	995
7. Chelsea Wintzinger	(2011)	791

8. Christina Solverson	(2010)	740
9. Chelsea Wintzinger	(2012)	680
10. Chelsea Wintzinger	(2013)	642

ASSISTS PER SET (MIN. 200 ASSISTS)

PLAYER	YEAR	AVG.
1. Alexa Filley	2017	10.72
2. Alexa Filley	2014	10.22
3. Alexa Filley	2015	10.13
4. Mica Allison	2018	10.05
5. Alexa Filley	2016	9.98
6. Jackie Barrett	2021	8.60
7. Sara Shanks	2008	8.43
8. Marissa Hines	2019	7.51
9. Chelsea Wintzinger	2011	7.39
10. Morgan Kull	2019	6.94
11. Chelsea Wintzinger	2012	6.24

ACES

PLAYER	YEAR	ACES
1. Brenna McIlroy	2018	48
2. Jesse Earl	2016	46
3. Jesse Earl	2017	42
4. Jesse Earl	2015	39
5. Brenna McIlroy	2016	36
6. Chelsea Wintzinger	2013	35
7. Courtney Crable	2014	33
8. Brenna McIlroy	2015	32
9. Sara Shanks	2008	30
Alexa Filley	2015	30

ACES PER SET (MIN. 15 ACES)

PLAYER	YEAR	AVG.
1. Brenna McIlroy	2018	0.46
2. Jesse Earl	2017	0.41
3. Jesse Earl	2016	0.37
4. Chelsea Wintzinger	2013	0.34
5. Jesse Earl	2015	0.32
Brenna McIlroy	2016	0.32
7. Jackie Barrett	2021	0.29
8. Courtney Crable	2014	0.27
9. Brenna McIlroy	2015	0.26
10. Alexa Filley	2015	0.25
Sara Shanks	2008	0.25
Kelly Stewart	2016	0.25

DEFENSIVE RECORDS

DIGS

PLAYER	YEAR	DIGS
1. Jesse Earl	2016	612
2. Jesse Earl	2017	529
3. Jesse Earl	2015	516
4. Sarah Wroblecky	2013	481
5. Liz Crouch	2010	469
6. Liz Crouch	2009	453
7. Alyssa Ivey	2014	434
8. Sarah Wroblecky	2012	431
9. Liz Crouch	2008	389
10. Alexa Filley	2016	367

DIGS PER SET (MIN. 100 DIGS)

PLAYER	YEAR	AVG.
1. Jesse Earl	2017	5.19
Bella Rosenthal	2021	5.19
3. Jesse Earl	2016	4.98
4. Sarah Wroblecky	2013	4.62

5. Jesse Earl	2015	4.26
6. Liz Crouch	2009	4.08
7. Alyssa Ivey	2014	4.02
8. Liz Crouch	2010	4.01
9. Sarah Wroblecky	2012	3.99
10. Liz Crouch	2008	3.70
11. Sarah Bullock	2012	3.31

BLOCKS - SOLO

PLAYER	YEAR	BLOCKS
1. Katherine Culwell	2012	25
2. Sarah Bullock	2012	18
Jessica Glover	2008	18
Anna Stevenson	2018	18
5. Kelly Fidero	2011	17
Sarah Bullock	2011	17
7. Katherine Culwell	2013	16
Camila Jersonsky	2013	16
9. Tatum Shipes	2021	15
Camila Jersonsky	2011	15
Jaeden Brown	2019	15

BLOCKS - ASSISTS

PLAYER	YEAR	BLOCKS
1. Camila Jersonsky	2012	108
2. Lauren Mellor	2009	90
3. Camila Jersonsky	2013	89
4. Breanna Barksdale	2014	87
5. Courtney McDonald	2012	84
6. Breanna Barksdale	2016	83
7. Breanna Barksdale	2015	82
8. Anna Stevenson	2018	73
9. Stephanie Campbell	2014	72
10. Emily Klitzke	2014	70

TOTAL BLOCKS

PLAYER	YEAR	BLOCKS
1. Camila Jersonsky	2012	119
2. Camila Jersonsky	2013	105
3. Breanna Barksdale	2014	101
4. Lauren Mellor	2009	97
Breanna Barksdale	2016	97
6. Breanna Barksdale	2015	94
7. Anna Stevenson	2018	91
8. Courtney McDonald	2012	89
9. Stephanie Campbell	2014	86
10. Emily Klitzke	2014	80

BLOCKS PER SET (MIN. 50 BLOCKS)

PLAYER	YEAR	BLOCKS
1. Tatum Shipes	2021	1.59
2. Anna Stevenson	2018	1.15
3. Camila Jersonsky	2012	1.09
4. Camila Jersonsky	2013	1.01
5. Chloe Rowand	2011	0.97
6. Breanna Barksdale	2014	0.91
7. Stephanie Campbell	2015	0.90
8. Camila Jersonsky	2011	0.89
9. Lauren Mellor	2009	0.88
10. Breanna Barksdale	2016	0.84
11. Shaina White	2019	0.82
Courtney McDonald	2012	0.82
Lauren Mellor	2010	0.82

Active student-athletes are listed in **BOLD**.

AUBURN VOLLEYBALL CAREER RECORDS (SIDEOUT + RALLY ERA)

OFFENSIVE RECORDS

KILLS

	PLAYER	YEARS	KILLS
1.	Jaunelle Hamilton	1997-00	1,848
2.	Allyson Beecroft	1993-96	1,727
3.	Brooke McCarley	1997-00	1,704
4.	Gina Thomas	1988-92	1,467
5.	Rachel Shanks	2004-07	1,319
6.	Brenna McIlroy	2015-18	1,288
7.	Sarah Bullock	2009-12	1,272
8.	Bridgitte Sims	1989-91	1,149
9.	Jessica Glover	2005-08	1,137
10.	Rani Whitson	1993-96	1,102

KILLS PER SET (MIN. 500 KILLS)

	PLAYER	YEARS	AVG.
1.	Brooke McCarley	1997-00	4.40
2.	Jaunelle Hamilton	1997-00	4.23
3.	Allyson Beecroft	1993-96	4.00
4.	Ashlee Johns	2003-04	3.82
5.	Terri Duckworth	1987-88	3.63
6.	Jennifer Amobi	2003-05	3.57
7.	Rachel Shanks	2004-07	3.43
8.	Bridgitte Sims	1989-91	3.40
9.	Jessica Glover	2005-08	3.17
10.	Sarah Bullock	2009-12	2.93
	Brenna McIlroy	2015-18	2.93

ATTACK PERCENTAGE (MIN. 1,000 ATT.)

	PLAYER	YEARS	K	E	ATT. PCT.
1.	Camila Jersonsky	2010-13	894	237	1,853 .355
2.	Jaunelle Hamilton	1997-00	1,848	532	3,827 .344
3.	Brooke McCarley	1997-00	1,704	455	3,847 .325
4.	Terri Duckworth	1987-99	876	291	1,860 .315
5.	Shaina White	2017-19	512	121	1,267 .309
6.	Rani Whitson	1993-96	1,102	383	2,562 .281
7.	Julie Bosler	2003-06	558	178	1,359 .280
8.	Gina Thomas	1988-92	1,467	540	3,319 .279
9.	Stephanie Campbell	2013-16	673	205	1,669 .276
10.	Whitney Jacob	2004-07	1,093	428	2,522 .264

ATTACKS

	PLAYER	YEARS	ATTACKS
1.	Allyson Beecroft	1993-96	4,349
2.	Brenna McIlroy	2015-18	4,027
3.	Brooke McCarley	1997-00	3,847
4.	Jaunelle Hamilton	1997-00	3,827
5.	Sarah Bullock	2009-12	3,774
6.	Rachel Shanks	2004-07	3,703
7.	Gina Thomas	1988-92	3,319
8.	Katherine Culwell	2009-13	3,130
	Jessica Glover	2005-08	3,130
10.	Jenifer Kleyn	1988-91	3,107

ASSISTS

	PLAYER	YEARS	ASSISTS
1.	Piper Craig	1995-98	5,053
2.	Alexa Filley	2014-17	4,721
3.	Janel Newkirk	1989-92	4,071
4.	Mary Orndorff	1986-89	3,242
5.	Chelsea Wintzinger	2010-13	2,654

6.	Tama English	1991-94	2,535
7.	Joanna Pappas	2005-06	2,073

ASSISTS PER SET (MIN. 500 ASSISTS)

	PLAYER	YEARS	AVG.
1.	Piper Craig	1995-98	12.86
2.	Traci Price	1999-00	11.77
3.	Maira Magollon	2003-04	11.38
4.	Chris Murphy	1993-96	11.35
5.	Joanna Pappas	2005-06	11.15
6.	Alexa Filley	2014-17	10.24
7.	Mica Allison	2018	10.05

ACES

	PLAYER	YEARS	ACES
1.	Jenifer Kleyn	1988-91	338
2.	Lori Russell	1989-92	201
3.	Gretchen Thompson	1986-89	164
4.	Tory Gutierrez	1989-92	160
5.	Terri Duckworth	1987-88	158
6.	Jaunelle Hamilton	1997-00	148
7.	Allyson Beecroft	1993-96	138
8.	Brenna McIlroy	2015-18	137
9.	Whitney Jacob	2004-07	134
10.	Janel Newkirk	1989-92	129

ACES PER SET (MIN. 40 ACES)

	PLAYER	YEARS	AVG.
1.	Jenifer Kleyn	1988-91	0.71
2.	Terri Duckworth	1987-88	0.66
3.	Lori Russell	1989-92	0.46
4.	Jenny Fisler	1987-88	0.40
5.	Bridgitte Sims	1989-91	0.37
	Jesse Earl	2015-17	0.37
7.	Gretchen Thompson	1986-89	0.36
8.	Maira Magollon	2003-04	0.35
	Tory Gutierrez	1989-92	0.35
10.	Jaunelle Hamilton	1997-00	0.34

DEFENSIVE RECORDS

DIGS

	PLAYER	YEARS	DIGS
1.	Liz Crouch	2007-10	1,703
2.	Jesse Earl	2015-17	1,657
3.	Gretchen Thompson	1986-89	1,495
4.	Alexa Filley	2014-17	1,315
5.	Allyson Beecroft	1993-96	1,249
6.	Sarah Wroblecky	2010-13	1,238
7.	Sarah Bullock	2009-12	1,210
8.	Rachel Shanks	2004-07	1,185
9.	Brenna McIlroy	2015-18	1,078
10.	Sarah Watson	1992-95	1,036

DIGS PER SET (MIN. 500 DIGS)

	PLAYER	YEARS	AVG.
1.	Jesse Earl	2015-17	4.79
2.	Liz Crouch	2007-10	4.00
3.	Sarah Wroblecky	2010-13	3.65
4.	Bella Rosenthal	2018-Pr.	3.48
5.	Gretchen Thompson	1986-89	3.26

6.	Rachel Shanks	2004-07	3.08
7.	Allyson Beecroft	1993-96	2.89
8.	Alexa Filley	2014-17	2.85
9.	Bailey Veit	2002-05	2.80
	Emily Suter	1995-98	2.80

BLOCKS - SOLO

	PLAYER	YEARS	BLOCKS
1.	Gina Thomas	1988-92	159
2.	Tory Gutierrez	1989-92	157
3.	Jaunelle Hamilton	1997-00	106
4.	Julie Bosler	2003-06	98
5.	Rani Whitson	1993-96	61
6.	Katherine Culwell	2009-13	59
7.	Mary Olks	1986-89	58
8.	Whitney Jacob	2004-07	56
9.	Sarah Bullock	2009-12	54
10.	Camila Jersonsky	2010-13	51

BLOCKS - ASSISTS

	PLAYER	YEARS	BLOCKS
1.	Jaunelle Hamilton	1997-00	465
2.	Rani Whitson	1993-96	426
3.	Gina Thomas	1988-92	360
4.	Whitney Jacob	2004-07	351
5.	Tory Gutierrez	1989-92	318
6.	Camila Jersonsky	2010-13	317
7.	Julie Bosler	2003-06	265
8.	La'Toi Finley	1994-97	261
	Krista Singleton	1994-97	261
10.	Breanna Barksdale	2014-16	252

TOTAL BLOCKS

	PLAYER	YEARS	BLOCKS
1.	Jaunelle Hamilton	1997-00	571
2.	Gina Thomas	1988-92	519
3.	Rani Whitson	1993-96	487
4.	Tory Gutierrez	1989-92	475
5.	Whitney Jacob	2004-07	407
6.	Camila Jersonsky	2010-13	368
7.	Julie Bosler	2003-06	363
8.	Breanna Barksdale	2014-16	292
9.	La'Toi Finley	1994-97	289
10.	Krista Singleton	1994-97	276

BLOCKS PER SET (MIN. 100 BLOCKS)

	PLAYER	YEARS	AVG.
1.	Jaunelle Hamilton	1997-00	1.31
2.	Rani Whitson	1993-96	1.16
3.	Julie Bosler	2003-06	1.06
4.	Tory Gutierrez	1989-92	1.03
5.	Gina Thomas	1988-92	0.98
6.	Whitney Jacob	2004-07	0.96
7.	Camila Jersonsky	2009-13	0.92
8.	Anna Stevenson	2017-18	0.90
	Heather Franey	1995-96,98	0.90
10.	La'Toi Finley	1994-97	0.88



#4 FALLAN LANHAM

DEFENSIVE SPECIALIST/LIBERO | 5-8 | FRESHMAN
LOUISVILLE, KY. (MERCY ACADEMY)



LANHAM'S HIGHLIGHTS:

- Recorded five 10+ dig matches this season
- Earned first collegiate start in Auburn's season opener versus Tennessee Tech on August 27
- Tallied her first collegiate kill while also setting career highs in assists (2) and digs (14) versus Santa Clara (9/12)
- Match her career high in digs (14) versus Nicholls (9/17)
- Returned to the service line at No. 20 Tennessee (9/29), recording her first collegiate ace
- Tallied her first double-digit dig performance in SEC play with 10 against Alabama (10/3)

CATEGORY	CAREER HIGH	OPPONENT/DATE
Kills	1 (3x)	last, at Alabama State (9/27/21)
Attempts	6 (4x)	last, vs. Alabama (10/3/21)
Hitting Percentage (Min. 10 ATT.)		
Assists	2	vs. Santa Clara (9/12/21)
Digs	14 (2x)	last, vs. Nicholls (9/17/21)
Blocks		
Aces	1	at #20 Tennessee (9/29/21)
Points	1.0 (4x)	last, at #20 Tennessee (9/29/21)

CATEGORY	SEASON HIGH	OPPONENT/DATE
Kills	1 (3x)	last, at Alabama State (9/27/21)
Attempts	6 (4x)	last, vs. Alabama (10/3/21)
Hitting Percentage (Min. 10 ATT.)		
Assists	2	vs. Santa Clara (9/12/21)
Digs	14 (2x)	last, vs. Nicholls (9/17/21)
Blocks		
Aces	1	at #20 Tennessee (9/29/21)
Points	1.0 (4x)	last, at #20 Tennessee (9/29/21)

DATE	OPPONENT	SP	ATTACK			SET			SERVE				RECEIPT			BLOCKING				BHE	POINTS	TEAM			
			K	E	TA	PCT	A	TA	PCT.	SA	SE	TA	PCT.	RE	TA	PCT.	DIG	BS	BA			BE	TOTAL	HIT%	SCORE
August 27	TENNESSEE TECH	3	0	0	3	.000	0	2	.000	0	1	5	.800	0	9	1.000	4	0	0	0	0.0	0	0.0	.292	3-0
August 28	JACKSON STATE	3	0	0	0	.000	0	1	.000	0	0	0	.000	1	10	.900	4	0	0	0	0.0	0	0.0	.457	3-0
September 2	CAL STATE FULLERTON	3	0	0	2	.000	0	3	.000	0	0	0	.000	0	7	1.000	5	0	0	0	0.0	0	0.0	.221	3-0
September 3	SOUTHEASTERN LA.	3	0	0	1	.000	1	1	1.000	0	0	0	.000	0	7	1.000	10	0	0	0	0.0	0	0.0	.300	3-0
September 9	NORTH ALABAMA	3	0	1	2	-.500	0	0	.000	0	0	0	.000	1	13	.923	3	0	0	0	0.0	0	0.0	.265	3-0
September 12	SANTA CLARA	5	1	0	6	.167	2	7	.286	0	0	0	.000	1	20	.950	14	0	0	0	0.0	0	1.0	.260	3-2
September 17	FLORIDA A&M	5	0	1	5	-.200	1	4	.250	0	0	0	.000	1	31	.968	10	0	0	0	0.0	0	0.0	.245	2-3
September 17	NICHOLLS	4	0	0	6	.000	0	3	.000	0	0	0	.000	1	11	.909	14	0	0	0	0.0	0	0.0	.183	3-1
September 18	BELMONT	3	0	1	1	-1.000	1	1	1.000	0	0	0	.000	0	4	1.000	4	0	0	0	0.0	0	0.0	.345	3-0
September 22	OLE MISS	4	1	1	3	.000	0	3	.000	0	0	0	.000	0	14	1.000	9	0	0	0	0.0	0	1.0	.196	1-3
September 26	at Alabama State	5	1	0	6	.167	1	9	.111	0	0	0	.000	1	16	.938	3	0	0	0	0.0	0	1.0	.209	2-3
September 29	at Tennessee	3	0	1	2	-.500	0	2	.000	1	0	10	1.000	0	20	1.000	5	0	0	0	0.0	0	1.0	.076	0-3
October 2	ALABAMA	5	0	0	2	.000	0	0	.000	0	2	14	.857	0	15	1.000	6	0	0	0	0.0	0	0.0	.183	3-2
October 3	ALABAMA	3	0	0	6	.000	1	3	.333	0	0	14	1.000	0	16	1.000	10	0	0	0	0.0	0	0.0	.248	3-0
TOTALS		52	3	5	45	-.044	7	39	.179	1	3	43	.930	6	193	.969	101	0	0	0	0.0	0	4.0	.236	

SETS PLAYED: 52
KILLS PER SET: 0.06
ASSISTS PER SET: 0.13

SERVICE ACES PER SET: 0.02
DIGS PER SET: 1.94

POINTS PER SET: 0.08

LANHAM'S OVERALL CAREER STATISTICS

YEAR	SETS	MP	KILLS	K/S	E	TA	PCT.	AST	A/S	SA	SA/S	SE	DIGS	D/S	RE	BS	BA	TB	B/S	PTS	PT/S
2021	52	14	3	0.06	5	45	-.044	7	.13	1	.02	3	101	1.94	6	0	0	0.0	.00	4.0	0.08
TOTAL	52	14	3	0.06	5	45	-.044	7	.13	1	.02	3	101	1.94	6	0	0	0.0	.00	4.0	0.08

LANHAM'S SEC CAREER STATISTICS

YEAR	SETS	MP	KILLS	K/S	E	TA	PCT.	AST	A/S	SA	SA/S	SE	DIGS	D/S	RE	BS	BA	TB	B/S	PTS	PT/S
2021	15	4	1	0.07	2	13	-.077	1	.07	1	.07	2	30	2.00	0	0	0	0.0	.00	2.0	0.13
TOTAL	15	5	1	0.07	2	13	-.077	1	.07	1	.07	2	30	2.00	0	0	0	0.0	.00	2.0	0.13



#5 AUDREY DOUGLAS
OUTSIDE/OPOSITE HITTER | 6-4 | SOPHOMORE
WINTER PARK, FLA. (HAGERTY)

DOUGLAS'S HIGHLIGHTS:

- Did not see action over the first three weeks of play due to a concussion
- Made he season debut versus Florida A&M (9/17), racking up four kills and adding a career high 4.0 blocks

CATEGORY	CAREER HIGH	OPPONENT/DATE
Kills	6	at #2 Kentucky (11/8/20)
Attempts	16	vs. #4 Florida (10/21/20)
Hitting Percentage (Min. 10 ATT.)	.545	at #2 Kentucky (11/8/20)
Assists	1	vs. #4 Florida (10/22/20)
Digs	1 (2x)	last, at #2 Kentucky (11/7/20)
Blocks	4.0	vs. Florida A&M (9/17/21)
Aces		
Points	6.5	at #2 Kentucky (11/8/20)

CATEGORY	SEASON HIGH	OPPONENT/DATE
Kills	4	vs. Florida A&M (9/17/21)
Attempts	12	vs. Florida A&M (9/17/21)
Hitting Percentage (Min. 10 ATT.)	.083	vs. Florida A&M (9/17/21)
Assists		
Digs		
Blocks	4.0	vs. Florida A&M (9/17/21)
Aces		
Points	6.0	vs. Florida A&M (9/17/21)

DATE	OPPONENT	SP	ATTACK				SET			SERVE				RECEIPT			BLOCKING				TEAM				
			K	E	TA	PCT.	A	TA	PCT.	SA	SE	TA	PCT.	RE	TA	PCT.	DIG	BS	BA	BE	TOTAL	BHE	POINTS	HIT%	SCORE
September 17	FLORIDA A&M	4	4	3	12	.083	0	1	.000	0	0	0	.000	0	0	.000	0	0	4	0	4.0	0	6.0	.245	2-3
September 26	at Alabama State	1	0	0	0	.000	0	0	.000	0	0	0	.000	0	0	.000	0	0	0	0	0.0	0	0.0	.209	2-3
TOTALS		5	4	3	12	.083	0	1	.000	0	0	0	.000	0	0	.000	0	0	4	0	4.0	0	6.0	.236	

DOUGLAS' OVERALL CAREER STATISTICS

YEAR	SETS	MP	KILLS	K/S	E	TA	PCT.	AST	A/S	SA	SA/S	SE	DIGS	D/S	RE	BS	BA	TB	B/S	PTS	PT/S
2021	5	1	4	0.80	3	12	.083	0	.00	0	.00	0	0	.00	0	0	4	4.0	0.80	6.0	1.20
2020	20	7	20	1.00	8	69	.174	1	.05	0	.00	0	2	.10	0	0	11	11.0	0.55	25.5	1.28
TOTAL	25	8	24	0.96	11	81	.160	1	.04	0	.00	0	2	.08	0	0	15	15.0	0.60	31.5	1.26

DOUGLAS' SEC CAREER STATISTICS

YEAR	SETS	MP	KILLS	K/S	E	TA	PCT.	AST	A/S	SA	SA/S	SE	DIGS	D/S	RE	BS	BA	TB	B/S	PTS	PT/S
2021	0	0	0	0.0	0	0	.000	0	.00	0	.00	0	0	.00	0	0	0	0.0	.00	0.0	0.00
2020	20	7	20	1.00	8	69	.174	1	.05	0	.00	0	2	.10	0	0	11	11.0	.55	25.5	1.28
TOTAL	20	7	20	1.00	8	69	.174	1	.05	0	.00	0	2	.10	0	0	11	11.0	.55	25.5	1.28



#6 BELLA ROSENTHALL
DEFENSIVE SPECIALIST/LIBERO | 5-5 | SENIOR
YORKTOWN, IND. (YORKTOWN)

ROSENTHALL'S HIGHLIGHTS:

- Named SEC Defensive Player of the Week twice (9/13 and 9/20) to become the first player in program history to win the award in back-to-back weeks
- First Tiger to win the award multiple times in a single season since Camila Jersonsky in 2012
- War Eagle Invitational and Auburn Invitational All-Tournament Team selection
- Leads the SEC and ranks 18th nationally with a 5.19 digs/set average and also ranks second overall in the SEC with 270 total digs
- Ranks 127th among all active NCAA Division I athlete for career digs (986)
- Totaled 44 career double-digit dig performances, including 14 20+ dig matches
- Recorded at least 10 digs in 13 of 14 matches to begin senior season
- Totaled 25 digs versus North Alabama (9/9) to become the first player to record 25+ digs in a match since she totaled 26 versus Georgia on Oct. 20, 2019
- Shattered career high with 31 digs versus Nicholls (9/17) to become the first Tiger to record at least 30 digs in a match since Payton White versus Butler on Aug. 31, 2019
- Her 31 digs tied for the eighth most individual digs recorded by a Tiger in a single match

CATEGORY	CAREER HIGH	OPPONENT/DATE
Kills	1 (4x)	last, vs. #4 Florida (10/22/20)
Attempts	8	at Alabama State (9/26/21)
Hitting Percentage (Min. 10 ATT.)		
Assists	10	vs. #4 Florida (10/22/20)
Digs	31	vs. Nicholls (9/17/21)
Blocks	1.0	vs. #4 Florida (10/22/20)
Aces	3 (2x)	last, vs. Tennessee State (8/30/19)
Points	3.0 (2x)	last, vs. Tennessee State (8/30/19)

CATEGORY	SEASON HIGH	OPPONENT/DATE
Kills		
Attempts	8	at Alabama State (9/26/21)
Hitting Percentage (Min. 10 ATT.)		
Assists	9	vs. Florida A&M (9/17/21)
Digs	31	vs. Nicholls (9/17/21)
Blocks		
Aces	2	vs. Belmont (9/18/21)
Points	2.0	vs. Belmont (9/18/21)

DATE	OPPONENT	SP	ATTACK			PCT.	SET			SERVE			RECEIPT			BLOCKING				BHE	POINTS	TEAM HIT%	SCORE		
			K	E	TA		A	TA	PCT.	SA	SE	TA	PCT.	RE	TA	PCT.	DIG	BS	BA					BE	TOTAL
August 27	TENNESSEE TECH	3	0	0	0	.000	4	14	.286	0	0	22	1.000	0	5	1.000	17	0	0	0	0.0	0	0.0	.292	3-0
August 28	JACKSON STATE	3	0	0	0	.000	6	12	.500	1	1	14	.929	0	6	1.000	14	0	0	0	0.0	0	1.0	.457	3-0
September 2	CAL STATE FULLERTON	3	0	0	0	.000	5	14	.357	0	0	11	1.000	0	12	1.000	17	0	0	0	0.0	0	0.0	.221	3-0
September 3	SOUTHEASTERN LA.	3	0	0	0	.000	2	12	.250	0	2	14	.857	1	16	.938	16	0	0	0	0.0	0	0.0	.300	3-0
September 9	NORTH ALABAMA	3	0	0	0	.000	0	11	.000	0	1	11	.909	0	10	1.000	25	0	0	0	0.0	0	0.0	.265	3-0
September 12	SANTA CLARA	5	0	0	1	.000	8	24	.333	0	1	22	.955	3	21	.857	20	0	0	0	0.0	0	0.0	.260	3-2
September 17	FLORIDA A&M	5	0	0	1	.000	9	24	.375	1	1	20	.950	1	22	.955	20	0	0	0	0.0	0	0.0	.245	2-3
September 17	NICHOLLS	4	0	0	0	.000	2	28	.071	1	1	25	.960	0	19	1.000	31	0	0	0	0.0	0	1.0	.183	3-1
September 18	BELMONT	3	0	0	0	.000	8	20	.400	2	0	17	1.000	0	5	1.000	19	0	0	0	0.0	0	2.0	.345	3-0
September 22	OLE MISS	4	0	0	0	.000	8	25	.320	1	0	17	1.000	2	32	.938	13	0	0	0	0.0	0	1.0	.196	1-3
September 26	at Alabama State	5	0	0	8	.000	3	17	.176	1	2	21	.905	2	32	.938	27	0	0	0	0.0	0	1.0	.209	2-3
September 29	at Tennessee	3	0	0	0	.000	4	22	.182	0	2	12	.833	2	23	.913	6	0	0	0	0.0	0	0.0	.076	0-3
October 2	ALABAMA	5	0	0	0	.000	4	32	.125	0	0	20	1.000	0	16	1.000	24	0	0	0	0.0	0	0.0	.183	3-2
October 3	ALABAMA	3	0	0	0	.000	2	19	.105	0	1	11	.909	0	11	1.000	21	0	0	0	0.0	0	0.0	.248	3-0
TOTALS		52	0	0	10	.000	66	274	.241	7	12	237	.949	11	230	.952	270	0	0	0	0.0	0	7.0	.236	

SETS PLAYED: 52
 KILLS PER SET: 0.00
 ASSISTS PER SET: 1.27

SERVICE ACES PER SET: 0.13
 DIGS PER SET: 5.19

POINTS PER SET: 0.13

ROSENTHALL'S OVERALL CAREER STATISTICS

YEAR	SETS	MP	KILLS	K/S	E	TA	PCT.	AST	A/S	SA	SA/S	SE	DIGS	D/S	RE	BS	BA	TB	B/S	PTS	PT/S
2021	52	14	0	.00	0	10	.000	66	1.27	7	.13	12	270	5.19	11	0	0	0.0	.00	7.0	.13
2020	25	8	1	.04	0	3	.333	20	0.80	2	.08	9	70	2.80	5	0	1	1.0	.04	3.5	.14
2019	103	29	2	.02	0	5	.400	38	0.37	12	.12	24	307	2.98	17	0	0	0.0	.00	14.0	.14
2018	103	28	1	.01	0	6	.167	65	0.63	16	.16	23	339	3.29	26	0	0	0.0	.00	17.0	.17
TOTAL	283	79	4	.01	0	24	.167	189	0.67	37	.13	68	986	3.48	59	0	1	1.0	.00	41.5	.15

ROSENTHALL'S SEC CAREER STATISTICS

YEAR	SETS	MP	KILLS	K/S	E	TA	PCT.	AST	A/S	SA	SA/S	SE	DIGS	D/S	RE	BS	BA	TB	B/S	PTS	PT/S
2021	15	4	0	.00	0	0	.000	18	1.20	1	.07	3	64	4.27	4	0	0	0.0	.00	1.0	.07
2020	25	8	1	.04	0	3	.333	20	0.80	2	.08	9	70	2.80	5	0	1	1.0	.04	3.5	.14
2019	59	18	1	.02	0	4	.250	31	0.53	7	.12	15	232	3.93	12	0	0	0.0	.00	8.0	.14
2018	67	18	1	.01	0	5	.200	39	0.58	11	.16	12	192	2.87	19	0	0	0.0	.00	12.0	.18
TOTAL	166	48	3	.02	0	12	.250	108	0.65	21	.13	39	558	3.36	40	0	1	1.0	.01	24.5	.14



#7 REBEKAH RATH
OUTSIDE HITTER | 6-0 | JUNIOR
ALTAMONTE SPRINGS, FLA. (MARYLAND)

RATH'S HIGHLIGHTS:

- Named SEC Offensive Player of the Week (9/7), the first Tiger to win the award since Breanna McIlroy in 2017
- War Eagle Invitational and Auburn Invitational All-Tournament Team selection
- Ranks second the SEC in attacks per set (12.10), kills per set (4.35), total points (265.0), points per set (5.10), total attacks (629), total kills (226)
- Ranks 16th nationally in points/set and 18th in attacks/set
- Recorded 10+ kills in 12 of 14 matches, including three matches of 20+ kills
- Picked up a double-double in three of Auburn's last four matches
- Recorded first double-double as a Tiger versus Cal State Fullerton (9/2) behind 16 kills and 10 digs
- Matched her season best with 10 digs and chipped in a season high 24 kills versus Santa Clara (9/12) for her second double-double of the season
- The first Tiger to record at least 20 kills in a match since Tatum Shipes versus Ole Miss on Oct. 26, 2018
- Totaled her third double-double of the season with 24 kills and a season high 13 digs at Alabama State (9/26), while adding a season high 29.0 total points

CATEGORY	CAREER HIGH	OPPONENT/DATE
Kills	24 (2x)	last, at Alabama State (9/26/21)
Attempts	69	vs. Alabama (10/2/21)
Hitting Percentage (Min. 10 ATT.)	.433	vs. Jackson State (8/28/21)
Assists	2 (2x)	last, vs. Ole Miss (9/22/21)
Digs	13	at Alabama State (9/26/21)
Blocks	6.0 (2x)	last, vs. Alabama (10/2/21)
Aces	2 (3x)	last, vs. Alabama (10/3/21)
Points	29.0	at Alabama State (9/26/21)

CATEGORY	SEASON HIGH	OPPONENT/DATE
Kills	24 (2x)	last, at Alabama State (9/26/21)
Attempts	69	vs. Alabama (10/2/21)
Hitting Percentage (Min. 10 ATT.)	.433	vs. Jackson State (8/28/21)
Assists	2 (2x)	last, vs. Ole Miss (9/22/21)
Digs	13	at Alabama State (9/26/21)
Blocks	6.0 (2x)	last, vs. Alabama (10/2/21)
Aces	2 (3x)	last, vs. Alabama (10/3/21)
Points	29.0	at Alabama State (9/26/21)

DATE	OPPONENT	SP	ATTACK				SET			SERVE				RECEIPT			BLOCKING				BHE	POINTS	TEAM HIT%	SCORE	
			K	E	TA	PCT.	A	TA	PCT.	SA	SE	TA	PCT.	RE	TA	PCT.	DIG	BS	BA	BE					TOTAL
August 27	TENNESSEE TECH	3	13	3	31	.323	0	1	.000	1	2	10	.800	2	8	.750	3	0	4	0	4.0	0	16.0	.292	3-0
August 28	JACKSON STATE	3	16	3	30	.433	0	0	.000	2	2	9	.778	0	5	1.000	3	1	4	0	5.0	0	21.0	.457	3-0
September 2	CAL STATE FULLERTON	3	16	5	42	.262	0	1	.000	1	2	9	.778	0	24	1.000	10	0	0	0	0.0	0	17.0	.221	3-0
September 3	SOUTHEASTERN LA	3	16	5	40	.275	0	1	.000	1	2	7	.714	1	14	.929	7	0	4	0	4.0	0	19.0	.300	3-0
September 9	NORTH ALABAMA	3	7	7	28	.000	0	1	.000	1	1	14	.929	2	11	.818	8	0	0	0	0.0	0	8.0	.265	3-0
September 12	SANTA CLARA	5	24	4	59	.339	1	3	.333	1	4	14	.714	2	14	.857	10	1	2	1	3.0	0	27.0	.260	3-2
September 17	FLORIDA A&M	5	12	6	47	.128	1	3	.333	1	4	12	.667	1	19	.947	4	0	1	0	1.0	0	13.5	.245	2-3
September 17	NICHOLLS	4	18	6	57	.211	2	6	.333	0	3	11	.727	0	13	1.000	6	2	4	0	6.0	0	22.0	.183	3-1
September 18	BELMONT	3	14	2	28	.429	0	1	.000	1	1	9	.889	0	16	1.000	2	1	2	0	3.0	0	17.0	.345	3-0
September 22	OLE MISS	4	19	4	52	.288	2	3	.667	0	3	10	.700	1	14	.929	6	0	0	0	0.0	0	19.0	.196	1-3
September 26	at Alabama State	5	24	7	60	.283	1	14	.071	2	2	16	.875	2	16	.875	13	2	2	0	4.0	0	29.0	.209	2-3
September 29	at Tennessee	3	9	7	43	.047	0	1	.000	0	2	8	.750	0	14	1.000	10	0	3	0	3.0	0	10.5	.076	0-3
October 2	ALABAMA	5	22	8	69	.203	1	5	.200	0	4	18	.778	1	32	.969	11	0	6	1	6.0	0	25.0	.183	3-2
October 3	ALABAMA	3	16	4	43	.279	0	0	.000	2	2	9	.778	0	11	1.000	11	1	4	0	5.0	0	21.0	.248	3-0
TOTALS		52	226	71	629	.246	8	40	.200	13	34	156	.782	12	211	.943	104	8	36	2	44.0	0	265.0	.236	

SETS PLAYED: 52
 KILLS PER SET: 4.35
 ASSISTS PER SET: 0.15

SERVICE ACES PER SET: 0.25
 DIGS PER SET: 2.00
 BLOCKS PER SET: 0.85

RATH'S OVERALL CAREER STATISTICS

YEAR	SETS	MP	KILLS	K/S	E	TA	PCT.	AST	A/S	SA	SA/S	SE	DIGS	D/S	RE	BS	BA	TB	B/S	PTS	PT/S
2021	52	14	226	4.35	71	629	.246	8	.15	13	.25	34	104	2.00	12	8	36	44.0	0.85	265.0	5.10
TOTAL	52	14	226	4.35	71	629	.246	8	.15	13	.25	34	104	2.00	12	8	36	44.0	0.85	265.0	5.10

RATH'S SEC CAREER STATISTICS

YEAR	SETS	MP	KILLS	K/S	E	TA	PCT.	AST	A/S	SA	SA/S	SE	DIGS	D/S	RE	BS	BA	TB	B/S	PTS	PT/S
2021	15	4	66	4.40	23	207	.208	3	.20	2	.13	11	38	2.53	2	1	13	14.0	.93	75.5	5.00
TOTAL	15	4	66	4.40	23	207	.208	3	.20	2	.13	11	38	2.53	2	1	13	14.0	.93	75.5	5.00



#8 LIZ REICH

OPPOSITE HITTER | 6-1 | GRADUATE STUDENT
COLORADO SPRINGS, COLO. (PORTLAND) RN



REICH'S HIGHLIGHTS:

- Ranks 61st among all active NCAA DI student-athletes in career sets played (443) and 124th in career kills (982)
- Currently ranks 17th in the SEC in kills per set (3.12)
- Named to War Eagle Invitational and Auburn Invitational All-Tournament teams
- Recorded at least 10 kills in 11 matches this season
- Set a season high with 17 kills versus Santa Clara (9/12) and Florida A&M (9/17)

CATEGORY	CAREER HIGH	OPPONENT/DATE
Kills	17 (2x)	last, vs. Florida A&M (9/17/21)
Attempts	46	vs. Ole Miss (9/22/21)
Hitting Percentage (Min. 10 ATT.)	.500	vs. Jackson State (8/28/21)
Assists	1 (3x)	last, at Alabama State (9/26/21)
Digs	5	vs. Nicholls (9/17/21)
Blocks	5	vs. Jackson State (8/28/21)
Aces		
Points	18.5	vs. Florida A&M (9/17/21)

CATEGORY	SEASON HIGH	OPPONENT/DATE
Kills	17 (2x)	last, vs. Florida A&M (9/17/21)
Attempts	46	vs. Ole Miss (9/22/21)
Hitting Percentage (Min. 10 ATT.)	.500	vs. Jackson State (8/28/21)
Assists	1 (3x)	last, at Alabama State (9/26/21)
Digs	5	vs. Nicholls (9/17/21)
Blocks	5	vs. Jackson State (8/28/21)
Aces		
Points	18.5	vs. Florida A&M (9/17/21)

DATE	OPPONENT	SP	ATTACK			SET			SERVE			RECEIPT			BLOCKING				BHE	POINTS	TEAM				
			K	E	TA	PCT.	A	TA	PCT.	SA	SE	TA	PCT.	RE	TA	PCT.	DIG	BS			BA	BE	TOTAL	HIT%	SCORE
August 27	TENNESSEE TECH	3	9	3	24	.250	0	1	.000	0	0	0	.000	0	1	1.000	4	0	1	0	1.0	0	9.5	.292	3-0
August 28	JACKSON STATE	3	13	1	24	.500	1	3	.333	0	0	0	.000	0	0	.000	1	0	5	0	5.0	0	15.5	.457	3-0
September 2	CAL STATE FULLERTON	3	11	2	22	.409	0	1	.000	0	0	0	.000	0	1	1.000	0	0	1	0	1.0	0	11.5	.221	3-0
September 3	SOUTHEASTERN LA.	3	13	2	24	.458	0	0	.000	0	0	0	.000	0	0	.000	0	0	4	0	4.0	0	15.0	.300	3-0
September 9	NORTH ALABAMA	3	8	2	21	.286	0	1	.000	0	0	0	.000	0	1	1.000	1	0	1	0	1.0	0	8.5	.265	3-0
September 12	SANTA CLARA	5	17	6	44	.250	0	1	.000	0	0	0	.000	0	2	1.000	2	0	0	0	0.0	0	17.0	.260	3-2
September 17	FLORIDA A&M	5	17	3	37	.378	0	2	.000	0	1	5	.800	0	0	.000	1	0	3	0	3.0	0	18.5	.245	2-3
September 17	NICHOLLS	4	10	3	37	.189	0	5	.000	0	0	0	.000	0	0	.000	5	0	4	0	4.0	0	12.0	.183	3-1
September 18	BELMONT	3	11	2	22	.409	1	1	1.000	0	0	0	.000	0	0	.000	1	0	2	0	2.0	0	12.0	.345	3-0
September 22	OLE MISS	4	10	5	46	.109	0	0	.000	0	0	0	.000	0	0	.000	4	0	2	0	2.0	0	11.0	.196	1-3
September 26	at Alabama State	5	13	3	27	.370	1	6	.167	0	0	1	1.000	0	0	.000	2	0	1	0	1.0	0	13.5	.209	2-3
September 29	at Tennessee	3	8	3	23	.217	0	2	.000	0	0	0	.000	0	0	.000	1	0	2	0	2.0	0	9.0	.076	0-3
October 2	ALABAMA	5	11	3	36	.222	0	2	.000	0	0	0	.000	1	1	.000	1	0	2	0	2.0	0	12.0	.183	3-2
October 3	ALABAMA	3	11	1	23	.435	0	2	.000	0	0	0	.000	0	0	.000	4	0	0	0	0.0	0	11.0	.248	3-0
TOTALS		52	162	39	410	.300	3	27	.111	0	1	6	.833	1	6	.833	27	0	28	0	28.0	0	176.0	.236	

SETS PLAYED: 52
 KILLS PER SET: 3.12
 ASSISTS PER SET: 0.06

DIGS PER SET: 0.52
 BLOCKS PER SET: 0.54

POINTS PER SET: 3.38

REICH'S OVERALL CAREER STATISTICS

YEAR	SETS	MP	KILLS	K/S	E	TA	PCT.	AST	A/S	SA	SA/S	SE	DIGS	D/S	RE	BS	BA	TB	B/S	PTS	PT/S
2021	52	14	162	3.12	39	410	.300	3	.06	0	.00	1	27	.52	1	0	28	28.0	0.54	176.0	3.38
TOTAL	52	14	162	3.12	39	410	.300	3	.06	0	.00	1	27	.52	1	0	28	28.0	0.54	176.0	3.38

REICH'S SEC CAREER STATISTICS

YEAR	SETS	MP	KILLS	K/S	E	TA	PCT.	AST	A/S	SA	SA/S	SE	DIGS	D/S	RE	BS	BA	TB	B/S	PTS	PT/S
2021	15	4	18	2.57	8	69	.145	0	.00	0	.00	0	5	0.71	0	0	4	4.0	0.57	20.0	2.86
TOTAL	15	4	18	2.57	8	69	.145	0	.00	0	.00	0	5	0.71	0	0	4	4.0	0.57	20.0	2.86



#10 JACKIE BARRETT

SETTER | 6-1 | SOPHOMORE
HIGHLAND, CALIF. (CITRUS VALLEY)

BARRETT'S HIGHLIGHTS

- Leads the team with nine double-doubles this fall, recording a double-double in her last three matches
- Ranks eighth in the SEC in assists per set (8.60) and total assists (447)
- Recorded her first career double-double with 25 assists and a career high 12 digs versus Tennessee Tech (8/27)
- Matched career high with 5.0 stuffs at the net versus the Broncos
- Set career highs in kills (6), hitting percentage (.308), assists (48) and points (10.0) versus Florida A&M (9/17)
- Matched career high with three aces while shattering her career high in digs (28) versus Nicholls (9/17)
- Recorded six kills, matching her career high, off 20 attempts at Alabama State (9/26)
- Picked up first double-double in conference play with 18 assists and 12 digs at No. 20 Tennessee (9/29)

CATEGORY	CAREER HIGH	OPPONENT/DATE
Kills	6 (2x)	last, at Alabama State (9/26/21)
Attempts	20	at Alabama State (9/26/21)
Hitting Percentage (Min. 10 ATT.)	.308	vs. Florida A&M (9/17/21)
Assists	48	vs. Florida A&M (9/17/21)
Digs	28	vs. Nicholls (9/17/21)
Blocks	5.0 (2x)	last, vs. Santa Clara (9/12/21)
Aces	3 (2x)	last, vs. Nicholls (9/17/21)
Points	10.0	vs. Florida A&M (9/17/21)

CATEGORY	SEASON HIGH	OPPONENT/DATE
Kills	6 (2x)	last, at Alabama State (9/26/21)
Attempts	20	at Alabama State (9/26/21)
Hitting Percentage (Min. 10 ATT.)	.308	vs. Florida A&M (9/17/21)
Assists	48	vs. Florida A&M (9/17/21)
Digs	28	vs. Nicholls (9/17/21)
Blocks	5.0	vs. Santa Clara (9/12/21)
Aces	3	vs. Nicholls (9/17/21)
Points	10.0	vs. Florida A&M (9/17/21)

DATE	OPPONENT	SP	ATTACK				SET			SERVE				RECEIPT			BLOCKING				BHE	POINTS	HIT%	SCORE	
			K	E	TA	PCT.	A	TA	PCT.	SA	SE	TA	PCT.	RE	TA	PCT.	DIG	BS	BA	BE					TOTAL
August 27	TENNESSEE TECH	3	1	0	3	.333	25	63	.397	1	0	8	1.000	0	0	.000	12	0	0	1	0.0	0	2.0	.292	3-0
August 28	JACKSON STATE	3	2	0	2	1.000	27	59	.458	2	0	10	1.000	0	1	1.000	8	0	1	0	1.0	0	4.5	.457	3-0
September 2	CAL STATE FULLERTON	3	0	1	6	-.167	16	39	.410	0	0	9	1.000	0	0	.000	5	0	1	1	1.0	0	0.5	.221	3-0
September 3	SOUTHEASTERN LA.	3	3	0	5	.600	28	74	.378	2	1	9	.889	0	0	.000	6	0	2	2	2.0	1	6.0	.300	3-0
September 9	NORTH ALABAMA	3	0	1	2	-.500	30	71	.423	1	1	22	.955	0	0	.000	8	0	4	0	4.0	0	3.0	.265	3-0
September 12	SANTA CLARA	5	1	0	6	.167	44	126	.349	2	2	20	.900	0	2	1.000	11	0	5	0	5.0	0	5.5	.260	3-2
September 17	FLORIDA A&M	5	6	2	13	.308	48	130	.369	2	1	21	.952	0	0	.000	15	0	4	0	4.0	0	10.0	.245	2-3
September 17	NICHOLLS	4	2	0	8	.250	40	124	.323	3	0	21	1.000	0	0	.000	28	0	2	0	2.0	0	6.0	.183	3-1
September 18	BELMONT	3	1	0	3	.333	24	57	.421	1	1	11	.909	0	0	.000	19	0	3	0	3.0	0	3.5	.345	3-0
September 22	OLE MISS	4	1	0	4	.250	34	117	.291	1	2	13	.846	0	0	.000	12	1	1	0	2.0	0	3.5	.196	1-3
September 26	at Alabama State	5	6	1	20	.250	36	113	.319	0	1	19	.947	0	0	.000	4	0	1	0	1.0	0	6.5	.209	2-3
September 29	at Tennessee	3	1	1	4	.000	18	79	.228	0	2	6	.667	0	0	.000	12	0	2	0	2.0	0	2.0	.076	0-3
October 2	ALABAMA	5	1	0	10	.100	43	123	.350	0	0	14	1.000	0	0	.000	14	1	3	0	4.0	0	3.5	.183	3-2
October 3	ALABAMA	3	1	0	6	.167	34	90	.378	0	0	14	1.000	0	0	.000	11	0	2	0	2.0	0	2.0	.248	3-0
TOTALS		52	26	6	92	.217	447	1265	.353	15	11	197	.944	0	3	1.000	165	2	31	4	33.0	1	58.5	.236	

SETS PLAYED: 52 SERVICE ACES PER SET: 0.29 POINTS PER SET: 1.12
 KILLS PER SET: 0.50 DIGS PER SET: 3.17
 ASSISTS PER SET: 8.60 BLOCKS PER SET: 0.63

BARRETT'S OVERALL CAREER STATISTICS

YEAR	SETS	MP	KILLS	K/S	E	TA	PCT.	AST	A/S	SA	SA/S	SE	DIGS	D/S	RE	BS	BA	TB	B/S	PTS	PT/S
2021	52	14	26	0.50	6	92	.217	447	8.60	15	.29	11	165	3.17	0	2	31	33.0	0.63	58.5	1.13
2020	19	6	10	0.53	6	45	.089	144	7.58	3	.16	8	33	1.74	0	0	11	11.0	0.58	18.5	0.97
TOTAL	71	20	36	0.51	12	137	.175	591	8.32	18	.25	19	198	2.79	0	2	42	44.0	0.62	77.0	1.08

BARRETT'S SEC CAREER STATISTICS

YEAR	SETS	MP	KILLS	K/S	E	TA	PCT.	AST	A/S	SA	SA/S	SE	DIGS	D/S	RE	BS	BA	TB	B/S	PTS	PT/S
2021	15	4	4	0.27	1	24	.125	129	8.60	1	.07	4	49	3.27	0	2	8	10.0	0.67	11.0	0.73
2020	19	6	10	0.53	6	45	.089	144	7.58	3	.16	8	33	1.74	0	0	11	11.0	0.58	18.5	0.97
TOTAL	34	10	14	0.41	7	69	.101	273	8.03	4	.12	12	82	2.41	0	2	19	21.0	0.62	29.5	0.85



#11 JORDAN SINNESS

SETTER | 5-9 | FRESHMAN
SEBRING, FLA. (SEBRING)

SINNESS'S HIGHLIGHTS:

- Made collegiate debut versus Cal State Fullerton (9/2), dishing out 16 assists, six digs, one kill and a block
- Picked up a season high two aces from the service line versus Santa Clara (9/12)
- Matched season high with a pair of aces at Alabama State (9/26)

CATEGORY	CAREER HIGH	OPPONENT/DATE
Kills	1	vs. Cal State Fullerton (9/2/21)
Attempts	2	vs. Cal State Fullerton (9/2/21)
Hitting Percentage (Min. 10 ATT.)		
Assists	16	vs. Cal State Fullerton (9/2/21)
Digs	6	vs. Cal State Fullerton (9/2/21)
Blocks	1	vs. Cal State Fullerton (9/2/21)
Aces	2 (2x)	last, at Alabama State (9/26/21)
Points	2.0 (2x)	last, at Alabama State (9/26/21)

CATEGORY	SEASON HIGH	OPPONENT/DATE
Kills	1	vs. Cal State Fullerton (9/2/21)
Attempts	2	vs. Cal State Fullerton (9/2/21)
Hitting Percentage (Min. 10 ATT.)		
Assists	16	vs. Cal State Fullerton (9/2/21)
Digs	6	vs. Cal State Fullerton (9/2/21)
Blocks	1	vs. Cal State Fullerton (9/2/21)
Aces	2 (2x)	last, at Alabama State (9/26/21)
Points	2.0 (2x)	last, at Alabama State (9/26/21)

DATE	OPPONENT	SP	ATTACK				SET			SERVE				RECEIPT			BLOCKING				BHE	POINTS	HIT%	SCORE	
			K	E	TA	PCT.	A	TA	PCT.	SA	SE	TA	PCT.	RE	TA	PCT.	DIG	BS	BA	BE					TOTAL
September 2	CAL STATE FULLERTON	2	1	1	2	.000	16	53	.302	0	0	3	1.000	0	0	.000	6	0	1	0	1.0	1	1.5	.221	3-0
September 9	NORTH ALABAMA	3	0	0	0	.000	0	0	.000	0	0	8	1.000	0	0	.000	0	0	0	0	0.0	0	0.0	.265	3-0
September 12	SANTA CLARA	5	0	0	0	.000	0	2	.000	2	1	17	.941	0	0	.000	1	0	0	0	0.0	0	2.0	.260	3-2
September 17	FLORIDA A&M	5	0	0	0	.000	0	3	.000	1	0	19	1.000	0	0	.000	2	0	0	0	0.0	0	1.0	.245	2-3
September 17	NICHOLLS	4	0	0	0	.000	0	0	.000	0	1	9	.889	0	0	.000	0	0	0	0	0.0	0	0.0	.183	3-1
September 18	BELMONT	3	0	0	0	.000	0	0	.000	0	1	5	.800	0	0	.000	2	0	0	0	0.0	0	0.0	.345	3-0
September 22	OLE MISS	4	0	0	0	.000	0	1	.000	0	0	15	1.000	0	0	.000	4	0	0	0	0.0	0	0.0	.196	1-3
September 26	at Alabama State	5	0	0	0	.000	1	2	.500	2	0	17	1.000	0	0	.000	1	0	0	0	0.0	0	2.0	.209	2-3
September 29	at Tennessee	3	0	0	0	.000	0	0	.000	0	0	8	1.000	0	0	.000	0	0	0	0	0.0	0	0.0	.076	0-3
October 2	ALABAMA	5	0	0	0	.000	0	1	.000	0	0	16	1.000	0	0	.000	2	0	0	0	0.0	0	0.0	.183	3-2
October 3	ALABAMA	3	0	0	0	.000	0	0	.000	1	1	9	.889	0	0	.000	0	0	0	0	0.0	0	1.0	.248	3-0
TOTALS		42	1	1	2	.000	17	62	.274	6	4	126	.968	0	0	.000	18	0	1	0	1.0	1	7.5	.236	

SETS PLAYED: 42
KILLS PER SET: 0.02
ASSISTS PER SET: 0.40

SERVICE ACES PER SET: 0.14
DIGS PER SET: 0.43
BLOCKS PER SET: 0.02

POINTS PER SET: 0.18

SINNESS'S OVERALL CAREER STATISTICS

YEAR	SETS	MP	KILLS	K/S	E	TA	PCT.	AST	A/S	SA	SA/S	SE	DIGS	D/S	RE	BS	BA	TB	B/S	PTS	PT/S
2021	42	11	1	0.02	1	2	.000	17	0.40	6	.14	4	18	0.43	0	0	1	1.0	.02	7.5	0.18
TOTAL	42	11	1	0.02	1	2	.000	17	0.40	6	.14	4	18	0.43	0	0	1	1.0	.02	7.5	0.18

SINNESS'S SEC CAREER STATISTICS

YEAR	SETS	MP	KILLS	K/S	E	TA	PCT.	AST	A/S	SA	SA/S	SE	DIGS	D/S	RE	BS	BA	TB	B/S	PTS	PT/S
2021	15	4	0	0.0	0	0	.000	0	.00	1	.07	1	6	0.40	0	0	0	0.0	.00	1.0	0.07
TOTAL	15	4	0	0.0	0	0	.000	0	.00	1	.07	1	6	0.40	0	0	0	0.0	.00	1.0	0.07



#15 KATE CURTIS

DEFENSIVE SPECIALIST/LIBERO | 5-6 | FRESHMAN
ANDERSON, S.C. (T.L. HANNA)

CURTIS'S HIGHLIGHTS:

- Appeared off the bench as one of Auburn's primary servers to begin the season
- Set career high in assists versus Florida A&M (9/17)
- Turned in her first double-digit dig effort with a career best 14 versus Nicholls (9/17)
- Picked up a season high two aces from the service line versus Alabama (10/3)

CATEGORY	CAREER HIGH	OPPONENT/DATE
Kills		
Attempts	3	at Alabama State (9/26/21)
Hitting Percentage (Min. 10 ATT.)		
Assists	4	vs. Florida A&M (9/17/21)
Digs	14	vs. Nicholls (9/17/21)
Blocks		
Aces	2	vs. Alabama (10/3/21)
Points	2.0	vs. Alabama (10/3/21)

CATEGORY	SEASON HIGH	OPPONENT/DATE
Kills		
Attempts	3	at Alabama State (9/26/21)
Hitting Percentage (Min. 10 ATT.)		
Assists	4	vs. Florida A&M (9/17/21)
Digs	14	vs. Nicholls (9/17/21)
Blocks		
Aces	2	vs. Alabama (10/3/21)
Points	2.0	vs. Alabama (10/3/21)

DATE	OPPONENT	SP	ATTACK				SET			SERVE				RECEIPT			BLOCKING				BHE	POINTS	TEAM HIT%	SCORE	
			K	E	TA	PCT.	A	TA	PCT.	SA	SE	TA	PCT.	RE	TA	PCT.	DIG	BS	BA	BE					TOTAL
August 27	TENNESSEE TECH	3	0	0	0	.000	0	0	.000	1	0	17	1.000	0	14	1.000	4	0	0	0	0.0	0	1.0	.292	3-0
August 28	JACKSON STATE	3	0	0	0	.000	0	0	.000	0	1	13	.923	0	6	1.000	3	0	0	0	0.0	0	0.0	.457	3-0
September 2	CAL STATE FULLERTON	3	0	0	0	.000	0	1	.000	0	0	17	1.000	0	10	1.000	6	0	0	0	0.0	0	0.0	.221	3-0
September 3	SOUTHEASTERN LA.	3	0	0	0	.000	0	3	.000	1	0	23	1.000	0	2	1.000	7	0	0	0	0.0	0	1.0	.300	3-0
September 9	NORTH ALABAMA	3	0	0	0	.000	0	3	.000	0	0	9	1.000	0	4	1.000	5	0	0	0	0.0	0	0.0	.265	3-0
September 12	SANTA CLARA	5	0	0	0	.000	1	2	.500	0	0	18	1.000	3	28	.893	5	0	0	0	0.0	0	0.0	.260	3-2
September 17	FLORIDA A&M	5	0	0	0	.000	4	6	.667	1	1	10	.900	1	28	.964	7	0	0	0	0.0	0	1.0	.245	2-3
September 17	NICHOLLS	4	0	0	0	.000	1	2	.500	0	0	21	1.000	1	14	.929	14	0	0	0	0.0	0	0.0	.183	3-1
September 18	BELMONT	3	0	0	0	.000	0	0	.000	1	1	13	.923	1	2	.500	4	0	0	0	0.0	0	1.0	.345	3-0
September 22	OLE MISS	4	0	0	0	.000	2	2	1.000	0	1	12	.917	1	20	.950	7	0	0	0	0.0	0	0.0	.196	1-3
September 26	at Alabama State	5	0	0	3	.000	1	3	.333	0	1	16	.938	0	14	1.000	6	0	0	0	0.0	0	0.0	.209	2-3
September 29	at Tennessee	3	0	0	0	.000	1	5	.200	0	1	9	.889	0	4	1.000	6	0	0	0	0.0	0	0.0	.076	0-3
October 2	ALABAMA	5	0	0	0	.000	1	3	.333	1	1	22	.955	1	22	.955	7	0	0	0	0.0	0	1.0	.183	3-2
October 3	ALABAMA	3	0	0	0	.000	1	5	.200	2	1	16	.938	0	4	1.000	4	0	0	0	0.0	0	2.0	.248	3-0
TOTALS		52	0	0	3	.000	12	35	.343	7	8	216	.963	8	172	.953	85	0	0	0	0.0	0	7.0	.236	

SETS PLAYED: 52
KILLS PER SET: 0.00
ASSISTS PER SET: 0.23

SERVICE ACES PER SET: 0.13
DIGS PER SET: 1.63

POINTS PER SET: 0.13

CURTIS'S OVERALL CAREER STATISTICS

YEAR	SETS	MP	KILLS	K/S	E	TA	PCT.	AST	A/S	SA	SA/S	SE	DIGS	D/S	RE	BS	BA	TB	B/S	PTS	PT/S
2021	52	14	0	0.0	0	3	.000	12	.23	7	.13	8	85	1.63	8	0	0	0.0	.00	7.0	0.13
TOTAL	52	14	0	0.0	0	3	.000	12	.23	7	.13	8	85	1.63	8	0	0	0.0	.00	7.0	0.13

CURTIS'S SEC CAREER STATISTICS

YEAR	SETS	MP	KILLS	K/S	E	TA	PCT.	AST	A/S	SA	SA/S	SE	DIGS	D/S	RE	BS	BA	TB	B/S	PTS	PT/S
2021	15	4	0	0.0	0	0	.000	5	.33	3	.20	4	24	1.60	2	0	0	0.0	.00	3.0	0.20
TOTAL	15	4	0	0.0	0	0	.000	5	.33	3	.20	4	24	1.60	2	0	0	0.0	.00	3.0	0.20



GREEN'S HIGHLIGHTS:

- Recorded 12 double-digit kill efforts during her Tiger career
- Chipped in 11 kills versus Cal State Fullerton (9/2) for her first 10+ kill match of the season
- Set a career high .375 hitting percentage behind 12 kills versus North Alabama (9/9)
- Against Florida A&M (9/17), set career highs in kills (19) and points (21.5)
- Totaled a season high two aces from the service line versus Ole Miss (9/22)
- Recorded a career high 5.0 blocks against Alabama (10/2), helping Auburn to a team total of 18.0 to tie the program's single-match record

CATEGORY	CAREER HIGH	OPPONENT/DATE
Kills	19	vs. Florida A&M (9/17/21)
Attempts	50	vs. Butler (8/31/19)
Hitting Percentage (Min. 10 ATT.)	.375	vs. North Alabama (9/9/21)
Assists	2	at South Carolina (10/29/20)
Digs	10	at South Carolina (10/29/20)
Blocks	5.0	vs. Alabama (10/2/21)
Aces	4	at TCU (9/15/19)
Points	21.5	vs. Florida A&M (9/17/21)

CATEGORY	SEASON HIGH	OPPONENT/DATE
Kills	19	vs. Florida A&M (9/17/21)
Attempts	48	vs. Florida A&M (9/17/21)
Hitting Percentage (Min. 10 ATT.)	.375	vs. North Alabama (9/9/21)
Assists	1 (2x)	last, vs. Ole Miss (9/22/21)
Digs	7	vs. Santa Clara (9/12/21)
Blocks	5.0	vs. Alabama (10/2/21)
Aces	2	vs. Ole Miss (9/22/21)
Points	21.5	vs. Florida A&M (9/17/21)

DATE	OPPONENT	SP	ATTACK				SET			SERVE				RECEIPT			BLOCKING				TEAM				
			K	E	TA	PCT.	A	TA	PCT.	SA	SE	TA	PCT.	RE	TA	PCT.	DIG	BS	BA	BE	TOTAL	BHE	POINTS	HIT%	SCORE
August 27	TENNESSEE TECH	3	5	1	20	.200	0	0	.000	0	0	6	1.000	0	2	1.000	1	0	3	0	3.0	0	6.5	.292	3-0
August 28	JACKSON STATE	3	3	1	10	.200	0	1	.000	1	0	24	1.000	0	0	.000	5	0	3	0	3.0	0	5.5	.457	3-0
September 2	CAL STATE FULLERTON	3	11	4	35	.200	0	2	.00	0	0	18	1.000	0	3	1.000	2	0	1	0	1.0	0	11.5	.221	3-0
September 3	SOUTHEASTERN LA.	3	2	1	18	.056	1	2	.500	1	2	14	.857	0	0	.000	4	0	1	0	1.0	0	3.5	.300	3-0
September 9	NORTH ALABAMA	3	12	0	32	.375	0	3	.000	1	0	9	1.000	0	2	1.000	2	0	0	1	0.0	0	13.0	.265	3-0
September 12	SANTA CLARA	5	12	3	41	.220	0	1	.000	0	0	17	1.000	2	9	.778	7	0	0	0	0.0	0	12.0	.260	3-2
September 17	FLORIDA A&M	5	19	5	48	.292	0	1	.000	0	2	16	.875	0	5	1.000	6	2	1	0	3.0	0	21.5	.245	2-3
September 17	NICHOLLS	4	12	6	41	.146	0	0	.000	0	1	13	.923	0	2	1.000	2	0	0	0	0.0	0	12.0	.183	3-1
September 18	BELMONT	3	4	2	16	.125	0	2	.000	1	0	18	1.000	0	2	1.000	0	0	0	0	0.0	0	5.0	.345	3-0
September 22	OLE MISS	4	13	6	34	.206	1	3	.333	2	1	15	.933	0	7	1.000	3	0	0	0	0.0	0	15.0	.196	1-3
September 26	at Alabama State	5	3	7	26	-.154	0	5	.000	0	2	17	.882	0	2	1.000	4	0	1	0	1.0	0	3.5	.209	2-3
September 29	at Tennessee	3	2	3	20	-.050	0	1	.000	0	0	0	.000	0	3	1.000	2	0	2	0	2.0	0	3.0	.076	0-3
October 2	ALABAMA	5	9	6	37	.081	0	1	.000	0	0	0	.000	0	5	1.000	2	0	5	0	5.0	0	11.5	.183	3-2
October 3	ALABAMA	3	7	3	27	.148	0	0	.000	0	0	0	.000	0	3	1.000	4	0	2	0	2.0	0	8.0	.248	3-0
TOTALS		52	114	48	405	.163	2	22	.091	6	8	167	.952	2	45	.956	45	2	19	1	21.0	0	131.5	.236	

SETS PLAYED: 52
 KILLS PER SET: 2.19
 ASSISTS PER SET: 0.04

SERVICE ACES PER SET: 0.12
 DIGS PER SET: 0.87
 BLOCKS PER SET: 0.40

POINTS PER SET: 2.53

GREEN'S OVERALL CAREER STATISTICS

YEAR	SETS	MP	KILLS	K/S	E	TA	PCT.	AST	A/S	SA	SA/S	SE	DIGS	D/S	RE	BS	BA	TB	B/S	PTS	PT/S
2021	52	14	114	2.19	48	405	.163	2	.04	6	.12	8	45	0.87	2	2	19	21.0	0.40	131.5	2.53
2020	13	4	27	2.08	33	139	-.043	3	.23	1	.08	8	28	2.15	2	1	8	9.0	0.69	33.0	2.54
2019	67	24	146	2.18	103	506	.085	1	.01	13	.19	14	30	0.45	3	3	7	10.0	0.15	165.5	2.47
2018	1	1	0	0.00	0	0	.000	0	.00	0	.00	1	0	0.00	0	0	0	0.0	0.00	0.0	0.00
TOTAL	133	43	287	2.16	184	1050	.098	6	.05	20	.15	31	103	0.77	7	6	34	40.0	0.30	330.0	2.48

GREEN'S SEC CAREER STATISTICS

YEAR	SETS	MP	KILLS	K/S	E	TA	PCT.	AST	A/S	SA	SA/S	SE	DIGS	D/S	RE	BS	BA	TB	B/S	PTS	PT/S
2021	15	4	31	2.07	18	118	.110	1	.07	2	.13	1	12	0.80	0	0	9	9.0	.60	37.5	2.47
2020	13	4	27	2.08	33	139	-.043	3	.23	1	.08	8	28	2.15	2	1	8	9.0	.69	33.0	2.54
2019	28	13	52	1.86	45	211	.033	1	.04	1	.04	9	13	0.46	1	2	3	5.0	.18	56.5	2.02
2018	0	0	0	0.00	0	0	.000	0	.00	0	.00	0	0	0.00	0	0	0	0.0	.00	0.0	0.00
TOTAL	56	21	110	1.96	96	468	.030	5	.09	4	.07	18	53	0.95	3	3	20	23.0	.41	127.0	2.27



#17 CASSIDY TANTON

OUTSIDE HITTER | 6-0 | FRESHMAN
STONEVILLE, N.C. (DALTON MCMICHAEL)

CURTIS'S HIGHLIGHTS:

- Did not see action during the first five weeks of play due to an ankle injury
- Made collegiate debut at Alabama State (9/26)

CATEGORY	CAREER HIGH	OPPONENT/DATE
Kills		
Attempts		
Hitting Percentage (Min. 10 ATT.)		
Assists		
Digs		
Blocks		
Aces		
Points		
CATEGORY	SEASON HIGH	OPPONENT/DATE
Kills		
Attempts		
Hitting Percentage (Min. 10 ATT.)		
Assists		
Digs		
Blocks		
Aces		
Points		

DATE	OPPONENT	SP	ATTACK				SET			SERVE				RECEIPT			BLOCKING				BHE	POINTS	TEAM					
			K	E	TA	PCT.	A	TA	PCT.	SA	SE	TA	PCT.	RE	TA	PCT.	DIG	BS	BA	BE			TOTAL	HIT%	SCORE			
September 26	at Alabama State	1	0	0	0	.000	0	0	.000	0	0	0	.000	0	0	.000	0	0	0	0	0	0	0	0	0.0	0.0	.209	2-3
TOTALS		1	0	0	0	.000	0	0	.000	0	0	0	.000	0	0	.000	0	0	0	0	0	0	0	0.0	0.0	.236		

TANTON'S OVERALL CAREER STATISTICS

YEAR	SETS	MP	KILLS	K/S	E	TA	PCT.	AST	A/S	SA	SA/S	SE	DIGS	D/S	RE	BS	BA	TB	B/S	PTS	PT/S
2021	1	0	0	0.0	0	0	.000	0	.00	0	.00	0	0	.00	0	0	0	0	.00	0.0	0.00
TOTAL	1	0	0	0.0	0	0	.000	0	.00	0	.00	0	0	.00	0	0	0	0	.00	0.0	0.00

TANTON'S SEC CAREER STATISTICS

YEAR	SETS	MP	KILLS	K/S	E	TA	PCT.	AST	A/S	SA	SA/S	SE	DIGS	D/S	RE	BS	BA	TB	B/S	PTS	PT/S
2021	0	0	0	0.0	0	0	.000	0	.00	0	.00	0	0	.00	0	0	0	0	.00	0.0	0.00
TOTAL	0	0	0	0.0	0	0	.000	0	.00	0	.00	0	0	.00	0	0	0	0	.00	0.0	0.00



YAVUZ'S HIGHLIGHTS:

- Made her Auburn debut, starting at middle blocker in the season opener versus Tennessee Tech (8/27)
- Set career high in total blocks (8.0) versus Jackson State (8/28)
- Shattered her career high in kills (8), hitting percentage (.571), digs (4) and points (10.5) versus Florida A&M (9/17)

CATEGORY	CAREER HIGH	OPPONENT/DATE
Kills	8	vs. Florida A&M (9/17/21)
Attempts	14	vs. Florida A&M (9/17/21)
Hitting Percentage (Min. 10 ATT.)	.571	vs. Florida A&M (9/17/21)
Assists		
Digs	4	vs. Florida A&M (9/17/21)
Blocks	8.0	vs. Jackson State (8/28/21)
Aces		
Points	10.5	vs. Florida A&M (9/17/21)

CATEGORY	SEASON HIGH	OPPONENT/DATE
Kills	8	vs. Florida A&M (9/17/21)
Attempts	14	vs. Florida A&M (9/17/21)
Hitting Percentage (Min. 10 ATT.)	.571	vs. Florida A&M (9/17/21)
Assists		
Digs	4	vs. Florida A&M (9/17/21)
Blocks	8.0	vs. Jackson State (8/28/21)
Aces		
Points	10.5	vs. Florida A&M (9/17/21)

DATE	OPPONENT	SP	ATTACK				SET			SERVE				RECEIPT			BLOCKING				TEAM				
			K	E	TA	PCT.	A	TA	PCT.	SA	SE	TA	PCT.	RE	TA	PCT.	DIG	BS	BA	BE	TOTAL	BHE	POINTS	HIT%	SCORE
August 27	TENNESSEE TECH	3	1	0	2	.500	0	1	.000	0	0	0	.000	0	0	.000	0	0	2	0	2.0	0	2.0	.292	3-0
August 28	JACKSON STATE	3	4	0	6	.667	0	0	.000	0	0	0	.000	0	0	.000	0	0	8	0	8.0	0	8.0	.457	3-0
September 3	CAL STATE FULLERTON	3	2	1	4	.250	0	0	.000	0	0	0	.000	0	0	.000	0	0	2	1	2.0	0	3.0	.221	3-0
September 4	SOUTHEASTERN LA.	3	1	0	1	1.000	0	0	.000	0	0	0	.000	0	0	.000	0	0	2	0	2.0	0	2.0	.300	3-0
September 9	NORTH ALABAMA	3	4	0	6	.667	0	1	.000	0	0	0	.000	0	0	.000	0	1	2	1	3.0	0	6.0	.265	3-0
September 12	SANTA CLARA	5	1	2	6	-.167	0	1	.000	0	0	0	.000	0	0	.000	1	0	3	0	3.0	0	2.5	.260	3-2
September 17	FLORIDA A&M	5	8	0	14	.571	0	2	.000	0	0	0	.000	0	0	.000	4	1	3	0	4.0	0	10.5	.245	2-3
September 17	NICHOLLS	4	2	0	6	.333	0	1	.000	0	0	0	.000	0	1	1.000	2	0	2	1	2.0	0	3.0	.183	3-1
September 18	BELMONT	3	3	1	4	.500	0	0	.000	0	0	0	.000	0	0	.000	0	0	2	0	2.0	0	4.0	.345	3-0
September 22	OLE MISS	4	2	1	5	.200	0	0	.000	0	0	0	.000	1	1	.000	0	1	2	1	3.0	0	4.0	.196	1-3
September 26	at Alabama State	5	2	1	3	.333	0	1	.000	0	0	0	.000	0	0	.000	0	0	3	0	3.0	0	3.5	.209	2-3
September 29	at Tennessee	3	1	0	3	.333	0	0	.000	0	0	0	.000	0	0	.000	0	0	4	0	4.0	0	3.0	.076	0-3
October 2	ALABAMA	5	4	1	8	.375	0	0	.000	0	0	0	.000	0	0	.000	2	0	4	2	4.0	0	6.0	.183	3-2
October 3	ALABAMA	3	2	1	7	.143	0	1	.000	0	0	0	.000	0	0	.000	1	1	2	0	3.0	1	4.0	.248	3-0
TOTALS		52	37	8	75	.387	0	8	.000	0	0	0	.000	1	2	.500	10	4	41	6	45.0	1	61.5	.236	

SETS PLAYED: 52
KILLS PER SET: 0.71

DIGS PER SET: 0.19
BLOCKS PER SET: 0.87

POINTS PER SET: 1.18

YAVUZ'S OVERALL CAREER STATISTICS

YEAR	SETS	MP	KILLS	K/S	E	TA	PCT.	AST	A/S	SA	SA/S	SE	DIGS	D/S	RE	BS	BA	TB	B/S	PTS	PT/S
2021	52	14	37	0.71	8	75	.387	0	.00	0	.00	0	10	0.19	1	4	41	45.0	0.87	61.5	1.18
TOTAL	52	14	37	0.71	8	75	.387	0	.00	0	.00	0	10	0.19	1	4	41	45.0	0.87	61.5	1.18

YAVUZ'S SEC CAREER STATISTICS

YEAR	SETS	MP	KILLS	K/S	E	TA	PCT.	AST	A/S	SA	SA/S	SE	DIGS	D/S	RE	BS	BA	TB	B/S	PTS	PT/S
2021	15	4	9	0.60	3	23	.261	0	.00	0	.00	0	3	0.20	1	2	12	14.0	0.93	17.0	1.13
TOTAL	15	4	9	0.60	3	23	.261	0	.00	0	.00	0	3	0.20	1	2	12	14.0	0.93	17.0	1.13



#21 TATUM SHIPES

OUTSIDE HITTER/MIDDLE BLOCKER | 6-4 | SENIOR
 BUFORD, GA. (BUFORD)

SHIPES HIGHLIGHTS:

- SEC Defensive Player of the Week (10/4)
- Moved to middle blocker to begin the season after spending the majority of career as a pin hitter
- Leads the SEC and ranks seventh nationally in blocks per set (1.59)
- Also leads the league and ranks 12th in the country in total blocks (78.0)
- Recorded 23 double-digit kill effort and seven career double-double performances
- Recorded 12.0 total blocks in Auburn's five-set victory against Alabama (10/2) to set the program's single-match record for blocks in the rally scoring era. The previous record of 11.0 was set on Nov. 23, 2017 by Breanna Barksdale at Florida
- As a team, Auburn totaled 18.0 blocks, tying the program's record for team blocks in a match. The Tigers also totaled 18.0 team blocks against South Florida on Sept. 13, 2014

CATEGORY	CAREER HIGH	OPPONENT/DATE
Kills	21	vs. Ole Miss (10/26/18)
Attempts	55	vs. Ole Miss (10/26/18)
Hitting Percentage (Min. 10 ATT.)	.462	vs. Tennessee Tech (8/27/21)
Assists	3 (4x)	last, at Texas A&M (11/13/19)
Digs	18 (2x)	last, at Tennessee (11/27/19)
Blocks	12.0	vs. Alabama (10/2/21)
Aces	3 (2x)	last, at Western Michigan (9/20/19)
Points	24.5	vs. Ole Miss (10/26/18)

CATEGORY	SEASON HIGH	OPPONENT/DATE
Kills	8	vs. Tennessee Tech (8/27/21)
Attempts	20	vs. Nicholls (9/17/21)
Hitting Percentage (Min. 10 ATT.)	.462	vs. Tennessee Tech (8/27/21)
Assists	1 (4x)	last, vs. Alabama (10/2/21)
Digs	5	vs. Alabama (10/2/21)
Blocks	12.0	vs. Alabama (10/2/21)
Aces	1	vs. Southeastern Louisiana (9/3/21)
Points	14.0	vs. Alabama (10/2/21)

DATE	OPPONENT	SP	ATTACK				SET			SERVE				RECEIPT			BLOCKING				BHE	POINTS	TEAM HIT%	SCORE	
			K	E	TA	PCT.	A	TA	PCT.	SA	SE	TA	PCT.	RE	TA	PCT.	DIG	BS	BA	BE	TOTAL				
August 27	TENNESSEE TECH	3	8	2	13	.462	1	2	.500	0	1	5	.800	0	2	1.000	1	1	6	0	7.0	0	12.0	.292	3-0
August 28	JACKSON STATE	3	4	0	9	.444	0	0	.000	0	1	3	.667	0	0	.000	1	0	5	0	5.0	0	6.5	.457	3-0
September 2	CAL STATE FULLERTON	3	1	1	9	.000	0	1	.000	0	0	7	1.000	0	1	1.000	2	1	2	1	3.0	0	3.0	.221	3-0
September 3	SOUTHEASTERN LA.	3	4	1	11	.273	0	2	.000	1	1	6	.833	0	0	.000	2	0	8	0	8.0	0	9.0	.300	3-0
September 9	NORTH ALABAMA	3	6	0	7	.857	0	0	.000	0	0	0	.000	0	0	.000	1	0	3	0	3.0	0	6.0	.265	3-0
September 12	SANTA CLARA	5	7	2	14	.357	1	3	.333	0	0	0	.000	0	0	.000	1	1	4	1	5.0	1	10.0	.260	3-2
September 17	FLORIDA A&M	2	3	3	11	.000	0	0	.000	0	0	0	.000	0	0	.000	0	0	1	0	1.0	0	3.5	.245	2-3
September 17	NICHOLLS	4	7	4	20	.150	1	2	.500	0	0	0	.000	0	0	.000	3	2	7	0	9.0	0	12.5	.183	3-1
September 18	BELMONT	3	4	0	10	.400	0	0	.000	0	0	0	.000	0	0	.000	0	3	4	0	7.0	0	9.0	.345	3-0
September 22	OLE MISS	4	3	2	9	.111	0	1	.000	0	0	0	.000	0	1	1.000	3	2	1	0	3.0	0	5.5	.196	1-3
September 26	at Alabama State	5	6	2	10	.400	0	1	.000	0	0	0	.000	0	0	.000	1	0	2	0	2.0	0	7.0	.209	2-3
September 29	at Tennessee	3	3	1	10	.200	0	1	.000	0	0	0	.000	0	1	1.000	1	2	4	0	6.0	1	7.0	.076	0-3
October 2	ALABAMA	5	7	4	13	.231	1	2	.500	0	0	0	.000	0	0	.000	5	2	10	0	12.0	0	14.0	.183	3-2
October 3	ALABAMA	3	3	1	9	.222	0	0	.000	0	0	0	.000	0	0	.000	0	1	6	0	7.0	0	7.0	.248	3-0
TOTALS		49	66	23	155	.277	4	15	.267	1	3	21	.857	0	5	1.000	21	15	63	2	78.0	2	113.5	.236	

SETS PLAYED: 49
 KILLS PER SET: 1.35
 ASSISTS PER SET: 0.08

SERVICE ACES SET: 0.02
 DIGS PER SET: 0.43
 BLOCKS PER SET: 1.59

POINTS PER SET: 2.32

SHIPES' OVERALL CAREER STATISTICS

YEAR	SETS	MP	KILLS	K/S	E	TA	PCT.	AST	A/S	SA	SA/S	SE	DIGS	D/S	RE	BS	BA	TB	B/S	PTS	PT/S
2021	49	14	66	1.35	23	155	.277	4	.08	1	.02	3	21	0.43	0	15	63	78.0	1.59	113.5	2.32
2020	25	8	59	2.36	44	230	.065	3	.12	4	.16	12	47	1.88	10	1	15	16.0	0.64	71.5	2.86
2019	103	29	269	2.61	154	900	.127	29	.28	23	.22	52	246	2.39	28	14	55	69.0	0.67	333.5	3.24
2018	59	21	147	2.49	63	403	.208	1	.02	0	.00	0	30	0.51	4	6	18	24.0	0.41	162.0	2.75
TOTAL	228	70	531	2.33	280	1,666	.151	36	.16	28	.12	67	339	1.49	42	33	135	168.0	0.74	659.5	2.89

SHIPES' SEC CAREER STATISTICS

YEAR	SETS	MP	KILLS	K/S	E	TA	PCT.	AST	A/S	SA	SA/S	SE	DIGS	D/S	RE	BS	BA	TB	B/S	PTS	PT/S
2021	15	4	16	1.07	8	41	.195	1	.07	0	.00	0	9	0.60	0	7	21	28.0	1.87	33.5	2.20
2020	25	8	59	2.36	44	230	.065	3	.12	4	.16	12	47	1.88	10	1	15	16.0	0.64	71.5	2.86
2019	59	18	176	2.98	99	605	.127	15	.25	9	.15	28	164	2.78	18	11	26	37.0	0.63	209.0	3.54
2018	47	15	128	2.72	56	341	.211	1	.02	0	.00	0	26	0.55	4	5	16	21.0	0.45	141.0	3.00
TOTAL	146	45	379	2.60	208	1218	.140	20	.14	13	.09	40	246	1.68	32	24	78	102.0	0.70	455.0	3.12



#4 FALLAN LANHAM
Fr. | DS/L | 5-8



#5 AUDREY DOUGLAS
So. | OH/OPP | 6-4



#6 BELLA ROSENTHALL
Sr. | DS/L | 5-5



#7 REBEKAH RATH
Jr. | OH | 6-0



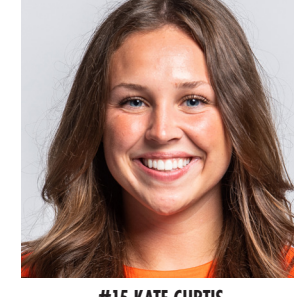
#8 LIZ REICH
Gr. | OPP | 6-1



#10 JACKIE BARRETT
So. | S | 6-1



#11 JORDAN SINNESS
Fr. | S | 5-9



#15 KATE CURTIS
Fr. | DS/L | 5-6



#16 VAL GREEN
Sr. | OH | 6-4



#17 CASSIDY TANTON
Fr. | OH | 6-0



#19 ELIF SU YAVUZ
Sr. | MB | 6-3



#21 TATUM SHIPES
Sr. | OH | 6-4



HEAD COACH
BRENT CROUCH



ASSOCIATE HEAD COACH
ALEX DUNPHY



ASSISTANT COACH
RICK MOLLER