



2021 VOLLEYBALL MATCH NOTES

AUBURN ATHLETICS COMMUNICATIONS: 392 SOUTH DONAHUE DRIVE || AUBURN, AL 36830 || AUBURNTIGERS.COM || @AUBURNVB

2021 SCHEDULE/RESULTS

12-8 OVERALL | 4-6 SEC

11-3 HOME | 1-5 AWAY | 0-0 NEUTRAL

| DATE | OPONENT | TV | TIME/RESULT |
|----------|--------------------------|--------------|--------------|
| Aug. 27 | ^ TENNESSEE TECH | SEC Network+ | W, 3-0 |
| Aug. 28 | ^ JACKSON STATE | SEC Network+ | W, 3-0 |
| Sept. 2 | % CAL STATE FULLERTON | | W, 3-0 |
| Sept. 3 | % SOUTHEASTERN LOUISIANA | | W, 3-0 |
| Sept. 9 | NORTH ALABAMA | SEC Network+ | W, 3-0 |
| Sept. 12 | SANTA CLARA | | W, 3-2 |
| Sept. 17 | ! FLORIDA A&M | | L, 2-3 |
| Sept. 17 | ! NICHOLLS | SEC Network+ | W, 3-1 |
| Sept. 18 | ! BELMONT | SEC Network+ | W, 3-0 |
| Sept. 22 | * (RV) OLE MISS | ESPNU | L, 1-3 |
| Sept. 26 | at Alabama State | | L, 2-3 |
| Sept. 29 | * at #20 Tennessee | SEC Network | L, 0-3 |
| Oct. 2 | * ALABAMA | SEC Network+ | W, 3-2 |
| Oct. 3 | * ALABAMA | ESPNU | W, 3-0 |
| Oct. 9 | * at Arkansas | SEC Network+ | L, 1-3 |
| Oct. 10 | * at Arkansas | SEC Network+ | L, 2-3 |
| Oct. 16 | * MISSOURI | SEC Network+ | W, 3-0 |
| Oct. 17 | * MISSOURI | SEC Network+ | L, 2-3 |
| Oct. 21 | * at Georgia | SEC Network+ | W, 3-0 |
| Oct. 22 | * at Georgia | SEC Network+ | L, 0-3 |
| Oct. 29 | * (RV) LSU | SEC Network+ | 6 p.m. CT |
| Nov. 4 | * at Texas A&M | SEC Network+ | 6 p.m. CT |
| Nov. 5 | * at Texas A&M | SEC Network+ | 6 p.m. CT |
| Nov. 10 | * SOUTH CAROLINA | SEC Network | 8 p.m. CT |
| Nov. 17 | * at Florida | SEC Network+ | 6 p.m. CT |
| Nov. 20 | * KENTUCKY | SEC Network+ | 4:30 p.m. CT |
| Nov. 21 | * KENTUCKY | SEC Network+ | 1 p.m. CT |
| Nov. 26 | * at Mississippi State | SEC Network+ | 4 p.m. CT |

BOLD indicates home contest | All time Central and subject to change
^ - War Eagle Invitational | % - SLU-Fullerton Tournament | % - Home Tournament | * - Southeastern Conference Game

AUBURN ATHLETICS COMMUNICATIONS

Office Phone _____ 334-844-9800
 Kirk Sampson _____ Associate AD
 _____ sampska@auburn.edu
 Taylor Shirey _____ Volleyball Contact
 _____ trs0010@auburn.edu
 _____ C: 334-750-0710

FOLLOW ALONG

Web _____ AuburnTigers.com
 Twitter _____ @AuburnVB
 Instagram _____ @auburnvolleyball

MATCH

21

LSU

Friday, Oct. 29 | 6 p.m. CT

Auburn, Ala. | Auburn Arena | SEC Network+



AUBURN

LSU

AVCA Coaches Poll _____ N/R
 2021 Record _____ 12-8 | 4-6 SEC
 Head Coach _____ Brent Crouch
 Career Record (Year) _____ 107-107 (8th)
 Record at Auburn (Year) _____ 12-16 (2nd)

AVCA Coaches Poll _____ RV
 2021 Record _____ 9-12 | 5-7 SEC
 Head Coach _____ Fran Flory
 Career Record (Year) _____ 511-414 (31st)
 Record at LSU (Year) _____ 401-300 (24th)

Site _____ Auburn, Ala.
 Venue _____ Auburn Arena
 Live Stats _____ Sidearm Stats | Statbroadcast
 Twitter _____ @AuburnVB
 Series Record _____ LSU leads 46-15
 Last Meeting _____ Nov. 17, 2019 in Baton Rouge, La.
 _____ Auburn 0; LSU 3 (21-25, 19-25, 14-25)

BY THE NUMBERS

6 With another strong offensive performance at Georgia, junior Rebekah Rath jumped to sixth in Auburn single-season history with 335 total kills. She is on pace to shatter the program's rally-scoring era record during Auburn's final eight matches.

3 Graduate student Liz Reich earned her first SEC weekly honor of her career as she was selected SEC Offensive Player of the Week. Reich's selection marked the third time Auburn has won the award this season to set a program record.

3 Senior Tatum Shipes enters Friday's match on the cusps of a record-breaking season as she is just three blocks shy of setting the program's single-season blocks record for the rally scoring era. Camila Jersonsky set the record of 119 blocks in 2012.

QUICK HITS

- After splitting a two-match series at Georgia, the Tigers return to Auburn Arena to host LSU for a single match. Auburn looks to continue the theme of the season and flip the script as the Tigers are searching for their first win over LSU since the 2016 season.
- Defense has been the name of the game for the Tigers this season. Auburn enters the week as the SEC leader in digs per set (16.655) and opponent hitting percentage (0.145) while ranking second in the league with a 2.79 blocks per set mark.
- The Tigers have seen massive improvement in the win-loss column in their second season under head coach Brent Crouch. With eight matches remaining in the regular-season, Auburn has already totaled 12 victories with four wins in the SEC play - the most in both categories since the 2018 season.
- After totaling 22 kills over Auburn's two-match series at Georgia, Rebekah Rath continues her stranglehold as the top offensive player in the SEC as she currently leads the league in six offensive categories, including: attacks per set, kills per set, points, points per set, total attacks and total kills.

AUBURN'S POTENTIAL STARTING SEVEN



BELLA ROSENTHAL

#6 • DS/L • SR. • 5-5



REBEKAH RATH

#7 • OH • JR. • 6-0



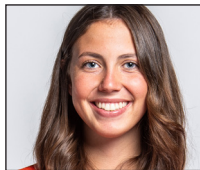
LIZ REICH

#8 • OPP • GR. • 6-1



FALLAN LANHAM

#4 • DS • FR. • 5-8



JACKIE BARRETT

#10 • S • SO. • 6-1



ELIF SU YAVUZ

#19 • MB • SR. • 6-3



TATUM SHIPES

#21 • MB • SR. • 6-4

| | | | | | | | | | | | | | |
|-------|------|-------|------|-------|------|-------|------|-------|------|-------|------|-------|------|
| D/S: | 5.31 | K/S: | 4.47 | K/S: | 2.91 | K/S: | 0.07 | K/S: | 0.56 | K/S: | 0.67 | K/S: | 1.19 |
| A/S: | 1.32 | HIT%: | .224 | HIT%: | .286 | A/S: | 0.11 | A/S: | 8.51 | HIT%: | .339 | HIT%: | .237 |
| SA/S: | 0.12 | D/S: | 2.12 | A/S: | 0.04 | SA/S: | 0.05 | SA/S: | 0.24 | B/S: | 0.92 | D/S: | 0.47 |
| P/S: | 0.13 | B/S: | 0.88 | D/S: | 0.51 | D/S: | 1.85 | D/S: | 3.18 | D/S: | 0.27 | B/S: | 1.63 |
| | | SA/S: | 0.23 | B/S: | 0.60 | P/S: | 0.13 | B/S: | 0.72 | P/S: | 1.19 | SA/S: | 0.06 |
| | | P/S: | 5.20 | P/S: | 3.21 | | | P/S: | 1.17 | | | P/S: | 2.19 |

K/S: kills per set • HIT%: hitting percentage • D/S: digs per set • B/S: blocks per set • A/S: assists per set • SA/S: aces per set • P/S: points per set

FIRST SERVE

» After splitting a pair of matches in Athens against the Bulldogs, Auburn volleyball (12-8, 4-6 SEC) returns to Auburn Arena to host LSU (9-12, 5-7 SEC) for a single match Friday evening. Auburn is searching for its first victory over LSU since 2016. Following the match, Auburn men's basketball will host its annual Orange and Blue scrimmage.

» Friday's match will be stream on SEC Network+ with JJ Jackson and Paige Wetzel on the call. First serve is set for 6 p.m. CT. Fans can also hear Friday's match on the airwaves via WEGL 91.1.

» In its 49th full season of volleyball, Auburn's all-time record stands at 667-683-4 (.494).

» Brent Crouch (12-16) enters his second season as the head coach for the Tigers after a two-year stint at USC. Entering his eighth overall season as a head coach, Crouch holds an 107-107 career record. He's the 11th head coach in Auburn program history.

» Auburn's 2021 schedule features four 2020-21 NCAA Volleyball Tournament participants: Jackson State, Missouri, Florida and reigning national champion Kentucky.

» The Tiger roster features a wealth of fresh faces as six of Auburn's 12 total student-athletes on roster will be taking the court in Blue and Orange for the first time in their careers with a combination of four true freshmen and two transfers.

UP NEXT

» Auburn will trek to College Station, Texas, for its final two-match road series of the regular season. The Tigers open the series at Texas A&M on Thursday, Nov. 4 with the series finale set for Friday, Nov. 5. Both matches are scheduled for 6 p.m. CT and will air on SEC Network+.

LAST TIME OUT

» Despite an impressive offensive performance on the right side from graduate student Liz Reich, Auburn volleyball (12-7, 4-6 SEC) fell in straight sets (14-25, 18-25, 23-25) to Georgia (6-13, 2-6 SEC) Friday night at Stegeman Coliseum.

» In her most efficient performance in conference play, Reich swung at a .409 hitting percentage as she landed 12 kills on 22 swings, committing just three errors. She set the tone for the Tiger offense in the first set as she landed five kills on six total swings. Reich added two blocks and a dig in her performance.

» Returning to form, junior Rebekah Rath totaled a match-leading 16 kills for the Tigers. With her

performance, Rath once again etched her name in Auburn's record book as she now stands fifth in single-season history with 335 kills. Defensively, Rath was credited with three blocks and eight digs.

» Tatum Shipes added a strong offensive performance as she closed the night with five kills on nine attempts for a .556 hitting percentage. With three blocks in Friday's contest, the senior has 117.0 total this season and is now three blocks shy of Auburn's single-season record.

» Rounding out the offense, senior Val Green chipped in four kills while sophomore Jackie Barrett added three from the setter position. Barrett's stat line included 30 assists, one block and six digs.

» Defensively, senior libero Bella Rosenthal paced the Tigers with 12 digs, her 19th match of the season with at least 10. Rosenthal now stands ninth in Auburn single-season history with 398 digs. Freshman Kate Curtis added eight digs in the match.

SEC REVAMPS CONFERENCE SCHEDULING FORMAT FOR 2021 CAMPAIGN

» The Southeastern Conference announced a new scheduling format for its conference slate ahead of the 2021 campaign.

» The SEC schedule consists of 18 matches in which each member institution will play each other at least once. The order of opponents for each team was determined by a random computer draw.

» Two-match series may be played Wednesday/Thursday, Thursday/Friday, Friday/Saturday or Saturday/Sunday per the league office.

SCOUTING LSU

» LSU looks to continue momentum as the Tigers swept #20 Tennessee on Sunday to split the two-match series. Tennessee edged out the Tigers in five sets in the series opener. The Tigers stand seventh in the league with a 5-7 conference record with additional wins over South Carolina. #20 Florida, Missouri and Alabama. LSU stands at 9-12 overall this season.

» The Tigers rank ninth in the league with a 12.92 kills per set average, while the team's .234 hitting percentage is good for seventh in the SEC. Outside hitter Kylie Kuyava-Deberg is the heart of the LSU offense as she's totaled a team-leading 324 kills - a mark that is second only to Auburn's Rebekah Rath. Kuyava-Deberg has proven to be one of the top offensive threats in the league as she ranks third in attacks per set (11.43), kills per set (4.00), points (370.0), points per set (4.57) and total attacks (640).

PLAYER TO WATCH: LIZ REICH

» The reigning SEC Offensive Player of the Week, Liz Reich is coming off one of her best performances in league action. Reich led the Tiger offense with 23 total kills over Auburn's two-match series at Georgia, while attacking at a .347 clip.



SEC STANDINGS & SCHEDULE

| | 2021 SEC RECORD | | | 2021 OVERALL | | |
|-------------------|-----------------|----------|-------------|--------------|----------|-------------|
| | W | L | Pct. | W | L | Pct. |
| Kentucky | 8 | 0 | 1.000 | 15 | 3 | .833 |
| Mississippi State | 8 | 2 | .800 | 17 | 5 | .773 |
| Florida | 7 | 2 | .778 | 13 | 6 | .684 |
| Tennessee | 8 | 3 | .727 | 16 | 5 | .762 |
| Arkansas | 6 | 4 | .600 | 15 | 6 | .714 |
| Ole Miss | 4 | 5 | .444 | 15 | 5 | .750 |
| LSU | 5 | 7 | .417 | 9 | 12 | .429 |
| AUBURN | 4 | 6 | .400 | 12 | 8 | .600 |
| South Carolina | 4 | 6 | .400 | 12 | 8 | .600 |
| Texas A&M | 4 | 6 | .400 | 11 | 9 | .550 |
| Alabama | 2 | 7 | .222 | 10 | 11 | .476 |
| Georgia | 2 | 7 | .222 | 6 | 14 | .300 |
| Missouri | 1 | 9 | .100 | 4 | 19 | .174 |

THIS WEEK IN THE SEC...

| | |
|-----------------------------------|---------------|
| Wednesday, Oct. 27 | |
| Arkansas 3; Missouri 0 | |
| Mississippi State 3; Georgia 2 | |
| #5 Kentucky 3; No. 21 Tennessee 0 | |
| Friday, Oct. 29 | |
| LSU AT AUBURN | 6 P.M. |
| South Carolina at Ole Miss | 6 p.m. |
| Saturday, Oct. 30 | |
| Georgia at Alabama | 1 p.m. |
| #23 Florida at Missouri | 5 p.m. |
| South Carolina at Ole Miss | 6 p.m. |
| Sunday, Oct. 31 | |
| Georgia at Alabama | 11 a.m. |

2021 NCAA RPI REPORT

| RK | TEAM | RECORD | AU RESULT |
|------------|------------------------|-------------|-------------|
| 6 | Kentucky | 15-3 | |
| 9 | Tennessee | 16-4 | L |
| 29 | Florida | 13-6 | |
| 32 | Mississippi State | 16-5 | |
| 33 | Arkansas | 14-6 | L L |
| 39 | South Carolina | 12-8 | |
| 37 | Texas A&M | 11-9 | |
| 45 | Ole Miss | 15-5 | L |
| 71 | LSU | 9-12 | |
| 88 | Georgia | 6-13 | W L |
| 125 | Alabama | 10-11 | W W |
| 150 | AUBURN | 12-8 | ---- |
| 157 | Tennessee Tech | 11-11 | W |
| 173 | Missouri | 4-18 | W L |
| 189 | Santa Clara | 8-12 | W |
| 207 | Cal State Fullerton | 8-9 | W |
| 226 | Florida A&M | 15-6 | L |
| 232 | Nicholls | 9-11 | W |
| 249 | Belmont | 8-14 | W |
| 260 | Jackson State | 9-11 | W |
| 275 | Southeastern Louisiana | 8-13 | W |
| 296 | Alabama State | 10-14 | L |
| 316 | North Alabama | 8-16 | W |

AUBURN OPPONENTS ONLY

AVCA COACHES POLL

| RK | TEAM | RECORD | PREVIOUS |
|-----|------------------|-------------|-----------|
| 1. | Texas (61) | 17-0 | 1 |
| 2. | Louisville (3) | 20-0 | 2 |
| 3. | Wisconsin | 17-1 | 3 |
| 4. | Pittsburgh | 18-2 | 4 |
| 5. | Kentucky | 15-3 | 5 |
| 6. | Nebraska | 16-3 | 9 |
| 7. | BYU | 19-1 | 8 |
| 8. | Washington | 15-3 | 10 |
| 9. | Ohio State | 16-4 | 6 |
| 10. | Baylor | 13-4 | 11 |
| 11. | Minnesota | 12-6 | 12 |
| 12. | Purdue | 14-5 | 7 |
| 13. | Penn State | 14-6 | 14 |
| 14. | Georgia Tech | 17-3 | 13 |
| 15. | Stanford | 12-6 | 15 |
| 16. | UCLA | 15-3 | 17 |
| 17. | Oregon | 15-5 | 16 |
| 18. | Western Kentucky | 20-1 | 19 |
| 19. | Utah | 13-6 | 18 |
| 20. | San Diego | 14-4 | 21 |
| 21. | Tennessee | 16-4 | 20 |
| 22. | Washington State | 12-7 | 22 |
| 23. | Florida | 13-6 | 23 |
| 24. | Creighton | 20-3 | 24 |
| 25. | Pepperdine | 15-4 | 25 |

Others receiving votes: Illinois; Miami (FL); Marquette; Arizona State; Michigan; Florida State; Rice; **LSU**

INSIDE THE MATCH-UP

LSU **15-46 (.246)**

10-17 H • 5-24 A • 0-5 N

SERIES HISTORY [LAST 10 MEETINGS]

| YEAR | SITE | RESULT | MATCH SCORE |
|------|------|--------|-------------|
| 2013 | AWAY | W | 3-2 |
| 2014 | AWAY | L | 0-3 |
| 2015 | HOME | W | 3-2 |
| 2015 | AWAY | L | 2-3 |
| 2016 | HOME | W | 3-2 |
| 2017 | HOME | L | 0-3 |
| 2017 | AWAY | L | 1-3 |
| 2018 | AWAY | L | 0-3 |
| 2019 | AWAY | L | 0-3 |
| 2019 | HOME | L | 0-3 |

» Freshman Ella Larkin has taking over the setting duties for the Tigers, starting 17 of LSU's 21 matches. Larkin has dished out 640 assists this season, averaging 7.81 per set. Larkin's assists total ranks seventh in the SEC. A threat offensively as well, Larkin has totaled 40 kills this season, attacking at a .333 clip.

» Defensively, LSU is led by libero Raigen Cianciulli. The graduate student has racked up 399 digs this season, leading the SEC in total digs. Cianciulli's 4.81 digs per set mark ranks second overall in the SEC. Larkin has totaled the second most digs on the team with 222 as she averages 2.71 per set. As a team, LSU ranks sixth in the league with a 14.64 digs per set average.

» LSU has found success at the net, ranking third in the SEC with a 2.63 blocks per set average. Senior middle blocker Whitney Foreman has led the charge with 80 total blocks, the eighth most in the SEC. Foreman ranks third overall in the league with a 1.36 blocks per set average. Not far behind is junior middle blocker Anita Anwusi's 78.0 total blocks, which rank ninth most in the SEC. Anwusi holds the fifth highest blocks per set mark in the league at 1.26.

A WIN OVER LSU...

» Would snap a five-game losing skid to LSU.
 » Would be Auburn's first in the series since 2016.

AUBURN-LSU SERIES

» LSU leads the all-time series 46-15, while dominating the series of late winning seven of the last 10 contests. Auburn's last victory in the series came in a five-set thriller at Auburn Arena during the 2016 season. LSU holds a 17-10 advantage in games played at Auburn.

REICH BECOMES THE REICH-ER

» Turning in her best performance in league action to date in Auburn's two-match series at Georgia, opposite hitter Liz Reich was selected as Southeastern Conference Offensive Player of the Week

» The recognition is the first for Reich this season. Her recognition marks the first time in program history Auburn has had multiple student-athletes named SEC Offensive Player of the Week as junior Rebekah Rath has won the award twice earlier this season. Auburn has now won the award a program-record three times in 2021.

» The Colorado Springs, Colo., native totaled 11 kills on 27 attempts in the series opener at Athens. Committing just three errors in the match, Reich recorded a .296 hitting percentage. She added six blocks to tie her season high.

» In the series finale, Reich powered the offense with

12 kills on 22 attempts, attacking at a blistering .409 clip. She set a season high for kills in a conference match with her performance. Defensively, she recorded one dig and a pair of blocks.

» Reich led the Tiger offense with 23 total kills over the two-match series, while attacking at a .347 clip. The graduate student averaged 3.83 kills per set and 4.50 points per set to pace the Tigers.

OH SHIPES! IT'S A BLOCK PARTY

» As the season progresses, Auburn's play at the net continues to improve as highlighted by a record-breaking performance against Alabama. As a team, the Tigers totaled 18.0 team blocks in Auburn's 3-2 victory against the Crimson Tide on Oct. 2. The mark tied the program's record for blocks in a match. The Tigers also totaled 18.0 team blocks against South Florida on Sept. 13, 2014.

» Auburn enters the weekend ranked second in the Southeastern Conference and seventh nationally with a 2.79 blocks per set average. The mark is currently the second highest team average recorded in a single-season. The record of 2.81 was set in 1989. Play at the net combined with Auburn's digging performance has helped the Tigers hold opponents to a minuscule .145 hitting percentage, the 10th lowest mark in the country.

» An SEC Defensive Player of the Week selection this season, Tatum Shipes recorded 12.0 total blocks in the five-set match against the Tide to help Auburn to its first SEC home victory since 2018. The mark set the program's single-match record for blocks in the rally scoring era. The previous record of 11.0 was set on Nov. 23, 2017 by Breanna Barksdale at Florida.

» Shipes continues to lead Auburn with her impressive play at the net since moving to middle blocker. Shipes leads the SEC in both total blocks (117) and blocks per set (1.62), while ranking third and second, respectively, in both categories nationally. Her efforts this season have Shipes on the verge of breaking all four of the program's single-season blocking records.

BLOCKS - SOLO

| | PLAYER | YEAR | BLOCKS |
|----|-------------------|------|--------|
| 1. | Katherine Culwell | 2012 | 25 |
| 2. | Tatum Shipes | 2021 | 18 |
| 2. | Sarah Bullock | 2012 | 18 |
| | Jessica Glover | 2008 | 18 |
| | Anna Stevenson | 2018 | 18 |

PLAYER TO WATCH: TATUM SHIPES

» Making the move to middle blocker has been an easy transition to Tatum Shipes. Shipes enters the weekend leading the SEC in total blocks and blocks per set. Shipes is just three blocks shy of setting Auburn's single-season blocks record.



BLOCKS - ASSISTIS

| | PLAYER | YEAR | BLOCKS |
|----|------------------|------|--------|
| 1. | Camila Jersonsky | 2012 | 108 |
| 2. | Tatum Shiples | 2021 | 99 |

TOTAL BLOCKS

| | PLAYER | YEAR | BLOCKS |
|----|------------------|------|--------|
| 1. | Camila Jersonsky | 2012 | 119 |
| 2. | Tatum Shiples | 2021 | 117 |

BLOCKS PER SET (MIN. 50 BLOCKS)

| | PLAYER | YEAR | BLOCKS |
|----|------------------|------|--------|
| 1. | Tatum Shiples | 2021 | 1.63 |
| 2. | Anna Stevenson | 2018 | 1.15 |
| 3. | Camila Jersonsky | 2012 | 1.09 |

THE CROUCH EFFECT

» After COVID-19 derailed the process last season, Brent Crouch's overhaul of the program took into effect since the season opener and has continued into the early portion of Southeastern Conference play.

» The Tigers opened the season with 17 consecutive set victories before dropping its first set of the season. Auburn tied the program record for most sweeps to begin a season with five. The record was first set by the 1974 squad.

» Auburn's 6-0 start is the best for the Tigers since the 2012 team began the season 8-0. Auburn has recorded 10 victories through its first 14 matches of the season. It is the most wins by the Tigers since the 2018 team closed the year with 12.

» Sweeping Alabama to earn the program's first SEC victories of the season, the Tigers have now won back-to-back SEC games for the first time since knocking off Georgia and Mississippi State in November of 2018. Auburn has now won three straight matches against Alabama. It is the longest win streak against the Crimson Tide since the Tigers won six straight from 2009 to 2012.

» Auburn opened its two-match series against Missouri with a sweep, picking up the program's first victory in the series since 1996. It also mark the first time in program history that Auburn had defeated Missouri since Missouri joined the SEC.

» With eight matches still remaining during the regular season, Auburn has racked up the program's most victories overall and in league action since the 2018 season. The Tigers have also seen dramatic improvement in multiple categories.

OFFENSE

- Auburn's .224 hitting percentage is the sixth highest mark recorded by a team in a single-season - highest team hitting percentage since 2018.

DEFENSE

- Auburn's digs per set average of 16.55 currently ranks sixth in single-season history and is the highest team average since 2012.
- Auburn currently holds the second high team blocks per set average for a single season at 2.79. The record of 2.81 was set in 1989.

CAN YOU DIG IT?

» Behind a career performance at the Auburn Invitational, Bella Rosenthal was selected as the SEC's Defensive Player of the Week for the second consecutive week. She is the first Tiger in program history to win the award in back-to-back weeks. She is also the first Tiger to win the award multiple times in a season since Camila Jersonsky in 2012.

» Rosenthal has paced the Tigers this season, recording at least 10 digs in 19 of Auburn's 20 matches to being the season. She has chipped in at least 20 digs in 10 matches for the Tigers while totaling at least 30 digs three time.

» She set a then career high with 31 digs. She is the first Tiger to record at least 30 digs in a match since Payton White versus Butler on Aug. 31, 2019.

» Behind her match-leading 30 digs in the series opener at Arkansas (10/9), she became just the 15th Tiger in program history to record 1,000 career digs. Rosenthal is the first Tiger to hit the mark since Brenna McLroy in 2018.

» Rosenthal is coming off a 33-dig performance in the series finale against Missouri (10/17), a career high for the senior. The mark is the sixth most ever recorded by

HEAD COACH BRENT CROUCH**QUICK FACTS**

College ___ Texas A&M ('98, '00)
 ___ Oregon ('06)
 Wife ___ Marcy
 Sons ___ Jonathan and William

COACHING RECORD

Head Coaching Career ___ 8th Season
 Career Record ___ 107-107
 NCAA Appearances ___ 2

COACHING CAPSULE

2020-Pt. Auburn 12-16
 2018-19 Southern California 40-25
 2014-17 Portland 55-66

YEAR-BY-YEAR RESULTS

| | | |
|------|----------|-------|
| 2021 | Auburn | 12-8 |
| 2020 | Auburn | 0-8 |
| 2019 | USC | 18-14 |
| 2018 | USC | 22-11 |
| 2017 | Portland | 15-15 |
| 2016 | Portland | 17-13 |
| 2015 | Portland | 16-15 |
| 2014 | Portland | 7-23 |



Brent Crouch enters his second season as the head coach of the Auburn volleyball team after guiding the program through the challenges of the COVID-19 pandemic during his first season on The Plains.

Crouch made his Auburn coaching debut against No. 4 Florida on Oct. 21, 2020, to open the shortened fall volleyball schedule. Crouch led the Tigers on the court for eight total matches.

The fall season was highlighted by Auburn setting the program record for blocks in a four-set match as the Tigers recorded 17 at South Carolina on Oct. 29, 2020. The previous mark of 14 was set on Nov. 9, 2014 against Tennessee. The total tied for the second-most blocks in a match in Auburn program history as was the most by the Tigers since 2009.

Due to injuries and opt-out, the Tigers were unable to compete in the spring portion of the amended 2020-21 schedule.

Crouch previously served as the head coach at the University of Southern California. In two seasons at USC, Crouch led the program to consecutive NCAA second round appearances, including a second-place finish in the Pac-12, and a No. 21 ranking in the season's final AVCA poll in his first season on campus in 2018. This past season, the Trojans were 18-14, while outside hitter Kholia Lanier became the fifth player in Pac-12 history to record 2,000 kills and 1,000 digs in career.

Under Crouch in 2018, the Trojans finished 22-11 overall with a 13-7 record in Pac-12 matches. USC played one of the toughest schedules in the nation and faced 18 ranked opponents in the regular season and were awarded the No. 11 overall seed in the NCAA Tournament. Setter Raquel Lázaro was named the Pac-12 Freshman of the Year and outside hitter Brooke Borikin was chosen for second-team AVCA All-America honors. Lázaro and Lanier were each tabbed for All-America honorable mention.

Under Crouch's tutelage, outside hitter Emilia Weske was tabbed to the Pac-12's All-Freshman Team while middle blocker Jasmine Gross added All-Pac-12 honors.

Prior to arriving at Troy, Crouch was the 2016 West Coast Conference Coach of the Year. He inherited a winless Portland program and within two seasons guided the Pilots to their winningest season in 25 years. Crouch first took over at Portland in 2014 after the Pilots went 0-27 the previous season. After going 7-23 in his debut season, he guided the Pilots to a 16-15 mark in 2015 (its most victories since 1991) and then improved upon that in 2016 with a 17-13 mark. His 2017 team, which was hampered by injuries, was 15-15, with five losses coming in five-set matches. His overall four-year record at Portland was 55-66.

The 48 victories in his final three years was Portland's best three-season total since 1984-86. The Pilots' 10-8 third place WCC finish in 2016 was its most league wins since 1985 and highest conference finish since 1989. He led Portland to the program's first-ever victories over Top 10, Top 15, and Top 25 opponents. Crouch coached three All-WCC first team players and a WCC All-Freshman team pick, along with three WCC All-Academic first teamers. He also helped establish beach volleyball as a varsity sport at Portland in 2016.

Crouch arrived at Portland after four seasons (2010-13) at Saint Mary's College, where he was an assistant with the indoor program and head coach of the beach team.

During his time at SMC, the Gaels' indoor team went 73-40 overall, finished in the top three in the WCC standings each season by winning 73.4 percent of its league matches (47-17) and earned a berth into the NCAA Tournament in 2012, advancing to the second round. Besides being involved in the team's offense and defense, recruiting, scouting, practice planning, statistical and video analysis and scheduling, he provided academic support, as he mentored several WCC All-Academic honorees and helped the team to the athletic department's highest grade point average, an NCAA Public Recognition Award, and an AVCA academic award.

Crouch also coached the inaugural Saint Mary's beach team in 2013, guiding the Gaels to an 8-2 record, the best mark among all Northern California teams, as well as a No. 9 national ranking and a bid to the AVCA national championship for the program's top pairs team.

2020-21 AUBURN VOLLEYBALL ROSTER

| No. | Name | Year | Pos. | Ht. | Hometown (High School/Previous School) |
|-----|-----------------|------|--------|-----|---|
| 4 | Fallan Lanham | Fr. | DS/L | 5-8 | Louisville, Ky. (Mercy Academy) |
| 5 | Audrey Douglas | So. | OH/OPP | 6-4 | Winter Park, Fla. (Hagerty) |
| 6 | Bella Rosenthal | Sr. | DS/L | 5-5 | Yorktown, Ind. (Yorktown) |
| 7 | Rebekah Rath | Jr. | OH | 6-0 | Altamonte Springs, Fla. (Oviedo/Maryland) |
| 8 | Liz Reich | Gr. | OPP | 6-1 | Colorado Springs, Colo. (Lewis-Palmer/Portland) |
| 10 | Jackie Barrett | So. | S | 6-1 | Highland, Calif. (Citrus Valley) |
| 11 | Jordan Sinness | Fr. | S | 5-9 | Sebring, Fla. (Sebring) |
| 15 | Kate Curtis | Fr. | DS/L | 5-6 | Anderson, S.C. (T.L. Hanna) |
| 16 | Val Green | Sr. | OH | 6-2 | Oxford, Ohio (Talawanda) |
| 17 | Cassidy Tanton | Fr. | OH | 6-0 | Stoneville, N.C. (Dalton McMichael) |
| 19 | Elif Su Yavuz | Sr. | MB | 6-3 | Ankara, Turkey (Gazi University) |
| 21 | Tatum Shiples | Sr. | OH | 6-4 | Buford, Ga. (Buford) |

HEAD COACH | BRENT CROUCH (SECOND SEASON)

ASSOCIATE HEAD COACH/RECRUITING COORDINATOR | ALEX DUNPHY (SECOND SEASON)

ASSISTANT COACH | RICK MOLLER (SECOND AS ASSISTANT COACH/THIRD SEASON OVERALL)

DIRECTOR OF VOLLEYBALL OPERATIONS/TECHNICAL COORDINATOR | MADI WILKERSON (SECOND SEASON)

PRONUNCIATION GUIDE:

FALLAN LANHAM (FOUL-an LAN-UM)

JORDAN SINNESS (SIN-es)

ELIF SU YAVUZ (e-LEAF SUE Yah-vous)

LIZ REICH (RICH)

CASSIDY TANTON (TAN-tun)

TATUM SHIPES (SHY-PS)

Crouch also has coaching experience with the USA Volleyball program, including working with U.S. Women's National Team head coach Karch Kiraly, being an assistant with the U.S. Collegiate National Team that captured a gold medal at the 2016 U22 Global Challenge and serving as both an indoor and beach coach in the USA Volleyball High Performance program.

Crouch played for Texas A&M's club team from 1993 to 1997. He earned his bachelor's degree in history in 1998 and his master's in philosophy in 2000, both from Texas A&M, then a doctorate in philosophy from Oregon in 2006.

He competed on the beach from 2005 to 2007 in AVP and CBVA events and placed second at the 2005 California Cup state championship.

He has held various teaching positions in philosophy at Oregon, San Diego City College, and Saint Mary's College since 2000.

Crouch and his wife Marcy have two sons, Jonathan and William.

INSIDE THE NUMBERS



| CATEGORY | AUBURN | LSU |
|------------------|--------|-------|
| Kills | 914 | 1072 |
| Per Set | 12.2 | 12.9 |
| Errors | 315 | 397 |
| Total Attacks | 2678 | 2888 |
| Hitting Pct. | .224 | .234 |
| Assists | 817 | 968 |
| Per Set | 10.9 | 11.7 |
| Service Aces | 75 | 90 |
| Per Set | 1.0 | 1.1 |
| Service Errors | 128 | 180 |
| Reception Errors | 83 | 124 |
| Per Set | 1.1 | 1.5 |
| Digs | 1241 | 1215 |
| Per Set | 16.5 | 14.6 |
| Solo Blocks | 36 | 49 |
| Block Assists | 347 | 339 |
| Total Blocks | 209.5 | 218.5 |
| Per Set | 2.8 | 2.6 |

2021 AUBURN INDIVIDUAL MATCH HIGHS (BY SET)

THREE SETS

HITTING PERCENTAGE (MIN. 12 KILLS) _____ .500, Liz Reich vs. Jackson State (August 28, 2021)
 KILLS _____ 17, Rebekah Rath vs. Missouri (October 16, 2021)
 TOTAL ATTEMPTS _____ 47, Rebekah Rath vs. Missouri (October 16, 2021)
 ASSISTS _____ 34, Jackie Barrett vs. Alabama (October 3, 2021)
 DIGS _____ 25, Bella Rosenthal vs. North Alabama (September 9, 2021)
 ACES _____ 3, Elif Yavuz at Georgia (October 21, 2021)
 BLOCKS _____ 8 (3x), last Tatum Shipes at Georgia (October 21, 2021)

FOUR SETS

HITTING PERCENTAGE (MIN. 12 KILLS) _____ .288, Rebekah Rath vs. Ole Miss (September 22, 2021)
 KILLS _____ 29, Rebekah Rath at Arkansas (October 9, 2021)
 TOTAL ATTEMPTS _____ 75, Rebekah Rath at Arkansas (October 9, 2021)
 ASSISTS _____ 40, Jackie Barrett vs. Nicholls (September 17, 2021)
 DIGS _____ 31, Bella Rosenthal vs. Nicholls (September 17, 2021)
 ACES _____ 3, Jackie Barrett vs. Nicholls (September 17, 2021)
 BLOCKS _____ 10.0, Tatum Shipes at Arkansas (October 9, 2021)

FIVE SETS

HITTING PERCENTAGE (MIN. 12 KILLS) _____ .378, Liz Reich vs. Florida A&M (September 17, 2021)
 KILLS _____ 24 (2x), last, Rebekah Rath at Alabama State (September 26, 2021)
 TOTAL ATTEMPTS _____ 71 (2x), last Rebekah Rath vs. Missouri (October 16, 2021)
 ASSISTS _____ 48, Jackie Barrett vs. Florida A&M (September 17, 2021)
 DIGS _____ 33, Bella Rosenthal vs. Missouri (October 16, 2021)
 ACES _____ 2 (6x), last Tatum Shipes at Arkansas (October 10, 2021)
 BLOCKS _____ 12, Tatum Shipes vs. Alabama State (October 2, 2021)

2021 AUBURN TEAM MATCH HIGHS (BY SET)

THREE SETS

HITTING PERCENTAGE _____ .457, vs. Jackson State (August 28, 2021)
 KILLS _____ 42 (3x), last at Georgia (October 21, 2021)
 TOTAL ATTEMPTS _____ 122, vs. Cal State Fullerton (September 2, 2021)
 ASSISTS _____ 39, at Georgia (October 21, 2021)
 DIGS _____ 66, vs. Alabama (October 3, 2021)
 ACES _____ 6 (4x), last at Georgia (October 21, 2021)
 BLOCKS _____ 14.0, vs. Jackson State (August 28, 2021)

FOUR SETS

HITTING PERCENTAGE _____ .196, vs. Ole Miss (September 22, 2021)
 KILLS _____ 51, vs. Nicholls (September 17, 2021)
 TOTAL ATTEMPTS _____ 175, vs. Nicholls (September 17, 2021)
 ASSISTS _____ 47, vs. Ole Miss (September 22, 2021)
 DIGS _____ 105, vs. Nicholls (September 17, 2021)
 ACES _____ 4 (2x), vs. Ole Miss (September 22, 2021)
 BLOCKS _____ 14.0, at Arkansas (October 9, 2021)

FIVE SETS

HITTING PERCENTAGE _____ .260, vs. Santa Clara (September 12, 2021)
 KILLS _____ 69, vs. Florida A&M (September 17, 2021)
 TOTAL ATTEMPTS _____ 188, vs. Florida A&M (September 17, 2021)
 ASSISTS _____ 63, vs. Florida A&M (September 17, 2021)
 DIGS _____ 90, vs. Missouri (October 16, 2021)
 ACES _____ 6, vs. Florida A&M (September 17, 2021)
 BLOCKS _____ 18.0, vs. Alabama (October 2, 2021)

a Tiger in a single match.

» She currently leads the SEC with a 5.31 digs/set average - a mark that currently ranks 10th nationally. She ranks second in SEC in total digs with 398 total. She currently holds the highest digs per set average set by a Tiger during a single season and is on pace to turn in one of the best dig performances in school history as she already in the top 10 with eight matches remaining in the regular season.

DIGS

| | PLAYER | YEAR | DIGS |
|----|-----------------|------|------|
| 1. | Jesse Earl | 2016 | 612 |
| 2. | Jesse Earl | 2017 | 529 |
| 3. | Jesse Earl | 2015 | 516 |
| 4. | Sarah Wroblecky | 2013 | 481 |
| 5. | Liz Crouch | 2010 | 469 |
| 6. | Liz Crouch | 2009 | 453 |
| 7. | Alyssa Ivey | 2014 | 434 |
| 8. | Sarah Wroblecky | 2012 | 431 |
| 9. | Bella Rosenthal | 2021 | 398 |

DIGS PER SET (MIN. 100 DIGS)

| | PLAYER | YEAR | AVG. |
|----|-----------------|------|------|
| 1. | Bella Rosenthal | 2021 | 5.31 |
| 2. | Jesse Earl | 2017 | 5.19 |
| 3. | Jesse Earl | 2016 | 4.98 |

» With 1,114 career digs to her credit, Rosenthal currently ranks 112th among all active Division I student-athletes in career digs. She has already added her name to Auburn's career record book in both dig categories with her senior-year performance.

DIGS

| | PLAYER | YEARS | DIGS |
|----|-------------------|----------|-------|
| 1. | Liz Crouch | 2007-10 | 1,703 |
| 2. | Jesse Earl | 2015-17 | 1,657 |
| 3. | Gretchen Thompson | 1986-89 | 1,495 |
| 4. | Alexa Filley | 2014-17 | 1,315 |
| 5. | Allyson Beecroft | 1993-96 | 1,249 |
| 6. | Sarah Wroblecky | 2010-13 | 1,238 |
| 7. | Sarah Bullock | 2009-12 | 1,210 |
| 8. | Rachel Shanks | 2004-07 | 1,185 |
| 9. | Bella Rosenthal | 2018-Pr. | 1,114 |

DIGS PER SET (MIN. 500 DIGS)

| | PLAYER | YEARS | AVG. |
|----|-------------------|----------|------|
| 1. | Jesse Earl | 2015-17 | 4.79 |
| 2. | Liz Crouch | 2007-10 | 4.00 |
| 3. | Sarah Wroblecky | 2010-13 | 3.65 |
| 4. | Bella Rosenthal | 2018-Pr. | 3.64 |
| 5. | Gretchen Thompson | 1986-89 | 3.26 |

FEEL THE RATH

» Behind one of the program's best offensive performances in almost two decades, junior outside hitter Rebekah Rath was selected as Southeastern Conference Co-Offensive Player of the Week, sharing the honor with LSU's Kylie Deberg.

» The recognition is the second for Rath this season. Rath is the first Tiger in program history to be named SEC Offensive Player of the Week twice in the same season. The SEC began distributing the award in 2004.

» In an epic performance in game one against Arkansas (10/9), Rath was virtually unstoppable on offense with 29 total kills. Rath attacked on a .240 hit percentage, committing just 11 errors in her 75 swings.

» Rath's 29 kills were the second most recorded by a Tiger during the rally-scoring era. Her 29 kills were the most totaled in a single match by a Tiger since Ashlee Johns' single-match record of 30, which was totaled in a five-set contest at Arkansas on Oct. 8, 2004. Her 29 kills are the most recorded in a four-set match by any SEC student-athlete this season.

» Rath currently leads the SEC in attacks per set (12.91), kills per set (4.47) points (390.0), points per set (5.20), total attacks (968) and total (335), while ranking in the top 25 nationally in all six categories.

» The junior as recorded at least 10 kills in 17 of Auburn's 20 matches. In Auburn's five-set thriller versus Santa Clara, Rath led the team with 24 kills to become the first Tiger to record at least 20 kills in a match since Tatum Shipes in 2018. Rath also chipped in 24 kills in Auburn's five-set contest at Alabama State on Sept. 26 before shattering the mark

at Arkansas.

» Rath's was named SEC Offensive Player of the Week on Sept. 7. The Altamonte Springs, Fla., native is the first Auburn Tiger to be named SEC Offensive Player of the Week since Brenna McIlroy won the award on Oct. 30, 2017.

» Her efforts have also won her all-tournament team honors at both the War Eagle Invitational and the Auburn Invitational.

» Rath's 4.47 kills per set average is currently the highest by a Tiger in single-season history (rally scoring era). Zeroing in on Auburn's single-season kill performances in the rally-scoring era, Rath needs 76 kills over the remaining eight matches of the season to break the record.

KILLS

| | PLAYER | YEAR | KILLS |
|----|----------------|------|-------|
| 1. | Jessica Glover | 2008 | 410 |
| 2. | Sarah Bullock | 2012 | 371 |
| 3. | Sarah Bullock | 2010 | 354 |
| 4. | Brenna McIlroy | 2016 | 351 |
| 5. | Kelly Fidero | 2011 | 341 |
| 6. | Rebekah Rath | 2021 | 335 |

KILLS PER SET (MIN. 100 KILLS)

| | PLAYER | YEAR | AVG. |
|----|----------------|------|------|
| 1. | Rebekah Rath | 2021 | 4.47 |
| 2. | Sarah Bullock | 2012 | 3.50 |
| 3. | Jessica Glover | 2008 | 3.45 |

ATTACKS

| | PLAYER | YEAR | ATTACKS |
|----|-------------------|------|---------|
| 1. | Brenna McIlroy | 2016 | 1,113 |
| 2. | Sarah Bullock | 2012 | 1,090 |
| 3. | Courtney Crable | 2014 | 1,062 |
| 4. | Brenna McIlroy | 2015 | 1,043 |
| 5. | Katherine Culwell | 2012 | 1,033 |
| 6. | Sarah Bullock | 2010 | 993 |
| 7. | Jessica Glover | 2008 | 988 |
| 8. | Katherine Culwell | 2013 | 981 |
| 9. | Rebekah Rath | 2021 | 968 |

AUBURN PICKED 13th IN PRESEASON POLL

» Auburn was selected to finish 13th in the Southeastern Conference in the annual preseason coaches' poll. The Tigers earned 12 points from the league's coaches.

» Reigning national champion Kentucky (139 pts) edged out Florida (138 pts) by one point as the favorite to win the SEC Championship. Kentucky secured seven first-place votes. Florida finished with six.

» LSU was tabbed to finished third, while Tennessee and Arkansas rounded out the top five.

TIGER TRACKS

» Air Green! Val Green set Takawanda High School's high jump record. She's also a second generation collegiate volleyball athlete. Her mother, Paula, played at Miami-Ohio.

» Tatum Shipes holds a wealth of athletic talent in her family's history. Her mother, Laurel, played basketball at Kentucky. Her father lettered in basketball at The Master's University. Her brother, T.J., was a member of Georgia State's basketball team. Her grandfather, Don Hudgens, and great grandparents, Ira and Opal, all played collegiate basketball.

» Jackie Barrett is the daughter of Martin J. Barrett, a former football star at the University of Buffalo. Martin was a two-time AP All-American and set 14 career UB records as a quarterback. He was inducted into Buffalo's Hall of Fame in 1989.

» Full Circle Moment: Liz Reich was originally recruited to Portland and competed her freshman season under Brent Crouch.

» Audrey Douglas is fluent in American Sign Language.

» Jordan Sinness is not the first member of her family to play collegiate sports in the state of Alabama. Her older sister, Jade, plays softball at Troy University.

» Associate head coach Alex Dunphy is the daughter of Volleyball Hall of Famer and American Volleyball Coaches Association Hall of Famer, Marv Dunphy. Dunphy has led Pepperdine to five NCAA Men's Division I Championships. Marv was an assistant coach for Team USA Women's Volleyball at the 2020 Tokyo Olympics, helping the squad to a gold medal.

THE LAST TIME AUBURN...

Won in three sets _____ Oct. 21, 2021 at Georgia (25-21, 25-19, 25-20)
Won in four sets _____ Sept. 17, 2021 vs. Nicholls (25-8, 25-15, 26-28, 25-15)
Won in five sets _____ Oct. 2, 2021 vs. Alabama (25-21, 20-25, 25-21, 20-25, 15-5)
Lost in three sets _____ Oct. 22, 2021 at Georgia (14-25, 18-25, 23-25)
Lost in four sets _____ Oct. 9, 2021 at Arkansas (27-25, 18-25, 23-25, 22-25)
Lost in five sets _____ Oct. 17, 2021 vs. Missouri (25-27, 25-20, 23-25, 25-21, 11-15)
 Lost first set in a win _____ Sept. 8, 2019 vs. George Washington (21-25, 25-13, 25-22, 25-13)
Won first set in a loss _____ Oct. 10, 2021 at Arkansas (25-20, 25-23, 15-25, 17-25, 7-15)
 Lost first two sets in a win _____ Sept. 11, 2018 at Kennesaw State (23-25, 20-25, 28-26, 26-24, 15-9)
Won first two sets in a loss _____ Oct. 10, 2021 at Arkansas (25-20, 25-23, 15-25, 17-25, 7-15)
 Beat a ranked opponent _____ Sept. 2, 2017 vs. #16 North Carolina (25-23, 25-22, 25-27, 25-21)
Hit .300-.399 in a match _____ Sept. 18, 2021 vs. Belmont (.345)
Hit .400-.499 in a match _____ Aug. 28, 2021 vs. Jackson State (.457)
 Hit .500 or better in a match _____ Oct. 18, 1998 at Ole Miss (.514)
Held opponent to .000-.100 in a match _____ Oct. 16, 2021 vs. Missouri (.097)
Held opponent to a negative hitting percentage _____ Sept. 18, 2014 vs. Belmont (-.093)
 Had 70-79 kills in a match _____ Oct. 26, 2018 vs. Ole Miss (77)
 Had 80+ kills in a match _____ Sept. 17, 2006 at Georgia (84)
Had 80-99 digs in a match _____ Oct. 17, 2021 vs. Missouri (90)
Had 100+ digs in a match _____ Sept. 17, 2021 vs. Nicholls (105)
Had 15+ blocks in a match _____ Oct. 10, 2021 at Arkansas (17.0)
 Had 10+ service aces in a match _____ Sept. 15, 2019 at TCU (11)
Had a player(s) with 20-24 kills in a match _____ Oct. 17, 2021, Rebekah Rath vs. Missouri (22)
Had a player(s) with 25-29 kills in a match _____ Oct. 9, 2021, Rebekah Rath at Arkansas (29)
 Had a player(s) with 30+ kills in a match _____ Oct. 8, 2004, Ashlee Johns vs. Arkansas (30)
Had a player(s) with 10+ blocks in a match _____ Oct. 9, 2021, Tatum Shipes at Arkansas (10.0)
Had a player(s) with 25-29 digs in a match _____ Oct. 3, 2021, Bella Rosenthal vs. Alabama (21)
Had a player(s) with 30+ digs in a match _____ Oct. 17, 2021, Bella Rosenthal vs. Missouri(33)
 Had a player(s) with 50+ assists in a match _____ Aug. 31, 2019, Marissa Hines (50)
 Had a player(s) with 60+ assists in a match _____ Oct. 28, 2018, Mica Allison vs. Ole Miss (61)
 Had a player(s) with 5+ aces in a match _____ Oct. 19, 2018, Brenna McLroy at Missouri (6)

AUBURN DOUBLE-DOUBLES IN 2021

| PLAYER | OPPONENT (SETS) | DATE | STATS |
|---------------------|-----------------------------|---------------------|---------------------|
| Jackie Barrett (12) | vs. Tennessee Tech (3) | August 27 | 25 assists, 12 digs |
| | vs. Santa Clara (5) | September 12 | 44 assists, 11 digs |
| | vs. Florida A&M (5) | September 17 | 48 assists, 15 digs |
| | vs. Nicholls (4) | September 17 | 40 assists, 28 digs |
| | vs. Belmont (3) | September 18 | 24 assists, 19 digs |
| | vs. Ole Miss (4) | September 22 | 34 assists, 12 digs |
| | at #20 Tennessee (3) | September 29 | 18 assists, 12 digs |
| | vs. Alabama (5) | October 2 | 43 assists, 14 digs |
| | vs. Alabama (3) | October 3 | 34 assists, 11 digs |
| | at Arkansas (4) | October 9 | 36 assists, 13 digs |
| Rebekah Rath (6) | at Arkansas (5) | October 10 | 36 assists, 16 digs |
| | at Georgia (3) | October 21 | 27 assists, 17 digs |
| | vs. Cal State Fullerton (3) | September 2 | 16 kills, 10 digs |
| | vs. Santa Clara (5) | September 12 | 24 kills, 10 digs |
| | at Alabama State (5) | September 26 | 24 kills, 13 digs |
| Jordan Sinness (1) | vs. Alabama (5) | October 2 | 22 kills, 11 digs |
| | vs. Alabama (3) | October 3 | 16 kills, 11 digs |
| | at Arkansas (5) | October 10 | 20 kills, 10 digs |
| | vs. Missouri (5) | October 20 | 22 kills, 12 digs |
| vs. Missouri (5) | October 20 | 35 assists, 14 digs | |

AUBURN'S 2021 RECORD WHEN...

| | |
|--|------|
| OVERALL | 12-8 |
| SEC | 4-6 |
| NON-CONFERENCE | 10-2 |
| RANKED OPPONENTS | 0-1 |
| HOME | 11-3 |
| AWAY | 1-5 |
| NEUTRAL | 0-0 |
| BY SETS | |
| THREE SETS | 9-2 |
| FOUR SETS | 1-2 |
| FIVE SETS | 2-4 |
| WON FIRST SET | 12-4 |
| LOST FIRST SET | 0-4 |
| WON SECOND SET | 11-3 |
| LOST SECOND SET | 1-5 |
| WON FIRST TWO SETS | 11-1 |
| LOST FIRST TWO SETS | 0-2 |
| SITUATIONAL | |
| MORE KILLS THAN OPPONENT | 9-2 |
| FEWER KILLS THAN OPPONENT | 3-6 |
| KILLS ARE TIED | 0-0 |
| MORE DIGS THAN OPPONENT | 8-1 |
| FEWER DIGS THAN OPPONENT | 3-7 |
| DIGS ARE TIED | 1-0 |
| MORE ACES THAN OPPONENT | 8-1 |
| FEWER ACES THAN OPPONENT | 3-7 |
| ACES ARE TIED | 1-0 |
| HIGHER HITTING PERCENTAGE THAN OPPONENT | 12-2 |
| LOWER HITTING PERCENTAGE THAN OPPONENT | 0-6 |
| HITTING PERCENTAGE TIED | 0-0 |
| HITTING PERCENTAGE | |
| .400 OR ABOVE | 1-0 |
| .300-.399 | 2-0 |
| .200-.299 | 7-3 |
| .100-.199 | 2-4 |
| .000-.099 | 0-1 |
| NEGATIVE | 0-0 |
| OPPONENTS' HITTING PERCENTAGE | |
| .400 OR ABOVE | 0-0 |
| .300-.399 | 0-0 |
| .200-.299 | 1-7 |
| .100-.199 | 2-1 |
| .000-.099 | 8-0 |
| NEGATIVE | 1-0 |
| BY DAY | |
| MONDAY | 0-0 |
| TUESDAY | 0-0 |
| WEDNESDAY | 0-2 |
| THURSDAY | 3-0 |
| FRIDAY | 3-2 |
| SATURDAY | 4-1 |
| SUNDAY | 2-3 |
| DAY MATCHES (FIRST SERVE BEFORE 6 P.M.) | 5-5 |
| NIGHT MATCHES (FIRST SERVE AFTER 6 P.M.) | 7-3 |
| BY MONTH | |
| AUGUST | 2-0 |
| SEPTEMBER | 6-4 |
| OCTOBER | 4-4 |
| NOVEMBER | 0-0 |
| JERSEY COLOR | |
| NAVY | 3-2 |
| NAVY w/ORANGE SLEEVE | 1-2 |
| ORANGE | 4-4 |
| ORANGE w/NAVY SLEEVE | 4-0 |
| PINK | 0-0 |

2021 AUBURN MATCH-BY-MATCH STARTERS

| DATE | OPPONENT | RESULT | OUTSIDE | MIDDLE | RIGHT SIDE | OUTSIDE/DS | MIDDLE | LIBERO | SETTER |
|-------|------------------------|--------|---------|--------|------------|-------------|--------|-----------|---------|
| 8/28 | TENNESSEE TECH | W, 3-0 | Rath | Shipes | Reich | Lanham (DS) | Yavuz | Rosenthal | Barrett |
| 8/28 | JACKSON STATE | W, 3-0 | Rath | Shipes | Reich | Green (OH) | Yavuz | Rosenthal | Barrett |
| 9/2 | CAL STATE FULLERTON | W, 3-0 | Rath | Shipes | Reich | Green (OH) | Yavuz | Rosenthal | Barrett |
| 9/3 | SOUTHEASTERN LOUISIANA | W, 3-0 | Rath | Shipes | Reich | Green (OH) | Yavuz | Rosenthal | Barrett |
| 9/9 | NORTH ALABAMA | W, 3-0 | Rath | Shipes | Reich | Green (OH) | Yavuz | Rosenthal | Barrett |
| 9/12 | SANTA CLARA | W, 3-2 | Rath | Shipes | Reich | Green (OH) | Yavuz | Rosenthal | Barrett |
| 9/17 | FLORIDA A&M | L, 2-3 | Rath | Shipes | Reich | Green (OH) | Yavuz | Rosenthal | Barrett |
| 9/17 | NICHOLLS | W, 3-1 | Rath | Shipes | Reich | Green (OH) | Yavuz | Rosenthal | Barrett |
| 9/18 | BELMONT | W, 3-0 | Rath | Shipes | Reich | Green (OH) | Yavuz | Rosenthal | Barrett |
| 9/22 | OLE MISS | L, 1-3 | Rath | Shipes | Reich | Green (OH) | Yavuz | Rosenthal | Barrett |
| 9/26 | at Alabama State | L, 2-3 | Rath | Shipes | Reich | Lanham (DS) | Yavuz | Rosenthal | Barrett |
| 9/29 | at Tennessee | L, 0-3 | Rath | Shipes | Reich | Lanham (DS) | Yavuz | Rosenthal | Barrett |
| 10/2 | ALABAMA | W, 3-2 | Rath | Shipes | Reich | Lanham (DS) | Yavuz | Rosenthal | Barrett |
| 10/3 | ALABAMA | W, 3-0 | Rath | Shipes | Reich | Lanham (DS) | Yavuz | Rosenthal | Barrett |
| 10/9 | at Arkansas | L, 1-3 | Rath | Shipes | Reich | Lanham (DS) | Yavuz | Rosenthal | Barrett |
| 10/10 | at Arkansas | L, 2-3 | Rath | Shipes | Reich | Lanham (DS) | Yavuz | Rosenthal | Barrett |
| 10/16 | MISSOURI | W, 3-0 | Rath | Shipes | Reich | Lanham (DS) | Yavuz | Rosenthal | Barrett |
| 10/17 | MISSOURI | L, 2-3 | Rath | Shipes | Reich | Lanham (DS) | Yavuz | Rosenthal | Barrett |
| 10/22 | at Georgia | W, 3-0 | Rath | Shipes | Reich | Lanham (DS) | Yavuz | Rosenthal | Barrett |
| 10/23 | at Georgia | L, 0-3 | Rath | Shipes | Reich | Lanham (DS) | Yavuz | Rosenthal | Barrett |
| 10/29 | LSU | | | | | | | | |
| 11/4 | at Texas A&M | | | | | | | | |
| 11/5 | at Texas A&M | | | | | | | | |
| 11/10 | SOUTH CAROLINA | | | | | | | | |
| 11/17 | at Florida | | | | | | | | |
| 11/20 | KENTUCKY | | | | | | | | |
| 11/21 | KENTUCKY | | | | | | | | |
| 11/26 | at Mississippi State | | | | | | | | |

2021 AUBURN MATCH-BY-MATCH LEADERS

| DATE | OPPONENT | RESULT | KILLS | ASSISTS | ACES | DIGS | BLOCKS | HIT PCT. (MIN 10 ATT.) |
|-------|------------------------|--------|------------|----------------------|-------------------------|------------------------|---------------------------|------------------------|
| 8/28 | TENNESSEE TECH | W, 3-0 | Rath (13) | Barrett (25) | Barrett/Rath/Curtis (1) | Rosenthal (17) | Shipes (7) | Shipes (.462) |
| 8/28 | JACKSON STATE | W, 3-0 | Rath (16) | Barrett (27) | Barrett/Rath (2) | Rosenthal (14) | Yavuz (8) | Reich (.500) |
| 9/2 | CAL STATE FULLERTON | W, 3-0 | Rath (16) | Barrett/Sinness (16) | Rath (1) | Rosenthal (17) | Shipes (3) | Reich (.409) |
| 9/3 | SOUTHEASTERN LOUISIANA | W, 3-0 | Rath (16) | Barrett (28) | Barrett (2) | Rosenthal (16) | Shipes (8) | Reich (.458) |
| 9/9 | NORTH ALABAMA | W, 3-0 | Green (12) | Barrett (30) | Barrett/Green/Rath (1) | Rosenthal (25) | Barrett (4) | Green (.375) |
| 9/12 | SANTA CLARA | W, 3-2 | Rath (24) | Barrett (44) | Barrett/Sinness (2) | Rosenthal (20) | Shipes/Barrett (5) | Shipes (.357) |
| 9/17 | FLORIDA A&M | L, 2-3 | Green (19) | Barrett (48) | Barrett (2) | Rosenthal (20) | Douglas/Barrett/Yavuz (4) | Yavuz (.571) |
| 9/17 | NICHOLLS | W, 3-1 | Rath (18) | Barrett (40) | Barrett (3) | Rosenthal (28) | Shipes (9) | Rath (.211) |
| 9/18 | BELMONT | W, 3-0 | Rath (14) | Barrett (24) | Rosenthal (2) | Rosenthal/Barrett (19) | Shipes (7) | Rath (.429) |
| 9/22 | OLE MISS | L, 1-3 | Rath (19) | Barrett (34) | Green (2) | Rosenthal (13) | Shipes/Yavuz (3) | Rath (.288) |
| 9/26 | at Alabama State | L, 2-3 | Rath (24) | Barrett (36) | Rath/Sinness (2) | Rosenthal (27) | Rath (4) | Shipes (.400) |
| 9/29 | at Tennessee | L, 0-3 | Rath (9) | Barrett (18) | Lanham (1) | Barrett (12) | Shipes (6) | Reich (.217) |
| 10/2 | ALABAMA | W, 3-2 | Rath (22) | Barrett (43) | Curtis (1) | Rosenthal (24) | Shipes (12) | Shipes (.231) |
| 10/3 | ALABAMA | W, 3-0 | Rath (16) | Barrett (34) | Curtis/Rath (2) | Rosenthal (21) | Shipes (7) | Reich (.435) |
| 10/9 | at Arkansas | L, 1-3 | Rath (29) | Barrett (36) | Barrett/Rath (1) | Rosenthal (30) | Shipes (10) | Rath (.240) |
| 10/10 | at Arkansas | L, 2-3 | Rath (20) | Barrett (36) | Shipes (2) | Rosenthal (20) | Shipes (9) | Green (.231) |
| 10/16 | MISSOURI | W, 3-0 | Rath (17) | Barrett (25) | Four Athletes (1) | Rosenthal (19) | Rath (4) | Rath (.277) |
| 10/17 | MISSOURI | L, 2-3 | Rath (22) | Sinness (35) | Rath/Lanham/Curtis (1) | Rosenthal (33) | Shipes (6) | Yavuz (.385) |
| 10/22 | at Georgia | W, 3-0 | Green (16) | Barrett (27) | Yavuz (3) | Barrett (17) | Shipes (8) | Green (.469) |
| 10/23 | at Georgia | L, 3-0 | Rath (16) | Barrett (30) | NONE | Rosenthal (12) | Shipes/Rath/Yavuz (3) | Reich (.409) |
| 10/29 | LSU | | | | | | | |
| 11/4 | at Texas A&M | | | | | | | |
| 11/5 | at Texas A&M | | | | | | | |
| 11/10 | SOUTH CAROLINA | | | | | | | |
| 11/17 | at Florida | | | | | | | |
| 11/20 | KENTUCKY | | | | | | | |
| 11/21 | KENTUCKY | | | | | | | |
| 11/26 | at Mississippi State | | | | | | | |

2021 OVERALL STATISTICS

Overall: 12-8 • SEC: 4-6 • Home: 11-3 • Away: 1-5 • Neutral: 0-0

| # | PLAYER | SP | K | K/S | E | TA | Pct | A | A/S | SA | SE | SA/S | RE | DIG | DIG/S | BS | BA | BLK | BLK/S | BE | BHE | PTS | PT/S |
|----------|------------------|----|-----|-------|-----|------|-------|-----|-------|----|-----|------|----|------|-------|----|-----|-------|-------|----|-----|--------|-------|
| 7 | Rath, Rebekah | 75 | 325 | 4.47 | 118 | 968 | .224 | 12 | 0.16 | 17 | 50 | 0.23 | 18 | 159 | 2.12 | 10 | 56 | 66.0 | 0.88 | 2 | 0 | 390.0 | 5.20 |
| 8 | Reich, Liz | 75 | 218 | 2.91 | 58 | 559 | .286 | 3 | 0.04 | 0 | 1 | 0.00 | 1 | 38 | 0.51 | 0 | 45 | 45.0 | 0.60 | 2 | 0 | 240.5 | 3.21 |
| 16 | Green, Val | 75 | 172 | 2.29 | 71 | 587 | .172 | 3 | 0.04 | 6 | 8 | 0.08 | 3 | 54 | 0.72 | 2 | 24 | 26.0 | 0.35 | 1 | 0 | 192.0 | 2.56 |
| 21 | Shipes, Tatum | 72 | 86 | 1.19 | 34 | 219 | .237 | 7 | 0.10 | 4 | 7 | 0.06 | 0 | 34 | 0.47 | 18 | 99 | 117.0 | 1.63 | 4 | 3 | 157.5 | 2.19 |
| 19 | Yavuz, Elif | 75 | 50 | 0.67 | 13 | 109 | .339 | 2 | 0.03 | 3 | 5 | 0.04 | 2 | 20 | 0.27 | 4 | 65 | 69.0 | 0.92 | 7 | 1 | 89.5 | 1.19 |
| 10 | Barrett, Jackie | 72 | 40 | 0.56 | 9 | 133 | .233 | 613 | 8.51 | 17 | 16 | 0.24 | 0 | 229 | 3.18 | 2 | 50 | 52.0 | 0.72 | 8 | 1 | 84.0 | 1.17 |
| 4 | Lanham, Fallan | 75 | 5 | 0.07 | 9 | 69 | -.043 | 8 | 0.12 | 4 | 8 | 0.05 | 11 | 139 | 1.85 | 0 | 1 | 1.0 | 0.01 | 0 | 0 | 9.5 | 0.13 |
| 5 | Douglas, Audrey | 5 | 4 | 0.80 | 3 | 12 | .083 | 0 | 0.00 | 0 | 0 | 0.00 | 0 | 0 | 0.00 | 0 | 4 | 4.0 | 0.80 | 0 | 0 | 6.0 | 1.20 |
| 11 | Sinness, Jordan | 48 | 2 | 0.04 | 1 | 5 | .200 | 52 | 1.08 | 6 | 5 | 0.13 | 0 | 32 | 0.67 | 0 | 3 | 3.0 | 0.06 | 0 | 2 | 9.5 | 0.20 |
| 6 | Rosenthal, Bella | 75 | 1 | 0.01 | 0 | 12 | .083 | 99 | 1.32 | 9 | 16 | 0.12 | 13 | 398 | 5.31 | 0 | 0 | 0.0 | 0.00 | 0 | 0 | 10.0 | 0.13 |
| 15 | Curtis, Kate | 75 | 1 | 0.01 | 0 | 5 | .200 | 18 | 0.24 | 9 | 12 | 0.12 | 13 | 138 | 1.84 | 0 | 0 | 0.0 | 0.00 | 0 | 0 | 10.0 | 0.13 |
| 17 | Tanton, Cassidy | 1 | 0 | 0.00 | 0 | 0 | .000 | 0 | 0.00 | 0 | 0 | 0.00 | 0 | 0 | 0.00 | 0 | 0 | 0.0 | 0.00 | 0 | 0 | 0.0 | 0.00 |
| TEAM | | | | | | | | | | | | | 22 | | | | | | | | | | |
| AUBURN | | 75 | 914 | 12.19 | 315 | 2678 | .224 | 817 | 10.89 | 75 | 128 | 1.00 | 83 | 1241 | 16.55 | 36 | 347 | 209.5 | 2.79 | 24 | 7 | 1198.5 | 15.98 |
| OPONENTS | | 75 | 911 | 12.15 | 494 | 2884 | .145 | 839 | 11.19 | 83 | 149 | 1.11 | 75 | 1278 | 17.04 | 38 | 132 | 104.0 | 1.39 | 32 | 16 | 1098.0 | 14.64 |

2021 CONFERENCE ONLY STATISTICS

SEC: 4-6 • Home: 3-2 • Away: 1-4

| # | PLAYER | SP | K | K/S | E | TA | Pct | A | A/S | SA | SE | SA/S | RE | DIG | DIG/S | BS | BA | BLK | BLK/S | BE | BHE | PTS | PT/S |
|----------|------------------|----|-----|-------|-----|------|-------|-----|-------|----|----|------|----|-----|-------|----|-----|-------|-------|----|-----|-------|-------|
| 7 | Rath, Rebekah | 38 | 175 | 4.61 | 70 | 546 | .192 | 7 | 0.18 | 6 | 27 | 0.16 | 8 | 93 | 2.45 | 3 | 33 | 36.0 | 0.95 | 1 | 0 | 200.5 | 5.28 |
| 8 | Reich, Liz | 38 | 96 | 2.53 | 31 | 277 | .235 | 0 | 0.00 | 0 | 0 | 0.00 | 1 | 21 | 0.55 | 0 | 23 | 23.0 | 0.61 | 2 | 0 | 107.5 | 2.83 |
| 16 | Green, Val | 38 | 89 | 2.34 | 41 | 300 | .160 | 2 | 0.05 | 2 | 1 | 0.05 | 1 | 53 | 0.55 | 0 | 14 | 14.0 | 0.37 | 0 | 0 | 98.0 | 2.58 |
| 21 | Shipes, Tatum | 38 | 36 | 0.95 | 18 | 104 | .173 | 4 | 0.11 | 3 | 4 | 0.08 | 0 | 22 | 0.58 | 10 | 57 | 67.0 | 1.76 | 2 | 2 | 77.5 | 2.04 |
| 19 | Yavuz, Elif | 38 | 22 | 0.58 | 8 | 57 | .246 | 2 | 0.05 | 3 | 5 | 0.08 | 2 | 13 | 0.34 | 2 | 36 | 38.0 | 1.00 | 4 | 1 | 45.0 | 1.18 |
| 10 | Barrett, Jackie | 35 | 18 | 0.51 | 4 | 65 | .215 | 295 | 8.43 | 3 | 9 | 0.09 | 0 | 113 | 3.23 | 2 | 27 | 29.0 | 0.83 | 4 | 0 | 36.5 | 1.04 |
| 4 | Lanham, Fallan | 38 | 3 | 0.08 | 5 | 37 | -.054 | 2 | 0.05 | 4 | 7 | 0.11 | 5 | 68 | 1.79 | 0 | 1 | 1.0 | 0.03 | 0 | 0 | 7.5 | 0.20 |
| 15 | Curtis, Kate | 38 | 1 | 0.03 | 0 | 2 | .500 | 11 | 0.29 | 5 | 8 | 0.13 | 7 | 77 | 2.03 | 0 | 0 | 0.0 | 0.00 | 0 | 0 | 6.0 | 0.16 |
| 6 | Rosenthal, Bella | 38 | 1 | 0.03 | 0 | 2 | .500 | 51 | 1.34 | 3 | 7 | 0.08 | 6 | 192 | 5.05 | 0 | 0 | 0.0 | 0.00 | 0 | 0 | 4.0 | 0.11 |
| 11 | Sinness, Jordan | 21 | 1 | 0.05 | 0 | 3 | .333 | 35 | 1.67 | 1 | 2 | 0.05 | 0 | 20 | 0.95 | 0 | 2 | 2.0 | 0.10 | 0 | 1 | 3.0 | 0.14 |
| TEAM | | | | | | | | | | | | | 15 | | | | | | | | | | |
| AUBURN | | 38 | 442 | 11.63 | 178 | 1394 | .189 | 409 | 10.76 | 30 | 70 | 0.79 | 45 | 640 | 16.84 | 17 | 193 | 113.5 | 2.99 | 13 | 4 | 585.5 | 15.41 |
| OPONENTS | | 38 | 508 | 13.34 | 237 | 1501 | .180 | 469 | 12.34 | 45 | 71 | 1.18 | 30 | 685 | 18.03 | 18 | 88 | 62.0 | 1.63 | 14 | 10 | 614.0 | 16.16 |

2021 STATISTICAL LEADERS

KILLS (PER SET)

| | |
|--------------|------------|
| Rebekah Rath | 335 (4.47) |
| Liz Reich | 218 (2.91) |
| Val Green | 172 (2.29) |
| Tatum Shipes | 86 (1.19) |
| Elif Yavuz | 50 (0.67) |

TOTAL ATTACKS

| | |
|----------------|-----|
| Rebekah Rath | 968 |
| Val Green | 587 |
| Liz Reich | 559 |
| Tatum Shipes | 219 |
| Jackie Barrett | 133 |

HITTING PERCENTAGE (MIN. 225 ATT.)

| | |
|--------------|------|
| Liz Reich | .286 |
| Rebekah Rath | .224 |
| Val Green | .172 |

ASSISTS (PER SET)

| | |
|-----------------|------------|
| Jackie Barrett | 613 (8.51) |
| Bella Rosenthal | 99 (1.32) |
| Jordan Sinness | 52 (1.08) |
| Kate Curtis | 18 (0.24) |
| Rebekah Rath | 12 (0.16) |

ACES (PER SET)

| | |
|-----------------|-----------|
| Jackie Barrett | 17 (0.24) |
| Rebekah Rath | 17 (0.23) |
| Bella Rosenthal | 9 (0.12) |
| Kate Curtis | 9 (0.12) |
| Jordan Sinness | 6 (0.13) |
| Val Green | 6 (0.08) |

DIGS (PER SET)

| | |
|-----------------|------------|
| Bella Rosenthal | 398 (5.31) |
| Jackie Barrett | 229 (3.18) |
| Rebekah Rath | 159 (2.12) |
| Fallan Lanham | 139 (1.85) |
| Kate Curtis | 138 (1.84) |

BLOCK | SOLOS

| | |
|----------------|----|
| Tatum Shipes | 18 |
| Rebekah Rath | 10 |
| Elif Yavuz | 4 |
| Val Green | 2 |
| Jackie Barrett | 2 |

BLOCK | ASSISTS

| | |
|----------------|----|
| Tatum Shipes | 99 |
| Elif Yavuz | 65 |
| Rebekah Rath | 56 |
| Jackie Barrett | 50 |
| Liz Reich | 45 |

TOTAL BLOCKS (PER SET)

| | |
|----------------|------------|
| Tatum Shipes | 117 (1.63) |
| Elif Yavuz | 69 (0.92) |
| Rebekah Rath | 66 (0.88) |
| Jackie Barrett | 52 (0.72) |
| Liz Reich | 45 (0.60) |

AUBURN VOLLEYBALL SINGLE-SEASON INDIVIDUAL RECORDS (25-POINT RALLY SCORING ERA)

OFFENSIVE RECORDS

KILLS

| | PLAYER | YEAR | KILLS |
|-----|---------------------|-------------|------------|
| 1. | Jessica Glover | 2008 | 410 |
| 2. | Sarah Bullock | 2012 | 371 |
| 3. | Sarah Bullock | 2010 | 354 |
| 4. | Brenna McLroy | 2016 | 351 |
| 5. | Kelly Fidero | 2011 | 341 |
| 6. | Rebekah Rath | 2021 | 335 |
| 7. | Courtney Crable | 2015 | 333 |
| | Brenna McLroy | 2015 | 333 |
| 9. | Katherine Culwell | 2012 | 330 |
| 10. | Katherine Culwell | 2013 | 326 |

KILLS PER SET (MIN. 100 KILLS)

| | PLAYER | YEAR | AVG. |
|-----|---------------------|-------------|-------------|
| 1. | Rebekah Rath | 2021 | 4.47 |
| 2. | Sarah Bullock | 2012 | 3.50 |
| 3. | Jessica Glover | 2008 | 3.45 |
| 4. | Kelly Fidero | 2011 | 3.22 |
| 5. | Brenna McLroy | 2016 | 3.13 |
| | Katherine Culwell | 2013 | 3.13 |
| 7. | Katherine Culwell | 2012 | 3.03 |
| | Sarah Bullock | 2010 | 3.03 |
| 9. | Brenna McLroy | 2018 | 3.00 |
| 10. | Liz Reich | 2021 | 2.91 |
| 11. | Brenna McLroy | 2017 | 2.86 |
| 12. | Courtney Crable | 2015 | 2.82 |
| | Taylor Rowland | 2018 | 2.82 |

ATTACK PERCENTAGE (MIN. 250 ATT.)

| | PLAYER | YEAR | PCT. |
|-----|--------------------|-------------|-------------|
| 1. | Shaina White | 2017 | .367 |
| 2. | Camila Jersonsky | 2012 | .356 |
| | Camila Jersonsky | 2011 | .356 |
| 4. | Camila Jersonsky | 2010 | .354 |
| 5. | Camila Jersonsky | 2013 | .351 |
| 6. | Alyssa Davis | 2009 | .316 |
| 7. | Morgan Johns | 2010 | .305 |
| 8. | Liz Reich | 2021 | .286 |
| 9. | Stephanie Campbell | 2013 | .281 |
| | Stephanie Campbell | 2015 | .280 |
| 11. | Stephanie Campbell | 2014 | .279 |

ATTACKS

| | PLAYER | YEAR | ATTACKS |
|-----|---------------------|-------------|------------|
| 1. | Brenna McLroy | 2016 | 1,113 |
| 2. | Sarah Bullock | 2012 | 1,090 |
| 3. | Courtney Crable | 2014 | 1,062 |
| 4. | Brenna McLroy | 2015 | 1,043 |
| 5. | Katherine Culwell | 2012 | 1,033 |
| 6. | Sarah Bullock | 2010 | 993 |
| 7. | Jessica Glover | 2008 | 988 |
| 8. | Katherine Culwell | 2013 | 981 |
| 9. | Rebekah Rath | 2021 | 968 |
| 10. | Brenna McLroy | 2017 | 938 |

ASSISTS

| | PLAYER | YEAR | ASSISTS |
|----|--------------------|------|---------|
| 1. | Alexa Filley | 2016 | 1,227 |
| 2. | Alexa Filley | 2015 | 1,226 |
| 3. | Alexa Filley | 2014 | 1,175 |
| 4. | Alexa Filley | 2017 | 1,093 |
| 5. | Mica Allison | 2018 | 1,055 |
| 6. | Sara Shanks | 2008 | 995 |
| 7. | Chelsea Wintzinger | 2011 | 791 |

| | | | |
|-----|---------------------|------|-----|
| 8. | Christina Salverson | 2010 | 740 |
| 9. | Chelsea Wintzinger | 2012 | 680 |
| 10. | Chelsea Wintzinger | 2013 | 642 |

ASSISTS PER SET (MIN. 200 ASSISTS)

| | PLAYER | YEAR | AVG. |
|-----|-----------------------|-------------|-------------|
| 1. | Alexa Filley | 2017 | 10.72 |
| 2. | Alexa Filley | 2014 | 10.22 |
| 3. | Alexa Filley | 2015 | 10.13 |
| 4. | Mica Allison | 2018 | 10.05 |
| 5. | Alexa Filley | 2016 | 9.98 |
| 6. | Jackie Barrett | 2021 | 8.51 |
| 7. | Sara Shanks | 2008 | 8.43 |
| 8. | Marissa Hines | 2019 | 7.51 |
| 9. | Chelsea Wintzinger | 2011 | 7.39 |
| 10. | Morgan Kull | 2019 | 6.94 |
| 11. | Chelsea Wintzinger | 2012 | 6.24 |

ACES

| | PLAYER | YEAR | ACES |
|----|--------------------|------|------|
| 1. | Brenna McLroy | 2018 | 48 |
| 2. | Jesse Earl | 2016 | 46 |
| 3. | Jesse Earl | 2017 | 42 |
| 4. | Jesse Earl | 2015 | 39 |
| 5. | Brenna McLroy | 2016 | 36 |
| 6. | Chelsea Wintzinger | 2013 | 35 |
| 7. | Courtney Crable | 2014 | 33 |
| 8. | Brenna McLroy | 2015 | 32 |
| 9. | Sara Shanks | 2008 | 30 |
| | Alexa Filley | 2015 | 30 |

ACES PER SET (MIN. 15 ACES)

| | PLAYER | YEAR | AVG. |
|----|--------------------|------|------|
| 1. | Brenna McLroy | 2018 | 0.46 |
| 2. | Jesse Earl | 2017 | 0.41 |
| 3. | Jesse Earl | 2016 | 0.37 |
| 4. | Chelsea Wintzinger | 2013 | 0.34 |
| 5. | Jesse Earl | 2015 | 0.32 |
| | Brenna McLroy | 2016 | 0.32 |
| 7. | Courtney Crable | 2014 | 0.27 |
| 8. | Brenna McLroy | 2015 | 0.26 |
| 9. | Alexa Filley | 2015 | 0.25 |
| | Sara Shanks | 2008 | 0.25 |
| | Kelly Stewart | 2016 | 0.25 |

DEFENSIVE RECORDS

DIGS

| | PLAYER | YEAR | DIGS |
|-----|------------------------|-------------|------------|
| 1. | Jesse Earl | 2016 | 612 |
| 2. | Jesse Earl | 2017 | 529 |
| 3. | Jesse Earl | 2015 | 516 |
| 4. | Sarah Wroblecky | 2013 | 481 |
| 5. | Liz Crouch | 2010 | 469 |
| 6. | Liz Crouch | 2009 | 453 |
| 7. | Alyssa Ivey | 2014 | 434 |
| 8. | Sarah Wroblecky | 2012 | 431 |
| 9. | Bella Rosenthal | 2021 | 398 |
| 10. | Liz Crouch | 2008 | 389 |

DIGS PER SET (MIN. 100 DIGS)

| | PLAYER | YEAR | AVG. |
|----|------------------------|-------------|-------------|
| 1. | Bella Rosenthal | 2021 | 5.31 |
| 2. | Jesse Earl | 2017 | 5.19 |
| 3. | Jesse Earl | 2016 | 4.98 |
| 4. | Sarah Wroblecky | 2013 | 4.62 |
| 5. | Jesse Earl | 2015 | 4.26 |

| | | | |
|-----|-----------------|------|------|
| 6. | Liz Crouch | 2009 | 4.08 |
| 7. | Alyssa Ivey | 2014 | 4.02 |
| 8. | Liz Crouch | 2010 | 4.01 |
| 9. | Sarah Wroblecky | 2012 | 3.99 |
| 10. | Liz Crouch | 2008 | 3.70 |
| 11. | Sarah Bullock | 2012 | 3.31 |

BLOCKS - SOLO

| | PLAYER | YEAR | BLOCKS |
|-----|---------------------|-------------|-----------|
| 1. | Katherine Culwell | 2012 | 25 |
| 2. | Tatum Shipes | 2021 | 18 |
| | Sarah Bullock | 2012 | 18 |
| | Jessica Glover | 2008 | 18 |
| | Anna Stevenson | 2018 | 18 |
| 6. | Kelly Fidero | 2011 | 17 |
| | Sarah Bullock | 2011 | 17 |
| 8. | Katherine Culwell | 2013 | 16 |
| | Camila Jersonsky | 2013 | 16 |
| 10. | Camila Jersonsky | 2011 | 15 |
| | Jaeden Brown | 2019 | 15 |

BLOCKS - ASSISTS

| | PLAYER | YEAR | BLOCKS |
|-----|---------------------|-------------|-----------|
| 1. | Camila Jersonsky | 2012 | 108 |
| 2. | Tatum Shipes | 2021 | 99 |
| 3. | Lauren Mellor | 2009 | 90 |
| 4. | Camila Jersonsky | 2013 | 89 |
| 5. | Breanna Barksdale | 2014 | 87 |
| 6. | Courtney McDonald | 2012 | 84 |
| 7. | Breanna Barksdale | 2016 | 83 |
| 8. | Breanna Barksdale | 2015 | 82 |
| 9. | Anna Stevenson | 2018 | 73 |
| 10. | Stephanie Campbell | 2014 | 72 |

TOTAL BLOCKS

| | PLAYER | YEAR | BLOCKS |
|-----|---------------------|-------------|------------|
| 1. | Camila Jersonsky | 2012 | 119 |
| 2. | Tatum Shipes | 2021 | 117 |
| 3. | Camila Jersonsky | 2013 | 105 |
| 4. | Breanna Barksdale | 2014 | 101 |
| 5. | Lauren Mellor | 2009 | 97 |
| | Breanna Barksdale | 2016 | 97 |
| 7. | Breanna Barksdale | 2015 | 94 |
| 8. | Anna Stevenson | 2018 | 91 |
| 9. | Courtney McDonald | 2012 | 89 |
| 10. | Stephanie Campbell | 2014 | 86 |

BLOCKS PER SET (MIN. 50 BLOCKS)

| | PLAYER | YEAR | BLOCKS |
|-----|---------------------|-------------|-------------|
| 1. | Tatum Shipes | 2021 | 1.63 |
| 2. | Anna Stevenson | 2018 | 1.15 |
| 3. | Camila Jersonsky | 2012 | 1.09 |
| 4. | Camila Jersonsky | 2013 | 1.01 |
| 5. | Chloe Rowand | 2011 | 0.97 |
| 6. | Elif Yavuz | 2021 | 0.92 |
| 7. | Breanna Barksdale | 2014 | 0.91 |
| 8. | Stephanie Campbell | 2015 | 0.90 |
| 9. | Camila Jersonsky | 2011 | 0.89 |
| 10. | Rebekah Rath | 2021 | 0.88 |
| | Lauren Mellor | 2009 | 0.88 |
| 12. | Breanna Barksdale | 2016 | 0.84 |
| 13. | Shaina White | 2019 | 0.82 |
| | Courtney McDonald | 2012 | 0.82 |
| | Lauren Mellor | 2010 | 0.82 |

Active student-athletes are listed in **BOLD**.

AUBURN VOLLEYBALL CAREER RECORDS (SIDEOUT + RALLY ERA)

OFFENSIVE RECORDS

KILLS

| | PLAYER | YEARS | KILLS |
|-----|-------------------|---------|-------|
| 1. | Jaunelle Hamilton | 1997-00 | 1,848 |
| 2. | Allyson Beecroft | 1993-96 | 1,727 |
| 3. | Brooke McCarley | 1997-00 | 1,704 |
| 4. | Gina Thomas | 1988-92 | 1,467 |
| 5. | Rachel Shanks | 2004-07 | 1,319 |
| 6. | Brenna McIlroy | 2015-18 | 1,288 |
| 7. | Sarah Bullock | 2009-12 | 1,272 |
| 8. | Bridgitte Sims | 1989-91 | 1,149 |
| 9. | Jessica Glover | 2005-08 | 1,137 |
| 10. | Rani Whitson | 1993-96 | 1,102 |

KILLS PER SET (MIN. 500 KILLS)

| | PLAYER | YEARS | AVG. |
|-----|-------------------|---------|------|
| 1. | Brooke McCarley | 1997-00 | 4.40 |
| 2. | Jaunelle Hamilton | 1997-00 | 4.23 |
| 3. | Allyson Beecroft | 1993-96 | 4.00 |
| 4. | Ashlee Johns | 2003-04 | 3.82 |
| 5. | Terri Duckworth | 1987-88 | 3.63 |
| 6. | Jennifer Amobi | 2003-05 | 3.57 |
| 7. | Rachel Shanks | 2004-07 | 3.43 |
| 8. | Bridgitte Sims | 1989-91 | 3.40 |
| 9. | Jessica Glover | 2005-08 | 3.17 |
| 10. | Sarah Bullock | 2009-12 | 2.93 |
| | Brenna McIlroy | 2015-18 | 2.93 |

ATTACK PERCENTAGE (MIN. 1,000 ATT.)

| | PLAYER | YEARS | K | E | ATT. PCT. |
|-----|--------------------|---------|-------|-----|------------|
| 1. | Camila Jersonsky | 2010-13 | 894 | 237 | 1.853 .355 |
| 2. | Jaunelle Hamilton | 1997-00 | 1,848 | 532 | 3.827 .344 |
| 3. | Brooke McCarley | 1997-00 | 1,704 | 455 | 3.847 .325 |
| 4. | Terri Duckworth | 1987-99 | 876 | 291 | 1.860 .315 |
| 5. | Shaina White | 2017-19 | 512 | 121 | 1.267 .309 |
| 6. | Rani Whitson | 1993-96 | 1,102 | 383 | 2.562 .281 |
| 7. | Julie Bosley | 2003-06 | 558 | 178 | 1.359 .280 |
| 8. | Gina Thomas | 1988-92 | 1,467 | 540 | 3.319 .279 |
| 9. | Stephanie Campbell | 2013-16 | 673 | 205 | 1.669 .276 |
| 10. | Whitney Jacob | 2004-07 | 1,093 | 428 | 2.522 .264 |

ATTACKS

| | PLAYER | YEARS | ATTACKS |
|-----|-------------------|---------|---------|
| 1. | Allyson Beecroft | 1993-96 | 4,349 |
| 2. | Brenna McIlroy | 2015-18 | 4,027 |
| 3. | Brooke McCarley | 1997-00 | 3,847 |
| 4. | Jaunelle Hamilton | 1997-00 | 3,827 |
| 5. | Sarah Bullock | 2009-12 | 3,774 |
| 6. | Rachel Shanks | 2004-07 | 3,703 |
| 7. | Gina Thomas | 1988-92 | 3,319 |
| 8. | Katherine Culwell | 2009-13 | 3,130 |
| | Jessica Glover | 2005-08 | 3,130 |
| 10. | Jenifer Kleyn | 1988-91 | 3,107 |

ASSISTS

| | PLAYER | YEARS | ASSISTS |
|----|--------------------|---------|---------|
| 1. | Piper Craig | 1995-98 | 5,053 |
| 2. | Alexa Filley | 2014-17 | 4,721 |
| 3. | Janel Newkirk | 1989-92 | 4,071 |
| 4. | Mary Orndorff | 1986-89 | 3,242 |
| 5. | Chelsea Wintzinger | 2010-13 | 2,654 |

| | | | |
|----|---------------|---------|-------|
| 6. | Tama English | 1991-94 | 2,535 |
| 7. | Joanna Pappas | 2005-06 | 2,073 |

ASSISTS PER SET (MIN. 500 ASSISTS)

| | PLAYER | YEARS | AVG. |
|----|-----------------------|-----------------|-------------|
| 1. | Piper Craig | 1995-98 | 12.86 |
| 2. | Traci Price | 1999-00 | 11.77 |
| 3. | Maira Mogallon | 2003-04 | 11.38 |
| 4. | Chris Murphy | 1993-96 | 11.35 |
| 5. | Joanna Pappas | 2005-06 | 11.15 |
| 6. | Alexa Filley | 2014-17 | 10.24 |
| 7. | Mica Allison | 2018 | 10.05 |
| 8. | Jackie Barrett | 2020-Pr. | 8.32 |
| 9. | Morgan Kull | 2017-19 | 5.26 |

ACES

| | PLAYER | YEARS | ACES |
|-----|-------------------|---------|------|
| 1. | Jenifer Kleyn | 1988-91 | 338 |
| 2. | Lori Russell | 1989-92 | 201 |
| 3. | Gretchen Thompson | 1986-89 | 164 |
| 4. | Tory Gutierrez | 1989-92 | 160 |
| 5. | Terri Duckworth | 1987-88 | 158 |
| 6. | Jaunelle Hamilton | 1997-00 | 148 |
| 7. | Allyson Beecroft | 1993-96 | 138 |
| 8. | Brenna McIlroy | 2015-18 | 137 |
| 9. | Whitney Jacob | 2004-07 | 134 |
| 10. | Janel Newkirk | 1989-92 | 129 |

ACES PER SET (MIN. 40 ACES)

| | PLAYER | YEARS | AVG. |
|-----|-------------------|---------|------|
| 1. | Jenifer Kleyn | 1988-91 | 0.71 |
| 2. | Terri Duckworth | 1987-88 | 0.66 |
| 3. | Lori Russell | 1989-92 | 0.46 |
| 4. | Jenny Fisler | 1987-88 | 0.40 |
| 5. | Bridgitte Sims | 1989-91 | 0.37 |
| | Jesse Earl | 2015-17 | 0.37 |
| 7. | Gretchen Thompson | 1986-89 | 0.36 |
| 8. | Maira Mogallon | 2003-04 | 0.35 |
| | Tory Gutierrez | 1989-92 | 0.35 |
| 10. | Jaunelle Hamilton | 1997-00 | 0.34 |

DEFENSIVE RECORDS

DIGS

| | PLAYER | YEARS | DIGS |
|-----|------------------------|-----------------|--------------|
| 1. | Liz Crouch | 2007-10 | 1,703 |
| 2. | Jesse Earl | 2015-17 | 1,657 |
| 3. | Gretchen Thompson | 1986-89 | 1,495 |
| 4. | Alexa Filley | 2014-17 | 1,315 |
| 5. | Allyson Beecroft | 1993-96 | 1,249 |
| 6. | Sarah Wroblecky | 2010-13 | 1,238 |
| 7. | Sarah Bullock | 2009-12 | 1,210 |
| 8. | Rachel Shanks | 2004-07 | 1,185 |
| 9. | Bella Rosenthal | 2018-Pr. | 1,114 |
| 10. | Brenna McIlroy | 2015-18 | 1,078 |

DIGS PER SET (MIN. 500 DIGS)

| | PLAYER | YEARS | AVG. |
|----|------------------------|-----------------|-------------|
| 1. | Jesse Earl | 2015-17 | 4.79 |
| 2. | Liz Crouch | 2007-10 | 4.00 |
| 3. | Sarah Wroblecky | 2010-13 | 3.65 |
| 4. | Bella Rosenthal | 2018-Pr. | 3.64 |

| | | | |
|----|-------------------|---------|------|
| 5. | Gretchen Thompson | 1986-89 | 3.26 |
| 6. | Rachel Shanks | 2004-07 | 3.08 |
| 7. | Allyson Beecroft | 1993-96 | 2.89 |
| 8. | Alexa Filley | 2014-17 | 2.85 |
| 9. | Bailey Veit | 2002-05 | 2.80 |
| | Emily Suter | 1995-98 | 2.80 |

BLOCKS - SOLO

| | PLAYER | YEARS | BLOCKS |
|-----|-------------------|---------|--------|
| 1. | Gina Thomas | 1988-92 | 159 |
| 2. | Tory Gutierrez | 1989-92 | 157 |
| 3. | Jaunelle Hamilton | 1997-00 | 106 |
| 4. | Julie Bosler | 2003-06 | 98 |
| 5. | Rani Whitson | 1993-96 | 61 |
| 6. | Katherine Culwell | 2009-13 | 59 |
| 7. | Mary Olks | 1986-89 | 58 |
| 8. | Whitney Jacob | 2004-07 | 56 |
| 9. | Sarah Bullock | 2009-12 | 54 |
| 10. | Camila Jersonsky | 2010-13 | 51 |

BLOCKS - ASSISTS

| | PLAYER | YEARS | BLOCKS |
|-----|-------------------|---------|--------|
| 1. | Jaunelle Hamilton | 1997-00 | 465 |
| 2. | Rani Whitson | 1993-96 | 426 |
| 3. | Gina Thomas | 1988-92 | 360 |
| 4. | Whitney Jacob | 2004-07 | 351 |
| 5. | Tory Gutierrez | 1989-92 | 318 |
| 6. | Camila Jersonsky | 2010-13 | 317 |
| 7. | Julie Bosley | 2003-06 | 265 |
| 8. | La'Toi Finley | 1994-97 | 261 |
| | Krista Singleton | 1994-97 | 261 |
| 10. | Breanna Barksdale | 2014-16 | 252 |

TOTAL BLOCKS

| | PLAYER | YEARS | BLOCKS |
|-----|-------------------|---------|--------|
| 1. | Jaunelle Hamilton | 1997-00 | 571 |
| 2. | Gina Thomas | 1988-92 | 519 |
| 3. | Rani Whitson | 1993-96 | 487 |
| 4. | Tory Gutierrez | 1989-92 | 475 |
| 5. | Whitney Jacob | 2004-07 | 407 |
| 6. | Camila Jersonsky | 2010-13 | 368 |
| 7. | Julie Bosler | 2003-06 | 363 |
| 8. | Breanna Barksdale | 2014-16 | 292 |
| 9. | La'Toi Finley | 1994-97 | 289 |
| 10. | Krista Singleton | 1994-97 | 276 |

BLOCKS PER SET (MIN. 100 BLOCKS)

| | PLAYER | YEARS | AVG. |
|-----|-------------------|------------|------|
| 1. | Jaunelle Hamilton | 1997-00 | 1.31 |
| 2. | Rani Whitson | 1993-96 | 1.16 |
| 3. | Julie Bosler | 2003-06 | 1.06 |
| 4. | Tory Gutierrez | 1989-92 | 1.03 |
| 5. | Gina Thomas | 1988-92 | 0.98 |
| 6. | Whitney Jacob | 2004-07 | 0.96 |
| 7. | Camila Jersonsky | 2009-13 | 0.92 |
| 8. | Anna Stevenson | 2017-18 | 0.90 |
| | Heather Franey | 1995-96,98 | 0.90 |
| 10. | La'Toi Finley | 1994-97 | 0.88 |

Active student-athletes are listed in **BOLD**.



#4 FALLAN LANHAM

DEFENSIVE SPECIALIST/LIBERO | 5-8 | FRESHMAN
LOUISVILLE, KY. (MERCY ACADEMY)

LANHAM'S HIGHLIGHTS:

- Recorded double-digit digs in six matches this season
- Earned first collegiate start in Auburn's season opener versus Tennessee Tech on August 27
- Tallied her first collegiate kill and set career highs in assists (2) and digs (14) versus Santa Clara (9/12)
- Match her career high in digs (14) versus Nicholls (9/17)
- Returned to the service line at No. 20 Tennessee (9/29), recording her first collegiate ace
- Turned in her best offensive performance of the season versus Missouri (10/17) with a career high two kills and a service ace to tally 3.0 points
- Delivered a season high two aces in series opener at Georgia (10/21) before being credited with her first collegiate block in the finale against the Bulldogs (10/22)

| CATEGORY | CAREER HIGH | OPPONENT/DATE |
|-----------------------------------|-------------|-------------------------------|
| Kills | 2 | vs. Missouri (9/12/21) |
| Attempts | 8 | at Arkansas (10/9/21) |
| Hitting Percentage (Min. 10 ATT.) | | |
| Assists | 2 | vs. Santa Clara (9/12/21) |
| Digs | 14 (2x) | last, vs. Nicholls (9/17/21) |
| Blocks | 1 | at Georgia (10/22/21) |
| Aces | 2 | at Georgia (10/21/21) |
| Points | 3.0 | last, vs. Missouri (10/17/21) |

| CATEGORY | SEASON HIGH | OPPONENT/DATE |
|-----------------------------------|-------------|-------------------------------|
| Kills | 2 | vs. Missouri (9/12/21) |
| Attempts | 8 | at Arkansas (10/9/21) |
| Hitting Percentage (Min. 10 ATT.) | | |
| Assists | 2 | vs. Santa Clara (9/12/21) |
| Digs | 14 (2x) | last, vs. Nicholls (9/17/21) |
| Blocks | 1 | at Georgia (10/22/21) |
| Aces | 2 | at Georgia (10/21/21) |
| Points | 3.0 | last, vs. Missouri (10/17/21) |

| DATE | OPPONENT | SP | ATTACK | | | | SET | | | SERVE | | | | RECEIPT | | | BLOCKING | | | | BHE | TEAM POINTS | HIT% | SCORE | |
|---------------|---------------------|-----------|----------|----------|-----------|--------------|----------|-----------|-------------|----------|----------|------------|-------------|-----------|------------|-------------|------------|----------|----------|----------|------------|-------------|------------|-------------|-------|
| | | | K | E | TA | PCT. | A | TA | PCT. | SA | SE | TA | PCT. | RE | TA | PCT. | DIG | BS | BA | BE | | | | | TOTAL |
| August 27 | TENNESSEE TECH | 3 | 0 | 0 | 3 | .000 | 0 | 2 | .000 | 0 | 1 | 5 | .800 | 0 | 9 | 1.000 | 4 | 0 | 0 | 0 | 0.0 | 0 | 0.0 | .292 | 3-0 |
| August 28 | JACKSON STATE | 3 | 0 | 0 | 0 | .000 | 0 | 1 | .000 | 0 | 0 | 0 | .000 | 1 | 10 | .900 | 4 | 0 | 0 | 0 | 0.0 | 0 | 0.0 | .457 | 3-0 |
| September 2 | CAL STATE FULLERTON | 3 | 0 | 0 | 2 | .000 | 0 | 3 | .000 | 0 | 0 | 0 | .000 | 0 | 7 | 1.000 | 5 | 0 | 0 | 0 | 0.0 | 0 | 0.0 | .221 | 3-0 |
| September 3 | SOUTHEASTERN LA. | 3 | 0 | 0 | 1 | .000 | 1 | 1 | 1.000 | 0 | 0 | 0 | .000 | 0 | 7 | 1.000 | 10 | 0 | 0 | 0 | 0.0 | 0 | 0.0 | .300 | 3-0 |
| September 9 | NORTH ALABAMA | 3 | 0 | 1 | 2 | -.500 | 0 | 0 | .000 | 0 | 0 | 0 | .000 | 1 | 13 | .923 | 3 | 0 | 0 | 0 | 0.0 | 0 | 0.0 | .265 | 3-0 |
| September 12 | SANTA CLARA | 5 | 1 | 0 | 6 | .167 | 2 | 7 | .286 | 0 | 0 | 0 | .000 | 1 | 20 | .950 | 14 | 0 | 0 | 0 | 0.0 | 0 | 1.0 | .260 | 3-2 |
| September 17 | FLORIDA A&M | 5 | 0 | 1 | 5 | -.200 | 1 | 4 | .250 | 0 | 0 | 0 | .000 | 1 | 31 | .968 | 10 | 0 | 0 | 0 | 0.0 | 0 | 0.0 | .245 | 2-3 |
| September 17 | NICHOLLS | 4 | 0 | 0 | 6 | .000 | 0 | 3 | .000 | 0 | 0 | 0 | .000 | 1 | 11 | .909 | 10 | 0 | 0 | 0 | 0.0 | 0 | 0.0 | .183 | 3-1 |
| September 18 | BELMONT | 3 | 0 | 1 | 1 | -1.000 | 1 | 1 | 1.000 | 0 | 0 | 0 | .000 | 0 | 4 | 1.000 | 4 | 0 | 0 | 0 | 0.0 | 0 | 0.0 | .345 | 3-0 |
| September 22 | OLE MISS | 4 | 1 | 1 | 3 | .000 | 0 | 3 | .000 | 0 | 0 | 0 | .000 | 0 | 14 | 1.000 | 9 | 0 | 0 | 0 | 0.0 | 0 | 1.0 | .196 | 1-3 |
| September 26 | at Alabama State | 5 | 1 | 0 | 6 | .167 | 1 | 9 | .111 | 0 | 0 | 0 | .000 | 1 | 16 | .938 | 3 | 0 | 0 | 0 | 0.0 | 0 | 1.0 | .209 | 2-3 |
| September 29 | at Tennessee | 3 | 0 | 1 | 2 | -.500 | 0 | 2 | .000 | 1 | 0 | 10 | 1.000 | 0 | 20 | 1.000 | 5 | 0 | 0 | 0 | 0.0 | 0 | 1.0 | .076 | 0-3 |
| October 2 | ALABAMA | 5 | 0 | 0 | 2 | .000 | 0 | 0 | .000 | 0 | 2 | 14 | .857 | 0 | 15 | 1.000 | 6 | 0 | 0 | 0 | 0.0 | 0 | 0.0 | .183 | 3-2 |
| October 3 | ALABAMA | 3 | 0 | 0 | 6 | .000 | 1 | 3 | .333 | 0 | 0 | 14 | 1.000 | 0 | 16 | 1.000 | 10 | 0 | 0 | 0 | 0.0 | 0 | 0.0 | .248 | 3-0 |
| October 9 | at Arkansas | 4 | 0 | 1 | 8 | -.125 | 0 | 3 | .000 | 0 | 0 | 16 | 1.000 | 1 | 13 | .923 | 7 | 0 | 0 | 0 | 0.0 | 0 | 0.0 | .158 | 1-3 |
| October 10 | at Arkansas | 5 | 0 | 2 | 7 | -.286 | 0 | 3 | .000 | 0 | 0 | 14 | 1.000 | 2 | 21 | .905 | 10 | 0 | 0 | 0 | 0.0 | 0 | 0.0 | .144 | 2-3 |
| October 16 | MISSOURI | 3 | 0 | 0 | 1 | .000 | 1 | 3 | .333 | 0 | 0 | 18 | 1.000 | 0 | 10 | 1.000 | 6 | 0 | 0 | 0 | 0.0 | 0 | 0.0 | .232 | 3-0 |
| October 17 | MISSOURI | 5 | 2 | 0 | 7 | .286 | 0 | 4 | .000 | 1 | 1 | 18 | .944 | 0 | 17 | 1.000 | 9 | 0 | 0 | 0 | 0.0 | 0 | 3.0 | .235 | 2-3 |
| October 21 | at Georgia | 3 | 0 | 0 | 1 | .000 | 0 | 2 | .000 | 2 | 2 | 12 | .833 | 1 | 6 | .833 | 2 | 0 | 0 | 0 | 0.0 | 0 | 2.0 | .241 | 3-0 |
| October 22 | at Georgia | 3 | 0 | 0 | 0 | .000 | 0 | 1 | .000 | 0 | 2 | 11 | .818 | 1 | 14 | .929 | 4 | 0 | 1 | 0 | 1.0 | 0 | 0.5 | .183 | 0-3 |
| TOTALS | | 75 | 5 | 8 | 69 | -.043 | 8 | 55 | .145 | 4 | 8 | 132 | .939 | 11 | 274 | .960 | 139 | 0 | 1 | 0 | 1.0 | 0 | 9.5 | .224 | |

SETS PLAYED: 75
 KILLS PER SET: 0.07
 ASSISTS PER SET: 0.11

SERVICE ACES PER SET: 0.05
 DIGS PER SET: 1.85

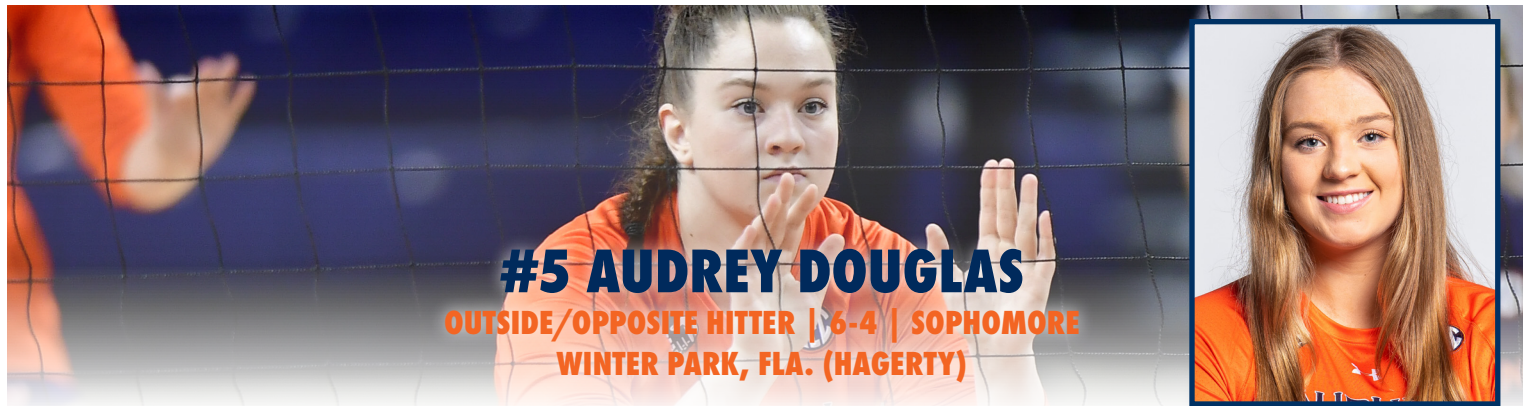
POINTS PER SET: 0.13

LANHAM'S OVERALL CAREER STATISTICS

| YEAR | SETS | MP | KILLS | K/S | E | TA | PCT. | AST | A/S | SA | SA/S | SE | DIGS | D/S | RE | BS | BA | TB | B/S | PTS | PT/S |
|--------------|-----------|-----------|----------|-------------|----------|-----------|--------------|----------|------------|----------|------------|----------|------------|-------------|-----------|----------|----------|----------|------------|------------|-------------|
| 2021 | 75 | 20 | 5 | 0.07 | 8 | 69 | -.043 | 8 | .11 | 4 | .05 | 8 | 139 | 1.85 | 11 | 0 | 1 | 1 | .01 | 9.5 | 0.13 |
| TOTAL | 75 | 20 | 5 | 0.07 | 8 | 69 | -.043 | 8 | .11 | 4 | .05 | 8 | 139 | 1.85 | 11 | 0 | 1 | 1 | .01 | 9.5 | 0.13 |

LANHAM'S SEC CAREER STATISTICS

| YEAR | SETS | MP | KILLS | K/S | E | TA | PCT. | AST | A/S | SA | SA/S | SE | DIGS | D/S | RE | BS | BA | TB | B/S | PTS | PT/S |
|--------------|-----------|-----------|----------|-------------|----------|-----------|--------------|----------|------------|----------|------------|----------|-----------|-------------|----------|----------|----------|----------|------------|------------|-------------|
| 2021 | 38 | 10 | 3 | 0.08 | 5 | 37 | -.054 | 2 | .05 | 4 | .11 | 7 | 68 | 1.79 | 5 | 0 | 1 | 1 | .03 | 7.5 | 0.18 |
| TOTAL | 38 | 10 | 3 | 0.08 | 5 | 37 | -.054 | 2 | .05 | 4 | .11 | 7 | 68 | 1.79 | 5 | 0 | 1 | 1 | .03 | 7.5 | 0.18 |



#5 AUDREY DOUGLAS

OUTSIDE/OPPOSITE HITTER | 6-4 | SOPHOMORE
WINTER PARK, FLA. (HAGERTY)

DOUGLAS'S HIGHLIGHTS:

- Did not see action over the first three weeks of play due to a concussion
- Made her season debut versus Florida A&M (9/17), racking up four kills and adding a career high 4.0 blocks

| CATEGORY | CAREER HIGH | OPPONENT/DATE |
|-----------------------------------|-------------|--------------------------------|
| Kills | 6 | at #2 Kentucky (11/8/20) |
| Attempts | 16 | vs. #4 Florida (10/21/20) |
| Hitting Percentage (Min. 10 ATT.) | .545 | at #2 Kentucky (11/8/20) |
| Assists | 1 | vs. #4 Florida (10/22/20) |
| Digs | 1 (2x) | last, at #2 Kentucky (11/7/20) |
| Blocks | 4.0 | vs. Florida A&M (9/17/21) |
| Aces | | |
| Points | 6.5 | at #2 Kentucky (11/8/20) |

| CATEGORY | SEASON HIGH | OPPONENT/DATE |
|-----------------------------------|-------------|---------------------------|
| Kills | 4 | vs. Florida A&M (9/17/21) |
| Attempts | 12 | vs. Florida A&M (9/17/21) |
| Hitting Percentage (Min. 10 ATT.) | .083 | vs. Florida A&M (9/17/21) |
| Assists | | |
| Digs | | |
| Blocks | 4.0 | vs. Florida A&M (9/17/21) |
| Aces | | |
| Points | 6.0 | vs. Florida A&M (9/17/21) |

| DATE | OPPONENT | SP | ATTACK | | | | SET | | | SERVE | | | | RECEIPT | | | BLOCKING | | | | BHE | POINTS | TEAM | | |
|---------------|------------------|----------|----------|----------|-----------|-------------|----------|----------|-------------|----------|----------|----------|-------------|----------|----------|-------------|----------|----------|----------|----------|------------|----------|------------|-------------|-------|
| | | | K | E | TA | PCT | A | TA | PCT. | SA | SE | TA | PCT. | RE | TA | PCT. | DIG | BS | BA | BE | | | TOTAL | HIT% | SCORE |
| September 17 | FLORIDA A&M | 4 | 4 | 3 | 12 | .083 | 0 | 1 | .000 | 0 | 0 | 0 | .000 | 0 | 0 | .000 | 0 | 0 | 4 | 0 | 4.0 | 0 | 6.0 | .245 | 2-3 |
| September 26 | at Alabama State | 1 | 0 | 0 | 0 | .000 | 0 | 0 | .000 | 0 | 0 | 0 | .000 | 0 | 0 | .000 | 0 | 0 | 0 | 0 | 0.0 | 0 | 0.0 | .209 | 2-3 |
| TOTALS | | 5 | 4 | 3 | 12 | .083 | 0 | 1 | .000 | 0 | 0 | 0 | .000 | 0 | 0 | .000 | 0 | 0 | 4 | 0 | 4.0 | 0 | 6.0 | .224 | |

DOUGLAS' OVERALL CAREER STATISTICS

| YEAR | SETS | MP | KILLS | K/S | E | TA | PCT. | AST | A/S | SA | SA/S | SE | DIGS | D/S | RE | BS | BA | TB | B/S | PTS | PT/S |
|--------------|-----------|----------|-----------|-------------|-----------|-----------|-------------|----------|------------|----------|------------|----------|----------|------------|----------|----------|-----------|-------------|-------------|-------------|-------------|
| 2021 | 5 | 1 | 4 | 0.80 | 3 | 12 | .083 | 0 | .00 | 0 | .00 | 0 | 0 | .00 | 0 | 0 | 4 | 4.0 | 0.80 | 6.0 | 1.20 |
| 2020 | 20 | 7 | 20 | 1.00 | 8 | 69 | .174 | 1 | .05 | 0 | .00 | 0 | 2 | .10 | 0 | 0 | 11 | 11.0 | 0.55 | 25.5 | 1.28 |
| TOTAL | 25 | 8 | 24 | 0.96 | 11 | 81 | .160 | 1 | .04 | 0 | .00 | 0 | 2 | .08 | 0 | 0 | 15 | 15.0 | 0.60 | 31.5 | 1.26 |

DOUGLAS' SEC CAREER STATISTICS

| YEAR | SETS | MP | KILLS | K/S | E | TA | PCT. | AST | A/S | SA | SA/S | SE | DIGS | D/S | RE | BS | BA | TB | B/S | PTS | PT/S |
|--------------|-----------|----------|-----------|-------------|----------|-----------|-------------|----------|------------|----------|------------|----------|----------|------------|----------|----------|-----------|-------------|------------|-------------|-------------|
| 2021 | 0 | 0 | 0 | 0.0 | 0 | 0 | .000 | 0 | .00 | 0 | .00 | 0 | 0 | .00 | 0 | 0 | 0 | 0.0 | .00 | 0.0 | 0.00 |
| 2020 | 20 | 7 | 20 | 1.00 | 8 | 69 | .174 | 1 | .05 | 0 | .00 | 0 | 2 | .10 | 0 | 0 | 11 | 11.0 | .55 | 25.5 | 1.28 |
| TOTAL | 20 | 7 | 20 | 1.00 | 8 | 69 | .174 | 1 | .05 | 0 | .00 | 0 | 2 | .10 | 0 | 0 | 11 | 11.0 | .55 | 25.5 | 1.28 |



ROSENTHALL'S HIGHLIGHTS:

- Named SEC Defensive Player of the Week twice (9/13 and 9/20) to become the first player in program history to win the award in back-to-back weeks
- First Tiger to win the award multiple times in a single season since Camila Jersonsky in 2012
- War Eagle Invitational and Auburn Invitational All-Tournament Team selection
- Leads the SEC and ranks 10th nationally with a 5.31 digs per set average
- Ranks second in the league and 23rd in the country with 398 total digs
- Ranks 110th among all active NCAA Division I athletes in career digs (1,114)
- Enters the weekend with the highest single-season digs per set average recorded by a Tiger in the rally scoring era, while her 398 total digs ranks ninth in single-season history
- Moved into ninth place in Auburn history in career total digs (1,114), while her career digs per set average of 3.64 is good for fourth overall
- Totaled 50 career double-digit dig performances, including 17 matches with 20+ dig
- Totaled 25 digs versus North Alabama (9/9) to become the first player to record 25+ digs in a match since she totaled 26 versus Georgia on Oct. 20, 2019
- Totaled 31 digs versus Nicholls (9/17) to become the first Tiger to record at least 30 digs in a match since Payton White versus Butler on Aug. 31, 2019
- Behind her 30 digs at Arkansas (10/9), became just the 15th Tiger in program history to record 1,000 career digs and is the first Tiger to hit the mark since Brenna McIlroy in 2018
- Shattered career high with 33 digs versus Missouri (10/17), the sixth most digs ever recorded by a Tiger in a single match

| CATEGORY | CAREER HIGH | OPPONENT/DATE |
|-----------------------------------|-------------|-------------------------------------|
| Kills | 1 (5x) | last, at Arkansas (10/10/21) |
| Attempts | 8 | at Alabama State (9/26/21) |
| Hitting Percentage (Min. 10 ATT.) | | |
| Assists | 10 | vs. #4 Florida (10/22/20) |
| Digs | 33 | vs. Missouri (10/17/21) |
| Blocks | 1.0 | vs. #4 Florida (10/22/20) |
| Aces | 3 (2x) | last, vs. Tennessee State (8/30/19) |
| Points | 3.0 (2x) | last, vs. Tennessee State (8/30/19) |

| CATEGORY | SEASON HIGH | OPPONENT/DATE |
|-----------------------------------|-------------|------------------------------|
| Kills | 1 | at Arkansas (10/10/21) |
| Attempts | 8 | at Alabama State (9/26/21) |
| Hitting Percentage (Min. 10 ATT.) | | |
| Assists | 9 | vs. Florida A&M (9/17/21) |
| Digs | 33 | vs. Missouri (10/17/21) |
| Blocks | | |
| Aces | 2 | vs. Belmont (9/18/21) |
| Points | 2.0 (2x) | last, at Arkansas (10/10/21) |

| DATE | OPPONENT | SP | ATTACK | | | SET | | | SERVE | | | RECEIPT | | | BLOCKING | | | | BHE | POINTS | TEAM HIT% | SCORE | | | |
|---------------|---------------------|-----------|----------|----------|-----------|-------------|-----------|------------|-------------|----------|-----------|------------|-------------|-----------|------------|-------------|------------|----------|----------|----------|------------|----------|-------------|-------------|-------|
| | | | K | E | TA | PCT. | A | TA | PCT. | SA | SE | TA | PCT. | RE | TA | PCT. | DIG | BS | | | | | BA | BE | TOTAL |
| August 27 | TENNESSEE TECH | 3 | 0 | 0 | 0 | .000 | 4 | 14 | .286 | 0 | 0 | 22 | 1.000 | 0 | 5 | 1.000 | 17 | 0 | 0 | 0 | 0.0 | 0 | 0.0 | .292 | 3-0 |
| August 28 | JACKSON STATE | 3 | 0 | 0 | 0 | .000 | 6 | 12 | .500 | 1 | 1 | 14 | .929 | 0 | 6 | 1.000 | 14 | 0 | 0 | 0 | 0.0 | 0 | 1.0 | .457 | 3-0 |
| September 2 | CAL STATE FULLERTON | 3 | 0 | 0 | 0 | .000 | 5 | 14 | .357 | 0 | 0 | 11 | 1.000 | 0 | 12 | 1.000 | 17 | 0 | 0 | 0 | 0.0 | 0 | 0.0 | .221 | 3-0 |
| September 3 | SOUTHEASTERN LA. | 3 | 0 | 0 | 0 | .000 | 2 | 12 | .250 | 0 | 2 | 14 | .857 | 1 | 16 | .938 | 16 | 0 | 0 | 0 | 0.0 | 0 | 0.0 | .300 | 3-0 |
| September 9 | NORTH ALABAMA | 3 | 0 | 0 | 0 | .000 | 0 | 11 | .000 | 0 | 1 | 11 | .909 | 0 | 10 | 1.000 | 25 | 0 | 0 | 0 | 0.0 | 0 | 0.0 | .265 | 3-0 |
| September 12 | SANTA CLARA | 5 | 0 | 0 | 1 | .000 | 8 | 24 | .333 | 0 | 1 | 22 | .955 | 3 | 21 | .857 | 20 | 0 | 0 | 0 | 0.0 | 0 | 0.0 | .260 | 3-2 |
| September 17 | FLORIDA A&M | 5 | 0 | 0 | 1 | .000 | 9 | 24 | .375 | 1 | 1 | 20 | .950 | 1 | 22 | .955 | 20 | 0 | 0 | 0 | 0.0 | 0 | 0.0 | .245 | 2-3 |
| September 17 | NICHOLLS | 4 | 0 | 0 | 0 | .000 | 2 | 28 | .071 | 1 | 1 | 25 | .960 | 0 | 19 | 1.000 | 31 | 0 | 0 | 0 | 0.0 | 0 | 1.0 | .183 | 3-1 |
| September 18 | BELMONT | 3 | 0 | 0 | 0 | .000 | 8 | 20 | .400 | 2 | 0 | 17 | 1.000 | 0 | 5 | 1.000 | 19 | 0 | 0 | 0 | 0.0 | 0 | 2.0 | .345 | 3-0 |
| September 22 | OLE MISS | 4 | 0 | 0 | 0 | .000 | 8 | 25 | .320 | 1 | 0 | 17 | 1.000 | 2 | 32 | .938 | 13 | 0 | 0 | 0 | 0.0 | 0 | 1.0 | .196 | 1-3 |
| September 26 | at Alabama State | 5 | 0 | 0 | 8 | .000 | 3 | 17 | .176 | 1 | 2 | 21 | .905 | 2 | 32 | .938 | 27 | 0 | 0 | 0 | 0.0 | 0 | 1.0 | .209 | 2-3 |
| September 29 | at Tennessee | 3 | 0 | 0 | 0 | .000 | 4 | 22 | .182 | 0 | 2 | 12 | .833 | 2 | 23 | .913 | 6 | 0 | 0 | 0 | 0.0 | 0 | 0.0 | .076 | 0-3 |
| October 2 | ALABAMA | 5 | 0 | 0 | 0 | .000 | 4 | 32 | .125 | 0 | 0 | 20 | 1.000 | 0 | 16 | 1.000 | 24 | 0 | 0 | 0 | 0.0 | 0 | 0.0 | .183 | 3-2 |
| October 3 | ALABAMA | 3 | 0 | 0 | 0 | .000 | 2 | 19 | .105 | 0 | 1 | 11 | .909 | 0 | 11 | 1.000 | 21 | 0 | 0 | 0 | 0.0 | 0 | 0.0 | .248 | 3-0 |
| October 9 | at Arkansas | 4 | 0 | 0 | 0 | .000 | 5 | 17 | .294 | 0 | 1 | 16 | .938 | 0 | 34 | 1.000 | 30 | 0 | 0 | 0 | 0.0 | 0 | 0.0 | .158 | 1-3 |
| October 10 | at Arkansas | 5 | 1 | 0 | 1 | 1.000 | 6 | 22 | .273 | 1 | 2 | 17 | .882 | 2 | 21 | .905 | 20 | 0 | 0 | 0 | 0.0 | 0 | 2.0 | .144 | 2-3 |
| October 16 | MISSOURI | 3 | 0 | 0 | 0 | .000 | 5 | 10 | .500 | 1 | 0 | 11 | 1.000 | 0 | 13 | 1.000 | 19 | 0 | 0 | 0 | 0.0 | 0 | 1.0 | .232 | 3-0 |
| October 17 | MISSOURI | 5 | 0 | 0 | 0 | .000 | 8 | 22 | .364 | 0 | 1 | 21 | .952 | 0 | 21 | 1.000 | 33 | 0 | 0 | 0 | 0.0 | 0 | 0.0 | .235 | 2-3 |
| October 21 | at Georgia | 3 | 0 | 0 | 0 | .000 | 8 | 23 | .348 | 0 | 0 | 7 | 1.000 | 0 | 18 | 1.000 | 14 | 0 | 0 | 0 | 0.0 | 0 | 0.0 | .241 | 3-0 |
| October 22 | at Georgia | 3 | 0 | 0 | 1 | .000 | 1 | 15 | .067 | 0 | 0 | 6 | 1.000 | 0 | 18 | 1.000 | 12 | 0 | 0 | 0 | 0.0 | 0 | 0.0 | .183 | 0-3 |
| TOTALS | | 75 | 1 | 0 | 12 | .083 | 99 | 383 | .258 | 9 | 16 | 315 | .949 | 13 | 355 | .963 | 398 | 0 | 0 | 0 | 0.0 | 0 | 10.0 | .224 | |

SETS PLAYED: 75
KILLS PER SET: 0.01
ASSISTS PER SET: 1.32

SERVICE ACES PER SET: 0.12
DIGS PER SET: 5.31

POINTS PER SET: 0.13

ROSENTHALL'S OVERALL CAREER STATISTICS

| YEAR | SETS | MP | KILLS | K/S | E | TA | PCT. | AST | A/S | SA | SA/S | SE | DIGS | D/S | RE | BS | BA | TB | B/S | PTS | PT/S |
|--------------|------------|-----------|----------|------------|----------|-----------|-------------|------------|-------------|-----------|------------|-----------|-------------|-------------|-----------|----------|----------|----------|------------|-------------|------------|
| 2021 | 75 | 20 | 1 | .01 | 0 | 12 | .083 | 99 | 1.32 | 9 | .12 | 16 | 398 | 5.31 | 13 | 0 | 0 | 0 | .00 | 10.0 | .13 |
| 2020 | 25 | 8 | 1 | .04 | 0 | 3 | .333 | 20 | 0.80 | 2 | .08 | 9 | 70 | 2.80 | 5 | 0 | 1 | 1 | .04 | 3.5 | .14 |
| 2019 | 103 | 29 | 2 | .02 | 0 | 5 | .400 | 38 | 0.37 | 12 | .12 | 24 | 307 | 2.98 | 17 | 0 | 0 | 0 | .00 | 14.0 | .14 |
| 2018 | 103 | 28 | 1 | .01 | 0 | 6 | .167 | 65 | 0.63 | 16 | .16 | 23 | 339 | 3.29 | 26 | 0 | 0 | 0 | .00 | 17.0 | .17 |
| TOTAL | 300 | 83 | 5 | .02 | 0 | 25 | .200 | 213 | 0.71 | 39 | .13 | 72 | 1088 | 3.63 | 61 | 0 | 1 | 1 | .00 | 44.5 | .15 |

ROSENTHALL'S SEC CAREER STATISTICS

| YEAR | SETS | MP | KILLS | K/S | E | TA | PCT. | AST | A/S | SA | SA/S | SE | DIGS | D/S | RE | BS | BA | TB | B/S | PTS | PT/S |
|--------------|------------|-----------|----------|------------|----------|-----------|-------------|------------|-------------|-----------|------------|-----------|------------|-------------|-----------|----------|----------|----------|------------|-------------|------------|
| 2021 | 38 | 10 | 1 | .03 | 0 | 2 | .500 | 51 | 1.34 | 3 | .08 | 7 | 192 | 5.05 | 6 | 0 | 0 | 0 | .00 | 4.0 | .11 |
| 2020 | 25 | 8 | 1 | .04 | 0 | 3 | .333 | 20 | 0.80 | 2 | .08 | 9 | 70 | 2.80 | 5 | 0 | 1 | 1 | .04 | 3.5 | .12 |
| 2019 | 59 | 18 | 1 | .02 | 0 | 4 | .250 | 31 | 0.53 | 7 | .12 | 15 | 232 | 3.93 | 12 | 0 | 0 | 0 | .00 | 8.0 | .14 |
| 2018 | 67 | 18 | 1 | .01 | 0 | 5 | .200 | 39 | 0.58 | 11 | .16 | 12 | 192 | 2.87 | 19 | 0 | 0 | 0 | .00 | 12.0 | .18 |
| TOTAL | 189 | 54 | 4 | .02 | 0 | 14 | .286 | 141 | 0.75 | 23 | .12 | 43 | 686 | 3.63 | 42 | 0 | 1 | 1 | .01 | 27.5 | .14 |



RATH'S HIGHLIGHTS:

- Named SEC Offensive Player of the Week twice (9/7 and 10/11) to become the first Tiger in program history to win the award twice in the same season
- War Eagle Invitational and Auburn Invitational All-Tournament Team selection
- Leads the SEC in attacks per set (12.91), kills per set (4.47), points (390.0), points per set (5.20), total attacks (968) and total kills (335), while ranking in the top 25 in all six categories nationally
- Enters the weekend with the highest single-season kills per set average (4.47) in program history (rally scoring era), while ranking sixth in total kills, ninth in total attacks and 10th in blocks per set (0.88)
- Chipped in a season high 24 kills versus Santa Clara (9/12) to become first Tiger to record at least 20 kills in a match since Tatum Shipes versus Ole Miss on Oct. 26, 2018
- Set career highs in kills (29), attempts (75) and points (32.0) at Arkansas (10/9) in one of the best offensive performances by a Tiger in almost two decades
- Her 29 kills were the second most recorded in a match by a Tiger in the rally scoring era and the most in a single match since Ashlee Johns' single-match record of 30, which was totaled in a five-set contest at Arkansas on Oct. 8, 2004
- Her 29 kills are the most recorded in a four-set match by any SEC student-athlete this season

| CATEGORY | CAREER HIGH | OPPONENT/DATE |
|-----------------------------------|-------------|-------------------------------|
| Kills | 29 | at Arkansas (10/9/21) |
| Attempts | 75 | at Arkansas (10/9/21) |
| Hitting Percentage (Min. 10 ATT.) | .433 | vs. Jackson State (8/28/21) |
| Assists | 2 (3x) | last, vs. Missouri (10/17/21) |
| Digs | 13 | at Alabama State (9/26/21) |
| Blocks | 6.0 (2x) | last, vs. Alabama (10/2/21) |
| Aces | 2 (3x) | last, vs. Alabama (10/3/21) |
| Points | 32.0 | at Arkansas (10/9/21) |

| CATEGORY | SEASON HIGH | OPPONENT/DATE |
|-----------------------------------|-------------|-------------------------------|
| Kills | 29 | at Arkansas (10/9/21) |
| Attempts | 75 | at Arkansas (10/9/21) |
| Hitting Percentage (Min. 10 ATT.) | .433 | vs. Jackson State (8/28/21) |
| Assists | 2 (3x) | last, vs. Missouri (10/17/21) |
| Digs | 13 | at Alabama State (9/26/21) |
| Blocks | 6.0 (2x) | last, vs. Alabama (10/2/21) |
| Aces | 2 (3x) | last, vs. Alabama (10/3/21) |
| Points | 32.0 | at Arkansas (10/9/21) |

| DATE | OPPONENT | SP | ATTACK | | | | SET | | | SERVE | | | | RECEIPT | | | BLOCKING | | | | BHE | TEAM POINTS | HIT% | SCORE | |
|---------------|---------------------|-----------|------------|------------|------------|-------------|-----------|-----------|-------------|-----------|-----------|------------|-------------|-----------|------------|-------------|------------|-----------|-----------|----------|-------------|-------------|--------------|-------------|-------|
| | | | K | E | TA | PCT. | A | TA | PCT. | SA | SE | TA | PCT. | RE | TA | PCT. | DIG | BS | BA | BE | | | | | TOTAL |
| August 27 | TENNESSEE TECH | 3 | 13 | 3 | 31 | .323 | 0 | 1 | .000 | 1 | 2 | 10 | .800 | 2 | 8 | .750 | 3 | 0 | 4 | 0 | 4.0 | 0 | 16.0 | .292 | 3-0 |
| August 28 | JACKSON STATE | 3 | 16 | 3 | 30 | .433 | 0 | 0 | .000 | 2 | 2 | 9 | .778 | 0 | 5 | 1.000 | 3 | 1 | 4 | 0 | 5.0 | 0 | 21.0 | .457 | 3-0 |
| September 2 | CAL STATE FULLERTON | 3 | 16 | 5 | 42 | .262 | 0 | 1 | .000 | 1 | 2 | 9 | .778 | 0 | 24 | 1.000 | 10 | 0 | 0 | 0 | 0.0 | 0 | 17.0 | .221 | 3-0 |
| September 3 | SOUTHEASTERN LA | 3 | 16 | 5 | 40 | .275 | 0 | 1 | .000 | 1 | 2 | 7 | .714 | 1 | 14 | .929 | 7 | 0 | 4 | 0 | 4.0 | 0 | 19.0 | .300 | 3-0 |
| September 9 | NORTH ALABAMA | 3 | 7 | 7 | 28 | .000 | 0 | 1 | .000 | 1 | 1 | 14 | .929 | 2 | 11 | .818 | 8 | 0 | 0 | 0 | 0.0 | 0 | 8.0 | .265 | 3-0 |
| September 12 | SANTA CLARA | 5 | 24 | 4 | 59 | .339 | 1 | 3 | .333 | 1 | 4 | 14 | .714 | 2 | 14 | .857 | 10 | 1 | 2 | 1 | 3.0 | 0 | 27.0 | .260 | 3-2 |
| September 17 | FLORIDA A&M | 5 | 12 | 6 | 47 | .128 | 1 | 3 | .333 | 1 | 4 | 12 | .667 | 1 | 19 | .947 | 4 | 0 | 1 | 0 | 1.0 | 0 | 13.5 | .245 | 2-3 |
| September 17 | NICHOLLS | 4 | 18 | 6 | 57 | .211 | 2 | 6 | .333 | 0 | 3 | 11 | .727 | 0 | 13 | 1.000 | 6 | 2 | 4 | 0 | 6.0 | 0 | 22.0 | .183 | 3-1 |
| September 18 | BELMONT | 3 | 14 | 2 | 28 | .429 | 0 | 1 | .000 | 1 | 1 | 9 | .889 | 0 | 16 | 1.000 | 2 | 1 | 2 | 0 | 3.0 | 0 | 17.0 | .345 | 3-0 |
| September 22 | OLE MISS | 4 | 19 | 4 | 52 | .288 | 2 | 3 | .667 | 0 | 3 | 10 | .700 | 1 | 14 | .929 | 6 | 0 | 0 | 0 | 0.0 | 0 | 19.0 | .196 | 1-3 |
| September 26 | at Alabama State | 5 | 24 | 7 | 60 | .283 | 1 | 14 | .071 | 2 | 2 | 16 | .875 | 2 | 16 | .875 | 13 | 2 | 2 | 0 | 4.0 | 0 | 29.0 | .209 | 2-3 |
| September 29 | at Tennessee | 3 | 9 | 7 | 43 | .047 | 0 | 1 | .000 | 0 | 2 | 8 | .750 | 0 | 14 | 1.000 | 10 | 0 | 3 | 0 | 3.0 | 0 | 10.5 | .076 | 0-3 |
| October 2 | ALABAMA | 5 | 22 | 8 | 69 | .203 | 1 | 5 | .200 | 0 | 4 | 18 | .778 | 1 | 32 | .969 | 11 | 0 | 6 | 1 | 6.0 | 0 | 25.0 | .183 | 3-2 |
| October 3 | ALABAMA | 3 | 16 | 4 | 43 | .279 | 0 | 0 | .000 | 2 | 2 | 9 | .778 | 0 | 11 | 1.000 | 11 | 1 | 4 | 0 | 5.0 | 0 | 21.0 | .248 | 3-0 |
| October 9 | at Arkansas | 4 | 29 | 11 | 75 | .240 | 0 | 3 | .000 | 1 | 3 | 11 | .727 | 0 | 13 | 1.000 | 9 | 0 | 4 | 0 | 4.0 | 0 | 32.0 | .158 | 1-3 |
| October 10 | at Arkansas | 5 | 20 | 9 | 71 | .155 | 0 | 4 | .000 | 1 | 1 | 12 | .917 | 2 | 24 | .917 | 10 | 0 | 5 | 0 | 5.0 | 0 | 23.5 | .144 | 2-3 |
| October 16 | MISSOURI | 3 | 17 | 4 | 47 | .277 | 1 | 4 | .250 | 0 | 3 | 7 | .571 | 2 | 8 | .750 | 9 | 0 | 4 | 0 | 4.0 | 0 | 19.0 | .232 | 3-0 |
| October 17 | MISSOURI | 5 | 22 | 5 | 71 | .239 | 2 | 5 | .400 | 1 | 5 | 21 | .762 | 1 | 20 | .950 | 12 | 1 | 2 | 0 | 3.0 | 0 | 25.0 | .235 | 2-3 |
| October 21 | at Georgia | 3 | 5 | 9 | 32 | -.125 | 1 | 4 | .250 | 1 | 2 | 14 | .857 | 0 | 18 | 1.000 | 8 | 0 | 3 | 0 | 3.0 | 0 | 7.5 | .241 | 3-0 |
| October 22 | at Georgia | 3 | 16 | 9 | 43 | .163 | 0 | 2 | .000 | 0 | 2 | 9 | .778 | 1 | 22 | .955 | 8 | 1 | 2 | 0 | 3.0 | 0 | 18.0 | .183 | 0-3 |
| TOTALS | | 75 | 335 | 118 | 968 | .224 | 12 | 62 | .194 | 17 | 50 | 230 | .783 | 18 | 316 | .943 | 159 | 10 | 56 | 2 | 66.0 | 0 | 390.0 | .224 | |

SETS PLAYED: 75
 KILLS PER SET: 4.47
 ASSISTS PER SET: 0.16

SERVICE ACES PER SET: 0.23
 DIGS PER SET: 2.12
 BLOCKS PER SET: 0.88

POINTS PER SET: 5.20

RATH'S OVERALL CAREER STATISTICS

| YEAR | SETS | MP | KILLS | K/S | E | TA | PCT. | AST | A/S | SA | SA/S | SE | DIGS | D/S | RE | BS | BA | TB | B/S | PTS | PT/S |
|--------------|-----------|-----------|------------|-------------|------------|------------|-------------|-----------|------------|-----------|------------|-----------|------------|-------------|-----------|-----------|-----------|-----------|-------------|--------------|-------------|
| 2021 | 75 | 20 | 335 | 4.47 | 118 | 968 | .224 | 12 | .16 | 17 | .23 | 50 | 159 | 2.12 | 18 | 10 | 56 | 66 | 0.88 | 390.0 | 5.20 |
| TOTAL | 75 | 20 | 335 | 4.47 | 118 | 968 | .224 | 12 | .16 | 17 | .23 | 50 | 159 | 2.12 | 18 | 10 | 56 | 66 | 0.88 | 390.0 | 5.20 |

RATH'S SEC CAREER STATISTICS

| YEAR | SETS | MP | KILLS | K/S | E | TA | PCT. | AST | A/S | SA | SA/S | SE | DIGS | D/S | RE | BS | BA | TB | B/S | PTS | PT/S |
|--------------|-----------|-----------|------------|-------------|-----------|------------|-------------|----------|------------|----------|------------|-----------|-----------|-------------|----------|----------|-----------|-----------|------------|--------------|-------------|
| 2021 | 38 | 10 | 175 | 4.61 | 70 | 546 | .192 | 7 | .18 | 6 | .16 | 27 | 93 | 2.45 | 8 | 3 | 33 | 36 | .95 | 200.5 | 5.26 |
| TOTAL | 38 | 10 | 175 | 4.61 | 70 | 546 | .192 | 7 | .18 | 6 | .16 | 27 | 93 | 2.45 | 8 | 3 | 33 | 36 | .95 | 200.5 | 5.26 |

#10 JACKIE BARRETT

SETTER | 6-1 | SOPHOMORE
HIGHLAND, CALIF. (CITRUS VALLEY)



BARRETT'S HIGHLIGHTS

- Leads Auburn with 12 double-doubles this fall
- Ranks eighth in the SEC in total assists (613)
- Enters the weekend ranked sixth in Auburn single-season history (rally scoring era) in assists per set (8.51) and eighth in Auburn career history in assists per set (8.32)
- Set career highs in kills (6), hitting percentage (.308), assists (48) and points (10.0) versus Florida A&M (9/17)
- Matched career high with three aces while shattering her career high in digs (28) versus Nicholls (9/17)
- Picked up first double-double in conference play with 18 assists and 12 digs at No. 20 Tennessee (9/29)
- Set a career high with eight blocks at Arkansas (10/9) while adding 36 assists and 13 digs to record a double-double
- Was lifted during the second set of game two versus Missouri (10/17) due to illness

| CATEGORY | CAREER HIGH | OPPONENT/DATE |
|-----------------------------------|-------------|----------------------------------|
| Kills | 6 (2x) | last, at Alabama State (9/26/21) |
| Attempts | 20 | at Alabama State (9/26/21) |
| Hitting Percentage (Min. 10 ATT.) | .308 | vs. Florida A&M (9/17/21) |
| Assists | 48 | vs. Florida A&M (9/17/21) |
| Digs | 28 | vs. Nicholls (9/17/21) |
| Blocks | 8.0 | at Arkansas (10/9/21) |
| Aces | 3 (2x) | last, vs. Nicholls (9/17/21) |
| Points | 10.0 | vs. Florida A&M (9/17/21) |

| CATEGORY | SEASON HIGH | OPPONENT/DATE |
|-----------------------------------|-------------|----------------------------------|
| Kills | 6 (2x) | last, at Alabama State (9/26/21) |
| Attempts | 20 | at Alabama State (9/26/21) |
| Hitting Percentage (Min. 10 ATT.) | .308 | vs. Florida A&M (9/17/21) |
| Assists | 48 | vs. Florida A&M (9/17/21) |
| Digs | 28 | vs. Nicholls (9/17/21) |
| Blocks | 8.0 | at Arkansas (10/9/21) |
| Aces | 3 | vs. Nicholls (9/17/21) |
| Points | 10.0 | vs. Florida A&M (9/17/21) |

| DATE | OPPONENT | SP | ATTACK | | | | SET | | | SERVE | | | | RECEIPT | | | BLOCKING | | | | TEAM | | | | |
|---------------|---------------------|-----------|-----------|----------|------------|-------------|------------|-------------|-------------|-----------|-----------|------------|-------------|----------|----------|--------------|------------|----------|-----------|----------|-------------|----------|-------------|-------------|-------|
| | | | K | E | TA | PCT. | A | TA | PCT. | SA | SE | TA | PCT. | RE | TA | PCT. | DIG | BS | BA | BE | TOTAL | BHE | POINTS | HIT% | SCORE |
| August 27 | TENNESSEE TECH | 3 | 1 | 0 | 3 | .333 | 25 | 63 | .397 | 1 | 0 | 8 | 1.000 | 0 | 0 | .000 | 12 | 0 | 0 | 1 | 0.0 | 0 | 2.0 | .292 | 3-0 |
| August 28 | JACKSON STATE | 3 | 2 | 0 | 2 | 1.000 | 27 | 59 | .458 | 2 | 0 | 10 | 1.000 | 0 | 1 | 1.000 | 8 | 0 | 1 | 0 | 1.0 | 0 | 4.5 | .457 | 3-0 |
| September 2 | CAL STATE FULLERTON | 3 | 0 | 1 | 6 | -.167 | 16 | 39 | .410 | 0 | 0 | 9 | 1.000 | 0 | 0 | .000 | 5 | 0 | 1 | 1 | 1.0 | 0 | 0.5 | .221 | 3-0 |
| September 3 | SOUTHEASTERN LA. | 3 | 3 | 0 | 5 | .600 | 28 | 74 | .378 | 2 | 1 | 9 | .889 | 0 | 0 | .000 | 6 | 0 | 2 | 2 | 2.0 | 1 | 6.0 | .300 | 3-0 |
| September 9 | NORTH ALABAMA | 3 | 0 | 1 | 2 | -.500 | 30 | 71 | .423 | 1 | 1 | 22 | .955 | 0 | 0 | .000 | 8 | 0 | 4 | 0 | 4.0 | 0 | 3.0 | .265 | 3-0 |
| September 12 | SANTA CLARA | 5 | 1 | 0 | 6 | .167 | 44 | 126 | .349 | 2 | 2 | 20 | .900 | 0 | 2 | 1.000 | 11 | 0 | 5 | 0 | 5.0 | 0 | 5.5 | .260 | 3-2 |
| September 17 | FLORIDA A&M | 5 | 6 | 2 | 13 | .308 | 48 | 130 | .369 | 2 | 1 | 21 | .952 | 0 | 0 | .000 | 15 | 0 | 4 | 0 | 4.0 | 0 | 10.0 | .245 | 2-3 |
| September 17 | NICHOLLS | 4 | 2 | 0 | 8 | .250 | 40 | 124 | .323 | 3 | 0 | 21 | 1.000 | 0 | 0 | .000 | 28 | 0 | 2 | 0 | 2.0 | 0 | 6.0 | .183 | 3-1 |
| September 18 | BELMONT | 3 | 1 | 0 | 3 | .333 | 24 | 57 | .421 | 1 | 1 | 11 | .909 | 0 | 0 | .000 | 19 | 0 | 3 | 0 | 3.0 | 0 | 3.5 | .345 | 3-0 |
| September 22 | OLE MISS | 4 | 1 | 0 | 4 | .250 | 34 | 117 | .291 | 1 | 2 | 13 | .846 | 0 | 0 | .000 | 12 | 1 | 1 | 0 | 2.0 | 0 | 3.5 | .196 | 1-3 |
| September 26 | at Alabama State | 5 | 6 | 1 | 20 | .250 | 36 | 113 | .319 | 0 | 1 | 19 | .947 | 0 | 0 | .000 | 4 | 0 | 1 | 0 | 1.0 | 0 | 6.5 | .209 | 2-3 |
| September 29 | at Tennessee | 3 | 1 | 1 | 4 | .000 | 18 | 79 | .228 | 0 | 2 | 6 | .667 | 0 | 0 | .000 | 12 | 0 | 2 | 0 | 2.0 | 0 | 2.0 | .076 | 0-3 |
| October 2 | ALABAMA | 5 | 1 | 0 | 10 | .100 | 43 | 123 | .350 | 0 | 0 | 14 | 1.000 | 0 | 0 | .000 | 14 | 1 | 3 | 0 | 4.0 | 0 | 3.5 | .183 | 3-2 |
| October 3 | ALABAMA | 3 | 1 | 0 | 6 | .167 | 34 | 90 | .378 | 0 | 0 | 14 | 1.000 | 0 | 0 | .000 | 11 | 0 | 2 | 0 | 2.0 | 0 | 2.0 | .248 | 3-0 |
| October 9 | at Arkansas | 4 | 3 | 0 | 8 | .375 | 36 | 119 | .303 | 1 | 0 | 15 | 1.000 | 0 | 0 | .000 | 13 | 0 | 8 | 3 | 8.0 | 0 | 8.0 | .158 | 1-3 |
| October 10 | at Arkansas | 5 | 1 | 0 | 8 | .125 | 36 | 122 | .295 | 0 | 1 | 17 | .941 | 0 | 0 | .000 | 16 | 0 | 4 | 0 | 4.0 | 0 | 3.0 | .144 | 2-3 |
| October 16 | MISSOURI | 3 | 2 | 1 | 5 | .200 | 25 | 80 | .312 | 1 | 1 | 13 | .923 | 0 | 0 | .000 | 9 | 0 | 2 | 1 | 2.0 | 0 | 4.0 | .232 | 3-0 |
| October 17 | MISSOURI | 2 | 1 | 0 | 3 | .333 | 12 | 29 | .414 | 0 | 0 | 4 | 1.000 | 0 | 0 | .000 | 3 | 0 | 2 | 0 | 2.0 | 0 | 2.0 | .235 | 2-3 |
| October 21 | at Georgia | 3 | 4 | 1 | 7 | .429 | 27 | 74 | .365 | 0 | 2 | 14 | .857 | 0 | 0 | .000 | 17 | 0 | 2 | 0 | 2.0 | 0 | 5.0 | .241 | 3-0 |
| October 22 | at Georgia | 3 | 3 | 1 | 10 | .200 | 30 | 82 | .366 | 0 | 1 | 6 | .833 | 0 | 1 | 1.000 | 6 | 0 | 1 | 0 | 1.0 | 0 | 3.5 | .183 | 0-3 |
| TOTALS | | 72 | 40 | 9 | 133 | .233 | 613 | 1771 | .346 | 17 | 16 | 266 | .940 | 0 | 4 | 1.000 | 229 | 2 | 50 | 8 | 52.0 | 1 | 84.0 | .224 | |

SETS PLAYED: 72
KILLS PER SET: 0.56
ASSISTS PER SET: 8.51

SERVICE ACES PER SET: 0.24
DIGS PER SET: 3.18
BLOCKS PER SET: 0.72

POINTS PER SET: 1.17

BARRETT'S OVERALL CAREER STATISTICS

| YEAR | SETS | MP | KILLS | K/S | E | TA | PCT. | AST | A/S | SA | SA/S | SE | DIGS | D/S | RE | BS | BA | TB | B/S | PTS | PT/S |
|--------------|-----------|-----------|-----------|-------------|-----------|------------|-------------|------------|-------------|-----------|------------|-----------|------------|-------------|----------|----------|-----------|-----------|-------------|--------------|-------------|
| 2021 | 72 | 20 | 40 | 0.56 | 9 | 133 | .233 | 613 | 8.51 | 17 | .24 | 16 | 229 | 3.18 | 0 | 2 | 50 | 52 | 0.72 | 84.0 | 1.17 |
| 2020 | 19 | 6 | 10 | 0.53 | 6 | 45 | .089 | 144 | 7.58 | 3 | .16 | 8 | 33 | 1.74 | 0 | 0 | 11 | 11 | 0.58 | 18.5 | 0.97 |
| TOTAL | 91 | 26 | 50 | 0.55 | 15 | 178 | .197 | 757 | 8.32 | 20 | .22 | 24 | 262 | 2.88 | 0 | 2 | 61 | 63 | 0.69 | 102.5 | 1.13 |

BARRETT'S SEC CAREER STATISTICS

| YEAR | SETS | MP | KILLS | K/S | E | TA | PCT. | AST | A/S | SA | SA/S | SE | DIGS | D/S | RE | BS | BA | TB | B/S | PTS | PT/S |
|--------------|-----------|-----------|-----------|-------------|-----------|------------|-------------|------------|-------------|----------|------------|-----------|------------|-------------|----------|----------|-----------|-----------|-------------|-------------|-------------|
| 2021 | 35 | 10 | 18 | 0.51 | 4 | 65 | .215 | 295 | 8.43 | 3 | .09 | 9 | 113 | 3.23 | 0 | 2 | 27 | 29 | 0.83 | 36.5 | 1.03 |
| 2020 | 19 | 6 | 10 | 0.53 | 6 | 45 | .089 | 144 | 7.58 | 3 | .16 | 8 | 33 | 1.74 | 0 | 0 | 11 | 11 | 0.58 | 18.5 | 0.95 |
| TOTAL | 54 | 16 | 28 | 0.52 | 10 | 110 | .164 | 439 | 8.13 | 6 | .11 | 17 | 146 | 2.70 | 0 | 2 | 38 | 40 | 0.74 | 55.0 | 1.02 |



#11 JORDAN SINNESS

SETTER | 5-9 | FRESHMAN
SEBRING, FLA. (SEBRING)

SINNESS'S HIGHLIGHTS:

- Made collegiate debut versus Cal State Fullerton (9/2), dishing out 16 assists, six digs, one kill and a block
- Picked up a season high two aces from the service line versus Santa Clara (9/12)
- Matched season high with a pair of aces at Alabama State (9/26)
- Came off the bench versus Missouri (10/17) to take over as setter for an ill Jackie Barrett
- Picked up her first collegiate double-double with career highs in assists (35) and digs (14), while also adding a career high two blocks

| CATEGORY | CAREER HIGH | OPPONENT/DATE |
|-----------------------------------|-------------|----------------------------------|
| Kills | 1 (2x) | last, vs. Missouri (10/17/21) |
| Attempts | 3 | vs. Missouri (10/17/21) |
| Hitting Percentage (Min. 10 ATT.) | | |
| Assists | 35 | vs. Missouri (10/17/21) |
| Digs | 14 | vs. Missouri (10/17/21) |
| Blocks | 2 | vs. Missouri (10/17/21) |
| Aces | 2 (2x) | last, at Alabama State (9/26/21) |
| Points | 2.0 (3x) | last, vs. Missouri (10/17/21) |

| CATEGORY | SEASON HIGH | OPPONENT/DATE |
|-----------------------------------|-------------|----------------------------------|
| Kills | 1 (2x) | last, vs. Missouri (10/17/21) |
| Attempts | 3 | vs. Missouri (10/17/21) |
| Hitting Percentage (Min. 10 ATT.) | | |
| Assists | 35 | vs. Missouri (10/17/21) |
| Digs | 14 | vs. Missouri (10/17/21) |
| Blocks | 2 | vs. Missouri (10/17/21) |
| Aces | 2 (2x) | last, at Alabama State (9/26/21) |
| Points | 2.0 (3x) | last, vs. Missouri (10/17/21) |

| DATE | OPPONENT | SP | ATTACK | | | | SET | | | SERVE | | | | RECEIPT | | | BLOCKING | | | | POINTS | TEAM HIT% | SCORE | | |
|---------------|---------------------|-----------|----------|----------|----------|-------------|-----------|------------|-------------|----------|----------|------------|-------------|----------|----------|-------------|-----------|----------|----------|----------|------------|-----------|------------|-------------|-----|
| | | | K | E | TA | PCT. | A | TA | PCT. | SA | SE | TA | PCT. | RE | TA | PCT. | DIG | BS | BA | BE | | | | TOTAL | BHE |
| September 2 | CAL STATE FULLERTON | 2 | 1 | 1 | 2 | .000 | 16 | 53 | .302 | 0 | 0 | 3 | 1.000 | 0 | 0 | .000 | 6 | 0 | 1 | 0 | 1.0 | 1 | 1.5 | .221 | 3-0 |
| September 9 | NORTH ALABAMA | 3 | 0 | 0 | 0 | .000 | 0 | 0 | .000 | 0 | 0 | 8 | 1.000 | 0 | 0 | .000 | 0 | 0 | 0 | 0 | 0.0 | 0 | 0.0 | .265 | 3-0 |
| September 12 | SANTA CLARA | 5 | 0 | 0 | 0 | .000 | 0 | 2 | .000 | 2 | 1 | 17 | .941 | 0 | 0 | .000 | 1 | 0 | 0 | 0 | 0.0 | 0 | 2.0 | .260 | 3-2 |
| September 17 | FLORIDA A&M | 5 | 0 | 0 | 0 | .000 | 0 | 3 | .000 | 1 | 0 | 19 | 1.000 | 0 | 0 | .000 | 2 | 0 | 0 | 0 | 0.0 | 0 | 1.0 | .245 | 2-3 |
| September 17 | NICHOLLS | 4 | 0 | 0 | 0 | .000 | 0 | 0 | .000 | 0 | 1 | 9 | .889 | 0 | 0 | .000 | 0 | 0 | 0 | 0 | 0.0 | 0 | 0.0 | .183 | 3-1 |
| September 18 | BELMONT | 3 | 0 | 0 | 0 | .000 | 0 | 0 | .000 | 0 | 1 | 5 | .800 | 0 | 0 | .000 | 2 | 0 | 0 | 0 | 0.0 | 0 | 0.0 | .345 | 3-0 |
| September 22 | OLE MISS | 4 | 0 | 0 | 0 | .000 | 0 | 1 | .000 | 0 | 0 | 15 | 1.000 | 0 | 0 | .000 | 4 | 0 | 0 | 0 | 0.0 | 0 | 0.0 | .196 | 1-3 |
| September 26 | at Alabama State | 5 | 0 | 0 | 0 | .000 | 1 | 2 | .500 | 2 | 0 | 17 | 1.000 | 0 | 0 | .000 | 1 | 0 | 0 | 0 | 0.0 | 0 | 2.0 | .209 | 2-3 |
| September 29 | at Tennessee | 3 | 0 | 0 | 0 | .000 | 0 | 0 | .000 | 0 | 0 | 8 | 1.000 | 0 | 0 | .000 | 0 | 0 | 0 | 0 | 0.0 | 0 | 0.0 | .076 | 0-3 |
| October 2 | ALABAMA | 5 | 0 | 0 | 0 | .000 | 0 | 1 | .000 | 0 | 0 | 16 | 1.000 | 0 | 0 | .000 | 2 | 0 | 0 | 0 | 0.0 | 0 | 0.0 | .183 | 3-2 |
| October 3 | ALABAMA | 3 | 0 | 0 | 0 | .000 | 0 | 0 | .000 | 1 | 1 | 9 | .889 | 0 | 0 | .000 | 0 | 0 | 0 | 0 | 0.0 | 0 | 1.0 | .248 | 3-0 |
| October 9 | at Arkansas | 2 | 0 | 0 | 0 | .000 | 0 | 0 | .000 | 0 | 0 | 3 | 1.000 | 0 | 0 | .000 | 0 | 0 | 0 | 0 | 0.0 | 0 | 0.0 | .158 | 1-3 |
| October 17 | MISSOURI | 4 | 1 | 0 | 3 | .333 | 35 | 111 | .315 | 0 | 1 | 13 | .923 | 0 | 0 | .000 | 14 | 0 | 2 | 0 | 2.0 | 1 | 2.0 | .235 | 2-3 |
| TOTALS | | 48 | 2 | 1 | 5 | .200 | 52 | 173 | .301 | 6 | 5 | 142 | .965 | 0 | 0 | .000 | 32 | 0 | 3 | 0 | 3.0 | 2 | 9.5 | .224 | |

SETS PLAYED: 48
KILLS PER SET: 0.04
ASSISTS PER SET: 1.08

SERVICE ACES PER SET: 0.12
DIGS PER SET: 0.67
BLOCKS PER SET: 0.06

POINTS PER SET: 0.20

SINNESS'S OVERALL CAREER STATISTICS

| YEAR | SETS | MP | KILLS | K/S | E | TA | PCT. | AST | A/S | SA | SA/S | SE | DIGS | D/S | RE | BS | BA | TB | B/S | PTS | PT/S |
|--------------|-----------|-----------|----------|-------------|----------|----------|-------------|-----------|-------------|----------|------------|----------|-----------|-------------|----------|----------|----------|----------|------------|------------|-------------|
| 2021 | 48 | 13 | 2 | 0.04 | 1 | 5 | .200 | 52 | 1.08 | 6 | .13 | 5 | 32 | 0.67 | 0 | 0 | 3 | 3 | .06 | 9.5 | 0.20 |
| TOTAL | 48 | 13 | 2 | 0.04 | 1 | 5 | .200 | 52 | 1.08 | 6 | .13 | 5 | 32 | 0.67 | 0 | 0 | 3 | 3 | .06 | 9.5 | 0.20 |

SINNESS'S SEC CAREER STATISTICS

| YEAR | SETS | MP | KILLS | K/S | E | TA | PCT. | AST | A/S | SA | SA/S | SE | DIGS | D/S | RE | BS | BA | TB | B/S | PTS | PT/S |
|--------------|-----------|----------|----------|-------------|----------|----------|-------------|-----------|-------------|----------|------------|----------|-----------|-------------|----------|----------|----------|----------|------------|------------|-------------|
| 2021 | 21 | 6 | 1 | 0.05 | 0 | 3 | .333 | 35 | 1.67 | 1 | .05 | 2 | 20 | 0.95 | 0 | 0 | 2 | 2 | .10 | 3.0 | 0.14 |
| TOTAL | 21 | 6 | 1 | 0.05 | 0 | 3 | .333 | 35 | 1.67 | 1 | .05 | 2 | 20 | 0.95 | 0 | 0 | 2 | 2 | .10 | 3.0 | 0.14 |



#15 KATE CURTIS

DEFENSIVE SPECIALIST/LIBERO | 5-6 | FRESHMAN
ANDERSON, S.C. (T.L. HANNA)

CURTIS'S HIGHLIGHTS:

- Set career high in assists versus Florida A&M (9/17)
- Turned in her first double-digit dig effort with a career best 14 versus Nicholls (9/17)
- Picked up a season high two aces from the service line versus Alabama (10/3)
- Recorded her first double-digit effort in Southeastern Conference play with 11 at Arkansas (10/10)
- Tallied her first collegiate kill at Georgia (10/21)

| CATEGORY | CAREER HIGH | OPPONENT/DATE |
|-----------------------------------|-------------|----------------------------|
| Kills | 1 | at Georgia (10/21/21) |
| Attempts | 3 | at Alabama State (9/26/21) |
| Hitting Percentage (Min. 10 ATT.) | | |
| Assists | 4 | vs. Florida A&M (9/17/21) |
| Digs | 14 | vs. Nicholls (9/17/21) |
| Blocks | | |
| Aces | 2 | vs. Alabama (10/3/21) |
| Points | 2.0 | vs. Alabama (10/3/21) |

| CATEGORY | SEASON HIGH | OPPONENT/DATE |
|-----------------------------------|-------------|----------------------------|
| Kills | 1 | at Georgia (10/21/21) |
| Attempts | 3 | at Alabama State (9/26/21) |
| Hitting Percentage (Min. 10 ATT.) | | |
| Assists | 4 | vs. Florida A&M (9/17/21) |
| Digs | 14 | vs. Nicholls (9/17/21) |
| Blocks | | |
| Aces | 2 | vs. Alabama (10/3/21) |
| Points | 2.0 | vs. Alabama (10/3/21) |

| DATE | OPPONENT | SP | ATTACK | | | | SET | | | SERVE | | | | RECEIPT | | | BLOCKING | | | | BHE | TEAM POINTS | HIT% | SCORE | |
|---------------|---------------------|-----------|----------|----------|----------|-------------|-----------|-----------|-------------|----------|-----------|------------|-------------|-----------|------------|-------------|------------|----------|----------|----------|------------|-------------|-------------|-------------|-------|
| | | | K | E | TA | PCT. | A | TA | PCT. | SA | SE | TA | PCT. | RE | TA | PCT. | DIG | BS | BA | BE | | | | | TOTAL |
| August 27 | TENNESSEE TECH | 3 | 0 | 0 | 0 | .000 | 0 | 0 | .000 | 1 | 0 | 17 | 1.000 | 0 | 14 | 1.000 | 4 | 0 | 0 | 0 | 0.0 | 0 | 1.0 | .292 | 3-0 |
| August 28 | JACKSON STATE | 3 | 0 | 0 | 0 | .000 | 0 | 0 | .000 | 0 | 1 | 13 | .923 | 0 | 6 | 1.000 | 3 | 0 | 0 | 0 | 0.0 | 0 | 0.0 | .457 | 3-0 |
| September 2 | CAL STATE FULLERTON | 3 | 0 | 0 | 0 | .000 | 0 | 1 | .000 | 0 | 0 | 17 | 1.000 | 0 | 10 | 1.000 | 6 | 0 | 0 | 0 | 0.0 | 0 | 0.0 | .221 | 3-0 |
| September 3 | SOUTHEASTERN LA. | 3 | 0 | 0 | 0 | .000 | 0 | 3 | .000 | 1 | 0 | 23 | 1.000 | 0 | 2 | 1.000 | 7 | 0 | 0 | 0 | 0.0 | 0 | 1.0 | .300 | 3-0 |
| September 9 | NORTH ALABAMA | 3 | 0 | 0 | 0 | .000 | 0 | 3 | .000 | 0 | 0 | 9 | 1.000 | 0 | 4 | 1.000 | 5 | 0 | 0 | 0 | 0.0 | 0 | 0.0 | .265 | 3-0 |
| September 12 | SANTA CLARA | 5 | 0 | 0 | 0 | .000 | 1 | 2 | .500 | 0 | 0 | 18 | 1.000 | 3 | 28 | .893 | 5 | 0 | 0 | 0 | 0.0 | 0 | 0.0 | .260 | 3-2 |
| September 17 | FLORIDA A&M | 5 | 0 | 0 | 0 | .000 | 4 | 6 | .667 | 1 | 1 | 10 | .900 | 1 | 28 | .964 | 7 | 0 | 0 | 0 | 0.0 | 0 | 1.0 | .245 | 2-3 |
| September 17 | NICHOLLS | 4 | 0 | 0 | 0 | .000 | 1 | 2 | .500 | 0 | 0 | 21 | 1.000 | 1 | 14 | .929 | 14 | 0 | 0 | 0 | 0.0 | 0 | 0.0 | .183 | 3-1 |
| September 18 | BELMONT | 3 | 0 | 0 | 0 | .000 | 0 | 0 | .000 | 1 | 1 | 13 | .923 | 1 | 2 | .500 | 4 | 0 | 0 | 0 | 0.0 | 0 | 1.0 | .345 | 3-0 |
| September 22 | OLE MISS | 4 | 0 | 0 | 0 | .000 | 2 | 2 | 1.000 | 0 | 1 | 12 | .917 | 1 | 20 | .950 | 7 | 0 | 0 | 0 | 0.0 | 0 | 0.0 | .196 | 1-3 |
| September 26 | at Alabama State | 5 | 0 | 0 | 3 | .000 | 1 | 3 | .333 | 0 | 1 | 16 | .938 | 0 | 14 | 1.000 | 6 | 0 | 0 | 0 | 0.0 | 0 | 0.0 | .209 | 2-3 |
| September 29 | at Tennessee | 3 | 0 | 0 | 0 | .000 | 1 | 5 | .200 | 0 | 1 | 9 | .889 | 0 | 4 | 1.000 | 6 | 0 | 0 | 0 | 0.0 | 0 | 0.0 | .076 | 0-3 |
| October 2 | ALABAMA | 5 | 0 | 0 | 0 | .000 | 1 | 3 | .333 | 1 | 1 | 22 | .955 | 1 | 22 | .955 | 7 | 0 | 0 | 0 | 0.0 | 0 | 1.0 | .183 | 3-2 |
| October 3 | ALABAMA | 3 | 0 | 0 | 0 | .000 | 1 | 5 | .200 | 2 | 1 | 16 | .938 | 0 | 4 | 1.000 | 4 | 0 | 0 | 0 | 0.0 | 0 | 2.0 | .248 | 3-0 |
| October 9 | at Arkansas | 4 | 0 | 0 | 0 | .000 | 3 | 8 | .375 | 0 | 2 | 20 | .900 | 0 | 13 | 1.000 | 7 | 0 | 0 | 0 | 0.0 | 0 | 0.0 | .158 | 1-3 |
| October 10 | at Arkansas | 5 | 0 | 0 | 0 | .000 | 0 | 3 | .000 | 0 | 0 | 14 | 1.000 | 1 | 26 | .962 | 11 | 0 | 0 | 0 | 0.0 | 0 | 0.0 | .144 | 2-3 |
| October 16 | MISSOURI | 3 | 0 | 0 | 0 | .000 | 0 | 2 | .000 | 1 | 1 | 17 | .941 | 0 | 13 | 1.000 | 8 | 0 | 0 | 0 | 0.0 | 0 | 1.0 | .232 | 3-0 |
| October 17 | MISSOURI | 5 | 0 | 0 | 0 | .000 | 0 | 3 | .000 | 1 | 1 | 19 | .947 | 3 | 28 | .893 | 12 | 0 | 0 | 0 | 0.0 | 0 | 1.0 | .235 | 2-3 |
| October 21 | at Georgia | 3 | 1 | 0 | 1 | 1.000 | 2 | 5 | .400 | 0 | 0 | 12 | 1.000 | 1 | 10 | .900 | 7 | 0 | 0 | 0 | 0.0 | 0 | 1.0 | .241 | 3-0 |
| October 22 | at Georgia | 3 | 0 | 0 | 1 | .000 | 1 | 3 | .333 | 0 | 0 | 14 | 1.000 | 0 | 4 | 1.000 | 8 | 0 | 0 | 0 | 0.0 | 0 | 0.0 | .183 | 0-3 |
| TOTALS | | 75 | 1 | 0 | 5 | .200 | 18 | 59 | .305 | 9 | 12 | 312 | .962 | 13 | 266 | .951 | 138 | 0 | 0 | 0 | 0.0 | 0 | 10.0 | .224 | |

SETS PLAYED: 75
KILLS PER SET: 0.01
ASSISTS PER SET: 0.24

SERVICE ACES PER SET: 0.12
DIGS PER SET: 1.84

POINTS PER SET: 0.13

CURTIS'S OVERALL CAREER STATISTICS

| YEAR | SETS | MP | KILLS | K/S | E | TA | PCT. | AST | A/S | SA | SA/S | SE | DIGS | D/S | RE | BS | BA | TB | B/S | PTS | PT/S |
|--------------|-----------|-----------|----------|-------------|----------|----------|-------------|-----------|------------|----------|------------|-----------|------------|-------------|-----------|----------|----------|----------|------------|-------------|-------------|
| 2021 | 75 | 20 | 1 | 0.01 | 0 | 5 | .200 | 18 | .24 | 9 | .12 | 12 | 138 | 1.84 | 13 | 0 | 0 | 0 | .00 | 10.0 | 0.13 |
| TOTAL | 75 | 20 | 1 | 0.01 | 0 | 5 | .200 | 18 | .24 | 9 | .12 | 12 | 138 | 1.84 | 13 | 0 | 0 | 0 | .00 | 10.0 | 0.13 |

CURTIS'S SEC CAREER STATISTICS

| YEAR | SETS | MP | KILLS | K/S | E | TA | PCT. | AST | A/S | SA | SA/S | SE | DIGS | D/S | RE | BS | BA | TB | B/S | PTS | PT/S |
|--------------|-----------|-----------|----------|-------------|----------|----------|-------------|-----------|------------|----------|------------|----------|-----------|-------------|----------|----------|----------|----------|------------|------------|-------------|
| 2021 | 38 | 10 | 1 | 0.03 | 0 | 2 | .500 | 11 | .29 | 5 | .13 | 8 | 77 | 2.03 | 7 | 0 | 0 | 0 | .00 | 6.0 | 0.16 |
| TOTAL | 38 | 10 | 1 | 0.03 | 0 | 2 | .500 | 11 | .29 | 5 | .13 | 8 | 77 | 2.03 | 7 | 0 | 0 | 0 | .00 | 6.0 | 0.16 |



#16 VAL GREEN
OUTSIDE HITTER | 6-2 | SENIOR
OXFORD, OHIO (TALAWANDA)

GREEN'S HIGHLIGHTS:

- Recorded 15 double-digit kill efforts during her Tiger career
- Chipped in 11 kills versus Cal State Fullerton (9/2) for her first 10+ kill match of the season
- Against Florida A&M (9/17), set career highs in kills (19) and points (21.5)
- Totaled a season high two aces from the service line versus Ole Miss (9/22)
- Recorded a career high 5.0 blocks against Alabama (10/2), helping Auburn to a team total of 18.0 to tie the program's single-match record
- Match season high for kills in a league match with 13 on the road at Arkansas (10/10)
- Shattered her career high attack percentage as she landed 16 kills on 32 swings with just one error at Georgia (10/21) for a .469 clip

| CATEGORY | CAREER HIGH | OPPONENT/DATE |
|-----------------------------------|-------------|------------------------------|
| Kills | 19 | vs. Florida A&M (9/17/21) |
| Attempts | 50 | vs. Butler (8/31/19) |
| Hitting Percentage (Min. 10 ATT.) | .469 | at Georgia (10/21/21) |
| Assists | 2 | at South Carolina (10/29/20) |
| Digs | 10 | at South Carolina (10/29/20) |
| Blocks | 5.0 | vs. Alabama (10/2/21) |
| Aces | 4 | at TCU (9/15/19) |
| Points | 21.5 | vs. Florida A&M (9/17/21) |

| CATEGORY | SEASON HIGH | OPPONENT/DATE |
|-----------------------------------|-------------|-------------------------------|
| Kills | 19 | vs. Florida A&M (9/17/21) |
| Attempts | 48 | vs. Florida A&M (9/17/21) |
| Hitting Percentage (Min. 10 ATT.) | .469 | at Georgia (10/21/21) |
| Assists | 1 (3x) | last, vs. Missouri (10/17/21) |
| Digs | 7 | vs. Santa Clara (9/12/21) |
| Blocks | 5.0 | vs. Alabama (10/2/21) |
| Aces | 2 | vs. Ole Miss (9/22/21) |
| Points | 21.5 | vs. Florida A&M (9/17/21) |

| DATE | OPPONENT | SP | ATTACK | | | | SET | | | SERVE | | | | RECEIPT | | | BLOCKING | | | TEAM POINTS | HIT% | SCORE | | | |
|---------------|---------------------|-----------|------------|-----------|------------|-------------|----------|-----------|-------------|----------|----------|------------|-------------|----------|-----------|-------------|-----------|----------|-----------|-------------|-------------|----------|--------------|-------------|-----|
| | | | K | E | TA | PCT. | A | TA | PCT. | SA | SE | TA | PCT. | RE | TA | PCT. | DIG | BS | BA | | | | BE | TOTAL | BHE |
| August 27 | TENNESSEE TECH | 3 | 5 | 1 | 20 | .200 | 0 | 0 | .000 | 0 | 0 | 6 | 1.000 | 0 | 2 | 1.000 | 1 | 0 | 3 | 0 | 3.0 | 0 | 6.5 | .292 | 3-0 |
| August 28 | JACKSON STATE | 3 | 3 | 1 | 10 | .200 | 0 | 1 | .000 | 1 | 0 | 24 | 1.000 | 0 | 0 | .000 | 5 | 0 | 3 | 0 | 3.0 | 0 | 5.5 | .457 | 3-0 |
| September 2 | CAL STATE FULLERTON | 3 | 11 | 4 | 35 | .200 | 0 | 2 | .00 | 0 | 0 | 18 | 1.000 | 0 | 3 | 1.000 | 2 | 0 | 1 | 0 | 1.0 | 0 | 11.5 | .221 | 3-0 |
| September 3 | SOUTHEASTERN LA. | 3 | 2 | 1 | 18 | .056 | 1 | 2 | .500 | 1 | 2 | 14 | .857 | 0 | 0 | .000 | 4 | 0 | 1 | 0 | 1.0 | 0 | 3.5 | .300 | 3-0 |
| September 9 | NORTH ALABAMA | 3 | 12 | 0 | 32 | .375 | 0 | 3 | .000 | 1 | 0 | 9 | 1.000 | 0 | 2 | 1.000 | 2 | 0 | 0 | 1 | 0.0 | 0 | 13.0 | .265 | 3-0 |
| September 12 | SANTA CLARA | 5 | 12 | 3 | 41 | .220 | 0 | 1 | .000 | 0 | 0 | 17 | 1.000 | 2 | 9 | .778 | 7 | 0 | 0 | 0 | 0.0 | 0 | 12.0 | .260 | 3-2 |
| September 17 | FLORIDA A&M | 5 | 19 | 5 | 48 | .292 | 0 | 1 | .000 | 0 | 2 | 16 | .875 | 0 | 5 | 1.000 | 6 | 2 | 1 | 0 | 3.0 | 0 | 21.5 | .245 | 2-3 |
| September 17 | NICHOLLS | 4 | 12 | 6 | 41 | .146 | 0 | 0 | .000 | 0 | 1 | 13 | .923 | 0 | 2 | 1.000 | 2 | 0 | 0 | 0 | 0.0 | 0 | 12.0 | .183 | 3-1 |
| September 18 | BELMONT | 3 | 4 | 2 | 16 | .125 | 0 | 2 | .000 | 1 | 0 | 18 | 1.000 | 0 | 2 | 1.000 | 0 | 0 | 0 | 0 | 0.0 | 0 | 5.0 | .345 | 3-0 |
| September 22 | OLE MISS | 4 | 13 | 6 | 34 | .206 | 1 | 3 | .333 | 2 | 1 | 15 | .933 | 0 | 7 | 1.000 | 3 | 0 | 0 | 0 | 0.0 | 0 | 15.0 | .196 | 1-3 |
| September 26 | at Alabama State | 5 | 3 | 7 | 26 | -.154 | 0 | 5 | .000 | 0 | 2 | 17 | .882 | 0 | 2 | 1.000 | 4 | 0 | 1 | 0 | 1.0 | 0 | 3.5 | .209 | 2-3 |
| September 29 | at Tennessee | 3 | 2 | 3 | 20 | -.050 | 0 | 1 | .000 | 0 | 0 | 0 | .000 | 0 | 3 | 1.000 | 2 | 0 | 2 | 0 | 2.0 | 0 | 3.0 | .076 | 0-3 |
| October 2 | ALABAMA | 5 | 9 | 6 | 37 | .081 | 0 | 1 | .000 | 0 | 0 | 0 | .000 | 0 | 5 | 1.000 | 2 | 0 | 5 | 0 | 5.0 | 0 | 11.5 | .183 | 3-2 |
| October 3 | ALABAMA | 3 | 7 | 3 | 27 | .148 | 0 | 0 | .000 | 0 | 0 | 0 | .000 | 0 | 3 | 1.000 | 4 | 0 | 2 | 0 | 2.0 | 0 | 8.0 | .248 | 3-0 |
| October 9 | at Arkansas | 4 | 7 | 4 | 30 | .100 | 0 | 2 | .000 | 0 | 0 | 0 | .000 | 0 | 12 | 1.000 | 1 | 0 | 1 | 0 | 1.0 | 0 | 7.5 | .158 | 1-3 |
| October 10 | at Arkansas | 5 | 13 | 4 | 39 | .231 | 0 | 4 | .000 | 0 | 0 | 0 | .000 | 1 | 6 | .833 | 3 | 0 | 2 | 0 | 2.0 | 0 | 14.0 | .144 | 2-3 |
| October 16 | MISSOURI | 3 | 2 | 1 | 14 | .071 | 0 | 1 | .000 | 0 | 0 | 0 | .000 | 0 | 1 | 1.000 | 0 | 0 | 0 | 0 | 0.0 | 0 | 2.0 | .232 | 3-0 |
| October 17 | MISSOURI | 5 | 16 | 7 | 47 | .191 | 1 | 6 | .167 | 0 | 0 | 0 | .000 | 0 | 7 | 1.000 | 2 | 0 | 1 | 0 | 1.0 | 0 | 16.5 | .235 | 2-3 |
| October 21 | at Georgia | 3 | 16 | 1 | 32 | .469 | 0 | 0 | .000 | 0 | 0 | 0 | .000 | 0 | 2 | 1.000 | 3 | 0 | 1 | 0 | 1.0 | 0 | 16.5 | .241 | 3-0 |
| October 22 | at Georgia | 3 | 4 | 6 | 20 | -.100 | 0 | 1 | .000 | 0 | 0 | 0 | .000 | 0 | 7 | 1.000 | 0 | 0 | 0 | 0 | 0.0 | 0 | 4.0 | .183 | 0-3 |
| TOTALS | | 75 | 172 | 71 | 587 | .172 | 3 | 36 | .083 | 6 | 8 | 167 | .952 | 3 | 80 | .962 | 54 | 2 | 24 | 1 | 26.0 | 0 | 192.0 | .224 | |

SETS PLAYED: 75 SERVICE ACES PER SET: 0.08 POINTS PER SET: 2.56
 KILLS PER SET: 2.29 DIGS PER SET: 0.72
 ASSISTS PER SET: 0.04 BLOCKS PER SET: 0.35

GREEN'S OVERALL CAREER STATISTICS

| YEAR | SETS | MP | KILLS | K/S | E | TA | PCT. | AST | A/S | SA | SA/S | SE | DIGS | D/S | RE | BS | BA | TB | B/S | PTS | PT/S |
|--------------|------------|-----------|------------|-------------|------------|-------------|-------------|----------|------------|-----------|------------|-----------|------------|-------------|----------|----------|-----------|-------------|-------------|--------------|-------------|
| 2021 | 75 | 20 | 172 | 2.29 | 71 | 587 | .172 | 3 | .04 | 6 | .08 | 8 | 54 | 0.72 | 3 | 2 | 24 | 26 | 0.35 | 192.0 | 2.56 |
| 2020 | 13 | 4 | 27 | 2.08 | 33 | 139 | -.043 | 3 | .23 | 1 | .08 | 8 | 28 | 2.15 | 2 | 1 | 8 | 9 | 0.69 | 33.0 | 2.54 |
| 2019 | 67 | 24 | 146 | 2.18 | 103 | 506 | .085 | 1 | .01 | 13 | .19 | 14 | 30 | 0.45 | 3 | 3 | 7 | 10 | 0.15 | 165.5 | 2.47 |
| 2018 | 1 | 1 | 0 | 0.00 | 0 | 0 | .000 | 0 | .00 | 0 | .00 | 1 | 0 | 0.00 | 0 | 0 | 0 | 0 | 0.00 | 0.0 | 0.00 |
| TOTAL | 156 | 49 | 345 | 2.21 | 207 | 1232 | .112 | 7 | .04 | 20 | .13 | 31 | 112 | 0.72 | 8 | 6 | 39 | 45.0 | 0.29 | 390.5 | 2.50 |

GREEN'S SEC CAREER STATISTICS

| YEAR | SETS | MP | KILLS | K/S | E | TA | PCT. | AST | A/S | SA | SA/S | SE | DIGS | D/S | RE | BS | BA | TB | B/S | PTS | PT/S |
|--------------|-----------|-----------|------------|-------------|------------|------------|-------------|----------|------------|----------|------------|-----------|-----------|-------------|----------|----------|-----------|-----------|------------|--------------|-------------|
| 2021 | 38 | 10 | 89 | 2.34 | 41 | 300 | .160 | 2 | .05 | 2 | .05 | 1 | 21 | 0.55 | 1 | 0 | 14 | 14 | .37 | 98.0 | 2.58 |
| 2020 | 13 | 4 | 27 | 2.08 | 33 | 139 | -.043 | 3 | .23 | 1 | .08 | 8 | 28 | 2.15 | 2 | 1 | 8 | 9 | .69 | 33.0 | 2.54 |
| 2019 | 28 | 13 | 52 | 1.86 | 45 | 211 | .033 | 1 | .04 | 1 | .04 | 9 | 13 | 0.46 | 1 | 2 | 3 | 5 | .18 | 56.5 | 2.00 |
| 2018 | 0 | 0 | 0 | 0.00 | 0 | 0 | .000 | 0 | .00 | 0 | .00 | 0 | 0 | 0.00 | 0 | 0 | 0 | 0 | .00 | 0.0 | 0.00 |
| TOTAL | 79 | 27 | 168 | 2.13 | 119 | 650 | .075 | 6 | .08 | 4 | .05 | 18 | 62 | 0.78 | 4 | 3 | 25 | 28 | .35 | 187.5 | 2.37 |



#17 CASSIDY TANTON

OUTSIDE HITTER | 6-0 | FRESHMAN
STONEVILLE, N.C. (DALTON MCMICHAEL)

CURTIS'S HIGHLIGHTS:

- Did not see action during the first five weeks of play due to an ankle injury
- Made collegiate debut at Alabama State (9/26)

| | | |
|---|-------------------|---------------------|
| CATEGORY _____ | CAREER HIGH _____ | OPPONENT/DATE _____ |
| Kills _____ | | |
| Attempts _____ | | |
| Hitting Percentage (Min. 10 ATT.) _____ | | |
| Assists _____ | | |
| Digs _____ | | |
| Blocks _____ | | |
| Aces _____ | | |
| Points _____ | | |

| | | |
|---|-------------------|---------------------|
| CATEGORY _____ | SEASON HIGH _____ | OPPONENT/DATE _____ |
| Kills _____ | | |
| Attempts _____ | | |
| Hitting Percentage (Min. 10 ATT.) _____ | | |
| Assists _____ | | |
| Digs _____ | | |
| Blocks _____ | | |
| Aces _____ | | |
| Points _____ | | |

| DATE | OPPONENT | SP | ATTACK | | | | SET | | | SERVE | | | | RECEIPT | | | BLOCKING | | | | BHE | POINTS | TEAM | | |
|---------------|------------------|----------|----------|----------|----------|-------------|----------|----------|-------------|----------|----------|----------|-------------|----------|----------|-------------|----------|----------|----------|----------|------------|----------|------------|-------------|-------|
| | | | K | E | TA | PCT | A | TA | PCT. | SA | SE | TA | PCT. | RE | TA | PCT. | DIG | BS | BA | BE | | | TOTAL | HIT% | SCORE |
| September 26 | at Alabama State | 1 | 0 | 0 | 0 | .000 | 0 | 0 | .000 | 0 | 0 | 0 | .000 | 0 | 0 | .000 | 0 | 0 | 0 | 0 | 0.0 | 0 | 0.0 | .209 | 2-3 |
| TOTALS | | 1 | 0 | 0 | 0 | .000 | 0 | 0 | .000 | 0 | 0 | 0 | .000 | 0 | 0 | .000 | 0 | 0 | 0 | 0 | 0.0 | 0 | 0.0 | .224 | |

TANTON'S OVERALL CAREER STATISTICS

| YEAR | SETS | MP | KILLS | K/S | E | TA | PCT. | AST | A/S | SA | SA/S | SE | DIGS | D/S | RE | BS | BA | TB | B/S | PTS | PT/S |
|--------------|----------|----------|----------|------------|----------|----------|-------------|----------|------------|----------|------------|----------|----------|------------|----------|----------|----------|----------|------------|------------|-------------|
| 2021 | 1 | 0 | 0 | 0.0 | 0 | 0 | .000 | 0 | .00 | 0 | .00 | 0 | 0 | .00 | 0 | 0 | 0 | 0 | .00 | 0.0 | 0.00 |
| TOTAL | 1 | 0 | 0 | 0.0 | 0 | 0 | .000 | 0 | .00 | 0 | .00 | 0 | 0 | .00 | 0 | 0 | 0 | 0 | .00 | 0.0 | 0.00 |

TANTON'S SEC CAREER STATISTICS

| YEAR | SETS | MP | KILLS | K/S | E | TA | PCT. | AST | A/S | SA | SA/S | SE | DIGS | D/S | RE | BS | BA | TB | B/S | PTS | PT/S |
|--------------|----------|----------|----------|------------|----------|----------|-------------|----------|------------|----------|------------|----------|----------|------------|----------|----------|----------|----------|------------|------------|-------------|
| 2021 | 0 | 0 | 0 | 0.0 | 0 | 0 | .000 | 0 | .00 | 0 | .00 | 0 | 0 | .00 | 0 | 0 | 0 | 0 | .00 | 0.0 | 0.00 |
| TOTAL | 0 | 0 | 0 | 0.0 | 0 | 0 | .000 | 0 | .00 | 0 | .00 | 0 | 0 | .00 | 0 | 0 | 0 | 0 | .00 | 0.0 | 0.00 |



#19 ELIF SU YAVUZ
MIDDLE BLOCKER | 6-3 | SENIOR
ANKARA, TURKEY (GAZI UNIVERSITY)

YAVUZ'S HIGHLIGHTS:

- Her blocks per set average (.92) currently ranks in Auburn single-season history (rally scoring era)
- Enters Friday's match ranked 18th in the SEC in blocks per set
- Has recorded at least four blocks in nine matches this season
- Made her Auburn debut, starting at middle blocker in the season opener versus Tennessee Tech (8/27)
- Set career high in total blocks (8.0) versus Jackson State (8/28)
- Shattered her career high in kills (8), hitting percentage (.571), digs (4) and points (10.5) versus Florida A&M (9/17)
- Match her career high in blocks while recording her first collegiate assist at Arkansas (10/10)
- In her first appearance at the service line this season, totaled three aces at Georgia (10/21)

| CATEGORY | CAREER HIGH | OPPONENT/DATE |
|-----------------------------------|-------------|-------------------------------|
| Kills | 8 | vs. Florida A&M (9/17/21) |
| Attempts | 14 | vs. Florida A&M (9/17/21) |
| Hitting Percentage (Min. 10 ATT.) | .571 | vs. Florida A&M (9/17/21) |
| Assists | 1 (2x) | last, vs. Missouri (10/16/21) |
| Digs | 4 (2x) | last, at Arkansas (10/9/21) |
| Blocks | 8.0 (2x) | last, at Arkansas (10/10/21) |
| Aces | 3 | at Georgia (10/21/21) |
| Points | 10.5 | vs. Florida A&M (9/17/21) |

| CATEGORY | SEASON HIGH | OPPONENT/DATE |
|-----------------------------------|-------------|-------------------------------|
| Kills | 8 | vs. Florida A&M (9/17/21) |
| Attempts | 14 | vs. Florida A&M (9/17/21) |
| Hitting Percentage (Min. 10 ATT.) | .571 | vs. Florida A&M (9/17/21) |
| Assists | 1 (2x) | last, vs. Missouri (10/16/21) |
| Digs | 4 (2x) | last, at Arkansas (10/9/21) |
| Blocks | 8.0 (2x) | last, at Arkansas (10/10/21) |
| Aces | 3 | at Georgia (10/21/21) |
| Points | 10.5 | vs. Florida A&M (9/17/21) |

| DATE | OPPONENT | SP | ATTACK | | | | SET | | | SERVE | | | | RECEIPT | | | BLOCKING | | | | TEAM POINTS | HIT% | SCORE | | |
|---------------|---------------------|-----------|-----------|-----------|------------|-------------|----------|-----------|-------------|----------|----------|-----------|-------------|----------|----------|-------------|-----------|----------|-----------|----------|-------------|----------|-------------|-------------|-----|
| | | | K | E | TA | PCT. | A | TA | PCT. | SA | SE | TA | PCT. | RE | TA | PCT. | DIG | BS | BA | TB | | | | TOTAL | BHE |
| August 27 | TENNESSEE TECH | 3 | 1 | 0 | 2 | .500 | 0 | 1 | .000 | 0 | 0 | 0 | .000 | 0 | 0 | 0 | 0 | 0 | 2 | 0 | 2.0 | 0 | 2.0 | .292 | 3-0 |
| August 28 | JACKSON STATE | 3 | 4 | 0 | 6 | .667 | 0 | 0 | .000 | 0 | 0 | 0 | .000 | 0 | 0 | 0 | 0 | 8 | 0 | 8.0 | 0 | 8.0 | .457 | 3-0 | |
| September 3 | CAL STATE FULLERTON | 3 | 2 | 1 | 4 | .250 | 0 | 0 | .000 | 0 | 0 | 0 | .000 | 0 | 0 | 0 | 0 | 2 | 1 | 2.0 | 0 | 3.0 | .221 | 3-0 | |
| September 4 | SOUTHEASTERN LA. | 3 | 1 | 0 | 1 | 1.000 | 0 | 0 | .000 | 0 | 0 | 0 | .000 | 0 | 0 | 0 | 0 | 2 | 0 | 2.0 | 0 | 2.0 | .300 | 3-0 | |
| September 9 | NORTH ALABAMA | 3 | 4 | 0 | 6 | .667 | 0 | 1 | .000 | 0 | 0 | 0 | .000 | 0 | 0 | 0 | 1 | 2 | 1 | 3.0 | 0 | 6.0 | .265 | 3-0 | |
| September 12 | SANTA CLARA | 5 | 1 | 2 | 6 | -.167 | 0 | 1 | .000 | 0 | 0 | 0 | .000 | 0 | 0 | 0 | 1 | 3 | 0 | 3.0 | 0 | 2.5 | .260 | 3-2 | |
| September 17 | FLORIDA A&M | 5 | 8 | 0 | 14 | .571 | 0 | 2 | .000 | 0 | 0 | 0 | .000 | 0 | 0 | 0 | 4 | 1 | 3 | 0 | 4.0 | 0 | 10.5 | .245 | 2-3 |
| September 17 | NICHOLLS | 4 | 2 | 0 | 6 | .333 | 0 | 1 | .000 | 0 | 0 | 0 | .000 | 0 | 1 | 1.000 | 2 | 0 | 2 | 1 | 2.0 | 0 | 3.0 | .183 | 3-1 |
| September 18 | BELMONT | 3 | 3 | 1 | 4 | .500 | 0 | 0 | .000 | 0 | 0 | 0 | .000 | 0 | 0 | 0 | 0 | 2 | 0 | 2.0 | 0 | 4.0 | .345 | 3-0 | |
| September 22 | OLE MISS | 4 | 2 | 1 | 5 | .200 | 0 | 0 | .000 | 0 | 0 | 0 | .000 | 1 | 1 | .000 | 0 | 1 | 2 | 1 | 3.0 | 0 | 4.0 | .196 | 1-3 |
| September 26 | at Alabama State | 5 | 2 | 1 | 3 | .333 | 0 | 1 | .000 | 0 | 0 | 0 | .000 | 0 | 0 | 0 | 0 | 3 | 0 | 3.0 | 0 | 3.5 | .209 | 2-3 | |
| September 29 | at Tennessee | 3 | 1 | 0 | 3 | .333 | 0 | 0 | .000 | 0 | 0 | 0 | .000 | 0 | 0 | 0 | 0 | 4 | 0 | 4.0 | 0 | 3.0 | .076 | 0-3 | |
| October 2 | ALABAMA | 5 | 4 | 1 | 8 | .375 | 0 | 0 | .000 | 0 | 0 | 0 | .000 | 0 | 0 | 0 | 2 | 0 | 4 | 2 | 4.0 | 0 | 6.0 | .183 | 3-2 |
| October 3 | ALABAMA | 3 | 2 | 1 | 7 | .143 | 0 | 1 | .000 | 0 | 0 | 0 | .000 | 0 | 0 | 0 | 1 | 2 | 0 | 3.0 | 1 | 4.0 | .248 | 3-0 | |
| October 9 | at Arkansas | 4 | 2 | 1 | 3 | .333 | 0 | 1 | .000 | 0 | 0 | 0 | .000 | 0 | 0 | 0 | 4 | 1 | 4 | 1 | 4.0 | 0 | 4.0 | .158 | 1-3 |
| October 10 | at Arkansas | 5 | 1 | 1 | 4 | .000 | 1 | 3 | .333 | 0 | 0 | 0 | .000 | 0 | 0 | 0 | 1 | 0 | 8 | 0 | 8.0 | 0 | 5.0 | .144 | 2-3 |
| October 16 | MISSOURI | 3 | 3 | 0 | 8 | .375 | 1 | 1 | 1.000 | 0 | 0 | 0 | .000 | 0 | 0 | 0 | 3 | 0 | 2 | 0 | 2.0 | 0 | 4.0 | .232 | 3-0 |
| October 17 | MISSOURI | 5 | 6 | 1 | 13 | .385 | 0 | 8 | .000 | 0 | 0 | 0 | .000 | 1 | 1 | .000 | 1 | 0 | 2 | 0 | 2.0 | 0 | 7.0 | .235 | 2-3 |
| October 21 | at Georgia | 3 | 1 | 1 | 3 | .000 | 0 | 1 | .000 | 3 | 2 | 15 | .867 | 0 | 0 | 0 | 1 | 0 | 5 | 0 | 5.0 | 0 | 6.5 | .241 | 3-0 |
| October 22 | at Georgia | 3 | 0 | 1 | 3 | -.333 | 0 | 0 | .000 | 0 | 3 | 10 | .700 | 0 | 1 | 1.000 | 0 | 0 | 3 | 0 | 3.0 | 0 | 1.5 | .183 | 0-3 |
| TOTALS | | 75 | 50 | 13 | 109 | .339 | 2 | 22 | .091 | 3 | 5 | 25 | .800 | 2 | 4 | .500 | 20 | 4 | 65 | 7 | 69.0 | 1 | 89.5 | .224 | |

SETS PLAYED: 75
 KILLS PER SET: 0.67
 ASSISTS PER SET: 0.03

SERVICE ACES PER SET: 0.04
 DIGS PER SET: 0.27
 BLOCKS PER SET: 0.92

POINTS PER SET: 1.19

YAVUZ'S OVERALL CAREER STATISTICS

| YEAR | SETS | MP | KILLS | K/S | E | TA | PCT. | AST | A/S | SA | SA/S | SE | DIGS | D/S | RE | BS | BA | TB | B/S | PTS | PT/S |
|--------------|-----------|-----------|-----------|-------------|-----------|------------|-------------|----------|------------|----------|------------|----------|-----------|-------------|----------|----------|-----------|-----------|-------------|-------------|-------------|
| 2021 | 75 | 20 | 50 | 0.67 | 13 | 109 | .339 | 2 | .03 | 3 | .04 | 5 | 20 | 0.27 | 2 | 4 | 65 | 69 | 0.92 | 89.5 | 1.19 |
| TOTAL | 75 | 20 | 50 | 0.67 | 13 | 109 | .339 | 2 | .03 | 3 | .04 | 5 | 20 | 0.27 | 2 | 4 | 65 | 69 | 0.92 | 89.5 | 1.19 |

YAVUZ'S SEC CAREER STATISTICS

| YEAR | SETS | MP | KILLS | K/S | E | TA | PCT. | AST | A/S | SA | SA/S | SE | DIGS | D/S | RE | BS | BA | TB | B/S | PTS | PT/S |
|--------------|-----------|-----------|-----------|-------------|----------|-----------|-------------|----------|------------|----------|------------|----------|-----------|-------------|----------|----------|-----------|-----------|-------------|-------------|-------------|
| 2021 | 38 | 10 | 22 | 0.58 | 8 | 57 | .246 | 2 | .05 | 3 | .08 | 5 | 13 | 0.34 | 2 | 2 | 36 | 39 | 1.00 | 45.0 | 1.18 |
| TOTAL | 38 | 10 | 22 | 0.58 | 8 | 57 | .246 | 2 | .05 | 3 | .08 | 5 | 13 | 0.34 | 2 | 2 | 36 | 38 | 1.00 | 45.0 | 1.18 |



#21 TATUM SHIPES

OUTSIDE HITTER/MIDDLE BLOCKER | 6-4 | SENIOR
 BUFORD, GA. (BUFORD)

SHIPES HIGHLIGHTS:

- SEC Defensive Player of the Week (10/4)
- Moved to middle blocker after spending her career as a pin hitter
- Leads the SEC in both total blocks (117) and blocks per set (1.62), while ranking third and second, respectively, in both categories nationally.
- Recorded at least five blocks in 11 matches this season
- Added 23 double-digit kill efforts and seven double-doubles as a Tiger
- Enters the weekend ranked first in single-season history (rally scoring era) in blocks per set (1.63) and second in solo blocks (18), block assists (99) and total blocks (117)
- Totaled 12.0 total blocks in Auburn's five-set victory against Alabama (10/2) to set the program's single-match record for blocks in the rally scoring era. The previous record of 11.0 was set on Nov. 23, 2017 by Breanna Barksdale at Florida
- Chipped in 10.0 blocks at Arkansas (10/9) for just her second double-digit blocking effort of her career
- Returned to the service line in Fayetteville (10/10) with a career high two ace

| CATEGORY | CAREER HIGH | OPPONENT/DATE |
|-----------------------------------|-------------|-------------------------------------|
| Kills | 21 | vs. Ole Miss (10/26/18) |
| Attempts | 55 | vs. Ole Miss (10/26/18) |
| Hitting Percentage (Min. 10 ATT.) | .462 | vs. Tennessee Tech (8/27/21) |
| Assists | 3 (4x) | last, at Texas A&M (11/13/19) |
| Digs | 18 (2x) | last, at Tennessee (11/27/19) |
| Blocks | 12.0 | vs. Alabama (10/2/21) |
| Aces | 3 (2x) | last, at Western Michigan (9/20/19) |
| Points | 24.5 | vs. Ole Miss (10/26/18) |

| CATEGORY | SEASON HIGH | OPPONENT/DATE |
|-----------------------------------|-------------|------------------------------|
| Kills | 8 | vs. Tennessee Tech (8/27/21) |
| Attempts | 20 | vs. Nicholls (9/17/21) |
| Hitting Percentage (Min. 10 ATT.) | .462 | vs. Tennessee Tech (8/27/21) |
| Assists | 1 (7x) | last, at Georgia (10/21/21) |
| Digs | 5 | vs. Alabama (10/2/21) |
| Blocks | 12.0 | vs. Alabama (10/2/21) |
| Aces | 2 | at Arkansas (10/10/21) |
| Points | 14.0 | vs. Alabama (10/2/21) |

| DATE | OPPONENT | SP | ATTACK | | | | SET | | | SERVE | | | RECEIPT | | | BLOCKING | | | | TEAM POINTS | HIT% | SCORE | | | |
|---------------|---------------------|-----------|-----------|-----------|------------|-------------|----------|-----------|-------------|----------|----------|-----------|-------------|----------|----------|--------------|-----------|-----------|-----------|-------------|--------------|----------|--------------|-------------|-----|
| | | | K | E | TA | PCT. | A | TA | PCT. | SA | SE | TA | PCT. | RE | TA | PCT. | DIG | BS | BA | | | | BE | TOTAL | BHE |
| August 27 | TENNESSEE TECH | 3 | 8 | 2 | 13 | .462 | 1 | 2 | .500 | 0 | 1 | 5 | .800 | 0 | 2 | 1.000 | 1 | 1 | 6 | 0 | 7.0 | 0 | 12.0 | .292 | 3-0 |
| August 28 | JACKSON STATE | 3 | 4 | 0 | 9 | .444 | 0 | 0 | .000 | 0 | 1 | 3 | .667 | 0 | 0 | .000 | 1 | 0 | 5 | 0 | 5.0 | 0 | 6.5 | .457 | 3-0 |
| September 2 | CAL STATE FULLERTON | 3 | 1 | 1 | 9 | .000 | 0 | 1 | .000 | 0 | 0 | 7 | 1.000 | 0 | 1 | 1.000 | 2 | 1 | 2 | 1 | 3.0 | 0 | 3.0 | .221 | 3-0 |
| September 3 | SOUTHEASTERN LA. | 3 | 4 | 1 | 11 | .273 | 0 | 2 | .000 | 1 | 1 | 6 | .833 | 0 | 0 | .000 | 2 | 0 | 8 | 0 | 8.0 | 0 | 9.0 | .300 | 3-0 |
| September 9 | NORTH ALABAMA | 3 | 6 | 0 | 7 | .857 | 0 | 0 | .000 | 0 | 0 | 0 | .000 | 0 | 0 | .000 | 1 | 0 | 3 | 0 | 3.0 | 0 | 6.0 | .265 | 3-0 |
| September 12 | SANTA CLARA | 5 | 7 | 2 | 14 | .357 | 1 | 3 | .333 | 0 | 0 | 0 | .000 | 0 | 0 | .000 | 1 | 1 | 4 | 1 | 5.0 | 1 | 10.0 | .260 | 3-2 |
| September 17 | FLORIDA A&M | 2 | 3 | 3 | 11 | .000 | 0 | 0 | .000 | 0 | 0 | 0 | .000 | 0 | 0 | .000 | 0 | 0 | 1 | 0 | 1.0 | 0 | 3.5 | .245 | 2-3 |
| September 17 | NICHOLLS | 4 | 7 | 4 | 20 | .150 | 1 | 2 | .500 | 0 | 0 | 0 | .000 | 0 | 0 | .000 | 3 | 2 | 7 | 0 | 9.0 | 0 | 12.5 | .183 | 3-1 |
| September 18 | BELMONT | 3 | 4 | 0 | 10 | .400 | 0 | 0 | .000 | 0 | 0 | 0 | .000 | 0 | 0 | .000 | 0 | 3 | 4 | 0 | 7.0 | 0 | 9.0 | .345 | 3-0 |
| September 22 | OLE MISS | 4 | 3 | 2 | 9 | .111 | 0 | 1 | .000 | 0 | 0 | 0 | .000 | 0 | 1 | 1.000 | 3 | 2 | 1 | 0 | 3.0 | 0 | 5.5 | .196 | 1-3 |
| September 26 | at Alabama State | 5 | 6 | 2 | 10 | .400 | 0 | 1 | .000 | 0 | 0 | 0 | .000 | 0 | 0 | .000 | 1 | 0 | 2 | 0 | 2.0 | 0 | 7.0 | .209 | 2-3 |
| September 29 | at Tennessee | 3 | 3 | 1 | 10 | .200 | 0 | 1 | .000 | 0 | 0 | 0 | .000 | 0 | 1 | 1.000 | 1 | 2 | 4 | 0 | 6.0 | 1 | 7.0 | .076 | 0-3 |
| October 2 | ALABAMA | 5 | 7 | 4 | 13 | .231 | 1 | 2 | .500 | 0 | 0 | 0 | .000 | 0 | 0 | .000 | 5 | 2 | 10 | 0 | 12.0 | 0 | 14.0 | .183 | 3-2 |
| October 3 | ALABAMA | 3 | 3 | 1 | 9 | .222 | 0 | 0 | .000 | 0 | 0 | 0 | .000 | 0 | 0 | .000 | 0 | 1 | 6 | 0 | 7.0 | 0 | 7.0 | .248 | 3-0 |
| October 9 | at Arkansas | 4 | 2 | 3 | 7 | -.143 | 1 | 5 | .200 | 0 | 0 | 10 | 1.000 | 0 | 0 | .000 | 4 | 1 | 9 | 1 | 10.0 | 0 | 7.5 | .158 | 1-3 |
| October 10 | at Arkansas | 5 | 2 | 3 | 13 | -.077 | 1 | 5 | .200 | 2 | 2 | 16 | .875 | 0 | 1 | 1.000 | 4 | 0 | 9 | 1 | 9.0 | 0 | 8.5 | .144 | 2-3 |
| October 16 | MISSOURI | 3 | 4 | 2 | 13 | .154 | 0 | 2 | .000 | 1 | 1 | 7 | .857 | 0 | 0 | .000 | 3 | 0 | 3 | 0 | 3.0 | 0 | 6.5 | .232 | 3-0 |
| October 17 | MISSOURI | 5 | 3 | 2 | 12 | .083 | 0 | 2 | .000 | 0 | 1 | 13 | .923 | 0 | 0 | .000 | 2 | 1 | 5 | 0 | 6.0 | 1 | 6.5 | .235 | 2-3 |
| October 21 | at Georgia | 3 | 4 | 0 | 9 | .444 | 1 | 2 | .500 | 0 | 0 | 0 | .000 | 0 | 0 | .000 | 0 | 1 | 7 | 0 | 8.0 | 0 | 8.5 | .241 | 3-0 |
| October 22 | at Georgia | 3 | 5 | 0 | 9 | .556 | 0 | 0 | .000 | 0 | 0 | 0 | .000 | 0 | 0 | .000 | 0 | 0 | 3 | 0 | 3.0 | 0 | 6.5 | .183 | 0-3 |
| TOTALS | | 72 | 86 | 33 | 218 | .243 | 7 | 31 | .226 | 4 | 7 | 67 | .896 | 0 | 6 | 1.000 | 34 | 18 | 99 | 4 | 117.0 | 3 | 157.5 | .224 | |

SETS PLAYED: 72
 KILLS PER SET: 1.19
 ASSISTS PER SET: 0.10

SERVICE ACES SET: 0.06
 DIGS PER SET: 0.47
 BLOCKS PER SET: 1.62

POINTS PER SET: 2.19

SHIPES' OVERALL CAREER STATISTICS

| YEAR | SETS | MP | KILLS | K/S | E | TA | PCT. | AST | A/S | SA | SA/S | SE | DIGS | D/S | RE | BS | BA | TB | B/S | PTS | PT/S |
|--------------|------------|-----------|------------|-------------|------------|-------------|-------------|-----------|------------|-----------|------------|-----------|------------|-------------|-----------|-----------|------------|------------|-------------|--------------|-------------|
| 2021 | 72 | 20 | 86 | 1.19 | 33 | 218 | .243 | 7 | .10 | 4 | .06 | 7 | 34 | 0.47 | 0 | 18 | 99 | 117 | 1.63 | 157.5 | 2.19 |
| 2020 | 25 | 8 | 59 | 2.36 | 44 | 230 | .065 | 3 | .12 | 4 | .16 | 12 | 47 | 1.88 | 10 | 1 | 15 | 16 | 0.64 | 71.5 | 2.86 |
| 2019 | 103 | 29 | 269 | 2.61 | 154 | 900 | .127 | 29 | .28 | 23 | .22 | 52 | 246 | 2.39 | 28 | 14 | 55 | 69 | 0.67 | 333.5 | 3.24 |
| 2018 | 59 | 21 | 147 | 2.49 | 63 | 403 | .208 | 1 | .02 | 0 | .00 | 0 | 30 | 0.51 | 4 | 6 | 18 | 24 | 0.41 | 162.0 | 2.75 |
| TOTAL | 259 | 78 | 561 | 2.17 | 295 | 1751 | .152 | 40 | .15 | 31 | .12 | 71 | 357 | 1.38 | 42 | 39 | 187 | 226 | 0.87 | 724.5 | 2.80 |

SHIPES' SEC CAREER STATISTICS

| YEAR | SETS | MP | KILLS | K/S | E | TA | PCT. | AST | A/S | SA | SA/S | SE | DIGS | D/S | RE | BS | BA | TB | B/S | PTS | PT/S |
|--------------|------------|-----------|------------|-------------|------------|-------------|-------------|-----------|------------|-----------|------------|-----------|------------|-------------|-----------|-----------|------------|------------|-------------|--------------|-------------|
| 2021 | 38 | 10 | 36 | 0.95 | 18 | 104 | .173 | 4 | .11 | 3 | .08 | 4 | 22 | 0.58 | 0 | 10 | 57 | 67 | 1.76 | 77.5 | 2.03 |
| 2020 | 25 | 8 | 59 | 2.36 | 44 | 230 | .065 | 3 | .12 | 4 | .16 | 12 | 47 | 1.88 | 10 | 1 | 15 | 16 | 0.64 | 71.5 | 2.84 |
| 2019 | 59 | 18 | 176 | 2.98 | 99 | 605 | .127 | 15 | .25 | 9 | .15 | 28 | 164 | 2.78 | 18 | 11 | 26 | 37 | 0.63 | 209.0 | 3.54 |
| 2018 | 47 | 15 | 128 | 2.72 | 56 | 341 | .211 | 1 | .02 | 0 | .00 | 0 | 26 | 0.55 | 4 | 5 | 16 | 21 | 0.45 | 141.0 | 3.00 |
| TOTAL | 169 | 51 | 399 | 2.36 | 218 | 1281 | .141 | 23 | .14 | 16 | .09 | 44 | 259 | 1.53 | 32 | 27 | 114 | 141 | 0.83 | 499.0 | 2.95 |



#4 FALLAN LANHAM
Fr. | DS/L | 5-8



#5 AUDREY DOUGLAS
So. | OH/OPP | 6-4



#6 BELLA ROSENTHALL
Sr. | DS/L | 5-5



#7 REBEKAH RATH
Jr. | OH | 6-0



#8 LIZ REICH
Gr. | OPP | 6-1



#10 JACKIE BARRETT
So. | S | 6-1



#11 JORDAN SINNESS
Fr. | S | 5-9



#15 KATE CURTIS
Fr. | DS/L | 5-6



#16 VAL GREEN
Sr. | OH | 6-4



#17 CASSIDY TANTON
Fr. | OH | 6-0



#19 ELIF SU YAVUZ
Sr. | MB | 6-3



#21 TATUM SHIPES
Sr. | OH | 6-4



HEAD COACH
BRENT CROUCH



ASSOCIATE HEAD COACH
ALEX DUNPHY



ASSISTANT COACH
RICK MOLLER