



2021 VOLLEYBALL MATCH NOTES

AUBURN ATHLETICS COMMUNICATIONS: 392 SOUTH DONAHUE DRIVE || AUBURN, AL 36830 || AUBURNTIGERS.COM || @AUBURNVB

2021 SCHEDULE/RESULTS

11-7 OVERALL | 3-5 SEC

11-3 HOME | 0-4 AWAY | 0-0 NEUTRAL

DATE	OPPONENT	TV	TIME/RESULT
Aug. 27	^ TENNESSEE TECH	SEC Network+	W, 3-0
Aug. 28	^ JACKSON STATE	SEC Network+	W, 3-0
Sept. 2	% CAL STATE FULLERTON		W, 3-0
Sept. 3	% SOUTHEASTERN LOUISIANA		W, 3-0
Sept. 9	NORTH ALABAMA	SEC Network+	W, 3-0
Sept. 12	SANTA CLARA		W, 3-2
Sept. 17	! FLORIDA A&M		L, 2-3
Sept. 17	! NICHOLLS	SEC Network+	W, 3-1
Sept. 18	! BELMONT	SEC Network+	W, 3-0
Sept. 22	* (RV) OLE MISS	ESPNU	L, 1-3
Sept. 26	at Alabama State		L, 2-3
Sept. 29	* at #20 Tennessee	SEC Network	L, 0-3
Oct. 2	* ALABAMA	SEC Network+	W, 3-2
Oct. 3	* ALABAMA	ESPNU	W, 3-0
Oct. 9	* at Arkansas	SEC Network+	L, 1-3
Oct. 10	* at Arkansas	SEC Network+	L, 2-3
Oct. 16	* MISSOURI	SEC Network+	W, 3-0
Oct. 17	* MISSOURI	SEC Network+	L, 2-3
Oct. 21	* at Georgia	SEC Network+	6 p.m. CT
Oct. 22	* at Georgia	SEC Network+	6 p.m. CT
Oct. 29	* LSU	SEC Network+	6 p.m. CT
Nov. 4	* at Texas A&M	SEC Network+	6 p.m. CT
Nov. 5	* at Texas A&M	SEC Network+	6 p.m. CT
Nov. 10	* SOUTH CAROLINA	SEC Network	8 p.m. CT
Nov. 17	* at Florida	SEC Network+	6 p.m. CT
Nov. 20	* KENTUCKY	SEC Network+	4:30 p.m. CT
Nov. 21	* KENTUCKY	SEC Network+	1 p.m. CT
Nov. 26	* at Mississippi State	SEC Network+	4 p.m. CT

BOLD indicates home contest | All time Central and subject to change
^ - War Eagle Invitational | % - SLU-Fullerton Tournament | % - Home Tournament | * - Southeastern Conference Game

AUBURN ATHLETICS COMMUNICATIONS

Office Phone _____ 334-844-9800
Kirk Sampson _____ Associate AD
_____ sampska@auburn.edu
Taylor Shirey _____ Volleyball Contact
_____ trs0010@auburn.edu
C: 334-750-0710

FOLLOW ALONG

Web _____ AuburnTigers.com
Twitter _____ @AuburnVB
Instagram _____ @auburnvolleyball

MATCH

19

GEORGIA

Thursday, Oct. 21 | 6 p.m. CT

Athens, Ga. | Stegeman Coliseum | SEC Network+



MATCH

20

GEORGIA

Friday, Oct. 22 | 6 p.m. CT

Athens, Ga. | Stegeman Coliseum | SEC Network+



AUBURN

GEORGIA

AVCA Coaches Poll	_____	N/R
2021 Record	_____	11-7 3-5 SEC
Head Coach	_____	Brent Crouch
Career Record (Year)	_____	106-106 (8th)
Record at Auburn (Year)	_____	11-15 (2nd)
AVCA Coaches Poll	_____	N/R
2021 Record	_____	5-12 1-5 SEC
Head Coach	_____	Tom Black
Career Record (Year)	_____	313-177 (17th)
Record at Georgia (Year)	_____	71-62 (5th)

Site _____ Athens, Ga.
Venue _____ Stegeman Coliseum
Live Stats _____ Sidarm State
Twitter _____ @AuburnVB
Series Record _____ Georgia leads 28-20
Last Meeting _____ Oct. 20, 2019 at Auburn, Ala.
_____ Auburn 1; Georgia 3 (25-27, 15-25, 26-24, 17-25)

BY THE NUMBERS

12 Junior Rebekah Rath is knocking on the door of one of the top 10 single-season offensive performances in school history as she enters the Georgia series 12 kills shy of breaking into the top 10.

6 Racking up a career high 33 digs in the series finale against Missouri, Bella Rosenthal totaled the sixth most digs ever recorded by a Tiger in a single match.

1 Senior Tatum Shipes enters the weekend as the SEC leader in both total blocks (106) and blocks per set (1.61). Shipes is ranked second nationally in total blocks, while her blocks per set average is good for fourth.

QUICK HITS

- After picking the program's first win against Missouri since 1996, Auburn looks to continue the momentum in a two-match series against Georgia. Auburn has won three straight matches over the Bulldogs in Athens.
- Zeroing in on a little history after another monster blocking performance, Tatum Shipes now stands second in program single-season history (rally scoring era) with 106 total blocks. She is just 14 blocks shy of breaking Camila Jersonsky's single-season record of 119, which was set in 2012.
- Defense has been the name of the game for the Tigers this season. Auburn enters the week as the SEC leader in digs per set (16.67) and opponent hitting percentage (0.141), while the Tigers rank second in the league with a 2.75 blocks per set mark.

AUBURN'S POTENTIAL STARTING SEVEN



BELLA ROSENTHAL

#6 • DS/L • SR. • 5-5
D/S: 5.39 K/S: 4.55
A/S: 1.30 HIT%: .240
SA/S: 0.13 D/S: 2.07
P/S: 0.14 B/S: 0.87



REBEKAH RATH

#7 • OH • JR. • 6-0
K/S: 2.83
HIT%: .280
A/S: 0.04
D/S: 0.54
B/S: 0.23
P/S: 5.28



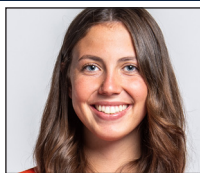
LIZ REICH

#8 • OPP • GR. • 6-1
K/S: 2.83
HIT%: .280
A/S: 0.04
D/S: 0.54
B/S: 0.23
P/S: 5.28



FALLAN LANHAM

#4 • DS • FR. • 5-8
K/S: 0.07
A/S: 0.12
SA/S: 0.03
D/S: 1.93
P/S: 0.10



JACKIE BARRETT

#10 • S • SO. • 6-1
K/S: 0.50
A/S: 8.42
SA/S: 0.26
D/S: 3.12
P/S: 0.74



ELIF SU YAVUZ

#19 • MB • SR. • 6-3
K/S: 0.71
HIT%: .369
D/S: 0.88
B/S: 0.28
SA/S: 1.18
P/S: 1.14



TATUM SHIPES

#21 • MB • SR. • 6-4
K/S: 1.17
HIT%: .214
D/S: 0.52
B/S: 1.61
SA/S: 0.06
P/S: 2.16

K/S: kills per set • HIT%: hitting percentage • D/S: digs per set • B/S: blocks per set • A/S: assists per set • SA/S: aces per set • P/S: points per set

#WarEagle



AuburnTigers.com



@AuburnVB | @AuburnTigers
@AuburnVBCoach



/AuburnVB
/AuburnTigers

TEAM SCHEDULE AND MEDIA AVAILABILITY >> WEEK OF OCTOBER 18-24

MONDAY October 18	TUESDAY October 19	WEDNESDAY October 20	THURSDAY October 21	FRIDAY October 22	SATURDAY October 23	SUNDAY October 24
OFF DAY	PRACTICE: 3:30-6:00 p.m. SAC	TRAVEL DAY	MATCH: 6:00 p.m. vs. Georgia Athens, Ga.	MATCH: 6:00 p.m. vs. Georgia Athens, Ga.	OFF DAY	PRACTICE: 9:45-12:15 p.m. SAC
NO INTERVIEWS	INTERVIEWS BY REQUEST	NO INTERVIEWS	INTERVIEWS BY REQUEST	INTERVIEWS BY REQUEST	NO INTERVIEWS	INTERVIEWS BY REQUEST

AUBURN ATHLETICS COMMUNICATIONS

QUICK FACTS

AUBURNTIGERS.COM

For updated game notes, statistics, safety protocols and latest information on Auburn volleyball and Auburn Athletics, visit AuburnTigers.com.

INTERVIEW POLICY

Coch Crouch, assistant coaches and student-athletes are available for interviews by contacting Taylor Shirey in the communications office. All interviews during the week will be conducted via phone or ZOOM. Post-match interviews will be conducted in the media room at Auburn Arena following a brief cooling-off period.

CREDENTIALS

Anyone wishing to cover an Auburn volleyball match should contact Taylor Shirey in the communications office at least 24 hours in advance to make arrangements. Due to COVID-19 safety guidelines, space within Auburn Arena will be limited. All media members will be required to wear masks inside Auburn Arena as part of Auburn University's mask mandate.

MATCH DAY SERVICES

Due to safety concerns related to COVID-19, printed copies of notes, flip cards and statistics will NOT be available. Digital copies will be emailed out prior to the match and will be available on AuburnTigers.com. Media members are permitted to bring their own printed materials. Stats will not printed between sets or after matches. Live stats will be provided during the match and final statistics will be emailed out and posted on AuburnTigers.com. All post-match interviews will be conducted

via ZOOM. Wireless internet is available in the Arena; ask Taylor Shirey for the password. Match highlights, photos and postgame interviews will be available on Imagen following matches.

VIDEO SERVICES

FTP feeds of selected Auburn volleyball highlights are available for the media. A number of studio and satellite services may be arranged for electronic media by contacting Cody Baker in War Eagle Productions at jcb0101@auburn.edu.

PHOTO SERVICES

For photos of Auburn volleyball or any Olympic sports, contact Shanna Lockwood at sal0002@auburn.edu.

COMMUNICATIONS STAFF

Taylor Shirey Volleyball Contact
cell: 334-750-0701
email: trs0010@auburn.edu

Kirk Sampson Associate AD
cell: 334-750-1385
email: sampspa@auburn.edu

UNIVERSITY INFORMATION

City / Zip _____ Auburn, Ala. / 36831
 Founded _____ Oct. 1, 1856
 Enrollment _____ 30,737
 Nickname _____ Tigers
 Colors _____ Navy Blue & Burnt Orange
 Affiliation _____ NCAA Division I
 Conference _____ Southeastern Conference
 Home Court _____ Auburn Arena (9,121)
 President _____ Dr. Jay Gogue (Auburn, 1969)
 Athletic Director _____ Allen Green (Notre Dame, 1998)
 Sport Administrator _____ Joy Vrbka (Florida, 2003)

TEAM INFORMATION

Letterwinners Returning/Lost _____ 7/8
 Starters Returning/Lost _____ 5/3+Libero
 Newcomers _____ 6
 2020 Overall Record _____ 0-8
 2020 Conference Record/Finish _____ 0-8/13th

PROGRAM HISTORY

First Year of Volleyball _____ 1967
 _____ Program discontinued 1981; Reinstated 1986
 Seasons of Auburn Volleyball _____ 49th
 All-Time Overall Record _____ 666-682-4 (.494)
 in Auburn Arena (Since 2013) _____ 60-52 (.536)
 Total Home Record _____ 232-205 (.531)
 All-Time SEC Record _____ 186-352 (.346)
 NCAA Tournament Appearances _____ 1/2010
 SEC Championships/Last _____ 1/Co-West Champions (1996)

STAFF INFORMATION

Head Coach _ Brent Crouch, 1st Season (Texas A&M, '98 & '00; Oregon '06)
 Career Record _____ 106-106 (.500)/8th Season
 Record at Auburn _____ 11-15 (.423)/2nd Season
 Associate Head Coach/Recruiting Coordinator _____ Alex Dunphy
 Assistant Coach _____ Rick Moller
 Volunteer Assistant Coach _____ Taylor Hammond
 Director of Volleyball Operations/Technical Coordinator _____ Madi Wilkerson
 Strength & Conditioning _____ Bethany Gainey
 Interim Athletic Trainer _____ Sydney Kinder
 Equipment Manager _____ Tra' Cee Tanner

ATHLETIC COMMUNICATIONS

Associate AD/Communications _____ Kirk Sampson
 Assistant Director/Volleyball Contact _____ Taylor Shirey
 Email _____ trs0010@auburn.edu
 Phone _____ 334-750-0710
 Mailing Address _____ Auburn Athletics Complex
 _____ 392 S. Donahue Drive
 Website _____ AuburnTigers.com

GAMEDAY EXPERIENCE: AUBURN ARENA

>> Auburn Arena is in its seventh season as home of Auburn volleyball. The Tigers are 60-52 since moving to the Arena in 2013. The facility seats approximately 2,000 fans for volleyball and 9,121 for basketball.



FIRST SERVE

» After picking up a historic victory against Missouri, Auburn volleyball (11-7, 3-4 SEC) looks to continue momentum in league action in a two-match series in Athens, Ga., against the Bulldogs (5-12, 1-5 SEC) at Stegeman Coliseum.

» Due to expected widespread internet outages on campus, the two-match series was moved to Thursday-Friday. First serve for both matches is scheduled for 6 p.m. CT. Kaleb Frady and Nikki Chester will have the call on SEC Network+.

» In its 49th full season of volleyball, Auburn's all-time record stands at 666-682-4 (.494).

» Brent Crouch (11-15) enters his second season as the head coach for the Tigers after a two-year stint at USC. Entering his eighth overall season as a head coach, Crouch holds an 106-106 career record. He's the 11th head coach in Auburn program history.

» Auburn's 2021 schedule features four 2020-21 NCAA Volleyball Tournament participants: Jackson State, Missouri, Florida and reigning national champion Kentucky.

» The Tiger roster features a wealth of fresh faces as six of Auburn's 12 total student-athletes on roster will be taking the court in Blue and Orange for the first time in their careers with a combination of four true freshmen and two transfers.

UP NEXT

» The Tigers return to Auburn Arena on Friday, Oct. 29 for a single match against LSU. First serve is slated for 6 p.m. CT on the SEC Network+.

LAST TIME OUT

» It was a gritty, back-and-forth battle broke out Sunday afternoon at Auburn Arena as Auburn volleyball took Missouri (4-16, 1-6 SEC) to the brink forcing five sets, but Mizzou held on the edge out a 3-2 (25-27, 25-20, 23-25, 25-21, 11-15) victory.

» For the seventh time this season, Rebekah Rath recorded at least 20 kills in a match as she led the Tigers with 22. The junior committed just five errors in 71 total attempts to total a .239 hitting percentage.

» Rath closed Sunday's match with two assists, matching her season high, one ace and three total blocks. Rath also recorded 12 digs to secure her seventh double-double of the season. Rath is now just 12 kills from moving into 10th place on Auburn single-season kills performances in the rally-scoring era.

» In her best offense performance in conference play this season, Val Green closed the match with 16 kills for

her seventh double-digit kill performance of the season. Green added one assist, one block and two digs for the Tigers.

» Liz Reich also finished the match with double-digit kills, totaling 10. The graduated student attacked at a .258 clip, committing just two errors in her 31 attempts. Reich picked up a pair of digs and one block. Senior Elif Yavuz hammered home six kills in the match, a career high in conference action.

» Sophomore Jackie Barrett started the match at setter. Barrett dished out 12 assists, while adding two blocks, three digs and one kill before being lifted in the second set.

» Freshman Jordan Sinness closed out the match at setter for the Tigers, picking up a career high 35 assists. Sinness recorded her first collegiate double-double with help of a career high 14 digs. She also added two blocks and a kill.

» In another impressive defensive before, libero Bella Rosenthal racked up career-high 33 digs for her third 30+ digs match of her senior season. Her 33 digs are tied for the sixth most ever recorded in a single match. Offensively, Rosenthal added eight assists.

» The Tiger blocking effort put together another strong performance at the net with nine total blocks. Senior Tatum Shipes led Auburn with six total blocks as she continues to inch her way up the record book.

» Shipes is now tied for fifth in single-season history with 17 solo blocks. Her 89 block assists move her into a tie for third in the program's single-season history. Shipes has totaled 106 blocks her senior season, the third most every recorded by a Tiger in the rally scoring era.

SEC REVAMPS CONFERENCE SCHEDULING FORMAT FOR 2021 CAMPAIGN

» The Southeastern Conference announced a new scheduling format for its conference slate ahead of the 2021 campaign.

» The SEC schedule consists of 18 matches in which each member institution will play each other at least once. The order of opponents for each team was determined by a random computer draw.

» Two-match series may be played Wednesday/Thursday, Thursday/Friday, Friday/Saturday or Saturday/Sunday per the league office.

SCOUTING GEORGIA

» The Georgia Bulldogs are looking to snap a two-match losing skid after falling to #21 Tennessee, 3-1, and to Texas A&M in a five-set thriller. Georgia's lobe conference victory this season came via a sweep at Texas

PLAYER TO WATCH: BELLA ROSENTHALL

» A two-time SEC Defensive Player of the Week, Bella Rosenthal recorded the sixth most digs by a Tiger in a single match with a career high 33 in a five-set thriller versus Missouri (10/17). She leads the SEC in total digs and digs per set.



SEC STANDINGS & SCHEDULE

	2021 SEC RECORD			2021 OVERALL		
	W	L	Pct.	W	L	Pct.
Kentucky	6	0	1.000	13	3	.813
Tennessee	7	1	.875	15	3	.833
Florida	6	2	.750	12	6	.667
Arkansas	5	2	.714	14	4	.778
Mississippi State	5	2	.417	14	5	.737
Texas A&M	4	4	.500	11	7	.611
South Carolina	3	4	.429	11	6	.647
AUBURN	3	5	.375	11	7	.611
LSU	3	6	.333	7	11	.389
Ole Miss	2	5	.286	13	5	.722
Alabama	1	5	.167	9	9	.500
Georgia	1	5	.167	5	12	.294
Missouri	1	6	.143	4	16	.200

THIS WEEK IN THE SEC...

Wednesday, Oct. 20

#23 Florida at Alabama 7 p.m.
LSU at South Carolina 7 p.m.

Thursday, Oct. 21

AUBURN AT GEORGIA 7 P.M.

Friday, Oct. 22

AUBURN AT GEORGIA 7 P.M.
Ole Miss at Missouri 7:30 p.m.
Arkansas at #5 Kentucky 8 p.m.

Saturday, Oct. 23

Alabama at South Carolina 2 p.m.
Texas A&M at Mississippi State 3 p.m.
#20 Tennessee at LSU 5 p.m.
Arkansas at #5 Kentucky 6 p.m.
Ole Miss at Missouri 6:30 p.m.

Sunday, Oct. 24

Alabama at South Carolina 11 a.m.
Texas A&M at Mississippi State 1 p.m.
#20 Tennessee at LSU 2 p.m.

2021 NCAA RPI REPORT

RK	TEAM	RECORD	AU RESULT
6	Tennessee	15-3	L
9	Kentucky	13-3	
29	South Carolina	11-6	
31	Arkansas	14-4	L L
34	Florida	12-6	
38	Texas A&M	11-7	
42	Mississippi State	14-5	
43	Ole Miss	13-5	L
79	Georgia	5-12	
115	LSU	7-11	
136	AUBURN	11-7	-----
142	Alabama	9-9	W W
166	Tennessee Tech	10-10	W
171	Santa Clara	7-11	W
172	Missouri	4-16	W L
216	Florida A&M	13-6	L
219	Cal State Fullerton	6-9	W
234	Nicholls	8-11	W
245	Belmont	8-12	W
252	Jackson State	8-10	W
281	Southeastern Louisiana	6-12	W
295	Alabama State	9-14	L
319	North Alabama	7-14	W

AUBURN OPPONENTS ONLY

AVCA COACHES POLL

RK	TEAM	RECORD	PREVIOUS
1.	Texas (64)	15-0	1
2.	Louisville	16-0	2
3.	Wisconsin	15-1	3
4.	Pittsburgh	17-1	4
5.	Kentucky	13-3	5
6.	Ohio State	16-2	7
7.	Purdue	14-3	6
8.	BYU	18-1	8
9.	Nebraska	14-3	9
10.	Washington	13-3	10
11.	Baylor	11-4	11
12.	Minnesota	10-5	12
13.	Georgia Tech	15-3	16
14.	Penn State	13-5	15
15.	Stanford	11-5	18
16.	Oregon	14-4	13
17.	UCLA	13-3	14
18.	Utah	12-5	17
19.	Western Kentucky	18-1	20
20.	Tennessee	15-3	21
21.	San Diego	14-3	22
22.	Washington State	11-6	25
23.	Florida	12-6	23
24.	Creighton	18-2	19
25.	Pepperdine	13-4	25

Others receiving votes: Marquette; Illinois; Miami (FL); Michigan; Colorado; Rice; Florida State

INSIDE THE MATCH-UP

GEORGIA **20-38 (.345)**

9-16 H • 7-18 A • 4-4 N

SERIES HISTORY [LAST 10 MEETINGS]

YEAR	SITE	RESULT	MATCH SCORE
2013	AWAY	L	1-3
2014	HOME	W	3-1
2014	AWAY	L	2-3
2015	HOME	W	3-0
2016	AWAY	W	3-1
2016	HOME	W	3-0
2017	AWAY	W	3-0
2018	HOME	L	2-3
2018	AWAY	W	3-0
2019	HOME	L	1-3

A&M. The Bulldogs have also suffered losses at the hands of South Carolina, #22 Florida and Arkansas to enter the series with a 1-5 record in conference play while standing at 5-12 overall.

» Georgia averages 12.19 kills per set this season, while attacking on a .219 team hitting percentage. Georgia offense is evenly spread with gout Bulldogs recording at least 100 kills this season. Junior outside hitter Amber Stivrins has done most of the damage with 194 kills to her credit. She stands 17th in the league with a 2.94 kills per set mark.

» One of the toughest serving teams in the league, Georgia ranks sixth in the SEC with a 1.41 aces per set average while the team's total service aces mark of 96 is good for fourth. Again, Stivrins has done most of the damage with a team-leading 28 aces, the third most in the SEC. Stivrins also ranks third overall in the league with a 0.42 services aces per set mark.

» Freshman Clara Brower has taking over the setting duties for the Bulldogs, starting 13 of Georgia's 17 matches. Brower averages 8.17 digs per set and has dished out 531 assists this season. Brower is also successful with dump attacks with 19 kills to her credit. At the service line, the setter has totaled 21 aces to average 0.32 per set.

» Defensively, the Bulldogs are once again spread evenly on the court with five student-athletes recording at least 100 digs this season. Redshirt senior Claire Rothenberger and sophomore Mallory Downing lead the team with 141 digs each. Downing holds a team-high 2.47 digs per set average.

» As a team, Georgia ranks eighth in the league with a 2.12 blocks per set mark. Sophomore middle blocker Phoebe Awoleye leads the Bulldogs with 72.0 blocks this season, the seventh most in the SEC. Awoleye averages 1.06 blocks per set to rank 12th overall in the league.

A WIN OVER GEORGIA...

» Would be Auburn's third straight victory against the Bulldogs in Athens

AUBURN-GEORGIA SERIES

» Georgia leads the overall series history with a 38-20 record, but Auburn has dominated the series as of late with a 6-4 record in the last 10 meetings. The Bulldogs hold a 18-7 advantage in games played in Athens, but Auburn has taken victories in the last three contests held in Stegeman Coliseum, a streak that dates back to 2016.

OH SHIPES! IT'S A BLOCK PARTY

» As the season progresses, Auburn's play at the net

continues to improve as highlighted by a record-breaking performance against Alabama. As a team, the Tigers totaled 18.0 team blocks in Auburn's 3-2 victory against the Crimson Tide on Oct. 2. The mark tied the program's record for blocks in a match. The Tigers also totaled 18.0 team blocks against South Florida on Sept. 13, 2014.

» Auburn enters the weekend ranked second in the Southeastern Conference and 11th nationally with a 2.75 blocks per set average. The mark is currently the second highest team average recorded in a single-season. The record of 2.81 was set in 1989. Play at the net combined with Auburn's digging performance has helped the Tigers hold opponents to a minuscule .141 hitting percentage, the 12th lowest mark in the country.

» An SEC Defensive Player of the Week selection this season, Tatum Shipes recorded 12.0 total blocks in the five-set match against the Tide to help Auburn to its first SEC home victory since 2018. The mark set the program's single-match record for blocks in the rally scoring era. The previous record of 11.0 was set on Nov. 23, 2017 by Breanna Barksdale at Florida.

» Shipes continues to lead Auburn with her impressive play at the net since moving to middle blocker. Shipes leads the SEC in both total blocks (106) and blocks per set (1.61), while ranking second and fourth, respectively, in both categories. Her efforts this season have jumped Shipes into the top 10 in several single-season blocking categories.

BLOCKS - SOLO

PLAYER	YEAR	BLOCKS
1. Katherine Culwell	2012	25
2. Sarah Bullock	2012	18
Jessica Glover	2008	18
Anna Stevenson	2018	18
5. Tatum Shipes	2021	17
Kelly Fidero	2011	17
Sarah Bullock	2011	17

BLOCKS - ASSISTS

PLAYER	YEAR	BLOCKS
1. Camila Jersonsky	2012	108
2. Lauren Mellor	2009	90
3. Tatum Shipes	2021	89
Camila Jersonsky	2013	89

TOTAL BLOCKS

PLAYER	YEAR	BLOCKS
1. Camila Jersonsky	2012	119
2. Tatum Shipes	2021	97

PLAYER TO WATCH: TATUM SHIPES

» Making the move to middle blocker has been an easy transition to Tatum Shipes. Shipes enters the weekend leading the SEC in total blocks and blocks per set. Shipes is just 14 blocks shy of setting Auburn's single-season blocks record.



BLOCKS PER SET (MIN. 50 BLOCKS)

	PLAYER	YEAR	BLOCKS
1.	Tatum Shipes	2021	1.61
2.	Anna Stevension	2018	1.15
3.	Camila Jersonsky	2012	1.09
4.	Camila Jersonsky	2013	1.01

THE CROUCH EFFECT

» After COVID-19 derailed the process last season, Brent Crouch's overhaul of the program took into effect since the season opener and has continued into the early portion of Southeastern Conference play.

» The Tigers opened the season with 17 consecutive set victories before dropping its first set of the season. Auburn tied the program record for most sweeps to begin a season with five. The record was first set by the 1974 squad.

» Auburn's 6-0 start is the best for the Tigers since the 2012 team began the season 8-0. Auburn has recorded 10 victories through its first 14 matches of the season. It is the most wins by the Tigers since the 2018 team closed the year with 12.

» Sweeping Alabama to earn the program's first SEC victories of the season, the Tigers have now won back-to-back SEC games for the first time since knocking off Georgia and Mississippi State in November of 2018. Auburn has now won three straight matches against Alabama. It is the longest win streak against the Crimson Tide since the Tigers won six straight from 2009 to 2012.

» Auburn opened its two-match series against Missouri with a sweep, picking up the program's first victory in the series since 1996. It also mark the first time in program history that Auburn had defeated Missouri since Missouri joined the SEC.

» With 10 matches still remaining during the regular season, Auburn has seen dramatic improvement in multiple categories.

OFFENSE

- Auburn's .225 hitting percentage is the sixth highest mark recorded by a team in a single-season - highest team hitting percentage since 2018.

DEFENSE

- Auburn's digs per set average of 16.67 currently ranks fourth in single-season history and is the highest team average since 2007.
- Auburn currently holds the second high team blocks per set average for a single season at 2.75. The record of 2.81 was set in 1989.

CAN YOU DIG IT?

» Behind a career performance at the Auburn Invitational, Bella Rosenthal was selected as the SEC's Defensive Player of the Week for the second consecutive week. She is the first Tiger in program history to win the award in back-to-back weeks. She is also the first Tiger to win the award multiple times in a season since Camila Jersonsky in 2012.

» Rosenthal has paced the Tigers this season, recording at least 10 digs in 17 of Auburn's 18 matches to being the season. She has chipped in at least 20 digs in 10 matches for the Tigers while totaling at least 30 digs three time.

» She set a then career high with 31 digs. She is the first Tiger to record at least 30 digs in a match since Payton White versus Butler on Aug. 31, 2019.

» Behind her match-leading 30 digs in the series opener at Arkansas (10/9), she became just the 15th Tiger in program history to record 1,000 career digs. Rosenthal is the first Tiger to hit the mark since Brenna McIlroy in 2018.

» Rosenthal is coming off a 33-dig performance in the series finale against Missouri (10/17), a career high for the senior. The mark is the sixth most ever recorded by a Tiger in a single match.

» She currently leads the SEC with a 5.39 digs/set average - a mark that currently ranks ninth nationally. She also leads the SEC in total digs with 372 total. She currently holds the highest digs per set average set by a Tiger during a single season and is on pace to turn in one of the best dig performances in school history as she already in the top 10 with 10 matches remaining in the regular season.

2020-21 AUBURN VOLLEYBALL ROSTER

No.	Name	Year	Pos.	Ht.	Hometown (High School/Previous School)
4	Fallan Lanham	Fr.	DS/L	5-8	Louisville, Ky. (Mercy Academy)
5	Audrey Douglas	So.	OH/OPP	6-4	Winter Park, Fla. (Hagerty)
6	Bella Rosenthal	Sr.	DS/L	5-5	Yorktown, Ind. (Yorktown)
7	Rebekah Rath	Jr.	OH	6-0	Altamonte Springs, Fla. (Oviedo/Maryland)
8	Liz Reich	Gr.	OPP	6-1	Colorado Springs, Colo. (Lewis-Palmer/Portland)
10	Jackie Barrett	So.	S	6-1	Highland, Calif. (Citrus Valley)
11	Jordan Sinness	Fr.	S	5-9	Sebring, Fla. (Sebring)
15	Kate Curtis	Fr.	DS/L	5-6	Anderson, S.C. (T.L. Hanna)
16	Val Green	Sr.	OH	6-2	Oxford, Ohio (Talawanda)
17	Cassidy Tanton	Fr.	OH	6-0	Stoneville, N.C. (Dalton McMichael)
19	Elif Su Yavuz	Sr.	MB	6-3	Ankara, Turkey (Gazi University)
21	Tatum Shipes	Sr.	OH	6-4	Buford, Ga. (Buford)

HEAD COACH | BRENT CROUCH (SECOND SEASON)

ASSOCIATE HEAD COACH/RECRUITING COORDINATOR | ALEX DUNPHY (SECOND SEASON)

ASSISTANT COACH | RICK MOLLER (SECOND AS ASSISTANT COACH/THIRD SEASON OVERALL)

DIRECTOR OF VOLLEYBALL OPERATIONS/TECHNICAL COORDINATOR | MADI WILKERSON (SECOND SEASON)

PRONUNCIATION GUIDE:

FALLAN LANHAM (FOUL-an LAN-UM)

JORDAN SINNESS (SIN-es)

ELIF SU YAVUZ (e-LEAF SUE Yah-vous)

LIZ REICH (RICH)

CASSIDY TANTON (TAN-tun)

TATUM SHIPES (SHY-PS)

HEAD COACH BRENT CROUCH**QUICK FACTS**

College ___ Texas A&M ('98, '00)
 ___ Oregon ('06)
 Wife ___ Marcy
 Sons ___ Jonathan and William

COACHING RECORD

Head Coaching Career ___ 8th Season
 Career Record ___ 106-106
 NCAA Appearances ___ 2

COACHING CAPSULE

2020-Pt. Auburn 11-15
 2018-19 Southern California 40-25
 2014-17 Portland 55-66

YEAR-BY-YEAR RESULTS

2021	Auburn	11-7
2020	Auburn	0-8
2019	USC	18-14
2018	USC	22-11
2017	Portland	15-15
2016	Portland	17-13
2015	Portland	16-15
2014	Portland	7-23



Brent Crouch enters his second season as the head coach of the Auburn volleyball team after guiding the program through the challenges of the COVID-19 pandemic during his first season on The Plains.

Crouch made his Auburn coaching debut against No. 4 Florida on Oct. 21, 2020, to open the shortened fall volleyball schedule. Crouch led the Tigers on the court for eight total matches.

The fall season was highlighted by Auburn setting the program record for blocks in a four-set match as the Tigers recorded 17 at South Carolina on Oct. 29, 2020. The previous mark of 14 was set on Nov. 9, 2014 against Tennessee. The total tied for the second-most blocks in a match in Auburn program history as was the most by the Tigers since 2009.

Due to injuries and opt-out, the Tigers were unable to compete in the spring portion of the amended 2020-21 schedule.

Crouch previously served as the head coach at the University of Southern California. In two seasons at USC, Crouch led the program to consecutive NCAA second round appearances, including a second-place finish in the Pac-12, and a No. 21 ranking in the season's final AVCA poll in his first season on campus in 2018. This past season, the Trojans were 18-14, while outside hitter Kholia Lanier became the fifth player in Pac-12 history to record 2,000 kills and 1,000 digs in career.

Under Crouch in 2018, the Trojans finished 22-11 overall with a 13-7 record in Pac-12 matches. USC played one of the toughest schedules in the nation and faced 18 ranked opponents in the regular season and were awarded the No. 11 overall seed in the NCAA Tournament. Setter Raquel Lázaro was named the Pac-12 Freshman of the Year and outside hitter Brooke Borikin was chosen for second-team AVCA All-America honors. Lázaro and Lanier were each tabbed for All-America honorable mention.

Under Crouch's tutelage, outside hitter Emilia Weske was tabbed to the Pac-12's All-Freshman Team while middle blocker Jasmine Gross added All-Pac-12 honors.

Prior to arriving at Troy, Crouch was the 2016 West Coast Conference Coach of the Year. He inherited a winless Portland program and within two seasons guided the Pilots to their winningest season in 25 years. Crouch first took over at Portland in 2014 after the Pilots went 0-27 the previous season. After going 7-23 in his debut season, he guided the Pilots to a 16-15 mark in 2015 (its most victories since 1991) and then improved upon that in 2016 with a 17-13 mark. His 2017 team, which was hampered by injuries, was 15-15, with five losses coming in five-set matches. His overall four-year record at Portland was 55-66.

The 48 victories in his final three years was Portland's best three-season total since 1984-86. The Pilots' 10-8 third place WCC finish in 2016 was its most league wins since 1985 and highest conference finish since 1989. He led Portland to the program's first-ever victories over Top 10, Top 15, and Top 25 opponents. Crouch coached three All-WCC first team players and a WCC All-Freshman team pick, along with three WCC All-Academic first teamers. He also helped establish beach volleyball as a varsity sport at Portland in 2016.

Crouch arrived at Portland after four seasons (2010-13) at Saint Mary's College, where he was an assistant with the indoor program and head coach of the beach team.

During his time at SMC, the Gaels' indoor team went 73-40 overall, finished in the top three in the WCC standings each season by winning 73.4 percent of its league matches (47-17) and earned a berth into the NCAA Tournament in 2012, advancing to the second round. Besides being involved in the team's offense and defense, recruiting, scouting, practice planning, statistical and video analysis and scheduling, he provided academic support, as he mentored several WCC All-Academic honorees and helped the team to the athletic department's highest grade point average, an NCAA Public Recognition Award, and an AVCA academic award.

Crouch also coached the inaugural Saint Mary's beach team in 2013, guiding the Gaels to an 8-2 record, the best mark among all Northern California teams, as well as a No. 9 national ranking and a bid to the AVCA national championship for the program's top pairs team.

Crouch also has coaching experience with the USA Volleyball program, including working with U.S. Women's National Team head coach Karch Kiraly, being an assistant with the U.S. Collegiate National Team that captured a gold medal at the 2016 U22 Global Challenge and serving as both an indoor and beach coach in the USA Volleyball High Performance program.

Crouch played for Texas A&M's club team from 1993 to 1997. He earned his bachelor's degree in history in 1998 and his master's in philosophy in 2000, both from Texas A&M, then a doctorate in philosophy from Oregon in 2006.

He competed on the beach from 2005 to 2007 in AVP and CBVA events and placed second at the 2005 California Cup state championship.

He has held various teaching positions in philosophy at Oregon, San Diego City College, and Saint Mary's College since 2000.

Crouch and his wife Marcy have two sons, Jonathan and William.

INSIDE THE NUMBERS



CATEGORY	AUBURN	GEORGIA
Kills	832	829
Per Set	12.1	12.2
Errors	280	360
Total Attacks	2457	2174
Hitting Pct.	.225	.216
Assists	746	782
Per Set	10.8	11.5
Service Aces	69	96
Per Set	1.0	1.4
Service Errors	112	154
Reception Errors	74	88
Per Set	1.1	1.3
Digs	1150	866
Per Set	16.7	12.7
Solo Blocks	34	18
Block Assists	311	253
Total Blocks	189.5	144.5
Per Set	2.7	2.1

2021 AUBURN INDIVIDUAL MATCH HIGHS (BY SET)

THREE SETS

HITTING PERCENTAGE (MIN. 12 KILLS) _____ .500, Liz Reich vs. Jackson State (August 28, 2021)
 KILLS _____ 17, Rebekah Rath vs. Missouri (October 16, 2021)
 TOTAL ATTEMPTS _____ 47, Rebekah Rath vs. Missouri (October 16, 2021)
 ASSISTS _____ 34, Rebekah Rath vs. Alabama (October 3, 2021)
 DIGS _____ 25, Bella Rosenthal vs. North Alabama (September 9, 2021)
 ACES _____ 2 (6x), last Kate Curtis/Rebekah Rath vs. Alabama (October 3, 2021)
 BLOCKS _____ 8 (2x), last Tatum Shipes vs. Southeastern Louisiana (September 3, 2021)

FOUR SETS

HITTING PERCENTAGE (MIN. 12 KILLS) _____ .288, Rebekah Rath vs. Ole Miss (September 22, 2021)
 KILLS _____ 29, Rebekah Rath at Arkansas (October 9, 2021)
 TOTAL ATTEMPTS _____ 75, Rebekah Rath at Arkansas (October 9, 2021)
 ASSISTS _____ 40, Jackie Barrett vs. Nicholls (September 17, 2021)
 DIGS _____ 31, Bella Rosenthal vs. Nicholls (September 17, 2021)
 ACES _____ 3, Jackie Barrett vs. Nicholls (September 17, 2021)
 BLOCKS _____ 10.0, Tatum Shipes at Arkansas (October 9, 2021)

FIVE SETS

HITTING PERCENTAGE (MIN. 12 KILLS) _____ .378, Liz Reich vs. Florida A&M (September 17, 2021)
 KILLS _____ 24 (2x), last, Rebekah Rath at Alabama State (September 26, 2021)
 TOTAL ATTEMPTS _____ 71 (2x), last Rebekah Rath vs. Missouri (October 16, 2021)
 ASSISTS _____ 48, Jackie Barrett vs. Florida A&M (September 17, 2021)
 DIGS _____ 33, Bella Rosenthal vs. Missouri (October 16, 2021)
 ACES _____ 2 (6x), last Tatum Shipes at Arkansas (October 10, 2021)
 BLOCKS _____ 12, Tatum Shipes vs. Alabama State (October 2, 2021)

2021 AUBURN TEAM MATCH HIGHS (BY SET)

THREE SETS

HITTING PERCENTAGE _____ .457, vs. Jackson State (August 28, 2021)
 KILLS _____ 42 (2x), last vs. Cal State Fullerton (September 2, 2021)
 TOTAL ATTEMPTS _____ 122, vs. Cal State Fullerton (September 2, 2021)
 ASSISTS _____ 38, vs. Alabama (October 3, 2021)
 DIGS _____ 66, vs. Alabama (October 3, 2021)
 ACES _____ 6 (3x), last vs. Belmont (September 18, 2021)
 BLOCKS _____ 14.0, vs. Jackson State (August 28, 2021)

FOUR SETS

HITTING PERCENTAGE _____ .196, vs. Ole Miss (September 22, 2021)
 KILLS _____ 51, vs. Nicholls (September 17, 2021)
 TOTAL ATTEMPTS _____ 175, vs. Nicholls (September 17, 2021)
 ASSISTS _____ 47, vs. Ole Miss (September 22, 2021)
 DIGS _____ 105, vs. Nicholls (September 17, 2021)
 ACES _____ 4 (2x), vs. Ole Miss (September 22, 2021)
 BLOCKS _____ 14.0, at Arkansas (October 9, 2021)

FIVE SETS

HITTING PERCENTAGE _____ .260, vs. Santa Clara (September 12, 2021)
 KILLS _____ 69, vs. Florida A&M (September 17, 2021)
 TOTAL ATTEMPTS _____ 188, vs. Florida A&M (September 17, 2021)
 ASSISTS _____ 63, vs. Florida A&M (September 17, 2021)
 DIGS _____ 90, vs. Missouri (October 16, 2021)
 ACES _____ 6, vs. Florida A&M (September 17, 2021)
 BLOCKS _____ 18.0, vs. Alabama (October 2, 2021)

DIGS

	PLAYER	YEAR	DIGS
1.	Jesse Earl	2016	612
2.	Jesse Earl	2017	529
3.	Jesse Earl	2015	516
4.	Sarah Wroblecky	2013	481
5.	Liz Crouch	2010	469
6.	Liz Crouch	2009	453
7.	Alyssa Ivey	2014	434
8.	Sarah Wroblecky	2012	431
9.	Liz Crouch	2008	389
10.	Bella Rosenthal	2021	372

DIGS PER SET (MIN. 100 DIGS)

	PLAYER	YEAR	AVG.
1.	Bella Rosenthal	2021	5.39
2.	Jesse Earl	2017	5.19
3.	Jesse Earl	2016	4.98

» With 1,088 career digs to her credit, Rosenthal currently ranks 111th among all active Division I student-athletes in career digs. She has already added her name to Auburn's career record book in both dig categories with her senior-year performance.

DIGS

	PLAYER	YEARS	DIGS
1.	Liz Crouch	2007-10	1,703
2.	Jesse Earl	2015-17	1,657
3.	Gretchen Thompson	1986-89	1,495
4.	Alexa Filley	2014-17	1,315
5.	Allyson Beecroft	1993-96	1,249
6.	Sarah Wroblecky	2010-13	1,238
7.	Sarah Bullock	2009-12	1,210
8.	Rachel Shanks	2004-07	1,185
9.	Bella Rosenthal	2018-Pr.	1,088

DIGS PER SET (MIN. 500 DIGS)

	PLAYER	YEARS	AVG.
1.	Jesse Earl	2015-17	4.79
2.	Liz Crouch	2007-10	4.00
3.	Sarah Wroblecky	2010-13	3.65
4.	Bella Rosenthal	2018-Pr.	3.63
5.	Gretchen Thompson	1986-89	3.26

FEEL THE RATH

» Behind one of the program's best offensive performances in almost two decades, junior outside hitter Rebekah Rath was selected as Southeastern Conference Co-Offensive Player of the Week, sharing the honor with LSU's Kylie Deberg.

» The recognition is the second for Rath this season. Rath is the first Tiger in program history to be named SEC Offensive Player of the Week twice in the same season. The SEC began distributing the award in 2004.

» In an epic performance in game one against Arkansas (10/9), Rath was virtually unstoppable on offense with 29 total kills. Rath attacked on a .240 hit percentage, committing just 11 errors in her 75 swings.

» Rath's 29 kills were the second most recorded by a Tiger during the rally-scoring era. Her 29 kills were the most totaled in a single match by a Tiger since Ashlee Johns' single-match record of 30, which was totaled in a five-set contest at Arkansas on Oct. 8, 2004. Her 29 kills are the most recorded in a four-set match by any SEC student-athlete this season.

» Rath currently leads the SEC in attacks per set (12.94), kills per set (4.55) points (364.5), points per set (5.28), total attacks (893) and total (314), while ranking in the top 15 nationally in all six categories.

» The junior as recorded at least 10 kills in 16 of Auburn's 18 matches. In Auburn's five-set thriller versus Santa Clara, Rath led the team with 24 kills to become the first Tiger to record at least 20 kills in a match since Tatum Shipes in 2018. Rath also chipped in 24 kills in Auburn's five-set contest at Alabama State on Sept. 26 before shattering the mark at Arkansas.

» Rath's was named SEC Offensive Player of the Week on Sept. 7. The Altamonte Springs, Fla., native is the first Auburn Tiger to be named SEC Offensive Player of the Week since Brenna McIlroy won the award on Oct. 30, 2017.

» Her efforts have also won her all-tournament team honors at both the War Eagle Invitational and the Auburn Invitational.

» Rath's 4.55 kills per set average is currently the highest by a Tiger in single-season history (rally scoring era). Zeroing in on Auburn's top 10 single-season kill performances in the rally-scoring era, Rath needs 12 kills over the remaining 10 matches of the season to add her name to the list.

KILLS PER SET (MIN. 100 KILLS)

	PLAYER	YEAR	AVG.
1.	Rebekah Rath	2021	4.51
2.	Sarah Bullock	2012	3.50
3.	Jessica Glover	2008	3.45

AUBURN PICKED 13th IN PRESEASON POLL

» Auburn was selected to finish 13th in the Southeastern Conference in the annual preseason coaches' poll. The Tigers earned 12 points from the league's coaches.

» Reigning national champion Kentucky (139 pts) edged out Florida (138 pts) by one point as the favorite to win the SEC Championship. Kentucky secured seven first-place votes. Florida finished with six.

» LSU was tabbed to finished third, while Tennessee and Arkansas rounded out the top five.

TIGER TRACKS

» Air Green! Val Green set Takawanda High School's high jump record. She's also a second generation collegiate volleyball athlete. Her mother, Paula, played at Miami-Ohio.

» Tatum Shipes holds a wealth of athletic talent in her family's history. Her mother, Laurel, played basketball at Kentucky. Her father lettered in basketball at The Master's University. Her brother, T.J., was a member of Georgia State's basketball team. Her grandfather, Don Hudgens, and great grandparents, Ira and Opal, all played collegiate basketball.

» Jackie Barrett is the daughter of Martin J. Barrett, a former football star at the University of Buffalo. Martin was a two-time AP All-American and set 14 career UB records as a quarterback. He was inducted into Buffalo's Hall of Fame in 1989.

» Full Circle Moment: Liz Reich was originally recruited to Portland and competed her freshman season under Brent Crouch.

» Audrey Douglas is fluent in American Sign Language.

» Jordan Sinness is not the first member of her family to play collegiate sports in the state of Alabama. Her older sister, Jade, plays softball at Troy University.

» Associate head coach Alex Dunphy is the daughter of Volleyball Hall of Famer and American Volleyball Coaches Association Hall of Famer, Marv Dunphy. Dunphy has led Pepperdine to five NCAA Men's Division I Championships. Marv was an assistant coach for Team USA Women's Volleyball at the 2020 Tokyo Olympics, helping the squad to a gold medal.

THE LAST TIME AUBURN...

Won in three sets _____ Oct. 16, 2021 vs. Missouri (25-23, 25-14, 25-15)
Won in four sets _____ Sept. 17, 2021 vs. Nicholls (25-8, 25-15, 26-28, 25-15)
Won in five sets _____ Oct. 2, 2021 vs. Alabama (25-21, 20-25, 25-21, 20-25, 15-5)
Lost in three sets _____ Sept. 29, 2021 at #20 Tennessee (16-25, 21-25, 14-25)
Lost in four sets _____ Oct. 9, 2021 at Arkansas (27-25, 18-25, 23-25, 22-25)
Lost in five sets _____ Oct. 17, 2021 vs. Missouri (25-27, 25-20, 23-25, 25-21, 11-15)
 Lost first set in a win _____ Sept. 8, 2019 vs. George Washington (21-25, 25-13, 25-22, 25-13)
Won first set in a loss _____ Oct. 10, 2021 at Arkansas (25-20, 25-23, 15-25, 17-25, 7-15)
 Lost first two sets in a win _____ Sept. 11, 2018 at Kennesaw State (23-25, 20-25, 28-26, 26-24, 15-9)
Won first two sets in a loss _____ Oct. 10, 2021 at Arkansas (25-20, 25-23, 15-25, 17-25, 7-15)
 Beat a ranked opponent _____ Sept. 2, 2017 vs. #16 North Carolina (25-23, 25-22, 25-27, 25-21)
Hit .300-.399 in a match _____ Sept. 18, 2021 vs. Belmont (.345)
Hit .400-.499 in a match _____ Aug. 28, 2021 vs. Jackson State (.457)
 Hit .500 or better in a match _____ Oct. 18, 1998 at Ole Miss (.514)
Held opponent to .000-.100 in a match _____ Oct. 16, 2021 vs. Missouri (.097)
Held opponent to a negative hitting percentage _____ Sept. 18, 2014 vs. Belmont (-.093)
 Had 70-79 kills in a match _____ Oct. 26, 2018 vs. Ole Miss (77)
 Had 80+ kills in a match _____ Sept. 17, 2006 at Georgia (84)
Had 80-99 digs in a match _____ Oct. 17, 2021 vs. Missouri (90)
Had 100+ digs in a match _____ Sept. 17, 2021 vs. Nicholls (105)
Had 15+ blocks in a match _____ Oct. 10, 2021 at Arkansas (17.0)
 Had 10+ service aces in a match _____ Sept. 15, 2019 at TCU (11)
Had a player(s) with 20-24 kills in a match _____ Oct. 17, 2021, Rebekah Rath vs. Missouri (22)
Had a player(s) with 25-29 kills in a match _____ Oct. 9, 2021, Rebekah Rath at Arkansas (29)
 Had a player(s) with 30+ kills in a match _____ Oct. 8, 2004, Ashlee Johns vs. Arkansas (30)
Had a player(s) with 10+ blocks in a match _____ Oct. 9, 2021, Tatum Shipes at Arkansas (10.0)
Had a player(s) with 25-29 digs in a match _____ Oct. 3, 2021, Bella Rosenthal vs. Alabama (21)
Had a player(s) with 30+ digs in a match _____ Oct. 17, 2021, Bella Rosenthal vs. Missouri(33)
 Had a player(s) with 50+ assists in a match _____ Aug. 31, 2019, Marissa Hines (50)
 Had a player(s) with 60+ assists in a match _____ Oct. 28, 2018, Mica Allison vs. Ole Miss (61)
 Had a player(s) with 5+ aces in a match _____ Oct. 19, 2018, Brenna McLroy at Missouri (6)

AUBURN DOUBLE-DOUBLES IN 2021

PLAYER	OPPONENT (SETS)	DATE	STATS
Jackie Barrett (11)	vs. Tennessee Tech (3)	August 27	25 assists, 12 digs
	vs. Santa Clara (5)	September 12	44 assists, 11 digs
	vs. Florida A&M (5)	September 17	48 assists, 15 digs
	vs. Nicholls (4)	September 17	40 assists, 28 digs
	vs. Belmont (3)	September 18	24 assists, 19 digs
	vs. Ole Miss (4)	September 22	34 assists, 12 digs
	at #20 Tennessee (3)	September 29	18 assists, 12 digs
	vs. Alabama (5)	October 2	43 assists, 14 digs
	vs. Alabama (3)	October 3	34 assists, 11 digs
	at Arkansas (4)	October 9	36 assists, 13 digs
Rebekah Rath (6)	at Arkansas (5)	October 10	36 assists, 16 digs
	vs. Cal State Fullerton (3)	September 2	16 kills, 10 digs
	vs. Santa Clara (5)	September 12	24 kills, 10 digs
	at Alabama State (5)	September 26	24 kills, 13 digs
	vs. Alabama (5)	October 2	22 kills, 11 digs
Jordan Sinness (1)	vs. Alabama (3)	October 3	16 kills, 11 digs
	at Arkansas (5)	October 10	20 kills, 10 digs
	vs. Missouri (5)	October 20	22 kills, 12 digs
Jordan Sinness (1)	vs. Missouri (5)	October 20	35 assists, 14 digs

AUBURN'S 2021 RECORD WHEN...

OVERALL	11-7
SEC	3-5
NON-CONFERENCE	10-2
RANKED OPPONENTS	0-1
HOME	11-3
AWAY	0-4
NEUTRAL	0-0
BY SETS	
THREE SETS	8-1
FOUR SETS	1-2
FIVE SETS	2-4
WON FIRST SET	11-4
LOST FIRST SET	0-3
WON SECOND SET	10-3
LOST SECOND SET	1-4
WON FIRST TWO SETS	10-1
LOST FIRST TWO SETS	0-1
SITUATIONAL	
MORE KILLS THAN OPPONENT	8-1
FEWER KILLS THAN OPPONENT	3-6
KILLS ARE TIED	0-0
MORE DIGS THAN OPPONENT	8-1
FEWER DIGS THAN OPPONENT	3-6
DIGS ARE TIED	0-0
MORE ACES THAN OPPONENT	7-1
FEWER ACES THAN OPPONENT	3-6
ACES ARE TIED	1-0
HIGHER HITTING PERCENTAGE THAN OPPONENT	11-2
LOWER HITTING PERCENTAGE THAN OPPONENT	0-5
HITTING PERCENTAGE TIED	0-0
HITTING PERCENTAGE	
.400 OR ABOVE	1-0
.300-.399	2-0
.200-.299	6-3
.100-.199	2-3
.000-.099	0-1
NEGATIVE	0-0
OPPONENTS' HITTING PERCENTAGE	
.400 OR ABOVE	0-0
.300-.399	0-0
.200-.299	1-6
.100-.199	1-1
.000-.099	8-0
NEGATIVE	1-0
BY DAY	
MONDAY	0-0
TUESDAY	0-0
WEDNESDAY	0-2
THURSDAY	2-0
FRIDAY	3-1
SATURDAY	4-1
SUNDAY	2-3
DAY MATCHES (FIRST SERVE BEFORE 6 P.M.)	5-5
NIGHT MATCHES (FIRST SERVE AFTER 6 P.M.)	6-2
BY MONTH	
AUGUST	2-0
SEPTEMBER	6-4
OCTOBER	3-3
NOVEMBER	0-0
JERSEY COLOR	
NAVY	2-2
NAVY w/ORANGE SLEEVE	1-2
ORANGE	4-3
ORANGE w/NAVY SLEEVE	4-0
PINK	0-0

2021 AUBURN MATCH-BY-MATCH STARTERS

DATE	OPPONENT	RESULT	OUTSIDE	MIDDLE	RIGHT SIDE	OUTSIDE/DS	MIDDLE	LIBERO	SETTER
8/28	TENNESSEE TECH	W, 3-0	Rath	Shipes	Reich	Lanham (DS)	Yavuz	Rosenthal	Barrett
8/28	JACKSON STATE	W, 3-0	Rath	Shipes	Reich	Green (OH)	Yavuz	Rosenthal	Barrett
9/2	CAL STATE FULLERTON	W, 3-0	Rath	Shipes	Reich	Green (OH)	Yavuz	Rosenthal	Barrett
9/3	SOUTHEASTERN LOUISIANA	W, 3-0	Rath	Shipes	Reich	Green (OH)	Yavuz	Rosenthal	Barrett
9/9	NORTH ALABAMA	W, 3-0	Rath	Shipes	Reich	Green (OH)	Yavuz	Rosenthal	Barrett
9/12	SANTA CLARA	W, 3-2	Rath	Shipes	Reich	Green (OH)	Yavuz	Rosenthal	Barrett
9/17	FLORIDA A&M	L, 2-3	Rath	Shipes	Reich	Green (OH)	Yavuz	Rosenthal	Barrett
9/17	NICHOLLS	W, 3-1	Rath	Shipes	Reich	Green (OH)	Yavuz	Rosenthal	Barrett
9/18	BELMONT	W, 3-0	Rath	Shipes	Reich	Green (OH)	Yavuz	Rosenthal	Barrett
9/22	OLE MISS	L, 1-3	Rath	Shipes	Reich	Green (OH)	Yavuz	Rosenthal	Barrett
9/26	at Alabama State	L, 2-3	Rath	Shipes	Reich	Lanham (DS)	Yavuz	Rosenthal	Barrett
9/29	at Tennessee	L, 0-3	Rath	Shipes	Reich	Lanham (DS)	Yavuz	Rosenthal	Barrett
10/2	ALABAMA	W, 3-2	Rath	Shipes	Reich	Lanham (DS)	Yavuz	Rosenthal	Barrett
10/3	ALABAMA	W, 3-0	Rath	Shipes	Reich	Lanham (DS)	Yavuz	Rosenthal	Barrett
10/9	at Arkansas	L, 1-3	Rath	Shipes	Reich	Lanham (DS)	Yavuz	Rosenthal	Barrett
10/10	at Arkansas	L, 2-3	Rath	Shipes	Reich	Lanham (DS)	Yavuz	Rosenthal	Barrett
10/16	MISSOURI	W, 3-0	Rath	Shipes	Reich	Lanham (DS)	Yavuz	Rosenthal	Barrett
10/17	MISSOURI	L, 2-3	Rath	Shipes	Reich	Lanham (DS)	Yavuz	Rosenthal	Barrett
10/22	at Georgia								
10/23	at Georgia								
10/29	LSU								
11/4	at Texas A&M								
11/5	at Texas A&M								
11/10	SOUTH CAROLINA								
11/17	at Florida								
11/20	KENTUCKY								
11/21	KENTUCKY								
11/26	at Mississippi State								

2021 AUBURN MATCH-BY-MATCH LEADERS

DATE	OPPONENT	RESULT	KILLS	ASSISTS	ACES	DIGS	BLOCKS	HIT PCT. (MIN 10 ATT.)
8/28	TENNESSEE TECH	W, 3-0	Rath (13)	Barrett (25)	Barrett/Rath/Curtis (1)	Rosenthal (17)	Shipes (7)	Shipes (.462)
8/28	JACKSON STATE	W, 3-0	Rath (16)	Barrett (27)	Barrett/Rath (2)	Rosenthal (14)	Yavuz (8)	Reich (.500)
9/2	CAL STATE FULLERTON	W, 3-0	Rath (16)	Barrett/Sinness (16)	Rath (1)	Rosenthal (17)	Shipes (3)	Reich (.409)
9/3	SOUTHEASTERN LOUISIANA	W, 3-0	Rath (16)	Barrett (28)	Barrett (2)	Rosenthal (16)	Shipes (8)	Reich (.458)
9/9	NORTH ALABAMA	W, 3-0	Green (12)	Barrett (30)	Barrett/Green/Rath (1)	Rosenthal (25)	Barrett (4)	Green (.375)
9/12	SANTA CLARA	W, 3-2	Rath (24)	Barrett (44)	Barrett/Sinness (2)	Rosenthal (20)	Shipes/Barrett (5)	Shipes (.357)
9/17	FLORIDA A&M	L, 2-3	Green (19)	Barrett (48)	Barrett (2)	Rosenthal (20)	Douglas/Barrett/Yavuz (4)	Yavuz (.571)
9/17	NICHOLLS	W, 3-1	Rath (18)	Barrett (40)	Barrett (3)	Rosenthal (28)	Shipes (9)	Rath (.211)
9/18	BELMONT	W, 3-0	Rath (14)	Barrett (24)	Rosenthal (2)	Rosenthal/Barrett (19)	Shipes (7)	Rath (.429)
9/22	OLE MISS	L, 1-3	Rath (19)	Barrett (34)	Green (2)	Rosenthal (13)	Shipes/Yavuz (3)	Rath (.288)
9/26	at Alabama State	L, 2-3	Rath (24)	Barrett (36)	Rath/Sinness (2)	Rosenthal (27)	Rath (4)	Shipes (.400)
9/29	at Tennessee	L, 0-3	Rath (9)	Barrett (18)	Lanham (1)	Barrett (12)	Shipes (6)	Reich (.217)
10/2	ALABAMA	W, 3-2	Rath (22)	Barrett (43)	Curtis (1)	Rosenthal (24)	Shipes (12)	Shipes (.231)
10/3	ALABAMA	W, 3-0	Rath (16)	Barrett (34)	Curtis/Rath (2)	Rosenthal (21)	Shipes (7)	Reich (.435)
10/9	at Arkansas	L, 1-3	Rath (29)	Barrett (36)	Barrett/Rath (1)	Rosenthal (30)	Shipes (10)	Rath (.240)
10/10	at Arkansas	L, 2-3	Rath (20)	Barrett (36)	Shipes (2)	Rosenthal (20)	Shipes (9)	Green (.231)
10/16	MISSOURI	W, 3-0	Rath (17)	Barrett (25)	Four Athletes (1)	Rosenthal (19)	Rath (4)	Rath (.277)
10/17	MISSOURI	L, 2-3	Rath (22)	Sinness (35)	Rath/Lanham/Curtis (1)	Rosenthal (33)	Shipes (6)	Yavuz (.385)
10/22	at Georgia							
10/23	at Georgia							
10/29	LSU							
11/4	at Texas A&M							
11/5	at Texas A&M							
11/10	SOUTH CAROLINA							
11/17	at Florida							
11/20	KENTUCKY							
11/21	KENTUCKY							
11/26	at Mississippi State							

2021 OVERALL STATISTICS

Overall: 11-7 • SEC: 3-5 • Home: 11-3 • Away: 0-4 • Neutral: 0-0

#	PLAYER	SP	K	K/S	E	TA	Pct	A	A/S	SA	SE	SA/S	RE	DIG	DIG/S	BS	BA	BLK	BLK/S	BE	BHE	PTS	PT/S
7	Rath, Rebekah	69	314	4.55	100	893	.240	11	0.16	16	46	0.23	17	143	2.07	9	51	60.0	0.87	2	0	364.5	5.28
8	Reich, Liz	69	195	2.83	52	510	.280	3	0.04	0	1	0.00	1	37	0.54	0	37	37.0	0.54	2	0	213.5	3.09
16	Green, Val	69	152	2.20	64	535	.164	3	0.04	6	8	0.09	3	51	0.74	2	23	25.0	0.36	1	0	171.5	2.49
21	Shipes, Tatum	66	77	1.17	34	201	.214	6	0.09	4	7	0.06	0	34	0.52	17	89	106.0	1.61	4	3	142.5	2.16
19	Yavuz, Elif	69	49	0.71	11	103	.369	2	0.03	0	0	0.00	2	19	0.28	4	57	61.0	0.88	7	1	81.5	1.18
10	Barrett, Jackie	66	33	0.50	7	116	.225	556	8.42	17	13	0.26	0	206	3.12	2	47	49.0	0.74	8	1	75.5	1.14
4	Lanham, Fallan	69	5	0.07	8	68	-.044	8	0.12	2	4	0.03	9	133	1.93	0	0	0.0	0.00	0	0	7.0	0.10
5	Douglas, Audrey	5	4	0.80	3	12	.083	0	0.00	0	0	0.00	0	0	0.00	0	4	4.0	0.80	0	0	6.0	1.20
11	Sinness, Jordan	48	2	0.04	1	5	.200	52	1.08	6	5	0.13	0	32	0.67	0	3	3.0	0.06	0	2	9.5	0.20
6	Rosenthal, Bella	69	1	0.01	0	11	.091	90	1.30	9	16	0.13	13	372	5.39	0	0	0.0	0.00	0	0	10.0	0.14
15	Curtis, Kate	69	0	0.00	0	3	.000	15	0.22	9	12	0.13	12	123	1.78	0	0	0.0	0.00	0	0	9.0	0.13
17	Tanton, Cassidy	1	0	0.00	0	0	.000	0	0.00	0	0	0.00	0	0	0.00	0	0	0.0	0.00	0	0	0.0	0.00
TEAM													17										
AUBURN		69	832	12.06	280	2457	.225	746	10.81	69	112	1.00	74	1150	16.67	34	311	189.5	2.75	24	7	1090.5	15.80
OPPONENTS		69	840	12.17	463	2679	.141	777	11.26	74	140	1.07	69	1182	17.13	36	98	85.0	1.23	31	16	999.0	14.48

2021 CONFERENCE ONLY STATISTICS

SEC: 3-5 • Home: 3-2 • Away: 0-3

#	PLAYER	SP	K	K/S	E	TA	Pct	A	A/S	SA	SE	SA/S	RE	DIG	DIG/S	BS	BA	BLK	BLK/S	BE	BHE	PTS	PT/S
7	Rath, Rebekah	32	154	4.81	52	471	.217	6	0.19	5	23	0.16	7	77	2.41	2	28	30.0	0.94	1	0	175.0	5.47
8	Reich, Liz	32	73	2.28	25	228	.211	0	0.00	0	0	0.00	1	20	0.62	0	15	15.0	0.47	2	0	80.5	2.52
16	Green, Val	32	69	2.16	34	248	.141	2	0.06	2	1	0.06	1	18	0.56	0	13	13.0	0.41	0	0	77.5	2.42
21	Shipes, Tatum	32	27	0.84	18	86	.105	3	0.09	3	4	0.09	0	22	0.69	9	47	56.0	1.75	2	2	62.5	1.95
19	Yavuz, Elif	32	21	0.66	6	51	.294	2	0.06	0	0	0.00	2	12	0.38	2	28	30.0	0.94	4	1	37.0	1.16
10	Barrett, Jackie	29	11	0.38	2	48	.188	238	8.21	3	6	0.10	0	90	3.10	2	24	26.0	0.90	4	0	28.0	0.97
4	Lanham, Fallan	32	3	0.09	5	36	-.056	2	0.06	2	3	0.06	3	62	1.94	0	0	0.0	0.00	0	0	5.0	0.16
11	Sinness, Jordan	21	1	0.05	0	3	.333	35	1.67	1	2	0.05	0	20	0.95	0	2	2.0	0.10	0	1	3.0	0.14
6	Rosenthal, Bella	32	1	0.03	0	1	1.000	42	1.31	3	7	0.09	6	166	5.19	0	0	0.0	0.00	0	0	4.0	0.13
15	Curtis, Kate	32	0	0.00	0	0	.000	8	0.25	5	8	0.16	6	62	1.94	0	0	0.0	0.00	0	0	5.0	0.16
TEAM													10										
AUBURN		32	360	11.25	142	1172	.186	338	10.56	24	54	0.75	36	549	17.16	15	157	93.5	2.92	13	4	477.5	14.92
OPPONENTS		32	437	13.66	206	1297	.178	407	12.72	36	62	1.12	24	589	18.41	16	54	43.0	1.34	13	10	516.0	16.09

2021 STATISTICAL LEADERS

KILLS (PER SET)

Rebekah Rath	314 (4.55)
Liz Reich	195 (2.83)
Val Green	152 (2.20)
Tatum Shipes	77 (1.17)
Elif Yavuz	49 (0.71)

TOTAL ATTACKS

Rebekah Rath	893
Val Green	535
Liz Reich	510
Tatum Shipes	201
Jackie Barrett	116

HITTING PERCENTAGE (MIN. 200 ATT.)

Liz Reich	.280
Rebekah Rath	.240
Tatum Shipes	.214
Val Green	.164

ASSISTS (PER SET)

Jackie Barrett	556 (8.42)
Bella Rosenthal	90 (1.30)
Jordan Sinness	52 (1.08)
Kate Curtis	15 (0.22)
Rebekah Rath	11 (0.16)

ACES (PER SET)

Jackie Barrett	17 (0.26)
Rebekah Rath	16 (0.23)
Bella Rosenthal	9 (0.13)
Kate Curtis	9 (0.13)
Val Green	6 (0.09)
Jordan Sinness	6 (0.13)

DIGS (PER SET)

Bella Rosenthal	372 (5.39)
Jackie Barrett	206 (3.12)
Rebekah Rath	143 (2.07)
Fallan Lanham	133 (1.93)
Kate Curtis	123 (1.78)

BLOCK | SOLOS

Tatum Shipes	17
Rebekah Rath	9
Elif Yavuz	4
Val Green	2
Jackie Barrett	2

BLOCK | ASSISTS

Tatum Shipes	89
Elif Yavuz	57
Rebekah Rath	51
Jackie Barrett	47
Liz Reich	37

TOTAL BLOCKS (PER SET)

Tatum Shipes	106 (1.61)
Elif Yavuz	61 (0.88)
Rebekah Rath	60 (0.87)
Jackie Barrett	49 (0.74)
Liz Reich	37 (0.54)

AUBURN VOLLEYBALL SINGLE-SEASON INDIVIDUAL RECORDS (25-POINT RALLY SCORING ERA)

OFFENSIVE RECORDS

KILLS

PLAYER	YEAR	KILLS
1. Jessica Glover	2008	410
2. Sarah Bullock	2012	371
3. Sarah Bullock	2010	354
4. Brenna McLroy	2016	351
5. Kelly Fidero	2011	341
6. Courtney Crable	2015	333
7. Brenna McLroy	2015	333
8. Katherine Culwell	2012	330
9. Katherine Culwell	2013	326
10. Morgan Johns	2010	325

KILLS PER SET (MIN. 100 KILLS)

PLAYER	YEAR	AVG.
1. Rebekah Rath	2021	4.55
2. Sarah Bullock	2012	3.50
3. Jessica Glover	2008	3.45
4. Kelly Fidero	2011	3.22
5. Brenna McLroy	2016	3.13
6. Katherine Culwell	2013	3.13
7. Katherine Culwell	2012	3.03
8. Sarah Bullock	2010	3.03
9. Brenna McLroy	2018	3.00
10. Brenna McLroy	2017	2.86
11. Liz Reich	2021	2.83
12. Courtney Crable	2015	2.82
Taylor Rowland	2018	2.82

ATTACK PERCENTAGE (MIN. 250 ATT.)

PLAYER	YEAR	PCT.
1. Shaina White	2017	.367
2. Camila Jersonsky	2012	.356
3. Camila Jersonsky	2011	.356
4. Camila Jersonsky	2010	.354
5. Camila Jersonsky	2013	.351
6. Alyssa Davis	2009	.316
7. Morgan Johns	2010	.305
8. Stephanie Campbell	2013	.281
9. Liz Reich	2021	.280
Stephanie Campbell	2015	.280
Stephanie Campbell	2014	.279

ATTACKS

PLAYER	YEAR	ATTACKS
1. Brenna McLroy	2016	1,113
2. Sarah Bullock	2012	1,090
3. Courtney Crable	2014	1,062
4. Brenna McLroy	2015	1,043
5. Katherine Culwell	2012	1,033
6. Sarah Bullock	2010	993
7. Jessica Glover	2008	988
8. Katherine Culwell	2013	981
9. Brenna McLroy	2017	938
10. Courtney Crable	2015	935

ASSISTS

PLAYER	YEAR	ASSISTS
1. Alexa Filley	2016	1,227
2. Alexa Filley	2015	1,226
3. Alexa Filley	2014	1,175
4. Alexa Filley	2017	1,093
5. Mica Allison	2018	1,055
6. Sara Shanks	2008	995
7. Chelsea Wintzinger	2011	791

8. Christina Salverson	2010	740
9. Chelsea Wintzinger	2012	680
10. Chelsea Wintzinger	2013	642

ASSISTS PER SET (MIN. 200 ASSISTS)

PLAYER	YEAR	AVG.
1. Alexa Filley	2017	10.72
2. Alexa Filley	2014	10.22
3. Alexa Filley	2015	10.13
4. Mica Allison	2018	10.05
5. Alexa Filley	2016	9.98
6. Sara Shanks	2008	8.43
7. Jackie Barrett	2021	8.42
8. Marissa Hines	2019	7.51
9. Chelsea Wintzinger	2011	7.39
10. Morgan Kull	2019	6.94
11. Chelsea Wintzinger	2012	6.24

ACES

PLAYER	YEAR	ACES
1. Brenna McLroy	2018	48
2. Jesse Earl	2016	46
3. Jesse Earl	2017	42
4. Jesse Earl	2015	39
5. Brenna McLroy	2016	36
6. Chelsea Wintzinger	2013	35
7. Courtney Crable	2014	33
8. Brenna McLroy	2015	32
9. Sara Shanks	2008	30
Alexa Filley	2015	30

ACES PER SET (MIN. 15 ACES)

PLAYER	YEAR	AVG.
1. Brenna McLroy	2018	0.46
2. Jesse Earl	2017	0.41
3. Jesse Earl	2016	0.37
4. Chelsea Wintzinger	2013	0.34
5. Jesse Earl	2015	0.32
Brenna McLroy	2016	0.32
7. Courtney Crable	2014	0.27
8. Brenna McLroy	2015	0.26
9. Jackie Barrett	2021	0.26
10. Alexa Filley	2015	0.25
Sara Shanks	2008	0.25
Kelly Stewart	2016	0.25

DEFENSIVE RECORDS

DIGS

PLAYER	YEAR	DIGS
1. Jesse Earl	2016	612
2. Jesse Earl	2017	529
3. Jesse Earl	2015	516
4. Sarah Wroblicky	2013	481
5. Liz Crouch	2010	469
6. Liz Crouch	2009	453
7. Alyssa Ivey	2014	434
8. Sarah Wroblicky	2012	431
9. Liz Crouch	2008	389
10. Bella Rosenthal	2021	372

DIGS PER SET (MIN. 100 DIGS)

PLAYER	YEAR	AVG.
1. Bella Rosenthal	2021	5.39
2. Jesse Earl	2017	5.19
3. Jesse Earl	2016	4.98
4. Sarah Wroblicky	2013	4.62

5. Jesse Earl	2015	4.26
6. Liz Crouch	2009	4.08
7. Alyssa Ivey	2014	4.02
8. Liz Crouch	2010	4.01
9. Sarah Wroblicky	2012	3.99
10. Liz Crouch	2008	3.70
11. Sarah Bullock	2012	3.31

BLOCKS - SOLO

PLAYER	YEAR	BLOCKS
1. Katherine Culwell	2012	25
2. Sarah Bullock	2012	18
Jessica Glover	2008	18
Anna Stevenson	2018	18
5. Tatum Shipes	2021	17
Kelly Fidero	2011	17
Sarah Bullock	2011	17
8. Katherine Culwell	2013	16
Camila Jersonsky	2013	16
10. Camila Jersonsky	2011	15
Jaeden Brown	2019	15

BLOCKS - ASSISTS

PLAYER	YEAR	BLOCKS
1. Camila Jersonsky	2012	108
2. Lauren Mellor	2009	90
3. Tatum Shipes	2021	89
Camila Jersonsky	2013	89
5. Breanna Barksdale	2014	87
6. Courtney McDonald	2012	84
7. Breanna Barksdale	2016	83
8. Breanna Barksdale	2015	82
9. Anna Stevenson	2018	73
10. Stephanie Campbell	2014	72

TOTAL BLOCKS

PLAYER	YEAR	BLOCKS
1. Camila Jersonsky	2012	119
2. Tatum Shipes	2021	106
3. Camila Jersonsky	2013	105
4. Breanna Barksdale	2014	101
5. Lauren Mellor	2009	97
Breanna Barksdale	2016	97
7. Breanna Barksdale	2015	94
8. Anna Stevenson	2018	91
9. Courtney McDonald	2012	89
10. Stephanie Campbell	2014	86

BLOCKS PER SET (MIN. 50 BLOCKS)

PLAYER	YEAR	BLOCKS
1. Tatum Shipes	2021	1.61
2. Anna Stevenson	2018	1.15
3. Camila Jersonsky	2012	1.09
4. Camila Jersonsky	2013	1.01
5. Chloe Rowand	2011	0.97
6. Breanna Barksdale	2014	0.91
7. Stephanie Campbell	2015	0.90
8. Camila Jersonsky	2011	0.89
9. Lauren Mellor	2009	0.88
10. Elif Yavuz	2021	0.88
11. Rebekah Rath	2021	0.87
12. Breanna Barksdale	2016	0.84
13. Shaina White	2019	0.82
Courtney McDonald	2012	0.82
Lauren Mellor	2010	0.82

Active student-athletes are listed in **BOLD**.

AUBURN VOLLEYBALL CAREER RECORDS (SIDEOUT + RALLY ERA)

OFFENSIVE RECORDS

KILLS

	PLAYER	YEARS	KILLS
1.	Jaunelle Hamilton	1997-00	1,848
2.	Allyson Beecroft	1993-96	1,727
3.	Brooke McCarley	1997-00	1,704
4.	Gina Thomas	1988-92	1,467
5.	Rachel Shanks	2004-07	1,319
6.	Brenna McIlroy	2015-18	1,288
7.	Sarah Bullock	2009-12	1,272
8.	Bridgitte Sims	1989-91	1,149
9.	Jessica Glover	2005-08	1,137
10.	Rani Whitson	1993-96	1,102

KILLS PER SET (MIN. 500 KILLS)

	PLAYER	YEARS	AVG.
1.	Brooke McCarley	1997-00	4.40
2.	Jaunelle Hamilton	1997-00	4.23
3.	Allyson Beecroft	1993-96	4.00
4.	Ashlee Johns	2003-04	3.82
5.	Terri Duckworth	1987-88	3.63
6.	Jennifer Amobi	2003-05	3.57
7.	Rachel Shanks	2004-07	3.43
8.	Bridgitte Sims	1989-91	3.40
9.	Jessica Glover	2005-08	3.17
10.	Sarah Bullock	2009-12	2.93
	Brenna McIlroy	2015-18	2.93

ATTACK PERCENTAGE (MIN. 1,000 ATT.)

	PLAYER	YEARS	K	E	ATT. PCT.
1.	Camila Jersonsky	2010-13	894	237	1.853 .355
2.	Jaunelle Hamilton	1997-00	1,848	532	3.827 .344
3.	Brooke McCarley	1997-00	1,704	455	3.847 .325
4.	Terri Duckworth	1987-99	876	291	1.860 .315
5.	Shaina White	2017-19	512	121	1.267 .309
6.	Rani Whitson	1993-96	1,102	383	2.562 .281
7.	Julie Bosley	2003-06	558	178	1.359 .280
8.	Gina Thomas	1988-92	1,467	540	3.319 .279
9.	Stephanie Campbell	2013-16	673	205	1.669 .276
10.	Whitney Jacob	2004-07	1,093	428	2.522 .264

ATTACKS

	PLAYER	YEARS	ATTACKS
1.	Allyson Beecroft	1993-96	4,349
2.	Brenna McIlroy	2015-18	4,027
3.	Brooke McCarley	1997-00	3,847
4.	Jaunelle Hamilton	1997-00	3,827
5.	Sarah Bullock	2009-12	3,774
6.	Rachel Shanks	2004-07	3,703
7.	Gina Thomas	1988-92	3,319
8.	Katherine Culwell	2009-13	3,130
	Jessica Glover	2005-08	3,130
10.	Jenifer Kleyn	1988-91	3,107

ASSISTS

	PLAYER	YEARS	ASSISTS
1.	Piper Craig	1995-98	5,053
2.	Alexa Filley	2014-17	4,721
3.	Janel Newkirk	1989-92	4,071
4.	Mary Orndorff	1986-89	3,242
5.	Chelsea Wintzinger	2010-13	2,654

6.	Tama English	1991-94	2,535
7.	Joanna Pappas	2005-06	2,073

ASSISTS PER SET (MIN. 500 ASSISTS)

	PLAYER	YEARS	AVG.
1.	Piper Craig	1995-98	12.86
2.	Traci Price	1999-00	11.77
3.	Maira Mogallon	2003-04	11.38
4.	Chris Murphy	1993-96	11.35
5.	Joanna Pappas	2005-06	11.15
6.	Alexa Filley	2014-17	10.24
7.	Mica Allison	2018	10.05
8.	Jackie Barrett	2020-Pr.	8.24
9.	Morgan Kull	2017-19	5.26

ACES

	PLAYER	YEARS	ACES
1.	Jenifer Kleyn	1988-91	338
2.	Lori Russell	1989-92	201
3.	Gretchen Thompson	1986-89	164
4.	Tory Gutierrez	1989-92	160
5.	Terri Duckworth	1987-88	158
6.	Jaunelle Hamilton	1997-00	148
7.	Allyson Beecroft	1993-96	138
8.	Brenna McIlroy	2015-18	137
9.	Whitney Jacob	2004-07	134
10.	Janel Newkirk	1989-92	129

ACES PER SET (MIN. 40 ACES)

	PLAYER	YEARS	AVG.
1.	Jenifer Kleyn	1988-91	0.71
2.	Terri Duckworth	1987-88	0.66
3.	Lori Russell	1989-92	0.46
4.	Jenny Fisler	1987-88	0.40
5.	Bridgitte Sims	1989-91	0.37
	Jesse Earl	2015-17	0.37
7.	Gretchen Thompson	1986-89	0.36
8.	Maira Mogallon	2003-04	0.35
	Tory Gutierrez	1989-92	0.35
10.	Jaunelle Hamilton	1997-00	0.34

DEFENSIVE RECORDS

DIGS

	PLAYER	YEARS	DIGS
1.	Liz Crouch	2007-10	1,703
2.	Jesse Earl	2015-17	1,657
3.	Gretchen Thompson	1986-89	1,495
4.	Alexa Filley	2014-17	1,315
5.	Allyson Beecroft	1993-96	1,249
6.	Sarah Wroblecky	2010-13	1,238
7.	Sarah Bullock	2009-12	1,210
8.	Rachel Shanks	2004-07	1,185
9.	Bella Rosenthal	2018-Pr.	1,088
10.	Brenna McIlroy	2015-18	1,078

DIGS PER SET (MIN. 500 DIGS)

	PLAYER	YEARS	AVG.
1.	Jesse Earl	2015-17	4.79
2.	Liz Crouch	2007-10	4.00
3.	Sarah Wroblecky	2010-13	3.65
4.	Bella Rosenthal	2018-Pr.	3.63

5.	Gretchen Thompson	1986-89	3.26
6.	Rachel Shanks	2004-07	3.08
7.	Allyson Beecroft	1993-96	2.89
8.	Alexa Filley	2014-17	2.85
9.	Bailey Veit	2002-05	2.80
	Emily Suter	1995-98	2.80

BLOCKS - SOLO

	PLAYER	YEARS	BLOCKS
1.	Gina Thomas	1988-92	159
2.	Tory Gutierrez	1989-92	157
3.	Jaunelle Hamilton	1997-00	106
4.	Julie Bosler	2003-06	98
5.	Rani Whitson	1993-96	61
6.	Katherine Culwell	2009-13	59
7.	Mary Olks	1986-89	58
8.	Whitney Jacob	2004-07	56
9.	Sarah Bullock	2009-12	54
10.	Camila Jersonsky	2010-13	51

BLOCKS - ASSISTS

	PLAYER	YEARS	BLOCKS
1.	Jaunelle Hamilton	1997-00	465
2.	Rani Whitson	1993-96	426
3.	Gina Thomas	1988-92	360
4.	Whitney Jacob	2004-07	351
5.	Tory Gutierrez	1989-92	318
6.	Camila Jersonsky	2010-13	317
7.	Julie Bosley	2003-06	265
8.	La'Toi Finley	1994-97	261
	Krista Singleton	1994-97	261
10.	Breanna Barksdale	2014-16	252

TOTAL BLOCKS

	PLAYER	YEARS	BLOCKS
1.	Jaunelle Hamilton	1997-00	571
2.	Gina Thomas	1988-92	519
3.	Rani Whitson	1993-96	487
4.	Tory Gutierrez	1989-92	475
5.	Whitney Jacob	2004-07	407
6.	Camila Jersonsky	2010-13	368
7.	Julie Bosler	2003-06	363
8.	Breanna Barksdale	2014-16	292
9.	La'Toi Finley	1994-97	289
10.	Krista Singleton	1994-97	276

BLOCKS PER SET (MIN. 100 BLOCKS)

	PLAYER	YEARS	AVG.
1.	Jaunelle Hamilton	1997-00	1.31
2.	Rani Whitson	1993-96	1.16
3.	Julie Bosler	2003-06	1.06
4.	Tory Gutierrez	1989-92	1.03
5.	Gina Thomas	1988-92	0.98
6.	Whitney Jacob	2004-07	0.96
7.	Camila Jersonsky	2009-13	0.92
8.	Anna Stevenson	2017-18	0.90
	Heather Franey	1995-96,98	0.90
10.	La'Toi Finley	1994-97	0.88

Active student-athletes are listed in **BOLD**.



#4 FALLAN LANHAM

DEFENSIVE SPECIALIST/LIBERO | 5-8 | FRESHMAN
LOUISVILLE, KY. (MERCY ACADEMY)



LANHAM'S HIGHLIGHTS:

- Recorded double-digit digs in six matches this season
- Earned first collegiate start in Auburn's season opener versus Tennessee Tech on August 27
- Tallied her first collegiate kill while also setting career highs in assists (2) and digs (14) versus Santa Clara (9/12)
- Match her career high in digs (14) versus Nicholls (9/17)
- Returned to the service line at No. 20 Tennessee (9/29), recording her first collegiate ace
- Tallied her first double-digit dig performance in SEC play with 10 against Alabama (10/3)
- Turned in her best offensive performance of the season versus Missouri (10/17) with a career high two kills and a service ace to tally 3.0 points

CATEGORY	CAREER HIGH	OPPONENT/DATE
Kills	1 (3x)	last, at Alabama State (9/27/21)
Attempts	8	at Arkansas (10/9/21)
Hitting Percentage (Min. 10 ATT.)		
Assists	2	vs. Santa Clara (9/12/21)
Digs	14 (2x)	last, vs. Nicholls (9/17/21)
Blocks		
Aces	1	at #20 Tennessee (9/29/21)
Points	1.0 (4x)	last, at #20 Tennessee (9/29/21)

CATEGORY	SEASON HIGH	OPPONENT/DATE
Kills	2	vs. Missouri (9/12/21)
Attempts	8	at Arkansas (10/9/21)
Hitting Percentage (Min. 10 ATT.)		
Assists	2	vs. Santa Clara (9/12/21)
Digs	14 (2x)	last, vs. Nicholls (9/17/21)
Blocks		
Aces	1 (2x)	last, vs. Missouri (10/17/21)
Points	3.0	last, vs. Missouri (10/17/21)

DATE	OPPONENT	SP	ATTACK				SET			SERVE				RECEIPT			BLOCKING				BHE	POINTS	TEAM HIT%	SCORE	
			K	E	TA	PCT.	A	TA	PCT.	SA	SE	TA	PCT.	RE	TA	PCT.	DIG	BS	BA	BE					TOTAL
August 27	TENNESSEE TECH	3	0	0	3	.000	0	2	.000	0	1	5	.800	0	9	1.000	4	0	0	0	0.0	0	0.0	.292	3-0
August 28	JACKSON STATE	3	0	0	0	.000	0	1	.000	0	0	0	.000	1	10	.900	4	0	0	0	0.0	0	0.0	.457	3-0
September 2	CAL STATE FULLERTON	3	0	0	2	.000	0	3	.000	0	0	0	.000	0	7	1.000	5	0	0	0	0.0	0	0.0	.221	3-0
September 3	SOUTHEASTERN LA.	3	0	0	1	.000	1	1	1.000	0	0	0	.000	0	7	1.000	10	0	0	0	0.0	0	0.0	.300	3-0
September 9	NORTH ALABAMA	3	0	1	2	-.500	0	0	.000	0	0	0	.000	1	13	.923	3	0	0	0	0.0	0	0.0	.265	3-0
September 12	SANTA CLARA	5	1	0	6	.167	2	7	.286	0	0	0	.000	1	20	.950	14	0	0	0	0.0	0	1.0	.260	3-2
September 17	FLORIDA A&M	5	0	1	5	-.200	1	4	.250	0	0	0	.000	1	31	.968	10	0	0	0	0.0	0	0.0	.245	2-3
September 17	NICHOLLS	4	0	0	6	.000	0	3	.000	0	0	0	.000	1	11	.909	14	0	0	0	0.0	0	0.0	.183	3-1
September 18	BELMONT	3	0	1	1	-1.000	1	1	1.000	0	0	0	.000	0	4	1.000	4	0	0	0	0.0	0	0.0	.345	3-0
September 22	OLE MISS	4	1	1	3	.000	0	3	.000	0	0	0	.000	0	14	1.000	9	0	0	0	0.0	0	1.0	.196	1-3
September 26	at Alabama State	5	1	0	6	.167	1	9	.111	0	0	0	.000	1	16	.938	3	0	0	0	0.0	0	1.0	.209	2-3
September 29	at Tennessee	3	0	1	2	-.500	0	2	.000	1	0	10	1.000	0	20	1.000	5	0	0	0	0.0	0	1.0	.076	0-3
October 2	ALABAMA	5	0	0	2	.000	0	0	.000	0	2	14	.857	0	15	1.000	6	0	0	0	0.0	0	0.0	.183	3-2
October 3	ALABAMA	3	0	0	6	.000	1	3	.333	0	0	14	1.000	0	16	1.000	10	0	0	0	0.0	0	0.0	.248	3-0
October 9	at Arkansas	4	0	1	8	-.125	0	3	.000	0	0	16	1.000	1	13	.923	7	0	0	0	0.0	0	0.0	.158	1-3
October 10	at Arkansas	5	0	2	7	-.286	0	3	.000	0	0	14	1.000	2	21	.905	10	0	0	0	0.0	0	0.0	.144	2-3
October 16	MISSOURI	3	0	0	1	.000	1	3	.333	0	0	18	1.000	0	10	1.000	6	0	0	0	0.0	0	0.0	.232	3-0
October 17	MISSOURI	5	2	0	7	.286	0	4	.000	1	1	18	.944	0	17	1.000	9	0	0	0	0.0	0	3.0	.235	2-3
TOTALS		69	5	8	68	-.044	8	52	.154	2	4	109	.963	9	254	.965	133	0	0	0	0.0	0	7.0	.225	

SETS PLAYED: 69
KILLS PER SET: 0.07
ASSISTS PER SET: 0.12

SERVICE ACES PER SET: 0.03
DIGS PER SET: 1.93

POINTS PER SET: 0.10

LANHAM'S OVERALL CAREER STATISTICS

YEAR	SETS	MP	KILLS	K/S	E	TA	PCT.	AST	A/S	SA	SA/S	SE	DIGS	D/S	RE	BS	BA	TB	B/S	PTS	PT/S
2021	69	18	5	0.07	8	68	-.044	8	.12	2	.03	4	133	1.93	9	0	0	0.0	.00	7.0	0.10
TOTAL	69	18	5	0.07	8	68	-.044	8	.12	2	.03	4	133	1.93	9	0	0	0.0	.00	7.0	0.10

LANHAM'S SEC CAREER STATISTICS

YEAR	SETS	MP	KILLS	K/S	E	TA	PCT.	AST	A/S	SA	SA/S	SE	DIGS	D/S	RE	BS	BA	TB	B/S	PTS	PT/S
2021	32	8	3	0.09	5	36	-.056	2	.06	2	.06	3	62	1.94	3	0	0	0.0	.00	5.0	0.16
TOTAL	32	8	3	0.09	5	36	-.056	2	.06	2	.06	3	62	1.94	3	0	0	0.0	.00	5.0	0.16



#5 AUDREY DOUGLAS

OUTSIDE/OPOSITE HITTER | 6-4 | SOPHOMORE
WINTER PARK, FLA. (HAGERTY)

DOUGLAS'S HIGHLIGHTS:

- Did not see action over the first three weeks of play due to a concussion
- Made he season debut versus Florida A&M (9/17), racking up four kills and adding a career high 4.0 blocks

CATEGORY	CAREER HIGH	OPPONENT/DATE
Kills	6	at #2 Kentucky (11/8/20)
Attempts	16	vs. #4 Florida (10/21/20)
Hitting Percentage (Min. 10 ATT.)	.545	at #2 Kentucky (11/8/20)
Assists	1	vs. #4 Florida (10/22/20)
Digs	1 (2x)	last, at #2 Kentucky (11/7/20)
Blocks	4.0	vs. Florida A&M (9/17/21)
Aces		
Points	6.5	at #2 Kentucky (11/8/20)

CATEGORY	SEASON HIGH	OPPONENT/DATE
Kills	4	vs. Florida A&M (9/17/21)
Attempts	12	vs. Florida A&M (9/17/21)
Hitting Percentage (Min. 10 ATT.)	.083	vs. Florida A&M (9/17/21)
Assists		
Digs		
Blocks	4.0	vs. Florida A&M (9/17/21)
Aces		
Points	6.0	vs. Florida A&M (9/17/21)

DATE	OPPONENT	SP	ATTACK				SET			SERVE				RECEIPT			BLOCKING				BHE	POINTS	TEAM		
			K	E	TA	PCT	A	TA	PCT.	SA	SE	TA	PCT.	RE	TA	PCT.	DIG	BS	BA	BE			TOTAL	HIT%	SCORE
September 17	FLORIDA A&M	4	4	3	12	.083	0	1	.000	0	0	0	.000	0	0	.000	0	0	4	0	4.0	0	6.0	.245	2-3
September 26	at Alabama State	1	0	0	0	.000	0	0	.000	0	0	0	.000	0	0	.000	0	0	0	0	0.0	0	0.0	.209	2-3
TOTALS		5	4	3	12	.083	0	1	.000	0	0	0	.000	0	0	.000	0	0	4	0	4.0	0	6.0	.225	

DOUGLAS' OVERALL CAREER STATISTICS

YEAR	SETS	MP	KILLS	K/S	E	TA	PCT.	AST	A/S	SA	SA/S	SE	DIGS	D/S	RE	BS	BA	TB	B/S	PTS	PT/S
2021	5	1	4	0.80	3	12	.083	0	.00	0	.00	0	0	.00	0	0	4	4.0	0.80	6.0	1.20
2020	20	7	20	1.00	8	69	.174	1	.05	0	.00	0	2	.10	0	0	11	11.0	0.55	25.5	1.28
TOTAL	25	8	24	0.96	11	81	.160	1	.04	0	.00	0	2	.08	0	0	15	15.0	0.60	31.5	1.26

DOUGLAS' SEC CAREER STATISTICS

YEAR	SETS	MP	KILLS	K/S	E	TA	PCT.	AST	A/S	SA	SA/S	SE	DIGS	D/S	RE	BS	BA	TB	B/S	PTS	PT/S
2021	0	0	0	0.0	0	0	.000	0	.00	0	.00	0	0	.00	0	0	0	0.0	.00	0.0	0.00
2020	20	7	20	1.00	8	69	.174	1	.05	0	.00	0	2	.10	0	0	11	11.0	.55	25.5	1.28
TOTAL	20	7	20	1.00	8	69	.174	1	.05	0	.00	0	2	.10	0	0	11	11.0	.55	25.5	1.28



#6 BELLA ROSENTHALL

DEFENSIVE SPECIALIST/LIBERO | 5-5 | SENIOR
YORKTOWN, IND. (YORKTOWN)

ROSENTHALL'S HIGHLIGHTS:

- Named SEC Defensive Player of the Week twice (9/13 and 9/20) to become the first player in program history to win the award in back-to-back weeks
- First Tiger to win the award multiple times in a single season since Camila Jersonsky in 2012
- War Eagle Invitational and Auburn Invitational All-Tournament Team selection
- Leads the SEC and ranks ninth nationally with a 5.39 digs per set average, while leading the league and ranking 15th in the country with 372 total digs.
- Ranks 111th among all active NCAA Division I athletes in career digs (1,088)
- Enters the weekend with the highest single-season digs per set average recorded by a Tiger in the rally scoring era, while her 372 total digs ranks 10th in single-season history
- Moved into ninth place in Auburn history in career total digs (1,088), while her career digs per set average of 3.63 is good for fourth overall
- Totaled 48 career double-digit dig performances, including 17 matches with 20+ dig
- Totaled 25 digs versus North Alabama (9/9) to become the first player to record 25+ digs in a match since she totaled 26 versus Georgia on Oct. 20, 2019
- Totaled 31 digs versus Nicholls (9/17) to become the first Tiger to record at least 30 digs in a match since Payton White versus Butler on Aug. 31, 2019
- Behind her 30 digs at Arkansas (10/9), became just the 15th Tiger in program history to record 1,000 career digs and is the first Tiger to hit the mark since Brenna McIlroy in 2018
- Shattered career high with 33 digs versus Missouri (10/17), the sixth most digs ever recorded by a Tiger in a single match

CATEGORY	CAREER HIGH	OPPONENT/DATE
Kills	1 (5x)	last, at Arkansas (10/10/21)
Attempts	8	at Alabama State (9/26/21)
Hitting Percentage (Min. 10 ATT.)		
Assists	10	vs. #4 Florida (10/22/20)
Digs	33	vs. Missouri (10/17/21)
Blocks	1.0	vs. #4 Florida (10/22/20)
Aces	3 (2x)	last, vs. Tennessee State (8/30/19)
Points	3.0 (2x)	last, vs. Tennessee State (8/30/19)

CATEGORY	SEASON HIGH	OPPONENT/DATE
Kills	1	at Arkansas (10/10/21)
Attempts	8	at Alabama State (9/26/21)
Hitting Percentage (Min. 10 ATT.)		
Assists	9	vs. Florida A&M (9/17/21)
Digs	33	vs. Missouri (10/17/21)
Blocks		
Aces	2	vs. Belmont (9/18/21)
Points	2.0 (2x)	last, at Arkansas (10/10/21)

DATE	OPPONENT	SP	K	E	TA	PCT.	A	TA	PCT.	SA	SE	TA	PCT.	RE	TA	PCT.	DIG	BS	BA	BE	TOTAL	BHE	POINTS	HIT%	SCORE
August 27	TENNESSEE TECH	3	0	0	0	.000	4	14	.286	0	0	22	1.000	0	5	1.000	17	0	0	0	0.0	0	0.0	.292	3-0
August 28	JACKSON STATE	3	0	0	0	.000	6	12	.500	1	1	14	.929	0	6	1.000	14	0	0	0	0.0	0	1.0	.457	3-0
September 2	CAL STATE FULLERTON	3	0	0	0	.000	5	14	.357	0	0	11	1.000	0	12	1.000	17	0	0	0	0.0	0	0.0	.221	3-0
September 3	SOUTHEASTERN LA.	3	0	0	0	.000	2	12	.250	0	2	14	.857	1	16	.938	16	0	0	0	0.0	0	0.0	.300	3-0
September 9	NORTH ALABAMA	3	0	0	0	.000	0	11	.000	0	1	11	.909	0	10	1.000	25	0	0	0	0.0	0	0.0	.265	3-0
September 12	SANTA CLARA	5	0	0	1	.000	8	24	.333	0	1	22	.955	3	21	.857	20	0	0	0	0.0	0	0.0	.260	3-2
September 17	FLORIDA A&M	5	0	0	1	.000	9	24	.375	1	1	20	.950	1	22	.955	20	0	0	0	0.0	0	0.0	.245	2-3
September 17	NICHOLLS	4	0	0	0	.000	2	28	.071	1	1	25	.960	0	19	1.000	31	0	0	0	0.0	0	1.0	.183	3-1
September 18	BELMONT	3	0	0	0	.000	8	20	.400	2	0	17	1.000	0	5	1.000	19	0	0	0	0.0	0	2.0	.345	3-0
September 22	OLE MISS	4	0	0	0	.000	8	25	.320	1	0	17	1.000	2	32	.938	13	0	0	0	0.0	0	1.0	.196	1-3
September 26	at Alabama State	5	0	0	8	.000	3	17	.176	1	2	21	.905	2	32	.938	27	0	0	0	0.0	0	1.0	.209	2-3
September 29	at Tennessee	3	0	0	0	.000	4	22	.182	0	2	12	.833	2	23	.913	6	0	0	0	0.0	0	0.0	.076	0-3
October 2	ALABAMA	5	0	0	0	.000	4	32	.125	0	0	20	1.000	0	16	1.000	24	0	0	0	0.0	0	0.0	.183	3-2
October 3	ALABAMA	3	0	0	0	.000	2	19	.105	0	1	11	.909	0	11	1.000	21	0	0	0	0.0	0	0.0	.248	3-0
October 9	at Arkansas	4	0	0	0	.000	5	17	.294	0	1	16	.938	0	34	1.000	30	0	0	0	0.0	0	0.0	.158	1-3
October 10	at Arkansas	5	1	0	1	1.000	6	22	.273	1	2	17	.882	2	21	.905	20	0	0	0	0.0	0	2.0	.144	2-3
October 16	MISSOURI	3	0	0	0	.000	5	10	.500	1	0	11	1.000	0	13	1.000	19	0	0	0	0.0	0	1.0	.232	3-0
October 17	MISSOURI	5	0	0	0	.000	8	22	.364	0	1	21	.952	0	21	1.000	33	0	0	0	0.0	0	0.0	.235	2-3
TOTALS		69	1	0	11	.091	90	345	.261	9	16	302	.947	13	319	.959	372	0	0	0	0.0	0	10.0	.225	

SETS PLAYED: 69 SERVICE ACES PER SET: 0.13 POINTS PER SET: 0.14
 KILLS PER SET: 0.01 DIGS PER SET: 5.39

ROSENTHALL'S OVERALL CAREER STATISTICS

YEAR	SETS	MP	KILLS	K/S	E	TA	PCT.	AST	A/S	SA	SA/S	SE	DIGS	D/S	RE	BS	BA	TB	B/S	PTS	PT/S
2021	69	18	1	.01	0	11	.091	90	1.30	9	.13	16	372	5.39	13	0	0	0	.00	10.0	.14
2020	25	8	1	.04	0	3	.333	20	0.80	2	.08	9	70	2.80	5	0	1	1	.04	3.5	.14
2019	103	29	2	.02	0	5	.400	38	0.37	12	.12	24	307	2.98	17	0	0	0	.00	14.0	.14
2018	103	28	1	.01	0	6	.167	65	0.63	16	.16	23	339	3.29	26	0	0	0	.00	17.0	.17
TOTAL	300	83	5	.02	0	25	.200	213	0.71	39	.13	72	1088	3.63	61	0	1	1	.00	44.5	.15

ROSENTHALL'S SEC CAREER STATISTICS

YEAR	SETS	MP	KILLS	K/S	E	TA	PCT.	AST	A/S	SA	SA/S	SE	DIGS	D/S	RE	BS	BA	TB	B/S	PTS	PT/S
2021	32	8	1	.03	0	1	1.000	42	1.31	3	.09	7	166	5.19	6	0	0	0	.00	4.0	.12
2020	25	8	1	.04	0	3	.333	20	0.80	2	.08	9	70	2.80	5	0	1	1	.04	3.5	.12
2019	59	18	1	.02	0	4	.250	31	0.53	7	.12	15	232	3.93	12	0	0	0	.00	8.0	.14
2018	67	18	1	.01	0	5	.200	39	0.58	11	.16	12	192	2.87	19	0	0	0	.00	12.0	.18
TOTAL	183	52	4	.02	0	13	.308	132	0.72	23	.13	43	660	3.61	42	0	1	1	.01	27.5	.15



RATH'S HIGHLIGHTS:

- Named SEC Offensive Player of the Week twice (9/7 and 10/11) to become the first Tiger in program history to win the award twice in the same season
- War Eagle Invitational and Auburn Invitational All-Tournament Team selection
- Leads the SEC in attacks per set (12.94), kills per set (4.55), points (364.5), points per set (5.28), total attacks (893), total kills (314), while ranking in the top 15 in all six categories nationally
- Enters the two-match series ranked first in Auburn single-season history (rally scoring era) in kills per set
- Chipped in a season high 24 kills versus Santa Clara (9/12) to become first Tiger to record at least 20 kills in a match since Tatum Shipes versus Ole Miss on Oct. 26, 2018
- Set career highs in kills (29), attempts (75) and points (32.0) at Arkansas (10/9) in one of the best offensive performances by a Tiger in almost two decades
- Her 29 kills were the second most recorded in a match by a Tiger in the rally scoring era and the most in a single match since Ashlee Johns' single-match record of 30, which was totaled in a five-set contest at Arkansas on Oct. 8, 2004
- Her 29 kills are the most recorded in a four-set match by any SEC student-athlete this season

CATEGORY	CAREER HIGH	OPPONENT/DATE
Kills	29	at Arkansas (10/9/21)
Attempts	75	at Arkansas (10/9/21)
Hitting Percentage (Min. 10 ATT.)	.433	vs. Jackson State (8/28/21)
Assists	2 (3x)	last, vs. Missouri (10/17/21)
Digs	13	at Alabama State (9/26/21)
Blocks	6.0 (2x)	last, vs. Alabama (10/2/21)
Aces	2 (3x)	last, vs. Alabama (10/3/21)
Points	32.0	at Arkansas (10/9/21)

CATEGORY	SEASON HIGH	OPPONENT/DATE
Kills	29	at Arkansas (10/9/21)
Attempts	75	at Arkansas (10/9/21)
Hitting Percentage (Min. 10 ATT.)	.433	vs. Jackson State (8/28/21)
Assists	2 (3x)	last, vs. Missouri (10/17/21)
Digs	13	at Alabama State (9/26/21)
Blocks	6.0 (2x)	last, vs. Alabama (10/2/21)
Aces	2 (3x)	last, vs. Alabama (10/3/21)
Points	32.0	at Arkansas (10/9/21)

DATE	OPPONENT	SP	ATTACK				SET		SERVE			RECEIPT			BLOCKING				BHE	POINTS	HIT%	SCORE			
			K	E	TA	PCT.	A	TA	PCT.	SA	SE	TA	PCT.	RE	TA	PCT.	DIG	BS					BA	BE	TOTAL
August 27	TENNESSEE TECH	3	13	3	31	.323	0	1	.000	1	2	10	.800	2	8	.750	3	0	4	0	4.0	0	16.0	.292	3-0
August 28	JACKSON STATE	3	16	3	30	.433	0	0	.000	2	2	9	.778	0	5	1.000	3	1	4	0	5.0	0	21.0	.457	3-0
September 2	CAL STATE FULLERTON	3	16	5	42	.262	0	1	.000	1	2	9	.778	0	24	1.000	10	0	0	0	0.0	0	17.0	.221	3-0
September 3	SOUTHEASTERN LA	3	16	5	40	.275	0	1	.000	1	2	7	.714	1	14	.929	7	0	4	0	4.0	0	19.0	.300	3-0
September 9	NORTH ALABAMA	3	7	7	28	.000	0	1	.000	1	1	14	.929	2	11	.818	8	0	0	0	0.0	0	8.0	.265	3-0
September 12	SANTA CLARA	5	24	4	59	.339	1	3	.333	1	4	14	.714	2	14	.857	10	1	2	1	3.0	0	27.0	.260	3-2
September 17	FLORIDA A&M	5	12	6	47	.128	1	3	.333	1	4	12	.667	1	19	.947	4	0	1	0	1.0	0	13.5	.245	2-3
September 17	NICHOLLS	4	18	6	57	.211	2	6	.333	0	3	11	.727	0	13	1.000	6	2	4	0	6.0	0	22.0	.183	3-1
September 18	BELMONT	3	14	2	28	.429	0	1	.000	1	1	9	.889	0	16	1.000	2	1	2	0	3.0	0	17.0	.345	3-0
September 22	OLE MISS	4	19	4	52	.288	2	3	.667	0	3	10	.700	1	14	.929	6	0	0	0	0.0	0	19.0	.196	1-3
September 26	at Alabama State	5	24	7	60	.283	1	14	.071	2	2	16	.875	2	16	.875	13	2	2	0	4.0	0	29.0	.209	2-3
September 29	at Tennessee	3	9	7	43	.047	0	1	.000	0	2	8	.750	0	14	1.000	10	0	3	0	3.0	0	10.5	.076	0-3
October 2	ALABAMA	5	22	8	69	.203	1	5	.200	0	4	18	.778	1	32	.969	11	0	6	1	6.0	0	25.0	.183	3-2
October 3	ALABAMA	3	16	4	43	.279	0	0	.000	2	2	9	.778	0	11	1.000	11	1	4	0	5.0	0	21.0	.248	3-0
October 9	at Arkansas	4	29	11	75	.240	0	3	.000	1	3	11	.727	0	13	1.000	9	0	4	0	4.0	0	32.0	.158	1-3
October 10	at Arkansas	5	20	9	71	.155	0	4	.000	1	1	12	.917	2	24	.917	10	0	5	0	5.0	0	23.5	.144	2-3
October 16	MISSOURI	3	17	4	47	.277	1	4	.250	0	3	7	.571	2	8	.750	9	0	4	0	4.0	0	19.0	.232	3-0
October 17	MISSOURI	5	22	5	71	.239	2	5	.400	1	5	21	.762	1	20	.950	12	1	2	0	3.0	0	25.0	.235	2-3
TOTALS		69	314	100	893	.240	11	56	.196	16	46	207	.778	17	276	.938	143	9	51	2	60.0	0	364.5	.225	

SETS PLAYED: 69
 KILLS PER SET: 4.55
 ASSISTS PER SET: 0.16

SERVICE ACES PER SET: 0.23
 DIGS PER SET: 2.07
 BLOCKS PER SET: 0.87

POINTS PER SET: 5.28

RATH'S OVERALL CAREER STATISTICS

YEAR	SETS	MP	KILLS	K/S	E	TA	PCT.	AST	A/S	SA	SA/S	SE	DIGS	D/S	RE	BS	BA	TB	B/S	PTS	PT/S
2021	69	18	314	4.55	100	893	.240	11	.16	16	.23	46	143	2.07	17	9	51	60	0.87	364.5	5.28
TOTAL	69	18	314	4.55	100	893	.240	11	.16	16	.23	46	143	2.07	17	9	51	60	0.87	364.5	5.28

RATH'S SEC CAREER STATISTICS

YEAR	SETS	MP	KILLS	K/S	E	TA	PCT.	AST	A/S	SA	SA/S	SE	DIGS	D/S	RE	BS	BA	TB	B/S	PTS	PT/S
2021	32	8	154	4.81	52	471	.217	6	.19	5	.16	23	77	2.41	7	2	28	30	.94	175.0	5.47
TOTAL	32	8	145	4.81	52	471	.217	6	.19	5	.16	23	77	2.41	7	2	28	30	.94	175.0	5.47



#8 LIZ REICH

OPPOSITE HITTER | 6-1 | GRADUATE STUDENT
COLORADO SPRINGS, COLO. (PORTLAND)

REICH'S HIGHLIGHTS:

- Ranks 58th among all active NCAA DI student-athletes in career sets played (460) and 124th in career kills (1,015)
- Currently ranks 20th in the SEC in kills per set (2.83)
- Enters the two-match series tied for ninth in Auburn single-season history (rally scoring era) in hitting percentage and 11th in kills per set
- Named to War Eagle Invitational and Auburn Invitational All-Tournament teams
- Set a season high with 17 kills versus Santa Clara (9/12) and Florida A&M (9/17)
- Tallied a career high six blocks at Arkansas (10/10)
- Behind her nine kills versus Missouri (10/16), tallied her 1,000th kill of her career

CATEGORY	CAREER HIGH	OPPONENT/DATE
Kills	17 (2x)	last, vs. Florida A&M (9/17/21)
Attempts	46	vs. Ole Miss (9/22/21)
Hitting Percentage (Min. 10 ATT.)	.500	vs. Jackson State (8/28/21)
Assists	1 (3x)	last, at Alabama State (9/26/21)
Digs	5	vs. Nicholls (9/17/21)
Blocks	6	at Arkansas (10/10/21)
Aces		
Points	18.5	vs. Florida A&M (9/17/21)

CATEGORY	SEASON HIGH	OPPONENT/DATE
Kills	17 (2x)	last, vs. Florida A&M (9/17/21)
Attempts	46	vs. Ole Miss (9/22/21)
Hitting Percentage (Min. 10 ATT.)	.500	vs. Jackson State (8/28/21)
Assists	1 (3x)	last, at Alabama State (9/26/21)
Digs	5	vs. Nicholls (9/17/21)
Blocks	6	at Arkansas (10/10/21)
Aces		
Points	18.5	vs. Florida A&M (9/17/21)

DATE	OPPONENT	SP	ATTACK				SET			SERVE			RECEIPT			BLOCKING				BHE	POINTS	TEAM HIT%	SCORE		
			K	E	TA	PCT.	A	TA	PCT.	SA	SE	TA	PCT.	RE	TA	PCT.	DIG	BS	BA					BE	TOTAL
August 27	TENNESSEE TECH	3	9	3	24	.250	0	1	.000	0	0	0	.000	0	1	1.000	4	0	1	0	1.0	0	9.5	.292	3-0
August 28	JACKSON STATE	3	13	1	24	.500	1	3	.333	0	0	0	.000	0	0	.000	1	0	5	0	5.0	0	15.5	.457	3-0
September 2	CAL STATE FULLERTON	3	11	2	22	.409	0	1	.000	0	0	0	.000	0	1	1.000	0	0	1	0	1.0	0	11.5	.221	3-0
September 3	SOUTHEASTERN LA.	3	13	2	24	.458	0	0	.000	0	0	0	.000	0	0	.000	0	0	4	0	4.0	0	15.0	.300	3-0
September 9	NORTH ALABAMA	3	8	2	21	.286	0	1	.000	0	0	0	.000	0	1	1.000	1	0	1	0	1.0	0	8.5	.265	3-0
September 12	SANTA CLARA	5	17	6	44	.250	0	1	.000	0	0	0	.000	0	2	1.000	2	0	0	0	0.0	0	17.0	.260	3-2
September 17	FLORIDA A&M	5	17	3	37	.378	0	2	.000	0	1	5	.800	0	0	.000	1	0	3	0	3.0	0	18.5	.245	2-3
September 17	NICHOLLS	4	10	3	37	.189	0	5	.000	0	0	0	.000	0	0	.000	5	0	4	0	4.0	0	12.0	.183	3-1
September 18	BELMONT	3	11	2	22	.409	1	1	1.000	0	0	0	.000	0	0	.000	1	0	2	0	2.0	0	12.0	.345	3-0
September 22	OLE MISS	4	10	5	46	.109	0	0	.000	0	0	0	.000	0	0	.000	4	0	2	0	2.0	0	11.0	.196	1-3
September 26	at Alabama State	5	13	3	27	.370	1	6	.167	0	0	1	1.000	0	0	.000	2	0	1	0	1.0	0	13.5	.209	2-3
September 29	at Tennessee	3	8	3	23	.217	0	2	.000	0	0	0	.000	0	0	.000	1	0	2	0	2.0	0	9.0	.076	0-3
October 2	ALABAMA	5	11	3	36	.222	0	2	.000	0	0	0	.000	1	1	.000	1	0	2	0	2.0	0	12.0	.183	3-2
October 3	ALABAMA	3	11	1	23	.435	0	2	.000	0	0	0	.000	0	0	.000	4	0	0	0	0.0	0	11.0	.248	3-0
October 9	at Arkansas	4	6	5	21	.048	0	0	.000	0	0	0	.000	0	1	1.000	4	0	1	2	1.0	0	6.5	.158	1-3
October 10	at Arkansas	5	8	3	24	.208	0	4	.000	0	0	0	.000	0	0	.000	1	0	6	0	6.0	0	11.0	.144	2-3
October 16	MISSOURI	3	9	3	24	.250	0	0	.000	0	0	0	.000	0	0	.000	3	0	1	0	1.0	0	9.5	.232	3-0
October 17	MISSOURI	5	10	2	31	.258	0	2	.000	0	0	0	.000	0	0	.000	2	0	1	0	1.0	0	10.5	.235	2-3
TOTALS		69	195	52	510	.280	3	33	.091	0	1	6	.833	1	7	.857	37	0	37	2	37.0	0	213.5	.225	

SETS PLAYED: 69
 KILLS PER SET: 2.83
 ASSISTS PER SET: 0.04

DIGS PER SET: 0.54
 BLOCKS PER SET: 0.54

POINTS PER SET: 3.09

REICH'S OVERALL CAREER STATISTICS

YEAR	SETS	MP	KILLS	K/S	E	TA	PCT.	AST	A/S	SA	SA/S	SE	DIGS	D/S	RE	BS	BA	TB	B/S	PTS	PT/S
2021	69	18	195	2.83	52	510	.280	3	.04	0	.00	1	37	.54	1	0	37	37	0.54	213.5	3.09
TOTAL	69	18	195	2.83	52	510	.280	3	.04	0	.00	1	37	.54	1	0	37	37	0.54	213.5	3.09

REICH'S SEC CAREER STATISTICS

YEAR	SETS	MP	KILLS	K/S	E	TA	PCT.	AST	A/S	SA	SA/S	SE	DIGS	D/S	RE	BS	BA	TB	B/S	PTS	PT/S
2021	32	8	73	2.28	25	228	.211	0	.00	0	.00	0	20	0.62	1	0	15	15	0.47	80.5	2.50
TOTAL	32	8	73	2.28	25	228	.211	0	.00	0	.00	0	20	0.62	1	0	15	15	0.47	80.5	2.50

#10 JACKIE BARRETT

SETTER | 6-1 | SOPHOMORE
HIGHLAND, CALIF. (CITRUS VALLEY)



BARRETT'S HIGHLIGHTS

- Leads the team with 11 double-doubles this fall
- Ranks seventh in the SEC in total assists (556)
- Enters the weekend ranked seventh in Auburn single-season history (rally scoring era) in assists per set (8.42) and tied for eighth in aces per set (.26)
- Ranks eighth in Auburn career history in assists per set (8.24)
- Set career highs in kills (6), hitting percentage (.308), assists (48) and points (10.0) versus Florida A&M (9/17)
- Matched career high with three aces while shattering her career high in digs (28) versus Nicholls (9/17)
- Picked up first double-double in conference play with 18 assists and 12 digs at No. 20 Tennessee (9/29)
- Set a career high with eight blocks at Arkansas (10/9) while adding 36 assists and 13 digs to record a double-double
- Was lifted during the second set of game two versus Missouri (10/17) due to illness

CATEGORY	CAREER HIGH	OPPONENT/DATE
Kills	6 (2x)	last, at Alabama State (9/26/21)
Attempts	20	at Alabama State (9/26/21)
Hitting Percentage (Min. 10 ATT.)	.308	vs. Florida A&M (9/17/21)
Assists	48	vs. Florida A&M (9/17/21)
Digs	28	vs. Nicholls (9/17/21)
Blocks	8.0	at Arkansas (10/9/21)
Aces	3 (2x)	last, vs. Nicholls (9/17/21)
Points	10.0	vs. Florida A&M (9/17/21)

CATEGORY	SEASON HIGH	OPPONENT/DATE
Kills	6 (2x)	last, at Alabama State (9/26/21)
Attempts	20	at Alabama State (9/26/21)
Hitting Percentage (Min. 10 ATT.)	.308	vs. Florida A&M (9/17/21)
Assists	48	vs. Florida A&M (9/17/21)
Digs	28	vs. Nicholls (9/17/21)
Blocks	8.0	at Arkansas (10/9/21)
Aces	3	vs. Nicholls (9/17/21)
Points	10.0	vs. Florida A&M (9/17/21)

DATE	OPPONENT	SP	ATTACK				SET			SERVE				RECEIPT			BLOCKING				TEAM				
			K	E	TA	PCT.	A	TA	PCT.	SA	SE	TA	PCT.	RE	TA	PCT.	DIG	BS	BA	BE	TOTAL	BHE	POINTS	HIT%	SCORE
August 27	TENNESSEE TECH	3	1	0	3	.333	25	63	.397	1	0	8	1.000	0	0	.000	12	0	0	1	0.0	0	2.0	.292	3-0
August 28	JACKSON STATE	3	2	0	2	1.000	27	59	.458	2	0	10	1.000	0	1	1.000	8	0	1	0	1.0	0	4.5	.457	3-0
September 2	CAL STATE FULLERTON	3	0	1	6	-.167	16	39	.410	0	0	9	1.000	0	0	.000	5	0	1	1	1.0	0	0.5	.221	3-0
September 3	SOUTHEASTERN LA.	3	3	0	5	.600	28	74	.378	2	1	9	.889	0	0	.000	6	0	2	2	2.0	1	6.0	.300	3-0
September 9	NORTH ALABAMA	3	0	1	2	-.500	30	71	.423	1	1	22	.955	0	0	.000	8	0	4	0	4.0	0	3.0	.265	3-0
September 12	SANTA CLARA	5	1	0	6	.167	44	126	.349	2	2	20	.900	0	2	1.000	11	0	5	0	5.0	0	5.5	.260	3-2
September 17	FLORIDA A&M	5	6	2	13	.308	48	130	.369	2	1	21	.952	0	0	.000	15	0	4	0	4.0	0	10.0	.245	2-3
September 17	NICHOLLS	4	2	0	8	.250	40	124	.323	3	0	21	1.000	0	0	.000	28	0	2	0	2.0	0	6.0	.183	3-1
September 18	BELMONT	3	1	0	3	.333	24	57	.421	1	1	11	.909	0	0	.000	19	0	3	0	3.0	0	3.5	.345	3-0
September 22	OLE MISS	4	1	0	4	.250	34	117	.291	1	2	13	.846	0	0	.000	12	1	1	0	2.0	0	3.5	.196	1-3
September 26	at Alabama State	5	6	1	20	.250	36	113	.319	0	1	19	.947	0	0	.000	4	0	1	0	1.0	0	6.5	.209	2-3
September 29	at Tennessee	3	1	1	4	.000	18	79	.228	0	2	6	.667	0	0	.000	12	0	2	0	2.0	0	2.0	.076	0-3
October 2	ALABAMA	5	1	0	10	.100	43	123	.350	0	0	14	1.000	0	0	.000	14	1	3	0	4.0	0	3.5	.183	3-2
October 3	ALABAMA	3	1	0	6	.167	34	90	.378	0	0	14	1.000	0	0	.000	11	0	2	0	2.0	0	2.0	.248	3-0
October 9	at Arkansas	4	3	0	8	.375	36	119	.303	1	0	15	1.000	0	0	.000	13	0	8	3	8.0	0	8.0	.158	1-3
October 10	at Arkansas	5	1	0	8	.125	36	122	.295	0	1	17	.941	0	0	.000	16	0	4	0	4.0	0	3.0	.144	2-3
October 16	MISSOURI	3	2	1	5	.200	25	80	.312	1	1	13	.923	0	0	.000	9	0	2	1	2.0	0	4.0	.232	3-0
October 17	MISSOURI	2	1	0	3	.333	12	29	.414	0	0	4	1.000	0	0	.000	3	0	2	0	2.0	0	2.0	.235	2-3
TOTALS		66	33	7	116	.224	556	1615	.344	17	13	246	.947	0	3	1.000	206	2	47	8	49.0	1	75.5	.223	

SETS PLAYED: 66
KILLS PER SET: 0.50
ASSISTS PER SET: 8.42

SERVICE ACES PER SET: 0.26
DIGS PER SET: 3.12
BLOCKS PER SET: 0.74

POINTS PER SET: 1.14

BARRETT'S OVERALL CAREER STATISTICS

YEAR	SETS	MP	KILLS	K/S	E	TA	PCT.	AST	A/S	SA	SA/S	SE	DIGS	D/S	RE	BS	BA	TB	B/S	PTS	PT/S
2021	66	18	33	0.50	7	116	.224	556	8.42	17	.26	13	206	3.12	0	2	47	49	0.74	75.5	1.14
2020	19	6	10	0.53	6	45	.089	144	7.58	3	.16	8	33	1.74	0	0	11	11.0	0.58	18.5	0.97
TOTAL	85	24	43	0.51	13	161	.186	700	8.24	20	.24	21	239	2.81	0	2	58	60.0	0.71	94.0	1.11

BARRETT'S SEC CAREER STATISTICS

YEAR	SETS	MP	KILLS	K/S	E	TA	PCT.	AST	A/S	SA	SA/S	SE	DIGS	D/S	RE	BS	BA	TB	B/S	PTS	PT/S
2021	29	8	11	0.38	2	48	.188	238	8.21	3	.10	6	90	3.10	0	2	24	26	0.90	28.0	0.97
2020	19	6	10	0.53	6	45	.089	144	7.58	3	.16	8	33	1.74	0	0	11	11	0.58	18.5	0.97
TOTAL	48	14	21	0.44	8	93	.140	382	7.96	6	.12	14	123	2.56	0	2	35	37	0.77	46.5	0.96



#11 JORDAN SINNESS

SETTER | 5-9 | FRESHMAN
SEBRING, FLA. (SEBRING)



SINNESS'S HIGHLIGHTS:

- Made collegiate debut versus Cal State Fullerton (9/2), dishing out 16 assists, six digs, one kill and a block
- Picked up a season high two aces from the service line versus Santa Clara (9/12)
- Matched season high with a pair of aces at Alabama State (9/26)
- Came off the bench versus Missouri (10/17) to take over as setter for an ill Jackie Barrett
- Picked up her first collegiate double-double with career highs in assists (35) and digs (14), while also adding a career high two blocks

CATEGORY	CAREER HIGH	OPPONENT/DATE
Kills	1 (2x)	last, vs. Missouri (10/17/21)
Attempts	3	vs. Missouri (10/17/21)
Hitting Percentage (Min. 10 ATT.)		
Assists	35	vs. Missouri (10/17/21)
Digs	14	vs. Missouri (10/17/21)
Blocks	2	vs. Missouri (10/17/21)
Aces	2 (2x)	last, at Alabama State (9/26/21)
Points	2.0 (3x)	last, vs. Missouri (10/17/21)

CATEGORY	SEASON HIGH	OPPONENT/DATE
Kills	1 (2x)	last, vs. Missouri (10/17/21)
Attempts	3	vs. Missouri (10/17/21)
Hitting Percentage (Min. 10 ATT.)		
Assists	35	vs. Missouri (10/17/21)
Digs	14	vs. Missouri (10/17/21)
Blocks	2	vs. Missouri (10/17/21)
Aces	2 (2x)	last, at Alabama State (9/26/21)
Points	2.0 (3x)	last, vs. Missouri (10/17/21)

DATE	OPPONENT	SP	ATTACK				SET			SERVE				RECEIPT			BLOCKING				TEAM				
			K	E	TA	PCT.	A	TA	PCT.	SA	SE	TA	PCT.	RE	TA	PCT.	DIG	BS	BA	BE	TOTAL	BHE	POINTS	HIT%	SCORE
September 2	CAL STATE FULLERTON	2	1	1	2	.000	16	53	.302	0	0	3	1.000	0	0	.000	6	0	1	0	1.0	1	1.5	.221	3-0
September 9	NORTH ALABAMA	3	0	0	0	.000	0	0	.000	0	0	8	1.000	0	0	.000	0	0	0	0	0.0	0	0.0	.265	3-0
September 12	SANTA CLARA	5	0	0	0	.000	0	2	.000	2	1	17	.941	0	0	.000	1	0	0	0	0.0	0	2.0	.260	3-2
September 17	FLORIDA A&M	5	0	0	0	.000	0	3	.000	1	0	19	1.000	0	0	.000	2	0	0	0	0.0	0	1.0	.245	2-3
September 17	NICHOLLS	4	0	0	0	.000	0	0	.000	0	1	9	.889	0	0	.000	0	0	0	0	0.0	0	0.0	.183	3-1
September 18	BELMONT	3	0	0	0	.000	0	0	.000	0	1	5	.800	0	0	.000	2	0	0	0	0.0	0	0.0	.345	3-0
September 22	OLE MISS	4	0	0	0	.000	0	1	.000	0	0	15	1.000	0	0	.000	4	0	0	0	0.0	0	0.0	.196	1-3
September 26	at Alabama State	5	0	0	0	.000	1	2	.500	2	0	17	1.000	0	0	.000	1	0	0	0	0.0	0	2.0	.209	2-3
September 29	at Tennessee	3	0	0	0	.000	0	0	.000	0	0	8	1.000	0	0	.000	0	0	0	0	0.0	0	0.0	.076	0-3
October 2	ALABAMA	5	0	0	0	.000	0	1	.000	0	0	16	1.000	0	0	.000	2	0	0	0	0.0	0	0.0	.183	3-2
October 3	ALABAMA	3	0	0	0	.000	0	0	.000	1	1	9	.889	0	0	.000	0	0	0	0	0.0	0	1.0	.248	3-0
October 9	at Arkansas	2	0	0	0	.000	0	0	.000	0	0	3	1.000	0	0	.000	0	0	0	0	0.0	0	0.0	.158	1-3
October 17	MISSOURI	4	1	0	3	.333	35	111	.315	0	1	13	.923	0	0	.000	14	0	2	0	2.0	1	2.0	.235	2-3
TOTALS		48	2	1	5	.200	52	173	.301	6	5	142	.965	0	0	.000	32	0	3	0	3.0	2	9.5	.225	

SETS PLAYED: 48 SERVICE ACES PER SET: 0.12 POINTS PER SET: 0.20
 KILLS PER SET: 0.04 DIGS PER SET: 0.67
 ASSISTS PER SET: 1.08 BLOCKS PER SET: 0.06

SINNESS'S OVERALL CAREER STATISTICS

YEAR	SETS	MP	KILLS	K/S	E	TA	PCT.	AST	A/S	SA	SA/S	SE	DIGS	D/S	RE	BS	BA	TB	B/S	PTS	PT/S
2021	48	13	2	0.04	1	5	.200	52	1.08	6	.13	5	32	0.67	0	0	3	3	.06	9.5	0.20
TOTAL	48	13	2	0.04	1	5	.200	52	1.08	6	.13	5	32	0.67	0	0	3	3	.06	9.5	0.20

SINNESS'S SEC CAREER STATISTICS

YEAR	SETS	MP	KILLS	K/S	E	TA	PCT.	AST	A/S	SA	SA/S	SE	DIGS	D/S	RE	BS	BA	TB	B/S	PTS	PT/S
2021	21	6	1	0.05	0	3	.333	35	1.67	1	.05	2	20	0.95	0	0	2	2	.10	3.0	0.14
TOTAL	21	6	1	0.05	0	3	.333	35	1.67	1	.05	2	20	0.95	0	0	2	2	.10	3.0	0.14



#15 KATE CURTIS

DEFENSIVE SPECIALIST/LIBERO | 5-6 | FRESHMAN
ANDERSON, S.C. (T.L. HANNA)

CURTIS'S HIGHLIGHTS:

- Set career high in assists versus Florida A&M (9/17)
- Turned in her first double-digit dig effort with a career best 14 versus Nicholls (9/17)
- Picked up a season high two aces from the service line versus Alabama (10/3)
- Recorded her first double-digit effort in Southeastern Conference play with 11 at Arkansas (10/10)

CATEGORY	CAREER HIGH	OPPONENT/DATE
Kills		
Attempts	3	at Alabama State (9/26/21)
Hitting Percentage (Min. 10 ATT.)		
Assists	4	vs. Florida A&M (9/17/21)
Digs	14	vs. Nicholls (9/17/21)
Blocks		
Aces	2	vs. Alabama (10/3/21)
Points	2.0	vs. Alabama (10/3/21)

CATEGORY	SEASON HIGH	OPPONENT/DATE
Kills		
Attempts	3	at Alabama State (9/26/21)
Hitting Percentage (Min. 10 ATT.)		
Assists	4	vs. Florida A&M (9/17/21)
Digs	14	vs. Nicholls (9/17/21)
Blocks		
Aces	2	vs. Alabama (10/3/21)
Points	2.0	vs. Alabama (10/3/21)

DATE	OPPONENT	SP	ATTACK				SET			SERVE			RECEIPT			BLOCKING				BHE	POINTS	HIT%	TEAM SCORE		
			K	E	TA	PCT.	A	TA	PCT.	SA	SE	TA	PCT.	RE	TA	PCT.	DIG	BS	BA					BE	TOTAL
August 27	TENNESSEE TECH	3	0	0	0	.000	0	0	.000	1	0	17	1.000	0	14	1.000	4	0	0	0	0.0	0	1.0	.292	3-0
August 28	JACKSON STATE	3	0	0	0	.000	0	0	.000	0	1	13	.923	0	6	1.000	3	0	0	0	0.0	0	0.0	.457	3-0
September 2	CAL STATE FULLERTON	3	0	0	0	.000	0	1	.000	0	0	17	1.000	0	10	1.000	6	0	0	0	0.0	0	0.0	.221	3-0
September 3	SOUTHEASTERN LA.	3	0	0	0	.000	0	3	.000	1	0	23	1.000	0	2	1.000	7	0	0	0	0.0	0	1.0	.300	3-0
September 9	NORTH ALABAMA	3	0	0	0	.000	0	3	.000	0	0	9	1.000	0	4	1.000	5	0	0	0	0.0	0	0.0	.265	3-0
September 12	SANTA CLARA	5	0	0	0	.000	1	2	.500	0	0	18	1.000	3	28	.893	5	0	0	0	0.0	0	0.0	.260	3-2
September 17	FLORIDA A&M	5	0	0	0	.000	4	6	.667	1	1	10	.900	1	28	.964	7	0	0	0	0.0	0	1.0	.245	2-3
September 17	NICHOLLS	4	0	0	0	.000	1	2	.500	0	0	21	1.000	1	14	.929	14	0	0	0	0.0	0	0.0	.183	3-1
September 18	BELMONT	3	0	0	0	.000	0	0	.000	1	1	13	.923	1	2	.500	4	0	0	0	0.0	0	1.0	.345	3-0
September 22	OLE MISS	4	0	0	0	.000	2	2	1.000	0	1	12	.917	1	20	.950	7	0	0	0	0.0	0	0.0	.196	1-3
September 26	at Alabama State	5	0	0	3	.000	1	3	.333	0	1	16	.938	0	14	1.000	6	0	0	0	0.0	0	0.0	.209	2-3
September 29	at Tennessee	3	0	0	0	.000	1	5	.200	0	1	9	.889	0	4	1.000	6	0	0	0	0.0	0	0.0	.076	0-3
October 2	ALABAMA	5	0	0	0	.000	1	3	.333	1	1	22	.955	1	22	.955	7	0	0	0	0.0	0	1.0	.183	3-2
October 3	ALABAMA	3	0	0	0	.000	1	5	.200	2	1	16	.938	0	4	1.000	4	0	0	0	0.0	0	2.0	.248	3-0
October 9	at Arkansas	4	0	0	0	.000	3	8	.375	0	2	20	.900	0	13	1.000	7	0	0	0	0.0	0	0.0	.158	1-3
October 10	at Arkansas	5	0	0	0	.000	0	3	.000	0	0	14	1.000	1	26	.962	11	0	0	0	0.0	0	0.0	.144	2-3
October 16	MISSOURI	3	0	0	0	.000	0	2	.000	1	1	17	.941	0	13	1.000	8	0	0	0	0.0	0	1.0	.232	3-0
October 17	MISSOURI	5	0	0	0	.000	0	3	.000	1	1	19	.947	3	28	.893	12	0	0	0	0.0	0	1.0	.235	2-3
TOTALS		69	0	0	3	.000	15	51	.294	9	12	286	.958	12	252	.952	123	0	0	0	0.0	0	9.0	.225	

SETS PLAYED: 69
KILLS PER SET: 0.00
ASSISTS PER SET: 0.22

SERVICE ACES PER SET: 0.13
DIGS PER SET: 1.78

POINTS PER SET: 0.13

CURTIS'S OVERALL CAREER STATISTICS

YEAR	SETS	MP	KILLS	K/S	E	TA	PCT.	AST	A/S	SA	SA/S	SE	DIGS	D/S	RE	BS	BA	TB	B/S	PTS	PT/S
2021	69	18	0	0.0	0	3	.000	15	.22	9	.13	12	123	1.78	12	0	0	0	.00	9.0	0.13
TOTAL	69	18	0	0.0	0	3	.000	15	.22	9	.13	12	123	1.78	12	0	0	0	.00	9.0	0.13

CURTIS'S SEC CAREER STATISTICS

YEAR	SETS	MP	KILLS	K/S	E	TA	PCT.	AST	A/S	SA	SA/S	SE	DIGS	D/S	RE	BS	BA	TB	B/S	PTS	PT/S
2021	32	8	0	0.0	0	0	.000	8	.25	5	.16	8	62	1.94	6	0	0	0	.00	5.0	0.16
TOTAL	32	8	0	0.0	0	0	.000	8	.25	5	.16	8	62	1.94	6	0	0	0	.00	5.0	0.16



#16 VAL GREEN
OUTSIDE HITTER (6-2 | SENIOR)
OXFORD, OHIO (TALAWANDA)

GREEN'S HIGHLIGHTS:

- Recorded 14 double-digit kill efforts during her Tiger career
- Chipped in 11 kills versus Cal State Fullerton (9/2) for her first 10+ kill match of the season
- Set a career high .375 hitting percentage behind 12 kills versus North Alabama (9/9)
- Against Florida A&M (9/17), set career highs in kills (19) and points (21.5)
- Totaled a season high two aces from the service line versus Ole Miss (9/22)
- Recorded a career high 5.0 blocks against Alabama (10/2), helping Auburn to a team total of 18.0 to tie the program's single-match record
- Match season high for kills in a league match with 13 on the road at Arkansas (10/10)

CATEGORY	CAREER HIGH	OPPONENT/DATE
Kills	19	vs. Florida A&M (9/17/21)
Attempts	50	vs. Butler (8/31/19)
Hitting Percentage (Min. 10 ATT.)	.375	vs. North Alabama (9/9/21)
Assists	2	at South Carolina (10/29/20)
Digs	10	at South Carolina (10/29/20)
Blocks	5.0	vs. Alabama (10/2/21)
Aces	4	at TCU (9/15/19)
Points	21.5	vs. Florida A&M (9/17/21)

CATEGORY	SEASON HIGH	OPPONENT/DATE
Kills	19	vs. Florida A&M (9/17/21)
Attempts	48	vs. Florida A&M (9/17/21)
Hitting Percentage (Min. 10 ATT.)	.375	vs. North Alabama (9/9/21)
Assists	1 (3x)	last, vs. Missouri (10/17/21)
Digs	7	vs. Santa Clara (9/12/21)
Blocks	5.0	vs. Alabama (10/2/21)
Aces	2	vs. Ole Miss (9/22/21)
Points	21.5	vs. Florida A&M (9/17/21)

DATE	OPPONENT	SP	ATTACK				SET			SERVE				RECEIPT			BLOCKING				TEAM		SCORE		
			K	E	TA	PCT.	A	TA	PCT.	SA	SE	TA	PCT.	RE	TA	PCT.	DIG	BS	BA	BE	TOTAL	BHE		POINTS	HIT%
August 27	TENNESSEE TECH	3	5	1	20	.200	0	0	.000	0	0	6	1.000	0	2	1.000	1	0	3	0	3.0	0	6.5	.292	3-0
August 28	JACKSON STATE	3	3	1	10	.200	0	1	.000	1	0	24	1.000	0	0	.000	5	0	3	0	3.0	0	5.5	.457	3-0
September 2	CAL STATE FULLERTON	3	11	4	35	.200	0	2	.00	0	0	18	1.000	0	3	1.000	2	0	1	0	1.0	0	11.5	.221	3-0
September 3	SOUTHEASTERN LA.	3	2	1	18	.056	1	2	.500	1	2	14	.857	0	0	.000	4	0	1	0	1.0	0	3.5	.300	3-0
September 9	NORTH ALABAMA	3	12	0	32	.375	0	3	.000	1	0	9	1.000	0	2	1.000	2	0	0	1	0.0	0	13.0	.265	3-0
September 12	SANTA CLARA	5	12	3	41	.220	0	1	.000	0	0	17	1.000	2	9	.778	7	0	0	0	0.0	0	12.0	.260	3-2
September 17	FLORIDA A&M	5	19	5	48	.292	0	1	.000	0	2	16	.875	0	5	1.000	6	2	1	0	3.0	0	21.5	.245	2-3
September 17	NICHOLLS	4	12	6	41	.146	0	0	.000	0	1	13	.923	0	2	1.000	2	0	0	0	0.0	0	12.0	.183	3-1
September 18	BELMONT	3	4	2	16	.125	0	2	.000	1	0	18	1.000	0	2	1.000	0	0	0	0	0.0	0	5.0	.345	3-0
September 22	OLE MISS	4	13	6	34	.206	1	3	.333	2	1	15	.933	0	7	1.000	3	0	0	0	0.0	0	15.0	.196	1-3
September 26	at Alabama State	5	3	7	26	-.154	0	5	.000	0	2	17	.882	0	2	1.000	4	0	1	0	1.0	0	3.5	.209	2-3
September 29	at Tennessee	3	2	3	20	-.050	0	1	.000	0	0	0	.000	0	3	1.000	2	0	2	0	2.0	0	3.0	.076	0-3
October 2	ALABAMA	5	9	6	37	.081	0	1	.000	0	0	0	.000	0	5	1.000	2	0	5	0	5.0	0	11.5	.183	3-2
October 3	ALABAMA	3	7	3	27	.148	0	0	.000	0	0	0	.000	0	3	1.000	4	0	2	0	2.0	0	8.0	.248	3-0
October 9	at Arkansas	4	7	4	30	.100	0	2	.000	0	0	0	.000	0	12	1.000	1	0	1	0	1.0	0	7.5	.158	1-3
October 10	at Arkansas	5	13	4	39	.231	0	4	.000	0	0	0	.000	1	6	.833	3	0	2	0	2.0	0	14.0	.144	2-3
October 16	MISSOURI	3	2	1	14	.071	0	1	.000	0	0	0	.000	0	1	1.000	0	0	0	0	0.0	0	2.0	.232	3-0
October 17	MISSOURI	5	16	7	47	.191	1	6	.167	0	0	0	.000	0	7	1.000	2	0	1	0	1.0	0	16.5	.235	2-3
TOTALS		69	152	64	535	.164	3	35	.086	6	8	167	.952	3	71	.958	51	2	23	1	25.0	0	171.5	.225	

SETS PLAYED: 69 SERVICE ACES PER SET: 0.09 POINTS PER SET: 2.49
 KILLS PER SET: 2.20 DIGS PER SET: 0.74
 ASSISTS PER SET: 0.04 BLOCKS PER SET: 0.36

GREEN'S OVERALL CAREER STATISTICS

YEAR	SETS	MP	KILLS	K/S	E	TA	PCT.	AST	A/S	SA	SA/S	SE	DIGS	D/S	RE	BS	BA	TB	B/S	PTS	PT/S
2021	69	18	152	2.20	64	535	.164	3	.04	6	.09	8	51	0.74	3	2	23	25	0.36	171.5	2.49
2020	13	4	27	2.08	33	139	-.043	3	.23	1	.08	8	28	2.15	2	1	8	9	0.69	33.0	2.54
2019	67	24	146	2.18	103	506	.085	1	.01	13	.19	14	30	0.45	3	3	7	10	0.15	165.5	2.47
2018	1	1	0	0.00	0	0	.000	0	.00	0	.00	1	0	0.00	0	0	0	0	0.00	0.0	0.00
TOTAL	150	47	335	2.17	200	1180	.106	7	.05	20	.13	31	109	0.73	8	6	38	44.0	0.29	370.0	2.47

GREEN'S SEC CAREER STATISTICS

YEAR	SETS	MP	KILLS	K/S	E	TA	PCT.	AST	A/S	SA	SA/S	SE	DIGS	D/S	RE	BS	BA	TB	B/S	PTS	PT/S
2021	32	8	69	2.16	34	248	.141	2	.06	2	.06	1	18	0.56	1	0	13	13	.41	77.5	2.41
2020	13	4	27	2.08	33	139	-.043	3	.23	1	.08	8	28	2.15	2	1	8	9	.69	33.0	2.54
2019	28	13	52	1.86	45	211	.033	1	.04	1	.04	9	13	0.46	1	2	3	5	.18	56.5	2.02
2018	0	0	0	0.00	0	0	.000	0	.00	0	.00	0	0	0.00	0	0	0	0	.00	0.0	0.00
TOTAL	73	25	148	2.03	112	598	.060	6	.08	4	.05	18	59	0.81	4	3	24	27	.37	167.0	2.29



#17 CASSIDY TANTON

OUTSIDE HITTER | 6-0 | FRESHMAN
STONEVILLE, N.C. (DALTON MCMICHAEL)

CURTIS'S HIGHLIGHTS:

- Did not see action during the first five weeks of play due to an ankle injury
- Made collegiate debut at Alabama State (9/26)

CATEGORY _____	CAREER HIGH _____	OPPONENT/DATE _____
Kills _____		
Attempts _____		
Hitting Percentage (Min. 10 ATT.) _____		
Assists _____		
Digs _____		
Blocks _____		
Aces _____		
Points _____		

CATEGORY _____	SEASON HIGH _____	OPPONENT/DATE _____
Kills _____		
Attempts _____		
Hitting Percentage (Min. 10 ATT.) _____		
Assists _____		
Digs _____		
Blocks _____		
Aces _____		
Points _____		

DATE	OPPONENT	SP	ATTACK				SET			SERVE				RECEIPT			BLOCKING				BHE	POINTS	TEAM		
			K	E	TA	PCT.	A	TA	PCT.	SA	SE	TA	PCT.	RE	TA	PCT.	DIG	BS	BA	BE			TOTAL	HIT%	SCORE
September 26	at Alabama State	1	0	0	0	.000	0	0	.000	0	0	0	.000	0	0	.000	0	0	0	0	0.0	0	0.0	.209	2-3
TOTALS		1	0	0	0	.000	0	0	.000	0	0	0	.000	0	0	.000	0	0	0	0	0.0	0	0.0	.225	

TANTON'S OVERALL CAREER STATISTICS

YEAR	SETS	MP	KILLS	K/S	E	TA	PCT.	AST	A/S	SA	SA/S	SE	DIGS	D/S	RE	BS	BA	TB	B/S	PTS	PT/S
2021	1	0	0	0.0	0	0	.000	0	.00	0	.00	0	0	.00	0	0	0	0	.00	0.0	0.00
TOTAL	1	0	0	0.0	0	0	.000	0	.00	0	.00	0	0	.00	0	0	0	0	.00	0.0	0.00

TANTON'S SEC CAREER STATISTICS

YEAR	SETS	MP	KILLS	K/S	E	TA	PCT.	AST	A/S	SA	SA/S	SE	DIGS	D/S	RE	BS	BA	TB	B/S	PTS	PT/S
2021	0	0	0	0.0	0	0	.000	0	.00	0	.00	0	0	.00	0	0	0	0	.00	0.0	0.00
TOTAL	0	0	0	0.0	0	0	.000	0	.00	0	.00	0	0	.00	0	0	0	0	.00	0.0	0.00



#19 ELIF SU YAVUZ
MIDDLE BLOCKER | 6-3 | SENIOR
ANKARA, TURKEY (GAZI UNIVERSITY)

YAVUZ'S HIGHLIGHTS:

- Her blocks per set average (.088) currently ranks as the 10th highest in a single season (rally scoring era) in program history
- Has recorded at least four blocks in eight matches this season
- Made her Auburn debut, starting at middle blocker in the season opener versus Tennessee Tech (8/27)
- Set career high in total blocks (8.0) versus Jackson State (8/28)
- Shattered her career high in kills (8), hitting percentage (.571), digs (4) and points (10.5) versus Florida A&M (9/17)
- Match her career high in blocks while recording her first collegiate assist at Arkansas (10/10)

CATEGORY	CAREER HIGH	OPPONENT/DATE
Kills	8	vs. Florida A&M (9/17/21)
Attempts	14	vs. Florida A&M (9/17/21)
Hitting Percentage (Min. 10 ATT.)	.571	vs. Florida A&M (9/17/21)
Assists	1 (2x)	last, vs. Missouri (10/16/21)
Digs	4 (2x)	last, at Arkansas (10/9/21)
Blocks	8.0 (2x)	last, at Arkansas (10/10/21)
Aces		
Points	10.5	vs. Florida A&M (9/17/21)

CATEGORY	SEASON HIGH	OPPONENT/DATE
Kills	8	vs. Florida A&M (9/17/21)
Attempts	14	vs. Florida A&M (9/17/21)
Hitting Percentage (Min. 10 ATT.)	.571	vs. Florida A&M (9/17/21)
Assists	1 (2x)	last, vs. Missouri (10/16/21)
Digs	4 (2x)	last, at Arkansas (10/9/21)
Blocks	8.0 (2x)	last, at Arkansas (10/10/21)
Aces		
Points	10.5	vs. Florida A&M (9/17/21)

DATE	OPPONENT	SP	ATTACK				SET			SERVE				RECEIPT			BLOCKING				BHE	POINTS	TEAM HIT%	SCORE	
			K	E	TA	PCT.	A	TA	PCT.	SA	SE	TA	PCT.	RE	TA	PCT.	DIG	BS	BA	BE	TOTAL				
August 27	TENNESSEE TECH	3	1	0	2	.500	0	1	.000	0	0	0	.000	0	0	.000	0	0	2	0	2.0	0	2.0	.292	3-0
August 28	JACKSON STATE	3	4	0	6	.667	0	0	.000	0	0	0	.000	0	0	.000	0	0	8	0	8.0	0	8.0	.457	3-0
September 3	CAL STATE FULLERTON	3	2	1	4	.250	0	0	.000	0	0	0	.000	0	0	.000	0	0	2	1	2.0	0	3.0	.221	3-0
September 4	SOUTHEASTERN LA.	3	1	0	1	1.000	0	0	.000	0	0	0	.000	0	0	.000	0	0	2	0	2.0	0	2.0	.300	3-0
September 9	NORTH ALABAMA	3	4	0	6	.667	0	1	.000	0	0	0	.000	0	0	.000	0	1	2	1	3.0	0	6.0	.265	3-0
September 12	SANTA CLARA	5	1	2	6	-.167	0	1	.000	0	0	0	.000	0	0	.000	1	0	3	0	3.0	0	2.5	.260	3-2
September 17	FLORIDA A&M	5	8	0	14	.571	0	2	.000	0	0	0	.000	0	0	.000	4	1	3	0	4.0	0	10.5	.245	2-3
September 17	NICHOLLS	4	2	0	6	.333	0	1	.000	0	0	0	.000	0	1	1.000	2	0	2	1	2.0	0	3.0	.183	3-1
September 18	BELMONT	3	3	1	4	.500	0	0	.000	0	0	0	.000	0	0	.000	0	0	2	0	2.0	0	4.0	.345	3-0
September 22	OLE MISS	4	2	1	5	.200	0	0	.000	0	0	0	.000	1	1	.000	0	1	2	1	3.0	0	4.0	.196	1-3
September 26	at Alabama State	5	2	1	3	.333	0	1	.000	0	0	0	.000	0	0	.000	0	0	3	0	3.0	0	3.5	.209	2-3
September 29	at Tennessee	3	1	0	3	.333	0	0	.000	0	0	0	.000	0	0	.000	0	0	4	0	4.0	0	3.0	.076	0-3
October 2	ALABAMA	5	4	1	8	.375	0	0	.000	0	0	0	.000	0	0	.000	2	0	4	2	4.0	0	6.0	.183	3-2
October 3	ALABAMA	3	2	1	7	.143	0	1	.000	0	0	0	.000	0	0	.000	1	1	2	0	3.0	1	4.0	.248	3-0
October 9	at Arkansas	4	2	1	3	.333	0	1	.000	0	0	0	.000	0	0	.000	4	0	4	1	4.0	0	4.0	.158	1-3
October 10	at Arkansas	5	1	1	4	.000	1	3	.333	0	0	0	.000	0	0	.000	1	0	8	0	8.0	0	5.0	.144	2-3
October 16	MISSOURI	3	3	0	8	.375	1	1	1.000	0	0	0	.000	0	0	.000	3	0	2	0	2.0	0	4.0	.232	3-0
October 17	MISSOURI	5	6	1	13	.385	0	8	.000	0	0	0	.000	1	1	.000	1	0	2	0	2.0	0	7.0	.235	2-3
TOTALS		69	49	11	103	.369	2	21	.095	0	0	0	.000	2	3	.333	19	4	57	7	61.0	1	81.5	.225	

SETS PLAYED: 69
 KILLS PER SET: 0.71
 ASSISTS PER SET: 0.03

DIGS PER SET: 0.28
 BLOCKS PER SET: 0.88

POINTS PER SET: 1.18

YAVUZ'S OVERALL CAREER STATISTICS

YEAR	SETS	MP	KILLS	K/S	E	TA	PCT.	AST	A/S	SA	SA/S	SE	DIGS	D/S	RE	BS	BA	TB	B/S	PTS	PT/S
2021	69	18	49	0.71	11	103	.369	2	.03	0	.00	0	19	0.28	2	4	57	61	0.88	81.5	1.18
TOTAL	69	18	49	0.71	11	103	.369	2	.03	0	.00	0	19	0.28	2	4	57	61	0.88	81.5	1.18

YAVUZ'S SEC CAREER STATISTICS

YEAR	SETS	MP	KILLS	K/S	E	TA	PCT.	AST	A/S	SA	SA/S	SE	DIGS	D/S	RE	BS	BA	TB	B/S	PTS	PT/S
2021	32	8	21	0.66	6	51	.294	2	.06	0	.00	0	12	0.38	2	2	28	30	0.94	37.0	1.16
TOTAL	32	8	21	0.66	6	51	.294	2	.06	0	.00	0	12	0.38	2	2	8	30	0.94	37.0	1.16



SHIPES HIGHLIGHTS:

- SEC Defensive Player of the Week (10/4)
- Moved to middle blocker after spending the majority of career as a pin hitter
- Leads the SEC in both total blocks (106) and blocks per set (1.61), while ranking second and fourth, respectively, in both categories
- Recorded at least five blocks in 10 matches this season
- Added 23 double-digit kill efforts and seven double-doubles as a Tiger
- Enters the weekend ranked first in single-season history (rally scoring era) in blocks per set, second in total blocks, third in block assists and tied for fifth in solo blocks
- Totalled 12.0 total blocks in Auburn's five-set victory against Alabama (10/2) to set the program's single-match record for blocks in the rally scoring era. The previous record of 11.0 was set on Nov. 23, 2017 by Breanna Barksdale at Florida
- Chipped in 10.0 blocks at Arkansas (10/9) for just her second double-digit blocking effort of her career
- Returned to the service line in Fayetteville (10/10) with a career high two ace

CATEGORY	CAREER HIGH	OPPONENT/DATE
Kills	21	vs. Ole Miss (10/26/18)
Attempts	55	vs. Ole Miss (10/26/18)
Hitting Percentage (Min. 10 ATT.)	.462	vs. Tennessee Tech (8/27/21)
Assists	3 (4x)	last, at Texas A&M (11/13/19)
Digs	18 (2x)	last, at Tennessee (11/27/19)
Blocks	12.0	vs. Alabama (10/2/21)
Aces	3 (2x)	last, at Western Michigan (9/20/19)
Points	24.5	vs. Ole Miss (10/26/18)

CATEGORY	SEASON HIGH	OPPONENT/DATE
Kills	8	vs. Tennessee Tech (8/27/21)
Attempts	20	vs. Nicholls (9/17/21)
Hitting Percentage (Min. 10 ATT.)	.462	vs. Tennessee Tech (8/27/21)
Assists	1 (6x)	last, at Arkansas (10/10/21)
Digs	5	vs. Alabama (10/2/21)
Blocks	12.0	vs. Alabama (10/2/21)
Aces	2	at Arkansas (10/10/21)
Points	14.0	vs. Alabama (10/2/21)

DATE	OPPONENT	SP	ATTACK				SET			SERVE				RECEIPT			BLOCKING				TEAM	SCORE			
			K	E	TA	PCT	A	TA	PCT.	SA	SE	TA	PCT.	RE	TA	PCT.	DIG	BS	BA	BE	TOTAL	BHE	POINTS	HIT%	
August 27	TENNESSEE TECH	3	8	2	13	.462	1	2	.500	0	1	5	.800	0	2	1.000	1	1	6	0	7.0	0	12.0	.292	3-0
August 28	JACKSON STATE	3	4	0	9	.444	0	0	.000	0	1	3	.667	0	0	.000	1	0	5	0	5.0	0	6.5	.457	3-0
September 2	CAL STATE FULLERTON	3	1	1	9	.000	0	1	.000	0	0	7	1.000	0	1	1.000	2	1	2	1	3.0	0	3.0	.221	3-0
September 3	SOUTHEASTERN LA.	3	4	1	11	.273	0	2	.000	1	1	6	.833	0	0	.000	2	0	8	0	8.0	0	9.0	.300	3-0
September 9	NORTH ALABAMA	3	6	0	7	.857	0	0	.000	0	0	0	.000	0	0	.000	1	0	3	0	3.0	0	6.0	.265	3-0
September 12	SANTA CLARA	5	7	2	14	.357	1	3	.333	0	0	0	.000	0	0	.000	1	1	4	1	5.0	1	10.0	.260	3-2
September 17	FLORIDA A&M	2	3	3	11	.000	0	0	.000	0	0	0	.000	0	0	.000	0	0	1	0	1.0	0	3.5	.245	2-3
September 17	NICHOLLS	4	7	4	20	.150	1	2	.500	0	0	0	.000	0	0	.000	3	2	7	0	9.0	0	12.5	.183	3-1
September 18	BELMONT	3	4	0	10	.400	0	0	.000	0	0	0	.000	0	0	.000	0	3	4	0	7.0	0	9.0	.345	3-0
September 22	OLE MISS	4	3	2	9	.111	0	1	.000	0	0	0	.000	0	1	1.000	3	2	1	0	3.0	0	5.5	.196	1-3
September 26	at Alabama State	5	6	2	10	.400	0	1	.000	0	0	0	.000	0	0	.000	1	0	2	0	2.0	0	7.0	.209	2-3
September 29	at Tennessee	3	3	1	10	.200	0	1	.000	0	0	0	.000	0	1	1.000	1	2	4	0	6.0	1	7.0	.076	0-3
October 2	ALABAMA	5	7	4	13	.231	1	2	.500	0	0	0	.000	0	0	.000	5	2	10	0	12.0	0	14.0	.183	3-2
October 3	ALABAMA	3	3	1	9	.222	0	0	.000	0	0	0	.000	0	0	.000	0	1	6	0	7.0	0	7.0	.248	3-0
October 9	at Arkansas	4	2	3	7	-.143	1	5	.200	0	0	10	1.000	0	0	.000	4	1	9	1	10.0	0	7.5	.158	1-3
October 10	at Arkansas	5	2	3	13	-.077	1	5	.200	2	2	16	.875	0	1	1.000	4	0	9	1	9.0	0	8.5	.144	2-3
October 16	MISSOURI	3	4	2	13	.154	0	2	.000	1	1	7	.857	0	0	.000	3	0	3	0	3.0	0	6.5	.232	3-0
October 17	MISSOURI	5	3	2	12	.083	0	2	.000	0	1	13	.923	0	0	.000	2	1	5	0	6.0	1	6.5	.235	2-3
TOTALS		66	77	33	200	.220	6	29	.207	4	7	67	.896	0	6	1.000	34	17	89	4	106.0	3	142.5	.225	

SETS PLAYED: 66
 KILLS PER SET: 1.17
 ASSISTS PER SET: 0.09

SERVICE ACES SET: 0.06
 DIGS PER SET: 0.52
 BLOCKS PER SET: 1.61

POINTS PER SET: 2.16

SHIPES' OVERALL CAREER STATISTICS

YEAR	SETS	MP	KILLS	K/S	E	TA	PCT.	AST	A/S	SA	SA/S	SE	DIGS	D/S	RE	BS	BA	TB	B/S	PTS	PT/S
2021	66	18	77	1.17	33	200	.220	6	.09	4	.06	7	34	0.52	0	17	89	106	1.61	142.5	2.16
2020	25	8	59	2.36	44	230	.065	3	.12	4	.16	12	47	1.88	10	1	15	16	0.64	71.5	2.86
2019	103	29	269	2.61	154	900	.127	29	.28	23	.22	52	246	2.39	28	14	55	69	0.67	333.5	3.24
2018	59	21	147	2.49	63	403	.208	1	.02	0	.00	0	30	0.51	4	6	18	24	0.41	162.0	2.75
TOTAL	253	76	552	2.18	295	1733	.148	39	.15	31	.12	71	357	1.41	42	38	177	215	0.85	709.5	2.80

SHIPES' SEC CAREER STATISTICS

YEAR	SETS	MP	KILLS	K/S	E	TA	PCT.	AST	A/S	SA	SA/S	SE	DIGS	D/S	RE	BS	BA	TB	B/S	PTS	PT/S
2021	32	8	27	0.84	18	86	.105	3	.09	3	.09	4	22	0.69	0	9	47	56	1.75	62.5	1.94
2020	25	8	59	2.36	44	230	.065	3	.12	4	.16	12	47	1.88	10	1	15	16	0.64	71.5	2.84
2019	59	18	176	2.98	99	605	.127	15	.25	9	.15	28	164	2.78	18	11	26	37	0.63	209.0	3.54
2018	47	15	128	2.72	56	341	.211	1	.02	0	.00	0	26	0.55	4	5	16	21	0.45	141.0	3.00
TOTAL	163	49	390	2.39	218	1263	.136	22	.13	16	.10	44	259	1.59	32	26	104	130	0.80	484.0	2.97



#4 FALLAN LANHAM
Fr. | DS/L | 5-8



#5 AUDREY DOUGLAS
So. | OH/OPP | 6-4



#6 BELLA ROSENTHALL
Sr. | DS/L | 5-5



#7 REBEKAH RATH
Jr. | OH | 6-0



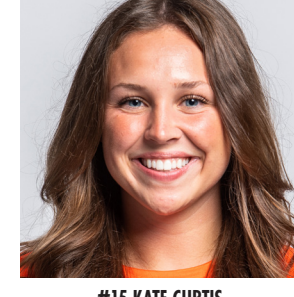
#8 LIZ REICH
Gr. | OPP | 6-1



#10 JACKIE BARRETT
So. | S | 6-1



#11 JORDAN SINNESS
Fr. | S | 5-9



#15 KATE CURTIS
Fr. | DS/L | 5-6



#16 VAL GREEN
Sr. | OH | 6-4



#17 CASSIDY TANTON
Fr. | OH | 6-0



#19 ELIF SU YAVUZ
Sr. | MB | 6-3



#21 TATUM SHIPES
Sr. | OH | 6-4



HEAD COACH
BRENT CROUCH



ASSOCIATE HEAD COACH
ALEX DUNPHY



ASSISTANT COACH
RICK MOLLER