



2020-21 AUBURN WOMEN'S BASKETBALL

AUBURN ATHLETICS COMMUNICATIONS: 392 SOUTH DONAHUE DRIVE || AUBURN, AL 36830 || AUBURNTIGERS.COM || @AUBURNWBB

2020-21 SCHEDULE/RESULTS

5-10, 0-7 SEC

DATE	OPPONENT	TIME/TV/RESULT
Nov. 25	USC UPSTATE	W 82-41
Nov. 28	SAMFORD	W 66-64
Dec. 1	GARDNER-WEBB	W 97-61
Dec. 5	at Houston	L 61-71
Dec. 8	BELMONT	PPD
Dec. 13	SOUTH ALABAMA	W 74-66
Dec. 16	STEPHEN F. AUSTIN	L 54-67
Dec. 17	NORTH FLORIDA	W 94-81
Dec. 20	BELMONT	L 57-78
Dec. 31	*at LSU	L 43-56
Jan. 3	*GEORGIA	L 44-76
Jan. 7	*at Ole Miss	L 58-62
Jan. 10	*MISSOURI	PPD
Jan. 14	*#12 KENTUCKY	PPD
Jan. 17	*at Florida	L 54-68
Jan. 21	*#12 KENTUCKY	L 71-76
Jan. 24	*at Alabama	L 55-67
Jan. 28	*#8 TEXAS A&M	L 69-84
Jan. 31	*at #19 Arkansas	+ 2 pm
Feb. 4	*#4 SOUTH CAROLINA	+ 6 pm
Feb. 7	*MISSOURI	SECN Noon
Feb. 11	*at #22 Georgia	+ 6 pm
Feb. 14	*ALABAMA	SECN 5 pm
Feb. 18	*at #21 Mississippi State	SECN 8 pm
Feb. 21	*VANDERBILT	Canceled
Feb. 25	*#19 ARKANSAS	SECN 8 pm
Feb. 28	*at #20 Tennessee	SECN 1 pm
Mar. 3-7	SEC Tournament	Greenville
M19-22	NCAA First-Second Rounds	TBD
M26-29	NCAA Regionals	TBD
Apr 2-4	Women's Final Four	San Antonio

All times Central. Home Games in **BOLD CAPS**.
*SEC Game
+ = SEC Network + / ESPN3.com

AUBURN ATHLETICS COMMUNICATIONS

WES TODDAssistant Director/WBB Contact
.....wlt0006@auburn.edu
.....C: 334-750-5682
KIRK SAMPSON Associate AD
.....kirk@auburn.edu

WebAuburnTigers.com
Twitter@AuburnWBB
Facebook/AuburnWBB
Instagram@AuburnWBB
Office Phone(334) 844-9800



GAME 16

at #19 Arkansas (12-6, 2-5)

Sunday, Jan. 31, 2021 • 2 p.m. CT



Site Fayetteville, Ark.
 Venue Bud Walton Arena
 TV SEC Network +
 Radio WQSI 93.9 FM (Brit Bowen, Larry DiChiara)
 Audio Webcast AuburnTigers.com / Auburn Athletics app
 Live Stats ArkansasRazorbacks.com
 Twitter @AuburnWBB
 Series Record Auburn leads 23-17
 in Fayetteville Auburn leads 10-8
 Last Meeting #25 Arkansas 90, Auburn 68 (March 5, 2020, in Greenville, S.C.)

GAMEDAY BREAKDOWN




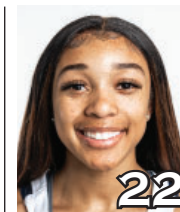

AUBURN TIGERS

Rankings AP: NR | Coaches: NR
 2020-21 Record 5-10
 SEC 0-7
 Home 5-5
 Away 0-5
 Neutral 0-0
 Streak L8
 Head Coach Terri Williams-Flournoy
 Record at AU (Yrs.) 140-129 (9th)
 Overall Record (Yrs.) 283-233 (17th)
 Record vs. Arkansas 4-5

ARKANSAS RAZORBACKS

Rankings AP: 19 | Coaches: 18
 2020-21 Record 12-6
 SEC 2-5
 Home 8-1
 Away 3-4
 Neutral 1-1
 Streak W1
 Head Coach Mike Neighbors
 Record at ARK (Yrs.) 71-46 (4th)
 Overall Record (Yrs.) 169-87 (8th)
 Record vs. Auburn 3-1

AUBURN PROJECTED STARTERS (based on last game)

				
KEYA PATTON G • JR • 5-6 Indianapolis, Ind.	ROMI LEVY F • FR • 6-2 Herzliya, Israel	UNIQUE THOMPSON F • SR • 6-3 Theodore, Ala.	ALAINA RICE G • SO • 5-8 Rockledge, Fla.	HONESTY SCOTT-GRAYSON G • R-SO • 5-8 Brick, N.J.
PPG: 5.5	PPG: 5.8	PPG: 17.8	PPG: 4.3	PPG: 12.5
RPG: 1.6	RPG: 3.8	RPG: 13.6	RPG: 2.2	RPG: 4.1
APG: 0.7	APG: 1.6	APG: 1.2	APG: 1.5	APG: 1.9

OFF THE BENCH

No.	Pos.	Name	Ht.	Year	PPG	RPG	Hometown
0	G	Alycia Reese	5-9	Jr.	2.7	0.9	Columbus, Ga.
2	G	Sania Wells	5-7	So.	3.1	0.8	Moss Point, Miss.
3	G	Annie Hughes	5-9	So.	4.3	2.4	Dutton, Ala.
4	G	Riley Donahue	5-10	Fr.	1.0	0.0	Atlanta, Ga.
5	F	Aicha Coulibaly	6-0	Fr.	4.4	3.3	Mali
10	F	Kiyae' White	6-2	R-Jr.	0.0	3.0	Macungie, Pa.
13	G	Kira Lowery	5-6	Jr.	2.9	1.2	Memphis, Tenn.
14	F	Jala Jordan	6-2	R-So.	7.2	3.2	Philadelphia, Pa.
24	G	Carsen McFadden	5-7	Fr.	0.5	0.5	Lucas, Texas
30	G	Morgan Robinson-Nwagwu	5-8	So.	2.1	1.3	Norcross, Ga.

Head Coach: Terri Williams-Flournoy

Assistants: La'Keshia Frett Meredith, Clarisse Garcia, Reneisha Hobbs

#WarEagle
#TeamOfExcellence



AuburnTigers.com



@AuburnWBB | @AuburnTigers
@AUCoachFlo



/AuburnWBB
/AuburnTigers

TEAM SCHEDULE AND MEDIA AVAILABILITY >> JANUARY 25-31 (times Central unless noted otherwise)

MONDAY January 25	TUESDAY January 26	WEDNESDAY January 27	THURSDAY January 28	FRIDAY January 29	SATURDAY January 30	SUNDAY January 31
OFF DAY	PRACTICE 2:30-5:30 pm Auburn Arena	PRACTICE 2:30-5:30 pm Auburn Arena	GAME 7:30 Auburn vs. Texas A&M Interviews Postgame via Zoom	PRACTICE 2:30-4:30 pm Auburn Arena	PRACTICE TBA Auburn Arena TRAVEL to Fayetteville, Ark.	GAME 2:00 Auburn at Arkansas Interviews postgame via Zoom Return to Auburn

AUBURN ATHLETICS COMMUNICATIONS SERVICES (COVID-19 EDITION)

QUICK FACTS

AUBURNTIGERS.COM

For updated game notes, statistics and all the latest information on Auburn basketball and gameday activities, go to AuburnTigers.com.

INTERVIEW POLICIES

--Coach Williams-Flournoy, assistant coaches and selected athletes are available for phone and virtual interviews by contacting Wes Todd in the athletic communications office.

--Following home games, interviews with Coach Flo and selected players will be conducted **via Zoom** following a 10-minute cooling-off period. Visiting coaches and players, if requested, will be available first **on the same Zoom link**.

--Interviews following road contests will be conducted **via Zoom**; the visiting **SID will send out links beforehand**.

--Practices are closed to the public and media until further notice.

CREDENTIALS

Anyone wishing to cover Auburn women's basketball should contact Wes Todd in the communications office at least one day in advance in order to make the proper arrangements. Game credentials will be held at media will call, **which will be at the north main entrance for the 2020-21 season**. There will be no season credentials. Parking passes are not needed.

GAME DAY SERVICES

--Printed flip cards will be available at each media seat. All other information (game notes, stats, etc.) will be available on AuburnTigers.com and StatBroadcast.com. Wireless internet is available in the Arena.

--Media will only be permitted to access the concourse level of the arena. With the exception of an extremely limited number of photographers/videographers, access to the playing floor by persons not subject to the SEC's COVID-19 testing protocol is strictly prohibited.

--Pool photos and video will be available on the SEC FTP site following most games.

VIDEO SERVICES

FTP feeds of selected Auburn basketball highlights are available for the media. Highlights and postgame press conference video will be posted following each game to ImagenCloud and the SEC FTP site.

COMMUNICATIONS STAFF

Wes Todd Women's Basketball contact
cell: 334-750-5682
email: wlt0006@auburn.edu
Kirk Sampson Associate AD
cell: 334-750-1385
email: sampska@auburn.edu

GENERAL INFORMATION

Location..... Auburn, Ala.
Founded1856
Enrollment.....30,440
Nickname Tigers
Colors..... Burnt Orange and Navy Blue
Facility (Capacity) Auburn Arena (9,121)
2020-21 Reduced Capacity1,438
President Dr. Jay Gogue
Director of Athletics Allen Greene
Sr. Assoc. AD/SWA..... Monique Holland

WOMEN'S BASKETBALL HISTORY

First Year of Women's Basketball1971
All-Time Record (Years)..... 952-507 (50th)
All-Time SEC Record (since 1981)240-255
All-Time Home Record 445-129
at Auburn Arena (since 2010).....98-58
NCAA Tournament Appearances21
Last NCAA App./Result.....2019 - First Round
SEC Regular-Season Championships 5
..... 1981, 1987, 1988, 1989, 2009
SEC Tournament Championships 4
..... 1981, 1987, 1990, 1997

COACHING & SUPPORT STAFF

Head Coach..... Terri Williams-Flournoy
Alma Mater, YearPenn State, 1991
Overall Record 283-233 (.549) / 17th year
Auburn Record 140-129 (.522) / 9th year
Assistant Coach (Year) La'Keshia Frett Meredith (2nd)
Alma Mater, YearGeorgia (1997)
Assistant Coach (Year at Auburn) Clarisse Garcia (5th)
Alma Mater, Year Villanova (2007)
Special Asst. to the Head Coach Reneisha Hobbs
Strength & Conditioning Coach Lee Taylor
Director of Basketball Operations Bianca Webb
Director of Basketball Services Justin Peak
Athletic Trainer..... Catherine Gordon
Grad. Student Mgrs Sean Holmes, AK Prestridge
Manager..... Trey Larrimore

GAMEDAY EXPERIENCE: AUBURN ARENA

>> Auburn Arena is in its 11th season as home of Auburn Basketball. The Tigers are 98-58 since moving to the Arena in 2010-11. The facility seats 9,121 for basketball and also hosts Auburn volleyball and gymnastics.



TEAM INFORMATION

2019-20 Record..... 11-18
2019-20 SEC Record..... 4-12
SEC Finish..... T-12th
Starters Returning/Lost1/4
Letterwinners Returning/Lost 5/8
Redshirts Returning 2
Newcomers..... 8

AUBURN TIGERS SPEED CHART

Overall: 5-9 SEC: 0-6

Head Coach: Terri Williams-Flournoy (9th Season)

Aicha Coulibaly - ay-EE-sha coo-li-BALL-ee
 Jala Jordan - JAY-lah
 Romi Levy - RO-mee LEV-ee
 Kira Lowery - KYE-rah
 Alycia Reese - a-LEE-see-ah

Morgan Robinson-Nwagwu - WAH-goo
 Sania Wells - sa-NYE-uh
 Kiyae' White - kye-YAY
 Terri Williams-Flournoy - FluH-NOY

		Pts	Reb	Ast	Stl	Blk		
0	ALYCIA REESE G • 5-9 • Jr. • Columbus, Ga. • Chattahoochee Valley CC	Season High	10	4	1	1	-	
		Career High	10	4	1	1	-	
		PPG	2.7	0.9	0.3	.318	.235	1.000
		20-21	2.7	0.9	0.3	.318	.235	1.000
							LAST GAME (vs TAMU): 1 assist, 8 minutes • 10 pts, 2-3 3FG in 16 mins at Houston (12/5) • 4 points in Auburn debut vs. USC Upstate (11/25) • Played 2 seasons at CVCC in Phenix City • Started all 24 games as soph.; avg. 12.8 ppg, 3.8 rpg	
1	KEYA PATTON G • 5-6 • Jr. • Indianapolis, Ind. • Wabash Valley College	Season High	14	5	2	2	-	
		Career High	14	5	2	2	-	
		PPG	5.5	1.6	0.7	.297	.241	.800
		20-21	5.5	1.6	0.7	.297	.241	.800
							LAST GAME (vs TAMU): 5 pts, 1 reb, 2 ast, 3-3 FT • Season-high 14 points in win over Gardner-Webb • Two-time NJCAA All-American; 1st team in 2020 • Avg. 20.8 pts, 6.8 reb, 6.4 ast, 2.9 stl as JC sophomore • Scored 1,000+ points in two JC seasons	
2	SANIA WELLS G • 5-7 • So. • Moss Point, Miss. • East Central HS	Season High	11	5	2	1	-	
		Career High	11	5	3	2	-	
		PPG	3.1	0.8	0.7	.197	.233	.667
		20-21	3.1	0.8	0.7	.197	.233	.667
							LAST GAME (vs TAMU): 4 minutes • Career-high 5 rebounds at Florida (1/17) • Career-high 11 points w/ 3 3FG vs. S. Alabama (12/13) • Played in 25 games as freshman; 8.6 mins/game • Scored 4 points in Auburn debut at UAB	
3	ANNIE HUGHES G • 5-9 • So. • Dutton, Ala. • Pisgah HS	Season High	17	7	1	3	1	
		Career High	17	7	4	3	1	
		PPG	4.3	2.4	0.6	.403	.296	.583
		20-21	4.3	2.4	0.6	.403	.296	.583
							LAST GAME (vs TAMU): 2 minutes • Career-high 17 pts, 7 reb, 3 stl vs. North Florida (12/17) • Scored SEC-best 8 points at Missouri (2/27/20) • Played in all 29 games in '19-20; started 7	
4	RILEY DONAHUE G • 5-10 • Fr. • Atlanta, Ga. • Marist School	Season High	3	-	-	-	-	
		Career High	3	-	-	-	-	
		PPG	1.0	0.0	0.0	1.000	1.000	-
		20-21	1.0	0.0	0.0	1.000	1.000	-
							LAST GAME (vs TAMU): DNP • Scored first AU points on 3FG in last minute vs. GWU • Joined Tigers as walk-on in August • First-team GHSA all-region selection as HS senior	
5	AICHA COULIBALY G/F • 6-0 • Fr. • Mali • IMG Academy (Fla.)	Season High	12	6	2	2	2	
		Career High	12	6	2	2	2	
		PPG	4.4	3.3	0.6	.382	.063	.444
		20-21	4.4	3.3	0.6	.382	.063	.444
							LAST GAME (vs TAMU): 6 pts, 3 reb, 1 ast, 1 stl • Started 1st 3 gms; 10 pts, 6 reb vs. GWU • Played for Mali U16 National Team at '17 African Champ. • Named tournament MVP, averaged 21.8 ppg in event • 3rd AU WBB player from Africa (C. Correia; K. Dieng)	
10	KIYAE' WHITE F • 6-2 • R-Jr. • Macungie, Pa. • Emmaus HS	Season High	-	3	-	-	-	
		Career High	15	11	4	3	1	
		PPG	0.0	3.0	0.0	.000	-	-
		20-21	0.0	3.0	0.0	.000	-	-
							LAST GAME (vs TAMU): DNP • Made '20-21 debut vs. South Alabama, 3 rebs in 4 mins • Played all 29 games, started 14 in 2019-20 • Career-high 15 points in SEC Tour. vs. Arkansas • Career-high 11 rebs in '19-20 opener vs. Wofford	
11	ROMI LEVY F • 6-2 • Fr. • Herzliya, Israel • Hof Hasharon HS	Season High	12	11	7	6	2	
		Career High	12	11	7	6	2	
		PPG	5.8	3.8	1.6	.378	.238	.300
		20-21	5.8	3.8	1.6	.378	.238	.300
							LAST GAME (vs TAMU): 6 pts, 4 reb, 2 ast • 7 assists vs. Kentucky (1/21); most by AU player in 20-21 • Season-high 13 pts at Ole Miss (1/7) • Scored 8 points off bench in Auburn debut vs. USCU • First AU WBB player from Israel	
13	KIRA LOWERY G • 5-6 • Jr. • Memphis, Tenn. • Dyersburg State CC	Season High	12	5	5	3	1	
		Career High	12	5	5	3	1	
		PPG	2.9	1.2	1.6	.462	.333	.765
		20-21	2.9	1.2	1.6	.462	.333	.765
							LAST GAME (vs TAMU): 1 reb, 1 ast, 5 minutes • Missed UF, UK games; returned at Alabama (1/24) • Led AU w/ 5 assists, 3 steals in win over UNF (12/17) • 12 points in 2nd AU game vs. Samford (11/28) • Third-team NJCAA All-American in '20	
14	JALA JORDAN F • 6-2 • R-So. • Philadelphia, Pa. • West Virginia	Season High	16	8	4	2	3	
		Career High	16	8	4	2	3	
		PPG	7.2	3.2	0.7	.345	.283	.682
		20-21	7.2	3.2	0.7	.345	.283	.682
							LAST GAME (vs TAMU): 4 minutes • Career-hi 3 blocks in 1st career start vs. S. Ala. (12/13) • Shared AU lead w/ 16 pts in season-opener vs. USCU • Redshirted 2019-20 season after transfer from WVU • Appeared in 25 games as freshman at WVU	
20	UNIQUE THOMPSON F • 6-3 • Sr. • Theodore, Ala. • Faith Academy	Season High	26	23	3	5	2	
		Career High	31	23	6	5	6	
		PPG	17.8	13.6	2.6	.568	1.000	.810
		20-21	17.8	13.6	2.6	.568	1.000	.810
							LAST GAME (vs TAMU): 18 pts, 7 reb, 3 stl • Preseason All-SEC; McClain, Wooden Watch Lists • 2 20-20 gms: 26/23 at HOU (12/5), 20/23 vs. BEL (12/20) • 52 career double-doubles, 1st in AU history • NCAA leader in off. rebs (5.8); 2nd in total rebs (13.6)	
22	ALAINA RICE G • 5-8 • So. • Rockledge, Fla. • Florida A&M	Season High	13	4	5	2	-	
		Career High	22	11	5	5	2	
		PPG	4.3	2.2	1.5	.306	.333	.765
		20-21	4.3	2.2	1.5	.306	.333	.765
							LAST GAME (vs TAMU): 13 pts, 3 reb, 5 ast, 2 stl • Season-high 13 pts, 5 ast, 2 stl vs. Texas A&M (1/28) • Led Auburn w/ 5 assists in debut vs. USC Upstate • 2020 MEAC Rookie of the Year at FAMU • Averaged 10.3 pts, 4.7 reb., 2.4 ast. as freshman in '20	
23	HONESTY SCOTT-GRAYSON G • 5-8 • R-So. • Brick, N.J. • Baylor	Season High	23	7	4	5	1	
		Career High	23	7	5	5	1	
		PPG	12.5	4.1	1.9	.385	.283	.723
		20-21	12.5	4.1	1.9	.385	.283	.723
							LAST GAME (vs TAMU): 21 pts, 4 reb, 3 ast, 3 stl • Career-high 23 pts, 5 reb, 3 stl at Ole Miss (1/7) • Back-to-back 16-point games vs. SFA, UNF • Redshirted '19-20 after transfer from Baylor • 2018 McDonald's All-American	
24	CARSEN McFADDEN G • 5-7 • Fr. • Fairview, Texas • Lovejoy HS	Season High	3	1	3	1	-	
		Career High	3	1	3	1	-	
		PPG	0.5	0.5	0.7	.333	-	.500
		20-21	0.5	0.5	0.7	.333	-	.500
							LAST GAME (vs TAMU): DNP • 1st AU points, led AU w/ 3 ast vs. S. Ala. (12/13) • Had a rebound and an assist in final minute vs. GWU • Joined Tigers as walk-on in August • Had 1,047 rebounds and 418 steals in HS career	
30	MORGAN ROBINSON-NWAGWU G • 5-8 • So. • Norcross, Ga. • Norcross HS	Season High	9	4	6	4	1	
		Career High	9	4	6	4	1	
		PPG	2.1	1.3	1.6	.286	.100	.889
		20-21	2.1	1.3	1.6	.286	.100	.889
							LAST GAME (vs TAMU): 2 minutes • 1st career start at UF; scored career-high 9 pts (1/17) • Career-high 6 assists at Ole Miss (1/7) • Career-high 4 steals in season-opener vs. USC Upstate • Played in all 29 games as a freshman; 10.9 mins/game	

Inside the Matchup

Auburn vs. Arkansas 23-17 (.575)

In Auburn: 11-7
 --At Auburn Arena: 2-4
 In Fayetteville: 10-8
 Neutral Sites: 2-2
 Trend: Teams have split the last 6 meetings

Nov. 24, 1984	W	70-65	Sanford, Fla. (37)
Dec. 14, 1989	W	84-69	Fayetteville, Ark.
Jan. 11, 1992	L	56-67	Fayetteville, Ark.
Jan. 9, 1993	W	68-49	Auburn
Jan. 22, 1994	W	66-57	Fayetteville, Ark.
Jan. 22, 1995	L	73-80	Auburn
Feb. 20, 1996	L	72-73 (OT)	Fayetteville, Ark.
Feb. 9, 1997	W	85-77	Auburn
Feb. 8, 1998	L	63-71	Fayetteville, Ark.
Feb. 26, 1998	L	43-59	Columbus, Ga.*
Feb. 7, 1999	W	66-46	Auburn
Feb. 17, 2000	W	73-56	Auburn
Feb. 24, 2000	W	71-58	Fayetteville, Ark.
Jan. 28, 2001	L	68-77	Fayetteville, Ark.
Feb. 22, 2001	W	68-60	Auburn
Feb. 17, 2002	L	65-88	Fayetteville, Ark.
Jan. 26, 2003	W	64-36	Auburn
Jan. 25, 2004	W	71-44	Fayetteville, Ark.
Feb. 3, 2005	W	62-51	Auburn
Jan. 12, 2006	L	60-64	Fayetteville, Ark.
Jan. 14, 2007	L	62-65	Auburn
Feb. 10, 2008	W	73-68	Fayetteville, Ark.
Mar. 2, 2008	W	74-57	Auburn
Mar. 6, 2008	W	73-51	Nashville, Tenn.*
Jan. 18, 2009	W	70-61	Fayetteville, Ark.
March 1, 2009	W	94-57	Auburn
Feb. 11, 2010	L	58-73	Auburn
Feb. 13, 2011	W	64-59	Fayetteville, Ark.
Jan. 15, 2012	L	39-59	Fayetteville, Ark.
Feb. 12, 2012	L	48-51	Auburn
Jan. 6, 2013	W	50-47	Auburn
Feb. 2, 2014	W	56-48	Fayetteville, Ark.
Jan. 29, 2015	L	47-52	Fayetteville, Ark.
Feb. 15, 2015	L	36-54	Auburn
Jan. 24, 2016	W	71-60 (OT)	Auburn
Feb. 26, 2017	W	70-64	Fayetteville, Ark.
Jan. 14, 2018	L	58-68	Auburn
Feb. 10, 2019	W	75-72	Fayetteville, Ark.
Jan. 5, 2020	L	70-86	Auburn
March 5, 2020	L	68-90	Greenville, S.C.*

*SEC Tournament

Auburn Women's Basketball Quick Hitters

- Auburn and Arkansas are meeting for the 41st time in women's basketball
- Auburn is 23-17 all-time against the Razorbacks, 10-8 in Fayetteville
- Arkansas won two meetings last year, a regular-season game in Auburn and an SEC Tournament matchup
- Thursday's game vs. Texas A&M was the first time Auburn had at least 14 players dressed since Dec. 1 vs. Gardner-Webb
- Unique Thompson passed DeWanna Bonner for second all-time in rebounds at Auburn vs. Texas A&M; she now has 1,051 career rebounds and is 67 shy of Becky Jackson's career mark of 1,118
- Thompson pulled down her 1,000th career rebound vs. Belmont (12/20)
- Thompson is the nation's active career leader in double-doubles (52) and the SEC's active leader in rebounds (1,051)
- Thompson is second in the nation in rebounds per game (13.6) and leads the NCAA in offensive rebounds per game (5.8)
- Thompson's 26-point, 23-rebound game at Houston was Auburn's first 20-20 game since Laurretta Freeman had 30 points, 21 rebounds vs. Alabama on Feb. 17, 1993; she followed that up with 20 points, 23 rebounds vs. Belmont (12/20)
- Thompson's 23 rebounds at Houston and vs. Belmont were a career-high and tied for the third-most in Auburn history (Sharon Stewart, 23 at Vanderbilt, Feb. 28, 1988)
- As of Jan. 30, Thompson's 23 rebounds at Houston and vs. Belmont were tied for the most by a player in NCAA Division I so far this season
- Honesty Scott-Grayson scored a career-high 23 points at Ole Miss; she is averaging 12.5 points/game overall and 14.7/game in SEC play
- Romi Levy had a career-high 7 assists vs. Kentucky; it was the most by an Auburn player this season
- Morgan Robinson-Nwagwu's 6 assists at Ole Miss were a career-high and the second-most by an Auburn player this season
- Robinson-Nwagwu made her first career start at Florida and scored a career-high 9 points
- Auburn has utilized seven different starting lineups through 15 games; 11 of 13 scholarship players have started at least one game and 8 players have made their first Division I starts
- Annie Hughes scored a career-high 17 points with 7 rebounds in the win over North Florida
- Auburn's 97 points in their win over Gardner-Webb tied the most scored by the Tigers under Terri Williams-Flournoy
- The Gardner-Webb win was Auburn's eighth 90-point game in the Williams-Flournoy era; the UNF win was the 9th
- The Tigers held USC Upstate to 41 points in the opener, the lowest for an opponent since Feb. 17, 2019 vs. Alabama (77-38)
- Auburn's 41-point margin of victory over USC Upstate was its largest since a 56-point win at Elon (96-44) on Dec. 22, 2018; it tied for the fifth-largest winning margin at Auburn Arena
- Ten players made their Auburn debuts in the win over USC Upstate; three newcomers were in the starting lineup

Moving On Up (Auburn Career Milestone Watch) . . .

- **Unique Thompson** has 52 career double-doubles, is Auburn's all-time leader and SEC and NCAA active career leader
- **Unique Thompson** needs 5 double-doubles to tie for 10th in SEC history (Alaina Coates, Chamique Holdsclaw, Armintie Price, 57)
- **Unique Thompson** is 2nd in career rebounds with 1,051; needs 67 for the all-time record (Becky Jackson, 1,118)
- **Unique Thompson** is 1st in career rebounding average at 10.5; Marianne Merritt (1975-79) is 2nd at 10.0
- **Unique Thompson** is 16th in career scoring with 1,384 points; needs 18 to tie for 15th (Tasha Hamilton, 1,402)
- **Coach Terri Williams-Flournoy** needs 17 wins for 300 in her head coaching career
- **Auburn** needs 2 home wins for 100 all-time at Auburn Arena

INDIVIDUAL CATEGORY LEADERS

Auburn	Arkansas
Unique Thompson - 17.8	Chelsea Dungee - 22.5
Unique Thompson - 13.6	Taylah Thomas - 6.6
Honesty Scott-Grayson- 1.9	Destiny Slocum - 3.7
Unique Thompson - 2.6	Makayla Daniels - 1.8
Jala Jordan - 0.7	Erynn Barnum - 1.0
Unique Thompson - 30.3	Chelsea Dungee - 30.3
Unique Thompson - .568	Erynn Barnum - .541
Alaina Rice - .333	Amber Ramirez - .452
Unique Thompson - .810	Amber Ramirez - .842

OPENING TIP

» The Auburn Tigers hit the road for their second straight game against a top-25 opponent when they take on No. 19 Arkansas in Fayetteville, Ark. Game time is 2 p.m. CT Sunday at Bud Walton Arena.

» Auburn is 5-10 overall, 0-7 in SEC play. The Tigers fell at home to No. 8 Texas A&M 84-69 Thursday.

» Arkansas is 12-6 overall, 2-5 in SEC play. The Razorbacks picked up a 90-87 win over No. 3 UConn Thursday night.

LAST TIME OUT

» Auburn got 21 points from Honesty Scott-Grayson and 18 from Unique Thompson, but No. 8 Texas A&M shot lights-out in the second half as the Tigers fell 84-69 Thursday night at Auburn Arena.

» The Tigers kept the Aggies in their sights through three-plus quarters and had one of their best shooting nights in SEC play, but A&M shot 69 percent in the second half and 83 percent in the fourth quarter to pull away in the closing minutes.

» For the night, Auburn shot 41.3 percent (26-63) and hit 10 3-pointers, their best in SEC play. But Texas A&M hit for 51.7 percent (31-60), including 67 percent from the second quarter on. The Aggies also made the most of 18 trips to the free-throw line, knocking down 14; Auburn was 7-for-8.

» Scott-Grayson topped the 20-point mark for the second time in SEC play; she had a career-high 23 at Ole Miss. She and Thompson shared the Auburn lead with three steals apiece. Thompson saw her streak of 10 straight double-doubles come to an end but led the Tigers with seven rebounds. She also made her first career 3-pointer late in the fourth quarter for Auburn's final points of the night.

UP NEXT

» Auburn returns home for its third straight game against a top-25 opponent when they host No. 4 South Carolina at 6 p.m. CT Thursday.

AN AUBURN WIN WOULD...

» Be the Tigers' third straight win in Fayetteville.

» Be Auburn's highest-ranked win since defeating then-No. 16 Florida 80-58 on Feb. 14, 2016.

AUBURN-ARKANSAS SERIES

» Auburn is 23-17 all-time against Arkansas, including a 10-8 advantage in Fayetteville. The Tigers have won their last two games on the road against the Razorbacks.

LAST MEETING: March 5, 2020, in Greenville No. 25 Arkansas 90, Auburn 68

» Unique Thompson picked up her 22nd double-double of the season, but Arkansas' 3-point shooting was too much as the Tigers fell 90-68 Friday afternoon in the second round of the SEC Tournament.

» Auburn (11-18) saw four players score in double-figures and grabbed more rebounds than Arkansas (23-7), but the Tigers were unable to slow down the SEC's top-scoring team as the Razorbacks topped the 90-point mark for the 11th time this season.

» Kiyae' White led Auburn with a career-high 15

points, hitting 7-of-9 attempts from the floor. She also pulled down eight rebounds and had a team-best four assists. Daisa Alexander scored 12 points in her final Auburn game. Thompson's 12-point, 15-rebound night was her 22nd double-double of the season, second-most in the nation this year, and the 42nd of her career. She also added three assists and a steal.

» Arkansas hit 17-of-42 3-point attempts on the night, an SEC Tournament record, and shot 47.8 percent (32-of-67) overall. The Tigers shot 42.4 percent (28-of-66) but were just 6-of-26 from 3-point range (23.1%). A day after forcing Vanderbilt into 25 turnovers, the Tigers were only about to get eight from Arkansas, turning those into 10 points. Meanwhile, the Razorbacks scored 24 points on fast-break chances. Auburn did out-rebound Arkansas, 38-36.

SCOUTING ARKANSAS

» Arkansas is 12-6 overall, 2-5 in SEC play, but with a pair of top-5 wins over Baylor and UConn. The Razorbacks are ranked No. 19 in the AP poll and No. 18 by the coaches.

» The Razorbacks are the SEC's top-scoring team, averaging 85.7 points/game while giving up 75.1. They also shoot 38.4% from 3-point range, the top mark in the SEC, and they average 10.3 turnovers/game, second-fewest in the nation.

» Chelsea Dungee is the SEC's leading scorer with 22.5 points/game; she has also made more free throws (112) than anyone in the country.

SCOUTING AUBURN

» Senior forward Unique Thompson leads the SEC and is second nationally with 13.6 rebounds per game this year and leads Auburn with 17.8 points/game. She has 10 double-doubles on the season, which ranks second in the SEC and fifth nationally. Thompson pulled down her 1,000th career rebound against Belmont on Dec. 20 and is one of two active players nationally with over 1,000 career rebounds.

» Thompson was unavailable the first three games of SEC play with medical issues, but made her return at Florida Jan. 17 and has recorded double-doubles in three of four games since, including 22 points, 10 rebounds vs. Kentucky.

» Two redshirt sophomore transfers that sat out last season are the Tigers' second- and third-leading scorers. Honesty Scott-Grayson (Baylor) has started all 14 games, averaging 12.3 points/game, and had a career-high 23 points at Ole Miss, 21 vs. Texas A&M, 18 points vs. Belmont & Florida, and 17 points at Alabama. Jordan is Auburn's third-leading scorer with 7.7 points/game; she's also the Tigers' leading shot-blocker (0.8/game).

» Four other returners saw game action for Auburn last season: redshirt junior Kiyae' White and sophomores Annie Hughes, Morgan Robinson-Nwagwu and Sania Wells. Hughes scored a career-high 17 points against North Florida and has started seven games. Wells and Robinson-Nwagwu played significant minutes in the opener; Robinson-Nwagwu had a career-high four steals and matched career-highs with 6 points and 4 rebounds. She also had a career-high 6 steals at Ole Miss, then made her first career start at Florida and scored a career-high 9 points. Wells scored a career-high 11 points in the win over South Alabama and made her first career start at LSU.

ALL THE NEW FACES**SEC STANDINGS & SCHEDULE**

	<i>(thru games of Jan. 28)</i>					
	SEC Games			All Games		
	W	L	Pct.	W	L	Pct.
South Carolina	8	0	1.000	13	1	.929
Texas A&M	6	1	.857	15	1	.938
Tennessee	5	1	.833	11	3	.786
Alabama	5	3	.625	12	3	.800
Georgia	5	3	.625	13	3	.813
Kentucky	5	3	.625	12	4	.750
LSU	5	3	.625	7	7	.500
Mississippi St.	3	4	.429	8	5	.615
Missouri	2	4	.333	6	5	.545
Arkansas	2	5	.286	12	6	.667
Florida	2	6	.250	9	7	.563
Ole Miss	1	6	.143	7	6	.538
AUBURN	0	7	.000	5	10	.333
[^] Vanderbilt	0	3	.000	4	4	.500

Thursday, Jan. 28

Arkansas 90, Connecticut 87
Texas A&M 84, Auburn 69
Missouri 61, Florida 58
LSU 60, Georgia 52
Kentucky 81, Alabama 68
South Carolina 75, Mississippi State 52
Tennessee 68, Ole Miss 67



Sunday, Jan. 31

*12:00 - Missouri at Kentucky (SEC Network)
*1:00 - Ole Miss at LSU (+)
*1:00 - Florida at Tennessee (ESPNU)
*2:00 - Alabama at South Carolina (SEC Network)
*2:00 - Auburn at Arkansas (+)
*4:00 - Georgia at Texas A&M (SEC Network)

Thursday, Feb. 4

*6:00 - Georgia at Alabama (SEC Network)
*6:00 - South Carolina at Auburn (+)
*6:00 - Kentucky at Ole Miss (+)
*7:00 - Arkansas at Missouri (+)
*7:00 - Tennessee at Mississippi State (+)
*8:00 - LSU at Texas A&M (SEC Network)

Inside the Numbers

CATEGORY		
	AUBURN	ARKANSAS
Points Per Game	65.3	85.7
Scoring Margin	-2.6	+10.6
Field Goal %	38.1%	44.0%
Opp. Field Goal %	42.9%	44.0%
3 pt Field Goal %	25.7%	38.4%
Opp. 3FG %	33.5%	33.4%
Rebounds	39.2	35.7
Opp. Rebounds	36.7	41.3
Rebound Margin	+2.5	-5.6
Turnovers	17.4	10.3
Opp. Turnovers	19.1	17.9
Steals	11.5	8.4
Opp. Steals	10.0	4.1
Blocks	2.3	2.6
Opp. Blocks	2.1	3.5

Associated Press Top 25

(Week 9: Jan. 25)

Rk	Team	Record	Prev
1	Louisville (22)	14-0	1
2	NC State (5)	11-0	2
3	Connecticut (1)	10-0	3
4	South Carolina (2)	12-1	4
6	UCLA	9-2	6
5	Stanford (1)	12-1	5
7	Maryland	11-1	7
8	Texas A&M	14-1	8
9	Baylor	10-2	9
10	Arizona	11-2	10
11	Oregon	11-3	13
12	Michigan	10-1	11
13	South Florida	10-1	14
14	Ohio State	8-1	17
15	Kentucky	11-4	12
16	Indiana	9-3	16
17	DePaul	9-3	18
18	Gonzaga	13-2	20
19	Arkansas	11-5	15
20	Tennessee	10-3	25
21	Mississippi State	8-4	19
22	Georgia	12-2	22
23	Northwestern	8-3	21
24	West Virginia	11-2	NR
25	South Dakota State	13-2	NR

Also receiving votes: Texas, Missouri State, Iowa State, Syracuse, **Alabama**, Rice, Milwaukee, Georgia Tech, TCU, South Dakota.

USA TODAY Coaches' Top 25

(Week 9: Jan. 26)

Rk	Team	Record	Prev
1	Louisville (30)	14-0	1
2	NC State (2)	11-0	2
3	South Carolina	10-1	3
4	Connecticut	10-0	5
5	UCLA	9-2	6
6	Stanford	12-1	4
7	Texas A&M	14-1	8
8	Baylor	10-2	9
9	Arizona	11-2	10
10	Maryland	11-2	7
11	Ohio State	9-1	16
12	Oregon	11-3	13
13	Michigan	10-1	11
14	Kentucky	11-4	12
15	Indiana	9-3	15
16	South Florida	10-1	14
17	Gonzaga	13-2	18
18	Arkansas	11-6	17
19	Mississippi State	8-4	19
20	DePaul	9-3	21
21	Georgia	13-2	23
22	Tennessee	10-3	NR
23t	Texas	11-3	24
23t	Northwestern	9-3	22
25	Missouri State	8-2	25

Also receiving votes: Syracuse, South Dakota State, West Virginia, Florida Gulf Coast, Iowa, Michigan State, Washington State, Dayton, **Alabama**, Milwaukee, IUPUI, Iowa State, Arizona State.

» Of the 15 players on the roster, 10 of them wore an Auburn uniform for the first time in game action vs. USC Upstate. All 10 newcomers saw the floor in the Tigers' 82-41 win on Nov. 25 and again vs. Gardner-Webb on Dec. 1.

» Auburn added three junior college transfers during the offseason, including two NJCAA All-Americans:

» Kira Lowery came to Auburn from Dyersburg State CC (Tenn.) where she ranked third in the nation in scoring (23.3 ppg) and second in steals (4.0/game) and was an NJCAA All-American in 2020. Lowery has started eight games at PG and is averaging 1.7 assists/game.

» Keya Patton was a two-time All-American at Wabash Valley College (Ill.), where she scored over 1,000 points in two seasons and averaged 20.8 points, 6.8 rebounds and 6.4 steals as a sophomore. She scored a season-best 14 points vs. Gardner-Webb (12/1) and made her first Auburn start vs. Georgia (1/3).

» Alycia Reese joins the Tigers from just down the road at Chattahoochee Valley CC in Phenix City, where she led the team with 12.8 points/game last season. Reese scored 10 points and hit Auburn's only two 3-pointers at Houston (12/5).

» Sophomore Alaina Rice joined the Tigers in June after transferring from Florida A&M. Rice was MEAC Rookie of the Year in 2020 at FAMU where she averaged 10.3 points and 4.7 rebounds. Rice led Auburn with 5 assists in the season-opener and scored 9 points at Alabama.

» The Tigers signed two freshmen during the offseason: Romi Levy (6-2, F, Herzliya, Israel) and Aicha Coulibaly (6-0, F/G, Mali). Two others joined Auburn as walk-ons: Riley Donahue (5-10, G, Atlanta, Ga.) and Carsen McFadden (5-7, G, Fairview, Texas). Coulibaly started the first four games; Levy is averaging 5.8 points, 3.8 rebounds and 2.0 steals, and she had a career-high 7 assists against Kentucky. McFadden played significant minutes in the win over South Alabama, sharing the team lead with three assists, and she played in her first road game at Florida.

UNIQUE LEADS THE WAY

» Through games of Jan. 28, Unique Thompson leads the nation in offensiverebounds per game (5.8), is second in total rebounds per game (13.6), and fifth in double-doubles (10). She leads the SEC in both rebounding categories and is second in double-doubles; she missed the Tigers' first three games of SEC play and the next two were postponed.

» In addition to being the SEC and national active career leader in double-doubles, Unique Thompson is the SEC active leader in career rebounds (1,051), second among SEC players in career steals (168) and is fourth among active SEC players in career scoring (1,384).

» Last season, Thompson was second in the SEC and 10th nationally in rebounding (11.4/game), led the SEC and was 8th nationally in offensive rebounds (4.4/game), and was third in the SEC and 15th nationally in field goal percentage (58.2%).

SEEING DOUBLE

» With 10 double-doubles so far this season, Unique Thompson has 52 career double-doubles, the all-time Auburn career record. She surpassed Auburn great DeWanna Bonner's record with her 41st double-double at Missouri on Feb. 27, 2020.

» Unique needs 5 more double-doubles this season to enter the SEC's all-time top 10.

» In 2019-20, Thompson had 22 double-doubles to lead the SEC and finish second overall nationally. She is the nation's leading returner in double-doubles.

» Thompson has averaged a double-double for two straight seasons and for her career, the first Auburn player to accomplish that feat.

» Thompson is first among active SEC players in career double-doubles (as of Jan. 26):

Player (School)	20-21	Career
Unique Thompson (Auburn)	10	52
N'dea Jones (Texas A&M)	11	37
Rennia Davis (Tennessee)	6	35
Ciera Johnson (Texas A&M)	3	21
Aliyah Boston (South Carolina)	7	20

20-20 VISION

» With 26 points and 23 rebounds at Houston (12/5), Thompson was the first Auburn player to record a 20-20 game since Lauretta Freeman had 30 points and 21 rebounds at Alabama on Feb. 17, 1993. Her 23 rebounds tied for the third-most in Auburn history.

» Thompson reprised the feat two weeks later with a 20-point, 23-rebound effort against Belmont at home.

» Auburn women's basketball has now had seven 20-20 games in its history; Freeman was responsible for three of them, including two in back-to-back games in 1993:

Date	Player	Opponent	Stats
12/20/20	Unique Thompson	Belmont	20 pts/23 reb
12/5/20	Unique Thompson	at Houston	26 pts/23 reb
2/17/93	Lauretta Freeman	Alabama	30 pts/21 reb
2/14/93	Lauretta Freeman	at Florida	24 pts/20 reb
11/29/91	Lauretta Freeman	Wisconsin	20 pts/20 reb
11/26/89	Linda Godby	Oregon	25 pts/21 reb
2/28/88	Sharon Stewart	at Vanderbilt	28 pts/23 reb

HITTING THE ROAD = HITTING THE BOARDS

» In her four seasons, Unique Thompson has put up 12 performances with at least 15 rebounds. Nine of those 12 have come away from Auburn Arena.

Rebs	Opponent (Location)	Date
23	at Houston	12/5/20
23	vs. Belmont	12/20/20
19	at UAB	11/21/19
19	at New Mexico	11/11/18
19	vs. BYU (at Stanford)	3/23/19
18	vs. North Florida	12/17/20
18	vs. North Carolina (at Myrtle Beach)	12/20/18
17	vs. Oklahoma	12/2/18
16	at Virginia Tech	11/13/17
15	at TCU	12/7/19
15	at Kentucky	1/27/20
15	vs. Arkansas (at Greenville)	3/5/20

AUBURN HONOR ROLL

» Unique Thompson was a consensus All-SEC First Team selection by the league's coaches and media.

» Thompson was also one of 20 players nationwide named to the Katrina McClain Award watch list. She was also named to the John R. Wooden Award Preseason Top 30 and Midseason Top 25, and she was named the 20th-best player in the country by ESPN in preseason rankings.

STARTING ON DAY ONE

» Three players making their Auburn debuts

were in the starting lineup for the season opener vs. USC Upstate on Nov. 25: true freshman Aicha Coulibaly, redshirt sophomore Honesty Scott-Grayson and junior Kira Lowery.

» Coulibaly became the eighth Auburn freshman since 2005 to earn a start in her collegiate debut. She was the fourth true freshman under Terri Williams-Flournoy to be in the starting lineup on night one.

Year	Freshman Starter	Opponent	Stats
2020	Aicha Coulibaly	USC Upstate	4 pts, 6 reb
2019	Annie Hughes	Wofford	10 pts, 4 ast
2017	Unique Thompson	@Va. Tech	9 pts, 16 reb
2013	Katie Frerking	Ga. Southern	8 pts, 3 reb
2011	Hasina Muhammad	@Mercer	12 pts, 2 reb
2008	Morgan Jennings	@Ala. A&M	4 pts, 4 reb
2005	Sherell Hobbs	UT Pan-Am.	6 pts, 5 reb
2005	DeWanna Bonner	UT Pan-Am.	19 pts, 4 reb

ON THIS DATE

» Auburn is 8-3 all-time on Jan. 31. The Tigers' last game on this date was a 64-51 win at Ole Miss in 2019.

TIGERS IN THE PROS

» DeWanna Bonner completed her 11th season in the WNBA in 2020, her first with the Connecticut Sun. It was one of her best in her pro career as she led the Sun to the WNBA semifinals while averaging 19.7 points and a career-best 7.8 rebounds per game. She was an all-WNBA second-team selection for the second time in her career. Bonner has gained North Macedonian citizenship and is competing with North Macedonia's national team in EuroBasket qualifying. She is currently playing for Elitzur Ramla in Israel.

» Daisa Alexander, who graduated in 2020, is playing for Etzella Ettelbruck in Luxembourg. This is her first year as a professional.

WORKING OVERTIME

» Auburn is 22-21 all-time in overtime games. The Tigers are 6-5 in the Coach Flo era when games have gone to an extra period.

OVERTIME GAMES UNDER COACH FLO

Date	Opponent	Location	Result
2/20/20	Mississippi St.	Auburn	L 85-92
11/30/19	Dayton	Esteros, Fla.	W 76-74
2/3/19	Georgia	Auburn	W 59-58
12/20/18	North Carolina	Myrtle Beach, S.C.	W 86-81
2/20/17	Alabama	Auburn	L 61-63
12/18/16	Virginia Tech	Auburn	L 87-92
1/24/16	Arkansas	Auburn	W 71-60
12/13/15	Marquette	Milwaukee, Wis.	L 69-70
11/28/15	Minnesota	Guaynabo, P.R.	W 81-79
3/2/14	Ole Miss	Oxford, Miss.	L 71-73
2/27/14	Alabama	Auburn	(2OT) W 70-65

THIS, THAT AND THE OTHER

» Auburn has utilized seven different starting lineups in 2020-21. Of the 13 scholarship players on Auburn's roster, 11 have started at least one game this year.

» Eight players - Aicha Coulibaly, Jala Jordan, Romi Levy, Kira Lowery, Keya Patton, Morgan Robinson-Nwagwu, Honesty Scott-Grayson and Sania Wells - have made their first Division I starts this season.

» Auburn's 97 points in the win over Gardner-Webb (12/1) tied for the highest-scoring output of the Terri Williams-Flournoy era. It was the eighth

90-point game for Auburn under Coach Flo. Auburn got its 9th 90-point game of the Coach Flo era with 94 points against North Florida.

» Auburn's last five women's basketball games played the same day as an Iron Bowl have been decided by a combined nine points - two-point wins over Samford (2020), Dayton (2019) and Minnesota (2015) along with a one-point loss to Northwestern (2017) and a two-point loss at Winthrop (2014).

Auburn in the SEC & NCAA Stats

(Thru games of 1/28/21)

Category	Value	SEC	NCAA
Scoring Offense	65.3	13th	178th
Scoring Defense	67.9	12th	216th
Scoring Margin	-2.6	12th	208th
Free Throw Pct.	.713	6th	129th
Field Goal Pct.	.381	14th	245th
Field Goal Pct. Def.	.429	12th	272nd
3-pt FG Pct.	.257	14th	298th
3-pt FG Pct. Def.	.335	12th	263rd
Rebounds	39.2	9th	111th
Rebound Margin	+2.7	9th	108th
Assists	11.9	11th	216th
Assist/Turnover	0.7	13th	236th
Blocks	2.3	13th	260th
Turnover Margin	+1.7	8th	105th
Turnovers Forced	19.1	3rd	51st
Steals	11.5	1st	15th

INDIVIDUALS (All Games)

Scoring

Unique Thompson	17.8	6th	74th
Honesty Scott-Grayson	12.5	30th	--

Rebounding

Unique Thompson	13.6	1st	2nd
-----------------	------	-----	-----

Field Goal Pct.

Unique Thompson	.568	3rd	18th
-----------------	------	-----	------

Free Throw Pct.

Unique Thompson	.810	3rd	123rd
-----------------	------	-----	-------

Steals

Unique Thompson	2.6	2nd	47th
Honesty Scott-Grayson	2.5	5th	61st
Romi Levy	1.9	8th	190th

Offensive Rebounds

Unique Thompson	5.8	1st	1st
-----------------	-----	-----	-----

Defensive Rebounds

Unique Thompson	7.8	2nd	19th
-----------------	-----	-----	------

Double-Doubles

Unique Thompson	10	2nd	5th
-----------------	----	-----	-----

Career Record Updates

Auburn Career Scoring

No.	Player	Years	Points
1.	DeWanna Bonner	2005-09	2,162
2.	Becky Jackson	1980-84	2,068
3.	Vickie Orr	1985-89	2,035
4.	Marianne Merritt	1975-79	1,979
5.	Carolyn Jones	1988-91	1,831
6.	Natasha Brackett	2001-05	1,716
7.	Janiah McKay	2015-19	1,647
8.	Brandy Montgomery	2013-17	1,644
9.	Mae Ola Bolton	1984-88	1,616
10.	Alli Smalley	2007-11	1,601
11.	Angie Hannah	1978-82	1,583
12.	Tyrese Tanner	2010-14	1,515
13.	Le'Coe Willingham	1999-03	1,475
14.	Lori Monroe	1979-83	1,415
15.	Tasha Hamilton	1997-01	1,402
16.	Unique Thompson	2017-present	1,384
17.	Sherell Hobbs	2005-09	1,372
18.	Linda Godby	1986-90	1,365
19.	Tra'Cee Tanner	2012-16	1,327
20.	Debra Larkin	1981-85	1,310
21.	C.C. Hayden	1989-92	1,306
22.	Katie Frerking	2013-17	1,271
23.	Conswella Sparrow	1997-00	1,249
24.	Blanche Alverson	2009-13	1,244
25.	Brenda Hill	1981-85	1,222
26.	Daisa Alexander	2016-20	1,215
27.	Monique Morehouse	1992-96	1,191
28.	Lauretta Freeman	1989-93	1,188
29.	Hasina Muhammad	2001-15	1,184
	Sharon Stewart	1984-88	1,184

Auburn Career Double-Doubles

No.	Player	Years	D-Ds
1.	Unique Thompson	2017-present	52
2.	DeWanna Bonner	2005-09	40
3.	Lauretta Freeman	1989-93	38
4.	C.C. Hayden	1989-92	30
5.	Le'Coe Willingham	1999-04	29
6.	Vickie Orr	1985-89	27
7.	Monique Morehouse	1992-96	24
8.	Becky Jackson	1980-84	19
9.	Conswella Sparrow	1997-00	15
10.	Tra'Cee Tanner	2012-16	14
11.	Tasha Hamilton	1997-01	13
	Sharon Stewart	1984-88	13
13.	Daniellette Coleman	1992-94	12
	Marita Payne	2002-06	12
15.	Whitney Boddie	2005-09	11
	KeKe Carrier	2005-10	11
17.	Tia Miller	2001-04	8
	Tara Williams	1995-97	8
19.	Katie Frerking	2013-17	7
	Linda Godby	1986-90	7
	Laticia Morris	1995-97	7
	Mandisa Stevenson	2002-04	7
	Tyrese Tanner	2010-14	7
24.	Justine Agbatan	1995-98	6
	Brenda Hill	1982-83	6
	Kendall Mago	1988-92	6
	Samantha Williams	1991-96	6
28.	Ruthie Bolton	1985-89	5
	Jordan Greenleaf	2006-11	5

SEC Career Double-Doubles

No.	Player	Years	D-Ds
1.	Sylvia Fowles, LSU	2004-08	86
2.	Janet Harris, Georgia	1982-85	78
3.	Teaira McCowan, Miss. State	2016-19	70
4.	Julie Gross, LSU	1978-80	68
5.	Valerie Still, Kentucky	1980-83	67
6.	Murriel Page, Florida	1995-98	65
7.	Quientella Bonner, Florida	1976-81	58
8.	Alaina Coats, South Carolina	2013-17	57
	Armintie Price, Ole Miss	2003-07	57
	Charnique Holdscaw, Tenn.	1996-99	57
11.	Katrina McClain, Georgia	1984-87	56
--	Unique Thompson, Auburn	2017-pres.	52

Auburn Career Free Throws Made

No.	Player	Years	FT
1.	DeWanna Bonner	2005-09	600
2.	Janiah McKay	2015-19	443
3.	Carolyn Jones	1988-91	438
4.	Tyrese Tanner	2010-14	376
5.	Conswella Sparrow	1997-00	346
	Le'Coe Willingham	1999-04	346
7.	Becky Jackson	1980-84	340
8.	Vickie Orr	1985-89	307
	Marianne Merritt	1975-79	305
10.	Tasha Hamilton	1997-01	296
--	Unique Thompson	2017-pres.	295

Auburn Career Rebounding

No.	Player	Years	Rebounds
1.	Becky Jackson	1980-84	1,118
2.	Unique Thompson	2017-present	1,051
3.	DeWanna Bonner	2005-09	1,047
4.	Lori Monroe	1979-83	1,015
5.	Vickie Orr	1985-89	1,006
6.	Lauretta Freeman	1989-93	976
7.	Marianne Merritt	1975-79	972
8.	Le'Coe Willingham	1999-03	927
9.	Monique Morehouse	1992-96	792
10.	Jordan Greenleaf	2006-11	761
	Charlene Thomas	1984-87	761
12.	Tra'Cee Tanner	2012-16	758
13.	Sharon Stewart	1984-88	757
14.	C.C. Hayden	1989-92	749
	Kendall Mago	1988-92	749
16.	Tasha Hamilton	1997-01	663
	Mae Ola Bolton	1984-88	653
18.	Marita Payne	2002-06	630
19.	Katie Frerking	2013-17	627
20.	Sherell Hobbs	2005-09	612
21.	Brenda Hill	1982-85	604
22.	Blanche Alverson	2009-13	602
23.	KeKe Carrier	2005-10	600
24.	Angie Hannah	1978-82	588
	Linda Godby	1986-90	580
26.	Tyrese Tanner	2010-14	572
	Conswella Sparrow	1997-00	572
28.	Diann McNeil	1984-88	498
29.	Samantha Williams	1991-96	495
	Hasina Muhammad	2011-15	494

Auburn Career Field Goals Made

No.	Player	Years	FG
1.	Becky Jackson	1980-84	864
	Vickie Orr	1985-89	864
3.	Marianne Merritt	1975-79	837
4.	DeWanna Bonner	2005-09	744
5.	Angie Hannah	1979-82	735
6.	Mae Ola Bolton	1984-88	697
7.	Carolyn Jones	1988-91	645
8.	Natasha Brackett	2001-05	641
9.	Brandy Montgomery	2013-17	627
10.	Alli Smalley	2007-11	599
--	Unique Thompson	2017-pres.	544

Auburn Career Field Goal Percentage

No.	Player	Years	FG%
1.	Becky Jackson	1980-84	.602 (864-1435)
2.	Conswella Sparrow	1997-00	.590 (451-764)
3.	Vickie Orr	1985-89	.565 (864-1528)
4.	Tra'Cee Tanner	2012-16	.564 (540-957)
5.	KeKe Carrier	2005-10	.555 (417-751)
6.	Linda Godby	1986-90	.550 (590-1072)
7.	Unique Thompson	2017-pres.	.548 (544-993)
8.	Sharon Stewart	1984-88	.543 (458-843)
9.	Charlene Thomas	1983-87	.536 (428-799)
10.	Angie Hannah	1979-82	.527 (735-1396)

TIGERS' RECORD WHEN...

	2020-21	Under Coach Flo
At Home.....	5-5	82-45
On the Road.....	0-5	37-66
At a Neutral Site.....	0-0	21-18
When wearing white.....	5-5	82-41
When wearing blue "Auburn".....	0-4	44-71
When wearing blue "Tigers".....	0-1	0-1
When wearing orange.....	0-0	7-10
When wearing pink.....	0-0	7-6
Leading at the half.....	4-1	110-26
Trailing at the half.....	1-8	30-95
Tied at the half.....	0-1	0-8
Scores 100+ points.....	0-0	0-0
Scores 90-99 points.....	2-0	9-0
Scores 80-89 points.....	1-0	28-3
Scores 70-79 points.....	1-1	41-11
Scores 60-69 points.....	1-2	41-34
Scores fewer than 60 points.....	0-7	19-81
Holds opponent to 41-50 points.....	1-0	33-3
Holds opponent to 31-40 points.....	0-0	7-0
Holds opponent to under 30 points.....	0-0	2-0
Force 25 or more turnovers.....	1-0	54-10
Shoots 50% FG or better.....	1-0	36-3
Shoots 40-49% FG.....	2-2	69-36
Shoots 39.9% or under FG.....	2-7	34-90
Holds opponent under 30% FG.....	2-0	28-2
Shoots higher FG% than opponent.....	2-0	107-23
Shoots lower FG% than opponent.....	3-10	33-101
Shoots same FG% as opponent.....	0-0	0-3
Shoots higher FT% than opponent.....	2-5	61-47
Shoots lower FT% than opponent.....	3-4	76-79
Shoots same FT% as opponent.....	0-1	2-4
Out-rebounds opponent.....	5-5	88-38
Out-rebounded by opponent.....	0-5	48-90
Tied in rebounds.....	0-0	5-2
Versus ranked opponent.....	0-2	5-56
In overtime.....	0-0	6-5
Games decided by 3 points or less.....	1-0	15-18
Games decided by 4-5 points.....	0-2	14-18
Games decided by 6-10 points.....	1-1	33-32
Games decided by 11-20 points.....	1-5	39-36
Games decided by 21-30 points.....	0-1	23-17
Games decided by 30+ points.....	2-1	16-8
On Television/Digital.....	5-10	76-91
In November.....	2-0	35-16
In December.....	3-4	44-14
In January.....	0-6	18-50
In February.....	0-0	26-33
In March.....	0-0	14-15

2020-21 Auburn Superlatives...

First Half

Most points scored in the first quarter.....	28 vs. Gardner-Webb (12/1/20)
Most points scored in the second quarter.....	24 vs. USC Upstate (11/25/20)
Most points scored in the first half.....	49 vs. Gardner-Webb (12/1/20)
Fewest points scored in the first half.....	17 at Houston (12/5/20)
Fewest points allowed in the first half.....	9, vs. USC Upstate (11/25/20)
Most points allowed in the first half.....	45 vs. Belmont (12/20/20)
Best FG % in the first half.....	.514 vs. Gardner-Webb (12/1/20)
Worst FG % in the first half.....	.194 at Florida (1/17/21)
Best FG % by an opponent in the first half.....	.581 vs. Georgia (1/3/21)
Worst FG % by an opponent in the first half.....	.143, vs. USC Upstate (11/25/20)
Most rebounds in the first half.....	27 at Houston (12/5/20) & vs. North Florida (12/17/20)
Fewest rebounds in the first half.....	15 vs. Georgia (1/3/21)
Most rebounds by an opponent in the first half.....	24 at Florida (1/17/21) & vs. Texas A&M (1/28/21)
Fewest rebounds by an opponent in the first half.....	10 vs. Samford (11/28/20)

Second Half

Most points scored in the third quarter.....	25 vs. South Alabama (12/13/20)
Most points scored in the fourth quarter.....	28 vs. North Florida (12/17/20)
Most points scored in an overtime period.....	
Most points scored in the second half.....	50 vs. North Florida (12/17/20)
Fewest points scored in the second half.....	16 at LSU (12/31/20)
Fewest points allowed in the second half.....	30 at Ole Miss (1/7/21)
Most points allowed in the second half.....	51 vs. Texas A&M (1/28/21)
Best FG % in the second half.....	.579 vs. Gardner-Webb (12/1/20)
Worst FG % in the second half.....	.240 vs. Georgia (1/3/21)
Best FG % by an opponent in the second half.....	.690 vs. Texas A&M (1/28/21)
Worst FG % by an opponent in the second half.....	.263 vs. Gardner-Webb (12/1/20)
Most rebounds in the second half.....	27 vs. Gardner-Webb (12/1/20)
Fewest rebounds in the second half.....	12 vs. Georgia (1/3/21), at Ole Miss (1/7/21), vs. Texas A&M (1/28/21)
Most rebounds by an opponent in the second half.....	24 vs. Georgia (1/3/21)
Fewest rebounds by an opponent in the second half.....	11, vs. USC Upstate (11/25/20)

Game

Most points scored.....	97 vs. Gardner-Webb (12/1/20)
Fewest points scored.....	43 at LSU (12/31/20)
Most points allowed.....	84 vs. Texas A&M (1/28/21)
Fewest points allowed.....	41 vs. USC Upstate (11/25/20)
Best FG %.....	.534 vs. Gardner-Webb (12/1/20)
Worst FG %.....	.279 at Florida (1/17/21)
Best FG % by an opponent.....	.521 vs. Samford (11/28/20)
Worst FG % by an opponent.....	.286, vs. USC Upstate (11/25/20)
Most rebounds.....	48 vs. North Florida (12/17/20)
Fewest rebounds.....	27 vs. Georgia (1/3/21)
Most rebounds by an opponent.....	43 vs. Stephen F. Austin (12/16/20), at LSU (12/31/20), vs. Georgia (1/3/21)
Fewest rebounds by an opponent.....	26, vs. USC Upstate (11/25/20)

Miscellaneous

Highest-scoring quarter.....	28, 1Q vs. Gardner-Webb (12/1/20); 4Q vs. North Florida (12/17/20)
Lowest-scoring quarter.....	6, 4Q at LSU (12/31/20); 3Q vs. Georgia (1/3/21)
Highest-scoring opponent quarter.....	28, 4Q vs. North Florida (12/17/20)
Lowest-scoring opponent quarter.....	2, 1Q vs. USC Upstate (11/25/20)
Largest margin in a single quarter.....	+19 (28-9) vs. Gardner-Webb (12/1/20)
Largest margin of victory.....	41, vs. USC Upstate (11/25/20)
Smallest margin of victory.....	2 vs. Samford (11/28/20)
Largest margin of defeat.....	32 vs. Georgia (1/3/21)
Smallest margin of defeat.....	4 at Ole Miss (1/7/21)
Largest halftime lead.....	31, vs. USC Upstate (11/25/20)
Smallest halftime lead.....	8 at LSU (12/31/20)
Times tied at halftime.....	1 - 27-27 vs. Stephen F. Austin (12/16/20)
Largest halftime deficit.....	20 vs. Georgia (1/3/21)
Smallest halftime deficit.....	6 vs. South Alabama (12/13/20) & vs. Texas A&M (1/28/21)
Largest rebounding margin.....	+19, vs. USC Upstate (11/25/20)
Smallest rebounding margin.....	+1 vs. Samford (11/28/20)
Last time tied in rebounding.....	
Largest rebounding deficit.....	-16 vs. Georgia (1/3/21)
Smallest rebounding deficit.....	-4 at LSU (12/31/20)
Largest deficit overcome to win game.....	12 vs. South Alabama (12/13/20)
Largest lead lost.....	13 at LSU (12/31/20)

MISCELLANEOUS STATISTICS

Category	Season	Career
Double-Doubles		
Unique Thompson	10	52
30+ Point Games		
Unique Thompson	0	1
20+ Point Games		
Unique Thompson	5	20
Honesty Scott-Grayson	2	2
10+ Rebound Games		
Unique Thompson	10	61
Romi Levy	1	1
Kiyae' White	0	1
10+ Assist Games		
5+ Steal Games		
Unique Thompson	2	2
Romi Levy	2	2
Honesty Scott-Grayson	2	2
5+ Block Games		
Unique Thompson	0	1

GAMES LED AUBURN IN...

Category	Season	Career
Scoring		
Unique Thompson	8	33
Honesty Scott-Grayson	5	5
Aicha Coulibaly	1	1
Jala Jordan	1	1
Keya Patton	1	1
Rebounding		
Unique Thompson	12	86
Honesty Scott-Grayson	2	2
Romi Levy	1	1
Alaina Rice	1	1
Kiyae' White	0	1
Assists		
Honesty Scott-Grayson	5	5
Alaina Rice	3	3
Romi Levy	3	3
Kira Lowery	3	3
Unique Thompson	2	12
Morgan Robinson-Nwagwu	1	4
Aicha Coulibaly	1	1
Jala Jordan	1	1
Carsen McFadden	1	1
Annie Hughes	0	2
Sania Wells	0	2
Kiyae' White	0	2

(includes games where lead was shared)

2020-21 DOUBLE-DOUBLES

Unique Thompson vs. Samford (16 pts, 11 reb)
Unique Thompson vs. Gardner-Webb (21 pts, 12 reb)
Unique Thompson at Houston (26 pts, 23 reb)
Unique Thompson vs S. Alabama (21 pts, 15 reb)
Unique Thompson vs. SFA (11 pts, 14 reb)
Unique Thompson vs. N. Florida (19 pts, 18 reb)
Unique Thompson vs. Belmont (20 pts, 23 reb)
Unique Thompson at Florida (14 pts, 14 reb)
Unique Thompson vs. Kentucky (22 pts, 10 reb)

Last Time an Auburn Team...

Scored 90 points	Auburn 94, North Florida 81 in Auburn, Ala. (Dec. 17, 2020)
Scored 90 points in an SEC game.....	Auburn 95, Missouri 82, in Columbia, Mo. (Feb. 27, 2020)
Scored 100 points.....	Auburn 119, Sam Houston State 54, in Auburn, Ala. (Dec. 5, 2008)
Scored 100 points against an SEC opponent.....	Auburn 102, Tennessee 96, SEC Tournament in Albany, Ga. (Mar. 6, 1987)
Scored 100 points in an SEC regular-season game.....	Auburn 111, Vanderbilt 67, in Auburn, Ala. (Feb. 18, 1987)
Scored 100 points at home.....	Auburn 119, Sam Houston State 54, in Auburn, Ala. (Dec. 5, 2008)
Scored 100 points in a true road game.....	Auburn 103, Mercer 29, in Macon, Ga. (Feb. 23, 1987)
Scored 110+ points.....	Auburn 119, Sam Houston State 54, in Auburn, Ala. (Dec. 5, 2008)
Scored 80 points and lost.....	Mississippi State 92, Auburn 85 [OT] in Auburn, Ala. (Feb. 20, 2020)
Scored 90 points and lost.....	Kentucky 91, Auburn 90 [2OT], in Auburn, Ala. (Feb. 2, 1986)
Scored 100 points and lost.....	Never
Scored 50-59 points in a half	50 (2nd half) vs. North Florida in Auburn, Ala. (Dec. 17, 2020)
Scored 60 or more points in a half.....	62 (2nd half) vs. Drake in New Orleans, La. (Dec. 21, 2016)
Scored 30 or more points in a quarter.....	34 (3rd quarter) - at Missouri in Columbia, Mo. (Feb. 27, 2020)
Scored 50 points or less in a game	44 - vs. Georgia in Auburn, Ala. (Jan. 3, 2021)
Scored 50 points or less and won.....	Auburn 47, Missouri 45 [SEC] in Jacksonville, Fla. (March 3, 2016)
Scored 40 points or less in a game.....	Georgia 63, Auburn 30, in Athens, Ga. (Jan. 28, 2016)
Scored less than 10 points in a quarter	8 points (1st quarter) vs. Texas A&M in Auburn, Ala. (Jan. 28, 2021)
Scored less than 20 points in a 1st half	17 points at Houston in Houston, Texas (Dec. 5, 2020)
Scored less than 20 points in a 2nd half	16 points at LSU in Baton Rouge, La. (Dec. 31, 2020)
Had 35+ rebound margin.....	36 - (52-16) vs. Alabama A&M in Normal, Ala. (Nov. 19, 2013)
Had 25+ rebound margin.....	33 - (53-26) vs. Grambling State in Auburn, Ala. (Nov. 6, 2018)
Had 20+ rebound margin.....	33 - (53-26) vs. Grambling State in Auburn, Ala. (Nov. 6, 2018)
Attempted 30 free throws.....	31 - vs. Mississippi State in Auburn, Ala. (Feb. 20, 2020)
Attempted 35 free throws.....	36 - vs. Alabama State in Auburn, Ala. (Dec. 29, 2018)
Attempted 40 free throws.....	41 - vs. Alabama State in Auburn, Ala. (Nov. 15, 2006)
Attempted 5 free throws or less.....	3 - at Texas A&M in College Station, Texas (Feb. 23, 2020)
Did not attempt a free throw.....	Never
Made 20-24 free throws	20 - vs. South Alabama in Auburn, Ala. (Dec. 13, 2020)
Made 25+ free throws.....	28 - vs. Mississippi State in Auburn, Ala. (28-31) (Feb. 20, 2020)
Made 30 free throws.....	31 - vs. Northwestern State (31-43) (Dec. 30, 2003)
Had 25 assists.....	25 - vs. Ole Miss in Auburn, Ala. (Jan. 8, 2017)
Had 25 turnovers	27 - vs. Georgia in Auburn, Ala. (Jan. 3, 2021)
Had 10 turnovers or less.....	6 - vs. Tennessee in Auburn, Ala. (March 1, 2020)
Had 25+ steals.....	Never
Had 20-24 steals.....	21 - vs. Georgia in Auburn, Ala. (Feb. 3, 2019)
Had 15-19 steals	16 - vs. North Florida in Auburn, Ala. (Dec. 17, 2020)
Had 10-14 blocks.....	10 - vs. Louisiana Tech in Auburn, Ala. (Nov. 19, 2017)
Had 15+ blocks.....	15 - at Florida International in Miami, Fla. (Dec. 29, 2014)
Won an overtime game.....	Auburn 74, Dayton 72 [1OT] in Estero, Fla. (Nov. 30, 2019)
Lost an overtime game.....	Mississippi State 92, Auburn 85 [1OT] in Auburn, Ala. (Feb. 20, 2020)
Played a double overtime game.....	Auburn 70, Alabama 65 [2OT] in Auburn, Ala. (Feb. 27, 2014)
Played three or more overtimes.....	Never
Shot 70% for a half.....	70.4% (19-of-27), 2nd half at Elon in Elon, N.C. (Dec. 22, 2018)
Shot 60% for a game.....	63.3% (38-of-60) at Elon in Elon, N.C. (Dec. 22, 2018)
Shot less than 30% for a game	27.9% (19-68) at Florida in Gainesville, Fla. (Jan. 17, 2021)
Shot 90-99.9% from the free throw line (min. 10 attempts).....	90.3% (28-of-31) vs. Mississippi State in Auburn, Ala. (Feb. 20, 2020)
Shot 100% from the free throw line (min. 10 attempts).....	100% (16-of-16) vs. Texas A&M in Auburn, Ala. (Jan. 7, 2018)
Shot 50% on 3-pointers (minimum 5 attempts).....	50.0% (8-of-16) vs. LSU in Auburn, Ala. (Feb. 16, 2020)
Shot 20-30% in a half	28.6% (8-28), 1st half at Alabama in Tuscaloosa, Ala. (Jan. 24, 2021)
Shot less than 20% in a half	19.4% (7-of-36), 1st half at Florida in Gainesville, Fla. (Jan. 17, 2021)
Shot 55% or better and lost.....	58.1% (25-of-43) vs. Tennessee (Jan. 20, 2005)
Made 10+ 3-point field goals	10-of-35 vs. Texas A&M in Auburn, Ala. (Jan. 28, 2021)
Failed to make a 3-point field goal.....	0-of-5 vs. Southern in Auburn, Ala. (Dec. 9, 2017)
Had 60+ rebounds.....	61 - vs. Stephen F. Austin in Auburn, Ala. (Dec. 17, 2007)
Had 50-59 rebounds.....	55 vs. Ole Miss in Auburn, Ala. (Jan. 23, 2020)
Defeated a Top-25 opponent.....	Auburn 58, #25 Missouri 54, in Auburn, Ala. (Feb. 24, 2019)
Defeated a Top-10 opponent.....	Auburn 66, #7 Kentucky 61, in Auburn, Ala. (Jan. 3, 2016)
Defeated a Top-25 opponent on the road.....	Auburn 68, #16 Vanderbilt 62, in Nashville, Tenn. (Feb. 13, 2014)

Last Time an Auburn Player...

Scored 25-29 points	26 - Unique Thompson at Houston in Houston, Texas. (Dec. 5, 2020)
Scored 30-34 points.....	31 - Unique Thompson at TCU in Fort Worth, Texas (Dec. 7, 2019)
Scored 35 points.....	35 - DeWanna Bonner vs. Tennessee in Auburn, Ala. (Jan. 25, 2009)
Scored 40 points.....	41 - Conswella Sparrow vs. South Alabama (Feb. 17, 1998)
Had 15-19 rebounds	18 - Unique Thompson vs. North Florida in Auburn, Ala. (Dec. 17, 2020)
Had 20+ rebounds	23 - Unique Thompson vs. Belmont in Auburn, Ala. (Dec. 20, 2020)
Had 10 assists.....	10 - Daisa Alexander vs. LSU in Auburn, Ala. (Feb. 16, 2020)
Had 15 assists.....	18 - Martha Monk vs. Alabama State (Feb. 18, 1981)
Had 5 blocks.....	6 - Unique Thompson vs. Louisiana Tech in Auburn, Ala. (Nov. 19, 2017)
Had 7 blocks.....	7 - Jassany Williams vs. Duke (Nov. 18, 2011)
Had 10 blocks.....	13 - Marita Payne vs. Arkansas (Feb. 3, 2005)
Had 5 steals	5 - Honesty Scott-Grayson at Alabama in Tuscaloosa, Ala. (Jan. 24, 2021)
Had 8 steals.....	8 - Brandy Montgomery vs. East Carolina in Auburn, Ala. (Dec. 5, 2015)
Had 10 steals.....	10 - Kristen Mulligan vs. Northeast Illinois in Auburn, Ala. (Dec. 18, 1992)
Made 10 field goals	10 - Unique Thompson [10-18] at Houston in Houston, Texas (Dec. 5, 2020)
Made 15 field goals.....	15 - Conswella Sparrow (15-16) vs. South Alabama (Feb. 17, 1998)
Attempted 20 field goals.....	21 - Daisa Alexander vs. Vanderbilt in Greenville, S.C. (March 4, 2020)
Attempted 25 field goals.....	28 - Brandy Montgomery (8-28) at Marquette in Milwaukee, Wis. (Dec. 13, 2015)
Made 5+ three-point field goals.....	5 - Erin Howard vs. Vanderbilt in Greenville, S.C. (March 4, 2020)
Made 8 three-point field goals.....	8 - Tiffany Krantz vs. Troy State in Auburn, Ala. (Nov. 21, 1997)
Attempted 10 three-point field goals.....	14 - Lauren Hansen vs. Drake in Estero, Fla. (Dec. 1, 2019)
Attempted 15 three-point field goals.....	16 - Brandy Montgomery at Marquette in Milwaukee, Wis. (Dec. 13, 2015)
Made 10 free throws.....	12 - Daisa Alexander vs. Mississippi State (Feb. 20, 2020)
Made 15 free throws.....	Never
Shot 100% at the free throw line (min. 10 attempts).....	12-12 - Daisa Alexander vs. Mississippi State (Feb. 20, 2020)

SEC PRESEASON POLL (Media Vote)**Order of Finish**

1. South Carolina
2. Mississippi State
3. Kentucky
4. Texas A&M
5. Arkansas
6. Tennessee
7. LSU
8. Georgia
9. Alabama
10. Florida
11. Missouri
12. Vanderbilt
13. Auburn
14. Ole Miss

Player of the Year

Rhyne Howard, Kentucky

All-SEC Team

Unique Thompson, Auburn
 Rhyne Howard, Kentucky
 Rickea Jackson, Mississippi State
 Aliyah Boston, South Carolina
 Renna Davis, Tennessee
 N'dea Jones, Texas A&M

SEC PRESEASON POLL (Coaches' Vote)**Order of Finish**

1. South Carolina
2. Kentucky
3. Texas A&M
4. Arkansas
5. Mississippi State
6. Tennessee
7. LSU
8. Alabama
9. Georgia
10. Missouri
11. Ole Miss
12. Florida
13. Vanderbilt
14. Auburn

Player of the Year

Rhyne Howard, Kentucky

All-SEC First Team

Chelsea Dungee, Arkansas
 Unique Thompson, Auburn
 Rhyne Howard, Kentucky
 Khayla Pointer, LSU
 Rickea Jackson, Mississippi State
 Aliyah Boston, South Carolina
 Renna Davis, Tennessee
 N'dea Jones, Texas A&M

All-SEC Second Team

Jasmine Walker, Alabama
 Destiny Slocum, Arkansas
 Lavender Briggs, Florida
 Shakira Austin, Ole Miss
 Jessika Carter, Mississippi State
 Aijha Blackwell, Missouri
 Zia Cooke, South Carolina
 Kayla Wells, Texas A&M

Had a double-double..... Unique Thompson (10 pts/10 reb) at Alabama in Tuscaloosa, Ala. (Jan. 24, 2021)
Had 2 consecutive double-doubles Unique Thompson: 22/10 vs. Kentucky, 10/10 at Alabama (Jan. 21-24, 2021)
Had 3 consecutive double-doubles..... Unique Thompson: 14/14 at Florida, 22/10 vs. Kentucky, 10/10 at Alabama (Jan. 17-24, 2021)
...Had 10 consecutive double-doubles..... Unique Thompson: First vs. Samford; last at Alabama (Nov. 28, 2020-Jan. 24, 2021)
Had 13 consecutive double-doubles..... Unique Thompson: First vs. BYU; last at Vandy (March 23, 2019-Jan. 2, 2020)
Had 18 consecutive double-doubles (AU record)..... Loretta Freeman: First vs. Furman, Last vs. Oral Roberts (Dec. 29, 1992-Feb. 23, 1993)
Had a double-double at halftime..... Unique Thompson (16 pts/10 rebs) at Iowa State in Ames, Iowa (Nov. 13, 2018)
Two players had a double-double..... Unique Thompson (14 p/13 r) & Jariah McKay (16 p/10 a) vs. Grambling State (Nov. 6, 2018)
Recorded a double-double with points and assists..... Jariah McKay (16 pts/10 assists) vs. Grambling State (Nov. 6, 2018)
Scored 20 points & had 20 rebounds..... Unique Thompson (20 pts/23 reb) vs. Belmont in Auburn, Ala. (Dec. 20, 2020)
Had a triple-double..... Whitney Boddie (24 pts./11 rebs./12 ast.) vs. Sam Houston State (Dec. 5, 2008)
Two or more players scored 20 points..... Benton (23), Howard (22), Alexander (21) at Missouri in Columbia, Mo. (Feb. 27, 2020)
Three players scored 20 points..... Benton (23), Howard (22), Alexander (21) at Missouri in Columbia, Mo. (Feb. 27, 2020)
Two players scored 30 points..... Laticia Morris (33) & Tara Williams (30) vs. South Alabama (Jan. 14, 1997)
Had 2 straight 25-point games..... Jariah McKay: 27 at South Carolina, 26 vs. Arkansas (Jan. 11-14, 2018)
Had 3 straight 25-point games..... Jariah McKay: 25 pts vs. Texas A&M, 27 pts at South Carolina, 26 pts vs. Arkansas (Jan. 7-14, 2018)
Zero players scored in double figures..... at Georgia in Athens, Ga. (Jan. 28, 2016)
Only one player scored in double figures..... Keya Patton (12) vs. Georgia in Auburn, Ala. (Jan. 3, 2021)
Five players scored in double figures..... Thompson (19), Hughes (17), Scott-Grayson (16), Levy (12), Jordan (11) vs. N. Florida (Dec. 17, 2020)
Six players scored in double figures..... McKay/Benton (16), Primm (15), Thompson (14), Alexander/Jones (13) vs. Grambling (Nov. 6, 2018)
Seven players scored in double figures..... Carrier (19 pts.), Bonner (18 pts.), Smalley (16 pts.), Boddie (13 pts.)
 R. Hobbs (13 pts.), Hilliard (13 pts.) & S. Hobbs (10 pts.) vs. Sam Houston State (Dec. 5, 2008)
Two players had 10 rebounds..... Unique Thompson (13) and Daisa Alexander (10) vs. Ole Miss in Auburn, Ala. (Jan. 23, 2020)
Three players had 10 rebounds..... J. Greenleaf (12 rebs.), D. Bonner (12 rebs.) & W. Boddie (10 rebs.) vs. Oakland (Nov. 21, 2007)
Played every minute..... Jordan Greenleaf (40 mins.) vs. Florida in Duluth, Ga. [SEC] (Mar. 4, 2010)
Played 40 or more minutes in OT game..... Unique Thompson (43 mins.) vs. Georgia in Auburn, Ala. (Feb. 3, 2019)
Attempted a slam dunk..... Hasina Muhammad vs. St. John's in Auburn, Ala. (Dec. 6, 2013)
Made a shot from half-court or beyond..... Brooke Moore (end 2nd quarter) vs. Alabama State in Auburn, Ala. (Dec. 29, 2018)

Last Time an Auburn Opponent...

Shot less than 30% in a game (SEC)..... Ole Miss - 27.4% (17-of-62) in Auburn, Ala. (Jan. 23, 2020)
Shot less than 30% in a game (Non-conf)..... Gardner-Webb - 29.4% (20-of-68) in Auburn, Ala. (Dec. 1, 2020)
Shot 60% or better in a game..... Florida - 61.5% (32-of-52) in Auburn, Ala. (Jan. 9, 2020)
Scored 90 points..... Arkansas 90, Auburn 68 in Greenville, S.C. (March 5, 2020)
Scored 100 points..... Georgia 102, Auburn 72 in Athens, Ga. (Mar. 3, 1984)
Scored 100 points at Auburn..... Tuskegee 105, Auburn 98 (2OT) (Feb. 12, 1979)
Had 25+ rebound margin..... Never
Had a 20+ rebound margin..... 20 - Alabama (56-36) in Auburn, Ala. (Feb. 20, 2017)
Scored less than 5 points in a quarter..... 2 - USC Upstate (1st quarter) in Auburn, Ala. (Nov. 25, 2020)
Scored less than 10 points in a quarter..... 8 - LSU (1st quarter) in Baton Rouge, La. (Dec. 31, 2020)
Scored less than 10 points in all four quarters..... Winthrop (9-8-8-8) in Auburn, Ala. (Dec. 16, 2015)
Scored 30 or more points in a quarter..... 34 - Wofford (4th quarter) in Auburn, Ala. (Nov. 6, 2019)
Scored less than 10 points in a half..... 9 - USC Upstate (1st half) in Auburn, Ala. (Nov. 25, 2020)
Scored less than 20 points in a 1st half..... 19 - LSU in Baton Rouge, La. (Dec. 31, 2020)
Scored less than 20 points in a 2nd half..... 19 - Florida in Auburn, Ala. (Dec. 31, 2017)
Had 50 rebounds..... 56 - Alabama in Auburn, Ala. (Feb. 20, 2017)
Had 25 assists..... 25 - Arkansas in Greenville, S.C. (March 5, 2020)
Had 25-29 turnovers..... 25 - USC Upstate in Auburn, Ala. (Nov. 25, 2020)
Had 30-34 turnovers..... 30 - XULA in Auburn, Ala. (Dec. 28, 2017)
Had 35+ turnovers..... 35 - ULM in Auburn, Ala. (Nov. 27, 2017)
Had 15 steals..... 21 - Belmont in Auburn, Ala. (Dec. 20, 2020)
Had 10 blocks..... 10 - Georgia in Athens, Ga. (Jan. 19, 2020)
Failed to make a 3-point field goal..... LSU (0-6) in Baton Rouge, La. (Feb. 1, 2016)
Attempted 35 free throws..... 35 - Florida in Gainesville, Fla. (Feb. 28, 2016)
Made 30 free throws..... 30 - Arkansas (Jan. 22, 1995)
Made 10-14 three-point field goals..... 10 - Kentucky in Auburn, Ala. (Jan. 21, 2021)
Made 15+ three-point field goals..... 17 - Arkansas in Greenville, S.C. (March 5, 2020)
Scored 41-50 points in a game..... 41 - USC Upstate in Auburn, Ala. (Nov. 25, 2020)
Scored 31-40 points in a game..... 38 - Alabama in Auburn, Ala. (Feb. 17, 2019)
Scored 30 points or less..... 26 - Georgia in Athens, Ga. (Feb. 22, 2015)
Scored 25 points or less..... 25 - Puerto Rico-Mayaguez (Dec. 17, 2000)

Last Time an Opposing Player...

Scored 30+ points (non-conference)..... 35 - Ajah Wayne of Old Dominion in Auburn, Ala. (Nov. 14, 2019)
Scored 30+ points (SEC)..... 30 - Alexis Tolefree of Arkansas in Greenville, S.C. (March 5, 2020)
Scored 35+ points (all games)..... 35 - Ajah Wayne of Old Dominion in Auburn, Ala. (Nov. 14, 2019)
Scored 40+ points (all games)..... 41 - Chelsea Dungee of Arkansas in Fayetteville, Ark. (Feb. 10, 2019)
Attempted 25 field goals..... 27 - Jantel Lavender (9-27) of Ohio State (Nov. 23, 2008)
Scored 20 points & had 20 rebounds..... Young of Baylor in the WNIT Championship Game, (20 pts./25 rebs.) (Apr. 4, 2003)
Two players scored 20 points..... Jazz Bond (23) and Rhetta Moore (22) of North Florida in Auburn, Ala. (Dec. 17, 2020)
Three players scored 20 points..... by LSU in Baton Rouge, Chatman (22 pts.), Johnson (21 pts) & Lowery (20 pts) (Jan. 12, 1991)
Five players scored in double figures..... Cooke (13), Boston (13), Harris (12), Grissett (11), Herbert Harrigan (11) of S. Carolina (Feb. 13, 2020)
Six players scored in double figures..... Williams (10), Lewis (13), Bonds (18), Peoples (10), Miller (12), Svetle (12) of Florida (Jan. 26, 2014)
Recorded a double-double..... N'dea Jones (23 pts/12 reb) of Texas A&M in Auburn, Ala. (Jan. 28, 2021)
Recorded a double-double with points and assists..... Tyasha Harris (12 pts/11 ast) of South Carolina in Columbia, S.C. (Jan. 11, 2018)
Recorded a triple-double..... Ceira Ricketts (14 pts./13 rebs./12 ast.) of Arkansas (Jan. 18, 2009)
Two players recorded a double-double..... C. Green (16 pts/11 reb) & Davis (15 pts/10 reb) of Tennessee in Knoxville, Tenn. (Feb. 14, 2019)
Committed 10+ turnovers..... 10 - Shaquera Wade of Alabama in Greenville, S.C. (March 7, 2019)
Had 15-19 rebounds..... 15 - by N'dea Jones of Texas A&M in Auburn, Ala. (Jan. 24, 2019)
Had 20+ rebounds..... 21 - Ayana Mitchell of LSU in Baton Rouge, La. (March 3, 2019)
Had 10 assists..... 10 - Tyasha Harris of South Carolina in Auburn, Ala. (Feb. 28, 2019)
Had 15 assists..... 16 - Cindy McMahan of Alabama-Huntsville (Nov. 24, 1980)
Had 5 blocks..... 5 - Ashley Knight of Alabama in Tuscaloosa, Ala. (Feb. 18, 2018)
Had 10 blocks..... Never
Had 5 steals..... 5 - N'dea Jones of Texas A&M in Auburn, Ala. (Jan. 28, 2021)
Made 15 field goals..... 15 - Chamique Holdsclaw (15-21) of Tennessee (Feb. 1, 1998)
Made 10 3-point field goals..... 11 - Morgan Eye (11-18) of Missouri in Columbia, Mo. (Jan. 6, 2013)

2020-21 Auburn Individual Highs...**First Half**

Points.....	16, Unique Thompson vs. Gardner-Webb (12/1/20)
Field Goals Made.....	7, Unique Thompson vs. Gardner-Webb (12/1/20)
Field Goal Attempts.....	10, Annie Hughes vs. North Florida (12/17/20)
3-Point Field Goals Made	3, 3x; last, Annie Hughes vs. North Florida (12/17/20)
3-Point Field Goal Attempts	7, Annie Hughes vs. North Florida (12/17/20)
Free Throws Made	5, Honesty Scott-Grayson vs. Belmont (12/20/20)
Free Throws Attempted	7, Honesty Scott-Grayson vs. Belmont (12/20/20)
Rebounds	11, Unique Thompson vs. Belmont (12/20/20)
Assists	4, Romi Levy vs. Kentucky (1/21/21)
Blocked Shots.....	2, 3x; last, Unique Thompson vs. Kentucky (1/21/21)
Steals	4, Romi Levy at LSU (12/31/20)

Second Half

Points.....	22, Unique Thompson at Houston (12/5/20)
Field Goals Made.....	8, 2x; last, Unique Thompson vs. Kentucky (1/21/21)
Field Goal Attempts.....	12, Unique Thompson at Houston (12/5/20)
3-Point Field Goals Made	3, Honesty Scott-Grayson at Ole Miss (1/7/21)
3-Point Field Goal Attempts	4, 4x; A. Rice/H. Scott-Grayson vs. Texas A&M (1/28/21)
Free Throws Made	9, Unique Thompson vs. South Alabama (12/13/20)
Free Throws Attempted	9, Unique Thompson vs. South Alabama (12/13/20)
Rebounds	15, Unique Thompson at Houston (12/5/20)
Assists	4, 2x; last, Honesty Scott-Grayson at Alabama (1/24/21)
Blocked Shots.....	2, 2x; last, Jala Jordan vs. North Florida (12/17/20)
Steals	3, 4x; last, Honesty Scott-Grayson vs. Texas A&M (1/28/21)

Game

Points.....	26, Unique Thompson at Houston (12/5/20)
Field Goals Made.....	10, Unique Thompson at Houston (12/5/20)
Field Goal Attempts.....	18, Unique Thompson at Houston (12/5/20)
3-Point Field Goals Made	4, 2x; Honesty Scott-Grayson vs. Texas A&M (1/28/21)
3-Point Field Goal Attempts	8, 2x; Honesty Scott-Grayson vs. Texas A&M (1/28/21)
Free Throws Made	9, Unique Thompson vs. South Alabama (12/13/20)
Free Throws Attempted	10, Unique Thompson vs. Samford (11/28/20)
Rebounds	23, Unique Thompson at Houston (12/5/20) & vs. Belmont (12/20/20)
Assists	7, Romi Levy vs. Kentucky (1/21/21)
Blocked Shots.....	3, Jala Jordan vs. South Alabama (12/13/20)
Steals	6, Romi Levy vs. Georgia (1/3/21)

2020-21 Auburn Team Highs...**First Half**

Points.....	49 vs. Gardner-Webb (12/1/20)
Field Goals Made.....	19 vs. Gardner-Webb (12/1/20)
Field Goal Attempts.....	43 vs. North Florida (12/17/20)
3-Point Field Goals Made	7 vs. North Florida (12/17/20)
3-Point Field Goal Attempts	21 vs. Texas A&M (1/28/21)
Free Throws Made	11 vs. Gardner-Webb (12/1/20)
Free Throws Attempted	16 vs. Gardner-Webb (12/1/20)
Rebounds	27 at Houston (12/5/20) & vs. North Florida (12/17/20)
Assists	9 vs. Samford (11/28/20) & vs. Gardner-Webb (12/1/20)
Blocked Shots.....	4 at Houston (12/5/20)
Steals	8 vs. Gardner-Webb (12/1/20) & vs. North Florida (12/17/20)

Second Half

Points.....	50 vs. North Florida (12/17/20)
Field Goals Made.....	20 vs. Gardner-Webb (12/1/20)
Field Goal Attempts.....	37 vs. North Florida (12/17/20) & vs. Kentucky (1/21/21)
3-Point Field Goals Made	5 at Ole Miss (1/7/21) & vs. Texas A&M (1/28/21)
3-Point Field Goal Attempts	14 vs. Texas A&M (1/28/21)
Free Throws Made	17 vs. South Alabama (12/13/20)
Free Throws Attempted	21 vs. South Alabama (12/13/20)
Rebounds	27 vs. Gardner-Webb (12/1/20)
Assists	11 vs. USC Upstate (11/25/20)
Blocked Shots.....	3 vs. SFA (12/16/20) & vs. North Florida (12/17/20)
Steals	8, 4x; last vs. Georgia (1/3/21)

Game

Points.....	97 vs. Gardner-Webb (12/1/20)
Field Goals Made.....	39 vs. Gardner-Webb (12/1/20)
Field Goal Attempts.....	80 vs. North Florida (12/17/20)
3-Point Field Goals Made	11 vs. North Florida (12/17/20)
3-Point Field Goal Attempts	35 vs. Texas A&M (1/28/21)
Free Throws Made	20 vs. South Alabama (12/13/20)
Free Throws Attempted	29 vs. Gardner-Webb (12/1/20)
Rebounds	48 vs. North Florida (12/17/20)
Assists	19 vs. USC Upstate (11/25/20)
Blocked Shots.....	5 vs. Stephen F. Austin (12/16/20)
Steals	16 vs. Gardner-Webb (12/1/20) & vs. North Florida (12/17/20)
Turnovers Forced.....	25 vs. USC Upstate (11/25/20)

Specialty Statistics (Auburn-Opponent)

Opponent	Points in the Paint	Points off Turnovers	2nd-Chance Points	Fast-Break Points	Bench Points
USC Upstate	42-6	21-7	15-2	8-0	51-23
Samford	28-28	22-16	15-5	11-5	24-1
Gardner-Webb	62-18	25-14	20-18	14-7	43-24
at Houston	34-30	19-21	19-9	7-6	29-25
South Alabama	24-28	15-14	16-12	14-10	22-10
Stephen F. Austin	28-30	18-18	7-7	10-5	12-17
North Florida	40-38	26-17	19-4	15-12	29-13
Belmont	30-34	15-31	9-14	6-8	12-19
at LSU	22-30	7-22	12-16	6-12	19-25
Georgia	30-42	14-26	4-15	12-14	14-32
at Ole Miss	16-26	17-14	4-8	6-3	10-18
at Florida	24-28	20-14	2-5	15-14	5-12
Kentucky	38-28	16-17	12-6	10-10	27-27
at Alabama	30-36	16-19	12-9	13-9	20-0
Texas A&M	26-46	13-22	7-14	8-4	6-25

Lead-Deficit Comparison

Opponent	Largest Lead	Largest Deficit	Lead Changes	Ties	Result
USC Upstate	43 (4th, 0:26)	--	0	0	W, 82-41
Samford	16 (3rd, 9:03)	3 (1st, 9:01)	3	1	W, 66-64
Gardner-Webb	36 (4th, 0:19)	3 (1st, 9:25)	1	0	W, 97-61
at Houston	--	17 (2nd, 3:53)	0	0	L, 61-71
South Alabama	12 (4th, 1:01)	12 (2nd, 6:04)	2	1	W, 74-66
Stephen F. Austin	7 (1st, 1:57)	13 (4th, 0:16)	3	7	L, 54-67
North Florida	17 (2nd, 9:05)	8 (1st, 7:09)	3	2	W, 94-81
Belmont	2 (1st, 9:16)	21 (4th, 0:23)	3	4	L, 57-78
at LSU	13 (3rd, 7:14)	13 (4th, 1:54)	2	2	L, 43-56
Georgia	--	37 (3rd, 1:43)	0	1	L, 44-76
at Ole Miss	--	13 (3rd, 5:49)	0	0	L, 58-62
at Florida	--	18 (3rd, 5:39)	0	0	L, 54-68
Kentucky	2 (1st, 6:02)	14 (3rd, 5:41)	8	3	L, 71-76
at Alabama	--	14 (3rd, 4:31)	0	0	L, 55-67
Texas A&M	1 (1st, 7:23)	15 (4th, 5:43)	4	3	L, 69-84

Scoring Breakdown

(Percentage of total points in parentheses)

Opponent	Front Court	Back Court	Sr.	Jr.	So.	Fr.	Starters	Bench
USC Upstate	44	38	16	14	24	12	31	51
Samford	34	32	16	21	19	10	42	24
Gardner-Webb	51	46	21	19	35	22	54	43
at Houston	39	22	26	18	17	0	32	29
South Alabama	35	39	21	10	32	11	52	22
Stephen F. Austin	23	31	11	2	37	4	42	12
North Florida	44	50	19	2	59	14	65	29
Belmont	24	33	20	0	33	4	45	12
at LSU	25	18	-	5	18	20	24	19
Georgia	18	26	-	15	26	6	30	14
at Ole Miss	21	37	-	6	35	17	48	10
at Florida	16	38	14	0	38	2	49	5
Kentucky	45	26	22	3	34	12	44	27
at Alabama	26	29	10	12	25	8	35	20
Texas A&M	30	39	18	5	34	12	63	6

Comparison Statistics (Auburn/Opponent)

Opponent	1st	2nd	Score	Mar	Total FG	FG Pct	3-Pointers	3FG Pct	Free Throws	FT Pct	Reb.	Mar	Assist	TO	Bk	Stl	Fouls
USC Upstate	40-9	42-32	82-41	+41	30-65/14-49	.462/.286	8-20/7-21	.400/.333	14-17/6-6	.824/1.000	45/26	+19	19/13	14/25	1/0	13/9	7/19
Samford	38-26	28-38	66-64	+2	22-60/25-48	.367/.521	7-25/8-22	.280/.364	15-23/6-10	.652/.600	33/32	+1	11/14	12/21	1/2	14/7	14/19
Gardner-Webb	49-28	48-33	97-61	+36	39-73/20-68	.534/.294	2-11/9-37	.182/.243	12-17/17-29	.706/.586	47/41	+6	16/11	11/24	3/2	16/7	17/23
at Houston	17-34	44-37	61-71	(10)	22-61/26-64	.361/.406	2-12/10-30	.333/.167	15-20/9-12	.750/.750	45/34	+11	9/18	23/17	4/1	10/11	18/21
South Alabama	28-34	46-32	74-66	+8	23-65/21-56	.356/.375	8-22/7-19	.364/.368	20-26/17-27	.769/.630	44/37	+7	10/11	16/21	3/5	12/15	20/21
Stephen F. Austin	27-27	27-40	54-67	(13)	19-56/22-54	.339/.407	2-15/7-25	.133/.280	14-23/16-21	.609/.762	34/43	(9)	7/12	19/24	5/2	14/7	23/21
North Florida	44-32	50-47	94-81	+13	34-80/32-65	.425/.492	11-28/10-31	.393/.323	15-18/7-8	.833/.875	48/34	+14	16/17	15/22	3/0	16/8	16/18
Belmont	28-45	29-33	57-78	(21)	22-60/30-62	.367/.484	3-17/11-22	.176/.500	10-17/7-11	.588/.636	47/30	+17	13/18	27/16	1/0	8/21	12/19
at LSU	27-19	16-37	43-56	(13)	17-60/21-60	.283/.350	3-18/0-9	.167/.000	6-8/14-15	.750/.933	39/43	(4)	7/10	24/19	4/3	10/11	18/13
Georgia	23-43	21-33	44-76	(32)	16-52/31-62	.308/.500	1-11/5-14	.091/.357	9-13/11-18	.611/.692	27/43	(16)	2/18	27/22	2/6	12/13	13/16
at Ole Miss	23-32	35-30	58-62	(4)	23-55/22-49	.418/.375	6-21/5-12	.286/.417	6-8/13-18	.750/.722	28/34	(6)	18/19	17/19	0/4	12/10	15/11
at Florida	21-35	33-33	54-68	(14)	19-68/25-59	.279/.424	4-23/7-22	.174/.318	12-15/11-14	.800/.786	44/41	+3	10/12	14/12	3/1	8/9	12/16
Kentucky	32-40	39-36	71-76	(5)	27-68/28-59	.397/.475	5-19/10-28	.263/.357	12-16/10-15	.750/.667	41/38	+3	13/20	14/15	2/2	7/9	15/14
at Alabama	22-31	33-36	55-67	(12)	22-62/26-56	.355/.464	4-19/7-21	.211/.333	7-8/8-10	.875/.800	38/33	+5	13/16	15/14	2/2	11/5	15/9
Texas A&M	27-33	42-51	69-84	(15)	26-63/31-60	.413/.517	10-35/8-18	.286/.444	7-8/14-18	.875/.778	28/41	(13)	15/15	14/16	0/1	9/8	19/14

Game-by-Game Leaders

	Points	Rebounds	Assists	Steals	Blocked Shots
USC Upstate	16-Thompson/Jordan	7-Unique Thompson	5-Alaina Rice	4-M. Robinson-Nwagwu	1-Aicha Coulibaly
Samford	16-Unique Thompson	11-Unique Thompson	4-Kira Lowery	5-Unique Thompson	1-Jala Jordan
Gardner-Webb	21-Unique Thompson	12-Unique Thompson	4-Jala Jordan	5-Honesty Scott-Grayson	2-Romi Levy
at Houston	26-Unique Thompson	23-Unique Thompson	2-Thompson/Coulibaly	2-(four players)	2-Romi Levy
South Alabama	21-Unique Thompson	14-Unique Thompson	3-Levy/McFadden	5-Unique Thompson	3-Jala Jordan
Stephen F. Austin	16-Honesty Scott-Grayson	14-Unique Thompson	2-Honesty Scott-Grayson	4-Unique Thompson	2-Unique Thompson
North Florida	19-Unique Thompson	18-Unique Thompson	5-Kira Lowery	3-(three players)	2-Unique Thompson
Belmont	20-Unique Thompson	23-Unique Thompson	4-Honesty Scott-Grayson	3-Honesty Scott-Grayson	1-Annie Hughes
at LSU	12-Aicha Coulibaly	11-Romi Levy	2-(three players)	5-Romi Levy	1-(four players)
Georgia	12-Keya Patton	4-Rice/Scott-Grayson	1-Scott-Grayson/Lowery	6-Romi Levy	1-Jordan/Coulibaly
at Ole Miss	23-Honesty Scott-Grayson	5-Honesty Scott-Grayson	6-M. Robinson-Nwagwu	3-Scott-Grayson/Rob.-Nw.	(none)
at Florida	18-Honesty Scott-Grayson	14-Unique Thompson	4-Unique Thompson	2-Thompson/Scott-Grayson	2-Aicha Coulibaly
Kentucky	22-Unique Thompson	10-Unique Thompson	7-Romi Levy	3-Honesty Scott-Grayson	2-Unique Thompson
at Alabama	17-Honesty Scott-Grayson	10-Unique Thompson	4-Honesty Scott-Grayson	5-Honesty Scott-Grayson	1-Jordan/Hughes
Texas A&M	21-Honesty Scott-Grayson	7-Unique Thompson	5-Alaina Rice	3-Thompson/Scott-Grayson	(none)

2020-21 Starting Lineups

	Point Guard (1)	Wing (2)	Wing (3)	Wing (4)	Post (5)
USC Upstate	Kira Lowery	Annie Hughes	Honesty Scott-Grayson	Aicha Coulibaly	Unique Thompson
Samford	Kira Lowery	Annie Hughes	Honesty Scott-Grayson	Aicha Coulibaly	Unique Thompson
Gardner-Webb	Kira Lowery	Annie Hughes	Honesty Scott-Grayson	Aicha Coulibaly	Unique Thompson
at Houston	Kira Lowery	Romi Levy	Honesty Scott-Grayson	Aicha Coulibaly	Unique Thompson
South Alabama	Kira Lowery	Annie Hughes	Honesty Scott-Grayson	Jala Jordan	Unique Thompson
Stephen F. Austin	Kira Lowery	Annie Hughes	Honesty Scott-Grayson	Jala Jordan	Unique Thompson
North Florida	Kira Lowery	Annie Hughes	Honesty Scott-Grayson	Jala Jordan	Unique Thompson
Belmont	Kira Lowery	Annie Hughes	Honesty Scott-Grayson	Jala Jordan	Unique Thompson
at LSU	Alaina Rice	Sania Wells	Honesty Scott-Grayson	Romi Levy	Jala Jordan
Georgia	Alaina Rice	Keya Patton	Honesty Scott-Grayson	Romi Levy	Jala Jordan
at Ole Miss	Alaina Rice	Keya Patton	Honesty Scott-Grayson	Romi Levy	Jala Jordan
at Florida	M.Robinson-Nwagwu	Annie Hughes	Honesty Scott-Grayson	Romi Levy	Unique Thompson
Kentucky	M.Robinson-Nwagwu	Annie Hughes	Honesty Scott-Grayson	Romi Levy	Unique Thompson
at Alabama	M.Robinson-Nwagwu	Annie Hughes	Honesty Scott-Grayson	Romi Levy	Unique Thompson
Texas A&M	Alaina Rice	Keya Patton	Honesty Scott-Grayson	Romi Levy	Unique Thompson

Record by Starting Lineup

Lowery, Hughes, Scott-Grayson, Coulibaly, Thompson	3-0 (1.000)
Lowery, Levy, Scott-Grayson, Coulibaly, Thompson	0-1 (.000)
Lowery, Hughes, Scott-Grayson, Jordan, Thompson	3-1 (.750)
Rice, Wells, Scott-Grayson, Levy, Jordan..... 0-1 (.000)
Rice, Patton, Scott-Grayson, Levy, Jordan..... 0-2 (.000)
Robinson-Nwagwu, Hughes, Scott-Grayson, Levy, Thompson..... 0-3 (.000)
Rice, Patton, Scott-Grayson, Levy, Thompson.... 0-1 (.000)



Terri

WILLIAMS-FLOURNOY

Head Coach

Ninth Season at Auburn • 17th as a Head Coach • 29th Season in coaching

Hampton, Va. • Penn State, 1991

- *Has taken her teams to postseason appearances in nine of the last 12 years, including six NCAA Tournament appearances*
- *Has had seven players selected to All-SEC teams*
- *Auburn has forced an average of 20.0+ turnovers per game under Coach Flo*
- *Led Auburn to the postseason in five of eight seasons, advancing to WNIT Quarterfinals in 2013 and Third Round in 2014, along with NCAA Tournament in 2016, 2017 and 2019*
- *Won her 100th game at Auburn on Feb. 8, 2018, defeating LSU 70-62*
- *Picked up her 200th career head coaching victory Dec. 5, 2015 at home vs. East Carolina*
- *Won 250th career game at Xavier (La.) on Nov. 28, 2018*
- *Recorded her 400th career win as a collegiate coach in Auburn's 68-58 win over Hofstra on Dec. 9, 2012*
- *Won her 500th game as a collegiate coach with victory over Louisiana-Lafayette on Nov. 25, 2018*
- *Picked up first SEC win in 50-47 win over #23 Arkansas in 2013*
- *Earned second win over ranked opponent at Auburn and snapped 21-game skid to #16 Vanderbilt with 68-62 win in Nashville on Feb. 13, 2014*
- *Picked up first top-10 win with a 66-61 victory over #7 Kentucky on Jan. 3, 2016*
- *Has 283 wins as a head coach and 251 as an assistant for a .610 winning percentage over 28 years as a collegiate coach*
- *Has been part of six conference championships and 21 post-season appearances as an assistant and head coach*
- *2010 Black Coaches Association Coach of the Year*
- *Served as an assistant coach for Team USA that won a gold medal at the 2011 World University Games in Shenzhen, China*
- *Coached teams to 15 NCAA Tournament appearances, nine as an assistant and six as a head coach*
- *Has coached 25 players that have gone on to the professional ranks, including seven in the WNBA*
- *As an assistant, helped coach Georgia to an NCAA Final Four appearance and two NCAA Elite Eight appearances*
- *Coached three Georgetown players to three all-conference honors and one All-America award*
- *Has a 622-384 record in 33 seasons as a head coach, assistant coach and player*
- *Helped coach Georgetown to a Big East title in 1992*
- *As an assistant coach at Southwest Missouri State, helped the team to two straight NCAA Tournaments and two consecutive Missouri Valley Conference Tournament titles*

All-time record as player and coach:	622-384 (.621)	33 seasons
Record as collegiate player:	88-36 (.709)	4 seasons
Record as collegiate coach:	534-348 (.607)	29 seasons
Record as collegiate assistant coach:	251-117 (.683)	12 seasons
Record as collegiate head coach:	283-233 (.548)	17 seasons
Record as Auburn head coach:	140-129 (.520)	9 seasons

Williams-Fournoy Year-by-Year

Penn State, Player (1987-91)

Year	Record	Conf.	Other Information
1987-88	20-13	11-7	NCAA Second Round
1988-89	14-14	12-6	
1989-90	25-7	15-3	NCAA Second Round
1990-91	29-2	17-1	NCAA Second Round

Georgetown, Assistant Coach (1992-96)

Year	Record	Conf.	Other Information
1992-93	23-7	15-3	Big East Champions NCAA Sweet 16
1993-94	12-15	6-12	
1994-95	11-17	6-12	
1995-96	12-15	7-11	

Georgia, Assistant Coach (1996-2002)

Year	Record	Conf.	Other Information
1996-97	25-6	11-1	SEC Champions NCAA Elite Eight
1997-98	17-11	8-6	NCAA First Round
1998-99	27-7	9-5	NCAA Final Four
1999-2000	32-4	13-1	SEC Champions NCAA Elite Eight
2000-01	27-6	11-3	SEC Tournament Champions NCAA Second Round
2001-02	19-11	6-8	NCAA First Round

Southwest Missouri State, Assistant Coach (2002-04)

Year	Record	Conf.	Other Information
2002-03	18-13	11-7	MVC Tournament Champions NCAA First Round
2003-04	28-4	16-2	Missouri Valley Champions MVC Tournament Champions NCAA First Round

Georgetown, Head Coach (2004-12)

Year	Record	Conf.	Other Information
2004-05	12-16	7-9	
2005-06	10-17	3-13	
2006-07	13-16	3-13	
2007-08	15-14	5-11	
2008-09	20-14	7-9	WNIT Quarterfinals
2009-10	26-7	13-3	NCAA Second Round
2010-11	24-11	9-7	NCAA Sweet 16
2011-12	23-9	11-5	NCAA Second Round

Auburn, Head Coach (2012-present)

Year	Record	Conf.	Other Information
2012-13	19-15	5-11	WNIT Quarterfinals
2013-14	19-15	7-9	WNIT Third Round
2014-15	13-18	3-13	
2015-16	20-13	8-8	NCAA Second Round
2016-17	17-15	7-9	NCAA First Round
2017-18	14-15	5-11	
2018-19	22-10	9-7	NCAA First Round
2019-20	11-18	4-12	
2020-21	5-10	0-7	



Alycia REESE

#0

Junior • Guard • 5-9

Columbus, Ga.

Carver HS | Chattahoochee Valley CC (Ala.)

- Scored season-best 10 points on 4-6 shooting, hit Auburn's only two 3-pointers at Houston (12/5)
- Hit four free throws, had one rebound in Auburn debut vs. USC Upstate (11/25)
- Signed with Auburn in the spring of 2020
- Played two seasons at CVCC in Phenix City; appeared in all 24 games as a sophomore in 2019-20; first-team all-conference selection
- Led CVCC with 12.8 points along with 3.8 rebounds, 1.6 assists, 1.5 steals per game in 2019-20
- All-state selection at Carver HS as a junior in 2017; led team to state runner-up finish
- Has a 3-year-old son, Andrew

SEASON/CAREER HIGHS

Points	10	at Houston	12/5/20
Rebounds	4	vs. Kentucky	1/21/21
Assists	1	3x; last vs. Texas A&M	1/28/21
Blocks			
Steals	1	2x; last at Alabama	1/24/21
Field Goals	4	at Houston	12/5/20
Field Goal Attempts	6	2x; last at Alabama	1/24/21
3-Point Field Goals	2	at Houston	12/5/20
3-Point FG Attempts	5	at Alabama	1/24/21
Free Throws	4	vs. USC Upstate	11/25/20
Free Throw Attempts	4	vs. USC Upstate	11/25/20

Opponent	Start	Min.	FG-A	3PT-A	FT-A	O-D-T	PF	Ast.	TO	Blk.	St.	Pts.
USC UPSTATE		4	0-1	0-1	4-4	0-1-1	1	0	0	0	0	4
SAMFORD						--DNP--						
GARDNER-WEBB		9	1-1	0-0	0-0	0-0-0	0	0	1	0	0	2
at Houston		16	4-6	2-3	0-0	0-1-1	0	1	1	0	1	10
SOUTH ALABAMA						--DNP--						
STEPHEN F. AUSTIN						--DNP--						
NORTH FLORIDA						--DNP--						
BELMONT						--DNP--						
at LSU		8	0-0	0-0	2-2	0-1-1	0	0	0	0	0	2
GEORGIA		5	0-0	0-0	0-0	0-0-0	0	0	0	0	0	0
at Ole Miss		4	0-2	0-2	0-0	0-0-0	0	1	0	0	0	0
at Florida						--DNP--						
KENTUCKY		21	1-4	1-4	0-0	1-3-4	1	0	2	0	0	3
at Alabama		19	1-6	1-5	0-0	1-0-1	3	0	1	0	1	3
TEXAS A&M		8	0-2	0-2	0-0	0-0-0	0	1	0	0	0	0
at Arkansas												
SOUTH CAROLINA												
at Georgia												
ALABAMA												
at Mississippi State												
VANDERBILT												
ARKANSAS												
at Tennessee												

REESE'S CAREER STATISTICS (at Auburn)

Season	gp-gs	min/avg	Total		3-Point		F-Throws		Rebounds				Scoring							
			fg-fga	pct	fg-fga	pct	ft-fga	pct	off	def	tot	avg	pf	fo	ast	to	blk	stl	pts	avg
2020-21	9-0	94/10.4	7-22	.318	4-17	.235	6-6	1.000	2	6	8	0.9	5	0	3	5	0	2	24	2.7
TOTAL	9-0	94/10.4	7-22	.318	4-17	.235	6-6	1.000	2	6	8	0.9	5	0	3	5	0	2	24	2.7



Keya PATTON

#1

Junior • Guard • 5-6

Indianapolis, Ind.

Cathedral HS | Wabash Valley College (Ill.)

- Made first Auburn start vs. Georgia (1/3); scored 12 points in season-high 27 minutes
- Scored 14 points off the bench in win over Gardner-Webb (12/1)
- Scored 6 points, had 5 rebounds and 2 steals in Auburn debut vs. USC Upstate (11/25)
- Signed with Auburn in the spring of 2020 after two seasons at Wabash Valley College
- Two-time NJCAA All-American; first-team in 2020, third-team in 2019; 2020 regional player of the year
- Scored over 1,000 points in two junior college seasons; set school record with 46 points vs. Olney Central College
- Averaged 20.8 points, 6.8 rebounds, 6.4 assists and 2.9 steals as a sophomore; had 10 double-doubles and a triple double
- Led Wabash Valley to 63-3 record in two seasons; sophomore postseason run cut short by pandemic
- Scored over 1,700 points in four-year high school career at Cathedral HS in Indianapolis; two-time first-team all-state selection

SEASON/CAREER HIGHS

Points	14	vs. Gardner-Webb	12/1/20
Rebounds	5	vs. USC Upstate	11/25/20
Assists	2	2x; last vs. Texas A&M	1/28/21
Blocks			
Steals	2	2x; last at Houston	12/5/20
Field Goals	5	vs. Gardner-Webb	12/1/20
Field Goal Attempts	10	at Houston	12/5/20
3-Point Field Goals	3	vs. Samford	11/28/20
3-Point FG Attempts	7	2x; last vs. Texas A&M	1/28/21
Free Throws	6	vs. Georgia	1/3/21
Free Throw Attempts	7	vs. Georgia	1/3/21

Opponent	Start	Min.	FG-A	3PT-A	FT-A	O-D-T	PF	Ast.	TO	Blk.	St.	Pts.
USC UPSTATE		18	2-6	1-2	1-2	2-3-5	0	1	1	0	2	6
SAMFORD		20	3-9	3-7	0-0	0-1-1	2	0	1	0	0	9
GARDNER-WEBB		16	5-9	0-2	4-6	1-0-1	0	2	0	0	1	14
at Houston		22	2-10	0-2	2-2	1-0-1	2	1	2	0	2	6
SOUTH ALABAMA						--DNP--						
STEPHEN F. AUSTIN		11	0-2	0-0	0-0	0-2-2	1	0	0	0	0	0
NORTH FLORIDA		3	0-0	0-0	0-0	0-0-0	1	0	2	0	0	0
BELMONT		10	0-1	0-1	0-0	0-0-0	1	1	2	0	0	0
at LSU		24	1-4	1-3	0-0	1-1-2	3	0	2	0	1	3
GEORGIA	*	27	3-9	0-1	6-7	2-1-3	1	0	2	0	1	12
at Ole Miss	*	28	2-6	2-4	0-0	0-2-2	2	1	2	0	0	6
at Florida						--DNP--						
KENTUCKY						--DNP--						
at Alabama						--DNP--						
TEXAS A&M	*	30	1-8	0-7	3-3	0-1-1	0	2	0	0	0	5
at Arkansas												
SOUTH CAROLINA												
at Georgia												
ALABAMA												
at Mississippi State												
VANDERBILT												
ARKANSAS												
at Tennessee												

PATTON'S CAREER STATISTICS (at Auburn)

Season	gp-gs	min/avg	Total		3-Point		F-Throws		Rebounds				Scoring							
			fg-fga	pct	fg-fga	pct	ft-fta	pct	off	def	tot	avg	pf	fo	ast	to	blk	stl	pts	avg
2020-21	11-3	232/21.1	19-64	.297	7-29	.241	16-20	.800	7	11	18	1.6	13	0	8	14	0	7	61	5.5
TOTAL	11-3	232/21.1	19-64	.297	7-29	.241	16-20	.800	7	11	18	1.6	13	0	8	14	0	7	61	5.5



Sania WELLS

#2

Sophomore • Guard • 5-7

Moss Point, Miss.

East Central HS

- Career-high 11 points, 3-6 on 3FG in 25 minutes off the bench in win over South Alabama (12/13)
- Scored 7 points in season-opener vs. USC Upstate (11/25)
- Played in 25 games as a freshman, averaging 8.6 minutes/game
- Averaged 1.6 points, 0.8 rebounds, 0.5 assists in 2019-20
- Scored season-high 8 points at Mississippi State (1/30/20) in return to her home state; career-high 21 minutes off the bench
- Ranked as No. 27 point guard nationally out of high school by ESPN HoopGurlz
- USA Today All-Mississippi Team as HS senior
- Averaged 27 points, 5 rebounds, 4 steals as HS senior

SEASON HIGHS

Points	11	vs. South Alabama	12/13/20
Rebounds	5	at Florida	1/17/21
Assists	2	2x; last vs. South Alabama	12/13/20
Blocks			
Steals	1	5x; last at Florida	1/17/21
Field Goals	3	2x; last vs. South Alabama	12/13/20
Field Goal Attempts	11	at Florida	1/17/21
3-Point Field Goals	3	vs. South Alabama	12/13/20
3-Point FG Attempts	6	vs. South Alabama	12/13/20
Free Throws	3	vs. Belmont	12/20/20
Free Throw Attempts	4	3x; last vs. Belmont	12/20/20

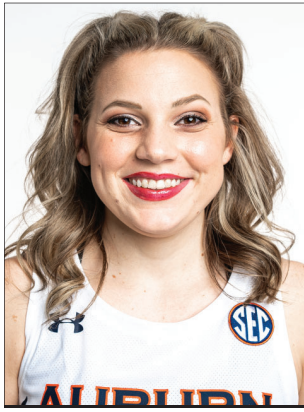
Opponent	Start	Min.	FG-A	3PT-A	FT-A	O-D-T	PF	Ast.	TO	Blk.	St.	Pts.
USC UPSTATE		12	3-6	1-3	0-0	0-0-0	0	1	0	0	0	7
SAMFORD		3	0-0	0-0	0-0	0-0-0	0	0	0	0	0	0
GARDNER-WEBB		14	0-2	0-1	2-2	0-1-1	3	2	2	0	1	2
at Houston		16	0-5	0-1	0-0	1-0-1	1	0	0	0	0	0
SOUTH ALABAMA		25	3-10	3-6	2-4	1-0-1	0	2	2	0	0	11
STEPHEN F. AUSTIN		19	1-6	0-3	2-4	0-0-0	3	0	1	0	1	4
NORTH FLORIDA		13	2-5	2-4	0-0	0-0-0	1	2	0	0	0	6
BELMONT		23	2-7	1-3	3-4	0-0-0	0	1	2	0	0	8
at LSU	*	16	0-5	0-3	0-0	0-2-2	2	1	2	0	1	0
GEORGIA		10	0-1	0-0	0-0	0-0-0	0	0	1	0	0	0
at Ole Miss		11	1-4	0-0	2-2	0-0-0	0	1	0	0	1	4
at Florida		26	2-11	0-2	1-2	2-3-5	1	0	2	0	1	5
KENTUCKY		13	0-4	0-2	0-0	0-0-0	0	0	1	0	0	0
at Alabama		9	0-4	0-1	0-0	0-2-2	1	0	1	0	0	0
TEXAS A&M		4	0-1	0-1	0-0	0-0-0	1	0	0	0	0	0
at Arkansas												
SOUTH CAROLINA												
at Georgia												
ALABAMA												
at Mississippi State												
VANDERBILT												
ARKANSAS												
at Tennessee												

CAREER HIGHS

Points	11	vs. South Alabama	12/13/20
Rebounds	5	at Florida	1/17/21
Assists	3	vs. Middle Tennessee	11/29/19
Blocks			
Steals	2	vs. Alabama	1/12/20
Field Goals	3	3x; last vs. South Alabama	12/13/20
Field Goal Attempts	11	at Florida	1/17/21
3-Point Field Goals	3	vs. South Alabama	12/13/20
3-Point FG Attempts	6	vs. South Alabama	12/13/20
Free Throws	3	vs. Belmont	12/20/20
Free Throw Attempts	4	4x; last vs. Belmont	12/20/20

WELLS' CAREER STATISTICS

Season	gp-gs	min/avg	Total		3-Point		F-Throws		Rebounds				Scoring							
			fg-fga	pct	fg-fga	pct	ft-fa	pct	off	def	tot	avg	pf	fo	ast	to	blk	stl	pts	avg
2019-20	25-0	214/8.6	14-47	.298	3-17	.176	10-14	.714	5	15	20	0.8	26	0	13	17	0	5	41	1.6
2020-21	15-1	210/14.0	14-71	.197	7-30	.233	12-18	.667	4	8	12	0.8	13	0	10	14	0	5	47	3.1
TOTAL	40-1	424/10.6	28-118	.237	10-47	.213	22-32	.688	9	23	32	0.8	39	0	23	31	0	10	88	2.2



Annie HUGHES

#3

Sophomore • Guard • 5-9

Dutton, Ala.

Pisgah HS

- Career-high 17 points, 7 rebounds, 3 steals in win over North Florida (12/17)
- Season-high 11 points, career-high three 3-pointers in win over South Alabama (12/13)
- Scored 6 points in first five minutes vs. Gardner-Webb (12/1); also added 4 rebounds, 1 assists, 1 steal
- Appeared in all 29 games as a freshman, earning 7 starts
- Averaged 3.6 points, 1.3 rebounds, 0.7 assists, 0.5 steals while playing 16.8 minutes/game
- Shot 45.2% from the field (42-93) and 34.2% (13-38) from 3-point range as a freshman
- Earned start in first collegiate game vs. Wofford (11/6/19); scored 10 points along with 4 assists and 3 steals
- 2019 Alabama Miss Basketball, first to attend Auburn since Whitney Boddie in 2005
- Averaged 21.4 points, 7.0 rebounds, 4.2 assists, 3.5 steals as HS senior; led Pisgah HS to back-to-back state titles in '18 and '19

SEASON HIGHS

Points

17 vs. North Florida 12/17/20

Rebounds

7 vs. North Florida 12/17/20

Assists

1 8x; last at Alabama 1/24/21

Blocks

1 2x; last at Alabama 1/24/21

Steals

3 vs. North Florida 12/17/20

Field Goals

7 vs. North Florida 12/17/20

Field Goal Attempts

16 vs. North Florida 12/17/20

3-Point Field Goals

3 2x; last vs. North Florida 12/17/20

3-Point FG Attempts

8 vs. North Florida 12/17/20

Free Throws

2 vs. Gardner-Webb 12/1/20

Free Throw Attempts

3 vs. Samford 11/28/20

CAREER HIGHS

Points

17 vs. North Florida 12/17/20

Rebounds

7 2x; last vs. North Florida 12/17/20

Assists

4 vs. Wofford 11/6/19

Blocks

1 2x; last at Alabama 1/24/21

Steals

3 2x; last vs. North Florida 12/17/20

Field Goals

7 vs. North Florida 12/17/20

Field Goal Attempts

16 vs. North Florida 12/17/20

3-Point Field Goals

3 2x; last vs. North Florida 12/17/20

3-Point FG Attempts

8 vs. North Florida 12/17/20

Free Throws

2 2x; last vs. Gardner-Webb 12/1/20

Free Throw Attempts

4 vs. Middle Tennessee 11/29/19

Opponent	Start	Min.	FG-A	3PT-A	FT-A	O-D-T	PF	Ast.	TO	Blk.	St.	Pts.
USC UPSTATE	*	10	0-1	0-0	0-0	1-0-1	0	0	0	0	0	0
SAMFORD	*	21	2-7	0-3	1-3	1-0-1	2	1	1	0	1	5
GARDNER-WEBB	*	20	2-4	0-0	2-2	1-3-4	1	1	1	0	1	6
at Houston		13	0-0	0-0	0-0	1-2-3	0	1	1	0	0	0
SOUTH ALABAMA	*	32	4-8	3-5	0-0	0-3-3	3	0	0	0	2	11
STEPHEN F. AUSTIN	*	25	2-4	0-2	1-2	3-0-3	2	0	0	0	2	5
NORTH FLORIDA	*	31	7-16	3-8	0-0	4-3-7	3	1	1	0	3	17
BELMONT	*	25	3-6	1-2	0-0	2-2-4	2	1	3	1	1	7
at LSU		6	1-1	0-0	0-0	0-0-0	0	0	2	0	0	2
GEORGIA		23	1-2	0-0	1-2	0-3-3	1	0	3	0	1	3
at Ole Miss		12	0-0	0-0	0-0	0-1-1	0	1	1	0	2	0
at Florida	*	30	2-10	1-5	1-2	1-2-3	1	1	0	0	1	6
KENTUCKY	*	17	1-2	0-1	1-1	0-0-0	1	0	0	0	1	3
at Alabama	*	18	0-0	0-0	0-0	2-1-3	0	1	1	1	0	0
TEXAS A&M		2	0-1	0-1	0-0	0-0-0	1	0	1	0	0	0
at Arkansas												
SOUTH CAROLINA												
at Georgia												
ALABAMA												
at Mississippi State												
VANDERBILT												
ARKANSAS												
at Tennessee												

HUGHES' CAREER STATISTICS

Season	gp-gs	min/avg	Total		3-Point		F-Throws		Rebounds				Scoring							
			fg-fga	pct	fg-fga	pct	ft-fga	pct	off	def	tot	avg	pf	fo	ast	to	blk	stl	pts	avg
2019-20	29-7	491/16.9	42-93	.452	13-38	.342	6-13	.462	20	17	37	1.3	29	0	19	21	0	14	103	3.6
2020-21	15-10	282/18.8	25-62	.403	8-27	.296	7-12	.583	16	20	36	2.4	17	0	8	15	2	15	65	4.3
TOTAL	44-17	773/17.6	67-155	.432	21-65	.323	13-25	.520	36	37	73	1.7	46	0	27	36	2	29	168	3.8



Riley DONAHUE

#4

Freshman • Guard • 5-10

Atlanta, Ga.

Marist School

- Hit first collegiate shot attempt, a 3-pointer, in final minute vs. Gardner-Webb (12/1)
- Made collegiate debut with one minute of action vs. USC Upstate (11/25)
- Joined Auburn as a walk-on in summer of 2020
- Was a GHSA first-team all-region selection as a senior

SEASON/CAREER HIGHS

Points	3	vs. Gardner-Webb	12/1/20
Rebounds			
Assists			
Blocks			
Steals			
Field Goals	1	vs. Gardner-Webb	12/1/20
Field Goal Attempts	1	vs. Gardner-Webb	12/1/20
3-Point Field Goals	1	vs. Gardner-Webb	12/1/20
3-Point FG Attempts	1	vs. Gardner-Webb	12/1/20
Free Throws			
Free Throw Attempts			

Opponent	Start	Min.	FG-A	3PT-A	FT-A	O-D-T	PF	Ast.	TO	Blk.	St.	Pts.
USC UPSTATE		1	0-0	0-0	0-0	0-0-0	0	0	0	0	0	0
SAMFORD						--DNP--						
GARDNER-WEBB		2	1-1	1-1	0-0	0-0-0	0	0	1	0	0	3
at Houston						--DNP--						
SOUTH ALABAMA		1	0-0	0-0	0-0	0-0-0	1	0	0	0	0	0
STEPHEN F. AUSTIN						--DNP--						
NORTH FLORIDA						--DNP--						
BELMONT						--DNP--						
at LSU						--DNP--						
GEORGIA						--DNP--						
at Ole Miss						--DNP--						
at Florida						--DNP--						
KENTUCKY						--DNP--						
at Alabama						--DNP--						
TEXAS A&M						--DNP--						
at Arkansas												
SOUTH CAROLINA												
at Georgia												
ALABAMA												
at Mississippi State												
VANDERBILT												
ARKANSAS												
at Tennessee												

DONAHUE'S CAREER STATISTICS

Season	gp-gs	min/avg	Total		3-Point		F-Throws		Rebounds				Scoring							
			fg-fga	pct	fg-fga	pct	ft-fta	pct	off	def	tot	avg	pf	fo	ast	to	blk	stl	pts	avg
2020-21	3-0	2/0.7	1-1	1.000	1-1	1.000	0-0	.000	0	0	0	0.0	1	0	0	1	0	0	3	1.0
TOTAL	3-0	2/0.7	1-1	1.000	1-1	1.000	0-0	.000	0	0	0	0.0	1	0	0	1	0	0	3	1.0



Aicha COULIBALY

#5

Freshman • Guard/Forward • 6-0

Mali

IMG Academy (Fla.)

- Led Auburn with season-high 12 points along with 5 rebounds at LSU (12/31)
- Scored 10 points along with 6 rebounds in win over Gardner-Webb (12/1)
- Earned start in first collegiate game vs. USC Upstate (11/25); finished with 4 points, 6 rebounds, 2 assists
- Played for Mali's national team at FIBA U16 African Championships in 2017, leading her team to tournament championship
- Named tournament MVP after scoring 21.8 points/game in that event
- Played high school basketball at IMG Academy in Florida
- Is Auburn's third women's basketball player from Africa, along with Crispina Correia (Cape Verde, 2001-03) and Khady Dieng (Senegal, 2013-17)

SEASON/CAREER HIGHS

Points	12	at LSU	12/31/20
Rebounds	6	vs. Gardner-Webb	12/1/20
Assists	2	2x; last at Houston	12/5/20
Blocks	2	at Florida	1/17/21
Steals	2	vs. Georgia	1/2/21
Field Goals	4	2x; last at LSU	12/31/20
Field Goal Attempts	8	2x; last at LSU	12/31/20
3-Point Field Goals	1	at LSU	12/31/20
3-Point FG Attempts	3	at LSU	12/31/20
Free Throws	3	at LSU	12/31/20
Free Throw Attempts	6	vs. Gardner-Webb	12/1/20

Opponent	Start	Min.	FG-A	3PT-A	FT-A	O-D-T	PF	Ast.	TO	Blk.	St.	Pts.
USC UPSTATE	*	19	2-8	0-2	0-0	1-5-6	2	2	2	1	1	4
SAMFORD	*	15	2-5	0-2	0-0	2-2-4	1	1	0	0	0	4
GARDNER-WEBB	*	22	4-7	0-1	2-6	3-3-6	1	0	1	0	0	10
at Houston	*	12	0-2	0-0	0-2	1-2-3	3	2	1	1	0	0
SOUTH ALABAMA						--DNP--						
STEPHEN F. AUSTIN		19	2-5	0-2	0-1	0-4-4	1	1	2	1	1	4
NORTH FLORIDA		9	0-3	0-1	2-2	1-1-2	0	0	0	0	0	2
BELMONT		8	1-4	0-0	0-0	1-0-1	1	0	0	0	0	2
at LSU		24	4-8	1-3	3-4	2-3-5	1	0	1	0	0	12
GEORGIA		24	3-7	0-1	0-1	0-2-2	2	0	1	1	2	6
at Ole Miss		15	2-6	0-0	0-0	1-1-2	1	1	1	0	0	4
at Florida		16	0-1	0-1	0-0	1-0-1	0	0	2	2	1	0
KENTUCKY		17	3-4	0-0	1-2	2-2-4	2	1	1	0	0	7
at Alabama		13	0-2	0-1	0-0	0-3-3	3	0	2	0	0	0
TEXAS A&M		24	3-6	0-2	0-0	1-2-3	2	1	1	0	1	6
at Arkansas												
SOUTH CAROLINA												
at Georgia												
ALABAMA												
at Mississippi State												
VANDERBILT												
ARKANSAS												
at Tennessee												

COULIBALY'S CAREER STATISTICS

Season	gp-gs	min/avg	Total		3-Point		F-Throws		Rebounds				Scoring							
			fg-fga	pct	fg-fga	pct	ft-fa	pct	off	def	tot	avg	pf	fo	ast	to	blk	stl	pts	avg
2020-21	14-4	236/16.9	26-68	.382	1-16	.063	8-18	.444	16	30	46	3.3	20	0	9	15	6	6	61	4.4
TOTAL	14-4	236/16.9	26-68	.382	1-16	.063	8-18	.444	16	30	46	3.3	20	0	9	15	6	6	61	4.4



Kiyae' WHITE

#10

Redshirt Junior • Forward • 6-2

Macungie, Pa.

Emmaus HS

- Made season debut vs. South Alabama; grabbed 3 rebounds in 4 minutes (12/13)
- Played in all 29 games as a redshirt sophomore, earning 14 starts; averaged 4.0 points, 4.8 rebounds in '19-20
- Shot 57.3% from the field (43-75) in 2019-20
- Scored career-high 15 points in season finale vs. Arkansas in 2020 SEC Tournament; also had 8 rebounds, 4 assists
- Had then-career high 12 points vs. St. Joseph's (11/24/19); was 3-4 from the field and 6-8 at FT line
- Career-high 11 rebounds in 2019-20 season-opener vs. Wofford while playing just 16 minutes
- Has two brothers that play in the NFL: Kevin White (49ers), Kyzir White (Chargers)

SEASON HIGHS

Points		
Rebounds		
3 vs. South Alabama		12/13/20
Assists		
Blocks		
Steals		
Field Goals		
Field Goal Attempts		
2 vs. South Alabama		12/13/20
3-Point Field Goals		
3-Point FG Attempts		
Free Throws		
Free Throw Attempts		

Opponent	Start	Min.	FG-A	3PT-A	FT-A	O-D-T	PF	Ast.	TO	Blk.	St.	Pts.
USC UPSTATE						--DNP--						
SAMFORD						--DNP--						
GARDNER-WEBB						--DNP--						
at Houston						--DNP--						
SOUTH ALABAMA		4	0-2	0-0	0-0	1-2-3	1	0	0	0	0	0
STEPHEN F. AUSTIN						--DNP--						
NORTH FLORIDA						--DNP--						
BELMONT						--DNP--						
at LSU						--DNP--						
GEORGIA						--DNP--						
at Ole Miss						--DNP--						
at Florida						--DNP--						
KENTUCKY						--DNP--						
at Alabama						--DNP--						
TEXAS A&M						--DNP--						
at Arkansas						--DNP--						
SOUTH CAROLINA						--DNP--						
at Georgia						--DNP--						
ALABAMA						--DNP--						
at Mississippi State						--DNP--						
VANDERBILT						--DNP--						
ARKANSAS						--DNP--						
at Tennessee						--DNP--						

CAREER HIGHS

Points		
15 vs. Arkansas		3/5/20
Rebounds		
11 vs. Wofford		11/6/19
Assists		
4 vs. Wofford		11/6/19
Blocks		
1 8x; last at Mississippi State		1/30/20
Steals		
3 2x; last vs. Tennessee		3/1/20
Field Goals		
7 vs. Arkansas		3/5/20
Field Goal Attempts		
9 vs. Arkansas		3/5/20
3-Point Field Goals		
3-Point FG Attempts		
1 at South Carolina		2/13/20
Free Throws		
6 vs. St. Joseph's		11/24/19
Free Throw Attempts		
8 vs. St. Joseph's		11/24/19

WHITE'S CAREER STATISTICS

Season	gp-gs	min/avg	Total		3-Point		F-Throws		Rebounds				Scoring							
			fg-fga	pct	fg-fga	pct	ft-fta	pct	off	def	tot	avg	pf	fo	ast	to	blk	stl	pts	avg
2018-19	29-0	199/6.9	15-39	.385	0-0	.000	8-14	.571	23	28	51	1.8	27	0	9	10	1	2	38	1.3
2019-20	29-14	532/18.3	43-75	.573	0-1	.000	29-56	.518	47	93	140	4.8	63	0	21	36	10	24	115	4.0
2020-21	1-0	4/4.0	0-2	.000	0-0	.000	0-0	.000	1	2	3	3.0	1	0	0	0	0	0	0	0.0
TOTAL	59-14	735/12.5	58-116	.500	0-1	.000	37-70	.529	71	123	194	3.3	91	0	30	46	11	26	153	2.6



Romi LEVY

#11

Freshman • Forward • 6-2

Herzliya, Israel

Hof Hasharon HS

- Had career-high 7 assists vs. Kentucky (1/21), most by an Auburn player so far in 2020-21
- Made second start at LSU, led team with 11 rebounds and 5 steals along with 8 points (12/31)
- Career-high 6 steals vs. Georgia (1/3)
- Career-high 12 points along with 5 rebounds in win over North Florida (12/17)
- Had 8 points, season-high 7 rebounds, and shared team lead with 3 assists vs. South Alabama (12/13)
- Made collegiate debut vs. USC Upstate (11/25); finished with 8 points, 3 rebounds, 2 assists, 2 steals
- Competed in 2018 U18 Women's European Championships with Israeli national team
- Helped lead team to bronze medal, scoring 14 points in win over Lithuania and 13 points vs. Albania
- Completed mandatory national service in Israel before enrolling at Auburn

SEASON/CAREER HIGHS

Points	13	at Ole Miss	1/7/21
Rebounds	11	at LSU	12/31/20
Assists	7	vs. Kentucky	1/21/21
Blocks	2	2x; last at Houston	12/5/20
Steals	6	vs. Georgia	1/2/21
Field Goals	6	at Ole Miss	1/7/21
Field Goal Attempts	12	at LSU	12/31/20
3-Point Field Goals	2	vs. USC Upstate	11/25/20
3-Point FG Attempts	5	at Ole Miss	1/7/21
Free Throws	2	2x; last vs. North Florida	12/17/20
Free Throw Attempts	2	4x; last vs. South Alabama	12/13/20

Opponent	Start	Min.	FG-A	3PT-A	FT-A	O-D-T	PF	Ast.	TO	Blk.	St.	Pts.
USC UPSTATE		19	3-5	2-4	0-2	0-3-3	0	2	0	0	2	8
SAMFORD		26	2-5	1-3	1-2	1-2-3	2	1	2	0	3	6
GARDNER-WEBB		17	4-6	1-1	0-2	0-2-2	1	1	2	2	2	9
at Houston	*	15	0-2	0-1	0-0	0-1-1	2	0	2	2	0	0
SOUTH ALABAMA		24	3-6	0-2	2-2	4-3-7	1	3	2	0	3	8
STEPHEN F. AUSTIN		16	0-1	0-0	0-0	0-1-1	2	1	1	1	1	0
NORTH FLORIDA		19	5-11	2-4	0-0	2-3-5	2	1	1	0	1	12
BELMONT		14	1-4	0-2	0-0	2-1-3	2	0	2	0	1	2
at LSU	*	31	4-12	0-2	0-0	4-7-11	2	2	5	1	5	8
GEORGIA	*	34	0-7	0-4	0-0	0-3-3	2	0	2	0	6	0
at Ole Miss	*	33	6-10	1-5	0-0	0-4-4	3	2	0	0	2	13
at Florida	*	24	1-10	0-6	0-0	0-3-3	1	1	0	0	0	2
KENTUCKY	*	23	2-6	1-2	0-2	1-3-4	1	7	1	0	1	5
at Alabama	*	25	4-7	0-1	0-0	2-1-3	1	1	1	0	1	8
TEXAS A&M	*	16	2-6	2-5	0-0	1-3-4	4	2	0	0	0	6
at Arkansas												
SOUTH CAROLINA												
at Georgia												
ALABAMA												
at Mississippi State												
VANDERBILT												
ARKANSAS												
at Tennessee												

LEVY'S CAREER STATISTICS

Season	gp-gs	min/avg	Total		3-Point		F-Throws		Rebounds				Scoring							
			fg-fga	pct	fg-fga	pct	ft-fa	pct	off	def	tot	avg	pf	fo	ast	to	blk	stl	pts	avg
2020-21	15-8	330/22.0	37-98	.378	10-42	.238	3-10	.300	17	40	57	3.8	26	0	24	21	6	28	87	5.8
TOTAL	15-8	330/22.0	37-98	.378	10-42	.238	3-10	.300	17	40	57	3.8	26	0	24	21	6	28	87	5.8



Kira LOWERY

#13

Junior • Guard • 5-6

Memphis, Tenn.

Southwind HS | Dyersburg State CC (Tenn.)

- Led Auburn with career-high 5 assists, 3 steals in win over North Florida (12/17)
- Scored 12 points with team-best 4 assists, hit clutch free throws in win over Samford (11/28)
- Earned start in first Division I game vs. USC Upstate (11/25); finished with 4 points, 5 rebounds, 4 assists in team-best 24 minutes
- Was a third-team NJCAA All-American in 2020 at Dyersburg State CC in Tennessee
- Ranked third nationally in scoring with 23.3 points/game; second in the nation in steals with 4.0 points/game
- Led DSCC to a 24-8 record and 3rd-place finish in Tennessee Community College Athletic Association; named TCCAA's top offensive player
- Played high school ball at Southwind High School in Memphis; scored over 1,000 career points

SEASON/CAREER HIGHS

Points	12	vs. Samford	11/28/20
Rebounds	5	vs. USC Upstate	11/25/20
Assists	5	vs. North Florida	12/17/20
Blocks	1	2x; last vs. North Florida	12/17/20
Steals	3	vs. North Florida	12/17/20
Field Goals	4	vs. Samford	11/28/20
Field Goal Attempts	7	vs. South Alabama	12/13/20
3-Point Field Goals	1	vs. Samford	11/28/20
3-Point FG Attempts	2	vs. Samford	11/28/20
Free Throws	4	vs. South Alabama	12/13/20
Free Throw Attempts	5	vs. South Alabama	12/13/20

Opponent	Start	Min.	FG-A	3PT-A	FT-A	O-D-T	PF	Ast.	TO	Blk.	St.	Pts.
USC UPSTATE	*	24	1-2	0-0	2-2	0-5-5	0	4	4	0	0	4
SAMFORD	*	24	4-6	1-2	3-4	0-0-0	0	4	1	0	2	12
GARDNER-WEBB	*	19	1-4	0-0	1-1	1-0-1	0	0	1	0	0	3
at Houston	*	21	1-3	0-1	0-0	0-1-1	0	0	3	0	1	2
SOUTH ALABAMA	*	28	3-7	0-0	4-5	1-1-2	1	0	2	0	2	10
STEPHEN F. AUSTIN	*	20	1-2	0-0	0-0	0-1-1	4	1	4	1	2	2
NORTH FLORIDA	*	18	0-0	0-0	2-2	0-0-0	0	5	3	1	3	2
BELMONT	*	15	0-0	0-0	0-0	0-1-1	2	3	4	0	0	0
at LSU		2	0-0	0-0	0-0	0-0-0	0	0	2	0	0	0
GEORGIA		13	1-1	0-0	1-3	0-1-1	0	1	5	0	0	3
at Ole Miss		12	0-1	0-0	0-0	0-1-1	2	1	0	0	0	0
at Florida						--DNP--						
KENTUCKY						--DNP--						
at Alabama		5	0-0	0-0	0-0	0-1-1	1	1	1	0	1	0
TEXAS A&M		5	0-0	0-0	0-0	0-1-1	0	1	0	0	0	0
at Arkansas												
SOUTH CAROLINA												
at Georgia												
ALABAMA												
at Mississippi State												
VANDERBILT												
ARKANSAS												
at Tennessee												

LOWERY'S CAREER STATISTICS (at Auburn)

Season	gp-gs	min/avg	Total		3-Point		F-Throws		Rebounds				Scoring							
			fg-fga	pct	fg-fga	pct	ft-fa	pct	off	def	tot	avg	pf	fo	ast	to	blk	stl	pts	avg
2020-21	13-8	205/15.8	12-26	.462	1-3	.333	13-17	.765	2	13	15	1.2	10	0	21	29	2	11	38	2.9
TOTAL	13-8	205/15.8	12-26	.462	1-3	.333	13-17	.765	2	13	15	1.2	10	0	21	29	2	11	38	2.9



Jala JORDAN

#14

Redshirt Sophomore • Forward • 6-2

Philadelphia, Pa.

IMG Academy (Fla.) | West Virginia

- Made first career start vs. South Alabama (12/13); had career-high 3 blocks along with 6 points, 5 rebounds, 2 assists
- Led Auburn with 4 assists vs. Gardner-Webb; also scored 11 points and had 5 rebounds (12/1)
- Tied for team lead with 16 points off the bench in season-opener vs. USC Upstate (11/25); was 4-6 on 3-pointers
- Sat out 2019-20 season per NCAA rules after transferring to Auburn from West Virginia in the 2019 offseason
- Appeared in 25 games as a freshman for WVU, averaging 1.7 points and 1.4 rebounds while playing 6.4 minutes/game
- Had season-high 6 points and 2 blocks at Texas Tech
- Rated No. 14 wing in class of 2018 by ESPN HoopGurlz
- Graduated from IMG Academy; also played at St. Francis (Ga.) HS, leading them to two GHSA state titles

SEASON HIGHS

Points	16	vs. USC Upstate	11/25/20
Rebounds	8	vs. North Florida	12/17/20
Assists	4	vs. Gardner-Webb	12/1/20
Blocks	3	vs. South Alabama	12/13/20
Steals	2	at Houston	12/5/20
Field Goals	5	2x; last vs. Gardner-Webb	12/1/20
Field Goal Attempts	14	vs. Georgia	1/2/21
3-Point Field Goals	4	vs. USC Upstate	11/25/20
3-Point FG Attempts	6	2x; last vs. South Alabama	12/13/20
Free Throws	5	at Houston	12/5/20
Free Throw Attempts	5	at Houston	12/5/20

Opponent	Start	Min.	FG-A	3PT-A	FT-A	O-D-T	PF	Ast.	TO	Blk.	St.	Pts.
USC UPSTATE		20	5-9	4-6	2-2	3-0-3	0	0	2	0	1	16
SAMFORD		13	3-4	1-2	1-2	2-2-4	3	0	1	1	0	8
GARDNER-WEBB		23	5-10	0-4	1-1	1-4-5	4	4	0	1	1	11
at Houston		26	4-11	0-4	5-5	2-3-5	5	1	3	1	2	13
SOUTH ALABAMA	*	24	2-8	1-6	1-2	1-4-5	4	2	4	3	0	6
STEPHEN F. AUSTIN	*	12	3-8	1-2	1-1	1-1-2	0	0	0	0	0	8
NORTH FLORIDA	*	20	3-10	2-4	2-4	2-6-8	3	0	1	2	1	11
BELMONT	*	14	0-5	0-2	0-0	2-1-3	1	0	3	0	1	0
at LSU	*	20	1-10	0-5	1-2	1-3-4	3	0	1	1	0	3
GEORGIA	*	18	4-14	1-5	0-1	1-0-1	3	0	3	1	0	9
at Ole Miss	*	27	2-5	0-3	0-2	1-3-4	3	1	1	0	0	4
at Florida		7	0-2	0-1	0-0	0-1-1	1	0	1	0	0	0
KENTUCKY		12	4-9	3-5	0-0	0-1-1	1	0	0	0	0	11
at Alabama		13	3-6	2-3	0-0	0-2-2	2	3	3	1	1	8
TEXAS A&M		4	0-2	0-1	0-0	0-0-0	2	0	0	0	0	0
at Arkansas												
SOUTH CAROLINA												
at Georgia												
ALABAMA												
at Mississippi State												
VANDERBILT												
ARKANSAS												
at Tennessee												

CAREER HIGHS (incl. 18-19 at WVU)

Points	16	vs. USC Upstate	11/25/20
Rebounds	8	vs. North Florida	12/17/20
Assists	4	vs. Gardner-Webb	12/1/20
Blocks	3	vs. South Alabama	12/13/20
Steals	2	2x; last at Houston	12/5/20
Field Goals	5	2x; last vs. Gardner-Webb	12/1/20
Field Goal Attempts	14	vs. Georgia	1/2/21
3-Point Field Goals	4	vs. USC Upstate	11/25/20
3-Point FG Attempts	6	2x; last vs. South Alabama	12/13/20
Free Throws	5	at Houston	12/5/20
Free Throw Attempts	5	at Houston	12/5/20

JORDAN'S CAREER STATISTICS

Season	gp-gs	min/avg	Total		3-Point		F-Throws		Rebounds				Scoring							
			fg-fga	pct	fg-fga	pct	ft-fga	pct	off	def	tot	avg	pf	fo	ast	to	blk	stl	pts	avg
2018-19*	27-0	163/6.0	14-40	.350	4-11	.364	11-16	.688	8	21	29	1.1	21	0	3	5	8	8	43	1.6
2020-21	15-7	249/16.6	39-113	.345	15-53	.283	15-22	.682	17	31	48	3.2	35	1	11	23	11	7	108	7.2
TOTAL	15-7	249/16.6	39-113	.345	15-53	.283	15-22	.682	17	31	48	3.2	35	1	11	23	11	7	108	7.2



Unique THOMPSON

#20

Senior • Forward • 6-3

****2020 AP Honorable Mention All-American****

Theodore, Ala.

****2020 All-SEC First Team****

Faith Academy

- Preseason All-SEC First Team (media & coaches); 2021 Katrina McClain Award watch list; 2021 Wooden Award Preseason Top 30 watch list
- 2nd in Auburn history with 1,051 career rebounds; Auburn all-time leader with 52 career double-doubles
- Missed first three SEC games for medical reasons; returned to action at Florida (1/17) with 14 points, 14 rebounds
- Leads SEC and ranks second nationally in rebounds (13.6/game); is SEC active leader and 2nd nationally in career rebounds (1,051)
- 10 double-doubles this season, 52 in her career (as of 1/24); is SEC and national leader in 2020-21 and active career double-doubles
- Had second 20-20 game of season with 20 points, 23 rebounds vs. Belmont (12/20); also grabbed 1,000th career rebound in game
- 26 points, 23 rebounds at Houston (12/5); first 20-20 game for Auburn since 2/17/1993 (Lauretta Freeman, 30 pts/21 rebs vs. Alabama)
- Career-high 5 steals vs. Samford (11/28) and South Alabama (12/13); added 4 more vs. Gardner-Webb (12/1)

SEASON HIGHS

Points	26	at Houston	12/5/20
Rebounds	23	2x; last vs. Belmont	12/20/20
Assists	4	at Florida	1/17/21
Blocks	2	2x; last vs. Kentucky	1/21/21
Steals	5	2x; last vs. South Alabama	12/13/20
Field Goals	10	at Houston	12/5/20
Field Goal Attempts	18	at Houston	12/5/20
3-Point Field Goals	1	vs. Texas A&M	1/28/21
3-Point FG Attempts	1	vs. Texas A&M	1/28/21
Free Throws	9	vs. South Alabama	12/13/20
Free Throw Attempts	10	vs. Samford	11/28/20

Opponent	Start	Min.	FG-A	3PT-A	FT-A	O-D-T	PF	Ast.	TO	Blk.	St.	Pts.
USC UPSTATE	*	22	7-9	0-0	2-2	4-3-7	3	0	1	0	2	16
SAMFORD	*	33	4-10	0-0	8-10	5-6-11	2	1	3	0	5	16
GARDNER-WEBB	*	20	9-12	0-0	3-4	5-7-12	2	0	1	0	4	21
at Houston	*	32	10-18	0-0	6-7	10-13-23	3	2	7	0	2	26
SOUTH ALABAMA	*	31	6-14	0-0	9-9	7-7-14	5	0	4	0	5	21
STEPHEN F. AUSTIN	*	34	3-9	0-0	5-8	3-11-14	3	1	1	2	4	11
NORTH FLORIDA	*	32	8-12	0-0	3-3	8-10-18	2	3	3	0	2	19
BELMONT	*	34	9-14	0-0	2-6	9-14-23	0	1	1	0	1	20
at LSU						--DNP--						
GEORGIA						--DNP--						
at Ole Miss						--DNP--						
at Florida	*	33	6-14	0-0	2-2	7-7-14	4	4	1	1	2	14
KENTUCKY	*	29	9-14	0-0	4-4	6-4-10	4	2	1	2	1	22
at Alabama	*	29	5-10	0-0	0-0	2-8-10	2	0	1	0	0	10
TEXAS A&M	*	36	7-10	1-1	3-3	3-4-7	3	0	6	0	3	18
at Arkansas												
SOUTH CAROLINA												
at Georgia												
ALABAMA												
at Mississippi State												
VANDERBILT												
ARKANSAS												
at Tennessee												

CAREER HIGHS

Points	31	at TCU	12/7/19
Rebounds	23	2x; last vs. Belmont	12/20/20
Assists	6	vs. Arkansas	1/5/20
Blocks	6	vs. Louisiana Tech	11/19/17
Steals	5	2x; last vs. South Alabama	12/13/20
Field Goals	12	at TCU	12/7/19
Field Goal Attempts	21	vs. Alabama	1/12/20
3-Point Field Goals	1	vs. Texas A&M	1/28/21
3-Point FG Attempts	1	vs. Texas A&M	1/28/21
Free Throws	10	at Ole Miss	1/31/19
Free Throw Attempts	12	at Ole Miss	1/31/19

THOMPSON'S CAREER STATISTICS

Season	gp-gs	min/avg	Total		3-Point		F-Throws		Rebounds				Scoring							
			fg-fga	pct	fg-fga	pct	ft-fta	pct	off	def	tot	avg	pf	fo	ast	to	blk	stl	pts	avg
2017-18	27-27	811/30.0	131-271	.483	0-0	.000	49-87	.563	112	115	227	8.4	63	0	28	66	21	32	311	11.5
2018-19	32-32	996/31.1	153-272	.563	0-0	.000	83-136	.610	143	187	330	10.3	71	1	35	63	20	57	389	12.2
2019-20	29-29	948/32.7	177-304	.582	0-0	.000	116-168	.690	128	203	331	11.4	63	0	51	81	12	48	470	16.2
2020-21	12-12	358/29.8	83-146	.568	1-1	1.000	47-58	.810	69	94	163	13.6	33	1	14	30	5	31	214	17.8
TOTAL	100-100	3113/31.1	544-993	.548	1-1	1.000	295-449	.657	452	599	1051	10.5	230	2	128	240	58	168	1384	13.8



Alaina RICE

#22

Sophomore • Guard • 5-8

Rockledge, Fla.

IMG Academy | Florida A&M

- Made first Auburn start at LSU, finished with 5 points, 5 rebounds, 2 assists (12/31)
- Season-high 9 points, 2 steals, first two Auburn 3-pointers in win over North Florida (12/17)
- Matched career-high, led team with 5 assists in Auburn debut vs. USC Upstate (11/25)
- Transferred from Florida A&M to Auburn in 2020 offseason; granted immediate eligibility by NCAA in November 2020
- Named MEAC Rookie of the Year in 2020 after averaging 10.3 points, 4.7 rebounds, 2.4 assists in 27 games as a freshman
- Scored in double-figures 17 times, including a career-high 22 points at Howard

SEASON HIGHS

Points	13	vs. Texas A&M	1/28/21
Rebounds	5	at LSU	12/31/20
Assists	5	2x; last vs. Texas A&M	1/28/21
Blocks			

Opponent	Start	Min.	FG-A	3PT-A	FT-A	O-D-T	PF	Ast.	TO	Blk.	St.	Pts.
USC UPSTATE		16	1-5	0-1	2-2	3-1-4	0	5	2	0	0	4
SAMFORD		11	0-1	0-0	1-2	2-0-2	0	1	1	0	0	1
GARDNER-WEBB		6	0-1	0-0	0-0	0-1-1	1	0	1	0	0	0
at Houston		3	0-1	0-0	0-0	0-0-0	0	0	0	0	0	0
SOUTH ALABAMA						--DNP--						
STEPHEN F. AUSTIN		20	0-3	0-1	4-4	0-0-0	4	1	6	0	1	4
NORTH FLORIDA		17	3-6	2-4	1-2	0-0-0	1	1	0	0	2	9
BELMONT		19	0-5	0-2	0-0	1-1-2	1	3	0	0	0	0
at LSU	*	24	2-6	1-1	0-0	4-1-5	3	2	4	0	1	5
GEORGIA	*	19	1-5	0-0	1-2	2-2-4	1	0	5	0	0	3
at Ole Miss	*	14	1-4	0-2	0-0	1-2-3	0	1	4	0	1	2
at Florida						--DNP--						
KENTUCKY		22	2-5	0-0	2-3	1-2-3	1	0	1	0	1	6
at Alabama		24	4-9	1-3	0-0	1-1-2	1	2	2	0	2	9
TEXAS A&M	*	32	5-11	3-7	0-0	0-3-3	3	5	1	0	2	13
at Arkansas												
SOUTH CAROLINA												
at Georgia												
ALABAMA												
at Mississippi State												
VANDERBILT												
ARKANSAS												
at Tennessee												

Steals	2	3x; last vs. Texas A&M	1/28/21
Field Goals	5	vs. Texas A&M	1/28/21
Field Goal Attempts	11	vs. Texas A&M	1/28/21
3-Point Field Goals	3	vs. Texas A&M	1/28/21
3-Point FG Attempts	7	vs. Texas A&M	1/28/21
Free Throws	4	vs. SFA	12/16/20
Free Throw Attempts	4	vs. SFA	12/16/20

CAREER HIGHS (incl. 19-20 at FAMU)

Points	22	at Howard	1/25/20
Rebounds	11	at S.C. State	1/18/20
Assists	5	3x; last vs. Texas A&M	1/28/21
Blocks	2	at Howard	1/25/20
Steals	5	vs. Coppin State	1/13/20
Field Goals	7	at Bethune-Cookman	3/5/20
Field Goal Attempts	17	vs. Morgan State	1/11/20
3-Point Field Goals	5	at UMES	2/17/20
3-Point FG Attempts	8	at Howard	1/25/20
Free Throws	8	at Howard	1/25/20
Free Throw Attempts	15	at Howard	1/25/20

RICE'S CAREER STATISTICS

Season	gp-gs	min/avg	Total		3-Point		F-Throws		Rebounds				Scoring							
			fg-fga	pct	fg-fga	pct	ft-fta	pct	off	def	tot	avg	pf	fo	ast	to	blk	stl	pts	avg
2019-20*	27-23	731/27.1	91-286	.318	34-106	.321	63-99	.636	41	85	126	4.7	64	1	64	142	6	43	279	10.3
2020-21	13-4	224/17.2	19-62	.306	7-21	.333	11-15	.733	15	14	29	2.2	16	0	19	30	0	10	56	4.3
TOTAL	13-4	224/17.2	19-62	.306	7-21	.333	11-15	.733	15	14	29	2.2	16	0	19	30	0	10	56	4.3
All*	40-27	955/23.9	110-348	.316	41-127	.323	74-114	.649	56	99	155	3.9	80	1	83	172	6	53	335	8.4



Honesty SCOTT-GRAYSON

#23

RS Sophomore • Guard • 5-8

Brick, N.J.

Paul VI HS | Baylor

- Career-high 23 points at Ole Miss (1/7)
- Scored 16 points in back-to-back games vs. SFA and North Florida (12/16-17)
- 14 points, 7 rebounds, 5 steals in win over Gardner-Webb (12/1)
- Scored 7 points in Auburn debut vs. USC Upstate (11/25)
- Sat out the 2019-20 season under NCAA rules after transferring to Auburn from Baylor
- Played in 28 games as a freshman at Baylor, averaging 6.9 minutes/game, 2.5 points, 0.9 rebounds, 0.9 assists
- 2018 McDonald's All-American & 2018 Jordan Brand Classic All-American
- Ranked as No. 20 overall player and No. 3 guard by ESPN out of high school

SEASON HIGHS

Points	23	at Ole Miss	1/7/21
Rebounds	9	at LSU	12/31/20
Assists	4	2x; last at Alabama	1/24/21
Blocks	1	at LSU	12/31/20
Steals	5	2x; last at Alabama	1/24/21
Field Goals	9	at Ole Miss	1/7/21
Field Goal Attempts	16	4x; last at Alabama	1/24/21
3-Point Field Goals	4	vs. Texas A&M	1/28/21
3-Point FG Attempts	8	vs. Texas A&M	1/28/21
Free Throws	7	at Alabama	1/24/21
Free Throw Attempts	8	at Alabama	1/24/21

Opponent	Start	Min.	FG-A	3PT-A	FT-A	O-D-T	PF	Ast.	TO	Blk.	St.	Pts.
USC UPSTATE	*	17	3-8	0-0	1-1	0-1-1	0	2	1	0	1	7
SAMFORD	*	25	2-12	1-5	0-0	0-0-0	1	1	0	0	2	5
GARDNER-WEBB	*	21	6-13	0-1	2-5	2-5-7	3	3	0	0	5	14
at Houston	*	25	1-3	0-0	2-4	0-3-3	2	1	2	0	2	4
SOUTH ALABAMA	*	24	1-8	1-3	1-2	0-3-3	4	0	2	0	0	4
STEPHEN F. AUSTIN	*	25	7-16	1-5	1-3	1-2-3	3	2	4	0	2	16
NORTH FLORIDA	*	31	6-15	0-2	4-5	0-2-2	3	1	3	0	3	16
BELMONT	*	31	6-13	1-4	5-7	3-1-4	2	4	5	0	3	18
at LSU	*	34	4-12	0-0	0-0	2-7-9	3	2	1	1	2	8
GEORGIA	*	16	2-5	0-0	2-2	1-3-4	2	1	0	0	1	6
at Ole Miss	*	29	9-16	3-5	2-2	1-4-5	4	2	4	0	3	23
at Florida	*	31	6-14	2-5	4-4	1-4-5	1	2	1	0	2	18
KENTUCKY	*	29	4-16	0-4	2-2	2-6-8	4	1	3	0	3	10
at Alabama	*	34	5-16	0-4	7-8	0-3-3	1	4	1	0	5	17
TEXAS A&M	*	36	8-15	4-8	1-2	1-3-4	3	3	3	0	3	21
at Arkansas												
SOUTH CAROLINA												
at Georgia												
ALABAMA												
at Mississippi State												
VANDERBILT												
ARKANSAS												
at Tennessee												

CAREER HIGHS (incl. 18-19 at Baylor)

Points	23	at Ole Miss	1/7/21
Rebounds	9	at LSU	12/31/20
Assists	5	vs. St. Francis	11/8/18
Blocks	1	2x; last at LSU	12/31/20
Steals	5	2x; last at Alabama	1/24/21
Field Goals	9	at Ole Miss	1/7/21
Field Goal Attempts	16	4x; last at Alabama	1/24/21
3-Point Field Goals	4	vs. Texas A&M	1/28/21
3-Point FG Attempts	8	vs. Texas A&M	1/28/21
Free Throws	7	at Alabama	1/24/21
Free Throw Attempts	8	at Alabama	1/24/21

SCOTT-GRAYSON'S CAREER STATISTICS

Season	gp-gs	min/avg	Total		3-Point		F-Throws		Rebounds				Scoring							
			fg-fga	pct	fg-fga	pct	ft-fta	pct	off	def	tot	avg	pf	fo	ast	to	blk	stl	pts	avg
2018-19*	29-0	193/6.7	25-51	.490	5-11	.455	19-26	.731	10	15	25	0.9	26	1	24	24	3	9	74	2.6
2020-21	15-15	407/27.1	70-182	.385	13-46	.283	34-47	.723	14	47	61	4.1	35	0	29	30	1	37	187	12.5
TOTAL	15-15	407/27.1	70-182	.385	13-46	.283	34-47	.723	14	47	61	4.1	35	0	29	30	1	37	187	12.5
All*	44-15	600/13.6	95-233	.408	18-57	.316	53-73	.726	24	62	86	2.0	61	1	53	54	4	46	261	5.9



Carsen McFADDEN

#24

Freshman • Guard • 5-7

Fairview, Texas

Lovejoy HS

- Played 9 minutes vs. South Alabama; scored first 3 collegiate points and shared team lead with 3 assists (12/13)
- Made Auburn debut vs. USC Upstate (11/25); pulled down a rebound in final minute of game
- Joined Auburn as a walk-on in the summer of 2020
- All-state selection at Lovejoy HS as a senior and two-year team captain
- Owns high school records for rebounds in a single game (19), season (340) and career (1,047) and steals in a game (15), season (145) and career (418)
- Also competed in track & field
- Has a twin sister, Claire, who also attends Auburn

SEASON/CAREER HIGHS

Points	3	vs. South Alabama	12/13/20
Rebounds	1	3x; last at Florida	1/17/21
Assists	3	vs. South Alabama	12/13/20
Blocks			
Steals	1	vs. North Florida	12/17/20
Field Goals	1	vs. South Alabama	12/13/20
Field Goal Attempts	2	vs. South Alabama	12/13/20
3-Point Field Goals			
3-Point FG Attempts			
Free Throws	1	vs. South Alabama	12/13/20
Free Throw Attempts	2	vs. South Alabama	12/13/20

Opponent	Start	Min.	FG-A	3PT-A	FT-A	O-D-T	PF	Ast.	TO	Blk.	St.	Pts.
USC UPSTATE		1	0-0	0-0	0-0	0-1-1	0	0	0	0	0	0
SAMFORD						--DNP--						
GARDNER-WEBB		2	0-0	0-0	0-0	1-0-1	0	1	0	0	0	0
at Houston						--DNP--						
SOUTH ALABAMA		9	1-2	0-0	1-2	0-0-0	0	3	0	0	0	3
STEPHEN F. AUSTIN						--DNP--						
NORTH FLORIDA		2	0-1	0-0	0-0	0-0-0	0	0	0	0	1	0
BELMONT						--DNP--						
at LSU						--DNP--						
GEORGIA		4	0-0	0-0	0-0	0-0-0	0	0	1	0	0	0
at Ole Miss						--DNP--						
at Florida		2	0-0	0-0	0-0	1-0-1	0	0	0	0	0	0
KENTUCKY						--DNP--						
at Alabama						--DNP--						
TEXAS A&M						--DNP--						
at Arkansas												
SOUTH CAROLINA												
at Georgia												
ALABAMA												
at Mississippi State												
VANDERBILT												
ARKANSAS												
at Tennessee												

McFADDEN'S CAREER STATISTICS

Season	gp-gs	min/avg	Total		3-Point		F-Throws		Rebounds				Scoring							
			fg-fga	pct	fg-fga	pct	ft-fa	pct	off	def	tot	avg	pf	fo	ast	to	blk	stl	pts	avg
2020-21	6-0	21/3.5	1-3	.333	0-0	.000	1-2	.500	2	1	3	0.5	0	0	4	1	0	1	3	0.5
TOTAL	6-0	21/3.5	1-3	.333	0-0	.000	1-2	.500	2	1	3	0.5	0	0	4	1	0	1	3	0.5



Morgan ROBINSON-NWAGWU

#30

Sophomore • Guard • 5-8

Norcross, Ga.

Norcross HS

- Scored career-high 9 points in first career start at Florida (1/17)
- Missed 3 games with ankle injury suffered in pregame warmups at Houston; returned to action vs. North Florida
- Career-high 4 steals; tied career-high with 6 points, 4 rebounds off the bench vs. USC Upstate (11/25)
- Played in all 29 games as a freshman; averaged 1.3 points, 1.3 rebounds, 1.5 assists, 0.7 steals in 10.9 minutes/game
- Scored season-high 6 points vs. Bethune-Cookman (12/15) and Florida (1/9)
- Season-high 4 rebounds twice, vs. ODU (11/14) and vs. Alabama (1/12)
- Recorded 3 rebounds, 2 assists, 2 steals at Missouri (2/27)
- Season-high 4 assists at TCU (12/7)
- Ranked as No. 28 guard nationally by ESPN HoopGurlz; first-team all-state selection at Norcross HS by Atlanta Journal-Constitution

SEASON HIGHS

Points	9	at Florida	1/17/21
Rebounds	4	vs. USC Upstate	11/25/20
Assists	6	at Ole Miss	1/7/21
Blocks	1	at LSU	12/31/20
Steals	4	vs. USC Upstate	11/25/20
Field Goals	3	vs. USC Upstate	11/25/20
Field Goal Attempts	6	at Florida	1/17/21
3-Point Field Goals	1	at Florida	1/17/21
3-Point FG Attempts	3	at Florida	1/17/21
Free Throws	4	at Florida	1/17/21
Free Throw Attempts	5	at Florida	1/17/21

Opponent	Start	Min.	FG-A	3PT-A	FT-A	O-D-T	PF	Ast.	TO	Blk.	St.	Pts.
USC UPSTATE		17	3-5	0-1	0-0	0-4-4	1	2	1	0	4	6
SAMFORD		9	0-1	0-1	0-0	0-0-0	1	1	2	0	1	0
GARDNER-WEBB		10	1-3	0-0	0-0	0-2-2	1	2	1	0	1	2
at Houston						--DNP--						
SOUTH ALABAMA						--DNP--						
STEPHEN F. AUSTIN						--DNP--						
NORTH FLORIDA		6	0-1	0-1	0-0	0-1-1	0	2	1	0	0	0
BELMONT		6	0-1	0-1	0-0	0-1-1	0	1	2	0	1	0
at LSU		13	0-2	0-1	0-0	0-0-0	1	0	2	1	0	0
GEORGIA		9	1-1	0-0	0-0	0-1-1	1	0	3	0	1	2
at Ole Miss		13	0-1	0-0	2-2	0-0-0	0	6	2	0	3	2
at Florida	*	31	2-6	1-3	4-5	1-2-3	2	2	6	0	1	9
KENTUCKY	*	18	1-4	0-1	2-2	1-1-2	0	2	4	0	0	4
at Alabama	*	11	0-2	0-1	0-0	0-1-1	0	1	1	0	0	0
TEXAS A&M		2	0-1	0-0	0-0	0-0-0	0	0	2	0	0	0
at Arkansas												
SOUTH CAROLINA												
at Georgia												
ALABAMA												
at Mississippi State												
VANDERBILT												
ARKANSAS												
at Tennessee												

CAREER HIGHS

Points	9	at Florida	1/17/21
Rebounds	4	3x; last vs. USC Upstate	11/25/20
Assists	6	at Ole Miss	1/7/21
Blocks	1	3x; last at LSU	12/31/20
Steals	4	vs. USC Upstate	11/25/20
Field Goals	3	2x; last vs. USC Upstate	11/25/20
Field Goal Attempts	12	vs. Florida	1/9/20
3-Point Field Goals	1	3x; last at Florida	1/17/21
3-Point FG Attempts	5	vs. Florida	1/9/20
Free Throws	4	at Florida	1/17/21
Free Throw Attempts	5	at Florida	1/17/21

ROBINSON-NWAGWU'S CAREER STATISTICS

Season	gp-gs	min/avg	Total		3-Point		F-Throws		Rebounds				Scoring							
			fg-fga	pct	fg-fga	pct	ft-fa	pct	off	def	tot	avg	pf	fo	ast	to	blk	stl	pts	avg
2019-20	29-0	314/10.8	13-64	.203	2-10	.200	11-21	.524	13	25	38	1.3	32	1	44	46	2	19	39	1.3
2020-21	12-3	146/12.2	8-28	.286	1-10	.100	8-9	.889	2	13	15	1.3	7	0	19	27	1	12	25	2.1
TOTAL	41-3	460/11.2	21-92	.228	3-20	.150	19-30	.633	15	38	53	1.3	39	1	63	73	3	31	64	1.6

Game 1: Nov. 25, 2020
Auburn 82, USC Upstate 41
Auburn Arena
Auburn, Ala.

Official Basketball Box Score - Game Totals - Final Statistics
 USC Upstate vs Auburn
 11/25/20 6:00 pm at Auburn, AL

USC Upstate 41 • 0-1,0-0 Big Six

#	Player	Total		3-Ptr		Rebounds		PF	TP	A	TO	Bk	Stl	Min
		FG	FGA	FT	FTA	Off	Def							
27	Marnicha Prudent	1	2-7	0-0	6-6	1	9	10	0	3	0	2	32	
23	Michaela Gibbons	1	1-5	0-1	0-0	0	1	2	0	2	0	0	13	
01	Denisha Wilson	4	0-7	0-2	0-0	0	0	2	0	1	5	0	32	
05	Molly McCutcheon	4	2-7	2-6	0-0	0	0	2	6	5	2	0	32	
15	Anda Kuzmina	4	0-2	0-1	0-0	0	1	1	0	2	1	0	17	
00	Dakota McCaughan	5	1-11	5-11	0-0	0	0	2	15	5	6	0	30	
03	Gift Sampson	1	2-0	0-0	0	1	1	0	2	0	1	0	2	
23	Lillian Flantos	2-5	0-0	0-0	2	3	5	2	4	0	3	0	1	26
25	Maya Timberlake	0-1	0-0	0-0	1	1	3	0	2	0	0	0	11	
04	Molly Coleman	1-2	0-0	0-0	2	1	1	2	0	0	0	0	5	
Team														
Totals			14-49	7-21	6-6	5	21	46	19	41	13	25	0	9

1st FG %: 1-0 0.0% 2nd: 3-11 28.2% 3rd: 7-15 46.7% 4th: 4-13 30.8% Games: 14-49 28.6% Deadball
 3FG %: 0-0 0.0% 2nd: 0-0 0.0% 3rd: 5-7 71.4% 4th: 2-2 100.0% Rebounds: 0
 FT %: 0.0 0.0% 2-2 100.0%

Auburn 82 • 1-0,0-0 SEC

#	Player	Total		3-Ptr		Rebounds		PF	TP	A	TO	Bk	Stl	Min
		FG	FGA	FT	FTA	Off	Def							
20	Unique Thompson	1	7-9	0-0	2-2	4	3	7	3	16	0	1	0	22
03	Annie Hughes	4	0-1	0-0	0	1	0	1	0	0	0	0	0	10
05	Aicha Coulibaly	4	2-8	0-2	0	1	5	6	2	4	2	2	1	19
13	Kira Lowery	4	1-2	0-0	2-2	0	5	5	0	4	4	4	0	24
23	H. Scott-Grayson	4	3-8	0-0	1-1	0	1	1	0	7	2	1	0	17
00	Alycia Reese	0-1	0-1	0-0	4-4	0	1	1	4	0	0	0	0	4
01	Keya Patton	2-6	1-2	1-2	2	3	5	0	6	1	1	0	2	18
02	Sania Wells	3-6	1-3	0-0	0	0	0	0	7	1	0	0	0	12
04	Riley Donahue	0-0	0-0	0-0	0	0	0	0	0	0	0	0	0	1
11	Romi Levy	2-4	0-2	0-0	3	3	0	0	0	2	0	0	2	19
14	Jala Jordan	5-9	4-6	2-2	3	0	3	0	16	2	0	1	20	
22	Alaina Rice	1-5	0-1	2-2	3	4	4	0	4	5	2	0	0	16
24	Carsen McFadden	0-0	0-0	0-0	0	1	1	0	0	0	0	0	0	1
30	M. Robinson-Nwagwu	3-5	0-1	0-0	1	4	4	1	6	2	1	0	4	17
Team														
Totals			30-65	8-20	14-17	15	30	45	7	82	19	14	1	13

1st FG %: 6-15 40.0% 2nd: 8-19 42.1% 3rd: 8-19 42.1% 4th: 8-16 50.0% Games: 30-65 46.2% Deadball
 3FG %: 2-5 40.0% 2nd: 4-9 44.4% 3rd: 4-10 40.0% 4th: 3-6 50.0% Rebounds: 2
 FT %: 2-2 100.0%

Officials: Ashlee Goode,Kylie Galloway,Michael McConnell
 Technical fouls: USC: Upstate-None, Auburn-None.
 Attendance: 588

2020-21 Women's Basketball. Round: 0. Auburn vs USC Upstate. Played at Auburn

Score by periods	1st	2nd	3rd	4th	Total
USC Upstate	2	23	9	9	41
Auburn	16	24	23	19	82

Last FG - USC: 4th-00:15, AU: 4th-01:32.
 Largest lead - USC: 11-09:25, AU: 16-3rd-09:03.
 SU led for 00:37, AU led for 37:54. Game was tied for 01:29.

Score tied - 1 time.
 Lead changed - 0 times.

Last FG - GW: 4th-01:12, AU: 4th-00:19.
 Largest lead - GW: 5-13:09:25, AU: 36-4th-00:19.
 GW led for 01:37, AU led for 37:46. Game was tied for 00:35.

AUBURN-- The new-look Auburn women's basketball team showcased its depth, speed and balance in their season-opener, running away with an 82-41 win over USC Upstate Wednesday night at Auburn Arena.

All 14 players on the roster saw action for the Tigers (1-0), 11 of the 14 found the scoresheet, and 12 players grabbed at least one rebound. Auburn's trademark defense was back, too, turning 25 USC Upstate (0-1) turnovers into 21 points.

Senior Unique Thompson and redshirt sophomore Jala Jordan shared the team lead with 16 points apiece. Thompson also pulled down seven rebounds to lead the Tigers, but the Tigers' 45 rebounds were spread amongst 13 players as Auburn did a great job crashing the boards.

Auburn's newcomers made an immediate impact. Along with Jordan's 16 points and three rebounds, freshman Romi Levy turned some heads with eight points, three rebounds, two assists and two steals. Sophomore transfer Honesty Scott-Grayson finished with seven points and two assists in her Auburn debut. And fellow newcomers Keya Patton, Kira Lowery, Aicha Coulibaly, Alaina Rice and Alycia Reese all found their way onto the scoresheet. Rice was the team's assist leader with five on the night, and Coulibaly had Auburn's only blocked shot.

Among the returners, sophomore Morgan Robinson-Nwagwu matched a career-high with six points along with four rebounds and a team-leading four steals, a career-best. And Sania Wells finished with seven points, one shy of her career-high.

As a team, Auburn shot 46.2 percent from the floor (30-65) and hit 8-of-20 3-point attempts (40%). The Tigers also knocked down 12-of-17 attempts at the line (82.4%). The Tigers outrebounded the Spartans 45-26.

Auburn never trailed, jumping out to a 16-0 lead before the Spartans got on the board late in the first quarter to make it 16-2 after one period. That lead would balloon to 31 points at the end of the first half as the Tigers led 40-9; it's the first time Auburn has held an opponent to single digits since the 2016-17 season when Jacksonville scored just eight in the opening 20 minutes.

Game 2: Nov. 28, 2020
Auburn 66, Samford 64
Auburn Arena
Auburn, Ala.

Official Basketball Box Score - Game Totals - Final Statistics
 Samford vs Auburn
 11/28/20 6:00 pm at Auburn, AL

Samford 64 • 0-2,0-0 SoCon

#	Player	Total		3-Ptr		Rebounds		PF	TP	A	TO	Bk	Stl	Min
		FG	FGA	FT	FTA	Off	Def							
44	Annie Ramil	1	2-7	0-0	0-0	0	6	6	3	4	3	4	0	24
46	Natalia Armstrong	4	5-7	0-1	0-0	2	4	6	5	10	0	1	2	26
03	Shauntal Allen	4	8-12	2-6	1-2	1	3	4	0	19	1	6	0	40
21	Katie Eatten	4	6-11	6-10	3-4	1	5	6	1	21	2	2	0	35
22	Raven Omar	4	4-8	0-2	1-2	1	2	3	5	9	8	5	0	37
12	Malory Hampton	0-1	0-1	0-0	0	1	2	0	0	1	0	0	0	8
33	Makaila Woolard	0-2	0-2	1-2	0	3	3	1	0	1	0	0	0	20
Team														
Totals			25-48	8-22	6-10	7	25	32	19	64	14	21	2	7

1st FG %: 3-11 27.3% 2nd: 4-9 44.4% 3rd: 5-13 38.5% 4th: 8-15 53.3% Games: 25-48 52.1% Deadball
 3FG %: 2-5 40.0% 2nd: 0-2 0.0% 3rd: 1-4 25.0% 4th: 5-11 45.5% Rebounds: 0
 FT %: 0.0 0.0% 2-4 50.0%

Auburn 66 • 2-0,0-0 SEC

#	Player	Total		3-Ptr		Rebounds		PF	TP	A	TO	Bk	Stl	Min
		FG	FGA	FT	FTA	Off	Def							
20	Unique Thompson	1	4-10	0-0	8-10	5	6	11	2	16	1	3	0	33
03	Annie Hughes	4	2-7	0-0	1-3	1	0	1	2	5	1	1	0	20
05	Aicha Coulibaly	4	2-5	0-0	0-0	2	2	4	1	4	1	0	0	15
13	Kira Lowery	4	4-6	1-2	3-4	0	0	0	0	12	4	1	0	24
23	H. Scott-Grayson	4	2-12	1-5	0-0	0	0	1	5	1	0	0	2	26
01	Keya Patton	0-0	0-0	0-0	0-0	0	0	0	0	0	0	0	0	0
02	Sania Wells	0-0	0-0	0-0	0-0	0	0	0	0	0	0	0	0	4
11	Romi Levy	2-5	1-3	1-2	1	2	3	2	6	1	2	0	3	25
14	Jala Jordan	3-4	1-2	1-2	2	2	4	3	8	0	1	1	0	13
22	Alaina Rice	0-1	0-0	1-2	2	2	0	0	1	1	1	0	0	10
30	M. Robinson-Nwagwu	0-1	0-1	0-0	0	0	0	1	0	1	2	0	1	10
Team														
Totals			22-60	7-25	18-23	18	15	33	14	66	11	12	1	14

1st FG %: 4-12 33.3% 2nd: 6-19 31.6% 3rd: 4-14 28.6% 4th: 4-15 26.7% Games: 22-60 36.7% Deadball
 3FG %: 5-7 71.4% 1-6 16.7% 2-5 40.0% 1-5 20.0% Rebounds: 0
 FT %: 1-2 50.0%

Officials: Sal'Eshe Maggie-Tiemann,Felicia Brunker
 Technical fouls: Samford-None, Auburn-None.
 Attendance: 540

2020-21 Women's Basketball. Round: 0. Auburn vs Samford. Played at Auburn Area

Score by periods	1st	2nd	3rd	4th	Total
Samford	16	10	16	22	64
Auburn	22	16	12	16	66

Last FG - SU: 4th-00:07, AU: 4th-00:56.
 Largest lead - SU: 9-15:09:05, AU: 16-3rd-09:03.
 SU led for 00:37, AU led for 37:54. Game was tied for 01:29.

Score tied - 1 time.
 Lead changed - 3 times.

Last FG - GW: 4th-01:12, AU: 4th-00:19.
 Largest lead - GW: 5-13:09:25, AU: 36-4th-00:19.
 GW led for 01:37, AU led for 37:46. Game was tied for 00:35.

AUBURN-- Senior Unique Thompson picked up her first double-double of the season, and Auburn was able to fend off a late 3-point flurry from Samford to pick up a 66-64 win Saturday night at Auburn Arena.

The Tigers (2-0) led by as many as 16 early in the second half. But Samford (0-2) chipped away over the final 20 minutes - led by five 3-pointers from the Bulldogs' Katie Eatten in the fourth quarter, three of them in the final 79 seconds - to put major pressure on the Tigers.

A pair of key shots from redshirt sophomore Jala Jordan kept the Bulldogs at bay, and clutch free throws from Thompson and junior Kira Lowery secured the win as Samford missed a final 3-point heave at the buzzer.

Thompson led Auburn with 16 points for the second straight game and pulled down 11 rebounds for her first double-double of the season and 43rd of her career. She also led the Tigers with five steals. Lowery added 12 points on 4-of-6 shooting and had a team-leading four assists in her second game as a Tiger. She also added a pair of steals.

The Tigers led 22-16 after one on the strength of hitting five of their first seven 3-point attempts of the night. But they would only make 2-of-18 from long range the rest of the way. Crashing the offensive glass in the second quarter helped pad the lead to 38-26 at the break.

It would be 42-26 less than a minute into the third on back-to-back buckets from Lowery, but from there, Auburn began to cool as Samford heated up. The Tigers saw their lead shrink to 50-42 at the end of three, then an 8-4 Bulldog run over the first three minutes of the fourth cut it to 54-50.

Auburn would make just two more field goals the rest of the way - both clutch shots from Jordan in the final three minutes. Her second, a 3-pointer with under a minute to play, pushed the lead to five at 61-56. From there, Allen sank two treys in a 10-second stretch, sandwiched around four free throws from Thompson and Lowery, to make it a 1-point game at 65-64. Lowery was fouled again, made one of two, and a long-range heave from Samford's Makaila Woolard was off the mark.

Game 3: Dec. 1, 2020
Auburn 97, Gardner-Webb 61
Auburn Arena
Auburn, Ala.

Official Basketball Box Score - Game Totals - Final Statistics
 Gardner-Webb vs Auburn
 12/01/20 6:00 pm at Auburn, AL

Gardner-Webb 61 • 0-2,0-0 Big Six

#	Player	Total		3-Ptr		Rebounds		PF	TP	A	TO	Bk	Stl	Min
		FG	FGA	FT	FTA	Off	Def							
34	Alexis Hueston	1	1-7	1-3	0-0	0	4	2	3	0	2	0	0	23
24	Lyrisia Deans	4	2-3	0-0	0-0	1	0	1	3	4	1	0	1	14
01	Ki'Ani Cain	4	1-11	3-8	2-2	0	1	1	3	13	4	3	0	34
12	Jessyka Williams	4	2-10	1-6	2-3	0	6	6	2	7	3	5	1	31
00	Alasia Smith	4	3-6	1-4	3-5	3	7	3	10	0	0	0	0	17
00	Micahna Funderburk	4	1-2	1-1	0-0	0	0	0	0	0				

Game 7: Dec. 17, 2020
Auburn 94, North Florida 81
Auburn Arena
Auburn, Ala.

Official Basketball Box Score - Game Totals - Final Statistics

North Florida vs Auburn
 12/17/20 6:00 pm at Auburn, AL

North Florida 81 • 2-4-0-0 ASUN

#	Player	Total		3-Ptr		Rebounds		PF	TP	A	To	Bk	Stl	Min	
		FG	FGA	FT	FTA	Off	Def								Total
11	Jazz Bond	10	18	2	6	1	2	7	9	3	23	1	5	0	36
14	Erin Jones	4	5	1	2	0	0	5	5	0	9	2	2	0	32
40	Emma Broermann	1	3	0	0	0	0	3	2	1	1	0	0	11	
4	Marissa Mackins	4	14	2	0	2	2	12	8	5	0	3	3	39	
13	Rhettua Moore	9	16	4	8	0	1	9	10	4	22	3	8	0	39
00	Elise Harden	1	1	0	2	4	0	2	4	0	0	1	0	9	
01	Nubia Bendeeth	3	8	1	5	0	0	2	11	2	0	0	2	33	
23	Summah Evans	0	0	0	0	0	0	0	0	0	0	0	0	1	
	Team														
	Totals	32	65	10	31	7	8	5	29	34	81	17	22	0	8

1st FG %:	7-17	41.2%	2nd:	7-13	53.8%	3rd:	2-16	43.8%	4th:	11-19	57.9%	Game:	32-65	49.2%	Deatball	
3Pt %:	2-8	25.0%	FT %:	5-12	41.7%	Rebounds:	15	20.0%	10-31	32.3%	Rebounds					
FT %:	0-1	0.0%	0-0	0.0%	2-2	100.0%	0-0	0.0%	7-8	87.5%	0					

Auburn 94 • 5-2-0-0 SEC

#	Player	Total		3-Ptr		Rebounds		PF	TP	A	To	Bk	Stl	Min	
		FG	FGA	FT	FTA	Off	Def								Total
14	Jala Jordan	3	10	2	4	3	6	3	11	0	1	2	1	17	
20	Unique Thompson	8	12	0	0	3	3	8	10	18	2	19	3	3	28
03	Annie Hughes	9	16	3	8	0	4	3	7	17	1	1	0	30	
13	Kira Lowery	6	0	0	2	0	0	0	0	0	5	3	1	3	16
23	H. Scott-Grayson	6	15	0	2	4	5	0	2	1	3	0	3	29	
01	Keya Patton	0	0	0	0	0	0	1	0	0	2	0	0	25	
02	Sania Wells	2	5	2	4	0	0	0	0	1	6	2	0	8	
05	Aicha Coulibaly	0	3	0	1	2	0	2	0	0	0	0	0	8	
11	Romi Levy	5	24	2	4	0	0	2	12	1	1	0	1	18	
22	Alaina Rice	3	6	2	2	0	0	0	1	9	1	0	0	21.5	
24	Carsen McFadden	0	1	0	0	0	0	0	0	0	0	0	0	1	
30	M. Robinson-Nwagwu	0	1	0	1	0	0	0	0	2	1	0	0	4	
	Team														
	Totals	34	80	11	28	15	18	19	29	48	16	94	16	15	3

1st FG %:	9-18	50.0%	2nd:	7-25	28.0%	3rd:	9-20	45.0%	4th:	6-17	35.3%	Game:	34-80	42.5%	Deatball	
3Pt %:	6-7	85.7%	FT %:	3-3	100.0%	Rebounds:	12	22.0%	11-28	39.3%	Rebounds					
FT %:	0-1	0.0%	0-0	0.0%	2-2	100.0%	0-0	0.0%	15-18	83.3%	1					

Officials: Kristen Bell, Bianca Burns, Felicia Grinter

Technical fouls: North Florida-None, Auburn-None.

Attendance: 469

2020-21 Women's Basketball, Round: 0, Auburn vs North Florida, Played at Auburn

Score by periods	1st				2nd				3rd				4th				Total
	1st	2nd	3rd	4th	1st	2nd	3rd	4th	1st	2nd	3rd	4th	1st	2nd	3rd	4th	
North Florida	16	16	21	28	81												
Auburn	27	17	22	28	94												

Points In Off 2nd Fast
 Point T/O Chance Break Bench
 UNF 38 14 4 12 13
 Auburn 40 26 19 15 29

Score tied - 2 times.
 Lead changed - 3 times.

Score tied - 2 times.
 Lead changed - 2 times.

AUBURN-- Five Tigers scored in double-figures as Auburn topped the 90-point mark for the second time this season with a 94-81 win over North Florida Thursday night at Auburn Arena.

The Tigers (5-2) were able to bounce back from tough offensive night Wednesday in their loss to SFA with their second-highest scoring total of the season, getting big rebounds from senior Unique Thompson and sophomore Annie Hughes to lead the way.

Thompson led Auburn with 19 points and 18 rebounds, her sixth straight double-double and the 48th of her career. Her 18 rebounds were the most in a home game in her Auburn career; she also contributed three assists and two steals. Hughes hit for a career-high 17 points and matched a career-high with seven rebounds, knocking down three 3-pointers for the second time in three games. She also shared the team lead with three steals.

Redshirt sophomore Honesty Scott-Grayson scored 16 points for the second straight night, matching her career high from Wednesday's game. She also had three steals. Freshman Romi Levy also had a career-high 12 points along with five rebounds, and Jala Jordan came up just short of her first career double-double with 11 points and eight rebounds. Alaina Rice added nine points off the bench, her best at Auburn, and Kira Lowery led the Tigers with five assists and a career-best three steals.

Auburn shot 42.5 percent for the game, hitting 34 of a season-high 80 shots. The Tigers also hit a season-best 11 3-pointers, three from Hughes and two each from Jordan, Levy, Rice and Sania Wells. It was also a much-improved night at the free-throw line as the Tigers hit 15-of-18 attempts (83.3%). Auburn out-rebounded UNF 48-34 and forced the Ospreys into 22 turnovers, leading to 26 points.

Auburn maintained its double-digit lead throughout the third as the Ospreys kept launching 3-pointers, but the Tigers increased their lead by one more point to 66-53 headed to the fourth. Taking advantage of tired legs on the part of Auburn, UNF cut the lead to as few as seven points, shooting 58 percent in the fourth. But Auburn got big buckets from Thompson, Levy and Rice down the stretch to hold off the Ospreys' comeback bid.

Game 8: Dec. 20, 2020
Belmont 78, Auburn 57
Auburn Arena
Auburn, Ala.

Official Basketball Box Score - Game Totals - Final Statistics

Belmont vs Auburn
 12/20/20 2:00 pm at Auburn, AL

Belmont 78 • 4-2-1-0 OVC

#	Player	Total		3-Ptr		Rebounds		PF	TP	A	To	Bk	Stl	Min	
		FG	FGA	FT	FTA	Off	Def								Total
10	Allison Luly	3	6	0	0	0	2	5	2	6	0	0	0	23	
20	Conley Chinn	9	15	3	6	0	0	3	6	2	21	3	5	0	28
00	Tuti Jones	5	10	3	4	0	0	1	3	4	13	2	1	0	30
11	Destinee Wells	5	12	1	3	4	5	1	4	5	15	6	3	0	30
14	Jamilyn Kinney	2	7	0	2	0	0	0	3	0	4	5	2	0	34
01	Madison Trecea	0	0	0	0	0	0	0	0	0	0	0	0	1	
03	Madison Bartley	0	1	0	0	0	0	0	0	0	1	0	0	0	
05	Whitney Hay	1	3	1	2	2	5	2	1	0	1	0	1	14	
11	Blair Schenwald	0	0	0	1	2	2	0	0	0	1	0	0	1	
22	Maddie Cook	1	1	0	0	0	0	3	2	0	1	0	0	14	
23	Nikki Baird	4	6	3	5	0	0	2	2	3	11	0	3	0	18
34	Cam Browning	0	1	0	0	0	1	2	0	0	0	0	0	1	
	Team														
	Totals	30	62	11	22	7	11	10	30	19	78	18	16	0	21

1st FG %:	11-21	52.4%	2nd:	7-14	50.0%	3rd:	7-13	53.8%	4th:	5-14	35.7%	Game:	30-62	48.4%	Deatball	
3Pt %:	4-8	50.0%	FT %:	2-4	50.0%	Rebounds:	2	2.4	10-31	32.3%	Rebounds					
FT %:	0-1	0.0%	0-0	0.0%	2-4	50.0%	0-0	0.0%	3-4	75.0%	0					

Auburn 57 • 5-3-0-0 SEC

#	Player	Total		3-Ptr		Rebounds		PF	TP	A	To	Bk	Stl	Min	
		FG	FGA	FT	FTA	Off	Def								Total
14	Jala Jordan	0	5	0	2	0	0	2	1	3	1	0	3	0	15
20	Unique Thompson	9	14	0	2	6	9	14	23	0	20	1	1	0	34
03	Annie Hughes	3	6	1	2	0	2	2	4	7	1	1	1	25	
13	Kira Lowery	0	0	0	0	0	0	1	1	2	0	4	0	15	
23	H. Scott-Grayson	9	0	0	0	0	0	0	0	0	0	0	0	8	
01	Keya Patton	0	1	0	0	0	0	0	0	1	0	2	0	10	
02	Sania Wells	2	7	1	3	4	0	0	0	8	1	2	0	23	
05	Aicha Coulibaly	1	4	0	0	0	1	0	1	2	0	0	0	8	
11	Romi Levy	1	4	0	0	0	2	1	2	2	0	2	0	14	
22	Alaina Rice	0	5	0	2	0	1	1	2	1	0	1	0	19	
30	M. Robinson-Nwagwu	0	1	0	0	0	2	1	0	0	1	0	0	6	
	Team														
	Totals	22	60	3	17	10	17	22	25	47	12	57	13	27	1

1st FG %:	11-21	52.4%	2nd:	5-12	41.7%	3rd:	7-15	46.7%	4th:	5-19	26.3%	Game:	22-60	36.7%	Deatball	
3Pt %:	0-2	0.0%	FT %:	3-3	100.0%	Rebounds:	1	1.1	10-31	32.3%	Rebounds					
FT %:	4-5	80.0%	0-0	0.0%	3-3	100.0%	0-1	0.0%	10-17	58.8%	0					

Officials: Carmen Portorreal, Marcus Clayton, Douglas Knight

Technical fouls: Belmont-None, Auburn-None.

Attendance: 513

2020-21 Women's Basketball, Round: 0, Auburn vs Belmont, Played at Auburn Arena

Score by periods	1st				2nd				3rd				4th				Total
	1st	2nd	3rd	4th	1st	2nd	3rd	4th	1st	2nd	3rd	4th	1st	2nd	3rd	4th	
Belmont	25	19	18	15	78												
Auburn	14	14	19	10	57												

Points In Off 2nd Fast
 Point T/O Chance Break Bench
 BEL 34 31 14 8 19
 Auburn 30 15 9 6 12

Score tied - 4 times.
 Lead changed - 3 times.

Score tied - 3 times.
 Lead changed - 4 times.

AUBURN-- Auburn senior Unique Thompson had 20 points, 23 rebounds and hit a major milestone with her 1,000th career rebound, but the Tigers could not overcome turnover troubles in a 78-57 loss to Belmont Sunday afternoon at Auburn Arena.

Thompson became the fifth player at Auburn to surpass the 1,000-rebound mark for her career with her 13th board of the day. With 23 rebounds in the contest, Thompson now sits fourth in career rebounds with 1,010, passing Vickie Orr (1,006).

But Auburn (5-3), playing its third game in five days, turned the ball over a season-high 27 times, leading to 31 points

Game 10: Jan. 3, 2021
Georgia 76, Auburn 44
Auburn Arena
Auburn, Ala.

Official Basketball Box Score - Game Totals - Final Statistics

Georgia vs Auburn
 01/03/21 2:00 pm at Auburn, AL

Georgia 76 • 9-1,1-1 SEC

#	Player	Total			3-Ptr			Rebounds			PF	TP	A	TO	Bk	Stl	Min
		FG	FGA	FT	FTA	FG	FGA	FT	FTA	Off							
20	Jordan Isaacs	f	2-3	0-0	0-0	2	5	7	1	4	1	3	0	0	0	17	
14	Jenna Staiti	f	5-11	0-0	3-4	2	3	5	3	13	0	1	4	1	1	19	
02	Gabby Connally	c	3-4	2-2	1-2	0	0	0	1	9	1	1	0	1	1	15	
11	Maya Caldwell	g	4-8	1-3	0-1	0	2	2	9	2	2	0	1	2	3	23	
23	Que Morrison	g	4-6	1-2	0-0	1	2	3	0	9	5	4	0	4	15	15	
00	Zoesha Smith	g	0-1	0-0	0-0	1	0	1	0	0	1	0	1	0	1	6	
01	Chloe Chapman	g	0-1	0-1	0-0	1	1	3	0	3	3	0	1	0	1	20	
03	Sarah Ashlee Barker	g	3-7	1-4	0-0	0	4	4	1	7	2	2	0	1	1	19	
04	Mikayla Combs	g	3-6	0-0	2-2	2	2	4	0	8	2	2	0	2	20	20	
10	Caitlin Hesse	g	0-3	0-2	0-0	0	1	1	0	0	1	0	0	0	8	8	
15	Heuri Davenport	g	1-1	0-0	0-0	0	0	1	2	0	2	1	1	1	8	8	
22	Malury Bates	g	2-5	0-0	2-2	1	2	3	1	6	2	1	0	0	13	13	
35	Javyn Nicholson	g	4-6	0-0	1-2	2	6	8	2	9	1	0	1	0	17	17	
	Team		2	2	4												
	Totals		31-62	5-14	9-13	13	30	43	16	76	18	22	6	13	200		

1st FG %:	11.9	57.0%	2nd:	7.12	58.3%	3rd:	9.15	60.0%	4th:	4.16	25.0%	Game:	31.62	50.0%	Rebounds:	Deadball
3Pt %:	3.5	60.0%	FT %:	2.2	100.0%	Off:	14	25.0%	Def:	5.4	35.7%	PF:	9-13	69.2%	TP:	4

Auburn 44 • 5-0,0-2 SEC

#	Player	Total			3-Ptr			Rebounds			PF	TP	A	TO	Bk	Stl	Min
		FG	FGA	FT	FTA	FG	FGA	FT	FTA	Off							
11	Romi Levy	f	0-7	0-4	0-0	0	3	3	2	0	2	0	0	6	3	34	
14	Jala Jordan	f	4-14	1-5	0-1	1	0	1	3	9	0	3	1	0	17		
01	Keya Patton	g	3-9	0-1	6-7	2	1	3	1	12	0	2	0	1	27		
22	Alaina Rice	g	1-5	0-0	1-2	2	4	1	3	0	5	0	0	0	19		
23	H. Scott-Grayson	g	2-5	0-0	2-2	1	3	4	2	6	1	0	0	1	17		
00	Alycia Reese	g	0-0	0-0	0-0	0	0	0	0	0	0	0	0	0	4		
02	Sania Wells	g	0-1	0-0	0-0	0	0	0	0	0	0	1	0	0	10		
03	Annie Hughes	g	1-2	0-0	1-2	0	3	3	1	3	0	3	0	1	22		
05	Aicha Coulibaly	g	3-7	0-1	0-1	0	2	2	2	6	0	1	1	2	24		
13	Kira Lowery	g	1-1	0-0	1-3	0	1	1	0	3	1	5	0	0	12		
24	Carsen McFadden	g	0-0	0-0	0-0	0	0	0	0	0	0	0	0	0	5		
30	M. Robinson-Nwagwu	g	1-1	0-0	0-0	0	0	0	0	1	2	0	3	0	1	9	
	Team		3	2	5												
	Totals		16-52	1-11	11-18	9	18	27	13	44	4	27	2	12	200		

1st FG %:	4.3	30.0%	2nd:	6.14	42.0%	3rd:	3.13	7.7%	4th:	5.12	41.7%	Game:	16.52	30.8%	Rebounds:	Deadball
3Pt %:	0.0	0.0%	FT %:	0.7	0.0%	Off:	5.7	71.4%	Def:	1.1	8.1%	PF:	11-18	61.1%	TP:	4

Officials: Carla Fountain,Angelica Suffren,Dee Kantner
 Technical fouls: Auburn-None. Auburn-Aicha Coulibaly.
 Attendance: 657
 2020-21 Women's Basketball. Round: 0. Auburn vs Ole Miss. Played at Auburn Arena

Score by periods	1st	2nd	3rd	4th	Total	Points	FGA	FG	FT	FTA	3Pt	3PtA	Reb	PF	TP	A	TO	Bk	Stl	Min	
																					USA
Georgia	26	17	19	14	76	42	29	12	14	33	14	12	14								
Auburn	10	13	6	15	44	30	14	4	12	14											

Last FG - UGA 4th-02:15, AU 4th-02:30.
 Largest lead - UGA by 37 3rd-01:43, AU None.
 UGA led for 36:37, AU led for 00:00. Game was tied for 01:33.

AUBURN-- Georgia's size and depth were too much to overcome for the Auburn women's basketball team Sunday afternoon as the Tigers fell 76-44 to the Lady Bulldogs at Auburn Arena.

The Tigers (5-5, 0-2 SEC), without leading scorer and rebounder Unique Thompson for the second straight game, were unable to get much going on offense and turned the ball over a season-high 27 times. Georgia (9-1, 1-1) converted those turnovers into 26 points and had seven players score at least eight points in the game.

Junior Keya Patton was Auburn's only player in double figures with 12 points, going 6-of-7 at the free-throw line. Jala Jordan added nine points. Romi Levy added a career-best six steals, the most by an Auburn player this season. Alaina Rice and Honesty Scott-Grayson were the Tigers' top rebounders with four apiece.

Auburn shot 30.8 percent from the field (16-52) and just one 3-pointer on 11 tries. Georgia shot 50 percent on the day (31-62) and out-rebounded the Tigers 43-27.

Jenna Staiti led the Lady Bulldogs with 13 points and four blocks. Gabby Connally, Maya Caldwell, Que Morrison and Javyn Nicholson all added nine points; Nicholson was the Dawgs' top rebounder with eight.

Game 11: Jan. 7, 2021
Ole Miss 62, Auburn 58
The Pavilion at Ole Miss
Oxford, Miss.

Official Basketball Box Score - Game Totals - Final Statistics

Auburn vs Ole Miss
 01/07/21 6:00 pm at Oxford, MS

Auburn 58 • 5-6,0-3 SEC

#	Player	Total			3-Ptr			Rebounds			PF	TP	A	TO	Bk	Stl	Min
		FG	FGA	FT	FTA	FG	FGA	FT	FTA	Off							
11	Romi Levy	f	6-10	1-5	0-0	0	4	4	3	13	2	0	0	2	33		
14	Jala Jordan	f	2-5	0-3	0-2	1	3	4	3	4	1	1	0	0	27		
01	Keya Patton	g	2-6	2-4	0-0	0	2	2	6	1	2	0	0	28			
22	Alaina Rice	g	1-4	0-2	0-0	1	2	3	0	2	1	4	0	1	14		
23	H. Scott-Grayson	g	9-16	3-5	2-2	1	4	5	4	23	2	4	0	3	30		
00	Alycia Reese	g	0-1	0-1	0-0	0	0	0	0	0	0	1	0	0	4		
02	Sania Wells	g	1-4	0-0	2-2	0	0	0	0	4	1	0	0	1	11		
03	Annie Hughes	g	0-0	0-0	0-0	0	1	1	0	0	1	1	0	2	12		
05	Aicha Coulibaly	g	2-6	0-0	0-0	1	1	2	1	4	1	1	0	0	15		
13	Kira Lowery	g	0-1	0-0	0-0	0	1	1	2	0	1	0	0	0	12		
30	M. Robinson-Nwagwu	g	2-1	0-0	2-2	0	0	0	0	2	2	0	3	14			
	Team		2	4	6												
	Totals		23-55	6-21	6-8	6	22	28	15	58	18	17	0	12	200		

1st FG %:	4.14	28.0%	2nd:	7.18	38.9%	3rd:	4.11	9.4%	4th:	8.12	66.7%	Game:	23.55	41.8%	Rebounds:	Deadball
3Pt %:	0.0	0.0%	FT %:	3.6	50.0%	Off:	2.4	50.0%	Def:	4.4	100.0%	PF:	9-18	75.0%	TP:	1

Ole Miss 62 • 7-1,1-1 SEC

#	Player	Total			3-Ptr			Rebounds			PF	TP	A	TO	Bk	Stl	Min
		FG	FGA	FT	FTA	FG	FGA	FT	FTA	Off							
00	Shakira Austin	f	10-17	1-2	4-5	2	8	10	2	25	2	2	0	3	34		
32	Iyanika Kitchens	f	3-4	0-0	0-2	1	2	3	6	1	2	0	0	18			
02	Mimi Reid	g	2-5	1-1	0-0	0	2	1	5	6	0	0	28				
00	Donnetta Johnson	g	2-4	0-1	3-3	0	3	0	7	6	3	1	1	34			
21	Taylor Smith	g	0-5	0-1	1-2	1	1	2	1	0	2	1	0	23			
04	Valerie Nesbitt	g	1-2	0-0	5-6	0	0	0	7	2	2	0	3	18			
05	Snudda Collins	g	3-8	3-7	0-0	0	7	4	9	0	1	3	0	30			
25	Tiya Douglas	g	1-3	0-0	0-0	0	1	1	2	0	2	0	1	15			
	Team		2	3	6												
	Totals		22-49	5-12	13-18	7	27	34	11	62	19	19	4	10	200		

1st FG %:	6.12	50.0%	2nd:	6.13	46.2%	3rd:	7.6	43.8%	4th:	3.8	37.0%	Game:	24.00	44.0%	Rebounds:	Deadball
3Pt %:	2.4	50.0%	FT %:	2.4	50.0%	Off:	1.2	50.0%	Def:	5.12	41.7%	PF:	11-18	61.1%	TP:	3

Officials: Karleena Tobin,Laura Morris,Gina Cross
 Technical fouls: Auburn-None. Ole Miss-None.
 Attendance: 851
 2020-21 Women's Basketball. Round: 0. Auburn vs Ole Miss. Played at The Pavilion

Score by periods	1st	2nd	3rd	4th	Total	Points	FGA	FG	FT	FTA	3Pt	3PtA	Reb	PF	TP	A	TO	Bk	Stl	Min	
																					USA
Ole Miss	8	15	13	22	58	42	29	12	14	33	14	12	14								
Auburn	16	16	16	14	62	30	14	4	12	14											

Last FG - AU 4th-00:39, OM 4th-03:37.
 Largest lead - AU None, OM by 12 3rd-05:49.
 AU led for 00:00, OM led for 38:37. Game was tied for 01:03.

OXFORD, Miss.-- Auburn sophomore Honesty Scott-Grayson scored a career-high 23 points, but the Tigers' best effort so far in SEC play came just short in a 62-58 loss at Ole Miss Thursday night.

The Tigers trailed by as many as 12 points late in the third quarter, but opened the fourth on a 7-0 run and got within two in the final minute of the game. But Ole Miss made a pair of free throws in the closing seconds to secure the victory.

Scott-Grayson was 9-of-16 from the field and hit three times from 3-point range; she also led the Tigers with five rebounds and shared the team lead with three steals. Romi Levy added 13 points, and Morgan Robinson-Nwagwu equaled Scott-Grayson's steals total with three of her own.

As a team, Auburn shot 41.8 percent (23-55) and was 6-of-21 from 3-point range (28.6%). But the fourth quarter saw the Tigers hit 8-of-12 shots as they nearly completed the comeback. Ole Miss outrebounded Auburn 34-28, but the Tigers turned 19 Rebel turnovers into 17 points, their best showing in the turnover department in SEC play.

A slow start saw Ole Miss take a 16-8 lead after one, but the Tigers never led the Rebels pull away; it was 32-23 at the half. Auburn then made three straight 3-pointers in the third to pull within four, but the Rebels ended

2020-21 Auburn Women's Basketball
Auburn Combined Team Statistics (as of Jan 28, 2021)
All games

RECORD:	OVERALL	HOME	AWAY	NEUTRAL
ALL GAMES	5-10	5-5	0-5	0-0
CONFERENCE	0-7	0-3	0-4	0-0
NON-CONFERENCE	5-3	5-2	0-1	0-0

##	Player	gp-gs	min	Total		3-Point		F-Throw		Rebounds				pf	dq	a	to	blk	stl	pts	avg				
				fg-fga	fg%	3fg-fga	3fg%	ft-fa	ft%	off	def	tot	avg												
20	Unique Thompson	12-12	358	29.8	83-146	.568	1-1	1.000	47-58	.810	69	94	163	13.6	33	1	14	30	5	31	214	17.8			
23	H. Scott-Grayson	15-15	407	27.1	70-182	.385	13-46	.283	34-47	.723	14	47	61	4.1	35	0	29	30	1	37	187	12.5			
14	Jala Jordan	15-7	249	16.6	39-113	.345	15-53	.283	15-22	.682	17	31	48	3.2	35	1	11	23	11	7	108	7.2			
11	Romi Levy	15-8	330	22.0	37-98	.378	10-42	.238	3-10	.300	17	40	57	3.8	26	0	24	21	6	28	87	5.8			
01	Keya Patton	11-3	232	21.1	19-64	.297	7-29	.241	16-20	.800	7	11	18	1.6	13	0	8	14	0	7	61	5.5			
05	Aicha Coulibaly	14-4	236	16.9	26-68	.382	1-16	.063	8-18	.444	16	30	46	3.3	20	0	9	15	6	6	61	4.4			
03	Annie Hughes	15-10	282	18.8	25-62	.403	8-27	.296	7-12	.583	16	20	36	2.4	17	0	8	15	2	15	65	4.3			
22	Alaina Rice	13-4	224	17.2	19-62	.306	7-21	.333	11-15	.733	15	14	29	2.2	16	0	19	30	0	10	56	4.3			
02	Sania Wells	15-1	210	14.0	14-71	.197	7-30	.233	12-18	.667	4	8	12	0.8	13	0	10	14	0	5	47	3.1			
13	Kira Lowery	13-8	205	15.8	12-26	.462	1-3	.333	13-17	.765	2	13	15	1.2	10	0	21	29	2	11	38	2.9			
00	Alycia Reese	9-0	94	10.4	7-22	.318	4-17	.235	6-6	1.000	2	6	8	0.9	5	0	3	5	0	2	24	2.7			
30	M. Robinson-Nwagwu	12-3	146	12.2	8-28	.286	1-10	.100	8-9	.889	2	13	15	1.3	7	0	19	27	1	12	25	2.1			
04	Riley Donahue	3-0	2	0.7	1-1	1.000	1-1	1.000	0-0	.000	0	0	0	0.0	1	0	0	1	0	0	3	1.0			
24	Carsen McFadden	6-0	21	3.5	1-3	.333	0-0	.000	1-2	.500	2	1	3	0.5	0	0	4	1	0	1	3	0.5			
10	Kiyae' White	1-0	4	4.0	0-2	.000	0-0	.000	0-0	.000	1	2	3	3.0	1	0	0	0	0	0	0	0.0			
Team											39	35	74												6
Total.....		15	3000		361-948	.381	76-296	.257	181-254	.713	223	365	588	39.2	232	2	179	261	34	172	979	65.3			
Opponents.....		15	3000		374-871	.429	111-331	.335	159-215	.740	154	396	550	36.7	254	-	224	287	31	150	1018	67.9			

TEAM STATISTICS	AU	OPP	Date	Opponent	Score	Att.	
SCORING	979	1018	11/25/20	USC UPSTATE	w	82-41	588
Points per game	65.3	67.9	11/28/20	SAMFORD	w	66-64	540
Scoring margin	-2.6	-	12/01/20	GARDNER-WEBB	w	97-61	487
FIELD GOALS-ATT	361-948	374-871	12/05/20	at Houston	L	61-71	509
Field goal pct	.381	.429	12/13/20	SOUTH ALABAMA	w	74-66	520
3 POINT FG-ATT	76-296	111-331	12/16/20	SFA	L	54-67	445
3-point FG pct	.257	.335	12/17/20	NORTH FLORIDA	w	94-81	449
3-pt FG made per game	5.1	7.4	12/20/20	BELMONT	L	57-78	515
FREE THROWS-ATT	181-254	159-215	* 12/31/20	at LSU	L	43-56	687
Free throw pct	.713	.740	* 01/03/21	GEORGIA	L	44-76	657
F-Throws made per game	12.1	10.6	* 01/07/21	at Ole Miss	L	58-62	851
REBOUNDS	588	550	* 01/17/21	at Florida	L	54-68	702
Rebounds per game	39.2	36.7	* 01/21/21	KENTUCKY	L	71-76	578
Rebounding margin	+2.5	-	* 01/24/21	at Alabama	L	55-67	922
ASSISTS	179	224	* 01/28/21	TEXAS A&M	L	69-84	578
Assists per game	11.9	14.9					
TURNOVERS	261	287					
Turnovers per game	17.4	19.1					
Turnover margin	+1.7	-					
Assist/turnover ratio	0.7	0.8					
STEALS	172	150					
Steals per game	11.5	10.0					
BLOCKS	34	31					
Blocks per game	2.3	2.1					
ATTENDANCE	5357	3671					
Home games-Avg/Game	10-536	5-734					
Neutral site-Avg/Game	-	0-0					

Score by Periods	1st	2nd	3rd	4th	Totals
Auburn	224	222	268	265	979
Opponents	245	223	276	274	1018

2020-21 Auburn Women's Basketball
Auburn Combined Team Statistics (as of Jan 28, 2021)
Conference games only

RECORD:	OVERALL	HOME	AWAY	NEUTRAL
ALL GAMES	0-7	0-3	0-4	0-0
CONFERENCE	0-7	0-3	0-4	0-0
NON-CONFERENCE	0-0	0-0	0-0	0-0

#	Player	gp-gs	min	avg	Total		3-Point		F-Throw		Rebounds				a	to	blk	stl	pts	avg		
					fg-fga	fg%	3fg-fga	3fg%	ft-fa	ft%	off	def	tot	avg							pf	dq
20	Unique Thompson	4-4	126	31.5	27-48	.563	1-1	1.000	9-9	1.000	18	23	41	10.3	13	0	6	9	3	6	64	16.0
23	H. Scott-Grayson	7-7	209	29.9	38-94	.404	9-26	.346	18-20	.900	8	30	38	5.4	18	0	15	13	1	19	103	14.7
01	Keya Patton	4-3	109	27.3	7-27	.259	3-15	.200	9-10	.900	3	5	8	2.0	6	0	3	6	0	2	26	6.5
22	Alaina Rice	6-4	134	22.3	15-40	.375	5-13	.385	3-5	.600	9	11	20	3.3	9	0	10	17	0	7	38	6.3
11	Romi Levy	7-7	184	26.3	19-58	.328	4-25	.160	0-2	.000	8	24	32	4.6	14	0	15	9	1	15	42	6.0
05	Aicha Coulibaly	7-0	133	19.0	15-34	.441	1-8	.125	4-7	.571	7	13	20	2.9	11	0	3	9	3	4	35	5.0
14	Jala Jordan	7-3	100	14.3	14-48	.292	6-23	.261	1-5	.200	3	10	13	1.9	15	0	4	9	3	1	35	5.0
30	M. Robinson-Nwagwu	7-3	99	14.1	4-17	.235	1-6	.167	8-9	.889	2	5	7	1.0	4	0	11	20	1	5	17	2.4
03	Annie Hughes	7-3	107	15.3	5-16	.313	1-7	.143	3-5	.600	3	7	10	1.4	4	0	3	8	1	5	14	2.0
00	Alycia Reese	6-0	65	10.8	2-14	.143	2-13	.154	2-2	1.000	2	4	6	1.0	4	0	2	3	0	1	8	1.3
02	Sania Wells	7-1	90	12.9	3-30	.100	0-9	.000	3-4	.750	2	7	9	1.3	5	0	2	7	0	3	9	1.3
13	Kira Lowery	5-0	37	7.4	1-2	.500	0-0	.000	1-3	.333	0	4	4	0.8	3	0	4	8	0	1	3	0.6
24	Carsen McFadden	2-0	7	3.5	0-0	.000	0-0	.000	0-0	.000	1	0	1	0.5	0	0	0	1	0	0	0	0.0
Team											21	15	36				5					
Total.....		7	1400		150-428	.350	33-146	.226	61-81	.753	87	158	245	35.0	106	0	78	124	13	69	394	56.3
Opponents.....		7	1400		184-405	.454	42-124	.339	79-103	.767	74	199	273	39.0	93	-	110	117	19	65	489	69.9

TEAM STATISTICS	AU	OPP	Date	Opponent	Score	Att.
SCORING	394	489	* 12/31/20	at LSU	L 43-56	687
Points per game	56.3	69.9	* 01/03/21	GEORGIA	L 44-76	657
Scoring margin	-13.6	-	* 01/07/21	at Ole Miss	L 58-62	851
FIELD GOALS-ATT	150-428	184-405	* 01/17/21	at Florida	L 54-68	702
Field goal pct	.350	.454	* 01/21/21	KENTUCKY	L 71-76	578
3 POINT FG-ATT	33-146	42-124	* 01/24/21	at Alabama	L 55-67	922
3-point FG pct	.226	.339	* 01/28/21	TEXAS A&M	L 69-84	578
3-pt FG made per game	4.7	6.0				
FREE THROWS-ATT	61-81	79-103	* - Conference game			
Free throw pct	.753	.767				
F-Throws made per game	8.7	11.3				
REBOUNDS	245	273				
Rebounds per game	35.0	39.0				
Rebounding margin	-4.0	-				
ASSISTS	78	110				
Assists per game	11.1	15.7				
TURNOVERS	124	117				
Turnovers per game	17.7	16.7				
Turnover margin	-1.0	-				
Assist/turnover ratio	0.6	0.9				
STEALS	69	65				
Steals per game	9.9	9.3				
BLOCKS	13	19				
Blocks per game	1.9	2.7				
ATTENDANCE	1813	3162				
Home games-Avg/Game	3-604	4-790				
Neutral site-Avg/Game	-	0-0				

Score by Periods	1st	2nd	3rd	4th	Totals
Auburn	79	96	104	115	394
Opponents	125	108	129	127	489



Alycia Reese
Junior • G • 5-9
Columbus, Ga.
Chattahoochee Valley CC



Keya Patton
Junior • G • 5-6
Indianapolis, Ind.
Wabash Valley CC



Sania Wells
Sophomore • G • 5-7
Moss Point, Miss.
East Central HS



Annie Hughes
Sophomore • G • 5-9
Dutton, Ala.
Pisgah HS



Riley Donahue
Freshman • G • 5-10
Atlanta, Ga.
Marist School



Aicha Coulibaly
Freshman • G/F • 6-0
Mali
IMG Academy (Fla.)



Kiyae' White
RS Junior • F • 6-2
Macungie, Pa.
Emmaus HS



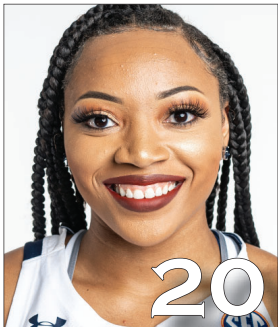
Romi Levy
Freshman • F • 6-2
Herzliya, Israel
Hof Hasharon HS



Kira Lowery
Junior • G • 5-6
Memphis, Tenn.
Dyersburg State CC



Jala Jordan
RS Sophomore • F • 6-2
Philadelphia, Pa.
West Virginia



Unique Thompson
Senior • F • 6-3
Theodore, Ala.
Faith Academy



Alaina Rice
Sophomore • G • 5-8
Rockledge, Fla.
Florida A&M



Honesty Scott-Grayson
RS Sophomore • G • 5-9
Brick, N.J.
Baylor



Carsen McFadden
Freshman • G • 5-7
Lucas, Texas
Lovejoy HS



Morgan Robinson-Nwagwu
Sophomore • G • 5-8
Norcross, Ga.
Norcross HS



Terri Williams-Flournoy
Head Coach
Penn State (1991)
Ninth Season



Clarisse Garcia
Assistant Coach
Villanova (2007)
Fourth Season



La'Keshia Frett Meredith
Assistant Coach
Georgia (1997)
Second Season