



2020 VOLLEYBALL MATCH NOTES

AUBURN ATHLETICS COMMUNICATIONS: 392 SOUTH DONAHUE DRIVE || AUBURN, AL 36830 || AUBURNTIGERS.COM || @AUBURNVB

2020 SCHEDULE/RESULTS

0-4 OVERALL | 0-4 SEC

Date	Opponent	TV	Time/Result
Oct. 21	* #4 FLORIDA	SEC Network	L, 0-3
Oct. 22	* #4 FLORIDA	ESPNU	L, 0-3
Oct. 28	* at (RV) South Carolina	SEC Network	L, 0-3
Oct. 29	* at (RV) South Carolina	SEC Network+	L, 1-3
Nov. 7	* at #3 Kentucky	SEC Network+	3 p.m.
Nov. 8	* at #3 Kentucky	SEC Network	3 p.m.
Nov. 18	* TENNESSEE	SEC Network	7 p.m.
Nov. 19	* TENNESSEE	TBA	5 p.m.

Due to health concerns related to COVID-19, the 2020 volleyball season will be split into both fall and spring competitions. The fall portion of the schedule has been limited to an eight-match, SEC-only format. The week of Nov. 23-27 has been designated for as a make-up week for any contests postponed due to COVID-19.

BOLD indicates home contest | All time Central and subject to change
* - Southeastern Conference Game

MATCH
05

#2 KENTUCKY

Saturday, Nov. 7 | 3 p.m. CT | SEC Network+
Lexington, Ky. | Memorial Coliseum



MATCH
06

#2 KENTUCKY

Sunday, Nov. 8 | 3 p.m. CT | SEC Network
Lexington, Ky. | Memorial Coliseum



Site _____ Lexington, Ky.
 Venue _____ Memorial Coliseum
 Live Stats _____ Sidarm Stats
 Twitter _____ @AuburnVB
 Series Record _____ Kentucky leads 42-10
 Last Meeting _____ Nov. 10, 2019 in Auburn
 _____ Kentucky 3; Auburn 0 (17-25, 15-25, 17-25)

AUBURN	KENTUCKY
AVCA Coaches Poll _____ N/R	AVCA Coaches Poll _____ #2
2020 Record _____ 0-4 0-4 SEC	2020 Record _____ 4-0 4-0 SEC
Head Coach _____ Brent Crouch	Head Coach _____ Craig Skinner
Career Record (Year) _____ 95-95 (7th)	Career Record (Year) _____ 357-125 (16th)
Record at Auburn (Year) _____ 0-4 (1st)	Record at Kentucky (Year) _____ 357-125 (16th)

BY THE NUMBERS

17 Auburn set the program's record for blocking in a four-set match with 17 in the series finale at South Carolina. It was the most blocks by a Tiger team since 2009.

1 With a 7.71 assists per set average after her collegiate debut, Jackie Barrett is the lone freshmen ranked in the top 10 in the conference in assists, checking in at ninth.

8 After an impressive blocking performance at South Carolina, Auburn jumped all the way to eighth in the country with a 2.62 blocks per set average.

AUBURN ATHLETICS COMMUNICATIONS

Office Phone _____ 334-844-9800
 Kirk Sampson _____ Associate AD
 _____ sampska@auburn.edu
 Taylor Shirey _____ Volleyball Contact
 _____ trs0010@auburn.edu
 _____ C: 334-750-0710

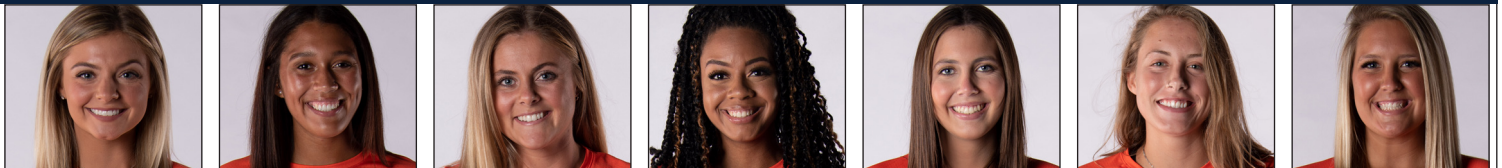
FOLLOW ALONG

Web _____ AuburnTigers.com
 Twitter _____ @AuburnVB
 Instagram _____ @auburnvolleyball

QUICK HITS

- Auburn wraps up its road slate with its second meeting with a nationally ranked opponent as the Tigers trek to No. 2 Kentucky. Auburn is searching for its first win over Kentucky since 2010.
- After its record-setting performance at South Carolina, Auburn now ranks 8th nationally in blocking (2.62 blks/set) with two Tigers - Jaeden Brown and Chesney McClellan - tied for 13th nationally with a 1.23 blocks per set mark.
- Tatum Shipes earned her first double-double of the season (11 K/10 D) at South Carolina (10/28/20). She leads Auburn with seven career double-double performances.
- Val Green ranks 17th national in attacks per set with a 10.69 average. The mark ranks fifth in the SEC.

AUBURN'S POTENTIAL STARTING SEVEN



BELLA ROSENTHALL	CHESNEY MCCLELLAN	PAYTON WHITE	JAEDEN BROWN	JACKIE BARRETT	VAL GREEN	TATUM SHIPES
#6 • DS/L • JR. • 5-5	#7 • MB • SR. • 6-4	#3 • DS/L • SR. • 6-7	#8 • MB • SR. • 6-0	#10 • S • FR. • 6-1	#16 • OH • JR. • 6-2	#21 • RS • JR. • 6-4
D/S: 3.23	K/S: 1.69	D/S: 2.69	K/S: 1.23	K/S: 1.79	K/S: 2.08	K/S: 1.92
A/S: 1.38	HIT%: .278	A/S: 0.69	HIT%: .132	A/S: 7.71	HIT%: -.043	HIT%: .027
SA/S: 0.08	D/S: 0.08	SA/S: 0.15	D/S: 0.08	D/S: 2.00	D/S: 2.15	D/S: 2.46
P/S: 0.19	B/S: 1.23	P/S: 0.15	B/S: 1.23	B/S: 1.00	B/S: 0.69	B/S: 0.69
	P/S: 2.31		P/S: 1.85	P/S: 1.79	P/S: 2.54	SA/S: 0.23
				SA/S: 0.43		P/S: 1.92

K/S: kills per set • HIT%: hitting percentage • D/S: digs per set • B/S: blocks per set • A/S: assists per set • SA/S: aces per set • P/S: points per set

#WarEagle



AuburnTigers.com



@AuburnVB | @AuburnTigers
@AuburnVBCoach



/AuburnVB
/AuburnTigers

TEAM SCHEDULE AND MEDIA AVAILABILITY >> WEEK OF NOVEMBER 2-8

MONDAY November 2	TUESDAY November 3	WEDNESDAY November 4	THURSDAY November 5	FRIDAY November 6	SATURDAY November 7	SUNDAY November 8
PRACTICE: 1:45-4:45 p.m. SAC	OFF DAY	PRACTICE: 2:55-4:55 p.m. SAC	PRACTICE: 2:55-4:55 p.m. SAC	TRAVEL DAY	MATCH: 3 p.m. Auburn at Kentucky SEC Network+	MATCH: 3 p.m. Auburn at Kentucky SEC Network
INTERVIEWS BY REQUEST		INTERVIEWS BY REQUEST	INTERVIEWS BY REQUEST		INTERVIEWS POSTGAME	INTERVIEWS POSTGAME

AUBURN ATHLETICS COMMUNICATIONS

QUICK FACTS

AUBURNTIGERS.COM

For updated game notes, statistics, safety protocols and latest information on Auburn volleyball and Auburn Athletics, visit AuburnTigers.com.

INTERVIEW POLICY

Coch Crouch, assistant coaches and all student-athletes are available for interviews by contacting Taylor Shirey in the communications office. All interviews during the week will be conducted via phone or ZOOM. Post-match interviews will be conducted via phone or ZOOM following a 10-minute cooling-off period.

CREDENTIALS

Anyone wishing to cover an Auburn volleyball match should contact Taylor Shirey in the communications office at least 24 hours in advance to make arrangements. Due to COVID-19 safety guidelines, space within Auburn Arena will be limited. All media members will be ask to submit to temperature checks before entering Auburn Arena.

MATCH DAY SERVICES

Due to safety concerns related to COVID-19, printed copies of notes, flip cards and statistics will NOT be available. Digital copies will be emailed out prior to the match and will be available on AuburnTigers.com. Stats will not printed between sets or after the match. Live stats will be provided during the match and final statistics will be emailed out and posted on AuburnTigers.com. Wireless internet is available in the Arena; ask Taylor Shirey for the password.

VIDEO SERVICES

FTP feeds of selected Auburn volleyball highlights are available for the media. A number of studio and satellite services may be arranged for electronic media by contacting Chase O'Hara in War Eagle Productions at cmo0029@auburn.edu

PHOTO SERVICES

For photos of Auburn volleyball or any Olympic sports, contact Shanna Lockwood at sal0002@auburn.edu,

COMMUNICATIONS STAFF

Taylor Shirey Volleyball Contact
cell: 334-750-07010
email: trs0010@auburn.edu
Kirk Sampson Associate AD
cell: 334-750-1385
email: sampska@auburn.edu

UNIVERSITY INFORMATION

City / Zip Auburn, Ala. / 36831
Founded Oct. 1, 1856
Enrollment 29,776
Nickname Tigers
Colors Navy Blue & Burnt Orange
Affiliation NCAA Division I
Conference Southeastern Conference
Home Court Auburn Arena (9,121)
President Dr. Jay Gogue (Auburn, 1969)
Athletic Director Allen Green (Notre Dame, 1998)
Sport Administrator Joy Vrbka (Florida, 2003)

TEAM INFORMATION

Letterwinners Returning/Lost 11/4
Starters Returning/Lost 4+libero/2
Newcomers 3
2019 Overall Record 7-22
2019 Conference Record/Finish 1-17/13th

PROGRAM HISTORY

First Year of Volleyball 1967
Program discontinued 1981; Reinstated 1986
Seasons of Auburn Volleyball 48th
All-Time Overall Record 655-671-4 (.492)
in Auburn Arena (Since 2013) 49-47 (.510)
Total Home Record 221-200 (.525)
All-Time SEC Record 183-343 (.348)
NCAA Tournament Appearances 1/2010
SEC Championships/Last 1/Co-West Champions (1996)

STAFF INFORMATION

Head Coach Brent Crouch, 1st Season (Texas A&M, '98 & '00; Oregon '06)
Career Record 95-95 (.500)/7th Season
Record at Auburn 0-4 (.000)/1st Season
Associate Head Coach/Recruiting Coordinator Alex Dunphy
Assistant Coach Rick Moller
Director of Volleyball Operations/Technical Coordinator Madi Wilkerson
Strength & Conditioning Bethany Gainey
Sports Dietitian Maggie Melhorn
Athletic Trainer Marie Siler
Equipment Manager Tra' Cee Tanner

GAMEDAY EXPERIENCE: AUBURN ARENA

>> Auburn Arena is in its seventh season as home of Auburn volleyball. The Tigers are 49-45 since moving to the Arena in 2013. The facility seats approximately 2,000 fans for volleyball and 9,121 for basketball.



ATHLETIC COMMUNICATIONS

Associate AD/Communications Kirk Sampson
Assistant Director/Volleyball Contact Taylor Shirey
Email trs0010@auburn.edu
Phone 334-750-0710
Mailing Address Auburn Athletics Complex
392 S. Donahue Drive
Website AuburnTigers.com

FIRST SERVE

» Auburn continues the fall season with its final road series of the 2020 as the Tigers travel to Lexington, Ky., for a two-match series at No. 2 Kentucky.

» The Tigers and Wildcats will go head-to-head on Saturday at 3 p.m. on the SEC Network+ to open the series. Sunday's finale is also set for a 3 p.m. CT first serve and will be televised on the SEC Network.

» In its 48th full season of volleyball, Auburn's all-time record stands at 655-671-4 (.492).

» Brent Crouch enters his first season as the head coach for the Tigers after a two-year stint at USC. Entering his seventh overall season as a head coach, Crouch holds a 95-95 career record. He is the 11th head coach in program history.

» Auburn's fall campaign features two 2019 NCAA Tournament participants: Florida and Kentucky.

» The Tiger roster is loaded with experience as the team returns 11 letterwinners from last season. The roster features four seniors, five juniors, two sophomores and three freshmen.

UP NEXT

» Auburn wraps up the fall season with a final homestand against Tennessee inside Auburn Arena.

» The Tigers opens the fall season finale on Wednesday, Nov. 18 at 7 p.m. CT on the SEC Network. The fall season concludes on Thursday, Nov. 19 at 5 p.m. CT.

LAST TIME OUT

» A recording-setting blocking performance highlighted a back-and-forth match that saw Auburn volleyball total 17.0 team blocks in a 3-1 loss to South Carolina inside the Carolina Volleyball Center.

» After dropping the opening set 22-25, Auburn bounced back for a 25-21 victory to even the match. The Gamecocks would hold on to take two tightly contested sets by 20-25 and 23-25 finals for the win.

» Auburn's 17 blocks set the program's record for a four-set match, besting the previous mark of 14 total blocks set against Tennessee on Nov. 9, 2014. It also tied for the second-most blocks in a single match in Auburn history and was the most blocks in a single match since the Tigers totaled 17 in a five-set contest against Georgia Southern on Sept. 12, 2009.

» Jaeden Brown led the way with a career-high nine blocks to tie for the 13th most blocks in a single-match in program history. Brown added three kills offensively. Her counterpart at middle blocker, Chesney McClellan, tied her career high with seven blocks. The senior also added

a season-high nine kills.

» It was Lauren Dorrell that paced Auburn's offense with a career-high 12 kills on a blistering .522 hitting percentage. Dorrell was errorless in her 23 attacking attempts and added four blocks and a pair of digs.

» Tatum Shipes picked up her seventh career double-double – the first for Auburn this season - with 11 kills and 10 digs. She also was crucial in Auburn's success at the net with six blocks.

» Shipes was one of four Tigers with double-digit digs Thursday afternoon. Junior Bella Rosenthal led the defense with a season-high 16. Senior Payton White totaled 12 digs as Auburn's libero and junior Val Green added 10.

» Freshman Jackie Barrett dished out a career-high 35 assists to carry Auburn to a .162 team hitting percentage, the highest for the Tigers over the 2020 season.

SEC & NCAA GUIDELINES FOR FALL/SPRING CAMPAIGNS

» As the country continues to navigate the challenges and health and safety issues presented by COVID-19, the Southeastern Conference has implemented new guidelines for the volleyball season to ensure the safety of its member institutions.

» The fall season will span from October 16 to November 27 for a total of six weeks of competition.

» Each program will compete against four opponents, twice in the same weekend on back-to-back days for a total of eight conference-only matches.

» The schedule includes a week at the end of the season for any makeup matches for all schools. The SEC will announce any cancellation of matches due to COVID-19.

» SEC teams will participate in spring competition with final details of format still pending. The spring season will span from Jan. 22 to April 3 per the NCAA. The NCAA Tournament field will be set on April 4. The finals site of the championship is scheduled for April 23-25.

SCOUTING KENTUCKY

» No. 2 Kentucky stands on top of the SEC standings with Florida with a perfect 4-0 record midway through the fall season. The Wildcats are coming off a road series sweep of No. 9 Missouri. Kentucky's effort at Missouri earned multiple individual honors as Ali Stumler (Offensive Player), Gabby Curry (Co-Defensive) and Madison Lilley (Setter) all won weekly honors from the SEC.

» Kentucky is one of the top offensive powers in the

PLAYER TO WATCH: LAUREN DORRELL

» Coming off the bench to spark Auburn to its first set win, Dorrell totaled a career-high 12 kills and attacked at a blistering .522 clip at South Carolina. Dorrell leads Auburn with a 2.57 kills per set average.



SEC STANDINGS & SCHEDULE

	SEC RECORD			OVERALL		
	W	L	Pct.	W	L	Pct.
Florida	4	0	1.000	4	0	1.000
Kentucky	4	0	1.000	4	0	1.000
South Carolina	3	1	.750	3	1	.750
Arkansas	4	2	.667	4	2	.667
Missouri	4	2	.667	4	2	.667
Texas A&M	4	2	.667	4	2	.667
Georgia	2	2	.500	2	2	.500
LSU	2	2	.500	2	2	.500
Mississippi State	2	4	.333	2	4	.333
Tennessee	1	3	.250	1	3	.250
Alabama	0	4	.000	0	4	.000
AUBURN	0	4	.000	0	4	.000
Ole Miss	0	4	.000	0	4	.000

THIS WEEK IN THE SEC...

Wednesday, November 4

Missouri 3, Arkansas 2
Mississippi State 3, Texas A&M 1

Thursday, November 5

Missouri 3, Arkansas 0
Mississippi State 3, Texas A&M 2

Friday, November 6

South Carolina at Tennessee 6 p.m. SECN

Saturday, November 7

Alabama at Georgia 1 p.m. SECN+
Auburn at Kentucky 3 p.m. SECN+
South Carolina at Tennessee 4 p.m. SECN+

Sunday, November 8

Alabama at Georgia 1 p.m. SECN
Auburn at Kentucky 3 p.m. SECN

NCAA RPI REPORT

RK*	TEAM	RECORD	AU RESULT
9	Kentucky	4-0	
10	Florida	4-0	L L
39	South Carolina	3-1	L L
77	Tennessee	1-3	
223	AUBURN	0-4	-----

Auburn Opponents Only

**2019 RPI RANKING*

AVCA DI COACHES POLL

RK	TEAM	RECORD	PREVIOUS
1.	Texas (47)	10-0	1
2.	Kentucky (2)	4-0	2
3.	Baylor	11-1	3
4.	Florida	4-0	4
5.	Notre Dame	6-1	5
6.	Louisville	5-2	6
7.	Texas A&M	4-0	7
8.	Georgia Tech	7-1	8
9.	Missouri	2-2	9
10.	Pittsburgh	4-4	10
11.	Kansas State	6-4	13
12.	Miami (FL)	5-3	11
13.	Texas State	16-1	15
14.	Syracuse	4-4	12
15.	South Carolina	3-1	NR

Also receiving votes: Coastal Carolina; Duke; West Virginia; Georgia; North Carolina; Arkansas; LSU; Tennessee

INSIDE THE MATCH-UP

VS. KENTUCKY **10-42 (.192)**

7-9 H • 3-18 A • 0-5 N

SERIES HISTORY [LAST 10 MEETINGS]

YEAR	SITE	RESULT	MATCH SCORE
2014	AWAY	L	0-3
2014	HOME	L	1-3
2015	HOME	L	2-3
2015	AWAY	L	2-3
2016	HOME	L	2-3
2017	AWAY	L	1-3
2017	HOME	L	0-3
2018	AWAY	L	0-3
2019	HOME	L	0-3

SEC and leads the league in five categories, including hitting percentage (.339) and team kills (235). The Wildcats leads the nation in kills per set (15.67) and ranks second nationally in hitting percentage.

» Lilley paces Kentucky's heavy-hitting offense, dishing out 12.53 assists per set to rank second nationally. Lilley also ranks second on the squad with 43 total digs and is one of three Wildcats with double-digit blocks.

» Offensively, Stumler and Avery Skinner are tied for the team lead with 65 kills each. They duo is tied for fifth in the SEC with their kill output. Skinner ranks also ranks fifth in the league with a .390 hitting percentage.

» Five Wildcats have 20+ digs the season led by Gabby Curry. Elise Goetzinger is the Wildcats' leading blocker at the net with 17.0 total.

A WIN OVER KENTUCKY WOULD...

» Be Brent Crouch's first victory as head coach for the Tigers.

» Be the first for Auburn over the Wildcats since 2010 and the first road victory in Lexington since 2005.

AUBURN-KENTUCKY SERIES

» Kentucky leads the all-time series, 42-10, and has won the last 15 meetings between the two programs.

Auburn has picked up just three total wins in Lexington over the series history - the last of which came in 2005.

» The two squads met just once last season with Kentucky sweeping in straight sets inside Auburn Arena.

BLOCK STARS

» After out-blocking No. 4 Florida to close the season-opening series, Auburn's blocking effort turned in a record-breaking effort at South Carolina.

» Auburn totaled 17 blocks in the series finale against the Gamecocks's to set the program's record for blocks in a four-set match, besting the previous total of 14 set against Tennessee on Nov. 9, 2014.

» The blocking effort was tied for the second-most blocks in a single match in Auburn history and was the most blocks in a single match since the Tigers totaled 17 in a five-set contest against Georgia Southern on Sept. 12, 2009.

» Jaeden Brown set a career high with nine blocks in the match, which tied for the 13th most blocks by a Tiger in a single match. It was the most blocks recorded by a Tiger since 2018.

» Auburn currently ranks eighth nationally in blocks/set with a 2.62 average. The average is good for fourth in the SEC. Auburn's 34.0 total team blocks ranks seventh in

the league.

» Brown and her counterpart at middle Chesney McClellan are tied for the team lead with 16 total blocks each - which is good for a tie for ninth in the SEC. The duo average 1.23 blocks per set which ranks fourth in the SEC and 13th nationally.

DISH IT OUT

» Freshman setter Jackie Barrett made her collegiate debut on the road at South Carolina and made an immediate impact, helping Auburn to its highest team hitting percentage in the series finale against the Gamecocks.

» Barrett is the only freshman to be ranked in the top 10 in the SEC in assists/set as Barrett currently averages 7.71 assists/set. Her 54 total assists ranks 15th in the league - despite missing the first two matches of the season.

DOUBLE-DOUBLE VISION

» Tatum Shipes is the first Tiger to record a double-double over the shortened fall season. Shipes racked up 11 kills and 10 total digs at South Carolina on Oct. 28, 2020.

» Shipes leads all active Tigers with seven career double-doubles to her credit.

FAST. AGGRESSIVE. FUN.

» Brent Crouch's new, aggressive style of offense is taking shape on the court and Auburn is slowly beginning to see the fruits of the new system.

» Highlighting the aggressive swings, Val Green averages 10.69 attacks per set to rank fifth in the SEC. She currently leads the Tigers in both kills (27) and points (33.0).

» Lauren Dorrell has seen the most improvement offensively with a career performance in Auburn's four-set thriller against the Gamecocks. Dorrell totaled a career-high 12 kills - her first double-digit kill effort as a Tiger - and committed zero errors to end the night with a career-high .522 hitting percentage. Dorrell leads Auburn with a 2.57 kills/set average.

» Dorrell and Shipes (11) both finished the night in double-digit kills. They are the first Tigers this season to rack up double-figures offensively this season.

AUBURN FAMILY TURNS UP

» The 2020 season has brought several new changes to attendance policies across The Plains, but Auburn still sees itself racking up the attendance numbers over the first

PLAYER TO WATCH: JACKIE BARRETT

» Jackie Barrett made her collegiate debut at South Carolina last week, dishing out 54 total assists. Her 7.71 assists per set mark ranks ninth in the SEC. She's the only freshman to be ranked in the top 10 in the conference.



two home contests of the fall.

- » Auburn has accumulated attendance stands at 1,119, which ranks 16th nationally and is the sixth highest among all SEC programs.
- » Auburn's average attendance mark stands of 560 stands at 10th nationally.

CROUCH ERA BEGINS ON THE PLAINS

- » Brent Crouch was named the 11th head coach in Auburn volleyball history in January of 2020. Crouch spent the last two seasons at the helm of USC.
- » Crouch led the Trojans to back-to-back NCAA Tournament appearances last season. He guided three Trojans to AVCA All-America nods and helped setter Raquel Lazaro to PAC-12 Freshman of the Year.
- » Crouch is just five victories away from the 100th of his coaching career. He holds a 95-95 overall career record in his seventh season as a head coach.

AUBURN PICKED 13th IN PRESEASON POLL

- » Auburn was selected to finish 13th in the Southeastern Conference in the annual preseason coaches' poll. The Tigers earned 19 points from the league's coaches.
- » Kentucky edged Florida as the favorite to win the SEC Championship, securing 11 first-place votes.
- » Missouri was selected third, while Texas A&M and LSU rounded out the top five.

TIGER TRACKS

- » Chesney McClellan served as the Community Engagement Chair for Auburn's Student-Athlete Advisory Committee and has led multiple community outreach projects, including The Salvation Army's Angel Tree program and more recently voting registration drives on campus. She now serves as SACC's Assistant Secretary.
- » Payton White boasts a volleyball pedigree. Both her older sisters have also played collegiate volleyball - Sloan at the College of Charleston and Kendall at Penn State.
- » Jaeden Brown is making a little family history of her own as the first member of her family to play a collegiate sport.
- » Air Green! Val Green set Takawanda High School's high jump record. She's also a second generation collegiate volleyball athlete. Her mother, Paula, played at

Miami-Ohio.

- » Molly is the second Pember to wear the Orange and Blue. Her older sister, Tate, played at Auburn for three seasons.
- » Lily Thomason also comes from an athletic family. Her father, Jeff, played collegiate football at Oregon and spent time in the NFL with the Bengals, Packers and Eagles.
- » Lauren Dorrell grew up competing in gymnastics, equestrian and competitive cheerleading before finding her groove in volleyball. Her father, Karl, is a prominent football coach with experience with the NFL. He is the current head coach at Colorado. Her brother, Chandler, played football at Vanderbilt.
- » You better WERK! Lily Sumner has experience as a model and has walked the runway during New York Fashion Week.
- » Tatum Shipes holds a wealth of athletic talent in her family's history. Her mother, Laurel, played basketball at Kentucky. Her father lettered in basketball at The Master's University. Her brother, T.J., was a member of Georgia State's basketball team. Her grandfather, Don Hudgens, and great grandparents, Ira and Opal, all played collegiate basketball.
- » Jackie Barrett is the daughter of Martin J. Barrett, a former football star at the University of Buffalo. Martin was a two-time AP All-American and set 14 career UB records as a quarterback. He was inducted into Buffalo's Hall of Fame in 1989.

2020 AUBURN VOLLEYBALL ROSTER

No.	Name	Year	Pos.	Ht.	Hometown (High School/Previous School)
2	Molly Pember	So.	DS/L	5-7	Marietta, Ga. (Walton)
3	Payton White	Sr.	DS/L	5-7	Zionsville, Ind. (Cathedral)
5	Audrey Douglas	Fr.	OH	6-4	Winter Park, Fla. (Hagerty)
6	Bella Rosenthal	Jr.	DS/L	5-5	Yorktown, Ind. (Yorktown)
7	Chesney McClellan	Sr.	MB	6-4	Knoxville, Tenn. (Nebraska)
8	Jaeden Brown	Sr.	MB	6-0	Hollywood, Fla. (South Florida)
9	Lily Thomason	So.	OH	6-1	Castle Pines, Colo. (Valor Christian)
10	Jackie Barrett	Fr.	S	6-1	Highland, Calif. (Citrus Valley)
12	Marissa Hines	Jr.	S	6-0	Olathe, Kan. (Wyoming)
13	Lily Sumner	Fr.	MB	6-0	Indianapolis, Ind. (Park Tudor)
14	Katie Persons	Jr.	DS/L	5-3	Grand Rapids, Mich. (East Grand Rapids)
16	Val Green	Jr.	OH	6-2	Oxford, Ohio (Talawanda)
19	Elif Su Yavuz	Jr.	MB	6-3	Ankara, Turkey (Gazi University)
21	Tatum Shipes	Jr.	OH	6-4	Buford, Ga. (Buford)
22	Lauren Dorrell	Sr.	OH	6-0	Brentwood, Tenn. (Colorado)

HEAD COACH | BRENT CROUCH (FIRST SEASON)
ASSOCIATE HEAD COACH/RECRUITING COORDINATOR | ALEX DUNPHY (FIRST SEASON)
ASSISTANT COACH | RICK MOLLER (FIRST AS ASSISTANT COACH | | SECOND SEASON OVERALL)
VOLUNTEER ASSISTANT COACH | JUSTIN DUECK (FIRST SEASON)
DIRECTOR OF VOLLEYBALL OPERATIONS/TECHNICAL COORDINATOR | MADI WILKERSON (FIRST SEASON)

HEAD COACH BRENT CROUCH

QUICK FACTS

College ___ Texas A&M ('98, '00)
 ___ Oregon ('06)
 Wife ___ Marcy
 Sons ___ Jonathan and William

COACHING RECORD

Head Coaching Career ___ Six Seasons
 Career Record ___ 95-95
 NCAA Appearances ___ 2

COACHING CAPSULE

2020- Auburn 0-4
 2018-19 Southern California 40-25
 2014-17 Portland 55-66

YEAR-BY-YEAR RESULTS

2020 Auburn 0-4
 2019 USC 18-14
 2018 USC 22-11
 2017 Portland 15-15
 2016 Portland 17-13
 2015 Portland 16-15
 2014 Portland 7-23



Brent Crouch was named Auburn's head coach by Director of Athletics Allen Greene on January 14, 2020.

In two seasons as head coach at USC, Crouch led the program to consecutive NCAA second round appearances, including a second-place finish in the Pac-12, and a No. 21 ranking in the season's final AVCA poll in his first season on campus in 2018. This past season, the Trojans were 18-14, while outside hitter Khaila Lanier became the fifth player in Pac-12 history to record 2,000 kills and 1,000 digs in career.

Under Crouch in 2018, the Trojans finished 22-11 overall with a 13-7 record in Pac-12 matches. USC played one of the toughest schedules in the nation and faced 18 ranked opponents in the regular season and were awarded the No. 11 overall seed in the NCAA Tournament. Setter Raquel Lazaro was named the Pac-12 Freshman of the Year and outside hitter Brooke Botkin was chosen for second-team AVCA All-America honors. Lazaro and Lanier were each tabbed for All-America honorable mention.

Under Crouch's tutelage, outside hitter Emilia Weske was tabbed to the Pac-12's All-Freshman Team while middle blocker Jasmine Gross added All-Pac 12 honors.

Prior to arriving at Troy, Crouch was the 2016 West Coast Conference Coach of the Year. He inherited a winless Portland program and within two seasons guided the Pilots to their winningest season in 25 years. Crouch first took over at Portland in 2014 after the Pilots went 0-27 the previous season. After going 7-23 in his debut season, he guided the Pilots to a 16-15 mark in 2015 (its most victories since 1991) and then improved upon that in 2016 with a 17-13 mark. His 2017 team, which was hampered by injuries, was 15-15, with five losses coming in five-set matches. His overall four-year record at Portland was 55-66.

The 48 victories in his final three years was Portland's best three-season total since 1984-86. The Pilots' 10-8 third place WCC finish in 2016 was its most league wins since 1985 and highest conference finish since 1989. He led Portland to the program's first-ever victories over Top 10, Top 15, and Top 25 opponents. Crouch coached three All-WCC first team players and a WCC All-Freshman team pick, along with three WCC All-Academic first teamers. He also helped establish beach volleyball as a varsity sport at Portland in 2016.

Crouch arrived at Portland after four seasons (2010-13) at Saint Mary's College, where he was an assistant with the indoor program and head coach of the beach team.

During his time at SMC, the Gaels' indoor team went 73-40 overall, finished in the top three in the WCC standings each season by winning 73.4 percent of its league matches (47-17) and earned a berth into the NCAA Tournament in 2012, advancing to the second round. Besides being involved in the team's offense and defense, recruiting, scouting, practice planning, statistical and video analysis and scheduling, he provided academic support, as he mentored several WCC All-Academic honorees and helped the team to the athletic department's highest grade point average, an NCAA Public Recognition Award, and an AVCA academic award.

Crouch also coached the inaugural Saint Mary's beach team in 2013, guiding the Gaels to an 8-2 record, the best mark among all Northern California teams, as well as a No. 9 national ranking and a bid to the AVCA national championship for the program's top pairs team.

Crouch also has coaching experience with the USA Volleyball program, including working with U.S. Women's Nationalist Team head coach Karch Kiraly, being an assistant with the U.S. Collegiate National Team that captured a gold medal at the 2016 U22 Global Challenge and serving as both an indoor and beach coach in the USA Volleyball High Performance program.

Crouch played for Texas A&M's club team from 1993 to 1997. He earned his bachelor's degree in history in 1998 and his master's in philosophy in 2000, both from Texas A&M, then a doctorate in philosophy from Oregon in 2006.

He competed on the beach from 2005 to 2007 in AVP and CBVA events and placed second at the 2005 California Cup state championship.

He has held various teaching positions in philosophy at Oregon, San Diego City College, and Saint Mary's College since 2000.

Crouch and his wife Marcy have two sons, Jonathan and William.

INSIDE THE NUMBERS



CATEGORY	AUBURN	KENTUCKY
Kills	124	234
Per Set	9.5	15.6
Errors	91	60
Total Attacks	454	514
Hitting Pct.	.073	.339
Assists	114	213
Per Set	8.8	14.2
Service Aces	10	21
Per Set	.8	1.4
Service Errors	33	36
Reception Errors	20	15
Per Set	1.5	1.0
Digs	176	206
Per Set	13.5	13.7
Solo Blocks	2	9
Block Assists	64	55
Total Blocks	34.0	36.5
Per Set	2.6	2.4

2020 AUBURN INDIVIDUAL MATCH HIGHS (BY SET)

THREE SETS

HITTING PERCENTAGE (MIN. 12 KILLS) _____
 KILLS _____ 8 (2x), last Val Green at South Carolina (10/28/20)
 TOTAL ATTEMPTS _____ 40, Val Green at South Carolina (10/28/20)
 ASSISTS _____ 19, Jackie Barrett at South Carolina (10/28/20)
 DIGS _____ 11, Tatum Shipes vs. #4 Florida (10/21/20)
 ACES _____ 3, Jackie Barrett at South Carolina (10/28/20)
 BLOCKS _____ 4 (2x), last Chesney McClellan at South Carolina (10/28/20)

FOUR SETS

HITTING PERCENTAGE (MIN. 12 KILLS) _____ .522, Lauren Dorrell at South Carolina (10/29/20)
 KILLS _____ 12, Lauren Dorrell at South Carolina (10/29/20)
 TOTAL ATTEMPTS _____ 39, Tatum Shipes at South Carolina (10/29/20)
 ASSISTS _____ 35, Jackie Barrett at South Carolina (10/29/20)
 DIGS _____ 19, Bella Rosenthal at South Carolina (10/29/20)
 ACES _____ 2, Payton White at South Carolina (10/29/20)
 BLOCKS _____ 9, Jaeden Brown at South Carolina (10/29/20)

FIVE SETS

HITTING PERCENTAGE (MIN. 12 KILLS) _____
 KILLS _____
 TOTAL ATTEMPTS _____
 ASSISTS _____
 DIGS _____
 ACES _____
 BLOCKS _____

2020 AUBURN TEAM MATCH HIGHS (BY SET)

THREE SETS

HITTING PERCENTAGE (MIN. 12 KILLS) _____ .076, vs. #4 Florida (10/22/2020)
 KILLS _____ 27 (2x), last vs. #4 Florida (10/22/2020)
 TOTAL ATTEMPTS _____ 111, vs. #4 Florida (10/21/2020)
 ASSISTS _____ 26, vs. #4 Florida (10/22/2020)
 DIGS _____ 42, vs. #4 Florida (10/21/2020)
 ACES _____ 4, at South Carolina (10/28/20)
 BLOCKS _____ 7, vs. #4 Florida (10/22/20)

FOUR SETS

HITTING PERCENTAGE _____ .168, at South Carolina (10/29/20)
 KILLS _____ 44, at South Carolina (10/29/20)
 TOTAL ATTEMPTS _____ 148, at South Carolina (10/29/20)
 ASSISTS _____ 42, at South Carolina (10/29/20)
 DIGS _____ 63, at South Carolina (10/29/20)
 ACES _____ 3, at South Carolina (10/29/20)
 BLOCKS _____ 17, at South Carolina (10/29/20)

FIVE SETS

HITTING PERCENTAGE _____
 KILLS _____
 TOTAL ATTEMPTS _____
 ASSISTS _____
 DIGS _____
 ACES _____
 BLOCKS _____

THE LAST TIME AUBURN...

Won in three sets	Nov. 30, 2019 at Alabama (29-27, 25-13, 25-17)
Won in four sets	Sept. 14, 2019 vs. Miami (25-22, 25-23, 24-26, 25-18)
Won in five sets	Sept. 7, 2019 vs. South Florida (20-25, 28-26, 25-13, 21-25, 17-15)
Lost in three sets	Oct. 28, 2020 at South Carolina (15-25, 16-25, 20-25)
Lost in four sets	Oct. 29, 2020 at South Carolina (22-25, 25-21, 20-25, 23-25)
Lost in five sets	Sept. 15, 2019 at TCU (21-25, 25-19, 25-19, 16-25, 14-16)
Lost first set in a win	Sept. 8, 2019 vs. George Washington (21-25, 25-13, 25-22, 25-13)
Won first set in a loss	Oct. 25, 2019 at Mississippi State (25-19, 22-25, 15-25, 16-25)
Lost first two sets in a win	Sept. 11, 2018 at Kennesaw State (23-25, 20-25, 28-26, 26-24, 15-9)
Won first two sets in a loss	Sept. 26, 2018 at Mississippi State (25-21, 25-12, 22-25, 23-25, 13-15)
Beat a ranked opponent	Sept. 2, 2019 vs. #16 North Carolina (25-23, 25-22, 25-27, 25-21)
Hit .300-.399 in a match	Nov. 30, 2019 at Alabama (.365)
Hit .400-.499 in a match	Sept. 1, 2018 vs. Eastern Illinois (.485)
Hit .500 or better in a match	Oct. 18, 1998 at Ole Miss (.514)
Held opponent to a .000-.100 in a match	Sept. 21, 2019 vs. IUPUI (.089)
Held opponent to a negative hitting percentage	Sept. 20, 2014 vs. Jacksonville State (-.037)
Had 70-79 kills in a match	Oct. 26, 2018 vs. Ole Miss (77)
Had 80+ kills in a match	Sept. 17, 2006 at Georgia (84)
Had 80-99 digs in a match	Sept. 27, 2019 at Tennessee (80)
Had 100+ digs in a match	Oct. 25, 2015 at LSU (109)
Had 15+ blocks in a match	Oct. 29, 2020 at South Carolina (17.0)
Had 10+ service aces in a match	Sept. 15, 2019 at TCU (11)
Had a player(s) with 20-24 kills in a match	Oct. 26, 2018, Tatum Shipes vs. Ole Miss (21)
Had a player(s) with 25-29 kills in a match	Sept. 13, 2014, Macy Reece vs. USF (25)
Had a player(s) with 30+ kills in a match	Oct. 8, 2004, Ashlee Johns vs. Arkansas (30)
Had a player(s) with 10+ blocks in a match	Nov. 23, 2016, Breanna Barksdale at #9 Florida (11)
Had a player(s) with 25-29 digs in a match	Oct. 20, 2019, Bella Rosenthal vs. Georgia (26)
Had a player(s) with 30+ digs in a match	Aug. 31, 2019, Payton White vs. Butler (37)
Had a player(s) with 50+ assists in a match	Aug. 31, 2019, Marissa Hines (50)
Had a player(s) with 60+ assists in a match	Oct. 28, 2018, Mica Allison vs. Ole Miss (61)
Had a player(s) with 5+ aces in a match	Oct. 19, 2018, Brenna McIlroy at Missouri (6)

AUBURN DOUBLE-DOUBLES IN 2020

PLAYER	OPPONENT (SETS)	DATE	STATS
Tatum Shipes (1)	at South Carolina (4)	Oct. 29, 2020	11 kills, 10 digs

AUBURN'S 2020 RECORD WHEN...

OVERALL	0-4
SEC	0-4
NON-CONFERENCE	0-0
RANKED OPPONENTS	0-2
HOME	0-2
AWAY	0-2
NEUTRAL	0-0

BY SETS

THREE SETS	0-3
FOUR SETS	0-1
FIVE SETS	0-0
WON FIRST SET	0-0
LOST FIRST SET	0-4
WON SECOND SET	0-1
LOST SECOND SET	0-3
WON FIRST TWO SETS	0-0
LOST FIRST TWO SETS-	0-3

SITUATIONAL

MORE KILLS THAN OPPONENT	0-0
FEWER KILLS THAN OPPONENT	0-4
KILLS ARE TIED	0-0
MORE DIGS THAN OPPONENT	0-0
FEWER DIGS THAN OPPONENT	0-4
DIGS ARE TIED	0-0
MORE ACES THAN OPPONENT	0-0
FEWER ACES THAN OPPONENT	0-4
ACES ARE TIED	0-0
HIGHER HITTING PERCENTAGE THAN OPPONENT	0-0
LOWER HITTING PERCENTAGE THAN OPPONENT	0-4
HITTING PERCENTAGE TIED	0-0

HITTING PERCENTAGE

.400 OR ABOVE	0-0
.300-.399	0-0
.200-.299	0-0
.100-.199	0-1
.000-.099	0-3
NEGATIVE	0-0

OPPONENTS' HITTING PERCENTAGE

.400 OR ABOVE	0-0
.300-.399	0-0
.200-.299	0-3
.100-.199	0-1
.000-.099	0-0
NEGATIVE	0-0

BY DAY

MONDAY	0-0
TUESDAY	0-0
WEDNESDAY	0-2
THURSDAY	0-2
FRIDAY	0-0
SATURDAY	0-0
SUNDAY	0-0

DAY MATCHES (FIRST SERVE BEFORE 6 P.M.)	0-1
NIGHT MATCHES (FIRST SERVE AFTER 6 P.M.)	0-3

BY MONTH

OCTOBER	0-4
NOVEMBER	0-0

JERSEY COLOR

NAVY	0-1
ORANGE	0-1
ORANGE/NAVY SLEEVE	0-2
PINK	0-0

2020 AUBURN MATCH-BY-MATCH STARTERS

DATE	OPPONENT	RESULT	OUTSIDE	MIDDLE	RIGHT SIDE	OUTSIDE/DS	MIDDLE	LIBERO	SETTER
10/21	FLORIDA	L, 0-3	Green	Brown	Shipes	Rosenthal (DS)	McClellan	White	Hines
10/22	FLORIDA	L, 0-3	Green	Brown	Shipes	Rosenthal (DS)	McClellan	White	Hines
10/28	at South Carolina	L, 0-3	Green	Brown	Douglas	Shipes	McClellan	White	Barrett
10/29	at South Carolina	L, 1-4	Green	Brown	Shipes	Rosenthal (DS)	McClellan	White	Barrett
11/7	at Kentucky								
11/8	at Kentucky								
11/18	TENNESSEE								
11/19	TENNESSEE								

2020 AUBURN MATCH-BY-MATCH LEADERS

DATE	OPPONENT	RESULT	KILLS	ASSISTS	ACES	DIGS	BLOCKS	HIT PCT. (MIN 10 ATT.)
10/21	FLORIDA	L, 0-3	Green (8)	Hines (17)	Rosenthal (1)	Shipes (11)	Brown/Green (2)	McClellan (.286)
10/22	FLORIDA	L, 0-3	Dorrell (6)	Rosenthal (10)	Shipes (2)	Rosenthal (8)	McClellan (4)	Dorrell (.133)
10/28	at South Carolina	L, 0-3	Green (8)	Barrett (19)	Barrett (3)	White (9)	McClellan (4)	McClellan (.091)
10/29	at South Carolina	L, 1-3	Dorrell (12)	Barrett (35)	White (2)	Rosenthal (19)	Brown (9)	Dorrell (.522)
11/7	at Kentucky							
11/8	at Kentucky							
11/18	TENNESSEE							
11/19	TENNESSEE							

2020 OVERALL STATISTICS

Overall: 0-4 • SEC: 0-4 • Home: 0-2 • Away: 0-2 • Neutral: 0-0

#	PLAYER	SP	K	K/S	E	TA	Pct	A	A/S	SA	SE	SA/S	RE	DIG	DIG/S	BS	BA	BLK	BLK/S	BE	BHE	PTS	PT/S
16	Green, Val	13	27	2.08	33	139	-.043	3	0.23	1	8	0.08	2	28	2.15	1	8	9.0	0.69	0	0	33.0	2.54
21	Shipes, Tatum	13	25	1.92	22	110	.027	3	0.23	3	5	0.23	4	32	2.46	0	9	9.0	0.69	0	0	32.5	2.50
7	McClellan, Chesney	13	22	1.69	7	54	.278	0	0.00	0	0	0.00	0	1	0.08	0	16	16.0	1.23	0	0	30.0	2.31
22	Dorrell, Lauren	7	18	2.57	5	41	.317	1	0.14	0	0	0.00	0	8	1.14	1	5	6.0	0.86	2	0	21.5	3.07
8	Brown, Jaeden	13	16	1.23	11	38	.123	0	0.00	0	0	0.00	0	1	0.08	0	16	16.0	1.23	0	0	24.0	1.85
5	Douglas, Audrey	8	6	0.75	8	36	-.056	1	0.13	0	0	0.00	0	1	0.13	0	2	2.0	0.25	0	0	7.0	0.88
10	Jackie Barrett	7	6	0.86	2	24	.167	54	7.71	3	3	0.43	0	14	2.00	0	7	7.0	1.00	0	0	12.5	1.79
12	Hines, Marissa	5	3	0.60	1	8	.250	25	5.00	0	2	0.00	0	12	2.40	0	0	0	0.00	0	6	3.0	0.60
6	Rosenthal, Bella	13	1	0.08	0	2	.500	18	1.38	1	6	0.08	1	42	3.23	0	1	1.0	0.08	0	1	2.5	0.19
3	White, Payton	13	0	0.00	2	2	-1.000	9	0.69	2	6	0.15	6	35	2.69	0	0	0.0	0.00	0	0	2.0	0.15
13	Sumner, Lily	1	0	0.00	0	0	.000	0	0.00	0	1	0.00	0	0	0.00	0	0	0.0	0.00	0	0	0.0	0.00
14	Persons, Katie	13	0	0.00	0	0	.000	0	0.00	0	2	0.00	2	2	0.15	0	0	0.0	0.00	0	0	0.0	0.00
TEAM													5										
AUBURN		13	124	9.54	91	454	.073	114	8.77	10	33	0.77	20	176	13.54	2	64	34.0	2.62	2	7	168.0	12.92
OPPONENTS		13	166	12.77	72	440	.214	156	12.00	20	31	1.54	10	196	15.08	9	40	29.0	2.23	7	2	215.0	16.54

2020 CONFERENCE STATISTICS

SEC: 0-4 • Home: 0-2 • Away: 0-2

#	PLAYER	SP	K	K/S	E	TA	Pct	A	A/S	SA	SE	SA/S	RE	DIG	DIG/S	BS	BA	BLK	BLK/S	BE	BHE	PTS	PT/S
16	Green, Val	13	27	2.08	33	139	-.043	3	0.23	1	8	0.08	2	28	2.15	1	8	9.0	0.69	0	0	33.0	2.54
21	Shipes, Tatum	13	25	1.92	22	110	.027	3	0.23	3	5	0.23	4	32	2.46	0	9	9.0	0.69	0	0	32.5	2.50
7	McClellan, Chesney	13	22	1.69	7	54	.278	0	0.00	0	0	0.00	0	1	0.08	0	16	16.0	1.23	0	0	30.0	2.31
22	Dorrell, Lauren	7	18	2.57	5	41	.317	1	0.14	0	0	0.00	0	8	1.14	1	5	6.0	0.86	2	0	21.5	3.07
8	Brown, Jaeden	13	16	1.23	11	38	.123	0	0.00	0	0	0.00	0	1	0.08	0	16	16.0	1.23	0	0	24.0	1.85
5	Douglas, Audrey	8	6	0.75	8	36	-.056	1	0.13	0	0	0.00	0	1	0.13	0	2	2.0	0.25	0	0	7.0	0.88
10	Jackie Barrett	7	6	0.86	2	24	.167	54	7.71	3	3	0.43	0	14	2.00	0	7	7.0	1.00	0	0	12.5	1.79
12	Hines, Marissa	5	3	0.60	1	8	.250	25	5.00	0	2	0.00	0	12	2.40	0	0	0	0.00	0	6	3.0	0.60
6	Rosenthal, Bella	13	1	0.08	0	2	.500	18	1.38	1	6	0.08	1	42	3.23	0	1	1.0	0.08	0	1	2.5	0.19
3	White, Payton	13	0	0.00	2	2	-1.000	9	0.69	2	6	0.15	6	35	2.69	0	0	0.0	0.00	0	0	2.0	0.15
13	Sumner, Lily	1	0	0.00	0	0	.000	0	0.00	0	1	0.00	0	0	0.00	0	0	0.0	0.00	0	0	0.0	0.00
14	Persons, Katie	13	0	0.00	0	0	.000	0	0.00	0	2	0.00	2	2	0.15	0	0	0.0	0.00	0	0	0.0	0.00
TEAM													5										
AUBURN		13	124	9.54	91	454	.073	114	8.77	10	33	0.77	20	176	13.54	2	64	34.0	2.62	2	7	168.0	12.92
OPPONENTS		13	166	12.77	72	440	.214	156	12.00	20	31	1.54	10	196	15.08	9	40	29.0	2.23	7	2	215.0	16.54

2020 STATISTICAL LEADERS

KILLS (PER SET)

Val Green	27 (2.08)
Tatum Shipes	25 (1.92)
Chesney McClellan	22 (1.69)
Lauren Dorrell	18 (2.57)
Jaeden Brown	16 (1.23)

TOTAL ATTACKS

Val Green	139
Tatum Shipes	110
Chesney McClellan	54
Lauren Dorrell	41
Jaeden Brown	38

HITTING PERCENTAGE (MIN. 20 ATT.)

Lauren Dorrell	.500
Chesney McClellan	.278
Jackie Barrett	.167
Jaeden Brown	.132
Tatum Shipes	.027

ASSISTS (PER SET)

Jackie Barrett	54 (7.71)
Marissa Hines	25 (5.00)
Bella Rosenthal	18 (1.38)

ACES (PER SET)

Jackie Barrett	3 (0.43)
Tatum Shipes	3 (0.23)
Payton White	2 (0.15)

DIGS (PER SET)

Bella Rosenthal	42 (3.23)
Payton White	35 (2.69)
Tatum Shipes	32 (2.46)
Val Green	28 (2.15)
Jackie Barrett	14 (2.00)

BLOCK | SOLOS

Val Green	1
Lauren Dorrell	1

BLOCK | ASSISTS

Chesney McClellan	16
Jaeden Brown	16
Tatum Shipes	9
Val Green	8
Jackie Barrett	7

TOTAL BLOCKS (PER SET)

Chesney McClellan	16 (1.23)
Jaeden Brown	16 (1.23)
Tatum Shipes	9 (0.69)
Val Green	8 (0.69)
Jackie Barrett	7 (1.00)

AUBURN VOLLEYBALL SINGLE-SEASON INDIVIDUAL RECORDS (25-POINT RALLY SCORING ERA)

OFFENSIVE RECORDS

KILLS

PLAYER	YEAR	KILLS
1. Jessica Glover	2008	410
2. Sarah Bullock	2012	371
3. Sarah Bullock	2010	354
4. Brenna McIlroy	2016	351
5. Kelly Fidero	2011	341
6. Courtney Crable	2015	333
Brenna McIlroy	2015	333
8. Katherine Culwell	2012	330
9. Katherine Culwell	2013	326
10. Morgan Johns	2010	325

KILLS PER SET (MIN. 100 KILLS)

PLAYER	YEAR	AVG.
1. Sarah Bullock	2012	3.50
2. Jessica Glover	2008	3.45
3. Kelly Fidero	2011	3.22
4. Brenna McIlroy	2016	3.13
Katherine Culwell	2013	3.13
6. Katherine Culwell	2012	3.03
Sarah Bullock	2010	3.03
8. Brenna McIlroy	2018	3.00
9. Brenna McIlroy	2017	2.86
10. Courtney Crable	2015	2.82
Taylor Rowland	2018	2.82

ATTACK PERCENTAGE (MIN. 250 ATT.)

PLAYER	YEAR	PCT.
1. Shaina White	2017	.367
2. Camila Jersonsky	2012	.356
Camila Jersonsky	2011	.356
4. Camila Jersonsky	2010	.354
5. Camila Jersonsky	2013	.351
6. Alyssa Davis	2009	.316
7. Morgan Johns	2010	.305
8. Stephanie Campbell	2013	.281
9. Stephanie Campbell	2015	.280
10. Stephanie Campbell	2014	.279

ATTACKS

PLAYER	YEAR	ATTACKS
1. Brenna McIlroy	2016	1,113
2. Sarah Bullock	2012	1,090
3. Courtney Crable	2014	1,062
4. Brenna McIlroy	2015	1,043
5. Katherine Culwell	2012	1,033
6. Sarah Bullock	2010	993
7. Jessica Glover	2008	988
8. Katherine Culwell	2013	981
9. Brenna McIlroy	2017	938
10. Courtney Crable	2015	935

ASSISTS

PLAYER	YEAR	ASSISTS
1. Alexa Filley	2016	1,227
2. Alexa Filley	2015	1,226
3. Alexa Filley	2014	1,175
4. Alexa Filley	2017	1,093
5. Mica Allison	2018	1,055
6. Sara Shanks	2008	995
7. Chelsea Wintzinger	2011	791
8. Christina Solverson	2010	740
9. Chelsea Wintzinger	2012	680
10. Chelsea Wintzinger	2013	642

ASSISTS PER SET (MIN. 200 ASSISTS)

PLAYER	YEAR	AVG.
1. Alexa Filley	2017	10.72
2. Alexa Filley	2014	10.22
3. Alexa Filley	2015	10.13
4. Mica Allison	2018	10.05
5. Alexa Filley	2016	9.98
6. Sara Shanks	2008	8.43
7. Marissa Hines	2019	7.51
8. Chelsea Wintzinger	2011	7.39
9. Morgan Kull	2019	6.94
10. Chelsea Wintzinger	2012	6.24

ACES

PLAYER	YEAR	ACES
1. Brenna McIlroy	2018	48
2. Jesse Earl	2016	46
3. Jesse Earl	2017	42
4. Jesse Earl	2015	39
5. Brenna McIlroy	2016	36
6. Chelsea Wintzinger	2013	35
7. Courtney Crable	2014	33
8. Brenna McIlroy	2015	32
9. Sara Shanks	2008	30
Alexa Filley	2015	30

ACES PER SET (MIN. 15 ACES)

PLAYER	YEAR	AVG.
1. Brenna McIlroy	2018	0.46
2. Jesse Earl	2017	0.41
3. Jesse Earl	2016	0.37
4. Chelsea Wintzinger	2013	0.34
5. Jesse Earl	2015	0.32
Brenna McIlroy	2016	0.32
7. Courtney Crable	2014	0.27
8. Brenna McIlroy	2015	0.26
9. Alexa Filley	2015	0.25
Sara Shanks	2008	0.25
Kelly Stewart	2016	0.25

DEFENSIVE RECORDS

DIGS

PLAYER	YEAR	DIGS
1. Jesse Earl	2016	612
2. Jesse Earl	2017	529
3. Jesse Earl	2015	516
4. Sarah Wroblecky	2013	481
5. Liz Crouch	2010	469
6. Liz Crouch	2009	453
7. Alyssa Ivey	2014	434
8. Sarah Wroblecky	2012	431
9. Liz Crouch	2008	389
10. Alexa Filley	2016	367

DIGS PER SET (MIN. 100 DIGS)

PLAYER	YEAR	AVG.
1. Jesse Earl	2017	5.19
2. Jesse Earl	2016	4.98
3. Sarah Wroblecky	2013	4.62
4. Jesse Earl	2015	4.26
5. Liz Crouch	2009	4.08
6. Alyssa Ivey	2014	4.02
7. Liz Crouch	2010	4.01
8. Sarah Wroblecky	2012	3.99
9. Liz Crouch	2008	3.70
10. Sarah Bullock	2012	3.31

BLOCKS - SOLO

PLAYER	YEAR	BLOCKS
1. Katherine Culwell	2012	25
2. Sarah Bullock	2012	18
Jessica Glover	2008	18
Anna Stevenson	2018	18
5. Kelly Fidero	2011	17
Sarah Bullock	2011	17
7. Katherine Culwell	2013	16
Camila Jersonsky	2013	16
9. Camila Jersonsky	2011	15
Jaeden Brown	2019	15

BLOCKS - ASSISTS

PLAYER	YEAR	BLOCKS
1. Camila Jersonsky	2012	108
2. Lauren Mellor	2009	90
3. Camila Jersonsky	2013	89
4. Breanna Barksdale	2014	87
5. Courtney McDonald	2012	84
6. Breanna Barksdale	2016	83
7. Breanna Barksdale	2015	82
8. Anna Stevenson	2018	73
9. Stephanie Campbell	2014	72
10. Emily Klitzke	2014	70

TOTAL BLOCKS

PLAYER	YEAR	BLOCKS
1. Camila Jersonsky	2012	119
2. Camila Jersonsky	2013	105
3. Breanna Barksdale	2014	101
4. Lauren Mellor	2009	97
Breanna Barksdale	2016	97
6. Breanna Barksdale	2015	94
7. Anna Stevenson	2018	91
8. Courtney McDonald	2012	89
9. Stephanie Campbell	2014	86
10. Emily Klitzke	2014	80

BLOCKS PER SET (MIN. 50 BLOCKS)

PLAYER	YEAR	BLOCKS
1. Anna Stevenson	2018	1.15
2. Camila Jersonsky	2012	1.09
3. Camila Jersonsky	2013	1.01
4. Chloe Rowand	2011	0.97
5. Breanna Barksdale	2014	0.91
6. Stephanie Campbell	2015	0.90
7. Camila Jersonsky	2011	0.89
8. Lauren Mellor	2009	0.88
9. Breanna Barksdale	2016	0.84
10. Shaina White	2019	0.82
Courtney McDonald	2012	0.82
Lauren Mellor	2010	0.82

Active student-athletes are listed in **BOLD**.

AUBURN VOLLEYBALL CAREER RECORDS (SIDEOUT + RALLY ERA)

OFFENSIVE RECORDS

KILLS

PLAYER	YEARS	KILLS
1. Jaunelle Hamilton	1997-00	1,848
2. Allyson Beecroft	1993-96	1,727
3. Brooke McCarley	1997-00	1,704
4. Gina Thomas	1988-92	1,467
5. Rachel Shanks	2004-07	1,319
6. Brenna McIlroy	2015-18	1,288
7. Sarah Bullock	2009-12	1,272
8. Bridgitte Sims	1989-91	1,149
9. Jessica Glover	2005-08	1,137
10. Rani Whitson	1993-96	1,102

KILLS PER SET (MIN. 500 KILLS)

PLAYER	YEARS	AVG.
1. Brooke McCarley	1997-00	4.40
2. Jaunelle Hamilton	1997-00	4.23
3. Allyson Beecroft	1993-96	4.00
4. Ashlee Johns	2003-04	3.82
5. Terri Duckworth	1987-88	3.63
6. Jennifer Amobi	2003-05	3.57
7. Rachel Shanks	2004-07	3.43
8. Bridgette Sims	1989-91	3.40
9. Jessica Glover	2005-08	3.17
10. Sarah Bullock	2009-12	2.93
Brenna McIlroy	2015-18	2.93

ATTACK PERCENTAGE (MIN. 1,000 ATT.)

PLAYER	YEARS	K	E	ATT. PCT.
1. Camila Jersonsky	2010-13	894	237	1,853 .355
2. Jaunelle Hamilton	1997-00	1,848	532	3,827 .344
3. Brooke McCarley	1997-00	1,704	455	3,847 .325
4. Terri Duckworth	1987-99	876	291	1,860 .315
5. Shaina White	2017-19	512	121	1,267 .309
6. Rani Whitson	1993-96	1,102	383	2,562 .281
7. Julie Bosley	2003-06	558	178	1,359 .280
8. Gina Thomas	1988-92	1,467	540	3,319 .279
9. Stephanie Campbell	2013-16	673	205	1,669 .276
10. Whitney Jacob	2004-07	1,093	428	2,522 .264

ATTACKS

PLAYER	YEARS	ATTACKS
1. Allyson Beecroft	1993-96	4,349
2. Brenna McIlroy	2015-18	4,027
3. Brooke McCarley	1997-00	3,847
4. Jaunelle Hamilton	1997-00	3,827
5. Sarah Bullock	2009-12	3,774
6. Rachel Shanks	2004-07	3,703
7. Gina Thomas	1988-92	3,319
8. Katherine Culwell	2009-13	3,130
Jessica Glover	2005-08	3,130
10. Jenifer Kleyn	1988-91	3,107

ASSISTS

PLAYER	YEARS	ASSISTS
1. Piper Craig	1995-98	5,053
2. Alexa Filley	2014-17	4,721
3. Janel Newkirk	1989-92	4,071
4. Mary Orndorff	1986-89	3,242
5. Chelsea Wintzinger	2010-13	2,654

6. Tama English	1991-94	2,535
7. Joanna Pappas	2005-06	2,073

ASSISTS PER SET (MIN. 500 ASSISTS)

PLAYER	YEARS	AVG.
1. Piper Craig	1995-98	12.86
2. Traci Price	1999-00	11.77
3. Maira Magollon	2003-04	11.38
4. Chris Murphy	1993-96	11.35
5. Joanna Pappas	2005-06	11.15
6. Alexa Filley	2014-17	10.24
7. Mica Allison	2018	10.05

ACES

PLAYER	YEARS	ACES
1. Jenifer Kleyn	1988-91	338
2. Lori Russell	1989-92	201
3. Gretchen Thompson	1986-89	164
4. Tory Gutierrez	1989-92	160
5. Terri Duckworth	1987-88	158
6. Jaunelle Hamilton	1997-00	148
7. Allyson Beecroft	1993-96	138
8. Brenna McIlroy	2015-18	137
9. Whitney Jacob	2004-07	134
10. Janel Newkirk	1989-92	129

ACES PER SET (MIN. 40 ACES)

PLAYER	YEARS	AVG.
1. Jenifer Kleyn	1988-91	0.71
2. Terri Duckworth	1987-88	0.66
3. Lori Russell	1989-92	0.46
4. Jenny Fisler	1987-88	0.40
5. Bridgitte Sims	1989-91	0.37
Jesse Earl	2015-17	0.37
7. Gretchen Thompson	1986-89	0.36
8. Maira Magollon	2003-04	0.35
Tory Gutierrez	1989-92	0.35
10. Jaunelle Hamilton	1997-00	0.34

DEFENSIVE RECORDS

DIGS

PLAYER	YEARS	DIGS
1. Liz Crouch	2007-10	1,703
2. Jesse Earl	2015-17	1,657
3. Gretchen Thompson	1986-89	1,495
4. Alexa Filley	2014-17	1,315
5. Allyson Beecroft	1993-96	1,249
6. Sarah Wrablicky	2010-13	1,238
7. Sarah Bullock	2009-12	1,210
8. Rachel Shanks	2004-07	1,185
9. Brenna McIlroy	2015-18	1,078
10. Sarah Watson	1992-95	1,036

DIGS PER SET (MIN. 500 DIGS)

PLAYER	YEARS	AVG.
1. Jesse Earl	2015-17	4.79
2. Liz Crouch	2007-10	4.00
3. Sarah Wrablicky	2010-13	3.65
4. Gretchen Thompson	1986-89	3.26
5. Bella Rosenthal	2018-Pr.	3.14

6. Rachel Shanks	2004-07	3.08
7. Allyson Beecroft	1993-96	2.89
8. Alexa Filley	2014-17	2.85
9. Bailey Veit	2002-05	2.80
Emily Suter	1995-98	2.80

BLOCKS - SOLO

PLAYER	YEARS	BLOCKS
1. Gina Thomas	1988-92	159
2. Tory Gutierrez	1989-92	157
3. Jaunelle Hamilton	1997-00	106
4. Julie Bosler	2003-06	98
5. Rani Whitson	1993-96	61
6. Katherine Culwell	2009-13	59
7. Mary Olks	1986-89	58
8. Whitney Jacob	2004-07	56
9. Sarah Bullock	2009-12	54
10. Camila Jersonsky	2010-13	51

BLOCKS - ASSISTS

PLAYER	YEARS	BLOCKS
1. Jaunelle Hamilton	1997-00	465
2. Rani Whitson	1993-96	426
3. Gina Thomas	1988-92	360
4. Whitney Jacob	2004-07	351
5. Tory Gutierrez	1989-92	318
6. Camila Jersonsky	2010-13	317
7. Julie Bosley	2003-06	265
8. La'Toi Finley	1994-97	261
Krista Singleton	1994-97	261
10. Breanna Barksdale	2014-16	252

TOTAL BLOCKS

PLAYER	YEARS	BLOCKS
1. Jaunelle Hamilton	1997-00	571
2. Gina Thomas	1988-92	519
3. Rani Whitson	1993-96	487
4. Tory Gutierrez	1989-92	475
5. Whitney Jacob	2004-07	407
6. Camila Jersonsky	2010-13	368
7. Julie Bosler	2003-06	363
8. Breanna Barksdale	2014-16	292
9. La'Toi Finley	1994-97	289
10. Krista Singleton	1994-97	276

BLOCKS PER SET (MIN. 100 BLOCKS)

PLAYER	YEARS	AVG.
1. Jaunelle Hamilton	1997-00	1.31
2. Rani Whitson	1993-96	1.16
3. Julie Bosler	2003-06	1.06
4. Tory Gutierrez	1989-92	1.03
5. Gina Thomas	1988-92	0.98
6. Whitney Jacob	2004-07	0.96
7. Camila Jersonsky	2009-13	0.92
8. Anna Stevenson	2017-18	0.90
Heather Franey	1995-96,98	0.90
10. La'Toi Finley	1994-97	0.88

Active student-athletes are listed in **BOLD**.



#2 MOLLY PEMBER
So. | DS/L | 5-7



#3 PAYTON WHITE
Sr. | DS/L | 5-7



#5 AUDREY DOUGLAS
Fr. | OH | 6-4



#6 BELLA ROSENTHALL
Jr. | DS/L | 5-5



#7 CHESNEY MCCLELLAN
Sr. | MB | 6-4



#8 JAEDEN BROWN
Sr. | MB | 6-0



#9 LILY THOMASON
So. | OH | 6-1



#10 JACKIE BARRETT
Fr. | S | 6-1



#12 MARISSA HINES
Jr. | S | 6-0



#13 LILY SUMNER
Fr. | MB | 6-0



#14 KATIE PERSONS
Jr. | DS/L | 5-3



#16 VAL GREEN
Jr. | OH | 6-4



#19 ELIF SU YAVUZ
Jr. | MB | 6-3



#21 TATUM SHIPES
Jr. | OH | 6-4



#22 LAUREN DORRELL
Sr. | OH | 6-0



HEAD COACH
BRENT CROUCH



ASSOCIATE HEAD COACH
ALEX DUPHY



ASSISTANT COACH
RICK MOLLER



VOLUNTEER ASSISTANT
JUSTIN DUECK



#2 MOLLY PEMBER
DEFENSIVE SPECIALIST | 5-7 | SOPHOMORE
MARIETTA, GA. (WALTON)

PEMBER'S 2020 CAREER/SEASON HIGHLIGHTS

- Enters 2020 with two career starts.
- Has three career double-digit dig performances.
- Missed the first half of the 2020 season due to concussion.

CATEGORY	CAREER HIGH	OPPONENT/DATE
Kills	1	vs. George Washington (9/8/19)
Attempts	1 (2x)	last, at Texas A&M (11/13/19)
Hitting Percentage (Min. 10 ATT.)		
Assists	4	vs. Michigan State (9/20/19)
Digs	15	vs. South Florida (9/7/19)
Blocks		
Aces	4	vs. Tennessee State (8/30/19)
Points	4.0	vs. Tennessee State (8/30/19)

CATEGORY	SEASON HIGH	OPPONENT/DATE
Kills		
Attempts		
Hitting Percentage (Min. 10 ATT.)		
Assists		
Digs		
Blocks		
Aces		
Points		

PEMBER'S OVERALL CAREER STATISTICS

YEAR	SETS	MP	KILLS	K/S	E	TA	PCT.	AST	A/S	SA	SA/S	SE	DIGS	D/S	RE	BS	BA	TB	B/S	PTS	PT/S
2019	78	26	1	.01	0	2	.500	18	.23	11	.14	9	135	1.73	14	0	0	0	.00	12.0	.15
TOTAL	78	26	1	.01	0	2	.500	18	.23	11	.14	9	135	1.73	14	0	0	0	.00	12.0	.15

PEMBER'S SEC CAREER STATISTICS

YEAR	SETS	MP	KILLS	K/S	E	TA	PCT.	AST	A/S	SA	SA/S	SE	DIGS	D/S	RE	BS	BA	TB	B/S	PTS	PT/S
2019	34	15	0	.00	0	1	.000	4	.12	1	.03	3	39	1.15	4	0	0	0	.00	1.0	.03
TOTAL	34	15	0	.00	0	1	.000	4	.12	1	.03	3	39	1.15	4	0	0	0	.00	1.0	.03



WHITE'S 2020 CAREER/SEASON HIGHLIGHTS

- Appeared in 87 career matches played and has tallied 693 career digs.
- Has 29 career double-digit dig performances.
- Holds Auburn's single-match record for digs with 37 against Butler (8/31/19)
- First double-digit dig effort of 2020 came at South Carolina (10/29/20)

CATEGORY	CAREER HIGH	OPPONENT/DATE
Kills	1 (4x)	last, at Florida (9/27/19)
Attempts	3	vs. George Washington (9/8/19)
Hitting Percentage (Min. 10 ATT.)		
Assists	7	vs. Michigan State (9/20/19)
Digs	37	vs. Butler (8/31/19)
Blocks		
Aces	3	at Kennesaw State (9/11/18)
Points	3.0 (2x)	last, vs. Tennessee State (8/30/19)

CATEGORY	SEASON HIGH	OPPONENT/DATE
Kills		
Attempts	1 (2x)	last, at South Carolina (10/29/20)
Hitting Percentage (Min. 10 ATT.)		
Assists	5	vs. #4 Florida (10/22/20)
Digs	12	at South Carolina (10/29/20)
Blocks		
Aces	2	at South Carolina (10/29/20)
Points	2.0	at South Carolina (10/29/20)

DATE	OPPONENT	SP	ATTACK				SET			SERVE				RECEPT			BLOCKING				TEAM				
			K	E	TA	PCT	A	TA	PCT.	SA	SE	TA	PCT.	RE	TA	PCT.	DIG	BS	BA	BE	TOTAL	BHE	POINTS	HIT%	SCORE
10/21/20	FLORIDA	*3	0	0	0	.000	2	13	.154	0	2	8	.750	1	15	.933	7	0	0	0	0.0	0	0.0	.009	0-3
10/22/20	FLORIDA	*3	0	0	0	.000	5	16	.312	0	1	8	.875	1	13	.923	7	0	0	0	0.0	0	0.0	.076	0-3
10/28/20	at South Carolina	*3	0	1	1	-1.000	0	5	.000	0	1	8	.875	2	25	.920	9	0	0	0	0.0	0	0.0	.010	0-3
10/29/20	at South Carolina	*4	0	1	1	-1.000	2	15	.133	2	2	15	.867	2	32	.938	12	0	0	0	0.0	0	2.0	.162	1-3
TOTALS		13	0	2	2	-1.000	9	49	.184	2	6	39	.846	6	85	.929	35	0	0	0	0.0	0	0.0		

SETS PLAYED: 13
 KILLS PER SET: 0.00
 ASSISTS PER SET: 0.69

SERVICE ACES PER SET: 0.15
 DIGS PER SET: 2.69

WHITE'S OVERALL CAREER STATISTICS

YEAR	SETS	MP	KILLS	K/S	E	TA	PCT.	AST	A/S	SA	SA/S	SE	DIGS	D/S	RE	BS	BA	TB	B/S	PTS	PT/S
2017	102	27	0	0.00	1	1	-1.000	34	0.33	16	.16	53	177	1.74	14	0	0	0	.00	16.0	.16
2018	102	27	0	0.00	3	6	-.500	43	0.42	16	.16	30	156	1.53	18	0	0	0	.00	16.0	.16
2019	103	29	4	0.04	2	13	.154	51	0.50	13	.13	27	325	3.16	26	0	0	0	.00	17.0	.17
2020	13	4	0	0.00	2	1	-1.000	9	0.69	2	.15	6	35	2.69	6	0	0	0	.00	2.0	.15
TOTAL	320	87	4	0.01	8	22	-.182	137	.43	47	.15	116	693	2.17	64	0	0	0	.00	51.0	.16

WHITE'S SEC CAREER STATISTICS

YEAR	SETS	MP	KILLS	K/S	E	TA	PCT.	AST	A/S	SA	SA/S	SE	DIGS	D/S	RE	BS	BA	TB	B/S	PTS	PT/S
2017	69	18	0	0.00	1	1	-1.000	24	.35	10	.14	35	115	1.67	10	0	0	0	.00	10.0	.14
2018	66	17	0	0.00	2	5	-.400	26	.39	9	.14	21	94	1.42	13	0	0	0	.00	9.0	.14
2019	59	18	1	0.02	2	5	-.200	17	.29	5	.08	16	140	2.37	15	0	0	0	.00	6.0	.10
2020	13	4	0	0.00	2	1	-1.000	9	0.69	2	.15	6	35	2.69	6	0	0	0	.00	2.0	.15
TOTAL	207	57	1	0.00	7	13	-.462	76	.37	26	.13	78	384	1.86	44	0	0	0	.00	27.0	.13



#5 AUDREY DOUGLAS

OUTSIDE HITTER | 6-4 | FRESHMAN
WINTER PARK, FLA. (HAGERTY)

DOUGLAS'S 2020 CAREER/SEASON HIGHLIGHTS

- Made her collegiate debut against #4 Florida (10/21/20), recording four kills and a block.
- Recorded her first collegiate dig at South Carolina (10/28/20).

CATEGORY	CAREER HIGH	OPPONENT/DATE
Kills	4	vs. #4 Florida (10/21/20)
Attempts	16	vs. #4 Florida (10/21/20)
Hitting Percentage (Min. 10 ATT.)	-.063	vs. #4 Florida (10/21/20)
Assists	1	vs. #4 Florida (10/22/20)
Digs	1	at South Carolina (10/28/20)
Blocks	1.0 (2x)	last, vs. #4 Florida (10/22/20)
Aces		
Points	4.5	vs. #4 Florida (10/21/20)

CATEGORY	SEASON HIGH	OPPONENT/DATE
Kills	4	vs. #4 Florida (10/21/20)
Attempts	16	vs. #4 Florida (10/21/20)
Hitting Percentage (Min. 10 ATT.)	-.063	vs. #4 Florida (10/21/20)
Assists	1	vs. #4 Florida (10/22/20)
Digs	1	at South Carolina (10/28/20)
Blocks	1.0 (2x)	last, vs. #4 Florida (10/22/20)
Aces		
Points	4.5	vs. #4 Florida (10/21/20)

DATE	OPPONENT	SP	ATTACK				SET			SERVE				RECEPT			DIG	BLOCKING				BHE	POINTS	TEAM	
			K	E	TA	PCT.	A	TA	PCT.	SA	SE	TA	PCT.	RE	TA	PCT.		BS	BA	BE	TOTAL			HIT%	SCORE
10/21/20	FLORIDA	3	4	5	16	-.062	0	0	.000	0	0	0	.000	0	0	.000	0	0	1	0	1.0	0	4.5	.009	0-3
10/22/20	FLORIDA	2	1	0	7	.143	1	1	1.000	0	0	0	.000	0	0	.000	0	0	1	0	1.0	0	1.5	.076	0-3
10/28/20	at South Carolina	*3	1	3	13	-.154	0	1	.00	0	0	0	.000	0	0	.000	1	0	0	0	0.0	0	1.0	0.10	0-3
TOTALS		8	6	8	36	-.056	1	2	.500	0	0	0	.000	0	0	.000	1	0	2	0	2.0	0	7.0		

SETS PLAYED: 8
KILLS PER SET: 0.75
ASSISTS PER SET: 0.12

DIGS PER SET: 0.12
BLOCKS PER SET: 0.25

DOUGLAS' OVERALL CAREER STATISTICS

YEAR	SETS	MP	KILLS	K/S	E	TA	PCT.	AST	A/S	SA	SA/S	SE	DIGS	D/S	RE	BS	BA	TB	B/S	PTS	PT/S
2020	8	3	6	0.75	8	36	-.056	1	.12	0	.00	0	1	.12	0	0	2	2	.25	7.0	0.88
TOTAL	8	3	6	0.75	8	36	-.056	1	.12	0	.00	0	1	.12	0	0	2	2	.25	7.0	0.88

DOUGLAS' SEC CAREER STATISTICS

YEAR	SETS	MP	KILLS	K/S	E	TA	PCT.	AST	A/S	SA	SA/S	SE	DIGS	D/S	RE	BS	BA	TB	B/S	PTS	PT/S
2020	8	3	6	0.75	8	36	-.056	1	.12	0	.00	0	1	.12	0	0	2	2	.25	7.0	0.88
TOTAL	8	3	6	0.75	8	36	-.056	1	.12	0	.00	0	1	.12	0	0	2	2	.25	7.0	0.88

#6 BELLA ROSENTHALL

DEFENSIVE SPECIALIST/LIBERO | 5-5 | JUNIOR
YORKTOWN, IND. (YORKTOWN)



ROSENTHALL'S 2020 CAREER/SEASON HIGHLIGHTS

- Appeared in 63 career matches and has recorded 688 career digs.
- Has 33 career double-digit dig performances.
- Ranks fifth in Auburn career history with a 3.14 digs/set average.
- Split time at setter against #4 Florida (10/22/20), recording a career high 10 assists. It was her first time playing the position since high school.
- Set a season high with 19 digs at South Carolina (10/28/20).
- Currently ranks 10th in the SEC in digs/set average.

CATEGORY	CAREER HIGH	OPPONENT/DATE
Kills	1 (4x)	last, vs. #4 Florida (10/22/20)
Attempts	2 (3x)	last, vs. #4 Florida (10/22/20)
Hitting Percentage (Min. 10 ATT.)		
Assists	10	vs. #4 Florida (10/22/20)
Digs	26	vs. Georgia (10/20/19)
Blocks	1.0	vs. #4 Florida (10/22/20)
Aces	3 (2x)	last, vs. Tennessee State (8/30/19)
Points	3.0 (2x)	last, vs. Tennessee State (8/30/19)

CATEGORY	SEASON HIGH	OPPONENT/DATE
Kills	1	vs. #4 Florida (10/22/20)
Attempts	2	vs. #4 Florida (10/22/20)
Hitting Percentage (Min. 10 ATT.)		
Assists	10	vs. #4 Florida (10/22/20)
Digs	19	at South Carolina (10/29/20)
Blocks	1.0	vs. #4 Florida (10/22/20)
Aces	1	vs. #4 Florida (10/21/20)
Points	1.5	vs. #4 Florida (10/22/20)

DATE	OPPONENT	SP	ATTACK				SET			SERVE				RECEPT			BLOCKING				TEAM				
			K	E	TA	PCT.	A	TA	PCT.	SA	SE	TA	PCT.	RE	TA	PCT.	DIG	BS	BA	BE	TOTAL	BHE	POINTS	HIT%	SCORE
10/21/20	FLORIDA	*3	0	0	0	.000	3	10	.300	1	3	11	.727	0	9	1.000	8	0	0	0	0.0	0	1.0	.009	0-3
10/22/20	FLORIDA	*3	1	0	2	.500	10	36	.278	0	1	8	.875	0	3	1.000	8	0	1	0	1.0	1	1.5	.076	0-3
10/28/20	at South Carolina	3	0	0	0	.000	3	7	.429	0	2	8	.750	0	12	1.000	7	0	0	0	0.0	0	0.0	.010	0-3
10/29/20	at South Carolina	*4	0	0	0	.000	2	8	.250	0	0	18	1.000	1	10	.900	19	0	0	0	0.0	0	0.0	.162	1-3
TOTALS		13	1	0	2	.500	18	61	.295	1	6	45	.867	1	34	.971	42	0	1	0	1.0	1	2.5		

SETS PLAYED: 13
KILLS PER SET: 0.08
ASSISTS PER SET: 1.38

SERVICE ACES PER SET: 0.08
DIGS PER SET: 3.23
BLOCKS PER SET: 0.08

ROSENTHALL'S OVERALL CAREER STATISTICS

YEAR	SETS	MP	KILLS	K/S	E	TA	PCT.	AST	A/S	SA	SA/S	SE	DIGS	D/S	RE	BS	BA	TB	B/S	PTS	PT/S
2018	103	28	1	.01	0	6	.167	65	0.63	16	.16	23	339	3.29	26	0	0	0	.00	17.0	.17
2019	103	29	2	.02	0	5	.400	38	0.37	12	.12	24	307	2.98	17	0	0	0	.00	14.0	.14
2020	13	4	1	.08	0	2	.500	28	1.38	1	.08	6	42	3.23	1	0	1	1	.08	2.5	.19
TOTAL	219	63	4	.02	0	13	.308	121	0.55	29	.13	53	688	3.14	44	0	1	1	.00	33.5	.15

ROSENTHALL'S SEC CAREER STATISTICS

YEAR	SETS	MP	KILLS	K/S	E	TA	PCT.	AST	A/S	SA	SA/S	SE	DIGS	D/S	RE	BS	BA	TB	B/S	PTS	PT/S
2018	67	18	1	.01	0	5	.200	39	.58	11	.16	12	192	2.87	19	0	0	0	.00	12.0	.18
2019	59	18	1	.02	0	4	.250	31	.53	7	.12	15	232	3.93	12	0	0	0	.00	8.0	.14
2020	13	4	1	.08	0	2	.500	28	1.38	1	.08	6	42	3.23	1	0	1	1	.08	2.5	.19
TOTAL	139	40	3	.02	0	11	.273	88	.63	19	.14	33	466	3.35	32	0	1	1	.01	22.5	.16



#7 CHESNEY MCCLELLAN

MIDDLE BLOCKER | 6-4 | SENIOR
KNOXVILLE, TENN. (NEBRASKA)



MCCLELLAN'S 2020 CAREER/SEASON HIGHLIGHTS

- Appeared in 54 career matches for the Tigers
- Totaled 294 career kills and 136.0 career total blocks.
- Set a season high with nine kills and matched her career-high with seven blocks at South Carolina (10/29/20).
- Part of Auburn's blocking effort that totaled 17 blocks against the Gamecocks (10/29/20) to set Auburn's four-set match record for blocks. It was Auburn's most blocks in a single match since 2009.
- Currently ranks 13th nationally and fourth in the SEC in blocks/set.
- Her 16 total blocks also ranks ninth in the SEC.

CATEGORY	CAREER HIGH	OPPONENT/DATE
Kills	14	vs. Tennessee State (8/30/19)
Attempts	32	at Tennessee (11/27/19)
Hitting Percentage (Min. 10 ATT.)	.476	at Western Michigan (9/20/19)
Assists	2	at Kansas (9/7/18)
Digs	2 (9x)	last, vs. Georgia (10/29/19)
Blocks	7.0 (2x)	last, at South Carolina (10/29/20)
Aces	2 (2x)	last, vs. Missouri (10/18/19)
Points	16.5 (2x)	last, at Western Michigan (9/20/19)

CATEGORY	SEASON HIGH	OPPONENT/DATE
Kills	9	at South Carolina (10/29/20)
Attempts	21	at South Carolina (10/29/20)
Hitting Percentage (Min. 10 ATT.)	.286 (2x)	last, at South Carolina (10/29/20)
Assists		
Digs	1	at South Carolina (10/29/20)
Blocks	7.0	at South Carolina (10/29/20)
Aces		
Points	12.5	at South Carolina (10/29/20)

DATE	OPPONENT	SP	ATTACK			SET			SERVE			RECEPT			DIG	BLOCKING			BHE	POINTS	TEAM				
			K	E	TA	PCT	A	TA	PCT.	SA	SE	TA	PCT.	RE		TA	PCT.	BS			BA	BE	TOTAL	HIT%	SCORE
10/21/20	FLORIDA	*3	6	2	14	.286	0	0	.000	0	0	0	.000	0	0	.000	0	0	1	0	1.0	0	6.5	.009	0-3
10/22/20	FLORIDA	*3	4	0	8	.500	0	1	.000	0	0	0	.000	0	0	.000	0	0	4	0	4.0	0	6.0	.076	0-3
10/28/20	at South Carolina	*3	3	2	11	.091	0	0	.000	0	0	0	.000	0	00	.000	0	0	4	0	4.0	0	5.0	.010	0-3
10/29/20	at South Carolina	*4	9	3	21	.286	0	2	.000	0	0	0	.000	0	0	.000	1	0	7	0	7.0	0	12.5	.162	1-3
TOTALS		13	22	7	54	.278	0	3	.000	0	0	0	.000	0	0	.000	1	0	16	0	16.0	0	30.0		

SETS PLAYED: 13
KILLS PER SET: 1.69

DIGS PER SET: 0.08
BLOCKS PER SET: 1.23

MCCLELLAN'S OVERALL CAREER STATISTICS

YEAR	SETS	MP	KILLS	K/S	E	TA	PCT.	AST	A/S	SA	SA/S	SE	DIGS	D/S	RE	BS	BA	TB	B/S	PTS	PT/S
2018	68	21	97	1.43	38	242	.244	3	.04	0	.00	0	12	.18	0	5	45	50	0.74	124.5	1.83
2019	100	29	175	1.75	69	490	.216	4	.04	4	.04	10	17	.17	0	11	59	70	0.70	219.5	2.20
2020	13	4	22	1.69	7	54	.278	0	.00	0	.00	0	1	.08	0	0	16	16	1.23	30.0	2.31
TOTAL	181	54	294	1.62	114	786	.229	7	.04	4	.02	10	30	.17	0	16	120	136	0.75	374.0	2.07

MCCLELLAN'S SEC CAREER STATISTICS

YEAR	SETS	MP	KILLS	K/S	E	TA	PCT.	AST	A/S	SA	SA/S	SE	DIGS	D/S	RE	BS	BA	TB	B/S	PTS	PT/S
2018	41	13	66	1.61	26	157	.255	0	.00	0	.00	0	7	.17	0	3	24	27	0.66	81.0	1.98
2019	59	18	90	1.53	45	299	.151	4	.07	4	.07	8	11	.19	0	7	38	45	0.76	120.0	2.03
2020	13	4	22	1.69	7	54	.278	0	.00	0	.00	0	1	.08	0	0	16	16	1.23	30.0	2.31
TOTAL	113	35	178	1.58	78	510	.196	4	.04	4	.04	8	19	.17	0	10	78	88	0.78	231.0	2.04



#8 JAELEN BROWN
MIDDLE BLOCKER | 6-0 | SENIOR
HOLLYWOOD, FLA. (SOUTH FLORIDA)

BROWN'S 2020 CAREER/SEASON HIGHLIGHTS

- Recorded 20 career starts as a Tiger.
- Tallied 15 solo stuffs in 2019 to rank tied for ninth in Auburn single-season history.
- Recorded 3+ blocks in 11 career matches.
- Recorded a career-high 9.0 blocks at South Carolina (10/29/20) to lead Auburn to a team effort of 17.0 blocks, the program's four-set match record.
- It was Auburn's most team blocks in a single match since 2009, while her individual effort was tied for the 13th most in a match in Auburn history.
- Currently ranks 13th nationally and fourth in the SEC in blocks/set.
- Her 16 total blocks also ranks ninth in the SEC.

CATEGORY	CAREER HIGH	OPPONENT/DATE
Kills	9	vs. IUPUI (9/21/19)
Attempts	22	vs. Georgia (10/20/19)
Hitting Percentage (Min. 10 ATT.)	.600	vs. South Florida (9/7/19)
Assists	---	
Digs	3	vs. Georgia (10/20/19)
Blocks	9.0	at South Carolina (10/29/20) Aces

Points	10.5	vs. IUPUI (9/21/19)

CATEGORY	SEASON HIGH	OPPONENT/DATE
Kills	5	at South Carolina (10/28/20)
Attempts	10 (2x)	last, vs. #4 Florida (10/22/20)
Hitting Percentage (Min. 10 ATT.)	.100	vs. #4 Florida (10/21/20)
Assists	---	
Digs	1	at South Carolina (10/28/20)
Blocks	9.0	at South Carolina (10/29/20)
Aces	---	
Points	7.5	at South Carolina (10/29/20)

DATE	OPPONENT	SP	ATTACK				SET			SERVE				RECEPT			BLOCKING				BHE	POINTS	HIT%	SCORE	
			K	E	TA	PCT.	A	TA	PCT.	SA	SE	TA	PCT.	RE	TA	PCT.	DIG	BS	BA	BE					TOTAL
10/21/20	FLORIDA	*3	4	3	10	.100	0	0	.000	0	0	0	.000	0	0	.000	0	0	2	0	2.0	0	5.0	.009	0-3
10/22/20	FLORIDA	*3	4	5	10	-.100	0	0	.000	0	0	0	.000	0	1	1.000	0	0	3	0	3.0	0	5.5	.076	0-3
10/28/20	at South Carolina	*3	5	2	9	.333	0	0	.000	0	0	0	.000	0	0	.000	1	0	2	0	2.0	0	6.0	.010	0-3
10/29/20	at South Carolina	*4	3	1	9	.222	0	0	.000	0	0	0	.000	0	0	.000	0	0	9	0	9.0	0	7.5	.162	1-3
TOTALS		13	16	11	38	.132	0	0	.000	0	0	0	.000	0	1	1.000	1	0	16	0	16.0	0	24.0		

SETS PLAYED: 13
 KILLS PER SET: 1.23

DIGS PER SET: 0.08
 BLOCKS PER SET: 1.23

BROWN'S OVERALL CAREER STATISTICS

YEAR	SETS	MP	KILLS	K/S	E	TA	PCT.	AST	A/S	SA	SA/S	SE	DIGS	D/S	RE	BS	BA	TB	B/S	PTS	PT/S
2019	57	21	77	1.35	34	199	.216	0	.00	0	.00	2	18	.32	0	15	33	48.0	0.84	108.5	1.90
2020	13	4	16	1.23	11	38	.132	0	.00	0	.00	0	1	.08	0	0	16	16.0	1.23	24.0	1.85
TOTAL	70	25	93	1.33	45	237	.203	0	.00	0	.00	2	19	.27	0	15	49	64.0	0.91	132.5	1.89

BROWN'S SEC CAREER STATISTICS

YEAR	SETS	MP	KILLS	K/S	E	TA	PCT.	AST	A/S	SA	SA/S	SE	DIGS	D/S	RE	BS	BA	TB	B/S	PTS	PT/S
2019	39	14	52	1.33	26	149	.174	0	.00	0	.00	0	14	.36	0	11	23	34.0	0.87	74.5	1.91
2020	13	4	16	1.23	11	38	.132	0	.00	0	.00	0	1	.08	0	0	16	16.0	1.23	24.0	1.85
TOTAL	52	18	68	1.31	37	187	.166	0	.00	0	.00	0	15	.29	0	11	39	50.0	0.96	98.5	1.89



#9 LILY THOMASON

OUTSIDE HITTER | 6-1 | SOPHOMORE
CASTLE PINES, COLO. (VALOR CHRISTIAN)

THOMASON'S 2020 CAREER/SEASON HIGHLIGHTS

- Recorded one career start after seeing an increase in playing time in conference play as a freshman.
- Totaled five double-digit kill performance - all in conference matches.
- Will miss the fall season due to recovery from a shoulder injury.

CATEGORY	CAREER HIGH	OPPONENT/DATE
Kills	14	vs. Georgia (10/20/19)
Attempts	42	vs. Georgia (10/20/19)
Hitting Percentage (Min. 10 ATT.)	.400	vs. Tennessee (10/6/19)
Assists	1	at Mississippi State (10/25/19)
Digs	6	at Tennessee (11/27/19)
Blocks	5	vs. South Florida (9/7/19)
Aces	---	
Points	14.5	vs. Georgia (10/20/19)

CATEGORY	SEASON HIGH	OPPONENT/DATE
Kills		
Attempts		
Hitting Percentage (Min. 10 ATT.)		
Assists		
Digs		
Blocks		
Aces		
Points		

THOMASON'S OVERALL CAREER STATISTICS

YEAR	SETS	MP	KILLS	K/S	E	TA	PCT.	AST	A/S	SA	SA/S	SE	DIGS	D/S	RE	BS	BA	TB	B/S	PTS	PT/S
2019	54	20	132	2.44	65	412	.163	1	.02	0	.00	0	40	.74	2	2	7	9	.17	137.5	2.55
TOTAL	54	20	132	2.44	65	412	.163	1	.02	0	.00	0	40	.74	2	2	7	9	.17	137.5	2.55

THOMASON'S SEC CAREER STATISTICS

YEAR	SETS	MP	KILLS	K/S	E	TA	PCT.	AST	A/S	SA	SA/S	SE	DIGS	D/S	RE	BS	BA	TB	B/S	PTS	PT/S
2019	45	16	119	2.64	53	357	.185	1	.02	0	.00	0	35	.78	2	1	3	4	.09	121.5	2.70
TOTAL	45	16	119	2.64	53	357	.185	1	.02	0	.00	0	35	.78	2	1	3	4	.09	121.5	2.70

#10 JACKIE BARRETT

SETTER | 6-1 | FRESHMAN
HIGHLAND, CALIF. (CITRUS VALLEY)



BARRETT'S 2020 CAREER/SEASON HIGHLIGHTS

- Made collegiate debut as Auburn's starting setter at South Carolina (10/28/20), recording three kills, three aces, five digs, two blocks and 19 assists.
- Dished out a career-high 35 assists to lead Auburn to its highest team attacking percentage of the season in Auburn's rematch with the Gamecocks (10/29/20), while also adding a career-high nine digs and five blocks.
- Part of Auburn's blocking effort that totaled 17 blocks against the Gamecocks (10/29/20) to set Auburn's four-set match record for blocks. It was Auburn's most blocks in a single match since 2009.
- Currently ranks 15th in the SEC in total assists.

CATEGORY	CAREER HIGH	OPPONENT/DATE
Kills	3 (2x)	last, at South Carolina (10/29/20)
Attempts	18	at South Carolina (10/29/20)
Hitting Percentage (Min. 10 ATT.)	.111	at South Carolina (10/29/20)
Assists	35	at South Carolina (10/29/20)
Digs	9	at South Carolina (10/29/20)
Blocks	5.0	at South Carolina (10/29/20)
Aces	3	at South Carolina (10/28/20)
Points	7.0	at South Carolina (10/28/20)

CATEGORY	SEASON HIGH	OPPONENT/DATE
Kills	3 (2x)	last, at South Carolina (10/29/20)
Attempts	18	at South Carolina (10/29/20)
Hitting Percentage (Min. 10 ATT.)	.111	at South Carolina (10/29/20)
Assists	35	at South Carolina (10/29/20)
Digs	9	at South Carolina (10/29/20)
Blocks	5.0	at South Carolina (10/29/20)
Aces	3	at South Carolina (10/28/20)
Points	7.0	at South Carolina (10/28/20)

DATE	OPPONENT	SP	ATTACK				SET			SERVE				RECEPT			BLOCKING				TEAM				
			K	E	TA	PCT.	A	TA	PCT.	SA	SE	TA	PCT.	RE	TA	PCT.	DIG	BS	BA	BE	TOTAL	BHE	POINTS	HIT%	SCORE
10/28/20	at South Carolina	*3	3	1	6	.333	19	78	.244	3	0	13	1.000	0	0	.000	5	0	2	0	2.0	0	7.0	.010	0-3
10/29/20	at South Carolina	*4	3	1	18	.111	35	104	.337	0	3	15	.800	0	0	.000	9	0	5	0	5.0	0	5.5	.162	1-3
TOTALS		7	6	2	24	.167	54	182	.297	3	3	28	.893	0	0	.000	14	0	7	0	7.0	0	12.5		

SETS PLAYED: 7
KILLS PER SET: 0.86
ASSISTS PER SET: 7.71

SERVICE ACES PER SET: 0.43
DIGS PER SET: 2.00
BLOCKS PER SET: 1.00

BARRETT'S OVERALL CAREER STATISTICS

YEAR	SETS	MP	KILLS	K/S	E	TA	PCT.	AST	A/S	SA	SA/S	SE	DIGS	D/S	RE	BS	BA	TB	B/S	PTS	PT/S
2020	7	2	6	0.86	2	24	.167	54	7.71	3	.43	3	14	2.00	0	0	7	7.0	1.00	12.5	1.79
TOTAL	7	2	6	0.86	2	24	.167	54	7.71	3	.43	3	14	2.00	0	0	7	7.0	1.00	12.5	1.79

BARRETT'S SEC CAREER STATISTICS

YEAR	SETS	MP	KILLS	K/S	E	TA	PCT.	AST	A/S	SA	SA/S	SE	DIGS	D/S	RE	BS	BA	TB	B/S	PTS	PT/S
2020	7	2	6	0.86	2	24	.167	54	7.71	3	.43	3	14	2.00	0	0	7	7.0	1.00	12.5	1.79
TOTAL	7	2	6	0.86	2	24	.167	54	7.71	3	.43	3	14	2.00	0	0	7	7.0	1.00	12.5	1.79



#12 MARISSA HINES

SETTER | 6-0 | JUNIOR
OLATHE, KAN. (WYOMING)

HINES' 2020 CAREER/SEASON HIGHLIGHTS

- Seen action in 18 total matches and has 378 career assists to her credit.
- Led Auburn with a 7.51 assists per set mark last season, ranking seventh in single-season history.

CATEGORY	CAREER HIGH	OPPONENT/DATE
Kills	5	at TCU (9/15/19)
Attempts	15	vs. Butler (8/31/19)
Hitting Percentage (Min. 10 ATT.)	.364	at TCU (9/15/19)
Assists	50	vs. Butler (8/31/19)
Digs	15	vs. South Florida (9/7/19)
Blocks	3 (3x)	last, at TCU (8/31/19)
Aces	2 (2x)	last, vs. Michigan State (9/20/19)
Points	7.0	at TCU (8/31/19)

CATEGORY	SEASON HIGH	OPPONENT/DATE
Kills	2	vs. #4 Florida (10/21/20)
Attempts	6	vs. #4 Florida (10/21/20)
Hitting Percentage (Min. 10 ATT.)		
Assists	17	vs. #4 Florida (10/21/20)
Digs	9	vs. #4 Florida (10/21/20)
Blocks		
Aces		
Points	2.0	vs. #4 Florida (10/21/20)

DATE	OPPONENT	SP	ATTACK				SET			SERVE				RECEPT			BLOCKING				BHE	POINTS	TEAM		
			K	E	TA	PCT	A	TA	PCT.	SA	SE	TA	PCT.	RE	TA	PCT.	DIG	BS	BA	BE			TOTAL	HIT%	SCORE
10/21/20	FLORIDA	*3	2	1	6	.167	17	80	.213	0	1	7	.857	0	0	.000	9	0	0	0	0.0	4	2.0	.009	0-3
10/22/20	FLORIDA	*2	1	0	2	.500	8	35	.229	0	1	7	.857	0	0	.000	3	0	0	0	0.0	2	1.0	.076	0-3
TOTALS		5	3	1	8	.250	25	115	.217	0	2	14	.857	0	0	.000	12	0	0	0	0.0	6	3.0		

SETS PLAYED: 5
KILLS PER SET: 0.60
ASSISTS PER SET: 5.00

DIGS PER SET: 2.40
BLOCKS PER SET: 0.00

HINES' OVERALL CAREER STATISTICS

YEAR	SETS	MP	KILLS	K/S	E	TA	PCT.	AST	A/S	SA	SA/S	SE	DIGS	D/S	RE	BS	BA	TB	B/S	PTS	PT/S
2019	47	16	30	0.64	23	104	.067	353	7.51	7	.15	12	97	2.06	0	2	15	17	.36	46.5	.99
2020	5	2	3	0.60	1	8	.250	25	5.00	0	.00	2	12	2.40	0	0	0	0	.00	3.0	.60
TOTAL	52	18	33	0.63	24	112	.080	378	7.27	7	.13	14	109	2.10	0	2	15	17	.33	49.5	.95

HINES' SEC CAREER STATISTICS

YEAR	SETS	MP	KILLS	K/S	E	TA	PCT.	AST	A/S	SA	SA/S	SE	DIGS	D/S	RE	BS	BA	TB	B/S	PTS	PT/S
2019	11	7	5	0.45	7	26	-.077	51	4.64	0	0.00	3	15	1.36	0	1	3	4	.36	7.5	.68
2020	5	2	3	0.60	1	8	.250	25	5.00	0	0.00	2	12	2.40	0	0	0	0	.00	3.0	.60
TOTAL	16	9	8	0.50	8	34	.000	76	4.75	0	0.00	5	27	1.69	0	1	3	4	.25	10.5	.66

#13 LILY SUMNER
MIDDLE BLOCKER | 6-0 | FRESHMAN
INDIANAPOLIS, IND. (PARK TUDOR SCHOOL)



SUMNER'S 2020 CAREER/SEASON HIGHLIGHTS

- Made her collegiate debut at the service line at South Carolina (10/28/20).

CATEGORY _____	CAREER HIGH _____	OPPONENT/DATE _____
Kills _____		
Attempts _____		
Hitting Percentage (Min. 10 ATT.) _____		
Assists _____		
Digs _____		
Blocks _____		
Aces _____		
Points _____		
CATEGORY _____	SEASON HIGH _____	OPPONENT/DATE _____
Kills _____		
Attempts _____		
Hitting Percentage (Min. 10 ATT.) _____		
Assists _____		
Digs _____		
Blocks _____		
Aces _____		
Points _____		

DATE	OPPONENT	SP	ATTACK				SET			SERVE				RECEPT			BLOCKING				BHE	POINTS	TEAM					
			K	E	TA	PCT.	A	TA	PCT.	SA	SE	TA	PCT.	RE	TA	PCT.	DIG	BS	BA	BE			TOTAL	HIT%	SCORE			
10/28/20	at South Carolina	1	0	0	0	.000	0	0	.000	0	1	1	.000	0	0	.000	0	0	0	0	0	0	0	0	0.0	0.0	.010	0-3
TOTALS		1	0	0	0	.00	0	0	.000	0	1	1	.000	0	0	.000	0	0	0	0	0	0	0	0.0	0.0			

SETS PLAYED: 1

SUMNER'S OVERALL CAREER STATISTICS

YEAR	SETS	MP	KILLS	K/S	E	TA	PCT.	AST	A/S	SA	SA/S	SE	DIGS	D/S	RE	BS	BA	TB	B/S	PTS	PT/S
2020	1	1	0	0.0	0	0	.000	0	0.0	0	0.0	1	0	0.0	0	0	0	0.0	0.0	0.0	0.0
TOTAL	1	1	0	0.0	0	0	.000	0	0.0	0	0.0	1	0	0.0	0	0	0	0.0	0.0	0.0	0.0

SUMNER'S SEC CAREER STATISTICS

YEAR	SETS	MP	KILLS	K/S	E	TA	PCT.	AST	A/S	SA	SA/S	SE	DIGS	D/S	RE	BS	BA	TB	B/S	PTS	PT/S
2020	1	1	0	0.0	0	0	.000	0	0.0	0	0.0	1	0	0.0	0	0	0	0.0	0.0	0.0	0.0
TOTAL	1	1	0	0.0	0	0	.000	0	0.0	0	0.0	1	0	0.0	0	0	0	0.0	0.0	0.0	0.0



#14 KATIE PERSONS

DEFENSIVE SPECIALIST/LIBERO | 5-3 | JUNIOR
GRAND RAPIDS, MICH. (EAST GRAND RAPIDS)

PERSONS' 2020 CAREER/SEASON HIGHLIGHTS

- Seen action in 20 career matches with 94 career digs to her credit.
- Has primarily seen action this season at the service line.

CATEGORY	CAREER HIGH	OPPONENT/DATE
Kills	1 (2x)	last, at Mississippi State (10/25/19)
Attempts	3	at Tennessee (11/27/19)
Hitting Percentage (Min. 10 ATT.)		
Assists	2 (5x)	last, vs. Florida (11/20/19)
Digs	11	at Mississippi State (10/25/19)
Blocks		
Aces	2 (3x)	last, at Texas A&M (11/13/19)
Points	3.0	vs. Alabama (10/2/19)

CATEGORY	SEASON HIGH	OPPONENT/DATE
Kills		
Attempts		
Hitting Percentage (Min. 10 ATT.)		
Assists		
Digs	1 (2x)	last, at South Carolina (10/28/20)
Blocks		
Aces		
Points		

DATE	OPPONENT	SP	ATTACK				SET			SERVE			RECEPT			DIG	BLOCKING				BHE	POINTS	TEAM					
			K	E	TA	PCT.	A	TA	PCT.	SA	SE	TA	PCT.	RE	TA		PCT.	BS	BA	BE			TOTAL	HIT%	SCORE			
10/21/20	FLORIDA	3	0	0	0	.000	0	1	.000	0	1	6	.833	0	0	.000	0	0	0	0	0	0	0	0.0	0.0	.009	0-3	
10/22/20	FLORIDA	3	0	0	0	.000	0	1	.000	0	0	7	1.000	0	0	.000	1	0	0	0	0	0	0	0.0	0.0	.076	0-3	
10/28/20	at South Carolina	3	0	0	0	.000	0	1	.000	0	0	7	1.000	2	7	.714	1	0	0	0	0	0	0	0.0	0.0	.010	0-3	
10/29/20	at South Carolina	4	0	0	0	.000	0	3	.000	0	1	16	.938	0	0	.000	0	0	0	0	0	0	0	0.0	0.0	.162	1-3	
TOTALS		13	0	0	0	.000	0	6	.000	0	2	36	.944	2	7	.714	2	0	0	0	0	0	0	0	0.0	0.0		

SETS PLAYED: 13

DIGS PER SET: 0.15

BLOCKS PER SET: 0.00

PERSONS' OVERALL CAREER STATISTICS

YEAR	SETS	MP	KILLS	K/S	E	TA	PCT.	AST	A/S	SA	SA/S	SE	DIGS	D/S	RE	BS	BA	TB	B/S	PTS	PT/S
2018	8	5	0	0.00	0	0	.000	2	.25	2	.25	2	9	1.12	2	0	0	0	.00	2.0	.25
2019	57	21	2	0.04	1	8	.125	12	.21	9	.16	13	83	1.46	4	0	0	0	.00	11.0	.19
2020	13	4	0	0.00	0	0	.000	0	.00	0	.00	2	2	0.15	2	0	0	0	.00	0.0	.00
TOTAL	78	30	2	0.03	1	8	.125	14	.20	11	.15	17	94	1.21	8	0	0	0	.00	13.0	.17

PERSONS' SEC CAREER STATISTICS

YEAR	SETS	MP	KILLS	K/S	E	TA	PCT.	AST	A/S	SA	SA/S	SE	DIGS	D/S	RE	BS	BA	TB	B/S	PTS	PT/S
2018	7	4	0	0.00	0	0	.000	2	.29	2	.29	2	8	1.14	2	0	0	0	.00	2.0	.29
2019	52	18	2	0.04	1	8	.125	12	.23	9	.17	12	79	1.52	4	0	0	0	.00	11.0	.21
2020	13	4	0	0.00	0	0	.000	0	.00	0	.00	2	2	0.15	2	0	0	0	.00	0.0	.00
TOTAL	72	26	2	0.03	1	8	.125	14	.22	11	.17	16	89	1.24	8	0	0	0	.00	13.0	.18



GREEN'S 2020 CAREER/SEASON HIGHLIGHTS

- Appeared 29 career matches with 173 career kills.
- Tallied six double-digit kill performances.
- Set a career-high in blocks in the series opener at South Carolina (10/28/20).
- Turned in the first double-digit dig performance of her career at South Carolina (10/29/20) while also setting a career-high in assists (2).
- Ranks fifth in the SEC in attacks/set and 10th in the league in total attacks.

CATEGORY	CAREER HIGH	OPPONENT/DATE
Kills	16	vs. Butler (8/31/19)
Attempts	50	vs. Butler (8/31/19)
Hitting Percentage (Min. 10 ATT.)	.300	vs. South Carolina (11/24/19)
Assists	2	at South Carolina (10/29/20)
Digs	10	at South Carolina (10/29/20)
Blocks	3.0	at South Carolina (10/28/20)
Aces	4	at TCU (9/15/19)
Points	16.0	vs. Butler (8/31/19)

CATEGORY	SEASON HIGH	OPPONENT/DATE
Kills	8 (2x)	last, at South Carolina (10/28/20)
Attempts	40	at South Carolina (10/28/20)
Hitting Percentage (Min. 10 ATT.)	.027	at South Carolina (10/29/20)
Assists	2	at South Carolina (10/29/20)
Digs	10	at South Carolina (10/29/20)
Blocks	3.0	at South Carolina (10/28/20)
Aces	1	at South Carolina (10/28/20)
Points	10.5	at South Carolina (10/28/20)

DATE	OPPONENT	SP	ATTACK				SET			SERVE				RECEPT			BLOCKING				BHE	POINTS	HIT%	SCORE	
			K	E	TA	PCT.	A	TA	PCT.	SA	SE	TA	PCT.	RE	TA	PCT.	DIG	BS	BA	BE					TOTAL
10/21/20	FLORIDA	*3	8	10	37	-.054	1	3	.333	0	2	9	.778	1	22	.955	7	1	1	0	2.0	0	9.5	.009	0-3
10/22/20	FLORIDA	*3	5	7	25	-.080	0	2	.000	0	1	9	.889	1	17	.941	6	0	2	0	2.0	0	6.0	.076	0-3
10/28/20	at South Carolina	*3	8	11	40	-.075	0	3	.000	1	2	1	.818	0	3	1.000	5	0	3	0	3.0	0	10.5	.010	0-3
10/29/20	at South Carolina	*4	6	5	37	.027	2	7	.286	0	3	16	.812	0	10	1.000	10	0	2	0	2.0	0	7.0	.162	1-3
TOTALS		13	27	33	139	-.043	3	15	.200	1	8	45	.822	2	52	.962	28	1	8	0	9.0	0	33.0		

SETS PLAYED: 13
 KILLS PER SET: 2.08
 ASSISTS PER SET: 0.23

SERVICE ACES PER SET: 0.08
 DIGS PER SET: 2.15
 BLOCKS PER SET: 0.69

GREEN'S OVERALL CAREER STATISTICS

YEAR	SETS	MP	KILLS	K/S	E	TA	PCT.	AST	A/S	SA	SA/S	SE	DIGS	D/S	RE	BS	BA	TB	B/S	PTS	PT/S
2018	1	1	0	0.00	0	0	.000	0	.00	0	.00	1	0	.00	0	0	0	0	.00	0.0	0.00
2019	67	24	146	2.18	103	506	.085	1	.01	13	.19	14	30	.45	3	3	7	10	.15	165.5	2.47
2020	13	4	27	2.08	33	139	-.043	3	.23	1	.08	8	28	2.15	2	1	8	9	.69	33.0	2.54
TOTAL	81	29	173	2.14	136	645	.057	4	.05	14	.17	23	58	0.72	5	4	15	19	.23	198.5	2.45

GREEN'S SEC CAREER STATISTICS

YEAR	SETS	MP	KILLS	K/S	E	TA	PCT.	AST	A/S	SA	SA/S	SE	DIGS	D/S	RE	BS	BA	TB	B/S	PTS	PT/S
2018	0	0	0	0.00	0	0	.000	0	.00	0	.00	0	0	.00	0	0	0	0	.00	0.0	0.0
2019	28	13	52	1.86	45	211	.033	1	.04	1	.04	9	13	.46	1	2	3	5	.18	56.5	2.02
2020	13	4	27	2.08	33	139	-.043	3	.23	1	.08	8	28	2.15	2	1	8	9	.69	33.0	2.54
TOTAL	41	17	79	1.93	78	350	.003	4	.07	2	.05	17	41	1.00	3	3	11	14	.34	89.5	2.18



#19 ELIF SU YAVUZ
MIDDLE BLOCKER | 6-3 | JUNIOR
ANKARA, TURKEY (GAZI UNIVERSITY)

YAVUZ'S 2020 CAREER/SEASON HIGHLIGHTS

- Transferred from Gazi University in Ankara, Turkey.
- Joined the team from Turkey in September.

CATEGORY	CAREER HIGH	OPPONENT/DATE
Kills	_____	_____
Attempts	_____	_____
Hitting Percentage (Min. 10 ATT.)	_____	_____
Assists	_____	_____
Digs	_____	_____
Blocks	_____	_____
Aces	_____	_____
Points	_____	_____
CATEGORY	SEASON HIGH	OPPONENT/DATE
Kills	_____	_____
Attempts	_____	_____
Hitting Percentage (Min. 10 ATT.)	_____	_____
Assists	_____	_____
Digs	_____	_____
Blocks	_____	_____
Aces	_____	_____
Points	_____	_____



#21 TATUM SHIPES

OUTSIDE HITTER | 6-4 | JUNIOR
 BUFORD, GA. (BUFORD)

SHIPES' 2020 CAREER/SEASON HIGHLIGHTS

- Seen action in 54 career matches and has tallied 441 kills.
- Tallied 23 double-digit kill performances.
- Recorded seven career double-double performances to lead the squad.
- Tallied the first Auburn double-double of the season at South Carolina (10/29/20) with 11 kills and 10 digs.
- Added a season-high six blocks to be part of Auburn's blocking effort that totaled 17 blocks against the Gamecocks (10/29/20) to set Auburn's four-set match record for blocks. It was Auburn's most blocks in a single match since 2009.
- Ranks 14th in the SEC in attacks/set.

CATEGORY	CAREER HIGH	OPPONENT/DATE
Kills	21	vs. Ole Miss (10/26/18)
Attempts	55	vs. Ole Miss (10/26/18)
Hitting Percentage (Min. 10 ATT.)	.450	at South Carolina (11/4/18)
Assists	3 (4x)	last, at Texas A&M (11/13/19)
Digs	18 (2x)	last, at Tennessee (11/27/19)
Blocks	7.0	vs. Butler (8/31/19)
Aces	3 (2x)	last, at Western Michigan (9/20/19)
Points	24.5	vs. Ole Miss (10/26/18)

CATEGORY	SEASON HIGH	OPPONENT/DATE
Kills	11	at South Carolina (10/29/20)
Attempts	39	at South Carolina (10/29/20)
Hitting Percentage (Min. 10 ATT.)	.051	at South Carolina (10/29/20)
Assists	1 (3x)	last, at South Carolina (10/29/20)
Digs	11	vs. Florida (10/21/20)
Blocks	6.0	at South Carolina (10/29/20)
Aces	2	vs. Florida (10/22/20)
Points	15.0	at South Carolina (10/29/20)

DATE	OPPONENT	SP	ATTACK				SET			SERVE				RECEPT			BLOCKING				TEAM				
			K	E	TA	PCT.	A	TA	PCT.	SA	SE	TA	PCT.	RE	TA	PCT.	DIG	BS	BA	BE	TOTAL	BHE	POINTS	HIT%	SCORE
10/21/20	FLORIDA	*3	3	4	25	-.040	0	7	.000	0	1	9	.889	0	18	1.000	11	0	1	0	1.0	0	3.5	.009	0-3
10/22/20	FLORIDA	*3	5	4	23	.043	1	2	.500	2	1	13	.923	1	26	.962	7	0	1	0	1.0	0	7.5	.076	0-3
10/28/20	at South Carolina	*3	6	5	23	.043	1	6	.167	0	0	5	1.000	2	21	.905	4	0	1	0	1.0	0	6.5	.010	0-3
10/29/20	at South Carolina	*4	11	9	39	.051	1	5	.200	1	3	11	.727	1	26	.962	10	0	6	0	6.0	0	15.0	.162	1-3
TOTALS		13	25	22	110	.027	3	20	.150	3	5	38	.868	4	91	.956	32	0	9	0	9.0	0	32.5		

SETS PLAYED: 13
 KILLS PER SET: 1.92
 ASSISTS PER SET: 0.23

SERVICE ACES PER SET: 0.23
 DIGS PER SET: 2.46
 BLOCKS PER SET: 0.69

SHIPES' OVERALL CAREER STATISTICS

YEAR	SETS	MP	KILLS	K/S	E	TA	PCT.	AST	A/S	SA	SA/S	SE	DIGS	D/S	RE	BS	BA	TB	B/S	PTS	PT/S
2018	59	21	147	2.49	63	403	.208	1	.02	0	.00	0	30	0.51	4	6	18	24	.41	162.0	2.75
2019	103	29	269	2.61	154	899	.128	29	.28	23	.22	52	246	2.39	28	14	55	69	.67	333.5	3.24
2020	13	4	25	1.92	22	110	.027	3	.23	3	.23	5	32	2.46	4	0	9	9	.69	32.5	2.50
TOTAL	175	54	441	2.52	240	1,413	.142	33	.19	26	.15	57	308	1.76	36	20	82	102	.58	528	3.02

SHIPES' SEC CAREER STATISTICS

YEAR	SETS	MP	KILLS	K/S	E	TA	PCT.	AST	A/S	SA	SA/S	SE	DIGS	D/S	RE	BS	BA	TB	B/S	PTS	PT/S
2018	47	15	128	2.72	56	341	.211	1	.02	0	.00	0	26	.55	4	5	16	21	.45	141.0	3.00
2019	59	18	176	2.98	99	605	.127	15	.25	9	.15	28	164	2.78	18	11	26	37	.63	209.0	3.54
2020	13	4	25	1.92	22	110	.027	3	.23	3	.23	5	32	2.46	4	0	9	9	.69	32.5	2.50
TOTAL	119	37	329	2.76	178	1,057	.143	19	.16	12	.10	33	222	1.87	26	16	51	67	.56	382.5	3.21



#22 LAUREN DORRELL

OUTSIDE HITTER | 6-0 | SENIOR
BRENTWOOD, TENN. (COLORADO)

DORRELL'S 2020 CAREER/SEASON HIGHLIGHTS

- Appeared in seven career matches with one start.
- Put together Auburn's best offense performance of the season with a career-high 12 kills on a blistering .522 percentage at South Carolina (10/29/20), while adding a career high four blocks and 14.5 points.
- Part of Auburn's blocking effort that totaled 17 blocks against the Gamecocks (10/29/20) to set Auburn's four-set match record for blocks. It was Auburn's most blocks in a single match since 2009.

CATEGORY	CAREER HIGH	OPPONENT/DATE
Kills	12	at South Carolina (10/29/20)
Attempts	23	at South Carolina (10/29/20)
Hitting Percentage (Min. 10 ATT.)	.522	at South Carolina (10/29/20)
Assists	1	vs. Florida (10/21/20)
Digs	6	vs. Florida (10/22/20)
Blocks	4.0	at South Carolina (10/29/20)
Aces		
Points	14.5	at South Carolina (10/29/20)

CATEGORY	SEASON HIGH	OPPONENT/DATE
Kills	12	at South Carolina (10/29/20)
Attempts	23	at South Carolina (10/29/20)
Hitting Percentage (Min. 10 ATT.)	.522	at South Carolina (10/29/20)
Assists	1	vs. Florida (10/21/20)
Digs	6	vs. Florida (10/22/20)
Blocks	4.0	at South Carolina (10/29/20)
Aces		
Points	14.5	at South Carolina (10/29/20)

DATE	OPPONENT	SP	ATTACK				SET			SERVE				RECEPT			BLOCKING				BHE	POINTS	TEAM		
			K	E	TA	PCT.	A	TA	PCT.	SA	SE	TA	PCT.	RE	TA	PCT.	DIG	BS	BA	BE			TOTAL	HIT%	SCORE
10/21/20	FLORIDA	2	0	1	3	.333	0	0	.000	0	0	0	.000	0	0	.000	0	0	0	0	0.0	0	0.0	.009	0-3
10/22/20	FLORIDA	2	6	4	15	.133	1	3	.333	0	0	4	1.000	0	1	1.000	6	0	2	0	2.0	0	7.0	.076	0-3
10/29/20	at South Carolina	4	12	0	23	.522	0	0	.000	0	0	0	.000	0	5	1.000	2	1	3	2	4.0	0	14.5	.162	1-3
TOTALS		8	18	5	41	.317	1	3	.333	0	0	4	1.000	0	6	1.000	8	1	5	2	6.0	0	21.5		

SETS PLAYED: 8
 KILLS PER SET: 2.25
 ASSISTS PER SET: 0.13

DIGS PER SET: 1.00
 BLOCKS PER SET: 0.75

DORRELL'S OVERALL CAREER STATISTICS

YEAR	SETS	MP	KILLS	K/S	E	TA	PCT.	AST	A/S	SA	SA/S	SE	DIGS	D/S	RE	BS	BA	TB	B/S	PTS	PT/S
2019	7	5	9	1.29	7	35	.057	0	.00	0	.00	0	2	.29	0	0	3	3.0	.43	10.5	1.50
2020	8	3	18	2.25	5	41	.317	1	.13	0	.00	0	8	1.00	0	1	5	6.0	.75	21.5	2.69
TOTAL	15	8	27	1.80	12	76	.197	1	.07	0	.00	0	10	.67	0	1	8	9.0	.60	32.0	2.13

DORRELL'S SEC CAREER STATISTICS

YEAR	SETS	MP	KILLS	K/S	E	TA	PCT.	AST	A/S	SA	SA/S	SE	DIGS	D/S	RE	BS	BA	TB	B/S	PTS	PT/S
2019	7	5	9	1.29	7	35	.057	0	.00	0	.00	0	2	.29	0	0	3	3.0	.43	10.5	1.50
2020	8	3	18	2.25	5	41	.317	1	.13	0	.00	0	8	1.00	0	1	5	6.0	.75	21.5	2.69
TOTAL	15	8	27	1.80	12	76	.197	1	.07	0	.00	0	10	.67	0	1	8	9.0	.60	32.0	2.13