



# USC Upstate Women's Basketball 2020-21 Game Notes

Contact: Codie Kunstmann • Email: [codiek@uscupstate.edu](mailto:codiek@uscupstate.edu) • Office: (864) 503-5152

## Game Central

USC Upstate  
Spartans  
(0-0, 0-0 BSC)



VS

Auburn  
Tigers  
(0-0, 0-0 SEC)



**Head Coach:** Becky Burke  
**Record at UPST:** 0-0 (1st season)  
**Overall Record:** 83-32 (5th season)

**Head Coach:** Terri Williams-Flournoy  
**Record at Auburn:** 135-119 (9th season)  
**Overall Record:** 278-223 (17th season)

**Series History:** Auburn leads 1-0

**Trend:** +1 Auburn

**Last Meeting:** Upstate lost 75-34 (11/27/11, Auburn, Ala.)

## Opening Tip

- The Becky Burke Era officially begins on Wednesday night as the Spartans open their 2020-21 campaign on the road against Auburn University.
- Upstate is 23-22 all-time in season openers.
- The Spartans were picked to finish ninth according to the league's head coaches in the Big South Conference Preseason Poll.
- Upstate ended last year's COVID-19-shortened season with a first-round win over Winthrop in the Hercules Tires Big South Tournament, becoming the first-ever 10 seed to advance to the quarterfinals.
- The squad finished the season 10-20 overall, 4-16 in Big South play.
- Upstate returns eight letterwinners including seniors Michaela Gibbons and Anda Kuzmina, and has added six new faces this season.
- Upstate is in its 46th season as a women's basketball program and 12th as a Division I institution. The Spartans moved to the Division I ranks prior to the 2007-08 season.

## Projected Starting Lineup (from SID)



G • 5 • Molly McCutcheon  
5-7 • Jr. • Vincent, Ohio

Pts. Reb. Ast. Min.



G • 15 • Anda Kuzmina  
5-9 • Sr. • Riga, Latvia

Pts. Reb. Ast. Min.



F • 25 • Maya Timberlake  
5-10 • So. • Norcross, Ga.

Pts. Reb. Ast. Min.



F • 33 • Michaela Gibbons  
5-11 • Sr. • Troutman, N.C.

Pts. Reb. Stl. Min.



F • 34 • Molly Coleman  
6-2 • Jr. • Clinton, South Australia

Pts. Reb. Blk. Min.



**Head Coach Becky Burke**  
• 1st season at USC Upstate (0-0)  
• 5th season overall (83-32)

## Game Information

**Date:** November 25, 2020 | 7:00 p.m. EST

**Site:** Auburn, Ala.

**Live Stats:** [www.upstatespartans.com](http://www.upstatespartans.com)

**Live Video:** SECN+

**Twitter:** @UpstateWBB

**Hashtag:** #SpartanArmy -> #JoinUP

## Schedule/Results

### NOVEMBER

25 at Auburn 7:00pm

### DECEMBER

2 at Alabama 7:00pm

5 **ST. ANDREWS** 2:00pm

13 at Old Dominion 2:00pm

17 at Winthrop \* 6:00pm

18 at Winthrop \* 6:00pm

30 **HIGH POINT \*** 2:00pm

31 **HIGH POINT \*** 2:00pm

### JANUARY

4 at Longwood \* TBA

5 at Longwood \* TBA

9 **PRESBYTERIAN \*** 4:00pm

10 **PRESBYTERIAN \*** 2:00pm

15 at Hampton \* 5:00pm

16 at Hampton \* 3:00pm

22 at Gardner-Webb \* TBA

23 at Gardner-Webb \* TBA

29 **RADFORD \*** 6:00pm

30 **RADFORD \*** 4:00pm

### FEBRUARY

5 at UNC Asheville \* 5:00pm

6 at UNC Asheville \* 4:00pm

19 **CAMPBELL \*** 6:00pm

20 **CAMPBELL \*** 4:00pm

26 **CHARLESTON SOU. \*** 6:00pm

27 **CHARLESTON SOU. \*** 4:00pm

### MARCH

9-14 Big South Championship TBA

All Games are EST and subject to change.  
Home games are in **bold**.

\* - Big South Conference Game

## Quick Facts

### UNIVERSITY INFORMATION

**School:** USC Upstate  
**Location:** Spartanburg, S.C.  
**Founded:** 1967  
**Enrollment:** 6,200  
**Nickname:** Spartans  
**Colors:** Green (349), White and Black  
**Home Facility (Capacity):** G.B. Hodge Center (833)  
**Press Row Phone:** (864) 503-5058  
**Affiliation:** NCAA Division I  
**Conference:** Big South  
**Interim Chancellor:** J. Derham Cole, Jr.  
**Director of Athletics:** Daniel Feig  
**Faculty Athletics Representative:** Dr. Jim Griffis  
**Senior Woman Administrator:** Sarah Gildersleeve  
**Athletic Department Phone:** (864) 503-5141

### WOMEN'S BASKETBALL HISTORY

**First Year of Women's Basketball:** 1974  
**Overall All-Time Record:** 582-655  
**No. of Years in NCAA Tournament (Div. II):** 4  
**Last Year in NCAA Tourney, (Div. II):** 2005-06  
**Last NCAA Tourney Opponent:** Wingate  
**Result:** L, 67-59

### TEAM INFORMATION

**2020-21 Overall Record:** 0-0  
**2020-21 BSC Record:** 0-0  
**Starters Returning/Lost:** 3/2  
**Letterwinners Returning/Lost:** 8/7  
**Newcomers:** 6

### COACHING STAFF

**Head Coach:** Becky Burke  
**Alma Mater:** University of Louisville, 2012  
**Record at School/Years:** 0-0/1st season  
**Overall Record/Years:** 83-32/5th season  
**Best Way To Reach Coach:** Through SID  
**Assistant Coaches:** Candyce Wheeler, Drew Landers, Nicole Ambrose  
**Athletic Trainer:** Kayce Miller

### ATHLETIC COMMUNICATIONS

**Contact:** Codie Kunstmann, Associate Director  
**Office:** (864) 503-5152  
**Cell:** (931) 551-5532  
**Fax:** (864) 503-5127  
**Email:** codiek@uscupstate.edu  
**Website:** www.upstatespartans.com

### SOCIAL MEDIA

**Official Athletics Twitter:** @UpstateSpartans  
**WBB Twitter:** @UpstateWBB  
**Facebook:** USC Upstate Athletics  
**Instagram:** @UpstateWBB  
**YouTube:** Upstate Spartans

### WHAT TO CALL US

Please refer to the University of South Carolina Upstate as USC Upstate on first reference. Upstate is acceptable after first reference. Do not use hyphens.

### The Auburn Series

This is just the second all-time meeting between the Spartans and Tigers, and first since 2011. Auburn came out on top 75-34 at home in the last matchup with Upstate on November 27, 2011. The Spartans were led in that game by ASUN All-Decade Team member Tee'ara Copney who put up 19 points and pulled down four boards.

### Scouting the Opponent

Senior Unique Thompson was an honorable mention All-American and First Team All-SEC selection in 2020. She led the Tigers with 16.2 points and 11.4 rebounds per game last season, ranking sixth in the SEC in scoring and second in rebounds. She registered 22 double-doubles in 29 games last season. She was named to the coaches' and media Preseason All-SEC First Team, as well as the watch list for the Katrina McClain Award.

### USC Upstate All-Time in Season Openers

The Spartans begin their 46th season on the hardwood Wednesday evening. Upstate is 23-22 all-time in season openers.

### Big South Preseason Poll

Rk - School (first-place votes)	Points
1 - Campbell (6)	112
2 - Radford (2)	107
3 - High Point (3)	104
4 - Hampton	86
5 - Gardner-Webb	70
6 - Longwood	66
7 - UNC Asheville	56
8 - Presbyterian College	48
9 - USC Upstate	30
10 - Charleston Southern	24
11 - Winthrop	23

### Old Friends

Despite a brand new coaching staff and six newcomers for the Spartans this year, this team has a lot of prior connections. Newcomers Dakota McCaughan and Denijsha Wilson played with each other on the same church league team

## Tale of the Tape

### Series History

<b>Overall Series</b>	Auburn leads 1-0
<b>Current Streak</b>	+1 Auburn
<b>Home</b>	N/A
<b>Away</b>	0-1
<b>Neutral</b>	N/A

### Statistical Comparison (from 2019-20)

Category	Upstate	Auburn
<b>Record</b>	10-20	11-18
<b>Scoring Average</b>	56.3	67.5
<b>Scoring Margin</b>	-8.9	-5.1
<b>Opponents Average</b>	65.2	72.6
<b>Field Goal Pct.</b>	35.0	40.7
<b>3-Point FG Pct.</b>	22.9	30.5
<b>Free Throw Pct.</b>	70.3	70.3
<b>Rebounding Avg.</b>	40.6	34.4
<b>Rebounding Margin</b>	-0.2	-0.2
<b>Assists/Game</b>	12.1	12.2
<b>Turnovers/Game</b>	18.6	17.1
<b>Turnover Margin</b>	-3.5	0.5
<b>Assist-to-Turnover Ratio</b>	0.6	0.7
<b>Steals/Game</b>	6.3	10.7
<b>Blocks/Game</b>	4.0	2.0

back in elementary school. Furthermore, Coach Burke and Coach Wheeler were teammates on the 2009 Louisville Final Four team while Coach Ambrose was a student assistant for the Cards at the time. Lastly, Coach Burke originally recruited Molly McCutcheon at Charleston, to only be reunited here at Upstate.

### It Runs in the Family

Assistant Coach Drew Landers is no stranger to DI women's basketball as he is the son of legendary University of Georgia women's basketball coach Andy Landers.

### International Ties

The Spartans have three international players on the team this season. Gift Sampson is a native of Lagos, Nigeria, Anda Kuzmina is from Riga, Latvia, and Molly Coleman is from Clinton, South Australia.

### Alumni Spotlight

Riley Popplewell was named the 2019-20 Big South Conference Woman of the Year based on the criteria of Service and Leadership (including community services, campus activities and leadership positions), Academic Achievement, Athletics Excellence and a Personal Statement from each candidate. With a degree in Elementary Education, Popplewell graduated with a 4.0 GPA as a four-year starter for the Spartans. She surpassed 1,000 career points and 700 career rebounds during her senior year of 2019-20, was the Big South's second-leading rebounder this past season with 8.6 rebounds per game and was third in free throw percentage at 79.5.

In her final game in green and black, Popplewell played a pivotal role in helping the Spartans advance in a conference tournament for the first time since 2016. She dropped 23 points and pulled down 17 rebounds against Winthrop in the First Round of the Hercules Tires Big South Women's Basketball Championship as Upstate became the first-ever 10-seed to advance to the Big South Tournament Quarterfinals.

This past spring she was a recipient of the Big South Conference's Christenberry Award for Academic Excellence, which is the highest academic honor a Big South student-athlete can achieve. Popplewell was also one of 10 national selections for the 2019-20 DI-AAA Athletic Directors Association Scholar-Athlete Team. The two-time CoSIDA Academic All-District Team member was named the 2019-20 USC Upstate Female Academic Athlete of the Year after earning the USC Upstate School of Education Outstanding Student-Teacher Award in the fall of 2019. Popplewell was also the 2017-18 ASUN Scholar-Athlete of the Year followed by the Big South Women's Basketball Scholar-Athlete of the Year in 2018-19.

Additionally, she participated in service projects throughout her collegiate career with United Way of the Piedmont Reading Buddies, McCarthy Teszler School Prom, Carolina Miracle League, Habitat for Humanity, and local nursing homes. She was also involved with Cru, National Walk to School Day, Girl/Boy Scouts, and community clean up days. Popplewell was the recipient of the 2018-19 USC Upstate SAAC Spartan Heart Award, and was honored with the 2020 USC Upstate Joe Bowman Pinnacle Award for Career Achievement. Popplewell is currently playing professionally in Spain.

### What's in a Name?

USC Upstate is one of five NCAA Division I schools that use the Spartans nickname. Upstate shares the Spartan nickname with Michigan State, Norfolk State, UNC Greensboro and San Jose State.

### About USC Upstate

The University of South Carolina Upstate is a regional comprehensive university offering more than 40 undergraduate and graduate programs in liberal arts and sciences, business administration, nursing, and education.

## The Last Time...

**USC Upstate won back-to-back games...**  
vs Bob Jones (12/19/19), Charleston Southern (12/28/19)

**USC Upstate lost back-to-back games...**  
Gardner-Webb (2/29/20), at Longwood (3/4/20)

**USC Upstate played an overtime game...**  
vs Campbell, L, 80-72 (2OT)

**USC Upstate won an overtime game...**  
at South Carolina State (12/12/16), W, 73-67

**USC Upstate scored 100 points in a game...**  
vs Bob Jones (12/8/18), W, 101-53

**USC Upstate allowed 100 points in a game...**  
at South Carolina (11/21/19), L, 112-32

**USC Upstate scored 90 points in a game...**  
at NJIT (1/6/18), W, 95-57

**USC Upstate allowed 90 points in a game...**  
at Omaha (11/9/18), L, 96-69

**USC Upstate won at the Hodge Center...**  
vs Presbyterian (2/4/20), W, 70-60

**USC Upstate lost at the Hodge Center...**  
vs Gardner-Webb (2/29/20), L, 70-59

**USC Upstate won on the road...**  
at Winthrop (3/10/20), W, 60-57

**USC Upstate lost on the road...**  
at Longwood (3/4/20), L, 69-56

**USC Upstate won at a neutral site...**  
vs Columbus State (PBT, 3/2/06), W, 69-62

**USC Upstate lost at a neutral site...**  
vs Stetson (ASUN, 3/15/14), L, 90-60

**USC Upstate won by 20 or more points...**  
vs Bob Jones (12/19/19), W, 71-49

**USC Upstate lost by 20 or more points...**  
at Radford (2/25/20) L, 78-57

**USC Upstate won by 30 or more points...**  
vs Mars Hill (11/16/19), W, 89-31

**USC Upstate lost by 30 or more points...**  
vs High Point (2/8/20), L, 81-45

**A USC Upstate player hit a buzzer-beating shot...**  
Shelby Hicks vs. Jacksonville (1/29/15), W, 66-64

**A USC Upstate player had a double-double...**  
Riley Popplewell at Winthrop (3/10/20), W, 60-57

**Five or More USC Upstate players scored 10 or more points...**  
Lewis, Popplewell, Swain, Panufnik, Parkhurst, Kuzmina, Gibbons, Kirkwood vs. Bob Jones (12/8/18), W, 101-53

**Four USC Upstate players scored 10 or more points...**  
Lewis (19), Moore (13), Logan (11), Popplewell (10), vs FAMU (11/5/19), W, 74-61

**Two USC Upstate players had 10 or more rebounds...**  
Popplewell (17), Gibbons (10) at Winthrop (3/10/20), W, 60-57

**A USC Upstate player had 20 or more points...**  
Riley Popplewell (23) at Winthrop (3/10/20)

**A USC Upstate player had 30 or more points...**  
DeNisha Swain (33) at Winthrop (1/11/19)

**A USC Upstate player had 10 or more rebounds...**  
Popplewell (17) at Winthrop (3/10/20), W, 60-57

**A USC Upstate player had 15 or more rebounds...**  
Popplewell (17) at Winthrop (3/10/20), W, 60-57

**A USC Upstate player had 20 or more rebounds...**  
Brittany Starling (24) vs. Florida Gulf Coast (2/15/16)

**A USC Upstate player had 10 or more assists...**  
Anda Kuzmina (10) vs Presbyterian (2/4/20)

**A USC Upstate player had 10 or more free throws made...**  
Riley Popplewell (15) vs Longwood (1/11/20)

**A USC Upstate player had 10 or more field goals made...**  
Brianna Lewis (10) vs Campbell (2/1/20)

**A USC Upstate player had five or more 3-pointers...**  
Micheala Gibbons, (5) vs Bob Jones (12/19/19)

**A USC Upstate player had five or more steals...**  
Michaela Gibbons (5), vs FAMU (11/5/19)

Located along the I-85 corridor in Spartanburg between Greenville and Charlotte, USC Upstate is ranked by U.S. News & World Report at #2 among Top Public Schools. It serves as a major talent producer for the region, with more than 6,000 students, approximately 1,300 new graduates a year, and nearly 30,000 alumni, many of whom live and work in the state.

The USC Upstate Spartans compete in 15 NCAA Division I sports as a member of the Big South Conference.

### 2020-21 Big South Standings

School	Big South		Overall	
	W-L	Pct.	W-L	Pct.
Campbell	0-0	.000	0-0	.000
Charleston Southern	0-0	.000	0-0	.000
Gardner-Webb	0-0	.000	0-0	.000
Hampton	0-0	.000	0-0	.000
High Point	0-0	.000	0-0	.000
Longwood	0-0	.000	0-0	.000
Presbyterian	0-0	.000	0-0	.000
Radford	0-0	.000	0-0	.000
UNC Asheville	0-0	.000	0-0	.000
<b>USC UPSTATE</b>	0-0	.000	0-0	.000
Winthrop	0-0	.000	0-0	.000

### Spartans Home/on the Road

Category	Home	Away
Record	0-0	0-0
Points/Gm		
Scoring Margin		
Points Allowed/Gm		
Field Goal%		
3-Pt. Field Goal%		
Free Throw %		
Opp. Field Goal%		
Opp. 3-Pt. FG%		
Opp. Free Throw %		
Rebounding Avg		
Opp. Rebound Avg		
Rebounding Margin		
Assists/Gm		
Turnovers/Gm		
Turnover Margin		
Asst./TO Ratio		
Steals/Gm		
Blocks/Gm		

## Career By The Numbers

### CAREER DOUBLE-FIGURE SCORING GAMES

Anda Kuzmina	19
Michaela Gibbons	17
Jada Logan	2
Barrett Herring	8

### CAREER 30-PLUS POINT SCORING GAMES

### CAREER 20-PLUS POINT SCORING GAMES

Michaela Gibbons	2
Anda Kuzmina	1

### CAREER DOUBLE-DOUBLES

Michaela Gibbons	2
Barrett Herring	1
Anda Kuzmina	1

### CAREER DOUBLE-FIGURE REBOUNDING GAMES

Michaela Gibbons	3
Barrett Herring	2
Jada Logan	1

### CAREER 4-PLUS ASSIST GAMES

Anda Kuzmina	5
Jada Logan	4
Maya Timberlake	1
Michaela Gibbons	1

### CAREER THREE-PLUS 3-POINT FG MADE GAMES

Michaela Gibbons	14
Anda Kuzmina	10

### CAREER STARTS

Anda Kuzmina	53
Michaela Gibbons	47
Jada Logan	20
Barrett Herring	19

**All-Time at the Hodge Center**

Year	Win	Loss	Pct.
1973-74	--	--	--
1974-75	--	--	--
1975-76	0	7	.000
1976-77	3	4	.429
1977-78	6	2	.750
1978-79	9	0	1.000
1979-80	7	6	.538
1980-81	3	4	.429
1981-82	7	2	.778
1982-83	6	2	.750
1983-84	6	6	.500
1984-85	4	7	.364
1985-86	13	2	.867
1986-87	12	2	.857
1987-88	8	6	.571
1988-89	8	5	.615
1989-90	10	3	.769
1990-91	10	3	.769
1991-92	7	6	.538
1992-93	14	2	.875
1993-94	15	0	1.000
1994-95	13	2	.867
1995-96	9	5	.643
1996-97	5	9	.357
1997-98	9	4	.692
1998-99	4	9	.308
1999-00	4	10	.286
2000-01	3	9	.250
2001-02	5	8	.385
2002-03	9	4	.692
2003-04	4	9	.308
2004-05	10	3	.769
2005-06	8	5	.615
2006-07	7	6	.538
2007-08	3	8	.273
2008-09	9	4	.692
2009-10	11	3	.846
2010-11	11	2	.846
2011-12	6	7	.462
2012-13	7	7	.500
2013-14	9	4	.692
2014-15	10	4	.714
2015-16	13	3	.813
2016-17	6	9	.400
2017-18	9	7	.563
2018-19	5	7	.416
2019-20	7	8	.545
2020-21			
<b>TOTAL</b>	<b>328</b>	<b>224</b>	<b>.594</b>

**Game-By-Game Starting Lineups**

Opponent	1	2	3	4	5
Auburn					

**2020-21 Miscellaneous**

Double-Digit Scorers	Total (High)
20-Point Scorers	Game
30-Point Scorers	Game
Double-Digit Rebounders	Total (High)
Double-Doubles	Game

**Bench Production**

GAME	UPST-OPP	DIFE	UPST HIGH
			BENCH SCORER

**Today in the Big South**

Wednesday, November 25

USC Upstate at Auburn, 7:00 p.m.

Longwood at Duke, 12 p.m.

Columbia International at Charleston Southern, 1 p.m.

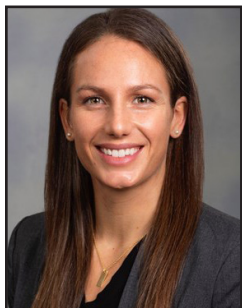
Western Carolina at UNC Asheville, 1 p.m.

Radford at North Carolina, 1:00 p.m.

Winthrop at Wofford, 1:30 p.m.

N.C. Central at Campbell, 2:00 p.m.

Elon at Gardner-Webb, 4:00 p.m.



# BECKY BURKE

Head Coach

1st Season

University of Louisville, 2012

Becky Burke is entering her first season at the helm of the USC Upstate Women's Basketball program. It was announced on June 8, 2020 that she was selected to lead the Spartan program, making her the 15th head coach in Upstate's program history, second in the Division I era.

"I felt like USC Upstate was a place where we could win before I even came on my campus visit, and after visiting, that was confirmed for me. It comes down to that simply. This is a place where we can recruit because of the campus support and resources, and I think the conference is winnable. At the end of the day you want to bring in a staff that plays to win championships, and I think everything is in place to do just that," said Burke.

"I'm looking forward to building relationships with the players and bringing fresh energy and life into the program. That's what you need when you're building, and I'm excited about watching them grow and seeing what they're going to do."

Burke takes the reins of the Upstate program after an impressive two-year stint at the NCAA DII level as the head coach at the University of Charleston in West Virginia. She brought the Golden Eagles back to national prominence in just her first season at the helm of the program in 2018-19, leading the team to a 25-7 record which was a 12-win improvement from the previous year. The Golden Eagles cracked the national top-25 that season and made their first NCAA Tournament since 2014 while leading the country in field goal percentage and the Mountain East Conference in defensive scoring. Burke coached a pair of First Team AllConference picks which included a DII All-American.

In her second year, the Golden Eagles entered the 2019-20 season as the conference's preseason No. 2 team and went on to a 23-7 record while once again leading the conference in defensive scoring behind another pair of All-Conference picks and the MEC Freshman of the Year.

Prior to her time at Charleston, Burke started the women's basketball program at Embry Riddle Aeronautical University in Prescott, Ariz. in 2015 and went on to be the head coach of the Eagles for two seasons. She led the team to a winning record in its inaugural season in 2016-17. In her second season at ERAU, the Eagles ranked nationally in the NAIA top-25 and compiled a 21-6 record, 11-3 in the California Pacific Conference. Burke recruited and coached three all-conference performers in two seasons at ERAU.

Burke earned a spot on the Women's Basketball Coaches Association 30-Under-30 list in 2019, and was the only head coach to appear on the exclusive list.

Before her head coaching career, Burke served as an assistant coach at Saint Joseph's College for the 2014-15 season where she was the recruiting coordinator and strength and conditioning coach while also being responsible for player development, scouting, and scheduling. Prior to that, she was the director of basketball

operations at California State University, Fullerton in 2013-14.

Burke had a standout playing career at the University of Louisville where she graduated with a degree in sports management in 2012. In four years as a Cardinal, she helped her team to three NCAA Tournament appearances including the championship game in 2009 and the Sweet Sixteen in 2011. She led the Cards in scoring her sophomore year and in 3-point field goal percentage her junior year. She tied a school record for 3-pointers in a game her senior year and ranks fourth all-time in 3-pointers made. Burke is a member of the 1,000-point club and became just the second Cardinal to participate in the State Farm College 3-Point Shoot-Out in 2012, finishing as the runner-up.

"I'm very grateful and humbled that AD Daniel Feig chose me to be the leader of this program and these young women," Burke said. "I want to thank him and the other administrators for giving me this opportunity."

A native of Clarks Summit, Pa., Burke starred at her hometown high school, Abington Heights. She was named the Pennsylvania Class 4A Player of the Year her senior year by the Associated Press and scored over 2,100 points in her four-year high school career.

Burke resides in Spartanburg with her fiancé, Jenna, and the couple will marry on May 22, 2021.

## THE BURKE FILE

**HOMETOWN:** Clarks Summit, PA

**FAMILY:** Fiancé - Jenna

### EDUCATIONAL BACKGROUND

2012 B.S. - Sports Management  
University of Louisville

### COLLEGIATE COACHING EXPERIENCE

2014-15 Assistant Coach - Saint Joseph's College  
2015-18 Head Coach - Embry Riddle Aeronautical University  
2018-20 Head Coach - University of Charleston (WV)  
20020-Pres. Head Coach - USC Upstate

### COACHING HONORS

2019 Women's Basketball Coaches Association 30-Under-30

### PLAYING EXPERIENCE

2008-2012 Guard, Louisville

### PLAYING HONORS

2009 NCAA Tournament Runner-up  
2011 NCAA Tournament Sweet Sixteen  
2012 State Farm College 3-Point Shootout Runner-up

### AS A HEAD COACH

Year	Team	Record
2016-17	Embry Riddle (AZ)	14-12
2017-18	Embry Riddle (AZ)	21-6
2018-19	Charleston (WV)	25-7
2019-20	Charleston (WV)	23-7
2020-21	USC Upstate	0-0
<b>Total</b>	<b>5 years</b>	<b>83-32</b>



## What They're Saying About Becky Burke:

### Daniel Feig

*Director of Athletics/Vice Chancellor for Intercollegiate Athletics  
USC Upstate*

"I am so excited to welcome Coach Burke to USC Upstate! She has been a winner at every stage of her career – as a student-athlete at Louisville, as a head coach in her mid-20s starting the program at Embry Riddle, and as a head coach most recently at the University of Charleston. From my first phone call with her, I felt her tremendous energy, contagious enthusiasm, personal charisma and commitment to excellence in all facets of running a collegiate basketball program. I have no doubt she will lead our program to new heights on the floor, while building relationships with our student-athletes to prepare them for a lifetime of success off the floor. I look forward to introducing her to our student-athletes, staff, University and community."

### Jeff Walz

*Head Women's Basketball Coach University of Louisville*

"I'm very excited for Becky as she has done a tremendous job at every stop she's had along the way to this point of her career. This is just the next step for her. She's had success at every stop. She's very passionate and knowledgeable, and just does a fantastic job of getting the best out of her student-athletes. She coaches the same way she played which is with a lot of passion and heart and fire, and I think that is going to continue to lead her to great success."

### Samantha Williams

*Head Women's Basketball Coach Eastern Kentucky University*

"Becky is a go-getter and I always knew she had a bright future and was going to be successful in the coaching profession. She was one of the most vocal kids that I've ever coached. She's just someone who brings the energy and has that charisma about her. There's a reason why she's moved up the ranks as quickly as she has. Her presence and her energy - you can feel that when you talk to her and I think it's contagious. I have no doubt that she's going to do great things at Upstate."

### Bethann Ord

*Head Women's Basketball Coach Binghamton University*

"USC Upstate is getting a great young coach coming in. She's a fierce competitor - she was as a player and is as a coach. She's very knowledgeable about the game and I think she's going to do a tremendous job. I'm excited about watching her growth. She's in it for the kids, and that's really important and what it's about."



## CANDYCE WHEELER

Assistant Coach

1st Season

University of Louisville, 2008

Wheeler, a former teammate of Burke's on the 2009 Final Four team at the University of Louisville, comes to Upstate from Bellarmine University where she served as the assistant women's basketball coach for the past four seasons.

In her first year with the Knights in 2016-17, Wheeler helped guide the team to an NCAA Tournament berth as well as its first back-to-back 20-win season in 12 years. Bellarmine made the Great Lakes Valley Conference Tournament in all of Wheeler's four seasons with the program, including an appearance in the title game in 2018-19. Additionally, Wheeler coached five All-GLVC selections.

Prior to her stint at Bellarmine, Wheeler was an assistant coach at her high school alma mater, DuPont Manual, and helped lead the team to a 7th Region Championship and an appearance in the state tournament. As an assistant coach at Western Kentucky University in 2013-14, she helped the Hilltoppers to a Sun Belt Conference Title and a berth in the NCAA Tournament. Before that, she returned to U of L as a graduate assistant under head coach Jeff Walz in 2012-13 and helped the Cardinals to the NCAA Tournament Finals for the second time in program history.

As a player at Louisville, Wheeler earned First Team All-Big East nods her senior year in 2008-09. She led the Cardinals to the program's first-ever NCAA Tournament championship game that season where she recorded a double-double against UConn and was named to the Raleigh Regional All-Tournament Team. Her junior year, she earned Second-Team All-Big East honors and was named to the Big East All-Tournament Team.

Wheeler earned her psychology degree from U of L and was selected in the third round of the 2009 WNBA draft by the San Antonio Silver Stars. She went on to play professionally overseas in Luxembourg, Germany, and Puerto Rico. Wheeler married her husband, Gary, in May 2019.



## DREW LANDERS

Assistant Coach  
1st Season  
Ole Miss, 2013

Landers, the son of legendary Georgia's women's basketball coach Andy Landers, joins the Upstate program from Mercer University where he has been the director of player personnel for women's basketball since 2018.

There, he was in charge of team operations that included travel, lodging, and meals as well as scouting, planning summer camps, managing the team budget, and devising team practice schedules and itineraries. He also acted as the liaison for compliance.

Prior to Mercer, Landers was the director of women's basketball operations at the University of Mississippi in 2017-18. In addition to the same responsibilities he had at Mercer, Landers also recruited practice players and mentored support staff, student managers, and student-athletes during his time at Ole Miss. In 2016-17, he was the women's basketball video coordinator at the University of Virginia after interning with Georgia's men's and women's basketball programs in 2014-15 where he assisted with film, scouting reports, and playbooks.

Additionally, Landers has worked with the Southeastern Conference in the past, volunteering at football media days and men's and women's basketball tournaments. He received his bachelor's in business administration from Ole Miss in 2013.



## NICOLE AMBROSE

Assistant Coach  
1st Season  
University of Louisville, 2012

Ambrose was a student manager for women's basketball at U of L during Coach Burke's time there, and she joins the Spartans after spending the last three seasons as an assistant coach at Indiana University Southeast.

During her tenure, she helped coach the Grenadiers to their first-ever River States Conference West Division Championship and an appearance in the River States Conference Tournament Championship. Ambrose compiled a 54-38 record at IU Southeast while coaching two All-RSC First Team selections and two All-RSC Second Team selections.

Before her time at IU Southeast, Ambrose was the head coach at Waggener High School in Louisville, KY during the 2016-17 school year. Prior to that, she spent three seasons as an assistant coach at Louisville Male High School and Assumption High School in Louisville, KY.

In addition to coaching scholastically, Ambrose directed the Louisville Legends Gauntlet travel program from 2016-2018 and sent more than 15 players to the collegiate ranks. In 2017, she founded The Outlet, LLC, a girls basketball exposure company that highlights players from Kentucky and surrounding states. In May 2019, Ambrose and The Outlet partnered with WNBA and University of Louisville stars Angel McCoughtry and Asia Durr to hold the Derby City Duo Skills Camp.

Ambrose was a student-manager and then a graduate assistant for U of L's women's basketball team, and during her time there, the Cardinals made two NCAA Sweet 16 appearances and one NCAA National Championship appearance. She graduated from U of L in 2012 with a bachelor's in sport administration and again in 2014 with a master's of business administration in entrepreneurship. In 2019, she graduated with her master's degree in teaching from the University of the Cumberlands.

## USC Upstate By The Numbers

	Big South	Overall		Big South	Overall
Record	0-0	0-0	Having 10 or more assists	0-0	0-0
Playing a ranked opponent	0-0	0-0	Having less than 10 assists	0-0	0-0
Home	0-0	0-0	Score more points in paint than opponent	0-0	0-0
Road	0-0	0-0	Score equal/less pts. in paint than opp.	0-0	0-0
Neutral	0-0	0-0	Scoring more pts. off TOs than opponent	0-0	0-0
Leading at halftime	0-0	0-0	Scoring equal/less pts. off TOs than opp.	0-0	0-0
Trailing at halftime	0-0	0-0	Scoring more 2nd-chance points	0-0	0-0
Tied at halftime	0-0	0-0	Scoring equal/less 2nd-chance points	0-0	0-0
Overtime	0-0	0-0	Scoring more fast break points	0-0	0-0
0 players score in double figures	0-0	0-0	Scoring equal/less fast break points	0-0	0-0
1 player scores in double figures	0-0	0-0	Wearing white uniforms	0-0	0-0
2 players score in double figures	0-0	0-0	Wearing black uniforms	0-0	0-0
3 players score in double figures	0-0	0-0	Wearing green uniforms	0-0	0-0
4 players score in double figures	0-0	0-0	Playing in November	0-0	0-0
5 players scpre in double figures	0-0	0-0	Playing in December	0-0	0-0
More than 5 players score in double figures	0-0	0-0	Playing in January	0-0	0-0
Starters out-score opponent's starters	0-0	0-0	Playing in February	0-0	0-0
Opponent's starters score equal/more	0-0	0-0	Playing in March	0-0	0-0
Bench out-scores opponent's bench	0-0	0-0	Playing during the day	0-0	0-0
Opponent's bench scores equal/more	0-0	0-0	Playing at night	0-0	0-0
Shooting 50% or better	0-0	0-0	Playing on Sunday	0-0	0-0
Shooting between 40-49%	0-0	0-0	Playing on Monday	0-0	0-0
Shooting between 30-39%	0-0	0-0	Playing on Tuesday	0-0	0-0
Shooting less than 30%	0-0	0-0	Playing on Wednesday	0-0	0-0
Shooting better than opponent	0-0	0-0	Playing on Thursday	0-0	0-0
Shooting worse than/equal to opponent	0-0	0-0	Playing on Friday	0-0	0-0
More made FTs than opponent	0-0	0-0	Playing on Saturday	0-0	0-0
Having equal/less FTs than opponent	0-0	0-0	Margin is 5 points or less	0-0	0-0
Out-rebounding opponent	0-0	0-0	Margin is between 6-10	0-0	0-0
Having equal/less rebounds than opponent	0-0	0-0	Margin is between 11-20	0-0	0-0
Having more TOs than opponent	0-0	0-0	Margin is more than 20	0-0	0-0
Having equal/less TOs than opponent	0-0	0-0	Having a 20-point scorer	0-0	0-0
Attempting more FT than 3FG	0-0	0-0	Having a 30-point scorer	0-0	0-0
Attempting equal/less FT than 3FG	0-0	0-0	Scoring 49 points or less	0-0	0-0
Making 5 or more 3FGs	0-0	0-0	Scoring 50-59 points	0-0	0-0
Making less than 5 3FGs	0-0	0-0	Scoring 60-69 points	0-0	0-0
Making no 3FGs	0-0	0-0	Scoring 70-79 points	0-0	0-0
Attempting 15 or more 3FGs	0-0	0-0	Scoring 80-89 points	0-0	0-0
Attempting less than 15 3FGs	0-0	0-0	Scoring 90-99 points	0-0	0-0
No Upstate players foul out	0-0	0-0	Scoring 100+ points	0-0	0-0
One or more Upstate players foul out	0-0	0-0			

2019-20 Season Statistics

**19-20 USC Upstate Women's Basketball**  
**USC Upstate Combined Team Statistics (as of Mar 11, 2020)**  
**All games**

RECORD:	OVERALL	HOME	AWAY	NEUTRAL
ALL GAMES	10-20	7-8	3-12	0-0
CONFERENCE	4-16	2-8	2-8	0-0
NON-CONFERENCE	6-4	5-0	1-4	0-0

#	Player	gp-gs	min	avg	Total		3-Point		F-Throw		Rebounds				pf	dq	a	to	blk	stl	pts	avg			
					fg-fga	fg%	3fg-fga	3fg%	ft-fita	ft%	off	def	tot	avg											
01	LEWIS, Brianna	25-24	912	36.5	148-370	.400	24-72	.333	74-104	.712	12	42	54	2.2	41	0	122	117	4	25	394	15.8			
21	POPPELWELL, Riley	30-30	896	29.9	91-234	.389	4-21	.190	97-122	.795	107	150	257	8.6	57	2	39	64	20	38	283	9.4			
30	HERRING, Barrett	25-19	477	19.1	76-195	.390	2-10	.200	40-63	.635	45	94	139	5.6	53	1	13	29	36	9	194	7.8			
24	MOORE, Quadijah	21-9	309	14.7	62-135	.459	1-6	.167	29-37	.784	28	58	86	4.1	58	3	10	37	27	12	154	7.3			
34	KIRKWOOD, Kathryn	26-1	311	12.0	66-150	.440	0-4	.000	18-30	.600	40	53	93	3.6	33	0	4	27	11	7	150	5.8			
33	GIBBONS, Michaela	30-30	1032	34.4	53-225	.236	42-180	.233	9-15	.600	9	134	143	4.8	37	0	32	53	10	30	157	5.2			
15	KUZMINA, Anda	30-14	593	19.8	45-125	.360	15-68	.221	16-24	.667	12	69	81	2.7	27	0	40	57	3	15	121	4.0			
12	LOGAN, Jada	29-20	594	20.5	36-146	.247	10-50	.200	17-29	.586	37	71	108	3.7	38	0	53	74	0	22	99	3.4			
32	PANUFNIK, Natalia	21-0	161	7.7	15-45	.333	4-17	.235	9-13	.692	11	17	28	1.3	22	0	4	17	3	4	43	2.0			
35	GLANCE, Shelby	12-0	84	7.0	6-29	.207	6-28	.214	1-2	.500	1	13	14	1.2	2	0	2	2	0	0	19	1.6			
23	FLANTOS, Lillian	23-0	209	9.1	12-52	.231	5-30	.167	5-8	.625	19	27	46	2.0	40	0	3	17	6	9	34	1.5			
25	TIMBERLAKE, Maya	28-0	318	11.4	14-65	.215	6-32	.188	2-4	.500	12	20	32	1.1	42	0	20	24	1	15	36	1.3			
03	JEFFERSON, Breanna	17-3	153	9.0	1-13	.077	1-4	.250	3-4	.750	1	9	10	0.6	11	0	21	18	0	4	6	0.4			
05	MCCUTCHEON, Molly	1-0	2	2.0	0-1	.000	0-1	.000	0-0	.000	0	0	0	0.0	0	0	0	0	0	0	0	0.0			
Team											53	75	128												23
Total.....		30	6051		625-1785	.350	120-523	.229	320-455	.703	387	832	1219	40.6	461	6	363	559	121	190	1690	56.3			
Opponents.....		30	6051		714-1861	.384	183-569	.322	344-497	.692	383	841	1224	40.8	490	-	397	453	75	295	1955	65.2			

TEAM STATISTICS	UPST	OPP	Date	Opponent	Score	Att.																
SCORING	1690	1955	11/05/19	FLORIDA A&M	w 74-61	590																
Points per game	56.3	65.2	11/08/19	at East Carolina	L 48-69	812																
Scoring margin	-8.8	-	11/12/19	WESTERN CARO.	w 70-62	833																
FIELD GOALS-ATT	625-1785	714-1861	11/16/19	MARS HILL	w 89-31	369																
Field goal pct	.350	.384	11/19/19	at Jacksonville	L 43-87	407																
3 POINT FG-ATT	120-523	183-569	11/21/19	at #5/6 South Carolina	L 32-112	10052																
3-point FG pct	.229	.322	11/26/19	at Georgia	L 53-67	2319																
3-pt FG made per game	4.0	6.1	12/14/19	SOUTH CAROLINA ST.	w 58-47	420																
FREE THROWS-ATT	320-455	344-497	12/19/19	BOB JONES	w 71-49	425																
Free throw pct	.703	.692	* 12/28/19	CHARLESTON SO.	w 70-53	269																
F-Throws made per game	10.7	11.5	* 12/31/19	at Campbell	L 38-50	728																
REBOUNDS	1219	1224	* 01/04/20	at High Point	L 46-85	748																
Rebounds per game	40.6	40.8	* 01/06/20	UNC ASHEVILLE	L 48-68	371																
Rebounding margin	-0.2	-	* 01/09/20	WINTHROP	L 38-52	305																
ASSISTS	363	397	* 01/11/20	LONGWOOD	L 62-70	427																
Assists per game	12.1	13.2	* 01/14/20	at Hampton	L 40-60	2245																
TURNOVERS	559	453	* 01/18/20	at Gardner-Webb	L 53-63	755																
Turnovers per game	18.6	15.1	* 01/21/20	RADFORD	L 41-57	384																
Turnover margin	-3.5	-	* 01/25/20	at Presbyterian	L 42-55	329																
Assist/turnover ratio	0.6	0.9	* 02/01/20	CAMPBELL	Lo2 72-80	560																
STEALS	190	295	* 02/04/20	PRESBYTERIAN	w 70-60	250																
Steals per game	6.3	9.8	* 02/08/20	HIGH POINT	L 45-81	375																
BLOCKS	121	75	* 02/11/20	at Charleston So.	w 71-64	78																
Blocks per game	4.0	2.5	* 02/18/20	HAMPTON	L 73-86	365																
ATTENDANCE	6288	19831	* 02/22/20	at UNC Asheville	L 45-53	0																
Home games-Avg/Game	15-419	15-1322	* 2/25/20	at Radford	L 57-78	527																
Neutral site-Avg/Game	-	0-0	* 02/29/20	GARDNER-WEBB	L 59-70	345																
			* 03/04/20	at Longwood	L 56-69	412																
Score by Periods	1st	2nd	3rd	4th	OT	OT2	Totals															
USC Upstate	368	421	441	446	6	8	1690	3-10-20	at Winthrop	w	60-57	188										
Opponents	462	445	503	523	6	16	1955															

\* = Conference game

## 2019-20 Season Results

**19-20 USC Upstate Women's Basketball**  
**USC Upstate Season Schedule/Results & Leaders (as of Mar 11, 2020)**  
**All games**

<b>RECORD:</b>	<b>OVERALL</b>	<b>HOME</b>	<b>AWAY</b>	<b>NEUTRAL</b>
ALL GAMES	10-20	7-8	3-12	0-0
CONFERENCE	4-16	2-8	2-8	0-0
NON-CONFERENCE	6-4	5-0	1-4	0-0

<b>Date</b>	<b>Opponent</b>	<b>Score</b>	<b>Att.</b>	<b>High Points</b>	<b>High Rebounds</b>
11/05/19	FLORIDA A&M	W 74-61	590	(19)LEWIS, Brianna	(11)MOORE, Quadijah
11/08/19	at East Carolina	48-69 L	812	(13)KIRKWOOD, Kathryn	(9)POPPLEWELL, Riley
11/12/19	WESTERN CARO.	W 70-62	833	(20)LEWIS, Brianna	(8)KIRKWOOD, Kathryn
11/16/19	MARS HILL	W 89-31	369	(23)MOORE, Quadijah	(8)GIBBONS, Michaela
11/19/19	at Jacksonville	43-87 L	407	(11)LEWIS, Brianna (11)GIBBONS, Michaela	(7)POPPLEWELL, Riley
11/21/19	at #5/6 South Carolina	32-112 L	10052	(7)TIMBERLAKE, Maya (7)LEWIS, Brianna	(6)KIRKWOOD, Kathryn
11/26/19	at Georgia	53-67 L	2319	(21)LEWIS, Brianna	(6)POPPLEWELL, Riley
12/14/19	SOUTH CAROLINA ST.	W 58-47	420	(17)MOORE, Quadijah	(7)MOORE, Quadijah
12/19/19	BOB JONES	W 71-49	425	(17)GIBBONS, Michaela	(10)POPPLEWELL, Riley
12/28/19	*CHARLESTON SO.	W 70-53	269	(24)LEWIS, Brianna	(13)POPPLEWELL, Riley
12/31/19	*at Campbell	38-50 L	728	(10)KIRKWOOD, Kathryn	(6)GIBBONS, Michaela
01/04/20	*at High Point	46-85 L	748	(12)MOORE, Quadijah (12)HERRING, Barrett	(6)LOGAN, Jada
01/06/20	*UNC ASHEVILLE	48-68 L	371	(17)HERRING, Barrett	(13)POPPLEWELL, Riley
01/09/20	*WINTHROP	38-52 L	305	(12)MOORE, Quadijah	(8)HERRING, Barrett
01/11/20	*LONGWOOD	62-70 L	427	(17)POPPLEWELL, Riley	(13)HERRING, Barrett
01/14/20	*at Hampton	40-60 L	2245	(10)HERRING, Barrett	(7)HERRING, Barrett
01/18/20	*at Gardner-Webb	53-63 L	755	(18)HERRING, Barrett	(10)POPPLEWELL, Riley
01/21/20	*RADFORD	41-57 L	384	(11)KIRKWOOD, Kathryn	(9)GIBBONS, Michaela
01/25/20	*at Presbyterian	42-55 L	329	(15)LEWIS, Brianna	(8)POPPLEWELL, Riley (8)HERRING, Barrett
02/01/20	*CAMPBELL	72-80 Lo2	560	(25)LEWIS, Brianna	(17)POPPLEWELL, Riley
02/04/20	*PRESBYTERIAN	W 70-60	250	(20)LEWIS, Brianna	(5)KIRKWOOD, Kathryn (5)POPPLEWELL, Riley
02/08/20	*HIGH POINT	45-81 L	375	(17)LEWIS, Brianna	(8)HERRING, Barrett
02/11/20	*at Charleston So.	W 71-64	78	(21)POPPLEWELL, Riley	(18)POPPLEWELL, Riley
02/18/20	*HAMPTON	73-86 L	365	(23)LEWIS, Brianna	(9)POPPLEWELL, Riley
02/22/20	*at UNC Asheville	45-53 L	(15)LEWIS, Brianna	(6)GIBBONS, Michaela (6)HERRING, Barrett	
2/25/20	*at Radford	57-78 L	527	(26)POPPLEWELL, Riley	(12)POPPLEWELL, Riley
02/29/20	*GARDNER-WEBB	59-70 L	345	(20)LEWIS, Brianna	(15)HERRING, Barrett
03/04/20	*at Longwood	56-69 L	412	(21)LEWIS, Brianna	(8)FLANTOS, Lillian
3-7-20	*at Winthrop	W 66-59	231	(26)LEWIS, Brianna	(17)POPPLEWELL, Riley
3-10-20	at Winthrop	W 60-57	188	(23)POPPLEWELL, Riley	(17)POPPLEWELL, Riley

\* = Conference game

<b>Attendance Summary</b>	<b>Games</b>	<b>Attend</b>	<b>Avg/Game</b>
Home	15	6288	419
Away	15	19831	1322
Neutral	0	0	0
Total	30	26119	871

## 2019-20 Team Game-By-Game

**19-20 USC Upstate Women's Basketball**  
**USC Upstate Season Box Score (as of Mar 11, 2020)**  
**All games**

<b>RECORD:</b>	<b>OVERALL</b>	<b>HOME</b>	<b>AWAY</b>	<b>NEUTRAL</b>
ALL GAMES	10-20	7-8	3-12	0-0
CONFERENCE	4-16	2-8	2-8	0-0
NON-CONFERENCE	6-4	5-0	1-4	0-0

#	Player	gp-gs	min	avg	Total		3-Point		F-Throw		Rebounds				pf	dq	a	to	blk	stl	pts	avg
					fg-fga	fg%	3fg-fga	3fg%	ft-fta	ft%	off	def	tot	avg								
01	LEWIS, Brianna	25-24	912	36.5	148-370	.400	24-72	.333	74-104	.712	12	42	54	2.2	41	0	122	117	4	25	394	15.8
21	POPPLEWELL, Riley	30-30	896	29.9	91-234	.389	4-21	.190	97-122	.795	107	150	257	8.6	57	2	39	64	20	38	283	9.4
30	HERRING, Barrett	25-19	477	19.1	76-195	.390	2-10	.200	40-63	.635	45	94	139	5.6	53	1	13	29	36	9	194	7.8
24	MOORE, Quadijah	21-9	309	14.7	62-135	.459	1-6	.167	29-37	.784	28	58	86	4.1	58	3	10	37	27	12	154	7.3
34	KIRKWOOD, Kathryn	26-1	311	12.0	66-150	.440	0-4	.000	18-30	.600	40	53	93	3.6	33	0	4	27	11	7	150	5.8
33	GIBBONS, Michaela	30-30	1032	34.4	53-225	.236	42-180	.233	9-15	.600	9	134	143	4.8	37	0	32	53	10	30	157	5.2
15	KUZMINA, Anda	30-14	593	19.8	45-125	.360	15-68	.221	16-24	.667	12	69	81	2.7	27	0	40	57	3	15	121	4.0
12	LOGAN, Jada	29-20	594	20.5	36-146	.247	10-50	.200	17-29	.586	37	71	108	3.7	38	0	53	74	0	22	99	3.4
32	PANUFNIK, Natalia	21-0	161	7.7	15-45	.333	4-17	.235	9-13	.692	11	17	28	1.3	22	0	4	17	3	4	43	2.0
35	GLANCE, Shelby	12-0	84	7.0	6-29	.207	6-28	.214	1-2	.500	1	13	14	1.2	2	0	2	2	0	0	19	1.6
23	FLANTOS, Lillian	23-0	209	9.1	12-52	.231	5-30	.167	5-8	.625	19	27	46	2.0	40	0	3	17	6	9	34	1.5
25	TIMBERLAKE, Maya	28-0	318	11.4	14-65	.215	6-32	.188	2-4	.500	12	20	32	1.1	42	0	20	24	1	15	36	1.3
03	JEFFERSON, Breanna	17-3	153	9.0	1-13	.077	1-4	.250	3-4	.750	1	9	10	0.6	11	0	21	18	0	4	6	0.4
05	MCCUTCHEON, Molly	1-0	2	2.0	0-1	.000	0-1	.000	0-0	.000	0	0	0	0.0	0	0	0	0	0	0	0	0.0
Team											53	75	128							23		
Total.....		0	6051		625-1785	.350	120-523	.229	320-455	.703	387	832	1219	0.0	461	6	363	559	121	190	1690	0.0
Opponents.....		0	6051		714-1861	.384	183-569	.322	344-497	.692	383	841	1224	0.0	490	-	397	453	75	295	1955	0.0

Score by Periods	1st	2nd	3rd	4th	OT	OT2	Totals
USC Upstate	368	421	441	446	6	8	1690
Opponents	462	445	503	523	6	16	1955

## 2019-20 Category Leaders

**19-20 USC Upstate Women's Basketball**  
**USC Upstate Category Leaders (as of Mar 11, 2020)**  
**All games**

<b>Points</b>	<b>G</b>	<b>Pts</b>	<b>Pts/G</b>	<b>Scoring Average</b>	<b>G</b>	<b>Pts</b>	<b>Avg/G</b>
LEWIS, Brianna	25	394	15.8	LEWIS, Brianna	25	394	15.8
POPPELWELL, Riley	30	283	9.4	POPPELWELL, Riley	30	283	9.4
HERRING, Barrett	25	194	7.8	HERRING, Barrett	25	194	7.8
GIBBONS, Michaela	30	157	5.2	MOORE, Quadijah	21	154	7.3
MOORE, Quadijah	21	154	7.3	KIRKWOOD, Kathryn	26	150	5.8
KIRKWOOD, Kathryn	26	150	5.8	GIBBONS, Michaela	30	157	5.2
KUZMINA, Anda	30	121	4.0	KUZMINA, Anda	30	121	4.0
LOGAN, Jada	29	99	3.4	LOGAN, Jada	29	99	3.4
PANUFNIK, Natalia	21	43	2.0	PANUFNIK, Natalia	21	43	2.0
TIMBERLAKE, Maya	28	36	1.3	GLANCE, Shelby	12	19	1.6
FLANTOS, Lillian	23	34	1.5	FLANTOS, Lillian	23	34	1.5
GLANCE, Shelby	12	19	1.6	TIMBERLAKE, Maya	28	36	1.3
<b>FG Percentage</b>	<b>FG</b>	<b>Att</b>	<b>Pct</b>	<b>Field Goal Attempts</b>	<b>G</b>	<b>Att</b>	<b>Att/G</b>
MOORE, Quadijah	62	135	.459	LEWIS, Brianna	25	370	14.8
KIRKWOOD, Kathryn	66	150	.440	POPPELWELL, Riley	30	234	7.8
LEWIS, Brianna	148	370	.400	GIBBONS, Michaela	30	225	7.5
HERRING, Barrett	76	195	.390	HERRING, Barrett	25	195	7.8
POPPELWELL, Riley	91	234	.389	KIRKWOOD, Kathryn	26	150	5.8
KUZMINA, Anda	45	125	.360	<b>Field Goals Made</b>	<b>G</b>	<b>Made</b>	<b>Made/G</b>
PANUFNIK, Natalia	15	45	.333	LEWIS, Brianna	25	148	5.9
LOGAN, Jada	36	146	.247	POPPELWELL, Riley	30	91	3.0
GIBBONS, Michaela	53	225	.236	HERRING, Barrett	25	76	3.0
FLANTOS, Lillian	12	52	.231	KIRKWOOD, Kathryn	26	66	2.5
TIMBERLAKE, Maya	14	65	.215	MOORE, Quadijah	21	62	3.0
GLANCE, Shelby	6	29	.207	<b>3-Point FG Attempts</b>	<b>G</b>	<b>Att</b>	<b>Att/G</b>
<b>3-Point Percentage</b>	<b>3FG</b>	<b>Att</b>	<b>Pct</b>	GIBBONS, Michaela	30	180	6.0
LEWIS, Brianna	24	72	.333	LEWIS, Brianna	25	72	2.9
JEFFERSON, Breanna	1	4	.250	KUZMINA, Anda	30	68	2.3
PANUFNIK, Natalia	4	17	.235	LOGAN, Jada	29	50	1.7
GIBBONS, Michaela	42	180	.233	TIMBERLAKE, Maya	28	32	1.1
KUZMINA, Anda	15	68	.221	<b>3-Point FG Made</b>	<b>G</b>	<b>Made</b>	<b>Made/G</b>
GLANCE, Shelby	6	28	.214	GIBBONS, Michaela	30	42	1.4
HERRING, Barrett	2	10	.200	LEWIS, Brianna	25	24	1.0
LOGAN, Jada	10	50	.200	KUZMINA, Anda	30	15	0.5
POPPELWELL, Riley	4	21	.190	LOGAN, Jada	29	10	0.3
TIMBERLAKE, Maya	6	32	.188	GLANCE, Shelby	12	6	0.5
MOORE, Quadijah	1	6	.167	TIMBERLAKE, Maya	28	6	0.2
FLANTOS, Lillian	5	30	.167	<b>Free Throw Attempts</b>	<b>G</b>	<b>Att</b>	<b>Att/G</b>
<b>Free Throw Percent</b>	<b>FG</b>	<b>Att</b>	<b>Pct</b>	POPPELWELL, Riley	30	122	4.1
POPPELWELL, Riley	97	122	.795	LEWIS, Brianna	25	104	4.2
MOORE, Quadijah	29	37	.784	HERRING, Barrett	25	63	2.5
JEFFERSON, Breanna	3	4	.750	MOORE, Quadijah	21	37	1.8
LEWIS, Brianna	74	104	.712	KIRKWOOD, Kathryn	26	30	1.2
PANUFNIK, Natalia	9	13	.692	<b>Free Throws Made</b>	<b>G</b>	<b>Made</b>	<b>Made/G</b>
KUZMINA, Anda	16	24	.667	POPPELWELL, Riley	30	97	3.2
HERRING, Barrett	40	63	.635	LEWIS, Brianna	25	74	3.0
FLANTOS, Lillian	5	8	.625	HERRING, Barrett	25	40	1.6
KIRKWOOD, Kathryn	18	30	.600	MOORE, Quadijah	21	29	1.4
GIBBONS, Michaela	9	15	.600	KIRKWOOD, Kathryn	26	18	0.7
LOGAN, Jada	17	29	.586				
GLANCE, Shelby	1	2	.500				
TIMBERLAKE, Maya	2	4	.500				

## 2019-20 Category Leaders

**19-20 USC Upstate Women's Basketball**  
**USC Upstate Category Leaders (as of Mar 11, 2020)**  
**All games**

<b>Rebounds</b>	<b>G</b>	<b>Reb</b>	<b>Reb/G</b>	<b>Assists</b>	<b>G</b>	<b>No.</b>	<b>Ast/G</b>
POPPLEWELL, Riley	30	257	8.6	LEWIS, Brianna	25	122	4.9
GIBBONS, Michaela	30	143	4.8	LOGAN, Jada	29	53	1.8
HERRING, Barrett	25	139	5.6	KUZMINA, Anda	30	40	1.3
LOGAN, Jada	29	108	3.7	POPPLEWELL, Riley	30	39	1.3
KIRKWOOD, Kathryn	26	93	3.6	GIBBONS, Michaela	30	32	1.1

<b>Rebound Average</b>	<b>G</b>	<b>Reb</b>	<b>Avg/G</b>	<b>Steals</b>	<b>G</b>	<b>No.</b>	<b>Stl/G</b>
POPPLEWELL, Riley	30	257	8.6	POPPLEWELL, Riley	30	38	1.3
HERRING, Barrett	25	139	5.6	GIBBONS, Michaela	30	30	1.0
GIBBONS, Michaela	30	143	4.8	LEWIS, Brianna	25	25	1.0
MOORE, Quadijah	21	86	4.1	LOGAN, Jada	29	22	0.8
LOGAN, Jada	29	108	3.7	KUZMINA, Anda	30	15	0.5
				TIMBERLAKE, Maya	28	15	0.5

<b>Offensive Rebounds</b>	<b>G</b>	<b>No.</b>	<b>Avg/G</b>	<b>Blocked Shots</b>	<b>G</b>	<b>No.</b>	<b>Blk/G</b>
POPPLEWELL, Riley	30	107	3.6	HERRING, Barrett	25	36	1.4
HERRING, Barrett	25	45	1.8	MOORE, Quadijah	21	27	1.3
KIRKWOOD, Kathryn	26	40	1.5	POPPLEWELL, Riley	30	20	0.7
LOGAN, Jada	29	37	1.3	KIRKWOOD, Kathryn	26	11	0.4
MOORE, Quadijah	21	28	1.3	GIBBONS, Michaela	30	10	0.3

<b>Defensive Rebounds</b>	<b>G</b>	<b>No.</b>	<b>Avg/G</b>	<b>Minutes</b>	<b>G</b>	<b>No.</b>	<b>Min/G</b>
POPPLEWELL, Riley	30	150	5.0	GIBBONS, Michaela	30	1032	34.4
GIBBONS, Michaela	30	134	4.5	LEWIS, Brianna	25	912	36.5
HERRING, Barrett	25	94	3.8	POPPLEWELL, Riley	30	896	29.9
LOGAN, Jada	29	71	2.4	LOGAN, Jada	29	594	20.5
KUZMINA, Anda	30	69	2.3	KUZMINA, Anda	30	593	19.8

<b>Fouls</b>	<b>G</b>	<b>No.</b>	<b>Per/G</b>	<b>Turnovers</b>	<b>G</b>	<b>No.</b>	<b>TO/G</b>
MOORE, Quadijah	21	58	2.8	LEWIS, Brianna	25	117	4.7
POPPLEWELL, Riley	30	57	1.9	LOGAN, Jada	29	74	2.6
HERRING, Barrett	25	53	2.1	POPPLEWELL, Riley	30	64	2.1
TIMBERLAKE, Maya	28	42	1.5	KUZMINA, Anda	30	57	1.9
LEWIS, Brianna	25	41	1.6	GIBBONS, Michaela	30	53	1.8

<b>Foulsouts</b>	<b>G</b>	<b>No.</b>
MOORE, Quadijah	21	3
POPPLEWELL, Riley	30	2
HERRING, Barrett	25	1





# DAKOTA MCCAUGHAN

Freshman • 5-5 • Guard

Secane, Pa.

(Ridley High School)

0

## Game-By-Game

### CAREER HIGHS

- Points
- Rebounds
- Assists
- Blocks
- Steals
- FGM
- FGA
- 3FGM
- 3FGA
- FTM
- FTA
- Minutes

### SEASON HIGHS

- Points
- Rebounds
- Assists
- Blocks
- Steals
- FGM
- FGA
- 3FGM
- 3FGA
- FTM
- FTA
- Minutes

## Career Statistics



# DENIJSHA WILSON

Junior • 5-3 • Guard

Darby, Pa.

(Labette Community College)

# 1

## Game-By-Game

### CAREER HIGHS

- Points
- Rebounds
- Assists
- Blocks
- Steals
- FGM
- FGA
- 3FGM
- 3FGA
- FTM
- FTA
- Minutes

### SEASON HIGHS

- Points
- Rebounds
- Assists
- Blocks
- Steals
- FGM
- FGA
- 3FGM
- 3FGA
- FTM
- FTA
- Minutes

## Career Statistics



# GIFT SAMPSON

Junior • 6-0 • Forward

Lagos, Nigeria

(Labette Community College)

# 3

## Game-By-Game

### CAREER HIGHS

- Points
- Rebounds
- Assists
- Blocks
- Steals
- FGM
- FGA
- 3FGM
- 3FGA
- FTM
- FTA
- Minutes

### SEASON HIGHS

- Points
- Rebounds
- Assists
- Blocks
- Steals
- FGM
- FGA
- 3FGM
- 3FGA
- FTM
- FTA
- Minutes

## Career Statistics



# MOLLY MCCUTCHEON

Junior • 5-7 • Guard

Vincent, Ohio

(Warren HS)

# 5

## Game-By-Game

### CAREER HIGHS

Points	N/A
Rebounds	N/A
Assists	2, Bob Jones, 12/8/18
Blocks	N/A
Steals	1, Bob Jones, 12/8/18
FGM	N/A
FGA	2, twice
3FGM	N/A
3FGA	1, twice
FTM	1, Converse, 11/13/18
FTA	2, Converse, 11/13/18
Minutes	8, at Furman, 11/17/18

### SEASON HIGHS

Points
Rebounds
Assists
Blocks
Steals
FGM
FGA
3FGM
3FGA
FTM
FTA
Minutes

### Career Statistics

Season	gp-gs	min/avg	fg-fga	pct	fg-fga	pct	ft-fta	pct	off	def	tot	avg	pf	fo	ast	to	blk	stl	pts	avg
2018-19	9-0	37/4.1	0-5	.000	0-3	.000	1-2	.500	2	2	4	0.4	1	0	3	2	1	2	1	0.1
2019-20	1-0	2/2.0	0-1	.000	0-1	.000	0-0	.000	0	0	0	0.0	0	0	0	0	0	0	0	0.0
TOTAL	10-0	39/3.9	0-6	.000	0-4	.000	1-2	.500	2	2	4	0.4	1	0	3	2	1	2	1	0.1



# MCKINLEY BROOKS-SUMPTER

Freshman • 5-8 • Guard

Columbia, S.C.

(AC Flora High School)

# 10

## Game-By-Game

### CAREER HIGHS

- Points
- Rebounds
- Assists
- Blocks
- Steals
- FGM
- FGA
- 3FGM
- 3FGA
- FTM
- FTA
- Minutes

### SEASON HIGHS

- Points
- Rebounds
- Assists
- Blocks
- Steals
- FGM
- FGA
- 3FGM
- 3FGA
- FTM
- FTA
- Minutes

## Career Statistics



# JADA LOGAN

Sophomore • 5-8 • Guard

Rutherfordton, N.C.

(RS Central High School)

# 12

## Game-By-Game

### CAREER HIGHS

Points	11, FAMU, 11/5/19
Rebounds	11, UNCA, 1/6/20
Assists	8, Western Carolina, 11/12/19
Blocks	N/A
Steals	2, 7 times
FGM	4, Western Carolina, 11/12/19
FGA	13, FAMU, 11/5/19
3FGM	2, twice
3FGA	7, FAMU, 11/5/19
FTM	3, FAMU, 11/5/19
FTA	4, twice
Minutes	39, Longwood, 1/11/20

### SEASON HIGHS

Points
Rebounds
Assists
Blocks
Steals
FGM
FGA
3FGM
3FGA
FTM
FTA
Minutes

### Career Statistics

Season	gp-gs	min/avg	fg-fga	pct	fg-fga	pct	ft-fta	pct	off	def	tot	avg	pf	fo	ast	to	blk	stl	pts	avg
2019-20	29-20	594/20.5	36-146	.247	10-50	.200	17-29	.586	37	71	108	3.7	38	0	53	74	0	22	99	3.4
TOTAL	29-20	594/20.5	36-146	.247	10-50	.200	17-29	.586	37	71	108	3.7	38	0	53	74	0	22	99	3.4



# ANDA KUZMINA

Senior • 5-9 • Guard

Riga, Latvia

(Latvijas Universitate)

# 15

## Game-By-Game

### CAREER HIGHS

Points	20, Brevard, 1/2/18
Rebounds	8, twice
Assists	10, Presbyterian, 2/4/20
Blocks	1, 4 times
Steals	4, at Winthrop, 3/7/20
FGM	8, Brevard, 1/2/18
FGA	15, twice
3FGM	5, at Winthrop, 1/9/19
3FGA	9, 3 times
FTM	7, Winthrop, 2/26/19
FTA	8, Winthrop, 2/26/19
Minutes	40, N.C. Central, 12/30/17

### SEASON HIGHS

Points
Rebounds
Assists
Blocks
Steals
FGM
FGA
3FGM
3FGA
FTM
FTA
Minutes

### Career Statistics

Season	gp-gs	min/avg	fg-fga	pct	fg-fga	pct	ft-fta	pct	off	def	tot	avg	pf	fo	ast	to	blk	stl	pts	avg
2017-18	30-29	811/27.0	96-251	.382	40-121	.331	30-43	.698	14	79	93	3.1	41	0	46	96	1	13	262	8.7
2018-19	30-12	450/15.0	40-136	.294	23-81	.284	9-10	.900	9	44	53	1.8	22	0	16	26	3	11	112	3.7
2019-20	30-14	593/19.8	45-125	.360	15-68	.221	16-24	.667	12	69	81	2.7	27	0	40	57	3	15	121	4.0
TOTAL	90-55	1854/20.6	181-512	.354	78-270	.289	55-77	.714	35	192	227	2.5	90	0	102	179	7	39	495	5.5



# MARNICHA PRUDENT

Junior • 5-11 • Forward

Ft. Lauderdale, Fla.

(Indian River State College)

# 21

## Game-By-Game

### CAREER HIGHS

- Points
- Rebounds
- Assists
- Blocks
- Steals
- FGM
- FGA
- 3FGM
- 3FGA
- FTM
- FTA
- Minutes

### SEASON HIGHS

- Points
- Rebounds
- Assists
- Blocks
- Steals
- FGM
- FGA
- 3FGM
- 3FGA
- FTM
- FTA
- Minutes

## Career Statistics





# LILLIAN FLANTOS

Sophomore • 5-11 • Forward

Lumberton, N.C.

(South View HS)

# 23

## Game-By-Game

### CAREER HIGHS

Points	5, twice
Rebounds	8, at Longwood, 3/4/20
Assists	1, 3 times
Blocks	2, twice
Steals	2, twice
FGM	2, twice
FGA	6, at Georgia, 11/26/19
3FGM	1, 5 times
3FGA	4, twice
FTM	2, twice
FTA	2, 4 times
Minutes	21, at Winthrop, 3/7/20

### SEASON HIGHS

Points
Rebounds
Assists
Blocks
Steals
FGM
FGA
3FGM
3FGA
FTM
FTA
Minutes

### Career Statistics

Season	gp-gs	min/avg	fg-fga	pct	fg-fga	pct	ft-fta	pct	off	def	tot	avg	pf	fo	ast	to	blk	stl	pts	avg
2019-20	23-0	209/9.1	12-52	.231	5-30	.167	5-8	.625	19	27	46	2.0	40	0	3	17	6	9	34	1.5
TOTAL	23-0	209/9.1	12-52	.231	5-30	.167	5-8	.625	19	27	46	2.0	40	0	3	17	6	9	34	1.5



# MAYA TIMBERLAKE

Sophomore • 5-10 • Guard

Norcross, Ga.

(Greater Atlanta Christian HS)

# 25

## Game-By-Game

### CAREER HIGHS

Points	9, Mars Hill, 11/16/19
Rebounds	4, Hampton, 1/14/20
Assists	4, Mars Hill, 11/16/19
Blocks	1, Hampton, 2/18/20
Steals	2, 5 times
FGM	3, twice
FGA	8, at South Carolina, 11/21/19
3FGM	2, Mars Hill, 11/16/19
3FGA	4, 3 times
FTM	1, twice
FTA	2, twice
Minutes	31, at South Carolina, 11/21/19

### SEASON HIGHS

Points
Rebounds
Assists
Blocks
Steals
FGM
FGA
3FGM
3FGA
FTM
FTA
Minutes

### Career Statistics

Season	gp-gs	min/avg	fg-fga	pct	fg-fga	pct	ft-fta	pct	off	def	tot	avg	pf	fo	ast	to	blk	stl	pts	avg
2019-20	28-0	318/11.4	14-65	.215	6-32	.188	2-4	.500	12	20	32	1.1	42	0	20	24	1	15	36	1.3
TOTAL	28-0	318/11.4	14-65	.215	6-32	.188	2-4	.500	12	20	32	1.1	42	0	20	24	1	15	36	1.3



# BARRETT HERRING

Junior • 6-3 • Center

Birmingham, Ala.

(Spain Park HS)

# 30

## Game-By-Game

### CAREER HIGHS

Points	18, at Gardner-Webb, 1/18/20
Rebounds	15, Gardner-Webb, 2/29/20
Assists	3, Hampton, 1/14/20
Blocks	4, twice
Steals	2, twice
FGM	7, at Gardner-Webb, 1/18/20
FGA	15, twice
3FGM	1, twice
3FGA	2, Hampton, 1/14/20
FTM	6, Hampton, 1/14/20
FTA	7, UNCA, 1/6/20
Minutes	32, Gardner-Webb, 2/29/20

### SEASON HIGHS

Points
Rebounds
Assists
Blocks
Steals
FGM
FGA
3FGM
3FGA
FTM
FTA
Minutes

### Career Statistics

Season	gp-gs	min/avg	fg-fga	pct	fg-fga	pct	ft-fta	pct	off	def	tot	avg	pf	fo	ast	to	blk	stl	pts	avg
2018-19	5-1	22/4.4	0-3	.000	0-0	.000	1-4	.250	3	2	5	1.0	6	0	0	2	4	1	1	0.2
2019-20	25-19	477/19.1	76-195	.390	2-10	.200	40-63	.635	45	94	139	5.6	53	1	13	29	36	9	194	7.8
TOTAL	30-20	499/16.6	76-198	.384	2-10	.200	41-67	.612	48	96	144	4.8	59	1	13	31	40	10	195	6.5



# MICHAELA GIBBONS

Senior • 5-11 • Forward

Troutman, N.C.  
(Hopewell HS)

# 33

## Game-By-Game

### CAREER HIGHS

Points	21, Charleston Southern, 1/19/19
Rebounds	12, Longwood, 1/26/19
Assists	4, UNCA, 1/6/20
Blocks	1, 15 times
Steals	5, FAMU, 11/5/19
FGM	8, at N.C. Central, 11/24/18
FGA	19, at Hampton, 1/29/19
3FGM	7, Charleston Southern, 1/19/19
3FGA	13, Western Carolina, 11/12/19
FTM	6, Brevard, 12/18/18
FTA	6, Brevard, 12/18/18
Minutes	45, Campbell, 2/1/20

### SEASON HIGHS

Points
Rebounds
Assists
Blocks
Steals
FGM
FGA
3FGM
3FGA
FTM
FTA
Minutes

### Career Statistics

Season	gp-gs	min/avg	fg-fga	pct	fg-fga	pct	ft-fta	pct	off	def	tot	avg	pf	fo	ast	to	blk	stl	pts	avg
2017-18	26-0	296/11.4	38-99	.384	19-59	.322	14-19	.737	10	36	46	1.8	33	1	4	14	7	12	109	4.2
2018-19	29-18	857/29.6	92-275	.335	54-174	.310	15-22	.682	19	130	149	5.1	57	0	11	47	8	38	253	8.7
2019-20	30-30	1032/34.4	53-225	.236	42-180	.233	9-15	.600	9	134	143	4.8	37	0	32	53	10	30	157	5.2
TOTAL	85-48	2185/25.7	183-599	.306	115-413	.278	38-56	.679	38	300	338	4.0	127	1	47	114	25	80	519	6.1



# MOLLY COLEMAN

Junior • 6-2 • Forward

Clinton, South Australia  
(Gillette College)

# 34

## Game-By-Game

### CAREER HIGHS

- Points
- Rebounds
- Assists
- Blocks
- Steals
- FGM
- FGA
- 3FGM
- 3FGA
- FTM
- FTA
- Minutes

### SEASON HIGHS

- Points
- Rebounds
- Assists
- Blocks
- Steals
- FGM
- FGA
- 3FGM
- 3FGA
- FTM
- FTA
- Minutes

## Career Statistics



# SHELBY GLANCE

Sophomore • 5-11 • Forward

Waynesville, N.C.

(Tuscola HS)

# 35

## Game-By-Game

### CAREER HIGHS

Points	6, Hampton, 2/18/20
Rebounds	3, twice
Assists	1, twice
Blocks	N/A
Steals	N/A
FGM	2, Hampton, 2/18/20
FGA	9, Charleston So., 2/11/20
3FGM	2, Hampton, 2/18/20
3FGA	9, Charleston So., 2/11/20
FTM	1, Presbyterian, 2/4/20
FTA	2, Presbyterian, 2/4/20
Minutes	19, Presbyterian, 2/4/20

### SEASON HIGHS

- Points
- Rebounds
- Assists
- Blocks
- Steals
- FGM
- FGA
- 3FGM
- 3FGA
- FTM
- FTA
- Minutes

## Career Statistics

Season	gp-gs	min/avg	fg-fga	pct	fg-fga	pct	ft-fta	pct	off	def	tot	avg	pf	fo	ast	to	blk	stl	pts	avg
2019-20	12-0	84/7.0	6-29	.207	6-28	.214	1-2	.500	1	13	14	1.2	2	0	2	2	0	0	19	1.6
TOTAL	12-0	84/7.0	6-29	.207	6-28	.214	1-2	.500	1	13	14	1.2	2	0	2	2	0	0	19	1.6

## Roster

## NUMERICAL

No.	Name	Pos.	Yr.	Ht.	Hometown/Previous School
0	Dakota McCaughan	G	Fr.	5-5	Secane, Penn. / Ridley HS
1	Denijsha Wilson	G	Jr.	5-3	Darby, Penn. / Labette Community College
3	Gift Sampson	F	Jr.	6-0	Lagos, Nigeria / Labette Community College
5	Molly McCutcheon	G	Jr.	5-7	Vincent, Ohio / Warren HS
10	McKinley Brooks-Sumpter	G	R-Fr.	5-8	Columbia, S.C. / AC Flora HS
12	Jada Logan	G	So.	5-8	Rutherfordton, N.C. / R-S Central HS
15	Anda Kuzmina	G	Sr.	5-9	Riga, Latvia / Latvijas Universitate
21	Marnicha Prudent	F	Jr.	5-11	Ft. Lauderdale, Fla. / Indian River State College
23	Lillian Flantos	F	So.	5-11	Lumberton, N.C. / South View HS
25	Maya Timberlake	G/F	So.	5-10	Norcross, Ga. / Greater Atlanta Christian HS
30	Barrett Herring	C	Jr.	6-3	Birmingham, Ala. / Spain Park HS
33	Michaela Gibbons	F	Sr.	5-11	Troutman, N.C. / Hopewell HS
34	Molly Coleman	F	Jr.	6-2	Clinton, South Australia / Gillette College
35	Shelby Glance	F	So.	5-11	Waynesville, N.C. / Tuscola HS

## ALPHABETICAL

No.	Name	Pos.	Yr.	Ht.	Hometown/Previous School
10	McKinley Brooks-Sumpter	G	R-Fr.	5-8	Columbia, S.C. / AC Flora HS
34	Molly Coleman	F	Jr.	6-2	Clinton, South Australia / Gillette College
23	Lillian Flantos	F	So.	5-11	Lumberton, N.C. / South View HS
33	Michaela Gibbons	F	Sr.	5-11	Troutman, N.C. / Hopewell HS
35	Shelby Glance	F	So.	5-11	Waynesville, N.C. / Tuscola HS
30	Barrett Herring	C	Jr.	6-3	Birmingham, Ala. / Spain Park HS
15	Anda Kuzmina	G	Sr.	5-9	Riga, Latvia / Latvijas Universitate
12	Jada Logan	G	So.	5-8	Rutherfordton, N.C. / R-S Central HS
0	Dakota McCaughan	G	Fr.	5-5	Secane, Penn. / Ridley High School
5	Molly McCutcheon	G	Jr.	5-7	Vincent, Ohio / Warren HS
21	Marnicha Prudent	F	Jr.	5-11	Ft. Lauderdale, Fla. / Indian River State College
3	Gift Sampson	F	Jr.	6-0	Lagos, Nigeria / Labette Community College
25	Maya Timberlake	G/F	So.	5-10	Norcross, Ga. / Greater Atl Christian HS
1	Denijsha Wilson	G	Jr.	5-3	Darby, Penn. / Labette Community College

Coaching Staff**Head Coach:** Becky Burke (1st season)**Assistant Coach:** Candyce Wheeler (1st season)**Assistant Coach:** Drew Landers (1st season)**Assistant Coach:** Nicole Ambrose (1st season)

Radio/TV Chart



#0 Dakota McCaughan  
Fr. | G | 5-5



#1 Denijsha Wilson  
Jr. | G | 5-3



#3 Gift Sampson  
Jr. | F | 6-0



#5 Molly McCutcheon  
Jr. | G | 5-7



#10 McKinley Brooks-Sumpter  
RS Fr. | G | 5-8



#12 Jada Logan  
So. | G | 5-8



#15 Anda Kuzmina  
Sr. | G | 5-9



#21 Marnicha Prudent  
Jr. | F | 5-11



#23 Lillian Flantos  
So. | F | 5-11



#25 Maya Timberlake  
So. | G/F | 5-10



#30 Barrett Herring  
Jr. | C | 6-3



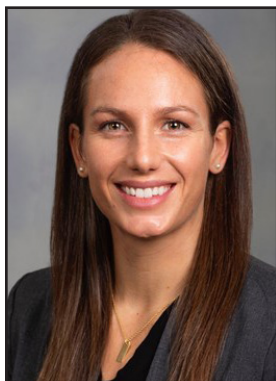
#33 Michaela Gibbons  
Sr. | F | 5-11



#34 Molly Coleman  
Jr. | F | 6-2



#35 Shelby Glance  
So. | F | 5-11



Becky Burke  
Head Coach



Candyce Wheeler  
Assistant Coach



Drew Landers  
Assistant Coach



Nicole Ambrose  
Assistant Coach