



2019-20 AUBURN WOMEN'S BASKETBALL

AUBURN ATHLETICS COMMUNICATIONS: 392 SOUTH DONAHUE DRIVE || AUBURN, AL 36830 || AUBURNTIGERS.COM || @AUBURNWBB

2019-20 SCHEDULE/RESULTS
1-1, 0-0 SEC

DATE	OPPONENT	TIME/TV/RESULT
Nov. 6	WOFFORD	W 84-82
Nov. 14	OLD DOMINION	L 77-89
Nov. 21	at UAB	6 pm
Nov. 24	ST. JOSEPH'S	+ 7 pm
Nov. 29	1-vs. Middle Tennessee	10 am
Nov. 30	1-vs. Dayton/Gonzaga	TBD
Dec. 1	1-vs. TBD	TBD
Dec. 4	at South Alabama	ESPN+ 7 pm
Dec. 7	2-at TCU	2 pm
Dec. 15	BETHUNE-COOKMAN	+ 2 pm
Dec. 28	JACKSONVILLE STATE	+ 2 pm
Jan. 2	*at Vanderbilt	SECN 7:30 pm
Jan. 5	*ARKANSAS	SECN 1 pm
Jan. 9	*FLORIDA	+ 6 pm
Jan. 12	*ALABAMA	+ 2 pm
Jan. 19	*at Georgia	ESPNU 1 pm
Jan. 23	*OLE MISS	+ 6 pm
Jan. 27	*at Kentucky	SECN 6 pm
Jan. 30	*at Mississippi State	+ 7 pm
Feb. 2	*VANDERBILT	+ 2 pm
Feb. 9	*at Alabama	SECN 2 pm
Feb. 13	*at South Carolina	SECN 6 pm
Feb. 16	*LSU	SECN 4 pm
Feb. 20	*MISSISSIPPI STATE	SECN 8 pm
Feb. 23	*at Texas A&M	ESPN2 3 pm
Feb. 27	*at Missouri	+ 7 pm
Mar. 1	*TENNESSEE	SECN 2 pm
Mar. 4-8	SEC Tournament	Greenville
M20-23	NCAA First-Second Rounds	TBD
M27-30	NCAA Regionals	TBD
Apr 3-5	Women's Final Four	New Orleans

All times Central. Home Games in **BOLD CAPS**.
1 - Gulf Coast Showcase (Estero, Fla.)
2 - SEC/Big 12 Challenge
+ = SEC Network+ / ESPN3.com

AUBURN ATHLETICS COMMUNICATIONS

KIRK SAMPSON..... Associate AD
..... kirk@auburn.edu
WES TODD Assistant Director/WBB Contact
..... wlt0006@auburn.edu
..... C: 334-750-5682

Web.....AuburnTigers.com
Twitter.....@AuburnWBB
Facebook...../AuburnWBB
Instagram.....@AuburnWBB
Office Phone.....(334) 844-9800



GAME 3

at UAB (1-2)

Thursday, Nov. 21, 2019 • 6 p.m. CT
Road Opener



Site.....Birmingham, Ala.
Venue.....Bartow Arena (8,508)
TV.....ESPN+
Radio.....WTGZ 93.9 FM (Brit Bowen)
Audio Webcast.....AuburnTigers.com/watch
Live Stats.....UABsports.com
Twitter.....@AuburnWBB
Series Record.....Auburn leads 31-4
in Birmingham.....Auburn leads 13-2
Last Meeting.....Auburn 85, UAB 71 (Nov. 13, 2015, in Auburn)

GAMEDAY BREAKDOWN

AUBURN TIGERS

Rankings.....AP: NR | Coaches: NR
2019-20 Record.....1-1
SEC.....0-0
Home.....1-1
Away.....0-0
Neutral.....0-0
Streak.....L1
Head Coach.....Terri Williams-Flournoy
Record at AU (Yrs.).....125-102 (8th)
Overall Record (Yrs.).....268-206 (16th)
Record vs. UAB.....2-0

UAB BLAZERS

Rankings.....AP: NR | Coaches: NR
2019-20 Record.....1-2
CUSA.....0-0
Home.....1-1
Away.....0-1
Neutral.....0-0
Streak.....L2
Head Coach.....Randy Norton
Record at UAB (Yrs.).....118-75 (7th)
Overall Record (Yrs.).....Same
Record vs. Auburn.....0-1

AUBURN PROJECTED STARTERS



DAISHA ALEXANDER
G • SR • 5-8
Decatur, Ga.

PPG: 19.5
RPG: 5.0
APG: 2.0



ANNIE HUGHES
G • FR • 5-9
Dutton, Ala.

PPG: 11.0
RPG: 3.0
APG: 2.5



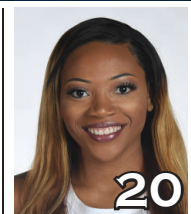
BROOKE MOORE
G • SO • 5-7
Atlanta, Ga.

PPG: 15.0
RPG: 1.5
APG: 1.5



LAUREN HANSEN
G • FR • 5-8
Long Island, N.Y.

PPG: 7.0
RPG: 0.0
APG: 1.0



UNIQUE THOMPSON
F • JR • 6-3
Theodore, Ala.

PPG: 19.0
RPG: 11.5
APG: 1.5

OFF THE BENCH

No.	Pos.	Name	Ht.	Year	PPG	RPG	Hometown
1	G	Robyn Benton	5-9	So.	--	--	Atlanta, Ga.
2	G	Sania Wells	5-7	Fr.	--	--	Moss Point, Miss.
10	F	Kiyae' White	6-2	R-So.	3.5	7.5	Macungie, Pa.
12	G/F	Maliya Perry	6-0	Fr.	2.5	1.0	Columbus, Ohio
*14	F	Jala Jordan	6-2	So.	--	--	Philadelphia, Pa. (WVU)
*23	G	Honesty Scott-Grayson	5-9	So.	--	--	Brick, N.J. (Baylor)
24	F/G	Erin Howard	6-1	So.	3.0	3.0	Madison, Wis.
30	G	Morgan Robinson-Nwagwu	5-8	Fr.	0.0	3.0	Norcross, Ga.
35	F	Natalie Kelly	6-3	So.	0.0	0.0	Albany, La.

*ineligible for 2019-20 season per NCAA transfer rules

Head Coach: Terri Williams-Flournoy

Assistants: Ty Evans, La'Keshia Frett Meredith, Clarisse Garcia

#WarEagle
#TeamOfExcellence



AuburnTigers.com



@AuburnWBB | @AuburnTigers
@AUCoachFlo



/AuburnWBB
/AuburnTigers

TEAM SCHEDULE AND MEDIA AVAILABILITY >> NOVEMBER 18-24 (times Central unless noted otherwise)

MONDAY November 18	TUESDAY November 19	WEDNESDAY November 20	THURSDAY November 21	FRIDAY November 22	SATURDAY November 23	SUNDAY November 24
PRACTICE 2:30-6 p.m. Auburn Arena	PRACTICE 2:30-6 p.m. Auburn Arena	PRACTICE 2-4 p.m. Auburn Arena TRAVEL to Birmingham	GAME 6:00 Auburn at UAB Interviews postgame	PRACTICE 2:30-6 p.m. Auburn Arena	PRACTICE 10 a.m.-2 p.m. Auburn Arena	GAME 7:00 Auburn vs. St. Joseph's Interviews postgame

AUBURN ATHLETICS COMMUNICATIONS

AUBURNTIGERS.COM

For updated game notes, statistics and all the latest information on Auburn basketball and gameday activities, go to AuburnTigers.com.

INTERVIEW POLICIES

- Coach Williams-Flournoy, assistant coaches and selected athletes are available for phone and personal interviews by contacting Wes Todd in the athletic communications office.
- Following home games, interviews with Coach Flo and selected players will be conducted in the media room following a 10-minute cooling-off period. Visiting coaches and players, if requested, will be available first.
- Interviews following road contests will be conducted in accordance with the home team's media policies.
- Practices are generally closed to the public, but media may cover practice with advance notice.**

CREDENTIALS

Anyone wishing to cover Auburn women's basketball should contact Wes Todd in the communications office at least one day in advance in order to make the proper arrangements. Game credentials will be held at media will call, located inside the scholarship entrance at Auburn Arena. Parking passes are not needed.

GAME DAY SERVICES

Notes for both teams and flip cards will be provided prior to the game. Stats will be distributed at halftime and after the game. Wireless internet is available in the Arena.

VIDEO SERVICES

FTP feeds of selected Auburn basketball highlights are available for the media. A number of studio and satellite services may be arranged for electronic media by calling War Eagle Productions at 334-750-4345.

COMMUNICATIONS STAFF

- Wes Todd Women's Basketball contact
cell: 334-750-5682
email: wlt0006@auburn.edu
- Grant Keith Student assistant/WBB
email: gak0005@auburn.edu
- Kirk Sampson Associate AD
cell: 334-750-1385
email: sampska@auburn.edu

QUICK FACTS

GENERAL INFORMATION

Location..... Auburn, Ala.
Founded1856
Enrollment.....30,440
Nickname Tigers
Colors..... Burnt Orange and Navy Blue
Facility (Capacity) Auburn Arena (9,121)
Interim President..... Dr. Jay Gogue
Director of Athletics Allen Greene
Sr. Assoc. AD/SWA..... Monique Holland

WOMEN'S BASKETBALL HISTORY

First Year of Women's Basketball1971
All-Time Record (Years).....936-480 (49th)
All-Time SEC Record (since 1981)236-236
All-Time Home Record434-119
at Auburn Arena (since 2010).....87-48
NCAA Tournament Appearances.....21
Last NCAA App./Result.....2019 - First Round
SEC Regular-Season Championships5
.....1981, 1987, 1988, 1989, 2009
SEC Tournament Championships.....4
.....1981, 1987, 1990, 1997

COACHING & SUPPORT STAFF

Head Coach..... Terri Williams-Flournoy
Alma Mater, Year Penn State, 1991
Overall Record268-206 (.565) / 16th year
Auburn Record125-102 (.551) / 8th year
Associate Head Coach (Year at Auburn) Ty Evans (8th)
Alma Mater, Year Wisconsin-Whitewater (1995)
Assistant Coach (Year) La'Keshia Frett Meredith (1st)
Alma Mater, Year Georgia (1997)
Assistant Coach (Year at Auburn) Clarisse Garcia (4th)
Alma Mater, Year Villanova (2007)
Strength & Conditioning Coach Lee Taylor
Director of Basketball Operations Bianca Webb
Director of Basketball Services Justin Peak
Special Asst. to the Head Coach Reneisha Hobbs
Athletic Trainer..... Catherine Gordon
Grad. Student Mgrs Anthony Evans, Rebecca Walthall

GAMEDAY EXPERIENCE: AUBURN ARENA

>> Auburn Arena is in its 10th season as home of Auburn Basketball. The Tigers are 87-48 since moving to the Arena in 2010-11. The facility seats 9,121 for basketball and also hosts Auburn volleyball and gymnastics.



TEAM INFORMATION

2018-19 Record 22-10
2018-19 SEC Record 9-7
SEC Finish..... T-6th
Starters Returning/Lost3/2
Letterwinners Returning/Lost7/4
Newcomers..... 7

AUBURN TIGERS SPEED CHART

Overall: 1-1 SEC: 0-0

Head Coach: Terri Williams-Flournoy (8th Season)

Daisa Alexander - DAY-zha
 Jala Jordan - JAY-lah
 Maliya Perry - ma-LEE-uh
 Morgan Robinson-Nwagwu - wah-GOO

Sania Wells - sa-NYE-uh
 Kiyae' White - kye-YAY
 Terri Williams-Flournoy - Fluh-NOY

		Pts	Reb	Ast	Stl	Blk	
0	DAISA ALEXANDER G • 5-8 • Sr. • Decatur, Ga. • Southwest DeKalb HS	Season High	22	6	2	4	-
		Career High	25	8	8	7	2
		PPG	RPG	SPG	FG	3FG	FT
		19-20	19.5	5.0	3.0	.393	.375
							LAST GAME (vs. ODU): 17 pts, 4 reb, 4 stl, 2 ast • Preseason All-SEC Second Team (coaches) • 2018 SEC All-Defensive Team • Led SEC in steals in '18 (2.8/game); 2nd in '19 (2.3/game) • Career-high 25 pts at Indiana (12/3/17)
1	ROBYN BENTON G • 5-9 • So. • Atlanta, Ga. • Greater Atlanta Christian	Season High	-	-	-	-	-
		Career High	16	5	3	4	1
		PPG	RPG	SPG	FG	3FG	FT
		19-20	-	-	-	-	-
							LAST GAME (vs. ODU): DNP • 2019 SEC All-Freshman Team • Avg. 5.8 ppg in '19; 4th among SEC freshmen • Best 3FG% among AU returners (37.2%; 35-94 in '19) • Sister of former Tenn. football player Inky Johnson
2	SANIA WELLS G • 5-7 • Fr. • Moss Point, Miss. • East Central HS	Season High	-	-	-	-	-
		Career High	-	-	-	-	-
		PPG	RPG	SPG	FG	3FG	FT
		19-20	-	-	-	-	-
							LAST GAME (vs. ODU): DNP • Ranked as #27 PG nationally by ESPN • USA Today All-Mississippi Team • Avg. 27 pts, 5 rebs, 4 stls as HS senior
3	ANNIE HUGHES G • 5-9 • Fr. • Dutton, Ala. • Pisgah HS	Season High	12	4	4	3	-
		Career High	12	4	4	3	-
		PPG	RPG	SPG	FG	3FG	FT
		19-20	11.0	3.0	2.5	.750	1.000
							LAST GAME (vs. ODU): 12 pts, 4 rebs, 2 stl, 1 ast • 3rd AU frosh to start debut since '12 (Thompson, Frerking) • 2019 Alabama Miss Basketball; 1st at AU since W. Boddie • Led Pisgah HS to back-to-back 3A state titles • Avg. 21.4 pts, 7.0 rebs, 4.2 asts, 3.5 stls as HS senior
5	BROOKE MOORE G • 5-7 • So. • Atlanta, Ga. • Henry County HS	Season High	15	2	2	2	1
		Career High	23	4	3	2	1
		PPG	RPG	SPG	FG	3FG	FT
		19-20	15.0	1.5	2.0	.360	.231
							LAST GAME (vs. ODU): 15 pts, 4 reb, 2 stls, 2 ast, 7-7 FT • Earned first career start vs. Wofford, scored 15 points • 19-of-19 on FTs in her career, 9-9 this season • Career-high 23 pts, 5 3FG vs. Alabama St. (12/29/18) • Made 4 3FG vs. Elon as AU set single-game 3FG record
10	KIYAE' WHITE F • 6-2 • R-So. • Macungie, Pa. • Emmaus HS	Season High	5	11	4	1	-
		Career High	5	11	4	1	1
		PPG	RPG	SPG	FG	3FG	FT
		19-20	3.5	7.5	0.5	.375	-
							LAST GAME (vs. ODU): 5 pts, 4 rebs • Career-high 11 rebs, 4 asts in 1st career start vs. Wofford • Played in 29 games as redshirt freshman in '19 • Career-high 5 pts vs. Samford (12/16/18) • Redshirted '17-18 while rehabbing knee injury
12	MALIYA PERRY G/F • 6-0 • Fr. • Columbus, Ohio • Pickerington Central HS	Season High	5	1	1	-	-
		Career High	5	1	1	-	-
		PPG	RPG	SPG	FG	3FG	FT
		19-20	2.5	1.0	0.0	.500	1.000
							LAST GAME (vs. ODU): 1 reb, played 7 minutes • #98 overall prospect nationally by Prospects Nation • Ranked as #28 guard nationally by ESPN • Led HS team to state title in '18 and runner-up in '19
13	LAUREN HANSEN G • 5-8 • Fr. • Long Island, N.Y. • Ward Melville HS	Season High	7	-	1	1	-
		Career High	7	-	1	1	-
		PPG	RPG	SPG	FG	3FG	FT
		19-20	7.0	0.0	1.0	.429	.333
							LAST GAME (vs. ODU): 7 pts, 1 ast, 1 stl • Made Auburn debut vs. ODU; missed 1st game w/ injury • Ranked as #71 overall prospect, #20 guard by ESPN • USA Today All-New York team in 2019 • Avg. 11.3 ppg in 3 games of Auburn's Italy Tour in August
14	JALA JORDAN F • 6-2 • So. • Philadelphia, Pa. • West Virginia	Season High	-	-	-	-	-
		Career High	-	-	-	-	-
		PPG	RPG	SPG	FG	3FG	FT
		19-20	-	-	-	-	-
							Will redshirt this season after transfer from WVU • Appeared in 25 games as freshman at WVU • Ranked #14 wing in class of '18 by ESPN
20	UNIQUE THOMPSON F • 6-3 • Jr. • Theodore, Ala. • Faith Academy	Season High	25	13	2	2	-
		Career High	29	19	4	4	6
		PPG	RPG	SPG	FG	3FG	FT
		19-20	19.0	11.5	1.0	.737	-
							LAST GAME (vs. Wofford): 13 pts, 10 reb, 5-6 FG • Preseason All-SEC Second Team (coaches/media) • 22 career double-doubles, 7th in AU history • Averaged double-double (12.2 pts, 10.3 rebs) in '19 • 3rd player in AU history w/ 500+ rebs thru 2 seasons
23	HONESTY SCOTT-GRAYSON G • 5-9 • So. • Brick, N.J. • Baylor	Season High	-	-	-	-	-
		Career High	-	-	-	-	-
		PPG	RPG	SPG	FG	3FG	FT
		19-20	-	-	-	-	-
							Will redshirt this season after transfer from Baylor • Appeared in 28 games as frosh at Baylor; avg. 2.5 ppg • 2018 McDonald's All-American • Bronze medal w/ USA Basketball U16 Team in '16 • Ranked as #20 overall prospect, #3 guard by ESPN
24	ERIN HOWARD F/G • 6-1 • So. • Madison, Wis. • Madison East HS	Season High	6	3	1	1	1
		Career High	12	8	5	3	3
		PPG	RPG	SPG	FG	3FG	FT
		19-20	3.0	3.0	0.5	.500	.286
							LAST GAME (vs. ODU): 6 pts, 3 rebs, 1 ast, 2-4 3FG • Appeared in 31 games as freshman, started 17 • Avg. 3.5 pts, 2.9 rebs as freshman in '19 • Career-high 12 pts vs. Missouri (2/24/19) • 7 pts, 8 rebs, 3 ast, 3 blk, 2 stls at Arkansas (2/10/19)
30	MORGAN ROBINSON-NWAGWU G • 5-8 • Fr. • Norcross, Ga. • Norcross HS	Season High	-	4	2	1	-
		Career High	-	4	2	1	-
		PPG	RPG	SPG	FG	3FG	FT
		19-20	0.0	3.0	0.5	.000	-
							LAST GAME (vs. ODU): 4 rebs, played 7 minutes • Ranked as No. 28 guard by ESPN • 1st-team all-state; regional player of the year • Helped Norcross HS to state runner-up finish in '17 • Avg. 15.3 pts, 7.1 rebs, 4.6 asts, 4.1 stl, 1.1 blk as HS JR
35	NATALIE KELLY F • 6-3 • So. • Albany, La. • Albany HS	Season High	-	-	-	-	-
		Career High	2	3	-	1	1
		PPG	RPG	SPG	FG	3FG	FT
		19-20	0.0	0.0	0.0	-	-
							LAST GAME (vs. ODU): DNP • Appeared in 12 games as freshman • Scored first collegiate FG vs. UL-Lafayette (11/25) • Career-high 3 rebs vs. Samford, Alabama St. • 2x all-metro selection in HS (Baton Rouge)

Inside the Matchup

Auburn vs. UAB **31-4 (.886)**

In Auburn: 15-1
 --At Auburn Arena: 2-0
 In Birmingham: 13-2
 Neutral Sites: 3-1
 Trend: Auburn has won the last 17 meetings

1972-73	W	33-22	Troy, Ala.
1973-74	W	N/A	Birmingham, Ala.
Dec. 4, 1978	W	70-61	Auburn
Feb. 14, 1979	L	60-62	Birmingham, Ala.
Jan. 26, 1980	W	74-71	Birmingham, Ala.
Feb. 22, 1980	W	71-57	Jacksonville, Ala.
Dec. 6, 1980	L	58-68	Auburn
Feb. 27, 1981	W	85-71	Troy, Ala.
Mar. 14, 1981	L	64-65	Tuscaloosa, Ala.
Jan. 6, 1982	W	73-65	Birmingham, Ala.
Feb. 3, 1982	W	66-52	Auburn
Nov. 26, 1982	W	82-50	Birmingham, Ala.
Feb. 21, 1983	W	89-69	Auburn
Dec. 2, 1983	W	89-55	Birmingham, Ala.
Jan. 23, 1984	W	77-48	Auburn
Dec. 7, 1985	W	73-55	Auburn
Jan. 20, 1987	W	89-45	Birmingham, Ala.
Jan. 15, 1992	L	56-57	Birmingham, Ala.
Dec. 12, 1992	W	65-46	Auburn
Jan. 20, 1993	W	63-53	Birmingham, Ala.
Jan. 12, 1994	W	56-51	Birmingham, Ala.
Jan. 5, 1995	W	88-71	Auburn
Jan. 17, 1996	W	80-39	Birmingham, Ala.
Dec. 3, 1996	W	52-45	Auburn
Dec. 3, 1997	W	73-50	Birmingham, Ala.
Dec. 4, 1998	W	62-51	Auburn
Dec. 14, 1999	W	96-71	Birmingham, Ala.
Dec. 6, 2000	W	79-71(OT)	Auburn
Dec. 3, 2001	W	62-57	Birmingham, Ala.
Dec. 3, 2002	W	76-58	Auburn
Mar. 18, 2007	W	74-60	Auburn
Nov. 17, 2007	W	93-66	Auburn
Nov. 26, 2008	W	91-62	Birmingham, Ala.
March 20, 2013	W	80-57	Auburn#
Nov. 13, 2015	W	85-71	Auburn

WNIT

Auburn Women's Basketball Quick Hitters

- This is the 36th all-time meeting between Auburn and UAB
- Auburn leads the series 31-4, including a 13-2 advantage in Birmingham
- Auburn is 80-32 in non-conference games under Terri Williams-Flournoy and has won 20 of their last 23
- Auburn is 59-16 all-time against current members of Conference USA
- Auburn has a 255-63 all-time record against in-state opponents; 202-25 against non-conference foes
- Under Coach Flo, Auburn is 32-1 when scoring at least 80 points in a game
- Unique Thompson has two double-doubles through two games this season; she has 22 career double-doubles, which ranks 7th in Auburn history
- Thompson's 580 career rebounds rank 2nd among active SEC players and tied for 24th in Auburn history
- Daisa Alexander is tied for second in the SEC in scoring with 19.5 points/game
- Alexander's 169 career steals rank second among active SEC players
- Brooke Moore is a perfect 19-for-19 in her career on free throws (9-for-9 this season)
- Auburn won its season opener over Wofford 84-82; its 41st straight win in a home opener
- Against Wofford, Unique Thompson (25 pts) and Daisa Alexander (22 pts) gave Auburn its first game with two 20-point scorers since an overtime win over North Carolina last season (Dec. 21, 2018, in Myrtle Beach)
- Freshman Annie Hughes became the third Auburn freshman to start her collegiate debut under Coach Flo and the seventh since 2005
- Auburn is in its 49th season of women's basketball and has 937 program wins
- Auburn is 141-41 all-time in the month of November; Coach Flo is 32-14 in November at Auburn
- Auburn returns three starters and eight letterwinners from 2018-19 while welcoming seven newcomers to the team
- Auburn is one of eight programs nationwide with 3 or fewer upperclassmen on the roster
- Last season, the Tigers went 22-10 overall, 9-7 in SEC play and advanced to the NCAA Tournament for the third time in four years
- Senior guard Daisa Alexander (coaches) and junior forward Unique Thompson (coaches & media) were named Preseason All-SEC (2nd team)
- Alexander is Auburn's leading returning scorer after averaging 12.2 points/game in 2018-19; she also ranked 2nd in the SEC with 2.3 steals/game
- Thompson averaged a double-double in 2018-19 with 12.2 points/10.3 rebounds in 2018-19; she was the first Auburn player to average a double-double since DeWanna Bonner in 2008 and the fifth in program history

Moving On Up (Auburn Career Milestone Watch) . . .

- **Unique Thompson** is 7th in career double-doubles with 22; needs 2 to tie for 6th (Monique Morehouse, 24)
- **Unique Thompson** is tied for 24th in career rebounds with 580 (Linda Godby); needs 8 to tie for 23rd (Angie Hannah, 588)
- **Daisa Alexander** is 9th in career 3-point FG made with 105; needs 42 to tie for 8th (Katie Frerking, 147)
- **Daisa Alexander** is 10th in career 3-point attempts with 306; needs 26 to tie for 9th (Shana Askew, 332)
- **Daisa Alexander** needs 119 points for 1,000 in her career

Inside the Numbers



CATEGORY	AUBURN	UAB
Points Per Game	80.5	77.7
Scoring Margin	-5.0	+2.3
Field Goal %	44.8%	42.7%
Opp. Field Goal %	49.2%	37.3%
3 pt Field Goal %	34.3%	39.8%
Opp. 3FG %	46.6%	27.9%
Rebounds	40.5	43.3
Opp. Rebounds	31.0	40.7
Rebound Margin	+9.5	+2.7
Turnovers	12.0	16.3
Opp. Turnovers	14.5	12.7
Steals	10.5	3.7
Opp. Steals	6.5	8.3
Blocks	2.0	2.7
Opp. Blocks	3.0	2.7

INDIVIDUAL CATEGORY LEADERS

Auburn	UAB
Daisa Alexander - 19.5	Miyah Barnes - 19.7
Unique Thompson - 11.5	Angela Vendrell - 11.3
Annie Hughes - 2.5	Miyah Barnes - 5.0
Daisa Alexander - 3.0	Miyah Barnes - 1.7
Erin Howard - 1.0	Angela Vendrell - 1.3
Annie Hughes - 32.3	Miyah Barnes - 35.3
Annie Hughes - .750	Miyah Barnes - .561
Annie Hughes - 1.000	Miyah Barnes - .529
Brooke Moore - 1.000	Angela Vendrell - 1.000

OPENING TIP

» Auburn hits the road for the first time in 2019-20, making the short drive north to Birmingham to take on UAB. Game time is set for 6 p.m. CT at Bartow Arena.

» Auburn is 1-1 after dropping an 89-77 decision to Old Dominion at home last Thursday. The Tigers defeated Wofford 84-82 in their first game.

» UAB is 1-2 after three games in the Preseason WNIT. The Blazers defeated South Alabama before dropping close games at Oklahoma and at home to Boise State.

LAST TIME OUT

» Auburn had four players in double figures, but a fourth-quarter surge from Old Dominion led the Monarchs to an 89-77 win Thursday night.

» The Tigers (1-1) trailed by just two points at the end of the third quarter, but Old Dominion (2-0) could scarcely miss in the final 10 minutes, shooting 90 percent (9-of-10) in the fourth period and 5-of-5 on 3-pointers to break open what had been a tight game.

» Senior Daisa Alexander finished with 17 points and four steals to lead the Tigers. Junior Unique Thompson picked up her second double-double in as many games with a 13-point, 10-rebound performance that saw her go 5-of-6 from the floor.

» Sophomore Brooke Moore recorded her second straight 15-point game and remained perfect at the free-throw line for her career, going 7-for-7. And freshman Annie Hughes scored 12 points and had two steals.

UP NEXT

» Auburn returns home to take on St. Joseph's on Sunday, Nov. 24, at 7 p.m. CT. The game is part of a day/night doubleheader with Auburn volleyball, who faces South Carolina at 1 p.m.

AN AUBURN WIN WOULD...

» Be Auburn's 18th straight victory over UAB, dating back to 1992.

» Be Auburn's sixth straight win over an in-state opponent.

» Be Auburn's 26th straight win over an in-state non-conference opponent, dating back to 2005.

AUBURN-UAB SERIES

» This is the 36th meeting between Auburn and UAB in women's basketball. It will be the first game in Birmingham for Auburn since 2008.

» Auburn leads the series 31-4, including a 13-2 advantage in games played in Birmingham. Auburn has won the last 17 meetings, dating back to 1992.

» The Tigers are 59-16 all-time against current members of Conference USA. UAB is the second of three CUSA teams Auburn faces this year (ODU, Middle Tennessee).

SCOUTING UAB

» UAB is 1-2 on the year after dropping an 83-81 contest to Boise State Friday night in the Preseason WNIT.

» The Blazers were picked to finish fourth in CUSA after a second-place finish last season. UAB returns four starters and seven letterwinners from its 2018-19 squad that advanced to the second round of the WNIT.

» Miyah Barnes was the CUSA Player of the Week last week after averaging 18.0 points in two games, including 25 points on the road at

Oklahoma. She is the Blazers' leading scorer at 19.7 points/game.

» UAB ranks sixth in the nation with 11.0 3-pointers per game. Rachael Childress has made 12 of them, including 8-of-15 in the season-opener vs. South Alabama.

LAST MEETING: Nov. 13, 2015**Auburn 85, UAB 71**

» Brandy Montgomery scored 24 points and Janiah McKay added 20 points with seven assists in her collegiate debut to lead Auburn to an 85-71 win over UAB in the 2015-16 season-opener at Auburn Arena.

» The Tigers (1-0) won their season opener at home for the 25th straight time behind a second-half surge that saw Auburn shoot 61.1 percent over the final 20 minutes.

» Tra'Cee Tanner recorded a double-double, the ninth of her career, with 18 points on 8-of-9 shooting and 10 rebounds, and junior Katie Frerking went 4-for-10 from 3-point range for 12 points and added a game-high three steals.

SCOUTING AUBURN

» Auburn is 1-1 after falling at home to Old Dominion 89-77 last Thursday.

» Auburn returns three starters (Daisa Alexander, Erin Howard, Unique Thompson) and five other letterwinners from its 2018-19 team that finished 22-10 overall, 9-7 in SEC play, and advanced to the NCAA Tournament for the third time in four seasons.

» The Tigers are among the most inexperienced teams in the country with just three upperclassmen on their 15-player roster. With five freshmen and seven sophomores, Auburn is one of just eight teams nationwide with three or fewer upperclassmen on its roster.

» Senior guard Daisa Alexander is the Tigers' leading scorer through two games, averaging 19.5 points/game. She scored 22 points in the opener vs. Wofford and 17 vs. Old Dominion while playing point guard, a position she has played sparingly throughout her career.

» Alexander was Auburn's top returning scorer after averaging 12.6 points/game last season. She also led Auburn returners in assists (1.8/game) and steals (2.3/game); she ranked 2nd in the SEC in steals last season. Alexander was a preseason All-SEC second team selection.

» Junior forward Unique Thompson has two double-doubles through two games, averaging 19.0 points and 11.5 rebounds. She has 22 career double-doubles, which ranks 7th in Auburn history and second among active SEC players.

» Thompson averaged a double-double (12.2 points, 10.3 rebounds) as a sophomore. She finished the 2018-19 season ranked 6th in the nation with 4.0 offensive rebounds per game. Thompson was a preseason All-SEC second team selection.

» Sophomore Brooke Moore, redshirt sophomore Kiyae' White and freshman Annie Hughes all earned their first collegiate starts vs. Wofford in the season opener. Moore scored 15 points, Hughes added 10 and led the Tigers with four assists and three steals, and White pulled down a career-high 11 rebounds.

» As a team, Auburn averaged 71.6 points per game last season while giving up 63.6/game. The Tigers were one of the nation's top defensive

SEC STANDINGS & SCHEDULE

	<i>(thru games of Nov. 19)</i>					
	SEC Games			All Games		
	W	L	Pct.	W	L	Pct.
Arkansas	0	0	.000	4	0	1.000
Florida	0	0	.000	4	0	1.000
Kentucky	0	0	.000	4	0	1.000
Mississippi St.	0	0	.000	4	0	1.000
South Carolina	0	0	.000	4	0	1.000
Tennessee	0	0	.000	5	0	1.000
Texas A&M	0	0	.000	3	0	1.000
LSU	0	0	.000	3	1	.750
Vanderbilt	0	0	.000	3	1	.750
Georgia	0	0	.000	2	1	.667
Alabama	0	0	.000	2	1	.667
AUBURN	0	0	.000	1	1	.500
Ole Miss	0	0	.000	2	2	.500
Missouri	0	0	.000	1	3	.250

Monday, Nov. 18

Florida 60, Presbyterian 46
Mississippi State 122, Troy 82

Tuesday, Nov. 19

Southern Miss 58, Ole Miss 53
Tennessee 73, Stetson 46

Wednesday, Nov. 20

Belmont at Arkansas
Southeastern Louisiana at LSU

Thursday, Nov. 21

Alabama at South Alabama
Auburn at UAB
Mercer at Georgia
Morehead State at Kentucky
Mississippi State at Jackson State
Missouri at South Dakota
USC Upstate at South Carolina

Friday, Nov. 22

Indiana at Florida
Furman at Vanderbilt

Saturday, Nov. 23

Louisiana Tech at Ole Miss
Texas A&M at Southern California

Sunday, Nov. 24

Alabama at Tulane
Arkansas at California
St. Joseph's at Auburn
Villanova at Georgia
Rutgers at LSU
SIUE at Missouri
South Carolina at Clemson

Monday, Nov. 25

Mississippi State at Marquette
Vanderbilt at Tennessee State

Tuesday, Nov. 26

Florida State at Florida
USC Upstate at Georgia
Grambling at Kentucky
Sam Houston State at Ole Miss
Arkansas-Pine Bluff at Tennessee

Wednesday, Nov. 27

Prairie View A&M at Texas A&M

Associated Press Top 25

(Week 2: Nov. 18)

Rk	Team	Record	Prev
1	Oregon (27)	3-0	1
2	Baylor (2)	3-0	2
3	Stanford	4-0	3
4	Connecticut	3-0	4
5	South Carolina	4-0	6
6	Texas A&M	3-0	5
7	Oregon State	4-0	7
8	Louisville	3-0	9
9	Maryland	3-1	8
10	Mississippi State	3-0	10
11	UCLA	3-0	11
12	Florida State	4-0	12
13	Kentucky	4-0	13
14	NC State	3-0	14
15	Michigan State	3-0	16
16	Miami	3-0	17
17	Syracuse	3-0	20
18	Indiana	3-0	21
19	DePaul	2-1	18
20	Arkansas	4-0	23
21	Michigan	4-0	24
22	South Florida	3-0	25
23†	Gonzaga	2-1	NR
23†	Tennessee	4-0	NR
25	West Virginia	3-0	NR

Also receiving votes: Notre Dame, Arizona, **Arizona State**, South Dakota, Missouri State, Minnesota, **Drake**, Texas, Rutgers, Northwestern.

USA TODAY Coaches' Top 25

(Week 2 - Nov. 19)

Rk	Team	Record	Prev
1	Oregon (30)	3-0	1
2	Baylor (2)	3-0	2
3	Stanford	4-0	3
4	Connecticut	3-0	4
5	Oregon State	4-0	6
6	South Carolina	4-0	10
7	Texas A&M	3-0	7
8	Mississippi State	4-0	8
9	Louisville	3-0	9
10	Maryland	3-1	5
11	UCLA	3-0	11
12	NC State	3-0	12
13	Florida State	4-0	13
14	Kentucky	4-0	16
15	Syracuse	3-0	17
16	Michigan State	3-0	21
17	Miami	3-0	19
18	Arkansas	4-0	22
19	Michigan	4-0	24
20	DePaul	2-1	20
21	Gonzaga	2-1	23
22	Missouri State	4-1	NR
23	South Florida	4-0	NR
24	Arizona	4-0	NR
25	Indiana	3-0	NR

Also receiving votes: Arizona State, Tennessee, South Dakota, Notre Dame, West Virginia, **Drake**, Texas, Princeton, James Madison, Rutgers, Minnesota, Southern California, Oklahoma State, Abilene Christian, Ohio, Northern Iowa, Boise State.

teams in 2018-19, ranking 5th nationally in steals per game (12.3) and turnover margin (+8.0).

STARTING ON DAY ONE

» Freshman Annie Hughes became the seventh Auburn freshman since 2005 to earn a start in her collegiate debut. She was the third under Terri Williams-FLOURNOY and the seventh since 2005 to be in the starting lineup on night one.

Year	Freshman Starter	Opponent	Stats
2019	Annie Hughes	Wofford	10 pts, 4 ast
2017	Unique Thompson	@Va. Tech	9 pts, 16 reb
2013	Katie Frerking	Ga. Southern	8 pts, 3 reb
2011	Hasina Muhammad	@Mercer	12 pts, 2 reb
2008	Morgan Jennings	@Ala. A&M	4 pts, 4 reb
2005	Sherell Hobbs	UT Pan-Am.	6 pts, 5 reb
2005	DeWanna Bonner	UT Pan-Am.	19 pts, 4 reb

HEART OF DIXIE

» Auburn is 255-63 (.802) all-time against in-state opponents, including a 202-25 (.890) record against foes other than Alabama. The Tigers will play five regular-season games against in-state opponents this season (UAB, South Alabama, Jacksonville State, and Alabama twice).

Opponent	Record	Last Meeting
Alabama	53-38	3/7/19 (W 53-52)
Alabama A&M	7-0	11/19/13 (W 77-49)
UAB	31-4	11/13/15 (W 83-71)
Alabama-Huntsville	7-0	1/27/87 (W 91-46)
Alabama State	19-0	12/29/18 (W 83-50)
Athens State	3-0	1974-75 (W 64-48)
AUM	4-0	1/14/95 (W 82-56)
Calhoun JC	1-0	1972-73 (W 51-38)
Coastal Alabama CC	1-0	1972-73 (W 41-27)
Faulkner State	1-1	1975-76 (L 65-75)
Gadsden JC	1-0	1975-76 (W 73-55)
Jacksonville State	14-1	11/13/13 (W 66-49)
Jefferson State JC	1-0	1972-73 (W 41-27)
Judson College	6-0	1975-76 (W 65-58)
Montevallo	8-1	1975-76 (W 77-68)
North Alabama	1-0	1974-75 (W 87-31)
Samford	3-0	12/16/18 (W 73-46)
South Alabama	39-2	12/2/10 (W 75-70)
Talladega College	3-9	1977-78 (L 67-81)
Troy	34-2	11/11/16 (W 61-52)
Tuskegee	17-5	1/27/90 (W 98-39)

SEEING DOUBLE

» Junior Unique Thompson has 22 career double-doubles, which ranks 7th in Auburn history. She is 2-for-2 this season after a 25-point, 13-rebound performance against Wofford in the season opener on Nov. 6, then a 13-point, 10 rebound effort against Old Dominion on Nov. 14.

» Thompson is second among active SEC players in career double-doubles (as of Nov. 18):

Player (School)	19-20	Career
Ayana Mitchell (LSU)	2	29
Unique Thompson (Auburn)	2	22
Rennia Davis (Tennessee)	3	21
Ciera Johnson (Texas A&M)	2	14
Amber Smith (Missouri)	2	12

PRESEASON HONORS

» Auburn senior Daisa Alexander and junior Unique Thompson were selected to the Preseason All-SEC Second Team by the league's coaches.

» Thompson was also selected to the All-SEC Second Team by a panel of regional and national media.

» Thompson is on the Katrina McClain Award

Watch List. The Katrina McClain Award is presented to the top power forward in the country by the WBCA and the Basketball Hall of Fame.

» The Tigers were picked to finish seventh in the SEC by the media and eighth by the coaches.

ON THIS DATE

» Auburn will be playing for the sixth time on Nov. 14. The Tigers are 4-1 all-time on this date with the last game being an 80-43 win over Alabama State in 2012.

» This is the second time Auburn and Old Dominion have met on Nov. 14. Auburn defeated ODU 84-49 on Nov. 14, 2003, at a tournament in Boulder, Colo.

IN NOVEMBER

» Auburn is 141-41 all-time in the month of November (records begin in 1978-79 season, not all dates provided prior to or during that year).

» Under Coach Flo, the Tigers are 33-14 in November.

NEW FACES

» Auburn welcomes seven newcomers to the roster for 2019-20, five freshman and two sophomore transfers.

» Joining the Tigers and eligible to play this season are Lauren Hansen (G, 5-8, Long Island, N.Y.); Annie Hughes (G, 5-9, Dutton, Ala.); Maliya Perry (G/F, 6-0, Columbus, Ohio); Morgan Robinson-Nwagwu (G, 5-8, Norcross, Ga.) and Sania Wells (G, 5-7, Moss Point, Miss.)

» Two transfers will also be on the Tigers' roster but ineligible to play this season. Jala Jordan (F, 6-2, Philadelphia, Pa.), joined the Tigers this summer after transferring from West Virginia. And Honesty Scott-Grayson (G, 5-9, Brick, N.J.) enrolled in August after transferring from Baylor. Both players will have three years of eligibility beginning with the 2020-21 season.

TIGERS IN THE PROS

» DeWanna Bonner completed her 10th season in the WNBA in 2019, all with the Phoenix Mercury. Bonner was selected as an All-Star for the third time in her last four seasons, averaging 17.2 points, a career-best 7.6 rebounds, 2.7 assists and 1.3 steals per game while starting all 34 games for the Mercury. She is also playing overseas for Dynamo Kursk in Russia.

» Brandy Montgomery is playing in Europe for her third season, currently on the roster of Last year, she played in Luxembourg for Etzella Ettelbruck, averaging a team-best 21.4 points per game. In 2017-18, she played for Visby in Sweden, averaging 16.3 points, 5.1 rebounds and 1.8 assists while helping her team to the league semifinals.

AQUILA DI GUERRA

» Auburn's women's basketball team spent nine days in Italy in August, playing three exhibition games and touring sites across the country in Rome, Florence, Milan, Pisa, Bellagio and others. The Tigers dropped their first game to the Netherlands National Team and fell short in two other games against a professional European all-star team.

Auburn Career Record Updates

Auburn Career Scoring

No.	Player	Years	Points
1.	DeWanna Bonner	2005-09	2,162
2.	Becky Jackson	1980-84	2,068
3.	Vickie Orr	1985-89	2,035
4.	Marianne Merritt	1975-79	1,979
5.	Carolyn Jones	1988-91	1,831
6.	Natasha Brackett	2001-05	1,716
7.	Janiah McKay	2015-present	1,647
8.	Brandy Montgomery	2013-17	1,644
9.	Mae Ola Bolton	1984-88	1,616
10.	Alli Smalley	2007-11	1,601
11.	Angie Hannah	1978-82	1,583
12.	Tyrese Tanner	2010-14	1,515
13.	Le'Coe Willingham	1999-03	1,475
14.	Lori Monroe	1979-83	1,415
15.	Tasha Hamilton	1997-01	1,402
16.	Sherell Hobbs	2005-09	1,372
17.	Linda Godby	1986-90	1,365
18.	Tra'Cee Tanner	2012-16	1,327
19.	Debra Larkin	1981-85	1,310
20.	C.C. Hayden	1989-92	1,306
21.	Katie Frerking	2013-17	1,271
22.	Conswella Sparrow	1997-00	1,249
23.	Blanche Alverson	2009-13	1,244
24.	Brenda Hill	1981-85	1,222
25.	Monique Morehouse	1992-96	1,191
26.	Lauretta Freeman	1989-93	1,188
27.	Hasina Muhammad	2001-15	1,184
	Sharon Stewart	1984-88	1,184
29.	Ruthie Bolton	1985-89	1,176
30.	Tiffany Krantz	1996-00	1,136
--	Daisa Alexander	2016-present	881

Auburn Career Rebounding

No.	Player	Years	Rebounds
1.	Becky Jackson	1980-84	1,118
2.	DeWanna Bonner	2005-09	1,047
3.	Lori Monroe	1979-83	1,015
4.	Vickie Orr	1985-89	1,006
5.	Lauretta Freeman	1989-93	976
6.	Marianne Merritt	1975-79	972
7.	Le'Coe Willingham	1999-03	927
8.	Monique Morehouse	1992-96	792
9.	Jordan Greenleaf	2006-11	761
	Charlene Thomas	1984-87	761
11.	Tra'Cee Tanner	2012-16	758
12.	Sharon Stewart	1984-88	757
13.	C.C. Hayden	1989-92	749
	Kendall Mago	1988-92	749
15.	Tasha Hamilton	1997-01	663
16.	Mae Ola Bolton	1984-88	653
17.	Marita Payne	2002-06	630
18.	Katie Frerking	2013-17	627
19.	Sherell Hobbs	2005-09	612
20.	Brenda Hill	1982-85	604
21.	Blanche Alverson	2009-13	602
22.	KeKe Carrier	2005-10	600
23.	Angie Hannah	1978-82	588
24.	Unique Thompson	2017-present	580
	Linda Godby	1986-90	580
26.	Tyrese Tanner	2010-14	572
	Conswella Sparrow	1997-00	572
28.	Diann McNeil	1984-88	498
29.	Samantha Williams	1991-96	495
	Hasina Muhammad	2011-15	494

Auburn Career Steals

No.	Player	Years	Steals
1.	Mae Ola Bolton	1985-88	282
2.	Kristen Mulligan	1993-96	253
3.	Ruthie Bolton	1986-89	246
4.	Debra Larkin	1982-85	242
5.	Helene Baroody	1984-87	240
6.	Katie Frerking	2013-17	234
7.	Sherell Hobbs	2005-09	231
8.	Janiah McKay	2015-19	223
	Hasina Muhammad	2011-15	223
10.	DeWanna Bonner	2005-09	208
--	Daisa Alexander	2016-present	169

Auburn Career Double-Doubles

No.	Player	Years	D-Ds
1.	DeWanna Bonner	2005-09	40
2.	Lauretta Freeman	1989-93	38
3.	C.C. Hayden	1989-92	30
4.	Le'Coe Willingham	1999-04	29
5.	Vickie Orr	1985-89	27
6.	Monique Morehouse	1992-96	24
7.	Unique Thompson	2017-present	22
8.	Becky Jackson	1980-84	19
9.	Conswella Sparrow	1997-00	15
10.	Tra'Cee Tanner	2012-16	14
11.	Tasha Hamilton	1997-01	13
	Sharon Stewart	1984-88	13
13.	Daniellette Coleman	1992-94	12
	Marita Payne	2002-06	12
15.	Whitney Boddie	2005-09	11
	KeKe Carrier	2005-10	11
17.	Tia Miller	2001-04	8
	Tara Williams	1995-97	8
19.	Katie Frerking	2013-17	7
	Linda Godby	1986-90	7
	Laticia Morris	1995-97	7
	Mandisa Stevenson	2002-04	7
	Tyrese Tanner	2010-14	7
24.	Justine Agbatan	1995-98	6
	Brenda Hill	1982-83	6
	Kendall Mago	1988-92	6
	Samantha Williams	1991-96	6
28.	Ruthie Bolton	1985-89	5
	Jordan Greenleaf	2006-11	5

Auburn Career 3-Point Attempts

No.	Player	Years	3FGA
1.	Brandy Montgomery	2013-17	688
2.	Alli Smalley	2007-11	637
3.	Blanche Alverson	2009-13	618
4.	Natasha Brackett	2001-05	545
5.	Tiffany Krantz	1996-00	520
6.	Katie Frerking	2013-17	518
7.	Samantha Williams	1992-96	500
8.	Kristen Mulligan	1992-96	370
9.	Shana Askew	1997-01	332
10.	Daisa Alexander	2016-present	306

Auburn Career 3-Point FG Made

No.	Player	Years	3FGM
1.	Alli Smalley	2007-11	219
2.	Blanche Alverson	2009-13	213
3.	Brandy Montgomery	2013-17	205
4.	Tiffany Krantz	1996-00	184
5.	Natasha Brackett	2001-05	171
6.	Samantha Williams	1992-96	161
7.	Kristen Mulligan	1992-96	149
8.	Katie Frerking	2013-17	147
9.	Daisa Alexander	2016-present	105
10.	Carolyn Jones	1988-91	103

TIGERS' RECORD WHEN...

	2019-20	Under Coach Flo
At Home.....	1-1	71-35
On the Road.....	0-0	35-52
At a Neutral Site.....	0-0	19-15
When wearing white.....	1-1	71-29
When wearing orange.....	0-0	7-10
When wearing blue.....	0-0	41-59
When wearing pink.....	0-0	6-4
Leading at the half.....	1-0	98-22
Trailing at the half.....	0-1	27-74
Tied at the half.....	0-0	0-6
Scores 100+ points.....	0-0	0-0
Scores 90-99 points.....	0-0	6-0
Scores 80-89 points.....	1-0	26-1
Scores 70-79 points.....	0-1	36-7
Scores 60-69 points.....	0-0	37-27
Scores fewer than 60 points.....	0-0	18-67
Holds opponent to 41-50 points.....	0-0	31-3
Holds opponent to 31-40 points.....	0-0	7-0
Holds opponent to under 30 points.....	0-0	2-0
Force 25 or more turnovers.....	0-0	51-9
Shoots 50% FG or better.....	0-0	31-2
Shoots 40-49% FG.....	1-1	64-28
Shoots 39.9% or under FG.....	0-0	29-73
Holds opponent under 30% FG.....	0-0	25-2
Shoots higher FG% than opponent.....	1-0	99-21
Shoots lower FG% than opponent.....	0-1	26-76
Shoots same FG% as opponent.....	0-0	0-3
Shoots higher FT% than opponent.....	0-0	53-36
Shoots lower FT% than opponent.....	1-1	70-65
Shoots same FT% as opponent.....	0-0	1-2
Out-rebounds opponent.....	1-1	77-28
Out-rebounded by opponent.....	0-0	42-73
Tied in rebounds.....	0-0	5-2
Versus ranked opponent.....	0-0	5-48
In overtime.....	0-0	5-4
Games decided by 3 points or less.....	1-0	13-16
Games decided by 4-5 points.....	0-0	12-13
Games decided by 6-10 points.....	0-0	29-29
Games decided by 11-20 points.....	0-1	34-28
Games decided by 21-30 points.....	0-0	23-10
Games decided by 30+ points.....	0-0	14-6
On Television/Digital.....	1-1	64-70
In November.....	1-1	31-14
In December.....	0-0	38-8
In January.....	0-0	17-37
In February.....	0-0	23-29
In March.....	0-0	13-13

2019-20 Auburn Superlatives...

First Half

Most points scored in the first quarter.....	24, vs. Old Dominion (11/14/19)
Most points scored in the second quarter.....	24, vs. Wofford (11/6/19)
Most points scored in the first half.....	39, vs. Old Dominion (11/14/19)
Fewest points scored in the first half.....	35, vs. Wofford (11/6/19)
Fewest points allowed in the first half.....	24, vs. Wofford (11/6/19)
Most points allowed in the first half.....	41, vs. Old Dominion (11/14/19)
Best FG % in the first half.....	.522, vs. Old Dominion (11/14/19)
Worst FG % in the first half.....	.371, vs. Wofford (11/6/19)
Best FG % by an opponent in the first half.....	.500, vs. Old Dominion (11/14/19)
Worst FG % by an opponent in the first half.....	.300, vs. Wofford (11/6/19)
Most rebounds in the first half.....	25, vs. Wofford (11/6/19)
Fewest rebounds in the first half.....	15, vs. Old Dominion (11/14/19)
Most rebounds by an opponent in the first half.....	19, vs. Wofford (11/6/19)
Fewest rebounds by an opponent in the first half.....	11, vs. Old Dominion (11/14/19)

Second Half

Most points scored in the third quarter.....	23, vs. Wofford (11/6/19)
Most points scored in the fourth quarter.....	26, vs. Wofford (11/6/19)
Most points scored in an overtime period.....	
Most points scored in the second half.....	49, vs. Wofford (11/6/19)
Fewest points scored in the second half.....	38, vs. Old Dominion (11/14/19)
Fewest points allowed in the second half.....	48, vs. Old Dominion (11/14/19)
Most points allowed in the second half.....	58, vs. Wofford (11/6/19)
Best FG % in the second half.....	.567, vs. Wofford (11/6/19)
Worst FG % in the second half.....	.378, vs. Old Dominion (11/14/19)
Best FG % by an opponent in the second half.....	.692, vs. Old Dominion (11/14/19)
Worst FG % by an opponent in the second half.....	.500, vs. Wofford (11/6/19)
Most rebounds in the second half.....	22, vs. Wofford (11/6/19)
Fewest rebounds in the second half.....	19, vs. Old Dominion (11/14/19)
Most rebounds by an opponent in the second half.....	17, vs. Old Dominion (11/14/19)
Fewest rebounds by an opponent in the second half.....	15, vs. Wofford (11/6/19)

Game

Most points scored.....	84, vs. Wofford (11/6/19)
Fewest points scored.....	79, vs. Old Dominion (11/14/19)
Most points allowed.....	89, vs. Old Dominion (11/14/19)
Fewest points allowed.....	82, vs. Wofford (11/6/19)
Best FG %.....	.462, vs. Wofford (11/6/19)
Worst FG %.....	.433, vs. Old Dominion (11/14/19)
Best FG % by an opponent.....	.593, vs. Old Dominion (11/14/19)
Worst FG % by an opponent.....	.406, vs. Wofford (11/6/19)
Most rebounds.....	47, vs. Wofford (11/6/19)
Fewest rebounds.....	34, vs. Old Dominion (11/14/19)
Most rebounds by an opponent.....	34, vs. Wofford (11/6/19)
Fewest rebounds by an opponent.....	28, vs. Old Dominion (11/14/19)

Miscellaneous

Highest-scoring quarter.....	26, 4Q vs. Wofford (11/6/19)
Lowest-scoring quarter.....	11, 1Q vs. Wofford (11/6/19)
Highest-scoring opponent quarter.....	34, 4Q vs. Wofford (11/6/19)
Lowest-scoring opponent quarter.....	11, 1Q vs. Wofford (11/6/19)
Largest margin in a single quarter.....	+11 (24-13), 2Q vs. Wofford (11/6/19)
Largest margin of victory.....	
Smallest margin of victory.....	2, vs. Wofford (11/6/19)
Largest margin of defeat.....	12, vs. Old Dominion (11/14/19)
Smallest margin of defeat.....	
Largest halftime lead.....	11, vs. Wofford (11/6/19)
Smallest halftime lead.....	
Times tied at halftime.....	
Largest halftime deficit.....	
Smallest halftime deficit.....	2, vs. Old Dominion (11/14/19)
Largest rebounding margin.....	+13, vs. Wofford (11/6/19)
Smallest rebounding margin.....	+6, vs. Old Dominion (11/14/19)
Last time tied in rebounding.....	
Largest rebounding deficit.....	
Smallest rebounding deficit.....	
Largest deficit overcome to win game.....	4, vs. Wofford (11/6/19)
Largest lead lost.....	2, vs. Old Dominion (11/14/19)

MISCELLANEOUS STATISTICS

	Season	Career
Double-Doubles		
Unique Thompson	2	21
30+ Point Games		
20+ Point Games		
Daisa Alexander	1	12
Unique Thompson	1	7
Brooke Moore	0	1
10+ Rebound Games		
Unique Thompson	2	30
Kiyae' White	1	1
10+ Assist Games		
5+ Steal Games		
Daisa Alexander	0	2
5+ Block Games		
Unique Thompson	0	1

GAMES LED AUBURN IN . . .

	Season	Career
Scoring		
Daisa Alexander	1	18
Unique Thompson	1	14
Robyn Benton	0	1
Brooke Moore	0	1
Rebounding		
Unique Thompson	1	48
Daisa Alexander	0	4
Abigayle Jackson	0	3
Erin Howard	0	1
Assists		
Daisa Alexander	1	8
Unique Thompson	1	5
Annie Hughes	1	1
Kiyae' White	1	1
Brooke Moore	1	1
Erin Howard	0	1

(includes games where lead was shared)

2019-20 DOUBLE-DOUBLES

Unique Thompson vs. Wofford (25 pts/11 reb)
 Unique Thompson vs. ODU (13 pts/10 reb)

Last Time an Auburn Team...

Scored 90 points	Auburn 96, Elon 44, in Elon, N.C. (Dec. 22, 2018)
Scored 100 points	Auburn 119, Sam Houston State 54, in Auburn, Ala. (Dec. 5, 2008)
Scored 100 points in an SEC game	Auburn 102, Tennessee 96, SEC Tournament in Albany, Ga. (Mar. 6, 1987)
Scored 100 at home	Auburn 119, Sam Houston State 54, in Auburn, Ala. (Dec. 5, 2008)
Scored 80 points and lost	Virginia Tech 92, Auburn 87 [OT] in Auburn, Ala. (Dec. 18, 2016)
Scored 90 points and lost	Kentucky 91, Auburn 90 [2OT], in Auburn, Ala. (Feb. 2, 1986)
Scored 100 points and lost	Never
Scored 110+ points	Auburn 119, Sam Houston State 54, in Auburn, Ala. (Dec. 5, 2008)
Scored 50-59 points in a half	51 - 1st half at Elon in Elon, N.C. (Dec. 22, 2018)
Scored 60 or more points in a half	62 (2nd half) - vs. Drake in New Orleans, La. (Dec. 21, 2016)
Scored 30 or more points in a quarter	30 (1st quarter) - at St. Joseph's in Philadelphia, Pa. (Dec. 6, 2018)
Scored 50 points or less in a game	48 - at Kentucky in Lexington, Ky. (Feb. 1, 2018)
Scored 50 points or less and won	Auburn 47, Missouri 45 [SEC] in Jacksonville, Fla. (March 3, 2016)
Scored 40 points or less in a game	Georgia 63, Auburn 30, in Athens, Ga. (Jan. 28, 2016)
Scored less than 10 points in a quarter	8 points (1st quarter) vs. Alabama [SEC] in Greenville, S.C. (March 7, 2019)
Scored less than 20 points in a 1st half	19 points vs. Georgia in Auburn, Ala. (Feb. 3, 2019)
Scored less than 20 points in a 2nd half	18 points vs. Missouri [SEC] in Jacksonville, Fla. (March 3, 2016)
Had 35+ rebound margin	36 - (52-16) vs. Alabama A&M in Normal, Ala. (Nov. 19, 2013)
Had 25+ rebound margin	33 - (53-26) vs. Grambling State in Auburn, Ala. (Nov. 6, 2018)
Had 20+ rebound margin	33 - (53-26) vs. Grambling State in Auburn, Ala. (Nov. 6, 2018)
Attempted 30 free throws	30 - vs. Wofford in Auburn, Ala. (Nov. 6, 2019)
Attempted 35 free throws	36 - vs. Alabama State in Auburn, Ala. (Dec. 29, 2018)
Attempted 40 free throws	41 - vs. Alabama State in Auburn, Ala. (Nov. 15, 2006)
Attempted 5 free throws or less	5 - at Tennessee in Knoxville, Tenn. (Feb. 14, 2019)
Did not attempt a free throw	Never
Made 20 free throws	20 - vs. Wofford in Auburn, Ala. (Nov. 6, 2019)
Made 25 free throws	29 - vs. Alabama State (29-36) in Auburn, Ala. (Dec. 29, 2018)
Made 30 free throws	31 - vs. Northwestern State (31-43) (Dec. 30, 2003)
Had 25 assists	25 - vs. Ole Miss in Auburn, Ala. (Jan. 8, 2017)
Had 25 turnovers	25 - at Kentucky in Lexington, Ky. (Feb. 1, 2018)
Had 10 turnovers or less	10 - at LSU in Baton Rouge, La. (March 3, 2019)
Had 25+ steals	Never
Had 20-24 steals	21 - vs. Georgia in Auburn, Ala. (Feb. 3, 2019)
Had 15-19 steals	15 - vs. Mississippi State in Auburn, Ala. (Jan. 14, 2019)
Had 10-14 blocks	10 - vs. Louisiana Tech in Auburn, Ala. (Nov. 19, 2017)
Had 15+ blocks	15 - at Florida International in Miami, Fla. (Dec. 29, 2014)
Won an overtime game	Auburn 59, Georgia 58 [1OT] in Auburn, Ala. (Feb. 3, 2019)
Lost an overtime game	Alabama 63, Auburn 61 [1OT] in Auburn, Ala. (Feb. 20, 2017)
Played a double overtime game	Auburn 70, Alabama 65 [2OT] in Auburn, Ala. (Feb. 27, 2014)
Played three or more overtimes	Never
Shot 70% for a half	70.4% (19-of-27), 2nd half at Elon in Elon, N.C. (Dec. 22, 2018)
Shot 60% for a game	63.3% (38-of-60) at Elon in Elon, N.C. (Dec. 22, 2018)
Shot less than 30% for a game	27.6% (21-of-76) vs. Missouri in Auburn, Ala. (Feb. 15, 2018)
Shot 90-99.9% from the free throw line (minimum 10 attempts)	92.3% (12-of-13) vs. Nicholls State in Auburn, Ala. (Nov. 9, 2018)
Shot 100% from the free throw line (minimum 10 attempts)	100% (16-of-16) vs. Texas A&M in Auburn, Ala. (Jan. 7, 2018)
Shot 50% on 3-pointers (minimum 5 attempts)	50.0% (6-of-12) at Missouri in Columbia, Mo. (Jan. 27, 2019)
Shot 20-30% in a half	26.3% (10-of-38), 1st half vs. BYU in Stanford, Calif. (March 23, 2019)
Shot less than 20% in a half	18.4% (7-of-38), 1st half vs. Missouri in Auburn, Ala. (Feb. 15, 2018)
Shot 55% or better and lost	58.1% (25-of-43) vs. Tennessee (Jan. 20, 2005)
Made at least 10 3-point field goals	10-of-35 vs. Alabama State in Auburn, Ala. (Dec. 29, 2018)
Failed to make a 3-point field goal	0-of-5 vs. Southern in Auburn, Ala. (Dec. 9, 2017)
Had 60+ rebounds	61 - vs. Stephen F. Austin in Auburn, Ala. (Dec. 17, 2007)
Had 50-59 rebounds	53 - vs. Grambling State in Auburn, Ala. (Nov. 6, 2018)
Defeated a Top-25 opponent	Auburn 58, #25 Missouri 54, in Auburn, Ala. (Feb. 24, 2019)
Defeated a Top-10 opponent	Auburn 66, #7 Kentucky 61, in Auburn, Ala. (Jan. 3, 2016)
Defeated a Top-25 opponent on the road	Auburn 68, #16 Vanderbilt 62, in Nashville, Tenn. (Feb. 13, 2014)

Last Time an Auburn Player...

Scored 25 points	25 - Unique Thompson vs. Wofford in Auburn, Ala. (Nov. 6, 2019)
Scored 30 points	32 - Katie Frerking at Texas A&M in College Station, Texas (Feb. 5, 2017)
Scored 35 points	35 - DeWanna Bonner vs. Tennessee in Auburn, Ala. (Jan. 25, 2009)
Scored 40 points	41 - Conswella Sparrow vs. South Alabama (Feb. 17, 1998)
Had 15+ rebounds	19 - Unique Thompson vs. BYU in Stanford, Calif. (March 23, 2019)
Had 20 rebounds	20 - Monique Morehouse at LSU (Feb. 4, 1995)
Had 10 assists	10 - Janiah McKay vs. Grambling State (Nov. 6, 2018)
Had 15 assists	18 - Martha Monk vs. Alabama State (Feb. 18, 1981)
Had 5 blocks	6 - Unique Thompson vs. Louisiana Tech in Auburn, Ala. (Nov. 19, 2017)
Had 7 blocks	7 - Jassany Williams vs. Duke (Nov. 18, 2011)
Had 10 blocks	13 - Marita Payne vs. Arkansas (Feb. 3, 2005)
Had 5 steals	6 - Crystal Pimm vs. Kentucky in Auburn, Ala. (Feb. 7, 2019)
Had 8 steals	8 - Brandy Montgomery vs. East Carolina in Auburn, Ala. (Dec. 5, 2015)
Had 10 steals	10 - Kristen Mulligan vs. Northeast Illinois in Auburn, Ala. (Dec. 18, 1992)
Made 10 field goals	10 - Unique Thompson [10-18] vs. North Carolina in Myrtle Beach, S.C. (Dec. 20, 2018)
Made 15 field goals	15 - Conswella Sparrow (15-16) vs. South Alabama (Feb. 17, 1998)
Attempted 20 field goals	20 - Daisa Alexander vs. South Carolina in Auburn, Ala. (Feb. 28, 2019)
Attempted 25 field goals	28 - Brandy Montgomery (8-28) at Marquette in Milwaukee, Wis. (Dec. 13, 2015)
Made 5 three-point field goals	5 - Brooke Moore vs. Alabama State in Auburn, Ala. (Dec. 29, 2018)
Made 8 three-point field goals	8 - Tiffany Krantz vs. Troy State in Auburn, Ala. (Nov. 21, 1997)
Attempted 10 three-point field goals	11 - Daisa Alexander vs. BYU in Stanford, Calif. (March 23, 2019)
Attempted 15 three-point field goals	16 - Brandy Montgomery at Marquette in Milwaukee, Wis. (Dec. 13, 2015)
Made 10 free throws	11 - Janiah McKay vs. South Carolina in Auburn, Ala. (Feb. 28, 2019)
Made 15 free throws	Never
Shot 100% at the free throw line (min. 10 attempts)	11-11 - Janiah McKay vs. Texas A&M in Auburn, Ala. (Jan. 7, 2018)
Had a double-double	Unique Thompson (13 pts/10 reb) vs. Old Dominion in Auburn, Ala. (Nov. 14, 2019)

SEC PRESEASON POLL (Media Vote)**Order of Finish**

1. South Carolina
2. Texas A&M
3. Mississippi State
4. Kentucky
5. Arkansas
6. Tennessee
7. Auburn
8. LSU
9. Missouri
10. Georgia
11. Alabama
12. Florida
13. Ole Miss
14. Vanderbilt

Player of the Year

Chennedy Carter, Texas A&M

All-SEC First Team

Chennedy Carter, Texas A&M
 Chelsea Dungee, Arkansas
 Rhyne Howard, Kentucky
 Ayana Mitchell, LSU
 Tyasha Harris, South Carolina

All-SEC Second Team

Unique Thompson, Auburn
 Mikiah Herbert Harrigan, South Carolina
 Rennia Davis, Tennessee
 Ciera Johnson, Texas A&M
 Mariella Fasoula, Vanderbilt

SEC PRESEASON POLL (Coaches' Vote)**Order of Finish**

1. Texas A&M
2. South Carolina
3. Mississippi State
4. Kentucky
5. Arkansas
6. LSU
7. Tennessee
8. Auburn
9. Missouri
10. Georgia
11. Alabama
12. Vanderbilt
13. Ole Miss
14. Florida

Player of the Year

Chennedy Carter, Texas A&M

All-SEC First Team

Chelsea Dungee, Arkansas
 Rhyne Howard, Kentucky
 Ayana Mitchell, LSU
 Jordan Danberry, Mississippi State
 Amber Smith, Missouri
 Tyasha Harris, South Carolina
 Rennia Davis, Tennessee
 Chennedy Carter, Texas A&M

All-SEC Second Team

Ciera Johnson, Alabama
 Daisa Alexander, Auburn
 Unique Thompson, Auburn
 Gabby Connally, Georgia
 Chloe Bibby, Mississippi State
 Mikiah Herbert Harrigan, South Carolina
 Ciera Johnson, Texas A&M
 Kayla Wells, Texas A&M
 Mariella Fasoula, Vanderbilt

Had 2 consecutive double-doubles	Unique Thompson: 25/13 vs. Wofford, 13/10 vs. ODU (Nov. 6-14, 2019)
Had 3 consecutive double-doubles.....	Unique Thompson: 10/19 vs. BYU, 25/13 vs. Wofford, 13/10 vs. ODU (Mar. 23/Nov. 6-14, 2019)
Had 4 consecutive double-doubles	DeWanna Bonner: vs. SC, at OM, at UGA, vs. Vandy (Feb. 17-28, 2008)
Had 5 consecutive double-doubles.....	Le'Coe Willingham: vs. ALA, at ARK, vs. MSU, at UT, at UK (Jan. 22-Feb. 5, 2004)
Had a double-double at halftime	Unique Thompson (16 pts/10 rebs) at Iowa State in Ames, Iowa (Nov. 13, 2018)
Two players had a double-double.....	Unique Thompson (14 p/13 r) & Janiah McKay (16 p/10 a) vs. Grambling State (Nov. 6, 2018)
Recorded a double-double with points and assists.....	Janiah McKay (16 pts/10 assists) vs. Grambling State (Nov. 6, 2018)
Scored 20 points & had 20 rebounds.....	Lauretta Freeman (30 pts/21 rebs.) vs. Alabama, (Feb. 17, 1993)
Had a triple-double.....	Whitney Boddie (24 pts./11 rebs./12 asst.) vs. Sam Houston State (Dec. 5, 2008)
Two players scored 20 points.....	Unique Thompson (25), Daisa Alexander (22) vs. Wofford in Auburn, Ala. (Nov. 6, 2019)
Two players scored 30 points.....	Laticia Morris (33 points) & Tara Williams (30 points) vs. South Alabama (Jan. 14, 1997)
Had 2 straight 25-point games.....	Janiah McKay: 27 at South Carolina, 26 vs. Arkansas (Jan. 11-14, 2018)
Had 3 straight 25-point games.....	Janiah McKay: 25 pts vs. Texas A&M, 27 pts at South Carolina, 26 pts vs. Arkansas (Jan. 7-14, 2018)
Zero players scored in double figures.....	at Georgia in Athens, Ga. (Jan. 28, 2016)
Only one player scored in double figures.....	Janiah McKay (12) vs. Alabama [SEC] in Greenville, S.C. (March 7, 2019)
Five players scored in double figures.....	Thompson (19), Primm (16), Alexander (13), Howard (11), McKay (10) vs. Tennessee (Jan. 3, 2019)
Six players scored in double figures.....	McKay/Benton (16), Primm (15), Thompson (14), Alexander/Jones (13) vs. Grambling (Nov. 6, 2018)
Seven players scored in double figures.....	Carrier (19 pts.), Bonner (18 pts.), Smalley (16 pts.), Boddie (13 pts.) vs. Sam Houston State (Dec. 5, 2008)
.....	R. Hobbs (13 pts.), Hilliard (13 pts.) & S. Hobbs (10 pts.) vs. Sam Houston State (Dec. 5, 2008)
Two players had 10 rebounds.....	Unique Thompson (13) and Kiyae' White (11) vs. Wofford in Auburn, Ala. (Nov. 6, 2019)
Three players had 10 rebounds	Jordan Greenleaf (12 rebs.), DeWanna Bonner (12 rebs.) & Whitney Boddie (10 rebs.) vs. Oakland (Nov. 21, 2007)
Played every minute.....	Jordan Greenleaf (40 mins.) vs. Florida in Duluth, Ga. [SEC] (Mar. 4, 2010)
Played 40 or more minutes in OT game	Unique Thompson (43 mins.) vs. Georgia in Auburn, Ala. (Feb. 3, 2019)
Attempted a slam dunk.....	Hasina Muhammad vs. St. John's in Auburn, Ala. (Dec. 6, 2013)
Made a shot from half-court or beyond	Brooke Moore (end 2nd quarter) vs. Alabama State in Auburn, Ala. (Dec. 29, 2018)

Last Time an Auburn Opponent...

Shot less than 30% in a game (SEC)	Alabama - 23.3% (10-of-43) in Auburn, Ala. (Feb. 17, 2019)
Shot less than 30% in a game (Non-conf)	Alabama State - 29.8% (14-of-47) in Auburn, Ala. (Dec. 29, 2018)
Shot 60% in a game.....	Vanderbilt - 61.0% in Nashville, Tenn. (Jan. 17, 2019)
Scored 90 points.....	Virginia Tech 92, Auburn 87 [OT] in Auburn, Ala. (Dec. 18, 2016)
Scored 100 points	Georgia 102, Auburn 72 in Athens, Ga. (Mar. 3, 1984)
Scored 100 points at Auburn.....	Tuskegee 105, Auburn 98 (2OT) (Feb. 12, 1979)
Scored 100 points and Lost.....	Never
Had 25+ rebound margin.....	Never
Had a 20+ rebound margin.....	20 - Alabama (56-36) in Auburn, Ala. (Feb. 20, 2017)
Scored less than 10 points in a quarter	8 - Texas A&M (2nd quarter) in Greenville, S.C. (March 8, 2019)
Scored less than 10 points in all four quarters	Winthrop (9-8-8-8) in Auburn, Ala. (Dec. 16, 2015)
Scored 30 or more points in a quarter	34 - Wofford (4th quarter) in Auburn, Ala. (Nov. 6, 2019)
Scored less than 10 points in a half	8 - Jacksonville (1st half) in Auburn, Ala. (Dec. 28, 2016)
Scored less than 20 points in a 1st half	12 - Alabama in Auburn, Ala. (Feb. 17, 2019)
Scored less than 20 points in a 2nd half.....	19 - Florida in Auburn, Ala. (Dec. 31, 2017)
Had 50 rebounds	56 - Alabama in Auburn, Ala. (Feb. 20, 2017)
Had 25 assists.....	25- Florida International in Miami, Fla. (Dec. 19, 1993)
Had 25-29 turnovers.....	26 - Texas A&M [SEC] in Greenville, S.C. (March 8, 2019)
Had 30-34 turnovers	30 - XULA in Auburn, Ala. (Dec. 28, 2017)
Had 35+ turnovers	35 - ULM in Auburn, Ala. (Nov. 27, 2017)
Had 15 steals.....	15 - East Carolina in Auburn, Ala. (Dec. 5, 2015)
Had 10 blocks.....	11 - at Baylor [NCAA] in Waco, Texas (March 20, 2016)
Failed to make a 3-point field goal	LSU (0-6) in Baton Rouge, La. (Feb. 1, 2016)
Attempted 35 free throws	35 - Florida in Gainesville, Fla. (Feb. 28, 2016)
Made 30 free throws	30 - Arkansas (Jan. 22, 1995)
Made 10 three-point field goals	14 - Old Dominion in Auburn, Ala. (Nov. 14, 2019)
Made 15 three-point field goals	18 - Missouri in Columbia, Mo. (Jan. 6, 2013)
Scored 41-50 points in a game.....	46 - LSU in Baton Rouge, La. (March 3, 2019)
Scored 31-40 points in a game.....	38 - Alabama in Auburn, Ala. (Feb. 17, 2019)
Scored 30 points or less.....	26 - Georgia in Athens, Ga. (Feb. 22, 2015)
Scored 25 points or less.....	25 - Puerto Rico-Mayaguez (Dec. 17, 2000)

Last Time an Opposing Player...

Scored 30+ points (non-conference).....	35 - Ajah Wayne of Old Dominion in Auburn, Ala. (Nov. 14, 2019)
Scored 30+ points (SEC)	41 - Chelsea Dungee of Arkansas in Fayetteville, Ark. (Feb. 10, 2019)
Scored 35+ points (all games).....	35 - Ajah Wayne of Old Dominion in Auburn, Ala. (Nov. 14, 2019)
Scored 40+ points (all games)	41 - Chelsea Dungee of Arkansas in Fayetteville, Ark. (Feb. 10, 2019)
Attempted 25 field goals	27- Jantel Lavender (9-27) of Ohio State (Nov. 23, 2008)
Scored 20 points & had 20 rebounds.....	Young of Baylor in the WNIT Championship Game, (20 pts./25 rebs.) (Apr. 4, 2003)
Two players scored 20 points	Ajah Wayne (35) and Victoria Morris (20) of Old Dominion in Auburn, Ala. (Nov. 14, 2019)
Three players scored 20 points	by LSU in Baton Rouge, Chatman (22 pts), Johnson (21 pts) & Lowery (20 pts) (Jan. 12, 1991)
Five players scored in double figures.....	Lorenzen (10), Needles (11), Lewis (10), Williams (11), Copeland (12) of Florida (Jan. 4, 2015)
Six players scored in double figures.....	Williams (10), Lewis (13), Bonds (18), Peoples (10), Miller (12), Svetel (12) of Florida (Jan. 26, 2014)
Recorded a double-double	Ajah Wayne (35 pts/10 reb) of Old Dominion in Auburn, Ala. (Nov. 14, 2019)
Recorded a double-double with points and assists.....	Tyasha Harris (12 pts/11 ast) of South Carolina in Columbia, S.C. (Jan. 11, 2018)
Recorded a triple-double.....	Ceira Ricketts (14 pts./13 rebs./12 asst.) of Arkansas (Jan. 18, 2009)
Two players recorded a double-double.....	C. Green (16 pts/11 reb) & Davis (15 pts/10 reb) of Tennessee in Knoxville, Tenn. (Feb. 14, 2019)
Committed 10+ turnovers	10 - Shaquera Wade of Alabama in Greenville, S.C. (March 7, 2019)
Had 15-19 rebounds	15 - by N'dea Jones of Texas A&M in Auburn, Ala. (Jan. 24, 2019)
Had 20+ rebounds	21 - Ayana Mitchell of LSU in Baton Rouge, La. (March 3, 2019)
Had 10 assists.....	10 - Tyasha Harris of South Carolina in Auburn, Ala. (Feb. 28, 2019)
Had 15 assists	16 - Cindy McMahan of Alabama-Huntsville (Nov. 24, 1980)
Had 5 blocks.....	5 - Ashley Knight of Alabama in Tuscaloosa, Ala. (Feb. 18, 2018)
Had 10 blocks.....	Never
Had 5 steals	6 - Taylor Murray of Kentucky in Auburn, Ala. (Feb. 7, 2019)
Made 15 field goals	15 - Charnique Holdscraw (15-21) of Tennessee (Feb. 1, 1998)
Made 10 3-point field goals.....	11 - Morgan Eye (11-18) of Missouri in Columbia, Mo. (Jan. 6, 2013)

2019-20 Auburn Individual Highs...**First Half**

Points.....	14, Unique Thompson vs. Wofford (11/6/19)
Field Goals Made.....	4, 2x; Unique Thompson vs. Old Dominion (11/6/19)
Field Goal Attempts.....	8, Brooke Moore vs. Wofford (11/6/19)
3-Point Field Goals Made	2, Brooke Moore vs. Old Dominion (11/14/19)
3-Point Field Goal Attempts	4, Brooke Moore vs. Wofford (11/6/19)
Free Throws Made	6, Unique Thompson vs. Wofford (11/6/19)
Free Throws Attempted	7, Unique Thompson vs. Wofford (11/6/19)
Rebounds	8, Kiyae' White & Unique Thompson vs. Wofford (11/6/19)
Assists	1, 9x; four players vs. Old Dominion (11/14/19)
Blocked Shots.....	1, 2x; Erin Howard vs. Old Dominion (11/14/19)
Steals	3, Daisa Alexander vs. Old Dominion (11/14/19)

Second Half

Points.....	14, Daisa Alexander vs. Wofford (11/6/19)
Field Goals Made.....	5, Unique Thompson vs. Wofford (11/6/19)
Field Goal Attempts.....	10, Daisa Alexander vs. Old Dominion (11/14/19)
3-Point Field Goals Made	2, Alexander & Howard vs. Old Dominion (11/14/19)
3-Point Field Goal Attempts	4, Alexander & Howard vs. Old Dominion (11/14/19)
Free Throws Made	8, Daisa Alexander vs. Wofford (11/6/19)
Free Throws Attempted	10, Daisa Alexander vs. Wofford (11/6/19)
Rebounds	8, Unique Thompson vs. Old Dominion (11/14/19)
Assists	4, Kiyae' White vs. Wofford (11/6/19)
Blocked Shots.....	1, 2x; Abigayle Jackson vs. Old Dominion (11/14/19)
Steals	2, Annie Hughes vs. Old Dominion (11/14/19)

Game

Points.....	25, Unique Thompson vs. Wofford (11/6/19)
Field Goals Made.....	9, Unique Thompson vs. Wofford (11/6/19)
Field Goal Attempts.....	16, Brooke Moore vs. Wofford (11/6/19)
3-Point Field Goals Made	1, four players vs. Wofford (11/6/19)
3-Point Field Goal Attempts	7, Brooke Moore vs. Wofford (11/6/19)
Free Throws Made	9, Daisa Alexander vs. Wofford (11/6/19)
Free Throws Attempted	14, Daisa Alexander vs. Wofford (11/6/19)
Rebounds	13, Unique Thompson vs. Wofford (11/6/19)
Assists	4, Kiyae' White & Annie Hughes vs. Wofford (11/6/19)
Blocked Shots.....	1, Brooke Moore & Erin Howard vs. Wofford (11/6/19)
Steals	3, Annie Hughes vs. Wofford (11/6/19)

2019-20 Auburn Team Highs...**First Half**

Points.....	39 vs. Old Dominion (11/14/19)
Field Goals Made.....	13 vs. Wofford (11/6/19)
Field Goal Attempts.....	35 vs. Wofford (11/6/19)
3-Point Field Goals Made	3 vs. Old Dominion (11/14/19)
3-Point Field Goal Attempts	11 vs. Wofford (11/6/19)
Free Throws Made	12 vs. Old Dominion (11/14/19)
Free Throws Attempted	19 vs. Old Dominion (11/14/19)
Rebounds	25 vs. Wofford (11/6/19)
Assists	5 vs. Wofford (11/6/19)
Blocked Shots.....	1, vs. Wofford (11/6/19) and Old Dominion (11/14/19)
Steals	9 vs. Wofford (11/6/19)

Second Half

Points.....	49 vs. Wofford (11/6/19)
Field Goals Made.....	17 vs. Wofford (11/6/19)
Field Goal Attempts.....	37 vs. Old Dominion (11/14/19)
3-Point Field Goals Made	5 vs. Old Dominion (11/14/19)
3-Point Field Goal Attempts	12 vs. Old Dominion (11/14/19)
Free Throws Made	13 vs. Wofford (11/6/19)
Free Throws Attempted	19 vs. Wofford (11/6/19)
Rebounds	22 vs. Wofford (11/6/19)
Assists	10 vs. Wofford (11/6/19)
Blocked Shots.....	1 vs. Wofford (11/6/19) and Old Dominion (11/14/19)
Steals	4 vs. Old Dominion (11/14/19)

Game

Points.....	84 vs. Wofford (11/6/19)
Field Goals Made.....	30 vs. Wofford (11/6/19)
Field Goal Attempts.....	65 vs. Wofford (11/6/19)
3-Point Field Goals Made	8 vs. Old Dominion (11/14/19)
3-Point Field Goal Attempts	19 vs. Old Dominion (11/14/19)
Free Throws Made	20 vs. Wofford (11/6/19)
Free Throws Attempted	30 vs. Wofford (11/6/19)
Rebounds	47 vs. Wofford (11/6/19)
Assists	15 vs. Wofford (11/6/19)
Blocked Shots.....	2 vs. Wofford (11/6/19)
Steals	12 vs. Wofford (11/6/19)
Turnovers Forced.....	15 vs. Wofford (11/6/19)

Specialty Statistics (Auburn-Opponent)

Opponent	Points in the Paint	Points off Turnovers	2nd-Chance Points	Fast-Break Points	Bench Points
Wofford	38-18	12-19	24-10	11-9	10-5
Old Dominion	28-30	14-13	22-11	4-13	15-16

Lead-Deficit Comparison

Opponent	Largest Lead	Largest Deficit	Lead Changes	Ties	Result
Wofford	17 (3rd, 5:39)	4 (1st, 9:16)	7	5	W, 84-82
Old Dominion	2 (1st, 7:02)	16 (4th, 3:30)	6	3	L, 77-89

Scoring Breakdown

(Percentage of total points in parentheses)

Opponent	Front Court	Back Court	Sr.	Jr.	So.	Fr.	Starters	Bench
Wofford	37 (44.0)	47 (56.0)	22	30	17	15	74 (88.1)	10 (10.9)
Old Dominion	26 (33.8)	51 (66.2)	17	15	26	19	62 (80.5)	15 (19.5)

Comparison Statistics (Auburn/Opponent)

Opponent	1st	2nd	Score	Mar	Total FG	FG Pct	3-Pointers	3FG Pct	Free Throws	FT Pct	Reb.	Mar	Assist	TO	Blk	Stl	Fouls
Wofford	35/24	49/58	84-82	+2	30-65/26-64	.462/.406	4-16/13-30	.250/.433	20-30/17-20	.667/.850	47/34	+13	15/13	14/15	2/3	12/6	19/26
Old Dominion	39/41	38/48	77-89	(12)	26-60/32-54	.433/.593	8-19/14-28	.421/.500	17-28/11-18	.607/.611	34/28	+6	9/16	14/15	2/3	9/7	19/21

Game-by-Game Leaders

	Points	Rebounds	Assists	Steals	Blocked Shots
Wofford	25-Unique Thompson	13-Unique Thompson	4-White/Hughes	3-Annie Hughes	1-Moore/Howard
Old Dominion	17-Daisa Alexander	10-Unique Thompson	2-(three playes)	4-Daisa Alexander	1-Jackson/Howard

2018-19 Starting Lineups

	Point Guard (1)	Wing (2)	Wing (3)	Wing (4)	Post (5)
Wofford	Daisa Alexander	Brooke Moore	Annie Hughes	Kiyae' White	Unique Thompson
Old Dominion	Daisa Alexander	Brooke Moore	Annie Hughes	Kiyae' White	Unique Thompson

Record by Starting Lineup

Alexander, Moore, Hughes, White, Thompson
 1-1 (.500)



Terri

WILLIAMS-FOURNOY

Head Coach

Seventh Season at Auburn • 15th as a Head Coach • 27th Season in coaching

Hampton, Va. • Penn State, 1991

• *Has taken her teams to postseason appearances in nine of the last 11 years, including six NCAA Tournament appearances*

- *Led Auburn to 19 or more wins in four of her first seven years*
- *Has had six players selected to All-SEC teams*
- *Auburn has forced an average of 20.0+ turnovers per game under Coach Flo*
- *Led Auburn to the postseason in five of seven seasons, advancing to WNIT Quarterfinals in 2013 and Third Round in 2014, along with NCAA Tournament in 2016, 2017 and 2019*
- *Won her 100th game at Auburn on Feb. 8, 2018, defeating LSU 70-62*
- *Picked up her 200th career head coaching victory Dec. 5, 2015 at home vs. East Carolina*
- *Won 250th career game at Xavier (La.) on Nov. 28, 2018*
- *Recorded her 400th career win as a collegiate coach in Auburn's 68-58 win over Hofstra on Dec. 9, 2012*
- *Won her 500th game as a collegiate coach with victory over Louisiana-Lafayette on Nov. 25, 2018*

2018

- *Picked up first SEC win in 50-47 win over #23 Arkansas in 2013*
- *Earned second win over ranked opponent at Auburn and snapped 21-game skid to #16 Vanderbilt with 68-62 win in Nashville on Feb. 13, 2014*
- *Picked up first top-10 win with a 66-61 victory over #7 Kentucky on Jan. 3, 2016*
- *Has 268 wins as a head coach and 251 as an assistant for a .618 winning percentage over 27 years as a collegiate coach*
- *Has been part of six conference championships and 21 post-season appearances as an assistant and head coach*
- *2010 Black Coaches Association Coach of the Year*
- *Served as an assistant coach for Team USA that won a gold medal at the 2011 World University Games in Shenzhen, China*
- *Coached teams to 15 NCAA Tournament appearances, nine as an assistant and six as a head coach*
- *Has coached 24 players that have gone on to the professional ranks, including seven in the WNBA*
- *As an assistant, helped coach Georgia to an NCAA Final Four appearance and two NCAA Elite Eight appearances*
- *Coached three Georgetown players to three all-conference honors and one All-America award*
- *Has a 607-357 record in 31 seasons as a head coach, assistant coach and player*
- *Helped coach Georgetown to a Big East title in 1992*
- *As an assistant coach at Southwest Missouri State, helped the team to two straight NCAA Tournaments and two consecutive Missouri Valley Conference Tournament titles*

All-time record as player and coach: 607-357 (.630) 32 seasons

Record as collegiate player: 88-36 (.709) 4 seasons

Record as collegiate coach: 519-321 (.618) 28 seasons

Record as collegiate assistant coach: 251-117 (.683) 12 seasons

Record as collegiate head coach: 268-206 (.565) 16 seasons

Record as Auburn head coach: 125-102 (.551) 8 seasons

Williams-Flournoy Year-by-Year

Penn State, Player (1987-91)

Year	Record	Conf.	Other Information
1987-88	20-13	11-7	NCAA Second Round
1988-89	14-14	12-6	
1989-90	25-7	15-3	NCAA Second Round
1990-91	29-2	17-1	NCAA Second Round

Georgetown, Assistant Coach (1992-96)

Year	Record	Conf.	Other Information
1992-93	23-7	15-3	Big East Champions NCAA Sweet 16
1993-94	12-15	6-12	
1994-95	11-17	6-12	
1995-96	12-15	7-11	

Georgia, Assistant Coach (1996-2002)

Year	Record	Conf.	Other Information
1996-97	25-6	11-1	SEC Champions NCAA Elite Eight
1997-98	17-11	8-6	NCAA First Round
1998-99	27-7	9-5	NCAA Final Four
1999-2000	32-4	13-1	SEC Champions NCAA Elite Eight
2000-01	27-6	11-3	SEC Tournament Champions NCAA Second Round
2001-02	19-11	6-8	NCAA First Round

Southwest Missouri State, Assistant Coach (2002-04)

Year	Record	Conf.	Other Information
2002-03	18-13	11-7	MVC Tournament Champions NCAA First Round
2003-04	28-4	16-2	Missouri Valley Champions MVC Tournament Champions NCAA First Round

Georgetown, Head Coach (2004-12)

Year	Record	Conf.	Other Information
2004-05	12-16	7-9	
2005-06	10-17	3-13	
2006-07	13-16	3-13	
2007-08	15-14	5-11	
2008-09	20-14	7-9	WNIT Quarterfinals
2009-10	26-7	13-3	NCAA Second Round
2010-11	24-11	9-7	NCAA Sweet 16
2011-12	23-9	11-5	NCAA Second Round

Auburn, Head Coach (2012-present)

Year	Record	Conf.	Other Information
2012-13	19-15	5-11	WNIT Quarterfinals
2013-14	19-15	7-9	WNIT Third Round
2014-15	13-18	3-13	
2015-16	20-13	8-8	NCAA Second Round
2016-17	17-15	7-9	NCAA First Round
2017-18	14-15	5-11	
2018-19	22-10	9-7	NCAA First Round
2019-20	1-1		



Daisa ALEXANDER

#0

Senior • Guard • 5-8

Decatur, Ga.

****2018 SEC All-Defensive Team****

Southwest DeKalb HS

Named to 2019-20 Preseason All-SEC Second Team (coaches)

- Opened season with 22-point, 6-rebound performance in win over Wofford (11/6)
- Auburn's leading returning scorer, averaged 12.6 points/game in 2018-19
- Scored in double-digits in 14 of 16 SEC games; led Auburn in 8 SEC games in 18-19; averaged 14.9 points in SEC play; 16.9 points in SEC road games
- Hit game-winning jumper + free throw with 17 seconds left in 79-76 win at New Mexico (11/11)
- Top 2 in steals in SEC last two years; led league with 2.8/game in '18; 2nd in SEC with 2.3/game in '19
- Scored career-high 25 points on 9-14 shooting at Indiana while playing just 20 minutes off the bench (12/3); 12 points in 4th quarter

SEASON HIGHS

Points	22 vs. Wofford	11/6/19
Rebounds	6 vs. Wofford	11/6/19
Assists	2 2x; last vs. Old Dominion	11/14/19
Blocks		
Steals	4 vs. Old Dominion	11/14/19
Field Goals	6 vs. Wofford	11/6/19
Field Goal Attempts	16 vs. Old Dominion	11/14/19
3-Point Field Goals	2 vs. Old Dominion	11/14/19
3-Point FG Attempts	5 vs. Old Dominion	11/14/19
Free Throws	9 vs. Wofford	11/6/19
Free Throw Attempts	14 vs. Wofford	11/6/19

Opponent	Start	Min.	FG-A	3PT-A	FT-A	0-D-T	PF	Ast.	TO	Blk.	St.	Pts.
WOFFORD	*	33	6-12	1-3	9-14	1-5-6	3	2	3	0	2	22
OLD DOMINION	*	29	5-16	2-5	5-6	1-3-4	4	2	3	0	4	17
at UAB												
ST. JOSEPH'S												
vs Middle Tennessee												
vs. TBD												
vs. TBD												
at South Alabama												
at TCU												
BETHUNE-COOKMAN												
JACKSONVILLE ST.												
at Vanderbilt												
ARKANSAS												
FLORIDA												
ALABAMA												
at Georgia												
OLE MISS												
at Kentucky												
at Mississippi State												
VANDERBILT												
at Alabama												
at South Carolina												
LSU												
MISSISSIPPI STATE												
at Texas A&M												
at Missouri												
TENNESSEE												

CAREER HIGHS

Points	25 at Indiana	12/3/17
Rebounds	8 vs. Grambling	11/6/18
Assists	8 vs. UL-Lafayette	11/25/18
Blocks	2 at Kentucky	2/1/18
Steals	7 at LSU	1/18/18
Field Goals	9 5x; last at Tennessee	2/14/19
Field Goal Attempts	23 at Tennessee	1/4/18
3-Point Field Goals	4 3x; last vs. Missouri	2/24/19
3-Point FG Attempts	11 vs. BYU	3/23/19
Free Throws	9 vs. Wofford	11/6/19
Free Throw Attempts	9 vs. Wofford	11/6/19

ALEXANDER'S CAREER STATISTICS

Season	gp-gs	min/avg	Total		3-Point		F-Throws		Rebounds				Scoring							
			fg-fga	pct	fg-fga	pct	ft-fta	pct	off	def	tot	avg	pf	fo	ast	to	blk	stl	pts	avg
2016-17	20-0	113/5.7	9-37	.243	1-10	.100	7-10	.700	9	8	17	0.9	18	0	1	10	0	9	26	1.3
2017-18	29-12	746/25.7	157-403	.390	41-122	.336	57-77	.740	17	59	76	2.6	73	0	39	79	3	80	412	14.2
2018-19	32-32	892/27.9	148-380	.389	60-166	.361	48-70	.686	22	79	101	3.2	73	2	56	57	3	74	404	12.6
2019-20	2-2	61/30.5	11-28	.393	3-8	.375	14-20	.700	2	8	10	5.0	7	0	4	6	0	6	39	19.5
TOTAL	83-46	1812/21.8	325-848	.383	105-306	.343	126-177	.712	50	154	204	2.5	171	2	100	152	6	169	881	10.6



Robyn BENTON

#1

Sophomore • Guard • 5-9

Conyers, Ga.

2019 SEC All-Freshman Team

Greater Atlanta Christian HS

• 2019 SEC All-Freshman Team

- Averaged 6.1 points/game in '18-19, top 5 among SEC freshmen
- Auburn's top returning 3-point shooter by percentage at 37.2% (35-94)
- Made game-winning shot + free throw with 8.6 seconds left to finish off 20-point comeback win at Vanderbilt (1/17); named SEC Freshman/Week
- Hit 5-of-5 3-point attempts and scored 15 points in win at Elon (12/22)
- Shared team lead with 16 points and hit three 3-pointers in collegiate debut vs. Grambling (11/6)
- Five-star prospect, rated No. 17 overall nationally, No. 6 guard by ESPN HoopGurlz
- Sister of former Tennessee football player Inky Johnson

SEASON HIGHS

- Points
- Rebounds
- Assists
- Blocks
- Steals
- Field Goals
- Field Goal Attempts
- 3-Point Field Goals
- 3-Point FG Attempts
- Free Throws
- Free Throw Attempts

CAREER HIGHS

- Points
16 vs. Grambling 11/6/18
- Rebounds
5 at XULA 11/28/18
- Assists
3 2x; last at XULA 11/28/18
- Blocks
1 3x; last vs. Alabama 2/17/19
- Steals
4 vs. Texas A&M [SEC] 3/8/19
- Field Goals
6 vs. Grambling 11/6/18
- Field Goal Attempts
12 vs. Grambling 11/6/18
- 3-Point Field Goals
5 at Elon 12/22/18
- 3-Point FG Attempts
8 vs. Grambling 11/6/18
- Free Throws
6 vs. Alabama 2/17/19
- Free Throw Attempts
6 vs. Alabama 2/17/19

Opponent	Start	Min.	FG-A	3PT-A	FT-A	O-D-T	PF	Ast.	TO	Blk.	St.	Pts.
WOFFORD						--DNP--						
OLD DOMINION						--DNP--						
at UAB												
ST. JOSEPH'S												
vs Middle Tennessee												
vs. TBD												
vs. TBD												
at South Alabama												
at TCU												
BETHUNE-COOKMAN												
JACKSONVILLE ST.												
at Vanderbilt												
ARKANSAS												
FLORIDA												
ALABAMA												
at Georgia												
OLE MISS												
at Kentucky												
at Mississippi State												
VANDERBILT												
at Alabama												
at South Carolina												
LSU												
MISSISSIPPI STATE												
at Texas A&M												
at Missouri												
TENNESSEE												

BENTON'S CAREER STATISTICS

Season	gp-gs		min/avg		Total fg-fga pct		3-Point fg-fga pct		F-Throws ft-fta pct		Rebounds off def tot avg				Scoring pf fo ast to blk stl pts avg										
	gp	gs	min	avg	fg	fga	pct	fg	fga	pct	off	def	tot	avg	pf	fo	ast	to	blk	stl	pts	avg			
2018-19	32	0	457	14.3	64	167	.383	35	94	.372	24	34	.706	16	26	42	1.3	41	0	18	15	3	34	187	5.8
TOTAL	32	0	457	14.3	64	167	.383	35	94	.372	24	34	.706	16	26	42	1.3	41	0	18	15	3	34	187	5.8



Sania WELLS

#2

Freshman • Guard • 5-7

Moss Point, Miss.

East Central HS

- Ranked as No. 27 point guard nationally by ESPN HoopGurlz
- USA Today All-Mississippi team
- Averaged 27 points, 5 rebounds, 4 steals as a HS senior

SEASON/CAREER HIGHS

- Points
- Rebounds
- Assists
- Blocks
- Steals
- Field Goals
- Field Goal Attempts
- 3-Point Field Goals
- 3-Point FG Attempts
- Free Throws
- Free Throw Attempts

Opponent	Start	Min.	FG-A	3PT-A	FT-A	O-D-T	PF	Ast.	TO	Blk.	St.	Pts.
WOFFORD						--DNP--						
OLD DOMINION						--DNP--						
at UAB												
ST. JOSEPH'S												
vs Middle Tennessee												
vs. TBD												
vs. TBD												
at South Alabama												
at TCU												
BETHUNE-COOKMAN												
JACKSONVILLE ST.												
at Vanderbilt												
ARKANSAS												
FLORIDA												
ALABAMA												
at Georgia												
OLE MISS												
at Kentucky												
at Mississippi State												
VANDERBILT												
at Alabama												
at South Carolina												
LSU												
MISSISSIPPI STATE												
at Texas A&M												
at Missouri												
TENNESSEE												

WELLS' CAREER STATISTICS



Annie HUGHES

#3

Freshman • Guard • 5-9

Dutton, Ala.

Pisgah HS

- Scored 10 points and led Auburn with 4 assists & 3 steals in collegiate debut vs. Wofford (11/6)
- Was the third true freshman to start her first game under Williams-Flournoy (Unique Thompson in 2017, Katie Frerking in 2013)
- 2019 Alabama Miss Basketball, first to attend Auburn since Whitney Boddie in 2005
- Led Pisgah HS to 65-2 record and back-to-back 3A state titles in 2018 and 2019
- Averaged 21.4 points, 7.0 rebounds, 4.2 assists and 3.5 steals as a high school senior
- All-state first team in 2018 and 2019
- Also helped Pisgah HS to 2019 state softball championship

SEASON/CAREER HIGHS

Points	12 vs. Old Dominion	11/14/19
Rebounds	4 vs. Old Dominion	11/14/19
Assists	4 vs. Wofford	11/6/19
Blocks		
Steals	3 vs. Wofford	11/6/19
Field Goals	5 vs. Old Dominion	11/14/19
Field Goal Attempts	7 vs. Old Dominion	11/14/19
3-Point Field Goals	1 2x; last vs. Old Dominion	11/14/19
3-Point FG Attempts	1 2x; last vs. Old Dominion	11/14/19
Free Throws	1 2x; last vs. Old Dominion	11/14/19
Free Throw Attempts	2 vs. Old Dominion	11/14/19

Opponent	Start	Min.	FG-A	3PT-A	FT-A	O-D-T	PF	Ast.	TO	Blk.	St.	Pts.
WOFFORD	*	30	4-5	1-1	1-1	2-0-2	3	4	0	0	3	10
OLD DOMINION	*	35	5-7	1-1	1-2	3-1-4	1	1	0	0	2	12
at UAB												
ST. JOSEPH'S												
vs Middle Tennessee												
vs. TBD												
vs. TBD												
at South Alabama												
at TCU												
BETHUNE-COOKMAN												
JACKSONVILLE ST.												
at Vanderbilt												
ARKANSAS												
FLORIDA												
ALABAMA												
at Georgia												
OLE MISS												
at Kentucky												
at Mississippi State												
VANDERBILT												
at Alabama												
at South Carolina												
LSU												
MISSISSIPPI STATE												
at Texas A&M												
at Missouri												
TENNESSEE												

HUGHES' CAREER STATISTICS

Season	gp-gs	min/avg	Total		3-Point		F-Throws			Rebounds				Scoring						
			fg-fga	pct	fg-fga	pct	ft-fta	pct	off	def	tot	avg	pf	fo	ast	to	blk	stl	pts	avg
2019-20	2-2	65/32.5	9-12	.750	2-2	1.000	2-3	.667	5	1	6	3.0	4	0	5	0	0	5	22	11.0
TOTAL	2-2	65/32.5	9-12	.750	2-2	1.000	2-3	.667	5	1	6	3.0	4	0	5	0	0	5	22	11.0



Brooke MOORE

#5

Sophomore • Guard • 5-7

Atlanta, Ga.

Henry County HS

- Scored 15 points while playing career-high 35 minutes in first career start vs. Wofford (11/6); matched 15-point effort vs. ODU (11/14)
- Is 19-for-19 at the free throw line for her career; 9-9 this season
- Played in 25 games as a freshman; averaged 5.2 points in 12.0 minutes/game
- Led Auburn with career-high 23 points, hit five 3-pointers in win over Alabama State (12/29); also made half-court shot at halftime; named SEC Freshman of the Week
- Scored 14 points and hit 4 3-pointers in win at Elon (12/22); helped set single-game 3-point record for 2nd time in less than a month
- Five-star prospect, No. 42 overall prospect and No. 11 guard by ESPN HoopGurlz
- Georgia Class AAAA Player of the Year as a senior; 3-time AJC Player of the Year

SEASON HIGHS

Points	15	2x; last vs. Old Dominion	11/14/19
Rebounds	2	vs. Wofford	11/6/19
Assists	2	vs. Old Dominion	11/14/19
Blocks	1	vs. Wofford	11/6/19
Steals	2	2x; last vs. Old Dominion	11/14/19
Field Goals	6	vs. Wofford	11/6/19
Field Goal Attempts	16	vs. Wofford	11/6/19
3-Point Field Goals	2	vs. Old Dominion	11/14/19
3-Point FG Attempts	7	vs. Wofford	11/6/19
Free Throws	7	vs. Old Dominion	11/14/19
Free Throw Attempts	7	vs. Old Dominion	11/14/19

Opponent	Start	Min.	FG-A	3PT-A	FT-A	O-D-T	PF	Ast.	TO	Blk.	St.	Pts.
WOFFORD	*	35	6-16	1-7	2-2	1-1-2	1	1	1	1	2	15
OLD DOMINION	*	24	3-9	2-6	7-7	1-0-1	0	2	2	0	2	15

at UAB
 ST. JOSEPH'S
 vs Middle Tennessee
 vs. TBD
 vs. TBD
 at South Alabama
 at TCU
 BETHUNE-COOKMAN
 JACKSONVILLE ST.
 at Vanderbilt
 ARKANSAS
 FLORIDA
 ALABAMA
 at Georgia
 OLE MISS
 at Kentucky
 at Mississippi State
 VANDERBILT
 at Alabama
 at South Carolina
 LSU
 MISSISSIPPI STATE
 at Texas A&M
 at Missouri
 TENNESSEE

CAREER HIGHS

Points	23	vs. Alabama State	12/29/18
Rebounds	4	vs. Coastal Carolina	12/18/18
Assists	3	2x; last vs. BYU	3/23/19
Blocks	1	vs. Mississippi State	1/14/19
Steals	2	4x; last vs. Old Dominion	11/14/19
Field Goals	6	3x; last vs. Wofford	11/6/19
Field Goal Attempts	16	vs. Wofford	11/6/19
3-Point Field Goals	5	vs. Alabama State	12/29/18
3-Point FG Attempts	13	vs. Alabama State	12/29/18
Free Throws	7	vs. Old Dominion	11/14/19
Free Throw Attempts	7	vs. Old Dominion	11/14/19

MOORE'S CAREER STATISTICS

Season	gp-gs	min/avg	Total		3-Point		F-Throws		Rebounds				Scoring							
			fg-fga	pct	fg-fga	pct	ft-fga	pct	off	def	tot	avg	pf	fo	ast	to	blk	stl	pts	avg
2018-19	25-0	299/12.0	45-147	.306	31-105	.295	10-10	1.000	7	19	26	1.0	15	0	10	19	1	11	131	5.2
2019-20	2-2	60/30.0	9-25	.360	3-13	.231	9-9	1.000	2	1	3	1.5	1	0	3	3	1	4	30	15.0
TOTAL	27-2	359/13.3	54-172	.314	34-118	.288	19-19	1.000	9	20	29	1.1	16	0	13	22	2	15	161	6.0



Kiyae' WHITE

#10

Redshirt Sophomore • Forward • 6-2

Macungie, Pa.

Emmaus HS

- Made first career start vs. Wofford (11/6); pulled down career-high 11 rebounds in just 17 minutes
- Played in 29 games as a redshirt freshman; averaging 6.9 minutes/game
- Career-high 5 points in 12 minutes vs. Samford; also had 4 rebounds (12/12/18)
- Made first collegiate appearance vs. Grambling (11/6/18); had 3 points, 4 rebounds in 12 minutes of action
- Redshirted 2017-18 season due to injury
- Ranked as No. 20 forward nationally out of high school
- Three brothers all played football at West Virginia; brother, Kevin White, plays for Chicago Bears

SEASON HIGHS

Points		
5	vs. Old Dominion	11/14/19
Rebounds		
11	vs. Wofford	11/6/19
Assists		
4	vs. Wofford	11/6/19
Blocks		
Steals		
1	vs. Wofford	11/6/19
Field Goals		
2	vs. Old Dominion	11/14/19
Field Goal Attempts		
4	2x; last vs. Old Dominion	11/14/19
3-Point Field Goals		
3-Point FG Attempts		
Free Throws		
1	vs. Old Dominion	11/14/19
Free Throw Attempts		
3	vs. Old Dominion	11/14/19

Opponent	Start	Min.	FG-A	3PT-A	FT-A	O-D-T	PF	Ast.	TO	Blk.	St.	Pts.
WOFFORD	*	17	1-4	0-0	0-2	2-9-11	1	4	2	0	1	2
OLD DOMINION	*	20	2-4	0-0	1-3	1-3-4	3	0	0	0	0	5
at UAB												
ST. JOSEPH'S												
vs Middle Tennessee												
vs. TBD												
vs. TBD												
at South Alabama												
at TCU												
BETHUNE-COOKMAN												
JACKSONVILLE ST.												
at Vanderbilt												
ARKANSAS												
FLORIDA												
ALABAMA												
at Georgia												
OLE MISS												
at Kentucky												
at Mississippi State												
VANDERBILT												
at Alabama												
at South Carolina												
LSU												
MISSISSIPPI STATE												
at Texas A&M												
at Missouri												
TENNESSEE												

CAREER HIGHS

Points		
5	2x; last vs. Old Dominion	11/14/19
Rebounds		
11	vs. Wofford	11/6/19
Assists		
4	vs. Wofford	11/6/19
Blocks		
1	at Ole Miss	1/31/19
Steals		
1	3x; last vs. Wofford	11/6/19
Field Goals		
2	5x; last vs. Old Dominion	11/14/19
Field Goal Attempts		
4	3x; last vs. Old Dominion	11/14/19
3-Point Field Goals		
3-Point FG Attempts		
Free Throws		
2	2x; last vs. Missouri	2/24/19
Free Throw Attempts		
4	vs. Missouri	2/24/19

WHITE'S CAREER STATISTICS

Season	gp-gs	min/avg	Total		3-Point		F-Throws		Rebounds					Scoring						
			fg-fga	pct	fg-fga	pct	ft-fta	pct	off	def	tot	avg	pf	fo	ast	to	blk	stl	pts	avg
2018-19	29-0	199/6.9	15-39	.385	0-0	.000	8-14	.571	23	28	51	1.8	27	0	9	10	1	2	38	1.3
2019-20	2-2	37/18.5	3-8	.375	0-0	.000	1-5	.200	3	12	15	7.5	4	0	4	2	0	1	7	3.5
TOTAL	31-2	236/7.6	18-47	.383	0-0	.000	9-19	.474	26	40	66	2.1	31	0	13	12	1	3	45	1.5



Maliya PERRY

#12

Freshman • Forward • 6-0

Columbus, Ohio

Pickerington Central HS

- Scored 5 points in 11 minutes off the bench in first collegiate game vs. Wofford
- Ranked as No. 98 prospect nationally out of high school by Prospects Nation; No.28 guard by ESPN
- Led Pickerington Central HS to 2018 Ohio state title and 2019 runner-up finish
- Named to Columbus Dispatch All-Metro Team

SEASON/CAREER HIGHS

Points		
5	vs. Wofford	11/6/19
Rebounds		
1	vs. Wofford	11/6/19
Assists		
1	vs. Wofford	11/6/19
Blocks		
Steals		
Field Goals		
2	vs. Wofford	11/6/19
Field Goal Attempts		
3	vs. Wofford	11/6/19
3-Point Field Goals		
1	vs. Wofford	11/6/19
3-Point FG Attempts		
1	vs. Wofford	11/6/19
Free Throws		
Free Throw Attempts		
2	vs. Old Dominion	11/14/19

Opponent	Start	Min.	FG-A	3PT-A	FT-A	O-D-T	PF	Ast.	TO	Blk.	St.	Pts.
WOFFORD		11	2-3	1-1	0-0	1-0-1	1	1	0	0	0	5
OLD DOMINION		7	0-1	0-0	0-2	0-1-1	1	0	0	0	0	0
at UAB												
ST. JOSEPH'S												
vs Middle Tennessee												
vs. TBD												
vs. TBD												
at South Alabama												
at TCU												
BETHUNE-COOKMAN												
JACKSONVILLE ST.												
at Vanderbilt												
ARKANSAS												
FLORIDA												
ALABAMA												
at Georgia												
OLE MISS												
at Kentucky												
at Mississippi State												
VANDERBILT												
at Alabama												
at South Carolina												
LSU												
MISSISSIPPI STATE												
at Texas A&M												
at Missouri												
TENNESSEE												

PERRY'S CAREER STATISTICS

Season	gp-gs	min/avg	Total		3-Point		F-Throws		Rebounds				Scoring							
			fg-fga	pct	fg-fga	pct	ft-fta	pct	off	def	tot	avg	pf	fo	ast	to	blk	stl	pts	avg
2019-20	2-0	18/9.0	2-4	.500	1-1	1.000	0-2	.000	1	1	2	1.0	2	0	1	0	0	0	5	2.5
TOTAL	2-0	18/9.0	2-4	.500	1-1	1.000	0-2	.000	1	1	2	1.0	2	0	1	0	0	0	5	2.5



Lauren HANSEN

#13

Freshman • Guard • 5-8

Setauket, N.Y.

Ward Melville HS

- Made collegiate debut vs. Old Dominion (11/14); scored 7 points and added one assist and one steal
- Ranked as No. 71 prospect nationally and No. 20 guard by ESPN
- USA Today First-Team All-State in New York as a senior
- All-conference and all-state selection at Ward Melville HS

SEASON/CAREER HIGHS

Points	7	vs. Old Dominion	11/14/19
Rebounds			
Assists	1	vs. Old Dominion	11/14/19
Blocks			
Steals	1	vs. Old Dominion	11/14/19
Field Goals	3	vs. Old Dominion	11/14/19
Field Goal Attempts	7	vs. Old Dominion	11/14/19
3-Point Field Goals	1	vs. Old Dominion	11/14/19
3-Point FG Attempts	3	vs. Old Dominion	11/14/19
Free Throws			
Free Throw Attempts			

Opponent	Start	Min.	FG-A	3PT-A	FT-A	O-D-T	PF	Ast.	TO	Blk.	St.	Pts.
WOFFORD						--DNP--						
OLD DOMINION at UAB		21	3-7	1-3	0-0	0-0-0	5	1	4	0	1	7
ST. JOSEPH'S vs Middle Tennessee												
vs. TBD												
vs. TBD												
at South Alabama												
at TCU												
BETHUNE-COOKMAN												
JACKSONVILLE ST. at Vanderbilt												
ARKANSAS												
FLORIDA												
ALABAMA												
at Georgia												
OLE MISS												
at Kentucky												
at Mississippi State												
VANDERBILT												
at Alabama												
at South Carolina												
LSU												
MISSISSIPPI STATE												
at Texas A&M												
at Missouri												
TENNESSEE												

HANSEN'S CAREER STATISTICS

Season	gp-gs	min/avg	Total		3-Point		F-Throws		Rebounds				Scoring							
			fg-fga	pct	fg-fga	pct	ft-fta	pct	off	def	tot	avg	pf	fo	ast	to	blk	stl	pts	avg
2019-20	1-0	21/21.0	3-7	.429	1-3	.333	0-0	.000	0	0	0	0.0	5	1	1	4	0	1	7	7.0
TOTAL	1-0	21/21.0	3-7	.429	1-3	.333	0-0	.000	0	0	0	0.0	5	1	1	4	0	1	7	7.0



Unique THOMPSON

#20

Freshman • Forward • 6-3

Theodore, Ala.

****2018 SEC All-Freshman Team****

Faith Academy

• Named to 2019-20 Preseason All-SEC Second Team (media & coaches)

- Averaged a double-double in 2018-19 with 12.2 points, 10.3 rebounds; 5th player in Auburn history to do so, first since DeWanna Bonner in 2008
- Has 22 career double-doubles, 7th in Auburn history
- Has 580 career rebounds; third player in Auburn history with 500 rebounds in first two seasons
- Had career-high 19 rebounds twice; at New Mexico (11/11/18) and vs. BYU in NCAA Tournament (3/23/19)
- Started 27 games as a freshman in '17-18; was Auburn's third-leading scorer with 11.5 points/game
- Her career-high 29 points at UL-Lafayette (12/8/17) were 2nd most ever by Auburn freshman, most since Becky Jackson had 38 in 1980

SEASON HIGHS

Points	25 vs. Wofford	11/6/19
Rebounds	13 vs. Wofford	11/6/19
Assists	2 vs. Old Dominion	11/14/19
Blocks		
Steals	2 vs. Wofford	11/6/19
Field Goals	9 vs. Wofford	11/6/19
Field Goal Attempts	13 vs. Wofford	11/6/19
3-Point Field Goals		
3-Point FG Attempts		
Free Throws	7 vs. Wofford	11/6/19
Free Throw Attempts	9 vs. Wofford	11/6/19

Opponent	Start	Min.	FG-A	3PT-A	FT-A	O-D-T	PF	Ast.	TO	Blk.	St.	Pts.
WOFFORD	*	31	9-13	0-0	7-9	6-7-13	3	1	3	0	2	25
OLD DOMINION	*	30	5-6	0-0	3-8	7-3-10	2	2	2	0	0	13

at UAB
ST. JOSEPH'S
vs Middle Tennessee
vs. TBD
vs. TBD
at South Alabama
at TCU
BETHUNE-COOKMAN
JACKSONVILLE ST.
at Vanderbilt
ARKANSAS
FLORIDA
ALABAMA
at Georgia
OLE MISS
at Kentucky
at Mississippi State
VANDERBILT
at Alabama
at South Carolina
LSU
MISSISSIPPI STATE
at Texas A&M
at Missouri
TENNESSEE

CAREER HIGHS

Points	29 at Louisiana-Lafayette	12/8/17
Rebounds	19 2x; last vs. BYU	3/23/19
Assists	4 at St. Joseph's	12/6/18
Blocks	6 vs. Louisiana Tech	11/19/17
Steals	4 3x; last vs. Georgia	2/3/19
Field Goals	11 2x; last vs. Texas A&M	1/7/18
Field Goal Attempts	18 vs. North Carolina	12/20/18
3-Point Field Goals		
3-Point FG Attempts		
Free Throws	10 at Ole Miss	1/31/19
Free Throw Attempts	12 at Ole Miss	1/31/19

THOMPSON'S CAREER STATISTICS

Season	gp-gs	min/avg	Total		3-Point		F-Throws		Rebounds				Scoring							
			fg-fga	pct	fg-fga	pct	ft-fta	pct	off	def	tot	avg	pf	fo	ast	to	blk	stl	pts	avg
2017-18	27-27	811/30.0	131-271	.483	0-0	.000	49-87	.563	112	115	227	8.4	63	0	28	66	21	32	311	11.5
2018-19	32-32	996/31.1	153-272	.563	0-0	.000	83-136	.610	143	187	330	10.3	71	1	35	63	20	57	389	12.2
2019-20	2-2	60/30.0	14-19	.737	0-0	.000	10-17	.588	13	10	23	11.5	5	0	3	5	0	2	38	19.0
TOTAL	61-61	1867/30.6	298-562	.530	0-0	.000	142-240	.592	268	312	580	9.5	139	1	66	134	41	91	738	12.1



Erin HOWARD

#24

Sophomore • Guard/Forward • 6-1

Madison, Wis.

Madison East HS

- Started 17 games, appeared in 29 as a freshman; averaged 3.5 points, 2.9 rebounds in 20.1 minutes/game
- Career-high 12 points on 5-6 shooting (2-2 3FG) in win over #25 Missouri (2/24)
- Made first collegiate start vs. Tennessee (1/3); scored career-high 11 points in 33 minutes
- Hit record-setting 14th Auburn 3-pointer in win at Elon (12/22)
- Averaged 17.4 points, 11.1 rebounds, 3.9 assists as high school senior
- First Auburn women's basketball player from state of Wisconsin

SEASON HIGHS

Points	6	vs. Old Dominion	11/14/19
Rebounds	3	2x; last vs. Old Dominion	11/14/19
Assists	1	vs. Old Dominion	11/14/19
Blocks	1	2x; last vs. Old Dominion	11/14/19
Steals	1	vs. Wofford	11/6/19
Field Goals	2	vs. Old Dominion	11/14/19
Field Goal Attempts	5	vs. Old Dominion	11/14/19
3-Point Field Goals	2	vs. Old Dominion	11/14/19
3-Point FG Attempts	4	vs. Old Dominion	11/14/19
Free Throws			
Free Throw Attempts			

Opponent	Start	Min.	FG-A	3PT-A	FT-A	O-D-T	PF	Ast.	TO	Blk.	St.	Pts.
WOFFORD		18	0-3	0-3	0-0	2-1-3	3	0	0	1	1	0
OLD DOMINION		18	2-5	2-4	0-0	0-3-3	2	1	1	1	0	6
at UAB												
ST. JOSEPH'S												
vs Middle Tennessee												
vs. TBD												
vs. TBD												
at South Alabama												
at TCU												
BETHUNE-COOKMAN												
JACKSONVILLE ST.												
at Vanderbilt												
ARKANSAS												
FLORIDA												
ALABAMA												
at Georgia												
OLE MISS												
at Kentucky												
at Mississippi State												
VANDERBILT												
at Alabama												
at South Carolina												
LSU												
MISSISSIPPI STATE												
at Texas A&M												
at Missouri												
TENNESSEE												

CAREER HIGHS

Points	12	vs. Missouri	2/24/19
Rebounds	8	at Arkansas	2/10/19
Assists	5	at Alabama	1/10/19
Blocks	3	at Arkansas	2/10/19
Steals	3	3x; last vs. Georgia	2/3/19
Field Goals	5	vs. Missouri	2/24/19
Field Goal Attempts	13	vs. Alabama State	12/29/18
3-Point Field Goals	3	vs. Tennessee	1/3/19
3-Point FG Attempts	9	vs. Alabama State	12/29/18
Free Throws	2	2x; last vs. Alabama	2/17/19
Free Throw Attempts	2	3x; last vs. Alabama	2/17/19

HOWARD'S CAREER STATISTICS

Season	gp-gs	min/avg	Total		3-Point		F-Throws		Rebounds				Scoring							
			fg-fga	pct	fg-fga	pct	ft-fa	pct	off	def	tot	avg	pf	fo	ast	to	blk	stl	pts	avg
2018-19	31-17	624/20.1	42-128	.328	20-79	.253	5-6	.833	26	64	90	2.9	55	0	36	25	17	27	109	3.5
2019-20	2-0	37/18.5	2-8	.250	2-7	.286	0-0	.000	2	4	6	3.0	5	0	1	1	2	1	6	3.0
TOTAL	33-17	661/20.0	44-136	.324	22-86	.256	5-6	.833	28	68	96	2.9	60	0	37	26	19	28	115	3.5



Morgan ROBINSON-NWAGWU

#30

Freshman • Guard • 5-8

Norcross, Ga.

Norcross HS

- Recorded 2 rebounds, 2 assists in collegiate debut vs. Wofford (11/6)
- Ranked as No. 28 guard nationally by ESPN
- Named first-team all-state and first-team all-metro by Atlanta Journal-Constitution
- Region 7A Player of the Year and All-Gwinnett County first team
- Averaged 15.3 points, 7.1 rebounds, 4.6 assists, 4.1 steals and 1.1 blocks as high school junior

SEASON/CAREER HIGHS

Points		
Rebounds		
4	vs. Old Dominion	11/14/19
Assists		
2	vs. Wofford	11/6/19
Blocks		
Steals		
1	vs. Wofford	11/6/19
Field Goals		
Field Goal Attempts		
4	2x; last vs. Old Dominion	11/14/19
3-Point Field Goals		
3-Point FG Attempts		
Free Throws		
Free Throw Attempts		

Opponent	Start	Min.	FG-A	3PT-A	FT-A	O-D-T	PF	Ast.	TO	Blk.	St.	Pts.
WOFFORD		13	0-4	0-0	0-0	0-2-2	1	2	3	0	1	0
OLD DOMINION		7	0-4	0-0	0-0	2-2-4	0	0	2	0	0	0
at UAB												
ST. JOSEPH'S												
vs Middle Tennessee												
vs. TBD												
vs. TBD												
at South Alabama												
at TCU												
BETHUNE-COOKMAN												
JACKSONVILLE ST.												
at Vanderbilt												
ARKANSAS												
FLORIDA												
ALABAMA												
at Georgia												
OLE MISS												
at Kentucky												
at Mississippi State												
VANDERBILT												
at Alabama												
at South Carolina												
LSU												
MISSISSIPPI STATE												
at Texas AGM												
at Missouri												
TENNESSEE												

ROBINSON-NWAGWU'S CAREER STATISTICS

Season	gp-gs	min/avg	Total		3-Point		F-Throws		Rebounds				Scoring							
			fg-fga	pct	fg-fga	pct	ft-fta	pct	off	def	tot	avg	pf	fo	ast	to	blk	stl	pts	avg
2019-20	2-0	19/9.5	0-8	.000	0-0	.000	0-0	.000	2	4	6	3.0	1	0	2	5	0	1	0	0.0
TOTAL	2-0	19/9.5	0-8	.000	0-0	.000	0-0	.000	2	4	6	3.0	1	0	2	5	0	1	0	0.0



Natalie KELLY

#35

Sophomore • Forward • 6-3

Albany, La.

Albany HS

- Appeared in 12 games as a freshman
- Made first collegiate field goal vs. Louisiana-Lafayette (11/25)
- Made first SEC appearance at Missouri (1/27)
- Ranked as No. 38 post player in nation out of high school, according to ESPN HoopGuriz
- Averaged 17.1 points, 12.1 rebounds, 3.3 steals as high school senior
- Set school record for single-season rebounds with 379 as a junior

SEASON HIGHS

- Points
- Rebounds
- Assists
- Blocks
- Steals
- Field Goals
- Field Goal Attempts
- 3-Point Field Goals
- 3-Point FG Attempts
- Free Throws
- Free Throw Attempts

Opponent	Start	Min.	FG-A	3PT-A	FT-A	O-D-T	PF	Ast.	TO	Blk.	St.	Pts.
WOFFORD		6	0-0	0-0	0-0	0-0-0	0	0	0	0	0	0
OLD DOMINION						--DNP--						
at UAB												
ST. JOSEPH'S												
vs Middle Tennessee												
vs. TBD												
vs. TBD												
at South Alabama												
at TCU												
BETHUNE-COOKMAN												
JACKSONVILLE ST.												
at Vanderbilt												
ARKANSAS												
FLORIDA												
ALABAMA												
at Georgia												
OLE MISS												
at Kentucky												
at Mississippi State												
VANDERBILT												
at Alabama												
at South Carolina												
LSU												
MISSISSIPPI STATE												
at Texas A&M												
at Missouri												
TENNESSEE												

SEASON/CAREER HIGHS

- Points
2 vs. UL-Lafayette 11/25/18
- Rebounds
3 2x; last vs. Alabama State 12/29/18
- Assists
- Blocks
1 2x; last vs. Alabama State 12/29/18
- Steals
1 2x; last vs. Alabama 2/17/19
- Field Goals
1 vs. UL-Lafayette 11/25/18
- Field Goal Attempts
2 vs. UL-Lafayette 11/25/18
- 3-Point Field Goals
- 3-Point FG Attempts
- Free Throws
1 3x; last vs. Alabama State 12/29/18
- Free Throw Attempts
2 4x; last vs. Alabama State 12/29/18

KELLY'S CAREER STATISTICS

Season	gp-gs	min/avg	Total		3-Point		F-Throws		Rebounds				Scoring							
			fg-fga	pct	fg-fga	pct	ft-fa	pct	off	def	tot	avg	pf	fo	ast	to	blk	stl	pts	avg
2018-19	12-0	49/4.1	1-5	.200	0-0	.000	3-8	.375	6	4	10	0.8	4	0	0	8	2	2	5	0.4
2019-20	1-0	6/6.0	0-0	.000	0-0	.000	0-0	.000	0	0	0	0.0	0	0	0	0	0	0	0	0.0
TOTAL	13-0	55/4.2	1-5	.200	0-0	.000	3-8	.375	6	4	10	0.8	4	0	0	8	2	2	5	0.4

Game 1: Nov. 6, 2019 Auburn 84, Wofford 82 Auburn Arena Auburn, Ala.

Game 2: Nov. 14, 2019 Old Dominion 89, Auburn 77 Auburn Arena Auburn, Ala.

Official Basketball Box Score -- Game Totals -- Final Statistics Wofford vs Auburn

Box score for Auburn vs Wofford. Includes team totals and individual player stats for Wofford 82 @ 1:00-0 C-USA.

Official Basketball Box Score -- Game Totals -- Final Statistics Old Dominion vs Auburn

Box score for Auburn vs Old Dominion. Includes team totals and individual player stats for Old Dominion 89 @ 2:0,0-0 C-USA.

Auburn 84 @ 1-0,0-0 SEC

Box score for Auburn 84 @ 1-0,0-0 SEC. Includes team totals and individual player stats.

Auburn 77 @ 1-1,0-0 SEC

Box score for Auburn 77 @ 1-1,0-0 SEC. Includes team totals and individual player stats.

Officials: Iyeyinwa Seales, Katie Lukulich, Felicia Grinter
Technical fouls: Wofford-None, Auburn-None.

Officials: Karietena Tobin, Angel Stanton, Tina Napier
Technical fouls: Old Dominion-None, Auburn-None.

Score by periods table for Auburn vs Wofford game.

Score by periods table for Auburn vs Old Dominion game.

AUBURN-- Junior Unique Thompson and senior Daisa Alexander combined for 47 points, and the Auburn women's basketball team held off a late rally to earn an 84-82 win over Wofford Wednesday night to open the 2019-20 season.

AUBURN-- Auburn had four players in double figures, but a fourth-quarter surge from Old Dominion led the Monarchs to an 89-77 win over the Tigers in women's basketball action at Auburn Arena Thursday night.

The Tigers (1-0) led by as many as 17 points midway through the third quarter but saw the Terriers (0-1) storm back to take the lead just nine minutes later. But strong rebounding and free-throw shooting down the stretch allowed Auburn to withstand a second-half 3-point barrage from Wofford.

The Tigers (1-1) trailed by just two points at the end of the third quarter, but Old Dominion (2-0) could scarcely miss in the final 10 minutes, shooting 90 percent (9-of-10) in the fourth period and 5-of-5 on 3-pointers to break open what had been a tight game.

Thompson picked up where she left off with her 21st career double-double, scoring 25 points and pulling down 11 rebounds. Alexander finished with 22 points and was 9-of-12 at the free-throw line, including a 7-of-8 mark in the fourth quarter.

Senior Daisa Alexander finished with 17 points and four steals to lead the Tigers. Junior Unique Thompson picked up her second double-double in as many games with a 13-point, 10-rebound performance that saw her go 5-of-6 from the floor.

Sophomore Brooke Moore scored 15 points in her first career start, and freshman Annie Hughes finished with 10 points, a team-high four assists and two steals. Sophomore Kiyae White pulled down a career-high nine rebounds as she started for the first time.

Sophomore Brooke Moore recorded her second straight 15-point game and remained perfect at the free-throw line for her career, going 7-for-7. And freshman Annie Hughes scored 12 points and had two steals.

Three freshmen made their Auburn debuts. Hughes started and played just under 30 minutes, and Maliya Perry and Morgan Robinson-Nwagwu saw 11 minutes each off the bench.

As a team, the Tigers shot 43.3 percent from the field (26-60) and hit 8-of-19 3-point attempts (42.1%). Auburn also out-rebounded the Monarchs 34-28. But Old Dominion shot a blistering 59.3 percent from the field and 50 percent (14-of-28) from 3-point range.

Auburn shot 46.9 percent for the game (30-of-64) and was 20-of-28 at the free-throw line. The Tigers out-rebounded the Terriers 43-32, including 17 offensive rebounds that led to 22 second-chance points. Auburn also controlled the paint, outscoring Wofford inside 38-18. The Terriers, shot 48.1 percent from 3-point range, hitting 13-of-27 attempts from long range, including 9-of-16 in the second half.

The Monarchs, who were just 1-of-13 from 3-point range in their first game, hit 8-of-17 from long range in the first half alone to lead most of the opening half and take a 41-39 lead at the break. Auburn led briefly in the second quarter when Hughes put back a missed free throw to give the Tigers a 33-32 advantage with 6:01 to play.

After the teams finished the first 10 minutes tied 11-11, Auburn outscored Wofford in the second quarter 24-13 to take a 35-24 lead at the break. An 11-4 run over the first 5:13 of the third quarter pushed the Tigers' advantage to as many as 17 at 51-34. Auburn saw its lead shrink a bit by the end of the quarter but still took a 58-48 lead to the final 10 minutes.

ODU jumped back ahead by as many as 10 points midway through the third quarter, but the Tigers closed the period on an 8-0 run, punctuated by a pair of 3-pointers from Erin Howard, to head to the fourth quarter down by just two at 60-58. After an Alexander free throw got Auburn within one 16 seconds into the fourth, the Monarchs missed just one shot the entire period and went on a 25-10 run over the next six-plus minutes to build a 16-point lead and secure the road win.

**2019-20 Auburn Women's Basketball
Auburn Combined Team Statistics (as of Nov 15, 2019)
All games**

RECORD:	OVERALL	HOME	AWAY	NEUTRAL
ALL GAMES	1-1	1-1	0-0	0-0
CONFERENCE	0-0	0-0	0-0	0-0
NON-CONFERENCE	1-1	1-1	0-0	0-0

##	Player	gp-gs	min	Total		3-Point		F-Throw		Rebounds				pf	dq	a	to	blk	stl	pts	avg	
				fg-fga	fg%	3fg-fga	3fg%	ft-fa	ft%	off	def	tot	avg									
00	Daisa Alexander	2-2	61	30.5	11-28	.393	3-8	.375	14-20	.700	2	8	10	5.0	7	0	4	6	0	6	39	19.5
20	Unique Thompson	2-2	60	30.0	14-19	.737	0-0	.000	10-17	.588	13	10	23	11.5	5	0	3	5	0	2	38	19.0
05	Brooke Moore	2-2	60	30.0	9-25	.360	3-13	.231	9-9	1.000	2	1	3	1.5	1	0	3	3	1	4	30	15.0
03	Annie Hughes	2-2	65	32.5	9-12	.750	2-2	1.000	2-3	.667	5	1	6	3.0	4	0	5	0	0	5	22	11.0
13	Lauren Hansen	1-0	21	21.0	3-7	.429	1-3	.333	0-0	.000	0	0	0	0.0	5	1	1	4	0	1	7	7.0
10	Kiyae' White	2-2	37	18.5	3-8	.375	0-0	.000	1-5	.200	3	12	15	7.5	4	0	4	2	0	1	7	3.5
04	Abigayle Jackson	2-0	17	8.5	3-6	.500	0-1	.000	1-2	.500	1	2	3	1.5	4	0	0	1	1	0	7	3.5
24	Erin Howard	2-0	37	18.5	2-8	.250	2-7	.286	0-0	.000	2	4	6	3.0	5	0	1	1	2	1	6	3.0
12	Maliya Perry	2-0	18	9.0	2-4	.500	1-1	1.000	0-2	.000	1	1	2	1.0	2	0	1	0	0	0	5	2.5
35	Natalie Kelly	1-0	6	6.0	0-0	.000	0-0	.000	0-0	.000	0	0	0	0.0	0	0	0	0	0	0	0	0.0
30	M. Robinson-Nwagwu	2-0	19	9.5	0-8	.000	0-0	.000	0-0	.000	2	4	6	3.0	1	0	2	5	0	1	0	0.0
	Team										4	3	7				1					
	Total.....	2	401		56-125	.448	12-35	.343	37-58	.638	35	46	81	40.5	38	1	24	28	4	21	161	80.5
	Opponents.....	2	400		58-118	.492	27-58	.466	28-38	.737	18	44	62	31.0	47	-	29	30	6	13	171	85.5

TEAM STATISTICS	AU	OPP	Date	Opponent	Score	Att.
SCORING	161	171	11/06/19	WOFFORD	W 84-82	1618
Points per game	80.5	85.5	11/14/19	OLD DOMINION	L 77-89	1635
Scoring margin	-5.0	-				
FIELD GOALS-ATT	56-125	58-118				
Field goal pct	.448	.492				
3 POINT FG-ATT	12-35	27-58				
3-point FG pct	.343	.466				
3-pt FG made per game	6.0	13.5				
FREE THROWS-ATT	37-58	28-38				
Free throw pct	.638	.737				
F-Throws made per game	18.5	14.0				
REBOUNDS	81	62				
Rebounds per game	40.5	31.0				
Rebounding margin	+9.5	-				
ASSISTS	24	29				
Assists per game	12.0	14.5				
TURNOVERS	28	30				
Turnovers per game	14.0	15.0				
Turnover margin	+1.0	-				
Assist/turnover ratio	0.9	1.0				
STEALS	21	13				
Steals per game	10.5	6.5				
BLOCKS	4	6				
Blocks per game	2.0	3.0				
ATTENDANCE	3253	0				
Home games-Avg/Game	2-1626	0-0				
Neutral site-Avg/Game	-	0-0				

* - Conference game

Score by Periods	1st	2nd	3rd	4th	Totals
Auburn	32	42	42	45	161
Opponents	35	30	43	63	171



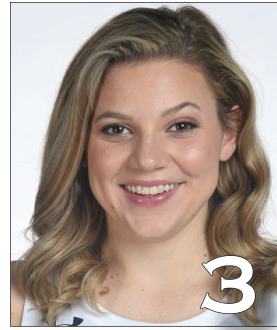
Daisa Alexander
Senior • G • 5-8
Decatur, Ga.
Southwest DeKalb HS



Robyn Benton
Sophomore • G • 5-9
Atlanta, Ga.
Greater Atlanta Christian School



Sania Wells
Freshman • G • 5-7
Moss Point, Miss.
East Central HS



Annie Hughes
Freshman • G • 5-9
Dutton, Ala.
Pisgah HS



Brooke Moore
Sophomore • G • 5-7
Atlanta, Ga.
Henry County HS



Kiyae' White
RS Sophomore • F • 6-2
Macungie, Pa.
Emmaus HS



Maliya Perry
Freshman • G/F • 6-0
Columbus, Ohio
Pickerington Central HS



Lauren Hansen
Freshman • G • 5-8
Setauket, N.Y.
Ward Melville HS



Jala Jordan
Sophomore • F • 6-2
Philadelphia, Pa.
West Virginia



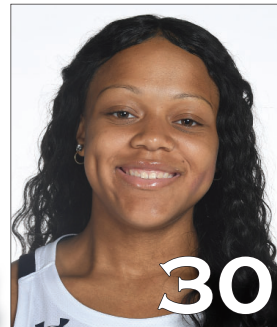
Unique Thompson
Junior • F • 6-3
Theodore, Ala.
Faith Academy



Honesty Scott-Grayson
Sophomore • G • 5-9
Brick, N.J.
Baylor



Erin Howard
Sophomore • G/F • 6-1
Madison, Wis.
Madison East HS



Morgan Robinson-Nwagwu
Freshman • G • 5-8
Norcross, Ga.
Norcross HS



Natalie Kelly
Freshman • F • 6-3
Albany, La.
Albany HS



Terri Williams-Flournoy
Head Coach
Penn State (1991)
Eighth Season



Ty Evans
Associate Head Coach
Wisconsin-Whitewater (1995)
Eighth Season



Clarisse Garcia
Assistant Coach
Villanova (2007)
Fourth Season



La'Keshia Frett Meredith
Assistant Coach
Georgia (1997)
First Season