



# 2018 AUBURN VOLLEYBALL

AUBURN ATHLETICS COMMUNICATIONS: 392 SOUTH DONAHUE DRIVE || AUBURN, AL 36830 || AUBURNTIGERS.COM || @AUBURNVB

## 2018 SCHEDULE/RESULTS

5-3, 0-0 SEC

### DATE OPPONENT TIME/TV/RESULT

#### War Eagle Invitational - Auburn, Ala.

Aug. 24 **HIGH POINT** 6:30 p.m. W, 3-0

Aug. 25 **MICHIGAN** 7 p.m. L, 0-3

#### Butler Invitational - Indianapolis, Ind.

Aug. 31 at Butler 6 p.m. W, 3-0

Sept. 1 vs. Illinois State 9 a.m. L, 1-3

Sept. 1 vs. Eastern Illinois 3 p.m. W, 3-0

#### Kansas Classic - Lawrence, Kan.

Sept. 7 vs. Loyola Marymount 10 a.m. L, 0-3

Sept. 7 at Kansas 7 p.m. W, 3-2

Sept. 8 vs. American 11 a.m. W, 3-0

Sept. 11 at Kennesaw State 6 p.m.

Sept. 16 **FLORIDA STATE** 12 p.m. SECN

Sept. 21 **TENNESSEE\*** 7 p.m. SEC+

Sept. 23 at Alabama\* 1 p.m. SEC+

Sept. 26 at Mississippi State\* 6 p.m. ESPN

Sept. 30 at Ole Miss\* 2 p.m. SECN

Oct. 3 **GEORGIA\*** 6 p.m. ESPN

Oct. 7 **ALABAMA\*** 1:30 p.m. SEC+

Oct. 12 at Texas A&M\* 6 p.m. SEC+

Oct. 14 at LSU\* 1 p.m. SEC+

Oct. 19 at Missouri\* 6:30 p.m. SEC+

Oct. 26 **OLE MISS\*** 7 p.m. SEC+

Oct. 28 **ARKANSAS\*** 1:30 p.m. SEC+

Oct. 31 **TEXAS A&M\*** 7 p.m. SECN

Nov. 4 at South Carolina\* 12:30 p.m. SEC+

Nov. 7 **MISSOURI\*** 8 p.m. SECN

Nov. 11 **FLORIDA\*** 12 p.m. SECN

Nov. 15 at Georgia\* TBA SEC+

Nov. 21 **MISSISSIPPI STATE\*** 7 p.m. SEC+

Nov. 24 at Kentucky\* TBA SEC+

All times Central. Home Matches in **BOLD CAPS**.

+ = SEC Network +/ESPN3.com \* = SEC match

## AUBURN ATHLETICS COMMUNICATIONS

KIRK SAMPSON..... Associate AD

..... sampska@auburn.edu

KENDRA WILLARD..... Volleyball Contact

..... kal0014@auburn.edu

..... C: 614-929-8029

Web..... AuburnTigers.com

Twitter..... @AuburnVB

Instagram..... @auburnvolleyball

Office Phone..... (334) 844-9800

## MATCH

# 9

# KENNESAW STATE

Tuesday, Sept. 11 • 6 p.m. CT

Kennesaw, Ga. • Convocation Center



Site ..... Kennesaw, Ga.  
 Venue ..... Convocation Center  
 Live Stats ..... AuburnTigers.com  
 Live video ..... WatchESPN.com  
 Twitter ..... @AuburnVB  
 Series Record vs. Kennesaw State ..... Auburn leads 3-0  
 Last Meeting ..... 8/30/16 in Auburn  
 Auburn, 3-2 (25-18, 21-25, 15-25, 28-26, 15-10)

AUBURN  
KENNESAW ST.

Rankings ..... N/R  
 2018 Record ..... 5-3  
 Head Coach ..... Rick Nold  
 Record at AU (Year) ..... 113-104 (8th)

Rankings ..... N/R  
 2018 Record ..... 6-3  
 Head Coach ..... Keith Schnuzel  
 Year at KSU ..... 6th

## THREE HITS

**1** Freshman Taylor Rowland was named the SEC Freshman of the Week after leading the Tigers to a 2-1 record at the Kansas Invitational this past weekend.

**2** Junior middle blocker Shaina White had a breakout match vs. American Saturday, having 12 kills and a .688 hitting percentage with five blocks in the three-set win.

**3** Rowland became the first Tiger in 2018 to reach 20+ kills, having 23 in Auburn's five-set victory over host Kansas Friday night.

## AUBURN'S POTENTIAL STARTERS



BRENNA MCILOY	TAYLOR ROWLAND	CHESNEY MCCLELLAN	SHAINA WHITE	BELLA ROSENTHALL	MICA ALLISON	PAYTON WHITE
#8 • OH • SR • 5-11	#12 • OH • FR • 6-3	#7 • MB • SO • 6-4	#4 • MB • JR • 6-1	#6 • L • FR • 5-5	#1 • S • FR • 6-1	#3 • DS • SO • 5-7
K/S: 2.96	K/S: 3.68	K/S: 1.33	K/S: 1.43	-	K/S: .70	-
HIT%: .216	HIT%: .269	HIT%: .293	HIT%: .234	A/S: .67	A/S: 10.3	A/S: .44
D/S: 2.81	D/S: .32	D/S: .11	D/S: .48	D/S: 3.78	D/S: 1.74	D/S: 1.81
B/S: .44	B/S: .24	B/S: .83	B/S: .71	SA/S: .15	B/S: .48	SA/S: .15
P/S: 3.59	P/S: 3.82	P/S: 1.81	P/S: 1.81	P/S: .15	P/S: 1.07	P/S: .15
SA/S: .41					SA/S: .11	

K/S: kills per set • HIT%: hitting percentage • D/S: digs per set • B/S: blocks per set • A/S: assists per set • SA/S: aces per set • P/S: points per set

#WarEagle



AuburnTigers.com



@AuburnVB | @AuburnTigers  
@CoachRickNold



/AuburnVB  
/AuburnTigers

TEAM SCHEDULE AND MEDIA AVAILABILITY » WEEK OF SEPTEMBER 10 - 16

MONDAY September 10	TUESDAY September 11	WEDNESDAY September 12	THURSDAY September 13	FRIDAY September 14	SATURDAY September 15	SUNDAY September 16
TRAVEL DAY	MATCH 6 p.m. Auburn at Kennesaw St.	PRACTICE 12:15 p.m. - 3:15 p.m. Auburn Arena	PRACTICE 11:00 a.m. - 2 p.m. Auburn Arena	PRACTICE 12:15 p.m. - 3:15 p.m. Auburn Arena	PRACTICE 9 a.m. - 11 a.m. Auburn Arena	MATCH 12 p.m. Auburn vs. Florida State
		Interviews by request	Interviews by request	Interviews by request	Interviews by request	

AUBURN ATHLETICS COMMUNICATIONS

QUICK FACTS

AUBURNTIGERS.COM

For updated game notes, statistics and all the latest information on Auburn volleyball and game weekend activities, go to AuburnTigers.com.

INTERVIEW POLICY

Coach Nold, assistant coaches and all athletes are available for phone and personal interviews by contacting Kendra Willard in the media relations office. Post-match interviews will be conducted on the court or in the media room following a 10-minute cooling-off period.

CREDENTIALS

Anyone wishing to cover an Auburn volleyball match should contact Kendra Willard in the communications office at least one day in advance in order to make the proper arrangements. Credentials are not required for attendance at the match, but those wishing to reserve a seat on press row should provide advance notice.

MATCH DAY SERVICES

Notes for both teams and flip cards will be provided prior to the match. Stats will be distributed between sets and after the match. Wireless internet is available in the Arena; ask Kendra Willard for the password.

VIDEO SERVICES

FTP feeds of selected Auburn volleyball highlights are available for the media. A number of studio and satellite services may be arranged for electronic media by calling Clara Baena Sanchez in the Auburn video services office at cbs0036@auburn.edu.

PHOTO SERVICES

For photos of Auburn volleyball or anything pertaining to Auburn Athletics, contact Wade Rackley at 334-750-6907 or via email at wwr0004@auburn.edu

COMMUNICATIONS STAFF

Kendra Willard Volleyball contact  
cell: 614-929-8029  
email: kal0014@auburn.edu

Kirk Sampson Associate AD  
cell: 334-750-1385  
email: sampska@auburn.edu

GENERAL INFORMATION

Location ..... Auburn, Ala.  
Founded ..... 1856  
Enrollment ..... 29,776  
Nickname ..... Tigers  
Colors ..... Burnt Orange and Navy Blue  
Facility (Capacity) ..... Auburn Arena (9,121)  
President ..... Dr. Steven Leath  
Director of Athletics ..... Allen Green  
Sport Administrator ..... Joy Vrbka

VOLLEYBALL HISTORY

First Year of Volleyball ..... 1967  
..... (discontinued 1981; reinstated 1986)  
All-Time Record ..... 641-632-4 (.502)  
All-Time SEC Record (since 1986) ..... 177-309 (.364)  
All-Time Home Record (since 1986) ..... 216-181 (.544)  
at Auburn Arena (since 2013) ..... 44-28 (.611)  
NCAA Tournament Appearances ..... 1  
Last NCAA App./Result ..... 2010 - Second Round  
SEC Championships ..... 1  
Last ..... 1996 - Co-West Champions

COACHING STAFF

Head Coach ..... Rick Nold  
Alma Mater, Year ..... Louisville, 1998  
Year at Auburn ..... Eighth  
Overall Record ..... 285-202 (.585) / 17th year  
Auburn Record ..... 113-104 (.519) / 8th year  
Assistant Coach ..... Eysa Ambler  
Alma Mater, Year ..... Jacksonville State, 2001  
Year at Auburn ..... Eighth  
Assistant Coach ..... Alex Wilharm  
Alma Mater, Year ..... Clarke, 2011  
Year at Auburn ..... Second  
Director of Operations ..... Paige Wetzal  
Athletic Trainer ..... Marie Siler  
Strength & Conditioning Coach ..... Bryan Karkoska  
Student Manager ..... Morgan Brackin

GAMEDAY EXPERIENCE: AUBURN ARENA

» Auburn Arena is in its sixth season as home of Auburn Volleyball. The Tigers are 44-28 since moving to the Arena in 2013. The facility seats approximately 2,000 fans for volleyball and 9,121 for basketball.



TEAM INFORMATION

2017 Record ..... 15-12  
2017 SEC Record ..... 8-10  
SEC Finish ..... t-7th  
Starters Returning/Lost ..... 5/1+libero  
Letterwinners Returning/Lost ..... 10/4  
Newcomers ..... 7

**FIRST SERVE**

- » The Auburn volleyball continues its long road stretch, traveling to Kennesaw State for a midweek match Tuesday. The Tigers and the Owls face off at 6 p.m. CT in Kennesaw, Ga., in the Convocation Center.
- » Auburn has an all-time record of 641-632-4 (.502) in its 46th full season of volleyball.
- » Head Coach Rick Nold stands at 113-104 in his eighth season on the Plains and is the second-winningest coach in Auburn volleyball history.
- » Auburn's 2018 schedule boasts 10 2017 NCAA Tournament participants.
- » The Tiger roster features two seniors, four juniors, five sophomores and six freshmen.

**LAST TIME OUT**

- » Auburn traveled to Lawrence, Kan., for the competitive Kansas Invitational, Sept. 7-8. The Tigers opened with a three-set (18-25, 20-25, 16-25) loss to Loyola Marymount before rebounding with a 3-2 (25-18, 18-25, 22-25, 27-25, 15-6) victory over host Kansas Friday night in front of a sold-out crowd. The Tigers capped the weekend with a sweep of American (25-21, 26-24, 25-23).
- » Freshmen Taylor Rowland and Mica Allison were placed on the all-tournament team for their efforts.
- » Rowland led the team with a 4.36 kills/set average and finished with a .295 hitting percentage over 11 sets played. The Charlotte, N.C., product totaled double-digit kills in all three matches, including 23 kills against host Kansas.
- » In addition, Rowland hit .480 against LMU, going 13-1-25 over three sets.
- » Freshman libero Bella Rosenthal put together a big performance against the Jayhawks Friday night. The Yorktown, Ind., product finished with a career-best 20 digs in the 3-2 win.
- » Senior Brenna McClroy picked up her third double-double of the year against the Jayhawks, having 14 kills and 14 digs. Also in the match, McClroy set a season-best with three service aces.
- » Junior middle blocker Shaina White came alive in the team's win vs. American, finishing with a season-best .688 hitting percentage. She went 12-1-16 offensively for the Tigers, while adding five blocks.
- » Junior Gwyn Jones hit .421 against the Jayhawks, finishing with nine kills on 19 attempts with just one error.

**UP NEXT**

- » The Tigers return to Auburn Arena Sunday, hosting Florida State in the final non-conference match of 2018. Auburn and the Seminoles will go head-to-head at 12 p.m. CT on SEC Network.

**SCOUTING KENNESAW STATE**

- » The Kennesaw State Owls stand at 6-3 overall following an 0-3 mark at the Panther Invitational in Pittsburgh. KSU dropped a five-set content to host and then-No. 11 Pittsburgh before falling in three to Dayton. The Owls capped the tough weekend with a 3-1 loss to then-No. 12 Washington.
- » KSU is riding a home-winning streak of 15 matches that date back to Oct. 21, 2016.
- » Lauren Chastang leads the team with 123 kills on the year and a 3.42 kills/set average.
- » Setter Lexi Broadwater has paced the Owls to a .233 hitting percentage and has a 10.75 assists/set average.
- » Karlee Groover has a team-best 3.86 digs/set average with 139 on the year.

**A WIN OVER KSU WOULD...**

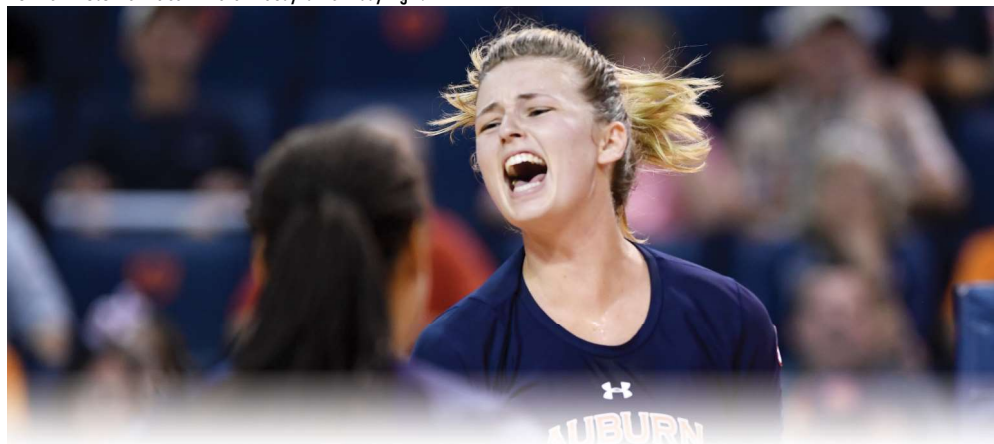
- » Be Auburn's fourth-straight win in the series history.

**AUBURN-KSU SERIES**

- » The teams have only met three times with Auburn holding a 3-0 record in the series.
- » Auburn and KSU last met in 2016 in Auburn where the Tigers held on for a 3-2 victory over the Owls.

**PLAYER TO WATCH: TAYLOR ROWLAND**

- » Taylor Rowland was named the SEC Freshman of the Week after averaging 4.36 kills/set over the weekend in Kansas. She reached a career-best 23 kills in Auburn's five-set win over the Jayhawks Friday night.



**SEC STANDINGS & SCHEDULE**

	(Sept. 10)					
	SEC Matches	All Matches		W	L	Pct.
	W	L	Pct.	W	L	Pct.
Alabama	0	0	.000	9	0	1.000
Ole Miss	0	0	.000	9	1	.900
South Carolina	0	0	.000	9	1	.900
Georgia	0	0	.000	8	1	.889
Missouri	0	0	.000	7	2	.778
Tennessee	0	0	.000	7	2	.778
Arkansas	0	0	.000	6	2	.750
Texas A&M	0	0	.000	6	3	.667
<b>AUBURN</b>	0	0	.000	5	3	.625
Florida	0	0	.000	5	3	.625
Kentucky	0	0	.000	4	4	.500
Mississippi State	0	0	.000	4	6	.400
LSU	0	0	.000	3	6	.333

**THIS WEEK IN THE SEC**

**Tuesday, September 11**

- #25 Alabama vs. Samford - 7 p.m.
- Auburn at Kennesaw State - 6 p.m.
- Ole Miss vs. Memphis - 7 p.m.

**Wednesday, September 12**

- #11 Florida at Florida State - 5 p.m.

**Thursday, September 13**

- Mississippi State at North Texas - 7 p.m.

**Friday, September 14**

- #25 Alabama vs. South Alabama - 10 a.m.
- #25 Alabama vs. #15 Purdue - 7 p.m.
- Arkansas vs. NC State - 3 p.m.
- #11 Florida vs. Jacksonville - 11 a.m.
- #11 Florida vs. Florida International - 6 p.m.
- Georgia at Georgia Tech - 6 p.m.
- #20 Kentucky at Louisville - 6 p.m.
- LSU vs. Liberty - 10 a.m.
- LSU vs. Abilene Christian - 4:30 p.m.
- Mississippi State vs. #14 Cal Poly - 3 p.m.
- Ole Miss vs. Austin Peay - 10 a.m.
- Ole Miss at Rice - 6:30 p.m.
- Missouri vs. Texas A&M-CC - 11 a.m.
- Missouri vs. Ohio - 7 p.m.
- South Carolina vs. Toledo - 2:30 p.m.
- Tennessee at Dayton - 6 p.m.
- Texas A&M at Oklahoma - 7 p.m.

**Saturday, September 15**

- #25 Alabama vs. Southern Miss - 2 p.m.
- Arkansas at Georgia Tech - 3 p.m.
- #11 Florida vs. Army - 1 p.m.
- Georgia vs. NC State - 12 p.m.
- LSU vs. SMU - 2:30 p.m.
- Mississippi State vs. SF Austin - 3:30 p.m.
- Ole Miss vs. McNeese - 1:30 p.m.
- Missouri vs. Drake - 2:30 p.m.
- South Carolina vs. Virginia - 9:30 a.m.
- South Carolina at VCU - 6 p.m.
- Tennessee vs. Ohio State - 9 a.m.
- Tennessee vs. Evansville - 3:30 p.m.
- Texas A&M vs. Northwestern St. - 11 a.m.
- Texas A&M at Oklahoma - 5 p.m.

**Sunday, September 16**

- Auburn vs. Florida State - 12 p.m.
- #20 Kentucky vs. UT Chattanooga - 12:30 p.m.

AVCA Top 25

Rk	Team	(Sept. 10) Record	Prev
1	BYU (54)	8-0	3
2	Stanford (10)	6-1	4
3	Texas	5-1	6
4	Nebraska	6-1	7
5	Penn State	6-1	5
6	Wisconsin	5-1	2
7	Minnesota	5-2	1
8	Illinois	8-0	11
9	Pittsburgh	9-0	13
10	Creighton	6-3	14
11	<b>Florida</b>	5-3	8
12	Oregon	5-3	18
13	Washington	5-2	12
14	Cal Poly	7-1	22
15	Purdue	8-0	19
t-16	Southern California	6-3	10
t-16	UCLA	4-2	9
18	Baylor	6-3	15
19	<b>Michigan</b>	9-0	20
20	<b>Kentucky</b>	4-4	16
21	Marquette	7-2	25
22	Washington State	7-0	23
23	San Diego	2-4	16
24	Utah	7-2	21
25	<b>Alabama</b>	9-0	NR

**Also receiving votes:** Iowa State, Northern Iowa, **Georgia**, Louisville, Michigan State, Colorado State, Colorado, Wyoming, **Tennessee**, Cincinnati, Kansas State, **Loyola Marymount**, Wichita State, Arizona, Oregon State, Portland

Inside the Matchup

**Auburn at Kennesaw State** 3-0 (1,000)

Away: 1-0  
Home: 2-0

Series History

2006	Kennesaw	W	3-0
2007	Auburn	W	3-0
2016	Auburn	W	3-2

**NOLD IN AUBURN HISTORY**

» In his eighth season at Auburn, head coach Rick Nold has a 113-104 overall record on the Plains. He became the third coach in program history to record 100 or more wins with the Tigers after Auburn swept Clemson, Sept. 9, 2017.

» With his 106th win vs. Alabama (Nov. 1, 2017), he moved up to No. 2 all-time in Auburn volleyball history.

Coach	Years at Auburn	Record
Sandra Newkirk	1967-79	134-107-4 (.556)
<b>Rick Nold</b>	<b>2011-present</b>	<b>113-104 (.519)</b>
Pat Ghasin	1986-90	105-77 (.577)
Liz Underwood	1992-97	99-77 (.577)

**SEC FRESHMAN OF THE WEEK**

» Taylor Rowland earned SEC Freshman of the Week Monday after putting together big performances at the Kansas Invitational.

» She led the squad with a 4.36 kills/set average

» Against Loyola Marymount in the tournament-opening match Friday, Rowland continued her hot streak at the net and went 13-1-25 for a .480 hitting percentage in the three-set match against the Lions.

» Rowland followed with a career-best 23 kills vs. the Jayhawks in front of the sold-out home crowd. She became the first Tiger this season to have 20 or more kills.

» Rowland capped the weekend with another double-digit kill performance, having 12 in the sweep of American. She led the Tigers in kills in all three matches.

**MACK ATTACK**

» Senior Brenna McLroy picked up where she has left off the last three season, leading the Tigers offensively on the outside. The Garland, Texas, product has 2.96 kills/set average on the year with 80 over 27 sets played.

» McLroy became the 15th Tiger in program history to reach 1,000 career kills in the team's 3-0 win at Butler (Aug. 31). She has 1,056 to her credit so far.

» In addition to her skill at the net, the 5-11 outside hitter also excels for the Tigers defensively in the back row. She is second on the team with a 2.81 digs/set average and picked up a season-best 16 digs vs. Eastern Illinois (9/1).

» McLroy needs just 98 digs to reach 1,000 in that category. She'll be the seventh Tigerto achieve both milestones in a career.

» McLroy has found herself among the Top 10 in the SEC so

far this season - 1-7th in aces/set (.41).

**TOP-NOTCH NEWCOMERS**

» The 2018 Auburn volleyball signing class is ranked the seventh-best incoming group in the nation.

» The 2018 class garnered the highest ranking in program history, featuring three Top 35 Senior Aces and two Gatorade Players of the Year.

» Auburn's incoming freshmen are also ranked the second-highest among Southeastern Conference opponents

**NEBRASKA TRANSFER**

» Sophomore Chesney McClellan is in her first season on the Plains after transferring from defending national champion Nebraska this summer.

» McClellan is a 6-4 middle blocker that saw time on the court with the Huskers in four matches last year.

**SETTING UP THE OFFENSE**

» Freshman Mica Allison as earned the starting nod in all matches at setter for the Tigers the year.

» The White Heath, Ill., native is fifth in the Southeastern Conference with a 10.37 assists/set average.

» Allison picked up a career-best 47 assists in the five-set win at Kansas (9/7).

» She added 43 assists in the team's 3-0 win over Eastern Illinois (9/1).

» Against the Panthers, Allison paced the Tiger offense to a .485 hitting clip (53-5-99). That average ranked tied for fifth in program history.

» In addition to her success at setter, Allison has started to improve defensively in the back row. She picked up her first career double-double vs. Illinois State (9/1), having 40 assists and 11 digs for the Tigers.

**YOUTH IN THE BACK**

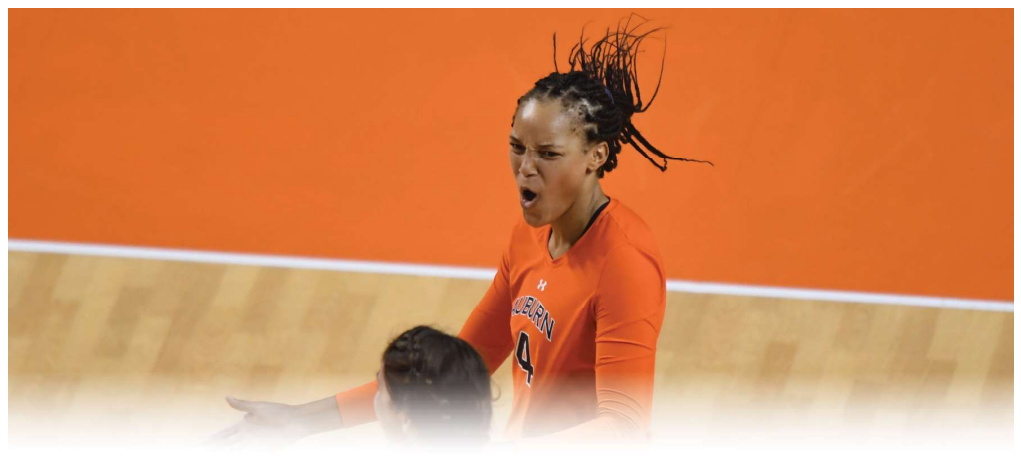
» The Tiger back row consists of a freshman, sophomore and junior.

» Freshman Bella Rosenthal has earned the starting nod at libero in all eight matches for the Tigers. The Yorktown, Ind., product leads the team with a 3.78 digs/set average. That mark ranks tied for seventh in the SEC.

» Rosenthal has totaled five double-digit dig performances on the year, including a 20-dig match at Kansas (9/7). Prior to the Jayhawks, Rosenthal put together a 19-dig match vs. Michigan (8/25). She opened her career with 17 digs vs. High Point (8/24).

**PLAYER TO WATCH: SHAINA WHITE**

» Junior Shaina White put together a big performance Saturday vs. American, helping the Tigers sweep the Eagles to close out the Kansas Invitational. She finished with 12 kills on 16 attempts for a .688 hitting clip and added five blocks in the victory.



- >> Sophomore Payton White and junior Karis Beasley have provided experience in the back for Auburn. The duo each played in all sets in 2017.
- >> White is third on the team with a 1.81 digs average.
- >> Beasley is fifth with a 1.70 digs/set mark.

**TIGERS PICKED SIXTH IN PRESEASON POLL**

- >> Auburn was chosen to finish sixth in the Southeastern Conference in this season's preseason coaches' poll.
- >> Auburn earned 78 points from the league's 13 coaches.
- >> Kentucky edged Florida as the favorite to win the conference championship, securing eight first-place votes and 140 points. Florida had five votes and 137 points. Missouri was selected third, while Georgia and LSU finished in a tie for fourth.
- >> Arkansas, Texas A&M, South Carolina, Tennessee, Ole Miss, Alabama and Mississippi State round out the poll.

**ALLISON'S SUCCESSFUL SUMMER**

- >> Freshman setter Mica Allison and the U.S. Women's Junior National Team captured the NORCECA Continental Championship in June to qualify for the 2019 FIVB U20 World Championship.
- >> Allison started at setter in all five matches for Team USA. She finished the week with nine service aces, including three against Puerto Rico (6/18) and again vs. Mexico (6/22). She added four blocks in the team's win against Mexico to reach the championship final.

**THIS, THAT, AND THE OTHER**

- >> Junior Karis Beasley's mother was a member of the Canadian National Softball Team from 1987-1996 and competed at the 1996 Olympics in Atlanta.
- >> Junior Gwyn Jones comes from a family background filled with volleyball success. Her mother played volleyball at Kentucky, while her aunt, Mary Jones Buczek, also played for the Wildcats. Buczek went on to coach at Wake Forest (1995-2000) and Georgia (2000-2005).
- >> Sophomore Payton White comes from a volleyball family as well. Her oldest sister played at College of Charleston, while her other sister is a sophomore on Penn State's volleyball team.
- >> Freshman Tatum Shiples has a wealth of athletic talent

in her family's history. Her mother, Laurel, played basketball at Kentucky, while her father, Rocky, played basketball at The Master's University. Her brother, T.J., was a member of the Georgia State basketball team. Grandfather, Don Hudgens, played basketball at Wheaton College and her great grandparents, Ira and Opal, played basketball at Southern Illinois.

**Head Coach Rick Nold**

at Auburn: 113-104 (8th)  
Overall: 285-201 (17th)



**Hometown:**  
Louisville, Ky.  
**Education:**  
Louisville, 1998

**COACHING EXPERIENCE**  
Falls Cities Volleyball Club (1989-92)  
• Louisville, Ky.  
Assumption High School (1992-95)  
• Louisville, Ky.  
USA Volleyball (Intern) (1995)  
Kentucky-Indiana Volleyball Academy (1995-02)  
• Louisville, Ky.  
Louisville Assistant Coach (1998-01)  
• Louisville, Ky.  
Jacksonville State Head Coach (2002-10)  
• Jacksonville, Ala.  
Auburn Head Coach (2011 - )  
• Auburn, Ala.

Rick Nold enters his eighth season as Auburn's head volleyball coach in 2018 after being named the 10th head coach in program history on April 10, 2011. In his seven seasons on the Plains, Nold has put together an 113-104 overall record (.519). He enters the season with a career winning percentage of .585 in 17 years as a collegiate head coach, having a 285-202 mark.

The 2017 season saw the Tigers go 15-12 overall, picking up big non-conference wins. Auburn opened with a sweep at Georgia Tech and topped then-No. 16 North Carolina and NC State in Puerto Rico. Boasting one of the toughest schedules in the Southeastern Conference, the squad finished 8-10 overall against the league and came in a tie for seventh.

Auburn had one of its best finishes in the SEC in 2016, going 9-9 and finishing tied for fifth overall. The league finish was the best for the program since 2010 as the squad went 15-16 overall. Jesse Earl and Alexa Filley were named All-SEC and honored by the AVCA All-South region. Earl and Filley both reached 1,000 career digs as juniors and Earl's path to that total marked the fastest by any Tiger in program history. Gwyn Jones picked up SEC All-Freshman honors, marking the second-straight season a Tiger has been recognized.

The 2015 season was an exciting one for the young Tiger team as the squad went 18-12 overall and came in sixth in the conference with an 10-8 mark. The team upped its defensive presence from the previous season and finished second overall among SEC opponents with a 15.62 digs/set average. Freshman Brenna McIlroy earned SEC All-Freshman accolades, marking the first time since 2010 that a Tiger newbie was honored by the league. Stephanie Campbell was named the SEC Scholar-Athlete of the Year — the fourth honor in program history. Auburn's 3-2 win over then-No. 11 Florida was the team's first win over a nationally-ranked opponent since 2013 and snapped a 41-match losing streak to the Gators. Auburn finished 11-3 at home in Auburn Arena.

The Tigers finished 19-11 during the 2013 season, tying for sixth in the SEC with a 10-8 conference record. The 10 victories in SEC play were the most by the Tigers since 2010 and just the second time in the last 15 years that Auburn posted 10 wins in league action. Nold also guided the Tigers to their first-ever win over a top-10 opponent, knocking off No. 10 Nebraska, 3-1.

His second season (2012) saw a six-match improvement from his first as he took the Tigers from an 11-19 mark (5-15 SEC) in 2011 to a 17-13 record (8-12 SEC) in 2012. He led the Tigers to nine straight wins to open the season, the second-longest winning streak in program history. Nold also picked up his 200th career head coaching victory on Nov. 4 with a 3-1 win over Georgia.

Nold came to Auburn after directing Jacksonville State to unprecedented heights during his nine-year tenure, winning three regular season conference titles, three conference tournament titles and making three NCAA postseason appearances.

**2018 AUBURN VOLLEYBALL ROSTER**

No.	Name	Cl.	Pos.	Ht.	Hometown/Previous School
1	Mica Allison	Fr.	S	6-1	White Heath, Ill. (Saint Thomas More)
2	Isabella Thompson	Sr.	MB	6-0	Stockton, Calif. (Santa Barbara City College)
3	Payton White	So.	DS/L	5-7	Zionsville, Ind. (Cathedral)
4	Shaina White	Jr.	MB	6-1	Mission Viejo, Calif. (Northeastern)
5	Shea McNamara	So.	MB	6-1	Cumming, Ga. (South Forsyth)
6	Bella Rosenthal	Fr.	DS/L	5-5	Yorktown, Ind. (Yorktown)
7	Chesney McClellan	So.	MB	6-4	Maryville, Tenn. (Nebraska)
8	Brenna McIlroy	Sr.	OH	5-11	Garland, Texas (Rowlett)
9	Karis Beasley	Jr.	OH/DS	5-9	Granbury, Texas (Granbury)
10	Gwyn Jones	Jr.	MB	6-3	Greenville, Ind. (Floyd Central)
11	Morgan Kull	So.	S	5-9	St. Charles, Ill. (St. Charles East)
12	Taylor Rowland	Fr.	OH	6-4	Charlotte, N.C. (Cox Mill)
13	Enija Bidzane	Jr.	OH	5-9	Talsi, Latvia (Murjanu Sports Gymnasium)
14	Katie Person	Fr.	DS/L	5-3	Grand Rapids, Mich. (East Grand Rapids)
16	Val Green	Fr.	OH	6-2	Oxford, Ohio (Talawanda)
21	Tatum Shiples	Fr.	OH	6-4	Buford, Ga. (Buford)
22	Anna Stevenson	So.	MB	6-1	Laurens, S.C. (Laurens)

**Head Coach:** Rick Nold (Eighth year at Auburn/17th year as a head coach)  
**Assistant Coach:** Eysa Ambler (Eighth year at Auburn)  
**Assistant Coach:** Alex Wilharm (Second year at Auburn)  
**Director of Operations:** Paige Wetzel (Third year at Auburn)  
**Athletic Trainer:** Marie Siler  
**Student Manager:** Morgan Brackin

Inside the Numbers



CATEGORY	AUBURN	KENNESAW STATE
Kills	349	475
Per Set	12.9	13.2
Errors	127	194
Total Attacks	913	1208
Hitting Pct.	.243	.233
Assists	329	447
Per Set	12.2	12.4
Service Aces	31	58
Per Set	1.1	1.6
Service Errors	63	98
Reception Errors	28	37
Per Set	1.0	1.0
Digs	358	462
Per Set	13.3	12.8
Solo Blocks	10	16
Block Assists	76	142
Total Blocks	48.0	87.0
Per Set	1.8	2.4

AUBURN INDIVIDUAL MATCH HIGHS (BY SET)

Three Sets

Hitting percentage .....	.688, Shaina White vs. American, 9/8/18
Kills.....	14, Taylor Rowland vs. Eastern Illinois, 9/1/18
Total Attempts .....	36, Brenna McLroy vs. Michigan, 8/25/18
Assists .....	43, Mica Allison vs Eastern Illinois, 9/1/18
Digs .....	19, Bella Rosenthal vs. Michigan, 8/25/18
Aces .....	3 (2x), last Karis Beasley vs. American, 9/8/18
Blocks .....	6, Anna Stevenson vs. Butler, 8/31/18

Four Sets

Hitting percentage .....	.216, Brenna McLroy vs. Illinois State, 9/1/18
Kills.....	13, Brenna McLroy vs. Illinois State, 9/1/18
Total Attempts .....	37, Brenna McLroy vs. Illinois State, 9/1/18
Assists .....	40, Mica Allison vs. Illinois State, 9/1/18
Digs .....	11, Allison/McLroy/Rosenthal vs. Illinois State, 9/1/18
Aces .....	2, Rosenthal/Beasley vs. Illinois State, 9/1/18
Blocks .....	7, Chesney McClellan vs. Illinois State, 9/1/18

Five Sets

Hitting percentage .....	.421, Gwyn Jones at Kansas, 9/7/18
Kills.....	23, Taylor Rowland at Kansas, 9/7/18
Total Attempts .....	59, Taylor Rowland at Kansas, 9/7/18
Assists .....	47, Mica Allison at Kansas, 9/7/18
Digs .....	20, Bella Rosenthal at Kansas, 9/7/18
Aces .....	3, Brenna McLroy at Kansas, 9/7/18
Blocks .....	4, Chesney McClellan/Shaina White at Kansas, 9/7/18

AUBURN TEAM MATCH HIGHS (BY SET)

Three Sets

Hitting percentage .....	.485 vs. Eastern Illinois, 9/1/18
Kills.....	53 vs. Eastern Illinois, 9/1/18
Total Attempts .....	125 vs. Michigan, 8/25/18
Assists .....	51 vs. Eastern Illinois, 9/1/18
Digs .....	53, 2x last vs. Michigan, 8/25/18
Aces .....	5 vs. Eastern Illinois, 9/1/18
Blocks .....	7.0 vs. Butler, 8/31/18

Four Sets

Hitting percentage .....	.169 vs. Illinois State, 9/1/18
Kills.....	46 vs. Illinois State, 9/1/18
Total Attempts .....	130 vs. Illinois State, 9/1/18
Assists .....	45 vs. Illinois state, 9/1/18
Digs .....	49 vs. Illinois State, 9/1/18
Aces .....	5 vs. Illinois State, 9/1/18
Blocks .....	9.0 vs. Illinois State, 9/1/18

Five Sets

Hitting percentage .....	.222 at Kansas, 9/7/18
Kills.....	62 at Kansas, 9/7/18
Total Attempts .....	167 at Kansas, 9/7/18
Assists .....	56 at Kansas, 9/7/18
Digs .....	59 at Kansas, 9/7/18
Aces .....	5 at Kansas, 9/7/18
Blocks .....	9.0 at Kansas, 9/7/18

**THE LAST TIME AUBURN...**

Won in three set .....	9/8/18 vs. American (25-21, 26-24, 25-23)
Won in four sets .....	11/9/17 vs. Tennessee (25-22, 23-25, 25-18, 25-20)
Won in five sets .....	9/7/18 at Kansas (25-18, 18-25, 22-25, 27-25, 15-6)
Lost in three sets.....	9/7/18 vs. Loyola Marymount (25-18, 25-20, 25-16)
Lost in four sets .....	9/1/18 vs. Illinois State (15-25, 17-25, 25-22, 22-25)
Lost in five sets.....	9/29/17 vs. Missouri (22-25, 25-23, 20-25, 25-27, 15-11)
Lost first set in a win.....	10/29/17 at South Carolina (20-25, 29-27, 25-18, 25-22)
Won first set in a loss.....	11/22/17 at #3 Florida (25-22, 10-25, 16-25, 22-25)
Lost first two sets in a win.....	9/3/16 at #21 Louisville (15-25, 17-25, 25-14, 25-22, 15-8)
Won first two sets in a loss.....	11/4/16 vs #18 Kentucky (23-25, 22-25, 26-24, 30-28, 15-12)
Beat a ranked opponent .....	9/2/17 vs. #16 North Carolina (25-23, 25-22, 25-27, 25-21)
Hit .300-.399 in a match .....	9/9/17 vs. Clemson (.321)
Hit .400-.499 in a match .....	9/1/18 vs. Eastern Illinois (.485)
Hit .500 or better in a match.....	10/18/98 at Ole Miss (.514)
Held opponent at .000-.100 in a match.....	8/31/18 vs. Butler (.080)
Held opponent to negative hitting pct.....	9/20/14 vs. Jacksonville State (-.037)
Had 70-79 kills in a match.....	9/23/16 vs. LSU (70)
Had 80+ kills in a match .....	9/17/06 at Georgia (84)
Had 80-99 digs in a match.....	10/4/17 at Tennessee (97)
Had 100+ digs in a match.....	10/25/15 at LSU (109)
Had 15+ blocks in a match.....	11/9/14 vs. Tennessee (16.0)
Had 10+ service aces in a match.....	9/2/16 vs. Stony Brook (11)
Had a player(s) with 20-24 kills in a match.....	9/7/18, Taylor Rowland at Kansas (23)
Had a player(s) with 25-29 kills in a match.....	9/13/14, Macy Reece vs. USF (25)
Had a player(s) with 30+ kills in a match.....	10/8/04, Ashlee Johns vs. Arkansas (30)
Had a player(s) with 10+ blocks in a match.....	11/23/16, Breanna Barksdale at #9 Florida (11)
Had a player(s) with 25-29 digs in a match.....	11/1/17, Jesse Earl vs. Alabama (26)
Had a player(s) with 30+ digs in a match.....	11/15/17, Jesse Earl at LSU (33)
Had a player(s) with 50+ assists in a match.....	11/9/17, Alexa Filley vs. Tennessee (53)
Had a player(s) with 60 + assists in a match.....	10/25/15, Alexa Filley at LSU (61)
Had a player(s) with 5+ aces in a match .....	9/16/17, Jesse Earl at #20 Florida State (5)

**AUBURN'S RECORD WHEN...**

Overall.....	5-3
SEC .....	-
Non-Conference.....	5-3
vs. Ranked Teams.....	-
Home.....	1-1
Away.....	2-0
Neutral .....	2-2
<b>By Set:</b>	
Three Sets.....	4-2
Four Sets .....	0-1
Five Sets.....	1-0
Won first set.....	5-0
Lost first set.....	0-3
Won second set.....	4-0
Lost second set.....	1-3
Won first two sets.....	4-0
Lost first two sets.....	0-3
<b>Situational:</b>	
More kills than opponent.....	5-0
Fewer kills than opponent .....	0-3
Kills are tied .....	-
More digs than opponent.....	3-0
Fewer digs than opponent .....	2-3
Digs are tied .....	-
More aces than opponent .....	3-1
Fewer aces than opponent .....	0-1
Aces are tied.....	2-1
Higher hitting percentage than opponent .....	5-0
Lower hitting percentage than opponent .....	0-3
Tied in hitting percentage.....	-
<b>Hitting percentage</b>	
.400 or above.....	1-0
.300-.399.....	1-0
.200-.299.....	3-1
.100-.199.....	0-2
.000-.099.....	-
Negative.....	-
<b>Opponents' hitting percentage:</b>	
.400 or above.....	0-1
.300-.399.....	-
.200-.299.....	0-2
.100-.199.....	2-0
.000-.099.....	3-0
Negative.....	-
<b>By Day:</b>	
Tuesday.....	-
Wednesday.....	-
Thursday.....	-
Friday.....	3-1
Saturday.....	2-2
Sunday.....	-
Day Matches (first serve before 6 p.m.).....	2-2
Night Matches (first serve after 6 p.m.).....	3-1
<b>By Month:</b>	
August.....	2-1
September.....	3-2
October.....	-
November.....	-
<b>By Jersey Color:</b>	
Navy.....	4-1
Orange.....	1-2
Pink.....	-

**AUBURN DOUBLE-DOUBLES IN 2018**

<b>Player</b>	<b>Opponent (Sets)</b>	<b>Date</b>	<b>Stats</b>
Allison, Mica (1)	vs. Illinois State (4)	9/1/18	40a, 11d
McIlroy, Brenna (3)	vs. Illinois State (4)	9/1/18	13k, 11d
	vs. Eastern Illinois (3)	9/1/18	10k, 16d
	at Kansas (5)	9/7/18	14k, 14d

## 2018 AUBURN MATCH-BY-MATCH STARTERS

Date	Opponent	Result	Outside	Outside	Outside/DS	Middle	Middle	Setter	Libero
8/24	HIGH POINT	W, 3-0	McIlroy	Rowland	P. White	S. White	Stevenson	Allison	Rosenthal
8/25	MICHIGAN	L, 0-3	McIlroy	Shipes	P. White	S. White	Stevenson	Allison	Rosenthal
8/31	at Butler	W, 3-0	McIlroy	Rowland	P. White	S. White	Stevenson	Allison	Rosenthal
9/1	vs. Illinois State	L, 1-3	McIlroy	Rowland	P. White	S. White	Stevenson	Allison	Rosenthal
9/1	vs. Eastern Illinois	W, 3-0	McIlroy	Jones	Beasley	McClellan	Stevenson	Allison	Rosenthal
9/7	vs. Loyola Marymount	L, 0-3	McIlroy	Jones	Beasley	S. White	McClellan	Allison	Rosenthal
9/7	at Kansas	W, 3-2	McIlroy	Rowland	P. White	S. White	McClellan	Allison	Rosenthal
9/8	vs. American	W, 3-0	McIlroy	Jones	Beasley	S. White	McClellan	Allison	Rosenthal
9/11	at Kennesaw State	6 p.m.							
9/16	FLORIDA STATE	12 p.m.							
9/21	TENNESSEE*	7 p.m.							
9/23	at Alabama*	1 p.m.							
9/26	at Mississippi State*	6 p.m.							
9/30	at Ole Miss*	2 p.m.							
10/3	GEORGIA*	6 p.m.							
10/7	ALABAMA*	1:30 p.m.							
10/12	at Texas A&M*	6 p.m.							
10/14	at LSU*	1 p.m.							
10/19	at Missouri*	6:30 p.m.							
10/26	OLE MISS*	7 p.m.							
10/28	ARKANSAS*	1:30 p.m.							
10/31	TEXAS A&M*	7 p.m.							
11/4	at South Carolina*	12:30 p.m.							
11/7	MISSOURI*	8 p.m.							
11/11	FLORIDA*	12 p.m.							
11/15	at Georgia*	TBA							
11/21	MISSISSIPPI STATE*	7 p.m.							
11/24	at Kentucky*	TBA							

## 2018 AUBURN MATCH-BY-MATCH LEADERS

Date	Opponent	Result	Kills	Assists	Aces	Digs	Blocks	Hit Pct. (Min 10 Att.)
8/24	HIGH POINT	W, 3-0	Stevenson (13)	Allison (33)	McIlroy (2)	Rosenthal (17)	Stevenson (5)	Stevenson (.500)
8/25	MICHIGAN	L, 0-3	McIlroy (12)	Allison (29)	McIlroy (2)	Rosenthal (19)	Stevenson (2)	McIlroy (.194)
8/31	at Butler	W, 3-0	Rowland (12)	Allison (30)	P. White/Beasley (2)	Rosenthal/Beasley (7)	Stevenson (6)	Jones (.545)
9/1	vs. Illinois State	L, 1-3	McIlroy (13)	Allison (40)	Rosenthal/Beasley (2)	Allison/McIlroy/Rosenthal (11)	McClellan (7)	McIlroy (.216)
9/1	vs. Eastern Illinois	W, 3-0	Rowland (14)	Allison (43)	McIlroy (3)	McIlroy (16)	McClellan (3)	Jones (.667)
9/7	vs. Loyola Marymount	L, 0-3	Rowland (13)	Allison (24)	Allison/P. White (1)	Rosenthal (6)	S. White (4)	Rowland (.480)
9/7	at Kansas	W, 3-2	Rowland (23)	Allison (47)	McIlroy (3)	Rosenthal (20)	S. White/McClellan (4)	Jones (.421)
9/8	vs. American	W, 3-0	Rowland/S. White (12)	Allison (34)	Beasley (3)	Rosenthal (14)	S. White (5)	S. White (.688)
9/11	at Kennesaw State	6 p.m.						
9/16	FLORIDA STATE	12 p.m.						
9/21	TENNESSEE*	7 p.m.						
9/23	at Alabama*	1 p.m.						
9/26	at Mississippi State*	6 p.m.						
9/30	at Ole Miss*	2 p.m.						
10/3	GEORGIA*	6 p.m.						
10/7	ALABAMA*	1:30 p.m.						
10/12	at Texas A&M*	6 p.m.						
10/14	at LSU*	1 p.m.						
10/19	at Missouri*	6:30 p.m.						
10/26	OLE MISS*	7 p.m.						
10/28	ARKANSAS*	1:30 p.m.						
10/31	TEXAS A&M*	7 p.m.						
11/4	at South Carolina*	12:30 p.m.						
11/7	MISSOURI*	8 p.m.						
11/11	FLORIDA*	12 p.m.						
11/15	at Georgia*	TBA						
11/21	MISSISSIPPI STATE*	7 p.m.						
11/24	at Kentucky*	TBA						



**The Automated ScoreBook**  
**Auburn Overall Individual Statistics (as of Sep 08, 2018)**  
**All matches**

Overall record: 5-3 Conf: 0-0 Home: 1-1 Away: 2-0 Neutral: 2-2

##	Player	Attack							Set				Serve				
		sp	mp-ms	k	k/s	e	ta	pct	a	a/s	ta	pct	sa	sa/s	se	ta	pct
12	Rowland, Taylor	25	8-4	92	3.68	32	223	.269	0	0.00	1	.000	0	0.00	0	0	.000
8	McIlroy, Brenna	27	8-8	80	2.96	31	227	.216	8	0.30	38	.211	11	0.41	19	117	.838
22	Stevenson, Anna	16	5-5	38	2.38	15	88	.261	1	0.06	4	.250	0	0.00	1	10	.900
10	Jones, Gwyn	27	8-3	58	2.15	13	141	.319	0	0.00	4	.000	0	0.00	0	0	.000
4	White, Shaina	21	7-7	30	1.43	12	77	.234	1	0.05	2	.500	0	0.00	5	72	.931
7	McClellan, Chesney	18	6-4	24	1.33	7	58	.293	2	0.11	5	.400	0	0.00	0	0	.000
21	Shipes, Tatum	6	4-1	5	0.83	4	24	.042	0	0.00	2	.000	0	0.00	0	0	.000
1	Allison, Mica	27	8-8	19	0.70	12	67	.104	280	10.3	716	.391	3	0.11	16	88	.818
9	Beasley, Karis	27	8-3	3	0.11	0	6	.500	6	0.22	20	.300	9	0.33	5	98	.949
6	Rosenthal, Bella	27	8-0	0	0.00	0	1	.000	18	0.67	79	.228	4	0.15	9	100	.910
3	White, Payton	27	8-5	0	0.00	1	1	-1.000	12	0.44	39	.308	4	0.15	6	110	.945
14	Persons, Katie	1	1-0	0	0.00	0	0	.000	0	0.00	0	.000	0	0.00	0	0	.000
11	Kull, Morgan	5	3-0	0	0.00	0	0	.000	1	0.20	1	1.00	0	0.00	1	13	.923
16	Green, Val	1	1-0	0	0.00	0	0	.000	0	0.00	0	.000	0	0.00	1	1	.000
	AUBURN	27	8-8	349	12.9	127	913	.243	329	12.1	911	.361	31	1.15	63	609	.897
	Opponents	27	8-8	353	13.0	158	913	.214	332	12.3	908	.366	28	1.04	58	589	.902

##	Player	Recept			Dig		Blocking					Points			
		sp	re	ta	pct	dig	dig/s	bs	ba	total	blk/s	be	bhe	pts	pts/s
12	Rowland, Taylor	25	1	26	.962	8	0.32	1	5	6	0.24	2	0	95.5	3.82
8	McIlroy, Brenna	27	5	147	.966	76	2.81	0	12	12	0.44	2	0	97.0	3.59
22	Stevenson, Anna	16	0	2	1.000	2	0.12	5	11	16	1.00	6	1	48.5	3.03
10	Jones, Gwyn	27	0	3	1.000	11	0.41	0	9	9	0.33	0	1	62.5	2.31
4	White, Shaina	21	0	0	.000	10	0.48	1	14	15	0.71	0	0	38.0	1.81
7	McClellan, Chesney	18	0	0	.000	2	0.11	2	13	15	0.83	1	1	32.5	1.81
21	Shipes, Tatum	6	0	2	1.000	3	0.50	0	0	0	0.00	0	0	5.0	0.83
1	Allison, Mica	27	0	0	.000	47	1.74	1	12	13	0.48	1	6	29.0	1.07
9	Beasley, Karis	27	9	125	.928	46	1.70	0	0	0	0.00	0	0	12.0	0.44
6	Rosenthal, Bella	27	5	120	.958	102	3.78	0	0	0	0.00	0	1	4.0	0.15
3	White, Payton	27	5	101	.950	49	1.81	0	0	0	0.00	0	0	4.0	0.15
11	Kull, Morgan	5	0	0	.000	1	0.20	0	0	0	0.00	0	0	0.0	0.00
16	Green, Val	1	0	0	.000	0	0.00	0	0	0	0.00	0	0	0.0	0.00
14	Persons, Katie	1	0	2	1.000	1	1.00	0	0	0	0.00	0	0	0.0	0.00
-	TEAM	-	3	-	-	-	-	-	-	-	-	-	-	-	-
	AUBURN.....	27	28	531	.947	358	13.26	10	76	48.0	1.78	12	10	428.0	15.85
	Opponents.....	27	31	545	.943	362	13.41	11	78	50.0	1.85	15	9	431.0	15.96

## AUBURN VOLLEYBALL SINGLE-SEASON INDIVIDUAL RECORDS (25-POINT RALLY SCORING ERA)

**KILLS**

1.	Jessica Glover (2008)	410
2.	Sarah Bullock (2012)	371
3.	Sarah Bullock (2010)	354
4.	<b>Brenna McIlroy (2016)</b>	<b>351</b>
5.	Kelly Fidero (2011)	341
6.	Courtney Crable (2015)	333
	<b>Brenna McIlroy (2015)</b>	<b>333</b>
8.	Katherine Culwell (2012)	330
9.	Katherine Culwell (2013)	326
10.	Morgan Johns (2010)	325

**KILLS PER SET (MIN. 100 KILLS)**

1.	Sarah Bullock (2012)	3.50
2.	Jessica Glover (2008)	3.45
3.	Kelly Fidero (2011)	3.22
4.	<b>Brenna McIlroy (2016)</b>	<b>3.13</b>
	Katherine Culwell (2013)	3.13
6.	Katherine Culwell (2012)	3.03
	Sarah Bullock (2010)	3.03
8.	<b>Brenna McIlroy (2017)</b>	<b>2.86</b>
9.	Courtney Crable (2015)	2.82
10.	Courtney Crable (2014)	2.78
	Camila Jersonsky (2013)	2.78

**ATTACK PCT. (MIN. 250 ATTACKS)**

1.	<b>Shaina White (2017)</b>	<b>.367</b>
2.	Camila Jersonsky (2012)	.356
	Camila Jersonsky (2011)	.356
4.	Camila Jersonsky (2010)	.354
5.	Camila Jersonsky (2013)	.351
6.	Alyssa Davis (2009)	.316
7.	Morgan Johns (2010)	.305
8.	Stephanie Campbell (2013)	.281
9.	Stephanie Campbell (2015)	.280
10.	Stephanie Campbell (2014)	.279

**ATTACKS**

1.	<b>Brenna McIlroy (2016)</b>	<b>1113</b>
2.	Sarah Bullock (2012)	1090
3.	Courtney Crable (2014)	1062
4.	<b>Brenna McIlroy (2015)</b>	<b>1043</b>
5.	Katherine Culwell (2012)	1033
6.	Sarah Bullock (2010)	993
7.	Jessica Glover (2008)	988
8.	Katherine Culwell (2013)	981
9.	<b>Brenna McIlroy (2017)</b>	<b>938</b>
10.	Courtney Crable (2015)	935

**ASSISTS**

1.	Alexa Filley (2016)	1227
2.	Alexa Filley (2015)	1226
3.	Alexa Filley (2014)	1175
4.	Alexa Filley (2017)	1093
5.	Sara Shanks (2008)	995
6.	Chelsea Wintzinger (2011)	791
7.	Christina Solverson (2010)	740
8.	Chelsea Wintzinger (2012)	680
9.	Chelsea Wintzinger (2013)	642
10.	Christina Solverson (2009)	608

**ASSISTS PER SET (MIN. 200 ASSISTS)**

1.	Alexa Filley (2017)	10.72
2.	Alexa Filley (2014)	10.22
3.	Alexa Filley (2015)	10.13
4.	Alexa Filley (2016)	9.98
5.	Sara Shanks (2008)	8.43
6.	Chelsea Wintzinger (2011)	7.39
7.	Chelsea Wintzinger (2012)	6.24
8.	Chelsea Wintzinger (2013)	6.17
	Christina Solverson (2010)	6.17
10.	Christina Solverson (2009)	5.48

**ACES**

1.	Jesse Earl (2016)	46
2.	Jesse Earl (2017)	42
3.	Jesse Earl (2015)	39
4.	<b>Brenna McIlroy (2016)</b>	<b>36</b>
5.	Chelsea Wintzinger (2013)	35
6.	Courtney Crable (2014)	33
7.	<b>Brenna McIlroy (2015)</b>	<b>32</b>
8.	Sara Shanks (2008)	30
	Alexa Filley (2015)	30
10.	Kelly Stewart (2016)	29

**ACES PER SET (MIN. 15 ACES)**

1.	Jesse Earl (2017)	0.41
2.	Jesse Earl (2016)	0.37
3.	Chelsea Wintzinger (2013)	0.34
4.	Jesse Earl (2015)	0.32
	<b>Brenna McIlroy (2016)</b>	<b>0.32</b>
6.	Courtney Crable (2014)	0.27
7.	<b>Brenna McIlroy (2015)</b>	<b>0.26</b>
8.	Alexa Filley (2015)	0.25
	Sara Shanks (2008)	0.25
	Kelly Stewart (2016)	0.25

**DIGS**

1.	Jesse Earl (2016)	612
2.	Jesse Earl (2017)	529
3.	Jesse Earl (2015)	516
4.	Sarah Wroblicky (2013)	481
5.	Liz Crouch (2010)	469
6.	Liz Crouch (2009)	453
7.	Alyssa Ivey (2014)	434
8.	Sarah Wroblicky (2012)	431
9.	Liz Crouch (2008)	389
10.	Alexa Filley (2016)	367

**DIGS PER SET (MIN. 100 DIGS)**

1.	Jesse Earl (2017)	5.19
2.	Jesse Earl (2016)	4.98
3.	Sarah Wroblicky (2013)	4.62
4.	Jesse Earl (2015)	4.26
5.	Liz Crouch (2009)	4.08
6.	Alyssa Ivey (2014)	4.02
7.	Liz Crouch (2010)	4.01
8.	Sarah Wroblicky (2012)	3.99
9.	Liz Crouch (2008)	3.70
10.	Sarah Bullock (2012)	3.31

**SOLO BLOCKS**

1.	Katherine Culwell (2012)	25
2.	Sarah Bullock (2012)	18
	Jessica Glover (2008)	18
4.	Kelly Fidero (2011)	17
	Sarah Bullock (2011)	17
6.	Katherine Culwell (2013)	16
	Camila Jersonsky (2013)	16
8.	Camila Jersonsky (2011)	15
9.	Macy Reece (2014)	14
	Breanna Barksdale (2014)	14
	Stephanie Campbell (2014)	14
	Breanna Barksdale (2014)	14

**BLOCK ASSISTS**

1.	Camila Jersonsky (2012)	108
2.	Lauren Mellor (2009)	90
3.	Camila Jersonsky (2013)	89
4.	Breanna Barksdale (2014)	87
5.	Courtney McDonald (2012)	84
6.	Breanna Barksdale (2016)	83
7.	Breanna Barksdale (2015)	82
8.	Stephanie Campbell (2014)	72
9.	Emily Klitzke (2014)	70
10.	Chloe Rowand (2012)	67

**TOTAL BLOCKS**

1.	Camila Jersonsky (2012)	119
2.	Camila Jersonsky (2013)	105
3.	Breanna Barksdale (2014)	101
4.	Lauren Mellor (2009)	97
	Breanna Barksdale (2016)	97
6.	Breanna Barksdale (2015)	94
7.	Courtney McDonald (2012)	89
8.	Stephanie Campbell (2014)	86
9.	Emily Klitzke (2014)	80
10.	Katherine Culwell (2012)	78

**BLOCKS PER SET (MIN. 50 BLOCKS)**

1.	Camila Jersonsky (2012)	1.09
2.	Camila Jersonsky (2013)	1.01
3.	Chloe Rowand (2011)	0.97
4.	Breanna Barksdale (2014)	0.91
5.	Stephanie Campbell (2015)	0.90
6.	Camila Jersonsky (2011)	0.89
7.	Lauren Mellor (2009)	0.88
8.	Breanna Barksdale (2016)	0.84
9.	Courtney McDonald (2012)	0.82
	Lauren Mellor (2010)	0.82

## AUBURN VOLLEYBALL CAREER RECORD BOOK (SIDEOUT + RALLY ERA)

**KILLS**

1. Jaunelle Hamilton (1997-00).....	1848
2. Allyson Beecroft (1993-96).....	1727
3. Brooke McCarley (1997-00).....	1704
4. Gina Thomas (1988-92).....	1467
5. Rachel Shanks (2004-07).....	1319
6. Sarah Bullock (2009-12).....	1272
7. Bridgitte Sims (1989-91).....	1149
8. Jessica Glover (2005-08).....	1137
9. Rani Whitson (1993-96).....	1102
10. Whitney Jacob (2004-07).....	1093

**KILLS PER SET (MIN. 500 KILLS)**

1. Brooke McCarley (1997-00).....	4.40
2. Jaunelle Hamilton (1997-00).....	4.23
3. Allyson Beecroft (1993-96).....	4.00
4. Ashlee Johns (2003-04).....	3.82
5. Terri Duckworth (1987-88).....	3.63
6. Jennifer Amobi (2003-05).....	3.57
7. Rachel Shanks (2004-07).....	3.43
8. Bridgitte Sims (1989-91).....	3.40
9. Jessica Glover (2005-08).....	3.17
10. Sarah Bullock (2009-12).....	2.93
11. <b>Brenna McIlroy (2015-present).....</b>	<b>2.92</b>

**ATTACK PCT. (MIN. 1000 ATTACKS)**

1. Camila Jersonsky (2010-13).....	355	894-237-1853
2. Jaunelle Hamilton (1997-00).....	344	1848-532-3827
3. Brooke McCarley (1997-00).....	325	1704-455-3847
4. Terri Duckworth (1987-99).....	315	876-291-1860
5. Rani Whitson (1993-96).....	281	1102-383-2562
6. Julie Bosler (2003-06).....	280	558-178-1359
7. Gina Thomas (1988-92).....	279	1467-540-3319
8. Stephanie Campbell (2013-16).....	276	673-205-1669
9. Whitney Jacob (2004-07).....	264	1093-428-2522
10. La'Toi Finley (1994-97).....	256	727-306-1647

**ATTACKS**

1. Allyson Beecroft (1993-96).....	4349
2. Brooke McCarley (1997-00).....	3847
3. Jaunelle Hamilton (1997-00).....	3827
4. Sarah Bullock (2009-12).....	3774
5. Rachel Shanks (2004-07).....	3703
6. <b>Brenna McIlroy (2015-present).....</b>	<b>3321</b>
7. Gina Thomas (1988-92).....	3319
8. Katherine Culwell (2009-13).....	3130
9. Jessica Glover (2005-08).....	3130
10. Jenifer Kleyn (1988-91).....	3107

**ASSISTS**

1. Piper Craig (1995-98).....	5053
2. Alexa Filley (2014-17).....	4721
3. Janel Newkirk (1989-92).....	4071
4. Mary Orndorff (1986-89).....	3242
5. Chelsea Wintzinger (2010-13).....	2654
6. Tama English (1991-94).....	2535
7. Joanna Pappas (2005-06).....	2073

**ASSISTS PER SET (MIN. 500 ASSISTS)**

1. Piper Craig (1995-98).....	12.86
2. Traci Price (1999-00).....	11.77
3. Maira Mogallon (2003-04).....	11.38
4. Chris Murphy (1993-96).....	11.35
5. Joanna Pappas (2005-06).....	11.15
6. Alexa Filley (2014-17).....	10.24

**ACES**

1. Jenifer Kleyn (1988-91).....	338
2. Lori Russell (1989-92).....	201
3. Gretchen Thompson (1986-89).....	164
4. Tory Gutierrez (1989-92).....	160
5. Terri Duckworth (1987-88).....	158
6. Jaunelle Hamilton (1997-00).....	148
7. Allyson Beecroft (1993-96).....	138
8. Whitney Jacob (2004-07).....	134
9. Janel Newkirk (1989-92).....	129
10. Jesse Earl (2015-17).....	127

**ACES PER SET (MIN. 40 ACES)**

1. Jenifer Kleyn (1988-91).....	0.71
2. Terri Duckworth (1987-88).....	0.66
3. Lori Russell (1989-92).....	0.46
4. Jenny Fislser (1987-88).....	0.40
5. Bridgitte Sims (1989-91).....	0.37
6. Jesse Earl (2015-17).....	0.37
7. Gretchen Thompson (1986-89).....	0.36
8. Maira Mogallon (2003-04).....	0.35
9. Tory Gutierrez (1989-92).....	0.35
10. Jaunelle Hamilton (1997-00).....	0.34

**DIGS**

1. Liz Crouch (2007-10).....	1703
2. Jesse Earl (2015-17).....	1657
3. Gretchen Thompson (1986-89).....	1495
4. Alexa Filley (2014-17).....	1315
5. Allyson Beecroft (1993-96).....	1249
6. Sarah Wroblecky (2010-13).....	1238
7. Sarah Bullock (2009-12).....	1210
8. Rachel Shanks (2004-07).....	1185
9. Sarah Watson (1992-95).....	1036
10. Janel Newkirk (1989-92).....	1026
11. Katherine Culwell (2009-13).....	1005
12. Jaunelle Hamilton (1997-00).....	1002

**DIGS PER SET (MIN. 500 DIGS)**

1. Jesse Earl (2015-17).....	4.79
2. Liz Crouch (2007-10).....	4.00
3. Sarah Wroblecky (2010-13).....	3.65
4. Gretchen Thompson (1986-89).....	3.26
5. Rachel Shanks (2004-07).....	3.08
6. Allyson Beecroft (1993-96).....	2.89
7. Alexa Filley (2014-17).....	2.85
8. Bailey Veit (2002-05).....	2.80
9. Emily Suter (1995-98).....	2.80
10. Sarah Bullock (2009-12).....	2.79

**SOLO BLOCKS**

1. Gina Thomas (1988-92).....	159
2. Tory Gutierrez (1989-92).....	157
3. Jaunelle Hamilton (1997-00).....	106
4. Julie Bosler (2003-06).....	98
5. Rani Whitson (1993-96).....	61
6. Katherine Culwell (2009-13).....	59
7. Mary Olks (1986-89).....	58
8. Whitney Jacob (2004-07).....	56
9. Sarah Bullock (2009-12).....	54
10. Camila Jersonsky (2010-13).....	51

**BLOCK ASSISTS**

1. Jaunelle Hamilton (1997-00).....	465
2. Rani Whitson (1993-96).....	426
3. Gina Thomas (1988-92).....	360
4. Whitney Jacob (2004-07).....	351
5. Tory Gutierrez (1989-92).....	318
6. Camila Jersonsky (2010-13).....	317
7. Julie Bosler (2003-06).....	265
8. La'Toi Finley (1994-97).....	261
9. Krista Singleton (1994-97).....	261
10. Breanna Barksdale (2014-16).....	252

**TOTAL BLOCKS**

1. Jaunelle Hamilton (1997-00).....	571
2. Gina Thomas (1988-92).....	519
3. Rani Whitson (1993-96).....	487
4. Tory Gutierrez (1989-92).....	475
5. Whitney Jacob (2004-07).....	407
6. Camila Jersonsky (2010-13).....	368
7. Julie Bosler (2003-06).....	363
8. Breanna Barksdale (2014-16).....	292
9. La'Toi Finley (1994-97).....	289
10. Krista Singleton (1994-97).....	276

**BLOCKS PER SET (MIN. 100 BLOCKS)**

1. Jaunelle Hamilton (1997-00).....	1.31
2. Rani Whitson (1993-96).....	1.16
3. Julie Bosler (2003-06).....	1.06
4. Tory Gutierrez (1989-92).....	1.03
5. Gina Thomas (1988-92).....	0.98
6. Whitney Jacob (2004-07).....	0.96
7. Camila Jersonsky (2009-13).....	0.92
8. Heather Franey (1995-96, 98).....	0.90
9. La'Toi Finley (1994-97).....	0.88
10. Breanna Barksdale (2014-present).....	0.85



#1 • MICA ALLISON  
Fr. • S • 6-1



#2 • ISABELLA THOMPSON  
Sr. • MB • 6-0



#3 • PAYTON WHITE  
So. • DS/L • 5-7



#4 • SHAINA WHITE  
Jr. • MB • 6-1



#5 • SHEA MCNAMARA  
So. • MB • 6-1



#6 • BELLA ROSENTHALL  
Fr. • DS/L • 5-5



#7 • CHESNEY MCCLELLAN  
So. • MB • 6-4



#8 • BRENNA MCILROY  
Sr. • OH • 5-11



#9 • KARIS BEASLEY  
Jr. • OH/DS • 5-9



#10 • GWYN JONES  
Jr. • MB • 6-3



#11 • MORGAN KULL  
So. • S • 5-9



#12 • TAYLOR ROWLAND  
Fr. • OH • 6-3



#13 • ENIJA BIDZANE  
Jr. • OH • 5-9



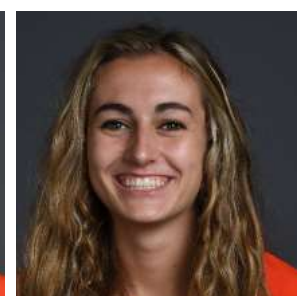
#14 • KATIE PERSONS  
Fr. • DS/L • 5-3



#16 • VAL GREEN  
Fr. • OH • 6-2



#21 • TATUM SHIPES  
Fr. • OH • 6-4



#22 • ANNA STEVENSON  
So. • MB • 6-1



RICK NOLD  
Head Coach



EYSHA AMBLER  
Assistant Coach



ALEX WILHARM  
Assistant Coach



PAIGE WETZEL  
Director of Operations