



# 2018 AUBURN VOLLEYBALL

AUBURN ATHLETICS COMMUNICATIONS: 392 SOUTH DONAHUE DRIVE || AUBURN, AL 36830 || AUBURNTIGERS.COM || @AUBURNVB

## 2018 SCHEDULE/RESULTS

1-1, 0-0 SEC

### DATE OPPONENT TIME/TV/RESULT

#### War Eagle Invitational - Auburn, Ala.

Aug. 24 **HIGH POINT** 6:30 p.m. W, 3-0

Aug. 25 **MICHIGAN** 7 p.m. L, 0-3

#### Butler Invitational - Indianapolis, Ind.

Aug. 31 at Butler 6 p.m.

Sept. 1 vs. Illinois State 9 a.m.

Sept. 1 vs. Eastern Illinois 3 p.m.

#### Kansas Classic - Lawrence, Kan.

Sept. 7 vs. Loyola Marymount 10 a.m.

Sept. 7 at Kansas 7 p.m.

Sept. 8 vs. American 11 a.m.

Sept. 11 at Kennesaw State 6 p.m.

Sept. 16 **FLORIDA STATE** 12 p.m. SECN

Sept. 21 **TENNESSEE\*** 7 p.m. SEC+

Sept. 23 at Alabama\* 1 p.m. SEC+

Sept. 26 at Mississippi State\* 6 p.m. ESPNU

Sept. 30 at Ole Miss\* 2 p.m. SECN

Oct. 3 **GEORGIA\*** 6 p.m. ESPNU

Oct. 7 **ALABAMA\*** 1:30 p.m. SEC+

Oct. 12 at Texas A&M\* 6 p.m. SEC+

Oct. 14 at LSU\* 1 p.m. SEC+

Oct. 19 at Missouri\* 6:30 p.m. SEC+

Oct. 26 **OLE MISS\*** 7 p.m. SEC+

Oct. 28 **ARKANSAS\*** 1:30 p.m. SEC+

Oct. 31 **TEXAS A&M\*** 7 p.m. SECN

Nov. 4 at South Carolina\* 12:30 p.m. SEC+

Nov. 7 **MISSOURI\*** 8 p.m. SECN

Nov. 11 **FLORIDA\*** 12 p.m. SECN

Nov. 15 at Georgia\* TBA SEC+

Nov. 21 **MISSISSIPPI STATE\*** 7 p.m. SEC+

Nov. 24 at Kentucky\* TBA SEC+

All times Central. Home Matches in **BOLD CAPS**.

+ = SEC Network +/-ESPN3.com \* = SEC match

## AUBURN ATHLETICS COMMUNICATIONS

KIRK SAMPSON..... Associate AD

..... sampska@auburn.edu

KENDRA WILLARD..... Volleyball Contact

..... kal0014@auburn.edu

..... C: 614-929-8029

Web..... AuburnTigers.com

Twitter..... @AuburnVB

Instagram..... @auburnvolleyball

Office Phone..... (334) 844-9800

### MATCH

# 3

## BUTLER

Friday, Aug. 31 • 6 p.m. CT  
Indianapolis, Ind. • Hinkle Fieldhouse



### MATCH

# 4

## ILLINOIS STATE

Saturday, Sept. 1 • 9 a.m. CT  
Indianapolis, Ind. • Hinkle Fieldhouse



### MATCH

# 5

## EASTERN ILLINOIS

Saturday, Sept. 1 • 3 p.m. CT  
Indianapolis, Ind. • Hinkle Fieldhouse



Site ..... Indianapolis, Ind.  
Venue ..... Hinkle Fieldhouse  
Live Stats ..... AuburnTigers.com  
Twitter ..... @AuburnVB  
Series Record vs. Butler..... Auburn leads 3-1  
Last Meeting..... 9/10/84 in Auburn  
Auburn, 3-2 (15-13, 12-15, 15-12, 9-15, 15-8)  
Series Record vs. Illinois State ..... Tied at 1-1  
Last Meeting..... 9/14/91 at Neutral Site  
Auburn, 3-1 (16-15, 15-9, 16-14, 3-15, 15-13)  
Series Record vs. Eastern Illinois..... Auburn leads 1-0  
Last Meeting..... 9/11/87 in Chicago  
Auburn, 3-2 (15-8, 14-16, 7-15, 15-4, 15-1)

AUBURN	Rankings.....	N/R
	2018 Record.....	1-1
BUTLER	Head Coach.....	Rick Nold
	Record at AU (Year).....	109-102 (8th)
ILLINOIS ST.	Rankings.....	N/R
	2018 Record.....	0-3
E. ILLINOIS	Head Coach.....	Sharon Clark
	Record at Illinois St. (Year).....	309-243 (19th)
ILLINOIS ST.	Rankings.....	N/R
	2018 Record.....	2-1
E. ILLINOIS	Head Coach.....	Leah Johnson
	Record at E. Illinois (Year).....	22-13 (2nd)
ILLINOIS ST.	Rankings.....	N/R
	2017 Record.....	2-2
E. ILLINOIS	Head Coach.....	Julie Allen
	Record at E. Illinois (Year).....	2-2 (1st)

## AUBURN'S POTENTIAL STARTERS



BRENNA MCILROY	TAYLOR ROWLAND	SHAINA WHITE	ANNA STEVENSON	BELLA ROSENTHALL	MICA ALLISON	PAYTON WHITE
#8 • OH • SR • 5-11	#12 • OH • FR • 6-3	#4 • MB • JR • 6-1	#22 • MB • SO • 6-1	#6 • DS • FR • 5-5	#1 • S • FR • 6-1	#3 • L • SO • 5-7
K/S: 3.17	K/S: 2.99	K/S: 1.33	K/S: 3.00	K/S: -	K/S: 1.00	K/S: -
HIT%: .293	HIT%: .031	HIT%: .107	HIT%: .293	A/S: .33	A/S: 10.3	A/S: .83
D/S: 3.00	D/S: .25	D/S: 1.00	D/S: .17	D/S: 6.00	D/S: 2.33	D/S: 2.33
B/S: .17	B/S: .00	B/S: .17	B/S: 1.17	SA/S: .17	B/S: .50	SA/S: .17
P/S: 3.92	P/S: 2.00	P/S: 1.42	P/S: 3.83	P/S: .17	P/S: 1.33	P/S: .17
SA/S: .67		SA/S: .00			SA/S: .00	

K/S: kills per set • HIT%: hitting percentage • D/S: digs per set • B/S: blocks per set • A/S: assists per set • SA/S: aces per set • P/S: points per set

#WarEagle



AuburnTigers.com



@AuburnVB | @AuburnTigers  
@CoachRickNold



/AuburnVB  
/AuburnTigers

TEAM SCHEDULE AND MEDIA AVAILABILITY » WEEK OF AUGUST 20-226

MONDAY August 27	TUESDAY August 28	WEDNESDAY August 29	THURSDAY August 30	FRIDAY August 31	SATURDAY September 1	SUNDAY September 2
<b>PRACTICE</b> 12:30 p.m. - 3:30 p.m. Auburn Arena	<b>PRACTICE</b> 11:00 a.m. - 2 p.m. Auburn Arena	<b>PRACTICE</b> 12:30 p.m. - 3:30 p.m. Auburn Arena	<b>TRAVEL DAY</b>	<b>MATCH</b> 6 p.m. Auburn at Butler	<b>MATCH</b> 9 a.m. Auburn vs. Illinois State  3 p.m. Auburn vs. Eastern Illinois	<b>TRAVEL DAY</b>
Interviews by request	Interviews by request	Interviews by request				

AUBURN ATHLETICS COMMUNICATIONS

QUICK FACTS

**AUBURNTIGERS.COM**

For updated game notes, statistics and all the latest information on Auburn volleyball and game weekend activities, go to AuburnTigers.com.

**INTERVIEW POLICY**

Coach Nold, assistant coaches and all athletes are available for phone and personal interviews by contacting Kendra Willard in the media relations office. Post-match interviews will be conducted on the court or in the media room following a 10-minute cooling-off period.

**CREDENTIALS**

Anyone wishing to cover an Auburn volleyball match should contact Kendra Willard in the communications office at least one day in advance in order to make the proper arrangements. Credentials are not required for attendance at the match, but those wishing to reserve a seat on press row should provide advance notice.

**MATCH DAY SERVICES**

Notes for both teams and flip cards will be provided prior to the match. Stats will be distributed between sets and after the match. Wireless internet is available in the Arena; ask Kendra Willard for the password.

**VIDEO SERVICES**

FTP feeds of selected Auburn volleyball highlights are available for the media. A number of studio and satellite services may be arranged for electronic media by calling Blake Leach in the Auburn video services office at 334.750.4322 or by emailing blake.leach@auburn.edu.

**PHOTO SERVICES**

For photos of Auburn volleyball or anything pertaining to Auburn Athletics, contact Wade Rackley at 334-750-6907 or via email at wwr0004@auburn.edu

**COMMUNICATIONS STAFF**

Kendra Willard Volleyball contact  
cell: 614-929-8029  
email: kal0014@auburn.edu  
Kirk Sampson Associate AD  
cell: 334-750-1385  
email: sampska@auburn.edu  
Cassie Arner SEC Network/TV contact  
cell: 334-750-0502  
email: carner@auburn.edu

**GENERAL INFORMATION**

Location ..... Auburn, Ala.  
Founded ..... 1856  
Enrollment ..... 29,776  
Nickname ..... Tigers  
Colors ..... Burnt Orange and Navy Blue  
Facility (Capacity) ..... Auburn Arena (9,121)  
President ..... Dr. Steven Leath  
Director of Athletics ..... Allen Green  
Sport Administrator ..... Joy Vrbka

**VOLLEYBALL HISTORY**

First Year of Volleyball ..... 1967  
..... (discontinued 1981; reinstated 1986)  
All-Time Record ..... 637-630-4 (.501)  
All-Time SEC Record (since 1986) ..... 177-309 (.364)  
All-Time Home Record (since 1986) ..... 216-181 (.544)  
at Auburn Arena (since 2013) ..... 44-28 (.614)  
NCAA Tournament Appearances ..... 1  
Last NCAA App./Result ..... 2010 - Second Round  
SEC Championships ..... 1  
Last ..... 1996 - Co-West Champions

**COACHING STAFF**

Head Coach ..... Rick Nold  
Alma Mater, Year ..... Louisville, 1998  
Year at Auburn ..... Eighth  
Overall Record ..... 281-200 (.585) / 17th year  
Auburn Record ..... 109-102 (.518) / 8th year  
Assistant Coach ..... Eysa Ambler  
Alma Mater, Year ..... Jacksonville State, 2001  
Year at Auburn ..... Eighth  
Assistant Coach ..... Alex Wilharm  
Alma Mater, Year ..... Clarke, 2011  
Year at Auburn ..... Second  
Director of Operations ..... Paige Wetzal  
Athletic Trainer ..... Marie Siler  
Strength & Conditioning Coach ..... Bryan Karkoska  
Student Manager ..... Morgan Brackin

**GAMEDAY EXPERIENCE: AUBURN ARENA**

» Auburn Arena is in its sixth season as home of Auburn Volleyball. The Tigers are 43-27 since moving to the Arena in 2013. The facility seats approximately 2,000 fans for volleyball and 9,121 for basketball.



**TEAM INFORMATION**

2017 Record ..... 15-12  
2017 SEC Record ..... 8-10  
SEC Finish ..... t-7th  
Starters Returning/Lost ..... 5/1+libero  
Letterwinners Returning/Lost ..... 10/4  
Newcomers ..... 7

**FIRST SERVE**

- >> The Auburn volleyball gets away from the Plains for the first time in 2018, traveling to Indianapolis for the Top Dawg Challenge hosted by Butler. The two-day tournament is slated for Aug. 31-Sept. 1 in historic Hinkle Fieldhouse.
- >> The Tigers open with a 6 p.m. CT match vs. host Butler Friday. The squad follows with a pair of tilts on Saturday with the first at 9 a.m. CT against Illinois State. The final contest of the day is set for 3 p.m. CT vs. Eastern Illinois.
- >> Auburn has an all-time record of 637-630-4 (.501) in its 46th full season of volleyball.
- >> Head Coach Rick Nold stands at 109-102 in his eighth season on the Plains and is the second-winningest coach in Auburn volleyball history.
- >> Auburn's 2018 schedule boasts 10 2017 NCAA Tournament participants.
- >> The Tiger roster features two seniors, four juniors, five sophomores and six freshmen.

**LAST TIME OUT**

- >> Auburn opened 2018 with the annual War Eagle Invitational in Auburn Arena, Aug. 24-25. The Tigers kicked things off with a 3-0 (25-21, 25-19, 28-26) win over High Point Friday night and followed with a three-set loss (22-25, 20-25, 22-25) to now nationally-ranked Michigan Saturday.
- >> Senior outside hitter Brenna McIlroy and sophomore middle blocker Anna Stevenson were placed on the all-tournament team.
- >> Stevenson tied her career best Friday against High Point with 13 kills in the win. She added a team-best five blocks for the Tigers.
- >> McIlroy followed with 12 kills against the Wolverines to move the magic number to five for her 1,000th career kill.
- >> A pair of freshmen in Mica Allison and Bella Rosenthal each got the starting nod in their respective positions in both matches. Allison guided the Tigers with a 10.3 assists/set average over the weekend, while Rosenthal finished with a 6.00 digs/set average after starting both contests at libero.

**UP NEXT**

- >> Auburn faces another tough set of opponents next weekend, traveling to Lawrence, Kan., for the Kansas Classic. The Tigers open with a pair of matches against Loyola Marymount and host Kansas, Sept. 7, and follow with a contest against American, Sept. 8.

**PLAYER TO WATCH: ANNA STEVENSON**

- >> Sophomore Anna Stevenson was placed on the War Eagle Invitational All-Tournament team after a solid opening weekend. The middle blocker led the team with 13 kills in the win over High Point, adding five blocks in the match.

**SCOUTING BUTLER**

- >> The Butler Bulldogs stand at 0-3 on the year after a challenging weekend to kick off 2018 last week. The Bulldogs dropped a trio of three-set matches in Pittsburgh, starting with a loss to host and No. 20 Pittsburgh. The squad followed with losses to Pepperdine and No. 24 Cal Poly.
- >> Sophomore outside hitter Natalie Ravenell led the Bulldogs on the weekend, having 27 kills for a 3.00 kills/set average. She was placed on the all-tournament team for her efforts.
- >> After the opening weekend, Butler leads the BIG EAST in blocks with a 2.44 average.
- >> Redshirt freshman Melody Davidson led the team with 1.67 blocks/set mark on the weekend.
- >> Butler was chosen to finish third in its conference based on the BIG EAST Preseason Coaches' Poll.

**A WIN OVER BUTLER WOULD...**

- >> Be Auburn's fourth win in the series.
- >> Be Auburn's first win in Indianapolis when facing Butler.

**AUBURN-BUTLER SERIES**

- >> The last meeting came in 1994 with Auburn taking a 3-2 win in a neutral setting.

**SCOUTING ILLINOIS STATE**

- >> The Illinois State Redbirds concluded the opening weekend with a 2-1 record at the Benson Invitational in Athens, Ga.
- >> The Redbirds picked up wins over Furman (3-1) and Coastal Carolina (3-0) before falling to host Georgia in four sets in Stegeman Coliseum.
- >> Sophomore Kaylee Martin and freshmen Marissa Stockman led the squad in Athens last weekend. Martin finished with a 2.82 kills/set average, while Stockman finished with 10 blocks over three matches.
- >> Martin had 18 kills and a .486 hitting percentage against Furman to kick off the year.

**A WIN OVER ILLINOIS STATE WOULD...**

- >> Break the 1-1 series tie with the Redbirds.

**AUBURN-ILLINOIS STATE SERIES**

- >> The Tigers and the Redbirds are locked in a 1-1 tie in the series.
- >> Auburn and Illinois State haven't faced each other until the 1991 season.

**SEC STANDINGS & SCHEDULE**

	(Aug. 27)					
	SEC Matches			All Matches		
	W	L	Pct.	W	L	Pct.
Alabama	0	0	.000	3	0	1.000
Georgia	0	0	.000	3	0	1.000
South Carolina	0	0	.000	3	0	1.000
Tennessee	0	0	.000	3	0	1.000
Missouri	0	0	.000	2	1	.667
Ole Miss	0	0	.000	2	1	.667
Texas A&M	0	0	.000	2	1	.667
Arkansas	0	0	.000	1	1	.500
<b>AUBURN</b>	0	0	.000	1	1	.500
Florida	0	0	.000	1	1	.500
LSU	0	0	.000	1	2	.333
Mississippi State	0	0	.000	1	3	.250
Kentucky	0	0	.000	0	3	.000

**THIS WEEK IN THE SEC****Friday, August 31**

- Alabama at Navy - 6 p.m.
- Arkansas vs. Georgia Southern - 4:30 p.m.
- Auburn at Butler - 6 p.m.
- #4 Florida vs. #7 USC - 6 p.m.
- Georgia vs. Texas Tech - 2:30 p.m.
- Georgia at UC Irvine - 9 p.m.
- #16 Kentucky vs. Charleston - 11 a.m.
- #16 Kentucky vs. Dayton - 8:30 p.m.
- LSU vs. Texas A&M-CC - 12:30 p.m.
- LSU vs. Duke - 7:30 p.m.
- Ole Miss vs. Samford - 10 a.m.
- Ole Miss vs. Ohio State - 6:30 p.m.
- Mississippi State vs. Clemson - 3:30 p.m.
- Missouri vs. Xavier - 4:30 p.m.
- South Carolina vs. Liberty - 9 a.m.
- Tennessee vs. Winthrop - 6 p.m.
- Texas A&M vs. Indiana - 4 p.m.

**Saturday, September 1**

- Alabama vs. Villanova - 12 p.m.
- Alabama vs. Dartmouth - 4 p.m.
- Arkansas vs. North Dakota St. - 12 p.m.
- Arkansas at #3 Minnesota - 7 p.m.
- Auburn vs. Illinois State - 9 a.m.
- Auburn vs. Eastern Illinois - 3 p.m.
- #4 Florida vs. Louisville - 4 p.m.
- Georgia vs. Cal State Bakersfield - 5 p.m.
- #16 Kentucky vs. Kansas - 6 p.m.
- LSU vs. South Florida - 1 p.m.
- Ole Miss vs. Little Rock - 2:30 p.m.
- Mississippi State vs. Davidson - 9 a.m.
- Mississippi State at Appalachian State - 6 p.m.
- Missouri vs. Miami (Fla.) - 7 p.m.
- South Carolina vs. Houston Baptist - 12:30 p.m.
- Tennessee vs. North Florida - 11:30 a.m.
- Tennessee vs. Indiana State - 6:30 p.m.
- Texas A&M vs. Temple - 1 p.m.
- Texas A&M at #6 Penn State - 7 p.m.

**Sunday, September 2**

- #4 Florida vs. UCF - 2:30 p.m.
- Ole Miss vs. Southern Miss - 1:30 p.m.
- Missouri vs. Arizona State - 7 p.m.

AVCA Top 25

(Aug. 27)

Rk	Team	Record	Prev
1	Stanford (57)	1-0	1
2	Texas (7)	2-0	3
3	Minnesota	2-0	4
4	<b>Florida</b>	1-1	7
5	Nebraska	1-1	2
6	Penn State	3-0	6
7	Southern California	3-0	10
8	Wisconsin	2-0	9
9	BYU	2-0	8
10	UCLA	2-0	11
11	Illinois	3-0	12
12	Baylor	3-0	16
13	Washington	2-0	17
14	Pittsburgh	3-0	20
15	Creighton	1-2	13
16	<b>Kentucky</b>	0-3	5
17	Northern Iowa	2-1	NR
18	Oregon	0-2	18
19	San Diego	0-2	14
20	Purdue	3-0	23
21	Colorado	2-1	15
22	Utah	2-1	19
23	<b>Michigan</b>	2-0	NR
24	Cal Poly	2-1	24
25	Colorado State	1-1	25

**Also receiving votes:** Marquette, Iowa State, Louisville, Wichita State, Washington State, Michigan State, Wyoming, **Alabama**, Oregon State, Ohio State, Arizona, **Tennessee**

Inside the Matchup

**Auburn vs. Butler** 3-1 (.750)

In Indianapolis: 0-1  
Neutral: 3-0

**Series History**

1987	Neutral	W	3-0
1991	Neutral	W	3-1
1992	Indianapolis	L	0-3
1994	Neutral	W	3-2

**Auburn vs. Illinois State** 1-1 (.500)

Neutral: 1-1

**Series History**

1989	Neutral	L	1-3
1991	Neutral	W	3-2

**Auburn vs. Eastern Illinois** 1-0 (1.000)

Neutral: 1-0

**Series History**

1987	Neutral	W	3-2
------	---------	---	-----

SCOUTING EASTERN ILLINOIS

» The Eastern Illinois Panthers hold a 2-2 record heading into this weekend's tournament. The squad opened with a three-set win over Saint Francis, before dropping two-straight 3-1 matches to Fresno State and Valparaiso. The Panthers finished with a 3-1 win against Iona Sunday.

» Junior Maggie Runge was placed to the Panther Invitational All-Tournament team after finishing with a team-best 23 blocks over the weekend. She added 23 kills to the team's offensive strike.

» Sophomore Laurel Bailey leads EIU on the early season with 48 kills over four matches played.

A WIN OVER EIU WOULD...

» Be the second win over the Panthers in the series history.

AUBURN-EIU SERIES

» The Tigers and the Panthers have just faced once before, coming in 1987.

» Auburn took the only match played in the series, 3-2.

NOLD IN AUBURN HISTORY

» In his eighth season at Auburn, head coach Rick Nold has a 109-102 overall record on the Plains. He became the third coach in program history to record 100 or more wins with the Tigers after Auburn swept Clemson, Sept. 9, 2017.

» With his 106th win vs. Alabama (Nov. 1, 2017), he moved up to No. 2 all-time in Auburn volleyball history.

Coach	Years at Auburn	Record
Sandra Newkirk	1967-79	134-107-4 (.556)
<b>Rick Nold</b>	<b>2011-present</b>	<b>109-102 (.518)</b>
Pat Ghastin	1986-90	105-77 (.577)
Liz Underwood	1992-97	99-77 (.577)

TOP-NOTCH NEWCOMERS

» The 2018 Auburn volleyball signing class is ranked the seventh-best incoming group in the nation.

» The 2018 class garnered the highest ranking in program history, featuring three Top 35 Senior Aces and two Gatorade Players of the Year.

» Auburn's incoming freshmen are also ranked the second-highest among Southeastern Conference opponents.

» Setter Mica Allison ranked No. 7 on the individual list and spent the summer on the 2018 USA Volleyball Junior National Team. She was also the Illinois Gatorade Player of the Year.

PLAYER TO WATCH: MICA ALLISON

» Freshman Mica Allison earned the starting role at setter for the Tigers and led the team with a 10.3 assists/set average.

» Outside hitter Taylor Rowland comes to Auburn as the two-time North Carolina Player of the Year, while outside hitter Tatum Shipes was the 2017 8-A AAAA Region Player of the Year in Georgia. Rowland and Shipes were ranked No. 30 and No. 34, respectively.

NEBRASKA TRANSFER

» Sophomore Chesney McClellan is in her first season on the Plains after transferring from defending national champion Nebraska this summer.

» McClellan is a 6-4 middle blocker that saw time on the court with the Huskers in four matches last year.

SETTER OUTLOOK

» Freshman Mica Allison will be looked to pace the Auburn offense in 2018. The White Heath, Ill., product stands at 6-1, brings a plethora of talent and experience to the Plains.

» Allison was an early enrollee in the spring.

» She earned a starting role for the 2018 USA Volleyball Women's Junior National Team, guiding the Americans to the NORCECA title and a berth in the 2019 FIVB U20 World Championship.

» Returning from last season is now sophomore Morgan Kull, who served as backup to four-year starter Alexa Filley.

OUTSIDE HITTER OUTLOOK

» The 2018 outside hitters bring a wealth of diversity for the Auburn Tigers this season.

» Leading way on the outside is senior Brenna McLroy. A 5-11 junior from Garland, Texas, McLroy has been the team's top attacker on the outside since her freshman season.

» McLroy enters her final campaign on the Plains needing just five kills and 156 digs to reach 1,000 in each category. She can become just the seventh Tiger to achieve both milestones in a career.

» Freshman Taylor Rowland was an early enrollee for Auburn this spring. Standing at 6-3, the Charlotte, N.C., native had an outstanding prep career and was the No. 30 ranked recruit in the nation.

» Rowland was a two-time Gatorade North Carolina Player of the Year.

» Freshman Tatum Shipes comes to Auburn as the No. 34 recruit nationally, standing at 6-4. She was the 2017 8-A AAAA Region Player of the Year in Georgia.

» Freshman Val Green brings a 6-2 frame from Ohio, while junior Enija Bidzane returns after missing 2017 because of injury.



**MIDDLE BLOCKER OUTLOOK**

- >> Auburn's roster has a total of five student-athletes with experience at middle blocker.
- >> Junior Shaina White returns to the squad after an outstanding first season on the Plains in 2017. She finished among the SEC's best in hitting percentage (.367) and came in second on the team in overall kills (276). Her performances throughout the year helped her earn AVCA All-South Region honorable mention honors.
- >> Sophomore Anna Stevenson had a solid first year in 2017, leading the team in blocks with 61.
- >> Junior Gwyn Jones is capable of playing both middle and right side for the Tigers. The 6-3 hitter has been a mainstay in the Auburn lineup since her freshman season.
- >> Sophomore Chesney McClellan transferred to Auburn from Nebraska. Her 6-4 presence will provide experience and a solid blocking front for the Auburn defense.
- >> Sophomore Shea McNamara and senior Isabella Thompson both bring strong blocking abilities to provide more defensive options Auburn.

**BACK ROW OUTLOOK**

- >> The 2018 edition of the Auburn back row will have to fill the shoes of AVCA All-America honorable mention honoree Jesse Earl.
- >> Junior Karis Beasley and sophomore Payton White played in every set last season and were among the team's best in dig totals.
- >> Freshmen Bella Rosenthal and Katie Persons join them in Auburn's first line of defense.
- >> Rosenthal and Persons were both AVCA Phenom List honorees during their prep careers.

**TIGERS PICKED SIXTH IN PRESEASON POLL**

- >> Auburn was chosen to finish sixth in the Southeastern Conference in this season's preseason coaches' poll.
- >> Auburn earned 78 points from the league's 13 coaches.
- >> Kentucky edged Florida as the favorite to win the conference championship, securing eight first-place votes and 140 points. Florida had five votes and 137 points. Missouri was

selected third, while Georgia and LSU finished in a tie for fourth.

- >> Arkansas, Texas A&M, South Carolina, Tennessee, Ole Miss, Alabama and Mississippi State round out the poll.

**ALLISON'S SUCCESSFUL SUMMER**

- >> Freshman setter Mica Allison and the U.S. Women's Junior National Team captured the NORCECA Continental Championship in June to qualify for the 2019 FIVB U20 World Championship.
- >> Allison started at setter in all five matches for Team USA. She finished the week with nine service aces, including three against Puerto Rico (6/18) and again vs. Mexico (6/22). She added four blocks in the team's win against Mexico to reach the championship final.

**THIS, THAT, AND THE OTHER**

- >> Junior Karis Beasley's mother was a member of the Canadian National Softball Team from 1987-1996 and competed at the 1996 Olympics in Atlanta.
- >> Junior Gwyn Jones comes from a family background filled with volleyball success. Her mother played volleyball at Kentucky, while her aunt, Mary Jones Buczek, also played for the Wildcats. Buczek went on to coach at Wake Forest (1995-2000) and Georgia (2000-2005).
- >> Sophomore Payton White comes from a volleyball family as well. Her oldest sister played at College of Charleston, while her other sister is a sophomore on Penn State's volleyball team.
- >> Freshman Tatum Shipes has a wealth of athletic talent in her family's history. Her mother, Laurel, played basketball at Kentucky, while her father, Rocky, played basketball at The Master's University. Her brother, T.J., was a member of the Georgia State basketball team. Grandfather, Don Hudgens, played basketball at Wheaton College and her great grandparents, Ira and Opal, played basketball at Southern Illinois.

**Head Coach Rick Nold**

at Auburn: 109-102 (8th)  
Overall: 281-200 (17th)

**Hometown:**

Louisville, Ky.

**Education:**

Louisville, 1998

**COACHING EXPERIENCE**

- Falls Cities Volleyball Club (1989-92)
  - Louisville, Ky.
- Assumption High School (1992-95)
  - Louisville, Ky.
- USA Volleyball (Intern) (1995)
- Kentucky-Indiana Volleyball Academy (1995-02)
  - Louisville, Ky.
- Louisville Assistant Coach (1998-01)
  - Louisville, Ky.
- Jacksonville State Head Coach (2002-10)
  - Jacksonville, Ala.
- Auburn Head Coach (2011 - )
  - Auburn, Ala.

Rick Nold enters his eighth season as Auburn's head volleyball coach in 2018 after being named the 10th head coach in program history on April 10, 2011. In his seven seasons on the Plains, Nold has put together an 109-102 overall record (.518). He enters the season with a career winning percentage of .585 in 17 years as a collegiate head coach, having a 281-200 mark.

The 2017 season saw the Tigers go 15-12 overall, picking up big non-conference wins. Auburn opened with a sweep at Georgia Tech and topped then-No. 16 North Carolina and NC State in Puerto Rico. Boasting one of the toughest schedules in the Southeastern Conference, the squad finished 8-10 overall against the league and came in a tie for seventh.

Auburn had one of its best finishes in the SEC in 2016, going 9-9 and finishing tied for fifth overall. The league finish was the best for the program since 2010 as the squad went 15-16 overall. Jesse Earl and Alexa Filley were named All-SEC and honored by the AVCA All-South region. Earl and Filley both reached 1,000 career digs as juniors and Earl's path to that total marked the fastest by any Tiger in program history. Gwyn Jones picked up SEC All-Freshman honors, marking the second-straight season a Tiger has been recognized.

The 2015 season was an exciting one for the young Tiger team as the squad went 18-12 overall and came in sixth in the conference with an 10-8 mark. The team upped its defensive presence from the previous season and finished second overall among SEC opponents with a 15.62 digs/set average. Freshman Brenna McIlroy earned SEC All-Freshman accolades, marking the first time since 2010 that a Tiger newbie was honored by the league. Stephanie Campbell was named the SEC Scholar-Athlete of the Year — the fourth honor in program history. Auburn's 3-2 win over then-No. 11 Florida was the team's first win over a nationally-ranked opponent since 2013 and snapped a 41-match losing streak to the Gators. Auburn finished 11-3 at home in Auburn Arena.

The Tigers finished 19-11 during the 2013 season, tying for sixth in the SEC with a 10-8 conference record. The 10 victories in SEC play were the most by the Tigers since 2010 and just the second time in the last 15 years that Auburn posted 10 wins in league action. Nold also guided the Tigers to their first-ever win over a top-10 opponent, knocking off No. 10 Nebraska, 3-1.

His second season (2012) saw a six-match improvement from his first as he took the Tigers from an 11-19 mark (5-15 SEC) in 2011 to a 17-13 record (8-12 SEC) in 2012. He led the Tigers to nine straight wins to open the season, the second-longest winning streak in program history. Nold also picked up his 200th career head coaching victory on Nov. 4 with a 3-1 win over Georgia.

Nold came to Auburn after directing Jacksonville State to unprecedented heights during his nine-year tenure, winning three regular season conference titles, three conference tournament titles and making three NCAA postseason appearances.

**2018 AUBURN VOLLEYBALL ROSTER**

No.	Name	Cl.	Pos.	Ht.	Hometown/Previous School
1	Mica Allison	Fr.	S	6-1	White Heath, Ill. (Saint Thomas More)
2	Isabella Thompson	Sr.	MB	6-0	Stockton, Calif. (Santa Barbara City College)
3	Payton White	So.	DS/L	5-7	Zionsville, Ind. (Cathedral)
4	Shaina White	Jr.	MB	6-1	Mission Viejo, Calif. (Northeastern)
5	Shea McNamara	So.	MB	6-1	Cumming, Ga. (South Forsyth)
6	Bella Rosenthal	Fr.	DS/L	5-5	Yorktown, Ind. (Yorktown)
7	Chesney McClellan	So.	MB	6-4	Maryville, Tenn. (Nebraska)
8	Brenna McIlroy	Sr.	OH	5-11	Garland, Texas (Rowlett)
9	Karis Beasley	Jr.	OH/DS	5-9	Granbury, Texas (Granbury)
10	Gwyn Jones	Jr.	MB	6-3	Greenville, Ind. (Floyd Central)
11	Morgan Kull	So.	S	5-9	St. Charles, Ill. (St. Charles East)
12	Taylor Rowland	Fr.	OH	6-4	Charlotte, N.C. (Cox Mill)
13	Enija Bidzane	Jr.	OH	5-9	Talsi, Latvia (Murjanu Sports Gymnasium)
14	Katie Person	Fr.	DS/L	5-3	Grand Rapids, Mich. (East Grand Rapids)
16	Val Green	Fr.	OH	6-2	Oxford, Ohio (Talawanda)
21	Tatum Shipes	Fr.	OH	6-4	Buford, Ga. (Buford)
22	Anna Stevenson	So.	MB	6-1	Laurens, S.C. (Laurens)

<b>Head Coach:</b>	Rick Nold (Eighth year at Auburn/17th year as a head coach)
<b>Assistant Coach:</b>	Eysha Ambler (Eighth year at Auburn)
<b>Assistant Coach:</b>	Alex Wilharm (Second year at Auburn)
<b>Director of Operations:</b>	Paige Wetzel (Third year at Auburn)
<b>Athletic Trainer:</b>	Marie Siler
<b>Student Manager:</b>	Morgan Brackin

Inside the Numbers



CATEGORY	AUBURN	BUTLER
Kills	78	88
Per Set	13.0	9.8
Errors	38	48
Total Attacks	243	289
Hitting Pct.	.165	.138
Assists	72	83
Per Set	12.0	9.2
Service Aces	7	5
Per Set	1.2	.6
Service Errors	17	20
Reception Errors	5	14
Per Set	.8	1.6
Digs	106	94
Per Set	17.7	10.4
Solo Blocks	4	6
Block Assists	10	32
Total Blocks	9.0	22.0
Per Set	1.5	2.4



CATEGORY	ILLINOIS ST.	E. ILLINOIS
Kills	147	166
Per Set	13.4	11.0
Errors	47	66
Total Attacks	393	592
Hitting Pct.	.254	.169
Assists	140	156
Per Set	12.7	10.4
Service Aces	20	28
Per Set	1.8	1.9
Service Errors	18	20
Reception Errors	10	18
Per Set	.9	1.2
Digs	173	267
Per Set	15.7	17.8
Solo Blocks	6	4
Block Assists	28	65
Total Blocks	20.0	36.5
Per Set	1.8	2.4

AUBURN INDIVIDUAL MATCH HIGHS (BY SET)

Three Sets

Hitting percentage	.....
Kills	.....
Total Attempts	.....
Assists	.....
Digs	.....
Aces	.....
Blocks	.....

Four Sets

Hitting percentage	.....
Kills	.....
Total Attempts	.....
Assists	.....
Digs	.....
Aces	.....
Blocks	.....

Five Sets

Hitting percentage	.....
Kills	.....
Total Attempts	.....
Assists	.....
Digs	.....
Aces	.....
Blocks	.....

AUBURN TEAM MATCH HIGHS (BY SET)

Three Sets

Hitting percentage	.....
Kills	.....
Total Attempts	.....
Assists	.....
Digs	.....
Aces	.....
Blocks	.....

Four Sets

Hitting percentage	.....
Kills	.....
Total Attempts	.....
Assists	.....
Digs	.....
Aces	.....
Blocks	.....

Five Sets

Hitting percentage	.....
Kills	.....
Total Attempts	.....
Assists	.....
Digs	.....
Aces	.....
Blocks	.....

**THE LAST TIME AUBURN...**

Won in three set .....	8/24/18 vs. High Point (25-21, 25-19, 28-26)
Won in four sets .....	11/9/17 vs. Tennessee (25-22, 23-25, 25-18, 25-20)
Won in five sets .....	11/1/17 vs. Alabama (25-21, 25-14, 20-25, 23-25, 15-11)
Lost in three sets.....	8/25/18 vs. Michigan (22-25, 20-25, 22-25)
Lost in four sets .....	11/22/17 at #3 Florida (25-22, 10-25, 16-25, 22-25)
Lost in five sets.....	9/29/17 vs. Missouri (22-25, 25-23, 20-25, 25-27, 15-11)
Lost first set in a win.....	10/29/17 at South Carolina (20-25, 29-27, 25-18, 25-22)
Won first set in a loss.....	11/22/17 at #3 Florida (25-22, 10-25, 16-25, 22-25)
Lost first two sets in a win.....	9/3/16 at #21 Louisville (15-25, 17-25, 25-14, 25-22, 15-8)
Won first two sets in a loss.....	11/4/16 vs #18 Kentucky (23-25, 22-25, 26-24, 30-28, 15-12)
Beat a ranked opponent .....	9/2/17 vs. #16 North Carolina (25-23, 25-22, 25-27, 25-21)
Hit .300-.399 in a match .....	9/9/17 vs. Clemson (.321)
Hit .400-.499 in a match .....	11/19/17 vs. Mississippi State (.416)
Hit .500 or better in a match.....	10/18/98 at Ole Miss (.514)
Held opponent at .000-.100 in a match.....	8/24/18 vs. High Point (.098)
Held opponent to negative hitting pct. ....	9/20/14 vs. Jacksonville State (-.037)
Had 70-79 kills in a match.....	9/23/16 vs. LSU (70)
Had 80+ kills in a match .....	9/17/06 at Georgia (84)
Had 80-99 digs in a match.....	10/4/17 at Tennessee (97)
Had 100+ digs in a match.....	10/25/15 at LSU (109)
Had 15+ blocks in a match.....	11/9/14 vs. Tennessee (16.0)
Had 10+ service aces in a match.....	9/2/16 vs. Stony Brook (11)
Had a player(s) with 20-24 kills in a match.....	11/9/16, Brenna McIlroy vs. Tennessee (20)
Had a player(s) with 25-29 kills in a match.....	9/13/14, Macy Reece vs. USF (25)
Had a player(s) with 30+ kills in a match.....	10/8/04, Ashlee Johns vs. Arkansas (30)
Had a player(s) with 10+ blocks in a match.....	11/23/16, Breanna Barksdale at #9 Florida (11)
Had a player(s) with 25-29 digs in a match.....	11/1/17, Jesse Earl vs. Alabama (26)
Had a player(s) with 30+ digs in a match.....	11/15/17, Jesse Earl at LSU (33)
Had a player(s) with 50+ assists in a match.....	11/9/17, Alexa Filley vs. Tennessee (53)
Had a player(s) with 60 + assists in a match.....	10/25/15, Alexa Filley at LSU (61)
Had a player(s) with 5+ aces in a match .....	9/16/17, Jesse Earl at #20 Florida State (5)

**AUBURN'S RECORD WHEN...**

Overall.....	1-1
SEC .....	-
Non-Conference.....	1-1
vs. Ranked Teams.....	-
Home.....	1-1
Away.....	-
Neutral .....	-
<b>By Set:</b>	
Three Sets.....	1-1
Four Sets .....	-
Five Sets.....	-
Won first set .....	1-0
Lost first set.....	0-1
Won second set.....	-
Lost second set.....	-
Won first two sets.....	1-0
Lost first two sets .....	0-1
<b>Situational:</b>	
More kills than opponent.....	1-0
Fewer kills than opponent .....	0-1
Kills are tied .....	-
More digs than opponent.....	1-0
Fewer digs than opponent .....	0-1
Digs are tied .....	-
More aces than opponent .....	0-1
Fewer aces than opponent .....	-
Aces are tied.....	1-0
Higher hitting percentage than opponent .....	1-0
Lower hitting percentage than opponent .....	0-1
Tied in hitting percentage.....	-
<b>Hitting percentage</b>	
.400 or above.....	-
.300-.399.....	-
.200-.299.....	1-0
.100-.199.....	0-1
.000-.099.....	0-2
Negative.....	-
<b>Opponents' hitting percentage:</b>	
.400 or above.....	-
.300-.399.....	-
.200-.299.....	0-1
.100-.199.....	-
.000-.099.....	1-0
Negative.....	-
<b>By Day:</b>	
Tuesday.....	-
Wednesday.....	-
Thursday.....	-
Friday.....	1-0
Saturday.....	0-1
Sunday.....	-
Day Matches (first serve before 6 p.m.) .....	-
Night Matches (first serve after 6 p.m.).....	1-1
<b>By Month:</b>	
August.....	1-1
September.....	-
October.....	-
November.....	-
<b>By Jersey Color:</b>	
Navy.....	1-0
Orange.....	0-1
Pink.....	-

**AUBURN DOUBLE-DOUBLES IN 2018**

Player	Opponent (Sets)	Date	Stats
--------	-----------------	------	-------

## 2018 AUBURN MATCH-BY-MATCH STARTERS

Date	Opponent	Result	Outside	Outside	Outside/DS	Middle	Middle	Setter	Libero
8/24	HIGH POINT	W, 3-0	McIlroy	Rowland	P. White	S. White	Stevenson	Allison	Rosenthal
8/25	MICHIGAN	L, 0-3	McIlroy	Shipes	P. White	S. White	Stevenson	Allison	Rosenthal
8/31	at Butler	6 p.m.							
9/1	vs. Illinois State	9 a.m.							
9/1	vs. Eastern Illinois	3 p.m.							
9/7	vs. Loyola Marymount	10 a.m.							
9/7	at Kansas	7 p.m.							
9/8	vs. American	11 a.m.							
9/11	at Kennesaw State	6 p.m.							
9/16	FLORIDA STATE	12 p.m.							
9/21	TENNESSEE*	7 p.m.							
9/23	at Alabama*	1 p.m.							
9/26	at Mississippi State*	6 p.m.							
9/30	at Ole Miss*	2 p.m.							
10/3	GEORGIA*	6 p.m.							
10/7	ALABAMA*	1:30 p.m.							
10/12	at Texas A&M*	6 p.m.							
10/14	at LSU*	1 p.m.							
10/19	at Missouri*	6:30 p.m.							
10/26	OLE MISS*	7 p.m.							
10/28	ARKANSAS*	1:30 p.m.							
10/31	TEXAS A&M*	7 p.m.							
11/4	at South Carolina*	12:30 p.m.							
11/7	MISSOURI*	8 p.m.							
11/11	FLORIDA*	12 p.m.							
11/15	at Georgia*	TBA							
11/21	MISSISSIPPI STATE*	7 p.m.							
11/24	at Kentucky*	TBA							

## 2018 AUBURN MATCH-BY-MATCH LEADERS

Date	Opponent	Result	Kills	Assists	Aces	Digs	Blocks	Hit Pct. (Min 10 Att.)
8/24	HIGH POINT	W, 3-0	Stevenson (13)	Allison (33)	McIlroy (2)	Rosenthal (17)	Stevenson (5)	Stevenson (.500)
8/25	MICHIGAN	L, 0-3	McIlroy (12)	Allison (29)	McIlroy (2)	Rosenthal (19)	Stevenson (2)	McIlroy (.194)
8/31	at Butler	6 p.m.						
9/1	vs. Illinois State	9 a.m.						
9/1	vs. Eastern Illinois	3 p.m.						
9/7	vs. Loyola Marymount	10 a.m.						
9/7	at Kansas	7 p.m.						
9/8	vs. American	11 a.m.						
9/11	at Kennesaw State	6 p.m.						
9/16	FLORIDA STATE	12 p.m.						
9/21	TENNESSEE*	7 p.m.						
9/23	at Alabama*	1 p.m.						
9/26	at Mississippi State*	6 p.m.						
9/30	at Ole Miss*	2 p.m.						
10/3	GEORGIA*	6 p.m.						
10/7	ALABAMA*	1:30 p.m.						
10/12	at Texas A&M*	6 p.m.						
10/14	at LSU*	1 p.m.						
10/19	at Missouri*	6:30 p.m.						
10/26	OLE MISS*	7 p.m.						
10/28	ARKANSAS*	1:30 p.m.						
10/31	TEXAS A&M*	7 p.m.						
11/4	at South Carolina*	12:30 p.m.						
11/7	MISSOURI*	8 p.m.						
11/11	FLORIDA*	12 p.m.						
11/15	at Georgia*	TBA						
11/21	MISSISSIPPI STATE*	7 p.m.						
11/24	at Kentucky*	TBA						



**2018 Auburn Volleyball  
Auburn Overall Individual Statistics (as of Aug 28, 2018)  
All matches**

Overall record: 1-1 Conf: 0-0 Home: 1-1 Away: 0-0 Neutral: 0-0

##	Player	sp	mp-ms	Attack					Set				Serve				
				k	k/s	e	ta	pct	a	a/s	ta	pct	sa	sa/s	se	ta	pct
8	McIlroy, Brenna	6	2-2	19	3.17	9	60	.167	2	0.33	9	.222	4	0.67	3	31	.903
22	Stevenson, Anna	6	2-2	18	3.00	6	41	.293	0	0.00	1	.000	0	0.00	0	0	.000
10	Jones, Gwyn	6	2-0	14	2.33	4	42	.238	0	0.00	1	.000	0	0.00	0	0	.000
12	Rowland, Taylor	4	2-1	8	2.00	7	32	.031	0	0.00	0	.000	0	0.00	0	0	.000
4	White, Shaina	6	2-2	8	1.33	5	28	.107	1	0.17	1	1.00	0	0.00	2	20	.900
21	Shipes, Tatum	4	2-1	5	1.25	4	23	.043	0	0.00	2	.000	0	0.00	0	0	.000
1	Allison, Mica	6	2-2	6	1.00	3	17	.176	62	10.3	195	.318	0	0.00	7	23	.696
6	Rosenthal, Bella	6	2-0	0	0.00	0	0	.000	2	0.33	14	.143	1	0.17	3	23	.870
3	White, Payton	6	2-2	0	0.00	0	0	.000	5	0.83	11	.455	1	0.17	2	24	.917
7	McClellan, Chesney	1	1-0	0	0.00	0	0	.000	0	0.00	0	.000	0	0.00	0	0	.000
9	Beasley, Karis	6	2-0	0	0.00	0	0	.000	0	0.00	2	.000	1	0.17	0	22	1.00
	AUBURN	6	2-2	78	13.0	38	243	.165	72	12.0	236	.305	7	1.17	17	143	.881
	Opponents	6	2-2	80	13.3	36	237	.186	77	12.8	235	.328	5	0.83	21	140	.850

##	Player	sp	Recept			Dig		Blocking					Points		
			re	ta	pct	dig	dig/s	bs	ba	total	blk/s	be	bhe	pts	pts/s
8	McIlroy, Brenna	6	1	26	.962	18	3.00	0	1	1	0.17	1	0	23.5	3.92
22	Stevenson, Anna	6	0	1	1.000	1	0.17	3	4	7	1.17	3	0	23.0	3.83
10	Jones, Gwyn	6	0	2	1.000	6	1.00	0	2	2	0.33	0	0	15.0	2.50
12	Rowland, Taylor	4	0	4	1.000	1	0.25	0	0	0	0.00	0	0	8.0	2.00
4	White, Shaina	6	0	0	.000	6	1.00	0	1	1	0.17	0	0	8.5	1.42
21	Shipes, Tatum	4	0	2	1.000	3	0.75	0	0	0	0.00	0	0	5.0	1.25
1	Allison, Mica	6	0	0	.000	14	2.33	1	2	3	0.50	1	0	8.0	1.33
6	Rosenthal, Bella	6	1	27	.963	36	6.00	0	0	0	0.00	0	1	1.0	0.17
3	White, Payton	6	1	34	.971	14	2.33	0	0	0	0.00	0	0	1.0	0.17
7	McClellan, Chesney	1	0	0	.000	0	0.00	0	0	0	0.00	0	0	0.0	0.00
9	Beasley, Karis	6	2	23	.913	7	1.17	0	0	0	0.00	0	0	1.0	0.17
	AUBURN.....	6	5	119	.958	106	17.67	4	10	9.0	1.50	5	1	94.0	15.67
	Opponents.....	6	7	126	.944	104	17.33	4	16	12.0	2.00	3	0	97.0	16.17



#1 • MICA ALLISON  
Fr. • S • 6-1



#2 • ISABELLA THOMPSON  
Sr. • MB • 6-0



#3 • PAYTON WHITE  
So. • DS/L • 5-7



#4 • SHAINA WHITE  
Jr. • MB • 6-1



#5 • SHEA MCNAMARA  
So. • MB • 6-1



#6 • BELLA ROSENTHALL  
Fr. • DS/L • 5-5



#7 • CHESNEY MCCLELLAN  
So. • MB • 6-4



#8 • BRENNA MCILROY  
Sr. • OH • 5-11



#9 • KARIS BEASLEY  
Jr. • OH/DS • 5-9



#10 • GWYN JONES  
Jr. • MB • 6-3



#11 • MORGAN KULL  
So. • S • 5-9



#12 • TAYLOR ROWLAND  
Fr. • OH • 6-3



#13 • ENIJA BIDZANE  
Jr. • OH • 5-9



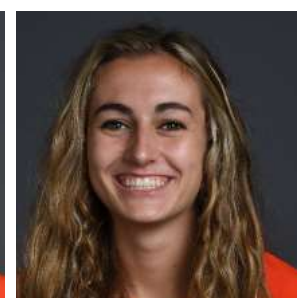
#14 • KATIE PERSONS  
Fr. • DS/L • 5-3



#16 • VAL GREEN  
Fr. • OH • 6-2



#21 • TATUM SHIPES  
Fr. • OH • 6-4



#22 • ANNA STEVENSON  
So. • MB • 6-1



RICK NOLD  
Head Coach



EYSHA AMBLER  
Assistant Coach



ALEX WILHARM  
Assistant Coach



PAIGE WETZEL  
Director of Operations