



2018 AUBURN VOLLEYBALL

AUBURN ATHLETICS COMMUNICATIONS: 392 SOUTH DONAHUE DRIVE || AUBURN, AL 36830 || AUBURNTIGERS.COM || @AUBURNVB

2018 SCHEDULE/RESULTS

8-11, 1-8 SEC

DATE OPPONENT TIME/TV/RESULT

War Eagle Invitational - Auburn, Ala.

Aug. 24 **HIGH POINT** 6:30 p.m. W, 3-0

Aug. 25 **MICHIGAN** 7 p.m. L, 0-3

Butler Invitational - Indianapolis, Ind.

Aug. 31 at Butler 6 p.m. W, 3-0

Sept. 1 vs. Illinois State 9 a.m. L, 1-3

Sept. 1 vs. Eastern Illinois 3 p.m. W, 3-0

Kansas Classic - Lawrence, Kan.

Sept. 7 vs. Loyola Marymount 10 a.m. L, 0-3

Sept. 7 at Kansas 7 p.m. W, 3-2

Sept. 8 vs. American 11 a.m. W, 3-0

Sept. 11 at Kennesaw State 6 p.m. W, 3-2

Sept. 16 **FLORIDA STATE** 12 p.m. W, 3-1

Sept. 21 **TENNESSEE*** 7 p.m. L, 1-3

Sept. 23 at No. 25 Alabama* 1 p.m. L, 1-3

Sept. 26 at Mississippi State* 6 p.m. L, 2-3

Sept. 30 at Ole Miss* 2 p.m. W, 3-1

Oct. 3 **GEORGIA*** 6 p.m. L, 2-3

Oct. 7 **ALABAMA*** 1:30 p.m. L, 0-3

Oct. 12 at Texas A&M* 6 p.m. L, 0-3

Oct. 14 at LSU* 1 p.m. L, 0-3

Oct. 19 at Missouri* 6:30 p.m. L, 1-3

Oct. 26 **OLE MISS*** 7 p.m. SEC+

Oct. 28 **ARKANSAS*** 1:30 p.m. SEC+

Oct. 31 **TEXAS A&M*** 7 p.m. SECN

Nov. 4 at South Carolina* 12:30 p.m. SEC+

Nov. 7 **MISSOURI*** 8 p.m. SECN

Nov. 11 **FLORIDA*** 12 p.m. SECN

Nov. 15 at Georgia* TBA SEC+

Nov. 21 **MISSISSIPPI STATE*** 7 p.m. SEC+

Nov. 24 at Kentucky* TBA SEC+

All times Central. Home Matches in **BOLD CAPS**.

+ = SEC Network +/-ESPN3.com * = SEC match

AUBURN ATHLETICS COMMUNICATIONS

KIRK SAMPSON..... Associate AD

..... sampska@auburn.edu

KENDRA WILLARD..... Volleyball Contact

..... kal0014@auburn.edu

..... C: 614-929-8029

Web..... AuburnTigers.com

Twitter..... @AuburnVB

Instagram..... @auburnvolleyball

Office Phone..... (334) 844-9800



OLE MISS

Friday, Oct. 26 • 7 p.m. CT
Auburn, Ala. • Auburn Arena



Site..... Auburn, Ala.
Venue..... Auburn Arena
Live Stats..... AuburnTigers.com
TV..... SEC+
Twitter..... @AuburnVB
Series Record..... Ole Miss leads 34-30
Last Meeting..... 9/30/18 in Oxford
AU, 3-1 (25-19, 25-21, 18-25, 25-15)

AUBURN
Rankings..... N/R
2018 Record..... 8-11 / 1-8
Head Coach..... Rick Nold
Record at AU (Year)..... 116-112 (8th)

OLE MISS
Rankings..... N/R
2018 Record..... 12-11 / 2-7
Head Coach..... Steven McRoberts
Record at OM (Year)..... 95-60 (5th)



ARKANSAS

Friday, Oct. 28 • 1:30 p.m. CT
Auburn, Ala. • Auburn Arena



Site..... Auburn, Ala.
Venue..... Auburn Arena
Live Stats..... AuburnTigers.com
TV..... SEC+
Twitter..... @AuburnVB
Series Record..... Arkansas leads 36-11
Last Meeting..... 11/25/17 in Fayetteville
ARK, 3-0 (25-21, 25-22, 25-20)

AUBURN
Rankings..... N/R
2018 Record..... 8-11 / 1-8
Head Coach..... Rick Nold
Record at AU (Year)..... 116-112 (8th)

ARKANSAS
Rankings..... N/R
2018 Record..... 9-10 / 3-6
Head Coach..... Jason Watson
Record at ARK (Year)..... 37-42 (3rd)

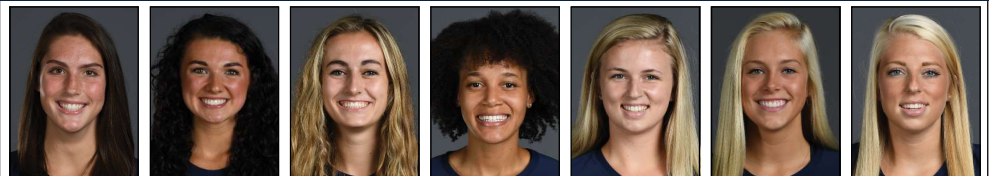
THREE HITS

1 Senior Brenna McIlroy reached another milestone in her career, picking up the 1000th digs of her career at Missouri (10/19). She became just the seventh Tiger in program history to have both 1000 kills and 1000 digs while donning an Auburn jersey.

2 McIlroy also set a career high from the service line vs. Mizzou last week Friday. She recorded six aces for the Tigers and upped her season average to .43. That mark ranks fourth in the conference.

3 Junior Shaina White ranks seventh in the SEC with a .340 hitting clip. She leads the Tigers with a .422 hitting percentage vs. SEC opponents.

AUBURN'S POTENTIAL STARTERS



| BRENNA MCILROY | GWYN JONES | ANNA STEVENSON | SHAINA WHITE | TAYLOR ROWLAND | MICA ALLISON | KARIS BEASLEY |
|--------------------|---------------------|---------------------|--------------------|---------------------|-------------------|--------------------|
| #8 • L • SR • 5-11 | #10 • RS • JR • 6-3 | #22 • MB • SO • 6-1 | #4 • MB • JR • 6-1 | #12 • OH • FR • 6-4 | #1 • S • FR • 6-1 | #9 • DS • JR • 5-9 |
| K/S: 2.86 | K/S: 2.26 | K/S: 2.18 | K/S: 1.53 | K/S: 2.91 | K/S: .70 | K/S: .04 |
| HIT%: .197 | HIT%: .283 | HIT%: .260 | HIT%: .340 | HIT%: .175 | A/S: 9.70 | A/S: .18 |
| D/S: 2.57 | D/S: .27 | D/S: .11 | D/S: .78 | D/S: .45 | D/S: 2.00 | D/S: 2.15 |
| B/S: .33 | B/S: .51 | B/S: 1.24 | B/S: .80 | B/S: .23 | B/S: .51 | SA/S: .24 |
| P/S: 3.48 | P/S: 2.53 | P/S: 2.96 | P/S: 2.02 | P/S: 3.05 | P/S: 1.08 | P/S: .28 |
| SA/S: .43 | | | | | SA/S: .11 | |

K/S: kills per set • HIT%: hitting percentage • D/S: digs per set • B/S: blocks per set • A/S: assists per set • SA/S: aces per set • P/S: points per set

#WarEagle



AuburnTigers.com



@AuburnVB | @AuburnTigers
@CoachRickNold



/AuburnVB
/AuburnTigers

TEAM SCHEDULE AND MEDIA AVAILABILITY » WEEK OF OCTOBER 22 - 28

| MONDAY October 22 | TUESDAY October 23 | WEDNESDAY October 24 | THURSDAY October 25 | FRIDAY October 26 | SATURDAY October 27 | SUNDAY October 28 |
|--|--|--|--|--|---|---|
| PRACTICE 12:15 - 2:15 p.m. Auburn Arena | PRACTICE 11:00 a.m. - 2 p.m. Auburn Arena | PRACTICE 12:15 - 2:15 p.m. Auburn Arena | PRACTICE 11:00 a.m. - 2 p.m. Auburn Arena | MATCH 7 p.m. Auburn vs. Ole Miss Auburn Arena | PRACTICE 2:30 - 4:30 p.m. Auburn Arena | MATCH 1:30 p.m. Auburn vs. Arkansas Auburn Arena |
| Interviews by request | Interviews by request | Interviews by request | Interviews by request | | | |

AUBURN ATHLETICS COMMUNICATIONS

QUICK FACTS

AUBURNTIGERS.COM

For updated game notes, statistics and all the latest information on Auburn volleyball and game weekend activities, go to AuburnTigers.com.

INTERVIEW POLICY

Coach Nold, assistant coaches and all athletes are available for phone and personal interviews by contacting Kendra Willard in the media relations office. Post-match interviews will be conducted on the court or in the media room following a 10-minute cooling-off period.

CREDENTIALS

Anyone wishing to cover an Auburn volleyball match should contact Kendra Willard in the communications office at least one day in advance in order to make the proper arrangements. Credentials are not required for attendance at the match, but those wishing to reserve a seat on press row should provide advance notice.

MATCH DAY SERVICES

Notes for both teams and flip cards will be provided prior to the match. Stats will be distributed between sets and after the match. Wireless internet is available in the Arena; ask Kendra Willard for the password.

VIDEO SERVICES

FTP feeds of selected Auburn volleyball highlights are available for the media. A number of studio and satellite services may be arranged for electronic media by calling Clara Baena Sanchez in the Auburn video services office at cbs0036@auburn.edu.

PHOTO SERVICES

For photos of Auburn volleyball or anything pertaining to Auburn Athletics, contact Wade Rackley at 334-750-6907 or via email at wwr0004@auburn.edu

COMMUNICATIONS STAFF

Kendra Willard Volleyball contact
cell: 614-929-8029
email: kal0014@auburn.edu
Kirk Sampson Associate AD
cell: 334-750-1385
email: sampska@auburn.edu

GENERAL INFORMATION

Location Auburn, Ala.
Founded 1856
Enrollment 29,776
Nickname Tigers
Colors Burnt Orange and Navy Blue
Facility (Capacity) Auburn Arena (9,121)
President Dr. Steven Leath
Director of Athletics Allen Green
Sport Administrator Joy Vrbka

VOLLEYBALL HISTORY

First Year of Volleyball 1967
..... (discontinued 1981; reinstated 1986)
All-Time Record 644-640-4 (.500)
All-Time SEC Record (since 1986) 178-317 (.360)
All-Time Home Record (since 1986) 217-184 (.541)
at Auburn Arena (since 2013) 45-31 (.592)
NCAA Tournament Appearances 1
Last NCAA App./Result 2010 - Second Round
SEC Championships 1
Last 1996 - Co-West Champions

COACHING STAFF

Head Coach Rick Nold
Alma Mater, Year Louisville, 1998
Year at Auburn Eighth
Overall Record 287-210 (.579) / 17th year
Auburn Record 116-112 (.511) / 8th year
Assistant Coach Eysa Ambler
Alma Mater, Year Jacksonville State, 2001
Year at Auburn Eighth
Assistant Coach Alex Wilharm
Alma Mater, Year Clarke, 2011
Year at Auburn Second
Director of Operations Paige Wetzal
Athletic Trainer Marie Siler
Strength & Conditioning Coach Bryan Karkoska
Student Manager Morgan Brackin

GAMEDAY EXPERIENCE: AUBURN ARENA

» Auburn Arena is in its sixth season as home of Auburn Volleyball. The Tigers are 45-31 since moving to the Arena in 2013. The facility seats approximately 2,000 fans for volleyball and 9,121 for basketball.



TEAM INFORMATION

2017 Record 15-12
2017 SEC Record 8-10
SEC Finish t-7th
Starters Returning/Lost 5/1+libero
Letterwinners Returning/Lost 10/4
Newcomers 7

FIRST SERVE

- » The Auburn volleyball team finally returns home for a consistent Southeastern Conference weekend, hosting Ole Miss and Arkansas in Auburn Arena. Both matches will be aired on SEC+/WatchESPN.
- » The Tigers and the Rebels will go head-to-head Friday, Oct. 26, at 7 p.m. CT. Auburn caps the weekend vs. the Razorbacks Sunday, Oct. 28, at 1:30 p.m. CT.
- » Auburn has an all-time record of 644-640-4 (.500) in its 46th full season of volleyball.
- » Head Coach Rick Nold stands at 116-112 in his eighth season on the Plains and is the second-winningest coach in Auburn volleyball history.
- » Auburn's 2018 schedule boasts 10 2017 NCAA Tournament participants.
- » The Tiger roster features two seniors, four juniors, five sophomores and six freshmen.

LAST TIME OUT

- » Auburn capped a long stretch on the road with a 3-1 (25-21, 25-10, 21-25, 25-16) loss at Missouri Friday night in Mizzou Arena.
- » Senior Brenna McLroy led the team with 13 digs at libero. In addition, she also excelled from the service line, having six aces on the night. That total set a new career high for the Tiger. To go with all of that, she set a career best in assists with seven.
- » Freshman Taylor Rowland led the Auburn offense with 12 kills, while classmate Tatum Shipes finished with eight.
- » Shaina White and Gwyn Jones chipped in seven kills each for the Tigers. White finished the match with a .417 hitting clip (7-2-12).
- » Freshman setter Mica Allison had 18 assists, while sophomore Morgan Kull came in the third set and added seven assists as the Tigers switched to a 6-2.
- » Junior Karis Beasley finished with nine digs.

UP NEXT

- » Auburn remains on the Plains, hosting Texas A&M for a Wednesday-night showdown. The Tigers and the Aggies will go head-to-head on Halloween, Oct. 31, at 7 p.m. CT on SEC Network.

SCOUTING OLE MISS

- » The Ole Miss Rebels stand at 12-11 on the season with a 2-7 mark in the Southeastern Conference.
- » The Rebels split last weekend at home, falling to nationally-ranked Florida in four sets Friday before topping rival

Mississippi State, 3-1, Sunday.

- » Junior outside hitter Emily Stroup leads the SEC with a 4.57 kills/set mark. Her 5.00 points/set is second overall.
- » Stroup's 4.56 kills/set in conference-only matches ranks second.
- » Senior libero Caroline Adams has a team-best 3.61 digs/set mark, while Stroup is second at 2.83.
- » Freshman Aubrey Sultemeier and junior Nayo Warnell are the team's top blockers, having a .84 and .83 block/set average, respectively.

A WIN OVER OLE MISS WOULD...

- » Be Auburn's sixth-straight win over the Rebels and 10th in the last 12 meetings.
- » Be Auburn's third-straight win in Auburn Arena over Ole Miss.

AUBURN-OLE MISS SERIES

- » Friday's match will be the 65th meeting between the two teams. The Rebels hold a 34-30 series record.
- » Auburn stands at 15-14 overall in matches played on the Plains. The Tigers have won three-straight at home.
- » The series dates back to 1974. Auburn and Ole Miss faced off in 11-straight neutral site matches until 1987.

LAST TIME OUT - SEPT. 30 IN OXFORD

- » Auburn earned a 3-1 (25-19, 25-21, 18-25, 25-15) win on the road, topping Ole Miss in the Gillom Center, Sept. 30.
- » Anna Stevenson led the squad with 13 kills, tying her career high. Shaina White and Brenna McLroy followed with 11 and 10, respectively.
- » The Auburn blockers tied the team's best this season with 13 stuffs in the match. Stevenson recorded nine blocks, tying another career high. Mica Allison and S. White added three, while McLroy and Gwyn Jones had two each.
- » McLroy picked up A double-double, having 11 digs for the Tiger defense. Karis Beasley had 11 digs for the Auburn and Payton White and Bella Rosenthal chipped in six apiece.

SCOUTING ARKANSAS

- » The Arkansas Razorbacks are 9-10 overall and with 3-6 record in the Southeastern Conference. The squad faces Mississippi State on the road Wednesday prior to coming to Auburn Sunday.
- » The Razorback swept South Carolina last week Wednesday (Oct. 17) before dropping a 3-1 contest to Alabama (Oct. 21).
- » Senior libero Okiana Valle leads the conference with a

PLAYER TO WATCH: BRENNA MCLROY

- » Senior Brenna McLroy has stepped into the libero role in the last two matches, having 13 digs both at LSU and Missouri. The Garland, Texas, product reached her 1,000th career dig last week and became the seventh Tiger in program history to have that number in both kills and digs.



SEC STANDINGS & SCHEDULE

| | <i>(Oct. 23)</i> | | | | | |
|-------------------|------------------|---|-------|-------------|----|------|
| | SEC Matches | | | All Matches | | |
| | W | L | Pct. | W | L | Pct. |
| Kentucky | 8 | 0 | 1.000 | 14 | 4 | .778 |
| Florida | 9 | 1 | .900 | 18 | 4 | .818 |
| Missouri | 8 | 2 | .800 | 18 | 4 | .818 |
| Tennessee | 7 | 2 | .778 | 16 | 5 | .762 |
| South Carolina | 6 | 3 | .667 | 15 | 4 | .789 |
| Texas A&M | 5 | 4 | .556 | 12 | 9 | .571 |
| Alabama | 4 | 5 | .444 | 17 | 6 | .739 |
| Georgia | 3 | 6 | .333 | 12 | 8 | .600 |
| Arkansas | 3 | 6 | .333 | 9 | 10 | .474 |
| Ole Miss | 2 | 7 | .222 | 12 | 11 | .522 |
| LSU | 2 | 7 | .222 | 7 | 13 | .350 |
| AUBURN | 1 | 8 | .111 | 8 | 11 | .421 |
| Mississippi State | 1 | 8 | .111 | 5 | 17 | .228 |

THIS WEEK IN THE SEC

Wednesday, October 24

- South Carolina at Tennessee - 6 p.m.
- Arkansas at Mississippi State - 7 p.m.

Friday, October 26

- #14 Kentucky at Georgia - 7 p.m.
- Alabama at Texas A&M - 6:30 p.m.
- Ole Miss at Auburn - 7 p.m.
- LSU at #24 Missouri - 8 p.m.

Sunday, October 28

- #13 Florida at Mississippi State - 12 p.m.
- Tennessee at Georgia - 1 p.m.
- South Carolina at #14 Kentucky - 1 p.m.
- Arkansas at Auburn - 1:30 p.m.
- Texas A&M at #24 Missouri - 1:30 p.m.
- Ole Miss at Alabama - 5 p.m.

NCAA RPI Report

| <i>(As of Oct. 21 - Auburn and Opponents only)</i> | | | |
|--|-------------------|-------------|-----------|
| Rk | Team | Record | AU Result |
| 10 | Kentucky | 14-4 | - |
| 11 | Michigan | 18-3 | L |
| 16 | Florida | 18-4 | - |
| 25 | Missouri | 18-4 | L |
| 26 | Kansas | 13-6 | W |
| 29 | South Carolina | 15-4 | - |
| 35 | Alabama | 17-6 | L+L |
| 36 | Florida State | 13-7 | W |
| 38 | Tennessee | 16-5 | L |
| 40 | Illinois State | 18-5 | L |
| 61 | Loyola Marymount | 15-6 | L |
| 73 | Georgia | 12-8 | L |
| 78 | Texas A&M | 12-9 | L |
| 82 | High Point | 15-8 | W |
| 84 | Arkansas | 9-10 | - |
| 85 | AUBURN | 8-11 | |
| 88 | Kennesaw State | 19-4 | W |
| 100 | LSU | 7-13 | L |
| 103 | American | 16-9 | W |
| 107 | Ole Miss | 12-11 | W |
| 190 | Butler | 7-16 | W |
| 224 | Mississippi State | 5-17 | L |
| 243 | Eastern Illinois | 9-16 | W |

AVCA Top 25

(Oct. 22)

| Rk | Team | Record | Prev |
|----|---------------------|--------|------|
| 1 | BYU (58) | 20-0 | 1 |
| 2 | Stanford (6) | 18-1 | 2 |
| 3 | Minnesota | 16-2 | 3 |
| 4 | Penn State | 17-3 | 4 |
| 5 | Pittsburgh | 22-0 | 6 |
| 6 | Illinois | 18-3 | 7 |
| 7 | Wisconsin | 14-4 | 9 |
| 8 | Texas | 12-4 | 8 |
| 9 | Nebraska | 15-5 | 5 |
| 10 | Creighton | 18-4 | 10 |
| 11 | Cal Poly | 19-1 | 12 |
| 12 | Michigan | 18-3 | 13 |
| 13 | Florida | 18-4 | 11 |
| 14 | Kentucky | 14-4 | 15 |
| 15 | Southern California | 15-6 | 14 |
| 16 | Oregon | 13-7 | 16 |
| 17 | Purdue | 17-4 | 17 |
| 18 | Marquette | 19-4 | 18 |
| 19 | Washington State | 15-5 | 23 |
| 20 | UCLA | 11-6 | 20 |
| 21 | Washington | 13-7 | 19 |
| 22 | Louisville | 16-5 | 21 |
| 23 | Arizona | 16-6 | 25 |
| 24 | Missouri | 18-4 | NR |
| 25 | UCF | 18-3 | NR |

Also receiving votes: Kansas State, Northern Iowa, **Tennessee**, Baylor, Cincinnati, Utah, **Kansas**, Colorado, San Diego

Inside the Matchup

Auburn vs. Ole Miss 30-34 (.469)

Home: 13-11
Away: 15-14
Neutral: 1-10

Series History (Last 10 Meetings)

| | | | |
|------|--------|---|-----|
| 2011 | Oxford | L | 1-3 |
| 2012 | Oxford | W | 3-0 |
| 2013 | Oxford | W | 3-0 |
| 2013 | Auburn | W | 3-1 |
| 2014 | Auburn | L | 0-3 |
| 2015 | Auburn | W | 3-2 |
| 2016 | Oxford | W | 3-2 |
| 2016 | Auburn | W | 3-2 |
| 2017 | Oxford | W | 3-1 |
| 2018 | Oxford | W | 3-1 |

Auburn vs. Arkansas 11-36 (.234)

Home: 7-16
Away: 3-19
Neutral: 0-1

Series History (Last 10 Meetings)

| | | | |
|------|--------------|---|-----|
| 2012 | Fayetteville | L | 0-3 |
| 2012 | Auburn | W | 3-2 |
| 2013 | Fayetteville | L | 1-3 |
| 2013 | Auburn | W | 3-1 |
| 2014 | Auburn | L | 0-3 |
| 2015 | Fayetteville | L | 2-3 |
| 2015 | Auburn | W | 3-0 |
| 2016 | Fayetteville | W | 3-1 |
| 2017 | Auburn | W | 3-0 |
| 2017 | Fayetteville | L | 0-3 |

5.00 digs/set mark and recently earned SEC Co-Defensive Player of the Week. Her 5.65 average vs. league-only opponents also ranks first.

» Junior setter Rachel Rippee is averaging 9.70 assists/set to rank sixth.

» Sophomore outside hitter Hailey Dirrigl is seventh in the league with a 3.55 kills/set average.

A WIN OVER ARKANSAS WOULD...

» Be Auburn's fourth win over the Razorbacks in the last five meetings.

» Be Auburn's third-straight win in Auburn Arena over Arkansas.

AUBURN-ARKANSAS SERIES

» Sunday's match is the 48th meeting between the two teams since the series started in 1994. Arkansas holds a 36-11 record, winning 24 of the first 25 meetings.

NOLD IN AUBURN HISTORY

» In his eighth season at Auburn, head coach Rick Nold has a 116-112 overall record on the Plains. He became the third coach in program history to record 100 or more wins with the Tigers after Auburn swept Clemson, Sept. 9, 2017.

| Coach | Years at Auburn | Record |
|------------------|---------------------|-----------------------|
| Sandra Newkirk | 1967-79 | 134-107-4 (.556) |
| Rick Nold | 2011-present | 116-112 (.509) |
| Pat Ghostin | 1986-90 | 105-77 (.577) |
| Liz Underwood | 1992-97 | 99-77 (.577) |

BRENNA THE VERSITILE

» Senior Brenna McIlroy has stepped up whenever and where ever she is needed so far this season.

» The Garland, Texas, product started the first 17 matches at outside hitter for the Tigers. However, against LSU (10/14), McIlroy started at libero for the first time in her career. She led the team with 13 digs in the three-set match and followed with 13 more digs in the same role at Mizzou (10/19).

» McIlroy became the 15th Tiger in program history to reach 1,000 career kills in the team's 3-0 win at Butler (Aug. 31). She has 1,176 to her credit so far.

» The outside hitter had a big match offensively for Auburn vs. Florida State, setting a season high with 20 kills in the four-set win. That mark was one shy of her career high.

» Defensively, she is second on the team with a 2.57 digs/set

average.

» At Mizzou Friday, she became the seventh Tiger to reach both 1,000 career kills and 1,000 career digs as she picked up her that magic number with the help of her 13 digs against the Tigers.

» McIlroy has also excelled from the service line for the Tigers this year, leading the team with 40 aces and a .43 aces/set average. She set a career high in the category against Missouri, having six in the match. Her season average is fourth among all SEC opponents.

BIG BLOCKS

» At Kennesaw State, the Tigers totaled 13 blocks collectively with sophomore Chesney McClellan leading the way with seven. Juniors Shaina White and Gwyn Jones added five apiece.

» Auburn put up 13 blocks again at Mississippi State. Sophomore Anna Stevenson led the way with a career-high nine in the five-set match.

» The Tigers followed with another 13-block performance in the 3-1 win at Ole Miss. Stevenson once again tied a career high with nine in the victory.

» Auburn continued its trend of big blocks, having 12 vs. Georgia (10/3). Stevenson and Mica Allison had six in the match, setting a career high for Allison

» The squad had 11 blocks at then-No. 25 Alabama (9/23) with six coming from Jones. That mark set a new career high for the junior. White and Stevenson each had five in the four-set win.

» The Tigers are averaging 1.97 blocks/set.

» Stevenson is among the conference's best individual ranking third in overall block average (1.24), while her 1.38 mark vs. SEC-only opponents is also third.

WHITE CONSISTENT IN THE MIDDLE

» Auburn middle Shaina White has become an efficient part of the Tiger offense this year.

» White's .340 hitting clip on the season overall stands seventh among the Southeastern Conference.

» White holds a .422 hitting percentage in league-only matches, but she is not averaging three attempts per set to be ranked among the league.

TOP-NOTCH NEWCOMERS

» The 2018 Auburn volleyball signing class is ranked the seventh-best incoming group in the nation.

» The 2018 class garnered the highest ranking in program history, featuring three Top 35 Senior Aces and two Gatorade Players of the Year (Mica Allison - Illinois; Taylor Rowland - twice

PLAYER TO WATCH: SHAINA WHITE

» Junior Shaina White has picked up her consistency as the season has progressed from the middle for the Tiger offense. The Mission Viejo, Calif., product ranks seventh in the SEC with a .340 hitting clip and has earned a .417 percentage or better in five of the last six matches, including a .647 mark at Ole Miss (9/30).



in North Carolina).

» Auburn's incoming freshmen are also ranked the second-highest among Southeastern Conference opponents

SETTING UP THE OFFENSE

- » Freshman Mica Allison as earned the starting nod in all matches at setter for the Tigers the year. The White Heath, Ill., native is fifth in the SEC with a 9.70 assists/set average.
- » Allison picked up a career-best 54 assists at MSST (9/26).
- » She totaled 47 assists in the five-set win at Kansas (9/7) and again vs. Florida State (9/16). She added 43 assists in the team's 3-0 win over Eastern Illinois (9/1).
- » Against the Panthers, Allison paced the Tiger offense to a .485 hitting clip (53-5-99). That average ranked tied for fifth in program history.
- » In addition to her success at setter, Allison has started to improve defensively in the back row. She picked up her first career double-double vs. Illinois State (9/1), having 40 assists and 11 digs for the Tigers.
- » Allison reached another double-double vs. FSU, having a season-best 13 digs and again at then-No. 25 Alabama with 13 digs. She added another 13-dig match vs. Georgia (10/3).

YOUTH IN THE BACK

- » Joining McIlroy in the back row is a freshman, sophomore and a junior.
- » Freshman Bella Rosenthal leads the team with a 3.38 digs/set average.
- » Rosenthal has totaled 11 double-digit dig performances on the year, including three 20+ dig matches. She reached a career-high 25 at Kennesaw State (9/11) after having 20 at Kansas (9/7). Most recently, she picked up 20 digs vs. FSU (9/16).
- » Junior Karis Beasley has a 2.15 digs average. She tied her career high vs. Florida State with 16 digs.
- » Sophomore Payton White has a 1.58 digs average on the year. She tied her career high at Mississippi State (9/26) with 14 digs vs. the Bulldogs.

TIGERS PICKED SIXTH IN PRESEASON POLL

» Auburn was chosen to finish sixth in the Southeastern

Conference in this season's preseason coaches' poll.

- » Auburn earned 78 points from the league's 13 coaches.
- » Kentucky edged Florida as the favorite to win the conference championship, securing eight first-place votes and 140 points. Florida had five votes and 137 points. Missouri was selected third, while Georgia and LSU finished in a tie for fourth.
- » Arkansas, Texas A&M, South Carolina, Tennessee, Ole Miss, Alabama and Mississippi State round out the poll.

ALLISON'S SUCCESSFUL SUMMER

- » Freshman setter Mica Allison and the U.S. Women's Junior National Team captured the NORCECA Continental Championship in June to qualify for the 2019 FIVB U20 World Championship.
- » Allison started at setter in all five matches for Team USA. She finished the week with nine service aces, including three against Puerto Rico (6/18) and again vs. Mexico (6/22). She added four blocks in the team's win against Mexico to reach the championship final.

THIS, THAT, AND THE OTHER

- » Junior Karis Beasley's mother was a member of the Canadian National Softball Team from 1987-1996 and competed at the 1996 Olympics in Atlanta.
- » Junior Gwyn Jones comes from a family background filled with volleyball success. Her mother played volleyball at Kentucky, while her aunt, Mary Jones Buczek, also played for the Wildcats. Buczek went on to coach at Wake Forest (1995-2000) and Georgia (2000-2005).
- » Sophomore Payton White comes from a volleyball family as well. Her oldest sister played at College of Charleston, while her other sister is a sophomore on Penn State's volleyball team.
- » Freshman Tatum Shiples has a wealth of athletic talent in her family's history. Her mother, Laurel, played basketball at Kentucky, while her father, Rocky, played basketball at The Master's University. Her brother, T.J., was a member of the Georgia State basketball team. Grandfather, Don Hudgens, played basketball at Wheaton College and her great grandparents, Ira and Opal, played basketball at Southern Illinois.

Head Coach Rick Nold

at Auburn: 116-112 (8th)
Overall: 287-210 (17th)



Hometown:
Louisville, Ky.
Education:
Louisville, 1998

COACHING EXPERIENCE

- Falls Cities Volleyball Club (1989-92)
 - Louisville, Ky.
- Assumption High School (1992-95)
 - Louisville, Ky.
- USA Volleyball (Intern) (1995)
- Kentucky-Indiana Volleyball Academy (1995-02)
 - Louisville, Ky.
- Louisville Assistant Coach (1998-01)
 - Louisville, Ky.
- Jacksonville State Head Coach (2002-10)
 - Jacksonville, Ala.
- Auburn Head Coach (2011 -)
 - Auburn, Ala.

Rick Nold enters his eighth season as Auburn's head volleyball coach in 2018 after being named the 10th head coach in program history on April 10, 2011. In his seven seasons on the Plains, Nold has put together an 116-112 overall record (.509). He enters the season with a career winning percentage of .579 in 17 years as a collegiate head coach, having a 287-210 mark.

The 2017 season saw the Tigers go 15-12 overall, picking up big non-conference wins. Auburn opened with a sweep at Georgia Tech and topped then-No. 16 North Carolina and NC State in Puerto Rico. Boasting one of the toughest schedules in the Southeastern Conference, the squad finished 8-10 overall against the league and came in a tie for seventh.

Auburn had one of its best finishes in the SEC in 2016, going 9-9 and finishing tied for fifth overall. The league finish was the best for the program since 2010 as the squad went 15-16 overall. Jesse Earl and Alexa Filley were named All-SEC and honored by the AVCA All-South region. Earl and Filley both reached 1,000 career digs as juniors and Earl's path to that total marked the fastest by any Tiger in program history. Gwyn Jones picked up SEC All-Freshman honors, marking the second-straight season a Tiger has been recognized.

The 2015 season was an exciting one for the young Tiger team as the squad went 18-12 overall and came in sixth in the conference with an 10-8 mark. The team upped its defensive presence from the previous season and finished second overall among SEC opponents with a 15.62 digs/set average. Freshman Brenna McIlroy earned SEC All-Freshman accolades, marking the first time since 2010 that a Tiger newbie was honored by the league. Stephanie Campbell was named the SEC Scholar-Athlete of the Year — the fourth honor in program history. Auburn's 3-2 win over then-No. 11 Florida was the team's first win over a nationally-ranked opponent since 2013 and snapped a 41-match losing streak to the Gators. Auburn finished 11-3 at home in Auburn Arena.

The Tigers finished 19-11 during the 2013 season, tying for sixth in the SEC with a 10-8 conference record. The 10 victories in SEC play were the most by the Tigers since 2010 and just the second time in the last 15 years that Auburn posted 10 wins in league action. Nold also guided the Tigers to their first-ever win over a top-10 opponent, knocking off No. 10 Nebraska, 3-1.

His second season (2012) saw a six-match improvement from his first as he took the Tigers from an 11-19 mark (5-15 SEC) in 2011 to a 17-13 record (8-12 SEC) in 2012. He led the Tigers to nine straight wins to open the season, the second-longest winning streak in program history. Nold also picked up his 200th career head coaching victory on Nov. 4 with a 3-1 win over Georgia.

Nold came to Auburn after directing Jacksonville State to unprecedented heights during his nine-year tenure, winning three regular season conference titles, three conference tournament titles and making three NCAA postseason appearances.

2018 AUBURN VOLLEYBALL ROSTER

| No. | Name | Cl. | Pos. | Ht. | Hometown/Previous School |
|-----|-------------------|-----|-------|------|---|
| 1 | Mica Allison | Fr. | S | 6-1 | White Heath, Ill. (Saint Thomas More) |
| 2 | Isabella Thompson | Sr. | MB | 6-0 | Stockton, Calif. (Santa Barbara City College) |
| 3 | Payton White | So. | DS/L | 5-7 | Zionsville, Ind. (Cathedral) |
| 4 | Shaina White | Jr. | MB | 6-1 | Mission Viejo, Calif. (Northeastern) |
| 5 | Shea McNamara | So. | MB | 6-1 | Cumming, Ga. (South Forsyth) |
| 6 | Bella Rosenthal | Fr. | DS/L | 5-5 | Yorktown, Ind. (Yorktown) |
| 7 | Chesney McClellan | So. | MB | 6-4 | Maryville, Tenn. (Nebraska) |
| 8 | Brenna McIlroy | Sr. | OH | 5-11 | Garland, Texas (Rowlett) |
| 9 | Karis Beasley | Jr. | OH/DS | 5-9 | Granbury, Texas (Granbury) |
| 10 | Gwyn Jones | Jr. | MB | 6-3 | Greenville, Ind. (Floyd Central) |
| 11 | Morgan Kull | So. | S | 5-9 | St. Charles, Ill. (St. Charles East) |
| 12 | Taylor Rowland | Fr. | OH | 6-4 | Charlotte, N.C. (Cox Mill) |
| 13 | Enija Bidzane | Jr. | OH | 5-9 | Talsi, Latvia (Murjanu Sports Gymnasium) |
| 14 | Katie Person | Fr. | DS/L | 5-3 | Grand Rapids, Mich. (East Grand Rapids) |
| 16 | Val Green | Fr. | OH | 6-2 | Oxford, Ohio (Talawanda) |
| 21 | Tatum Shiples | Fr. | OH | 6-4 | Buford, Ga. (Buford) |
| 22 | Anna Stevenson | So. | MB | 6-1 | Laurens, S.C. (Laurens) |

- Head Coach:** Rick Nold (Eighth year at Auburn/17th year as a head coach)
- Assistant Coach:** Eysa Ambler (Eighth year at Auburn)
- Assistant Coach:** Alex Wilharm (Second year at Auburn)
- Director of Operations:** Paige Wetzel (Third year at Auburn)
- Athletic Trainer:** Marie Siler
- Student Manager:** Morgan Brackin

Inside the Numbers



Ole Miss

| CATEGORY | AUBURN | OLE MISS |
|------------------|--------|----------|
| Kills | 878 | 1152 |
| Per Set | 12.3 | 13.1 |
| Errors | 344 | 463 |
| Total Attacks | 2423 | 3035 |
| Hitting Pct. | .220 | .227 |
| Assists | 818 | 1078 |
| Per Set | 11.5 | 12.2 |
| Service Aces | 81 | 98 |
| Per Set | 1.1 | 1.1 |
| Service Errors | 161 | 141 |
| Reception Errors | 75 | 105 |
| Per Set | 1.1 | 1.2 |
| Digs | 945 | 1277 |
| Per Set | 13.3 | 14.5 |
| Solo Blocks | 33 | 76 |
| Block Assists | 214 | 202 |
| Total Blocks | 140.0 | 177.0 |
| Per Set | 2.0 | 2.0 |



| CATEGORY | AUBURN | ARKANSAS |
|------------------|--------|----------|
| Kills | 878 | 1944 |
| Per Set | 12.3 | 13.3 |
| Errors | 344 | 389 |
| Total Attacks | 2423 | 2606 |
| Hitting Pct. | .220 | .213 |
| Assists | 818 | 885 |
| Per Set | 11.5 | 12.5 |
| Service Aces | 81 | 96 |
| Per Set | 1.1 | 1.4 |
| Service Errors | 161 | 159 |
| Reception Errors | 75 | 76 |
| Per Set | 1.1 | 1.1 |
| Digs | 945 | 1043 |
| Per Set | 13.3 | 14.7 |
| Solo Blocks | 33 | 17 |
| Block Assists | 214 | 234 |
| Total Blocks | 140.0 | 134.0 |
| Per Set | 2.0 | 1.9 |

AUBURN INDIVIDUAL MATCH HIGHS (BY SET)

Three Sets

| | |
|--------------------|---|
| Hitting percentage | .688, Shaina White vs. American, 9/8/18 |
| Kills | 14, Taylor Rowland vs. Eastern Illinois, 9/1/18 |
| Total Attempts | 36, Brenna McLroy vs. Michigan, 8/25/18 |
| Assists | 43, Mica Allison vs Eastern Illinois, 9/1/18 |
| Digs | 19, Bella Rosenthal vs. Michigan, 8/25/18 |
| Aces | 3 (2x), last Karis Beasley vs. American, 9/8/18 |
| Blocks | 6, Anna Stevenson vs. Butler, 8/31/18 |

Four Sets

| | |
|--------------------|--|
| Hitting percentage | .750, Tatum Shipes vs. Florida State, 9/16/18 |
| Kills | 20, Brenna McLroy vs. Florida State, 9/16/18 |
| Total Attempts | 60, Brenna McLroy vs. Florida State, 9/16/18 |
| Assists | 47, Mica Allison vs. Florida State, 9/16/18 |
| Digs | 20, Bella Rosenthal vs. Florida State, 9/16/18 |
| Aces | 6, Brenna McLroy at Missouri, 10/19/18 |
| Blocks | 9, Anna Stevenson at Ole Miss, 9/30/18 |

Five Sets

| | |
|--------------------|---|
| Hitting percentage | .583, Mica Allison at Kennesaw State, 9/11/18 |
| Kills | 23, Taylor Rowland at Kansas, 9/7/18 |
| Total Attempts | 75, Brenna McLroy vs. Georgia, 10/3/18 |
| Assists | 54, Mica Allison at Mississippi State, 9/26/18 |
| Digs | 25, Bella Rosenthal at Kennesaw State, 9/11/18 |
| Aces | 3 (3x), last Brenna McLroy vs. Georgia, 10/3/18 |
| Blocks | 9, Anna Stevenson at Mississippi State, 9/26/18 |

AUBURN TEAM MATCH HIGHS (BY SET)

Three Sets

| | |
|--------------------|-----------------------------------|
| Hitting percentage | .485 vs. Eastern Illinois, 9/1/18 |
| Kills | 53 vs. Eastern Illinois, 9/1/18 |
| Total Attempts | 125 vs. Michigan, 8/25/18 |
| Assists | 51 vs. Eastern Illinois, 9/1/18 |
| Digs | 53, 2x last vs. Michigan, 8/25/18 |
| Aces | 5, 2x last vs. Alabama, 10/7/18 |
| Blocks | 7.0, 2x last at LSU, 10/14/18 |

Four Sets

| | |
|--------------------|--|
| Hitting percentage | .293 at Ole Miss, 9/30/18 |
| Kills | 57 (2x), last at No. 25 Alabama, 9/23/18 |
| Total Attempts | 164 vs. Florida State, 9/16/18 |
| Assists | 54 vs. Florida State, 9/16/18 |
| Digs | 77 vs. Florida State, 9/16/18 |
| Aces | 7 at Missouri, 10/19/18 |
| Blocks | 13.0 at Ole Miss, 9/30/18 |

Five Sets

| | |
|--------------------|------------------------------------|
| Hitting percentage | .276 at Mississippi State, 9/26/18 |
| Kills | 65 at Mississippi State, 9/26/18 |
| Total Attempts | 173 vs. Georgia, 10/3/18 |
| Assists | 59 at Mississippi State, 9/7/18 |
| Digs | 71 vs. Georgia, 10/3/18 |
| Aces | 9 at Kennesaw State, 9/11/18 |
| Blocks | 13.0 at Kennesaw State, 9/11/18 |

THE LAST TIME AUBURN...

| | |
|---|--|
| Won in three sets | 9/8/18 vs. American (25-21, 26-24, 25-23) |
| Won in four sets | 9/30/18 at Ole Miss (25-19, 25-21, 18-25, 25-15) |
| Won in five sets | 9/11/18 at Kennesaw State (23-25, 20-25, 28-26, 26-24, 15-9) |
| Lost in three sets | 10/14/18 at LSU (22-25, 21-25, 23-25) |
| Lost in four sets | 10/19/18 at Missouri (25-21, 25-10, 21-25, 25-16) |
| Lost in five sets | 10/3/18 vs. Georgia (24-26, 25-15, 22-25, 25-21, 20-18) |
| Lost first set in a win | 10/29/17 at South Carolina (20-25, 29-27, 25-18, 25-22) |
| Won first set in a loss | 10/3/18 vs. Georgia (24-26, 25-15, 22-25, 25-21, 20-18) |
| Lost first two sets in a win | 9/11/18 at Kennesaw State (23-25, 20-25, 28-26, 26-24, 15-9) |
| Won first two sets in a loss | 9/26/18 at Mississippi State (25-21, 25-12, 22-25, 23-25, 13-15) |
| Beat a ranked opponent | 9/2/17 vs. #16 North Carolina (25-23, 25-22, 25-27, 25-21) |
| Hit .300-.399 in a match | 9/9/17 vs. Clemson (.321) |
| Hit .400-.499 in a match | 9/1/18 vs. Eastern Illinois (.485) |
| Hit .500 or better in a match | 10/18/98 at Ole Miss (.514) |
| Held opponent at .000-.100 in a match | 8/31/18 vs. Butler (.080) |
| Held opponent to negative hitting pct. | 9/20/14 vs. Jacksonville State (-.037) |
| Had 70-79 kills in a match | 9/23/16 vs. LSU (70) |
| Had 80+ kills in a match | 9/17/06 at Georgia (84) |
| Had 80-99 digs in a match | 10/4/17 at Tennessee (97) |
| Had 100+ digs in a match | 10/25/15 at LSU (109) |
| Had 15+ blocks in a match | 11/9/14 vs. Tennessee (16.0) |
| Had 10+ service aces in a match | 9/2/16 vs. Stony Brook (11) |
| Had a player(s) with 20-24 kills in a match .. | 9/16/18, Brenna McLroy vs. Florida State (20) |
| Had a player(s) with 25-29 kills in a match .. | 9/13/14, Macy Reece vs. USF (25) |
| Had a player(s) with 30+ kills in a match | 10/8/04, Ashlee Johns vs. Arkansas (30) |
| Had a player(s) with 10+ blocks in a match | 11/23/16, Breanna Barksdale at #9 Florida (11) |
| Had a player(s) with 25-29 digs in a match | 9/11/18, Bella Rosenthal at Kennesaw State (25) |
| Had a player(s) with 30+ digs in a match | 11/15/17, Jesse Earl at LSU (33) |
| Had a player(s) with 50+ assists in a match | 9/26/18, Mica Allison at Mississippi State (54) |
| Had a player(s) with 60 + assists in a match .. | 10/25/15, Alexa Filley at LSU (61) |
| Had a player(s) with 5+ aces in a match | 10/19/18, Brenna McLroy at Missouri (6) |

AUBURN'S RECORD WHEN...

| | |
|--|------|
| Overall | 8-11 |
| SEC | 1-8 |
| Non-Conference | 7-3 |
| vs. Ranked Teams | 0-1 |
| Home | 2-4 |
| Away | 4-5 |
| Neutral | 2-2 |
| By Set: | |
| Three Sets | 4-5 |
| Four Sets | 2-4 |
| Five Sets | 2-2 |
| Won first set | 7-3 |
| Lost first set | 1-7 |
| Won second set | 6-2 |
| Lost second set | 2-8 |
| Won first two sets | 6-1 |
| Lost first two sets | 1-6 |
| Situational: | |
| More kills than opponent | 6-1 |
| Fewer kills than opponent | 2-9 |
| Kills are tied | 0-1 |
| More digs than opponent | 4-1 |
| Fewer digs than opponent | 4-10 |
| Digs are tied | - |
| More aces than opponent | 5-4 |
| Fewer aces than opponent | 0-4 |
| Aces are tied | 3-3 |
| Higher hitting percentage than opponent | 7-2 |
| Lower hitting percentage than opponent | 1-9 |
| Tied in hitting percentage | - |
| Hitting percentage | |
| .400 or above | 1-0 |
| .300-.399 | 1-0 |
| .200-.299 | 6-5 |
| .100-.199 | 0-6 |
| .000-.099 | - |
| Negative | - |
| Opponents' hitting percentage: | |
| .400 or above | 0-3 |
| .300-.399 | 0-1 |
| .200-.299 | 1-6 |
| .100-.199 | 4-1 |
| .000-.099 | 3-0 |
| Negative | - |
| By Day: | |
| Tuesday | 1-0 |
| Wednesday | 0-2 |
| Thursday | - |
| Friday | 3-4 |
| Saturday | 2-2 |
| Sunday | 2-3 |
| Day Matches (first serve before 6 p.m.) | 4-5 |
| Night Matches (first serve after 6 p.m.) | 4-6 |
| By Month: | |
| August | 2-1 |
| September | 6-5 |
| October | 0-5 |
| November | - |
| By Jersey Color: | |
| Navy | 5-5 |
| Orange | 3-4 |
| Pink | 0-2 |

AUBURN DOUBLE-DOUBLES IN 2018

| Player | Opponent (Sets) | Date | Stats |
|--------------------|--------------------------|-------------|--------------|
| Allison, Mica (4) | vs. Illinois State (4) | 9/1/18 | 40a, 11d |
| | vs. Florida State (4) | 9/16/18 | 47a, 13d |
| | at No. 25 Alabama (4) | 9/23/18 | 41a, 13d |
| | vs. Georgia (5) | 10/3/18 | 46a, 13d |
| McLroy, Brenna (5) | vs. Illinois State (4) | 9/1/18 | 13k, 11d |
| | vs. Eastern Illinois (3) | 9/1/18 | 10k, 16d |
| | at Kansas (5) | 9/7/18 | 14k, 14d |
| | at Kennesaw State (5) | 9/11/18 | 14k, 11d |
| | vs. Florida State (4) | 9/16/18 | 20k, 14d |
| | at Ole Miss (4) | 9/30/18 | 10k, 11d |

2018 AUBURN MATCH-BY-MATCH STARTERS

| Date | Opponent | Result | Outside | Outside | Outside/DS | Middle | Middle | Setter | Libero |
|-------|-----------------------|------------|---------|---------|------------|-----------|-----------|---------|-----------|
| 8/24 | HIGH POINT | W, 3-0 | McIroy | Rowland | P. White | S. White | Stevenson | Allison | Rosenthal |
| 8/25 | MICHIGAN | L, 0-3 | McIroy | Shipes | P. White | S. White | Stevenson | Allison | Rosenthal |
| 8/31 | at Butler | W, 3-0 | McIroy | Rowland | P. White | S. White | Stevenson | Allison | Rosenthal |
| 9/1 | vs. Illinois State | L, 1-3 | McIroy | Rowland | P. White | S. White | Stevenson | Allison | Rosenthal |
| 9/1 | vs. Eastern Illinois | W, 3-0 | McIroy | Jones | Beasley | McClellan | Stevenson | Allison | Rosenthal |
| 9/7 | vs. Loyola Marymount | L, 0-3 | McIroy | Jones | Beasley | S. White | McClellan | Allison | Rosenthal |
| 9/7 | at Kansas | W, 3-2 | McIroy | Rowland | P. White | S. White | McClellan | Allison | Rosenthal |
| 9/8 | vs. American | W, 3-0 | McIroy | Jones | Beasley | S. White | McClellan | Allison | Rosenthal |
| 9/11 | at Kennesaw State | W, 3-2 | McIroy | Jones | Beasley | S. White | McClellan | Allison | Rosenthal |
| 9/16 | FLORIDA STATE | W, 3-1 | McIroy | Jones | Beasley | S. White | McClellan | Allison | Rosenthal |
| 9/21 | TENNESSEE* | L, 1-3 | McIroy | Jones | Beasley | S. White | McClellan | Allison | Rosenthal |
| 9/23 | at #25 Alabama* | L, 1-3 | McIroy | Jones | Beasley | S. White | Stevenson | Allison | Rosenthal |
| 9/26 | at Mississippi State* | L, 2-3 | McIroy | Jones | Beasley | McClellan | Stevenson | Allison | Rosenthal |
| 9/30 | at Ole Miss* | W, 3-1 | McIroy | Jones | Beasley | S. White | Stevenson | Allison | Rosenthal |
| 10/3 | GEORGIA* | L, 2-3 | McIroy | Jones | Beasley | S. White | Stevenson | Allison | Rosenthal |
| 10/7 | ALABAMA* | L, 0-3 | McIroy | Jones | Beasley | S. White | Stevenson | Allison | Rosenthal |
| 10/12 | at Texas A&M* | L, 0-3 | McIroy | Jones | Beasley | S. White | Stevenson | Allison | Rosenthal |
| 10/14 | at LSU* | L, 0-3 | Rowland | Jones | Beasley | S. White | Stevenson | Allison | McIroy |
| 10/19 | at Missouri* | L, 1-3 | Rowland | Jones | Beasley | S. White | Stevenson | Allison | McIroy |
| 10/26 | OLE MISS* | 7 p.m. | | | | | | | |
| 10/28 | ARKANSAS* | 1:30 p.m. | | | | | | | |
| 10/31 | TEXAS A&M* | 7 p.m. | | | | | | | |
| 11/4 | at South Carolina* | 12:30 p.m. | | | | | | | |
| 11/7 | MISSOURI* | 8 p.m. | | | | | | | |
| 11/11 | FLORIDA* | 12 p.m. | | | | | | | |
| 11/15 | at Georgia* | TBA | | | | | | | |
| 11/21 | MISSISSIPPI STATE* | 7 p.m. | | | | | | | |
| 11/24 | at Kentucky* | TBA | | | | | | | |

2018 AUBURN MATCH-BY-MATCH LEADERS

| Date | Opponent | Result | Kills | Assists | Aces | Digs | Blocks | Hit Pct. (Min 10 Att.) |
|-------|-----------------------|------------|-----------------------|--------------|-----------------------|-------------------------------|------------------------|-----------------------------|
| 8/24 | HIGH POINT | W, 3-0 | Stevenson (13) | Allison (33) | McIroy (2) | Rosenthal (17) | Stevenson (5) | Stevenson (.500) |
| 8/25 | MICHIGAN | L, 0-3 | McIroy (12) | Allison (29) | McIroy (2) | Rosenthal (19) | Stevenson (2) | McIroy (.194) |
| 8/31 | at Butler | W, 3-0 | Rowland (12) | Allison (30) | P. White/Beasley (2) | Rosenthal/Beasley (7) | Stevenson (6) | Jones (.545) |
| 9/1 | vs. Illinois State | L, 1-3 | McIroy (13) | Allison (40) | Rosenthal/Beasley (2) | Allison/McIroy/Rosenthal (11) | McClellan (7) | McIroy (.216) |
| 9/1 | vs. Eastern Illinois | W, 3-0 | Rowland (14) | Allison (43) | McIroy (3) | McIroy (16) | McClellan (3) | Jones (.667) |
| 9/7 | vs. Loyola Marymount | L, 0-3 | Rowland (13) | Allison (24) | Allison/P. White (1) | Rosenthal (6) | S. White (4) | Rowland (.480) |
| 9/7 | at Kansas | W, 3-2 | Rowland (23) | Allison (47) | McIroy (3) | Rosenthal (20) | S. White/McClellan (4) | Jones (.421) |
| 9/8 | vs. American | W, 3-0 | Rowland/S. White (12) | Allison (34) | Beasley (3) | Rosenthal (14) | S. White (5) | S. White (.688) |
| 9/11 | at Kennesaw State | W, 3-2 | McIroy (14) | Allison (37) | P. White (3) | Rosenthal (25) | S. White/McClellan (5) | Allison (.583) |
| 9/16 | FLORIDA STATE | W, 3-1 | McIroy (20) | Allison (47) | McIroy (3) | Rosenthal (20) | S. White (4) | S. White / McClellan (.235) |
| 9/21 | TENNESSEE* | L, 1-3 | McIroy (15) | Allison (34) | S. White/P. White (1) | Rosenthal (14) | S. White (2) | S. White (.286) |
| 9/23 | at #25 Alabama* | L, 1-3 | Rowland (16) | Allison (41) | 3 with 1 | Rosenthal/Allison (13) | Jones (6) | Stevenson (.476) |
| 9/26 | at Mississippi State* | L, 2-3 | McIroy (19) | Allison (54) | 3 with 1 | Rosenthal (17) | Stevenson (9) | Jones (.394) |
| 9/30 | at Ole Miss* | W, 3-1 | Stevenson (13) | Allison (40) | Rosenthal (3) | McIroy/Beasley (11) | Stevenson (9) | S. White (.647) |
| 10/3 | GEORGIA* | L, 2-3 | McIroy (19) | Allison (46) | McIroy (3) | Rosenthal (18) | Stevenson (6) | S. White (.462) |
| 10/7 | ALABAMA* | L, 0-3 | McIroy (8) | Allison (31) | Beasley (2) | McIroy (9) | Stevenson (4) | Stevenson (.188) |
| 10/12 | at Texas A&M* | L, 0-3 | Jones/Rowland (9) | Allison (30) | 3 with 1 | Beasley (8) | S. White (3) | Jones (.273) |
| 10/14 | at LSU* | L, 0-3 | Shipes (10) | Allison (31) | McIroy (2) | McIroy (13) | Stevenson (4) | Jones (.467) |
| 10/19 | at Missouri* | L, 1-3 | Rowland (12) | Allison (18) | McIroy (6) | McIroy (13) | 4 with 1 | S. White (.417) |
| 10/26 | OLE MISS* | 7 p.m. | | | | | | |
| 10/28 | ARKANSAS* | 1:30 p.m. | | | | | | |
| 10/31 | TEXAS A&M* | 7 p.m. | | | | | | |
| 11/4 | at South Carolina* | 12:30 p.m. | | | | | | |
| 11/7 | MISSOURI* | 8 p.m. | | | | | | |
| 11/11 | FLORIDA* | 12 p.m. | | | | | | |
| 11/15 | at Georgia* | TBA | | | | | | |
| 11/21 | MISSISSIPPI STATE* | 7 p.m. | | | | | | |
| 11/24 | at Kentucky* | TBA | | | | | | |

The Automated ScoreBook
Auburn Overall Individual Statistics (as of Oct 22, 2018)
All matches

Overall record: 8-11 Conf: 1-8 Home: 2-4 Away: 4-5 Neutral: 2-2

| ## | Player | Attack | | | | | | | Set | | | | Serve | | | | |
|----|--------------------|--------|-------|-----|------|-----|------|-------|-----|------|------|------|-------|------|-----|------|------|
| | | sp | mp-ms | k | k/s | e | ta | pct | a | a/s | ta | pct | sa | sa/s | se | ta | pct |
| 12 | Rowland, Taylor | 64 | 19-6 | 186 | 2.91 | 91 | 544 | .175 | 1 | 0.02 | 15 | .067 | 0 | 0.00 | 0 | 6 | 1.00 |
| 8 | McIlroy, Brenna | 70 | 19-17 | 200 | 2.86 | 78 | 620 | .197 | 20 | 0.29 | 105 | .190 | 30 | 0.43 | 49 | 284 | .827 |
| 10 | Jones, Gwyn | 70 | 19-14 | 158 | 2.26 | 47 | 392 | .283 | 2 | 0.03 | 12 | .167 | 0 | 0.00 | 0 | 0 | .000 |
| 22 | Stevenson, Anna | 45 | 13-13 | 98 | 2.18 | 39 | 227 | .260 | 1 | 0.02 | 15 | .067 | 0 | 0.00 | 3 | 20 | .850 |
| 21 | Shipes, Tatum | 25 | 12-1 | 48 | 1.92 | 17 | 141 | .220 | 0 | 0.00 | 9 | .000 | 0 | 0.00 | 0 | 0 | .000 |
| 4 | White, Shaina | 59 | 17-17 | 90 | 1.53 | 23 | 197 | .340 | 2 | 0.03 | 10 | .200 | 3 | 0.05 | 7 | 210 | .967 |
| 7 | McClellan, Chesney | 39 | 12-8 | 45 | 1.15 | 18 | 123 | .220 | 3 | 0.08 | 6 | .500 | 0 | 0.00 | 0 | 0 | .000 |
| 1 | Allison, Mica | 71 | 19-19 | 50 | 0.70 | 28 | 157 | .140 | 689 | 9.70 | 1820 | .379 | 8 | 0.11 | 37 | 210 | .824 |
| 9 | Beasley, Karis | 71 | 19-14 | 3 | 0.04 | 1 | 15 | .133 | 13 | 0.18 | 78 | .167 | 17 | 0.24 | 28 | 254 | .890 |
| 6 | Rosenthal, Bella | 69 | 19-0 | 0 | 0.00 | 0 | 3 | .000 | 47 | 0.68 | 203 | .232 | 11 | 0.16 | 19 | 260 | .927 |
| 3 | White, Payton | 71 | 19-5 | 0 | 0.00 | 2 | 4 | -.500 | 32 | 0.45 | 96 | .333 | 12 | 0.17 | 15 | 272 | .945 |
| 13 | Bidzane, Enija | 1 | 1-0 | 0 | 0.00 | 0 | 0 | .000 | 0 | 0.00 | 0 | .000 | 0 | 0.00 | 1 | 1 | .000 |
| 16 | Green, Val | 1 | 1-0 | 0 | 0.00 | 0 | 0 | .000 | 0 | 0.00 | 0 | .000 | 0 | 0.00 | 1 | 1 | .000 |
| 14 | Persons, Katie | 4 | 3-0 | 0 | 0.00 | 0 | 0 | .000 | 0 | 0.00 | 0 | .000 | 0 | 0.00 | 0 | 0 | .000 |
| 11 | Kull, Morgan | 13 | 6-0 | 0 | 0.00 | 0 | 0 | .000 | 8 | 0.62 | 34 | .235 | 0 | 0.00 | 1 | 27 | .963 |
| | AUBURN | 71 | 19-19 | 878 | 12.3 | 344 | 2423 | .220 | 818 | 11.5 | 2403 | .340 | 81 | 1.14 | 161 | 1545 | .896 |
| | Opponents | 71 | 19-19 | 968 | 13.6 | 390 | 2430 | .238 | 893 | 12.5 | 2402 | .372 | 75 | 1.06 | 148 | 1594 | .907 |

| ## | Player | Recept | | | | Dig | | Blocking | | | | | Points | | |
|----|--------------------|--------|----|------|-------|------|-------|----------|-----|-------|-------|----|--------|--------|-------|
| | | sp | re | ta | pct | dig | dig/s | bs | ba | total | blk/s | be | bhe | pts | pts/s |
| 12 | Rowland, Taylor | 64 | 4 | 106 | .962 | 29 | 0.45 | 3 | 12 | 15 | 0.23 | 2 | 0 | 195.0 | 3.05 |
| 8 | McIlroy, Brenna | 70 | 10 | 361 | .972 | 180 | 2.57 | 4 | 19 | 23 | 0.33 | 2 | 0 | 243.5 | 3.48 |
| 10 | Jones, Gwyn | 70 | 0 | 3 | 1.000 | 19 | 0.27 | 2 | 34 | 36 | 0.51 | 3 | 1 | 177.0 | 2.53 |
| 22 | Stevenson, Anna | 45 | 0 | 5 | 1.000 | 5 | 0.11 | 14 | 42 | 56 | 1.24 | 9 | 3 | 133.0 | 2.96 |
| 21 | Shipes, Tatum | 25 | 2 | 22 | .909 | 11 | 0.44 | 2 | 7 | 9 | 0.36 | 1 | 0 | 53.5 | 2.14 |
| 4 | White, Shaina | 59 | 0 | 0 | .000 | 46 | 0.78 | 5 | 42 | 47 | 0.80 | 5 | 0 | 119.0 | 2.02 |
| 7 | McClellan, Chesney | 39 | 0 | 1 | 1.000 | 8 | 0.21 | 2 | 23 | 25 | 0.64 | 1 | 1 | 58.5 | 1.50 |
| 1 | Allison, Mica | 71 | 0 | 0 | .000 | 142 | 2.00 | 1 | 35 | 36 | 0.51 | 6 | 17 | 76.5 | 1.08 |
| 9 | Beasley, Karis | 71 | 15 | 355 | .958 | 153 | 2.15 | 0 | 0 | 0 | 0.00 | 0 | 3 | 20.0 | 0.28 |
| 6 | Rosenthal, Bella | 69 | 15 | 296 | .949 | 233 | 3.38 | 0 | 0 | 0 | 0.00 | 0 | 2 | 11.0 | 0.16 |
| 3 | White, Payton | 71 | 13 | 275 | .953 | 112 | 1.58 | 0 | 0 | 0 | 0.00 | 0 | 0 | 12.0 | 0.17 |
| 13 | Bidzane, Enija | 1 | 0 | 0 | .000 | 0 | 0.00 | 0 | 0 | 0 | 0.00 | 0 | 0 | 0.0 | 0.00 |
| 16 | Green, Val | 1 | 0 | 0 | .000 | 0 | 0.00 | 0 | 0 | 0 | 0.00 | 0 | 0 | 0.0 | 0.00 |
| 14 | Persons, Katie | 4 | 1 | 6 | .833 | 2 | 0.50 | 0 | 0 | 0 | 0.00 | 0 | 0 | 0.0 | 0.00 |
| 11 | Kull, Morgan | 13 | 0 | 0 | .000 | 5 | 0.38 | 0 | 0 | 0 | 0.00 | 0 | 1 | 0.0 | 0.00 |
| - | TEAM | - | 15 | - | - | - | - | - | - | - | - | - | - | - | - |
| | AUBURN..... | 71 | 75 | 1445 | .948 | 945 | 13.31 | 33 | 214 | 140.0 | 1.97 | 29 | 28 | 1099.0 | 15.48 |
| | Opponents..... | 71 | 81 | 1381 | .941 | 1032 | 14.54 | 35 | 200 | 135.0 | 1.90 | 33 | 22 | 1178.0 | 16.59 |

AUBURN VOLLEYBALL SINGLE-SEASON INDIVIDUAL RECORDS (25-POINT RALLY SCORING ERA)

KILLS

| | |
|--------------------------------------|------------|
| 1. Jessica Glover (2008)..... | 410 |
| 2. Sarah Bullock (2012)..... | 371 |
| 3. Sarah Bullock (2010)..... | 354 |
| 4. Brenna McIlroy (2016)..... | 351 |
| 5. Kelly Fidero (2011)..... | 341 |
| 6. Courtney Crable (2015)..... | 333 |
| Brenna McIlroy (2015)..... | 333 |
| 8. Katherine Culwell (2012)..... | 330 |
| 9. Katherine Culwell (2013)..... | 326 |
| 10. Morgan Johns (2010)..... | 325 |

KILLS PER SET (MIN. 100 KILLS)

| | |
|--------------------------------------|-------------|
| 1. Sarah Bullock (2012)..... | 3.50 |
| 2. Jessica Glover (2008)..... | 3.45 |
| 3. Kelly Fidero (2011)..... | 3.22 |
| 4. Brenna McIlroy (2016)..... | 3.13 |
| Katherine Culwell (2013)..... | 3.13 |
| 6. Katherine Culwell (2012)..... | 3.03 |
| Sarah Bullock (2010)..... | 3.03 |
| 8. Taylor Rowland (2018)..... | 2.91 |
| 9. Brenna McIlroy (2017)..... | 2.86 |
| Brenna McIlroy (2018)..... | 2.86 |

ATTACK PCT. (MIN. 250 ATTACKS)

| | |
|------------------------------------|-------------|
| 1. Shaina White (2017)..... | .367 |
| 2. Camila Jersonsky (2012)..... | .356 |
| Camila Jersonsky (2011)..... | .356 |
| 4. Camila Jersonsky (2010)..... | .354 |
| 5. Camila Jersonsky (2013)..... | .351 |
| 6. Alyssa Davis (2009)..... | .316 |
| 7. Morgan Johns (2010)..... | .305 |
| 8. Gwyn Jones (2018)..... | .283 |
| 9. Stephanie Campbell (2013)..... | .281 |
| 10. Stephanie Campbell (2015)..... | .280 |

ATTACKS

| | |
|--------------------------------------|-------------|
| 1. Brenna McIlroy (2016)..... | 1113 |
| 2. Sarah Bullock (2012)..... | 1090 |
| 3. Courtney Crable (2014)..... | 1062 |
| 4. Brenna McIlroy (2015)..... | 1043 |
| 5. Katherine Culwell (2012)..... | 1033 |
| 6. Sarah Bullock (2010)..... | 993 |
| 7. Jessica Glover (2008)..... | 988 |
| 8. Katherine Culwell (2013)..... | 981 |
| 9. Brenna McIlroy (2017)..... | 938 |
| 10. Courtney Crable (2015)..... | 935 |

ASSISTS

| | |
|------------------------------------|------------|
| 1. Alexa Filley (2016)..... | 1227 |
| 2. Alexa Filley (2015)..... | 1226 |
| 3. Alexa Filley (2014)..... | 1175 |
| 4. Alexa Filley (2017)..... | 1093 |
| 5. Sara Shanks (2008)..... | 995 |
| 6. Chelsea Wintzinger (2011)..... | 791 |
| 7. Christina Solverson (2010)..... | 740 |
| 8. Mica Allison (2018)..... | 689 |
| 9. Chelsea Wintzinger (2012)..... | 680 |
| 10. Chelsea Wintzinger (2013)..... | 642 |

ASSISTS PER SET (MIN. 200 ASSISTS)

| | |
|------------------------------------|-------------|
| 1. Alexa Filley (2017)..... | 10.72 |
| 2. Alexa Filley (2014)..... | 10.22 |
| 3. Alexa Filley (2015)..... | 10.13 |
| 4. Alexa Filley (2016)..... | 9.98 |
| 5. Mica Allison (2018)..... | 9.70 |
| 6. Sara Shanks (2008)..... | 8.43 |
| 7. Chelsea Wintzinger (2011)..... | 7.39 |
| 8. Chelsea Wintzinger (2012)..... | 6.24 |
| 9. Chelsea Wintzinger (2013)..... | 6.17 |
| Christina Solverson (2010)..... | 6.17 |

ACES

| | |
|--------------------------------------|-----------|
| 1. Jesse Earl (2016)..... | 46 |
| 2. Jesse Earl (2017)..... | 42 |
| 3. Jesse Earl (2015)..... | 39 |
| 4. Brenna McIlroy (2016)..... | 36 |
| 5. Chelsea Wintzinger (2013)..... | 35 |
| 6. Courtney Crable (2014)..... | 33 |
| 7. Brenna McIlroy (2015)..... | 32 |
| 8. Sara Shanks (2008)..... | 30 |
| Alexa Filley (2015)..... | 30 |
| Brenna McIlroy (2015)..... | 30 |

ACES PER SET (MIN. 15 ACES)

| | |
|--------------------------------------|-------------|
| 1. Brenna McIlroy (2018)..... | 0.43 |
| 2. Jesse Earl (2017)..... | 0.41 |
| 3. Jesse Earl (2016)..... | 0.37 |
| 4. Chelsea Wintzinger (2013)..... | 0.34 |
| 5. Jesse Earl (2015)..... | 0.32 |
| Brenna McIlroy (2016)..... | 0.32 |
| 7. Courtney Crable (2014)..... | 0.27 |
| 8. Brenna McIlroy (2015)..... | 0.26 |
| 9. Alexa Filley (2015)..... | 0.25 |
| Sara Shanks (2008)..... | 0.25 |
| Kelly Stewart (2016)..... | 0.25 |

DIGS

| | |
|--------------------------------|-----|
| 1. Jesse Earl (2016)..... | 612 |
| 2. Jesse Earl (2017)..... | 529 |
| 3. Jesse Earl (2015)..... | 516 |
| 4. Sarah Wroblecky (2013)..... | 481 |
| 5. Liz Crouch (2010)..... | 469 |
| 6. Liz Crouch (2009)..... | 453 |
| 7. Alyssa Ivey (2014)..... | 434 |
| 8. Sarah Wroblecky (2012)..... | 431 |
| 9. Liz Crouch (2008)..... | 389 |
| 10. Alexa Filley (2016)..... | 367 |

DIGS PER SET (MIN. 100 DIGS)

| | |
|--|-------------|
| 1. Jesse Earl (2017)..... | 5.19 |
| 2. Jesse Earl (2016)..... | 4.98 |
| 3. Sarah Wroblecky (2013)..... | 4.62 |
| 4. Jesse Earl (2015)..... | 4.26 |
| 5. Liz Crouch (2009)..... | 4.08 |
| 6. Alyssa Ivey (2014)..... | 4.02 |
| 7. Liz Crouch (2010)..... | 4.01 |
| 8. Sarah Wroblecky (2012)..... | 3.99 |
| 9. Liz Crouch (2008)..... | 3.70 |
| 10. Bella Rosenthal (2018)..... | 3.38 |

SOLO BLOCKS

| | |
|-----------------------------------|-----------|
| 1. Katherine Culwell (2012)..... | 25 |
| 2. Sarah Bullock (2012)..... | 18 |
| Jessica Glover (2008)..... | 18 |
| 4. Kelly Fidero (2011)..... | 17 |
| Sarah Bullock (2011)..... | 17 |
| 6. Katherine Culwell (2013)..... | 16 |
| Camila Jersonsky (2013)..... | 16 |
| 8. Camila Jersonsky (2011)..... | 15 |
| 9. Macy Reece (2014)..... | 14 |
| Breanna Barksdale (2014)..... | 14 |
| Stephanie Campbell (2014)..... | 14 |
| Breanna Barksdale (2014)..... | 14 |
| Anna Stevenson (2018)..... | 14 |

BLOCK ASSISTS

| | |
|-----------------------------------|-----|
| 1. Camila Jersonsky (2012)..... | 108 |
| 2. Lauren Mellor (2009)..... | 90 |
| 3. Camila Jersonsky (2013)..... | 89 |
| 4. Breanna Barksdale (2014)..... | 87 |
| 5. Courtney McDonald (2012)..... | 84 |
| 6. Breanna Barksdale (2016)..... | 83 |
| 7. Breanna Barksdale (2015)..... | 82 |
| 8. Stephanie Campbell (2014)..... | 72 |
| 9. Emily Klitzke (2014)..... | 70 |
| 10. Chloe Rowand (2012)..... | 67 |

TOTAL BLOCKS

| | |
|-----------------------------------|-----|
| 1. Camila Jersonsky (2012)..... | 119 |
| 2. Camila Jersonsky (2013)..... | 105 |
| 3. Breanna Barksdale (2014)..... | 101 |
| 4. Lauren Mellor (2009)..... | 97 |
| Breanna Barksdale (2016)..... | 97 |
| 6. Breanna Barksdale (2015)..... | 94 |
| 7. Courtney McDonald (2012)..... | 89 |
| 8. Stephanie Campbell (2014)..... | 86 |
| 9. Emily Klitzke (2014)..... | 80 |
| 10. Katherine Culwell (2012)..... | 78 |

BLOCKS PER SET (MIN. 50 BLOCKS)

| | |
|--------------------------------------|-------------|
| 1. Anna Stevenson (2018)..... | 1.24 |
| 2. Camila Jersonsky (2012)..... | 1.09 |
| 3. Camila Jersonsky (2013)..... | 1.01 |
| 4. Chloe Rowand (2011)..... | 0.97 |
| 5. Breanna Barksdale (2014)..... | 0.91 |
| 6. Stephanie Campbell (2015)..... | 0.90 |
| 7. Camila Jersonsky (2011)..... | 0.89 |
| 8. Lauren Mellor (2009)..... | 0.88 |
| 9. Breanna Barksdale (2016)..... | 0.84 |
| 10. Courtney McDonald (2012)..... | 0.82 |
| Lauren Mellor (2010)..... | 0.82 |

AUBURN VOLLEYBALL CAREER RECORD BOOK (SIDEOUT + RALLY ERA)

KILLS

| | |
|--|-------------|
| 1. Jaunelle Hamilton (1997-00)..... | 1848 |
| 2. Allyson Beecroft (1993-96)..... | 1727 |
| 3. Brooke McCarley (1997-00)..... | 1704 |
| 4. Gina Thomas (1988-92)..... | 1467 |
| 5. Rachel Shanks (2004-07)..... | 1319 |
| 6. Sarah Bullock (2009-12)..... | 1272 |
| 7. Brenna McIlroy (2015-present)..... | 1176 |
| 8. Bridgitte Sims (1989-91)..... | 1149 |
| 9. Jessica Glover (2005-08)..... | 1137 |
| 10. Rani Whitson (1993-96)..... | 1102 |

KILLS PER SET (MIN. 500 KILLS)

| | |
|-------------------------------------|------|
| 1. Brooke McCarley (1997-00)..... | 4.40 |
| 2. Jaunelle Hamilton (1997-00)..... | 4.23 |
| 3. Allyson Beecroft (1993-96)..... | 4.00 |
| 4. Ashlee Johns (2003-04)..... | 3.82 |
| 5. Terri Duckworth (1987-88)..... | 3.63 |
| 6. Jennifer Amobi (2003-05)..... | 3.57 |
| 7. Rachel Shanks (2004-07)..... | 3.43 |
| 8. Bridgitte Sims (1989-91)..... | 3.40 |
| 9. Jessica Glover (2005-08)..... | 3.17 |
| 10. Sarah Bullock (2009-12)..... | 2.93 |

ATTACK PCT. (MIN. 1000 ATTACKS)

| | | |
|---|------------|---------------------|
| 1. Camila Jersonsky (2010-13)..... | 355 | 894-237-1853 |
| 2. Jaunelle Hamilton (1997-00)..... | 344 | 1848-532-3827 |
| 3. Brooke McCarley (1997-00)..... | 325 | 1704-455-3847 |
| 4. Terri Duckworth (1987-99)..... | 315 | 876-291-1860 |
| 5. Rani Whitson (1993-96)..... | 281 | 1102-383-2562 |
| 6. Julie Bosler (2003-06)..... | 280 | 558-178-1359 |
| 7. Gina Thomas (1988-92)..... | 279 | 1467-540-3319 |
| 8. Stephanie Campbell (2013-16)..... | 276 | 673-205-1669 |
| 9. Whitney Jacob (2004-07)..... | 264 | 1093-428-2522 |
| 10. Gwyn Jones (2016-present)..... | 258 | 744-276-1813 |
| 11. La'Toi Finley (1994-97)..... | 256 | 727-306-1647 |

ATTACKS

| | |
|--|-------------|
| 1. Allyson Beecroft (1993-96)..... | 4349 |
| 2. Brooke McCarley (1997-00)..... | 3847 |
| 3. Jaunelle Hamilton (1997-00)..... | 3827 |
| 4. Sarah Bullock (2009-12)..... | 3774 |
| 5. Brenna McIlroy (2015-present)..... | 3714 |
| 6. Rachel Shanks (2004-07)..... | 3703 |
| 7. Gina Thomas (1988-92)..... | 3319 |
| 8. Katherine Culwell (2009-13)..... | 3130 |
| 9. Jessica Glover (2005-08)..... | 3130 |
| 10. Jenifer Kleyn (1988-91)..... | 3107 |

ASSISTS

| | |
|--------------------------------------|------|
| 1. Piper Craig (1995-98)..... | 5053 |
| 2. Alexa Filley (2014-17)..... | 4721 |
| 3. Janel Newkirk (1989-92)..... | 4071 |
| 4. Mary Orndorff (1986-89)..... | 3242 |
| 5. Chelsea Wintzinger (2010-13)..... | 2654 |
| 6. Tama English (1991-94)..... | 2535 |
| 7. Joanna Pappas (2005-06)..... | 2073 |

ASSISTS PER SET (MIN. 500 ASSISTS)

| | |
|--|-------------|
| 1. Piper Craig (1995-98)..... | 12.86 |
| 2. Traci Price (1999-00)..... | 11.77 |
| 3. Maira Mogallon (2003-04)..... | 11.38 |
| 4. Chris Murphy (1993-96)..... | 11.35 |
| 5. Joanna Pappas (2005-06)..... | 11.15 |
| 6. Alexa Filley (2014-17)..... | 10.24 |
| 7. Mica Allison (2018-present)..... | 9.70 |

ACES

| | |
|-------------------------------------|-----|
| 1. Jenifer Kleyn (1988-91)..... | 338 |
| 2. Lori Russell (1989-92)..... | 201 |
| 3. Gretchen Thompson (1986-89)..... | 164 |
| 4. Tory Gutierrez (1989-92)..... | 160 |
| 5. Terri Duckworth (1987-88)..... | 158 |
| 6. Jaunelle Hamilton (1997-00)..... | 148 |
| 7. Allyson Beecroft (1993-96)..... | 138 |
| 8. Whitney Jacob (2004-07)..... | 134 |
| 9. Janel Newkirk (1989-92)..... | 129 |
| 10. Jesse Earl (2015-17)..... | 127 |

ACES PER SET (MIN. 40 ACES)

| | |
|--------------------------------------|------|
| 1. Jenifer Kleyn (1988-91)..... | 0.71 |
| 2. Terri Duckworth (1987-88)..... | 0.66 |
| 3. Lori Russell (1989-92)..... | 0.46 |
| 4. Jenny Fisler (1987-88)..... | 0.40 |
| 5. Bridgitte Sims (1989-91)..... | 0.37 |
| 6. Jesse Earl (2015-17)..... | 0.37 |
| 7. Gretchen Thompson (1986-89)..... | 0.36 |
| 8. Maira Mogallon (2003-04)..... | 0.35 |
| 9. Tory Gutierrez (1989-92)..... | 0.35 |
| 10. Jaunelle Hamilton (1997-00)..... | 0.34 |

DIGS

| | |
|---|-------------|
| 1. Liz Crouch (2007-10)..... | 1703 |
| 2. Jesse Earl (2015-17)..... | 1657 |
| 3. Gretchen Thompson (1986-89)..... | 1495 |
| 4. Alexa Filley (2014-17)..... | 1315 |
| 5. Allyson Beecroft (1993-96)..... | 1249 |
| 6. Sarah Wroblecky (2010-13)..... | 1238 |
| 7. Sarah Bullock (2009-12)..... | 1210 |
| 8. Rachel Shanks (2004-07)..... | 1185 |
| 9. Sarah Watson (1992-95)..... | 1036 |
| 10. Janel Newkirk (1989-92)..... | 1026 |
| 11. Brenna McIlroy (2015-present)..... | 1006 |
| 12. Katherine Culwell (2009-13)..... | 1005 |
| 13. Jaunelle Hamilton (1997-00)..... | 1002 |

DIGS PER SET (MIN. 500 DIGS)

| | |
|-------------------------------------|------|
| 1. Jesse Earl (2015-17)..... | 4.79 |
| 2. Liz Crouch (2007-10)..... | 4.00 |
| 3. Sarah Wroblecky (2010-13)..... | 3.65 |
| 4. Gretchen Thompson (1986-89)..... | 3.26 |
| 5. Rachel Shanks (2004-07)..... | 3.08 |
| 6. Allyson Beecroft (1993-96)..... | 2.89 |
| 7. Alexa Filley (2014-17)..... | 2.85 |
| 8. Bailey Veit (2002-05)..... | 2.80 |
| 9. Emily Suter (1995-98)..... | 2.80 |
| 10. Sarah Bullock (2009-12)..... | 2.79 |

SOLO BLOCKS

| | |
|-------------------------------------|-----|
| 1. Gina Thomas (1988-92)..... | 159 |
| 2. Tory Gutierrez (1989-92)..... | 157 |
| 3. Jaunelle Hamilton (1997-00)..... | 106 |
| 4. Julie Bosler (2003-06)..... | 98 |
| 5. Rani Whitson (1993-96)..... | 61 |
| 6. Katherine Culwell (2009-13)..... | 59 |
| 7. Mary Olks (1986-89)..... | 58 |
| 8. Whitney Jacob (2004-07)..... | 56 |
| 9. Sarah Bullock (2009-12)..... | 54 |
| 10. Camila Jersonsky (2010-13)..... | 51 |

BLOCK ASSISTS

| | |
|--------------------------------------|-----|
| 1. Jaunelle Hamilton (1997-00)..... | 465 |
| 2. Rani Whitson (1993-96)..... | 426 |
| 3. Gina Thomas (1988-92)..... | 360 |
| 4. Whitney Jacob (2004-07)..... | 351 |
| 5. Tory Gutierrez (1989-92)..... | 318 |
| 6. Camila Jersonsky (2010-13)..... | 317 |
| 7. Julie Bosler (2003-06)..... | 265 |
| 8. La'Toi Finley (1994-97)..... | 261 |
| 9. Krista Singleton (1994-97)..... | 261 |
| 10. Breanna Barksdale (2014-16)..... | 252 |

TOTAL BLOCKS

| | |
|-------------------------------------|-----|
| 1. Jaunelle Hamilton (1997-00)..... | 571 |
| 2. Gina Thomas (1988-92)..... | 519 |
| 3. Rani Whitson (1993-96)..... | 487 |
| 4. Tory Gutierrez (1989-92)..... | 475 |
| 5. Whitney Jacob (2004-07)..... | 407 |
| 6. Camila Jersonsky (2010-13)..... | 368 |
| 7. Julie Bosler (2003-06)..... | 363 |
| 8. Breanna Barksdale (2014-16)..... | 292 |
| 9. La'Toi Finley (1994-97)..... | 289 |
| 10. Krista Singleton (1994-97)..... | 276 |

BLOCKS PER SET (MIN. 100 BLOCKS)

| | |
|---|-------------|
| 1. Jaunelle Hamilton (1997-00)..... | 1.31 |
| 2. Rani Whitson (1993-96)..... | 1.16 |
| 3. Julie Bosler (2003-06)..... | 1.06 |
| 4. Tory Gutierrez (1989-92)..... | 1.03 |
| 5. Gina Thomas (1988-92)..... | 0.98 |
| 6. Whitney Jacob (2004-07)..... | 0.96 |
| 7. Camila Jersonsky (2009-13)..... | 0.92 |
| 8. Heather Franey (1995-96, 98)..... | 0.90 |
| 9. La'Toi Finley (1994-97)..... | 0.88 |
| 10. Anna Stevenson (2017-present)..... | 0.87 |
| 11. Breanna Barksdale (2014-present)..... | 0.85 |



#1 • MICA ALLISON
Fr. • S • 6-1



#2 • ISABELLA THOMPSON
Sr. • MB • 6-0



#3 • PAYTON WHITE
So. • DS/L • 5-7



#4 • SHAINA WHITE
Jr. • MB • 6-1



#5 • SHEA MCNAMARA
So. • MB • 6-1



#6 • BELLA ROSENTHALL
Fr. • DS/L • 5-5



#7 • CHESNEY MCCLELLAN
So. • MB • 6-4



#8 • BRENNA MCILROY
Sr. • OH • 5-11



#9 • KARIS BEASLEY
Jr. • OH/DS • 5-9



#10 • GWYN JONES
Jr. • MB • 6-3



#11 • MORGAN KULL
So. • S • 5-9



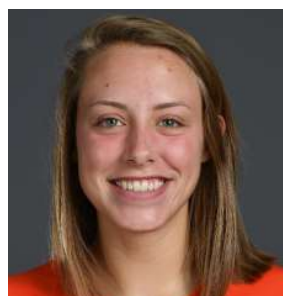
#12 • TAYLOR ROWLAND
Fr. • OH • 6-3



#13 • ENIJA BIDZANE
Jr. • OH • 5-9



#14 • KATIE PERSONS
Fr. • DS/L • 5-3



#16 • VAL GREEN
Fr. • OH • 6-2



#21 • TATUM SHIPES
Fr. • OH • 6-4



#22 • ANNA STEVENSON
So. • MB • 6-1



RICK NOLD
Head Coach



EYSHA AMBLER
Assistant Coach



ALEX WILHARM
Assistant Coach



PAIGE WETZEL
Director of Operations



BRENNA MCILROY

SENIOR / 5-11 / OH
GARLAND, TEXAS
ROWLETT HS



| Category | Career High | Opponent/Date |
|--------------------|-------------|----------------------------|
| Kills | 21 | at Georgia, 10/2/16 |
| Attempts | 75 | vs. Georgia, 10/3/18 |
| Hitting Percentage | .481 | vs. Clemson, 9/9/17 |
| Assists | 7 | at Missouri, 10/19/18 |
| Digs | 22 | vs. LSU, 10/4/15 |
| Blocks | 4 | at LSU, 10/25/15 |
| Aces | 6 | at Missouri, 10/19/18 |
| Points | 24.0 | vs. Florida State, 9/16/18 |

| Category | Season High | Opponent/Date |
|--------------------|-------------|--|
| Kills | 20 | vs. Florida State, 9/16/18 |
| Attempts | 75 | vs. Georgia, 10/3/18 |
| Hitting Percentage | .455 | at Butler, 8/31/18 |
| Assists | 7 | at Missouri, 10/19/18 |
| Digs | 16 | vs. EIU, 9/1/18 |
| Blocks | 3 | 3x, last at Mississippi State, 9/26/18 |
| Aces | 6 | at Missouri, 10/19/18 |
| Points | 24.0 | vs. Florida State, 9/16/18 |

MCILROY'S SEASON NOTES

- Started at libero vs. LSU (10/14) and at Missouri (10/19).
- Back-to-back 13-kill performances vs. both Tiger teams.
- Set a career high in aces with six at Mizzou and upped her season average to .43, ranking fourth in the SEC.
- Has a 2.91 kills/set average.
- 12 matches in with double-digitt kills
- Leads the squad with six double-doubles (kills/digs).
- Season-best 20 kills in four-set win vs. Florida State (9/16).
- Had 19 kills at Mississippi State (9/26) and again vs. Georgia (10/3).

- Finished with 14 kills on two occasions - at Kansas (9/7) and at Kennesaw State (9/11)
- Had 13 kills vs. Illinois State (9/1) and added 11 digs for her first double-double of the year.
- Season-high 16 digs against Eastern Illinois (9/1).
- Became the program's 15th player to reach 1,000 career kills against Butler (8/31) and 13th Tiger to have 1,000 career digs (10/19).
- Became just the seventh AU athlete to have 1,000 in both kills and digs.
- Her .455 hitting clip (11-1-22) against the Bulldogs in Indianapolis was a season-best.

| Date | Opponent | sp | attack | | | | set | | | serve | | | | recept | | | blocking | | | team | | | | | |
|--------------|----------------------|----|--------|----|-----|------|-----|-----|------|-------|----|-----|------|--------|-----|-------|----------|----|----|------|------|--------|-------|-------|-----|
| | | | k | e | ta | pct | a | ta | pct | sa | se | ta | pct | re | ta | pct | dig | bs | ba | be | bhe | points | hit% | score | |
| Aug 24, 2018 | HIGH POINT | *3 | 7 | 4 | 24 | .125 | 2 | 7 | .286 | 2 | 2 | 14 | .857 | 0 | 9 | 1.000 | 10 | 0 | 1 | 0 | 1.0 | 0 | 9.5 | .203 | 3-0 |
| Aug 25, 2018 | MICHIGAN | *3 | 12 | 5 | 36 | .194 | 0 | 2 | .000 | 2 | 1 | 17 | .941 | 1 | 17 | .941 | 8 | 0 | 0 | 1 | 0.0 | 0 | 14.0 | .128 | 0-3 |
| Aug 31, 2018 | at Butler | *3 | 11 | 1 | 22 | .455 | 1 | 5 | .200 | 0 | 5 | 15 | .667 | 1 | 11 | .909 | 2 | 0 | 3 | 0 | 3.0 | 0 | 12.5 | .333 | 3-0 |
| Sep 01, 2018 | vs Illinois State | *4 | 13 | 5 | 37 | .216 | 0 | 2 | .000 | 1 | 2 | 9 | .778 | 1 | 30 | .967 | 11 | 0 | 2 | 1 | 2.0 | 0 | 15.0 | .169 | 1-3 |
| Sep 01, 2018 | vs EIU | *3 | 10 | 2 | 19 | .421 | 2 | 4 | .500 | 3 | 1 | 12 | .917 | 0 | 10 | 1.000 | 16 | 0 | 1 | 0 | 1.0 | 0 | 13.5 | .485 | 3-0 |
| Sep 07, 2018 | vs Loyola Marymount | *3 | 7 | 3 | 28 | .143 | 1 | 4 | .250 | 0 | 2 | 11 | .818 | 1 | 23 | .957 | 4 | 0 | 1 | 0 | 1.0 | 0 | 7.5 | .250 | 0-3 |
| Sep 07, 2018 | at Kansas | *5 | 14 | 7 | 40 | .175 | 1 | 9 | .111 | 3 | 4 | 28 | .857 | 0 | 29 | 1.000 | 14 | 0 | 1 | 0 | 1.0 | 0 | 17.5 | .222 | 3-2 |
| Sep 08, 2018 | at American | *3 | 6 | 4 | 21 | .095 | 1 | 5 | .200 | 0 | 2 | 11 | .818 | 1 | 18 | .944 | 11 | 0 | 3 | 0 | 3.0 | 0 | 7.5 | .248 | 3-0 |
| Sep 11, 2018 | at Kennesaw State | *5 | 14 | 4 | 38 | .263 | 2 | 6 | .333 | 2 | 4 | 24 | .833 | 1 | 41 | .976 | 11 | 0 | 2 | 0 | 2.0 | 0 | 17.0 | .205 | 3-2 |
| Sep 16, 2018 | FLORIDA STATE | *4 | 20 | 8 | 60 | .200 | 1 | 7 | .143 | 3 | 2 | 18 | .889 | 0 | 25 | 1.000 | 14 | 1 | 0 | 0 | 1.0 | 0 | 24.0 | .207 | 3-1 |
| Sep 21, 2018 | TENNESSEE | *4 | 15 | 5 | 44 | .227 | 0 | 2 | .000 | 0 | 1 | 11 | .909 | 1 | 16 | .938 | 8 | 0 | 0 | 0 | 0.0 | 0 | 15.0 | .160 | 1-3 |
| Sep 23, 2018 | at Alabama | *4 | 10 | 6 | 44 | .091 | 0 | 4 | .000 | 1 | 6 | 16 | .625 | 1 | 10 | .900 | 7 | 0 | 0 | 0 | 0.0 | 0 | 11.0 | .230 | 1-3 |
| 09-26-18 | at Mississippi State | *5 | 19 | 7 | 49 | .245 | 0 | 4 | .000 | 1 | 1 | 19 | .947 | 1 | 26 | .962 | 8 | 1 | 2 | 0 | 3.0 | 0 | 22.0 | .276 | 2-3 |
| Sep 30, 2018 | at Ole Miss | *4 | 10 | 7 | 36 | .083 | 1 | 13 | .077 | 0 | 2 | 12 | .833 | 0 | 14 | 1.000 | 11 | 1 | 1 | 0 | 2.0 | 0 | 11.5 | .293 | 3-1 |
| Oct 03, 2018 | GEORGIA | *5 | 19 | 5 | 75 | .187 | 0 | 8 | .000 | 3 | 5 | 17 | .706 | 1 | 19 | .947 | 8 | 1 | 1 | 0 | 2.0 | 0 | 23.5 | .214 | 2-3 |
| Oct 07, 2018 | ALABAMA | *3 | 8 | 4 | 31 | .129 | 0 | 2 | .000 | 1 | 2 | 10 | .800 | 0 | 17 | 1.000 | 9 | 0 | 1 | 0 | 1.0 | 0 | 9.5 | .127 | 0-3 |
| Oct 12, 2018 | at Texas A&M | *2 | 4 | 1 | 12 | .250 | 0 | 2 | .000 | 0 | 1 | 4 | .750 | 0 | 17 | 1.000 | 2 | 0 | 0 | 0 | 0.0 | 0 | 4.0 | .188 | 0-3 |
| Oct 14, 2018 | at LSU | 3 | 0 | 0 | 2 | .000 | 1 | 9 | .111 | 2 | 3 | 18 | .833 | 0 | 14 | 1.000 | 13 | 0 | 0 | 0 | 0.0 | 0 | 2.0 | .226 | 0-3 |
| Oct 19, 2018 | at Mizzou | 4 | 1 | 0 | 2 | .500 | 7 | 10 | .700 | 6 | 3 | 18 | .833 | 0 | 15 | 1.000 | 13 | 0 | 0 | 0 | 0.0 | 0 | 7.0 | .127 | 1-3 |
| | | 70 | 200 | 78 | 620 | .197 | 20 | 105 | .190 | 30 | 49 | 284 | .827 | 10 | 361 | .972 | 180 | 4 | 19 | 2 | 23.0 | 0 | 243.5 | | |

Sets played: 70 Service aces per set: 0.43 Points per set: 3.48
 Kills per set: 2.86 Digs per set: 2.57
 Assists per set: 0.29 Blocks per set: 0.33

CAREER STATISTICS

| Year | Sets | MP | Kills | KPS | E | TA | Pct. | Ast. | APS | SA | SAPS | SE | Digs | DPS | RE | BS | BA | TB | BPS | Pts. | PTS |
|--------------|------------|------------|-------------|-------------|------------|-------------|-------------|-----------|------------|------------|------------|------------|-------------|-------------|-----------|-----------|-----------|------------|------------|---------------|-------------|
| 2015 | 121 | 30 | 333 | 2.75 | 183 | 1043 | .144 | 16 | .13 | 32 | .26 | 60 | 291 | 2.40 | 27 | 13 | 31 | 44 | .36 | 393.5 | 3.25 |
| 2016 | 112 | 29 | 351 | 3.13 | 166 | 1113 | .166 | 23 | .21 | 36 | .32 | 72 | 257 | 2.29 | 12 | 13 | 17 | 30 | .27 | 408.5 | 3.64 |
| 2017 | 102 | 27 | 292 | 2.86 | 147 | 938 | .155 | 33 | .32 | 21 | .21 | 56 | 278 | 2.73 | 22 | 6 | 17 | 23 | .23 | 327.5 | 3.21 |
| 2018 | 70 | 19 | 200 | 2.86 | 78 | 620 | .197 | 20 | .29 | 30 | .43 | 49 | 180 | 2.57 | 10 | 4 | 19 | 23 | .33 | 243.5 | 3.47 |
| TOTAL | 405 | 105 | 1176 | 2.90 | 574 | 3714 | .162 | 92 | .23 | 119 | .29 | 237 | 1006 | 2.48 | 71 | 36 | 84 | 120 | .30 | 1373.0 | 3.39 |

SEC STATISTICS

| Year | Sets | MP | Kills | KPS | E | TA | Pct. | Ast. | APS | SA | SAPS | SE | Digs | DPS | RE | BS | BA | TB | BPS | Pts. | PTS |
|--------------|------------|-----------|------------|-------------|------------|-------------|-------------|-----------|------------|-----------|------------|------------|------------|-------------|-----------|-----------|-----------|-----------|------------|--------------|-------------|
| 2015 | 74 | 18 | 197 | 2.66 | 111 | 636 | .135 | 9 | .12 | 18 | .24 | 38 | 174 | 2.35 | 18 | 11 | 16 | 27 | .36 | 234.0 | 3.16 |
| 2016 | 62 | 16 | 193 | 3.11 | 98 | 589 | .161 | 15 | .24 | 17 | .27 | 42 | 153 | 2.47 | 5 | 6 | 11 | 17 | .27 | 221.5 | 3.56 |
| 2017 | 69 | 18 | 200 | 2.90 | 109 | 650 | .140 | 24 | .35 | 17 | .25 | 38 | 186 | 2.70 | 17 | 5 | 9 | 14 | .20 | 226.5 | 3.28 |
| 2018 | 34 | 9 | 86 | 2.53 | 35 | 295 | .173 | 9 | .26 | 14 | .41 | 24 | 79 | 2.32 | 4 | 3 | 5 | 8 | .24 | 105.5 | 3.09 |
| TOTAL | 239 | 61 | 676 | 2.83 | 353 | 2170 | .149 | 57 | .24 | 66 | .28 | 142 | 592 | 2.48 | 44 | 25 | 41 | 66 | .28 | 787.5 | 3.29 |



KARIS BEASLEY

JUNIOR / 5-9 / OH/DS
GRANBURY, TEXAS
GRANBURY HS

| Category | Career High | Opponent/Date |
|--------------------|-------------|-------------------------------------|
| Kills | 2 | at Kansas, 9/7/18 |
| Attempts | 3 | 4x, last at Ole Miss, 9/30/18 |
| Hitting Percentage | 1.000 | 2x, last at Kansas, 9/7/18 |
| Assists | 2 | 4x, last vs. American, 9/8/18 |
| Digs | 16 | 2x, last vs. Florida State, 9/16/18 |
| Blocks | - | - |
| Aces | 3 | 2x, vs. American, 9/8/18 |
| Points | 3.0 | 3x, last vs. American, 9/8/18 |

| Category | Season High | Opponent/Date |
|--------------------|-------------|--------------------------------|
| Kills | 2 | at Kansas, 9/7/18 |
| Attempts | 3 | at Ole Miss, 9/30/18 |
| Hitting Percentage | 1.000 | 2x, last at Kansas 9/7/18 |
| Assists | 2 | 2x, last at Missouri, 10/19/18 |
| Digs | 16 | vs. Florida State, 9/16/18 |
| Blocks | - | - |
| Aces | 3 | vs. American, 9/8/18 |
| Points | 3.0 | 3x, last vs. American, 9/8/18 |

BEASLEY'S SEASON NOTES

- Third on the team with a 2.15 digs/set average, having 153 on the year.
- Double-digit digs in five matches this season.
- Tied her career best vs. Florida State (9/16) with 16 digs in the 3-1 win over the Seminoles.
- Chipped in 14 digs in the five-set match vs. Georgia (10/3).
- Picked up 12 digs vs. Tennessee (9/21).
- Back-to-back 11-dig performances on the road - at Mississippi State (9/26) and at Ole Miss (9/30). Second on the team in aces with a .25 aces/set average.

- Career-high three aces vs. American (9/8).
- Second on the team with a .25 aces/set average.
- Had two-straight matches with two aces - at Butler and vs. ISU.

| Date | Opponent | sp | attack | | | | set | | | serve | | | | recept | | | blocking | | | | team | | | | |
|--------------|----------------------|----|--------|---|----|--------|-----|----|-------|-------|----|-----|-------|--------|-----|-------|----------|----|----|----|------|--------|------|-------|-----|
| | | | k | e | ta | pct | a | ta | pct | sa | se | ta | pct | re | ta | pct | dig | bs | ba | be | bhe | points | hit% | score | |
| Aug 24, 2018 | HIGH POINT | 3 | 0 | 0 | 0 | .000 | 0 | 1 | .000 | 1 | 0 | 14 | 1.000 | 2 | 10 | .800 | 3 | 0 | 0 | 0 | 0.0 | 0 | 1.0 | .203 | 3-0 |
| Aug 25, 2018 | MICHIGAN | 3 | 0 | 0 | 0 | .000 | 0 | 1 | .000 | 0 | 0 | 8 | 1.000 | 0 | 13 | 1.000 | 4 | 0 | 0 | 0 | 0.0 | 0 | 0.0 | .128 | 0-3 |
| Aug 31, 2018 | at Butler | 3 | 0 | 0 | 1 | .000 | 0 | 1 | .000 | 2 | 1 | 13 | .923 | 1 | 10 | .900 | 7 | 0 | 0 | 0 | 0.0 | 0 | 2.0 | .333 | 3-0 |
| Sep 01, 2018 | vs Illinois State | 4 | 1 | 0 | 1 | 1.000 | 1 | 4 | .250 | 2 | 2 | 19 | .895 | 2 | 19 | .895 | 7 | 0 | 0 | 0 | 0.0 | 0 | 3.0 | .169 | 1-3 |
| Sep 01, 2018 | vs EIU | *3 | 0 | 0 | 0 | .000 | 1 | 1 | 1.000 | 0 | 0 | 11 | 1.000 | 1 | 13 | .923 | 7 | 0 | 0 | 0 | 0.0 | 0 | 0.0 | .485 | 3-0 |
| Sep 07, 2018 | vs Loyola Marymount | *3 | 0 | 0 | 1 | .000 | 1 | 6 | .167 | 0 | 0 | 7 | 1.000 | 2 | 19 | .895 | 2 | 0 | 0 | 0 | 0.0 | 0 | 0.0 | .250 | 0-3 |
| Sep 07, 2018 | at Kansas | 5 | 2 | 0 | 2 | 1.000 | 1 | 2 | .500 | 1 | 1 | 12 | .917 | 1 | 25 | .960 | 9 | 0 | 0 | 0 | 0.0 | 0 | 3.0 | .222 | 3-2 |
| Sep 08, 2018 | vs American | *3 | 0 | 0 | 1 | .000 | 2 | 4 | .500 | 3 | 1 | 14 | .929 | 0 | 16 | 1.000 | 7 | 0 | 0 | 0 | 0.0 | 0 | 3.0 | .248 | 3-0 |
| Sep 11, 2018 | at Kennesaw State | *5 | 0 | 0 | 1 | .000 | 1 | 4 | .250 | 1 | 3 | 16 | .812 | 2 | 18 | .889 | 6 | 0 | 0 | 0 | 0.0 | 1 | 1.0 | .205 | 3-2 |
| Sep 16, 2018 | FLORIDA STATE | *4 | 0 | 0 | 0 | .000 | 0 | 3 | .000 | 1 | 1 | 14 | .929 | 0 | 29 | 1.000 | 16 | 0 | 0 | 0 | 0.0 | 0 | 1.0 | .207 | 3-1 |
| Sep 21, 2018 | TENNESSEE | *4 | 0 | 0 | 0 | .000 | 2 | 5 | .400 | 0 | 1 | 14 | .929 | 0 | 18 | 1.000 | 12 | 0 | 0 | 0 | 0.0 | 0 | 0.0 | .160 | 1-3 |
| Sep 23, 2018 | at Alabama | *4 | 0 | 0 | 1 | .000 | 1 | 4 | .250 | 1 | 3 | 15 | .800 | 1 | 33 | .970 | 9 | 0 | 0 | 0 | 0.0 | 0 | 1.0 | .230 | 1-3 |
| 09-26-18 | at Mississippi State | *5 | 0 | 0 | 2 | .000 | 0 | 5 | .000 | 1 | 2 | 22 | .909 | 1 | 14 | .929 | 11 | 0 | 0 | 0 | 0.0 | 1 | 1.0 | .276 | 2-3 |
| Sep 30, 2018 | at Ole Miss | *4 | 0 | 0 | 3 | .000 | 0 | 22 | .000 | 0 | 4 | 13 | .692 | 1 | 31 | .968 | 11 | 0 | 0 | 0 | 0.0 | 0 | 0.0 | .293 | 3-1 |
| Oct 03, 2018 | GEORGIA | *5 | 0 | 1 | 1 | -1.000 | 1 | 7 | .143 | 0 | 1 | 14 | .929 | 1 | 26 | .962 | 14 | 0 | 0 | 0 | 0.0 | 0 | 0.0 | .214 | 2-3 |
| Oct 07, 2018 | ALABAMA | *3 | 0 | 0 | 0 | .000 | 0 | 2 | .000 | 2 | 3 | 11 | .727 | 0 | 17 | 1.000 | 4 | 0 | 0 | 0 | 0.0 | 1 | 2.0 | .127 | 0-3 |
| Oct 12, 2018 | at Texas A&M | *3 | 0 | 0 | 1 | .000 | 0 | 1 | .000 | 1 | 2 | 13 | .846 | 0 | 12 | 1.000 | 8 | 0 | 0 | 0 | 0.0 | 0 | 1.0 | .188 | 0-3 |
| Oct 14, 2018 | at LSU | *3 | 0 | 0 | 0 | .000 | 0 | 3 | .000 | 0 | 1 | 12 | .917 | 0 | 11 | 1.000 | 7 | 0 | 0 | 0 | 0.0 | 0 | 0.0 | .226 | 0-3 |
| Oct 19, 2018 | at Mizzou | *4 | 0 | 0 | 0 | .000 | 2 | 2 | 1.000 | 1 | 2 | 12 | .833 | 0 | 21 | 1.000 | 9 | 0 | 0 | 0 | 0.0 | 0 | 1.0 | .127 | 1-3 |
| | | 71 | 3 | 1 | 15 | .133 | 13 | 78 | .167 | 17 | 28 | 254 | .890 | 15 | 355 | .958 | 153 | 0 | 0 | 0 | 0.0 | 3 | 20.0 | | |

Sets played: 71
Kills per set: 0.04
Assists per set: 0.18

Service aces per set: 0.24
Digs per set: 2.15
Blocks per set: 0.00

Points per set: 0.28

CAREER STATISTICS

| Year | Sets | MP | Kills | KPS | E | TA | Pct. | Ast. | APS | SA | SAPS | SE | Digs | DPS | RE | BS | BA | TB | BPS | Pts. | PTS |
|--------------|------------|-----------|----------|------------|----------|-----------|--------------|-----------|------------|-----------|------------|-----------|------------|-------------|-----------|----------|----------|----------|------------|-------------|------------|
| 2017 | 102 | 27 | 2 | .02 | 6 | 22 | -.182 | 12 | .12 | 20 | .20 | 63 | 193 | 1.89 | 20 | 0 | 0 | 0 | .00 | 22.0 | .22 |
| 2018 | 71 | 19 | 3 | .04 | 1 | 15 | .133 | 13 | .18 | 17 | .24 | 28 | 153 | 2.15 | 15 | 0 | 0 | 0 | .00 | 20.0 | .28 |
| TOTAL | 173 | 46 | 5 | .03 | 7 | 37 | -.054 | 25 | .14 | 37 | .21 | 91 | 346 | 2.00 | 35 | 0 | 0 | 0 | .00 | 42.0 | .24 |

SEC STATISTICS

| Year | Sets | MP | Kills | KPS | E | TA | Pct. | Ast. | APS | SA | SAPS | SE | Digs | DPS | RE | BS | BA | TB | BPS | Pts. | PTS |
|--------------|------------|-----------|----------|------------|----------|-----------|--------------|-----------|------------|-----------|------------|-----------|------------|-------------|-----------|----------|----------|----------|------------|-------------|------------|
| 2017 | 69 | 18 | 1 | .01 | 2 | 9 | -.111 | 9 | .13 | 12 | .17 | 43 | 140 | 2.03 | 12 | 0 | 0 | 0 | .00 | 13.0 | .19 |
| 2018 | 35 | 9 | 0 | .00 | 1 | 8 | -.125 | 6 | .17 | 6 | .17 | 19 | 85 | 2.43 | 4 | 0 | 0 | 0 | .00 | 6.0 | .17 |
| TOTAL | 104 | 27 | 1 | .01 | 3 | 17 | -.118 | 15 | .14 | 18 | .17 | 62 | 225 | 2.16 | 16 | 0 | 0 | 0 | .00 | 19.0 | .18 |



ENIJA BIDZANE

JUNIOR / 5-9 / OH
TALSI, LATVIA
MURJANU GYMNASIUM

| Category | Career High | Opponent/Date |
|--------------------|-------------|---------------------------------|
| Kills | 19 | at Eastern Michigan, 9/17/16 |
| Attempts | 38 | at Eastern Michigan, 9/17/16 |
| Hitting Percentage | .667 | vs. Colgate, 9/17/16 |
| Assists | 2 | vs. Georgia, 10/12/16 |
| Digs | 10 | vs. Georgia, 10/12/16 |
| Blocks | 5 | vs. Mississippi State, 10/16/16 |
| Aces | 3 | vs. Missouri, 10/7/16 |
| Points | 19.5 | at Eastern Michigan, 9/17/16 |

2016: Started in six matches for the Tigers and appeared in 22 at outside hitter ... Finished with 103 kills on the season with a 1.87 kills/set average ... Career-high 19 kills at Eastern Michigan (9/17) ... Led the team with 14 kills and a .500 hitting percentage vs. Alabama (10/9) ... Had a career-high 10 digs with seven kills in 3-0 sweep of Georgia (10/12) ... Totaled three service aces against Missouri (10/7) ... Finished with a career-best five blocks in 3-2 win over Mississippi State (10/16).

PRIOR TO AUBURN: Brings a wealth of international experience ... Member of the Latvian team at the 2015 Women's European Championship ... Participated in the U20 and U18 European Qualification for the World Championships in 2015 and 2013, respectively ... Competed at the 2014 U19 and 2013 U18 European Championships ... Member of the Zeltaleja club that competes in the Baltic Women's League ... Named the top hitter following the 2014-15 Latvia Women's Volleyball Championship ... Member of the 2011-12 Latvian Youth championship team and was named the top player.

PERSONAL: Daughter of Kristina Bidzane and Mareks Bidzans ... Has a brother, Valts Bidzans ... Enjoys anything related to art ... Working on a degree from the College of Liberal Arts.

CAREER STATISTICS

| Year | Sets | MP | Kills | KPS | E | TA | Pct. | Ast. | APS | SA | SAPS | SE | Digs | DPS | RE | BS | BA | TB | BPS | Pts. | PTS | |
|--------------|-----------|-----------|------------|-------------|-----------|------------|-------------|----------|------------|----------|------------|----------|-----------|------------|----------|----------|-----------|-----------|------------|--------------|-------------|---|
| 2016 | 55 | 22 | 103 | 1.87 | 55 | 325 | .148 | 3 | .05 | 7 | .13 | 9 | 46 | .84 | 7 | 3 | 12 | 15 | .27 | 119.0 | 2.16 | |
| 2017 | DNP | - | - | - | - | - | - | - | - | - | - | - | - | - | - | - | - | - | - | - | - | - |
| 2018 | 1 | 1 | 0 | .00 | 0 | 0 | .000 | 0 | .00 | 0 | .00 | 1 | 0 | .00 | 0 | 0 | 0 | 0 | .00 | .0 | .00 | |
| TOTAL | 56 | 23 | 103 | 1.84 | 55 | 325 | .148 | 3 | .05 | 7 | .12 | 9 | 46 | .82 | 7 | 3 | 12 | 15 | .27 | 119.0 | 2.12 | |

SEC STATISTICS

| Year | Sets | MP | Kills | KPS | E | TA | Pct. | Ast. | APS | SA | SAPS | SE | Digs | DPS | RE | BS | BA | TB | BPS | Pts. | PTS | |
|--------------|-----------|-----------|-----------|-------------|-----------|------------|-------------|----------|------------|----------|------------|----------|-----------|-------------|----------|----------|-----------|-----------|------------|-------------|-------------|---|
| 2016 | 39 | 14 | 65 | 1.67 | 32 | 216 | .153 | 3 | .08 | 7 | .18 | 8 | 42 | 1.08 | 7 | 3 | 10 | 13 | .33 | 80.0 | 2.05 | |
| 2017 | DNP | - | - | - | - | - | - | - | - | - | - | - | - | - | - | - | - | - | - | - | - | - |
| 2018 | 1 | 1 | 0 | .00 | 0 | 0 | .000 | 0 | .00 | 0 | .00 | 1 | 0 | .00 | 0 | 0 | 0 | 0 | .00 | .0 | .00 | |
| TOTAL | 40 | 15 | 65 | 1.62 | 32 | 216 | .153 | 3 | .08 | 7 | .17 | 8 | 42 | 1.05 | 7 | 3 | 10 | 13 | .32 | 80.0 | 2.00 | |



GWYN JONES

JUNIOR / 6-3 / MB
GREENVILLE, IND.
FLOYD CENTRAL HS

10

| Category | Career High | Opponent/Date |
|--------------------|-------------|-------------------------------------|
| Kills | 21 | vs. Missouri, 9/29/17 |
| Attempts | 41 | vs. Ole Miss, 11/6/16 |
| Hitting Percentage | .667 | vs. Eastern Illinois, 9/1/18 |
| Assists | 2 | 2x, last at No. 25 Alabama, 9/23/18 |
| Digs | 5 | vs. High Point, 8/24/18 |
| Blocks | 6 | at No. 25 Alabama, 9/23/18 |
| Aces | - | - |
| Points | 22.5 | vs. Missouri, 9/29/17 |

| Category | Season High | Opponent/Date |
|--------------------|-------------|-------------------------------|
| Kills | 17 | at Mississippi State, 9/26/18 |
| Attempts | 33 | at Mississippi State, 9/26/18 |
| Hitting Percentage | .667 | vs. Eastern Illinois, 9/1/18 |
| Assists | 2 | at No. 25 Alabama, 9/23/18 |
| Digs | 5 | vs. High Point, 8/24/18 |
| Blocks | 6 | at No. 25 Alabama, 9/23/18 |
| Aces | - | - |
| Points | 20.0 | at Mississippi State, 9/26/18 |

JONES' SEASON NOTES

- Third on the team with a 2.26 kills/set average.
- Totaled a season-best 17 kills at Mississippi State (9/26) and added five blocks.
- Had 14 kills at then-No. 25 Alabama (9/23) and added a career-high six blocks against the Tide.
- Finished with 12 kills against Eastern Illinois (9/1) and notched a career-high .667 hitting clip (12-0-18) against the Panthers.
- Added 11 kills at Kennesaw State (9/11) and again vs. Florida State (9/16).

- Her .283 hitting percentage for the season second on the team.
- Picked up a career-best five digs vs. High Point (8/24).
- Has 36 blocks on the year, having a .51 average.
- She totaled five stuffs at Kennesaw State.

| Date | Opponent | sp | attack | | | | set | | | serve | | | | recept | | | blocking | | | | team | | | | |
|--------------|----------------------|----|--------|----|-----|------|-----|----|------|-------|----|----|------|--------|----|-------|----------|----|----|----|-------|-----|--------|------|-------|
| | | | k | e | ta | pct | a | ta | pct | sa | se | ta | pct | re | ta | pct | dig | bs | ba | be | total | bhe | points | hit% | score |
| Aug 24, 2018 | HIGH POINT | 3 | 9 | 1 | 22 | .364 | 0 | 1 | .000 | 0 | 0 | 0 | .000 | 0 | 2 | 1.000 | 5 | 0 | 1 | 0 | 1.0 | 0 | 9.5 | .203 | 3-0 |
| Aug 25, 2018 | MICHIGAN | 3 | 5 | 3 | 20 | .100 | 0 | 0 | .000 | 0 | 0 | 0 | .000 | 0 | 0 | .000 | 1 | 0 | 1 | 0 | 1.0 | 0 | 5.5 | .128 | 0-3 |
| Aug 31, 2018 | at Butler | 3 | 6 | 0 | 11 | .545 | 0 | 0 | .000 | 0 | 0 | 0 | .000 | 0 | 0 | .000 | 0 | 0 | 0 | 0 | 0.0 | 0 | 6.0 | .333 | 3-0 |
| Sep 01, 2018 | vs Illinois State | 4 | 8 | 4 | 24 | .167 | 0 | 1 | .000 | 0 | 0 | 0 | .000 | 0 | 0 | .000 | 0 | 0 | 3 | 0 | 3.0 | 0 | 9.5 | .169 | 1-3 |
| Sep 01, 2018 | vs EIU | *3 | 12 | 0 | 18 | .667 | 0 | 1 | .000 | 0 | 0 | 0 | .000 | 0 | 0 | .000 | 3 | 0 | 1 | 0 | 1.0 | 1 | 12.5 | .485 | 3-0 |
| Sep 07, 2018 | vs Loyola Marymount | *3 | 3 | 1 | 9 | .222 | 0 | 1 | .000 | 0 | 0 | 0 | .000 | 0 | 0 | .000 | 2 | 0 | 1 | 0 | 1.0 | 0 | 3.5 | .250 | 0-3 |
| Sep 07, 2018 | at Kansas | 5 | 9 | 1 | 19 | .421 | 0 | 0 | .000 | 0 | 0 | 0 | .000 | 0 | 1 | 1.000 | 0 | 0 | 2 | 0 | 2.0 | 0 | 10.0 | .222 | 3-2 |
| Sep 08, 2018 | vs American | *3 | 6 | 3 | 18 | .167 | 0 | 0 | .000 | 0 | 0 | 0 | .000 | 0 | 0 | .000 | 0 | 0 | 0 | 0 | 0.0 | 0 | 6.0 | .248 | 3-0 |
| Sep 11, 2018 | at Kennesaw State | *5 | 11 | 5 | 29 | .207 | 0 | 0 | .000 | 0 | 0 | 0 | .000 | 0 | 0 | .000 | 3 | 1 | 4 | 0 | 5.0 | 0 | 14.0 | .205 | 3-2 |
| Sep 16, 2018 | FLORIDA STATE | *4 | 11 | 4 | 30 | .233 | 0 | 0 | .000 | 0 | 0 | 0 | .000 | 0 | 0 | .000 | 0 | 0 | 2 | 0 | 2.0 | 0 | 12.0 | .207 | 3-1 |
| Sep 21, 2018 | TENNESSEE | *3 | 4 | 2 | 19 | .105 | 0 | 0 | .000 | 0 | 0 | 0 | .000 | 0 | 0 | .000 | 0 | 0 | 0 | 0 | 0.0 | 0 | 4.0 | .160 | 1-3 |
| Sep 23, 2018 | at Alabama | *4 | 14 | 3 | 28 | .393 | 2 | 3 | .667 | 0 | 0 | 0 | .000 | 0 | 0 | .000 | 2 | 0 | 6 | 1 | 6.0 | 0 | 17.0 | .230 | 1-3 |
| 09-26-18 | at Mississippi State | *5 | 17 | 4 | 33 | .394 | 0 | 1 | .000 | 0 | 0 | 0 | .000 | 0 | 0 | .000 | 0 | 1 | 4 | 0 | 5.0 | 0 | 20.0 | .276 | 2-3 |
| Sep 30, 2018 | at Ole Miss | *4 | 6 | 3 | 16 | .188 | 0 | 0 | .000 | 0 | 0 | 0 | .000 | 0 | 0 | .000 | 1 | 0 | 2 | 0 | 2.0 | 0 | 7.0 | .293 | 3-1 |
| Oct 03, 2018 | GEORGIA | *5 | 8 | 3 | 24 | .208 | 0 | 0 | .000 | 0 | 0 | 0 | .000 | 0 | 0 | .000 | 2 | 0 | 4 | 0 | 4.0 | 0 | 10.0 | .214 | 2-3 |
| Oct 07, 2018 | ALABAMA | *3 | 5 | 3 | 12 | .167 | 0 | 0 | .000 | 0 | 0 | 0 | .000 | 0 | 0 | .000 | 0 | 0 | 0 | 1 | 0.0 | 0 | 5.0 | .127 | 0-3 |
| Oct 12, 2018 | at Texas A&M | *3 | 9 | 3 | 22 | .273 | 0 | 0 | .000 | 0 | 0 | 0 | .000 | 0 | 0 | .000 | 0 | 0 | 2 | 1 | 2.0 | 0 | 10.0 | .188 | 0-3 |
| Oct 14, 2018 | at LSU | *3 | 8 | 1 | 15 | .467 | 0 | 1 | .000 | 0 | 0 | 0 | .000 | 0 | 0 | .000 | 0 | 0 | 1 | 0 | 1.0 | 0 | 8.5 | .226 | 0-3 |
| Oct 19, 2018 | at Mizzou | *4 | 7 | 3 | 23 | .174 | 0 | 3 | .000 | 0 | 0 | 0 | .000 | 0 | 0 | .000 | 0 | 0 | 0 | 0 | 0.0 | 0 | 7.0 | .127 | 1-3 |
| | | 70 | 158 | 47 | 392 | .283 | 2 | 12 | .167 | 0 | 0 | 0 | .000 | 0 | 3 | 1.000 | 19 | 2 | 34 | 3 | 36.0 | 1 | 177.0 | | |

Sets played: 70
Kills per set: 2.26
Assists per set: 0.03

Digs per set: 0.27
Blocks per set: 0.51

Points per set: 2.53

CAREER STATISTICS

| Year | Sets | MP | Kills | KPS | E | TA | Pct. | Ast. | APS | SA | SAPS | SE | Digs | DPS | RE | BS | BA | TB | BPS | Pts. | PTS |
|--------------|------------|-----------|------------|-------------|------------|-------------|-------------|----------|------------|----------|------------|----------|-----------|------------|----------|----------|------------|------------|------------|--------------|-------------|
| 2016 | 123 | 31 | 321 | 2.61 | 117 | 771 | .265 | 1 | .01 | 0 | .00 | 2 | 21 | .17 | 0 | 0 | 59 | 59 | .48 | 350.5 | 2.85 |
| 2017 | 102 | 27 | 265 | 2.60 | 112 | 650 | .235 | 3 | .03 | 0 | .00 | 0 | 28 | .27 | 1 | 1 | 48 | 49 | .48 | 290.0 | 2.84 |
| 2018 | 70 | 19 | 158 | 2.26 | 47 | 392 | .283 | 2 | .03 | 0 | .00 | 0 | 19 | .27 | 0 | 2 | 34 | 36 | .51 | 117.0 | 2.53 |
| TOTAL | 295 | 77 | 744 | 2.52 | 276 | 1813 | .258 | 6 | .02 | 0 | .00 | 2 | 68 | .23 | 1 | 3 | 141 | 144 | .49 | 817.5 | 2.77 |

SEC STATISTICS

| Year | Sets | MP | Kills | KPS | E | TA | Pct. | Ast. | APS | SA | SAPS | SE | Digs | DPS | RE | BS | BA | TB | BPS | Pts. | PTS |
|--------------|------------|-----------|------------|-------------|------------|-------------|-------------|----------|------------|----------|------------|----------|-----------|------------|----------|----------|-----------|-----------|------------|--------------|-------------|
| 2016 | 73 | 18 | 216 | 2.96 | 80 | 507 | .268 | 1 | .01 | 0 | .00 | 0 | 9 | .12 | 0 | 0 | 30 | 30 | .41 | 231.0 | 3.16 |
| 2017 | 69 | 18 | 171 | 2.48 | 76 | 437 | .217 | 3 | .04 | 0 | .00 | 0 | 15 | .22 | 0 | 0 | 34 | 34 | .49 | 188.0 | 2.72 |
| 2018 | 34 | 9 | 78 | 2.29 | 25 | 192 | .276 | 2 | .06 | 0 | .00 | 0 | 5 | .15 | 0 | 1 | 19 | 20 | .59 | 88.5 | 2.59 |
| TOTAL | 176 | 45 | 465 | 2.64 | 181 | 1136 | .250 | 6 | .03 | 0 | .00 | 0 | 29 | .16 | 0 | 1 | 83 | 84 | .48 | 507.5 | 2.88 |



SHAINA WHITE

JUNIOR / 6-1 / MB
MISSION VIEJO, CALIF.
NORTHEASTERN UNIVERSITY
MISSION VIEJO HS

4

| Category | Career High | Opponent / Date |
|--------------------|-------------|-------------------------------------|
| Kills | 19 | at Tennessee, 10/4/17 |
| Attempts | 40 | vs. Tennessee, 11/9/17 |
| Hitting Percentage | .714 | at Georgia Tech, 8/25/17 |
| Assists | 2 | vs. NC State, 9/3/17 |
| Digs | 9 | at No. 25 Alabama, 9/23/18 |
| Blocks | 7 | at Ole Miss, 9/22/17 |
| Aces | 2 | 3x, last at Kennesaw State, 9/11/18 |
| Points | 24.5 | at Tennessee, 10/4/17 |

| Category | Season High | Opponent / Date |
|--------------------|-------------|--------------------------------|
| Kills | 12 | vs. American, 9/8/18 |
| Attempts | 20 | at Kennesaw State, 9/11/18 |
| Hitting Percentage | .688 | vs. American, 9/8/18 |
| Assists | 1 | 2x, last at Missouri, 10/19/18 |
| Digs | 9 | 2x, last vs. Georgia, 10/3/18 |
| Blocks | 5 | 4x, last vs. Georgia, 10/3/18 |
| Aces | 2 | at Kennesaw State, 9/11/18 |
| Points | 16.0 | at Kennesaw State, 9/11/18 |

WHITE'S SEASON NOTES

- Leads the team with a .340 hitting percentage on the season. That mark is seventh in the SEC.
- Hitting .422 in SEC-only matches.
- Had an outstanding match in the 3-0 win vs. American, having 12 kills and a .688 hitting percentage.
- Followed that up with 11 kills and a .500 clip in the five-set victory at Kennesaw State (9/11).
- Went 11-0-17 for a .647 mark at Ole Miss (9/30).
- Picked up back-to-back five-block performances - vs. American & at

KSU.

- Added five blocks at then-No. 25 Alabama (9/23), while added a career-high nine digs.
- Put together another five-block, nine-dig performance vs. Georgia (10/3).
- Her 47 blocks and .85 average is second on the team.
- Added two service aces vs. the Owls.

| Date | Opponent | sp | attack | | | | set | | | serve | | | | receipt | | | blocking | | | team | | | | | | |
|--------------|---------------------|----|--------|----|----|-------|------|----|-------|-------|----|----|-------|---------|----|------|----------|----|----|------|-----|------|-------|-------|-----|--|
| | | | k | e | ta | pct | a | ta | pct | sa | se | ta | pct | re | ta | pct | dig | bs | ba | tb | bps | pts | score | | | |
| Aug 24, 2018 | HIGH POINT | *3 | 6 | 4 | 19 | .105 | 0 | 0 | .000 | 0 | 2 | 9 | .778 | 0 | 0 | .000 | 4 | 0 | 1 | 0 | 1.0 | 0 | 6.5 | .203 | 3-0 | |
| Aug 25, 2018 | MICHIGAN | *3 | 2 | 1 | 9 | .111 | 1 | 1 | 1.000 | 0 | 0 | 11 | 1.000 | 0 | 0 | .000 | 2 | 0 | 0 | 0 | 0.0 | 0 | 2.0 | .128 | 0-3 | |
| Aug 31, 2018 | at Butler | *3 | 2 | 0 | 8 | .250 | 0 | 0 | .000 | 0 | 1 | 11 | .909 | 0 | 0 | .000 | 1 | 0 | 1 | 0 | 1.0 | 0 | 2.5 | .333 | 3-0 | |
| Sep 01, 2018 | vs Illinois State | *1 | 1 | 0 | 1 | 1.000 | 0 | 0 | .000 | 0 | 0 | 2 | 1.000 | 0 | 0 | .000 | 0 | 0 | 0 | 0 | 0.0 | 0 | 1.0 | .169 | 1-3 | |
| Sep 07, 2018 | vs Loyola Marymount | *3 | 2 | 2 | 9 | .000 | 0 | 1 | .000 | 0 | 0 | 9 | 1.000 | 0 | 0 | .000 | 1 | 0 | 4 | 0 | 4.0 | 0 | 4.0 | .250 | 0-3 | |
| Sep 07, 2018 | at Kansas | *5 | 5 | 4 | 15 | .067 | 0 | 0 | .000 | 0 | 1 | 20 | .950 | 0 | 0 | .000 | 1 | 0 | 4 | 0 | 4.0 | 0 | 7.0 | .222 | 3-2 | |
| Sep 08, 2018 | vs American | *3 | 12 | 1 | 16 | .688 | 0 | 0 | .000 | 0 | 1 | 10 | .900 | 0 | 0 | .000 | 1 | 1 | 4 | 0 | 5.0 | 0 | 15.0 | .248 | 3-0 | |
| Sep 11, 2018 | at Kennesaw State | *5 | 11 | 1 | 20 | .500 | 0 | 1 | .000 | 2 | 0 | 14 | 1.000 | 0 | 0 | .000 | 2 | 1 | 4 | 0 | 5.0 | 0 | 16.0 | .205 | 3-2 | |
| Sep 16, 2018 | FLORIDA STATE | *4 | 6 | 2 | 17 | .235 | 0 | 1 | .000 | 0 | 0 | 10 | 1.000 | 0 | 0 | .000 | 4 | 1 | 3 | 0 | 4.0 | 0 | 8.5 | .207 | 3-1 | |
| Sep 21, 2018 | TENNESSEE | *4 | 5 | 1 | 14 | .286 | 0 | 0 | .000 | 1 | 0 | 10 | 1.000 | 0 | 0 | .000 | 1 | 0 | 2 | 0 | 2.0 | 0 | 7.0 | .160 | 1-3 | |
| Sep 23, 2018 | at Alabama | *4 | 3 | 2 | 6 | .167 | 0 | 3 | .000 | 0 | 0 | 17 | 1.000 | 0 | 0 | .000 | 9 | 1 | 4 | 2 | 5.0 | 0 | 6.0 | .230 | 1-3 | |
| Sep 30, 2018 | at Ole Miss | *4 | 11 | 0 | 17 | .647 | 0 | 1 | .000 | 0 | 1 | 24 | .958 | 0 | 0 | .000 | 2 | 0 | 3 | 0 | 3.0 | 0 | 12.5 | .293 | 3-1 | |
| Oct 03, 2018 | GEORGIA | *5 | 7 | 1 | 13 | .462 | 0 | 1 | .000 | 0 | 0 | 26 | 1.000 | 0 | 0 | .000 | 9 | 0 | 5 | 3 | 5.0 | 0 | 9.5 | .214 | 2-3 | |
| Oct 07, 2018 | ALABAMA | *2 | 2 | 2 | 4 | .000 | 0 | 0 | .000 | 0 | 0 | 7 | 1.000 | 0 | 0 | .000 | 1 | 1 | 1 | 0 | 2.0 | 0 | 3.5 | .127 | 0-3 | |
| Oct 12, 2018 | at Texas A&M | *3 | 4 | 0 | 9 | .444 | 0 | 0 | .000 | 0 | 0 | 11 | 1.000 | 0 | 0 | .000 | 3 | 0 | 3 | 0 | 3.0 | 0 | 5.5 | .188 | 0-3 | |
| Oct 14, 2018 | at LSU | *3 | 4 | 0 | 8 | .500 | 0 | 0 | .000 | 0 | 0 | 8 | 1.000 | 0 | 0 | .000 | 2 | 0 | 3 | 0 | 3.0 | 0 | 5.5 | .226 | 0-3 | |
| Oct 19, 2018 | at Mizzou | *4 | 7 | 2 | 12 | .417 | 1 | 1 | 1.000 | 0 | 1 | 11 | .909 | 0 | 0 | .000 | 3 | 0 | 0 | 0 | 0.0 | 0 | 7.0 | .127 | 1-3 | |
| | | | 59 | 90 | 23 | 197 | .340 | 2 | 10 | .200 | 3 | 7 | 210 | .967 | 0 | 0 | .000 | 46 | 5 | 42 | 5 | 47.0 | 0 | 119.0 | | |

Sets played: 59
Kills per set: 1.53
Assists per set: 0.03

Service aces per set: 0.05
Digs per set: 0.78
Blocks per set: 0.80

Points per set: 2.02

CAREER STATISTICS

| Year | Sets | MP | Kills | KPS | E | TA | Pct. | Ast. | APS | SA | SAPS | SE | Digs | DPS | RE | BS | BA | TB | BPS | Pts. | PTS |
|--------------|------------|-----------|------------|-------------|-----------|------------|-------------|----------|------------|----------|------------|-----------|-----------|------------|----------|-----------|-----------|-----------|------------|--------------|-------------|
| 2017 | 102 | 27 | 276 | 2.71 | 44 | 632 | .367 | 2 | .02 | 6 | .06 | 3 | 44 | .43 | 0 | 8 | 43 | 51 | .50 | 311.5 | 3.05 |
| 2018 | 59 | 17 | 90 | 1.53 | 23 | 197 | .340 | 2 | .03 | 3 | .05 | 7 | 46 | .78 | 0 | 5 | 42 | 47 | .80 | 119.0 | 2.02 |
| TOTAL | 161 | 44 | 366 | 2.27 | 67 | 829 | .361 | 4 | .02 | 9 | .06 | 10 | 90 | .56 | 0 | 13 | 85 | 98 | .61 | 430.5 | 2.67 |

SEC STATISTICS

| Year | Sets | MP | Kills | KPS | E | TA | Pct. | Ast. | APS | SA | SAPS | SE | Digs | DPS | RE | BS | BA | TB | BPS | Pts. | PTS |
|--------------|-----------|-----------|------------|-------------|-----------|------------|-------------|----------|------------|----------|------------|----------|-----------|------------|----------|----------|-----------|-----------|------------|--------------|-------------|
| 2017 | 69 | 18 | 187 | 2.71 | 33 | 468 | .329 | 0 | .00 | 3 | .04 | 1 | 25 | .36 | 0 | 3 | 31 | 34 | .49 | 208.5 | 3.01 |
| 2018 | 29 | 8 | 43 | 1.48 | 8 | 83 | .422 | 1 | .03 | 1 | .03 | 2 | 30 | 1.03 | 0 | 2 | 21 | 23 | .79 | 56.5 | 1.93 |
| TOTAL | 98 | 26 | 230 | 2.35 | 41 | 551 | .343 | 1 | .01 | 4 | .04 | 3 | 55 | .56 | 0 | 5 | 52 | 57 | .58 | 265.0 | 2.70 |



MORGAN KULL

SOPHOMORE / 5-9 / S
ST. CHARLES, ILL.
ST. CHARLES EAST

| | | |
|-------------------------|------------------|-----------------------|
| Category..... | Career High..... | Opponent/Date..... |
| Kills..... | - | - |
| Attempts..... | - | - |
| Hitting Percentage..... | - | - |
| Assists..... | 7..... | at Missouri, 10/19/18 |
| Digs..... | 3..... | at Missouri, 10/19/18 |
| Blocks..... | - | - |
| Aces..... | - | - |
| Points..... | - | - |

KULL'S SEASON NOTES

- Came in off the bench in five matches this season.
- Picked up a career-high seven assists at Missouri (10/19) when Auburn switched to a 6-2.
- Added a career-best three digs vs. Mizzou.

| Date | Opponent | sp | attack | | | | set | | | serve | | | | recept | | | blocking | | | | team | | | |
|--------------|----------------------|----|--------|---|----|------|-----|----|-------|-------|----|----|-------|--------|----|------|----------|----|----|-----|-------|-----|--------|------|
| | | | k | e | ta | pct | a | ta | pct | sa | se | ta | pct | re | ta | pct | dig | bs | ba | be | total | bhe | points | hit% |
| Sep 01, 2018 | vs Illinois State | 1 | 0 | 0 | 0 | .000 | 0 | 0 | .000 | 0 | 0 | 1 | 1.000 | 0 | 0 | .000 | 0 | 0 | 0 | 0.0 | 0 | 0.0 | .169 | 1-3 |
| Sep 01, 2018 | vs EIU | 3 | 0 | 0 | 0 | .000 | 1 | 1 | 1.000 | 0 | 1 | 11 | .909 | 0 | 0 | .000 | 1 | 0 | 0 | 0.0 | 0 | 0.0 | .485 | 3-0 |
| Sep 07, 2018 | vs Loyola Marymount | 1 | 0 | 0 | 0 | .000 | 0 | 0 | .000 | 0 | 0 | 1 | 1.000 | 0 | 0 | .000 | 0 | 0 | 0 | 0.0 | 0 | 0.0 | .250 | 0-3 |
| 09-26-18 | at Mississippi State | 4 | 0 | 0 | 0 | .000 | 0 | 0 | .000 | 0 | 0 | 5 | 1.000 | 0 | 0 | .000 | 1 | 0 | 0 | 0.0 | 0 | 0.0 | .276 | 2-3 |
| Oct 07, 2018 | ALABAMA | 1 | 0 | 0 | 0 | .000 | 0 | 0 | .000 | 0 | 0 | 1 | 1.000 | 0 | 0 | .000 | 0 | 0 | 0 | 0.0 | 0 | 0.0 | .127 | 0-3 |
| Oct 19, 2018 | at Mizzou | 3 | 0 | 0 | 0 | .000 | 7 | 33 | .212 | 0 | 0 | 8 | 1.000 | 0 | 0 | .000 | 3 | 0 | 0 | 0.0 | 1 | 0.0 | .127 | 1-3 |
| Totals | | 13 | 0 | 0 | 0 | .000 | 8 | 34 | .235 | 0 | 1 | 27 | .963 | 0 | 0 | .000 | 5 | 0 | 0 | 0.0 | 1 | 0.0 | | |

Sets played: 13
Assists per set: 0.62

Digs per set: 0.38

Points per set: 0.00

CAREER STATISTICS

| Year | Sets | MP | Kills | KPS | E | TA | Pct. | Ast. | APS | SA | SAPS | SE | Digs | DPS | RE | BS | BA | TB | BPS | Pts. | PTS |
|--------------|-----------|----------|----------|------------|----------|----------|-------------|----------|------------|----------|------------|----------|----------|------------|----------|----------|----------|----------|------------|-----------|------------|
| 2017 | 3 | 3 | 0 | .00 | 0 | 0 | .000 | 0 | .00 | 0 | .00 | 1 | 0 | .00 | 0 | 0 | 0 | 0 | .00 | .0 | .00 |
| 2018 | 13 | 6 | 0 | .00 | 0 | 0 | .000 | 8 | .62 | 0 | .00 | 1 | 5 | .38 | 0 | 0 | 0 | 0 | .00 | .0 | .00 |
| TOTAL | 16 | 9 | 0 | .00 | 0 | 0 | .000 | 8 | .50 | 0 | .00 | 2 | 5 | .31 | 0 | 0 | 0 | 0 | .00 | .0 | .00 |

SEC STATISTICS

| Year | Sets | MP | Kills | KPS | E | TA | Pct. | Ast. | APS | SA | SAPS | SE | Digs | DPS | RE | BS | BA | TB | BPS | Pts. | PTS |
|--------------|----------|----------|----------|------------|----------|----------|-------------|----------|------------|----------|------------|----------|----------|------------|----------|----------|----------|----------|------------|-----------|------------|
| 2017 | 1 | 1 | 0 | .00 | 0 | 0 | .000 | 0 | .00 | 0 | .00 | 0 | 0 | .00 | 0 | 0 | 0 | 0 | .00 | .0 | .00 |
| 2018 | 8 | 3 | 0 | .00 | 0 | 0 | .000 | 7 | .88 | 0 | .00 | 0 | 4 | .50 | 0 | 0 | 0 | 0 | .00 | .0 | .00 |
| TOTAL | 9 | 4 | 0 | .00 | 0 | 0 | .000 | 7 | .78 | 0 | .00 | 0 | 4 | .44 | 0 | 0 | 0 | 0 | .00 | .0 | .00 |



CHESNEY MCCLELLAN

SOPHOMORE / 6-4 / MB
 MARYVILLE, TENN.
 MARYVILLE HS
 NEBRASKA

| Category | Career/Season High | Opponent/Date |
|--------------------|--------------------|--------------------------------------|
| Kills | 7 | at Kansas, 9/7/18 |
| Attempts | 21 | at Kansas, 9/7/18 |
| Hitting Percentage | .500 | .2x, last vs. Alabama, 10/7/18 |
| Assists | 2 | at Kansas, 9/7/18 |
| Digs | 2 | 3x, last vs. Tennessee, 9/23/18 |
| Blocks | 7 | .2x, last at Kennesaw State, 9/11/18 |
| Aces | - | - |
| Points | 10.0 | at Kansas, 9/7/18 |

MCCLELLAN'S SEASON NOTES

- Came off the bench vs. Illinois State (9/1) and set a career-best with seven blocks vs. the Redbirds.
- Picked up another seven-block performance at Kennesaw State (9/11).
- Had five kills and a .455 hitting clip (5-0-11) vs. Eastern Illinois (9/1).
- Added two blocks against EIU and at Mississippi State (9/26).
- Finished with a season-best seven kills at Kansas (9/7).
- Went 4-0-8 in one set played vs. Alabama (10/7).

| Date | Opponent | sp | attack | | | set | | | serve | | | | recept | | | dig | blocking | | | | team | | | | |
|--------------|----------------------|----|--------|----|-----|-------|---|----|-------|----|----|----|--------|----|----|-------|----------|----|----|----|-------|-----|--------|------|-------|
| | | | k | e | ta | pct | a | ta | pct | sa | se | ta | pct | re | ta | | pct | bs | ba | be | total | bhe | points | hit% | score |
| Aug 25, 2018 | MICHIGAN | 1 | 0 | 0 | 0 | .000 | 0 | 0 | .000 | 0 | 0 | 0 | .000 | 0 | 0 | .000 | 0 | 0 | 0 | 0 | 0.0 | 0 | 0.0 | .128 | 0-3 |
| Sep 01, 2018 | vs Illinois State | 3 | 2 | 1 | 7 | .143 | 0 | 0 | .000 | 0 | 0 | 0 | .000 | 0 | 0 | .000 | 2 | 0 | 7 | 0 | 7.0 | 0 | 5.5 | .169 | 1-3 |
| Sep 01, 2018 | vs EIU | *3 | 5 | 0 | 11 | .455 | 0 | 0 | .000 | 0 | 0 | 0 | .000 | 0 | 0 | .000 | 0 | 0 | 2 | 0 | 2.0 | 0 | 6.0 | .485 | 3-0 |
| Sep 07, 2018 | vs Loyola Marymount | *3 | 4 | 0 | 8 | .500 | 0 | 0 | .000 | 0 | 0 | 0 | .000 | 0 | 0 | .000 | 0 | 0 | 1 | 1 | 1.0 | 0 | 4.5 | .250 | 0-3 |
| Sep 07, 2018 | at Kansas | *5 | 7 | 3 | 21 | .190 | 2 | 4 | .500 | 0 | 0 | 0 | .000 | 0 | 0 | .000 | 0 | 2 | 2 | 0 | 4.0 | 1 | 10.0 | .222 | 3-2 |
| Sep 08, 2018 | vs American | *3 | 6 | 3 | 11 | .273 | 0 | 1 | .000 | 0 | 0 | 0 | .000 | 0 | 0 | .000 | 0 | 0 | 1 | 0 | 1.0 | 0 | 6.5 | .248 | 3-0 |
| Sep 11, 2018 | at Kennesaw State | *5 | 1 | 3 | 10 | -.200 | 0 | 0 | .000 | 0 | 0 | 0 | .000 | 0 | 0 | .000 | 1 | 0 | 7 | 0 | 7.0 | 0 | 4.5 | .205 | 3-2 |
| Sep 16, 2018 | FLORIDA STATE | *4 | 6 | 2 | 17 | .235 | 1 | 1 | 1.000 | 0 | 0 | 0 | .000 | 0 | 0 | .000 | 2 | 0 | 1 | 0 | 1.0 | 0 | 6.5 | .207 | 3-1 |
| Sep 21, 2018 | TENNESSEE | *4 | 4 | 3 | 14 | .071 | 0 | 0 | .000 | 0 | 0 | 0 | .000 | 0 | 0 | .000 | 2 | 0 | 0 | 0 | 0.0 | 0 | 4.0 | .160 | 1-3 |
| 09-26-18 | at Mississippi State | *5 | 4 | 1 | 9 | .333 | 0 | 0 | .000 | 0 | 0 | 0 | .000 | 0 | 0 | .000 | 0 | 0 | 2 | 0 | 2.0 | 0 | 5.0 | .276 | 2-3 |
| Oct 07, 2018 | ALABAMA | 1 | 4 | 0 | 8 | .500 | 0 | 0 | .000 | 0 | 0 | 0 | .000 | 0 | 1 | 1.000 | 0 | 0 | 0 | 0 | 0.0 | 0 | 4.0 | .127 | 0-3 |
| Oct 19, 2018 | at Mizzou | 2 | 2 | 2 | 7 | .000 | 0 | 0 | .000 | 0 | 0 | 0 | .000 | 0 | 0 | .000 | 1 | 0 | 0 | 0 | 0.0 | 0 | 2.0 | .127 | 1-3 |
| Totals | | 39 | 45 | 18 | 123 | .220 | 3 | 6 | .500 | 0 | 0 | 0 | .000 | 0 | 1 | 1.000 | 8 | 2 | 23 | 1 | 25.0 | 1 | 58.5 | | |

Sets played: 39
 Kills per set: 1.15
 Assists per set: 0.08

Digs per set: 0.21
 Blocks per set: 0.64

Points per set: 1.50

CAREER STATISTICS

| Year | Sets | MP | Kills | KPS | E | TA | Pct. | Ast. | APS | SA | SAPS | SE | Digs | DPS | RE | BS | BA | TB | BPS | Pts. | PTS |
|--------------|-----------|-----------|-----------|-------------|-----------|------------|-------------|----------|------------|----------|------------|----------|----------|------------|----------|----------|-----------|-----------|------------|-------------|-------------|
| 2018 | 39 | 12 | 45 | 1.15 | 18 | 123 | .220 | 3 | .08 | 0 | .00 | 0 | 8 | .21 | 0 | 2 | 23 | 25 | .64 | 58.5 | 1.49 |
| TOTAL | 39 | 12 | 45 | 1.15 | 18 | 123 | .220 | 3 | .08 | 0 | .00 | 0 | 8 | .21 | 0 | 2 | 23 | 25 | .64 | 58.5 | 1.49 |

SEC STATISTICS

| Year | Sets | MP | Kills | KPS | E | TA | Pct. | Ast. | APS | SA | SAPS | SE | Digs | DPS | RE | BS | BA | TB | BPS | Pts. | PTS |
|--------------|-----------|----------|-----------|-------------|----------|-----------|-------------|----------|------------|----------|------------|----------|----------|------------|----------|----------|----------|----------|------------|-------------|-------------|
| 2018 | 12 | 4 | 14 | 1.17 | 6 | 38 | .211 | 0 | .00 | 0 | .00 | 0 | 3 | .25 | 0 | 0 | 2 | 2 | .17 | 15.0 | 1.25 |
| TOTAL | 12 | 4 | 14 | 1.17 | 6 | 38 | .211 | 0 | .00 | 0 | .00 | 0 | 3 | .25 | 0 | 0 | 2 | 2 | .17 | 15.0 | 1.25 |



ANNA STEVENSON

SOPHOMORE / 6-1 / MB
LAURENS, S.C.
LAURENS HS

22

| Category | Career High | Opponent/Date |
|--------------------|-------------|---------------------------------|
| Kills | 13 | 3x, last at Ole Miss, 9/30/18 |
| Attempts | 27 | 2x, last vs. Missouri, 9/29/17 |
| Hitting Percentage | .667 | at Georgia Tech, 8/25/17 |
| Assists | 1 | 6x, last at Butler, 8/31/18 |
| Digs | 3 | 2x, last vs. Kentucky, 11/12/17 |
| Blocks | 9 | 2x, last at Ole Miss, 9/30/18 |
| Aces | - | - |
| Points | 20.0 | at Ole Miss, 9/30/18 |

| Category | Season High | Opponent/Date |
|--------------------|-------------|--|
| Kills | 13 | 2x, last at Ole Miss, 9/30/18 |
| Attempts | 24 | vs. Georgia, 10/3/18 |
| Hitting Percentage | .533 | vs. Eastern Illinois, 9/1/18 |
| Assists | 1 | at Butler, 8/31/18 |
| Digs | 1 | 4x, last at Mississippi State, 9/26/18 |
| Blocks | 9 | 2x, last at Ole Miss, 9/30/18 |
| Aces | - | - |
| Points | 20.0 | at Ole Miss, 9/30/18 |

STEVENSON'S SEASON NOTES

- Third on the team with a .260 hitting percentage.
- Kicked off the year with big numbers in the 3-0 win vs. High Point (8/24), tying a career-best with 13 kills and chipping in five blocks.
- Notched another 13-kill performance at Ole Miss (9/30).
- Came back for the Tigers at then-No. 25 Alabama (9/23) after a couple weeks off, totaling 12 kills on a .476 hitting clip with five blocks.
- Her 2.18 kills/set average is fourth on the team.
- Notched a season-best .533 hitting percentage (8-0-15) against Eastern Illinois (9/1).

- Set a career best with nine blocks at Mississippi State (9/26) and again at Ole Miss (9/30).
- Had six blocks at Butler (8/31) and vs. Georgia (10/3).
- Her 1.24 blocks/set average is leads the squad and is ranked No. 3 in the SEC.
- Averaging 1.38 blocks/set in conference-only play, ranking third in the league.

| Date | Opponent | sp | attack | | | | set | | | serve | | | recept | | | blocking | | | | team | | | | | | |
|--------------|----------------------|----|--------|----|----|-------|------|----|-------|-------|----|----|--------|------|----|----------|-------|----|----|------|-------|------|--------|-------|-------|--|
| | | | k | e | ta | pct | a | ta | pct | sa | se | ta | pct | re | ta | pct | dig | bs | ba | be | total | bhe | points | hit% | score | |
| Aug 24, 2018 | HIGH POINT | *3 | 13 | 3 | 20 | .500 | 0 | 0 | .000 | 0 | 0 | 0 | .000 | 0 | 1 | 1.000 | 0 | 3 | 2 | 1 | 5.0 | 0 | 17.0 | .203 | 3-0 | |
| Aug 25, 2018 | MICHIGAN | *3 | 5 | 3 | 21 | .095 | 0 | 1 | .000 | 0 | 0 | 0 | .000 | 0 | 0 | .000 | 1 | 0 | 2 | 2 | 2.0 | 0 | 6.0 | .128 | 0-3 | |
| Aug 31, 2018 | at Butler | *3 | 4 | 4 | 12 | .000 | 1 | 1 | 1.000 | 0 | 0 | 0 | .000 | 0 | 1 | 1.000 | 0 | 2 | 4 | 1 | 6.0 | 0 | 8.0 | .333 | 3-0 | |
| Sep 01, 2018 | vs Illinois State | *4 | 8 | 5 | 20 | .150 | 0 | 1 | .000 | 0 | 0 | 6 | 1.000 | 0 | 0 | .000 | 0 | 0 | 2 | 0 | 2.0 | 0 | 9.0 | .169 | 1-3 | |
| Sep 01, 2018 | vs EIU | *3 | 8 | 0 | 15 | .533 | 0 | 1 | .000 | 0 | 1 | 4 | .750 | 0 | 0 | .000 | 1 | 0 | 1 | 2 | 1.0 | 1 | 8.5 | .485 | 3-0 | |
| Sep 23, 2018 | at Alabama | *4 | 12 | 2 | 21 | .476 | 0 | 1 | .000 | 0 | 0 | 0 | .000 | 0 | 1 | 1.000 | 1 | 1 | 4 | 0 | 5.0 | 0 | 15.0 | .230 | 1-3 | |
| 09-26-18 | at Mississippi State | *5 | 10 | 3 | 22 | .318 | 0 | 2 | .000 | 0 | 2 | 8 | .750 | 0 | 1 | 1.000 | 1 | 2 | 7 | 0 | 9.0 | 0 | 15.5 | .276 | 2-3 | |
| Sep 30, 2018 | at Ole Miss | *4 | 13 | 5 | 22 | .364 | 0 | 0 | .000 | 0 | 0 | 0 | .000 | 0 | 0 | .000 | 0 | 5 | 4 | 0 | 9.0 | 0 | 20.0 | .293 | 3-1 | |
| Oct 03, 2018 | GEORGIA | *5 | 9 | 3 | 24 | .250 | 0 | 4 | .000 | 0 | 0 | 0 | .000 | 0 | 1 | 1.000 | 0 | 0 | 6 | 2 | 6.0 | 1 | 12.0 | .214 | 2-3 | |
| Oct 07, 2018 | ALABAMA | *3 | 6 | 3 | 16 | .188 | 0 | 0 | .000 | 0 | 0 | 2 | 1.000 | 0 | 0 | .000 | 1 | 1 | 3 | 0 | 4.0 | 0 | 8.5 | .127 | 0-3 | |
| Oct 12, 2018 | at Texas A&M | *3 | 4 | 4 | 11 | .000 | 0 | 0 | .000 | 0 | 0 | 0 | .000 | 0 | 0 | .000 | 0 | 0 | 2 | 1 | 2.0 | 0 | 5.0 | .188 | 0-3 | |
| Oct 14, 2018 | at LSU | *3 | 5 | 0 | 15 | .333 | 0 | 4 | .000 | 0 | 0 | 0 | .000 | 0 | 0 | .000 | 0 | 0 | 4 | 0 | 4.0 | 1 | 7.0 | .226 | 0-3 | |
| Oct 19, 2018 | at Mizzou | *2 | 1 | 4 | 8 | -.375 | 0 | 0 | .000 | 0 | 0 | 0 | .000 | 0 | 0 | .000 | 0 | 0 | 1 | 0 | 1.0 | 0 | 1.5 | .127 | 1-3 | |
| | | | 45 | 98 | 39 | 227 | .260 | 1 | 15 | .067 | 0 | 3 | 20 | .850 | 0 | 5 | 1.000 | 5 | 14 | 42 | 9 | 56.0 | 3 | 133.0 | | |

Sets played: 45
Kills per set: 2.18
Assists per set: 0.02

Digs per set: 0.11
Blocks per set: 1.24

Points per set: 2.96

CAREER STATISTICS

| Year | Sets | MP | Kills | KPS | E | TA | Pct. | Ast. | APS | SA | SAPS | SE | Digs | DPS | RE | BS | BA | TB | BPS | Pts. | PTS |
|--------------|------------|-----------|------------|-------------|------------|------------|-------------|----------|------------|----------|------------|----------|-----------|------------|----------|-----------|-----------|------------|------------|--------------|-------------|
| 2017 | 89 | 26 | 188 | 2.11 | 109 | 456 | .173 | 5 | .06 | 0 | .00 | 0 | 23 | .26 | 0 | 12 | 49 | 61 | .69 | 224.5 | 2.52 |
| 2018 | 45 | 13 | 98 | 2.18 | 39 | 227 | .260 | 1 | .02 | 0 | .00 | 3 | 5 | .11 | 0 | 14 | 42 | 56 | 1.24 | 133.0 | 2.96 |
| TOTAL | 134 | 39 | 286 | 2.13 | 148 | 683 | .202 | 6 | .04 | 0 | .00 | 3 | 28 | .21 | 0 | 26 | 91 | 117 | .87 | 357.5 | 2.66 |

SEC STATISTICS

| Year | Sets | MP | Kills | KPS | E | TA | Pct. | Ast. | APS | SA | SAPS | SE | Digs | DPS | RE | BS | BA | TB | BPS | Pts. | PTS |
|--------------|-----------|-----------|------------|-------------|-----------|------------|-------------|----------|------------|----------|------------|----------|-----------|------------|----------|-----------|-----------|-----------|------------|--------------|-------------|
| 2017 | 59 | 17 | 129 | 2.19 | 67 | 299 | .207 | 4 | .07 | 0 | .00 | 0 | 15 | .25 | 0 | 7 | 32 | 39 | .66 | 152.0 | 2.58 |
| 2018 | 29 | 8 | 60 | 2.07 | 24 | 139 | .259 | 0 | .00 | 0 | .00 | 2 | 3 | .10 | 0 | 9 | 31 | 40 | 1.38 | 84.5 | 2.90 |
| TOTAL | 88 | 25 | 189 | 2.15 | 91 | 438 | .224 | 4 | .05 | 0 | .00 | 2 | 18 | .20 | 0 | 16 | 63 | 79 | .90 | 236.5 | 2.68 |



PAYTON WHITE

SOPHOMORE / 5-7 / DS/L
ZIONSVILLE, IND.
CATHEDRAL HS



| Category | Career High | Opponent/Date |
|--------------------|-------------|--|
| Kills | 1 | vs. Loyola Marymount, 9/7/18 |
| Attempts | 1 | |
| Hitting Percentage | | |
| Assists | 6 | at Tennessee, 10/4/17 |
| Digs | 14 | 3x, last at Mississippi State, 9/26/18 |
| Blocks | | |
| Aces | 3 | at Kennesaw State, 9/11/18 |
| Points | 3.0 | at Kennesaw State, 9/11/18 |

| Category | Season High | Opponent/Date |
|--------------------|-------------|-------------------------------|
| Kills | 1 | 3x, last at LSU, 10/14/18 |
| Attempts | 1 | |
| Hitting Percentage | | |
| Assists | 4 | 2x, last at Ole Miss, 9/30/18 |
| Digs | 14 | at Mississippi State, 9/26/18 |
| Blocks | | |
| Aces | 3 | at Kennesaw State, 9/11/18 |
| Points | 3.0 | at Kennesaw State, 9/11/18 |

WHITE'S SEASON NOTES

- Fifth on the team with a 1.58 digs/set average.
- Picked up her first double-digit digs total of the season against Michigan (8/25), having 11 for the Tigers.
- Tied her career high with 14 at Mississippi State (9/26).
- Had a pair of six-dig performances in Indianapolis - at Butler (8/31) and vs. Illinois State (9/1).
- Set a career-best with three service aces at Kennesaw State (9/11).
- Finished with two service aces against Butler.

| Date | Opponent | sp | attack | | | | set | | | serve | | | | recept | | | dig | blocking | | | | team | | | |
|--------------|----------------------|----|--------|---|----|--------|-----|----|------|-------|----|-----|-------|--------|-----|-------|-----|----------|----|----|-------|------|--------|------|-------|
| | | | k | e | ta | pct | a | ta | pct | sa | se | ta | pct | re | ta | pct | | bs | ba | tb | total | bhe | points | hit% | score |
| Aug 24, 2018 | HIGH POINT | *3 | 0 | 0 | 0 | .000 | 3 | 6 | .500 | 1 | 1 | 16 | .938 | 1 | 16 | .938 | 3 | 0 | 0 | 0 | 0.0 | 0 | 1.0 | .203 | 3-0 |
| Aug 25, 2018 | MICHIGAN | *3 | 0 | 0 | 0 | .000 | 2 | 5 | .400 | 0 | 1 | 8 | .875 | 0 | 18 | 1.000 | 11 | 0 | 0 | 0 | 0.0 | 0 | 0.0 | .128 | 0-3 |
| Aug 31, 2018 | at Butler | *3 | 0 | 0 | 0 | .000 | 0 | 5 | .000 | 2 | 0 | 14 | 1.000 | 0 | 22 | 1.000 | 6 | 0 | 0 | 0 | 0.0 | 0 | 2.0 | .333 | 3-0 |
| Sep 01, 2018 | vs Illinois State | *4 | 0 | 0 | 0 | .000 | 1 | 2 | .500 | 0 | 2 | 17 | .882 | 0 | 2 | 1.000 | 6 | 0 | 0 | 0 | 0.0 | 0 | 0.0 | .169 | 1-3 |
| Sep 01, 2018 | vs EIU | 3 | 0 | 0 | 0 | .000 | 1 | 5 | .200 | 0 | 1 | 11 | .909 | 2 | 13 | .846 | 5 | 0 | 0 | 0 | 0.0 | 0 | 0.0 | .485 | 3-0 |
| Sep 07, 2018 | vs Loyola Marymount | 3 | 0 | 1 | 1 | -1.000 | 2 | 4 | .500 | 1 | 1 | 9 | .889 | 0 | 5 | 1.000 | 5 | 0 | 0 | 0 | 0.0 | 0 | 1.0 | .250 | 0-3 |
| Sep 07, 2018 | at Kansas | *5 | 0 | 0 | 0 | .000 | 3 | 10 | .300 | 0 | 0 | 16 | 1.000 | 1 | 19 | .947 | 6 | 0 | 0 | 0 | 0.0 | 0 | 0.0 | .222 | 3-2 |
| Sep 08, 2018 | vs American | 3 | 0 | 0 | 0 | .000 | 0 | 2 | .000 | 0 | 0 | 19 | 1.000 | 1 | 6 | .833 | 7 | 0 | 0 | 0 | 0.0 | 0 | 0.0 | .248 | 3-0 |
| Sep 11, 2018 | at Kennesaw State | 5 | 0 | 0 | 0 | .000 | 4 | 12 | .333 | 3 | 1 | 21 | .952 | 0 | 13 | 1.000 | 8 | 0 | 0 | 0 | 0.0 | 0 | 3.0 | .205 | 3-2 |
| Sep 16, 2018 | FLORIDA STATE | 4 | 0 | 0 | 0 | .000 | 1 | 4 | .250 | 0 | 2 | 22 | .909 | 0 | 12 | 1.000 | 5 | 0 | 0 | 0 | 0.0 | 0 | 0.0 | .207 | 3-1 |
| Sep 21, 2018 | TENNESSEE | 4 | 0 | 0 | 0 | .000 | 1 | 5 | .200 | 1 | 0 | 14 | 1.000 | 1 | 19 | .947 | 5 | 0 | 0 | 0 | 0.0 | 0 | 1.0 | .160 | 1-3 |
| Sep 23, 2018 | at Alabama | 4 | 0 | 0 | 0 | .000 | 2 | 6 | .333 | 1 | 1 | 14 | .929 | 1 | 23 | .957 | 6 | 0 | 0 | 0 | 0.0 | 0 | 1.0 | .230 | 1-3 |
| 09-26-18 | at Mississippi State | 5 | 0 | 0 | 0 | .000 | 3 | 6 | .500 | 0 | 4 | 19 | .789 | 4 | 20 | .800 | 14 | 0 | 0 | 0 | 0.0 | 0 | 0.0 | .276 | 2-3 |
| Sep 30, 2018 | at Ole Miss | 4 | 0 | 0 | 0 | .000 | 4 | 11 | .364 | 0 | 0 | 17 | 1.000 | 1 | 15 | .933 | 6 | 0 | 0 | 0 | 0.0 | 0 | 0.0 | .293 | 3-1 |
| Oct 03, 2018 | GEORGIA | 5 | 0 | 0 | 1 | .000 | 3 | 4 | .750 | 1 | 1 | 21 | .952 | 1 | 24 | .958 | 6 | 0 | 0 | 0 | 0.0 | 0 | 1.0 | .214 | 2-3 |
| Oct 07, 2018 | ALABAMA | 3 | 0 | 1 | 1 | -1.000 | 1 | 4 | .250 | 0 | 0 | 7 | 1.000 | 0 | 10 | 1.000 | 3 | 0 | 0 | 0 | 0.0 | 0 | 0.0 | .127 | 0-3 |
| Oct 12, 2018 | at Texas A&M | 3 | 0 | 0 | 0 | .000 | 1 | 3 | .333 | 1 | 0 | 11 | 1.000 | 0 | 13 | 1.000 | 3 | 0 | 0 | 0 | 0.0 | 0 | 1.0 | .188 | 0-3 |
| Oct 14, 2018 | at LSU | 3 | 0 | 0 | 1 | .000 | 0 | 1 | .000 | 1 | 0 | 10 | 1.000 | 0 | 11 | 1.000 | 3 | 0 | 0 | 0 | 0.0 | 0 | 1.0 | .226 | 0-3 |
| Oct 19, 2018 | at Mizzou | 4 | 0 | 0 | 0 | .000 | 0 | 1 | .000 | 0 | 0 | 6 | 1.000 | 0 | 14 | 1.000 | 4 | 0 | 0 | 0 | 0.0 | 0 | 0.0 | .127 | 1-3 |
| | | 71 | 0 | 2 | 4 | -.500 | 32 | 96 | .333 | 12 | 15 | 272 | .945 | 13 | 275 | .953 | 112 | 0 | 0 | 0 | 0.0 | 0 | 12.0 | | |

Sets played: 71
Kills per set: 0.00
Assists per set: 0.45

Service aces per set: 0.17
Digs per set: 1.58
Blocks per set: 0.00

Points per set: 0.17

CAREER STATISTICS

| Year | Sets | MP | Kills | KPS | E | TA | Pct. | Ast. | APS | SA | SAPS | SE | Digs | DPS | RE | BS | BA | TB | BPS | Pts. | PTS |
|--------------|------------|-----------|----------|------------|----------|----------|--------------|-----------|------------|-----------|------------|-----------|------------|-------------|-----------|----------|----------|----------|------------|-------------|------------|
| 2017 | 102 | 27 | 0 | .00 | 1 | 1 | -1.000 | 34 | .33 | 16 | .16 | 53 | 177 | 1.74 | 14 | 0 | 0 | 0 | .00 | 16.0 | .16 |
| 2018 | 71 | 19 | 0 | .00 | 2 | 4 | -.500 | 32 | .45 | 12 | .17 | 15 | 112 | 1.58 | 13 | 0 | 0 | 0 | .00 | 12.0 | .17 |
| TOTAL | 173 | 46 | 0 | .00 | 3 | 5 | -.600 | 66 | .38 | 28 | .16 | 68 | 289 | 1.67 | 27 | 0 | 0 | 0 | .00 | 28.0 | .16 |

SEC STATISTICS

| Year | Sets | MP | Kills | KPS | E | TA | Pct. | Ast. | APS | SA | SAPS | SE | Digs | DPS | RE | BS | BA | TB | BPS | Pts. | PTS |
|--------------|------------|-----------|----------|------------|----------|----------|--------------|-----------|------------|-----------|------------|-----------|------------|-------------|-----------|----------|----------|----------|------------|-------------|------------|
| 2017 | 69 | 18 | 0 | .00 | 1 | 1 | -1.000 | 24 | .35 | 10 | .14 | 35 | 115 | 1.67 | 10 | 0 | 0 | 0 | .00 | 10.0 | .14 |
| 2018 | 35 | 9 | 0 | .00 | 1 | 3 | -.333 | 15 | .43 | 5 | .14 | 6 | 50 | 1.43 | 8 | 0 | 0 | 0 | .00 | 5.0 | .14 |
| TOTAL | 104 | 27 | 0 | .00 | 2 | 4 | -.500 | 39 | .38 | 15 | .14 | 41 | 165 | 1.59 | 18 | 0 | 0 | 0 | .00 | 15.0 | .14 |



MICA ALLISON

FRESHMAN / 6-1 / S
WHITE HEATH, ILL.
SAINT THOMAS MOORE

| Category | Career High | Opponent/Date |
|--------------------|-------------|-------------------------------|
| Kills | 7 | at Kennesaw State, 9/11/18 |
| Attempts | 12 | at Missouri, 10/19/18 |
| Hitting Percentage | .800 | at Ole Miss, 9/30/18 |
| Assists | 54 | at Mississippi State, 9/26/18 |
| Digs | 13 | 3x, last vs. Georgia, 10/3/18 |
| Blocks | 6.0 | vs. Georgia, 10/3/18 |
| Aces | | vs. Eastern Illinois, 9/1/18 |
| Points | 9.0 | at Kennesaw State, 9/11/18 |

ALLISON'S SEASON NOTES

- Has started every match at setter so far for Auburn.
- Her 9.70 assists/set average ranks fifth in the Southeastern Conference, while her 9.29 average against league-only opponents is sixth.
- Finished with a career-high 54 assists at Mississippi State (9/26).
- Totaled 47 assists in the five-set win at Kansas (9/7) and again in the 3-1 win vs. Florida State (9/16).
- Had 43 assists in the team's 3-0 win over Eastern Illinois (9/1), pacing the Tigers to a .485 hitting percentage vs. the Panthers.
- Picked up the first double-double of her career against Illinois State

- (9/1), having 40 assists and 11 digs.
- Second double-double came vs. the Seminoles as she set a career high in digs with 13.
- Had a double-double at then-No. 25 Alabama with 41 assists, while tying her career number in digs (13).
- Another double-double vs. Georgia (10/3) with 46 assists and another 13 digs performance
- Has 36 blocks on the year, including a season-best six vs. Georgia.

| Date | Opponent | sp | attack | | | | set | | | serve | | | | recept | | | dig | blocking | | | team | | | | |
|--------------|----------------------|----|--------|----|-----|-------|-----|------|------|-------|----|-----|-------|--------|----|------|-----|----------|----|----|------|--------|------|-------|-----|
| | | | k | e | ta | pct | a | ta | pct | sa | se | ta | pct | re | ta | pct | | bs | ba | be | bhe | points | hit% | score | |
| Aug 24, 2018 | HIGH POINT | *3 | 3 | 1 | 8 | .250 | 33 | 91 | .363 | 0 | 3 | 14 | .786 | 0 | 0 | .000 | 8 | 0 | 1 | 1 | 1.0 | 0 | 3.5 | .203 | 3-0 |
| Aug 25, 2018 | MICHIGAN | *3 | 3 | 2 | 9 | .111 | 29 | 104 | .279 | 0 | 4 | 9 | .556 | 0 | 0 | .000 | 6 | 1 | 1 | 0 | 2.0 | 0 | 4.5 | .128 | 0-3 |
| Aug 31, 2018 | at Butler | *3 | 1 | 3 | 6 | -.333 | 30 | 60 | .500 | 0 | 2 | 11 | .818 | 0 | 0 | .000 | 1 | 0 | 1 | 0 | 1.0 | 0 | 1.5 | .333 | 3-0 |
| Sep 01, 2018 | vs Illinois State | *4 | 3 | 1 | 8 | .250 | 40 | 110 | .364 | 0 | 2 | 14 | .857 | 0 | 0 | .000 | 11 | 0 | 2 | 0 | 2.0 | 4 | 4.0 | .169 | 1-3 |
| Sep 01, 2018 | vs EIU | *3 | 4 | 2 | 10 | .200 | 43 | 81 | .531 | 2 | 0 | 11 | 1.000 | 0 | 0 | .000 | 2 | 0 | 0 | 0 | 0.0 | 2 | 6.0 | .485 | 3-0 |
| Sep 07, 2018 | vs Loyola Marymount | *3 | 2 | 1 | 7 | .143 | 24 | 62 | .387 | 1 | 2 | 8 | .750 | 0 | 0 | .000 | 2 | 0 | 2 | 0 | 2.0 | 0 | 4.0 | .250 | 0-3 |
| Sep 07, 2018 | at Kansas | *5 | 2 | 0 | 10 | .200 | 47 | 129 | .364 | 0 | 3 | 14 | .786 | 0 | 0 | .000 | 8 | 0 | 3 | 0 | 3.0 | 0 | 3.5 | .222 | 3-2 |
| Sep 08, 2018 | vs American | *3 | 1 | 2 | 9 | -.111 | 34 | 79 | .430 | 0 | 0 | 7 | 1.000 | 0 | 0 | .000 | 9 | 0 | 2 | 0 | 2.0 | 0 | 2.0 | .248 | 3-0 |
| Sep 11, 2018 | at Kennesaw State | *5 | 7 | 0 | 12 | .583 | 37 | 119 | .311 | 0 | 3 | 13 | .769 | 0 | 0 | .000 | 9 | 0 | 4 | 0 | 4.0 | 1 | 9.0 | .205 | 3-2 |
| Sep 16, 2018 | FLORIDA STATE | *4 | 2 | 0 | 10 | .200 | 47 | 130 | .362 | 1 | 2 | 13 | .846 | 0 | 0 | .000 | 13 | 0 | 0 | 0 | 0.0 | 0 | 3.0 | .207 | 3-1 |
| Sep 21, 2018 | TENNESSEE | *4 | 4 | 2 | 10 | .200 | 34 | 111 | .306 | 0 | 0 | 8 | 1.000 | 0 | 0 | .000 | 9 | 0 | 1 | 0 | 1.0 | 0 | 4.5 | .160 | 1-3 |
| Sep 23, 2018 | at Alabama | *4 | 2 | 3 | 10 | -.100 | 41 | 111 | .369 | 0 | 2 | 13 | .846 | 0 | 0 | .000 | 13 | 0 | 1 | 0 | 1.0 | 0 | 2.5 | .230 | 1-3 |
| 09-26-18 | at Mississippi State | *5 | 2 | 3 | 5 | -.200 | 54 | 127 | .425 | 1 | 1 | 12 | .917 | 0 | 0 | .000 | 9 | 0 | 3 | 0 | 3.0 | 5 | 4.5 | .276 | 2-3 |
| Sep 30, 2018 | at Ole Miss | *4 | 4 | 0 | 5 | .800 | 40 | 46 | .870 | 0 | 1 | 11 | .909 | 0 | 0 | .000 | 5 | 0 | 3 | 0 | 3.0 | 0 | 5.5 | .293 | 3-1 |
| Oct 03, 2018 | GEORGIA | *5 | 4 | 2 | 9 | .222 | 46 | 137 | .336 | 1 | 3 | 14 | .786 | 0 | 0 | .000 | 13 | 0 | 6 | 0 | 6.0 | 2 | 8.0 | .214 | 2-3 |
| Oct 07, 2018 | ALABAMA | *3 | 1 | 1 | 6 | .000 | 31 | 85 | .365 | 1 | 1 | 10 | .900 | 0 | 0 | .000 | 7 | 0 | 2 | 2 | 2.0 | 0 | 3.0 | .127 | 0-3 |
| Oct 12, 2018 | at Texas A&M | *3 | 0 | 1 | 5 | -.200 | 30 | 77 | .390 | 1 | 4 | 10 | .600 | 0 | 0 | .000 | 5 | 0 | 1 | 2 | 1.0 | 1 | 1.5 | .188 | 0-3 |
| Oct 14, 2018 | at LSU | *3 | 2 | 1 | 6 | .167 | 31 | 81 | .383 | 0 | 1 | 8 | .875 | 0 | 0 | .000 | 7 | 0 | 1 | 1 | 1.0 | 0 | 2.5 | .226 | 0-3 |
| Oct 19, 2018 | at Mizzou | *4 | 3 | 3 | 12 | .000 | 18 | 80 | .225 | 0 | 3 | 10 | .700 | 0 | 0 | .000 | 5 | 0 | 1 | 0 | 1.0 | 2 | 3.5 | .127 | 1-3 |
| | | 71 | 50 | 28 | 157 | .140 | 689 | 1820 | .379 | 8 | 37 | 210 | .824 | 0 | 0 | .000 | 142 | 1 | 35 | 6 | 36.0 | 17 | 76.5 | | |

Sets played: 71
Kills per set: 0.70
Assists per set: 9.70

Service aces per set: 0.11
Digs per set: 2.00
Blocks per set: 0.51

Points per set: 1.08

CAREER STATISTICS

| Year | Sets | MP | Kills | KPS | E | TA | Pct. | Ast. | APS | SA | SAPS | SE | Digs | DPS | RE | BS | BA | TB | BPS | Pts. | PTS |
|--------------|-----------|-----------|-----------|------------|-----------|------------|-------------|------------|-------------|----------|------------|-----------|------------|-------------|----------|----------|-----------|-----------|------------|-------------|-------------|
| 2018 | 71 | 19 | 50 | .70 | 28 | 157 | .140 | 689 | 9.70 | 8 | .11 | 37 | 142 | 2.00 | 0 | 1 | 35 | 36 | .51 | 76.5 | 1.07 |
| TOTAL | 71 | 19 | 50 | .70 | 28 | 157 | .140 | 689 | 9.70 | 8 | .11 | 37 | 142 | 2.00 | 0 | 1 | 35 | 36 | .51 | 76.5 | 1.07 |

SEC STATISTICS

| Year | Sets | MP | Kills | KPS | E | TA | Pct. | Ast. | APS | SA | SAPS | SE | Digs | DPS | RE | BS | BA | TB | BPS | Pts. | PTS |
|--------------|-----------|----------|-----------|------------|-----------|-----------|-------------|------------|-------------|----------|------------|-----------|-----------|-------------|----------|----------|-----------|-----------|------------|-------------|-------------|
| 2018 | 35 | 9 | 22 | .63 | 16 | 68 | .088 | 325 | 9.29 | 4 | .11 | 16 | 73 | 2.09 | 0 | 0 | 19 | 19 | .54 | 35.5 | 1.00 |
| TOTAL | 35 | 9 | 22 | .63 | 16 | 68 | .088 | 325 | 9.29 | 4 | .11 | 16 | 73 | 2.09 | 0 | 0 | 19 | 19 | .54 | 35.5 | 1.00 |



BELLA ROSENTHALL

FRESHMAN / 5-5 / DS
YORKTOWN, IND.
YORKTOWN HS

6

| Category | Career High | Opponent / Date |
|--------------------|-------------|-------------------------------------|
| Kills | - | - |
| Attempts | 1 | at Kansas, 9/7/18 |
| Hitting Percentage | - | - |
| Assists | 5 | 2x, last at Kennesaw State, 9/11/18 |
| Digs | 25 | at Kennesaw State, 9/11/18 |
| Blocks | - | - |
| Aces | 3 | at Ole Miss, 9/30/18 |
| Points | 3.0 | at Ole Miss, 9/30/18 |

ROSENTHALL'S SEASON NOTES

- Started 17 matches at libero for the Tigers and has played in the back row in all 19 contests.
- SEC Freshman of the Week - Sept. 17
- Leads the team with a 3.38 digs/set average.
- Has three 20-dig performances on the year - 20 at Kansas (9/7), career-high 25 at Kennesaw State (9/11), 20 vs. Florida State (9/16).
- Had an outstanding season-opening weekend defensively, totaling 17 digs against High Point (8/24) and following with 19 vs. Michigan (8/25).

- Set a career best in service aces at Ole Miss (9/30) with three.
- Chipped in two service aces against Illinois State (9/1).

| Date | Opponent | sp | attack | | | | set | | | serve | | | recept | | | dig | blocking | | | team | | | | | |
|--------------|----------------------|----|--------|---|----|------|-----|-----|------|-------|----|-----|--------|----|-----|-------|----------|----|----|------|-------|-----|--------|------|-------|
| | | | k | e | ta | pct | a | ta | pct | sa | se | ta | pct | re | ta | | pct | bs | ba | be | total | bhe | points | hit% | score |
| Aug 24, 2018 | HIGH POINT | 3 | 0 | 0 | 0 | .000 | 1 | 7 | .143 | 0 | 3 | 10 | .700 | 1 | 16 | .938 | 17 | 0 | 0 | 0 | 0.0 | 1 | 0.0 | .203 | 3-0 |
| Aug 25, 2018 | MICHIGAN | 3 | 0 | 0 | 0 | .000 | 1 | 7 | .143 | 1 | 0 | 13 | 1.000 | 0 | 11 | 1.000 | 19 | 0 | 0 | 0 | 0.0 | 0 | 1.0 | .128 | 0-3 |
| Aug 31, 2018 | at Butler | 3 | 0 | 0 | 0 | .000 | 2 | 9 | .222 | 0 | 2 | 10 | .800 | 0 | 7 | 1.000 | 7 | 0 | 0 | 0 | 0.0 | 0 | 0.0 | .333 | 3-0 |
| Sep 01, 2018 | vs Illinois State | 4 | 0 | 0 | 0 | .000 | 3 | 14 | .214 | 2 | 2 | 11 | .818 | 1 | 30 | .967 | 11 | 0 | 0 | 0 | 0.0 | 0 | 2.0 | .169 | 1-3 |
| Sep 01, 2018 | vs EIU | 3 | 0 | 0 | 0 | .000 | 3 | 5 | .600 | 0 | 0 | 14 | 1.000 | 0 | 10 | 1.000 | 8 | 0 | 0 | 0 | 0.0 | 0 | 0.0 | .485 | 3-0 |
| Sep 07, 2018 | vs Loyola Marymount | 3 | 0 | 0 | 0 | .000 | 1 | 9 | .111 | 0 | 0 | 11 | 1.000 | 3 | 14 | .786 | 6 | 0 | 0 | 0 | 0.0 | 0 | 0.0 | .250 | 0-3 |
| Sep 07, 2018 | at Kansas | 5 | 0 | 0 | 1 | .000 | 2 | 13 | .154 | 1 | 1 | 17 | .941 | 0 | 14 | 1.000 | 20 | 0 | 0 | 0 | 0.0 | 0 | 1.0 | .222 | 3-2 |
| Sep 08, 2018 | vs American | 3 | 0 | 0 | 0 | .000 | 5 | 15 | .333 | 0 | 1 | 14 | .929 | 0 | 18 | 1.000 | 14 | 0 | 0 | 0 | 0.0 | 0 | 0.0 | .248 | 3-0 |
| Sep 11, 2018 | at Kennesaw State | 5 | 0 | 0 | 0 | .000 | 5 | 17 | .294 | 1 | 1 | 22 | .955 | 2 | 11 | .818 | 25 | 0 | 0 | 0 | 0.0 | 1 | 1.0 | .205 | 3-2 |
| Sep 16, 2018 | FLORIDA STATE | 4 | 0 | 0 | 0 | .000 | 3 | 16 | .188 | 0 | 1 | 16 | .938 | 0 | 15 | 1.000 | 20 | 0 | 0 | 0 | 0.0 | 0 | 0.0 | .207 | 3-1 |
| Sep 21, 2018 | TENNESSEE | 4 | 0 | 0 | 0 | .000 | 3 | 14 | .214 | 0 | 1 | 14 | .929 | 0 | 22 | 1.000 | 14 | 0 | 0 | 0 | 0.0 | 0 | 0.0 | .160 | 1-3 |
| Sep 23, 2018 | at Alabama | 4 | 0 | 0 | 0 | .000 | 3 | 12 | .250 | 0 | 2 | 19 | .895 | 0 | 14 | 1.000 | 13 | 0 | 0 | 0 | 0.0 | 0 | 0.0 | .230 | 1-3 |
| 09-26-18 | at Mississippi State | 5 | 0 | 0 | 1 | .000 | 2 | 8 | .250 | 0 | 0 | 24 | 1.000 | 2 | 22 | .909 | 17 | 0 | 0 | 0 | 0.0 | 0 | 0.0 | .276 | 2-3 |
| Sep 30, 2018 | at Ole Miss | 4 | 0 | 0 | 0 | .000 | 3 | 9 | .333 | 3 | 1 | 15 | .933 | 0 | 11 | 1.000 | 6 | 0 | 0 | 0 | 0.0 | 0 | 3.0 | .293 | 3-1 |
| Oct 03, 2018 | GEORGIA | 5 | 0 | 0 | 0 | .000 | 4 | 15 | .267 | 1 | 1 | 14 | .929 | 3 | 30 | .900 | 18 | 0 | 0 | 0 | 0.0 | 0 | 1.0 | .214 | 2-3 |
| Oct 07, 2018 | ALABAMA | 3 | 0 | 0 | 0 | .000 | 1 | 14 | .071 | 1 | 3 | 11 | .727 | 2 | 16 | .875 | 4 | 0 | 0 | 0 | 0.0 | 0 | 1.0 | .127 | 0-3 |
| Oct 12, 2018 | at Texas A&M | 3 | 0 | 0 | 1 | .000 | 3 | 11 | .273 | 0 | 0 | 8 | 1.000 | 0 | 10 | 1.000 | 4 | 0 | 0 | 0 | 0.0 | 0 | 0.0 | .188 | 0-3 |
| Oct 14, 2018 | at LSU | 3 | 0 | 0 | 0 | .000 | 2 | 6 | .333 | 1 | 0 | 11 | 1.000 | 1 | 18 | .944 | 6 | 0 | 0 | 0 | 0.0 | 0 | 1.0 | .226 | 0-3 |
| Oct 19, 2018 | at Mizzou | 2 | 0 | 0 | 0 | .000 | 0 | 2 | .000 | 0 | 0 | 6 | 1.000 | 0 | 7 | 1.000 | 4 | 0 | 0 | 0 | 0.0 | 0 | 0.0 | .127 | 1-3 |
| | | 69 | 0 | 0 | 3 | .000 | 47 | 203 | .232 | 11 | 19 | 260 | .927 | 15 | 296 | .949 | 233 | 0 | 0 | 0 | 0.0 | 2 | 11.0 | | |

Sets played: 69
Kills per set: 0.00
Assists per set: 0.68

Service aces per set: 0.16
Digs per set: 3.38

Points per set: 0.16

CAREER STATISTICS

| Year | Sets | MP | Kills | KPS | E | TA | Pct. | Ast. | APS | SA | SAPS | SE | Digs | DPS | RE | BS | BA | TB | BPS | Pts. | PTS |
|--------------|-----------|-----------|----------|------------|----------|----------|-------------|-----------|------------|-----------|------------|-----------|------------|-------------|-----------|----------|----------|----------|------------|-------------|------------|
| 2018 | 69 | 19 | 0 | .00 | 0 | 3 | .000 | 47 | .68 | 11 | .16 | 19 | 233 | 3.38 | 15 | 0 | 0 | 0 | .00 | 11.0 | .16 |
| TOTAL | 69 | 19 | 0 | .00 | 0 | 3 | .000 | 47 | .68 | 11 | .16 | 19 | 233 | 3.38 | 15 | 0 | 0 | 0 | .00 | 11.0 | .16 |

SEC STATISTICS

| Year | Sets | MP | Kills | KPS | E | TA | Pct. | Ast. | APS | SA | SAPS | SE | Digs | DPS | RE | BS | BA | TB | BPS | Pts. | PTS |
|--------------|-----------|----------|----------|------------|----------|----------|-------------|-----------|------------|----------|------------|----------|-----------|-------------|----------|----------|----------|----------|------------|------------|------------|
| 2018 | 33 | 9 | 0 | .00 | 0 | 2 | .000 | 21 | .64 | 6 | .18 | 8 | 86 | 2.61 | 8 | 0 | 0 | 0 | .00 | 6.0 | .18 |
| TOTAL | 33 | 9 | 0 | .00 | 0 | 2 | .000 | 21 | .64 | 6 | .18 | 8 | 86 | 2.61 | 8 | 0 | 0 | 0 | .00 | 6.0 | .18 |



TAYLOR ROWLAND

FRESHMAN / 6-3 / OH
CHARLOTTE, N.C.
COX MILL

12

| Category | Career High | Opponent/Date |
|--------------------|-------------|---------------------------|
| Kills | 23 | at Kansas, 9/7/18 |
| Attempts | 59 | at Kansas, 9/7/18 |
| Hitting Percentage | .524 | at Butler, 8/31/18 |
| Assists | - | - |
| Digs | 4 | at Missouri, 10/19/18 |
| Blocks | 2 | 3x, last at LSU, 10/14/18 |
| Aces | - | - |
| Points | 24.0 | at Kansas, 9/7/18 |

ROWLAND'S SEASON NOTES

- SEC Freshman of the Week (Sept. 10)
- Has started six matches and has played in all 19 at outside hitter.
- Leads the team with a 2.91 kills/set average.
- Nine matches with double-digit kills.
- Reached a career-high 23 kills at Kansas (9/11), helping Auburn take down the Jayhawks in five sets.
- Finished with 14 kills vs. Eastern Illinois (9/1) and finished with a .500 hitting percentage (14-1-25).
- Went 12-1-21 at Butler (8/31) to kick off the Top Dawg Challenge,

- having a career-best .524 hitting clip.
- Reached a .480 attack percentage vs. Loyola Marymount (9/7), going 13-1-25 vs. the Lions.

| Date | Opponent | sp | attack | | | | set | | serve | | | recept | | | dig | blocking | | | | team | | | | | |
|--------------|----------------------|----|--------|----|-----|-------|-----|----|-------|----|----|--------|-------|----|-----|----------|-----|----|----|------|-------|-----|--------|------|-------|
| | | | k | e | ta | pct | a | ta | pct | sa | se | ta | pct | re | | ta | pct | bs | ba | be | total | bhe | points | hit% | score |
| Aug 24, 2018 | HIGH POINT | *3 | 5 | 6 | 24 | -.042 | 0 | 0 | .000 | 0 | 0 | 0 | .000 | 0 | 2 | 1.000 | 1 | 0 | 0 | 0 | 0.0 | 0 | 5.0 | .203 | 3-0 |
| Aug 25, 2018 | MICHIGAN | 1 | 3 | 1 | 8 | .250 | 0 | 0 | .000 | 0 | 0 | 0 | .000 | 0 | 2 | 1.000 | 0 | 0 | 0 | 0 | 0.0 | 0 | 3.0 | .128 | 0-3 |
| Aug 31, 2018 | at Butler | *3 | 12 | 1 | 21 | .524 | 0 | 0 | .000 | 0 | 0 | 0 | .000 | 0 | 2 | 1.000 | 1 | 0 | 1 | 1 | 1.0 | 0 | 12.5 | .333 | 3-0 |
| Sep 01, 2018 | vs Illinois State | *4 | 10 | 8 | 32 | .062 | 0 | 0 | .000 | 0 | 0 | 0 | .000 | 1 | 10 | .900 | 1 | 0 | 2 | 0 | 2.0 | 0 | 11.0 | .169 | 1-3 |
| Sep 01, 2018 | vs EIU | 3 | 14 | 1 | 26 | .500 | 0 | 0 | .000 | 0 | 0 | 0 | .000 | 0 | 0 | .000 | 1 | 0 | 1 | 0 | 1.0 | 0 | 14.5 | .485 | 3-0 |
| Sep 07, 2018 | vs Loyola Marymount | 3 | 13 | 1 | 25 | .480 | 0 | 1 | .000 | 0 | 0 | 0 | .000 | 0 | 3 | 1.000 | 1 | 0 | 1 | 1 | 1.0 | 0 | 13.5 | .250 | 0-3 |
| Sep 07, 2018 | at Kansas | *5 | 23 | 10 | 59 | .220 | 0 | 0 | .000 | 0 | 0 | 0 | .000 | 0 | 5 | 1.000 | 1 | 1 | 0 | 0 | 1.0 | 0 | 24.0 | .222 | 3-2 |
| Sep 08, 2018 | vs American | 3 | 12 | 4 | 28 | .286 | 0 | 0 | .000 | 0 | 0 | 0 | .000 | 0 | 2 | 1.000 | 2 | 0 | 0 | 0 | 0.0 | 0 | 12.0 | .248 | 3-0 |
| Sep 11, 2018 | at Kennesaw State | 2 | 2 | 6 | 16 | -.250 | 0 | 1 | .000 | 0 | 0 | 0 | .000 | 0 | 7 | 1.000 | 1 | 0 | 0 | 0 | 0.0 | 0 | 2.0 | .205 | 3-2 |
| Sep 16, 2018 | FLORIDA STATE | 3 | 5 | 6 | 22 | -.045 | 1 | 1 | 1.000 | 0 | 0 | 0 | .000 | 0 | 3 | 1.000 | 2 | 0 | 1 | 0 | 1.0 | 0 | 5.5 | .207 | 3-1 |
| Sep 21, 2018 | TENNESSEE | 4 | 11 | 8 | 42 | .071 | 0 | 0 | .000 | 0 | 0 | 0 | .000 | 0 | 9 | 1.000 | 2 | 0 | 1 | 0 | 1.0 | 0 | 11.5 | .160 | 1-3 |
| Sep 23, 2018 | at Alabama | 4 | 16 | 6 | 42 | .238 | 0 | 1 | .000 | 0 | 0 | 0 | .000 | 0 | 7 | 1.000 | 2 | 1 | 1 | 0 | 2.0 | 0 | 17.5 | .230 | 1-3 |
| 09-26-18 | at Mississippi State | 4 | 9 | 4 | 23 | .217 | 0 | 0 | .000 | 0 | 0 | 0 | .000 | 0 | 0 | .000 | 1 | 0 | 0 | 0 | 0.0 | 0 | 9.0 | .276 | 2-3 |
| Sep 30, 2018 | at Ole Miss | 4 | 9 | 2 | 24 | .292 | 0 | 3 | .000 | 0 | 0 | 0 | .000 | 0 | 3 | 1.000 | 3 | 0 | 1 | 0 | 1.0 | 0 | 9.5 | .293 | 3-1 |
| Oct 03, 2018 | GEORGIA | 5 | 9 | 4 | 26 | .192 | 0 | 0 | .000 | 0 | 0 | 0 | .000 | 0 | 3 | 1.000 | 1 | 0 | 0 | 0 | 0.0 | 0 | 9.0 | .214 | 2-3 |
| Oct 07, 2018 | ALABAMA | 3 | 6 | 5 | 25 | .040 | 0 | 0 | .000 | 0 | 0 | 0 | .000 | 2 | 8 | .750 | 2 | 0 | 0 | 0 | 0.0 | 0 | 6.0 | .127 | 0-3 |
| Oct 12, 2018 | at Texas A&M | 3 | 9 | 6 | 29 | .103 | 0 | 3 | .000 | 0 | 0 | 2 | 1.000 | 0 | 9 | 1.000 | 1 | 0 | 1 | 0 | 1.0 | 0 | 9.5 | .188 | 0-3 |
| Oct 14, 2018 | at LSU | *3 | 6 | 6 | 30 | .000 | 0 | 2 | .000 | 0 | 0 | 1 | 1.000 | 1 | 10 | .900 | 2 | 0 | 2 | 0 | 2.0 | 0 | 7.0 | .226 | 0-3 |
| Oct 19, 2018 | at Mizzou | *4 | 12 | 6 | 42 | .143 | 0 | 3 | .000 | 0 | 0 | 3 | 1.000 | 0 | 21 | 1.000 | 4 | 1 | 0 | 0 | 1.0 | 0 | 13.0 | .127 | 1-3 |
| | | 64 | 186 | 91 | 544 | .175 | 1 | 15 | .067 | 0 | 0 | 6 | 1.000 | 4 | 106 | .962 | 29 | 3 | 12 | 2 | 15.0 | 0 | 195.0 | | |

Sets played: 64
Kills per set: 2.91
Assists per set: 0.02
Digs per set: 0.45
Blocks per set: 0.23
Points per set: 3.05

CAREER STATISTICS

| Year | Sets | MP | Kills | KPS | E | TA | Pct. | Ast. | APS | SA | SAPS | SE | Digs | DPS | RE | BS | BA | TB | BPS | Pts. | PTS |
|--------------|-----------|-----------|------------|-------------|-----------|------------|-------------|----------|------------|----------|------------|----------|-----------|------------|----------|----------|-----------|-----------|------------|--------------|-------------|
| 2018 | 64 | 19 | 186 | 2.91 | 91 | 544 | .175 | 1 | .02 | 0 | .00 | 0 | 29 | .45 | 4 | 3 | 12 | 15 | .23 | 195.0 | 3.05 |
| TOTAL | 64 | 19 | 186 | 2.91 | 91 | 544 | .175 | 1 | .02 | 0 | .00 | 0 | 29 | .45 | 4 | 3 | 12 | 15 | .23 | 195.0 | 3.05 |

SEC STATISTICS

| Year | Sets | MP | Kills | KPS | E | TA | Pct. | Ast. | APS | SA | SAPS | SE | Digs | DPS | RE | BS | BA | TB | BPS | Pts. | PTS |
|--------------|-----------|----------|-----------|-------------|-----------|------------|-------------|----------|------------|----------|------------|----------|-----------|------------|----------|----------|----------|----------|------------|-------------|-------------|
| 2018 | 34 | 9 | 87 | 2.56 | 47 | 283 | .141 | 0 | .00 | 0 | .00 | 0 | 18 | .53 | 3 | 2 | 6 | 8 | .24 | 92.0 | 2.71 |
| TOTAL | 34 | 9 | 87 | 2.56 | 47 | 283 | .141 | 0 | .00 | 0 | .00 | 0 | 18 | .53 | 3 | 2 | 6 | 8 | .24 | 92.0 | 2.71 |



TATUM SHIPES

FRESHMAN / 6-4 / OH
 BUFORD, GA.
 BUFORD HS

| Category | Career High | Opponent / Date |
|--------------------|-------------|----------------------------|
| Kills | 10 | at LSU, 10/14/18 |
| Attempts | 30 | at Kennesaw State, 9/11/18 |
| Hitting Percentage | .750 | vs. Florida State, 9/16/18 |
| Assists | - | - |
| Digs | 3 | at LSU, 10/14/18 |
| Blocks | 3 | at LSU, 10/14/18 |
| Aces | - | - |
| Points | 11.5 | at LSU, 10/14/18 |

SHIPES' SEASON NOTES

- Started for the Tigers at outside hitter vs. Michigan (8/25).
- Played in all three sets at LSU (10/14), setting a career best with 10 kills on the outside.
- Had five kills against the Wolverines.
- Came in at Kennesaw State (9/11) and reached seven kills vs. the Owls.
- Tied her career high vs. Florida State (9/16), having seven kills in two sets in the 3-1 win.
- Hit .750 (7-1-8) vs. the Seminoles.
- Had four kills on six attempts in a set played at Texas A&M (10/12).

- Came in off the bench vs. High Point (8/24) and picked up two digs.
- Defensively, set new career bests in digs (3) and blocks (3) at LSU.

| Date | Opponent | sp | attack | | | | set | | | serve | | | | recept | | | dig | blocking | | | | team | | | |
|--------------|----------------------|----|--------|----|-----|-------|-----|----|------|-------|----|----|------|--------|----|-------|-----|----------|----|----|-------|------|--------|------|-------|
| | | | k | e | ta | pct | a | ta | pct | sa | se | ta | pct | re | ta | pct | | bs | ba | be | total | bhe | points | hit% | score |
| Aug 24, 2018 | HIGH POINT | 1 | 0 | 0 | 1 | .000 | 0 | 0 | .000 | 0 | 0 | 0 | .000 | 0 | 0 | .000 | 2 | 0 | 0 | 0 | 0.0 | 0 | 0.0 | .203 | 3-0 |
| Aug 25, 2018 | MICHIGAN | *3 | 5 | 4 | 22 | .045 | 0 | 2 | .000 | 0 | 0 | 0 | .000 | 0 | 2 | 1.000 | 1 | 0 | 0 | 0 | 0.0 | 0 | 5.0 | .128 | 0-3 |
| Sep 07, 2018 | vs Loyola Marymount | 1 | 0 | 0 | 0 | .000 | 0 | 0 | .000 | 0 | 0 | 0 | .000 | 0 | 0 | .000 | 0 | 0 | 0 | 0 | 0.0 | 0 | 0.0 | .250 | 0-3 |
| Sep 08, 2018 | vs American | 1 | 0 | 0 | 1 | .000 | 0 | 0 | .000 | 0 | 0 | 0 | .000 | 0 | 0 | .000 | 0 | 0 | 0 | 0 | 0.0 | 0 | 0.0 | .248 | 3-0 |
| Sep 11, 2018 | at Kennesaw State | 4 | 7 | 2 | 30 | .167 | 0 | 0 | .000 | 0 | 0 | 0 | .000 | 0 | 4 | 1.000 | 0 | 0 | 1 | 0 | 1.0 | 0 | 7.5 | .205 | 3-2 |
| Sep 16, 2018 | FLORIDA STATE | 2 | 7 | 1 | 8 | .750 | 0 | 1 | .000 | 0 | 0 | 0 | .000 | 0 | 3 | 1.000 | 1 | 1 | 1 | 0 | 2.0 | 0 | 8.5 | .207 | 3-1 |
| Sep 21, 2018 | TENNESSEE | 1 | 1 | 0 | 1 | 1.000 | 0 | 0 | .000 | 0 | 0 | 0 | .000 | 0 | 1 | 1.000 | 0 | 0 | 0 | 0 | 0.0 | 0 | 1.0 | .160 | 1-3 |
| 09-26-18 | at Mississippi State | 2 | 4 | 1 | 8 | .375 | 0 | 0 | .000 | 0 | 0 | 0 | .000 | 1 | 3 | .667 | 1 | 0 | 0 | 0 | 0.0 | 0 | 4.0 | .276 | 2-3 |
| Oct 07, 2018 | ALABAMA | 2 | 2 | 1 | 7 | .143 | 0 | 0 | .000 | 0 | 0 | 0 | .000 | 0 | 1 | 1.000 | 0 | 0 | 1 | 0 | 1.0 | 0 | 2.5 | .127 | 0-3 |
| Oct 12, 2018 | at Texas A&M | 1 | 4 | 1 | 6 | .500 | 0 | 0 | .000 | 0 | 0 | 0 | .000 | 0 | 1 | 1.000 | 2 | 0 | 1 | 0 | 1.0 | 0 | 4.5 | .188 | 0-3 |
| Oct 14, 2018 | at LSU | 3 | 10 | 3 | 29 | .241 | 0 | 5 | .000 | 0 | 0 | 0 | .000 | 0 | 2 | 1.000 | 3 | 0 | 3 | 1 | 3.0 | 0 | 11.5 | .226 | 0-3 |
| Oct 19, 2018 | at Mizzou | 4 | 8 | 4 | 28 | .143 | 0 | 1 | .000 | 0 | 0 | 0 | .000 | 1 | 5 | .800 | 1 | 1 | 0 | 0 | 1.0 | 0 | 9.0 | .127 | 1-3 |
| Totals | | 25 | 48 | 17 | 141 | .220 | 0 | 9 | .000 | 0 | 0 | 0 | .000 | 2 | 22 | .909 | 11 | 2 | 7 | 1 | 9.0 | 0 | 53.5 | | |

Sets played: 25
 Kills per set: 1.92

Digs per set: 0.44
 Blocks per set: 0.36

Points per set: 2.14

CAREER STATISTICS

| Year | Sets | MP | Kills | KPS | E | TA | Pct. | Ast. | APS | SA | SAPS | SE | Digs | DPS | RE | BS | BA | TB | BPS | Pts. | PTS |
|--------------|-----------|-----------|-----------|-------------|-----------|------------|-------------|----------|------------|----------|------------|----------|-----------|------------|----------|----------|----------|----------|------------|-------------|-------------|
| 2018 | 25 | 12 | 48 | 1.92 | 17 | 141 | .220 | 0 | .00 | 0 | .00 | 0 | 11 | .44 | 2 | 2 | 7 | 9 | .36 | 53.5 | 2.12 |
| TOTAL | 25 | 12 | 48 | 1.92 | 17 | 141 | .220 | 0 | .00 | 0 | .00 | 0 | 11 | .44 | 2 | 2 | 7 | 9 | .36 | 53.5 | 2.12 |

SEC STATISTICS

| Year | Sets | MP | Kills | KPS | E | TA | Pct. | Ast. | APS | SA | SAPS | SE | Digs | DPS | RE | BS | BA | TB | BPS | Pts. | PTS |
|--------------|-----------|----------|-----------|-------------|-----------|-----------|-------------|----------|------------|----------|------------|----------|----------|------------|----------|----------|----------|----------|------------|-------------|-------------|
| 2018 | 13 | 6 | 29 | 2.23 | 10 | 79 | .241 | 0 | .00 | 0 | .00 | 0 | 7 | .54 | 2 | 1 | 5 | 6 | .46 | 32.5 | 2.46 |
| TOTAL | 13 | 6 | 29 | 2.23 | 10 | 79 | .241 | 0 | .00 | 0 | .00 | 0 | 7 | .54 | 2 | 1 | 5 | 6 | .46 | 32.5 | 2.46 |



ISABELLA THOMPSON

SENIOR / 6-0 / MB
STOCKTON, CALIF.
SAINT MARY'S HS
SANTA BARBARA CITY COLLEGE

2

AT SBCC: Two-time All-WSC North performer ... Guided Santa Barbara City College to two WSC North titles and helped the team go 48-8 over two seasons (2015, 2016) ... Totaled 101 kills and 70 blocks in 2016, while her 50 solo blocks ranked No. 2 in the Western State Conference.

HIGHSCHOOL / CLUB: Played high school volleyball at Saint Mary's High School ... Competed with Pacific Coast Volleyball Club ... Four-time conference champion with Saint Mary's ... Member of the PCVC team that captured the Southern California Volleyball Association championship in 2015.

PERSONAL: Full name is Isabella Louise Thompson ... Daughter of Gina and Kevin Thompson ... Has an older brother, Nathaniel ... Plans on majoring in psychology through the College of Liberal Arts.



SHEA MCNAMARA

SOPHOMORE / 6-1 / MB
CUMMING, GA.
SOUTH FORSYTH HS

5

HIGH SCHOOL / CLUB: Guided South Forsyth High School to the state championship in 2015 and the state Final Four in 2016 ... 2015 All-State honorable mention ... 2015 All-Region first team ... 2015 Breakout Player of the Year ... 2014 All-County honorable mention ... Competed with A5 Volleyball Club.

PERSONAL: Full name is Shealyn Christin McNamara ... Daughter of Joe and Karen McNamara ... Has an older brother, Liam, who currently attends Auburn ... Has a younger brother, Reilly ... Grandfather played football at Kings College in Pennsylvania ... Plans on pursuing a degree in biomedical sciences with the College of Science and Mathematics.



KATIE PERSONS

FRESHMAN / 5-3 / DS
GRAND RAPIDS, MICH.
EAST GRAND RAPIDS

14

FRESHMAN SEASON (2018): Came off the bench for a set vs. Eastern Illinois (9/1) and had a dig vs. the Panthers ... Also played in a set for the Tigers at Mississippi State (9/26).

HIGH SCHOOL / CLUB: Two-time All-Region honoree ... 2016 All-State Third Team ... 2017 All-State Honorable Mention ... 2017 First Team All-Area ... 2017 First Team All-Conference honoree ... 2015-2016 AVCA Phenom List.

PERSONAL: Full name is Kathryn Grace Persons ... Daughter of Vint and Mari Person ... Has a sister, Maggie ... Dad played tennis at Michigan State ... Majoring in Nutrition with the College of Human Sciences.



VAL GREEN

FRESHMAN / 6-2 / OH
OXFORD, OHIO
TALAWANDA HS

16

FRESHMAN SEASON (2018): Came off the bench vs. Illinois State (9/1) to serve.

HIGH SCHOOL / CLUB: Three-time Southwest Ohio Conference Volleyball Athlete of the Year ... Three-time Southwest Ohio Conference First Team honoree ... Three-time Talawanda Most Valuable Player.

PERSONAL: Full name is Valerie Anne Green ... Daughter of Matt and Paula Green ... Has a sister, Norah ... Mom played volleyball at Miami (OH) ... Father played basketball at Nebraska Wesleyan ... Also holds her school's high jump record ... Planning on majoring in Physics with the College of Sciences and Mathematics.